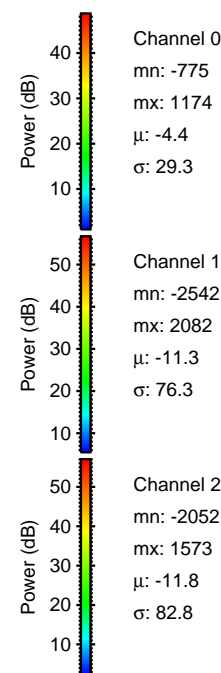
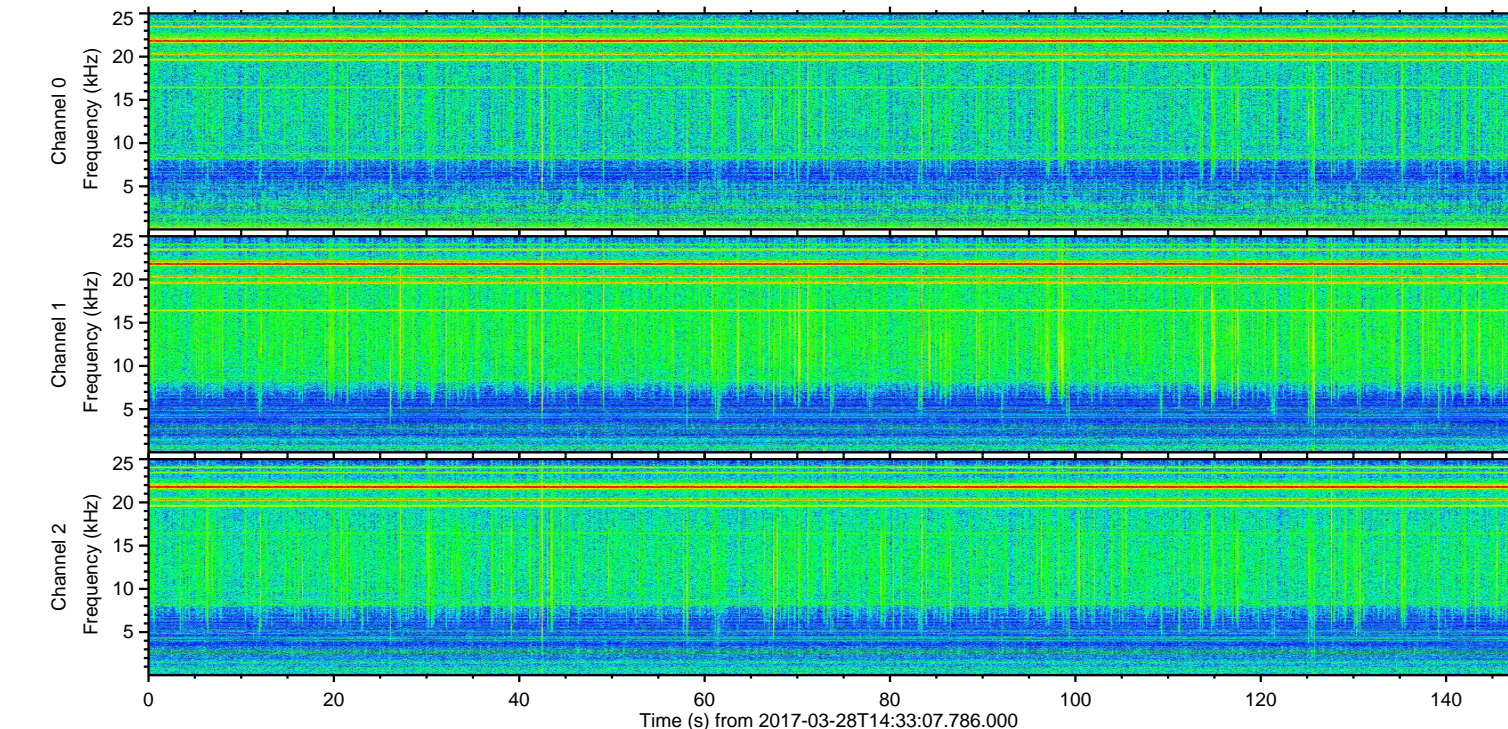
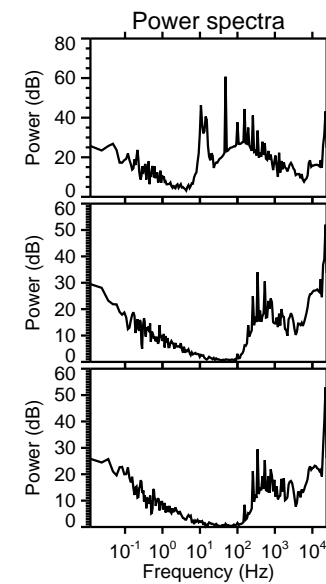
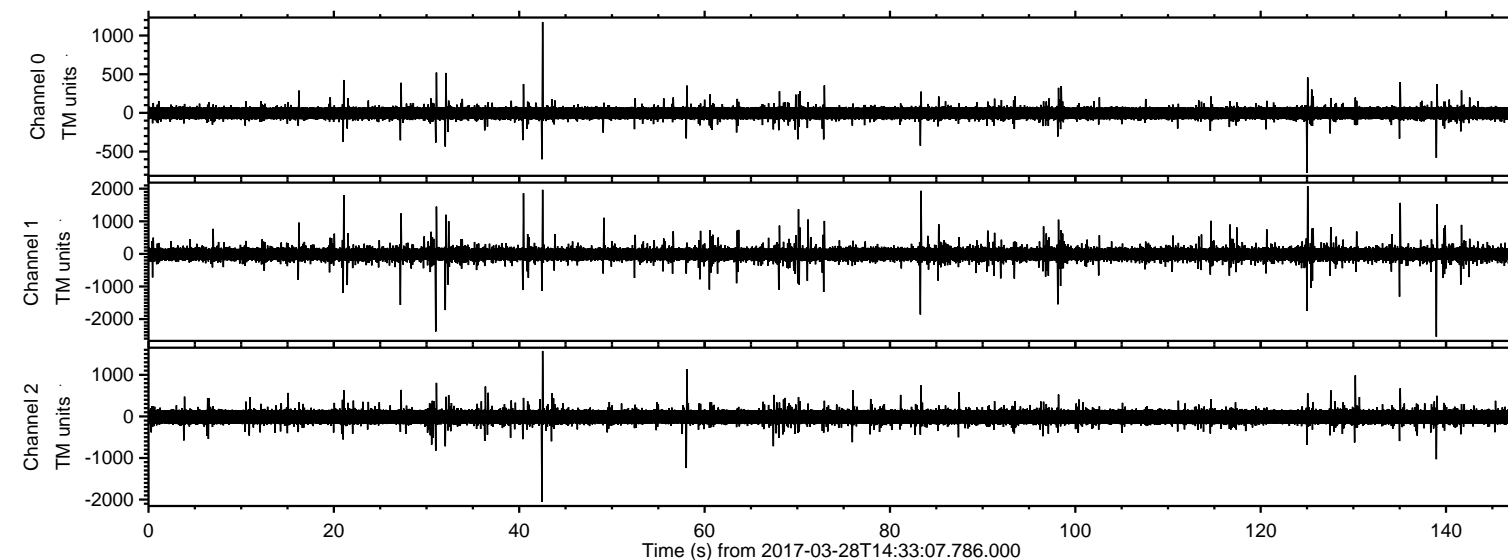


# ELMAVAN 3D WAVEFORMS (Measured data sampled at 50 kHz) 51000 packets of 144 samples from 2017-03-28T14:33:07.786.000.

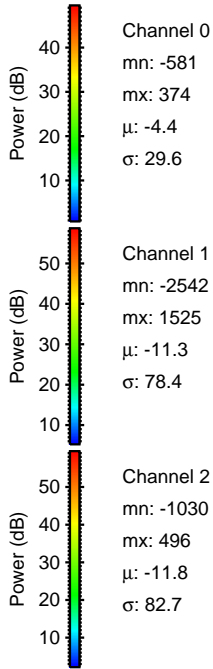
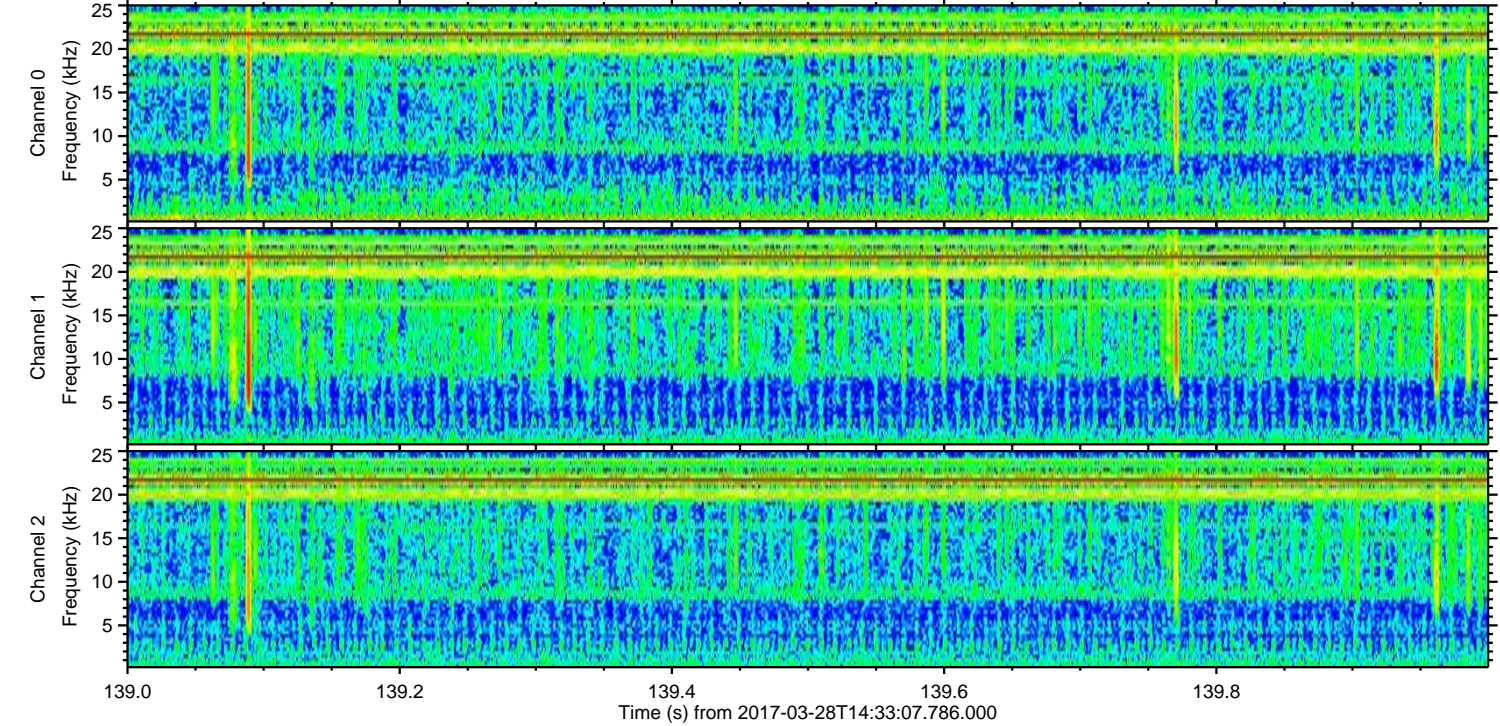
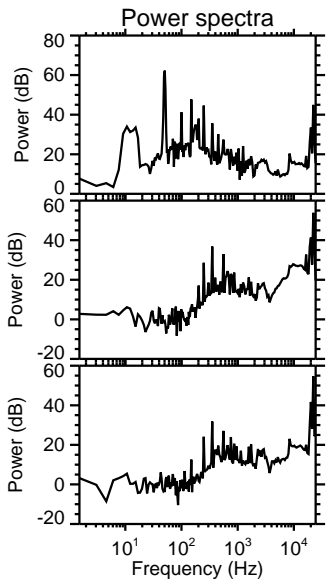
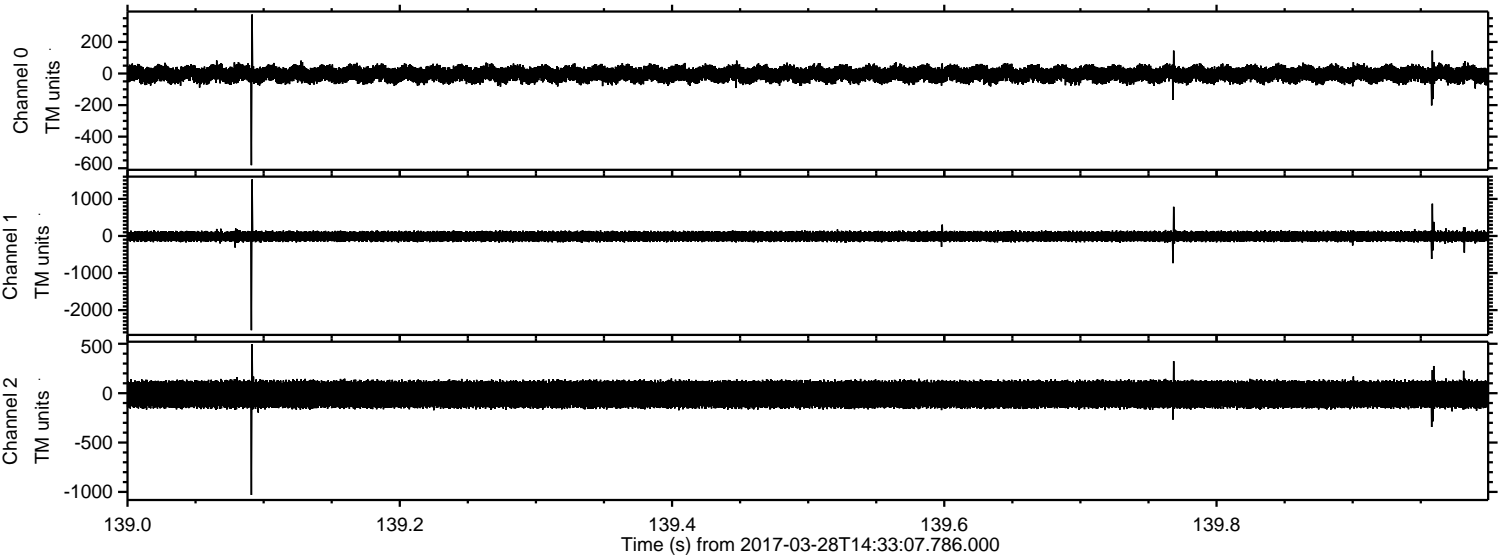
Processed Tue Mar 28 16:40:54 2017 by ELM ver.2012-10-06 from 001\_\_elm20170328\_143306\_\_dat00.bin





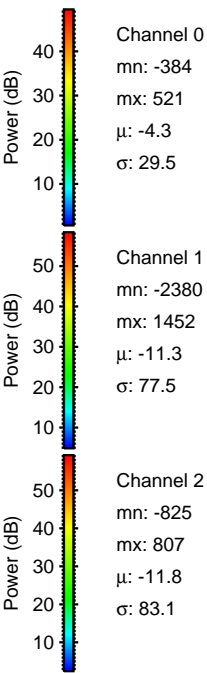
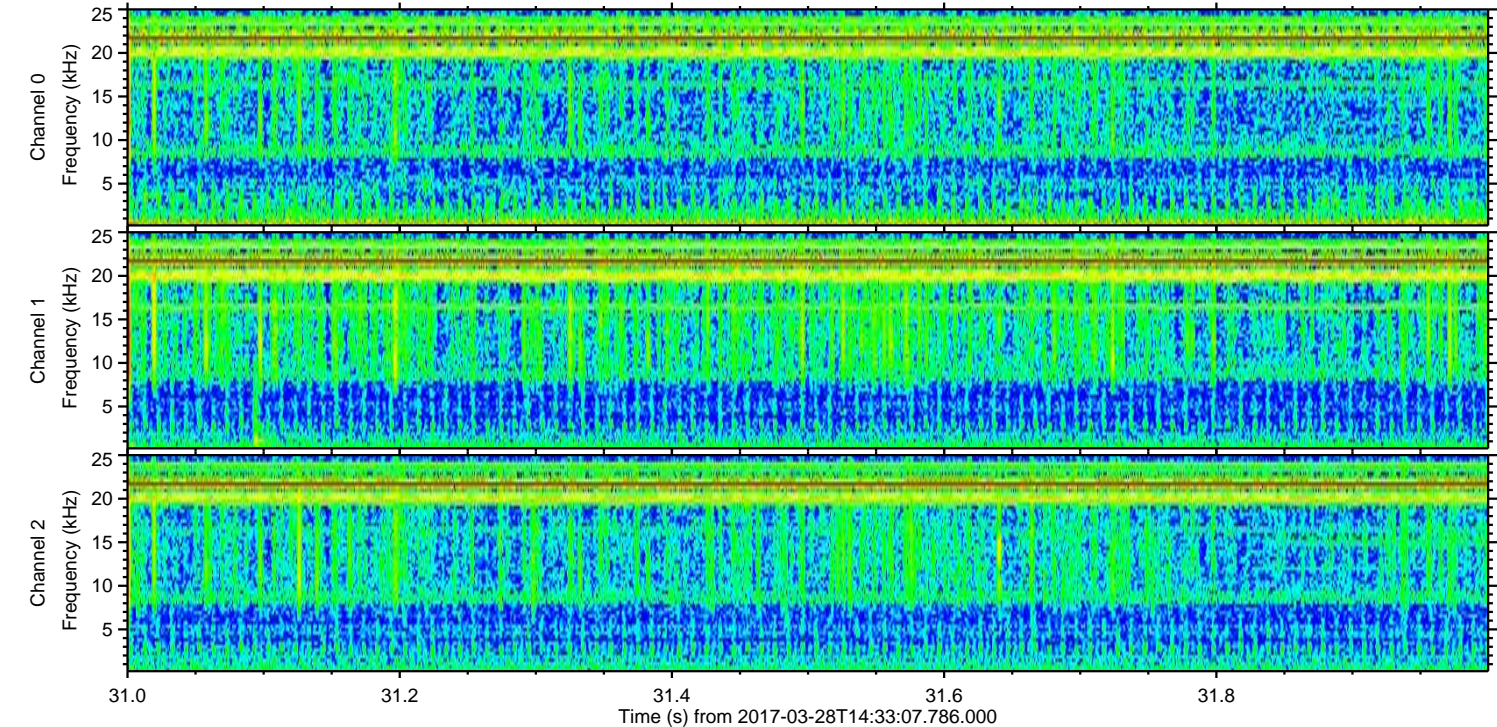
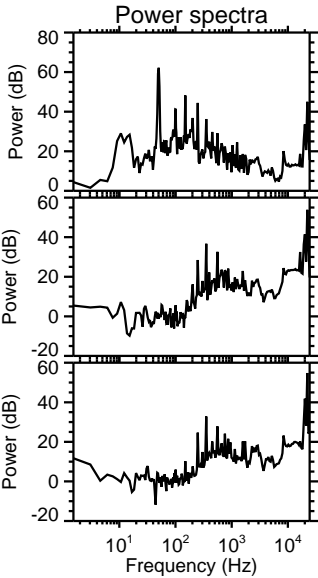
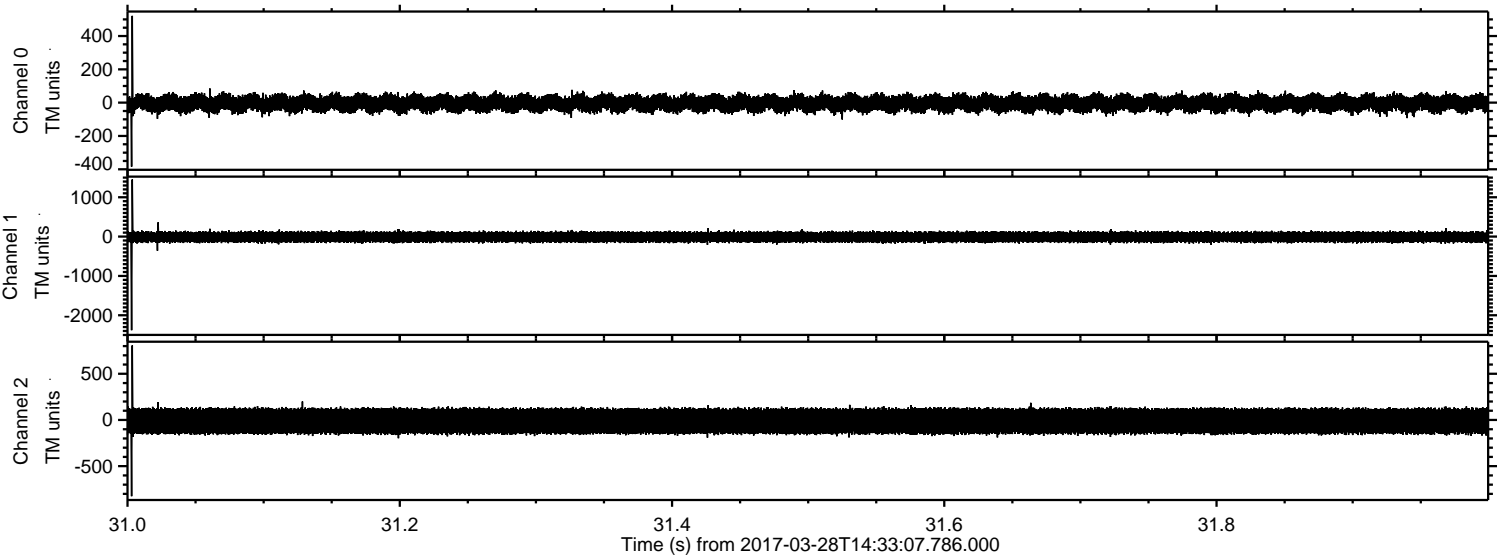
ELMAVAN 3D WAVEFORMS (Measured data sampled at 50 kHz) 51000 packets of 144 samples from 2017-03-28T14:33:07.786.000. Part 140/147

Processed Tue Mar 28 16:41:12 2017 by ELM ver.2012-10-06 from 001\_\_elm20170328\_143306\_\_dat00.bin





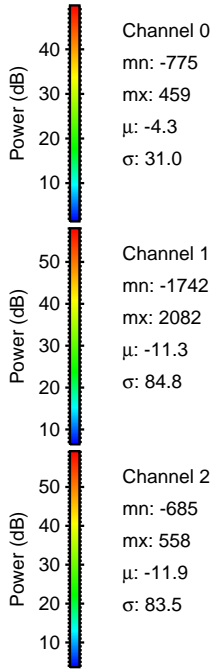
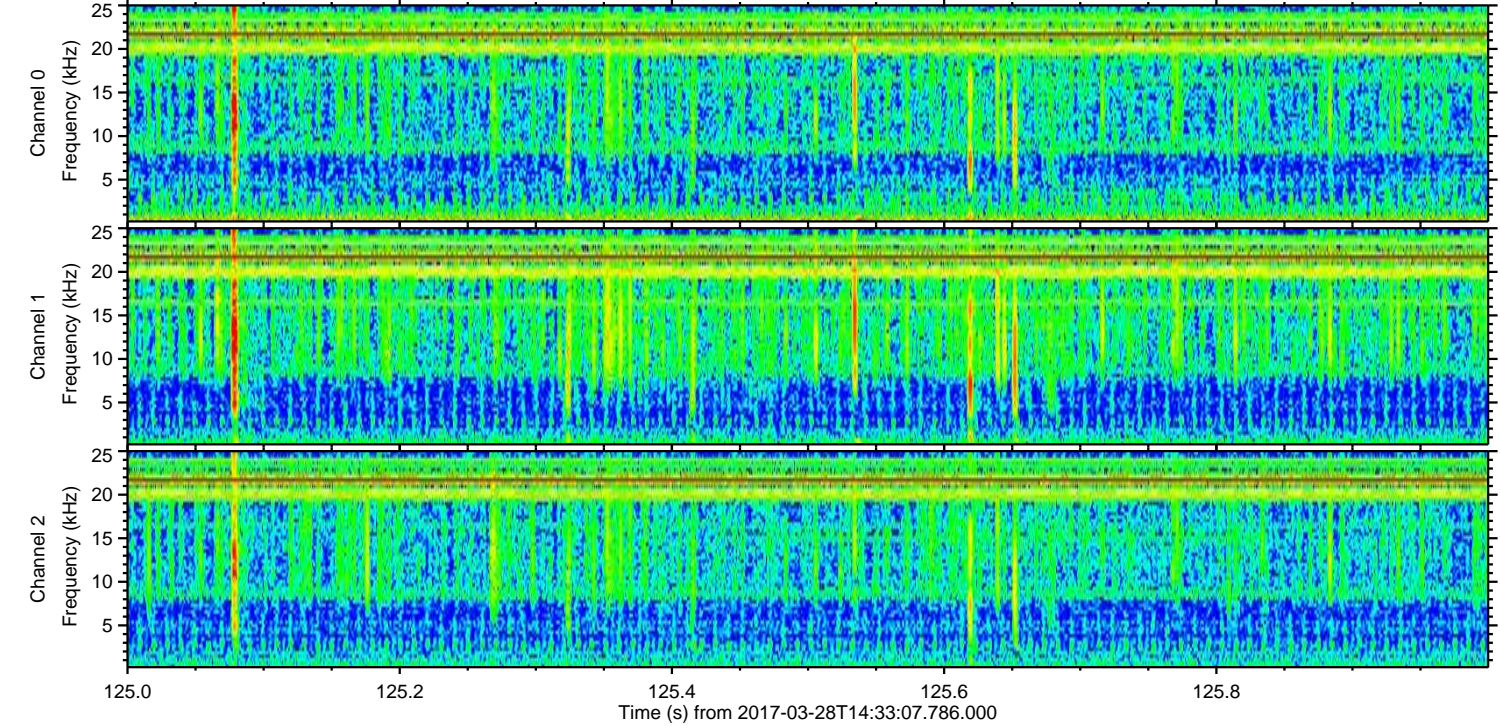
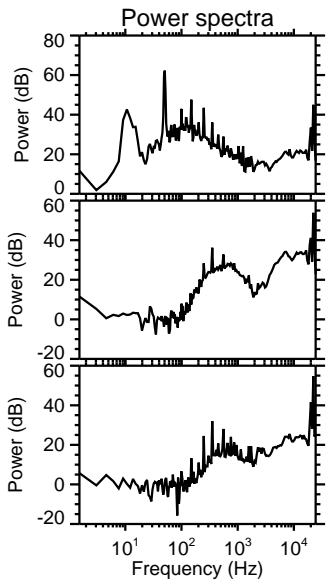
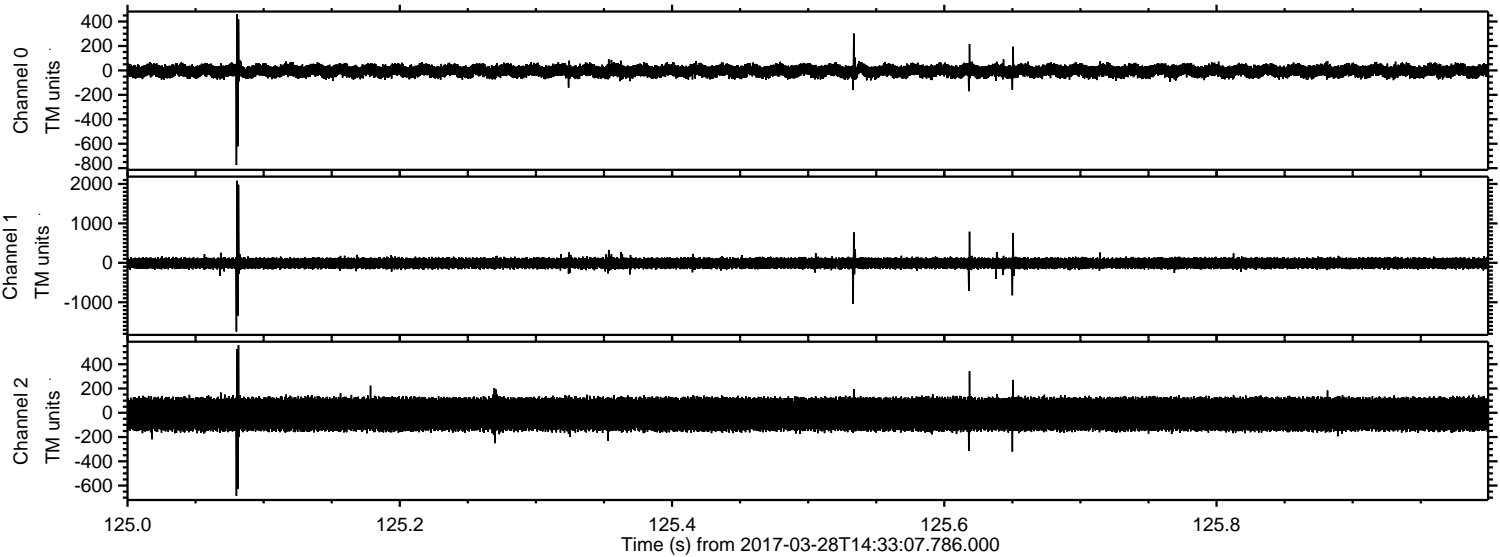
Processed Tue Mar 28 16:41:13 2017 by ELM ver.2012-10-06 from 001\_\_elm20170328\_143306\_\_dat00.bin





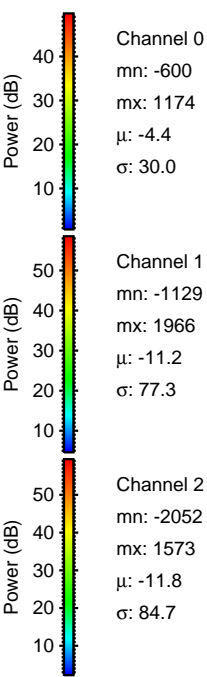
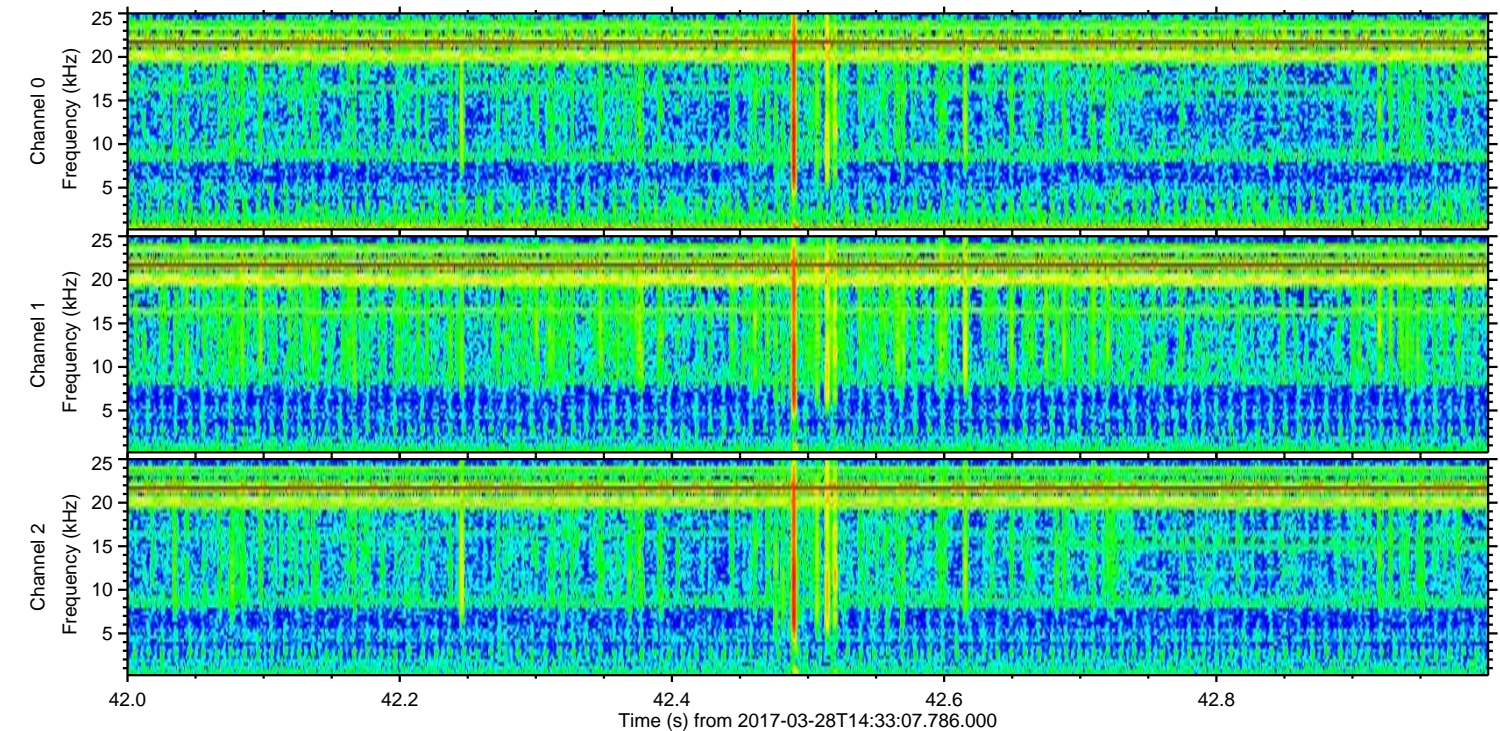
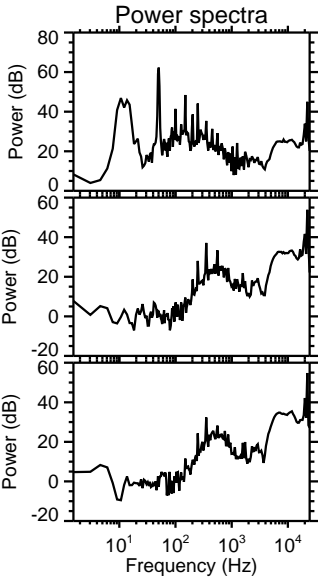
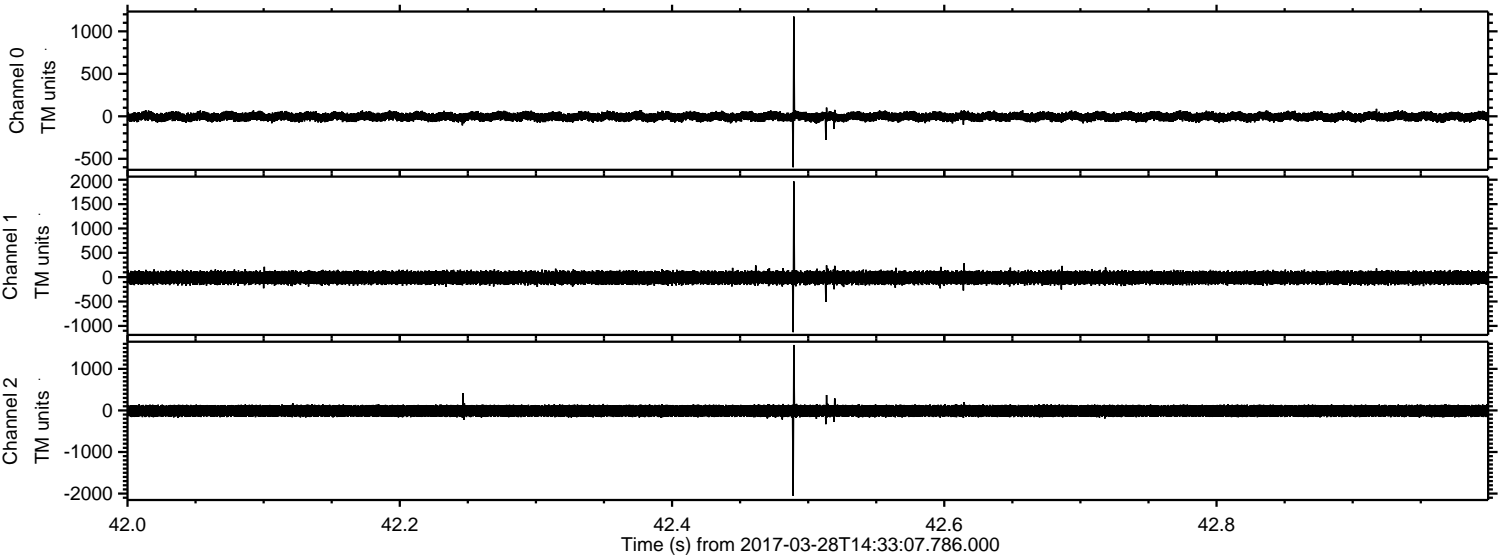
ELMAVAN 3D WAVEFORMS (Measured data sampled at 50 kHz) 51000 packets of 144 samples from 2017-03-28T14:33:07.786.000. Part 126/147

Processed Tue Mar 28 16:41:15 2017 by ELM ver.2012-10-06 from 001\_\_elm20170328\_143306\_\_dat00.bin



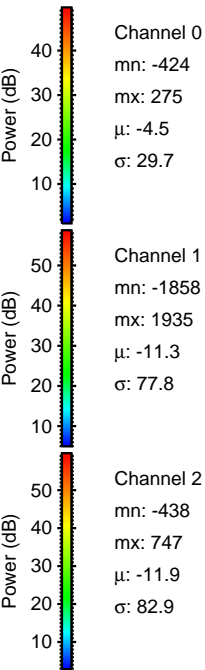
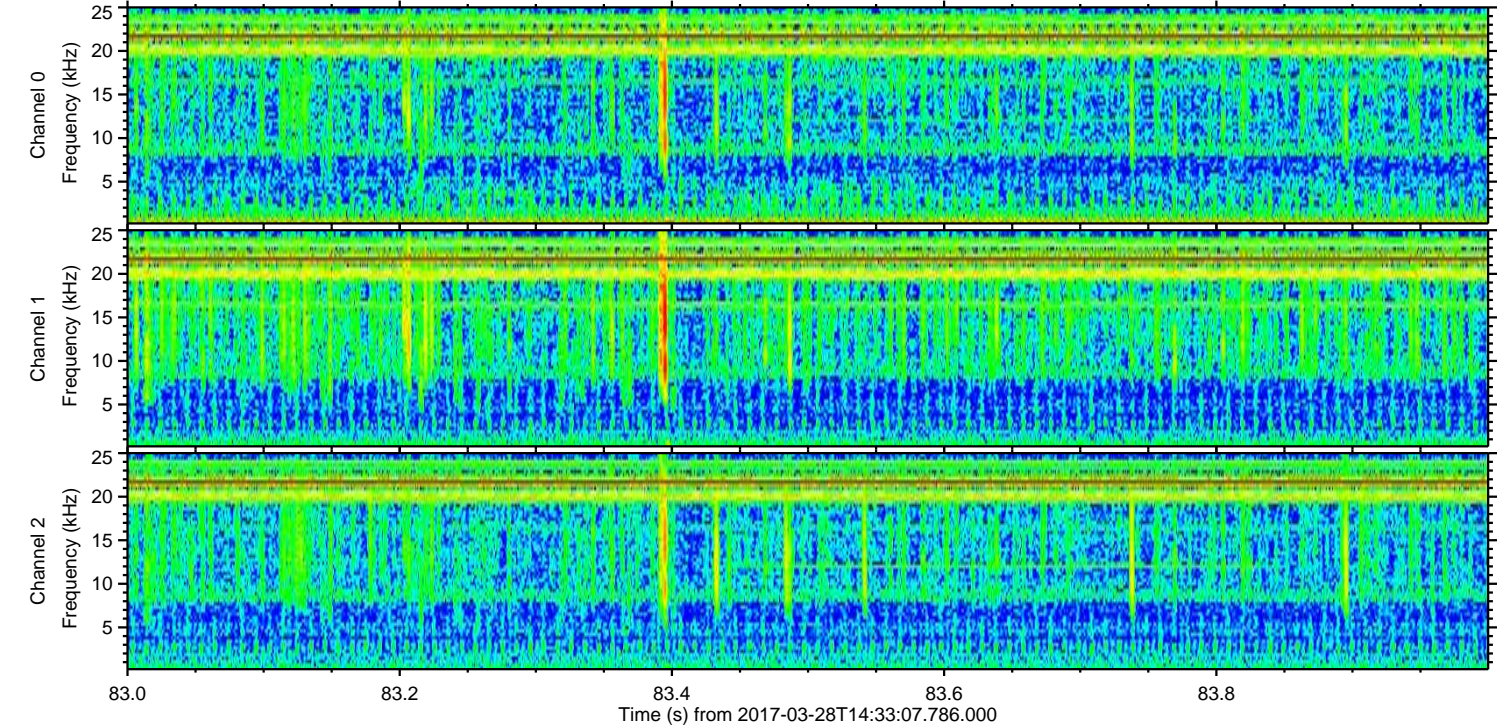
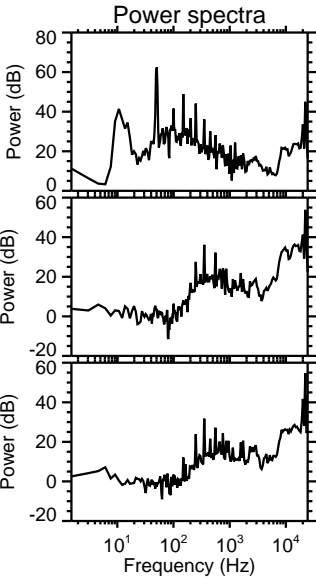
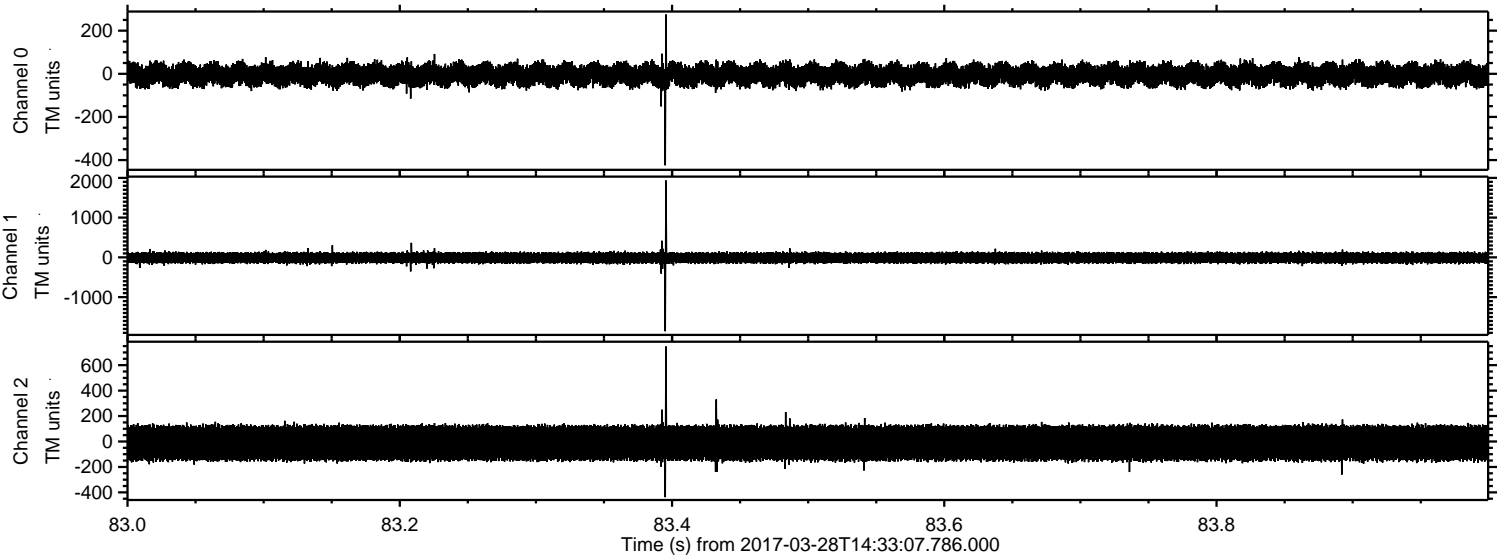


Processed Tue Mar 28 16:41:16 2017 by ELM ver.2012-10-06 from 001\_\_elm20170328\_143306\_\_dat00.bin



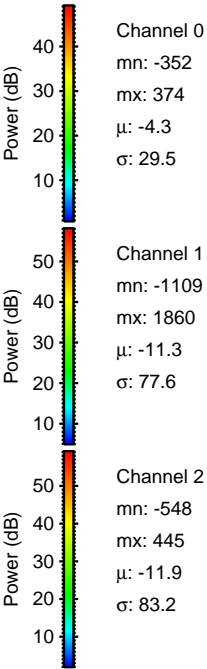
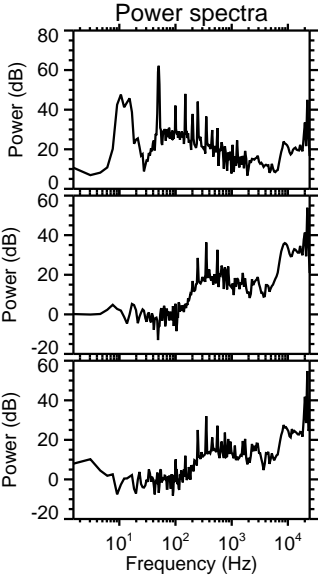
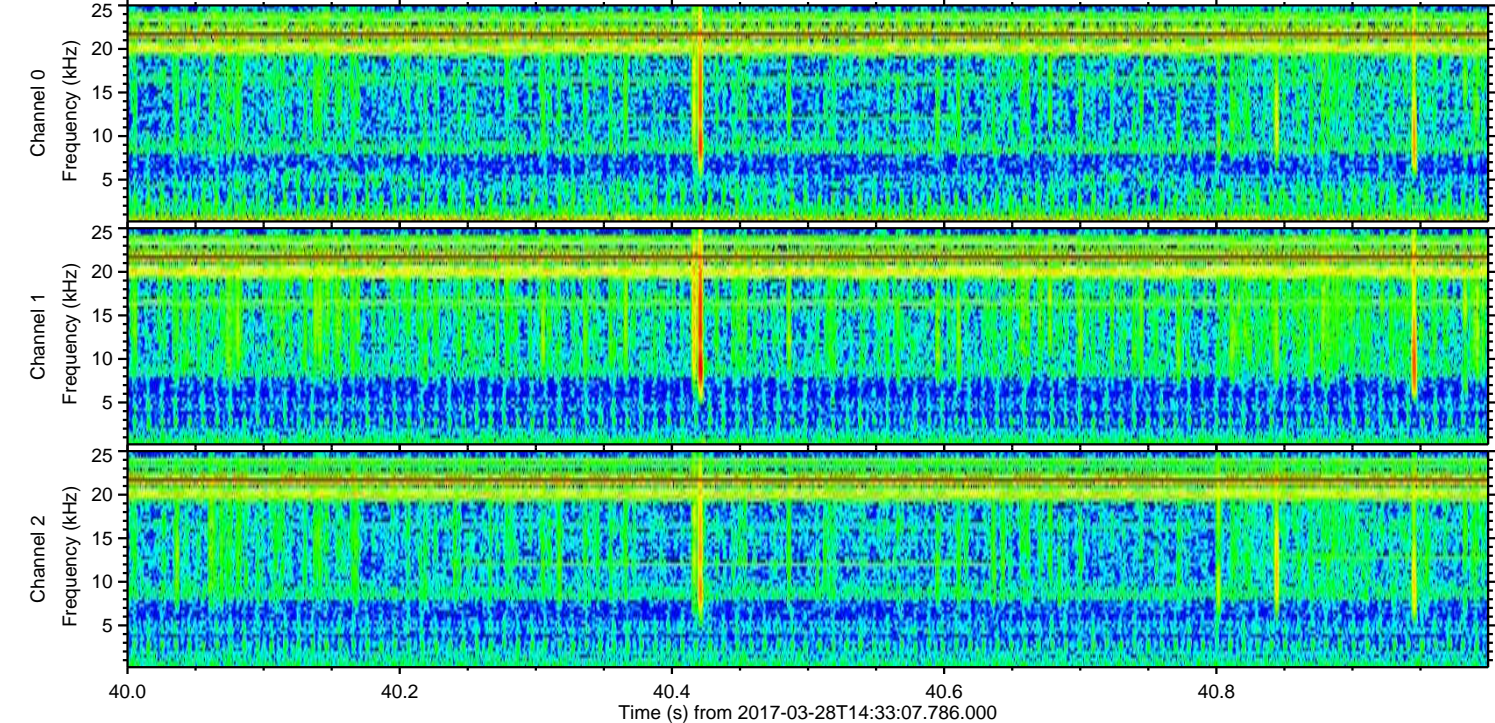
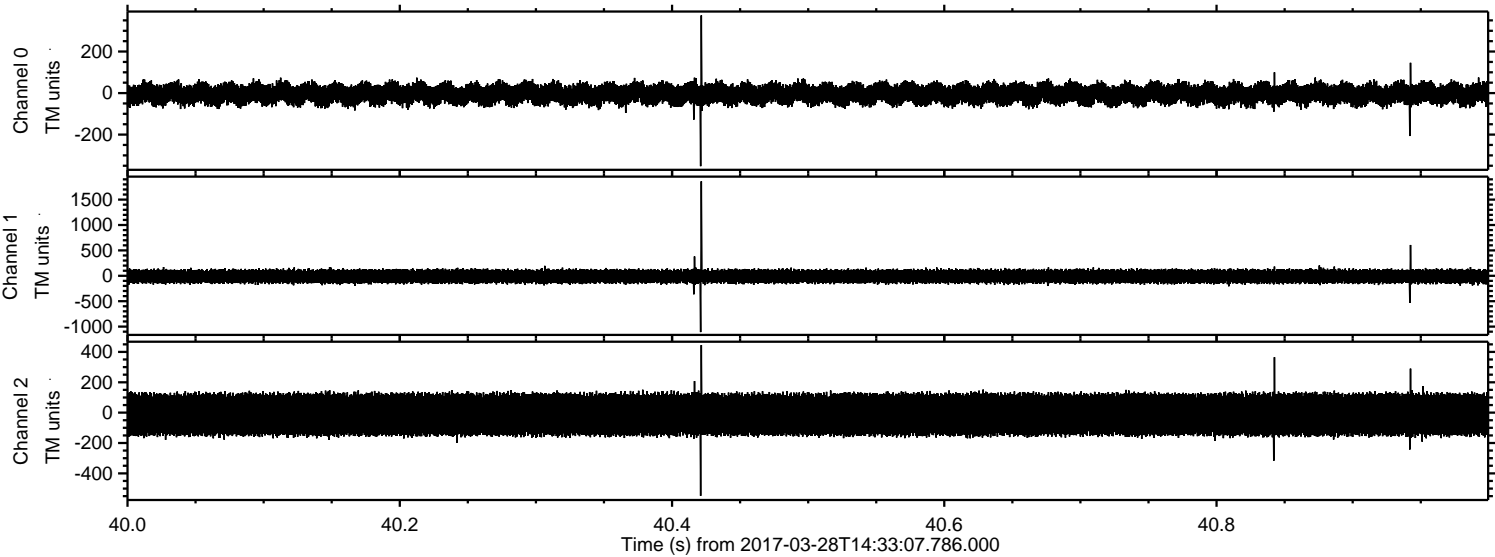


Processed Tue Mar 28 16:41:18 2017 by ELM ver.2012-10-06 from 001\_\_elm20170328\_143306\_\_dat00.bin



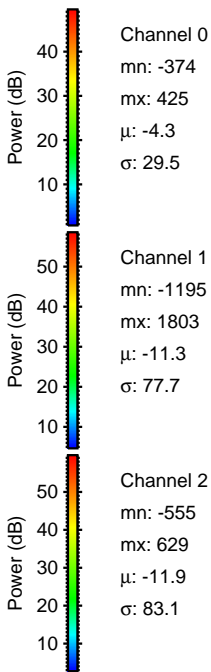
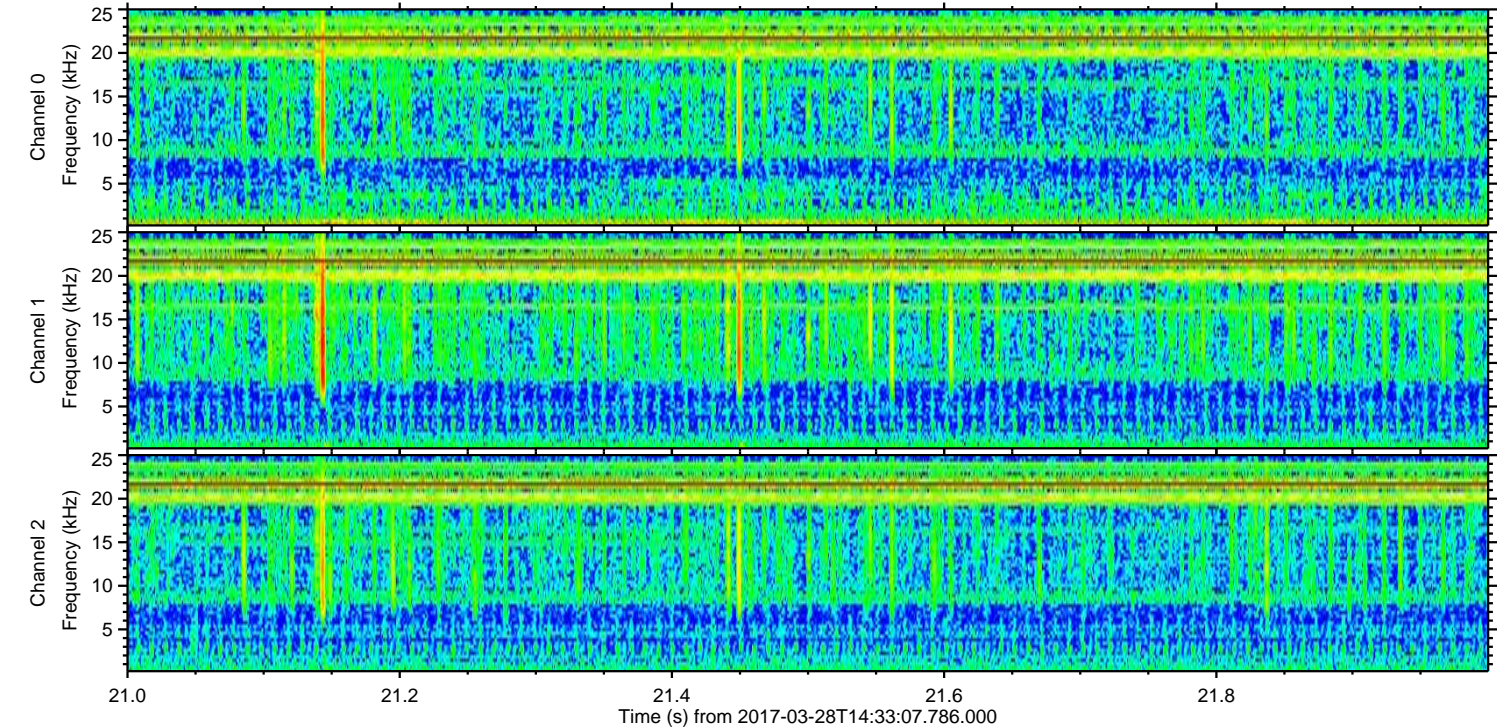
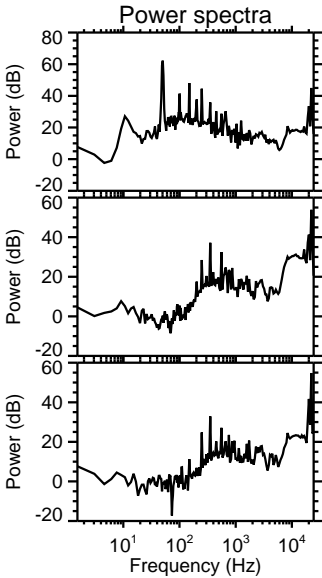
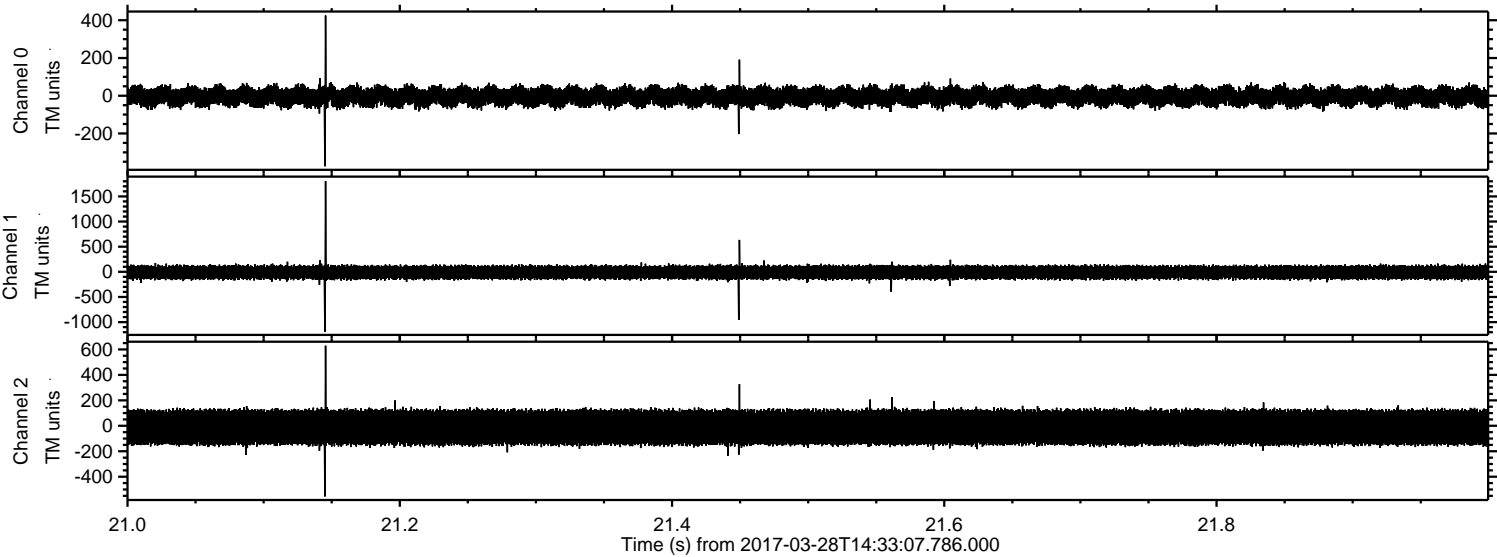


Processed Tue Mar 28 16:41:19 2017 by ELM ver.2012-10-06 from 001\_\_elm20170328\_143306\_\_dat00.bin



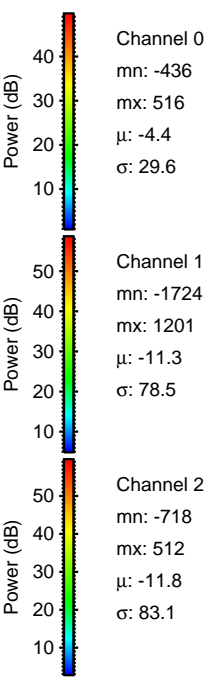
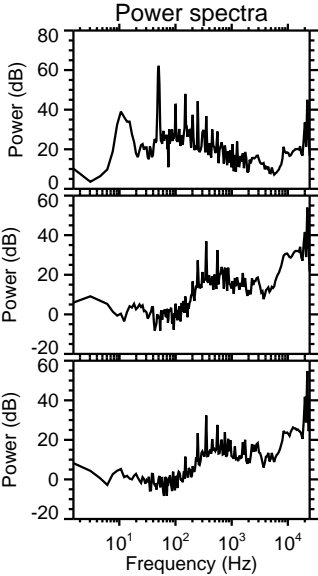
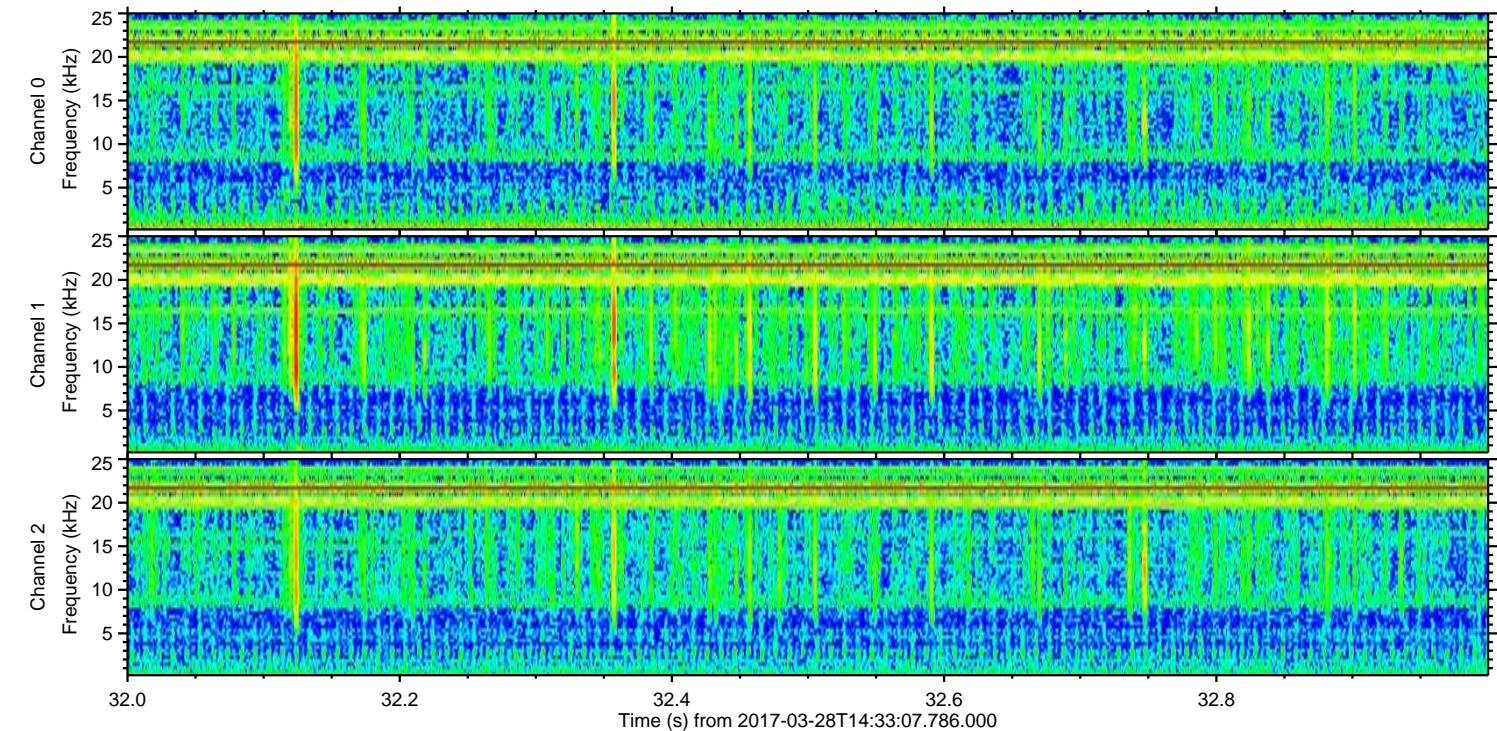
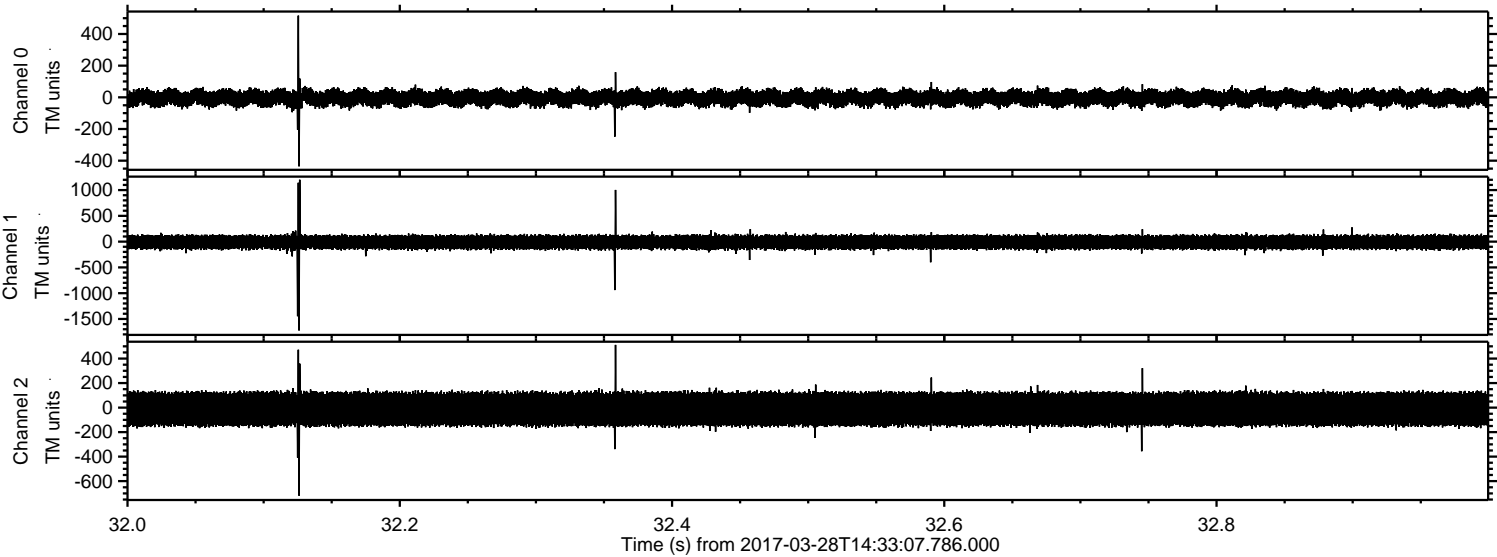


Processed Tue Mar 28 16:41:20 2017 by ELM ver.2012-10-06 from 001\_\_elm20170328\_143306\_\_dat00.bin





Processed Tue Mar 28 16:41:21 2017 by ELM ver.2012-10-06 from 001\_\_elm20170328\_143306\_\_dat00.bin



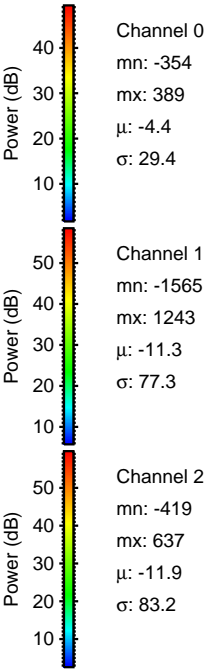
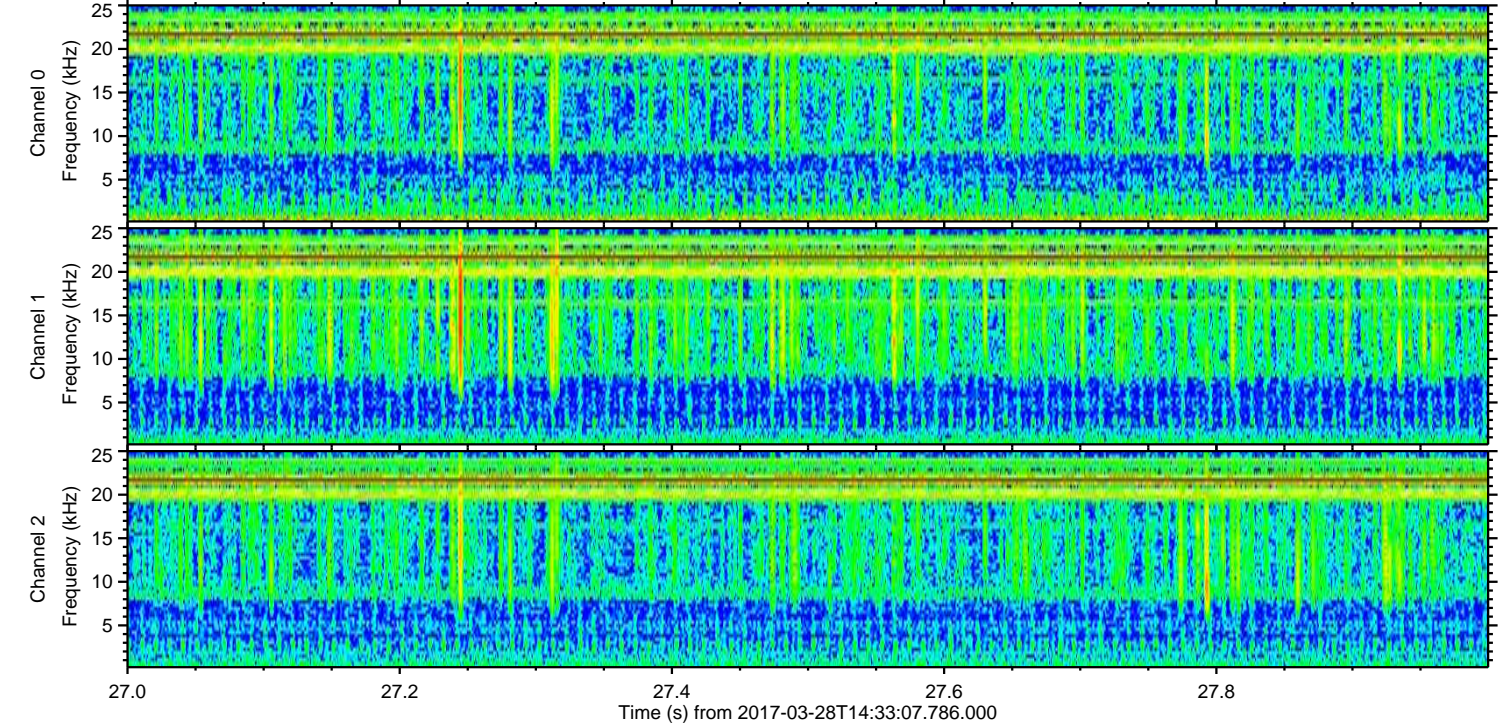
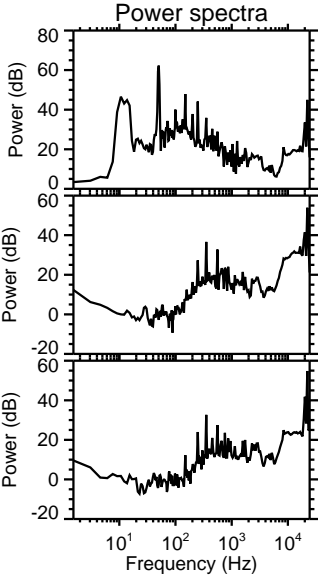
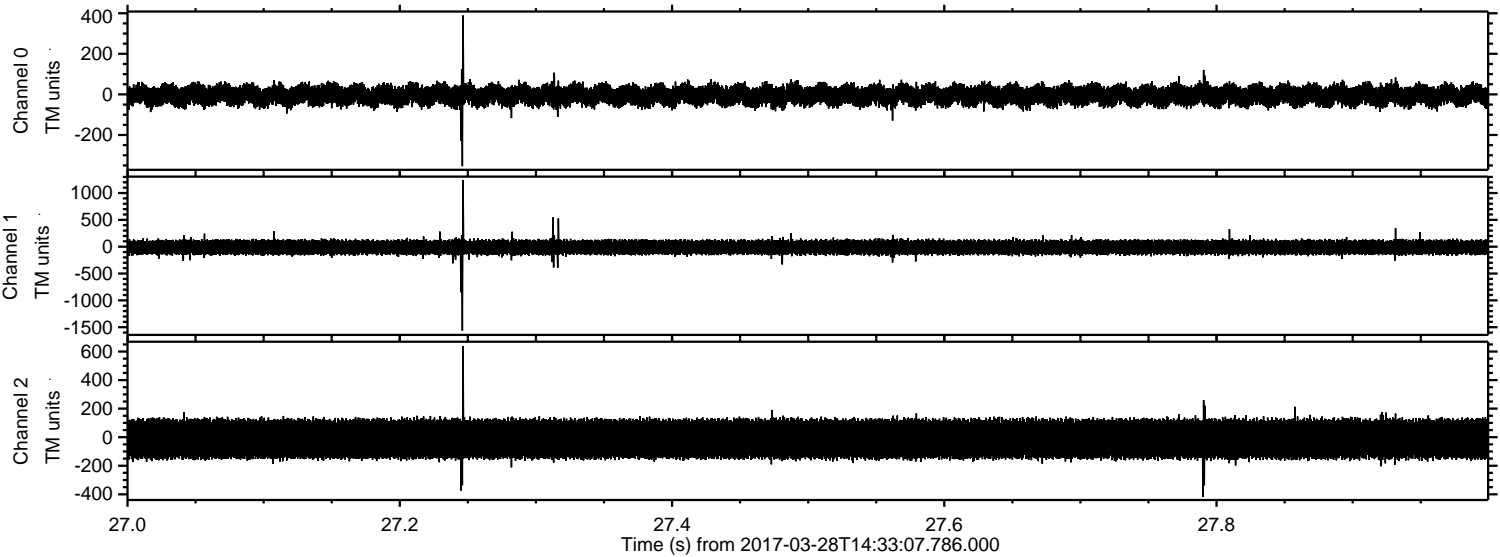
Channel 0  
mn: -436  
mx: 516  
 $\mu$ : -4.4  
 $\sigma$ : 29.6

Channel 1  
mn: -1724  
mx: 1201  
 $\mu$ : -11.3  
 $\sigma$ : 78.5

Channel 2  
mn: -718  
mx: 512  
 $\mu$ : -11.8  
 $\sigma$ : 83.1



Processed Tue Mar 28 16:41:22 2017 by ELM ver.2012-10-06 from 001\_\_elm20170328\_143306\_\_dat00.bin





Processed Tue Mar 28 16:41:24 2017 by ELM ver.2012-10-06 from 001\_\_elm20170328\_143306\_\_dat00.bin

