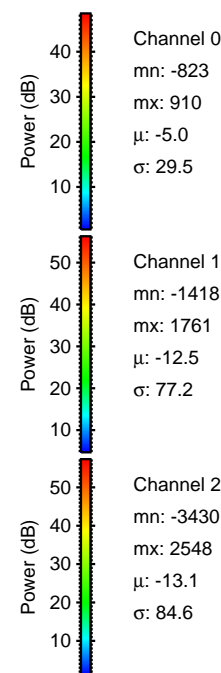
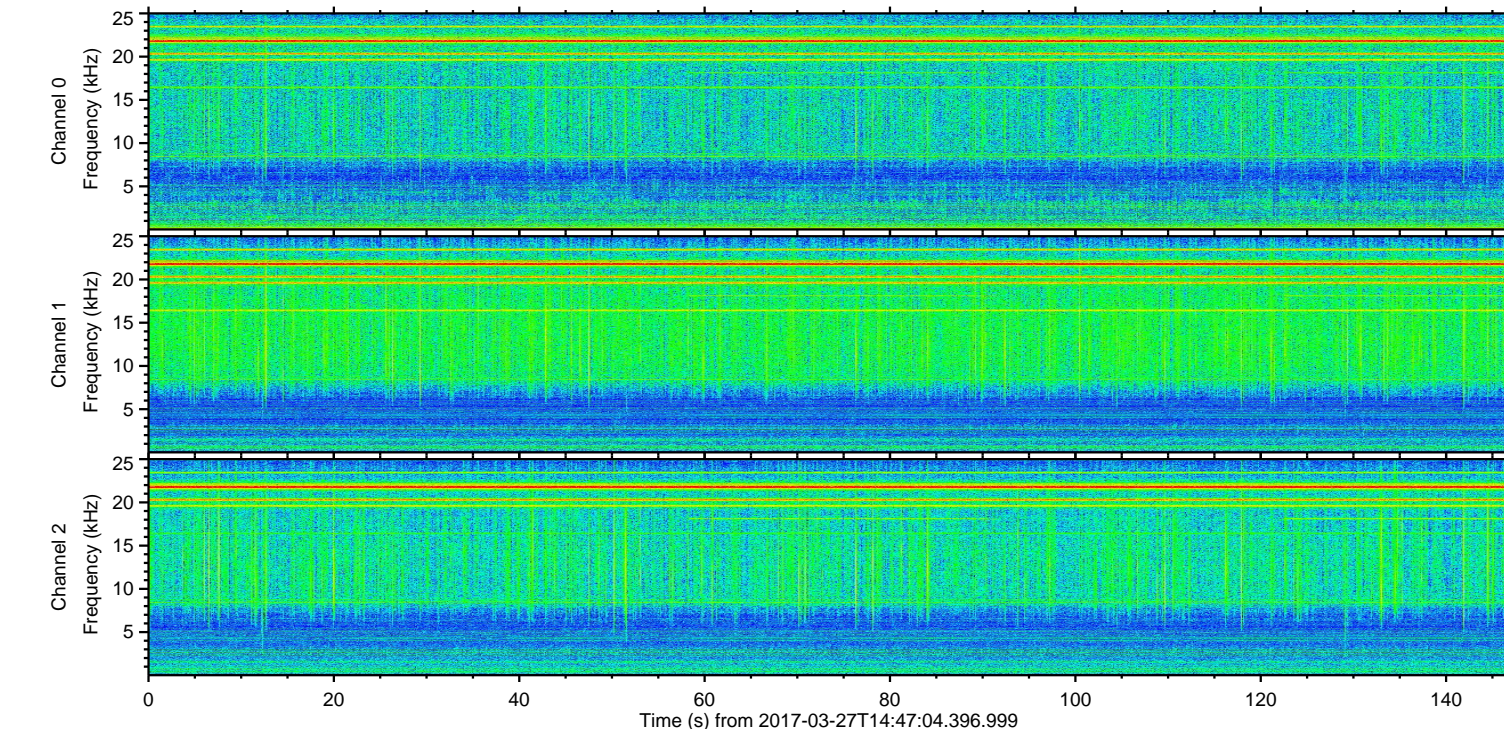
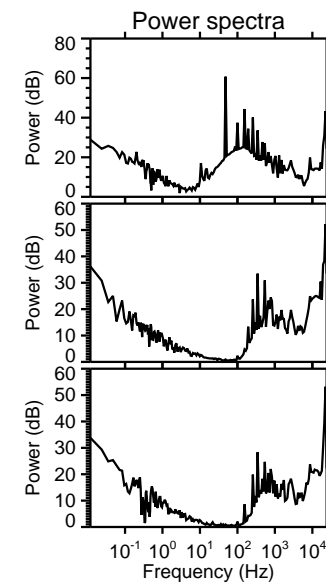
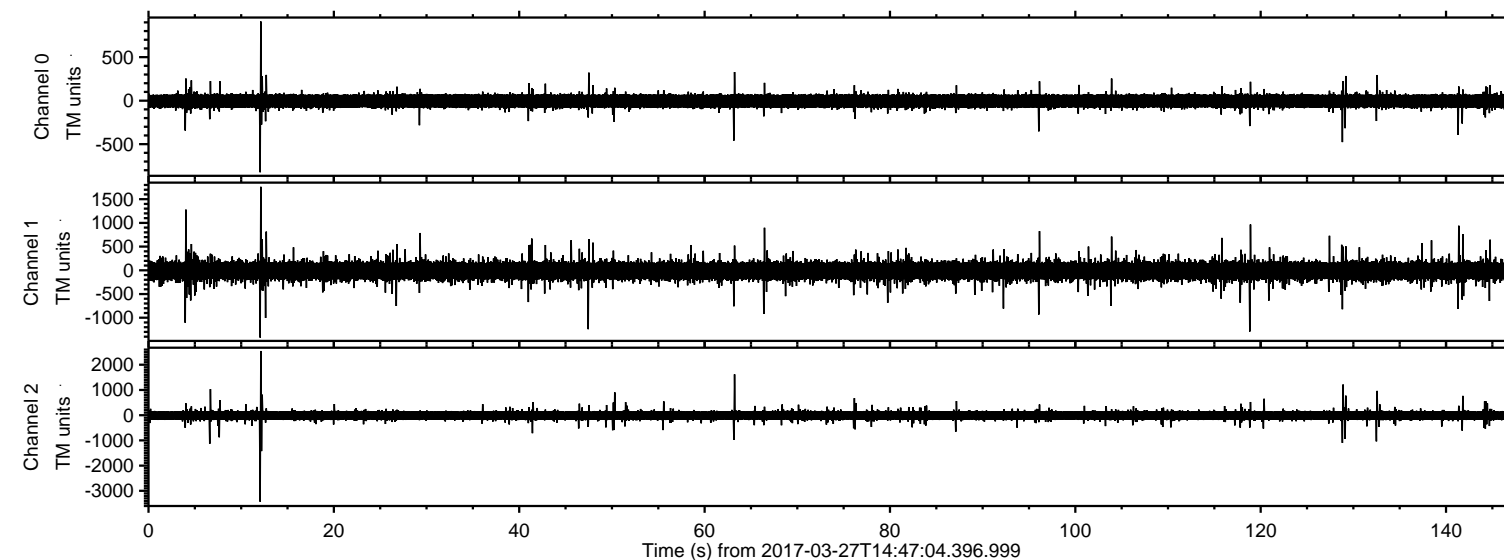
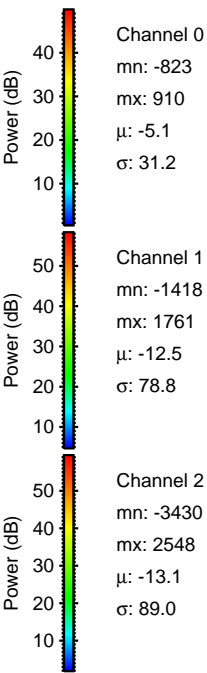
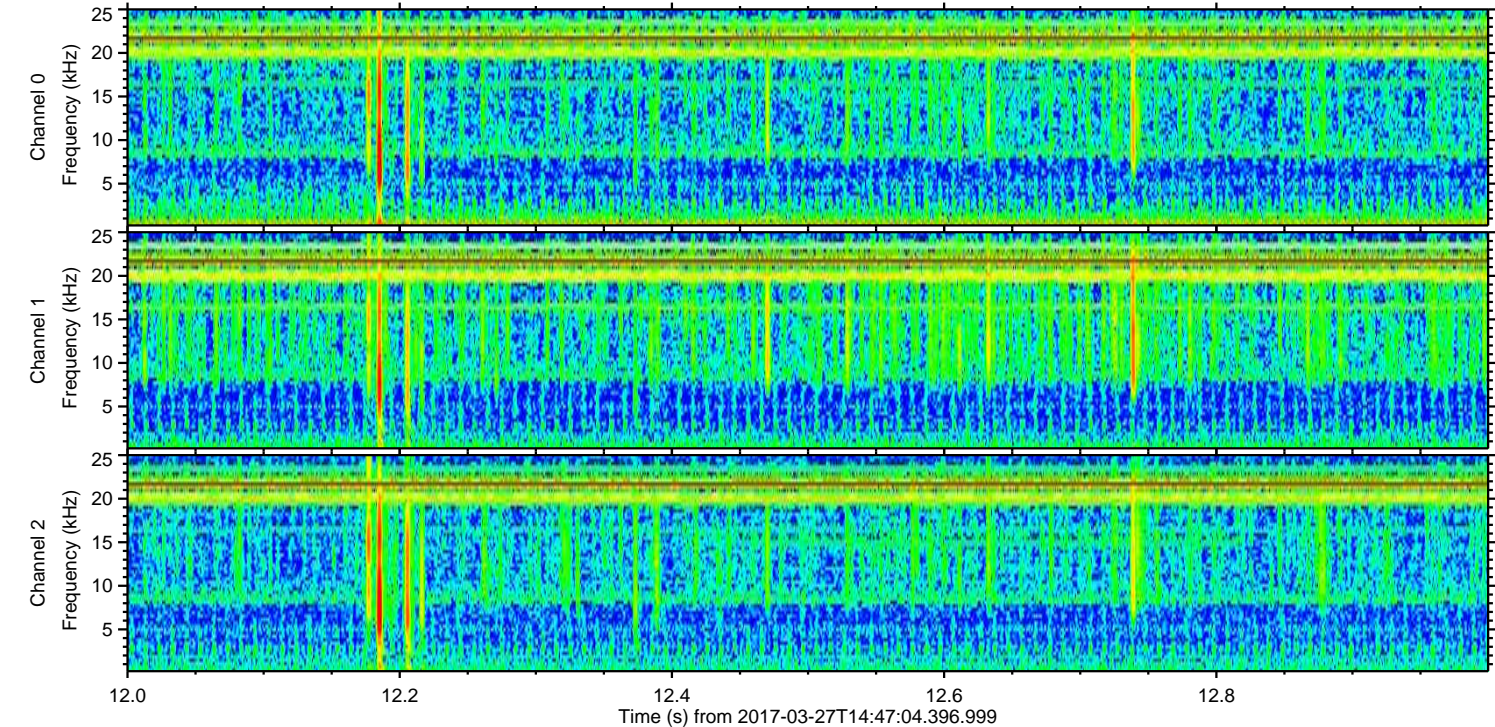
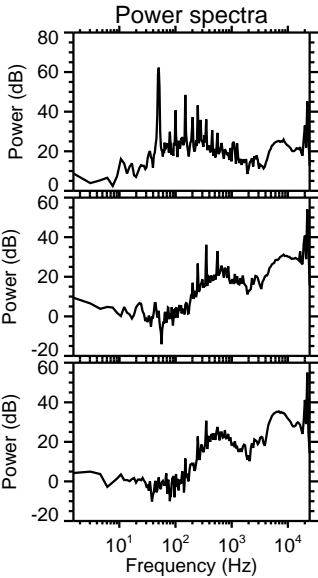
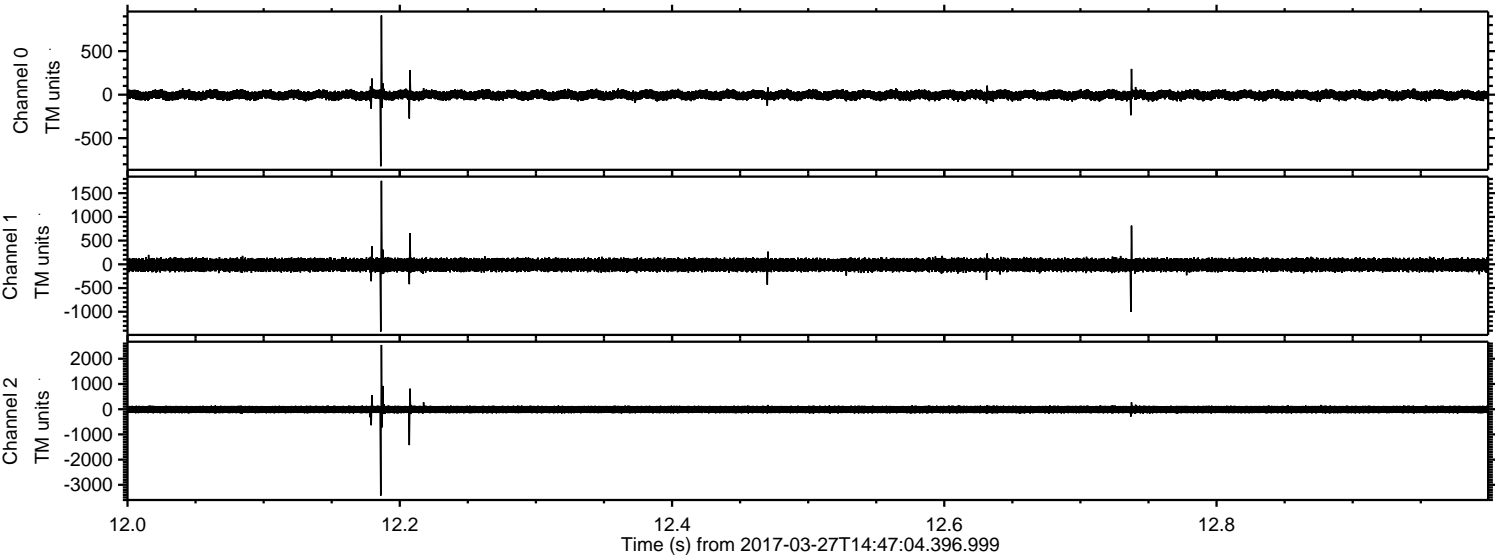


ELMAVAN 3D WAVEFORMS (Measured data sampled at 50 kHz) 51000 packets of 144 samples from 2017-03-27T14:47:04.396.999.

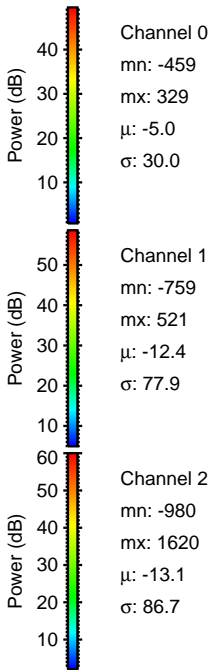
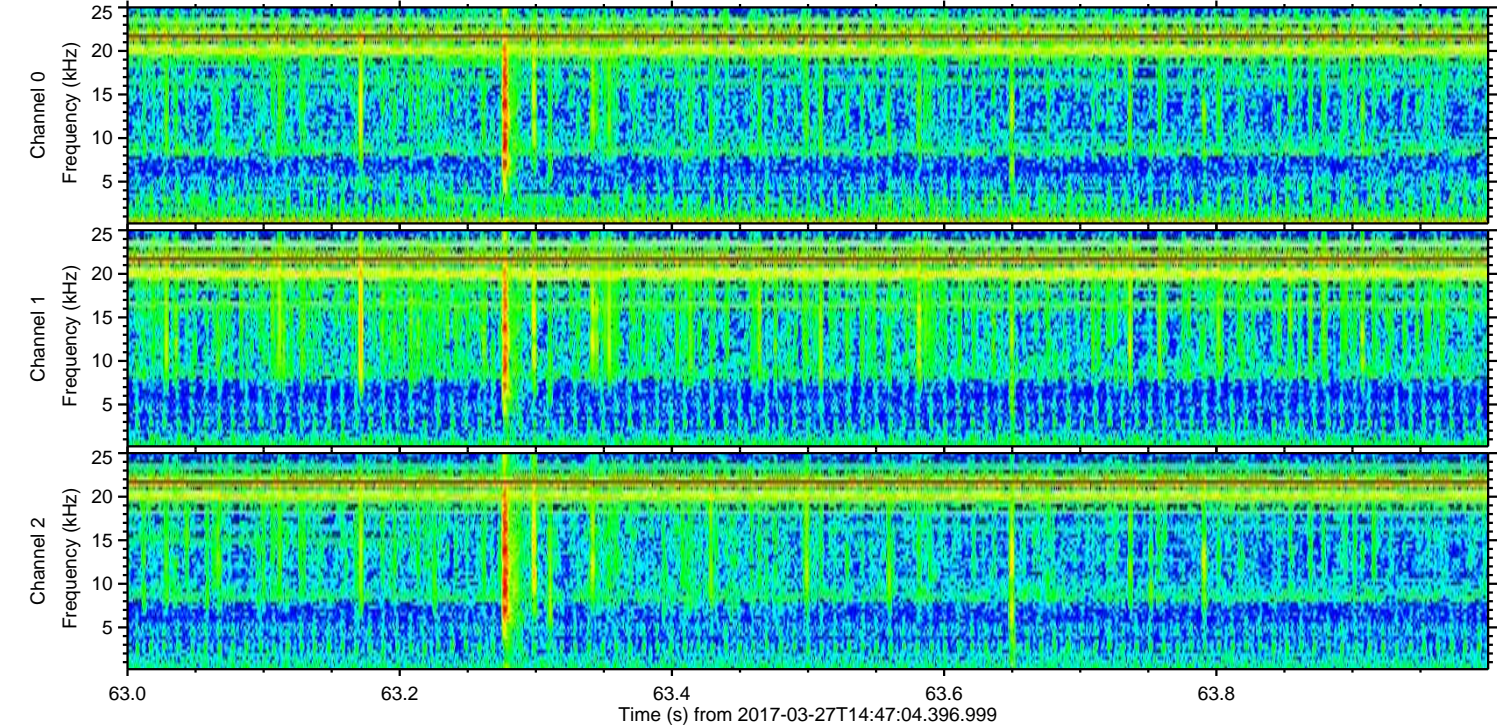
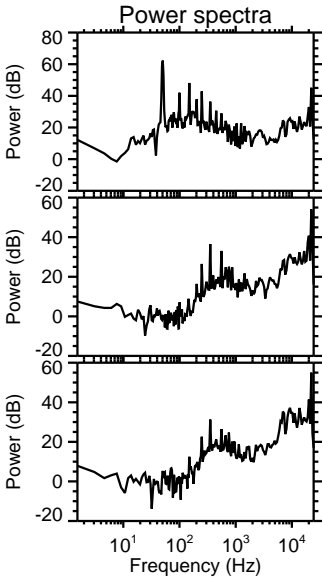
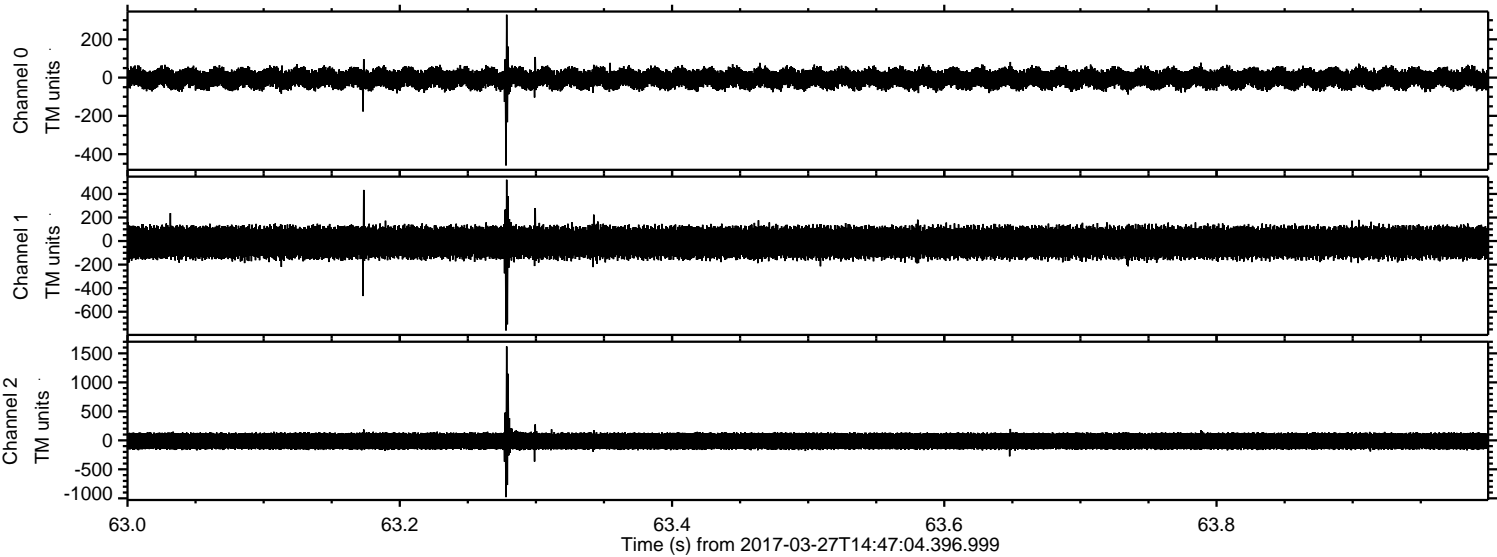
Processed Mon Mar 27 16:54:32 2017 by ELM ver.2012-10-06 from 001__elm20170327_144703__dat00.bin



Processed Mon Mar 27 16:54:43 2017 by ELM ver.2012-10-06 from 001__elm20170327_144703__dat00.bin

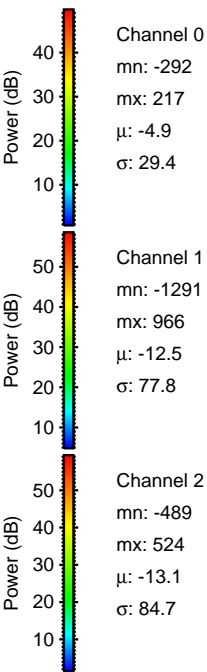
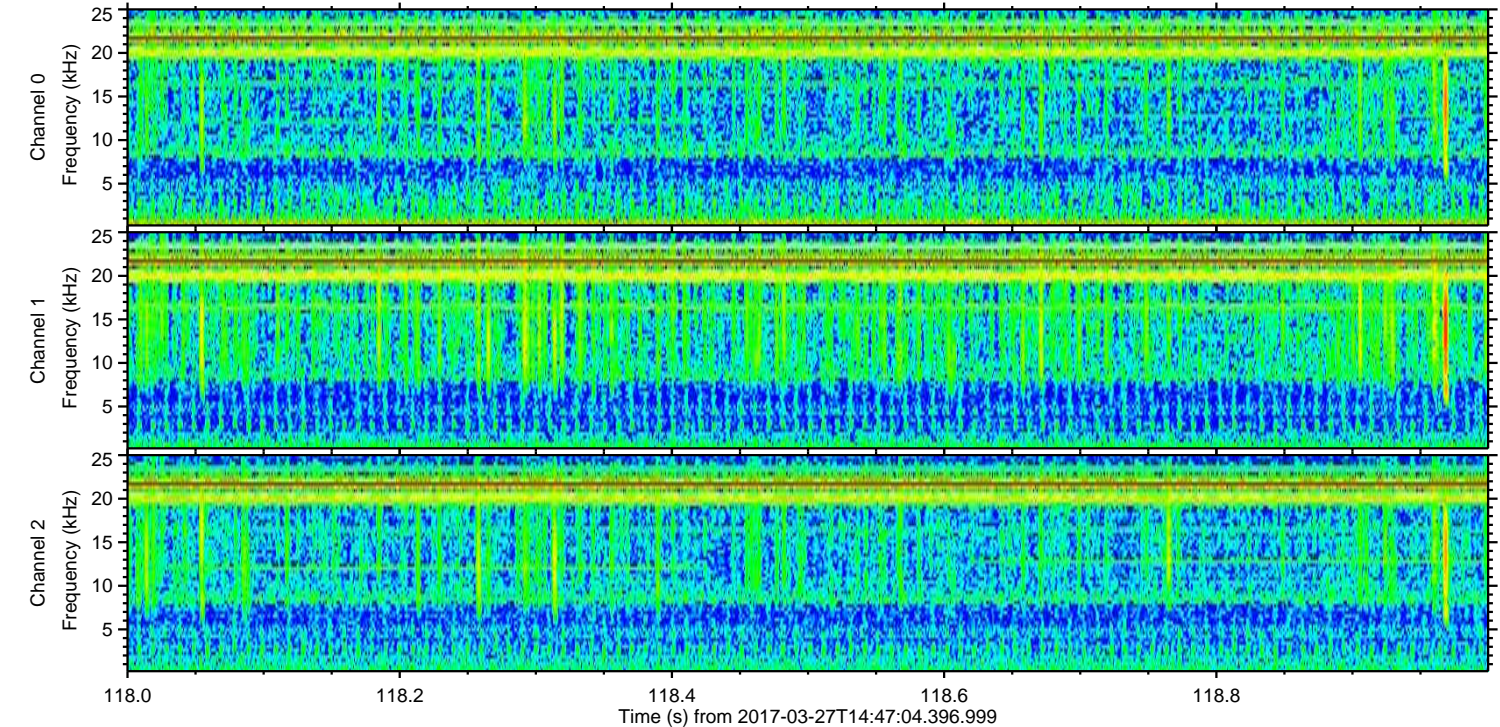
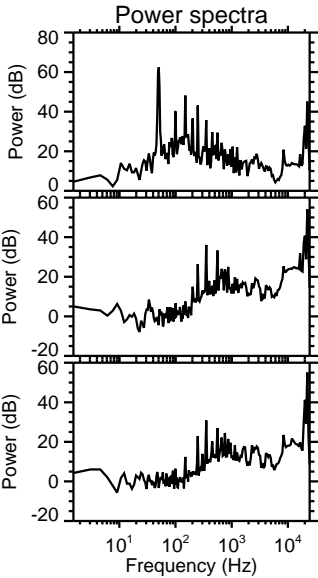
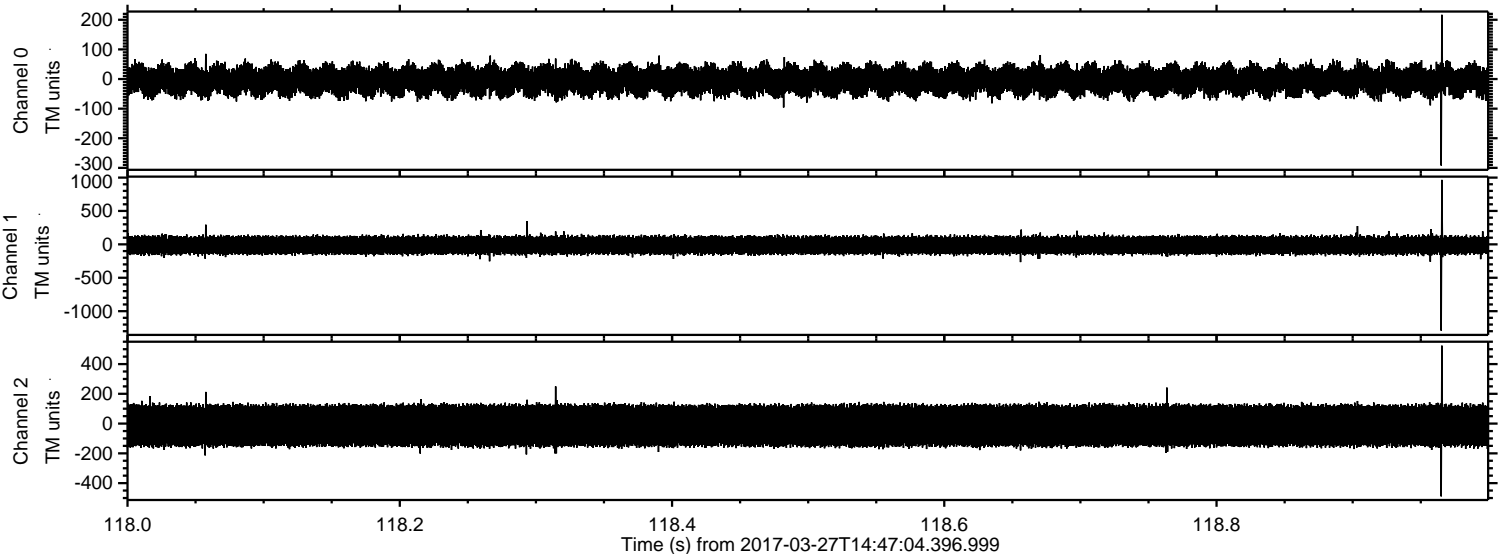


Processed Mon Mar 27 16:54:44 2017 by ELM ver.2012-10-06 from 001__elm20170327_144703__dat00.bin

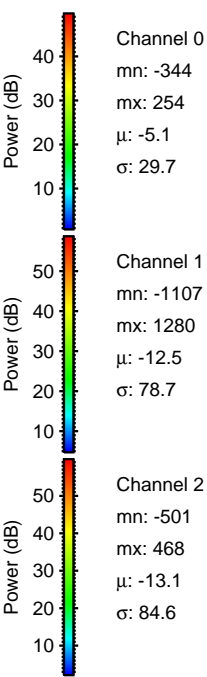
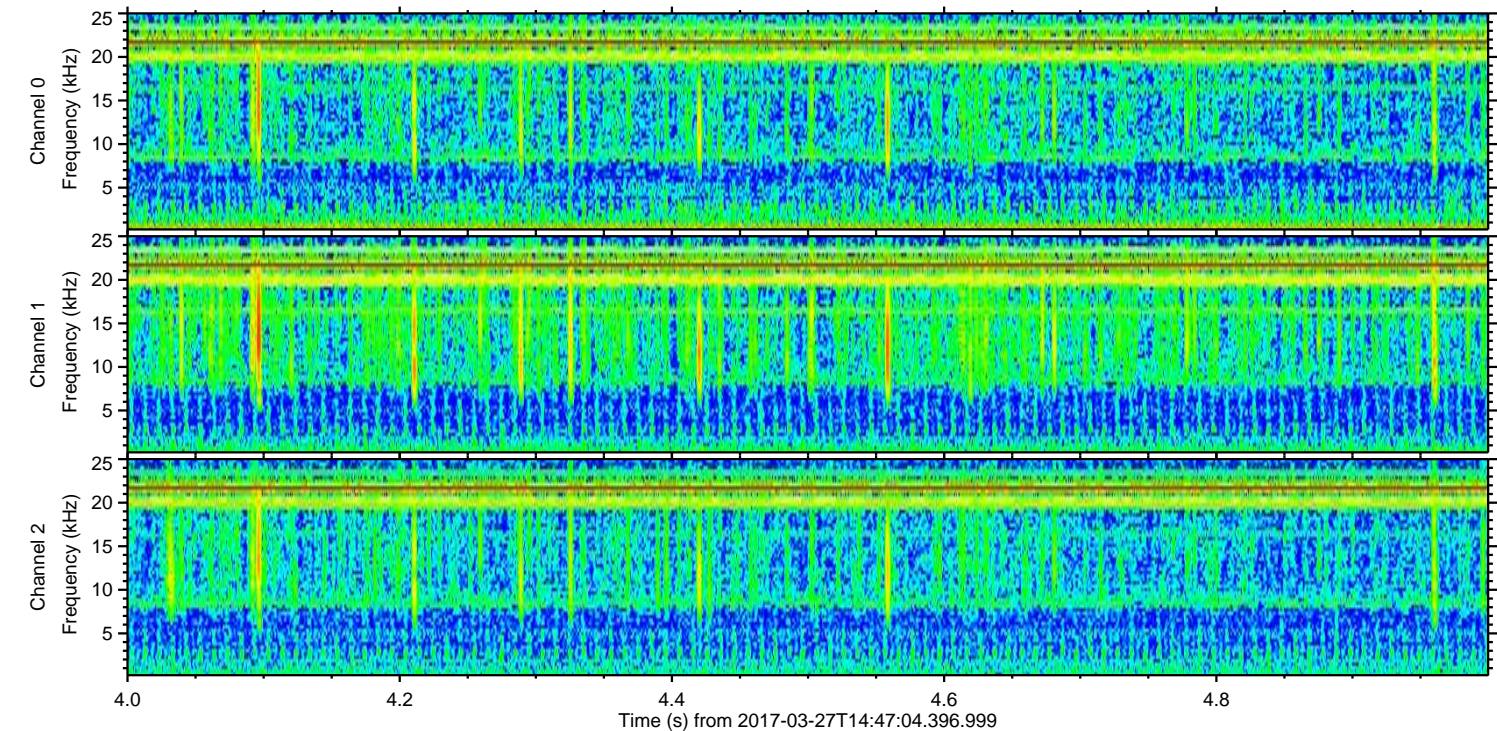
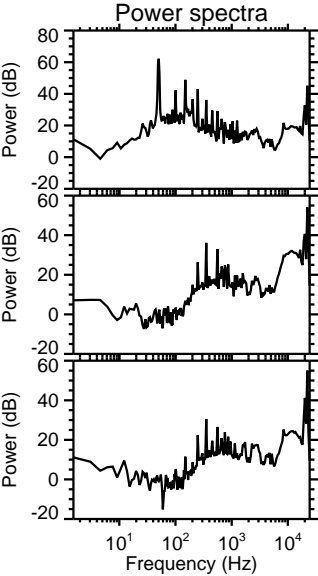
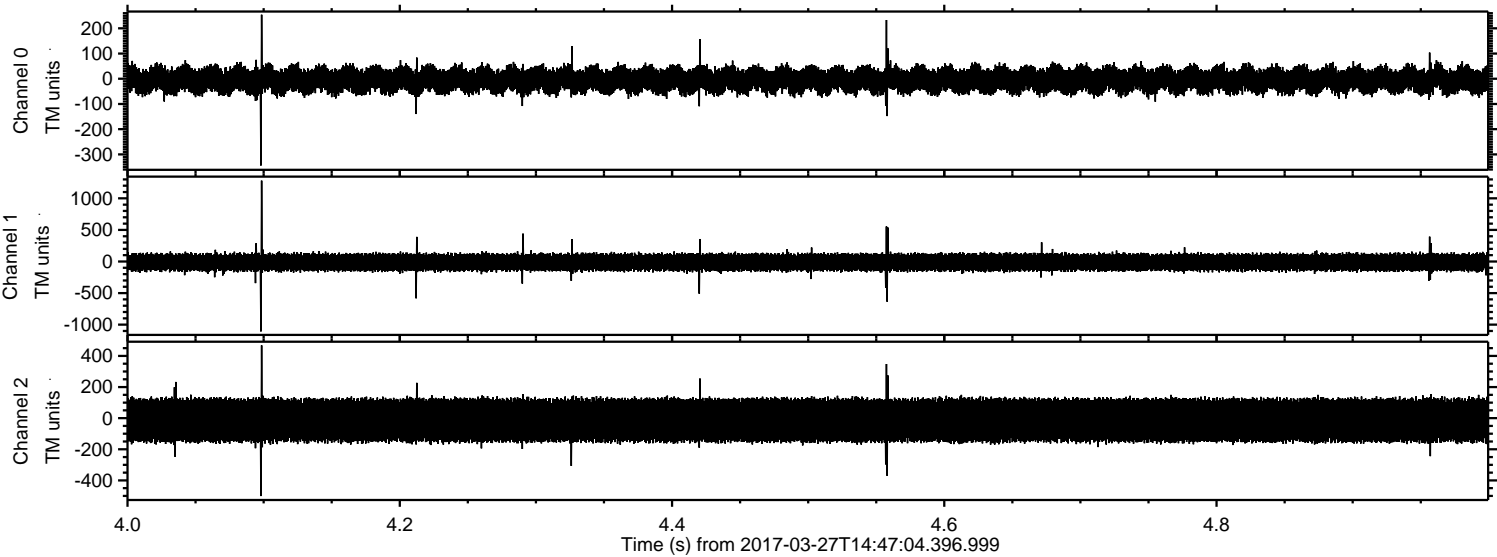


ELMAVAN 3D WAVEFORMS (Measured data sampled at 50 kHz) 51000 packets of 144 samples from 2017-03-27T14:47:04.396.999. Part 119/147

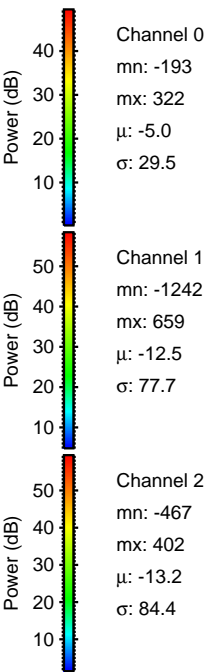
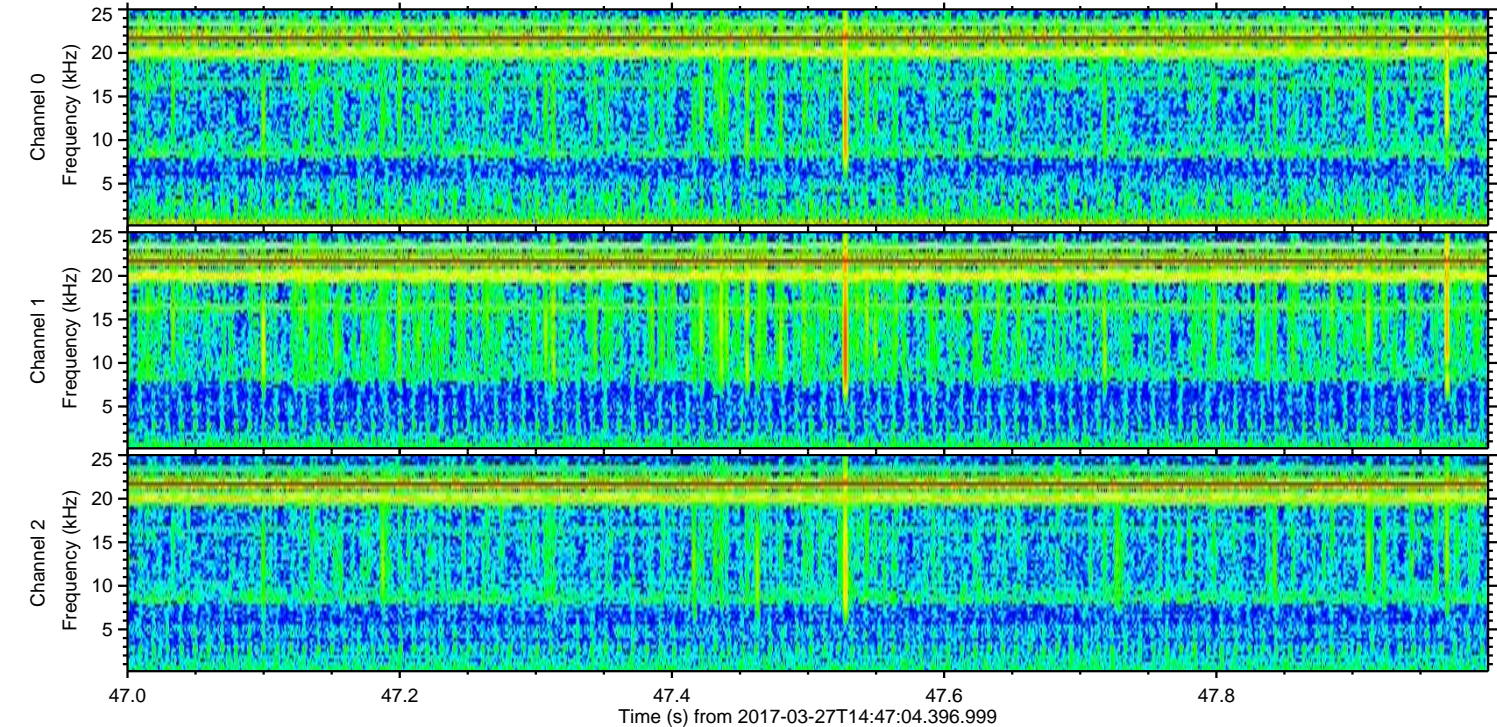
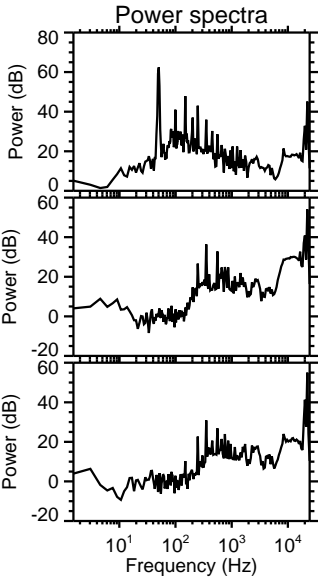
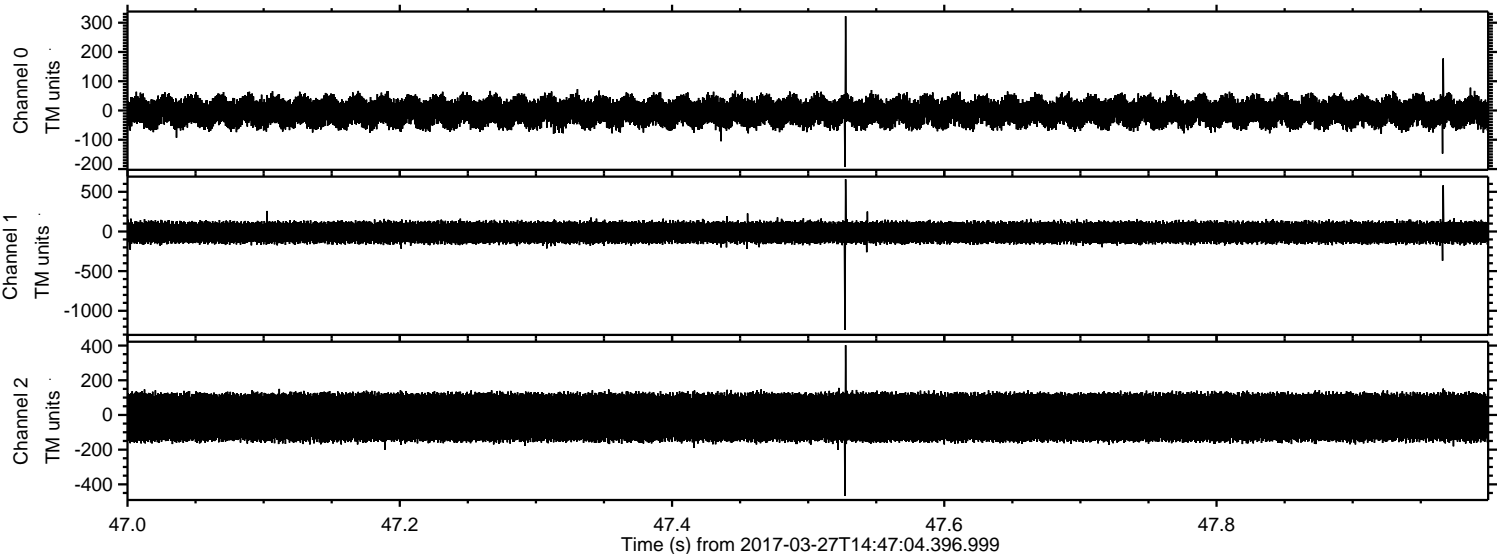
Processed Mon Mar 27 16:54:45 2017 by ELM ver.2012-10-06 from 001__elm20170327_144703__dat00.bin



Processed Mon Mar 27 16:54:46 2017 by ELM ver.2012-10-06 from 001__elm20170327_144703__dat00.bin

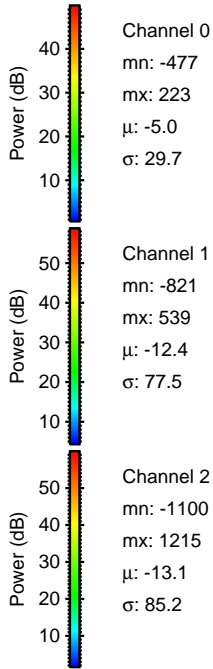
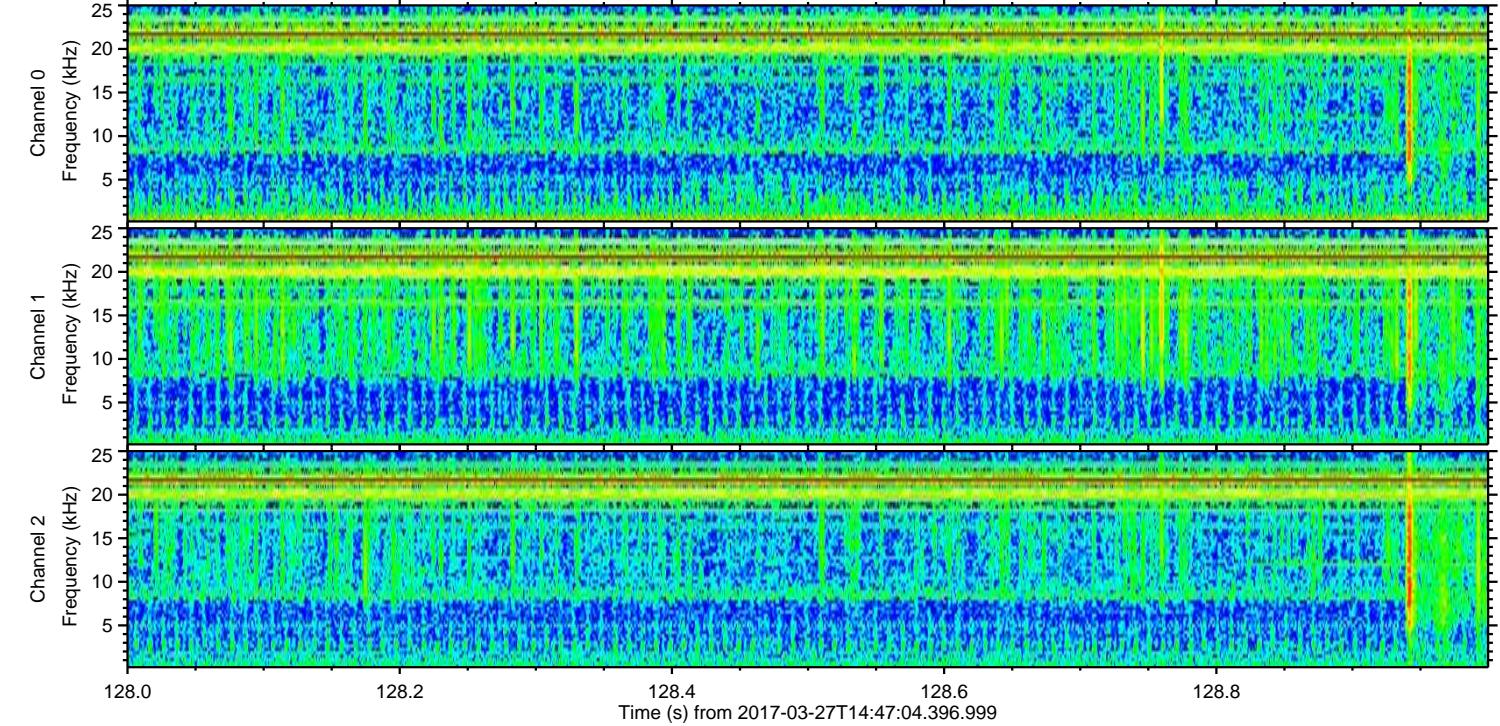
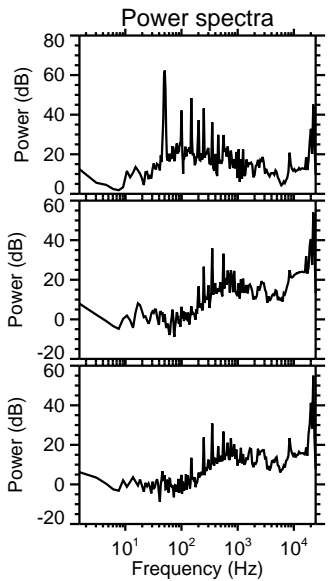
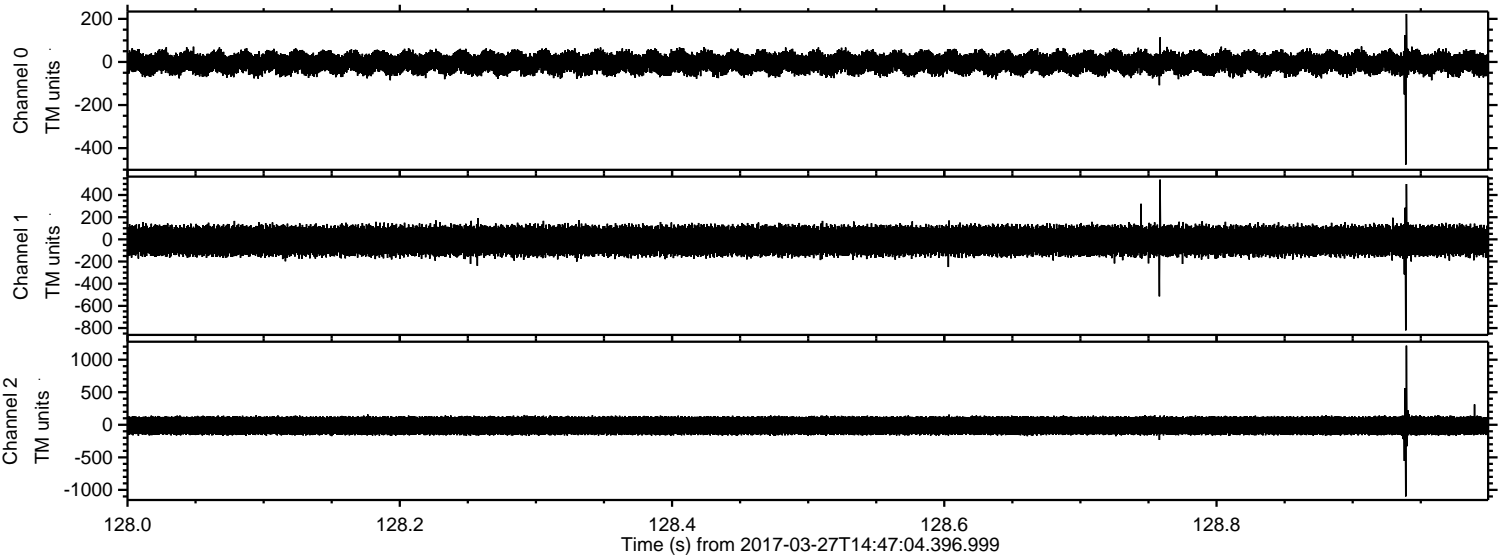


Processed Mon Mar 27 16:54:47 2017 by ELM ver.2012-10-06 from 001__elm20170327_144703__dat00.bin

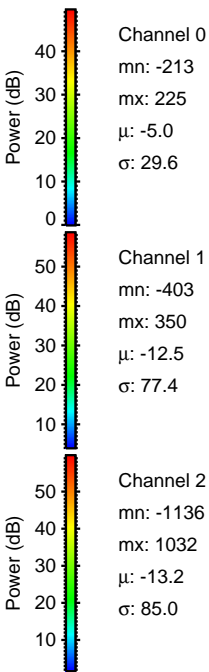
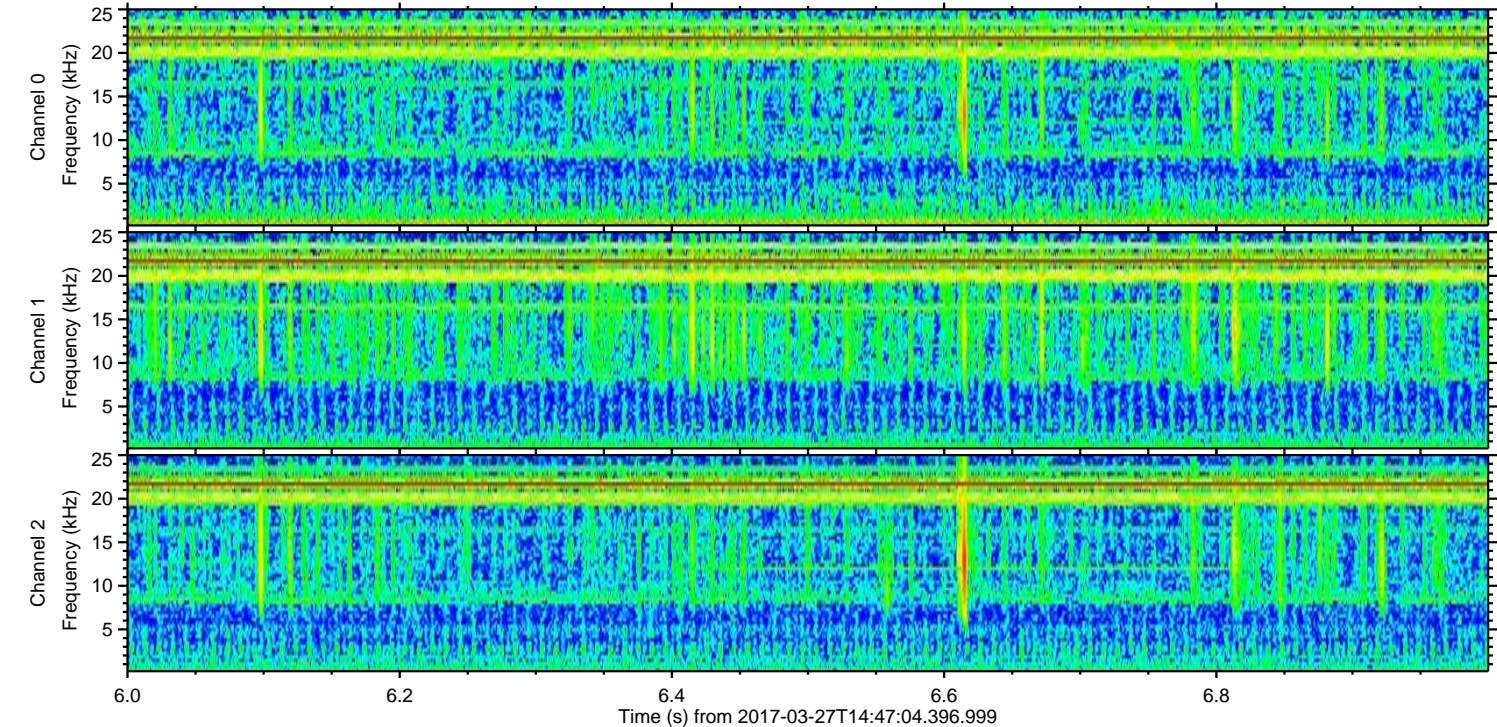
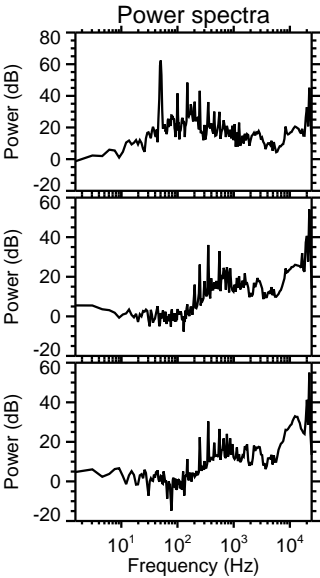
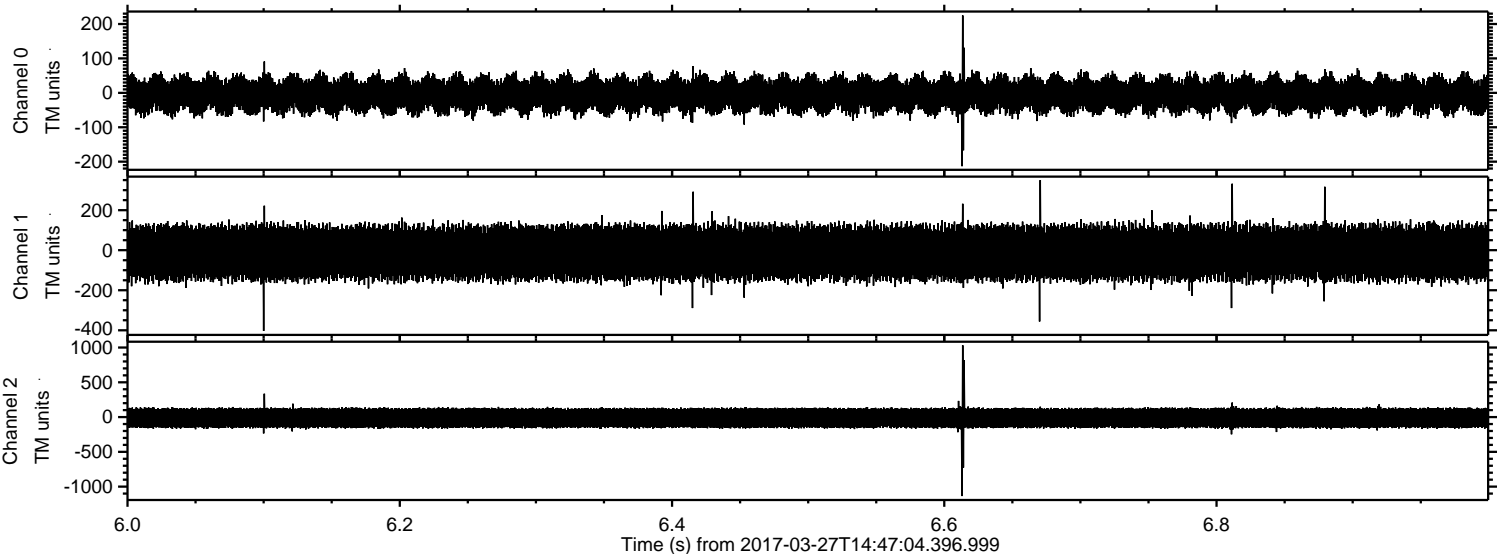


ELMAVAN 3D WAVEFORMS (Measured data sampled at 50 kHz) 51000 packets of 144 samples from 2017-03-27T14:47:04.396.999. Part 129/147

Processed Mon Mar 27 16:54:48 2017 by ELM ver.2012-10-06 from 001__elm20170327_144703__dat00.bin

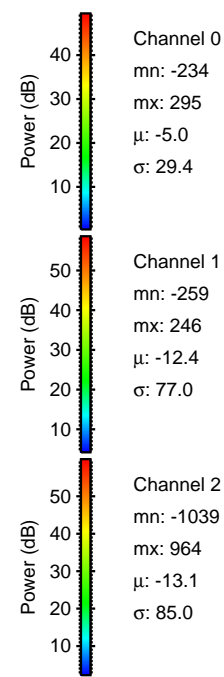
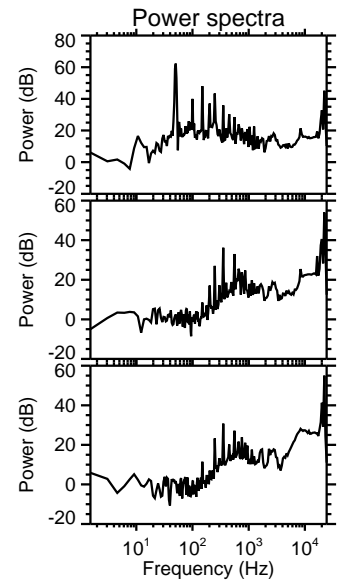
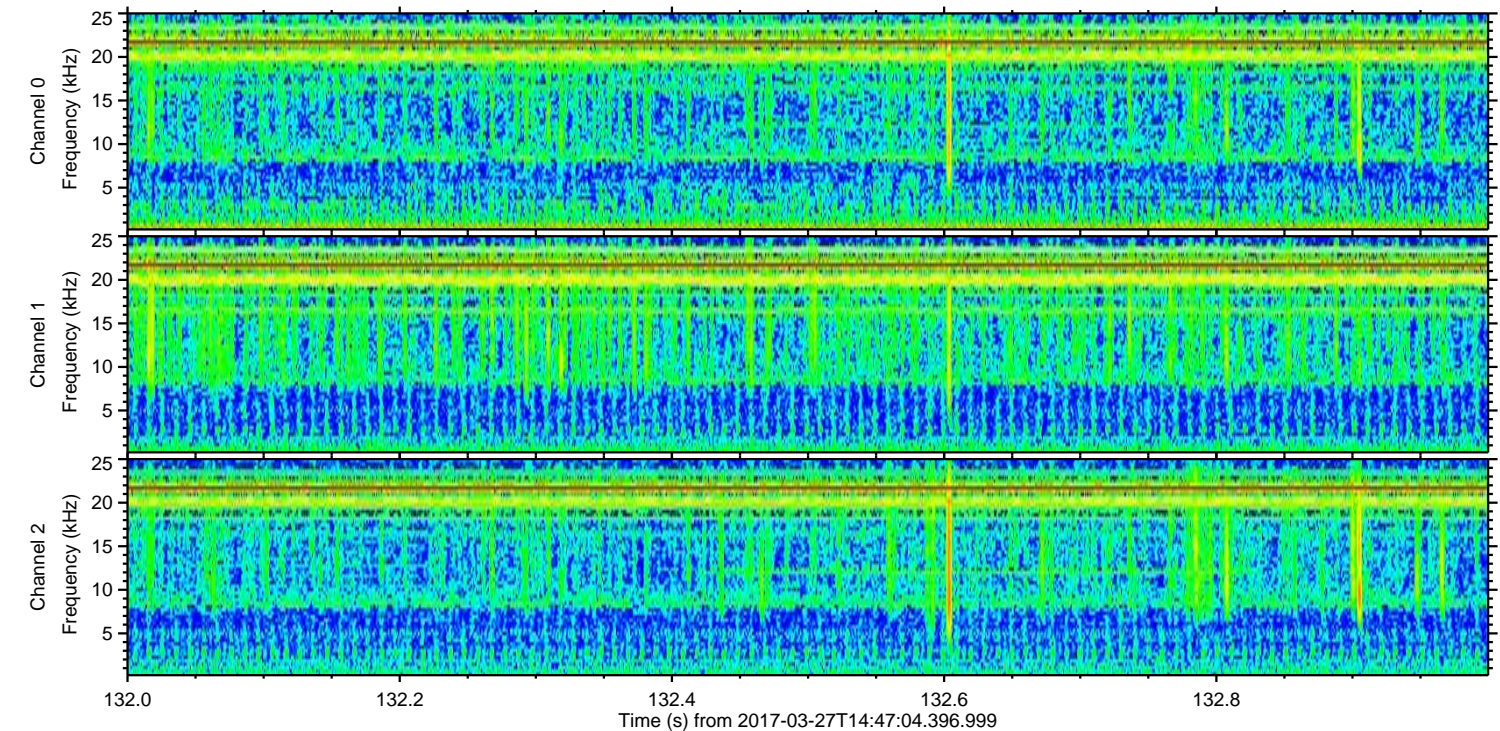
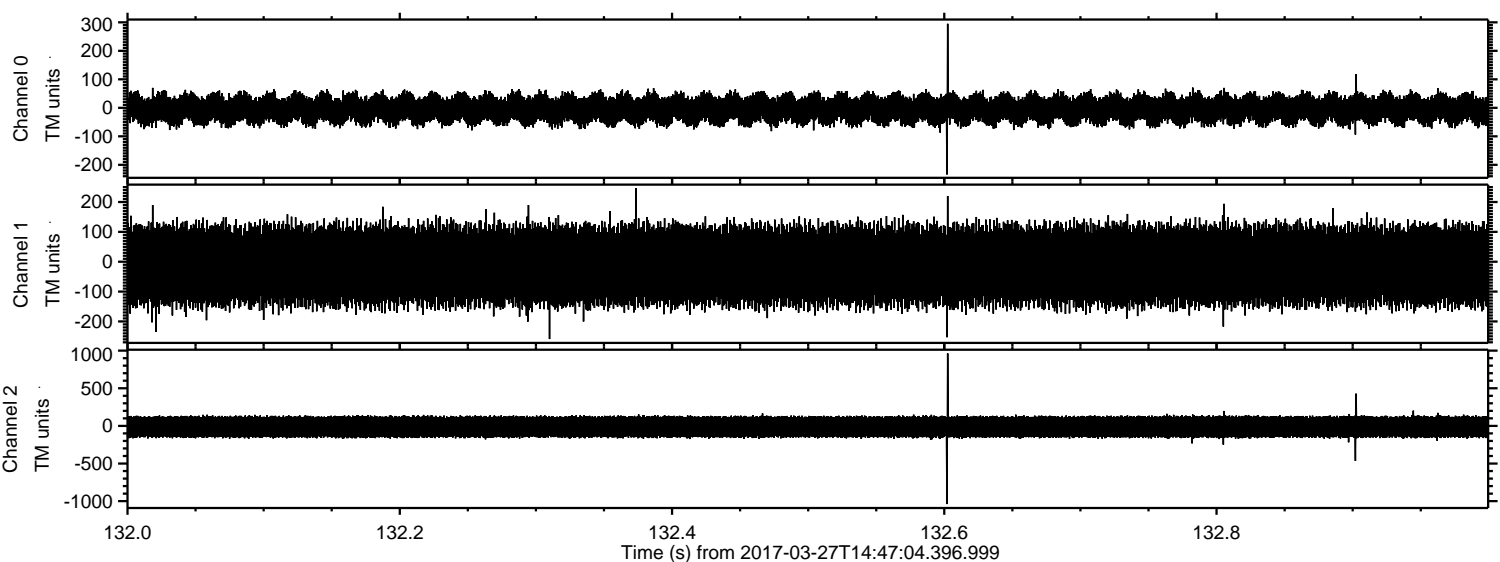


Processed Mon Mar 27 16:54:49 2017 by ELM ver.2012-10-06 from 001__elm20170327_144703__dat00.bin



ELMAVAN 3D WAVEFORMS (Measured data sampled at 50 kHz) 51000 packets of 144 samples from 2017-03-27T14:47:04.396.999. Part 133/147

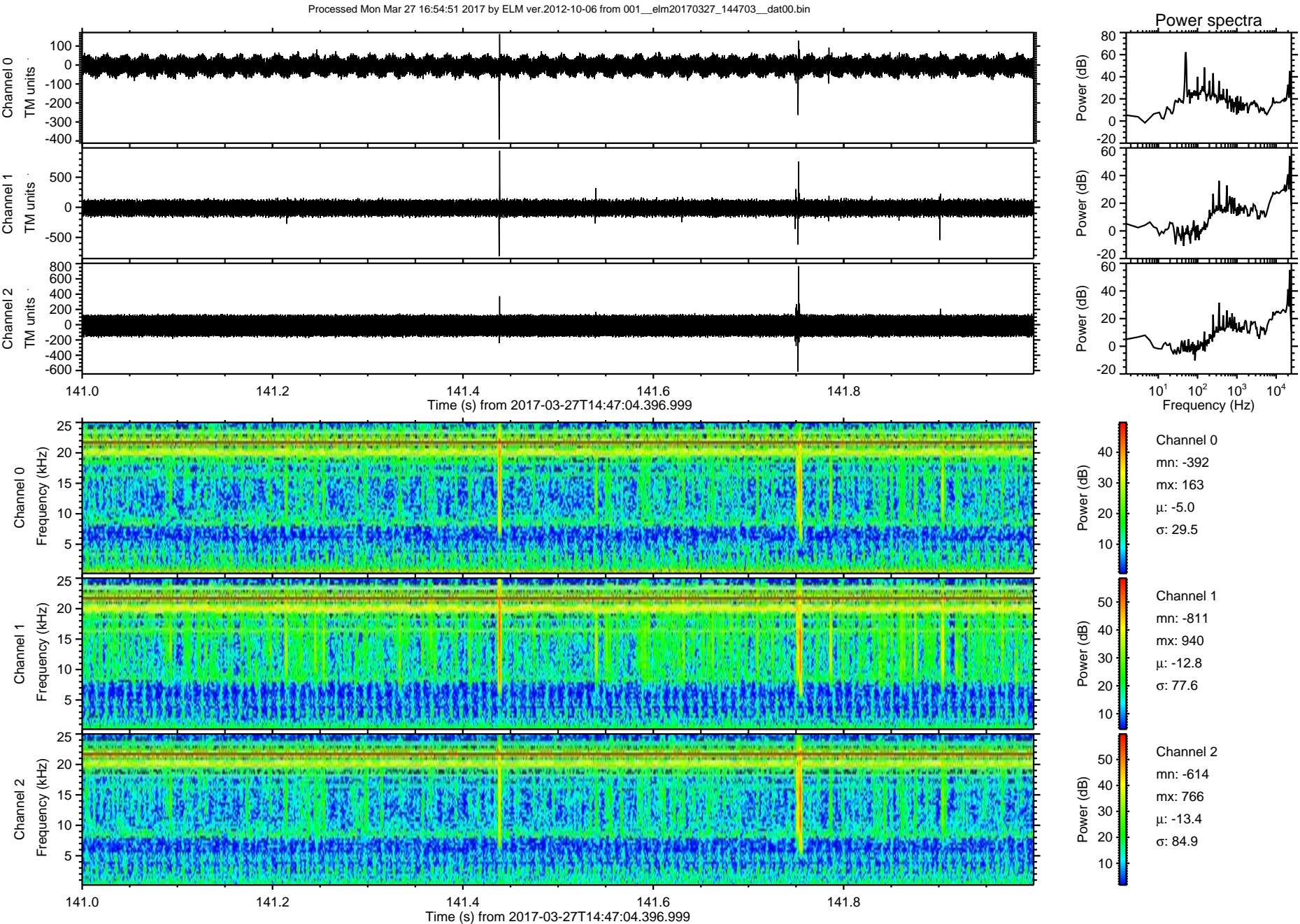
Processed Mon Mar 27 16:54:50 2017 by ELM ver.2012-10-06 from 001_elm20170327_144703__dat00.bin



Channel 0
mn: -234
mx: 295
 μ : -5.0
 σ : 29.4

Channel 1
mn: -259
mx: 246
 μ : -12.4
 σ : 77.0

Channel 2
mn: -1039
mx: 964
 μ : -13.1
 σ : 85.0



Processed Mon Mar 27 16:54:51 2017 by ELM ver.2012-10-06 from 001__elm20170327_144703__dat00.bin

