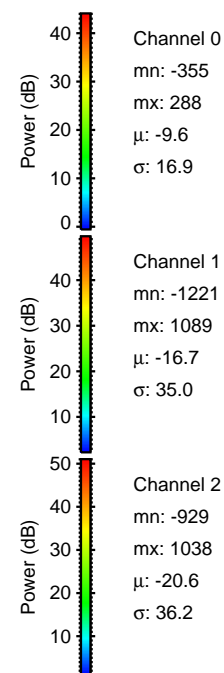
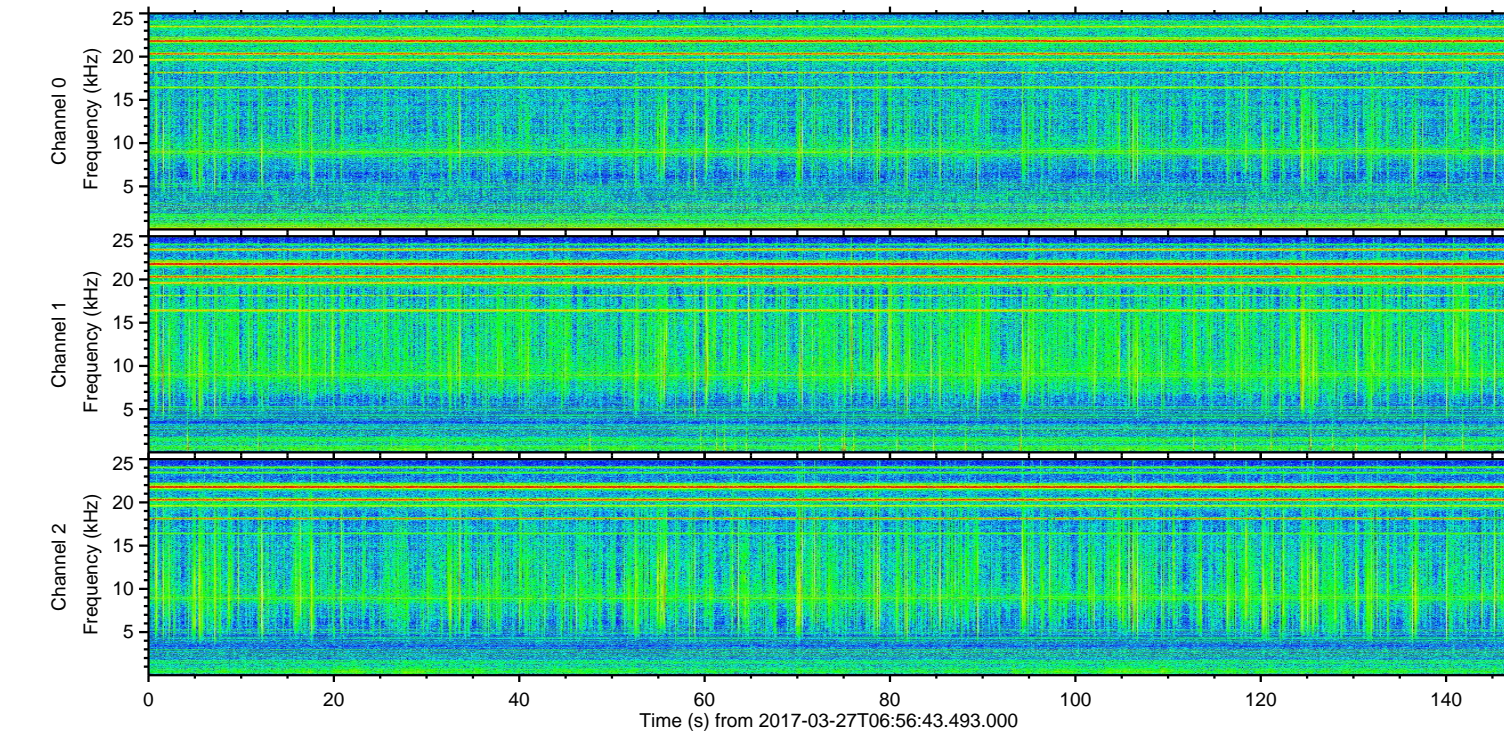
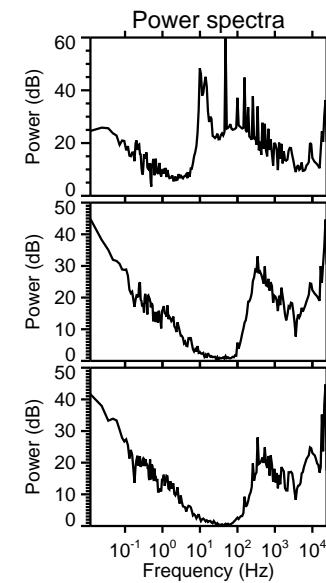
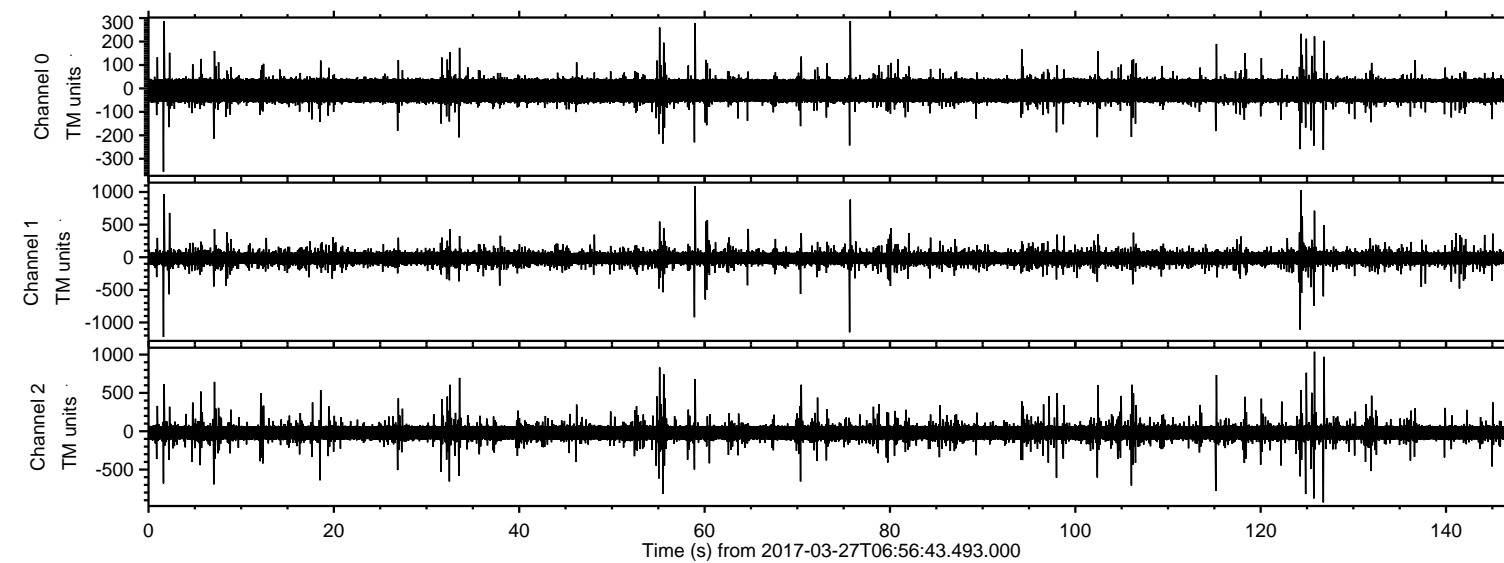


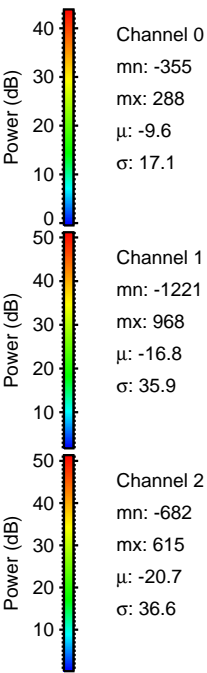
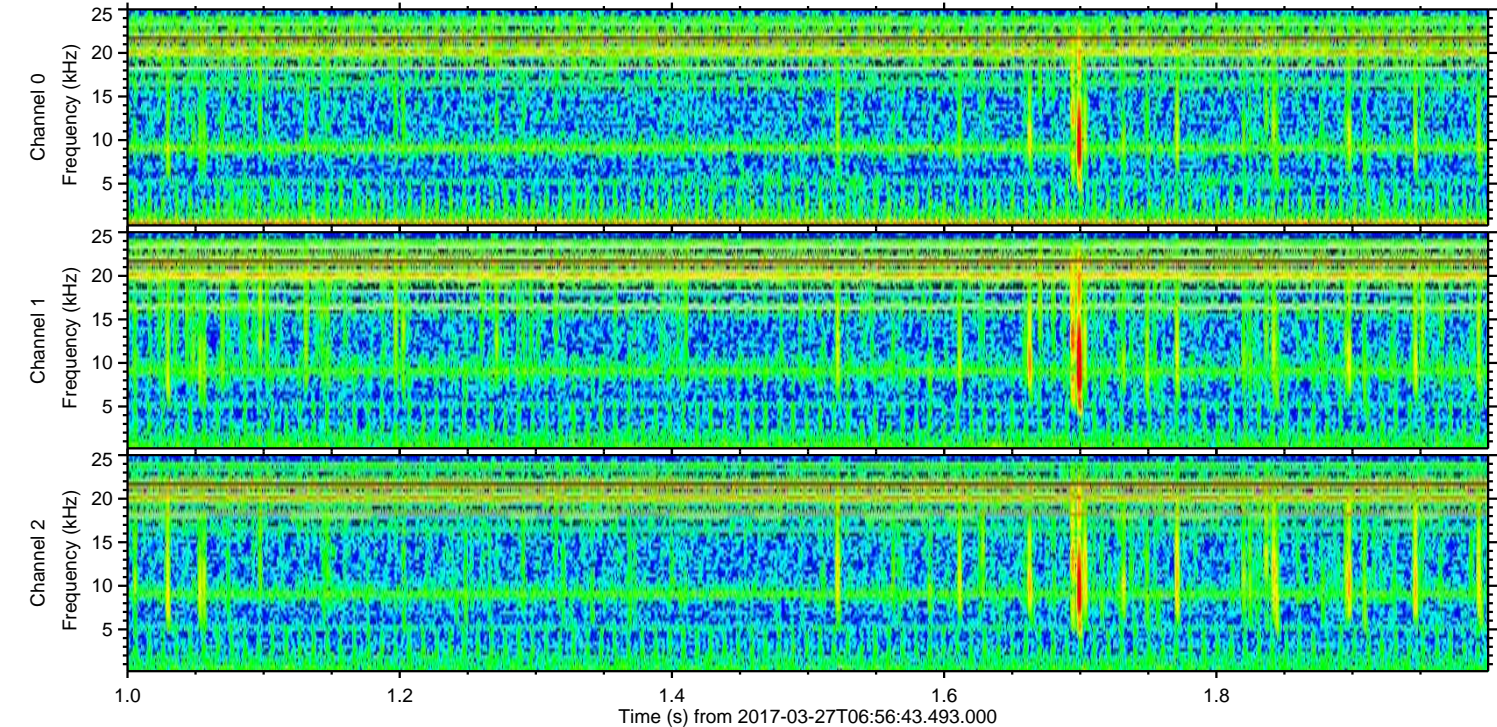
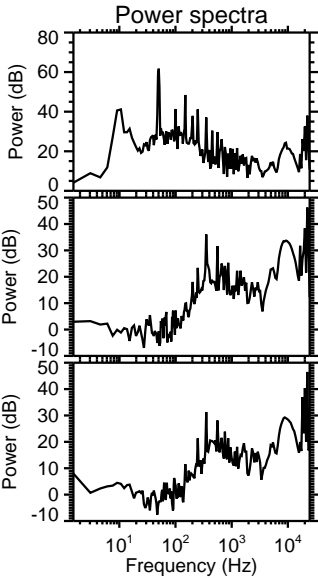
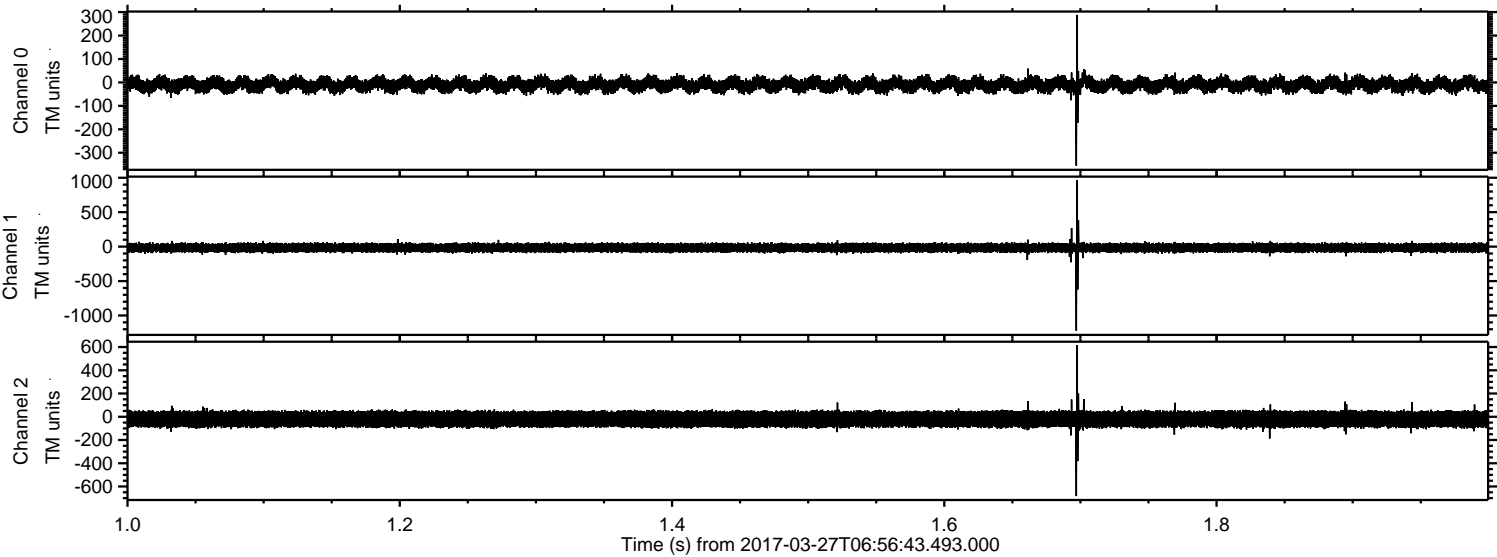
ELMAVAN 3D WAVEFORMS (Measured data sampled at 50 kHz) 51000 packets of 144 samples from 2017-03-27T06:56:43.493.000.

Processed Mon Mar 27 09:04:31 2017 by ELM ver.2012-10-06 from 001__elm20170327_065642__dat00.bin



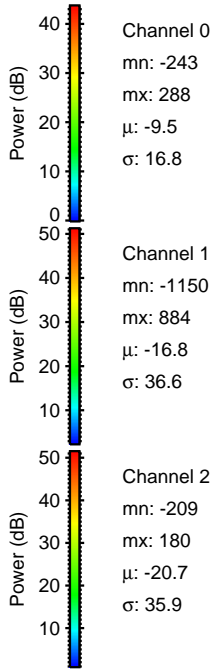
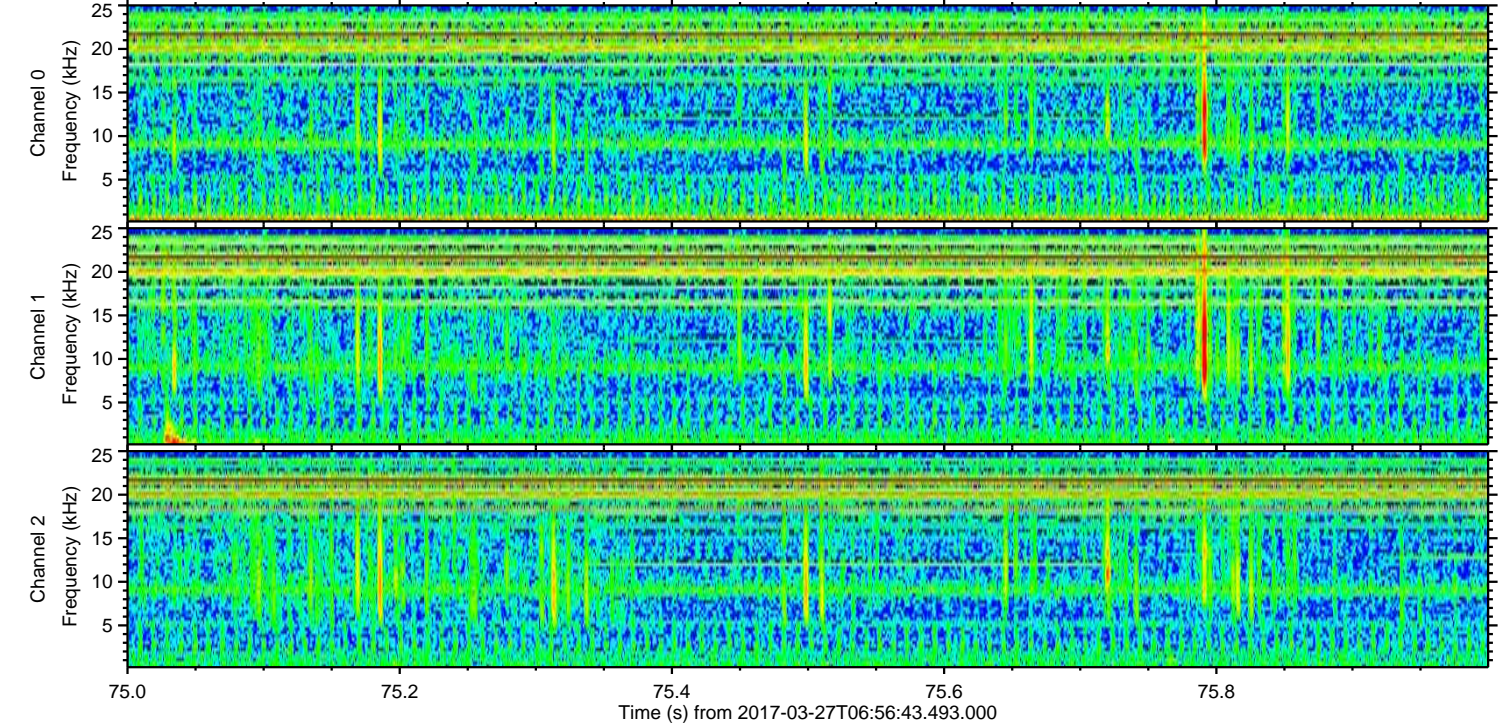
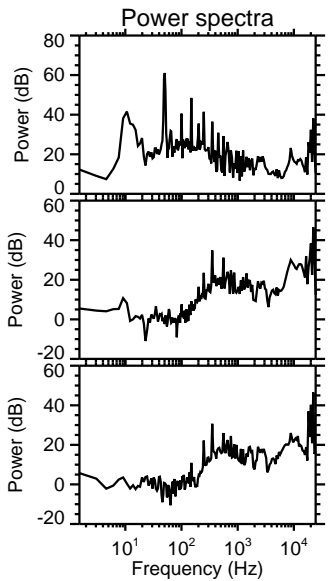
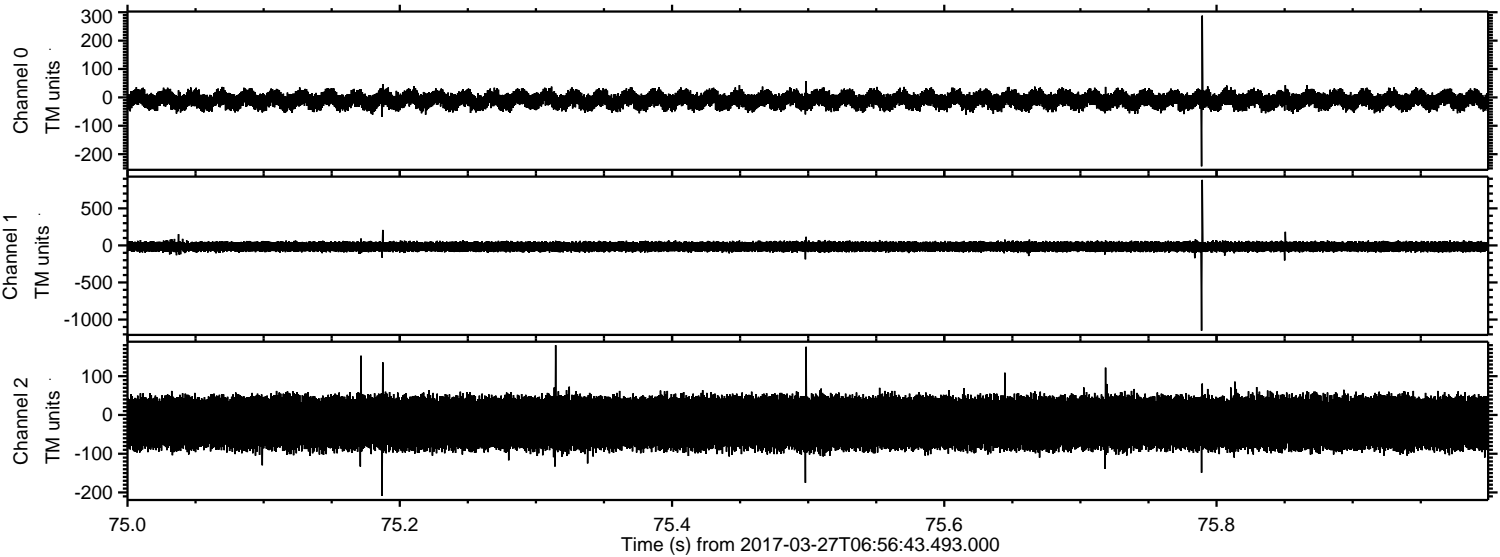
ELMAVAN 3D WAVEFORMS (Measured data sampled at 50 kHz) 51000 packets of 144 samples from 2017-03-27T06:56:43.493.000. Part 2/147

Processed Mon Mar 27 09:04:43 2017 by ELM ver.2012-10-06 from 001__elm20170327_065642__dat00.bin



ELMAVAN 3D WAVEFORMS (Measured data sampled at 50 kHz) 51000 packets of 144 samples from 2017-03-27T06:56:43.493.000. Part 76/147

Processed Mon Mar 27 09:04:43 2017 by ELM ver.2012-10-06 from 001__elm20170327_065642__dat00.bin



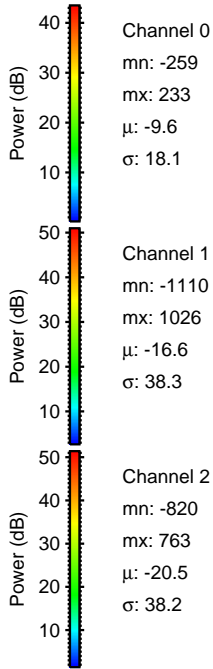
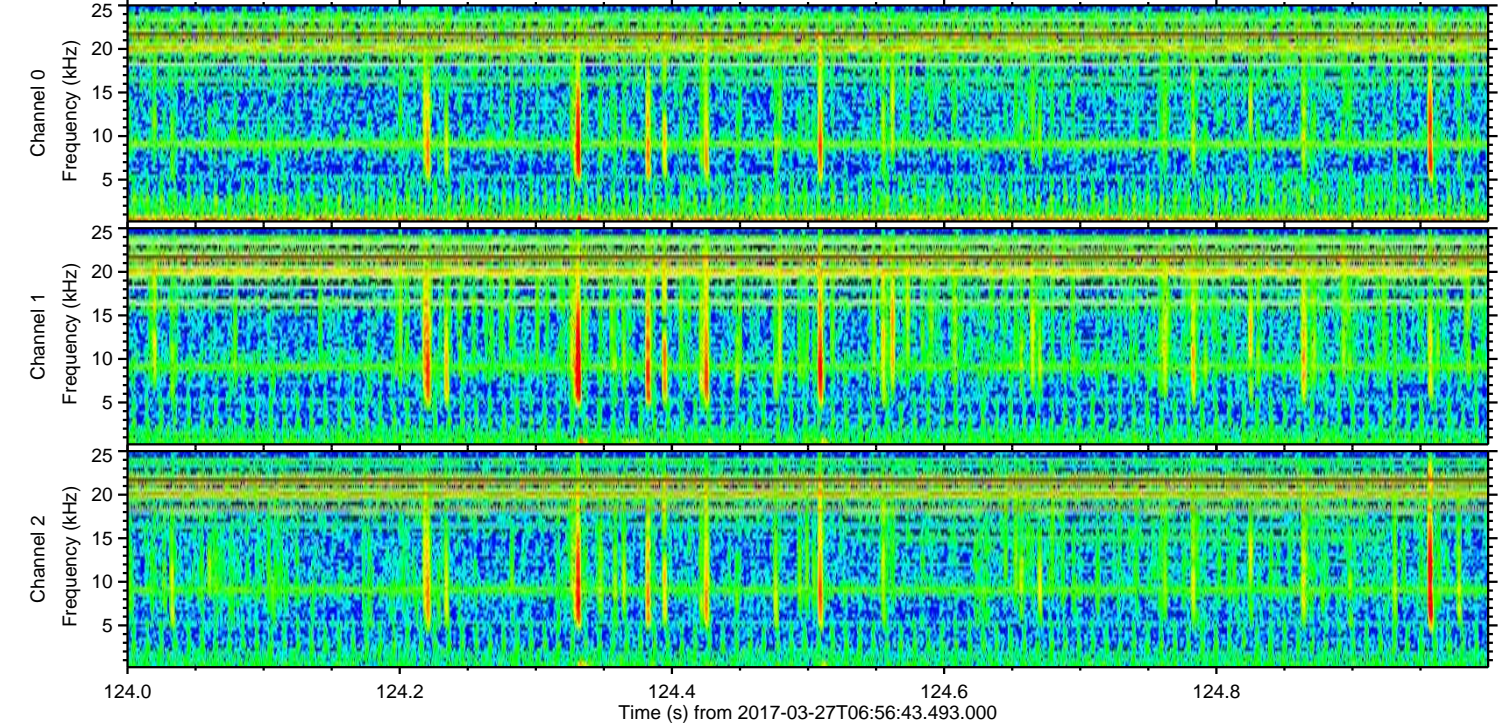
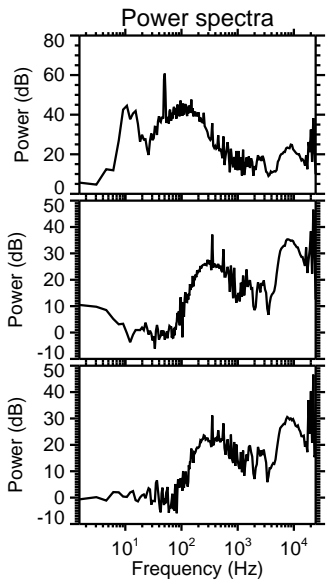
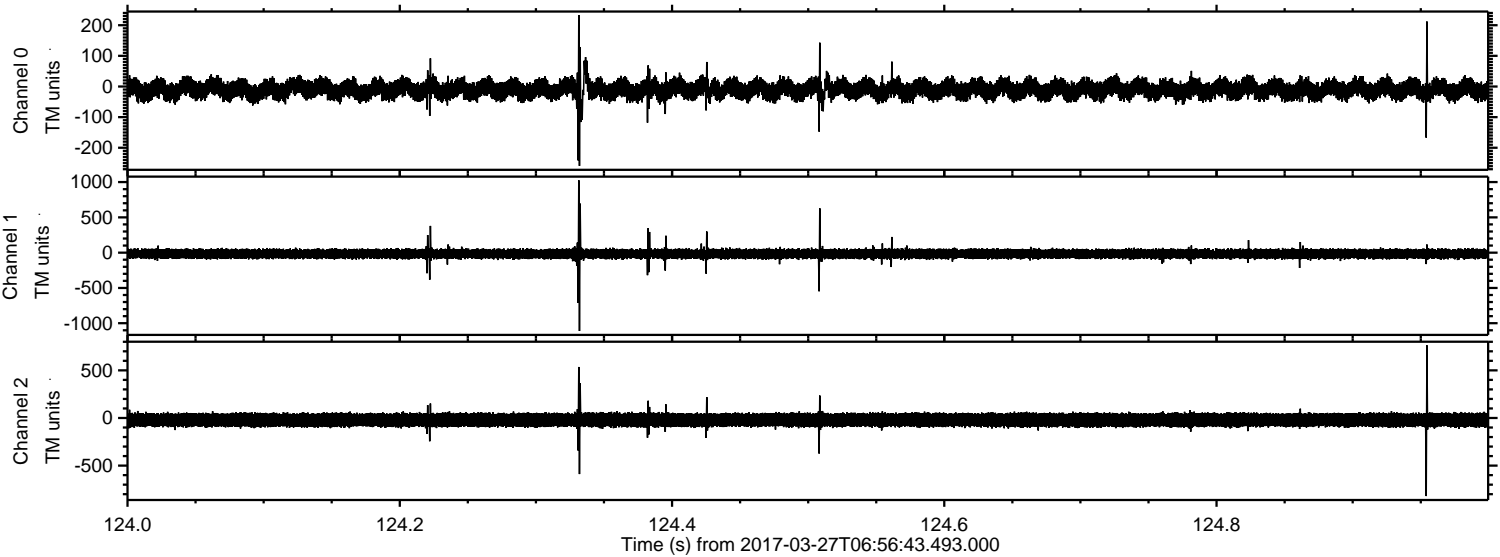
Channel 0
mn: -243
mx: 288
 μ : -9.5
 σ : 16.8

Channel 1
mn: -1150
mx: 884
 μ : -16.8
 σ : 36.6

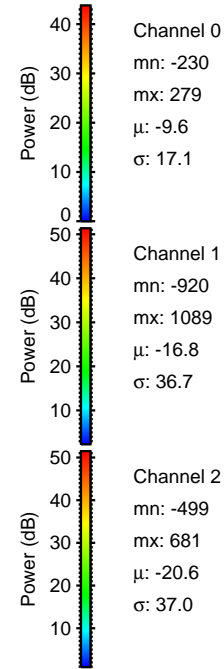
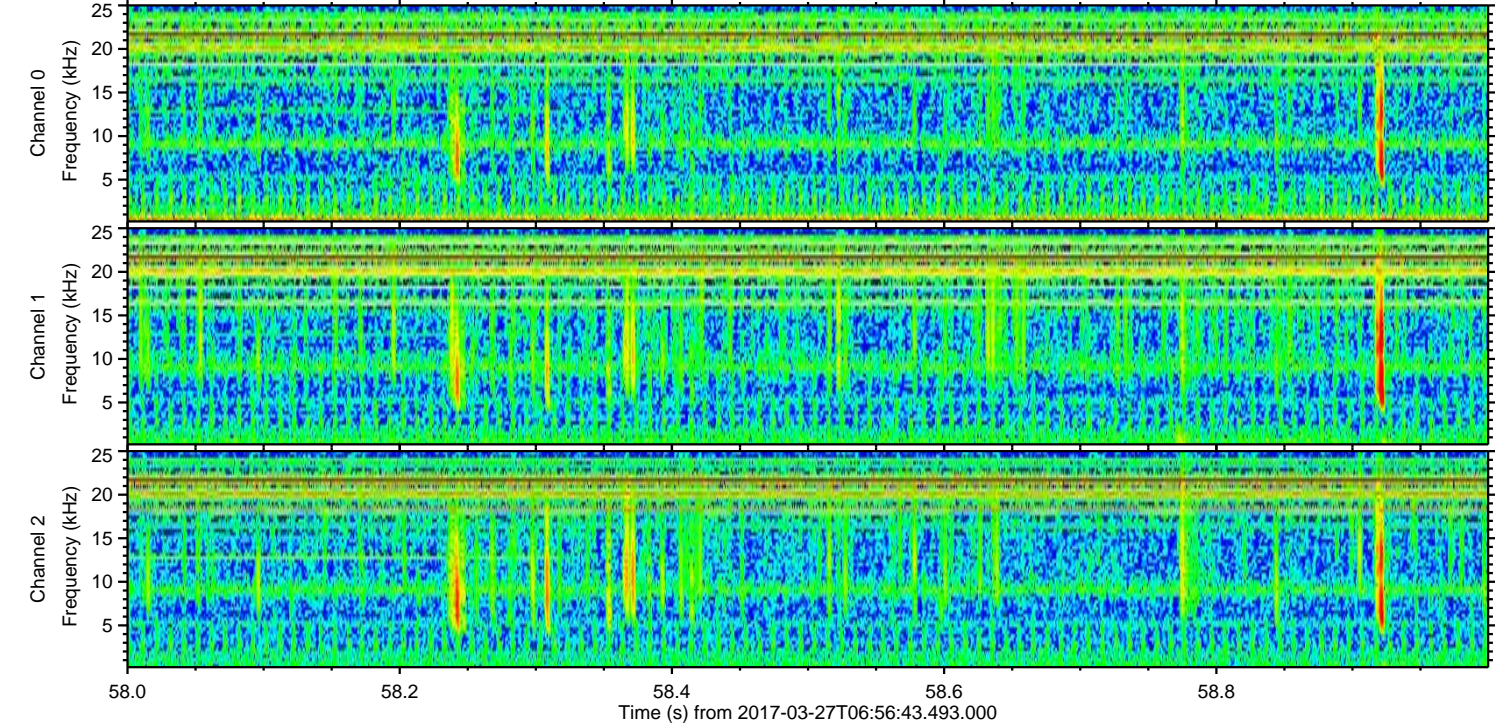
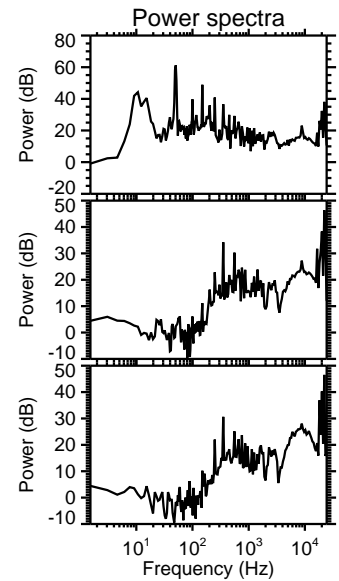
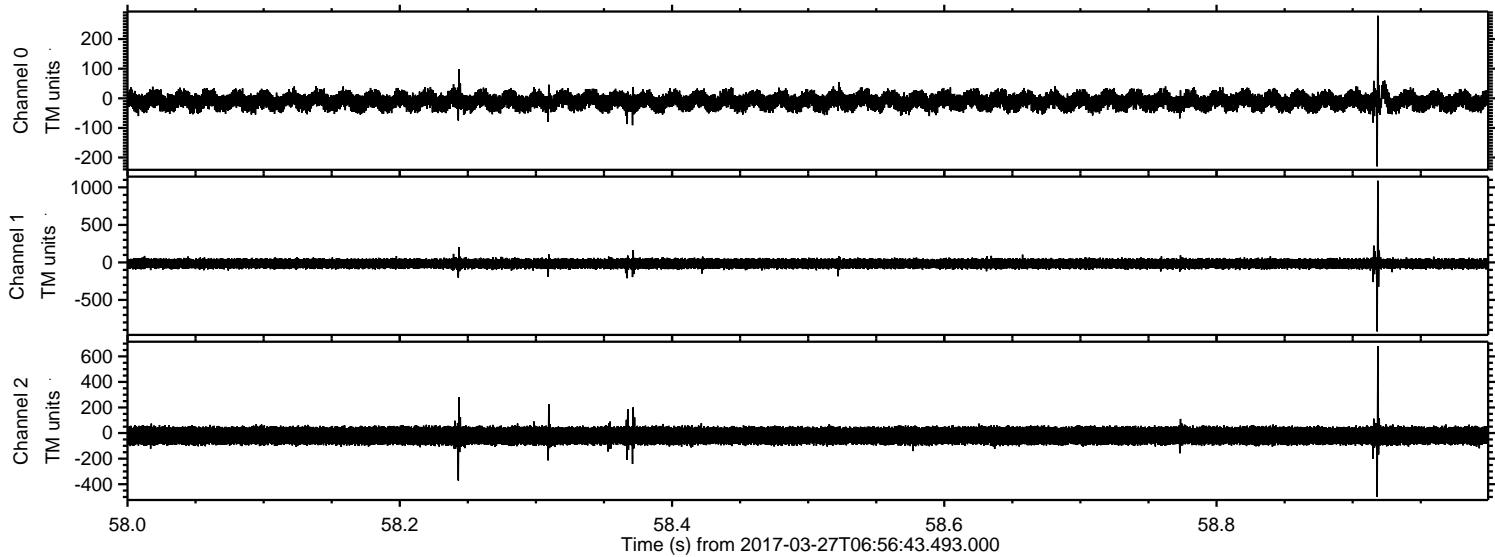
Channel 2
mn: -209
mx: 180
 μ : -20.7
 σ : 35.9

ELMAVAN 3D WAVEFORMS (Measured data sampled at 50 kHz) 51000 packets of 144 samples from 2017-03-27T06:56:43.493.000. Part 125/147

Processed Mon Mar 27 09:04:44 2017 by ELM ver.2012-10-06 from 001__elm20170327_065642__dat00.bin

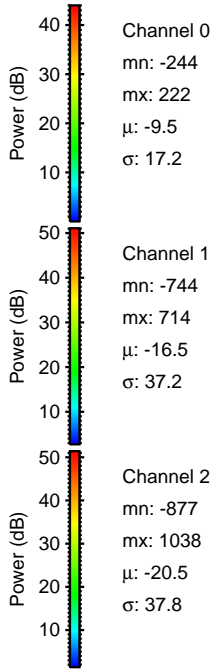
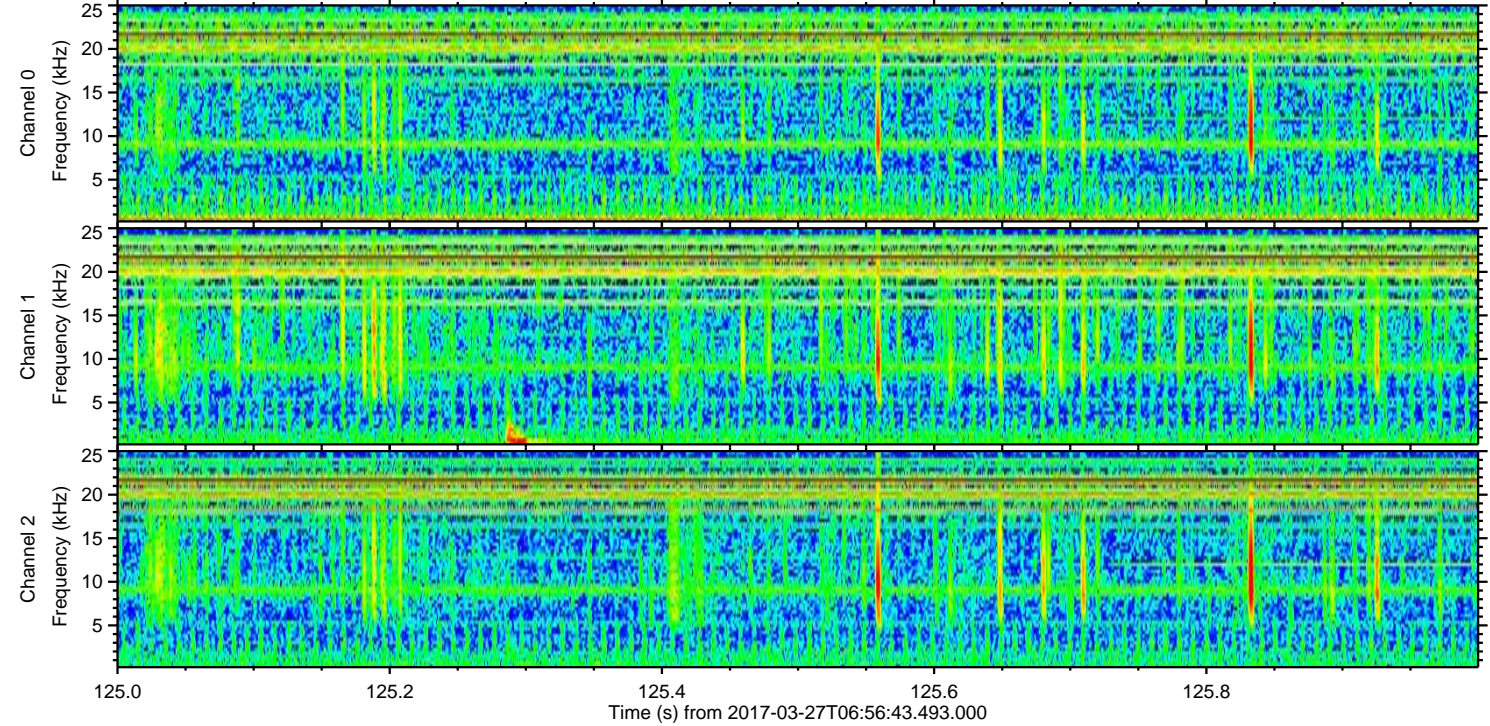
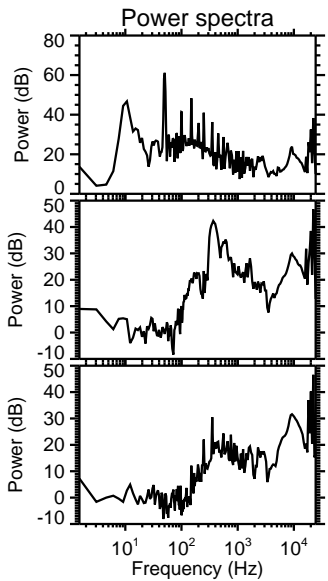
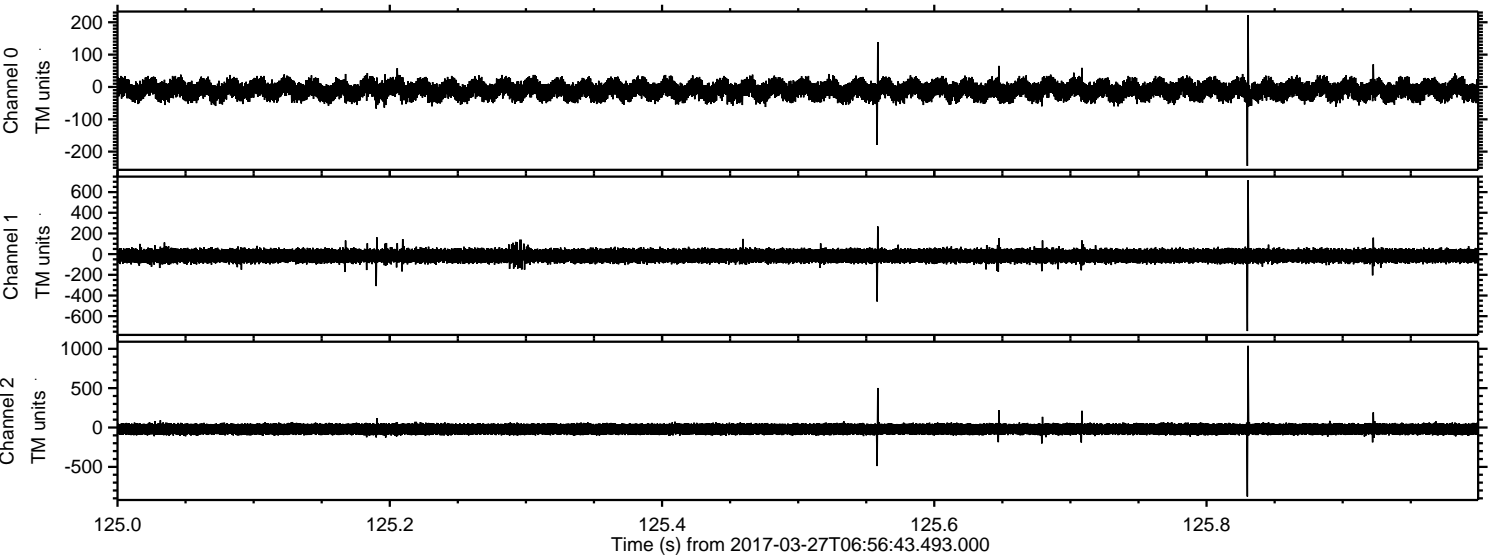


Processed Mon Mar 27 09:04:45 2017 by ELM ver.2012-10-06 from 001__elm20170327_065642__dat00.bin



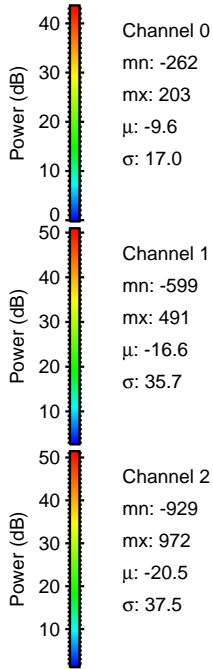
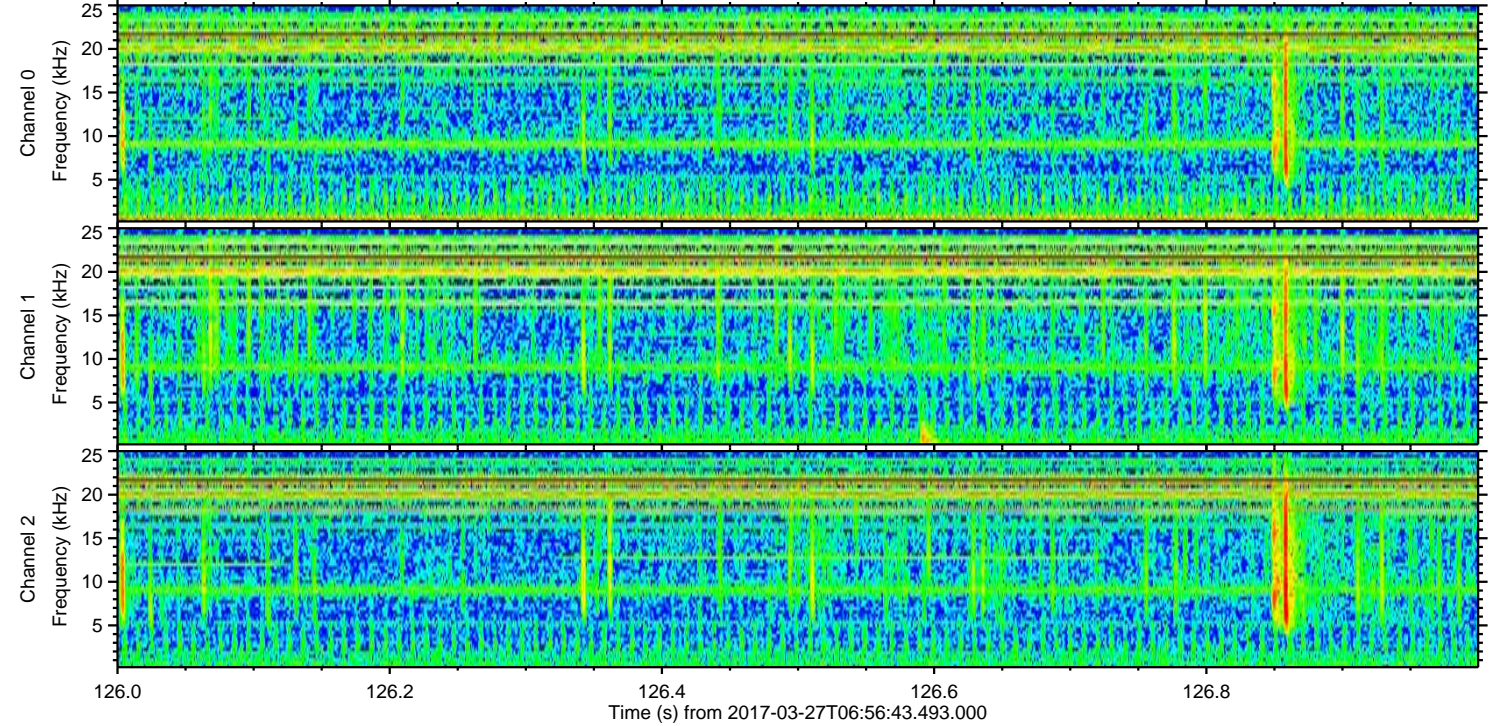
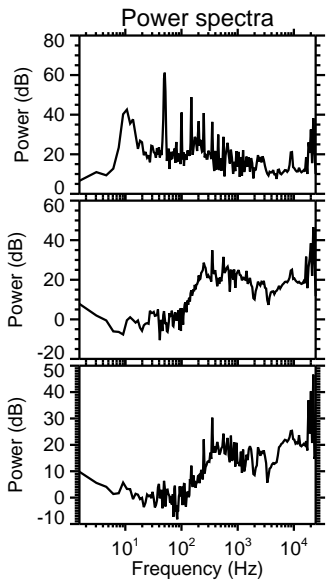
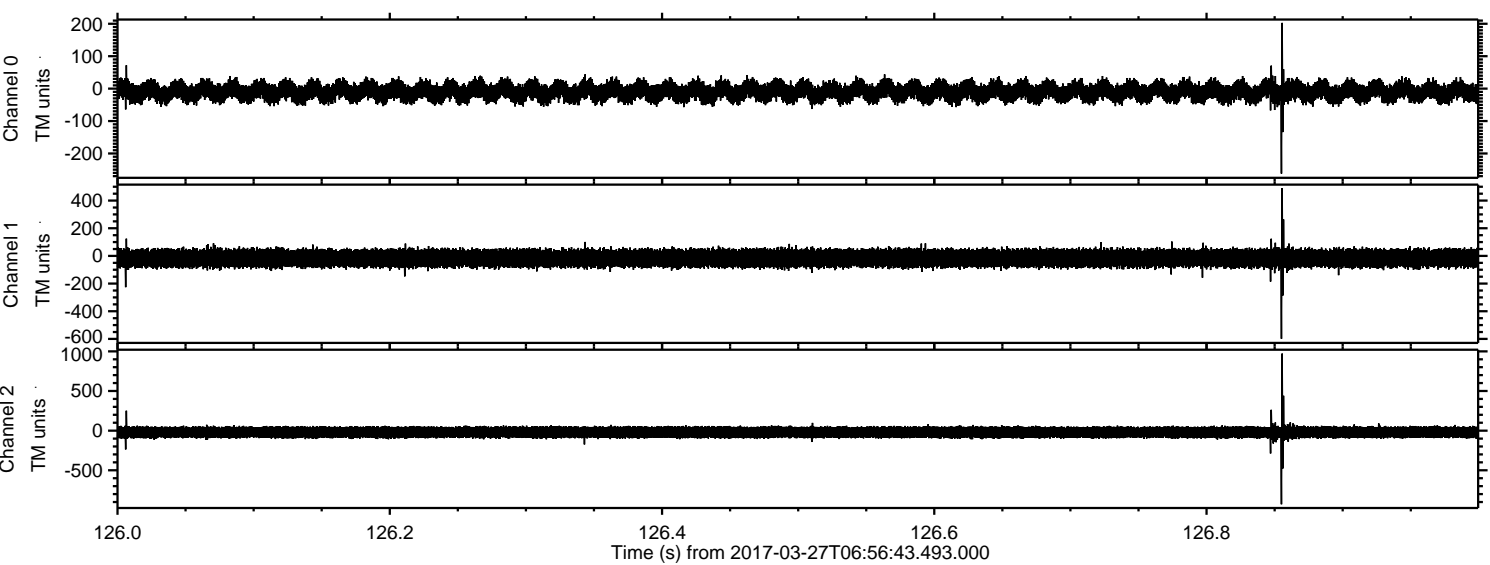
ELMAVAN 3D WAVEFORMS (Measured data sampled at 50 kHz) 51000 packets of 144 samples from 2017-03-27T06:56:43.493.000. Part 126/147

Processed Mon Mar 27 09:04:46 2017 by ELM ver.2012-10-06 from 001__elm20170327_065642__dat00.bin

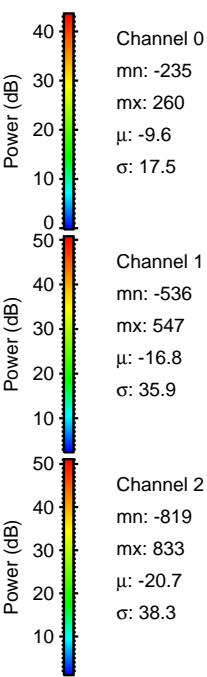
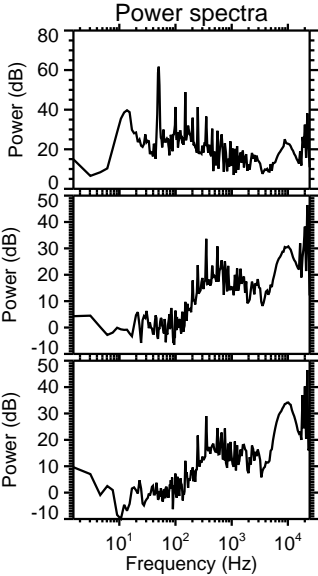
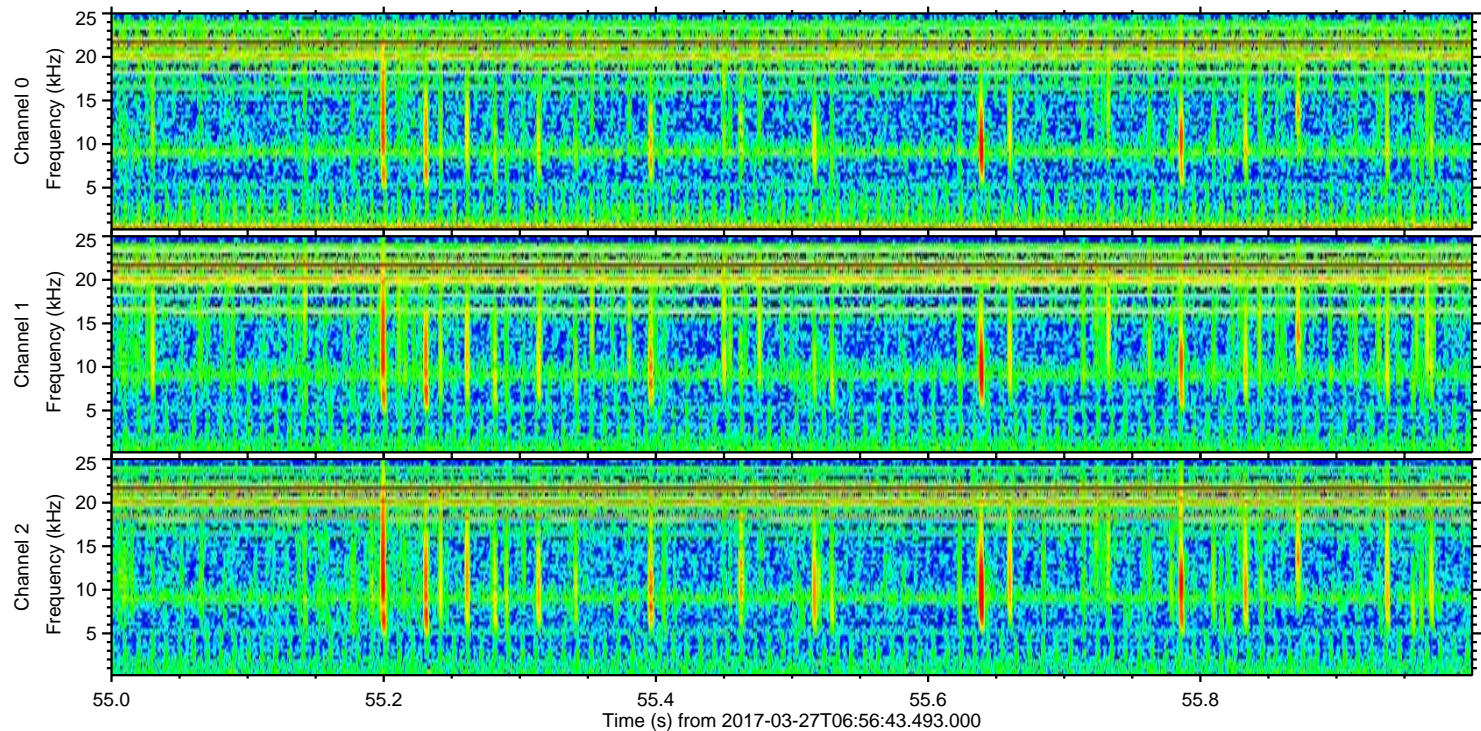
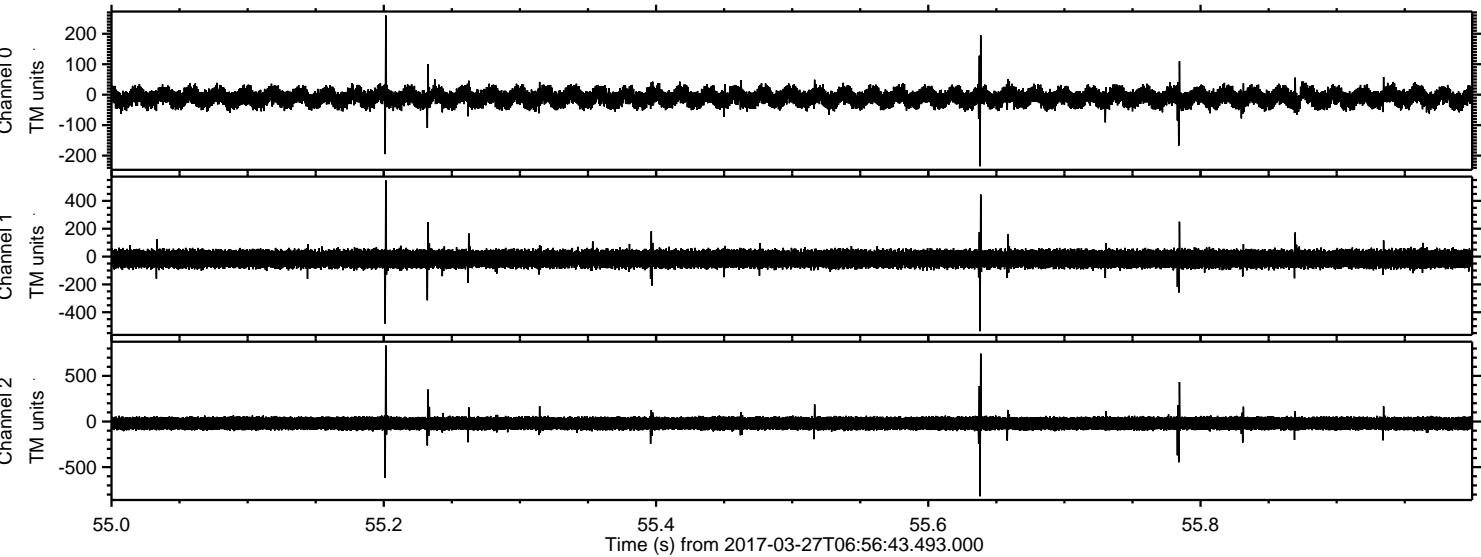


ELMAVAN 3D WAVEFORMS (Measured data sampled at 50 kHz) 51000 packets of 144 samples from 2017-03-27T06:56:43.493.000. Part 127/147

Processed Mon Mar 27 09:04:47 2017 by ELM ver.2012-10-06 from 001__elm20170327_065642__dat00.bin

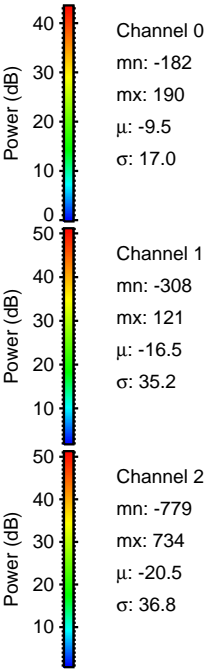
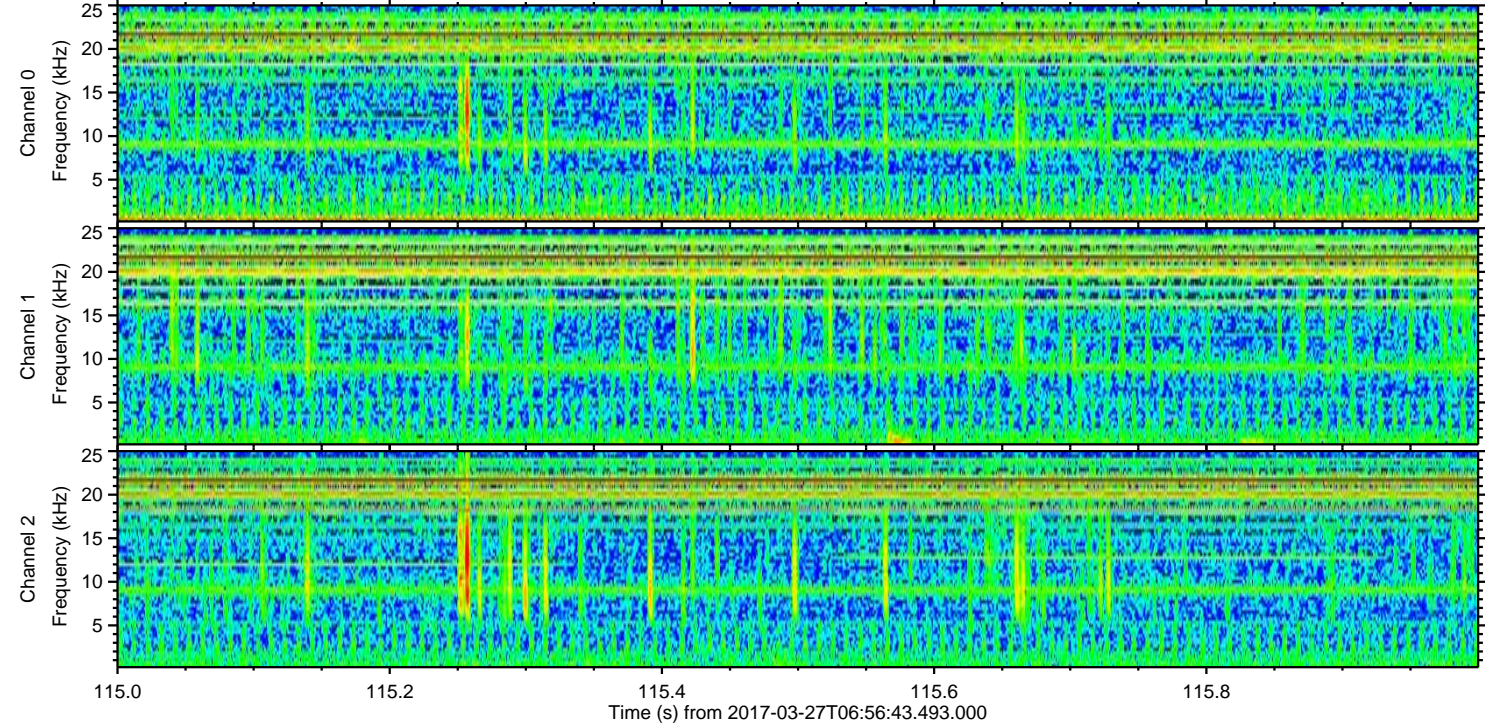
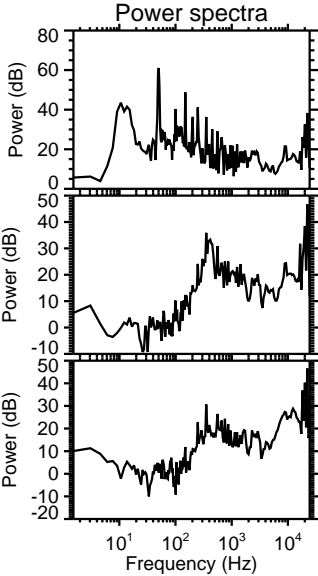
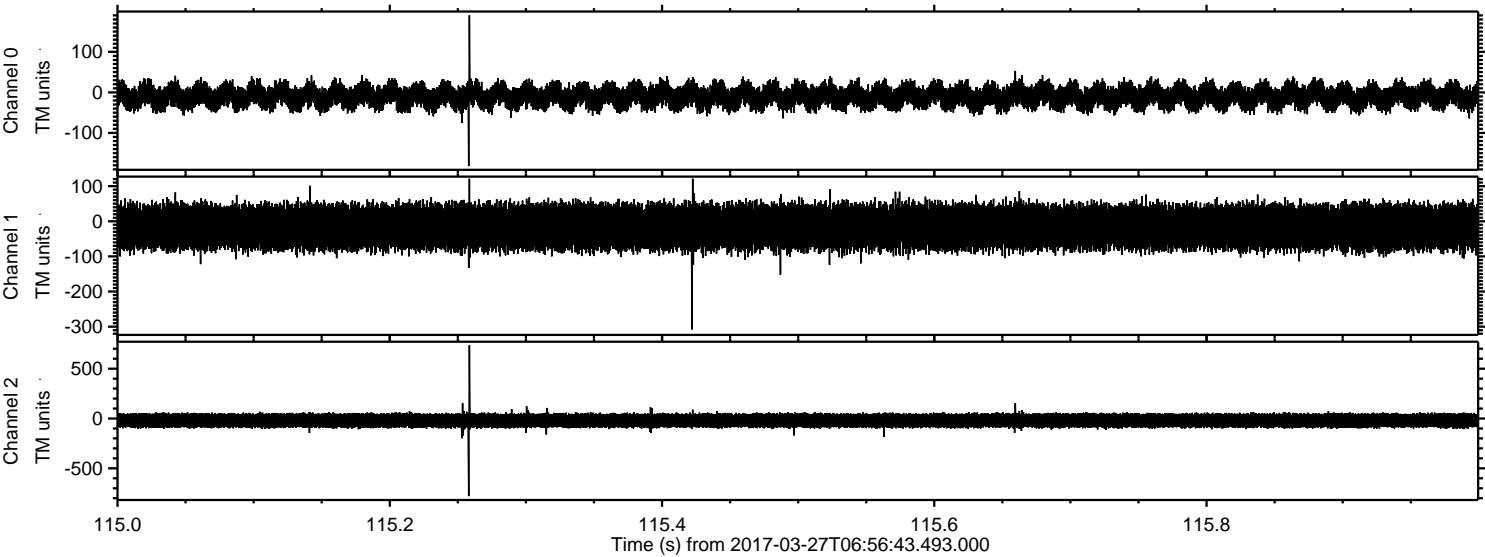


Processed Mon Mar 27 09:04:48 2017 by ELM ver.2012-10-06 from 001__elm20170327_065642__dat00.bin



ELMAVAN 3D WAVEFORMS (Measured data sampled at 50 kHz) 51000 packets of 144 samples from 2017-03-27T06:56:43.493.000. Part 116/147

Processed Mon Mar 27 09:04:49 2017 by ELM ver.2012-10-06 from 001__elm20170327_065642__dat00.bin



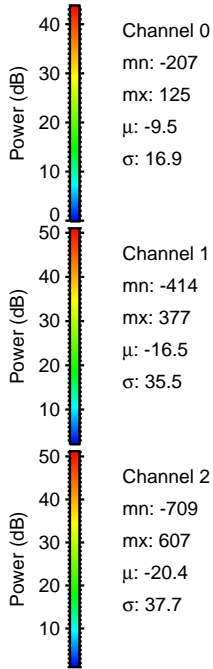
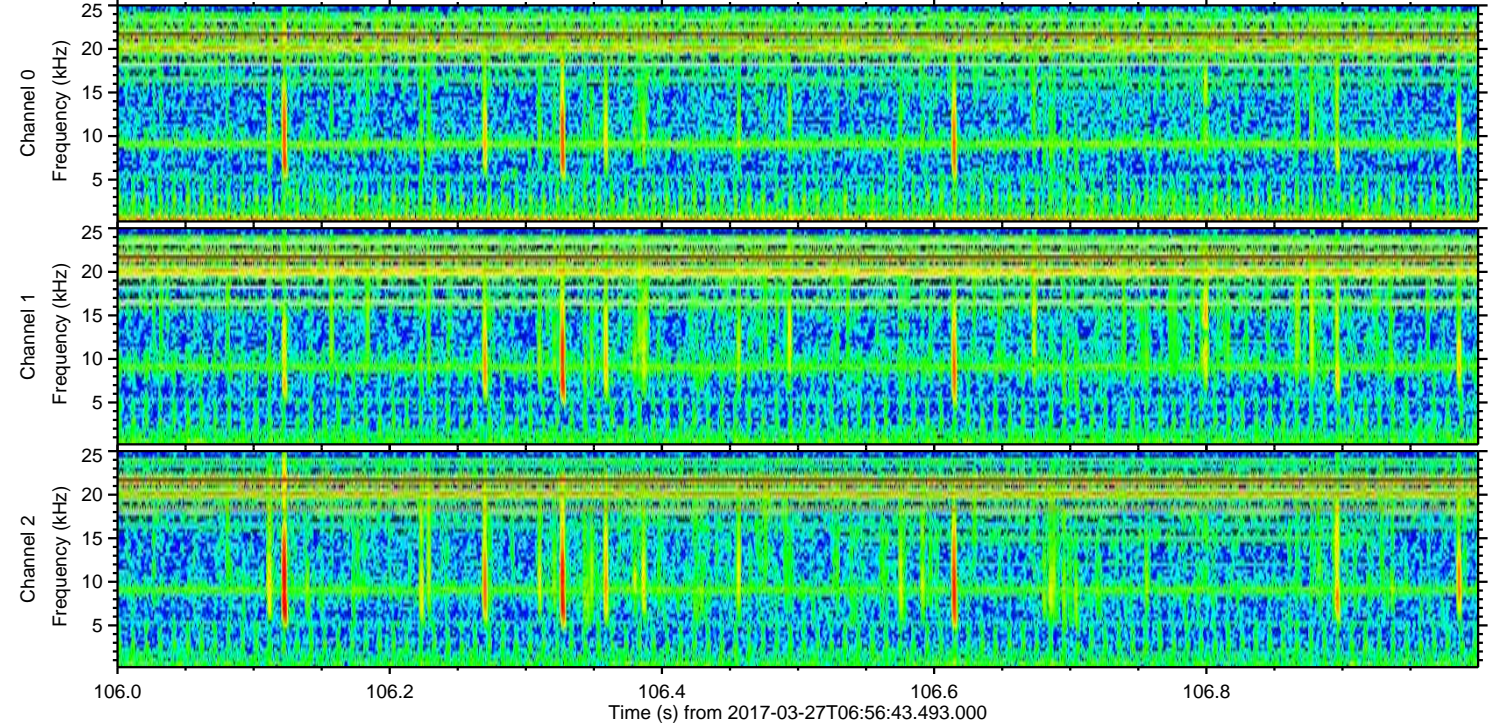
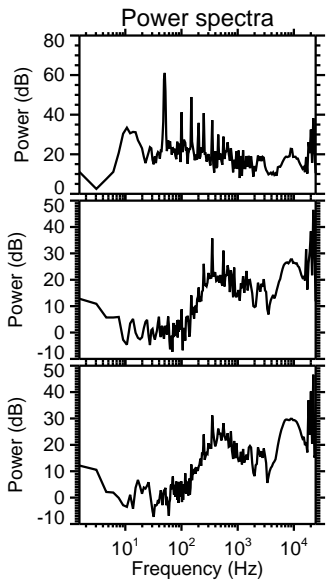
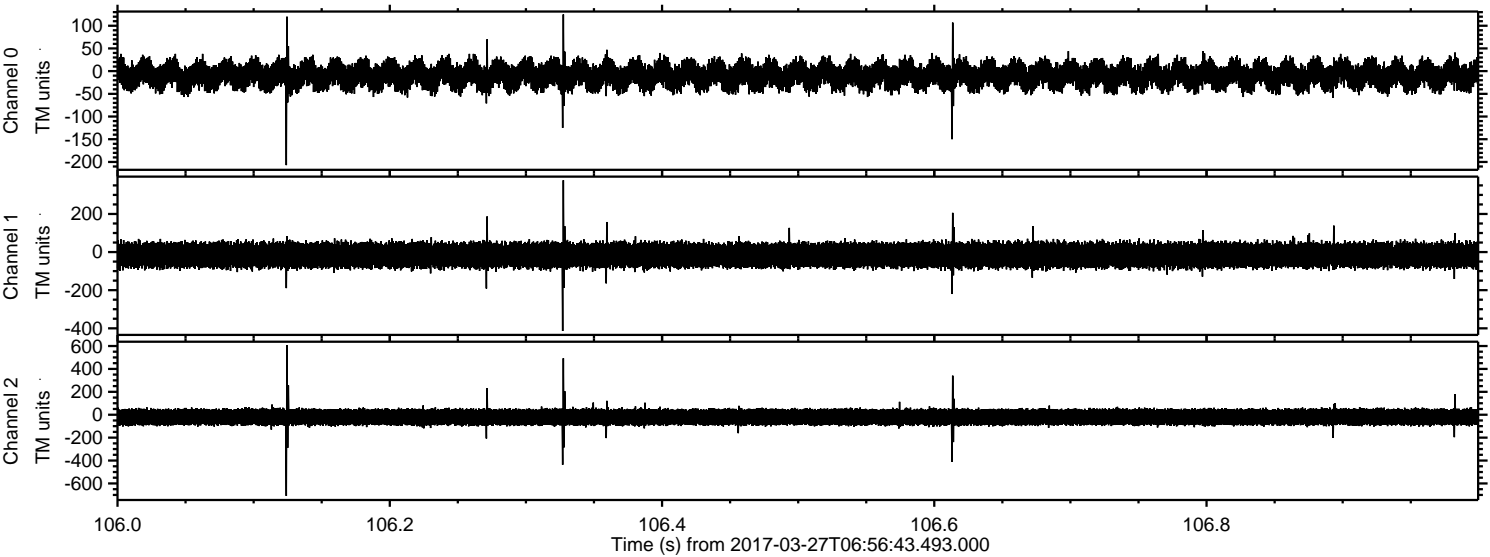
Channel 0
mn: -182
mx: 190
 μ : -9.5
 σ : 17.0

Channel 1
mn: -308
mx: 121
 μ : -16.5
 σ : 35.2

Channel 2
mn: -779
mx: 734
 μ : -20.5
 σ : 36.8

ELMAVAN 3D WAVEFORMS (Measured data sampled at 50 kHz) 51000 packets of 144 samples from 2017-03-27T06:56:43.493.000. Part 107/147

Processed Mon Mar 27 09:04:50 2017 by ELM ver.2012-10-06 from 001__elm20170327_065642__dat00.bin



Channel 0
mn: -207
mx: 125
μ: -9.5
σ: 16.9

Channel 1
mn: -414
mx: 377
μ: -16.5
σ: 35.5

Channel 2
mn: -709
mx: 607
μ: -20.4
σ: 37.7

Processed Mon Mar 27 09:04:51 2017 by ELM ver.2012-10-06 from 001__elm20170327_065642__dat00.bin

