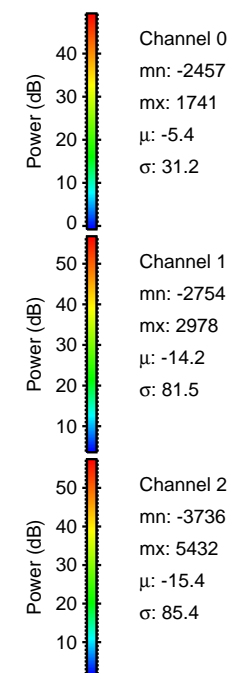
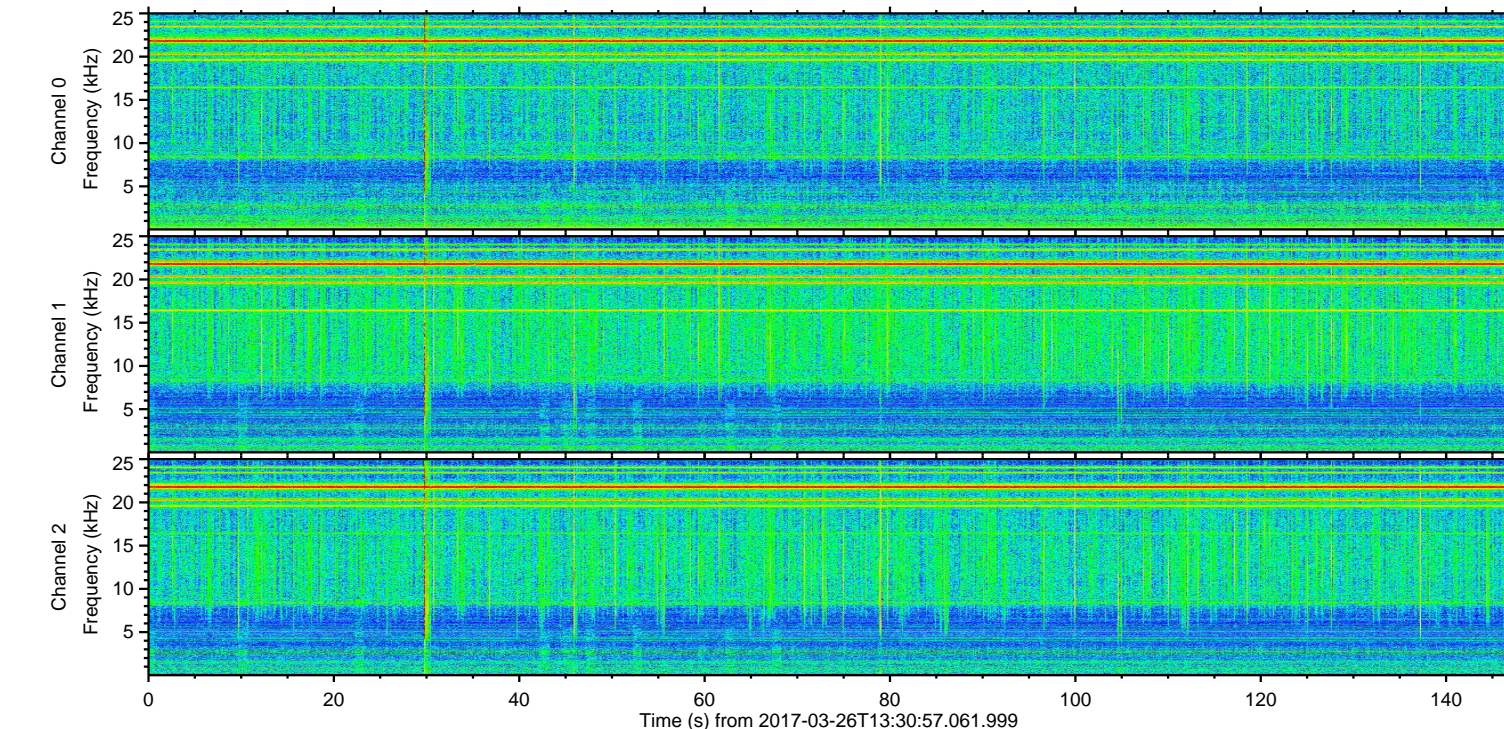
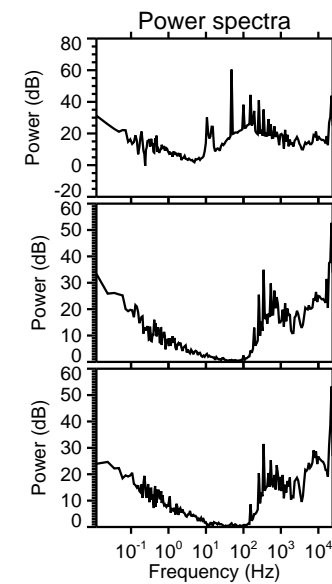
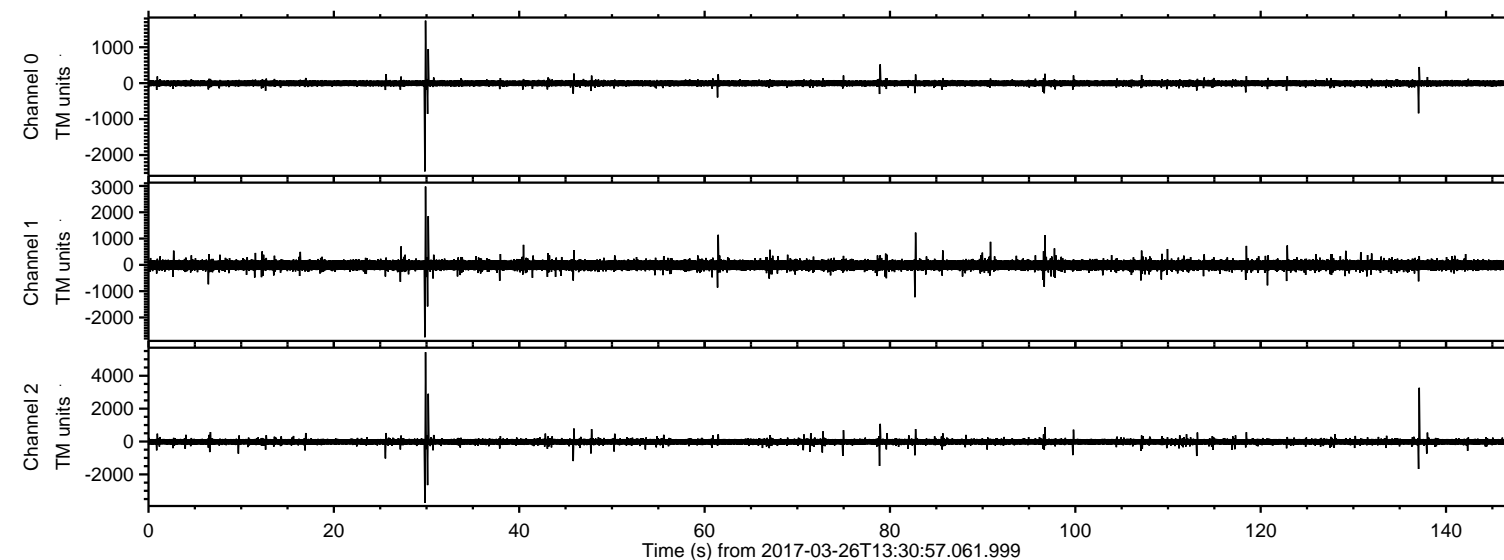


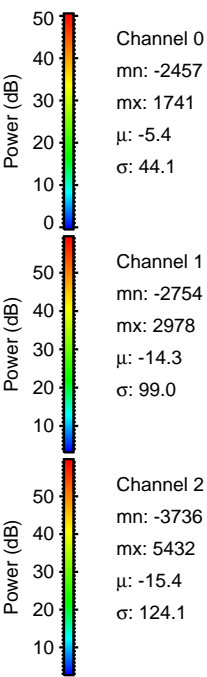
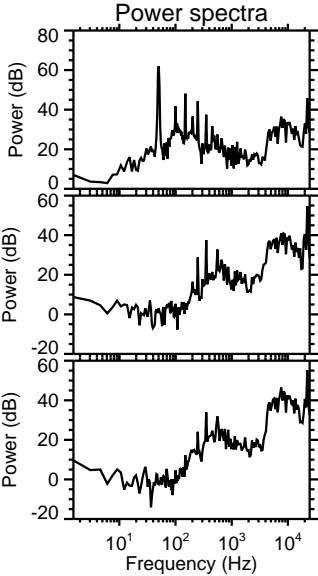
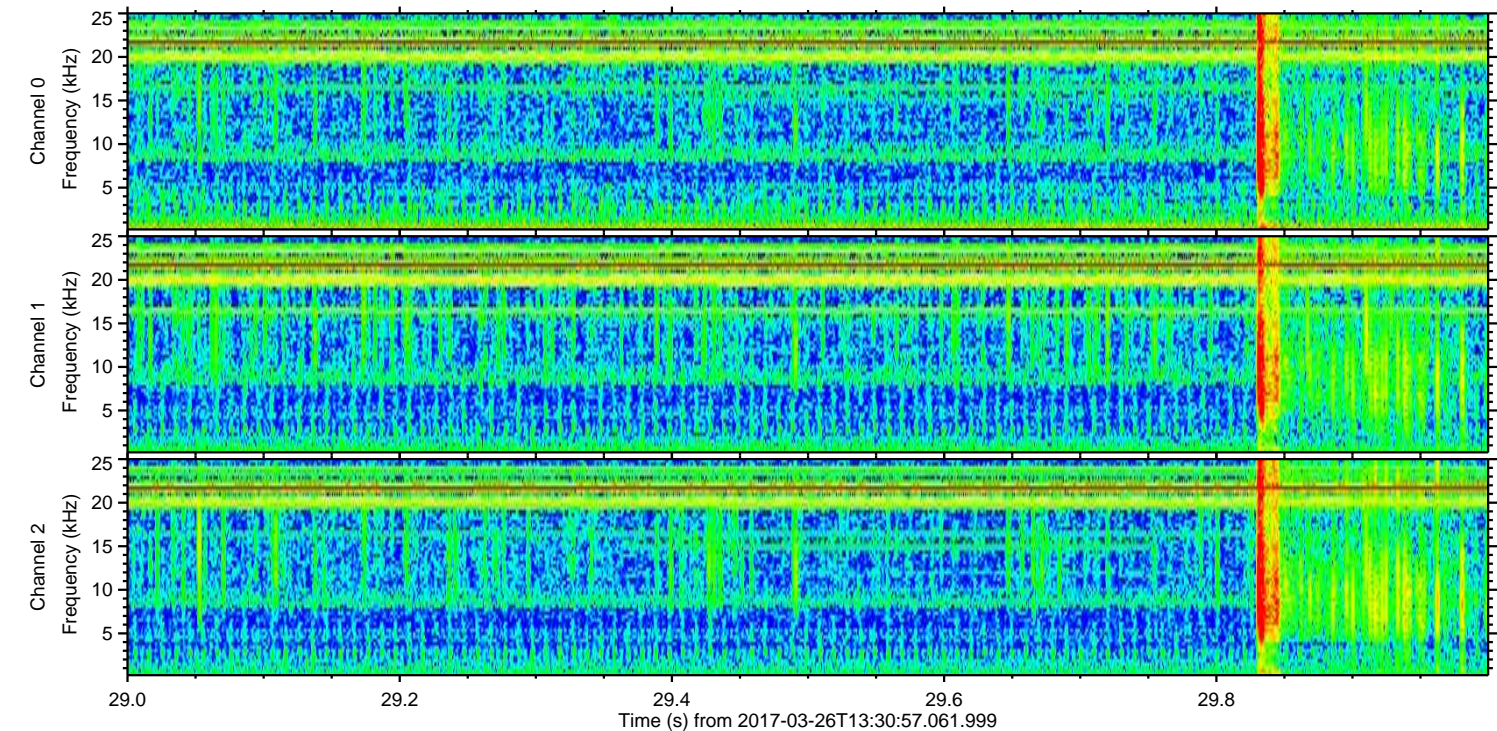
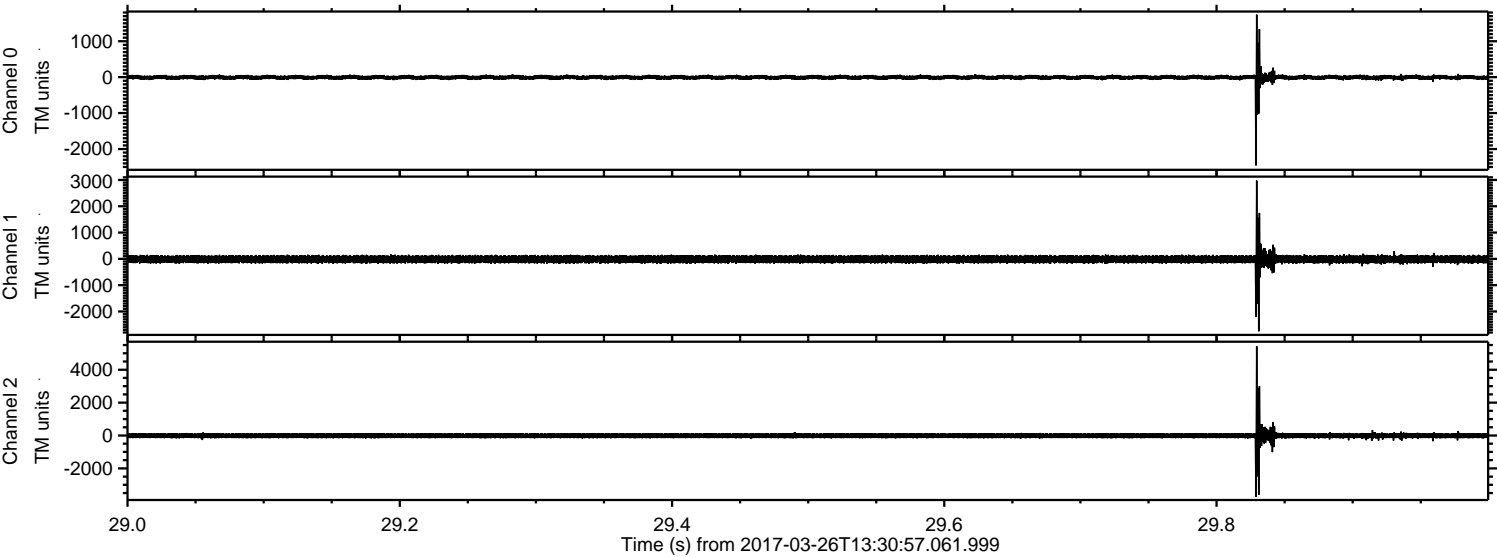
ELMAVAN 3D WAVEFORMS (Measured data sampled at 50 kHz) 51000 packets of 144 samples from 2017-03-26T13:30:57.061.999.

Processed Sun Mar 26 15:39:05 2017 by ELM ver.2012-10-06 from 001__elm20170326_133056__dat00.bin



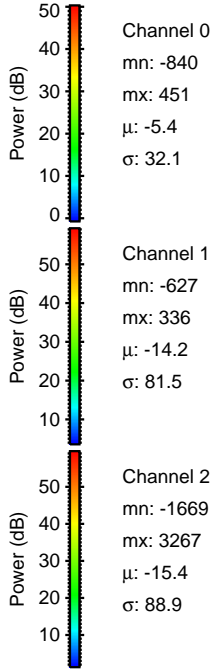
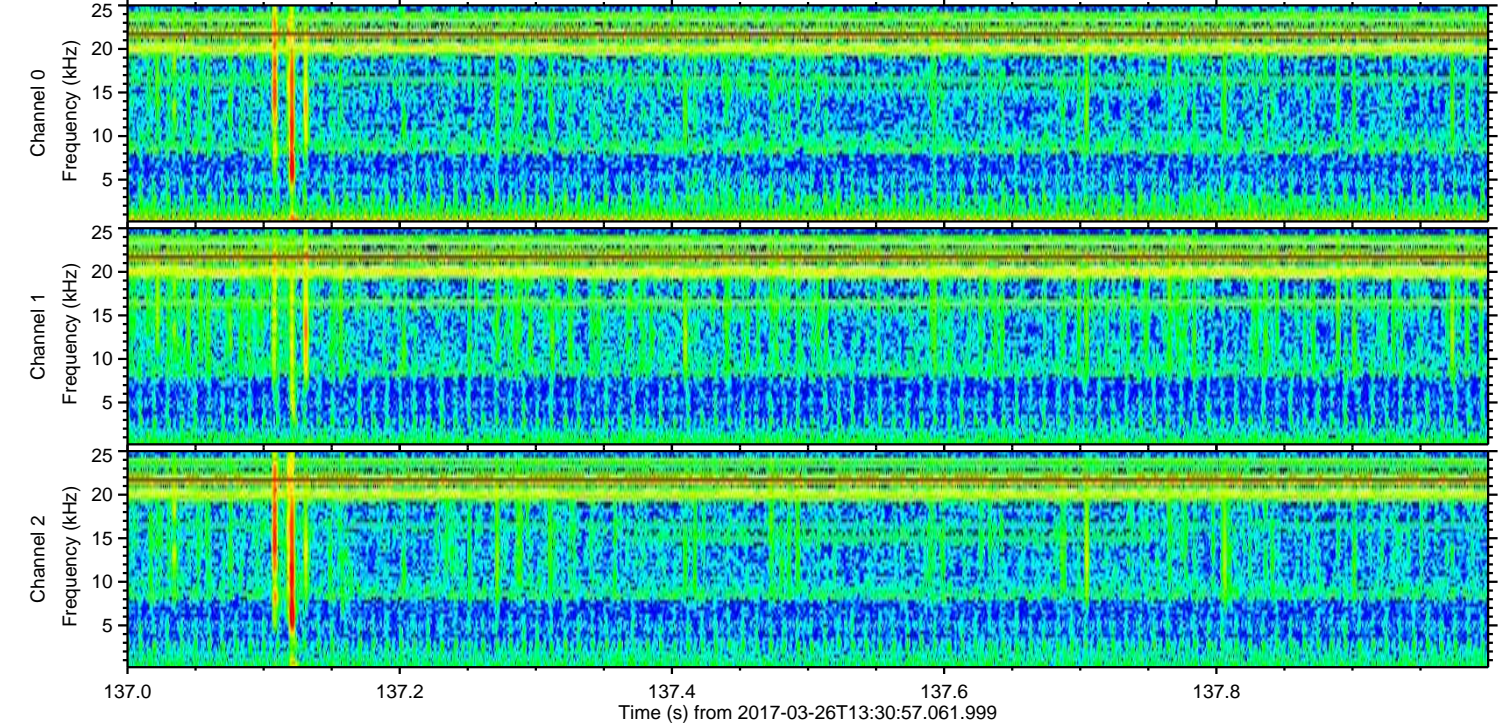
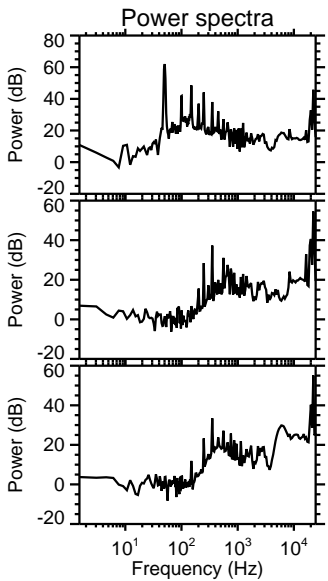
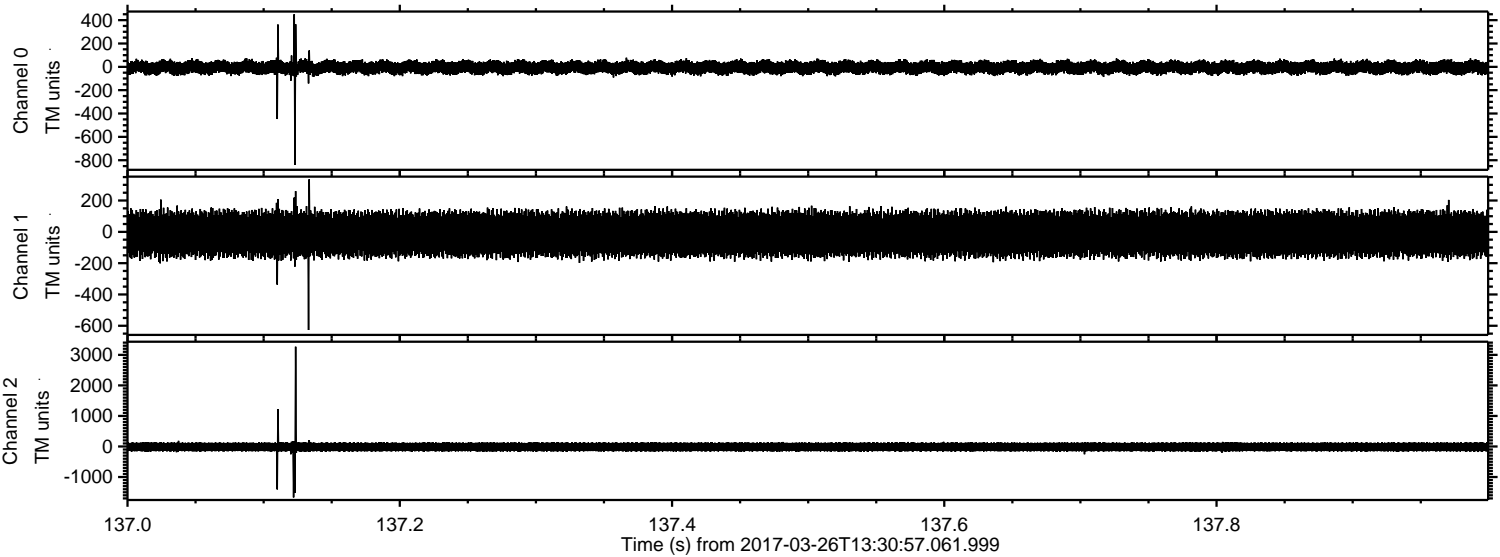
ELMAVAN 3D WAVEFORMS (Measured data sampled at 50 kHz) 51000 packets of 144 samples from 2017-03-26T13:30:57.061.999. Part 30/147

Processed Sun Mar 26 15:39:21 2017 by ELM ver.2012-10-06 from 001__elm20170326_133056__dat00.bin

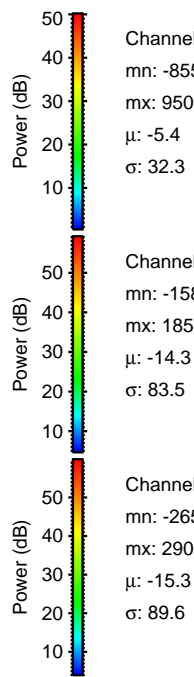
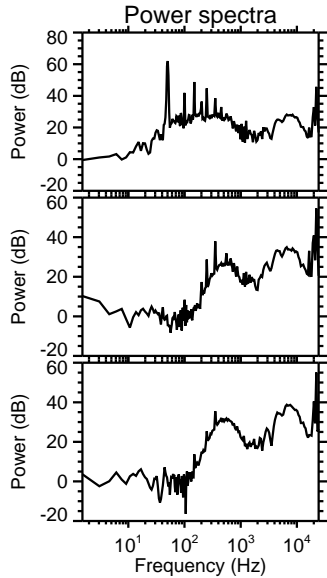
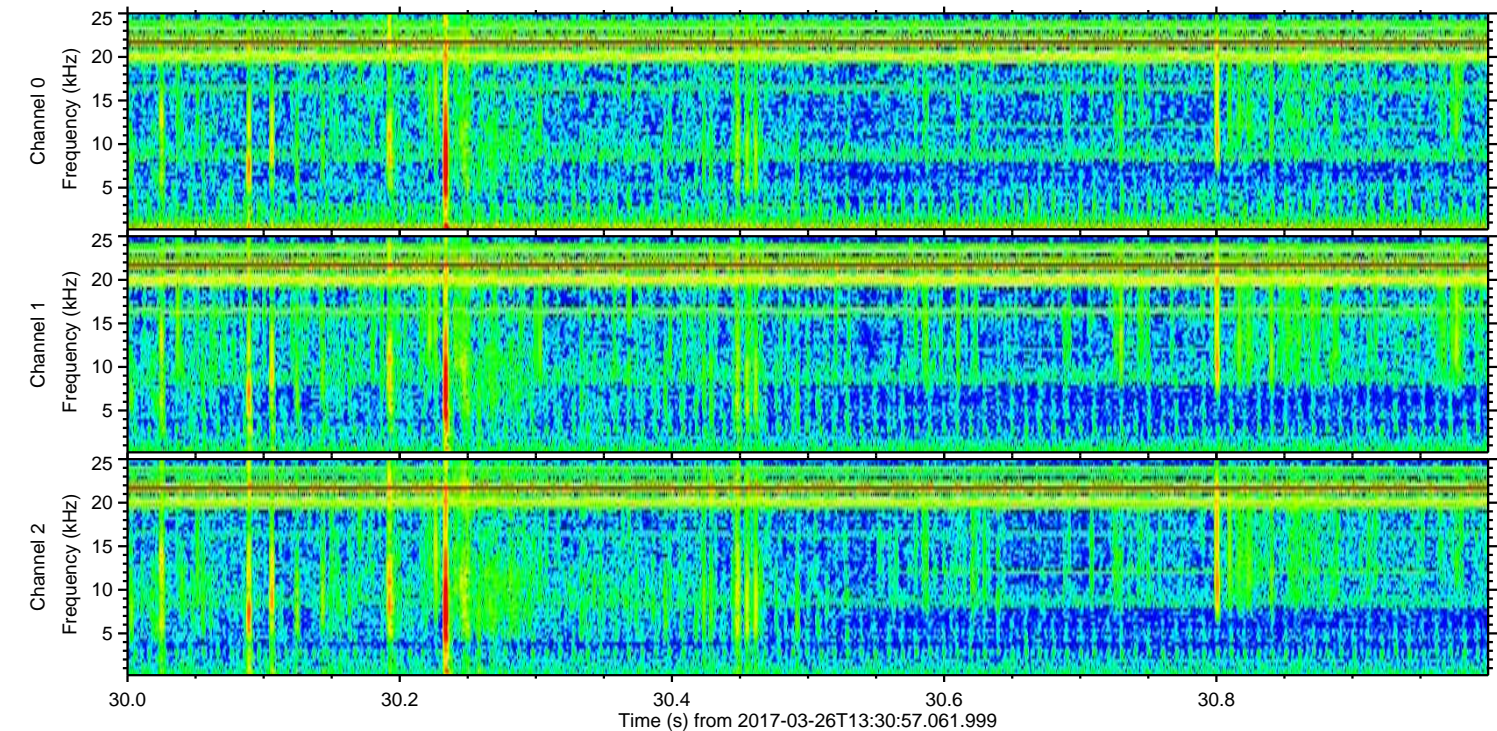
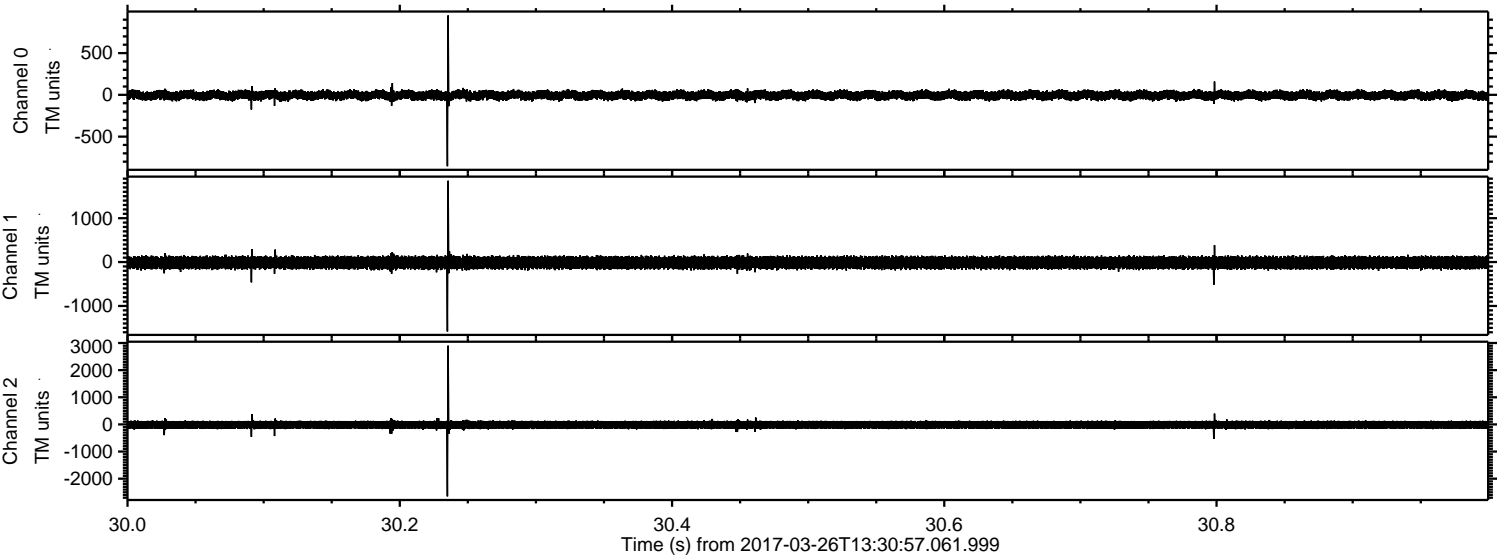


ELMAVAN 3D WAVEFORMS (Measured data sampled at 50 kHz) 51000 packets of 144 samples from 2017-03-26T13:30:57.061.999. Part 138/147

Processed Sun Mar 26 15:39:22 2017 by ELM ver.2012-10-06 from 001__elm20170326_133056__dat00.bin



Processed Sun Mar 26 15:39:23 2017 by ELM ver.2012-10-06 from 001__elm20170326_133056__dat00.bin

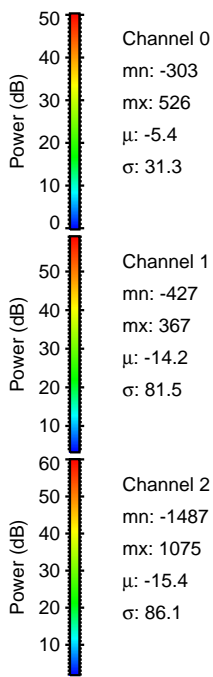
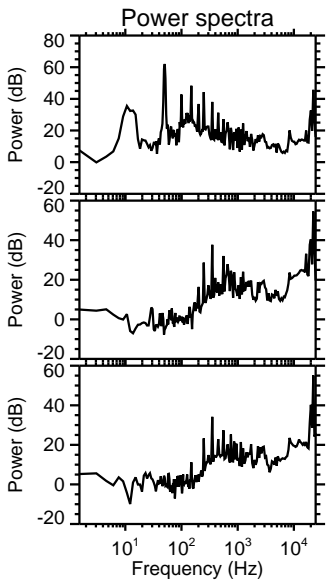
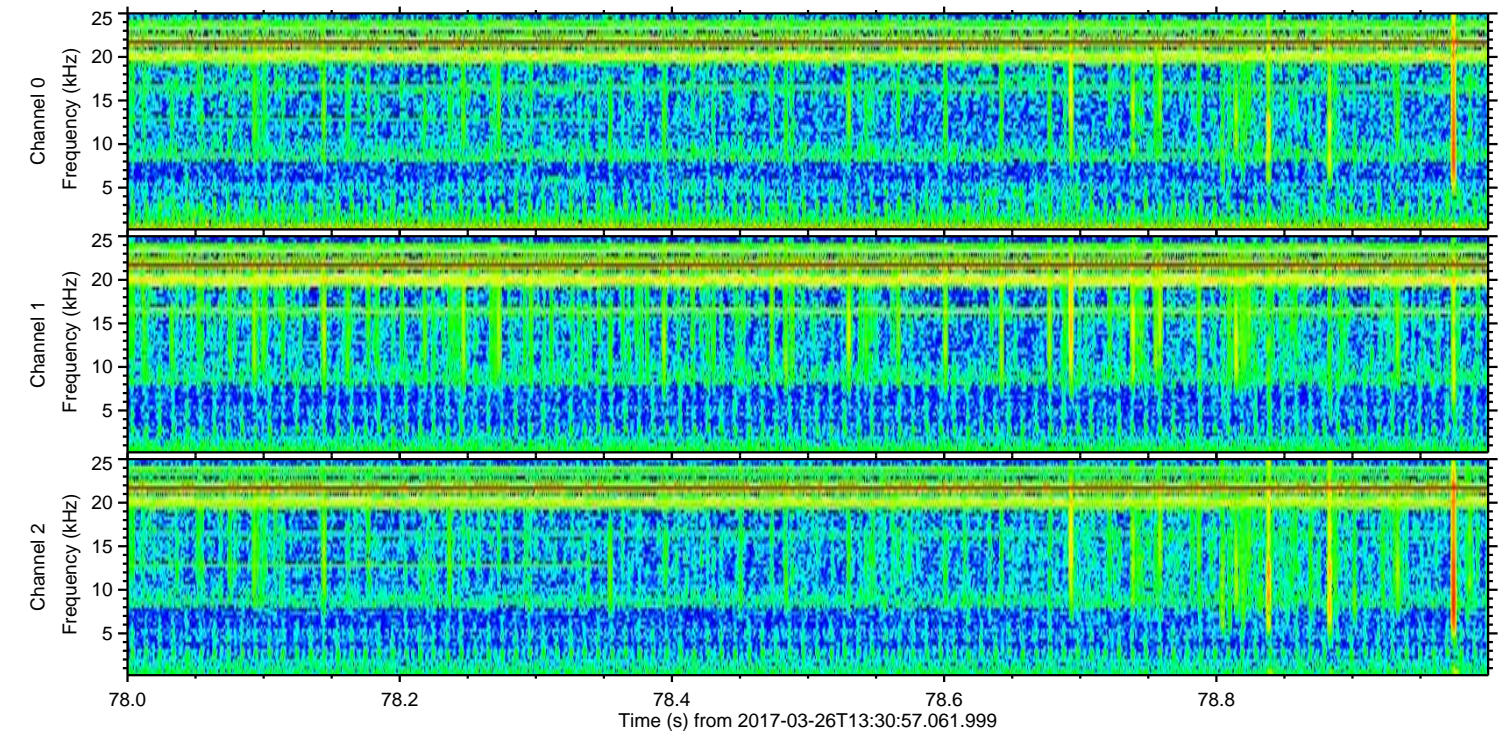
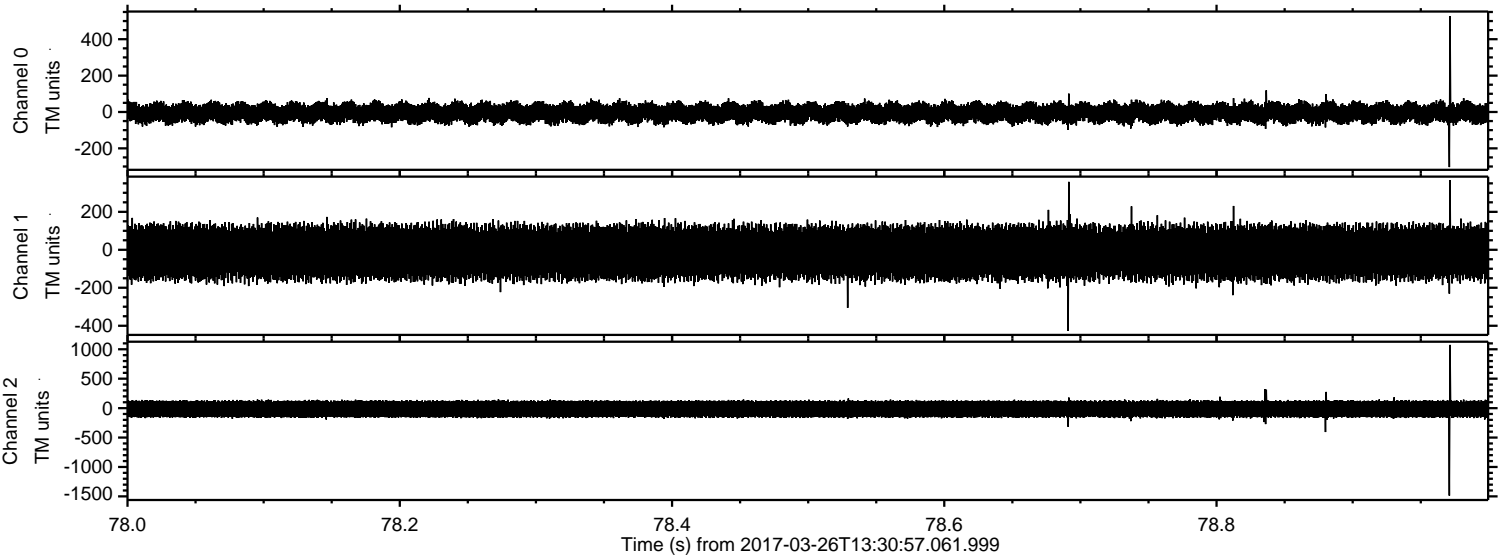


Channel 0
mn: -855
mx: 950
 μ : -5.4
 σ : 32.3

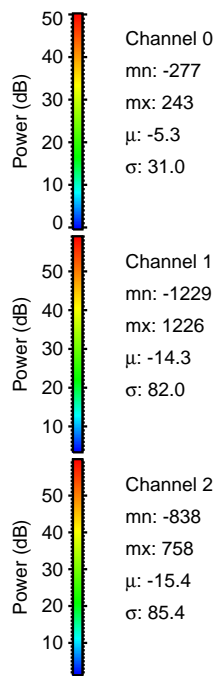
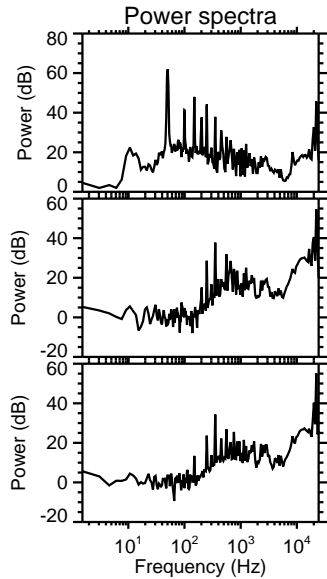
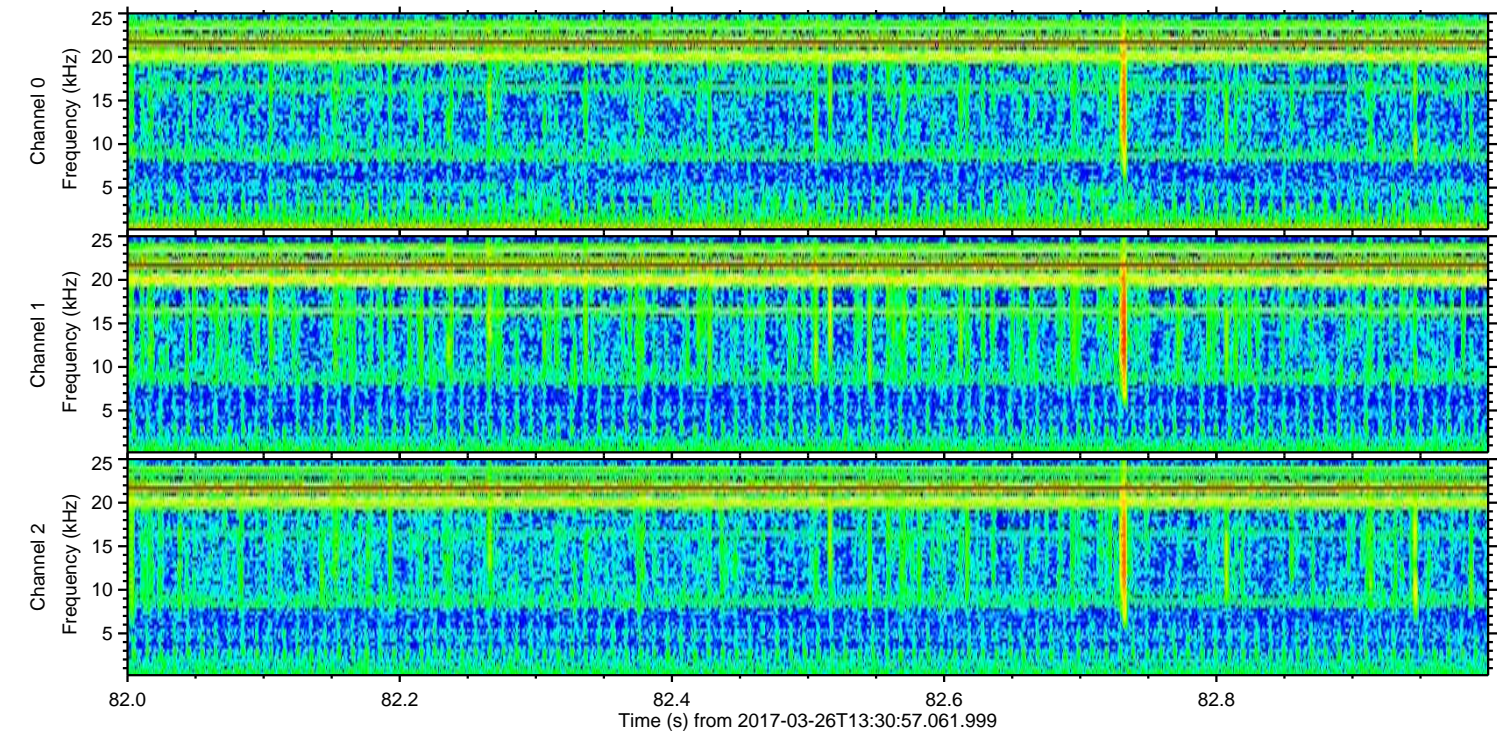
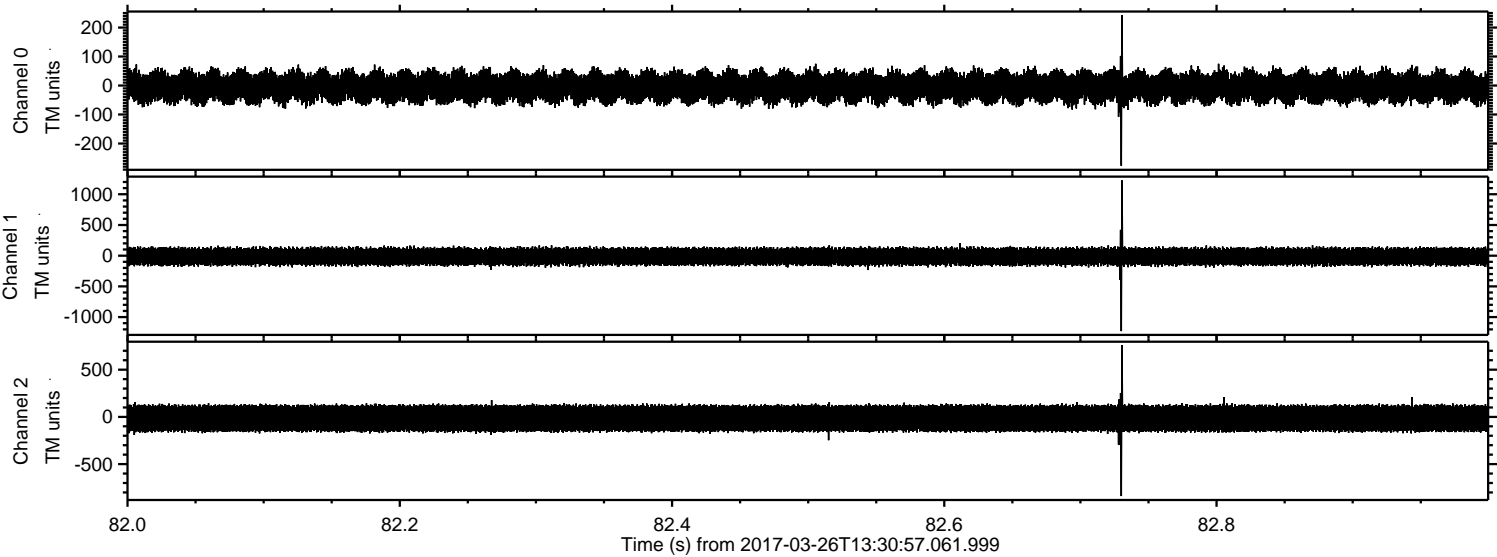
Channel 1
mn: -1581
mx: 1854
 μ : -14.3
 σ : 83.5

Channel 2
mn: -2652
mx: 2903
 μ : -15.3
 σ : 89.6

Processed Sun Mar 26 15:39:24 2017 by ELM ver.2012-10-06 from 001__elm20170326_133056__dat00.bin



Processed Sun Mar 26 15:39:25 2017 by ELM ver.2012-10-06 from 001__elm20170326_133056__dat00.bin

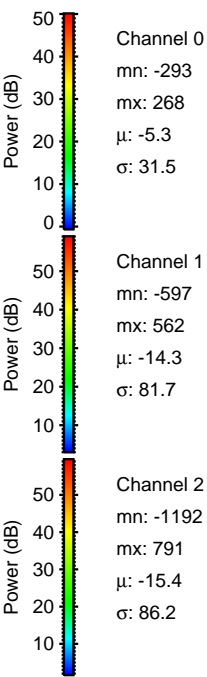
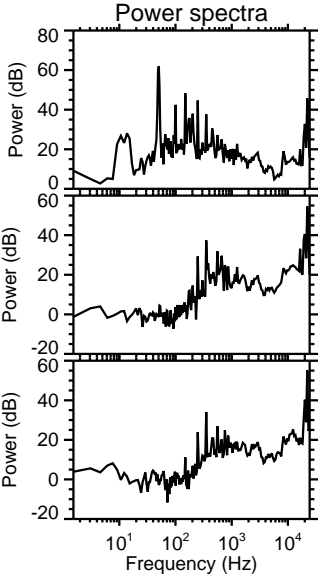
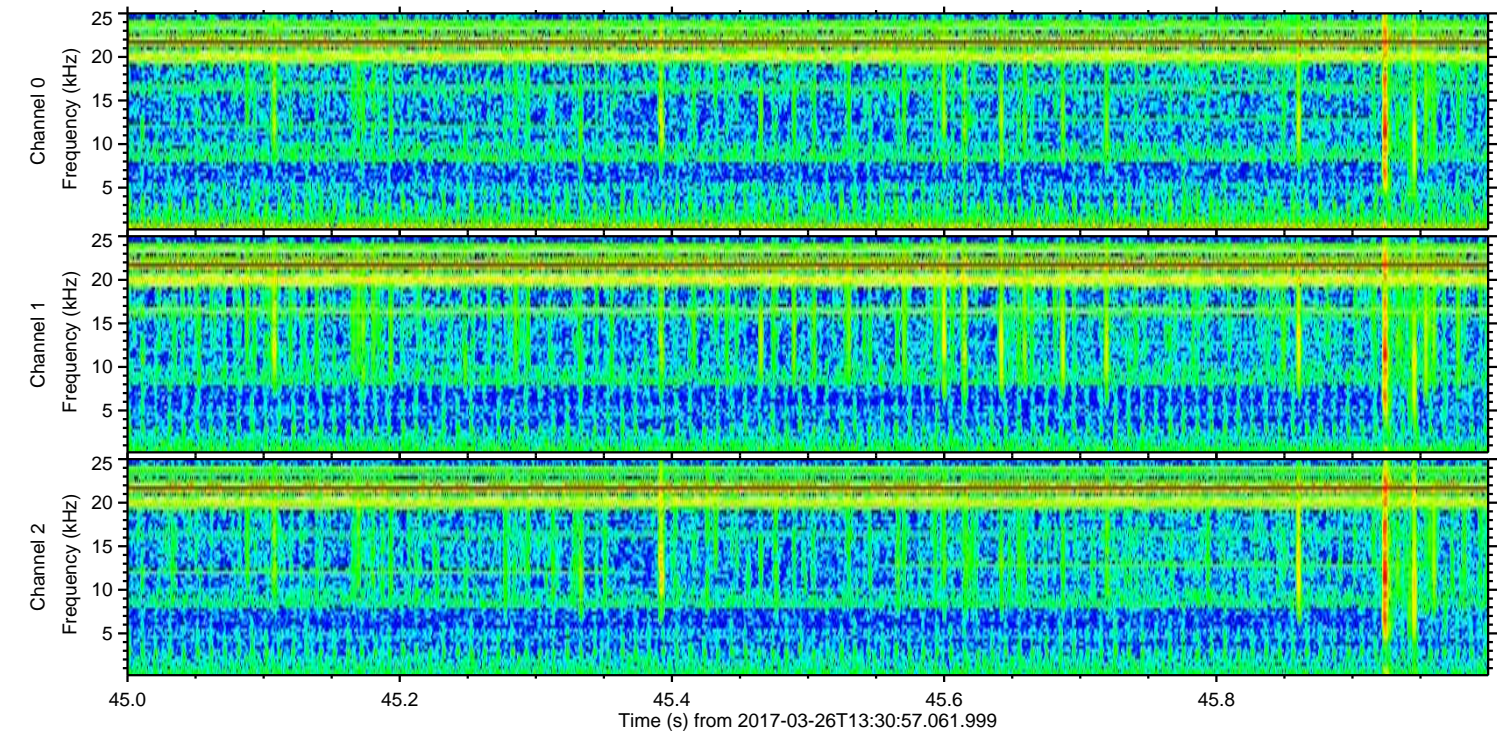
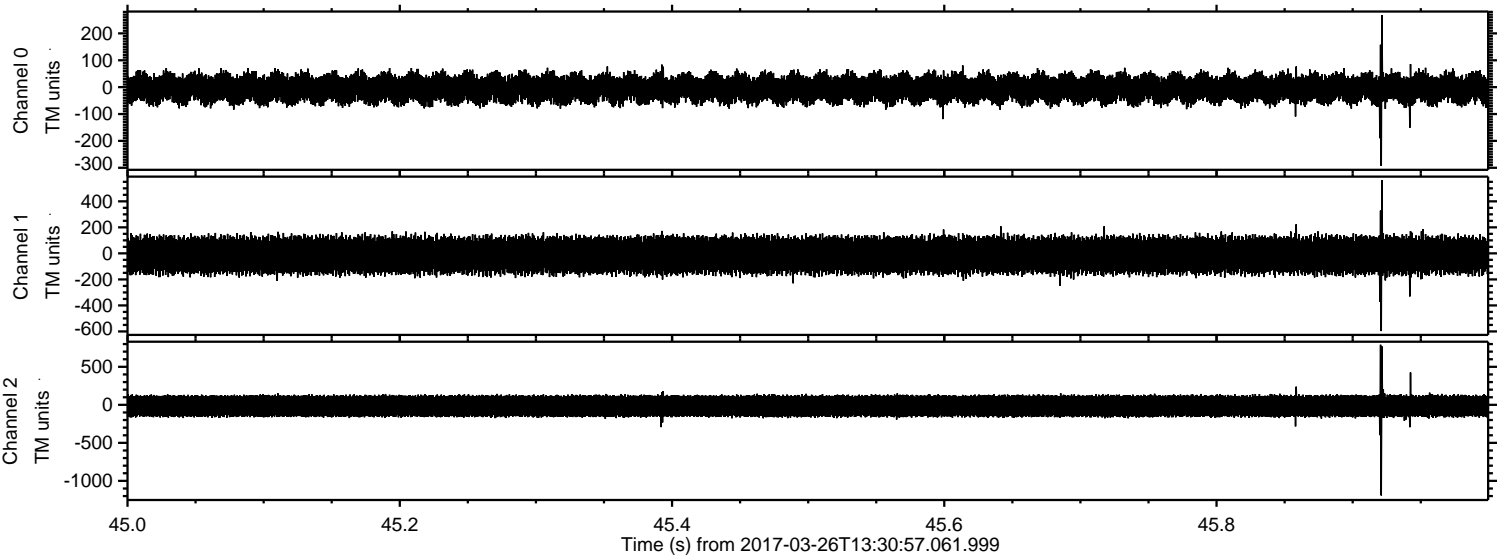


Channel 0
mn: -277
mx: 243
 μ : -5.3
 σ : 31.0

Channel 1
mn: -1229
mx: 1226
 μ : -14.3
 σ : 82.0

Channel 2
mn: -838
mx: 758
 μ : -15.4
 σ : 85.4

Processed Sun Mar 26 15:39:26 2017 by ELM ver.2012-10-06 from 001__elm20170326_133056__dat00.bin

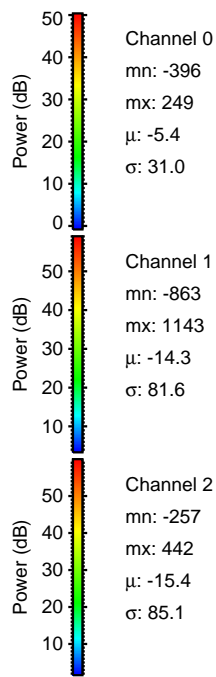
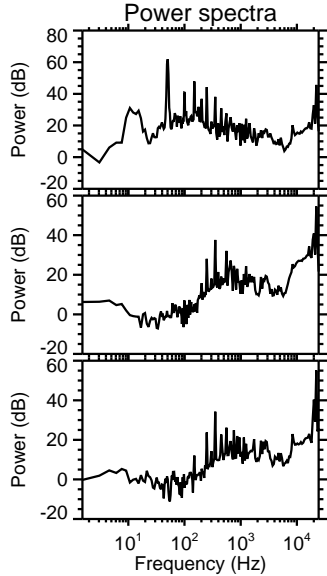
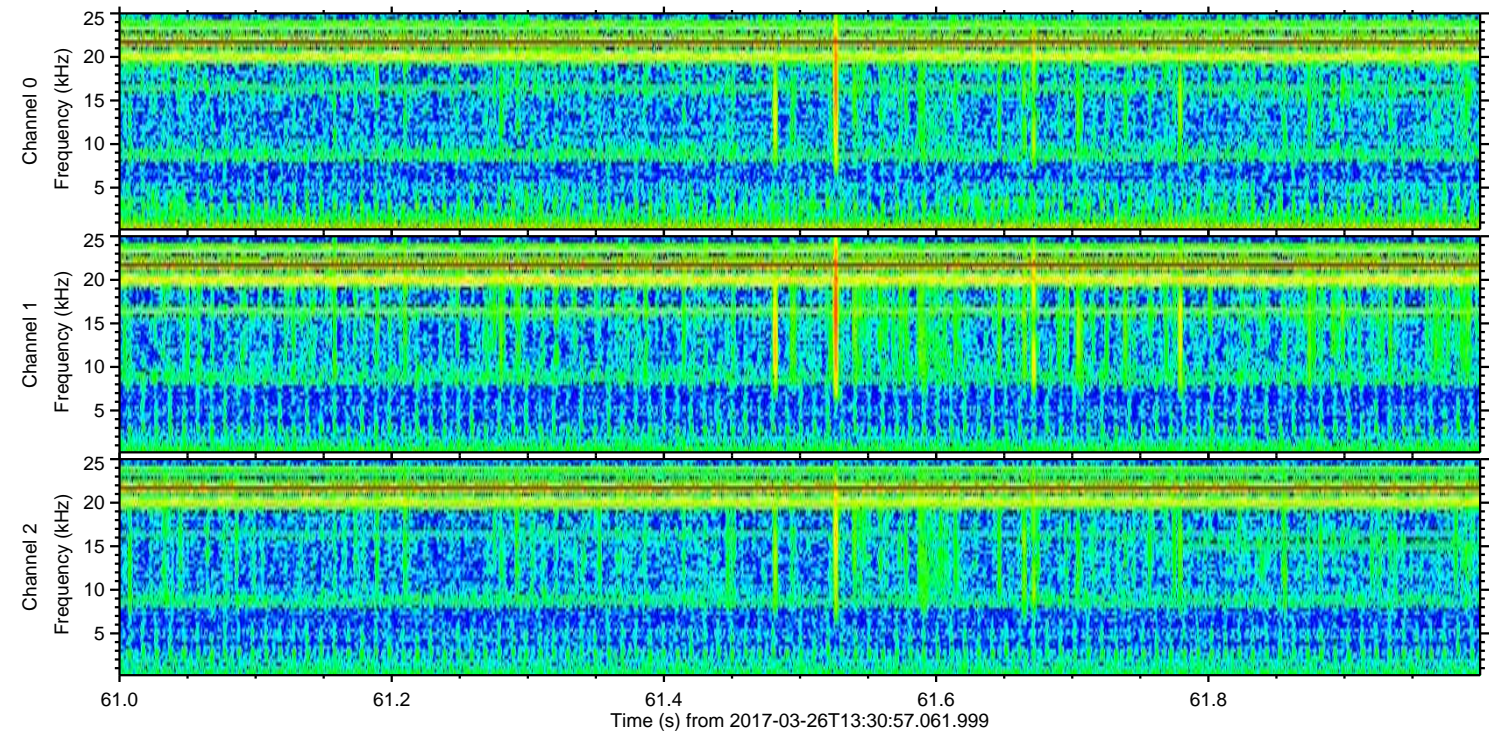
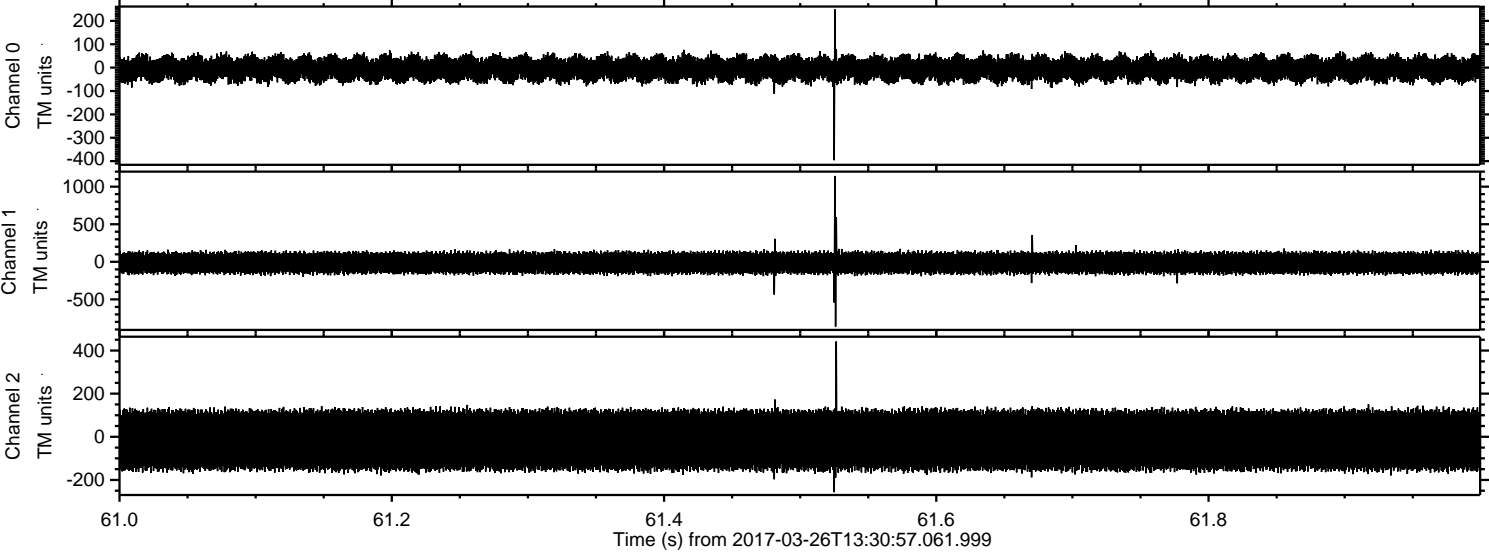


Channel 0
mn: -293
mx: 268
 μ : -5.3
 σ : 31.5

Channel 1
mn: -597
mx: 562
 μ : -14.3
 σ : 81.7

Channel 2
mn: -1192
mx: 791
 μ : -15.4
 σ : 86.2

Processed Sun Mar 26 15:39:27 2017 by ELM ver.2012-10-06 from 001__elm20170326_133056__dat00.bin

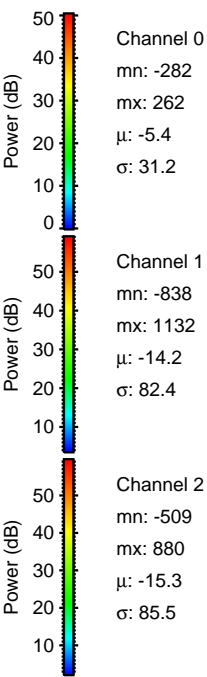
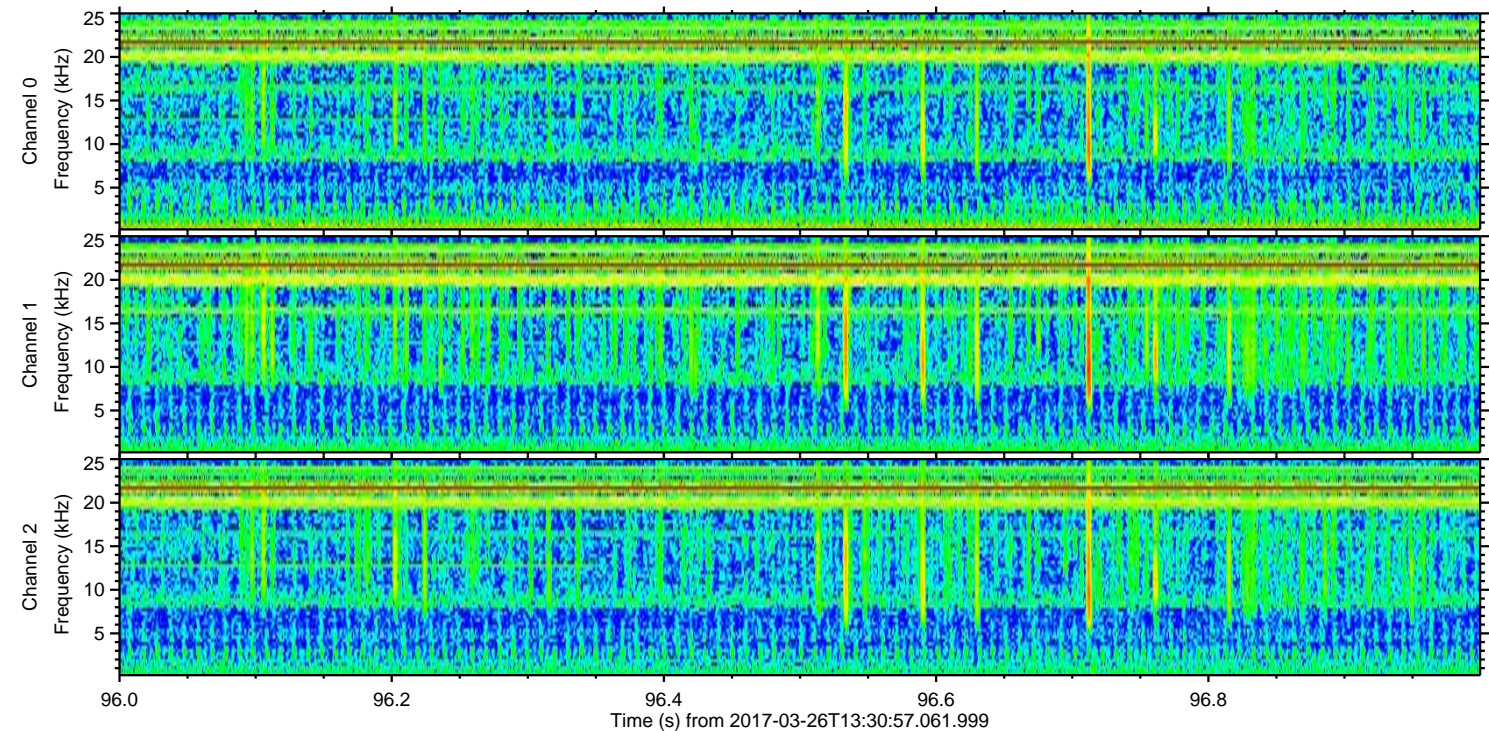
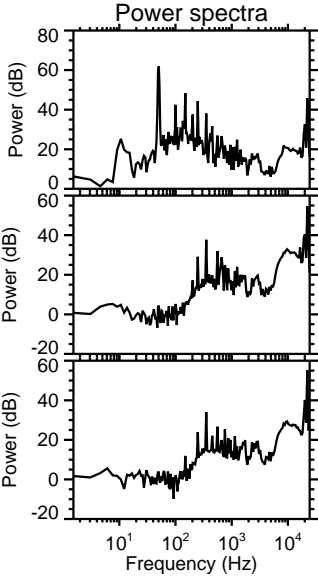
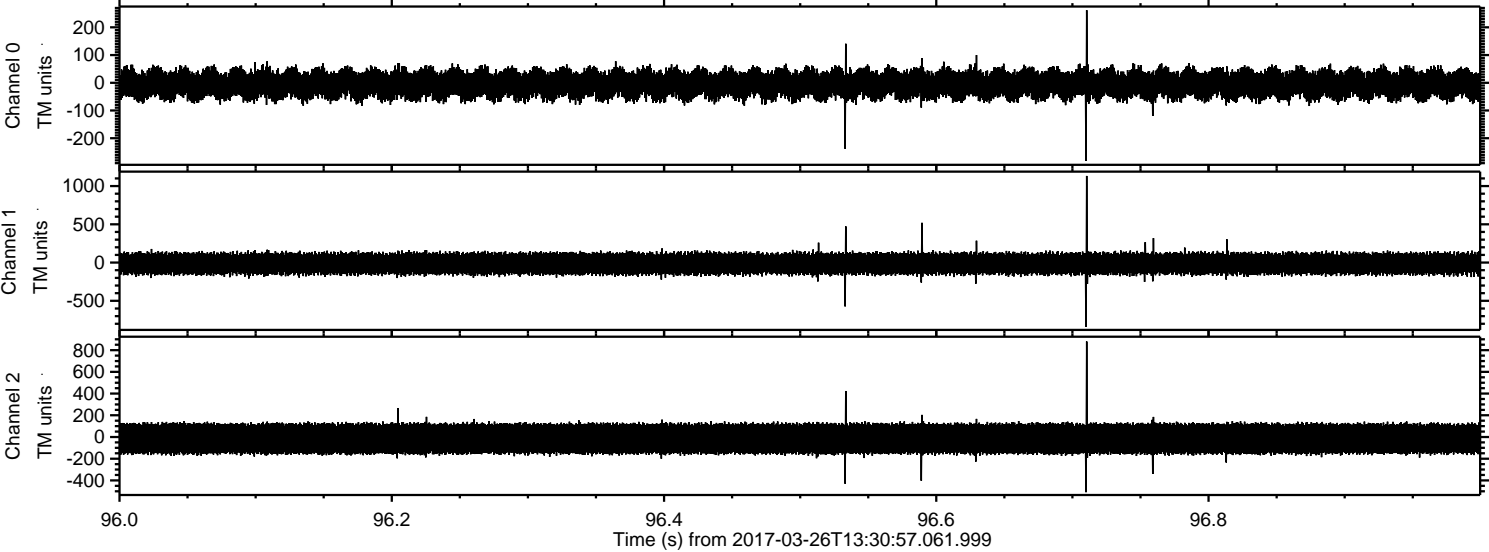


Channel 0
mn: -396
mx: 249
 μ : -5.4
 σ : 31.0

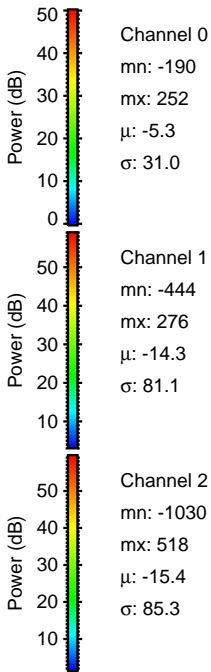
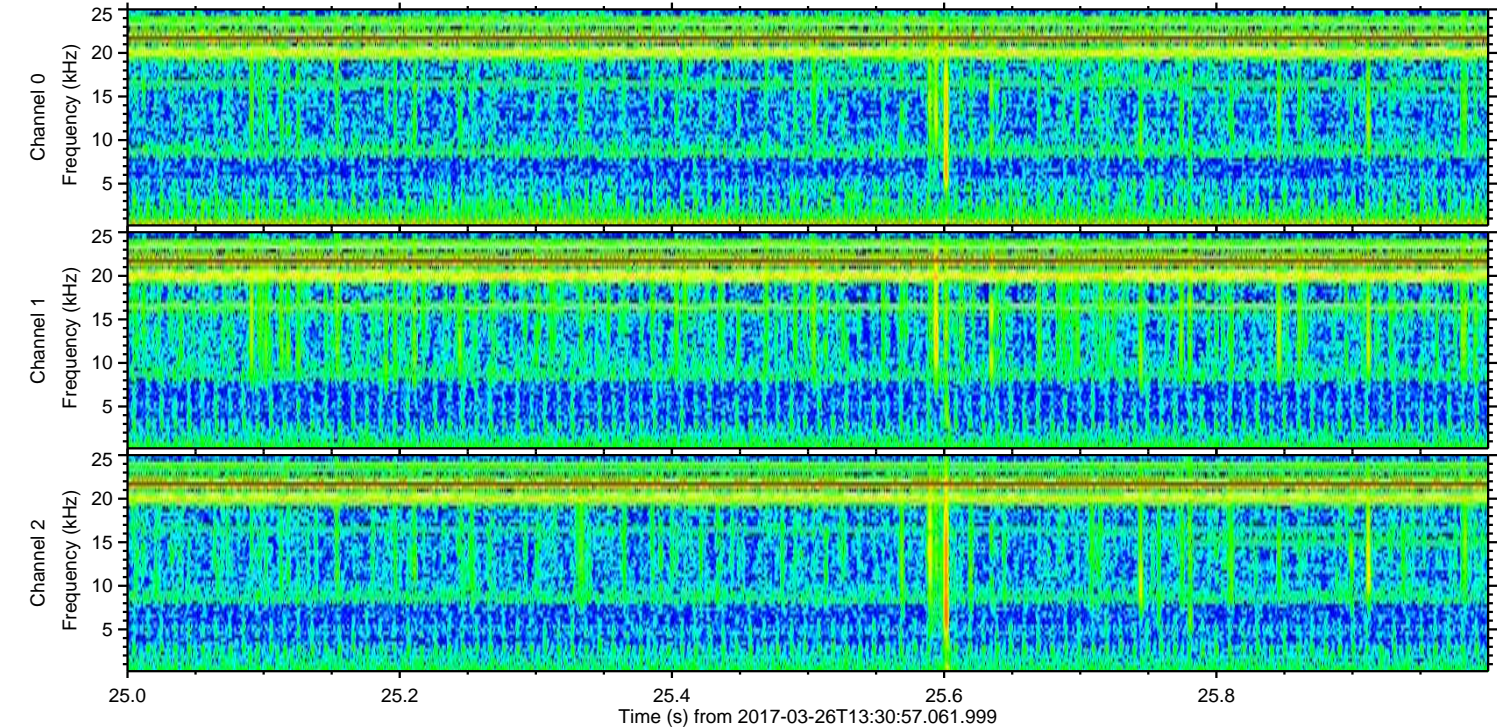
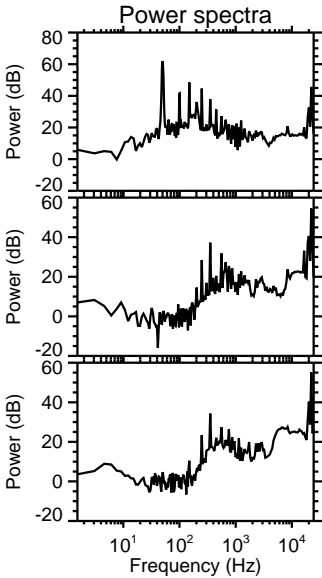
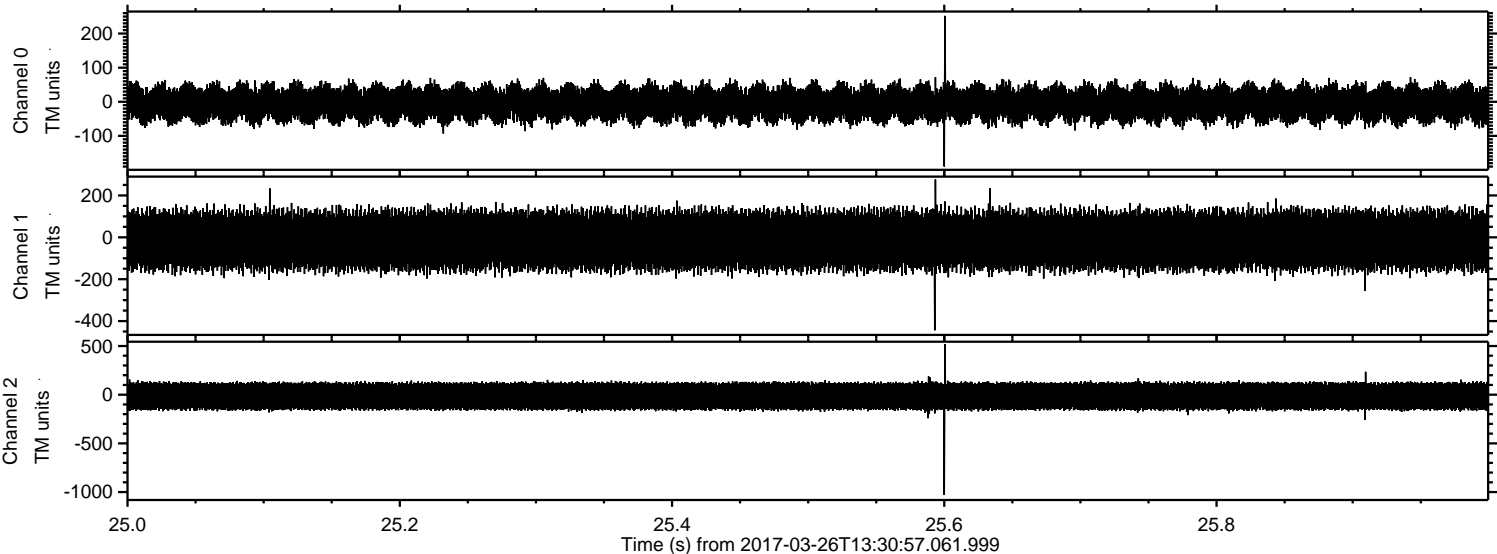
Channel 1
mn: -863
mx: 1143
 μ : -14.3
 σ : 81.6

Channel 2
mn: -257
mx: 442
 μ : -15.4
 σ : 85.1

Processed Sun Mar 26 15:39:28 2017 by ELM ver.2012-10-06 from 001__elm20170326_133056__dat00.bin



Processed Sun Mar 26 15:39:29 2017 by ELM ver.2012-10-06 from 001__elm20170326_133056__dat00.bin



Processed Sun Mar 26 15:39:30 2017 by ELM ver.2012-10-06 from 001__elm20170326_133056__dat00.bin

