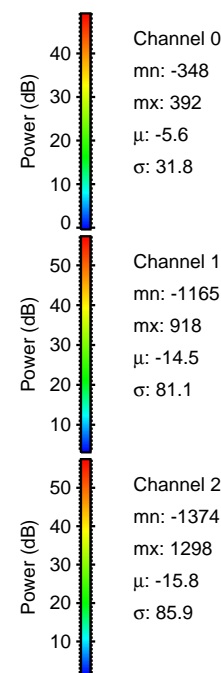
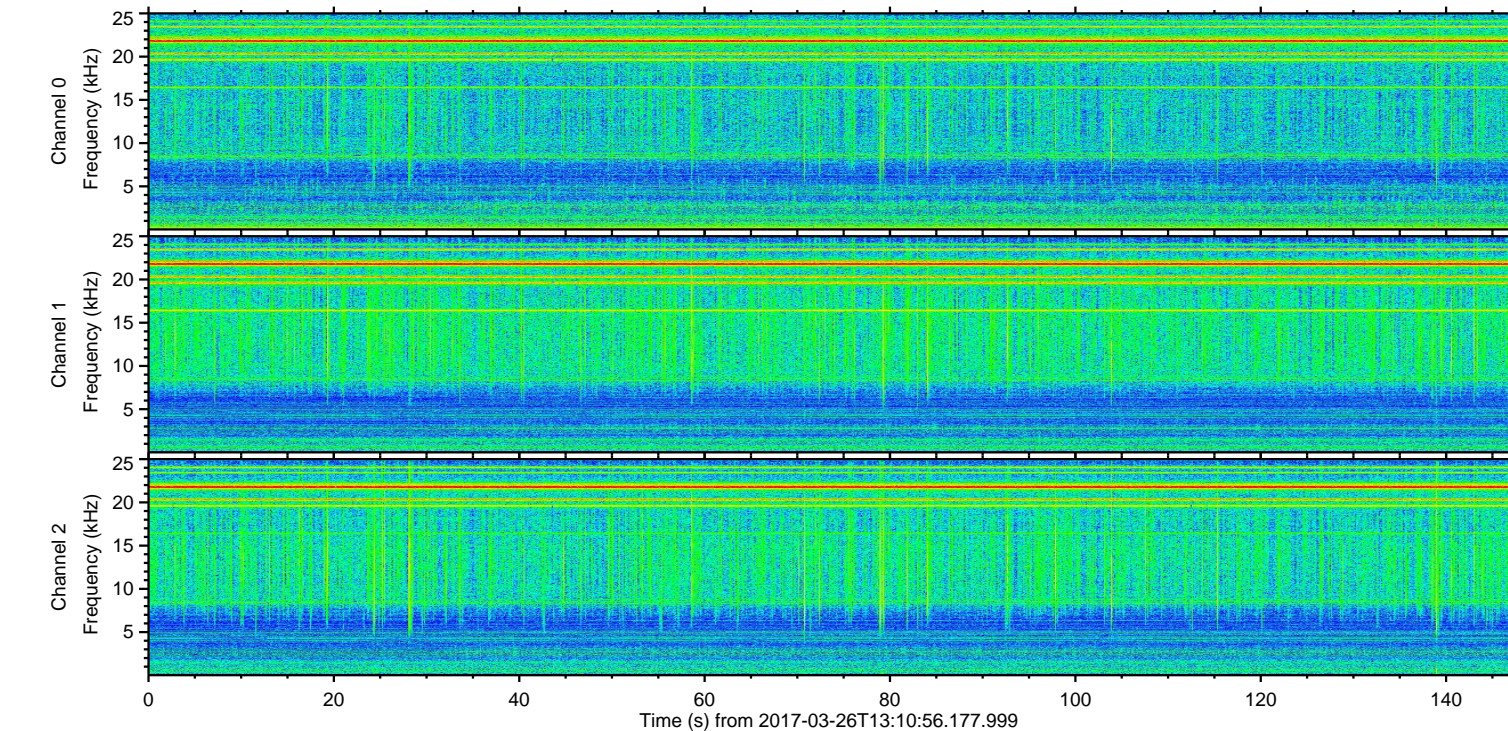
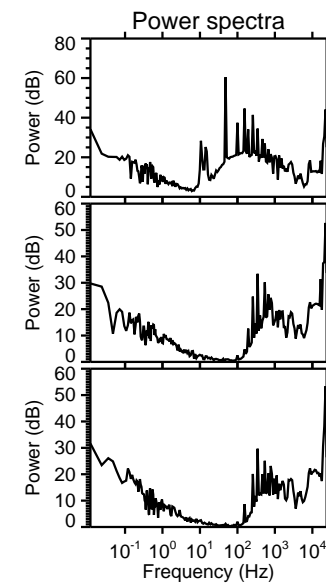
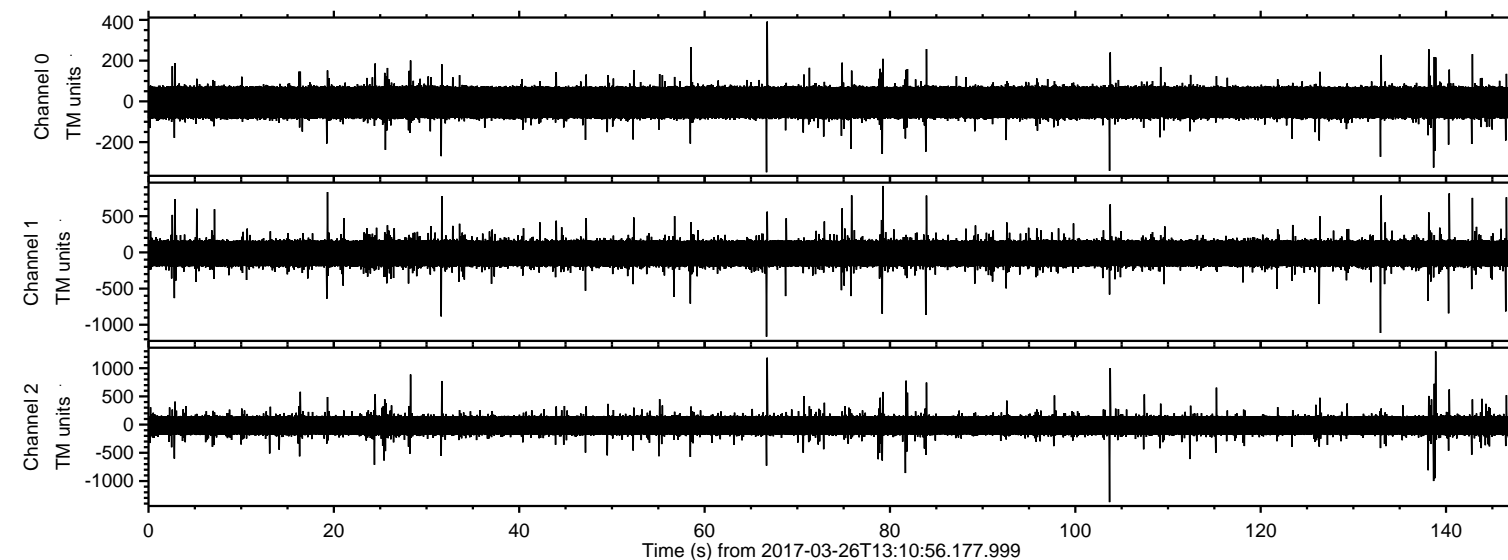


# ELMAVAN 3D WAVEFORMS (Measured data sampled at 50 kHz) 51000 packets of 144 samples from 2017-03-26T13:10:56.177.999.

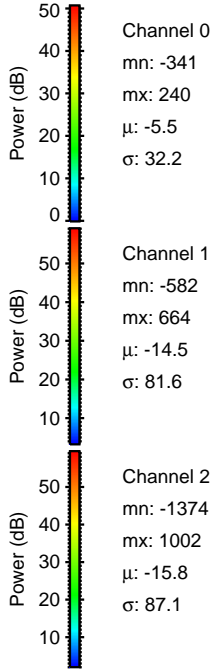
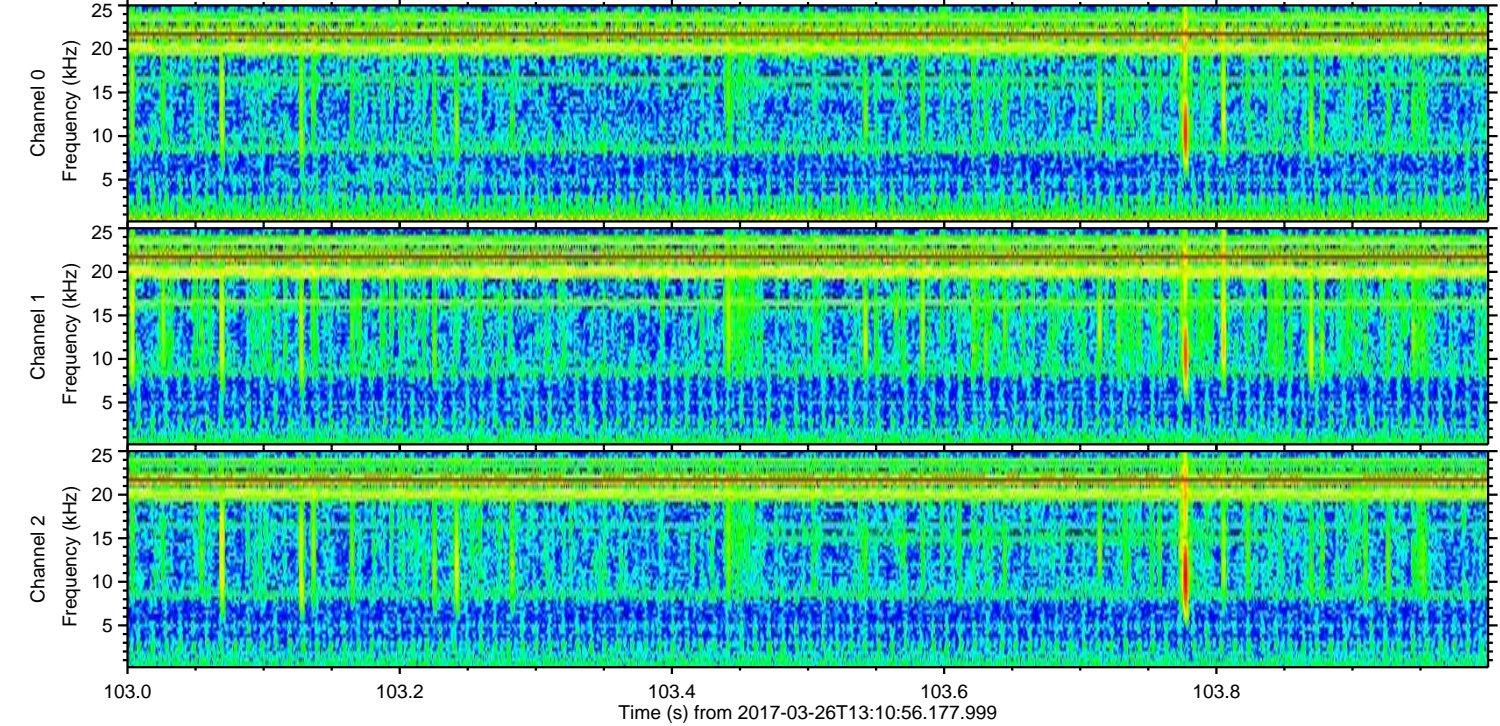
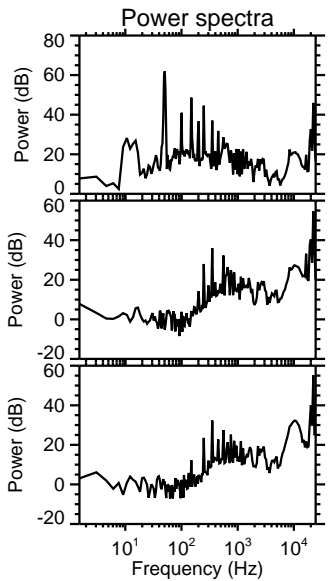
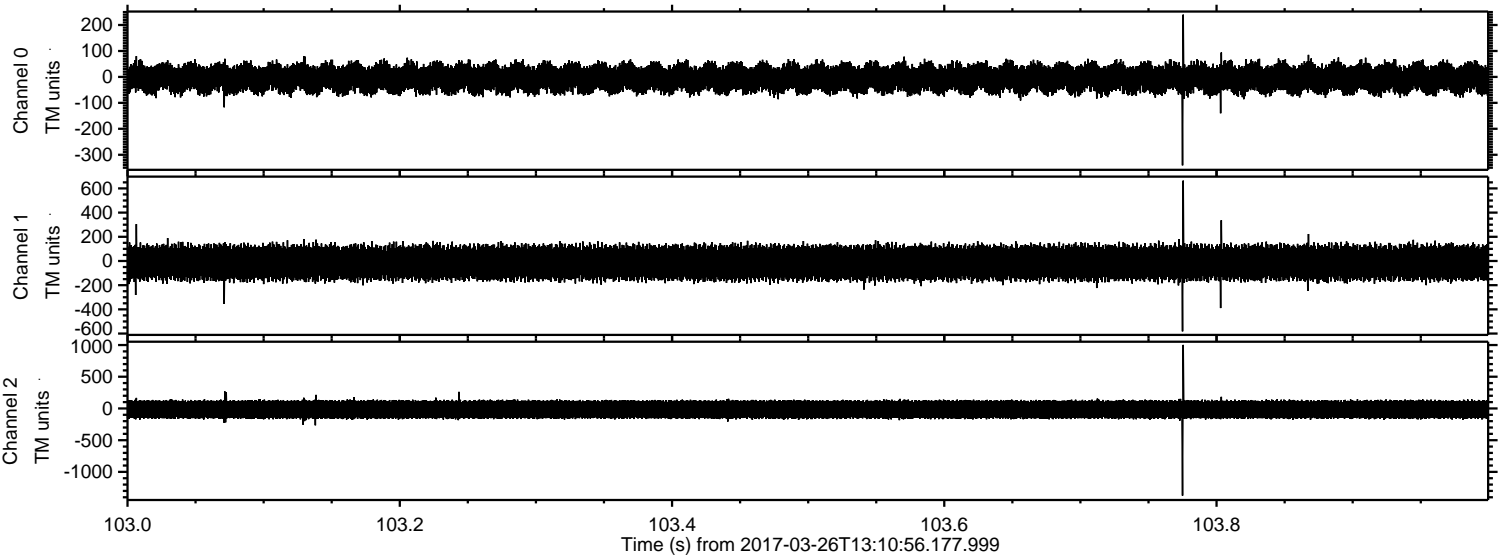
Processed Sun Mar 26 15:18:52 2017 by ELM ver.2012-10-06 from 001\_\_elm20170326\_131055\_\_dat00.bin





ELMAVAN 3D WAVEFORMS (Measured data sampled at 50 kHz) 51000 packets of 144 samples from 2017-03-26T13:10:56.177.999. Part 104/147

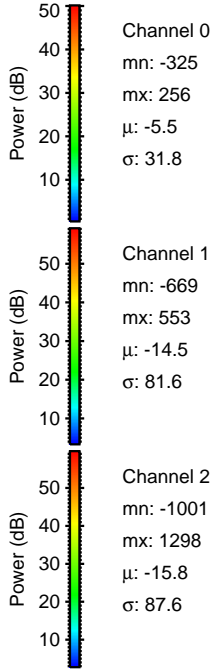
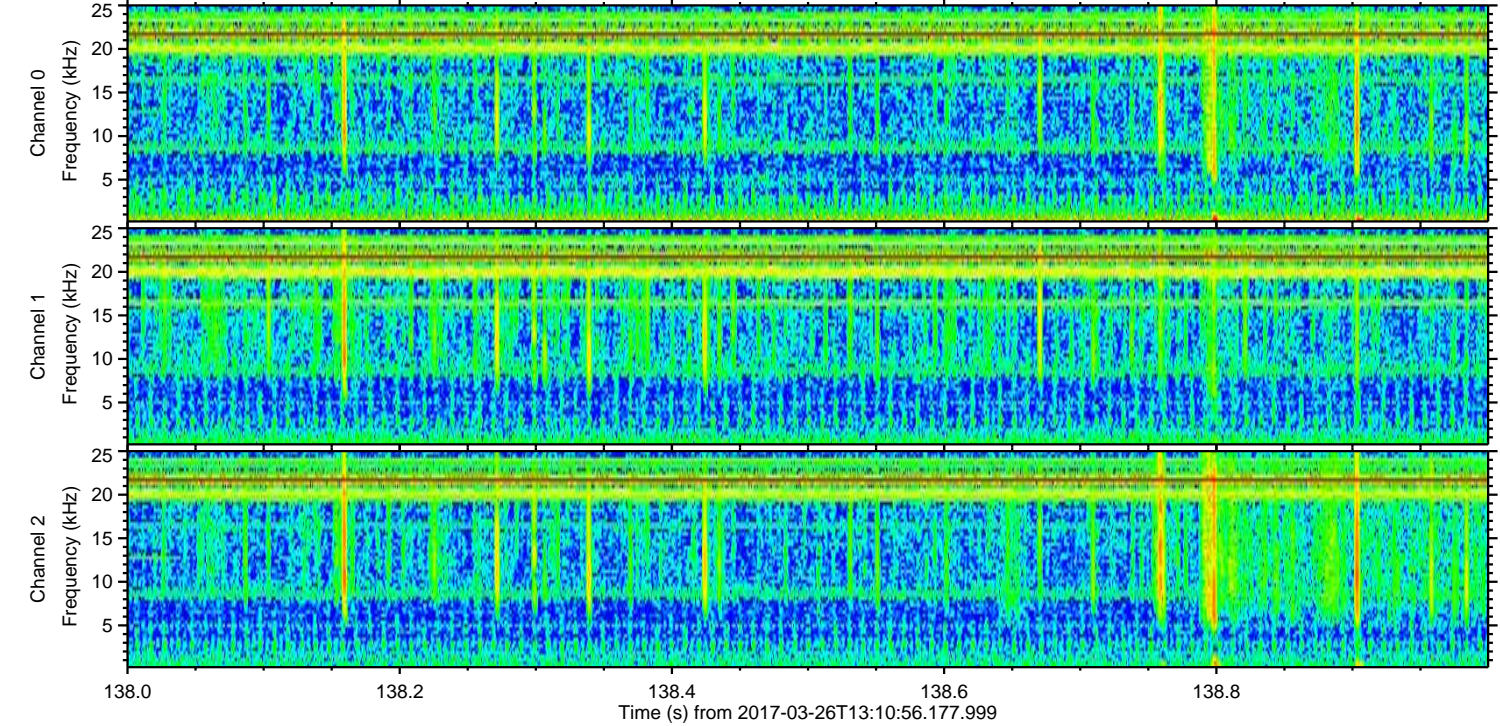
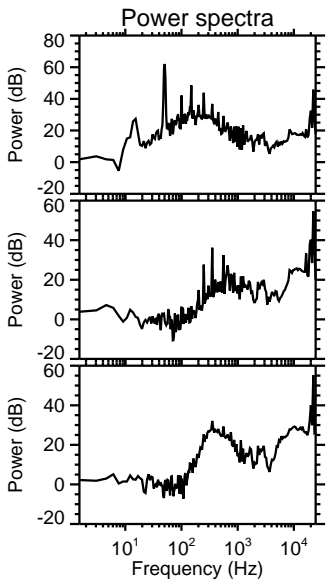
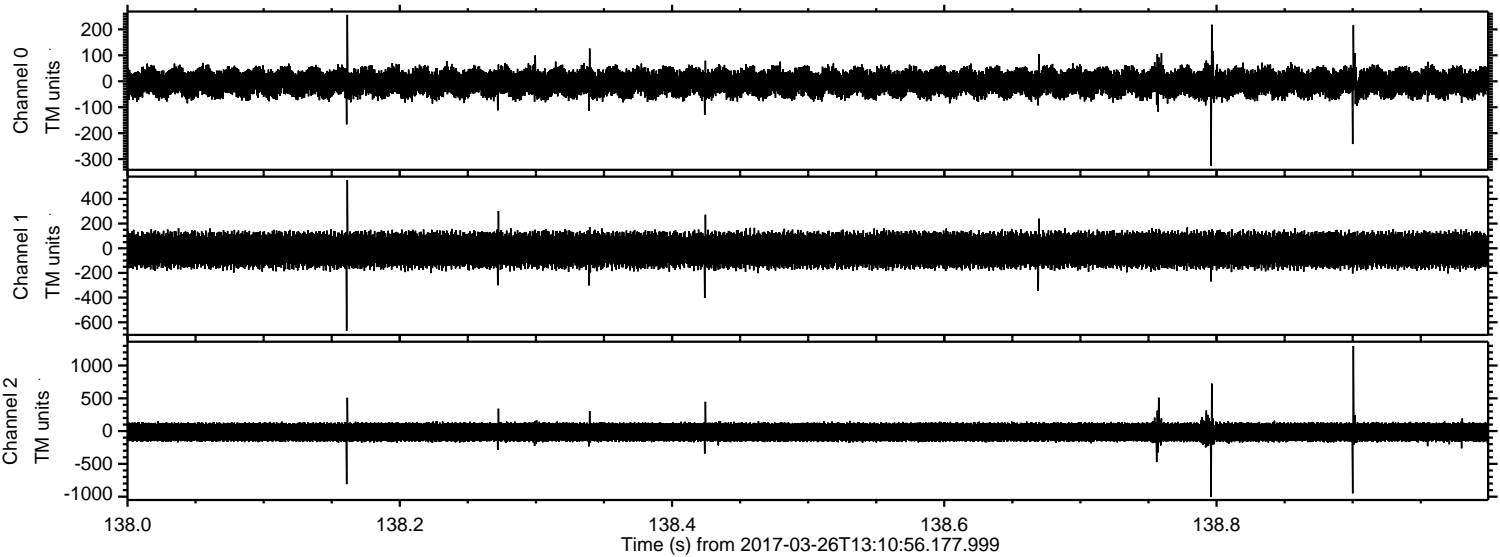
Processed Sun Mar 26 15:19:03 2017 by ELM ver.2012-10-06 from 001\_\_elm20170326\_131055\_\_dat00.bin





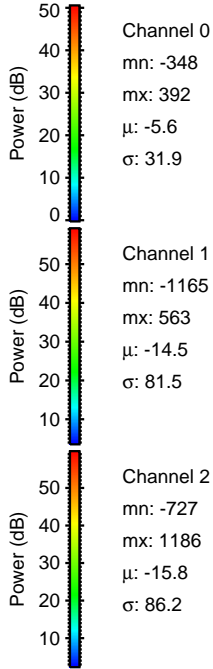
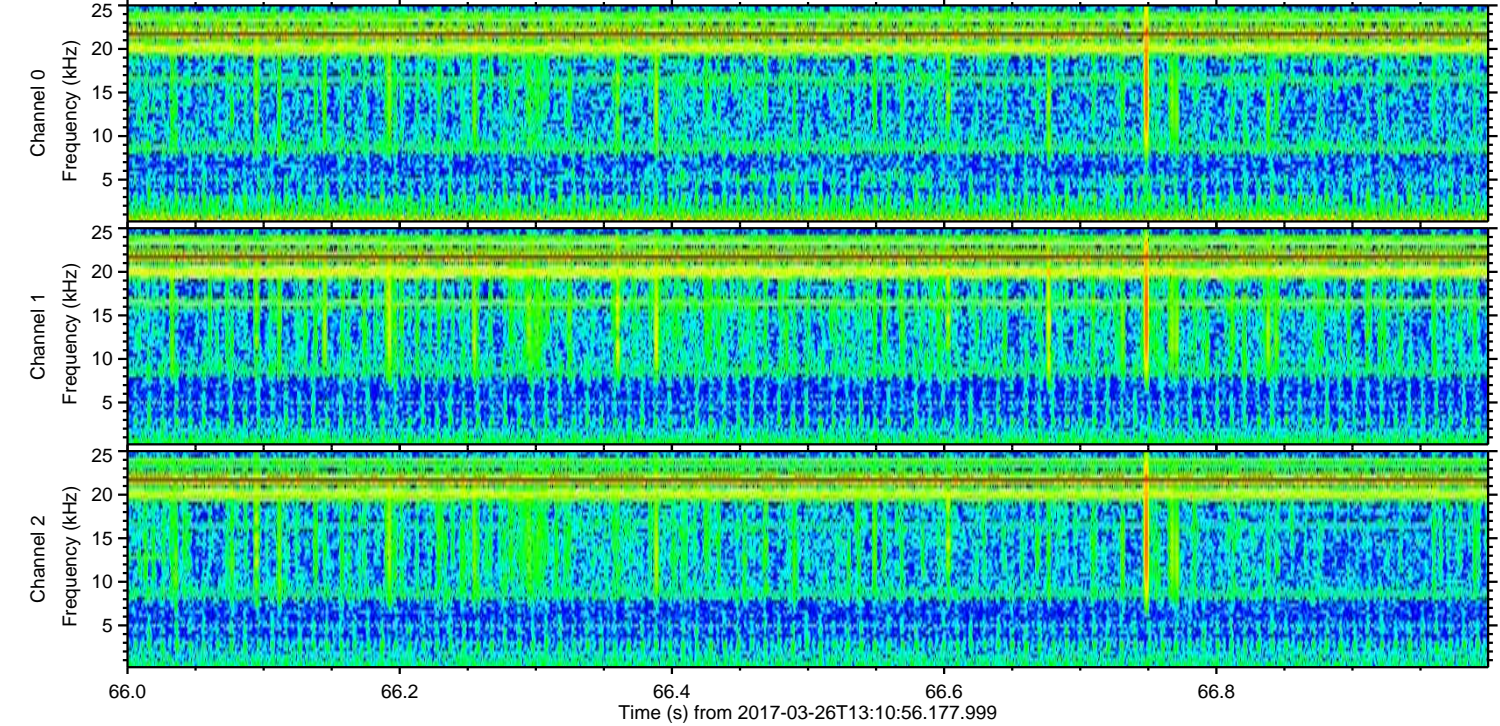
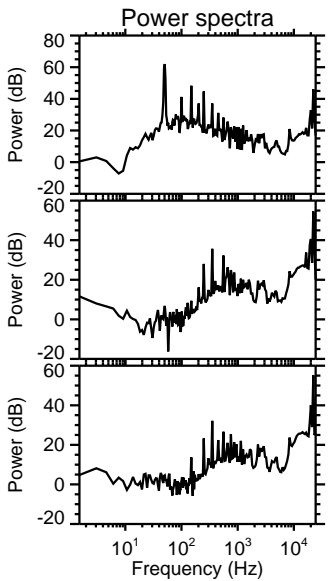
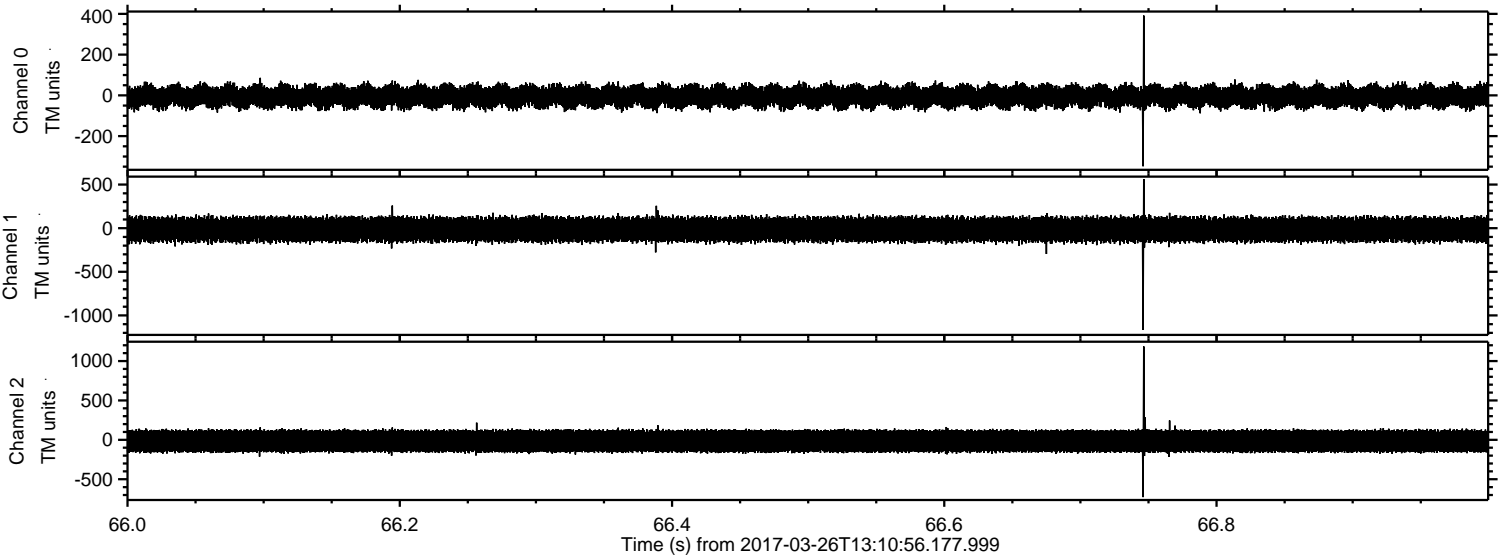
ELMAVAN 3D WAVEFORMS (Measured data sampled at 50 kHz) 51000 packets of 144 samples from 2017-03-26T13:10:56.177.999. Part 139/147

Processed Sun Mar 26 15:19:04 2017 by ELM ver.2012-10-06 from 001\_\_elm20170326\_131055\_\_dat00.bin





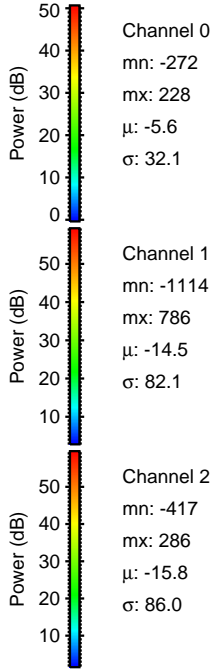
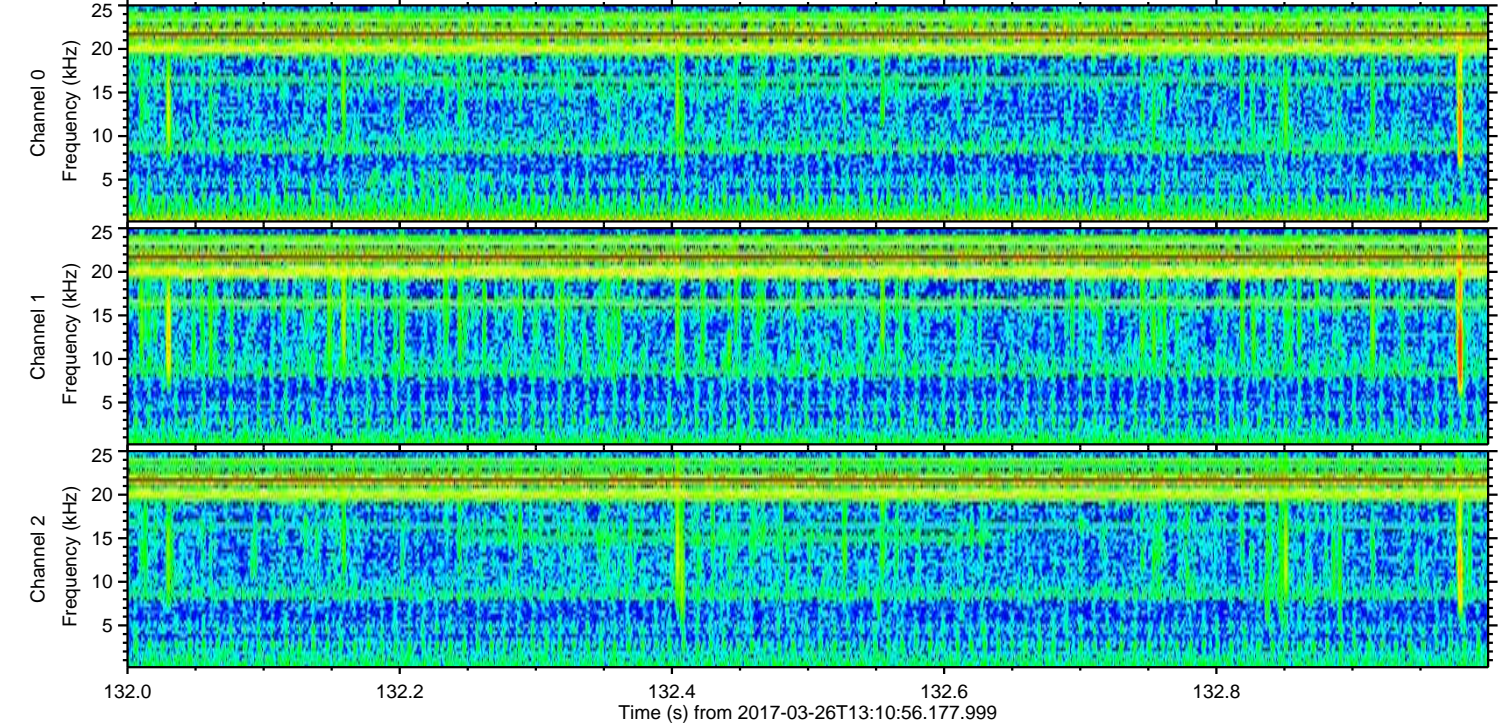
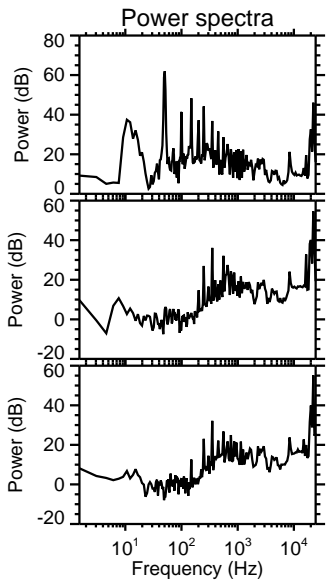
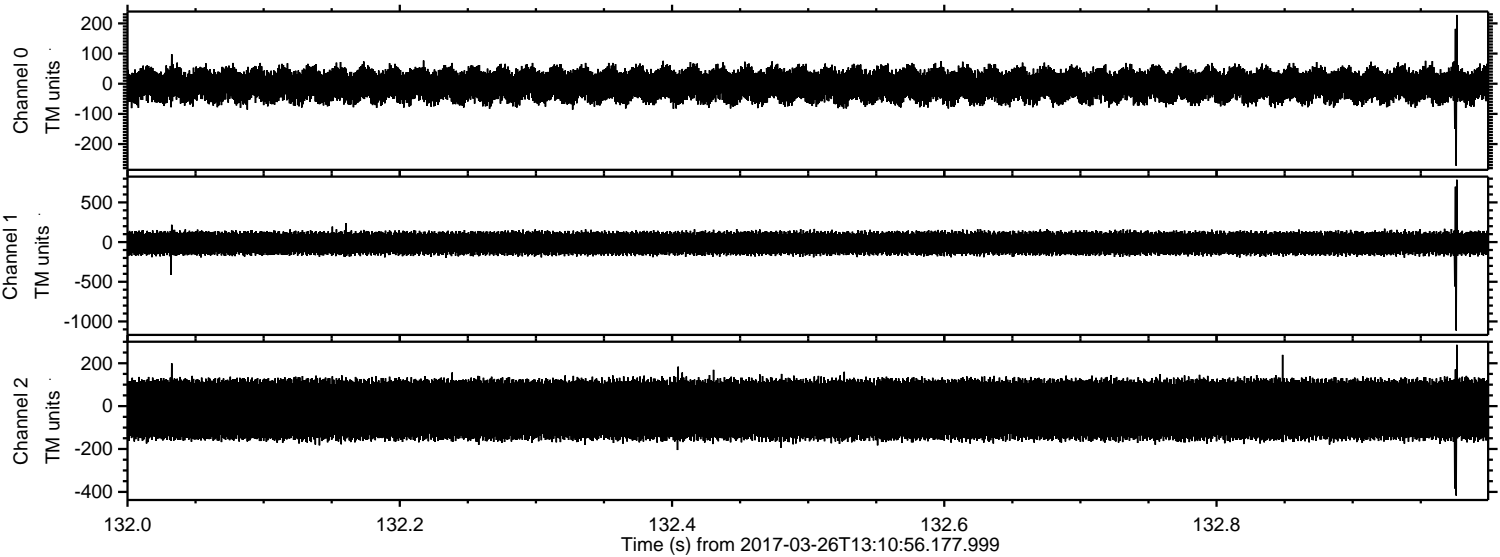
Processed Sun Mar 26 15:19:05 2017 by ELM ver.2012-10-06 from 001\_\_elm20170326\_131055\_\_dat00.bin





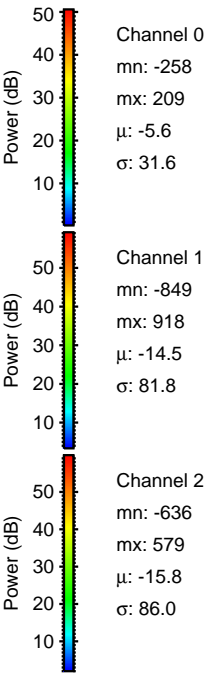
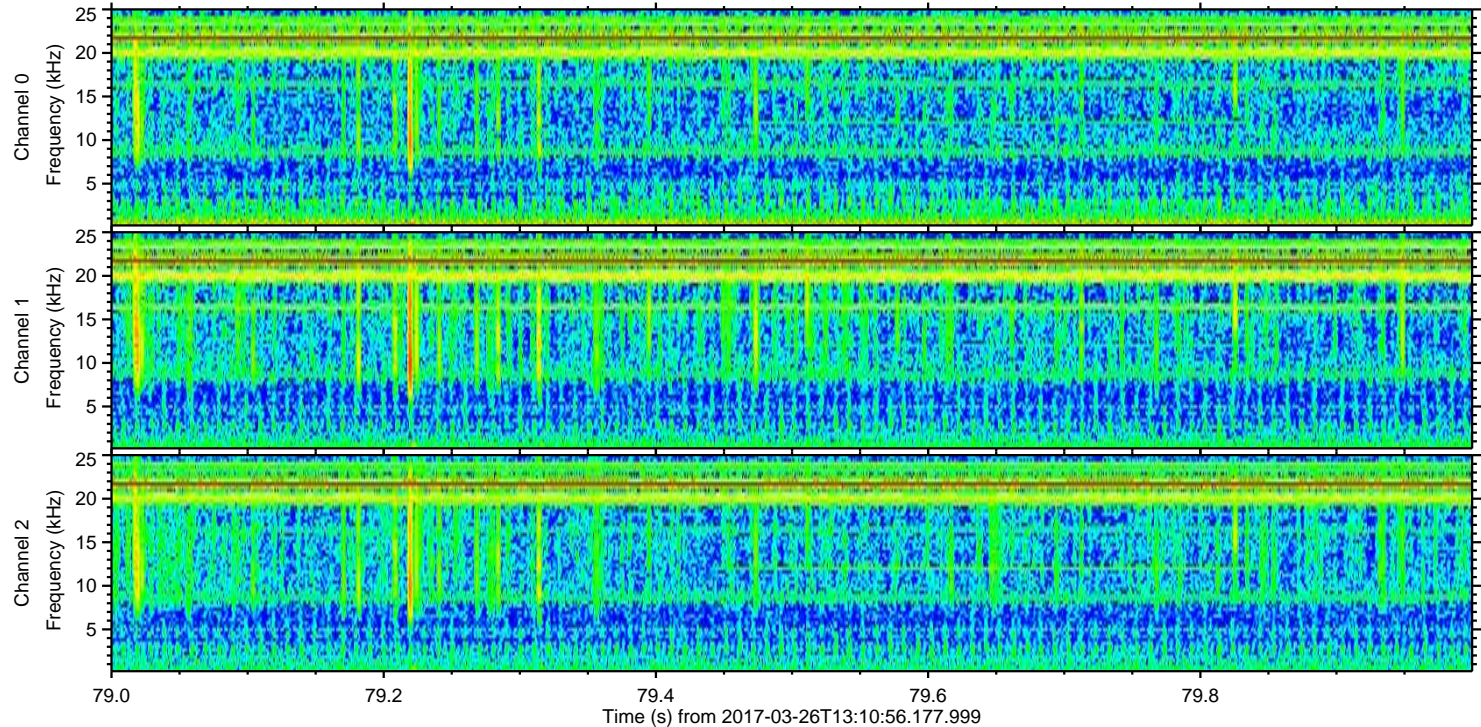
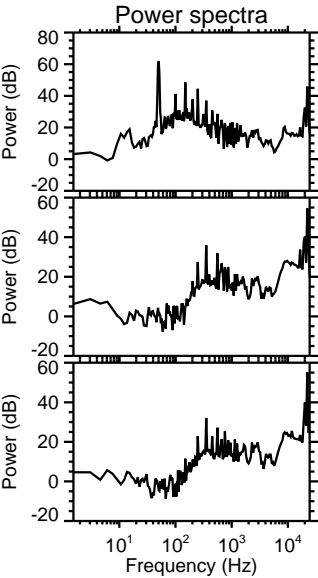
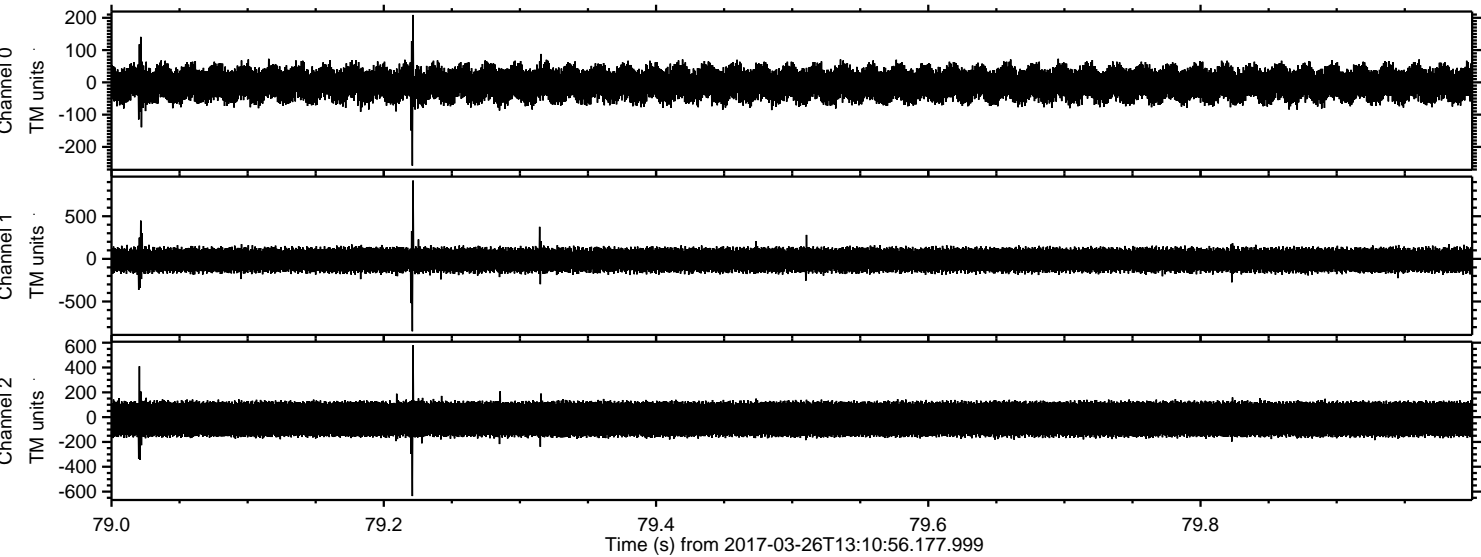
ELMAVAN 3D WAVEFORMS (Measured data sampled at 50 kHz) 51000 packets of 144 samples from 2017-03-26T13:10:56.177.999. Part 133/147

Processed Sun Mar 26 15:19:06 2017 by ELM ver.2012-10-06 from 001\_\_elm20170326\_131055\_\_dat00.bin



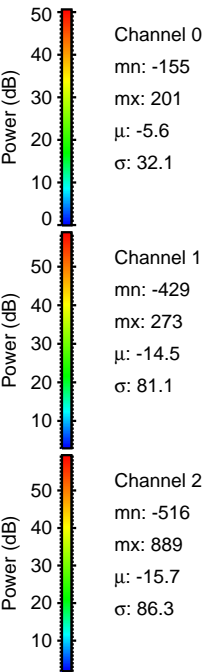
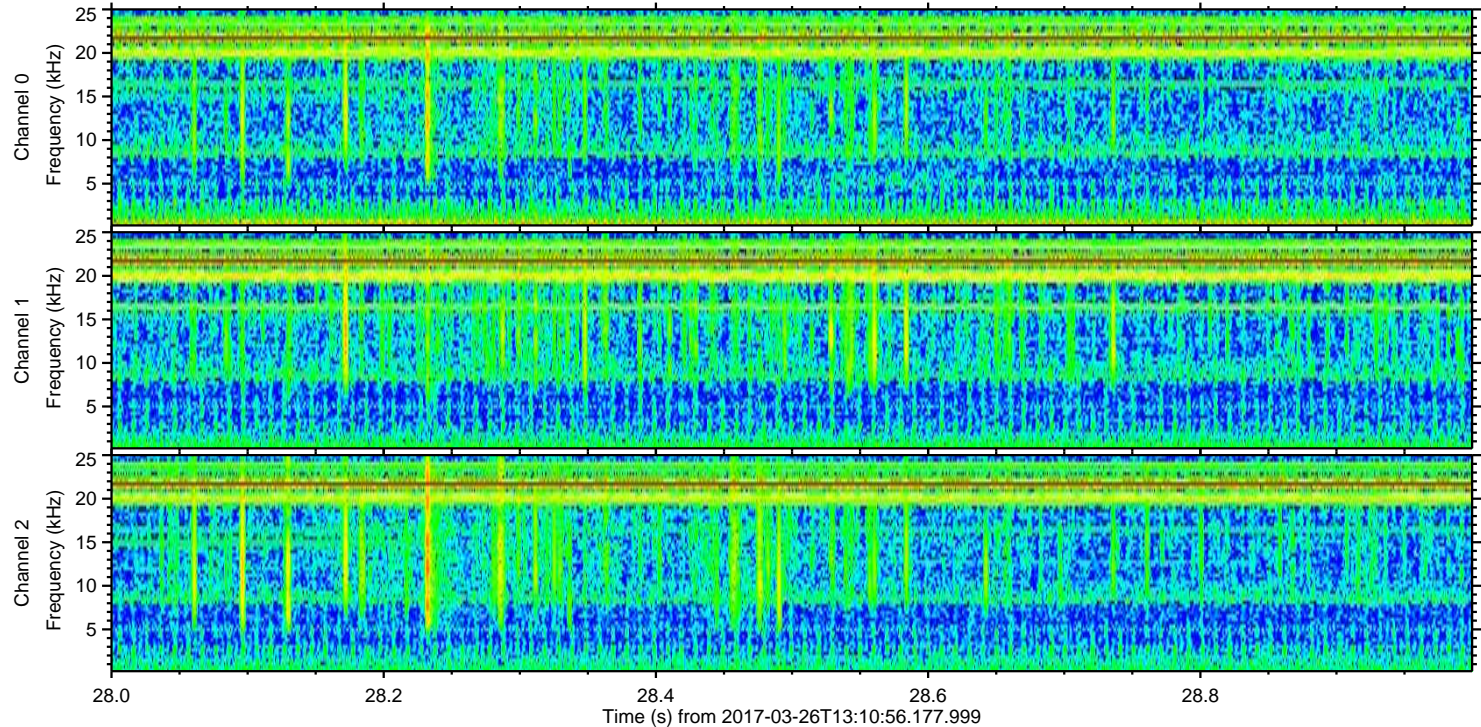
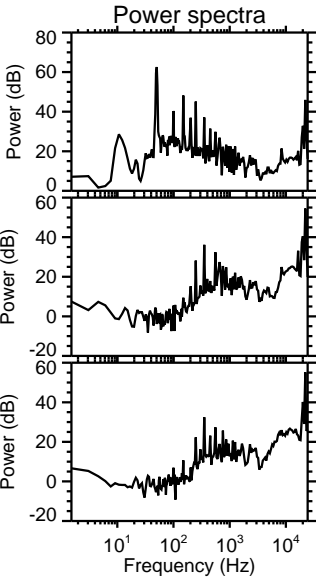
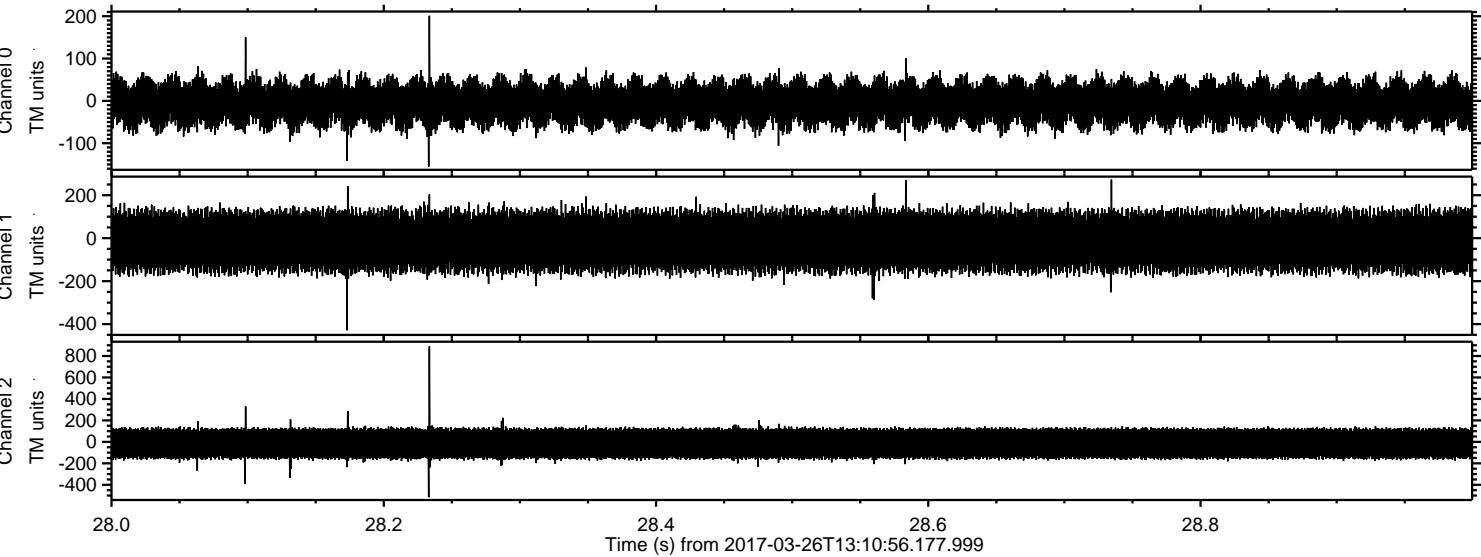


Processed Sun Mar 26 15:19:07 2017 by ELM ver.2012-10-06 from 001\_\_elm20170326\_131055\_\_dat00.bin





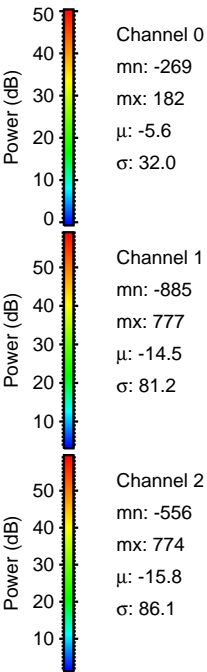
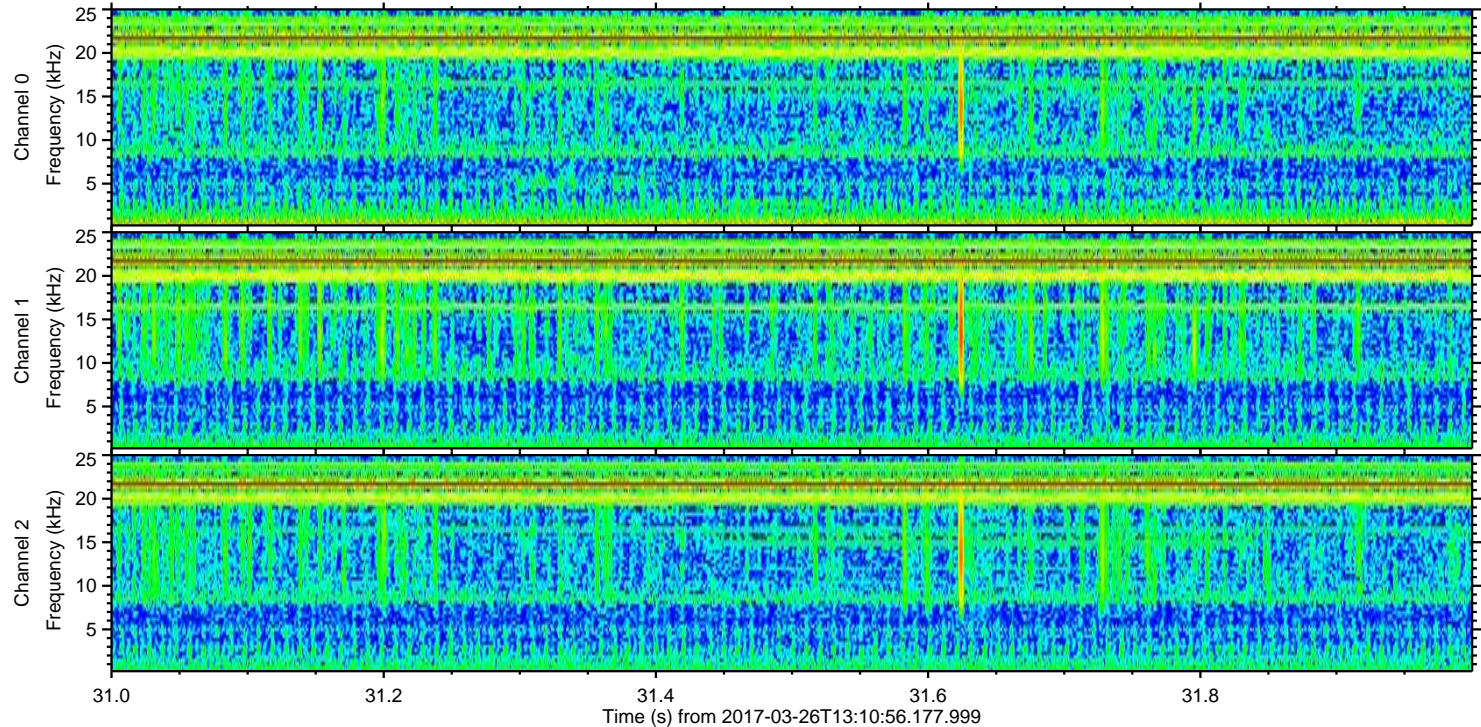
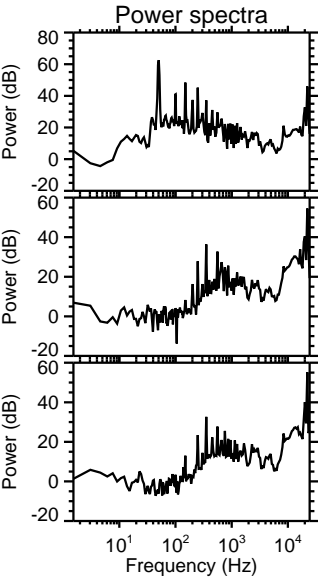
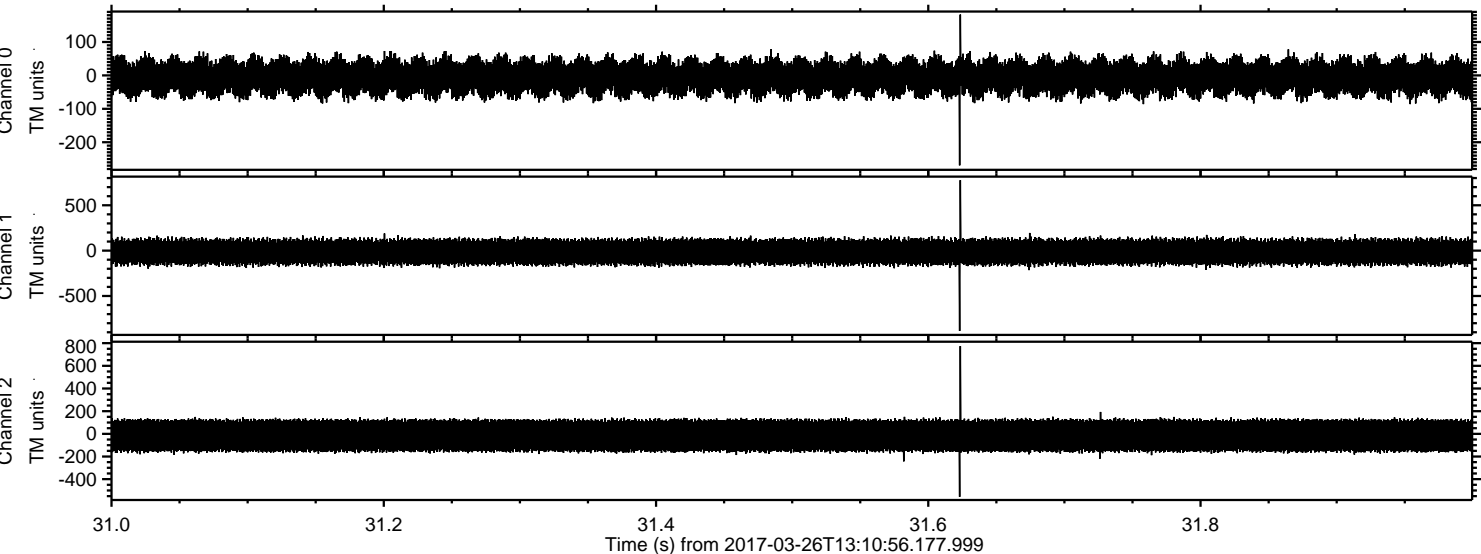
Processed Sun Mar 26 15:19:08 2017 by ELM ver.2012-10-06 from 001\_\_elm20170326\_131055\_\_dat00.bin





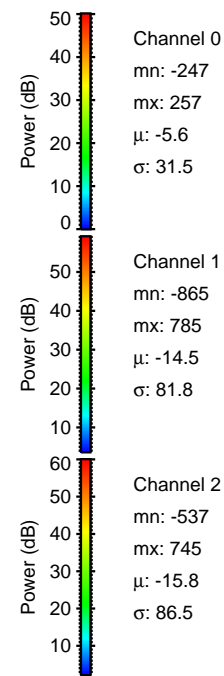
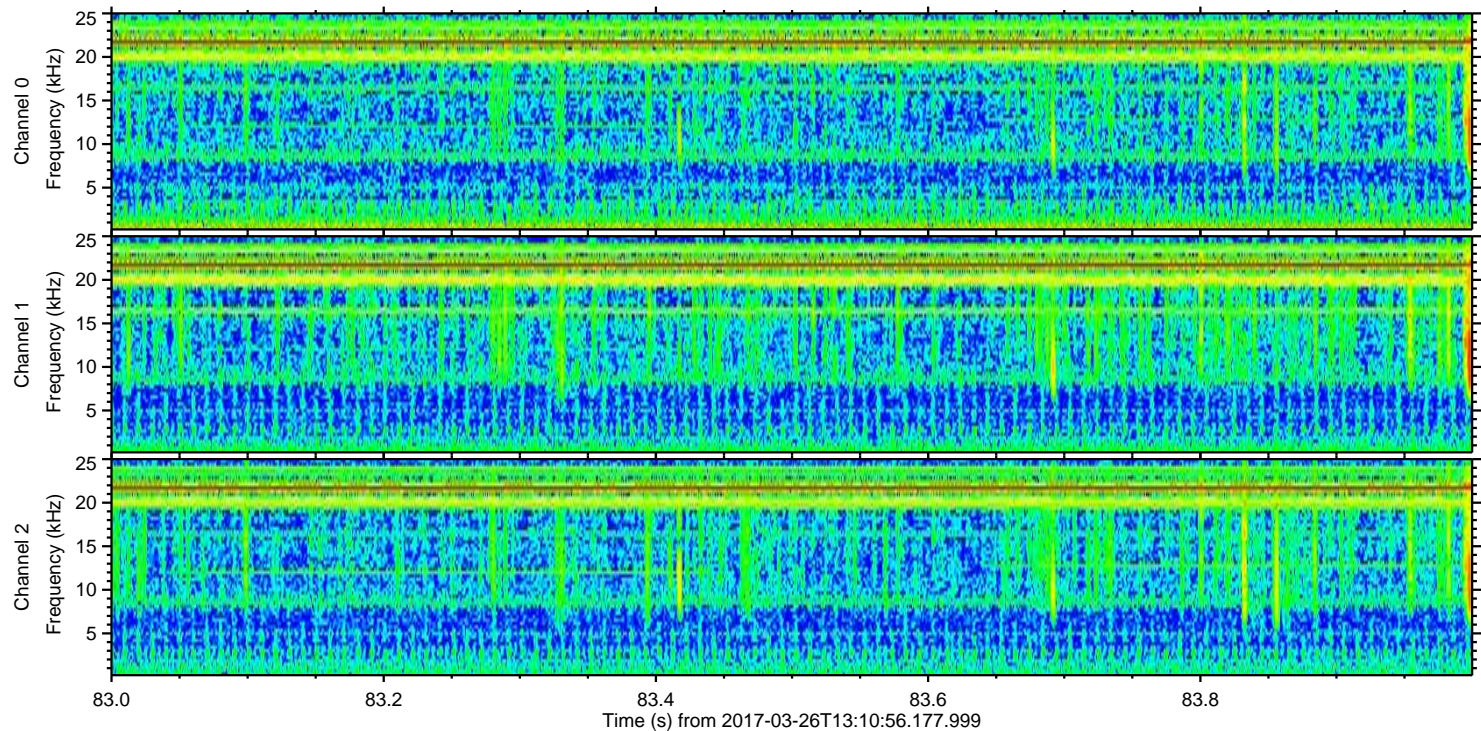
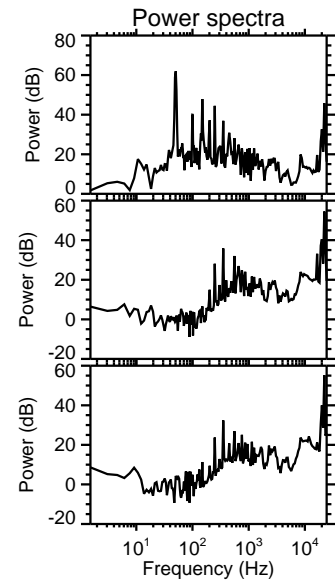
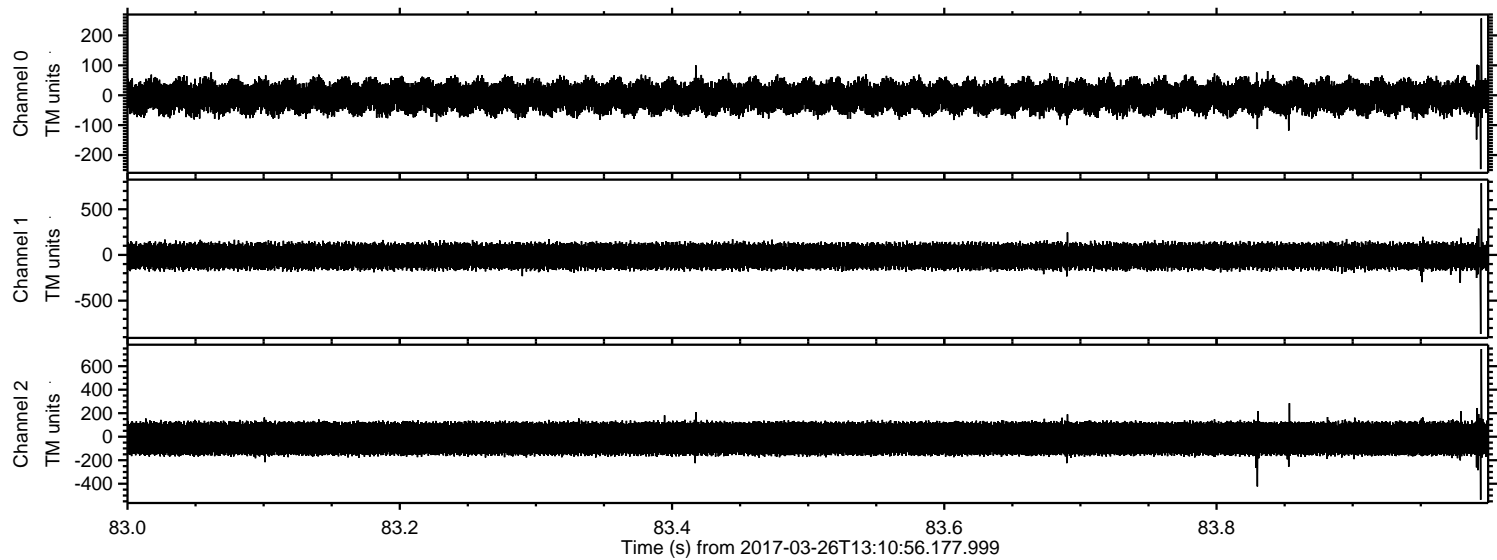
ELMAVAN 3D WAVEFORMS (Measured data sampled at 50 kHz) 51000 packets of 144 samples from 2017-03-26T13:10:56.177.999. Part 32/147

Processed Sun Mar 26 15:19:09 2017 by ELM ver.2012-10-06 from 001\_\_elm20170326\_131055\_\_dat00.bin



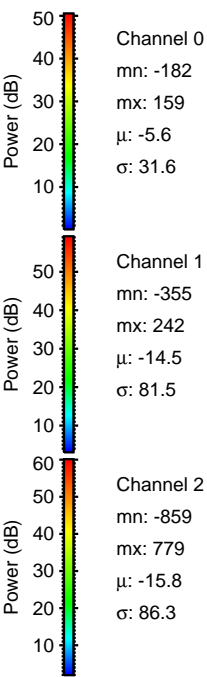
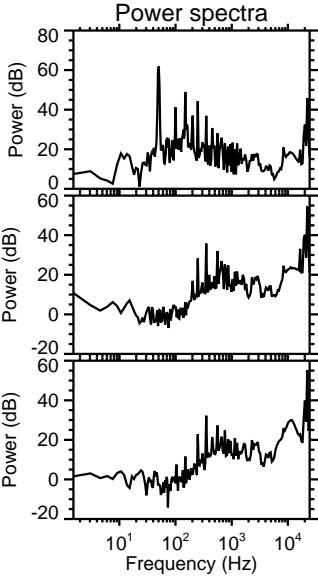
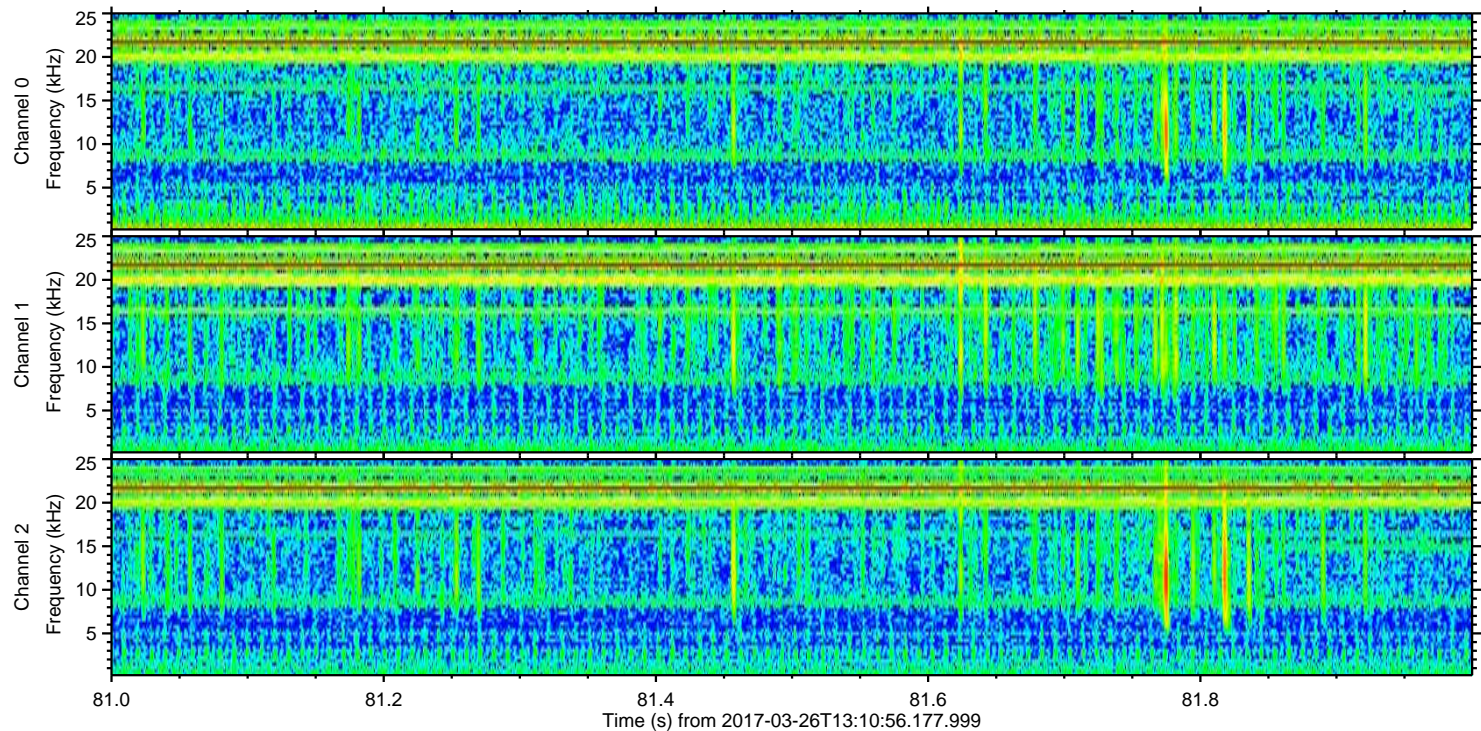
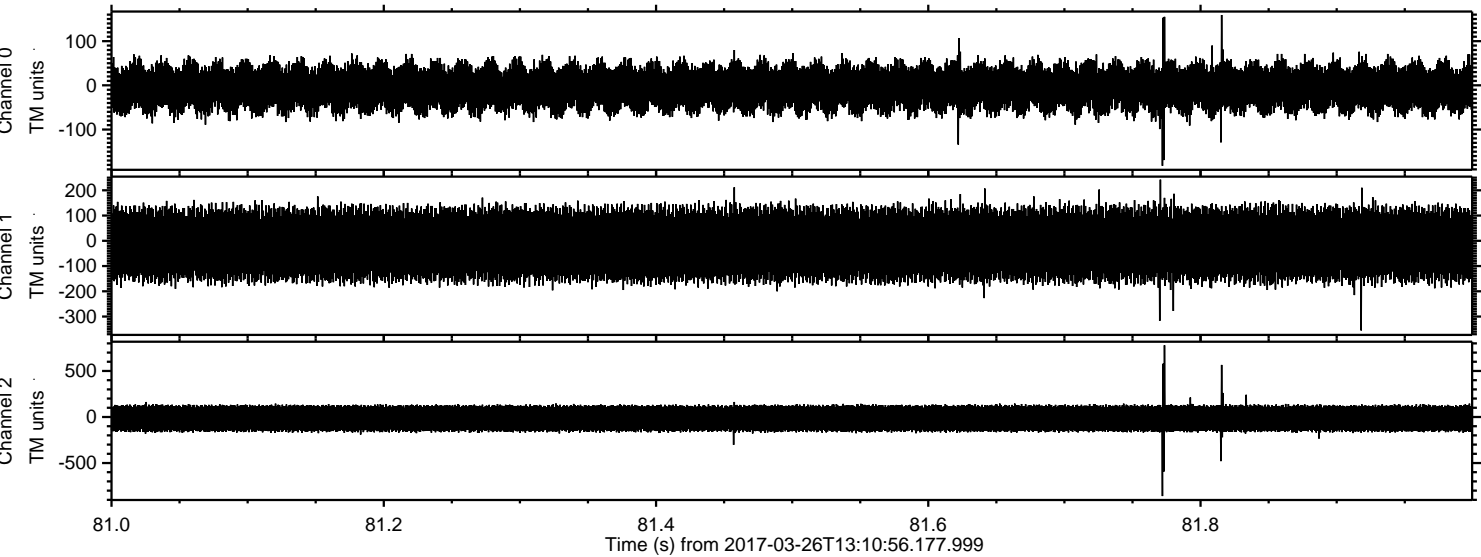


Processed Sun Mar 26 15:19:10 2017 by ELM ver.2012-10-06 from 001\_\_elm20170326\_131055\_\_dat00.bin





Processed Sun Mar 26 15:19:11 2017 by ELM ver.2012-10-06 from 001\_\_elm20170326\_131055\_\_dat00.bin



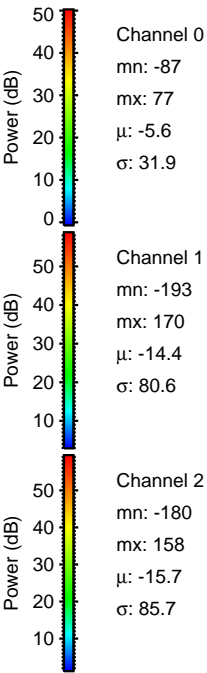
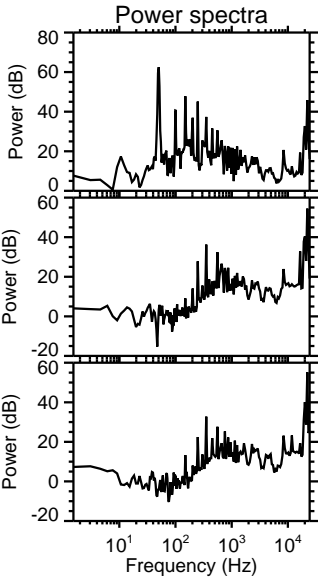
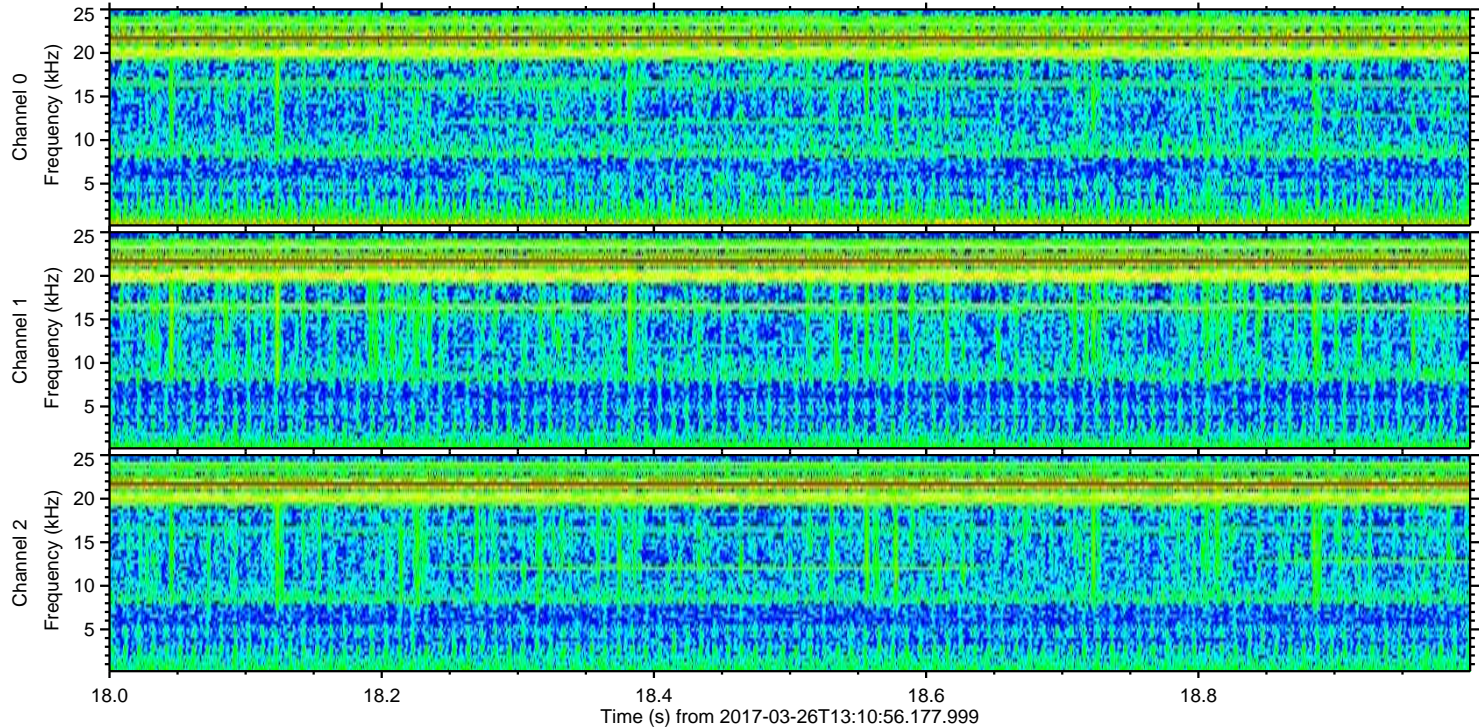
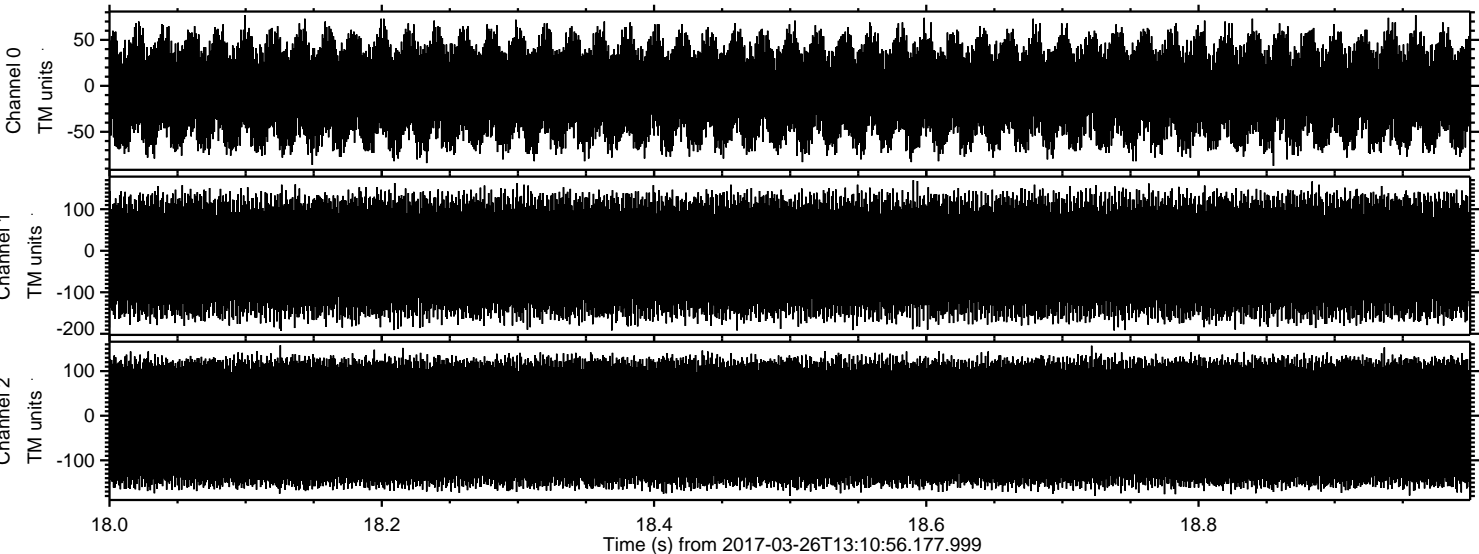
Channel 0  
mn: -182  
mx: 159  
 $\mu$ : -5.6  
 $\sigma$ : 31.6

Channel 1  
mn: -355  
mx: 242  
 $\mu$ : -14.5  
 $\sigma$ : 81.5

Channel 2  
mn: -859  
mx: 779  
 $\mu$ : -15.8  
 $\sigma$ : 86.3



Processed Sun Mar 26 15:19:12 2017 by ELM ver.2012-10-06 from 001\_\_elm20170326\_131055\_\_dat00.bin



Power spectra

Channel 0  
mn: -87  
mx: 77  
 $\mu$ : -5.6  
 $\sigma$ : 31.9

Channel 1  
mn: -193  
mx: 170  
 $\mu$ : -14.4  
 $\sigma$ : 80.6

Channel 2  
mn: -180  
mx: 158  
 $\mu$ : -15.7  
 $\sigma$ : 85.7