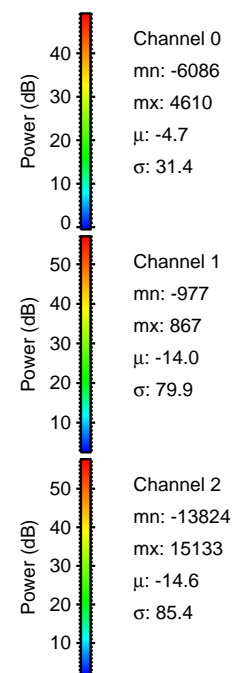
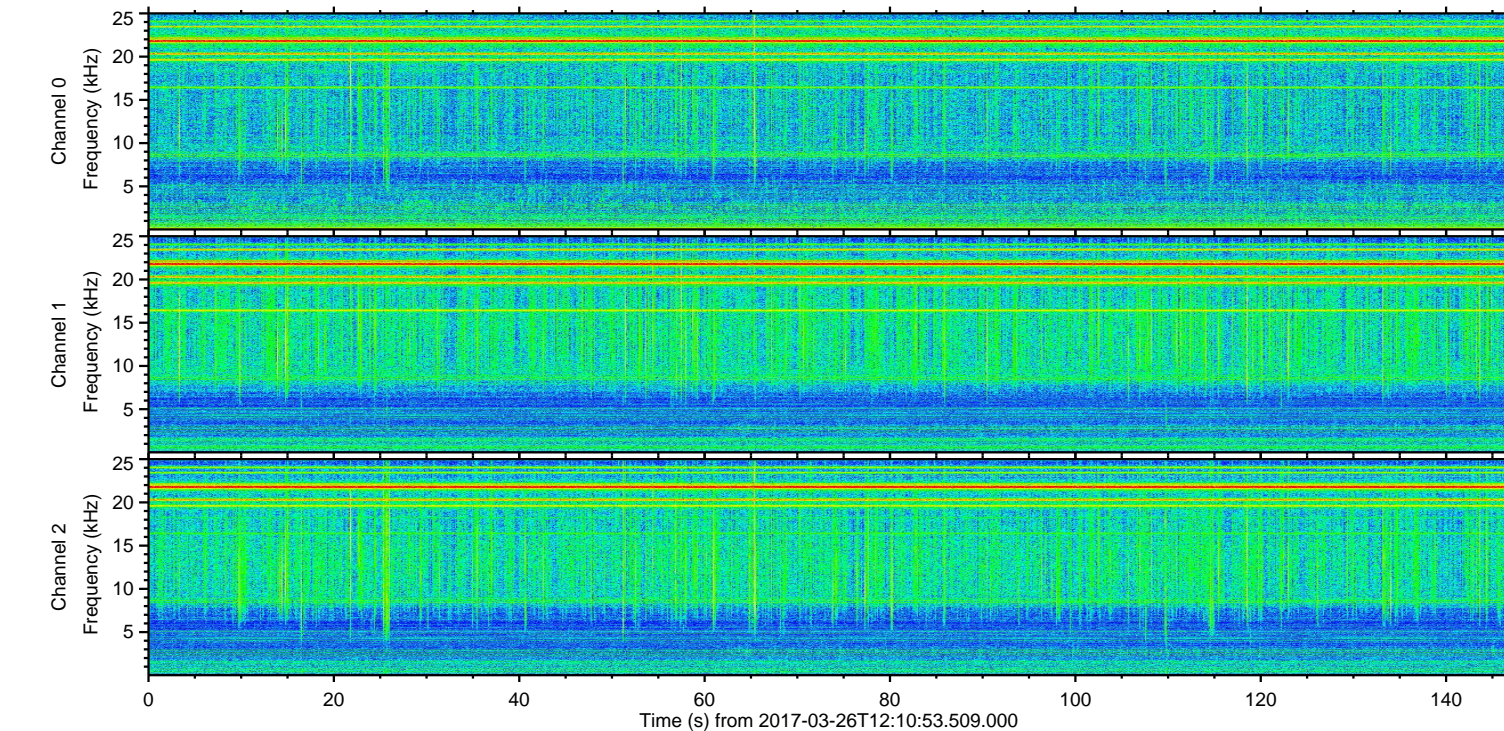
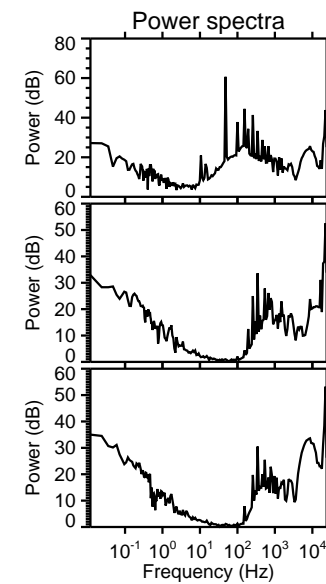
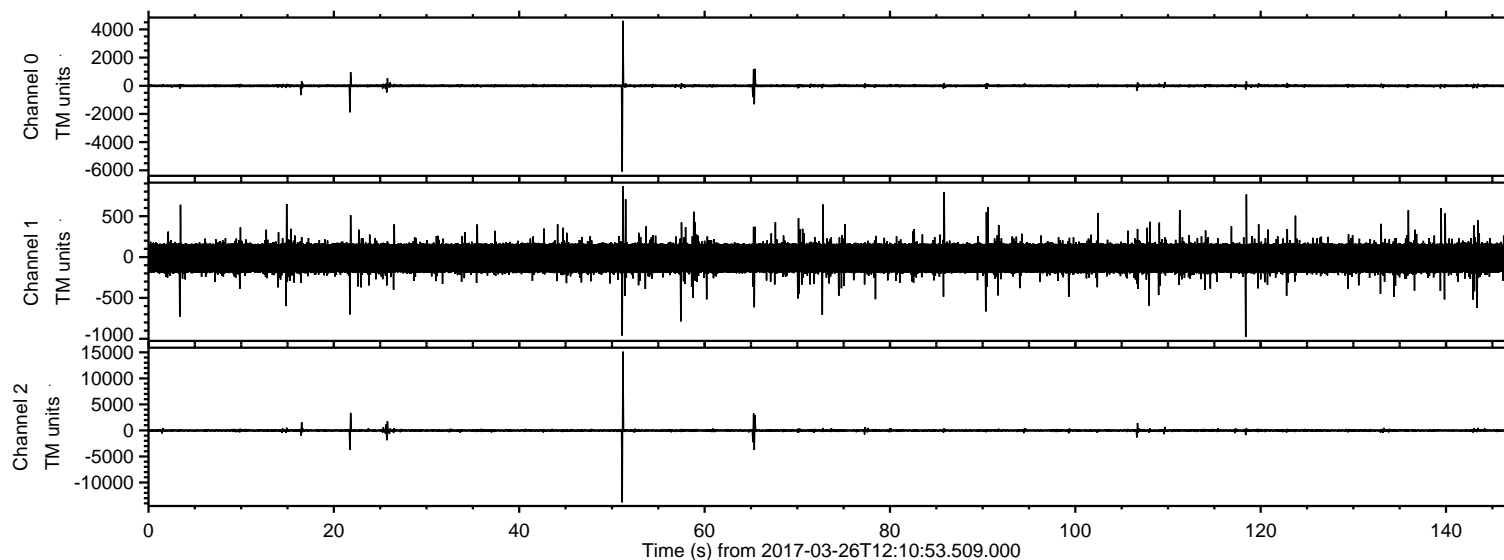
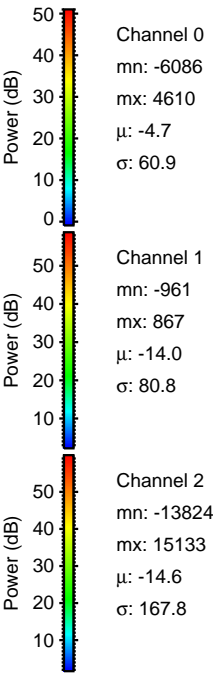
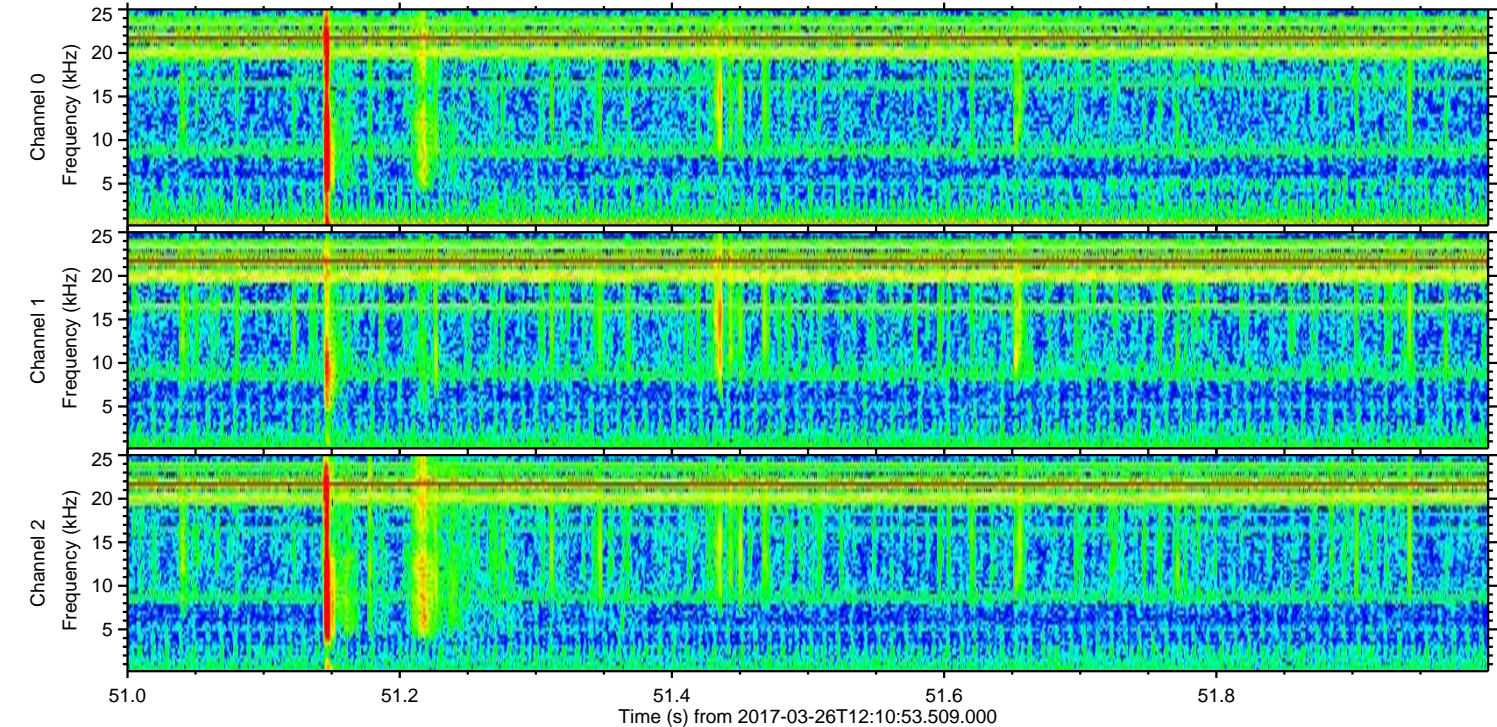
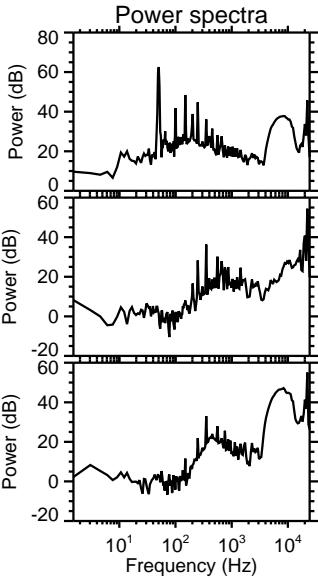
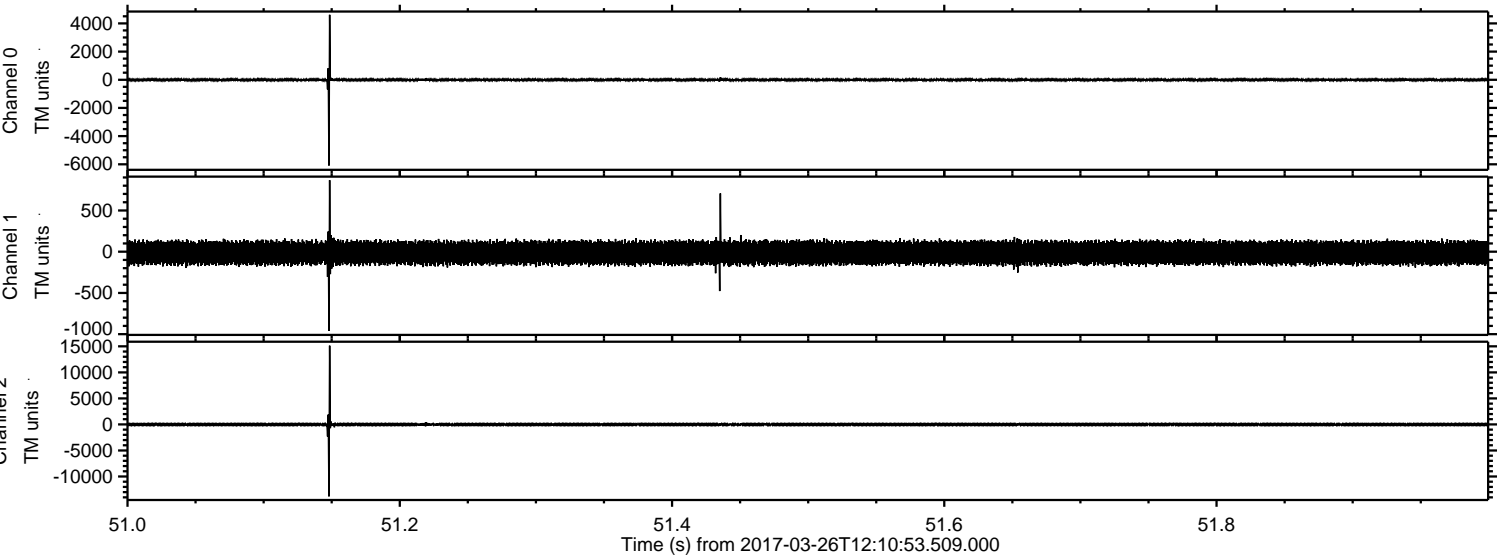


ELMAVAN 3D WAVEFORMS (Measured data sampled at 50 kHz) 51000 packets of 144 samples from 2017-03-26T12:10:53.509.000.

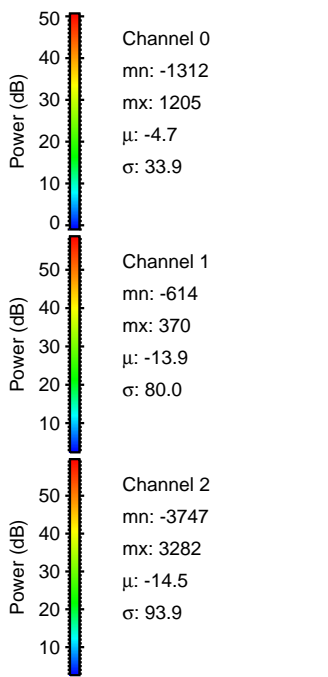
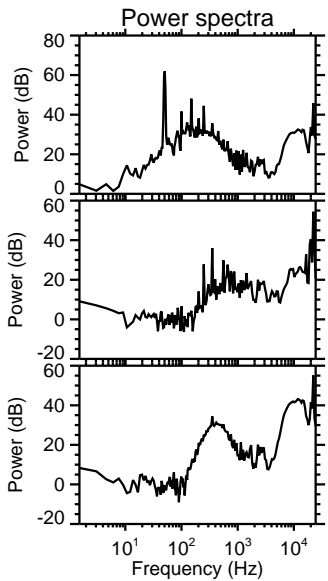
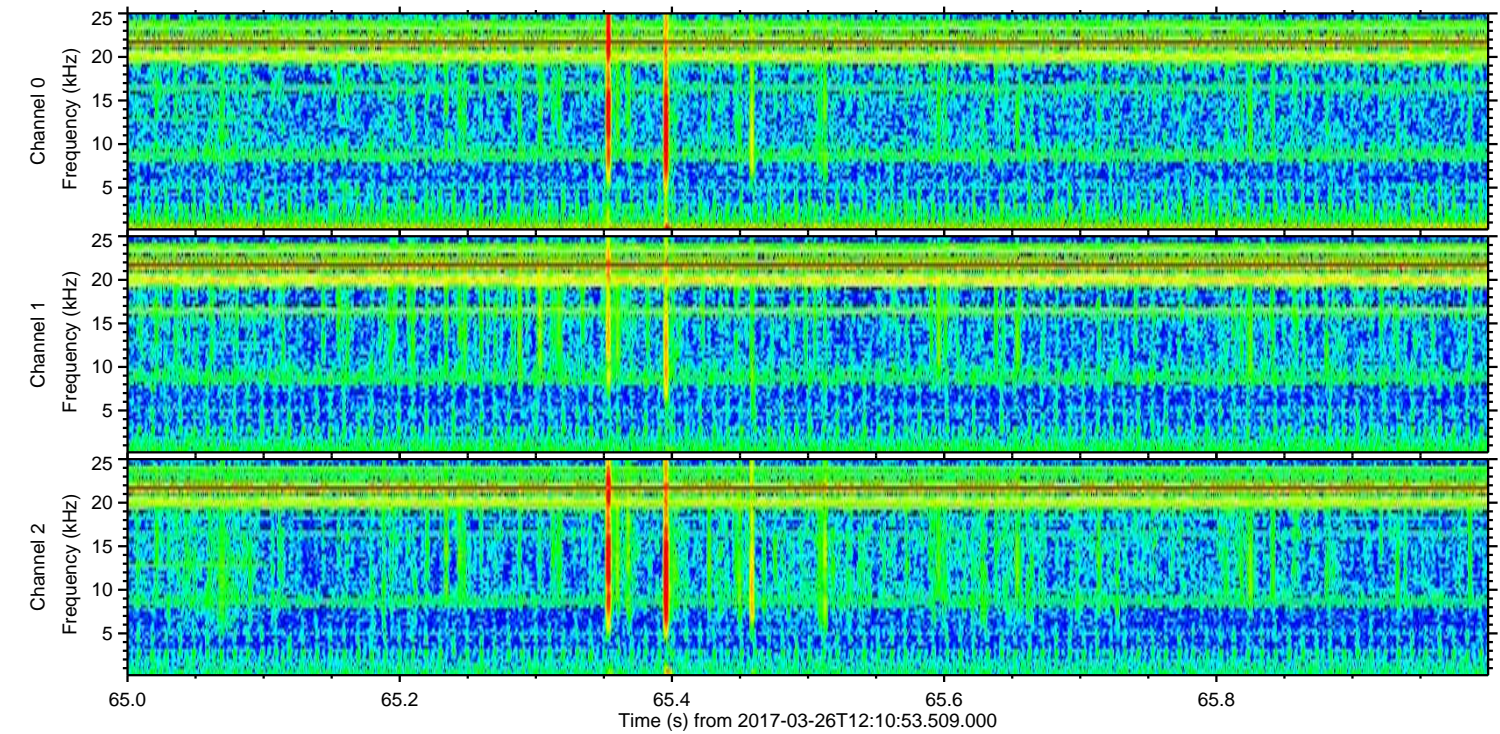
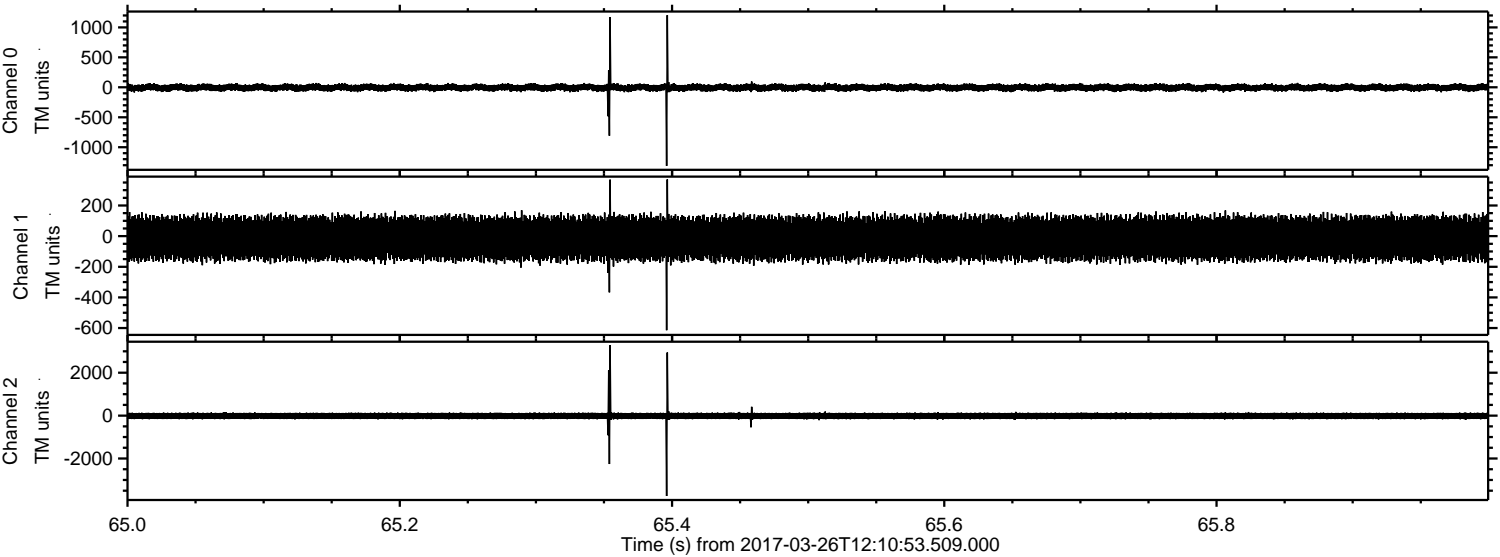
Processed Sun Mar 26 14:18:52 2017 by ELM ver.2012-10-06 from 001__elm20170326_121052__dat00.bin



Processed Sun Mar 26 14:19:03 2017 by ELM ver.2012-10-06 from 001__elm20170326_121052__dat00.bin

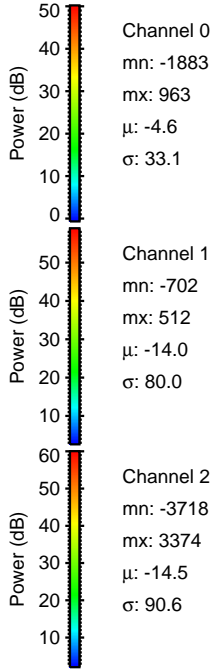
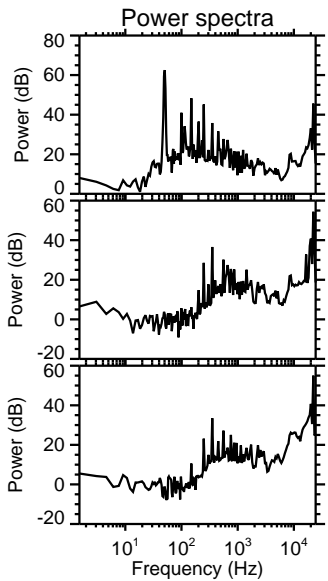
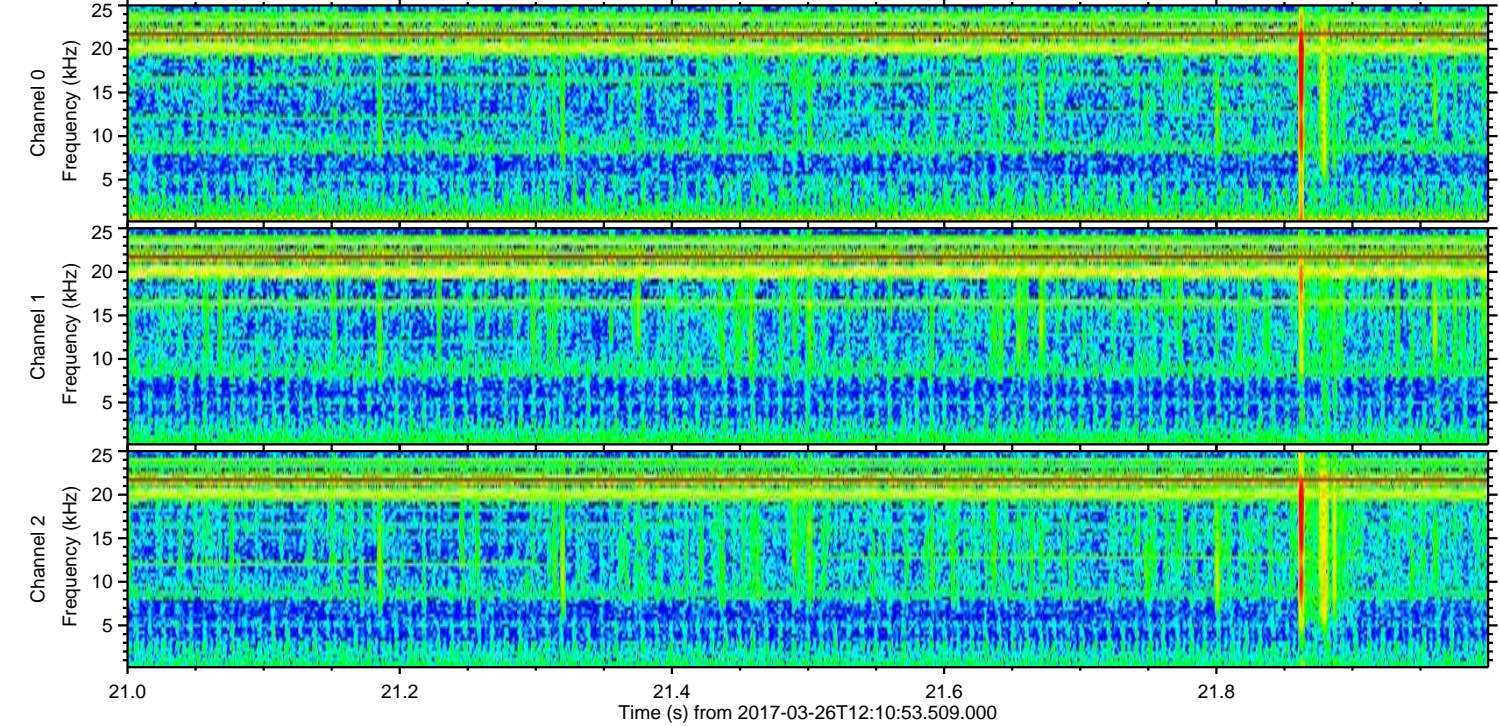
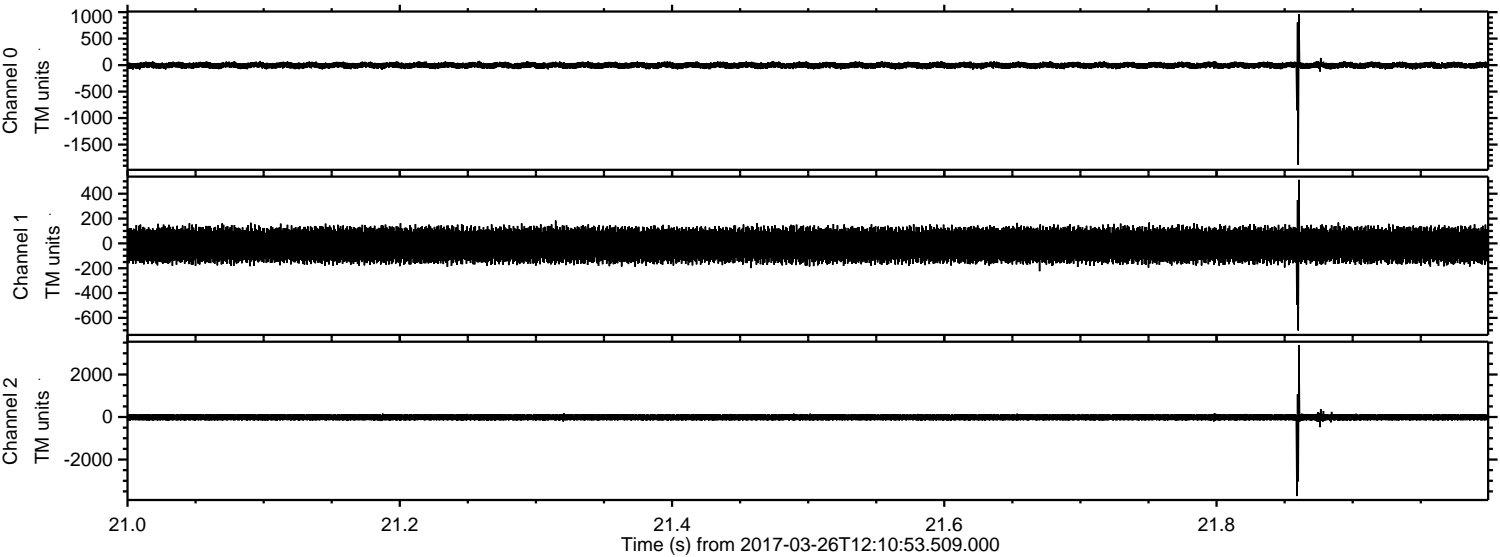


Processed Sun Mar 26 14:19:04 2017 by ELM ver.2012-10-06 from 001__elm20170326_121052__dat00.bin



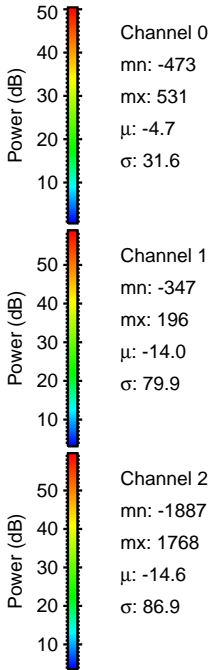
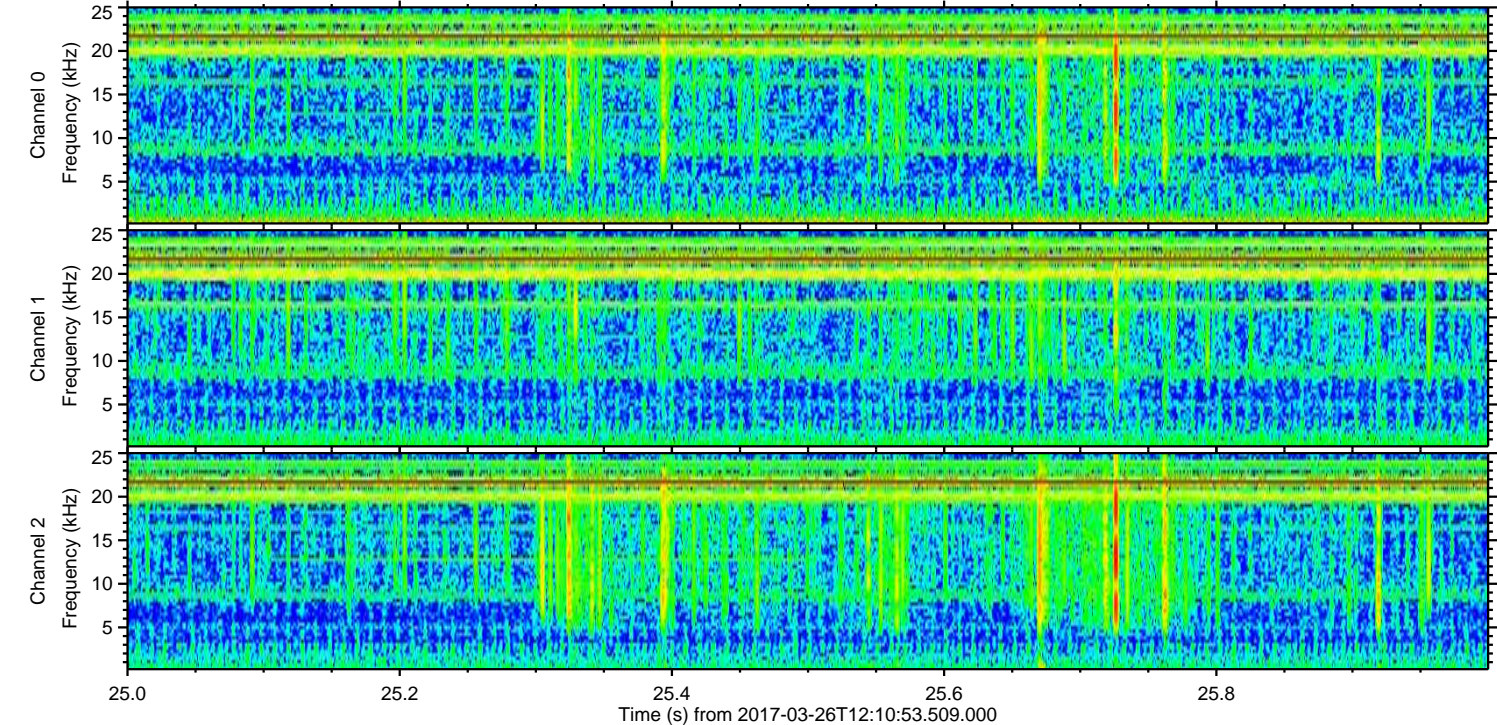
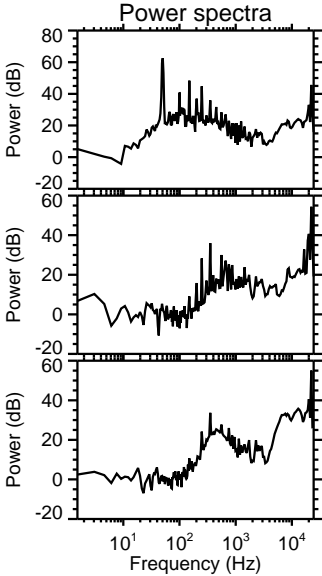
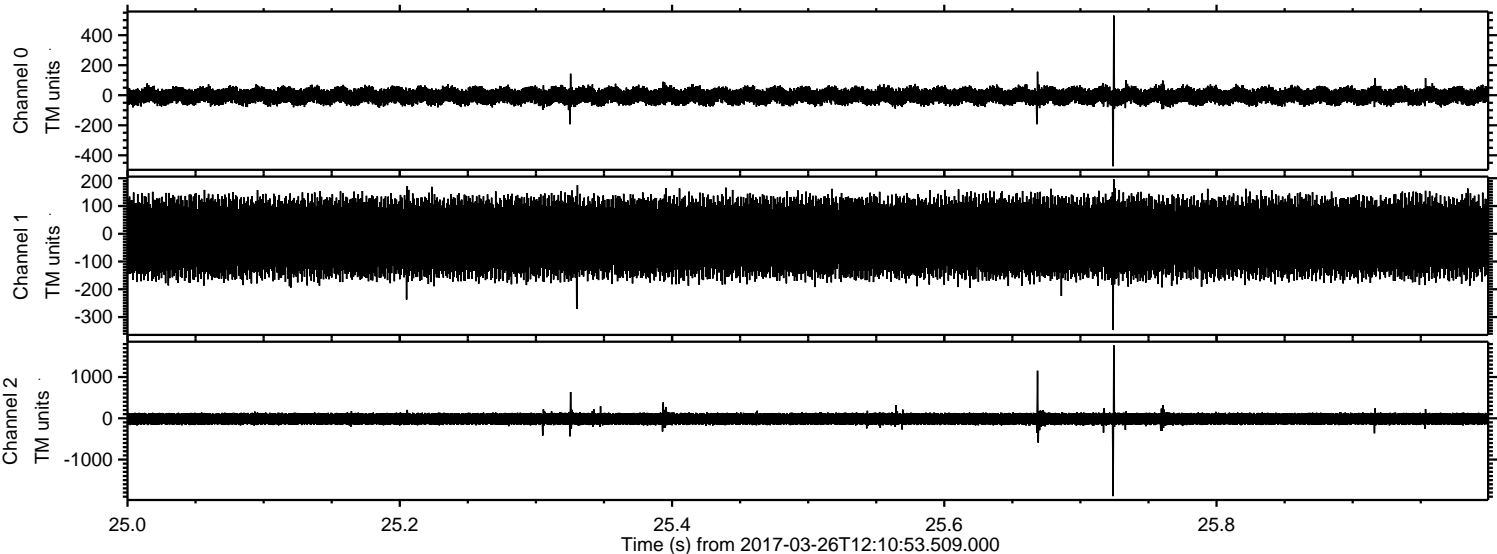
ELMAVAN 3D WAVEFORMS (Measured data sampled at 50 kHz) 51000 packets of 144 samples from 2017-03-26T12:10:53.509.000. Part 22/147

Processed Sun Mar 26 14:19:05 2017 by ELM ver.2012-10-06 from 001__elm20170326_121052__dat00.bin

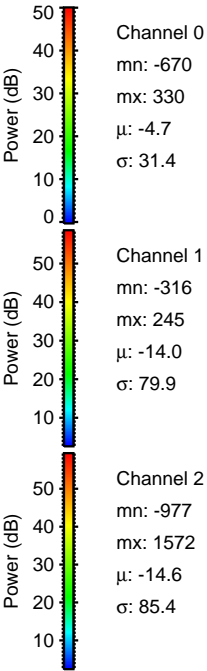
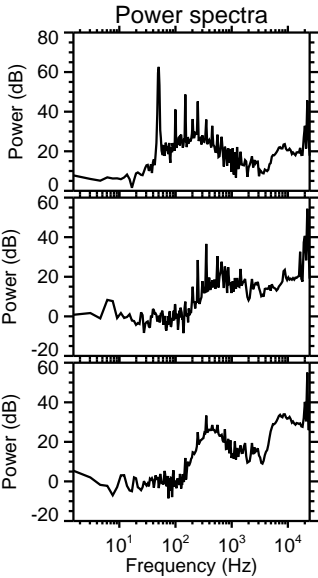
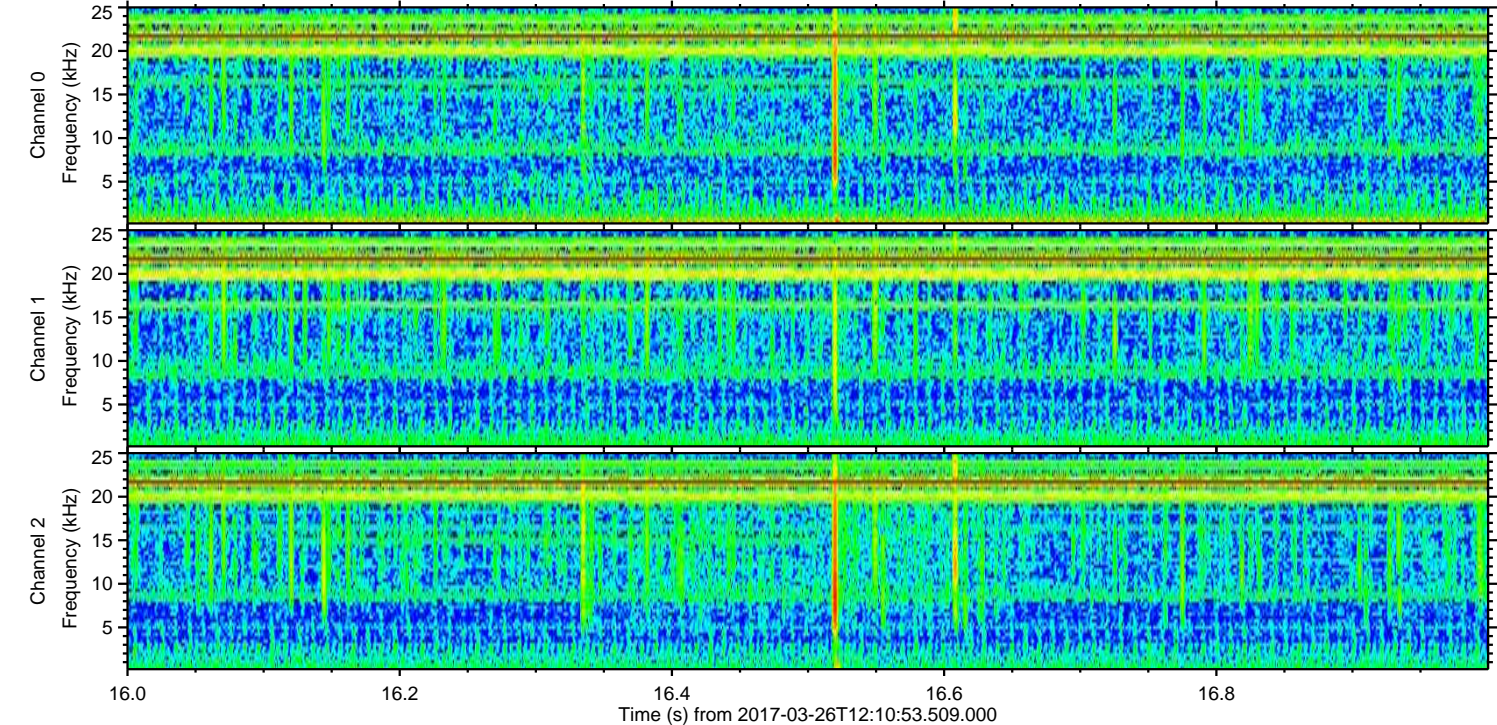
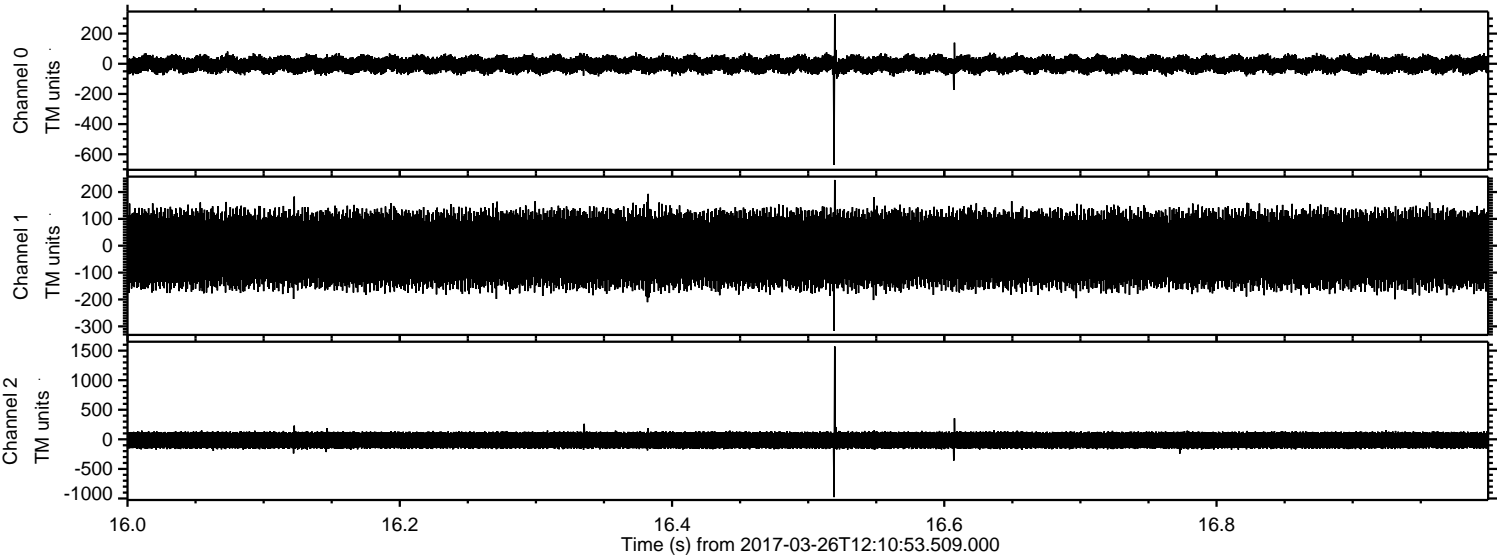


ELMAVAN 3D WAVEFORMS (Measured data sampled at 50 kHz) 51000 packets of 144 samples from 2017-03-26T12:10:53.509.000. Part 26/147

Processed Sun Mar 26 14:19:06 2017 by ELM ver.2012-10-06 from 001__elm20170326_121052__dat00.bin

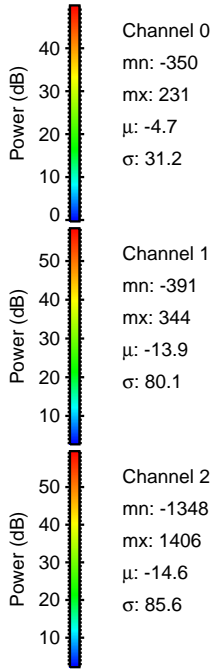
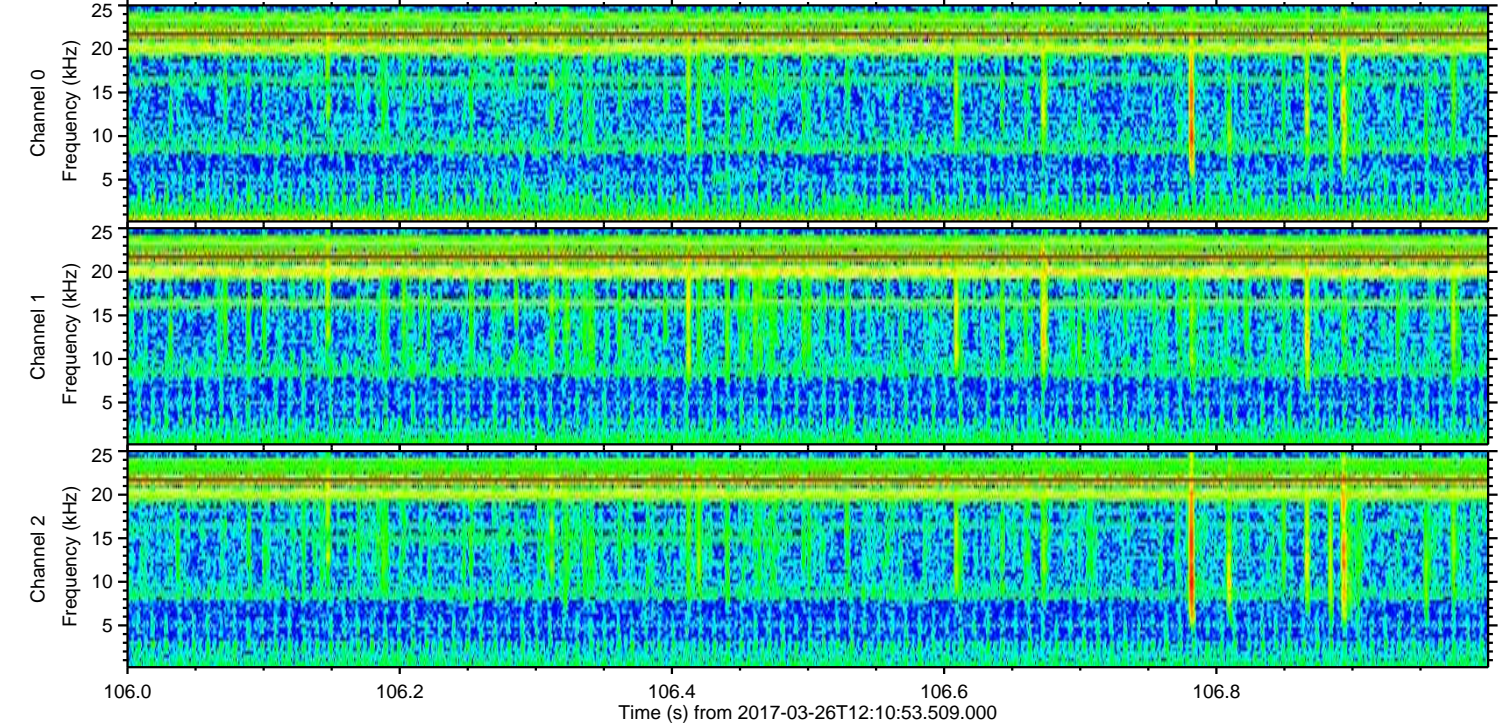
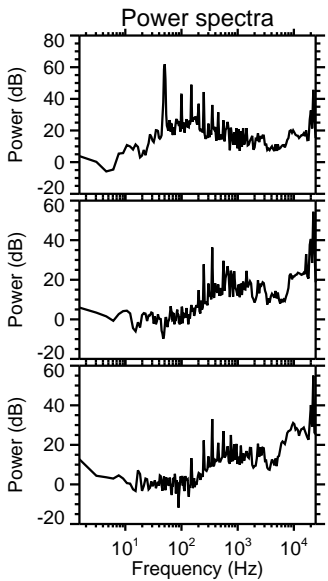
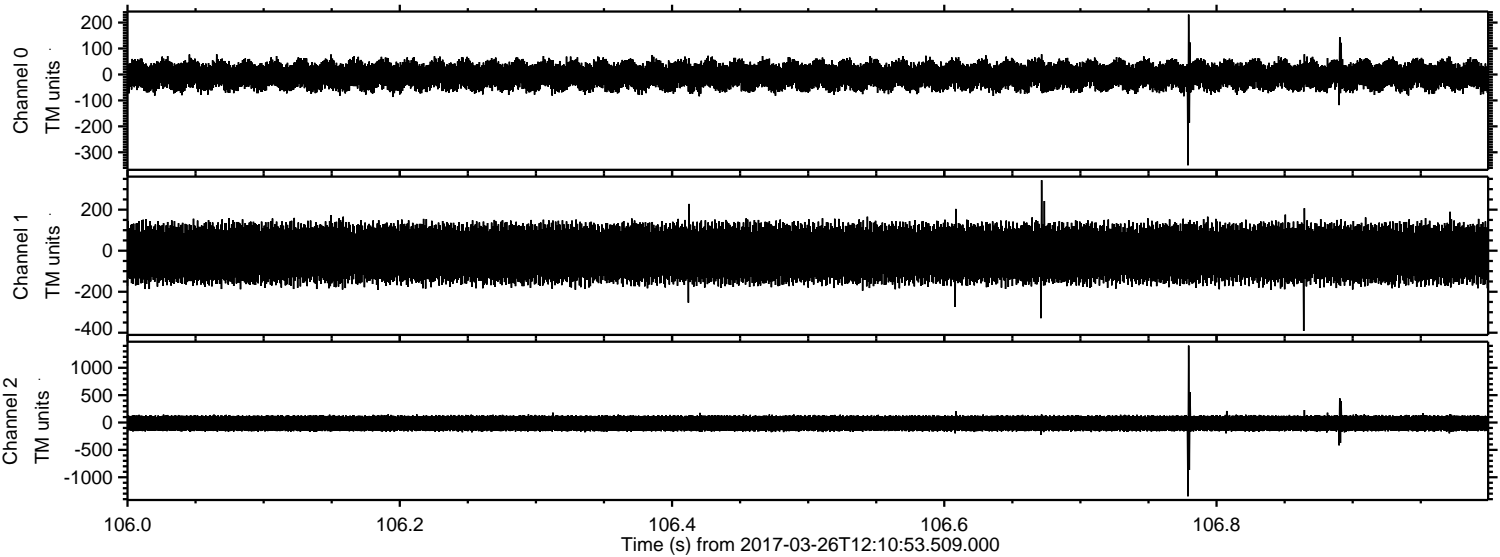


Processed Sun Mar 26 14:19:07 2017 by ELM ver.2012-10-06 from 001__elm20170326_121052__dat00.bin



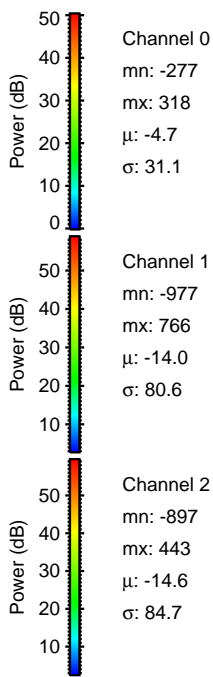
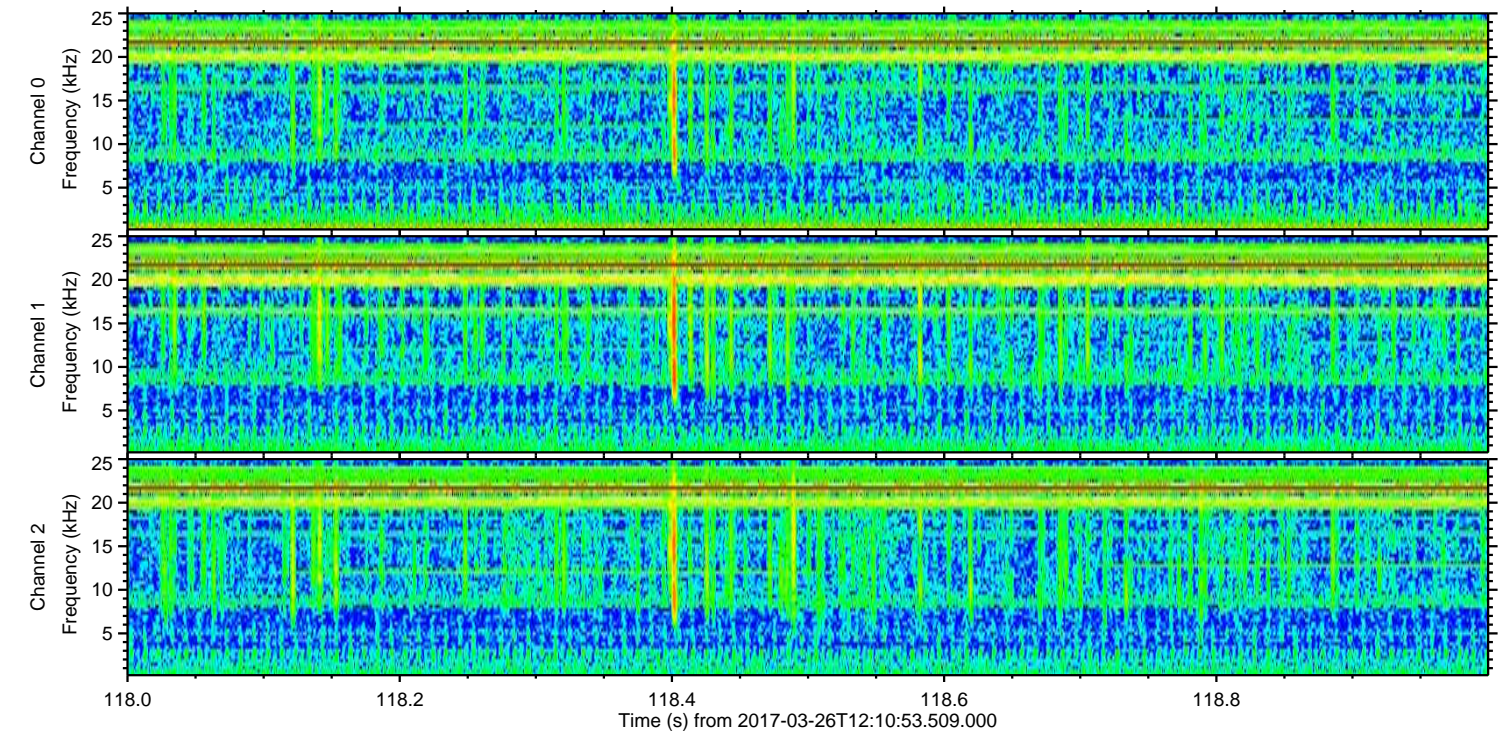
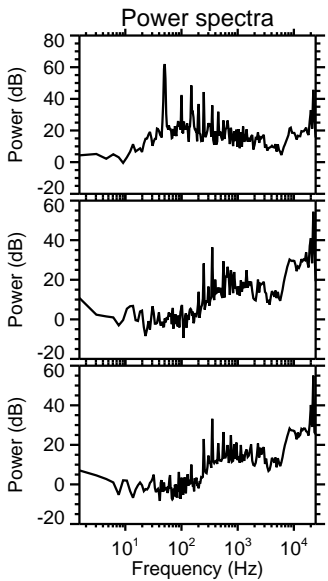
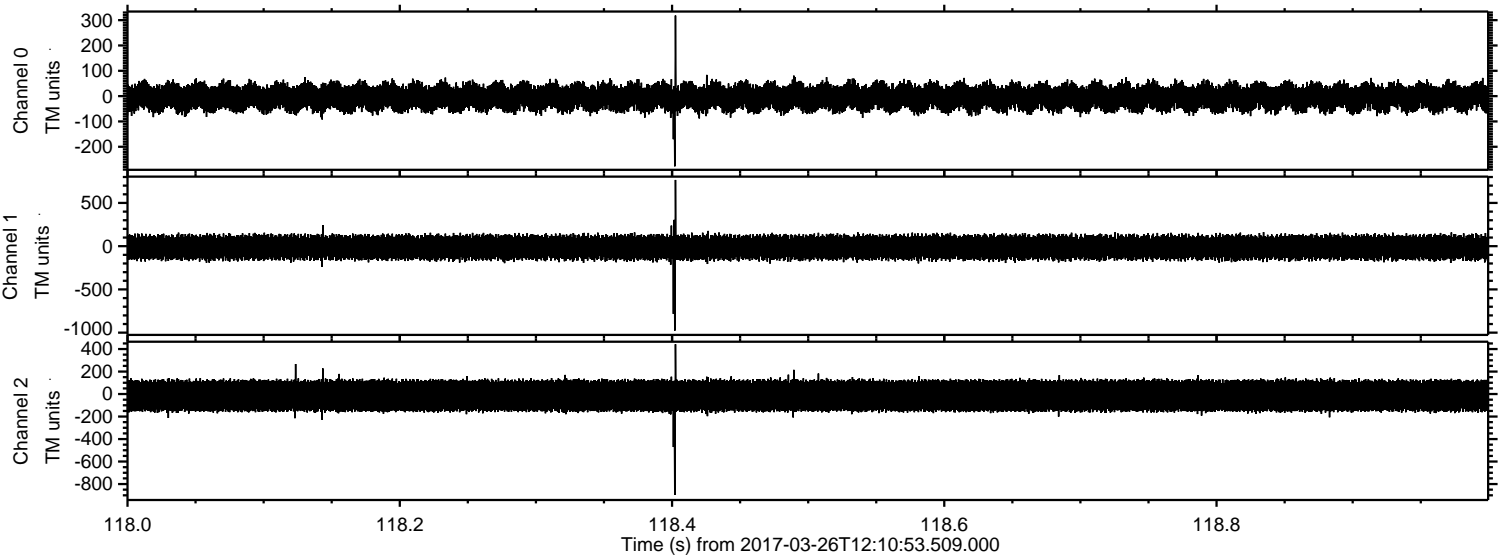
ELMAVAN 3D WAVEFORMS (Measured data sampled at 50 kHz) 51000 packets of 144 samples from 2017-03-26T12:10:53.509.000. Part 107/147

Processed Sun Mar 26 14:19:08 2017 by ELM ver.2012-10-06 from 001__elm20170326_121052__dat00.bin



ELMAVAN 3D WAVEFORMS (Measured data sampled at 50 kHz) 51000 packets of 144 samples from 2017-03-26T12:10:53.509.000. Part 119/147

Processed Sun Mar 26 14:19:09 2017 by ELM ver.2012-10-06 from 001__elm20170326_121052__dat00.bin

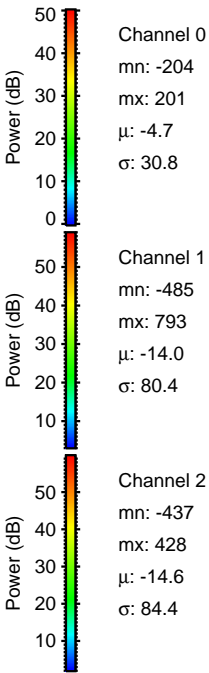
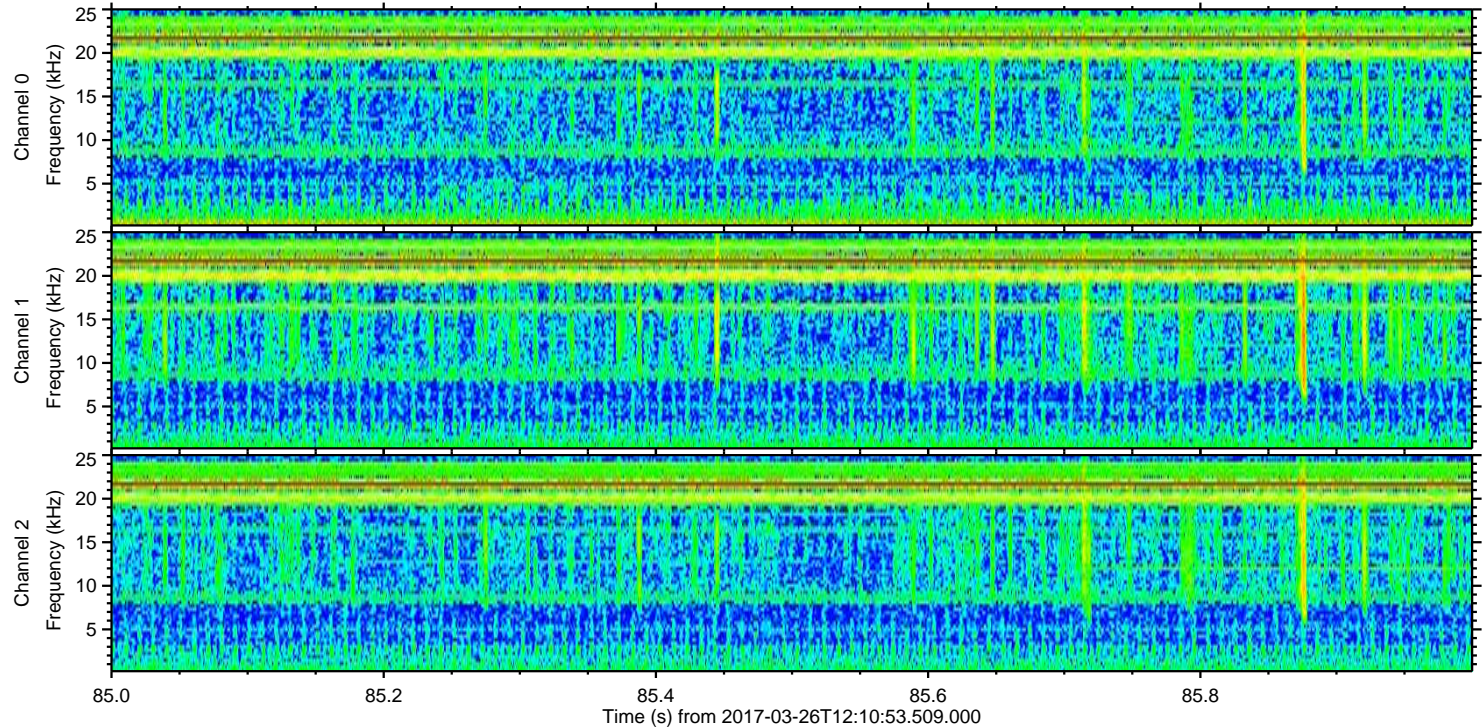
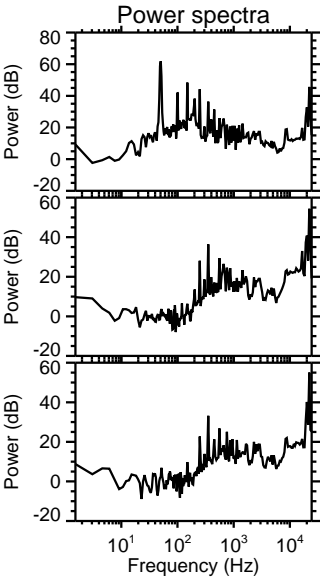
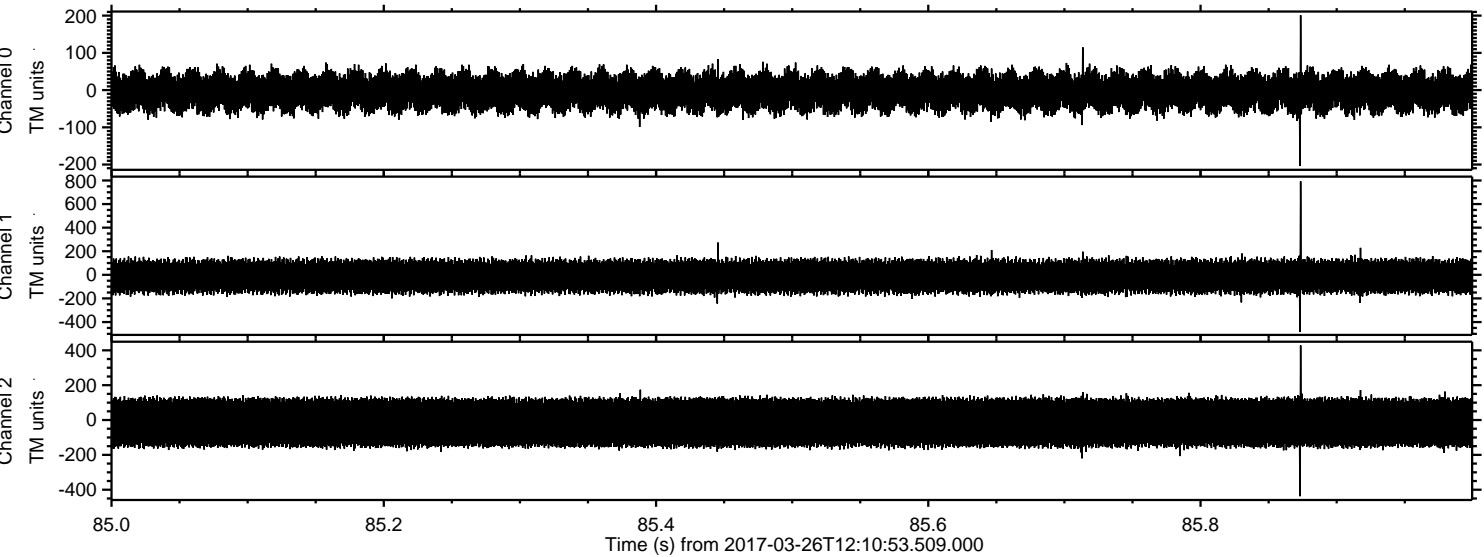


Channel 0
mn: -277
mx: 318
 μ : -4.7
 σ : 31.1

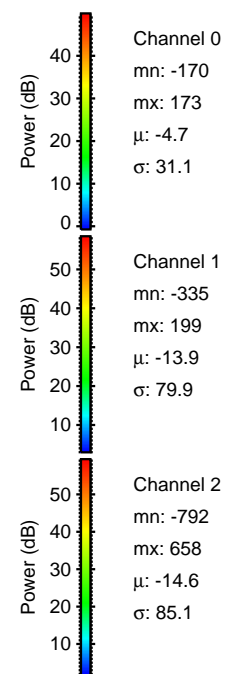
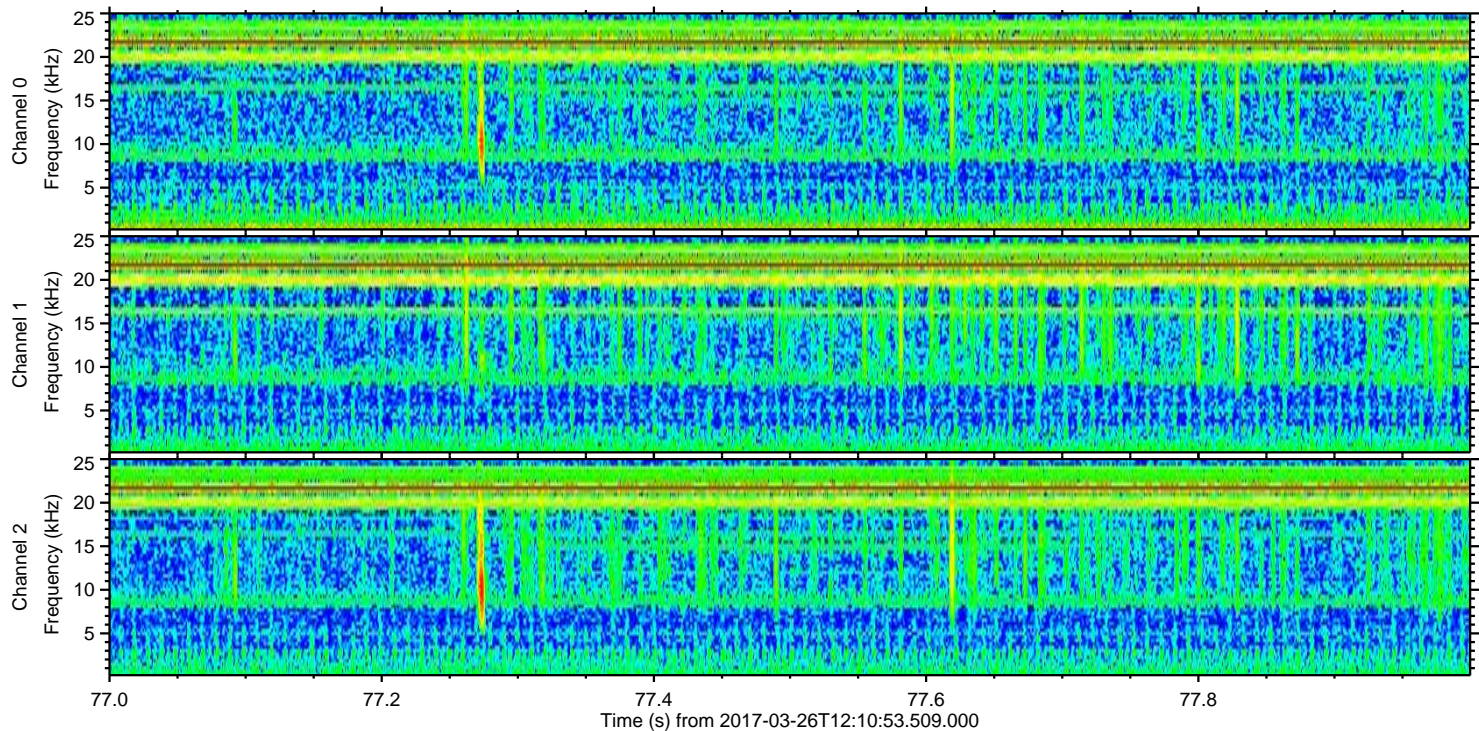
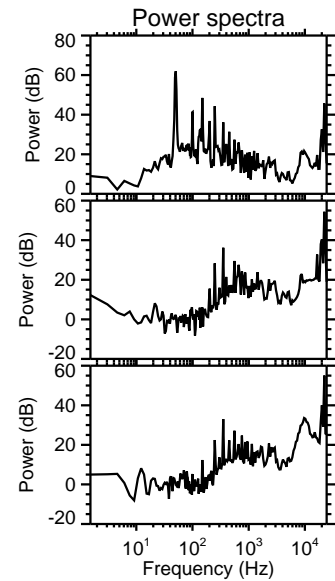
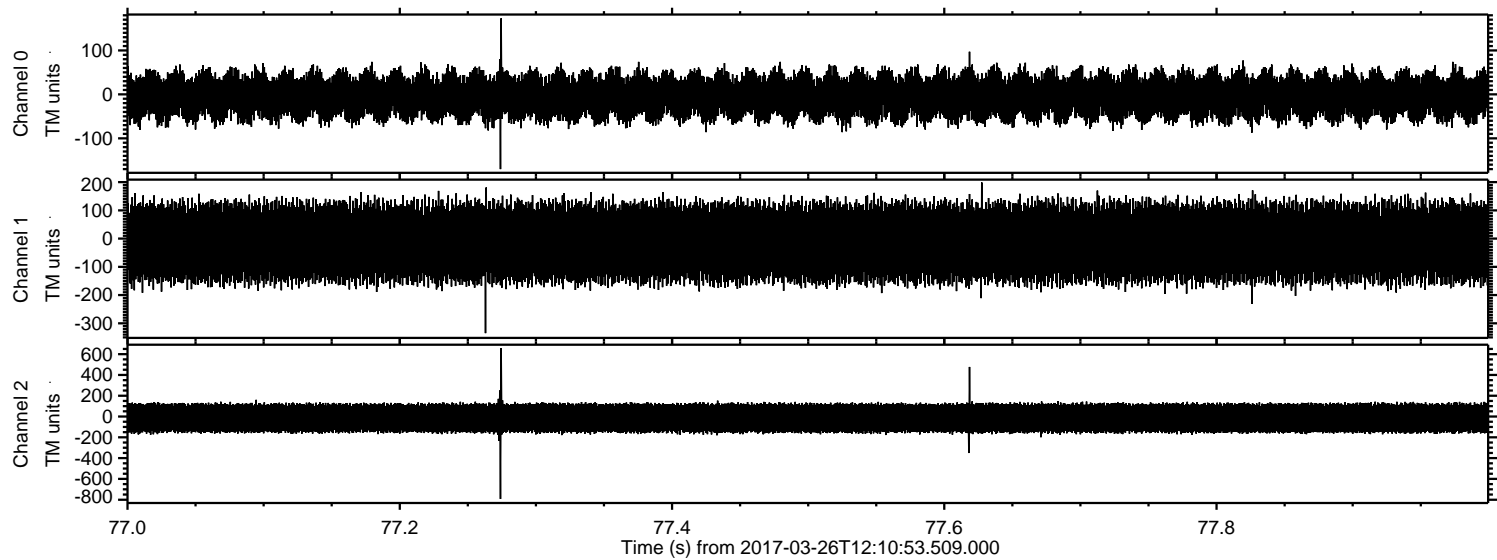
Channel 1
mn: -977
mx: 766
 μ : -14.0
 σ : 80.6

Channel 2
mn: -897
mx: 443
 μ : -14.6
 σ : 84.7

Processed Sun Mar 26 14:19:10 2017 by ELM ver.2012-10-06 from 001__elm20170326_121052__dat00.bin



Processed Sun Mar 26 14:19:11 2017 by ELM ver.2012-10-06 from 001__elm20170326_121052__dat00.bin



Processed Sun Mar 26 14:19:12 2017 by ELM ver.2012-10-06 from 001__elm20170326_121052__dat00.bin

