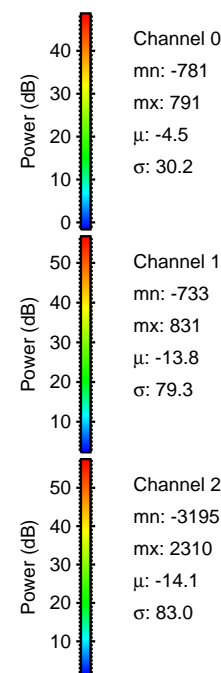
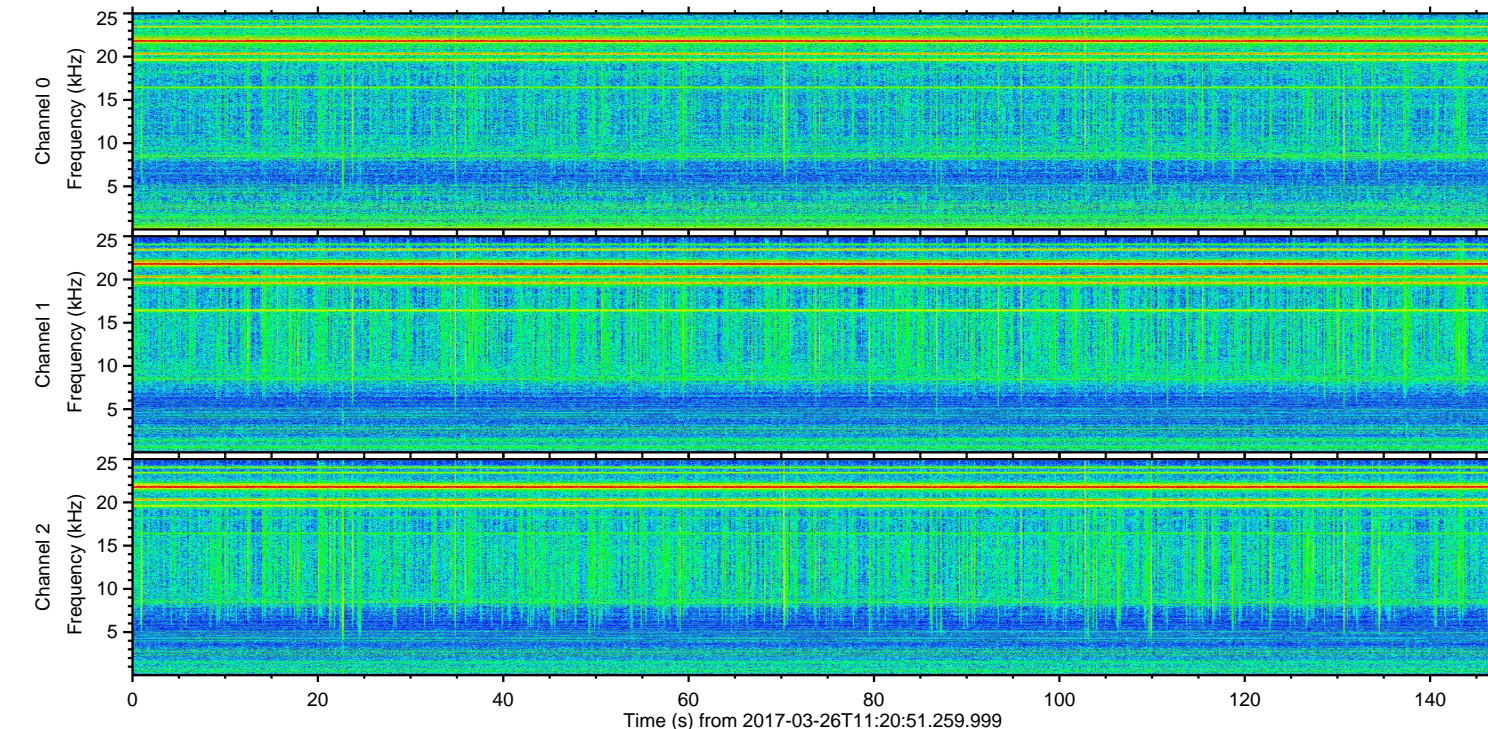
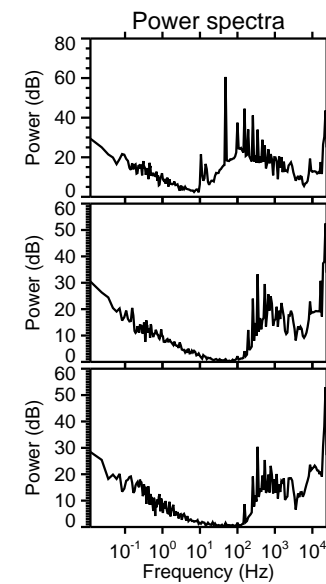
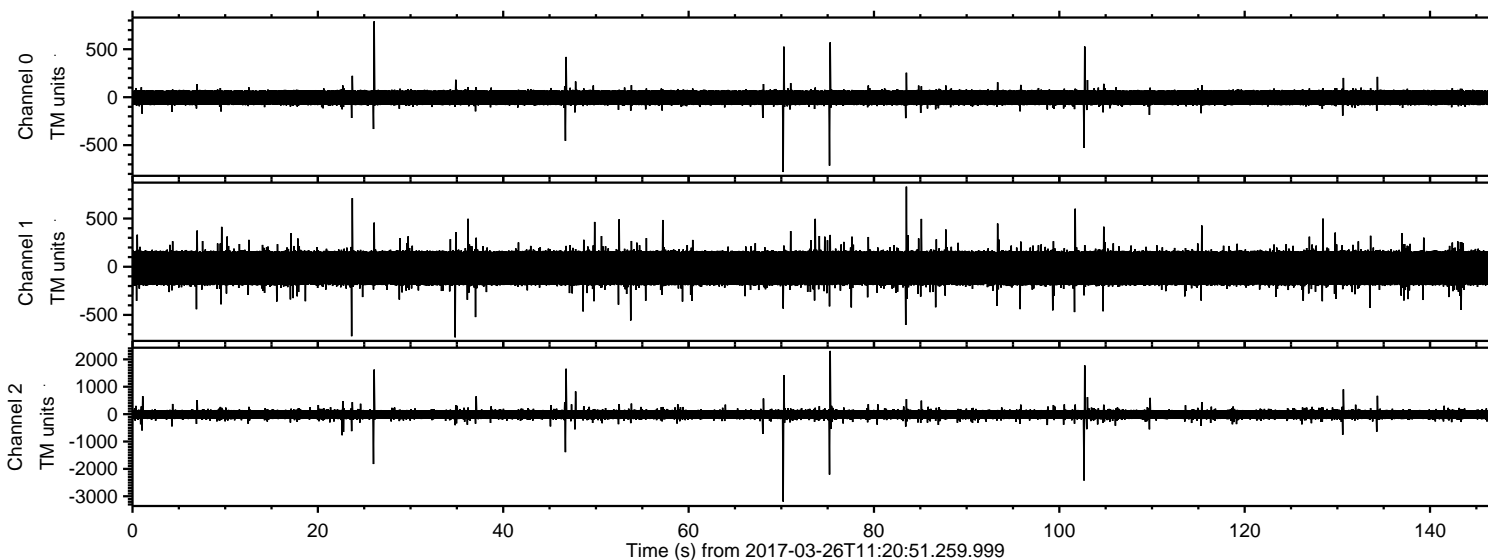
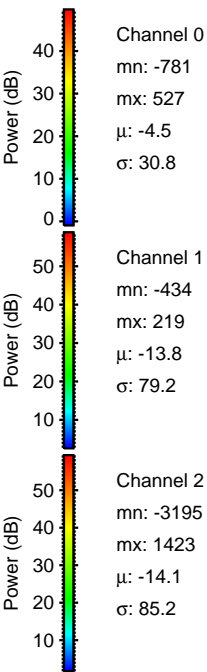
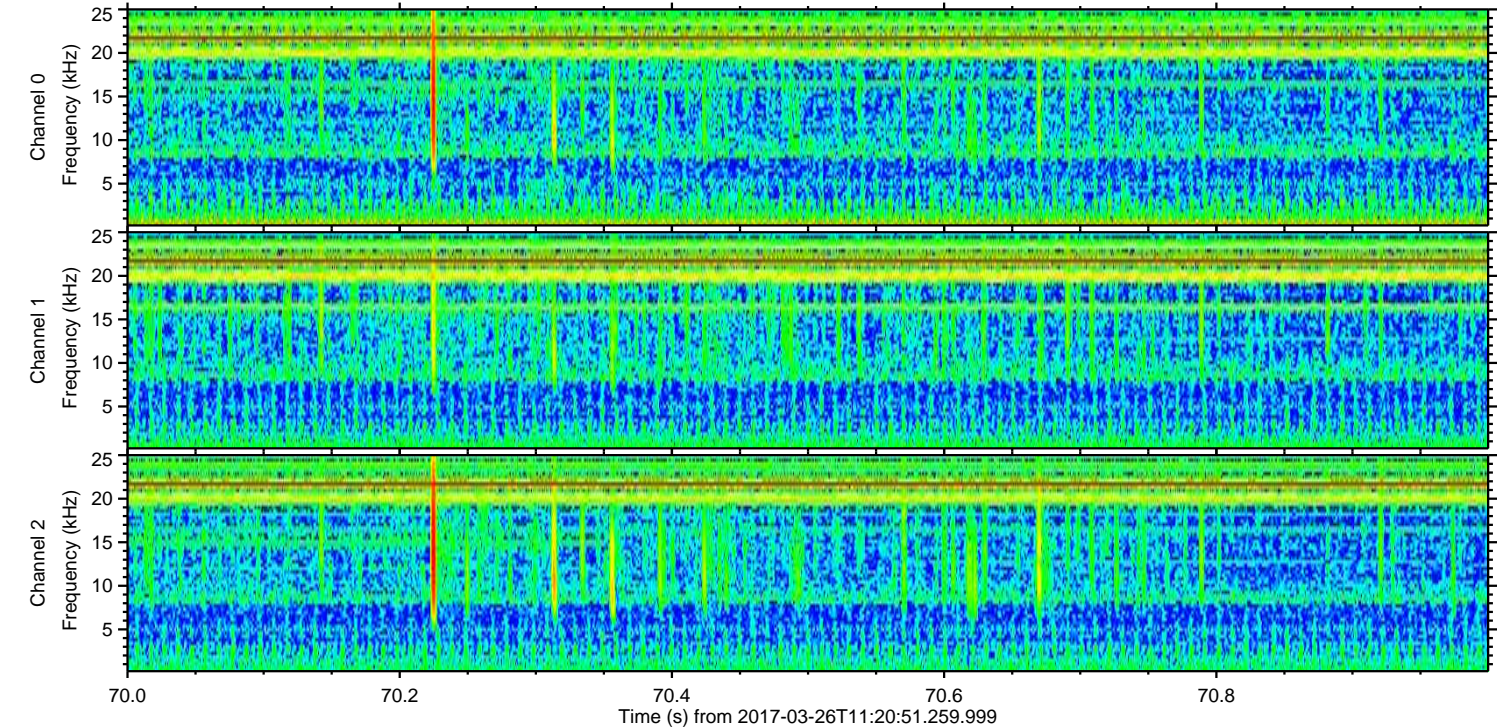
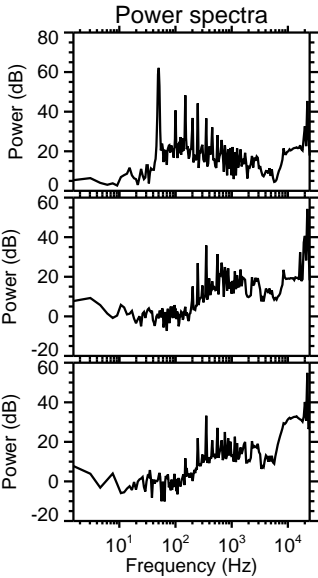
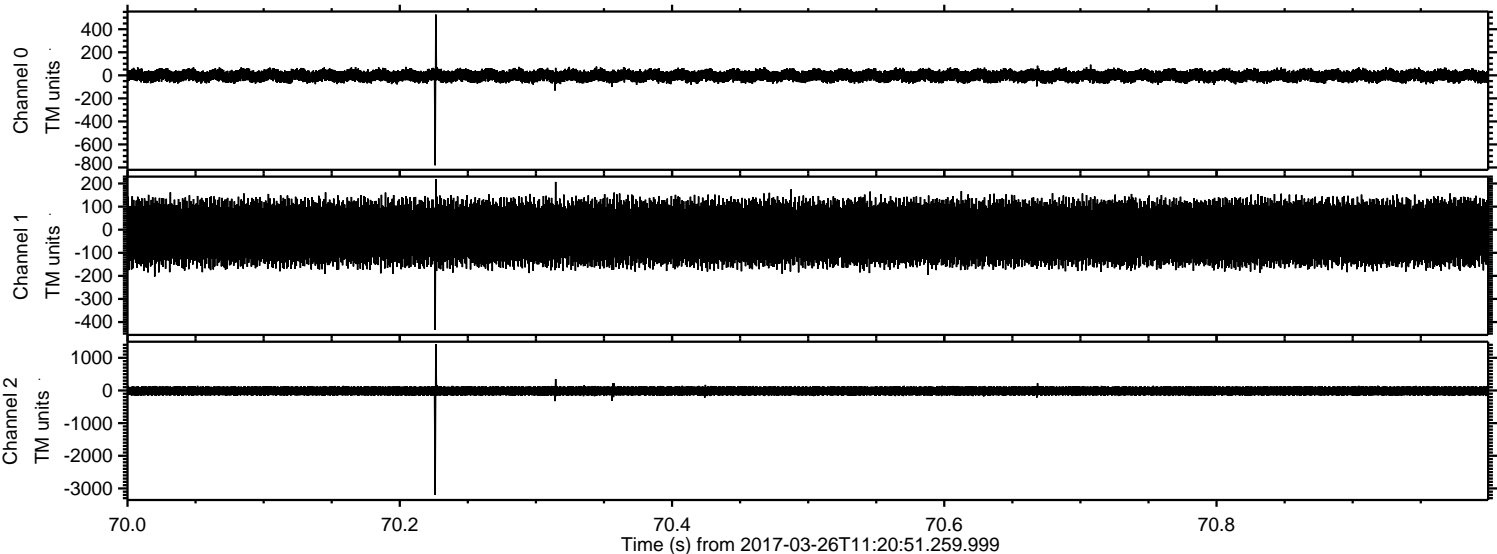


ELMAVAN 3D WAVEFORMS (Measured data sampled at 50 kHz) 51000 packets of 144 samples from 2017-03-26T11:20:51.259.999.

Processed Sun Mar 26 13:28:28 2017 by ELM ver.2012-10-06 from 001__elm20170326_112050__dat00.bin

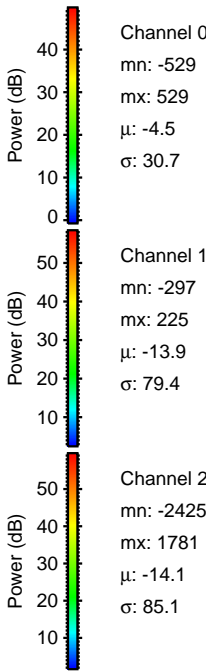
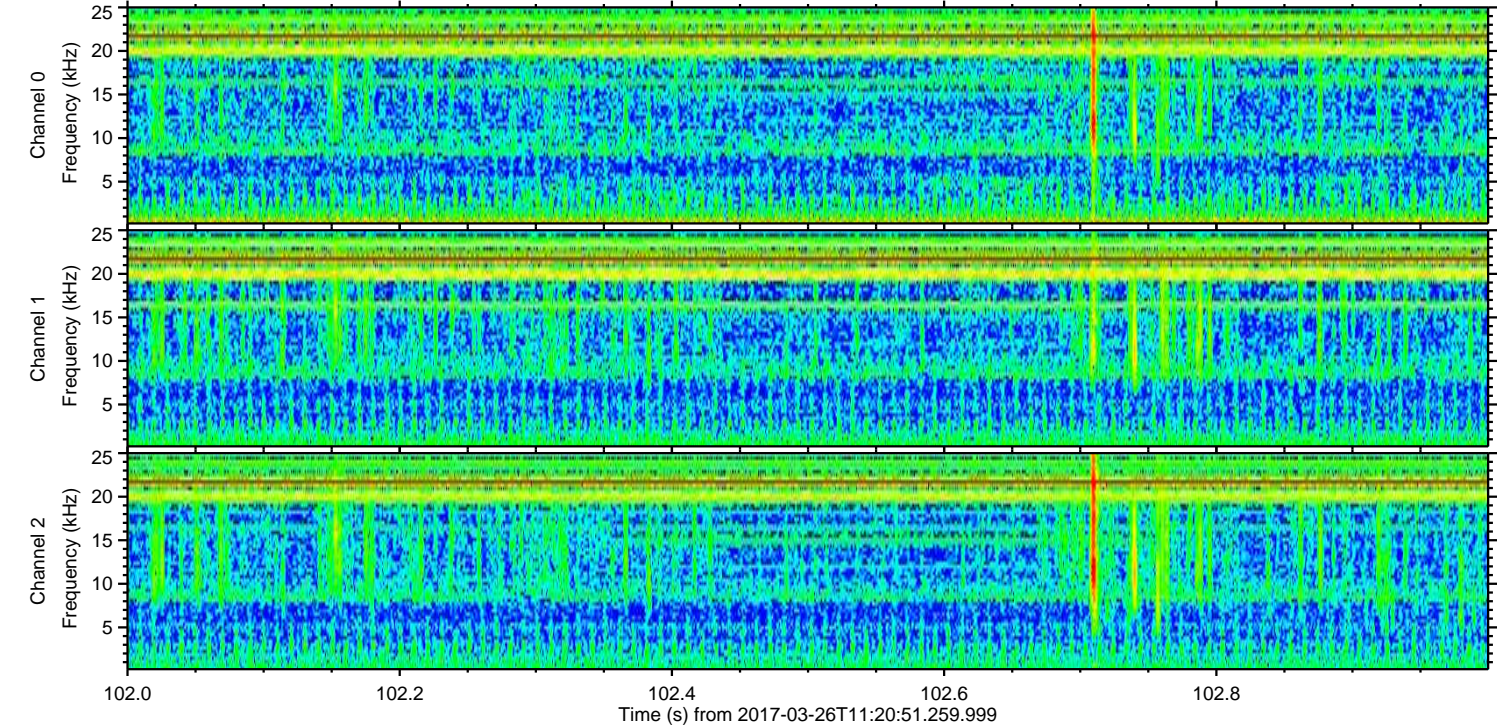
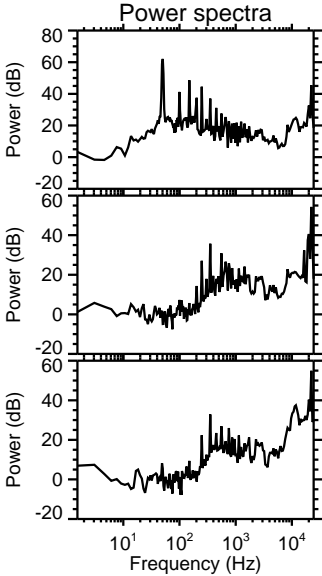
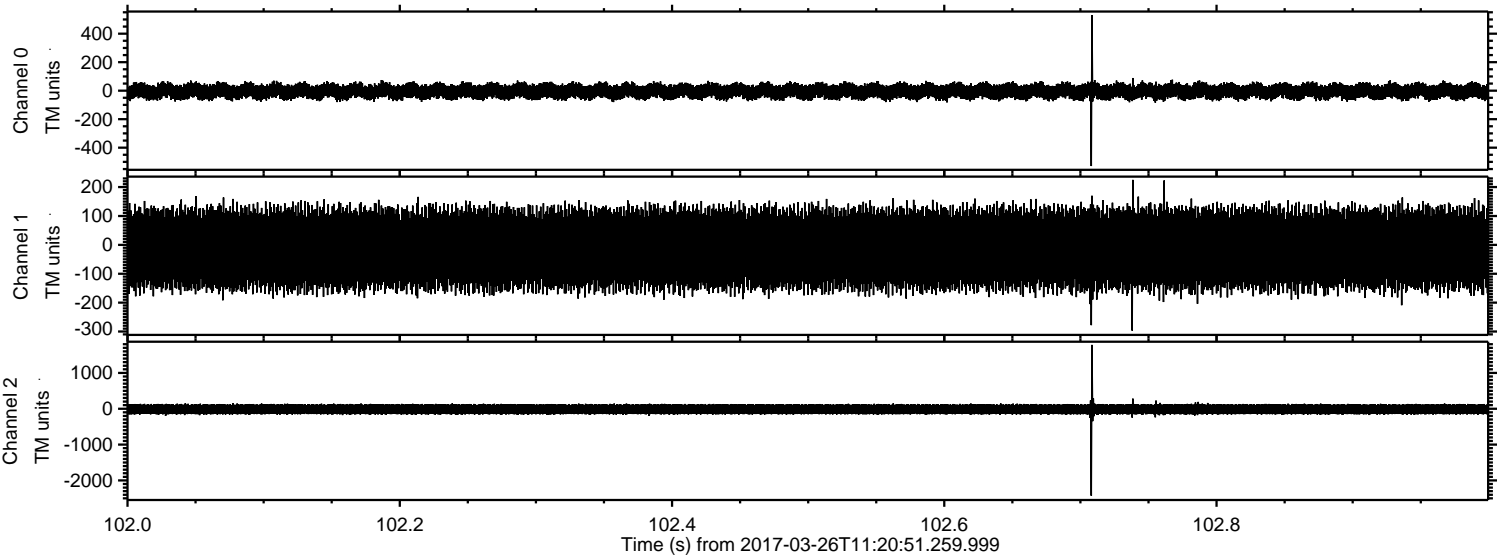


Processed Sun Mar 26 13:28:40 2017 by ELM ver.2012-10-06 from 001__elm20170326_112050__dat00.bin

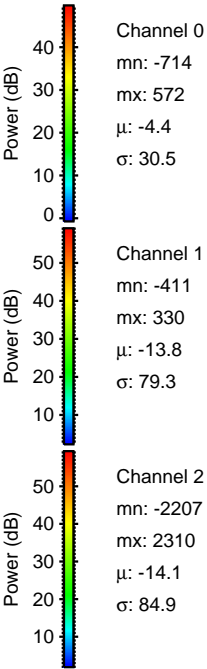
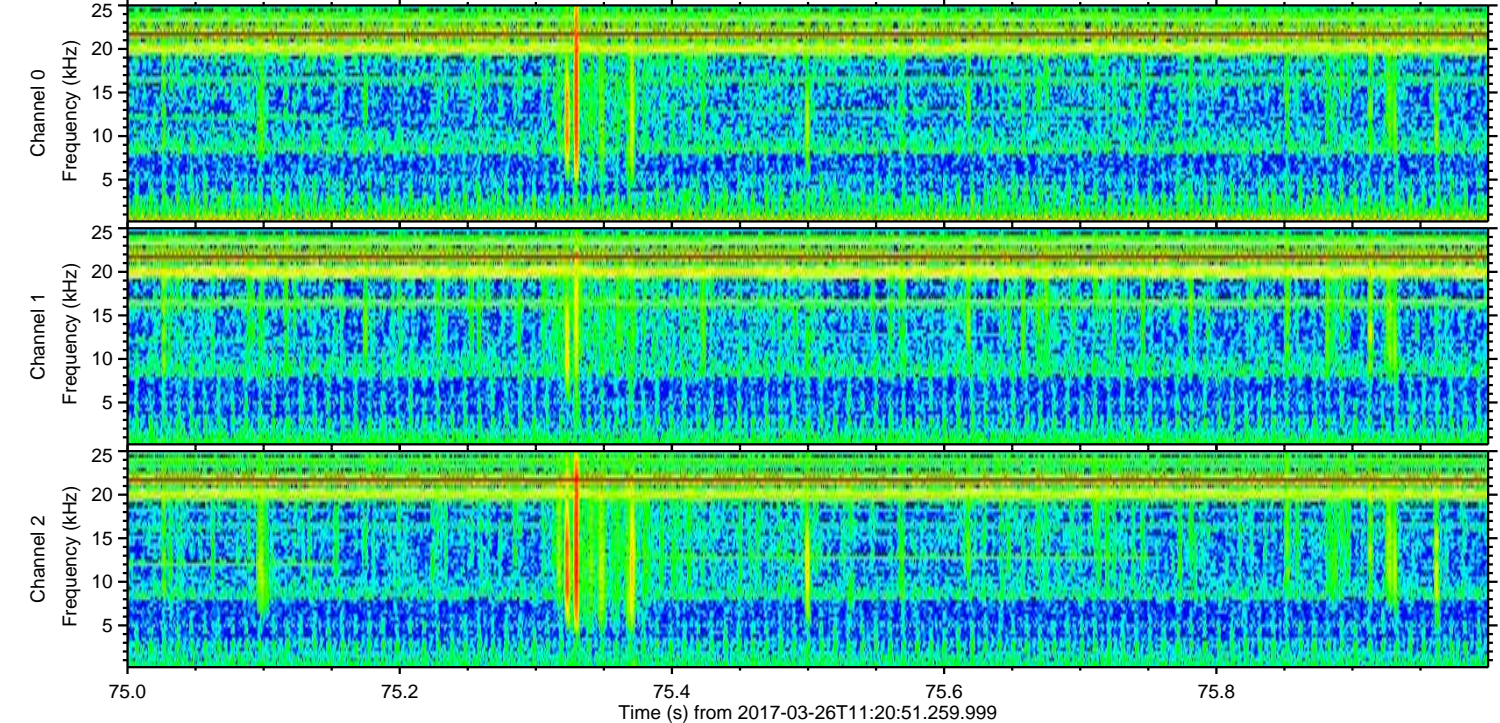
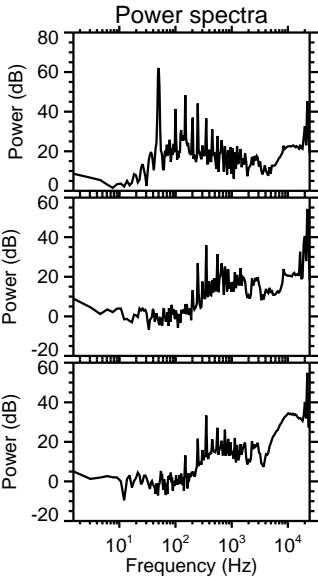
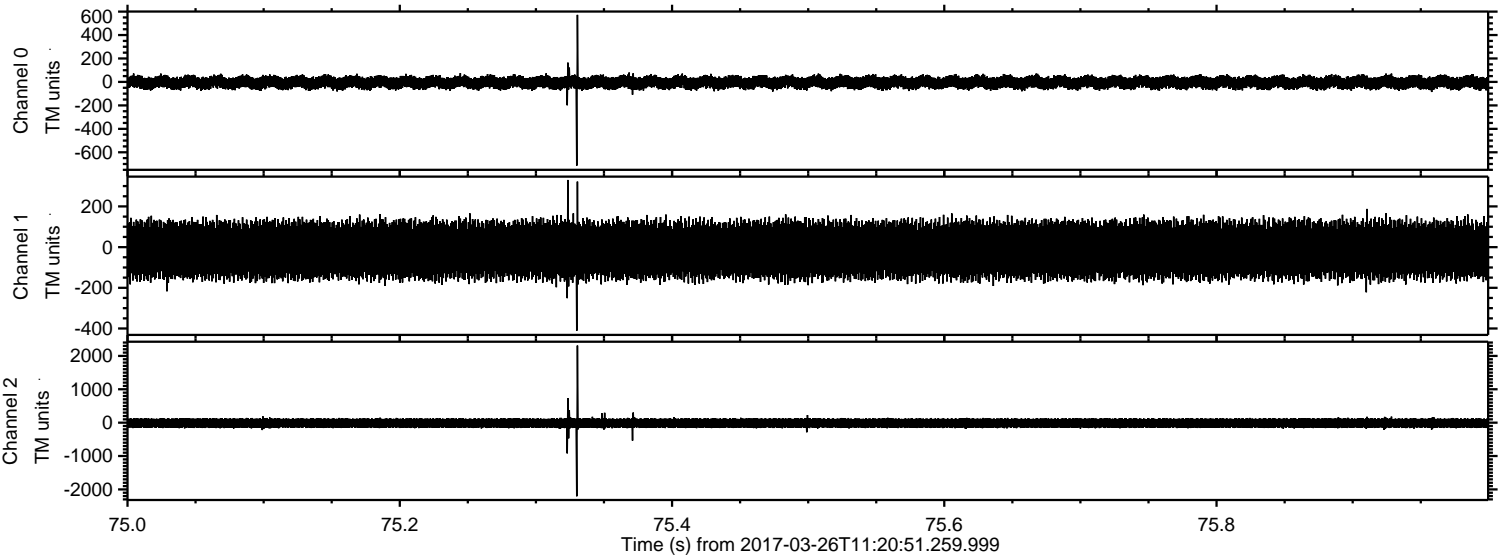


ELMAVAN 3D WAVEFORMS (Measured data sampled at 50 kHz) 51000 packets of 144 samples from 2017-03-26T11:20:51.259.999. Part 103/147

Processed Sun Mar 26 13:28:41 2017 by ELM ver.2012-10-06 from 001__elm20170326_112050__dat00.bin

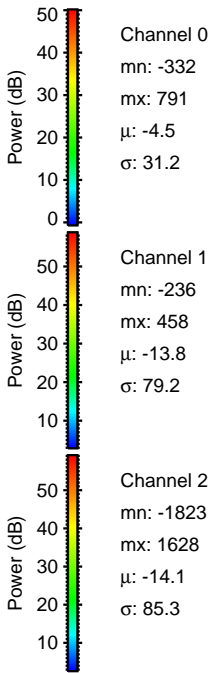
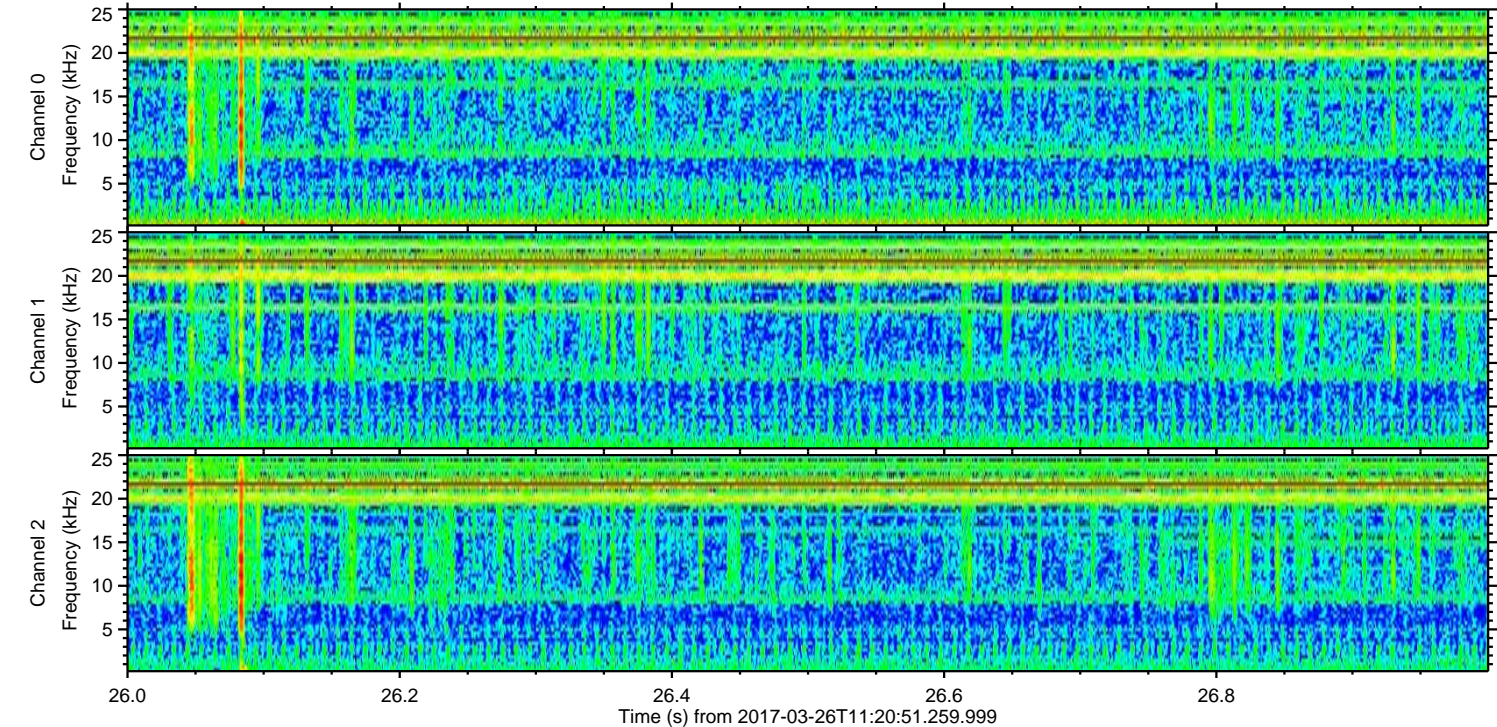
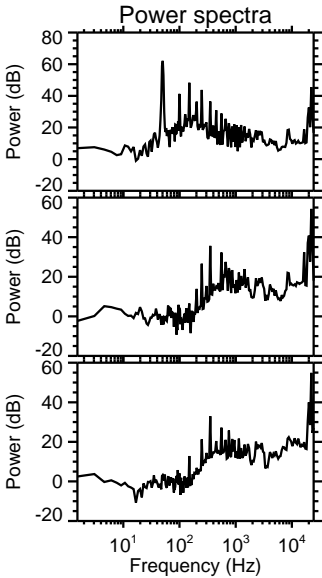
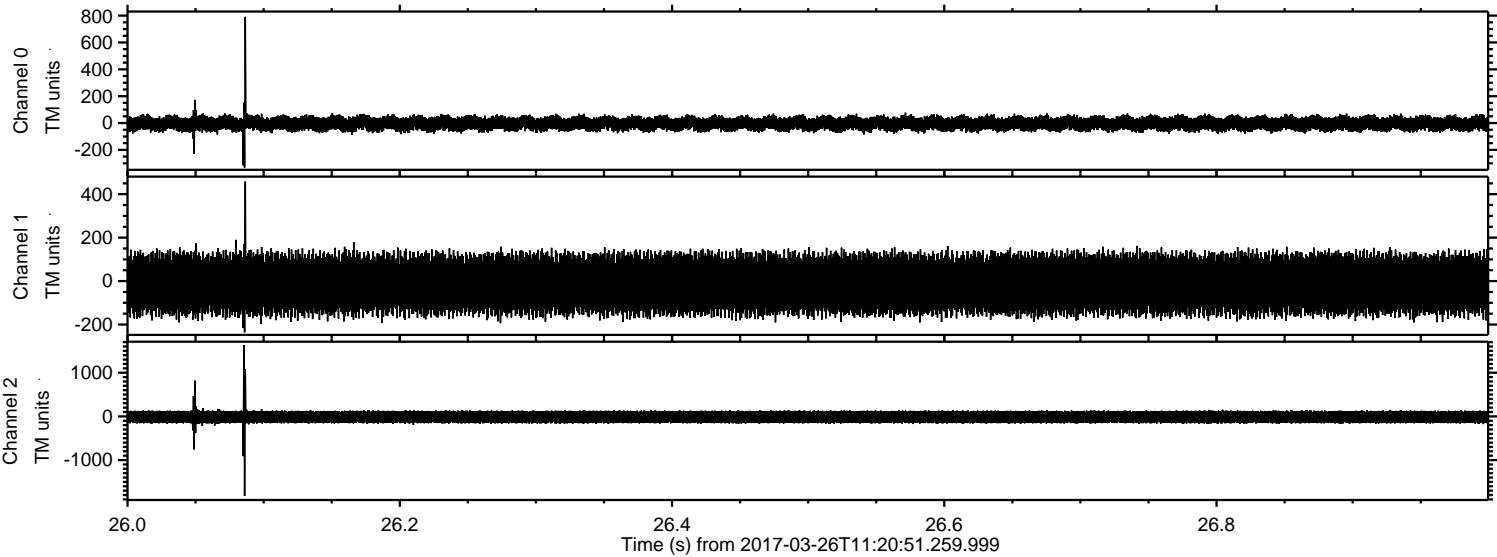


Processed Sun Mar 26 13:28:41 2017 by ELM ver.2012-10-06 from 001__elm20170326_112050__dat00.bin

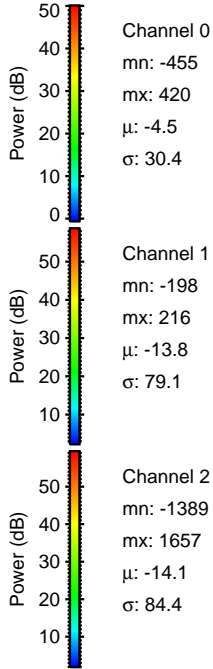
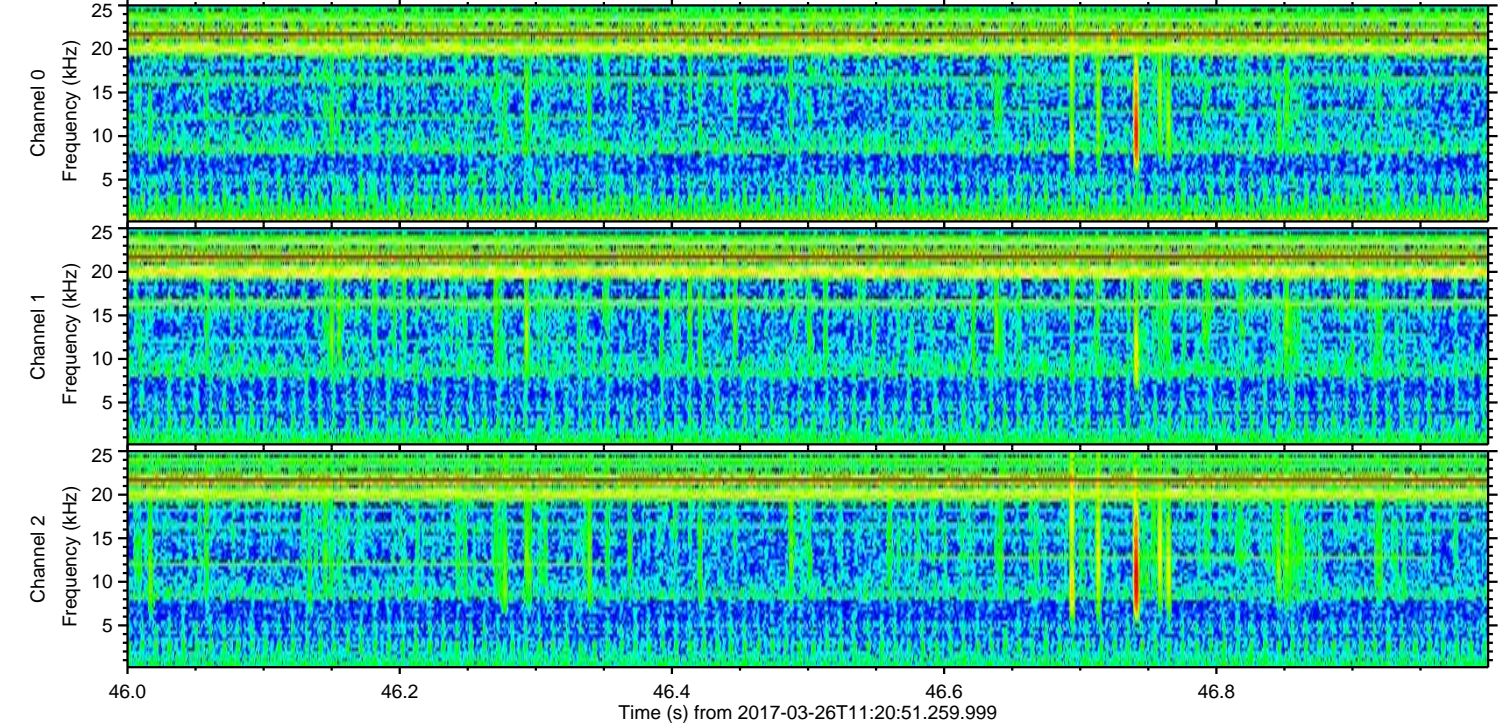
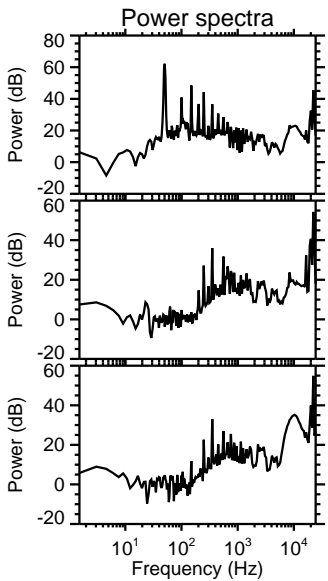
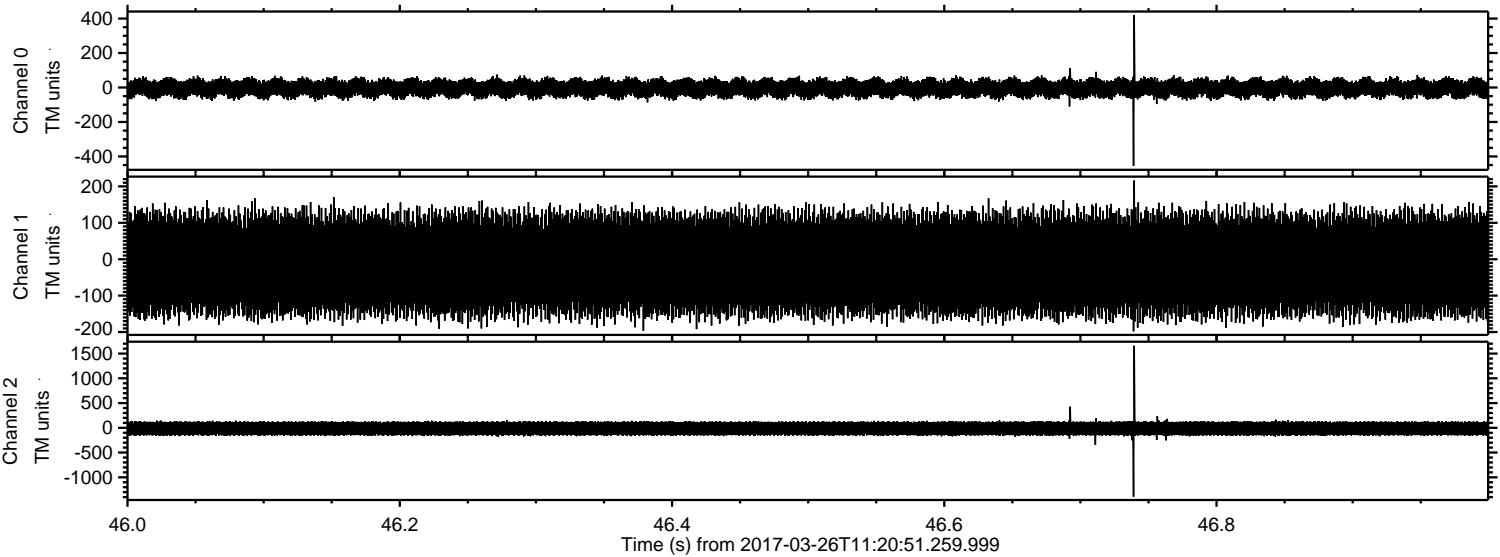


ELMAVAN 3D WAVEFORMS (Measured data sampled at 50 kHz) 51000 packets of 144 samples from 2017-03-26T11:20:51.259.999. Part 27/147

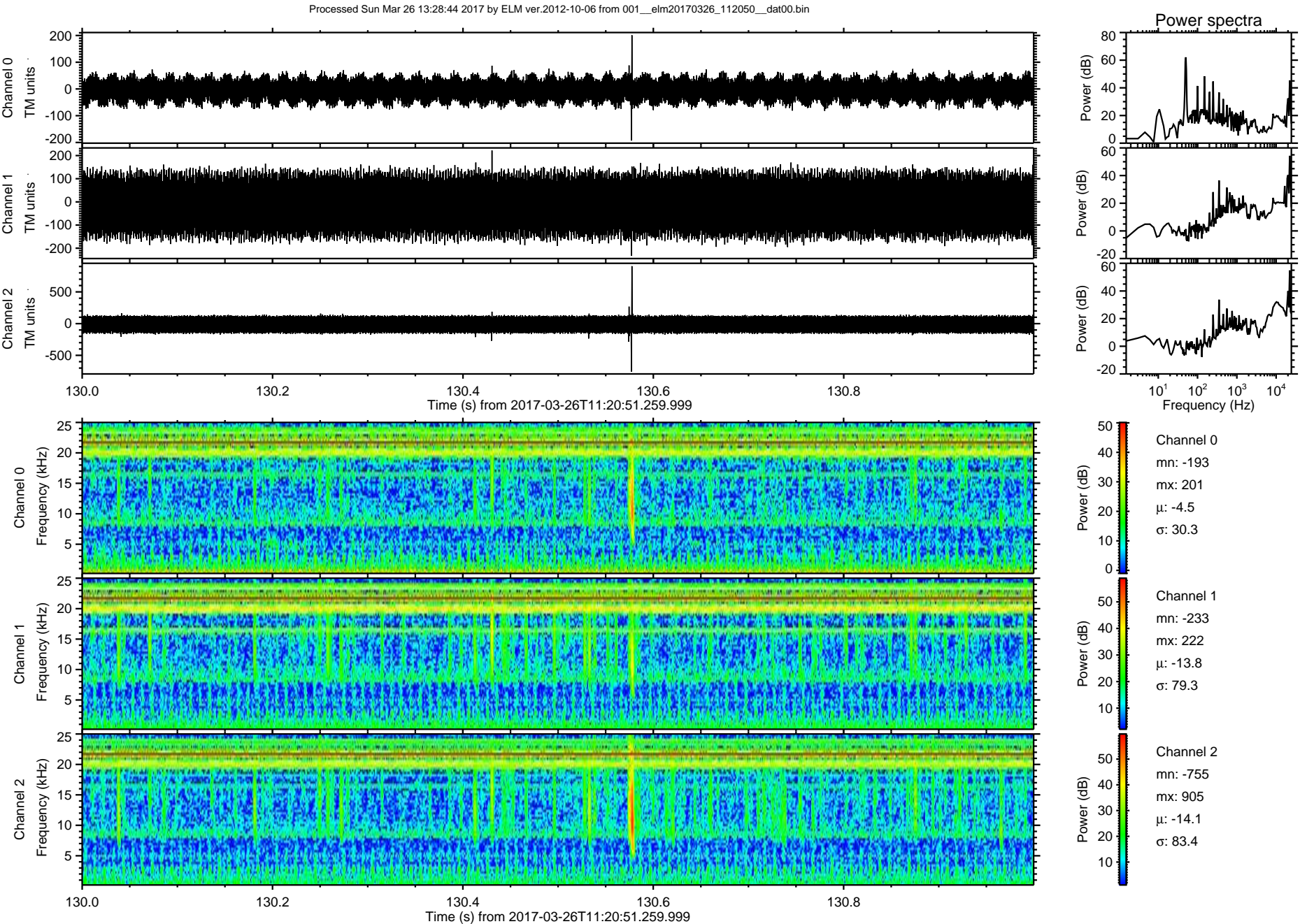
Processed Sun Mar 26 13:28:42 2017 by ELM ver.2012-10-06 from 001__elm20170326_112050__dat00.bin



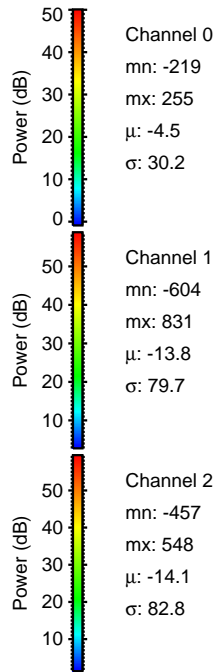
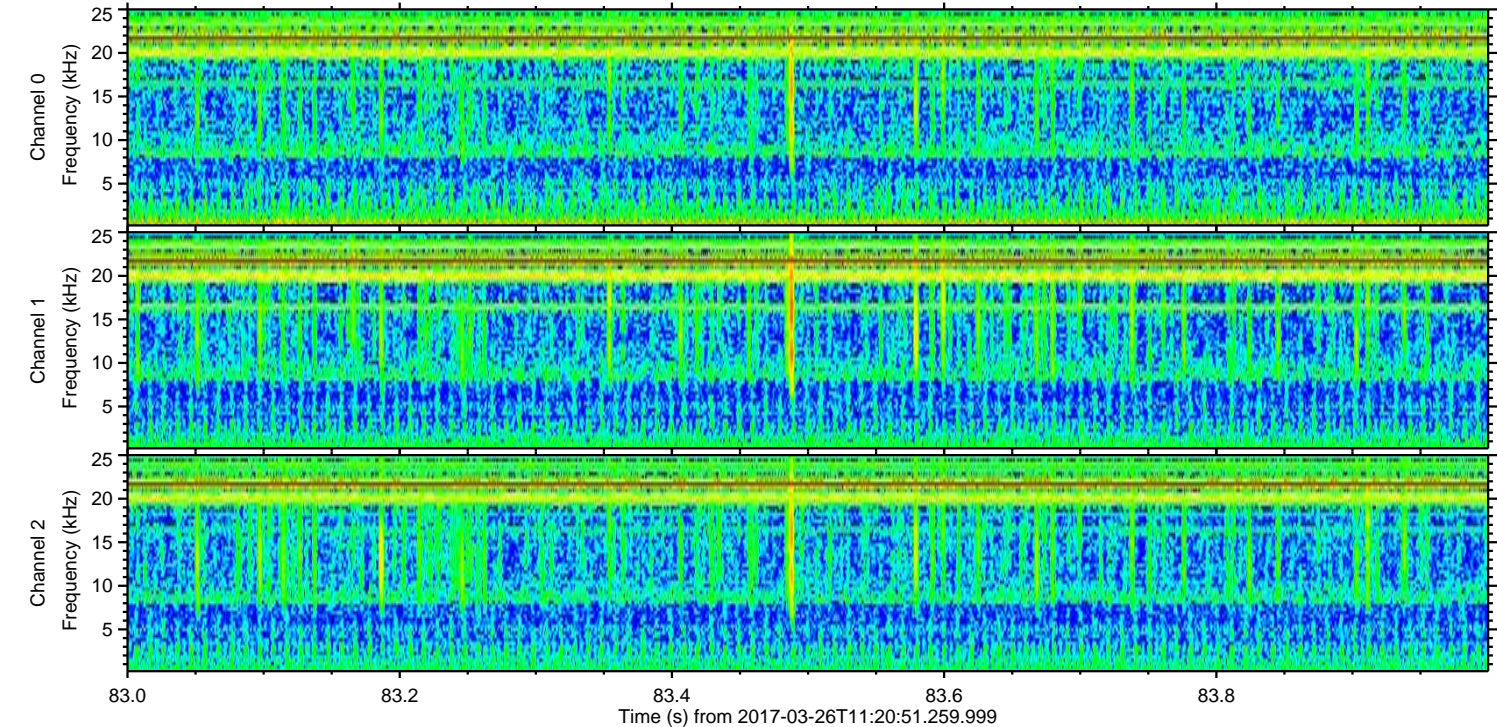
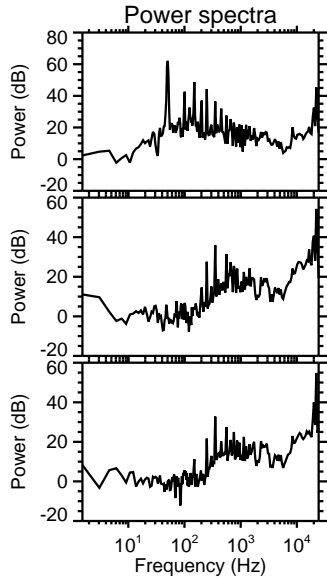
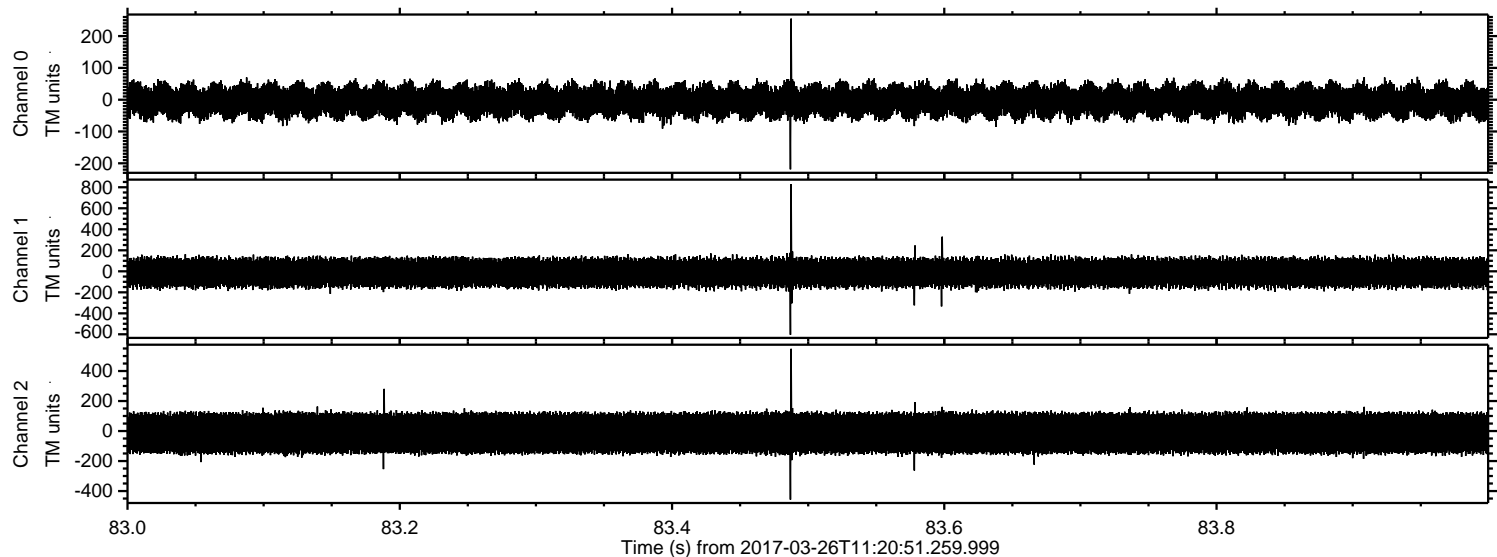
Processed Sun Mar 26 13:28:43 2017 by ELM ver.2012-10-06 from 001__elm20170326_112050__dat00.bin



ELMAVAN 3D WAVEFORMS (Measured data sampled at 50 kHz) 51000 packets of 144 samples from 2017-03-26T11:20:51.259.999. Part 131/147

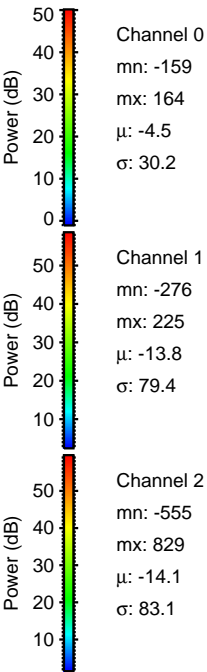
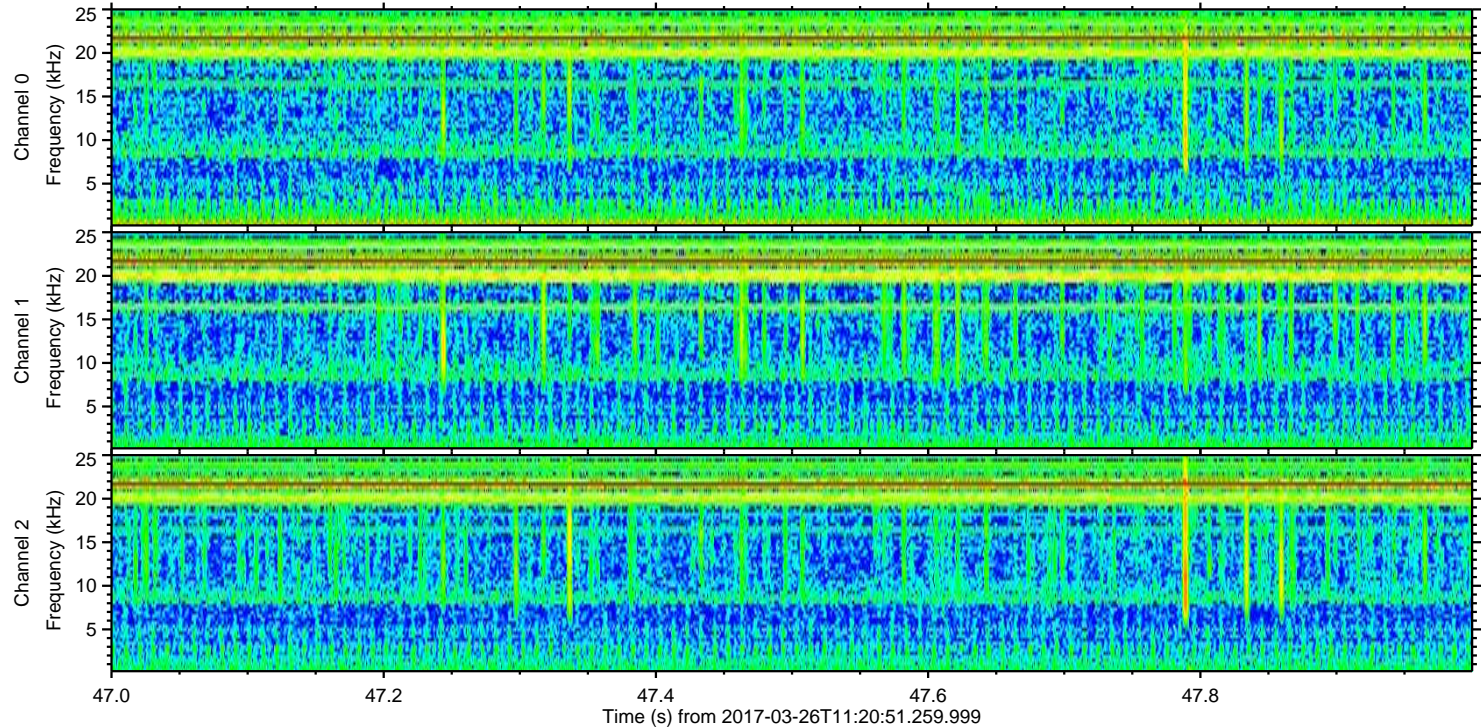
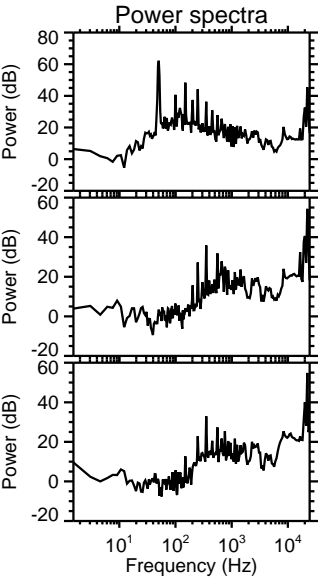
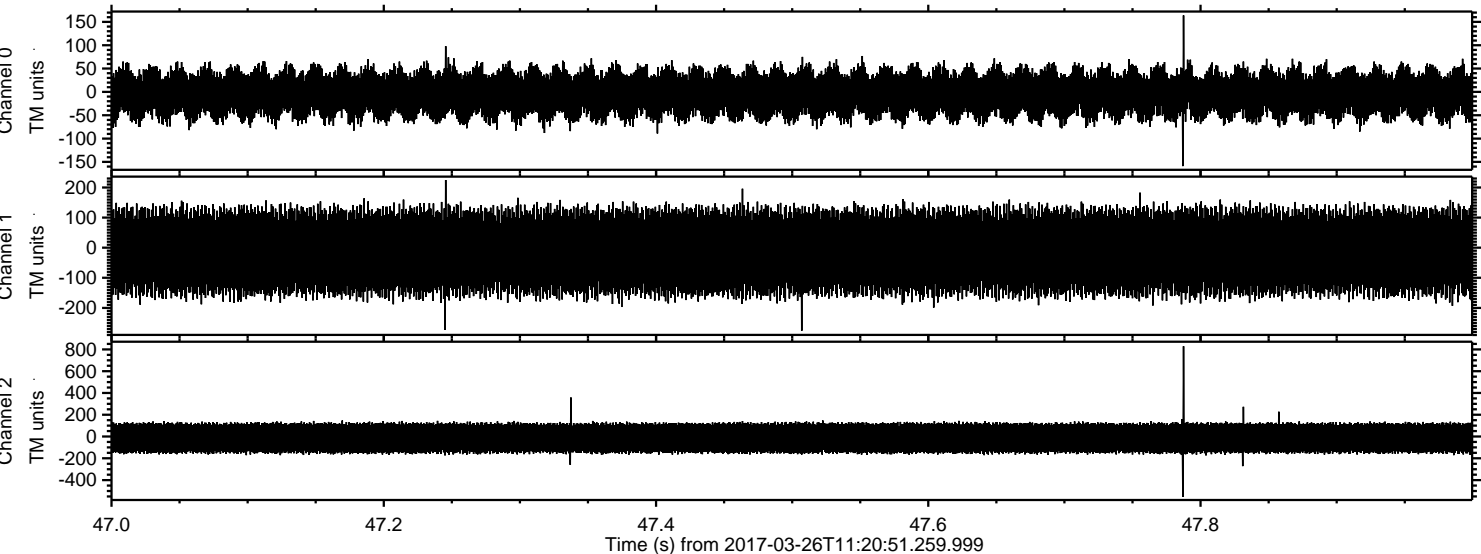


Processed Sun Mar 26 13:28:45 2017 by ELM ver.2012-10-06 from 001__elm20170326_112050__dat00.bin

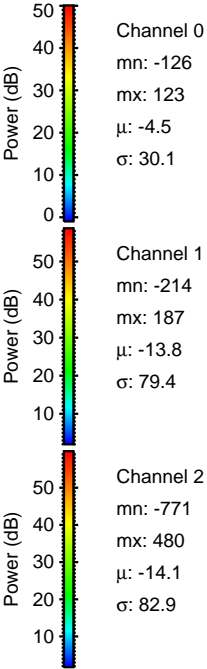
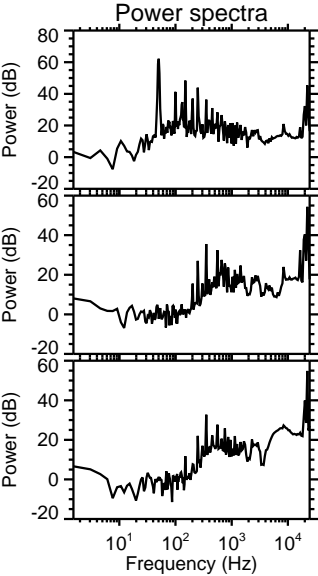
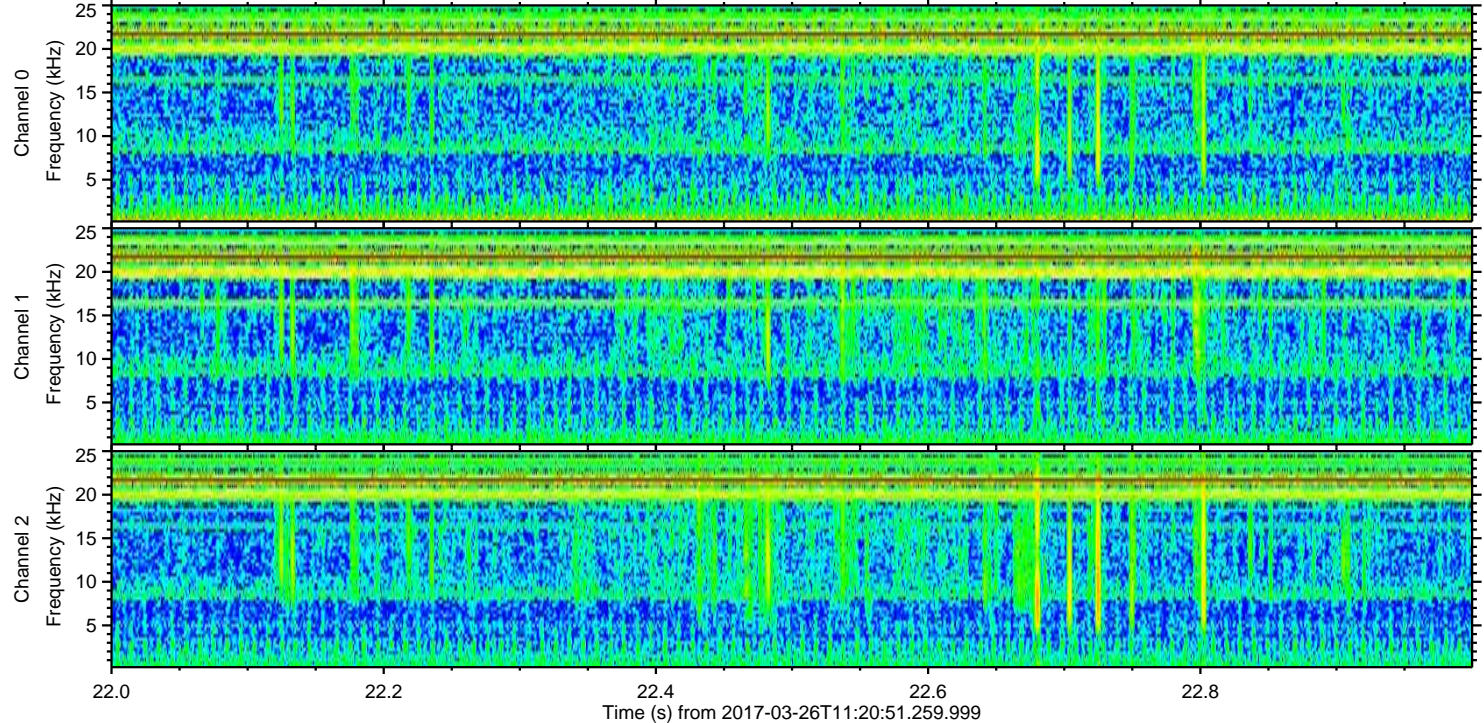
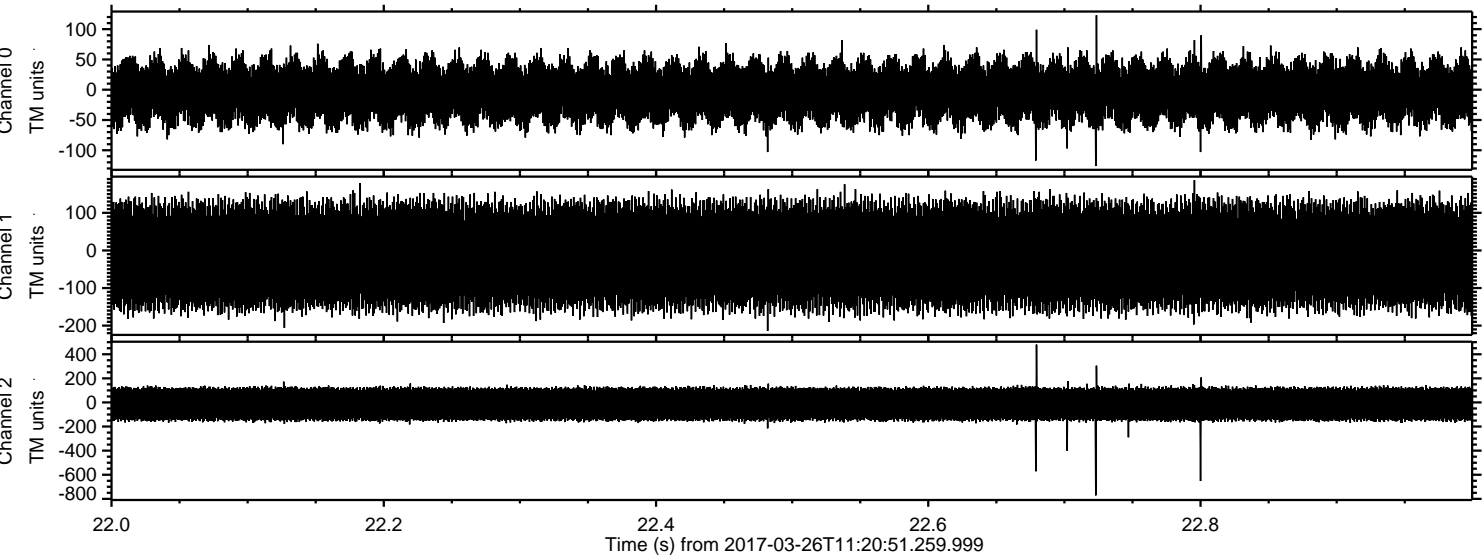


ELMAVAN 3D WAVEFORMS (Measured data sampled at 50 kHz) 51000 packets of 144 samples from 2017-03-26T11:20:51.259.999. Part 48/147

Processed Sun Mar 26 13:28:46 2017 by ELM ver.2012-10-06 from 001__elm20170326_112050__dat00.bin



Processed Sun Mar 26 13:28:47 2017 by ELM ver.2012-10-06 from 001__elm20170326_112050__dat00.bin



Channel 0
mn: -126
mx: 123
 μ : -4.5
 σ : 30.1

Channel 1
mn: -214
mx: 187
 μ : -13.8
 σ : 79.4

Channel 2
mn: -771
mx: 480
 μ : -14.1
 σ : 82.9

Processed Sun Mar 26 13:28:48 2017 by ELM ver.2012-10-06 from 001__elm20170326_112050__dat00.bin

