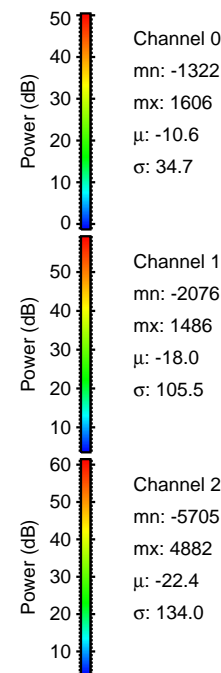
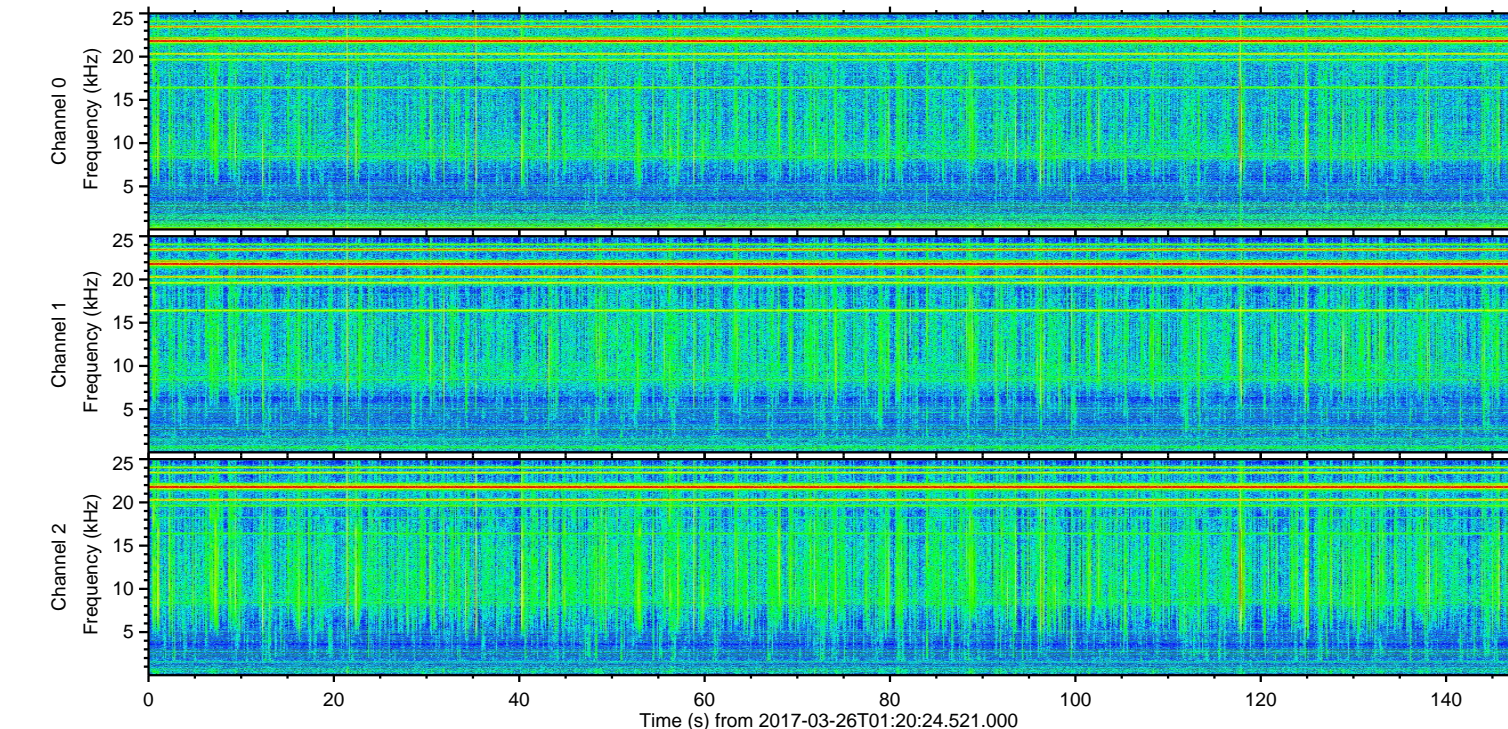
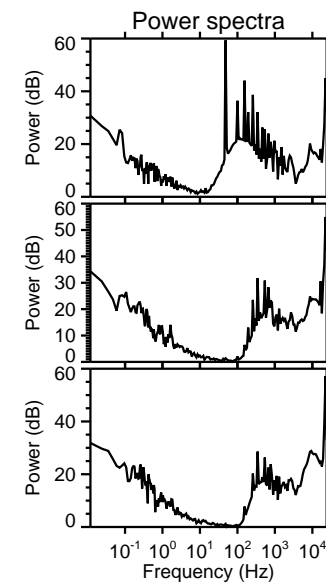
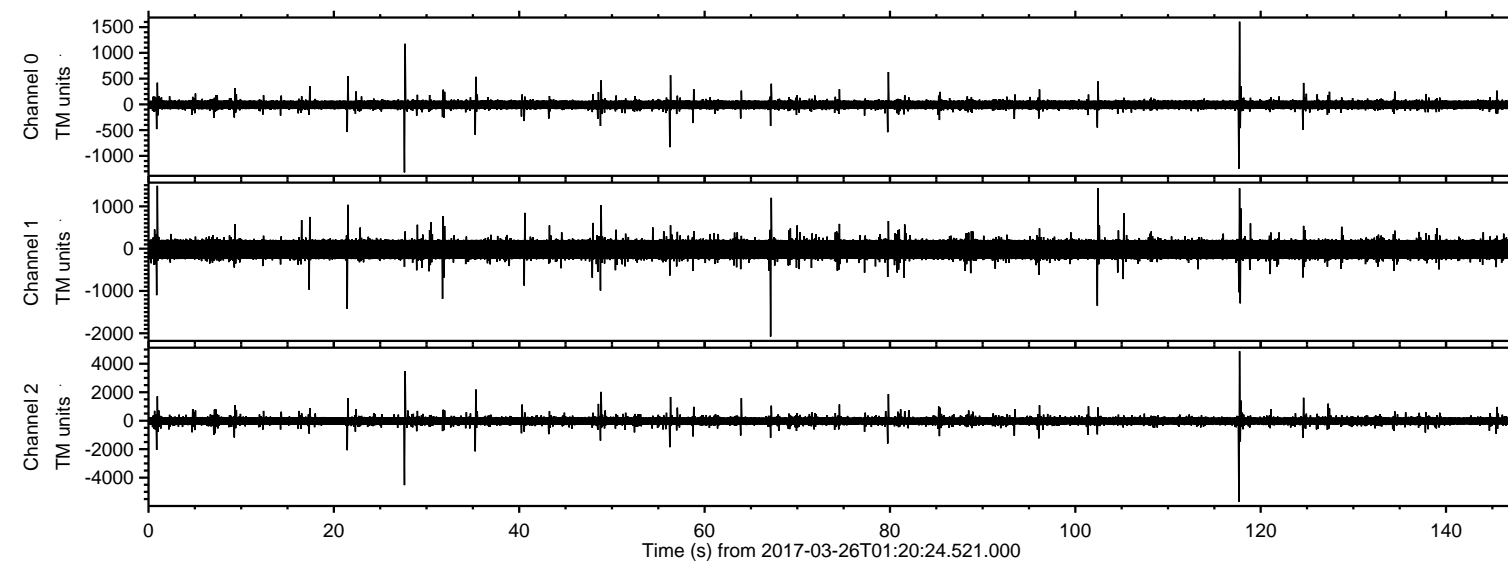


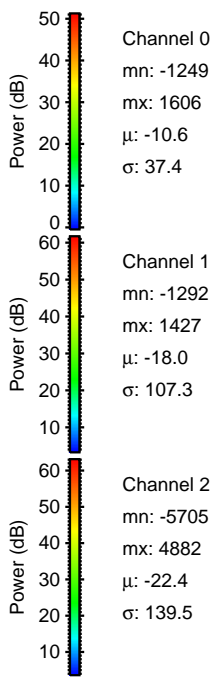
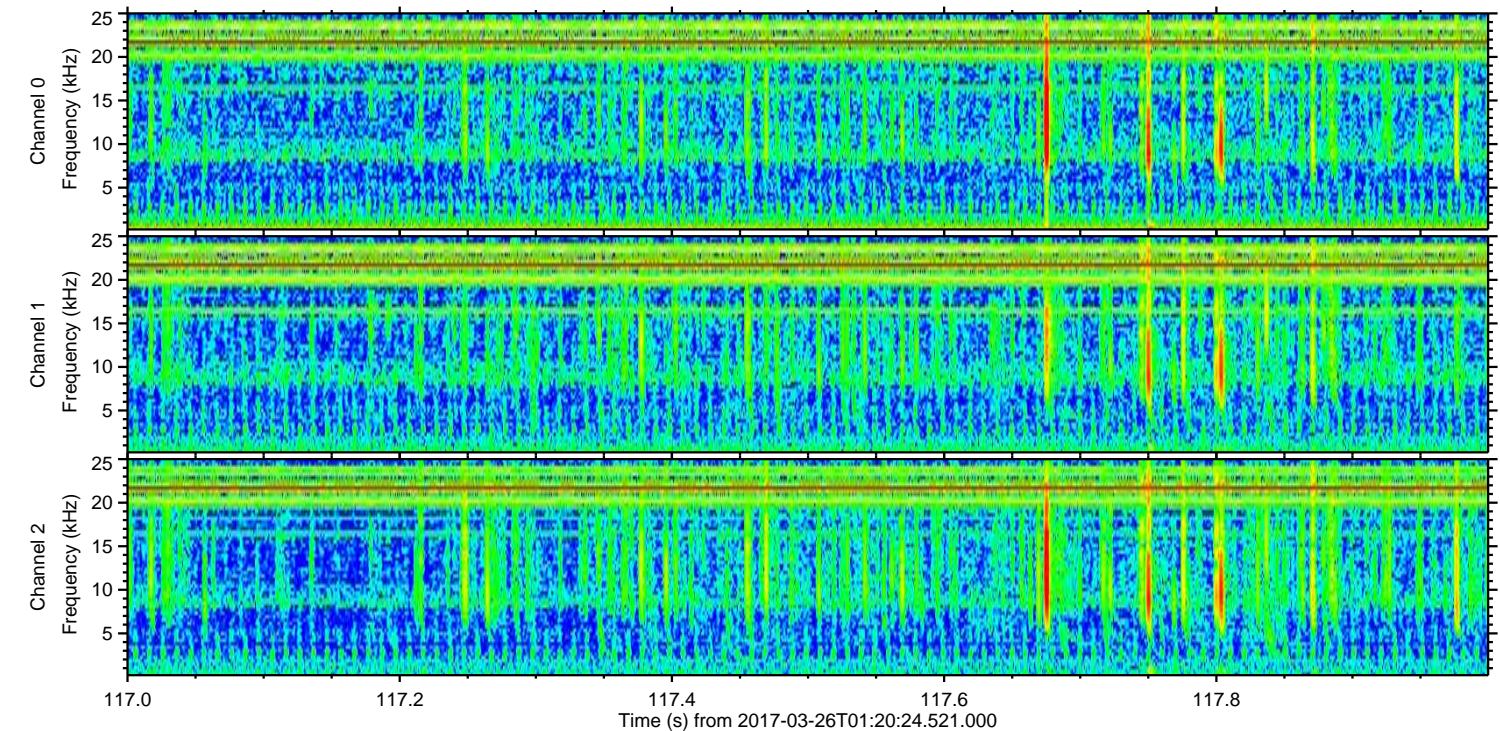
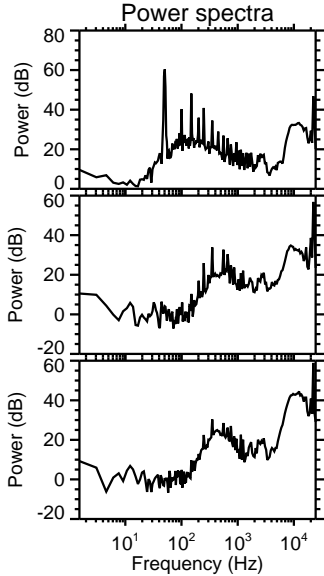
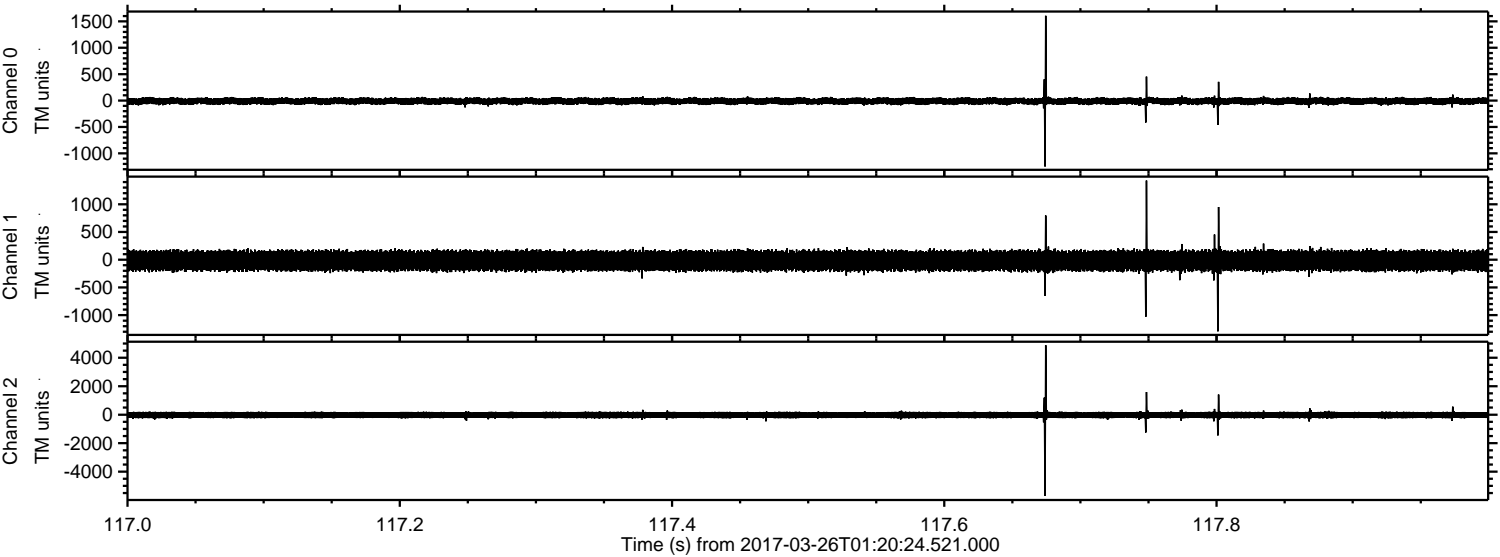
ELMAVAN 3D WAVEFORMS (Measured data sampled at 50 kHz) 51000 packets of 144 samples from 2017-03-26T01:20:24.521.000.

Processed Sun Mar 26 03:28:04 2017 by ELM ver.2012-10-06 from 001__elm20170326_012023__dat00.bin

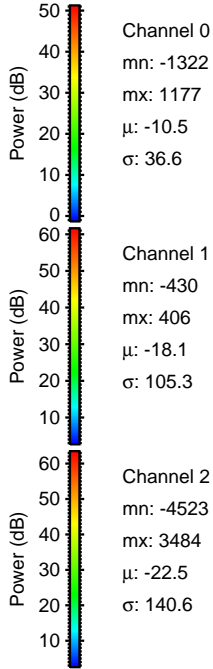
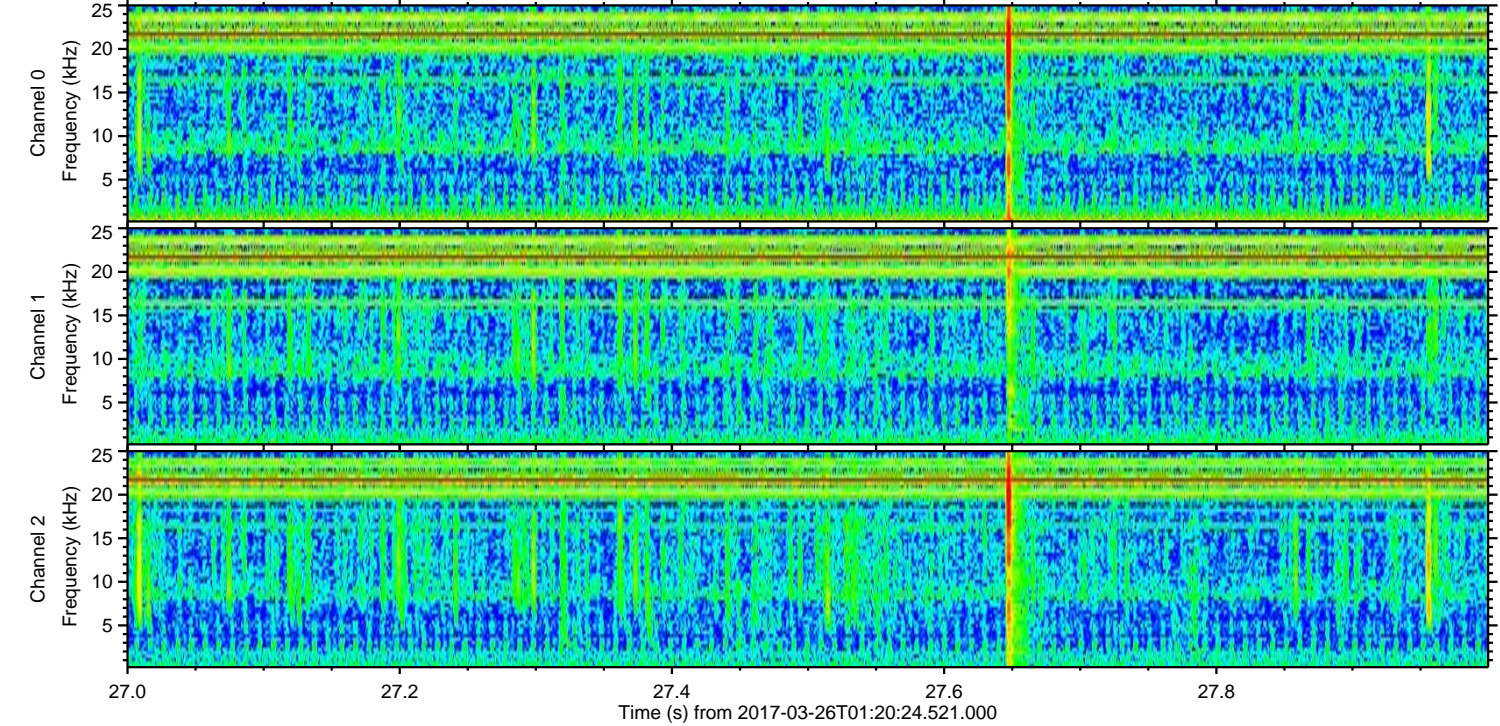
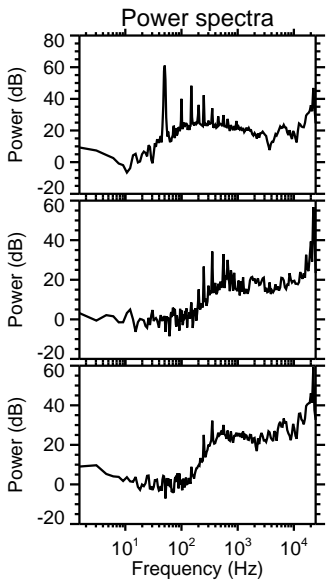
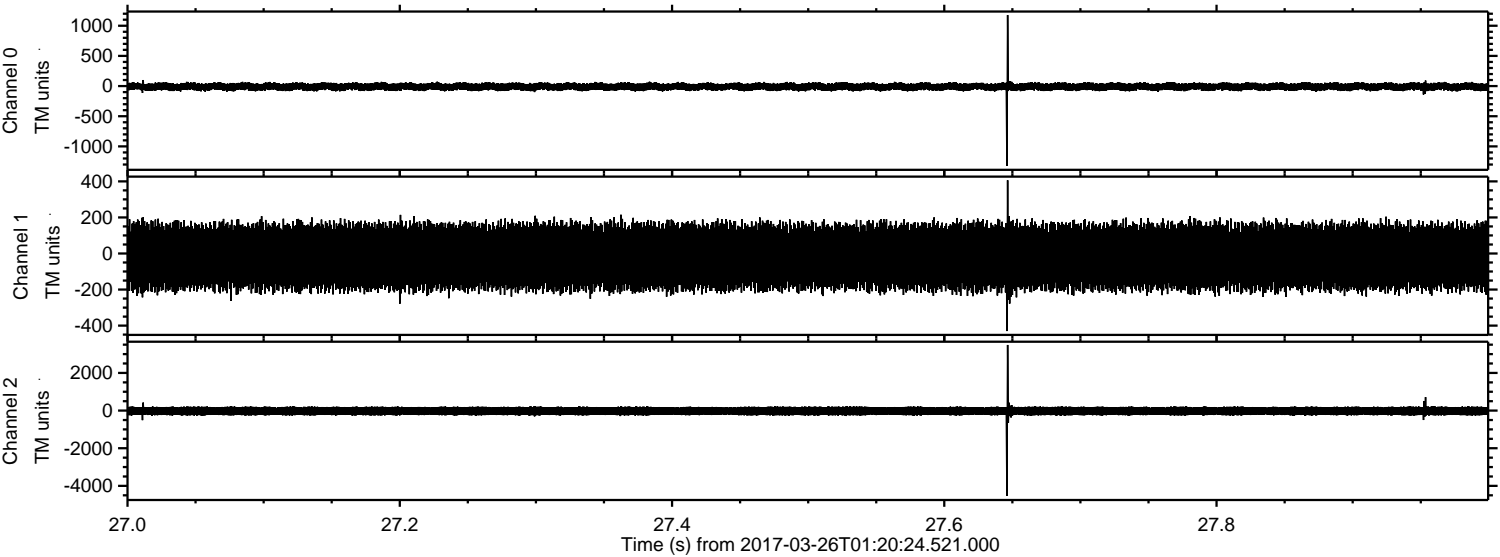


ELMAVAN 3D WAVEFORMS (Measured data sampled at 50 kHz) 51000 packets of 144 samples from 2017-03-26T01:20:24.521.000. Part 118/147

Processed Sun Mar 26 03:28:15 2017 by ELM ver.2012-10-06 from 001__elm20170326_012023__dat00.bin



Processed Sun Mar 26 03:28:16 2017 by ELM ver.2012-10-06 from 001__elm20170326_012023__dat00.bin



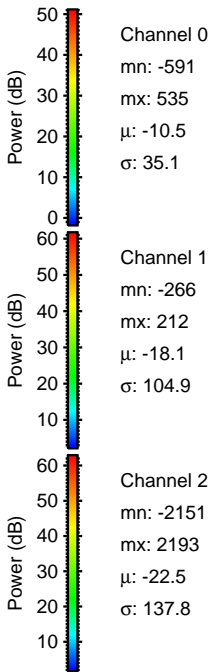
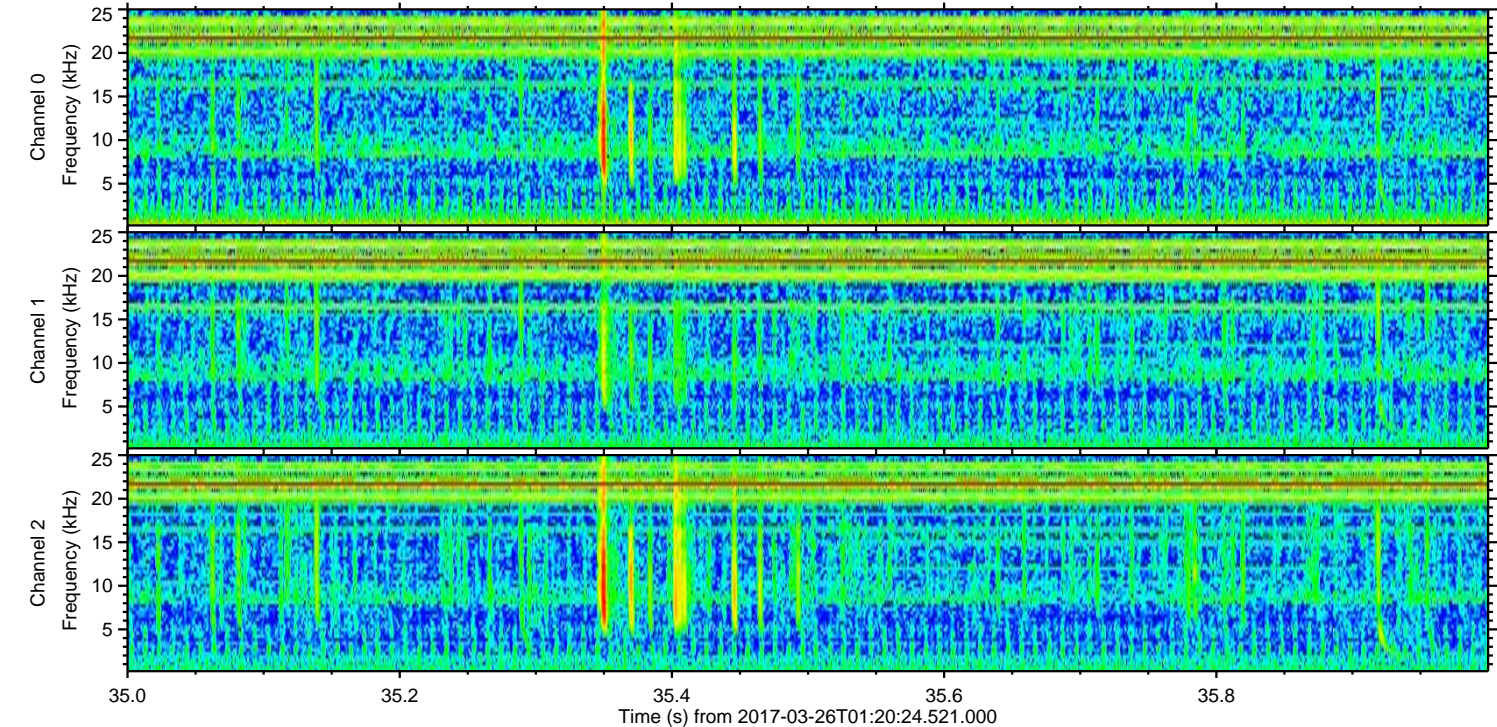
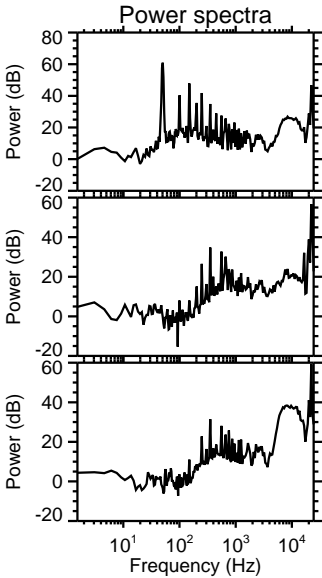
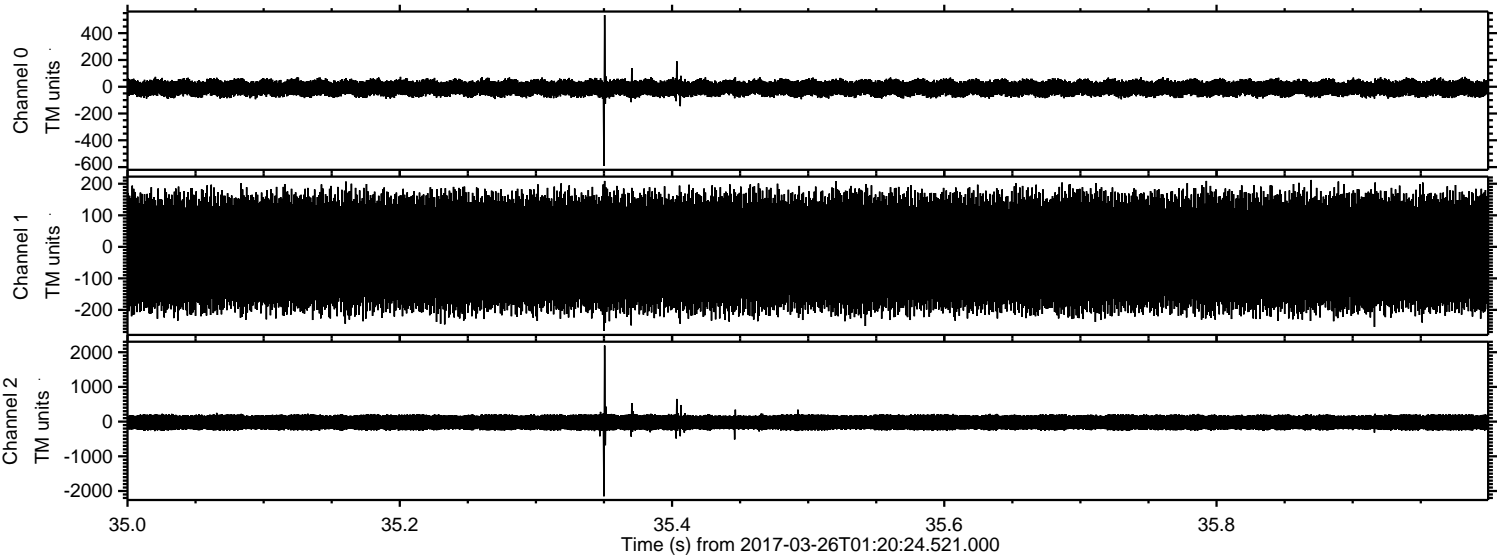
Channel 0
mn: -1322
mx: 1177
 μ : -10.5
 σ : 36.6

Channel 1
mn: -430
mx: 406
 μ : -18.1
 σ : 105.3

Channel 2
mn: -4523
mx: 3484
 μ : -22.5
 σ : 140.6

ELMAVAN 3D WAVEFORMS (Measured data sampled at 50 kHz) 51000 packets of 144 samples from 2017-03-26T01:20:24.521.000. Part 36/147

Processed Sun Mar 26 03:28:17 2017 by ELM ver.2012-10-06 from 001__elm20170326_012023__dat00.bin

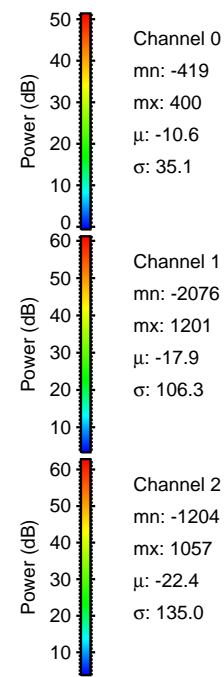
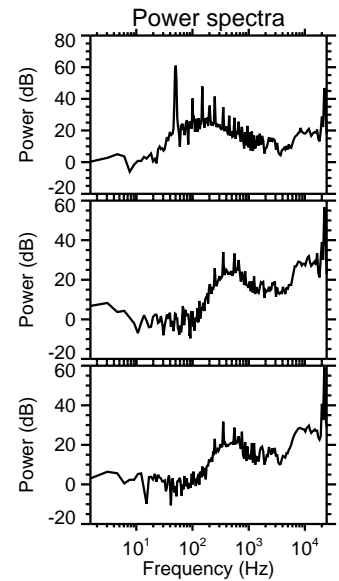
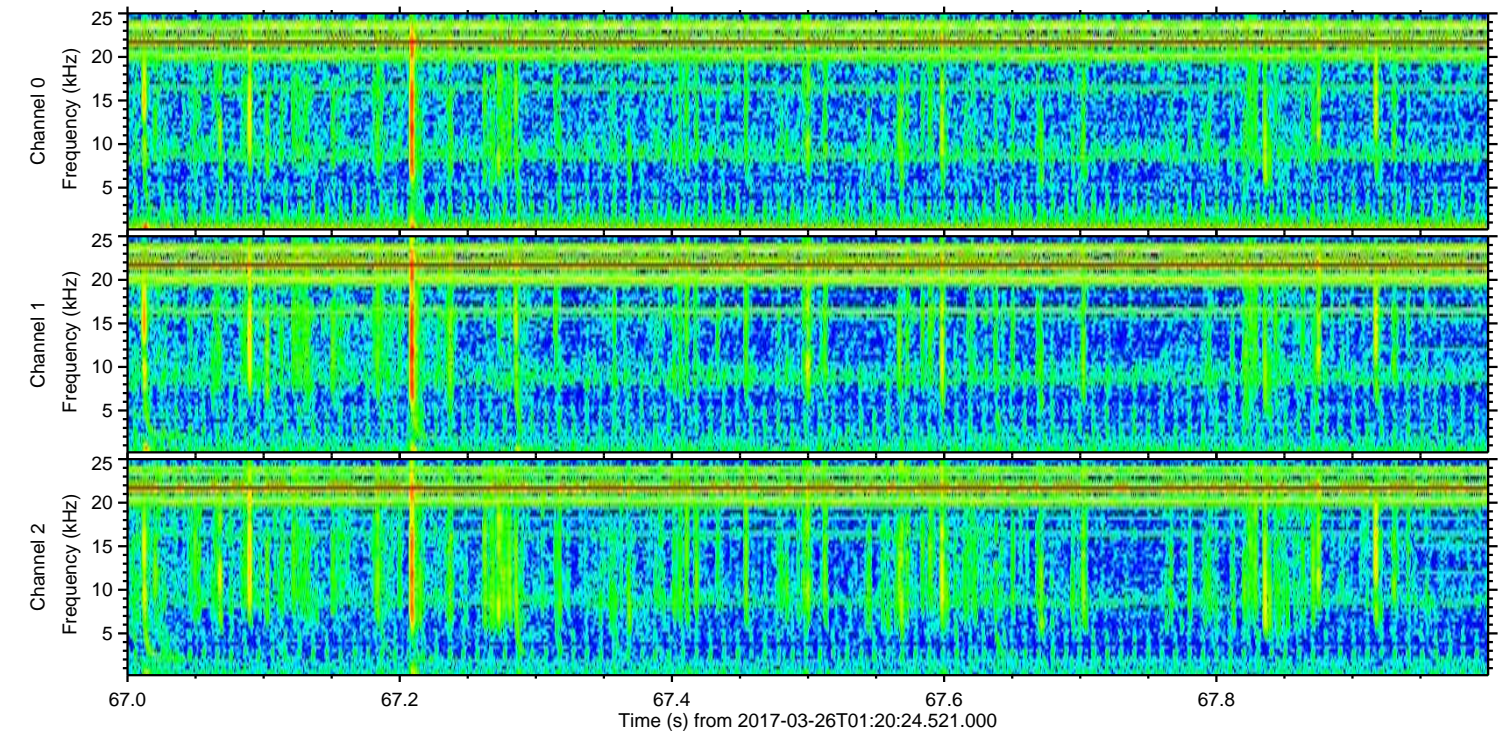
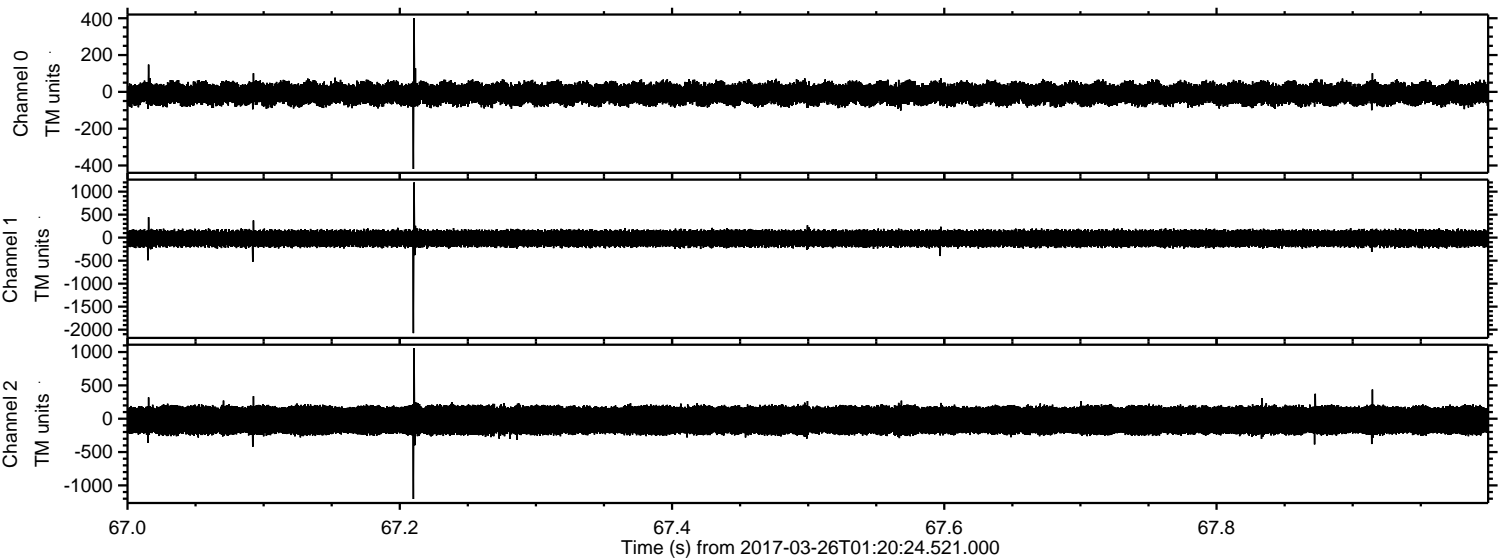


Channel 0
mn: -591
mx: 535
 μ : -10.5
 σ : 35.1

Channel 1
mn: -266
mx: 212
 μ : -18.1
 σ : 104.9

Channel 2
mn: -2151
mx: 2193
 μ : -22.5
 σ : 137.8

Processed Sun Mar 26 03:28:18 2017 by ELM ver.2012-10-06 from 001__elm20170326_012023__dat00.bin

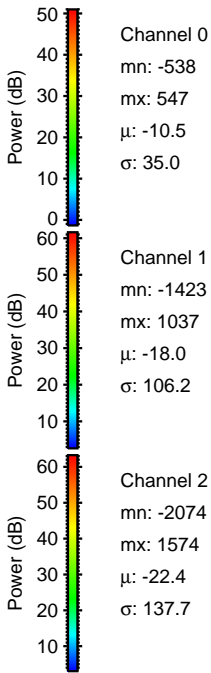
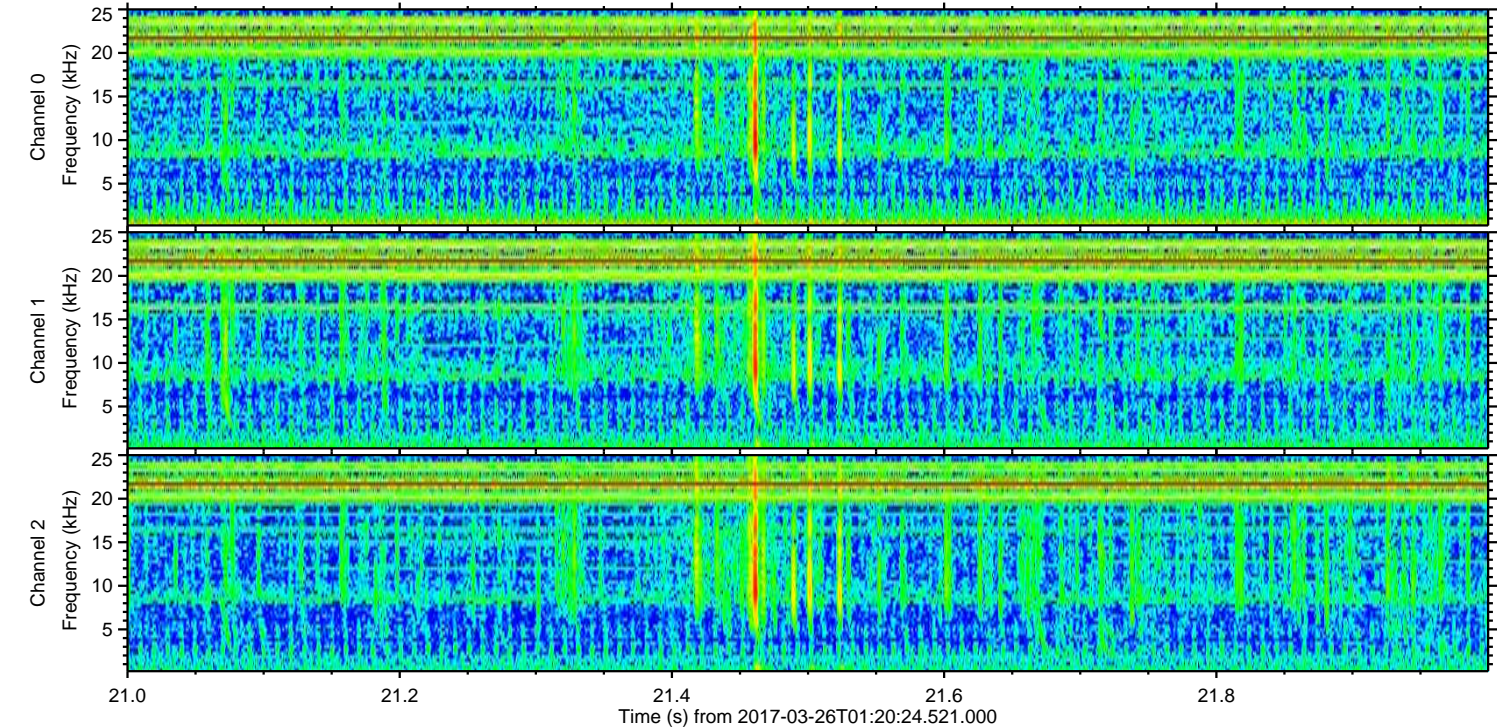
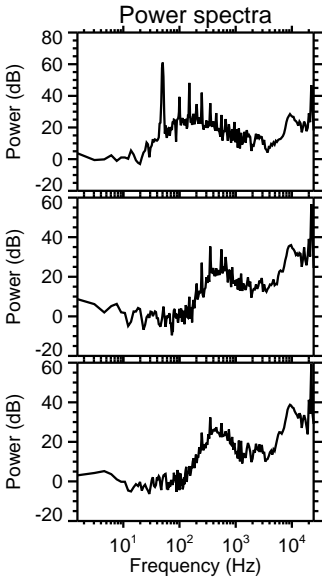
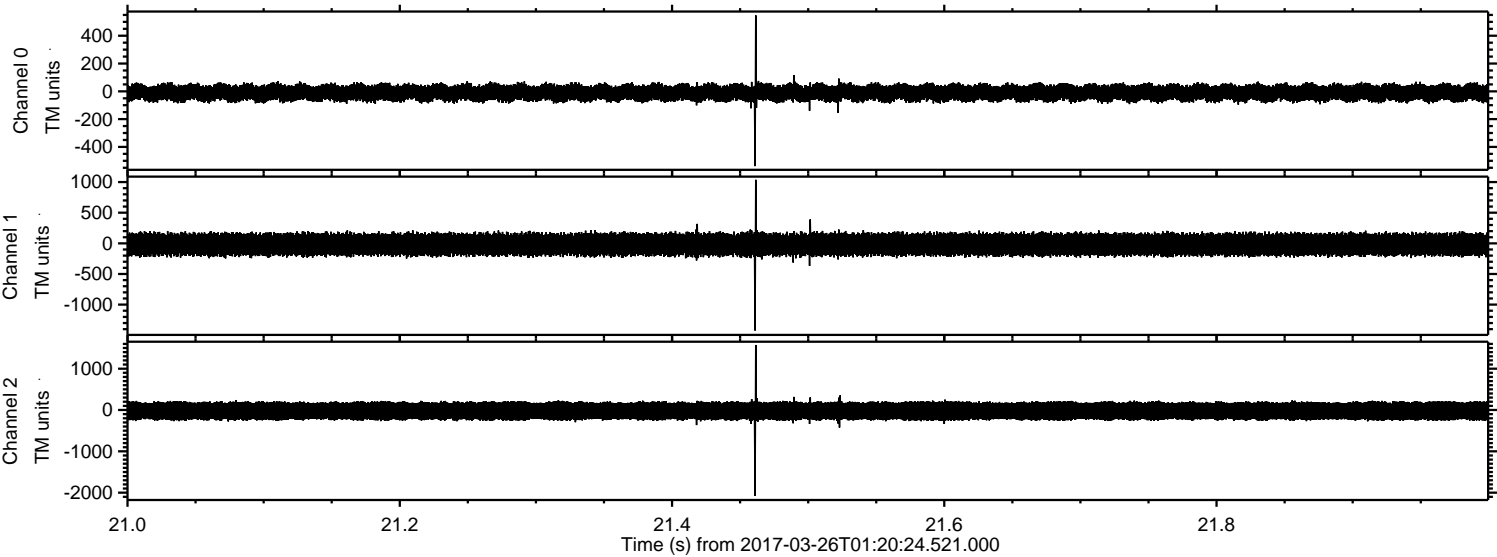


Channel 0
mn: -419
mx: 400
 μ : -10.6
 σ : 35.1

Channel 1
mn: -2076
mx: 1201
 μ : -17.9
 σ : 106.3

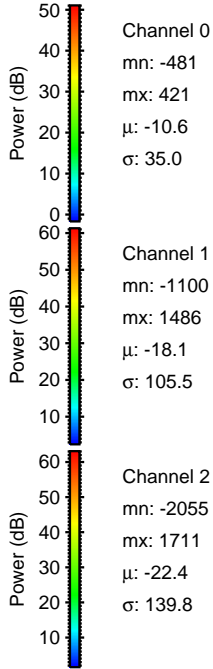
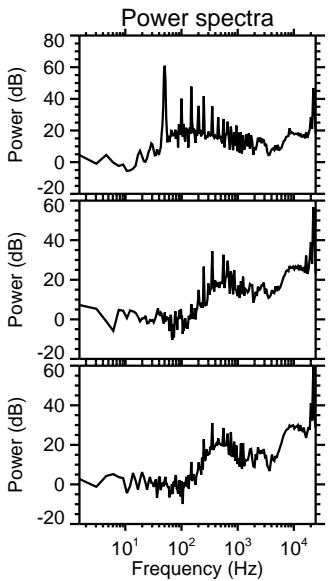
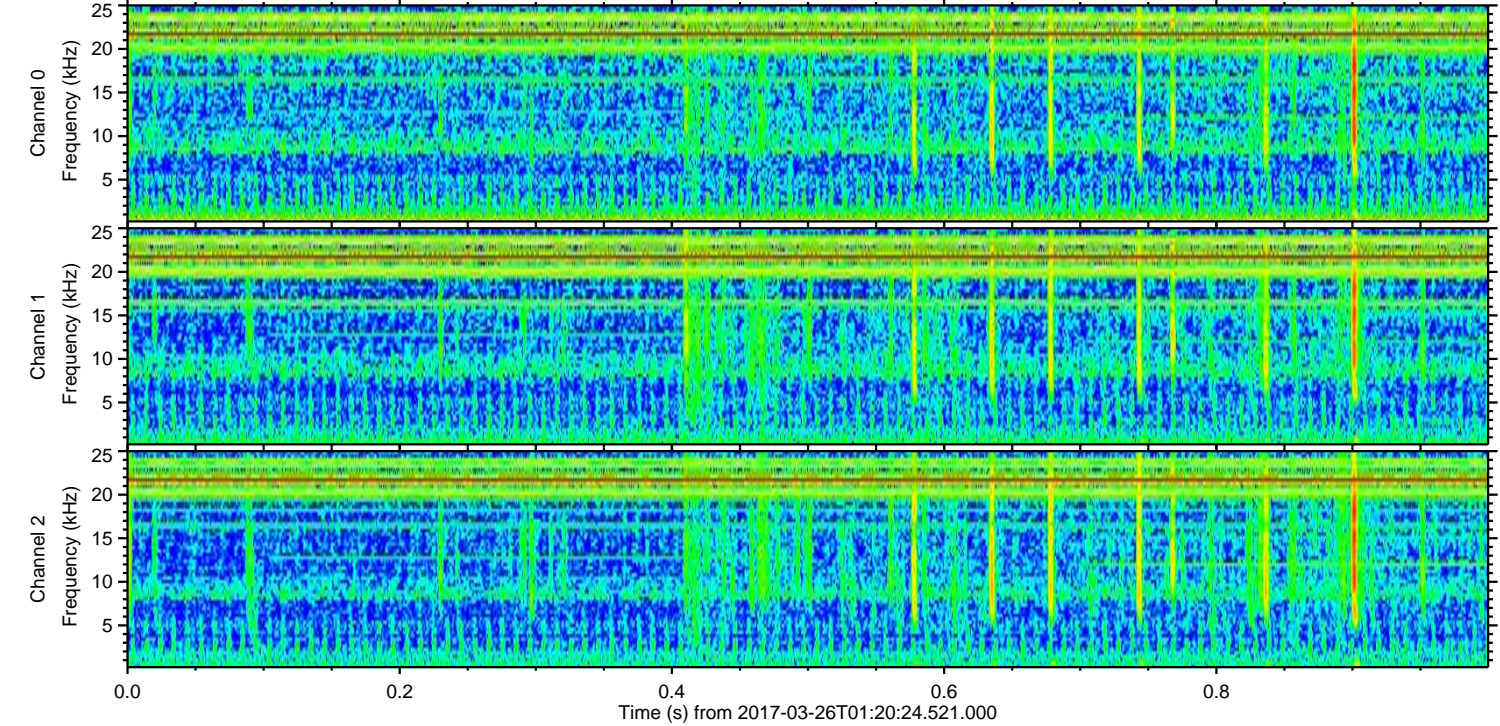
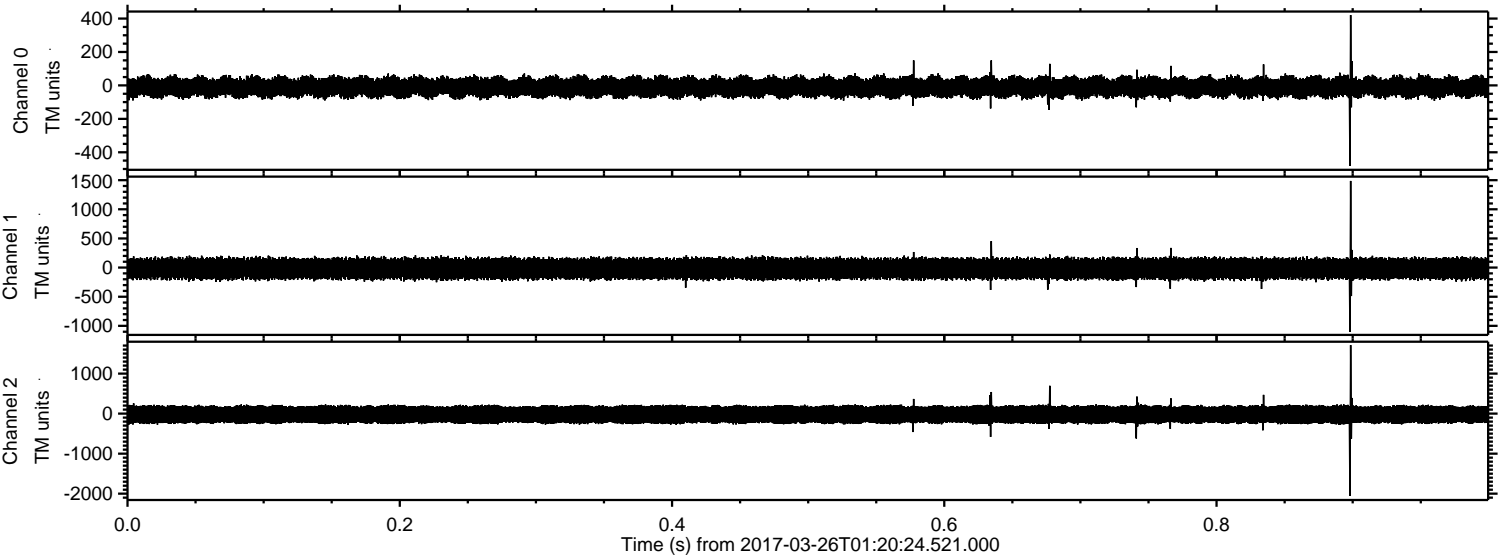
Channel 2
mn: -1204
mx: 1057
 μ : -22.4
 σ : 135.0

Processed Sun Mar 26 03:28:19 2017 by ELM ver.2012-10-06 from 001__elm20170326_012023__dat00.bin

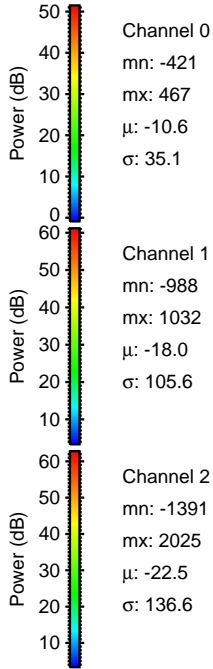
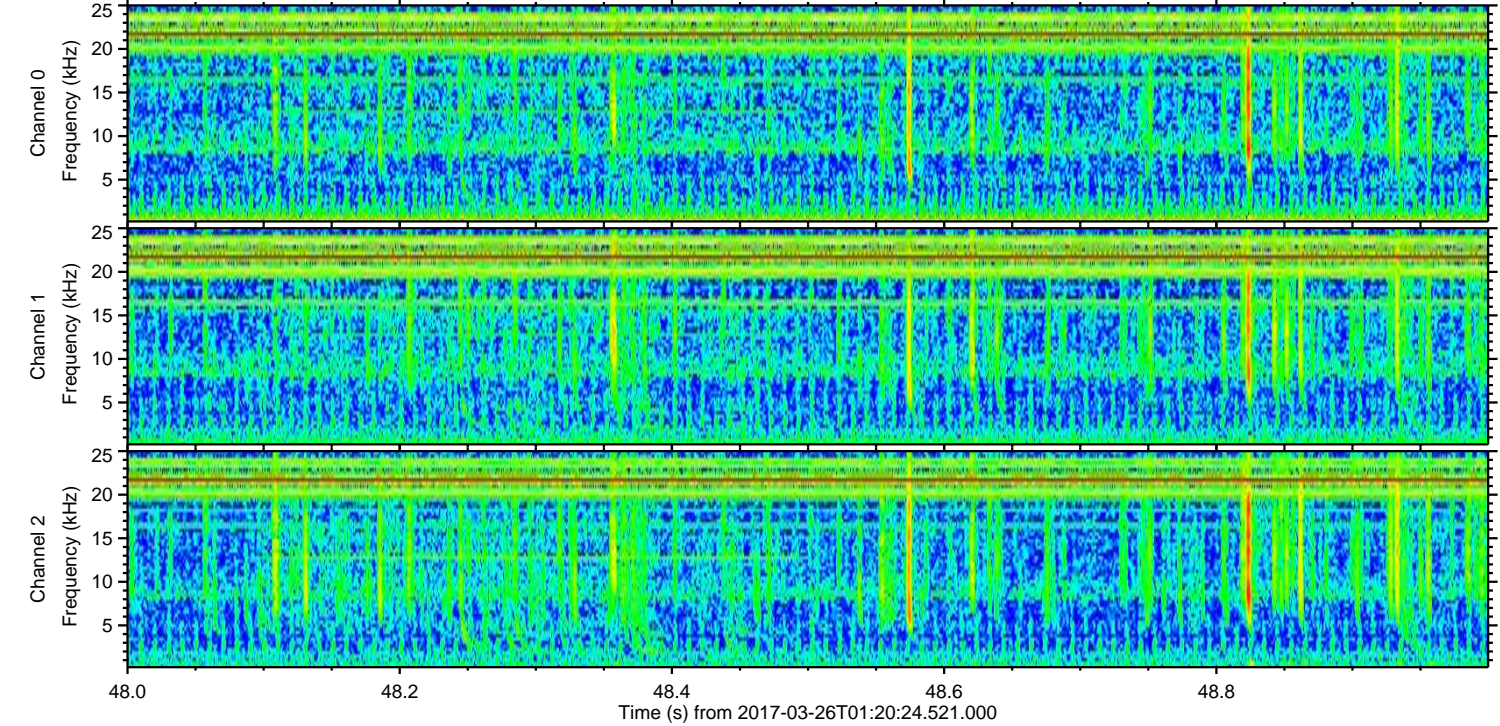
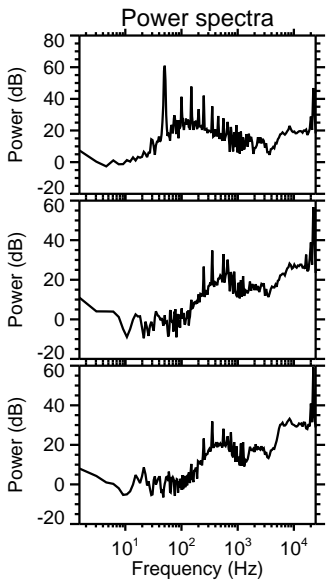
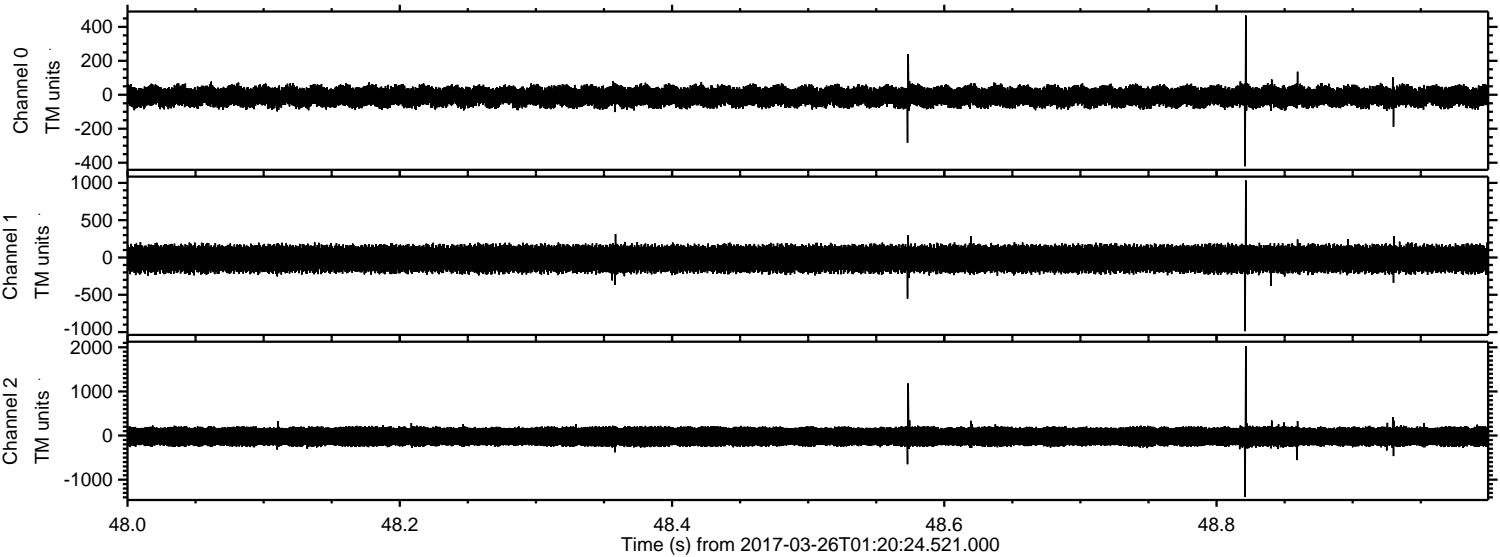


ELMAVAN 3D WAVEFORMS (Measured data sampled at 50 kHz) 51000 packets of 144 samples from 2017-03-26T01:20:24.521.000. Part 1/147

Processed Sun Mar 26 03:28:20 2017 by ELM ver.2012-10-06 from 001__elm20170326_012023__dat00.bin

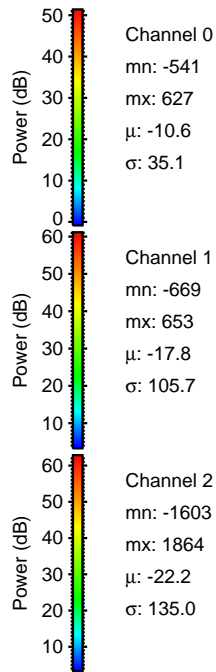
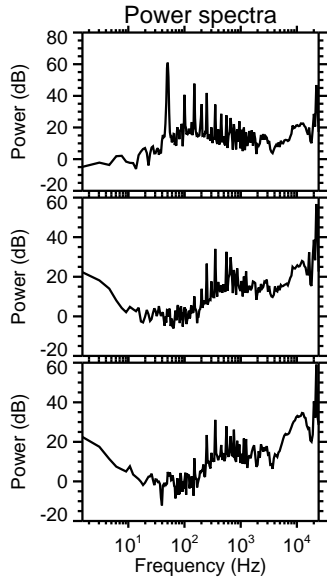
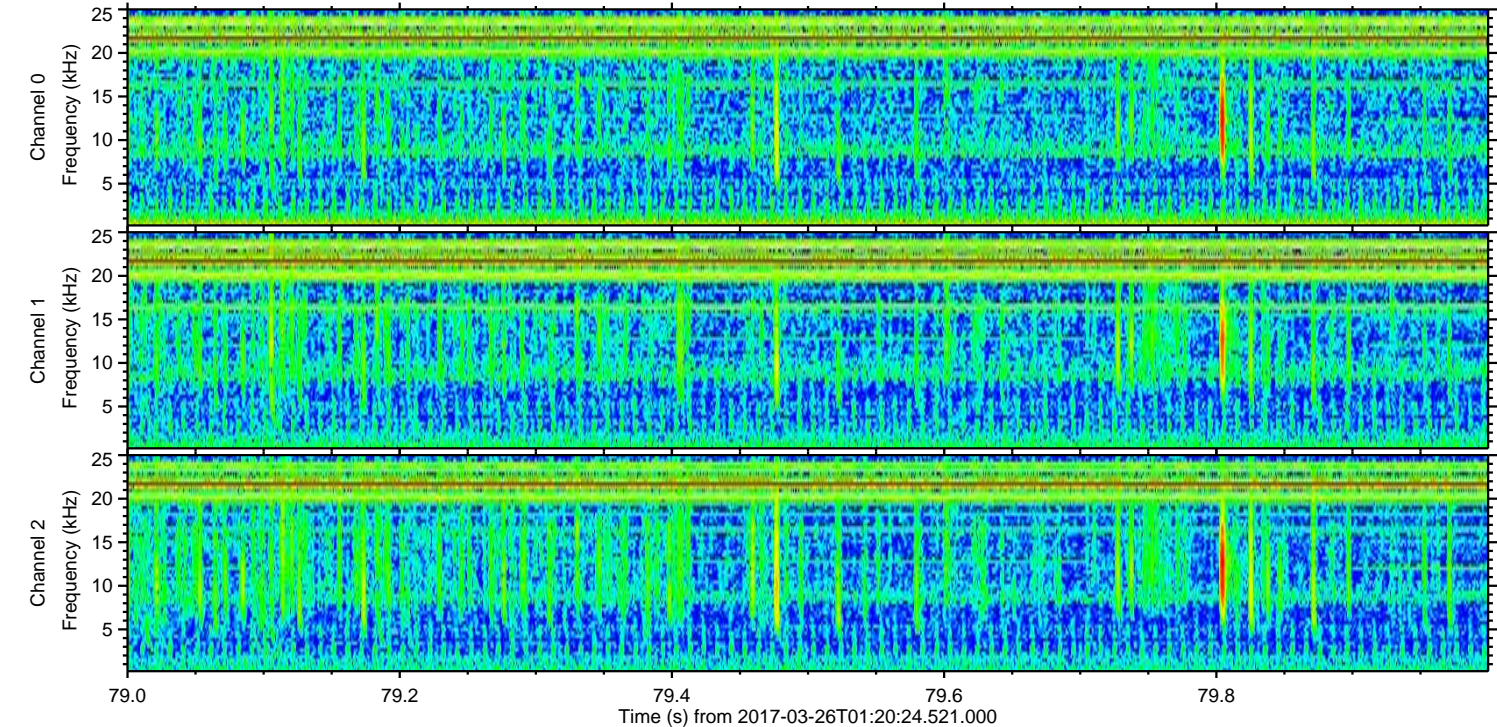
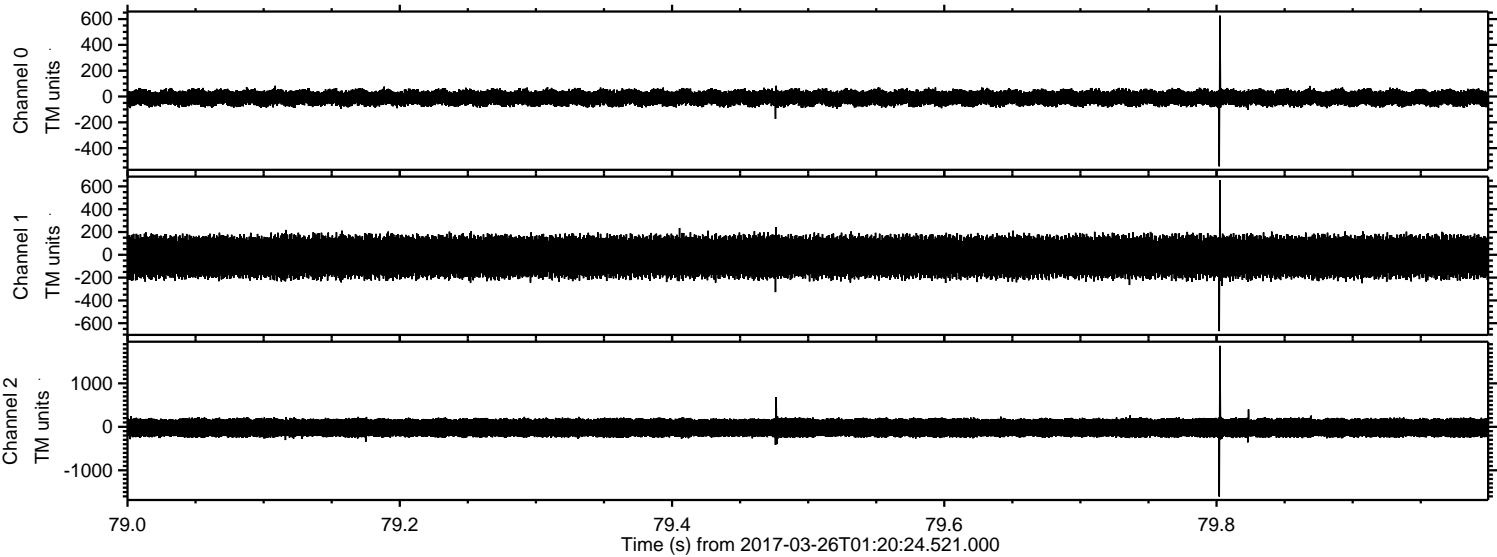


Processed Sun Mar 26 03:28:21 2017 by ELM ver.2012-10-06 from 001__elm20170326_012023__dat00.bin



ELMAVAN 3D WAVEFORMS (Measured data sampled at 50 kHz) 51000 packets of 144 samples from 2017-03-26T01:20:24.521.000. Part 80/147

Processed Sun Mar 26 03:28:22 2017 by ELM ver.2012-10-06 from 001__elm20170326_012023__dat00.bin



Power spectra

Channel 0

mn: -541
mx: 627
 μ : -10.6
 σ : 35.1

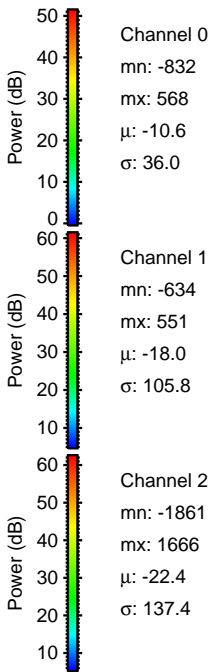
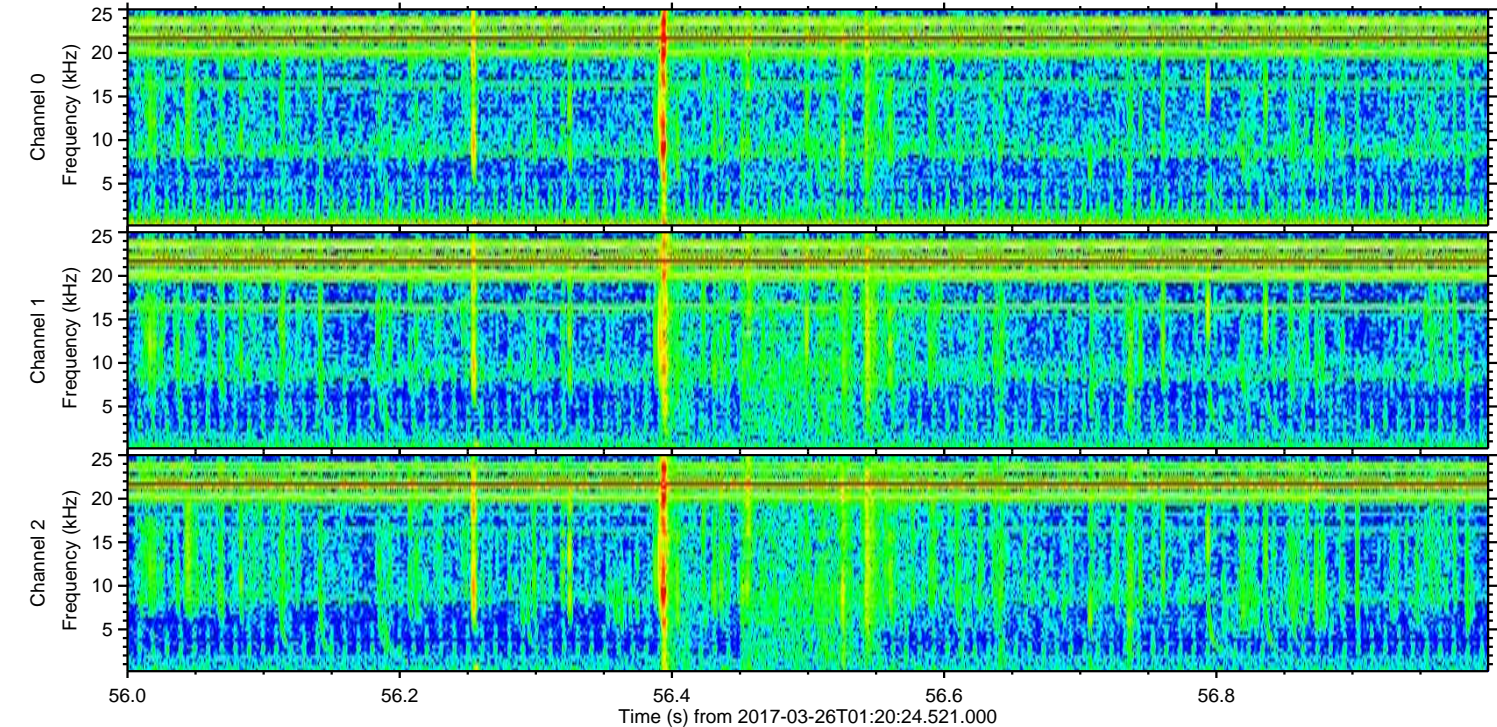
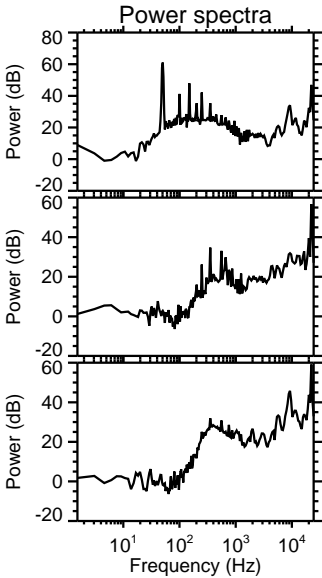
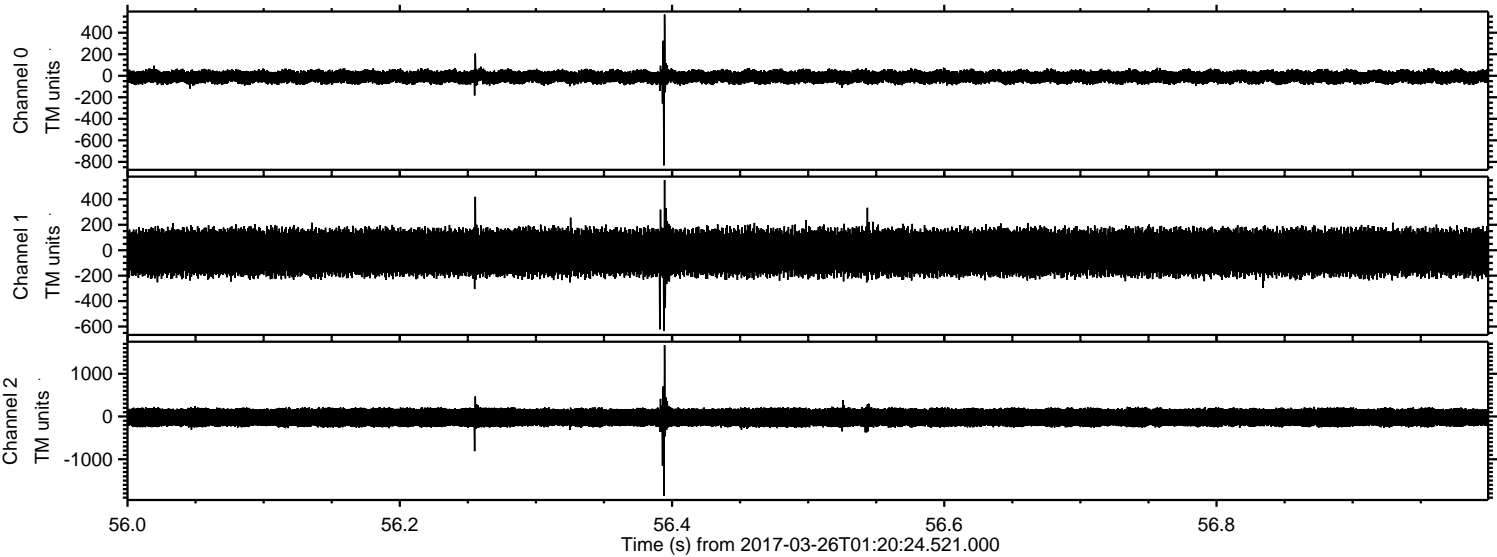
Channel 1

mn: -669
mx: 653
 μ : -17.8
 σ : 105.7

Channel 2

mn: -1603
mx: 1864
 μ : -22.2
 σ : 135.0

Processed Sun Mar 26 03:28:23 2017 by ELM ver.2012-10-06 from 001__elm20170326_012023__dat00.bin



ELMAVAN 3D WAVEFORMS (Measured data sampled at 50 kHz) 51000 packets of 144 samples from 2017-03-26T01:20:24.521.000. Part 21/147

Processed Sun Mar 26 03:28:24 2017 by ELM ver.2012-10-06 from 001__elm20170326_012023__dat00.bin

