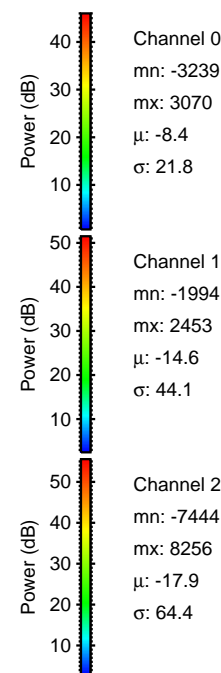
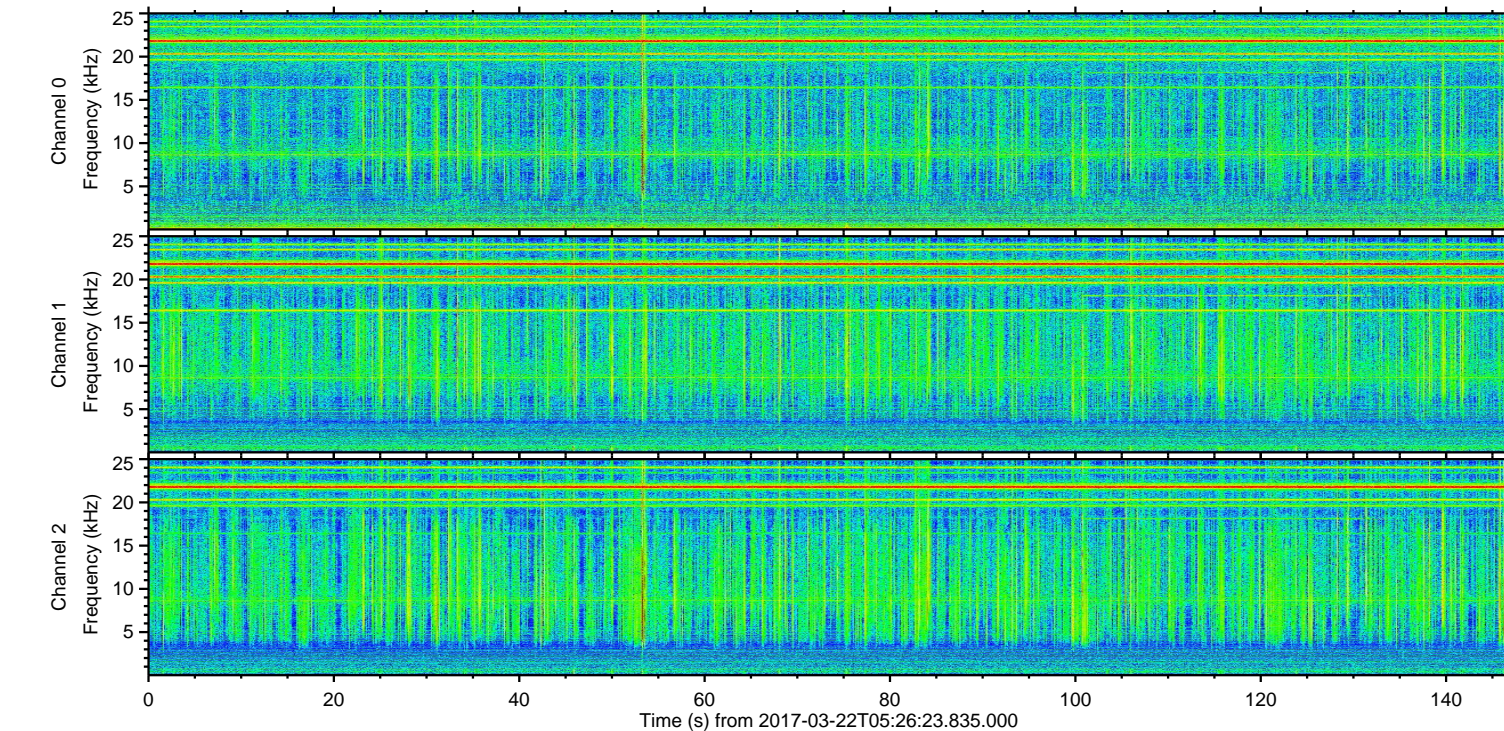
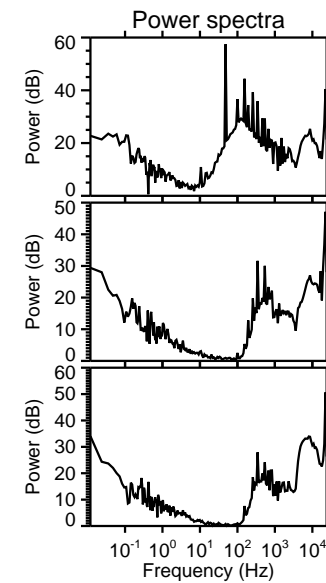
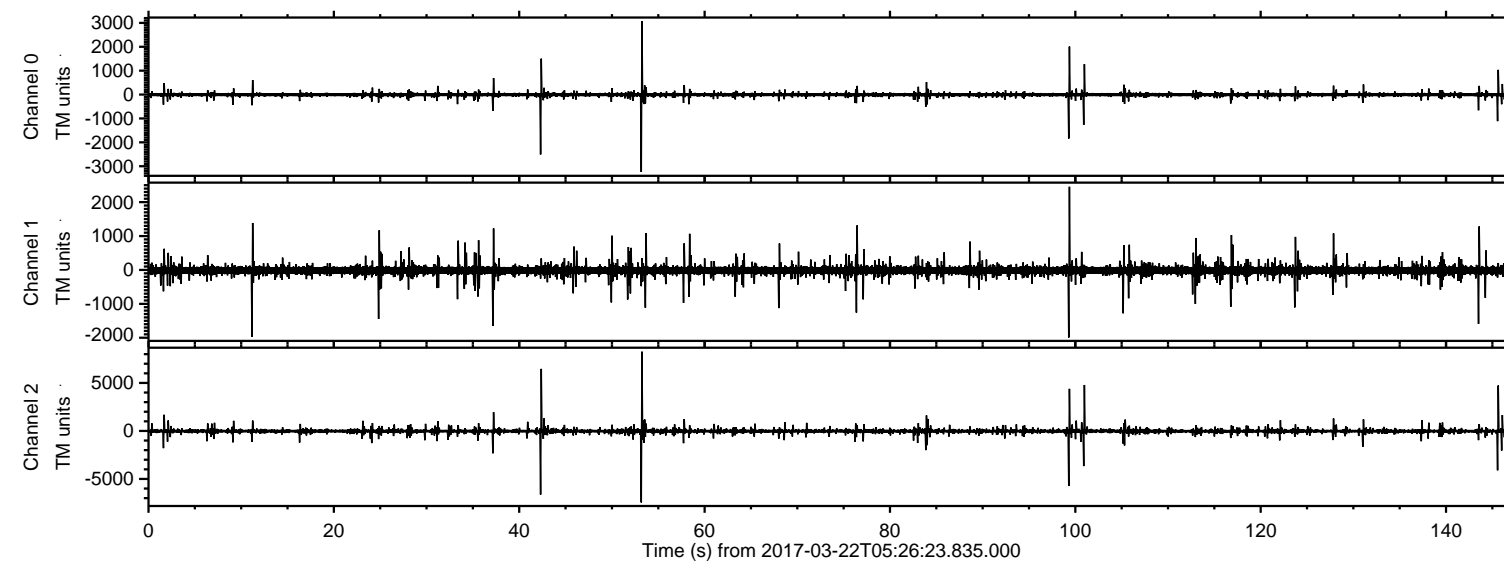


# ELMAVAN 3D WAVEFORMS (Measured data sampled at 50 kHz) 51000 packets of 144 samples from 2017-03-22T05:26:23.835.000.

Processed Wed Mar 22 06:34:44 2017 by ELM ver.2012-10-06 from 001\_\_elm20170322\_052622\_\_dat00.bin



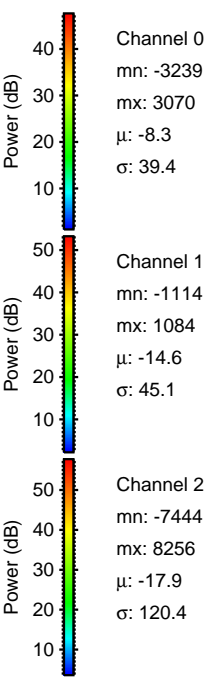
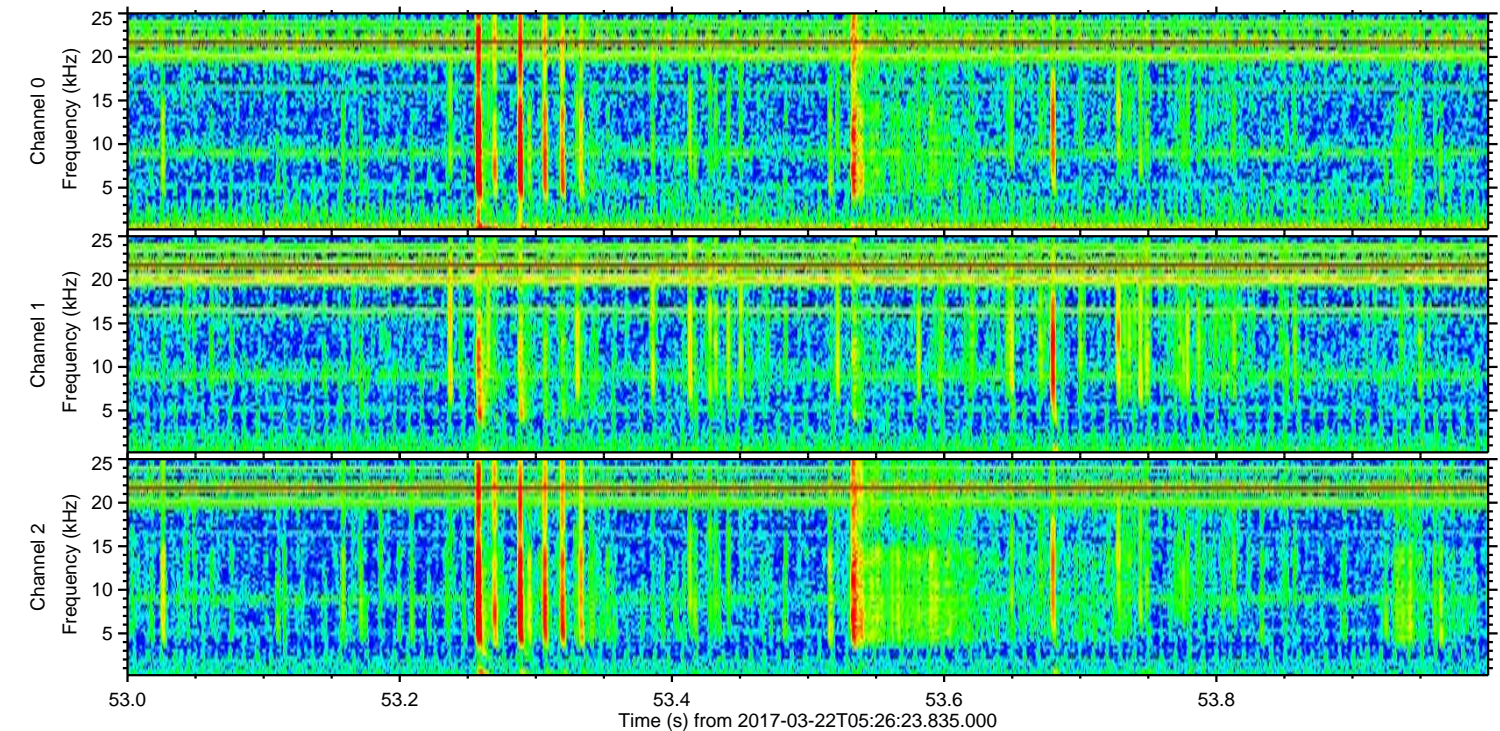
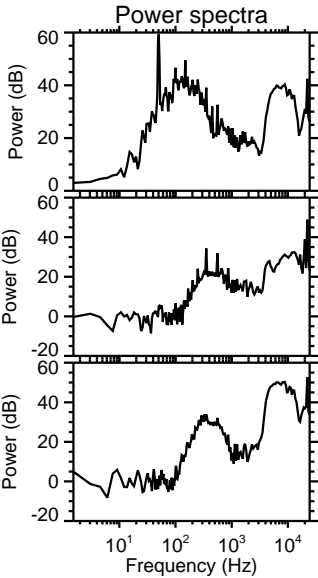
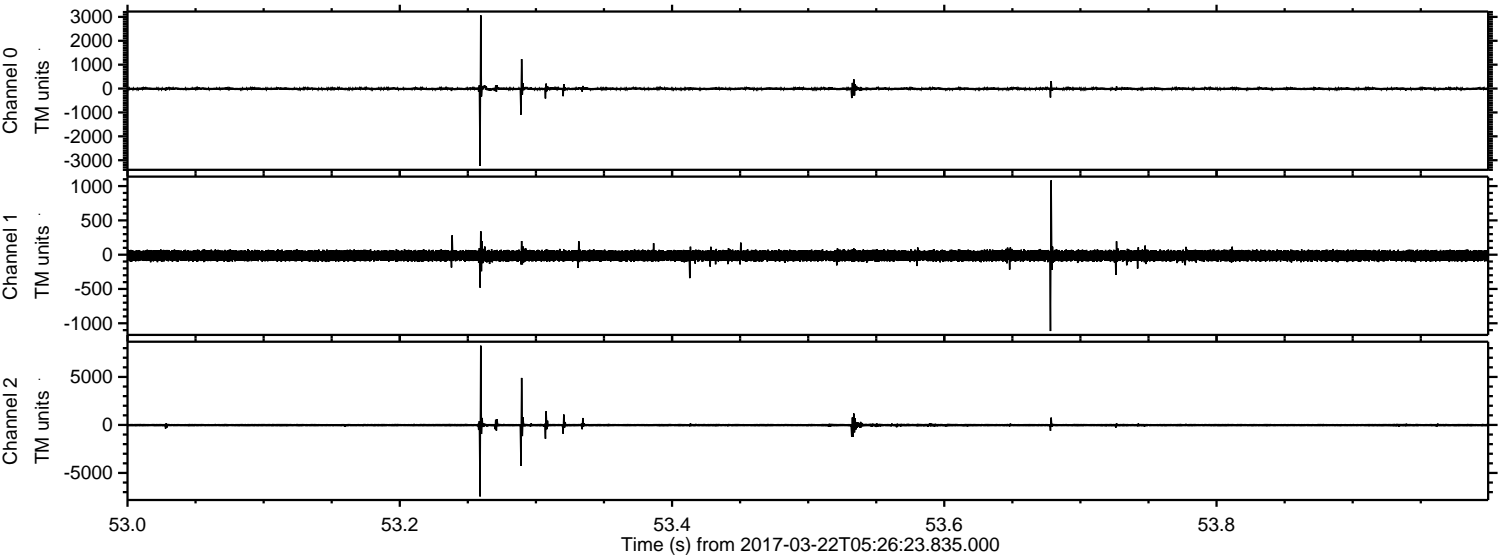
Channel 0  
mn: -3239  
mx: 3070  
 $\mu$ : -8.4  
 $\sigma$ : 21.8

Channel 1  
mn: -1994  
mx: 2453  
 $\mu$ : -14.6  
 $\sigma$ : 44.1

Channel 2  
mn: -7444  
mx: 8256  
 $\mu$ : -17.9  
 $\sigma$ : 64.4



Processed Wed Mar 22 06:34:55 2017 by ELM ver.2012-10-06 from 001\_\_elm20170322\_052622\_\_dat00.bin



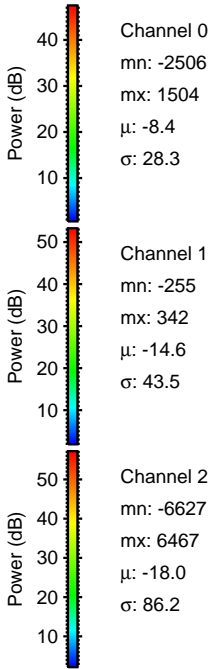
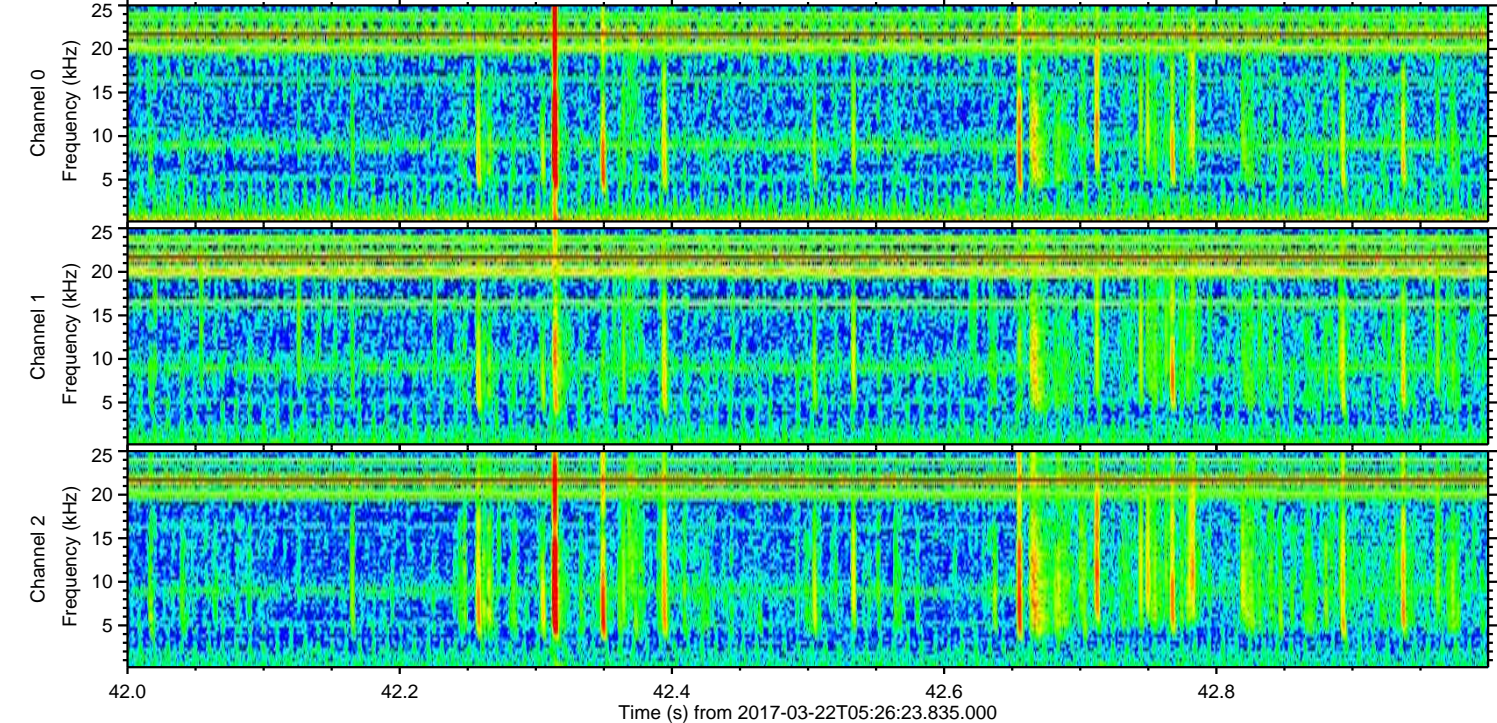
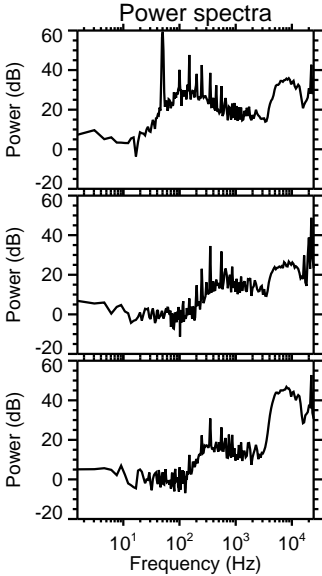
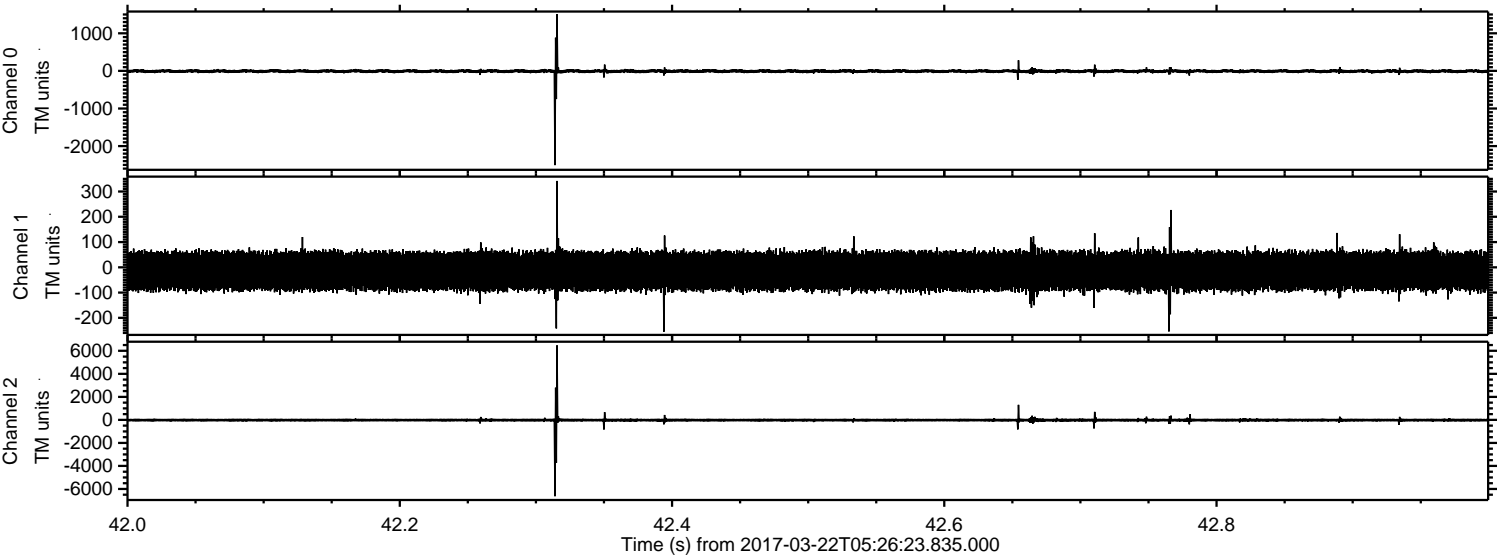
Channel 0  
mn: -3239  
mx: 3070  
 $\mu$ : -8.3  
 $\sigma$ : 39.4

Channel 1  
mn: -1114  
mx: 1084  
 $\mu$ : -14.6  
 $\sigma$ : 45.1

Channel 2  
mn: -7444  
mx: 8256  
 $\mu$ : -17.9  
 $\sigma$ : 120.4



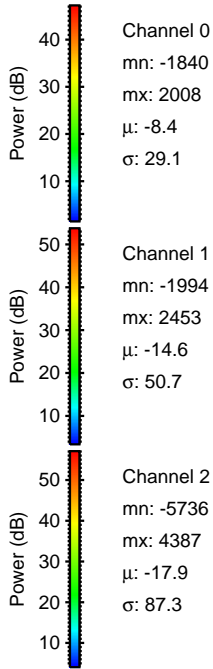
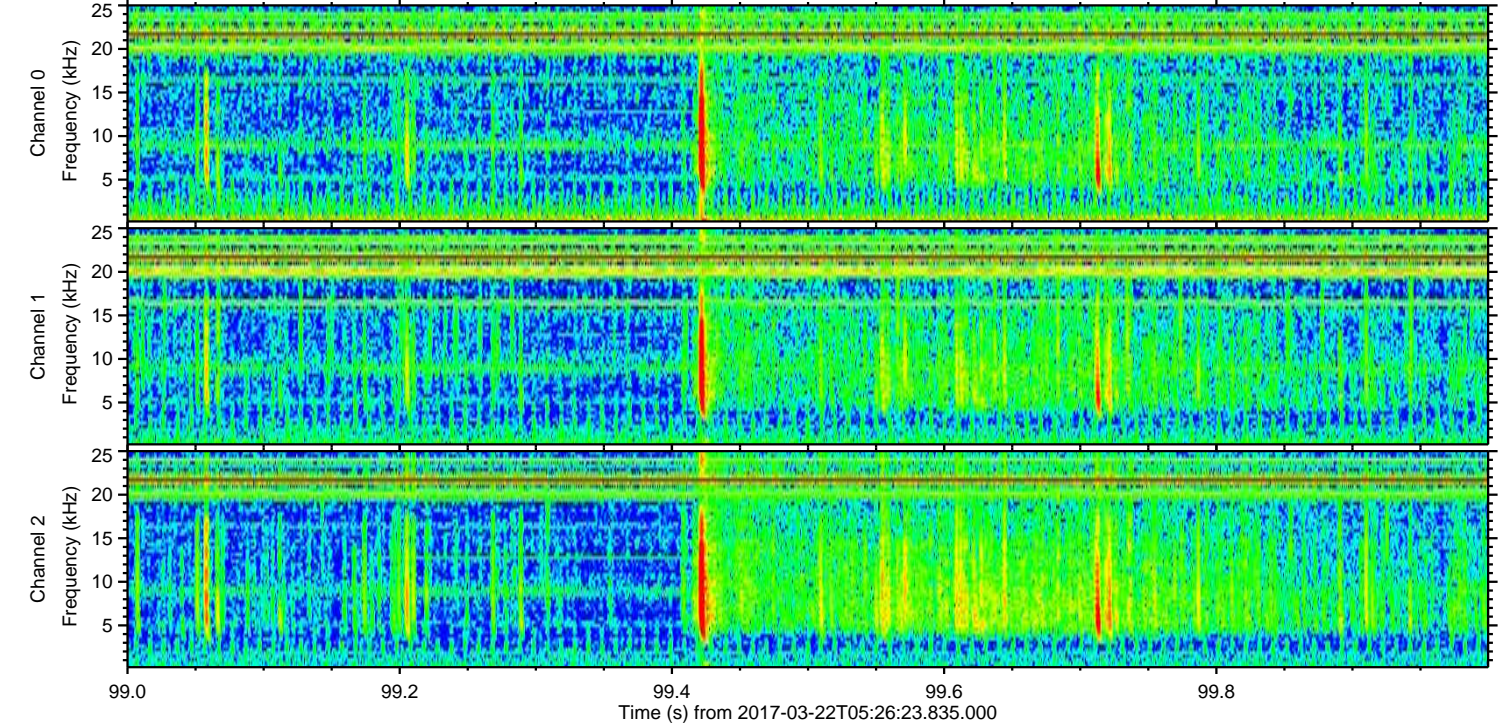
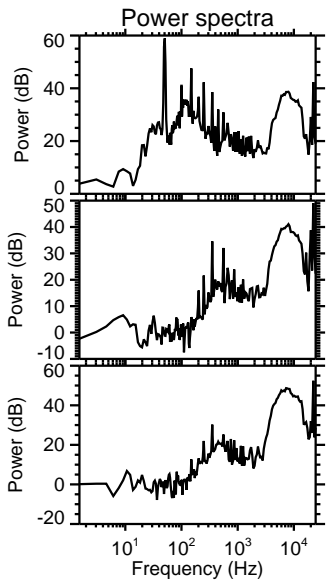
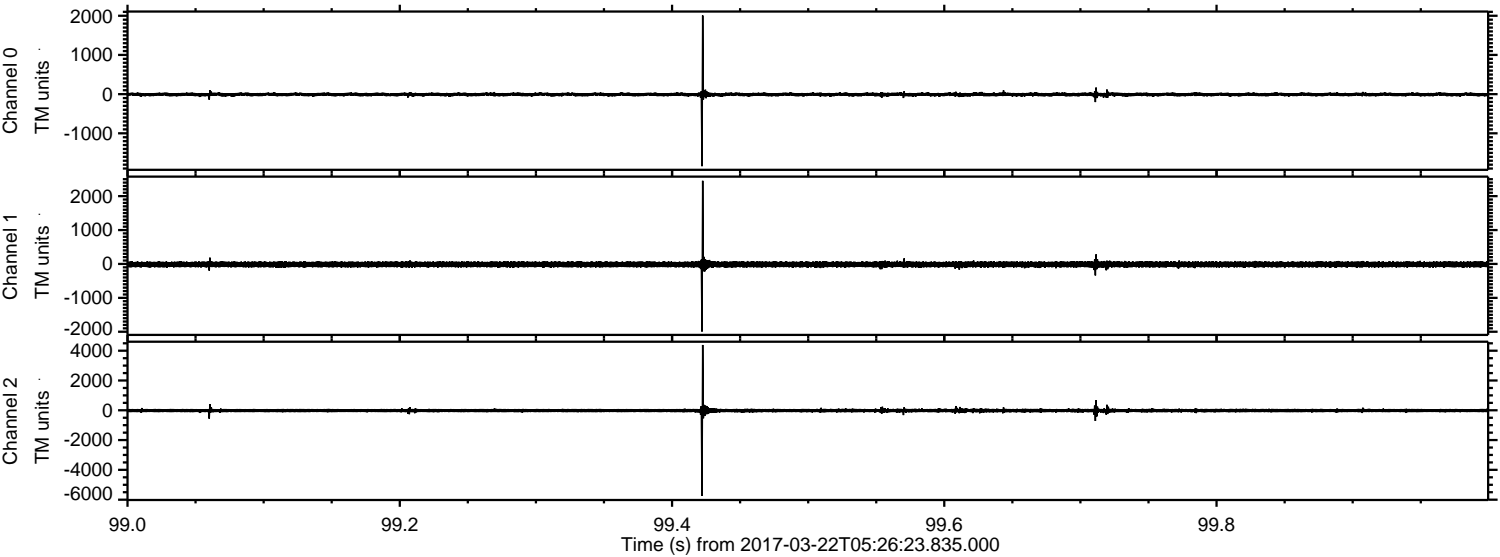
Processed Wed Mar 22 06:34:56 2017 by ELM ver.2012-10-06 from 001\_\_elm20170322\_052622\_\_dat00.bin





ELMAVAN 3D WAVEFORMS (Measured data sampled at 50 kHz) 51000 packets of 144 samples from 2017-03-22T05:26:23.835.000. Part 100/147

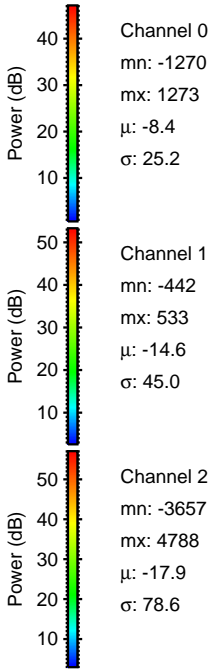
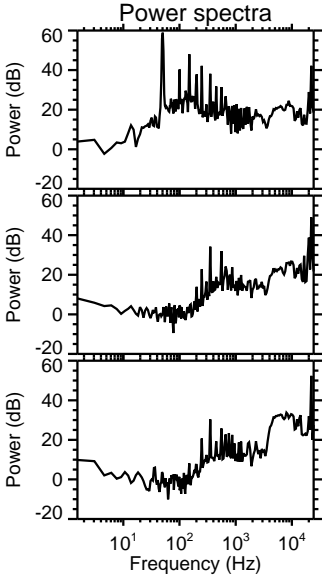
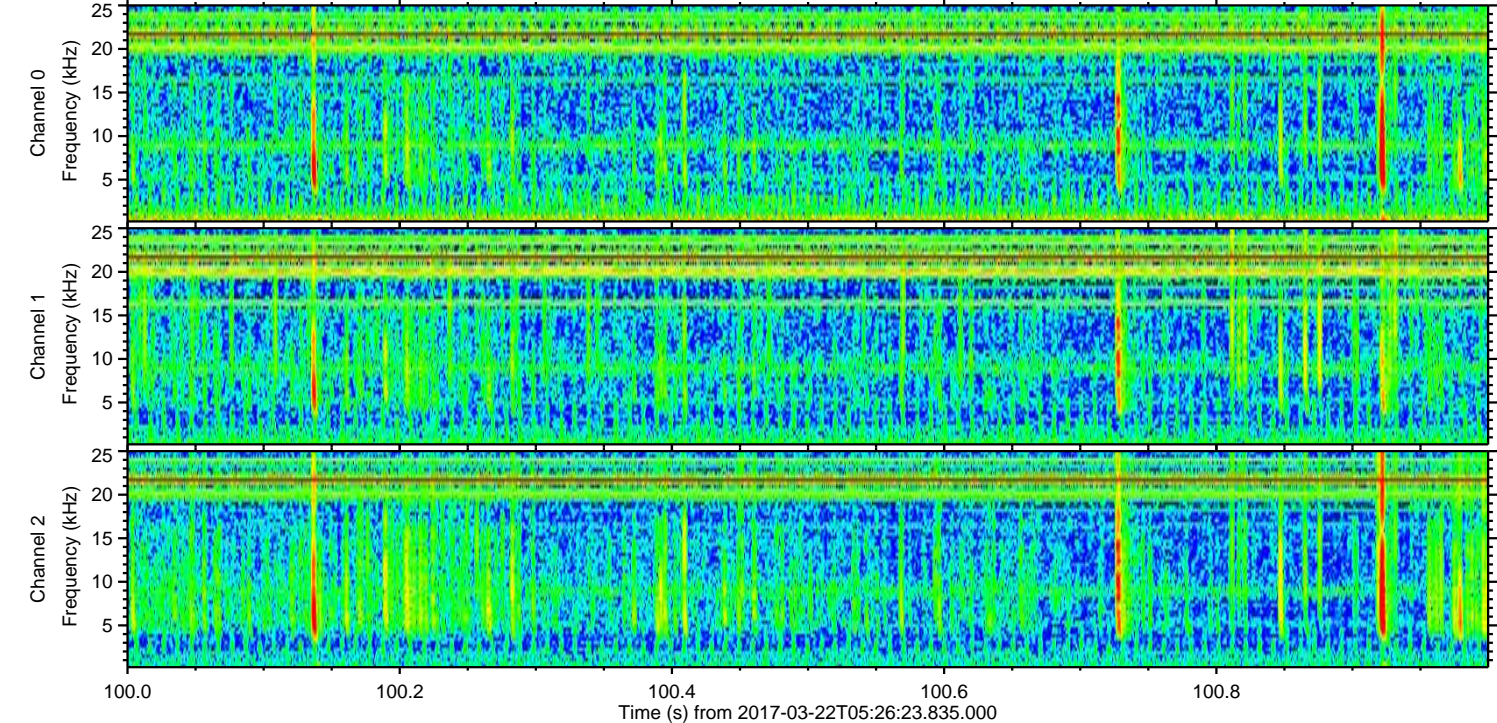
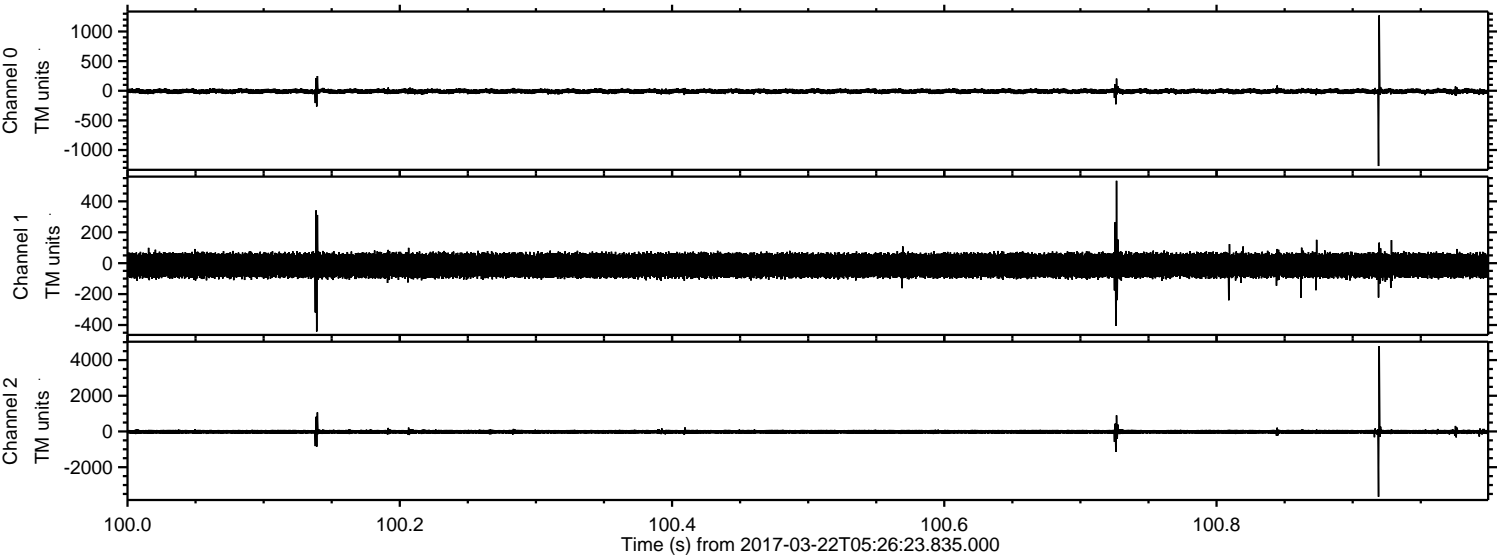
Processed Wed Mar 22 06:34:57 2017 by ELM ver.2012-10-06 from 001\_\_elm20170322\_052622\_\_dat00.bin





ELMAVAN 3D WAVEFORMS (Measured data sampled at 50 kHz) 51000 packets of 144 samples from 2017-03-22T05:26:23.835.000. Part 101/147

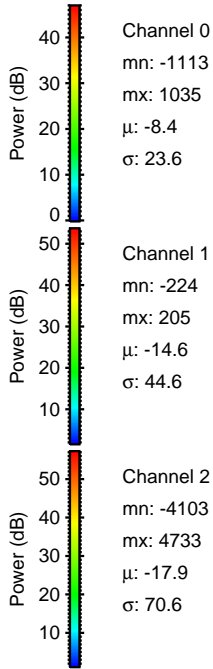
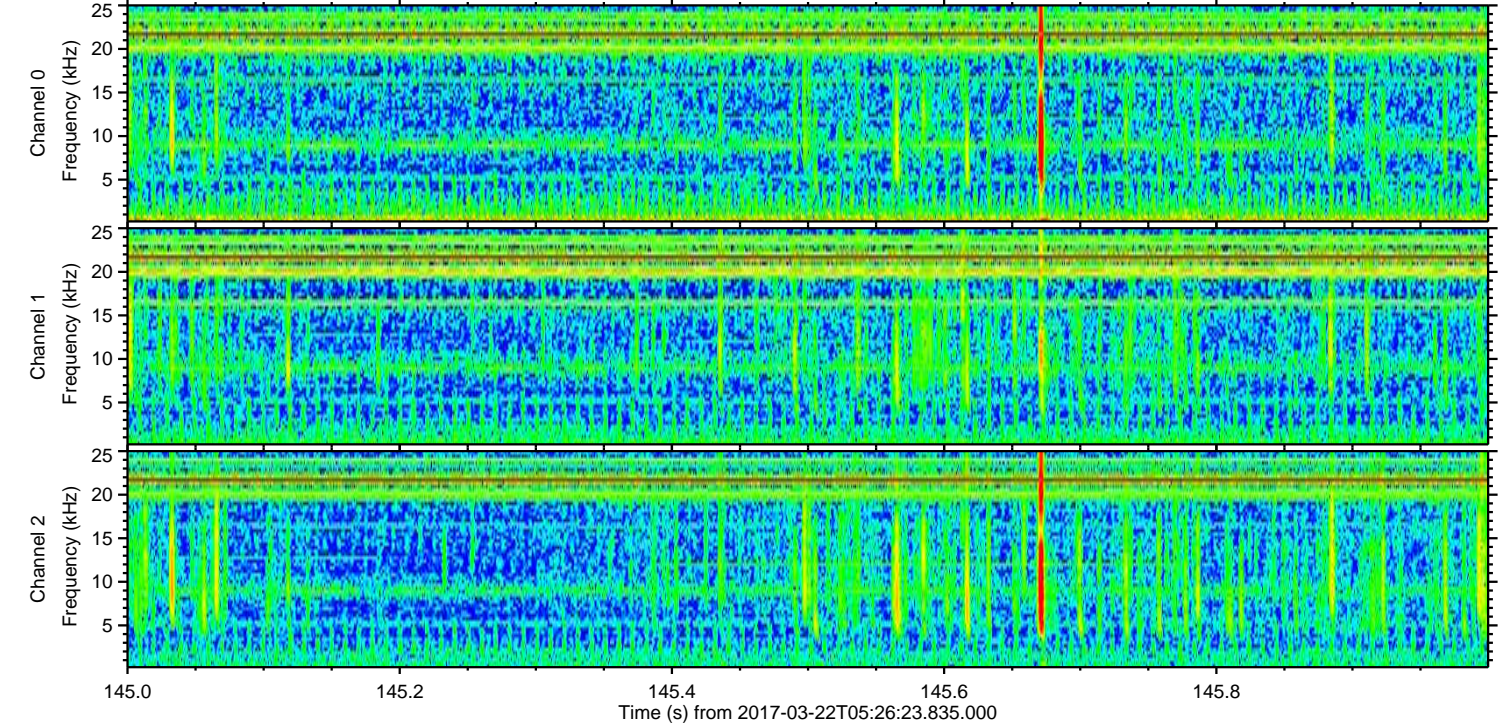
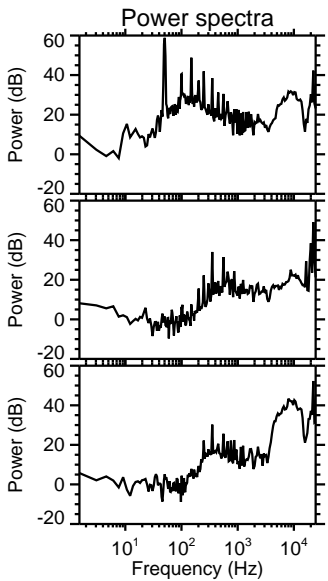
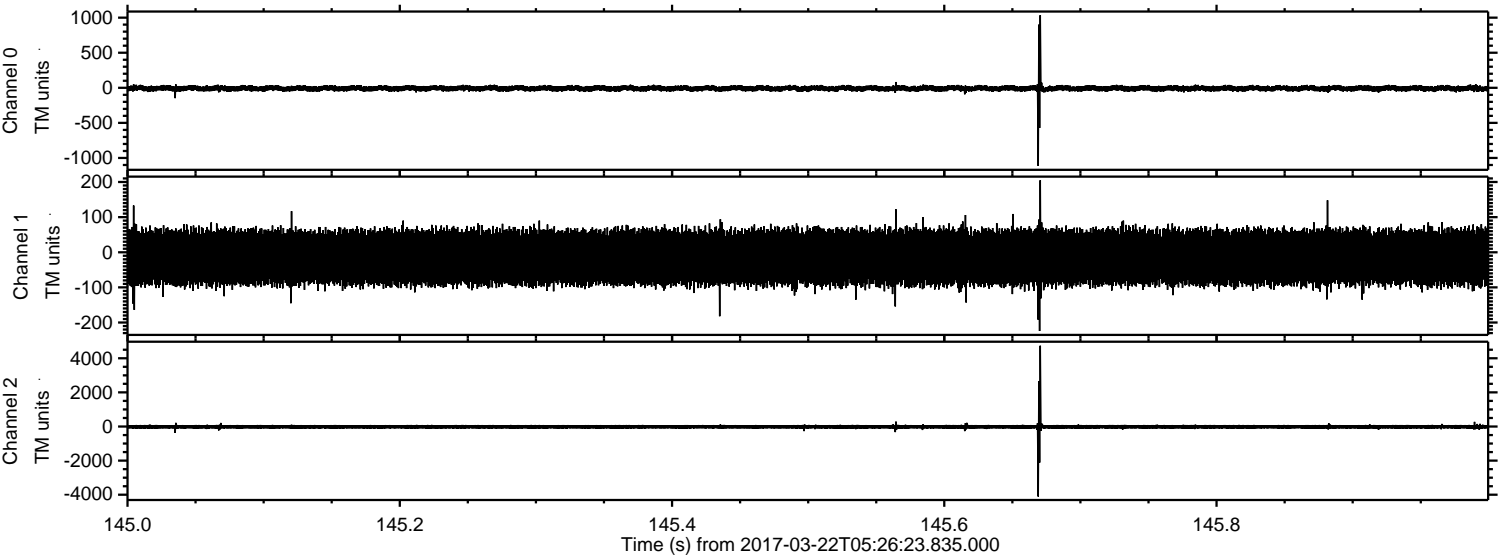
Processed Wed Mar 22 06:34:58 2017 by ELM ver.2012-10-06 from 001\_\_elm20170322\_052622\_\_dat00.bin





ELMAVAN 3D WAVEFORMS (Measured data sampled at 50 kHz) 51000 packets of 144 samples from 2017-03-22T05:26:23.835.000. Part 146/147

Processed Wed Mar 22 06:34:59 2017 by ELM ver.2012-10-06 from 001\_\_elm20170322\_052622\_\_dat00.bin



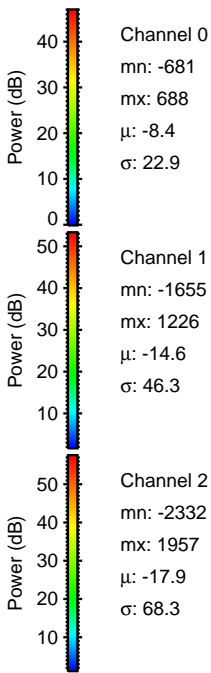
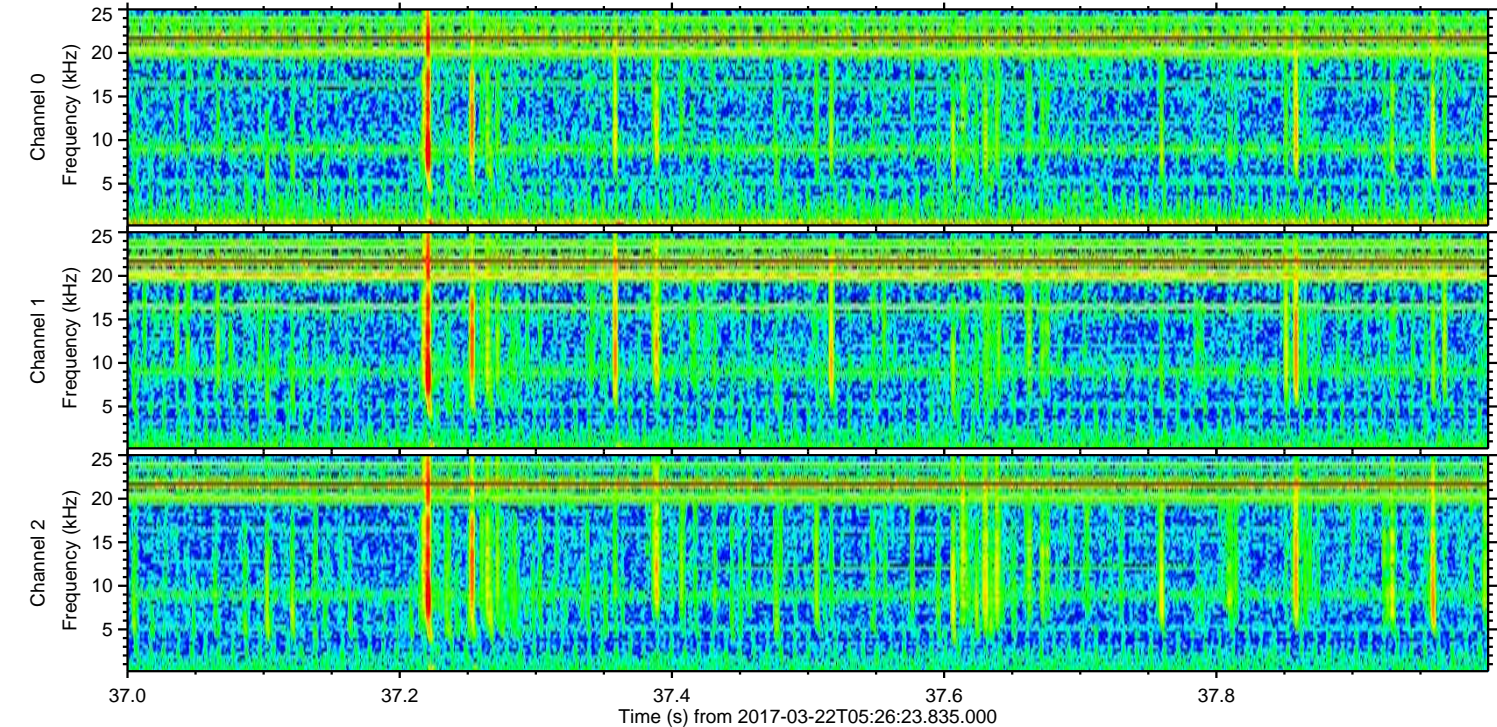
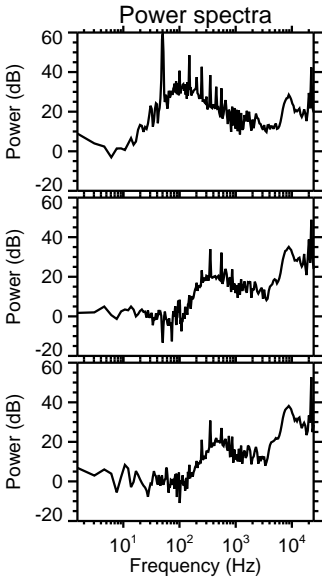
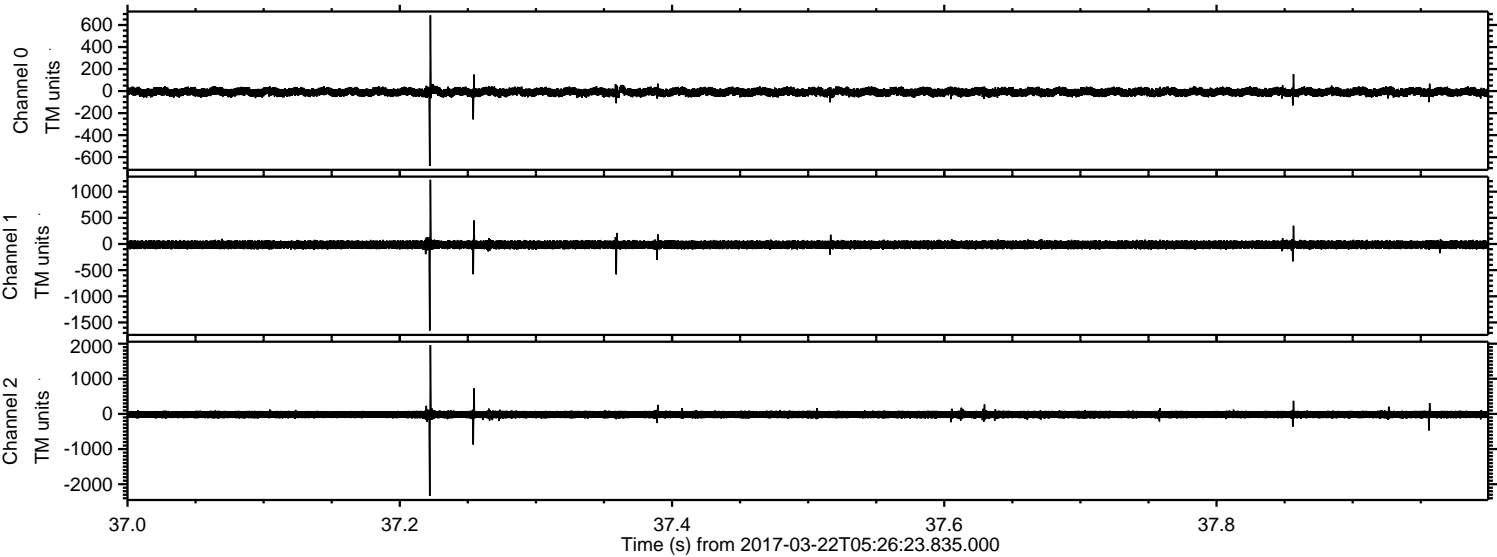
Channel 0  
mn: -1113  
mx: 1035  
 $\mu$ : -8.4  
 $\sigma$ : 23.6

Channel 1  
mn: -224  
mx: 205  
 $\mu$ : -14.6  
 $\sigma$ : 44.6

Channel 2  
mn: -4103  
mx: 4733  
 $\mu$ : -17.9  
 $\sigma$ : 70.6



Processed Wed Mar 22 06:35:00 2017 by ELM ver.2012-10-06 from 001\_\_elm20170322\_052622\_\_dat00.bin



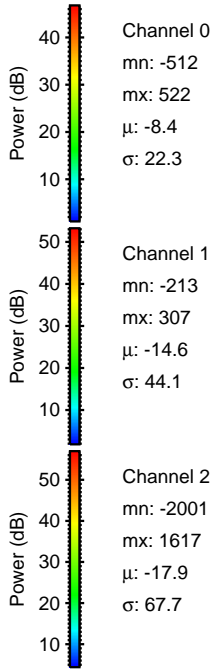
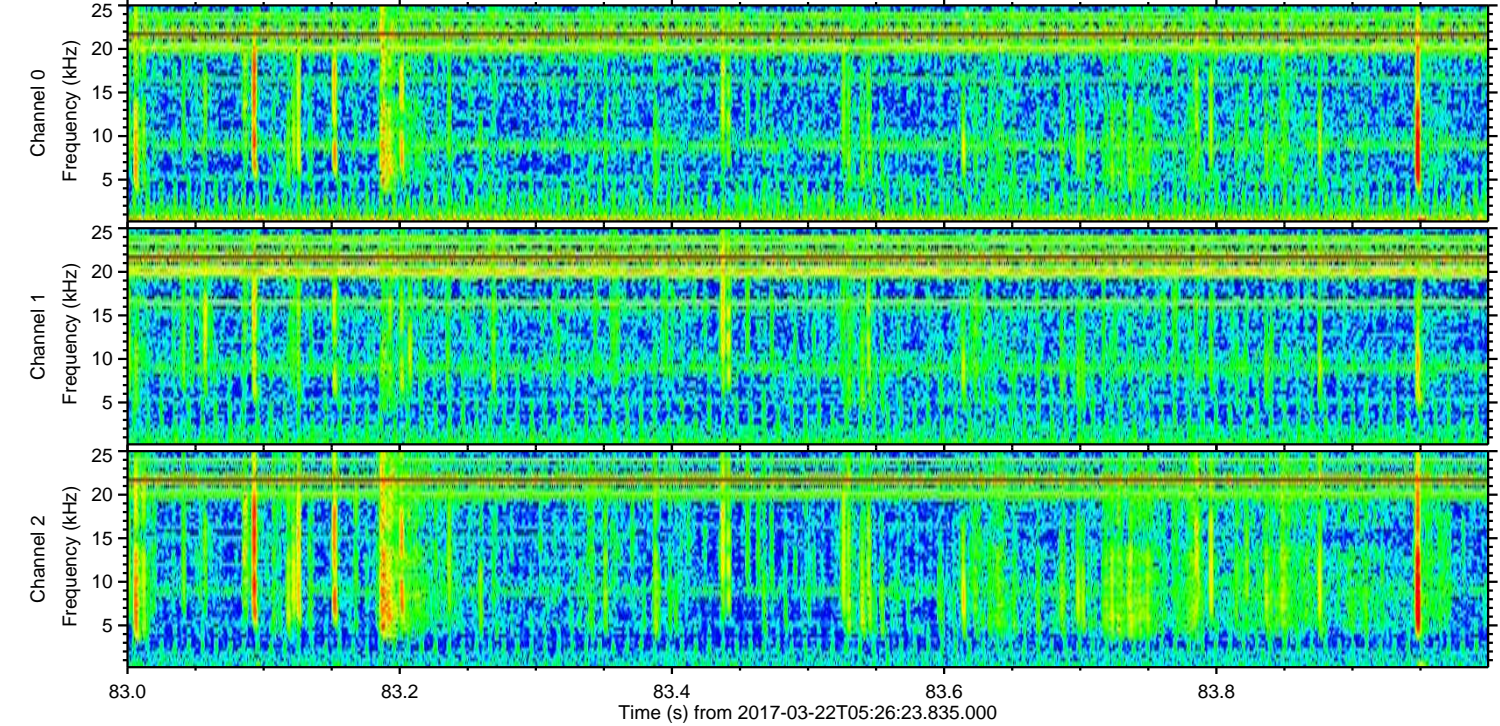
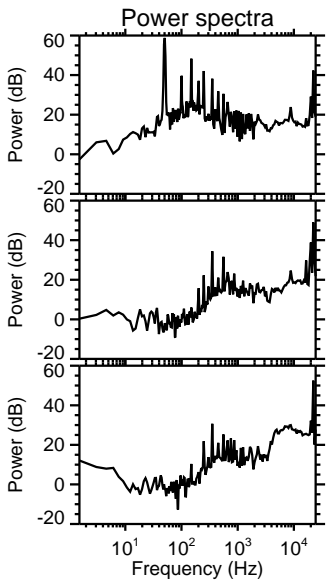
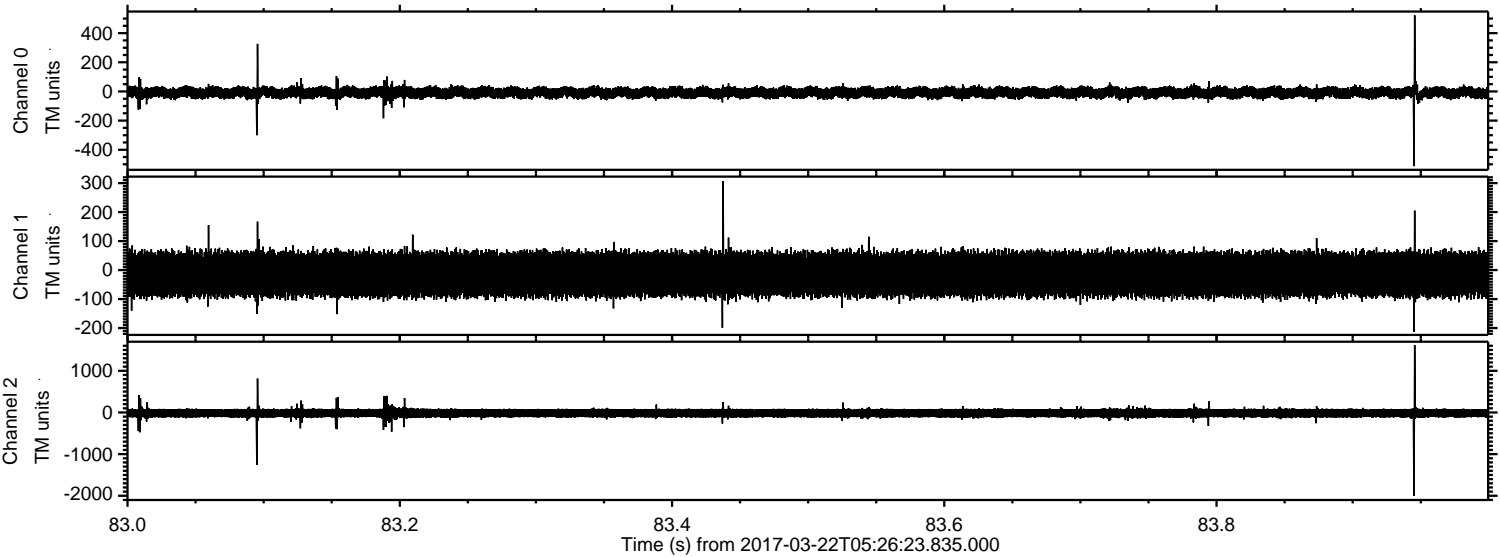
Channel 0  
mn: -681  
mx: 688  
 $\mu$ : -8.4  
 $\sigma$ : 22.9

Channel 1  
mn: -1655  
mx: 1226  
 $\mu$ : -14.6  
 $\sigma$ : 46.3

Channel 2  
mn: -2332  
mx: 1957  
 $\mu$ : -17.9  
 $\sigma$ : 68.3

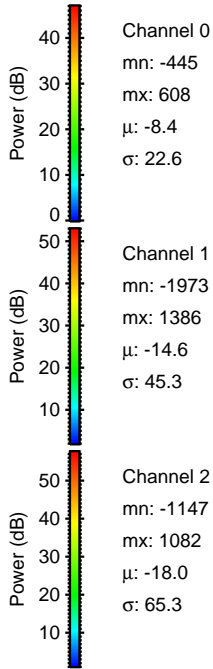
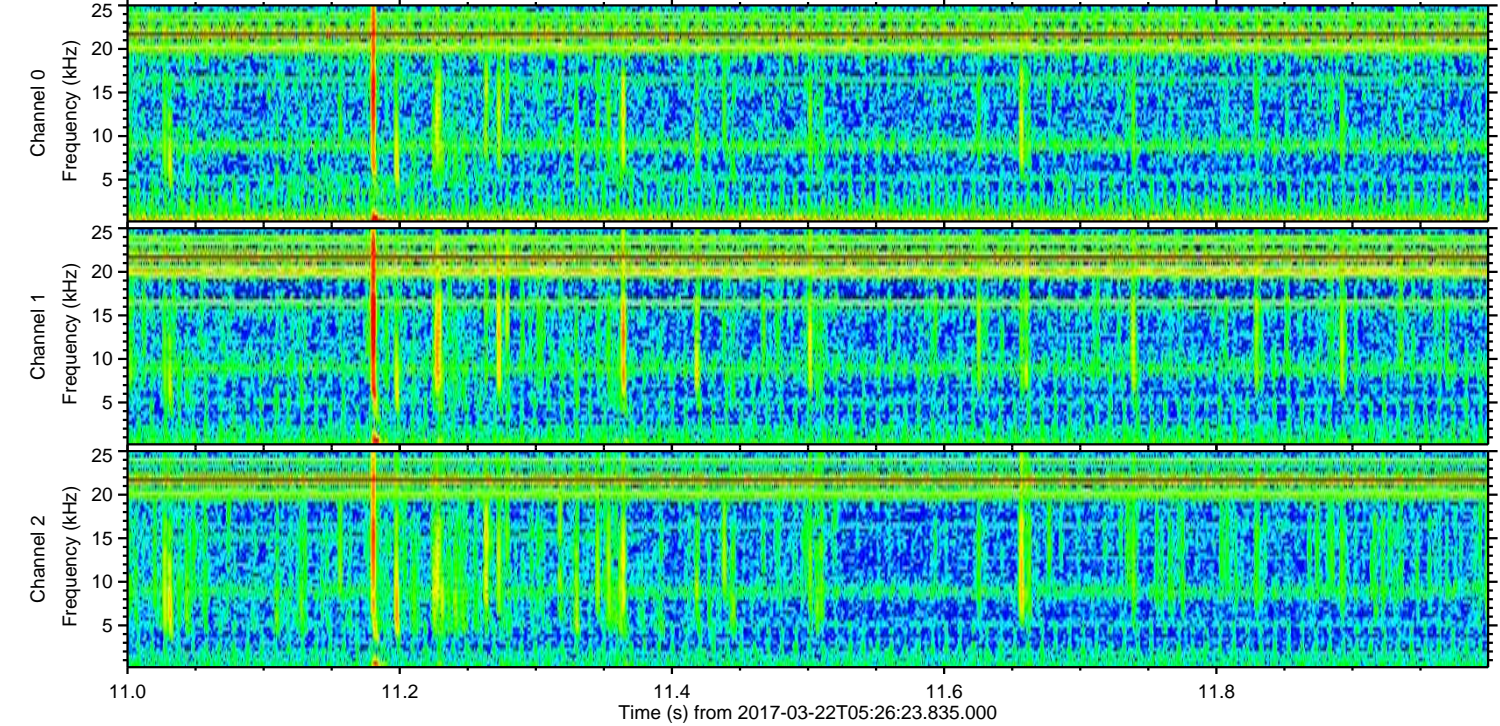
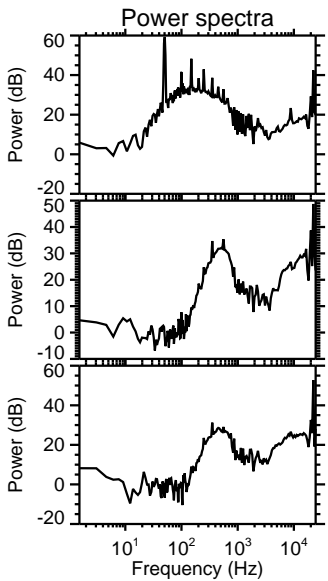
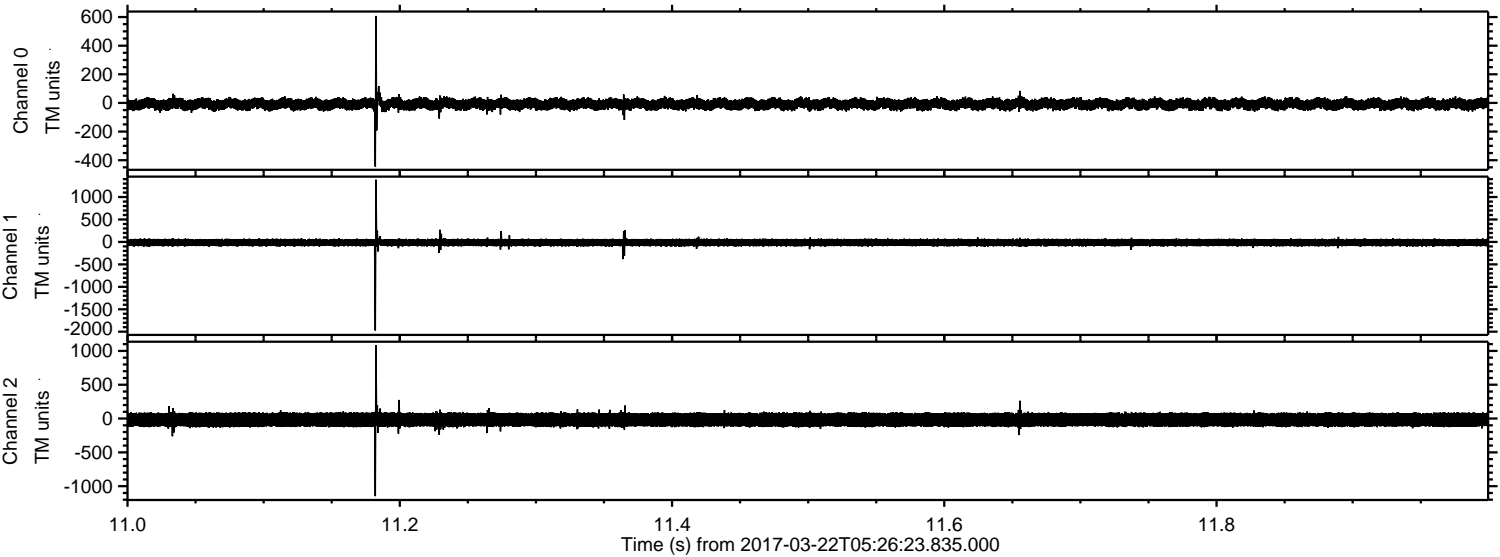


Processed Wed Mar 22 06:35:01 2017 by ELM ver.2012-10-06 from 001\_\_elm20170322\_052622\_\_dat00.bin



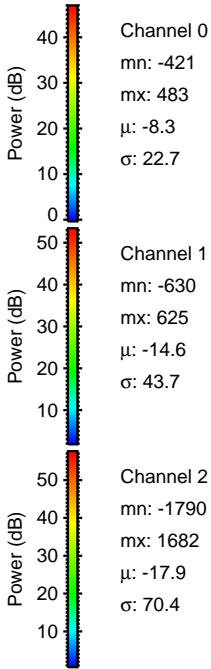
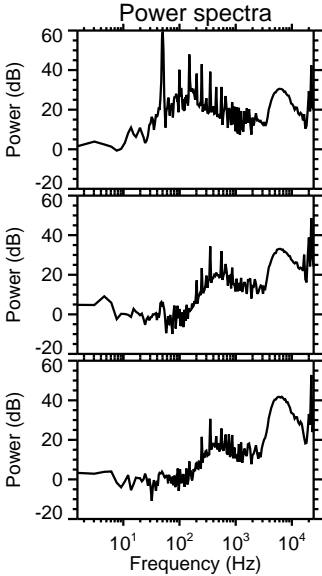
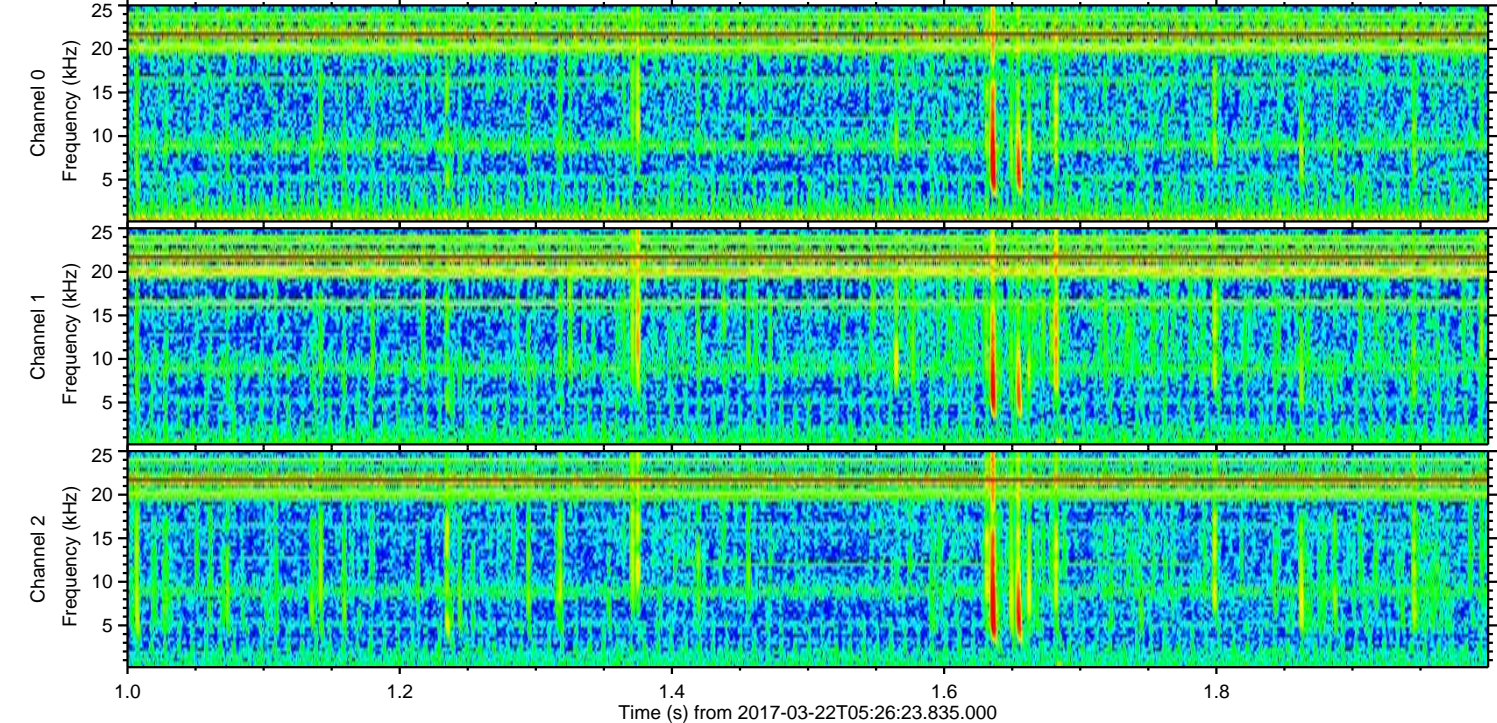
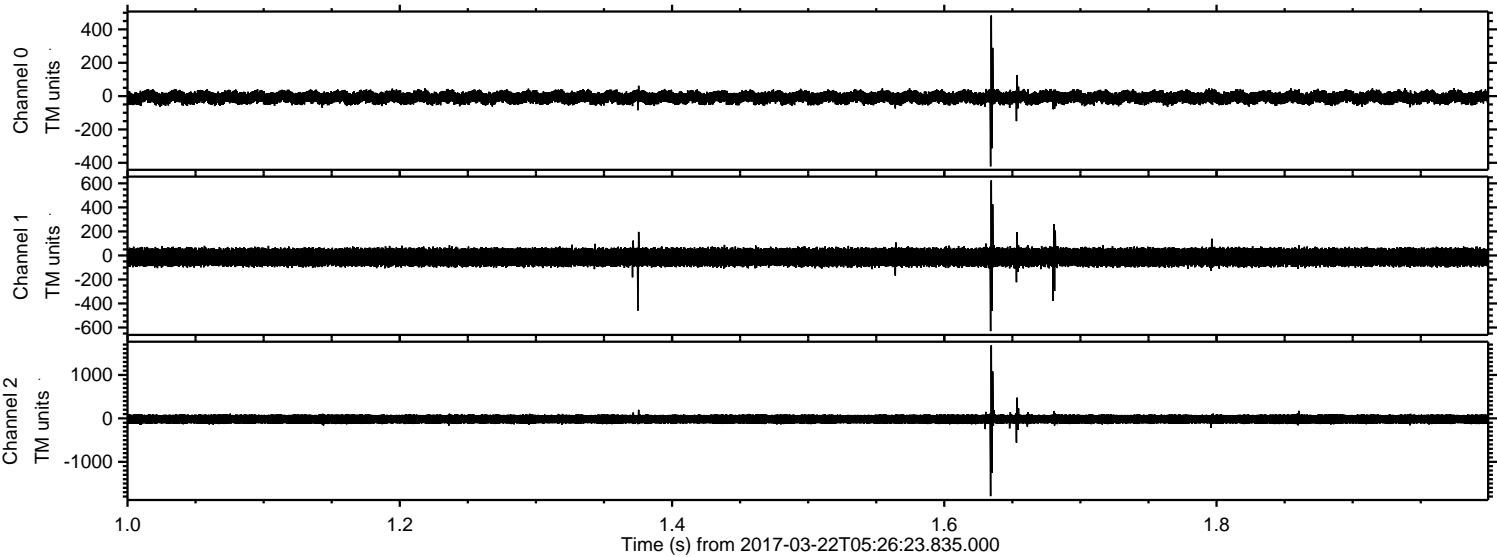


Processed Wed Mar 22 06:35:02 2017 by ELM ver.2012-10-06 from 001\_\_elm20170322\_052622\_\_dat00.bin





Processed Wed Mar 22 06:35:03 2017 by ELM ver.2012-10-06 from 001\_\_elm20170322\_052622\_\_dat00.bin





Processed Wed Mar 22 06:35:04 2017 by ELM ver.2012-10-06 from 001\_\_elm20170322\_052622\_\_dat00.bin

