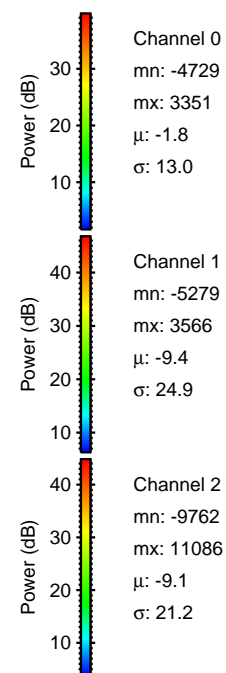
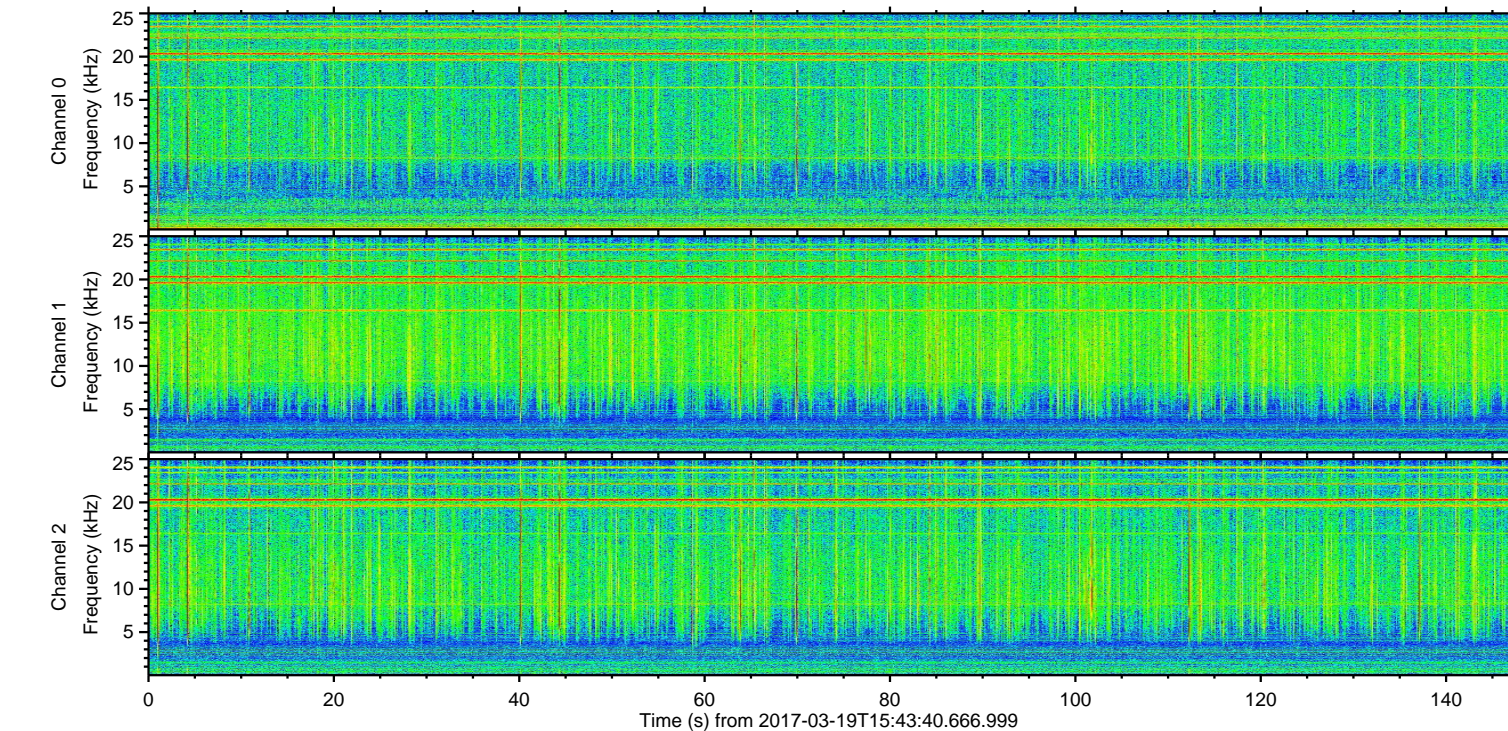
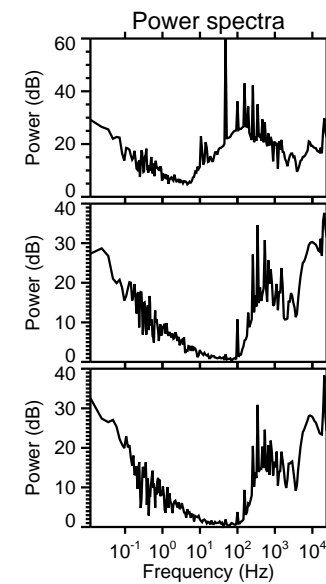
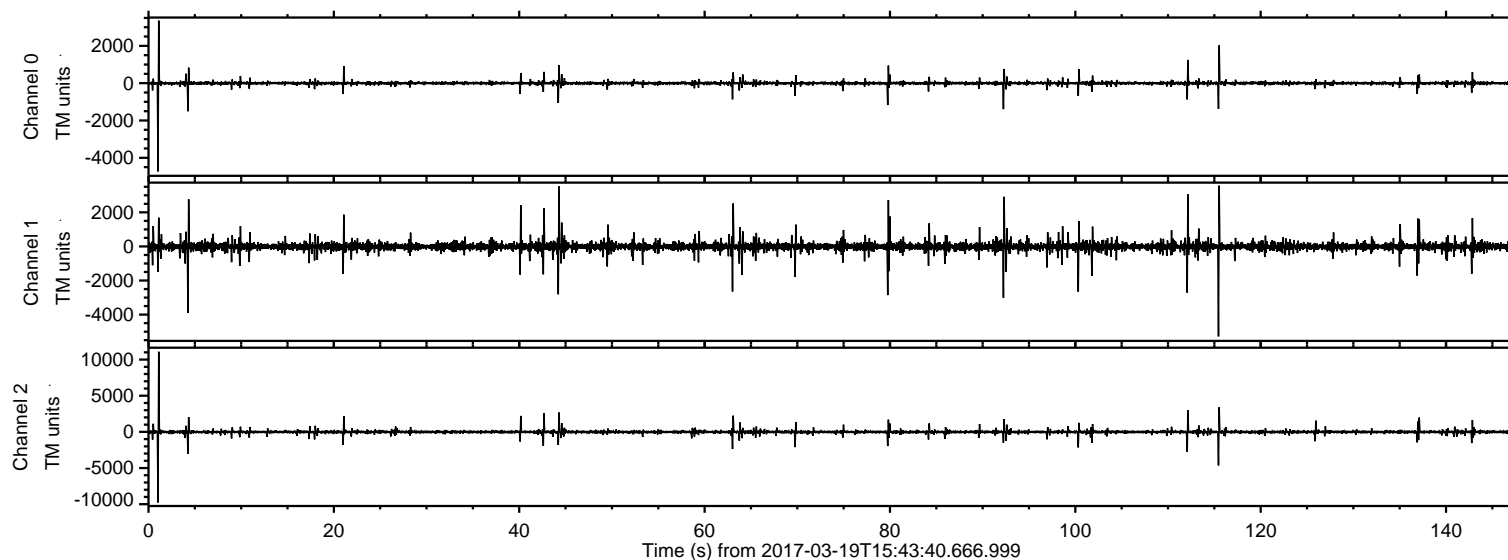
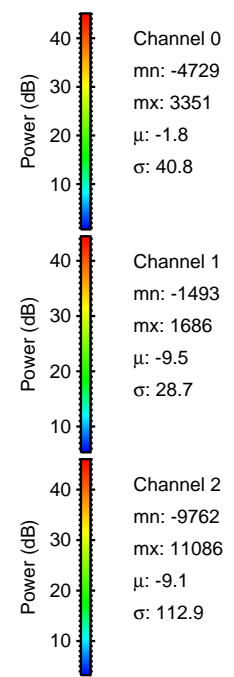
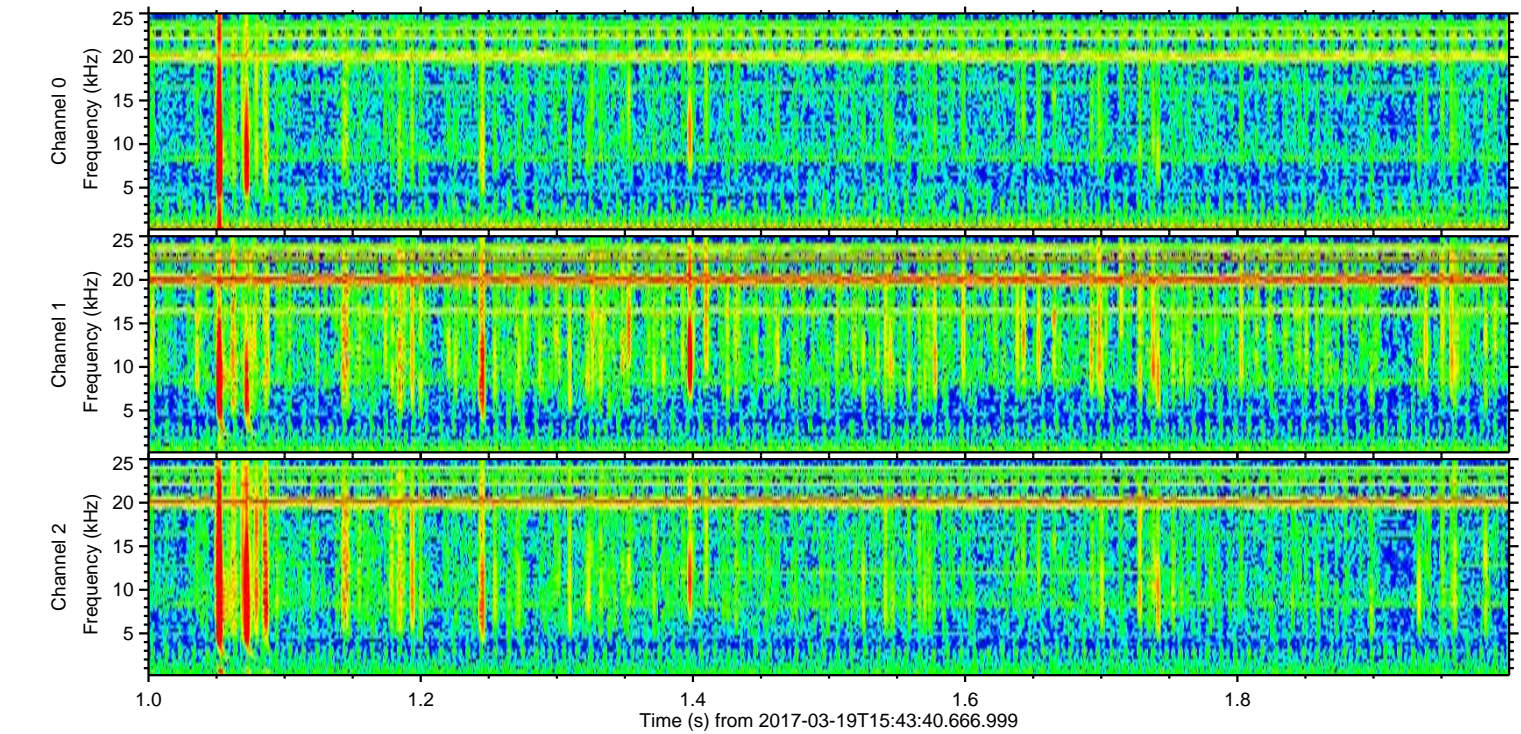
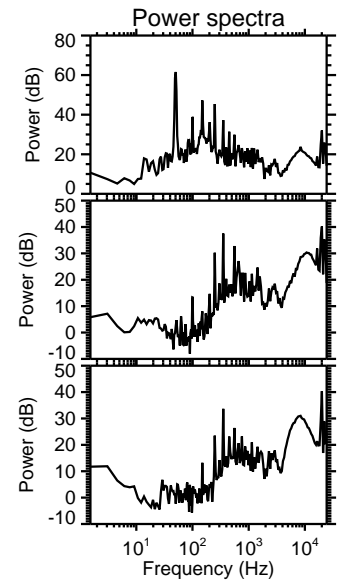
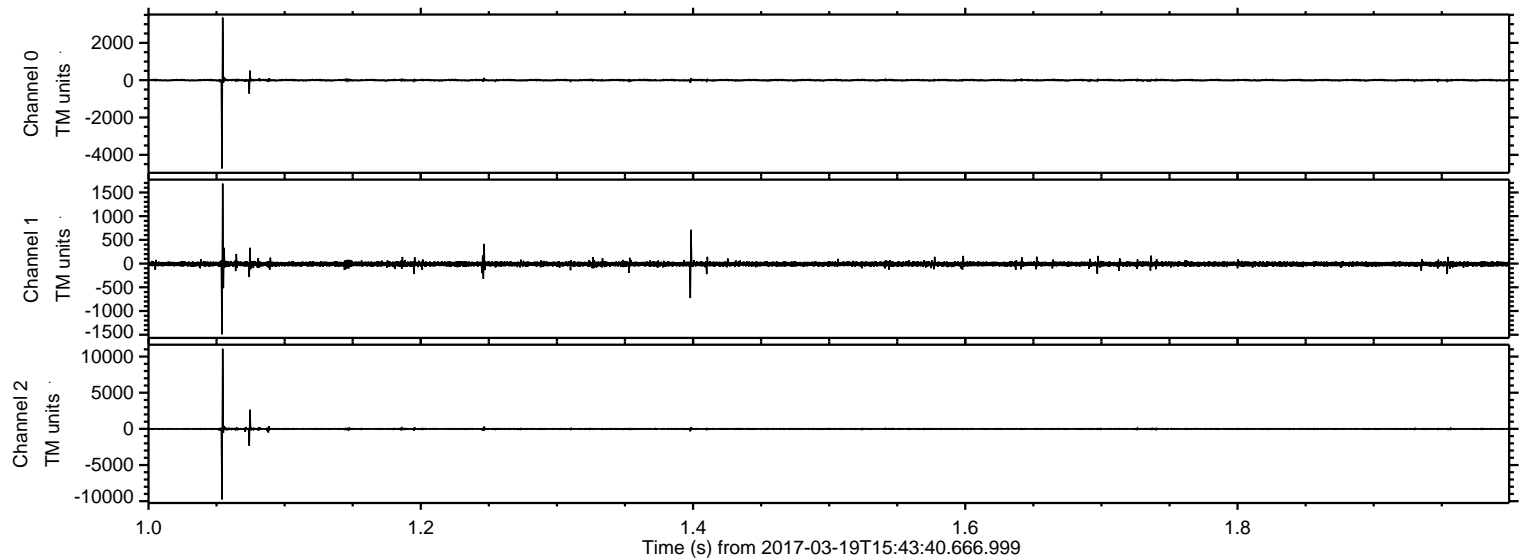


ELMAVAN 3D WAVEFORMS (Measured data sampled at 50 kHz) 51000 packets of 144 samples from 2017-03-19T15:43:40.666.999.

Processed Sun Mar 19 16:51:28 2017 by ELM ver.2012-10-06 from 001__elm20170319_154339__dat00.bin

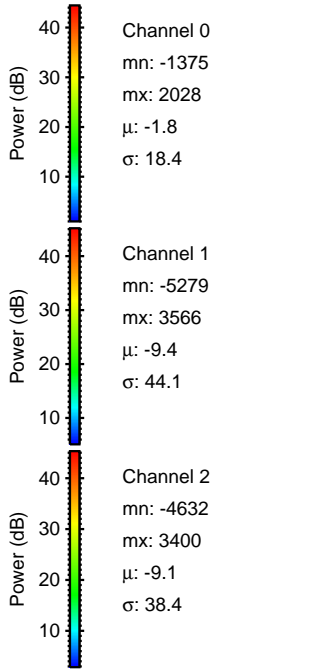
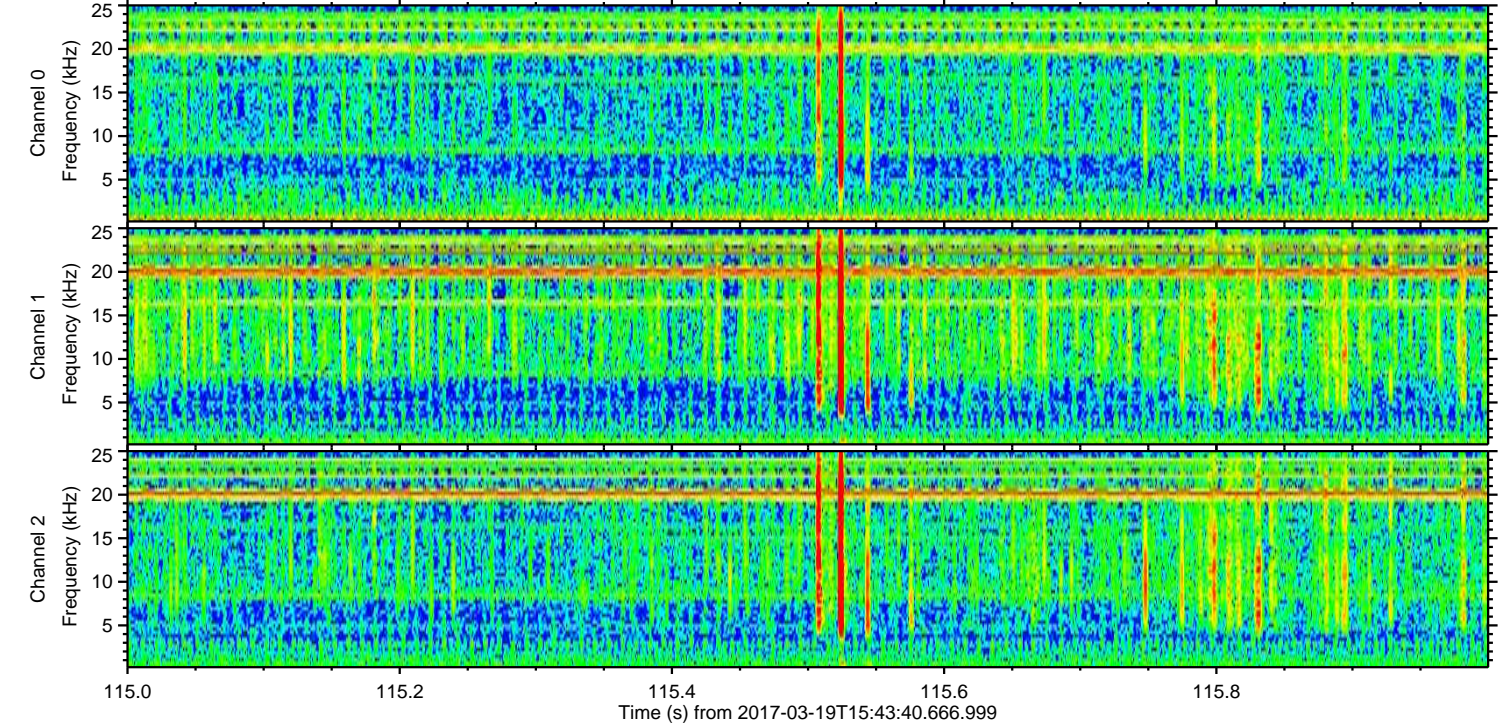
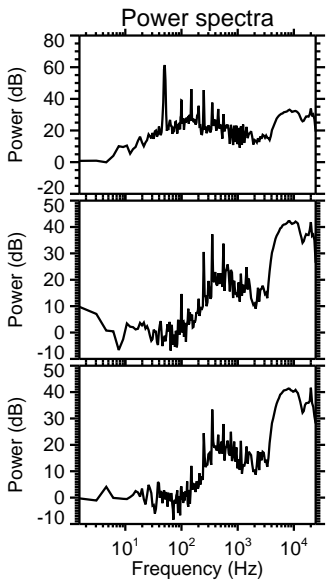
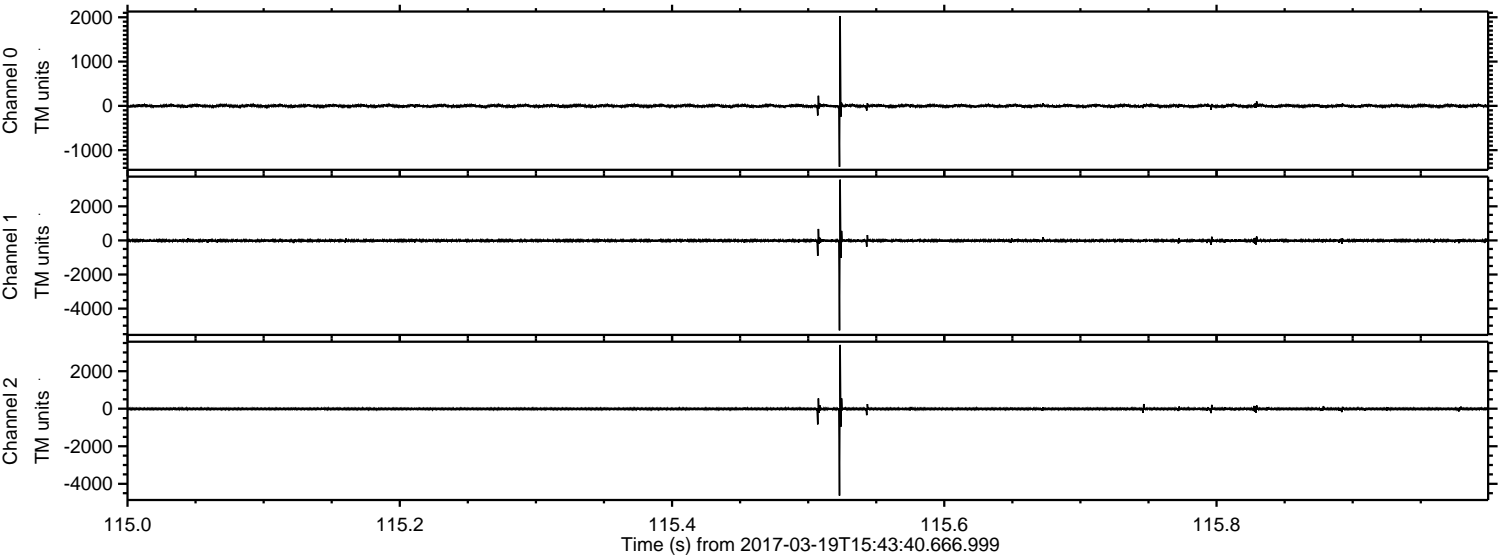


Processed Sun Mar 19 16:51:39 2017 by ELM ver.2012-10-06 from 001__elm20170319_154339__dat00.bin

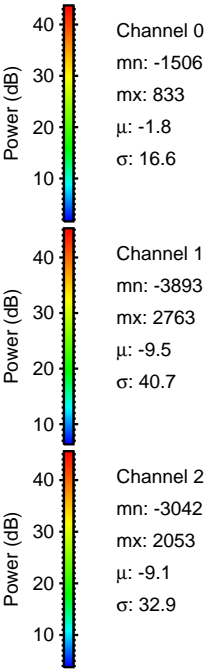
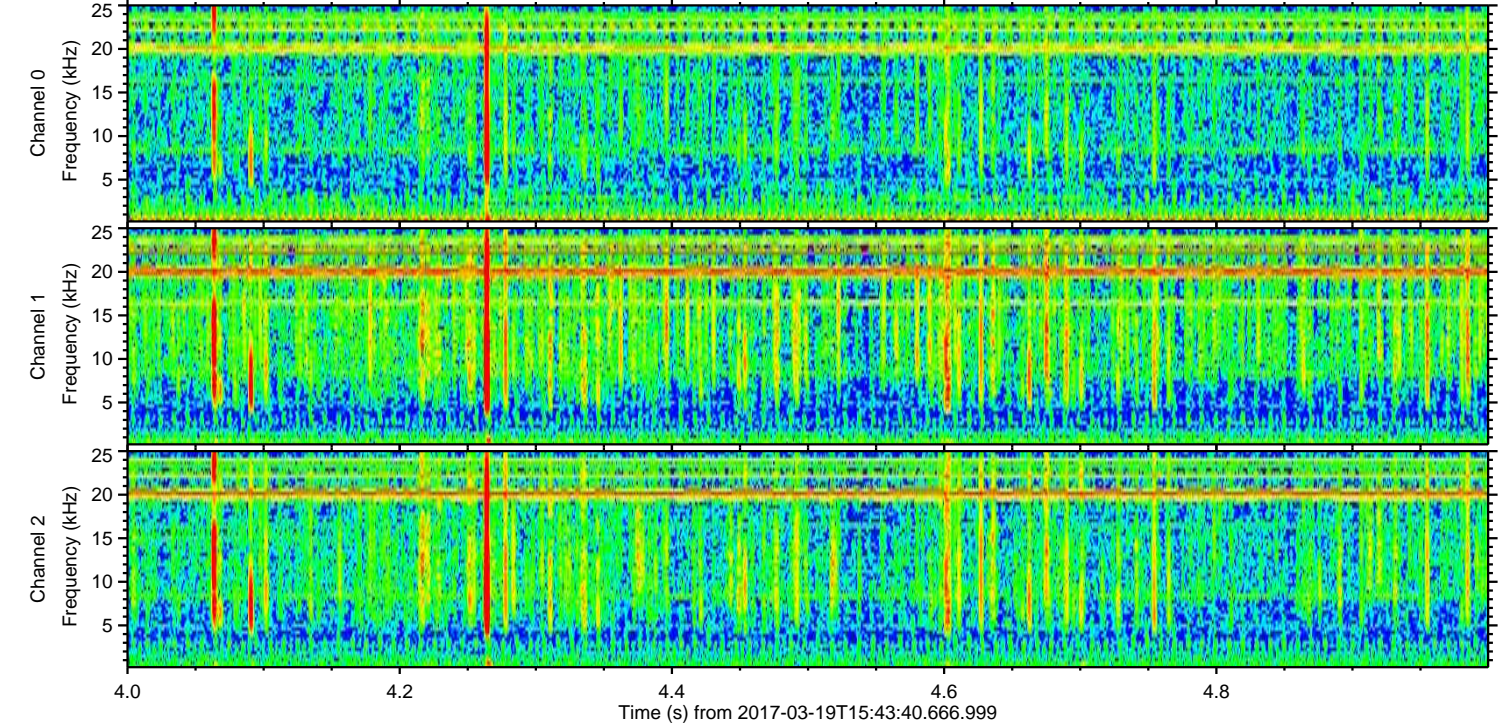
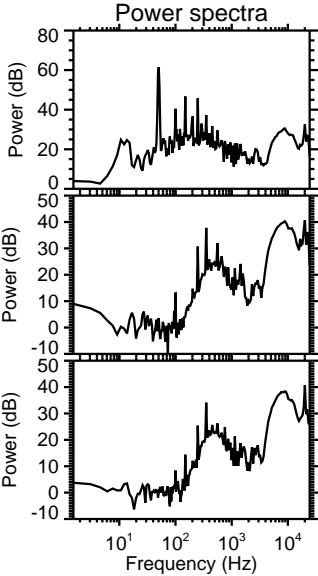
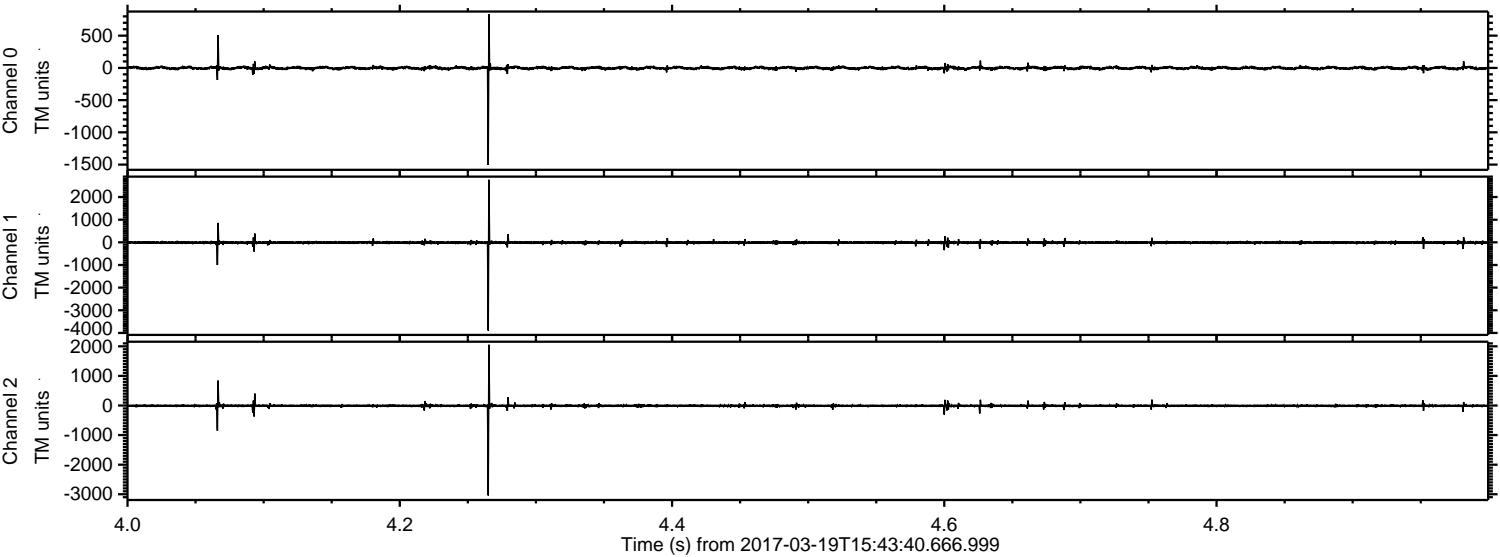


ELMAVAN 3D WAVEFORMS (Measured data sampled at 50 kHz) 51000 packets of 144 samples from 2017-03-19T15:43:40.666.999. Part 116/147

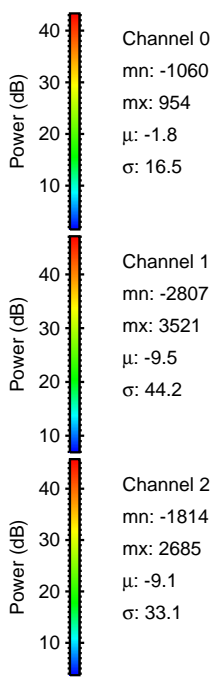
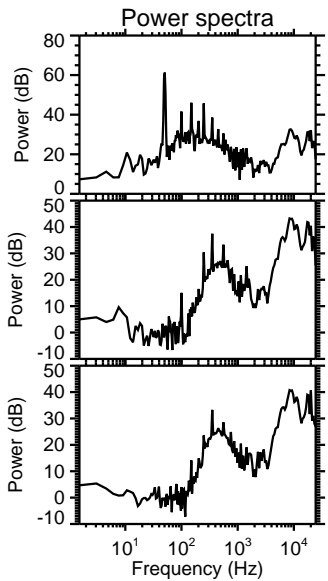
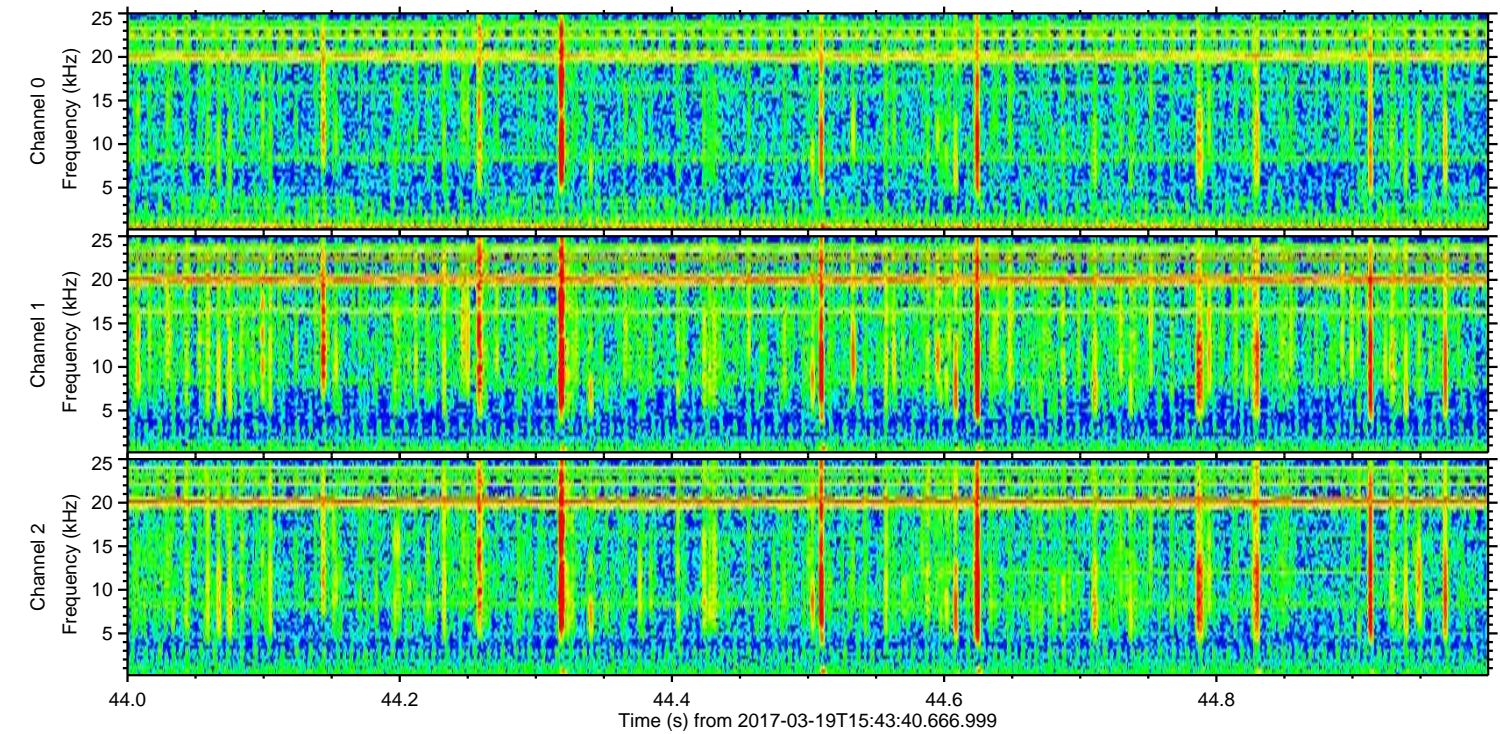
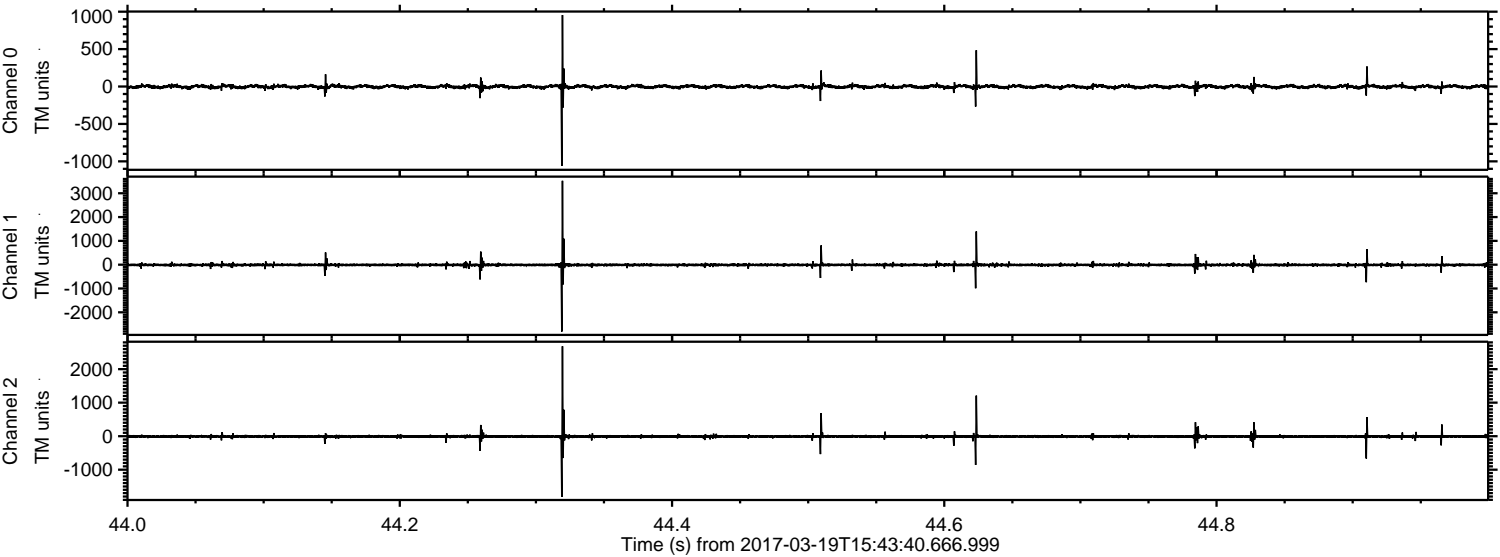
Processed Sun Mar 19 16:51:40 2017 by ELM ver.2012-10-06 from 001__elm20170319_154339__dat00.bin



Processed Sun Mar 19 16:51:41 2017 by ELM ver.2012-10-06 from 001__elm20170319_154339__dat00.bin

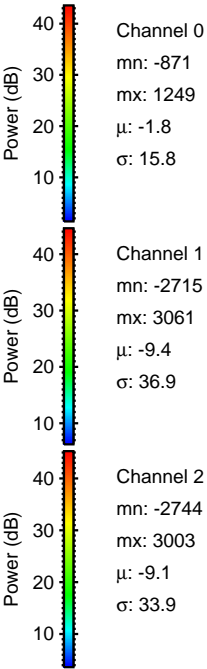
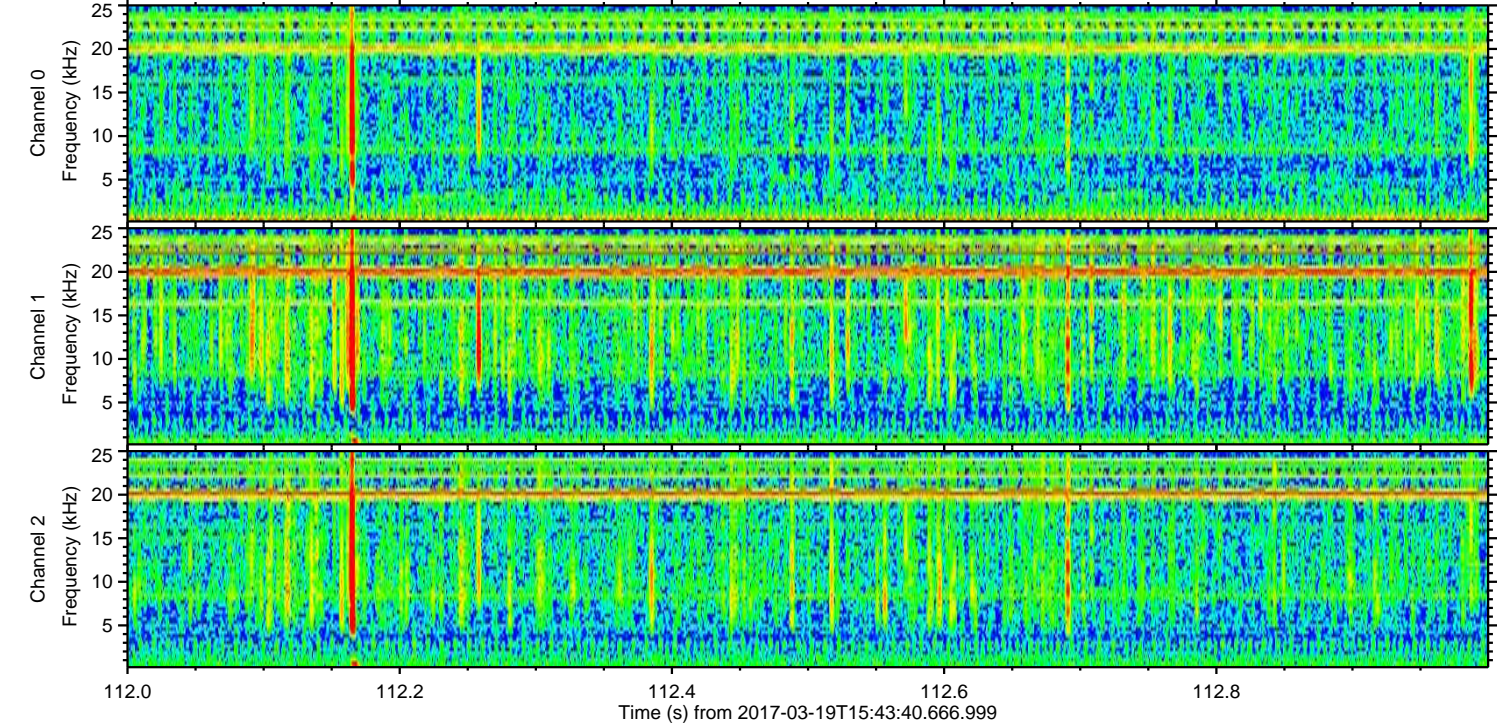
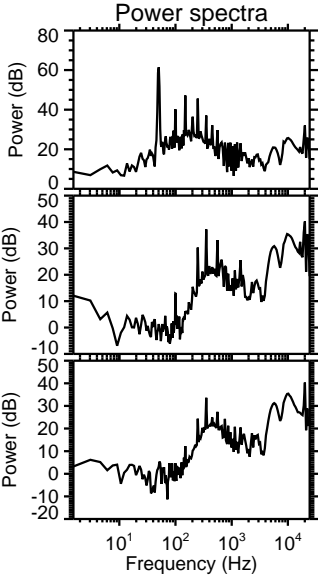
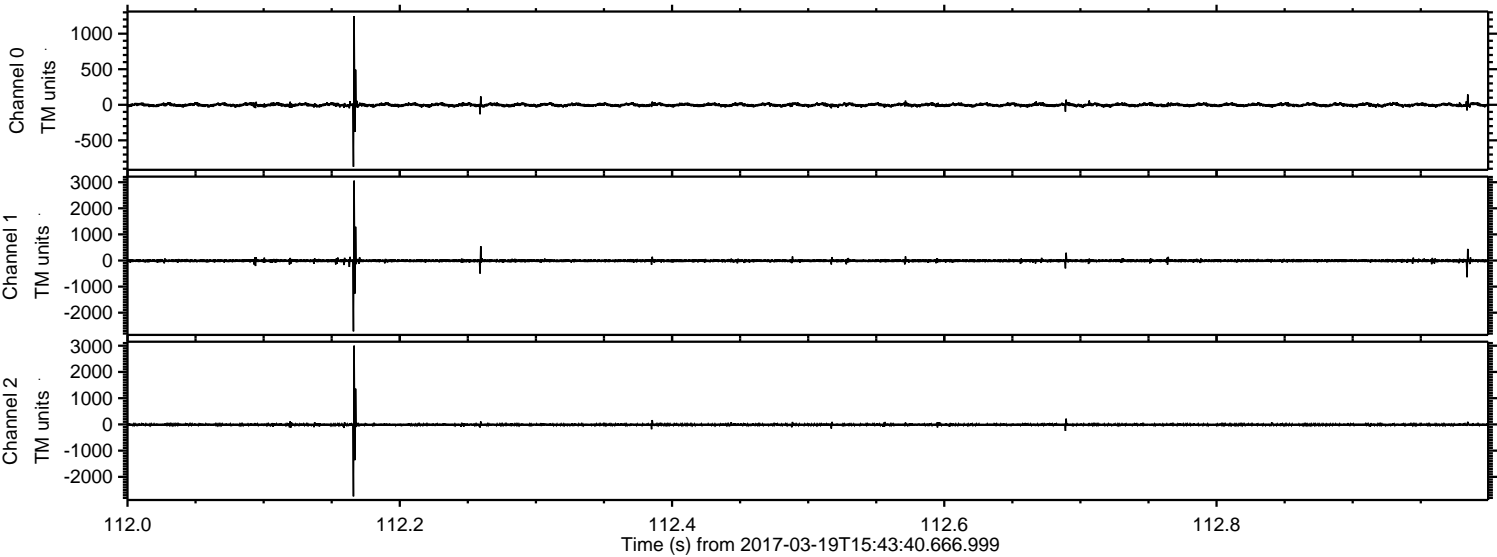


Processed Sun Mar 19 16:51:42 2017 by ELM ver.2012-10-06 from 001__elm20170319_154339__dat00.bin

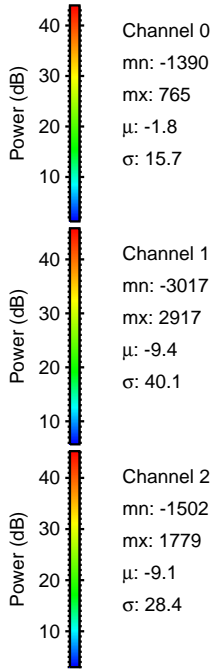
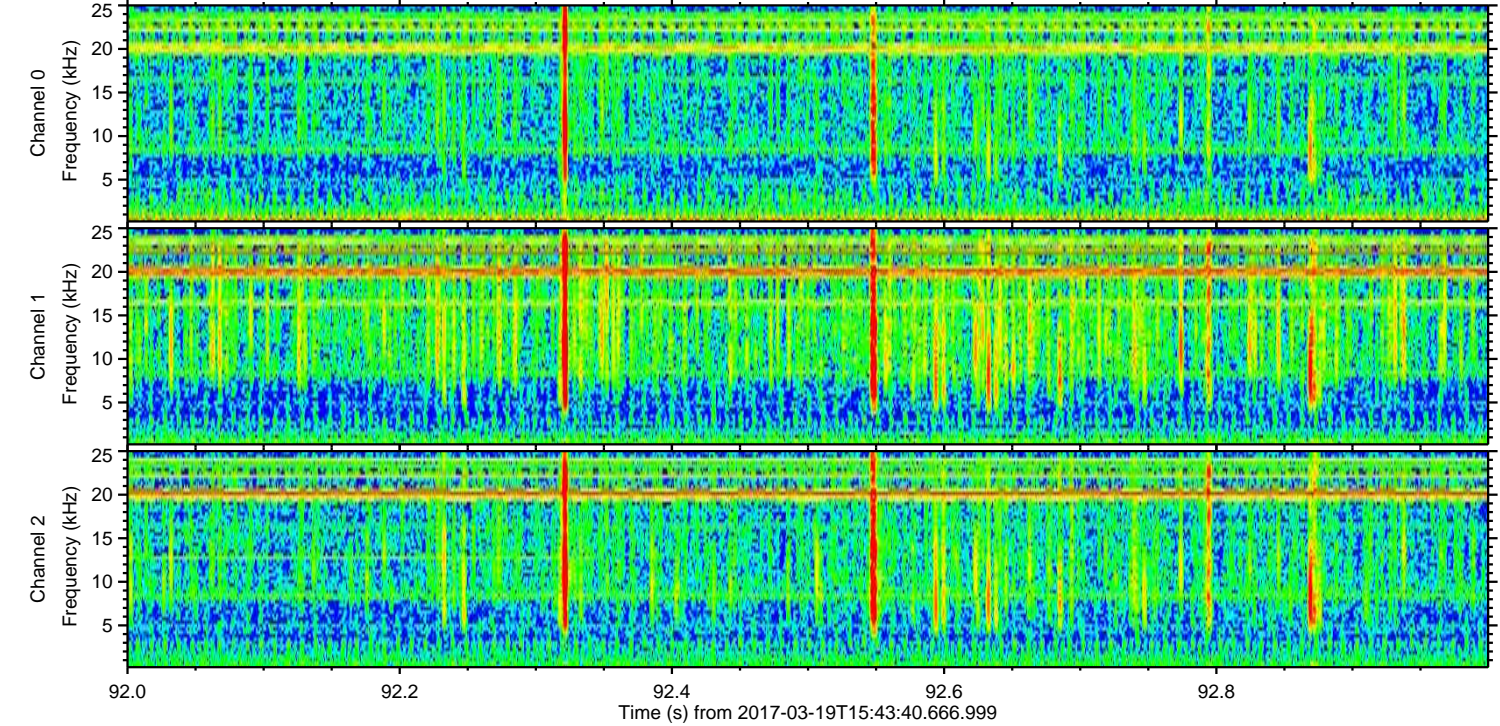
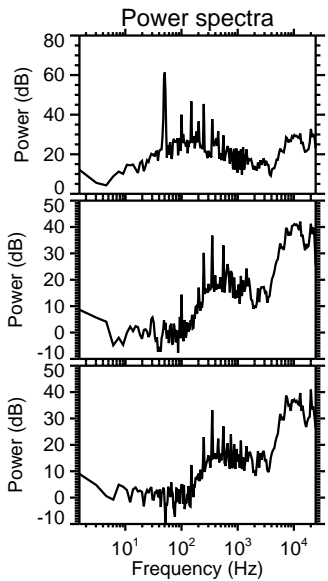
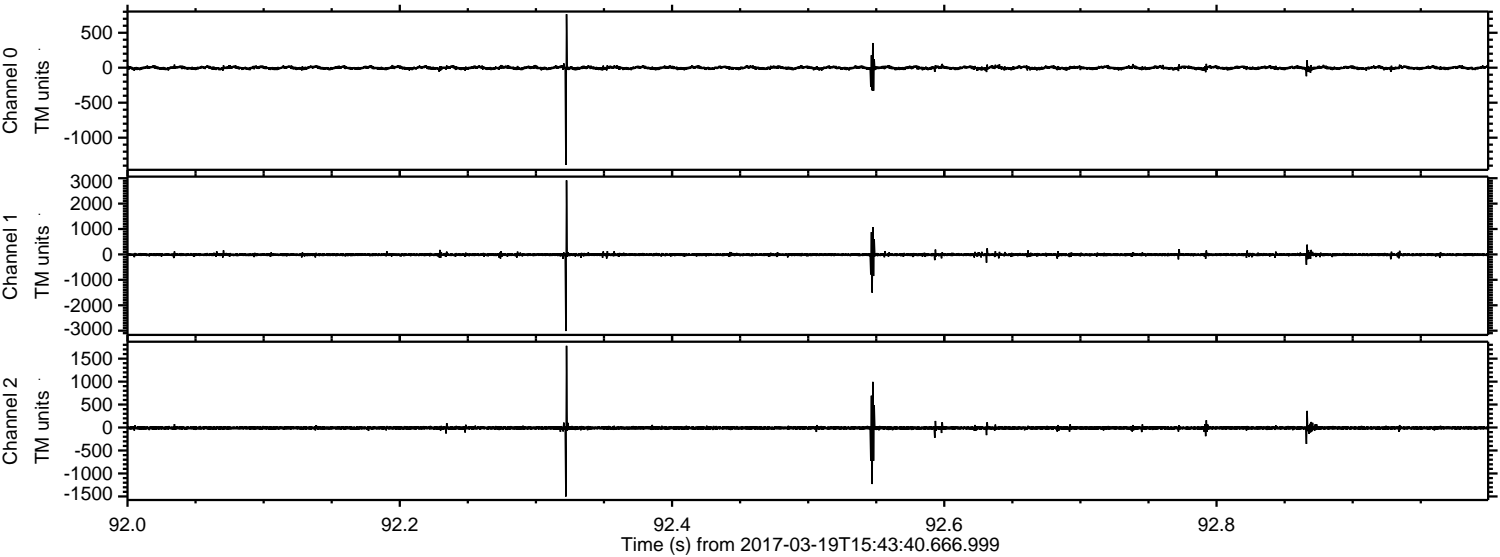


ELMAVAN 3D WAVEFORMS (Measured data sampled at 50 kHz) 51000 packets of 144 samples from 2017-03-19T15:43:40.666.999. Part 113/147

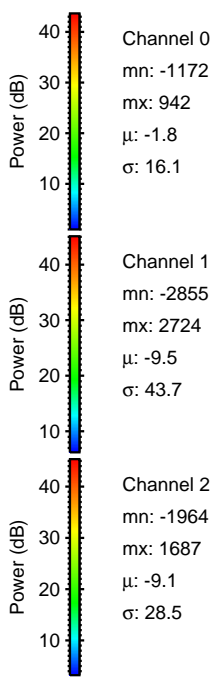
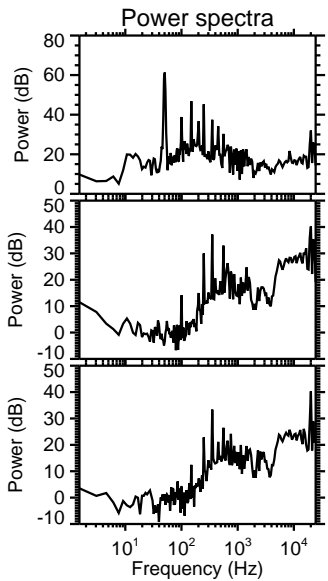
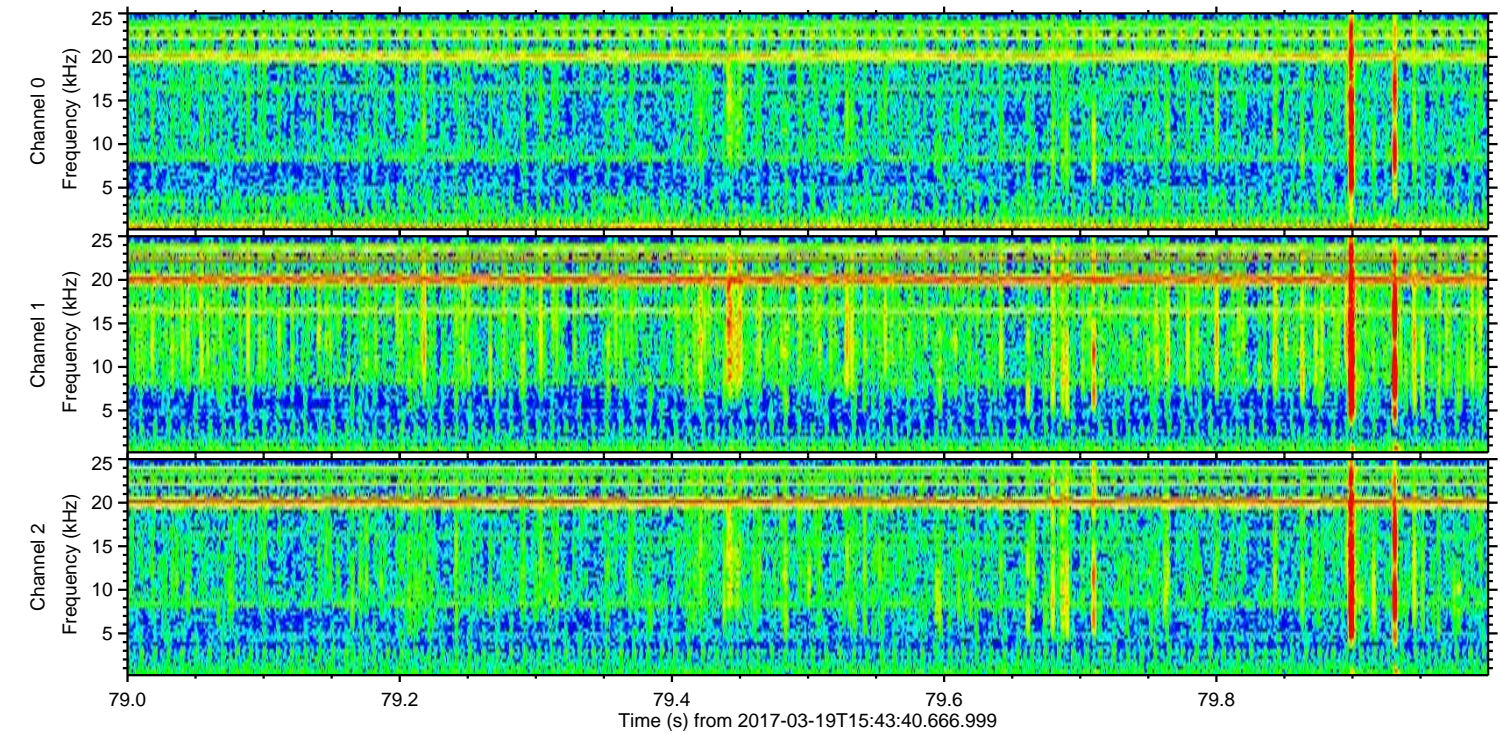
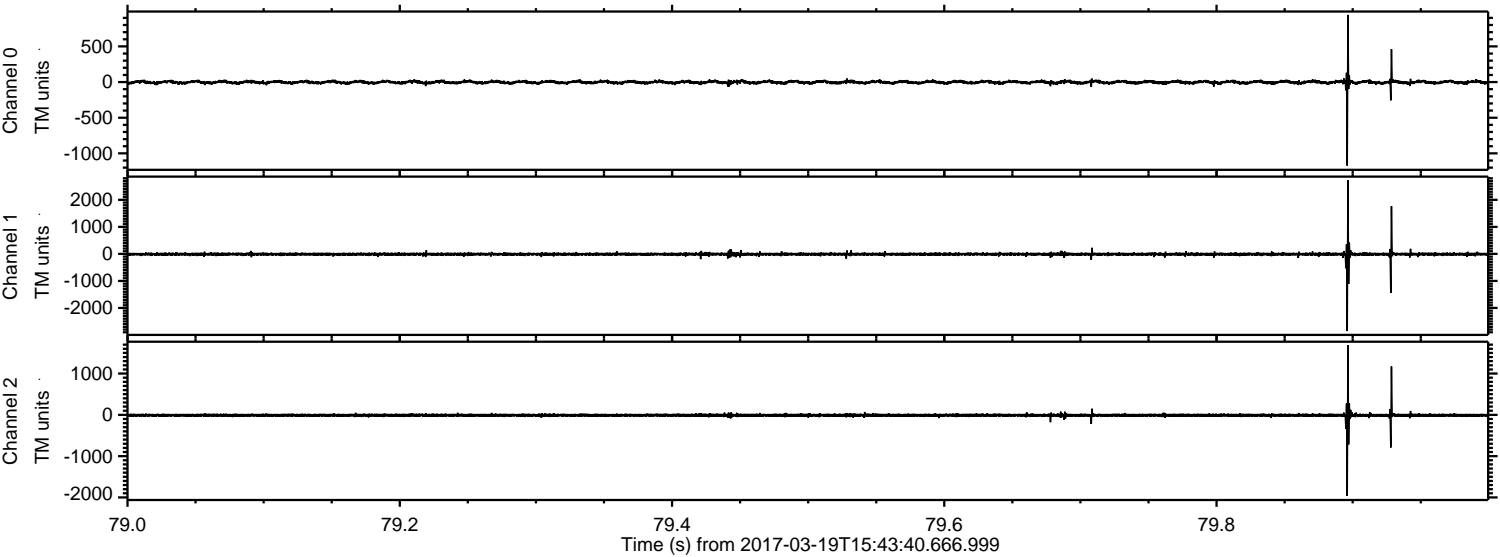
Processed Sun Mar 19 16:51:43 2017 by ELM ver.2012-10-06 from 001__elm20170319_154339__dat00.bin



Processed Sun Mar 19 16:51:44 2017 by ELM ver.2012-10-06 from 001__elm20170319_154339__dat00.bin

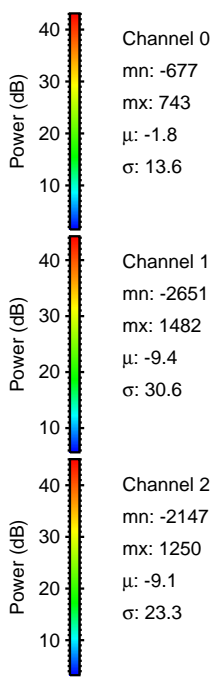
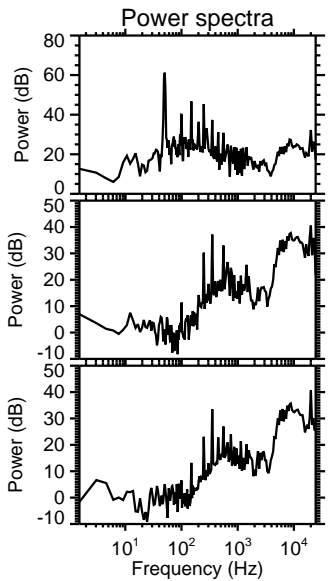
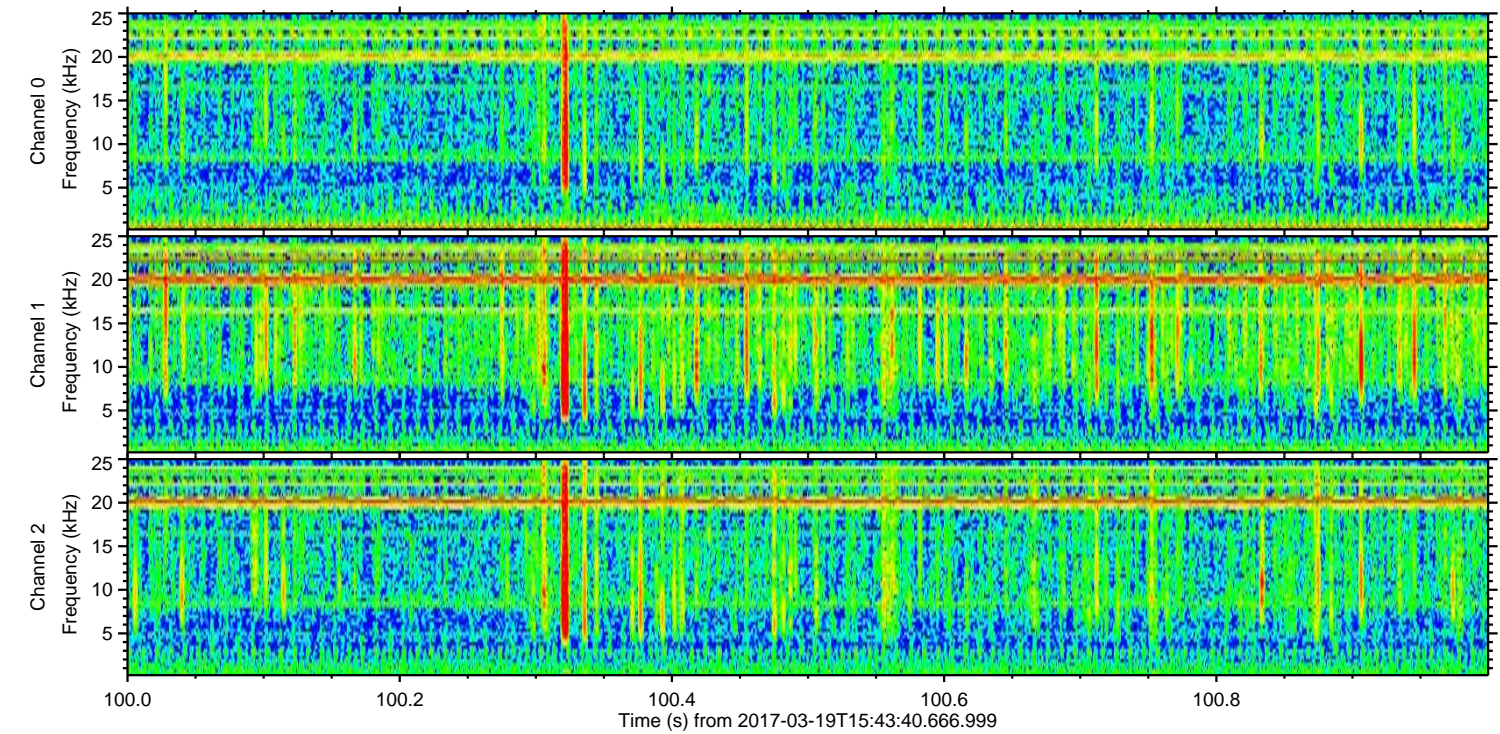
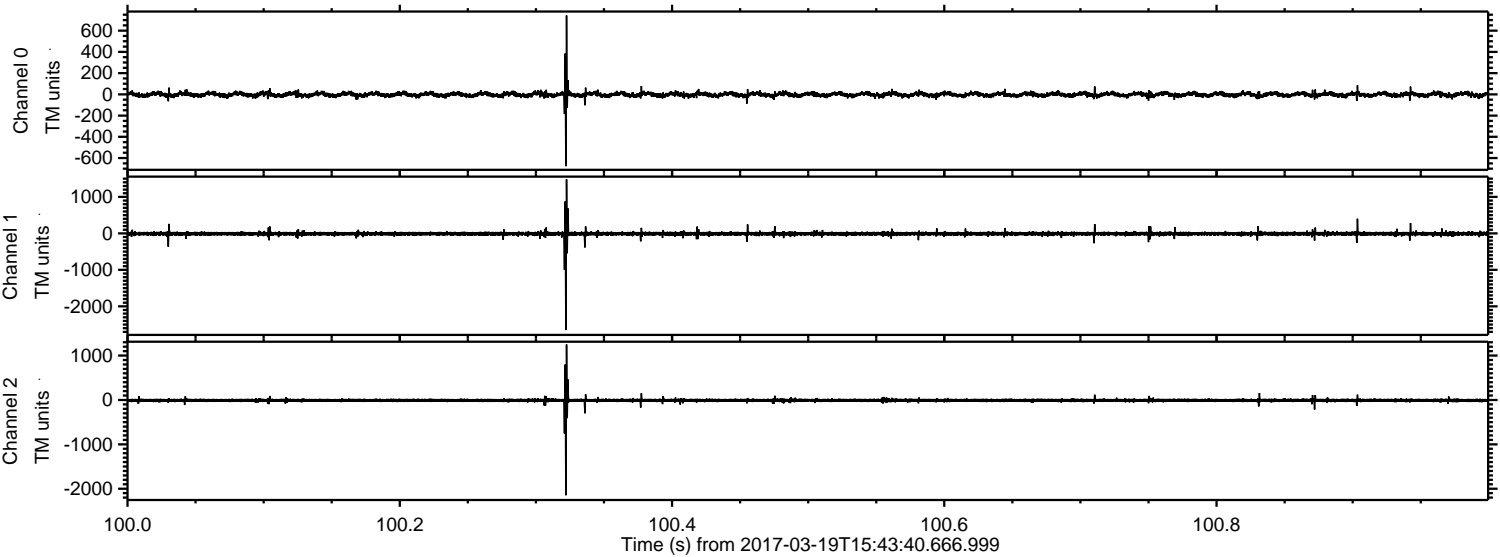


Processed Sun Mar 19 16:51:45 2017 by ELM ver.2012-10-06 from 001__elm20170319_154339__dat00.bin

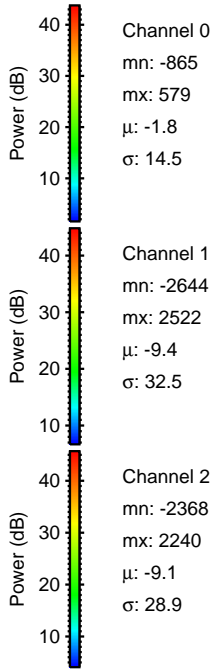
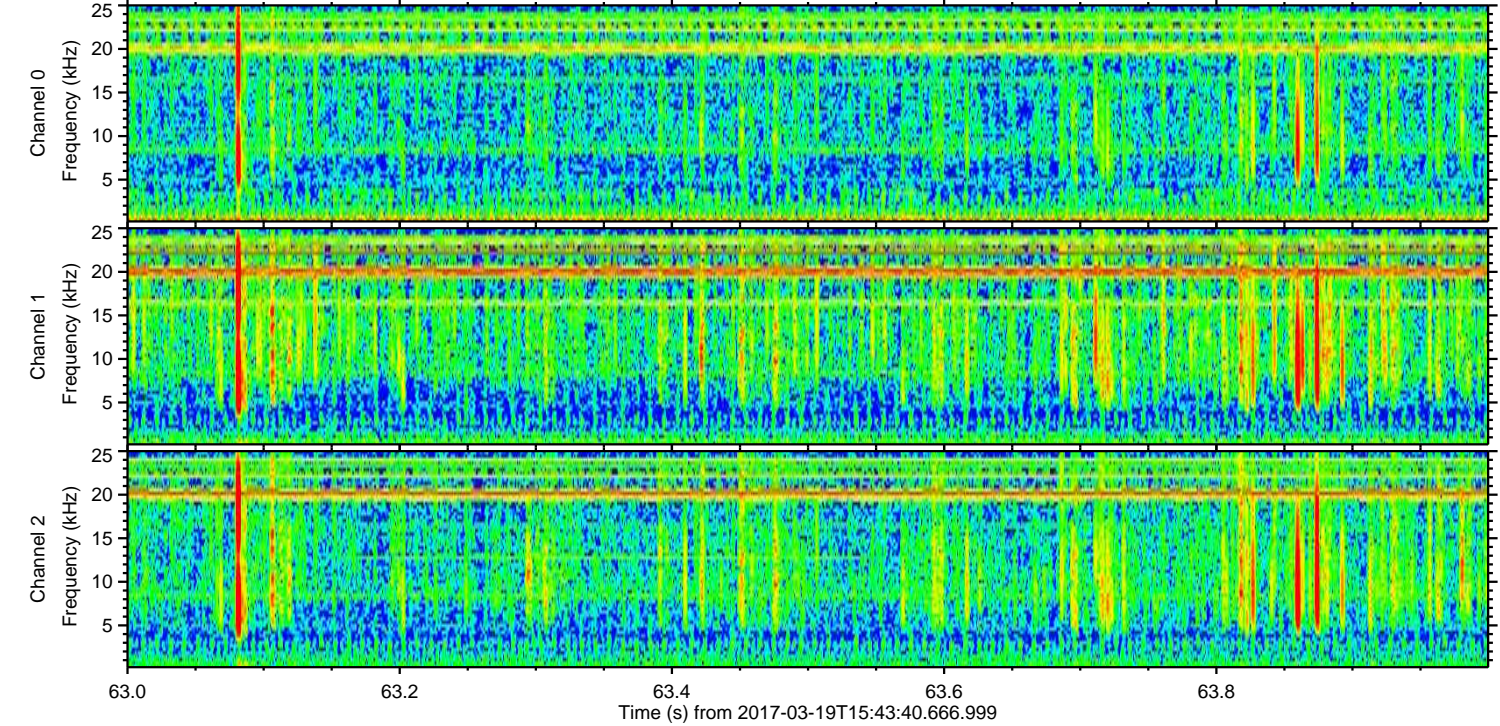
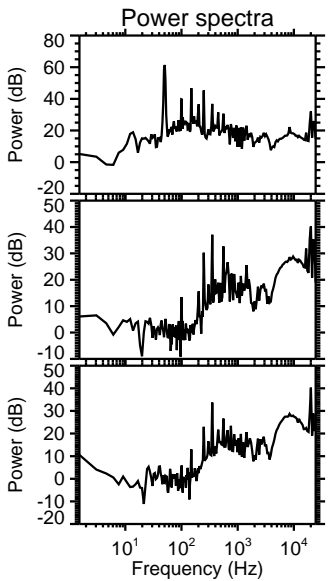
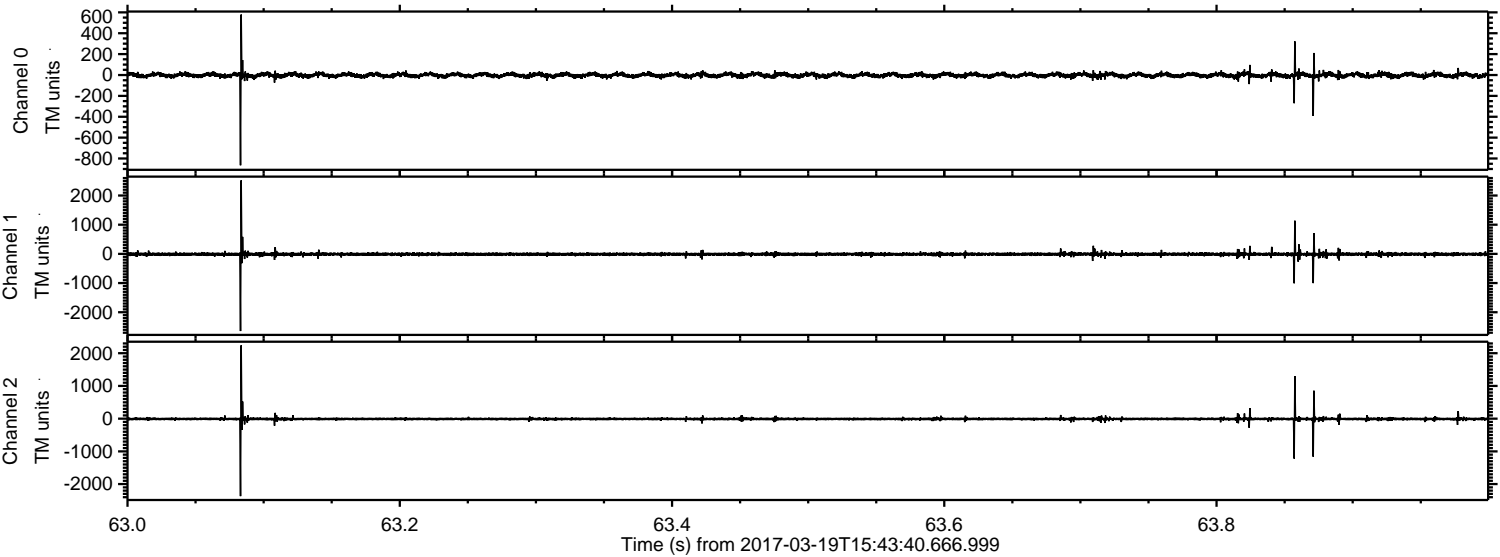


ELMAVAN 3D WAVEFORMS (Measured data sampled at 50 kHz) 51000 packets of 144 samples from 2017-03-19T15:43:40.666.999. Part 101/147

Processed Sun Mar 19 16:51:46 2017 by ELM ver.2012-10-06 from 001__elm20170319_154339__dat00.bin



Processed Sun Mar 19 16:51:47 2017 by ELM ver.2012-10-06 from 001__elm20170319_154339__dat00.bin



Channel 0
mn: -865
mx: 579
 μ : -1.8
 σ : 14.5

Channel 1
mn: -2644
mx: 2522
 μ : -9.4
 σ : 32.5

Channel 2
mn: -2368
mx: 2240
 μ : -9.1
 σ : 28.9

