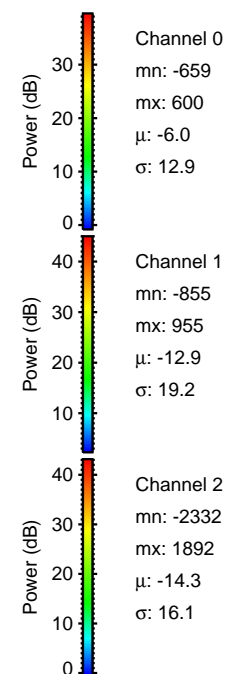
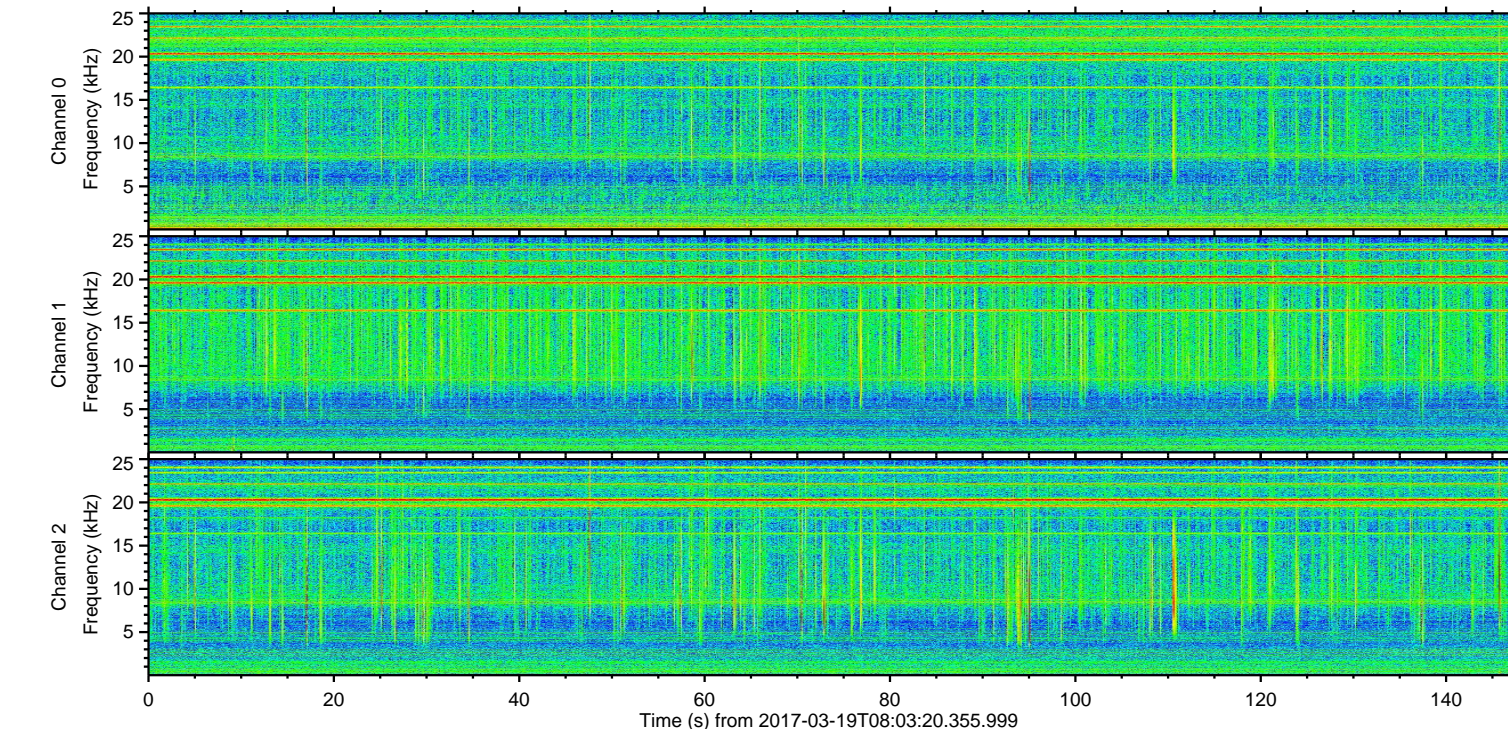
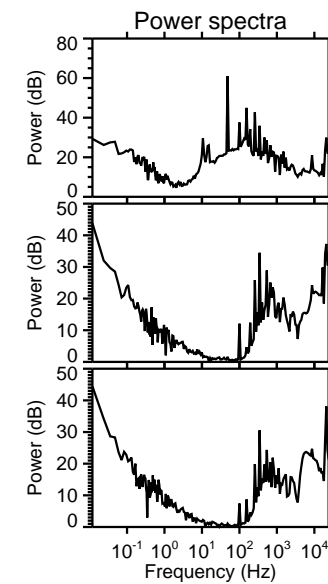
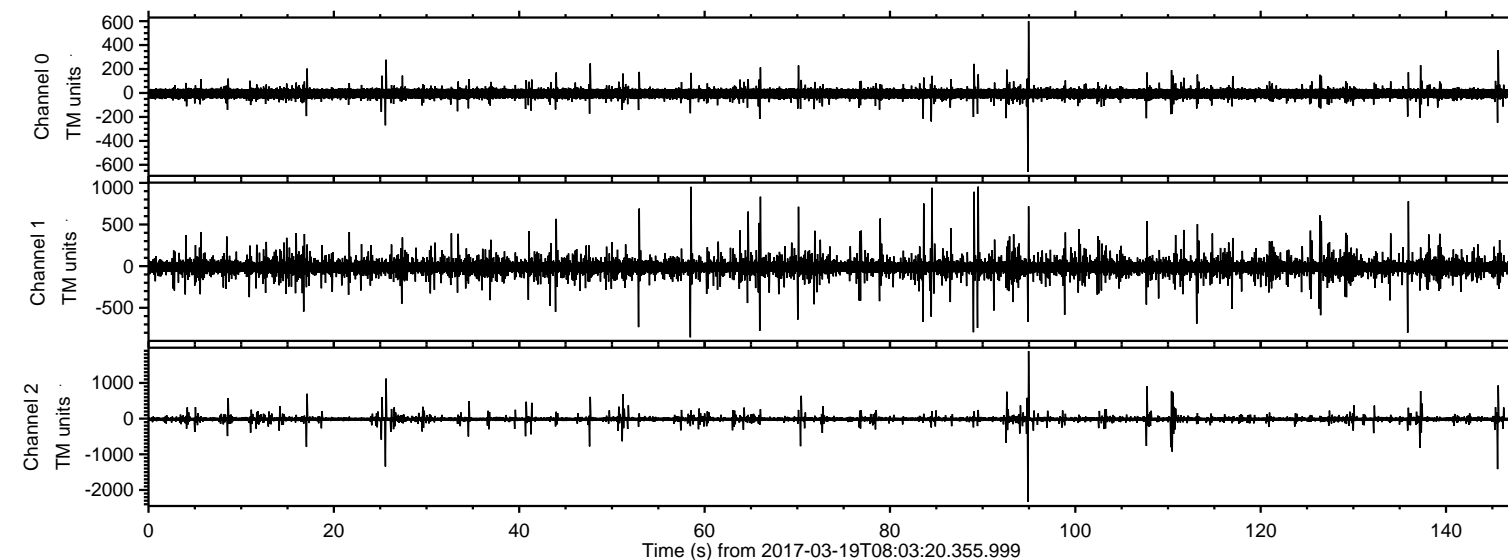
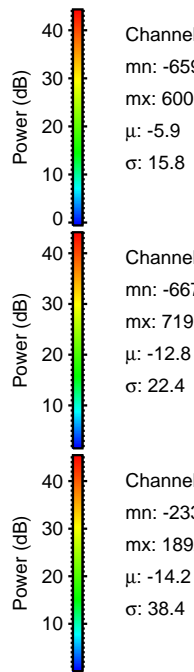
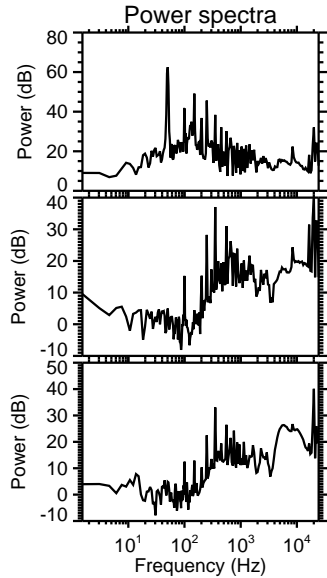
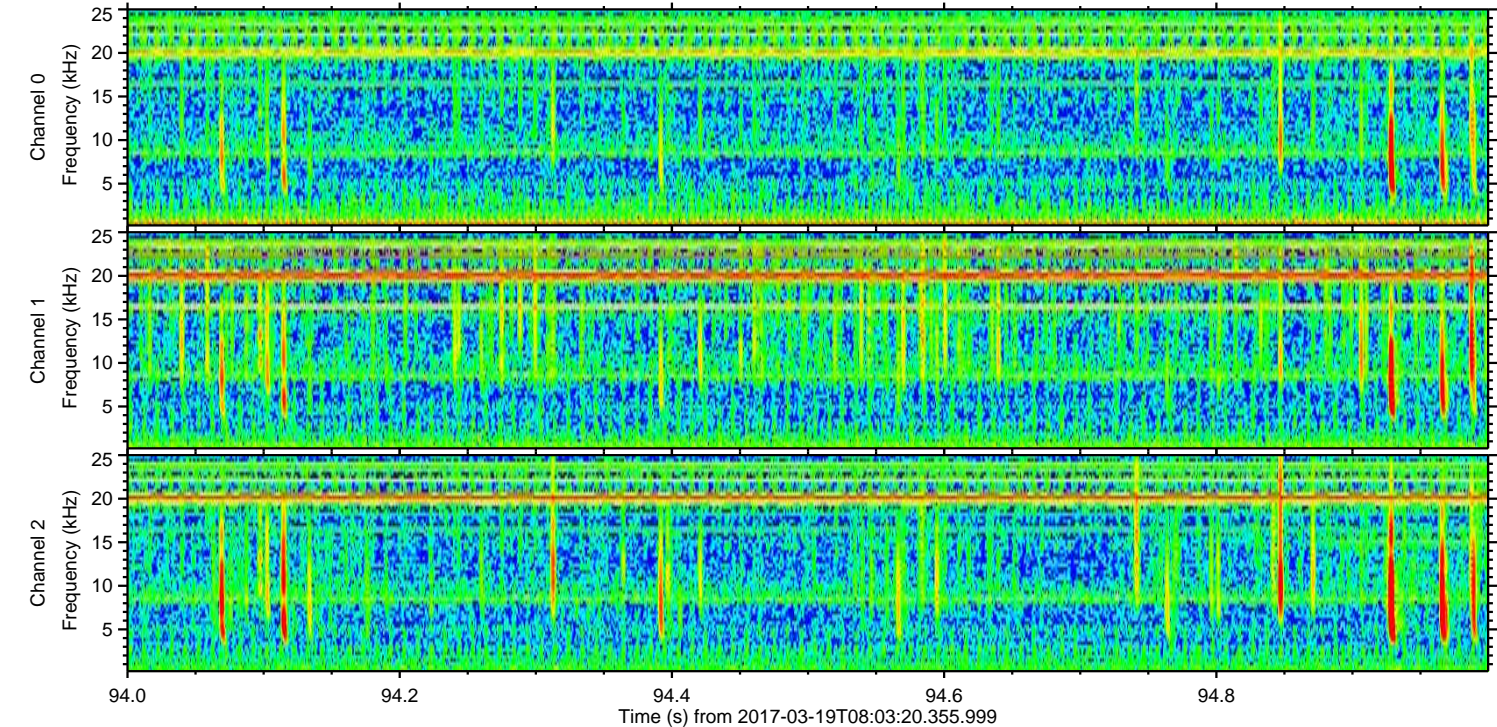
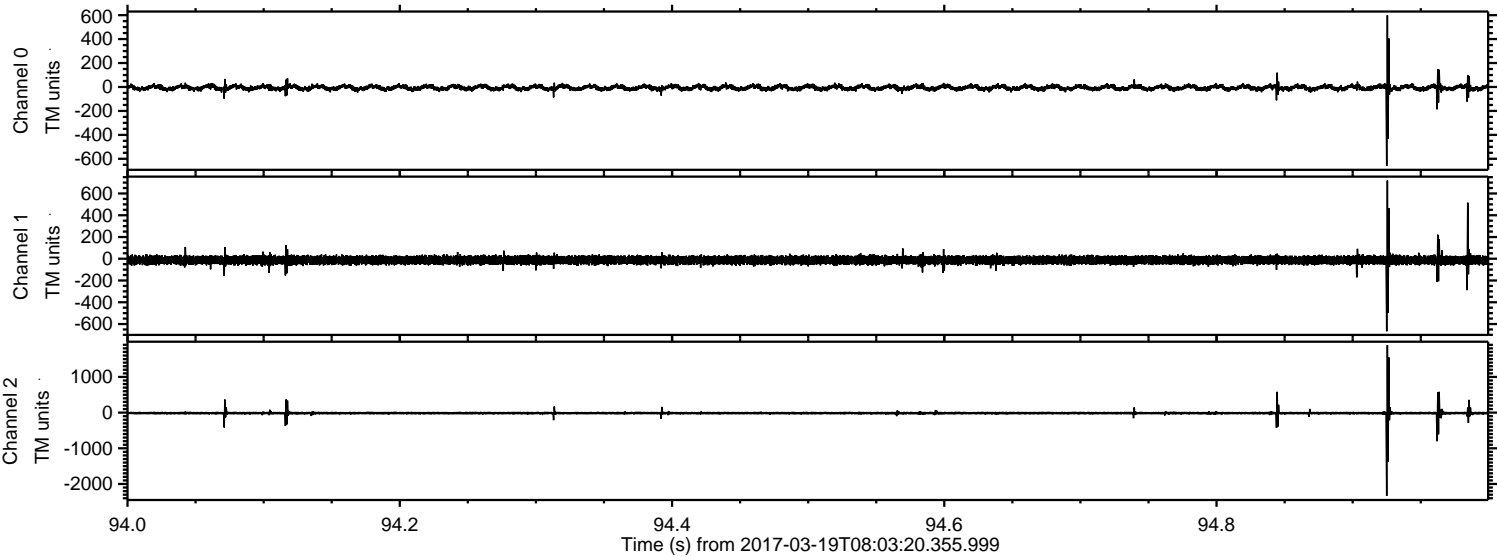


ELMAVAN 3D WAVEFORMS (Measured data sampled at 50 kHz) 51000 packets of 144 samples from 2017-03-19T08:03:20.355.999.

Processed Sun Mar 19 09:11:08 2017 by ELM ver.2012-10-06 from 001__elm20170319_080319__dat00.bin

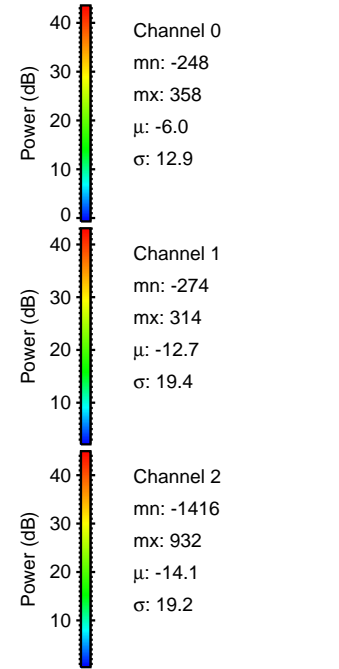
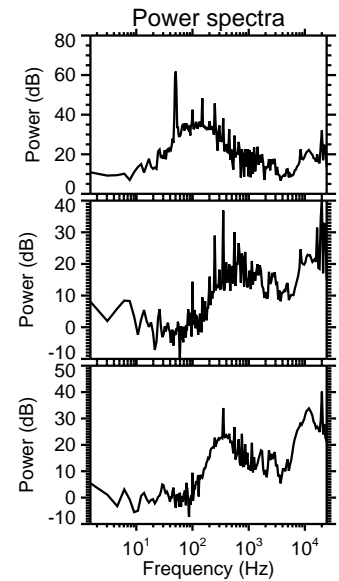
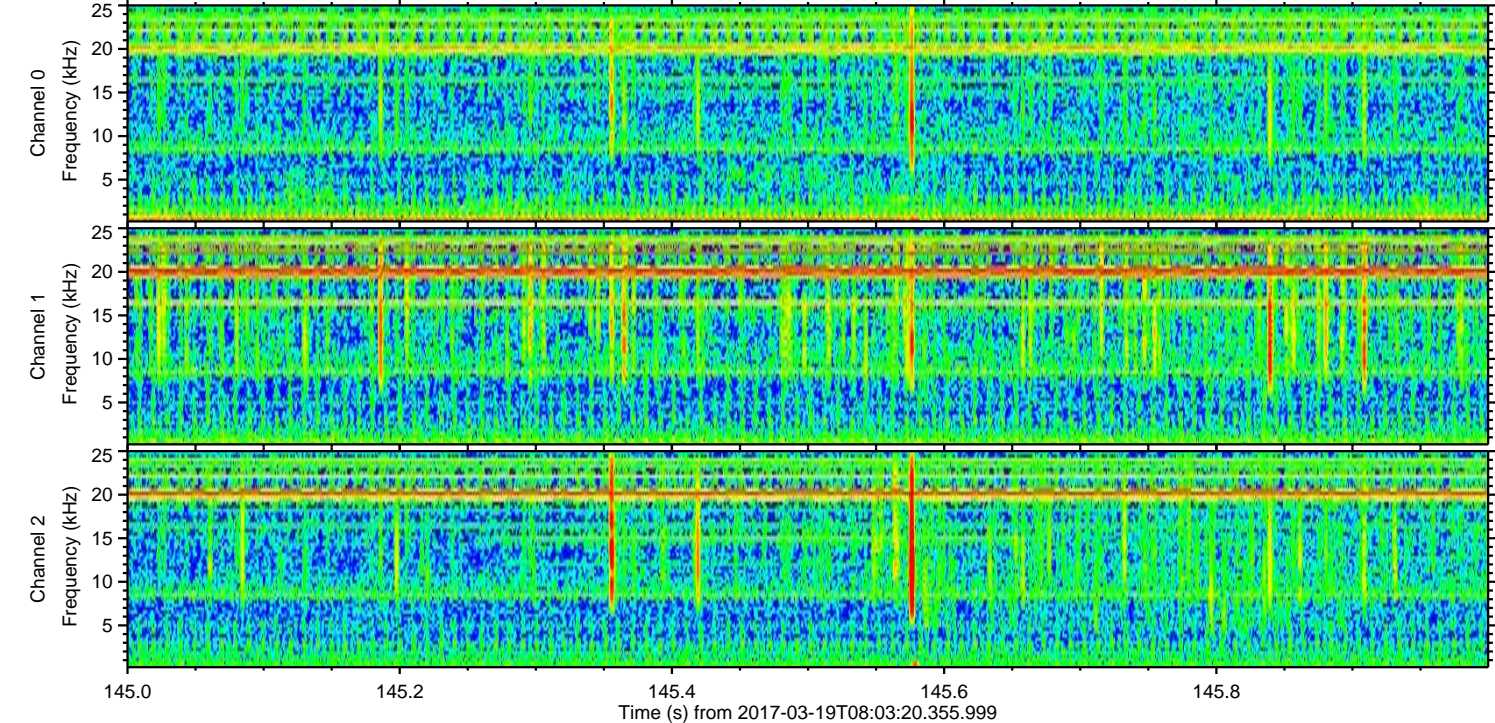
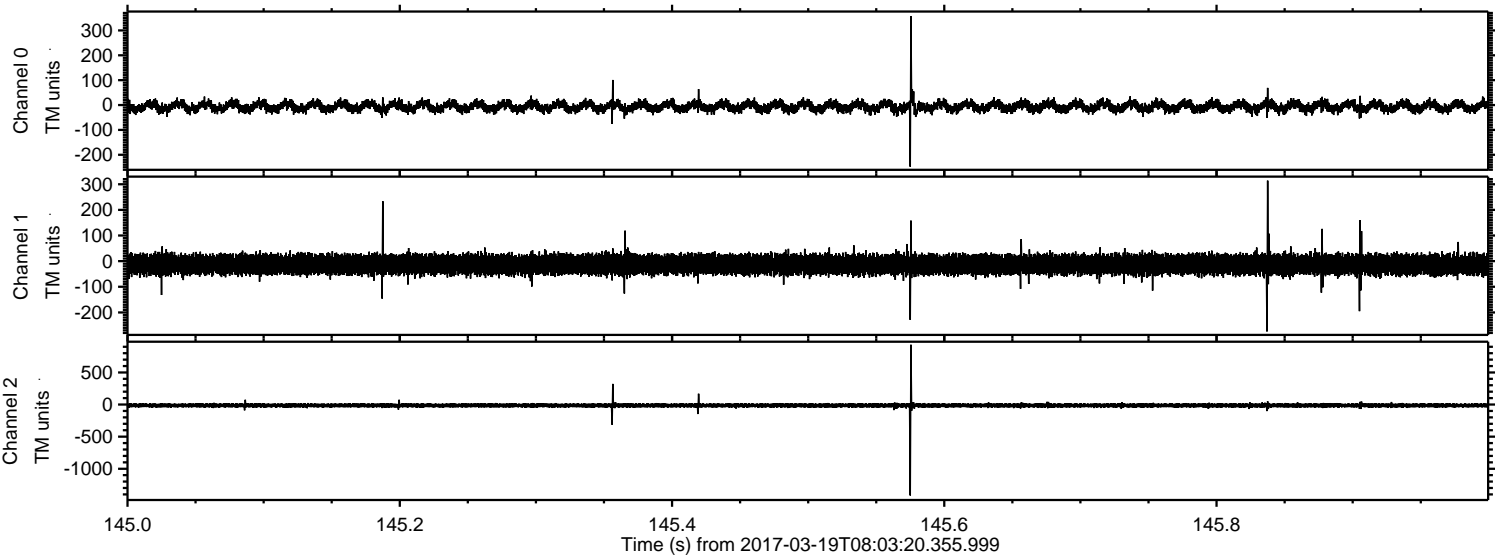


Processed Sun Mar 19 09:11:19 2017 by ELM ver.2012-10-06 from 001__elm20170319_080319__dat00.bin

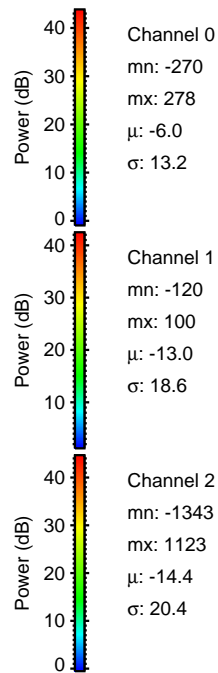
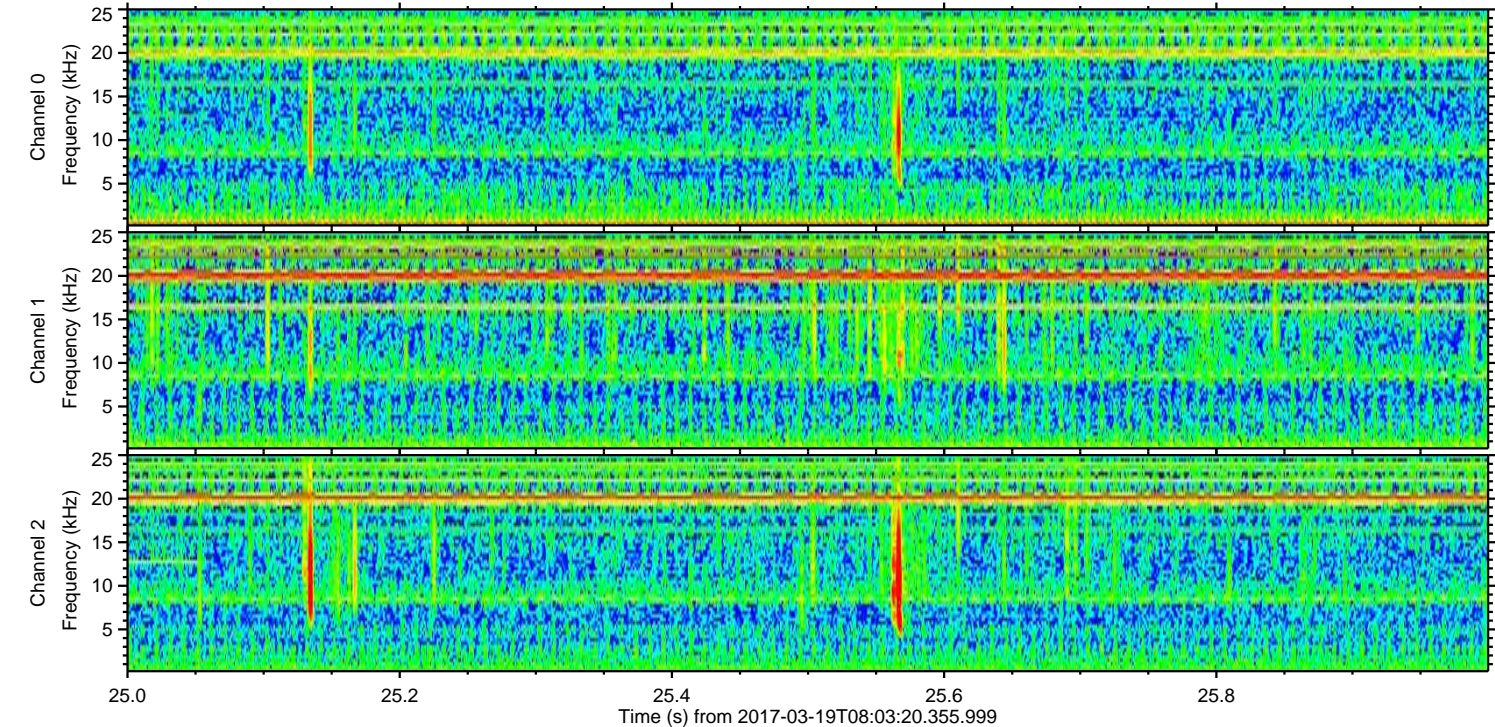
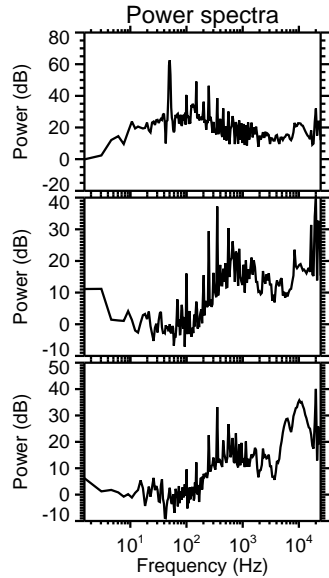
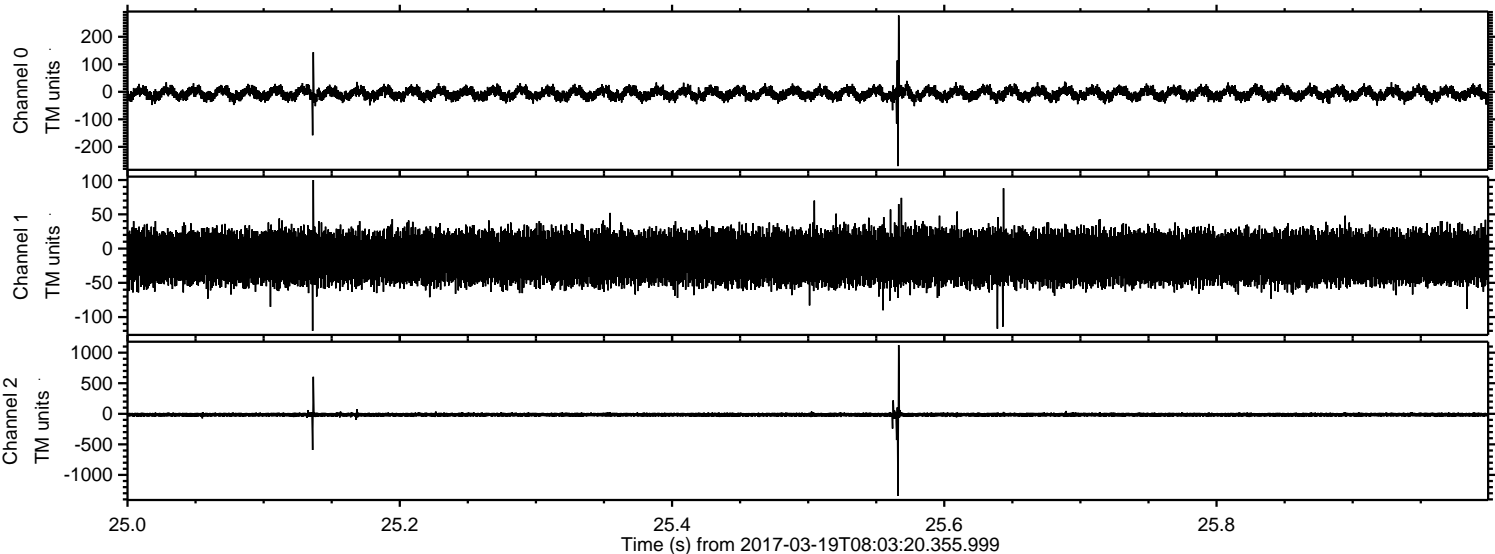


ELMAVAN 3D WAVEFORMS (Measured data sampled at 50 kHz) 51000 packets of 144 samples from 2017-03-19T08:03:20.355.999. Part 146/147

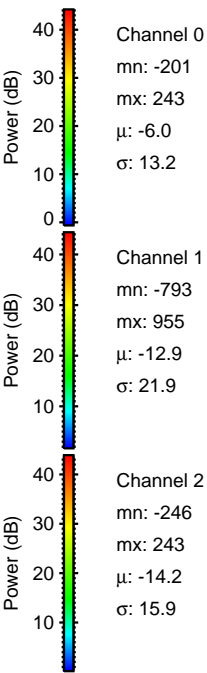
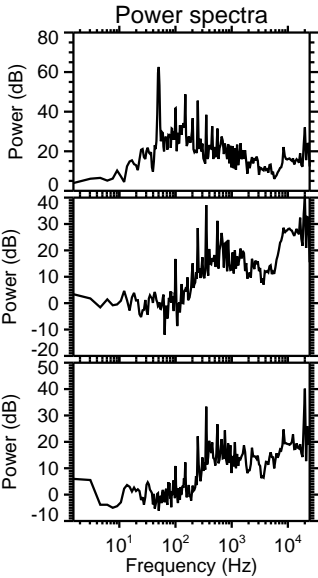
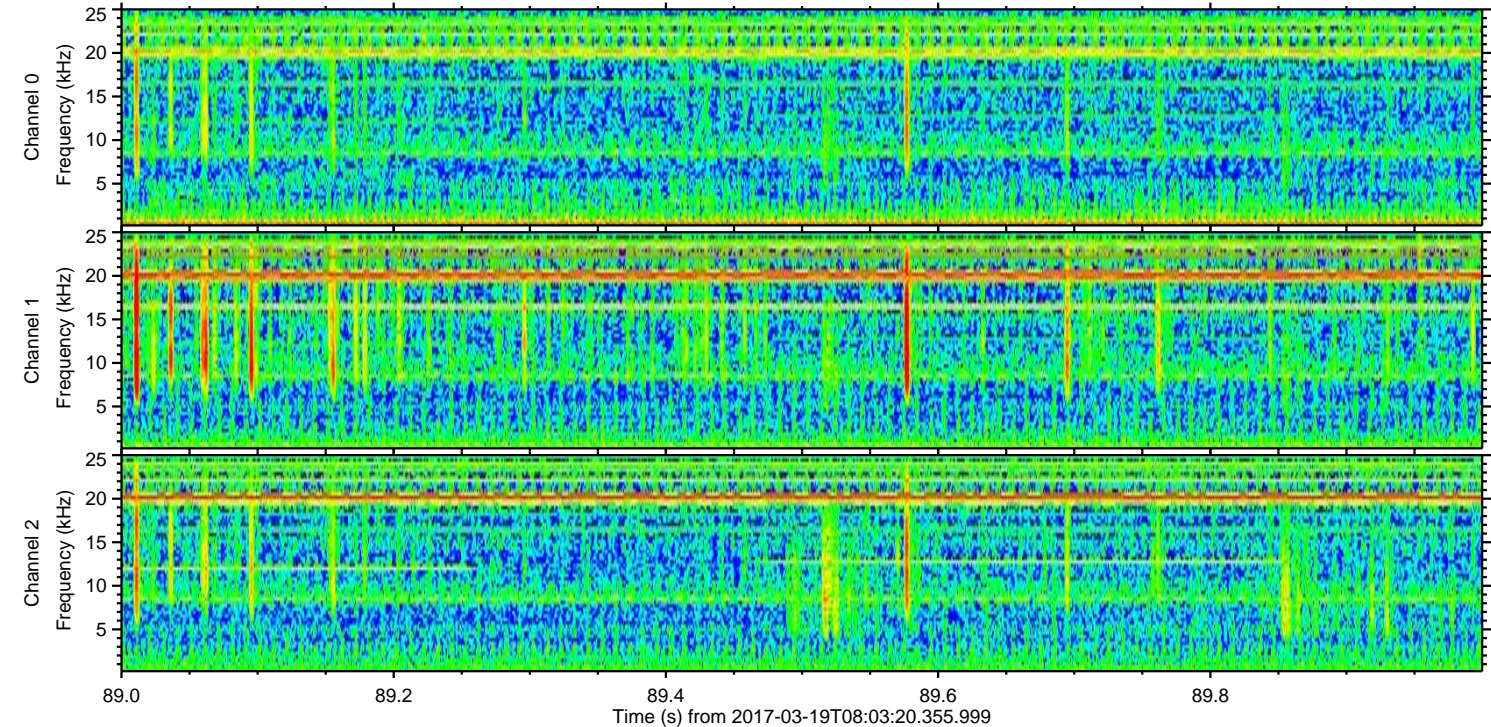
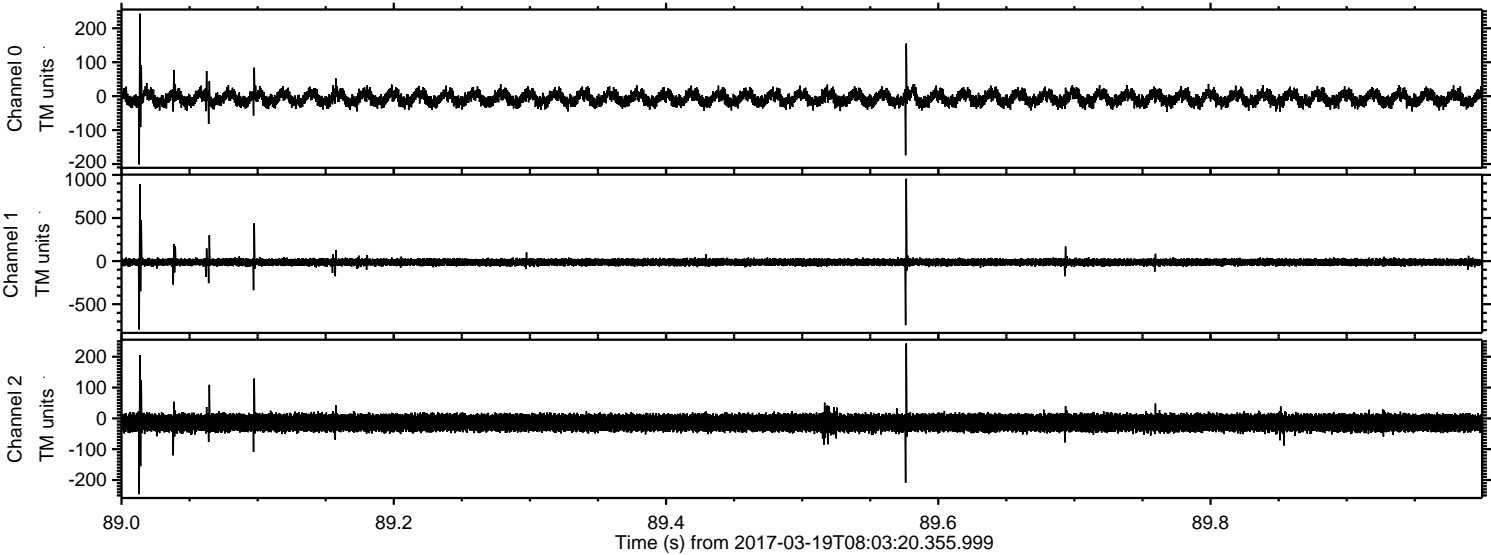
Processed Sun Mar 19 09:11:20 2017 by ELM ver.2012-10-06 from 001__elm20170319_080319__dat00.bin



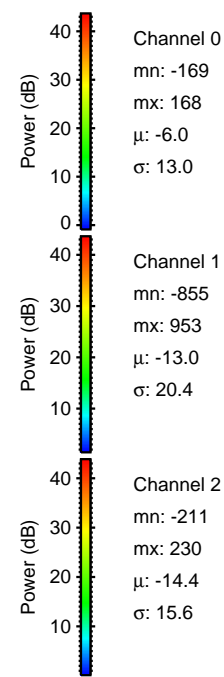
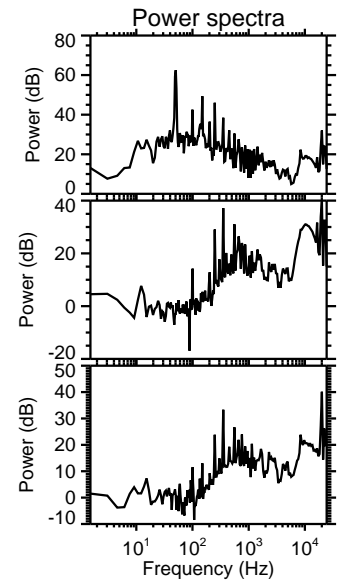
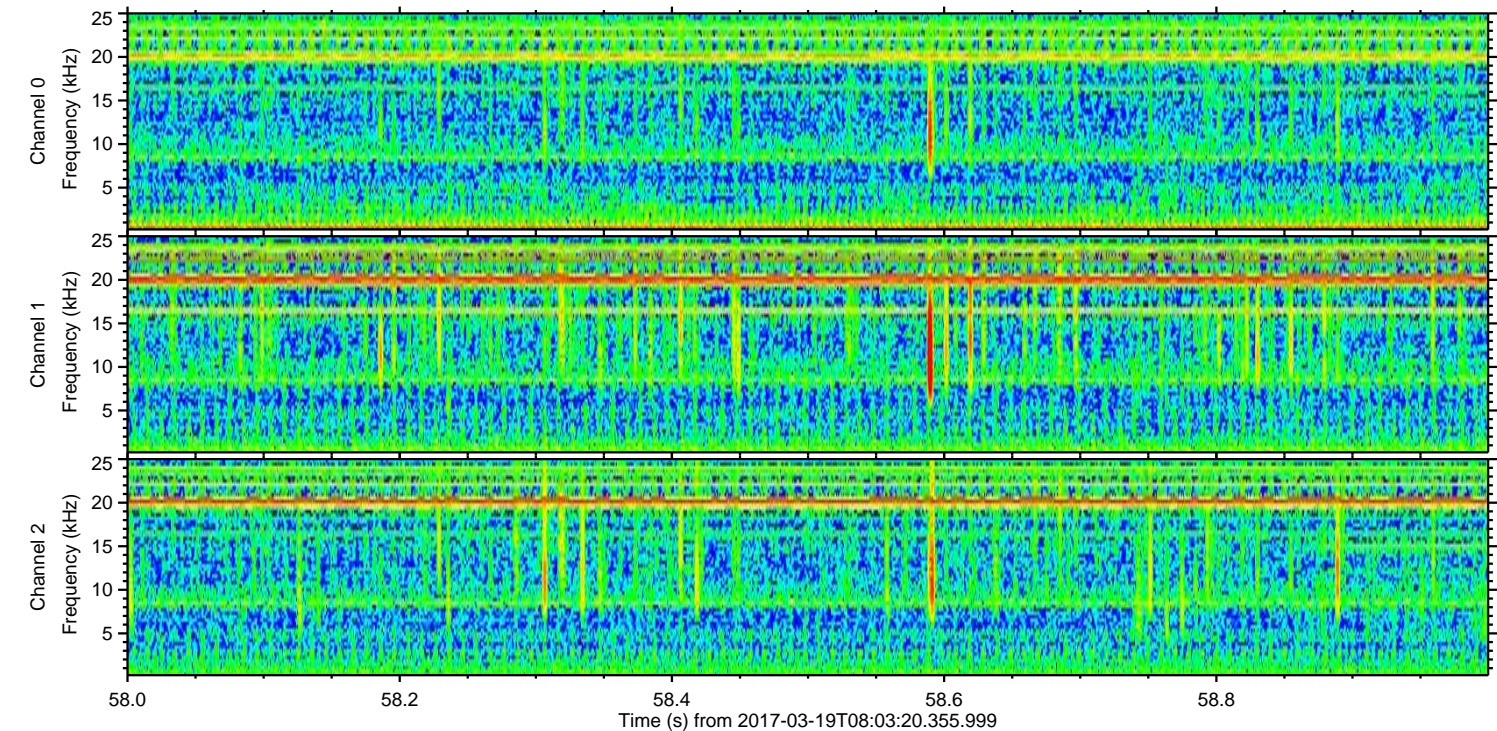
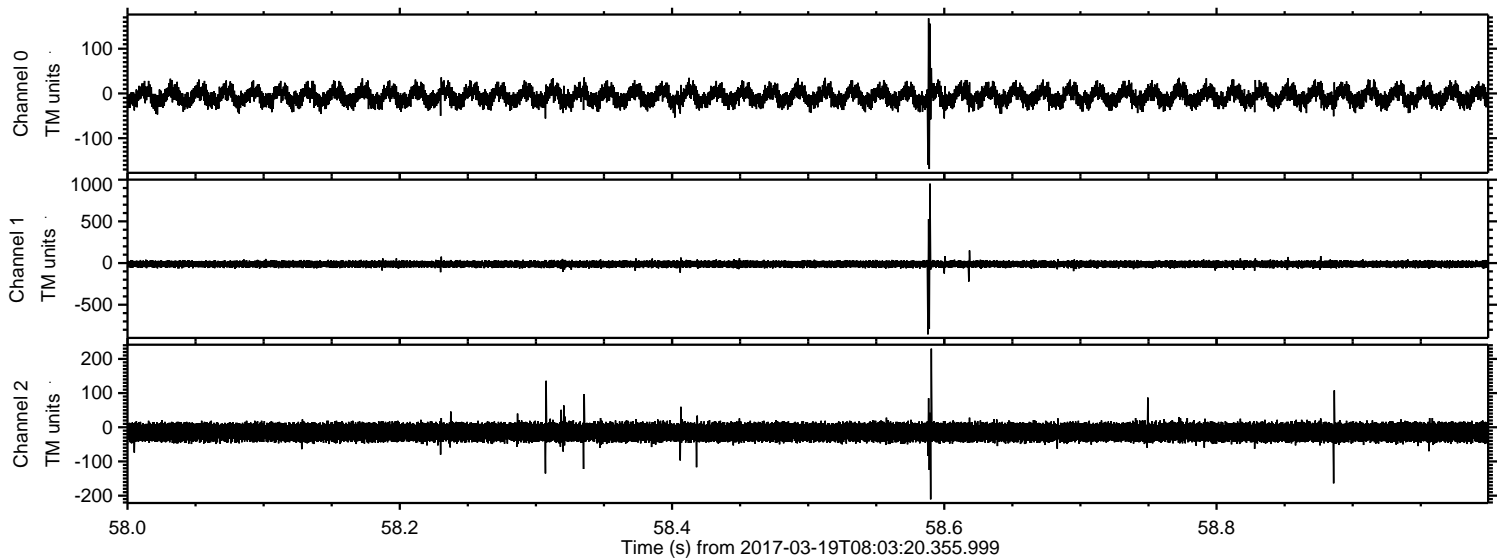
Processed Sun Mar 19 09:11:21 2017 by ELM ver.2012-10-06 from 001__elm20170319_080319__dat00.bin



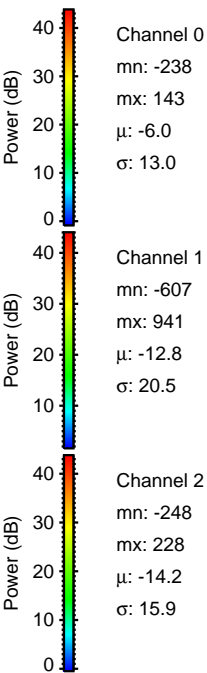
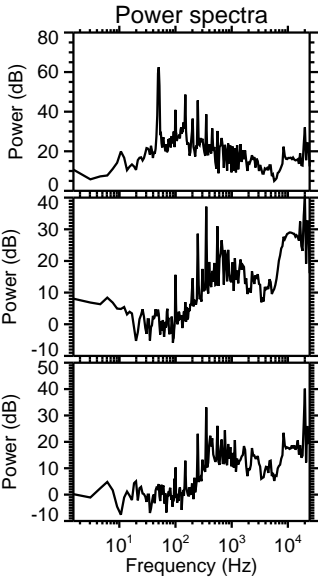
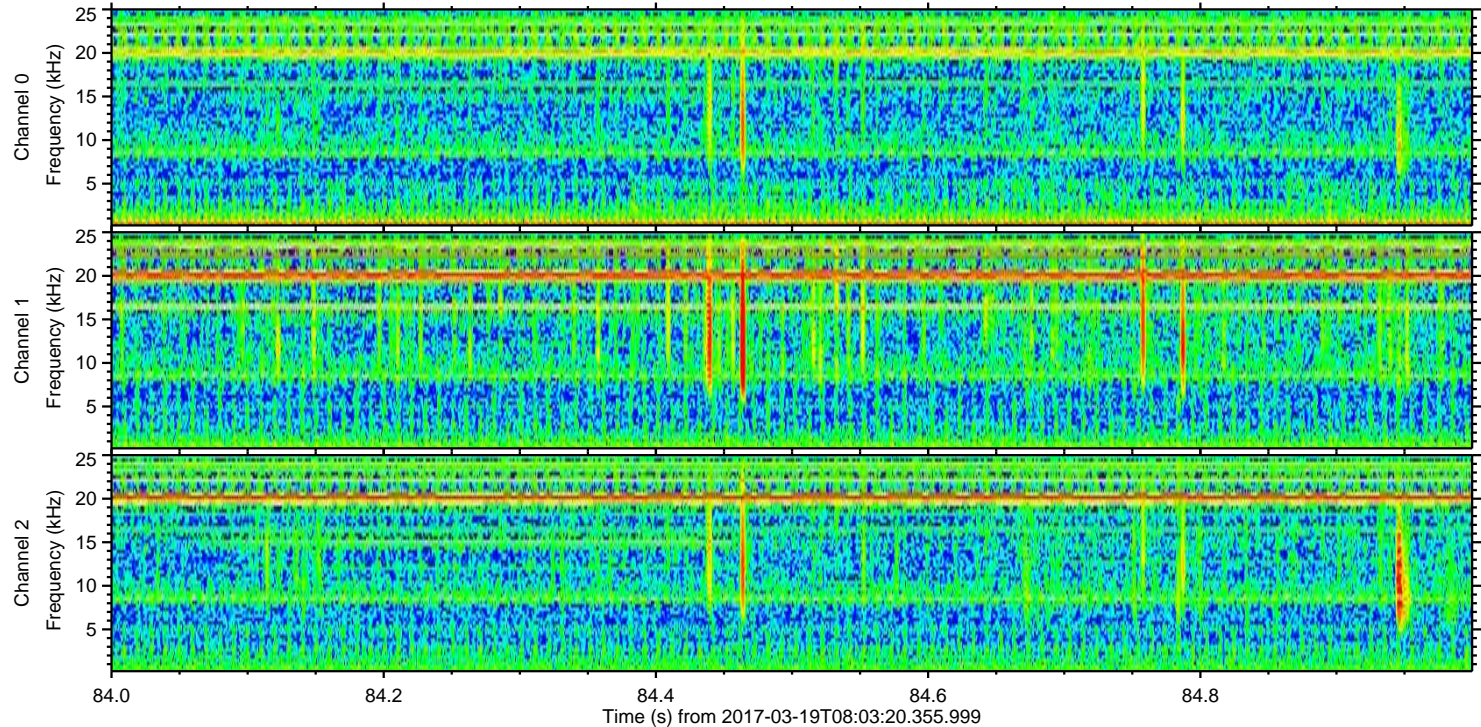
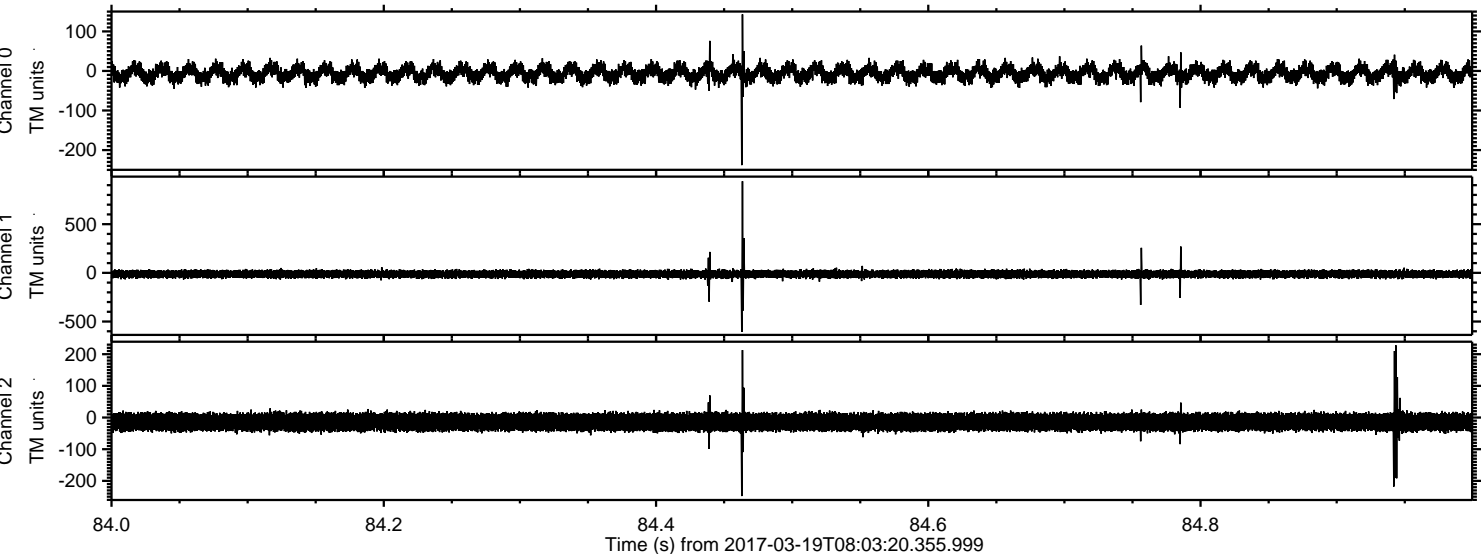
Processed Sun Mar 19 09:11:22 2017 by ELM ver.2012-10-06 from 001__elm20170319_080319__dat00.bin



Processed Sun Mar 19 09:11:23 2017 by ELM ver.2012-10-06 from 001__elm20170319_080319__dat00.bin

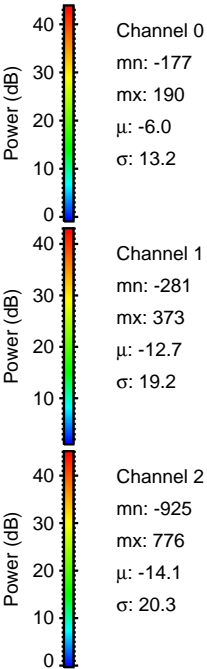
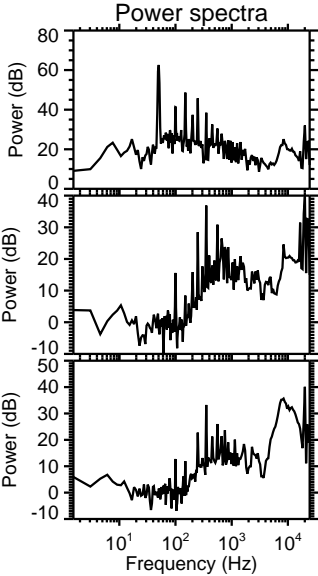
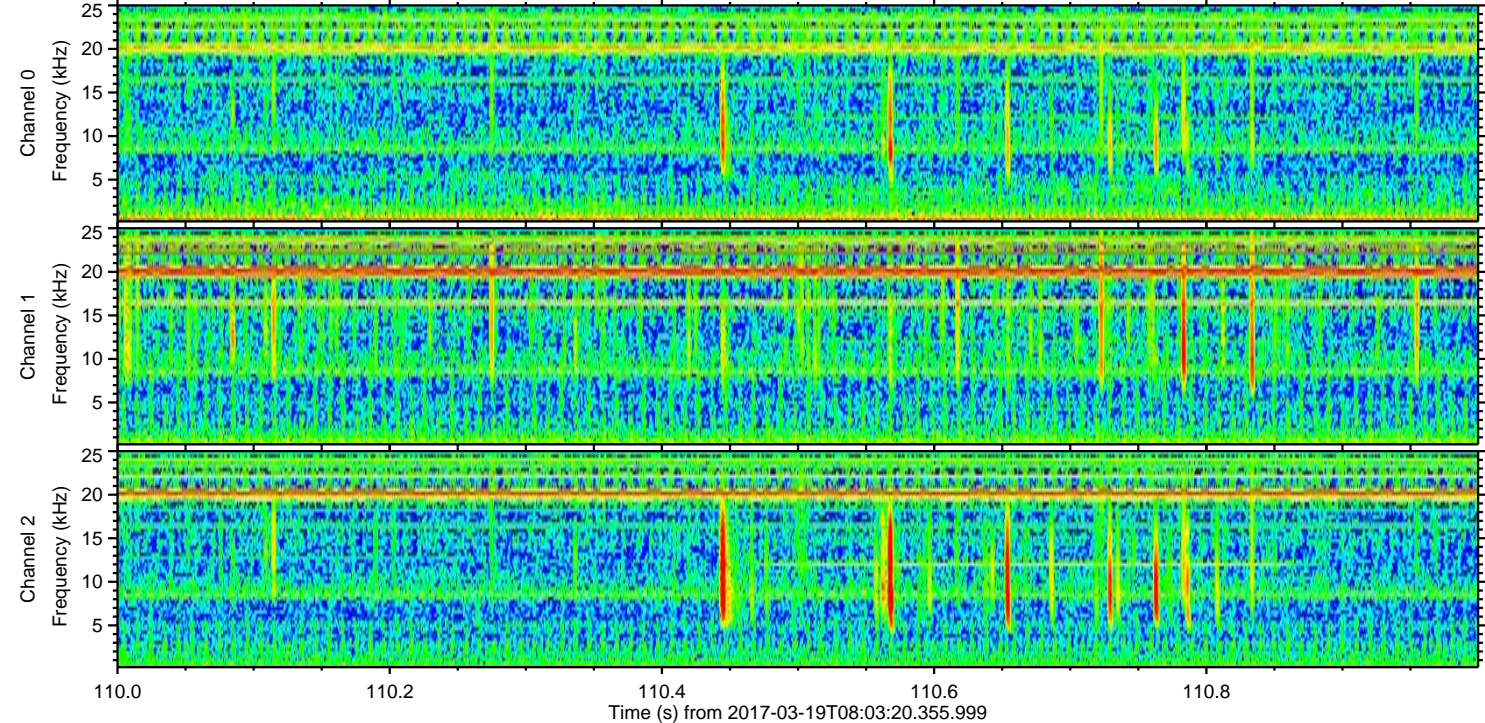
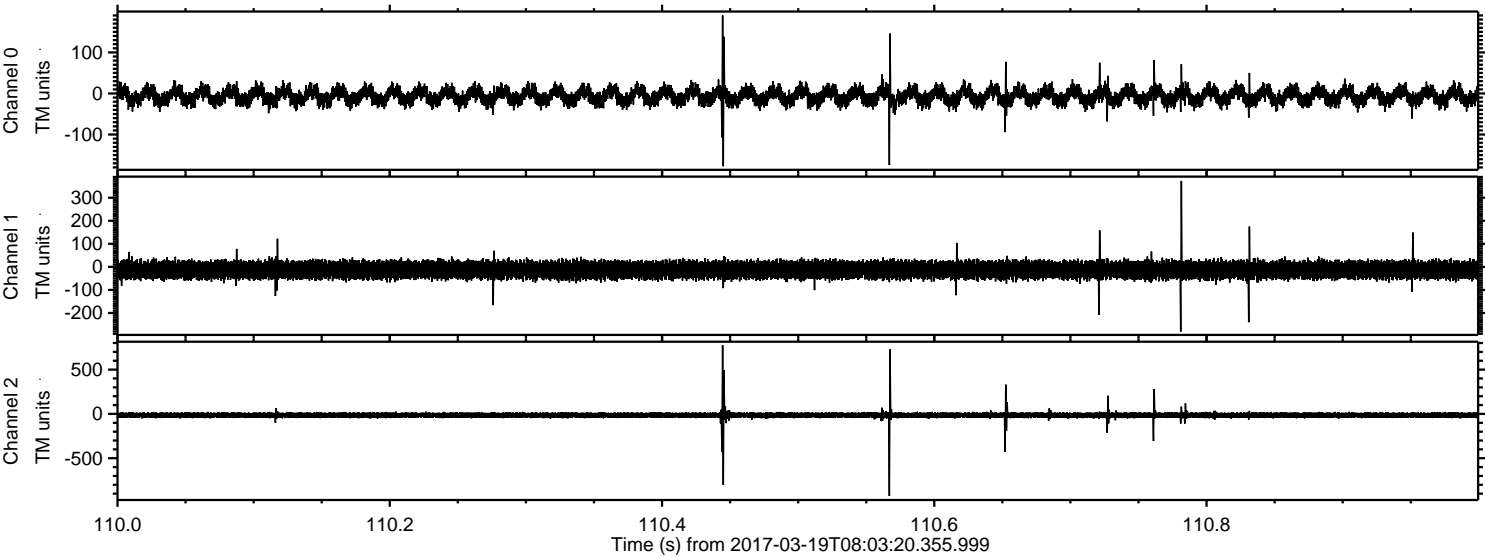


Processed Sun Mar 19 09:11:24 2017 by ELM ver.2012-10-06 from 001__elm20170319_080319__dat00.bin

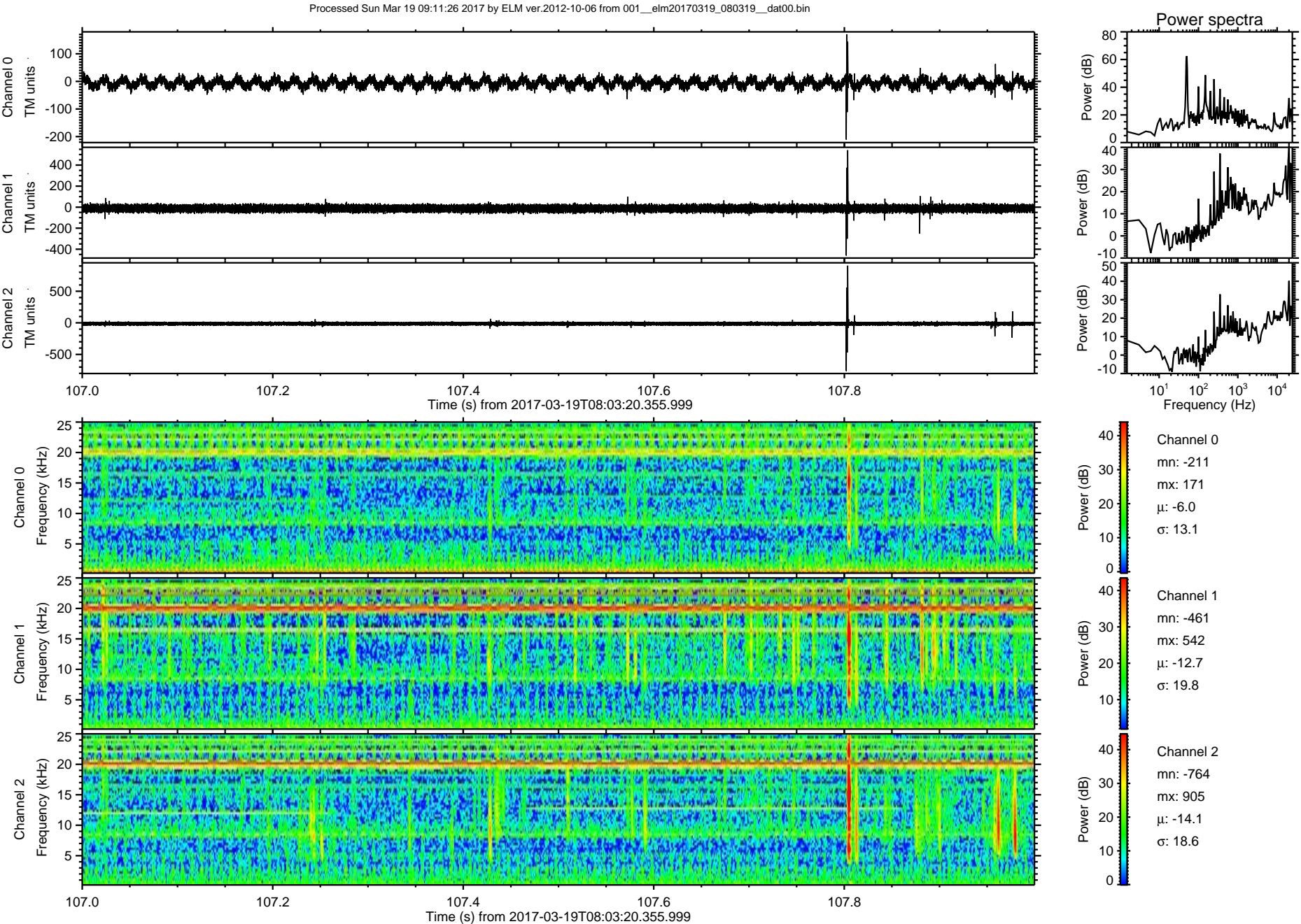


ELMAVAN 3D WAVEFORMS (Measured data sampled at 50 kHz) 51000 packets of 144 samples from 2017-03-19T08:03:20.355.999. Part 111/147

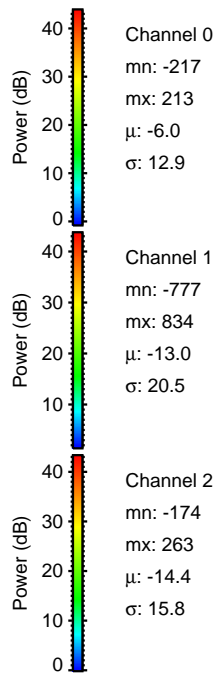
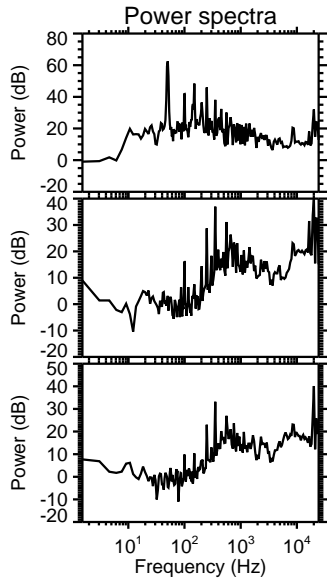
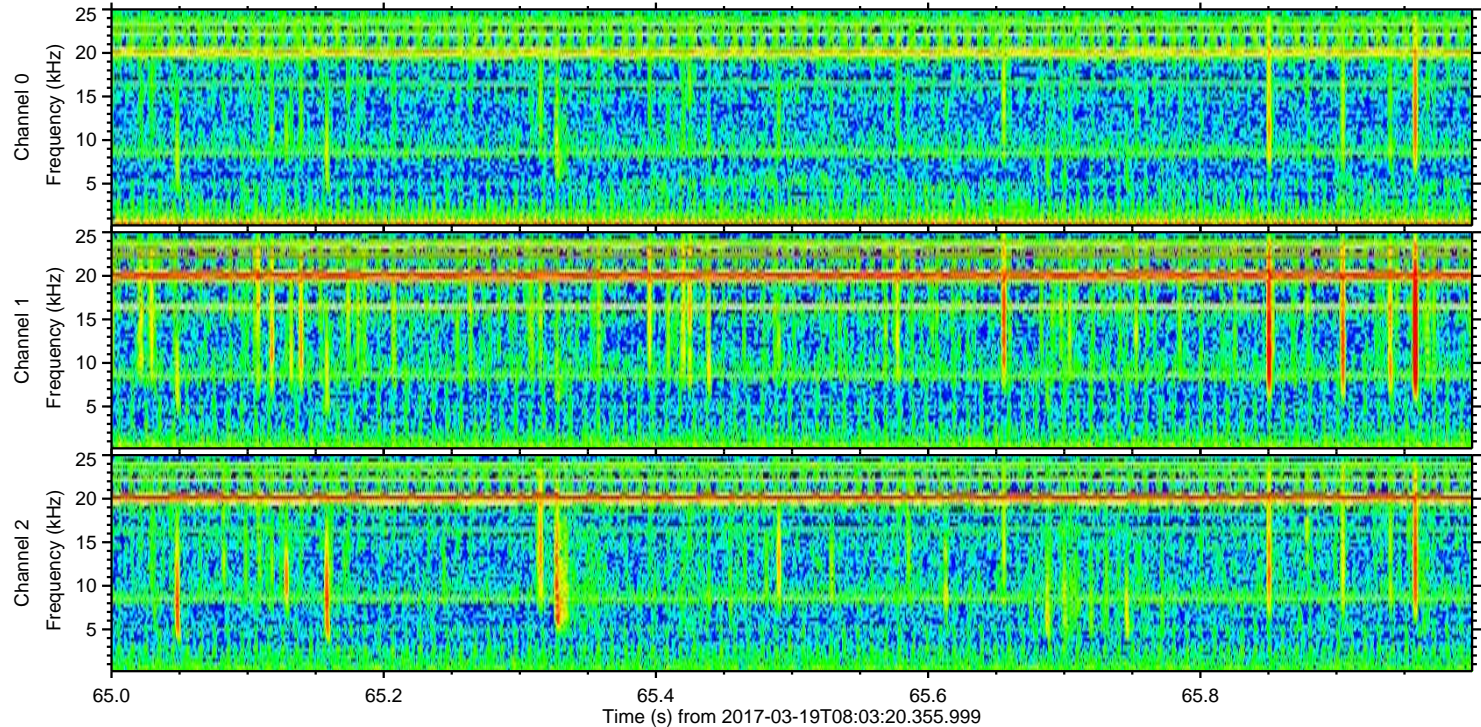
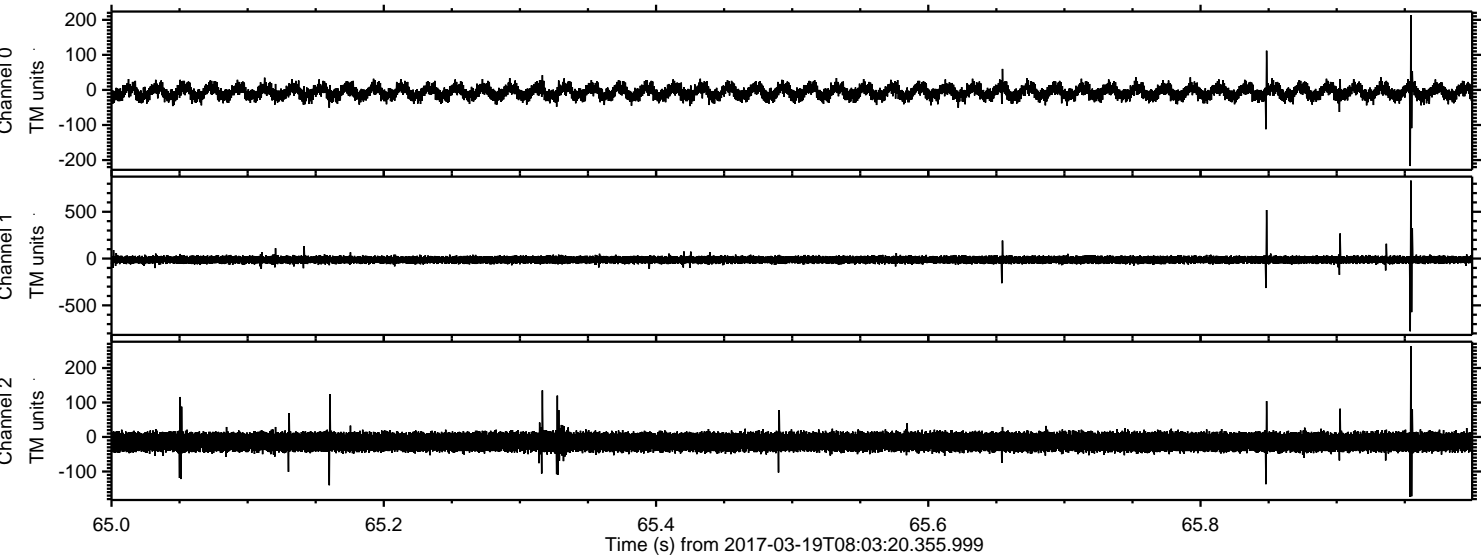
Processed Sun Mar 19 09:11:25 2017 by ELM ver.2012-10-06 from 001__elm20170319_080319__dat00.bin



ELMAVAN 3D WAVEFORMS (Measured data sampled at 50 kHz) 51000 packets of 144 samples from 2017-03-19T08:03:20.355.999. Part 108/147



Processed Sun Mar 19 09:11:27 2017 by ELM ver.2012-10-06 from 001__elm20170319_080319__dat00.bin



Channel 0
mn: -217
mx: 213
 μ : -6.0
 σ : 12.9

Channel 1
mn: -777
mx: 834
 μ : -13.0
 σ : 20.5

Channel 2
mn: -174
mx: 263
 μ : -14.4
 σ : 15.8

