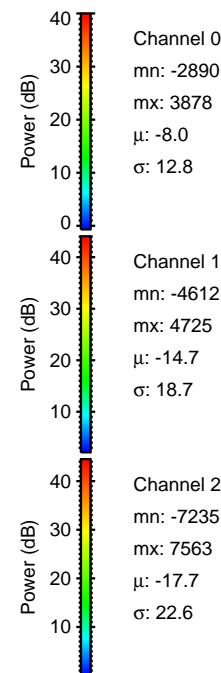
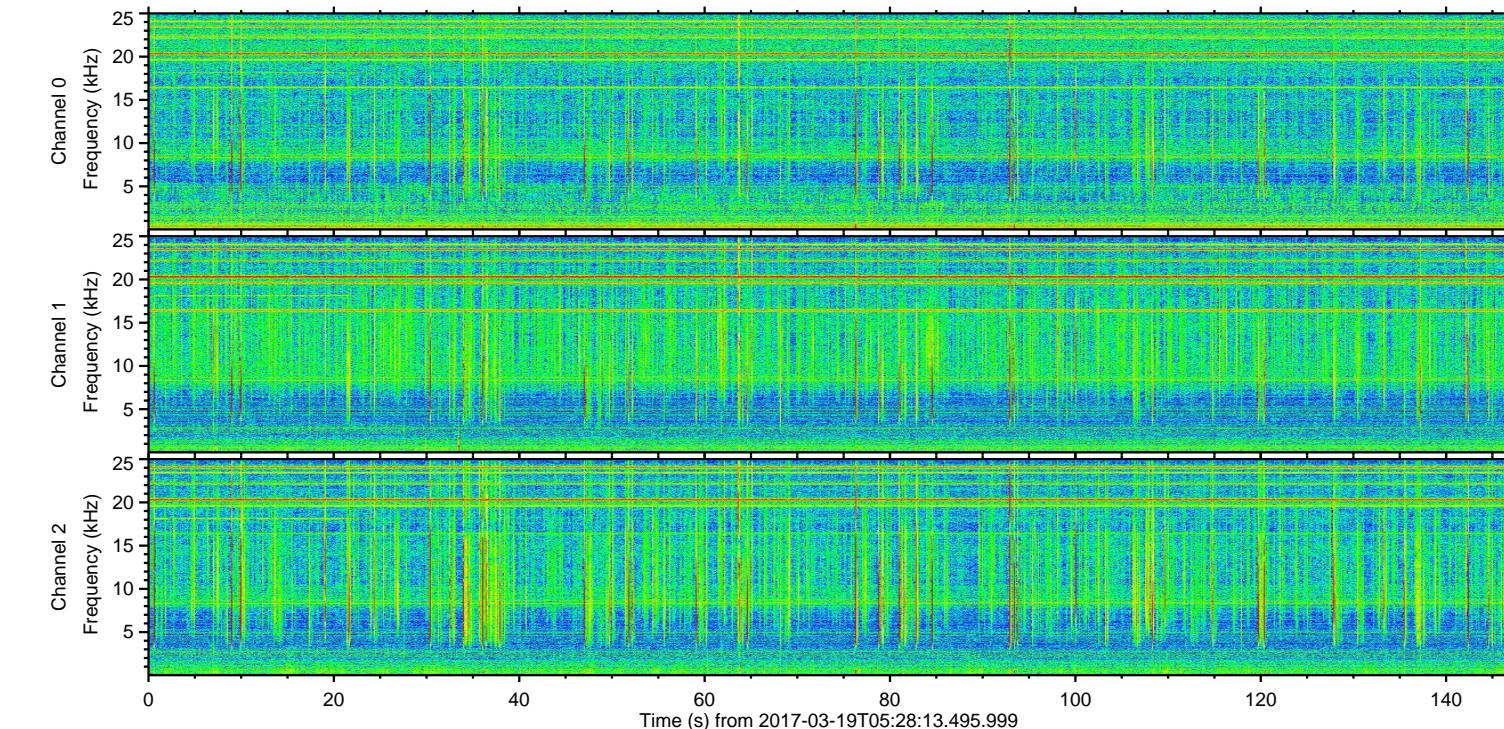
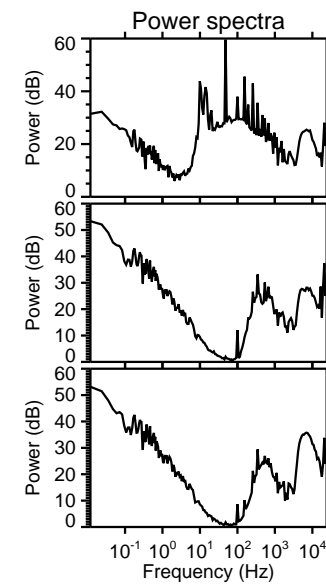
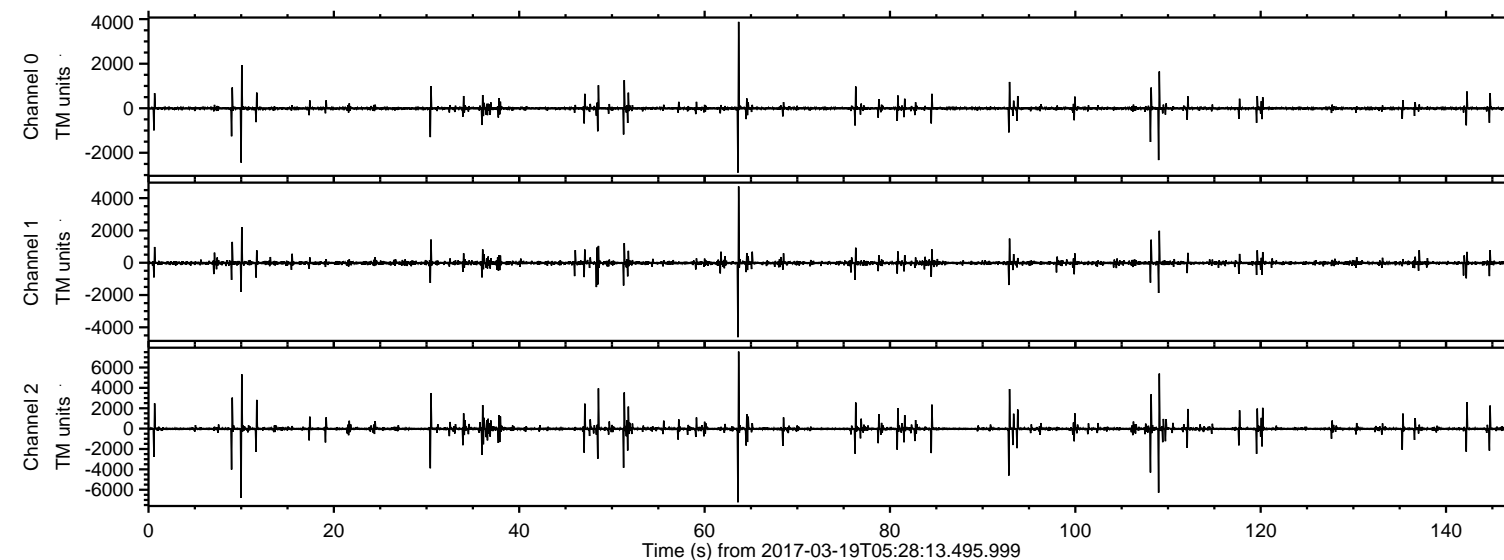


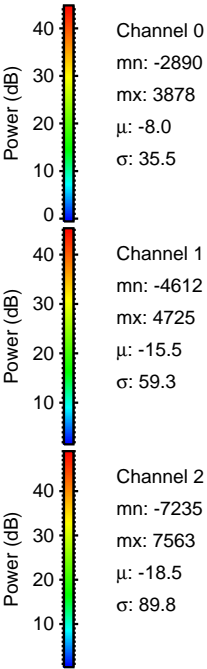
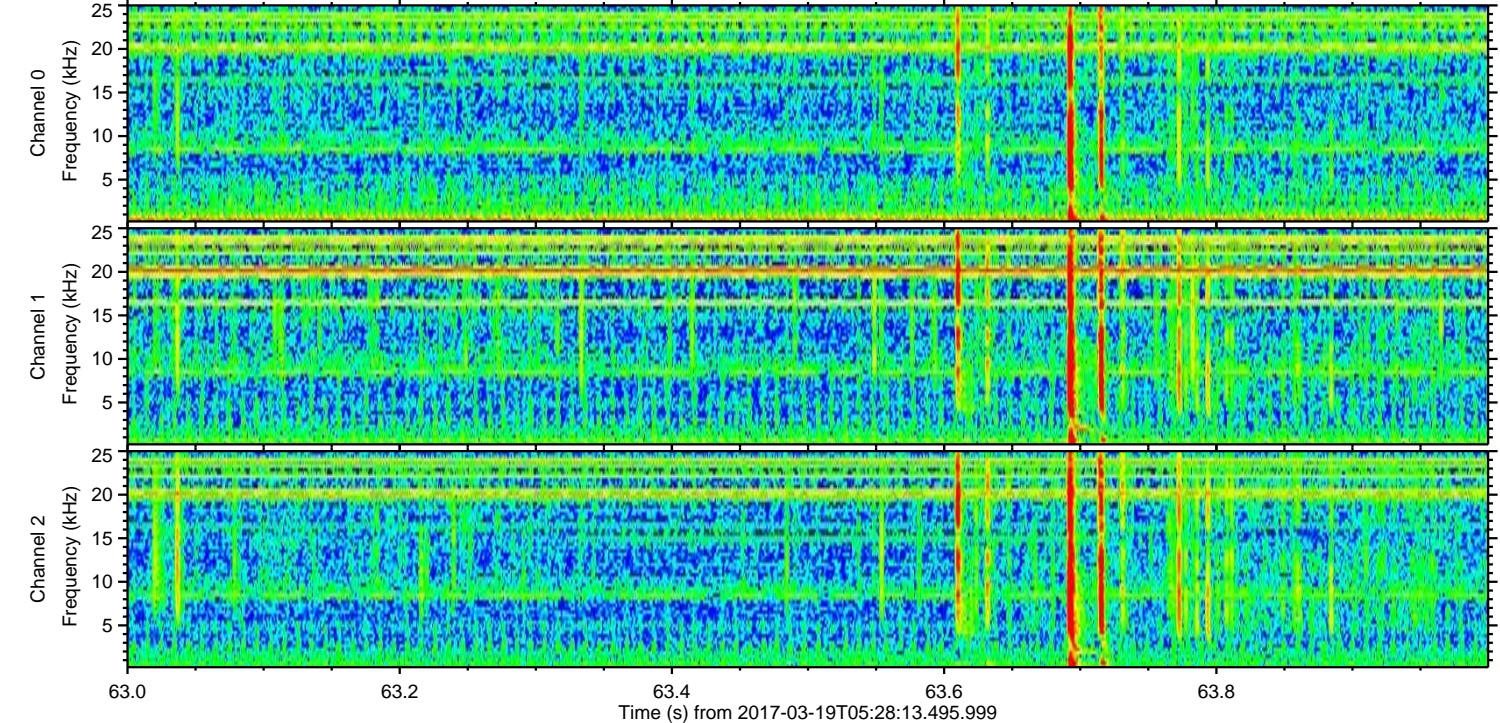
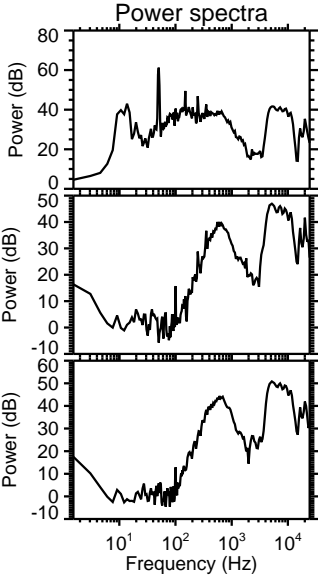
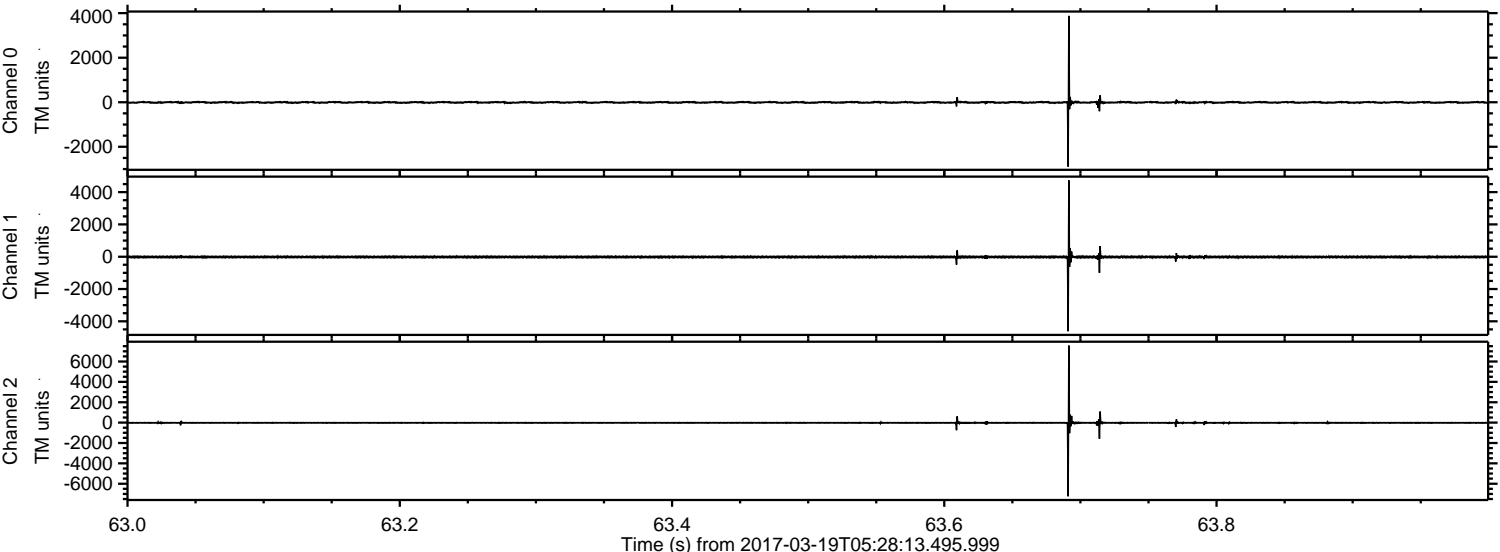
# ELMAVAN 3D WAVEFORMS (Measured data sampled at 50 kHz) 51000 packets of 144 samples from 2017-03-19T05:28:13.495.999.

Processed Sun Mar 19 06:36:03 2017 by ELM ver.2012-10-06 from 001\_\_elm20170319\_052812\_\_dat00.bin





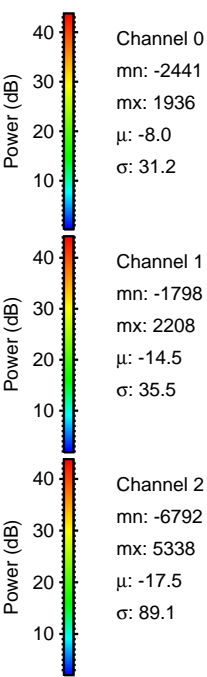
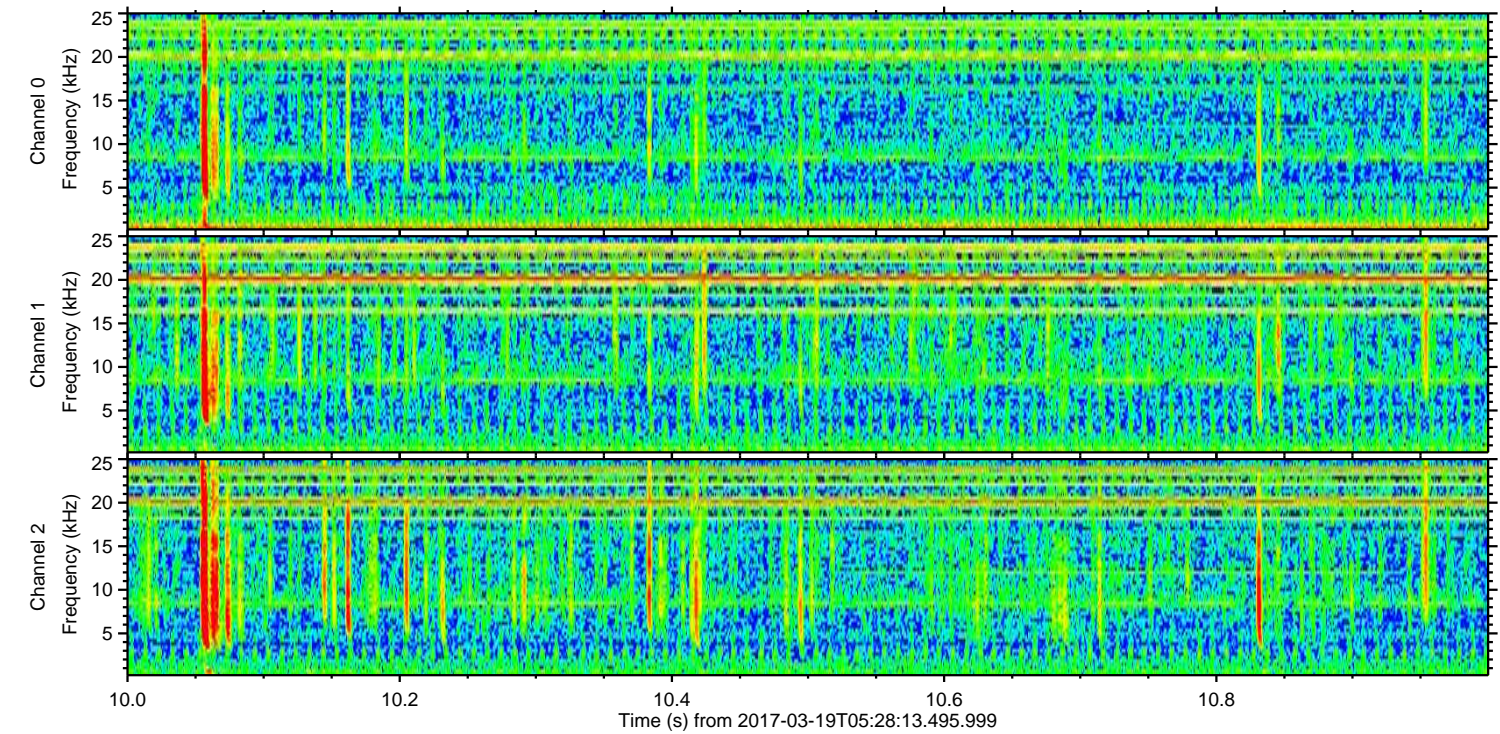
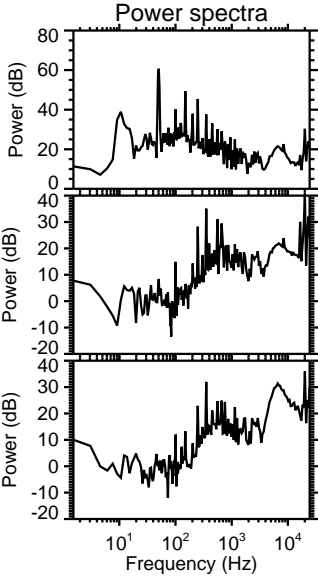
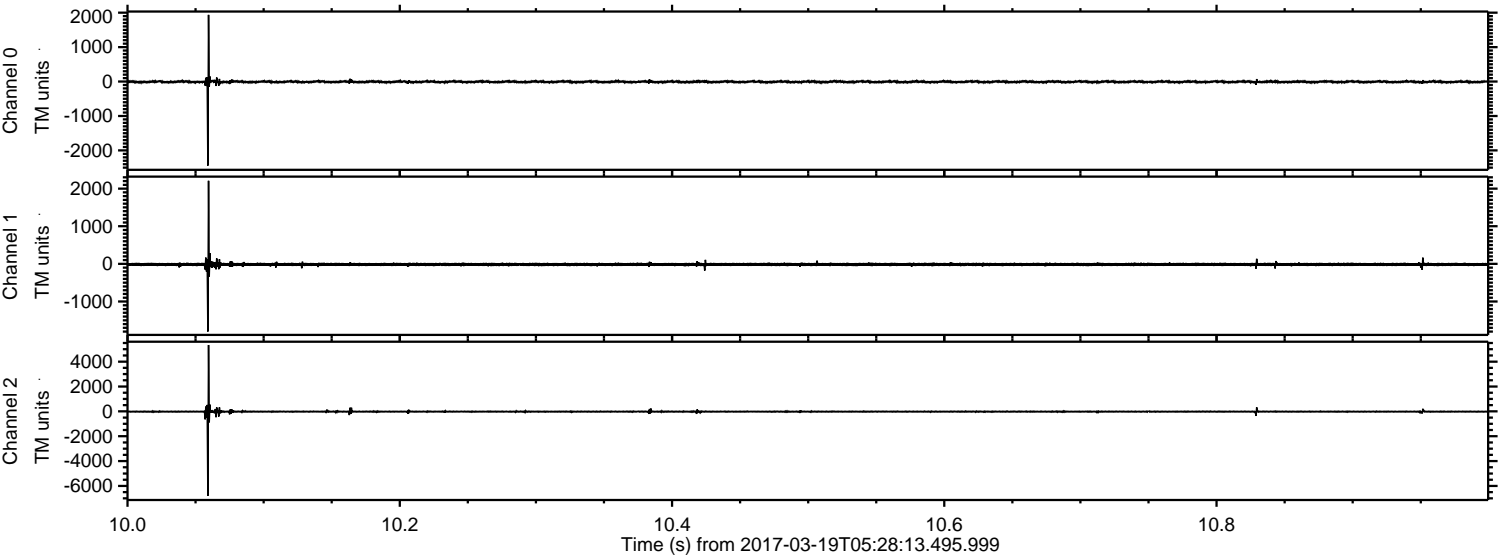
Processed Sun Mar 19 06:36:14 2017 by ELM ver.2012-10-06 from 001\_\_elm20170319\_052812\_\_dat00.bin





ELMAVAN 3D WAVEFORMS (Measured data sampled at 50 kHz) 51000 packets of 144 samples from 2017-03-19T05:28:13.495.999. Part 11/147

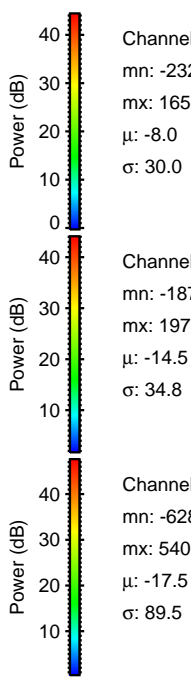
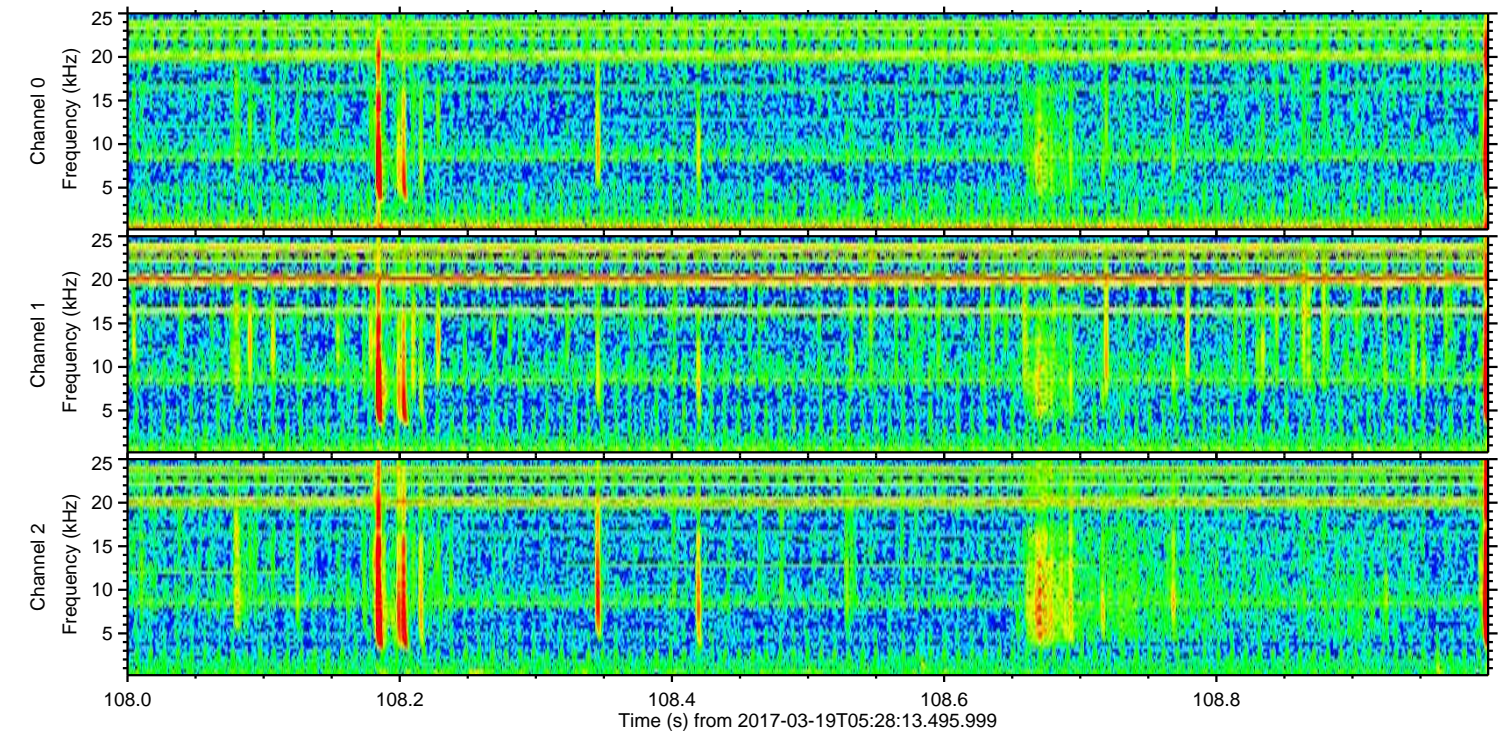
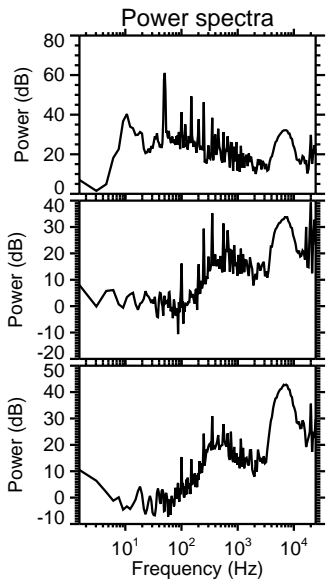
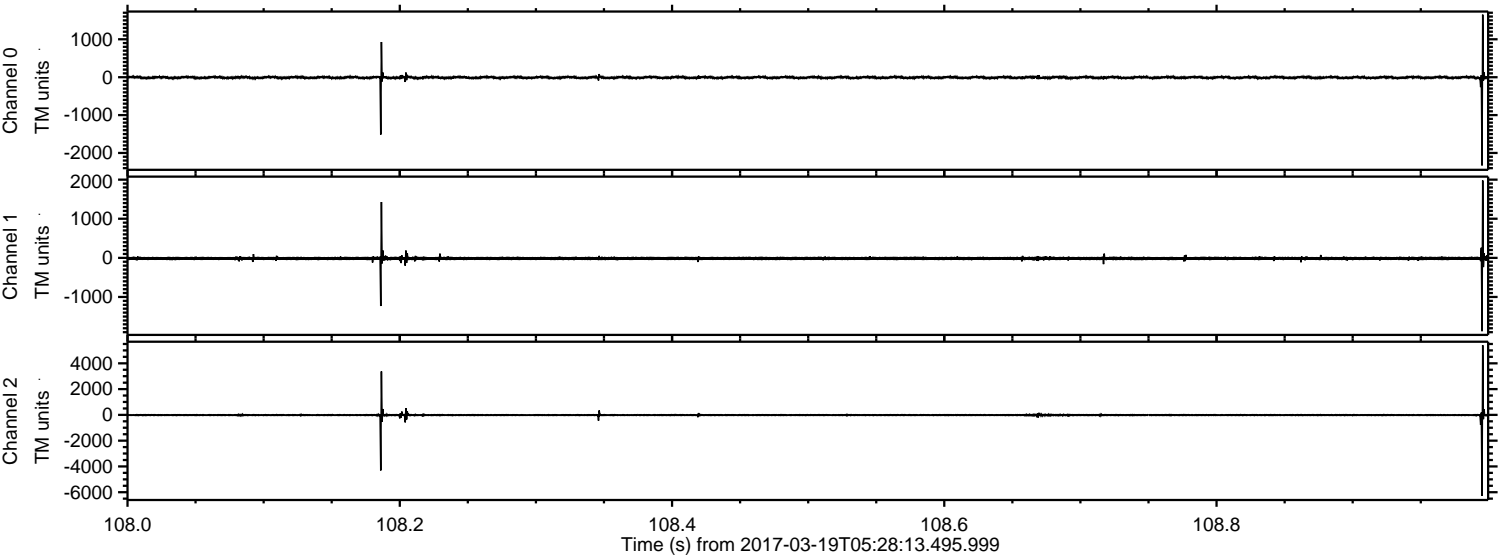
Processed Sun Mar 19 06:36:15 2017 by ELM ver.2012-10-06 from 001\_\_elm20170319\_052812\_\_dat00.bin





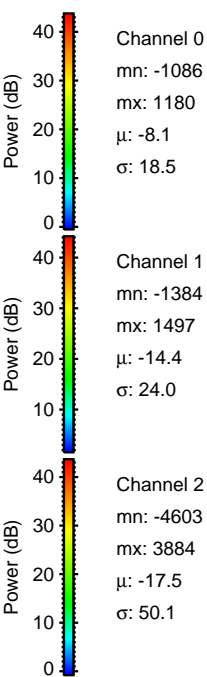
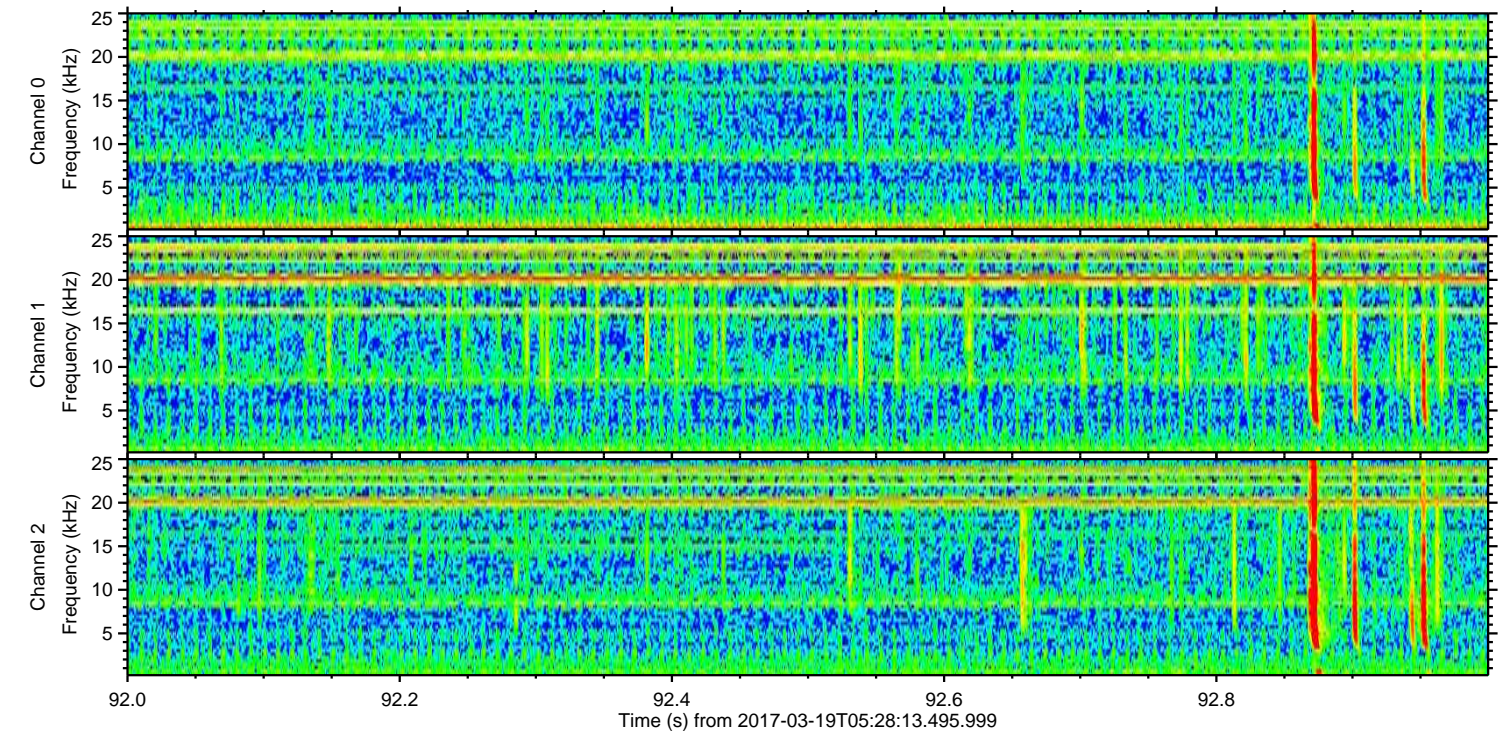
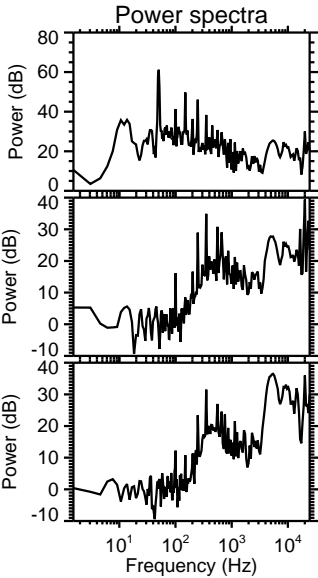
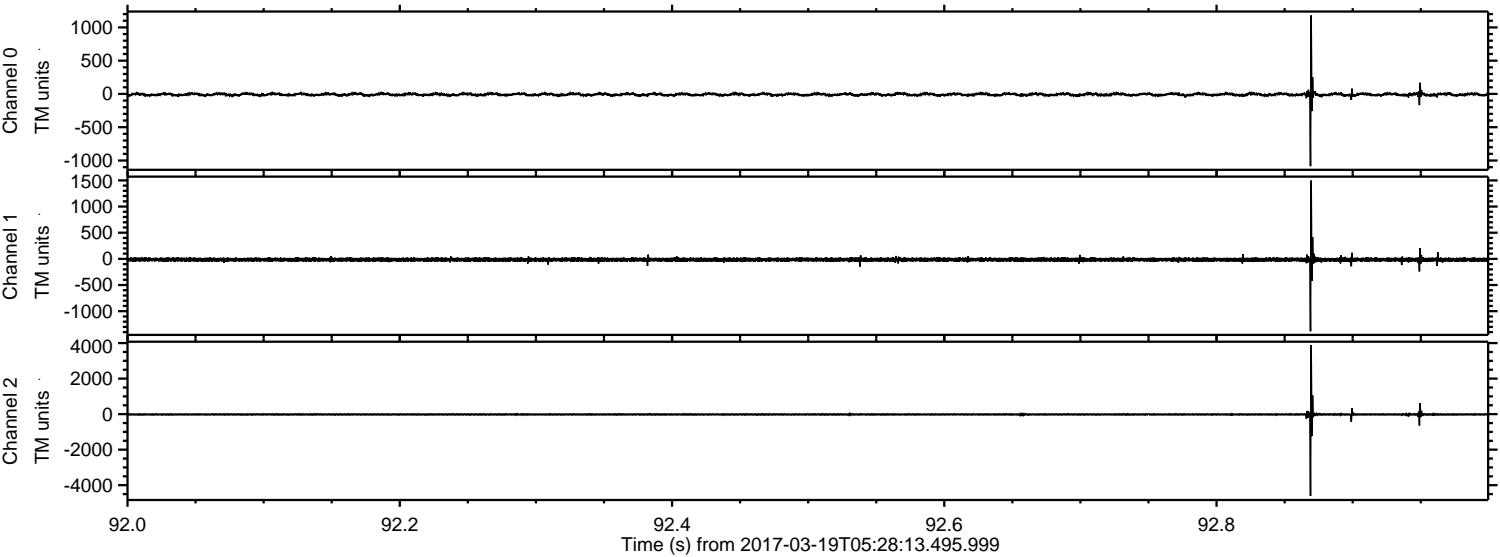
ELMAVAN 3D WAVEFORMS (Measured data sampled at 50 kHz) 51000 packets of 144 samples from 2017-03-19T05:28:13.495.999. Part 109/147

Processed Sun Mar 19 06:36:16 2017 by ELM ver.2012-10-06 from 001\_\_elm20170319\_052812\_\_dat00.bin





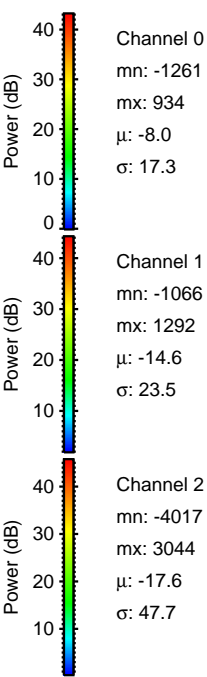
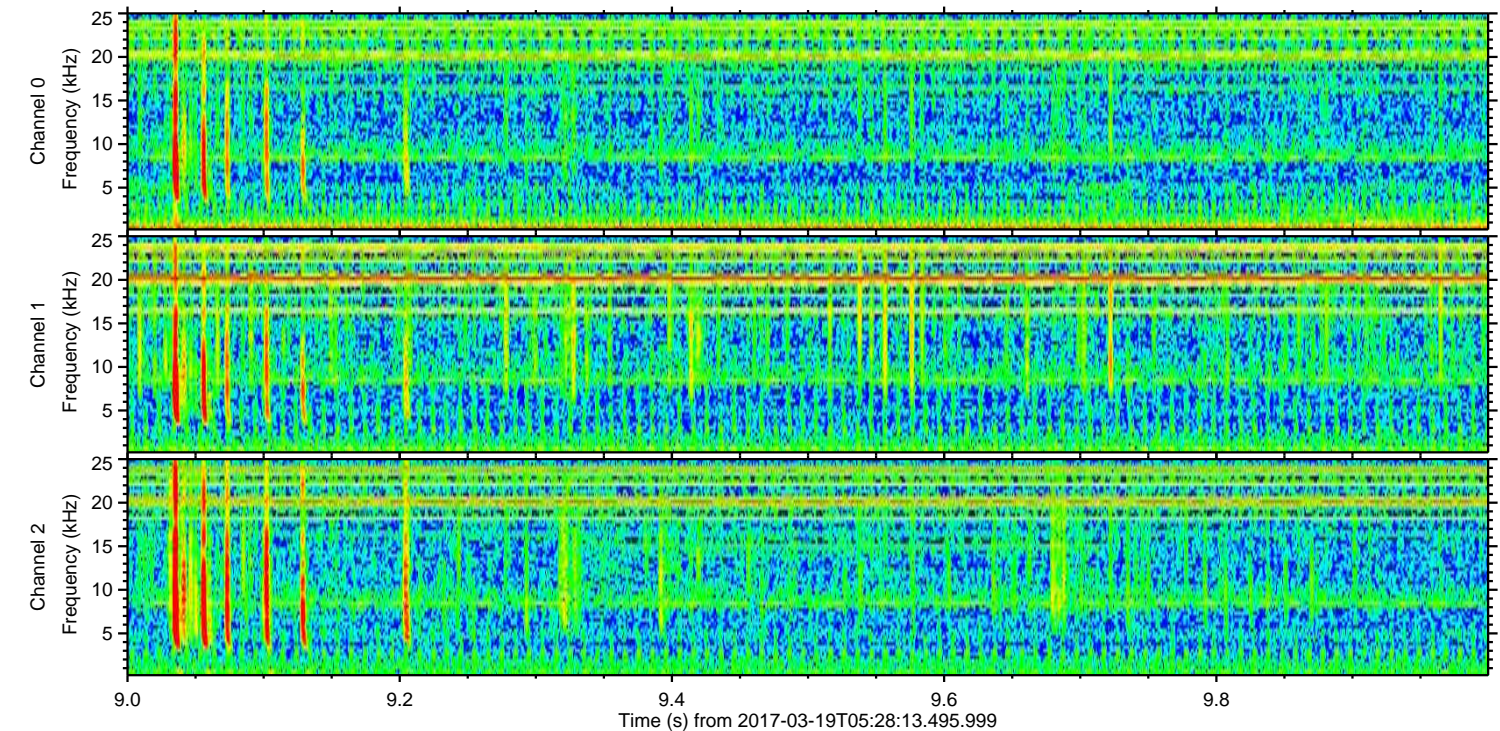
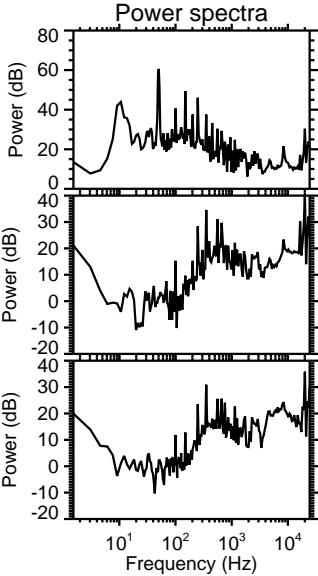
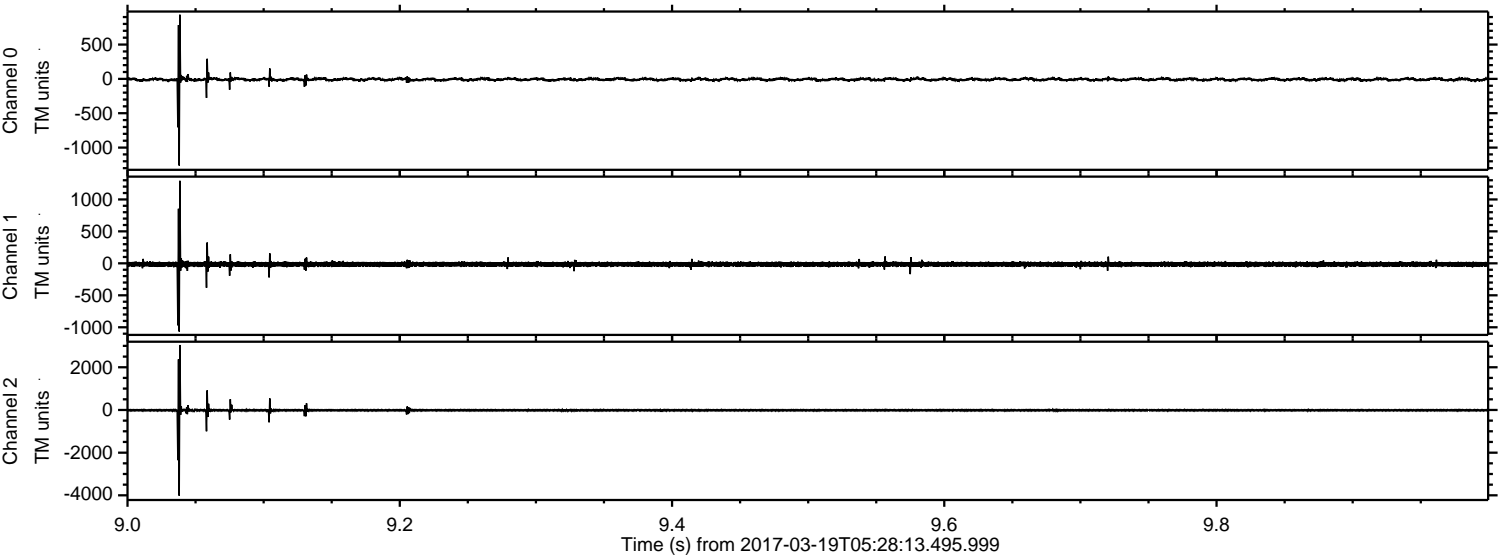
Processed Sun Mar 19 06:36:17 2017 by ELM ver.2012-10-06 from 001\_\_elm20170319\_052812\_\_dat00.bin





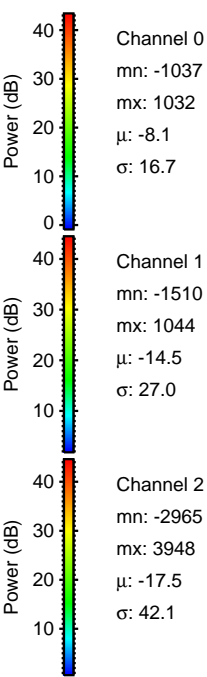
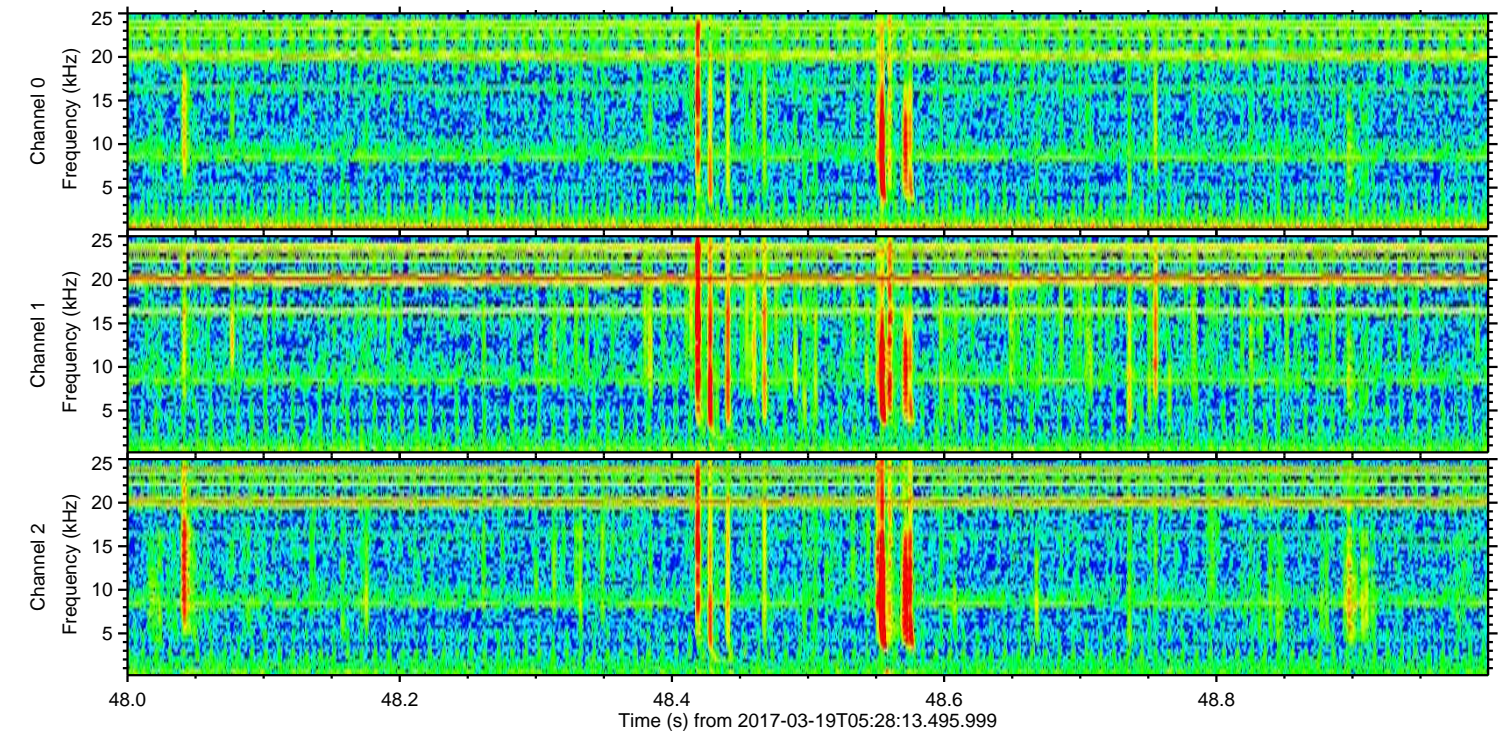
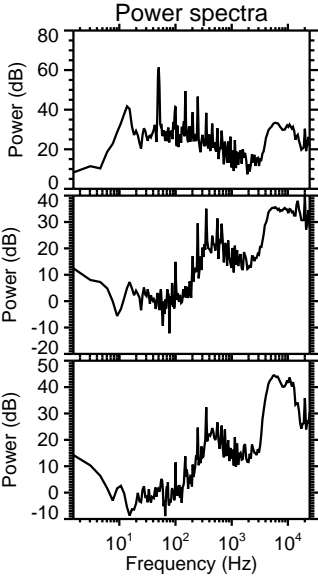
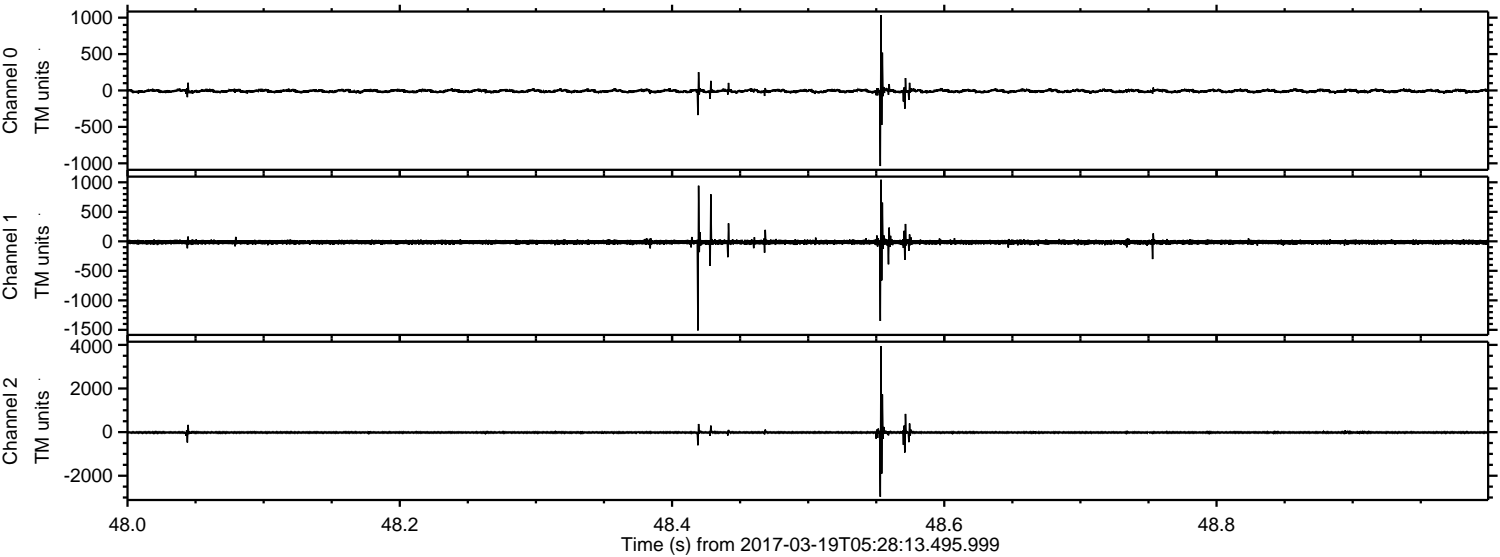
ELMAVAN 3D WAVEFORMS (Measured data sampled at 50 kHz) 51000 packets of 144 samples from 2017-03-19T05:28:13.495.999. Part 10/147

Processed Sun Mar 19 06:36:18 2017 by ELM ver.2012-10-06 from 001\_\_elm20170319\_052812\_\_dat00.bin





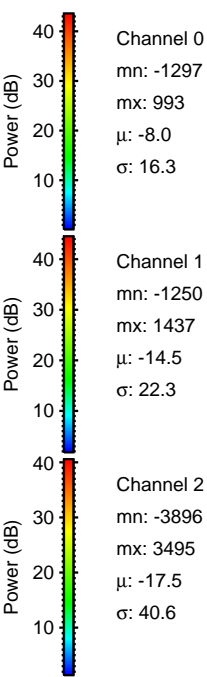
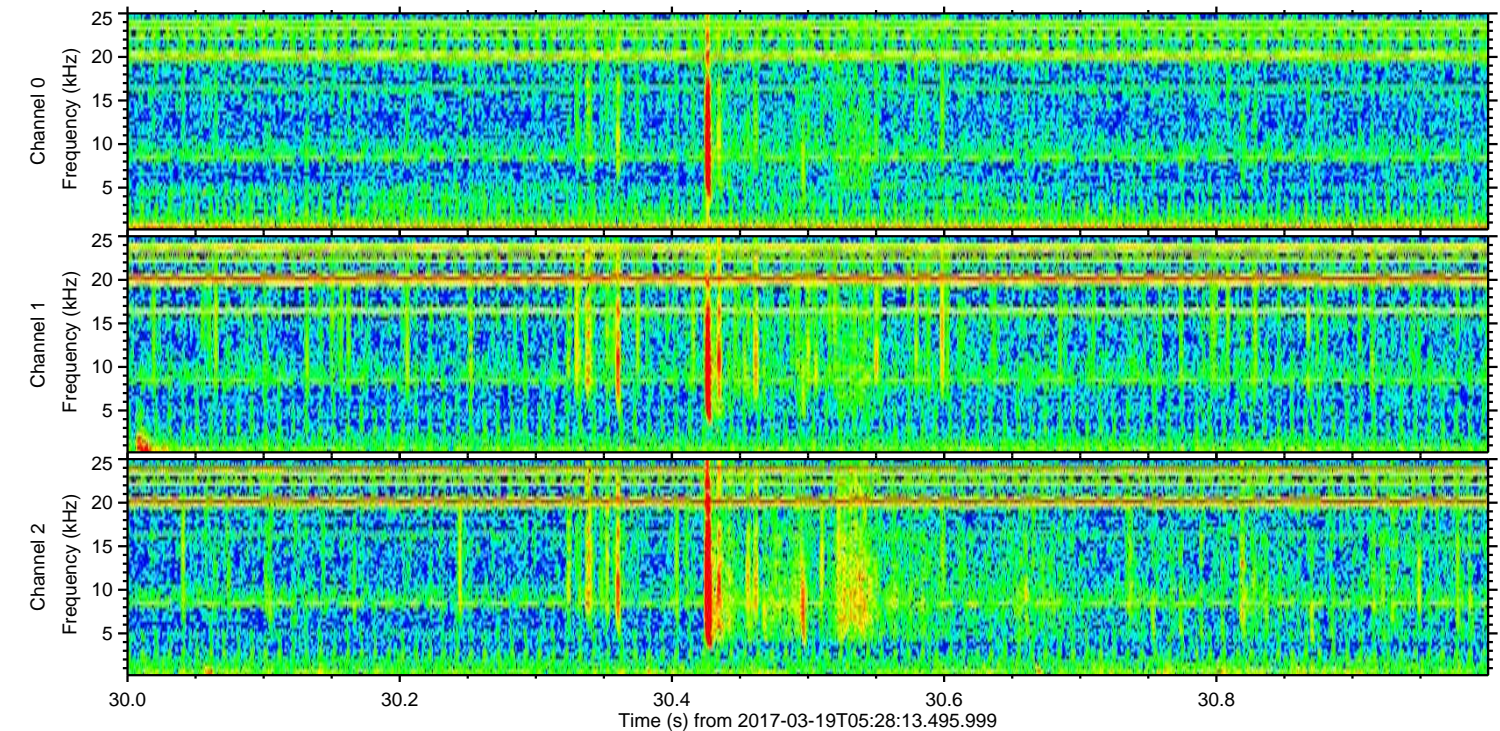
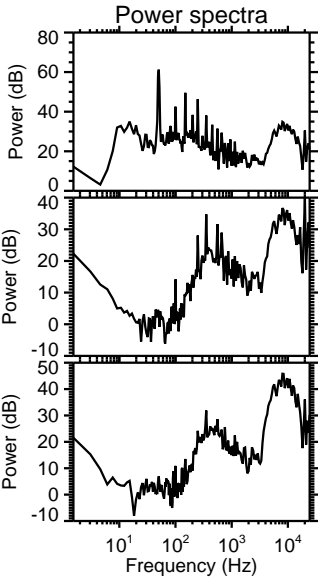
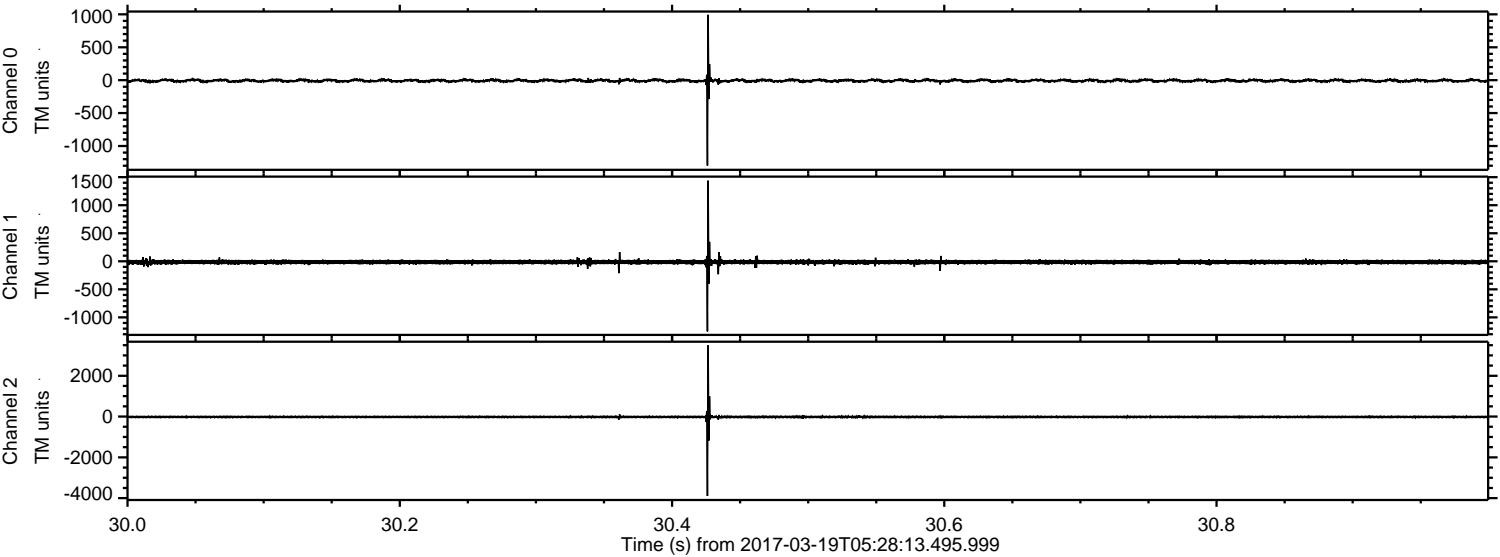
Processed Sun Mar 19 06:36:19 2017 by ELM ver.2012-10-06 from 001\_\_elm20170319\_052812\_\_dat00.bin





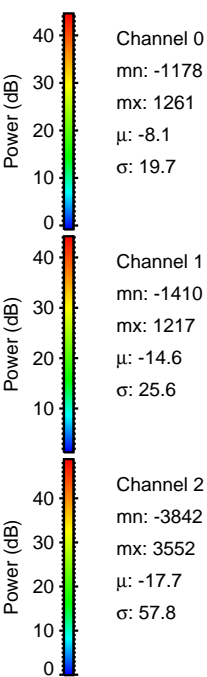
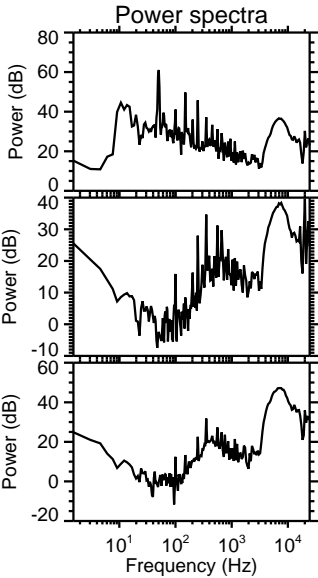
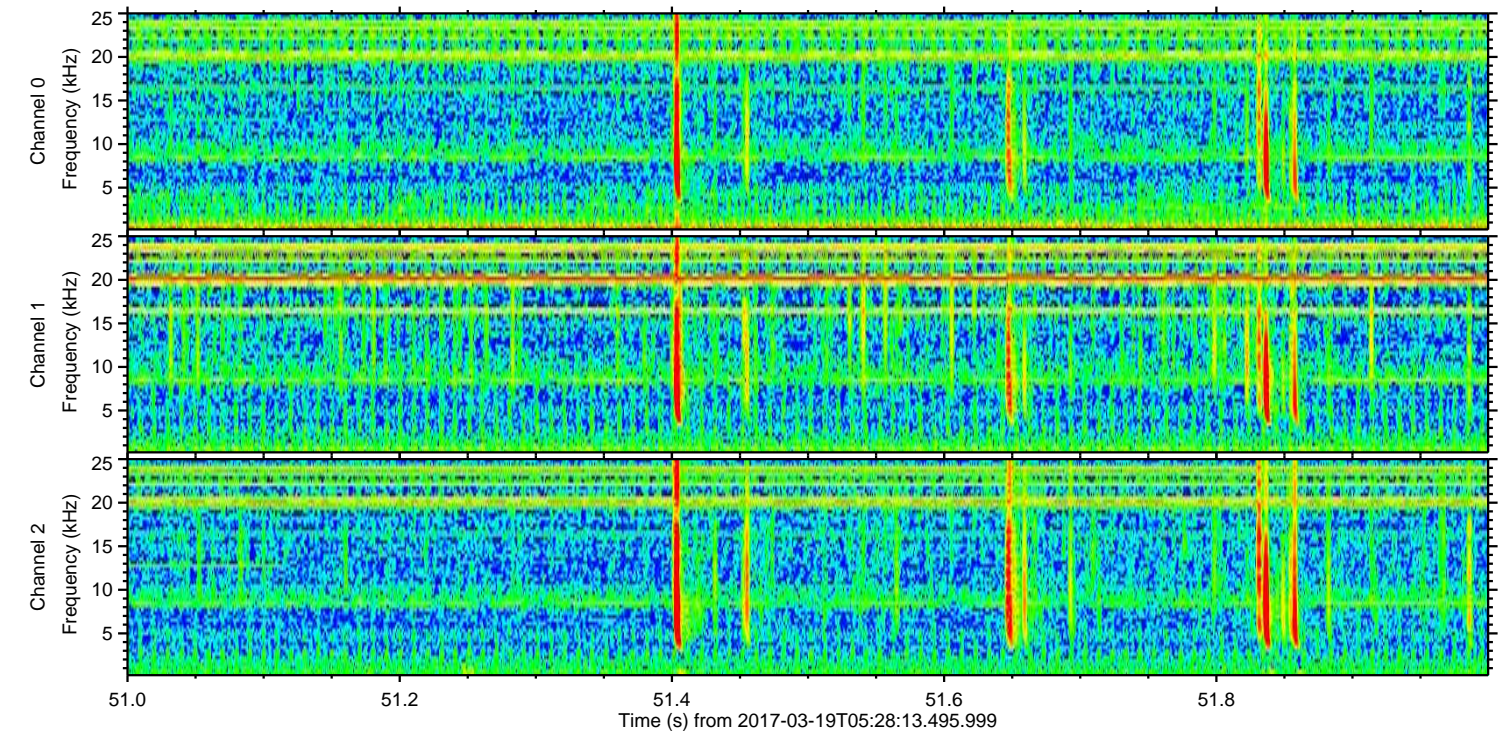
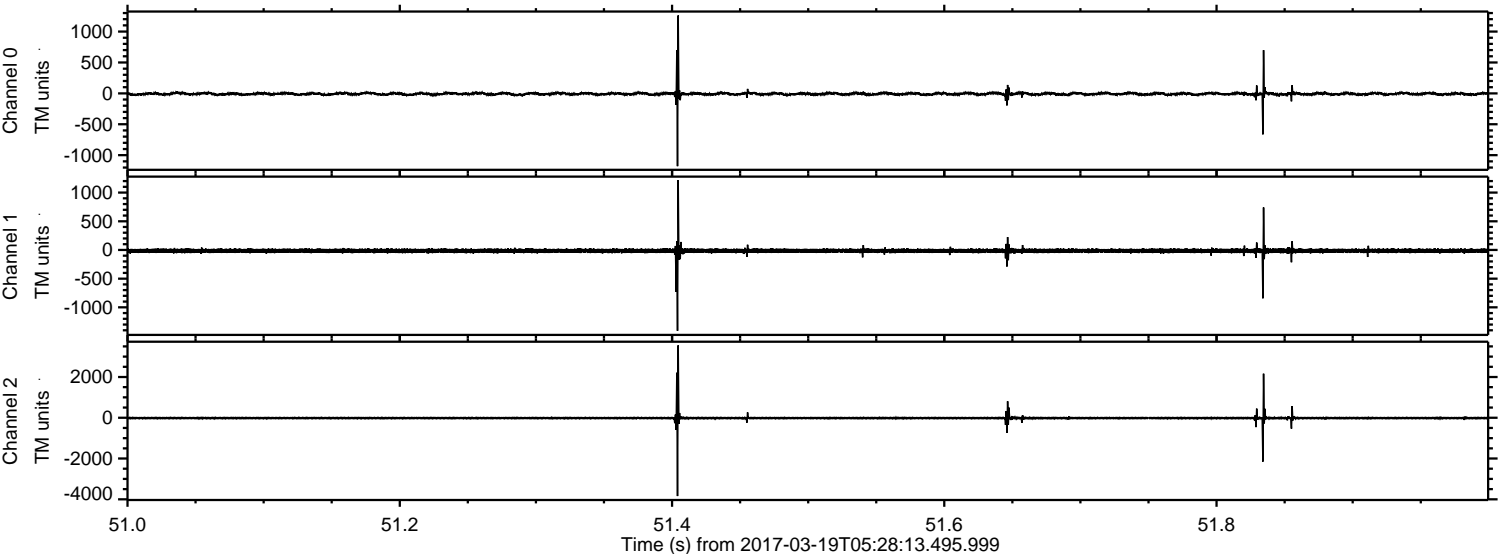
ELMAVAN 3D WAVEFORMS (Measured data sampled at 50 kHz) 51000 packets of 144 samples from 2017-03-19T05:28:13.495.999. Part 31/147

Processed Sun Mar 19 06:36:20 2017 by ELM ver.2012-10-06 from 001\_\_elm20170319\_052812\_\_dat00.bin



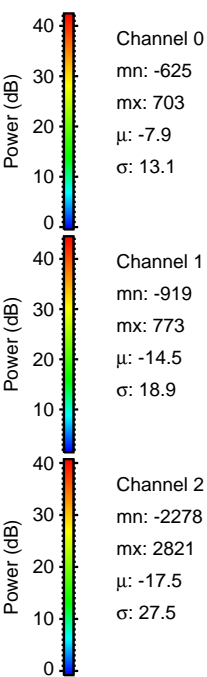
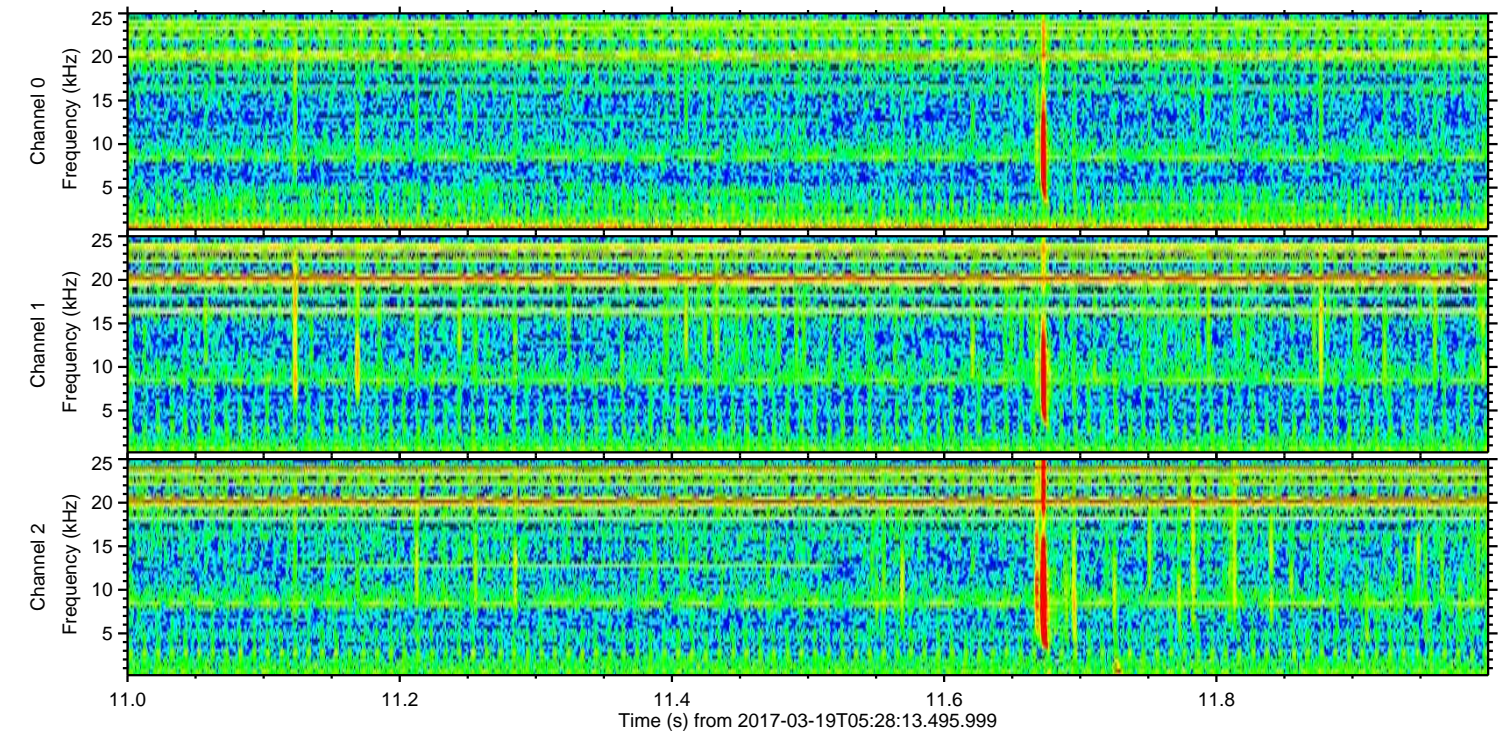
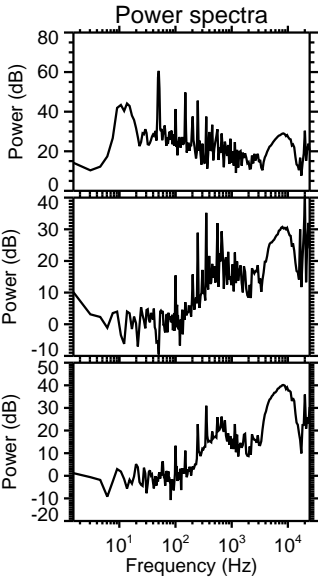
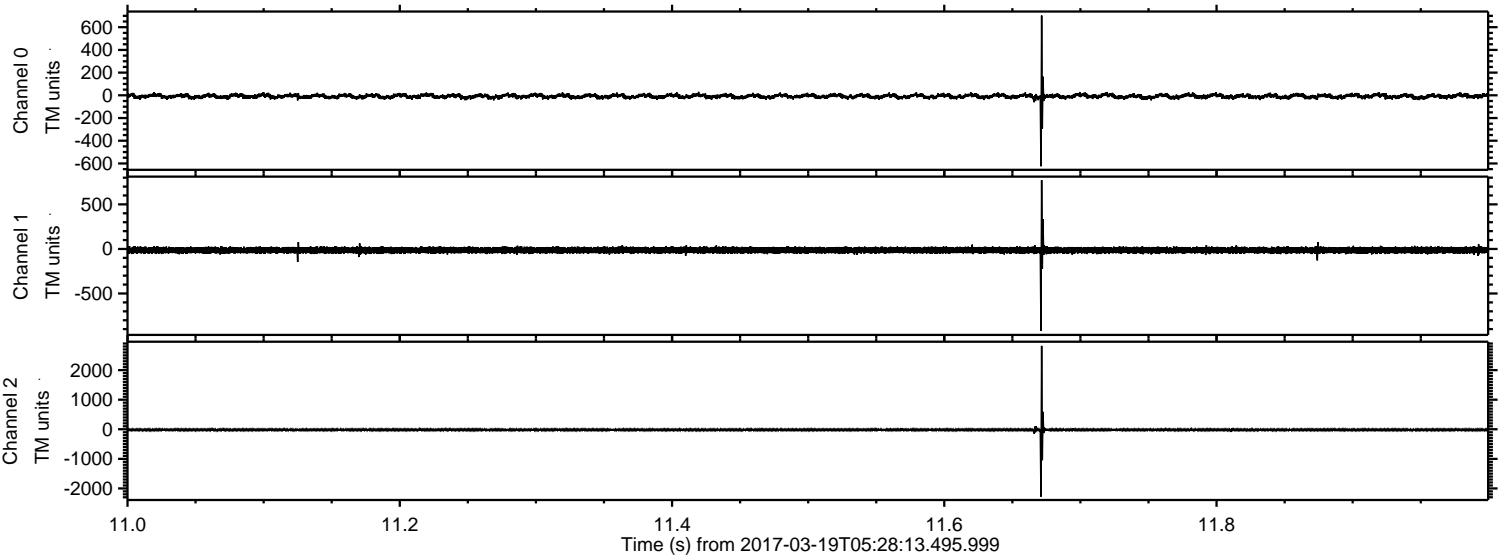


Processed Sun Mar 19 06:36:21 2017 by ELM ver.2012-10-06 from 001\_\_elm20170319\_052812\_\_dat00.bin





Processed Sun Mar 19 06:36:21 2017 by ELM ver.2012-10-06 from 001\_\_elm20170319\_052812\_\_dat00.bin



Channel 0  
mn: -625  
mx: 703  
 $\mu$ : -7.9  
 $\sigma$ : 13.1

Channel 1  
mn: -919  
mx: 773  
 $\mu$ : -14.5  
 $\sigma$ : 18.9

Channel 2  
mn: -2278  
mx: 2821  
 $\mu$ : -17.5  
 $\sigma$ : 27.5



Processed Sun Mar 19 06:36:22 2017 by ELM ver.2012-10-06 from 001\_\_elm20170319\_052812\_\_dat00.bin

