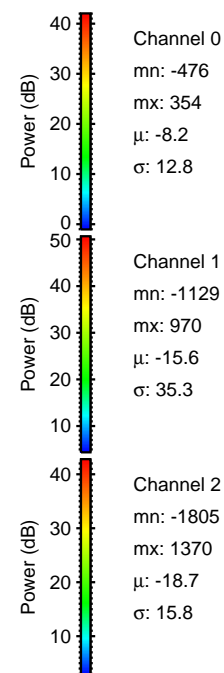
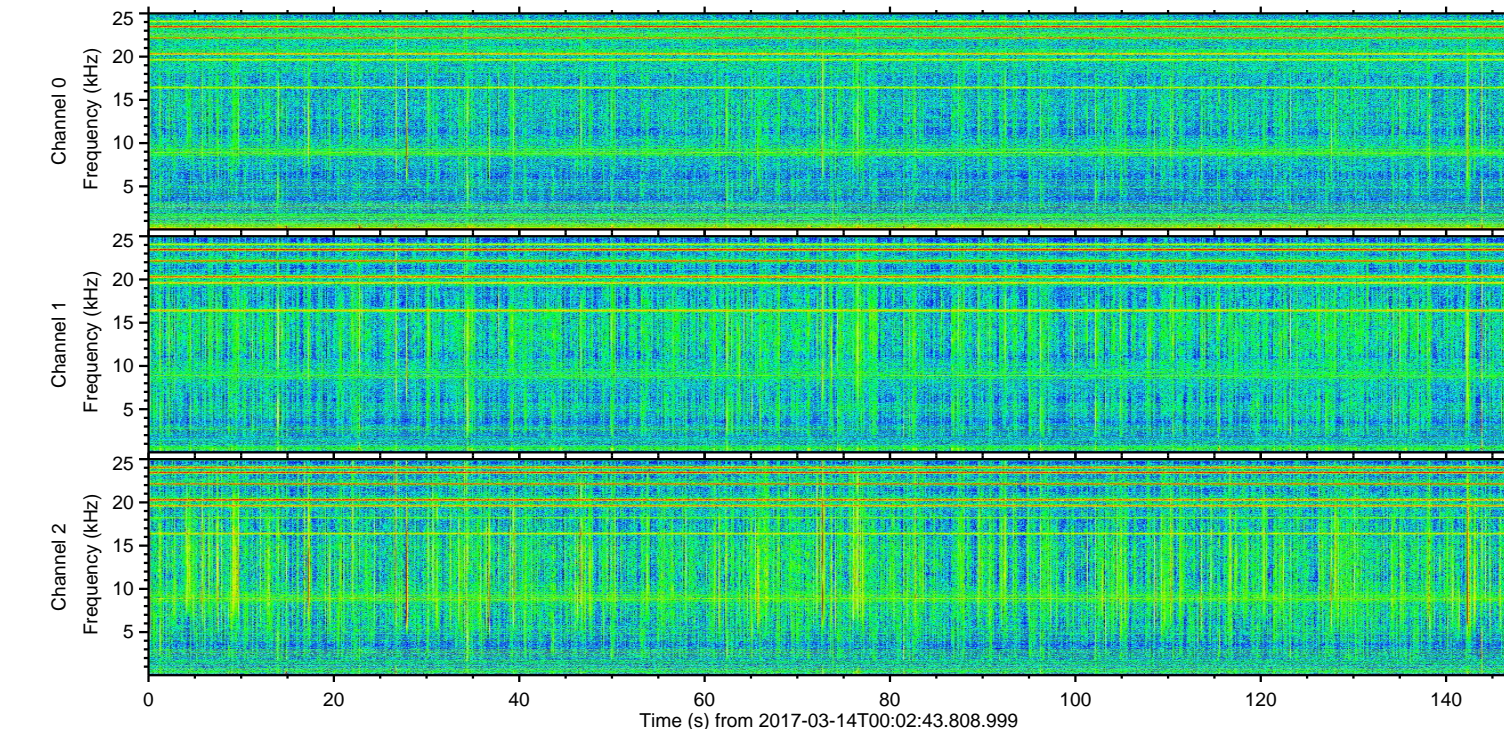
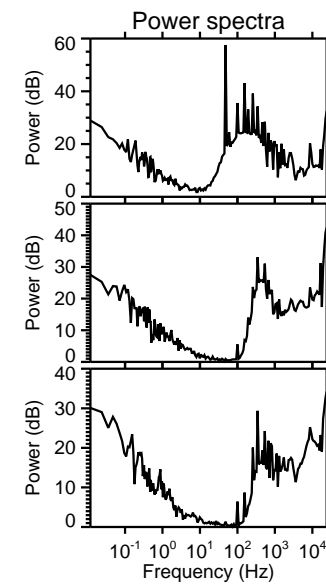
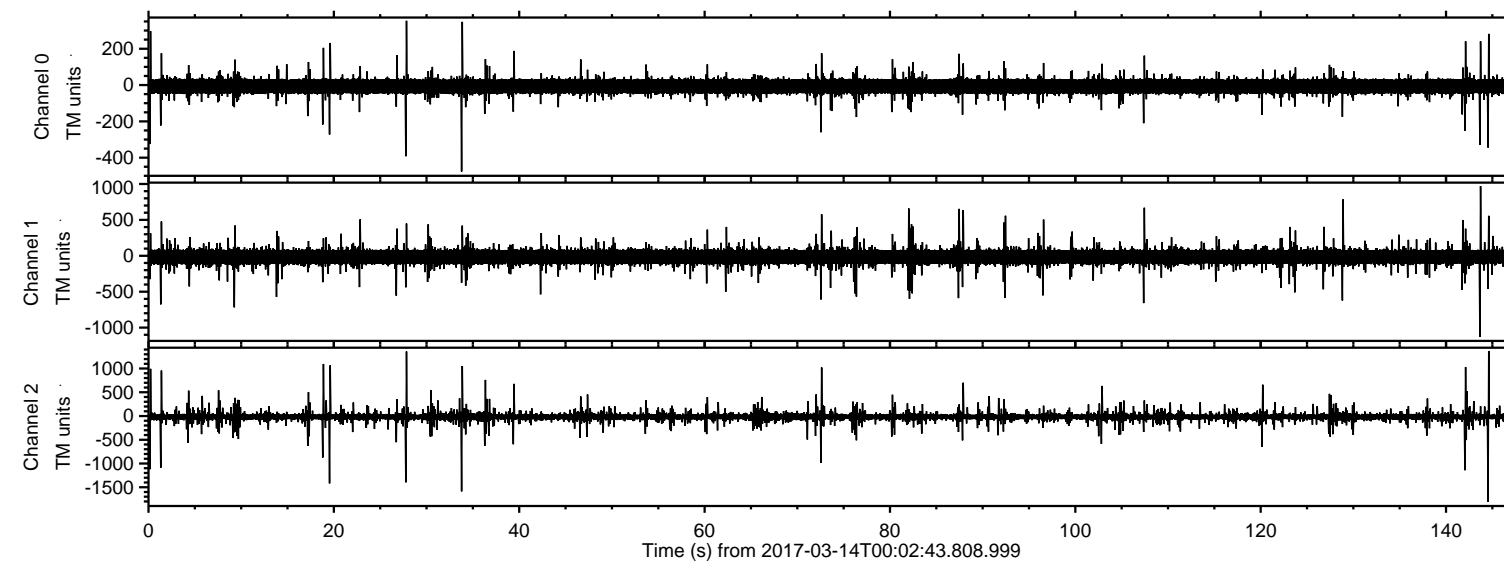


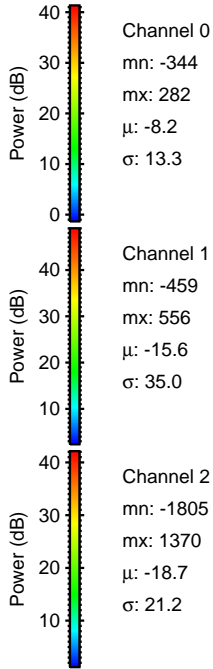
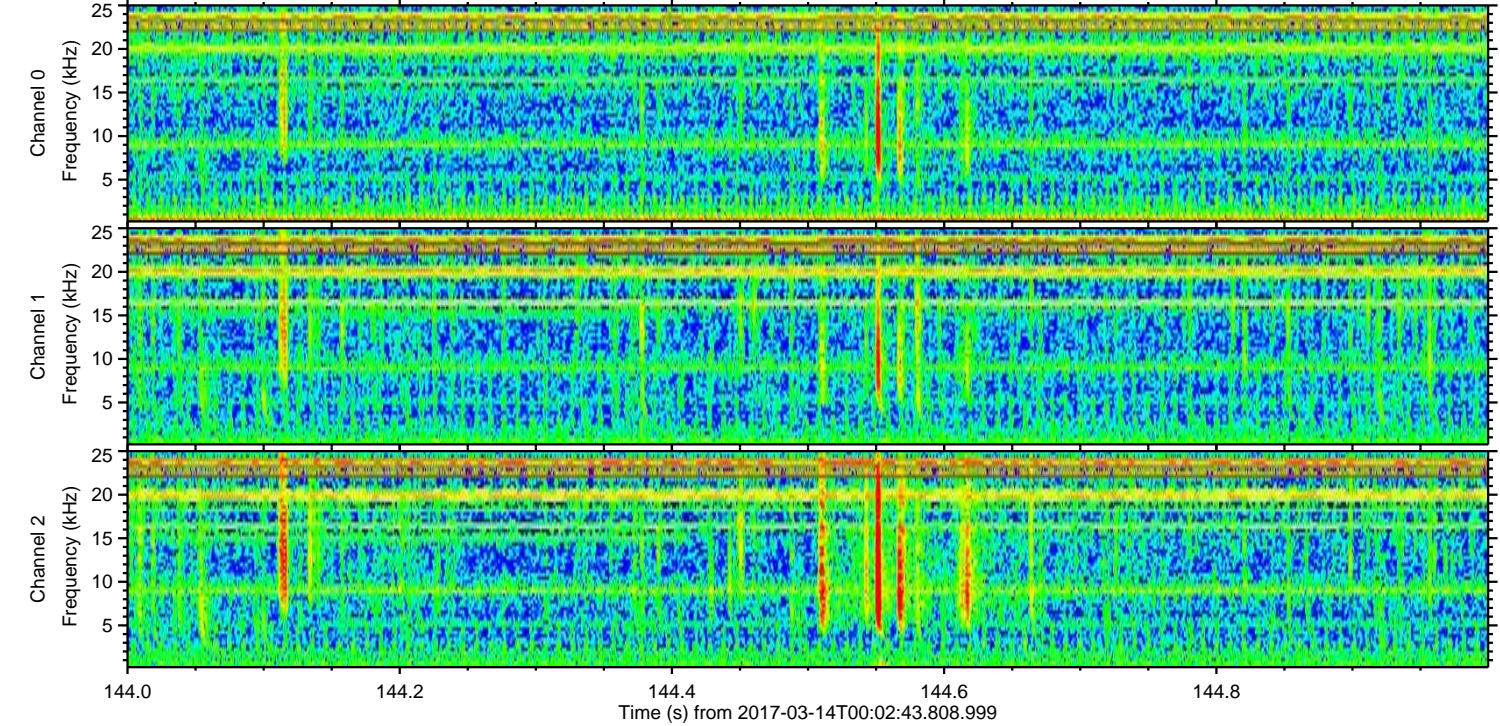
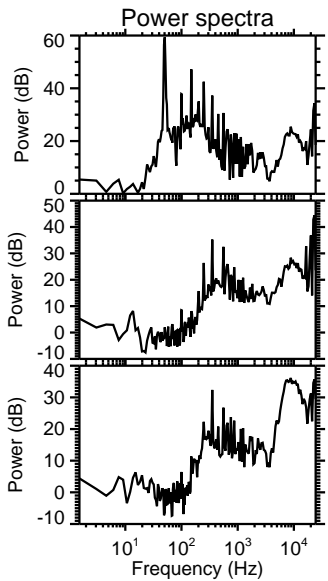
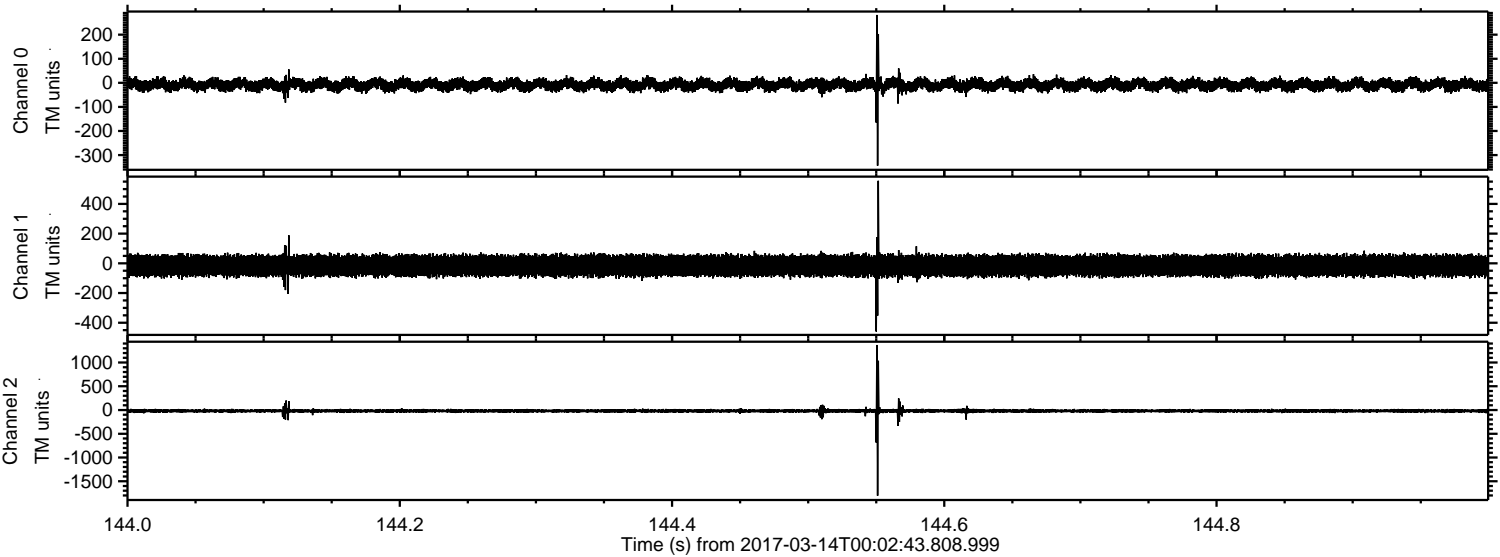
ELMAVAN 3D WAVEFORMS (Measured data sampled at 50 kHz) 51000 packets of 144 samples from 2017-03-14T00:02:43.808.999.

Processed Tue Mar 14 01:10:09 2017 by ELM ver.2012-10-06 from 001__elm20170314_000242__dat00.bin

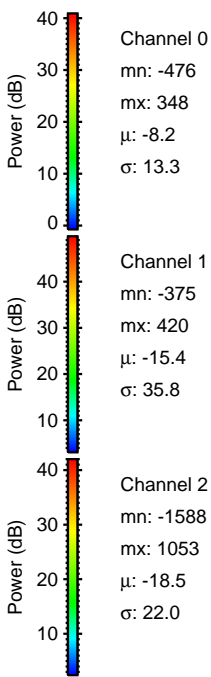
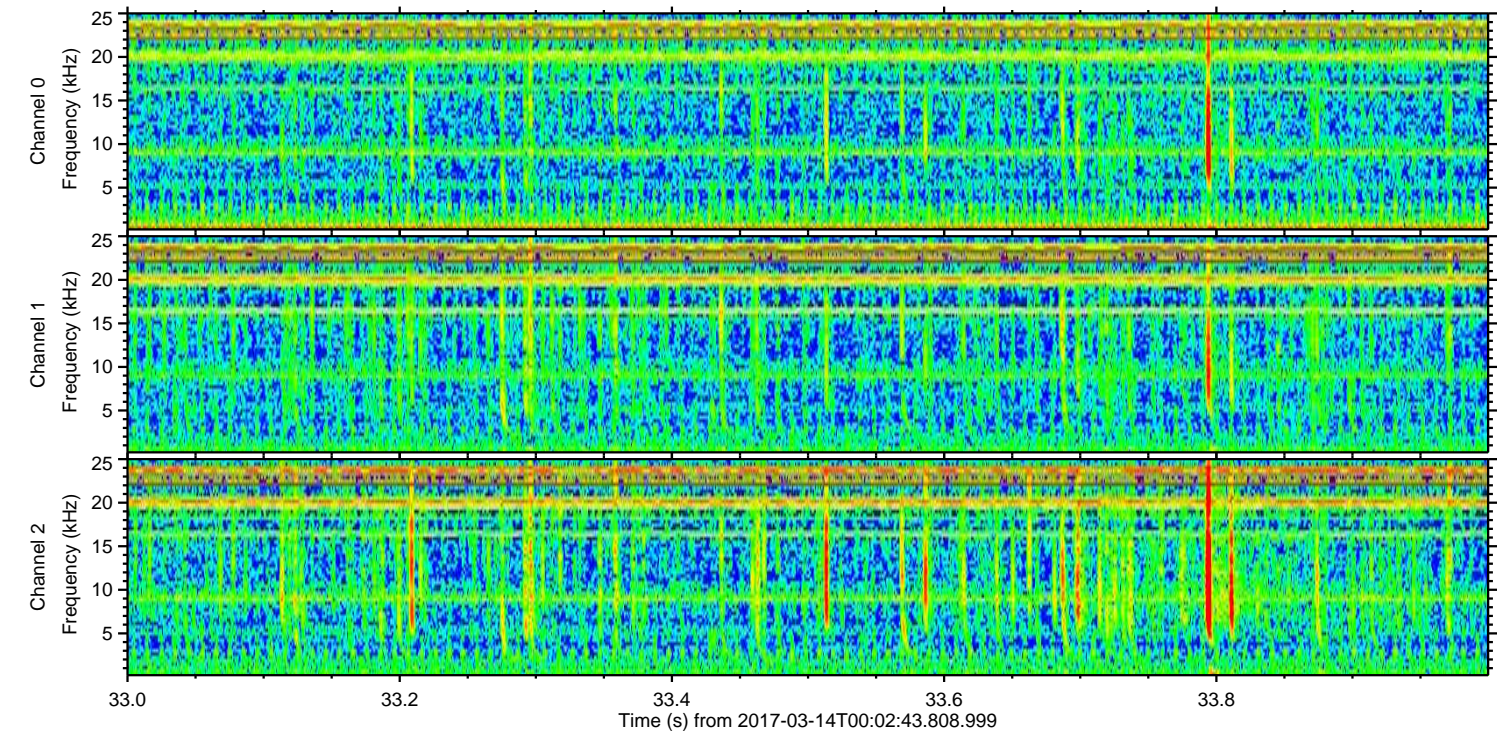
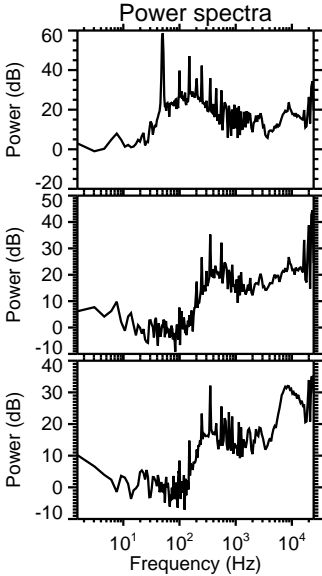
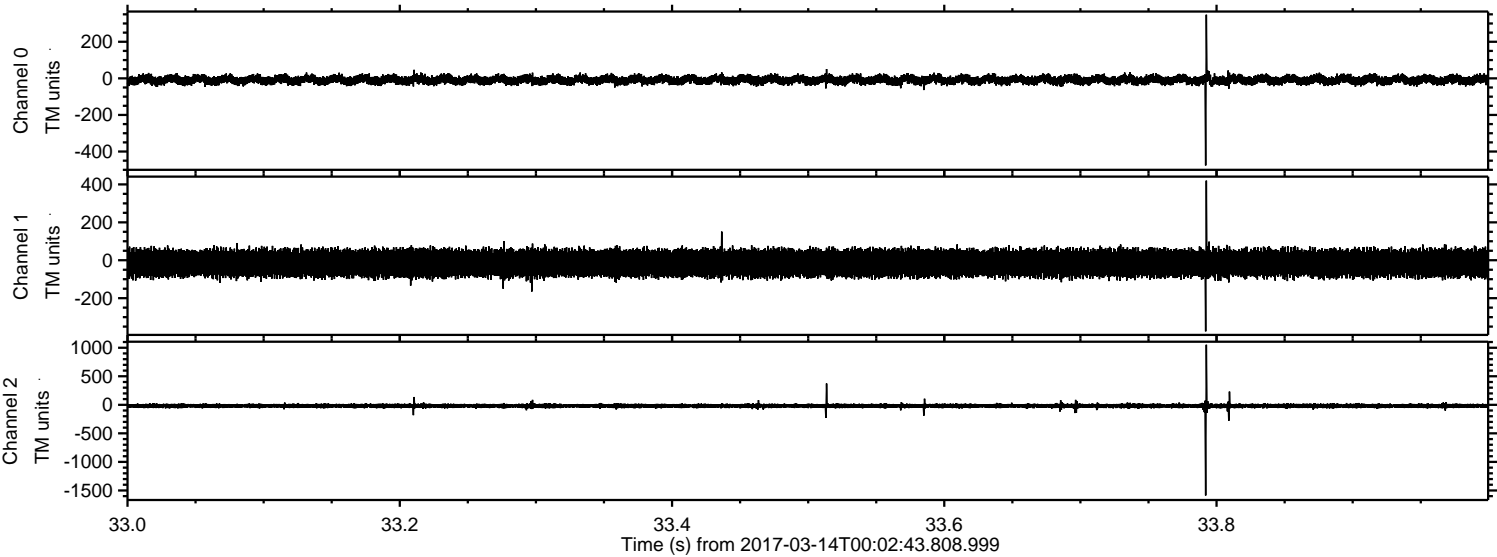


ELMAVAN 3D WAVEFORMS (Measured data sampled at 50 kHz) 51000 packets of 144 samples from 2017-03-14T00:02:43.808.999. Part 145/147

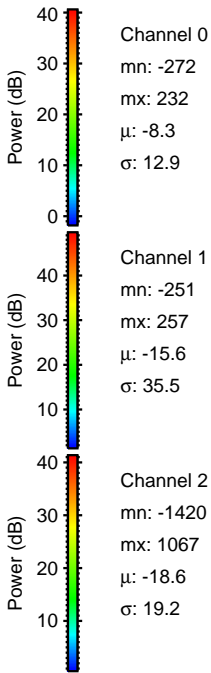
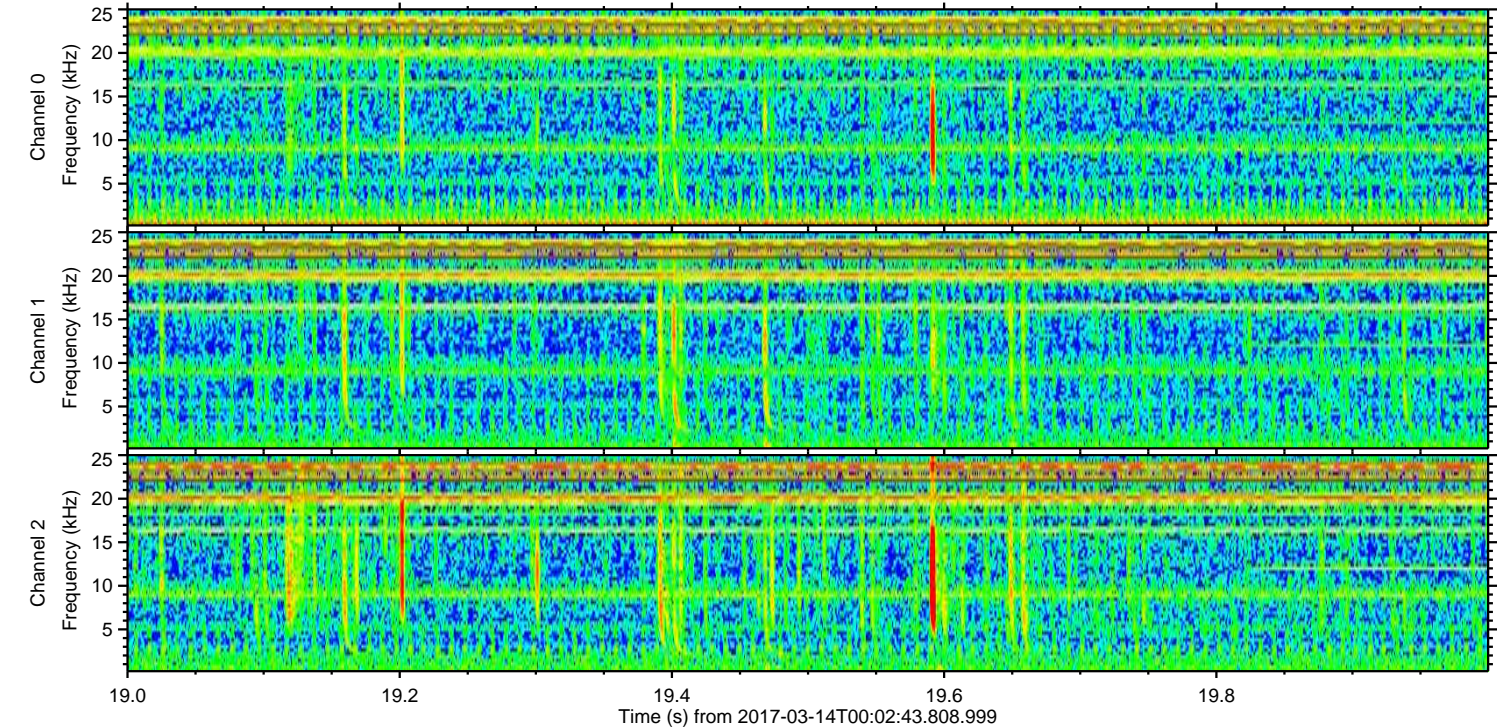
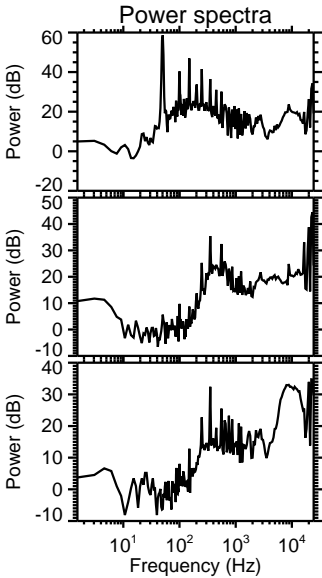
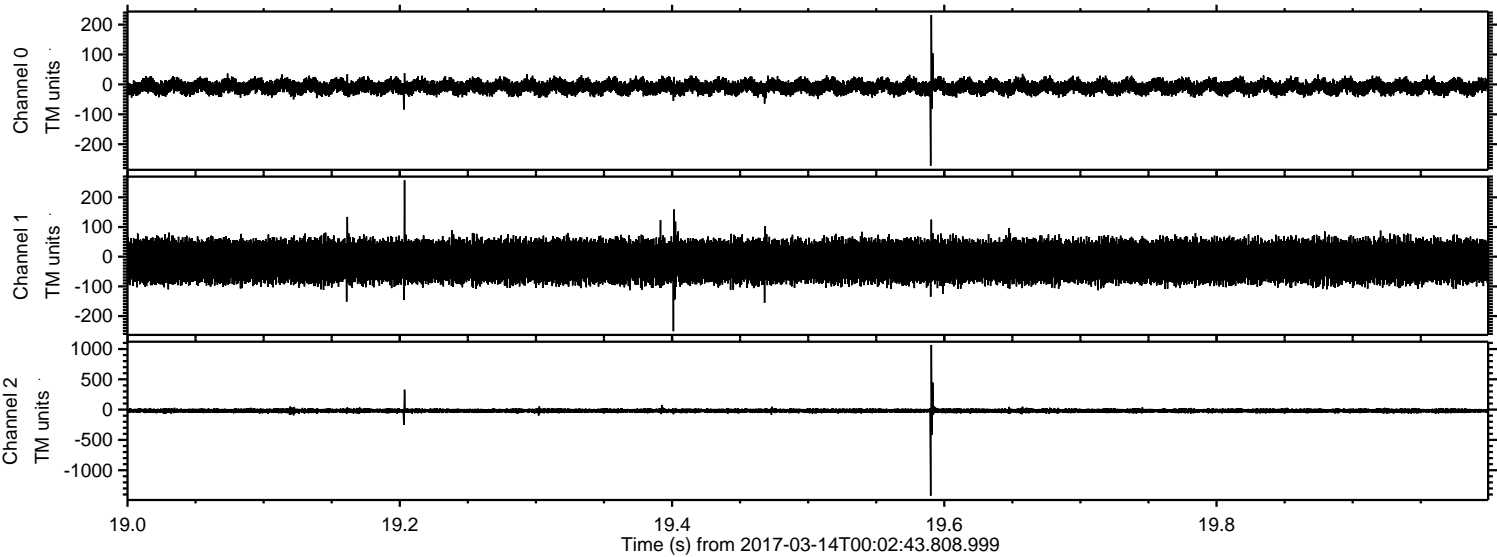
Processed Tue Mar 14 01:10:21 2017 by ELM ver.2012-10-06 from 001__elm20170314_000242__dat00.bin



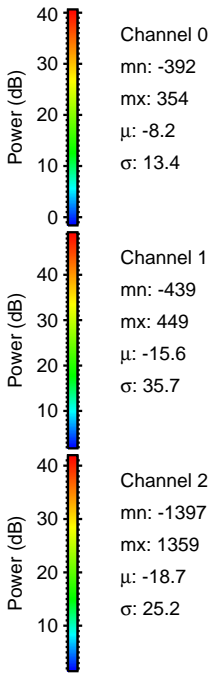
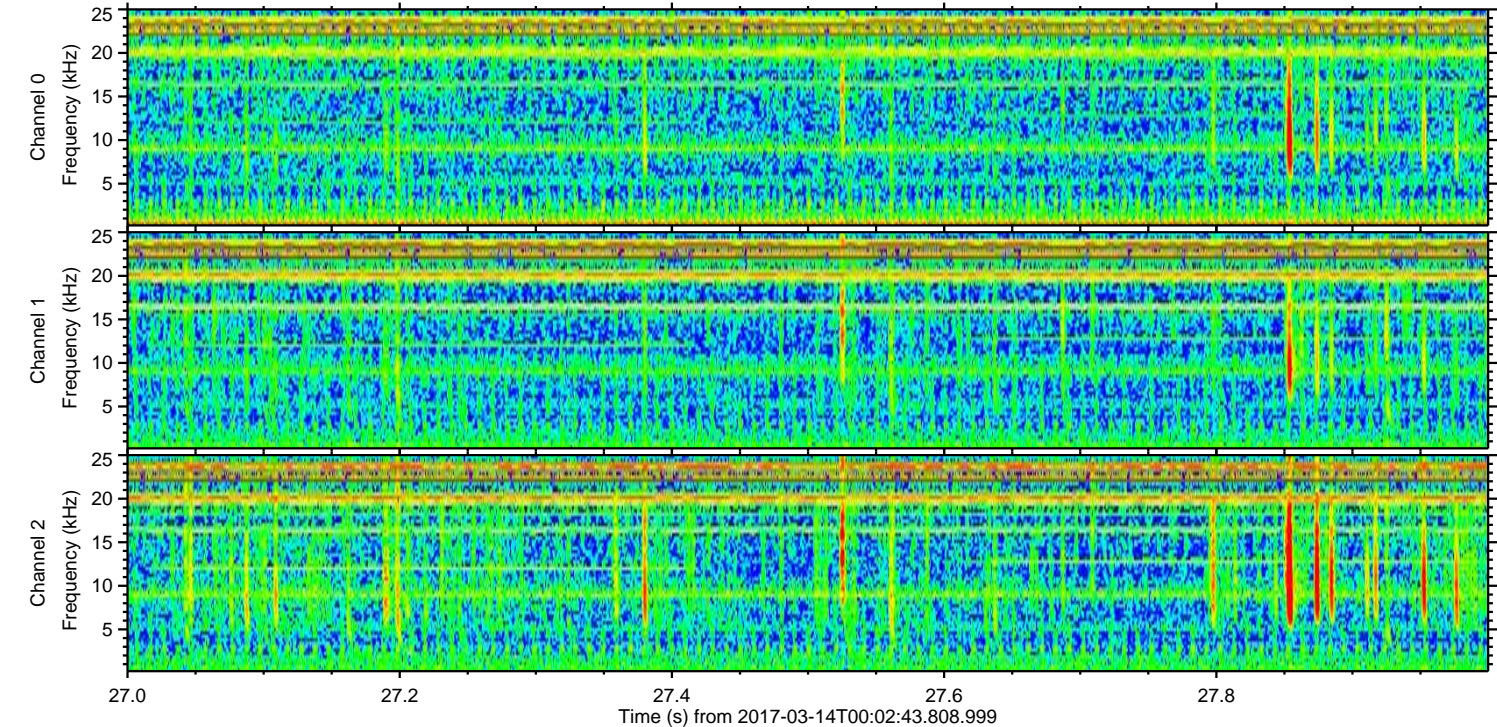
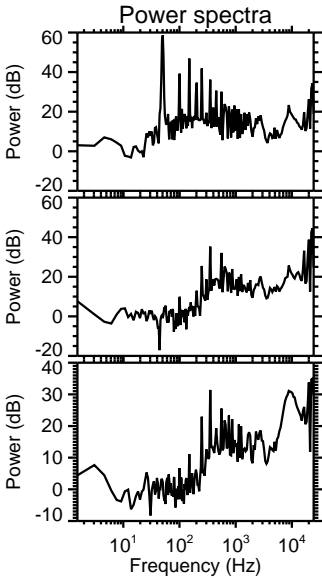
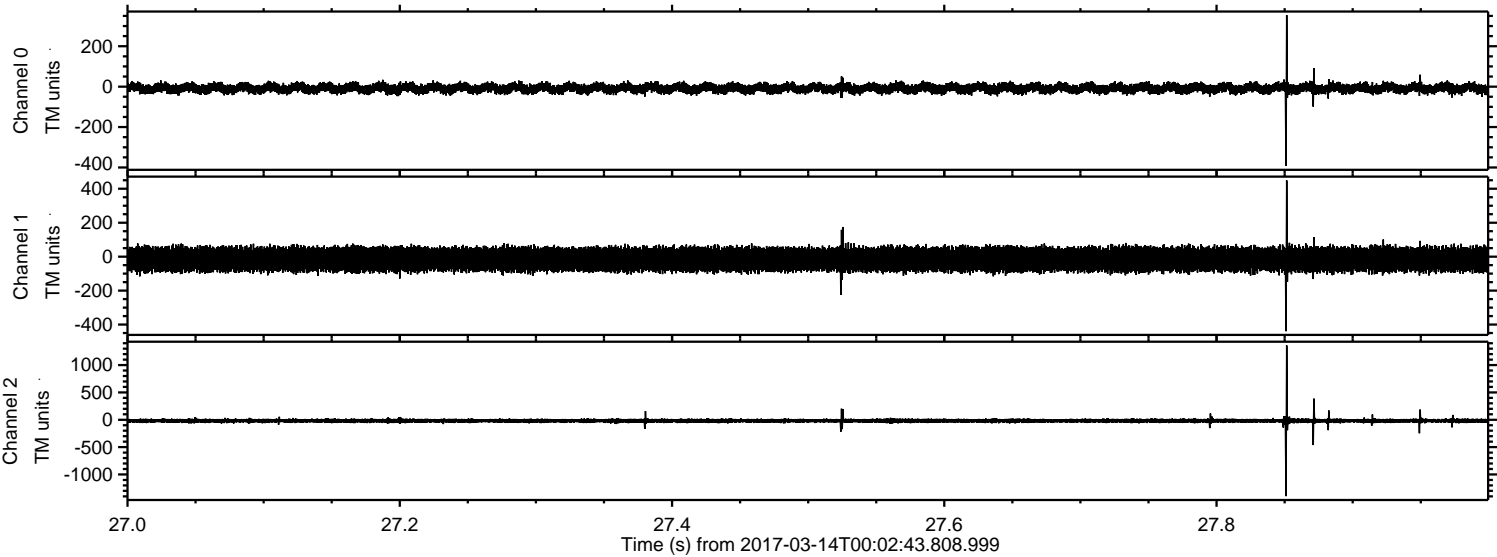
Processed Tue Mar 14 01:10:22 2017 by ELM ver.2012-10-06 from 001__elm20170314_000242__dat00.bin



Processed Tue Mar 14 01:10:22 2017 by ELM ver.2012-10-06 from 001__elm20170314_000242__dat00.bin

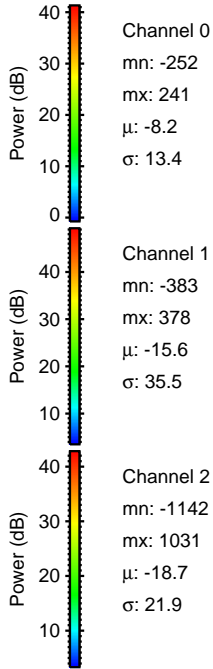
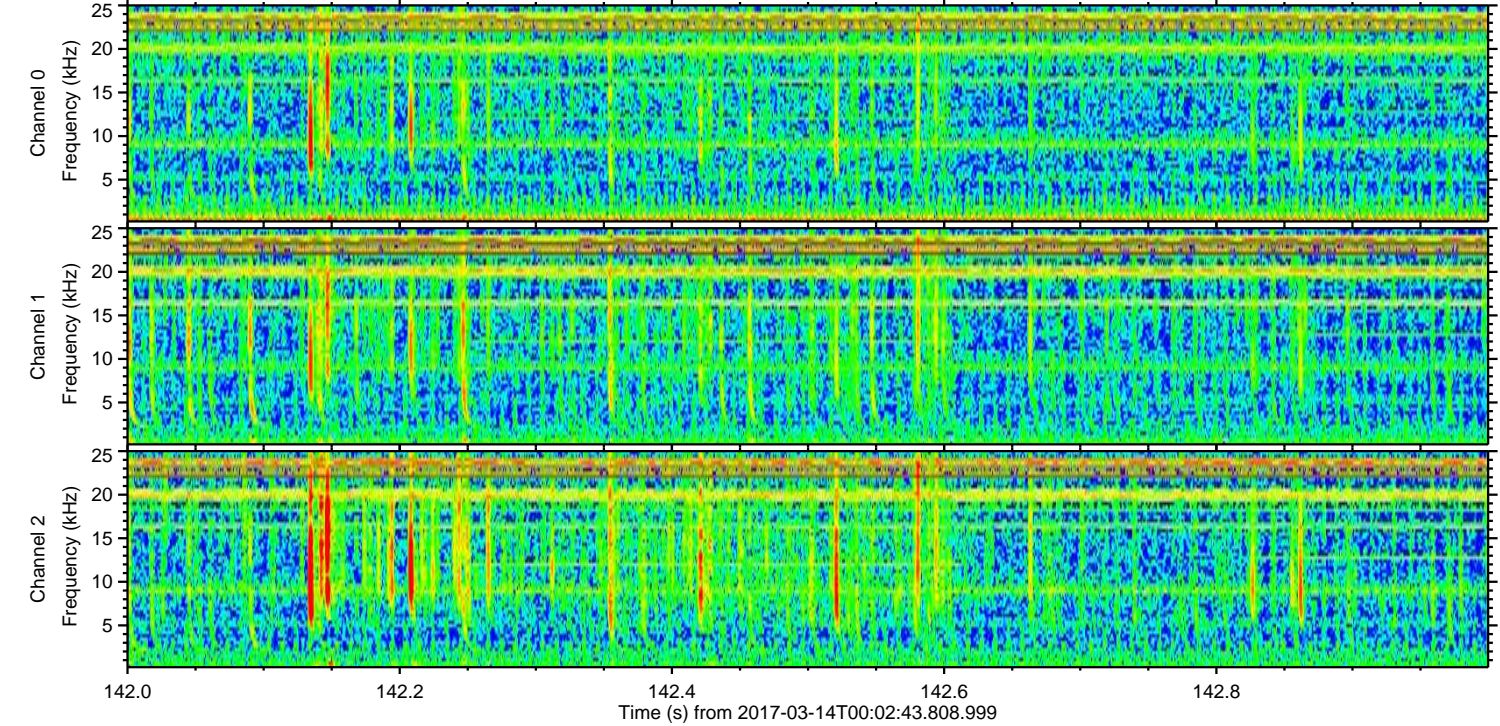
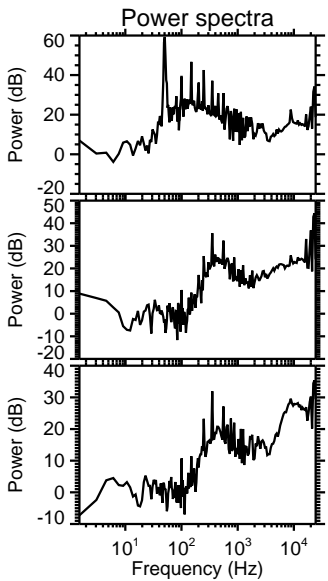
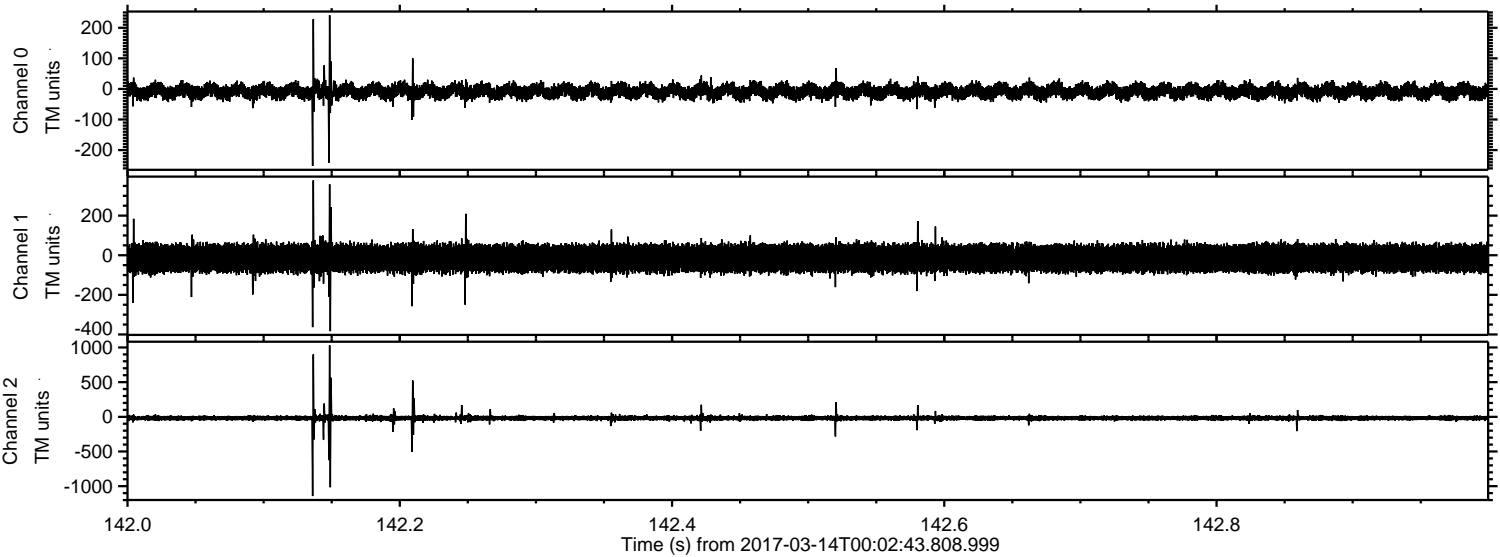


Processed Tue Mar 14 01:10:23 2017 by ELM ver.2012-10-06 from 001__elm20170314_000242__dat00.bin



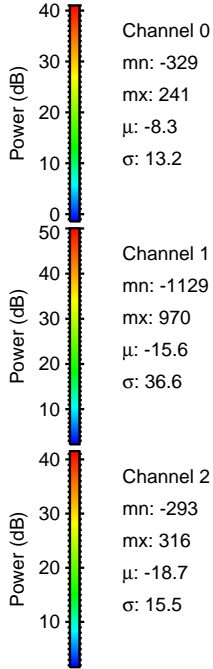
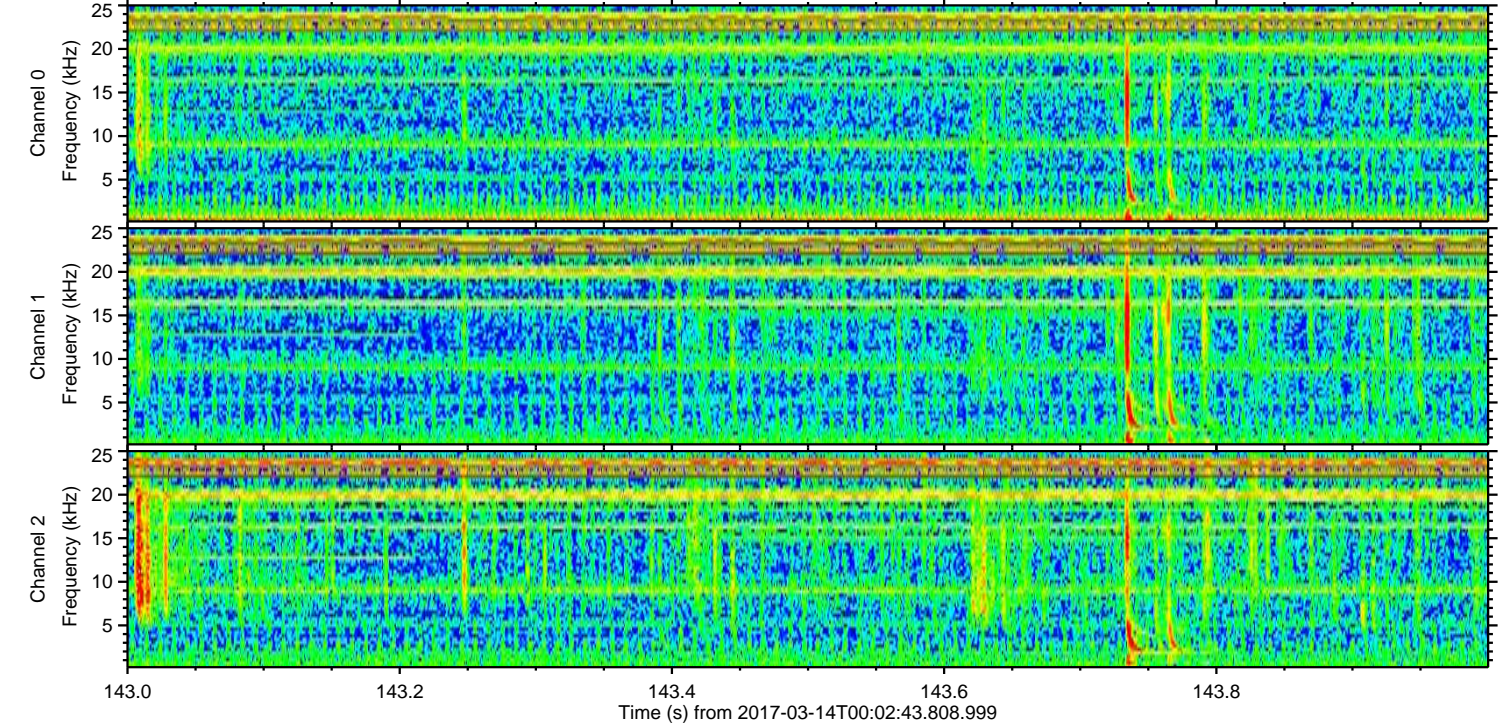
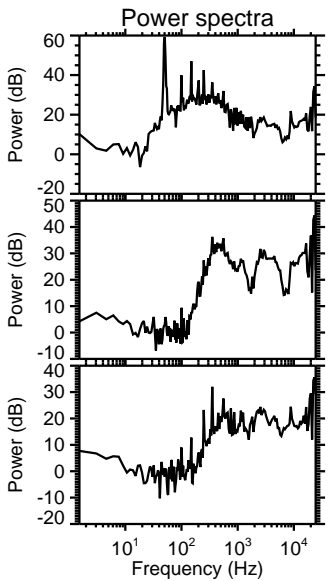
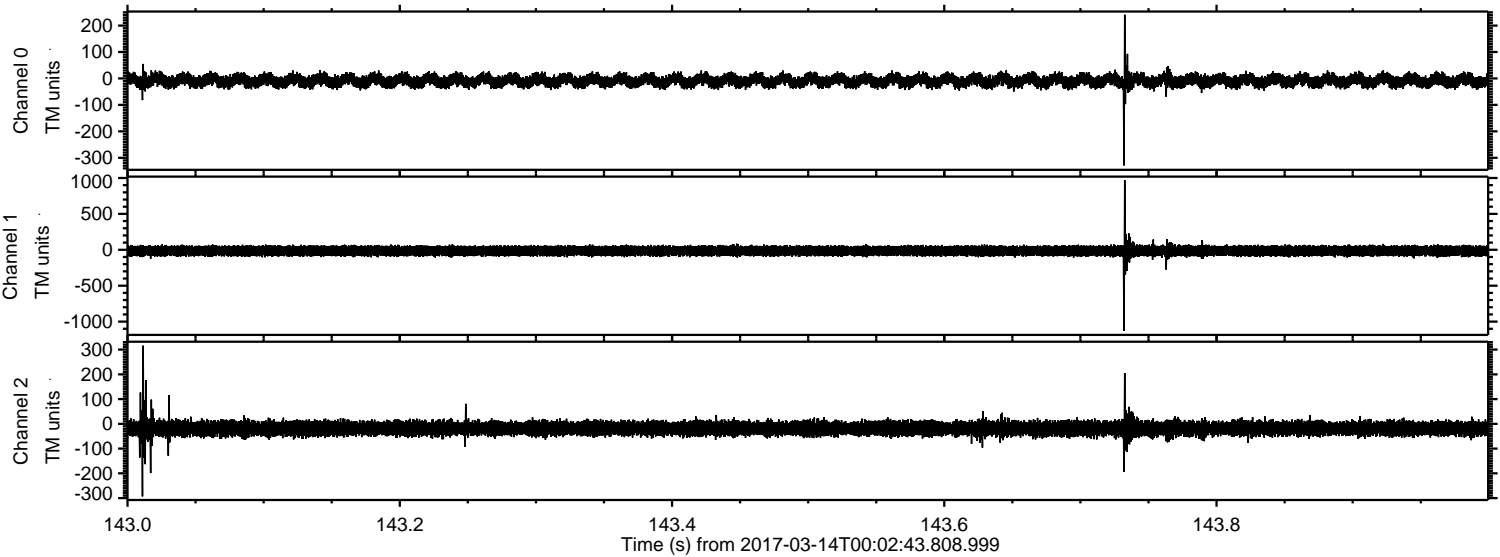
ELMAVAN 3D WAVEFORMS (Measured data sampled at 50 kHz) 51000 packets of 144 samples from 2017-03-14T00:02:43.808.999. Part 143/147

Processed Tue Mar 14 01:10:24 2017 by ELM ver.2012-10-06 from 001__elm20170314_000242__dat00.bin

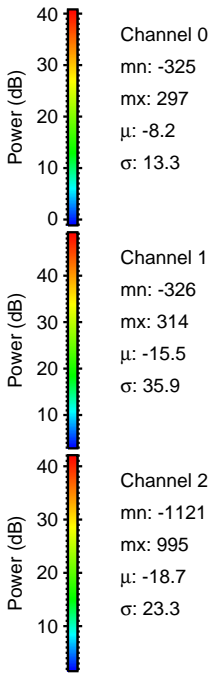
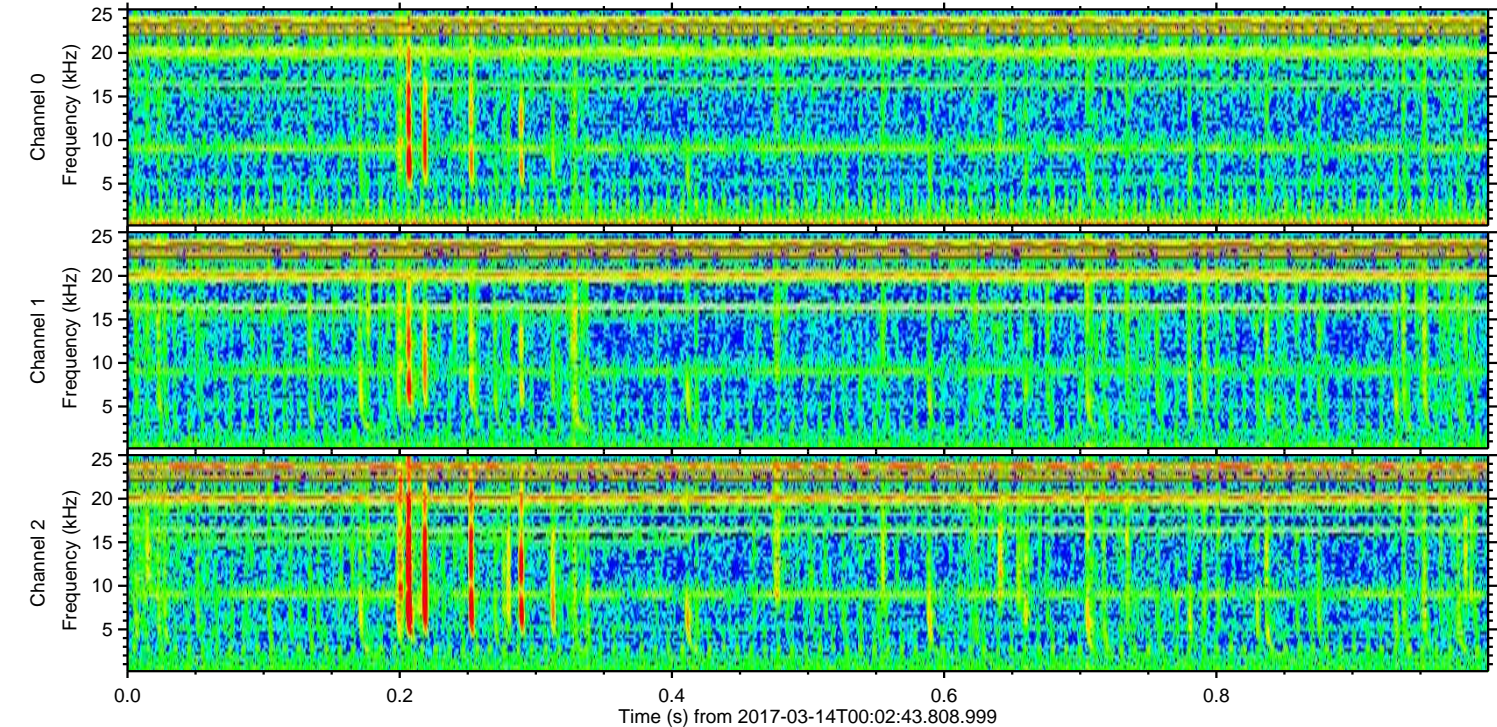
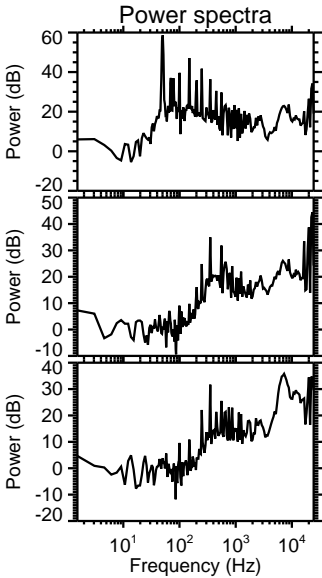
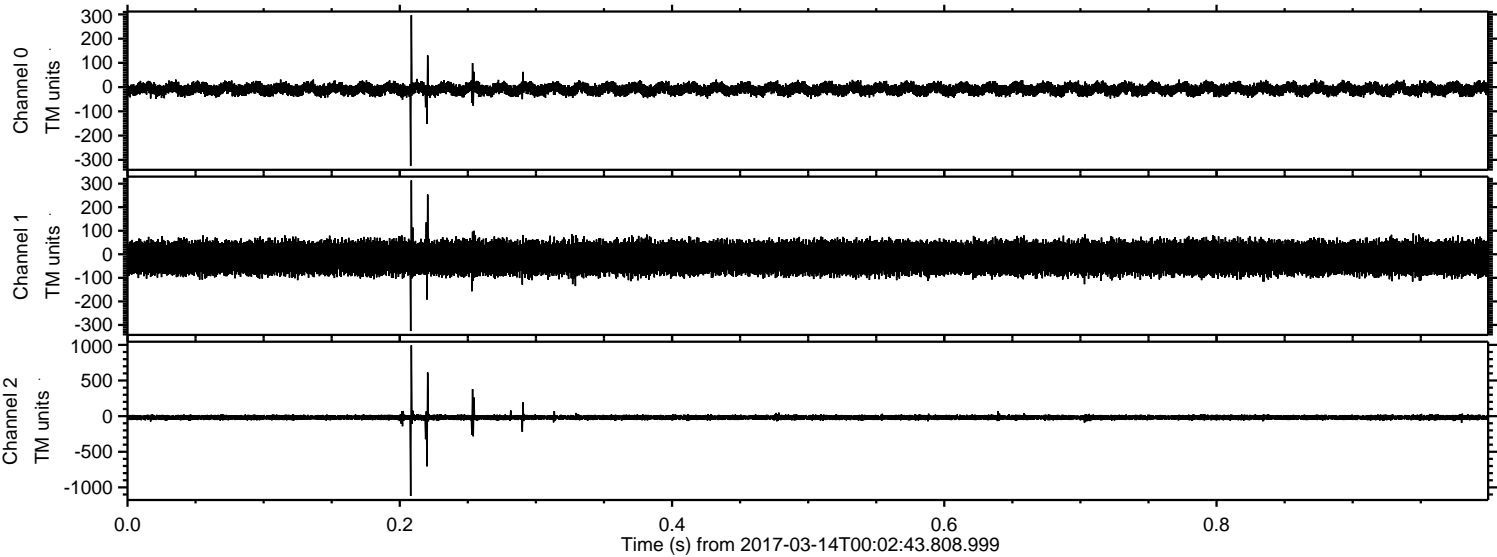


ELMAVAN 3D WAVEFORMS (Measured data sampled at 50 kHz) 51000 packets of 144 samples from 2017-03-14T00:02:43.808.999. Part 144/147

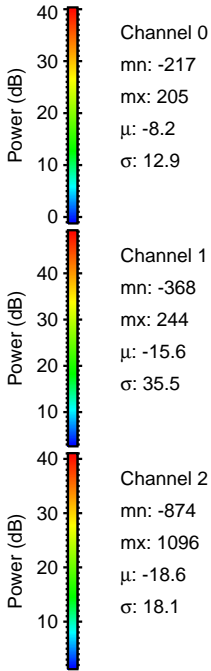
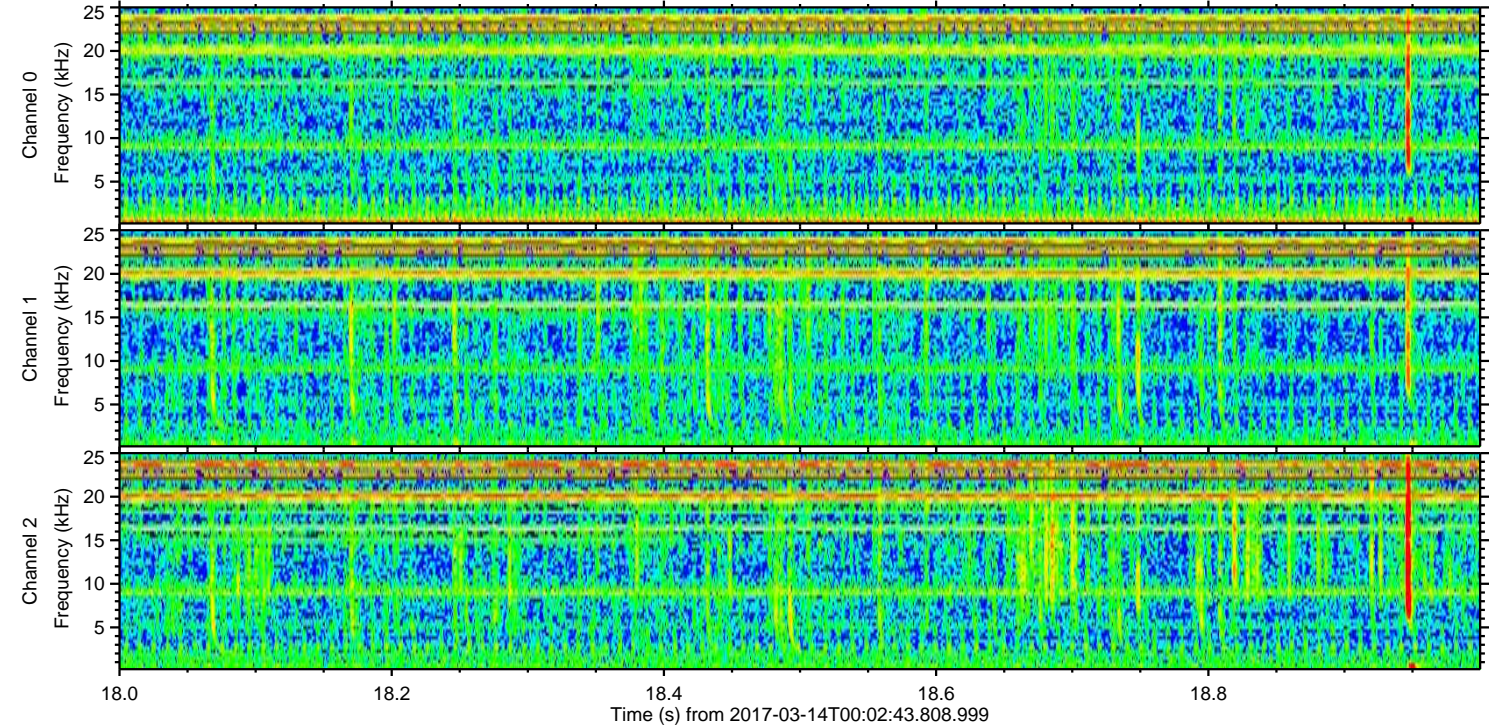
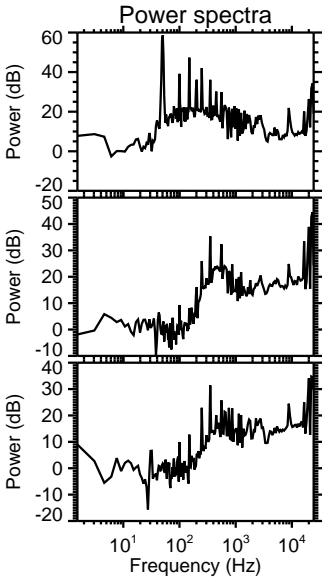
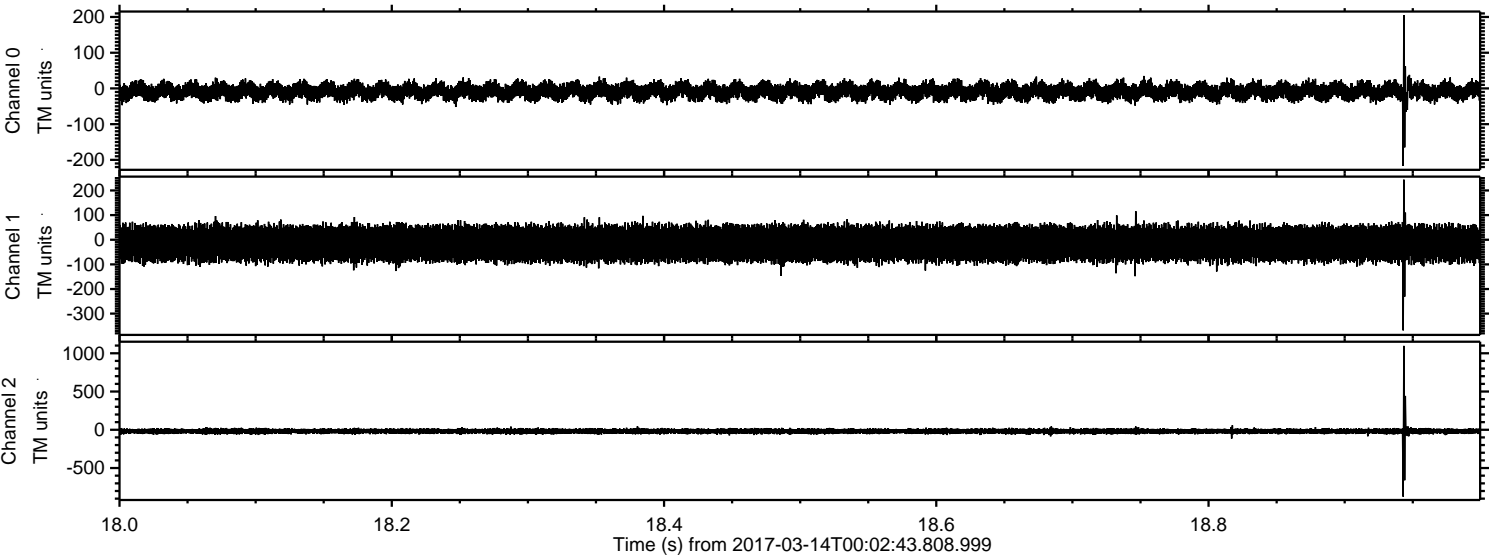
Processed Tue Mar 14 01:10:25 2017 by ELM ver.2012-10-06 from 001__elm20170314_000242__dat00.bin



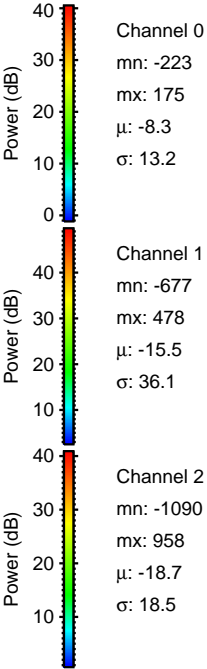
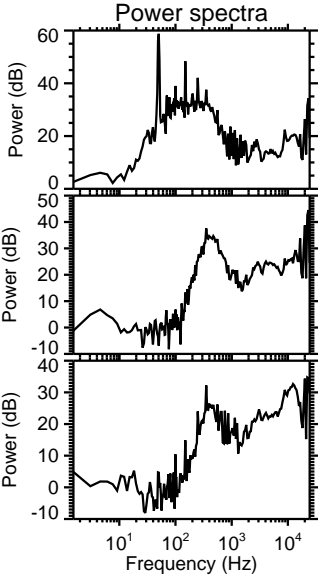
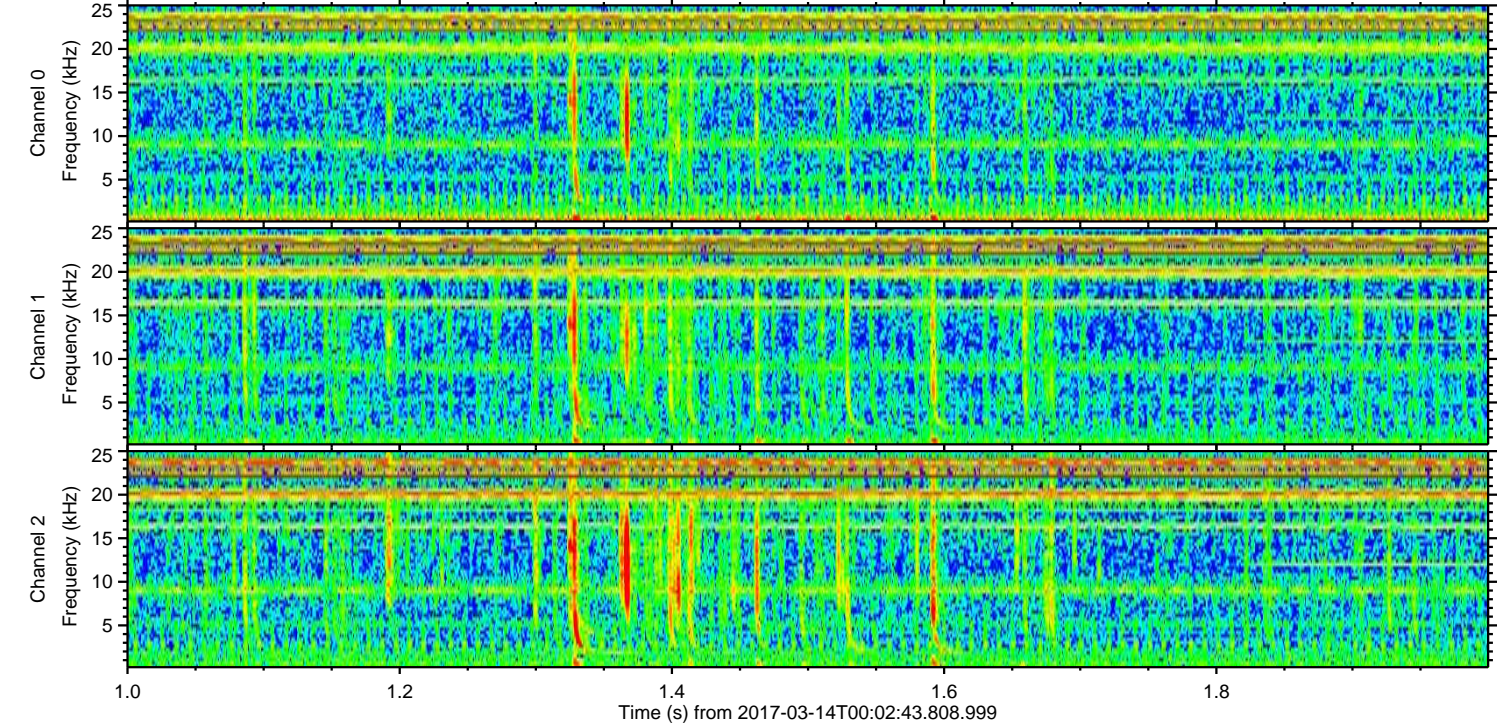
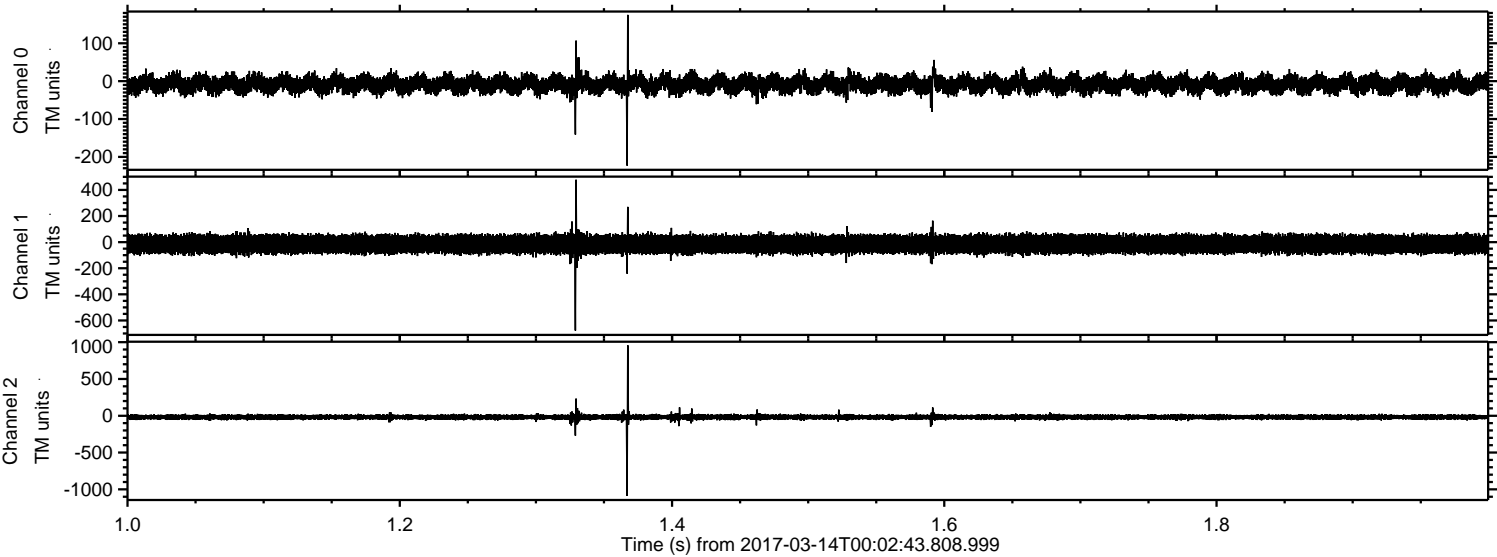
Processed Tue Mar 14 01:10:26 2017 by ELM ver.2012-10-06 from 001__elm20170314_000242__dat00.bin



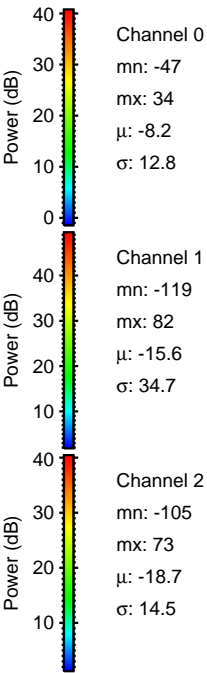
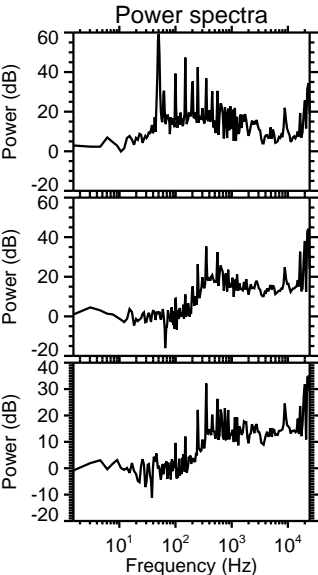
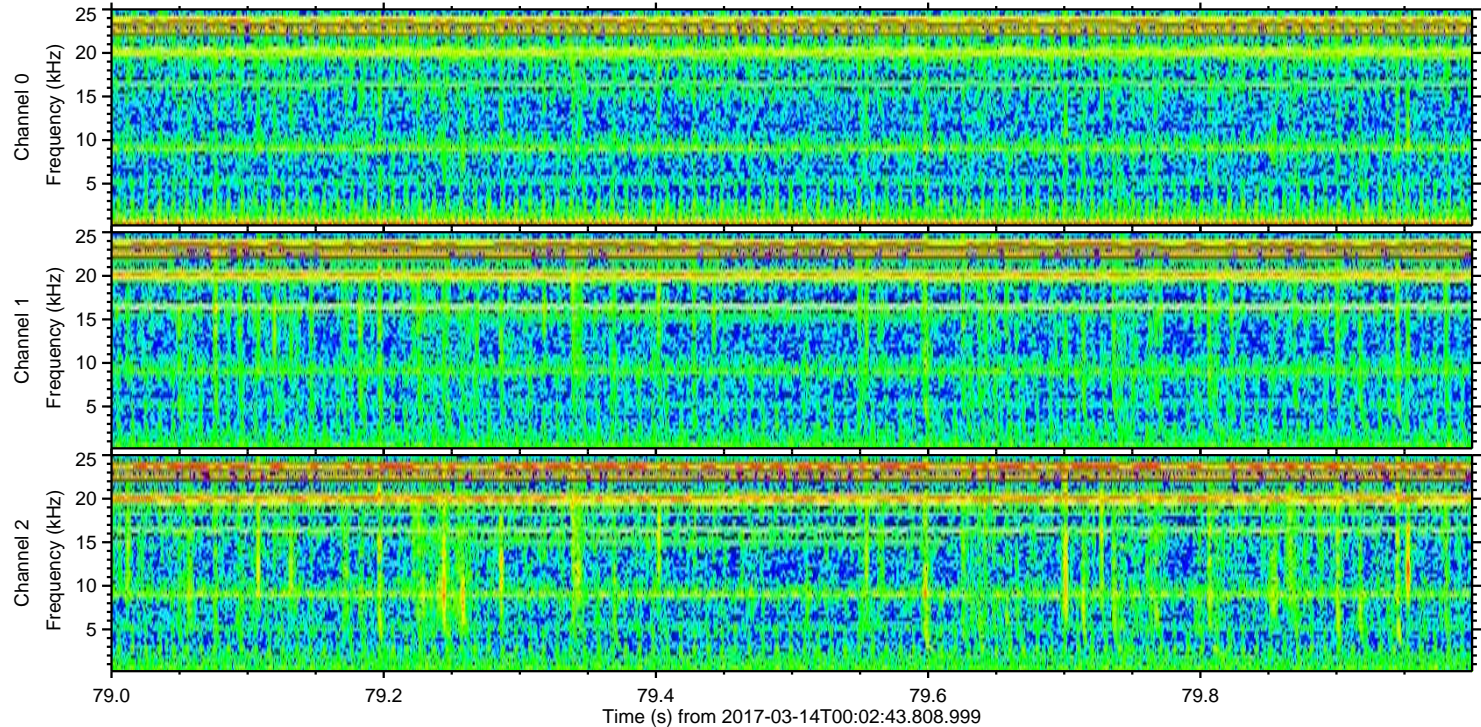
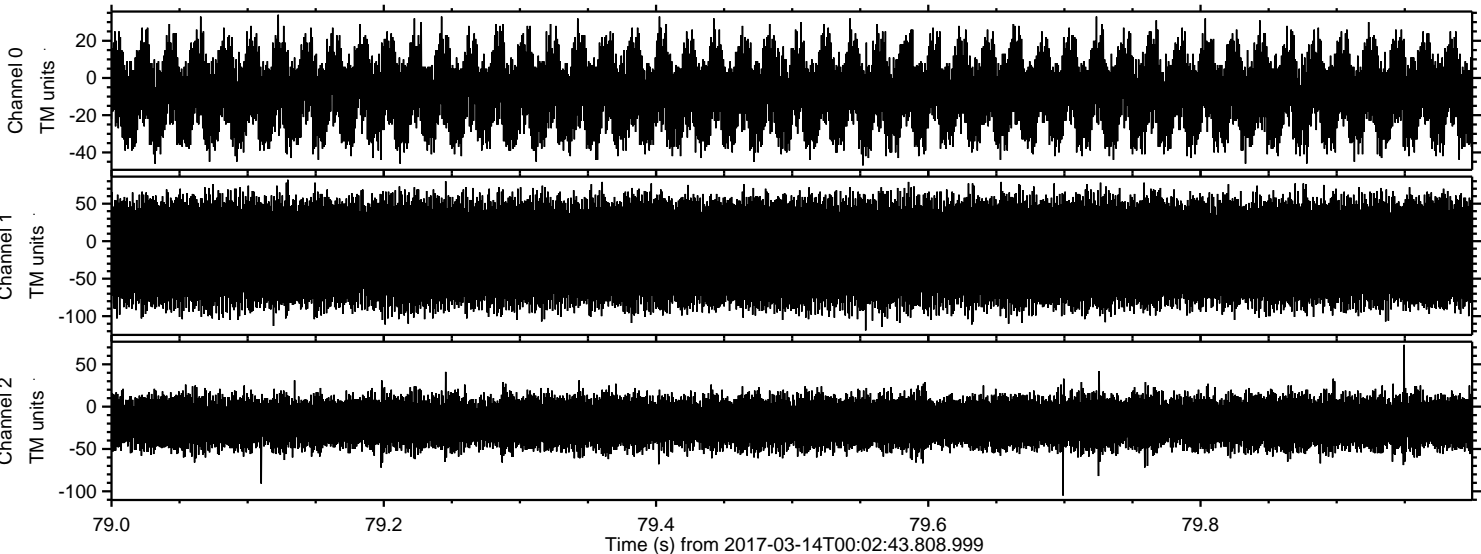
Processed Tue Mar 14 01:10:27 2017 by ELM ver.2012-10-06 from 001__elm20170314_000242__dat00.bin



Processed Tue Mar 14 01:10:28 2017 by ELM ver.2012-10-06 from 001__elm20170314_000242__dat00.bin



Processed Tue Mar 14 01:10:29 2017 by ELM ver.2012-10-06 from 001__elm20170314_000242__dat00.bin



Channel 0
mn: -47
mx: 34
 μ : -8.2
 σ : 12.8

Channel 1
mn: -119
mx: 82
 μ : -15.6
 σ : 34.7

Channel 2
mn: -105
mx: 73
 μ : -18.7
 σ : 14.5