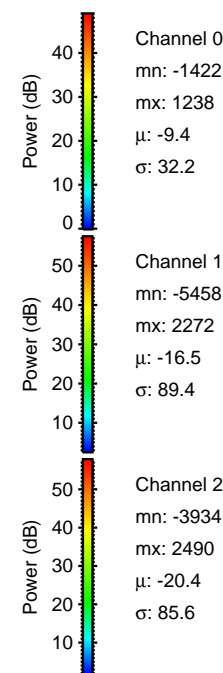
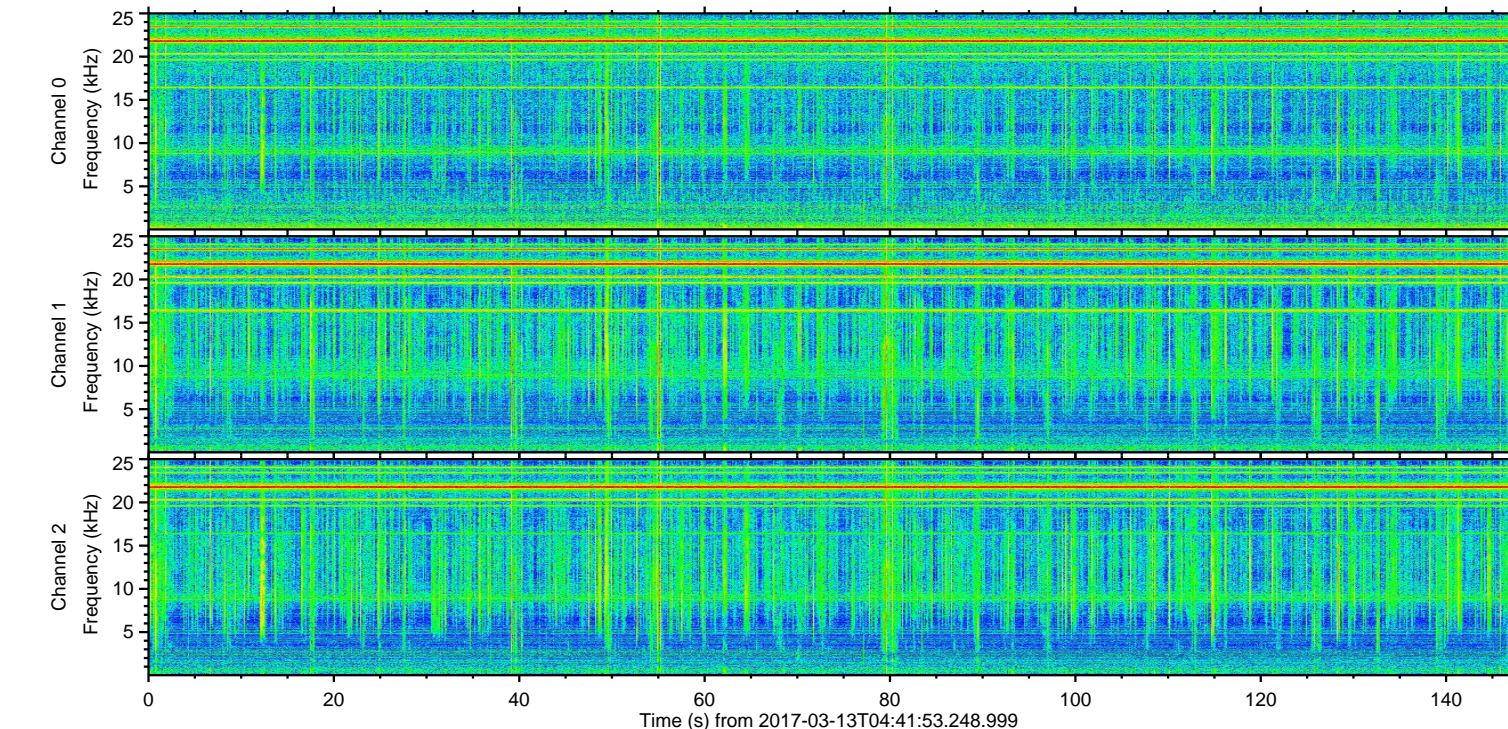
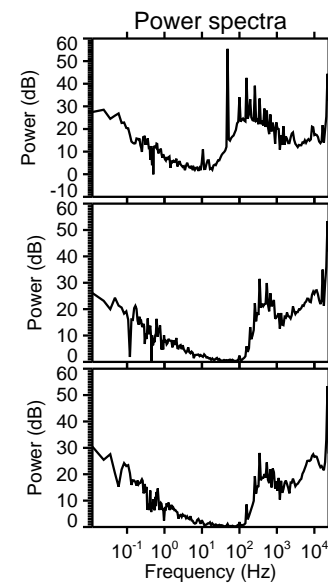
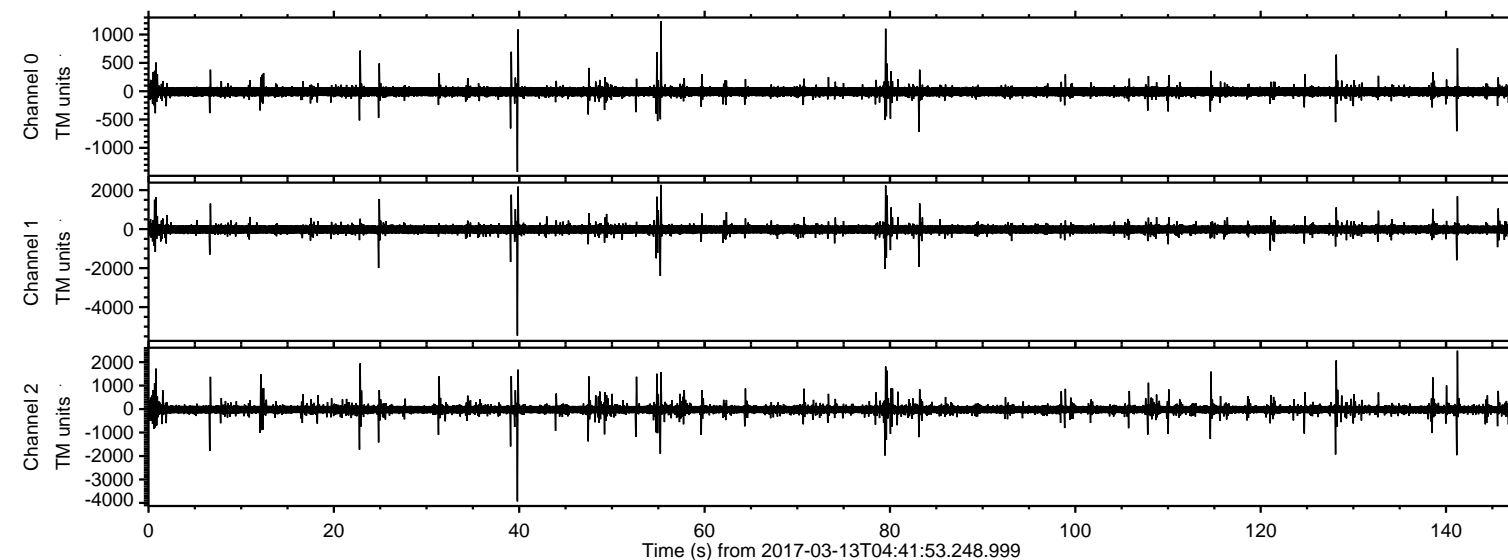
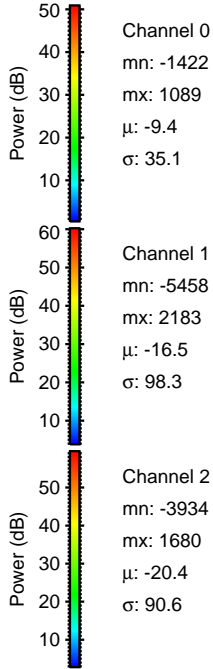
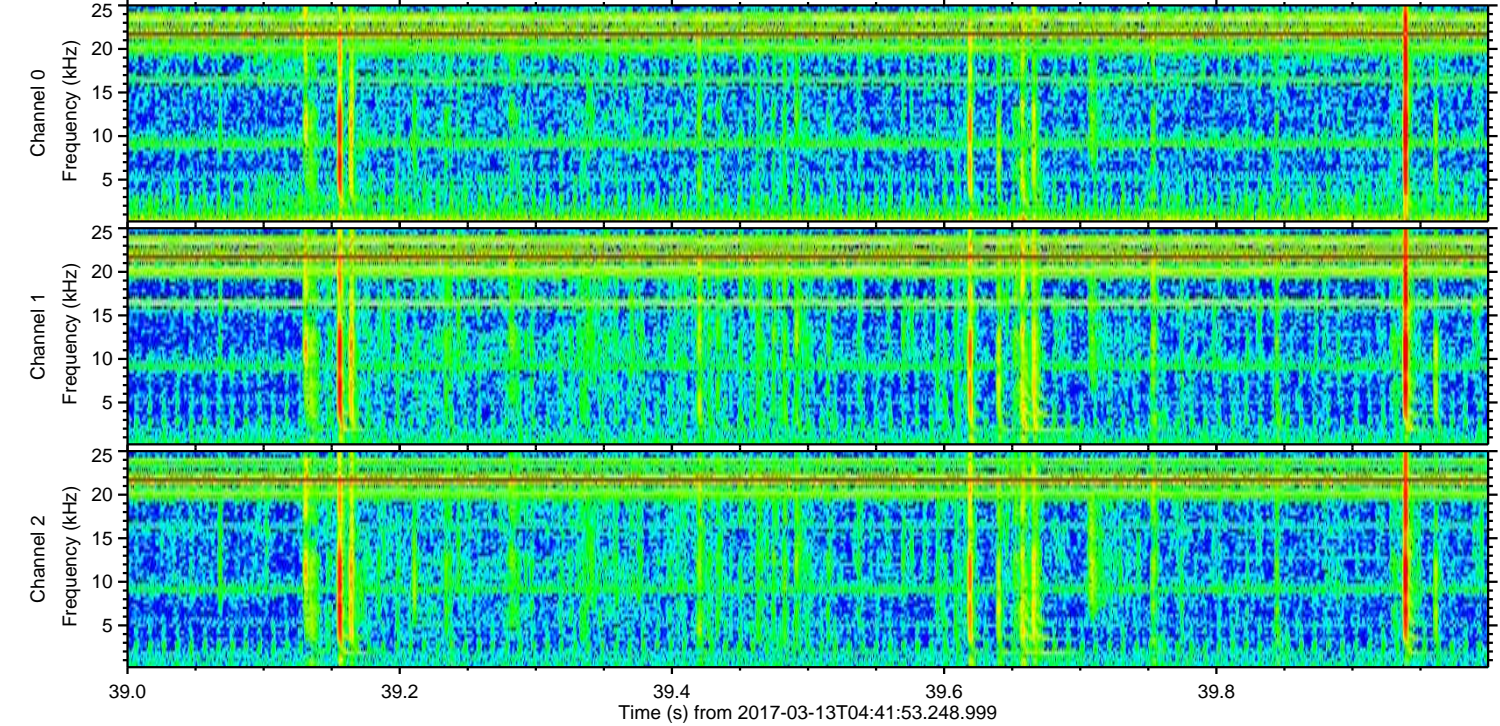
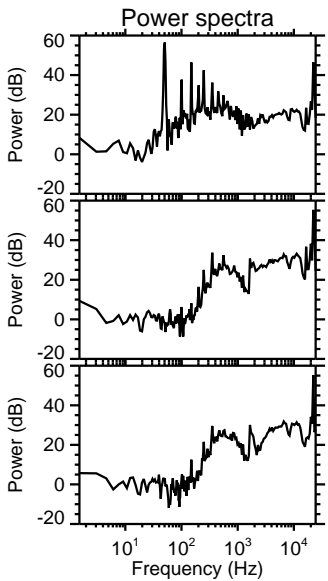
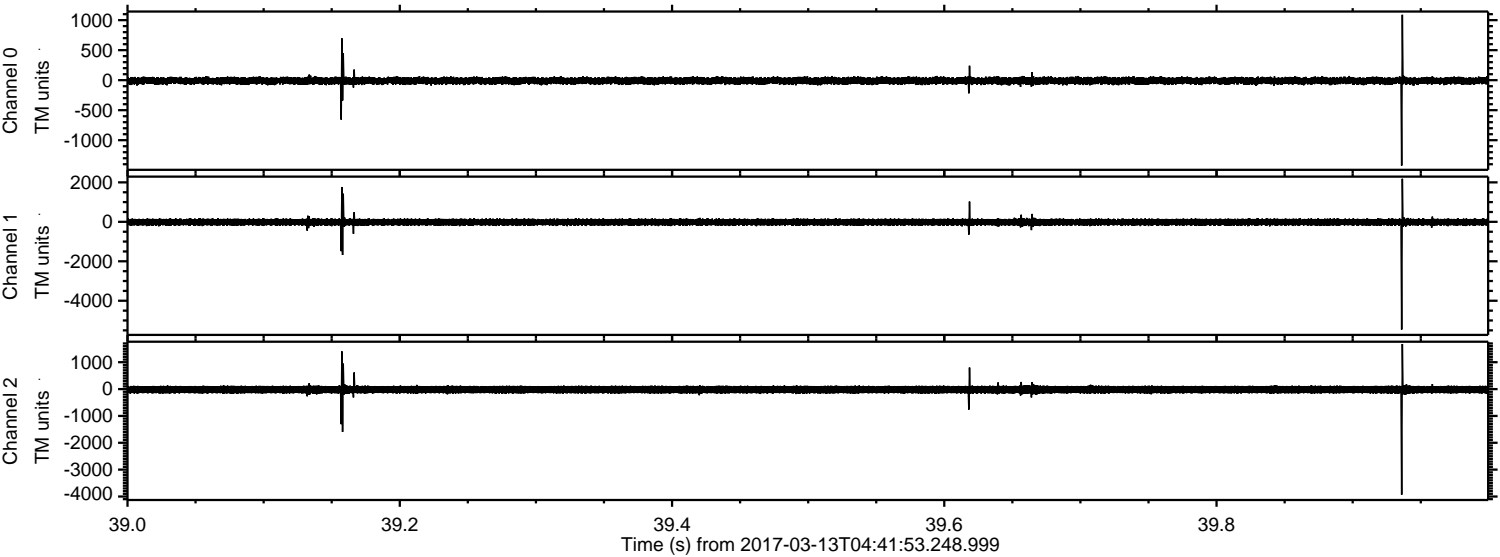


ELMAVAN 3D WAVEFORMS (Measured data sampled at 50 kHz) 51000 packets of 144 samples from 2017-03-13T04:41:53.248.999.

Processed Mon Mar 13 05:49:50 2017 by ELM ver.2012-10-06 from 001__elm20170313_044152__dat00.bin

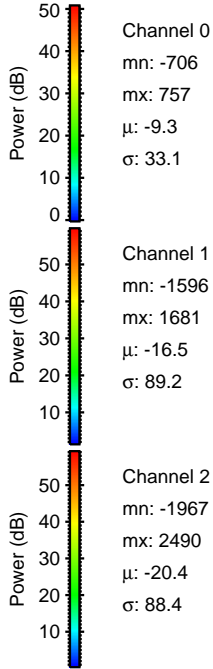
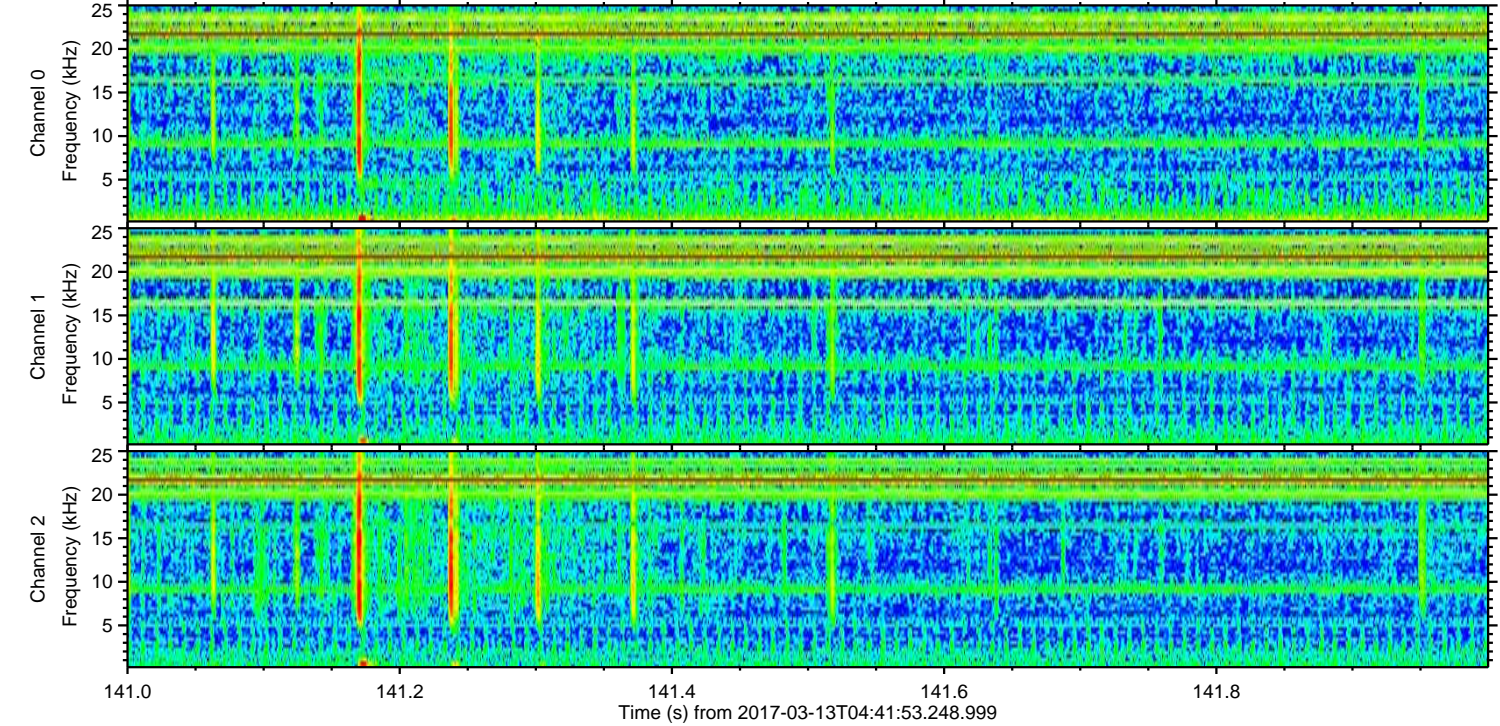
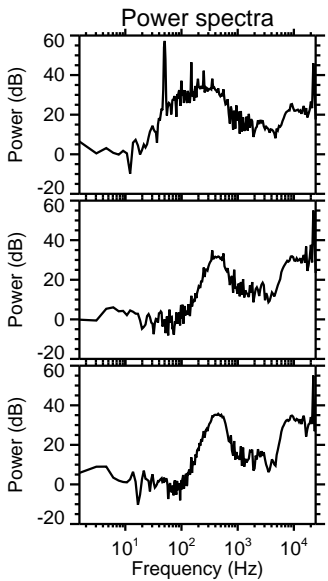
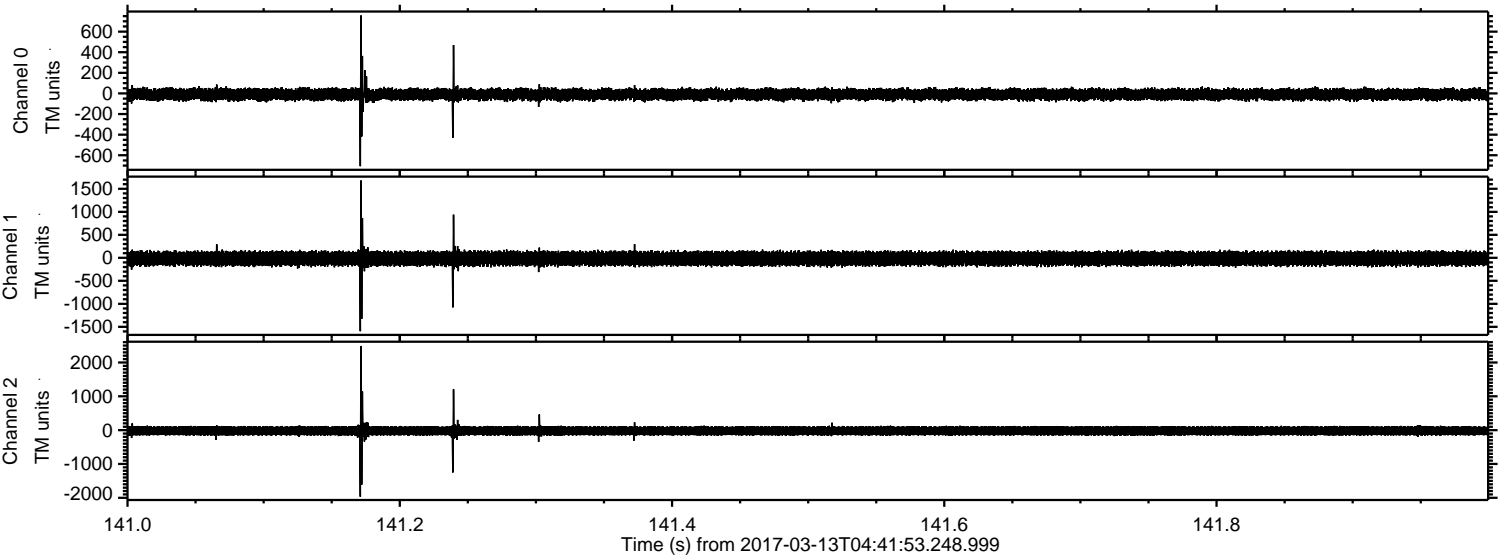


Processed Mon Mar 13 05:50:01 2017 by ELM ver.2012-10-06 from 001__elm20170313_044152__dat00.bin

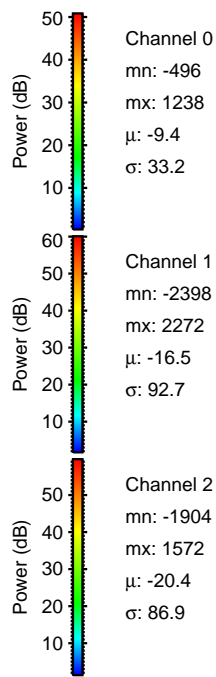
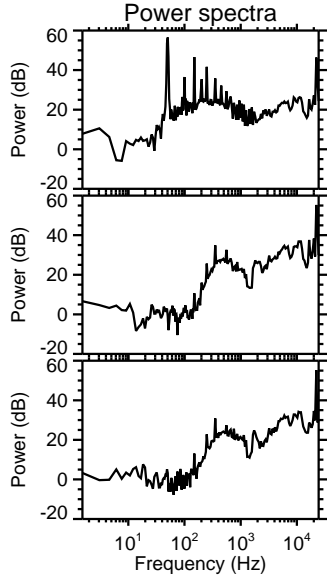
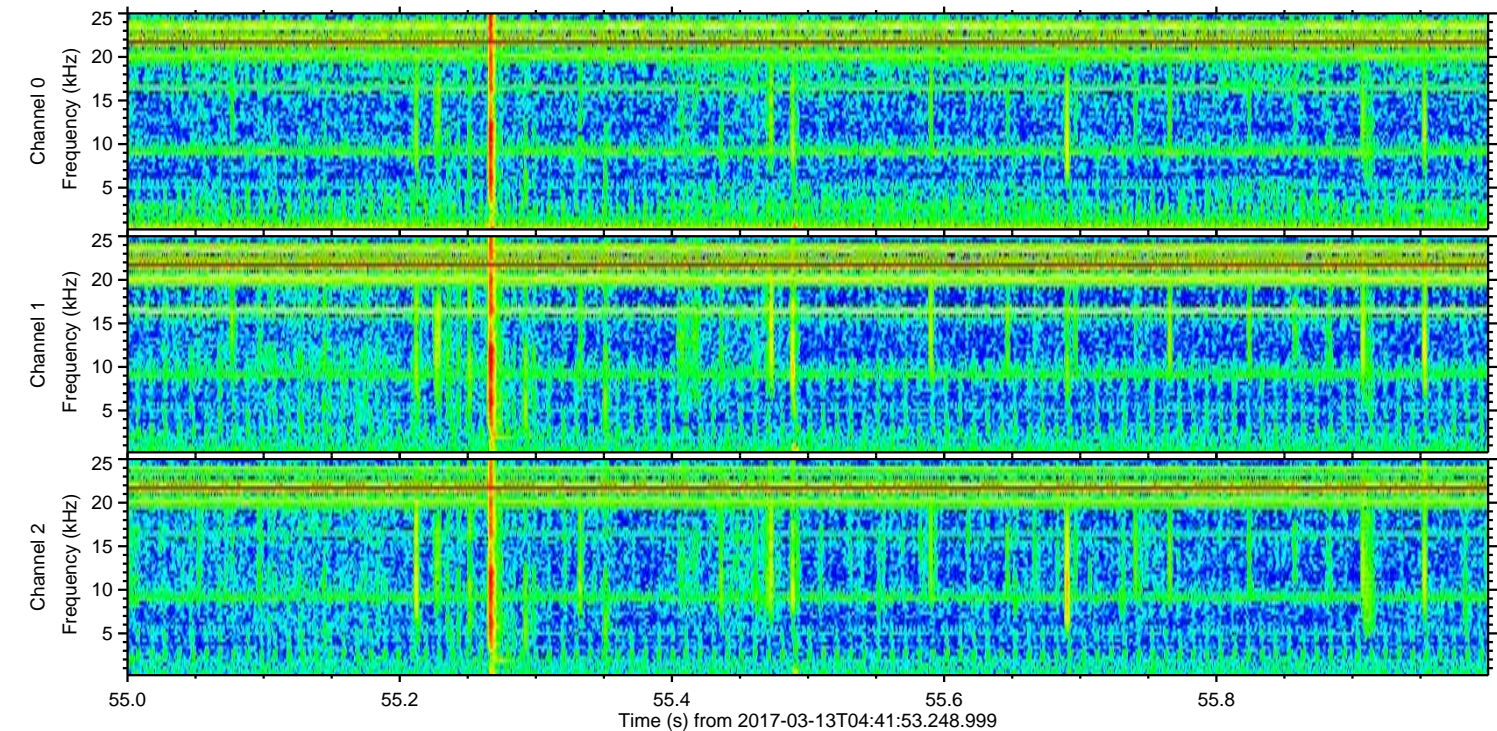
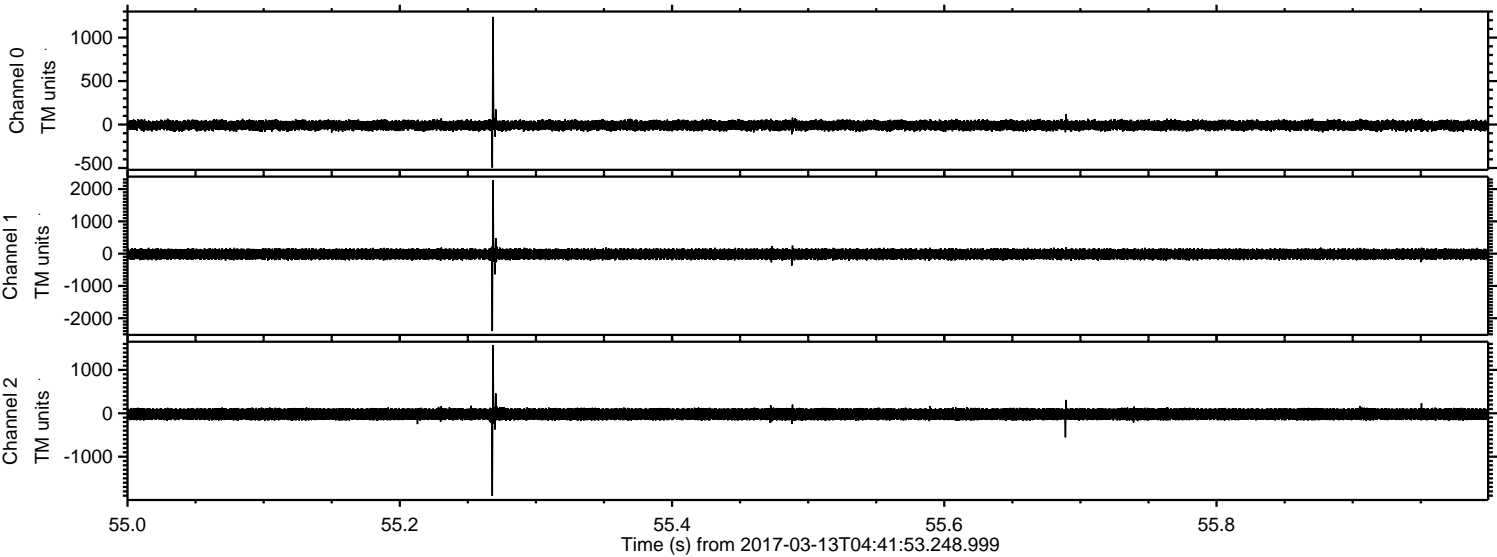


ELMAVAN 3D WAVEFORMS (Measured data sampled at 50 kHz) 51000 packets of 144 samples from 2017-03-13T04:41:53.248.999. Part 142/147

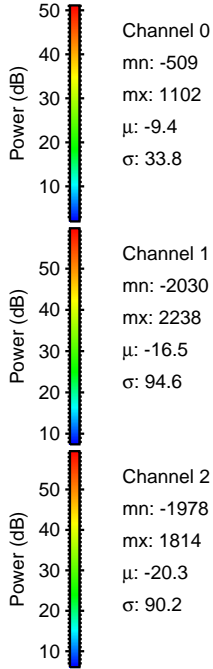
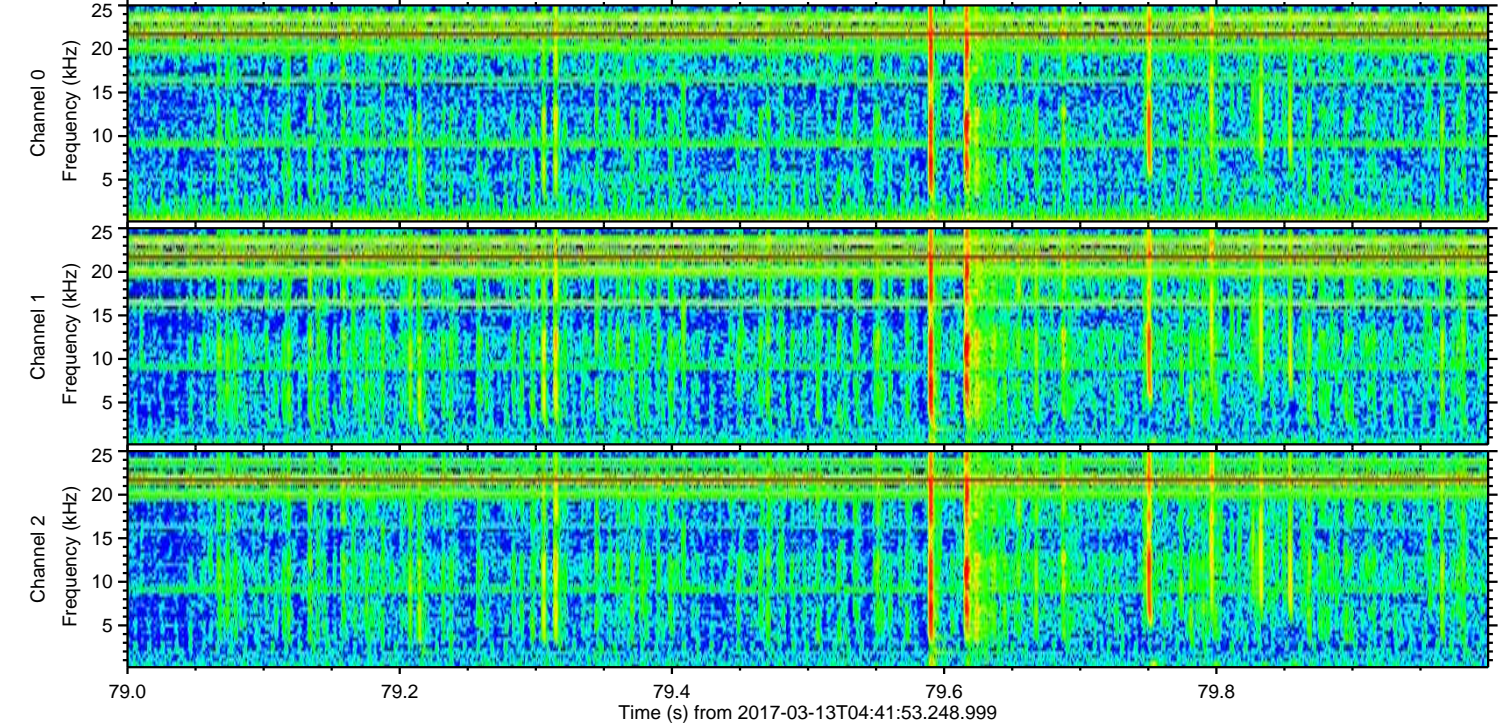
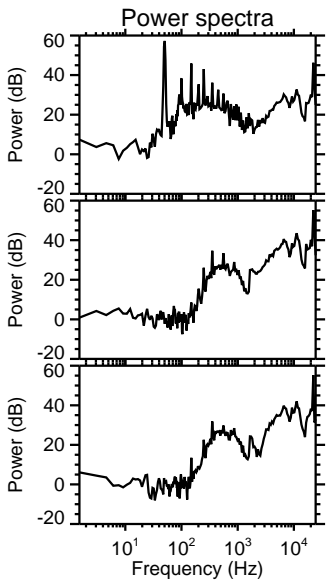
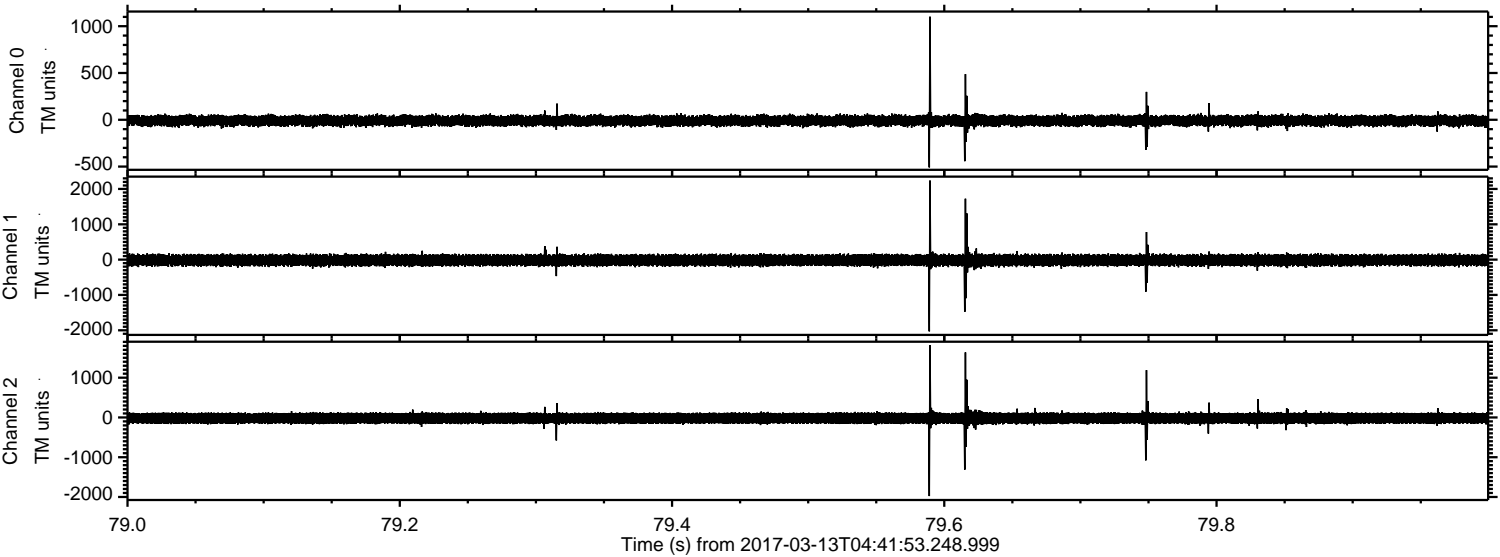
Processed Mon Mar 13 05:50:02 2017 by ELM ver.2012-10-06 from 001__elm20170313_044152__dat00.bin



Processed Mon Mar 13 05:50:03 2017 by ELM ver.2012-10-06 from 001__elm20170313_044152__dat00.bin

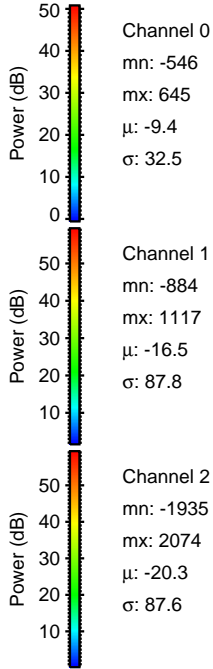
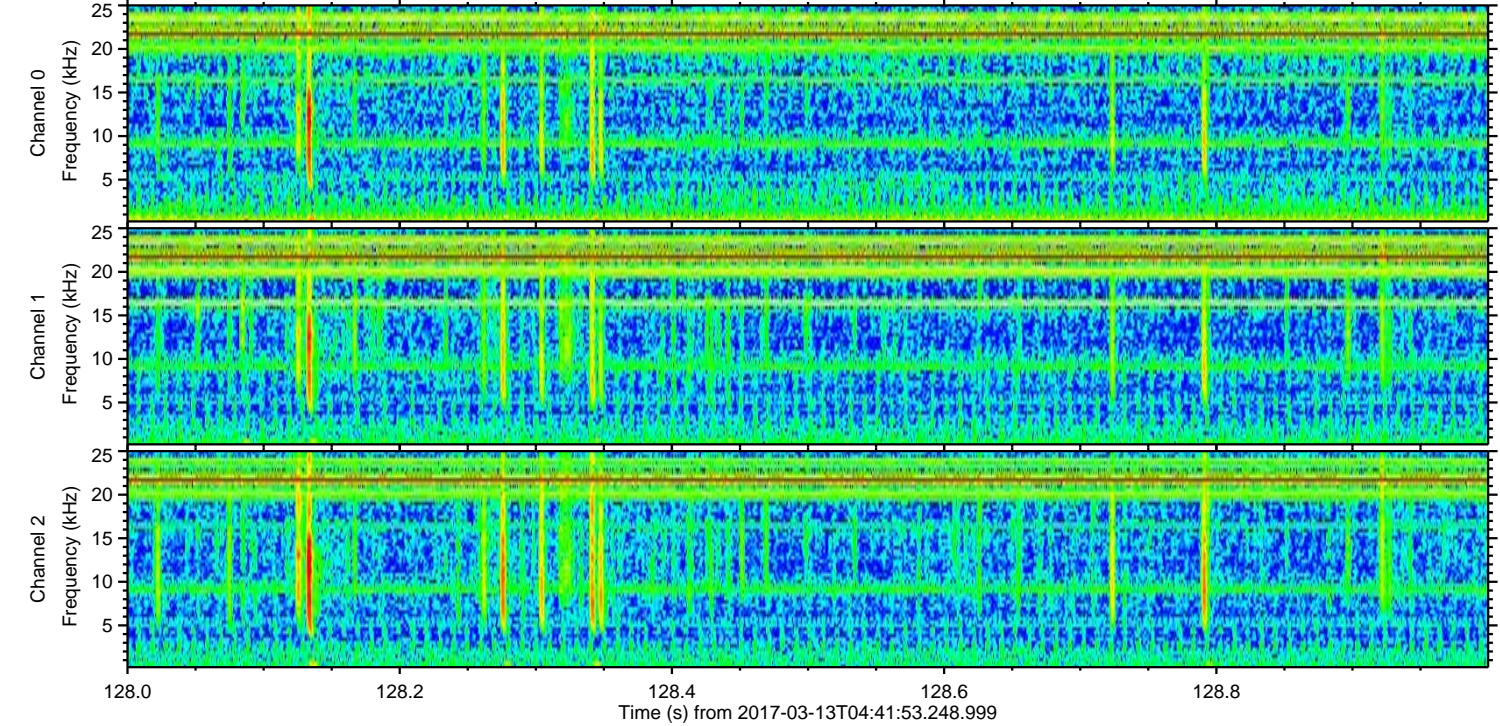
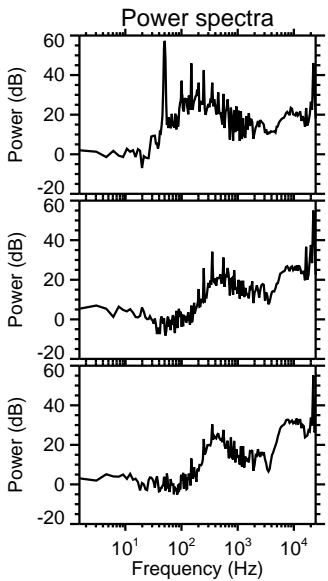
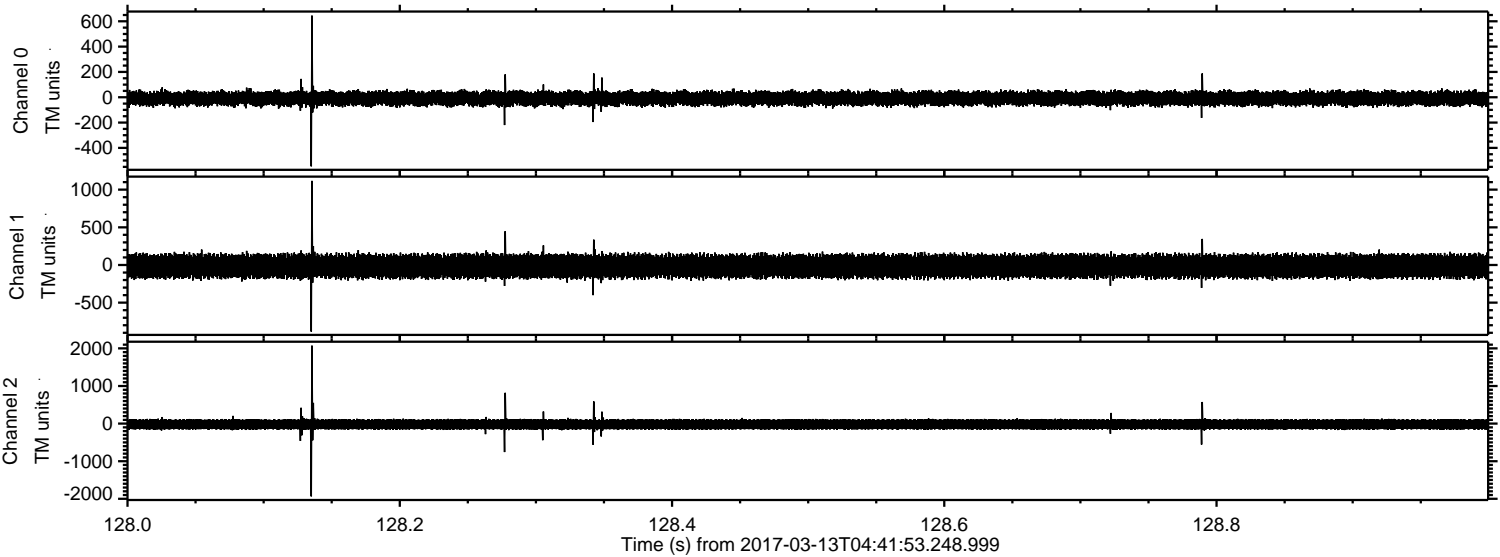


Processed Mon Mar 13 05:50:04 2017 by ELM ver.2012-10-06 from 001__elm20170313_044152__dat00.bin



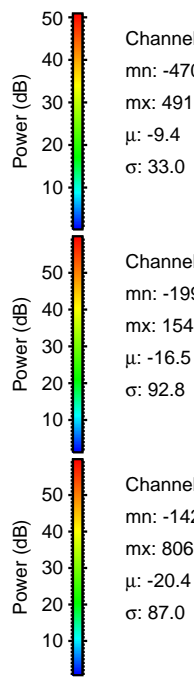
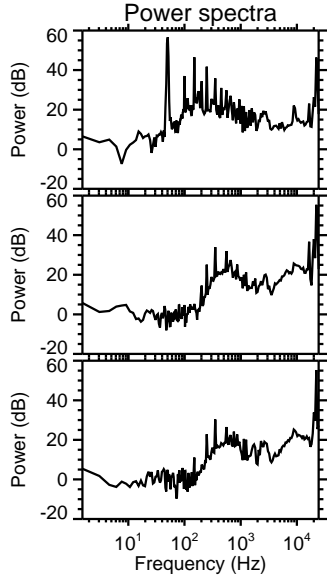
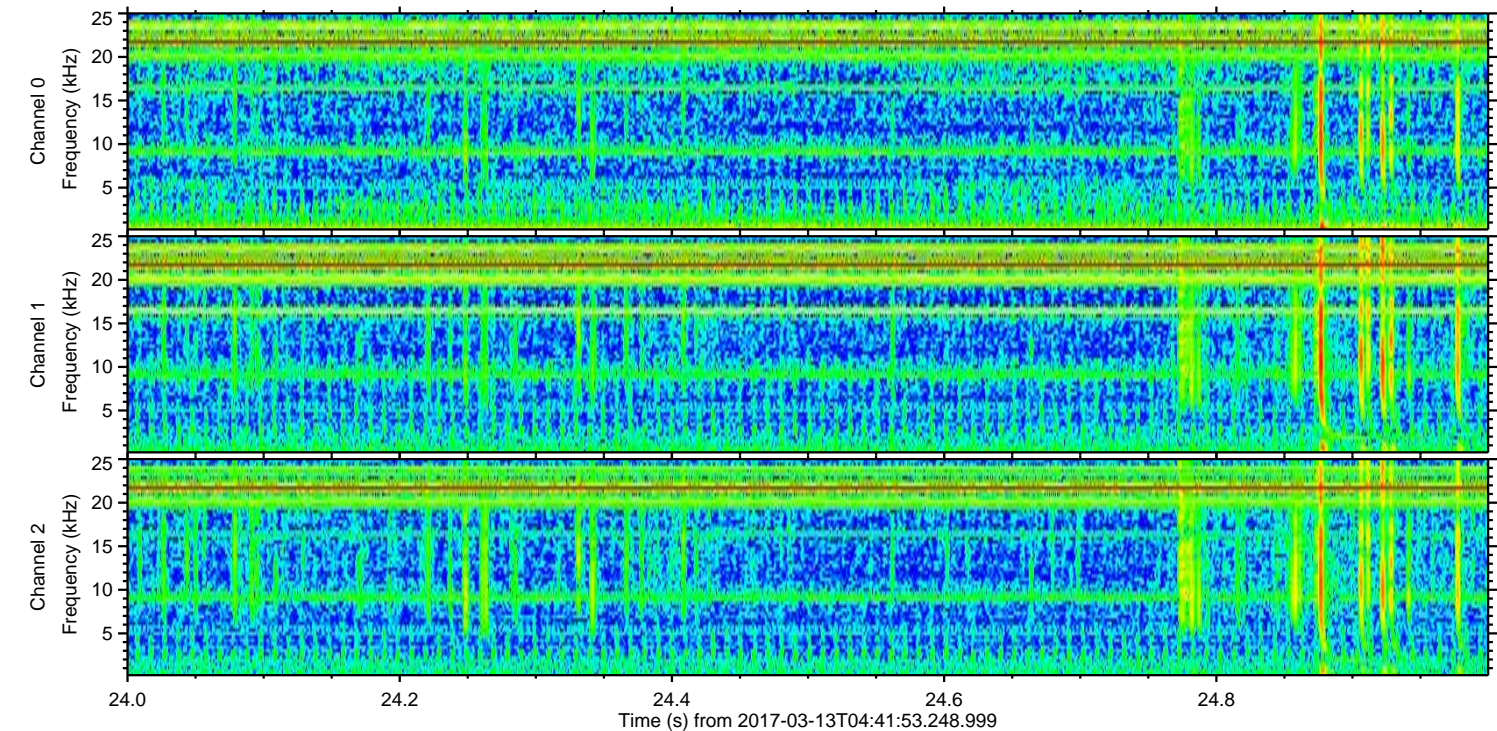
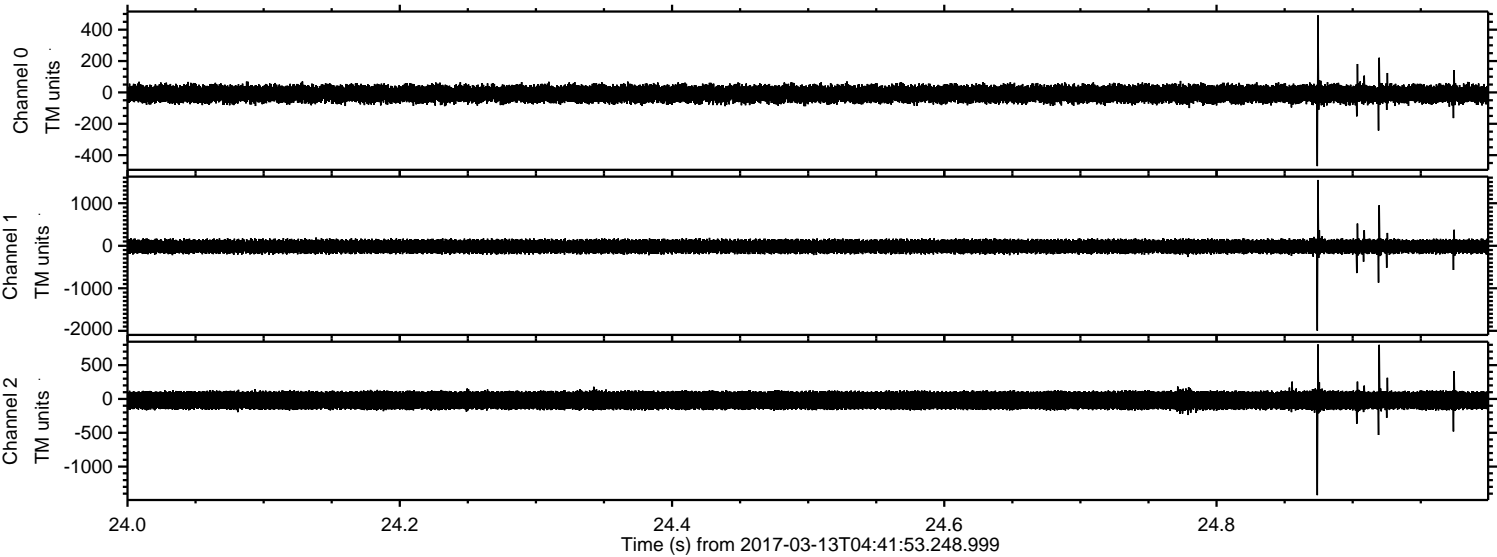
ELMAVAN 3D WAVEFORMS (Measured data sampled at 50 kHz) 51000 packets of 144 samples from 2017-03-13T04:41:53.248.999. Part 129/147

Processed Mon Mar 13 05:50:05 2017 by ELM ver.2012-10-06 from 001__elm20170313_044152__dat00.bin



ELMAVAN 3D WAVEFORMS (Measured data sampled at 50 kHz) 51000 packets of 144 samples from 2017-03-13T04:41:53.248.999. Part 25/147

Processed Mon Mar 13 05:50:06 2017 by ELM ver.2012-10-06 from 001__elm20170313_044152__dat00.bin

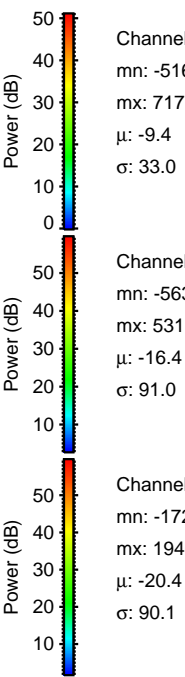
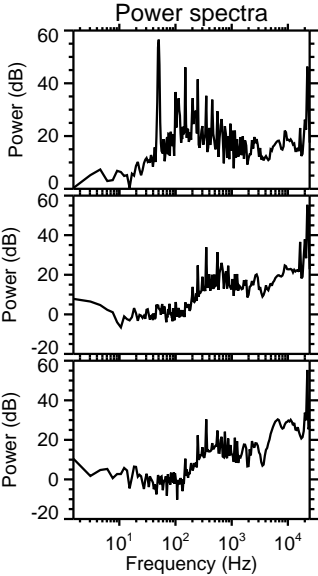
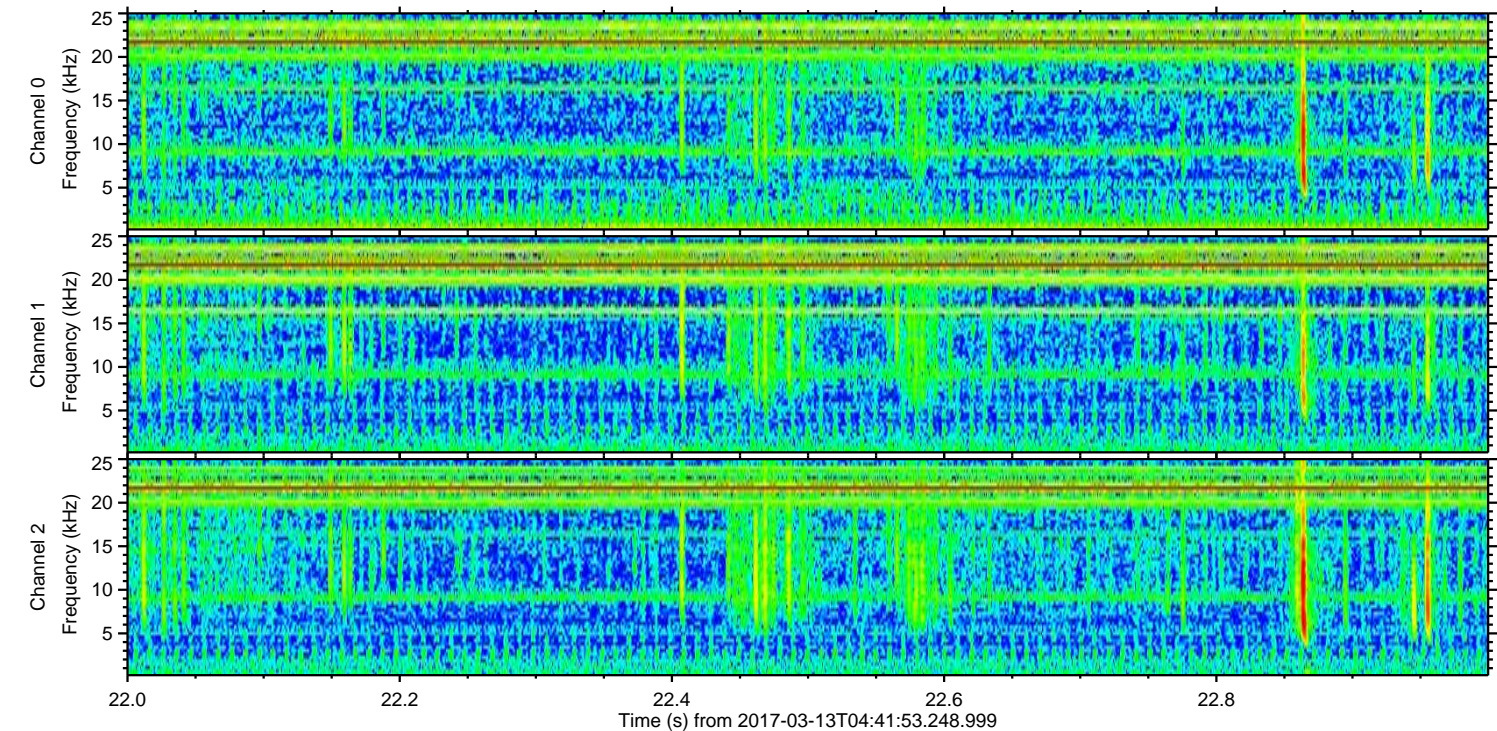
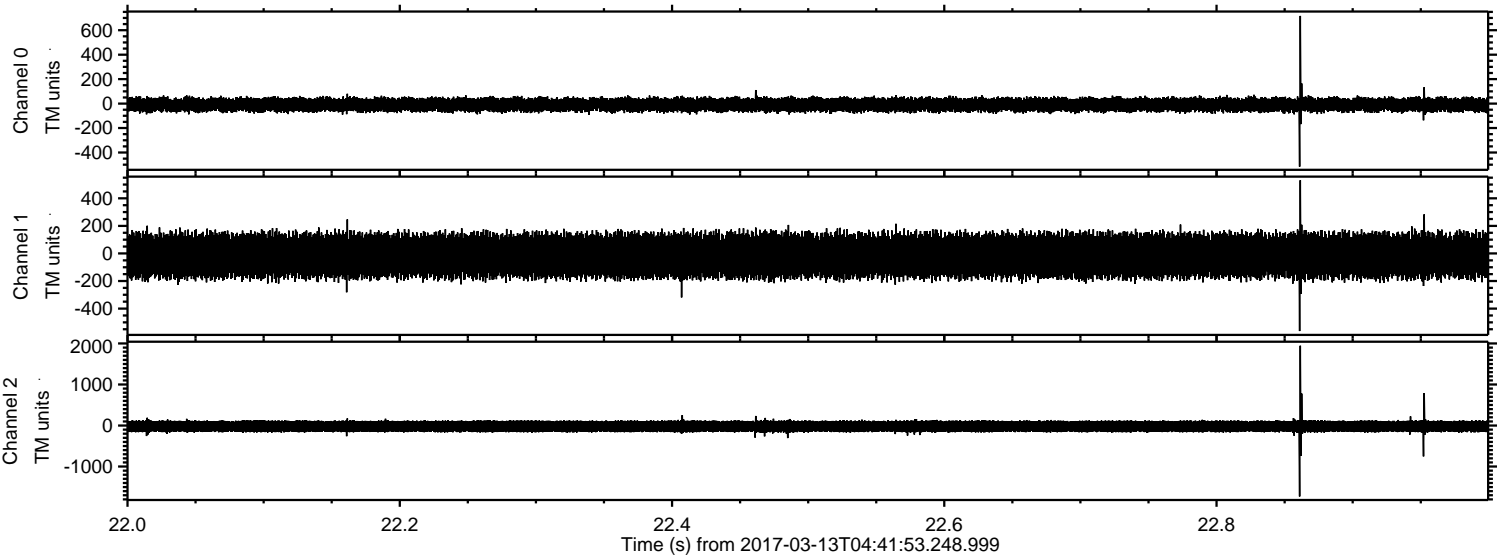


Channel 0
mn: -470
mx: 491
 μ : -9.4
 σ : 33.0

Channel 1
mn: -1996
mx: 1548
 μ : -16.5
 σ : 92.8

Channel 2
mn: -1423
mx: 806
 μ : -20.4
 σ : 87.0

Processed Mon Mar 13 05:50:07 2017 by ELM ver.2012-10-06 from 001__elm20170313_044152__dat00.bin

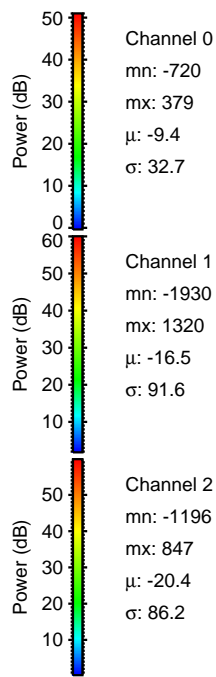
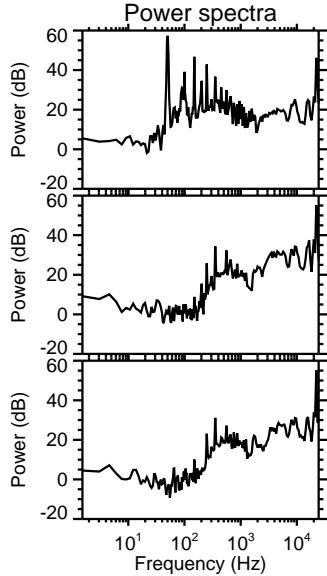
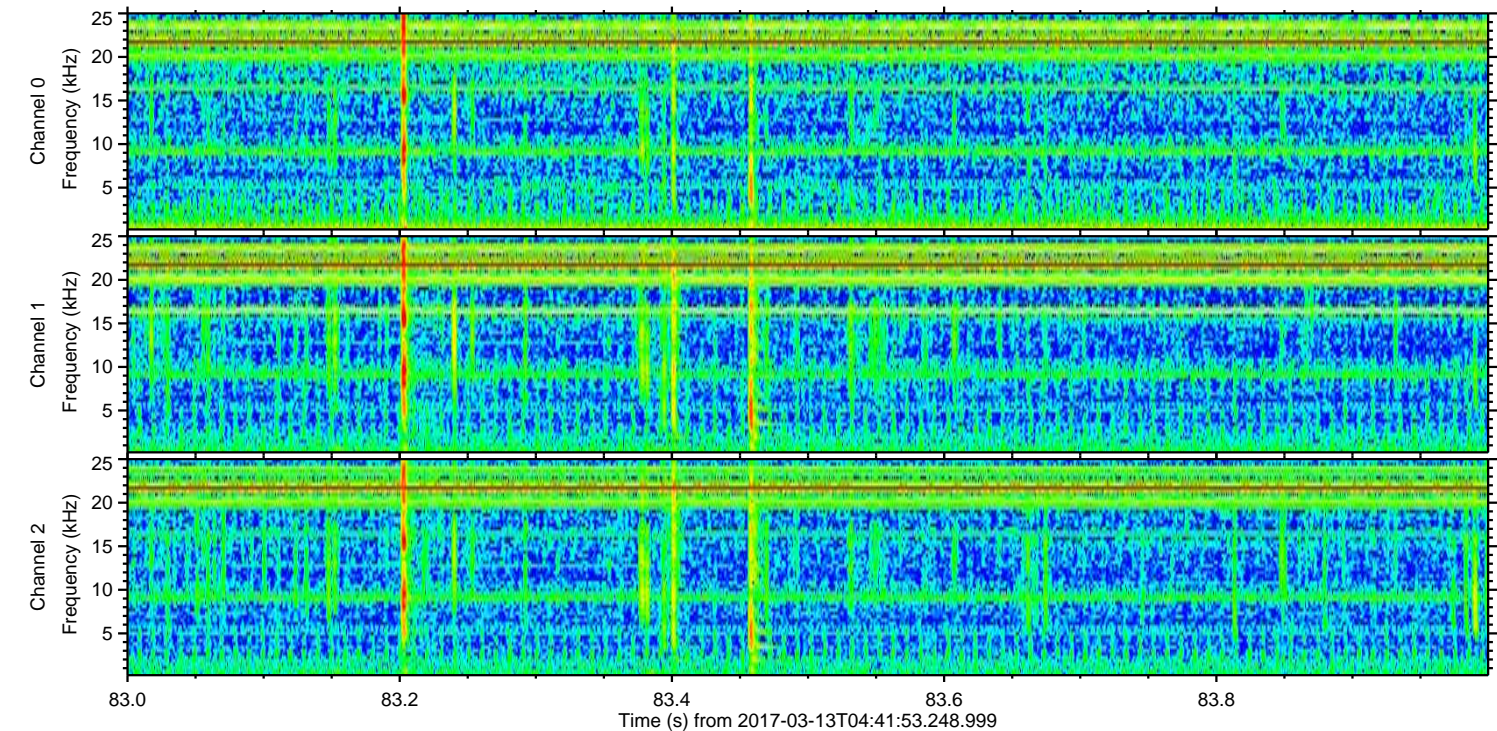
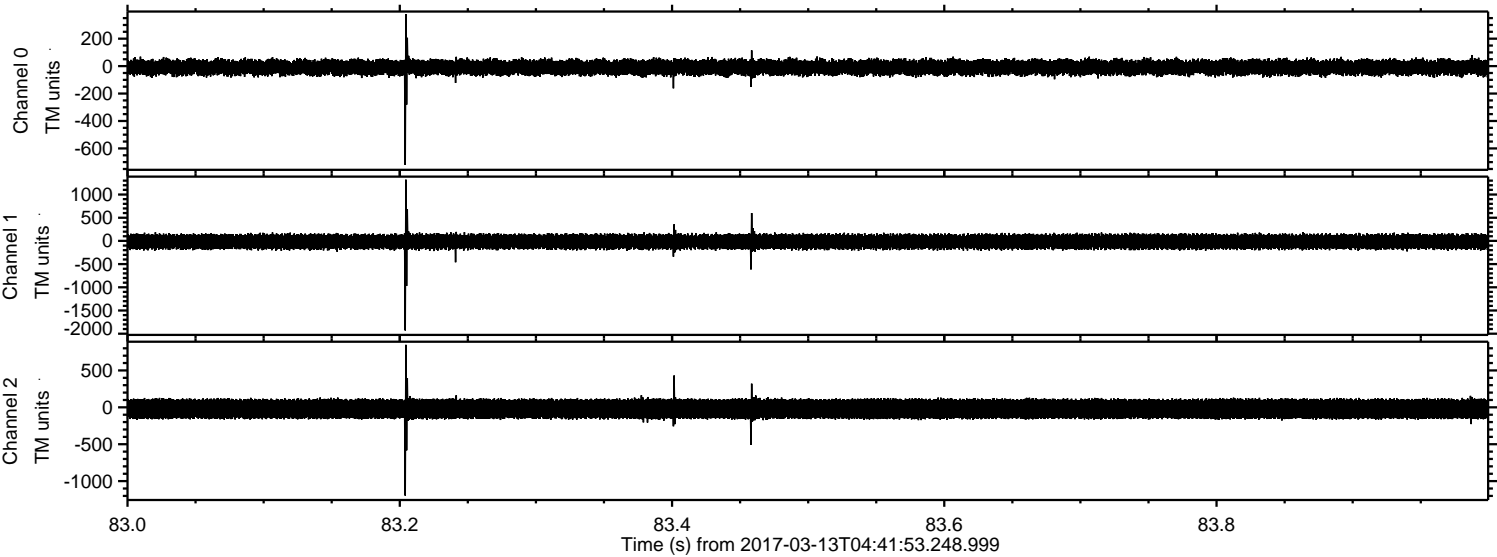


Channel 0
mn: -516
mx: 717
 μ : -9.4
 σ : 33.0

Channel 1
mn: -563
mx: 531
 μ : -16.4
 σ : 91.0

Channel 2
mn: -1729
mx: 1946
 μ : -20.4
 σ : 90.1

Processed Mon Mar 13 05:50:08 2017 by ELM ver.2012-10-06 from 001__elm20170313_044152__dat00.bin

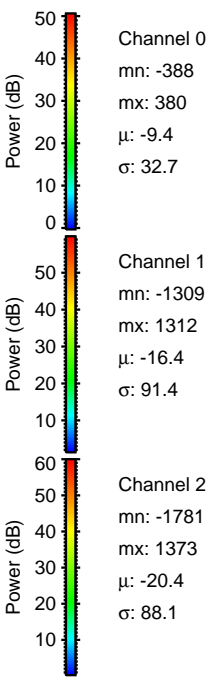
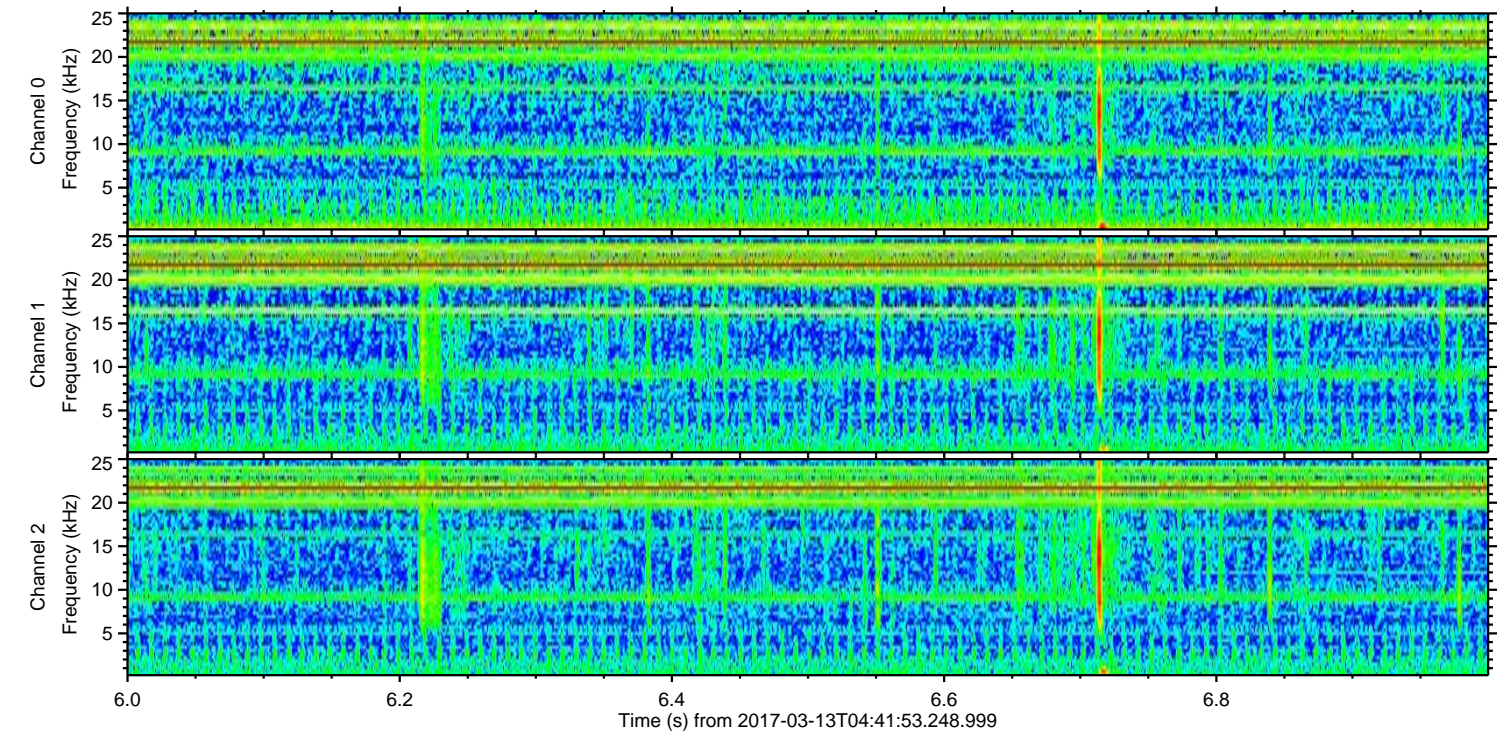
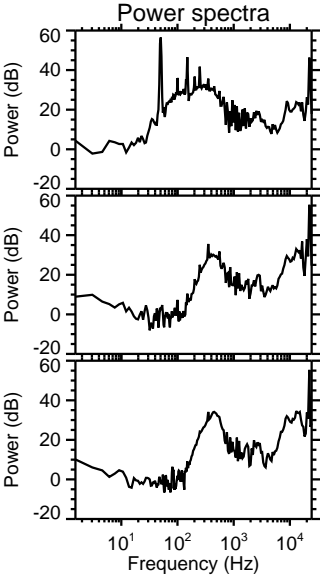
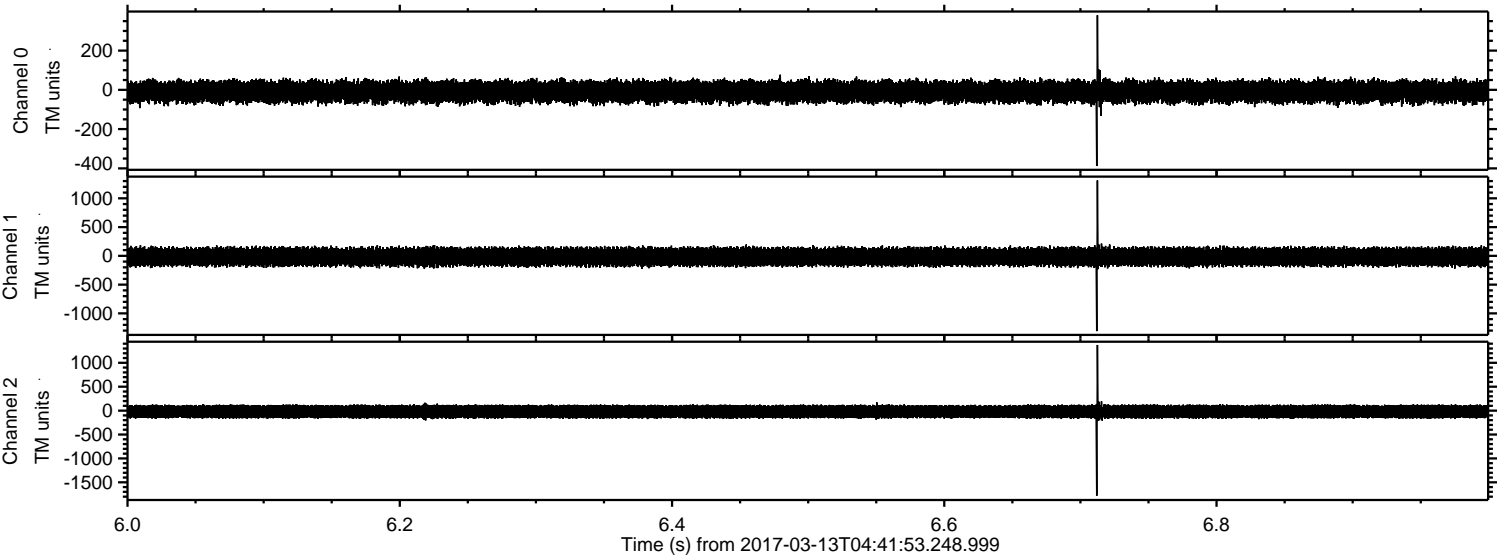


Channel 0
mn: -720
mx: 379
 μ : -9.4
 σ : 32.7

Channel 1
mn: -1930
mx: 1320
 μ : -16.5
 σ : 91.6

Channel 2
mn: -1196
mx: 847
 μ : -20.4
 σ : 86.2

Processed Mon Mar 13 05:50:09 2017 by ELM ver.2012-10-06 from 001__elm20170313_044152__dat00.bin



Processed Mon Mar 13 05:50:10 2017 by ELM ver.2012-10-06 from 001__elm20170313_044152__dat00.bin

