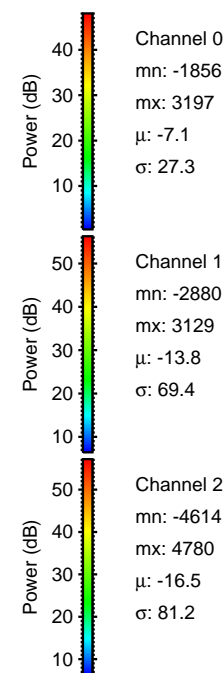
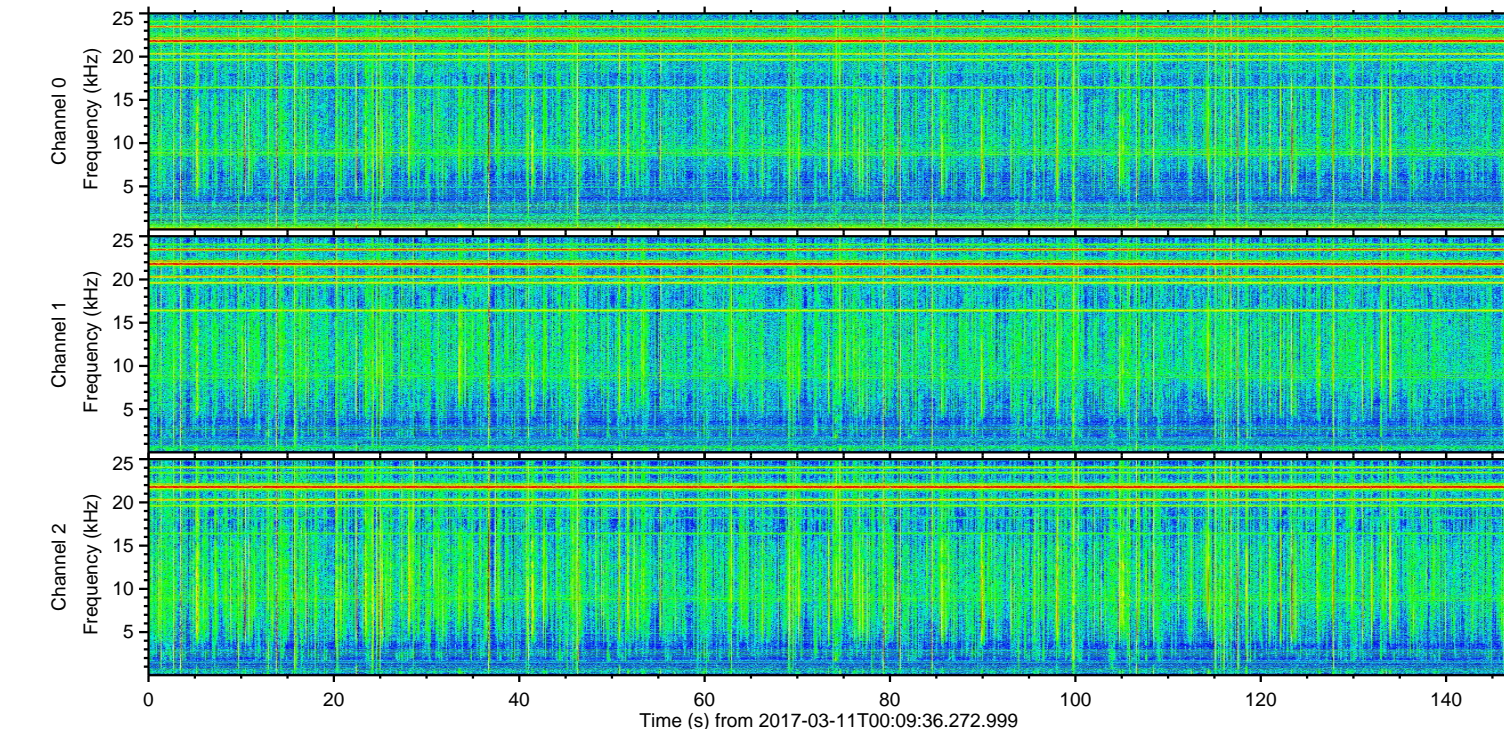
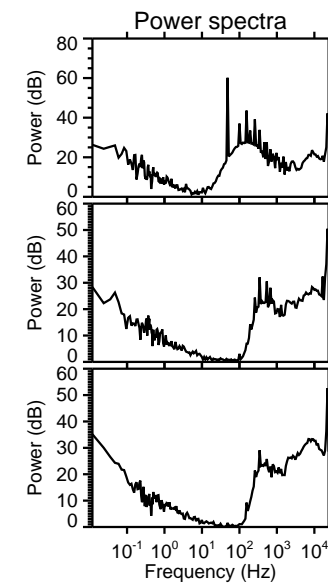
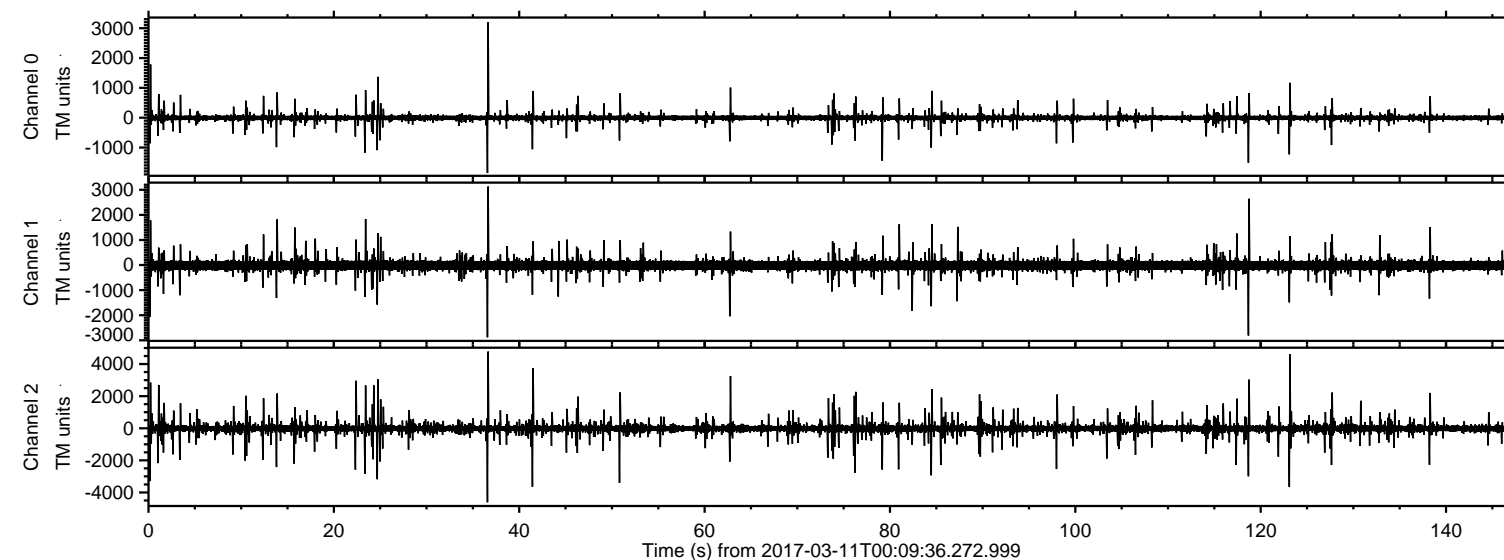


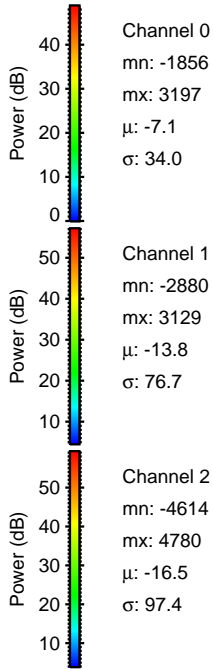
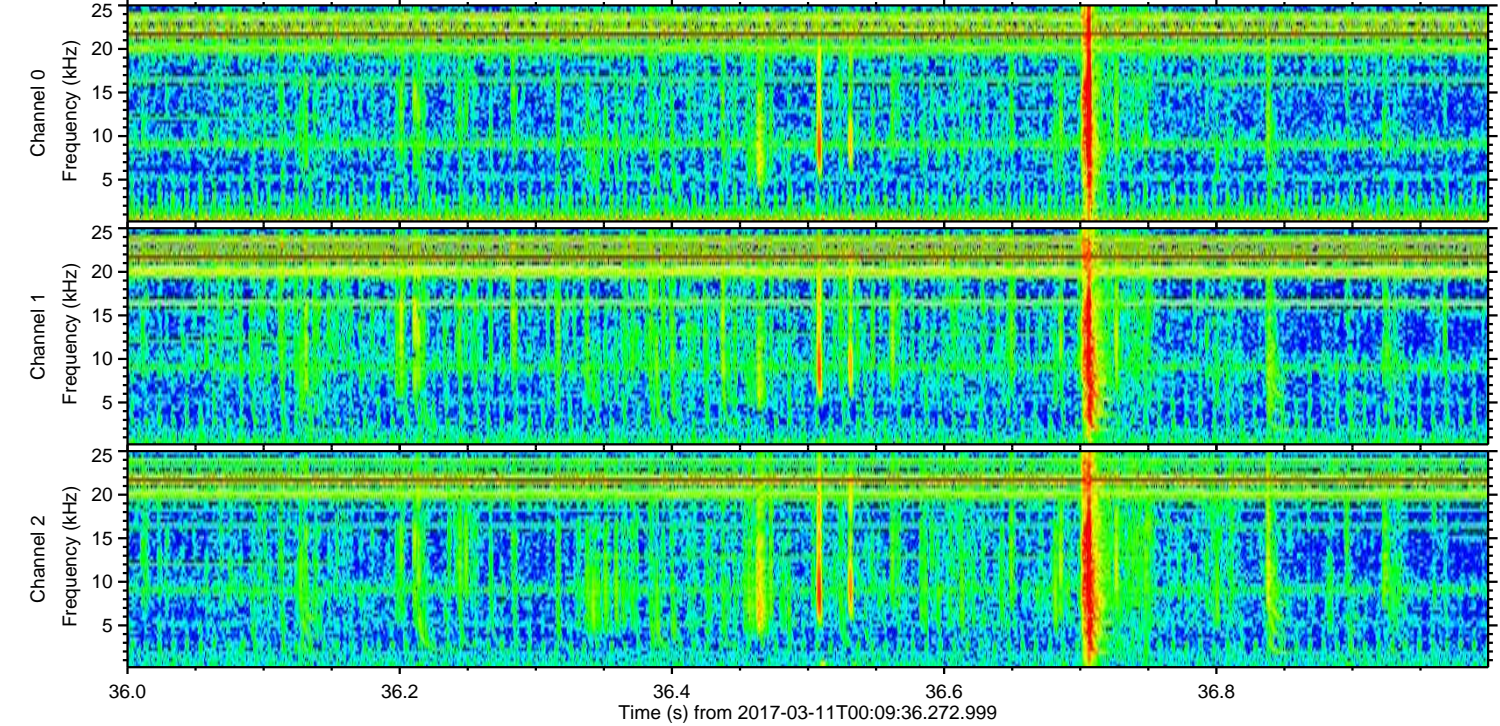
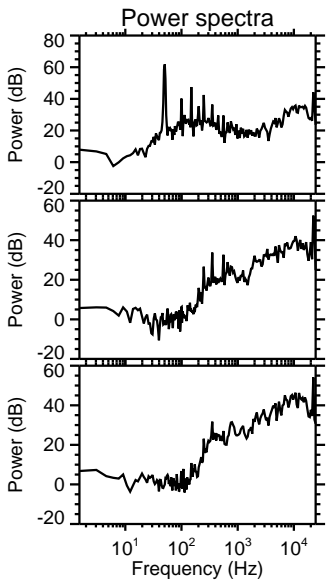
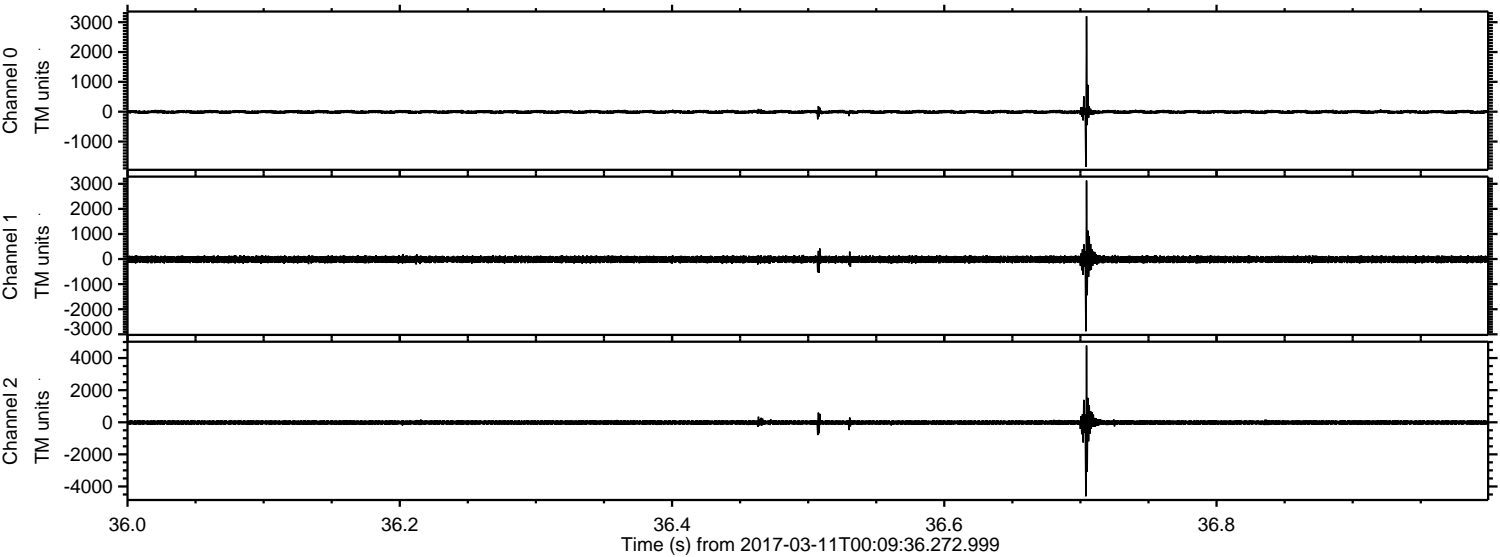
ELMAVAN 3D WAVEFORMS (Measured data sampled at 50 kHz) 51000 packets of 144 samples from 2017-03-11T00:09:36.272.999.

Processed Sat Mar 11 01:17:03 2017 by ELM ver.2012-10-06 from 001__elm20170311_000935__dat00.bin



ELMAVAN 3D WAVEFORMS (Measured data sampled at 50 kHz) 51000 packets of 144 samples from 2017-03-11T00:09:36.272.999. Part 37/147

Processed Sat Mar 11 01:17:15 2017 by ELM ver.2012-10-06 from 001__elm20170311_000935__dat00.bin



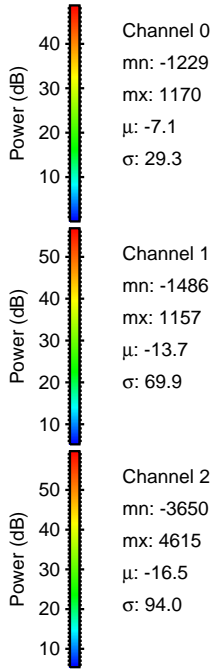
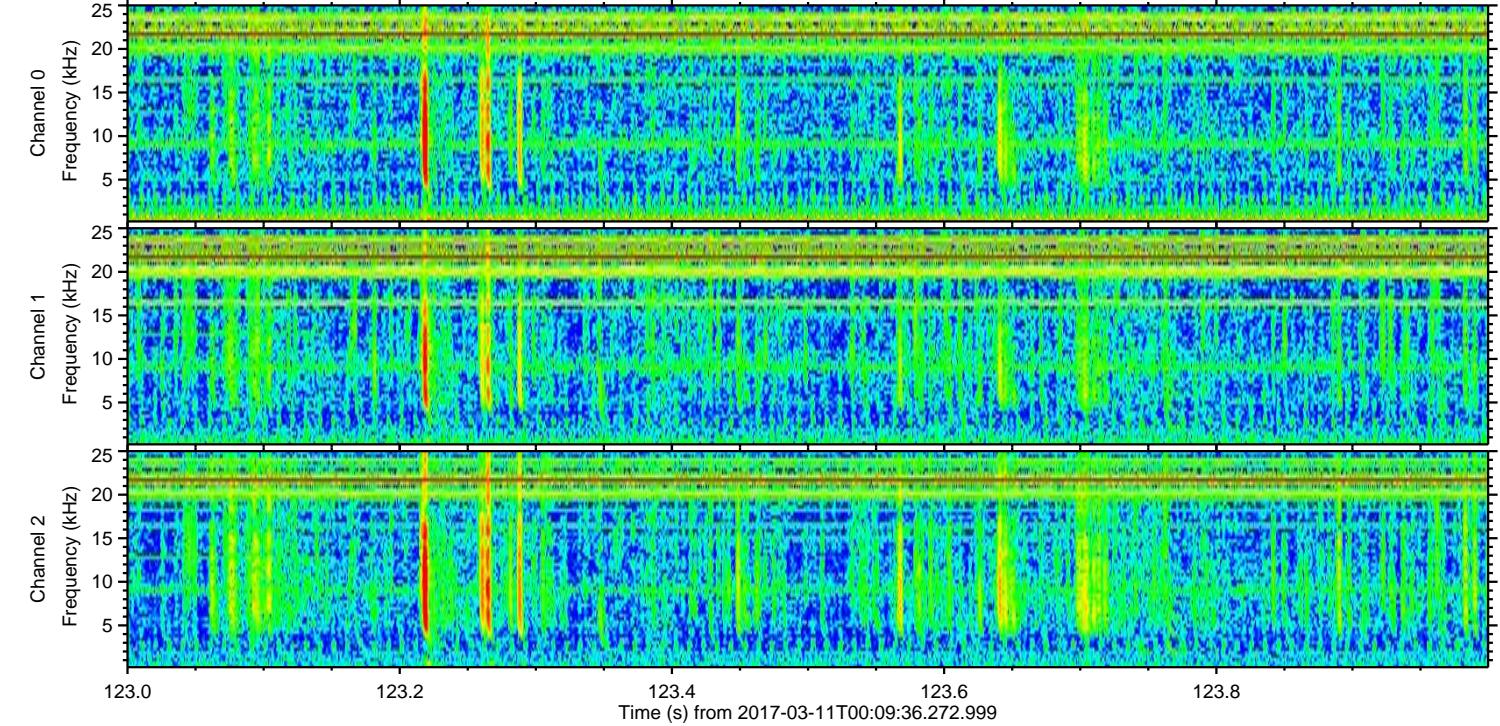
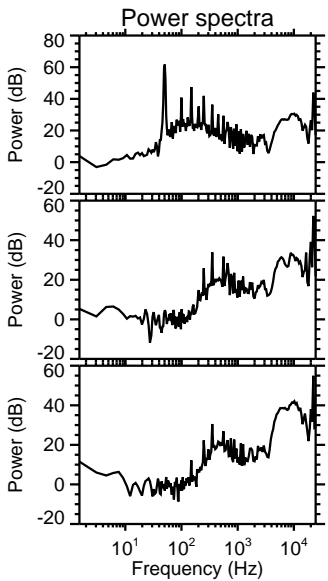
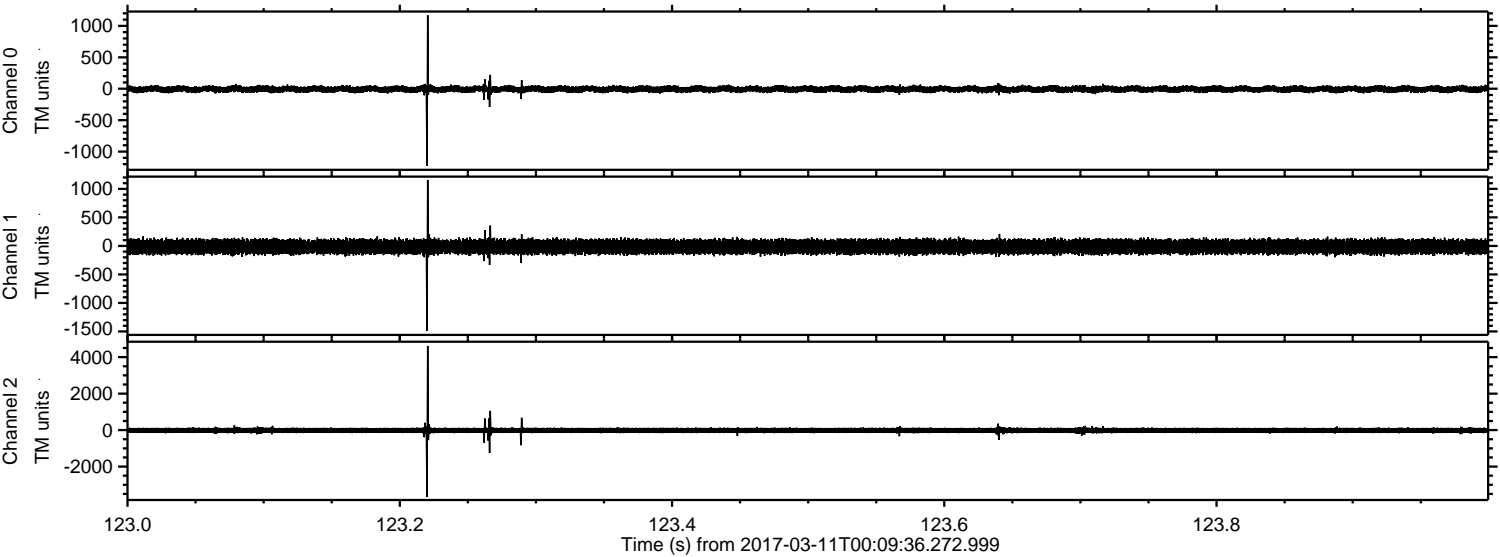
Channel 0
mn: -1856
mx: 3197
 μ : -7.1
 σ : 34.0

Channel 1
mn: -2880
mx: 3129
 μ : -13.8
 σ : 76.7

Channel 2
mn: -4614
mx: 4780
 μ : -16.5
 σ : 97.4

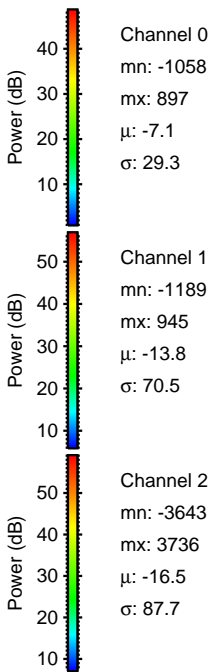
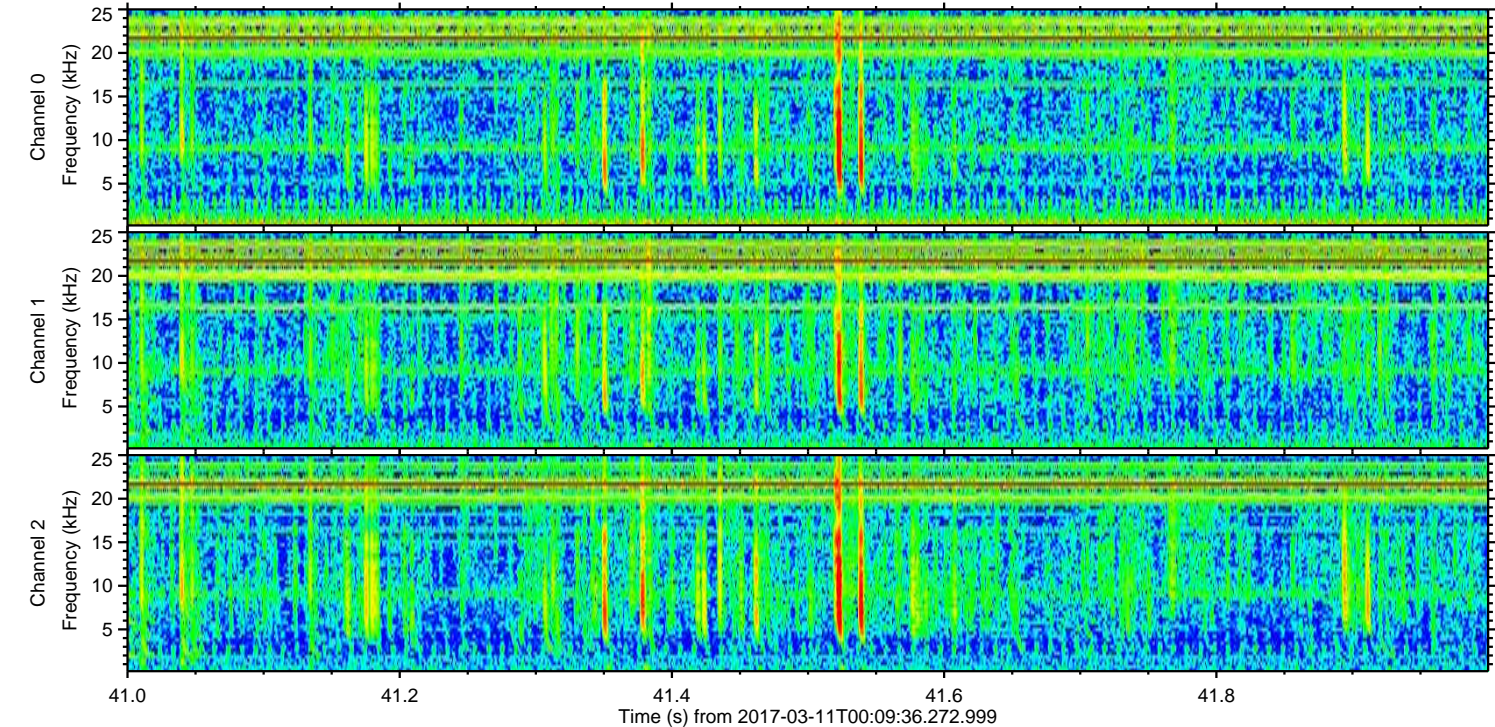
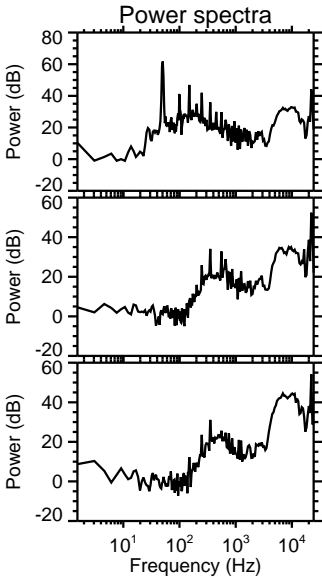
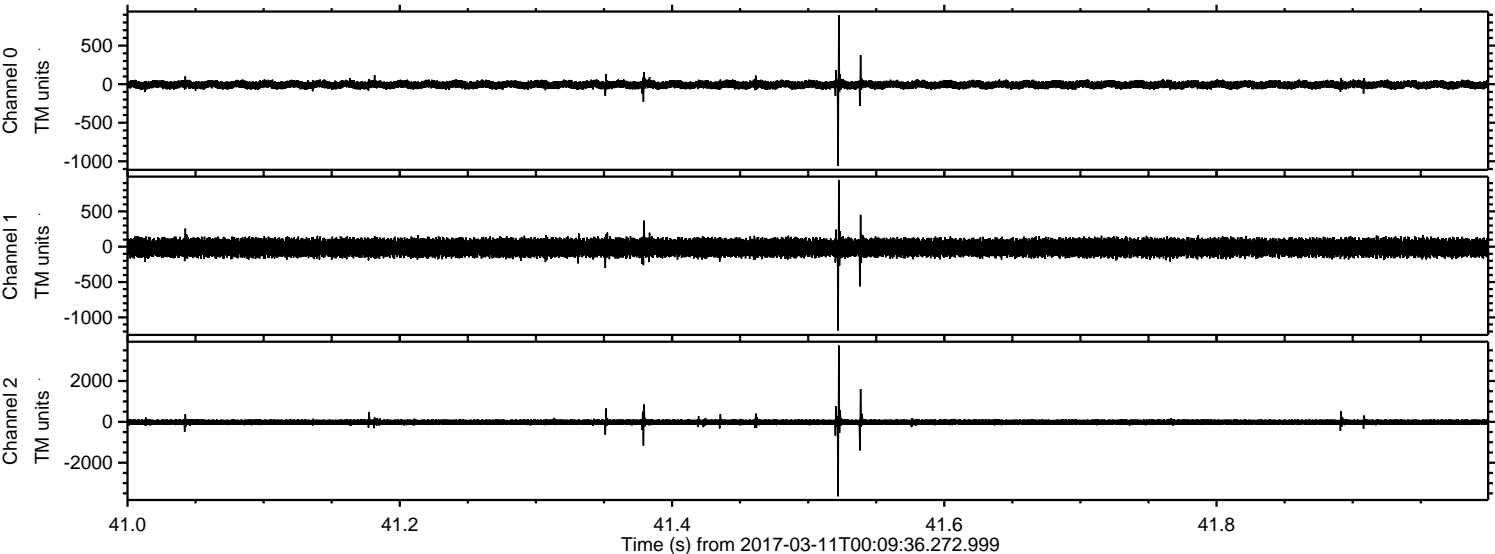
ELMAVAN 3D WAVEFORMS (Measured data sampled at 50 kHz) 51000 packets of 144 samples from 2017-03-11T00:09:36.272.999. Part 124/147

Processed Sat Mar 11 01:17:16 2017 by ELM ver.2012-10-06 from 001__elm20170311_000935__dat00.bin

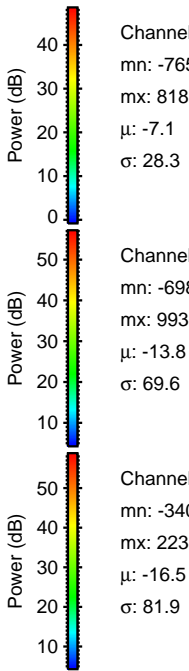
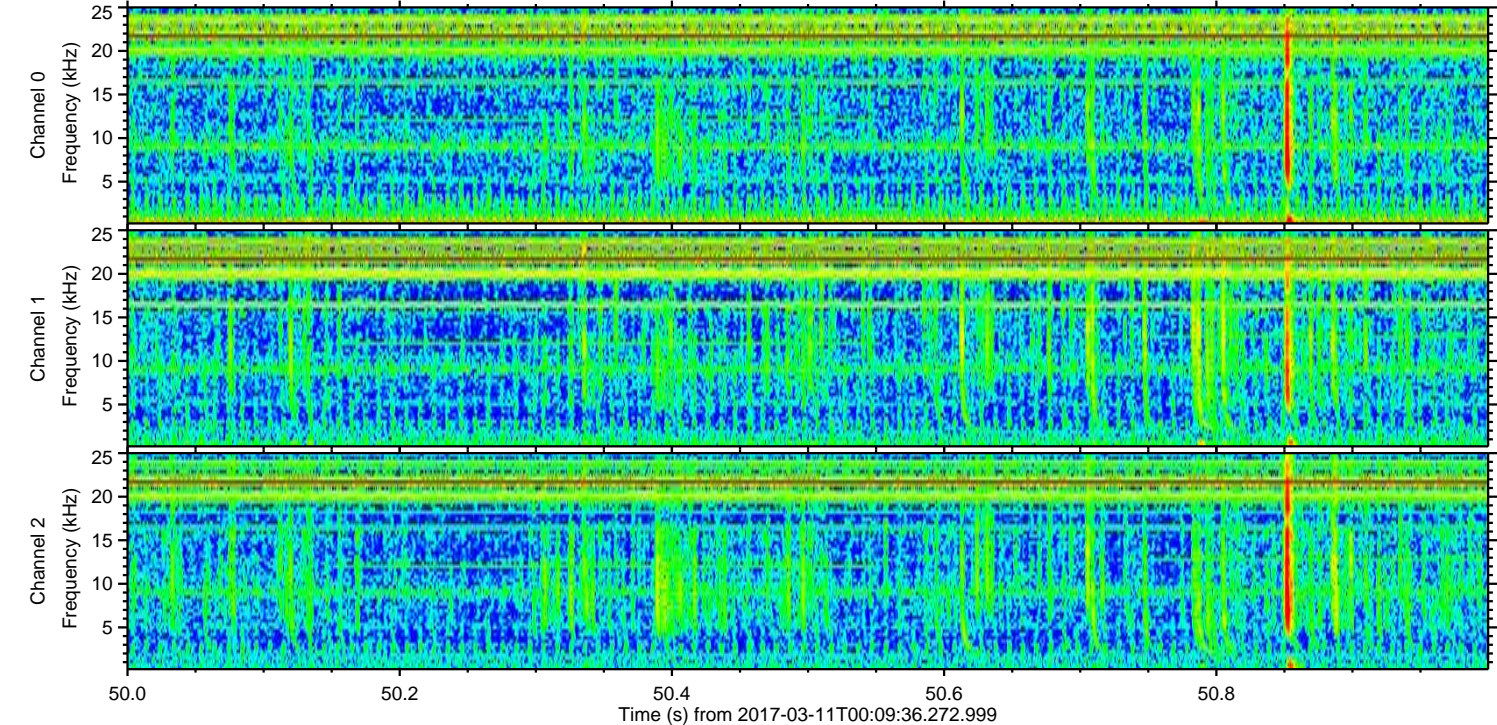
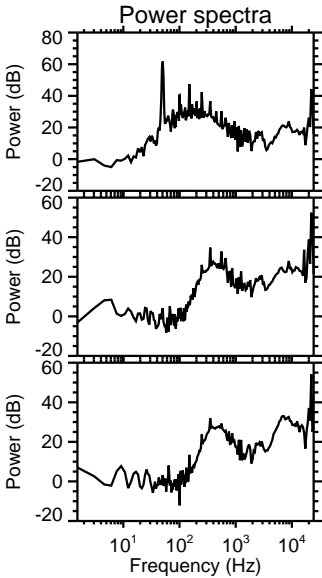
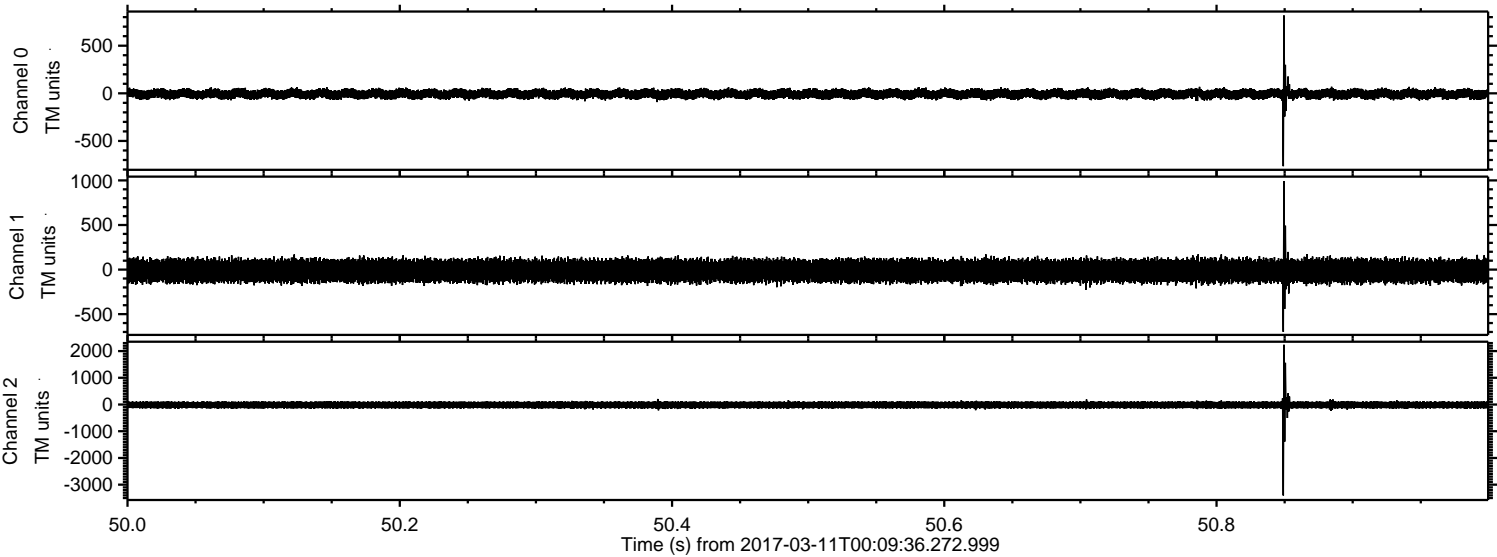


ELMAVAN 3D WAVEFORMS (Measured data sampled at 50 kHz) 51000 packets of 144 samples from 2017-03-11T00:09:36.272.999. Part 42/147

Processed Sat Mar 11 01:17:17 2017 by ELM ver.2012-10-06 from 001__elm20170311_000935__dat00.bin

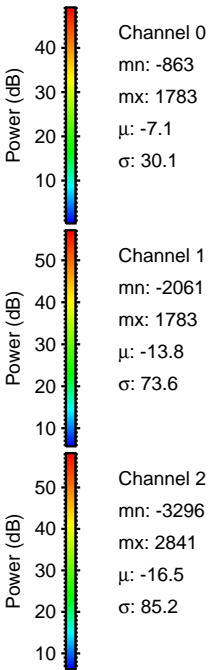
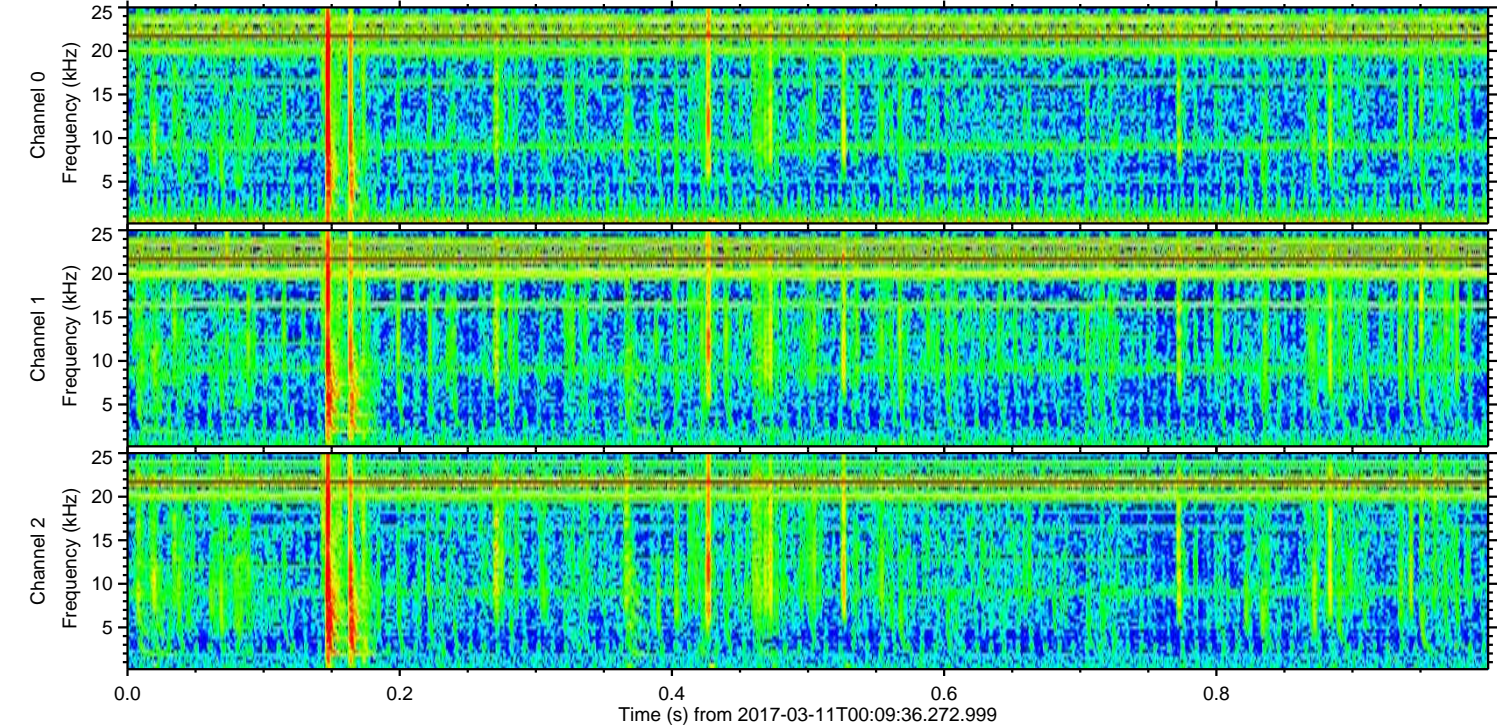
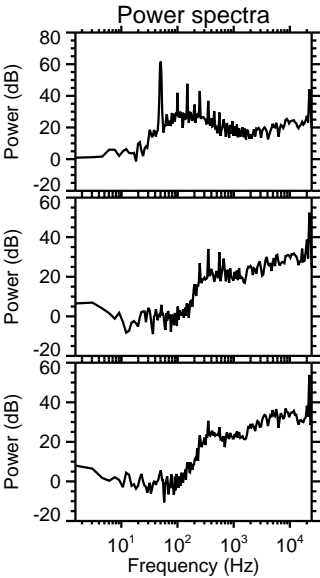
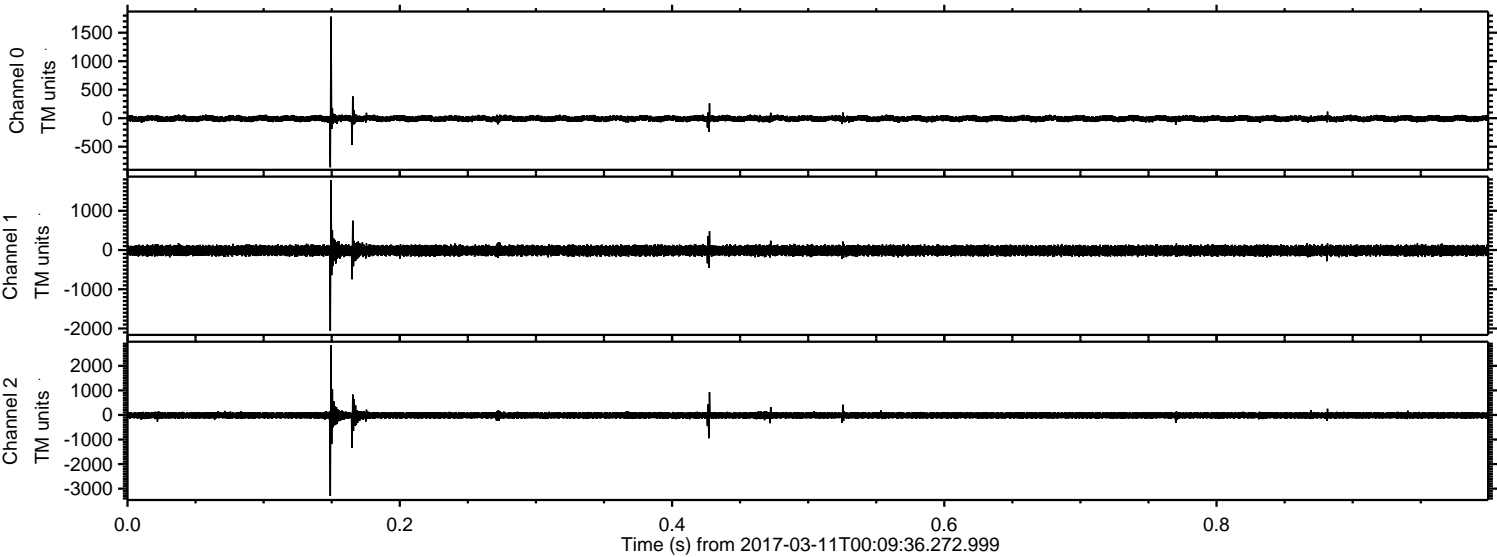


Processed Sat Mar 11 01:17:18 2017 by ELM ver.2012-10-06 from 001__elm20170311_000935__dat00.bin



ELMAVAN 3D WAVEFORMS (Measured data sampled at 50 kHz) 51000 packets of 144 samples from 2017-03-11T00:09:36.272.999. Part 1/147

Processed Sat Mar 11 01:17:19 2017 by ELM ver.2012-10-06 from 001__elm20170311_000935__dat00.bin



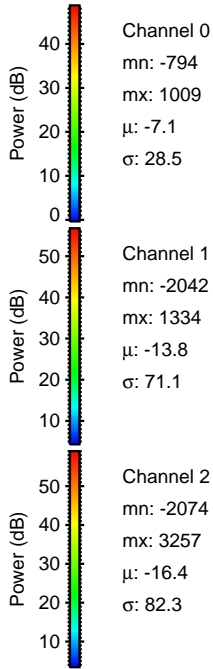
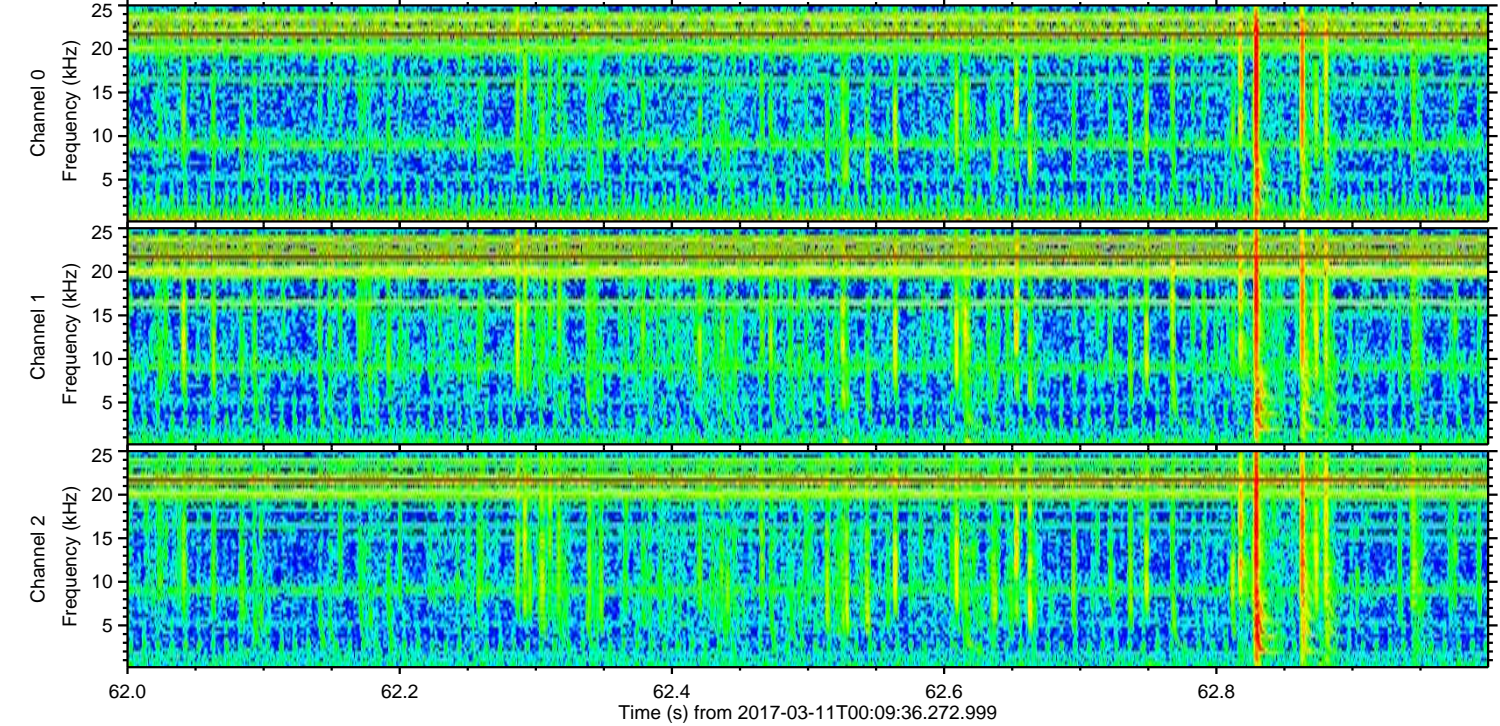
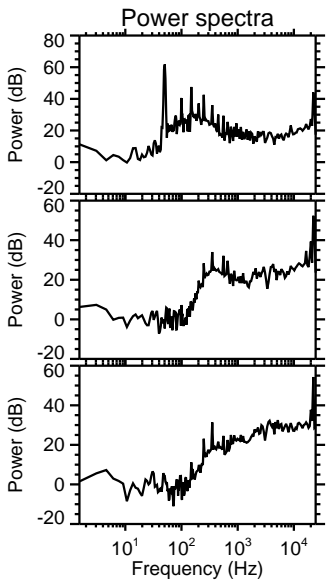
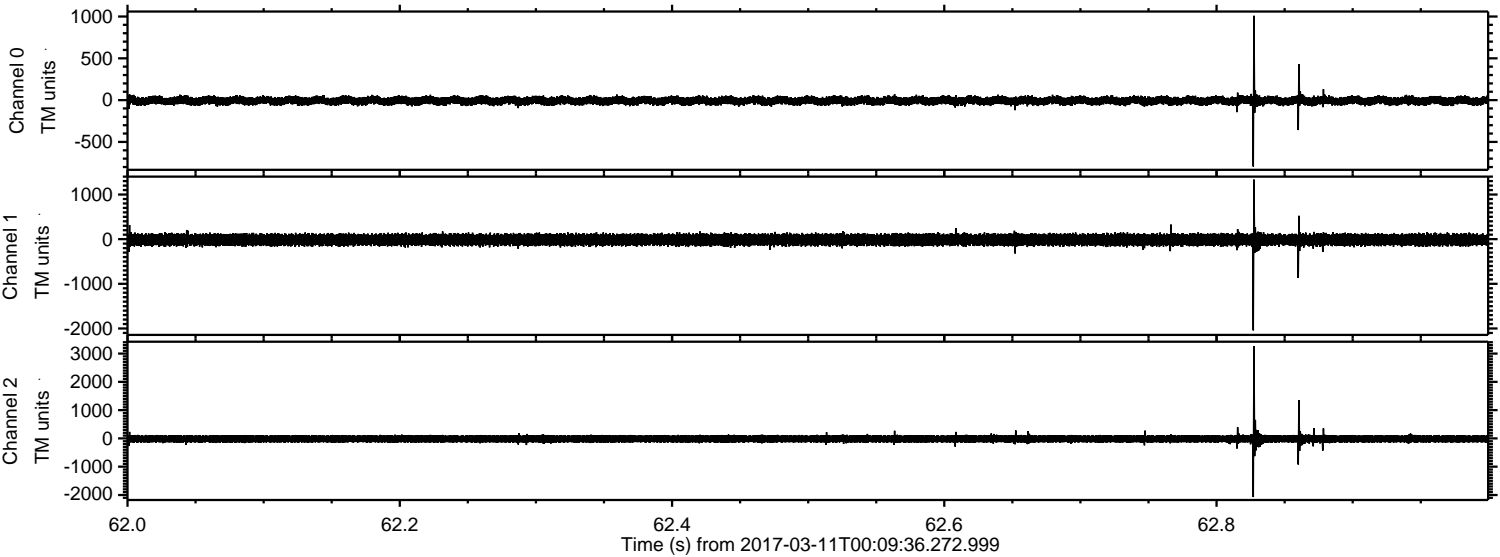
Channel 0
mn: -863
mx: 1783
 μ : -7.1
 σ : 30.1

Channel 1
mn: -2061
mx: 1783
 μ : -13.8
 σ : 73.6

Channel 2
mn: -3296
mx: 2841
 μ : -16.5
 σ : 85.2

ELMAVAN 3D WAVEFORMS (Measured data sampled at 50 kHz) 51000 packets of 144 samples from 2017-03-11T00:09:36.272.999. Part 63/147

Processed Sat Mar 11 01:17:20 2017 by ELM ver.2012-10-06 from 001__elm20170311_000935__dat00.bin

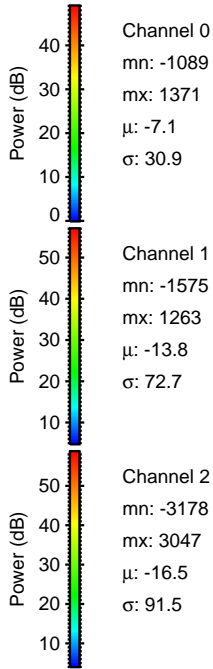
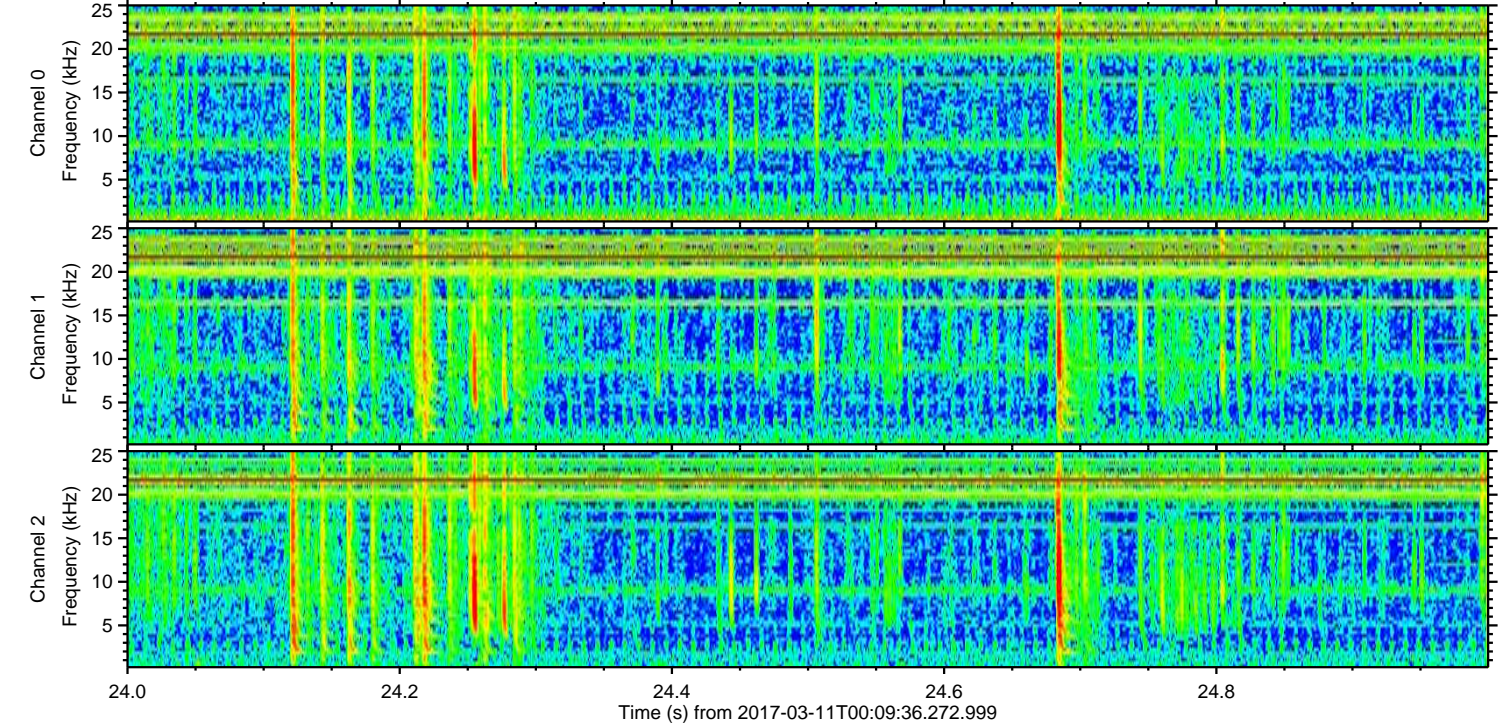
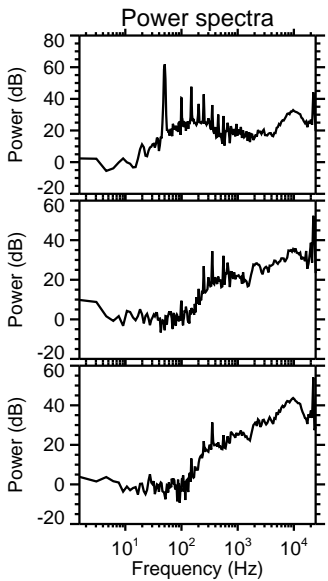
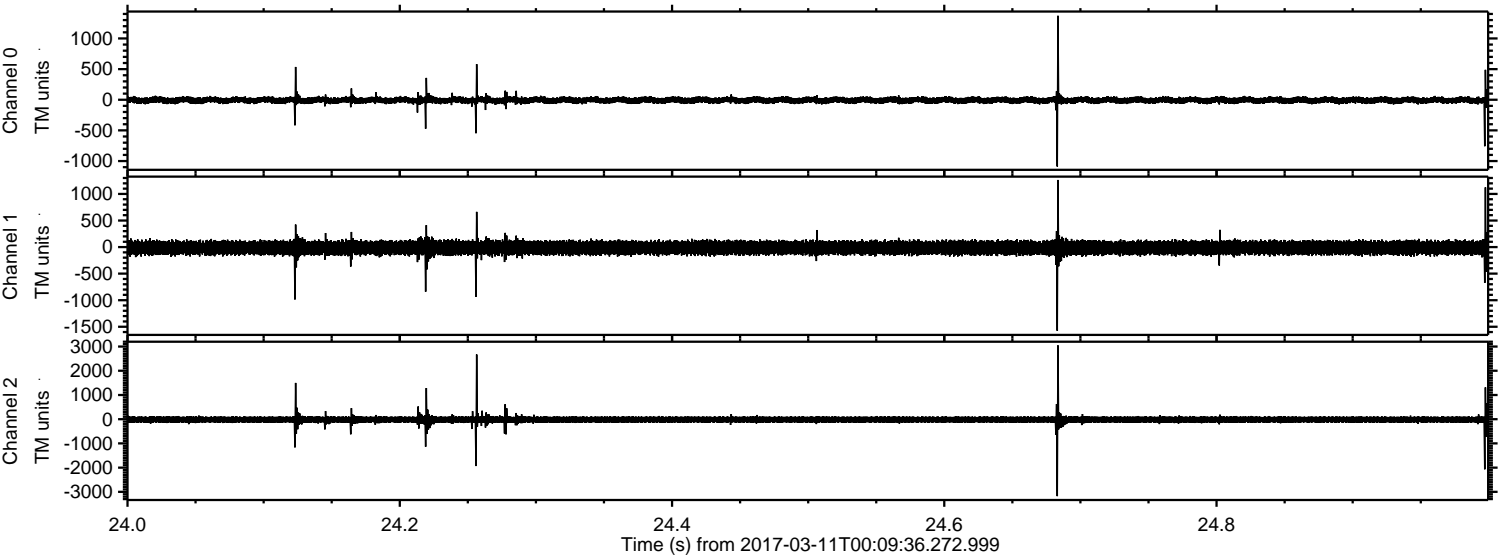


Channel 0
mn: -794
mx: 1009
 μ : -7.1
 σ : 28.5

Channel 1
mn: -2042
mx: 1334
 μ : -13.8
 σ : 71.1

Channel 2
mn: -2074
mx: 3257
 μ : -16.4
 σ : 82.3

Processed Sat Mar 11 01:17:21 2017 by ELM ver.2012-10-06 from 001__elm20170311_000935__dat00.bin



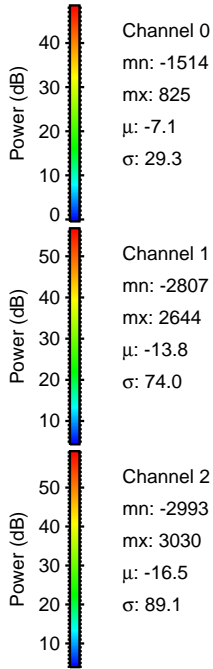
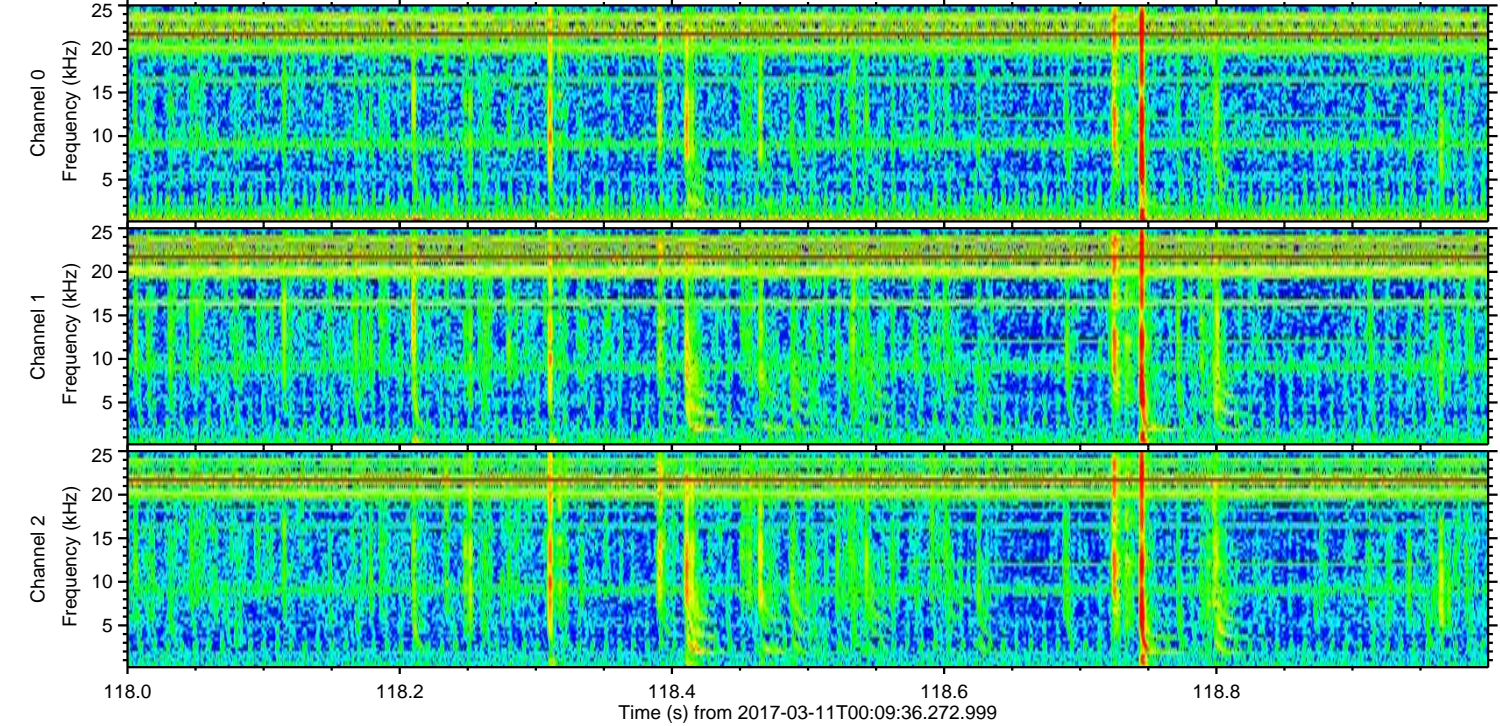
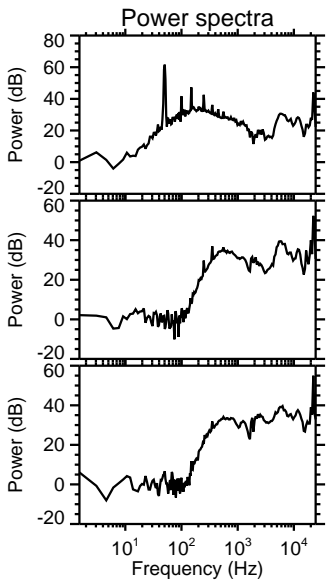
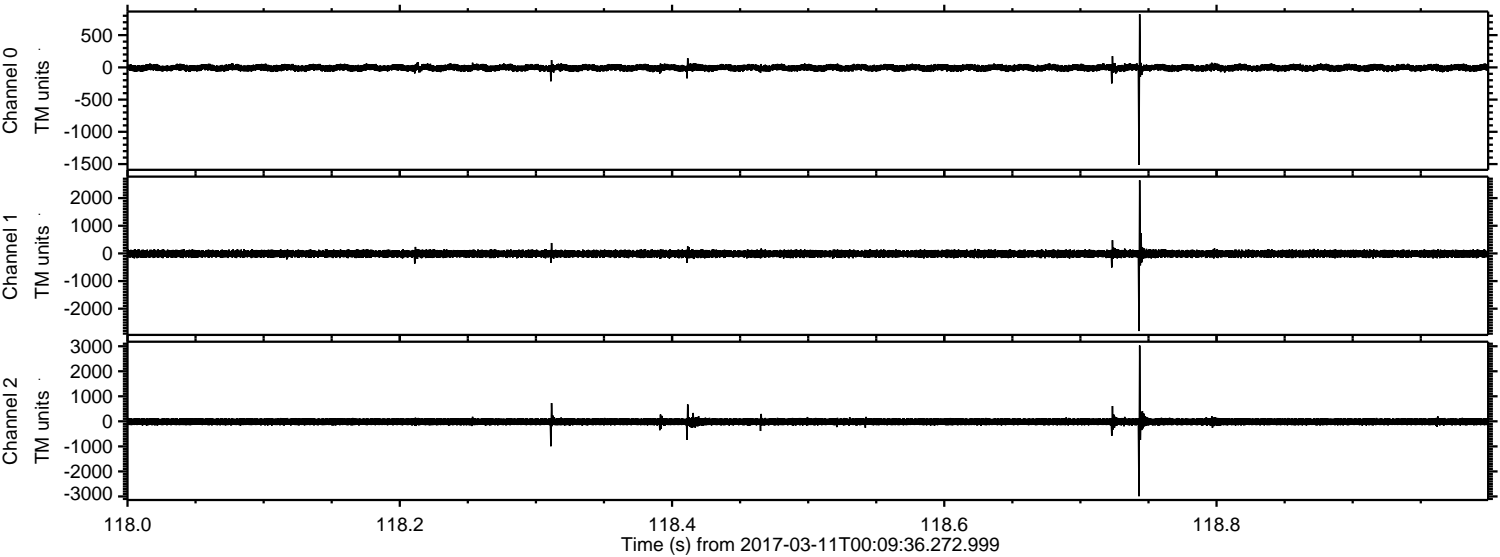
Channel 0
mn: -1089
mx: 1371
 μ : -7.1
 σ : 30.9

Channel 1
mn: -1575
mx: 1263
 μ : -13.8
 σ : 72.7

Channel 2
mn: -3178
mx: 3047
 μ : -16.5
 σ : 91.5

ELMAVAN 3D WAVEFORMS (Measured data sampled at 50 kHz) 51000 packets of 144 samples from 2017-03-11T00:09:36.272.999. Part 119/147

Processed Sat Mar 11 01:17:21 2017 by ELM ver.2012-10-06 from 001__elm20170311_000935__dat00.bin



Channel 0
mn: -1514
mx: 825
 μ : -7.1
 σ : 29.3

Channel 1
mn: -2807
mx: 2644
 μ : -13.8
 σ : 74.0

Channel 2
mn: -2993
mx: 3030
 μ : -16.5
 σ : 89.1

ELMAVAN 3D WAVEFORMS (Measured data sampled at 50 kHz) 51000 packets of 144 samples from 2017-03-11T00:09:36.272.999. Part 23/147

Processed Sat Mar 11 01:17:22 2017 by ELM ver.2012-10-06 from 001__elm20170311_000935__dat00.bin

