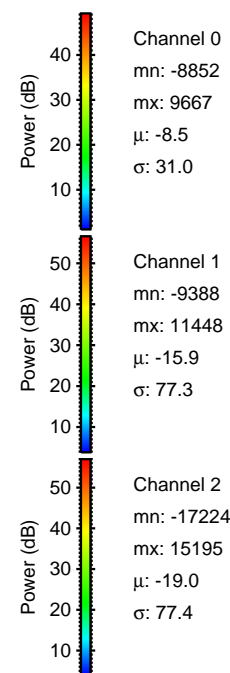
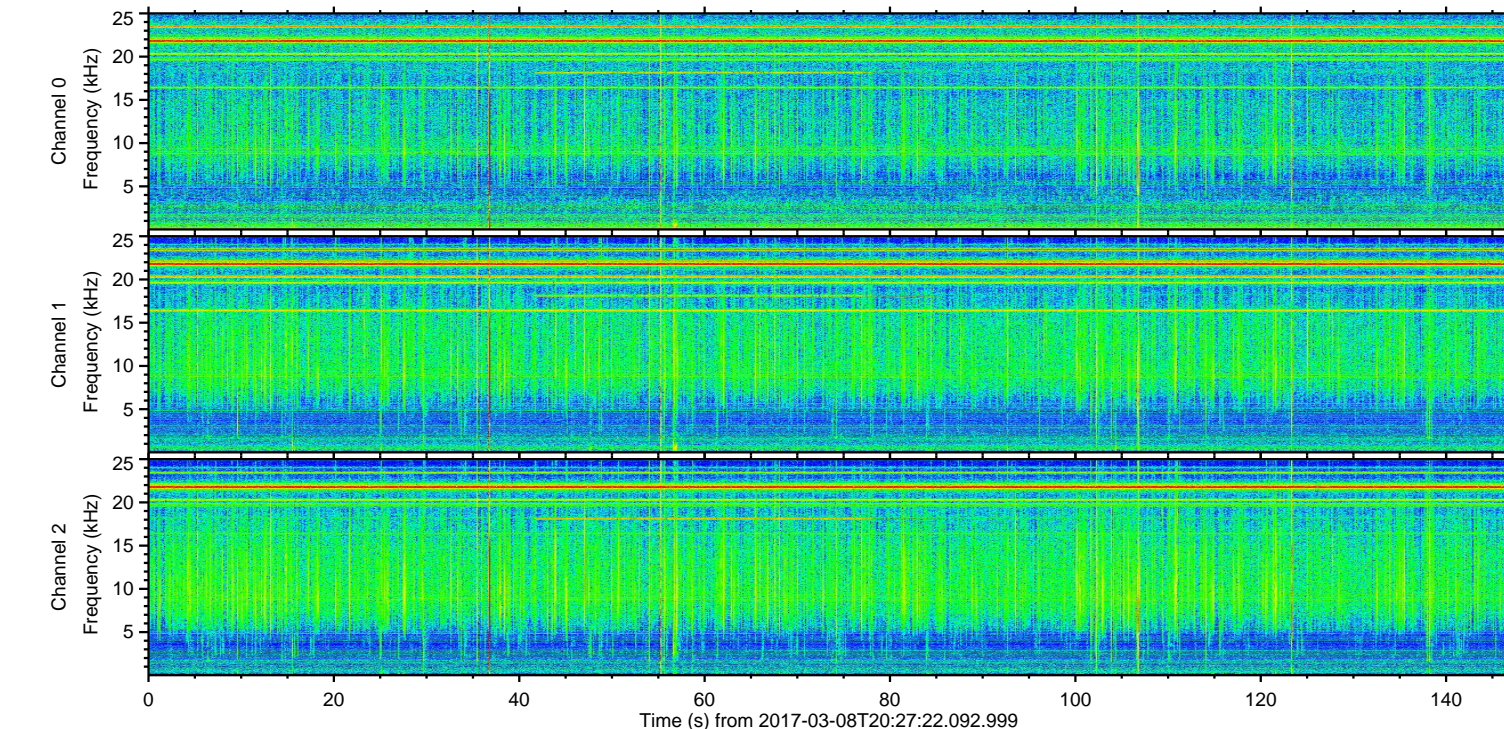
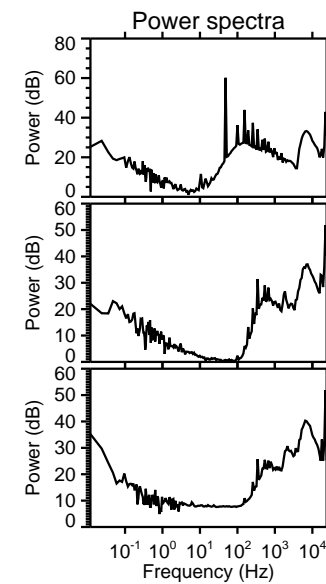
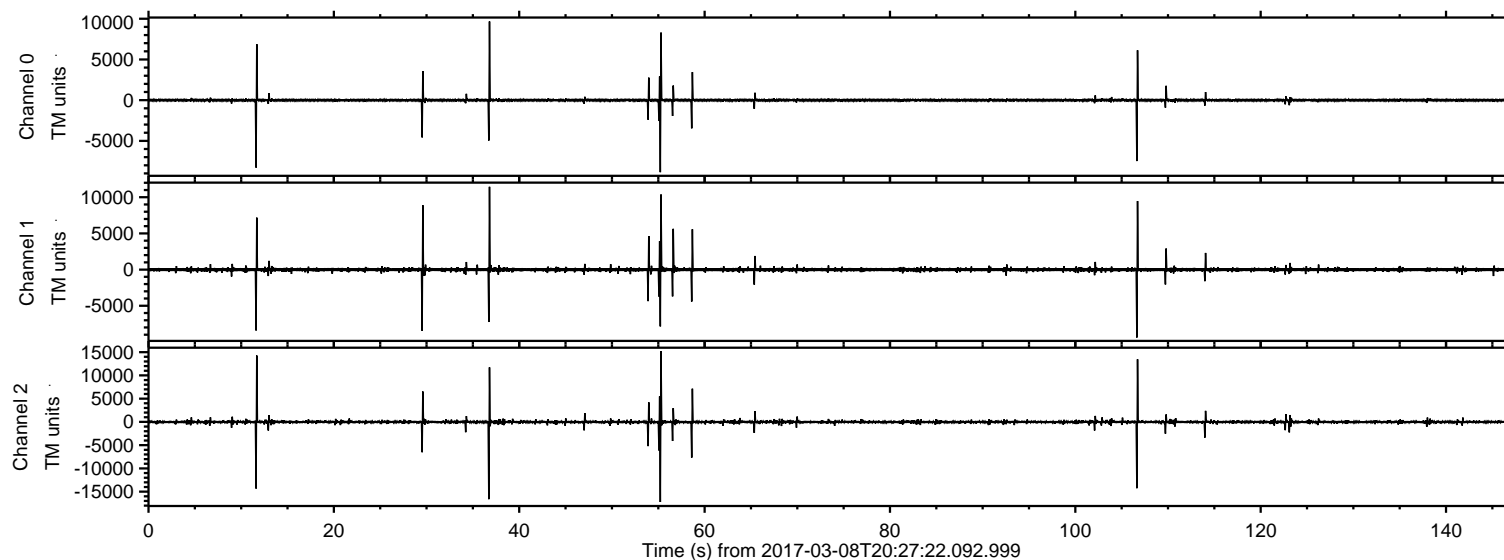


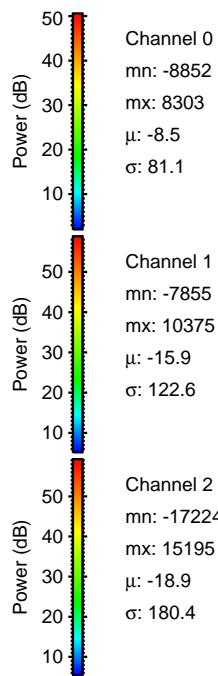
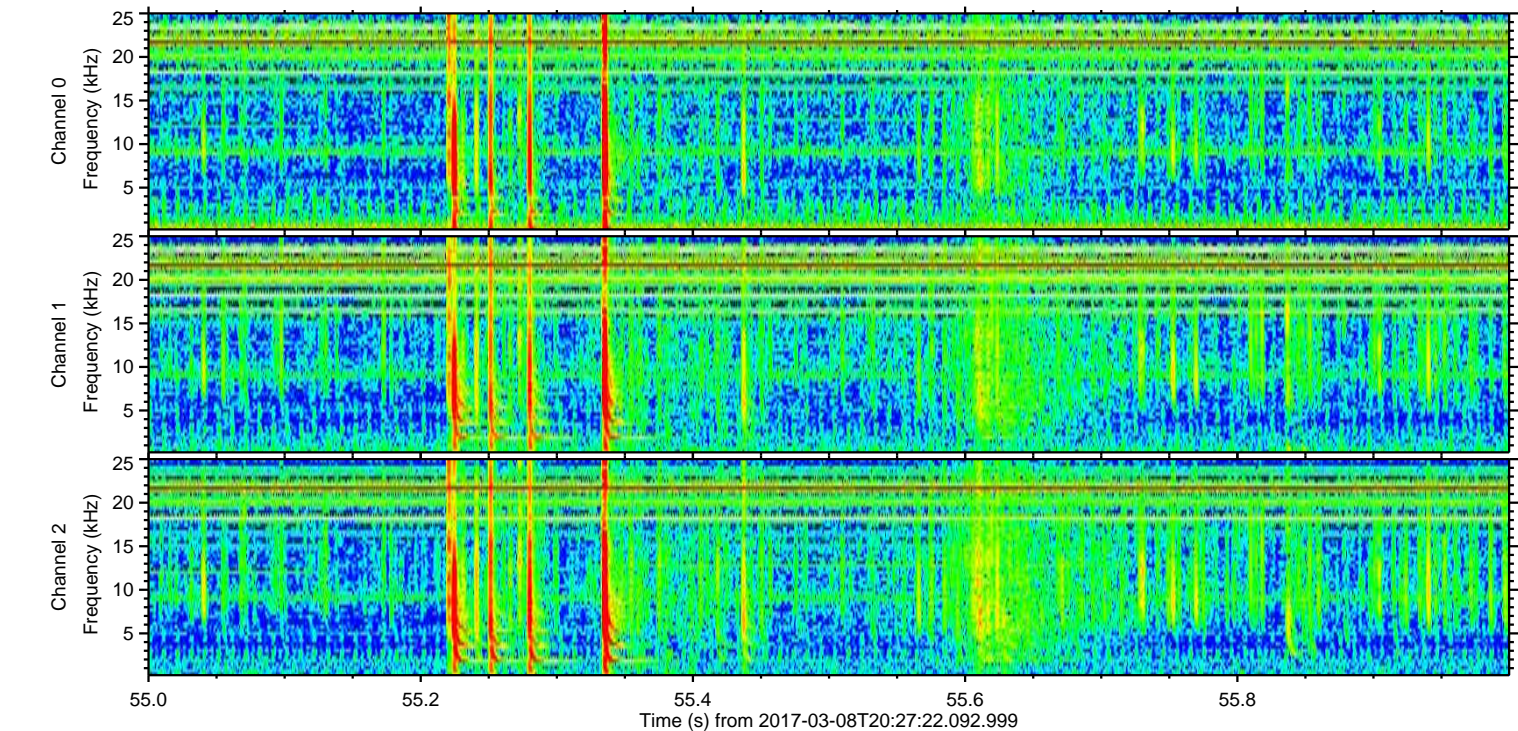
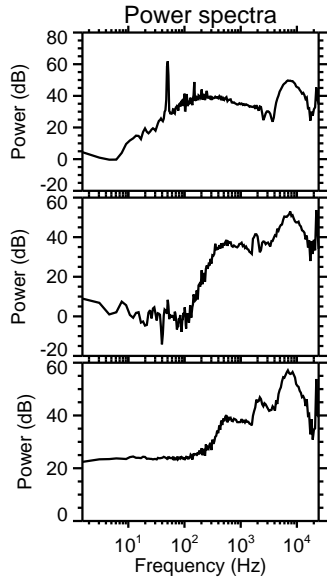
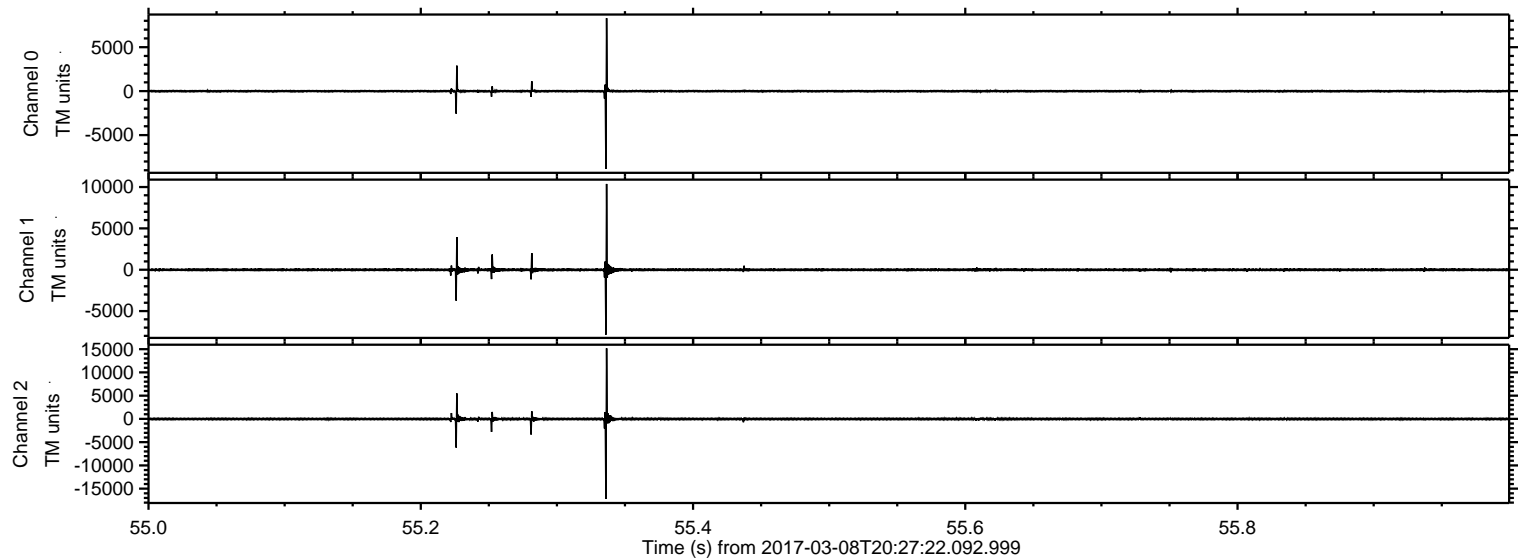
# ELMAVAN 3D WAVEFORMS (Measured data sampled at 50 kHz) 51000 packets of 144 samples from 2017-03-08T20:27:22.092.999.

Processed Wed Mar 8 21:35:03 2017 by ELM ver.2012-10-06 from 001\_\_elm20170308\_202721\_\_dat00.bin



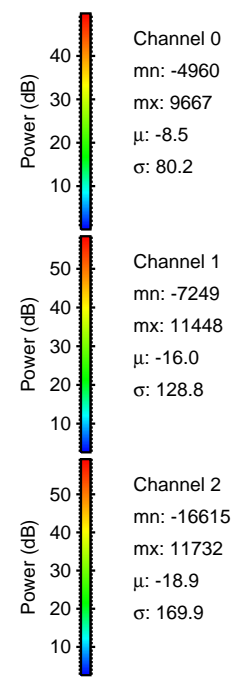
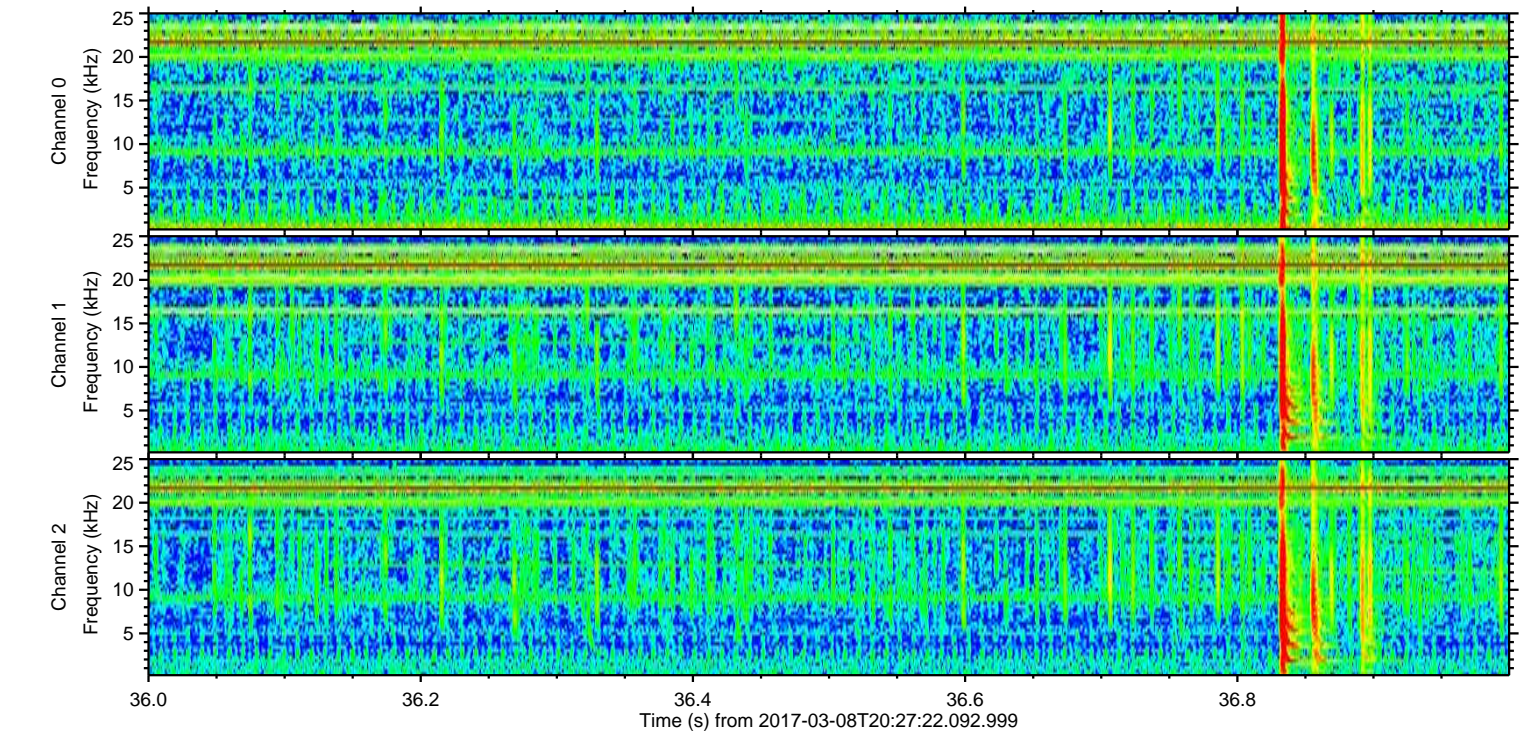
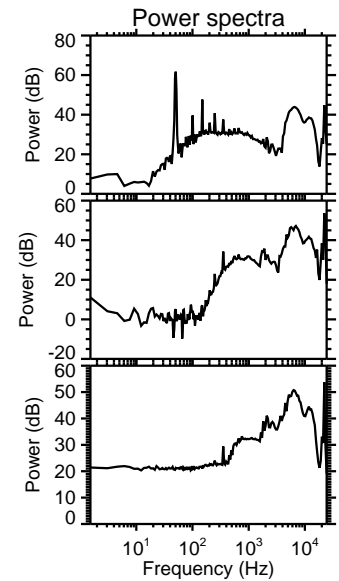
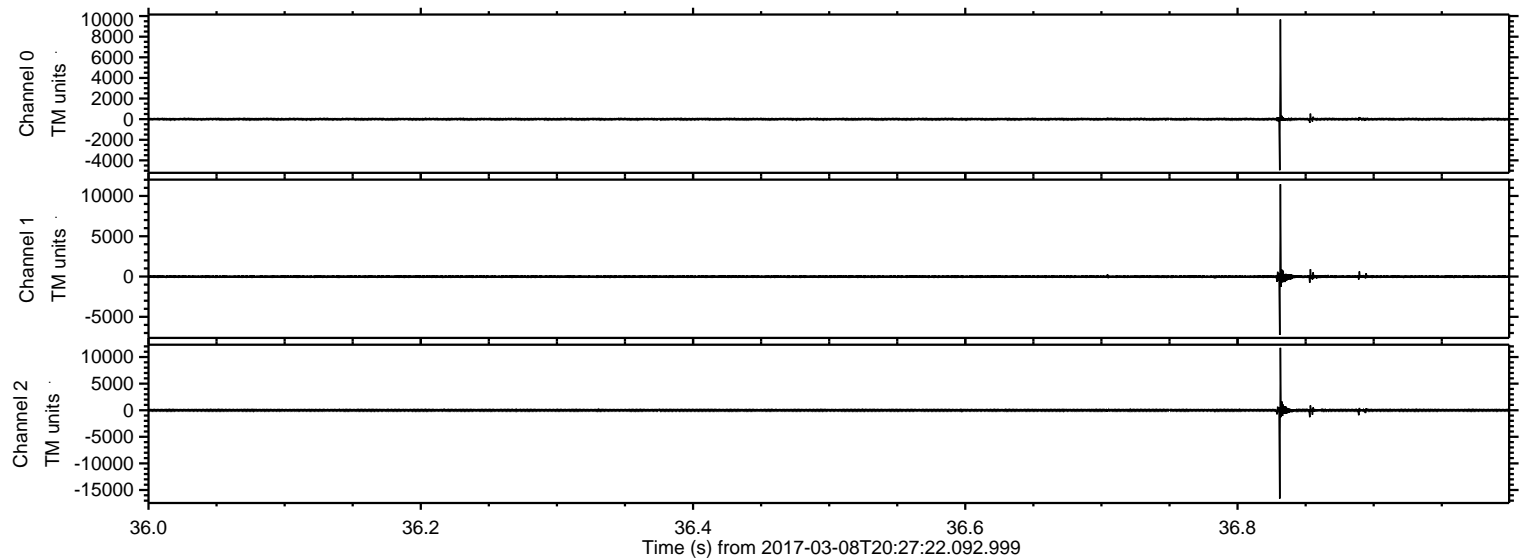


Processed Wed Mar 8 21:35:14 2017 by ELM ver.2012-10-06 from 001\_\_elm20170308\_202721\_\_dat00.bin



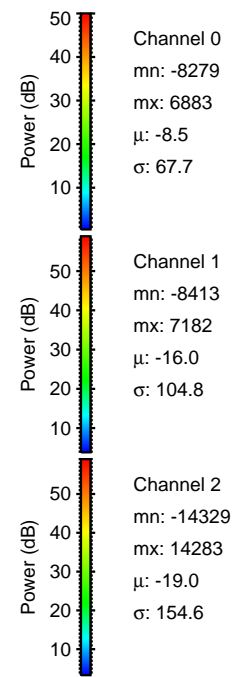
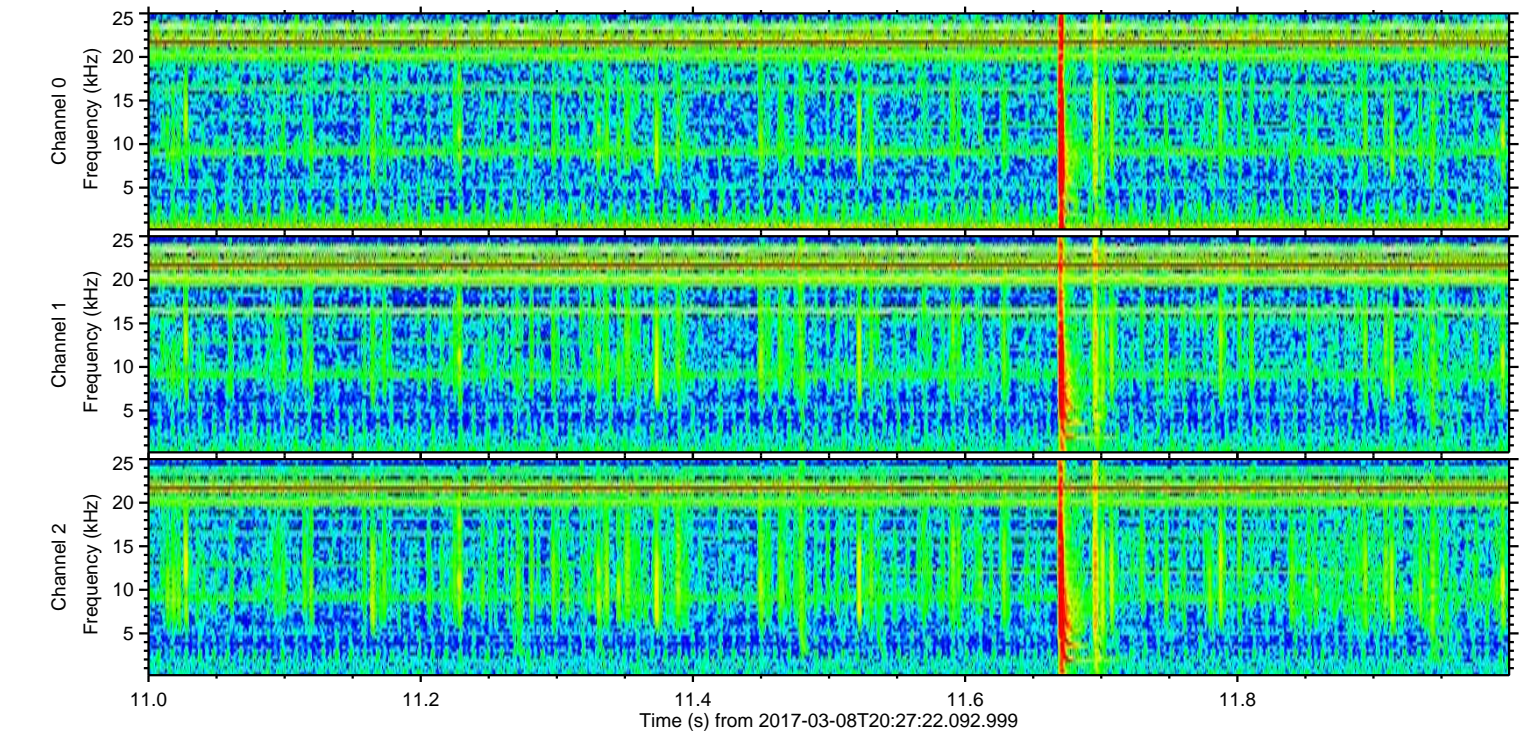
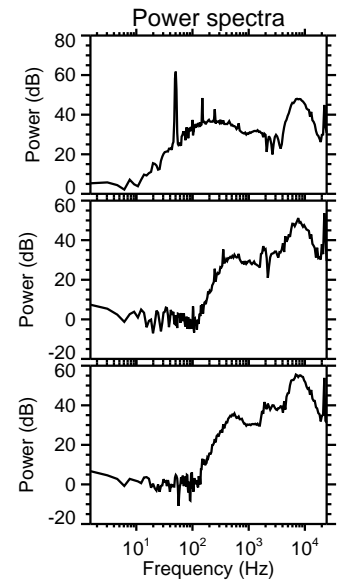
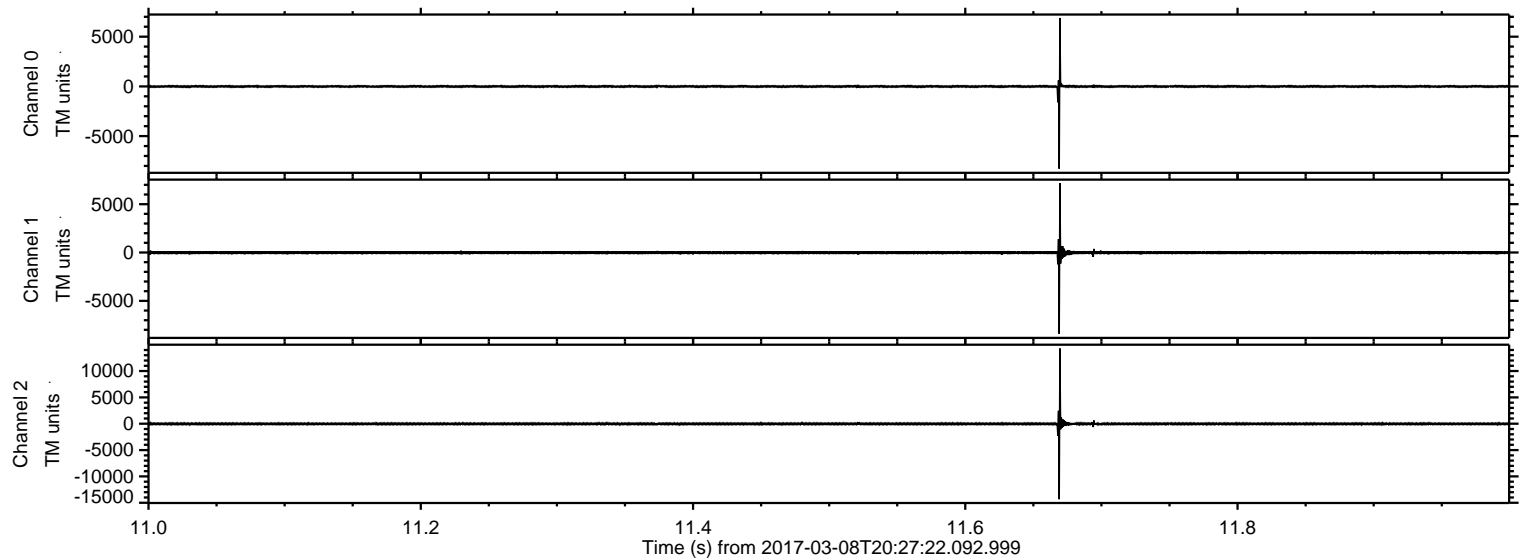


Processed Wed Mar 8 21:35:15 2017 by ELM ver.2012-10-06 from 001\_\_elm20170308\_202721\_\_dat00.bin





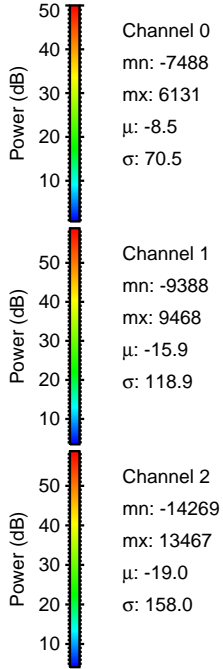
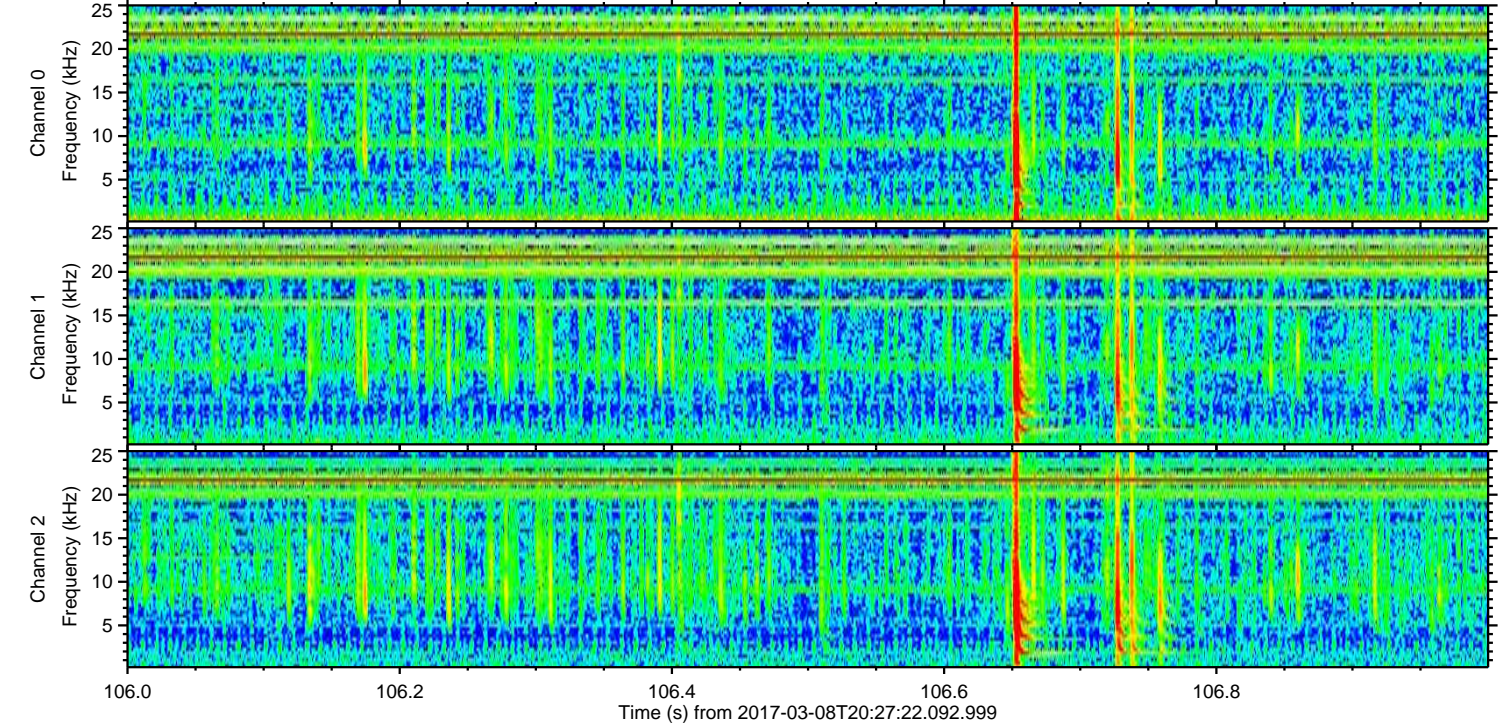
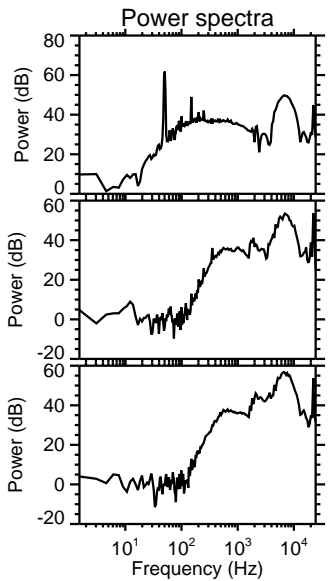
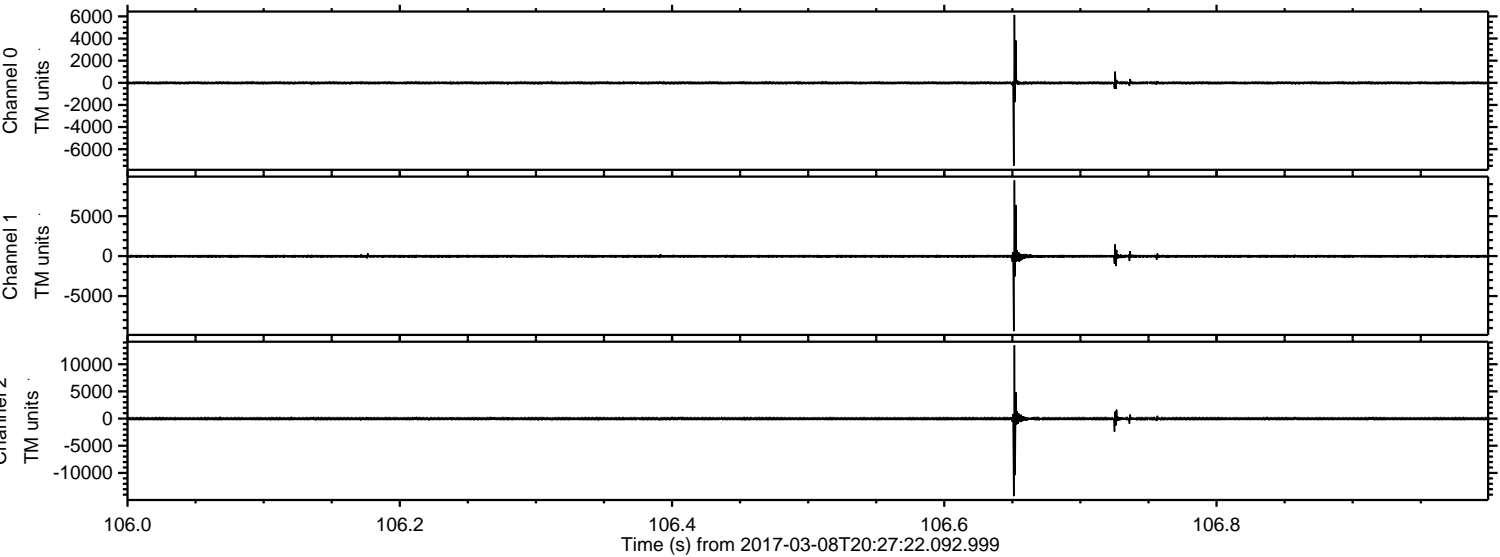
Processed Wed Mar 8 21:35:16 2017 by ELM ver.2012-10-06 from 001\_\_elm20170308\_202721\_\_dat00.bin





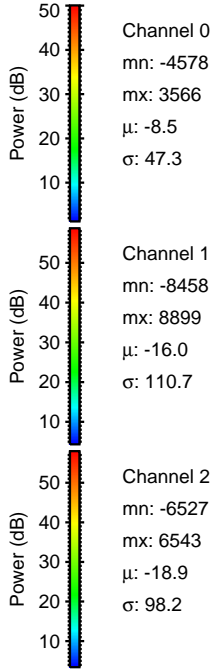
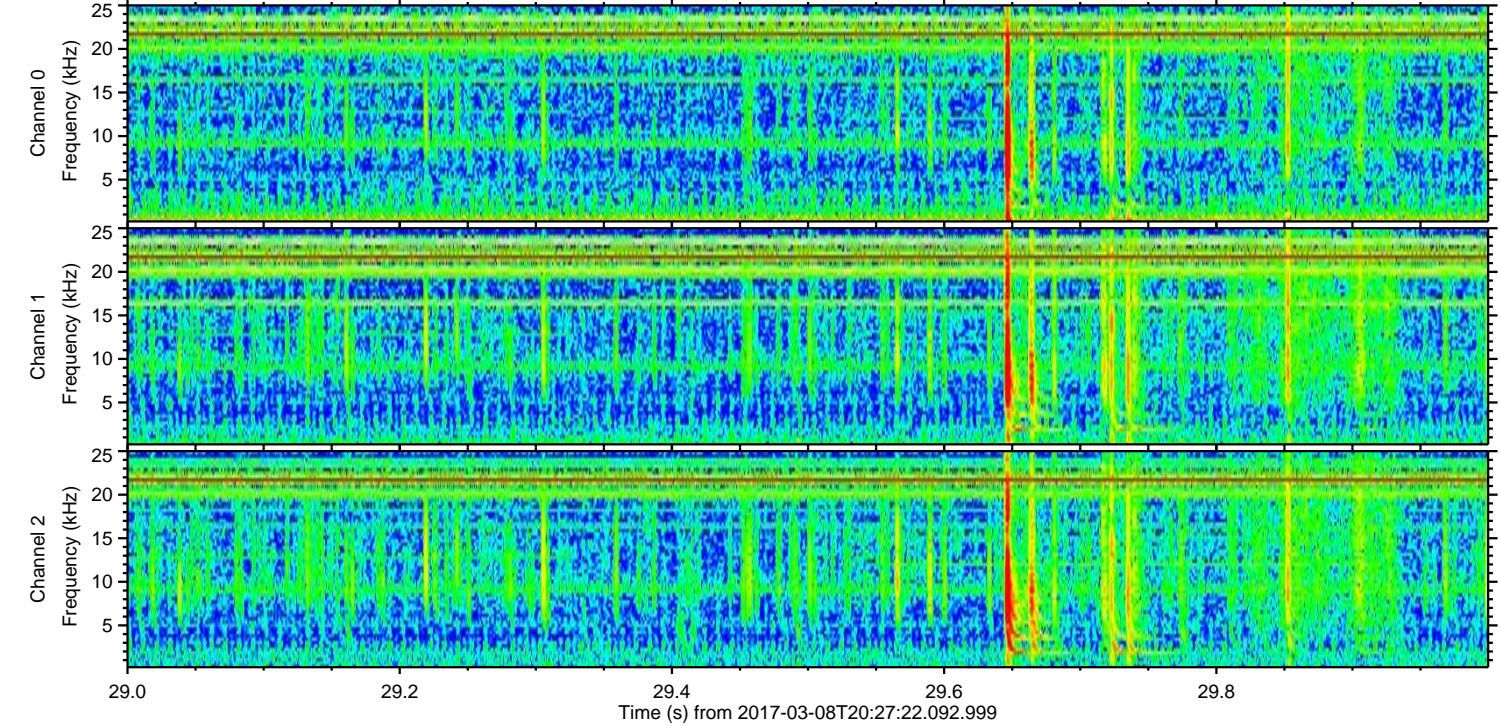
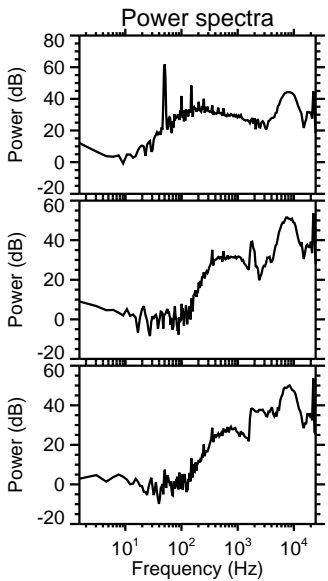
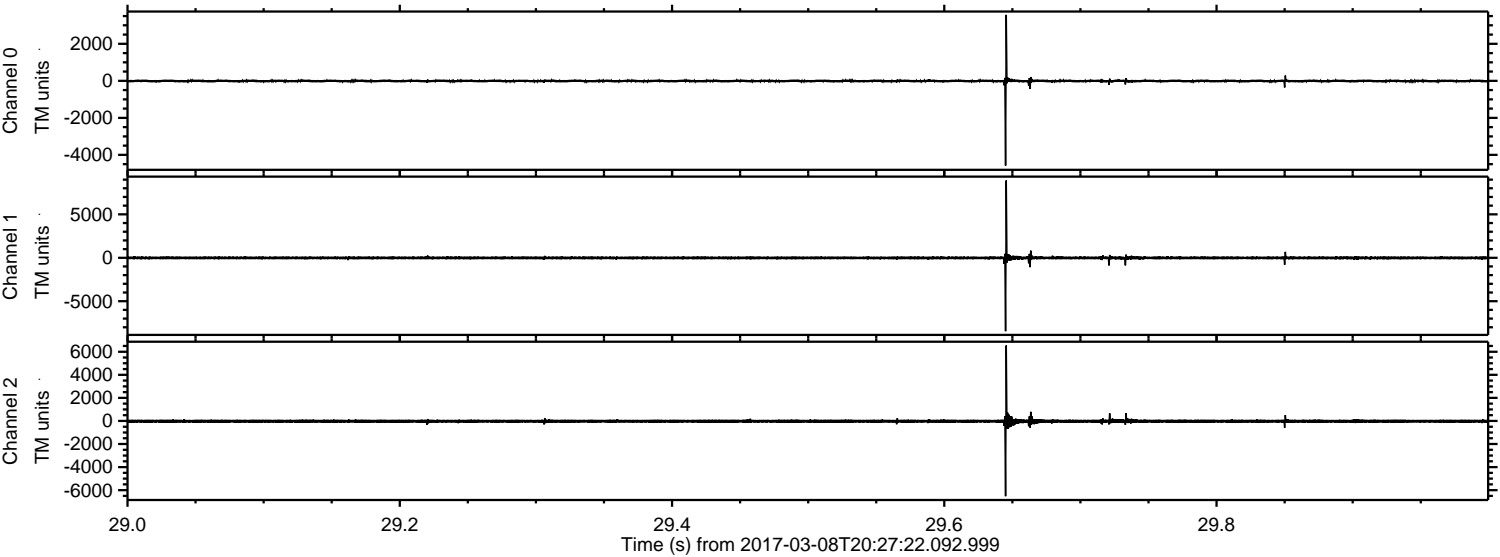
ELMAVAN 3D WAVEFORMS (Measured data sampled at 50 kHz) 51000 packets of 144 samples from 2017-03-08T20:27:22.092.999. Part 107/147

Processed Wed Mar 8 21:35:17 2017 by ELM ver.2012-10-06 from 001\_\_elm20170308\_202721\_\_dat00.bin



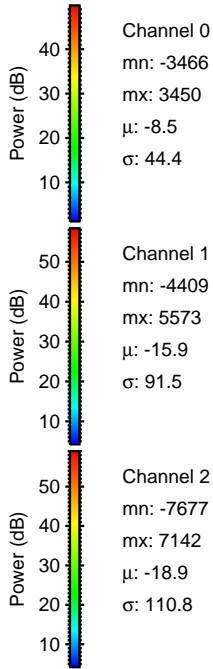
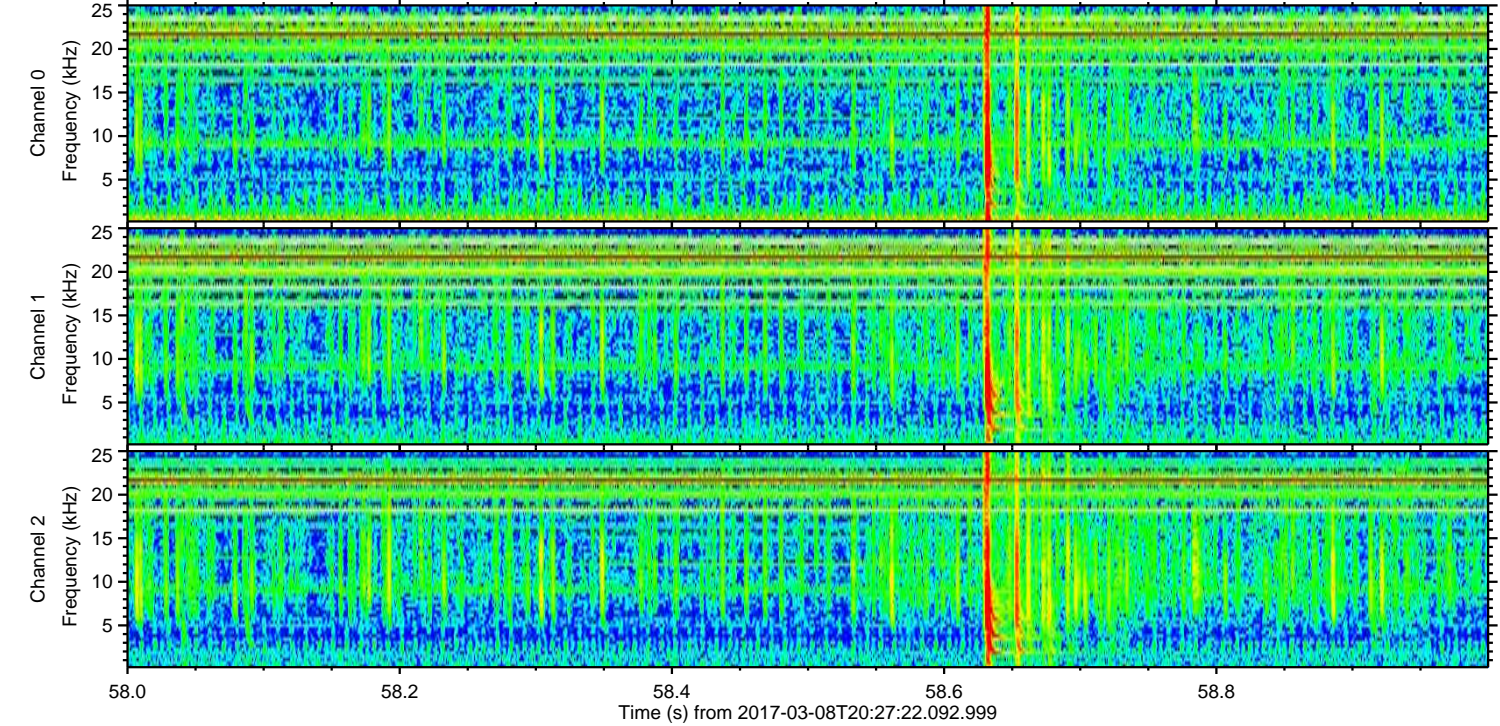
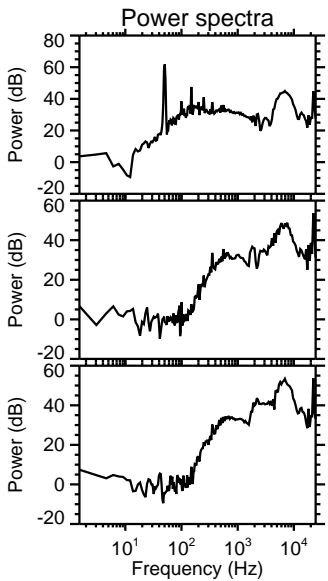
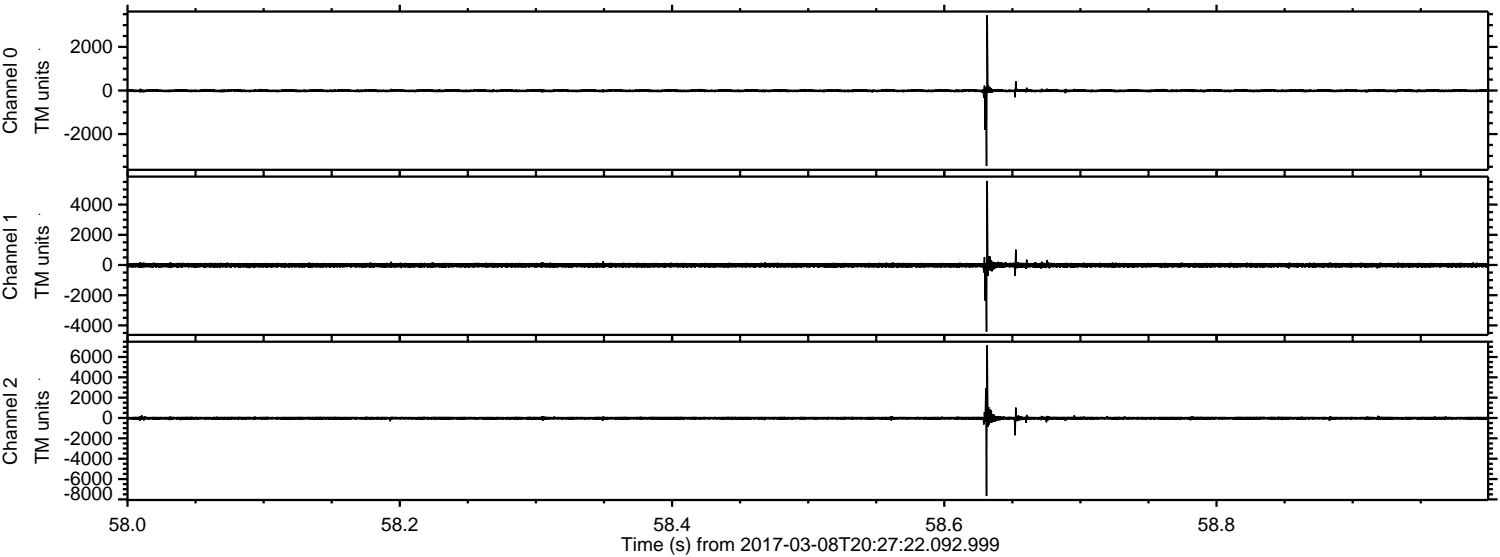


Processed Wed Mar 8 21:35:18 2017 by ELM ver.2012-10-06 from 001\_\_elm20170308\_202721\_\_dat00.bin



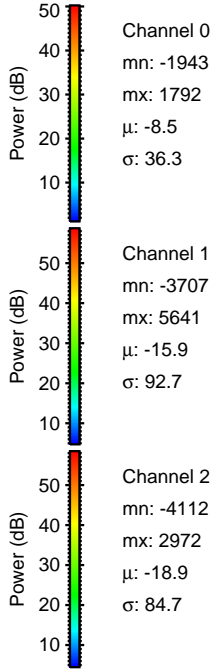
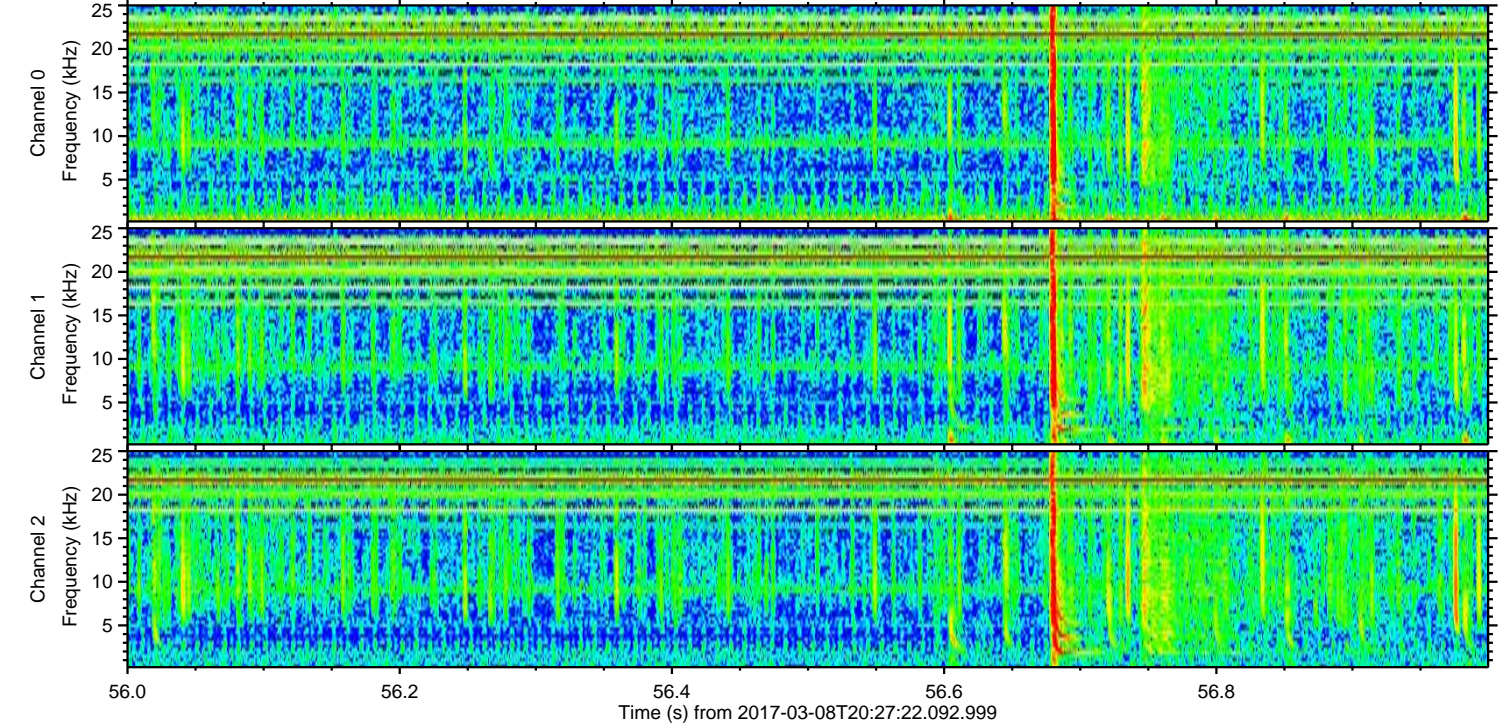
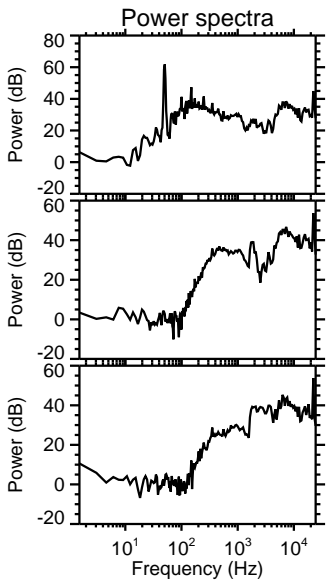
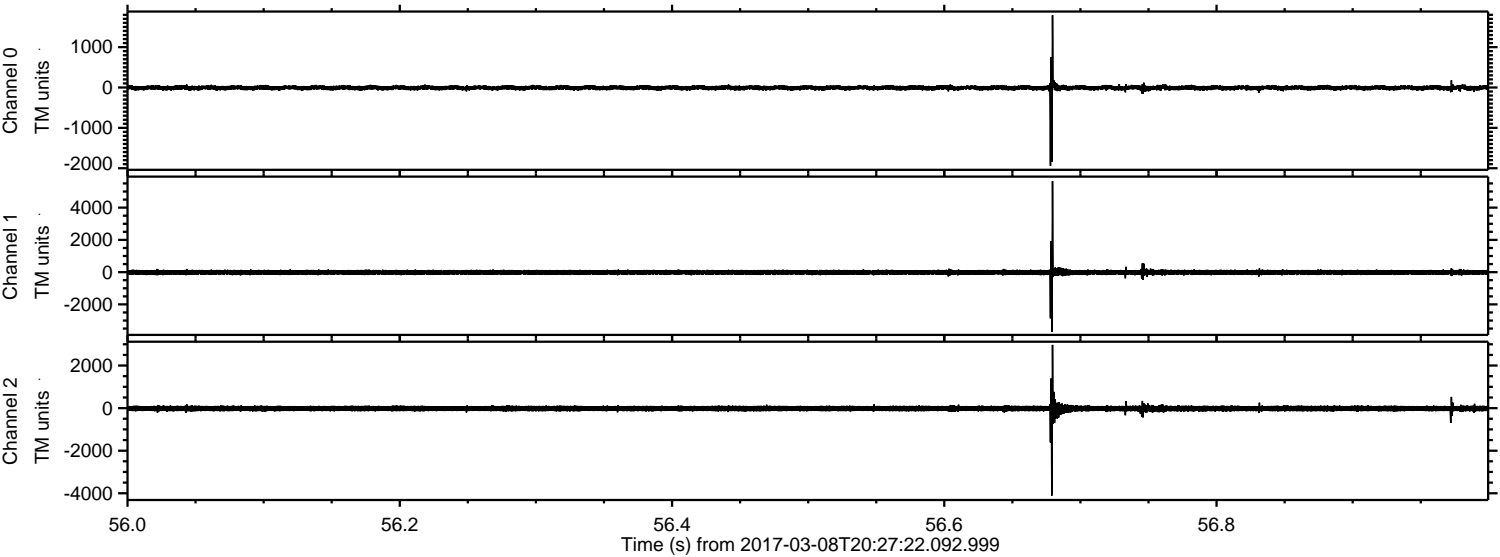


Processed Wed Mar 8 21:35:19 2017 by ELM ver.2012-10-06 from 001\_\_elm20170308\_202721\_\_dat00.bin



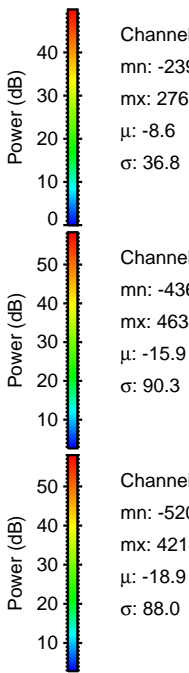
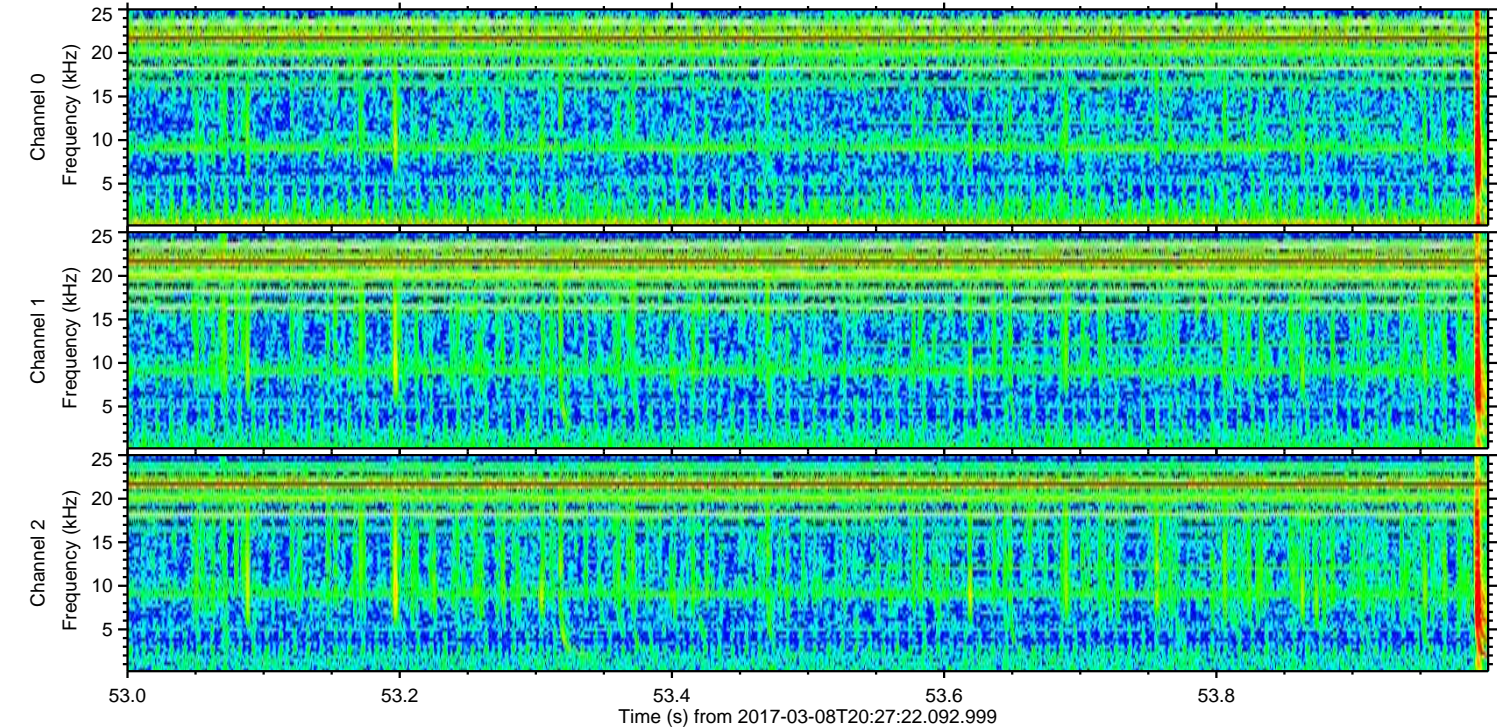
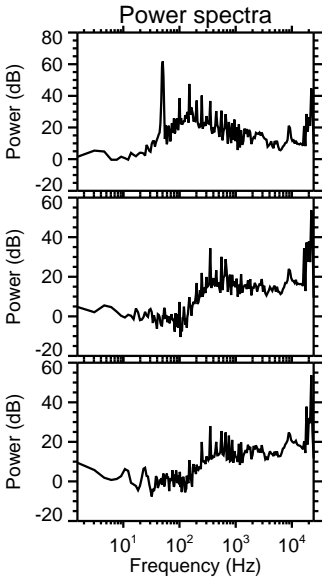
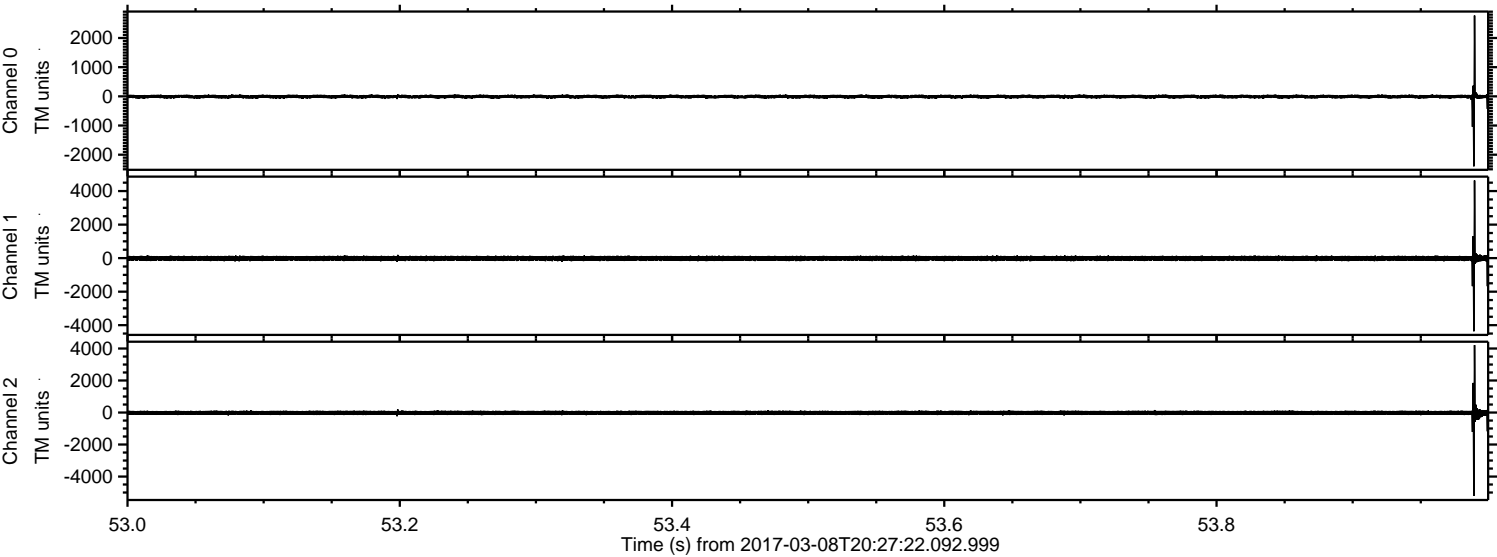


Processed Wed Mar 8 21:35:20 2017 by ELM ver.2012-10-06 from 001\_\_elm20170308\_202721\_\_dat00.bin





Processed Wed Mar 8 21:35:21 2017 by ELM ver.2012-10-06 from 001\_\_elm20170308\_202721\_\_dat00.bin





ELMAVAN 3D WAVEFORMS (Measured data sampled at 50 kHz) 51000 packets of 144 samples from 2017-03-08T20:27:22.092.999. Part 115/147

Processed Wed Mar 8 21:35:22 2017 by ELM ver.2012-10-06 from 001\_\_elm20170308\_202721\_\_dat00.bin

