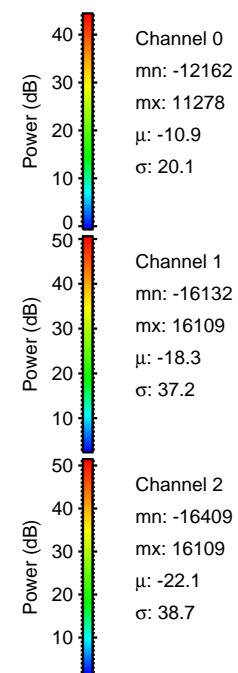
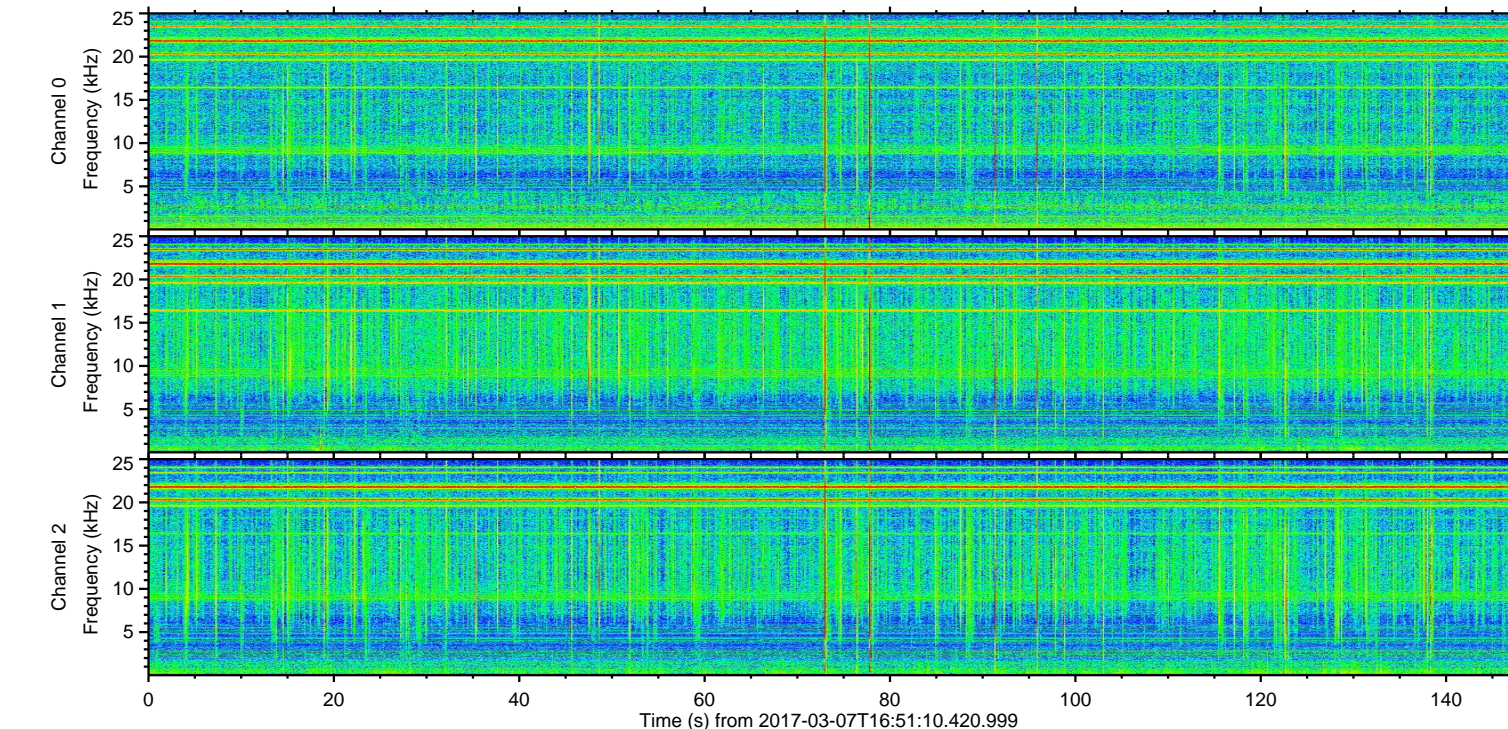
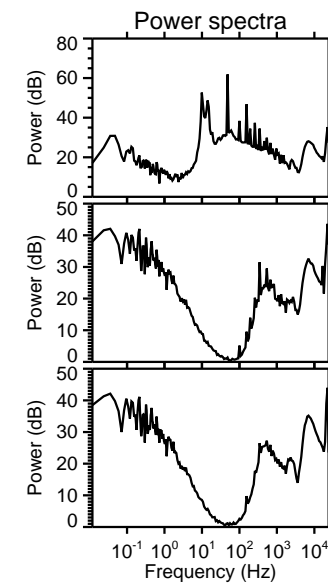
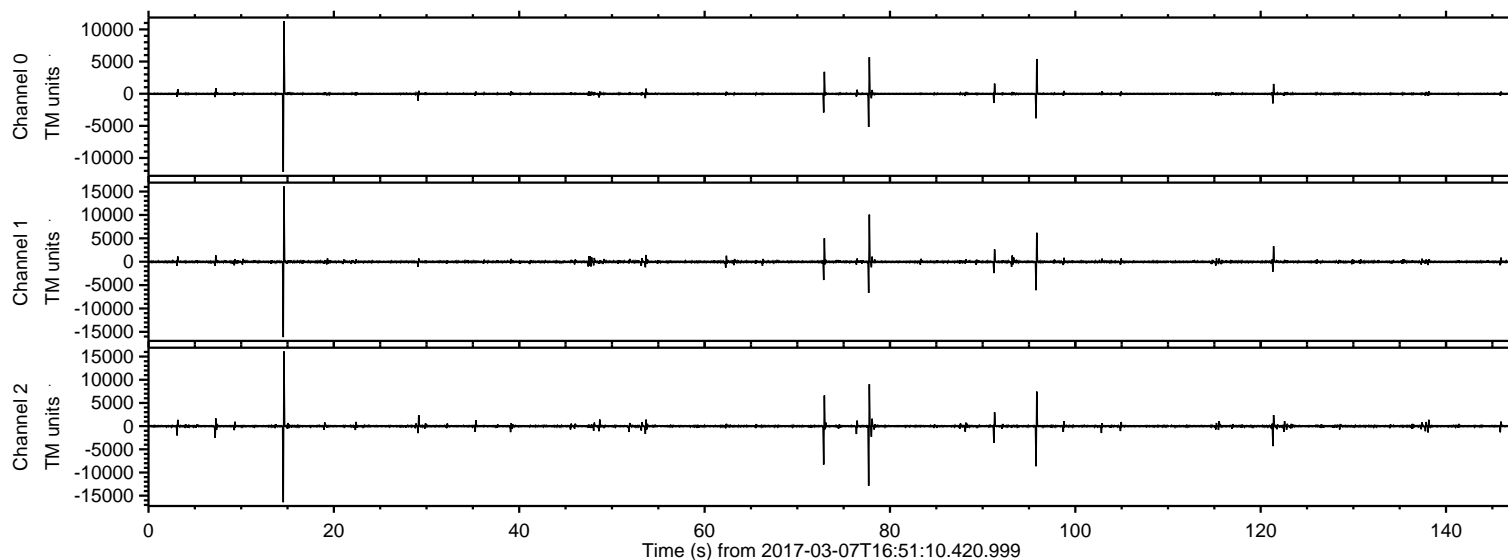
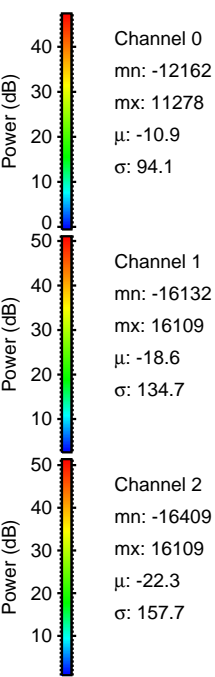
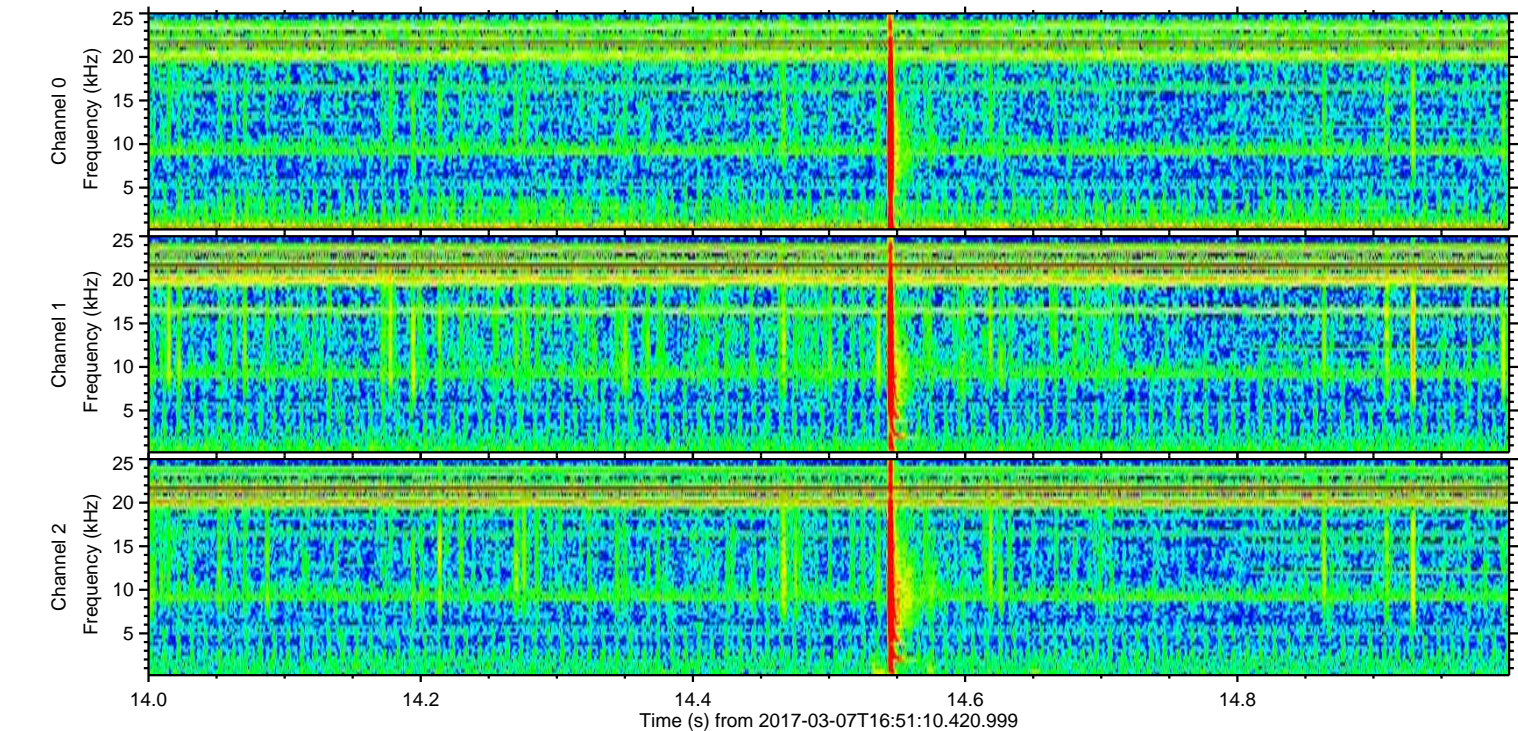
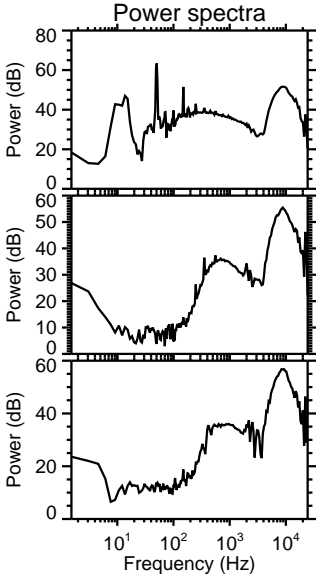
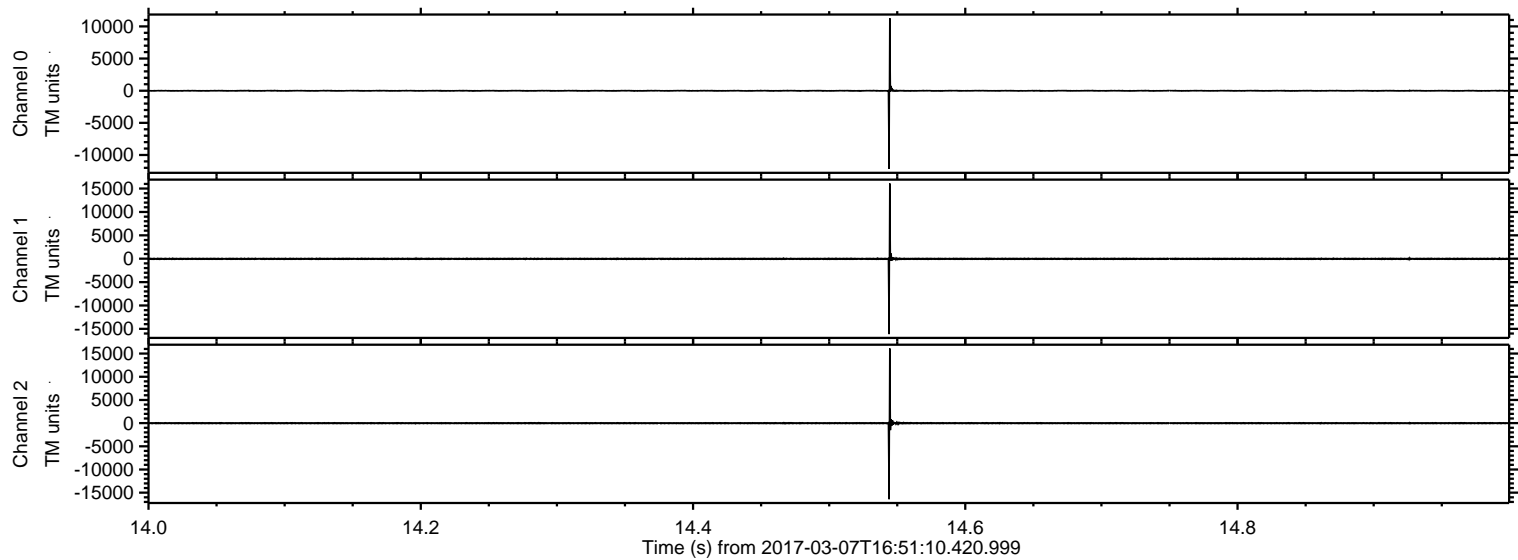


ELMAVAN 3D WAVEFORMS (Measured data sampled at 50 kHz) 51000 packets of 144 samples from 2017-03-07T16:51:10.420.999.

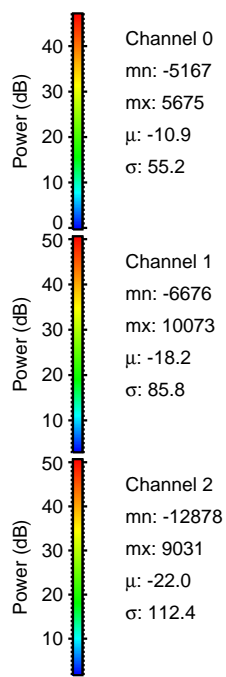
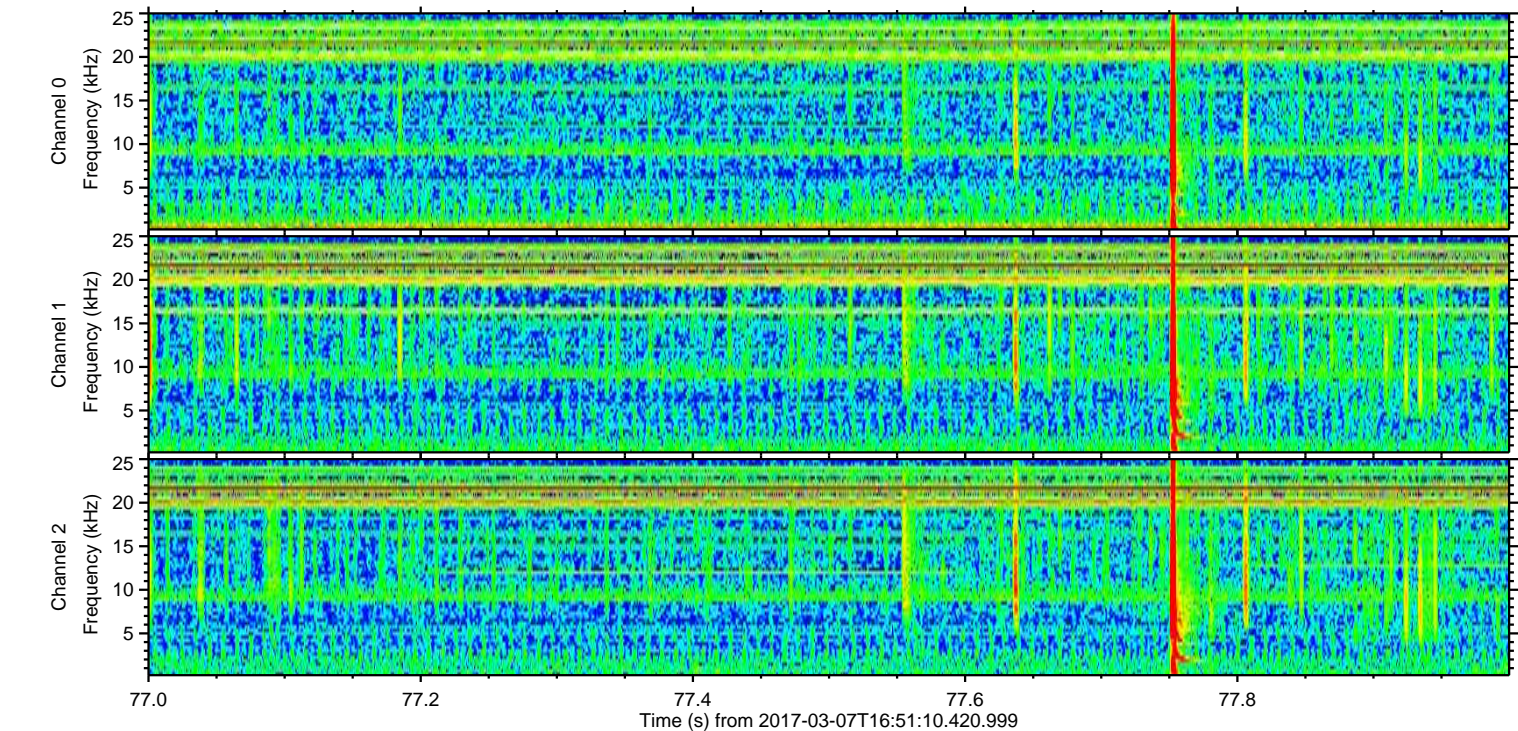
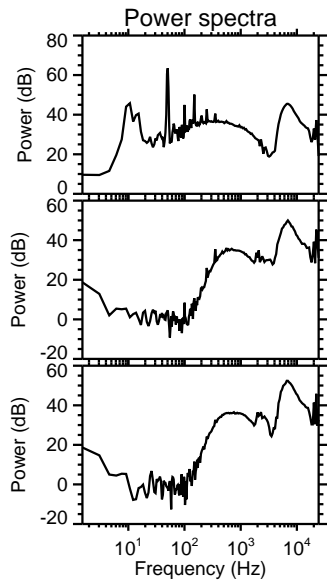
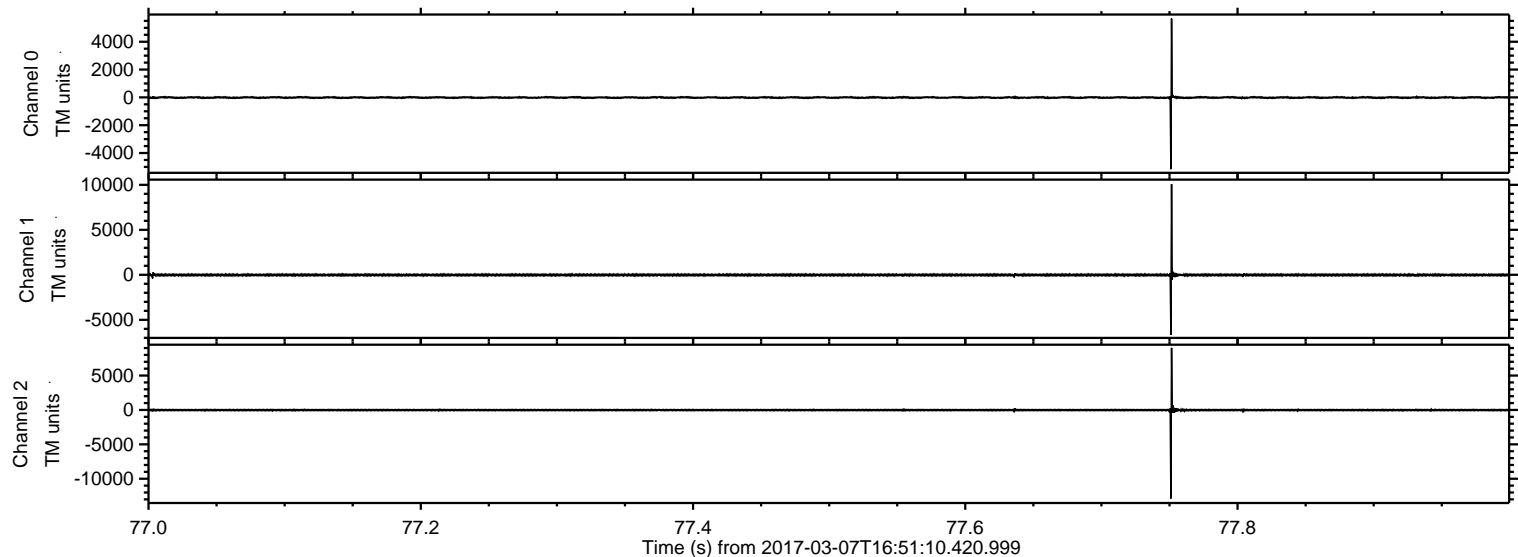
Processed Tue Mar 7 17:58:57 2017 by ELM ver.2012-10-06 from 001__elm20170307_165109__dat00.bin



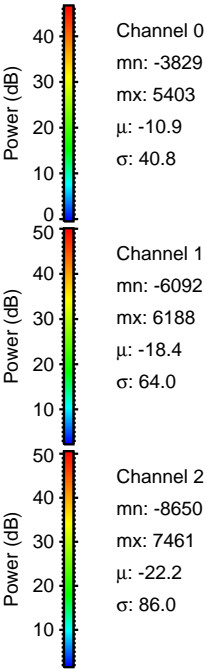
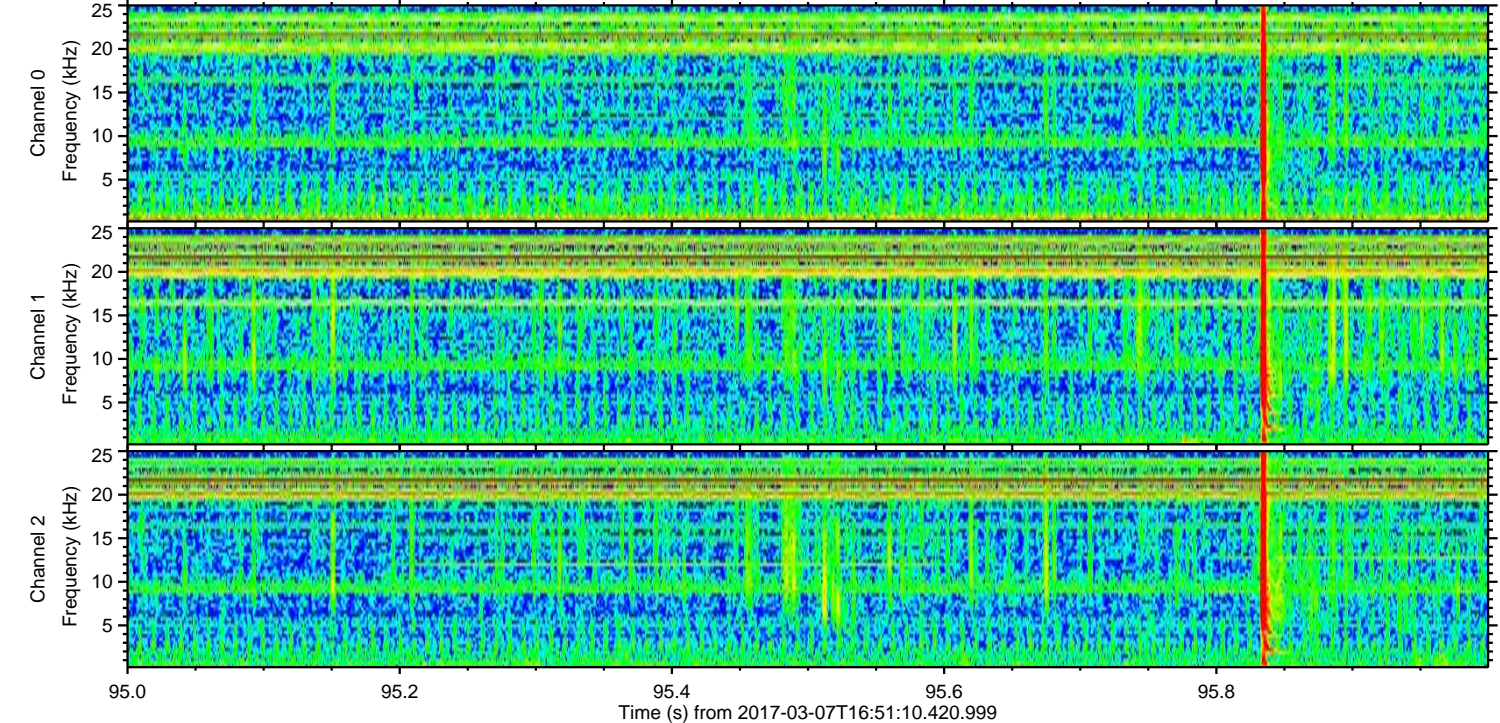
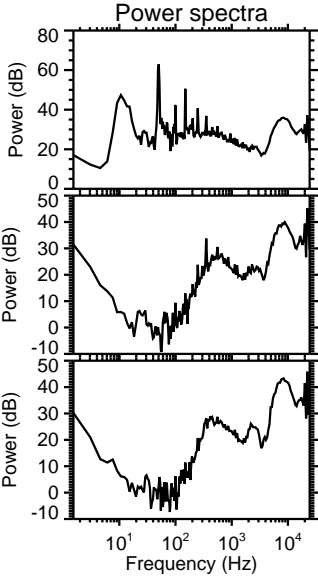
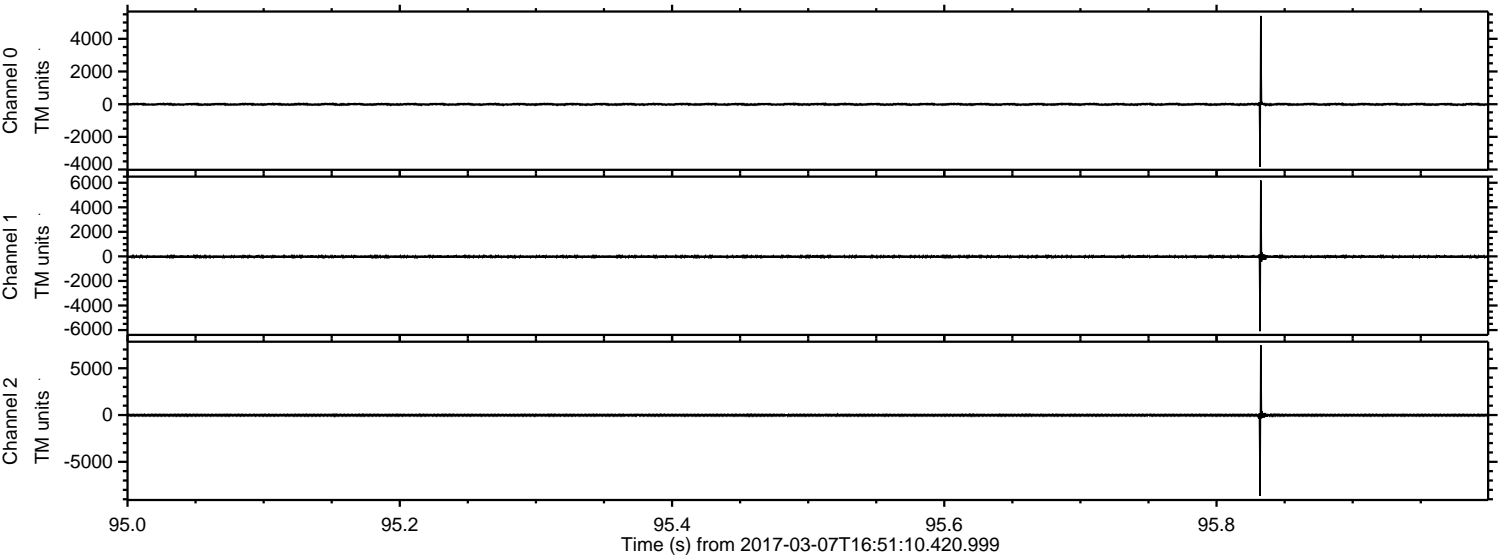
Processed Tue Mar 7 17:59:08 2017 by ELM ver.2012-10-06 from 001__elm20170307_165109__dat00.bin



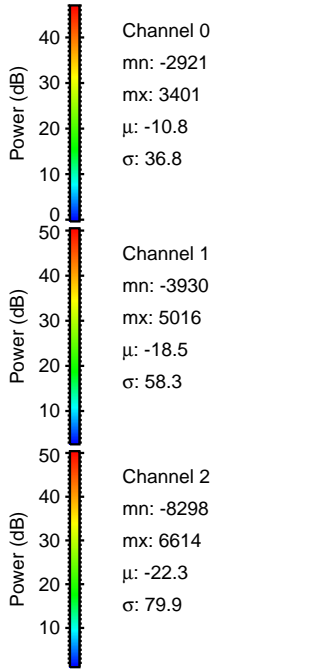
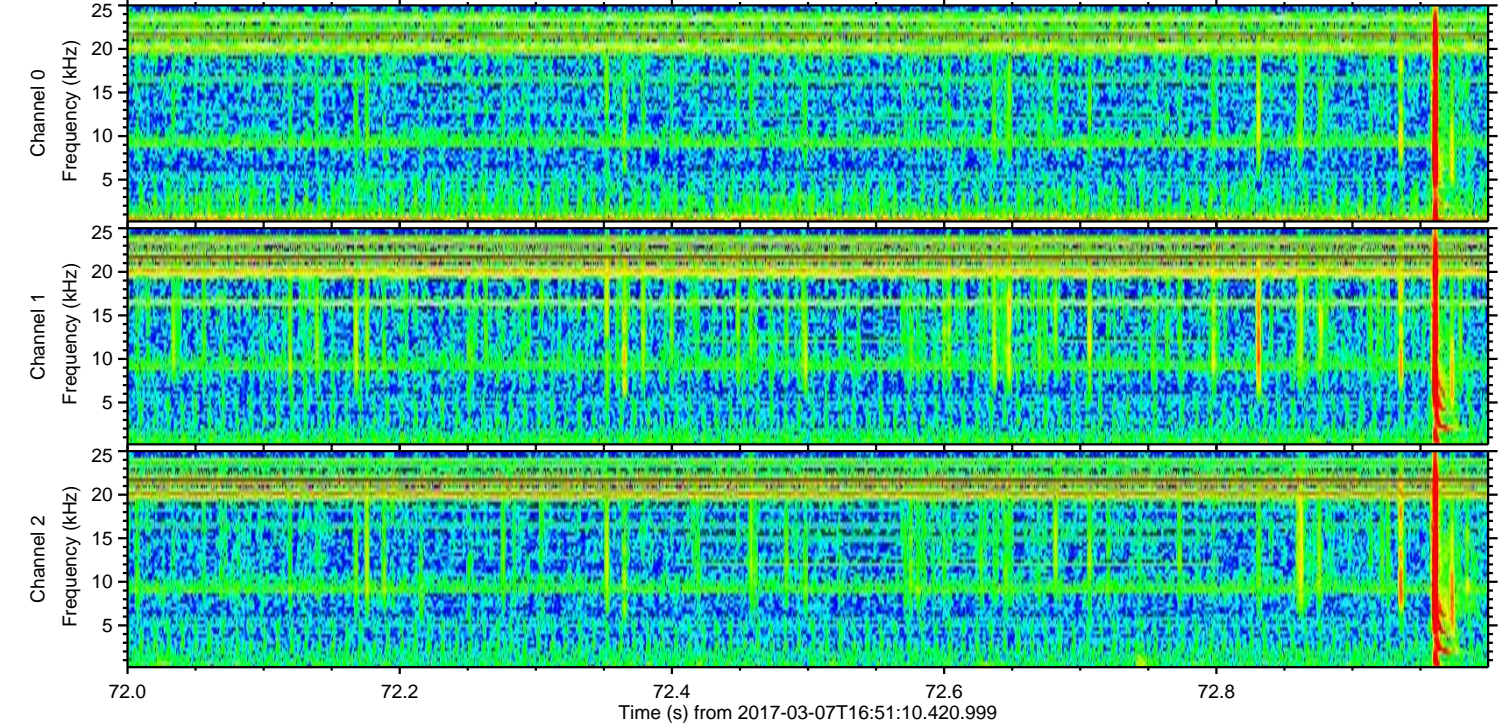
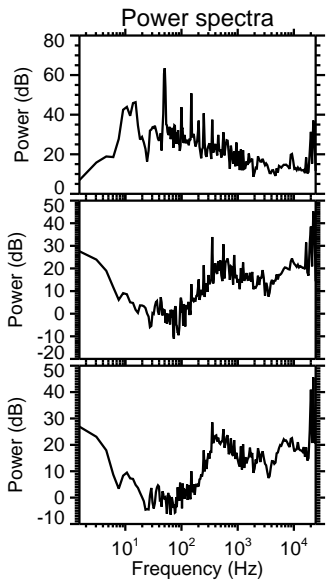
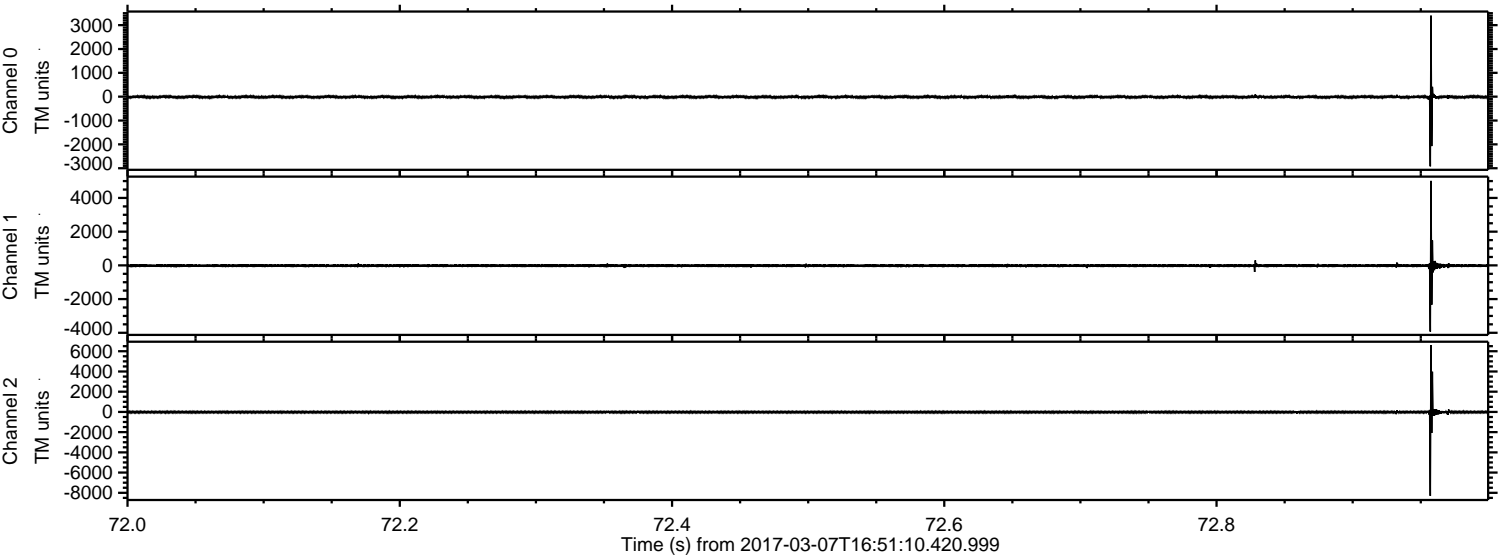
Processed Tue Mar 7 17:59:09 2017 by ELM ver.2012-10-06 from 001__elm20170307_165109__dat00.bin



Processed Tue Mar 7 17:59:10 2017 by ELM ver.2012-10-06 from 001__elm20170307_165109__dat00.bin

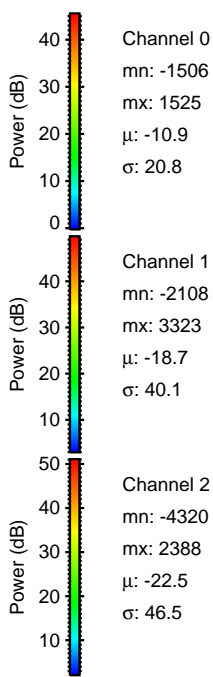
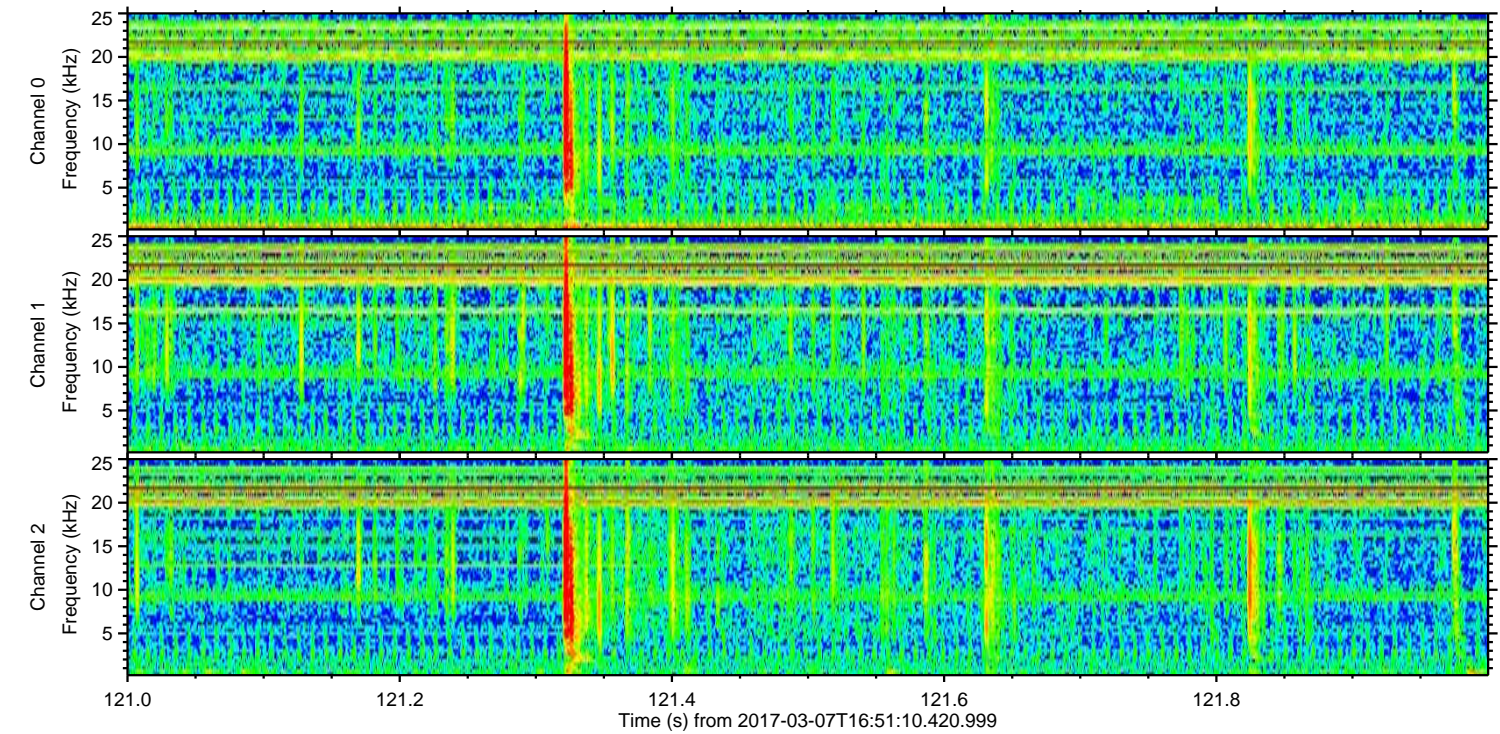
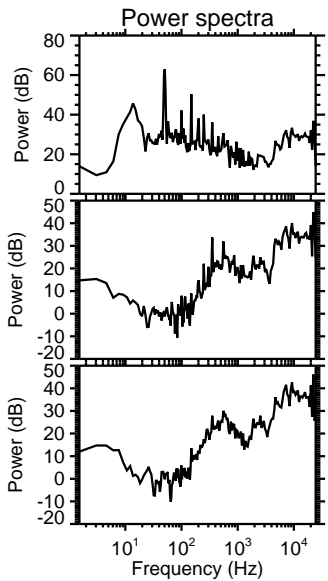
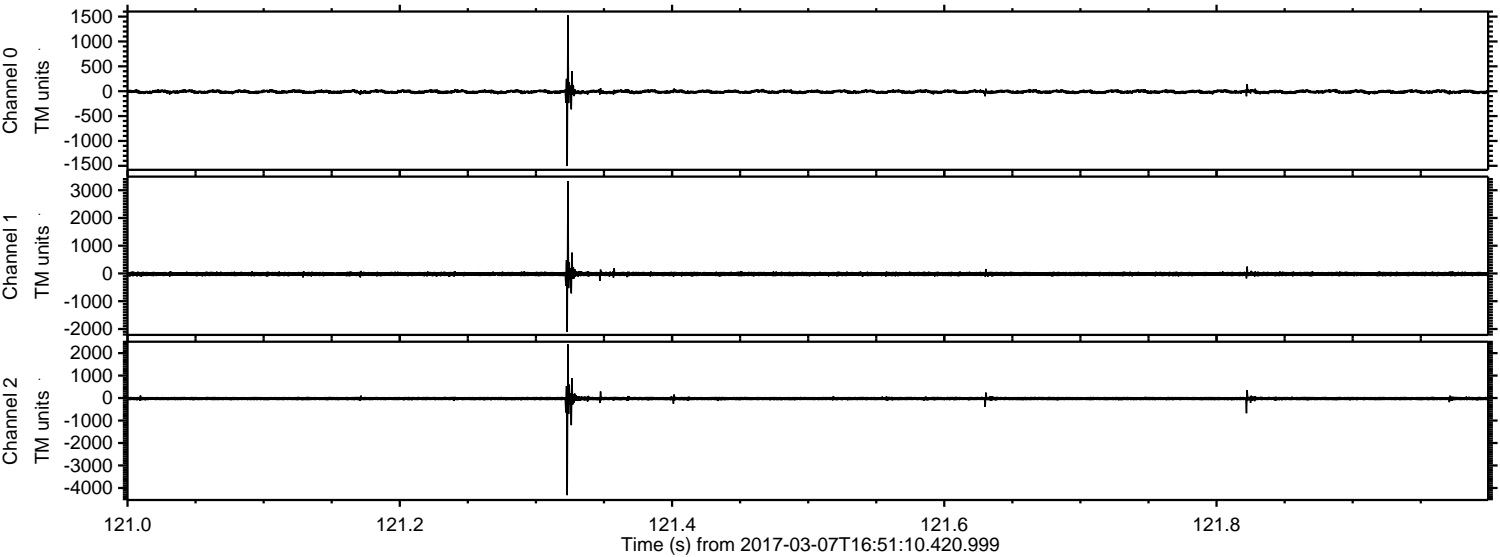


Processed Tue Mar 7 17:59:11 2017 by ELM ver.2012-10-06 from 001__elm20170307_165109__dat00.bin



ELMAVAN 3D WAVEFORMS (Measured data sampled at 50 kHz) 51000 packets of 144 samples from 2017-03-07T16:51:10.420.999. Part 122/147

Processed Tue Mar 7 17:59:12 2017 by ELM ver.2012-10-06 from 001__elm20170307_165109__dat00.bin

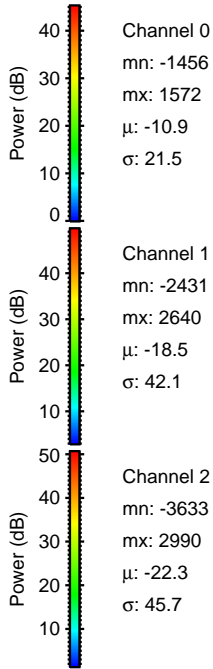
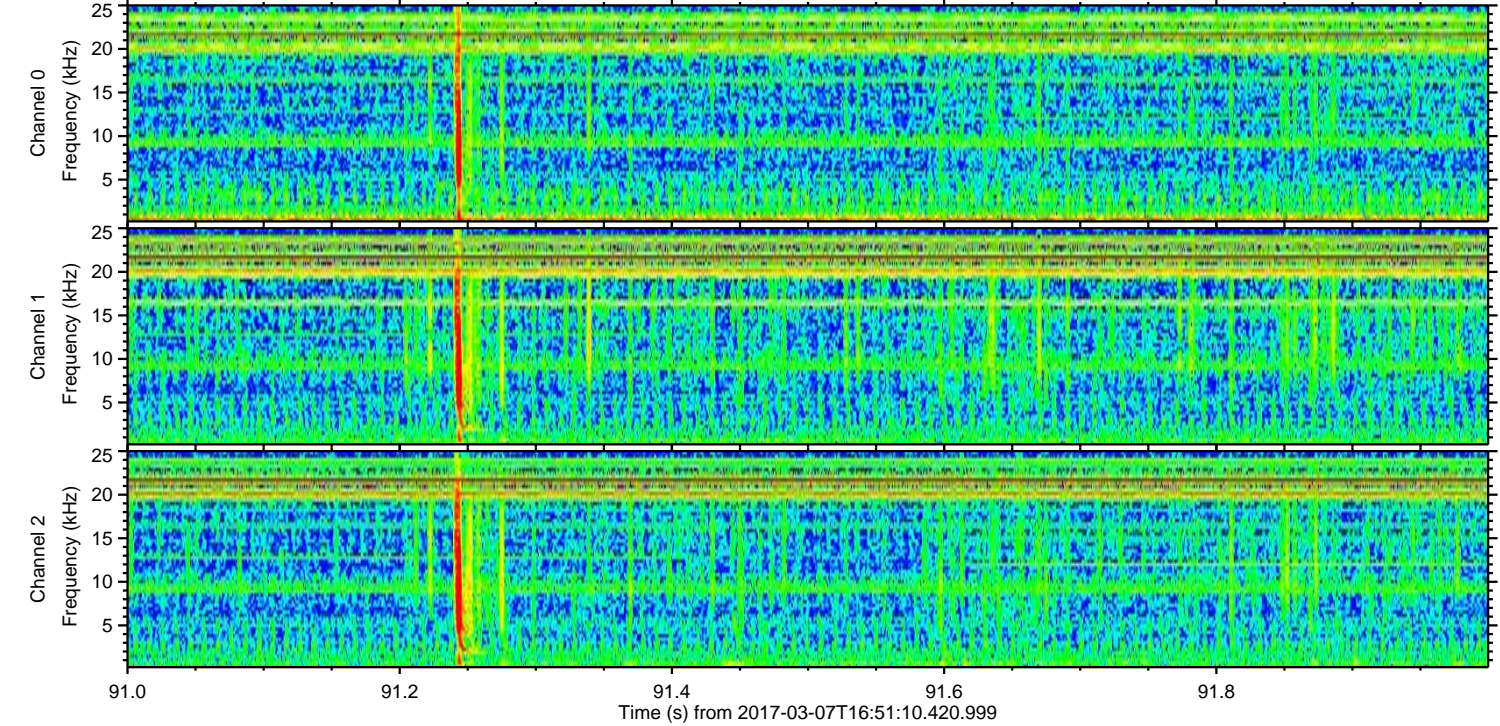
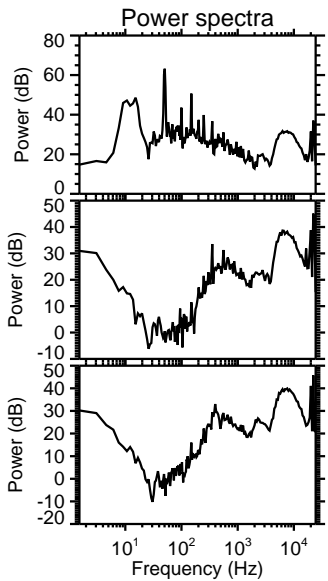
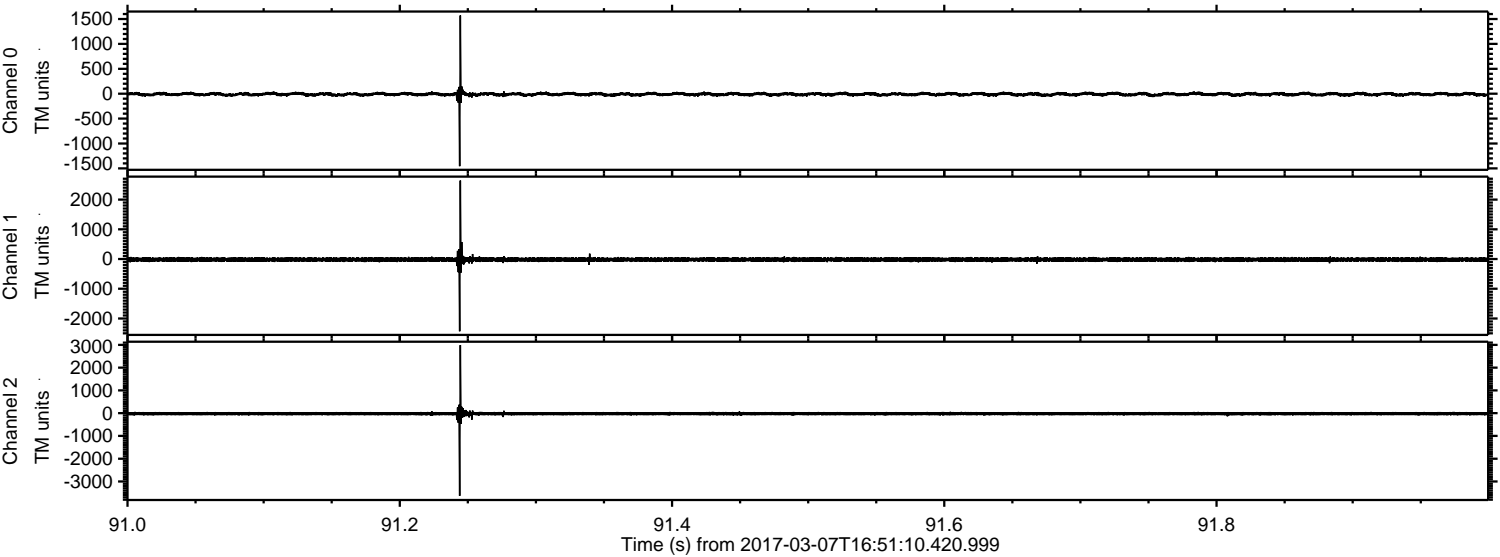


Channel 0
mn: -1506
mx: 1525
 μ : -10.9
 σ : 20.8

Channel 1
mn: -2108
mx: 3323
 μ : -18.7
 σ : 40.1

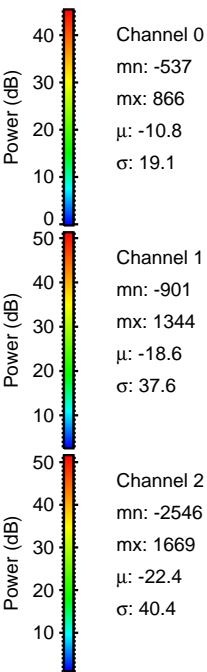
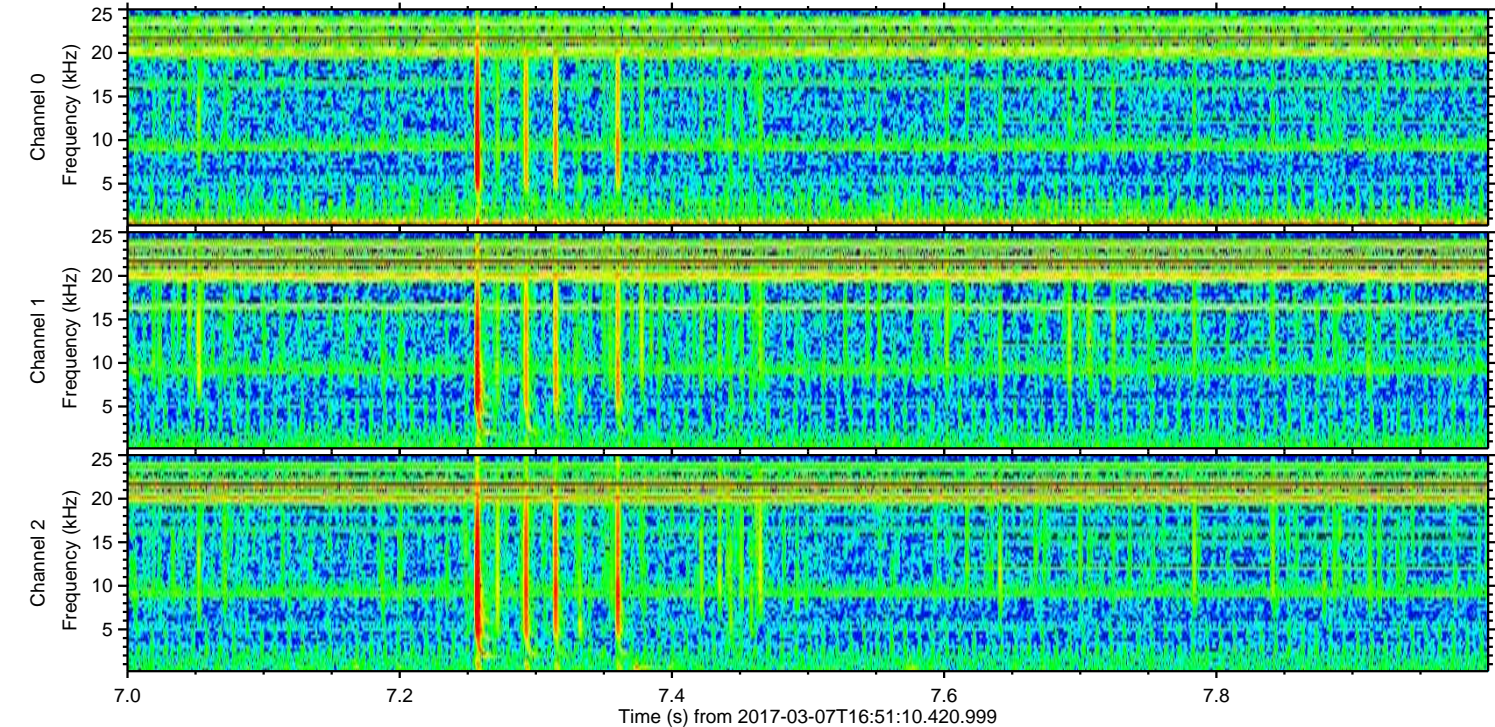
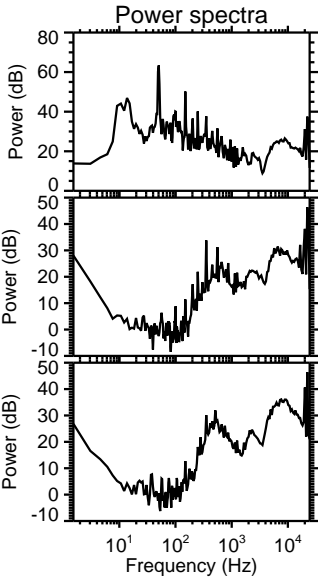
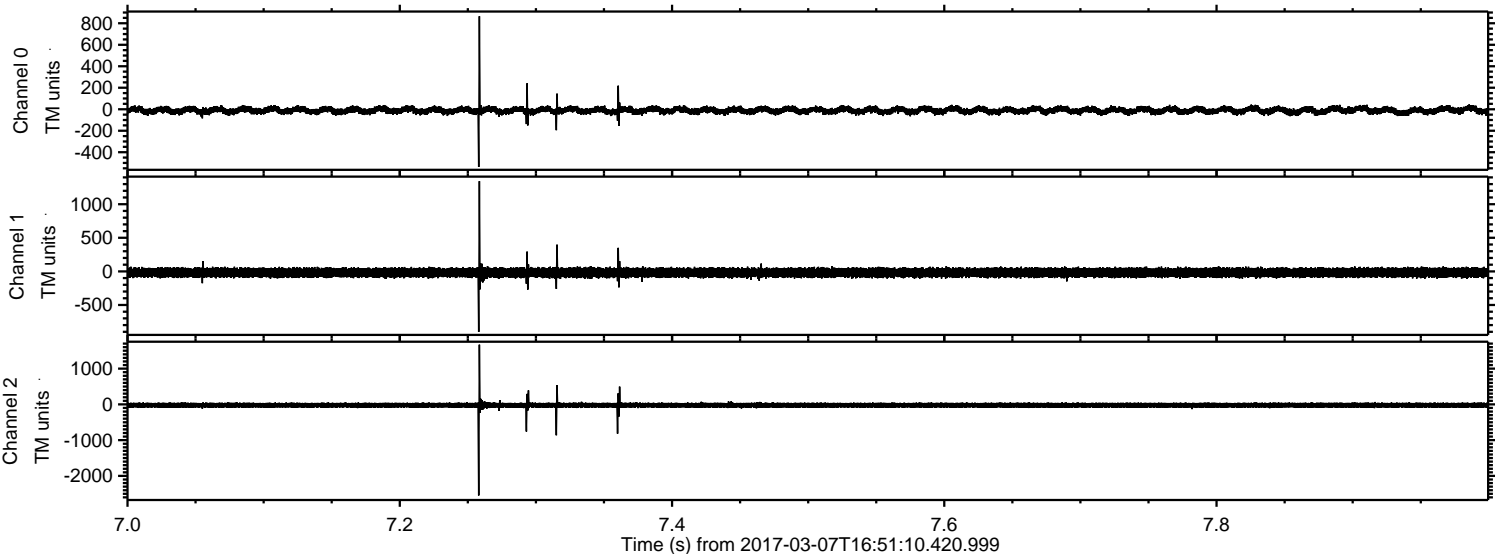
Channel 2
mn: -4320
mx: 2388
 μ : -22.5
 σ : 46.5

Processed Tue Mar 7 17:59:13 2017 by ELM ver.2012-10-06 from 001__elm20170307_165109__dat00.bin

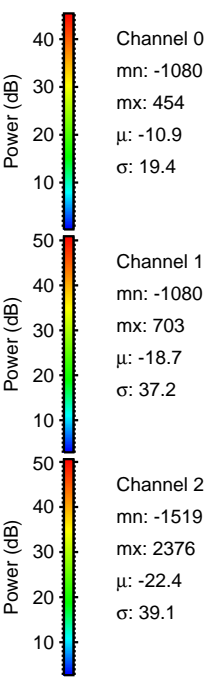
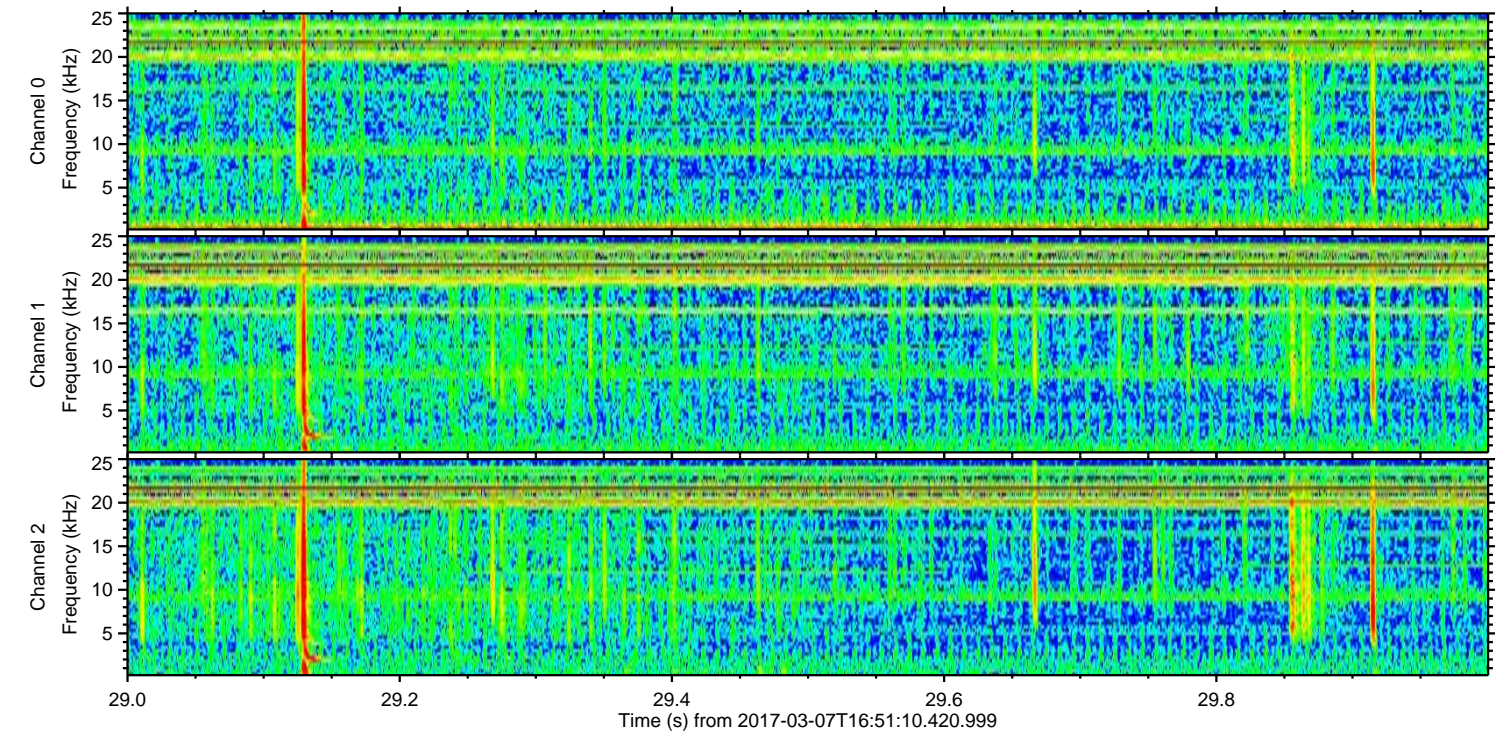
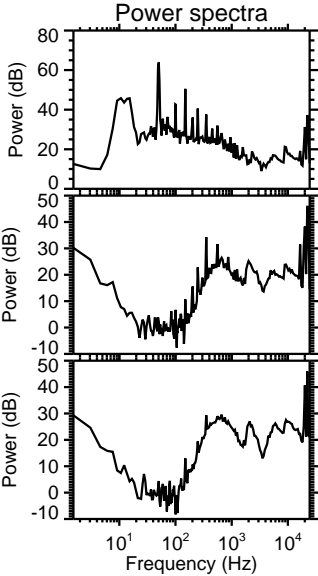
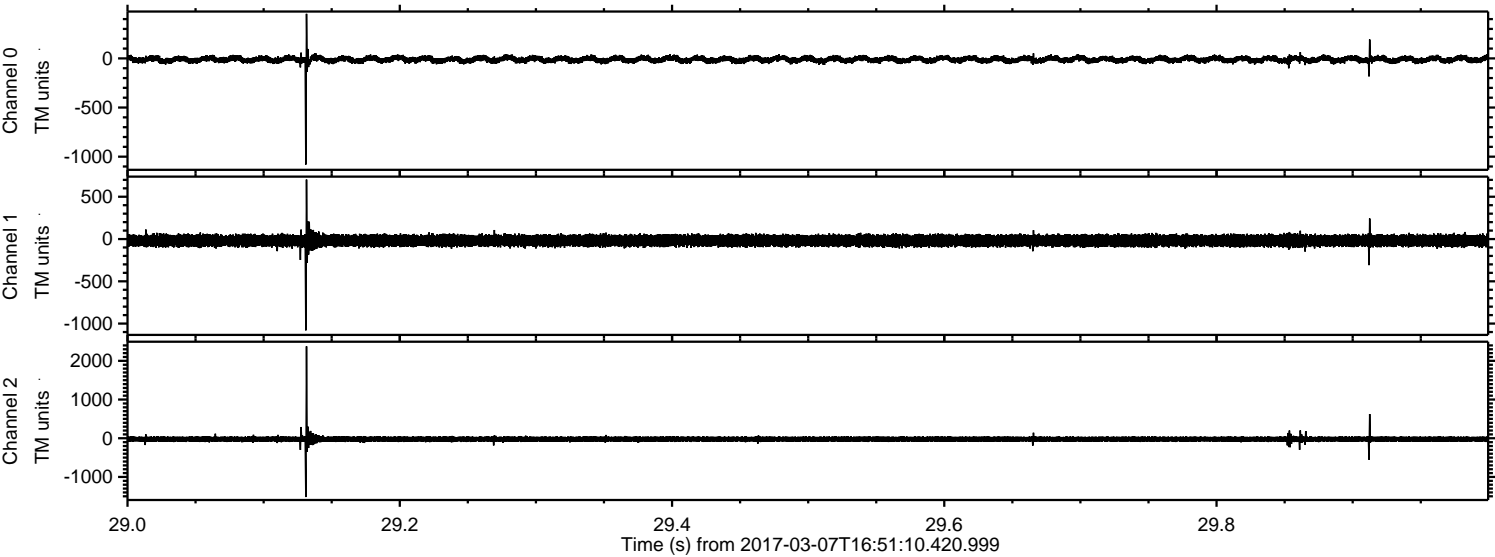


ELMAVAN 3D WAVEFORMS (Measured data sampled at 50 kHz) 51000 packets of 144 samples from 2017-03-07T16:51:10.420.999. Part 8/147

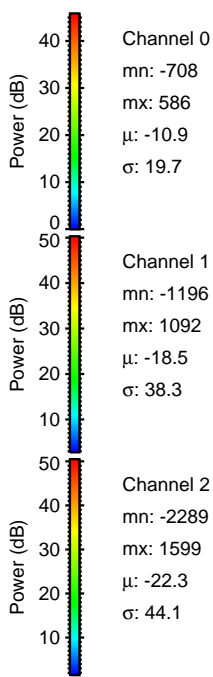
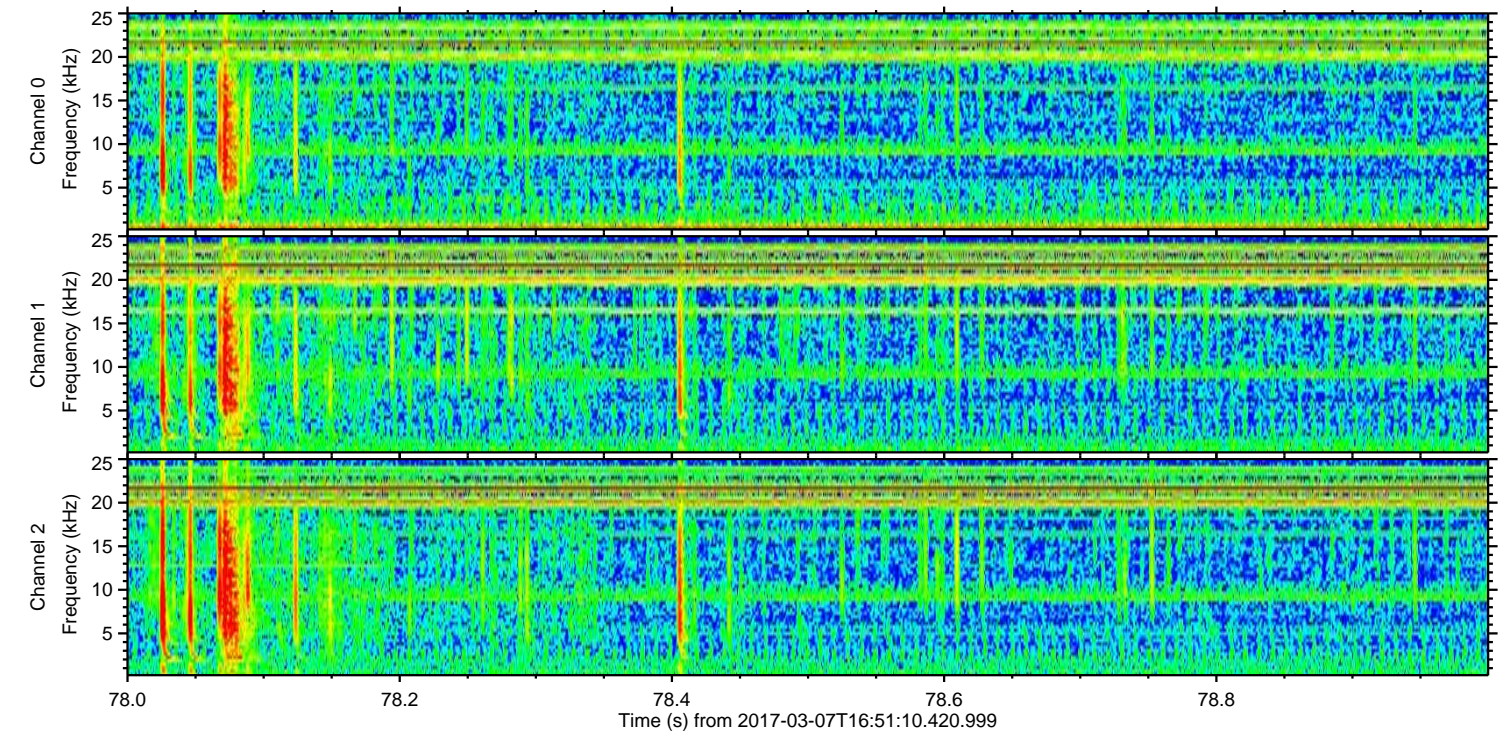
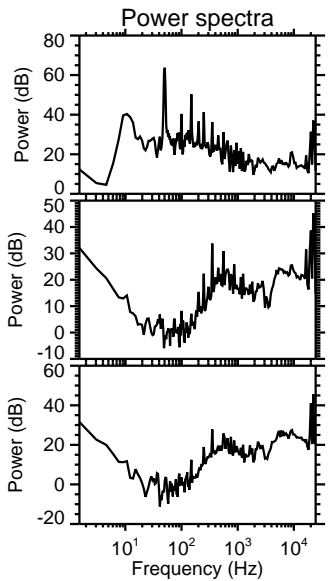
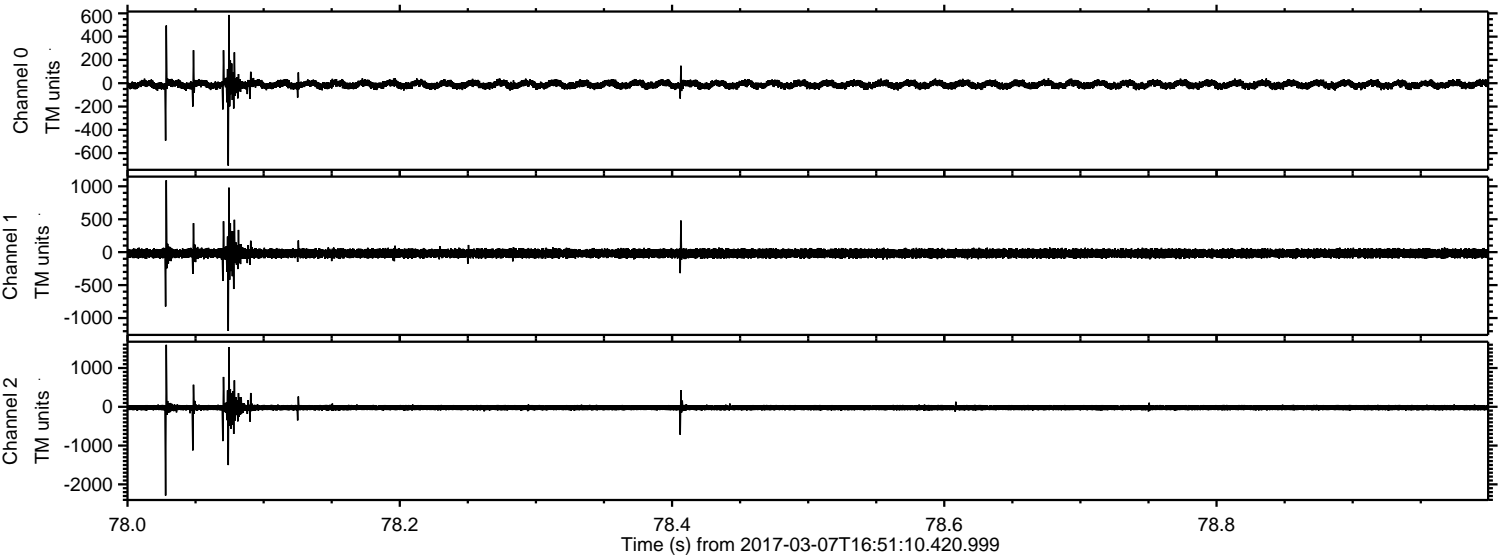
Processed Tue Mar 7 17:59:14 2017 by ELM ver.2012-10-06 from 001__elm20170307_165109__dat00.bin



Processed Tue Mar 7 17:59:15 2017 by ELM ver.2012-10-06 from 001__elm20170307_165109__dat00.bin



Processed Tue Mar 7 17:59:16 2017 by ELM ver.2012-10-06 from 001__elm20170307_165109__dat00.bin



Channel 0
mn: -708
mx: 586
 μ : -10.9
 σ : 19.7

Channel 1
mn: -1196
mx: 1092
 μ : -18.5
 σ : 38.3

Channel 2
mn: -2289
mx: 1599
 μ : -22.3
 σ : 44.1

Processed Tue Mar 7 17:59:17 2017 by ELM ver.2012-10-06 from 001__elm20170307_165109__dat00.bin

