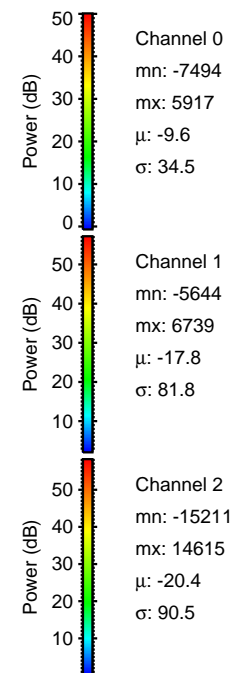
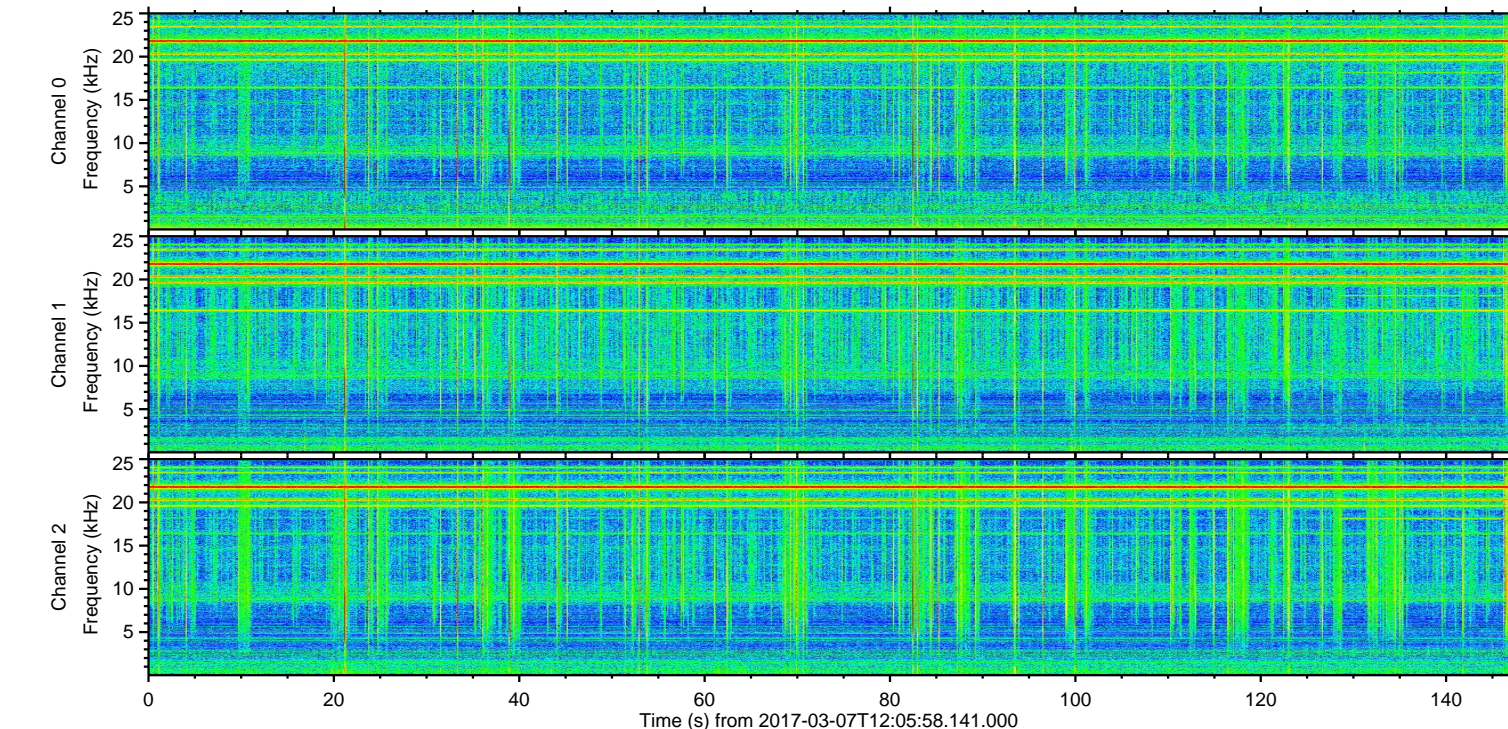
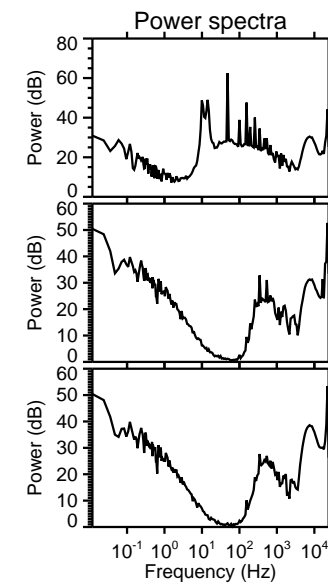
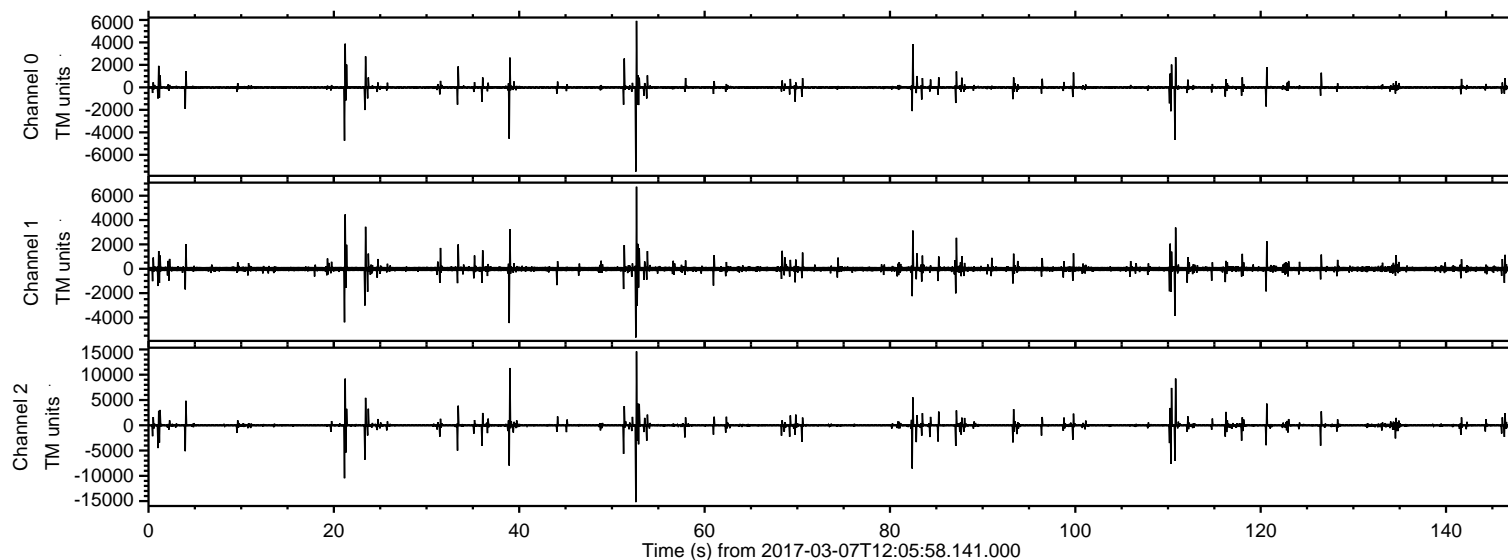


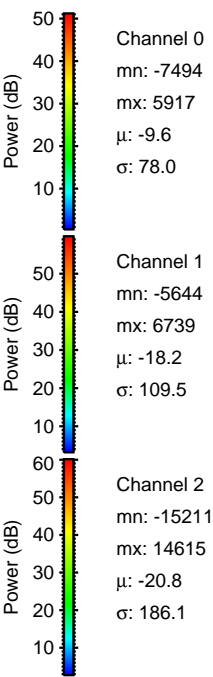
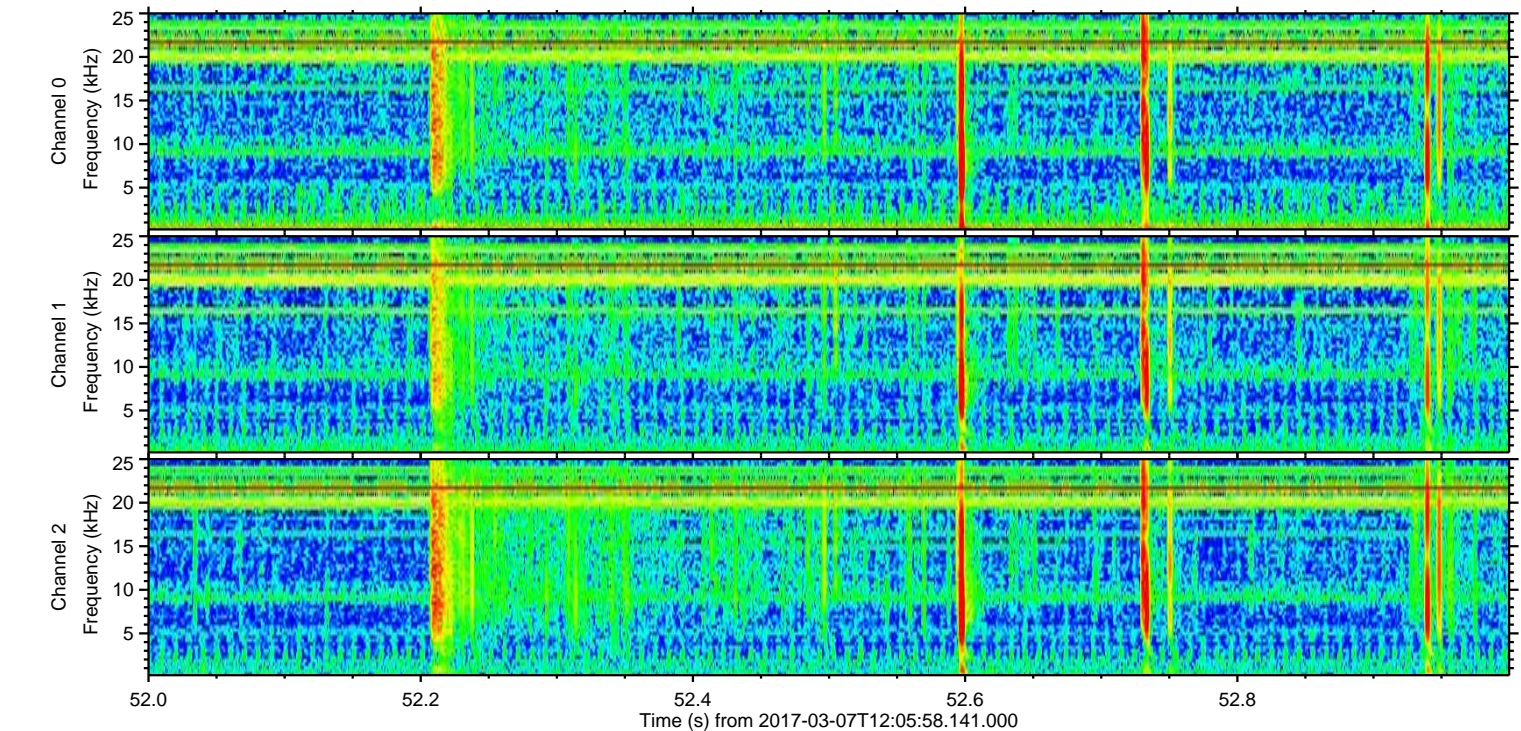
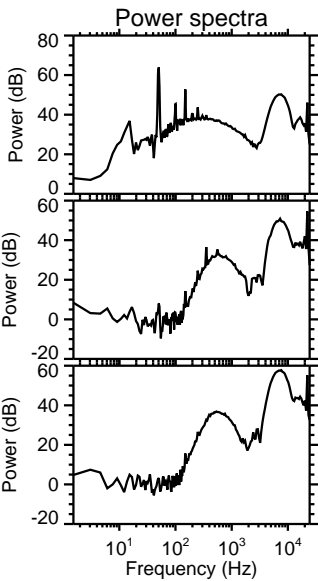
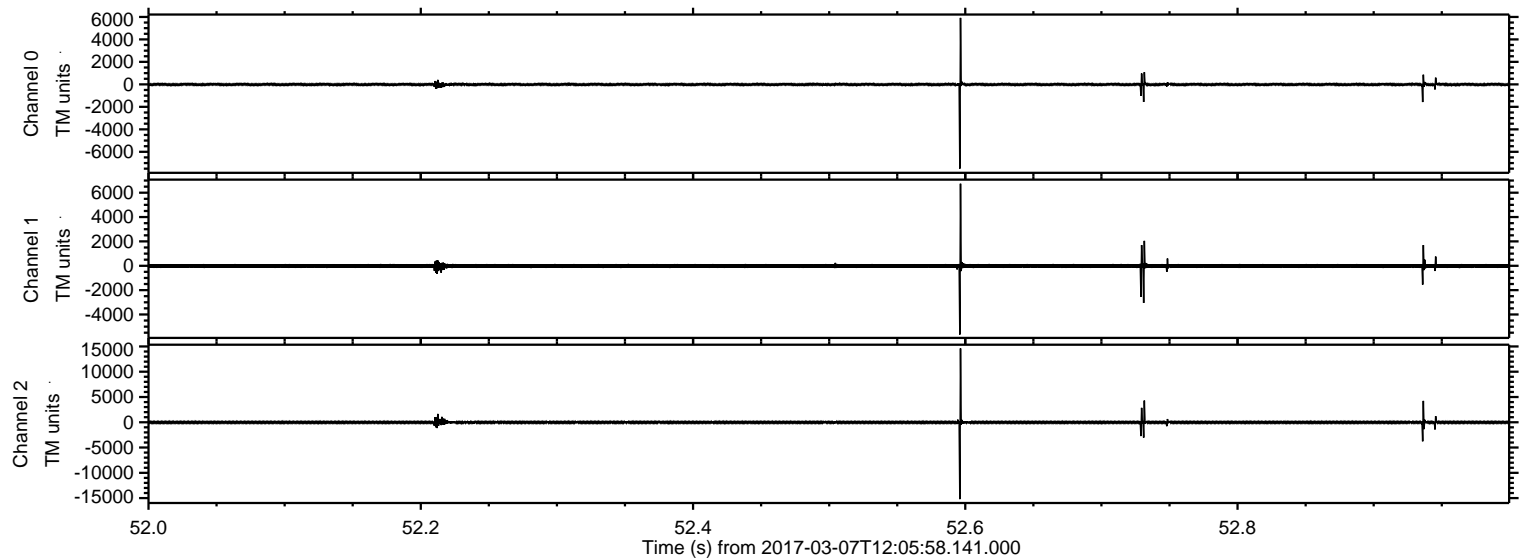
ELMAVAN 3D WAVEFORMS (Measured data sampled at 50 kHz) 51000 packets of 144 samples from 2017-03-07T12:05:58.141.000.

Processed Tue Mar 7 13:13:55 2017 by ELM ver.2012-10-06 from 001__elm20170307_120557__dat00.bin

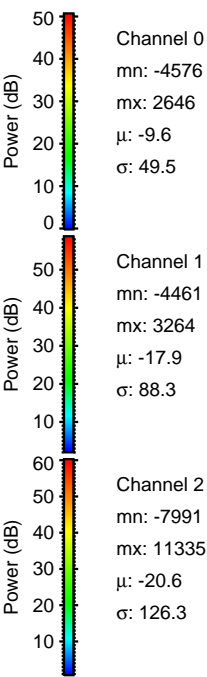
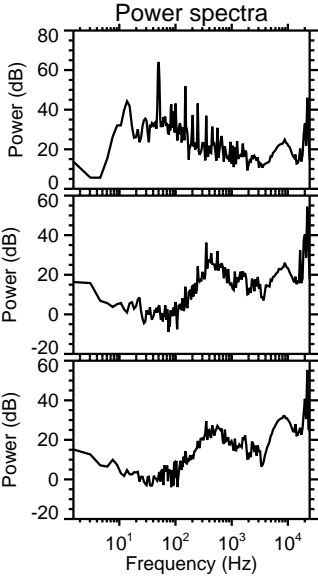
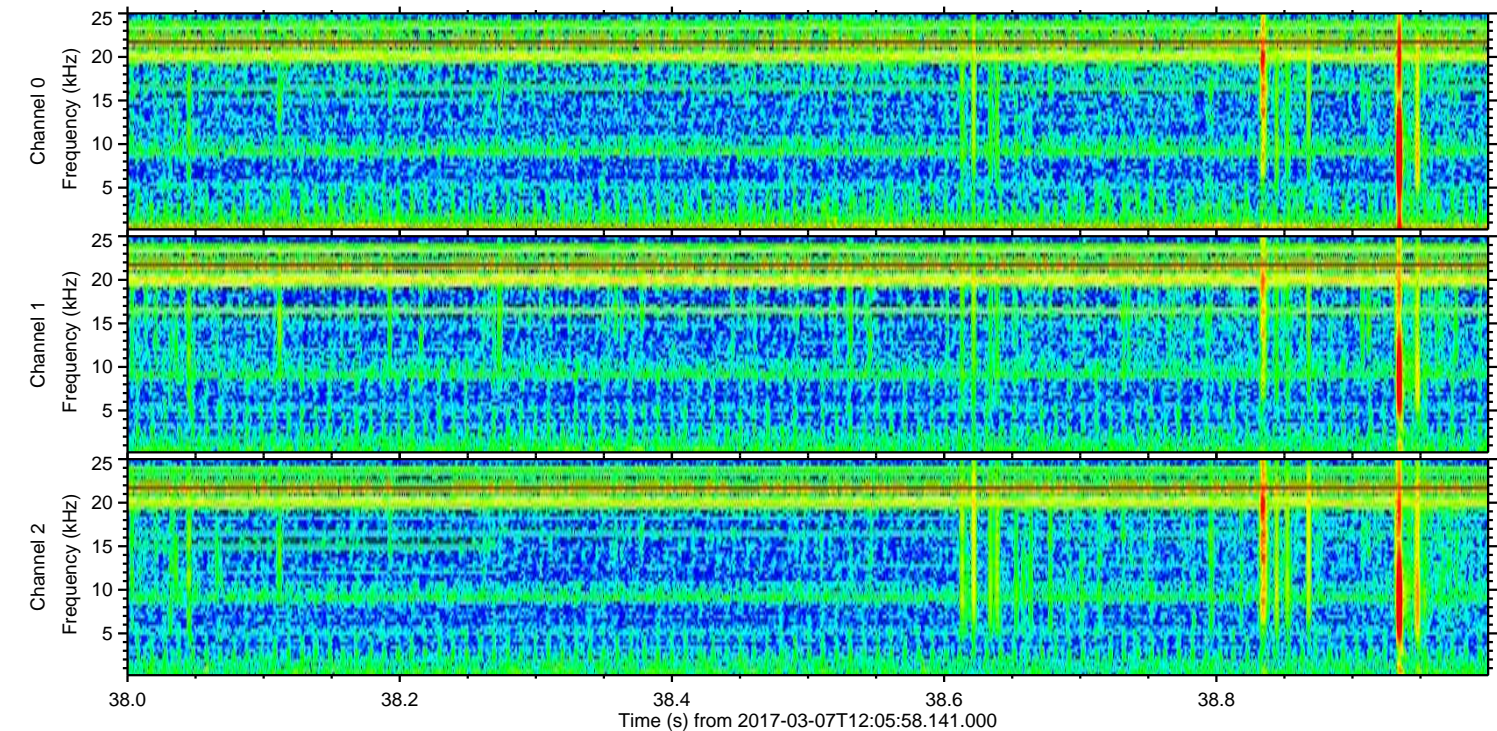
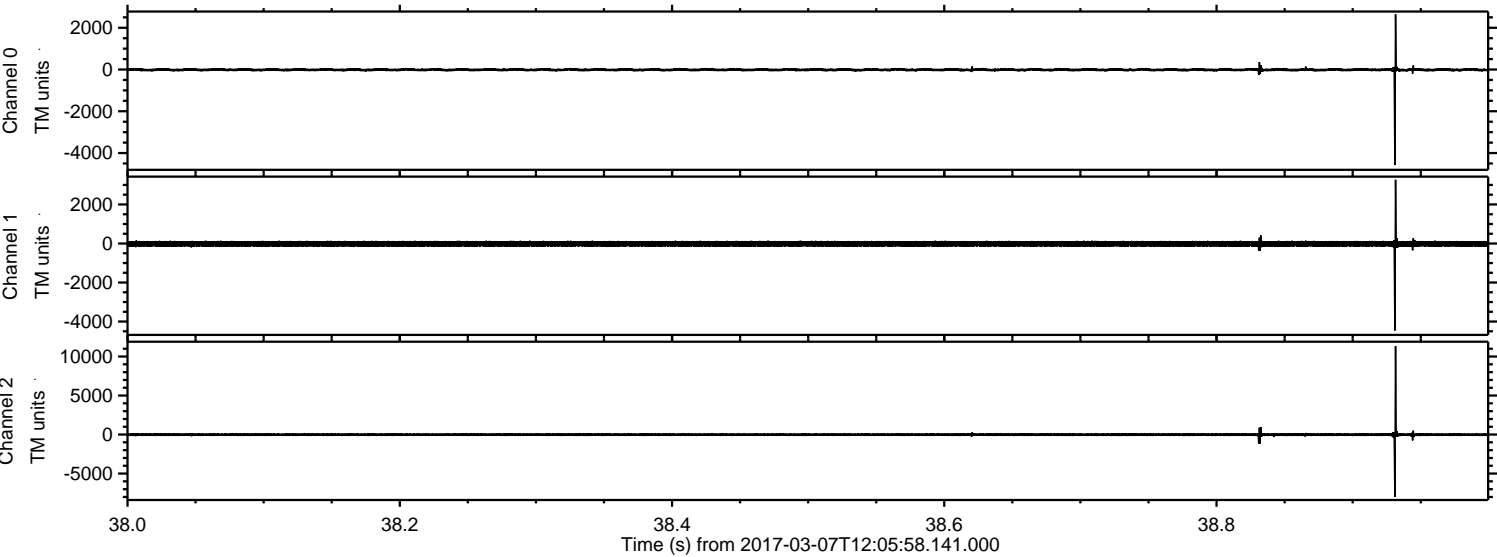


ELMAVAN 3D WAVEFORMS (Measured data sampled at 50 kHz) 51000 packets of 144 samples from 2017-03-07T12:05:58.141.000. Part 53/147

Processed Tue Mar 7 13:14:06 2017 by ELM ver.2012-10-06 from 001__elm20170307_120557__dat00.bin

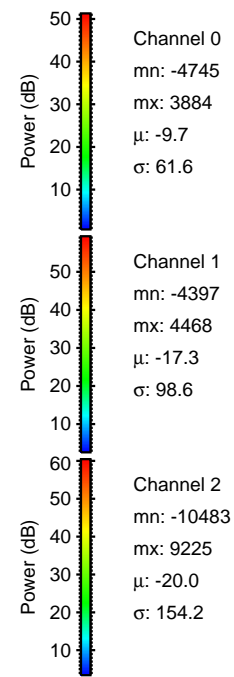
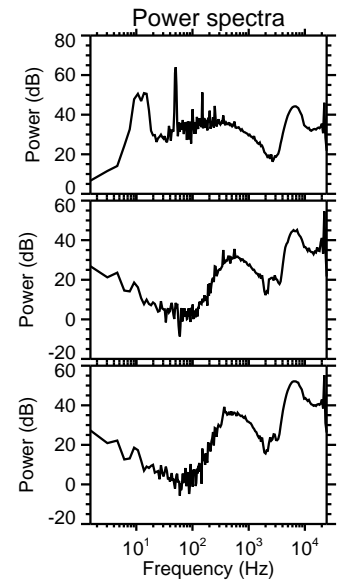
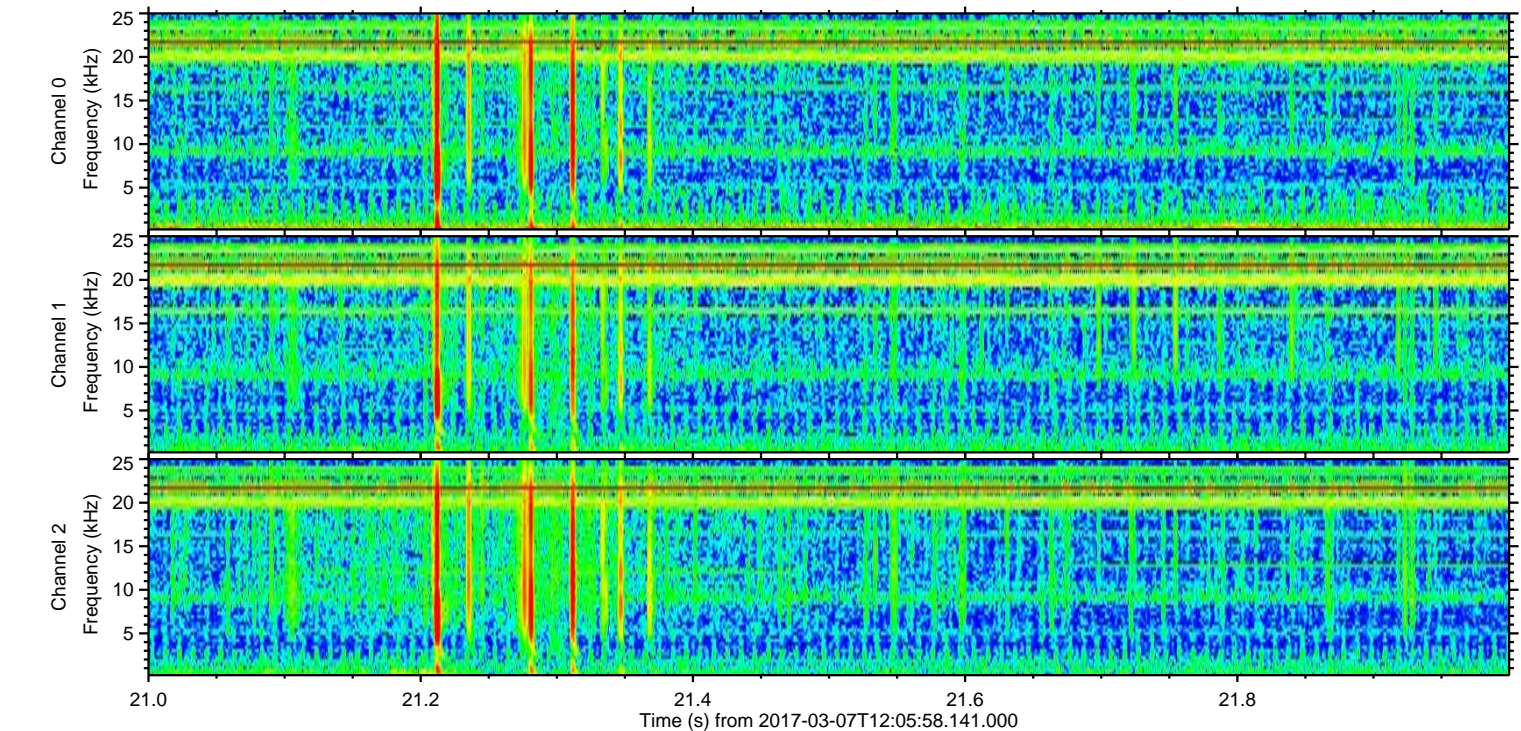
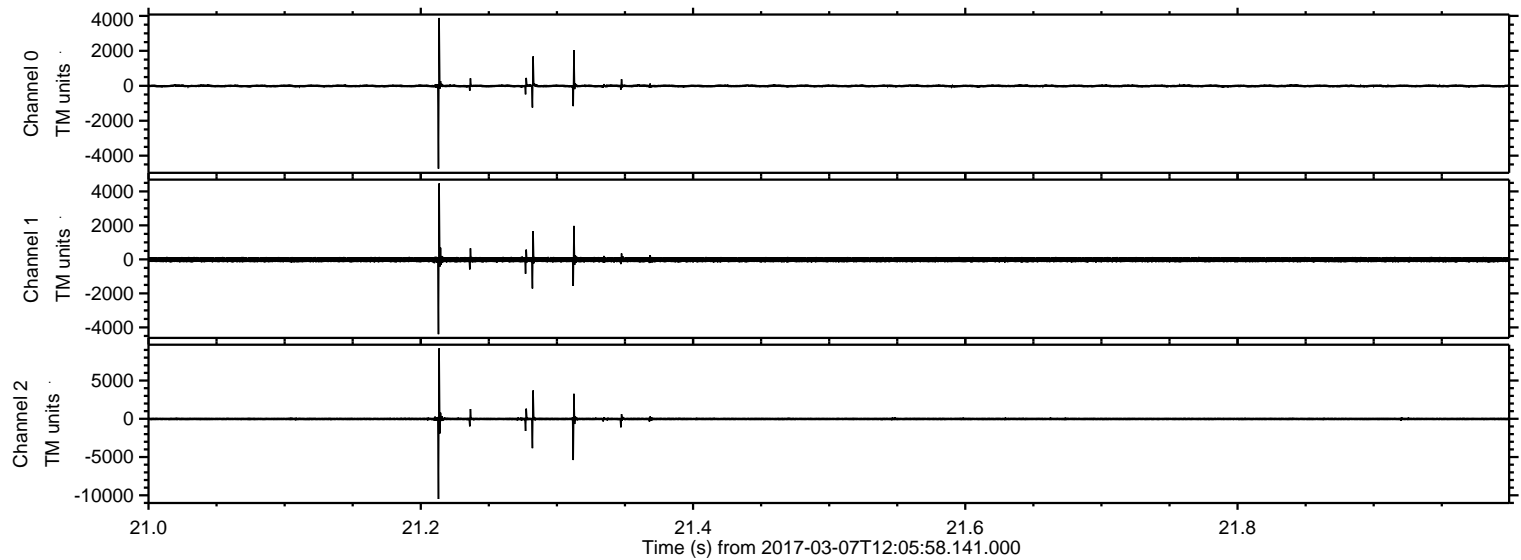


Processed Tue Mar 7 13:14:07 2017 by ELM ver.2012-10-06 from 001__elm20170307_120557__dat00.bin



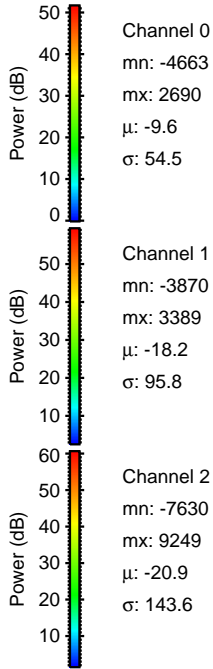
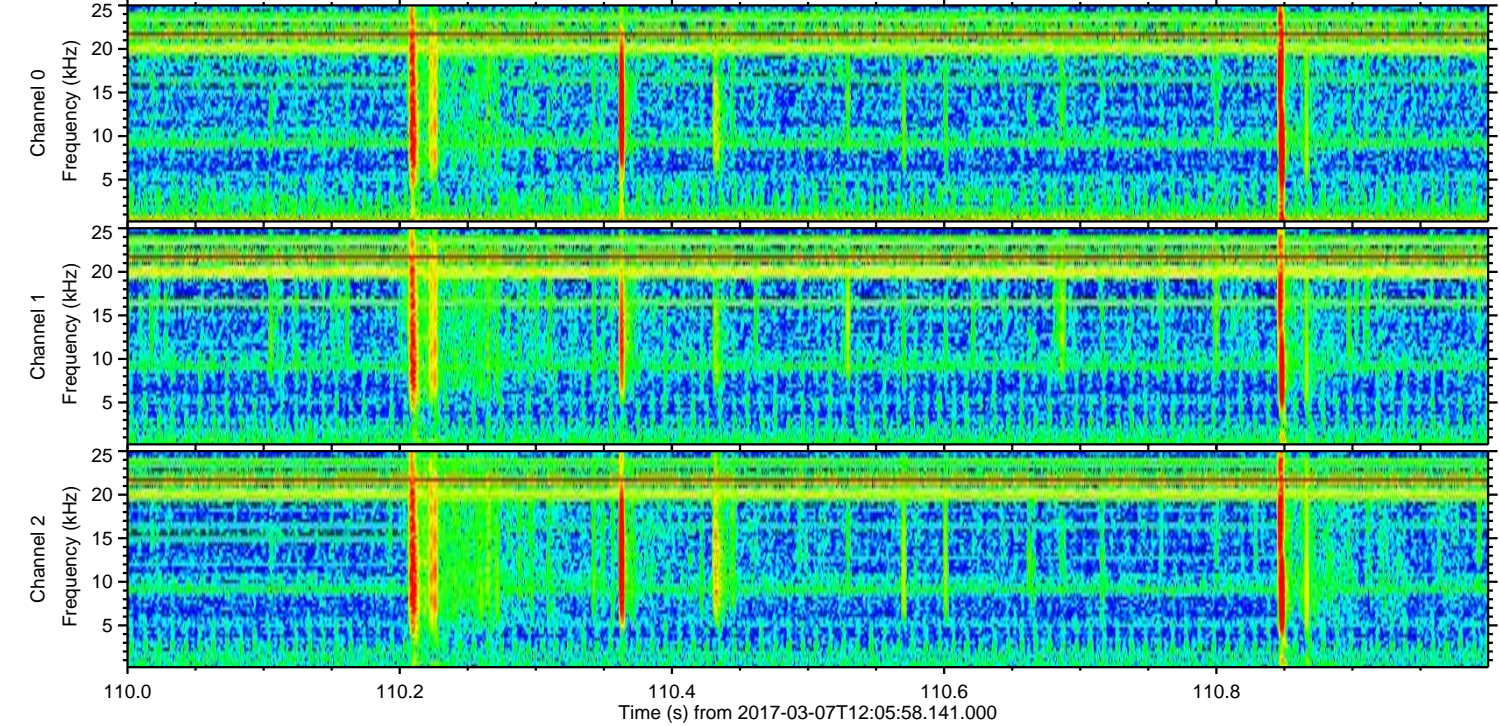
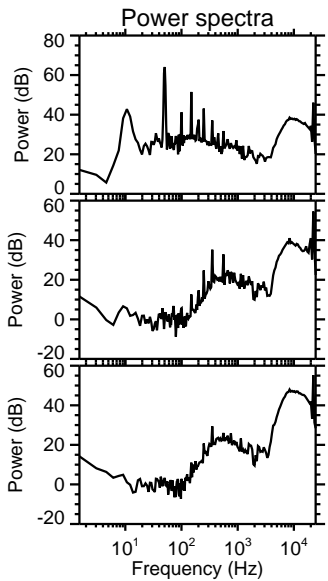
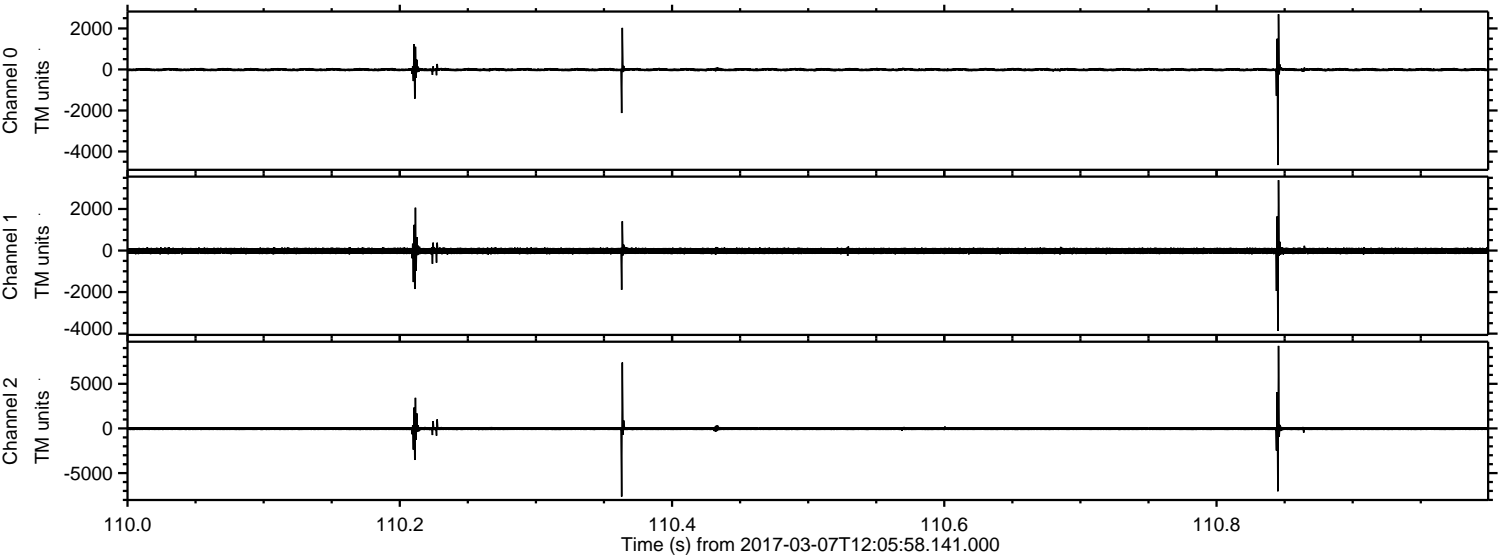
ELMAVAN 3D WAVEFORMS (Measured data sampled at 50 kHz) 51000 packets of 144 samples from 2017-03-07T12:05:58.141.000. Part 22/147

Processed Tue Mar 7 13:14:08 2017 by ELM ver.2012-10-06 from 001__elm20170307_120557__dat00.bin

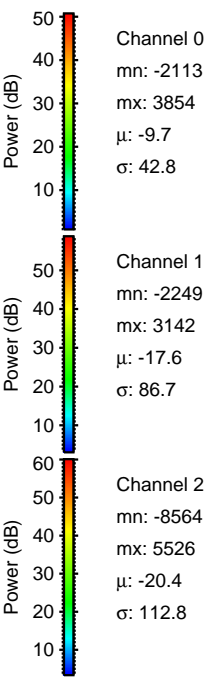
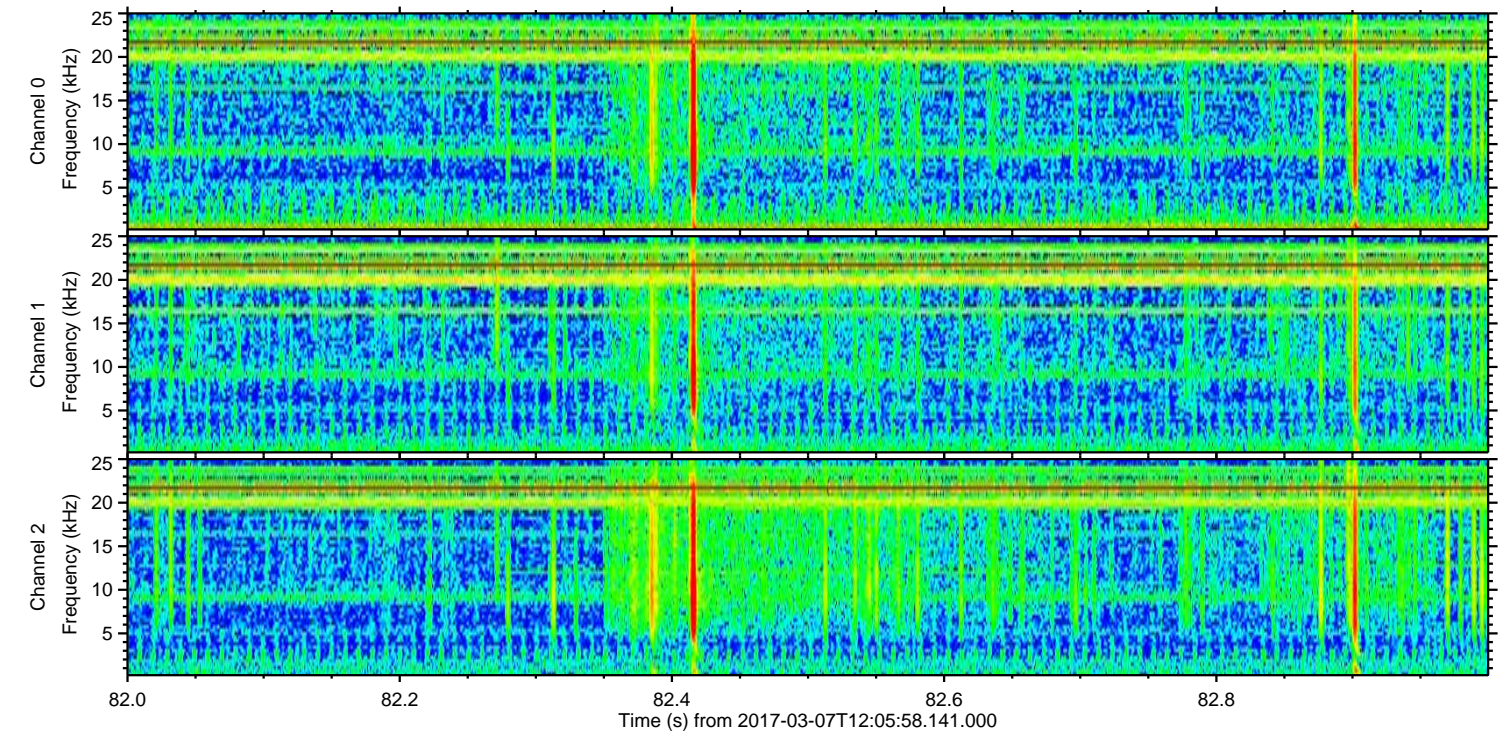
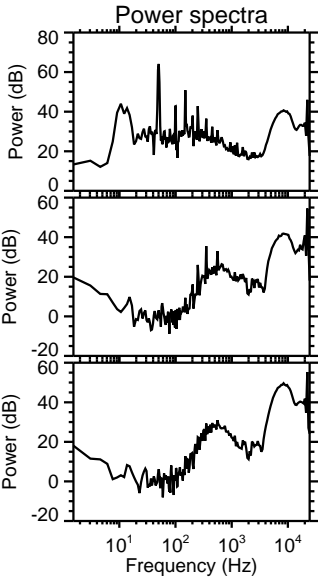
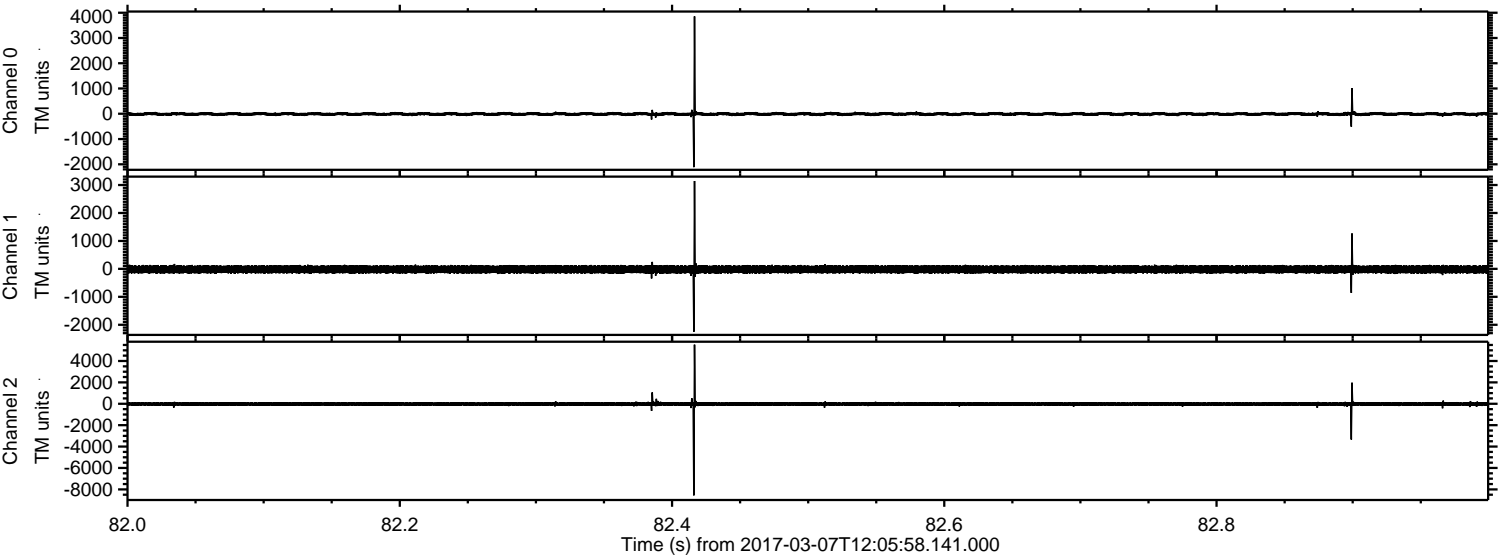


ELMAVAN 3D WAVEFORMS (Measured data sampled at 50 kHz) 51000 packets of 144 samples from 2017-03-07T12:05:58.141.000. Part 111/147

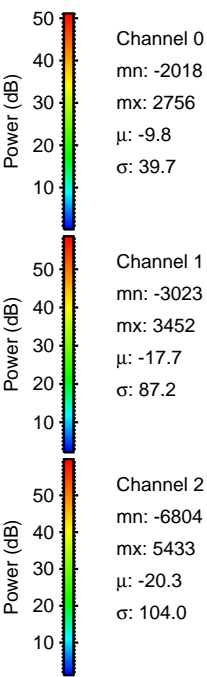
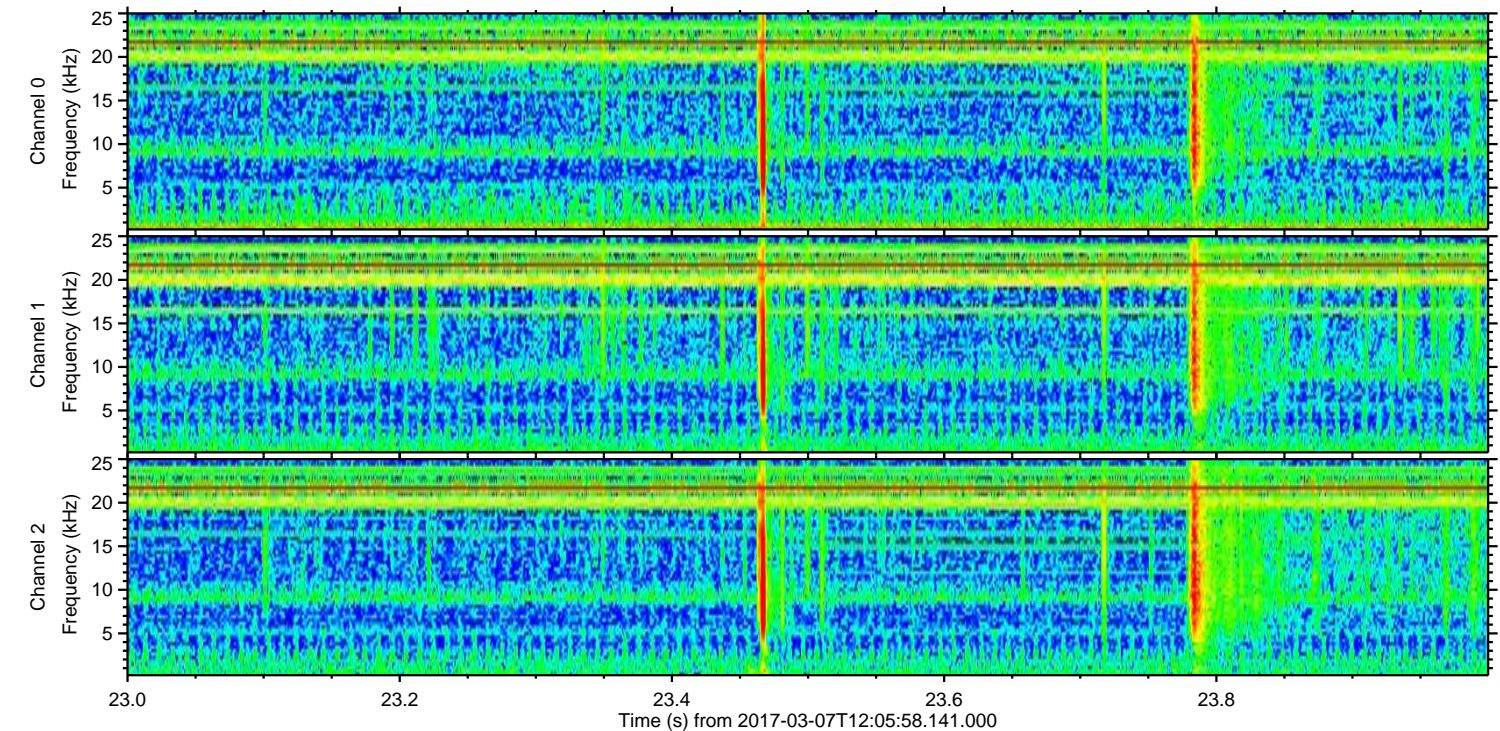
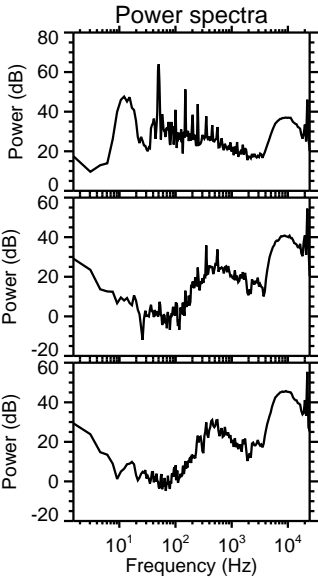
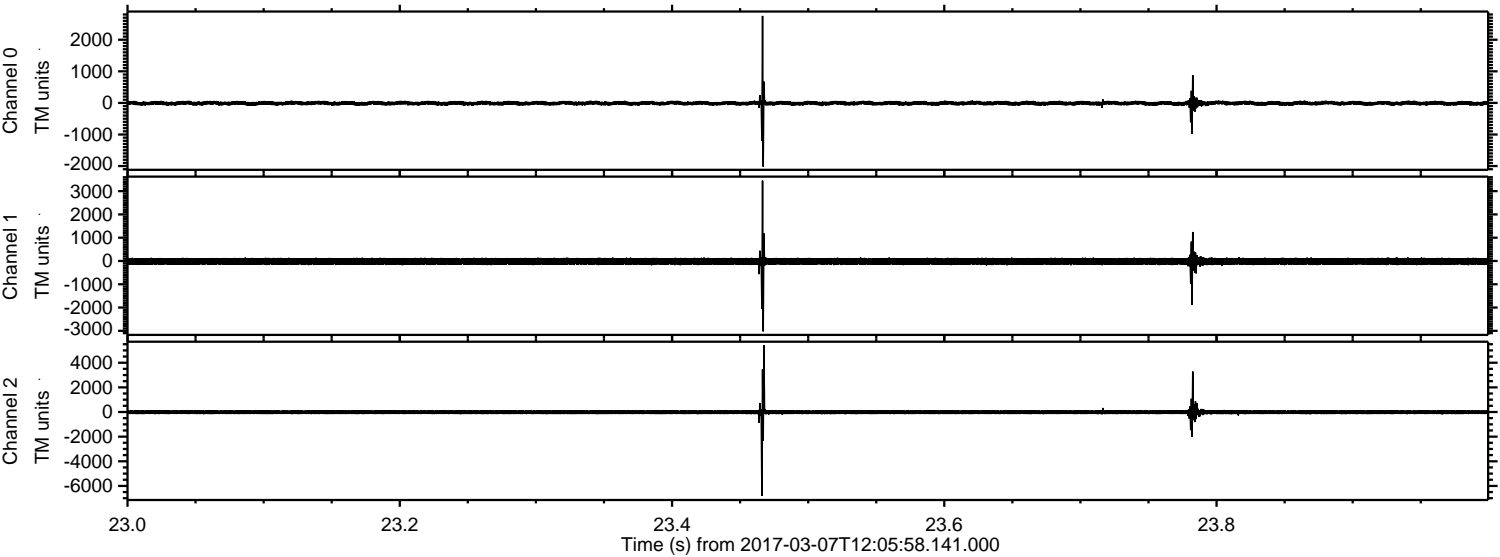
Processed Tue Mar 7 13:14:09 2017 by ELM ver.2012-10-06 from 001__elm20170307_120557__dat00.bin



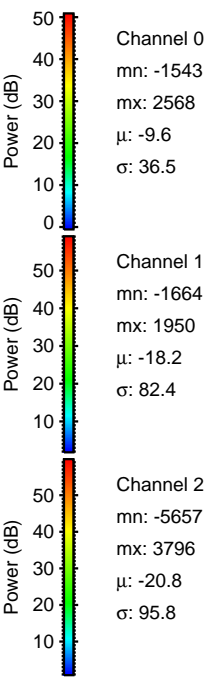
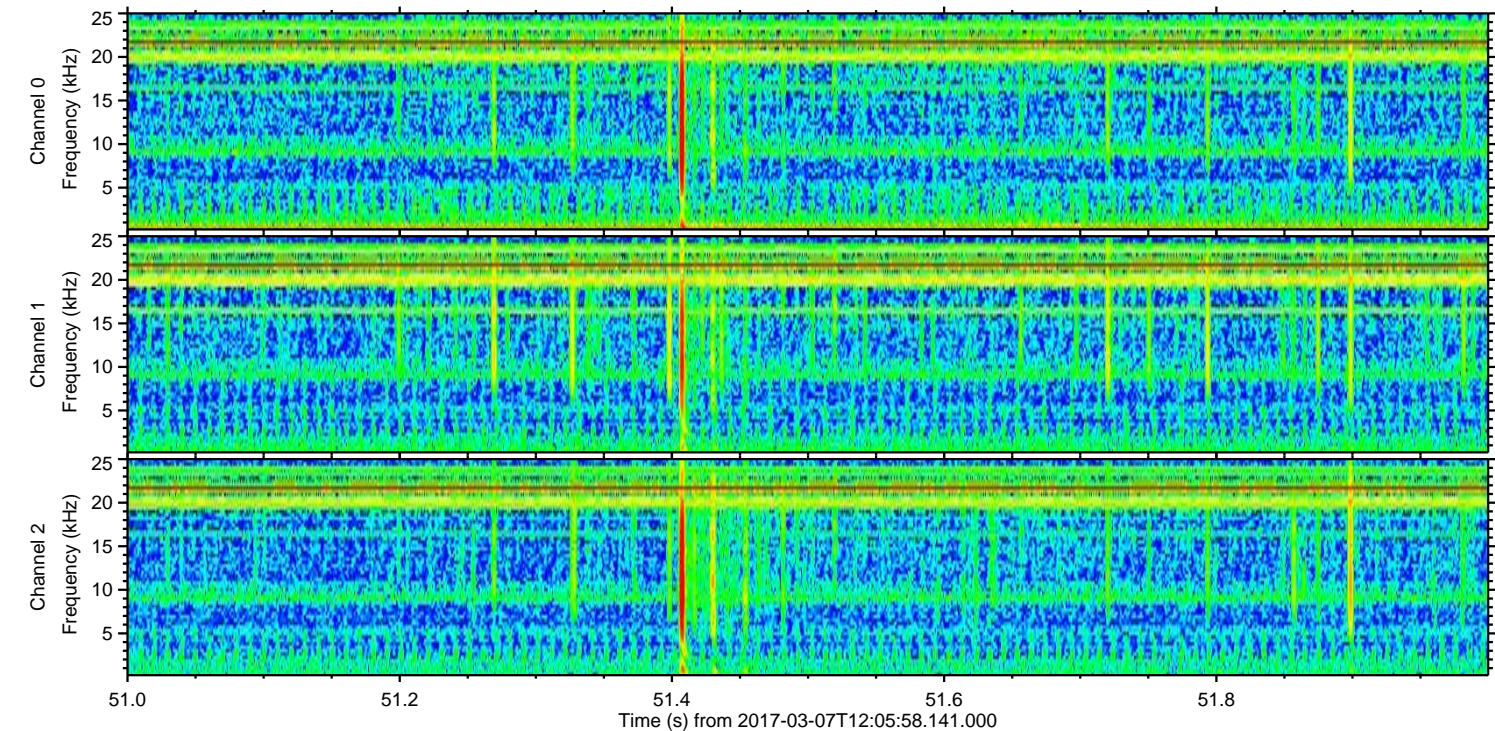
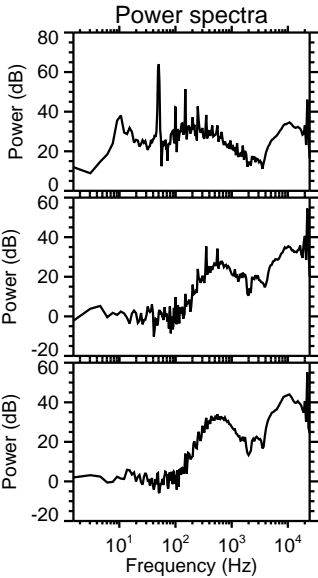
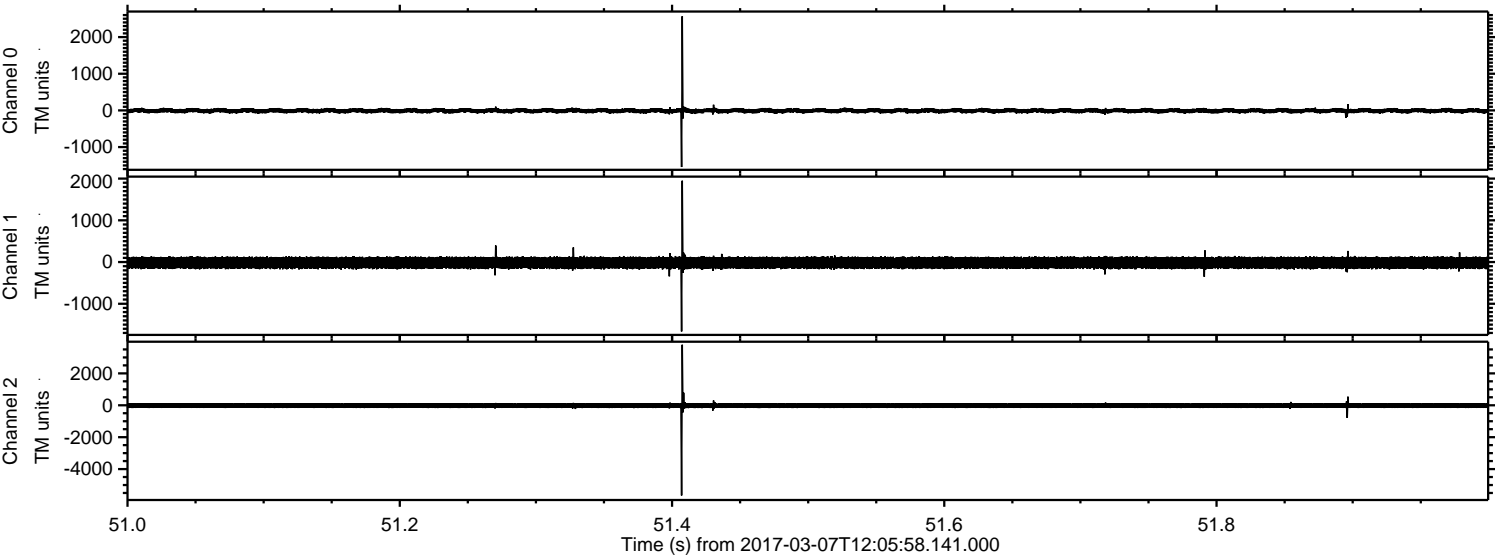
Processed Tue Mar 7 13:14:10 2017 by ELM ver.2012-10-06 from 001__elm20170307_120557__dat00.bin



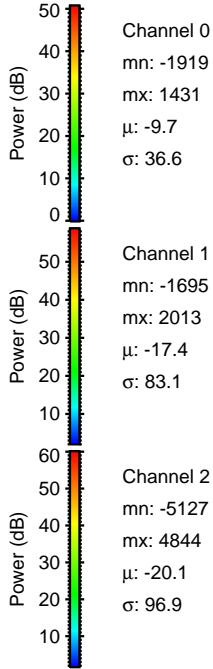
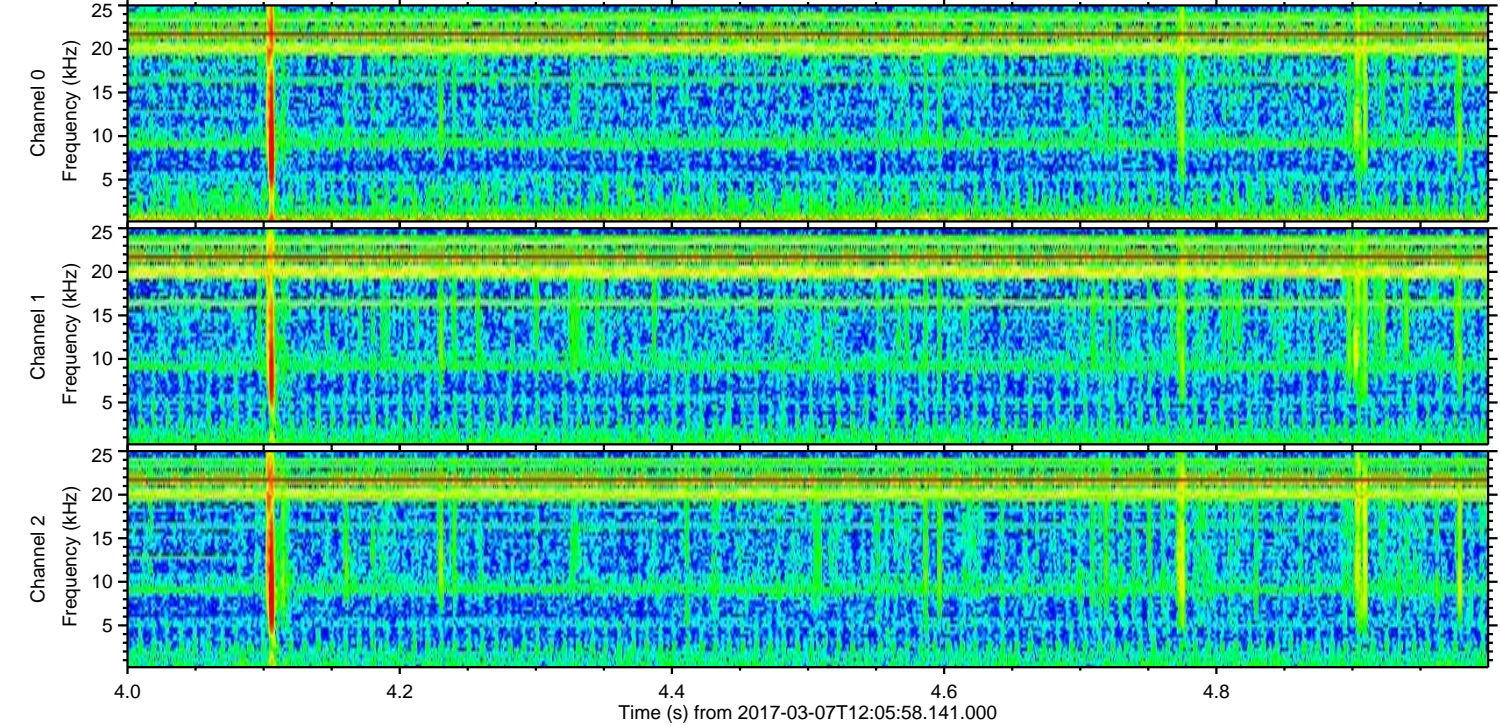
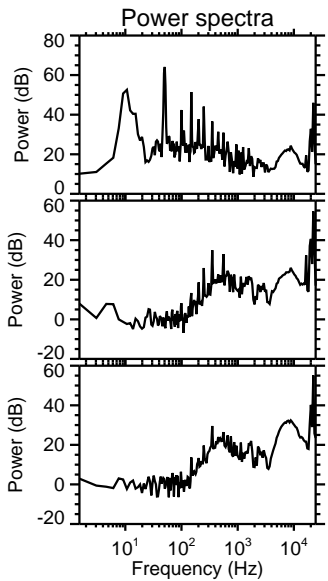
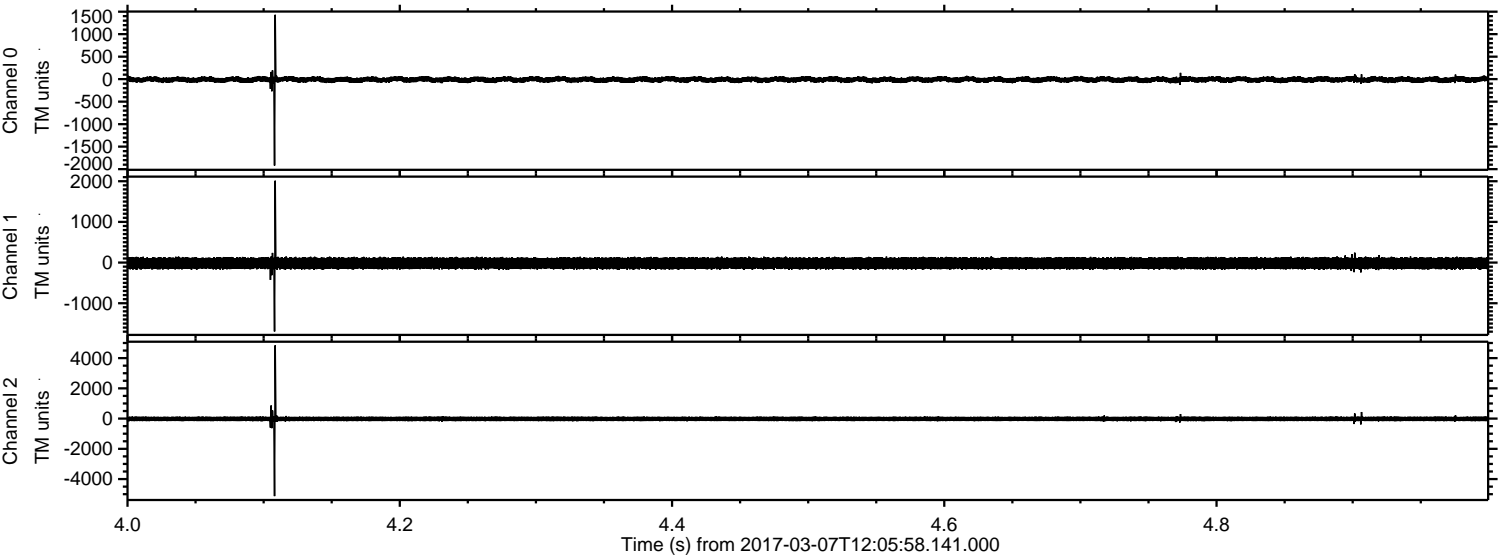
Processed Tue Mar 7 13:14:11 2017 by ELM ver.2012-10-06 from 001__elm20170307_120557__dat00.bin



Processed Tue Mar 7 13:14:12 2017 by ELM ver.2012-10-06 from 001__elm20170307_120557__dat00.bin



Processed Tue Mar 7 13:14:13 2017 by ELM ver.2012-10-06 from 001__elm20170307_120557__dat00.bin

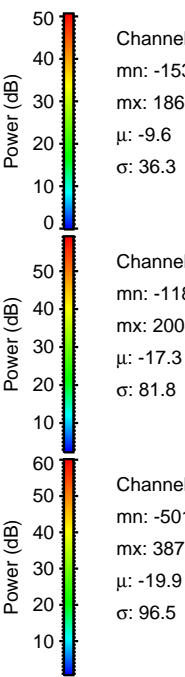
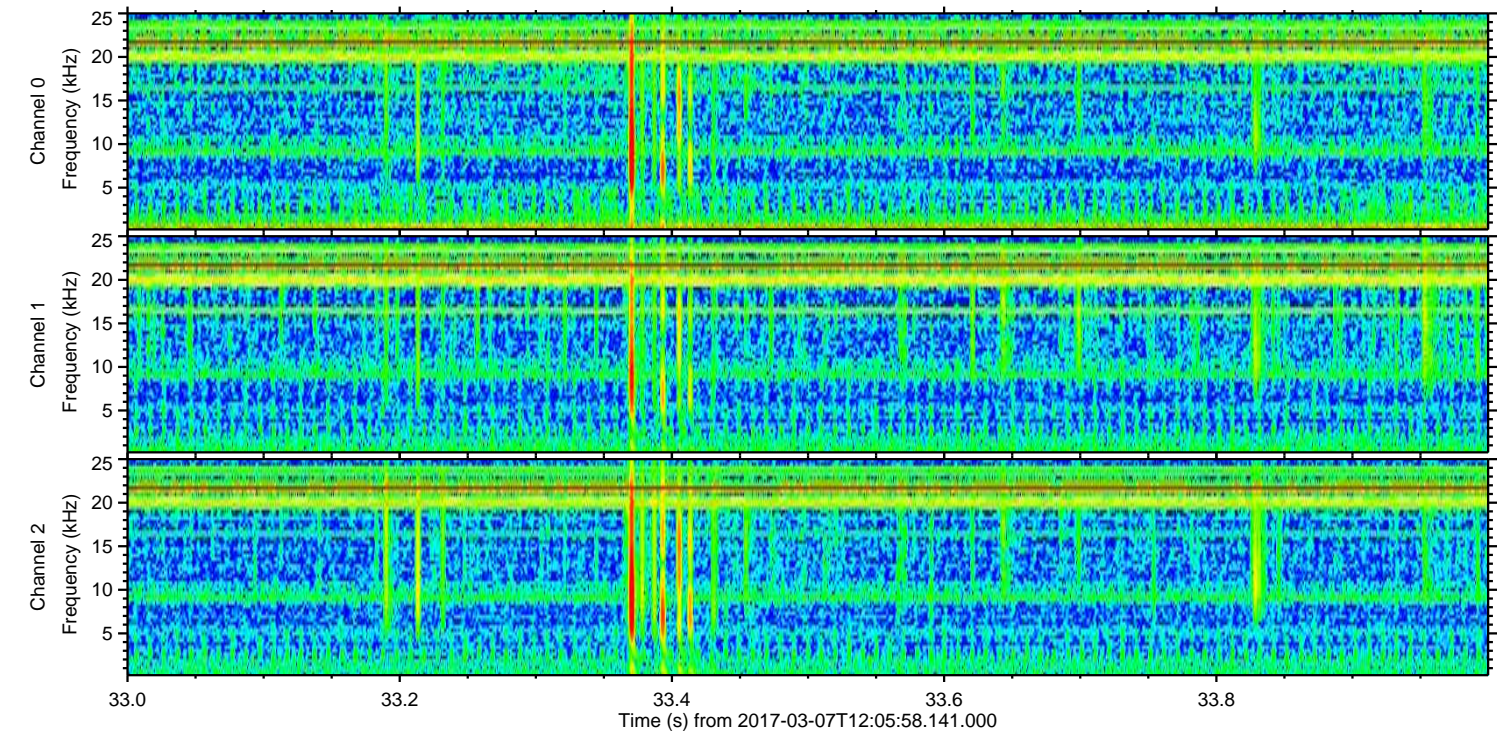
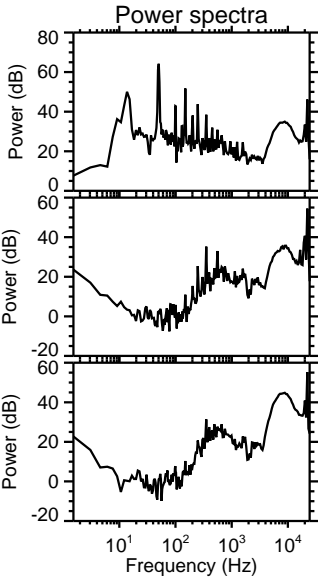
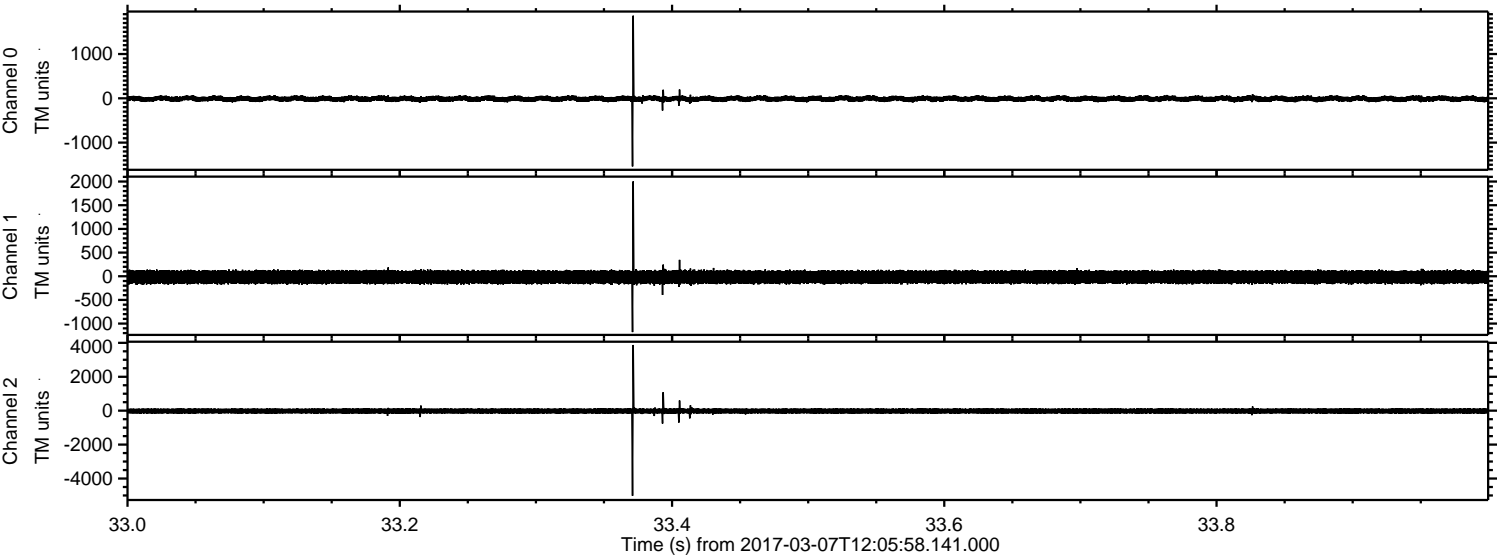


Channel 0
mn: -1919
mx: 1431
 μ : -9.7
 σ : 36.6

Channel 1
mn: -1695
mx: 2013
 μ : -17.4
 σ : 83.1

Channel 2
mn: -5127
mx: 4844
 μ : -20.1
 σ : 96.9

Processed Tue Mar 7 13:14:14 2017 by ELM ver.2012-10-06 from 001__elm20170307_120557__dat00.bin



Processed Tue Mar 7 13:14:15 2017 by ELM ver.2012-10-06 from 001__elm20170307_120557__dat00.bin

