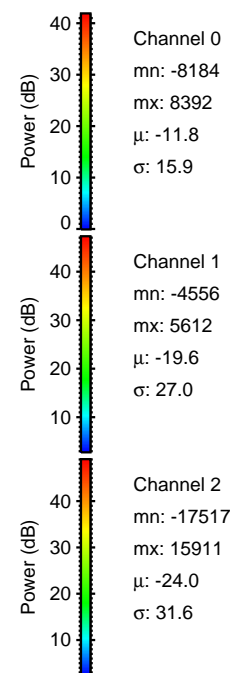
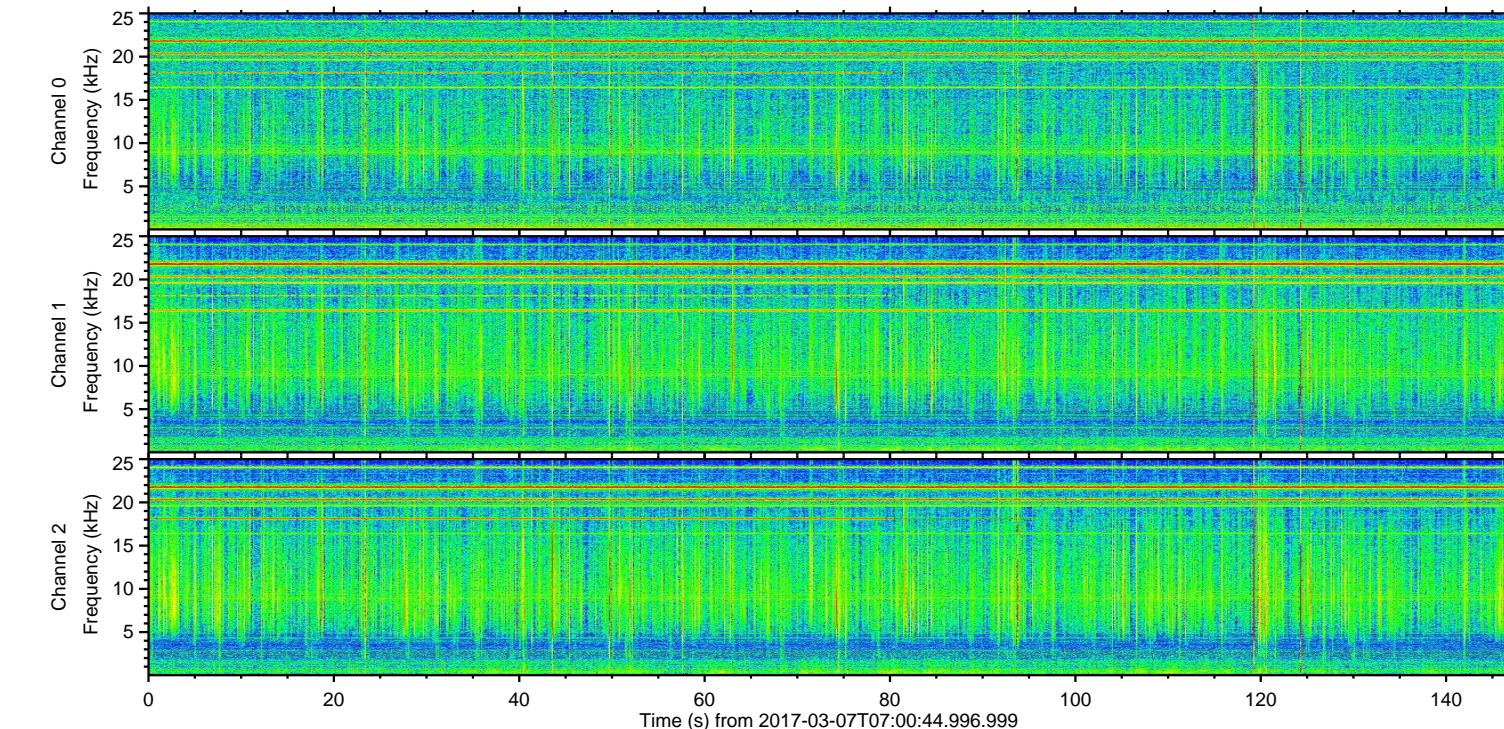
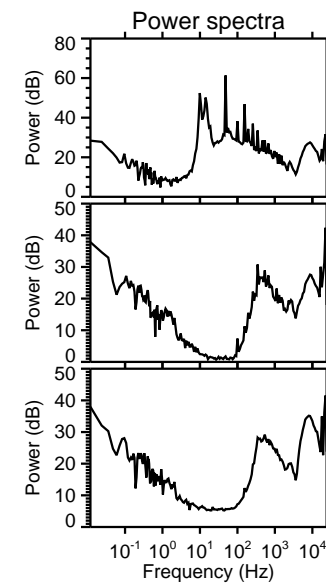
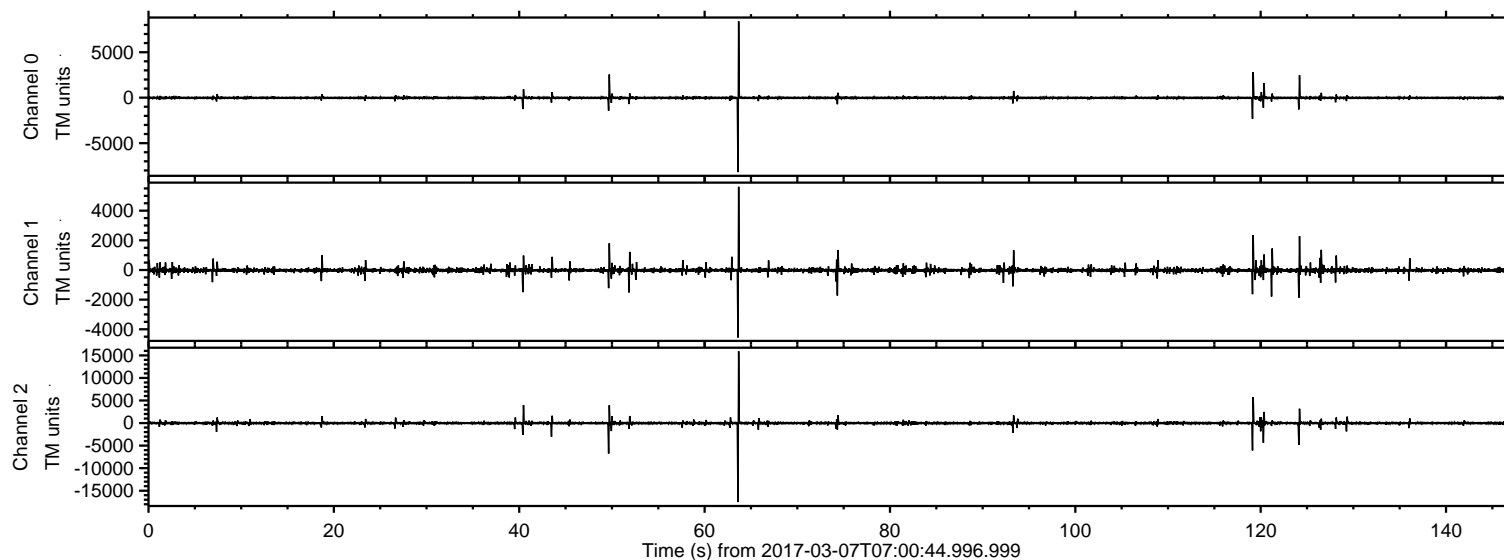
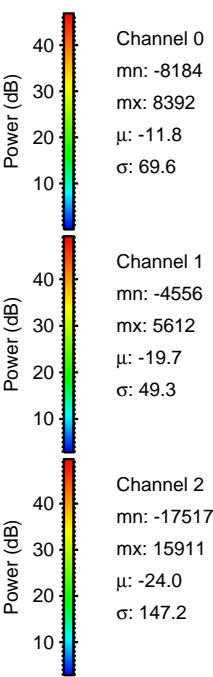
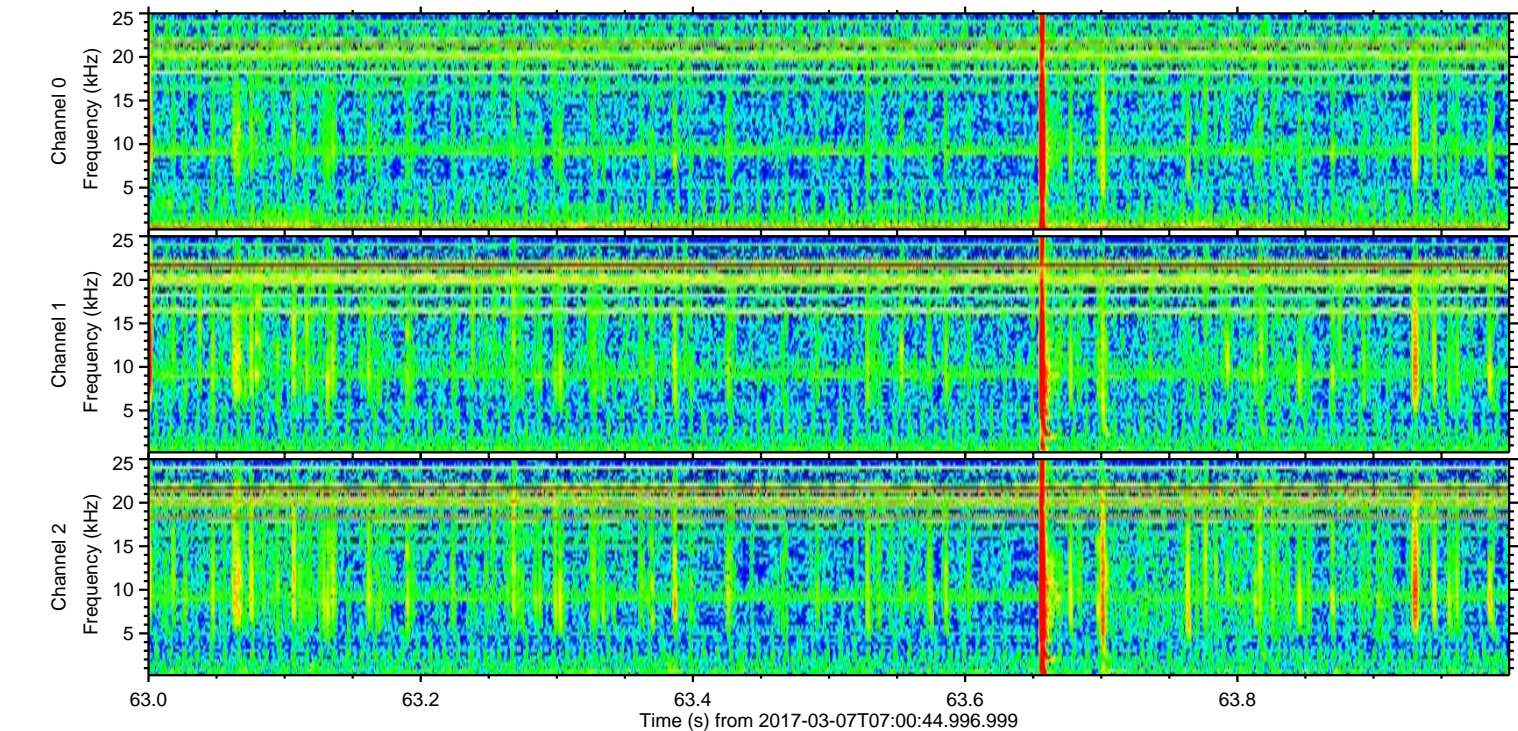
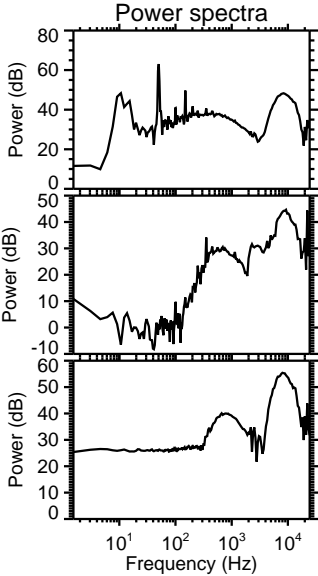
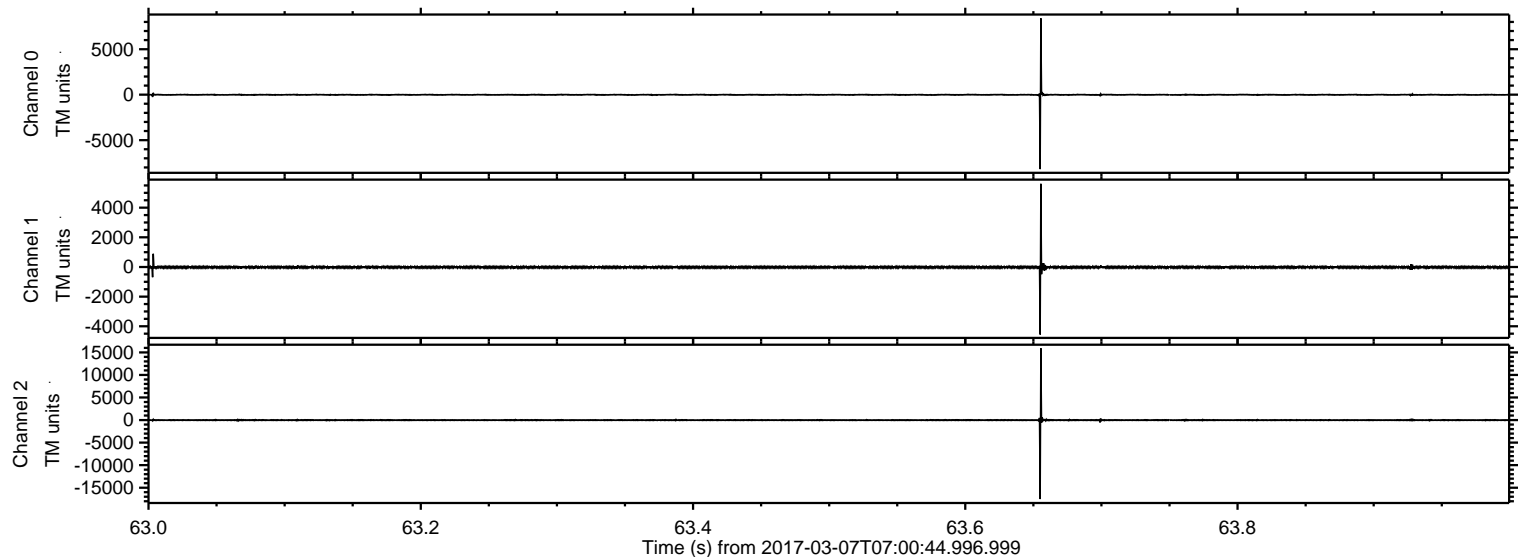


ELMAVAN 3D WAVEFORMS (Measured data sampled at 50 kHz) 51000 packets of 144 samples from 2017-03-07T07:00:44.996.999.

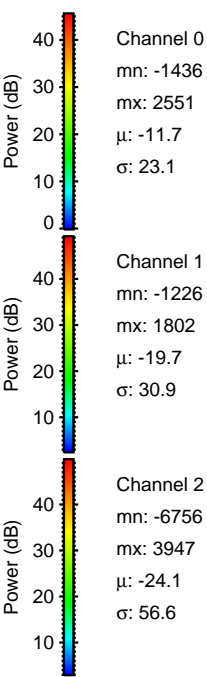
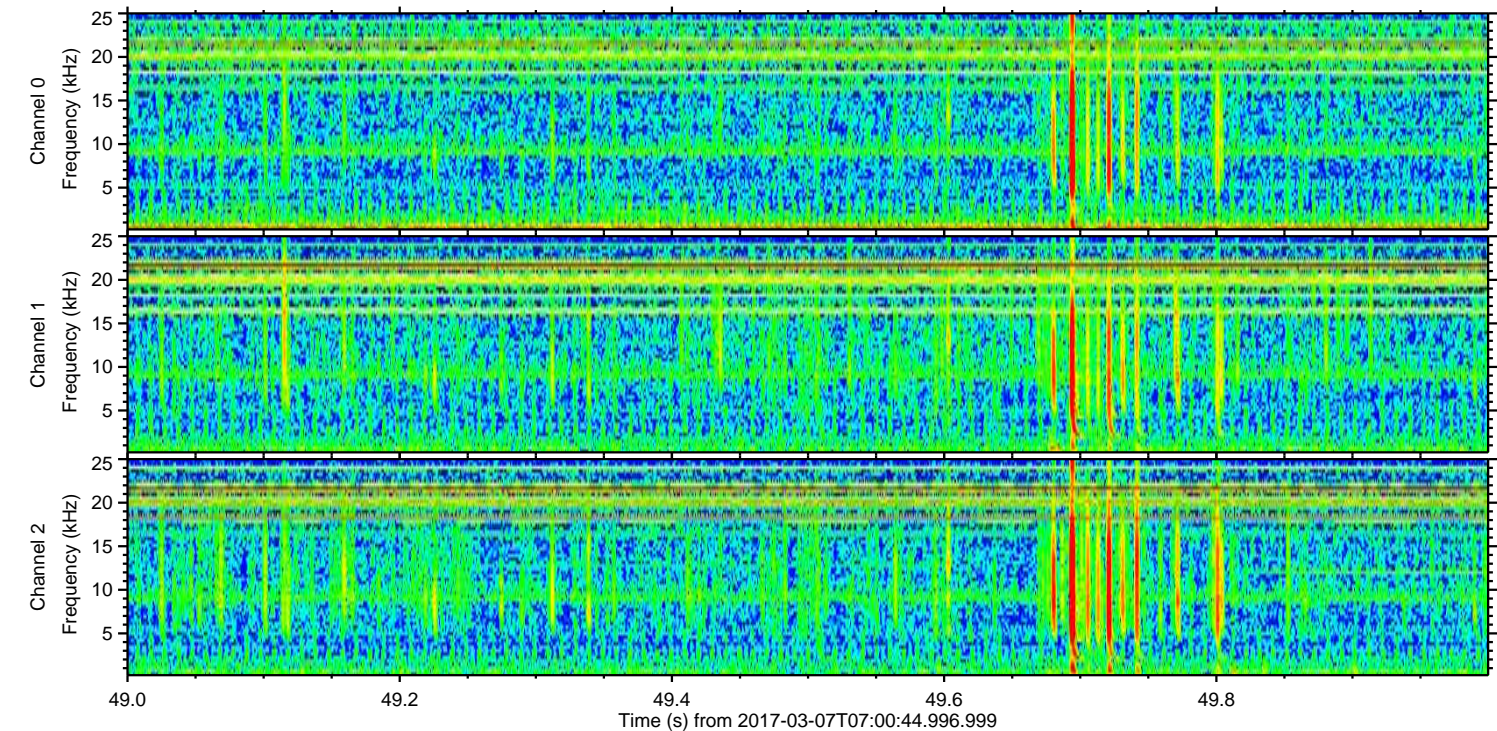
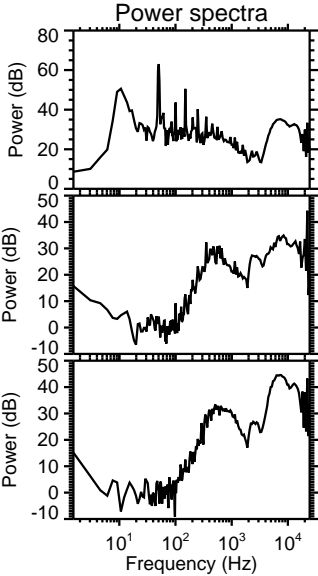
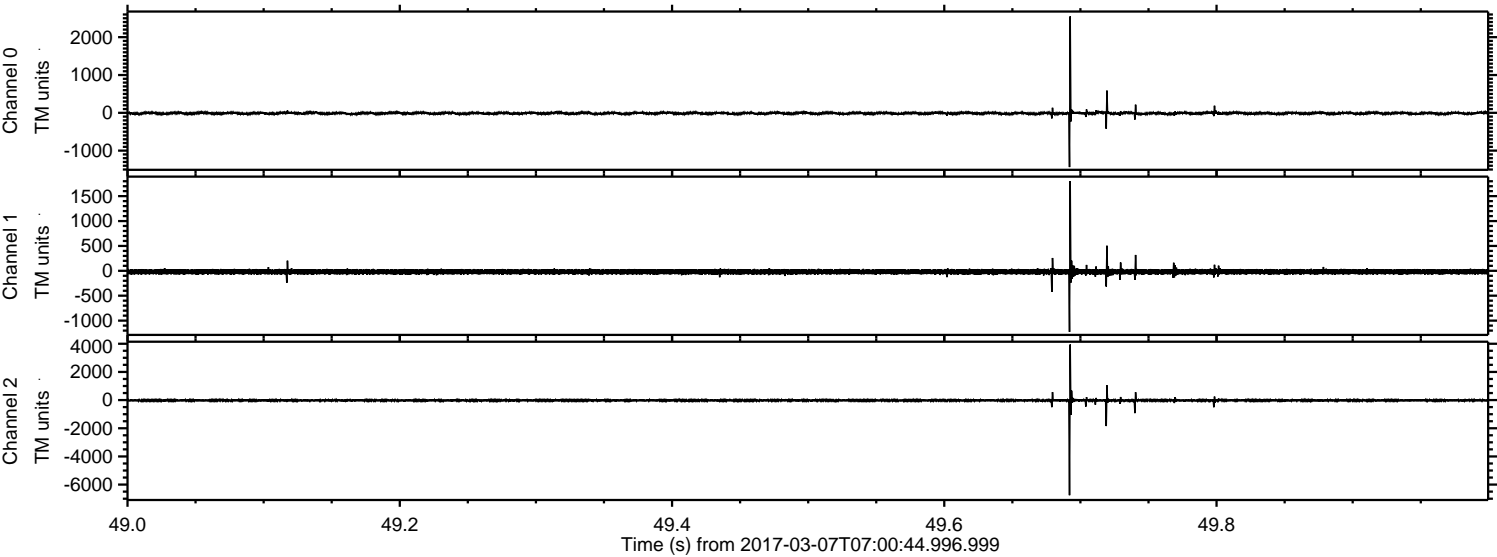
Processed Tue Mar 7 08:08:53 2017 by ELM ver.2012-10-06 from 001__elm20170307_070043__dat00.bin



Processed Tue Mar 7 08:09:09 2017 by ELM ver.2012-10-06 from 001__elm20170307_070043__dat00.bin

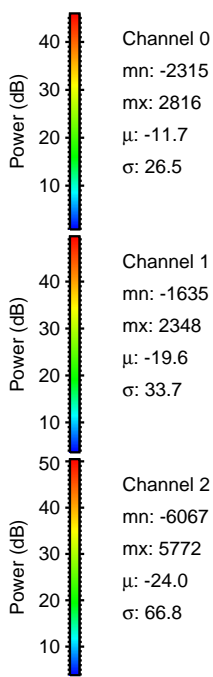
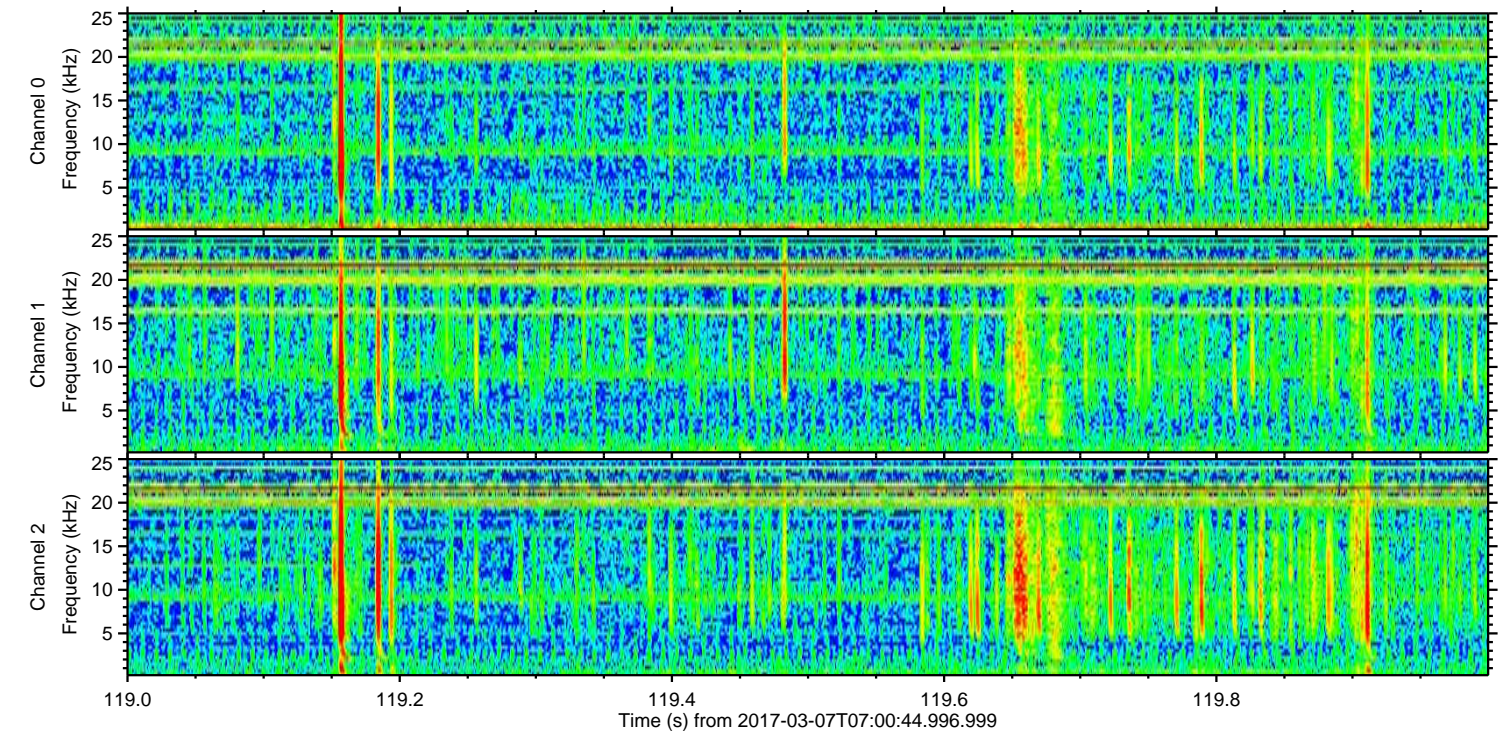
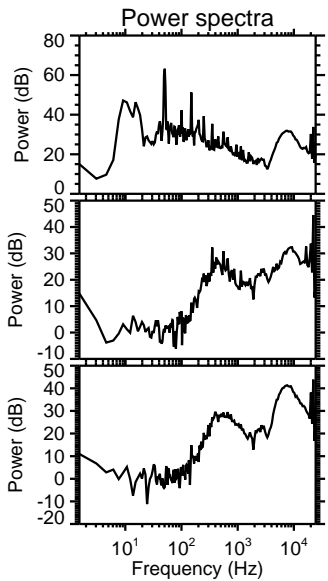
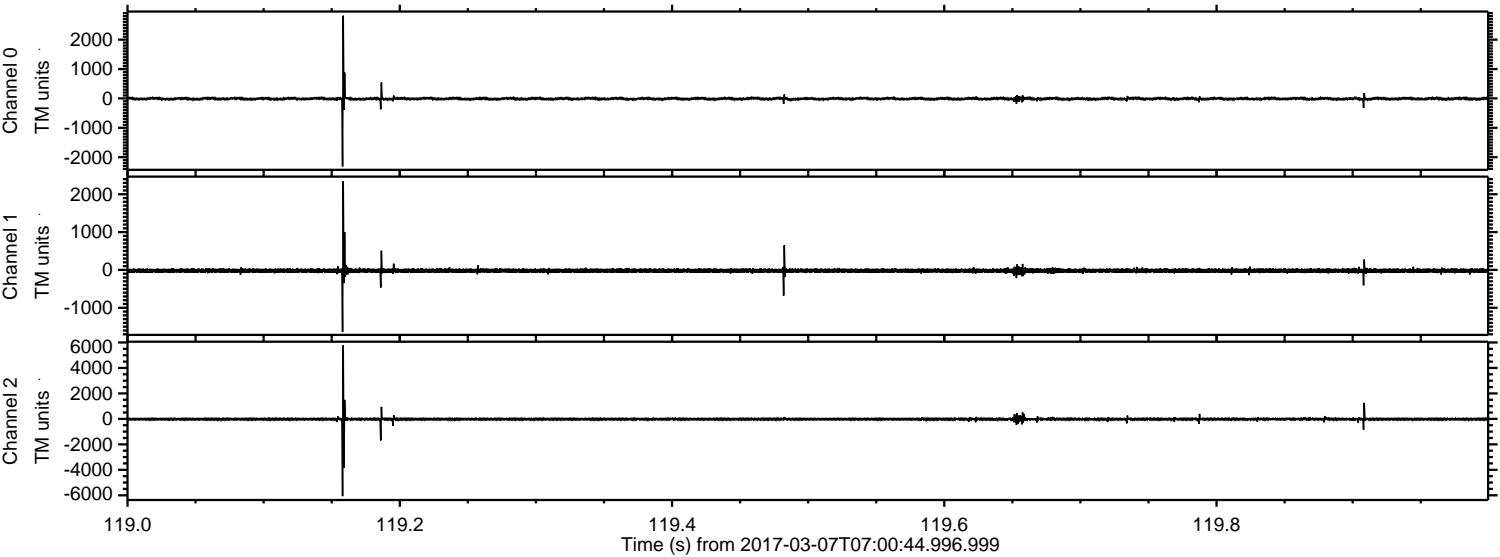


Processed Tue Mar 7 08:09:10 2017 by ELM ver.2012-10-06 from 001__elm20170307_070043__dat00.bin



ELMAVAN 3D WAVEFORMS (Measured data sampled at 50 kHz) 51000 packets of 144 samples from 2017-03-07T07:00:44.996.999. Part 120/147

Processed Tue Mar 7 08:09:11 2017 by ELM ver.2012-10-06 from 001__elm20170307_070043__dat00.bin



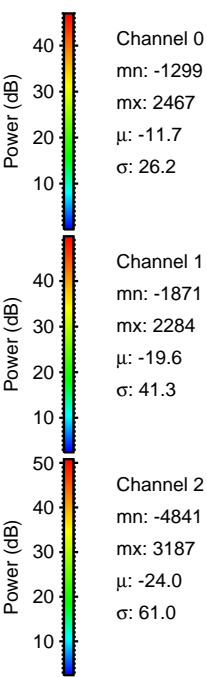
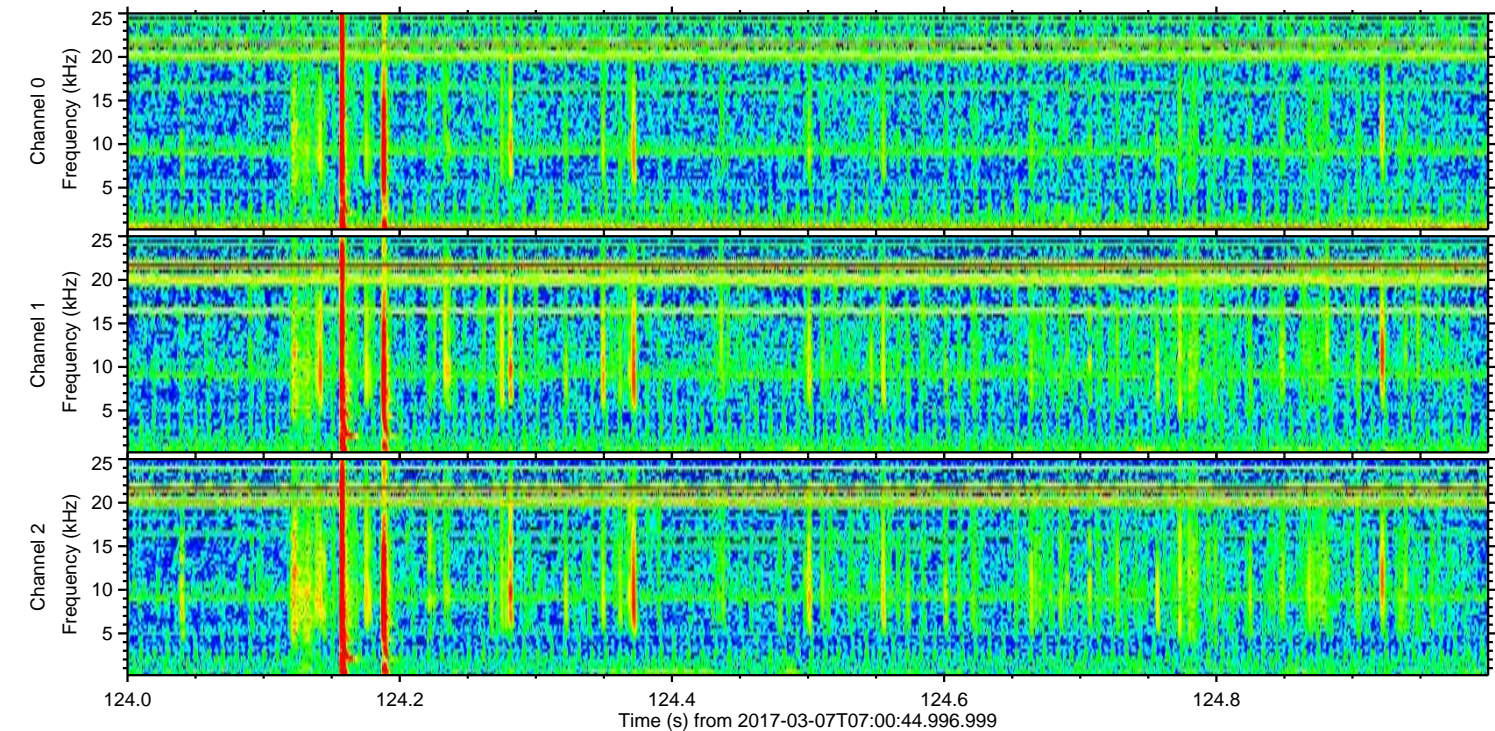
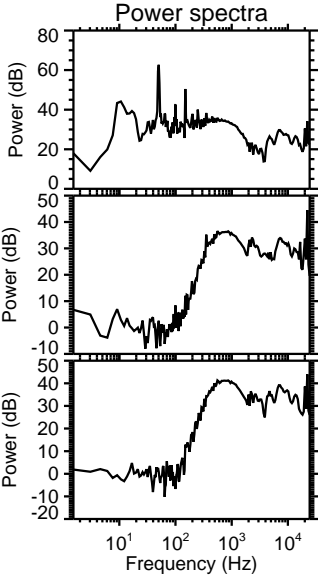
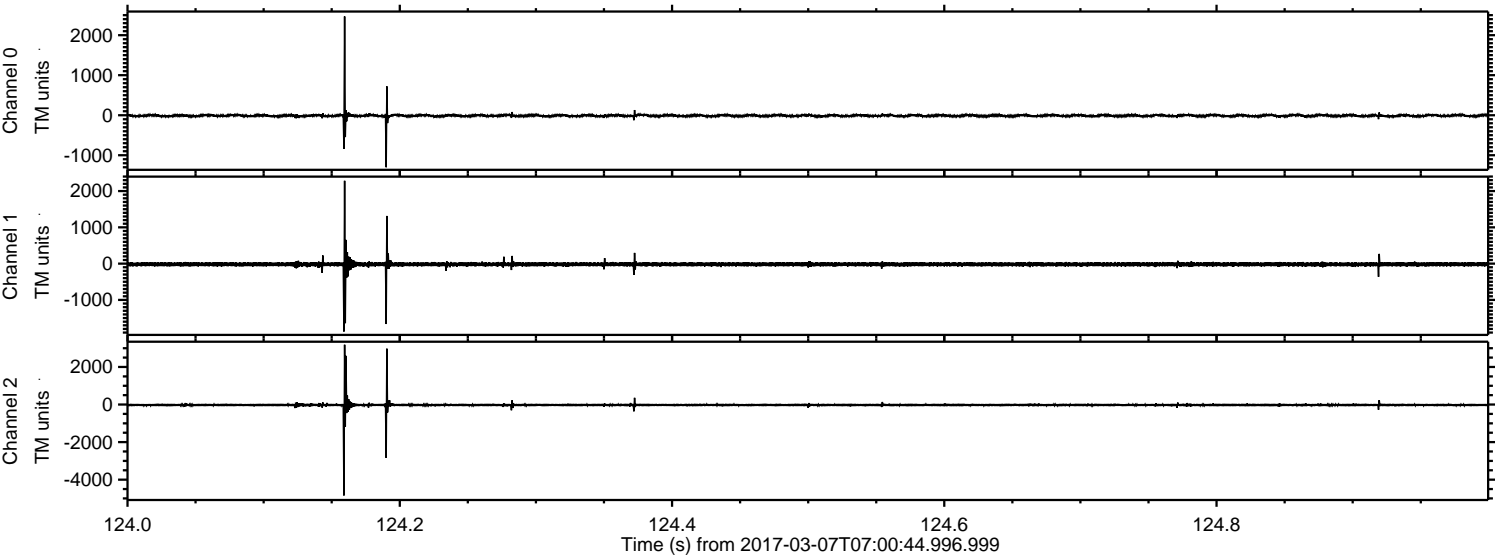
Channel 0
mn: -2315
mx: 2816
 μ : -11.7
 σ : 26.5

Channel 1
mn: -1635
mx: 2348
 μ : -19.6
 σ : 33.7

Channel 2
mn: -6067
mx: 5772
 μ : -24.0
 σ : 66.8

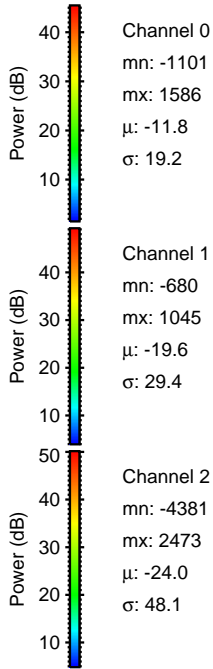
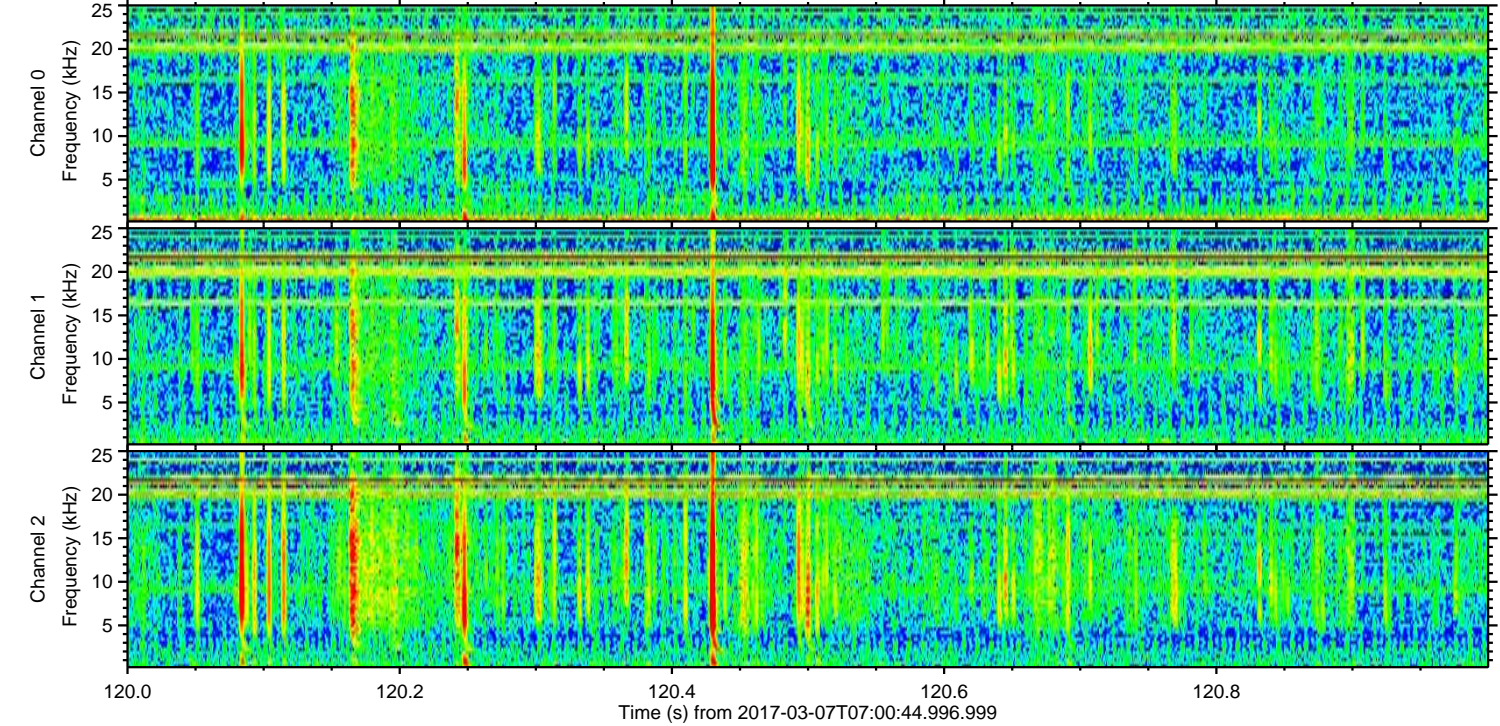
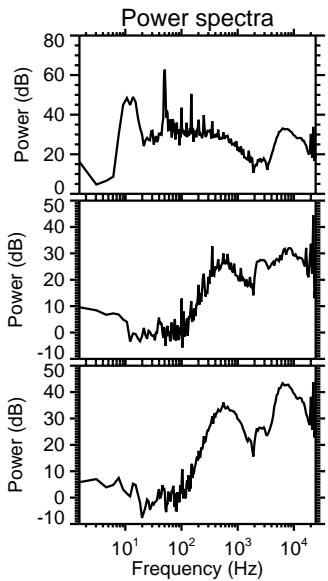
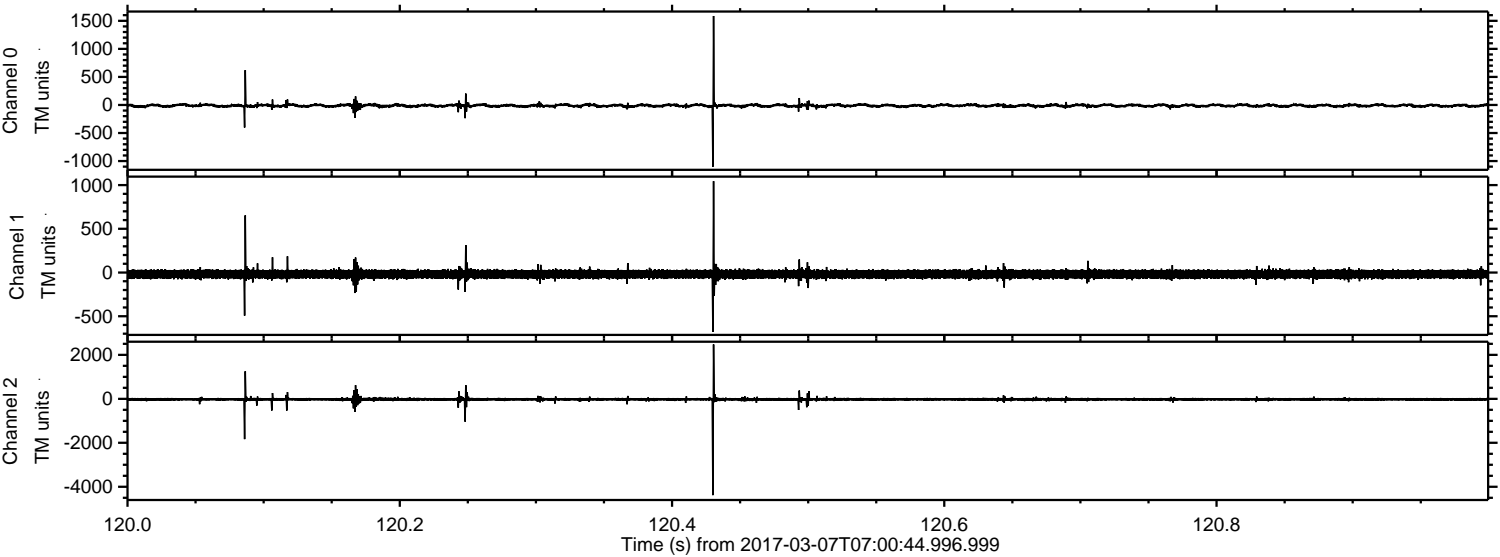
ELMAVAN 3D WAVEFORMS (Measured data sampled at 50 kHz) 51000 packets of 144 samples from 2017-03-07T07:00:44.996.999. Part 125/147

Processed Tue Mar 7 08:09:12 2017 by ELM ver.2012-10-06 from 001__elm20170307_070043__dat00.bin

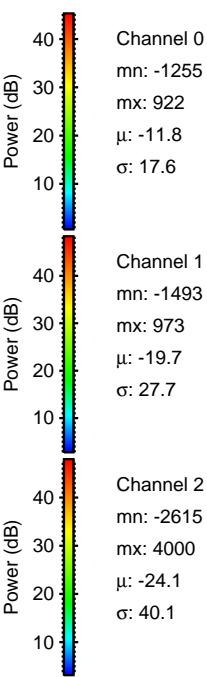
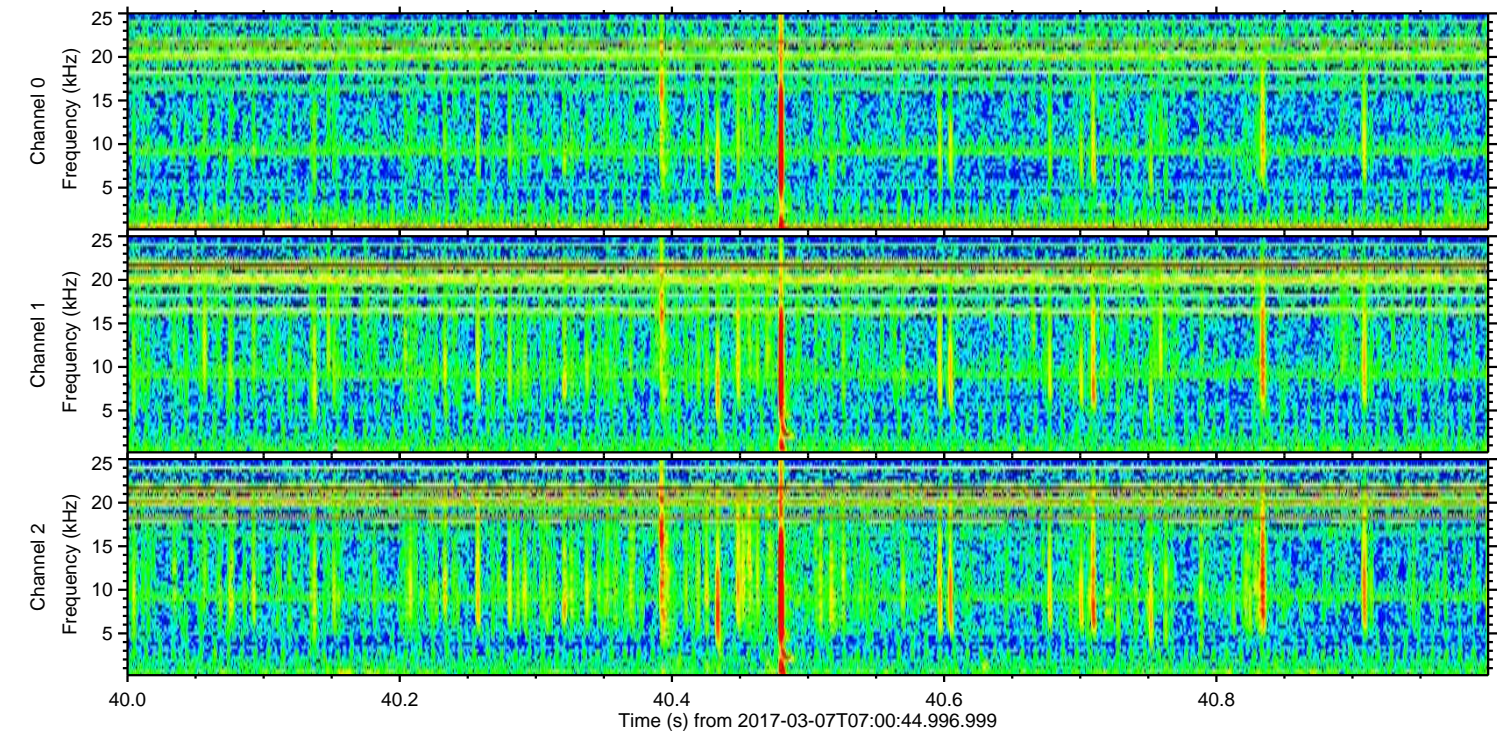
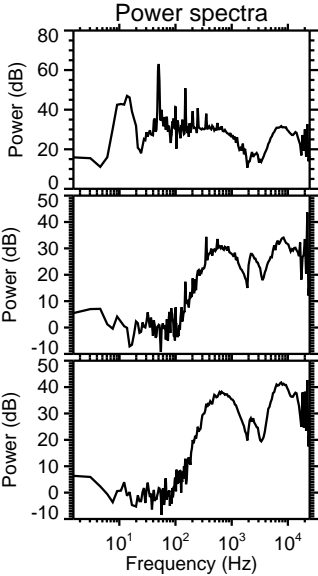
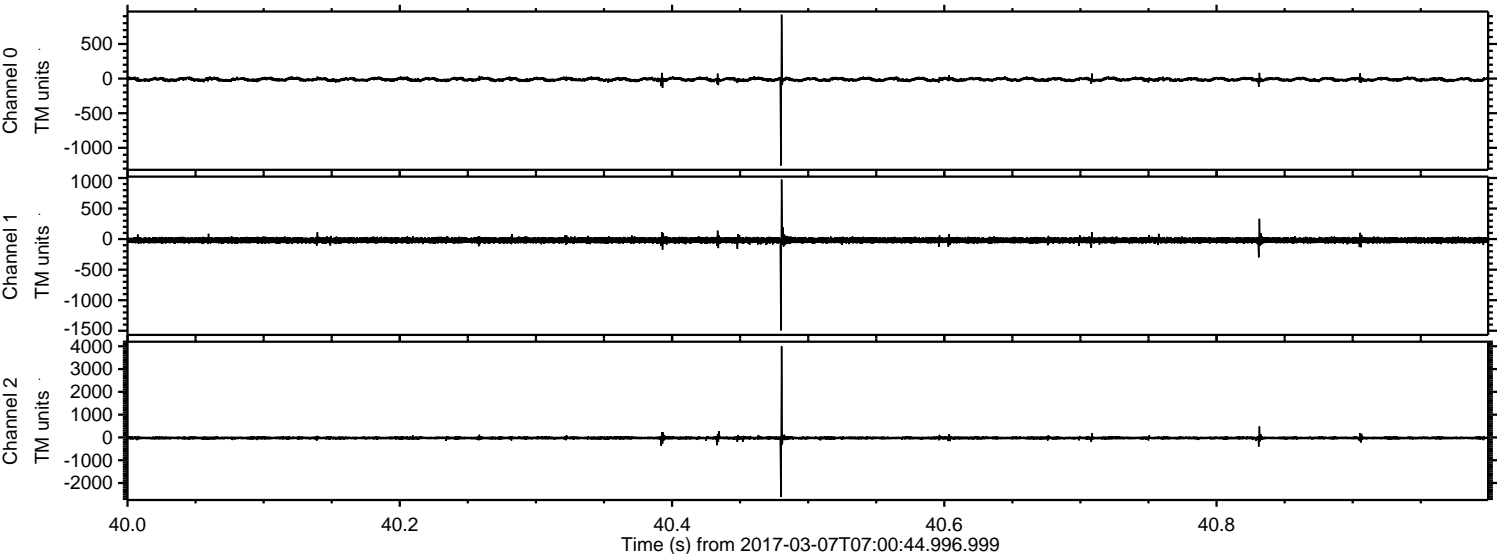


ELMAVAN 3D WAVEFORMS (Measured data sampled at 50 kHz) 51000 packets of 144 samples from 2017-03-07T07:00:44.996.999. Part 121/147

Processed Tue Mar 7 08:09:13 2017 by ELM ver.2012-10-06 from 001__elm20170307_070043__dat00.bin

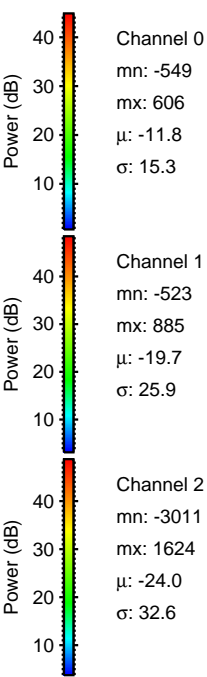
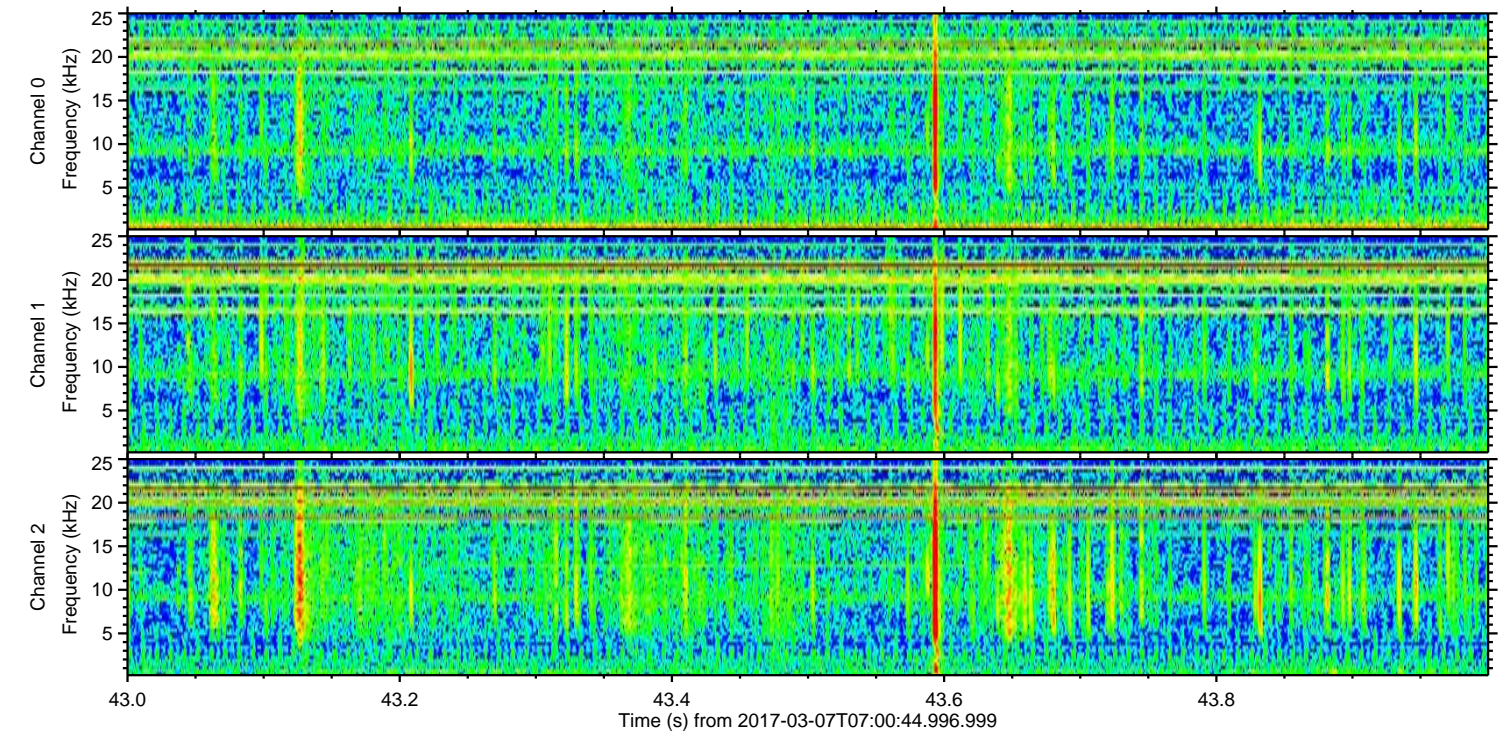
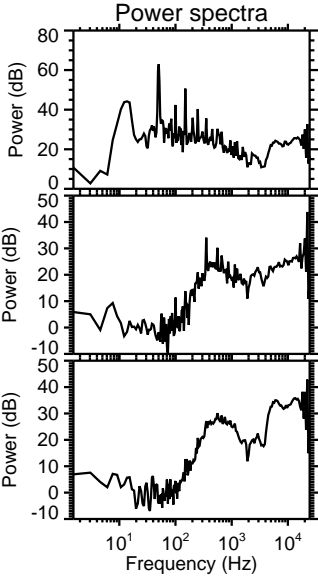
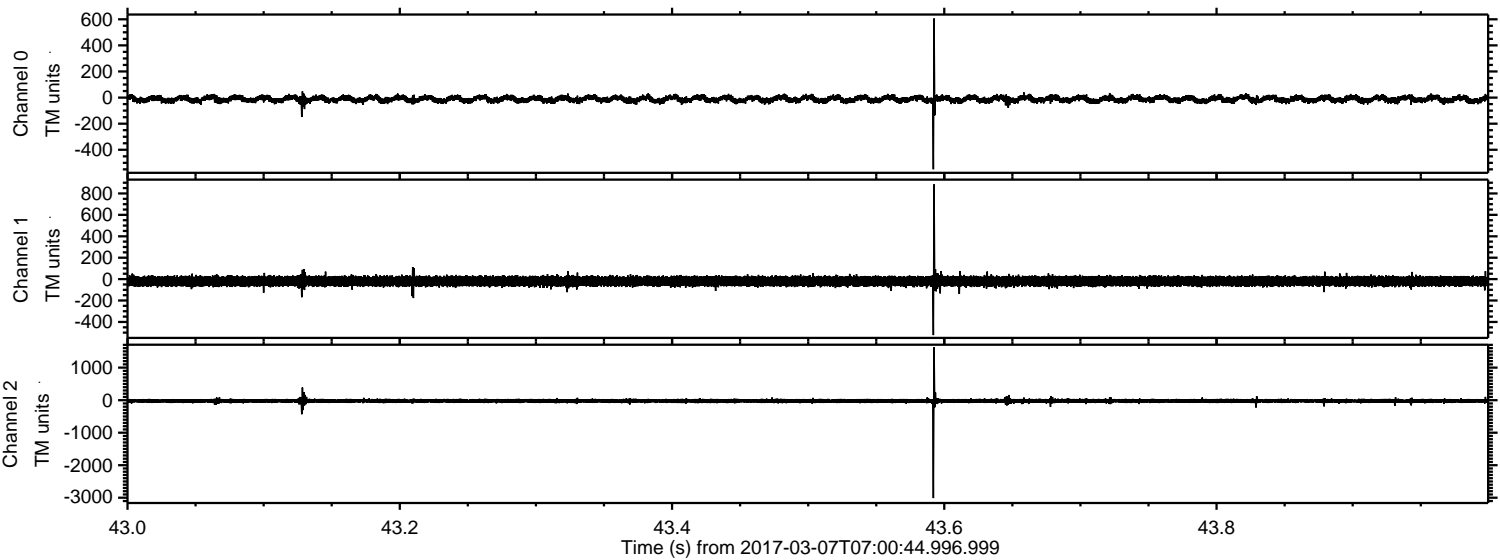


Processed Tue Mar 7 08:09:14 2017 by ELM ver.2012-10-06 from 001__elm20170307_070043__dat00.bin

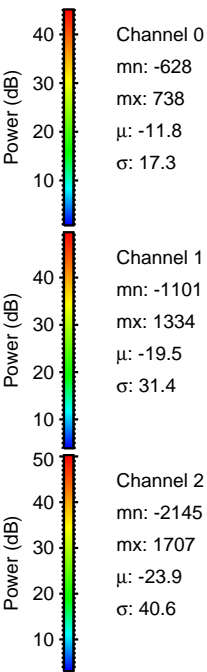
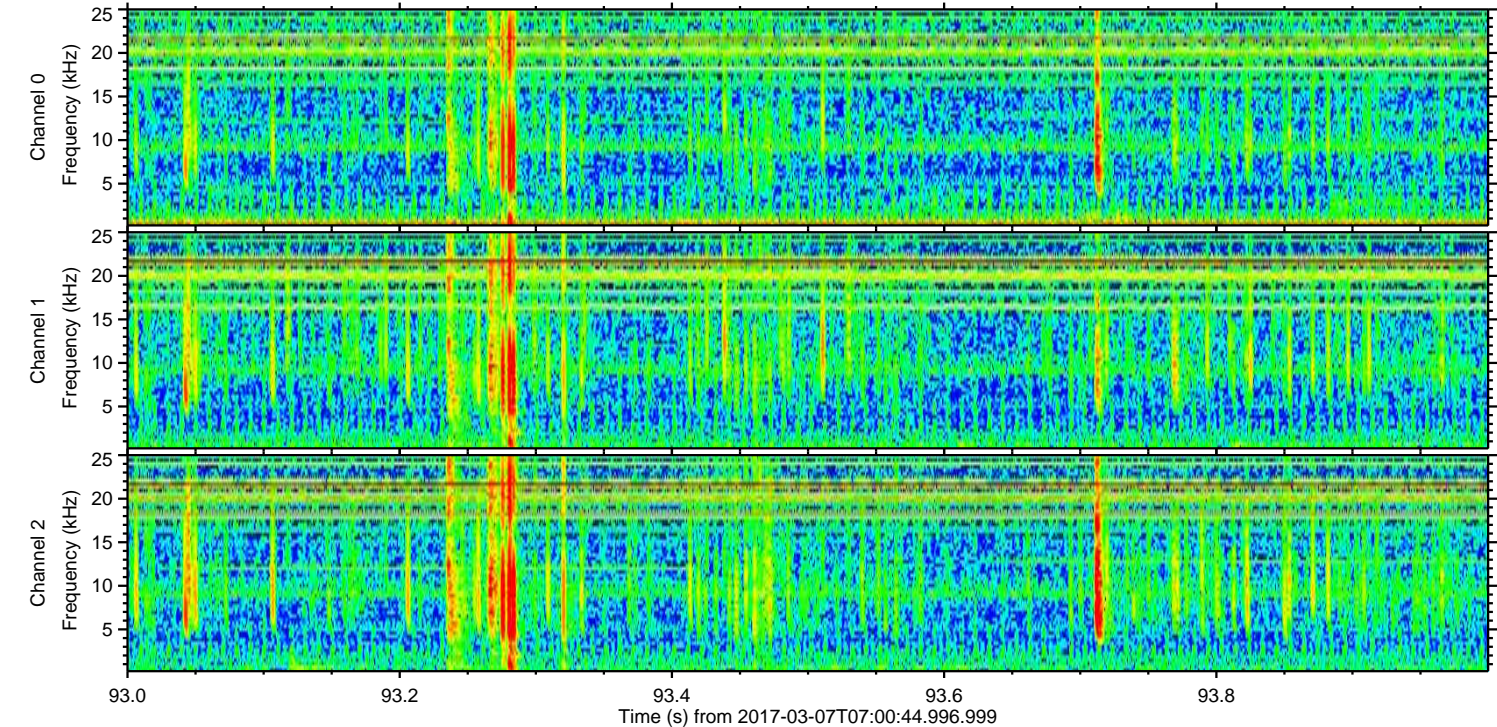
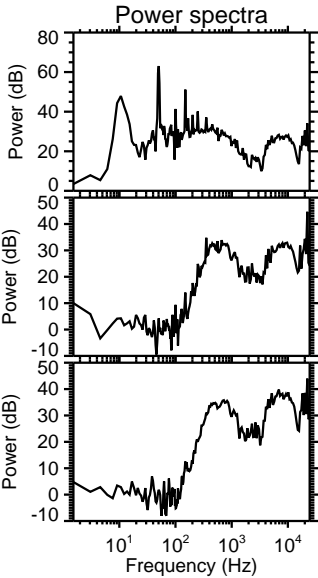
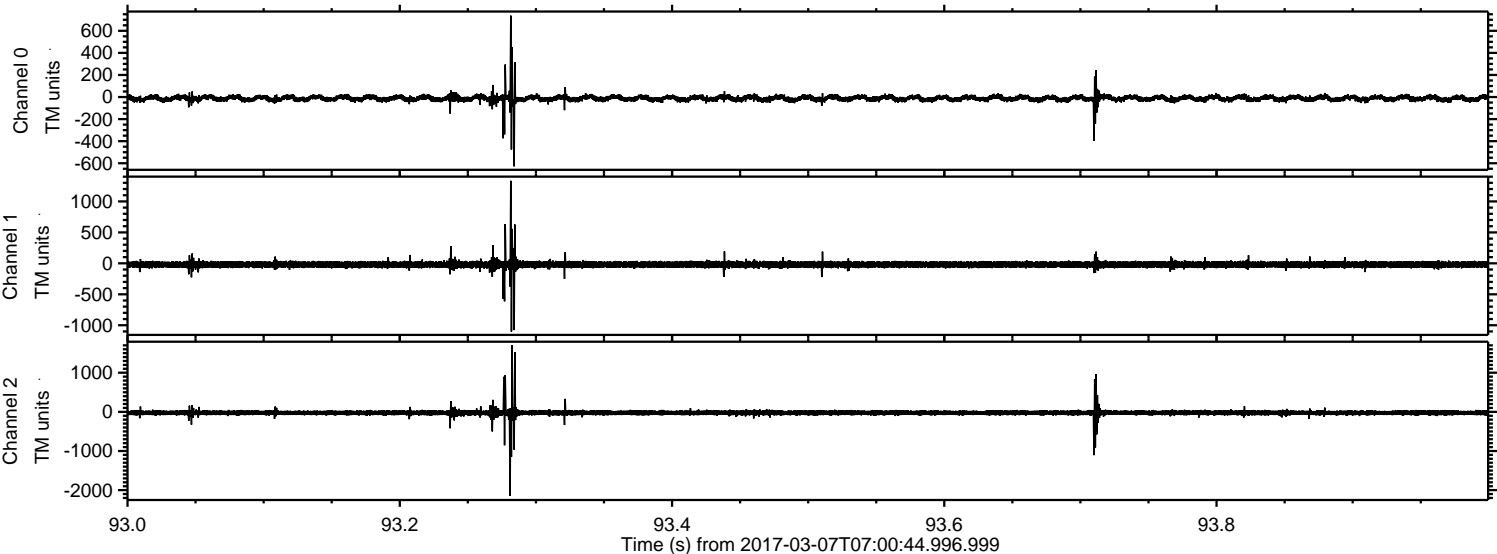


ELMAVAN 3D WAVEFORMS (Measured data sampled at 50 kHz) 51000 packets of 144 samples from 2017-03-07T07:00:44.996.999. Part 44/147

Processed Tue Mar 7 08:09:15 2017 by ELM ver.2012-10-06 from 001__elm20170307_070043__dat00.bin



Processed Tue Mar 7 08:09:16 2017 by ELM ver.2012-10-06 from 001__elm20170307_070043__dat00.bin

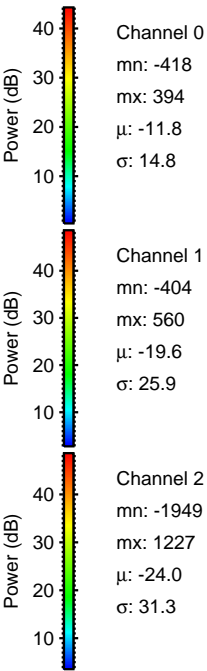
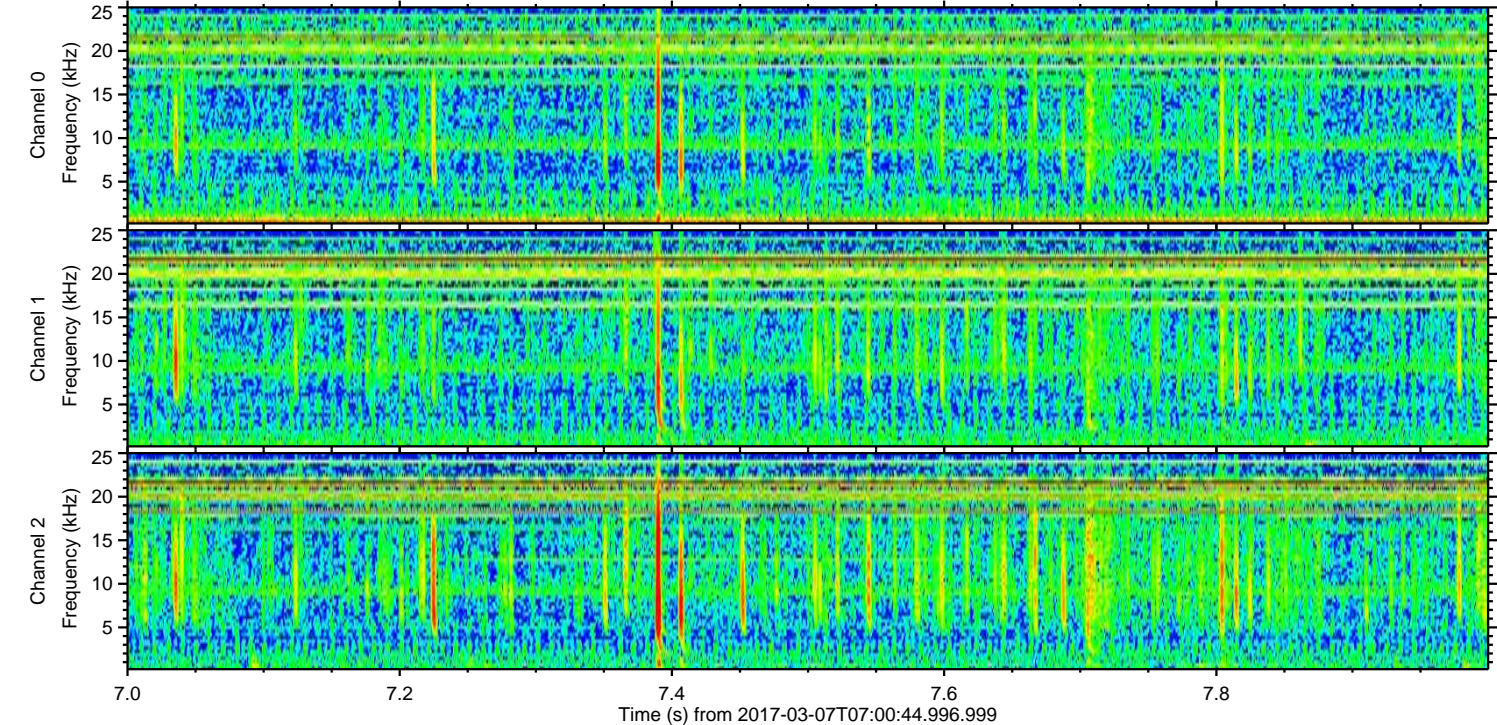
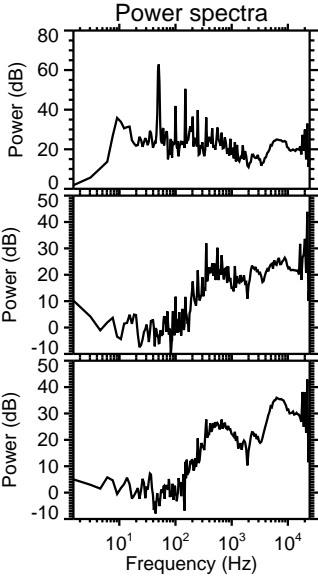
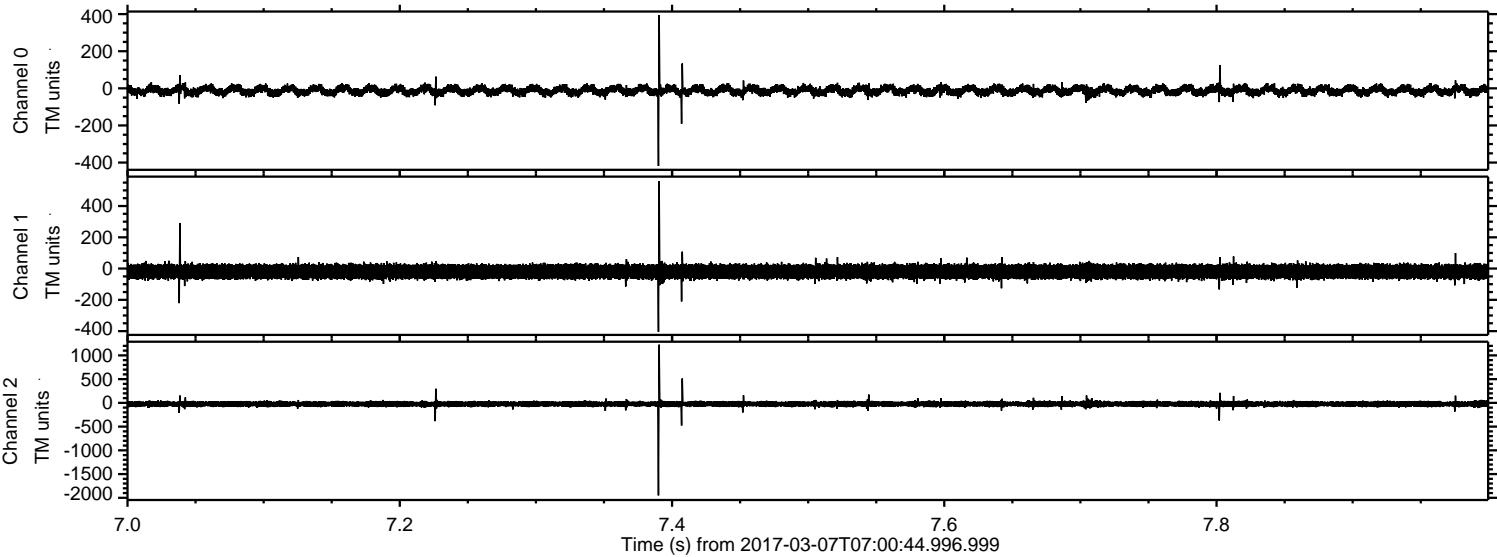


Channel 0
mn: -628
mx: 738
 μ : -11.8
 σ : 17.3

Channel 1
mn: -1101
mx: 1334
 μ : -19.5
 σ : 31.4

Channel 2
mn: -2145
mx: 1707
 μ : -23.9
 σ : 40.6

Processed Tue Mar 7 08:09:17 2017 by ELM ver.2012-10-06 from 001__elm20170307_070043__dat00.bin



Processed Tue Mar 7 08:09:18 2017 by ELM ver.2012-10-06 from 001__elm20170307_070043__dat00.bin

