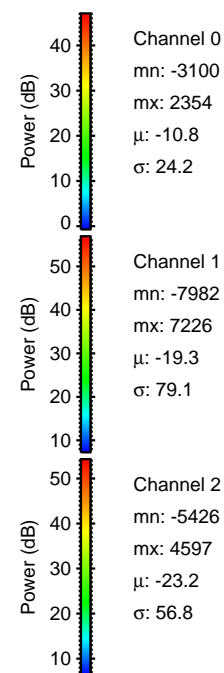
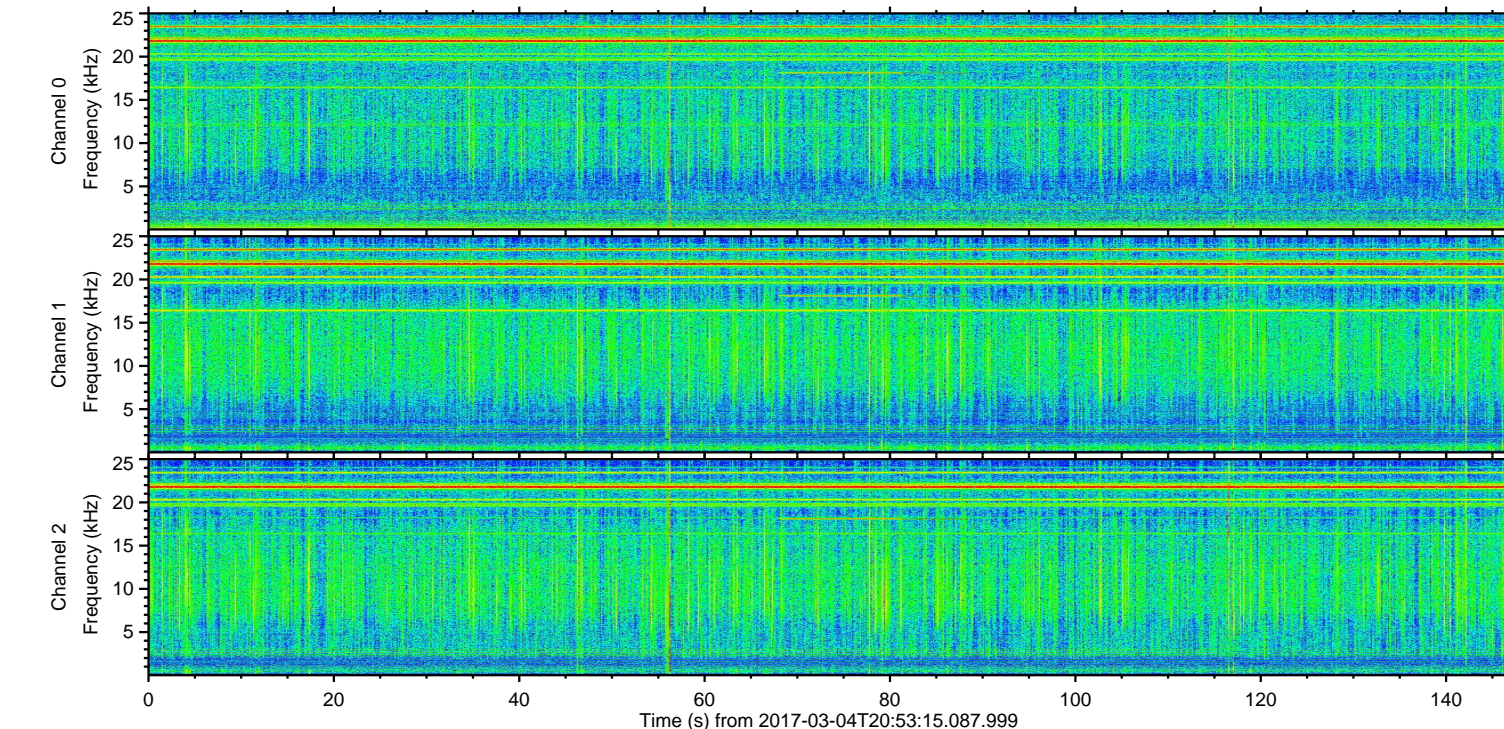
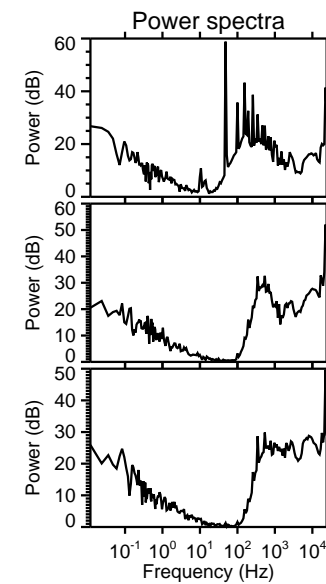
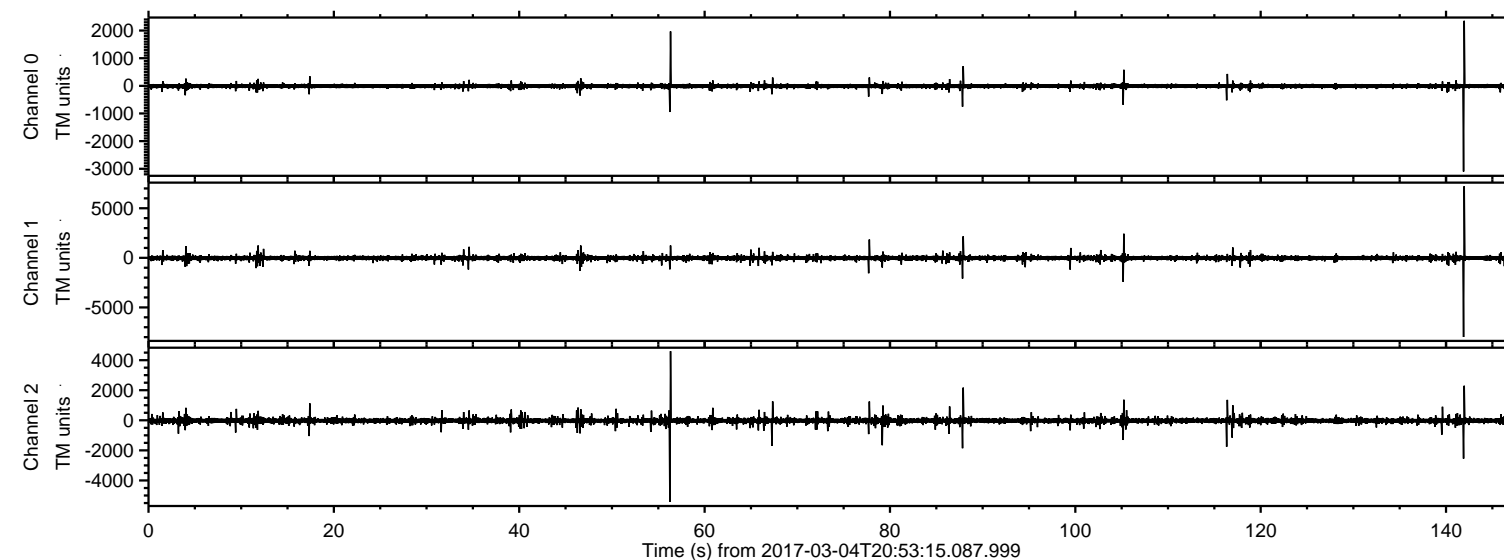


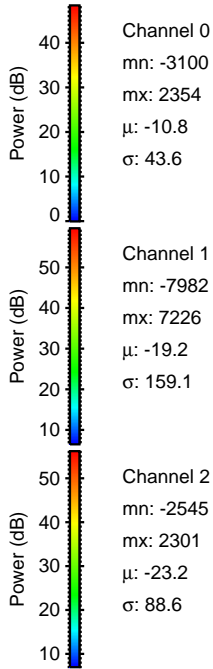
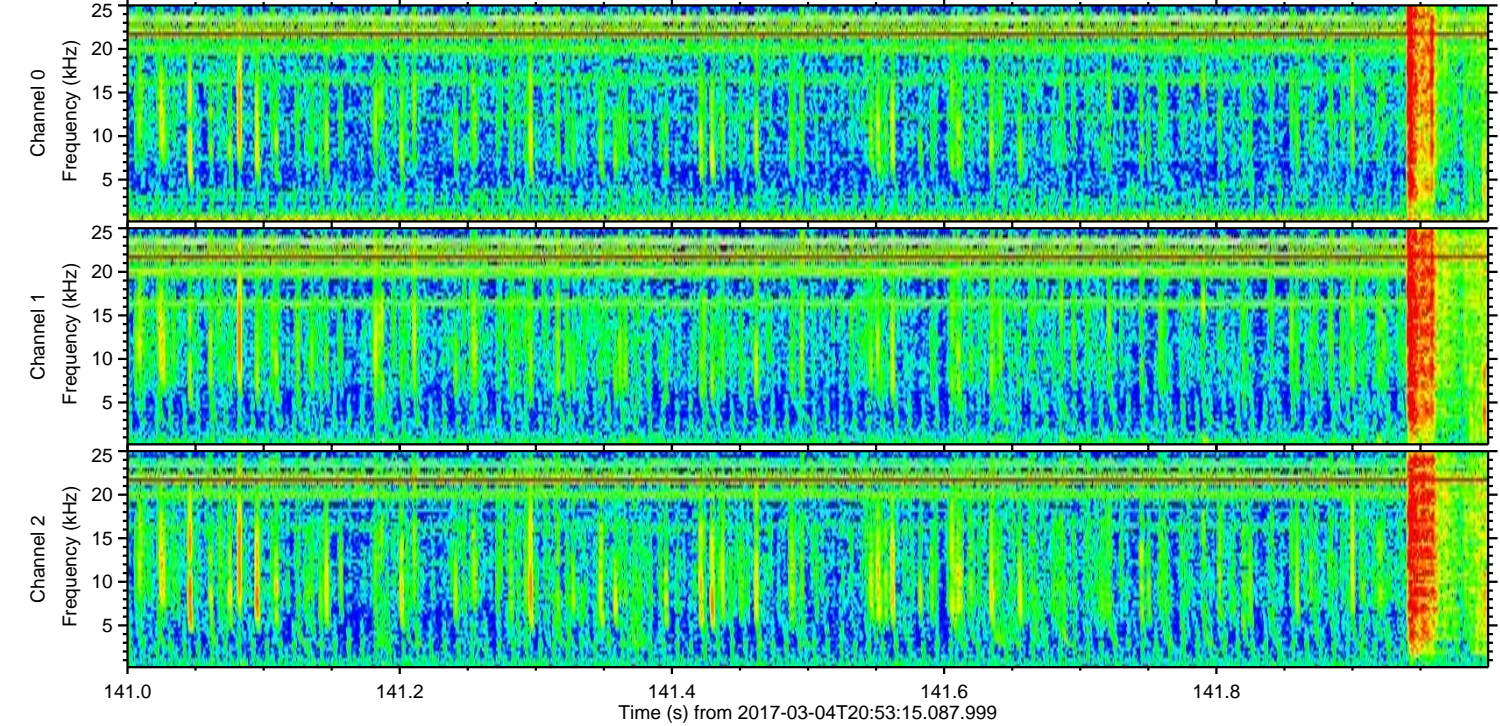
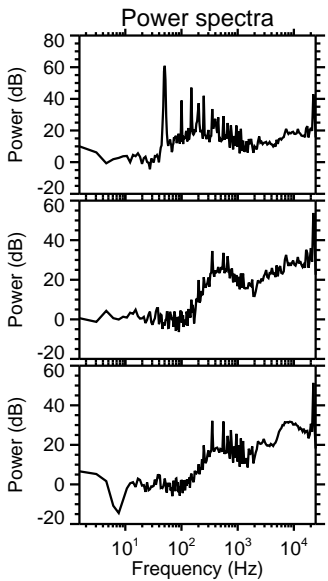
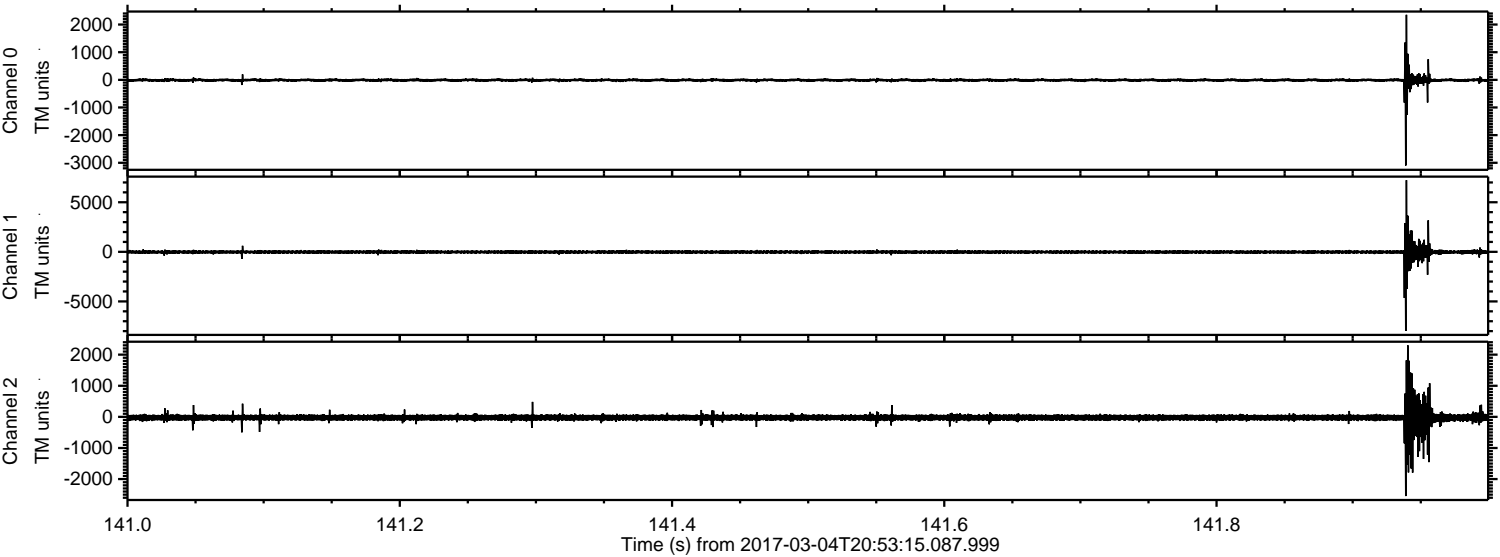
ELMAVAN 3D WAVEFORMS (Measured data sampled at 50 kHz) 51000 packets of 144 samples from 2017-03-04T20:53:15.087.999.

Processed Sat Mar 4 22:00:35 2017 by ELM ver.2012-10-06 from 001__elm20170304_205314__dat00.bin



ELMAVAN 3D WAVEFORMS (Measured data sampled at 50 kHz) 51000 packets of 144 samples from 2017-03-04T20:53:15.087.999. Part 142/147

Processed Sat Mar 4 22:00:47 2017 by ELM ver.2012-10-06 from 001__elm20170304_205314__dat00.bin



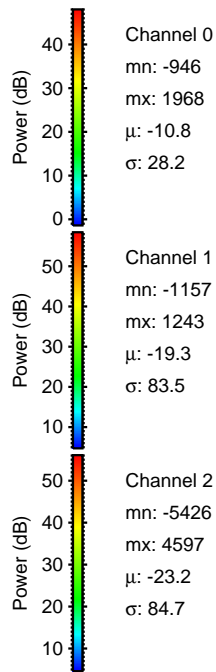
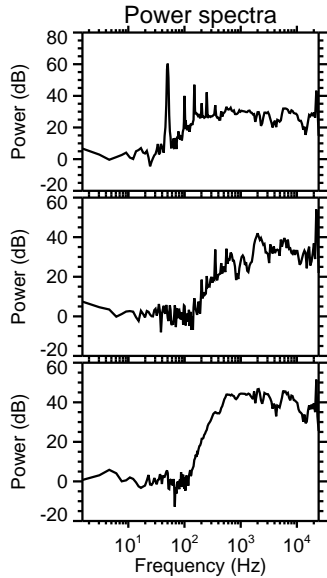
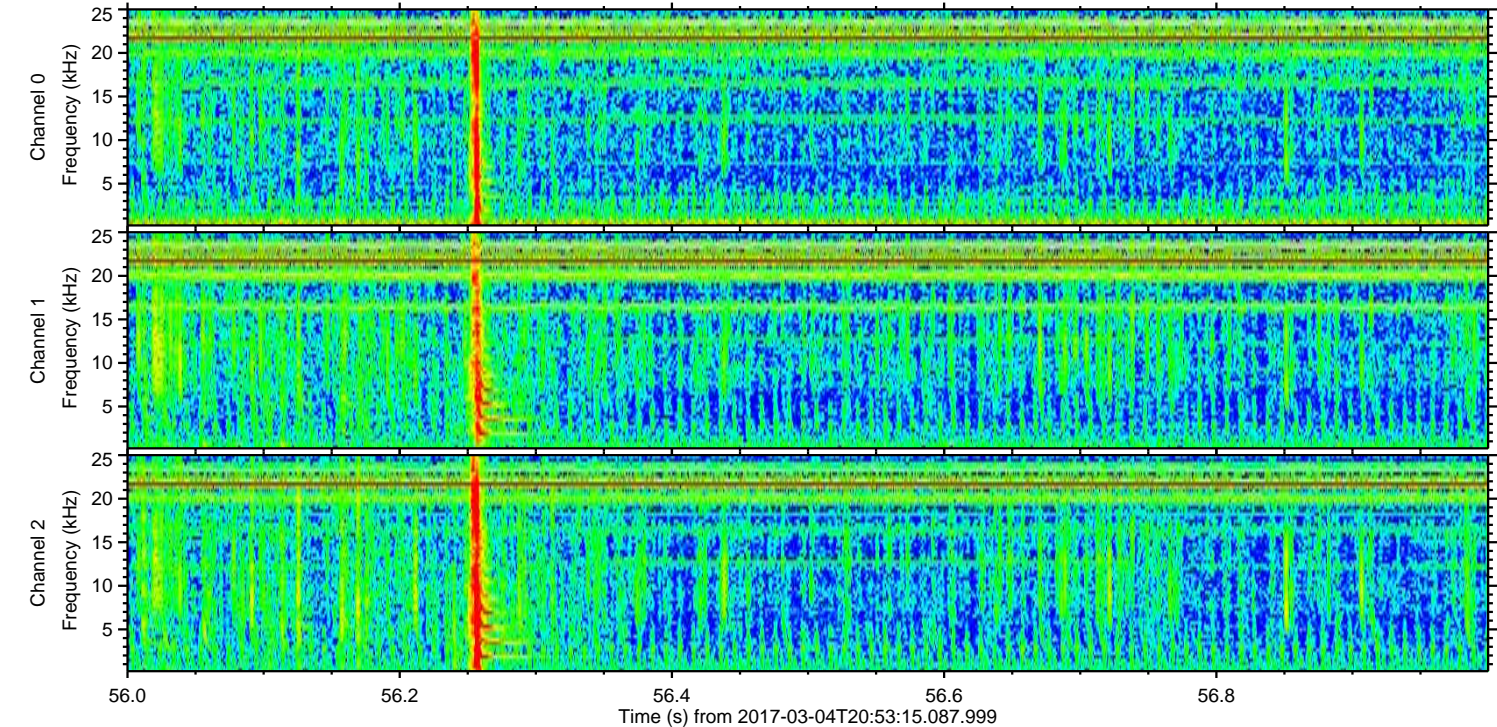
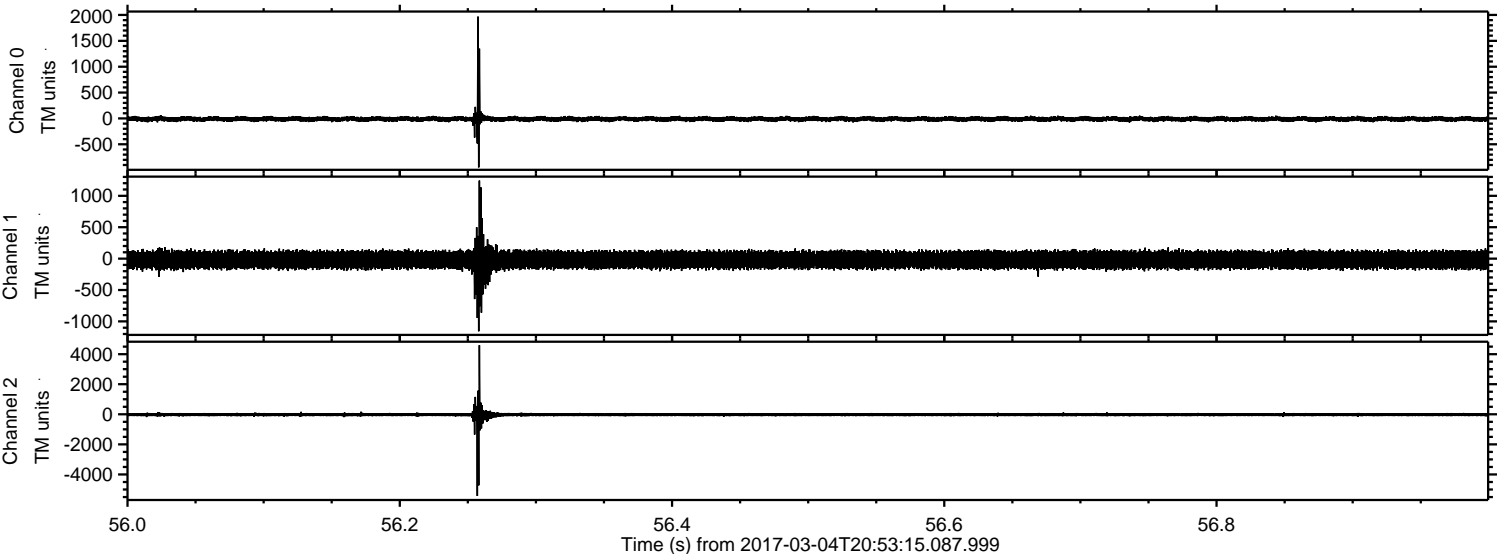
Channel 0
mn: -3100
mx: 2354
 μ : -10.8
 σ : 43.6

Channel 1
mn: -7982
mx: 7226
 μ : -19.2
 σ : 159.1

Channel 2
mn: -2545
mx: 2301
 μ : -23.2
 σ : 88.6

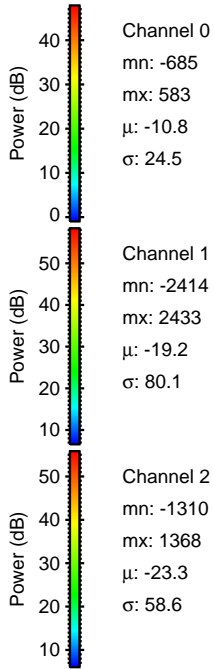
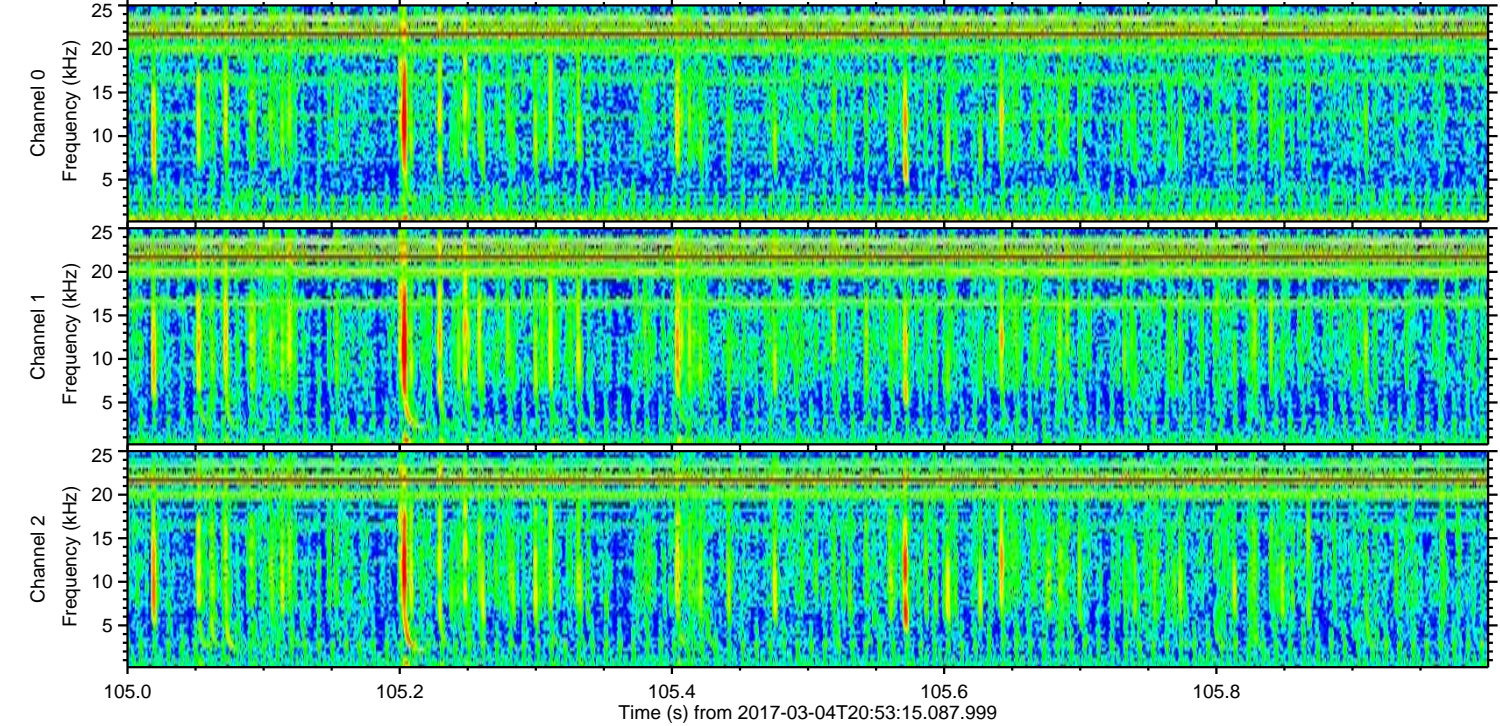
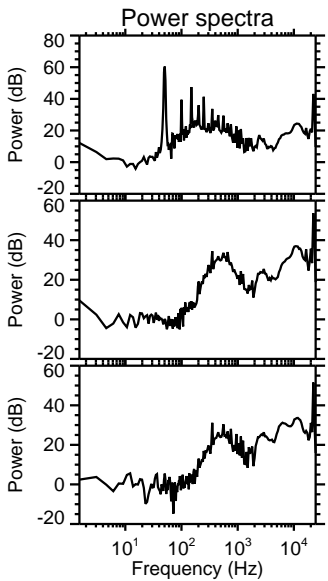
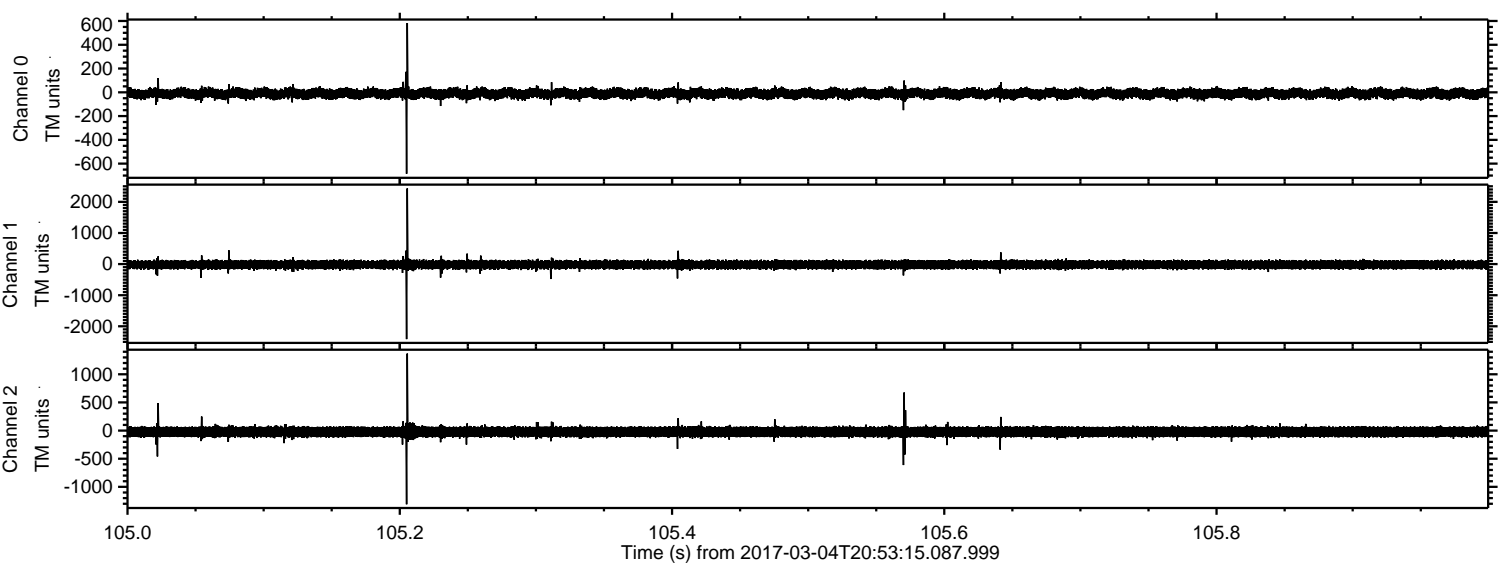
ELMAVAN 3D WAVEFORMS (Measured data sampled at 50 kHz) 51000 packets of 144 samples from 2017-03-04T20:53:15.087.999. Part 57/147

Processed Sat Mar 4 22:00:48 2017 by ELM ver.2012-10-06 from 001__elm20170304_205314__dat00.bin

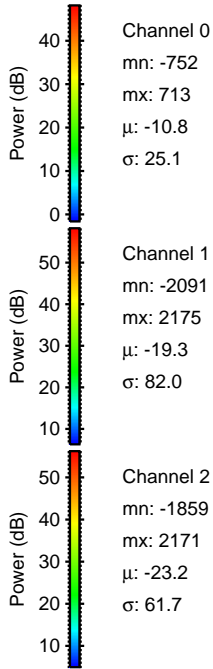
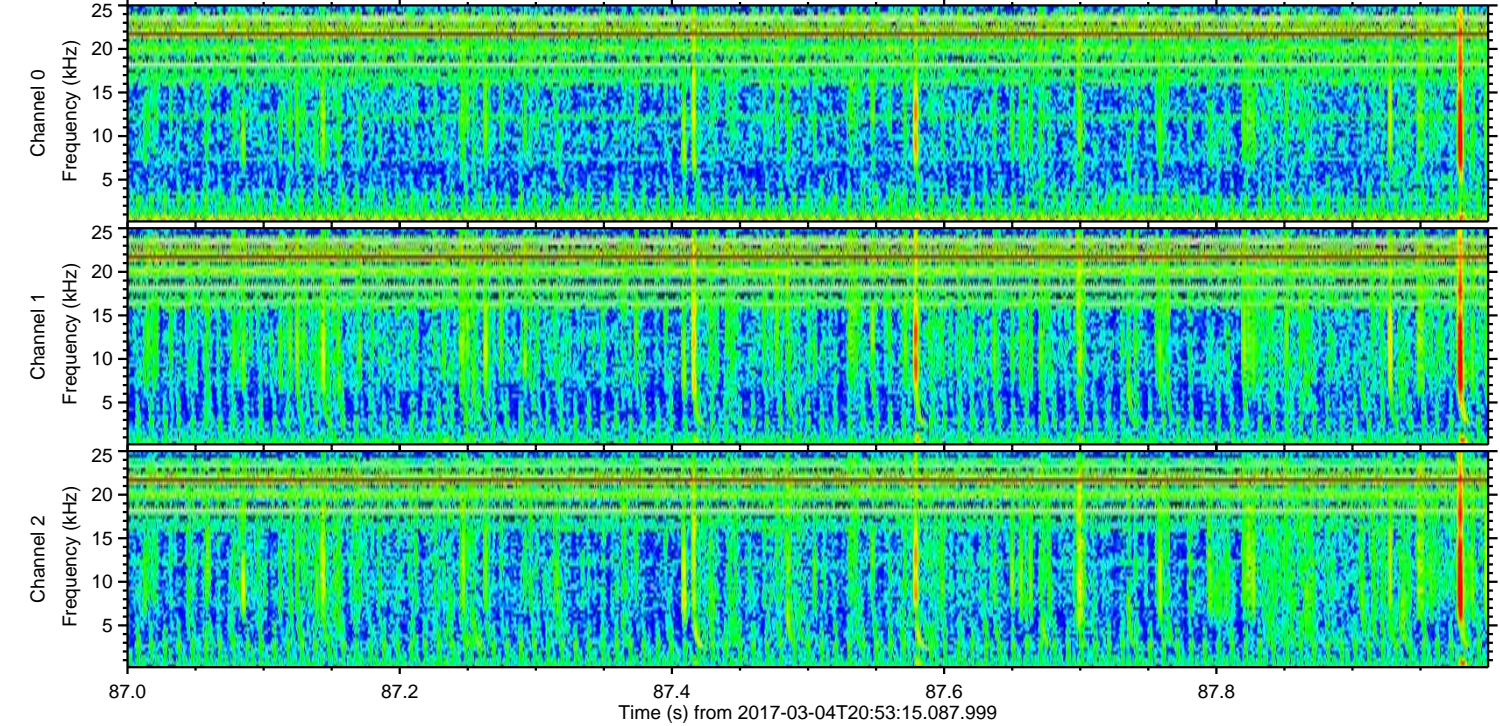
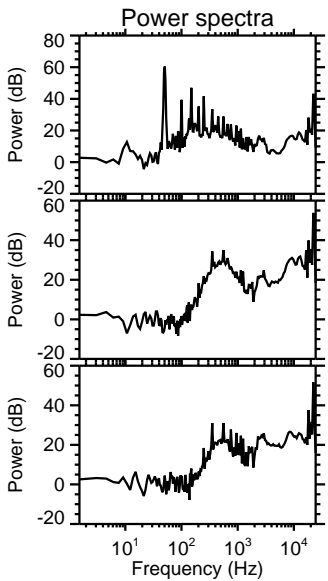
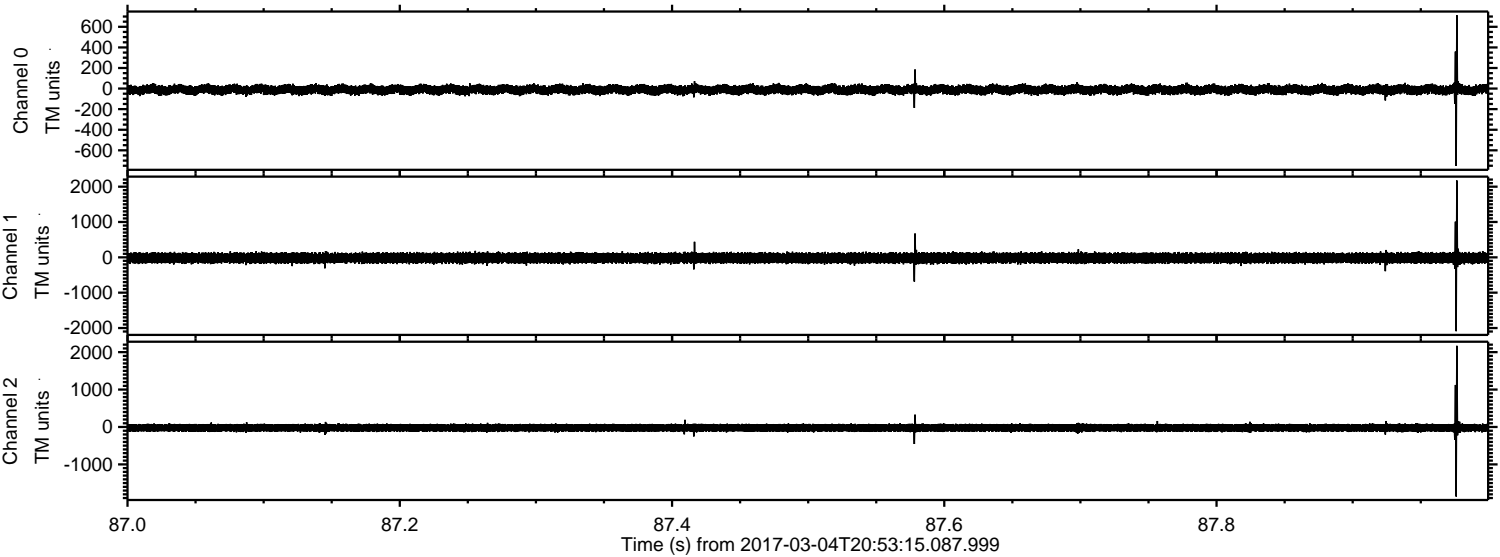


ELMAVAN 3D WAVEFORMS (Measured data sampled at 50 kHz) 51000 packets of 144 samples from 2017-03-04T20:53:15.087.999. Part 106/147

Processed Sat Mar 4 22:00:48 2017 by ELM ver.2012-10-06 from 001__elm20170304_205314__dat00.bin

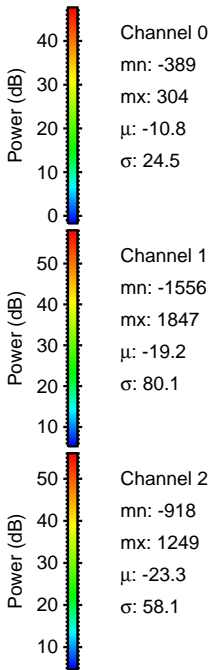
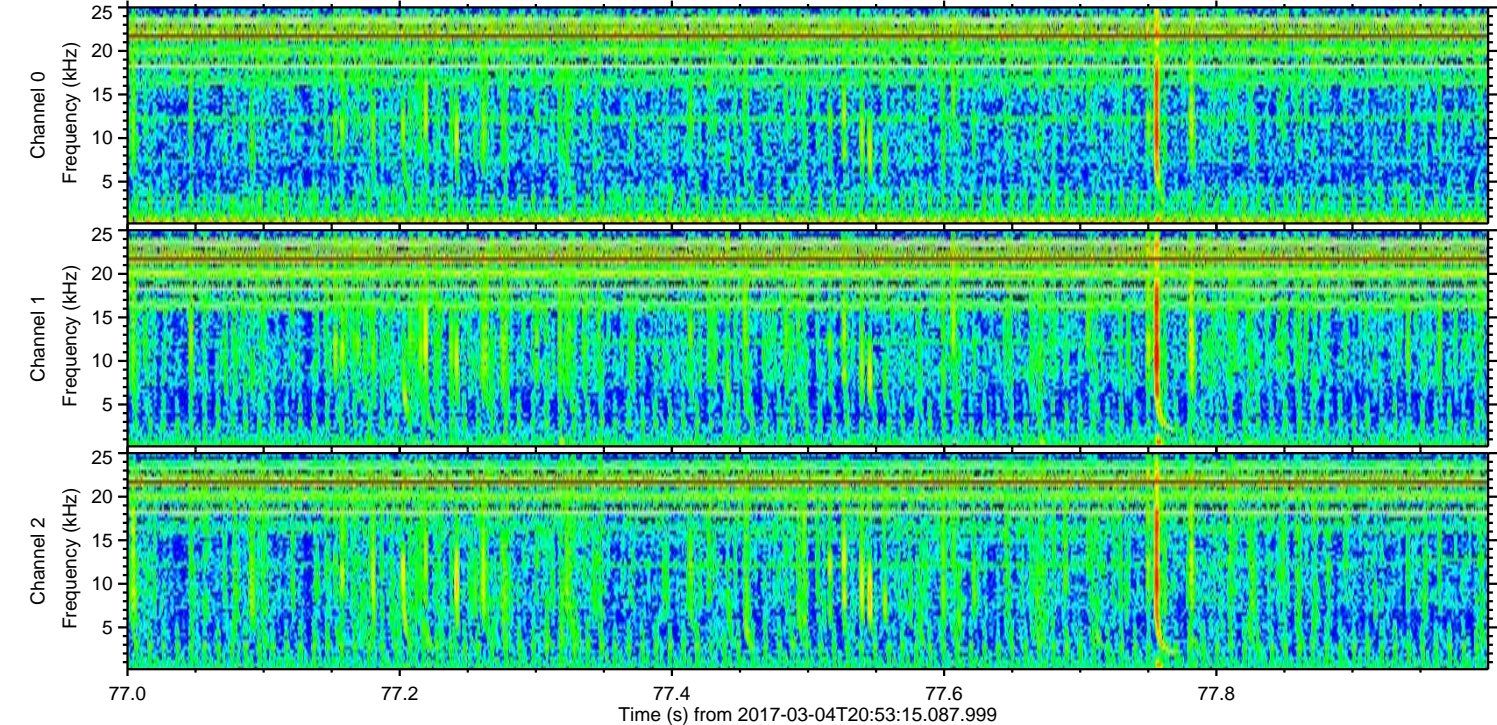
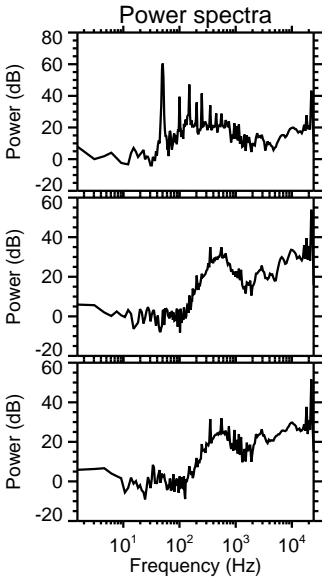
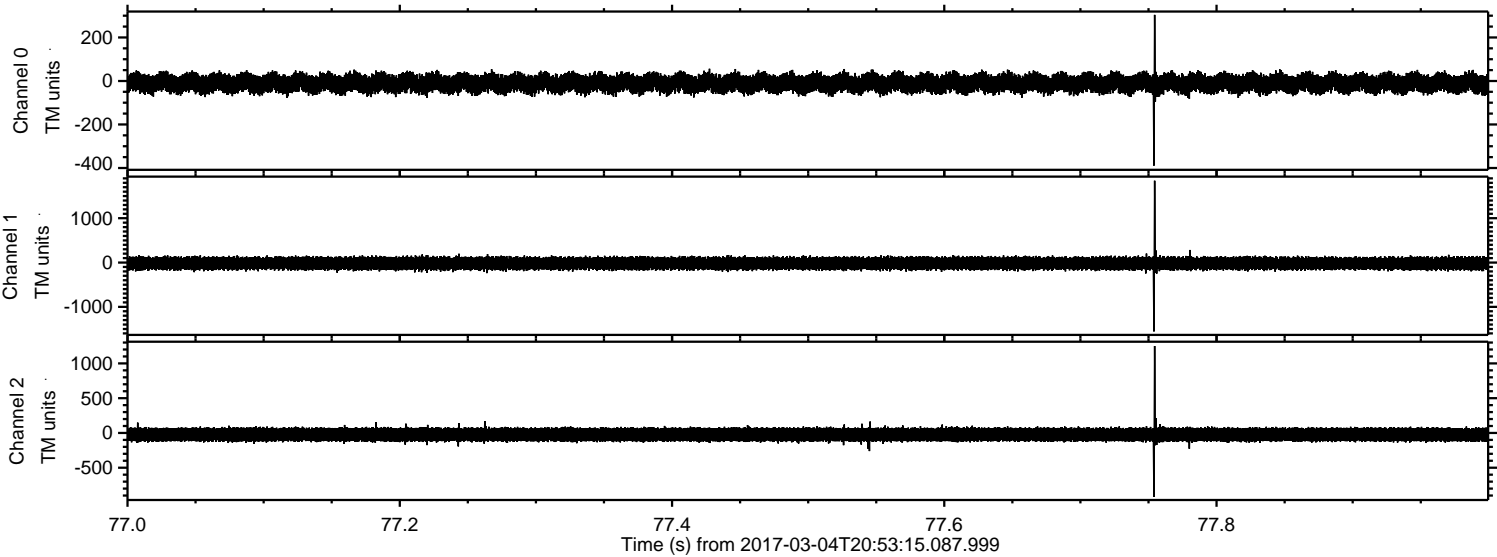


Processed Sat Mar 4 22:00:49 2017 by ELM ver.2012-10-06 from 001__elm20170304_205314__dat00.bin



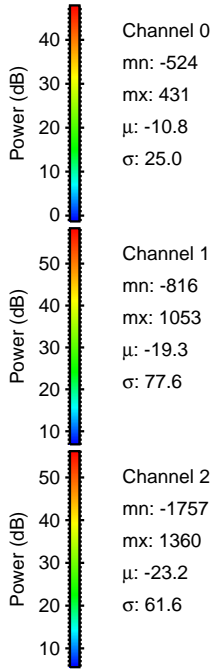
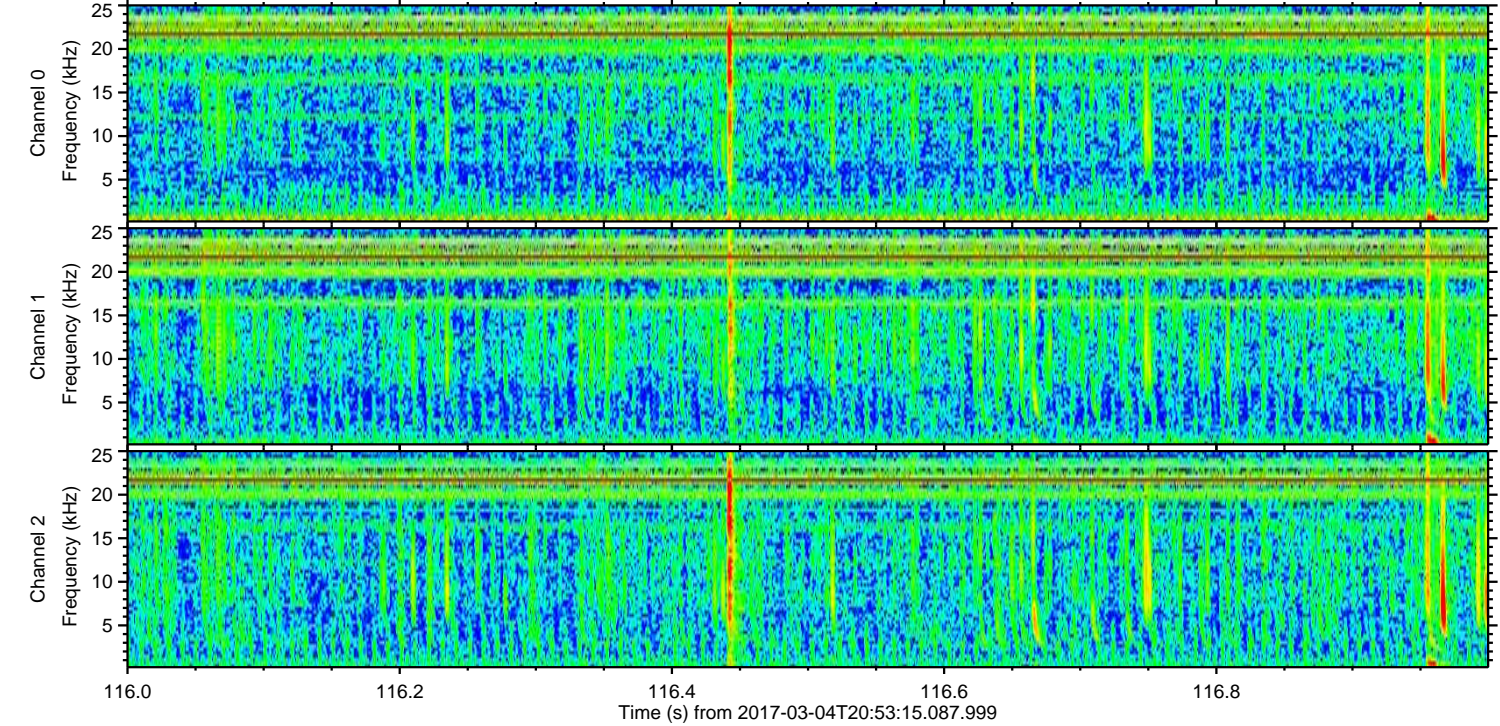
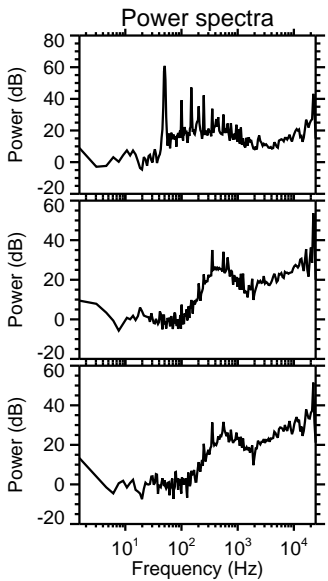
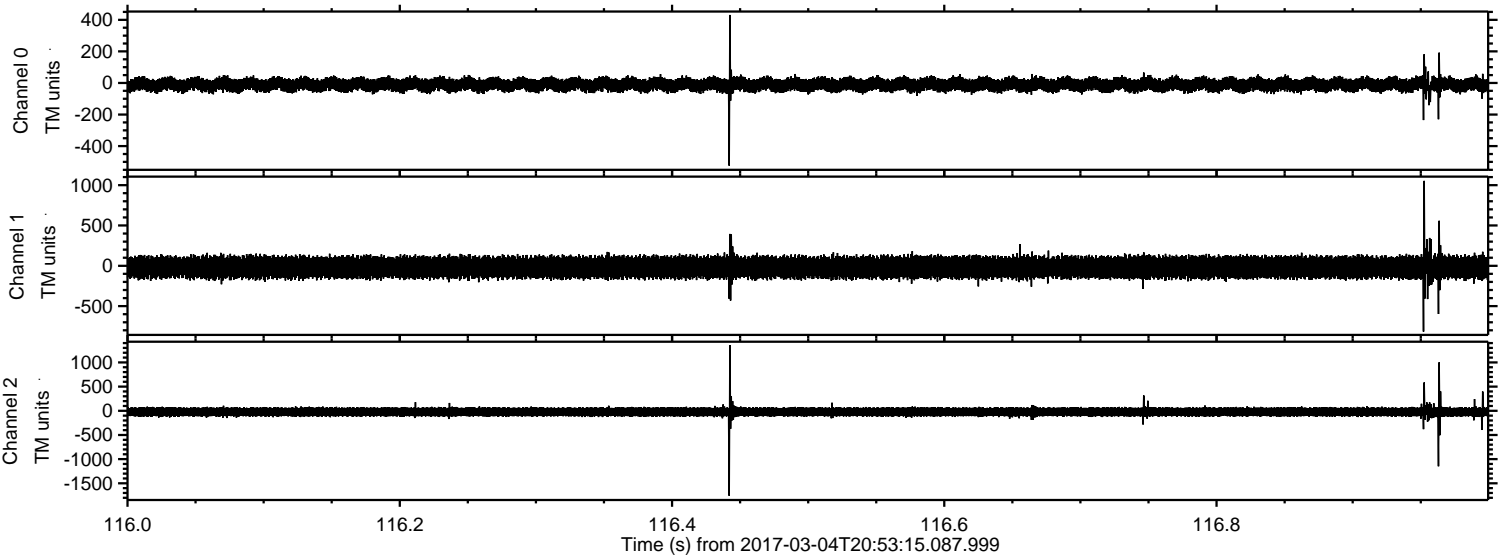
ELMAVAN 3D WAVEFORMS (Measured data sampled at 50 kHz) 51000 packets of 144 samples from 2017-03-04T20:53:15.087.999. Part 78/147

Processed Sat Mar 4 22:00:50 2017 by ELM ver.2012-10-06 from 001__elm20170304_205314__dat00.bin



ELMAVAN 3D WAVEFORMS (Measured data sampled at 50 kHz) 51000 packets of 144 samples from 2017-03-04T20:53:15.087.999. Part 117/147

Processed Sat Mar 4 22:00:51 2017 by ELM ver.2012-10-06 from 001__elm20170304_205314__dat00.bin

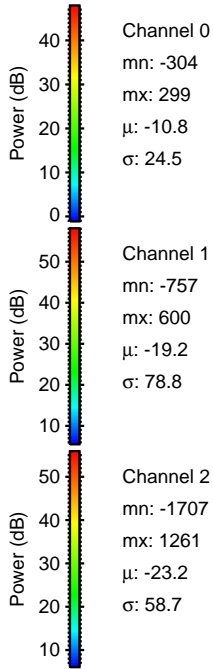
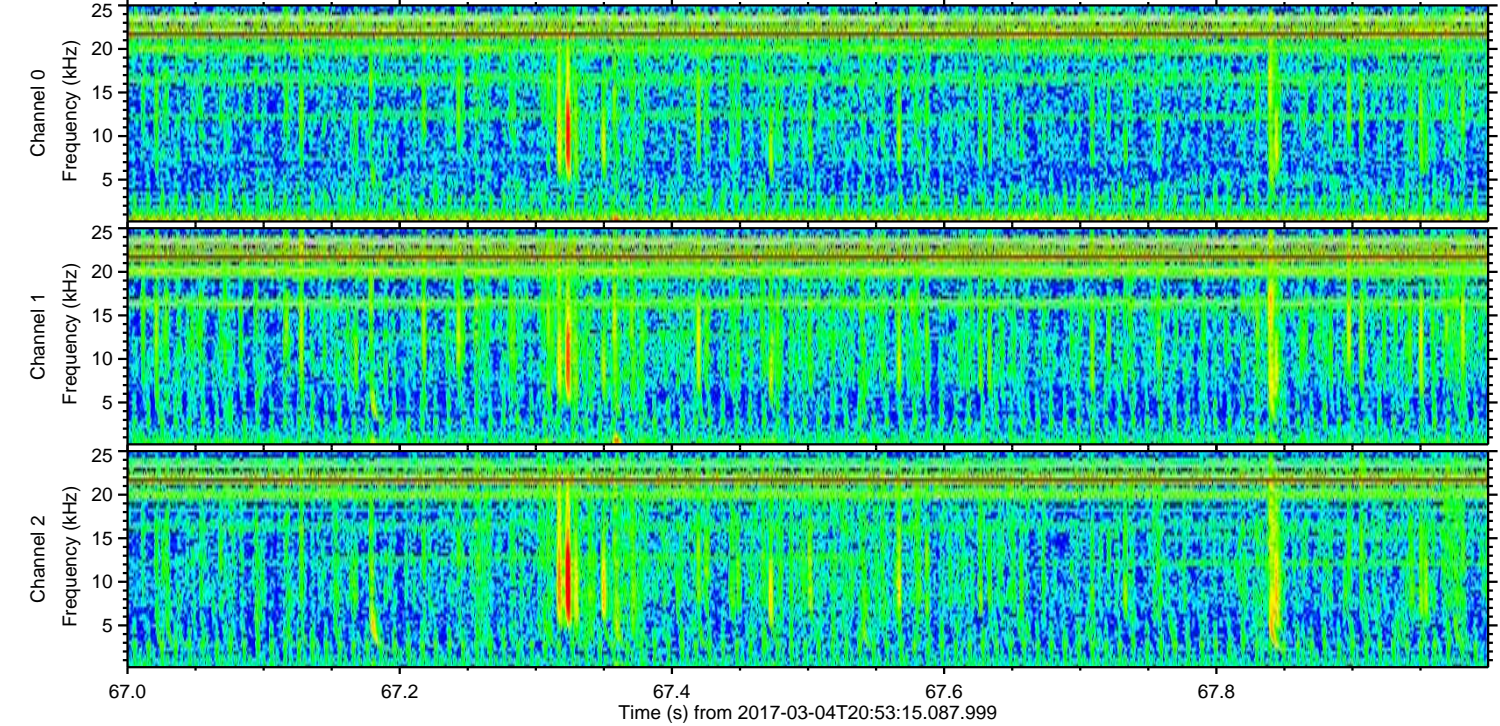
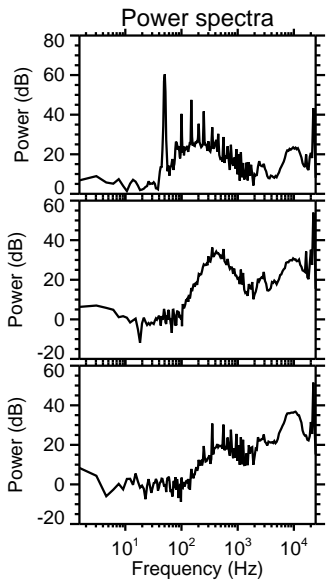
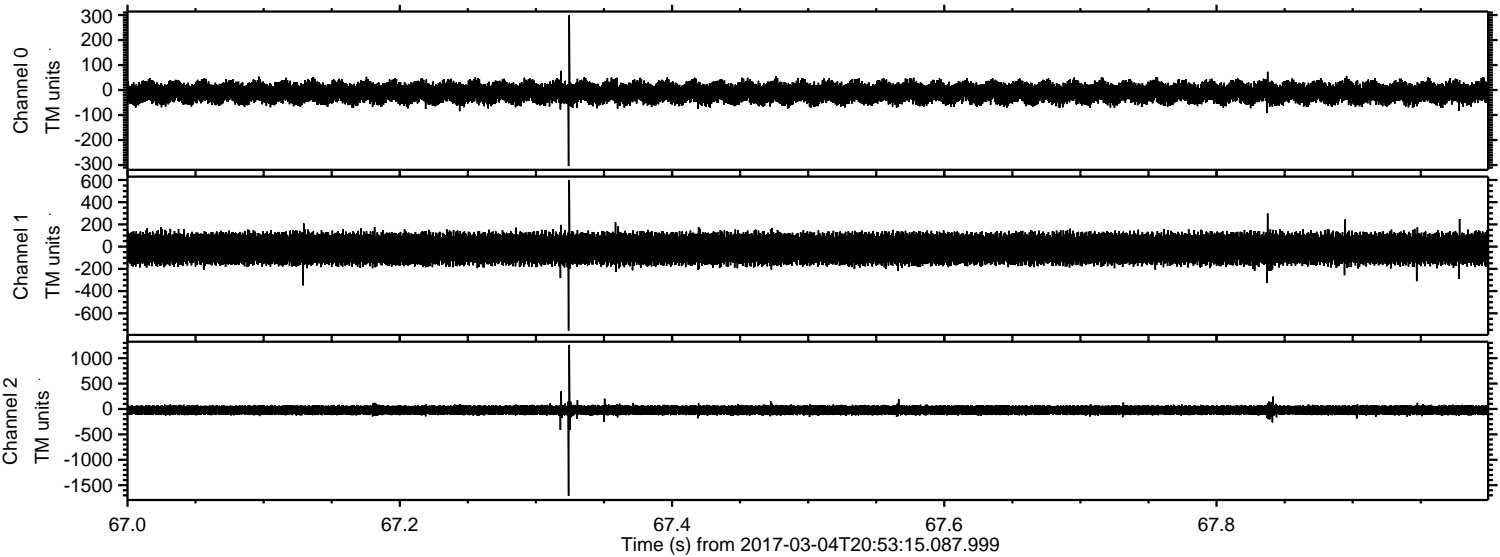


Channel 0
mn: -524
mx: 431
 μ : -10.8
 σ : 25.0

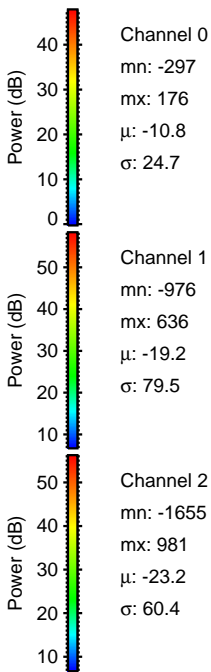
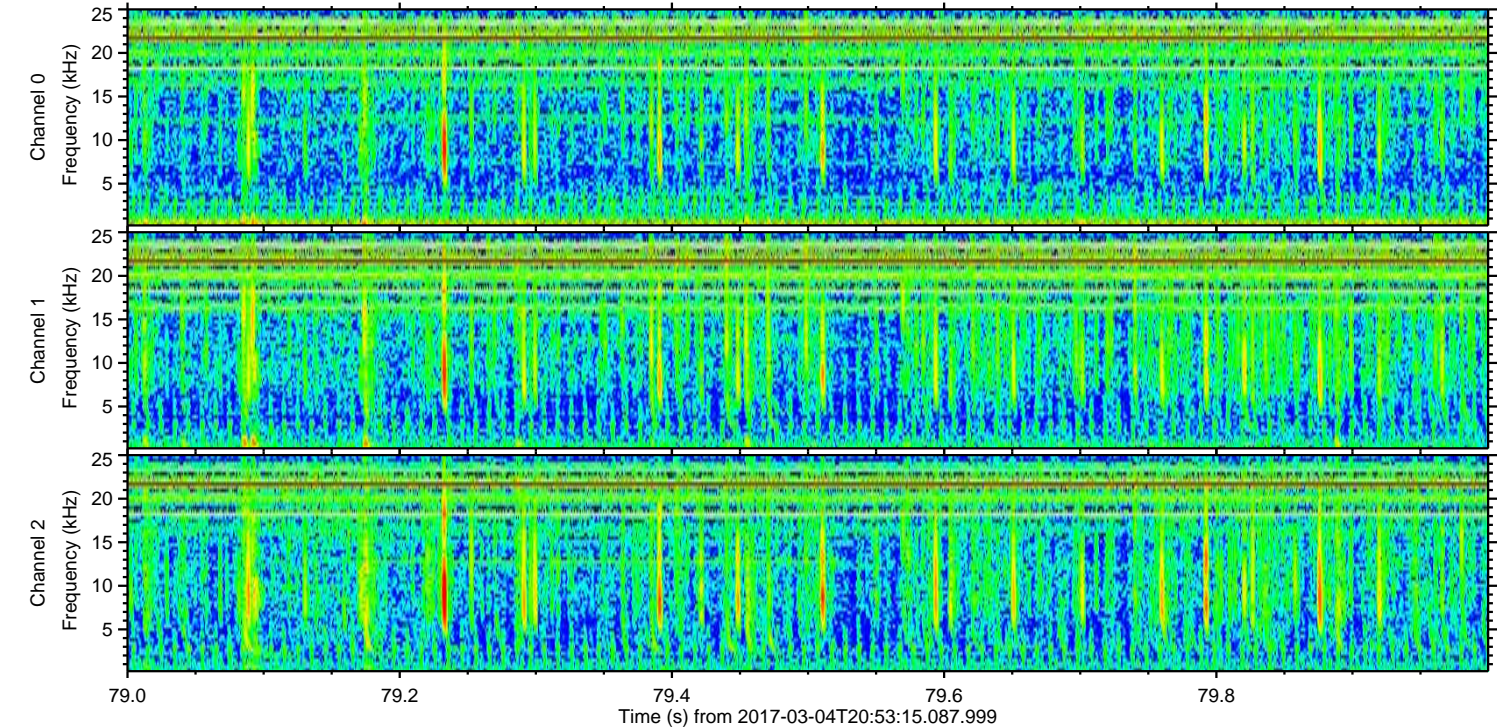
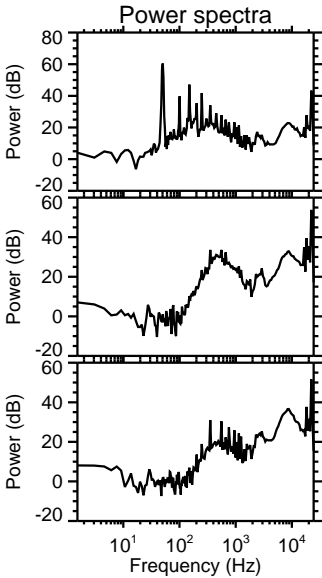
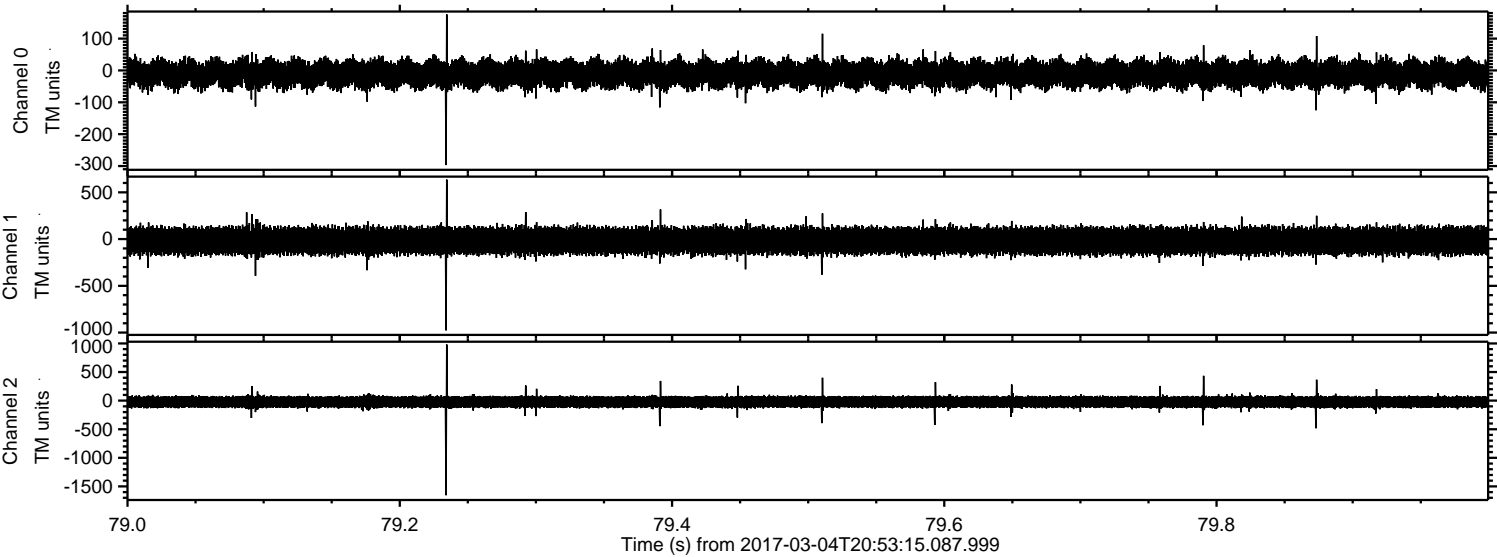
Channel 1
mn: -816
mx: 1053
 μ : -19.3
 σ : 77.6

Channel 2
mn: -1757
mx: 1360
 μ : -23.2
 σ : 61.6

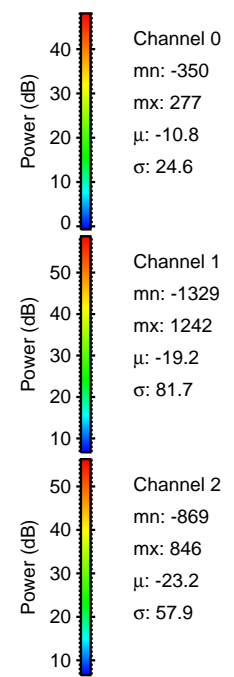
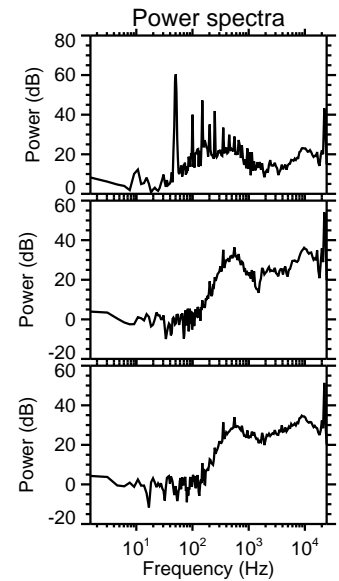
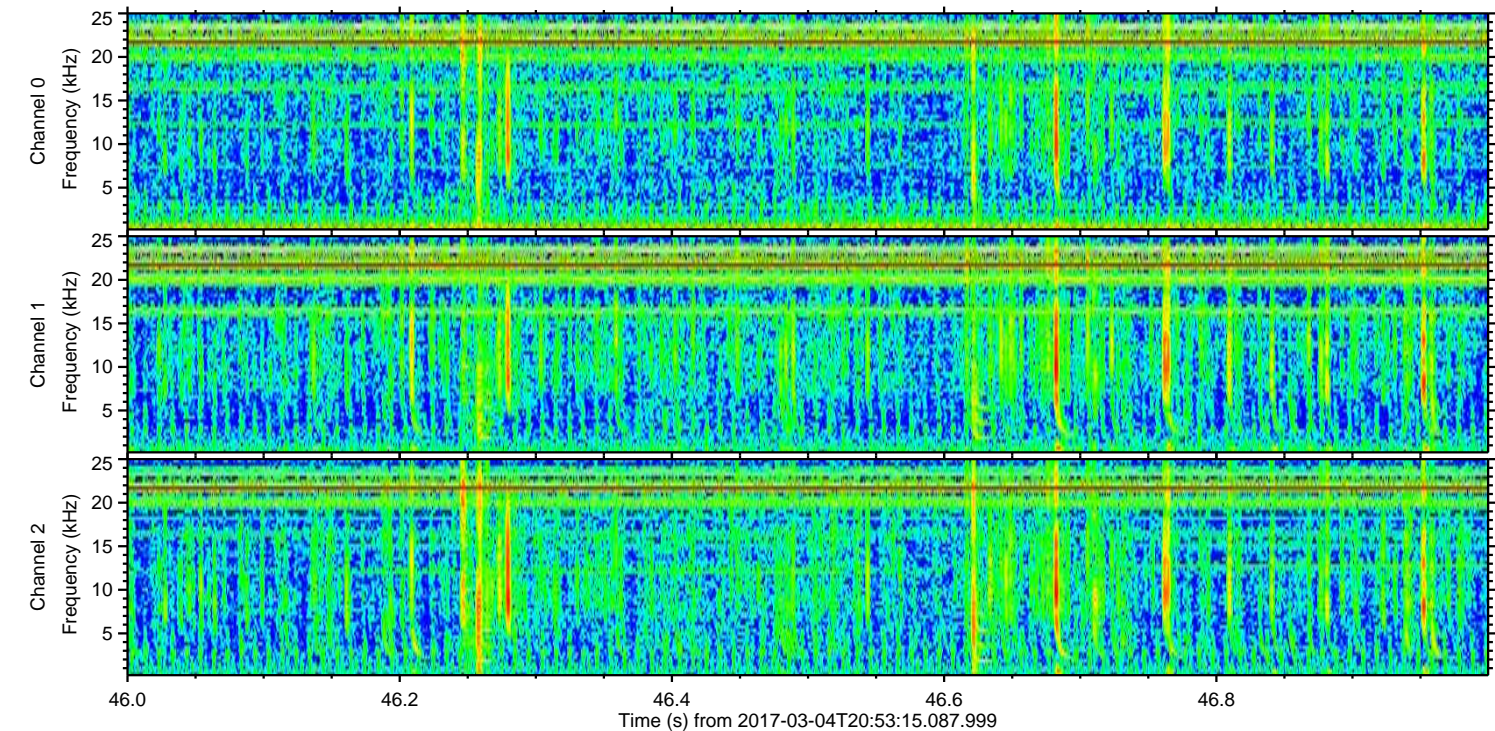
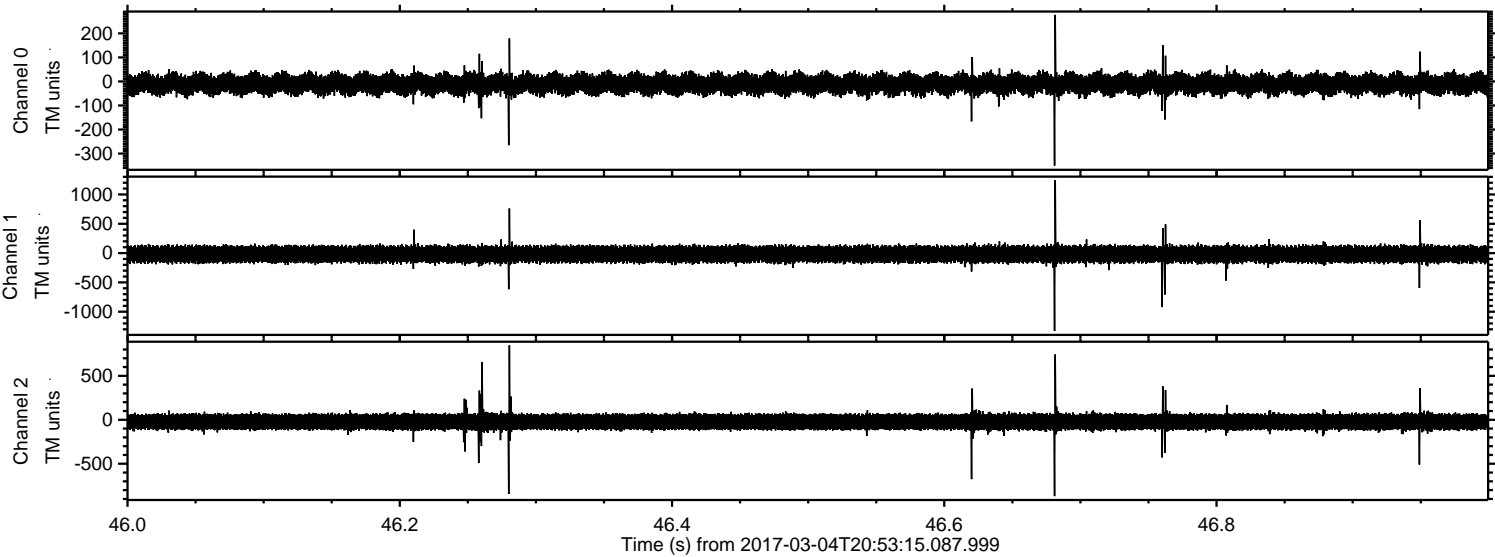
Processed Sat Mar 4 22:00:52 2017 by ELM ver.2012-10-06 from 001__elm20170304_205314__dat00.bin



Processed Sat Mar 4 22:00:53 2017 by ELM ver.2012-10-06 from 001__elm20170304_205314__dat00.bin



Processed Sat Mar 4 22:00:54 2017 by ELM ver.2012-10-06 from 001__elm20170304_205314__dat00.bin



Channel 0
mn: -350
mx: 277
 μ : -10.8
 σ : 24.6

Channel 1
mn: -1329
mx: 1242
 μ : -19.2
 σ : 81.7

Channel 2
mn: -869
mx: 846
 μ : -23.2
 σ : 57.9

ELMAVAN 3D WAVEFORMS (Measured data sampled at 50 kHz) 51000 packets of 144 samples from 2017-03-04T20:53:15.087.999. Part 144/147

