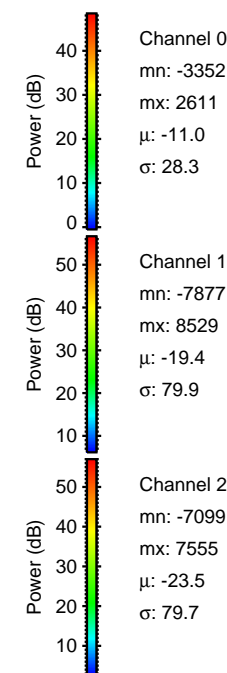
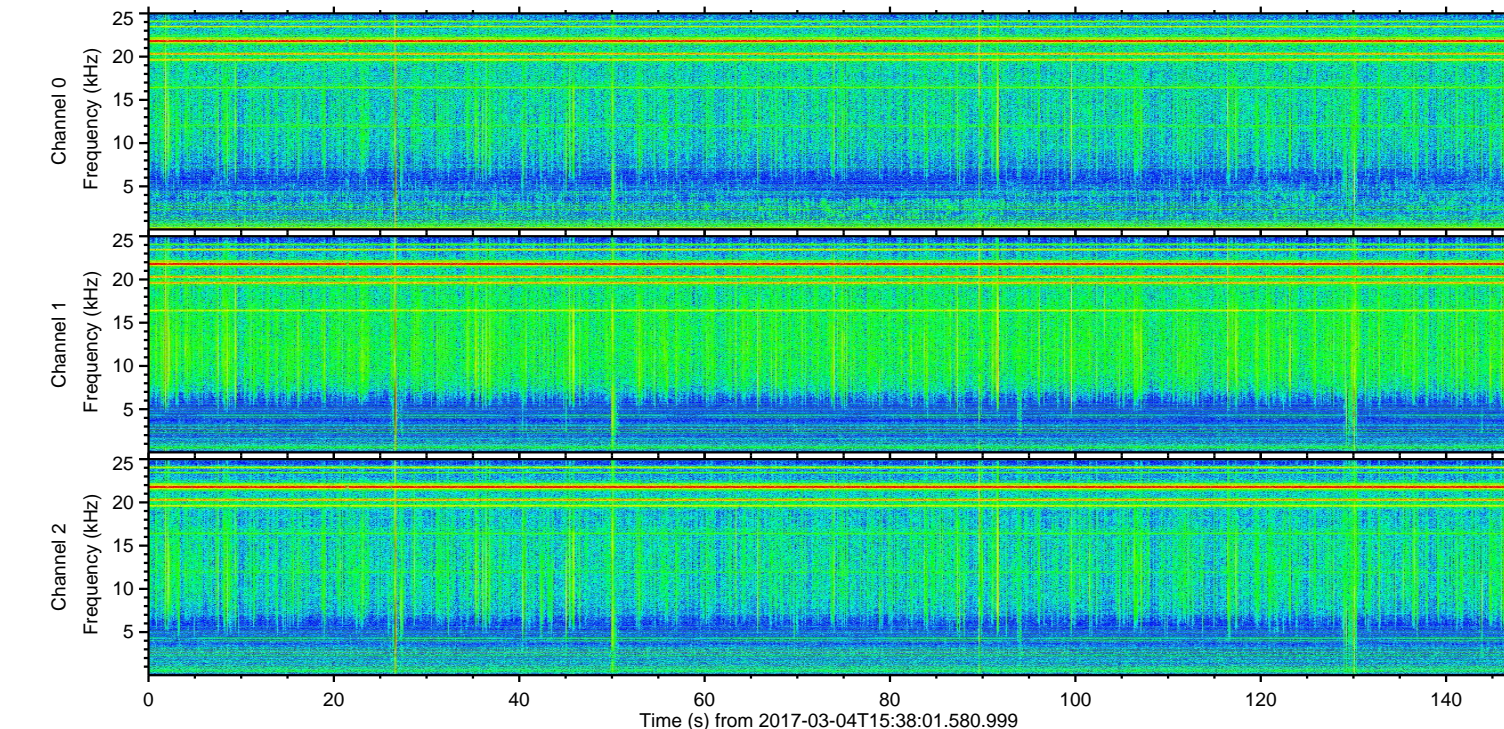
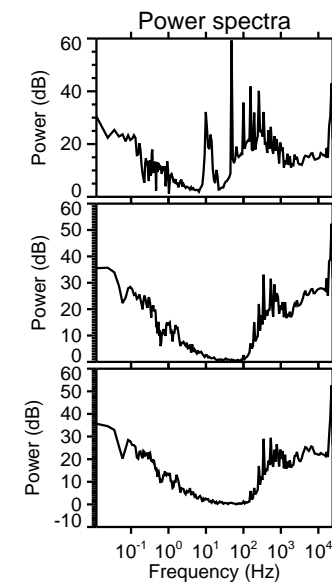
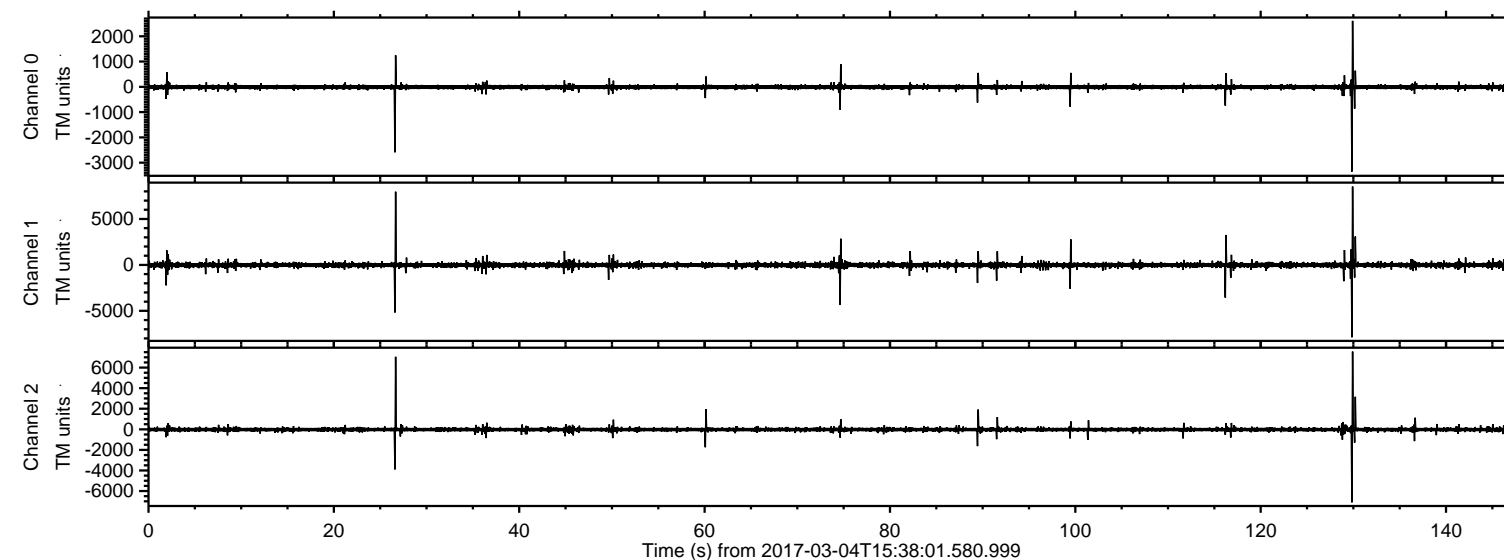


# ELMAVAN 3D WAVEFORMS (Measured data sampled at 50 kHz) 51000 packets of 144 samples from 2017-03-04T15:38:01.580.999.

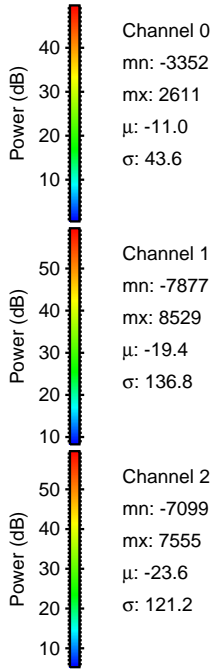
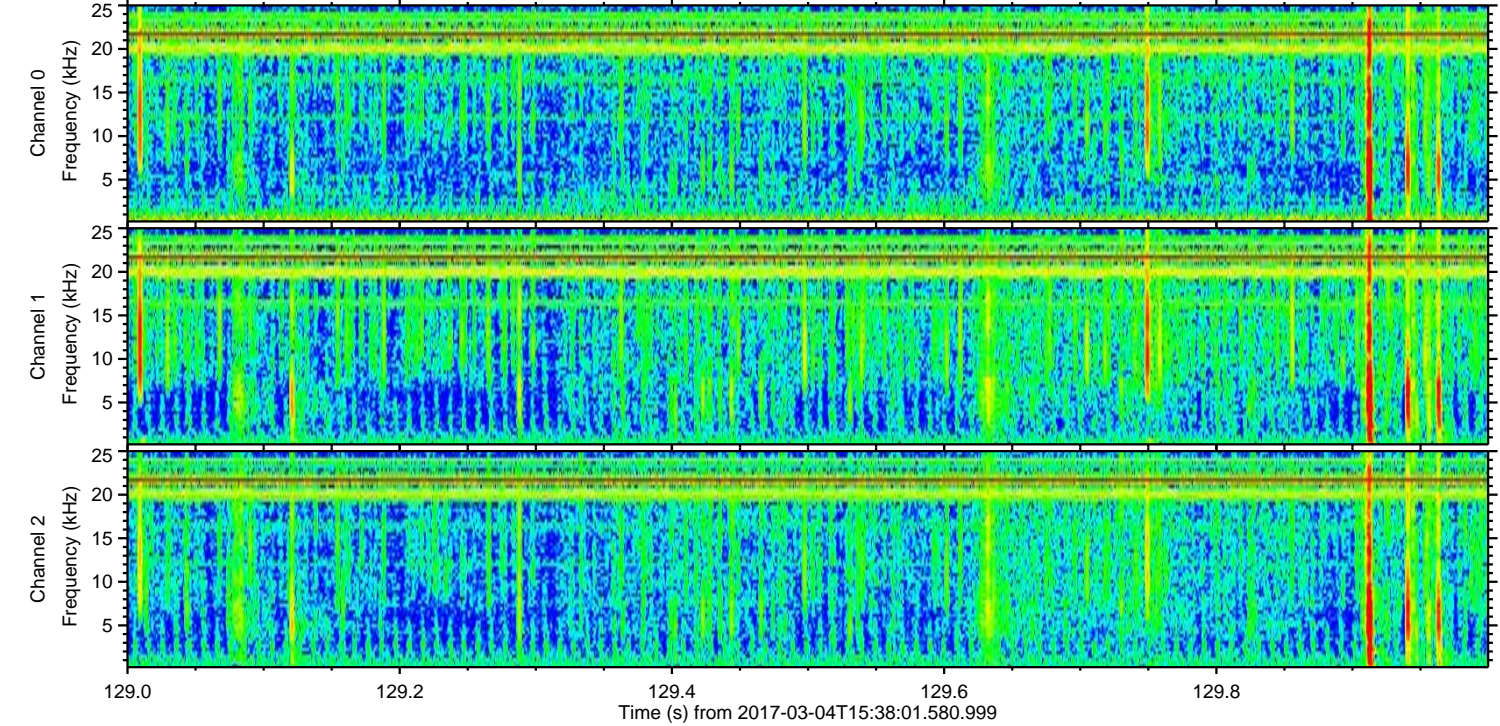
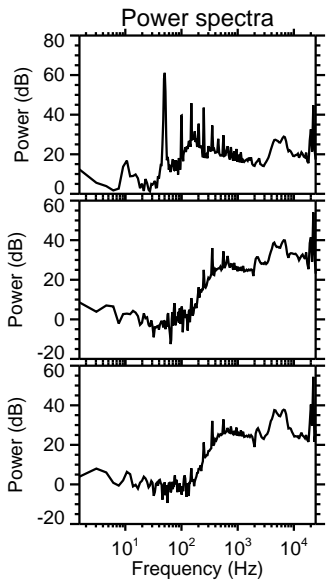
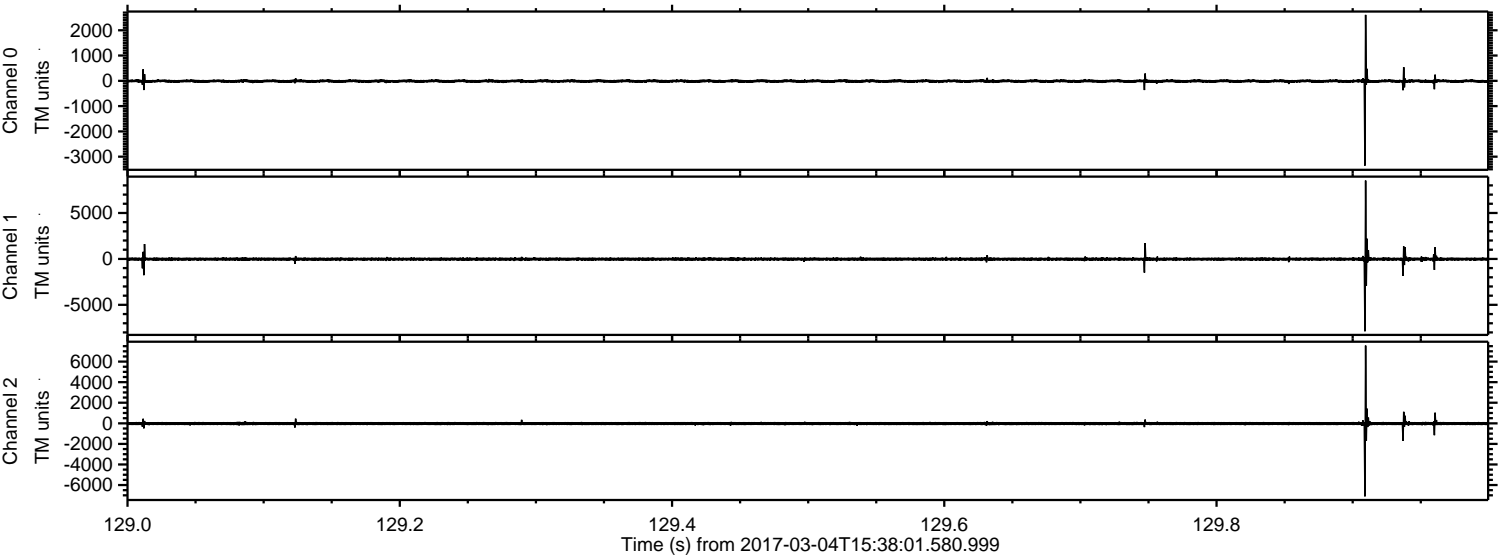
Processed Sat Mar 4 16:45:49 2017 by ELM ver.2012-10-06 from 001\_\_elm20170304\_153800\_\_dat00.bin





ELMAVAN 3D WAVEFORMS (Measured data sampled at 50 kHz) 51000 packets of 144 samples from 2017-03-04T15:38:01.580.999. Part 130/147

Processed Sat Mar 4 16:46:01 2017 by ELM ver.2012-10-06 from 001\_\_elm20170304\_153800\_\_dat00.bin



Channel 0  
mn: -3352  
mx: 2611  
 $\mu$ : -11.0  
 $\sigma$ : 43.6

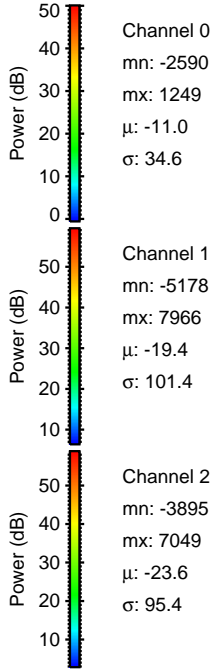
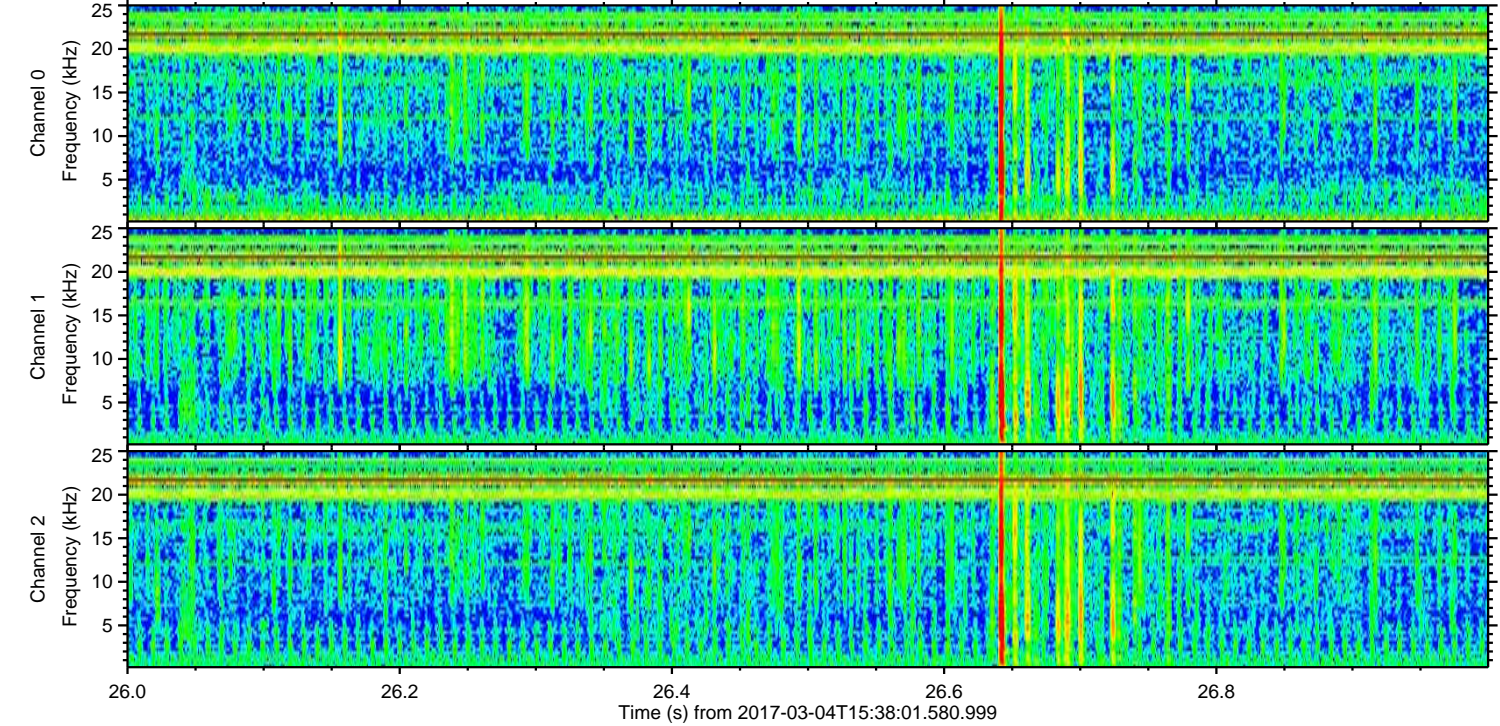
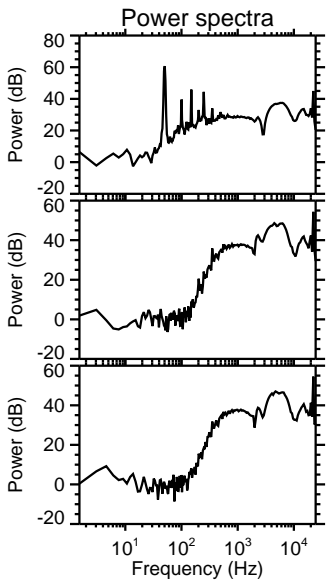
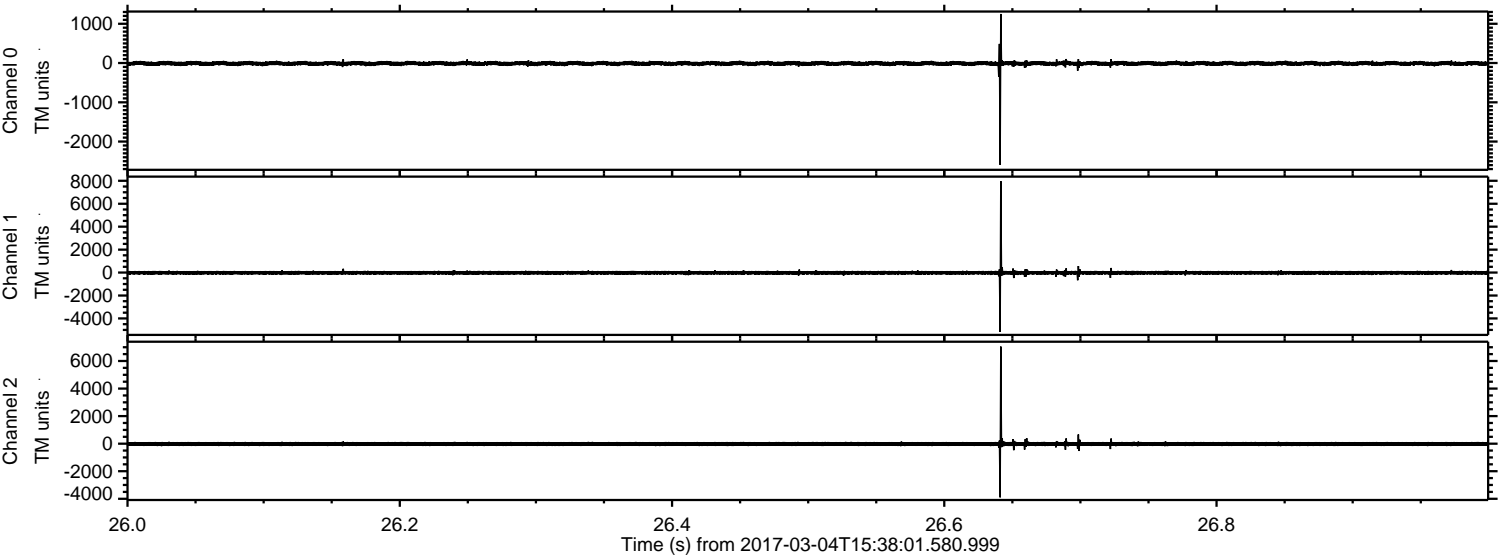
Channel 1  
mn: -7877  
mx: 8529  
 $\mu$ : -19.4  
 $\sigma$ : 136.8

Channel 2  
mn: -7099  
mx: 7555  
 $\mu$ : -23.6  
 $\sigma$ : 121.2



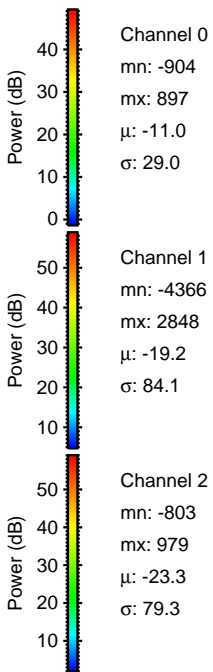
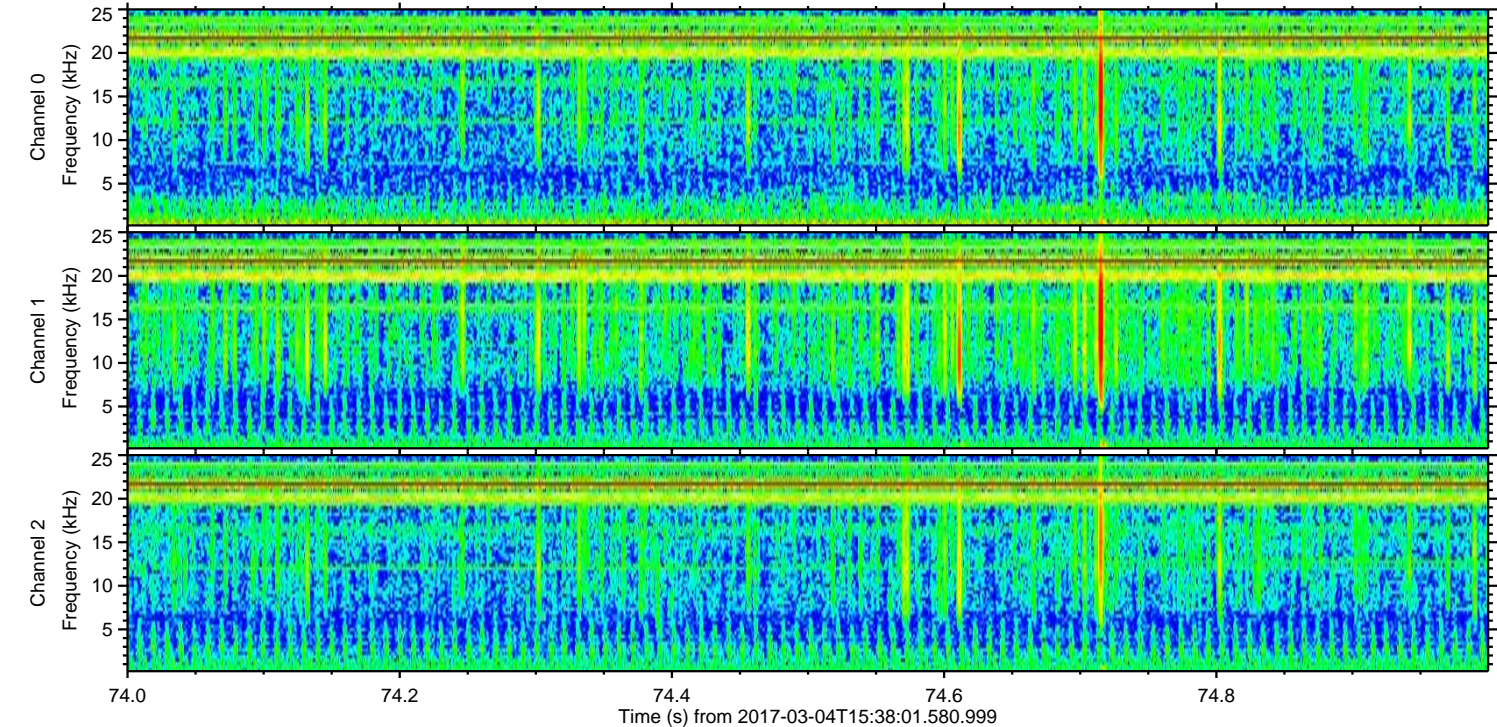
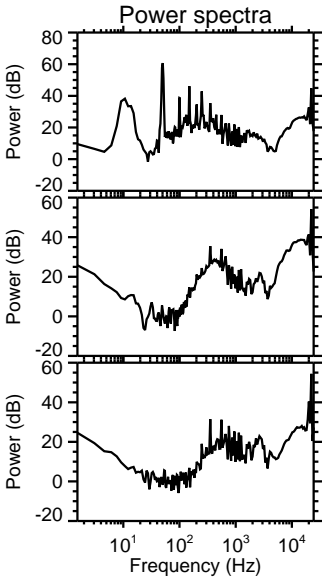
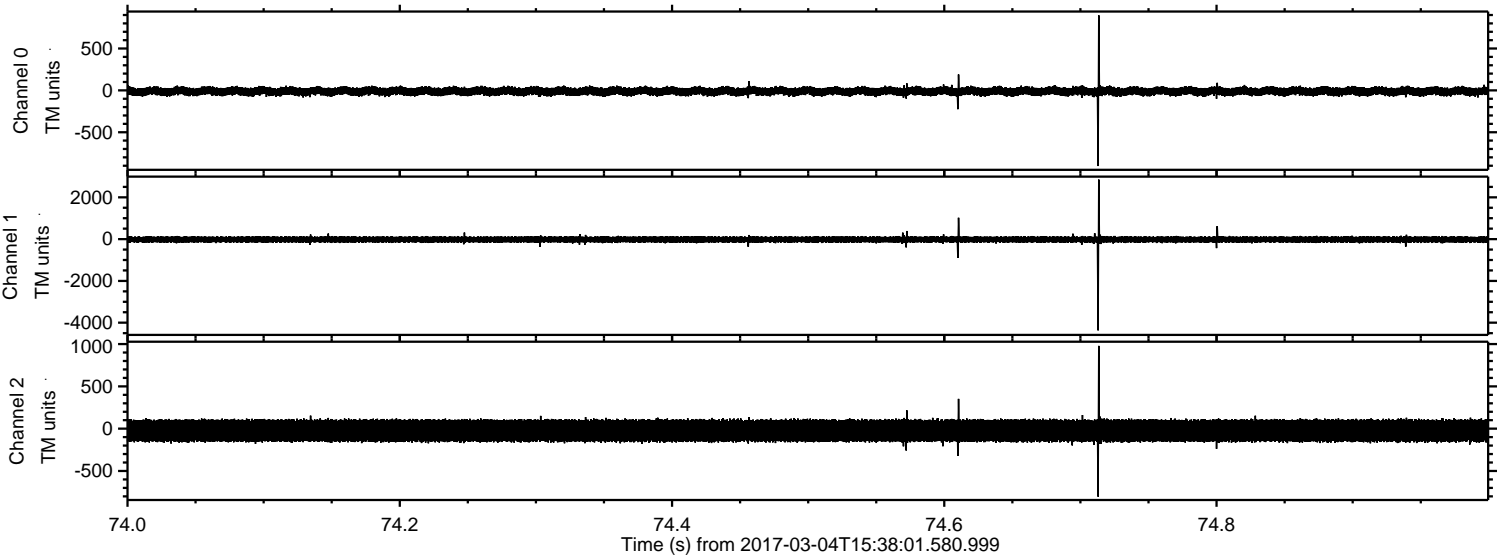
ELMAVAN 3D WAVEFORMS (Measured data sampled at 50 kHz) 51000 packets of 144 samples from 2017-03-04T15:38:01.580.999. Part 27/147

Processed Sat Mar 4 16:46:02 2017 by ELM ver.2012-10-06 from 001\_\_elm20170304\_153800\_\_dat00.bin





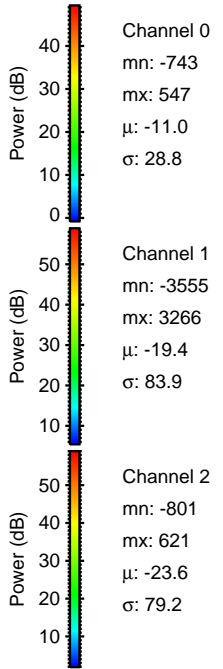
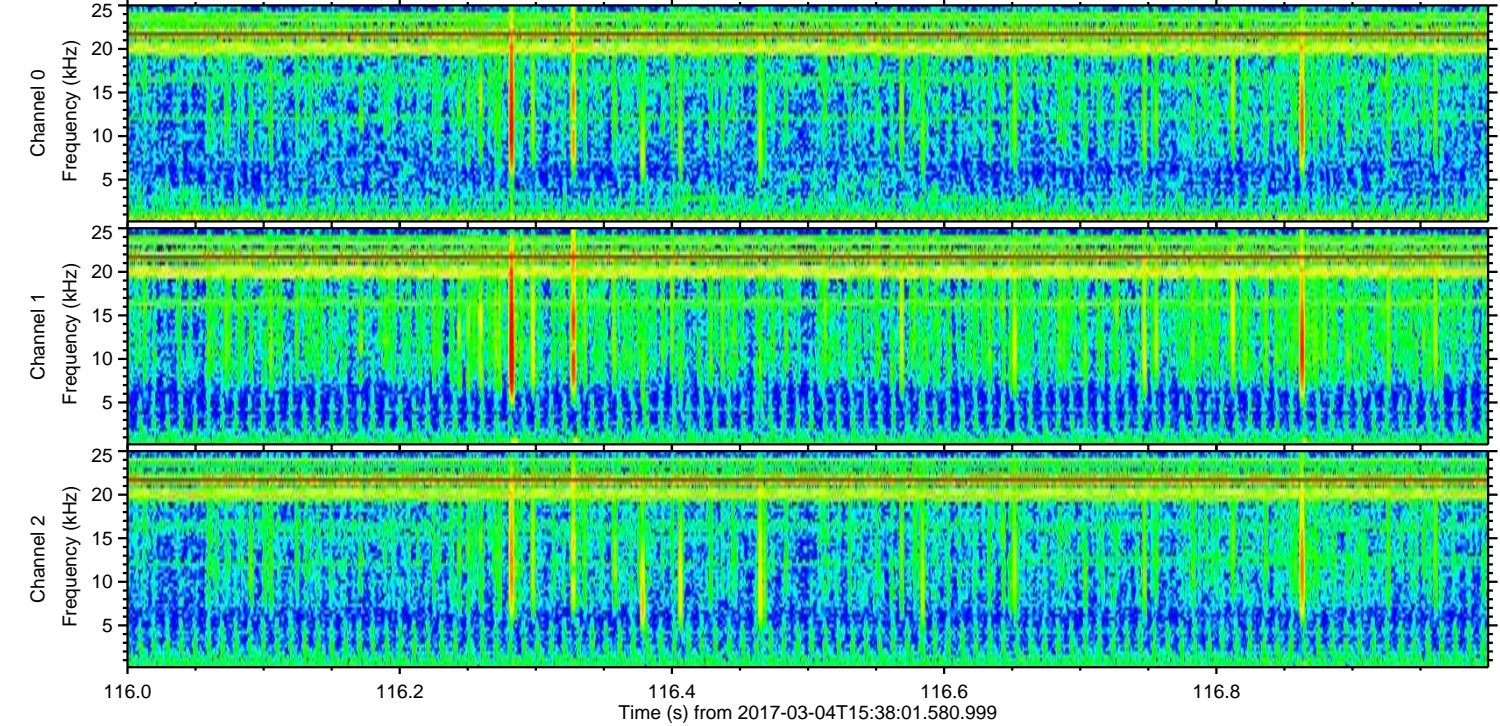
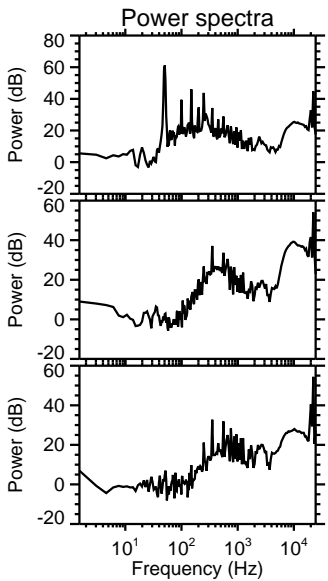
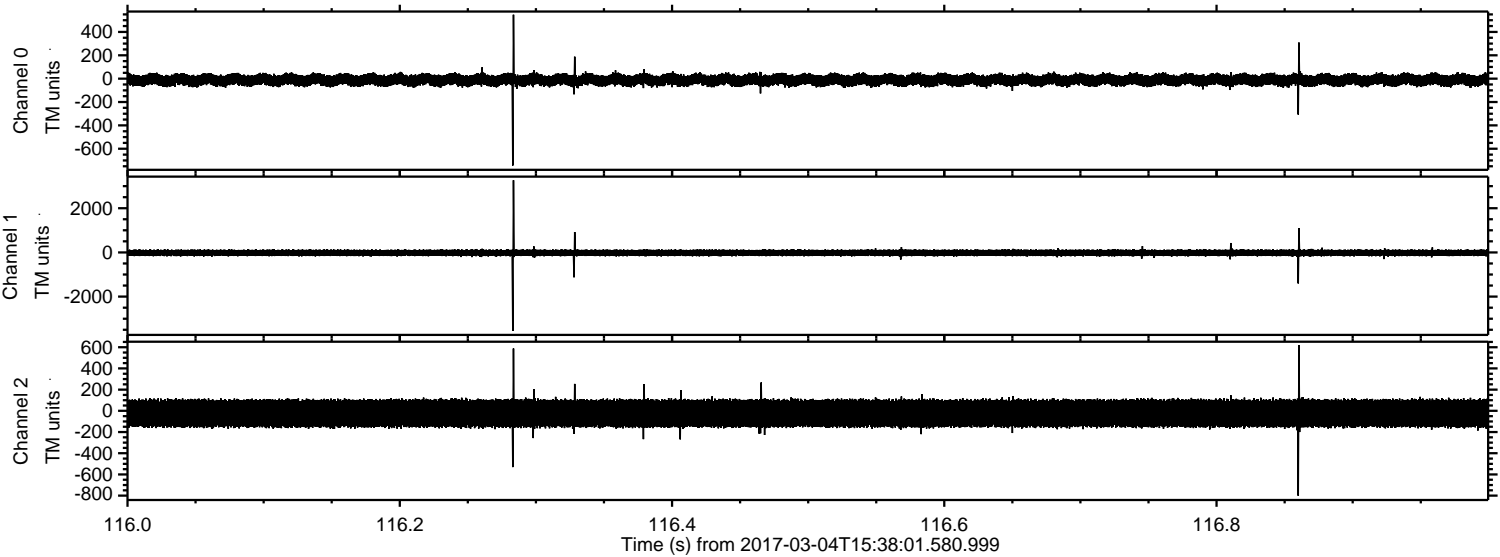
Processed Sat Mar 4 16:46:03 2017 by ELM ver.2012-10-06 from 001\_\_elm20170304\_153800\_\_dat00.bin





ELMAVAN 3D WAVEFORMS (Measured data sampled at 50 kHz) 51000 packets of 144 samples from 2017-03-04T15:38:01.580.999. Part 117/147

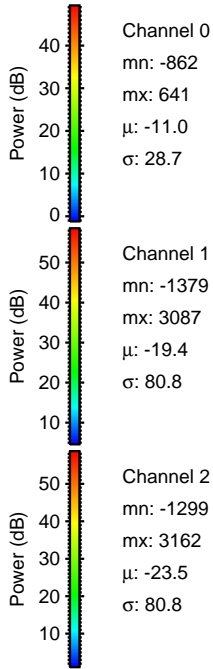
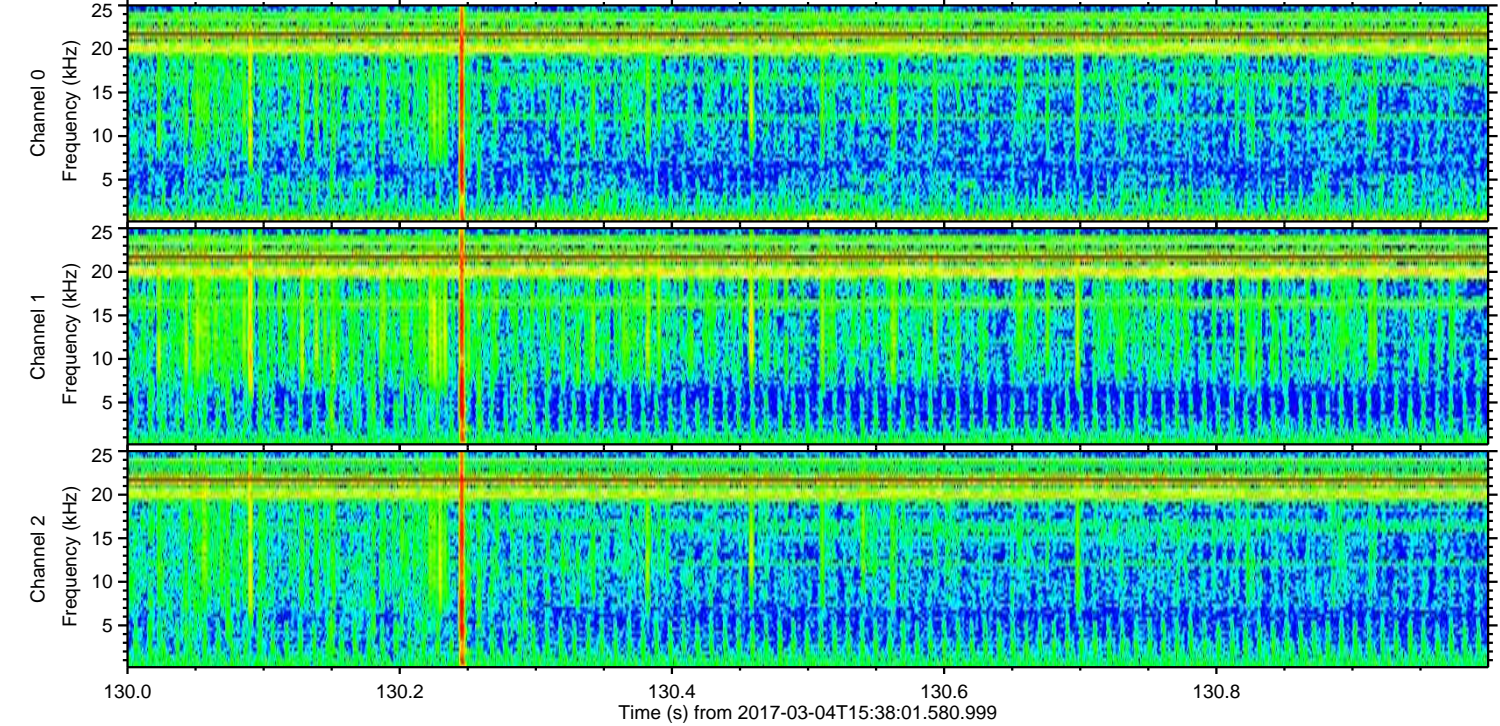
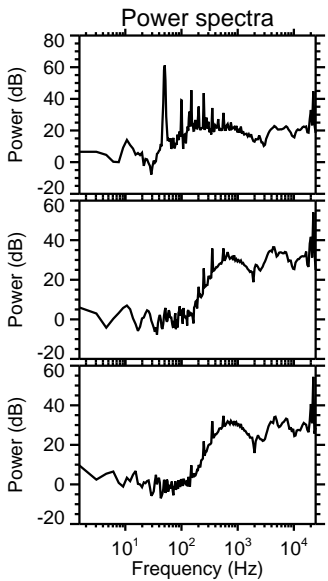
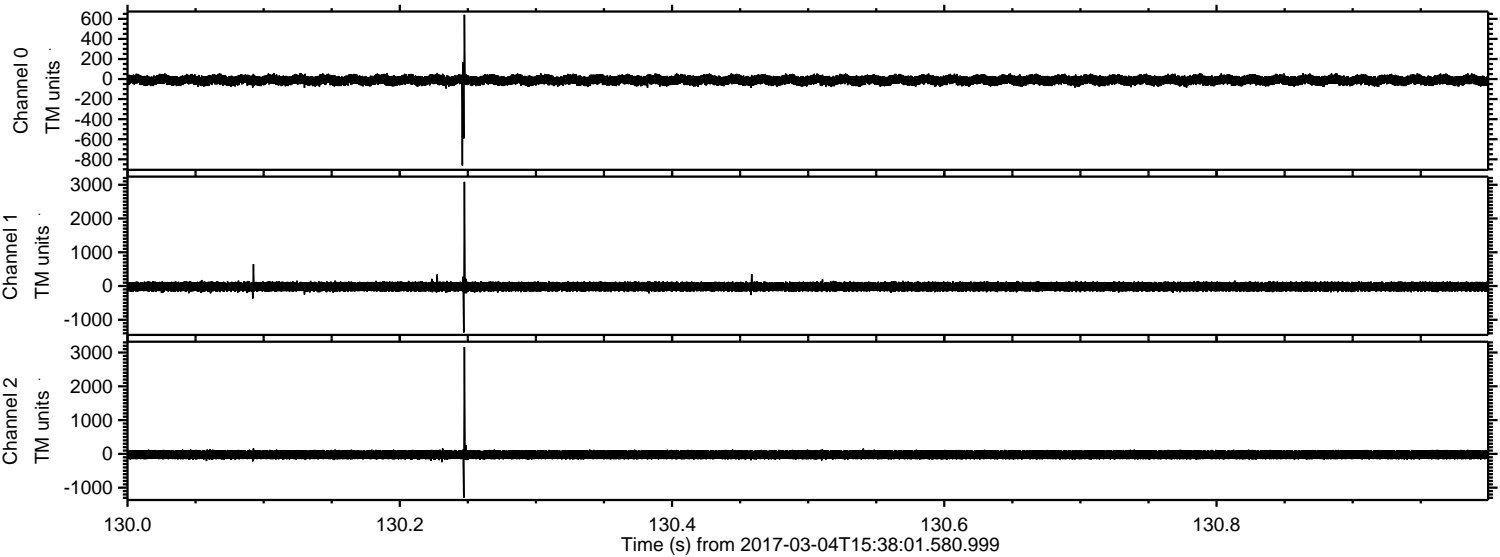
Processed Sat Mar 4 16:46:04 2017 by ELM ver.2012-10-06 from 001\_\_elm20170304\_153800\_\_dat00.bin





ELMAVAN 3D WAVEFORMS (Measured data sampled at 50 kHz) 51000 packets of 144 samples from 2017-03-04T15:38:01.580.999. Part 131/147

Processed Sat Mar 4 16:46:05 2017 by ELM ver.2012-10-06 from 001\_\_elm20170304\_153800\_\_dat00.bin



Channel 0  
mn: -862  
mx: 641  
 $\mu$ : -11.0  
 $\sigma$ : 28.7

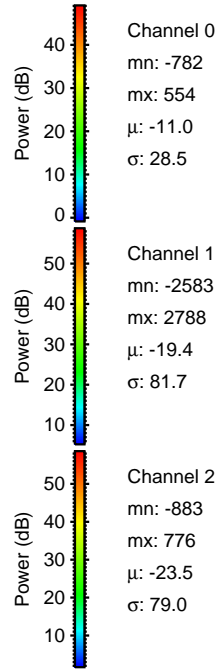
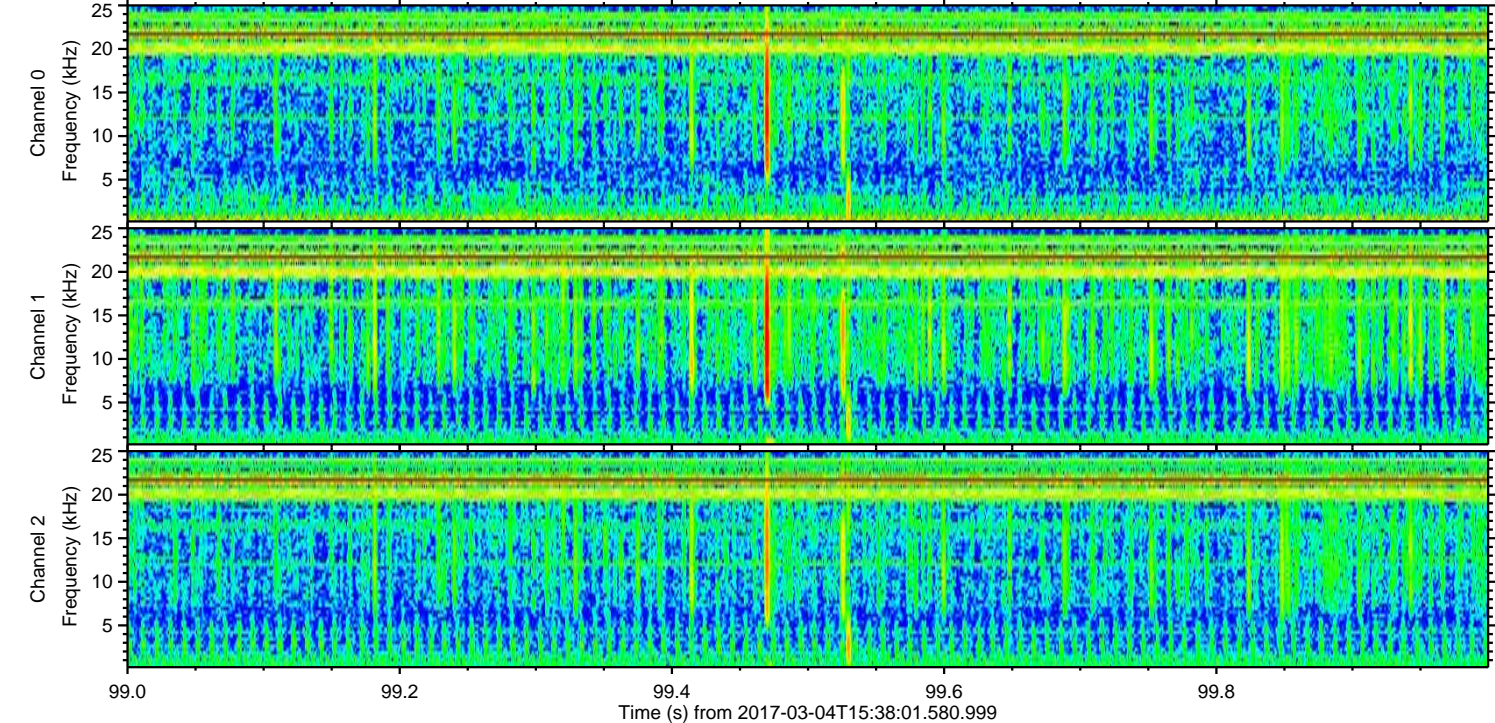
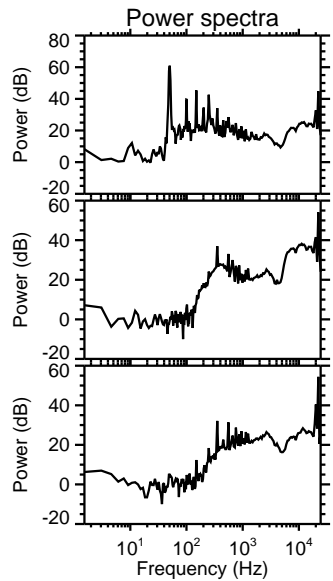
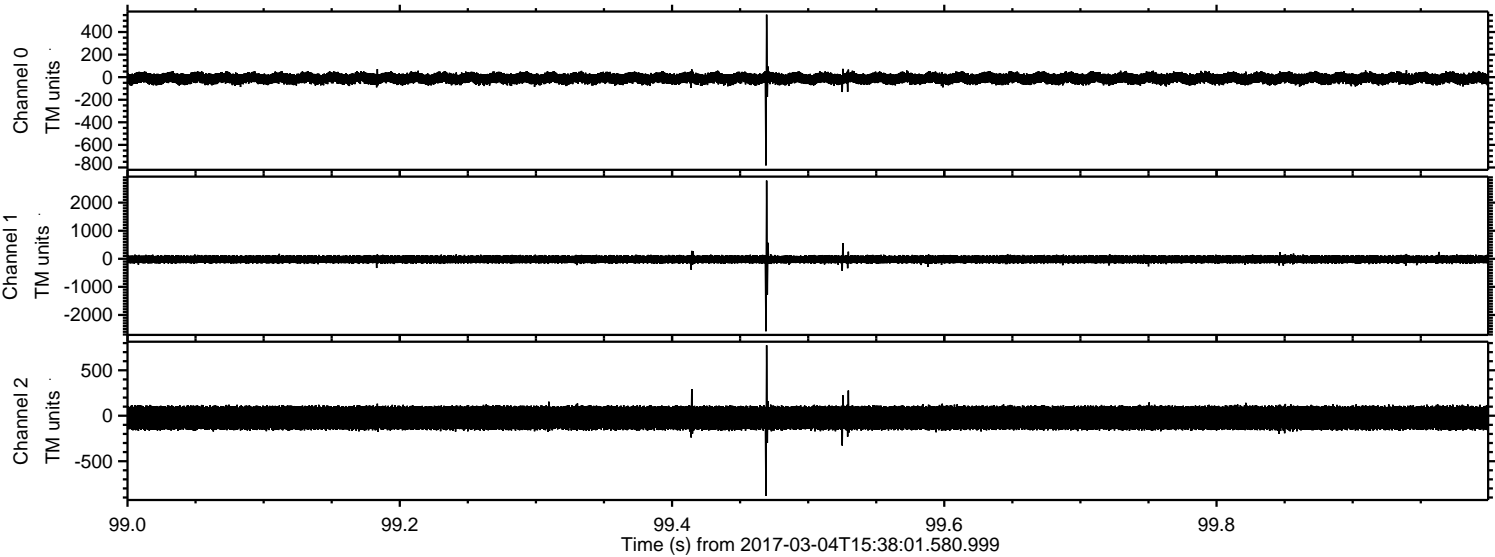
Channel 1  
mn: -1379  
mx: 3087  
 $\mu$ : -19.4  
 $\sigma$ : 80.8

Channel 2  
mn: -1299  
mx: 3162  
 $\mu$ : -23.5  
 $\sigma$ : 80.8



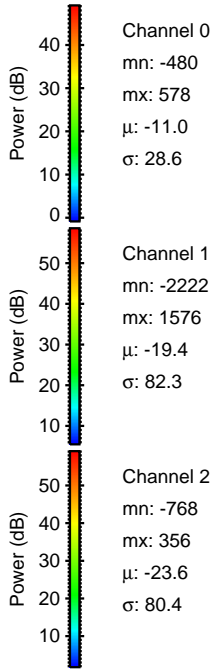
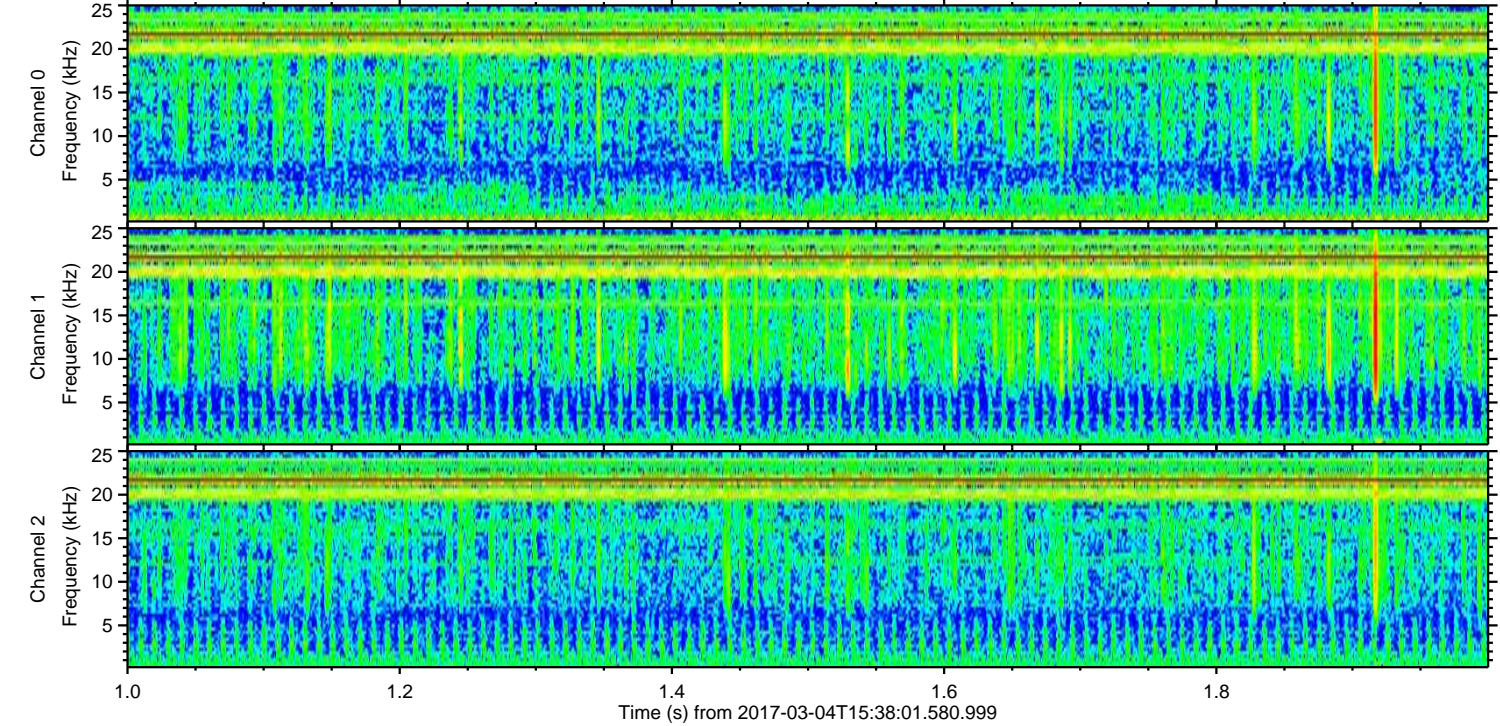
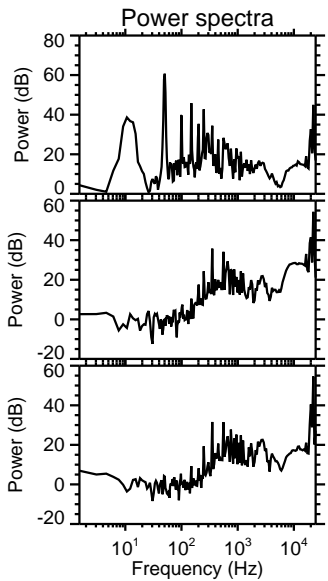
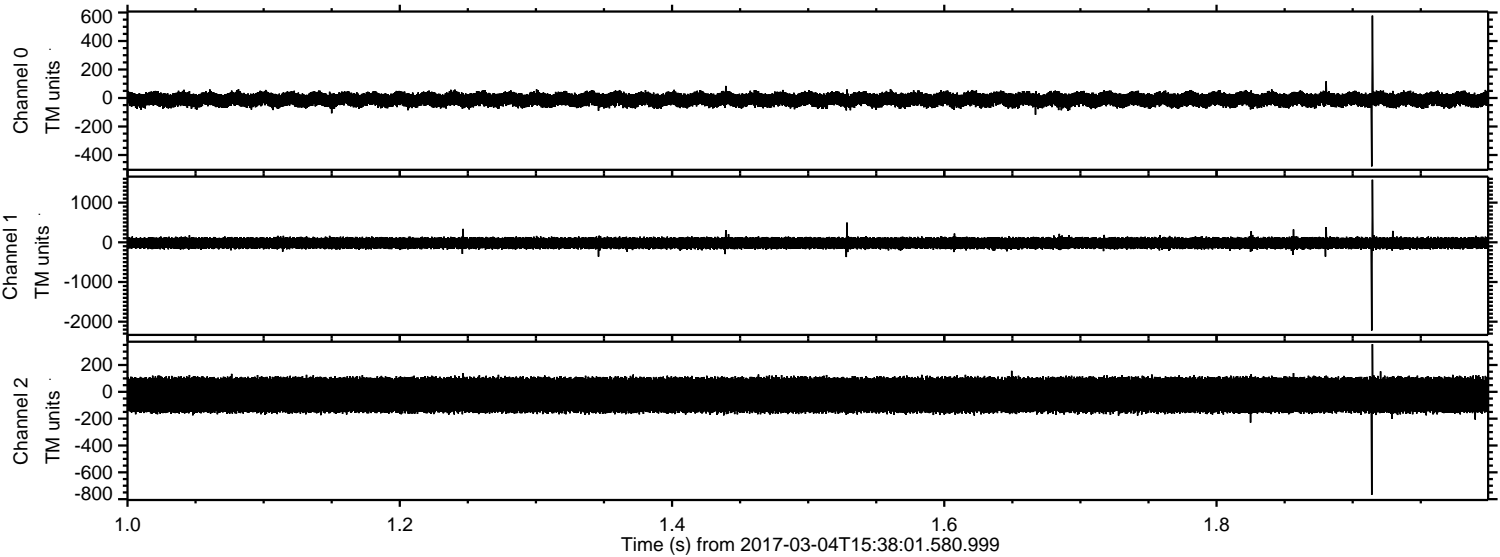
ELMAVAN 3D WAVEFORMS (Measured data sampled at 50 kHz) 51000 packets of 144 samples from 2017-03-04T15:38:01.580.999. Part 100/147

Processed Sat Mar 4 16:46:05 2017 by ELM ver.2012-10-06 from 001\_\_elm20170304\_153800\_\_dat00.bin





Processed Sat Mar 4 16:46:06 2017 by ELM ver.2012-10-06 from 001\_\_elm20170304\_153800\_\_dat00.bin



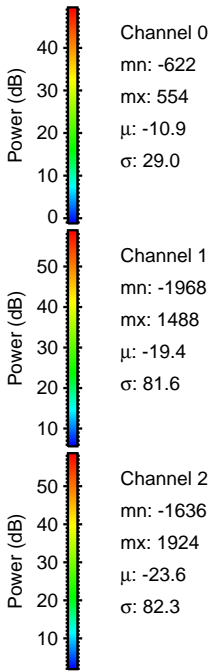
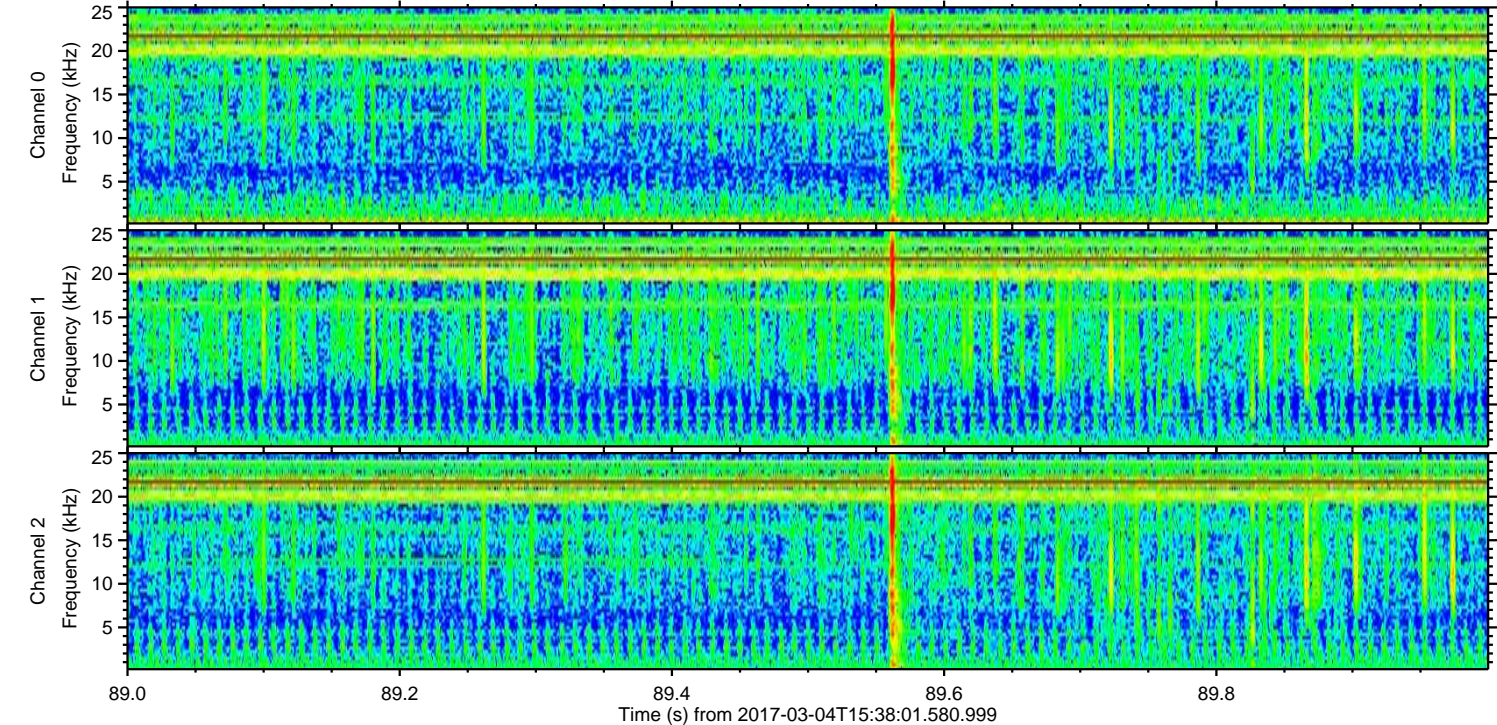
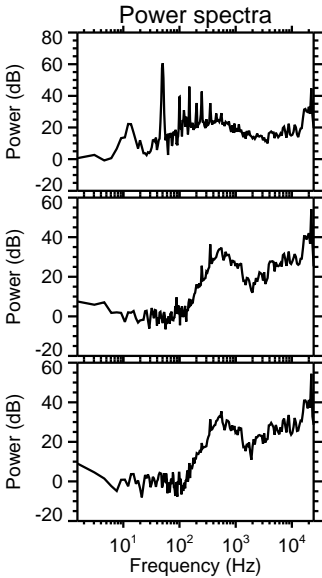
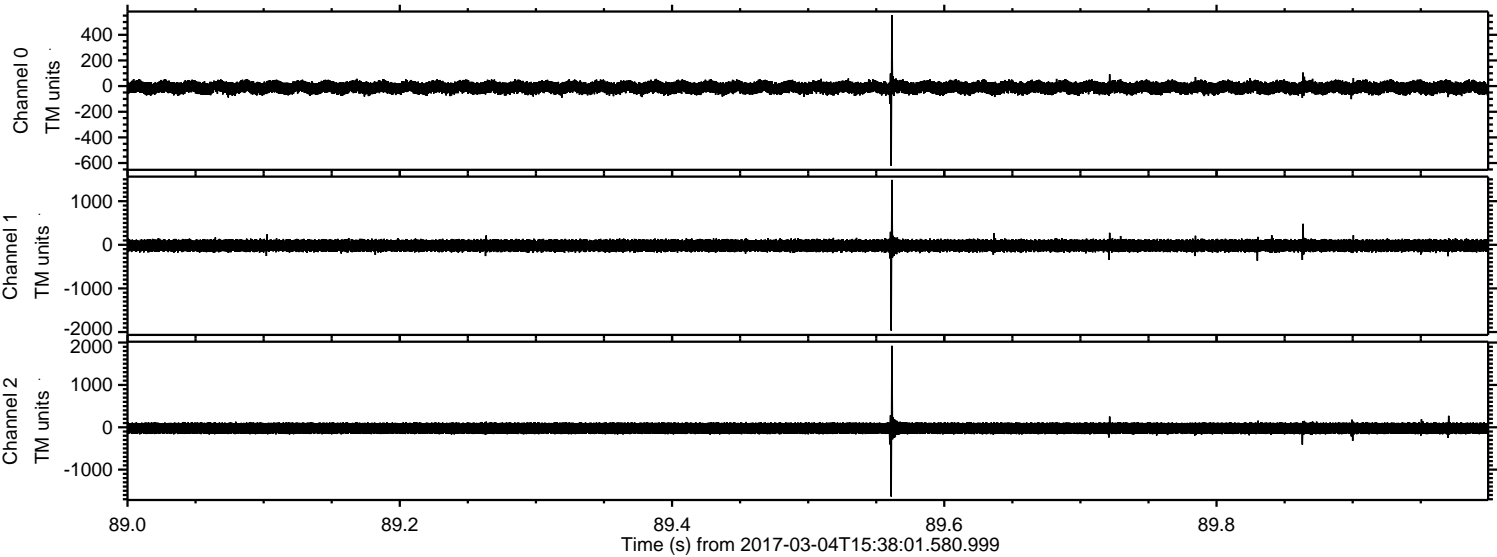
Channel 0  
mn: -480  
mx: 578  
 $\mu$ : -11.0  
 $\sigma$ : 28.6

Channel 1  
mn: -2222  
mx: 1576  
 $\mu$ : -19.4  
 $\sigma$ : 82.3

Channel 2  
mn: -768  
mx: 356  
 $\mu$ : -23.6  
 $\sigma$ : 80.4

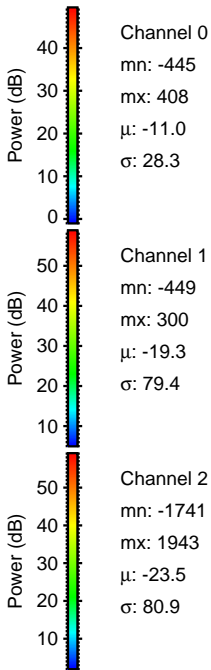
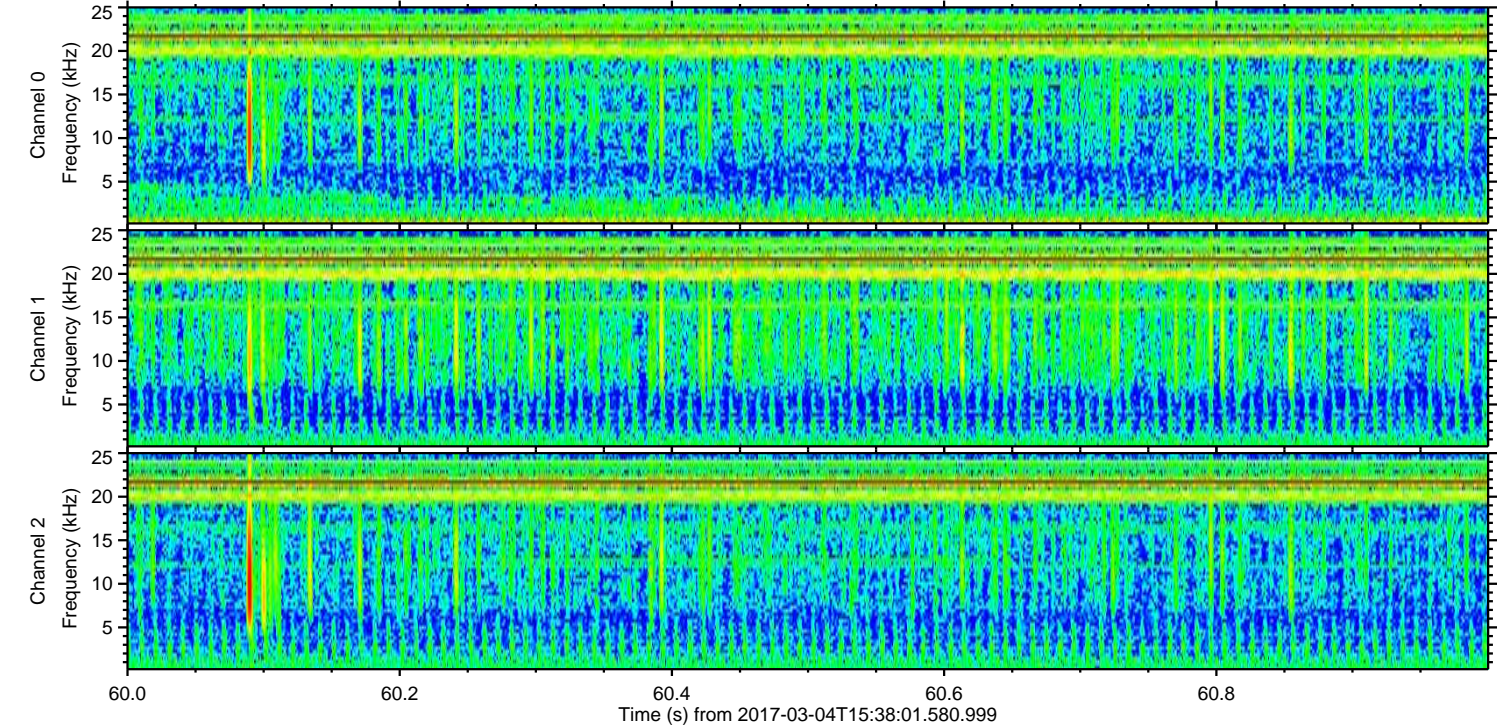
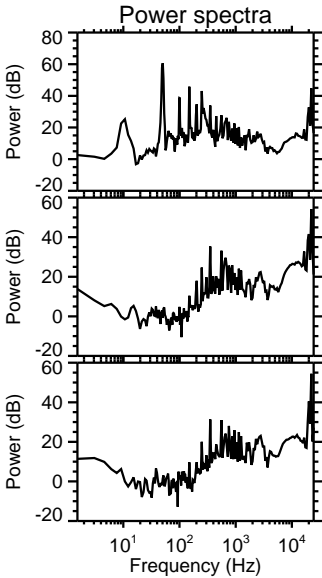
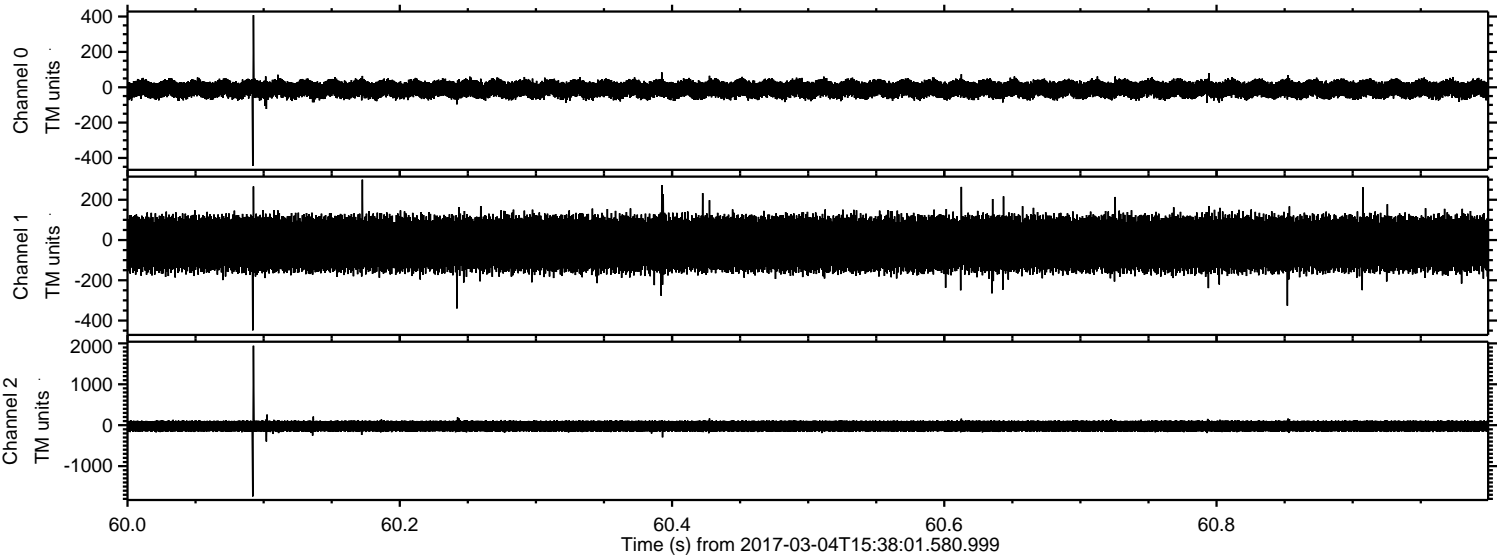


Processed Sat Mar 4 16:46:07 2017 by ELM ver.2012-10-06 from 001\_\_elm20170304\_153800\_\_dat00.bin





Processed Sat Mar 4 16:46:08 2017 by ELM ver.2012-10-06 from 001\_\_elm20170304\_153800\_\_dat00.bin



Channel 0

mn: -445  
mx: 408  
 $\mu$ : -11.0  
 $\sigma$ : 28.3

Channel 1

mn: -449  
mx: 300  
 $\mu$ : -19.3  
 $\sigma$ : 79.4

Channel 2

mn: -1741  
mx: 1943  
 $\mu$ : -23.5  
 $\sigma$ : 80.9



