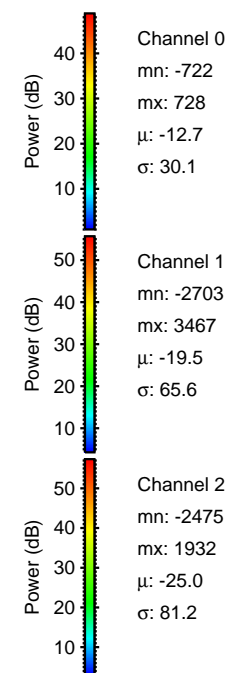
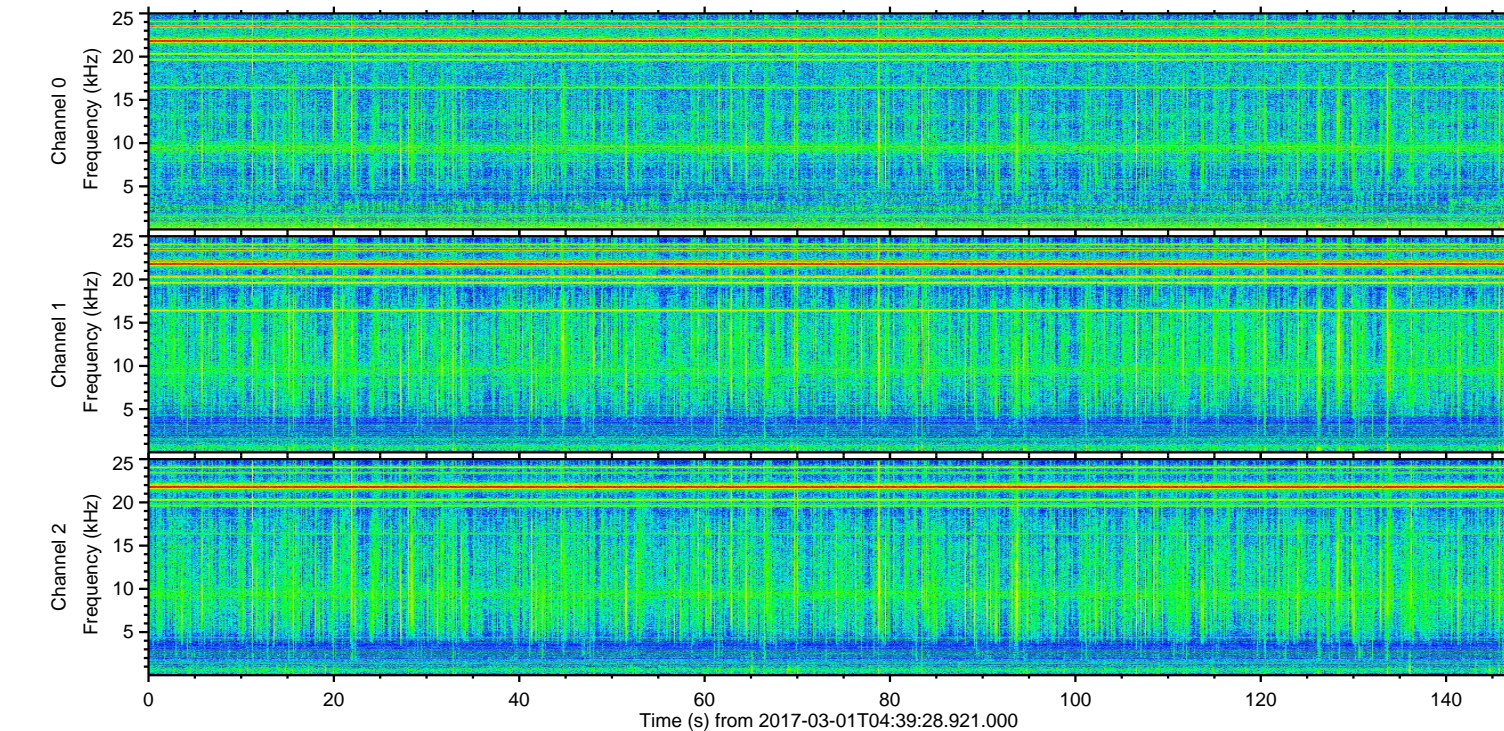
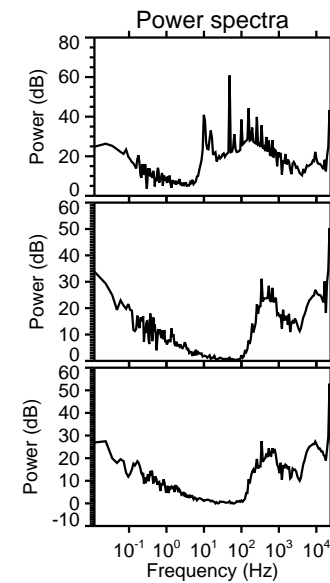
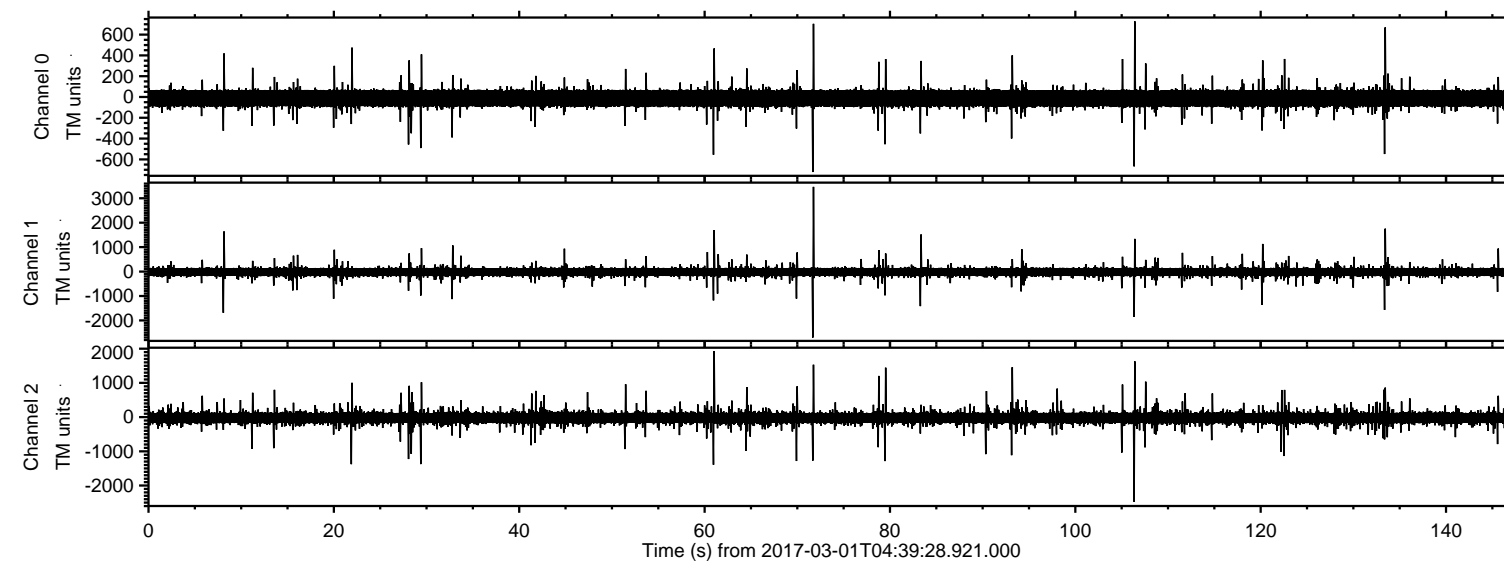


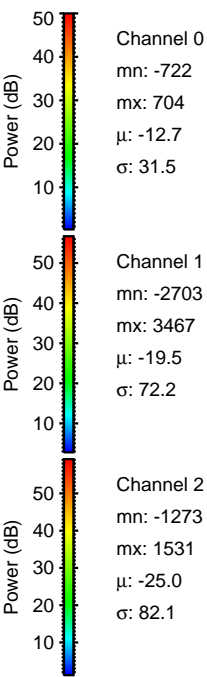
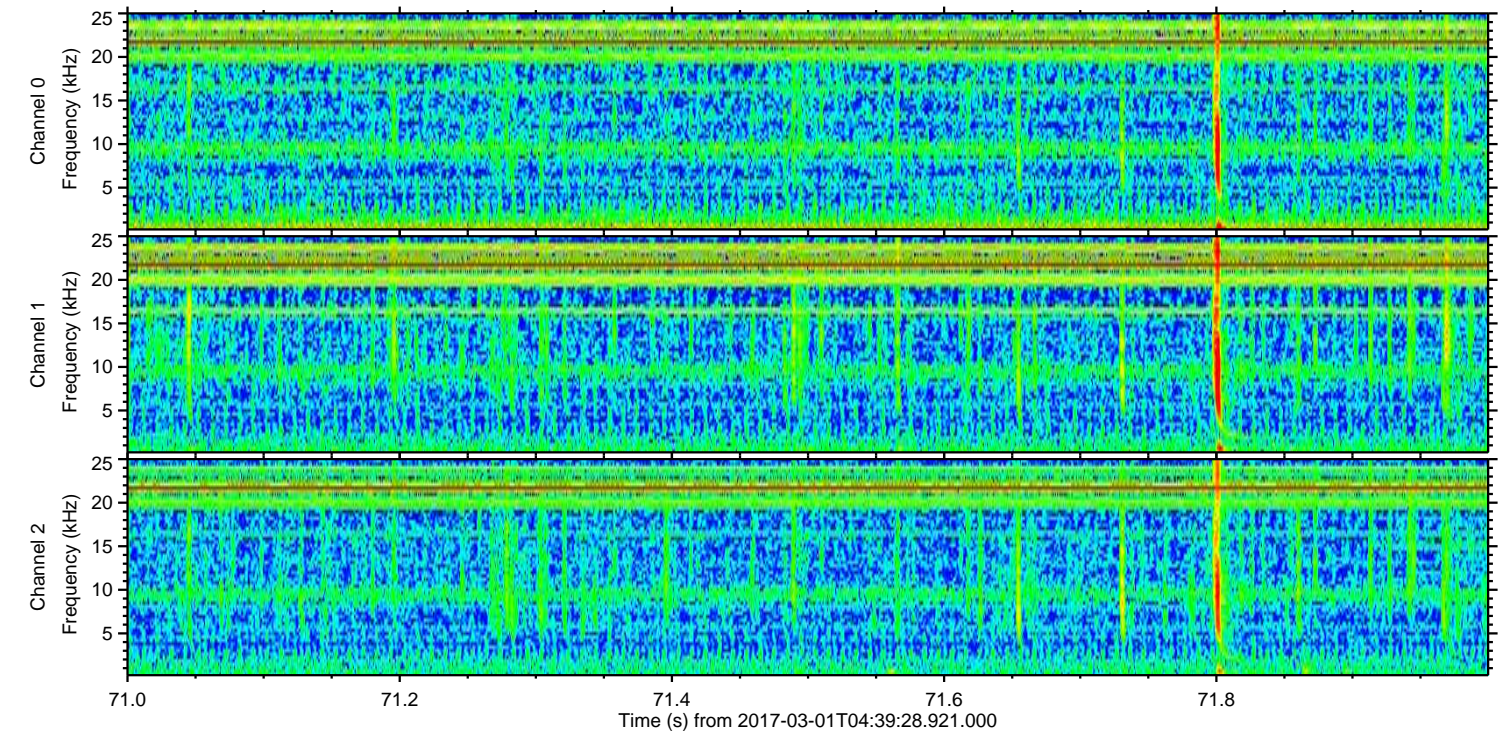
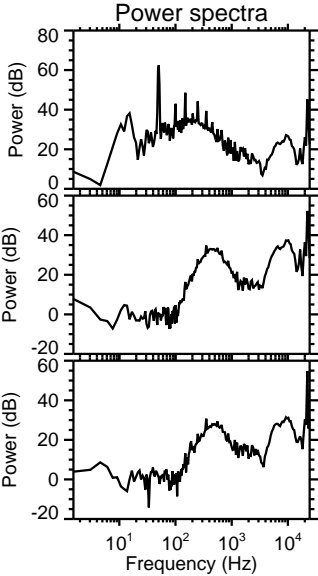
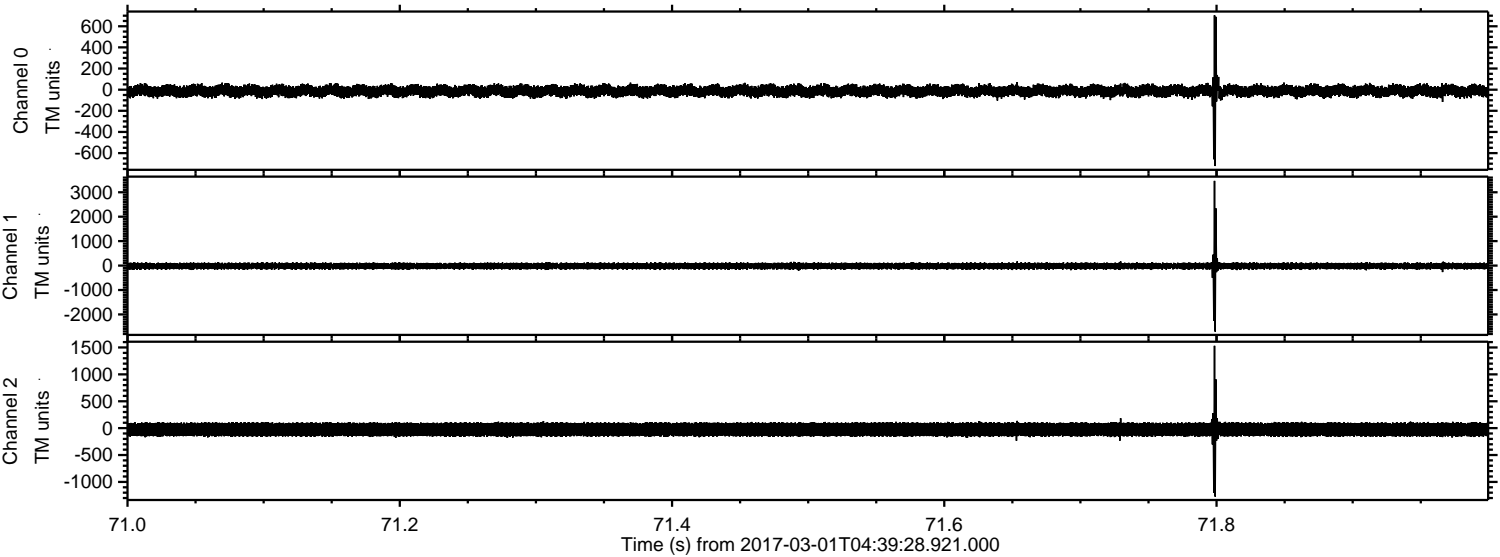
# ELMAVAN 3D WAVEFORMS (Measured data sampled at 50 kHz) 51000 packets of 144 samples from 2017-03-01T04:39:28.921.000.

Processed Wed Mar 1 05:46:48 2017 by ELM ver.2012-10-06 from 001\_\_elm20170301\_043927\_\_dat00.bin





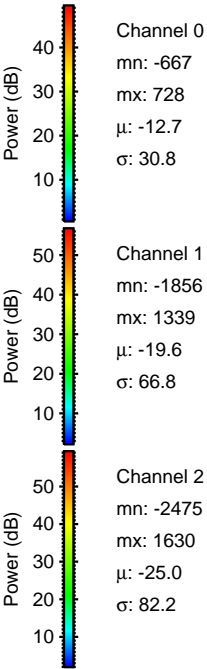
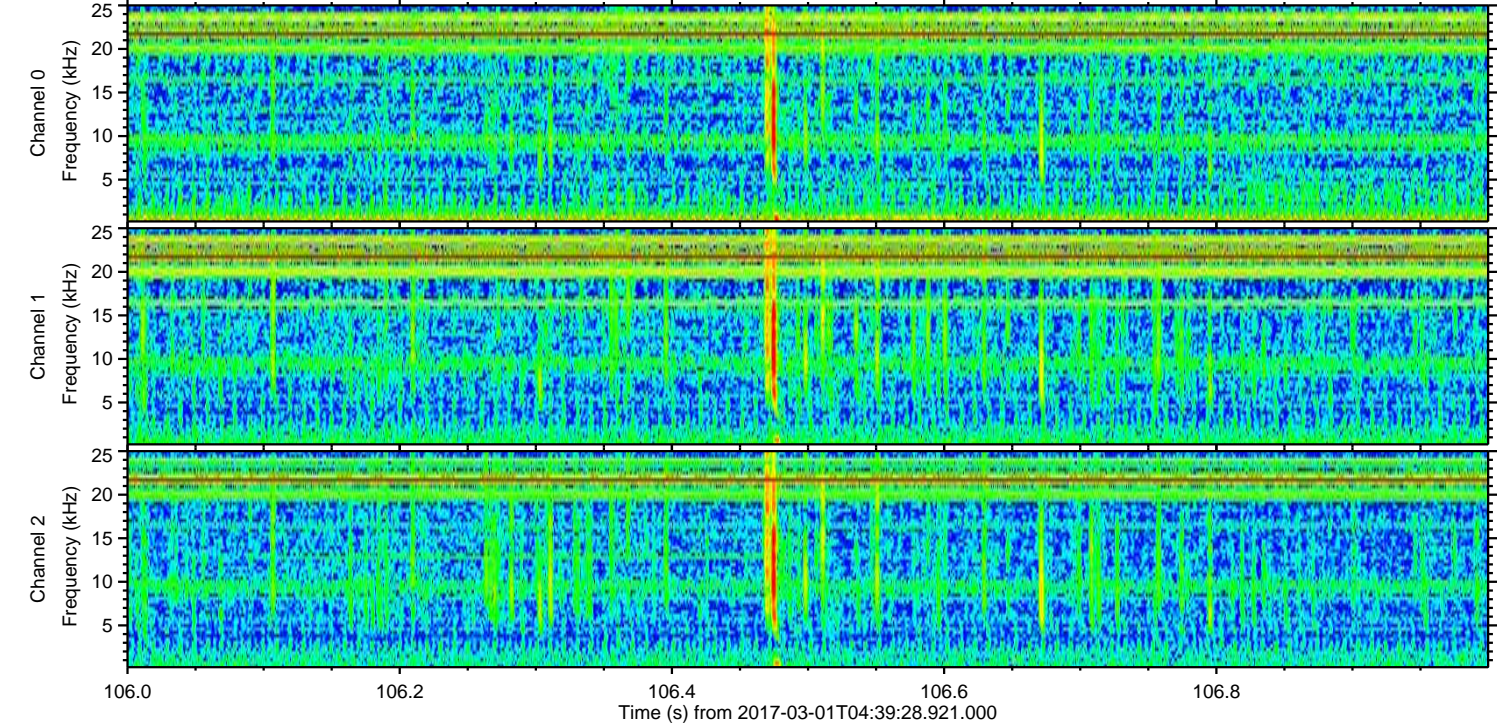
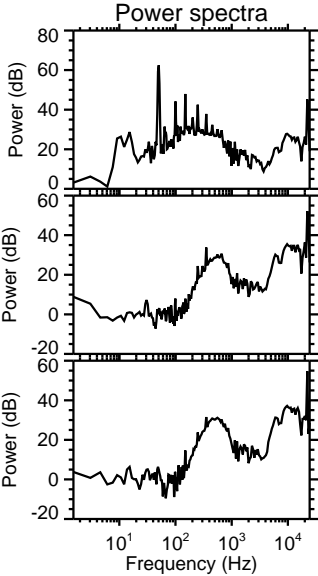
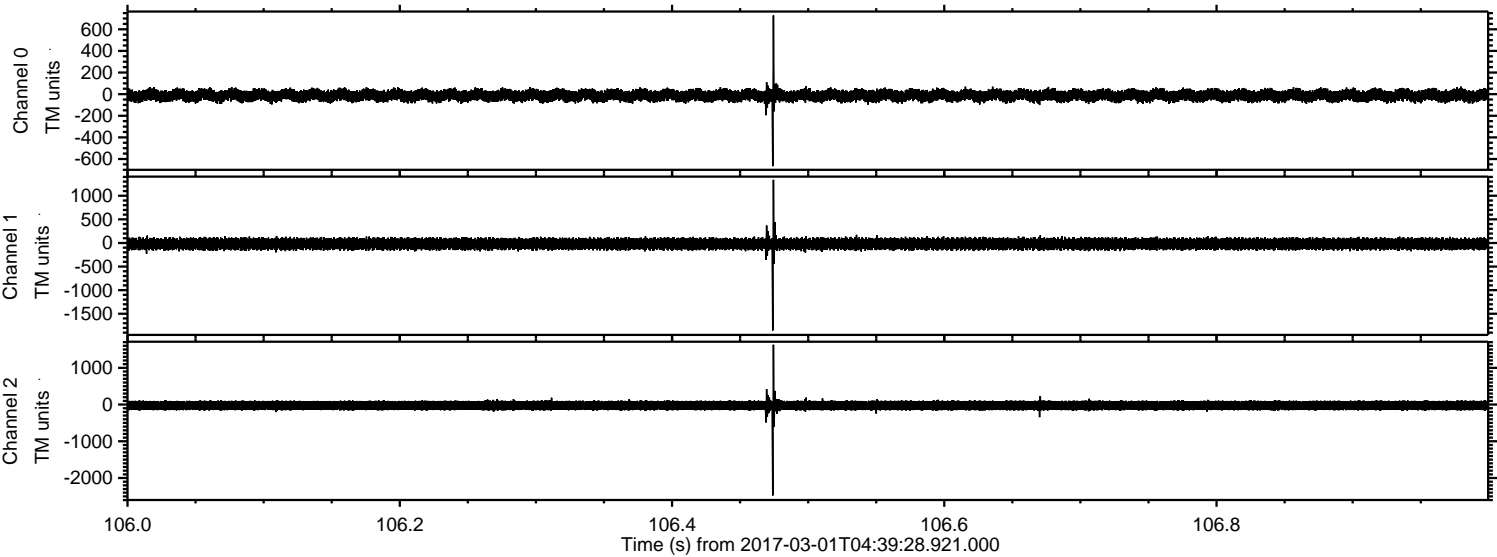
Processed Wed Mar 1 05:46:59 2017 by ELM ver.2012-10-06 from 001\_\_elm20170301\_043927\_\_dat00.bin





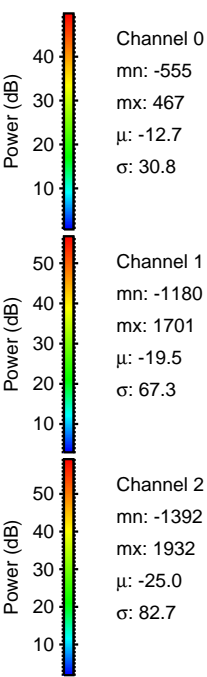
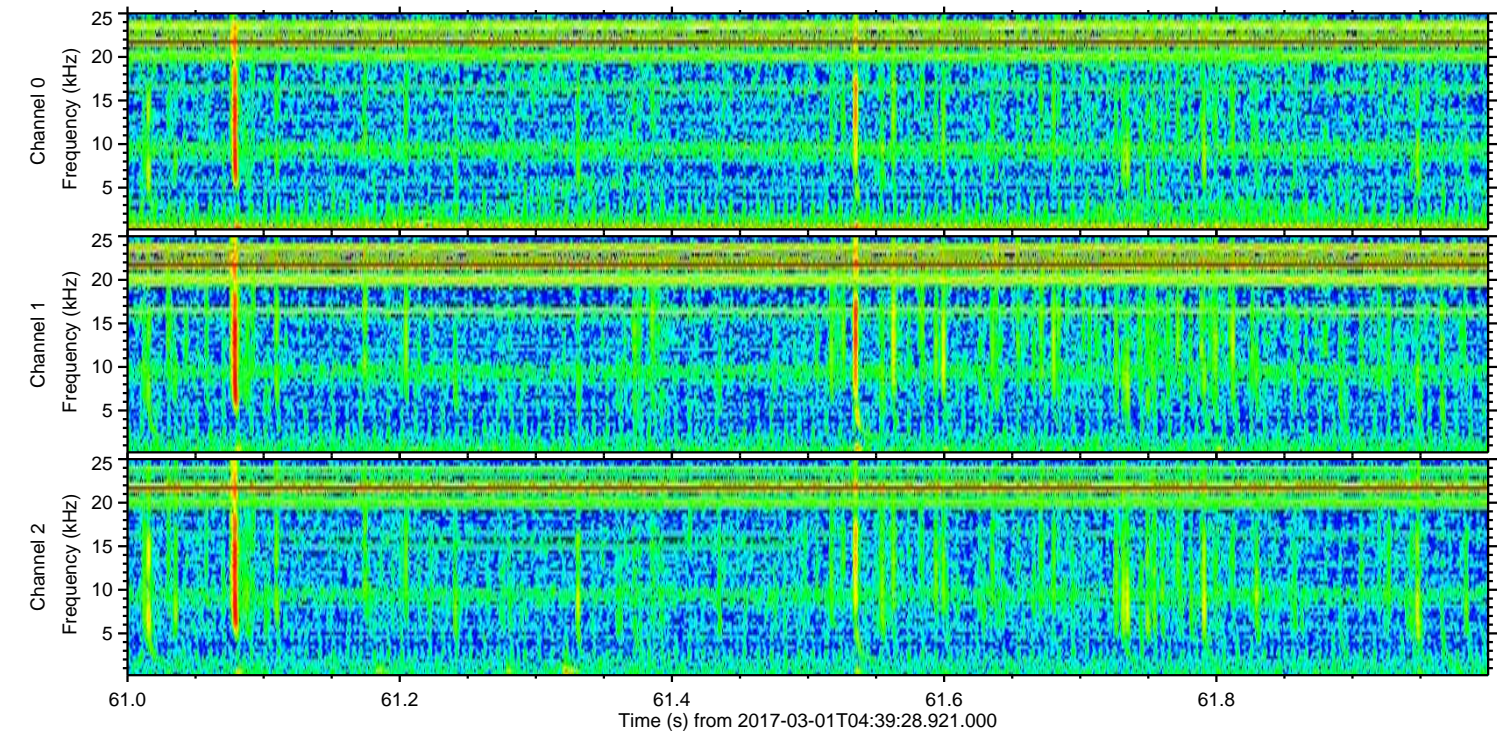
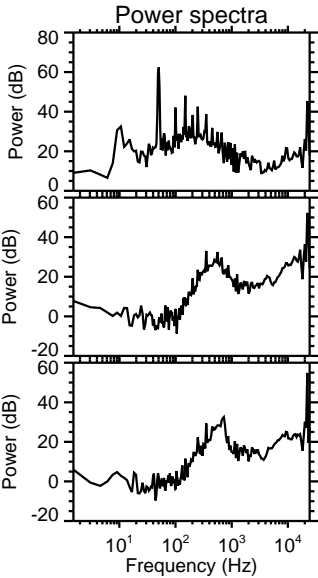
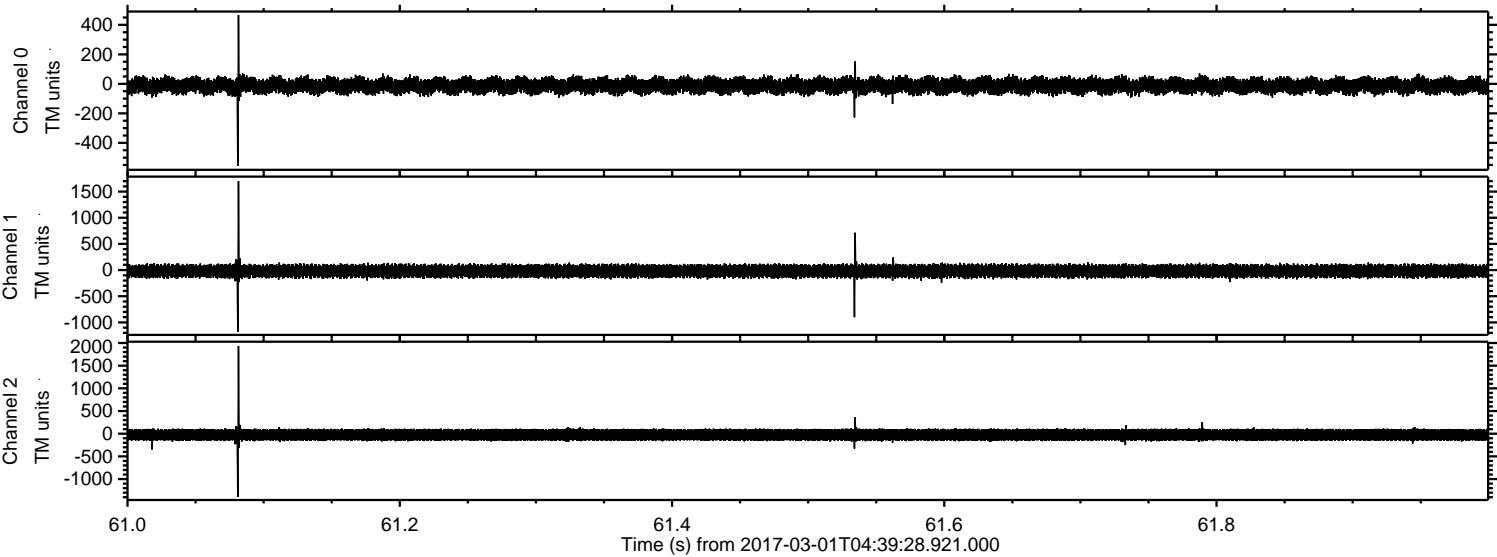
ELMAVAN 3D WAVEFORMS (Measured data sampled at 50 kHz) 51000 packets of 144 samples from 2017-03-01T04:39:28.921.000. Part 107/147

Processed Wed Mar 1 05:47:00 2017 by ELM ver.2012-10-06 from 001\_\_elm20170301\_043927\_\_dat00.bin



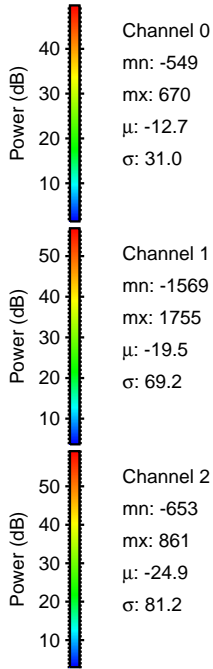
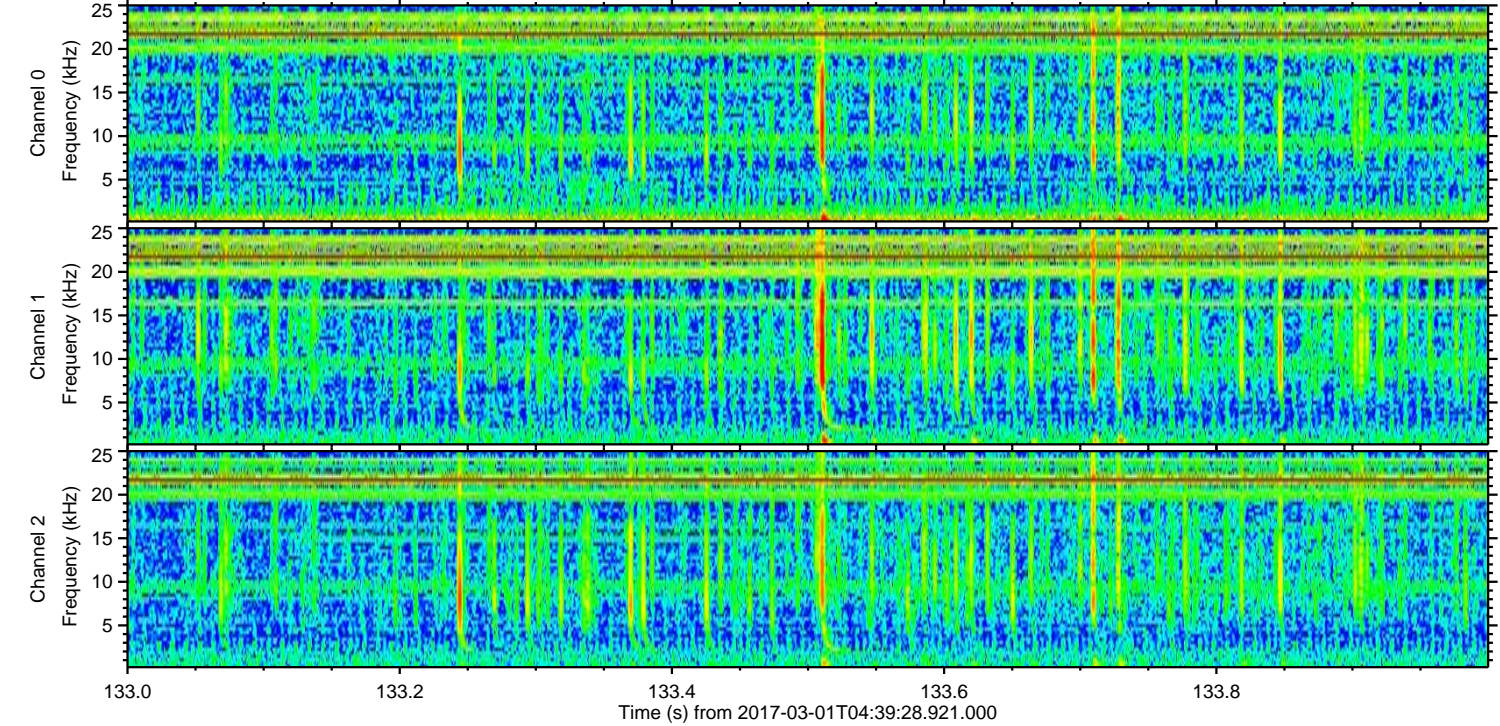
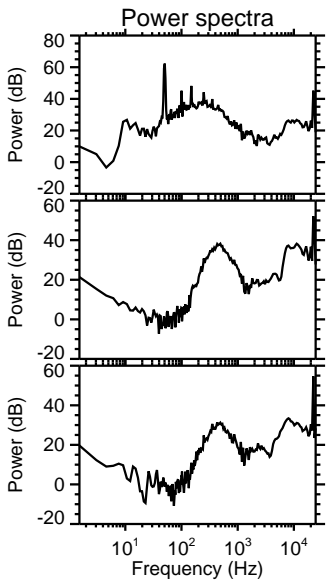
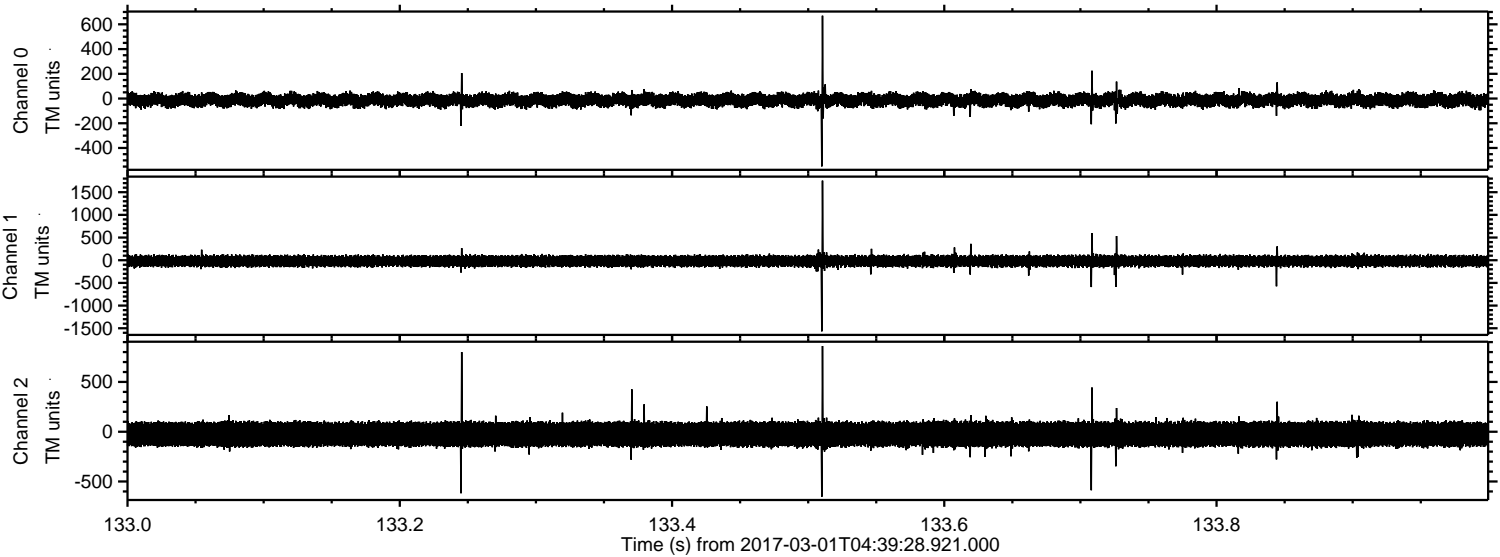


Processed Wed Mar 1 05:47:01 2017 by ELM ver.2012-10-06 from 001\_\_elm20170301\_043927\_\_dat00.bin



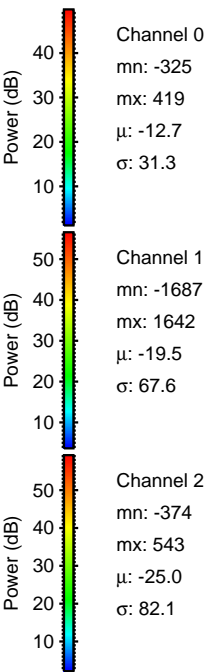
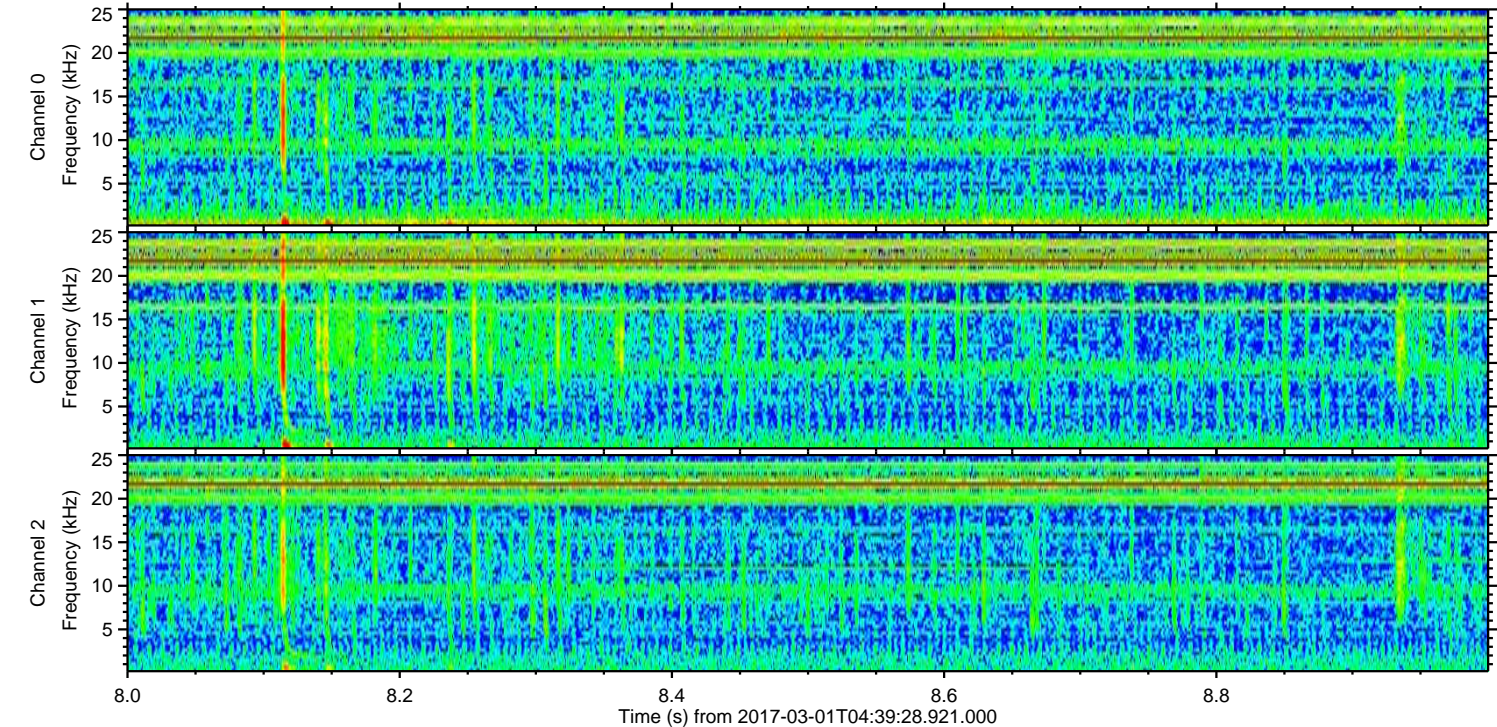
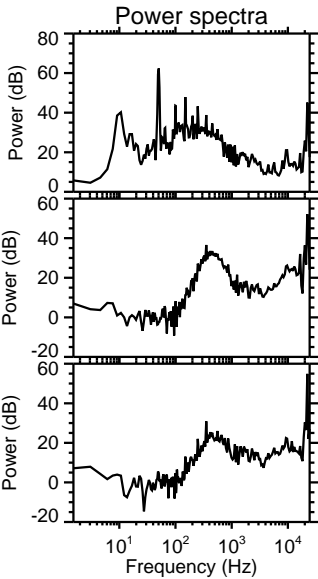
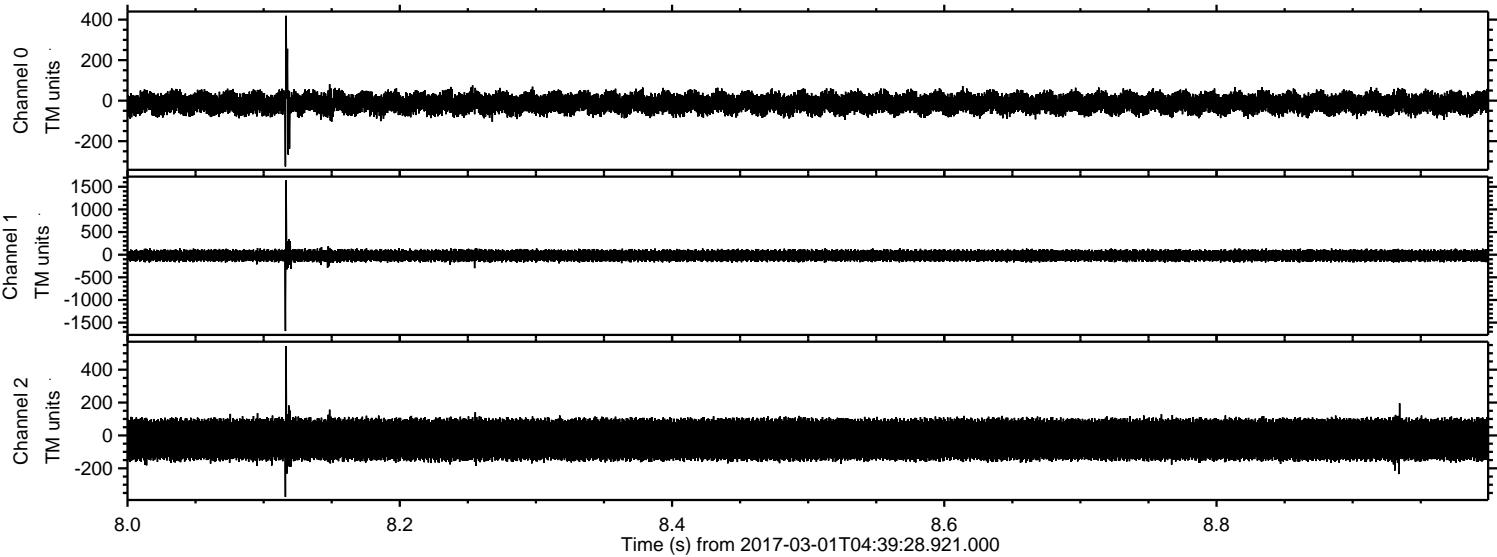


Processed Wed Mar 1 05:47:02 2017 by ELM ver.2012-10-06 from 001\_\_elm20170301\_043927\_\_dat00.bin



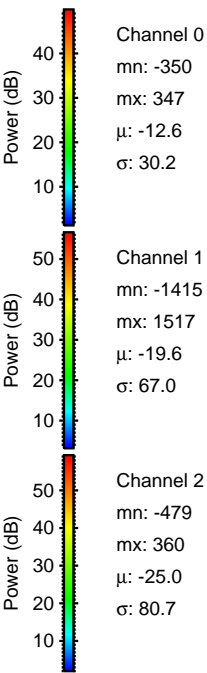
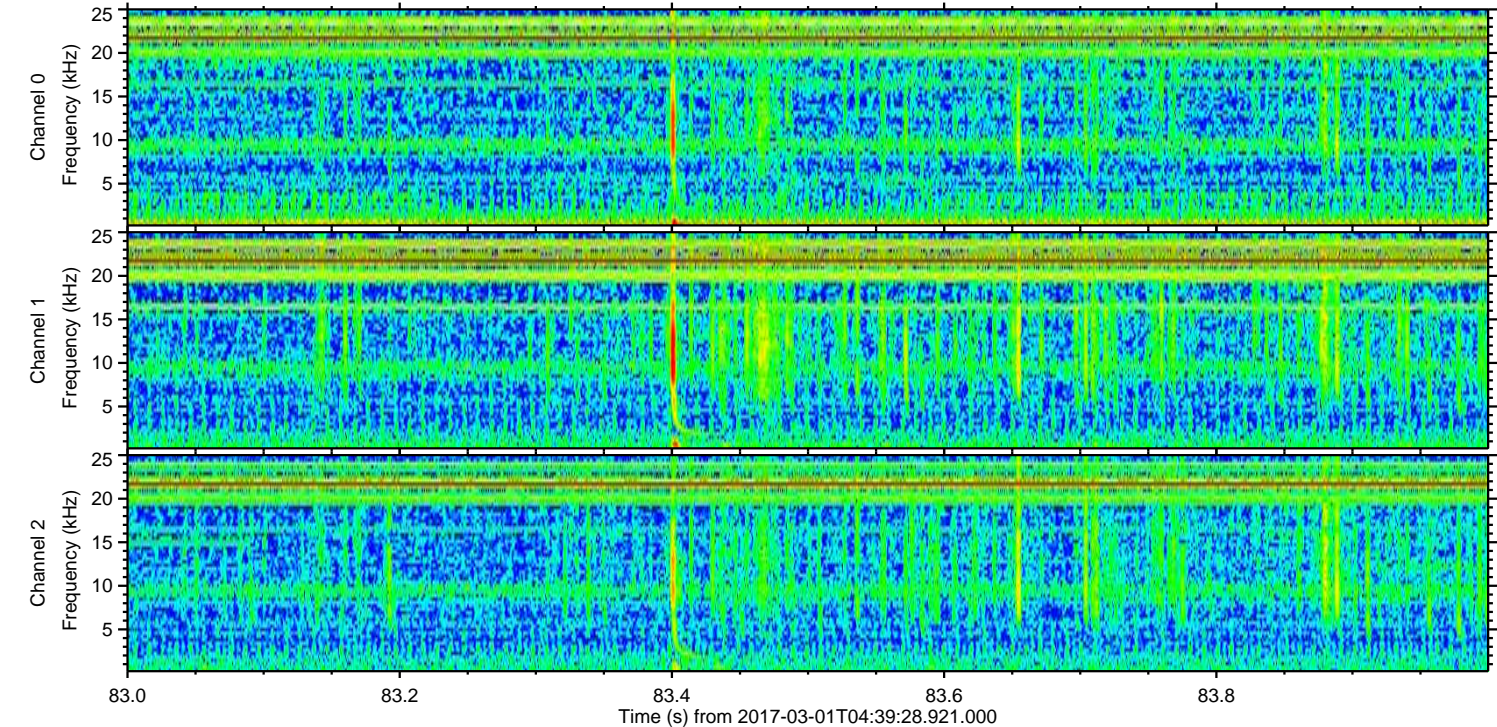
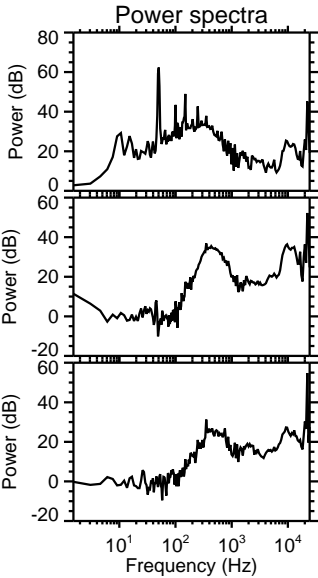
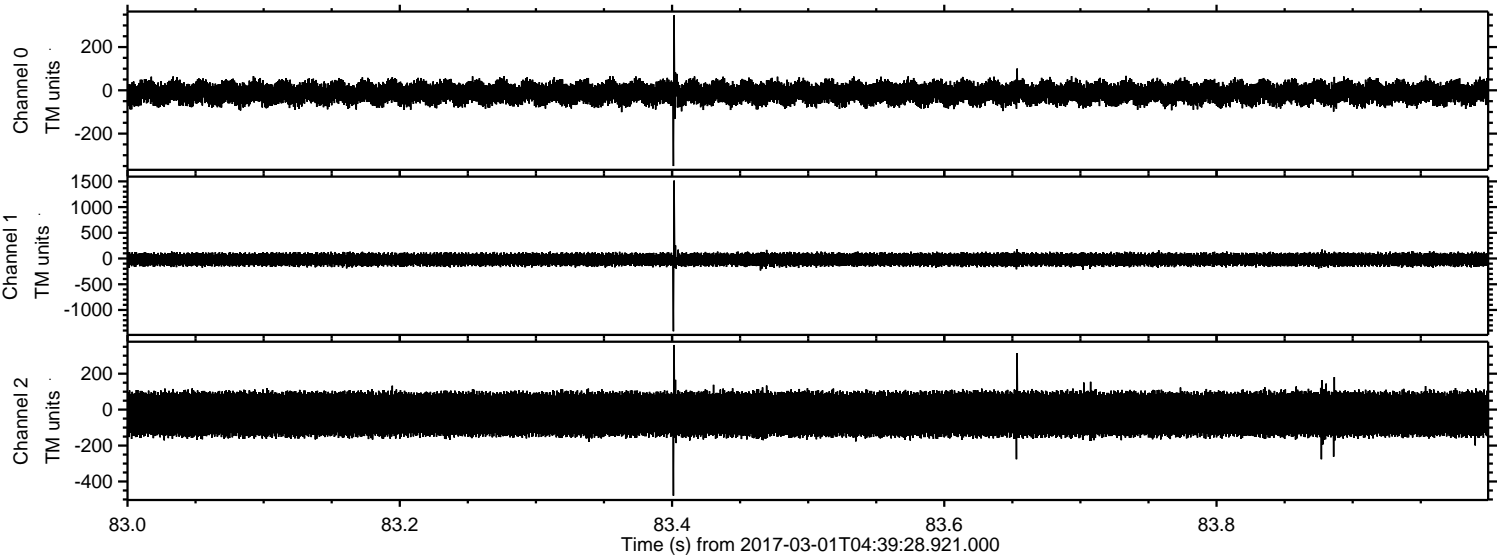


Processed Wed Mar 1 05:47:03 2017 by ELM ver.2012-10-06 from 001\_\_elm20170301\_043927\_\_dat00.bin



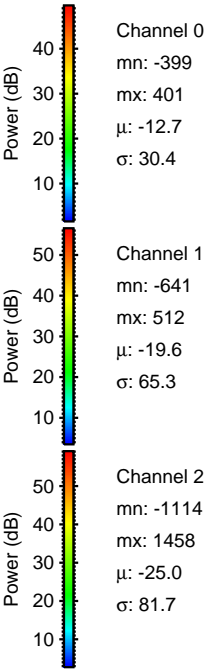
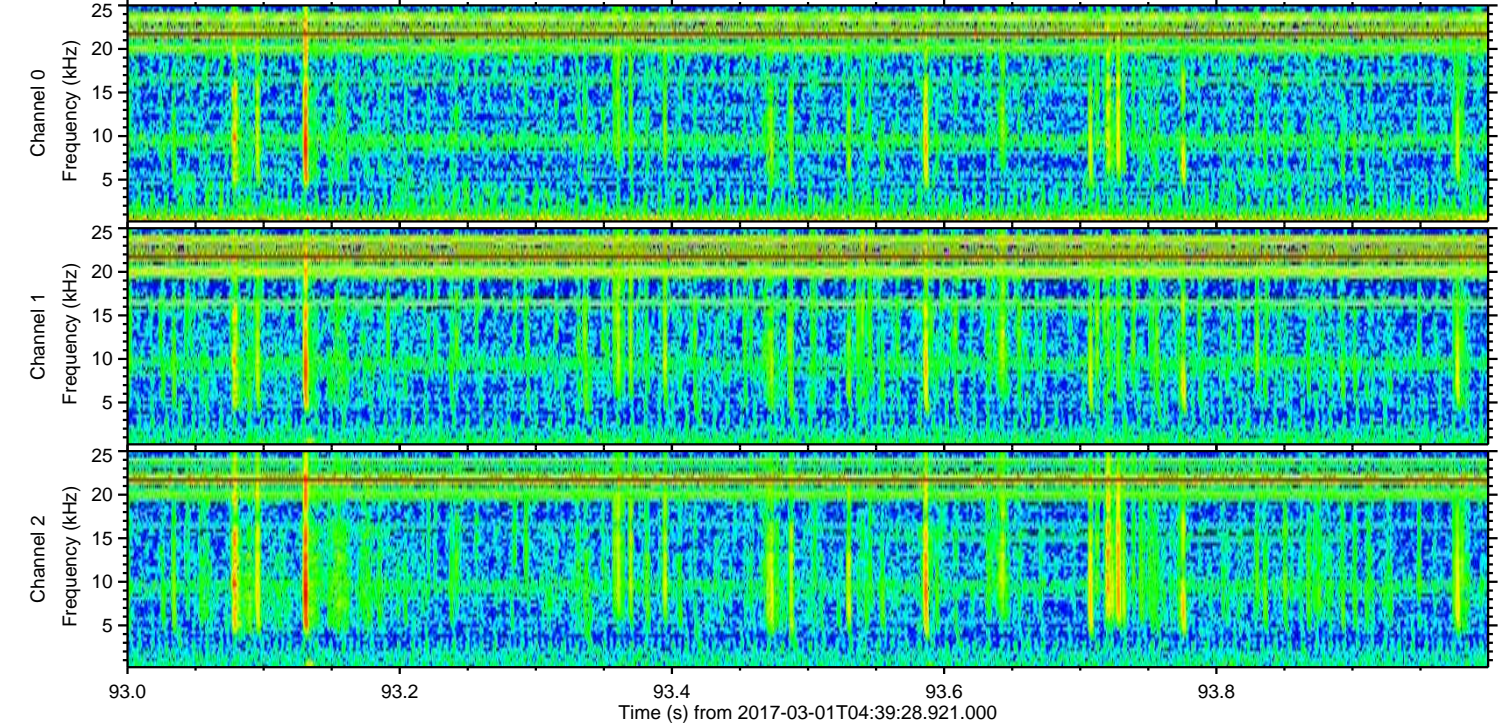
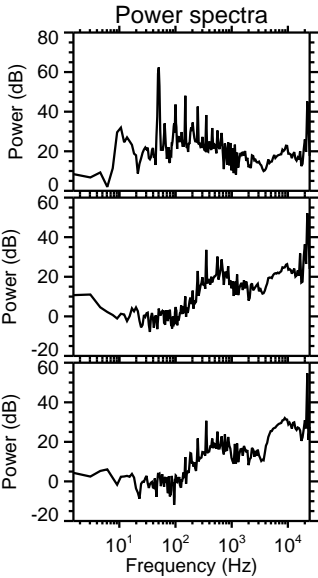
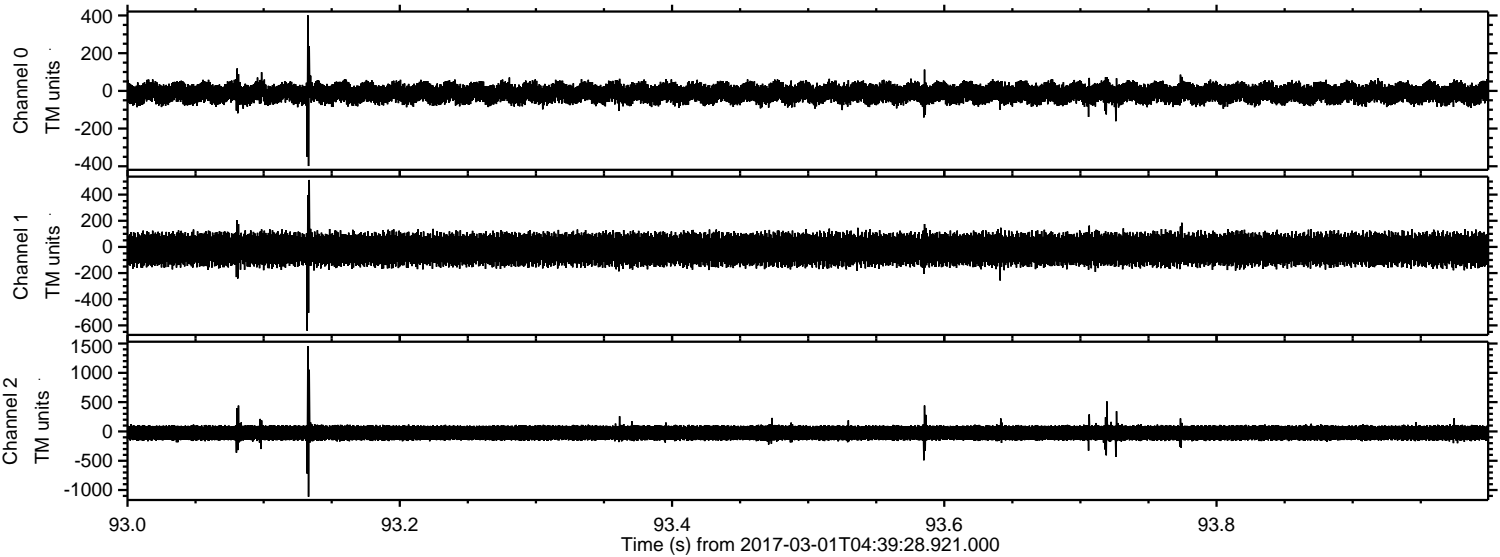


Processed Wed Mar 1 05:47:04 2017 by ELM ver.2012-10-06 from 001\_\_elm20170301\_043927\_\_dat00.bin



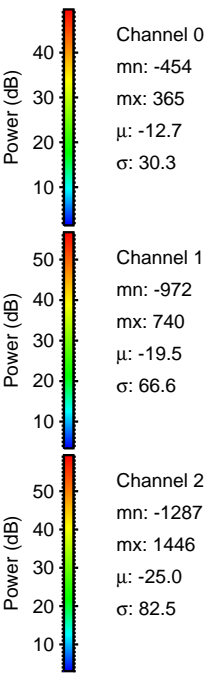
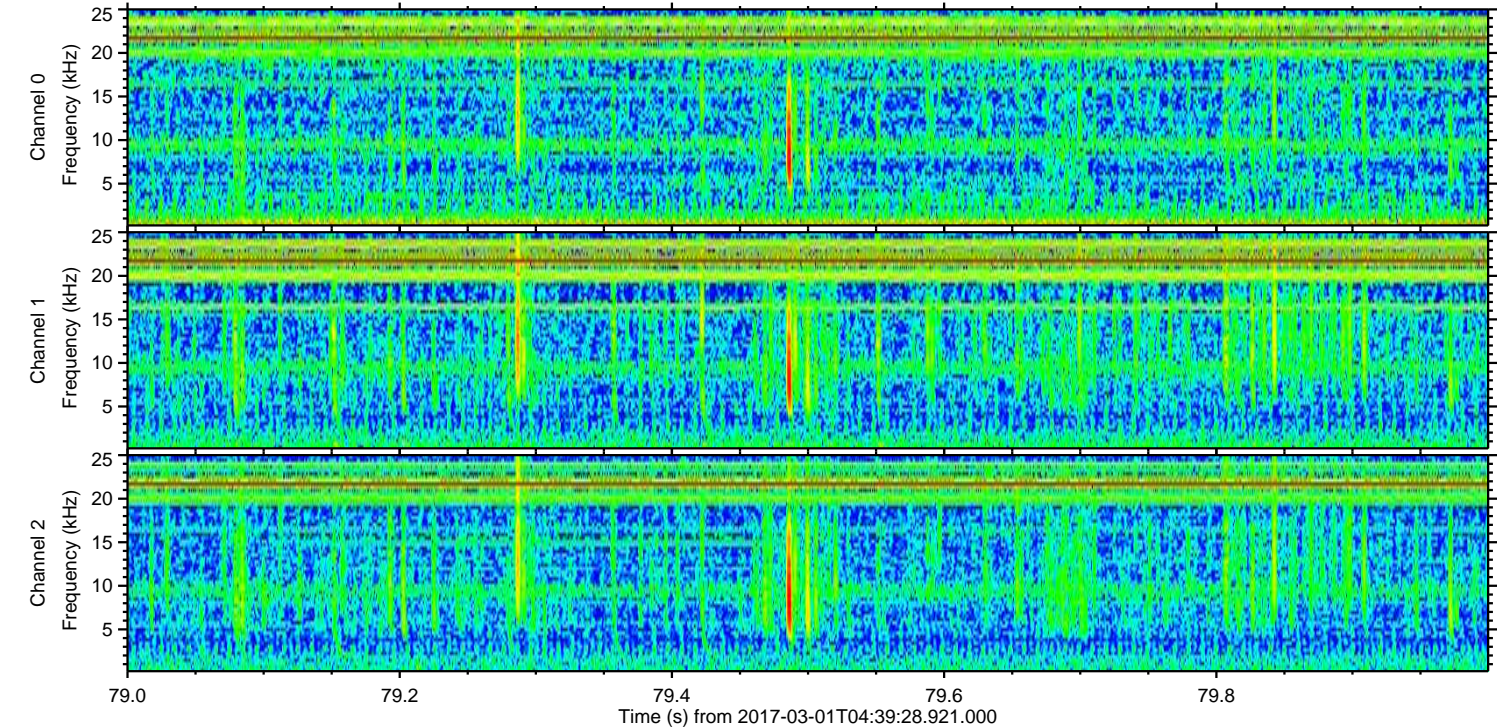
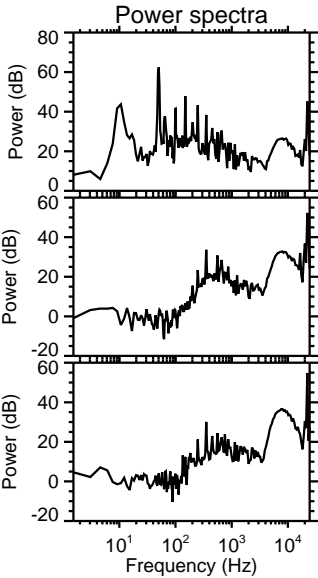
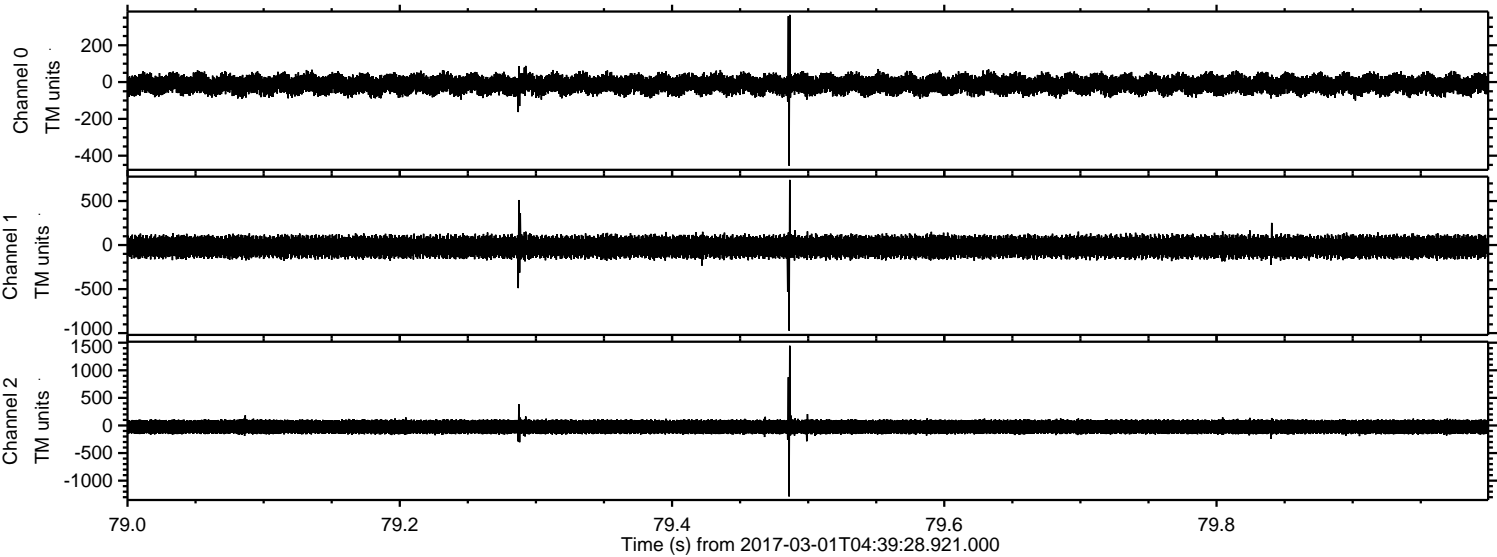


Processed Wed Mar 1 05:47:05 2017 by ELM ver.2012-10-06 from 001\_\_elm20170301\_043927\_\_dat00.bin



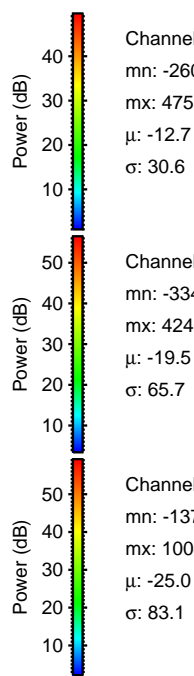
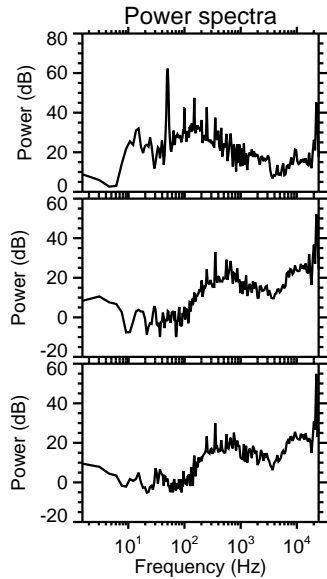
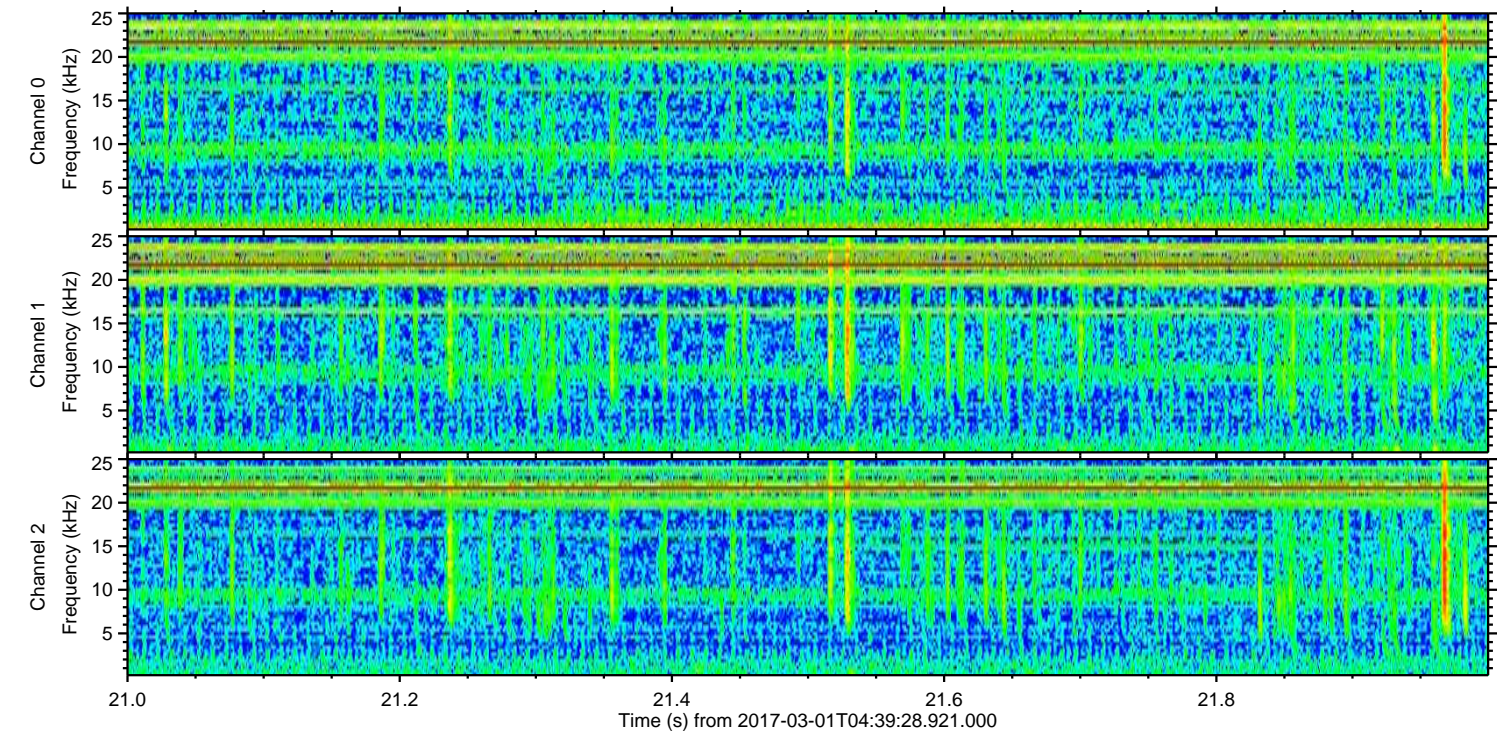
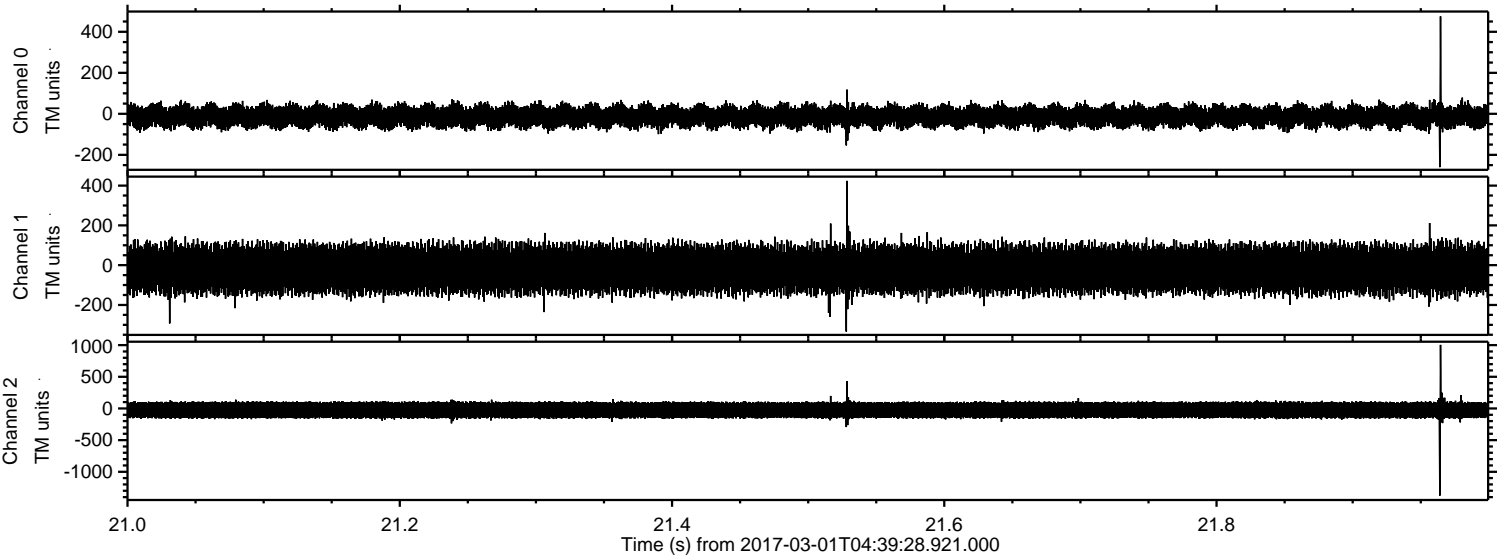


Processed Wed Mar 1 05:47:05 2017 by ELM ver.2012-10-06 from 001\_\_elm20170301\_043927\_\_dat00.bin





Processed Wed Mar 1 05:47:06 2017 by ELM ver.2012-10-06 from 001\_\_elm20170301\_043927\_\_dat00.bin



Channel 0

mn: -260  
mx: 475  
 $\mu$ : -12.7  
 $\sigma$ : 30.6

Channel 1

mn: -334  
mx: 424  
 $\mu$ : -19.5  
 $\sigma$ : 65.7

Channel 2

mn: -1377  
mx: 1004  
 $\mu$ : -25.0  
 $\sigma$ : 83.1



Processed Wed Mar 1 05:47:07 2017 by ELM ver.2012-10-06 from 001\_\_elm20170301\_043927\_\_dat00.bin

