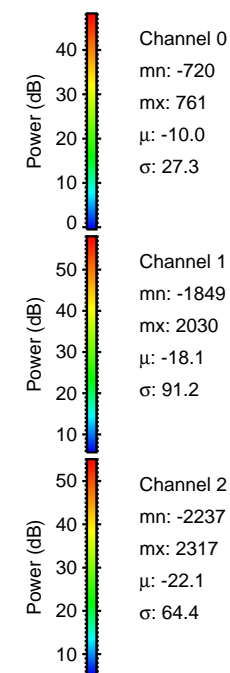
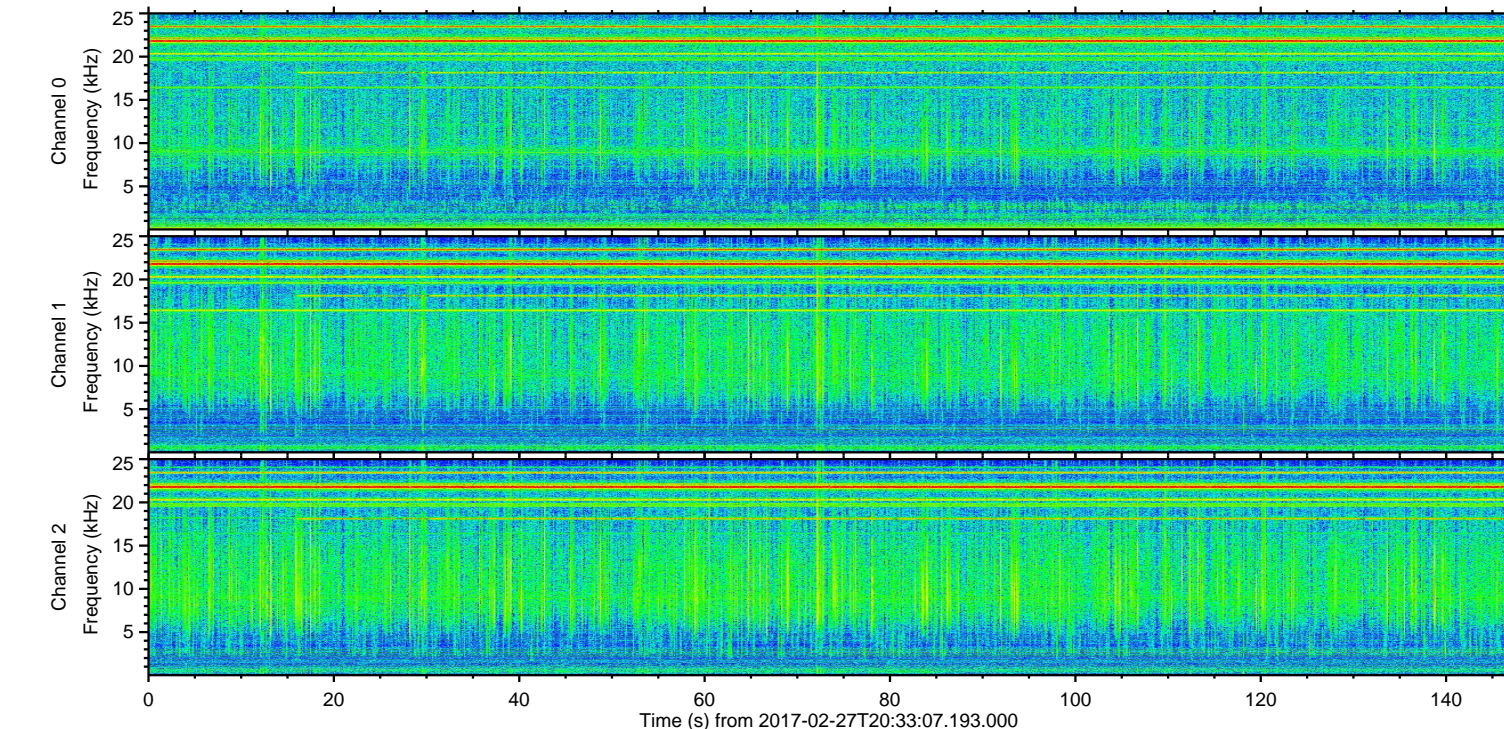
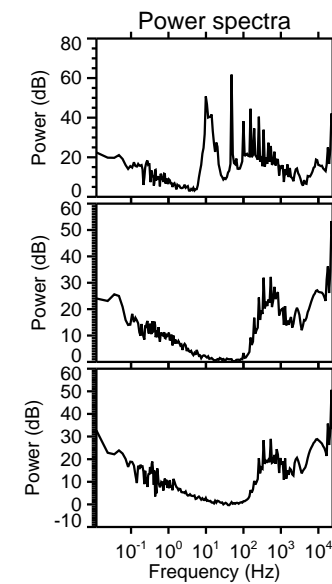
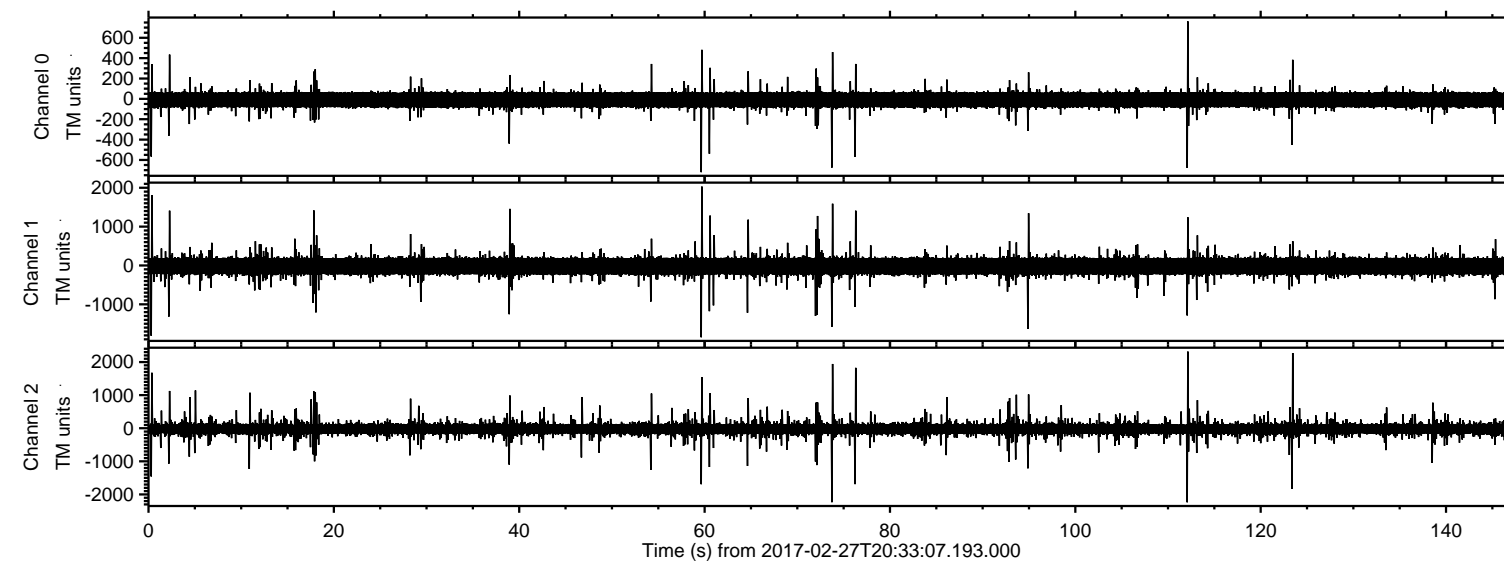


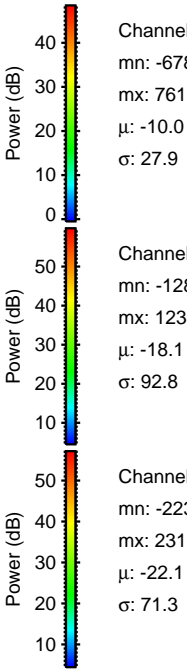
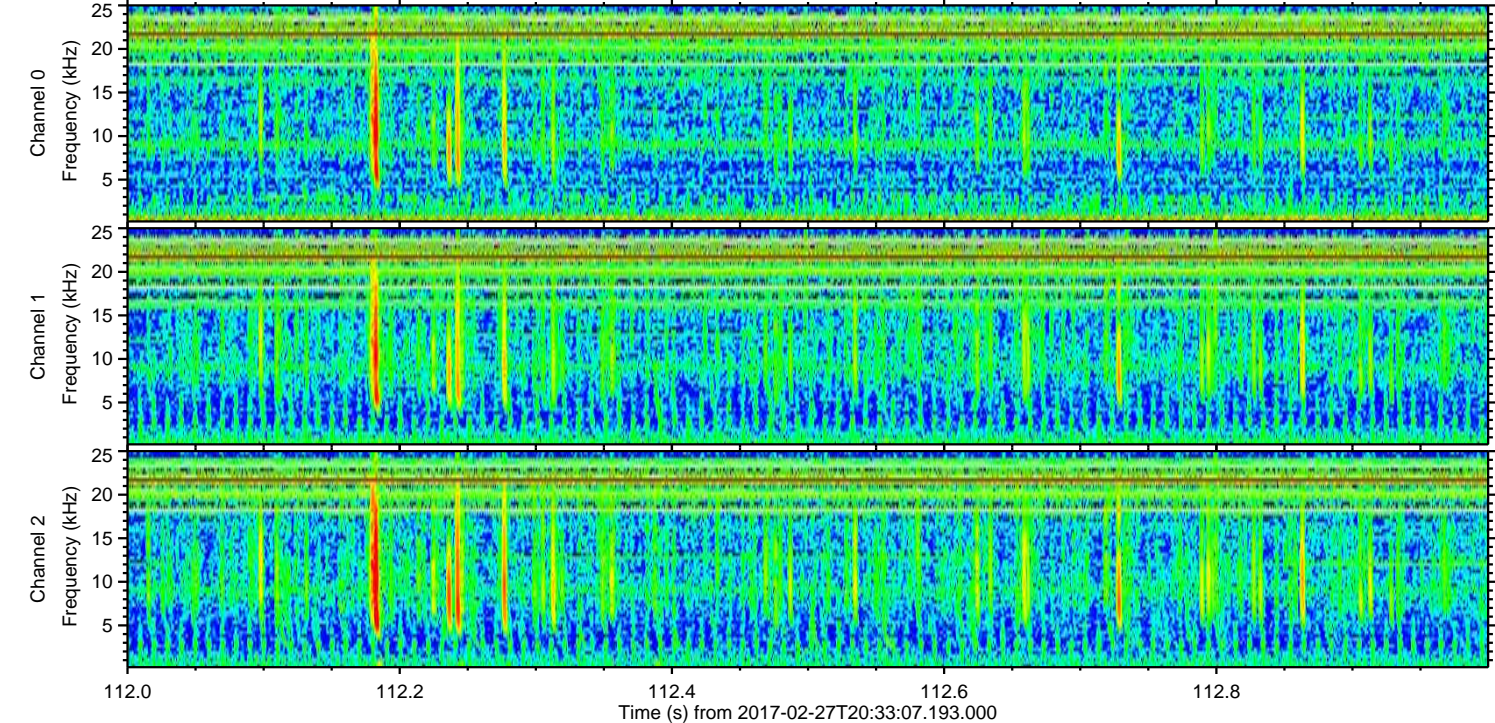
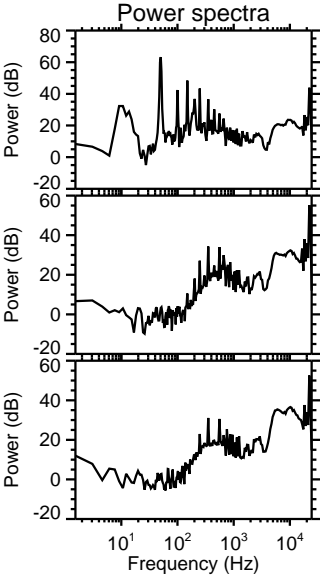
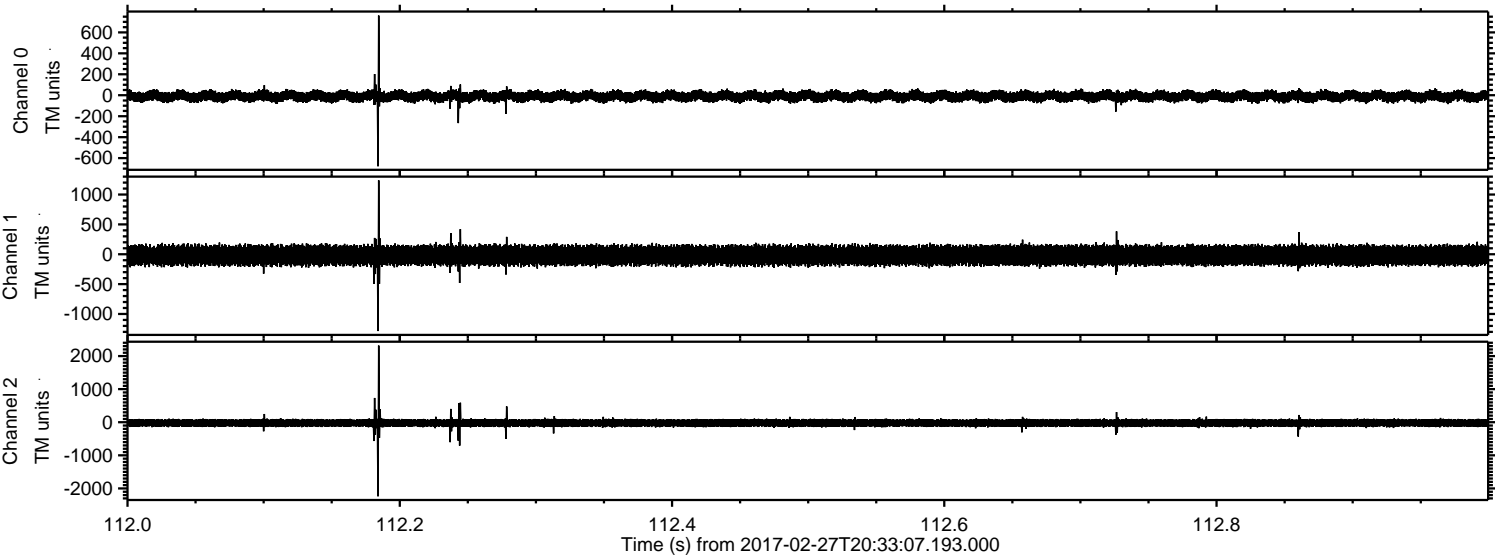
ELMAVAN 3D WAVEFORMS (Measured data sampled at 50 kHz) 51000 packets of 144 samples from 2017-02-27T20:33:07.193.000.

Processed Mon Feb 27 21:40:47 2017 by ELM ver.2012-10-06 from 001__elm20170227_203306__dat00.bin



ELMAVAN 3D WAVEFORMS (Measured data sampled at 50 kHz) 51000 packets of 144 samples from 2017-02-27T20:33:07.193.000. Part 113/147

Processed Mon Feb 27 21:40:58 2017 by ELM ver.2012-10-06 from 001__elm20170227_203306__dat00.bin



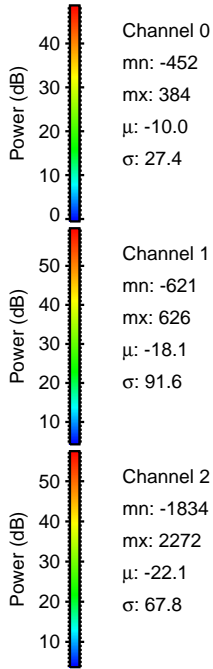
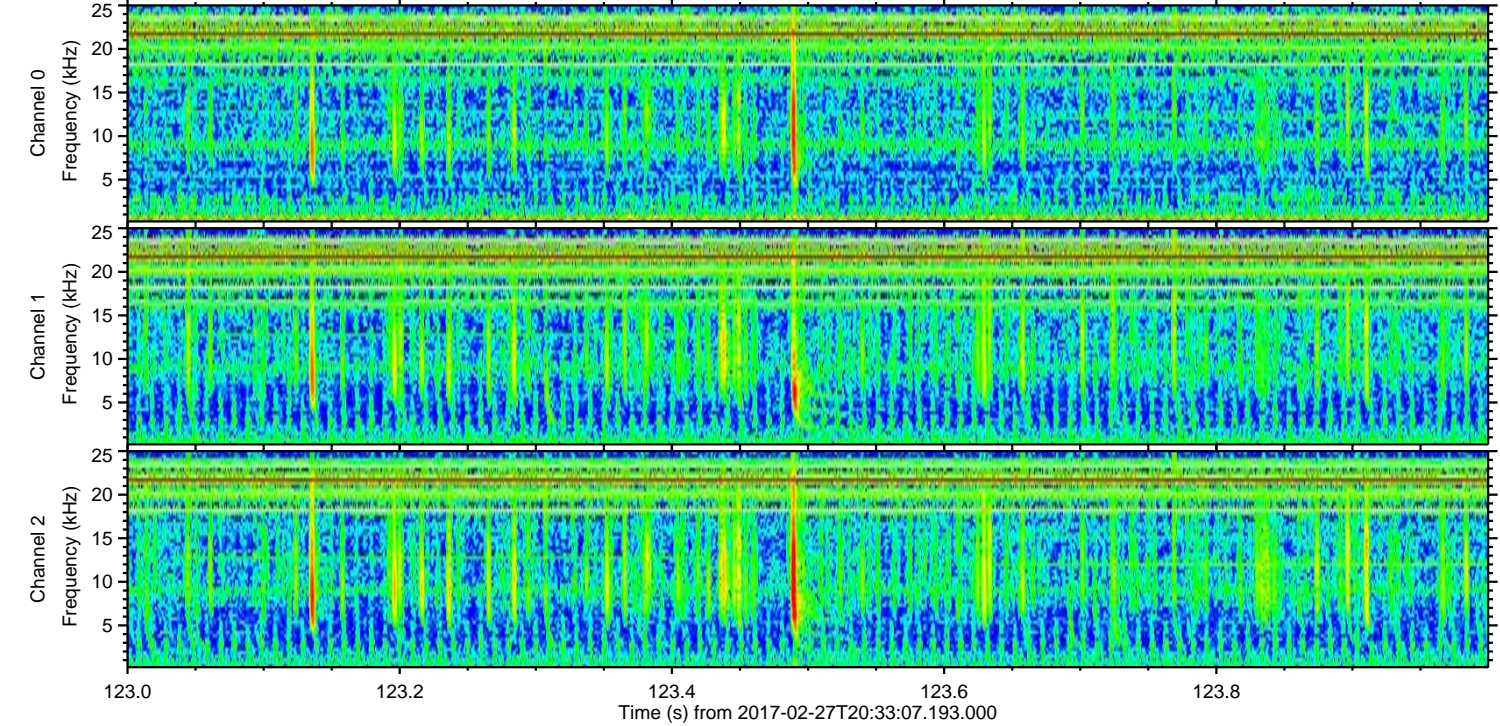
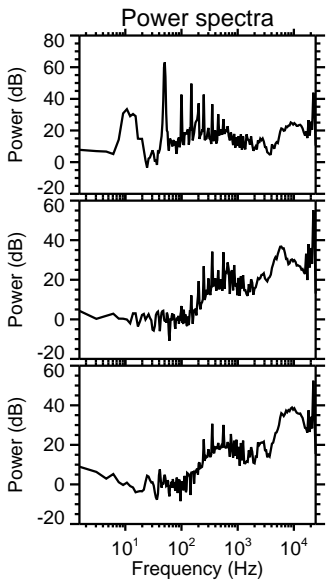
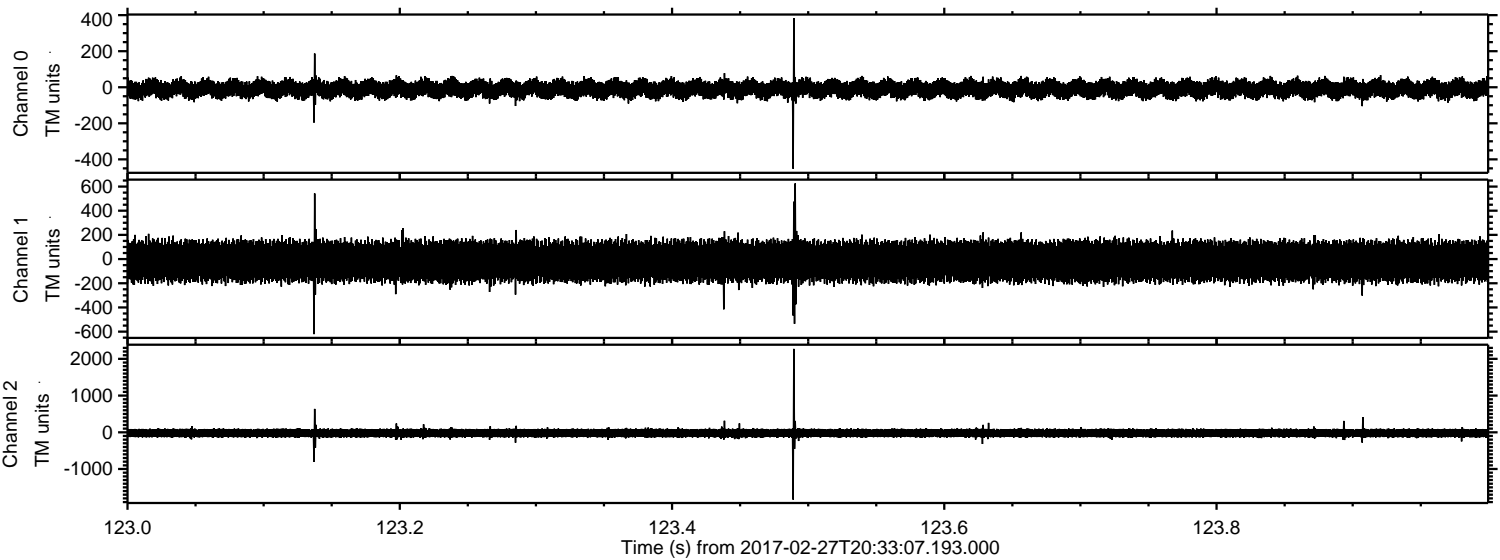
Channel 0
mn: -678
mx: 761
 μ : -10.0
 σ : 27.9

Channel 1
mn: -1286
mx: 1238
 μ : -18.1
 σ : 92.8

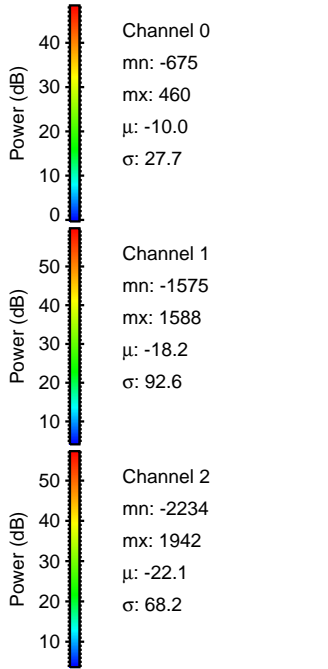
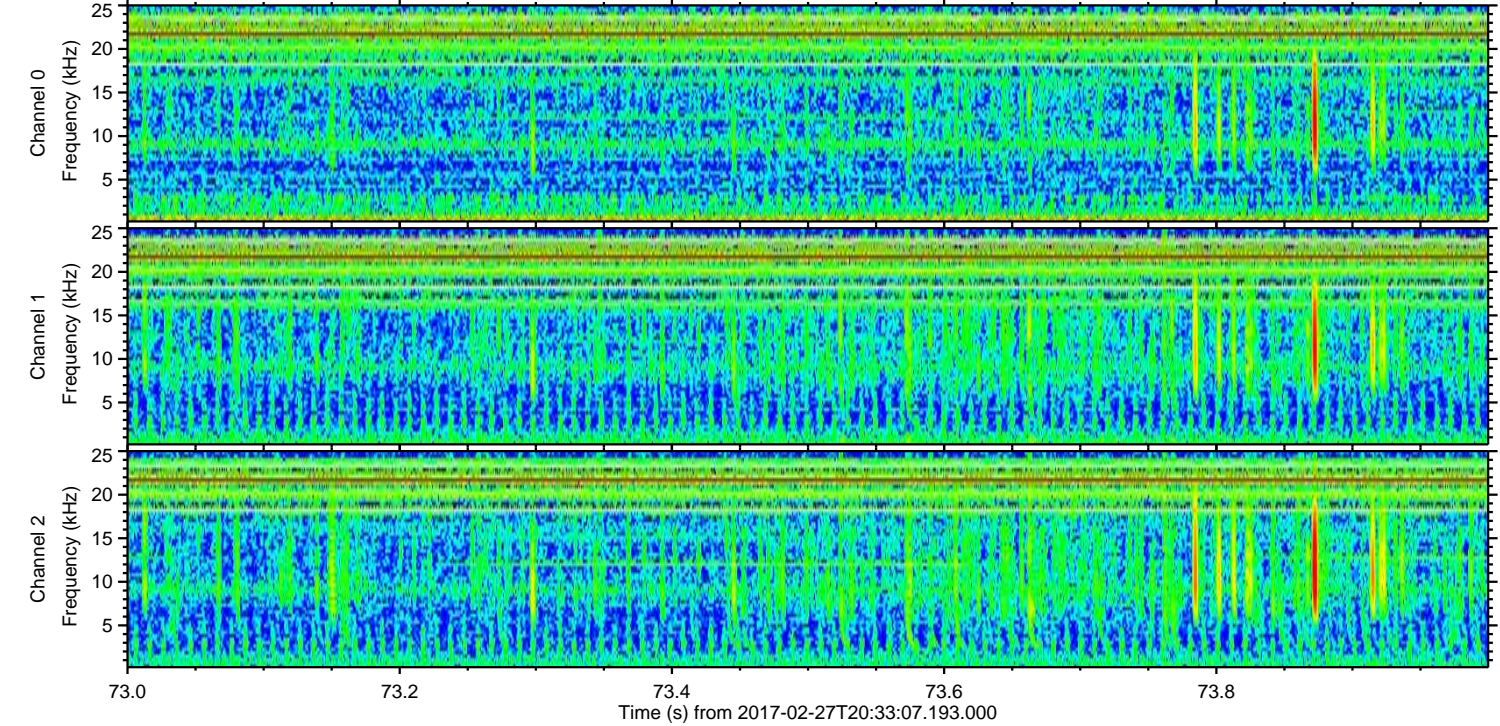
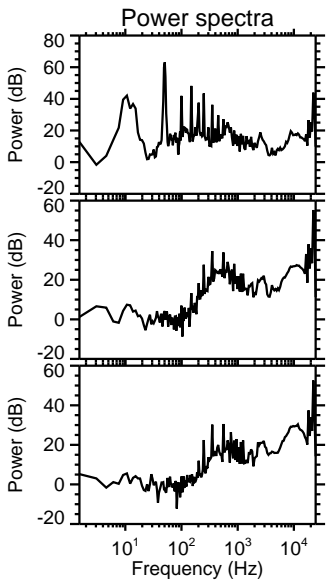
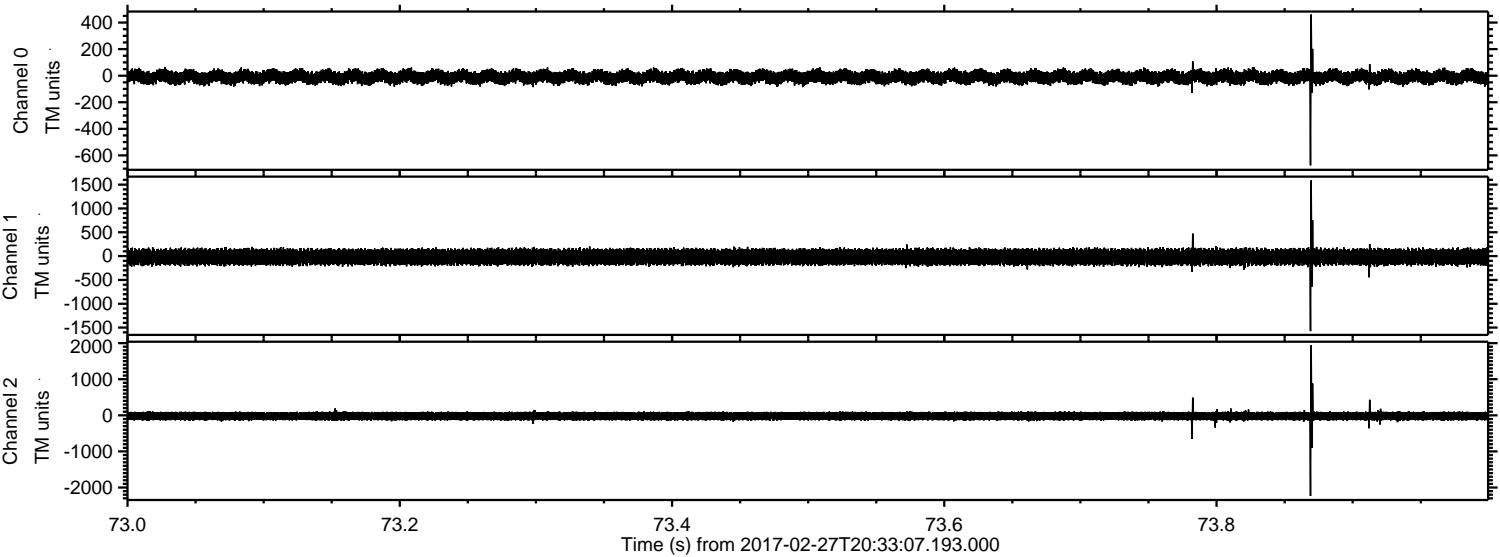
Channel 2
mn: -2237
mx: 2317
 μ : -22.1
 σ : 71.3

ELMAVAN 3D WAVEFORMS (Measured data sampled at 50 kHz) 51000 packets of 144 samples from 2017-02-27T20:33:07.193.000. Part 124/147

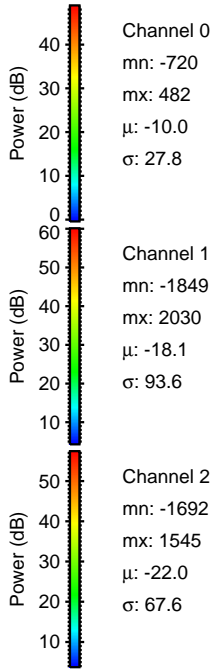
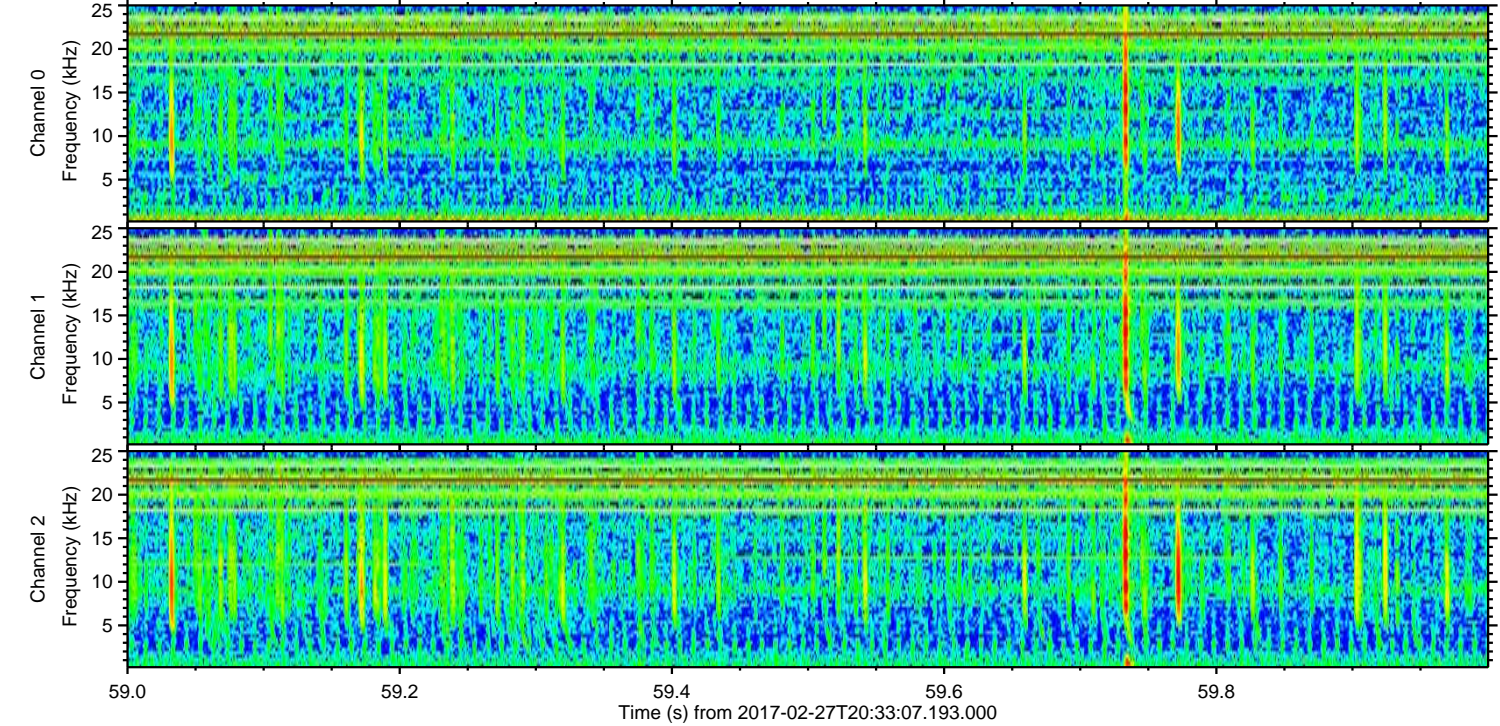
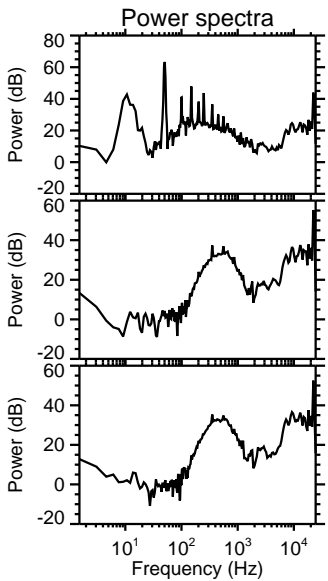
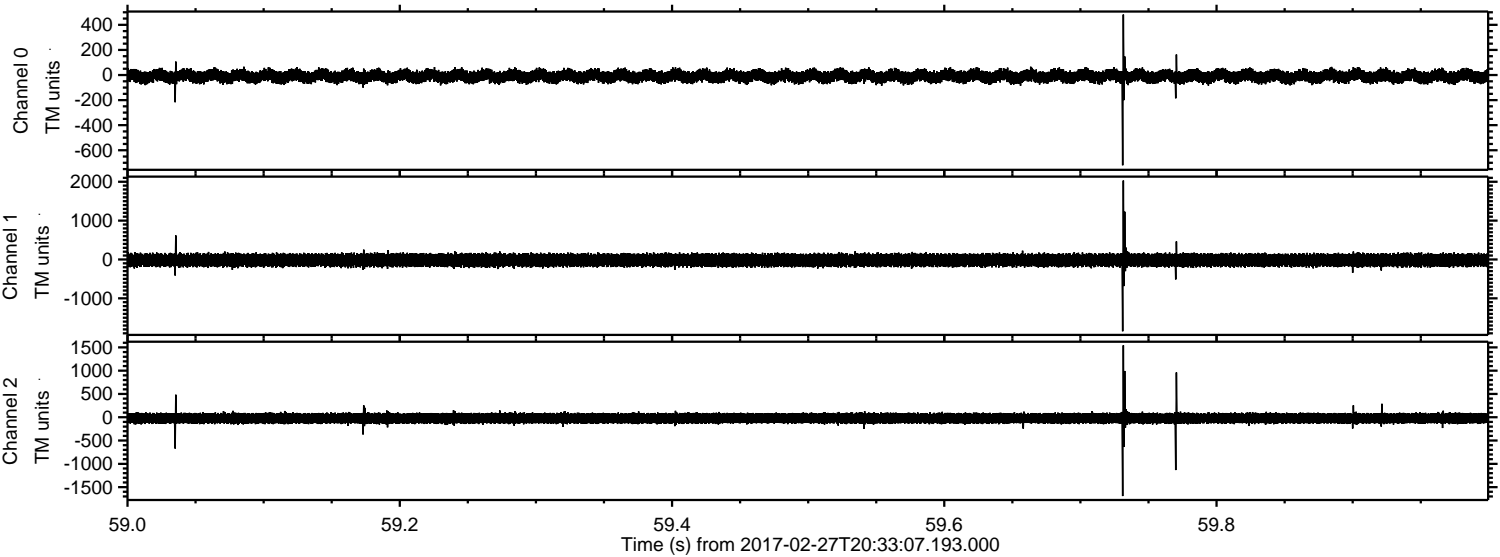
Processed Mon Feb 27 21:40:59 2017 by ELM ver.2012-10-06 from 001__elm20170227_203306__dat00.bin



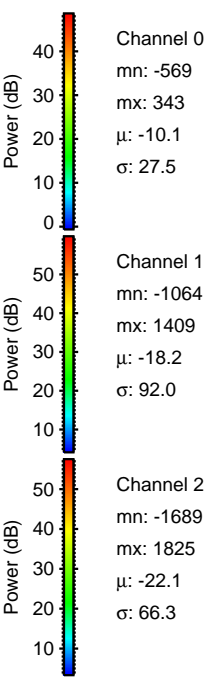
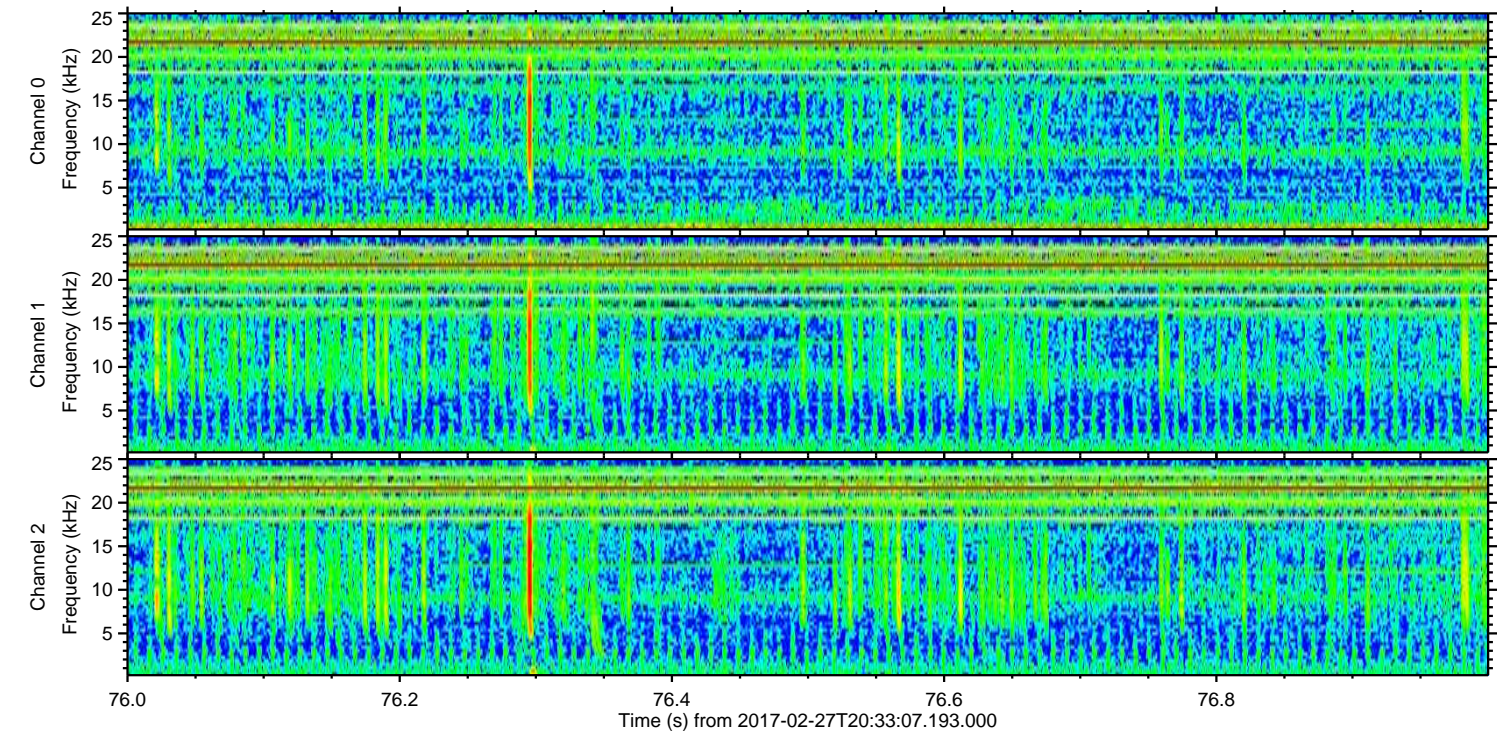
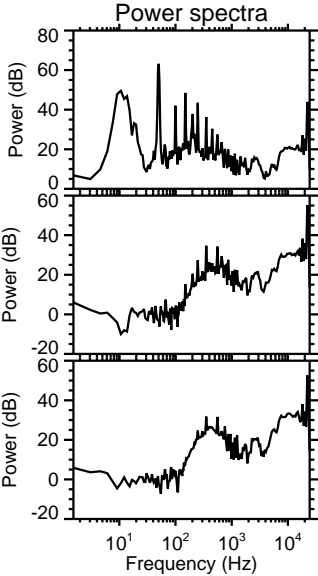
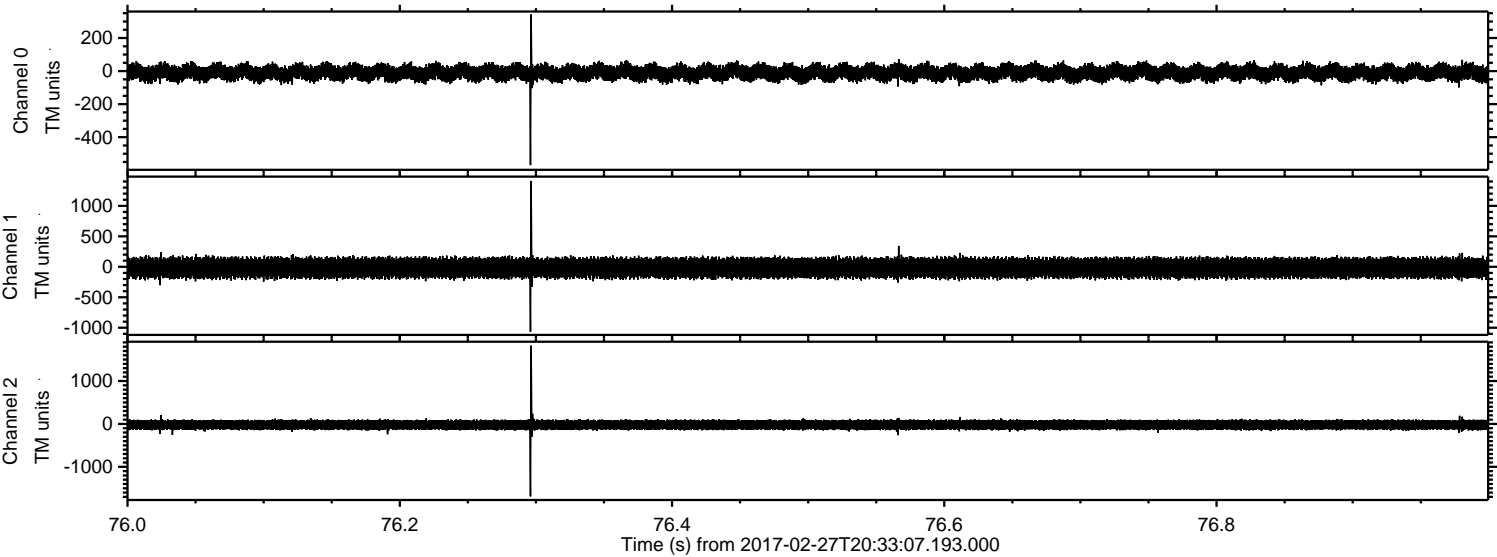
Processed Mon Feb 27 21:41:00 2017 by ELM ver.2012-10-06 from 001__elm20170227_203306__dat00.bin



Processed Mon Feb 27 21:41:01 2017 by ELM ver.2012-10-06 from 001__elm20170227_203306__dat00.bin



Processed Mon Feb 27 21:41:02 2017 by ELM ver.2012-10-06 from 001__elm20170227_203306__dat00.bin



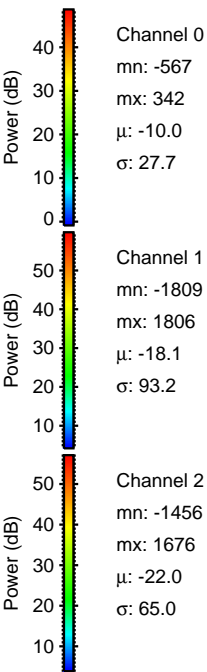
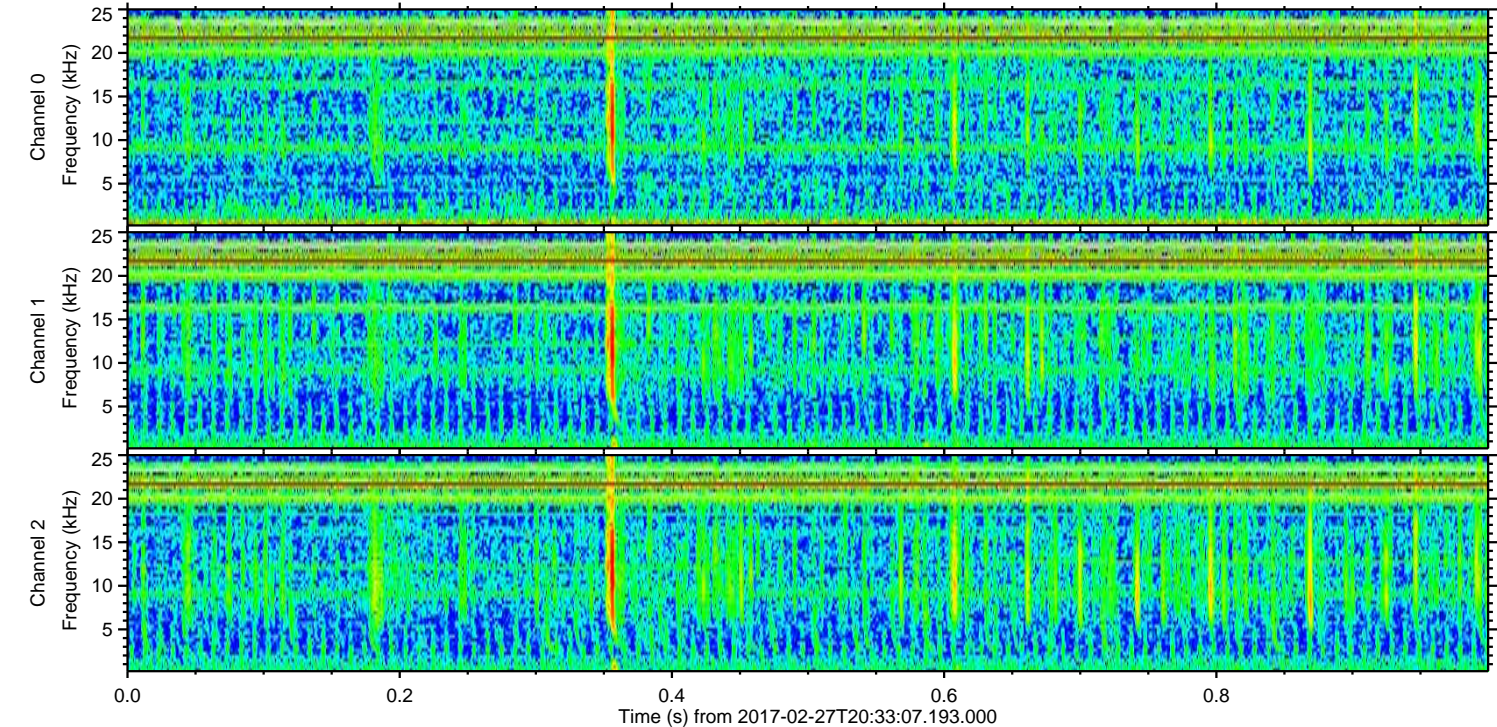
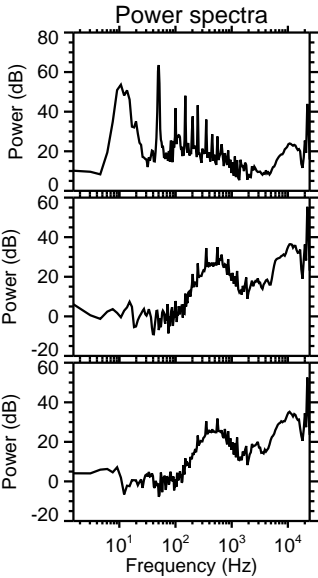
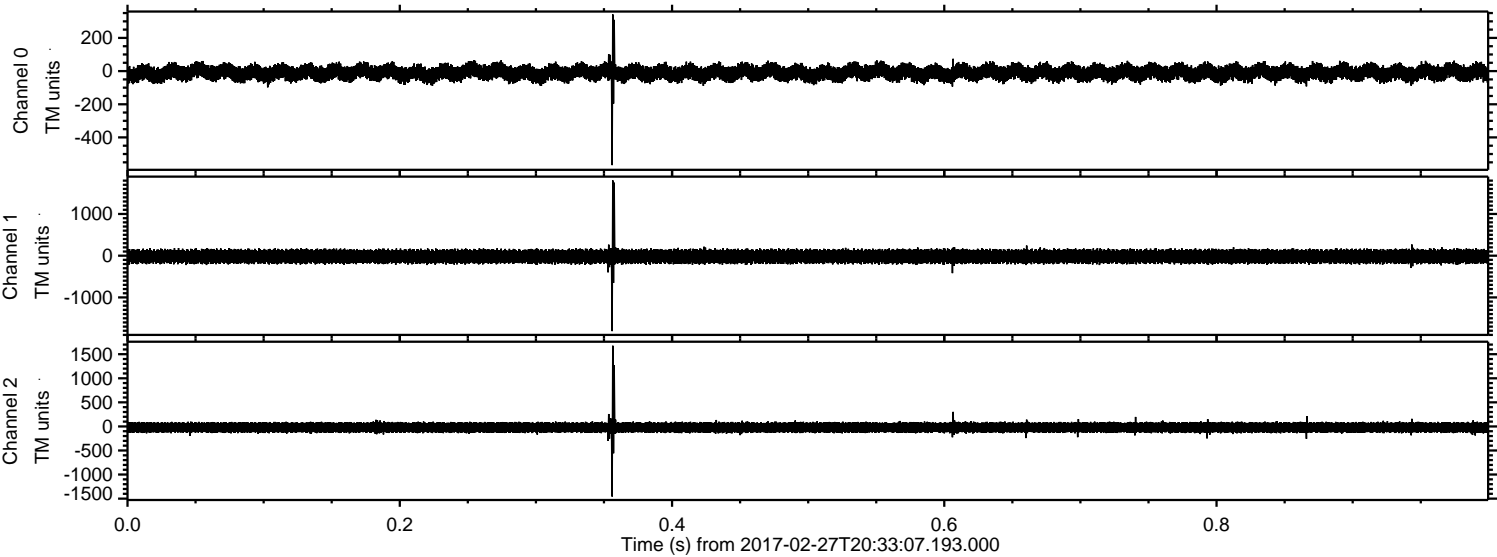
Channel 0
mn: -569
mx: 343
 μ : -10.1
 σ : 27.5

Channel 1
mn: -1064
mx: 1409
 μ : -18.2
 σ : 92.0

Channel 2
mn: -1689
mx: 1825
 μ : -22.1
 σ : 66.3

ELMAVAN 3D WAVEFORMS (Measured data sampled at 50 kHz) 51000 packets of 144 samples from 2017-02-27T20:33:07.193.000. Part 1/147

Processed Mon Feb 27 21:41:03 2017 by ELM ver.2012-10-06 from 001__elm20170227_203306__dat00.bin

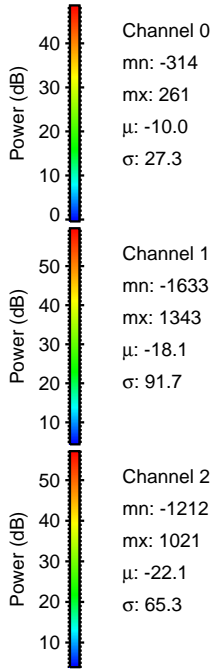
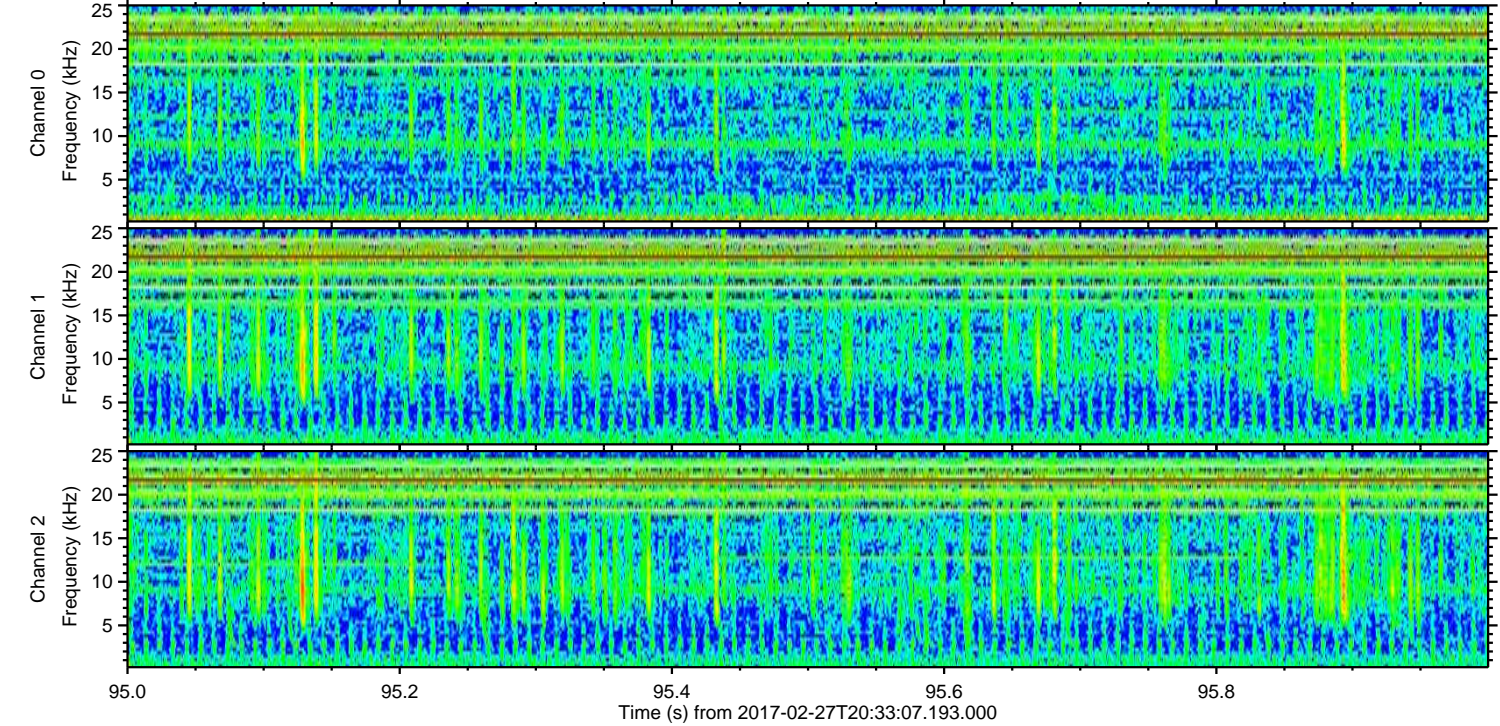
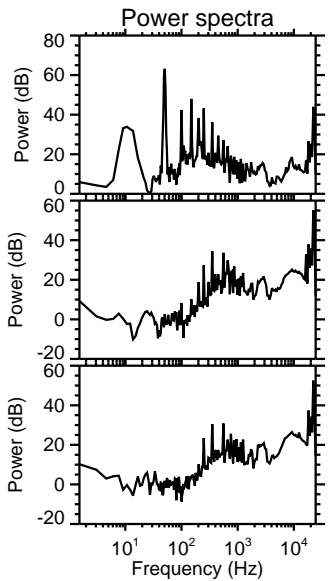
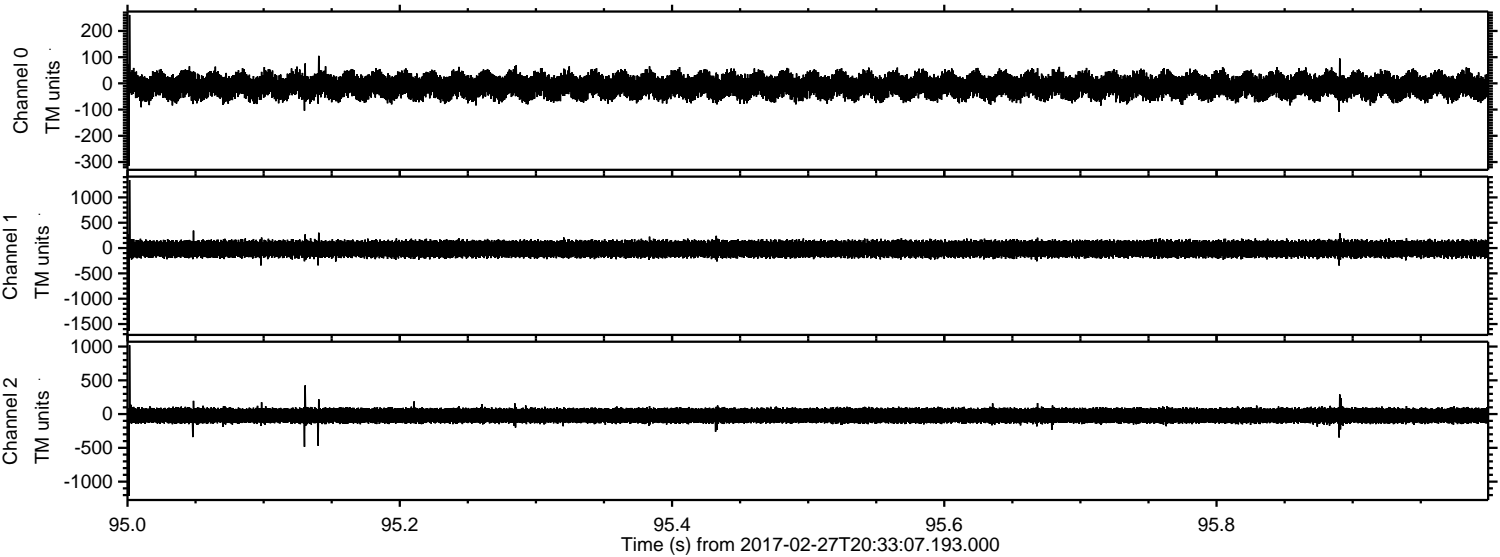


Channel 0
mn: -567
mx: 342
 μ : -10.0
 σ : 27.7

Channel 1
mn: -1809
mx: 1806
 μ : -18.1
 σ : 93.2

Channel 2
mn: -1456
mx: 1676
 μ : -22.0
 σ : 65.0

Processed Mon Feb 27 21:41:04 2017 by ELM ver.2012-10-06 from 001__elm20170227_203306__dat00.bin

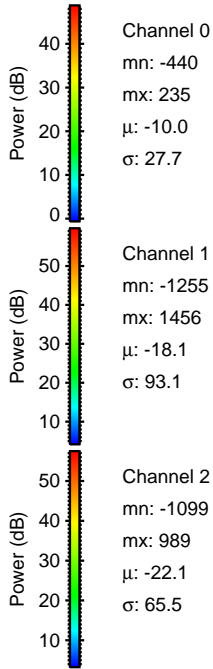
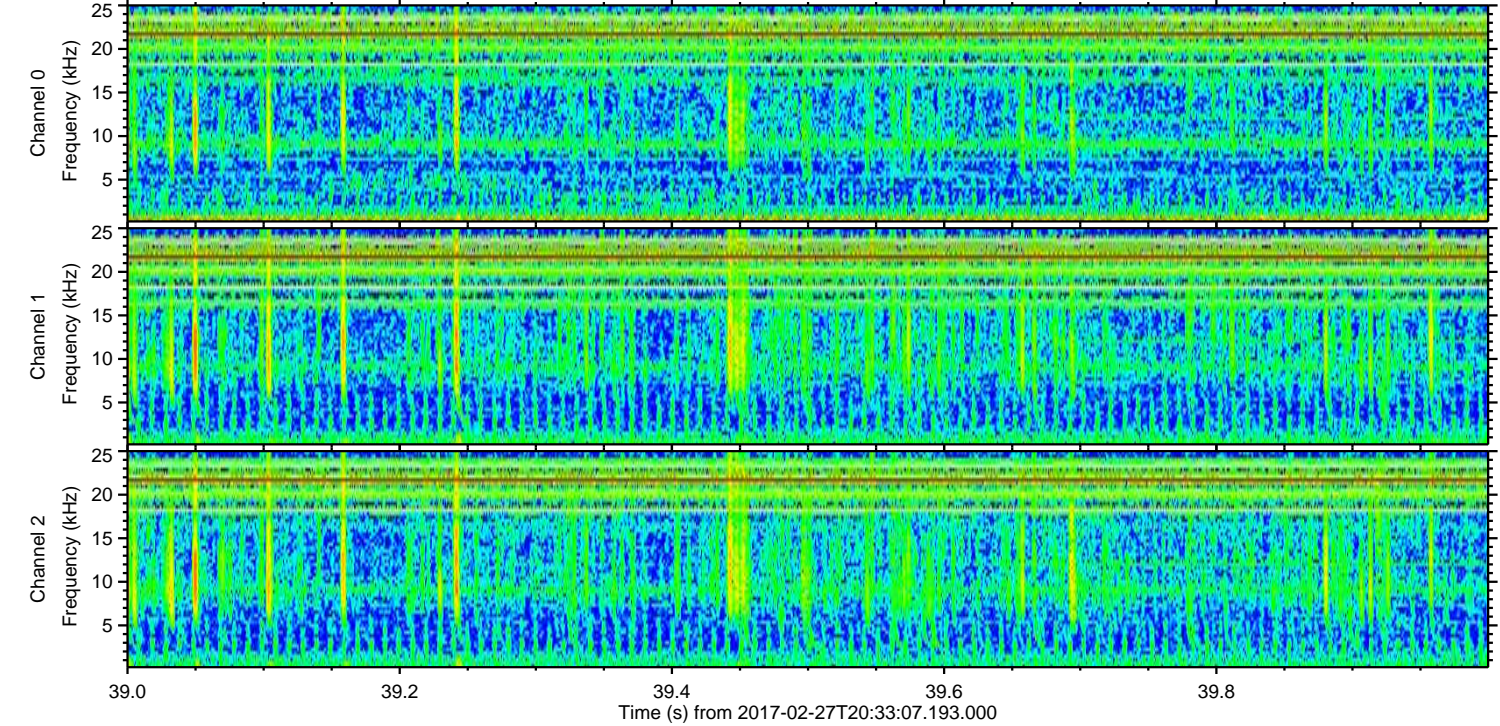
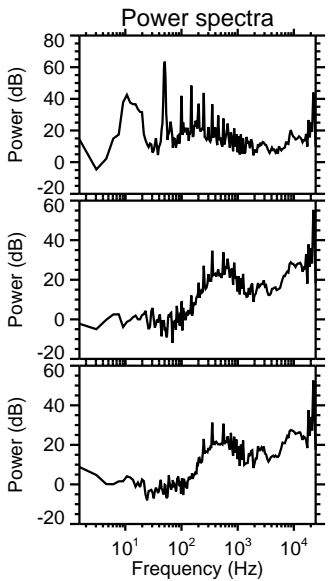
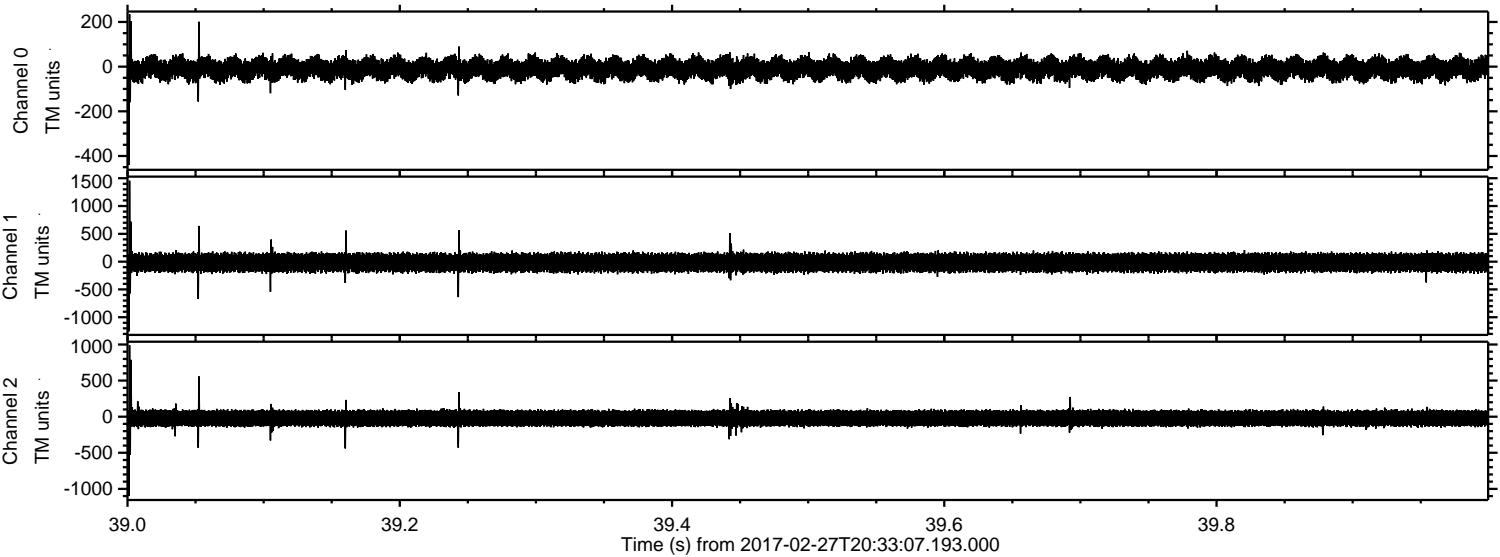


Channel 0
mn: -314
mx: 261
 μ : -10.0
 σ : 27.3

Channel 1
mn: -1633
mx: 1343
 μ : -18.1
 σ : 91.7

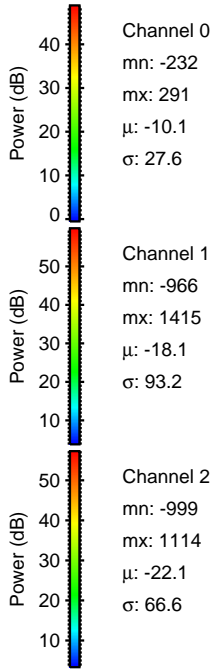
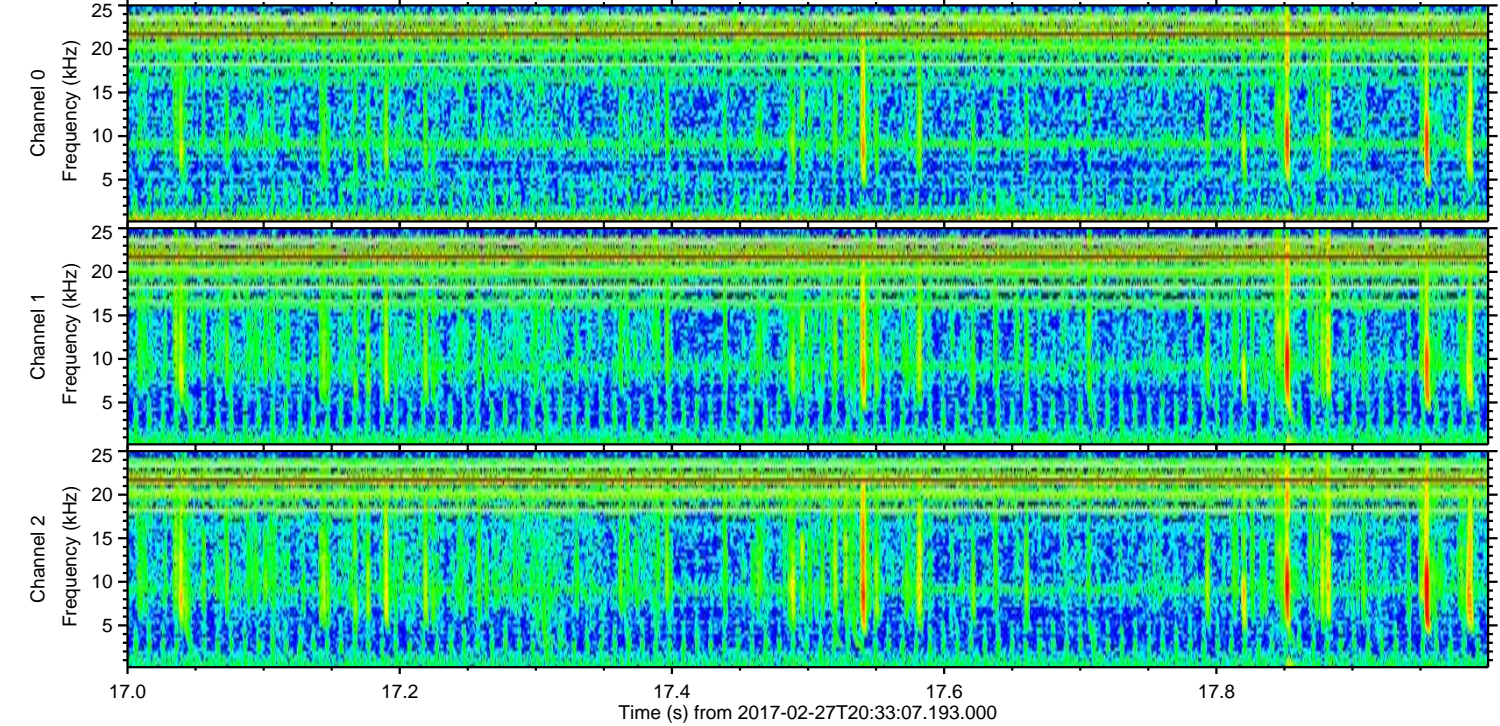
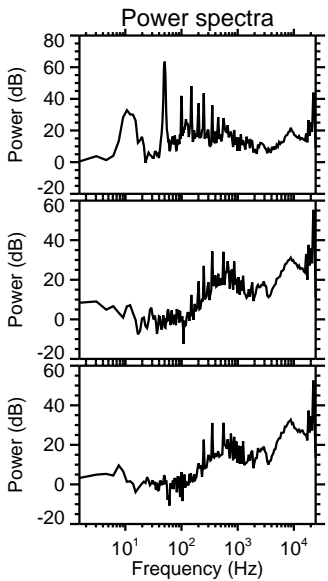
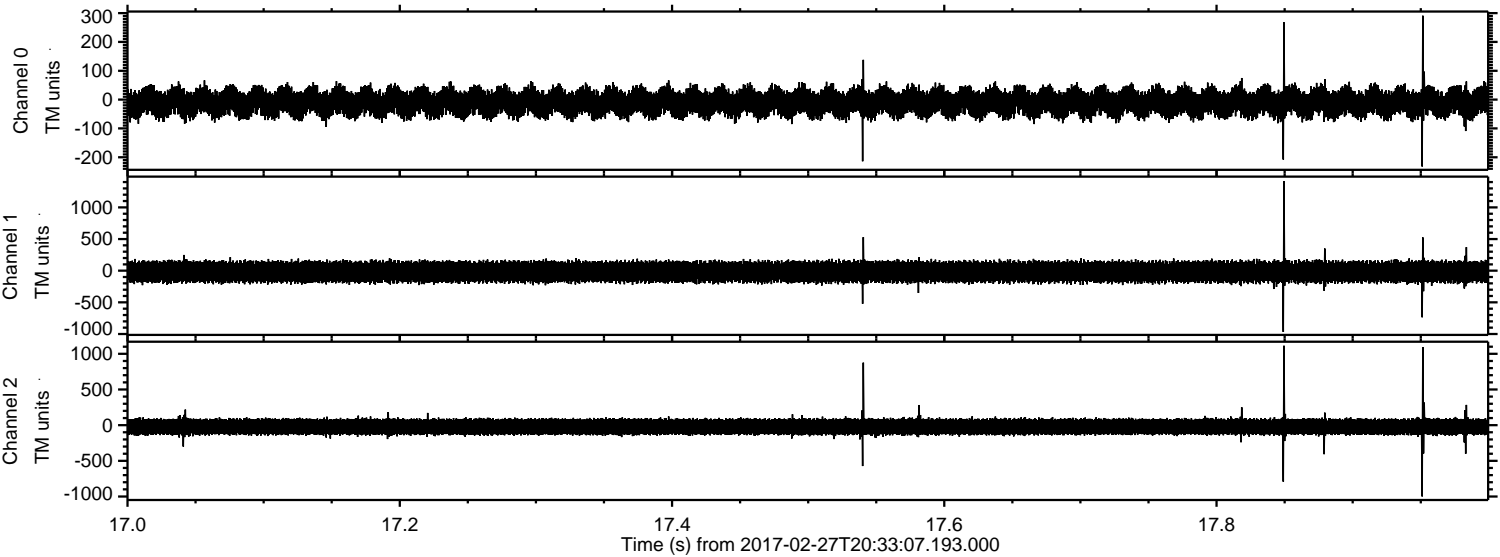
Channel 2
mn: -1212
mx: 1021
 μ : -22.1
 σ : 65.3

Processed Mon Feb 27 21:41:05 2017 by ELM ver.2012-10-06 from 001__elm20170227_203306__dat00.bin



ELMAVAN 3D WAVEFORMS (Measured data sampled at 50 kHz) 51000 packets of 144 samples from 2017-02-27T20:33:07.193.000. Part 18/147

Processed Mon Feb 27 21:41:06 2017 by ELM ver.2012-10-06 from 001__elm20170227_203306__dat00.bin



Channel 0
mn: -232
mx: 291
 μ : -10.1
 σ : 27.6

Channel 1
mn: -966
mx: 1415
 μ : -18.1
 σ : 93.2

Channel 2
mn: -999
mx: 1114
 μ : -22.1
 σ : 66.6

ELMAVAN 3D WAVEFORMS (Measured data sampled at 50 kHz) 51000 packets of 144 samples from 2017-02-27T20:33:07.193.000. Part 109/147

