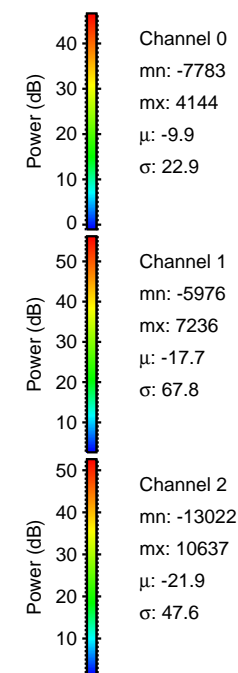
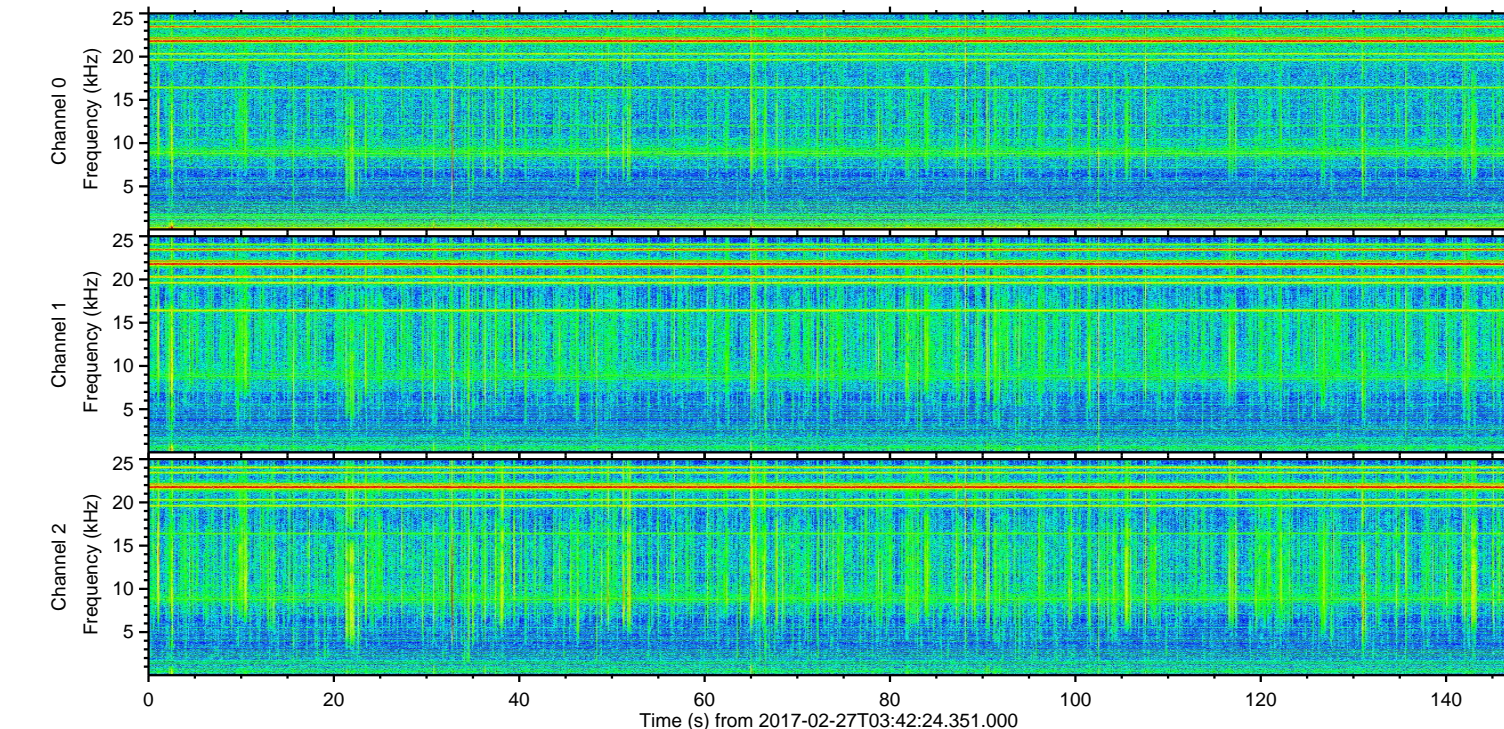
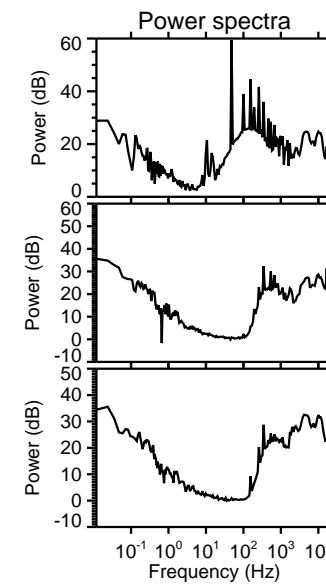
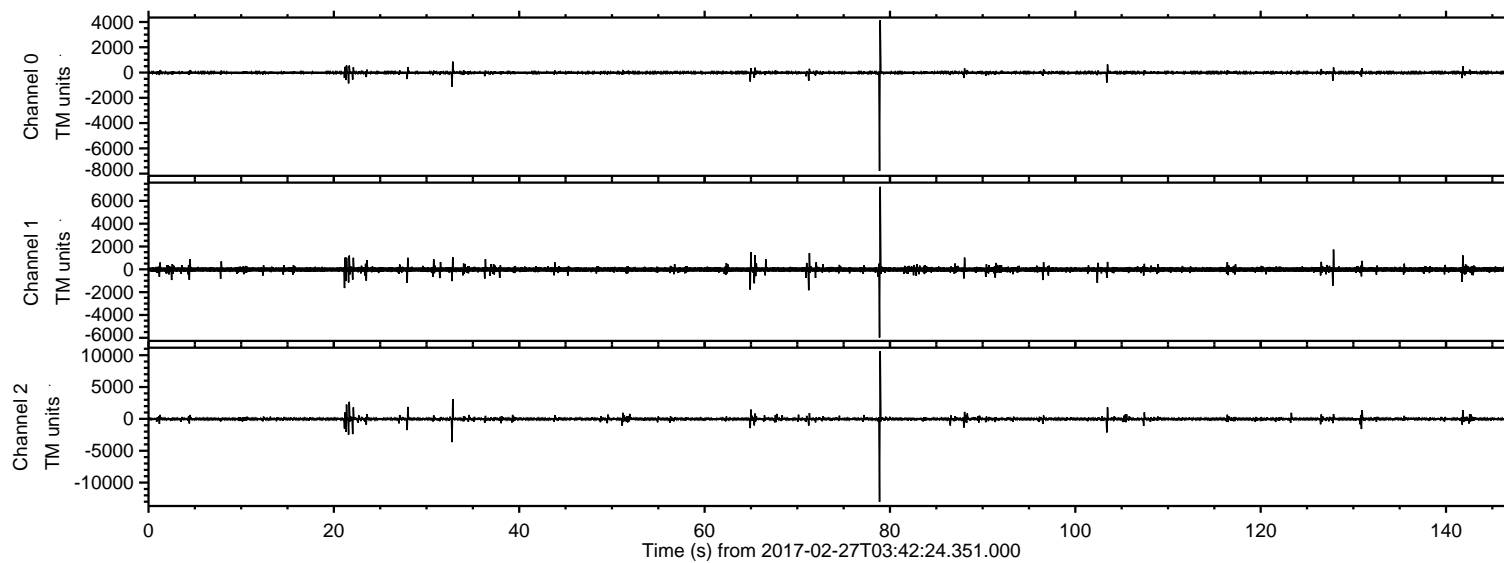


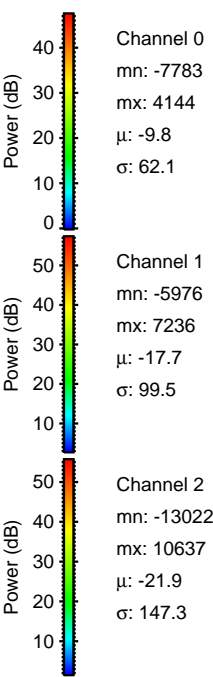
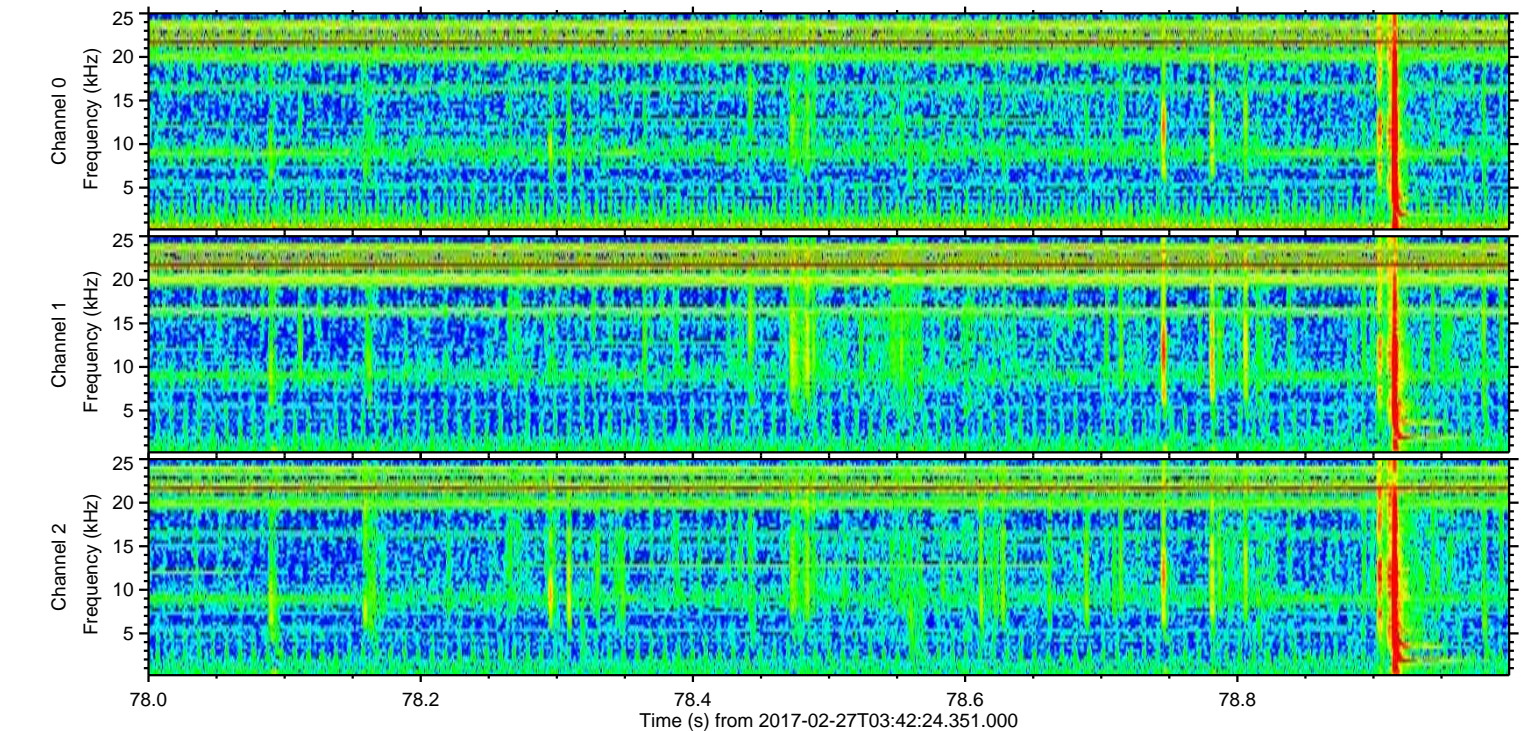
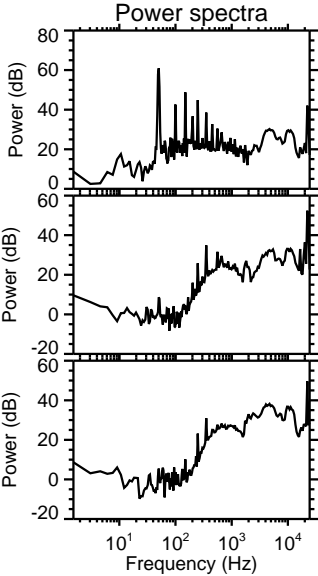
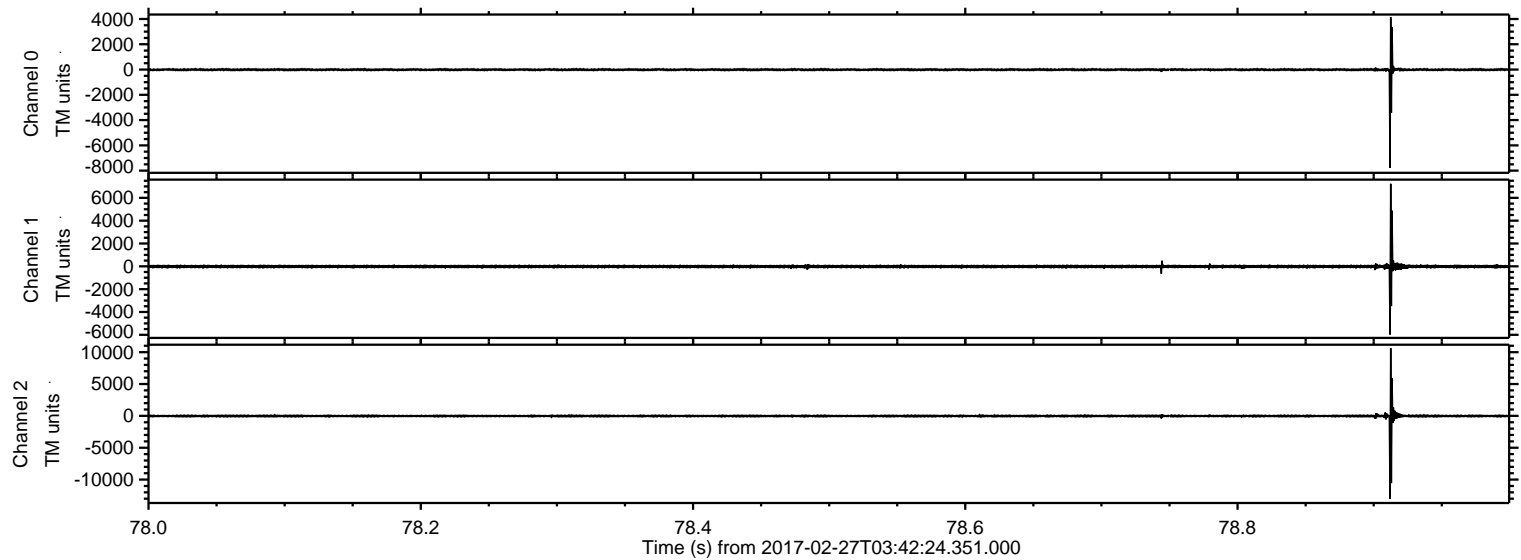
# ELMAVAN 3D WAVEFORMS (Measured data sampled at 50 kHz) 51000 packets of 144 samples from 2017-02-27T03:42:24.351.000.

Processed Mon Feb 27 04:49:52 2017 by ELM ver.2012-10-06 from 001\_\_elm20170227\_034223\_\_dat00.bin

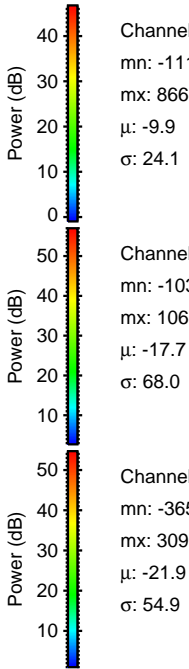
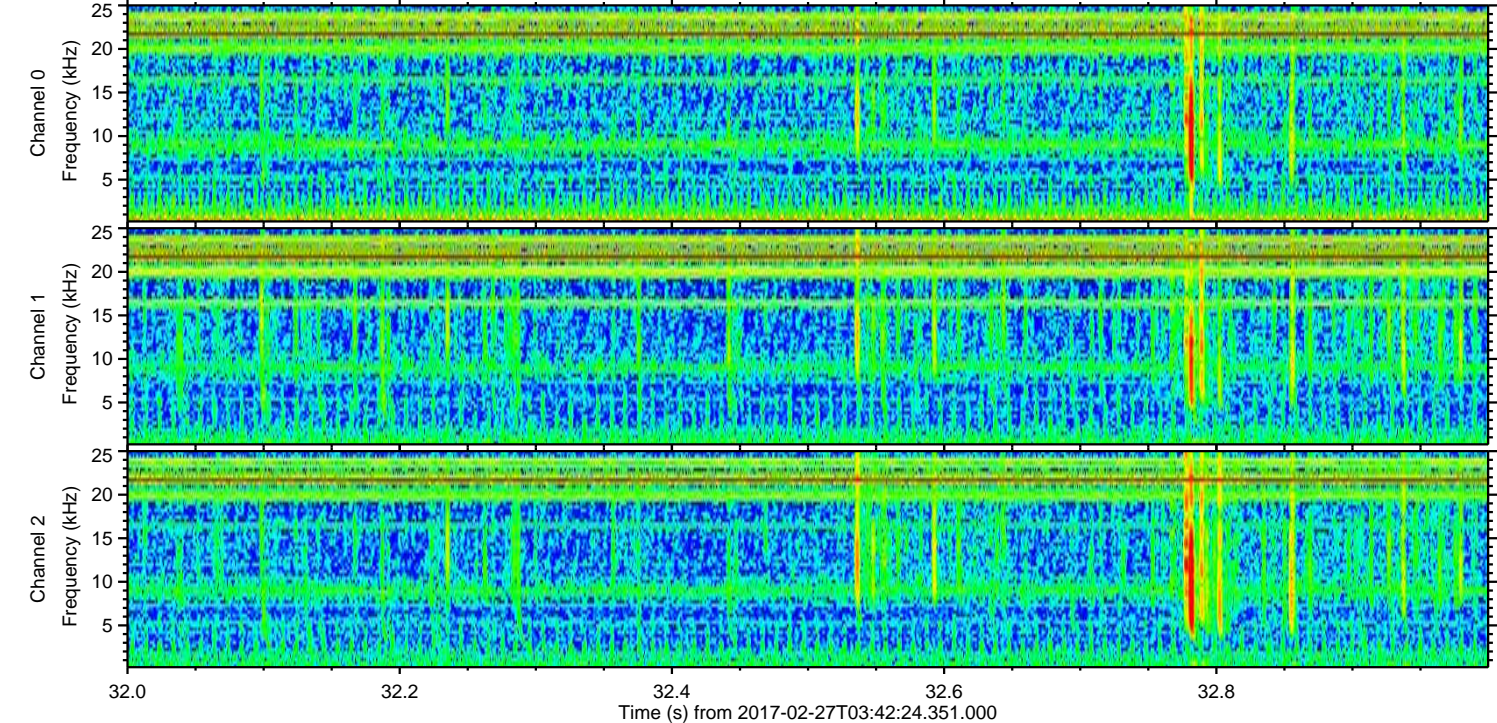
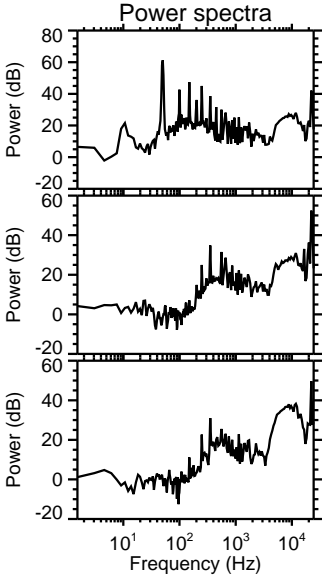
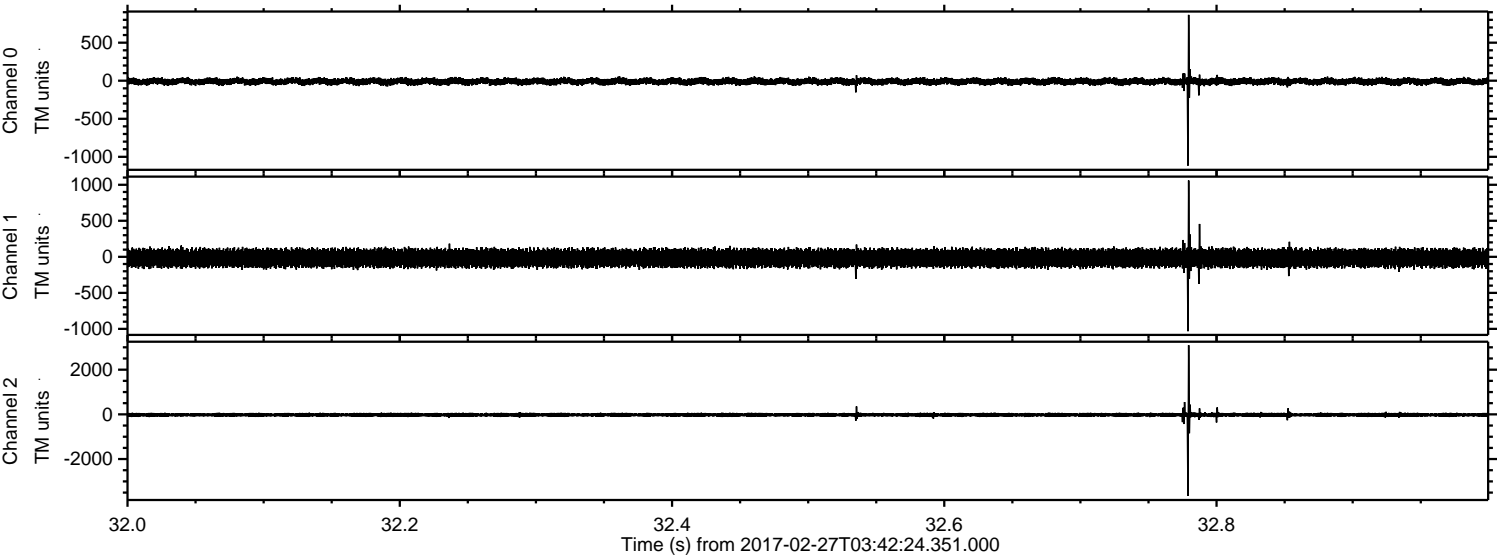


ELMAVAN 3D WAVEFORMS (Measured data sampled at 50 kHz) 51000 packets of 144 samples from 2017-02-27T03:42:24.351.000. Part 79/147

Processed Mon Feb 27 04:50:03 2017 by ELM ver.2012-10-06 from 001\_\_elm20170227\_034223\_\_dat00.bin



Processed Mon Feb 27 04:50:04 2017 by ELM ver.2012-10-06 from 001\_\_elm20170227\_034223\_\_dat00.bin

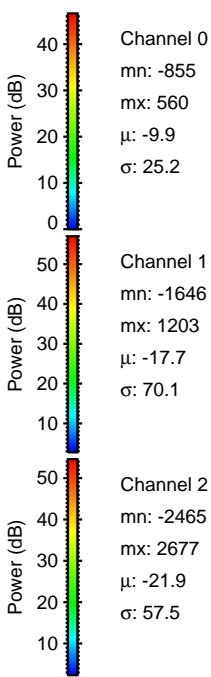
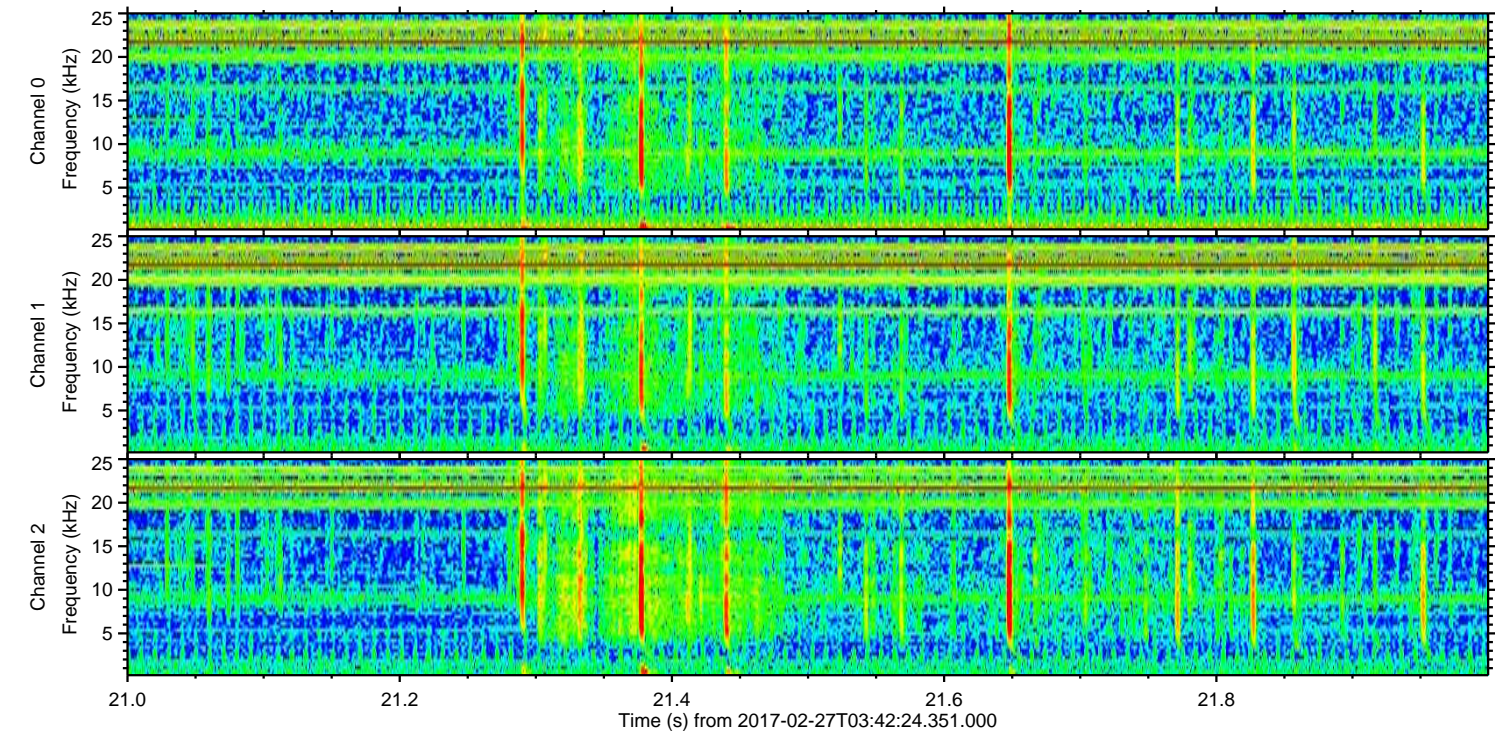
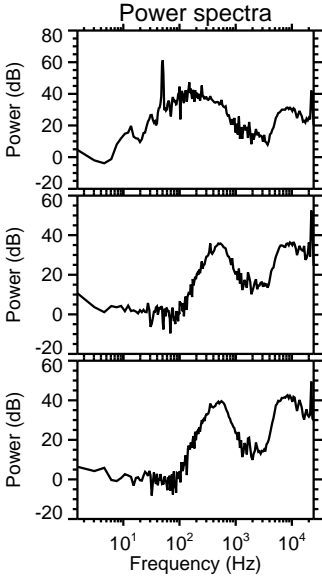
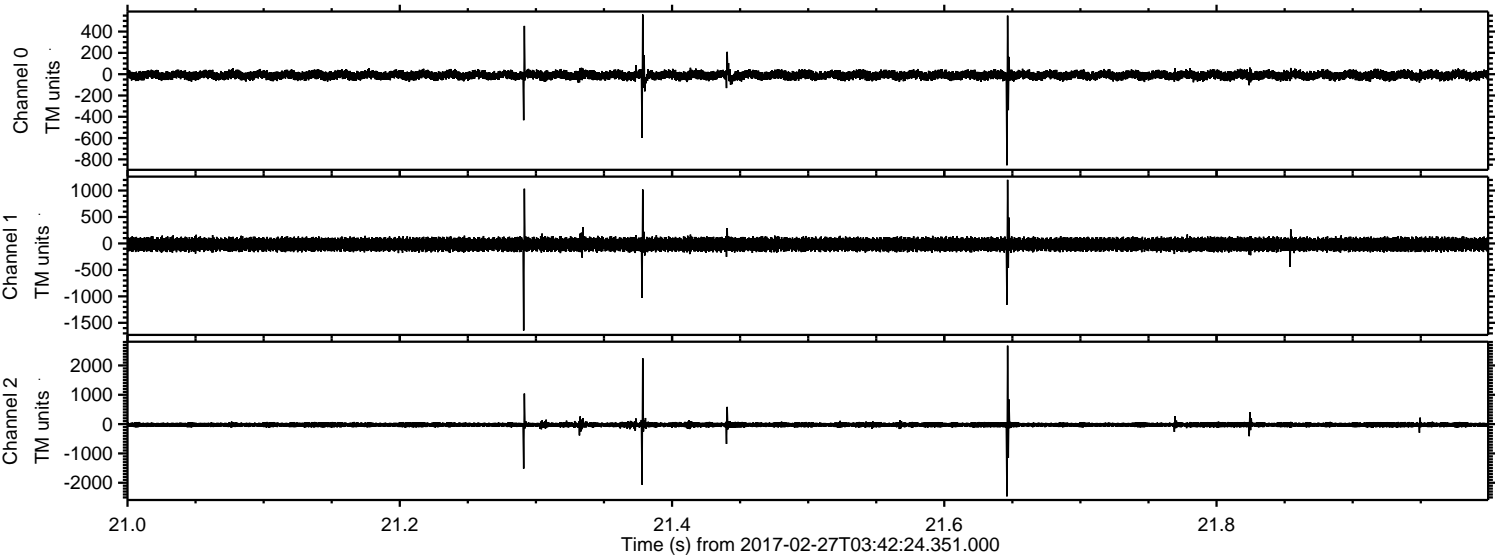


Channel 0  
mn: -1115  
mx: 866  
 $\mu$ : -9.9  
 $\sigma$ : 24.1

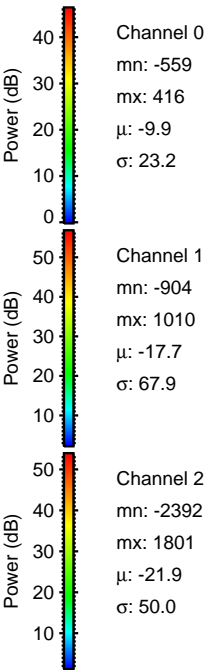
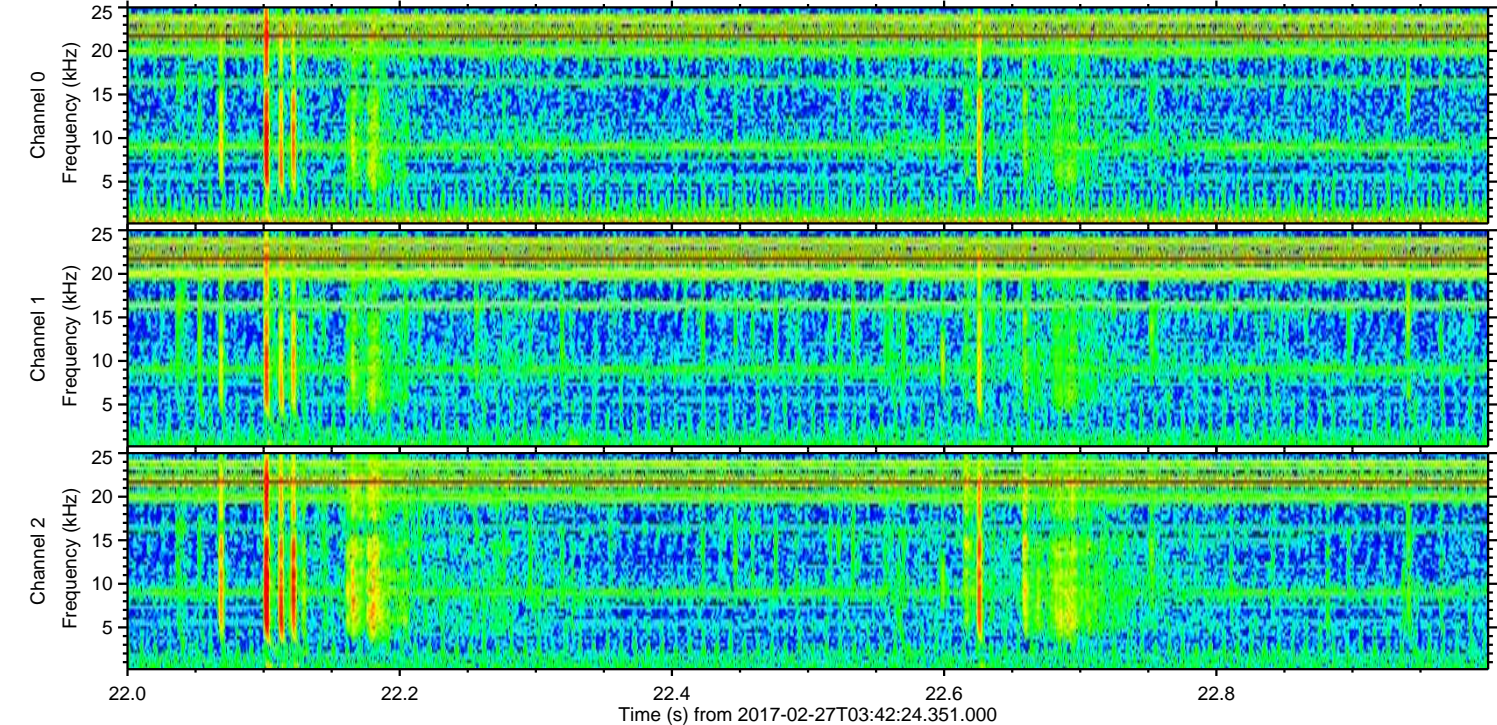
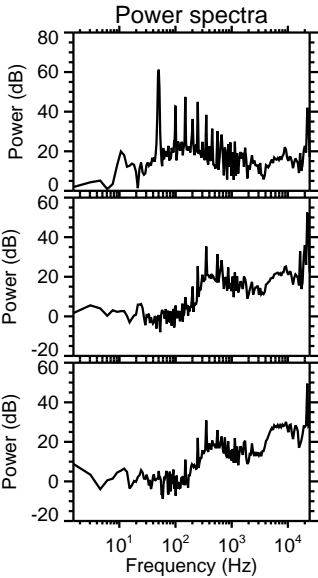
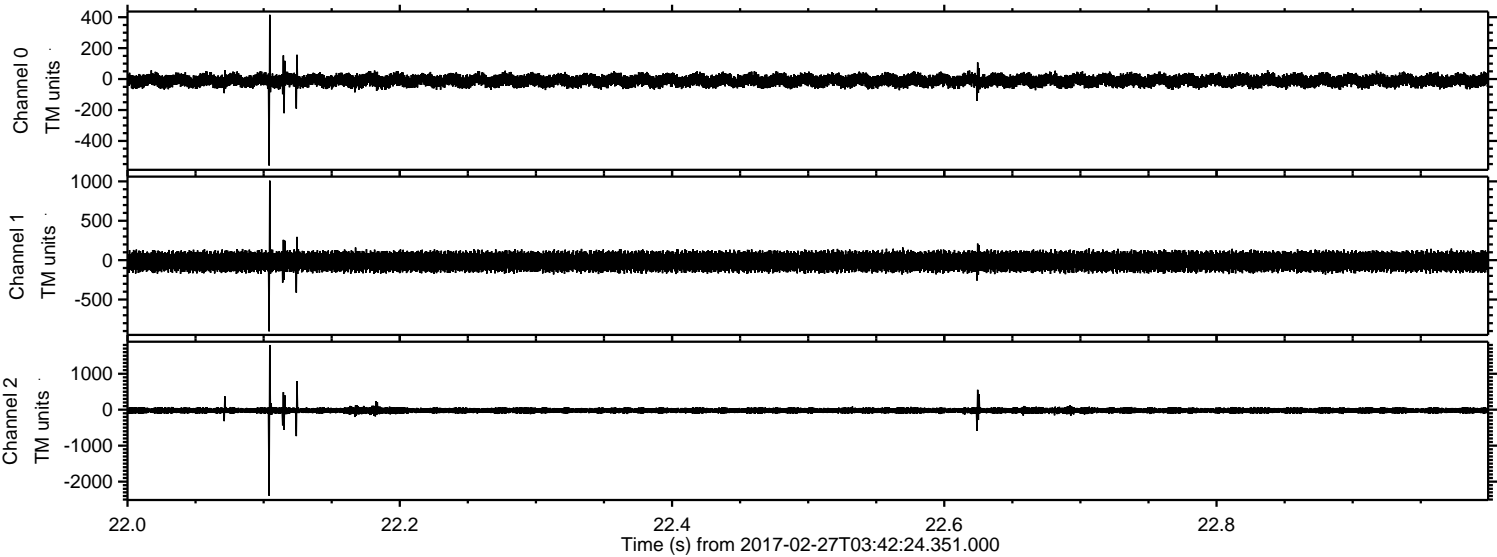
Channel 1  
mn: -1032  
mx: 1060  
 $\mu$ : -17.7  
 $\sigma$ : 68.0

Channel 2  
mn: -3650  
mx: 3097  
 $\mu$ : -21.9  
 $\sigma$ : 54.9

Processed Mon Feb 27 04:50:05 2017 by ELM ver.2012-10-06 from 001\_\_elm20170227\_034223\_\_dat00.bin

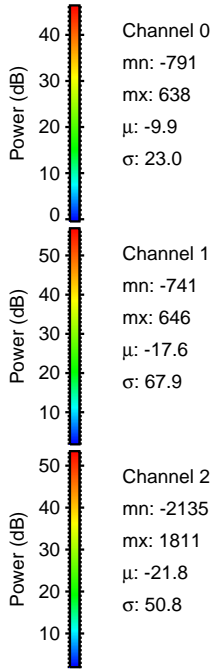
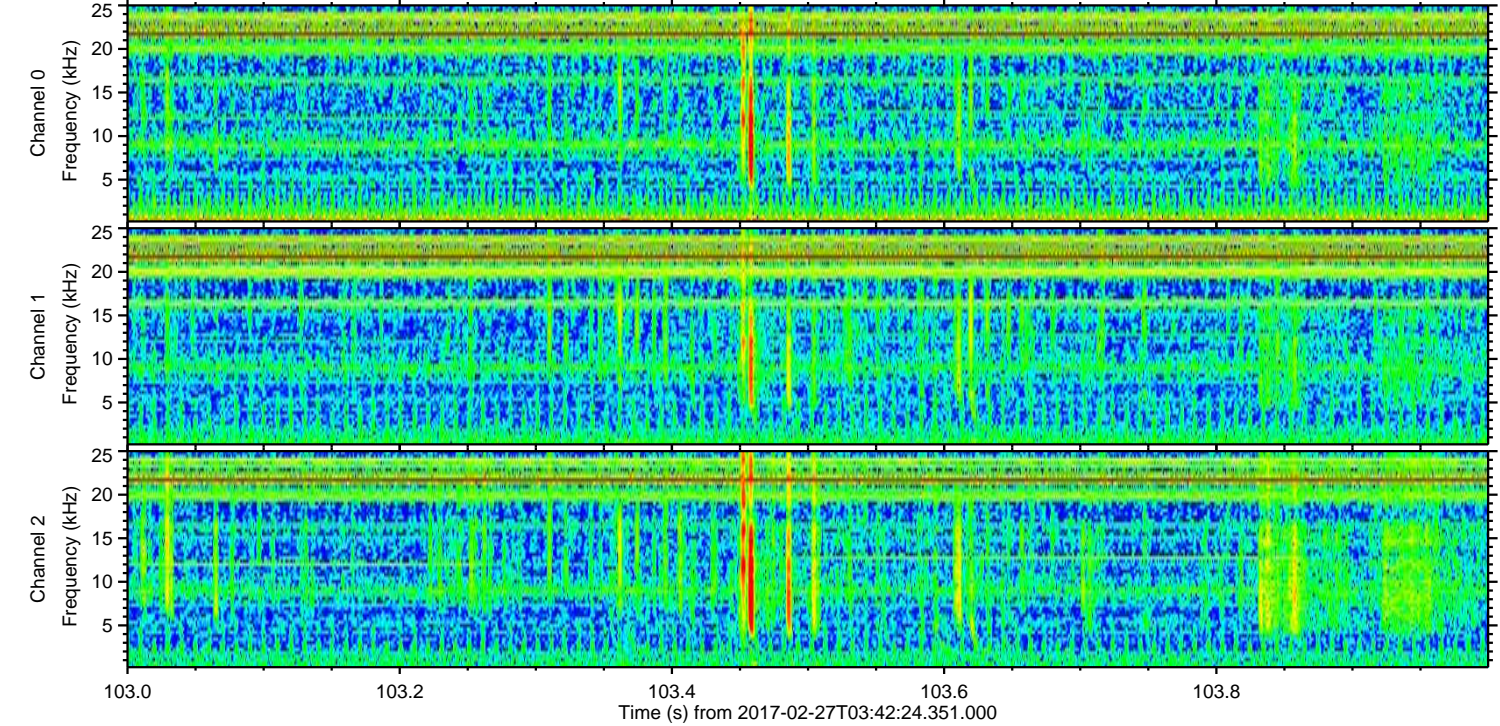
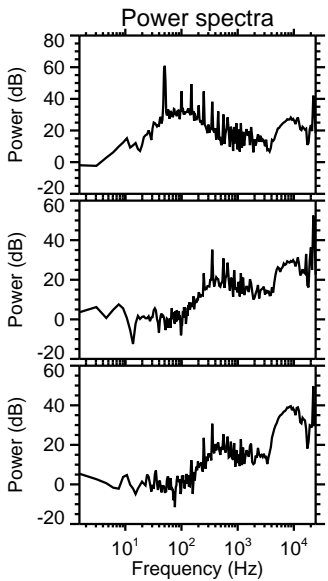
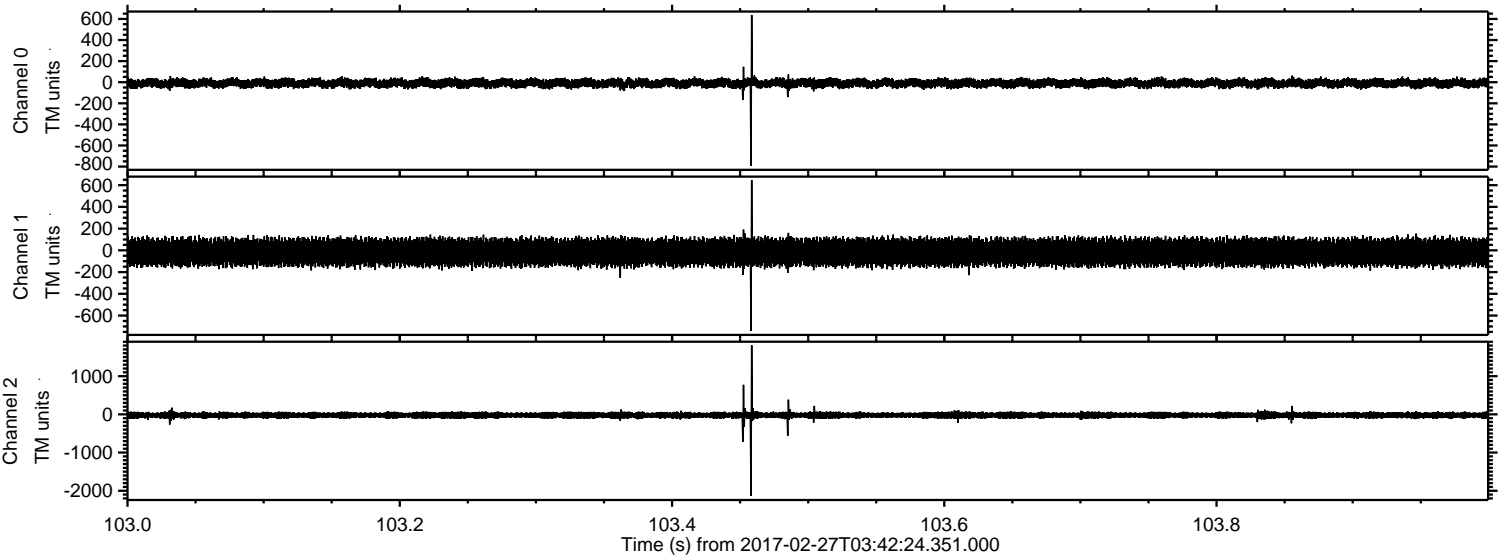


Processed Mon Feb 27 04:50:06 2017 by ELM ver.2012-10-06 from 001\_\_elm20170227\_034223\_\_dat00.bin



ELMAVAN 3D WAVEFORMS (Measured data sampled at 50 kHz) 51000 packets of 144 samples from 2017-02-27T03:42:24.351.000. Part 104/147

Processed Mon Feb 27 04:50:07 2017 by ELM ver.2012-10-06 from 001\_\_elm20170227\_034223\_\_dat00.bin



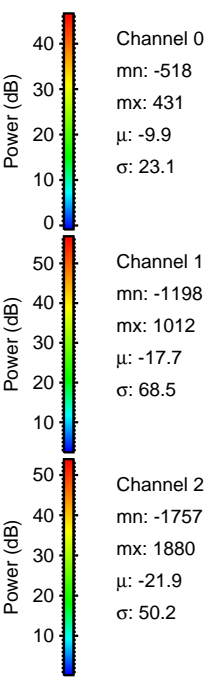
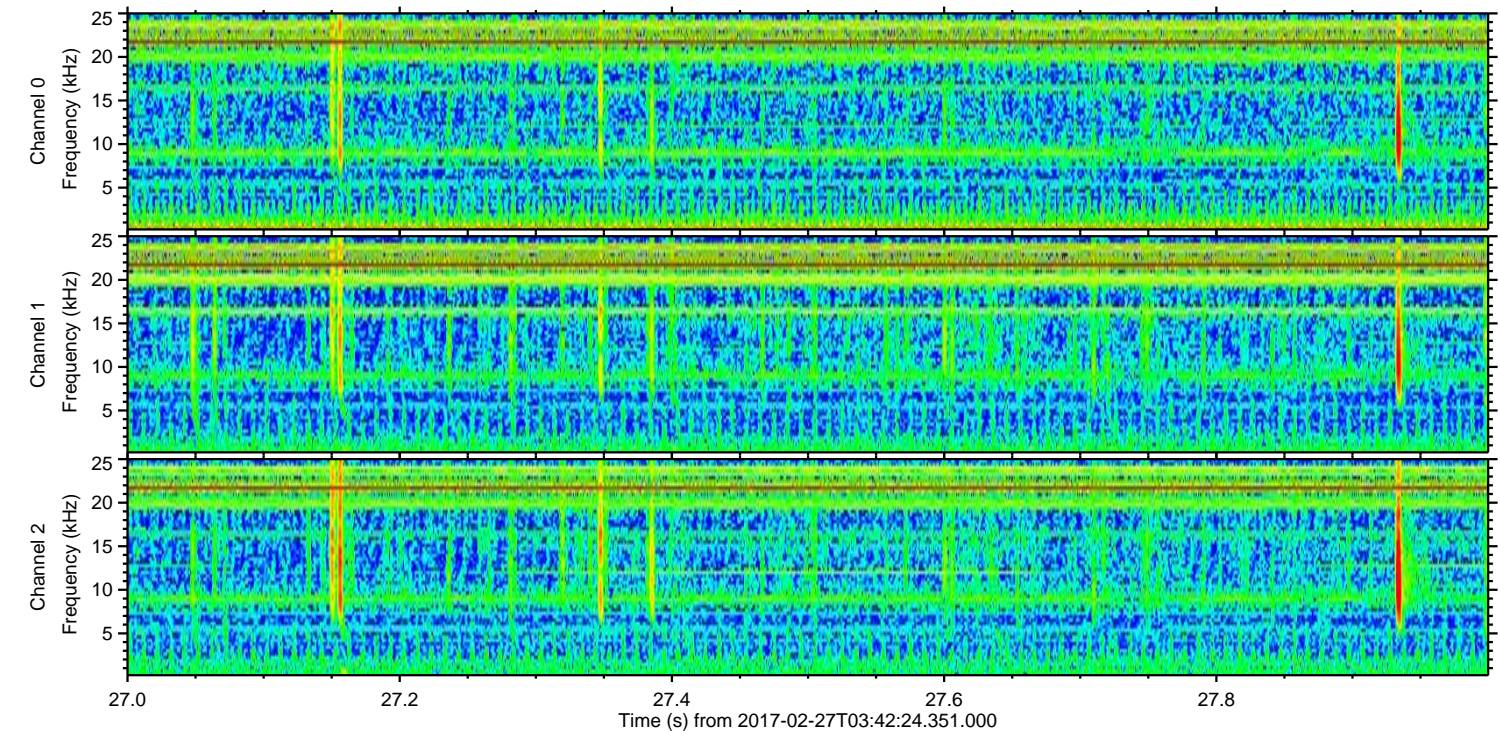
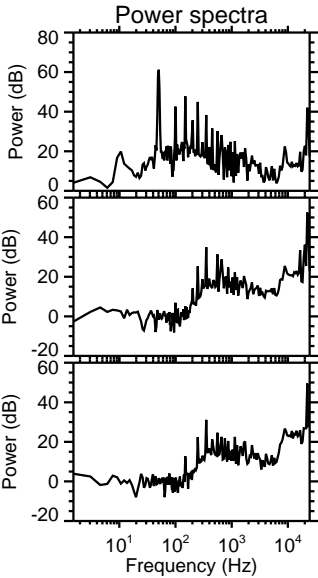
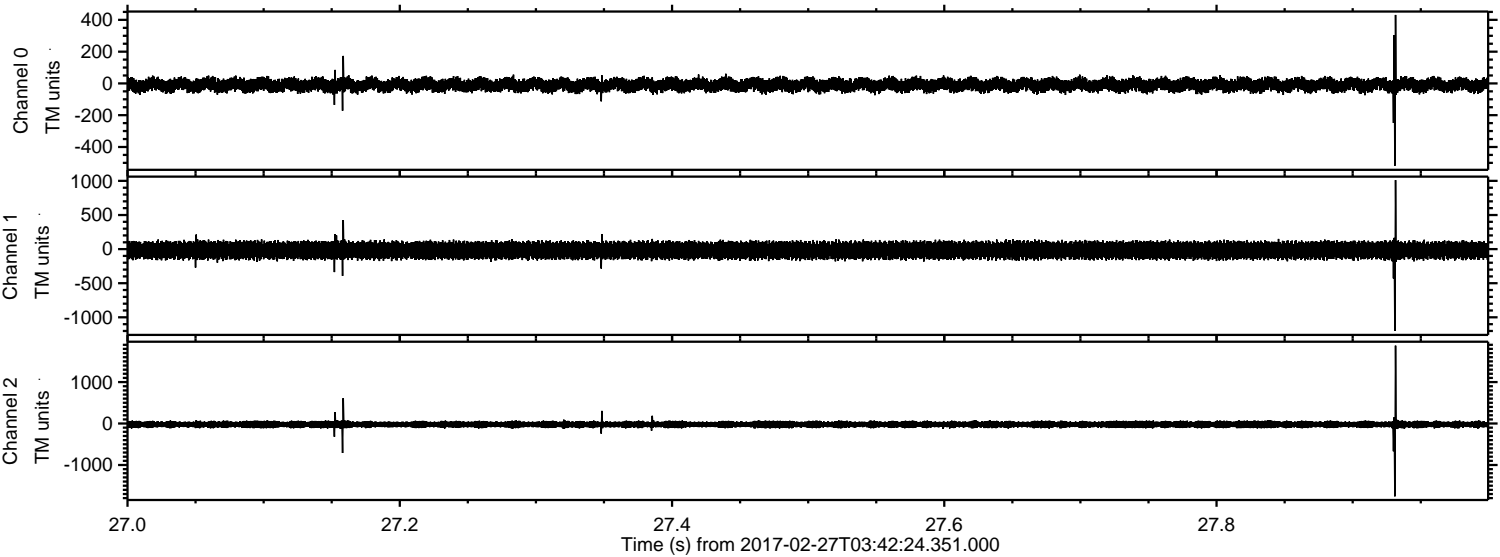
Channel 0  
mn: -791  
mx: 638  
 $\mu$ : -9.9  
 $\sigma$ : 23.0

Channel 1  
mn: -741  
mx: 646  
 $\mu$ : -17.6  
 $\sigma$ : 67.9

Channel 2  
mn: -2135  
mx: 1811  
 $\mu$ : -21.8  
 $\sigma$ : 50.8

ELMAVAN 3D WAVEFORMS (Measured data sampled at 50 kHz) 51000 packets of 144 samples from 2017-02-27T03:42:24.351.000. Part 28/147

Processed Mon Feb 27 04:50:08 2017 by ELM ver.2012-10-06 from 001\_\_elm20170227\_034223\_\_dat00.bin

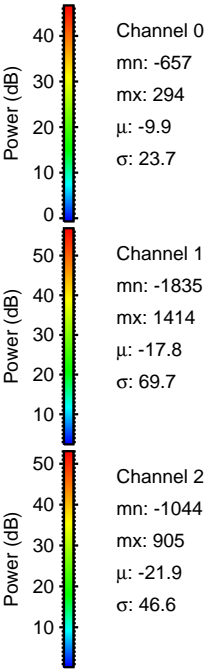
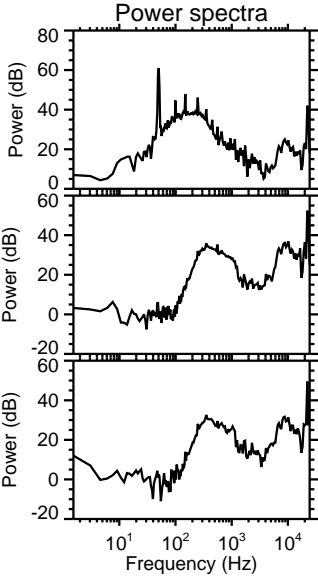
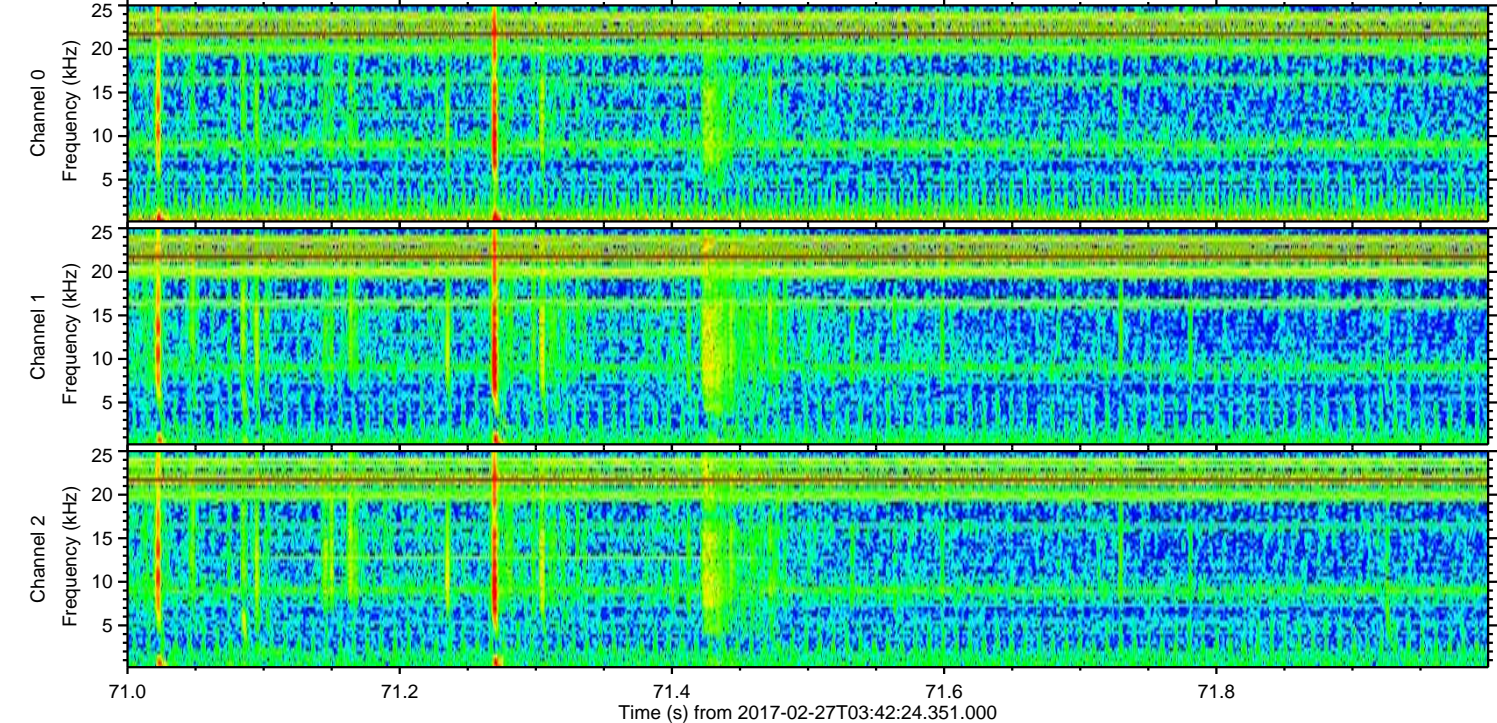
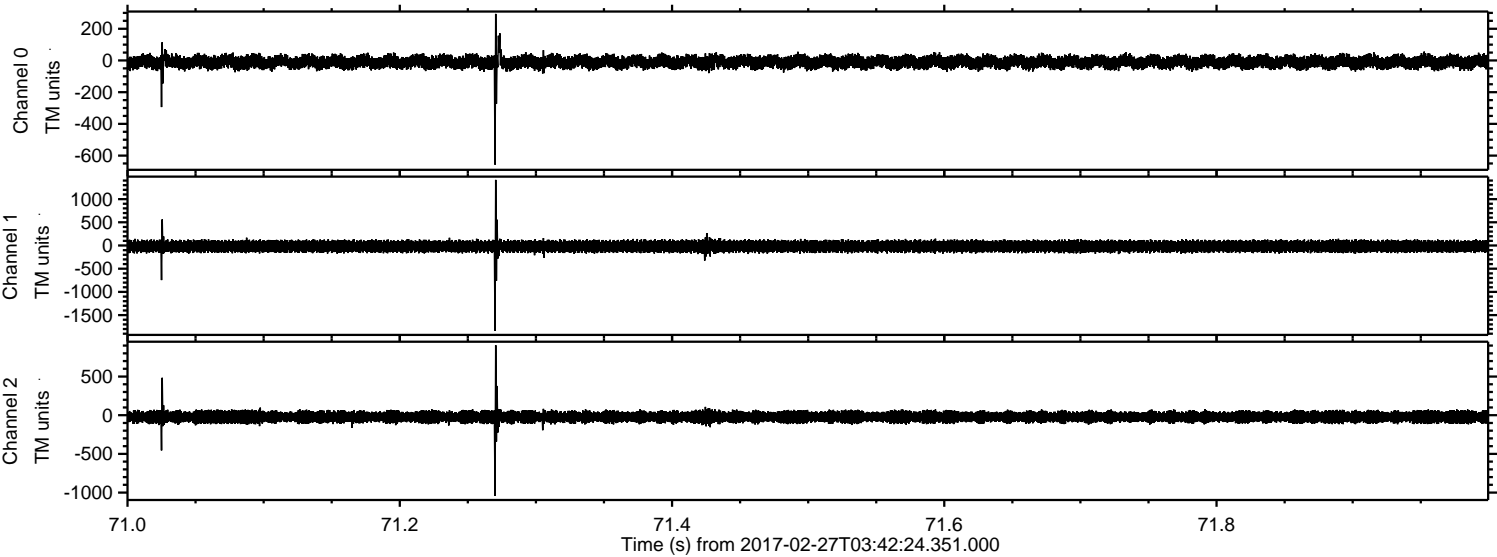


Channel 0  
mn: -518  
mx: 431  
 $\mu$ : -9.9  
 $\sigma$ : 23.1

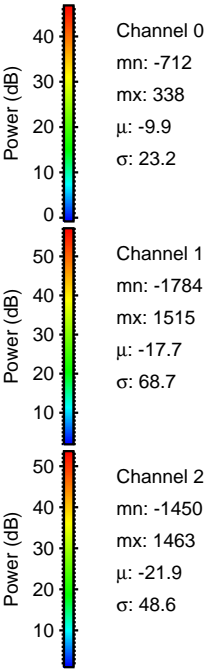
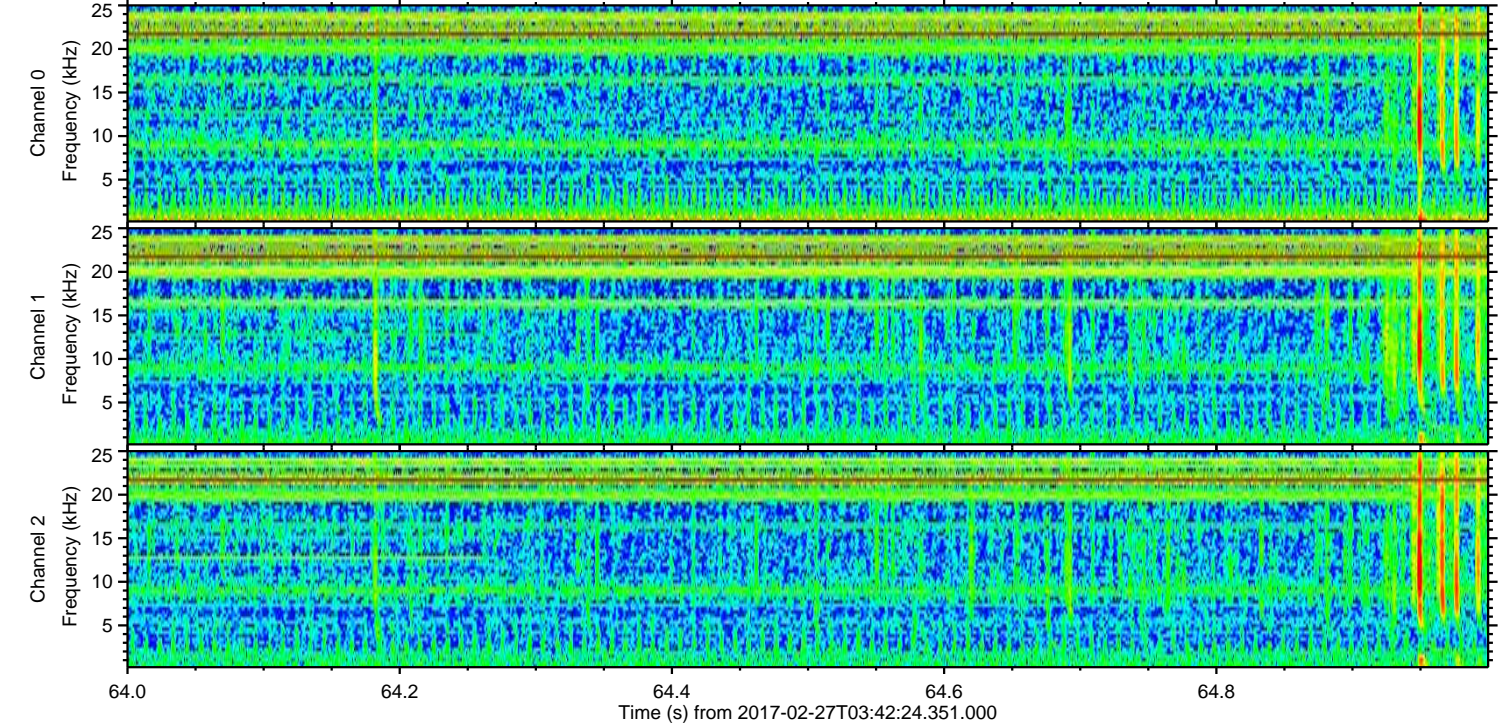
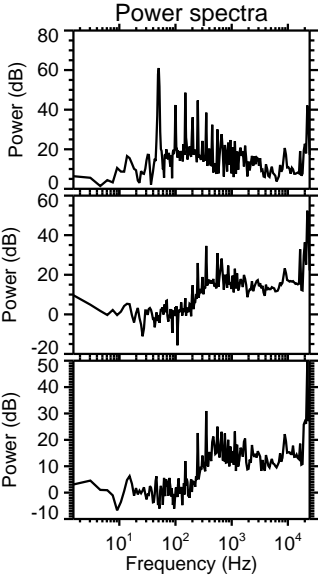
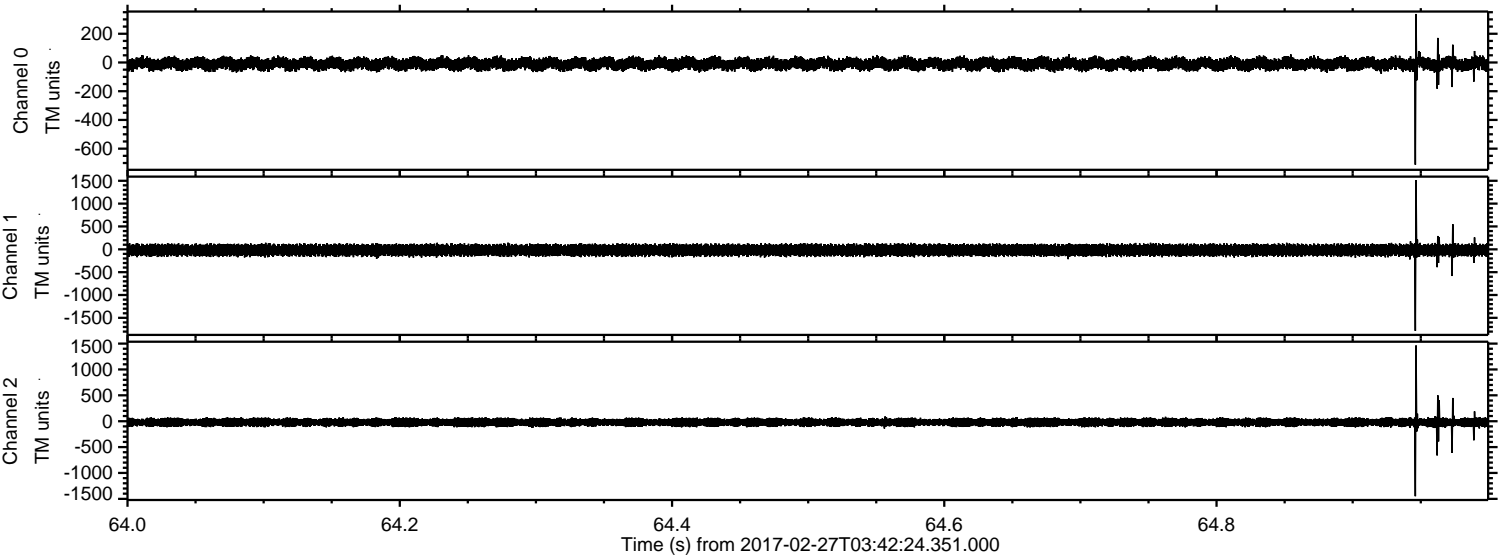
Channel 1  
mn: -1198  
mx: 1012  
 $\mu$ : -17.7  
 $\sigma$ : 68.5

Channel 2  
mn: -1757  
mx: 1880  
 $\mu$ : -21.9  
 $\sigma$ : 50.2

Processed Mon Feb 27 04:50:09 2017 by ELM ver.2012-10-06 from 001\_\_elm20170227\_034223\_\_dat00.bin

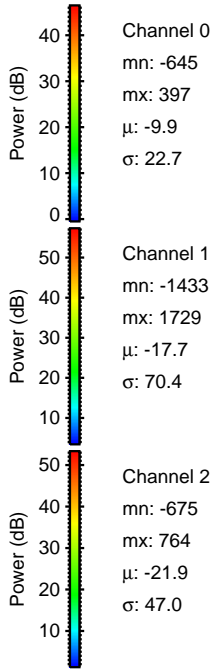
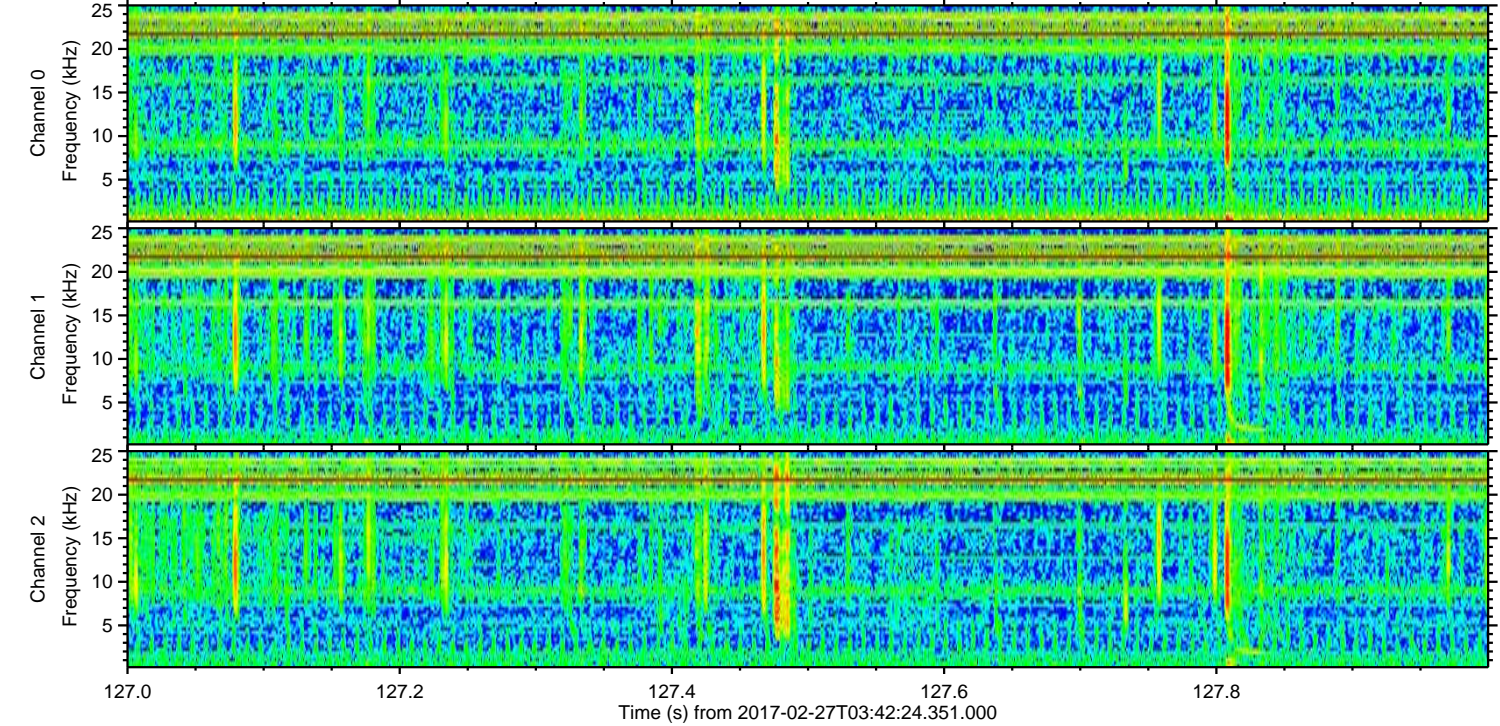
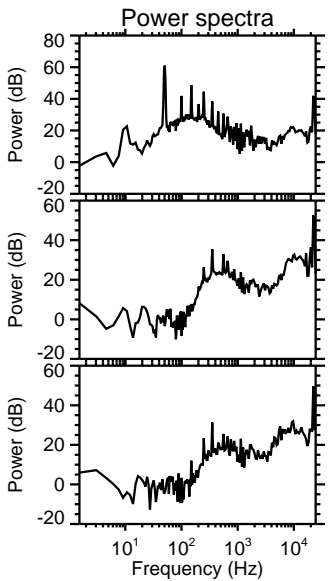
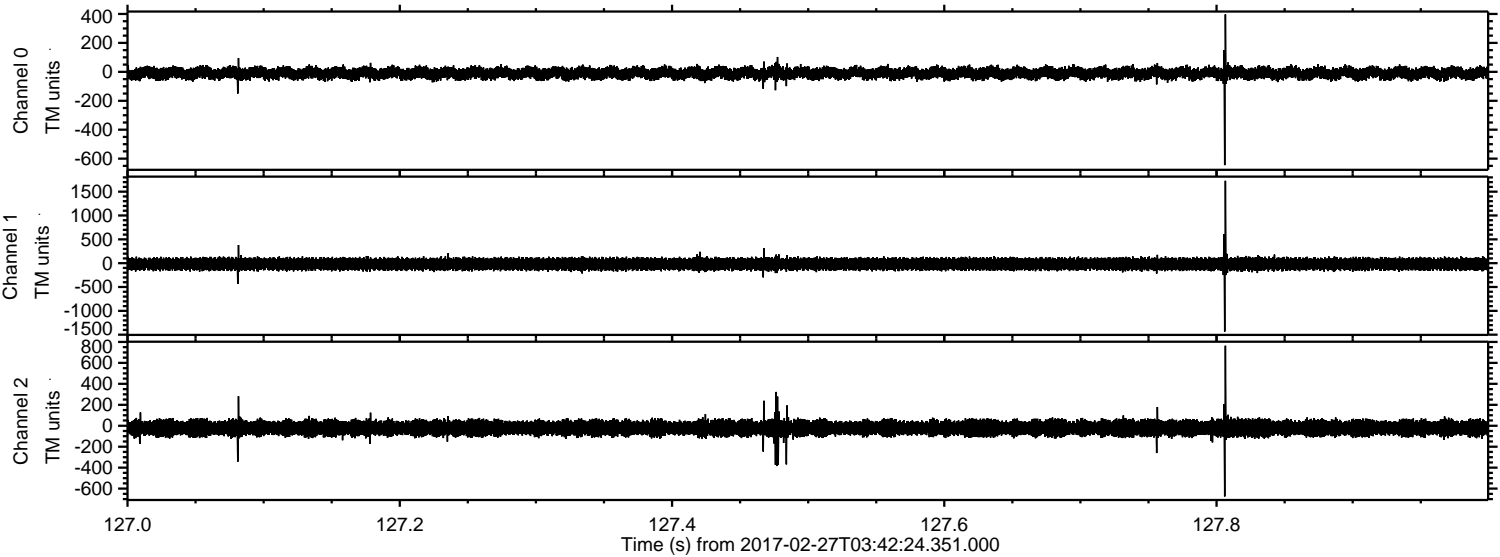


Processed Mon Feb 27 04:50:10 2017 by ELM ver.2012-10-06 from 001\_\_elm20170227\_034223\_\_dat00.bin



ELMAVAN 3D WAVEFORMS (Measured data sampled at 50 kHz) 51000 packets of 144 samples from 2017-02-27T03:42:24.351.000. Part 128/147

Processed Mon Feb 27 04:50:11 2017 by ELM ver.2012-10-06 from 001\_\_elm20170227\_034223\_\_dat00.bin



ELMAVAN 3D WAVEFORMS (Measured data sampled at 50 kHz) 51000 packets of 144 samples from 2017-02-27T03:42:24.351.000. Part 20/147

Processed Mon Feb 27 04:50:12 2017 by ELM ver.2012-10-06 from 001\_\_elm20170227\_034223\_\_dat00.bin

