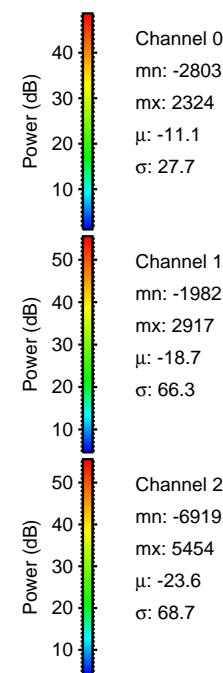
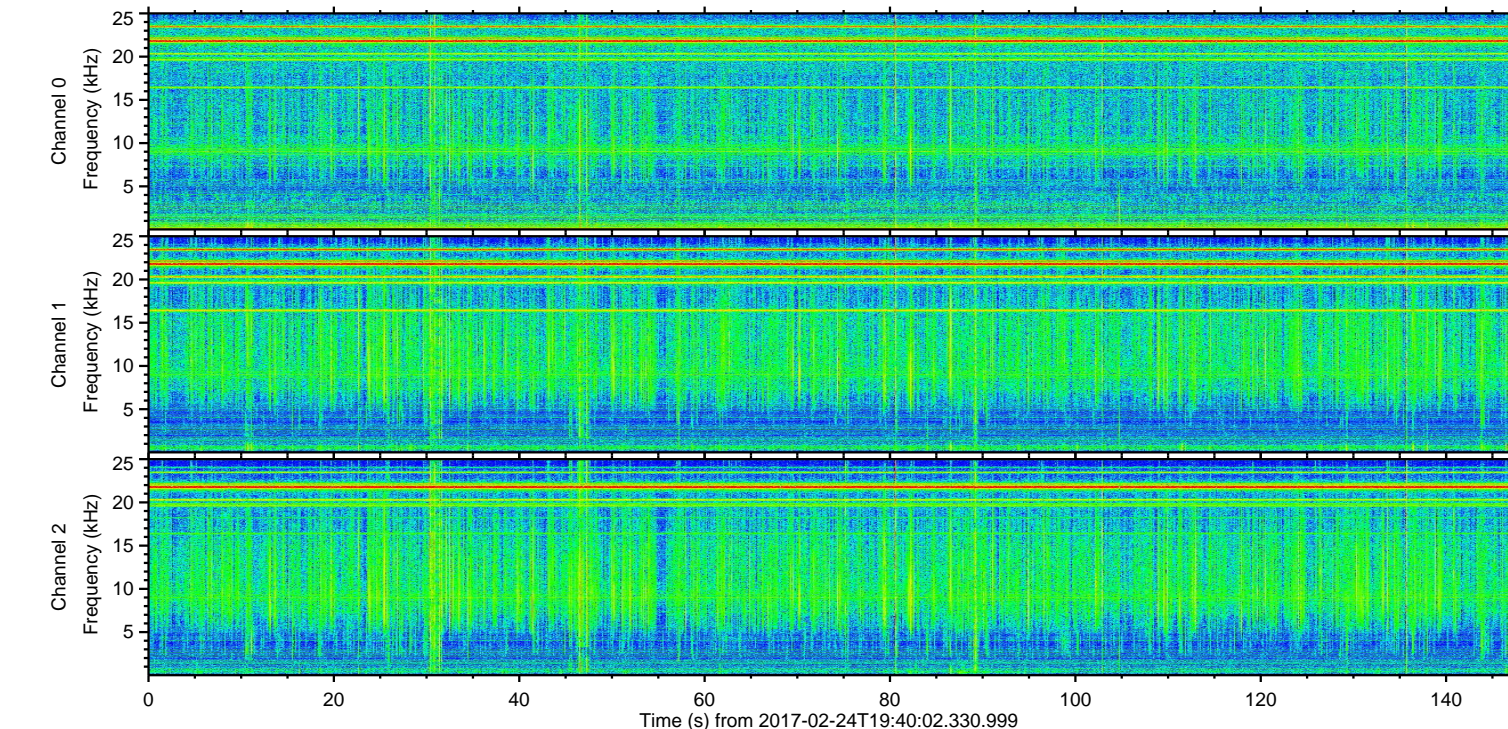
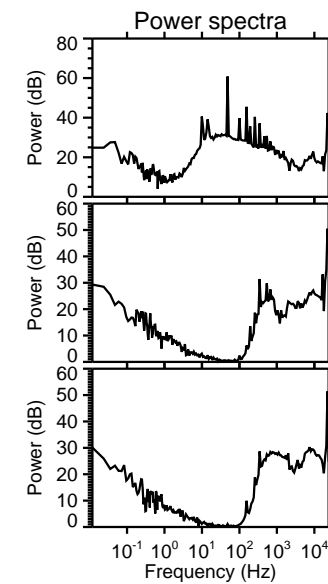
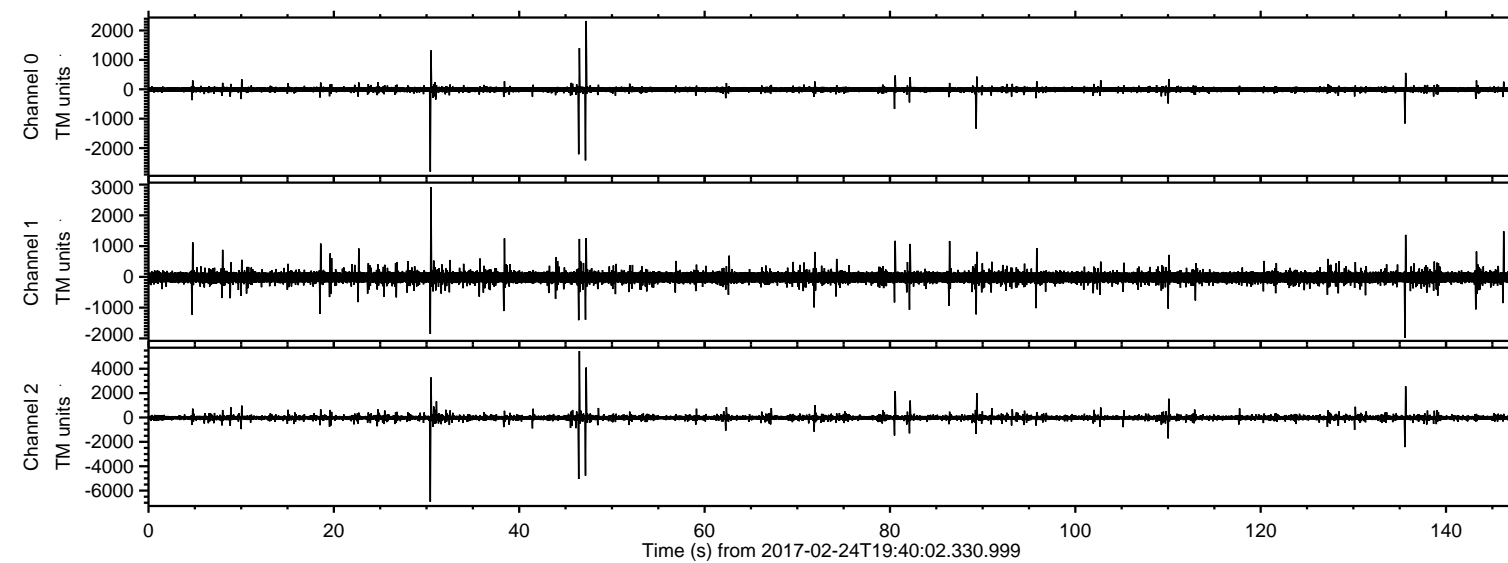
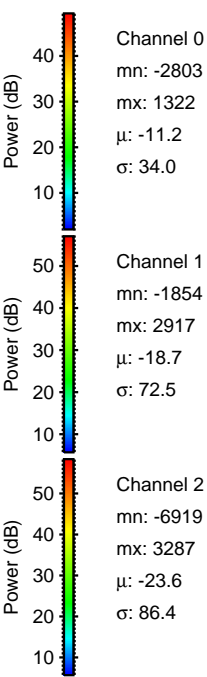
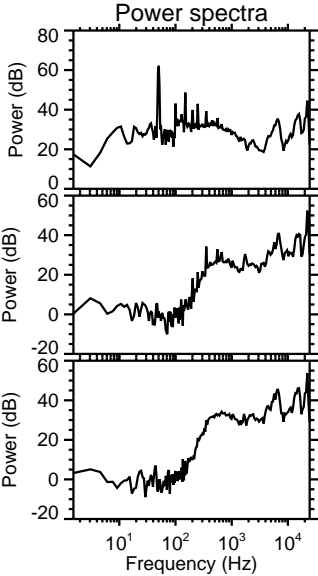
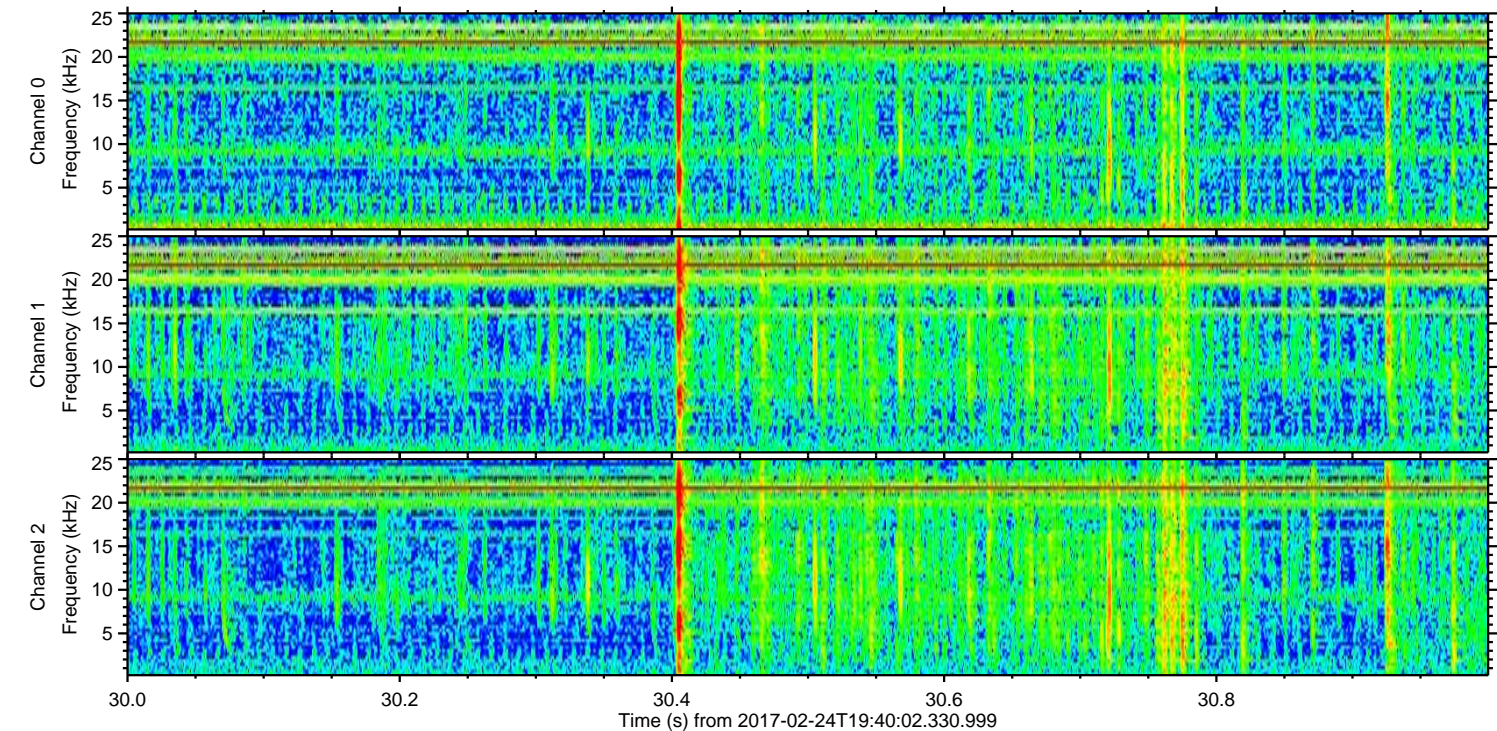
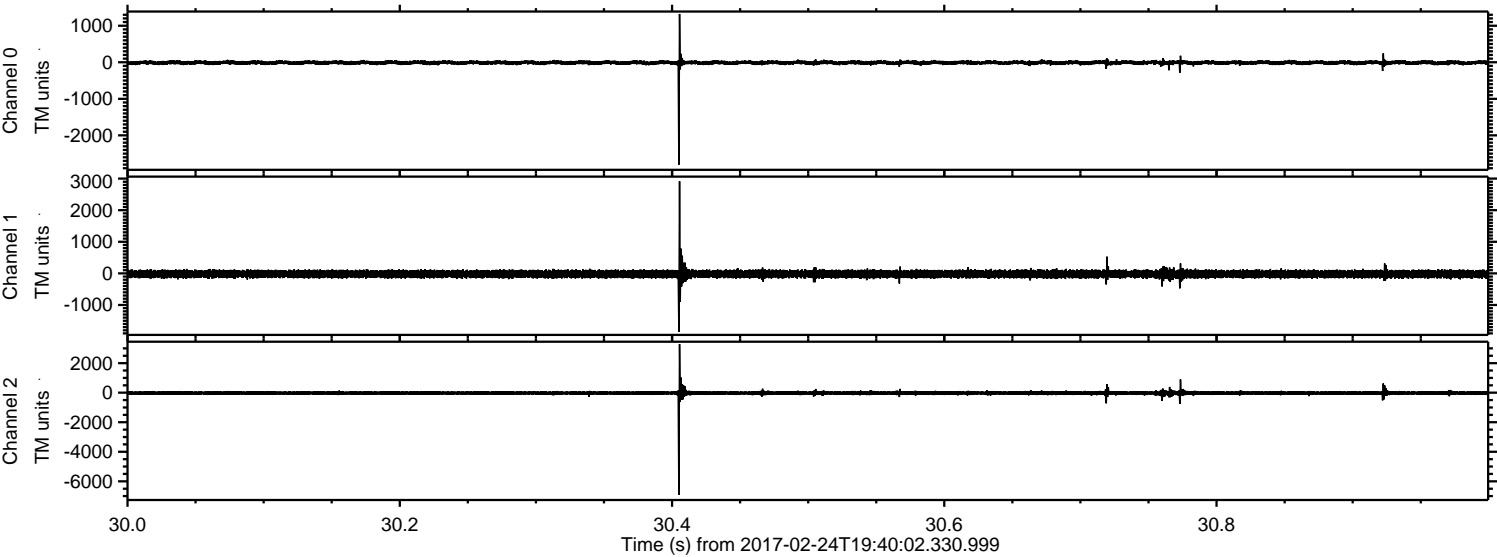


ELMAVAN 3D WAVEFORMS (Measured data sampled at 50 kHz) 51000 packets of 144 samples from 2017-02-24T19:40:02.330.999.

Processed Fri Feb 24 20:47:49 2017 by ELM ver.2012-10-06 from 001__elm20170224_194001__dat00.bin

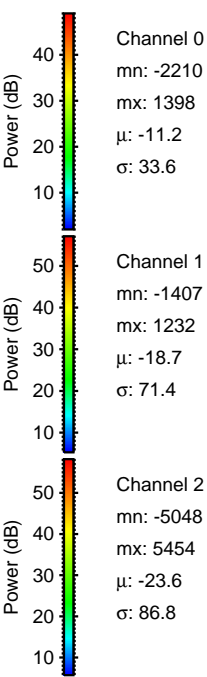
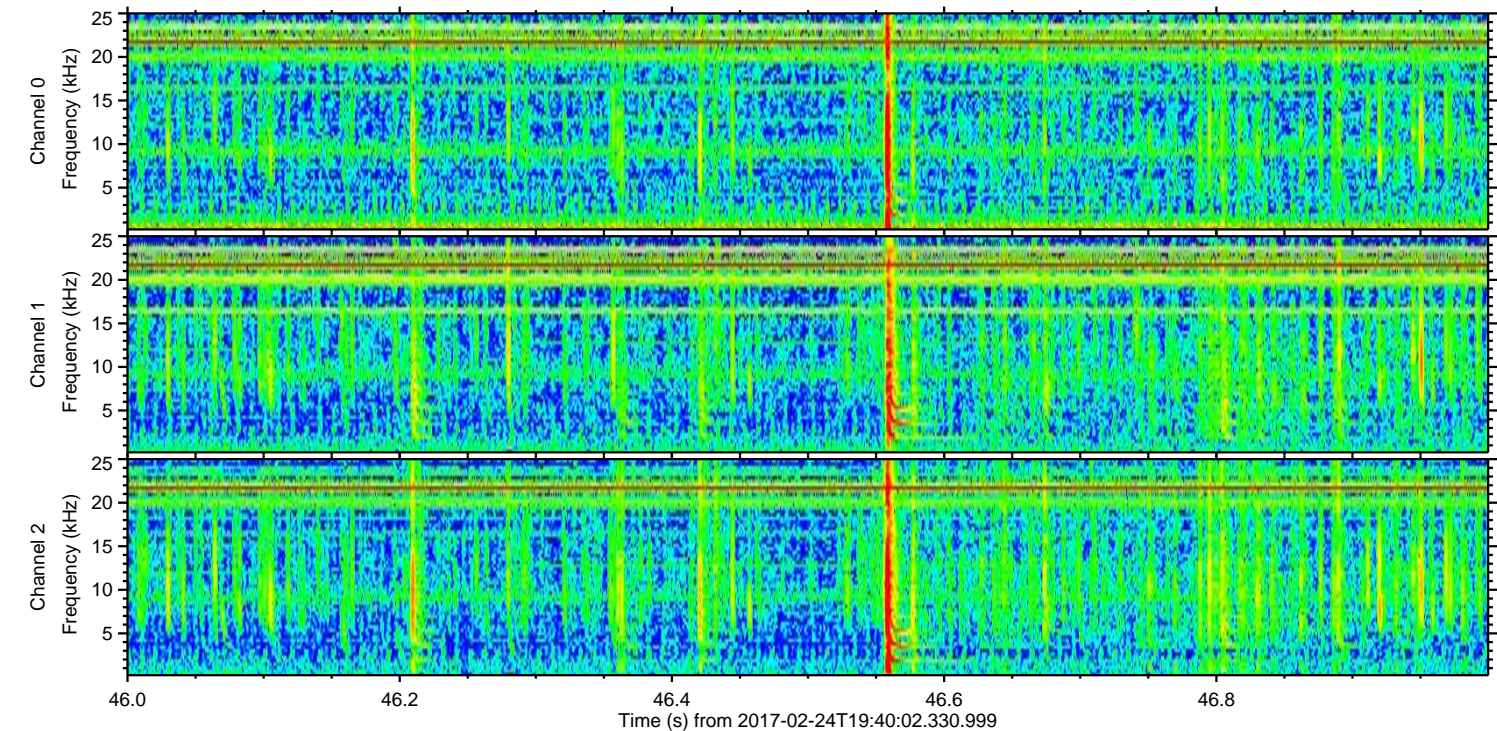
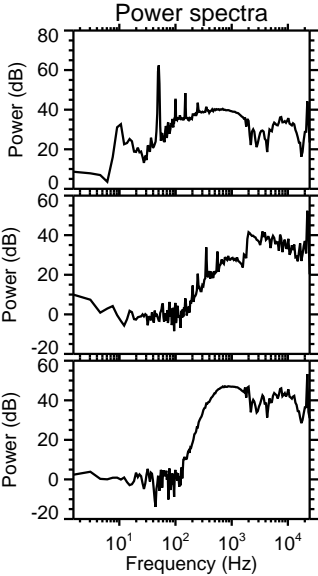
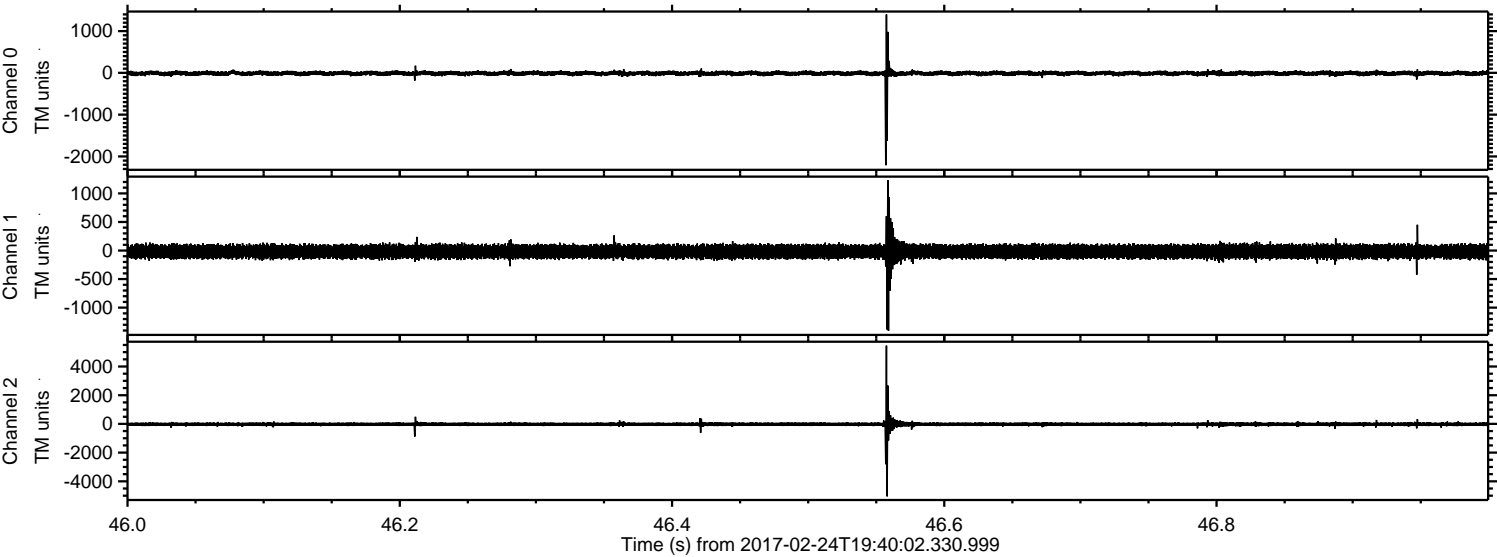


Processed Fri Feb 24 20:48:01 2017 by ELM ver.2012-10-06 from 001__elm20170224_194001__dat00.bin



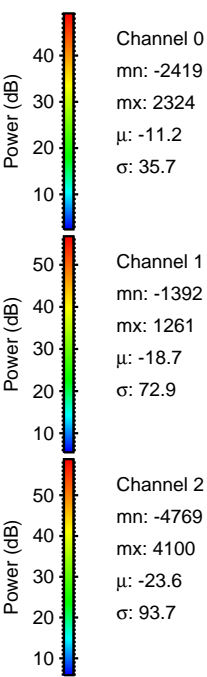
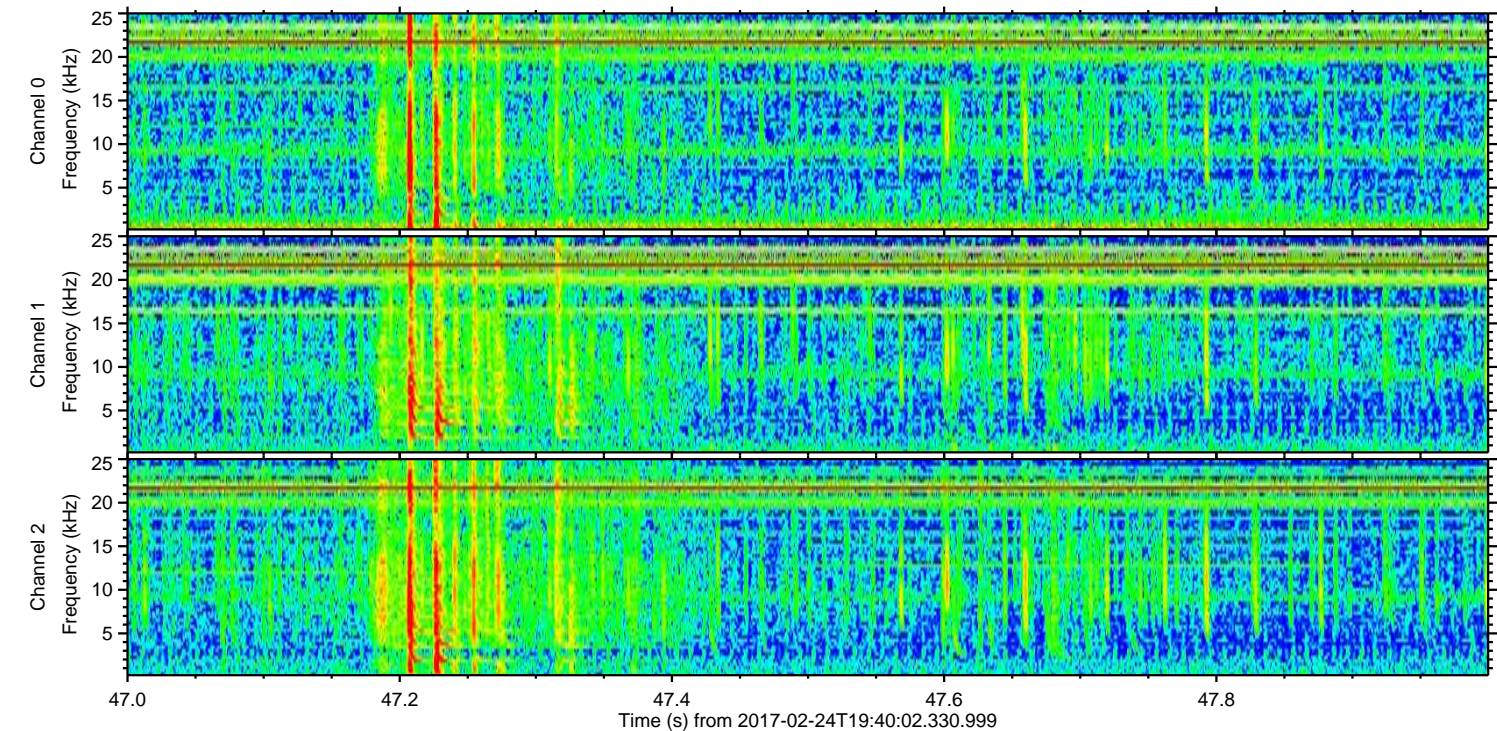
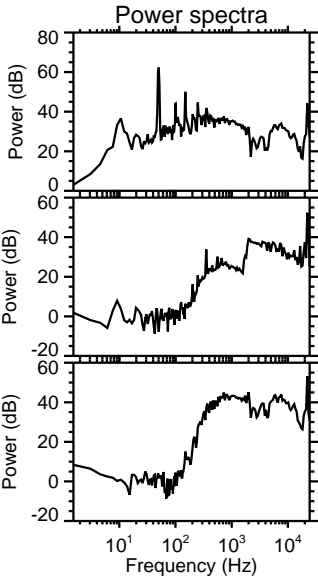
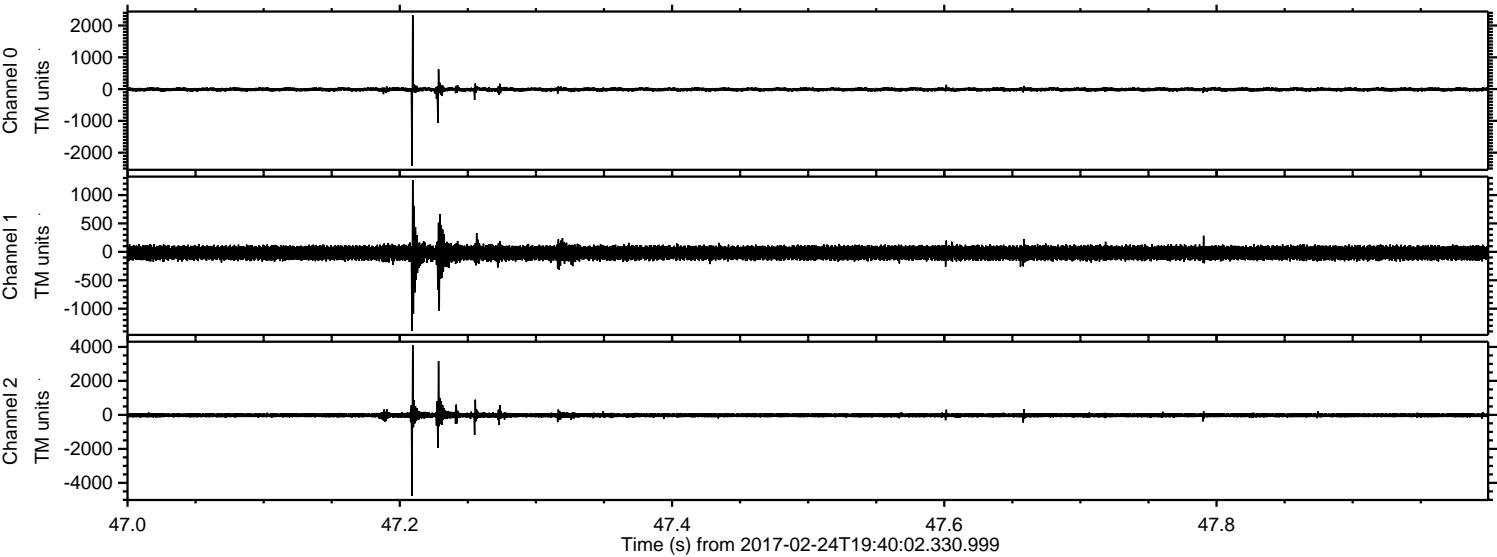
ELMAVAN 3D WAVEFORMS (Measured data sampled at 50 kHz) 51000 packets of 144 samples from 2017-02-24T19:40:02.330.999. Part 47/147

Processed Fri Feb 24 20:48:02 2017 by ELM ver.2012-10-06 from 001__elm20170224_194001__dat00.bin



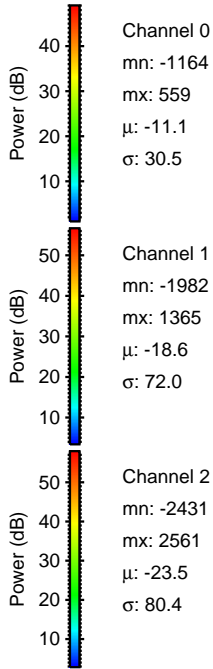
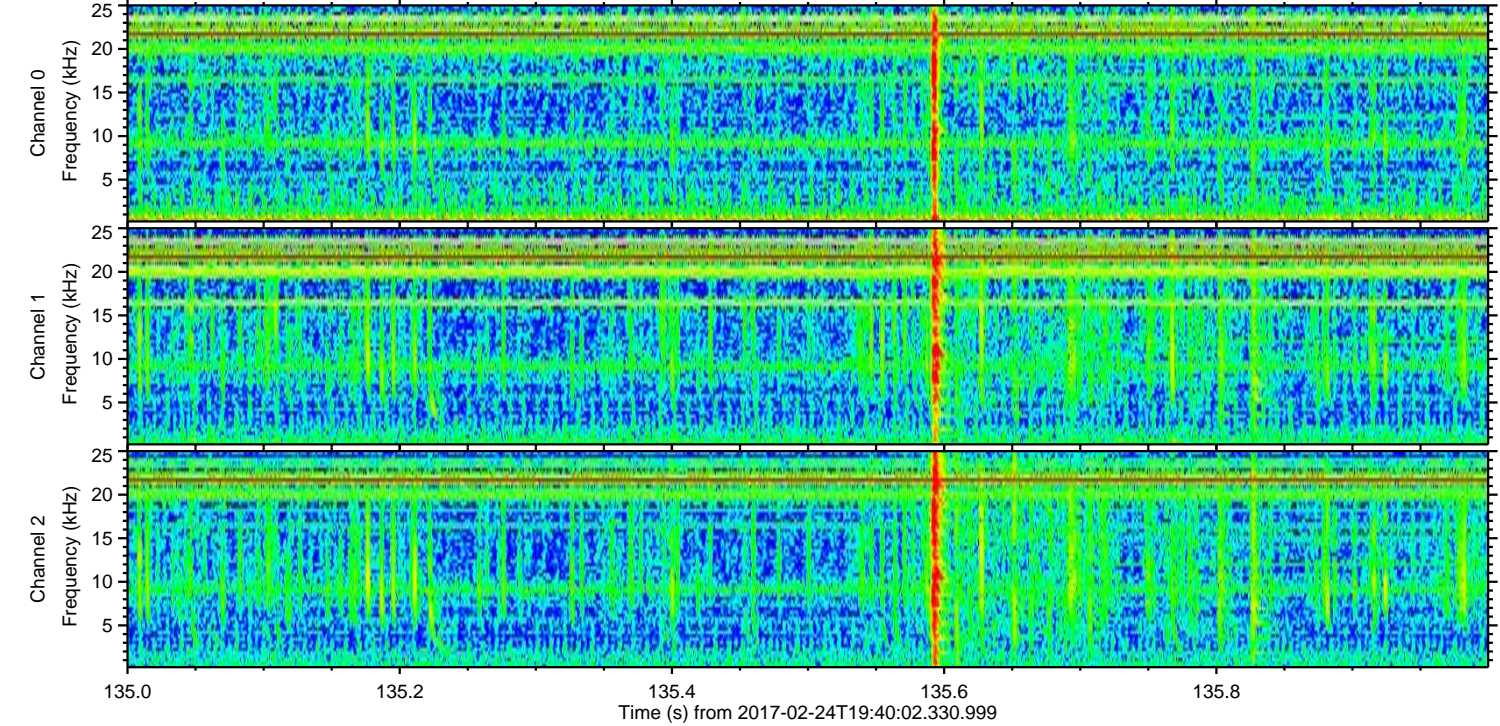
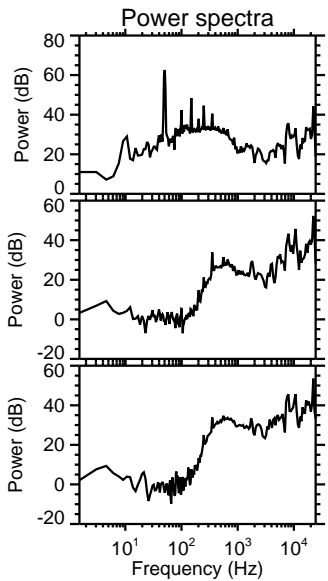
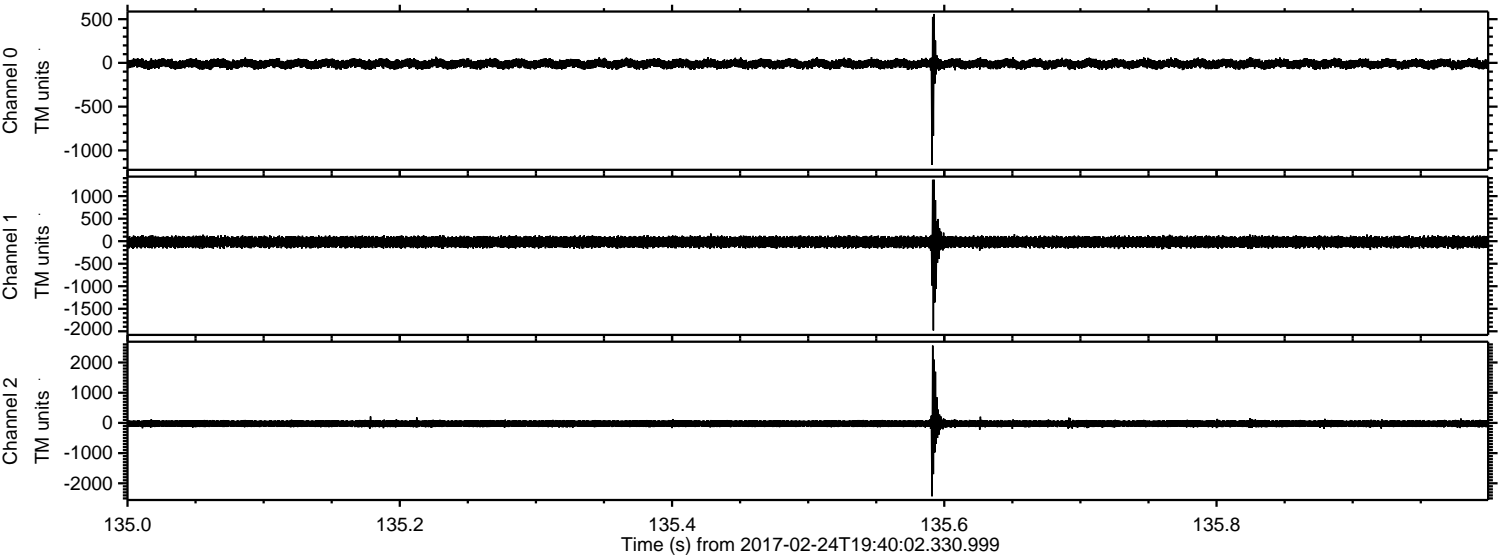
ELMAVAN 3D WAVEFORMS (Measured data sampled at 50 kHz) 51000 packets of 144 samples from 2017-02-24T19:40:02.330.999. Part 48/147

Processed Fri Feb 24 20:48:03 2017 by ELM ver.2012-10-06 from 001__elm20170224_194001__dat00.bin



ELMAVAN 3D WAVEFORMS (Measured data sampled at 50 kHz) 51000 packets of 144 samples from 2017-02-24T19:40:02.330.999. Part 136/147

Processed Fri Feb 24 20:48:03 2017 by ELM ver.2012-10-06 from 001__elm20170224_194001__dat00.bin

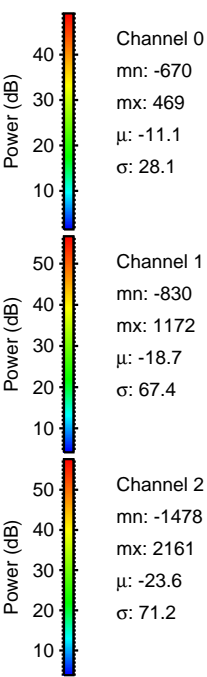
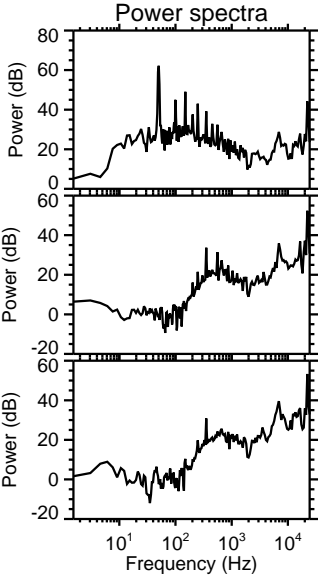
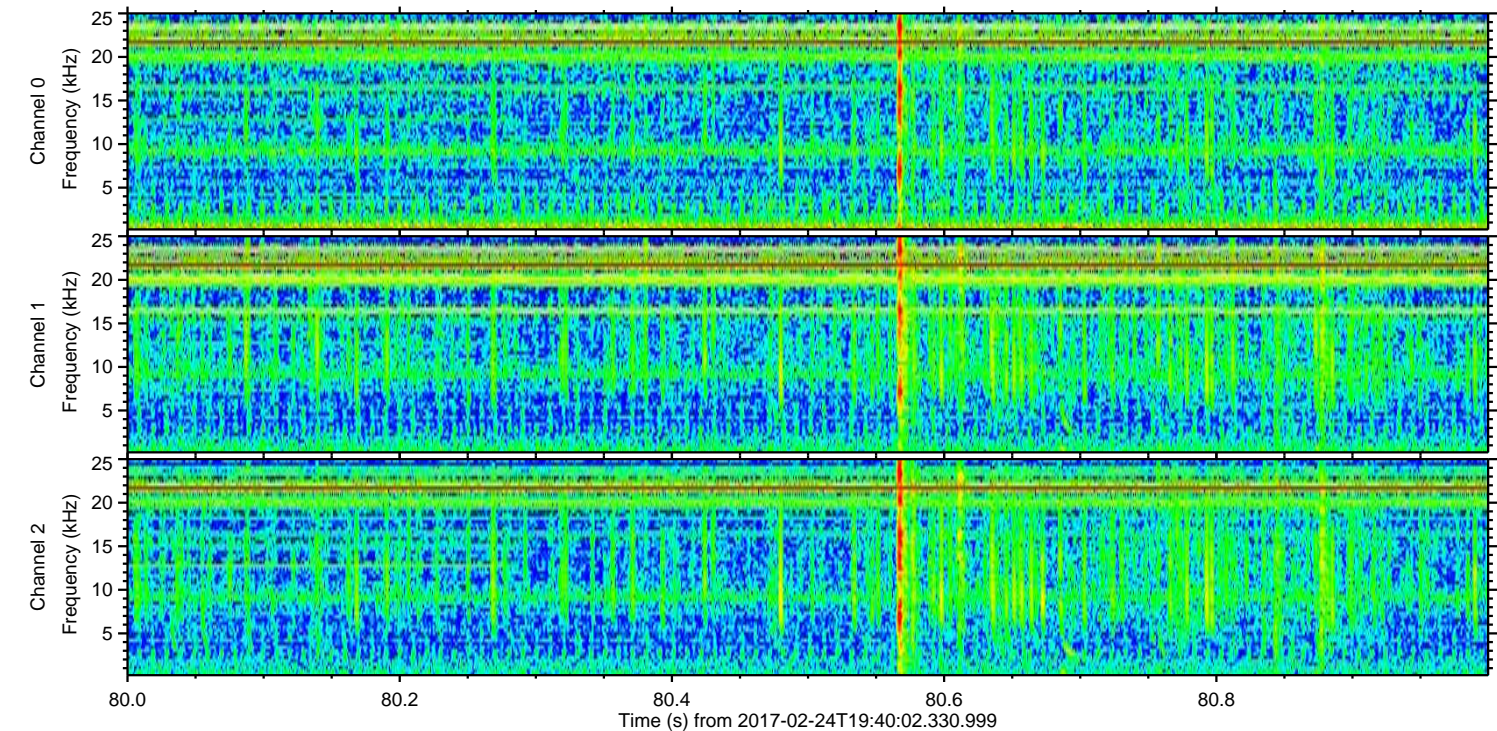
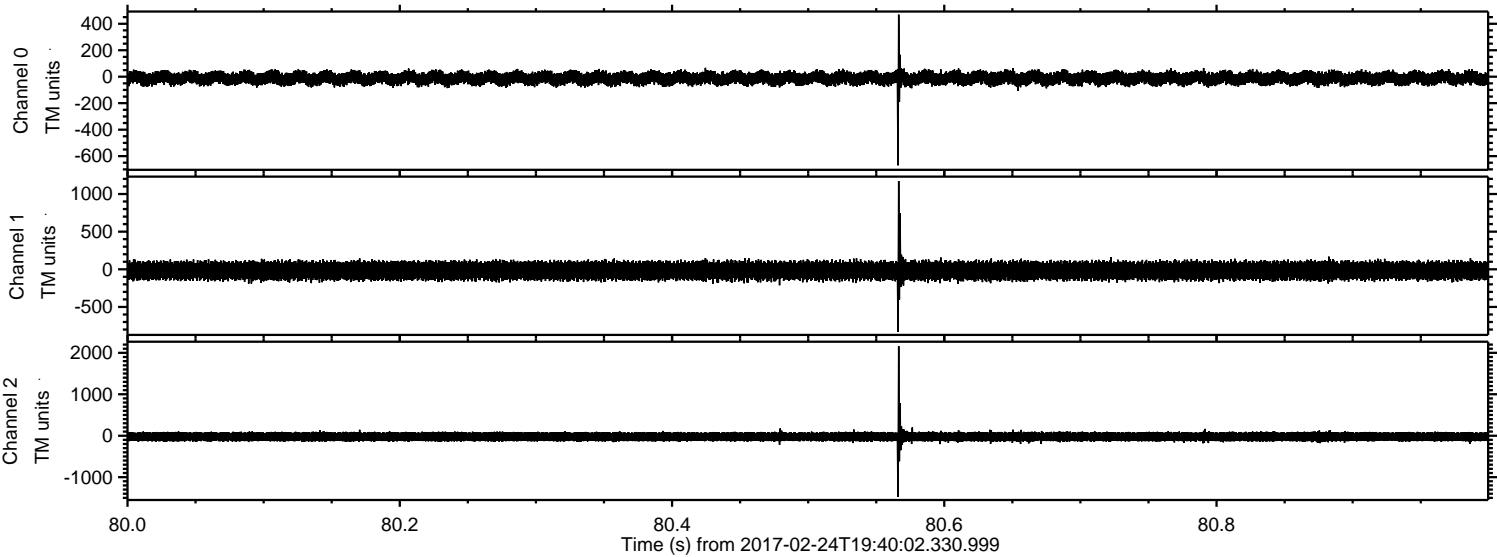


Channel 0
mn: -1164
mx: 559
 μ : -11.1
 σ : 30.5

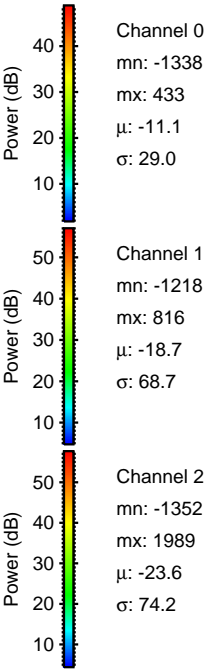
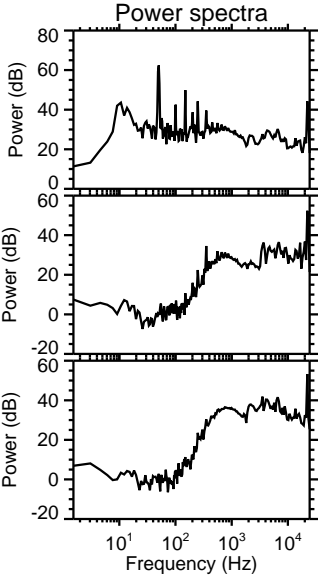
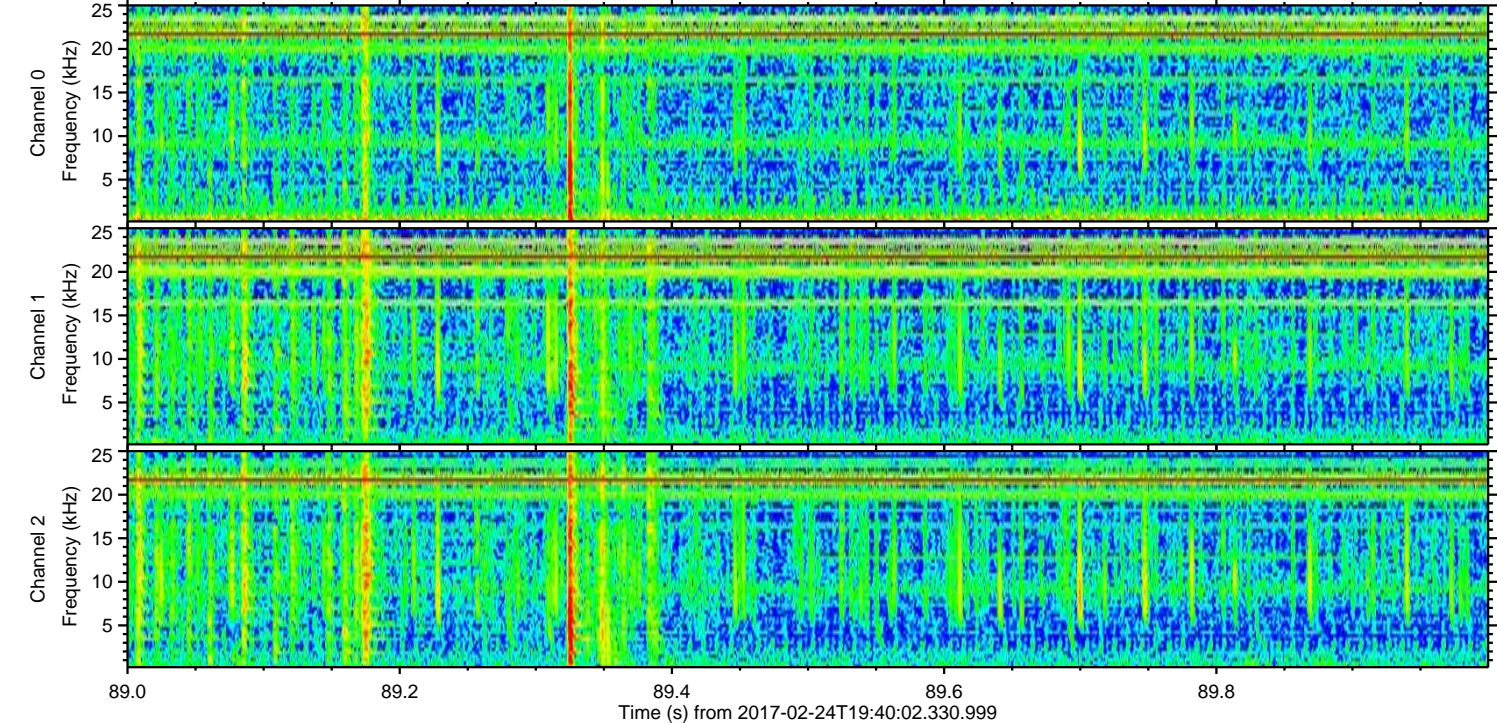
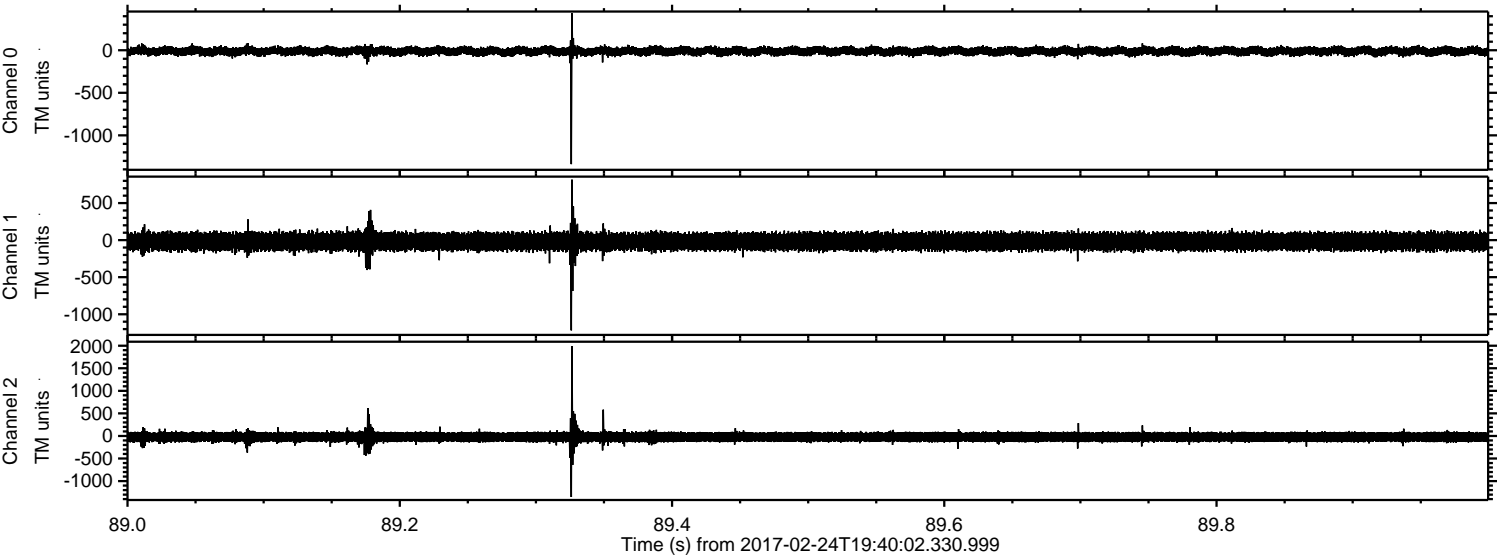
Channel 1
mn: -1982
mx: 1365
 μ : -18.6
 σ : 72.0

Channel 2
mn: -2431
mx: 2561
 μ : -23.5
 σ : 80.4

Processed Fri Feb 24 20:48:04 2017 by ELM ver.2012-10-06 from 001__elm20170224_194001__dat00.bin

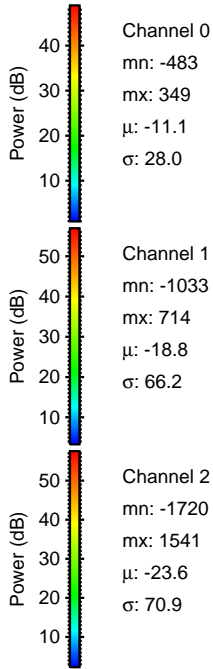
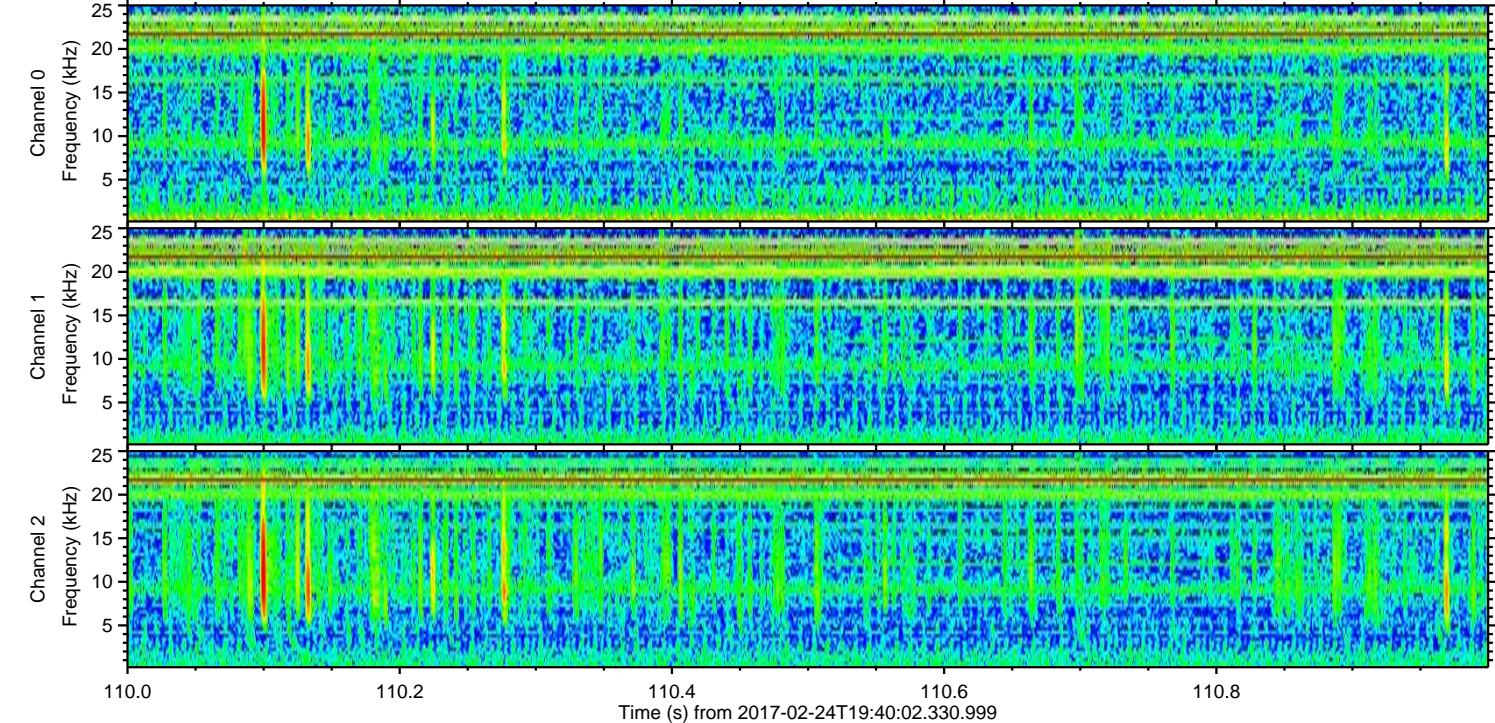
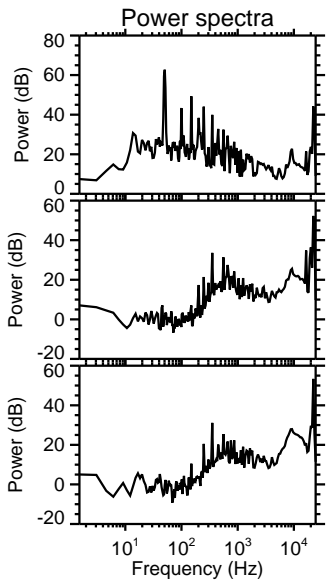
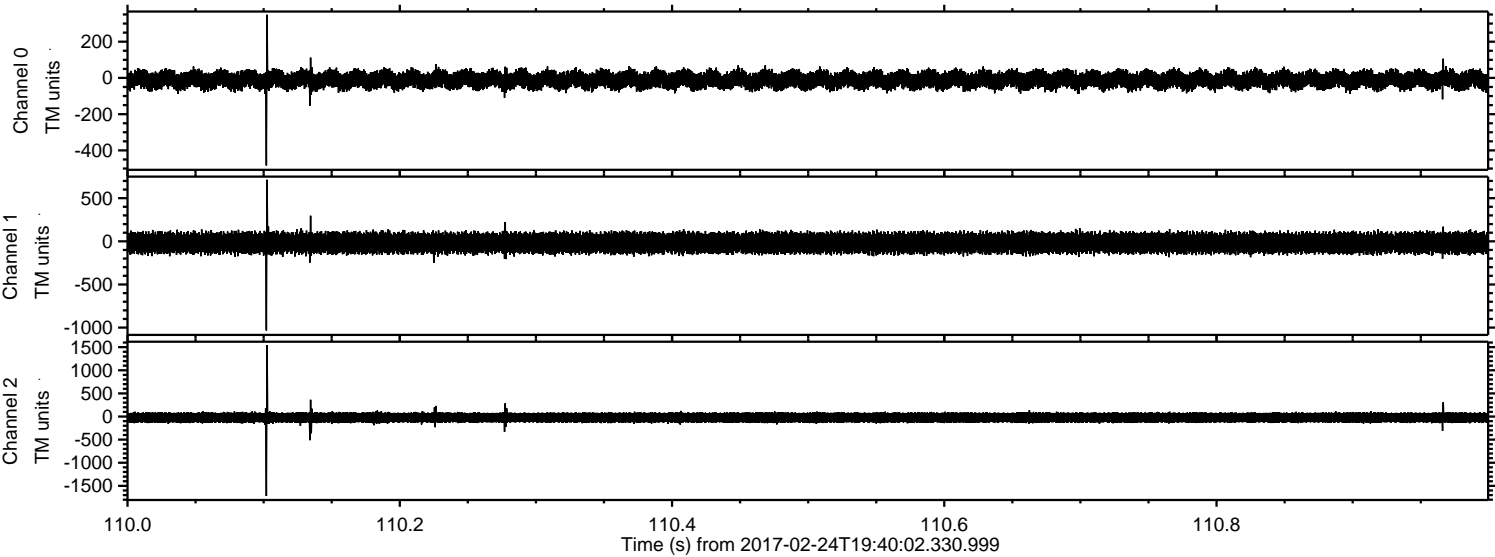


Processed Fri Feb 24 20:48:05 2017 by ELM ver.2012-10-06 from 001__elm20170224_194001__dat00.bin

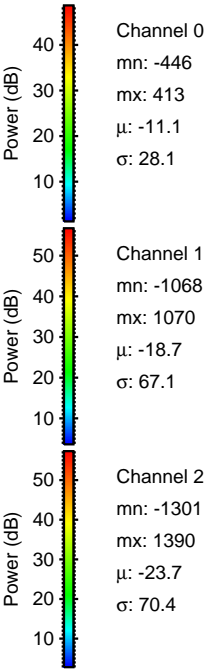
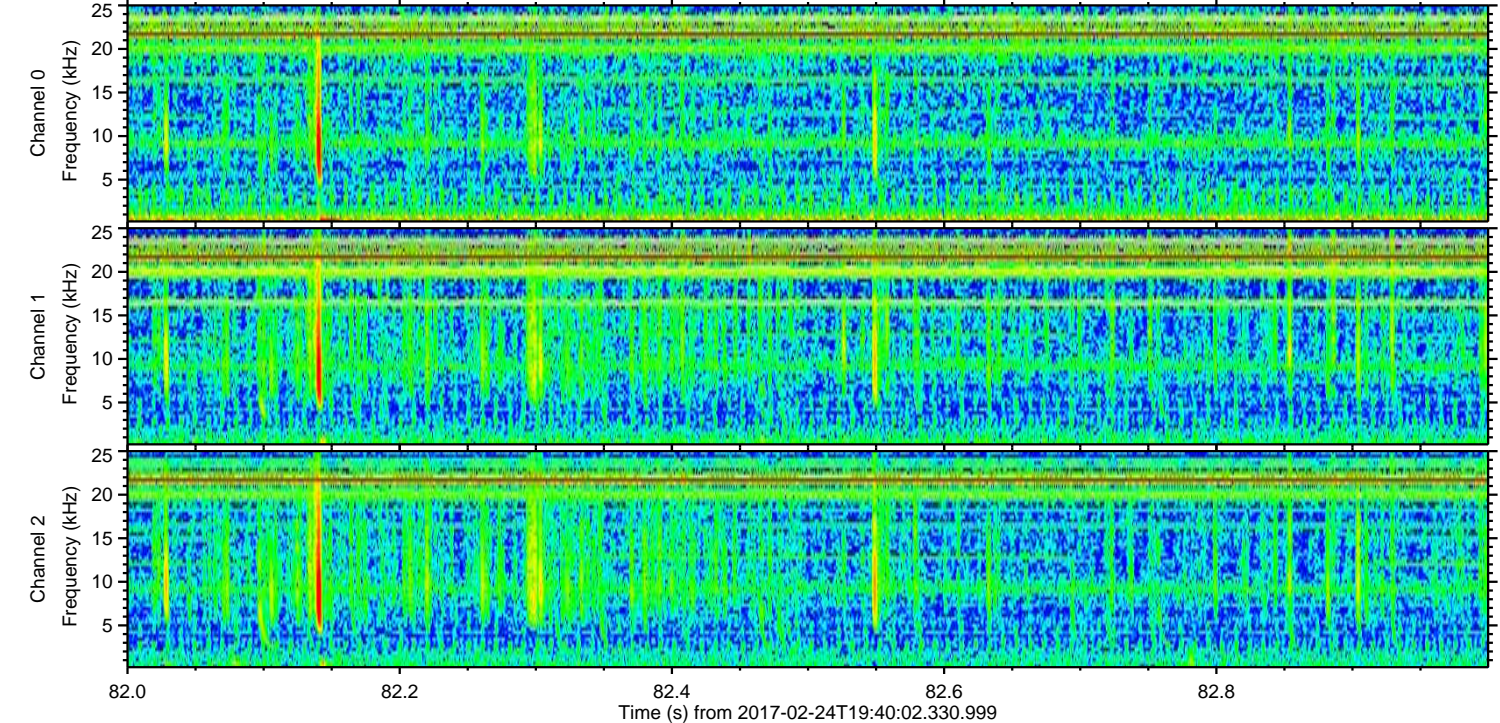
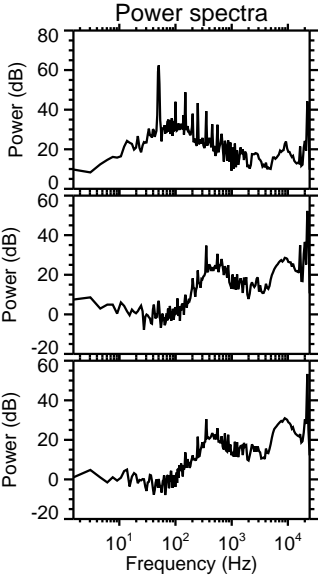
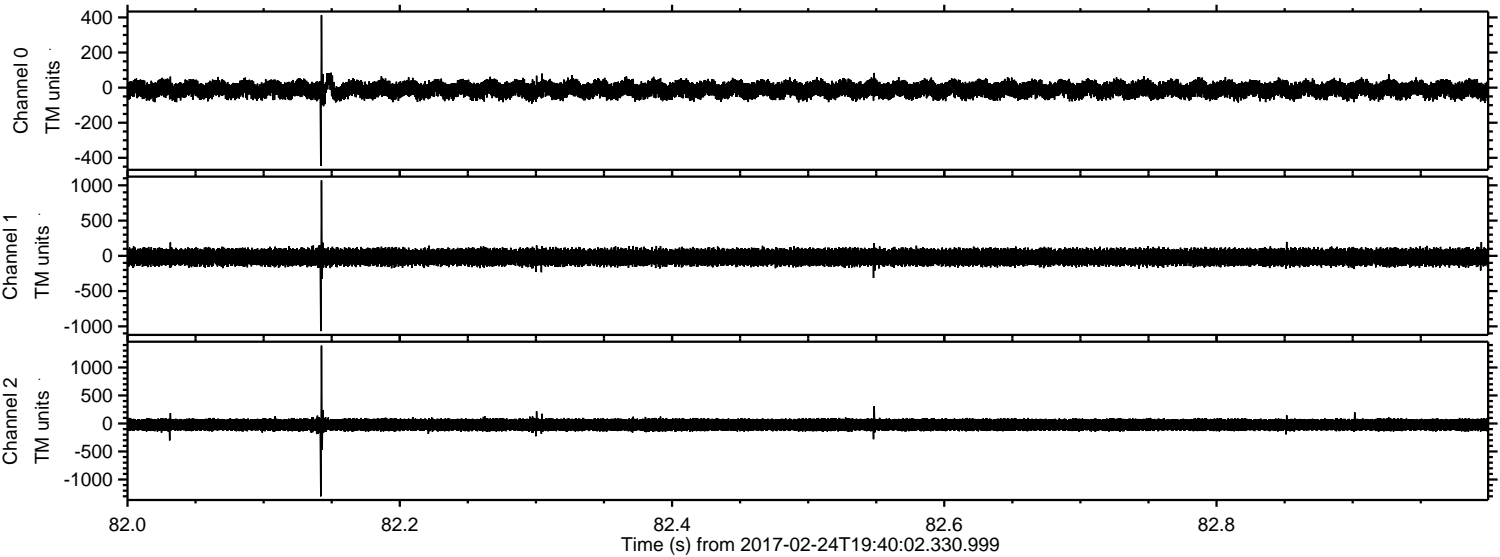


ELMAVAN 3D WAVEFORMS (Measured data sampled at 50 kHz) 51000 packets of 144 samples from 2017-02-24T19:40:02.330.999. Part 111/147

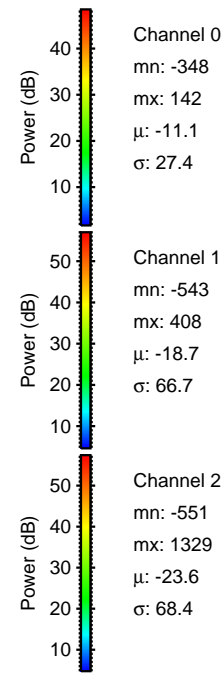
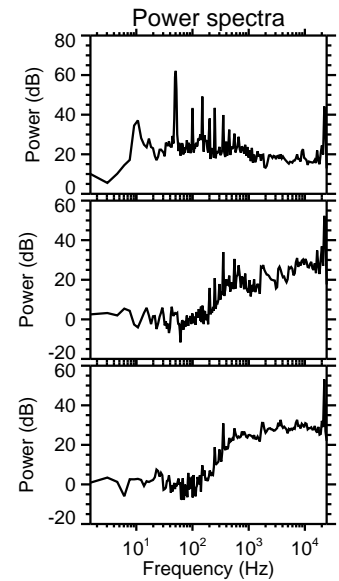
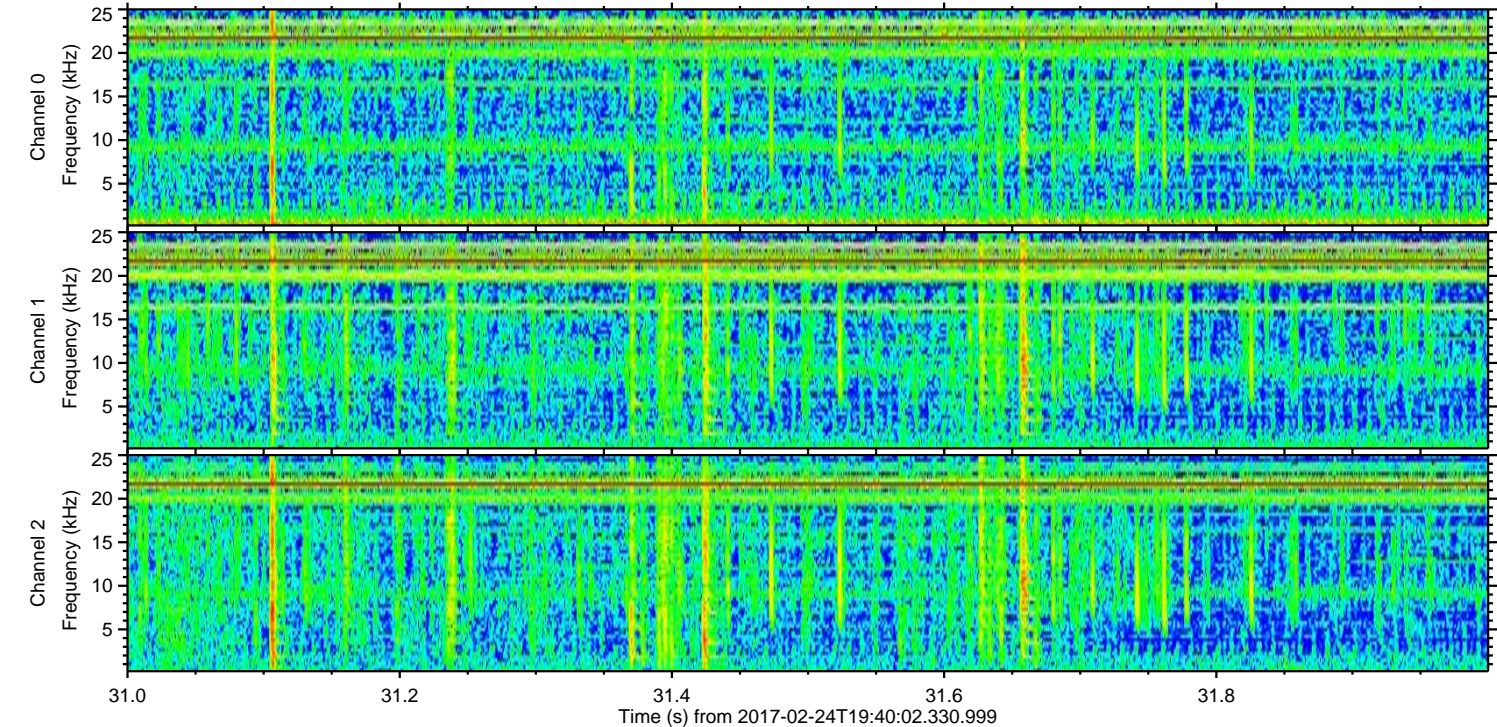
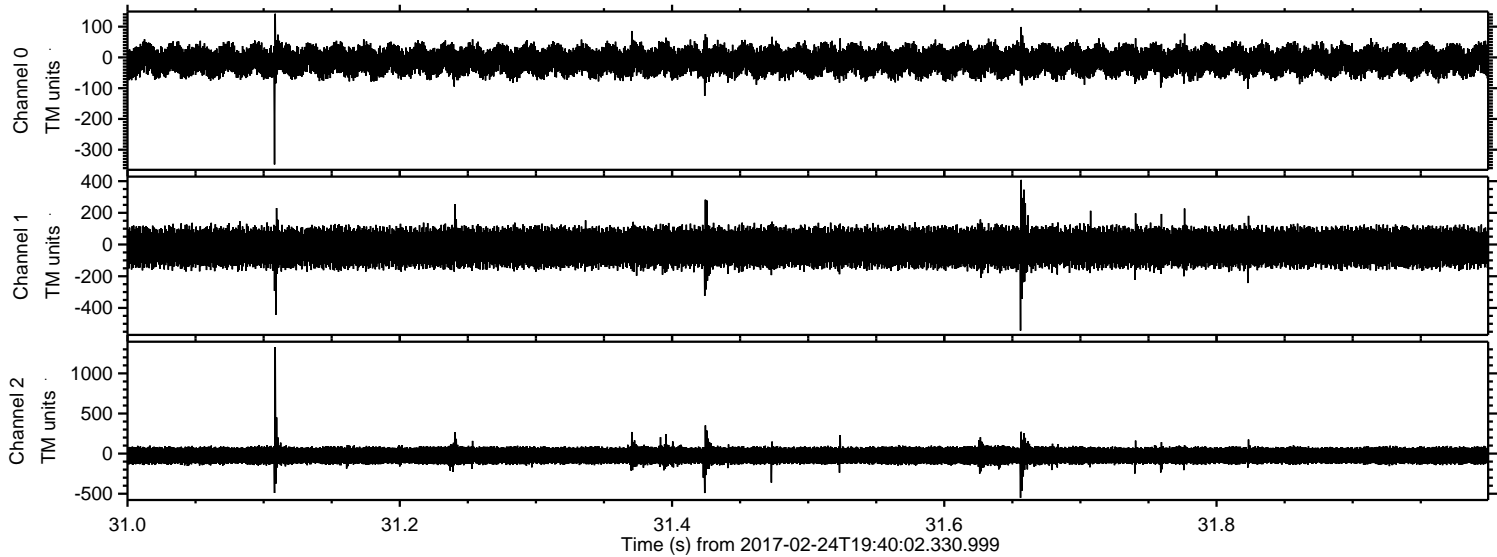
Processed Fri Feb 24 20:48:06 2017 by ELM ver.2012-10-06 from 001__elm20170224_194001__dat00.bin



Processed Fri Feb 24 20:48:07 2017 by ELM ver.2012-10-06 from 001__elm20170224_194001__dat00.bin



Processed Fri Feb 24 20:48:08 2017 by ELM ver.2012-10-06 from 001__elm20170224_194001__dat00.bin



Channel 0
mn: -348
mx: 142
 μ : -11.1
 σ : 27.4

Channel 1
mn: -543
mx: 408
 μ : -18.7
 σ : 66.7

Channel 2
mn: -551
mx: 1329
 μ : -23.6
 σ : 68.4

Processed Fri Feb 24 20:48:09 2017 by ELM ver.2012-10-06 from 001__elm20170224_194001__dat00.bin

