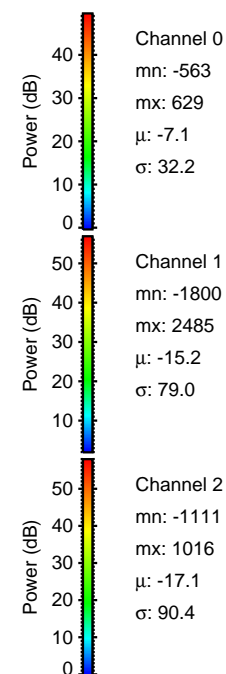
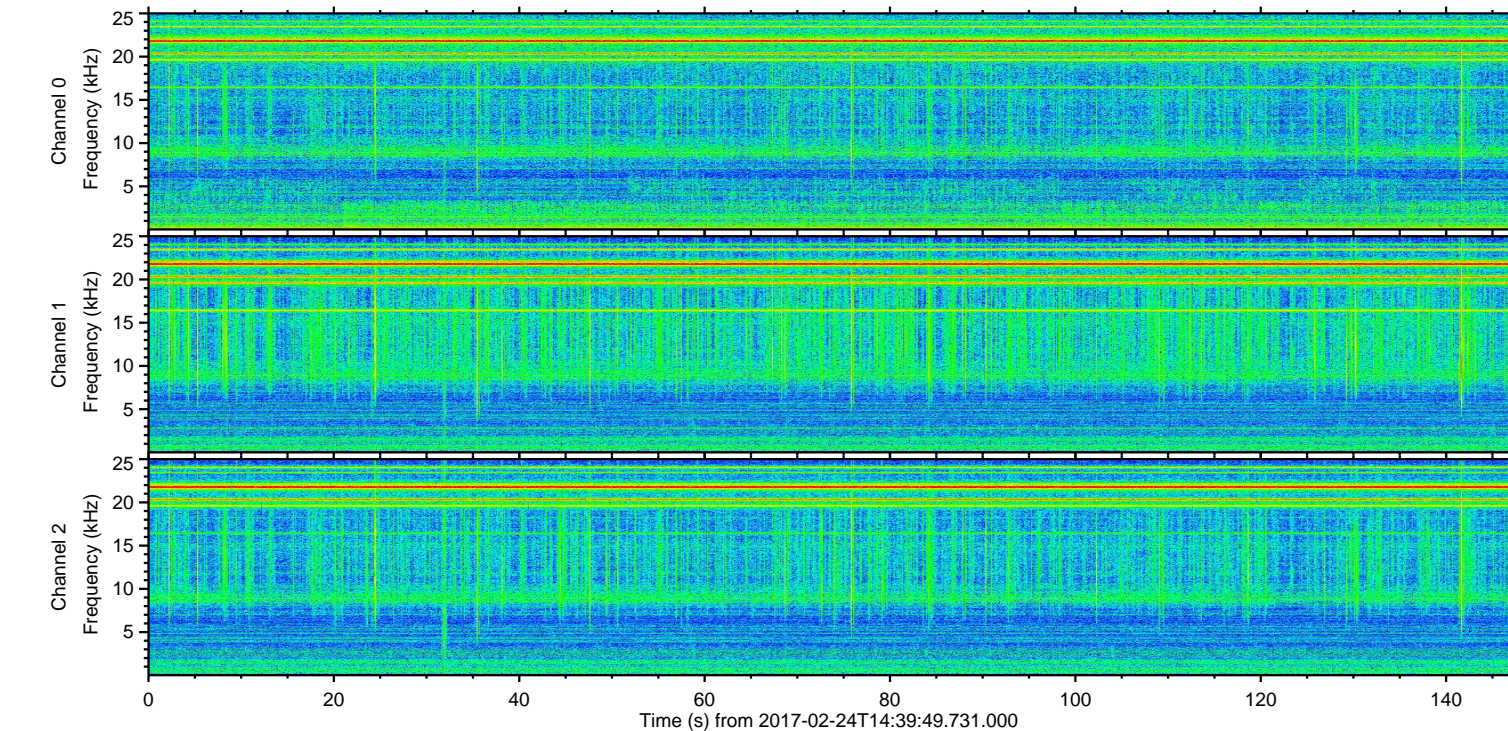
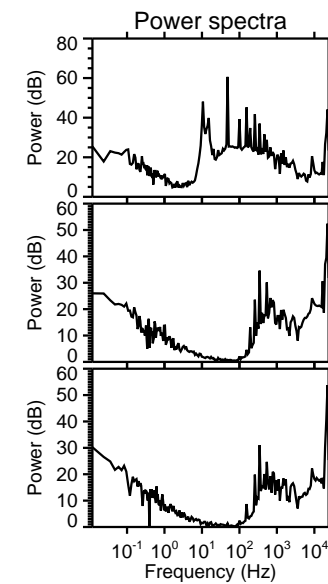
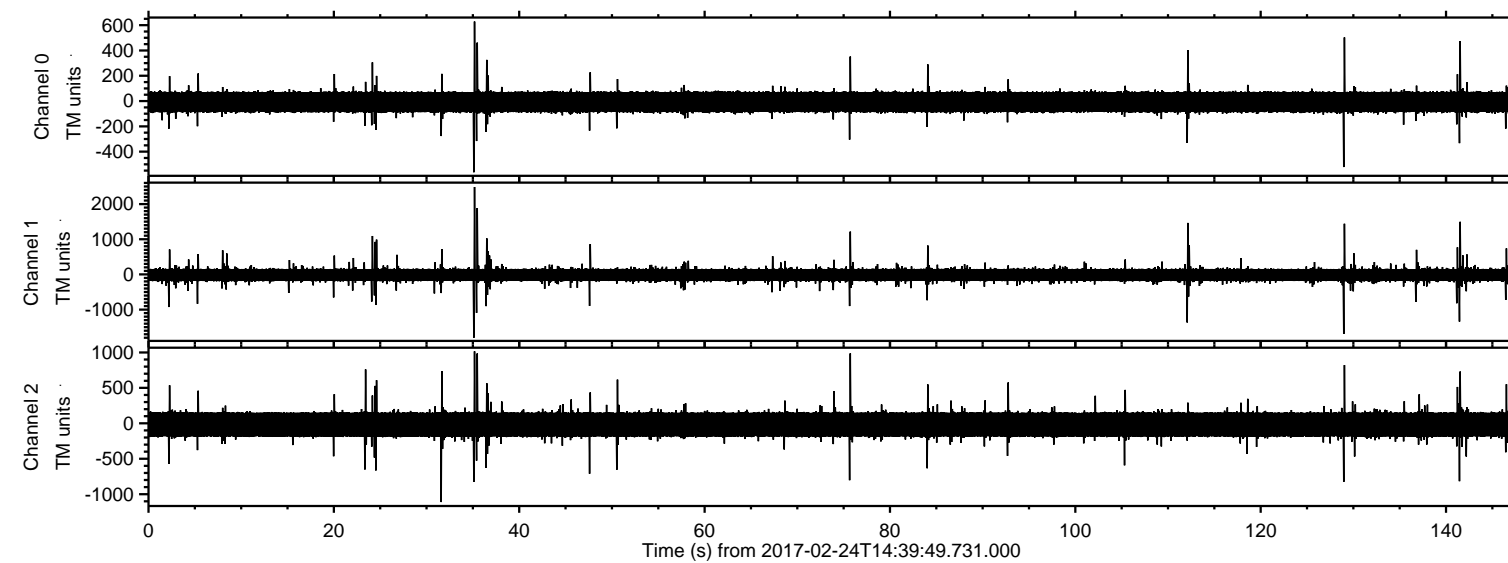


ELMAVAN 3D WAVEFORMS (Measured data sampled at 50 kHz) 51000 packets of 144 samples from 2017-02-24T14:39:49.731.000.

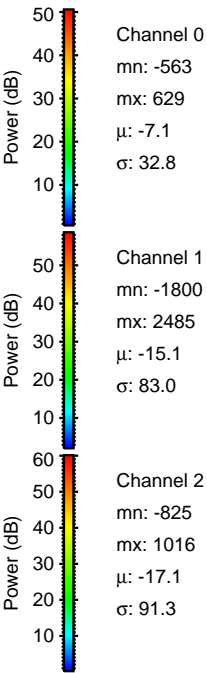
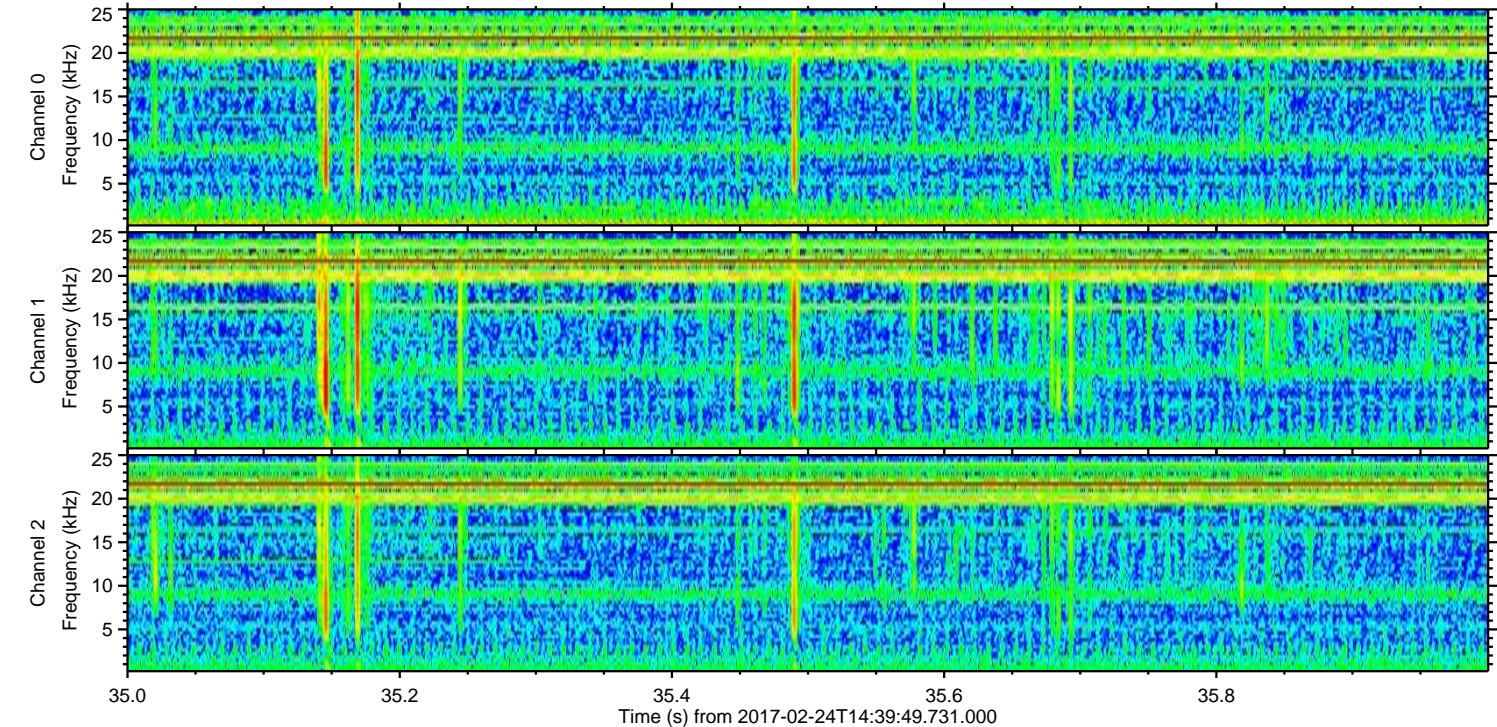
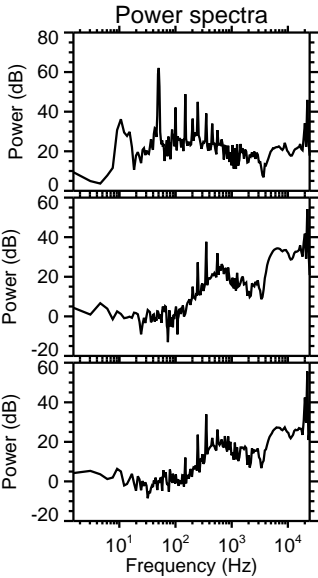
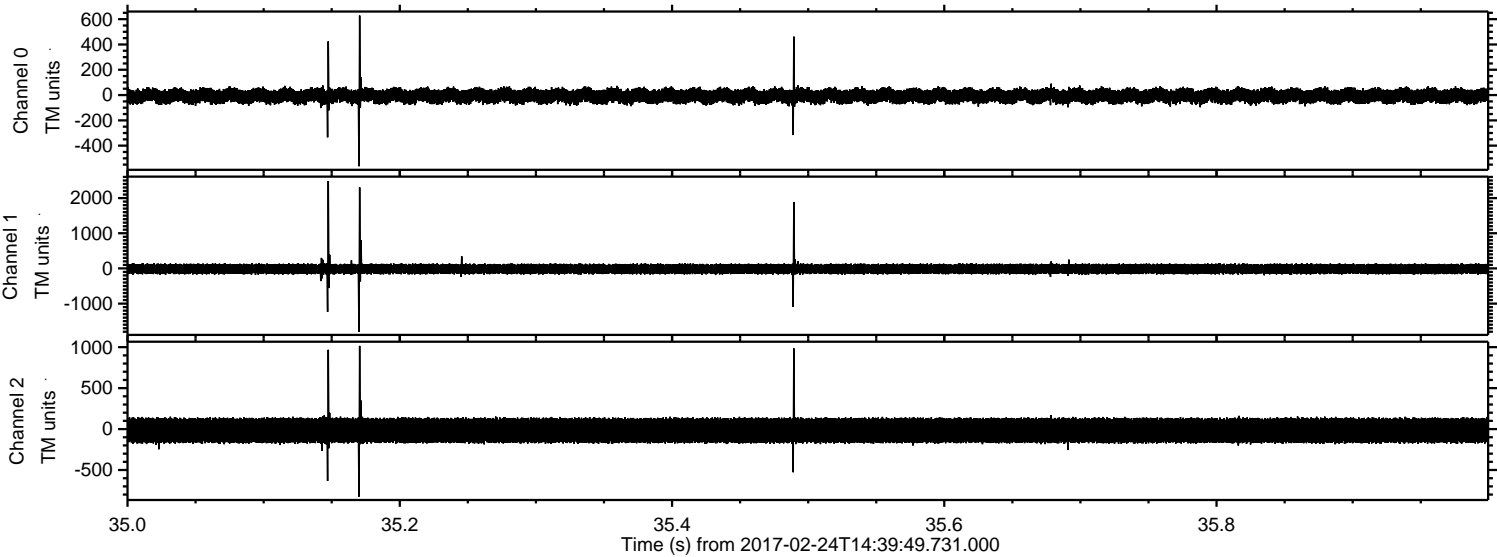
Processed Fri Feb 24 15:47:17 2017 by ELM ver.2012-10-06 from 001\_\_elm20170224\_143948\_\_dat00.bin





ELMAVAN 3D WAVEFORMS (Measured data sampled at 50 kHz) 51000 packets of 144 samples from 2017-02-24T14:39:49.731.000. Part 36/147

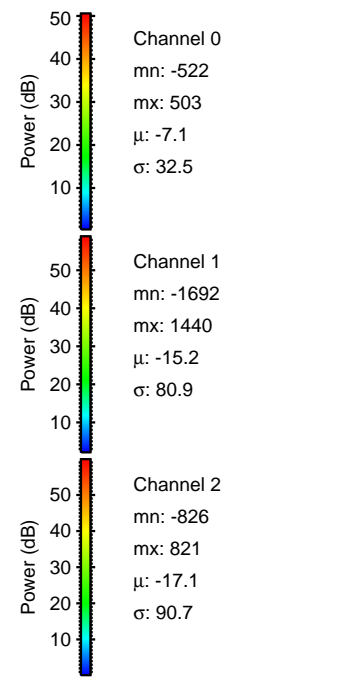
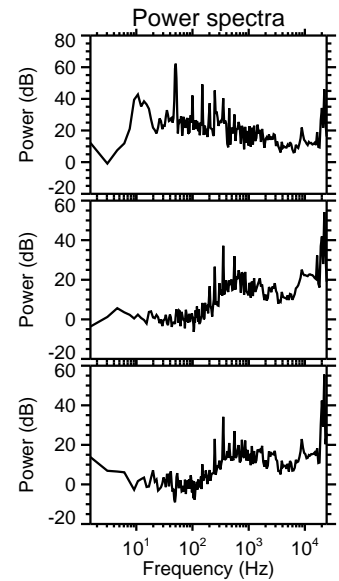
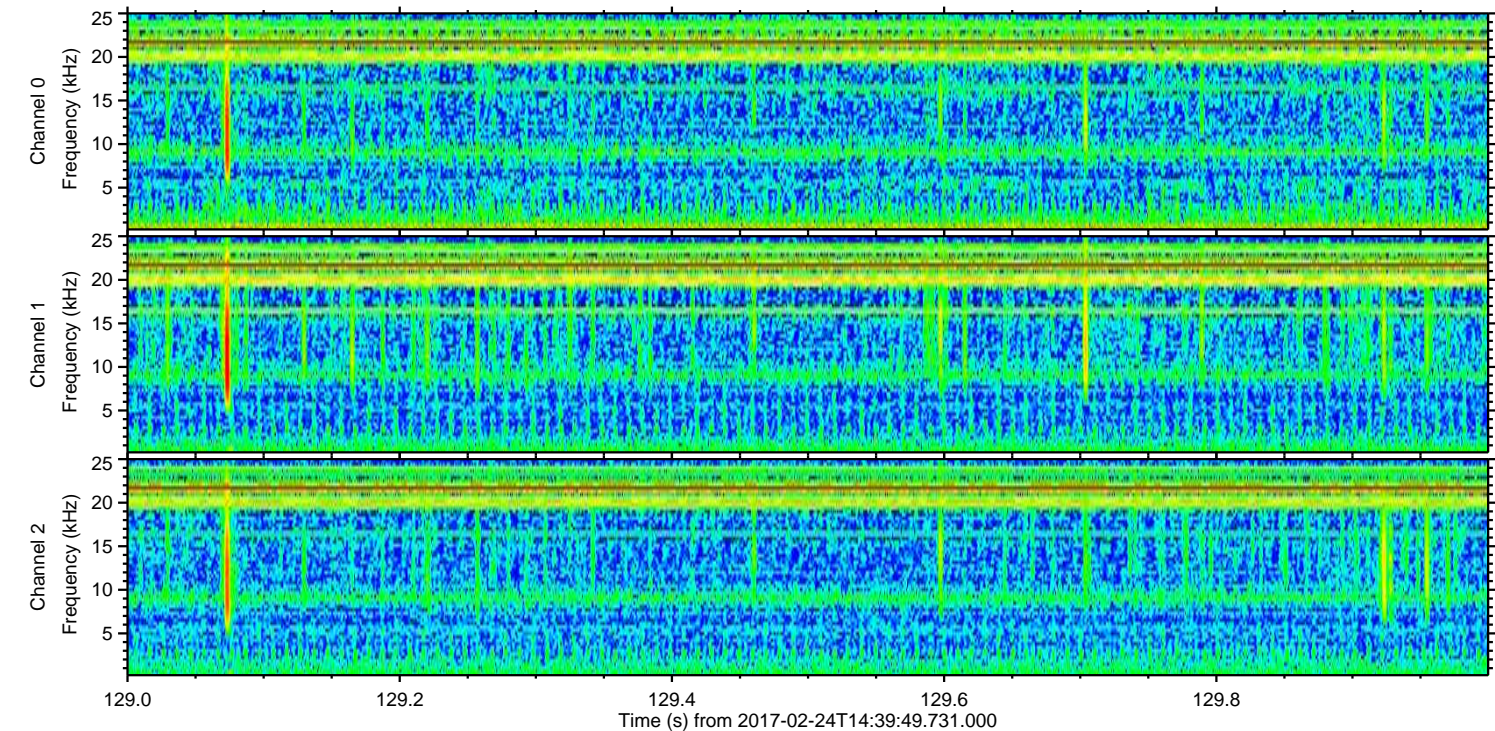
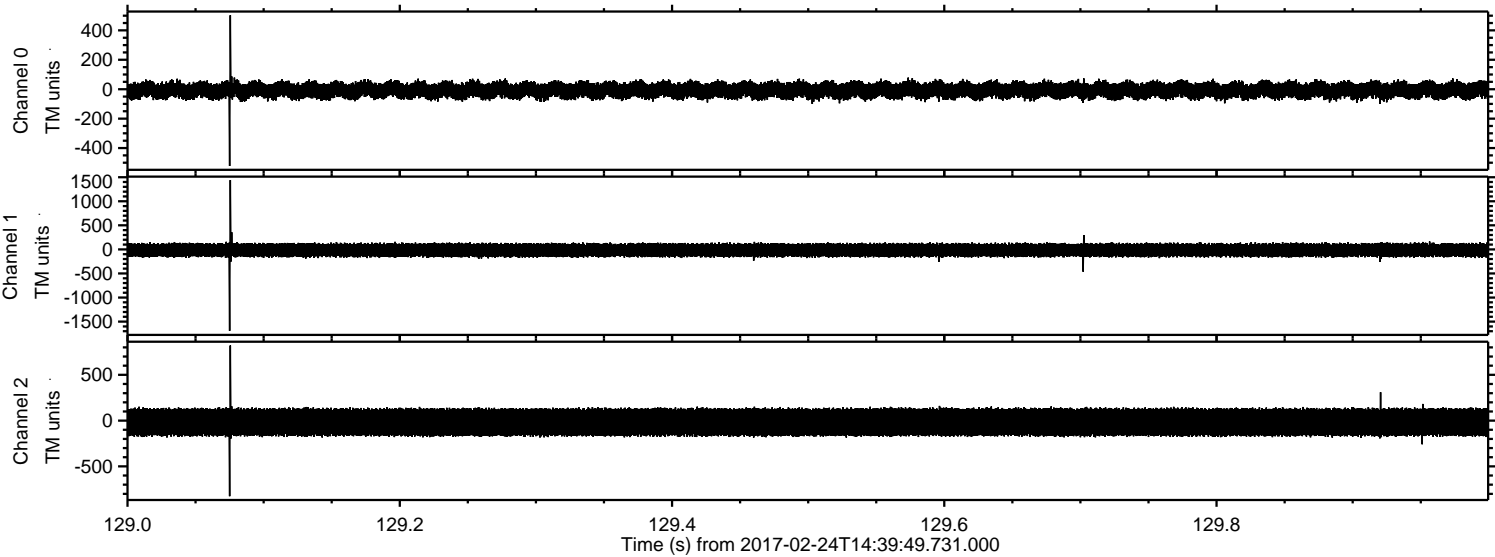
Processed Fri Feb 24 15:47:28 2017 by ELM ver.2012-10-06 from 001\_\_elm20170224\_143948\_\_dat00.bin





ELMAVAN 3D WAVEFORMS (Measured data sampled at 50 kHz) 51000 packets of 144 samples from 2017-02-24T14:39:49.731.000. Part 130/147

Processed Fri Feb 24 15:47:29 2017 by ELM ver.2012-10-06 from 001\_\_elm20170224\_143948\_\_dat00.bin



Channel 0  
mn: -522  
mx: 503  
 $\mu$ : -7.1  
 $\sigma$ : 32.5

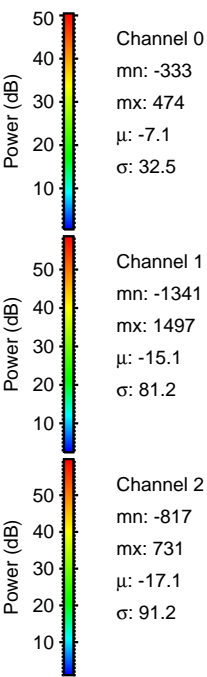
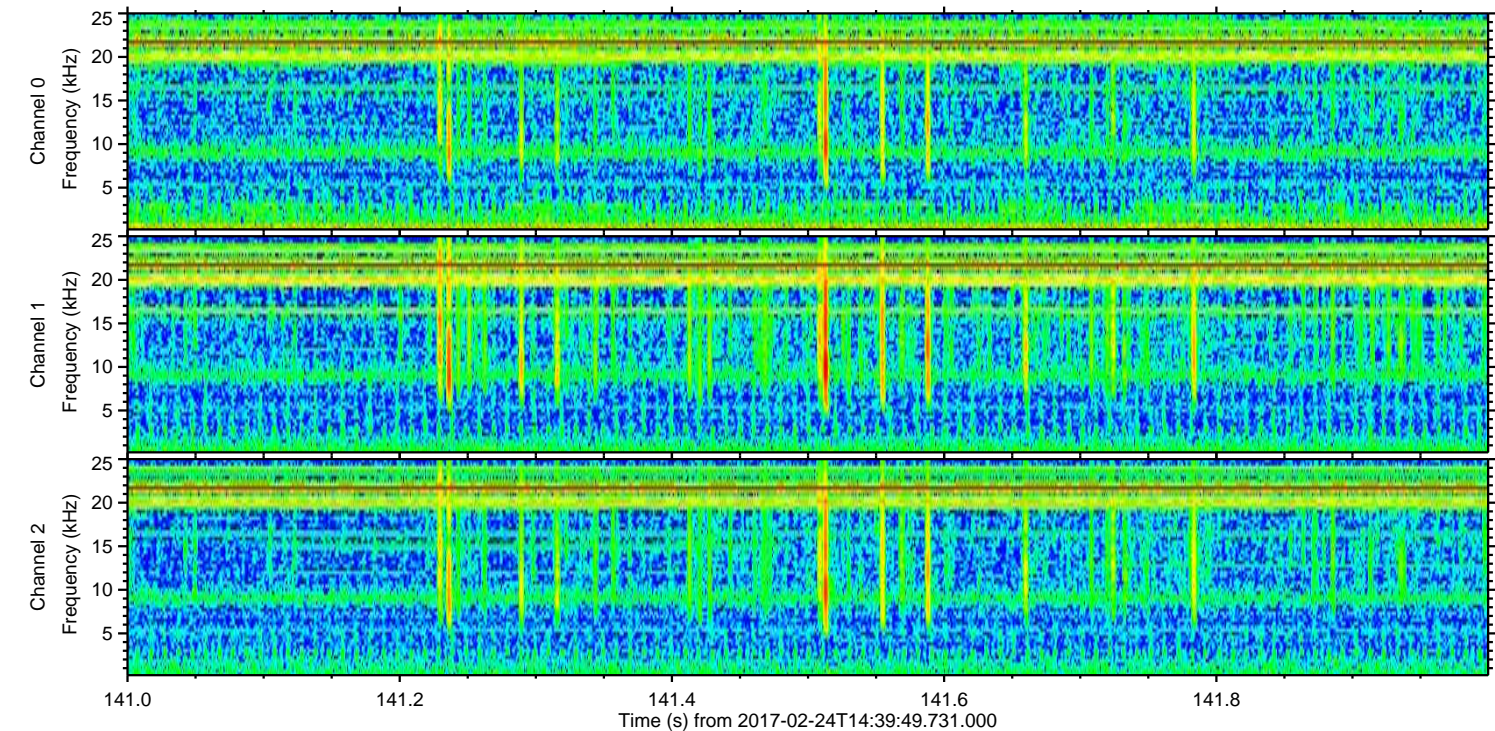
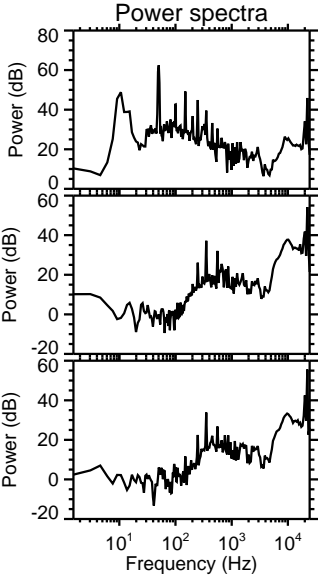
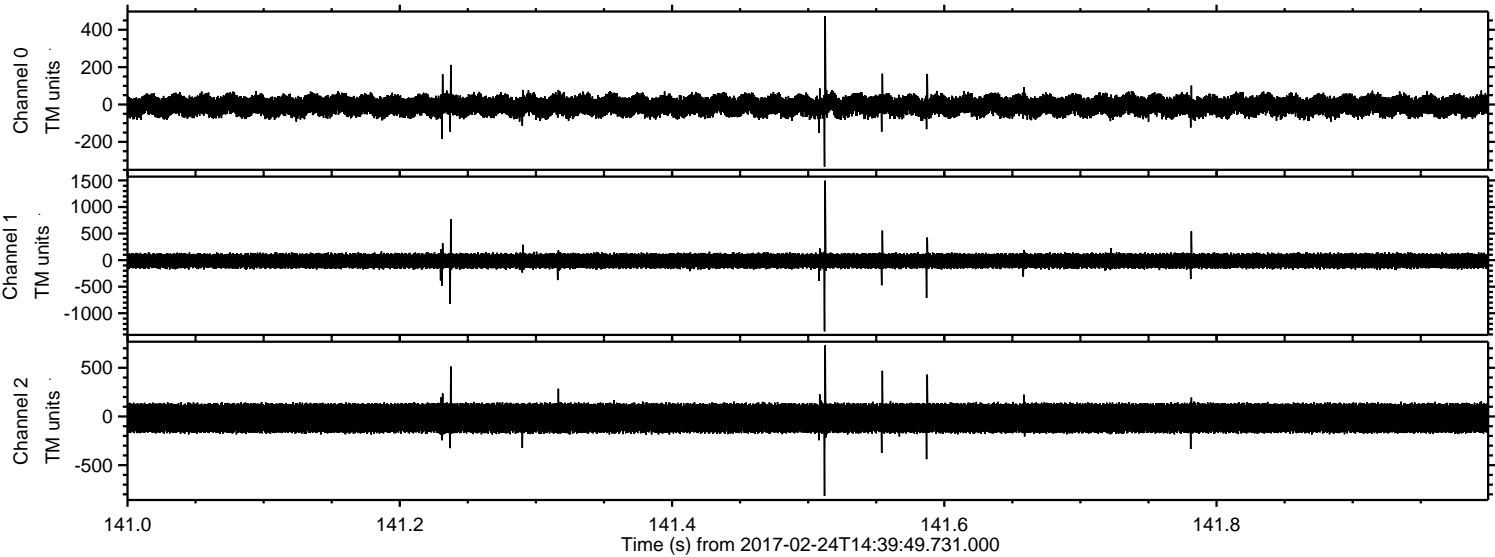
Channel 1  
mn: -1692  
mx: 1440  
 $\mu$ : -15.2  
 $\sigma$ : 80.9

Channel 2  
mn: -826  
mx: 821  
 $\mu$ : -17.1  
 $\sigma$ : 90.7



ELMAVAN 3D WAVEFORMS (Measured data sampled at 50 kHz) 51000 packets of 144 samples from 2017-02-24T14:39:49.731.000. Part 142/147

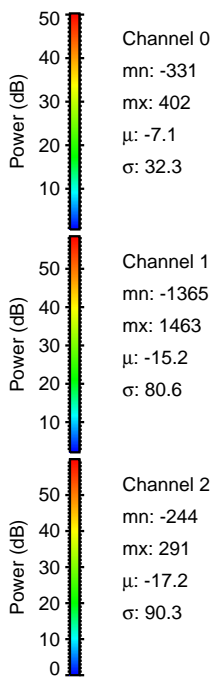
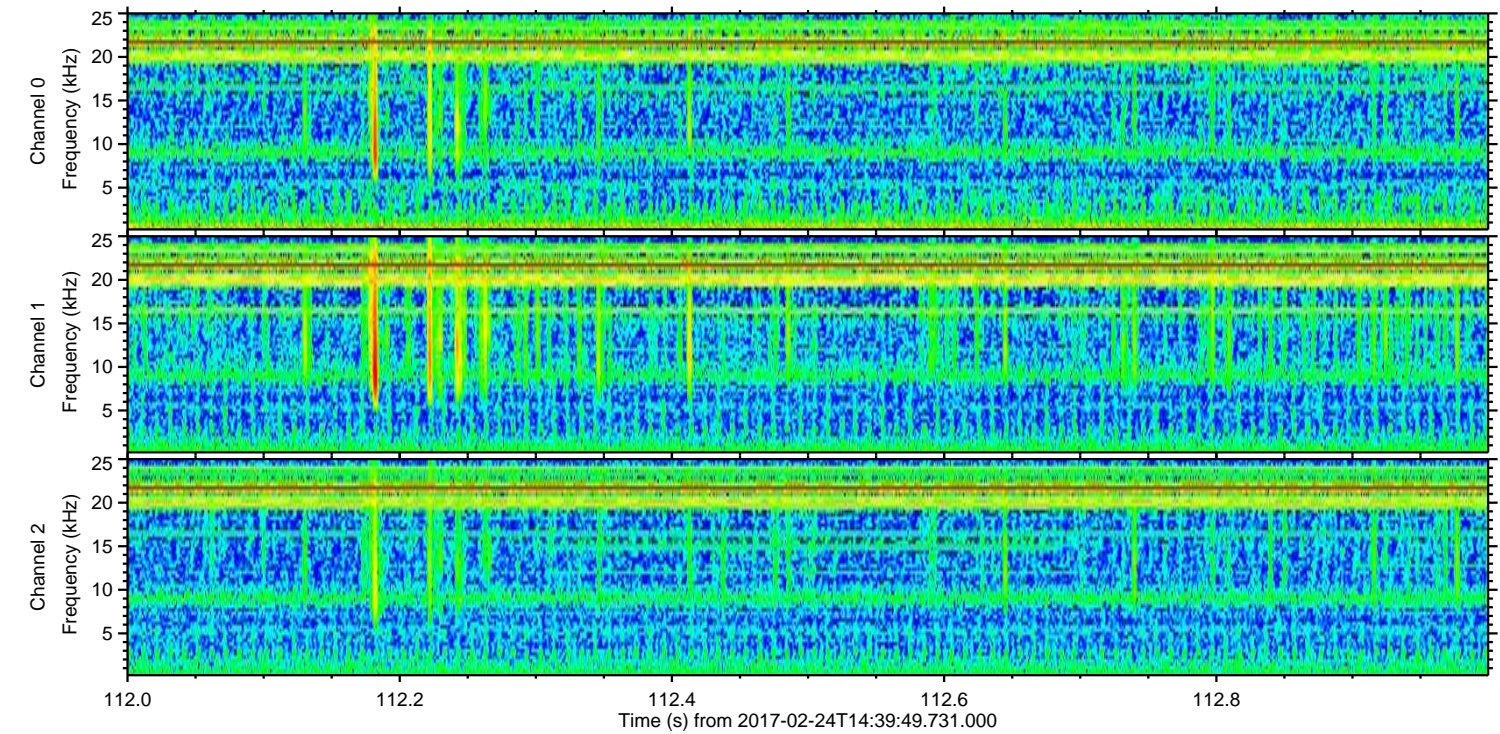
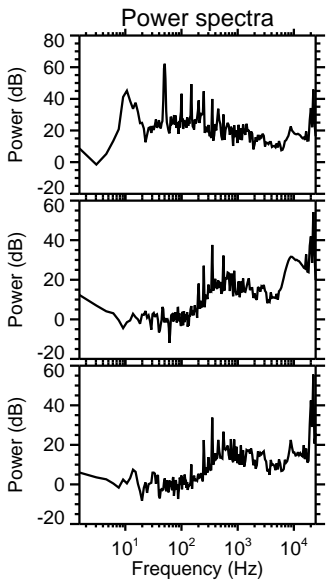
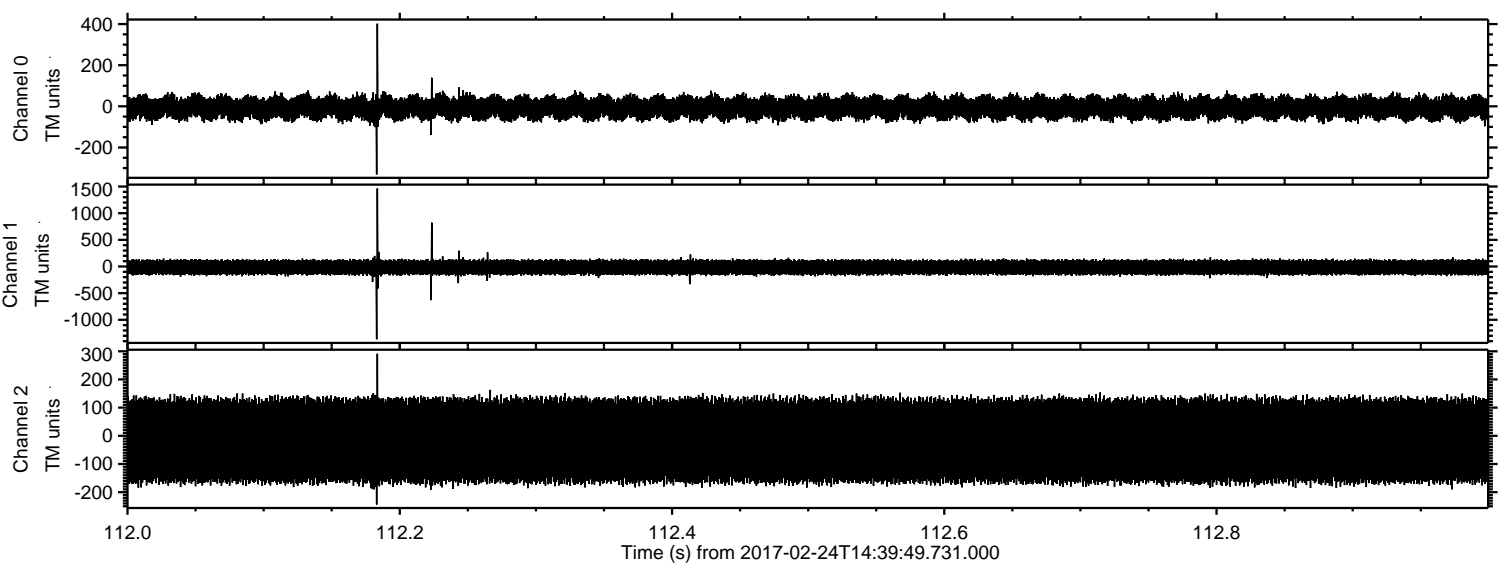
Processed Fri Feb 24 15:47:30 2017 by ELM ver.2012-10-06 from 001\_\_elm20170224\_143948\_\_dat00.bin





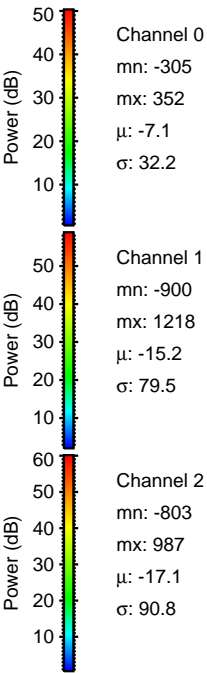
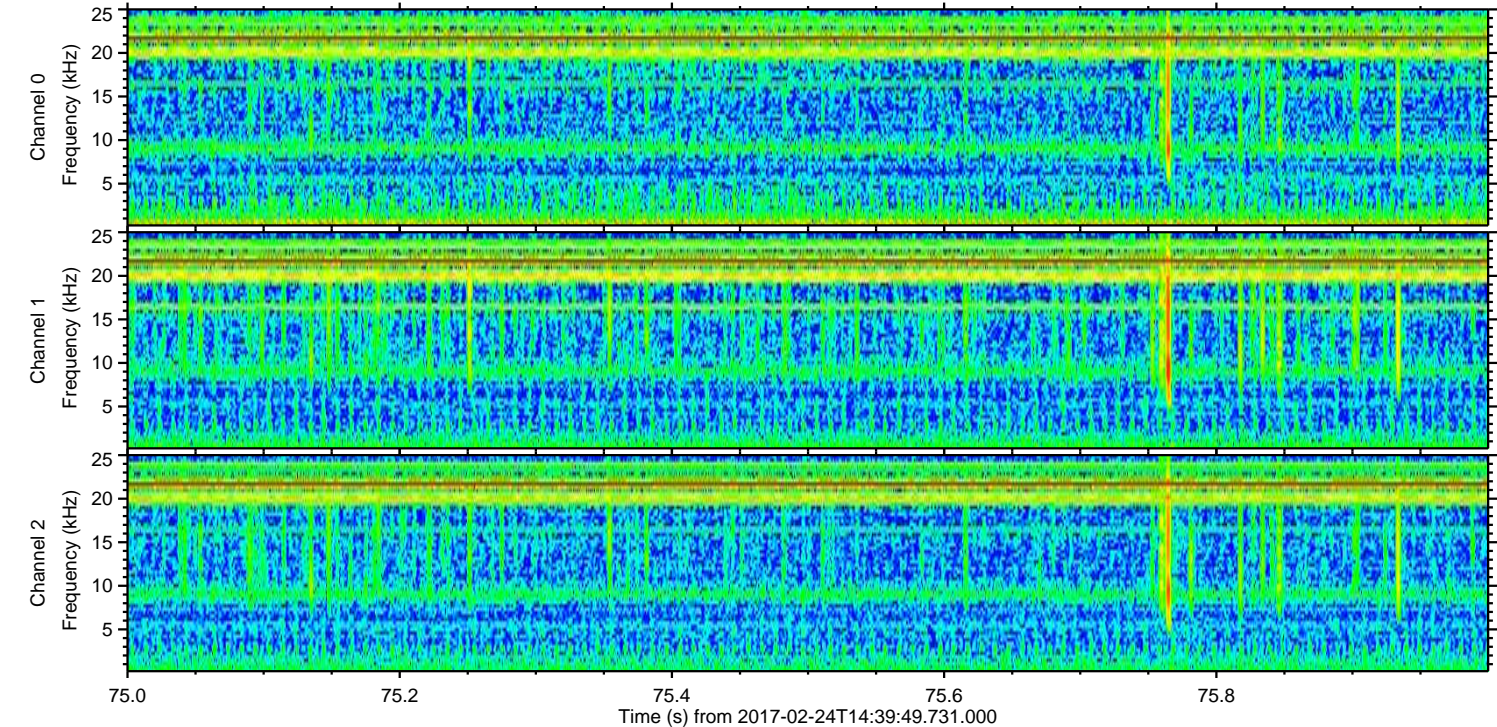
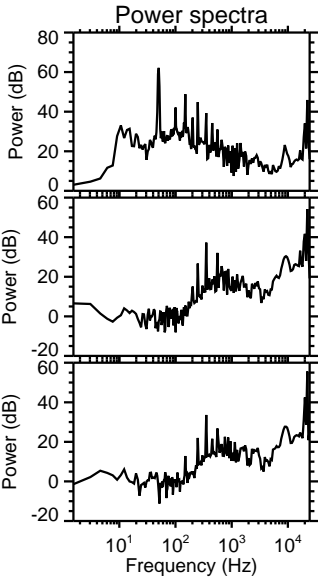
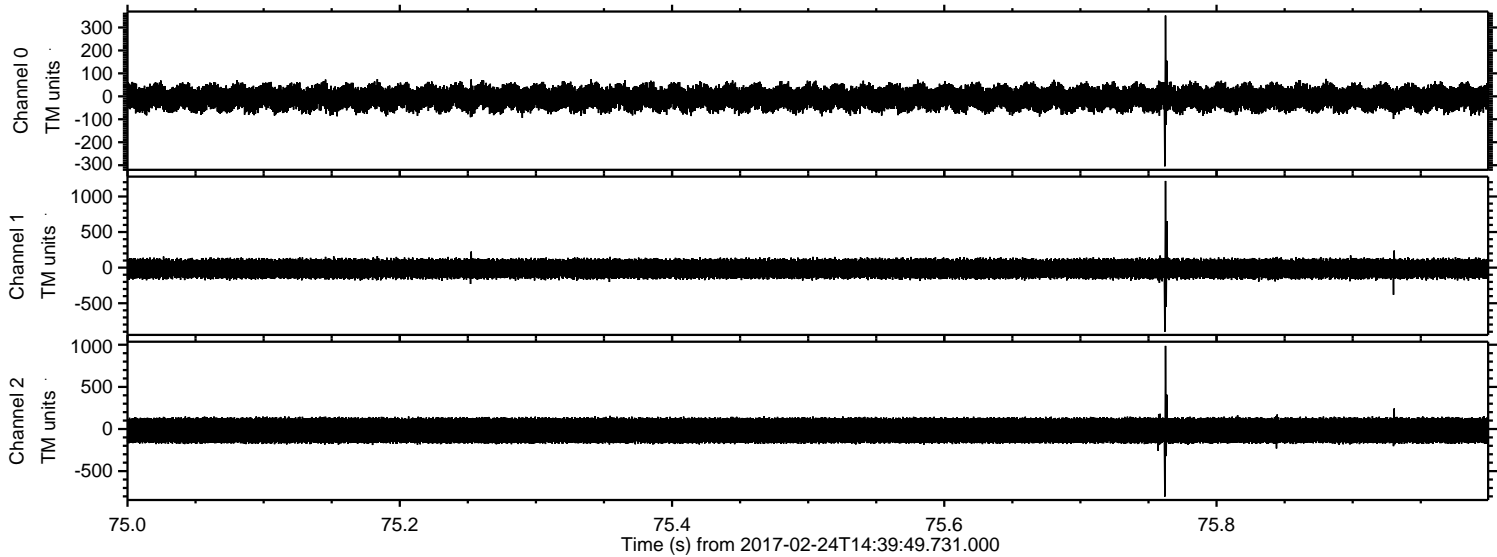
ELMAVAN 3D WAVEFORMS (Measured data sampled at 50 kHz) 51000 packets of 144 samples from 2017-02-24T14:39:49.731.000. Part 113/147

Processed Fri Feb 24 15:47:31 2017 by ELM ver.2012-10-06 from 001\_\_elm20170224\_143948\_\_dat00.bin



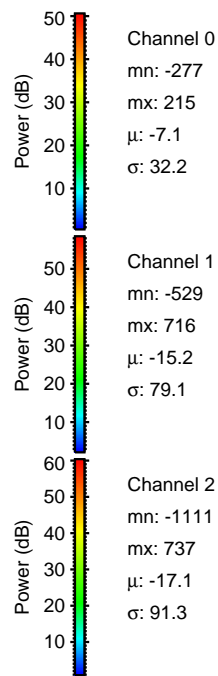
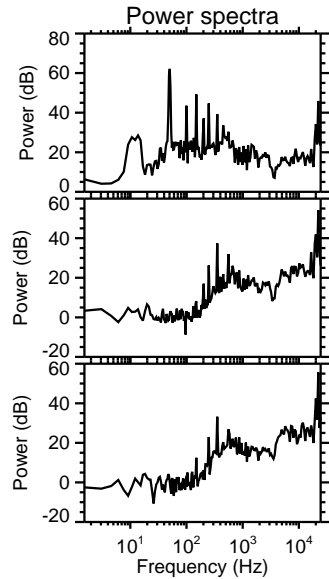
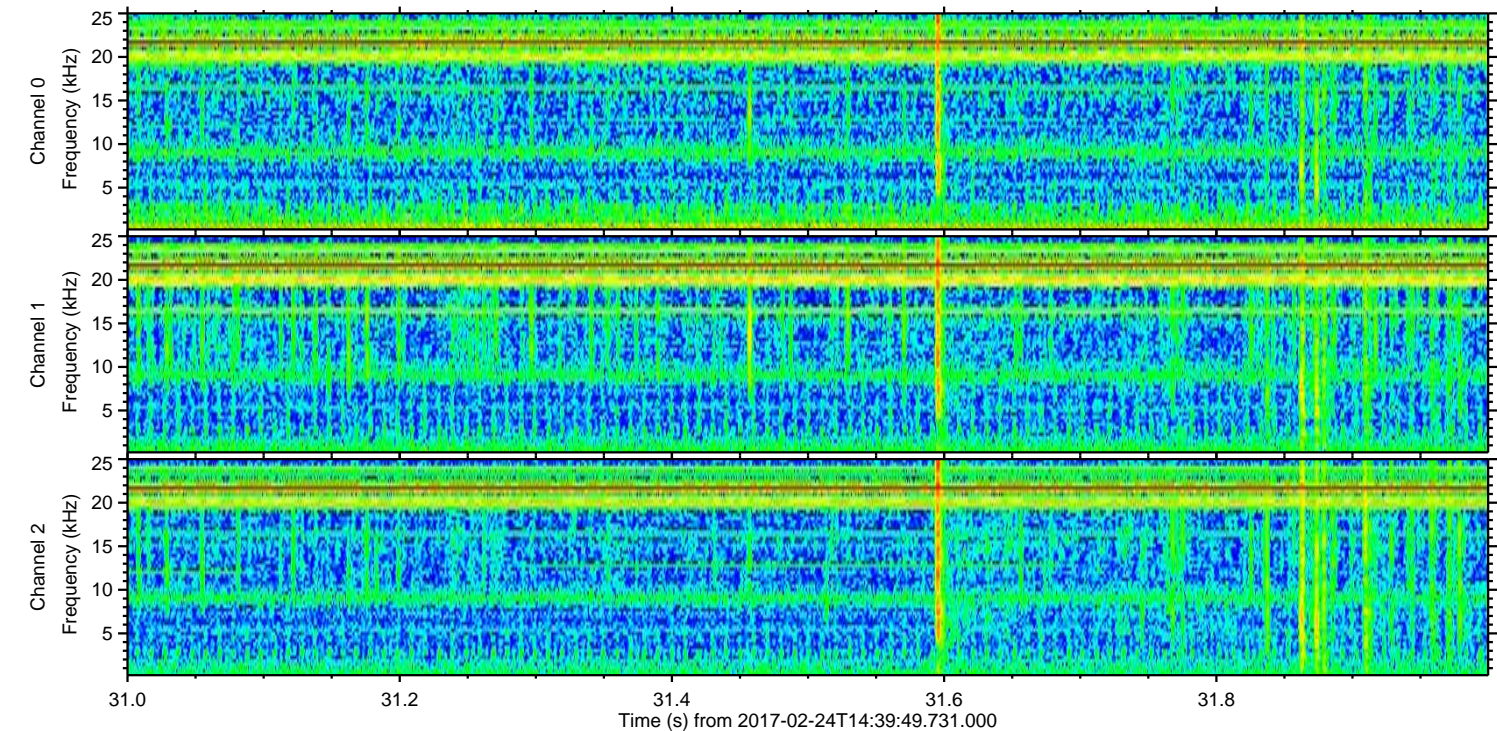
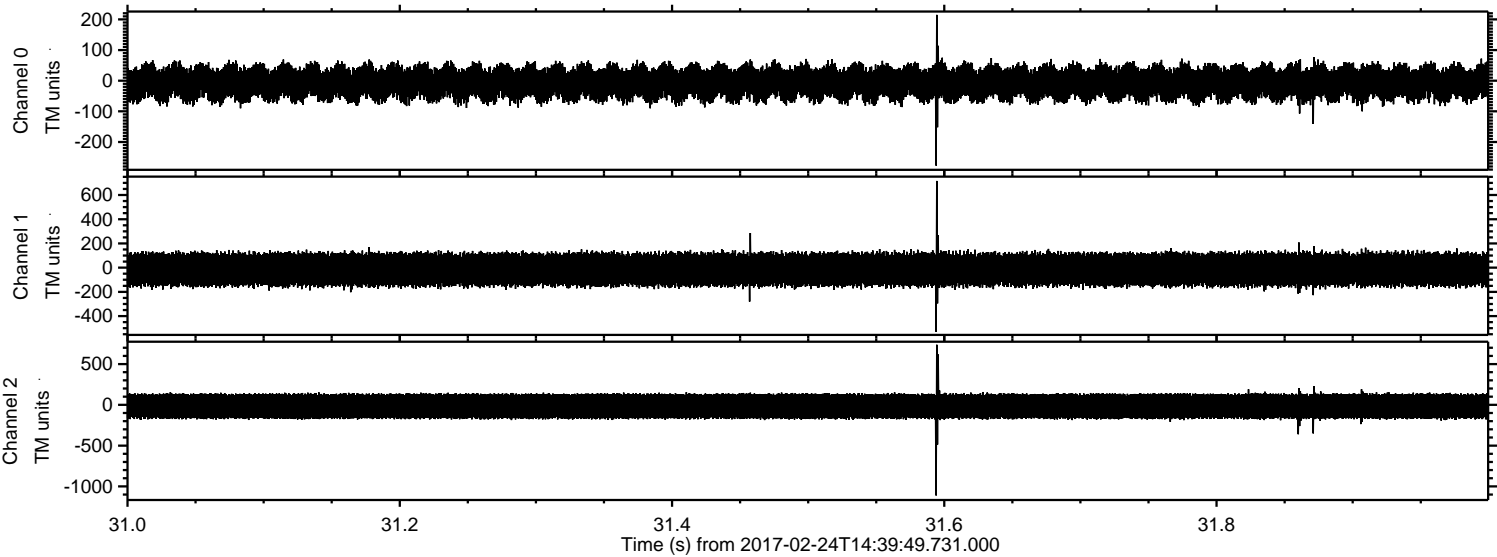


Processed Fri Feb 24 15:47:32 2017 by ELM ver.2012-10-06 from 001\_\_elm20170224\_143948\_\_dat00.bin



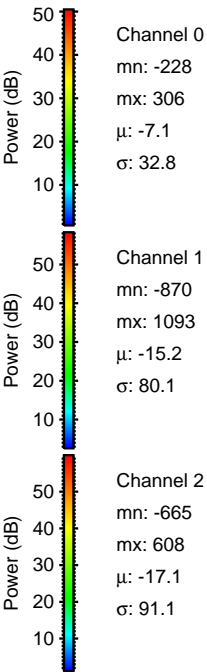
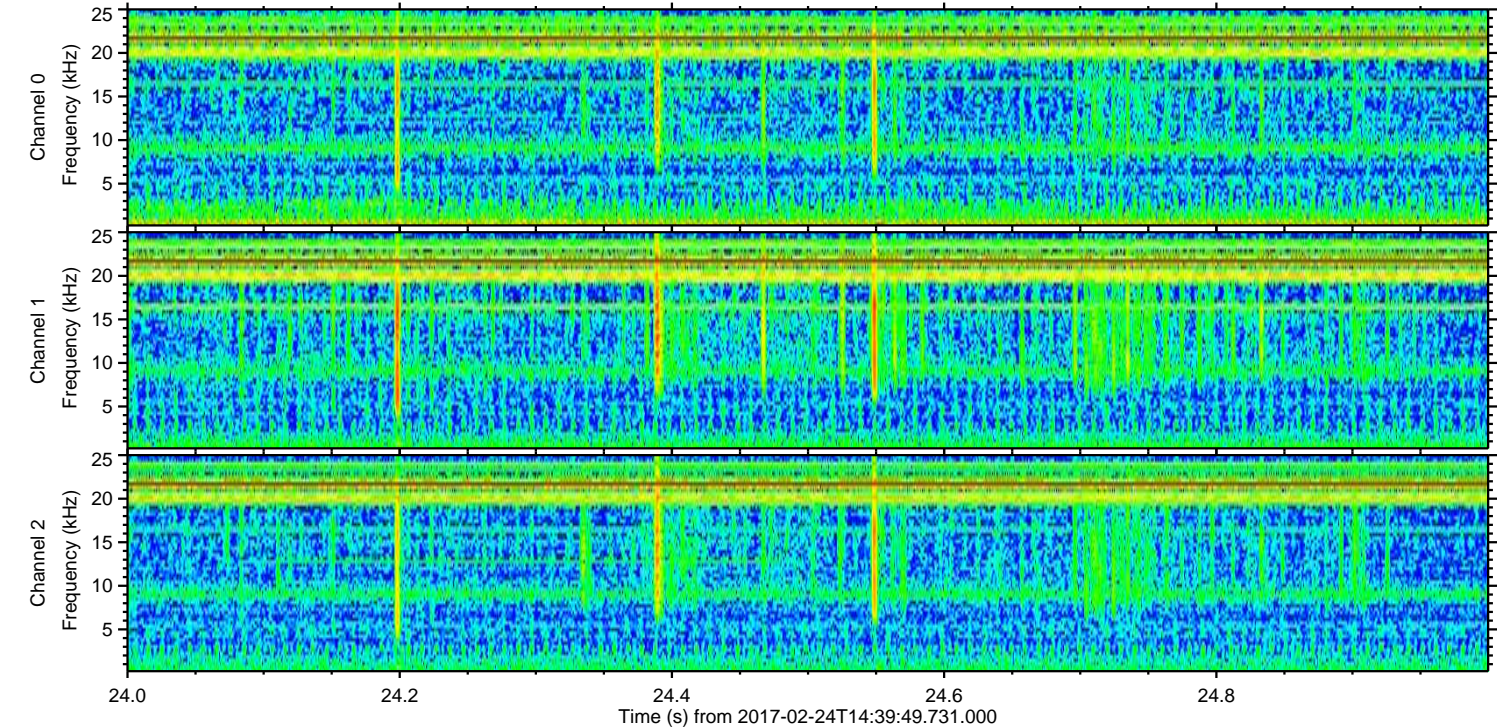
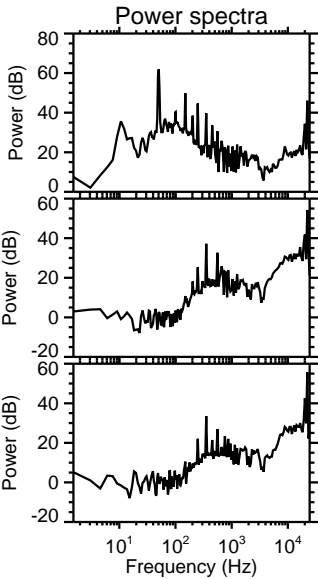
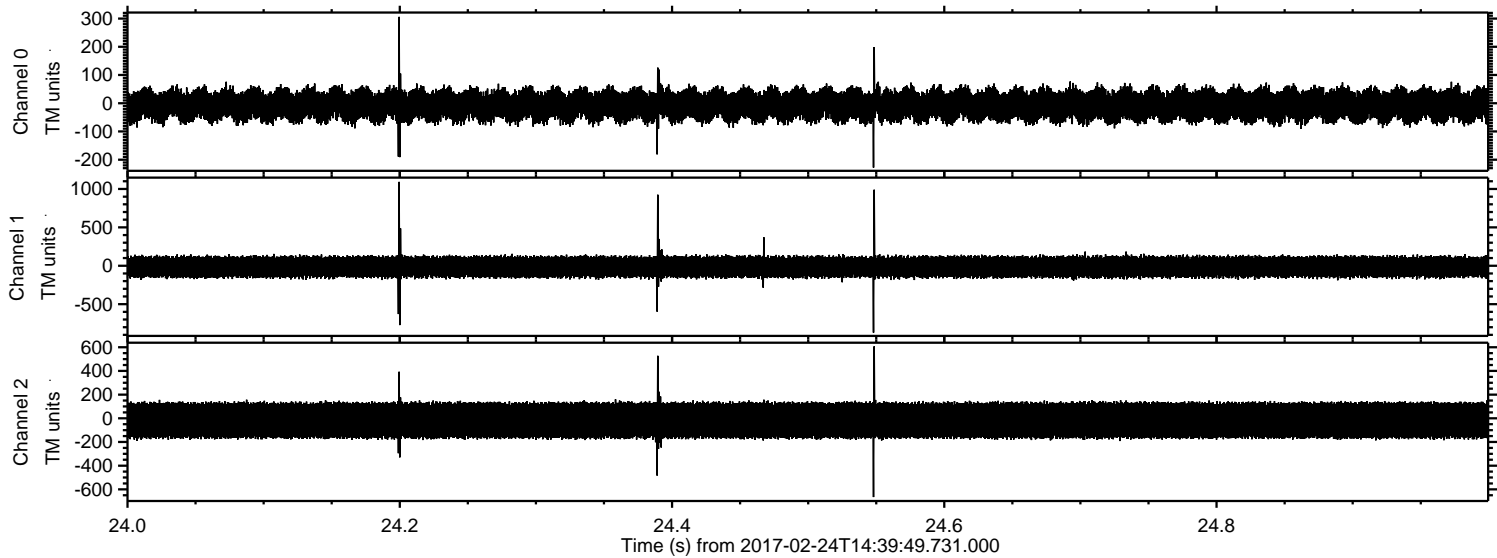


Processed Fri Feb 24 15:47:33 2017 by ELM ver.2012-10-06 from 001\_\_elm20170224\_143948\_\_dat00.bin



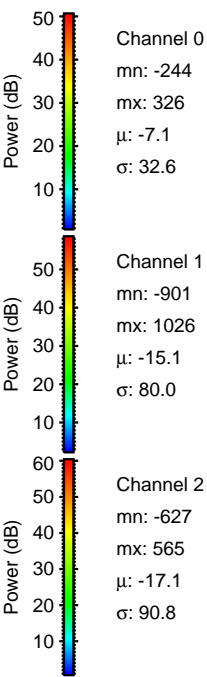
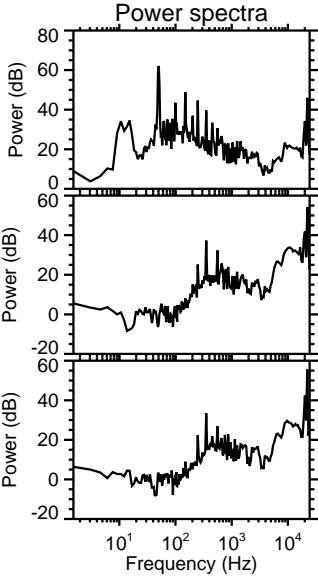
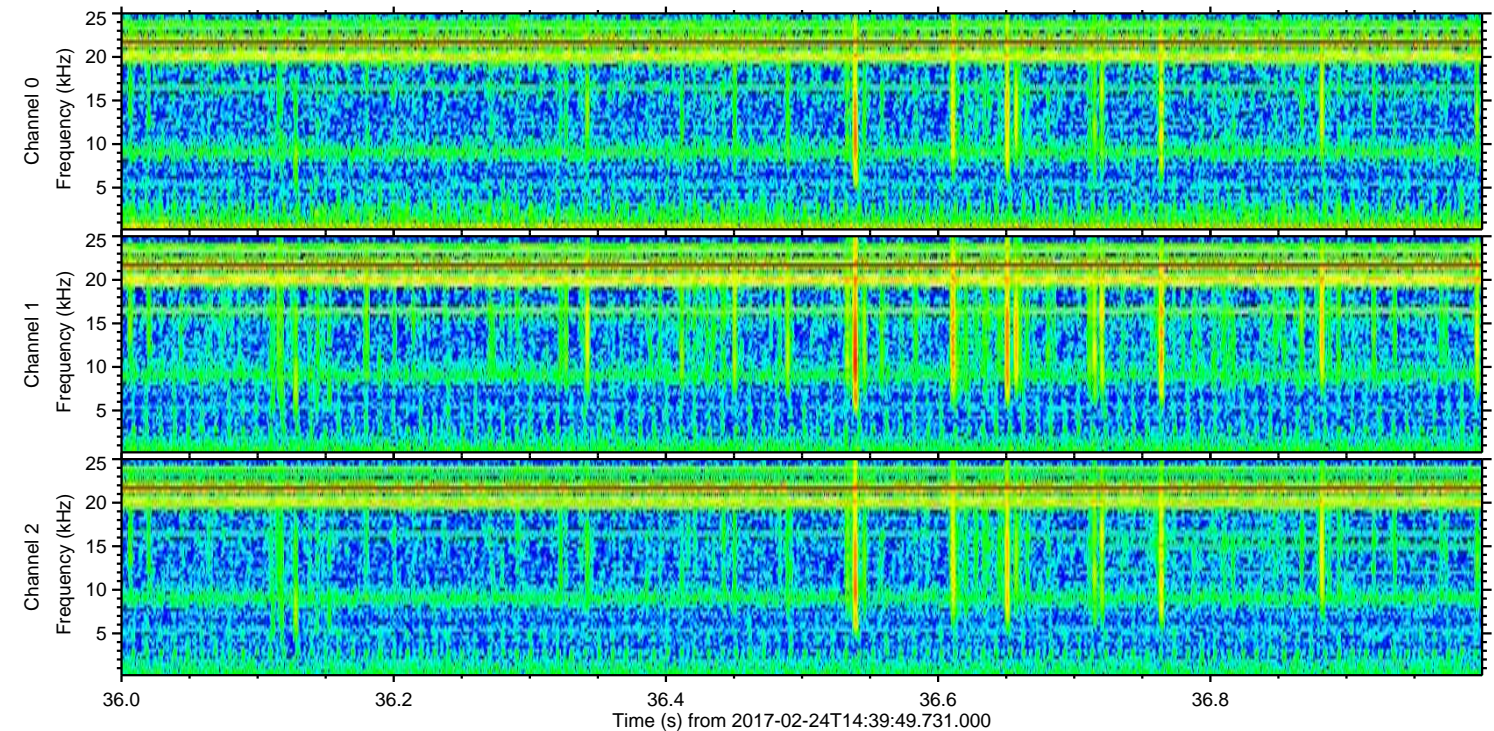
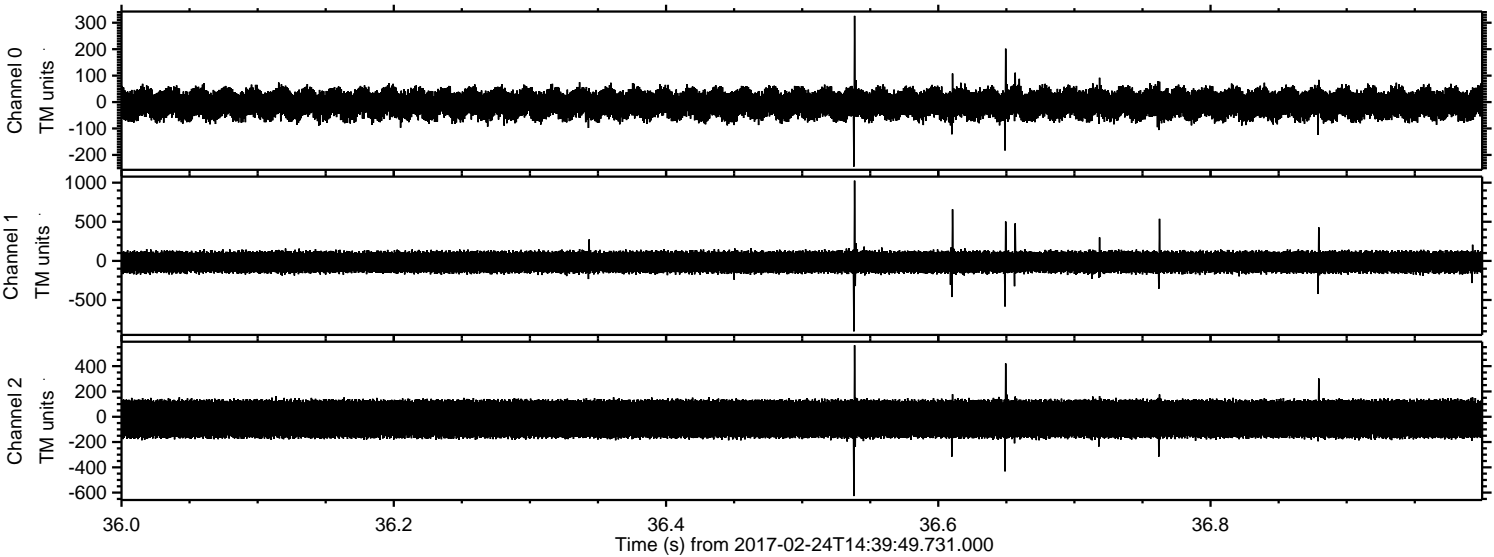


Processed Fri Feb 24 15:47:34 2017 by ELM ver.2012-10-06 from 001\_\_elm20170224\_143948\_\_dat00.bin



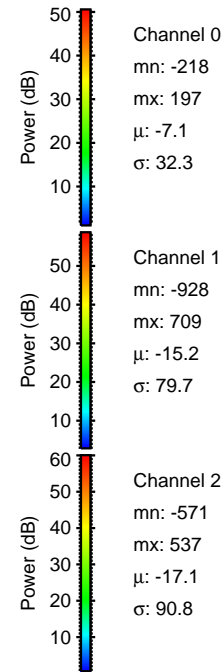
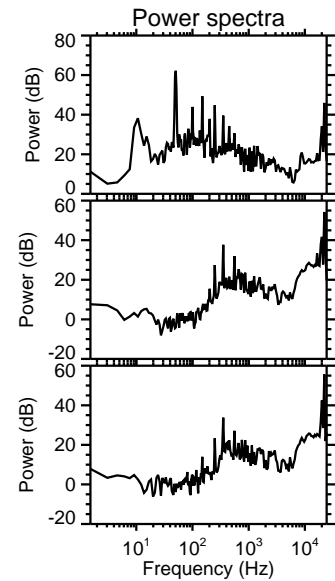
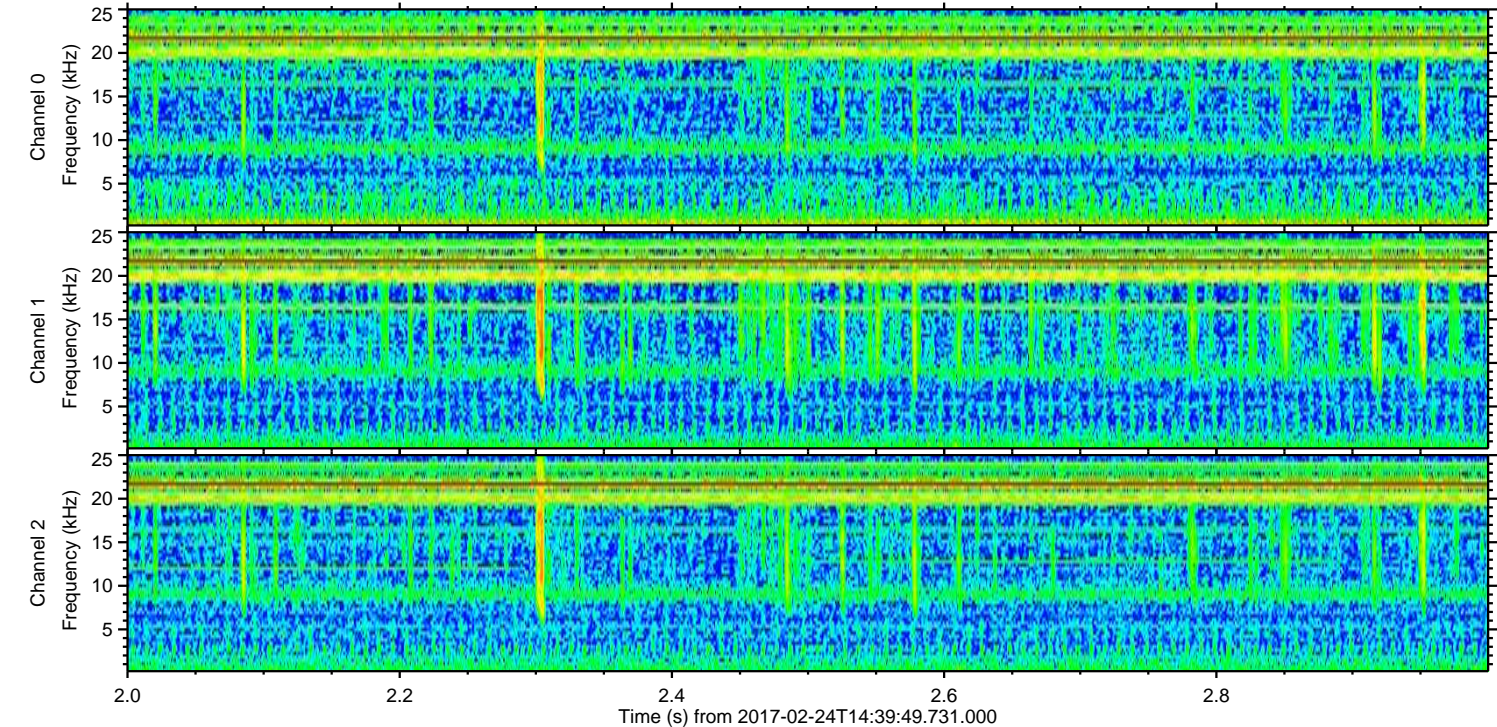
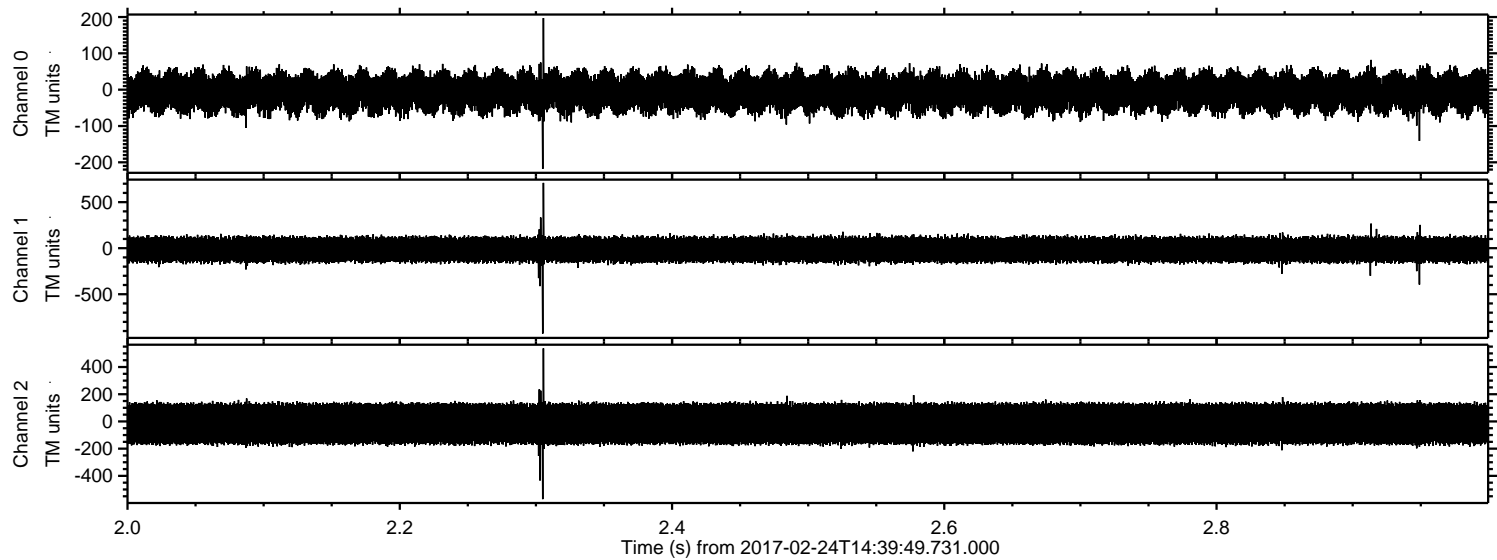


Processed Fri Feb 24 15:47:35 2017 by ELM ver.2012-10-06 from 001\_\_elm20170224\_143948\_\_dat00.bin





Processed Fri Feb 24 15:47:36 2017 by ELM ver.2012-10-06 from 001\_\_elm20170224\_143948\_\_dat00.bin



Channel 0  
mn: -218  
mx: 197  
 $\mu$ : -7.1  
 $\sigma$ : 32.3

Channel 1  
mn: -928  
mx: 709  
 $\mu$ : -15.2  
 $\sigma$ : 79.7

Channel 2  
mn: -571  
mx: 537  
 $\mu$ : -17.1  
 $\sigma$ : 90.8



Processed Fri Feb 24 15:47:36 2017 by ELM ver.2012-10-06 from 001\_\_elm20170224\_143948\_\_dat00.bin

