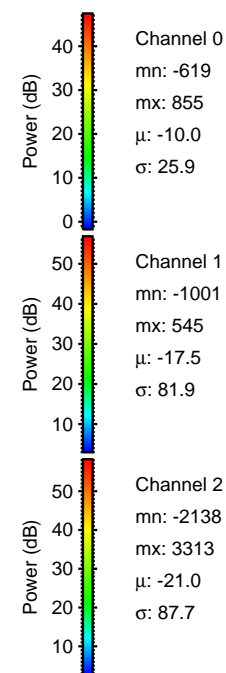
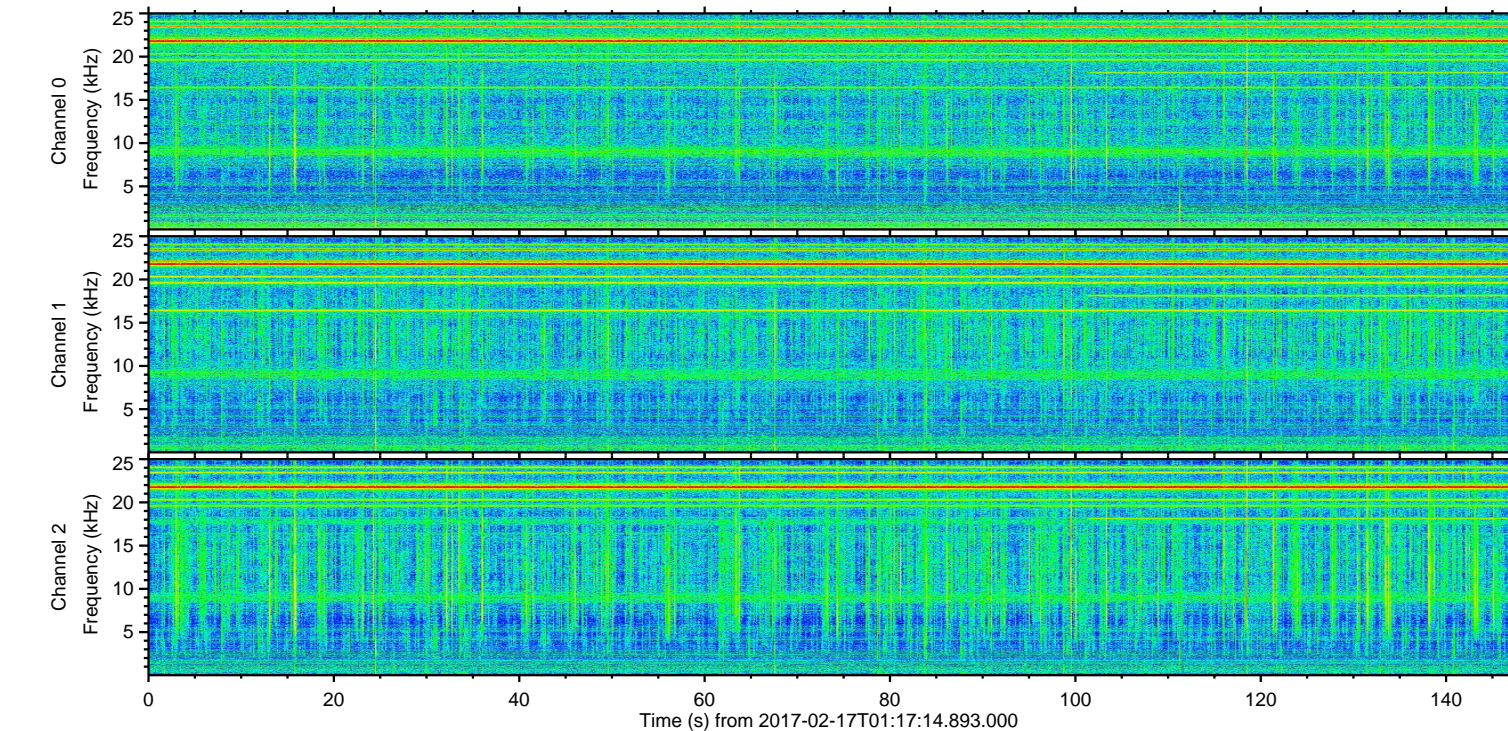
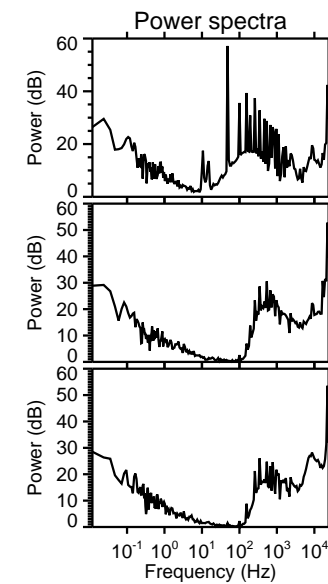
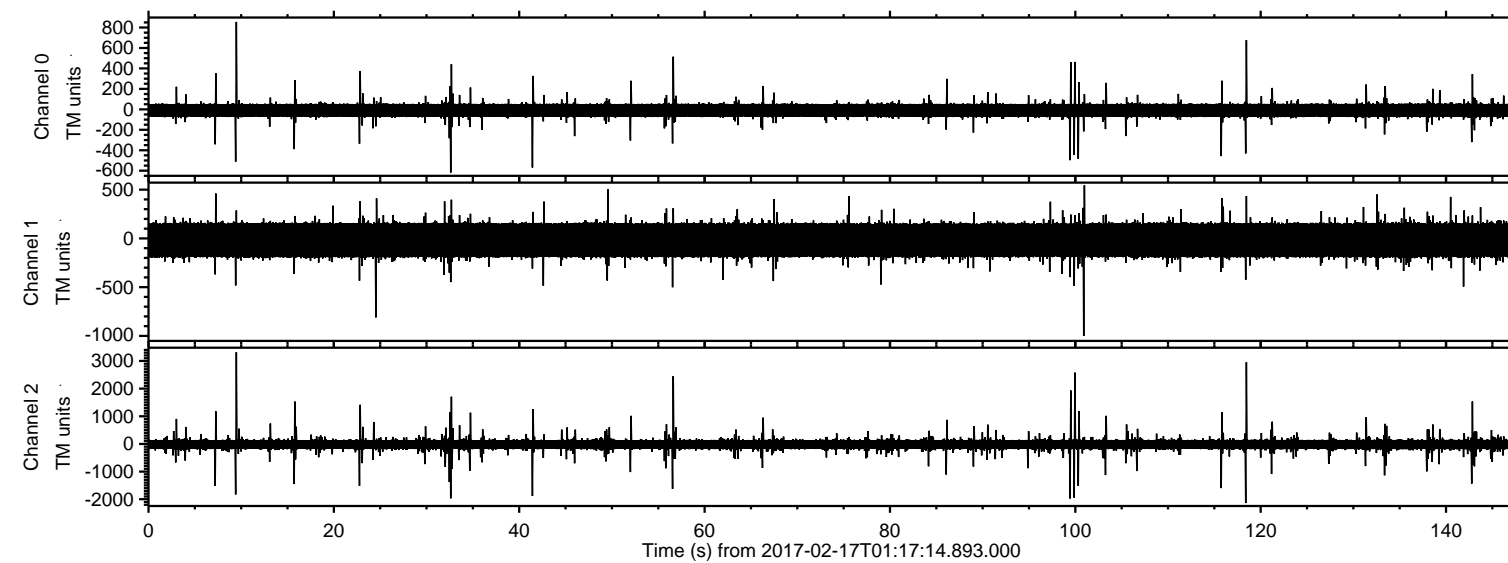


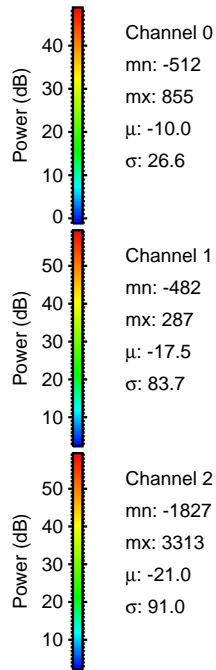
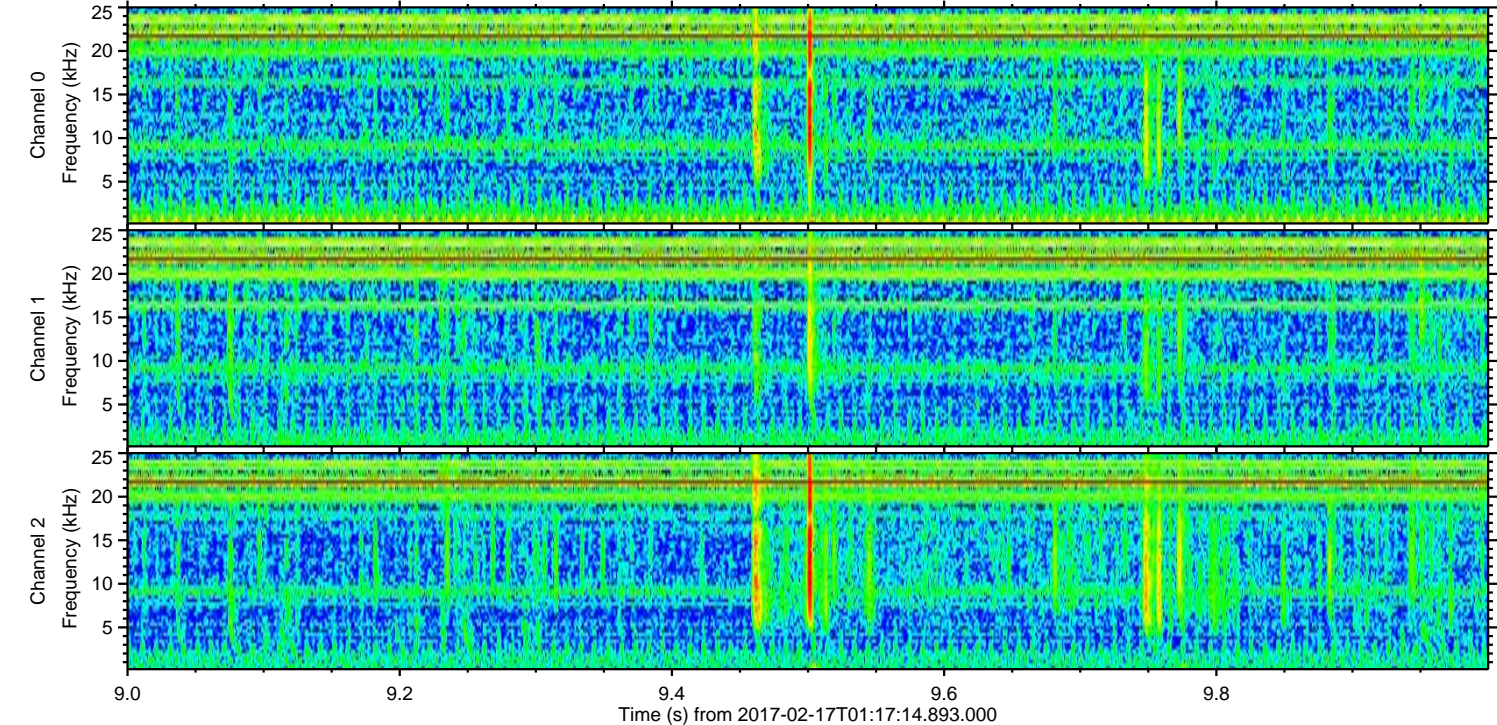
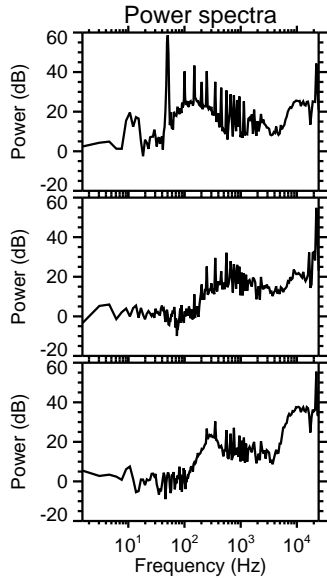
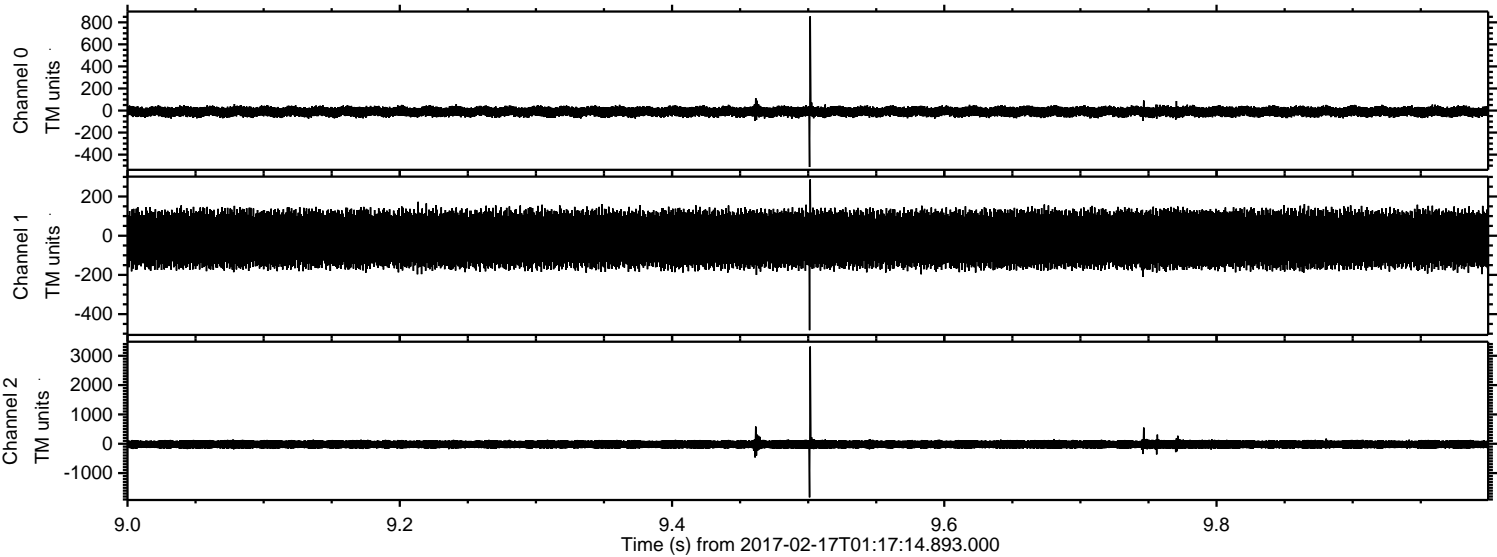
ELMAVAN 3D WAVEFORMS (Measured data sampled at 50 kHz) 51000 packets of 144 samples from 2017-02-17T01:17:14.893.000.

Processed Fri Feb 17 02:24:46 2017 by ELM ver.2012-10-06 from 001\_\_elm20170217\_011713\_\_dat00.bin





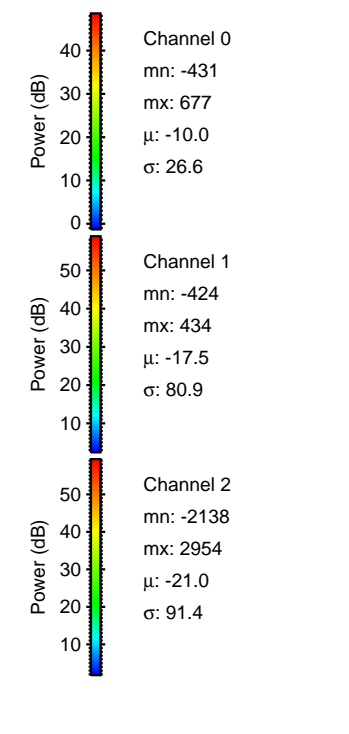
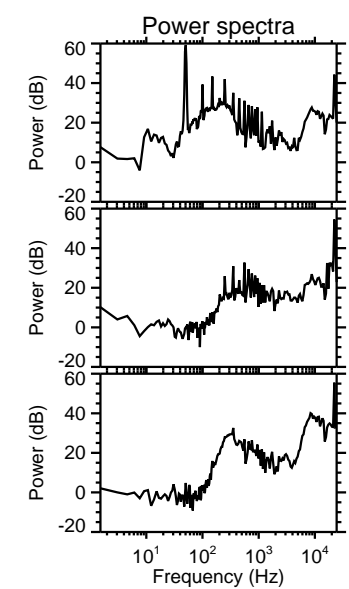
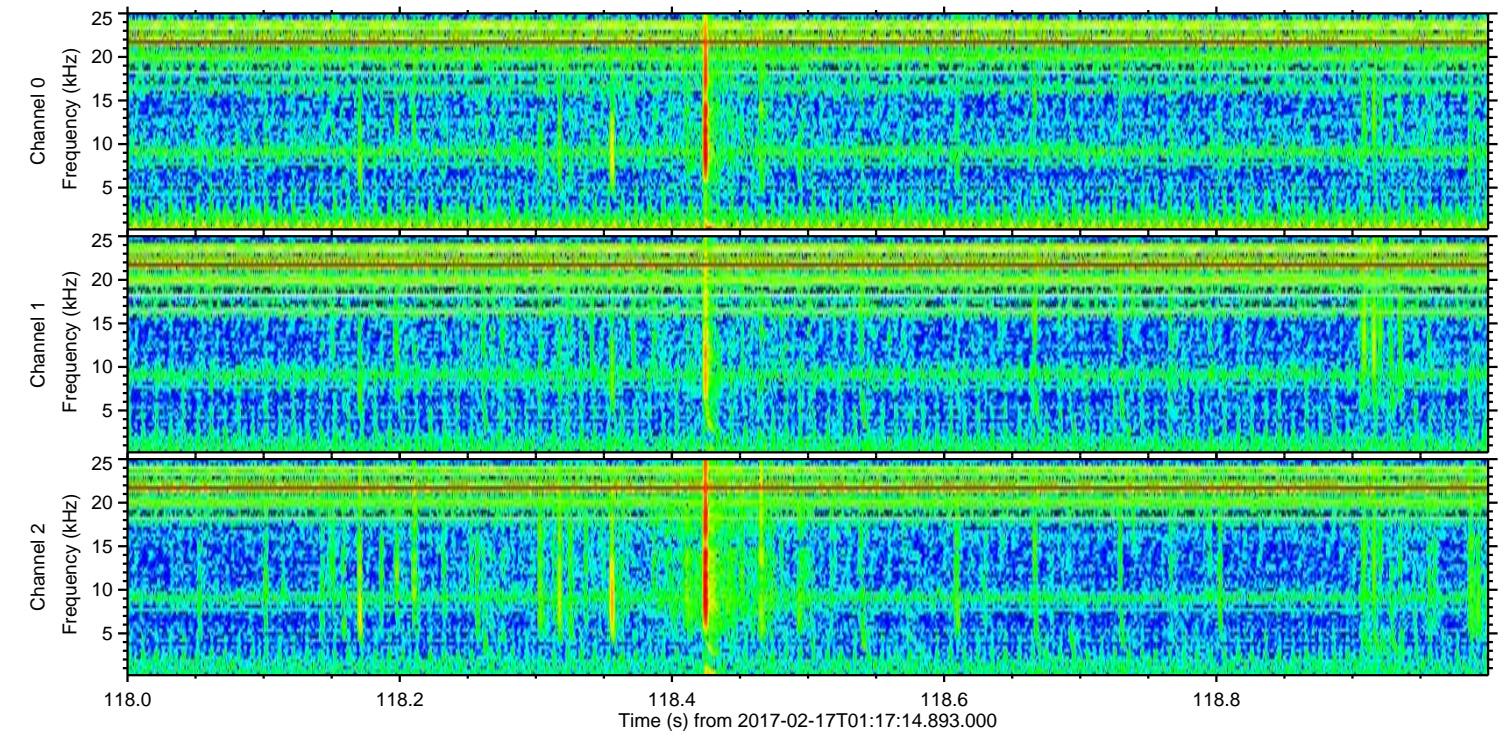
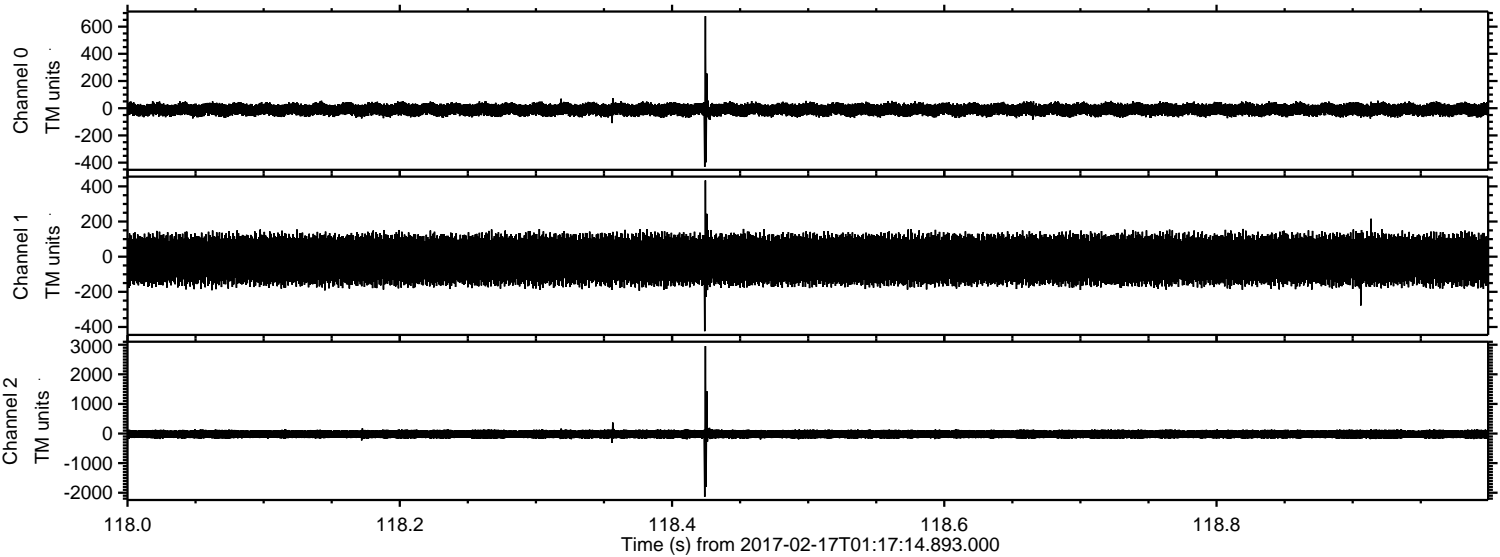
Processed Fri Feb 17 02:25:02 2017 by ELM ver.2012-10-06 from 001\_\_elm20170217\_011713\_\_dat00.bin





ELMAVAN 3D WAVEFORMS (Measured data sampled at 50 kHz) 51000 packets of 144 samples from 2017-02-17T01:17:14.893.000. Part 119/147

Processed Fri Feb 17 02:25:03 2017 by ELM ver.2012-10-06 from 001\_\_elm20170217\_011713\_\_dat00.bin



Channel 0
mn: -431
mx: 677
$\mu$ : -10.0
$\sigma$ : 26.6

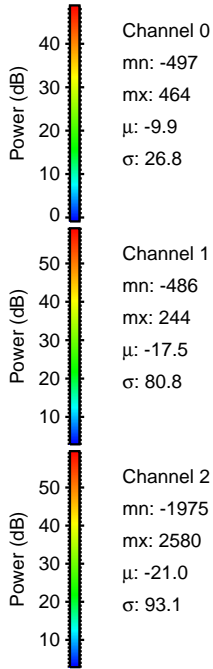
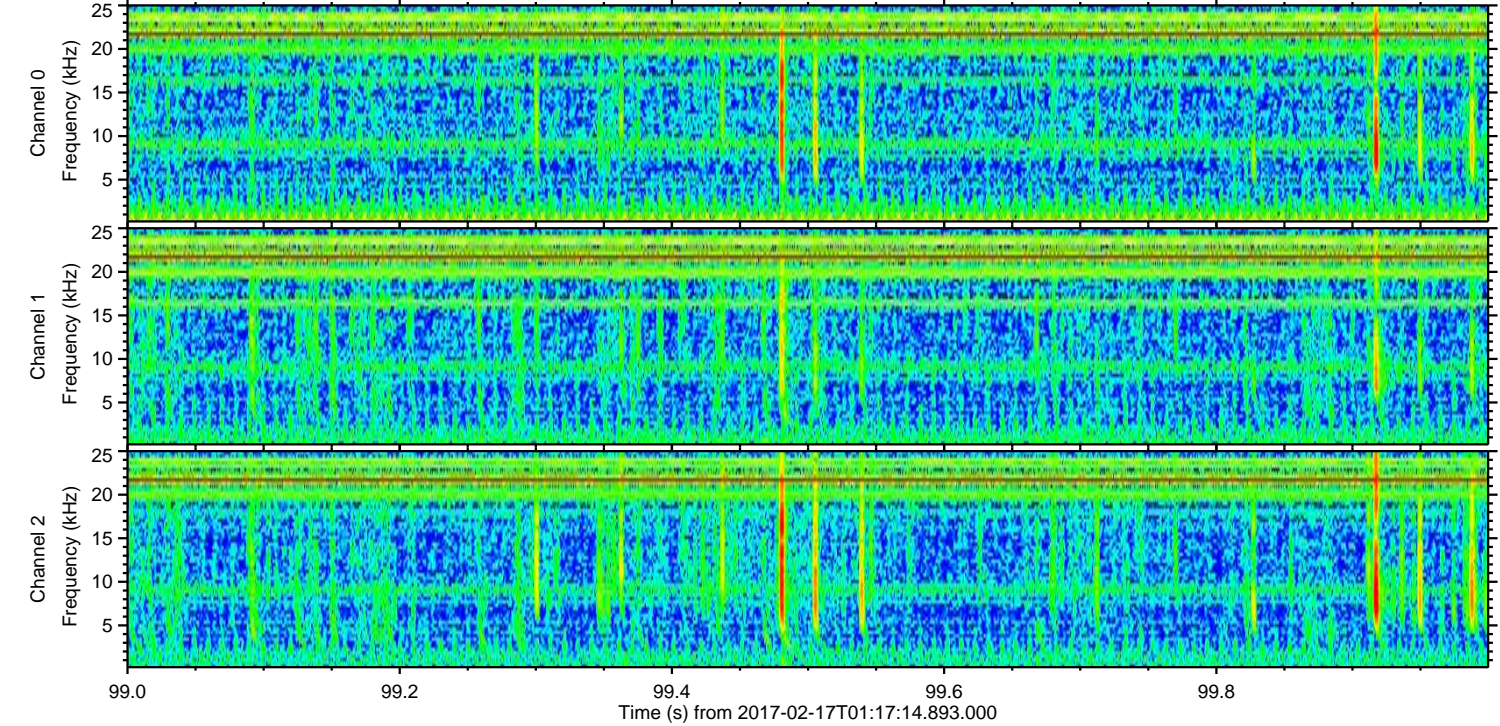
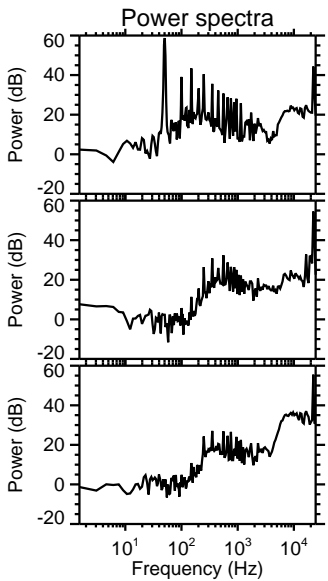
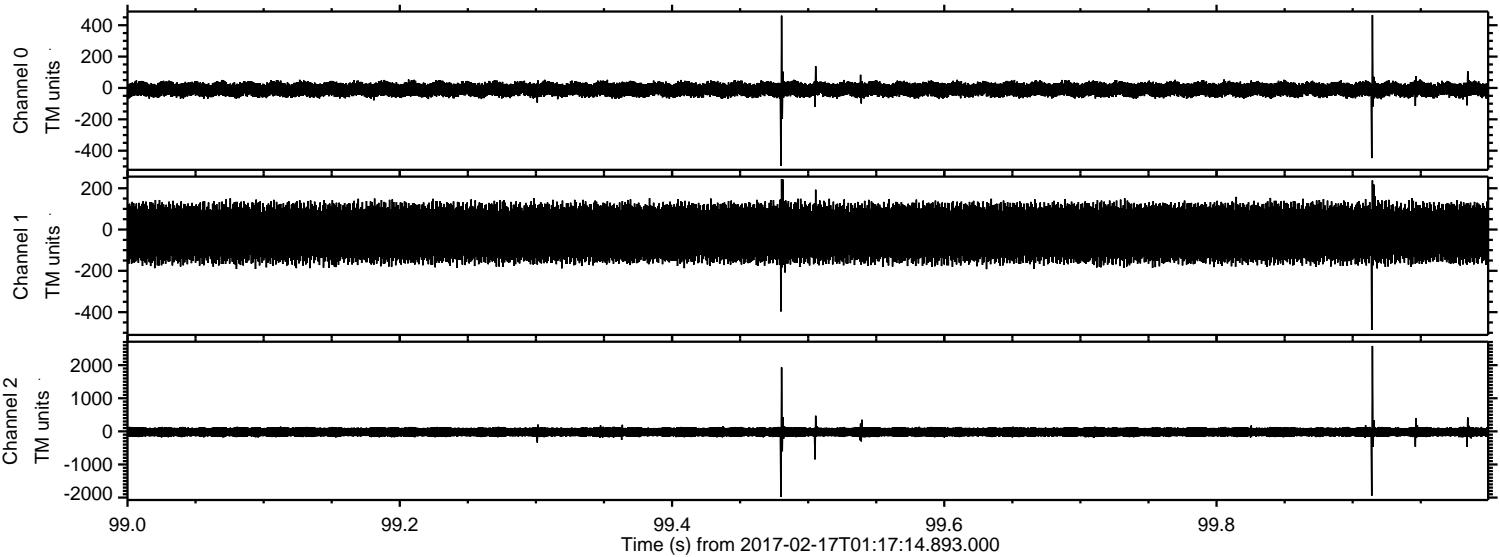
Channel 1
mn: -424
mx: 434
$\mu$ : -17.5
$\sigma$ : 80.9

Channel 2
mn: -2138
mx: 2954
$\mu$ : -21.0
$\sigma$ : 91.4



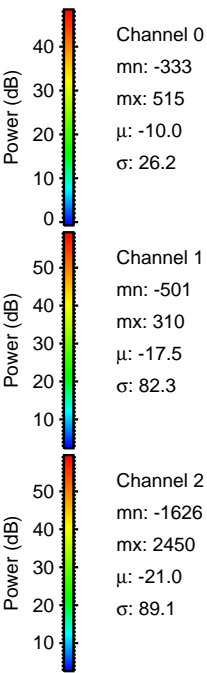
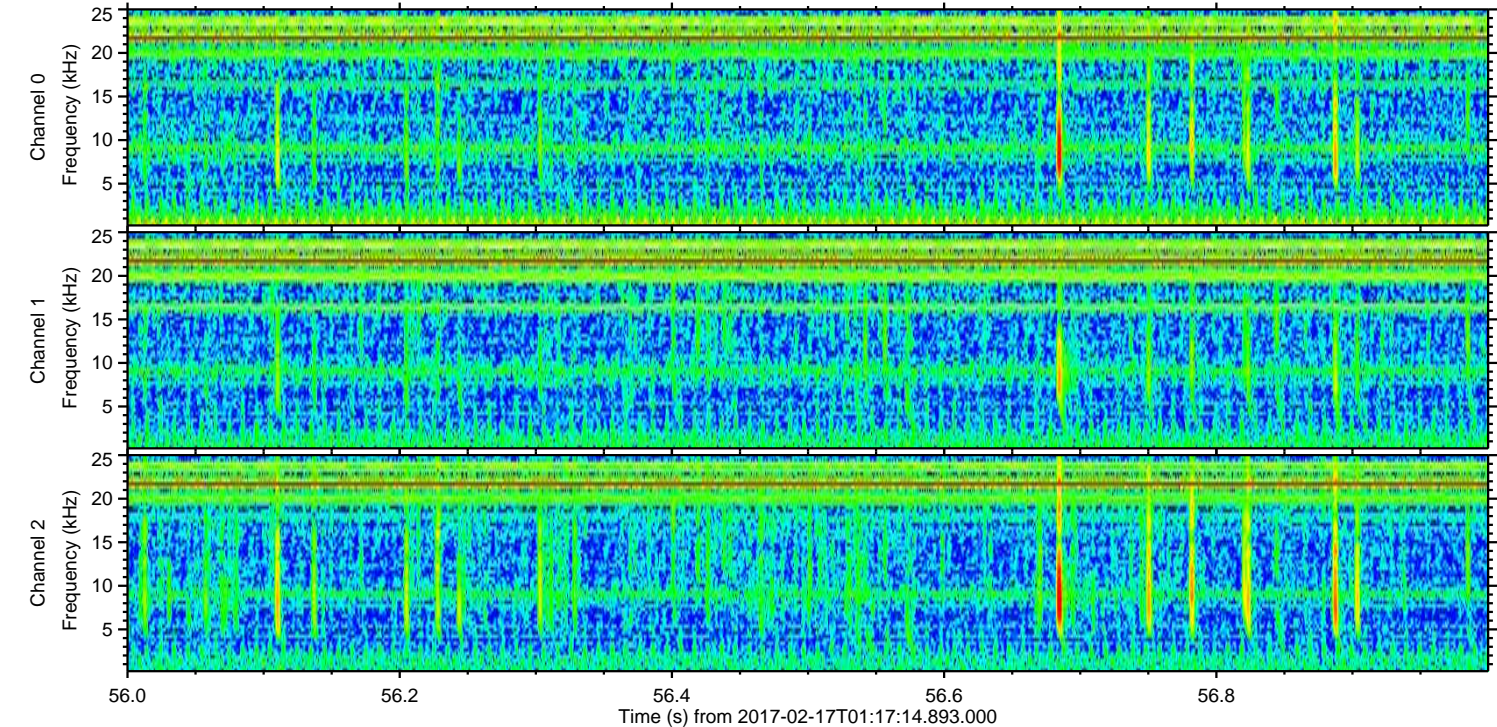
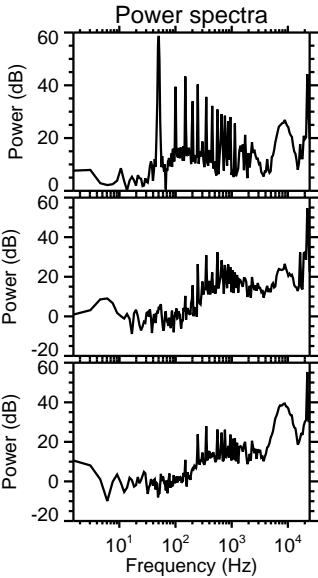
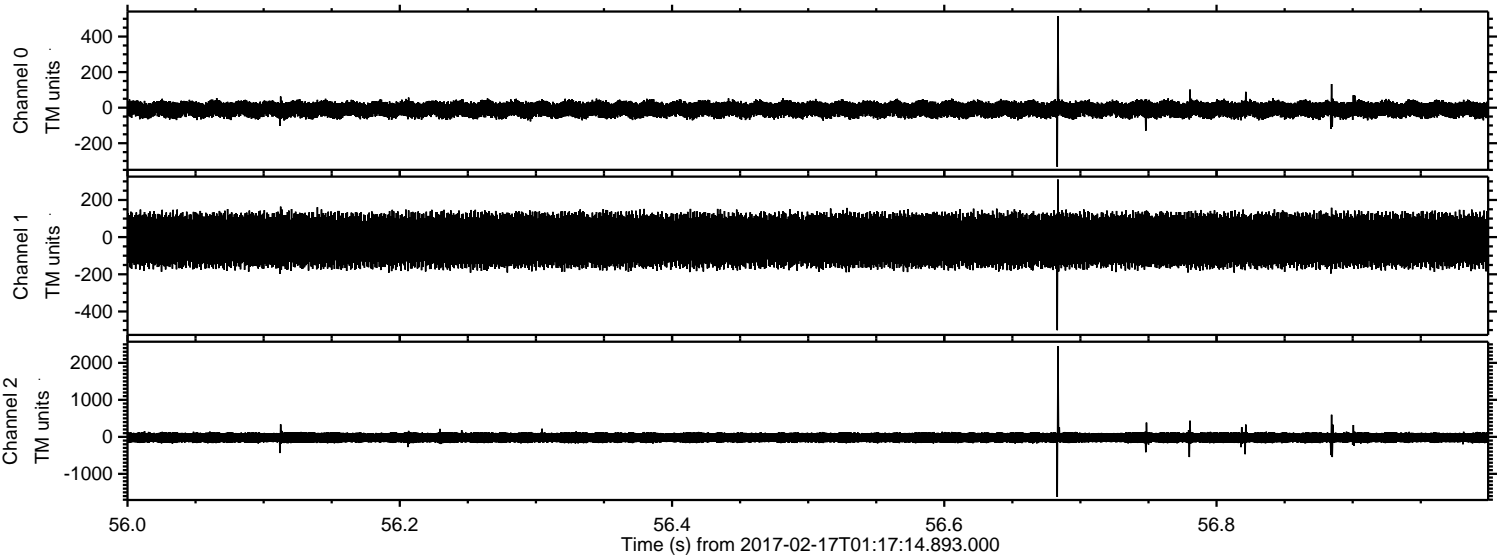
ELMAVAN 3D WAVEFORMS (Measured data sampled at 50 kHz) 51000 packets of 144 samples from 2017-02-17T01:17:14.893.000. Part 100/147

Processed Fri Feb 17 02:25:04 2017 by ELM ver.2012-10-06 from 001\_\_elm20170217\_011713\_\_dat00.bin



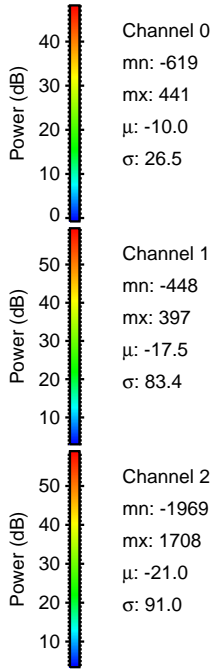
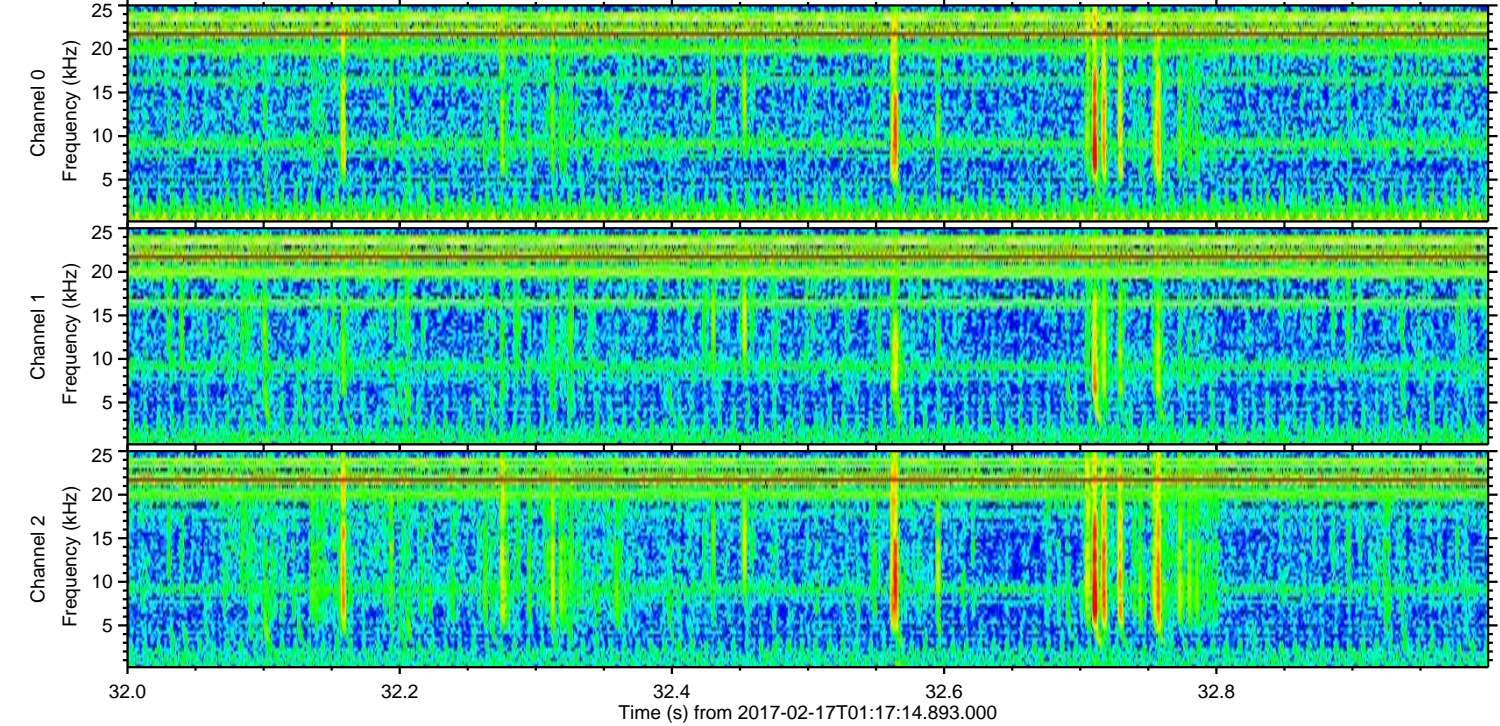
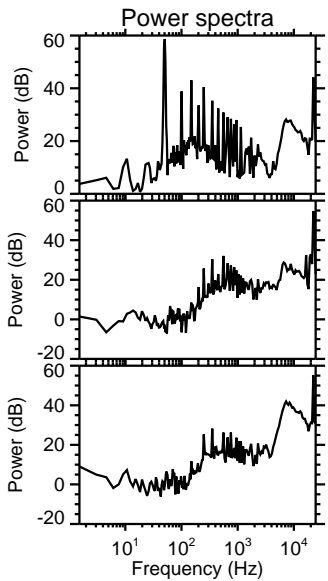
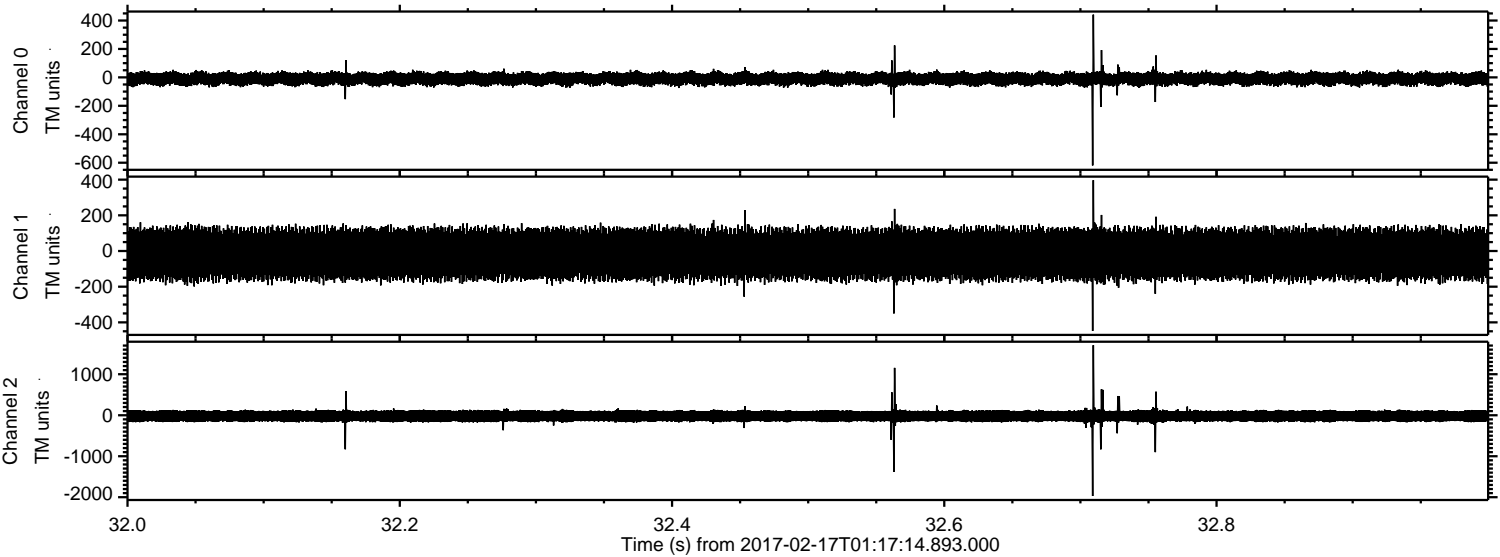


Processed Fri Feb 17 02:25:05 2017 by ELM ver.2012-10-06 from 001\_\_elm20170217\_011713\_\_dat00.bin





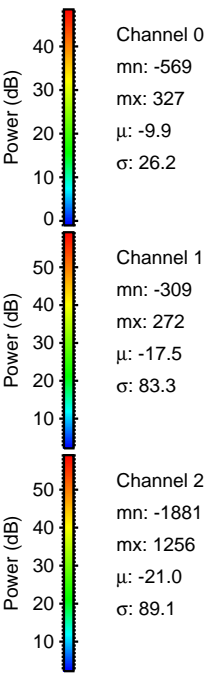
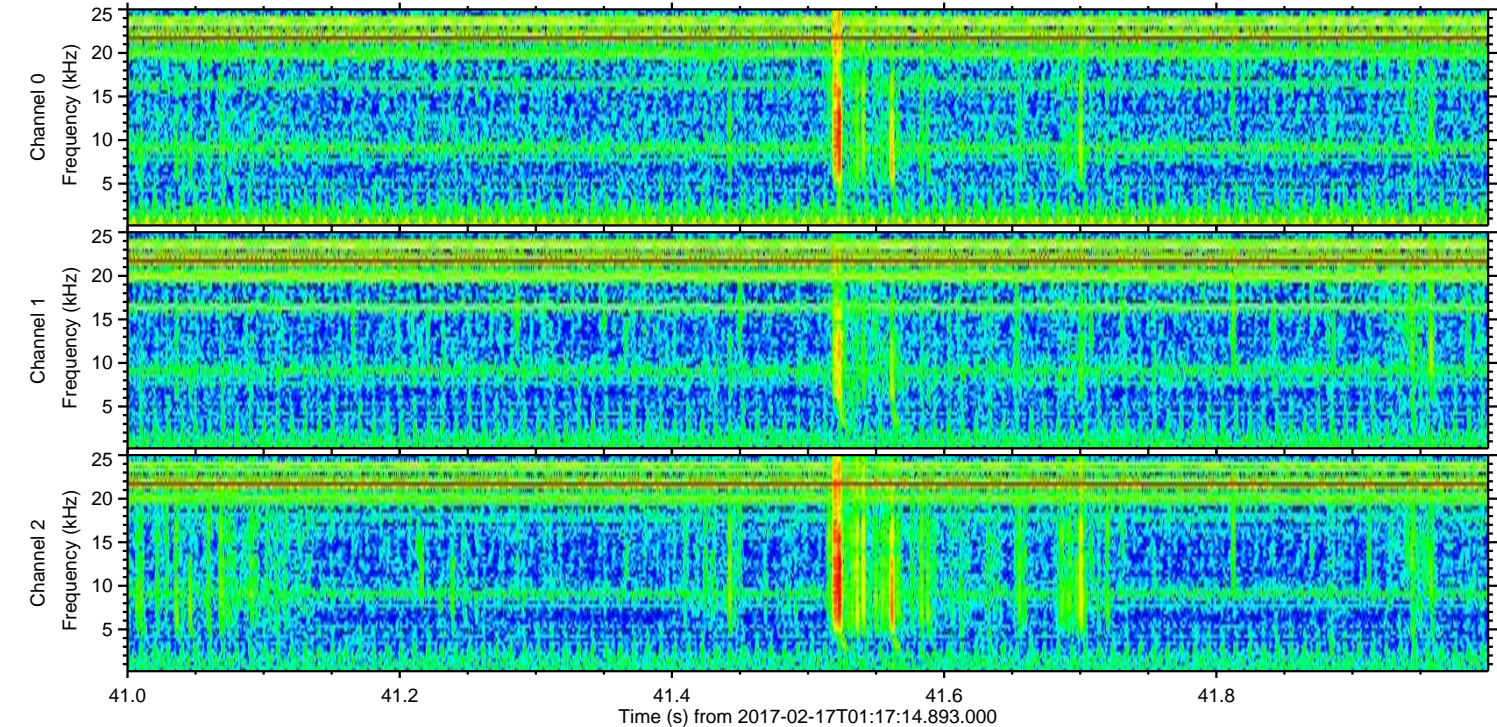
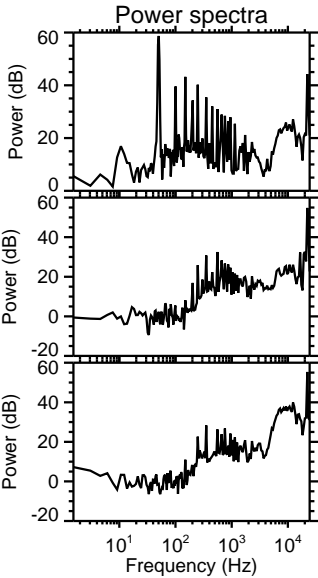
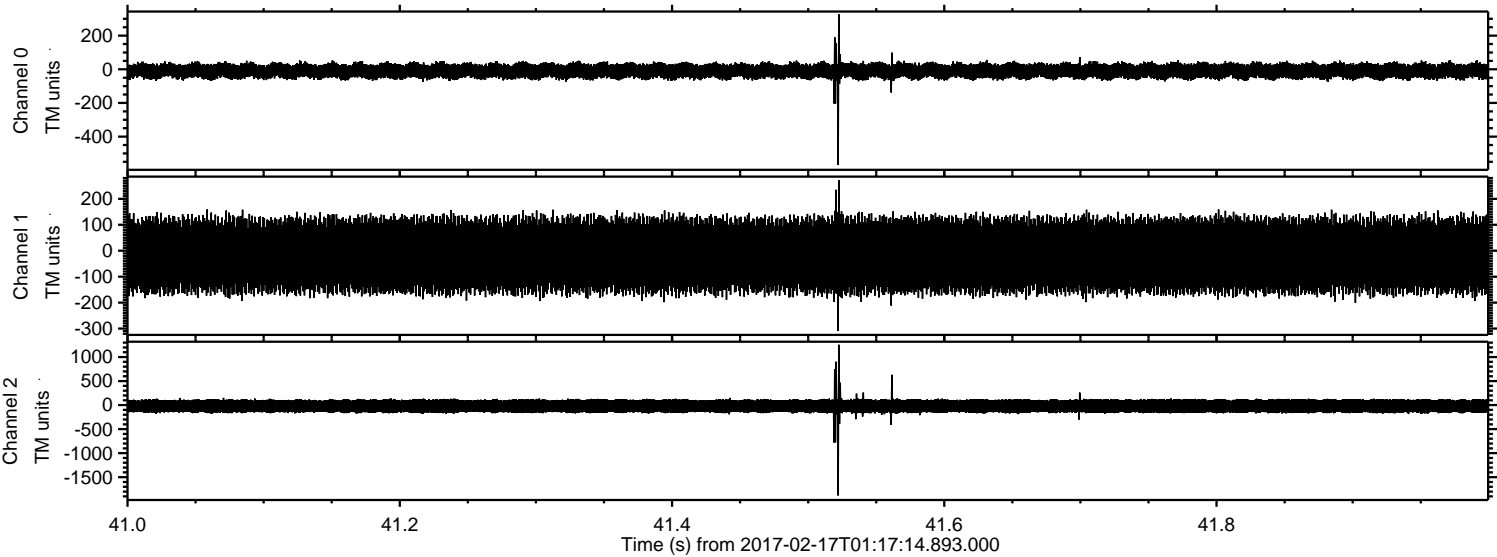
Processed Fri Feb 17 02:25:06 2017 by ELM ver.2012-10-06 from 001\_\_elm20170217\_011713\_\_dat00.bin





ELMAVAN 3D WAVEFORMS (Measured data sampled at 50 kHz) 51000 packets of 144 samples from 2017-02-17T01:17:14.893.000. Part 42/147

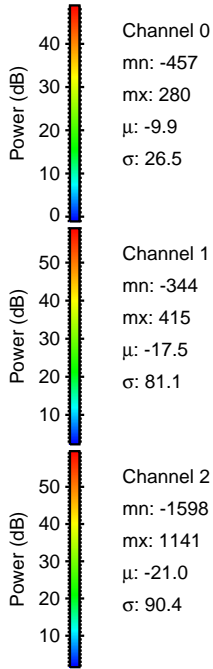
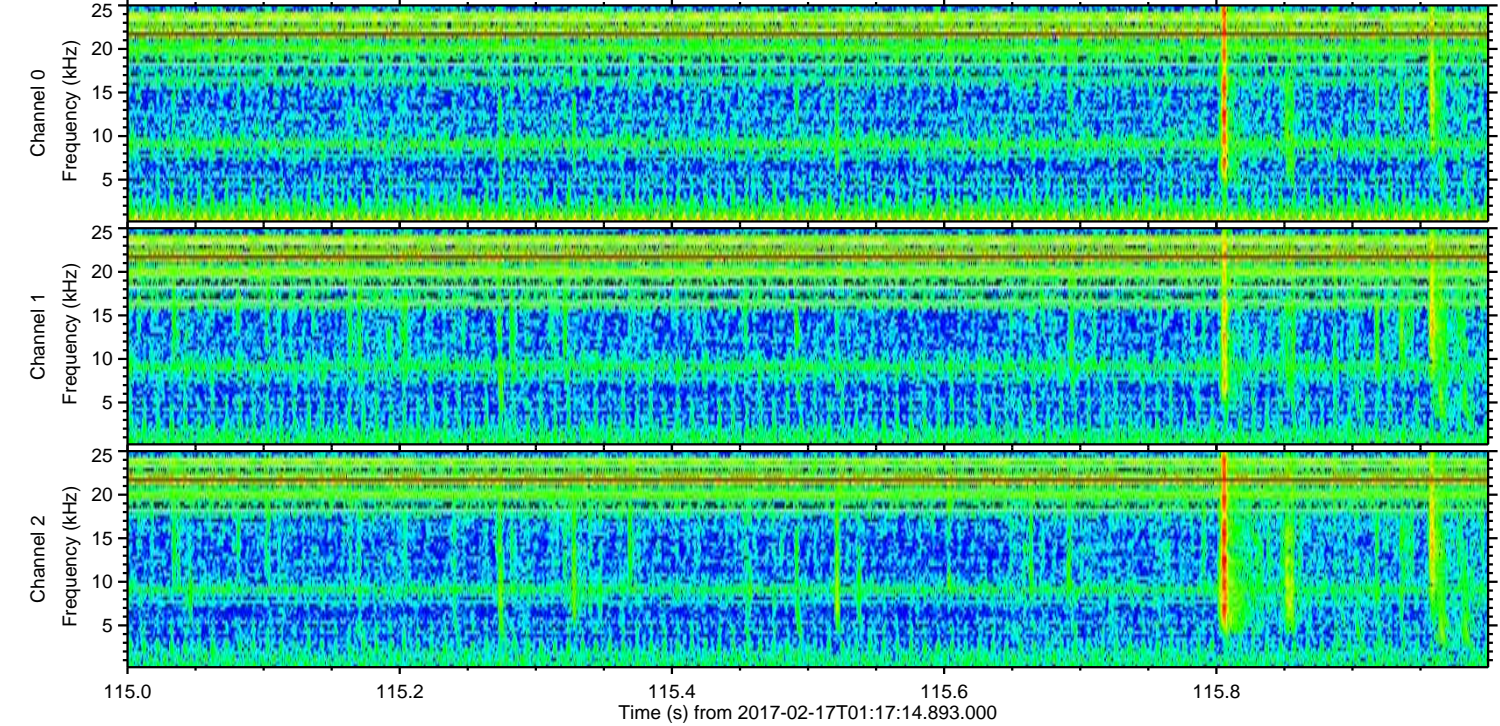
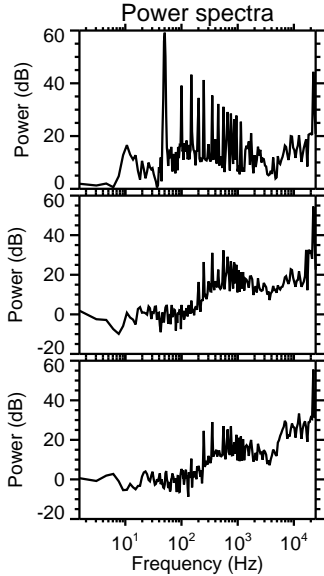
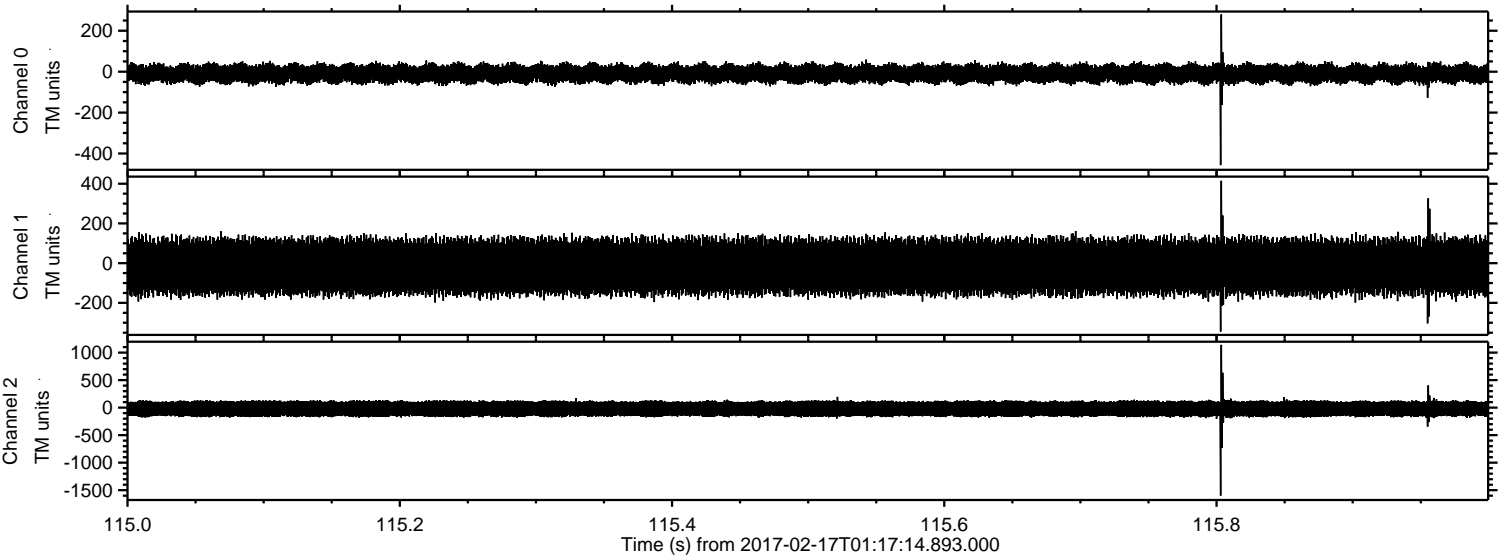
Processed Fri Feb 17 02:25:07 2017 by ELM ver.2012-10-06 from 001\_\_elm20170217\_011713\_\_dat00.bin





ELMAVAN 3D WAVEFORMS (Measured data sampled at 50 kHz) 51000 packets of 144 samples from 2017-02-17T01:17:14.893.000. Part 116/147

Processed Fri Feb 17 02:25:08 2017 by ELM ver.2012-10-06 from 001\_\_elm20170217\_011713\_\_dat00.bin



Channel 0  
mn: -457  
mx: 280  
 $\mu$ : -9.9  
 $\sigma$ : 26.5

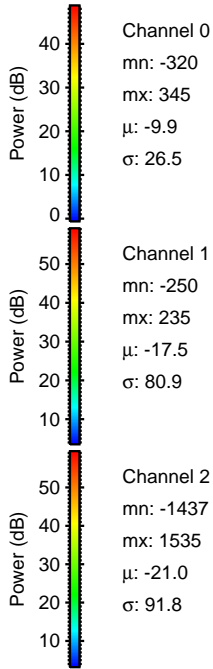
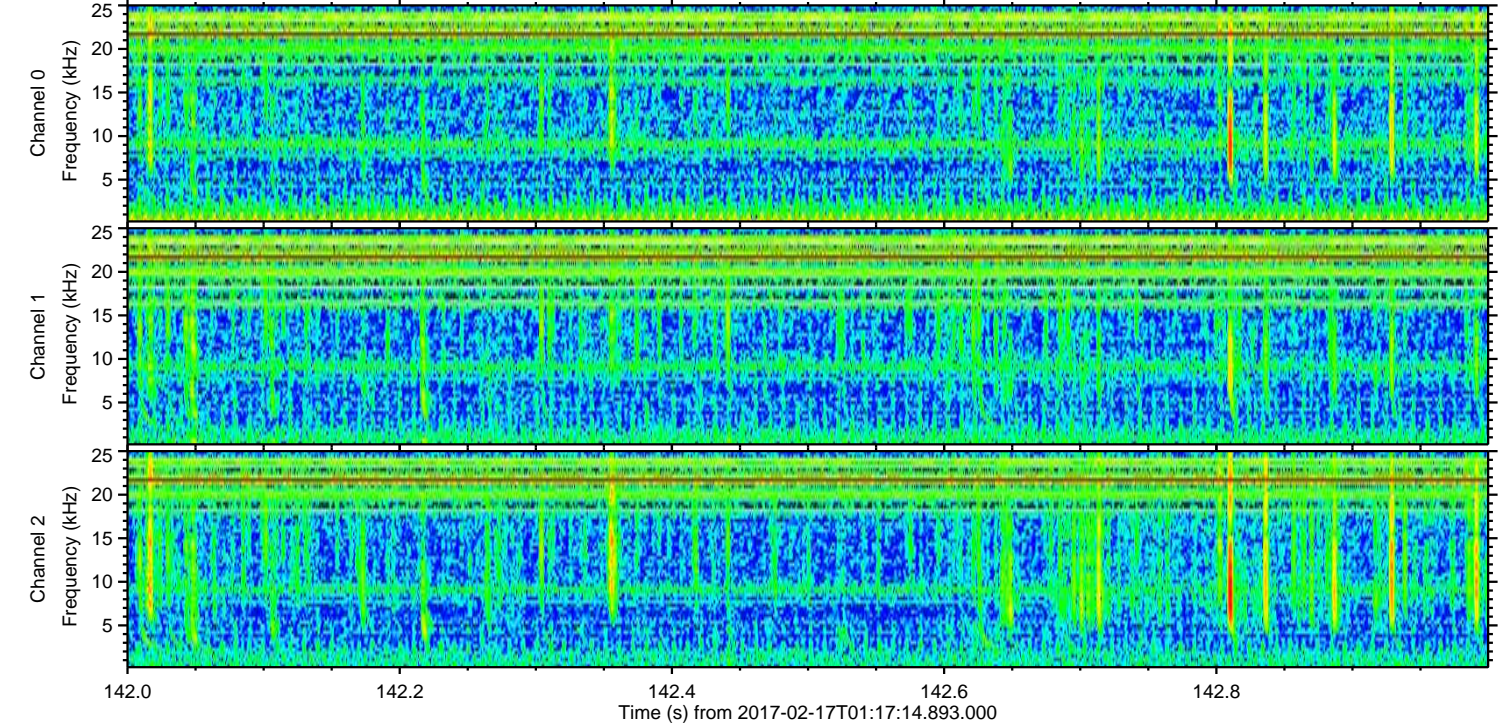
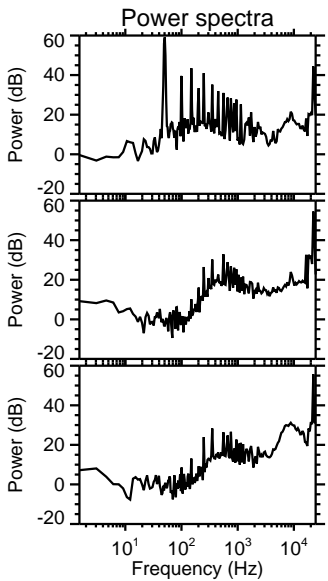
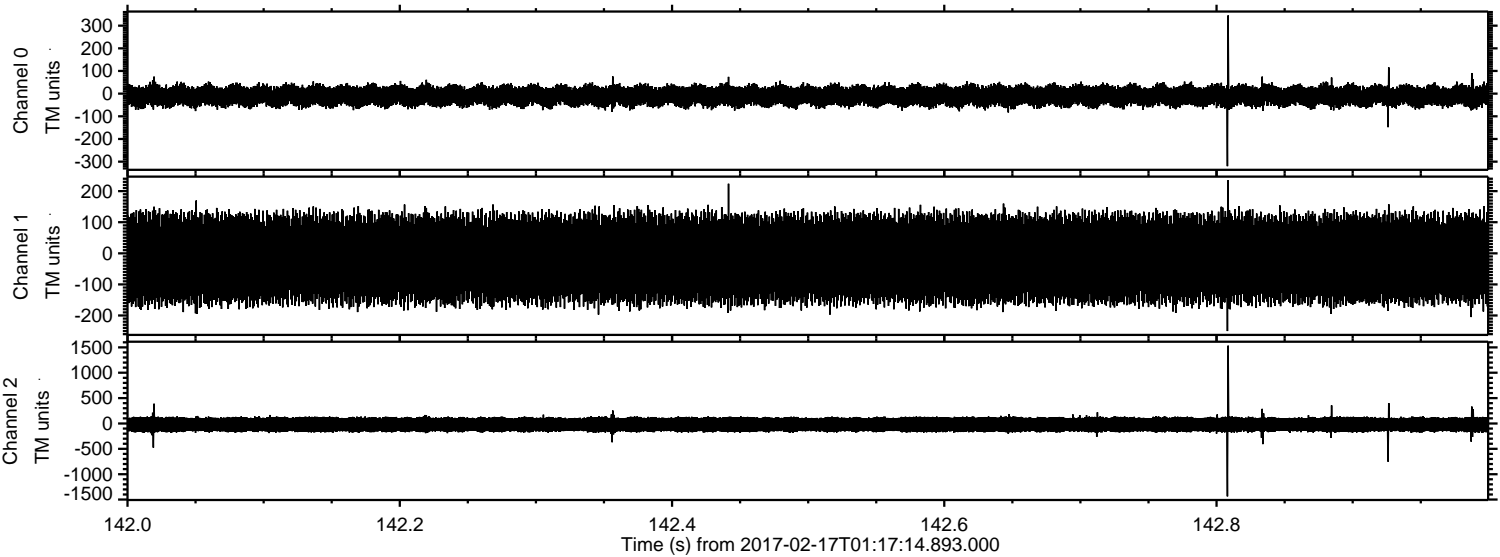
Channel 1  
mn: -344  
mx: 415  
 $\mu$ : -17.5  
 $\sigma$ : 81.1

Channel 2  
mn: -1598  
mx: 1141  
 $\mu$ : -21.0  
 $\sigma$ : 90.4



ELMAVAN 3D WAVEFORMS (Measured data sampled at 50 kHz) 51000 packets of 144 samples from 2017-02-17T01:17:14.893.000. Part 143/147

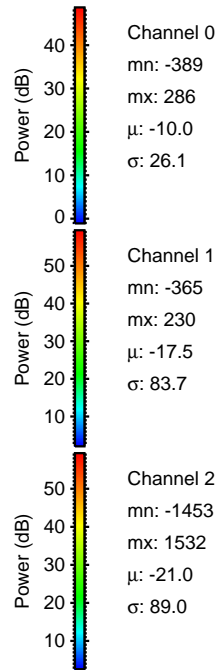
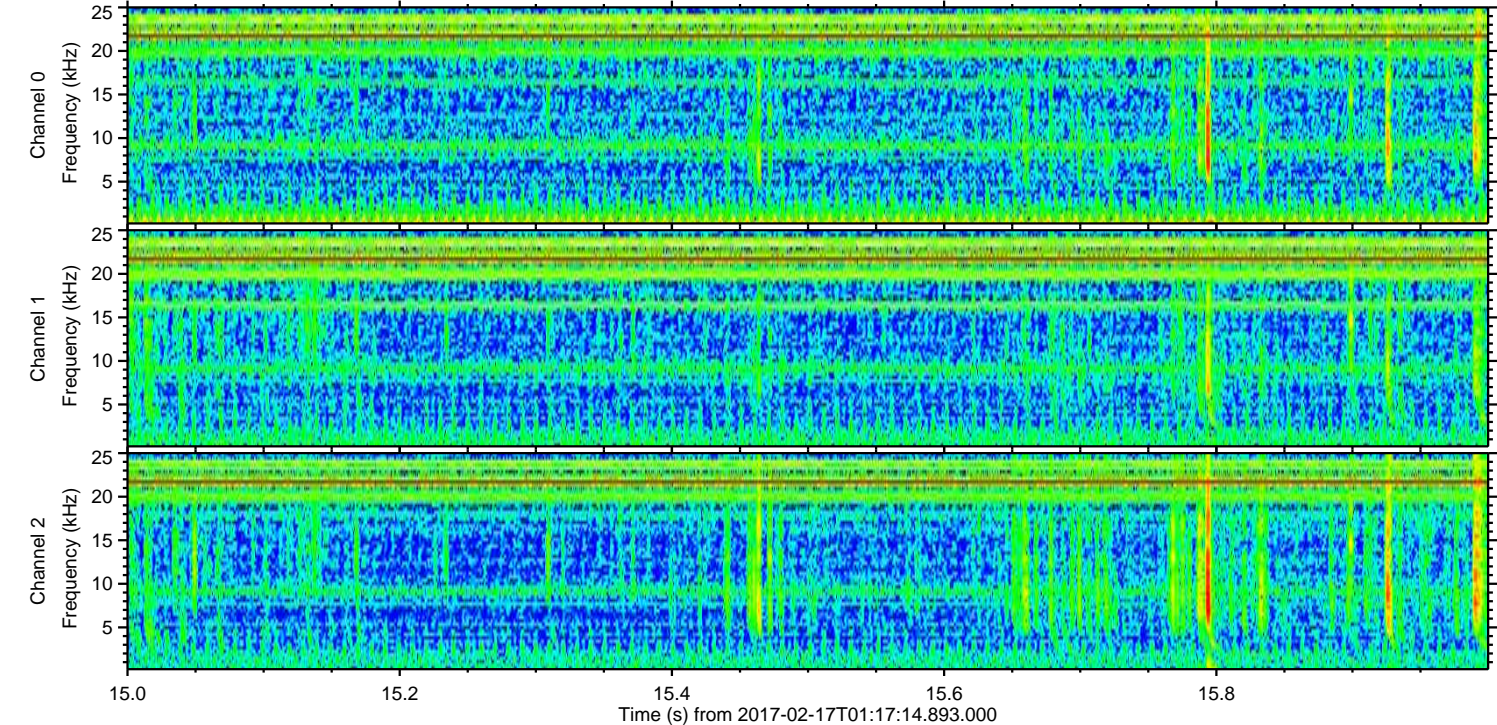
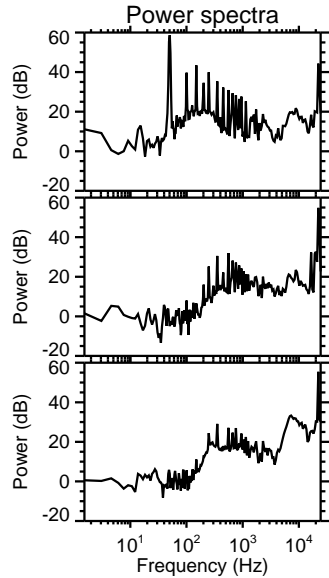
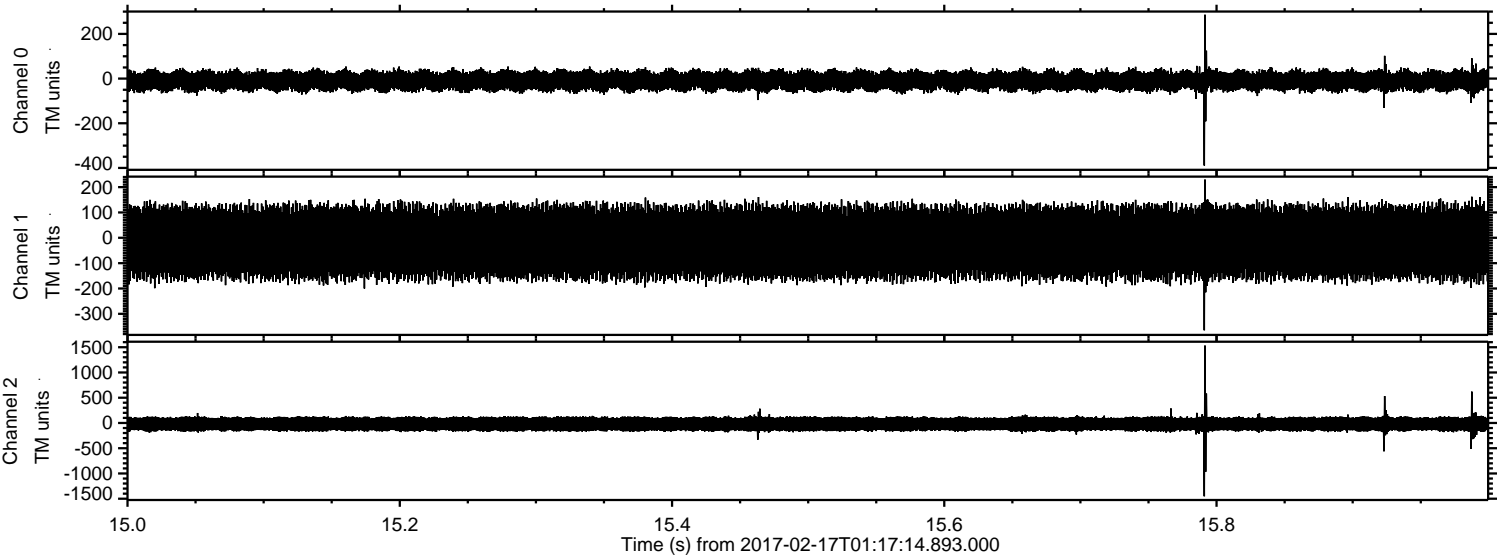
Processed Fri Feb 17 02:25:09 2017 by ELM ver.2012-10-06 from 001\_\_elm20170217\_011713\_\_dat00.bin





ELMAVAN 3D WAVEFORMS (Measured data sampled at 50 kHz) 51000 packets of 144 samples from 2017-02-17T01:17:14.893.000. Part 16/147

Processed Fri Feb 17 02:25:10 2017 by ELM ver.2012-10-06 from 001\_\_elm20170217\_011713\_\_dat00.bin





ELMAVAN 3D WAVEFORMS (Measured data sampled at 50 kHz) 51000 packets of 144 samples from 2017-02-17T01:17:14.893.000. Part 44/147

Processed Fri Feb 17 02:25:11 2017 by ELM ver.2012-10-06 from 001\_\_elm20170217\_011713\_\_dat00.bin

