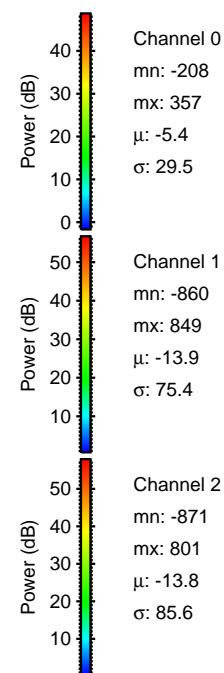
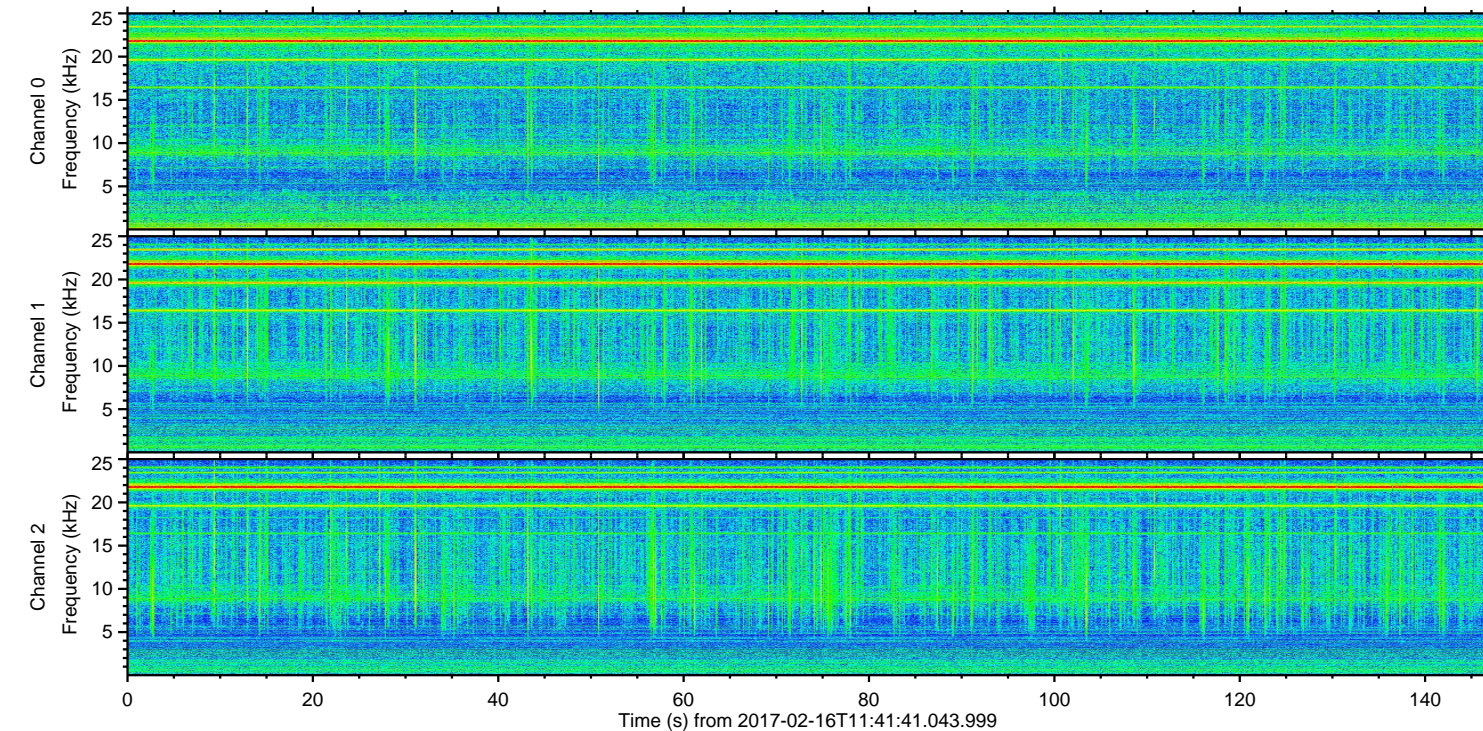
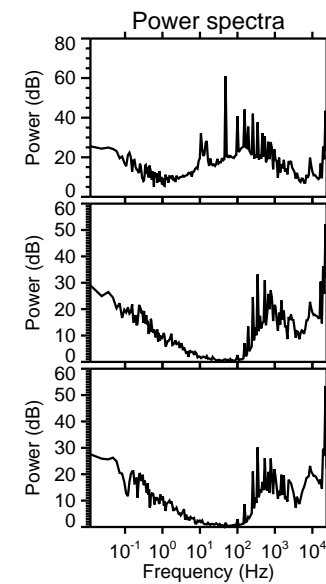
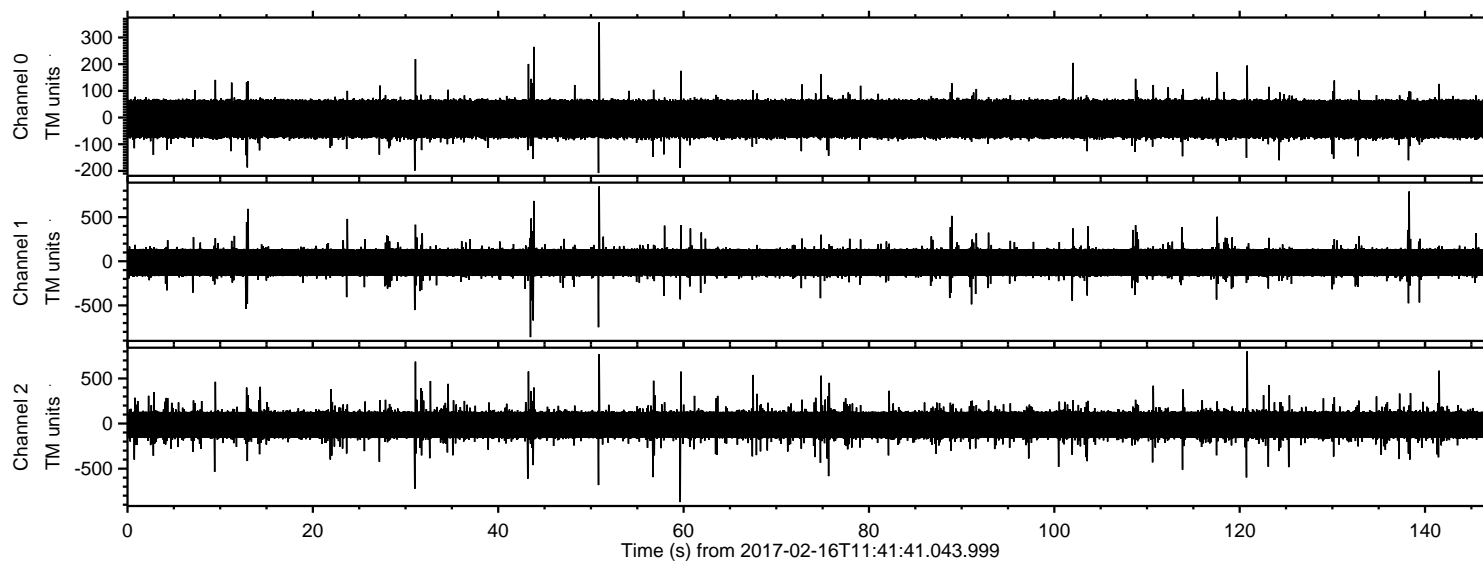
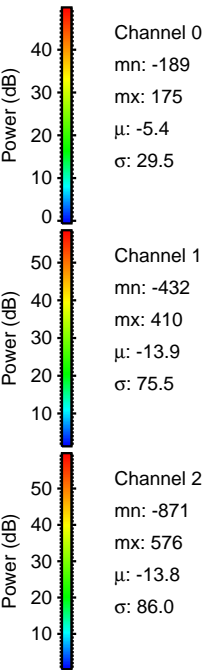
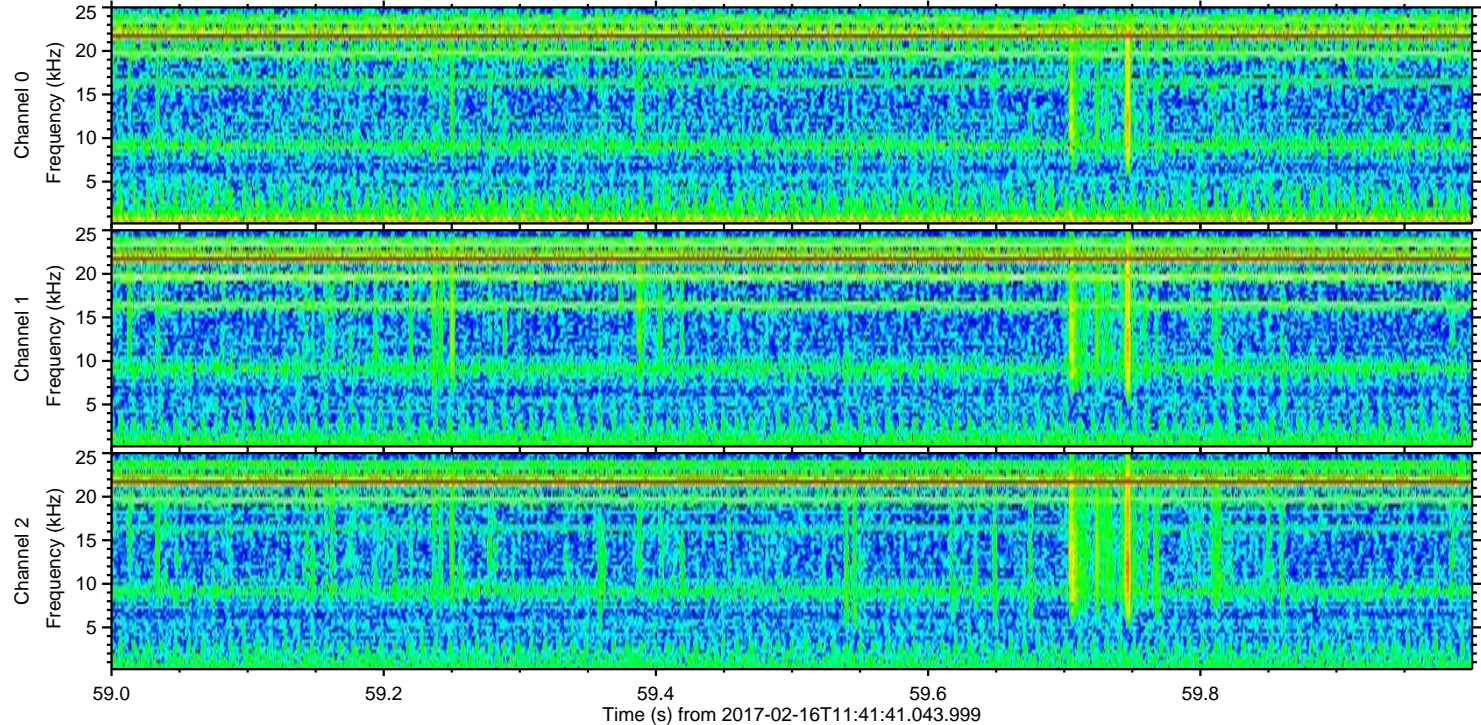
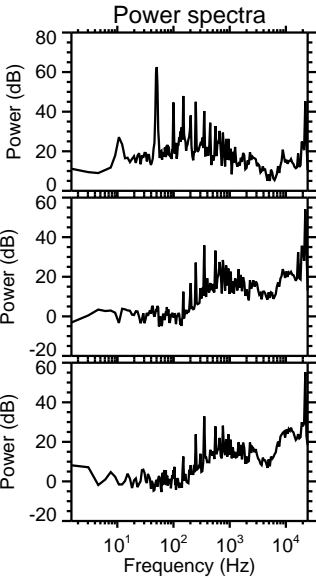
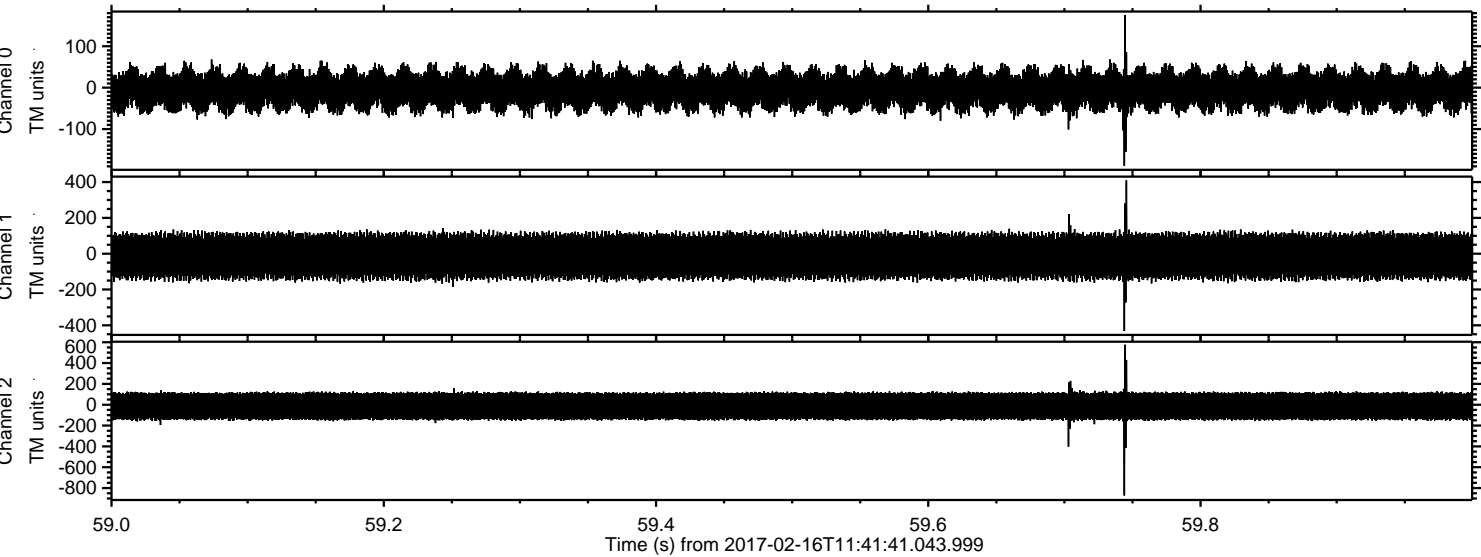


ELMAVAN 3D WAVEFORMS (Measured data sampled at 50 kHz) 51000 packets of 144 samples from 2017-02-16T11:41:41.043.999.

Processed Thu Feb 16 12:49:26 2017 by ELM ver.2012-10-06 from 001__elm20170216_114140__dat00.bin

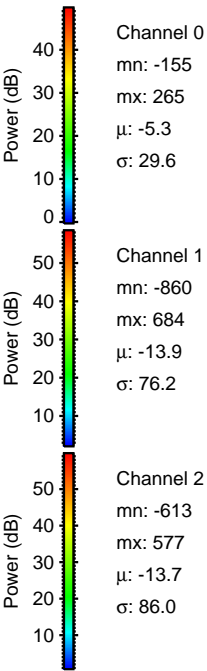
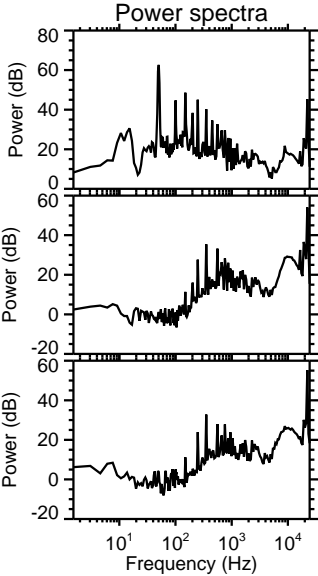
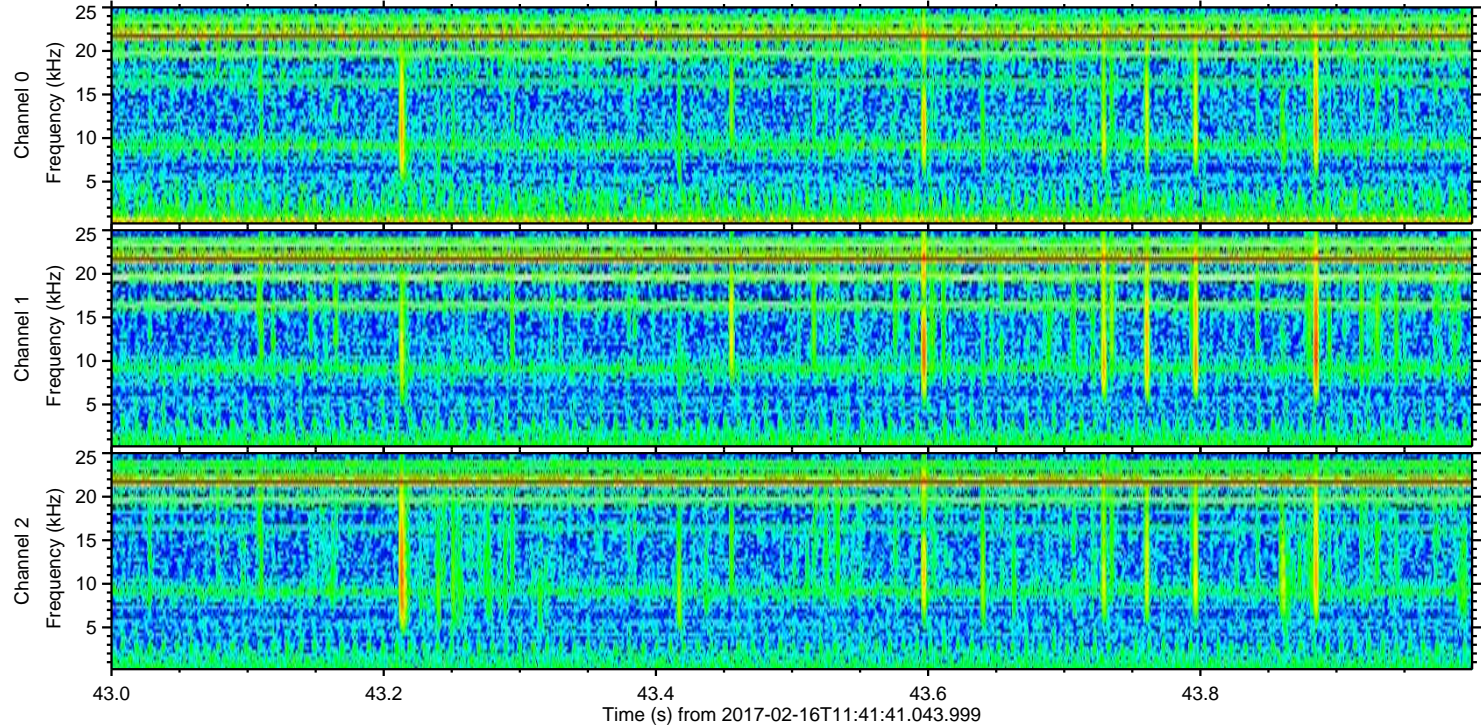
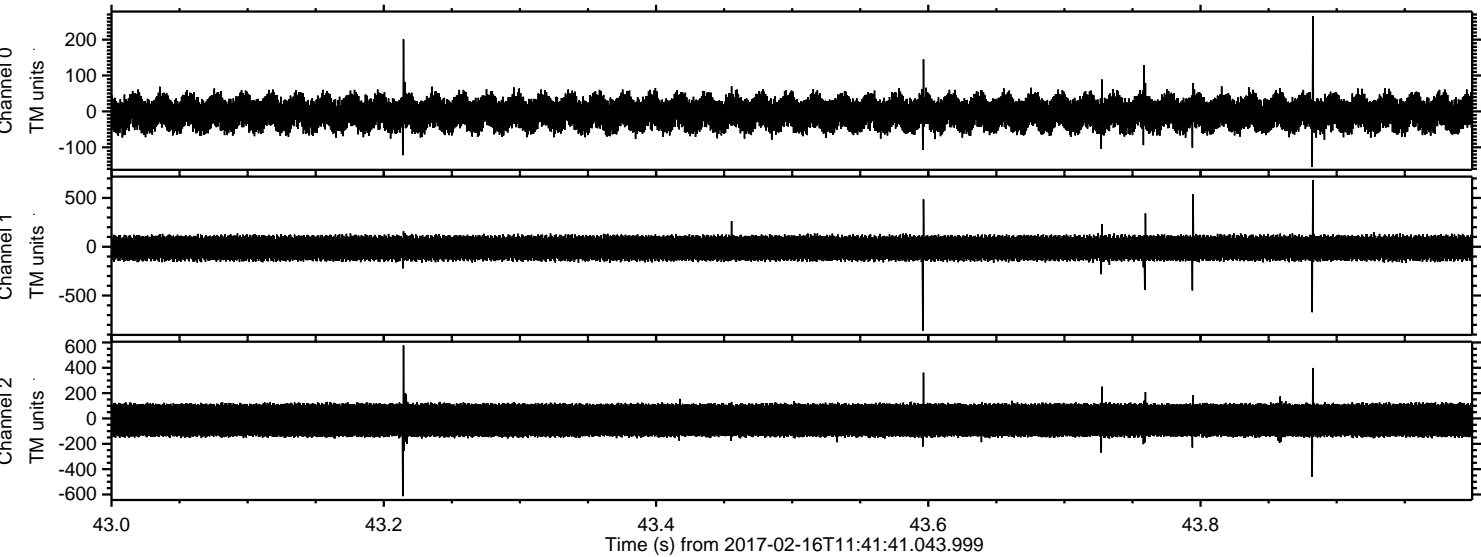


Processed Thu Feb 16 12:49:38 2017 by ELM ver.2012-10-06 from 001__elm20170216_114140__dat00.bin



ELMAVAN 3D WAVEFORMS (Measured data sampled at 50 kHz) 51000 packets of 144 samples from 2017-02-16T11:41:41.043.999. Part 44/147

Processed Thu Feb 16 12:49:39 2017 by ELM ver.2012-10-06 from 001__elm20170216_114140__dat00.bin

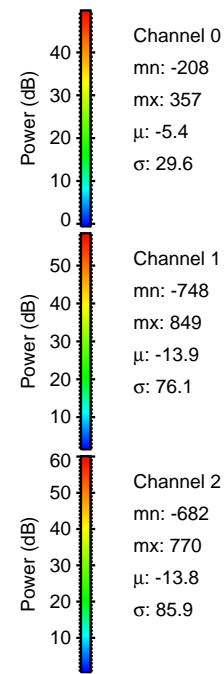
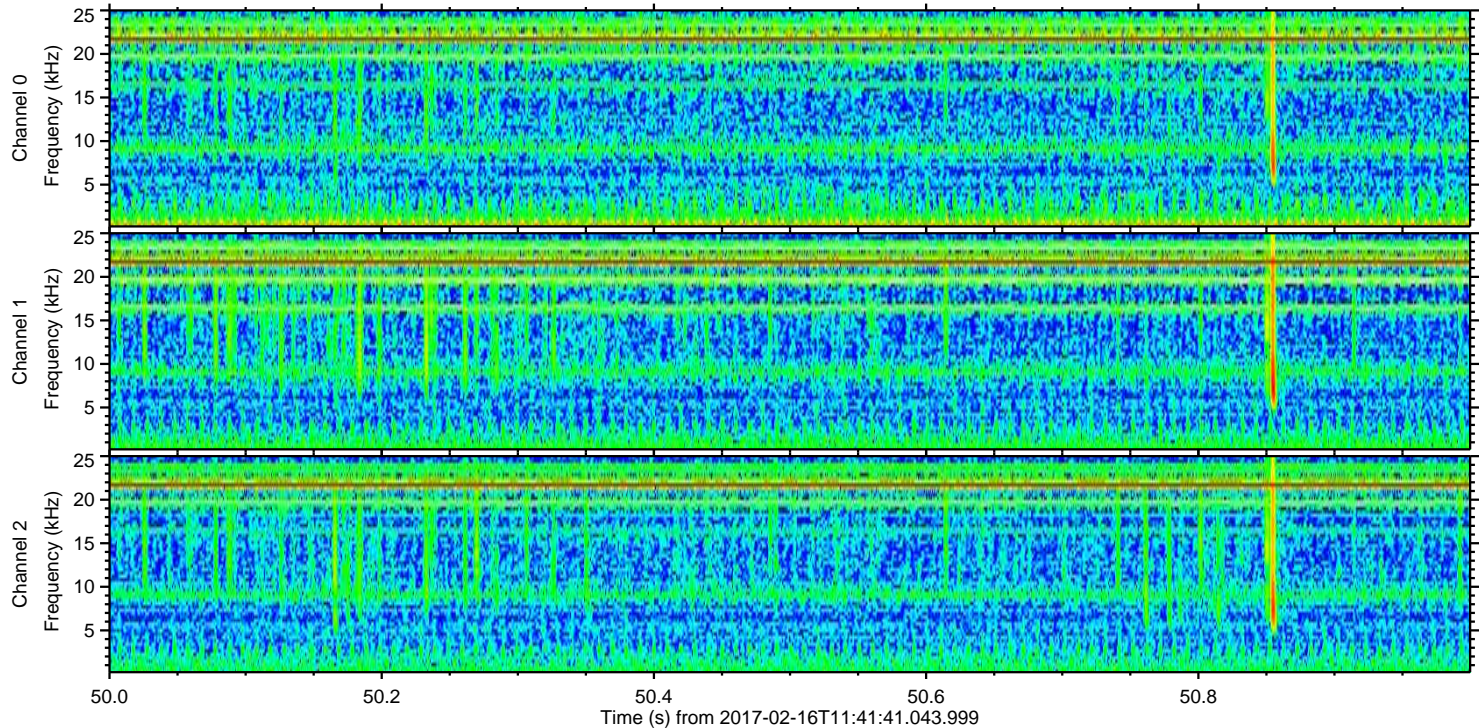
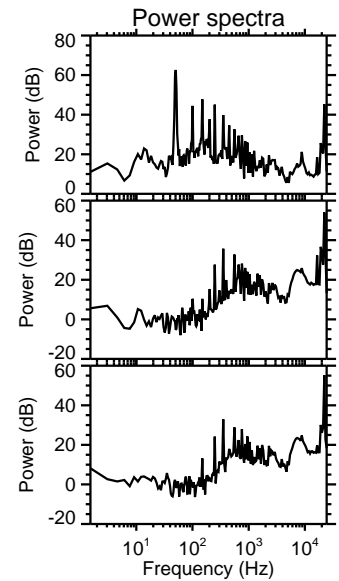
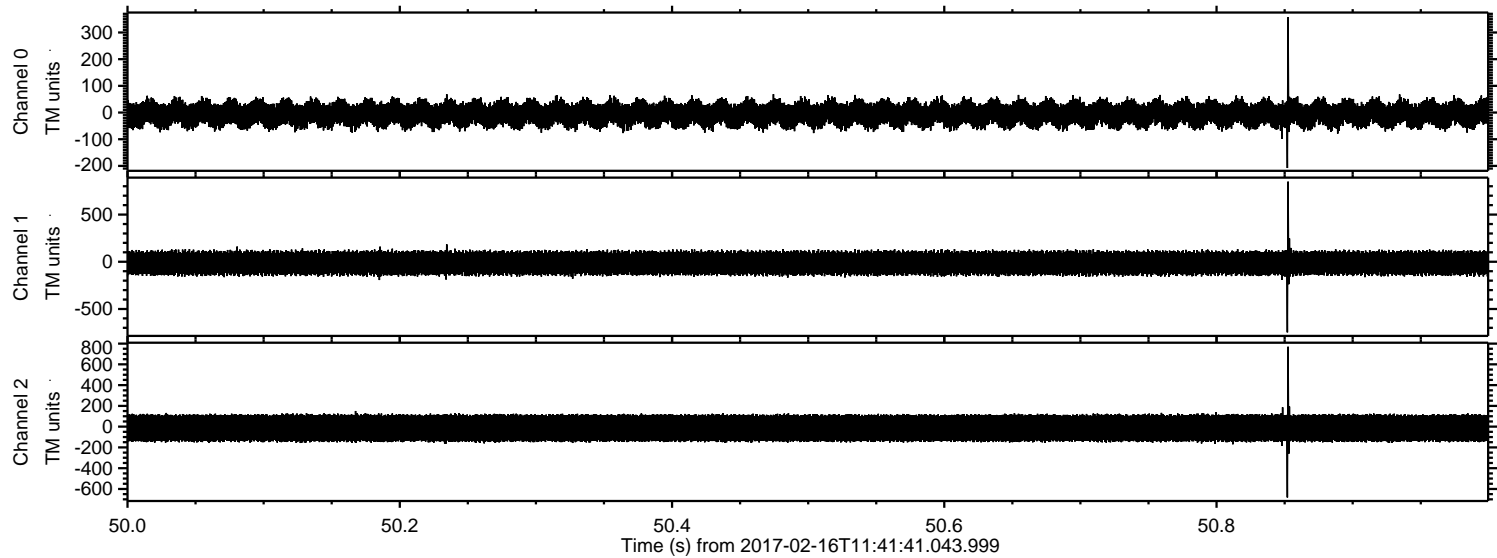


Channel 0
mn: -155
mx: 265
 μ : -5.3
 σ : 29.6

Channel 1
mn: -860
mx: 684
 μ : -13.9
 σ : 76.2

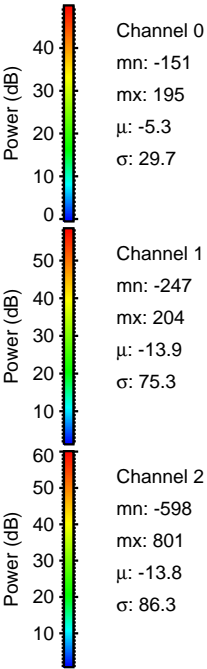
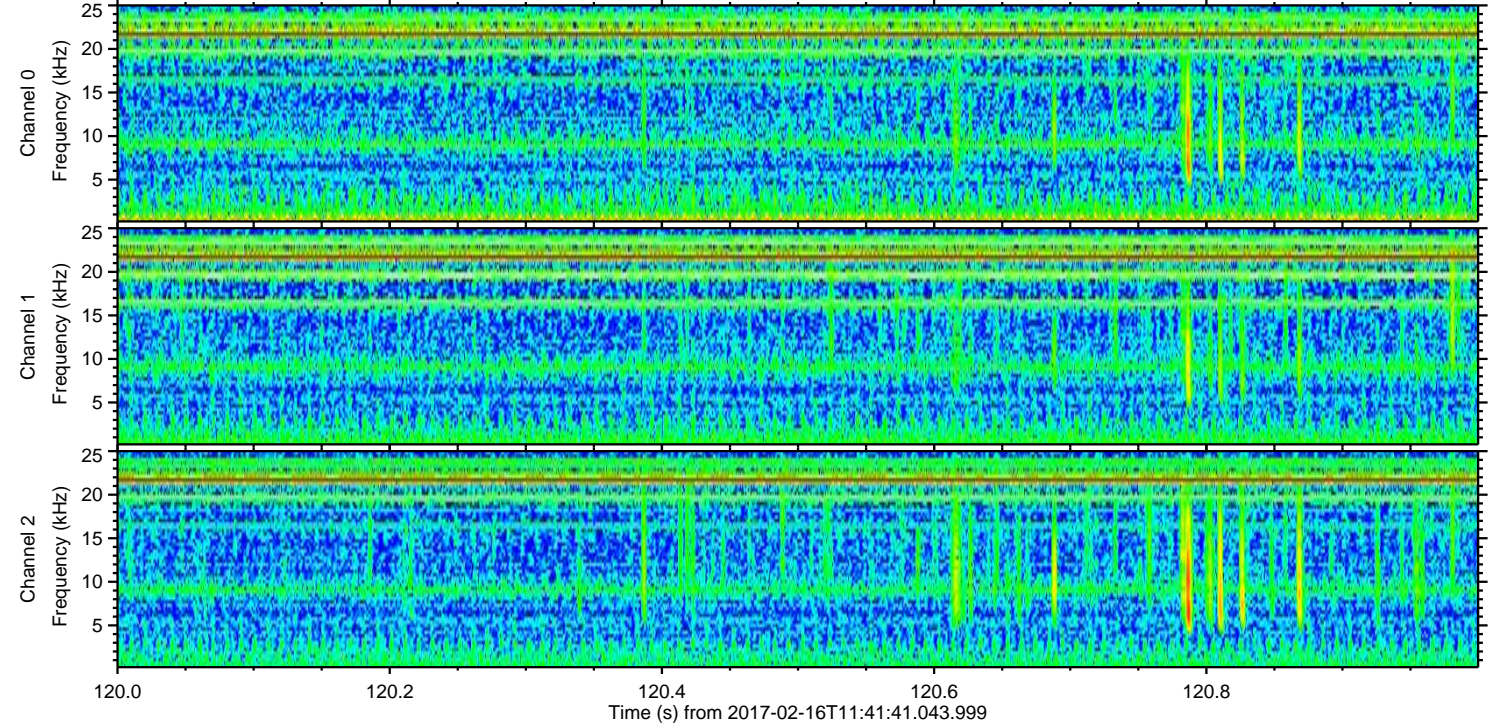
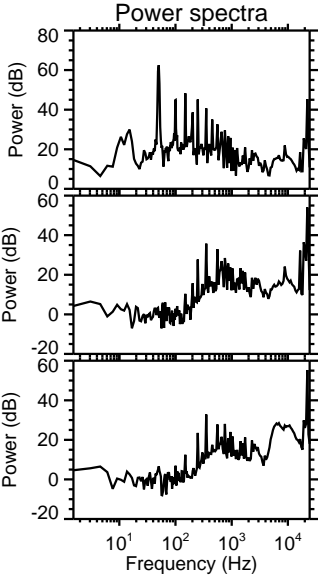
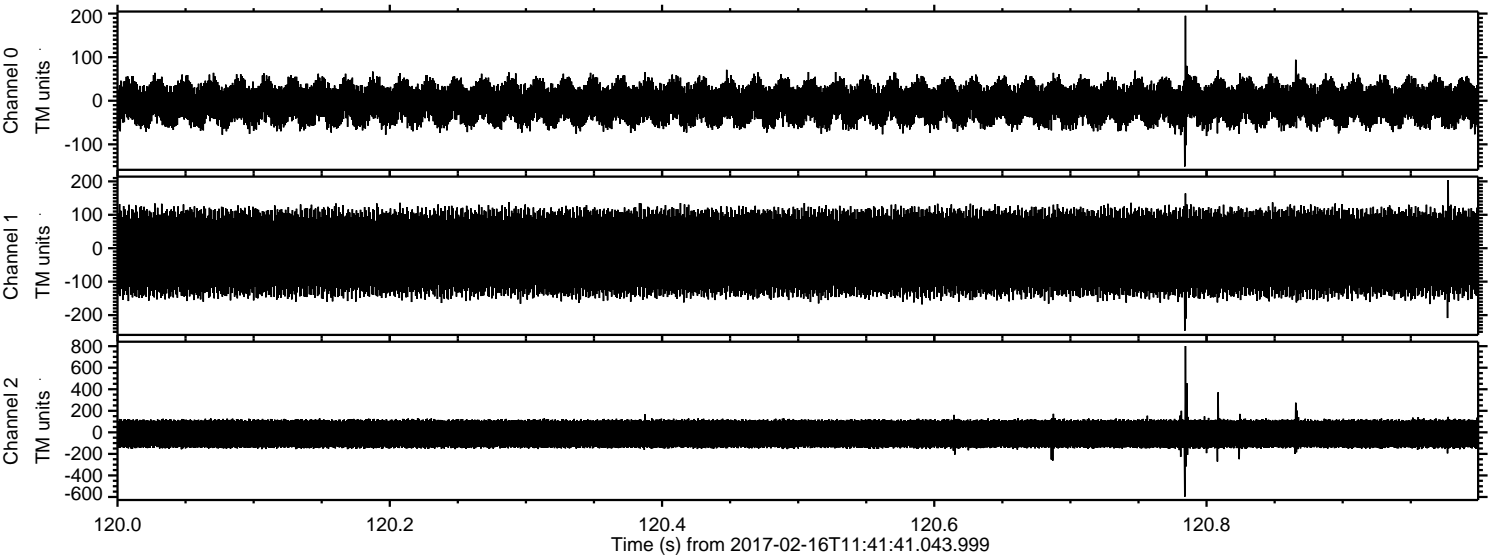
Channel 2
mn: -613
mx: 577
 μ : -13.7
 σ : 86.0

Processed Thu Feb 16 12:49:40 2017 by ELM ver.2012-10-06 from 001__elm20170216_114140__dat00.bin

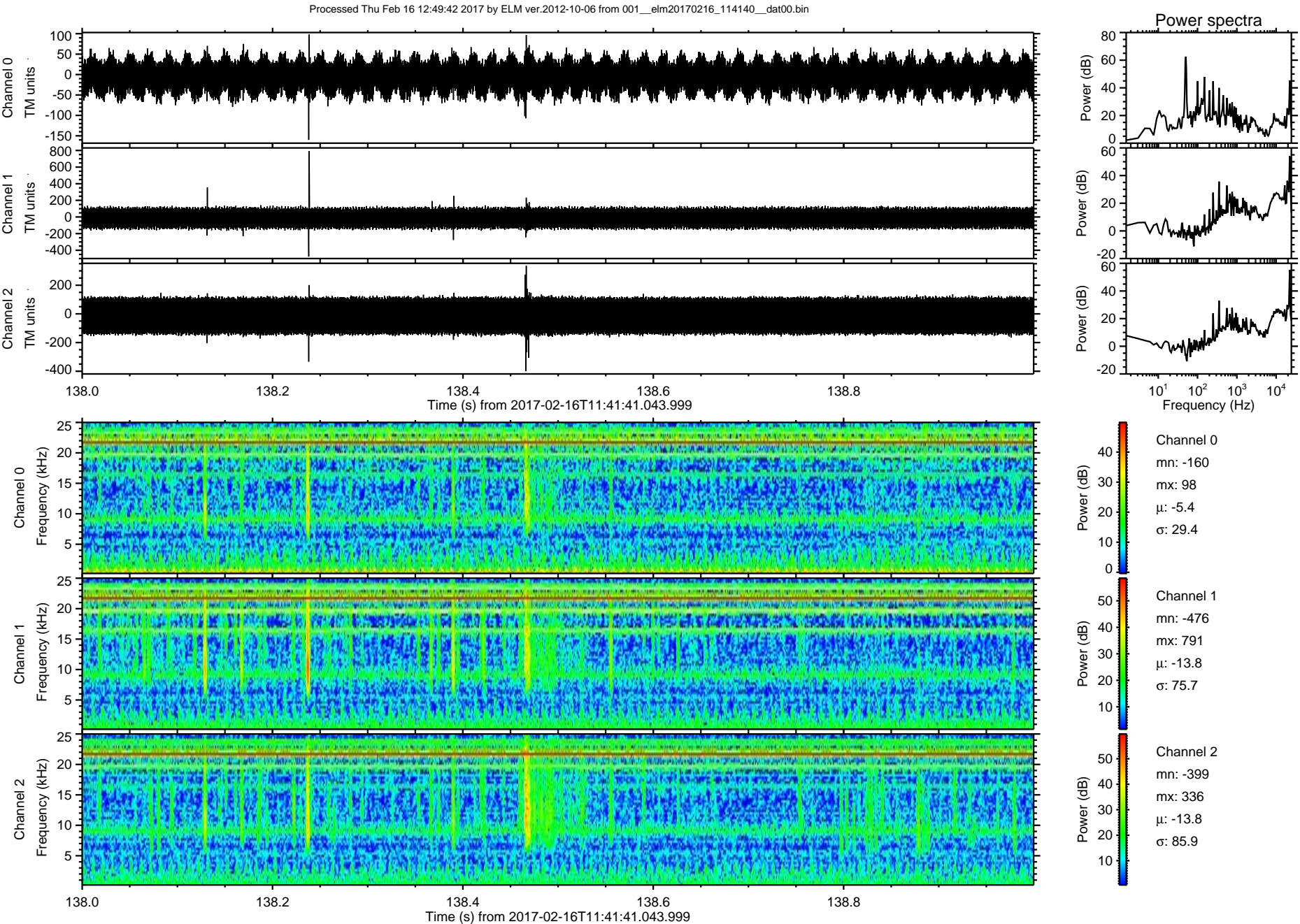


ELMAVAN 3D WAVEFORMS (Measured data sampled at 50 kHz) 51000 packets of 144 samples from 2017-02-16T11:41:41.043.999. Part 121/147

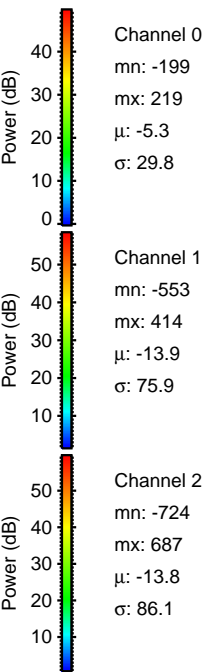
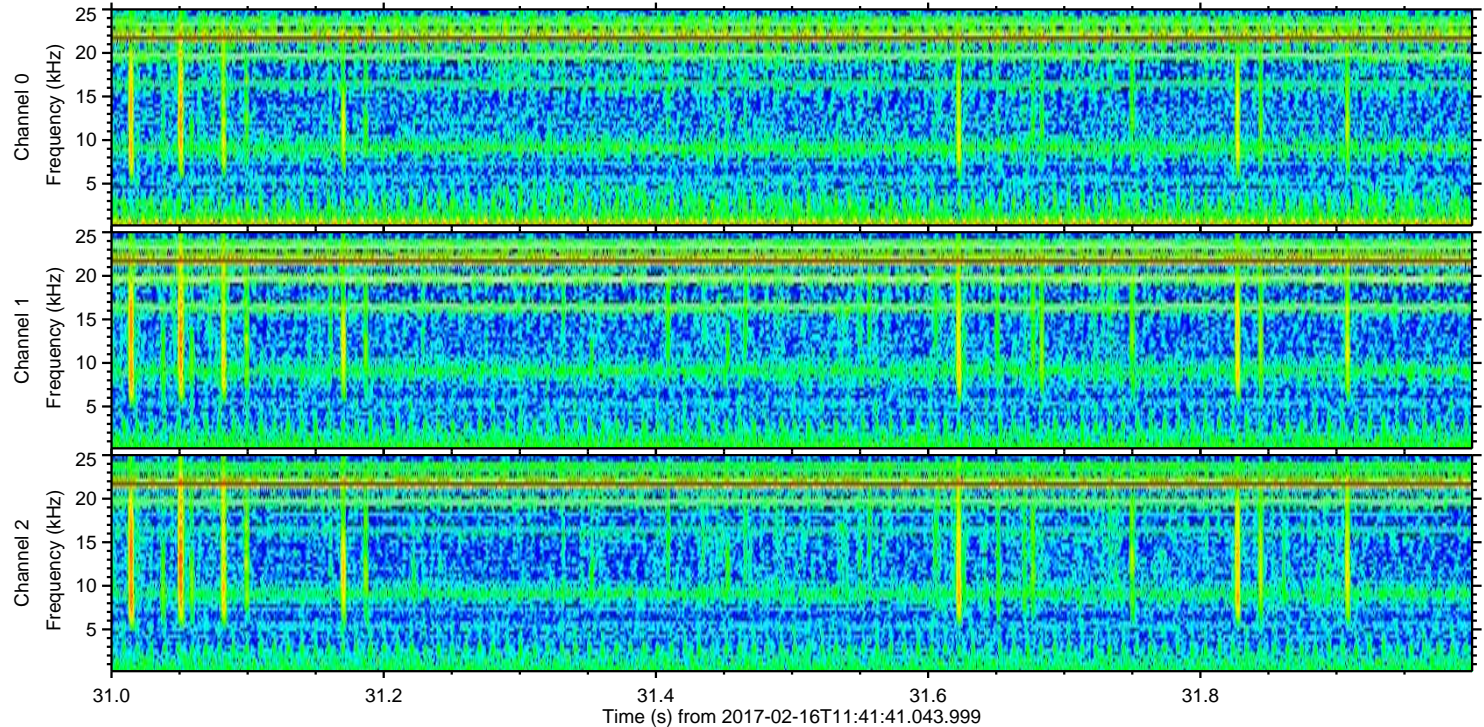
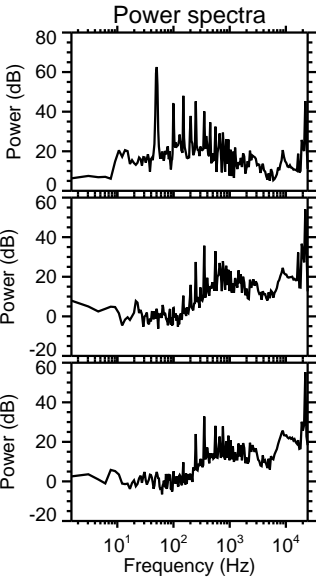
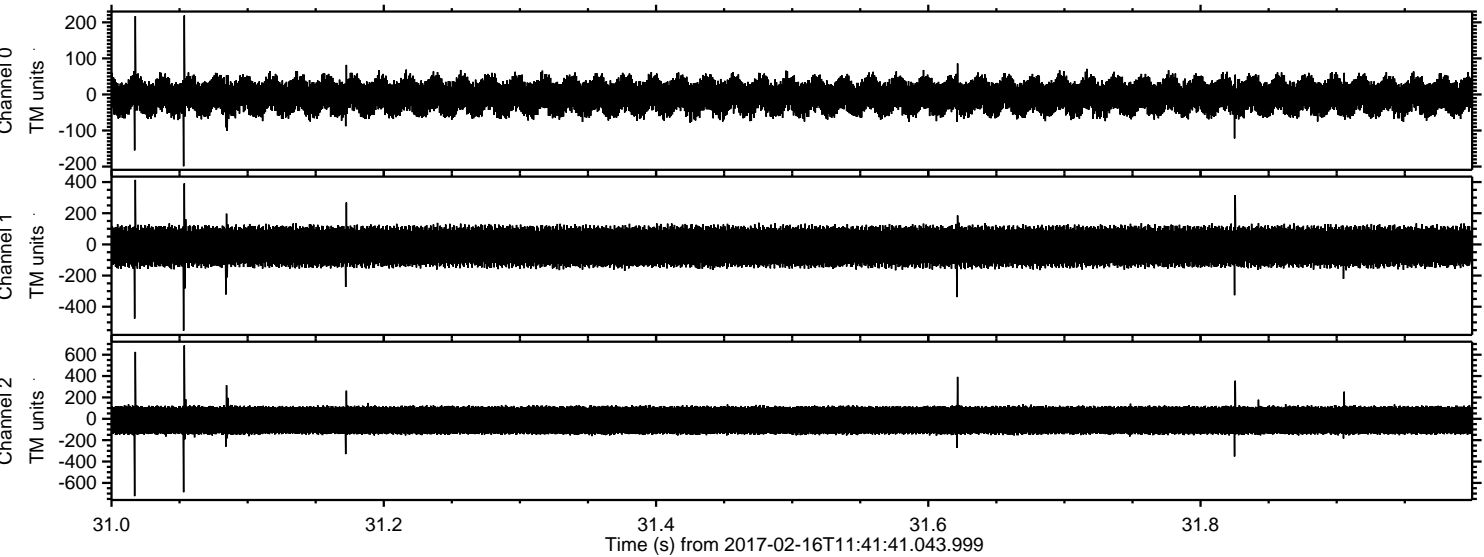
Processed Thu Feb 16 12:49:41 2017 by ELM ver.2012-10-06 from 001__elm20170216_114140__dat00.bin



ELMAVAN 3D WAVEFORMS (Measured data sampled at 50 kHz) 51000 packets of 144 samples from 2017-02-16T11:41:41.043.999. Part 139/147

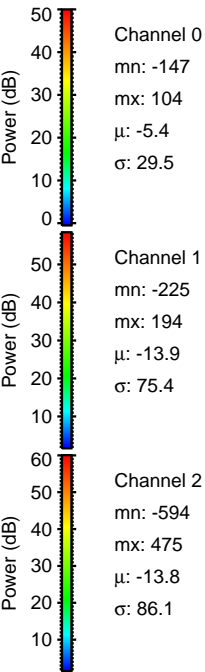
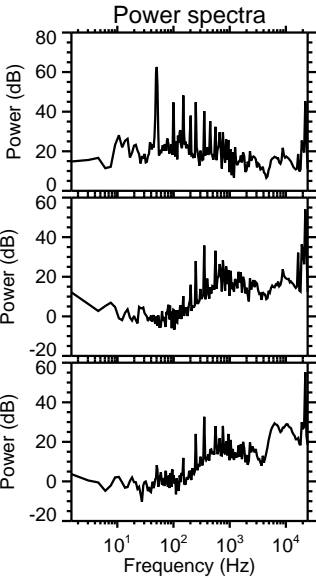
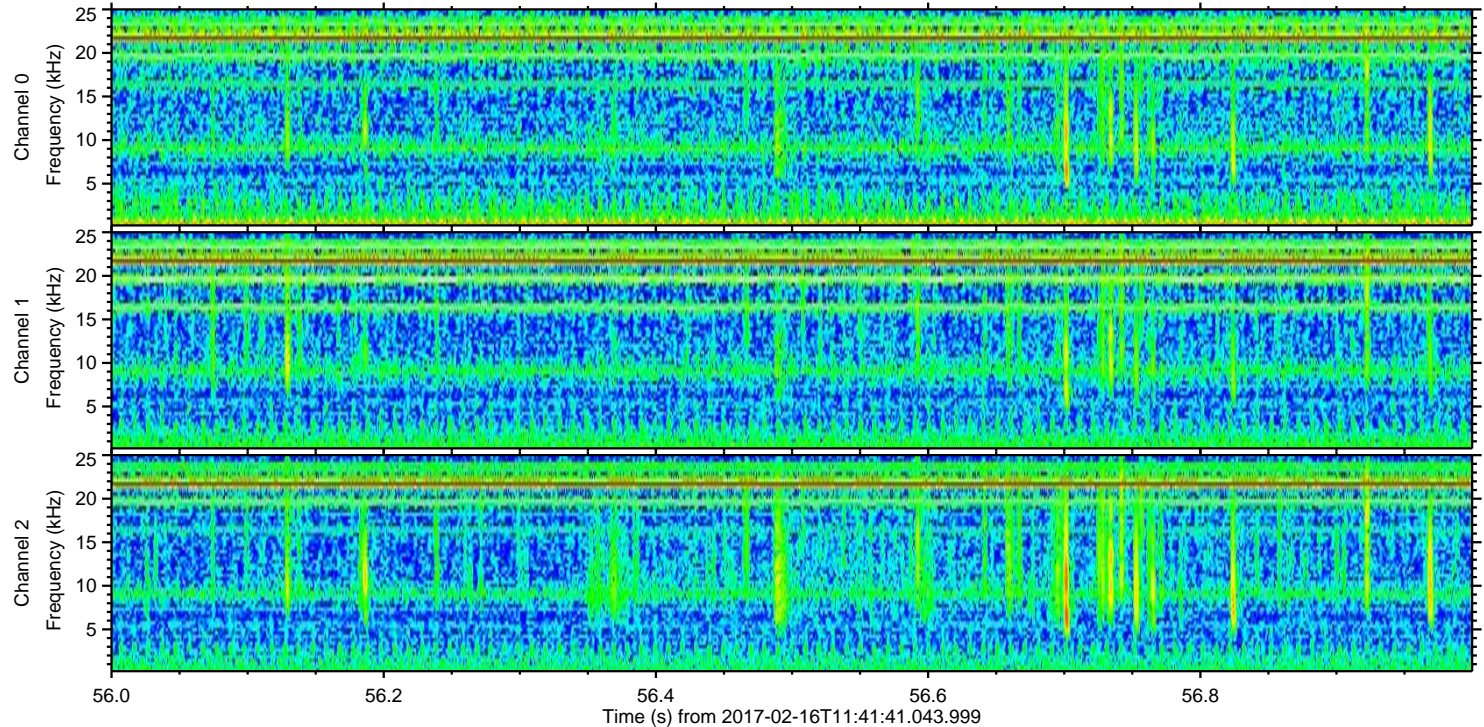
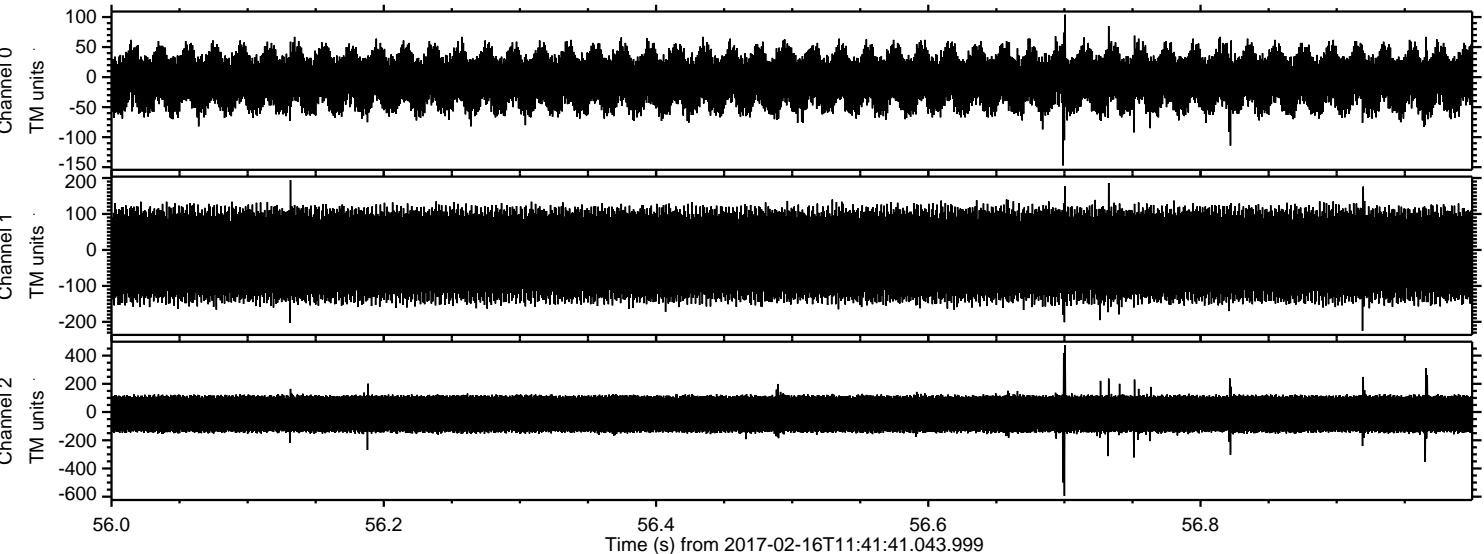


Processed Thu Feb 16 12:49:43 2017 by ELM ver.2012-10-06 from 001__elm20170216_114140__dat00.bin



ELMAVAN 3D WAVEFORMS (Measured data sampled at 50 kHz) 51000 packets of 144 samples from 2017-02-16T11:41:41.043.999. Part 57/147

Processed Thu Feb 16 12:49:44 2017 by ELM ver.2012-10-06 from 001__elm20170216_114140__dat00.bin

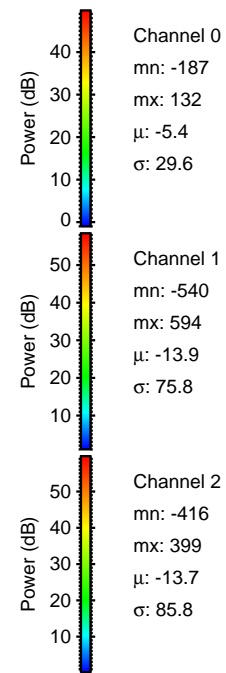
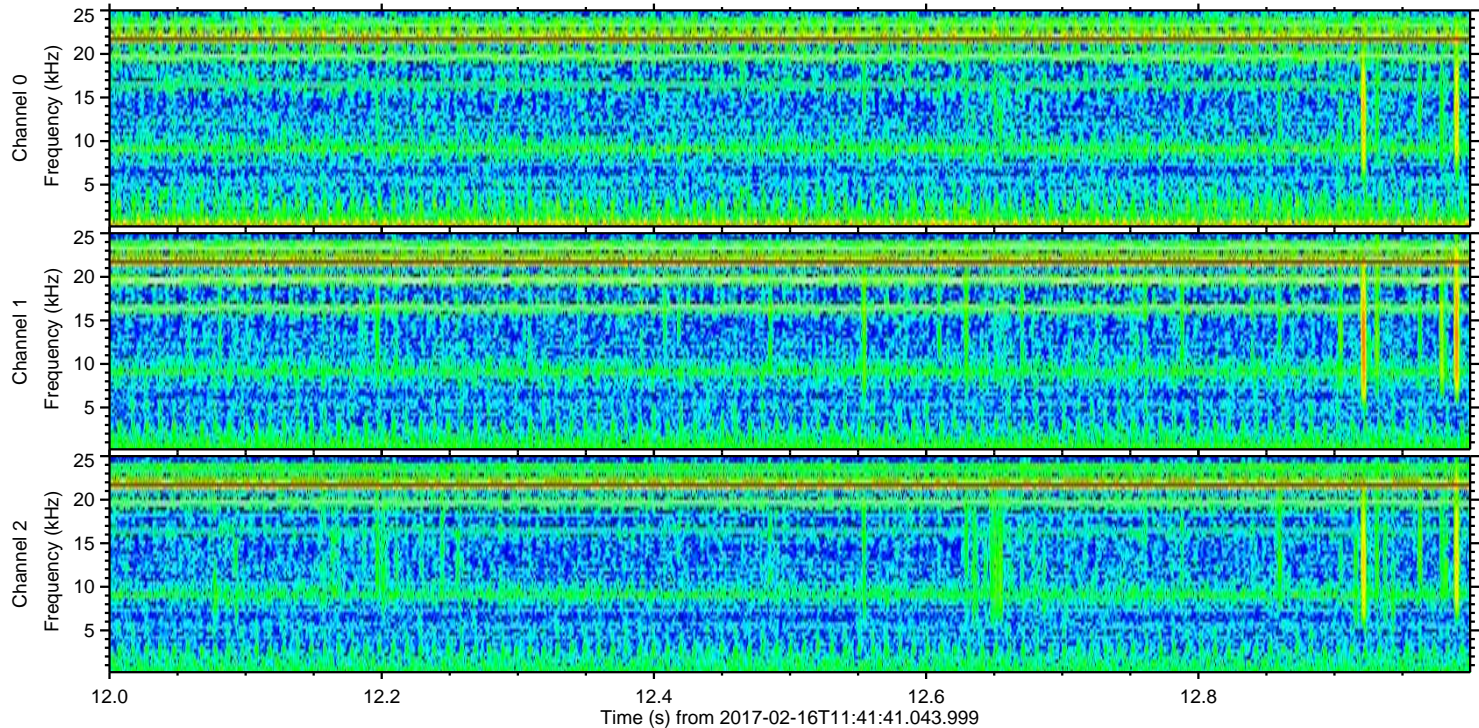
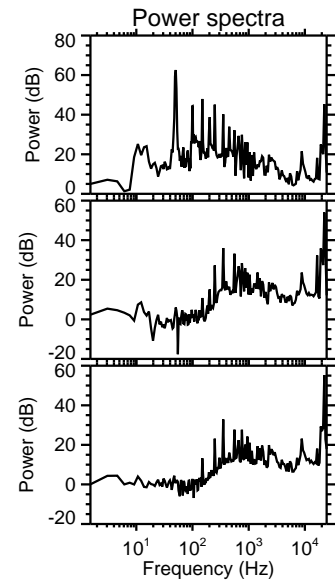
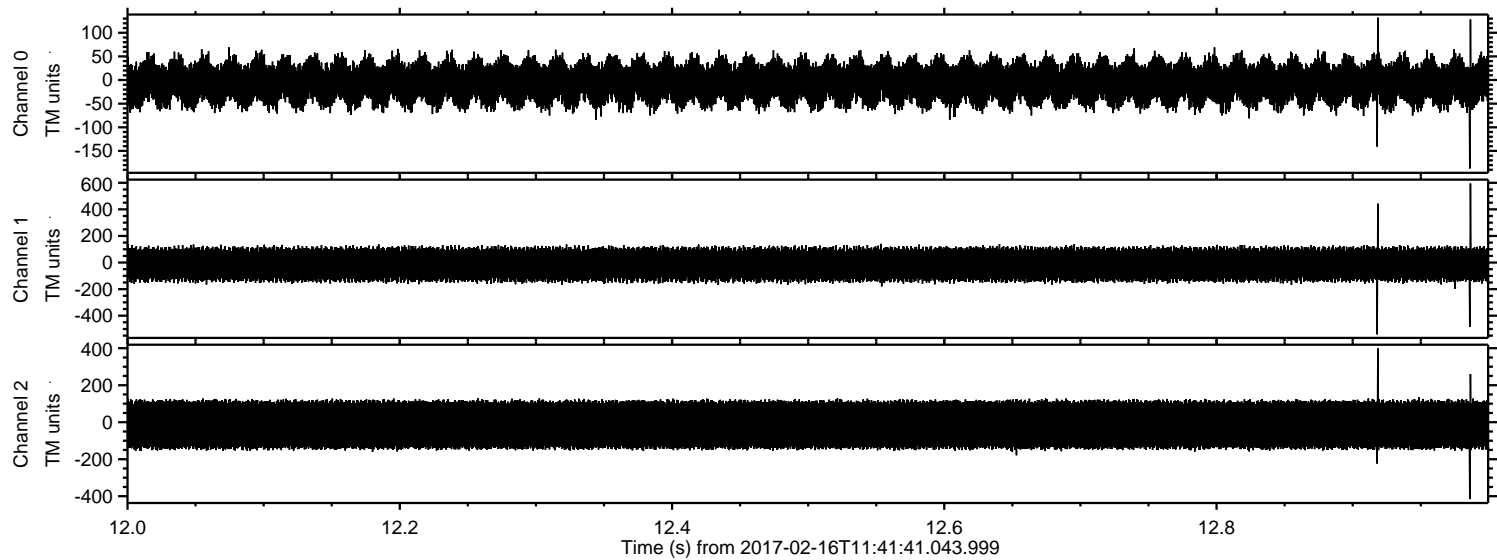


Channel 0
mn: -147
mx: 104
 μ : -5.4
 σ : 29.5

Channel 1
mn: -225
mx: 194
 μ : -13.9
 σ : 75.4

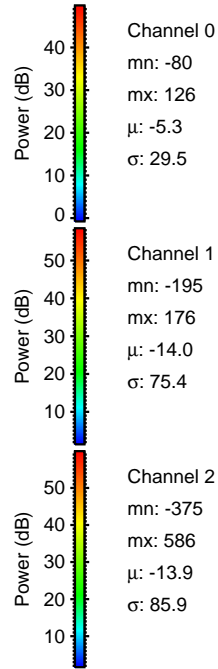
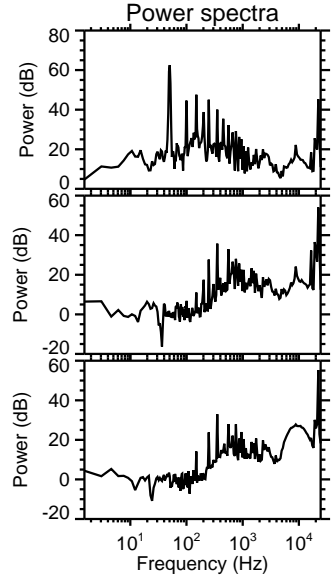
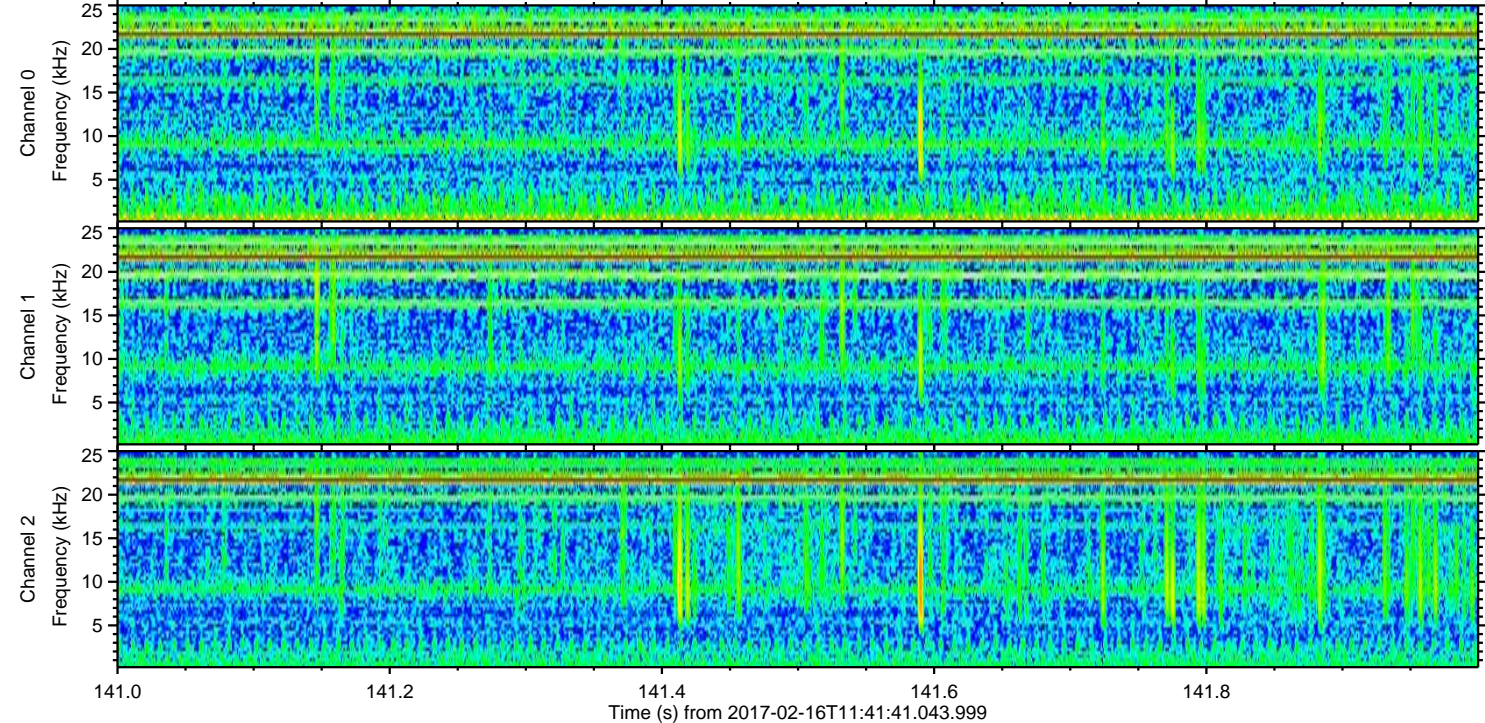
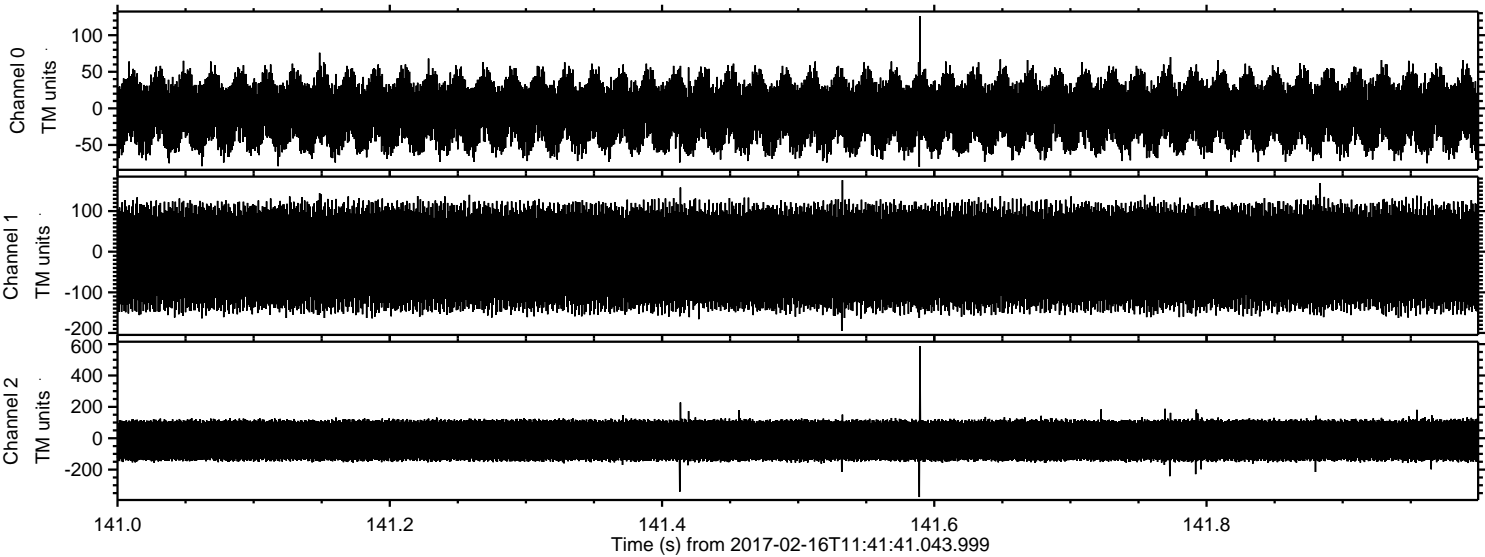
Channel 2
mn: -594
mx: 475
 μ : -13.8
 σ : 86.1

Processed Thu Feb 16 12:49:44 2017 by ELM ver.2012-10-06 from 001__elm20170216_114140__dat00.bin



ELMAVAN 3D WAVEFORMS (Measured data sampled at 50 kHz) 51000 packets of 144 samples from 2017-02-16T11:41:41.043.999. Part 142/147

Processed Thu Feb 16 12:49:45 2017 by ELM ver.2012-10-06 from 001__elm20170216_114140__dat00.bin



Channel 0
mn: -80
mx: 126
 μ : -5.3
 σ : 29.5

Channel 1
mn: -195
mx: 176
 μ : -14.0
 σ : 75.4

Channel 2
mn: -375
mx: 586
 μ : -13.9
 σ : 85.9

ELMAVAN 3D WAVEFORMS (Measured data sampled at 50 kHz) 51000 packets of 144 samples from 2017-02-16T11:41:41.043.999. Part 31/147

Processed Thu Feb 16 12:49:46 2017 by ELM ver.2012-10-06 from 001__elm20170216_114140__dat00.bin

