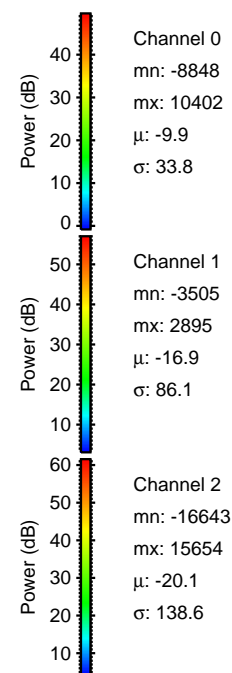
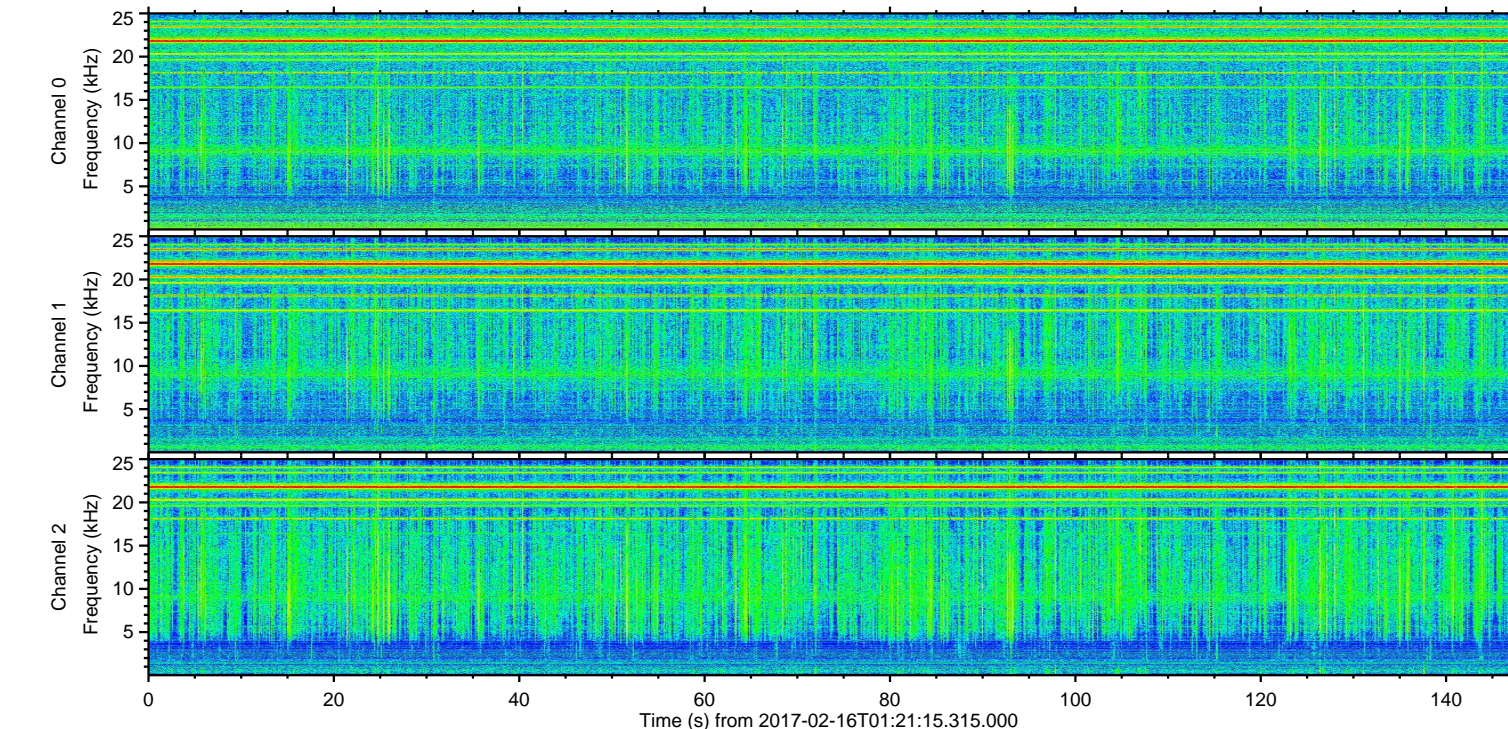
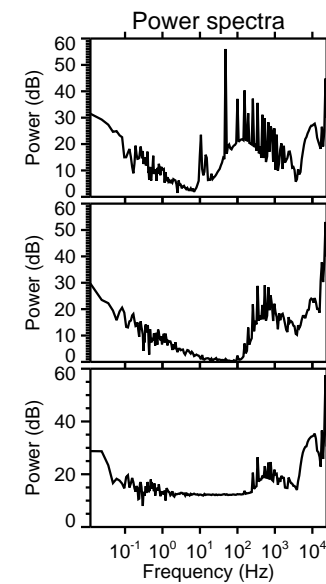
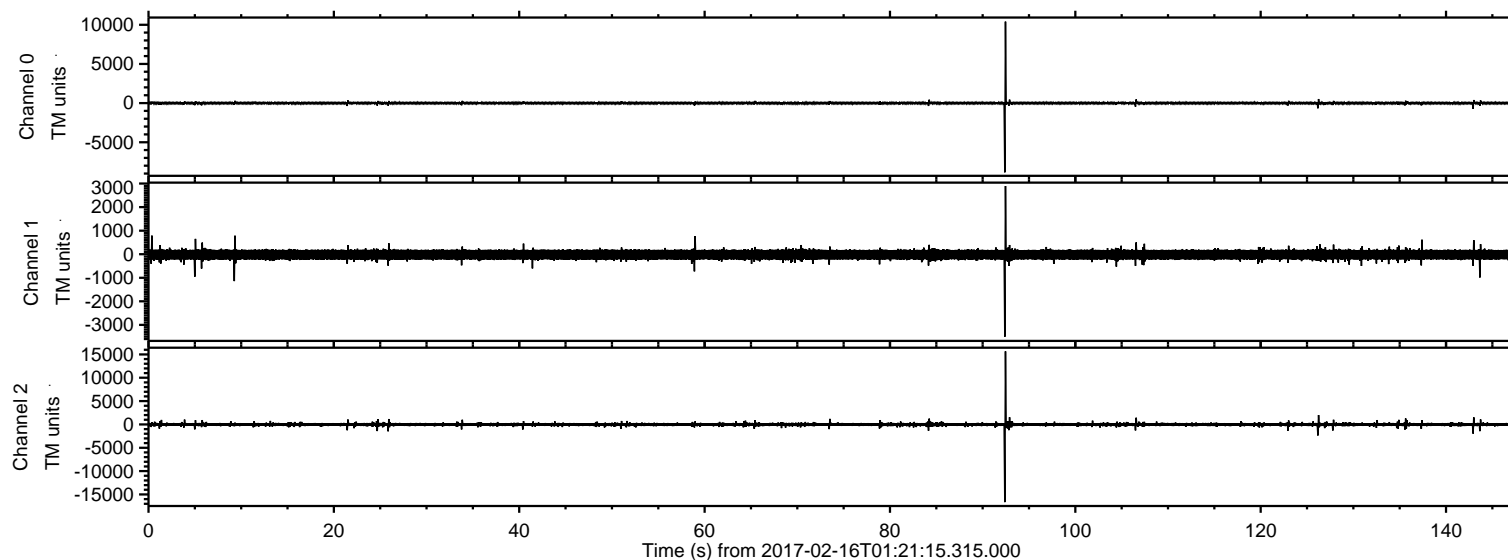


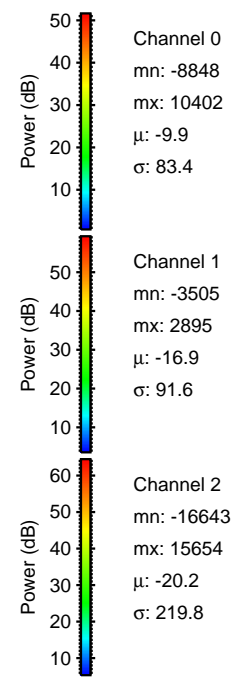
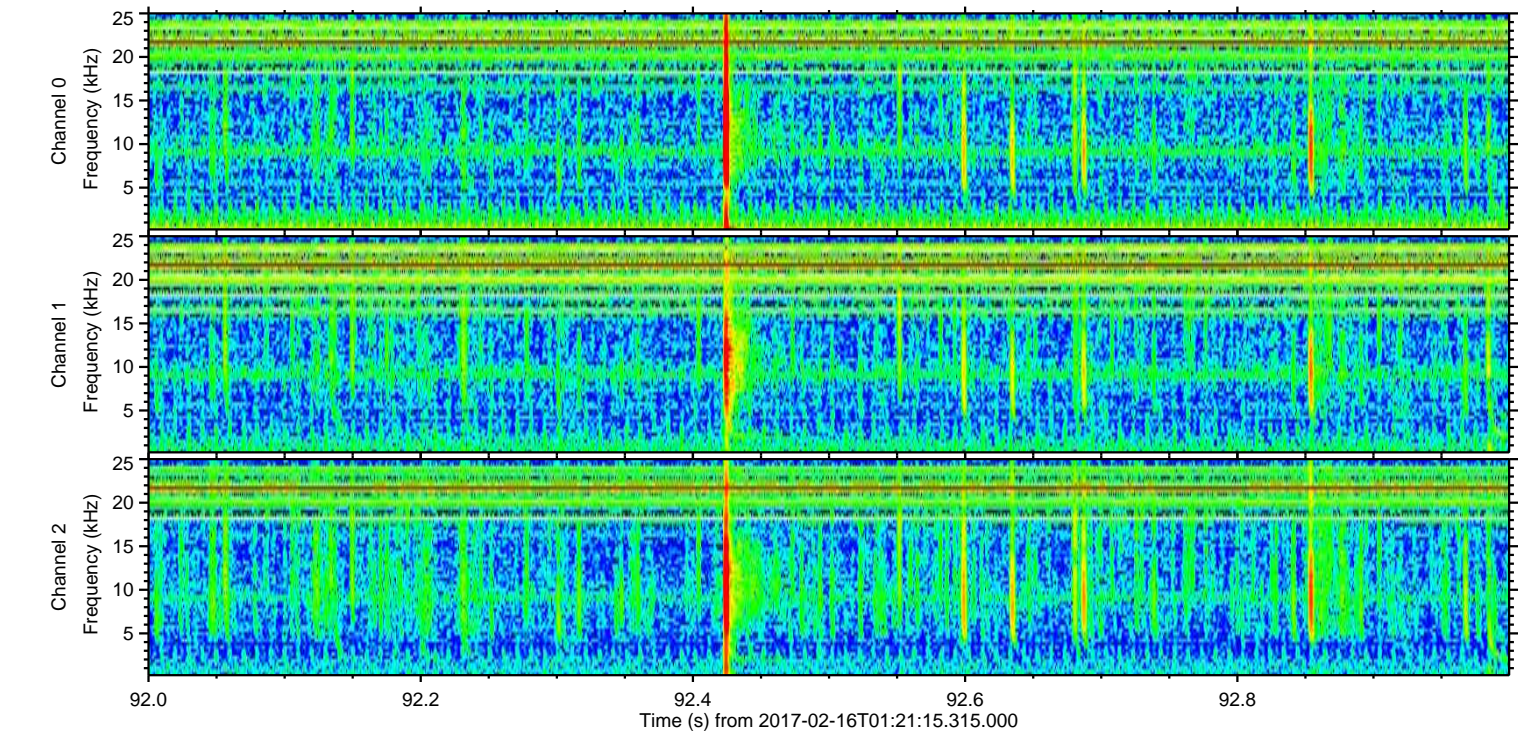
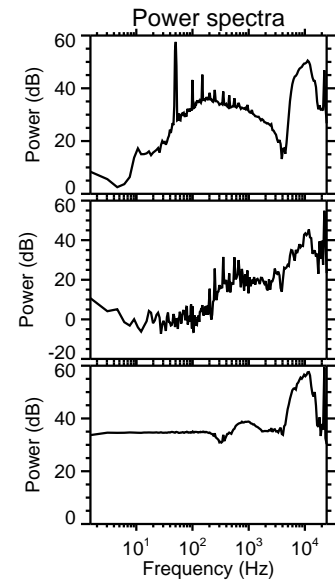
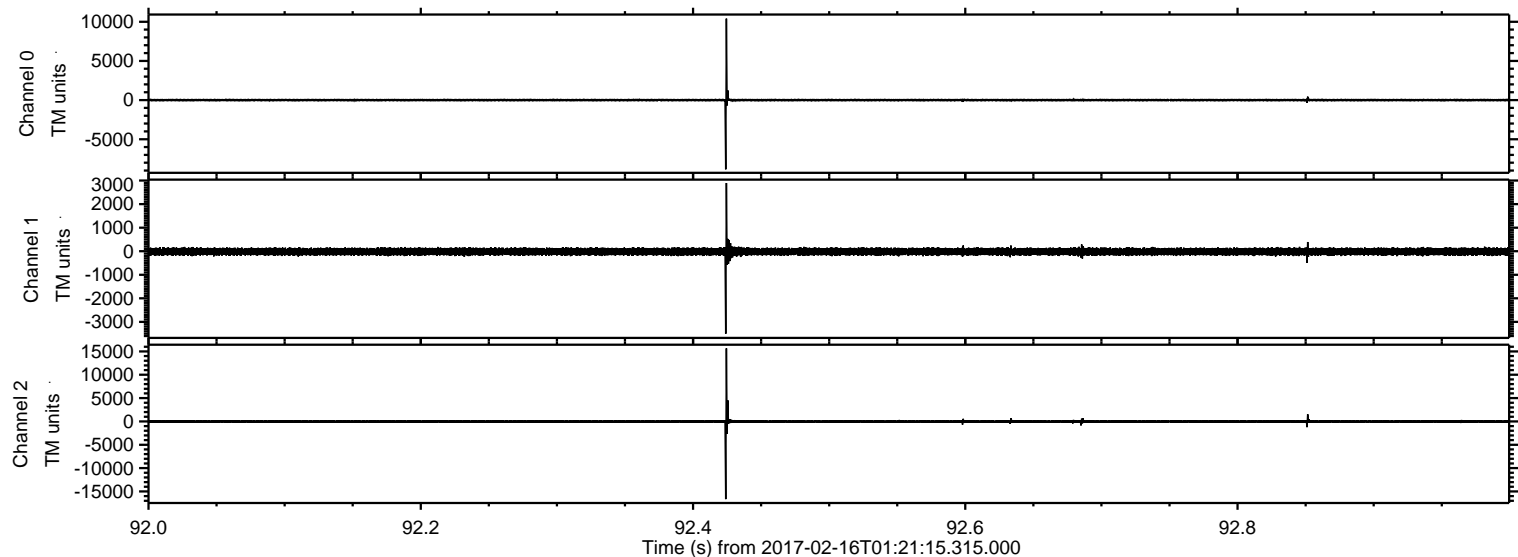
ELMAVAN 3D WAVEFORMS (Measured data sampled at 50 kHz) 51000 packets of 144 samples from 2017-02-16T01:21:15.315.000.

Processed Thu Feb 16 02:29:21 2017 by ELM ver.2012-10-06 from 001__elm20170216_012114__dat00.bin



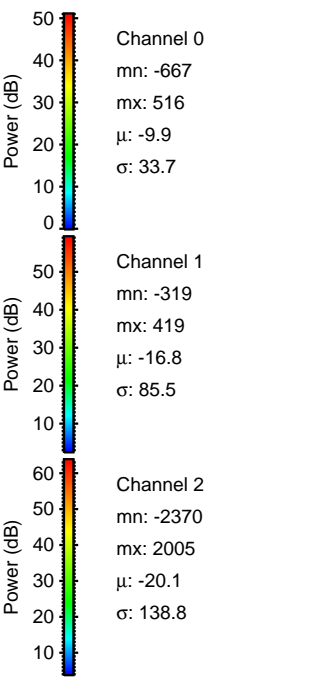
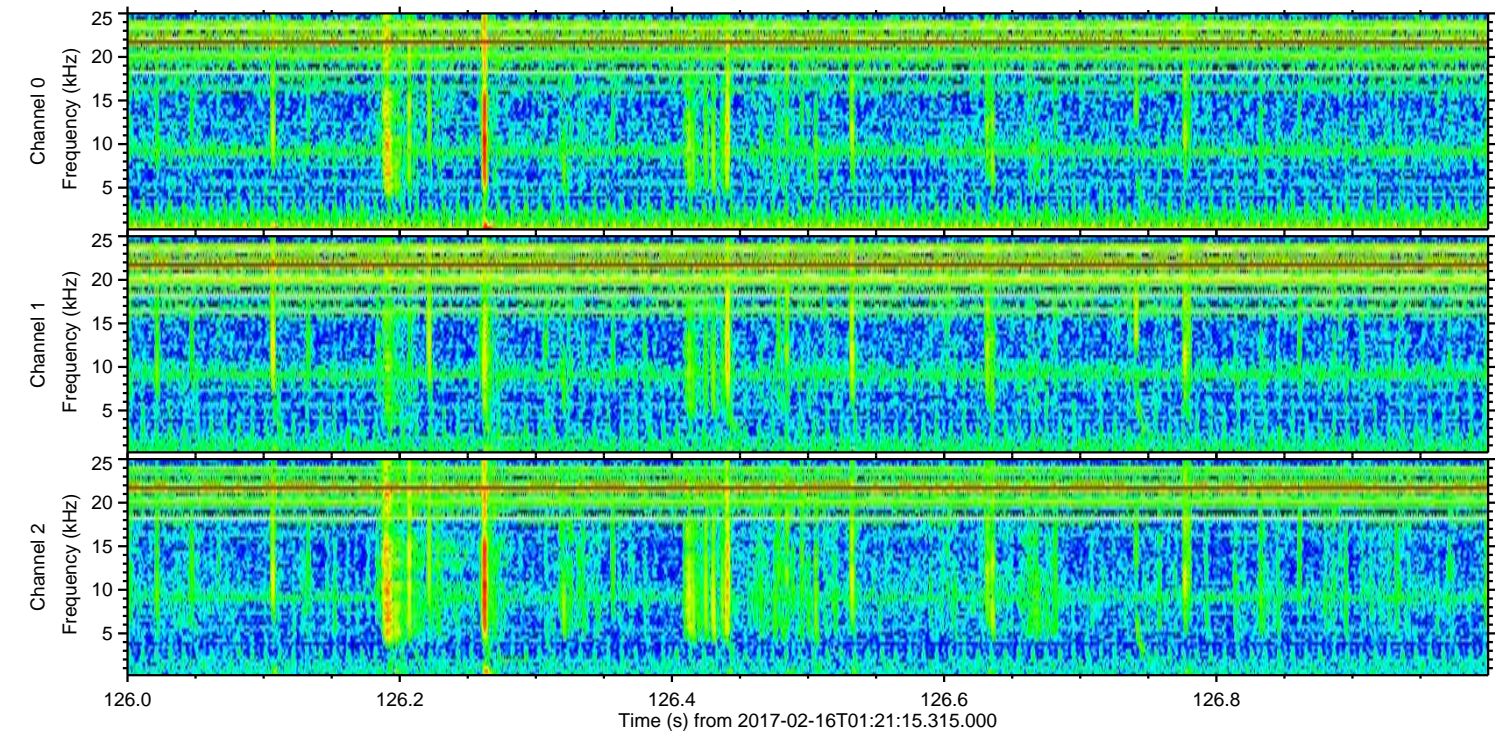
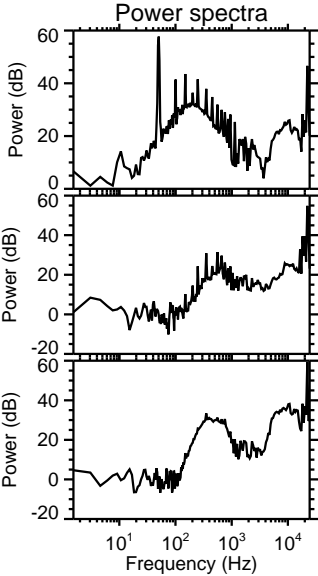
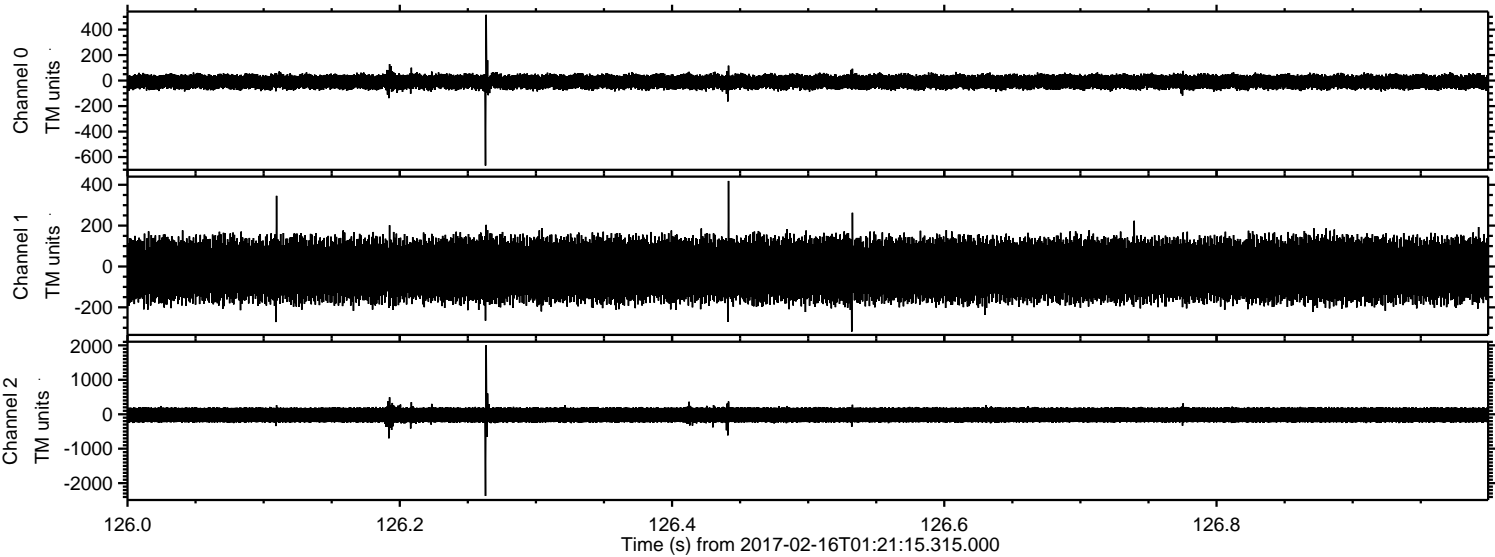
ELMAVAN 3D WAVEFORMS (Measured data sampled at 50 kHz) 51000 packets of 144 samples from 2017-02-16T01:21:15.315.000. Part 93/147

Processed Thu Feb 16 02:29:33 2017 by ELM ver.2012-10-06 from 001__elm20170216_012114__dat00.bin



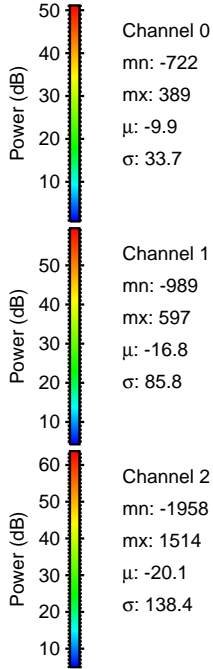
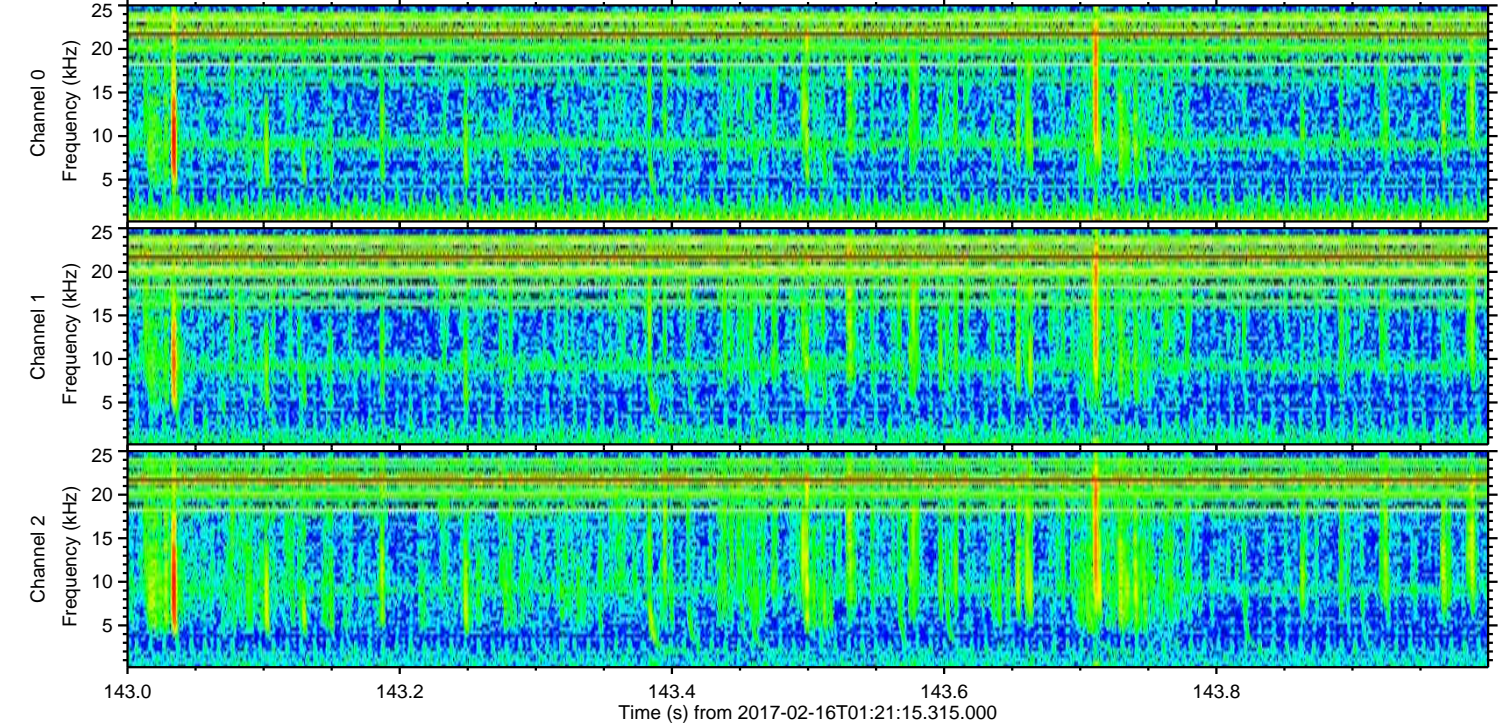
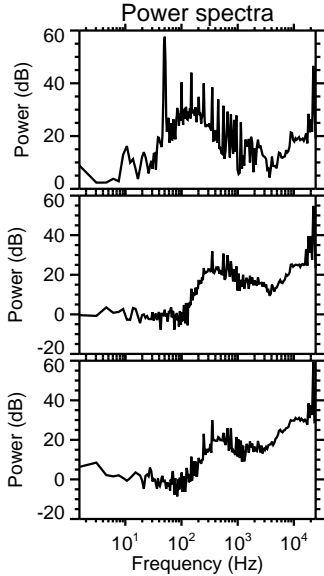
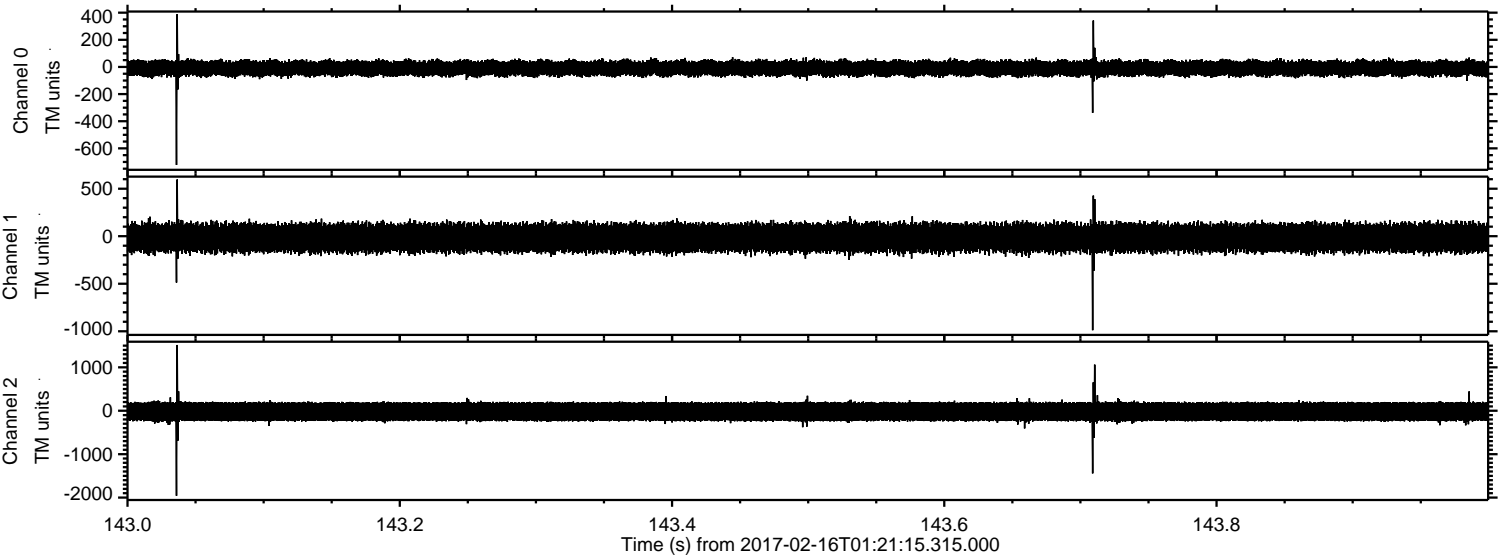
ELMAVAN 3D WAVEFORMS (Measured data sampled at 50 kHz) 51000 packets of 144 samples from 2017-02-16T01:21:15.315.000. Part 127/147

Processed Thu Feb 16 02:29:34 2017 by ELM ver.2012-10-06 from 001__elm20170216_012114__dat00.bin



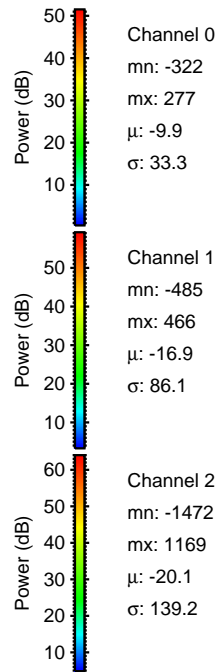
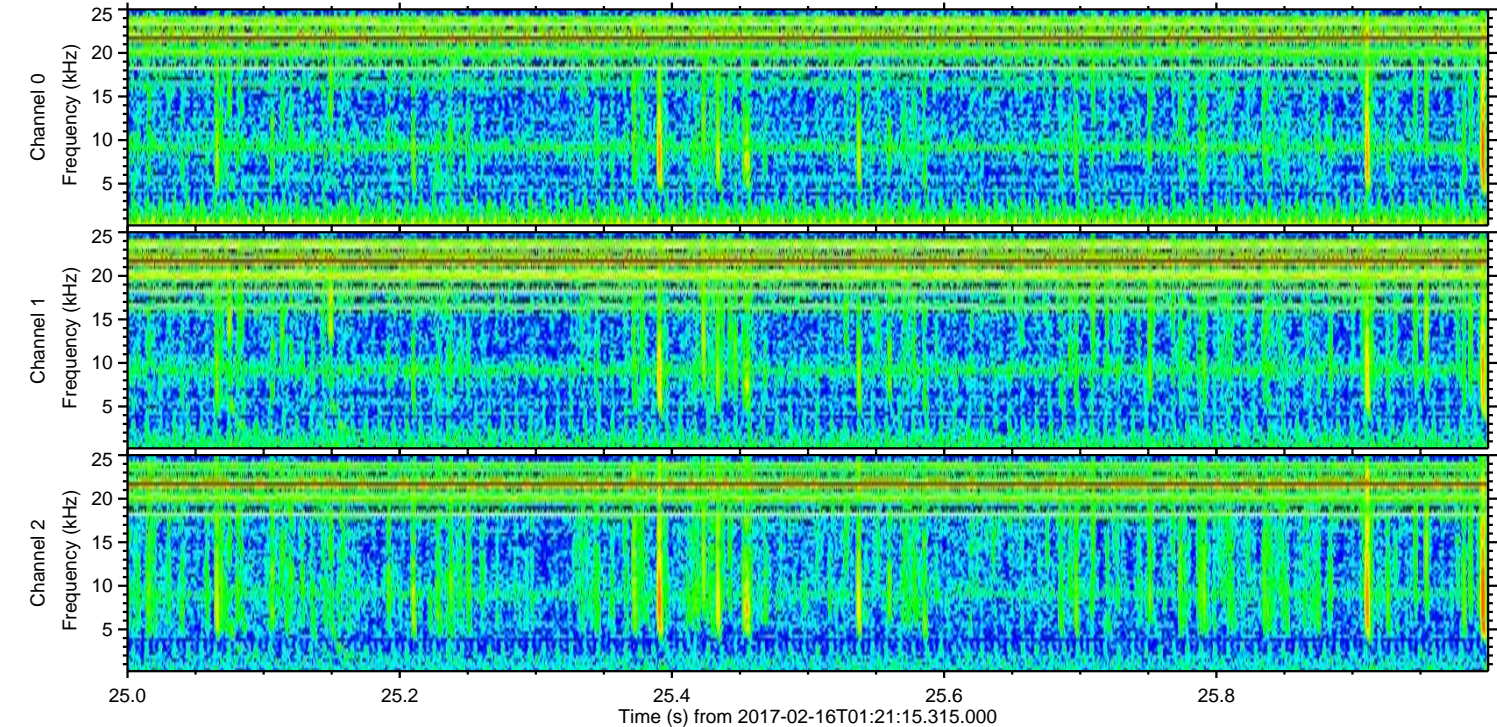
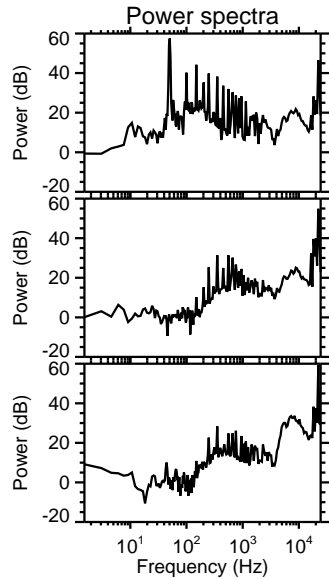
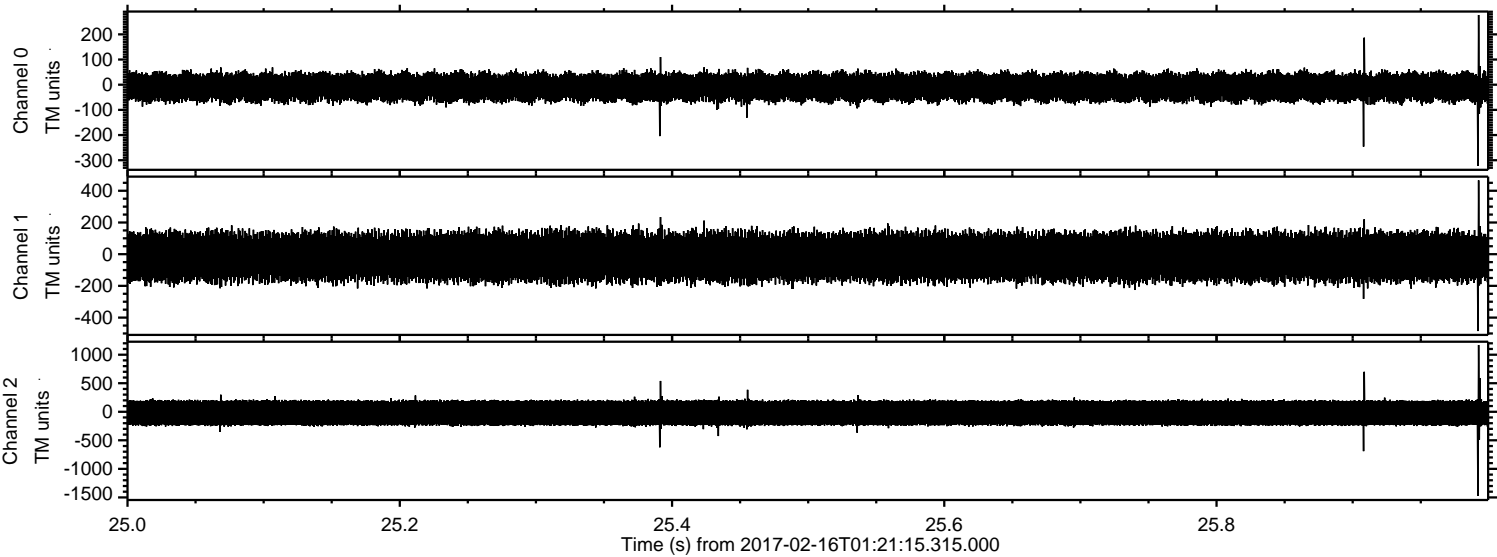
ELMAVAN 3D WAVEFORMS (Measured data sampled at 50 kHz) 51000 packets of 144 samples from 2017-02-16T01:21:15.315.000. Part 144/147

Processed Thu Feb 16 02:29:35 2017 by ELM ver.2012-10-06 from 001__elm20170216_012114__dat00.bin



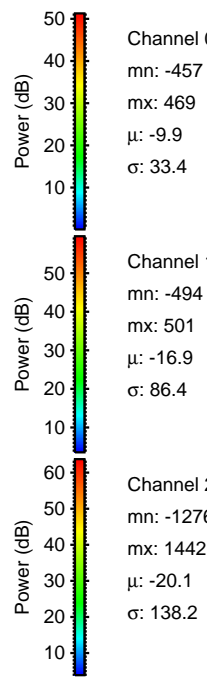
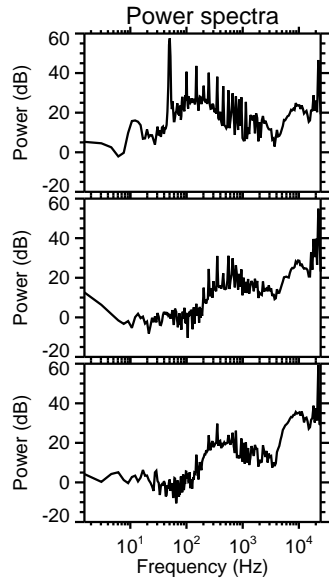
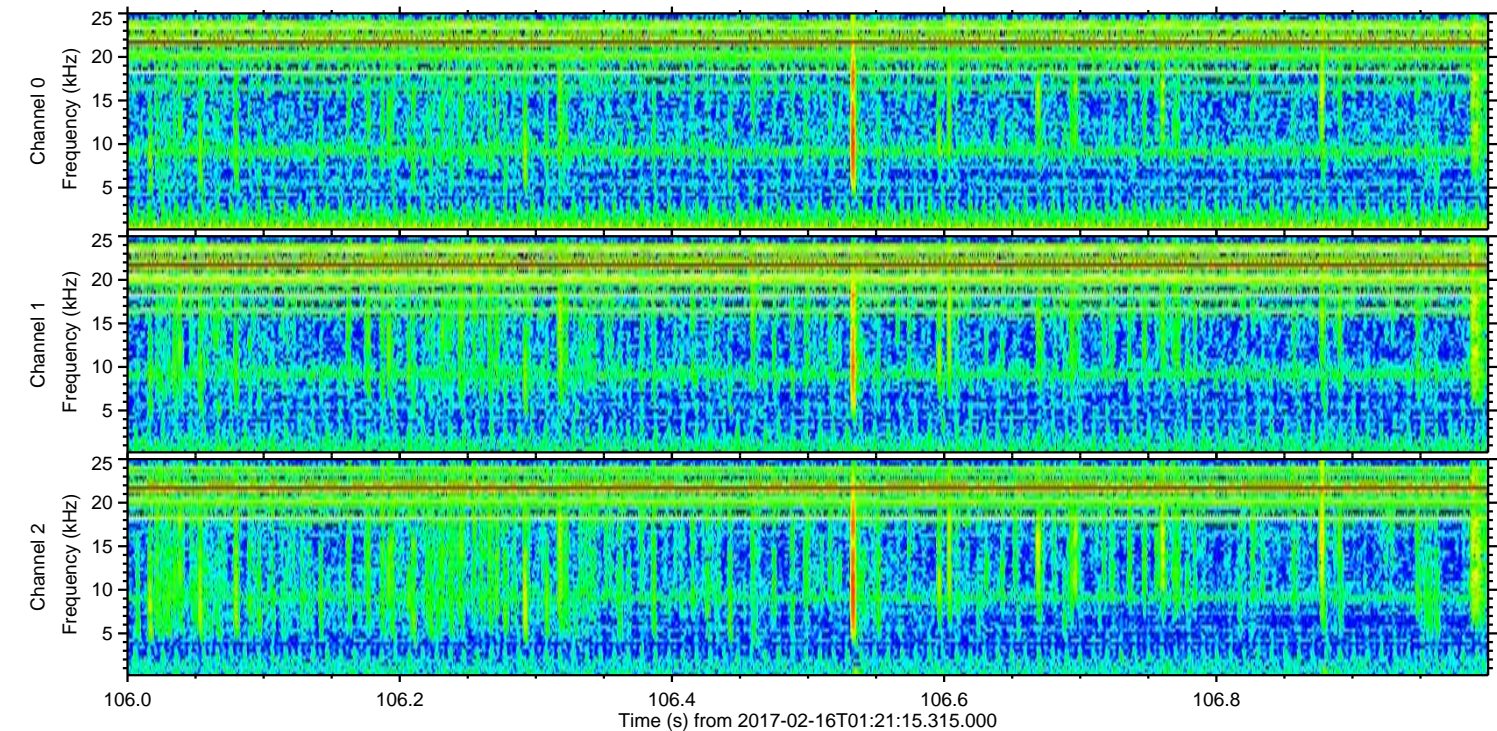
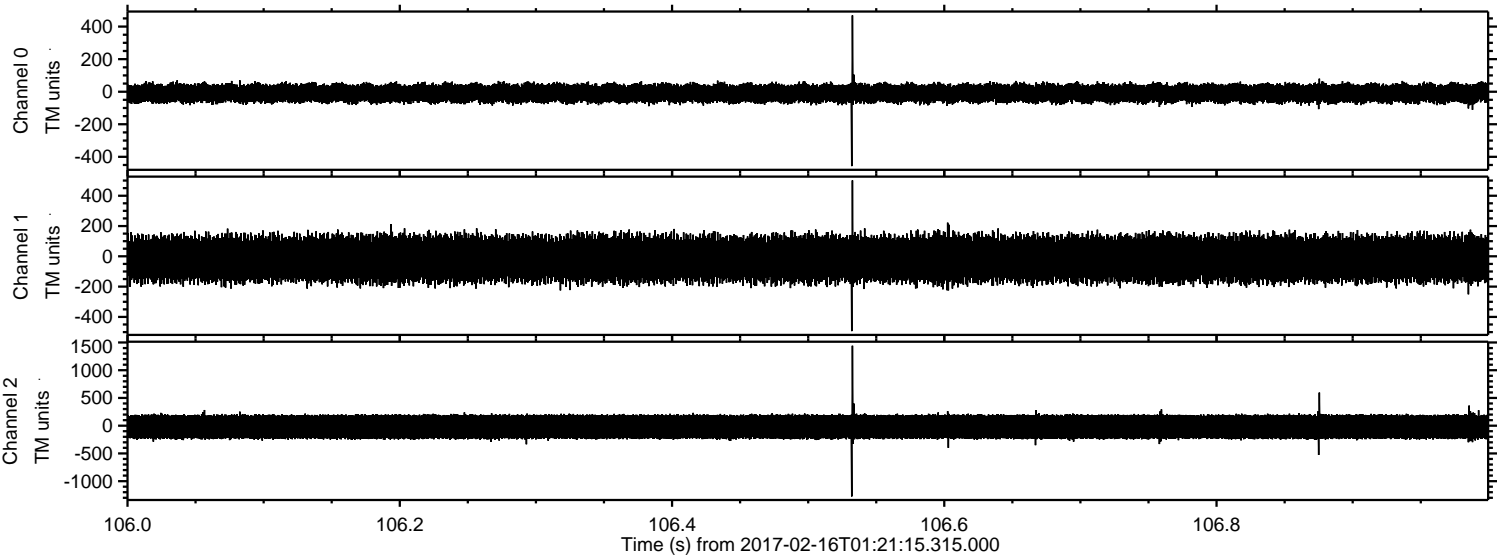
ELMAVAN 3D WAVEFORMS (Measured data sampled at 50 kHz) 51000 packets of 144 samples from 2017-02-16T01:21:15.315.000. Part 26/147

Processed Thu Feb 16 02:29:36 2017 by ELM ver.2012-10-06 from 001__elm20170216_012114__dat00.bin



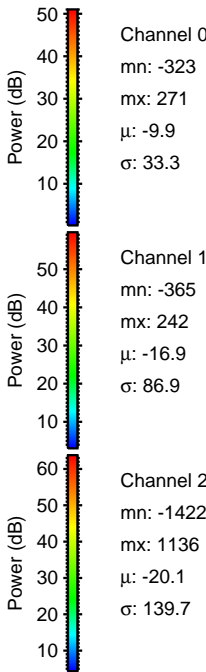
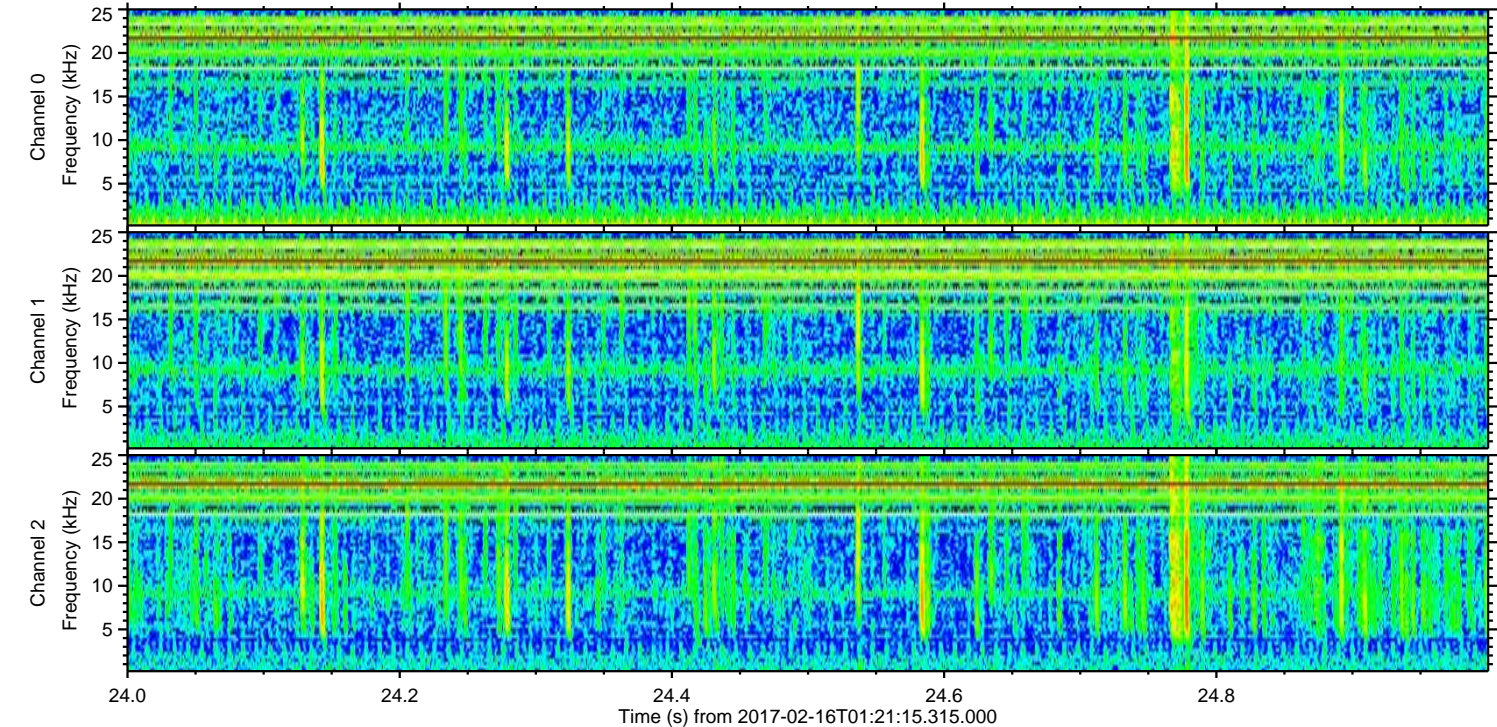
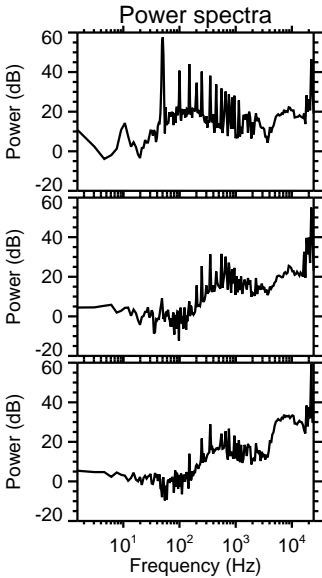
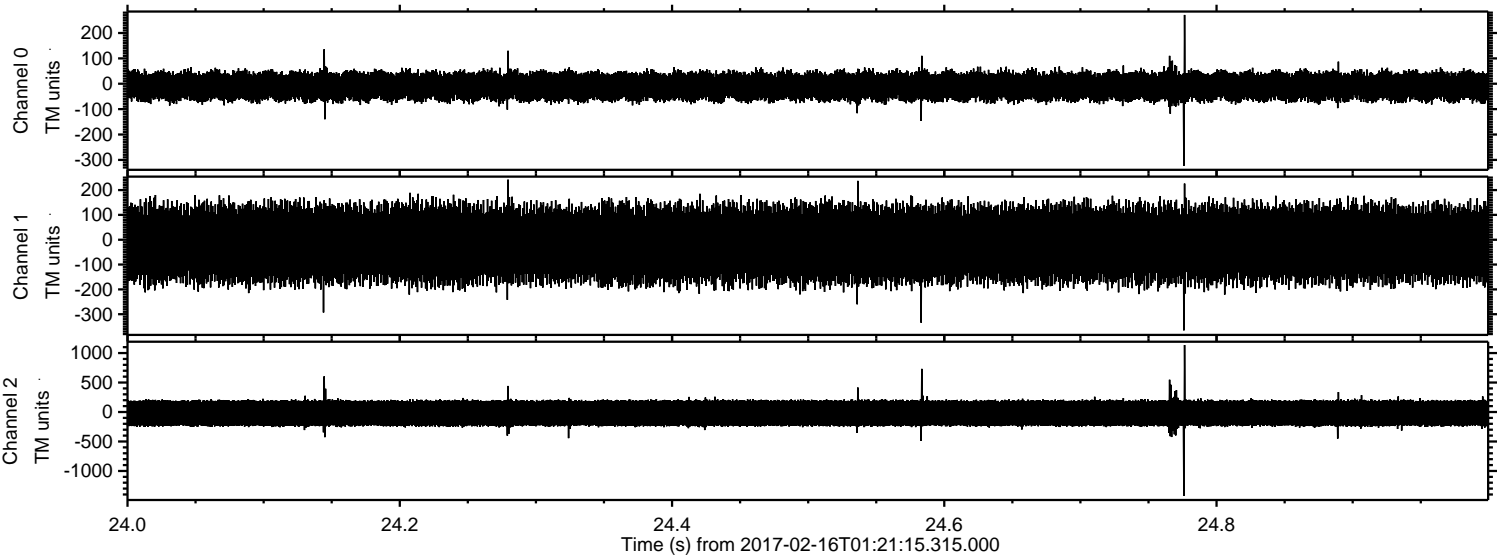
ELMAVAN 3D WAVEFORMS (Measured data sampled at 50 kHz) 51000 packets of 144 samples from 2017-02-16T01:21:15.315.000. Part 107/147

Processed Thu Feb 16 02:29:37 2017 by ELM ver.2012-10-06 from 001__elm20170216_012114__dat00.bin

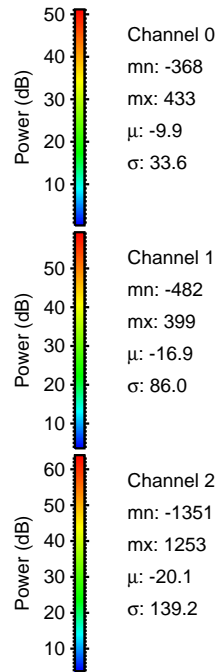
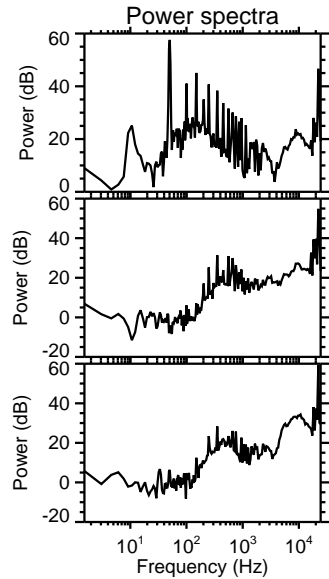
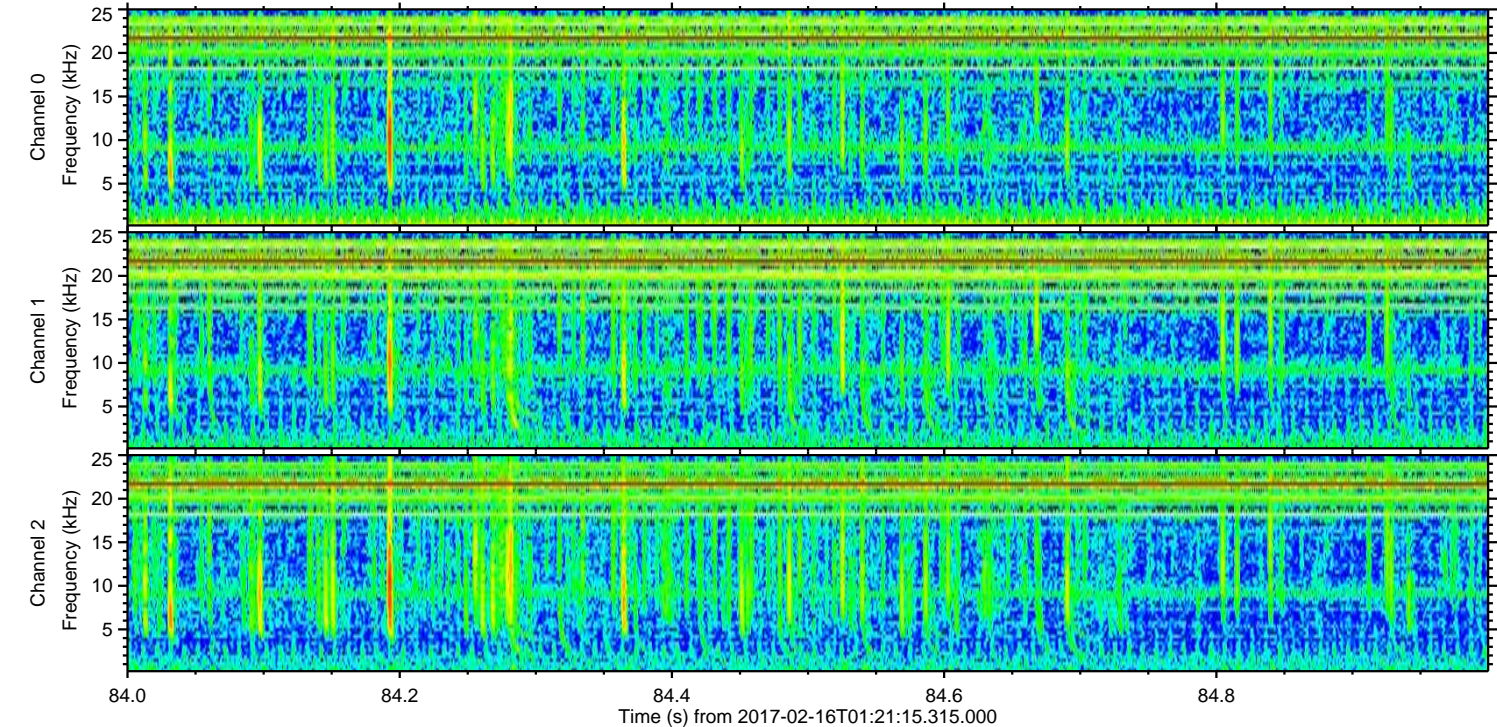
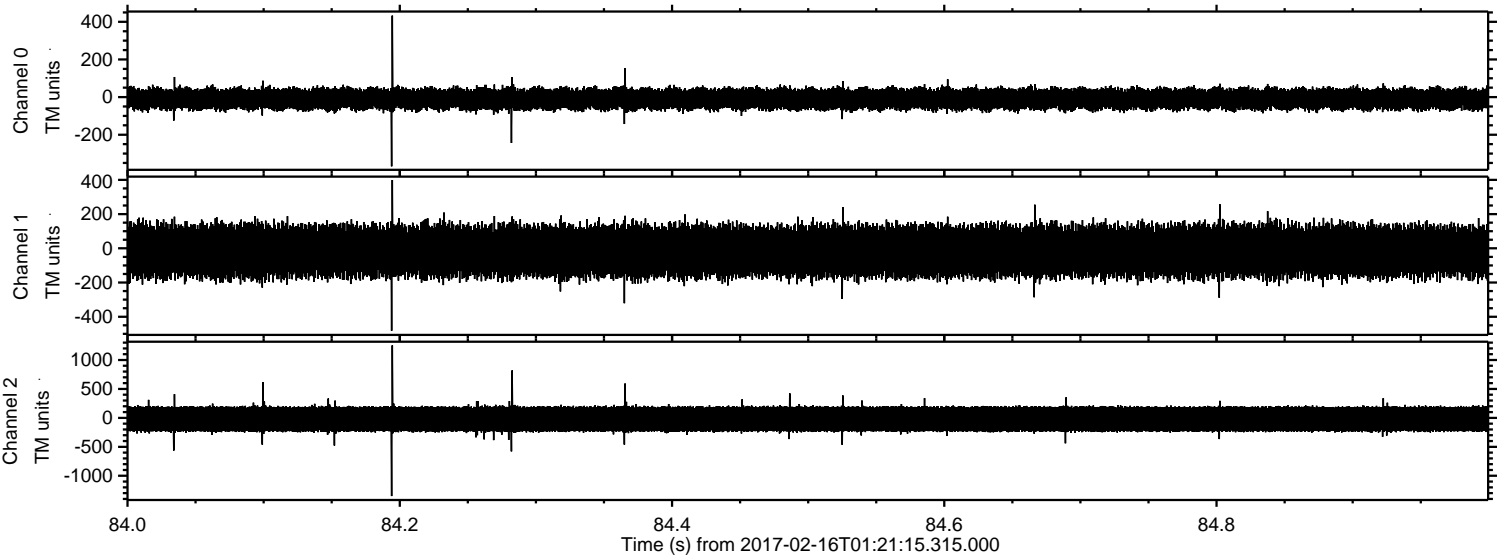


ELMAVAN 3D WAVEFORMS (Measured data sampled at 50 kHz) 51000 packets of 144 samples from 2017-02-16T01:21:15.315.000. Part 25/147

Processed Thu Feb 16 02:29:38 2017 by ELM ver.2012-10-06 from 001__elm20170216_012114__dat00.bin



Processed Thu Feb 16 02:29:38 2017 by ELM ver.2012-10-06 from 001__elm20170216_012114__dat00.bin



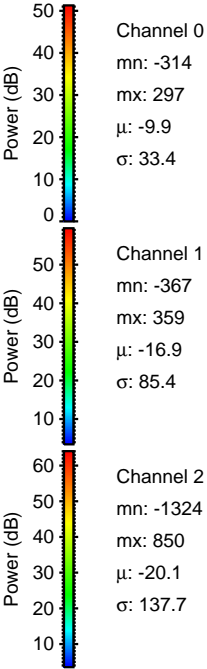
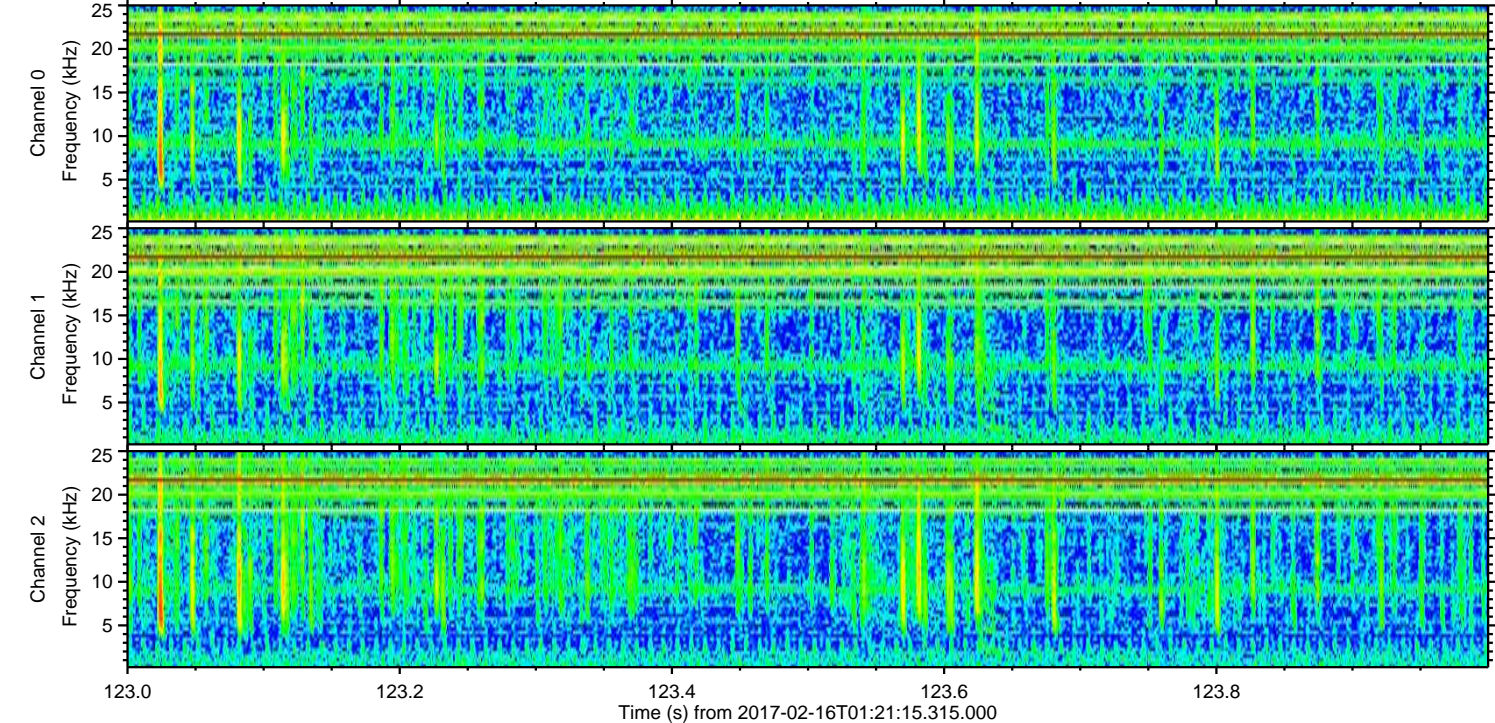
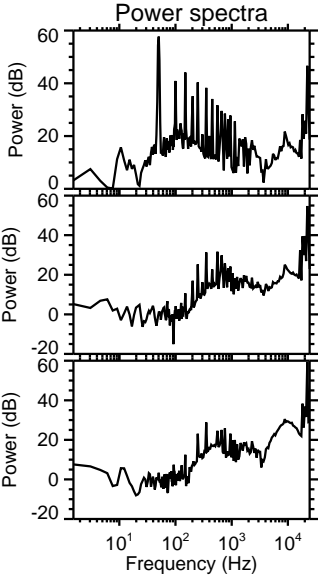
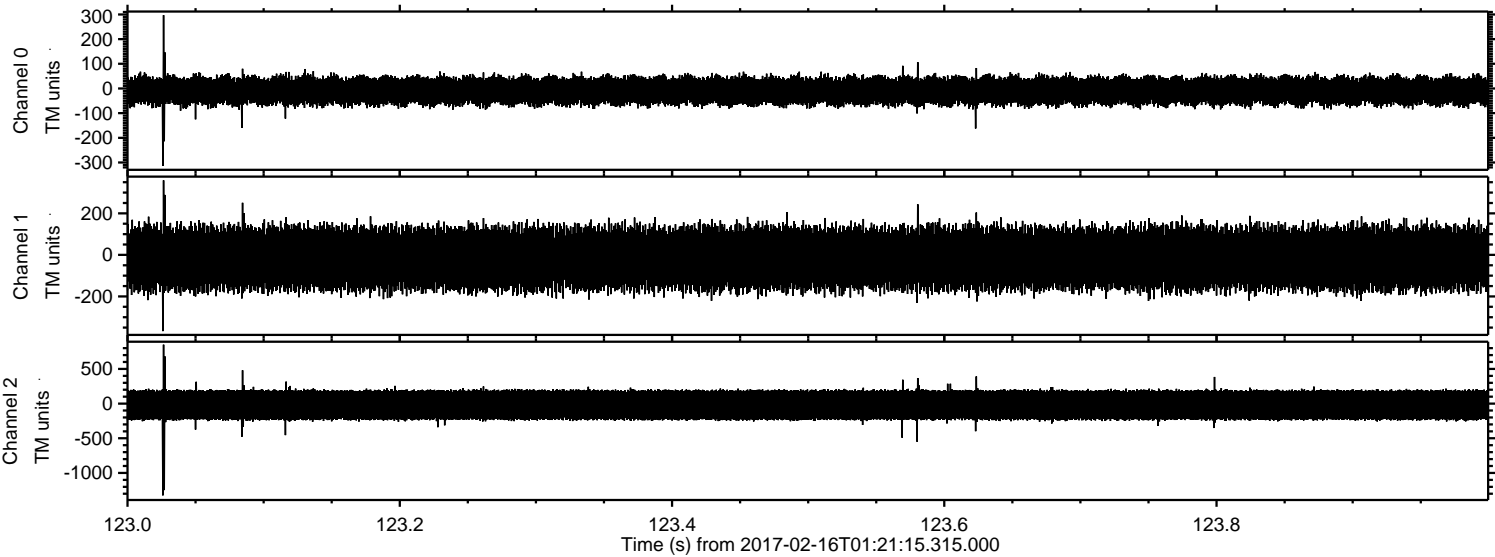
Channel 0
mn: -368
mx: 433
 μ : -9.9
 σ : 33.6

Channel 1
mn: -482
mx: 399
 μ : -16.9
 σ : 86.0

Channel 2
mn: -1351
mx: 1253
 μ : -20.1
 σ : 139.2

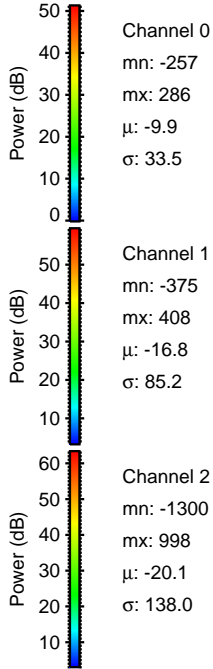
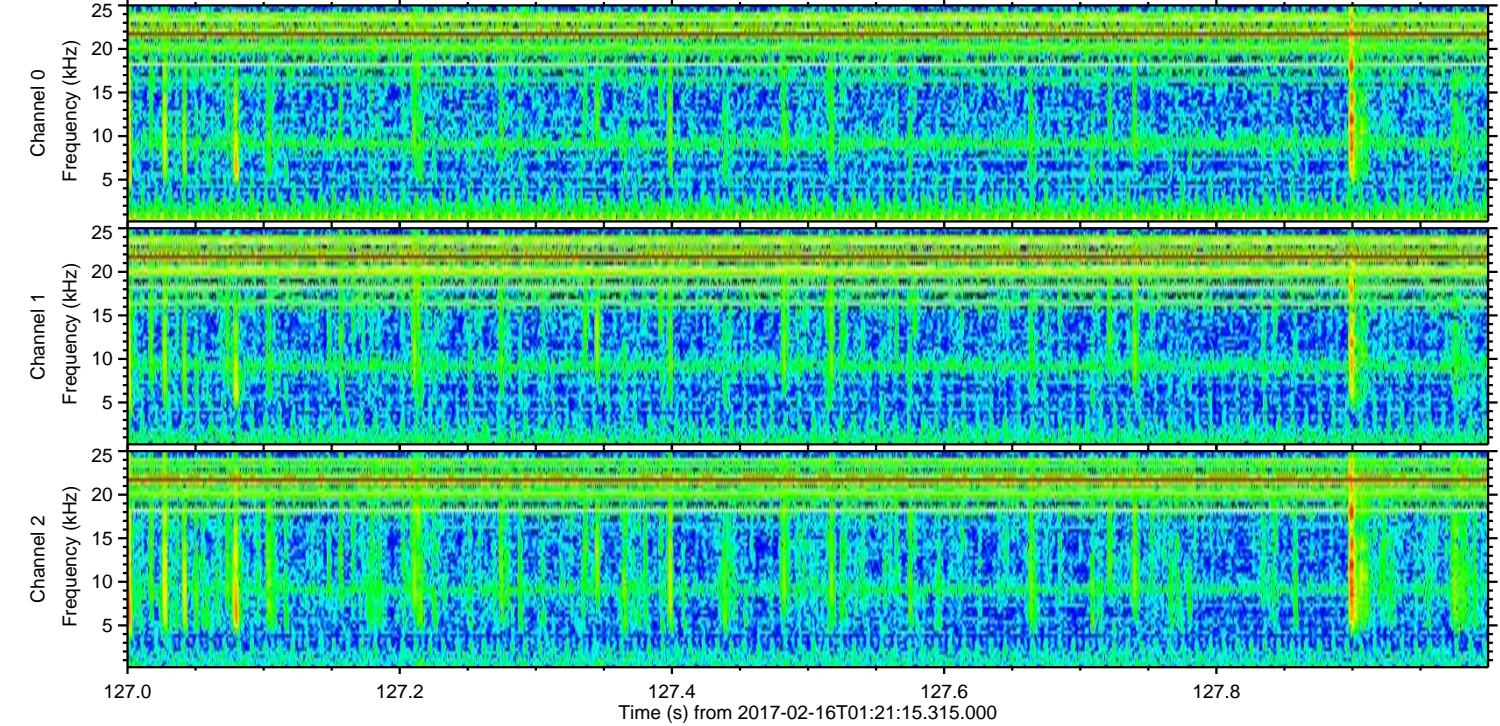
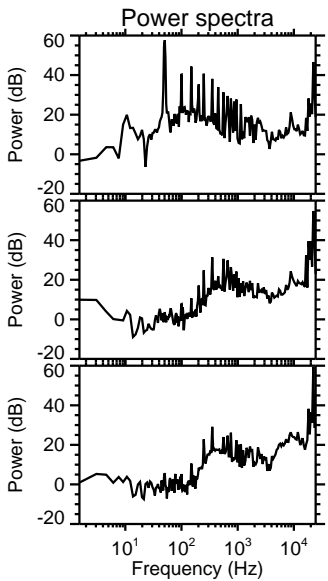
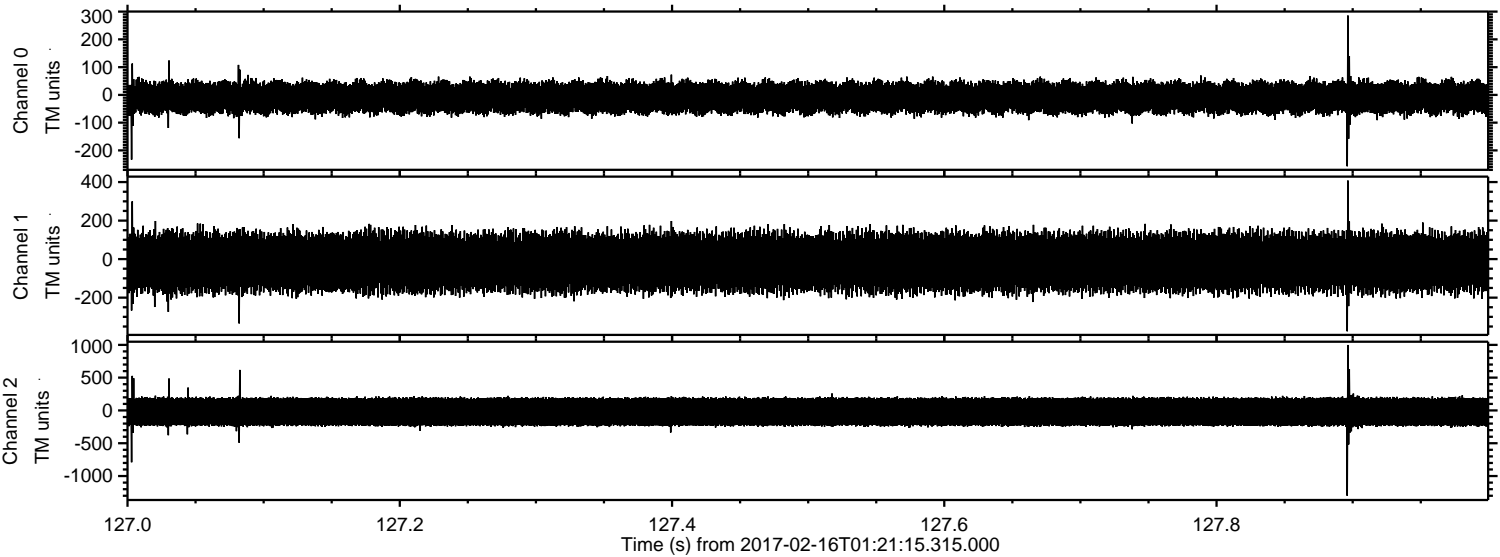
ELMAVAN 3D WAVEFORMS (Measured data sampled at 50 kHz) 51000 packets of 144 samples from 2017-02-16T01:21:15.315.000. Part 124/147

Processed Thu Feb 16 02:29:39 2017 by ELM ver.2012-10-06 from 001__elm20170216_012114__dat00.bin



ELMAVAN 3D WAVEFORMS (Measured data sampled at 50 kHz) 51000 packets of 144 samples from 2017-02-16T01:21:15.315.000. Part 128/147

Processed Thu Feb 16 02:29:40 2017 by ELM ver.2012-10-06 from 001__elm20170216_012114__dat00.bin



ELMAVAN 3D WAVEFORMS (Measured data sampled at 50 kHz) 51000 packets of 144 samples from 2017-02-16T01:21:15.315.000. Part 11/147

Processed Thu Feb 16 02:29:41 2017 by ELM ver.2012-10-06 from 001__elm20170216_012114__dat00.bin

