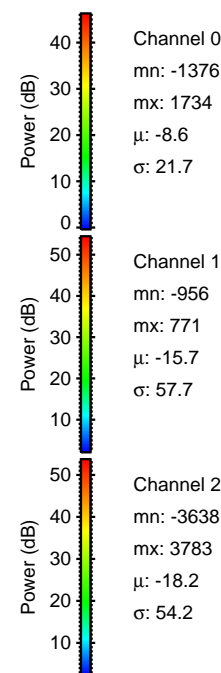
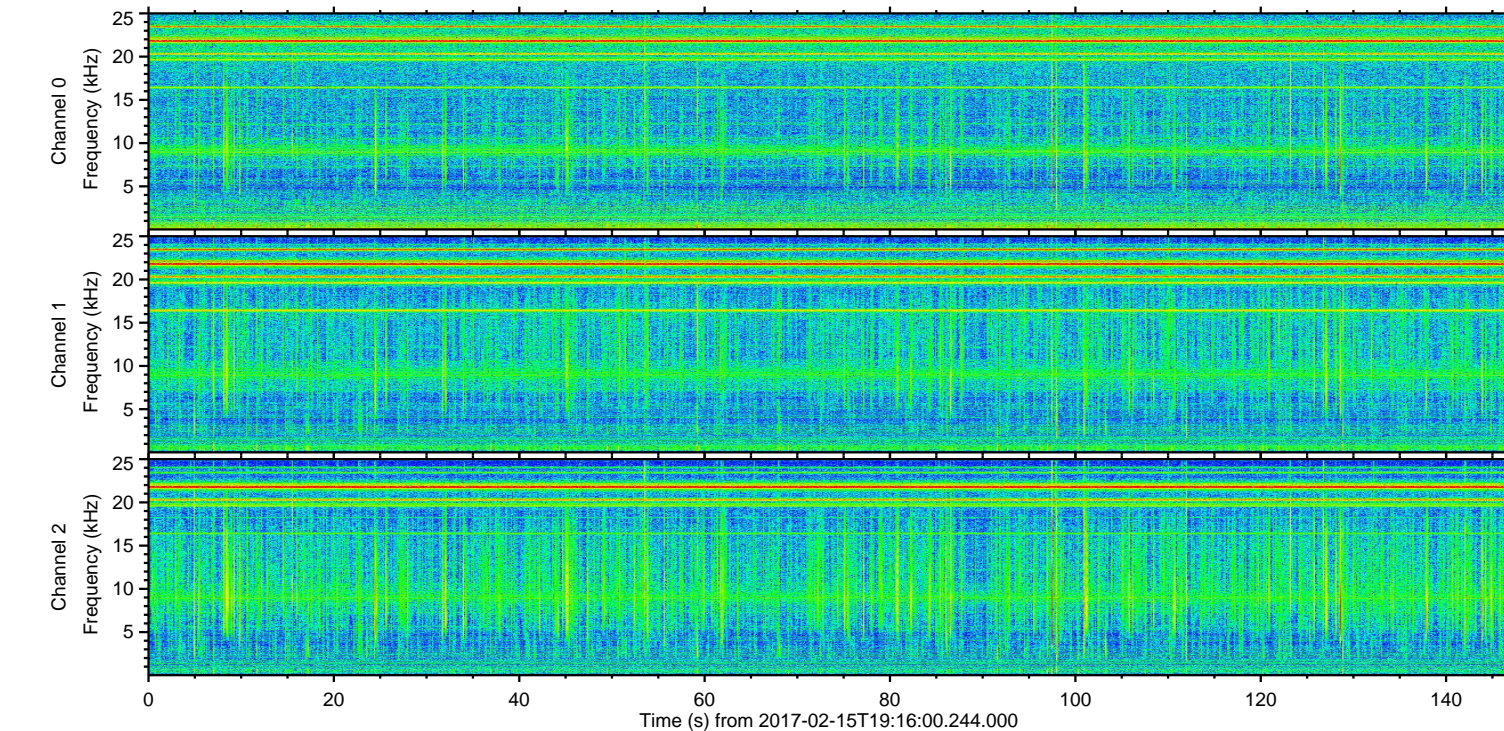
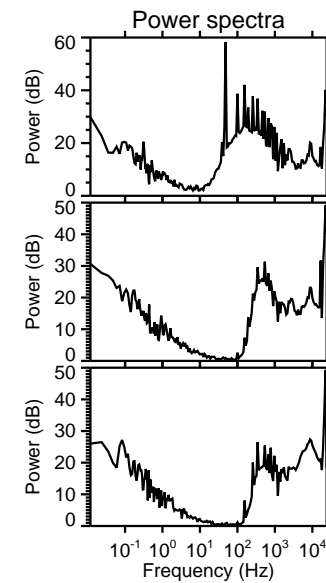
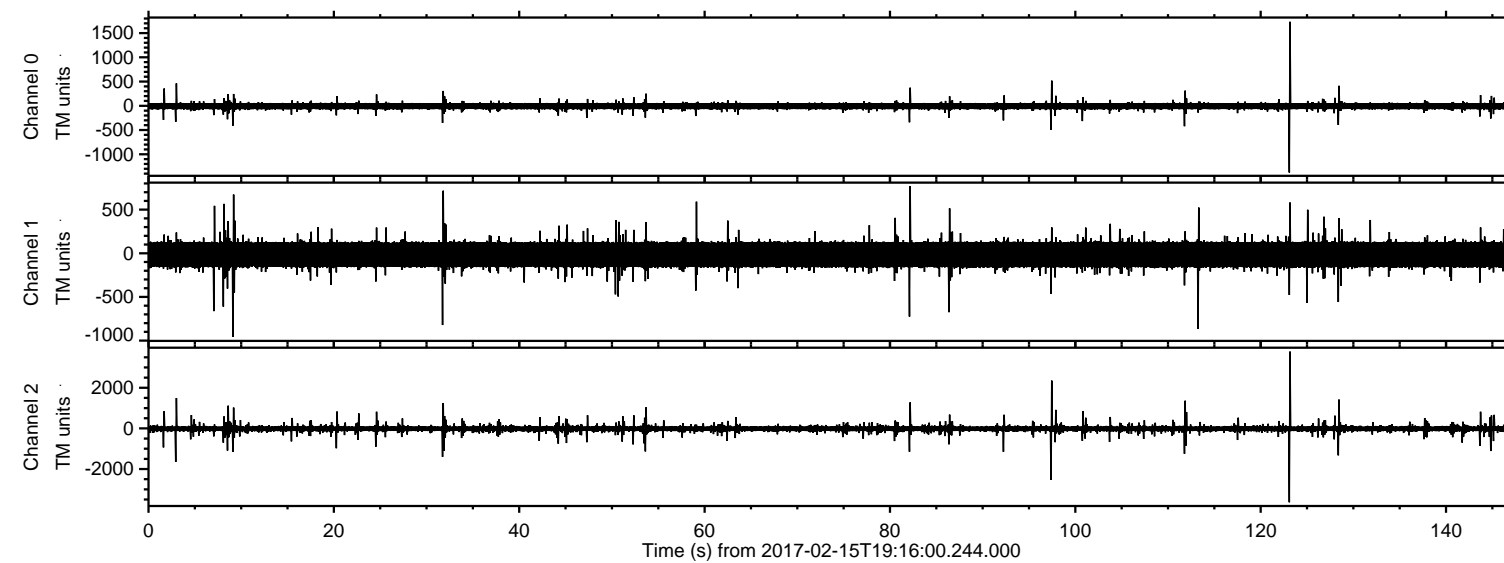


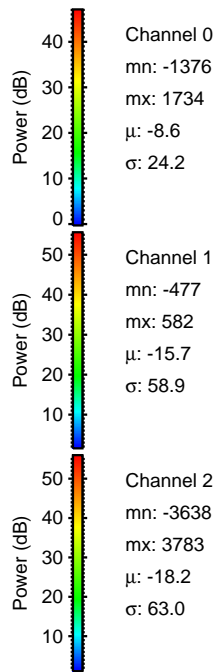
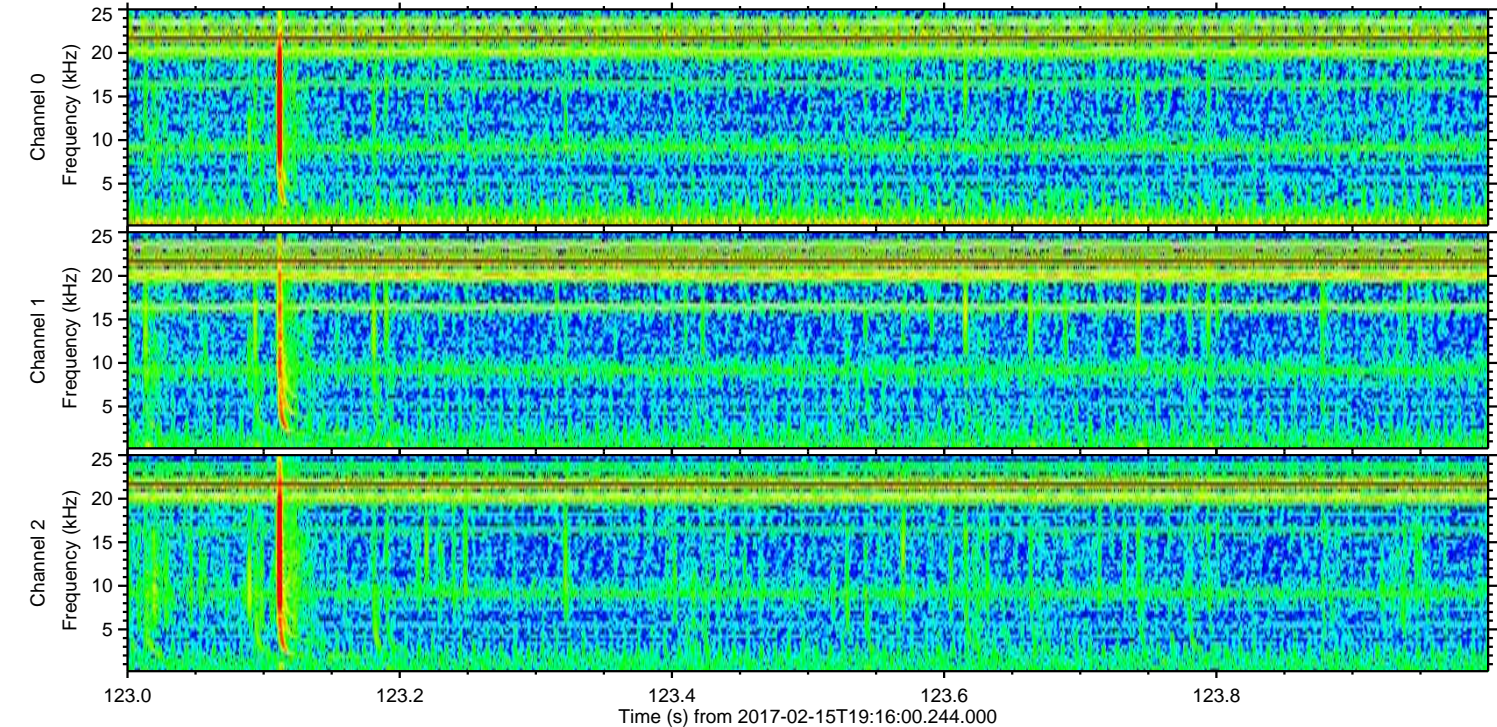
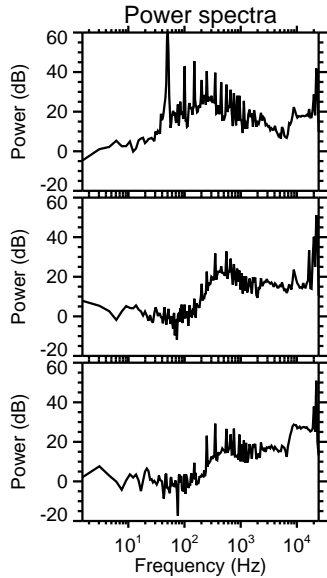
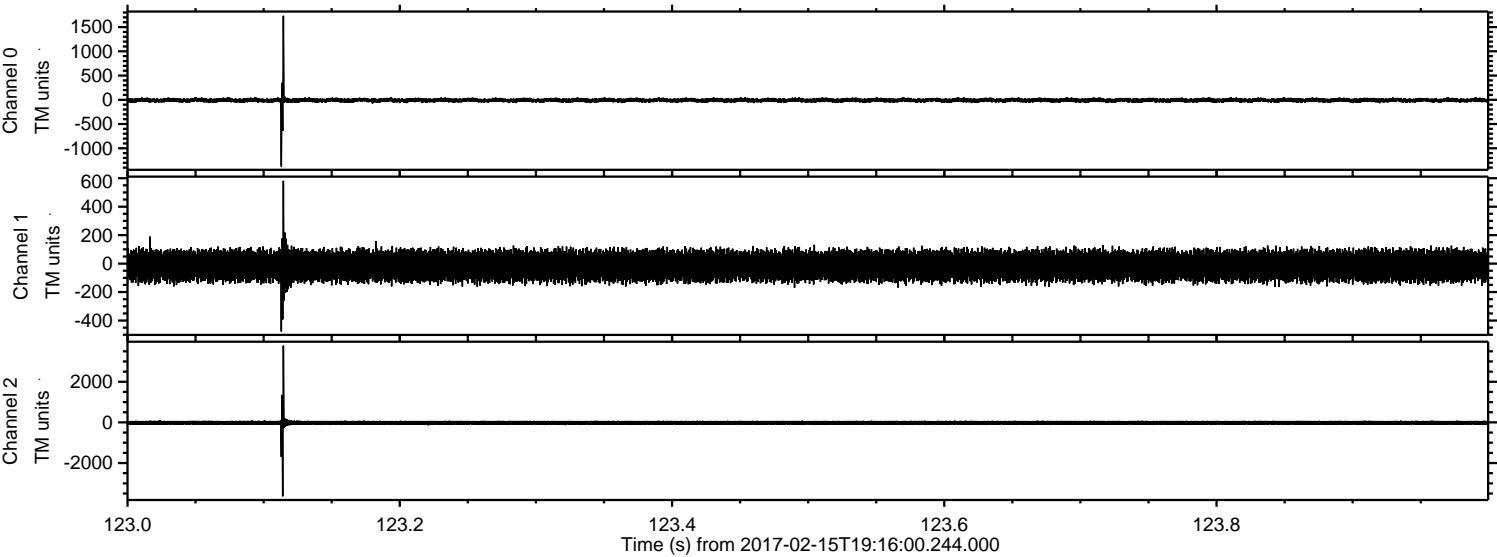
ELMAVAN 3D WAVEFORMS (Measured data sampled at 50 kHz) 51000 packets of 144 samples from 2017-02-15T19:16:00.244.000.

Processed Wed Feb 15 20:24:09 2017 by ELM ver.2012-10-06 from 001__elm20170215_191559__dat00.bin

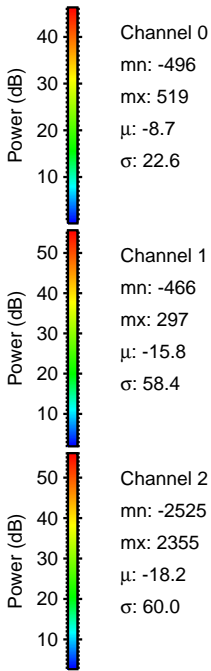
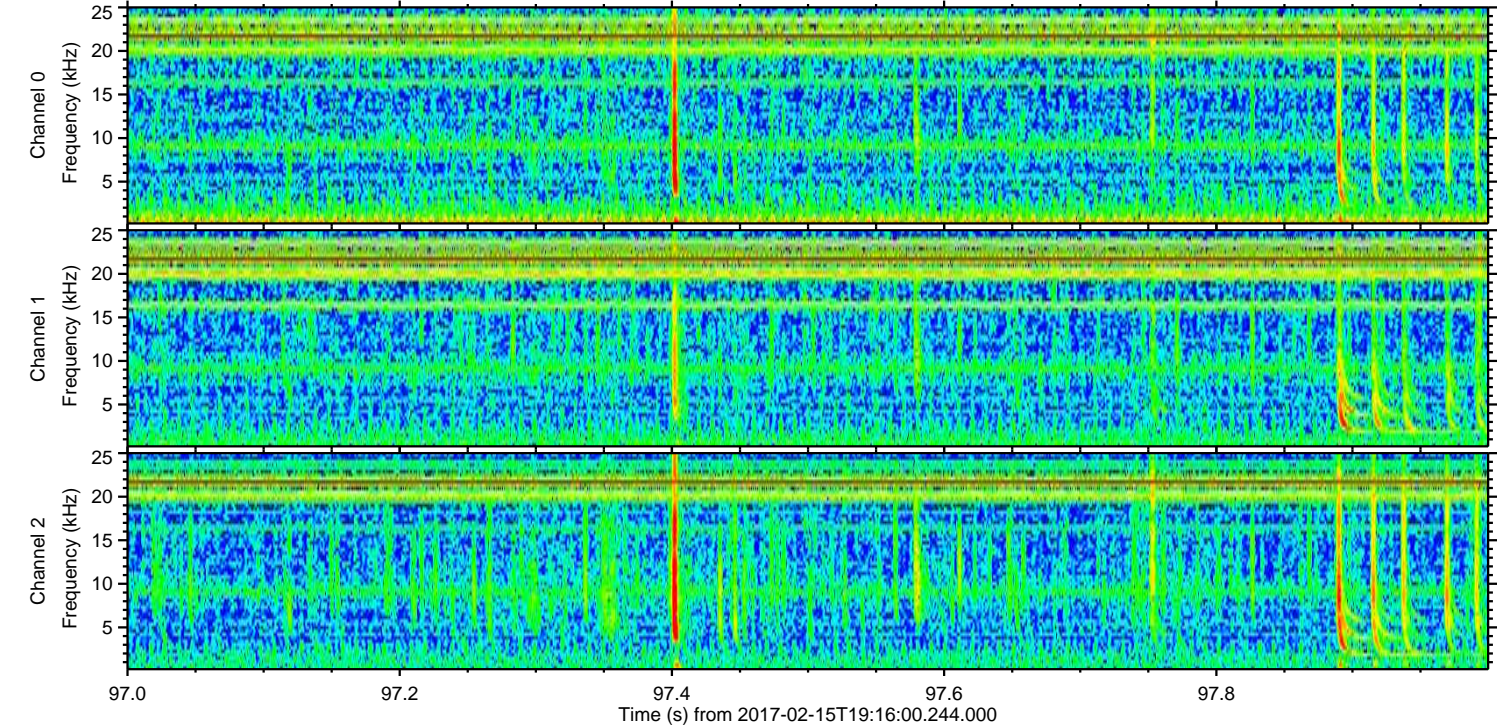
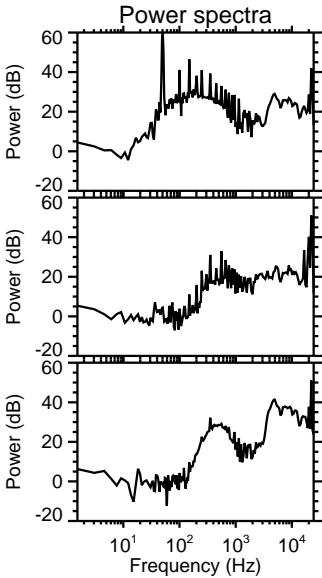
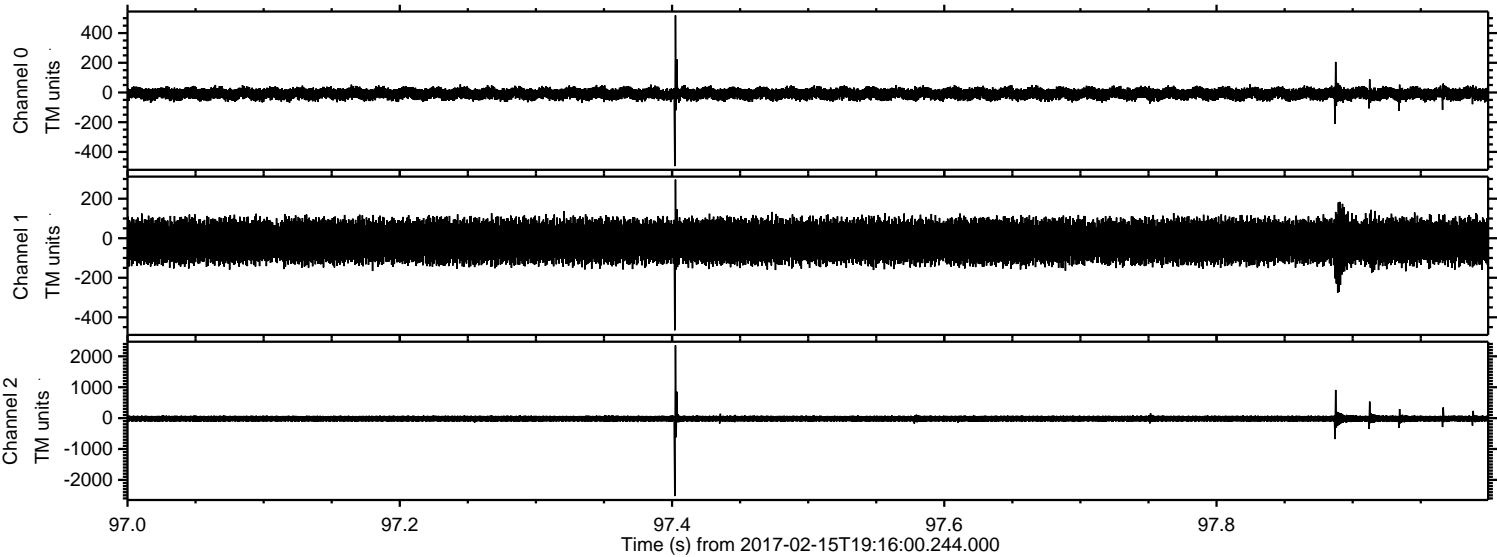


ELMAVAN 3D WAVEFORMS (Measured data sampled at 50 kHz) 51000 packets of 144 samples from 2017-02-15T19:16:00.244.000. Part 124/147

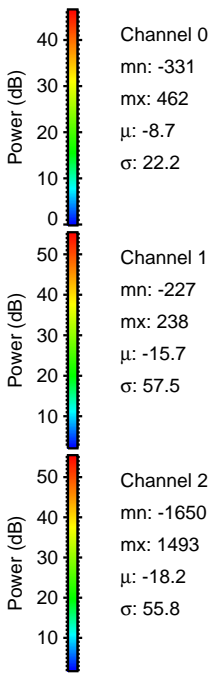
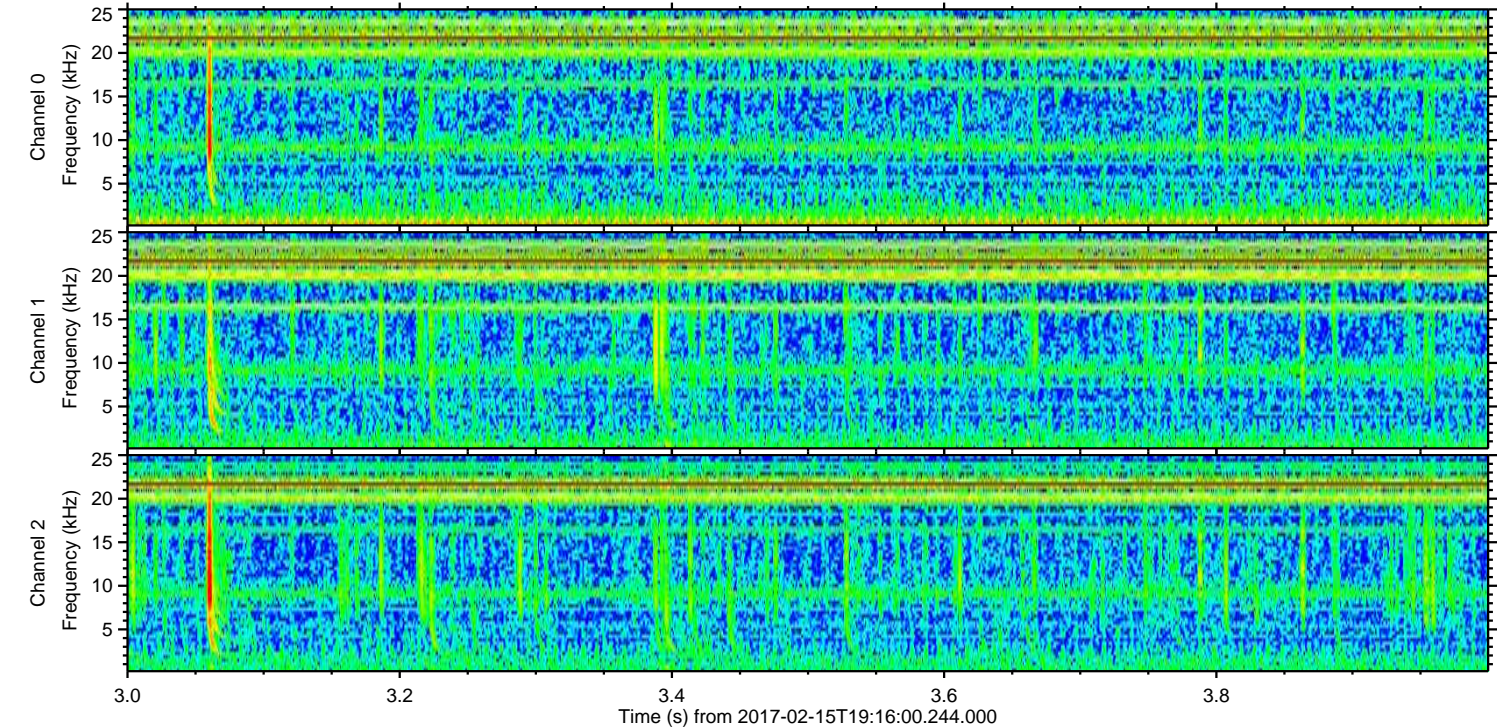
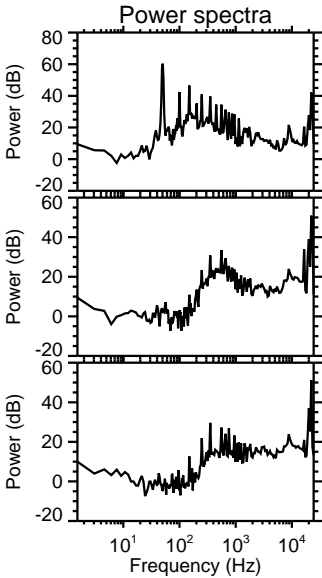
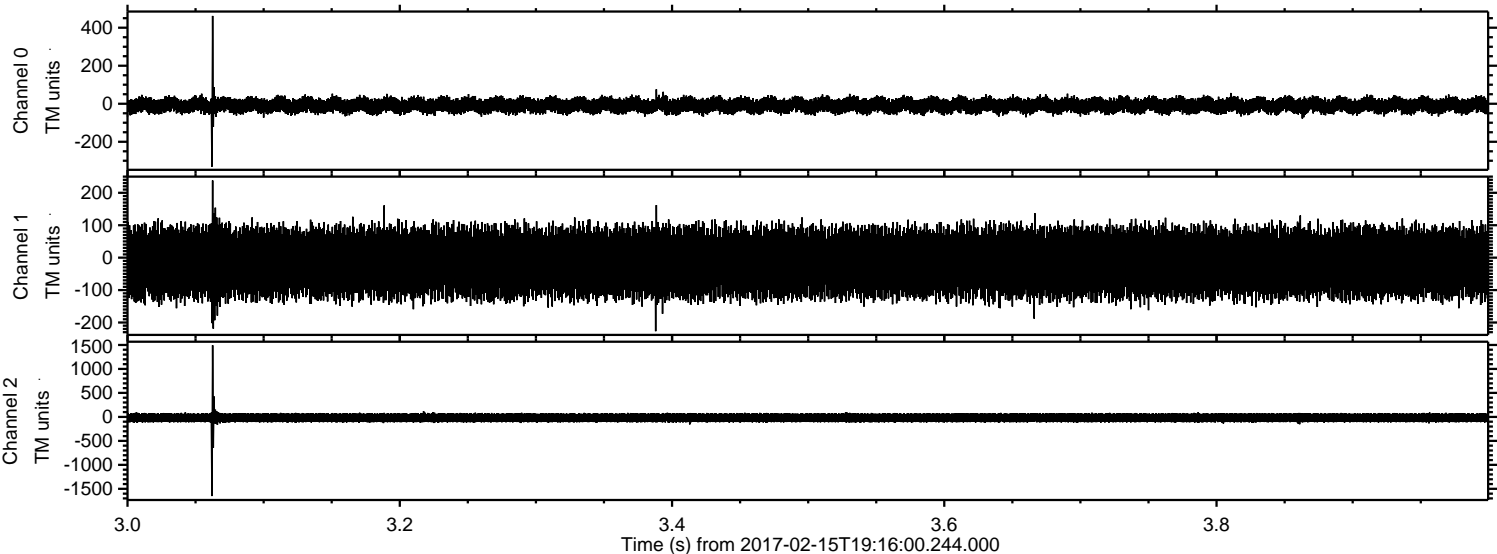
Processed Wed Feb 15 20:24:20 2017 by ELM ver.2012-10-06 from 001__elm20170215_191559__dat00.bin



Processed Wed Feb 15 20:24:21 2017 by ELM ver.2012-10-06 from 001__elm20170215_191559__dat00.bin

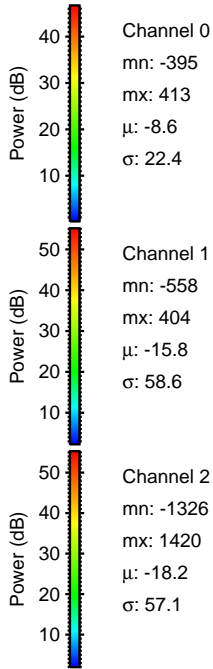
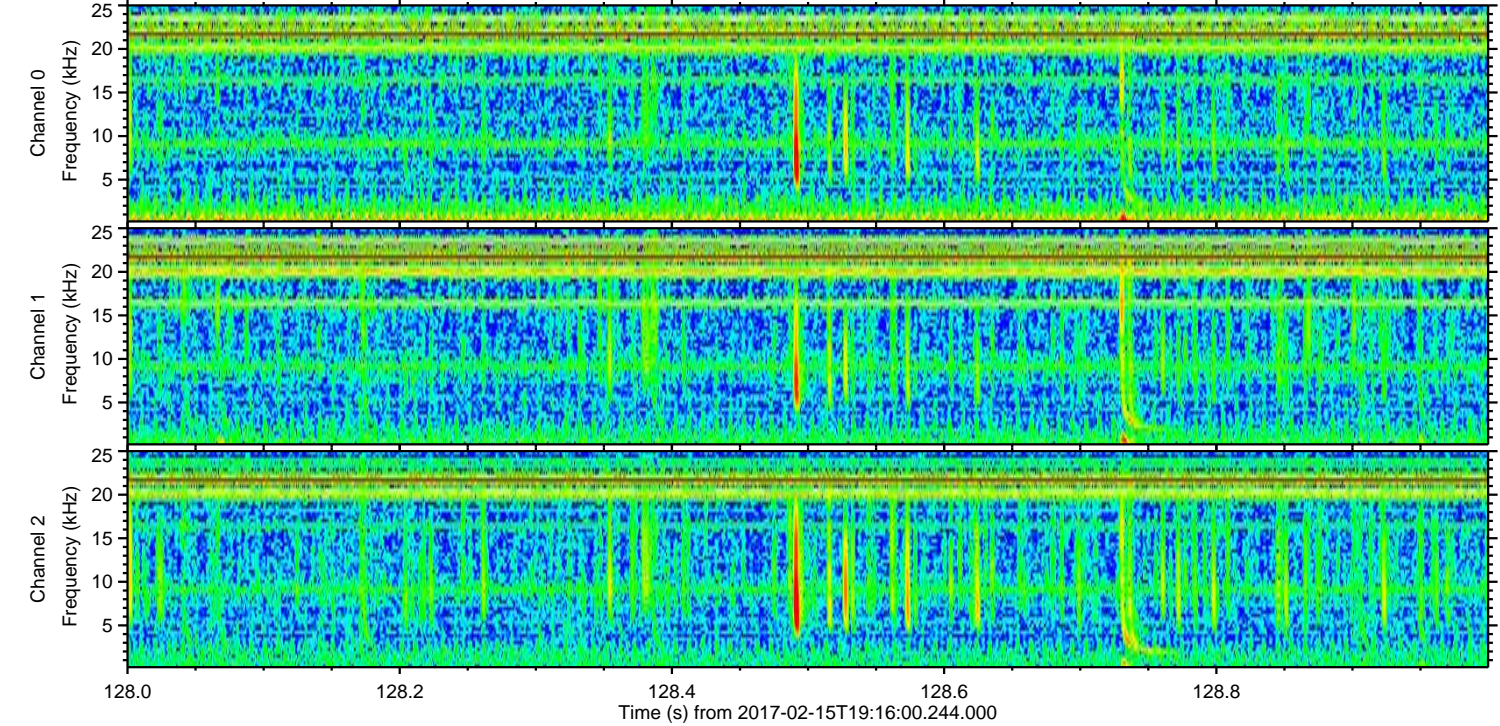
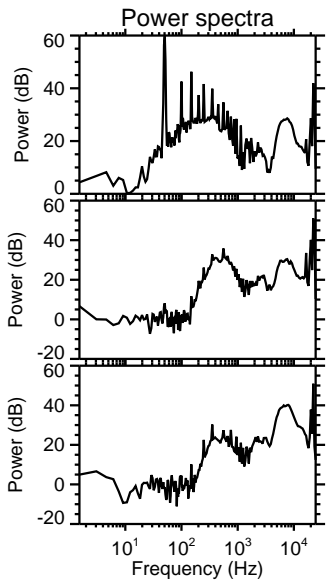
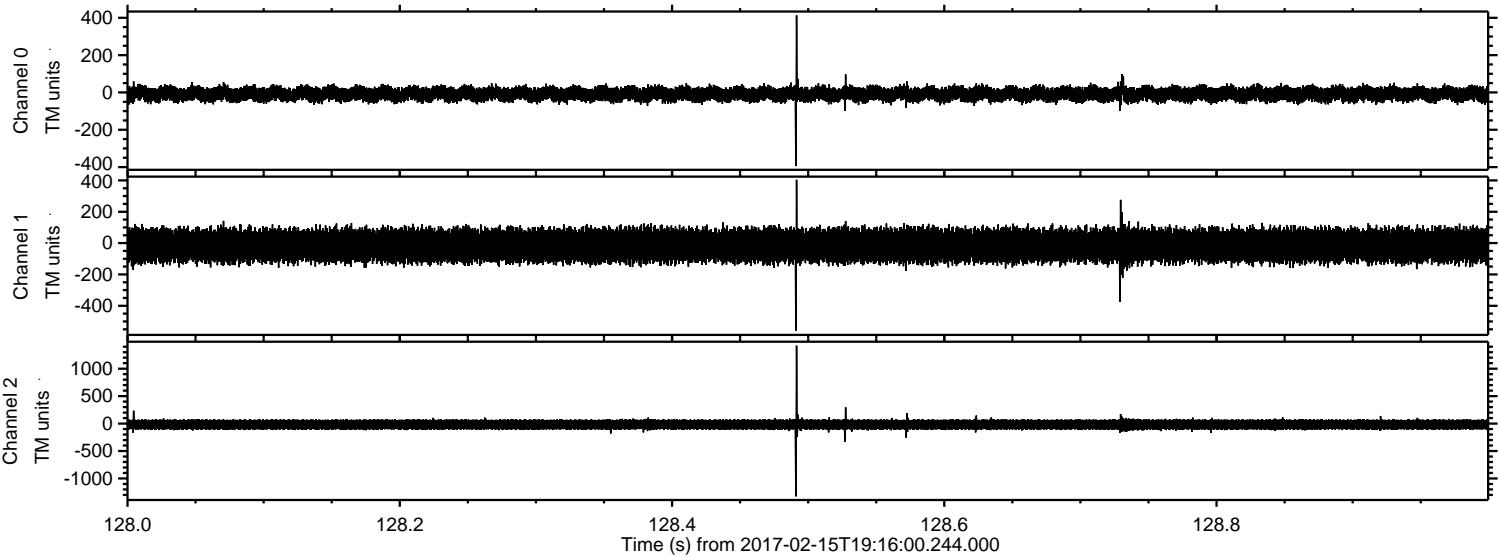


Processed Wed Feb 15 20:24:22 2017 by ELM ver.2012-10-06 from 001__elm20170215_191559__dat00.bin

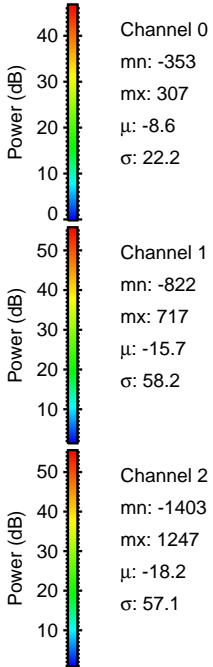
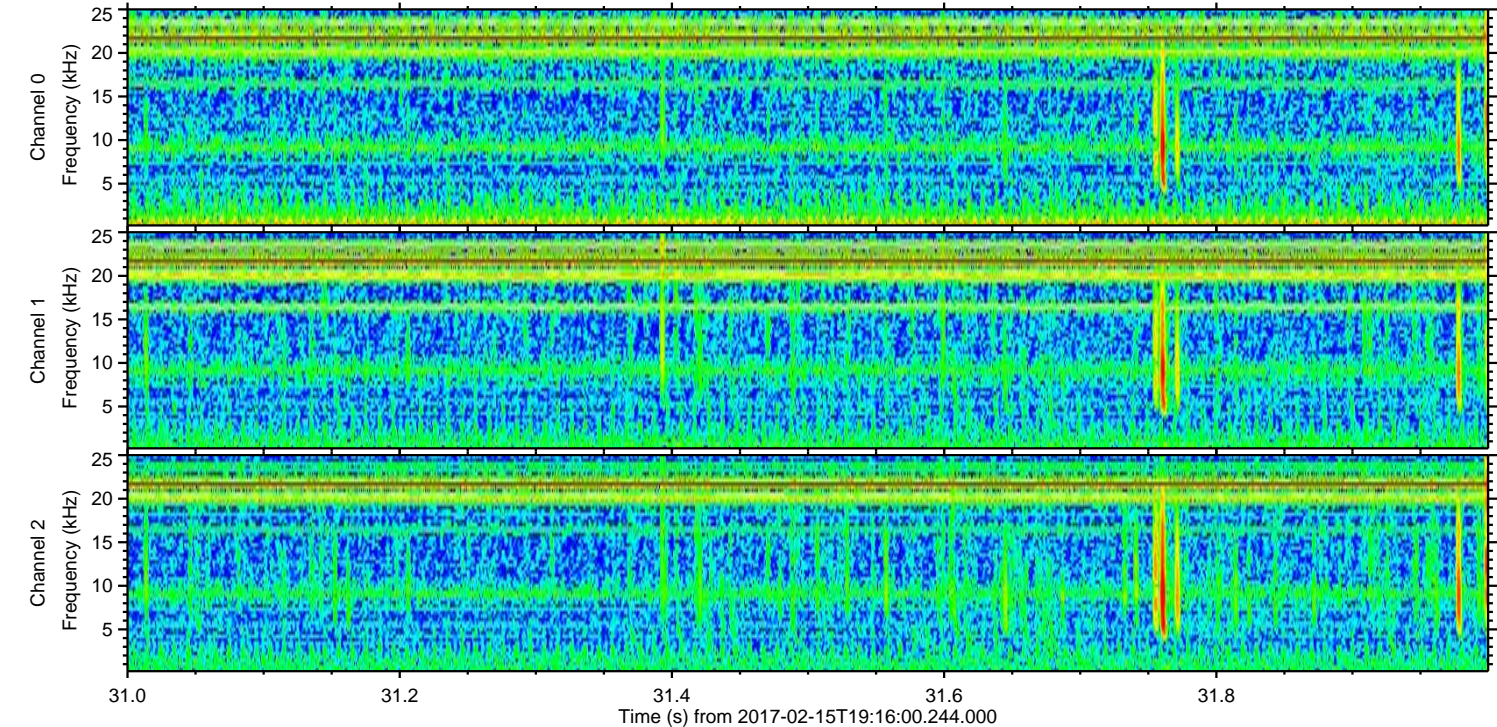
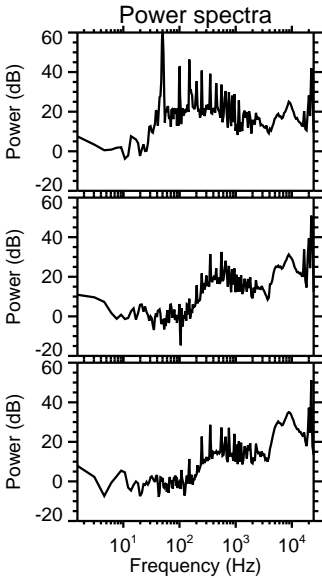
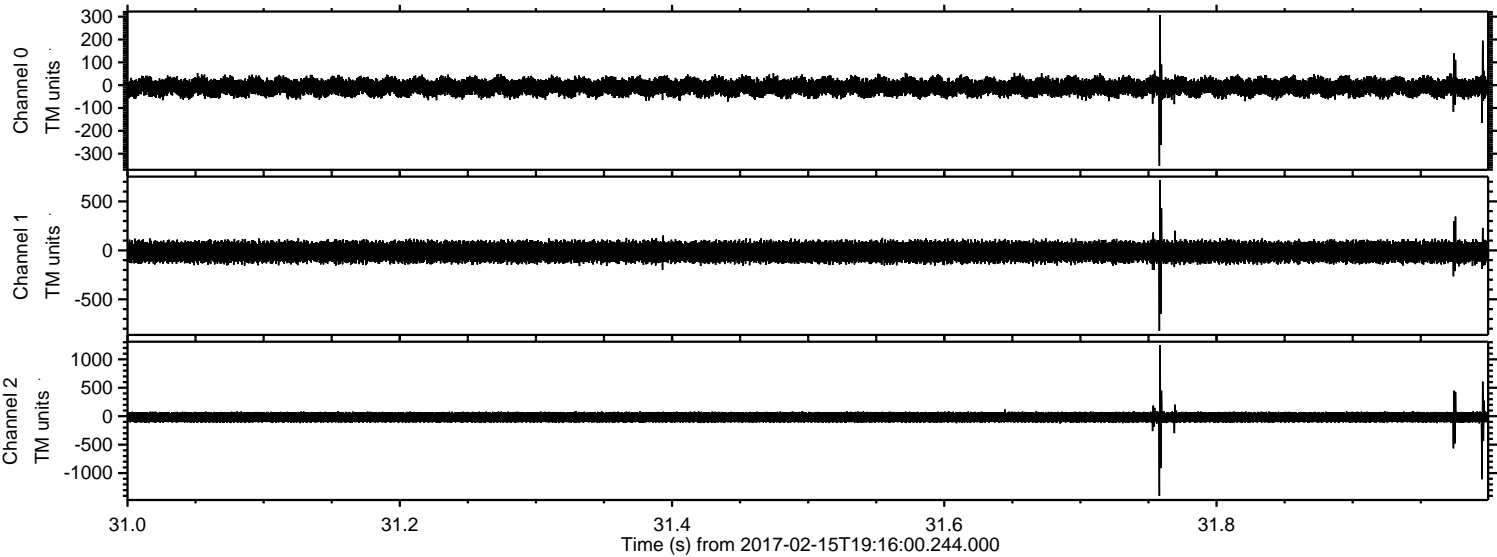


ELMAVAN 3D WAVEFORMS (Measured data sampled at 50 kHz) 51000 packets of 144 samples from 2017-02-15T19:16:00.244.000. Part 129/147

Processed Wed Feb 15 20:24:23 2017 by ELM ver.2012-10-06 from 001__elm20170215_191559__dat00.bin

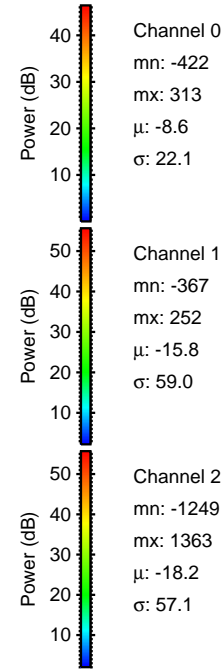
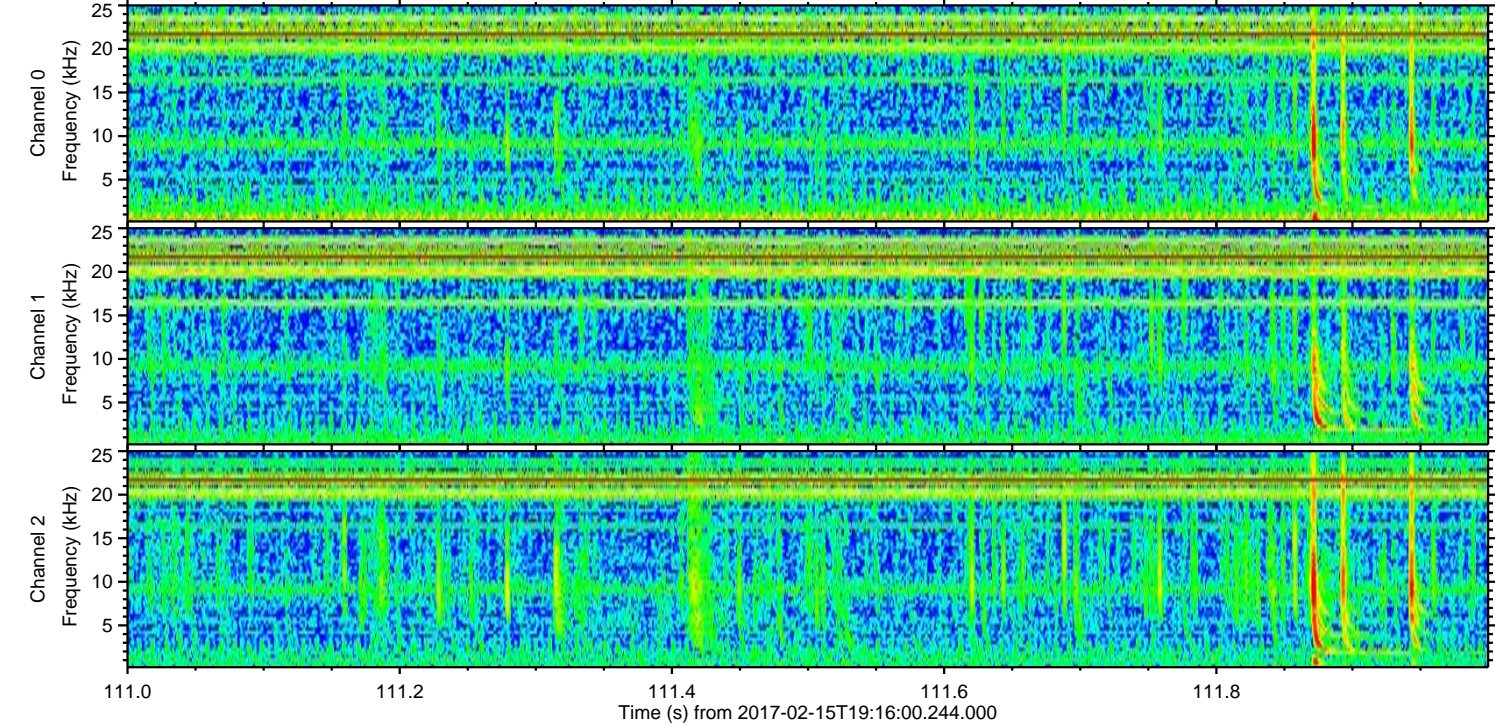
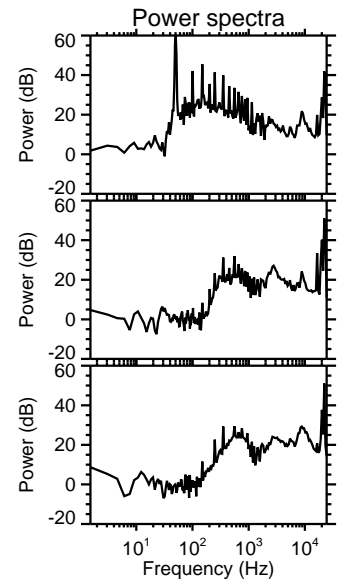
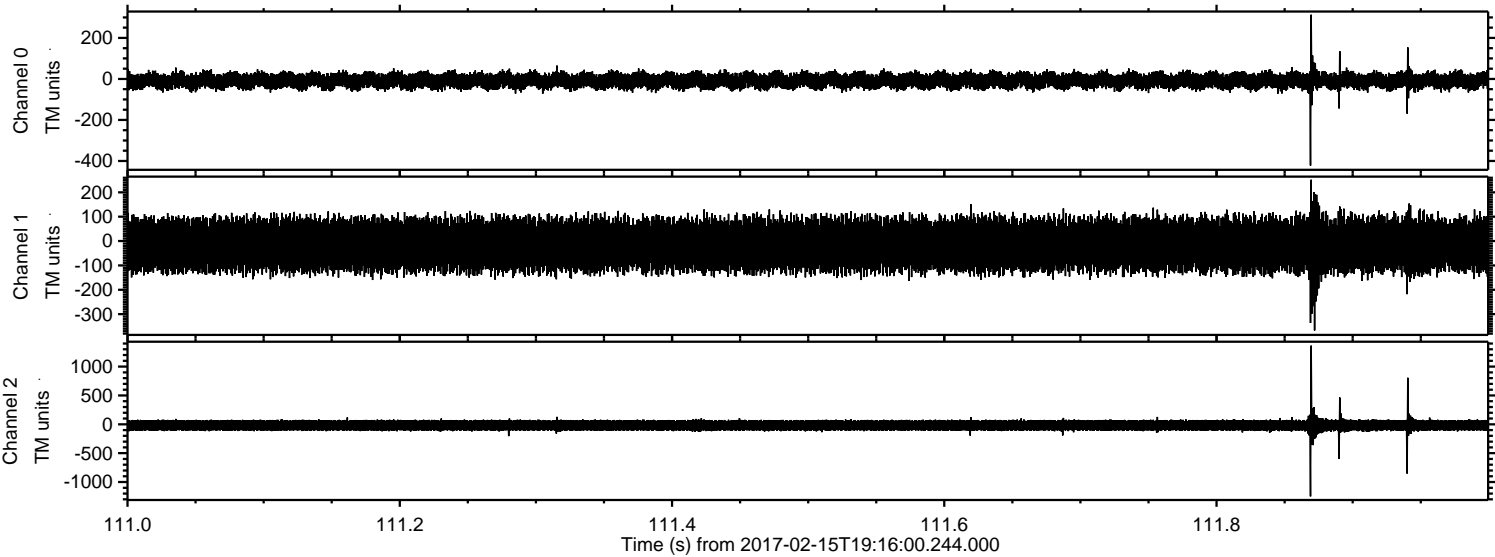


Processed Wed Feb 15 20:24:24 2017 by ELM ver.2012-10-06 from 001__elm20170215_191559__dat00.bin

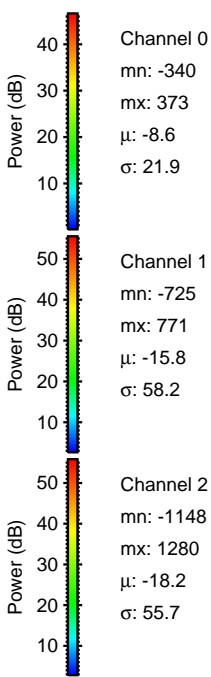
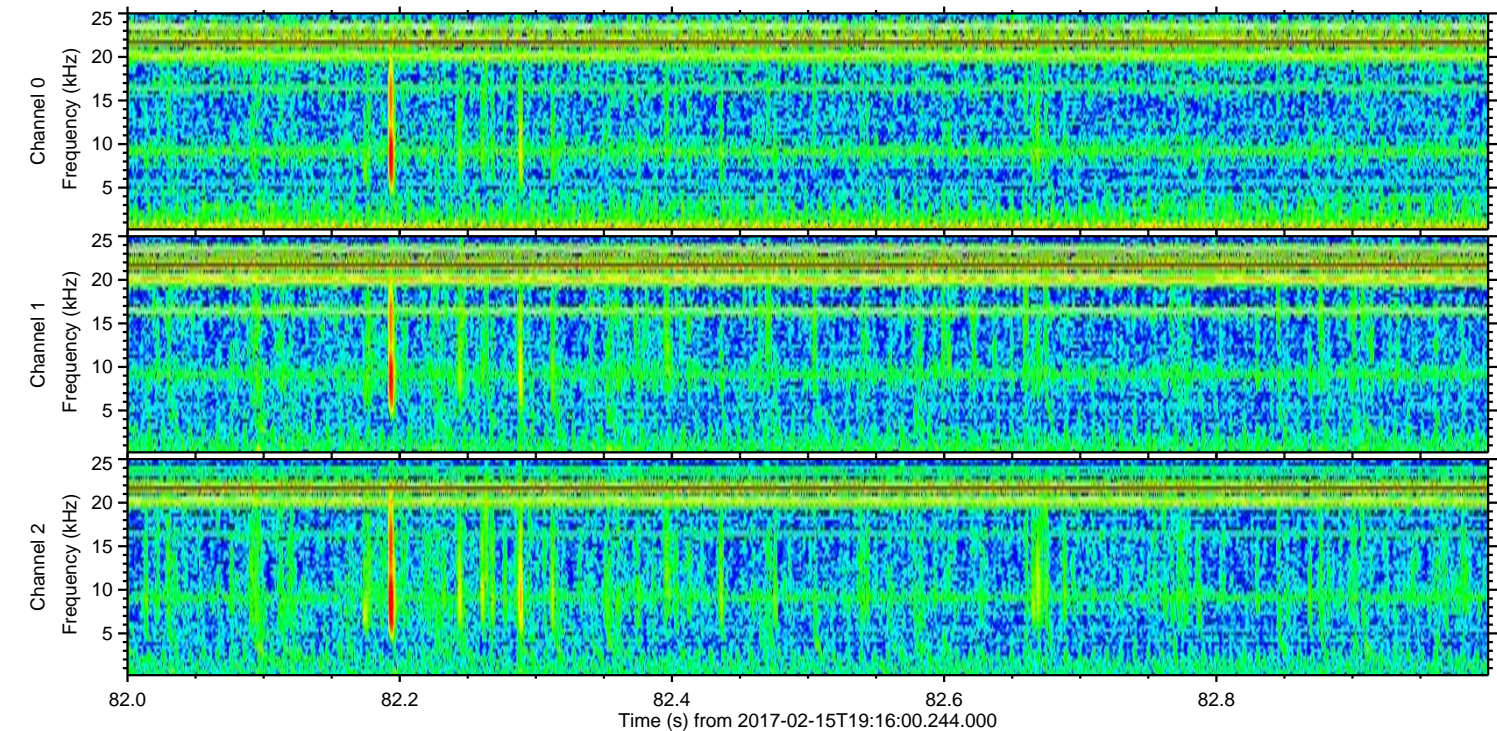
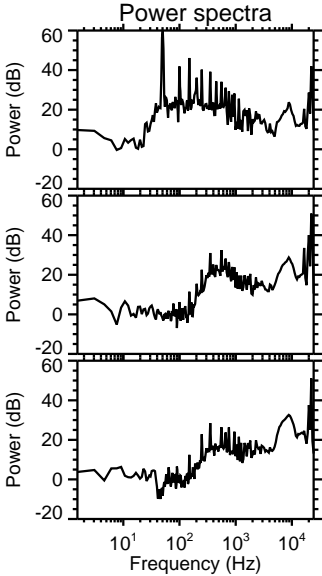
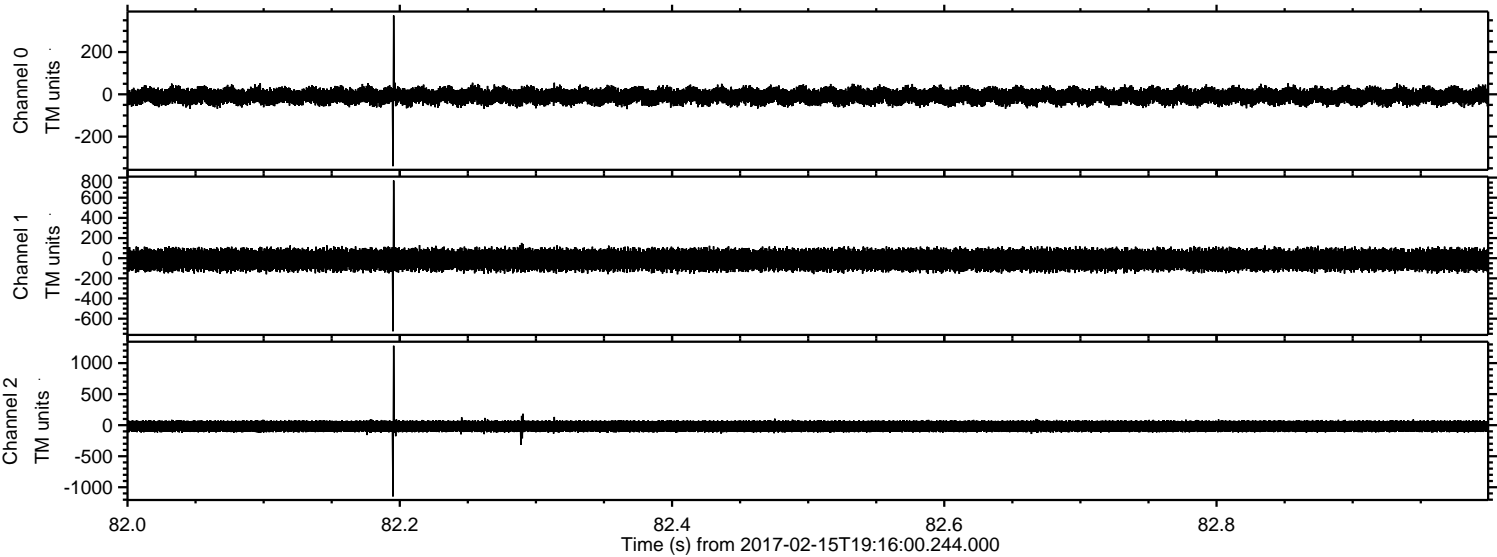


ELMAVAN 3D WAVEFORMS (Measured data sampled at 50 kHz) 51000 packets of 144 samples from 2017-02-15T19:16:00.244.000. Part 112/147

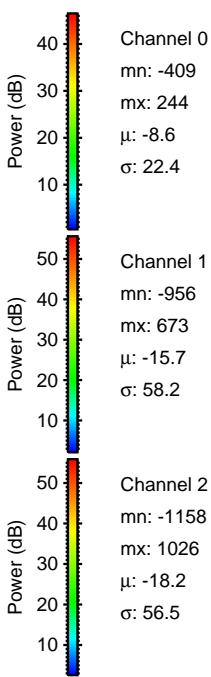
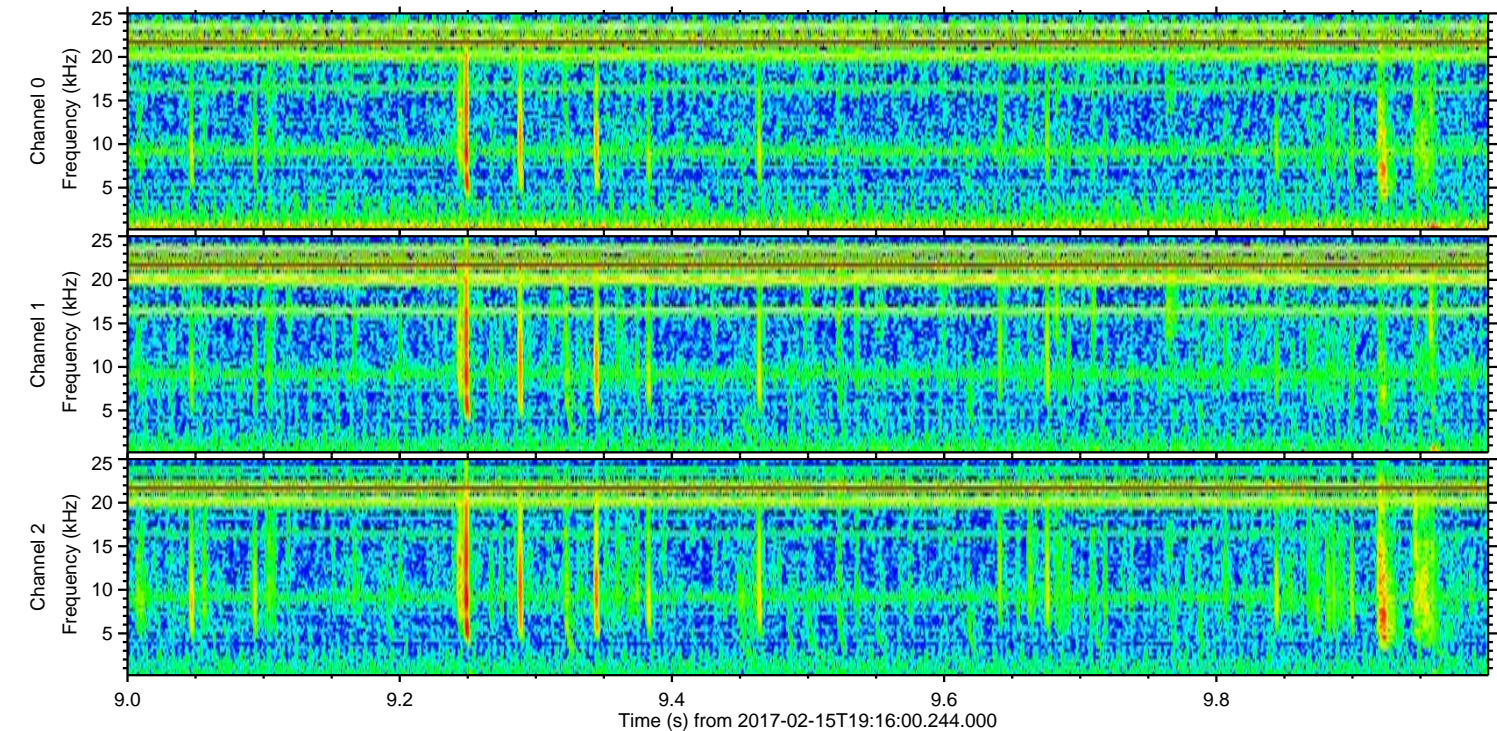
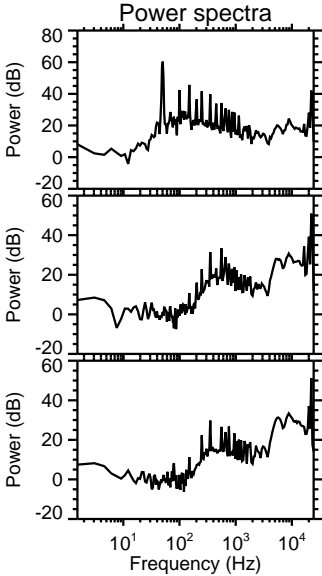
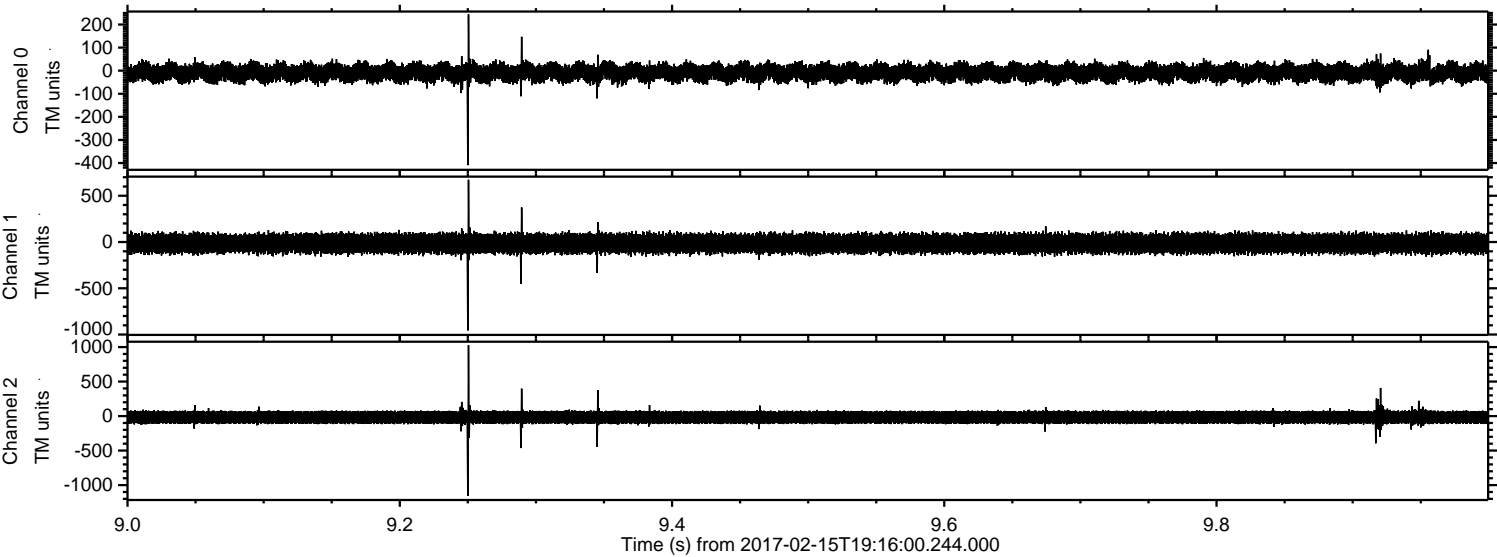
Processed Wed Feb 15 20:24:25 2017 by ELM ver.2012-10-06 from 001__elm20170215_191559__dat00.bin



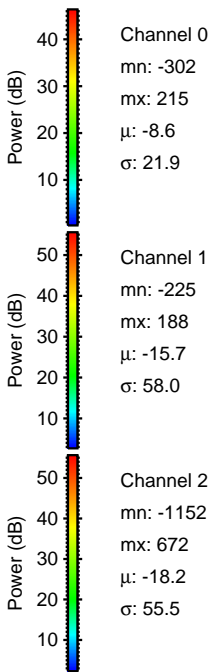
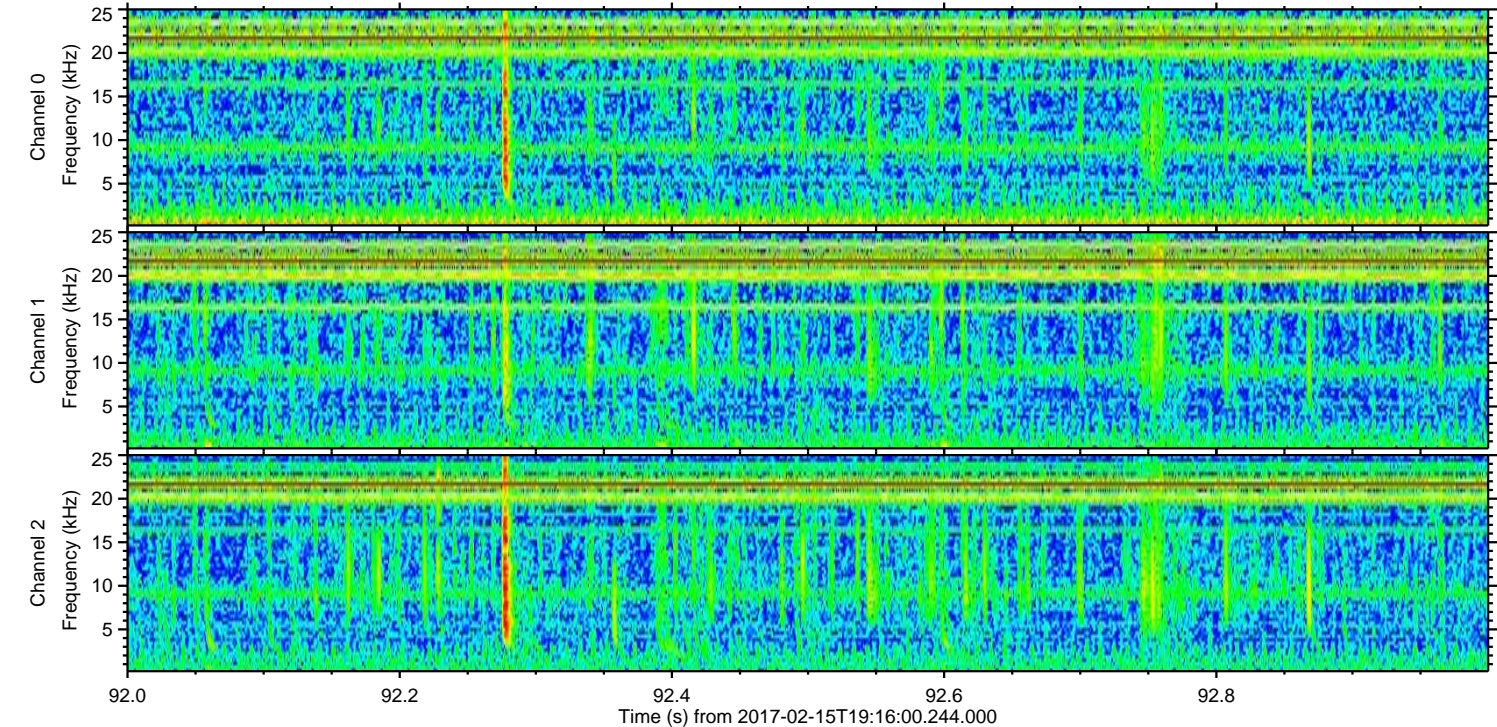
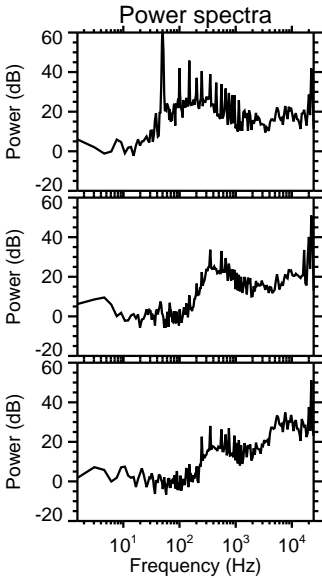
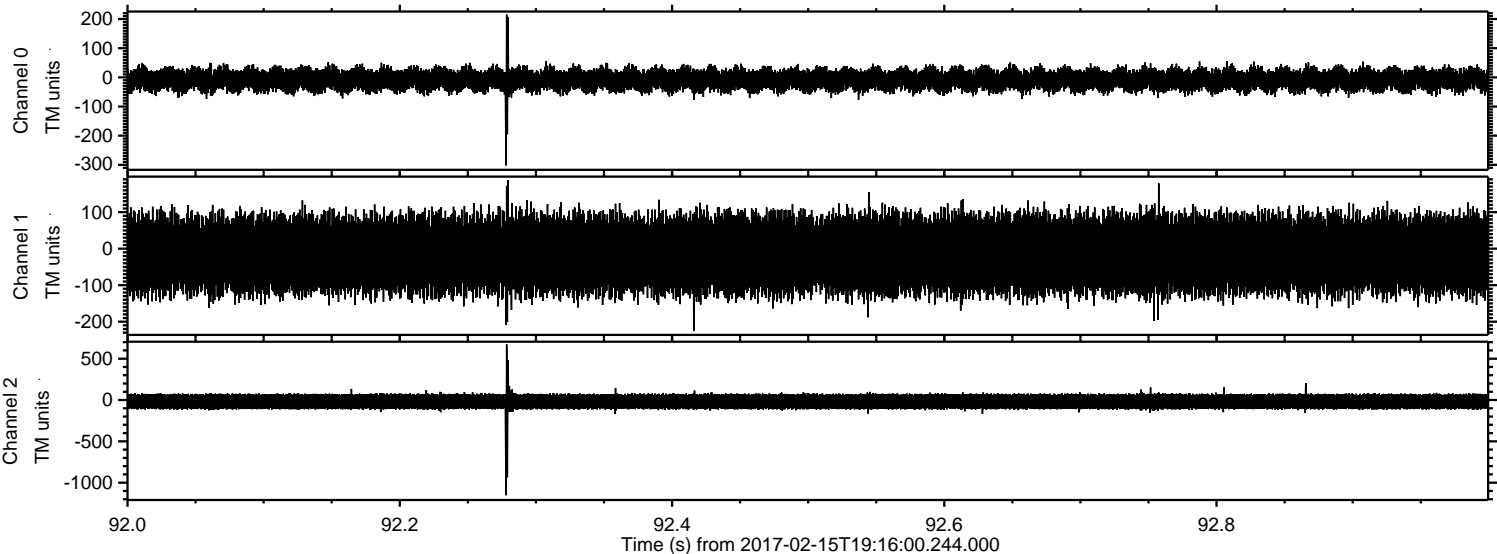
Processed Wed Feb 15 20:24:26 2017 by ELM ver.2012-10-06 from 001__elm20170215_191559__dat00.bin



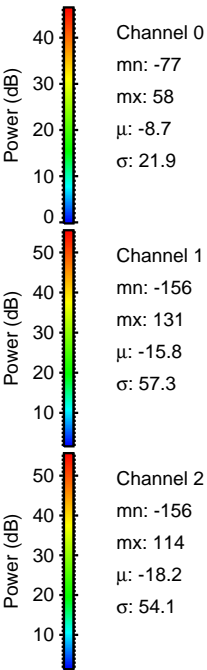
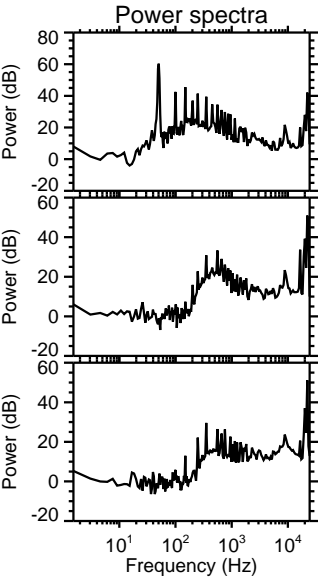
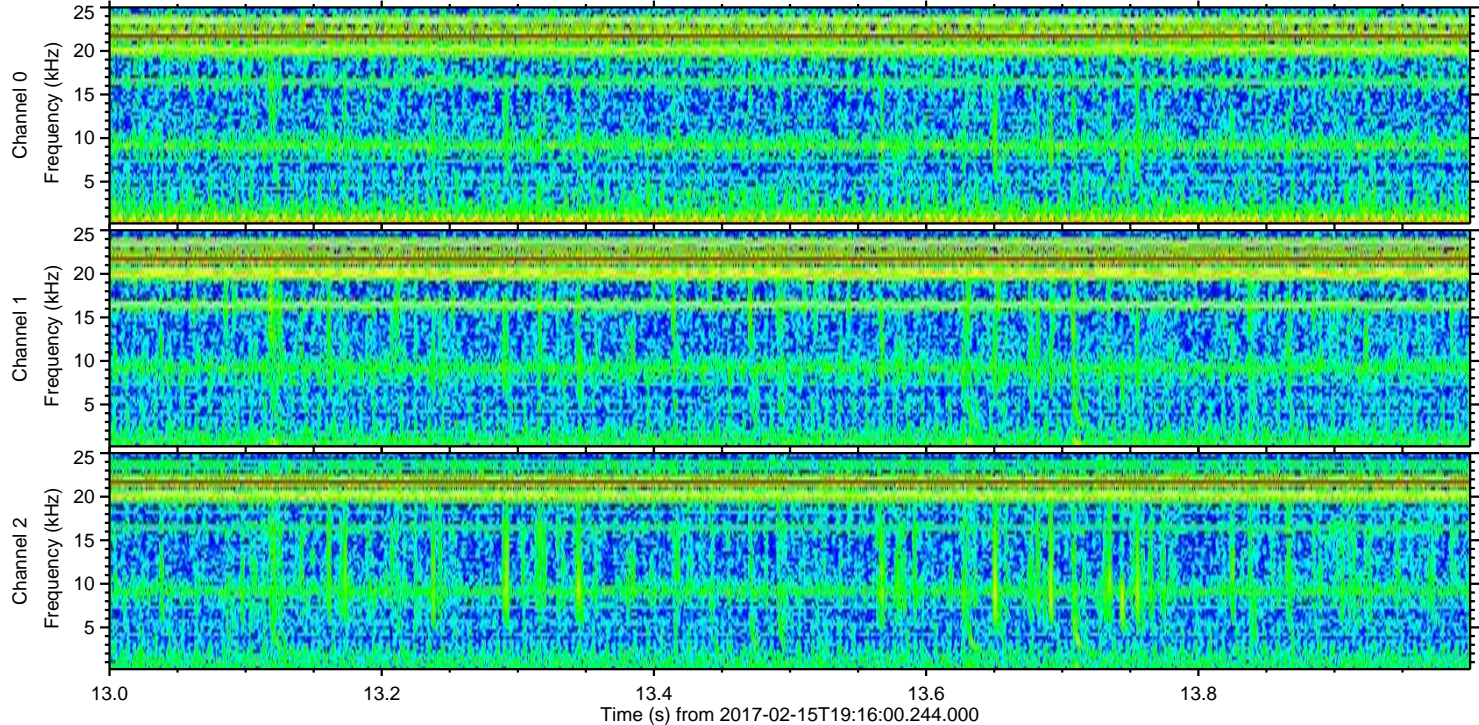
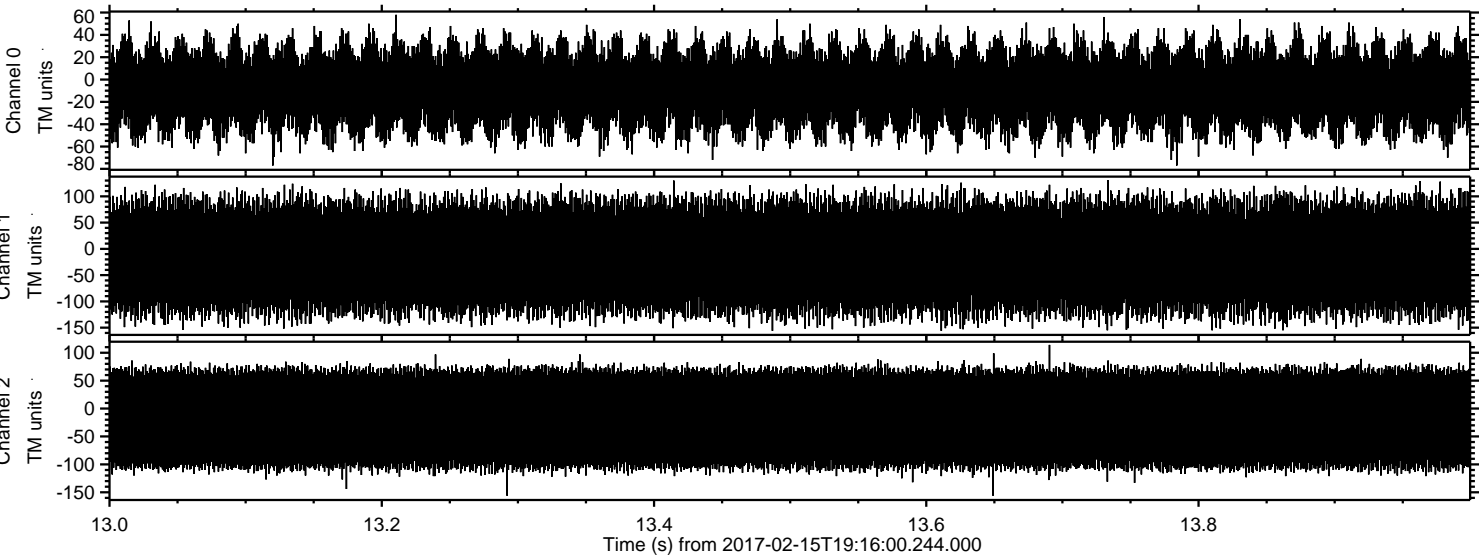
Processed Wed Feb 15 20:24:27 2017 by ELM ver.2012-10-06 from 001__elm20170215_191559__dat00.bin



Processed Wed Feb 15 20:24:28 2017 by ELM ver.2012-10-06 from 001__elm20170215_191559__dat00.bin



Processed Wed Feb 15 20:24:29 2017 by ELM ver.2012-10-06 from 001__elm20170215_191559__dat00.bin



Channel 0
mn: -77
mx: 58
 μ : -8.7
 σ : 21.9

Channel 1
mn: -156
mx: 131
 μ : -15.8
 σ : 57.3

Channel 2
mn: -156
mx: 114
 μ : -18.2
 σ : 54.1