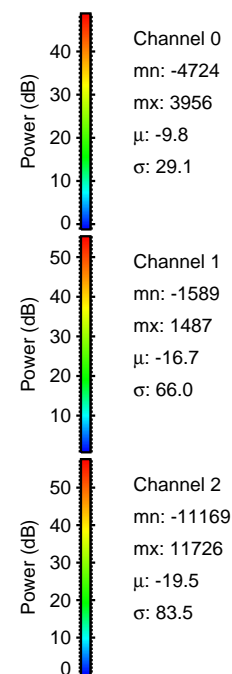
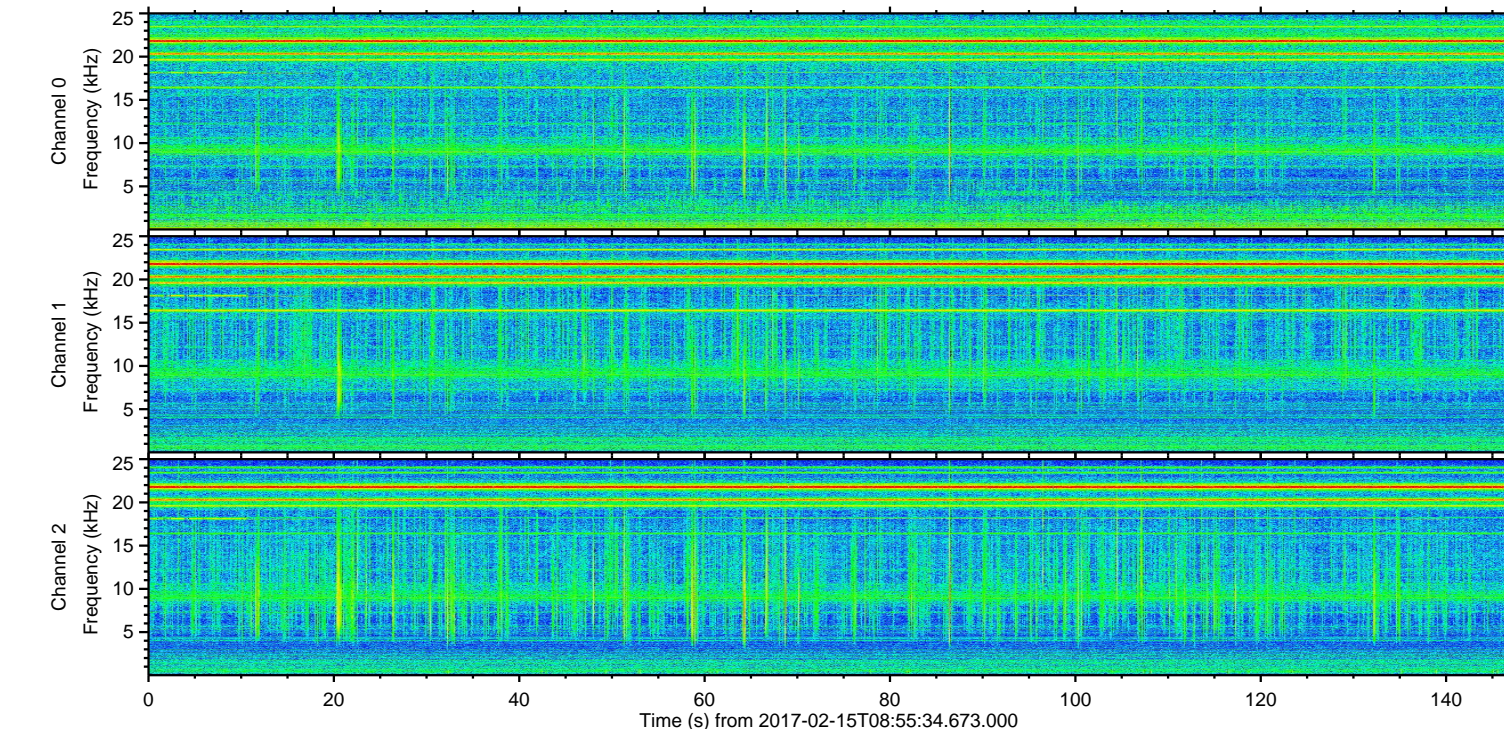
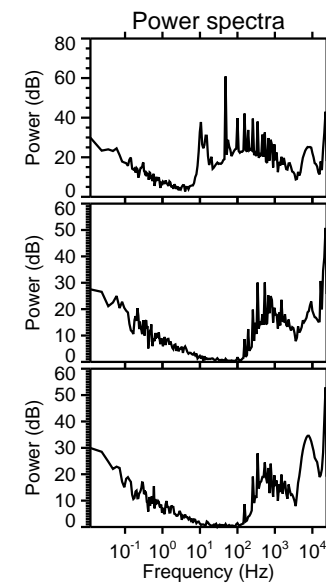
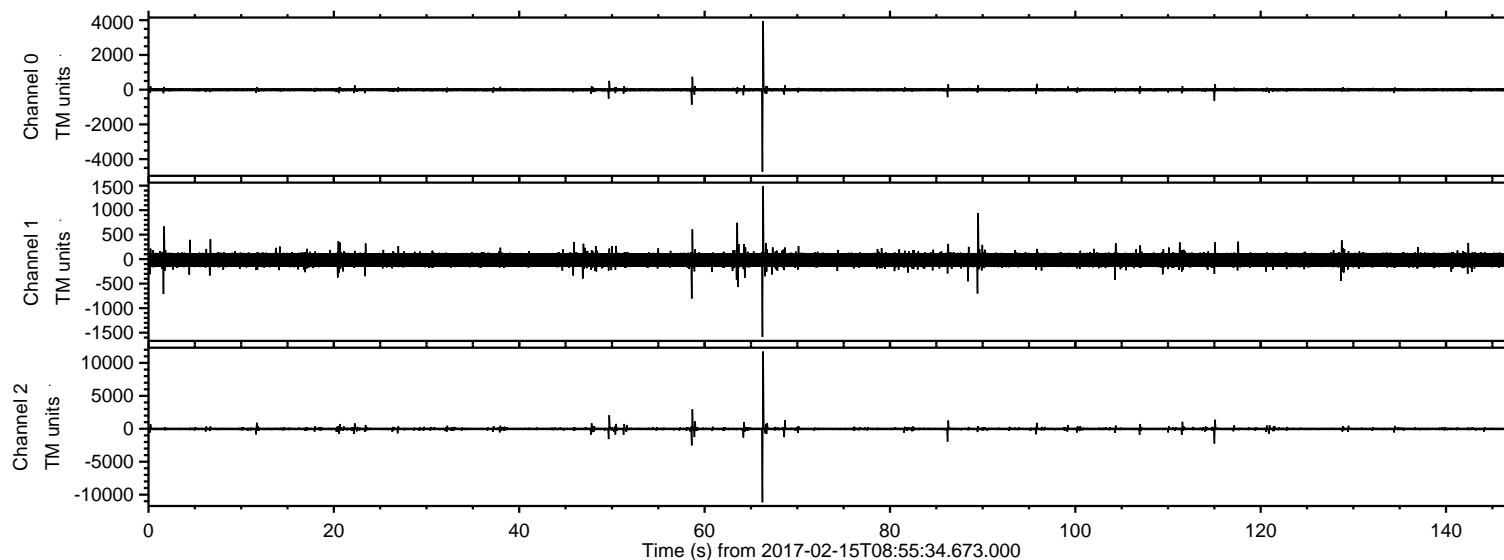


# ELMAVAN 3D WAVEFORMS (Measured data sampled at 50 kHz) 51000 packets of 144 samples from 2017-02-15T08:55:34.673.000.

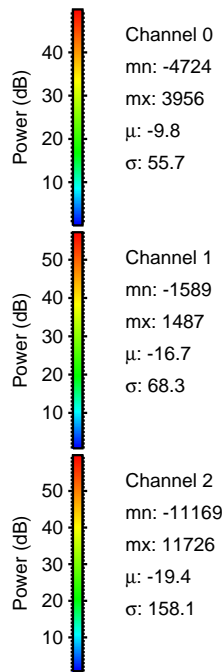
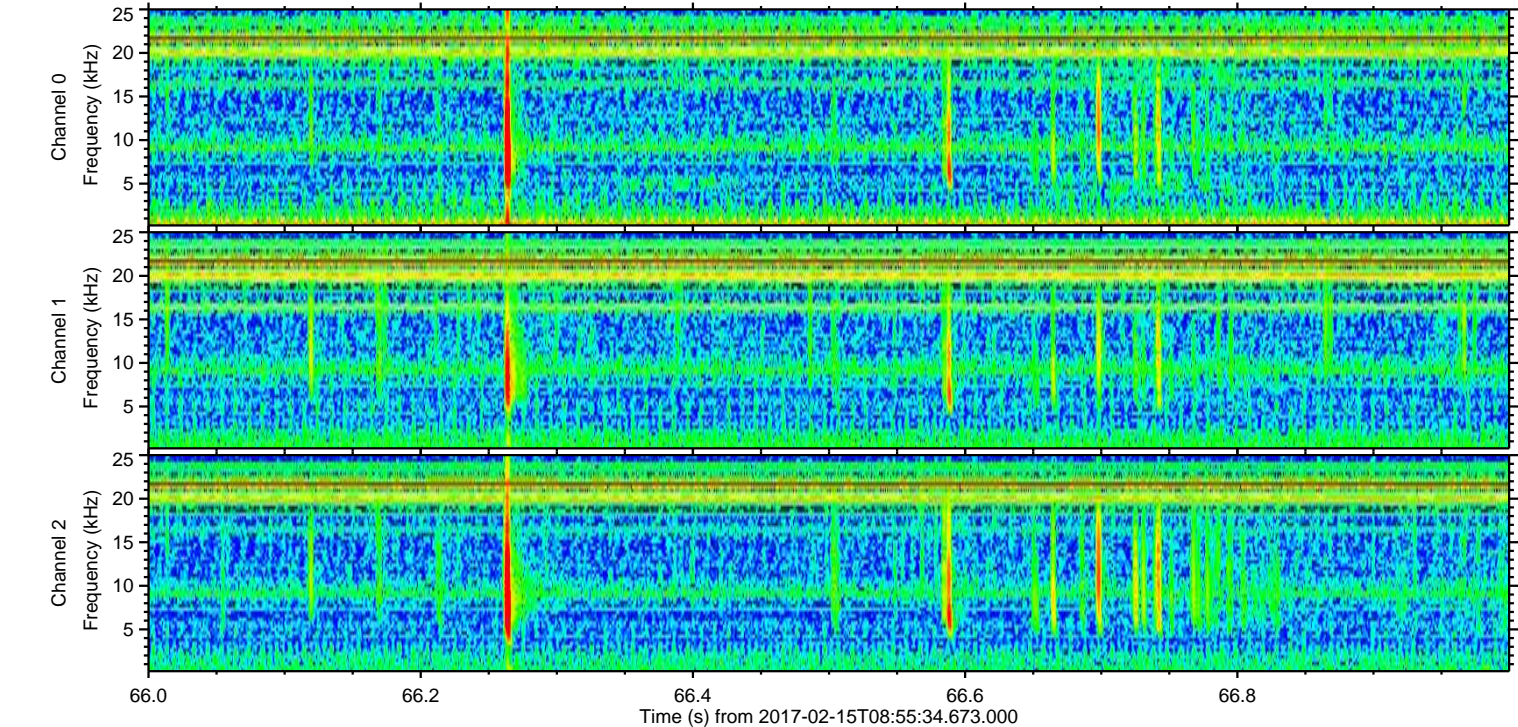
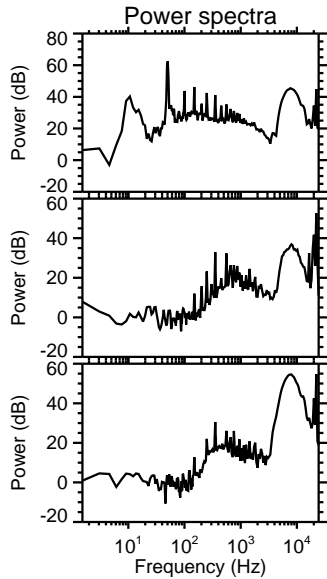
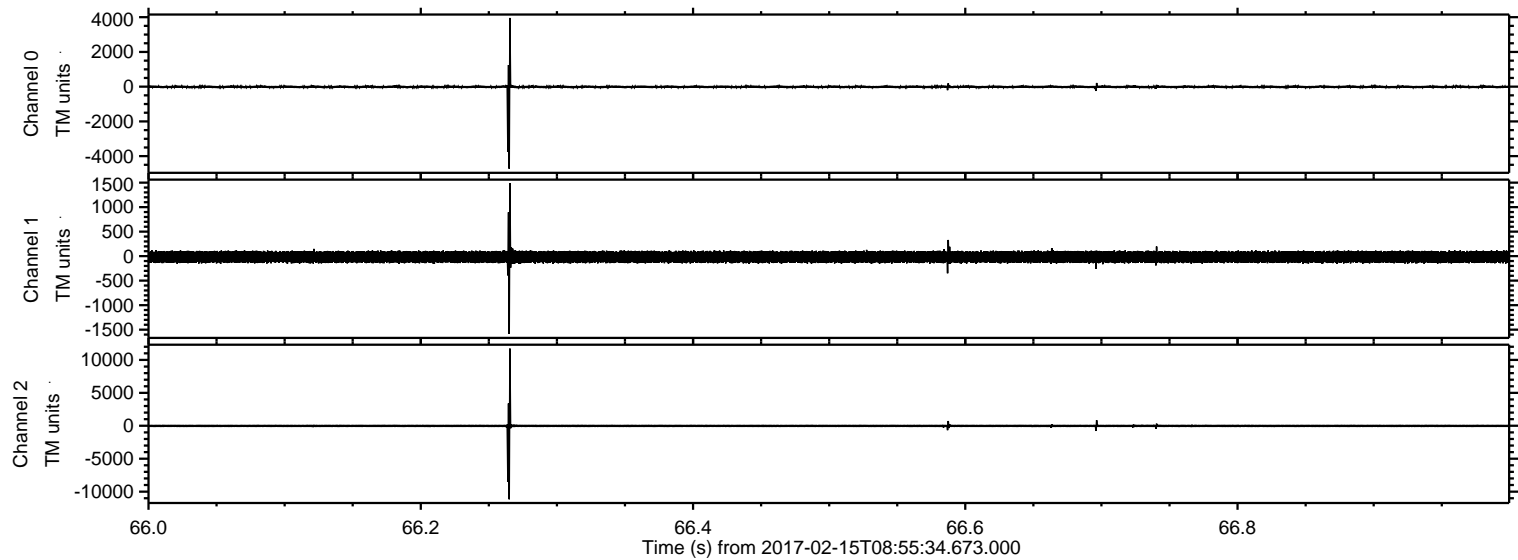
Processed Wed Feb 15 10:03:07 2017 by ELM ver.2012-10-06 from 001\_\_elm20170215\_085533\_\_dat00.bin





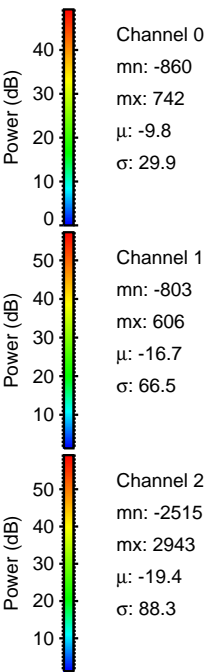
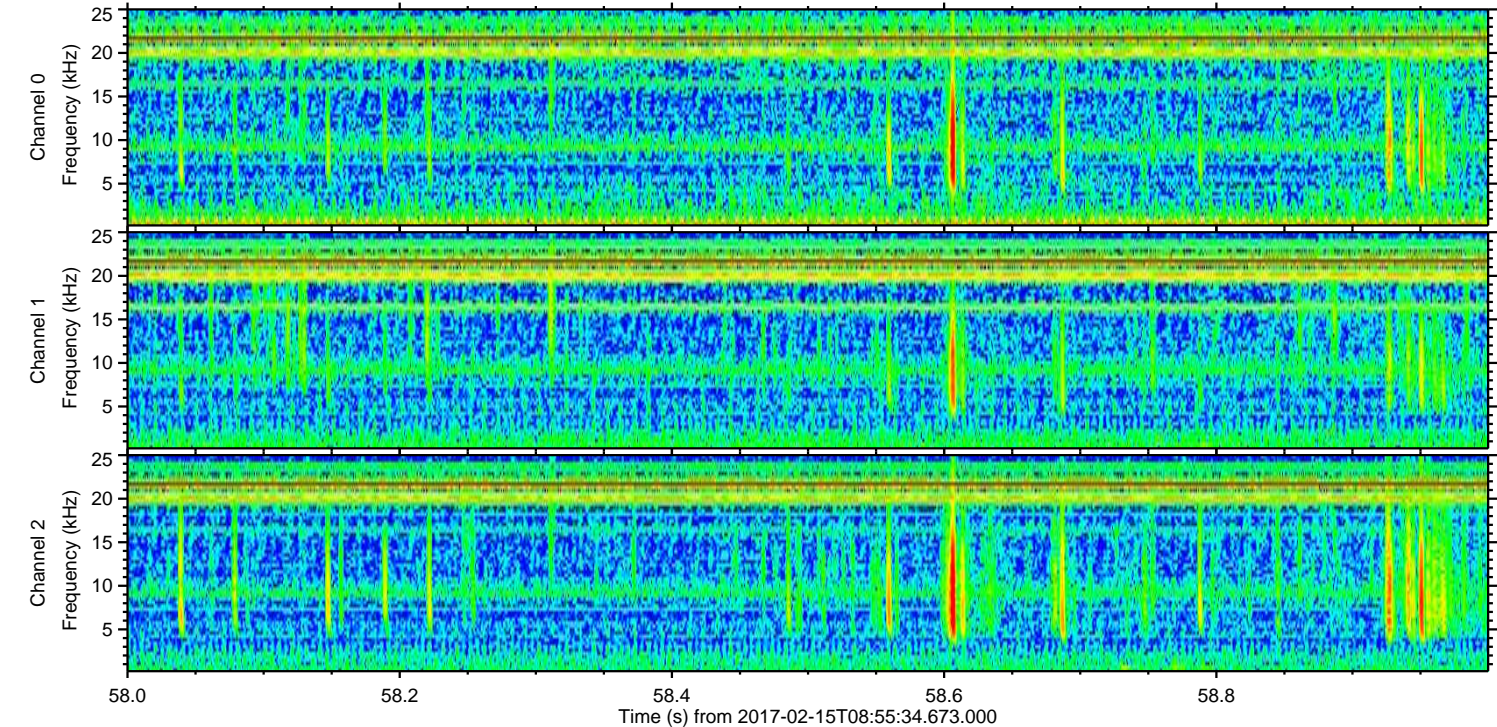
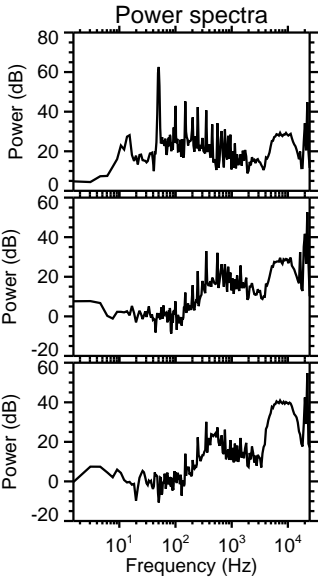
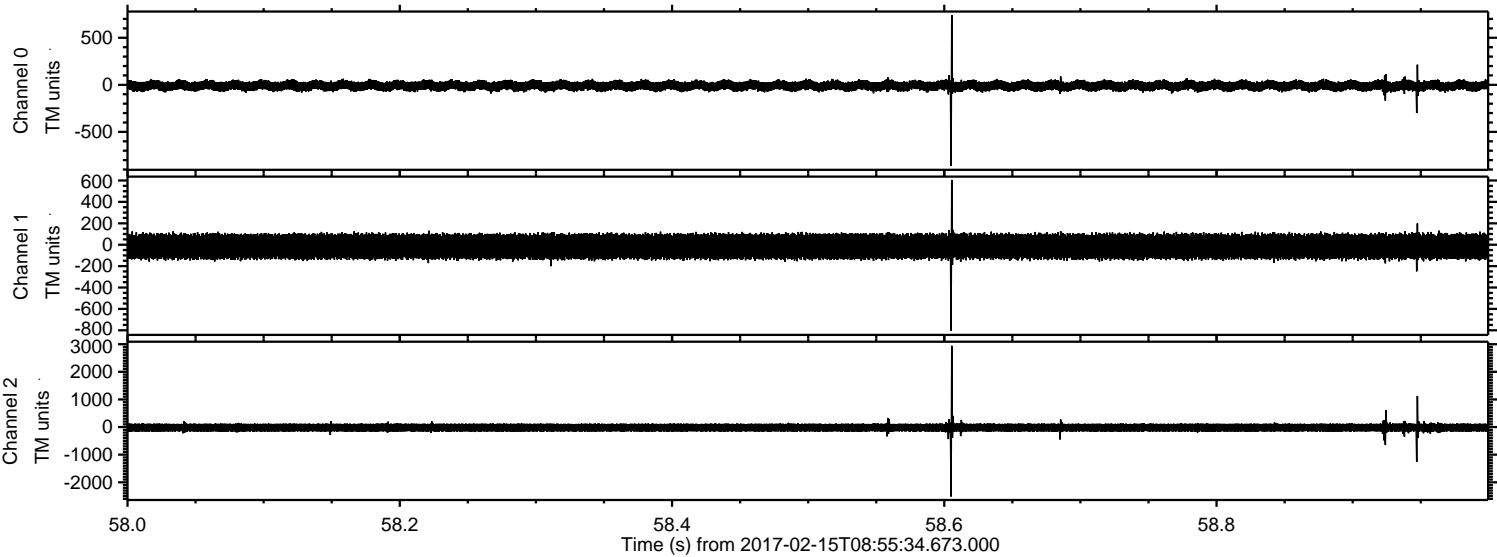
ELMAVAN 3D WAVEFORMS (Measured data sampled at 50 kHz) 51000 packets of 144 samples from 2017-02-15T08:55:34.673.000. Part 67/147

Processed Wed Feb 15 10:03:19 2017 by ELM ver.2012-10-06 from 001\_\_elm20170215\_085533\_\_dat00.bin





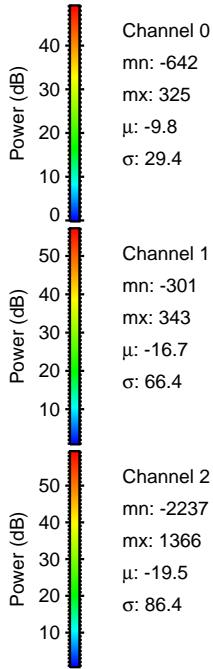
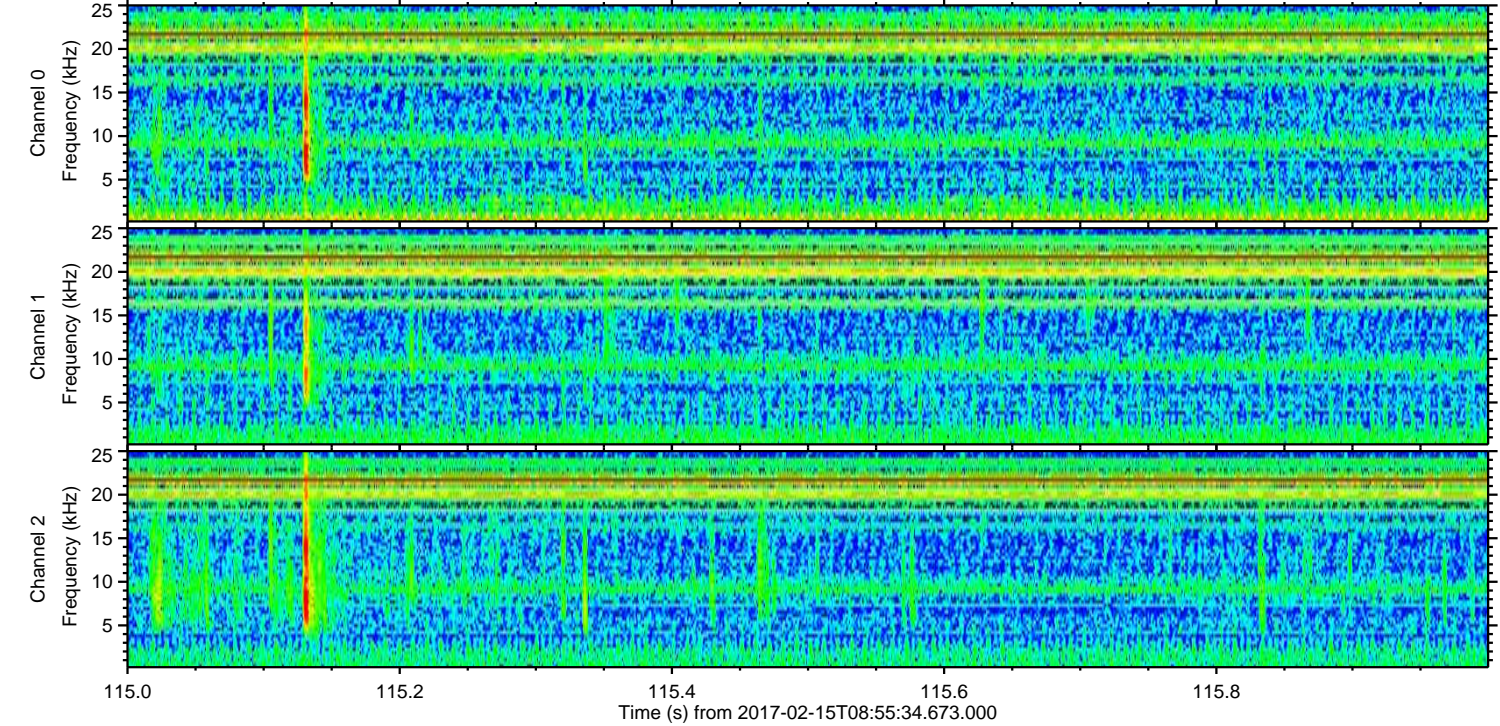
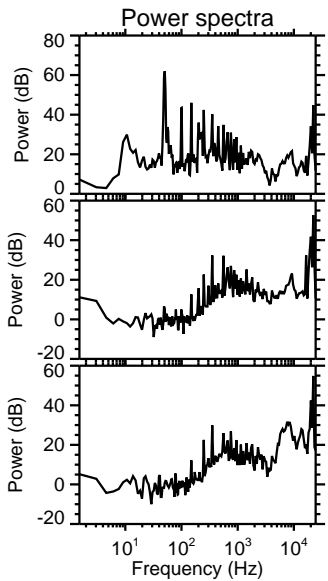
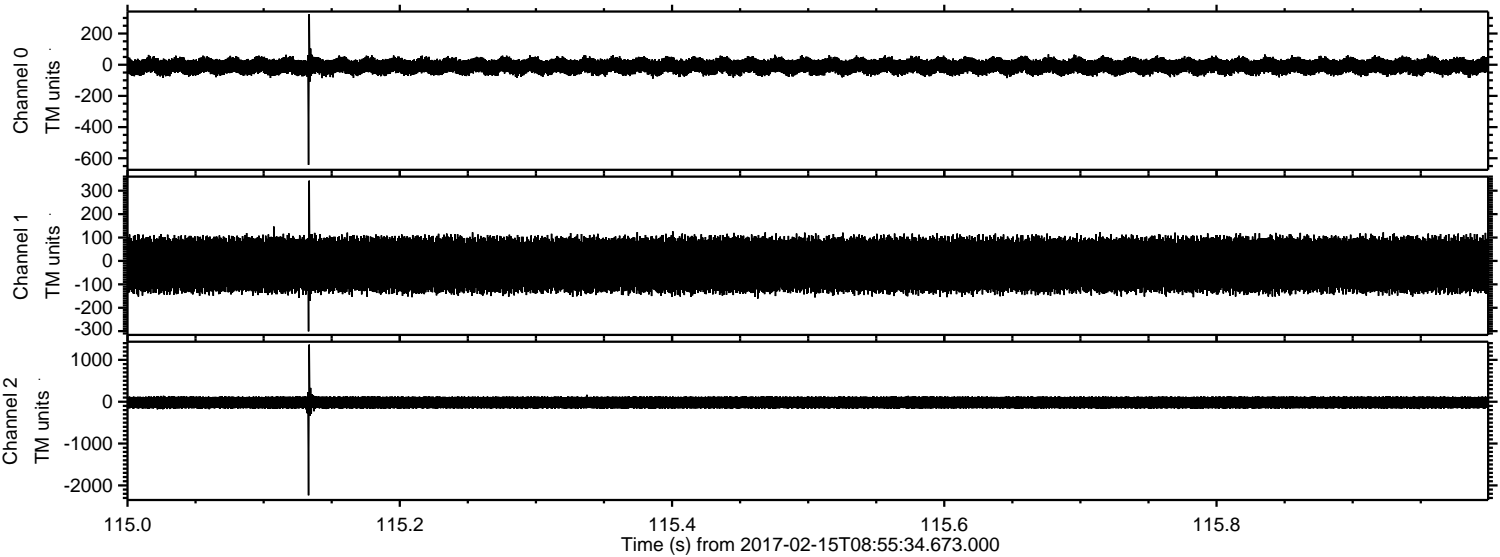
Processed Wed Feb 15 10:03:20 2017 by ELM ver.2012-10-06 from 001\_\_elm20170215\_085533\_\_dat00.bin





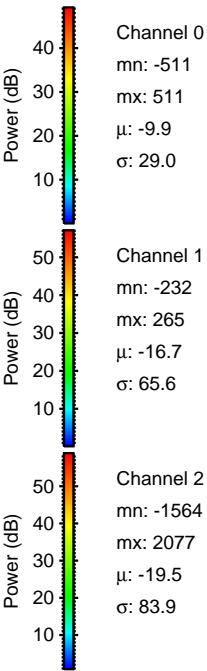
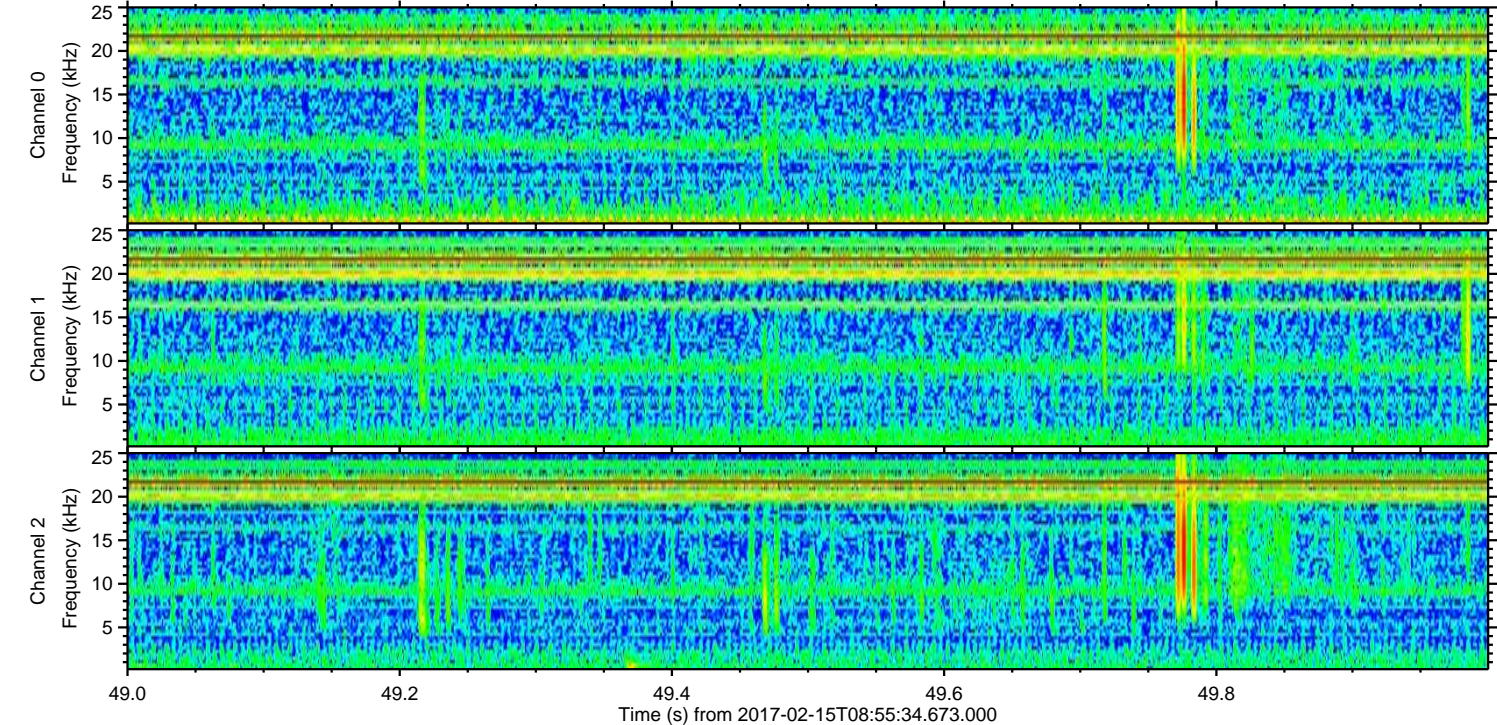
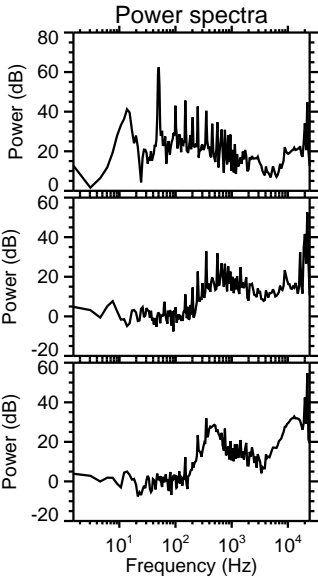
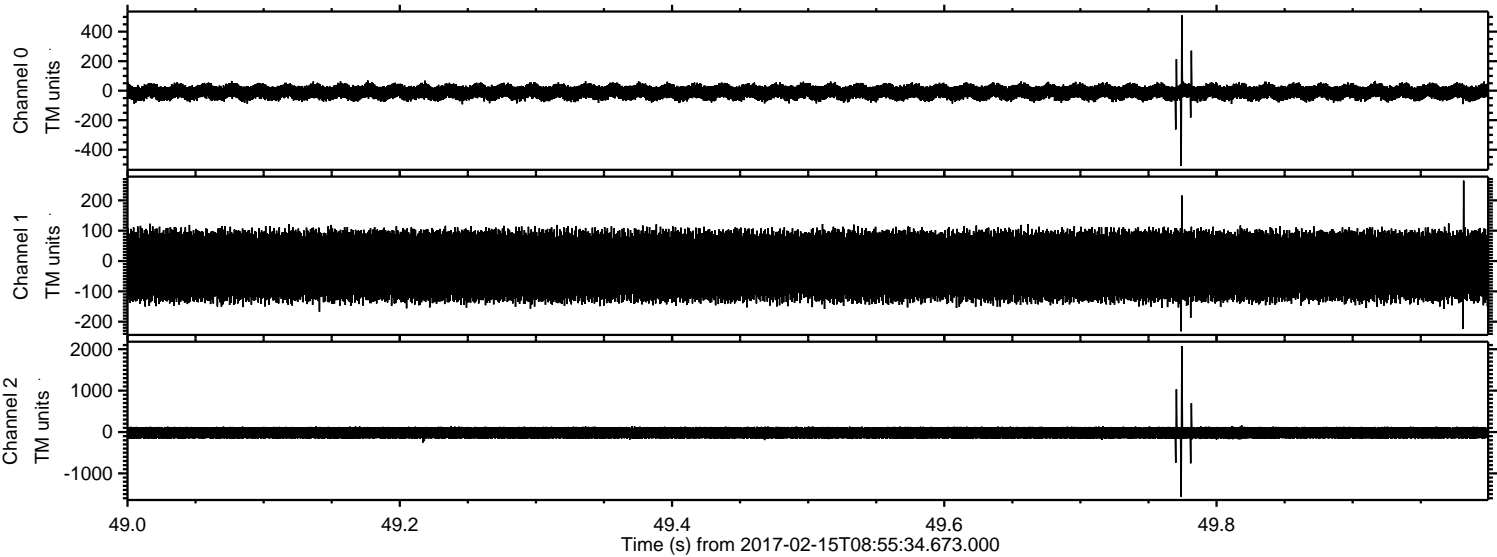
ELMAVAN 3D WAVEFORMS (Measured data sampled at 50 kHz) 51000 packets of 144 samples from 2017-02-15T08:55:34.673.000. Part 116/147

Processed Wed Feb 15 10:03:21 2017 by ELM ver.2012-10-06 from 001\_\_elm20170215\_085533\_\_dat00.bin



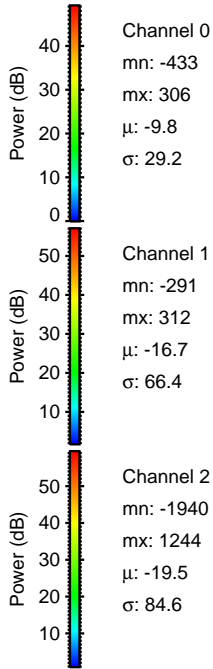
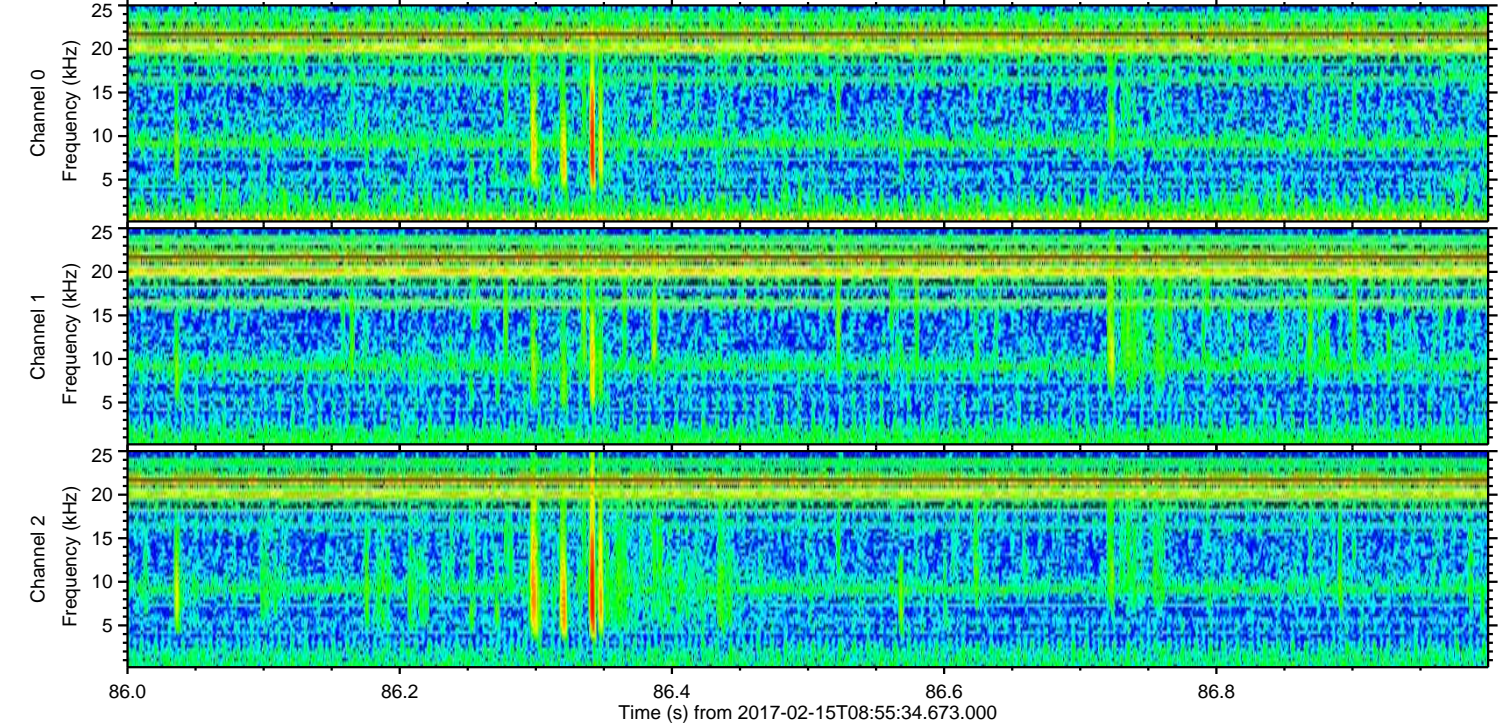
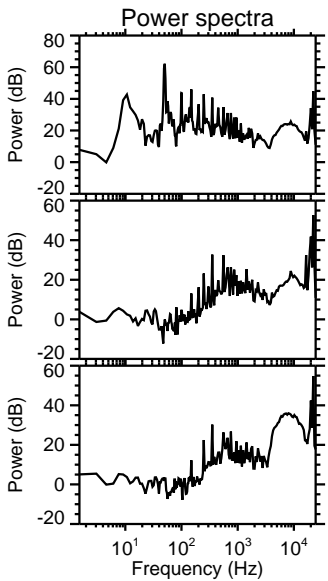
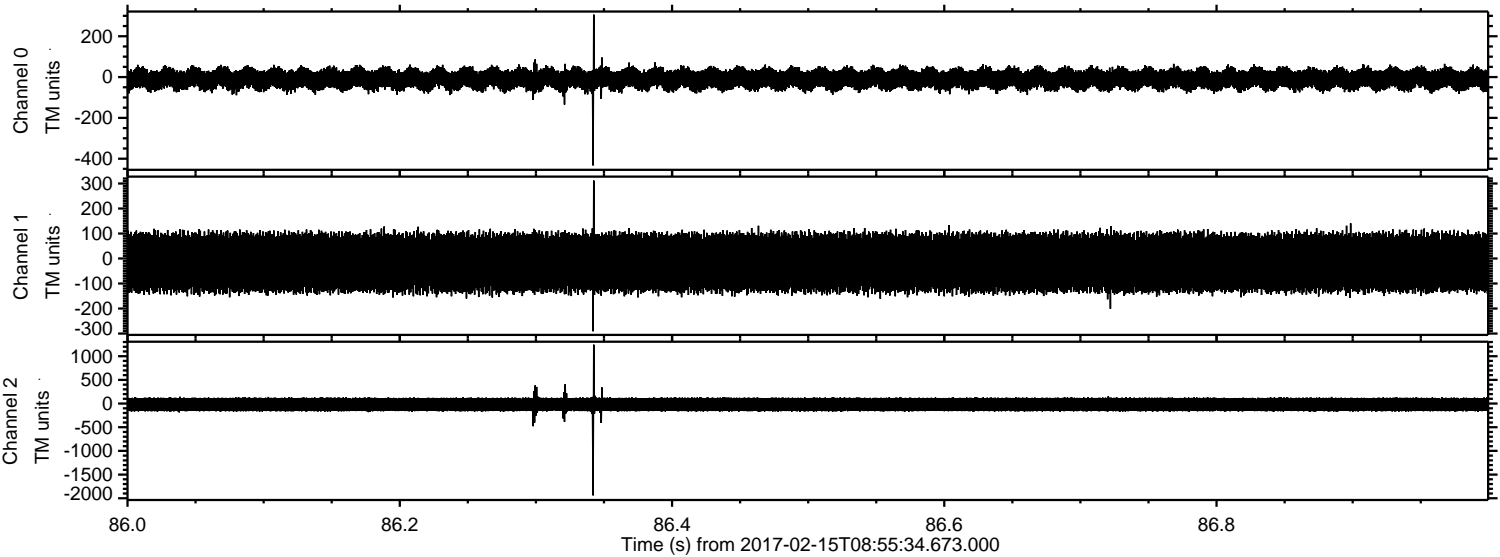


Processed Wed Feb 15 10:03:22 2017 by ELM ver.2012-10-06 from 001\_\_elm20170215\_085533\_\_dat00.bin



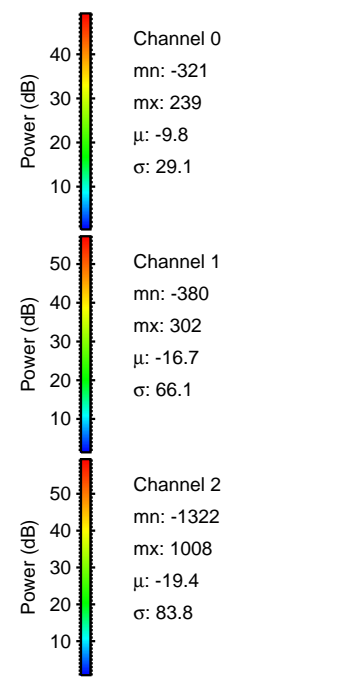
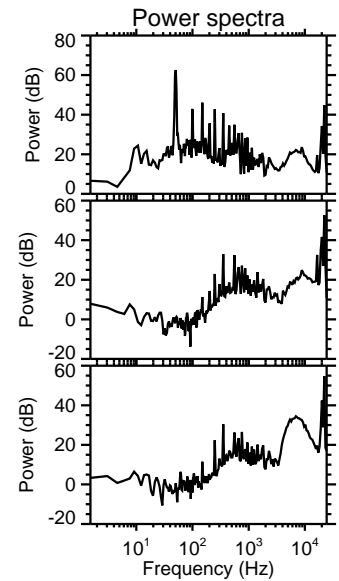
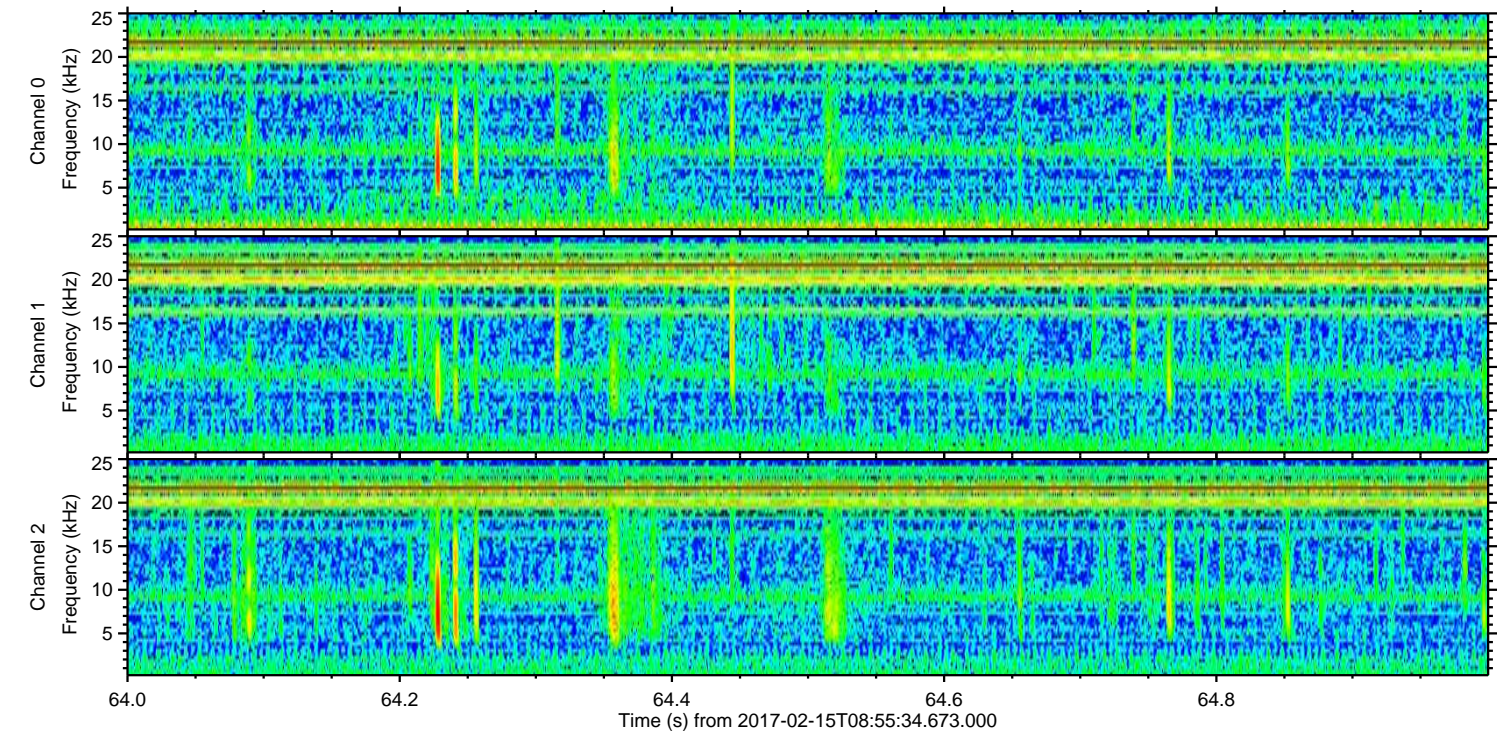
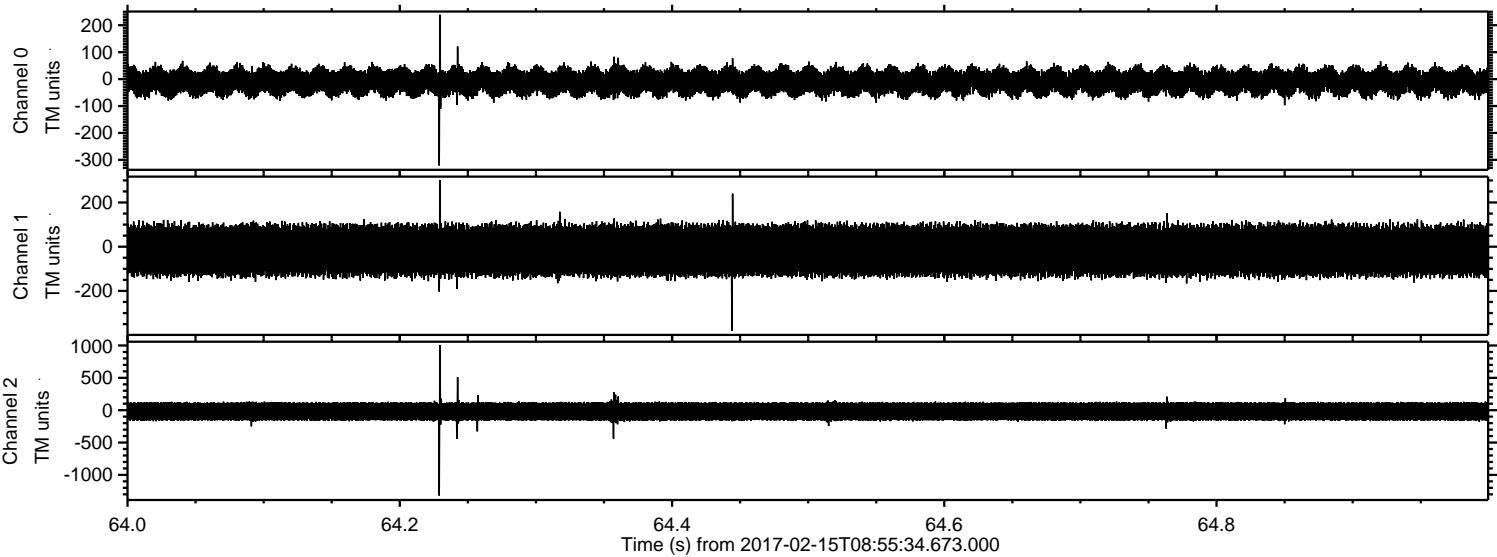


Processed Wed Feb 15 10:03:23 2017 by ELM ver.2012-10-06 from 001\_\_elm20170215\_085533\_\_dat00.bin



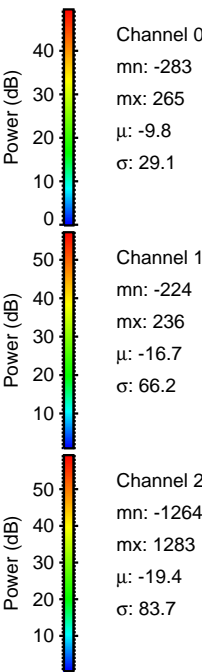
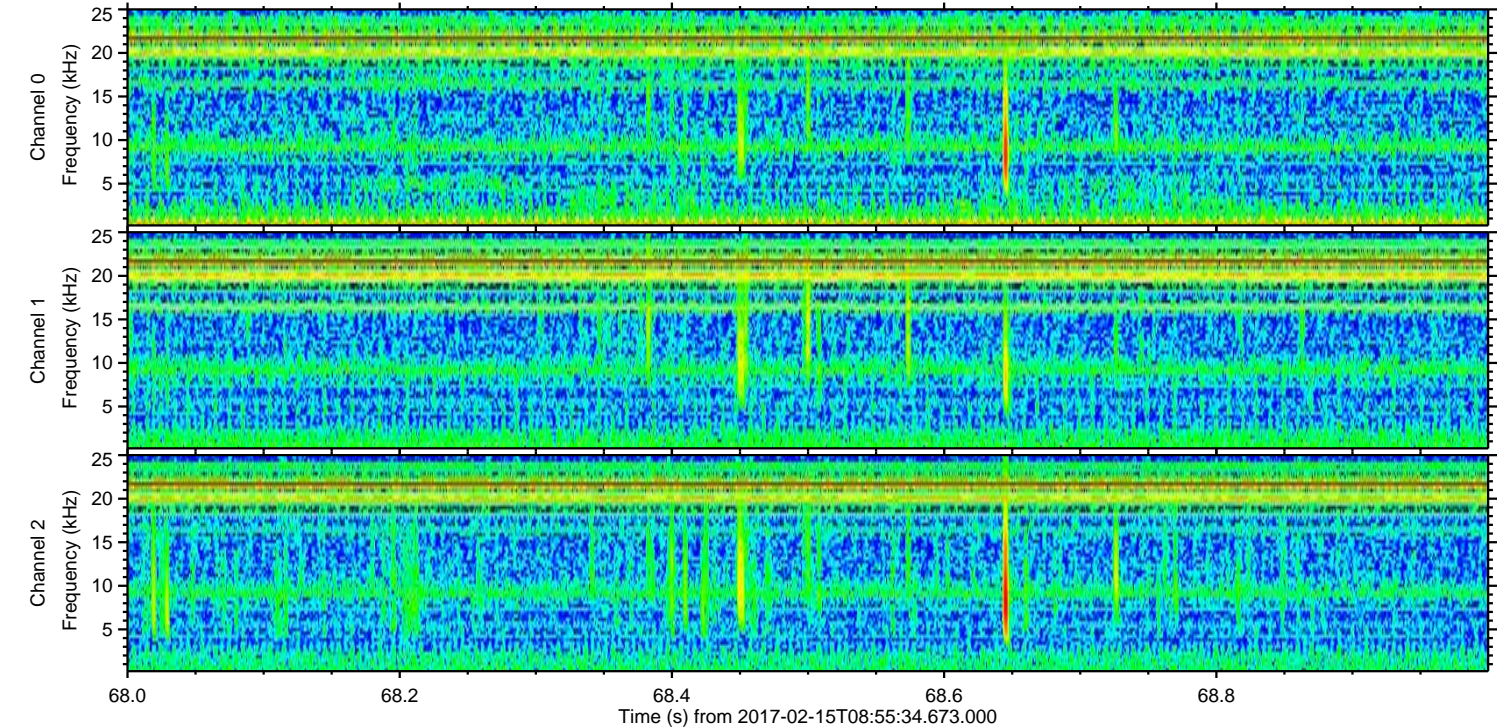
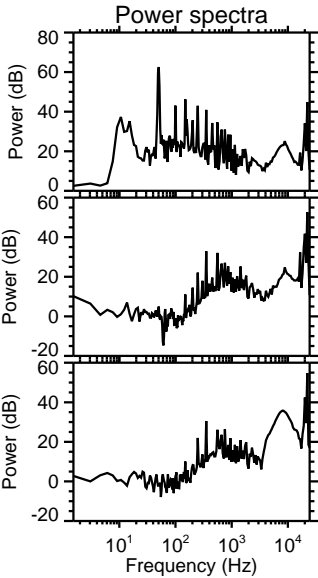
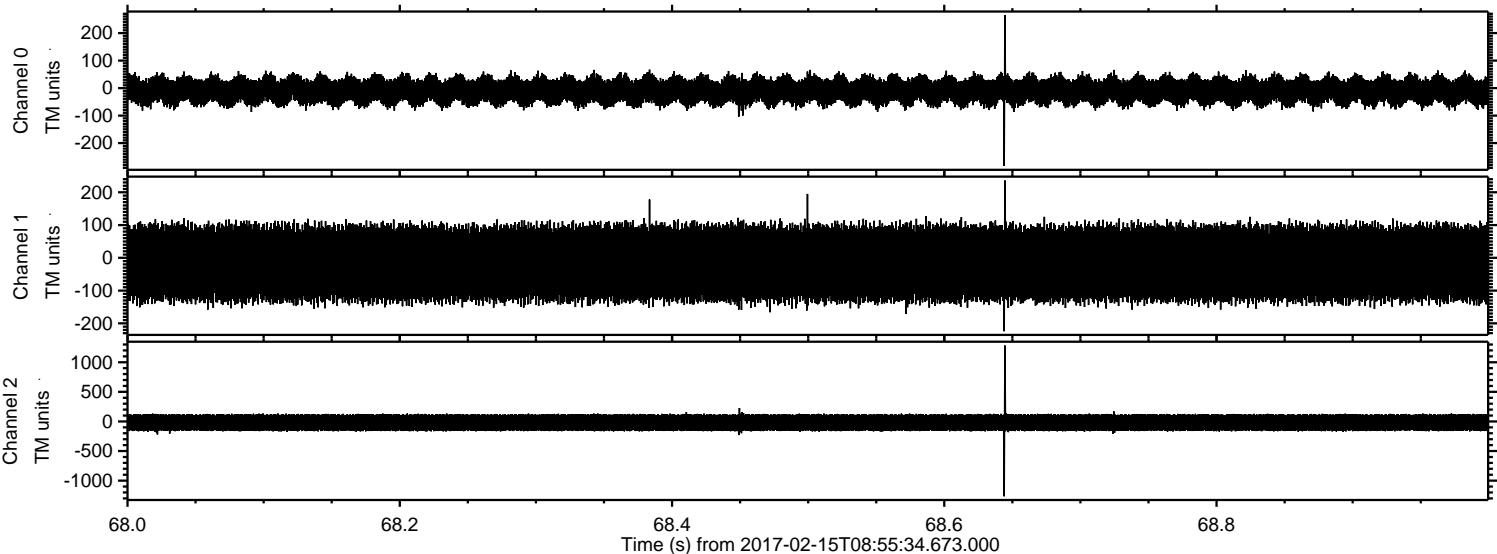


Processed Wed Feb 15 10:03:23 2017 by ELM ver.2012-10-06 from 001\_\_elm20170215\_085533\_\_dat00.bin





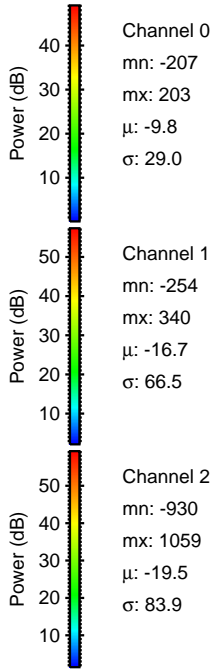
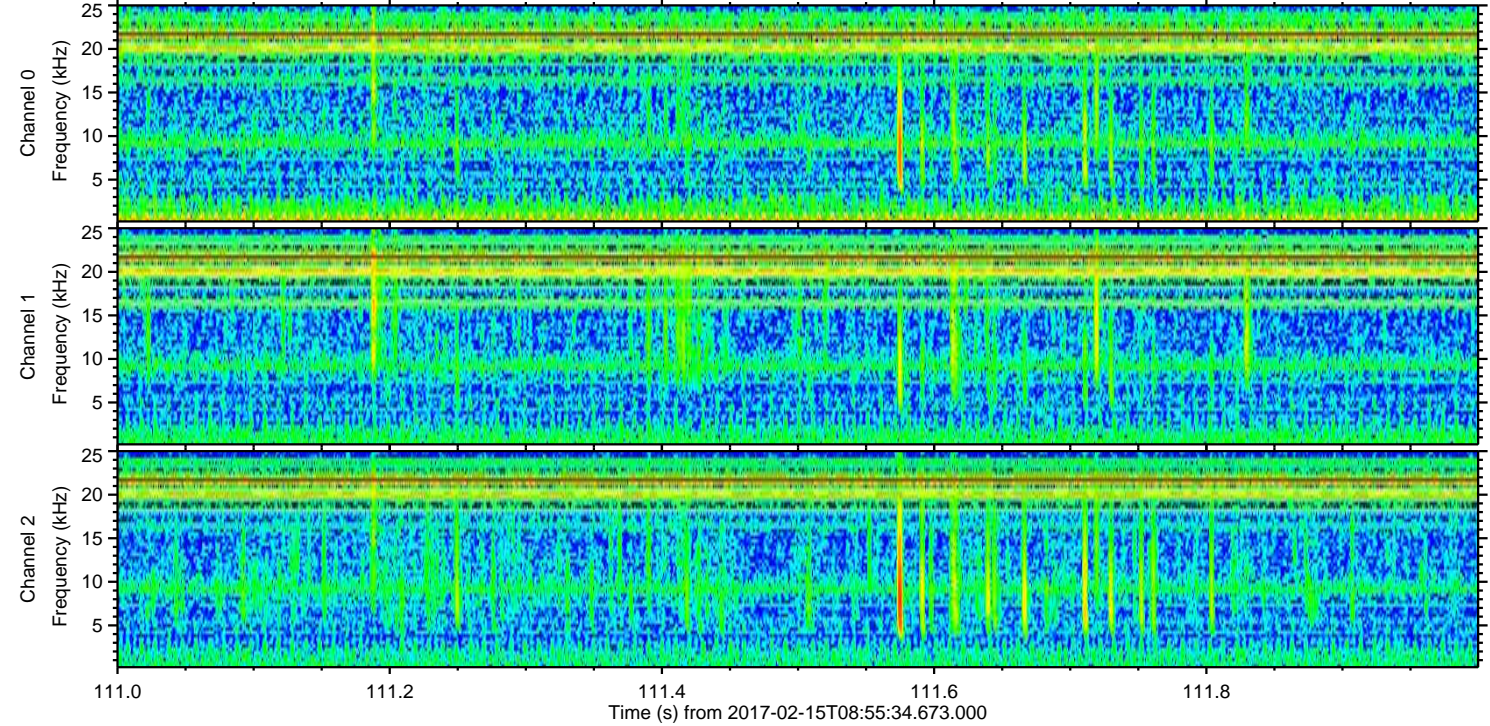
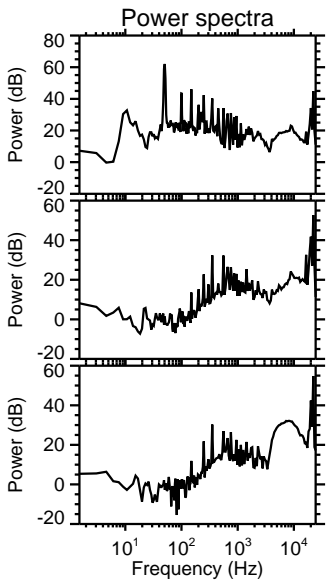
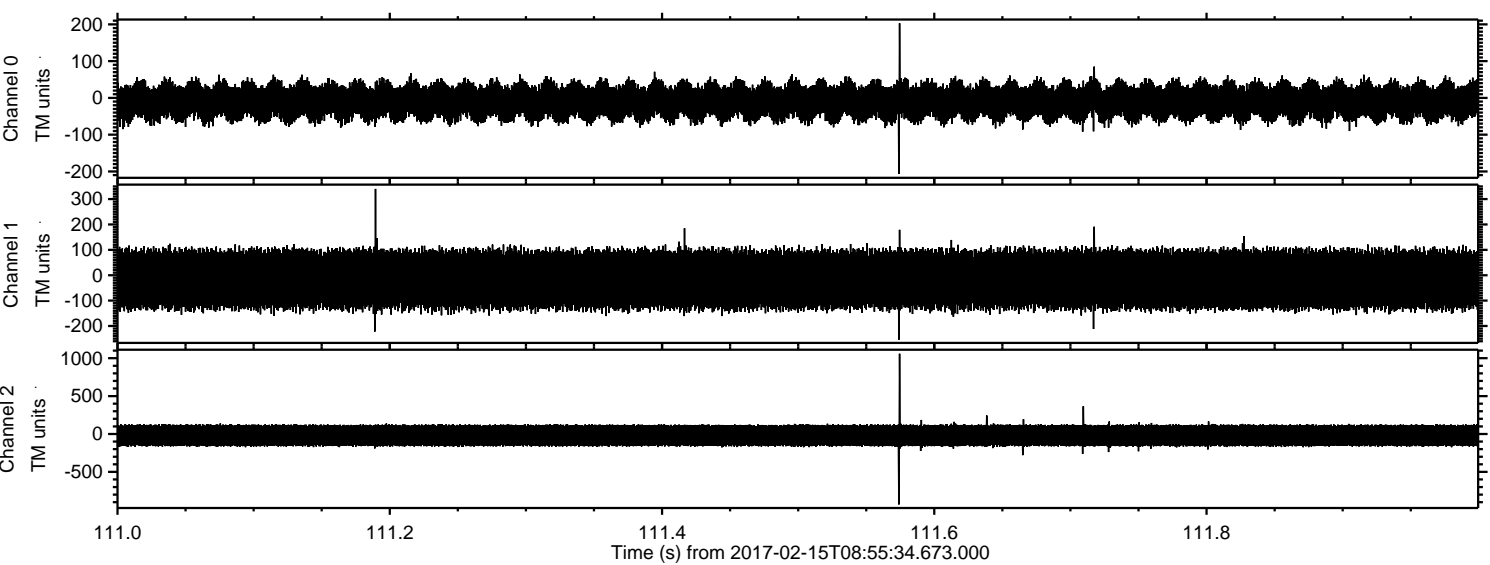
Processed Wed Feb 15 10:03:24 2017 by ELM ver.2012-10-06 from 001\_\_elm20170215\_085533\_\_dat00.bin





ELMAVAN 3D WAVEFORMS (Measured data sampled at 50 kHz) 51000 packets of 144 samples from 2017-02-15T08:55:34.673.000. Part 112/147

Processed Wed Feb 15 10:03:25 2017 by ELM ver.2012-10-06 from 001\_\_elm20170215\_085533\_\_dat00.bin



Channel 0  
mn: -207  
mx: 203  
 $\mu$ : -9.8  
 $\sigma$ : 29.0

Channel 1  
mn: -254  
mx: 340  
 $\mu$ : -16.7  
 $\sigma$ : 66.5

Channel 2  
mn: -930  
mx: 1059  
 $\mu$ : -19.5  
 $\sigma$ : 83.9



Processed Wed Feb 15 10:03:26 2017 by ELM ver.2012-10-06 from 001\_\_elm20170215\_085533\_\_dat00.bin

