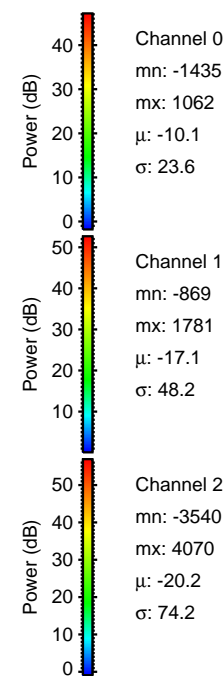
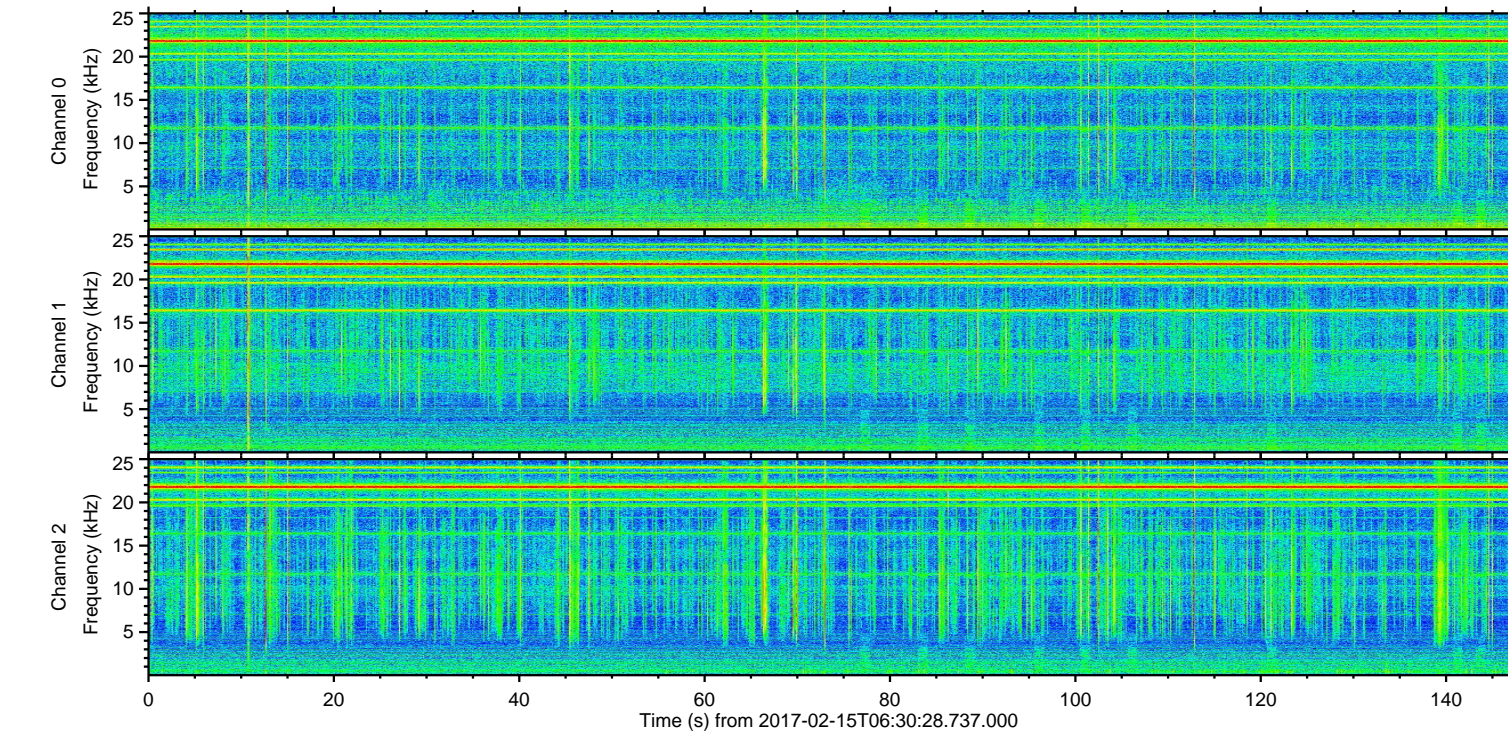
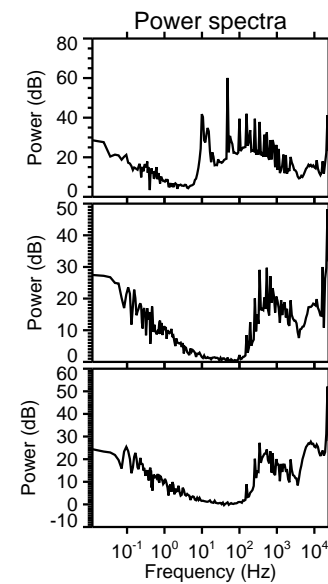
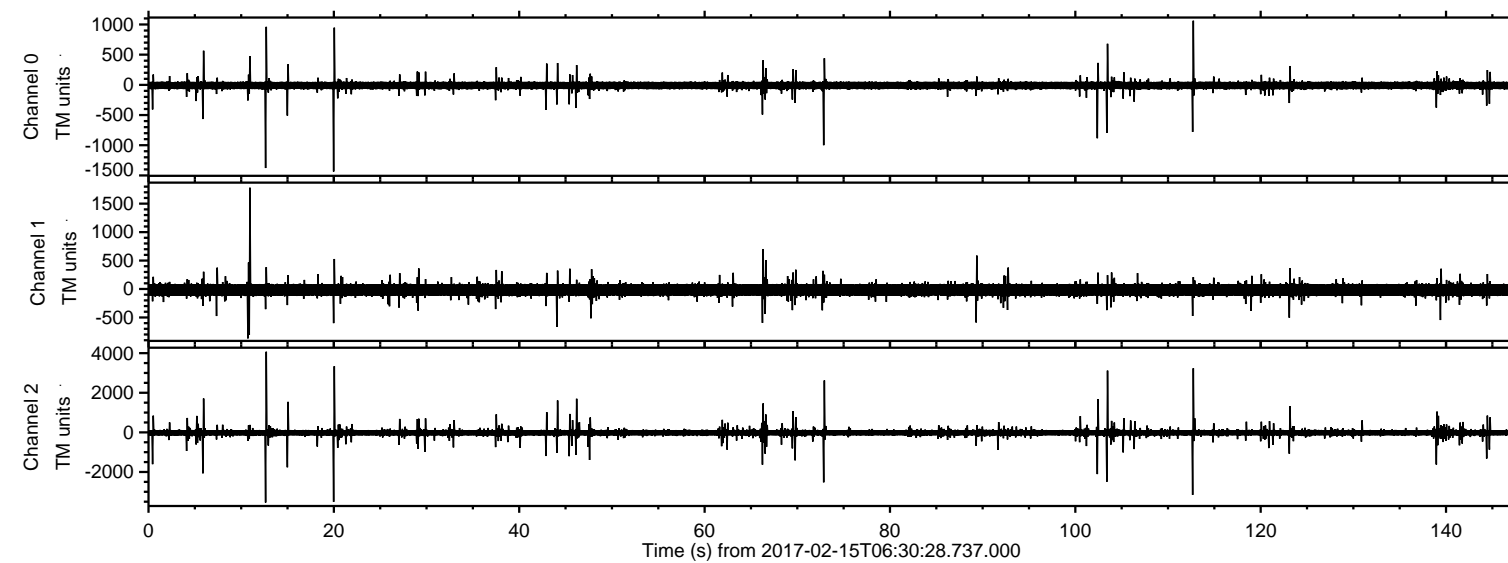


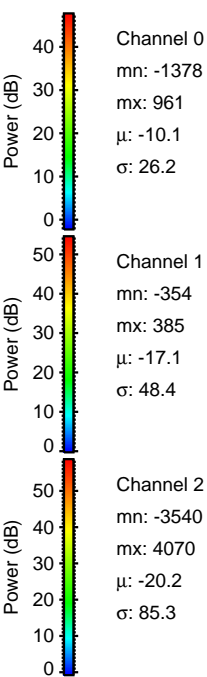
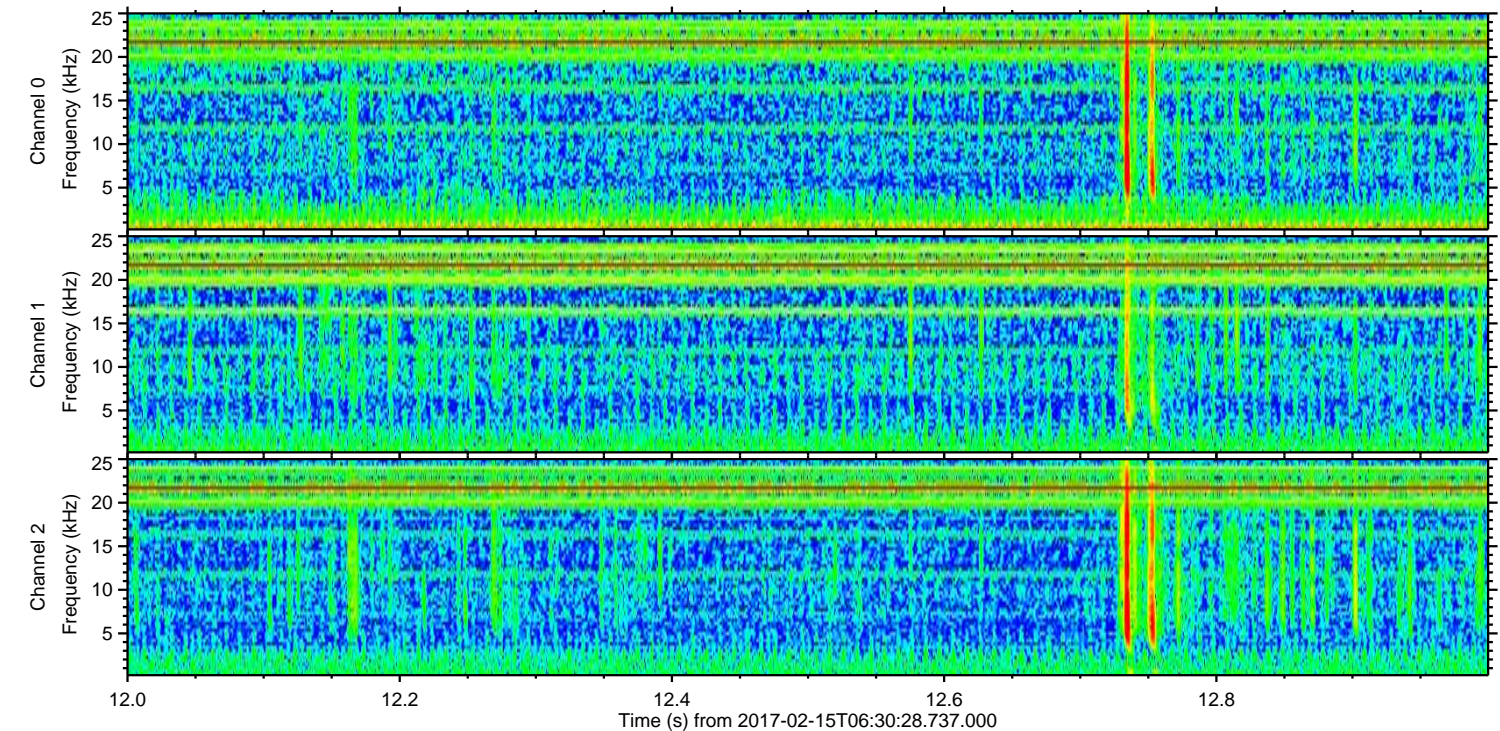
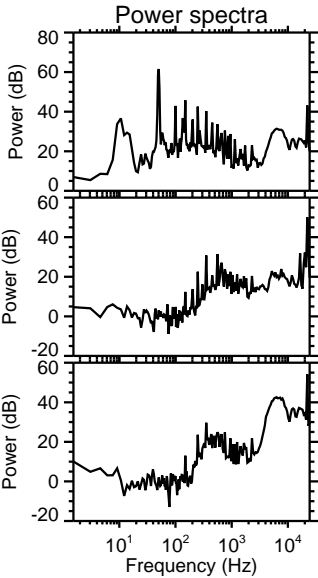
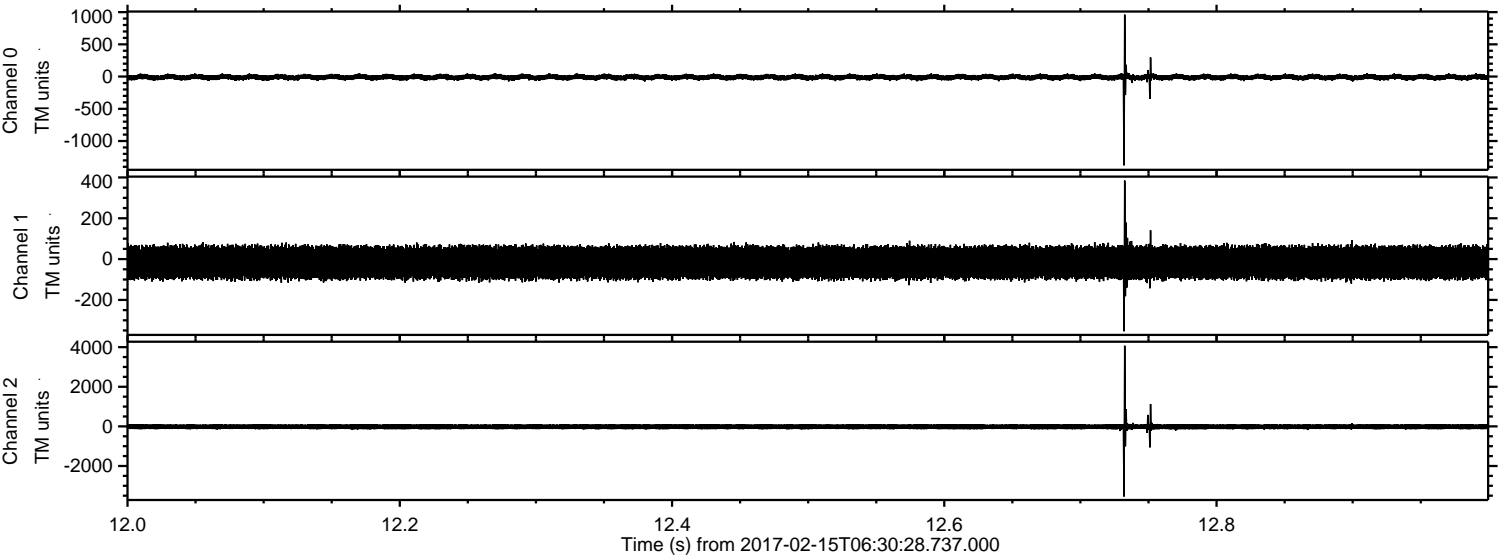
# ELMAVAN 3D WAVEFORMS (Measured data sampled at 50 kHz) 51000 packets of 144 samples from 2017-02-15T06:30:28.737.000.

Processed Wed Feb 15 07:38:13 2017 by ELM ver.2012-10-06 from 001\_\_elm20170215\_063027\_\_dat00.bin



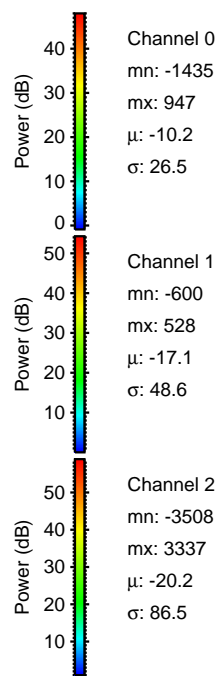
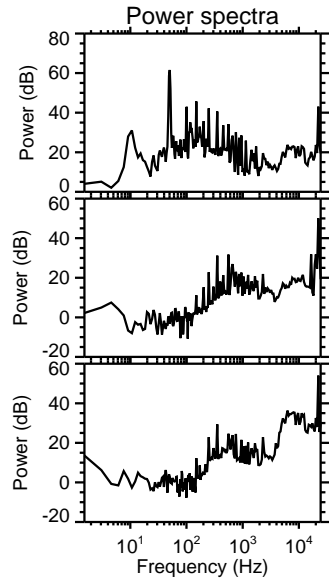
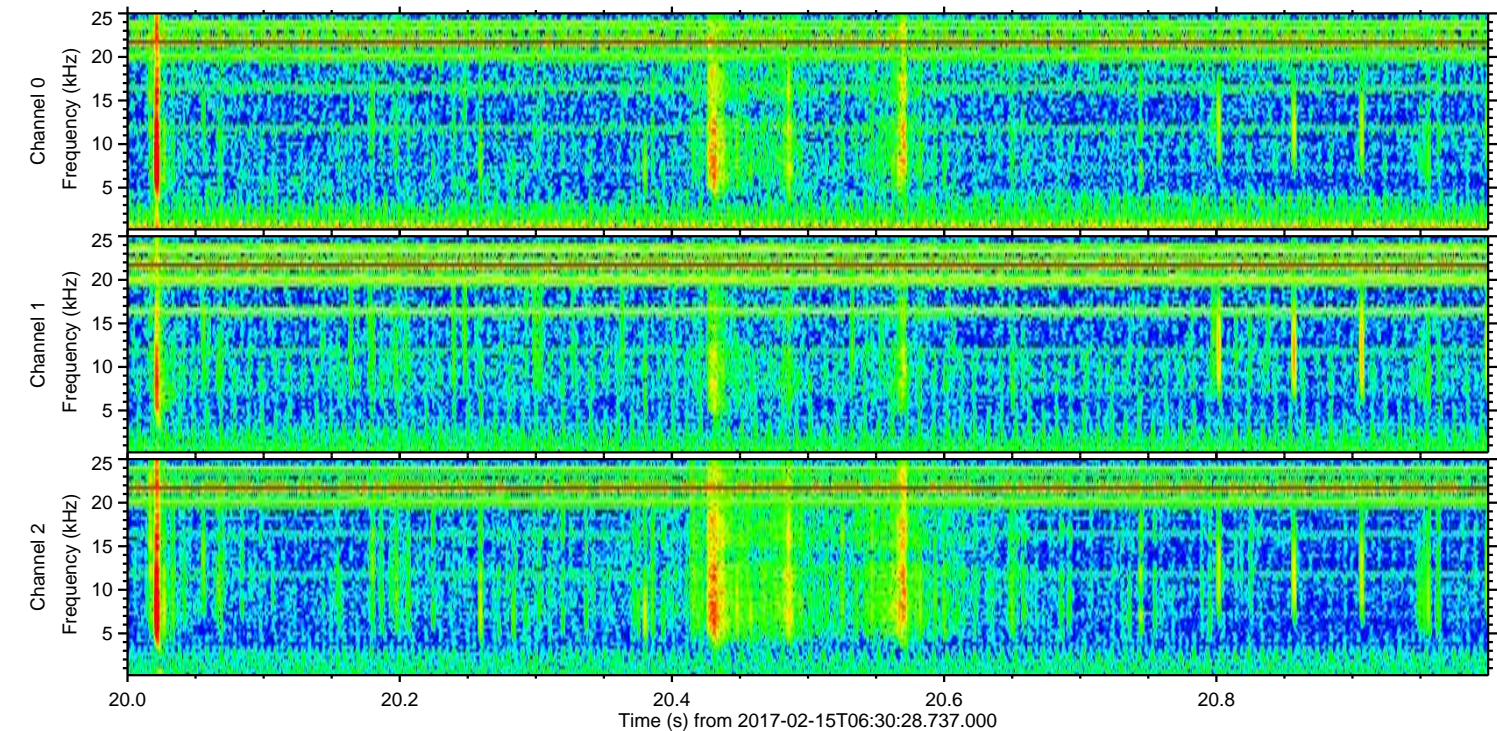
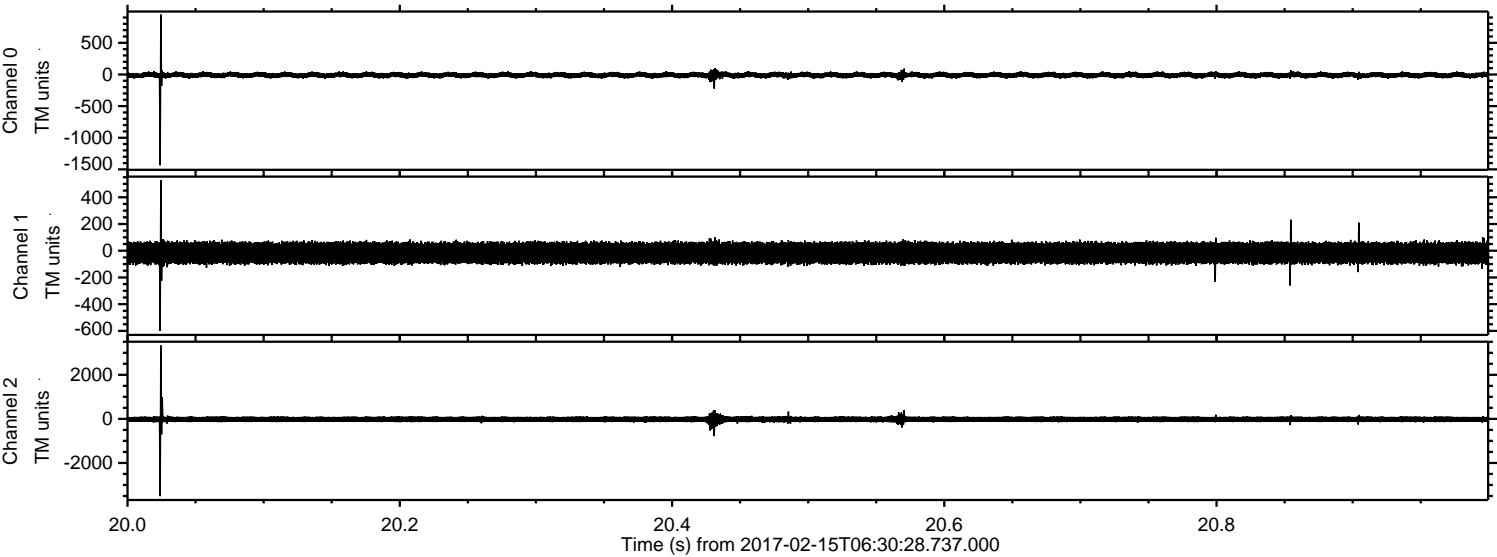


Processed Wed Feb 15 07:38:24 2017 by ELM ver.2012-10-06 from 001\_\_elm20170215\_063027\_\_dat00.bin





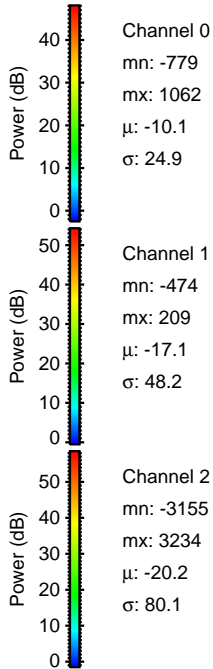
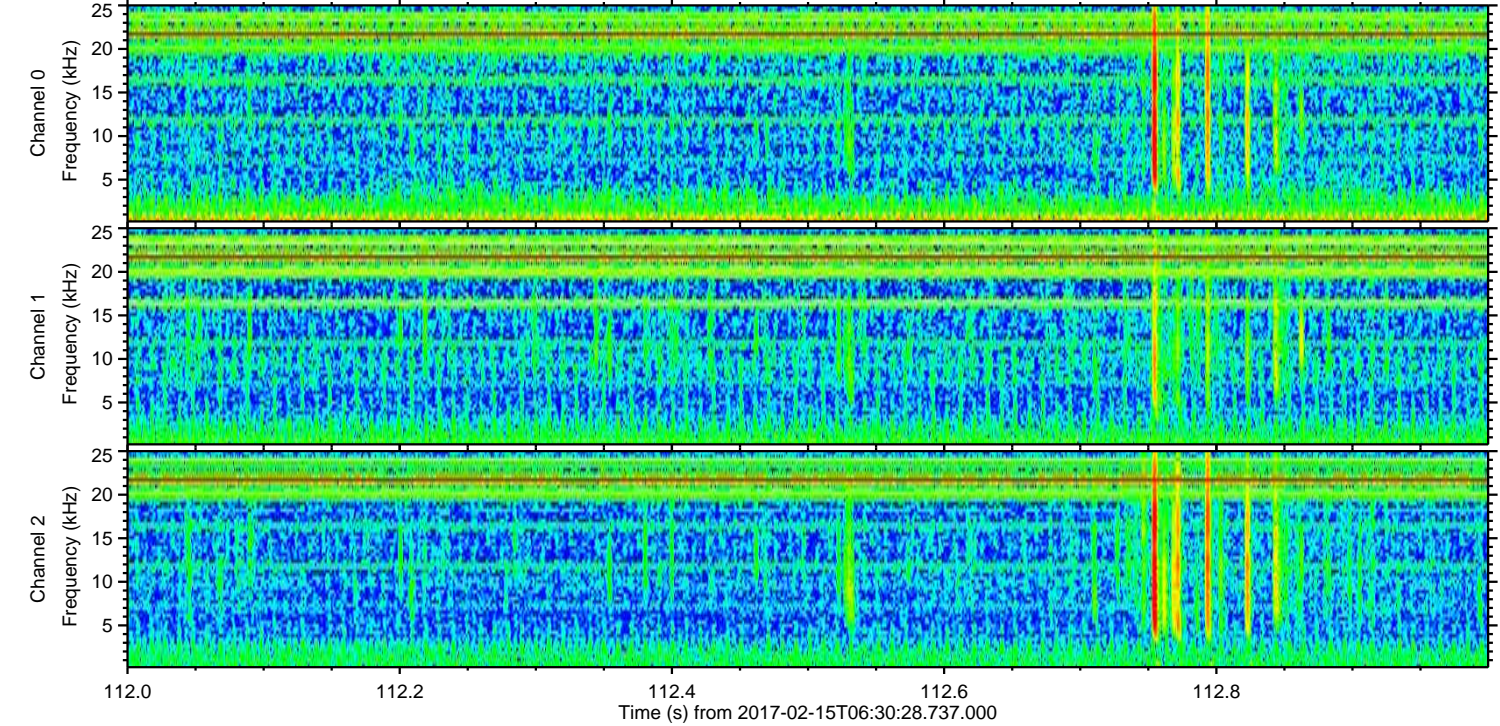
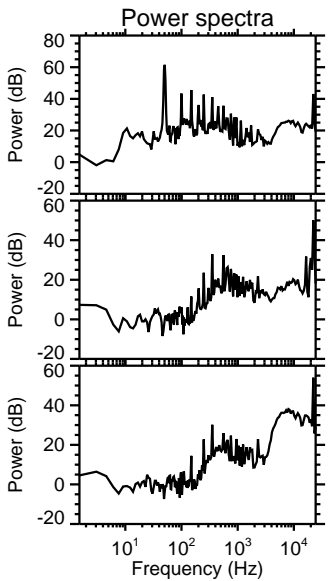
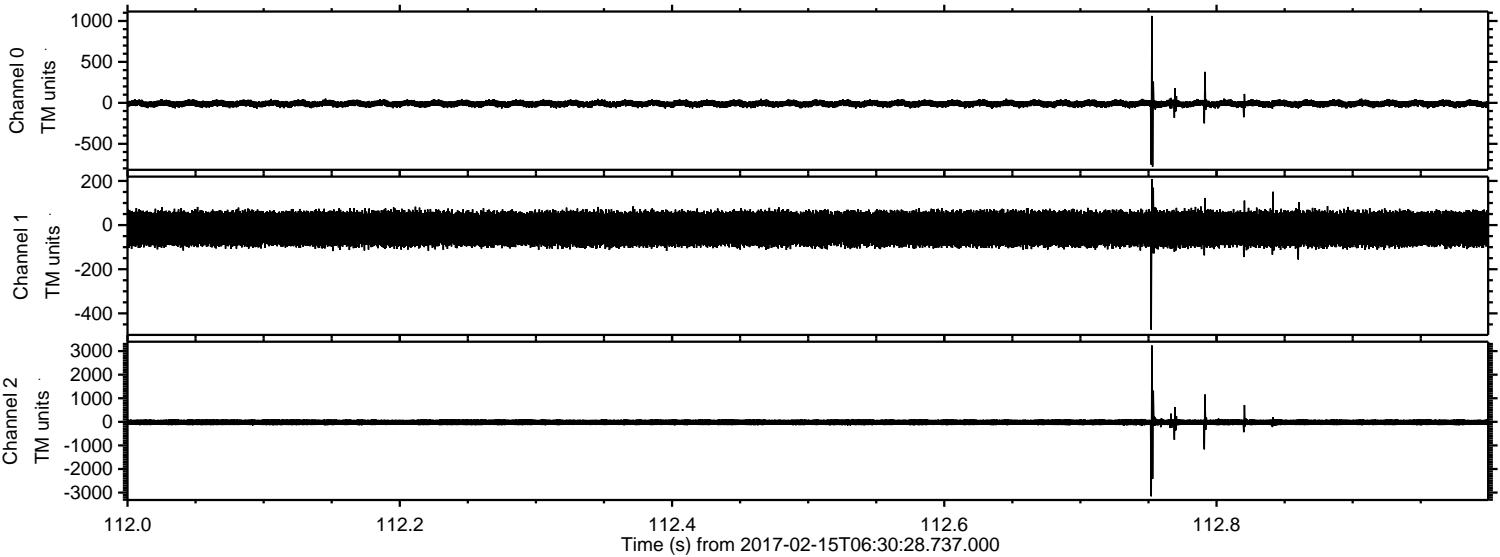
Processed Wed Feb 15 07:38:25 2017 by ELM ver.2012-10-06 from 001\_\_elm20170215\_063027\_\_dat00.bin





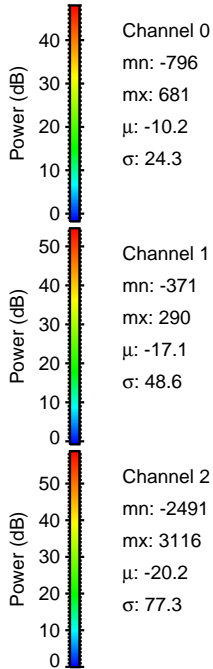
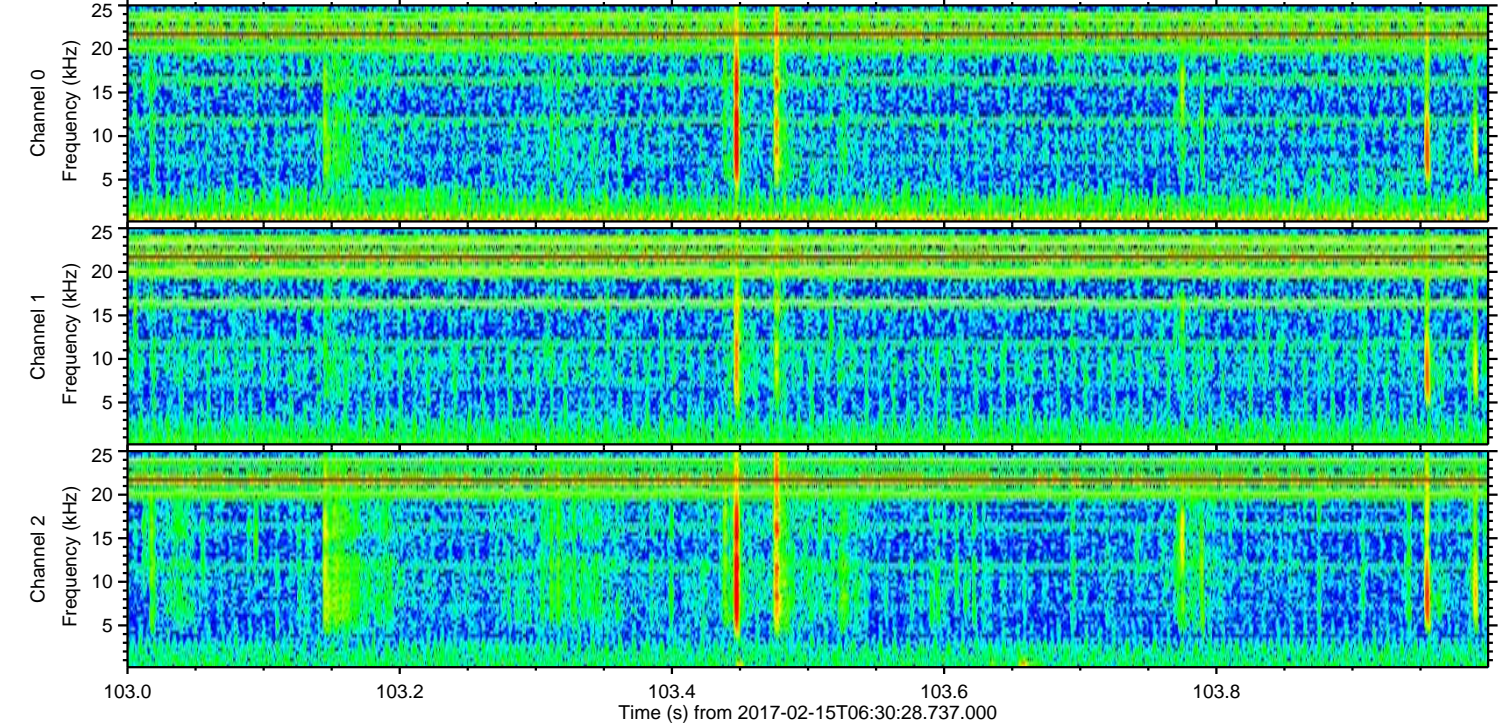
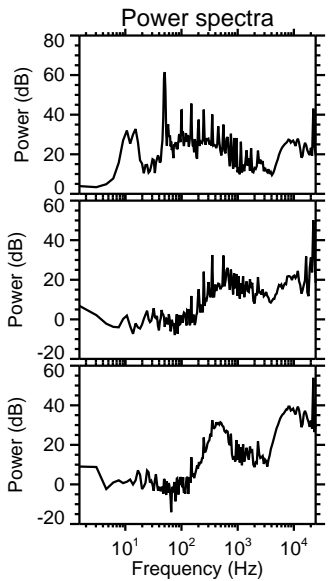
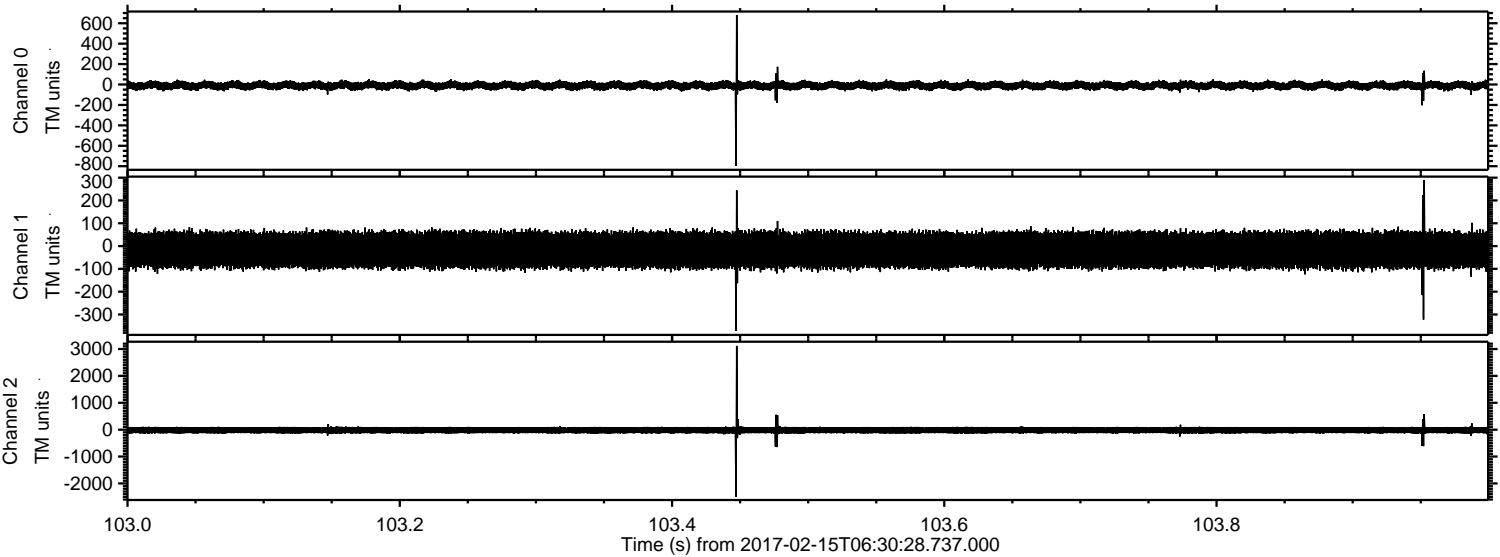
ELMAVAN 3D WAVEFORMS (Measured data sampled at 50 kHz) 51000 packets of 144 samples from 2017-02-15T06:30:28.737.000. Part 113/147

Processed Wed Feb 15 07:38:26 2017 by ELM ver.2012-10-06 from 001\_\_elm20170215\_063027\_\_dat00.bin





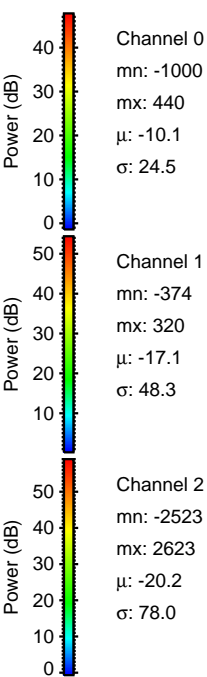
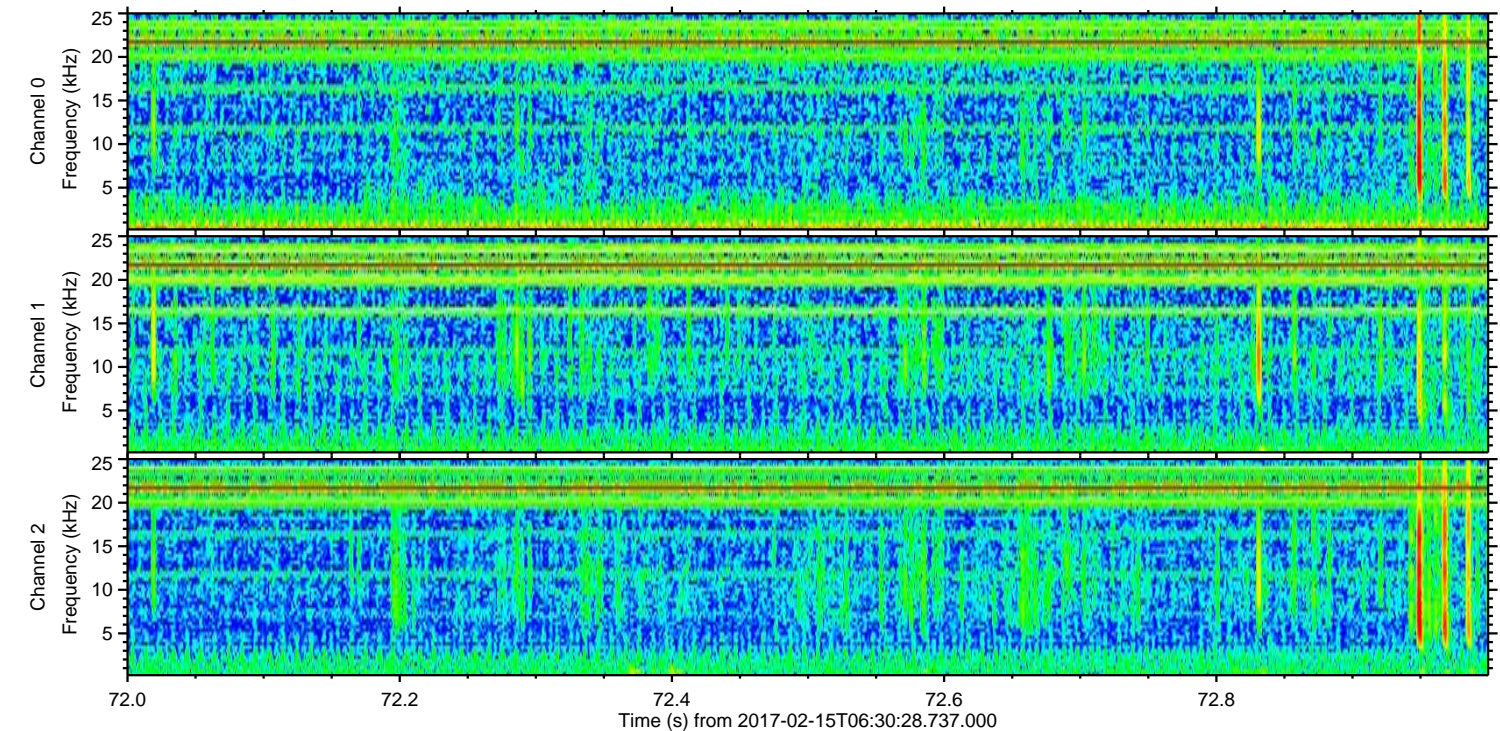
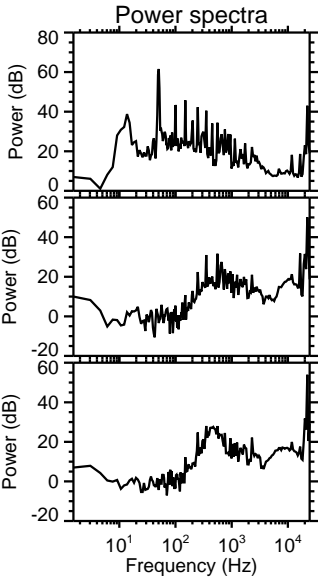
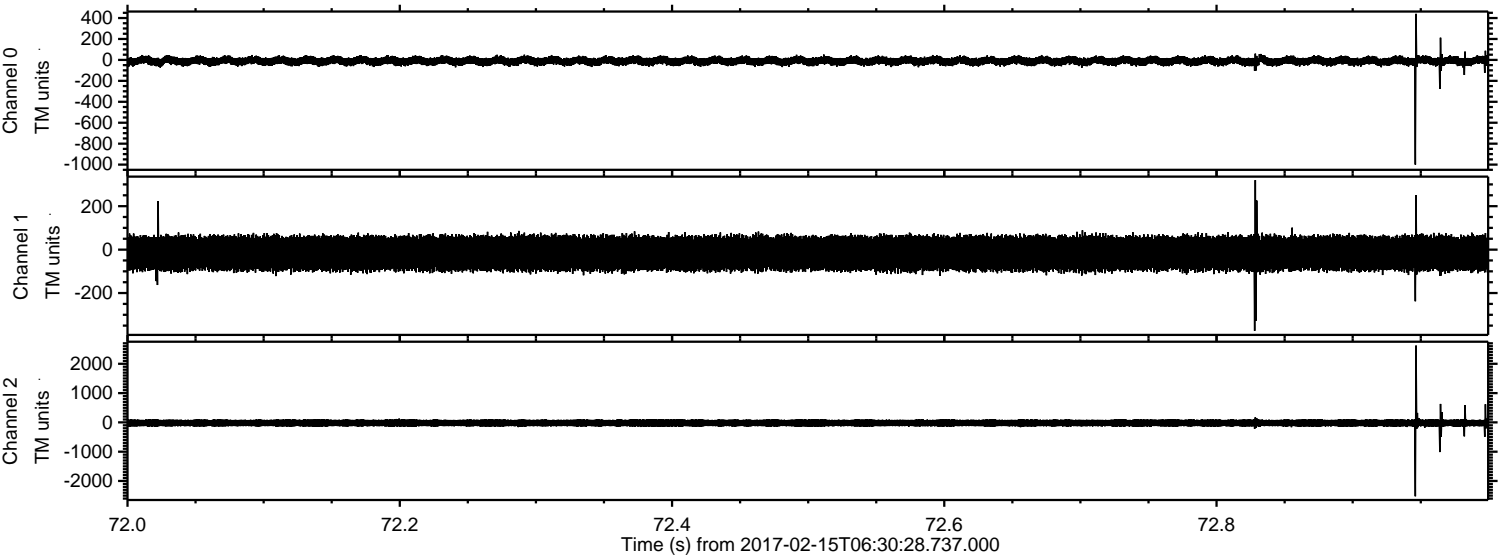
Processed Wed Feb 15 07:38:27 2017 by ELM ver.2012-10-06 from 001\_\_elm20170215\_063027\_\_dat00.bin





ELMAVAN 3D WAVEFORMS (Measured data sampled at 50 kHz) 51000 packets of 144 samples from 2017-02-15T06:30:28.737.000. Part 73/147

Processed Wed Feb 15 07:38:28 2017 by ELM ver.2012-10-06 from 001\_\_elm20170215\_063027\_\_dat00.bin



Channel 0  
mn: -1000  
mx: 440  
 $\mu$ : -10.1  
 $\sigma$ : 24.5

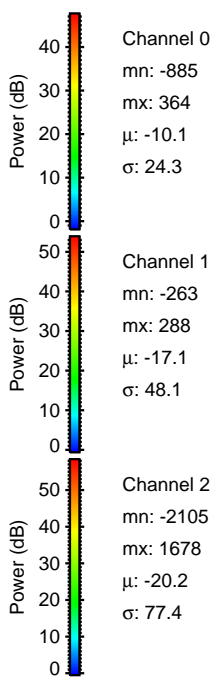
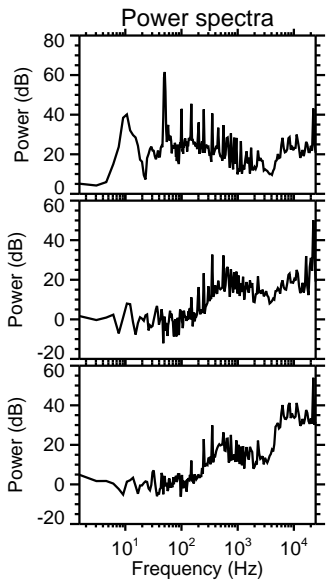
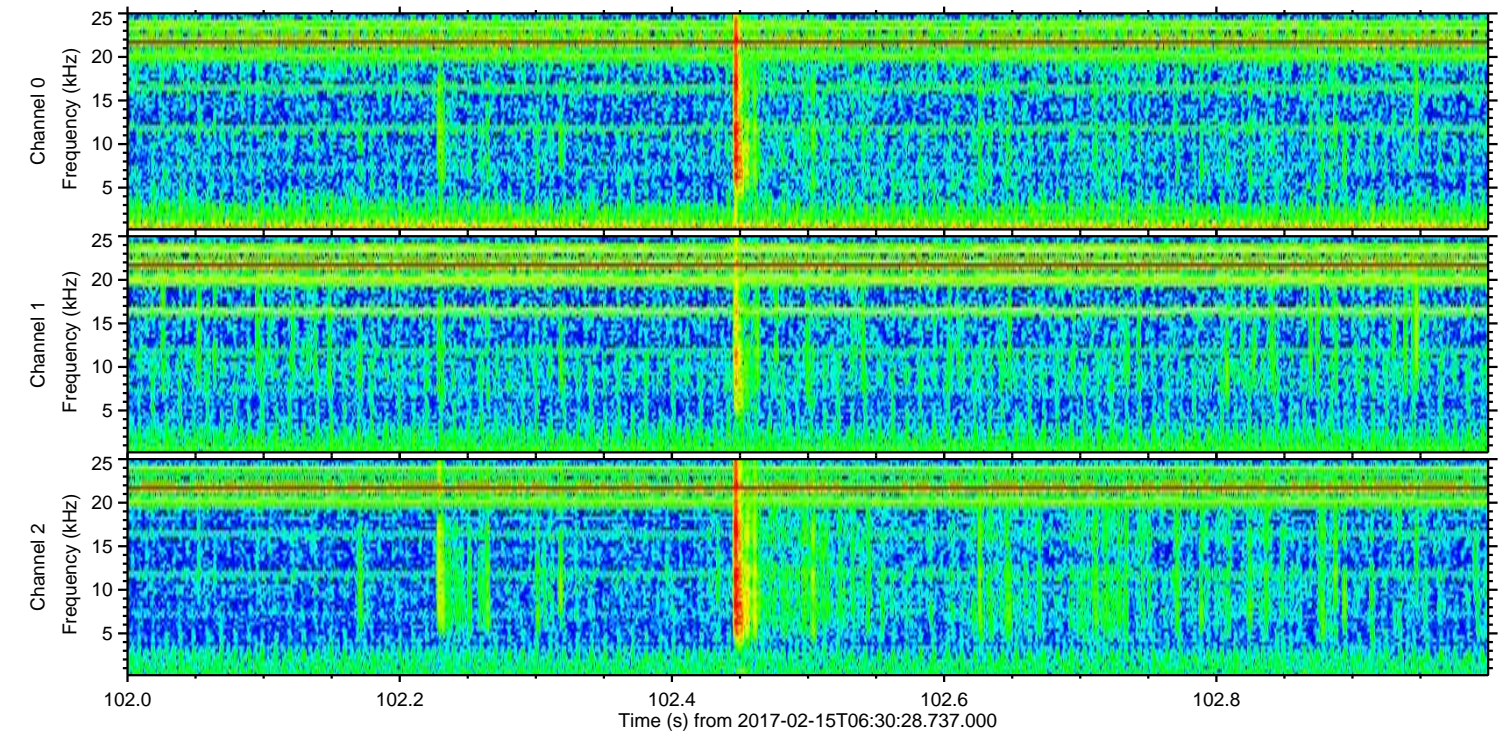
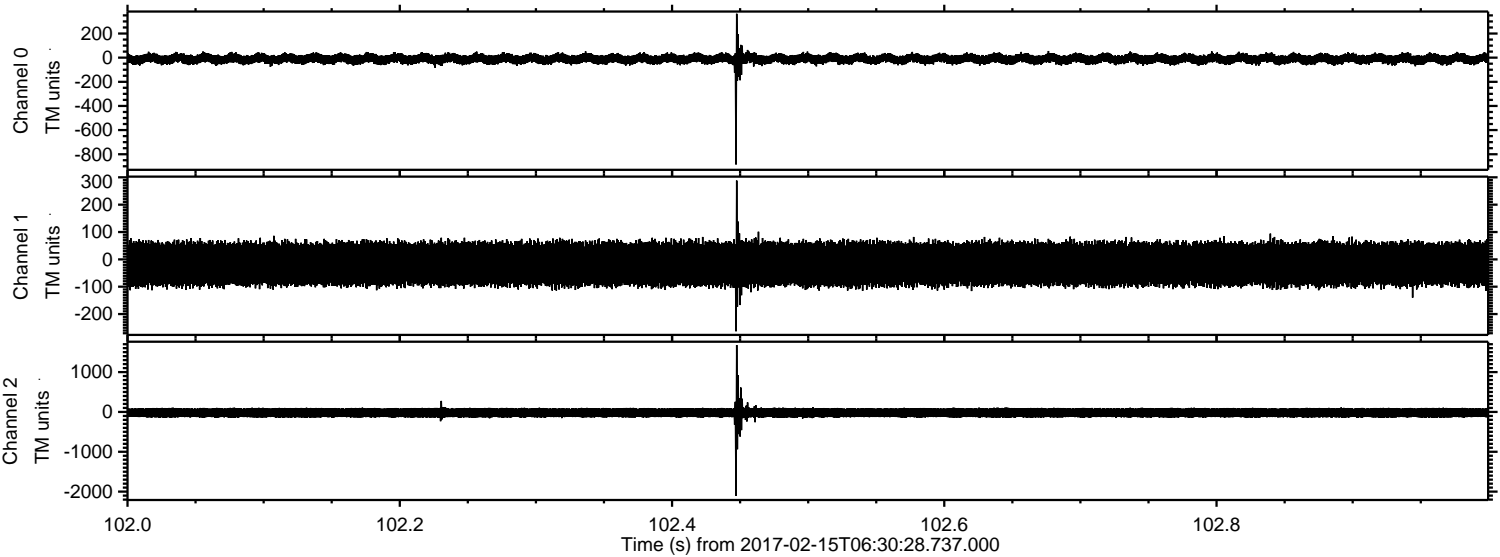
Channel 1  
mn: -374  
mx: 320  
 $\mu$ : -17.1  
 $\sigma$ : 48.3

Channel 2  
mn: -2523  
mx: 2623  
 $\mu$ : -20.2  
 $\sigma$ : 78.0



ELMAVAN 3D WAVEFORMS (Measured data sampled at 50 kHz) 51000 packets of 144 samples from 2017-02-15T06:30:28.737.000. Part 103/147

Processed Wed Feb 15 07:38:29 2017 by ELM ver.2012-10-06 from 001\_\_elm20170215\_063027\_\_dat00.bin



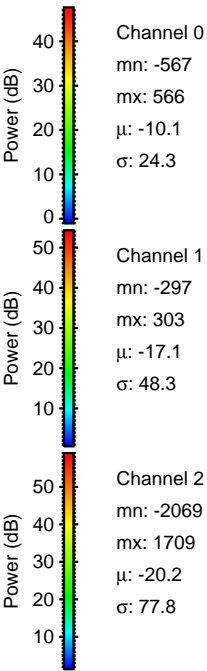
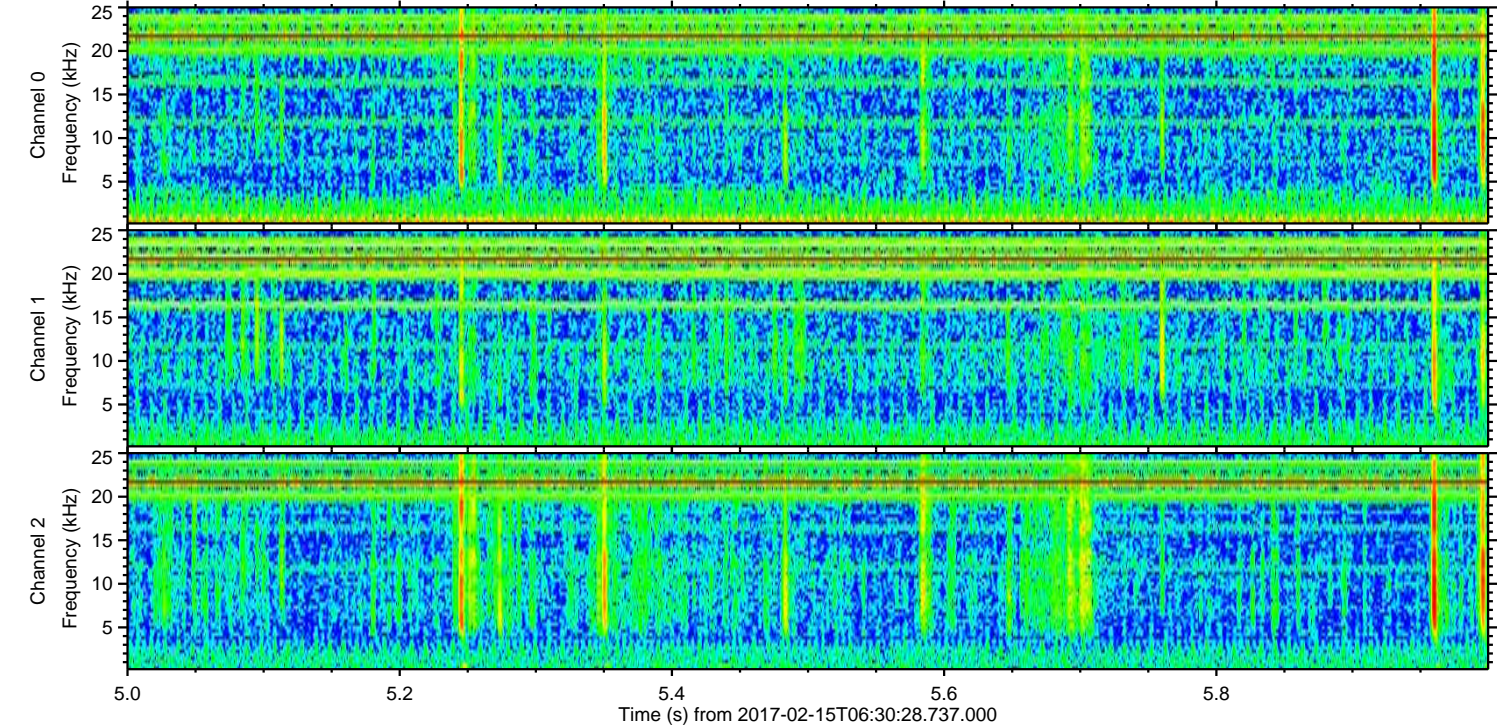
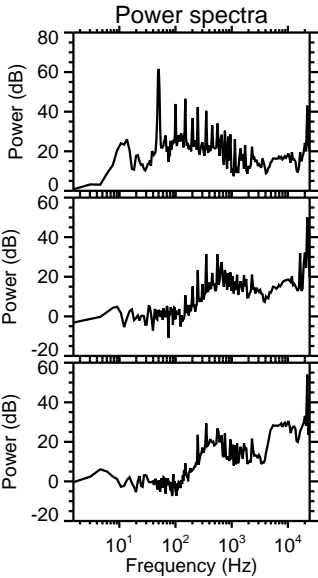
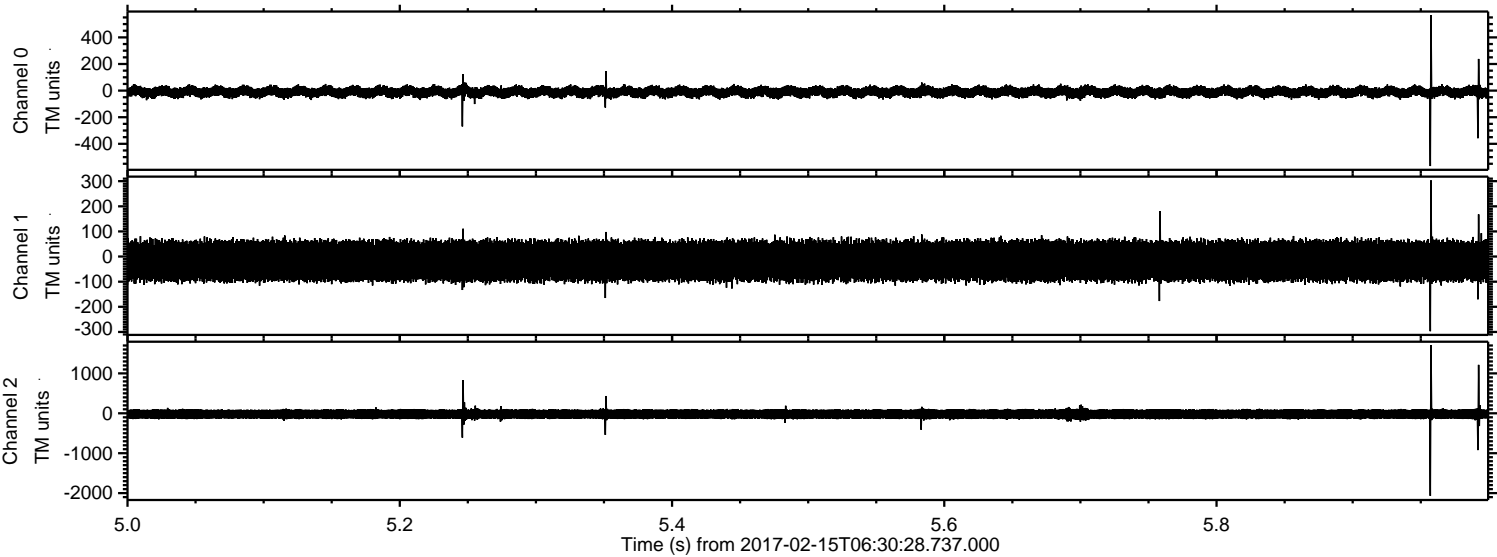
Channel 0  
mn: -885  
mx: 364  
 $\mu$ : -10.1  
 $\sigma$ : 24.3

Channel 1  
mn: -263  
mx: 288  
 $\mu$ : -17.1  
 $\sigma$ : 48.1

Channel 2  
mn: -2105  
mx: 1678  
 $\mu$ : -20.2  
 $\sigma$ : 77.4

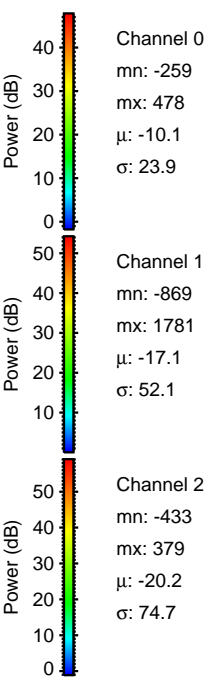
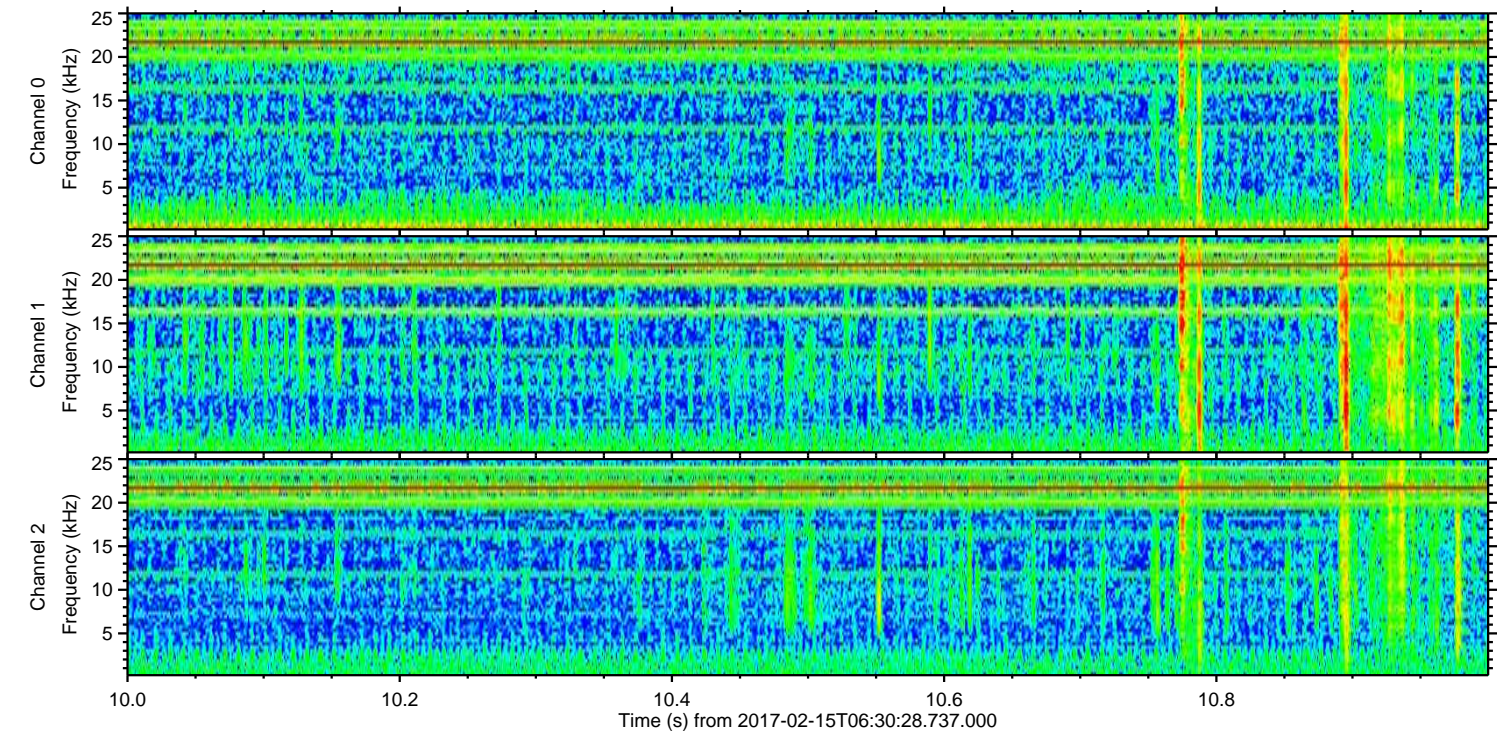
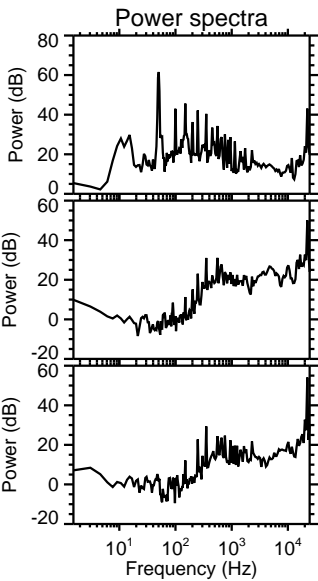
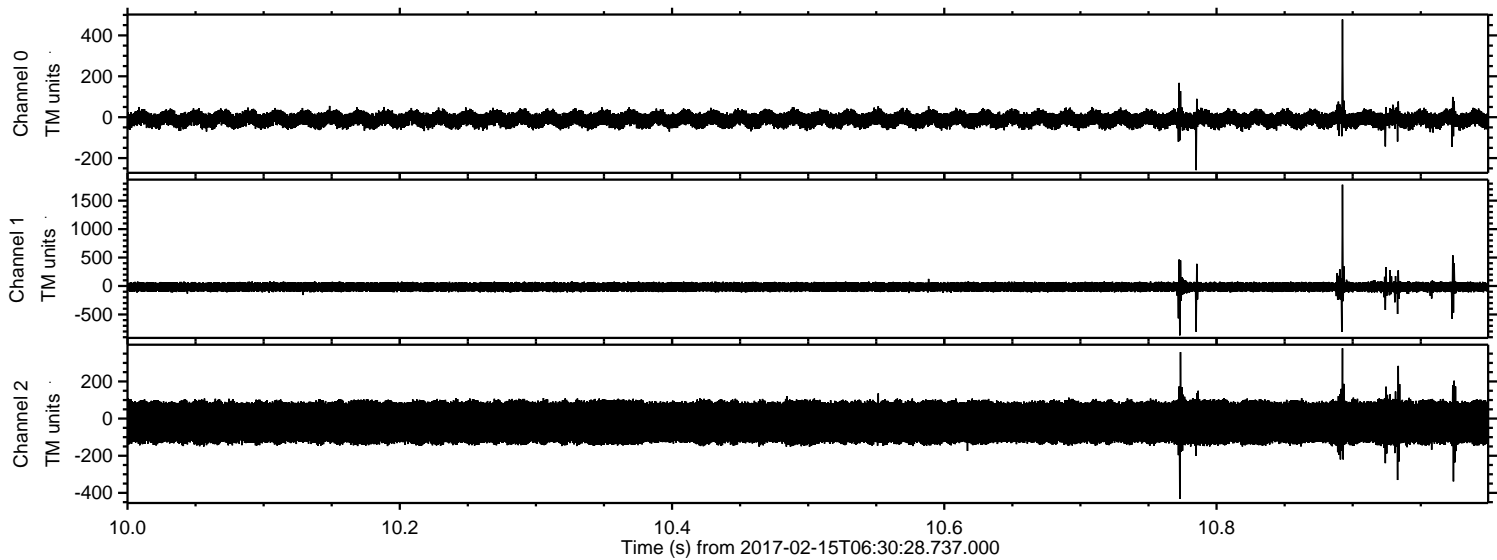


Processed Wed Feb 15 07:38:30 2017 by ELM ver.2012-10-06 from 001\_\_elm20170215\_063027\_\_dat00.bin



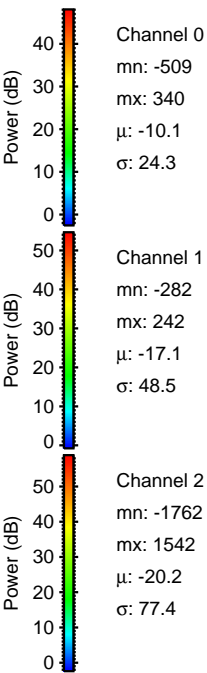
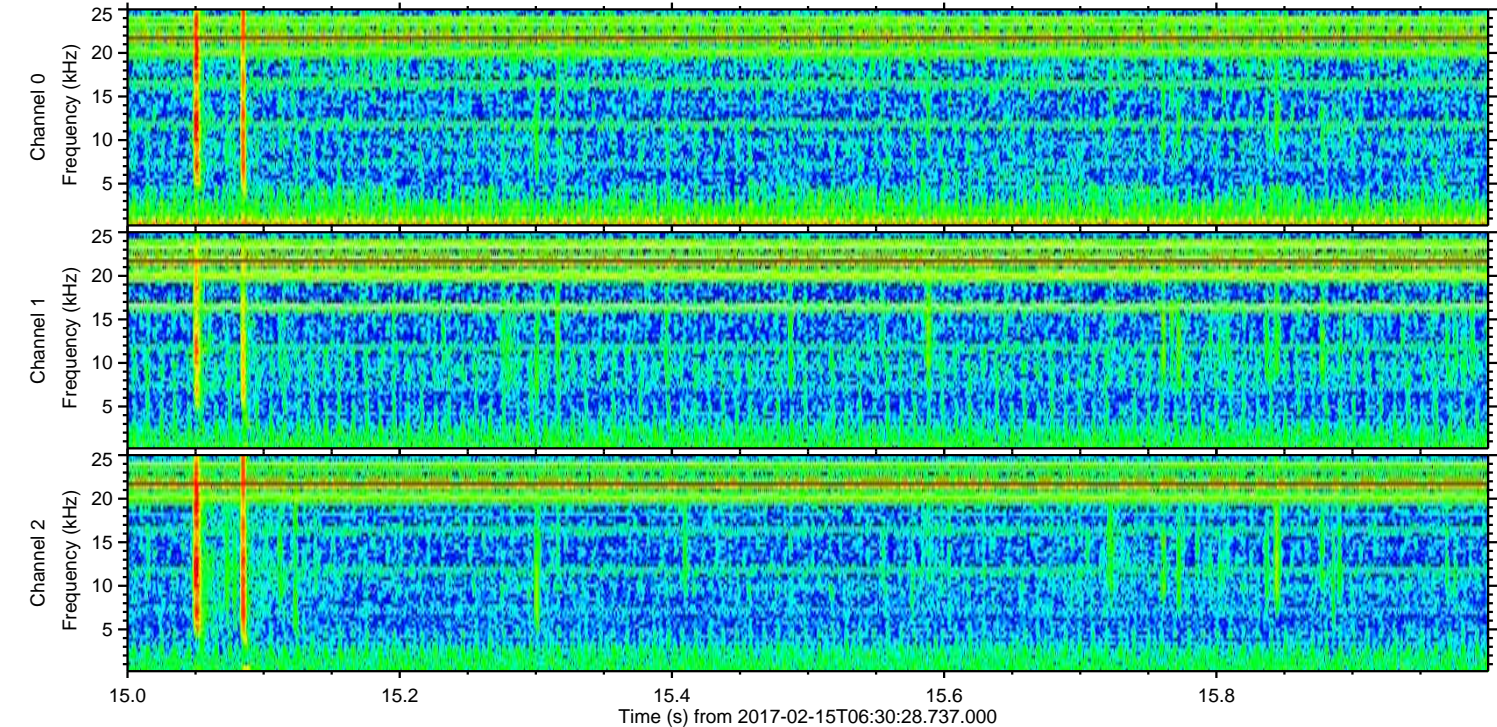
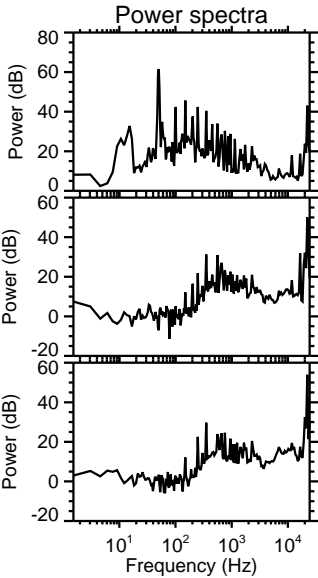
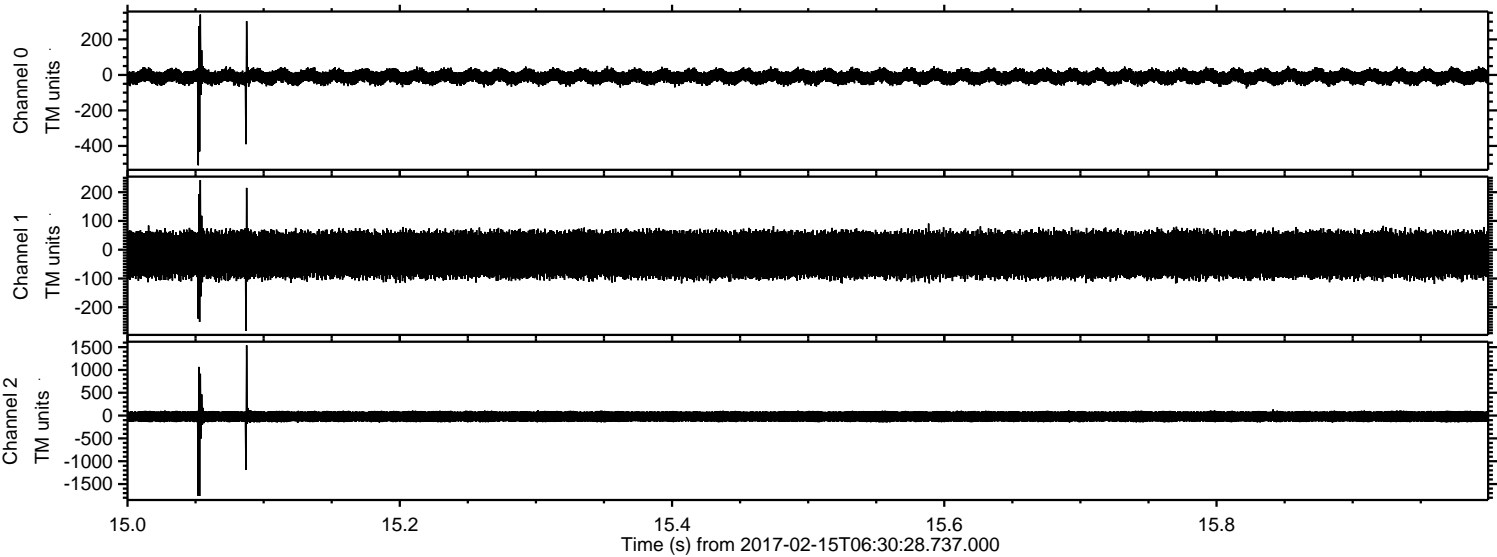


Processed Wed Feb 15 07:38:31 2017 by ELM ver.2012-10-06 from 001\_\_elm20170215\_063027\_\_dat00.bin



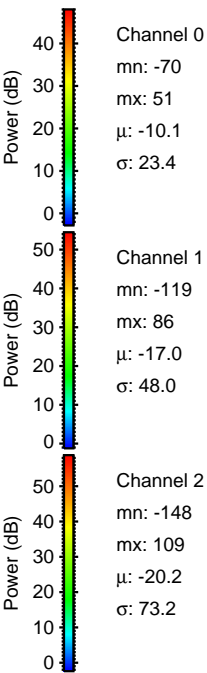
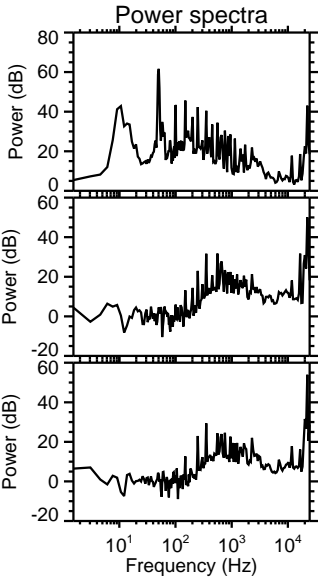
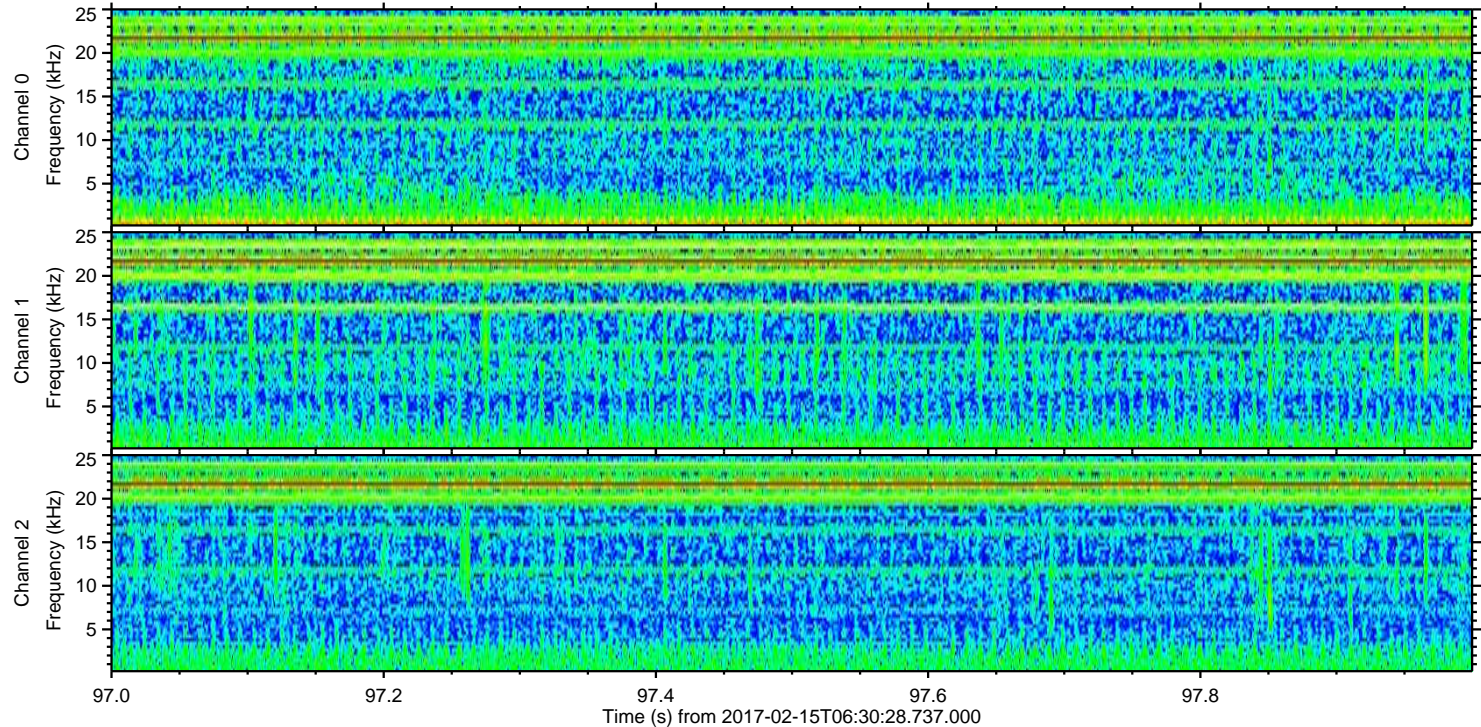
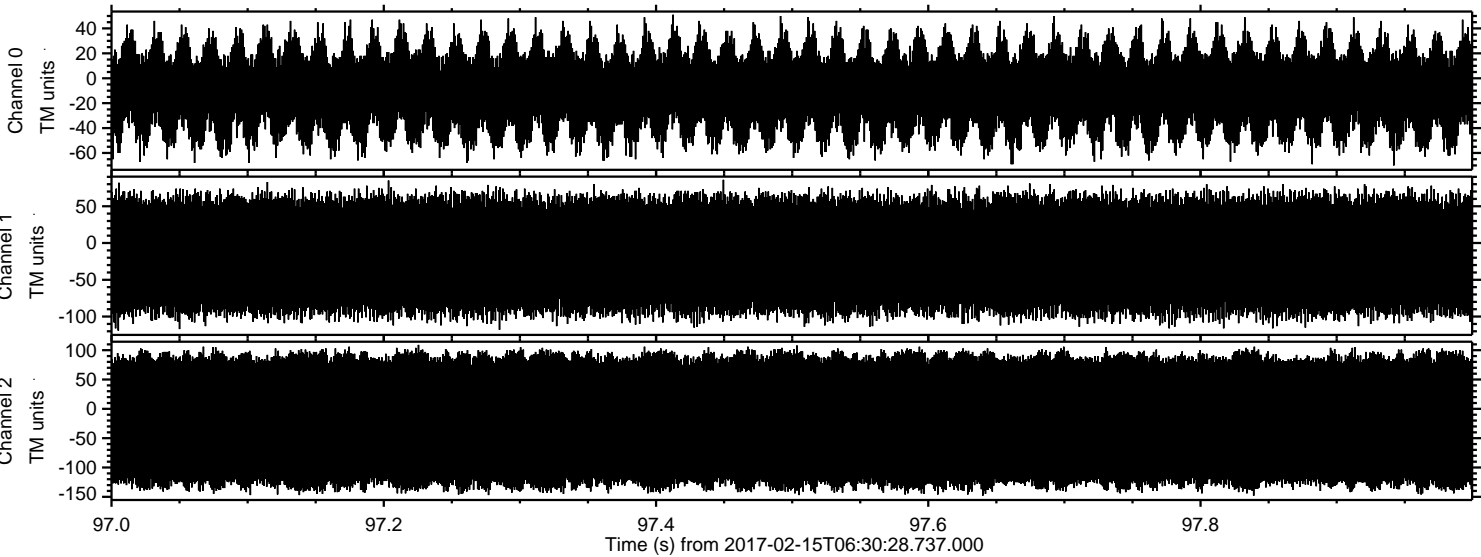


Processed Wed Feb 15 07:38:32 2017 by ELM ver.2012-10-06 from 001\_\_elm20170215\_063027\_\_dat00.bin





Processed Wed Feb 15 07:38:33 2017 by ELM ver.2012-10-06 from 001\_\_elm20170215\_063027\_\_dat00.bin



Channel 0  
mn: -70  
mx: 51  
 $\mu$ : -10.1  
 $\sigma$ : 23.4

Channel 1  
mn: -119  
mx: 86  
 $\mu$ : -17.0  
 $\sigma$ : 48.0

Channel 2  
mn: -148  
mx: 109  
 $\mu$ : -20.2  
 $\sigma$ : 73.2