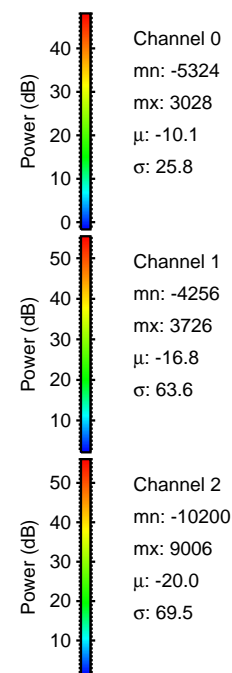
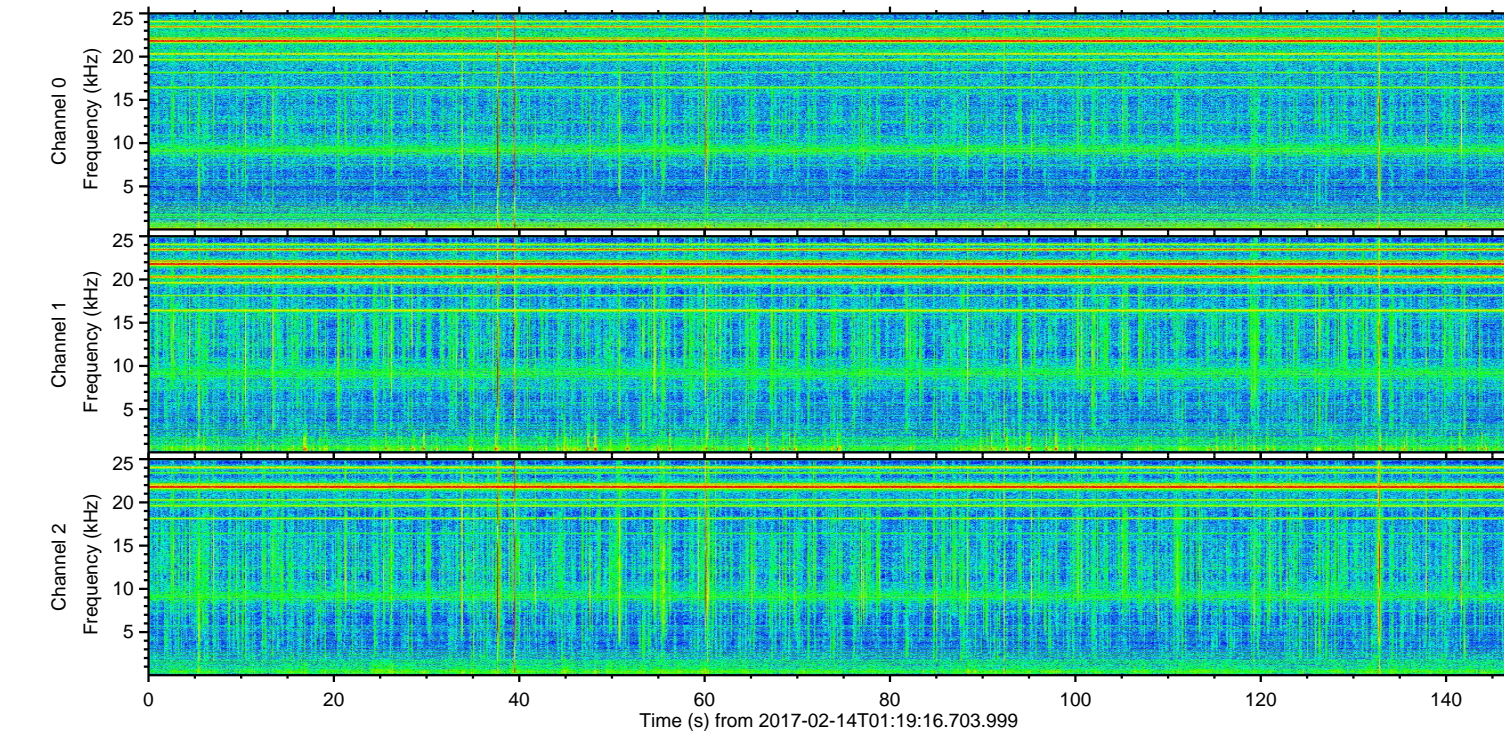
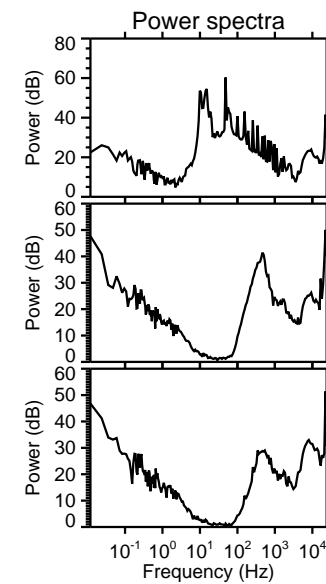
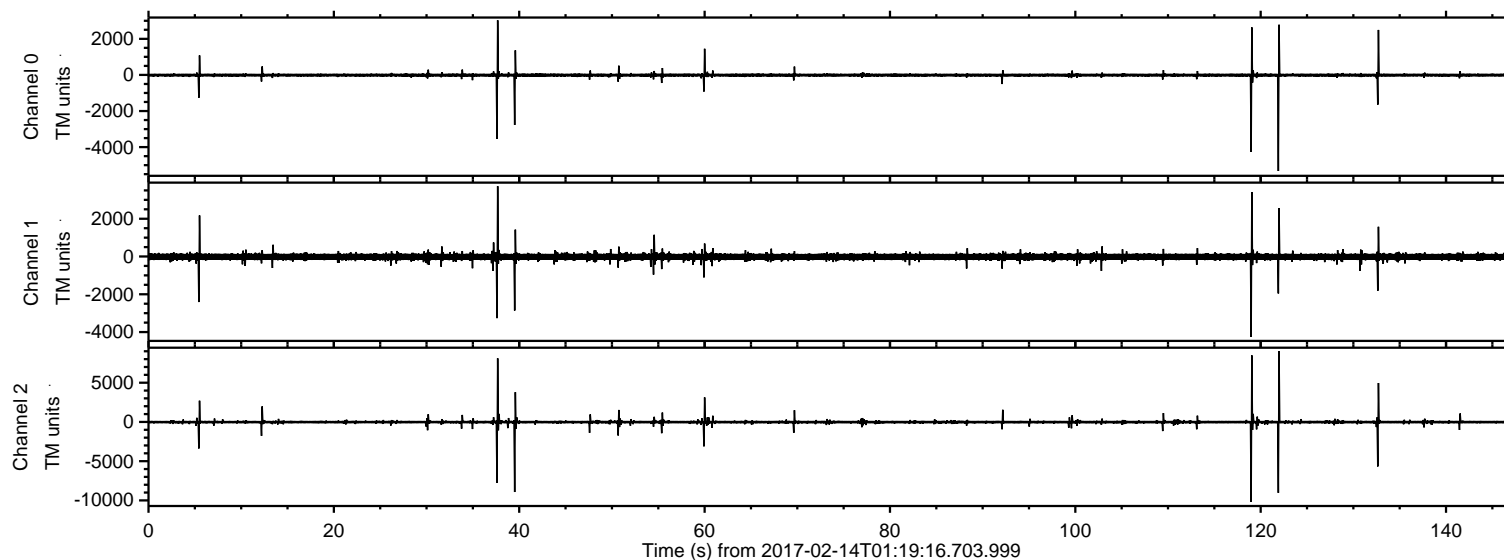


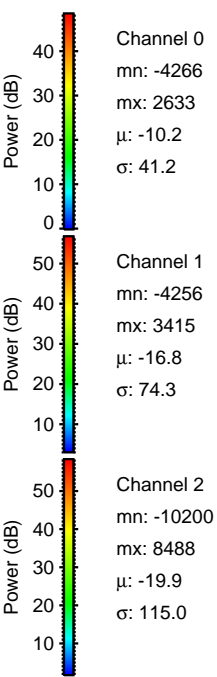
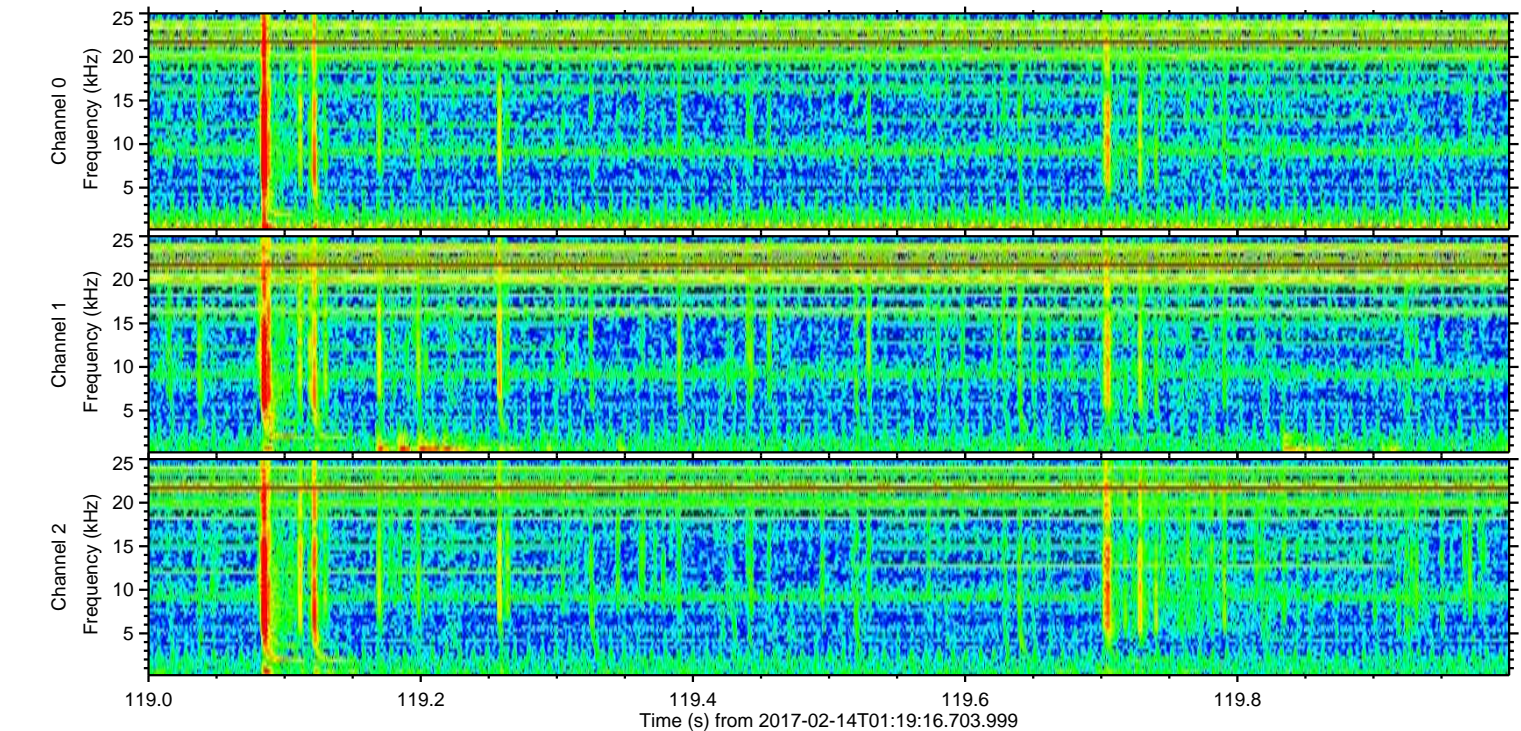
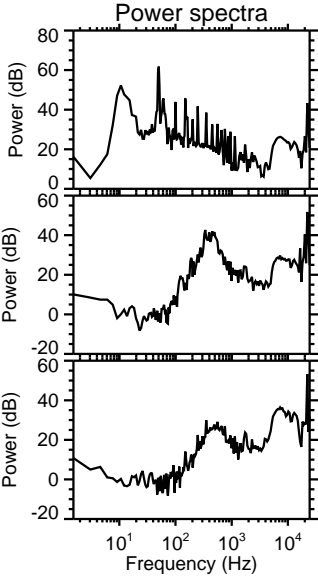
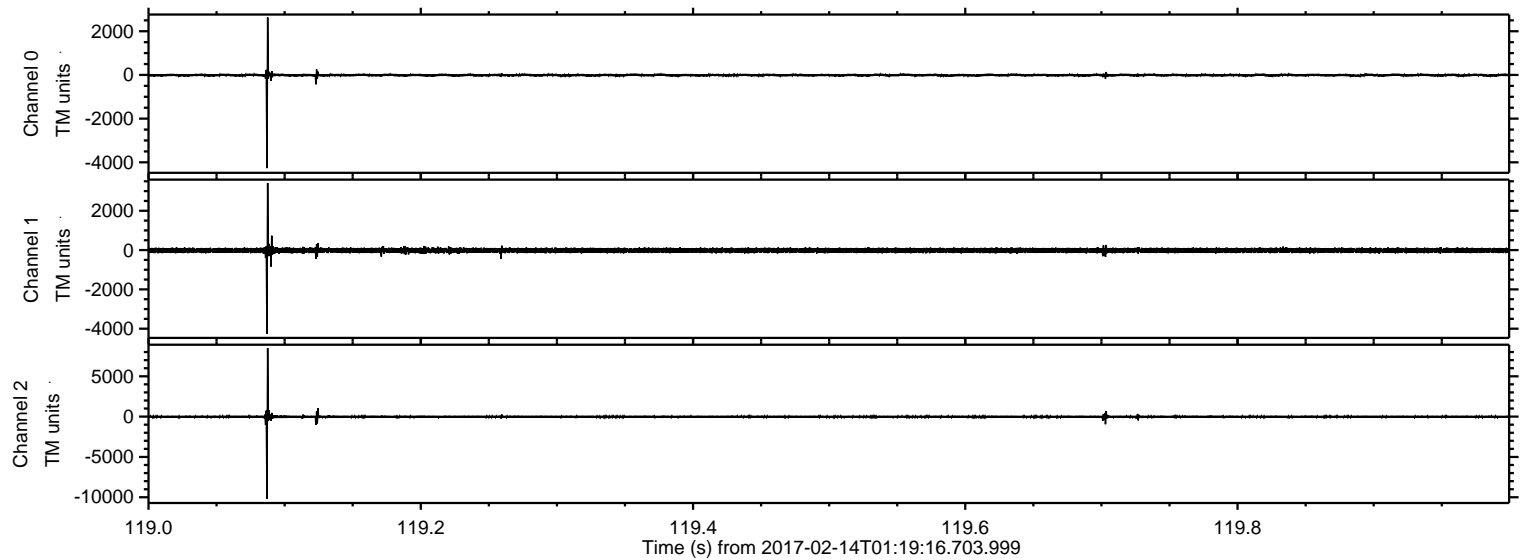
ELMAVAN 3D WAVEFORMS (Measured data sampled at 50 kHz) 51000 packets of 144 samples from 2017-02-14T01:19:16.703.999.

Processed Tue Feb 14 02:27:32 2017 by ELM ver.2012-10-06 from 001__elm20170214_011915__dat00.bin



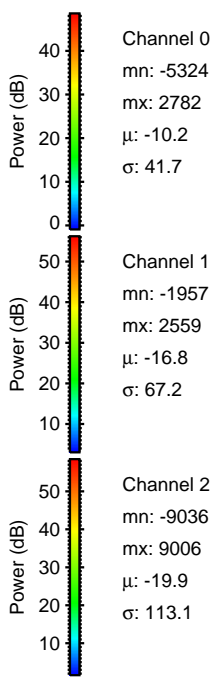
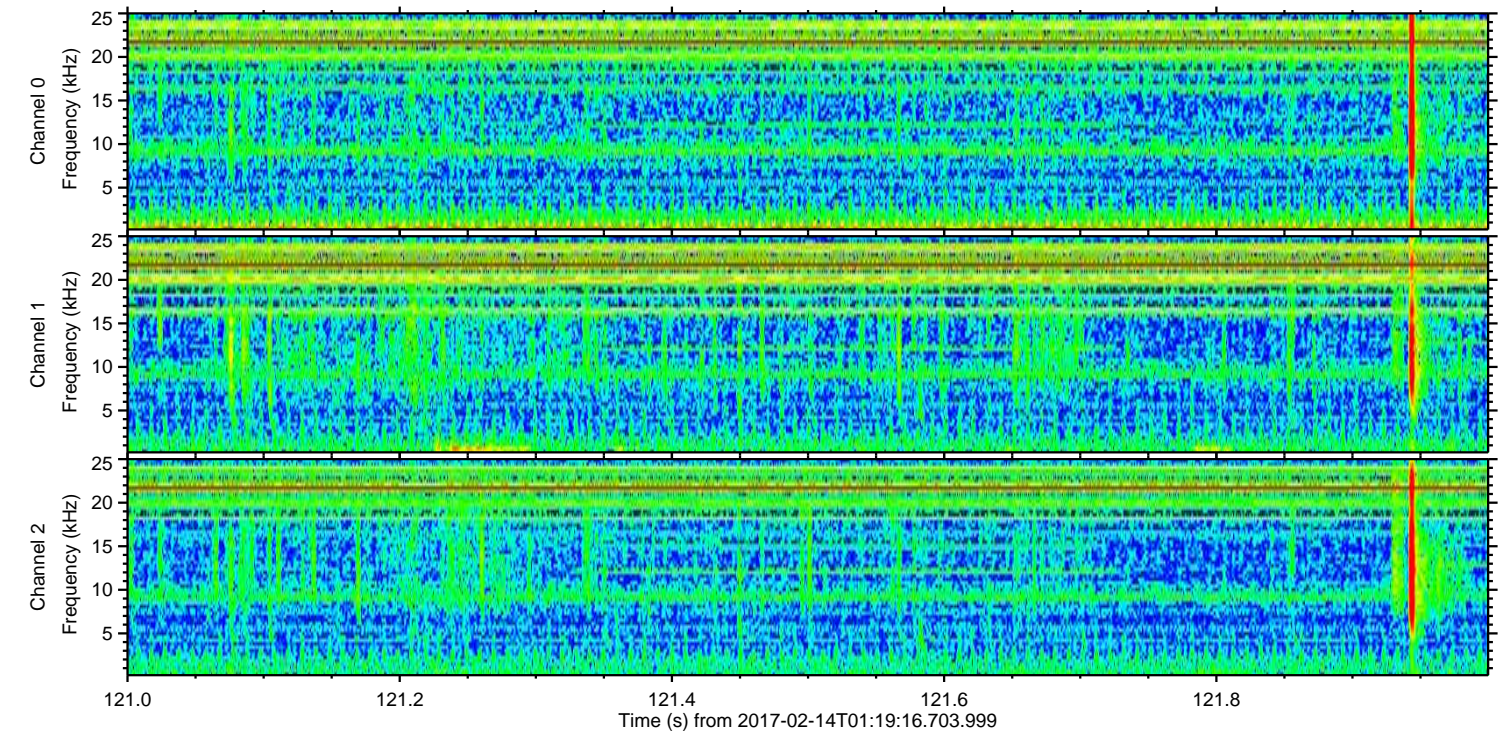
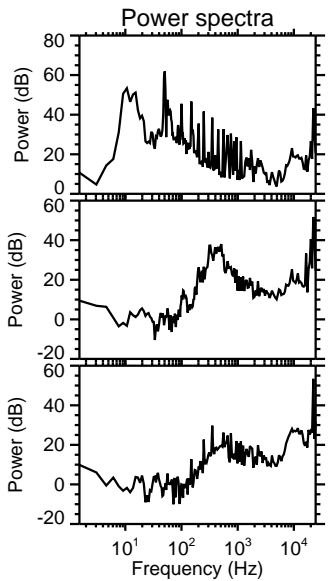
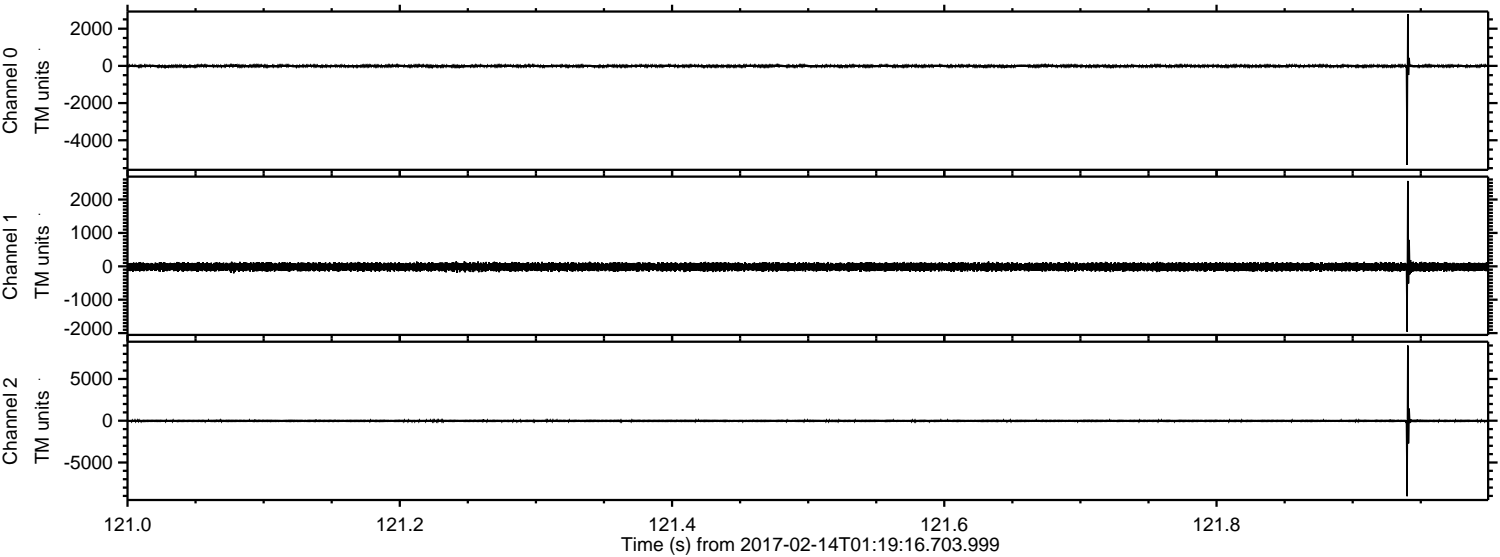
ELMAVAN 3D WAVEFORMS (Measured data sampled at 50 kHz) 51000 packets of 144 samples from 2017-02-14T01:19:16.703.999. Part 120/147

Processed Tue Feb 14 02:27:43 2017 by ELM ver.2012-10-06 from 001__elm20170214_011915__dat00.bin



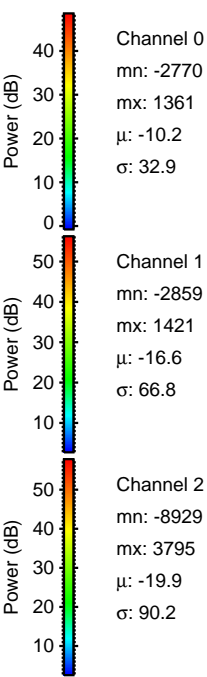
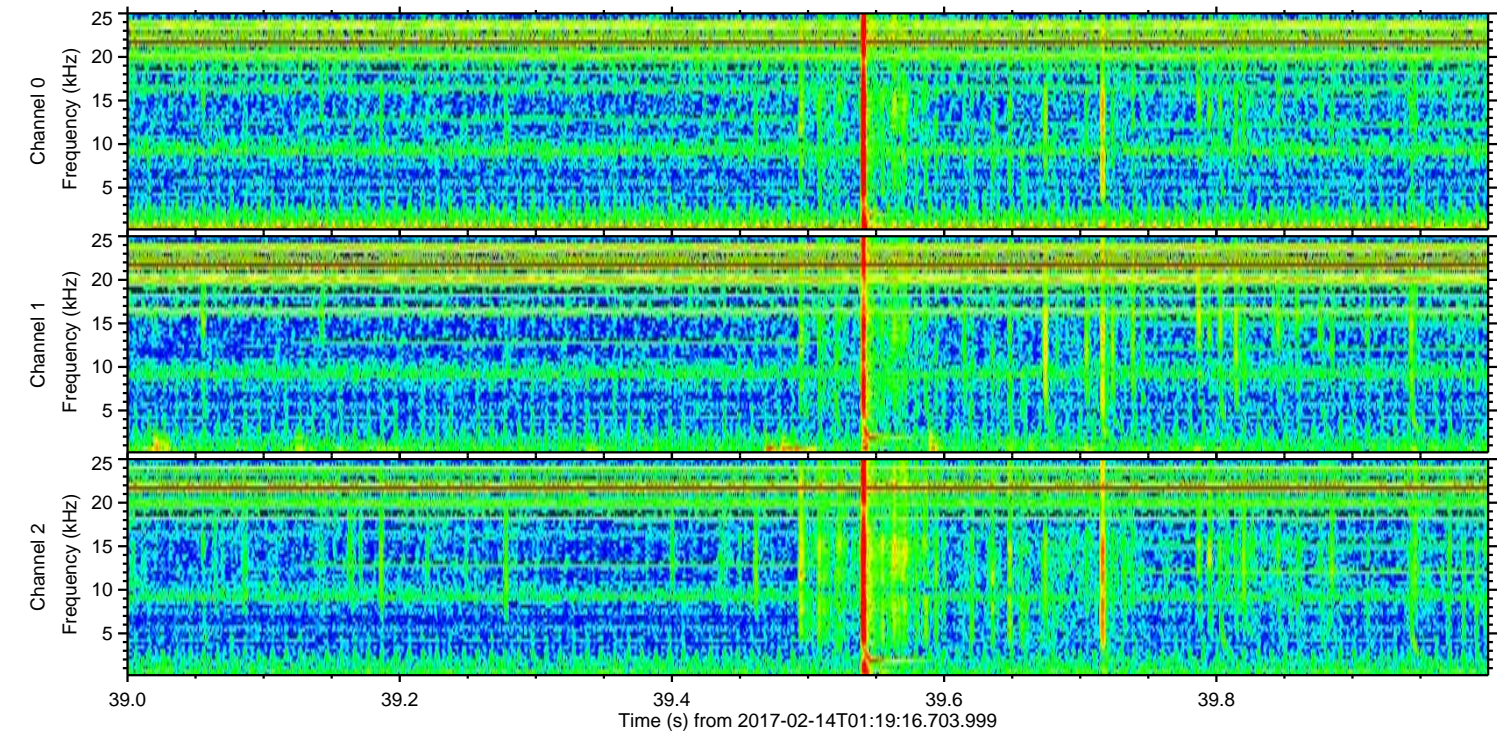
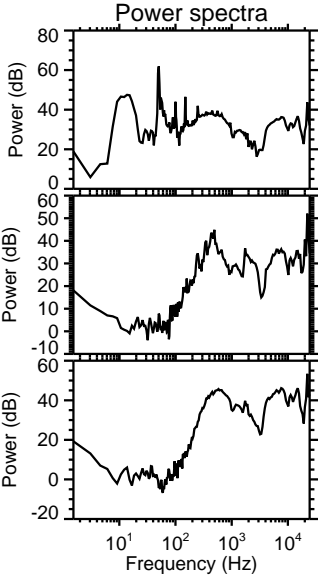
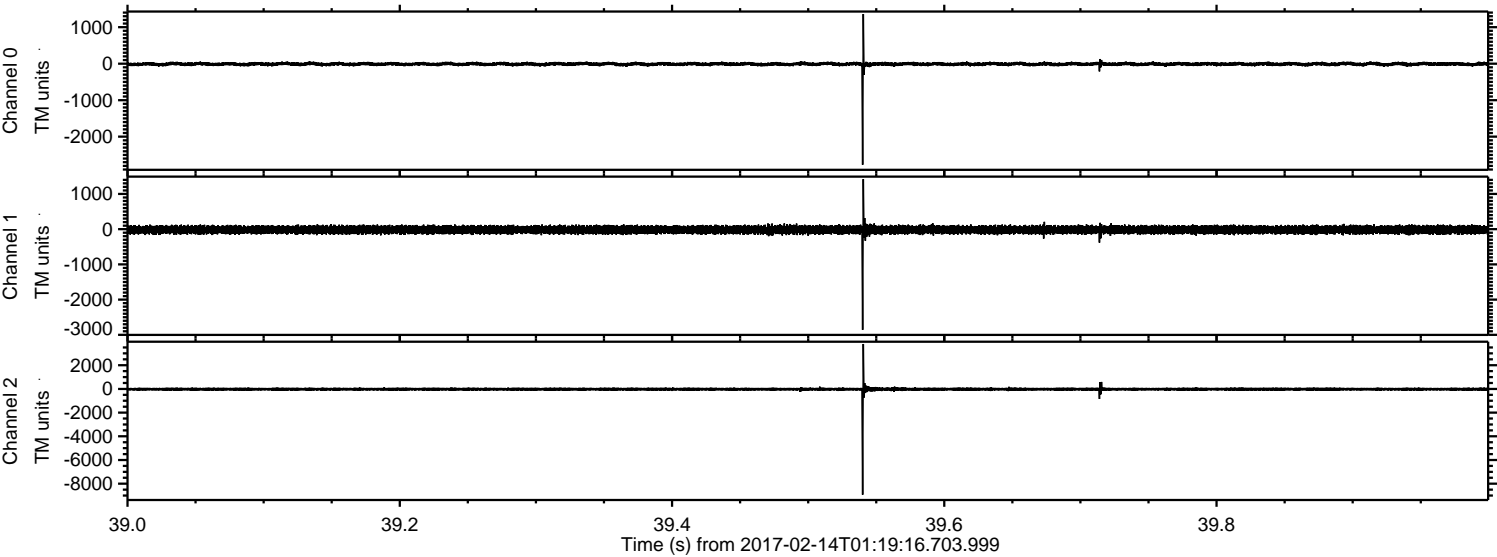
ELMAVAN 3D WAVEFORMS (Measured data sampled at 50 kHz) 51000 packets of 144 samples from 2017-02-14T01:19:16.703.999. Part 122/147

Processed Tue Feb 14 02:27:44 2017 by ELM ver.2012-10-06 from 001__elm20170214_011915__dat00.bin



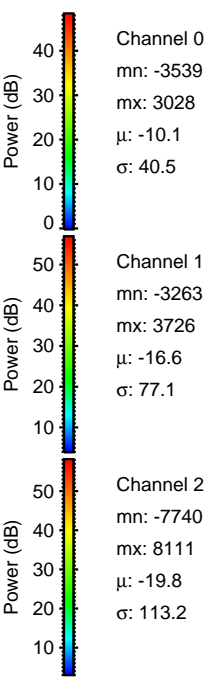
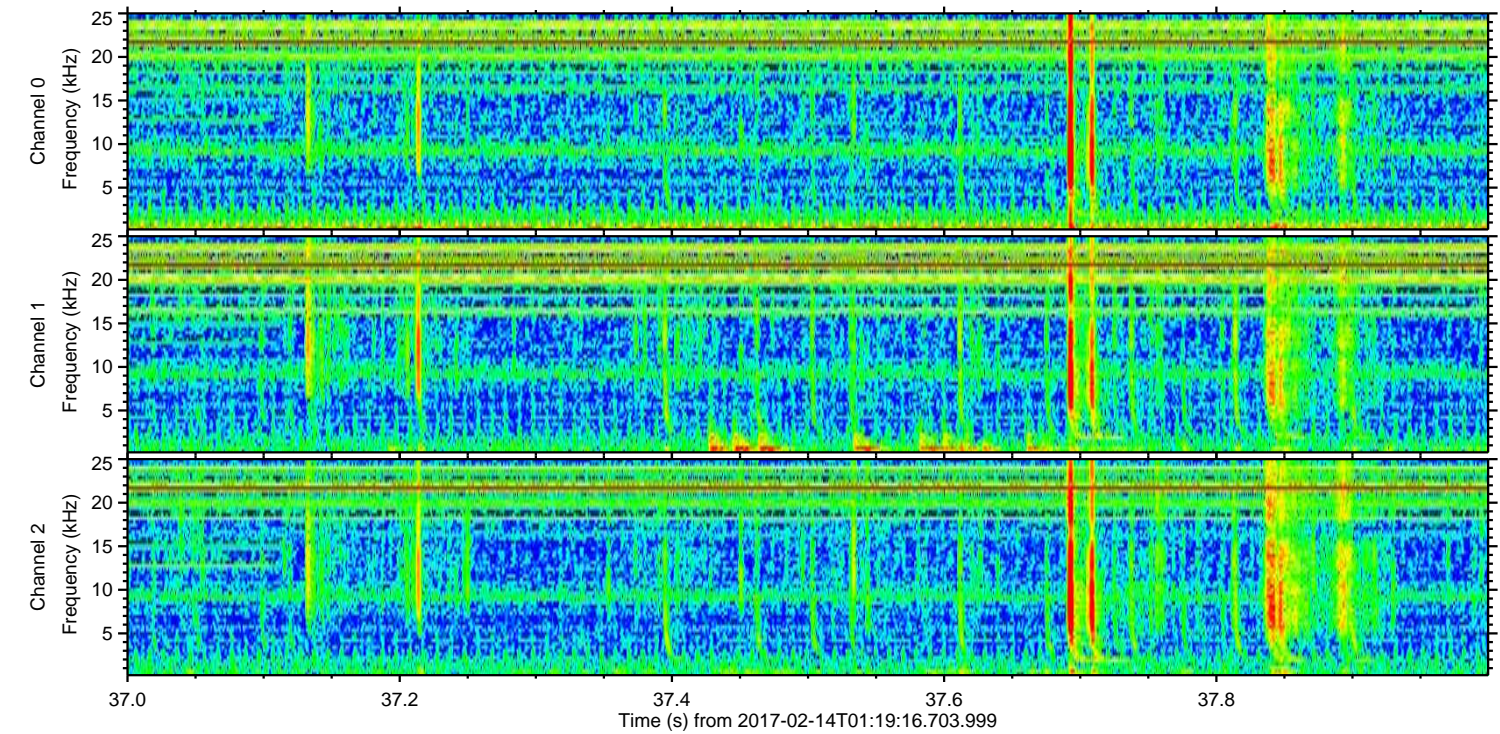
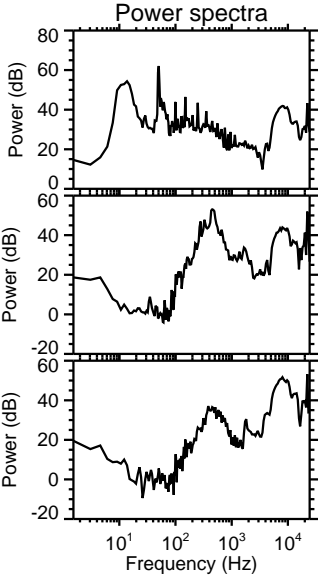
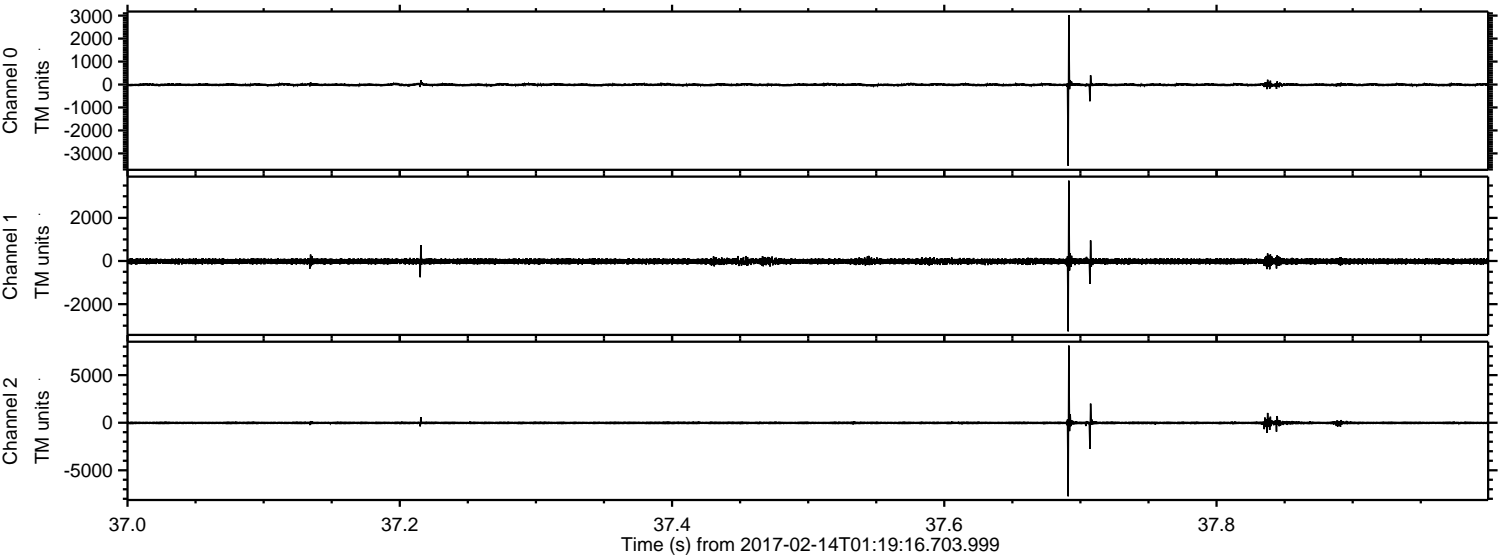
ELMAVAN 3D WAVEFORMS (Measured data sampled at 50 kHz) 51000 packets of 144 samples from 2017-02-14T01:19:16.703.999. Part 40/147

Processed Tue Feb 14 02:27:45 2017 by ELM ver.2012-10-06 from 001__elm20170214_011915__dat00.bin



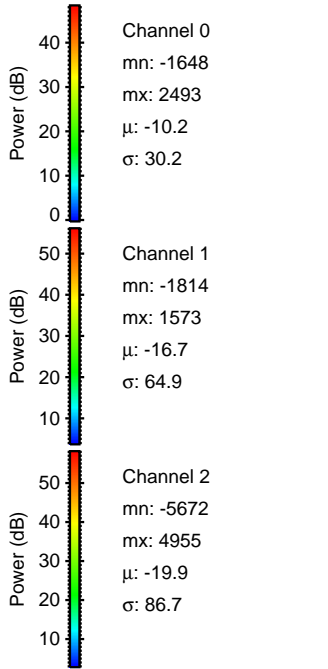
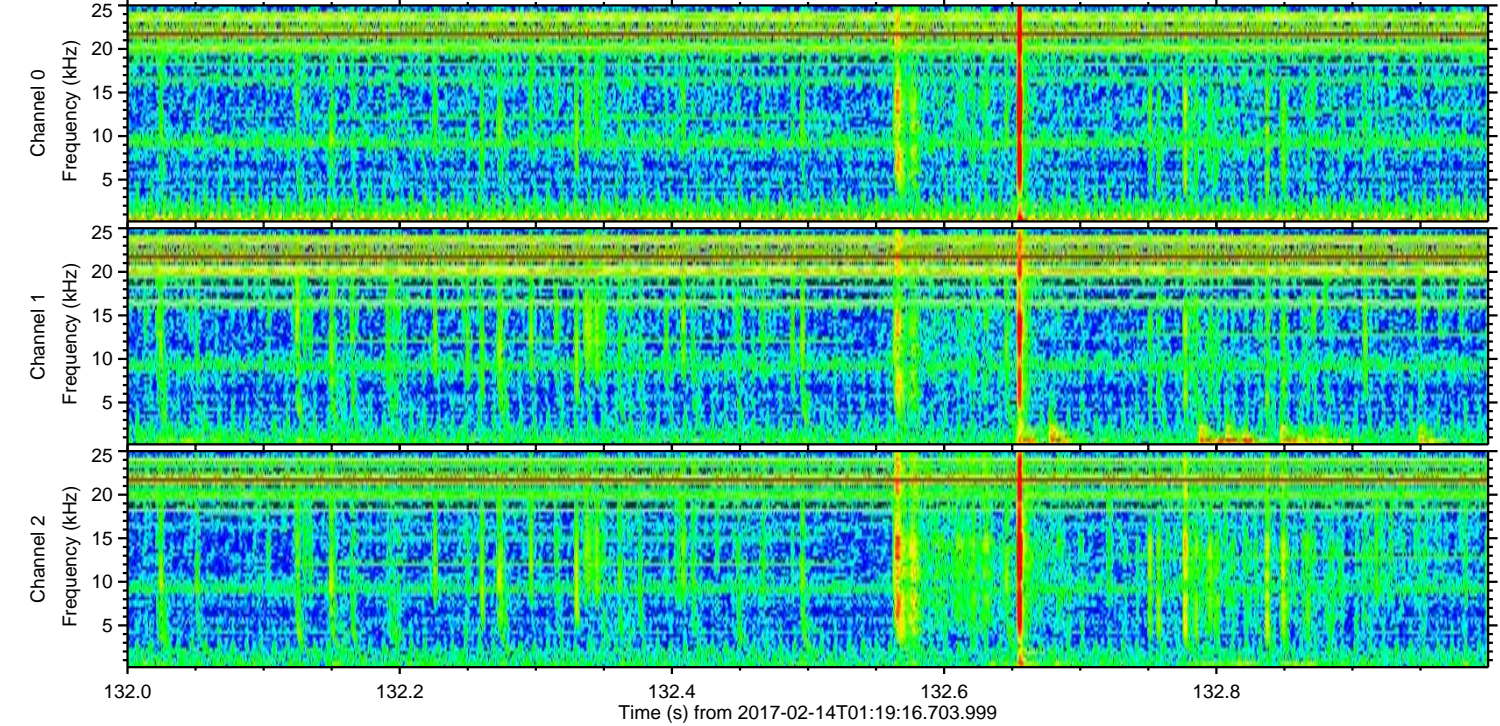
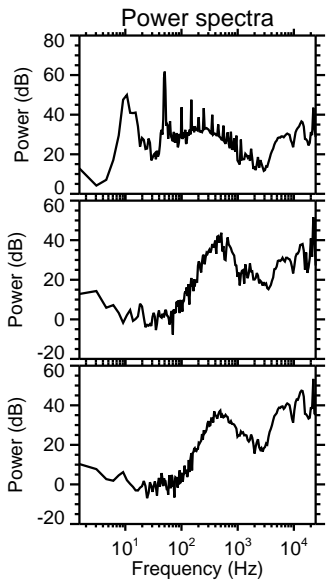
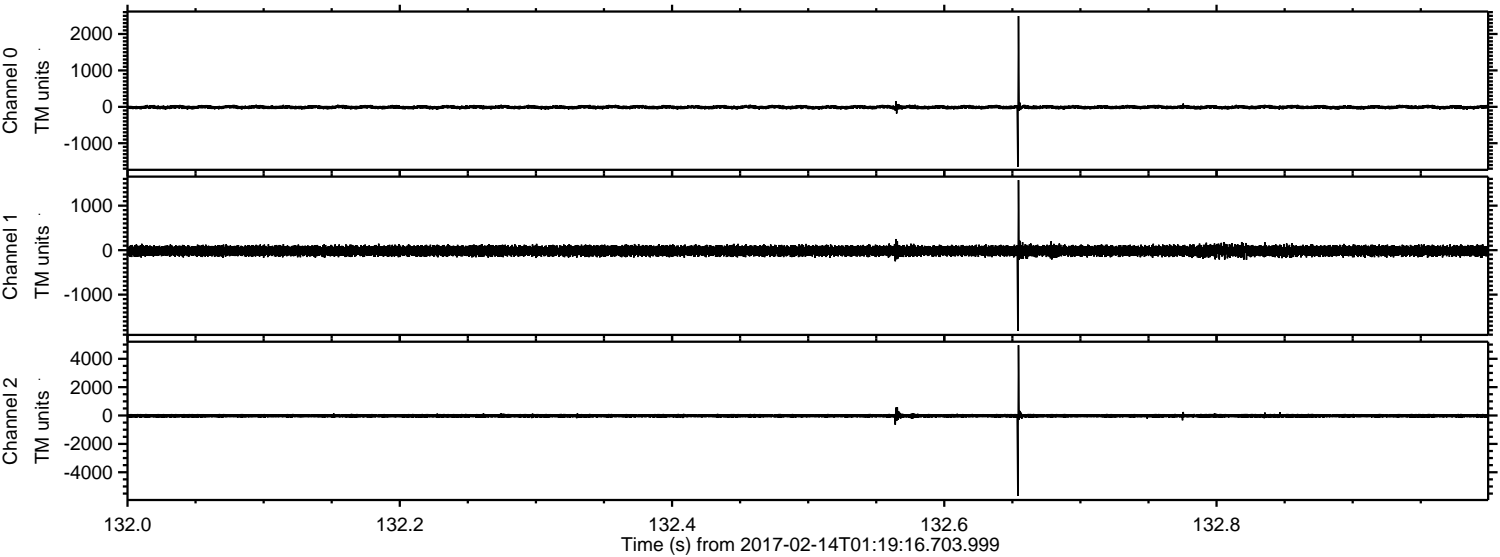
ELMAVAN 3D WAVEFORMS (Measured data sampled at 50 kHz) 51000 packets of 144 samples from 2017-02-14T01:19:16.703.999. Part 38/147

Processed Tue Feb 14 02:27:46 2017 by ELM ver.2012-10-06 from 001__elm20170214_011915__dat00.bin



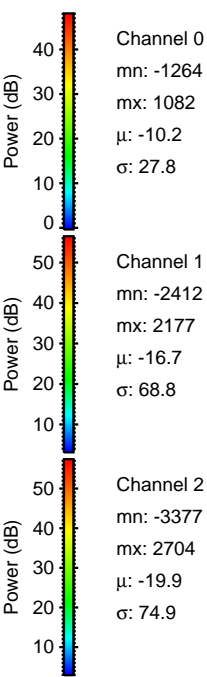
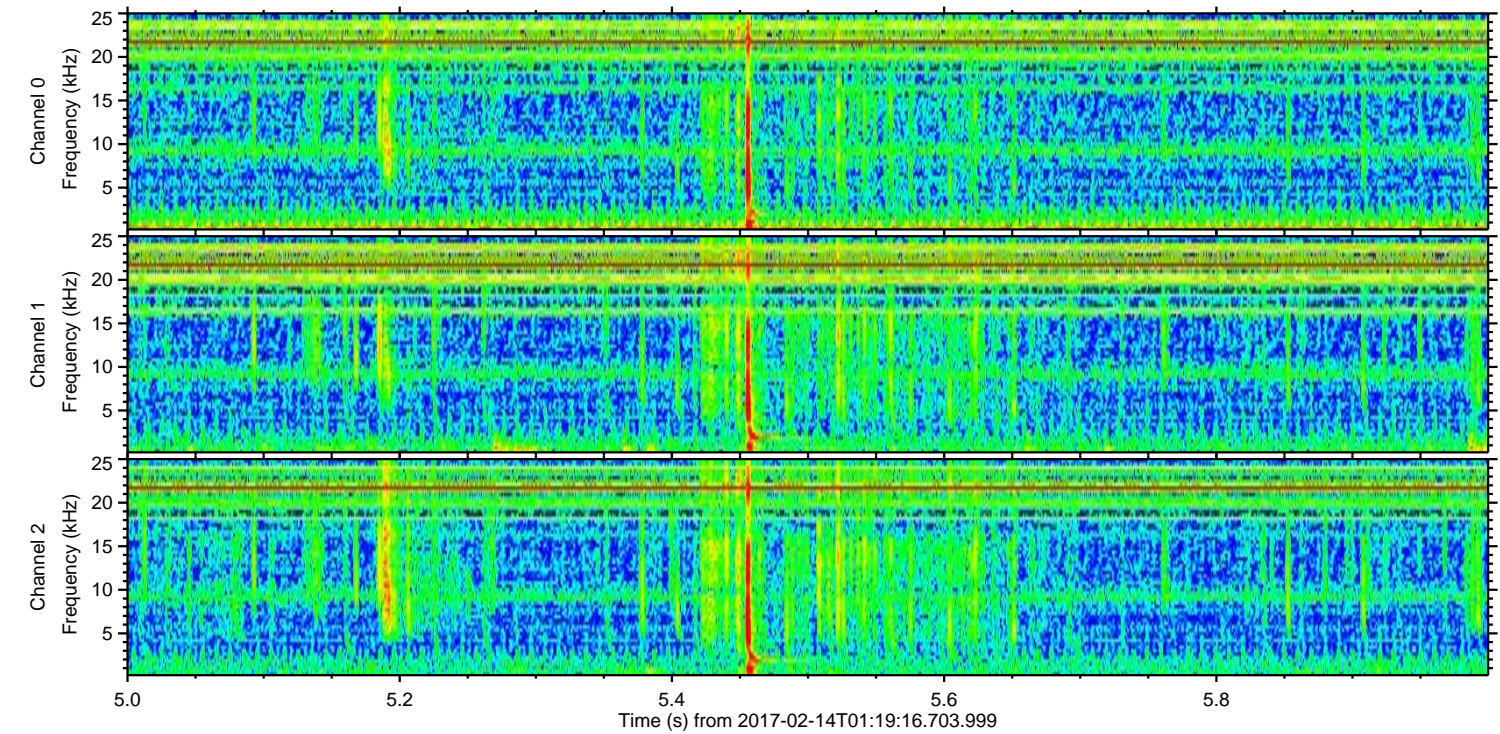
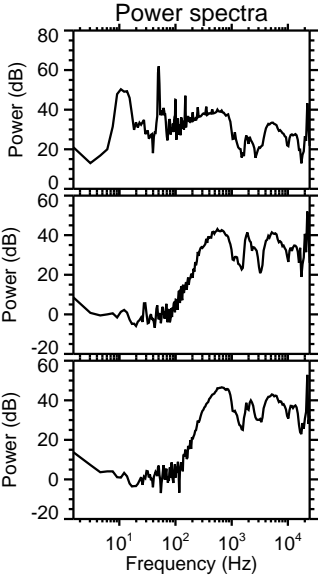
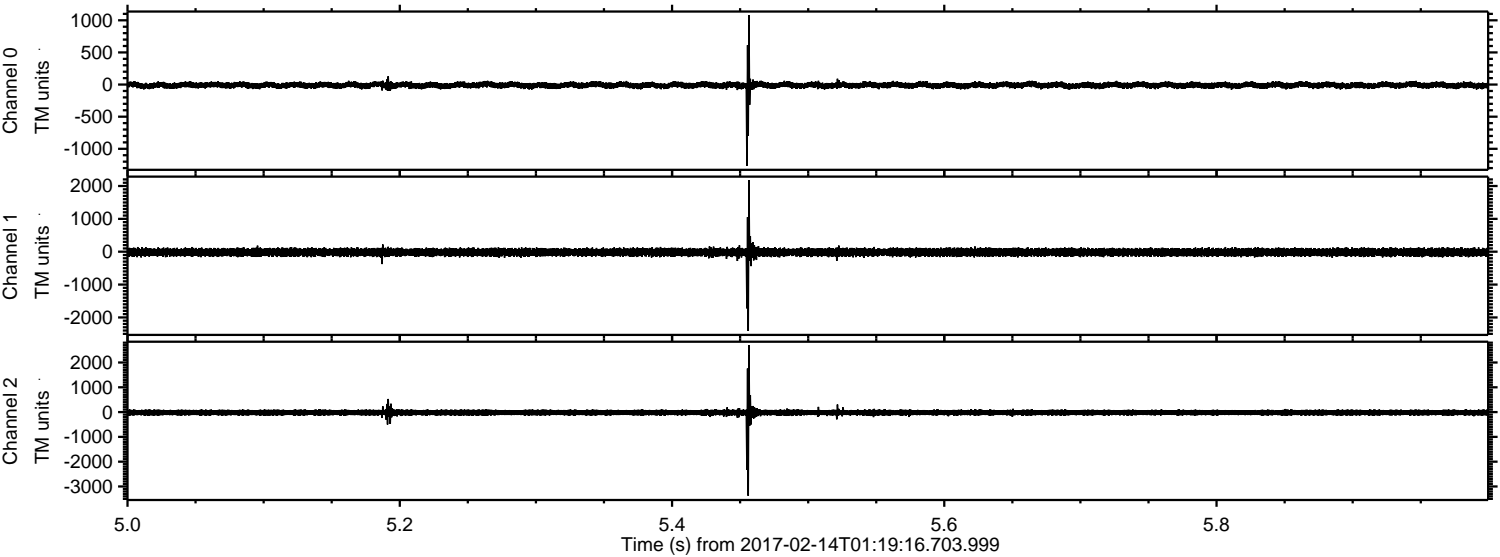
ELMAVAN 3D WAVEFORMS (Measured data sampled at 50 kHz) 51000 packets of 144 samples from 2017-02-14T01:19:16.703.999. Part 133/147

Processed Tue Feb 14 02:27:47 2017 by ELM ver.2012-10-06 from 001__elm20170214_011915__dat00.bin



ELMAVAN 3D WAVEFORMS (Measured data sampled at 50 kHz) 51000 packets of 144 samples from 2017-02-14T01:19:16.703.999. Part 6/147

Processed Tue Feb 14 02:27:48 2017 by ELM ver.2012-10-06 from 001__elm20170214_011915__dat00.bin



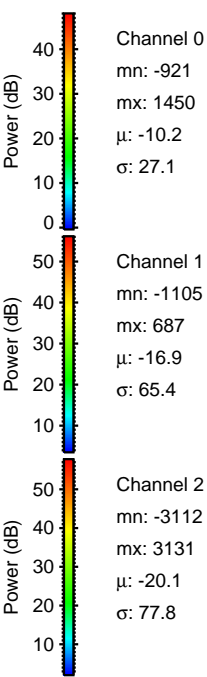
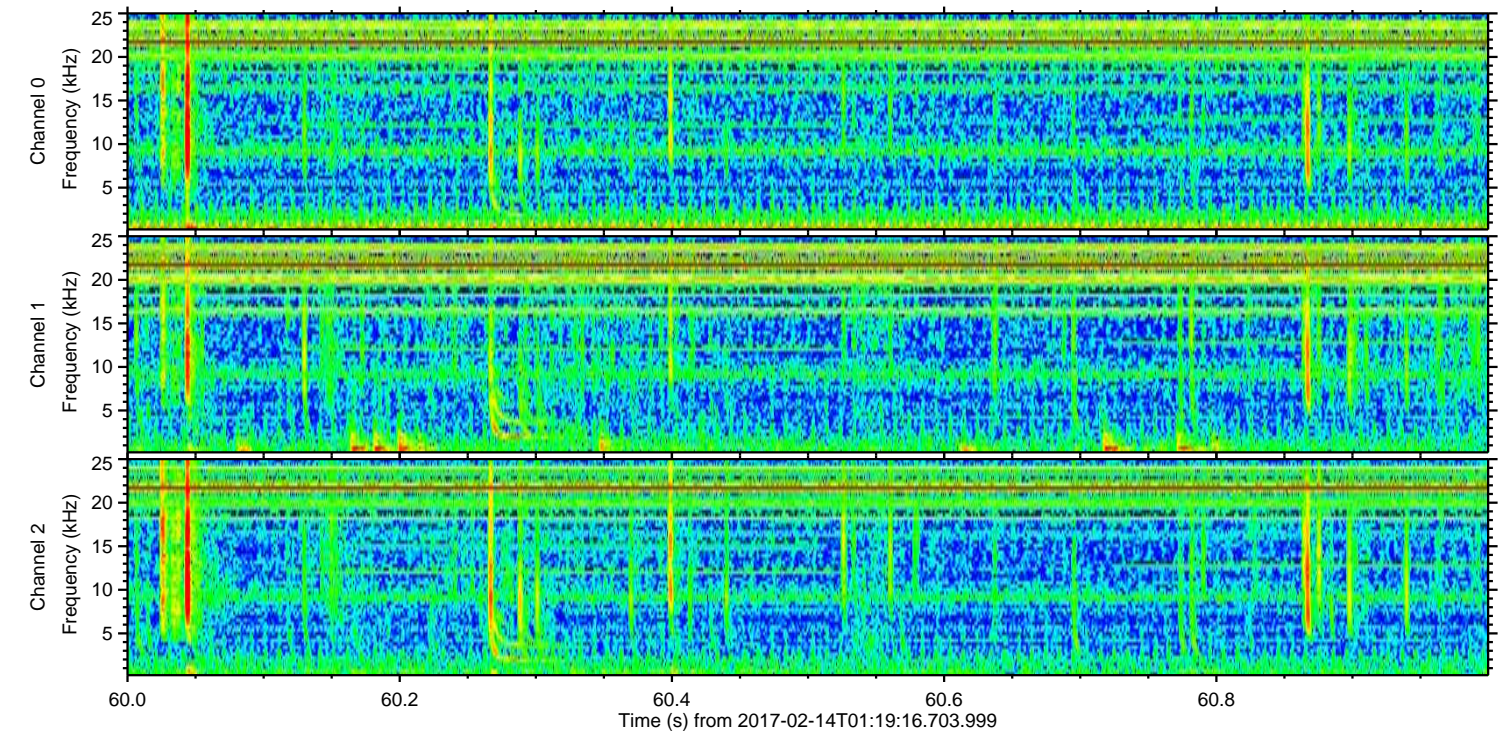
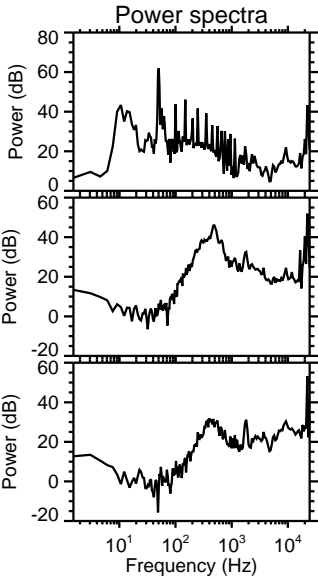
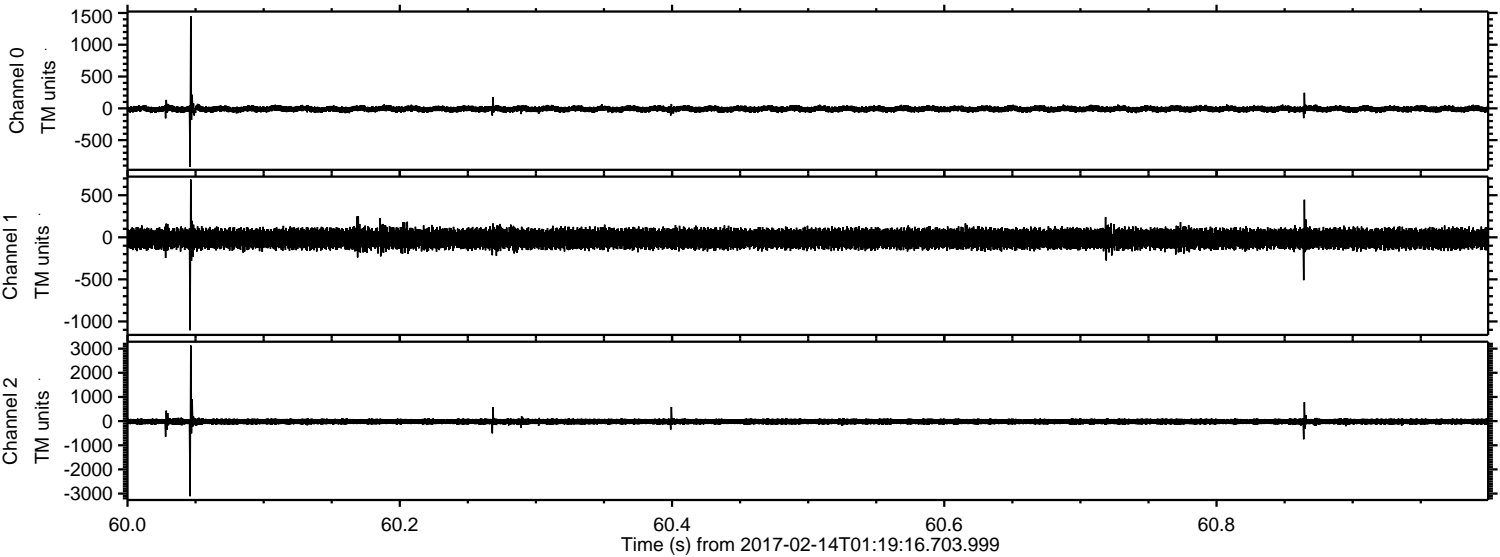
Channel 0
mn: -1264
mx: 1082
 μ : -10.2
 σ : 27.8

Channel 1
mn: -2412
mx: 2177
 μ : -16.7
 σ : 68.8

Channel 2
mn: -3377
mx: 2704
 μ : -19.9
 σ : 74.9

ELMAVAN 3D WAVEFORMS (Measured data sampled at 50 kHz) 51000 packets of 144 samples from 2017-02-14T01:19:16.703.999. Part 61/147

Processed Tue Feb 14 02:27:49 2017 by ELM ver.2012-10-06 from 001__elm20170214_011915__dat00.bin



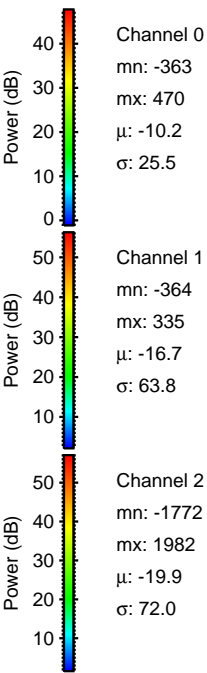
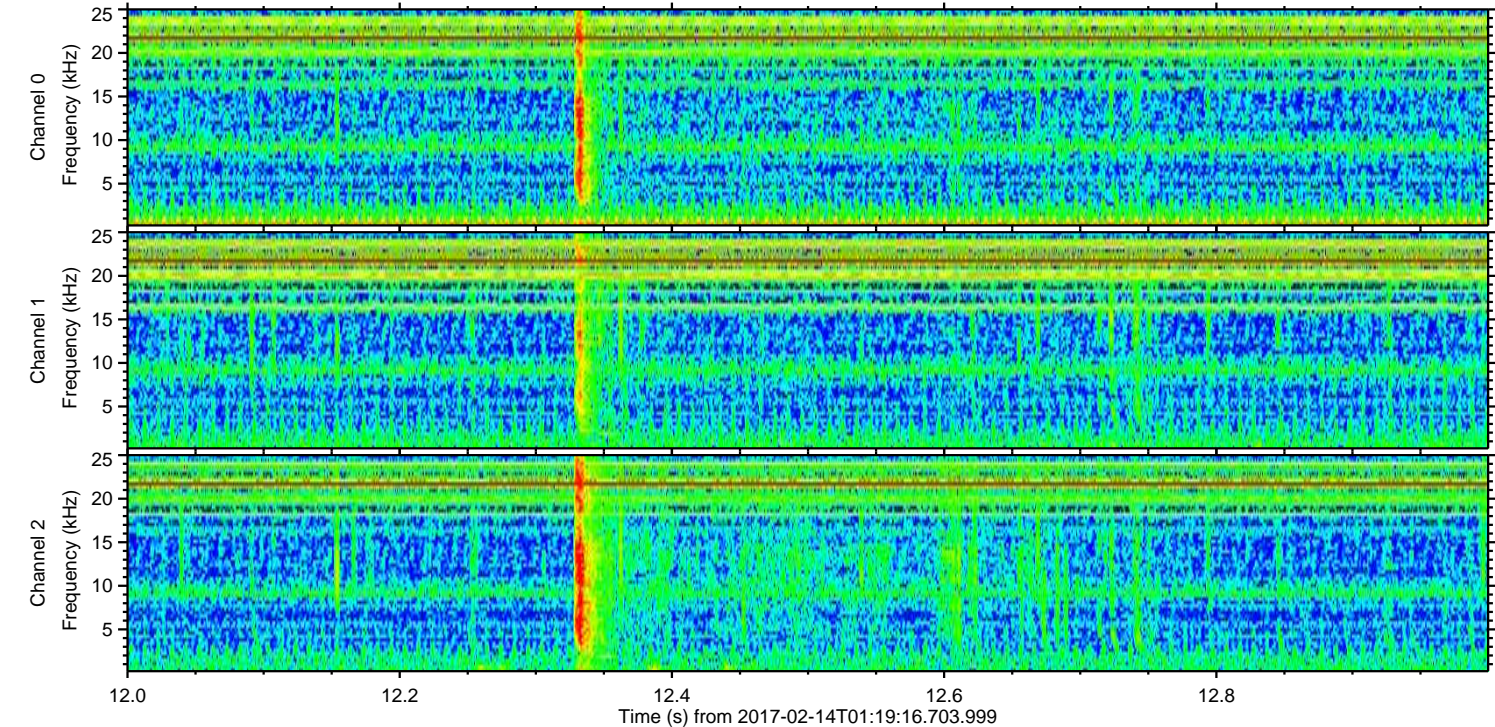
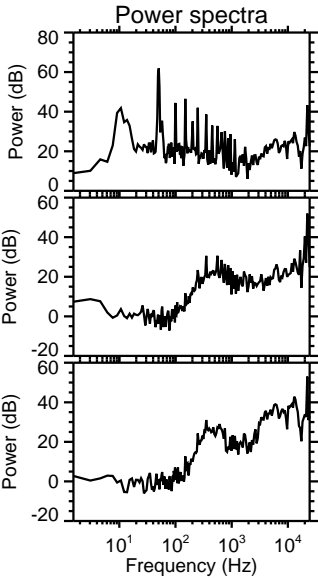
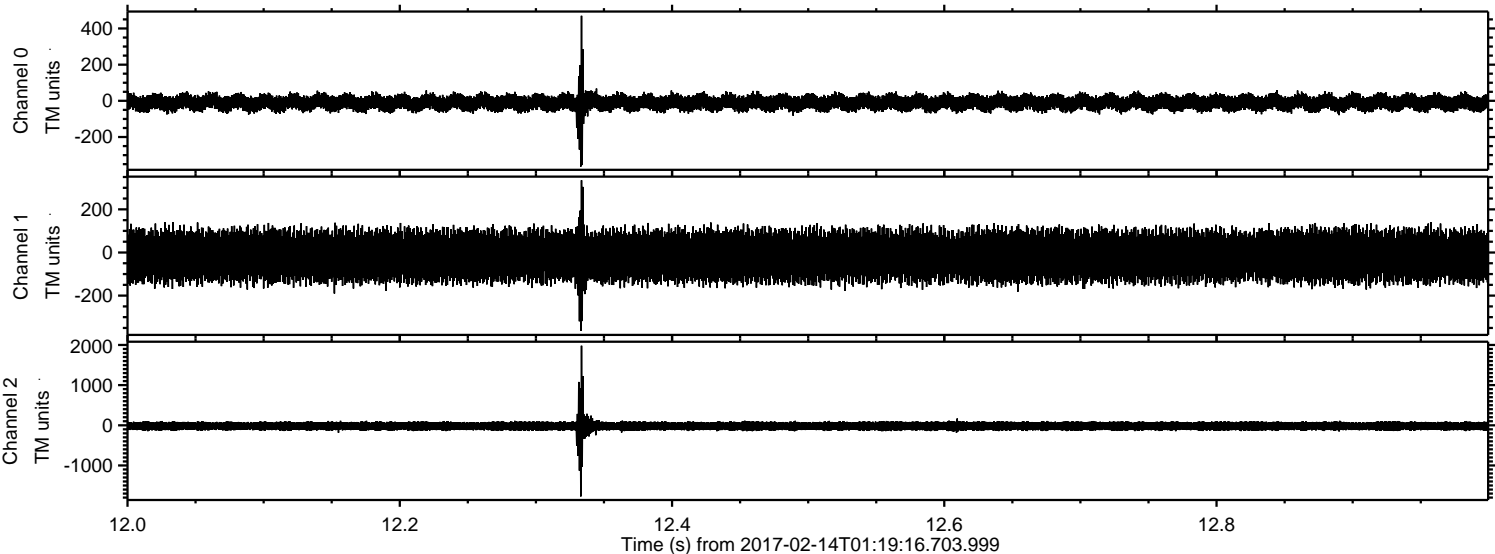
Channel 0
mn: -921
mx: 1450
 μ : -10.2
 σ : 27.1

Channel 1
mn: -1105
mx: 687
 μ : -16.9
 σ : 65.4

Channel 2
mn: -3112
mx: 3131
 μ : -20.1
 σ : 77.8

ELMAVAN 3D WAVEFORMS (Measured data sampled at 50 kHz) 51000 packets of 144 samples from 2017-02-14T01:19:16.703.999. Part 13/147

Processed Tue Feb 14 02:27:50 2017 by ELM ver.2012-10-06 from 001__elm20170214_011915__dat00.bin



ELMAVAN 3D WAVEFORMS (Measured data sampled at 50 kHz) 51000 packets of 144 samples from 2017-02-14T01:19:16.703.999. Part 51/147

Processed Tue Feb 14 02:27:50 2017 by ELM ver.2012-10-06 from 001__elm20170214_011915__dat00.bin

