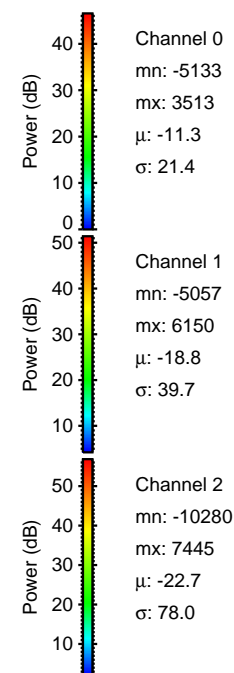
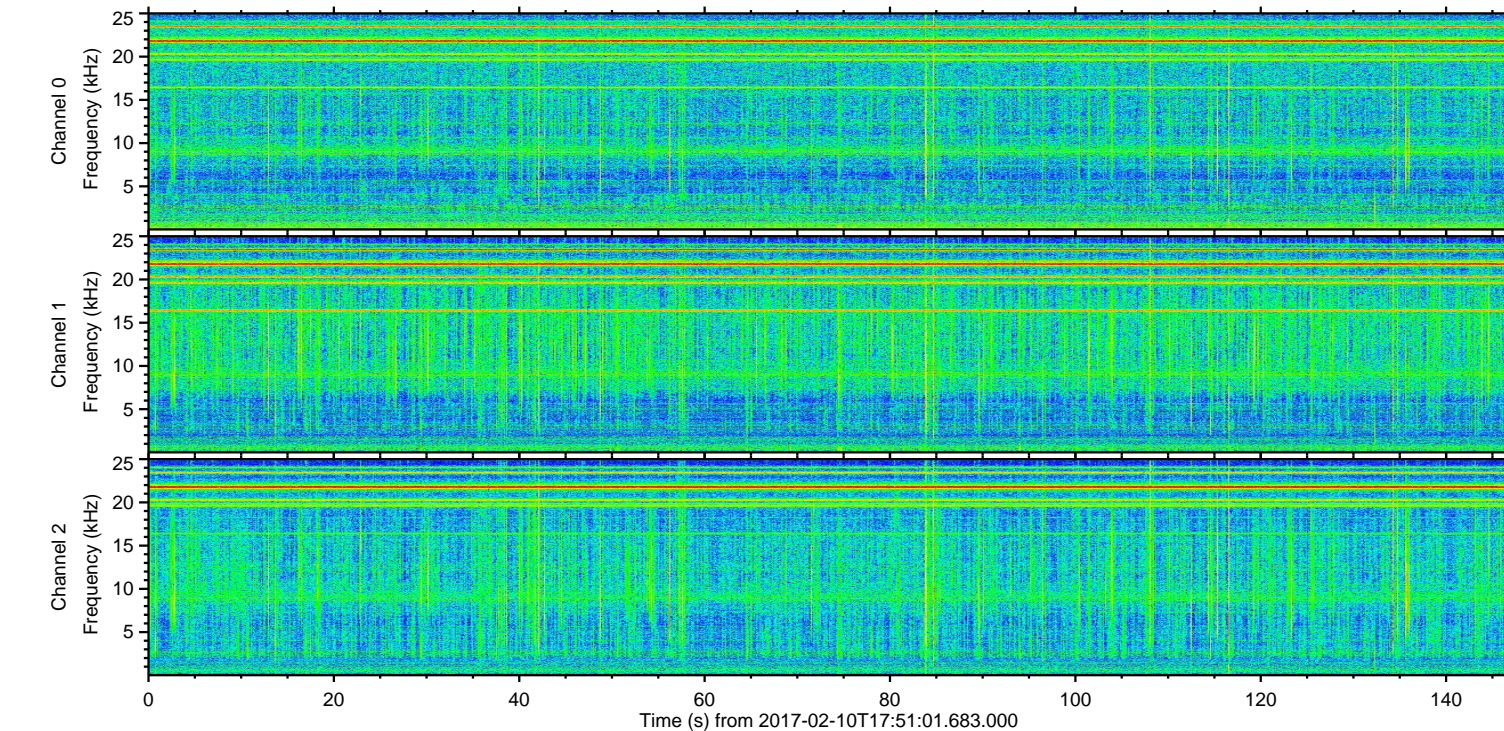
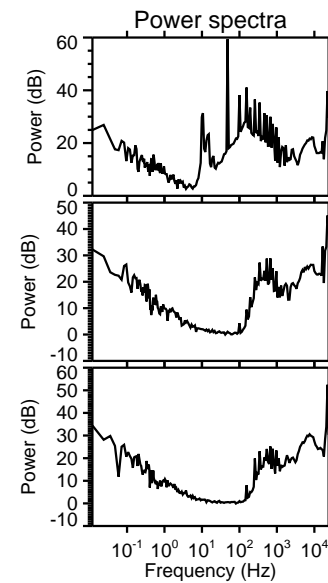
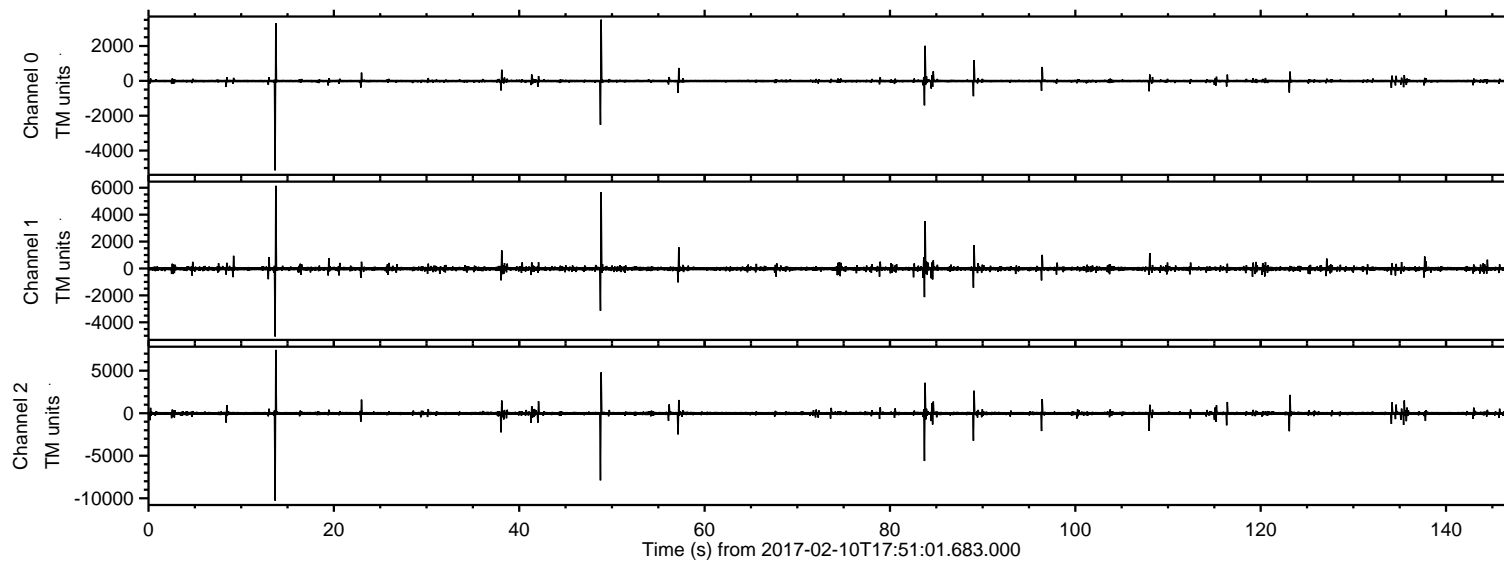
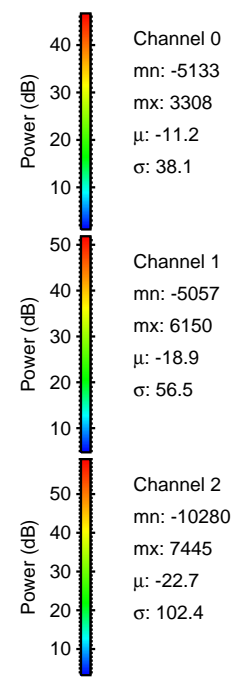
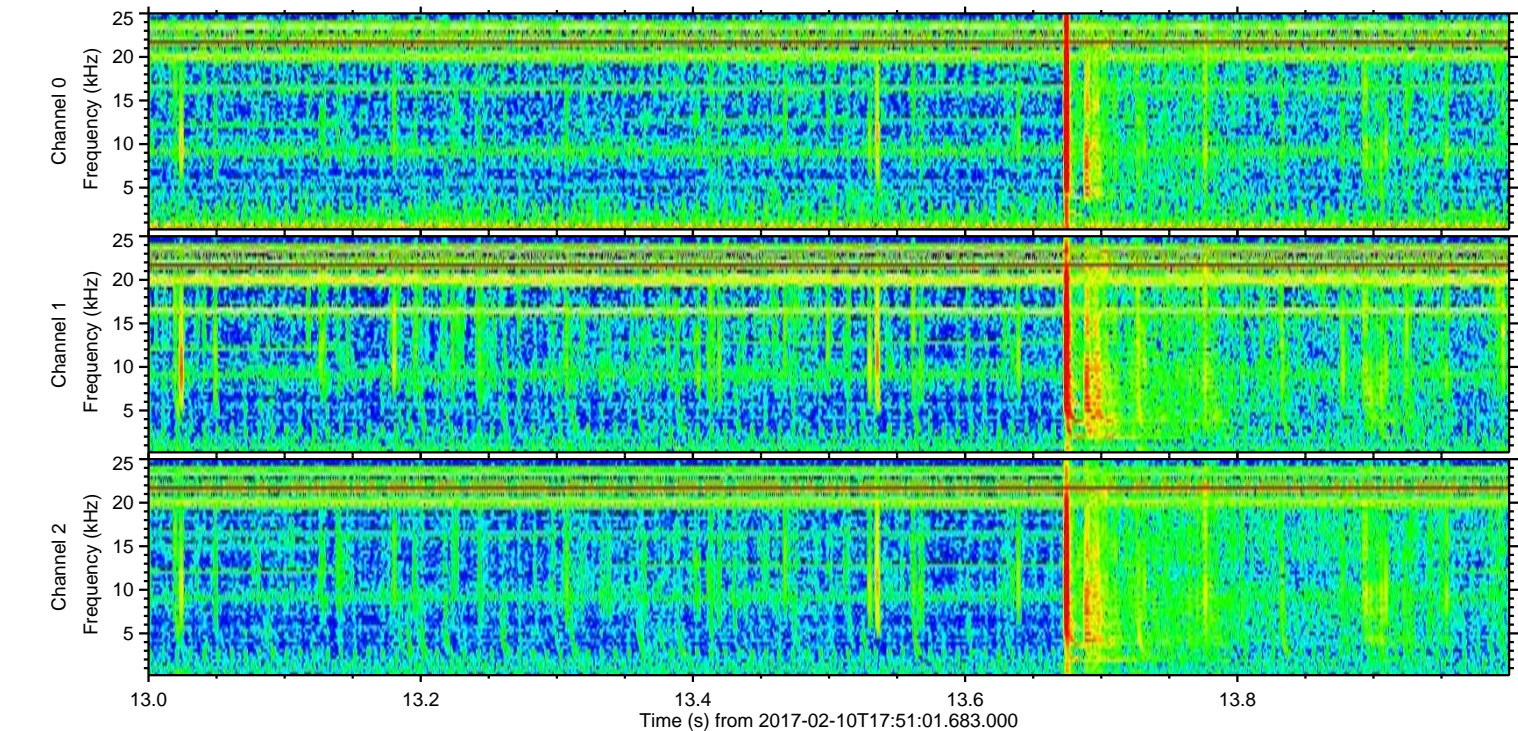
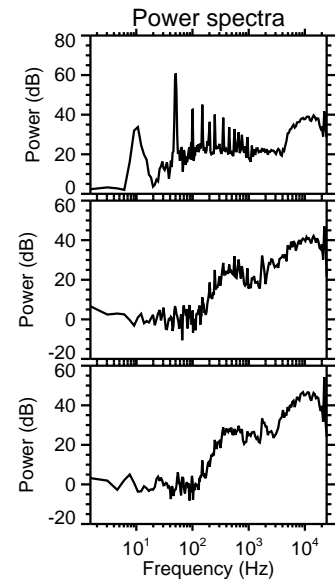
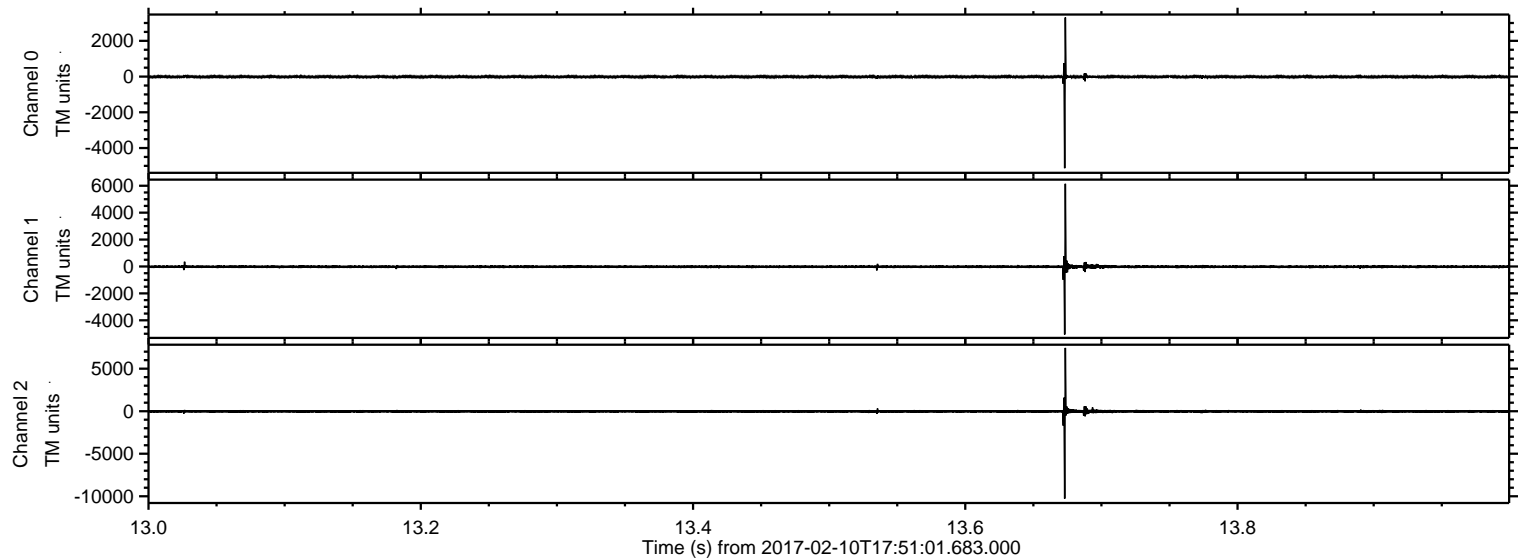


ELMAVAN 3D WAVEFORMS (Measured data sampled at 50 kHz) 51000 packets of 144 samples from 2017-02-10T17:51:01.683.000.

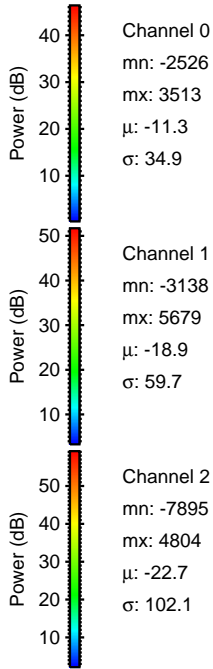
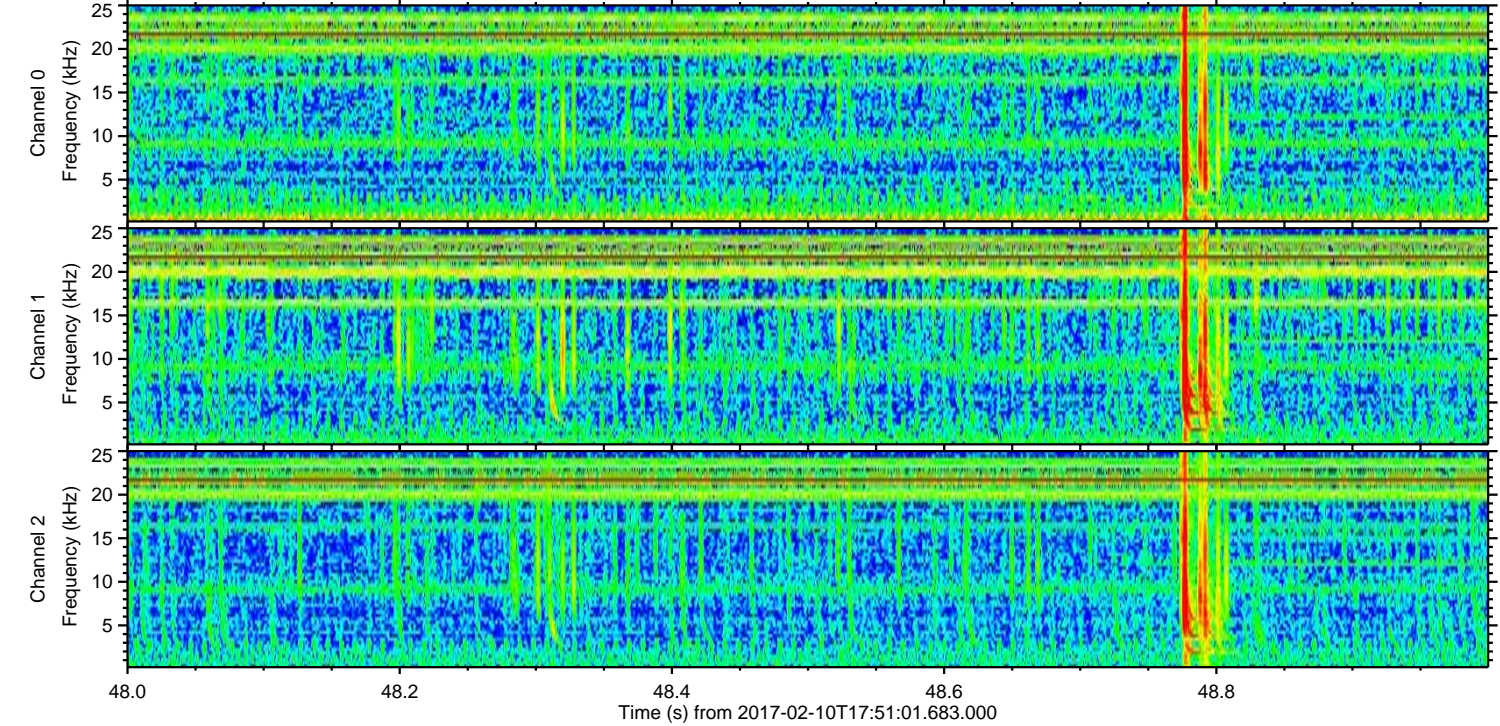
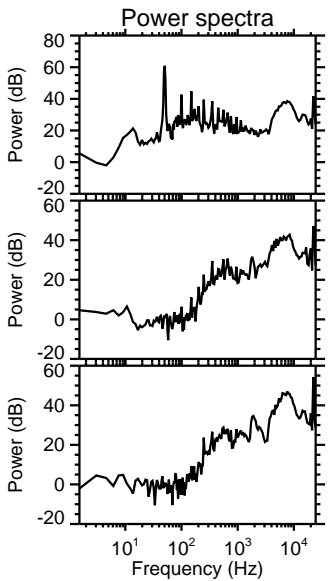
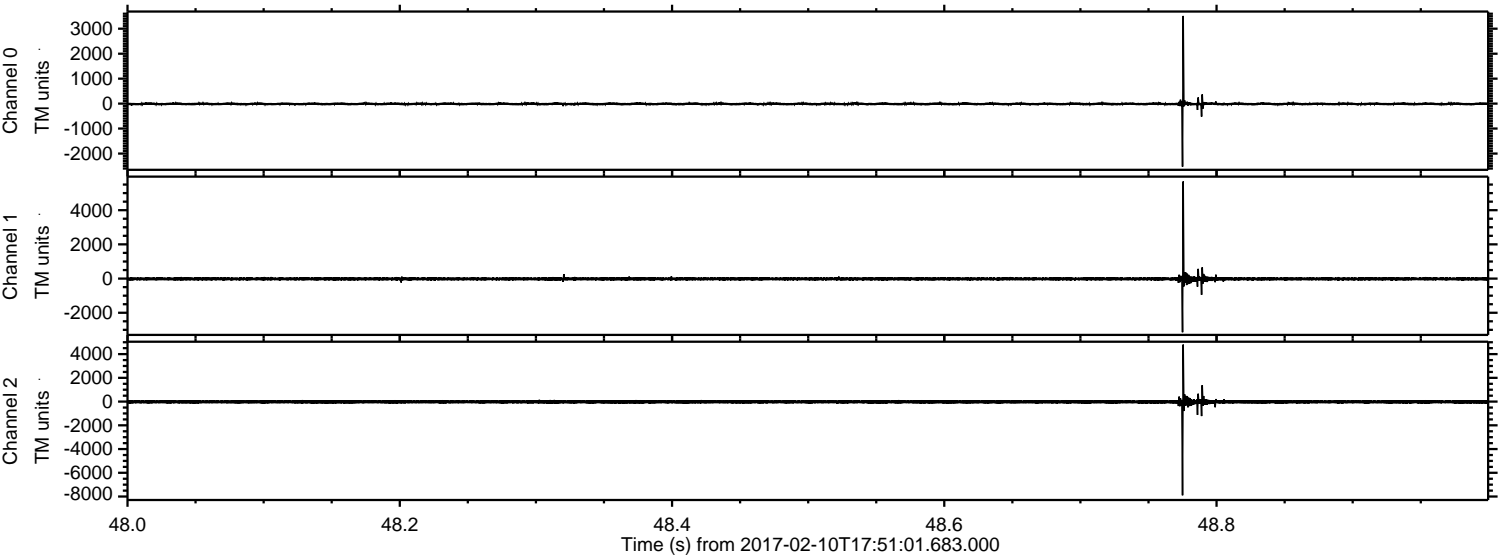
Processed Fri Feb 10 18:58:39 2017 by ELM ver.2012-10-06 from 001__elm20170210_175100__dat00.bin



Processed Fri Feb 10 18:58:51 2017 by ELM ver.2012-10-06 from 001__elm20170210_175100__dat00.bin

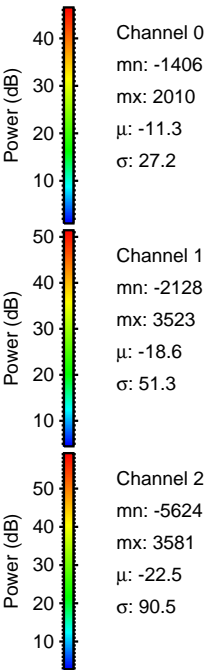
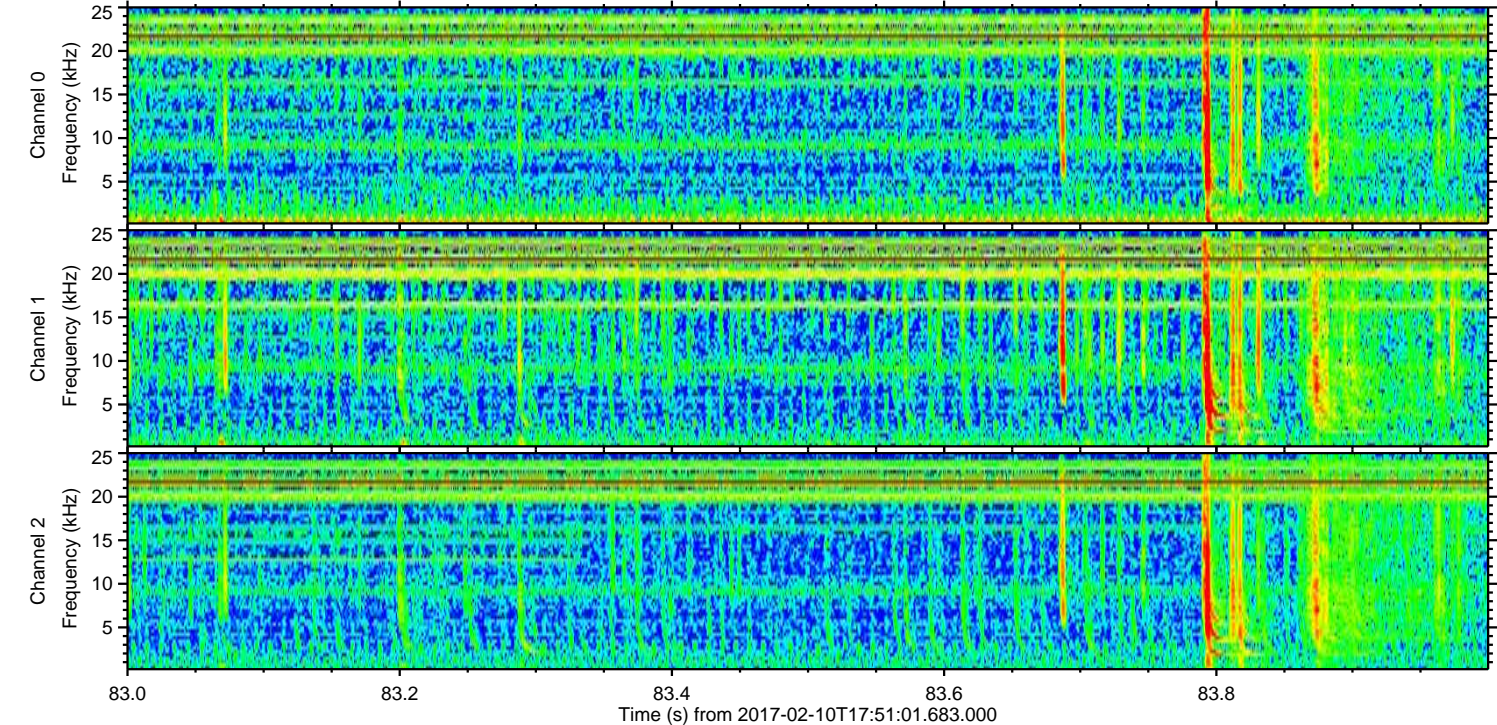
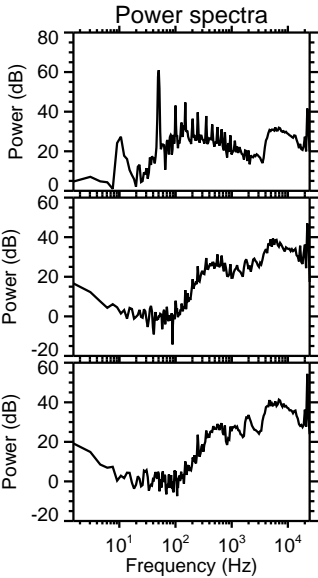
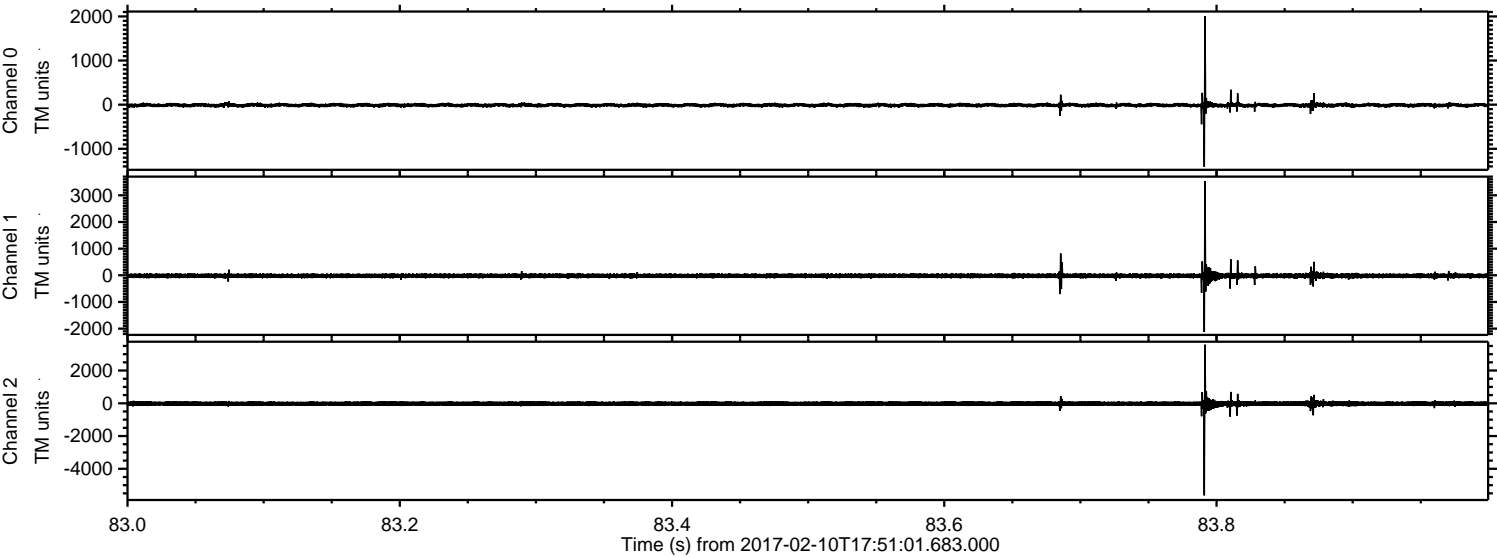


Processed Fri Feb 10 18:58:52 2017 by ELM ver.2012-10-06 from 001__elm20170210_175100__dat00.bin

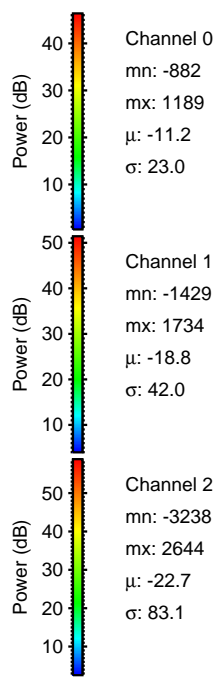
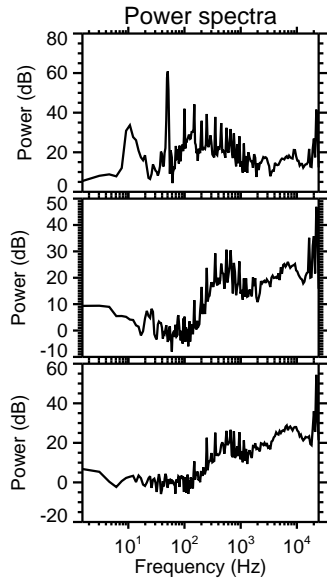
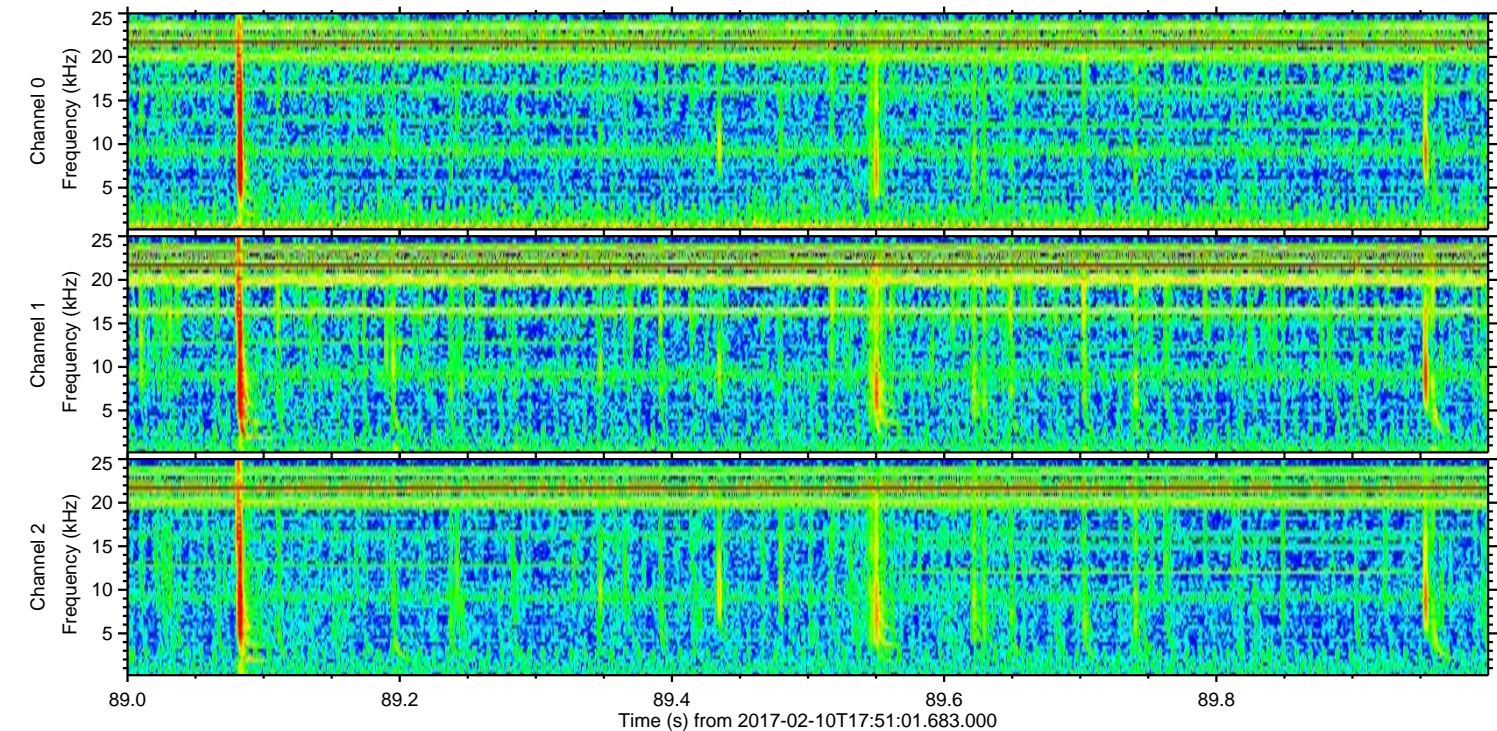
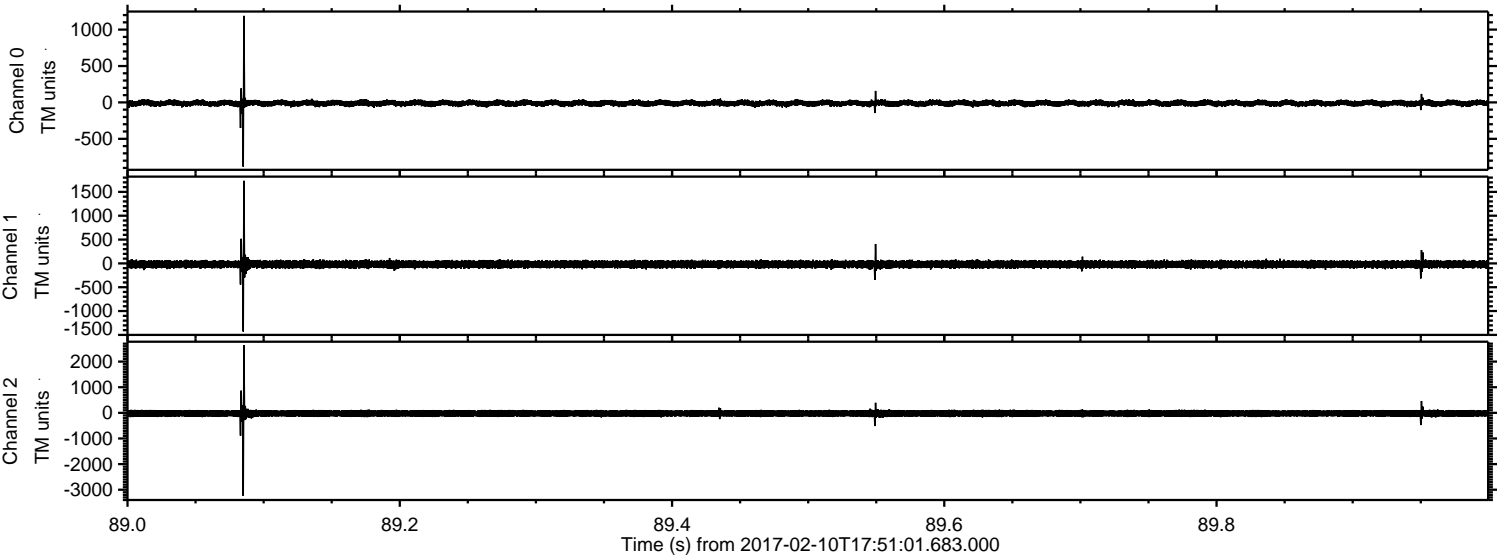


ELMAVAN 3D WAVEFORMS (Measured data sampled at 50 kHz) 51000 packets of 144 samples from 2017-02-10T17:51:01.683.000. Part 84/147

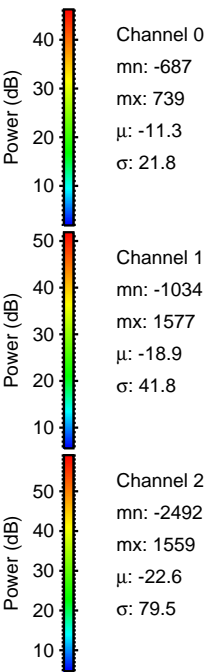
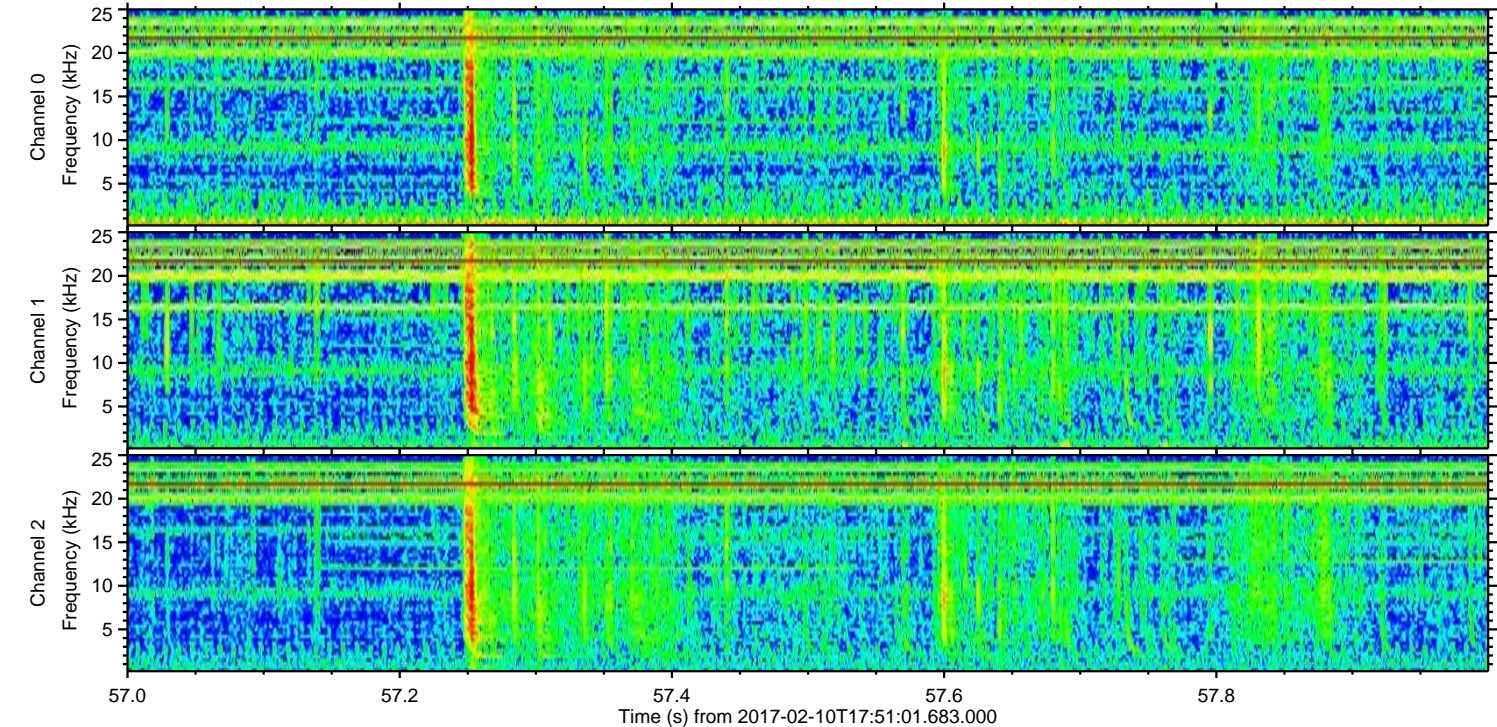
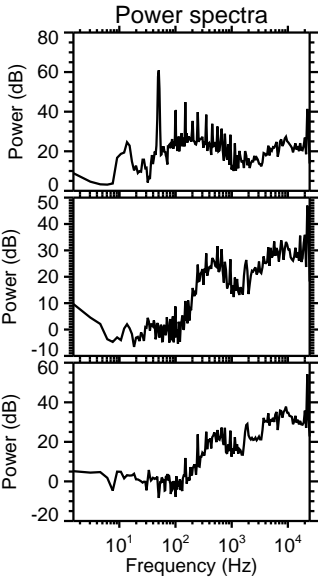
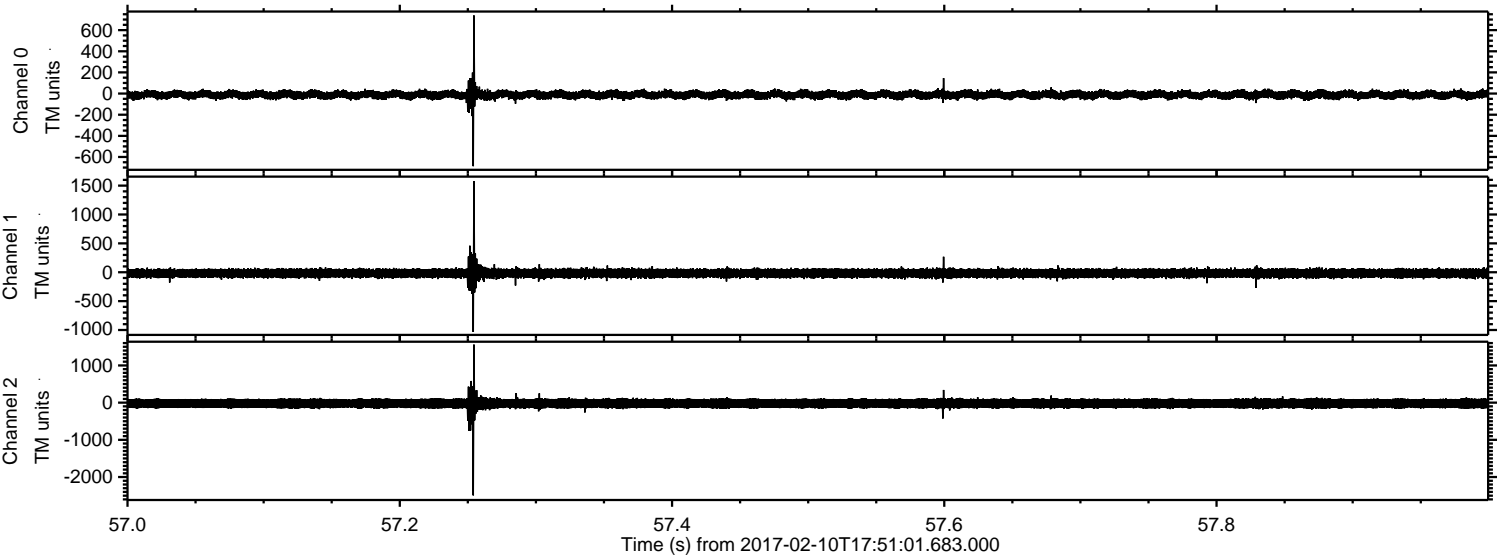
Processed Fri Feb 10 18:58:53 2017 by ELM ver.2012-10-06 from 001__elm20170210_175100__dat00.bin



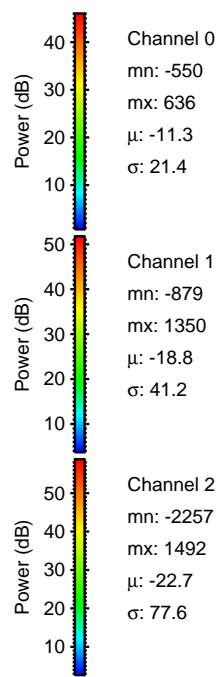
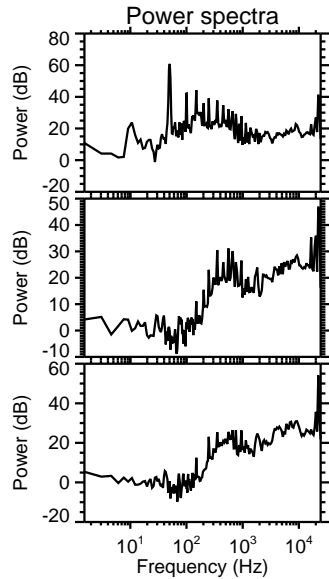
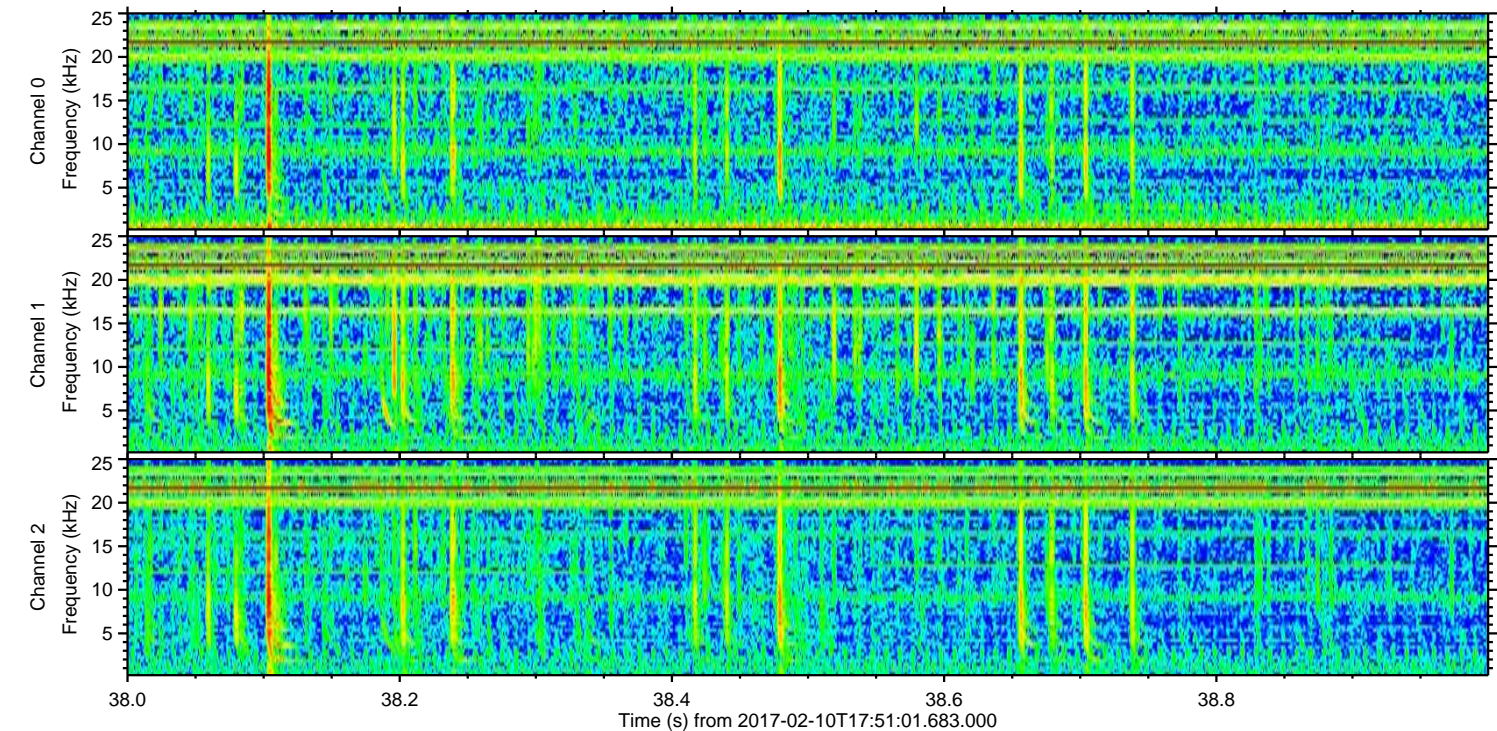
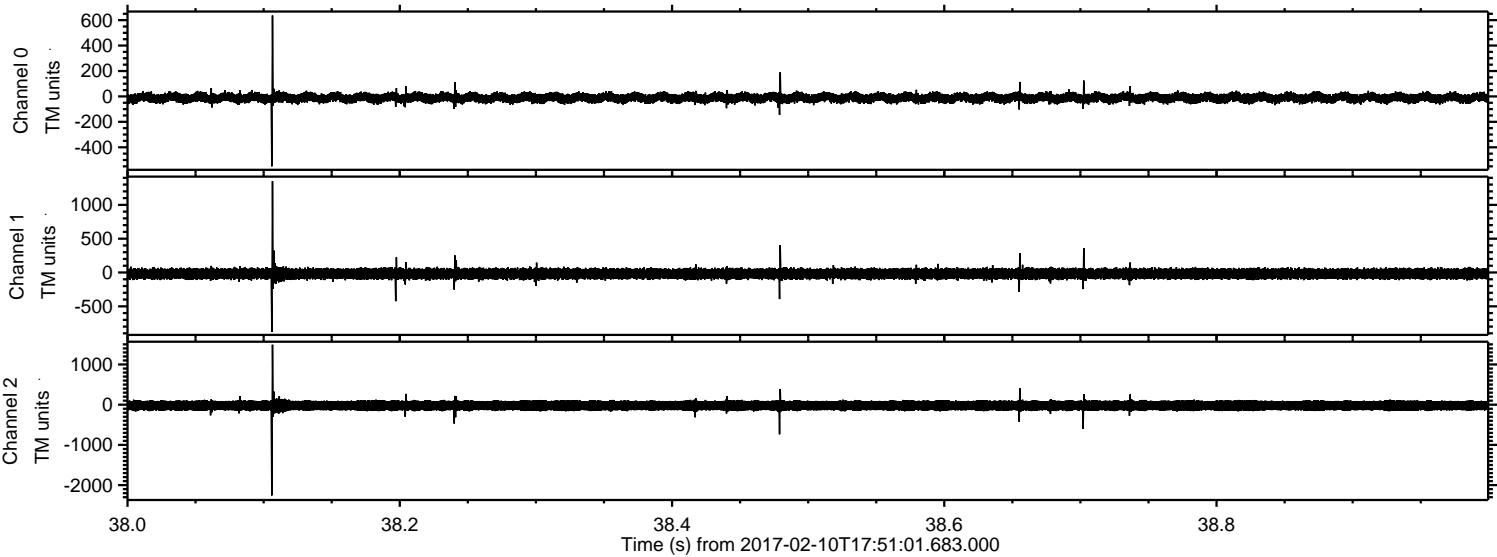
Processed Fri Feb 10 18:58:54 2017 by ELM ver.2012-10-06 from 001__elm20170210_175100__dat00.bin



Processed Fri Feb 10 18:58:55 2017 by ELM ver.2012-10-06 from 001__elm20170210_175100__dat00.bin

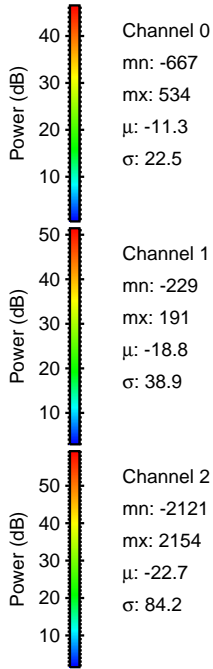
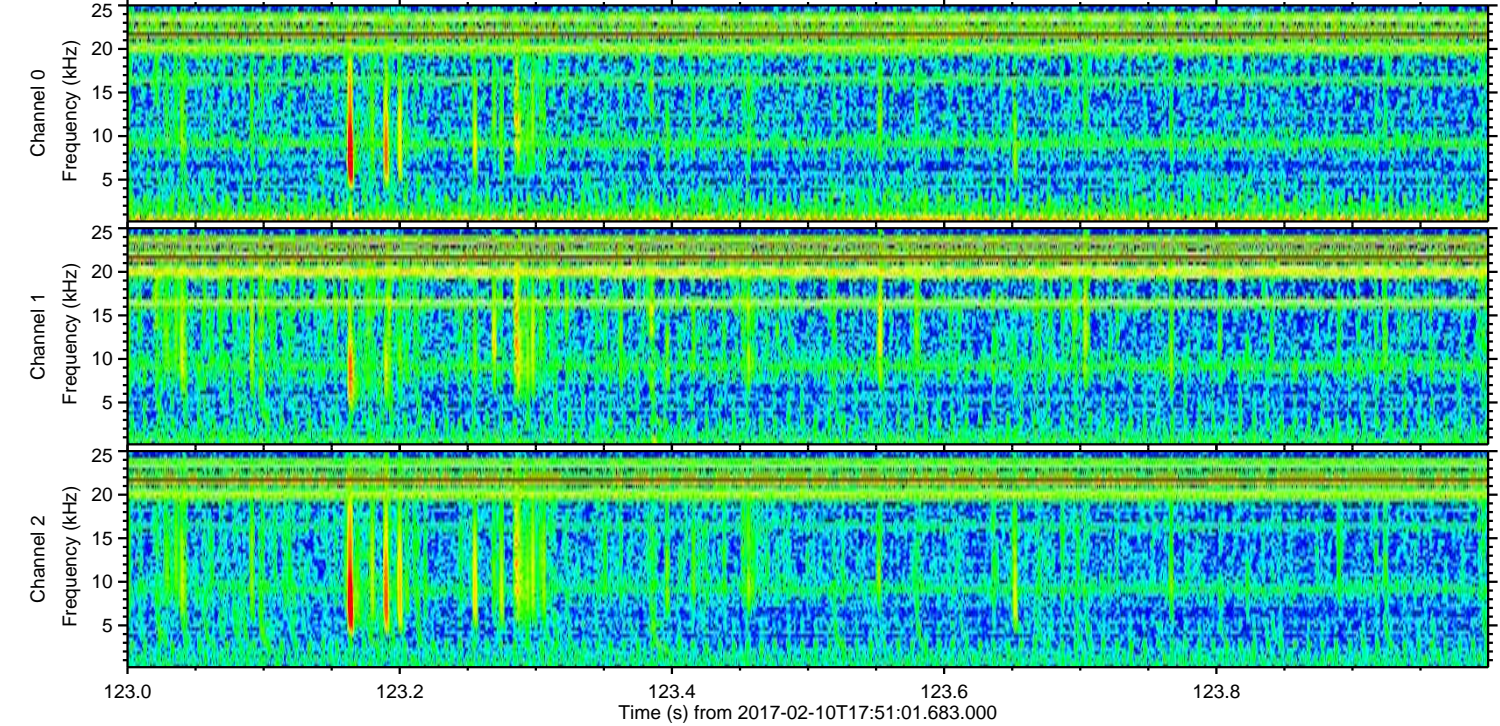
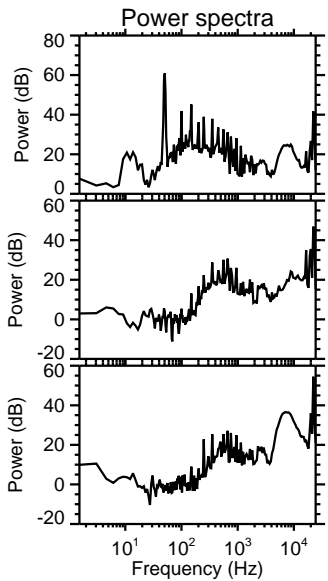
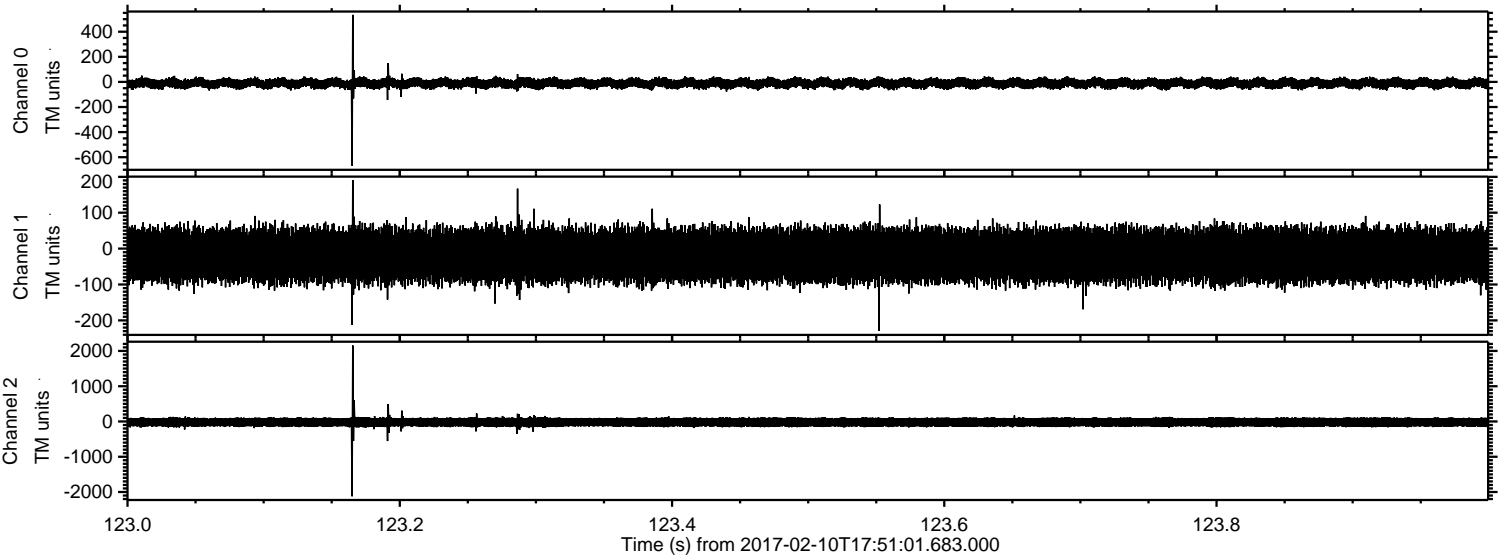


Processed Fri Feb 10 18:58:56 2017 by ELM ver.2012-10-06 from 001__elm20170210_175100__dat00.bin

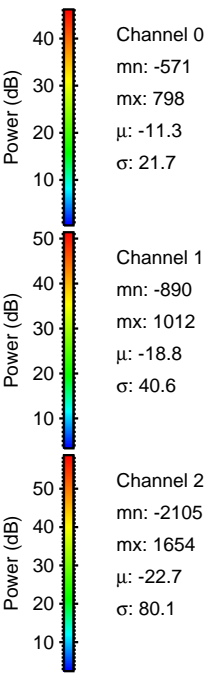
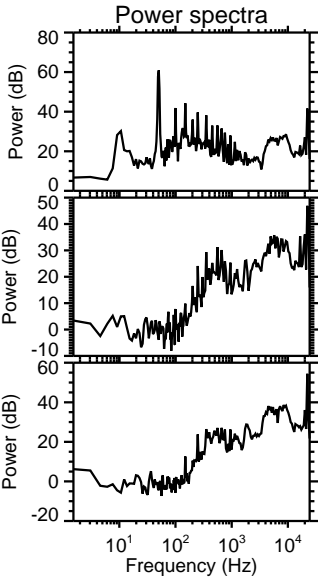
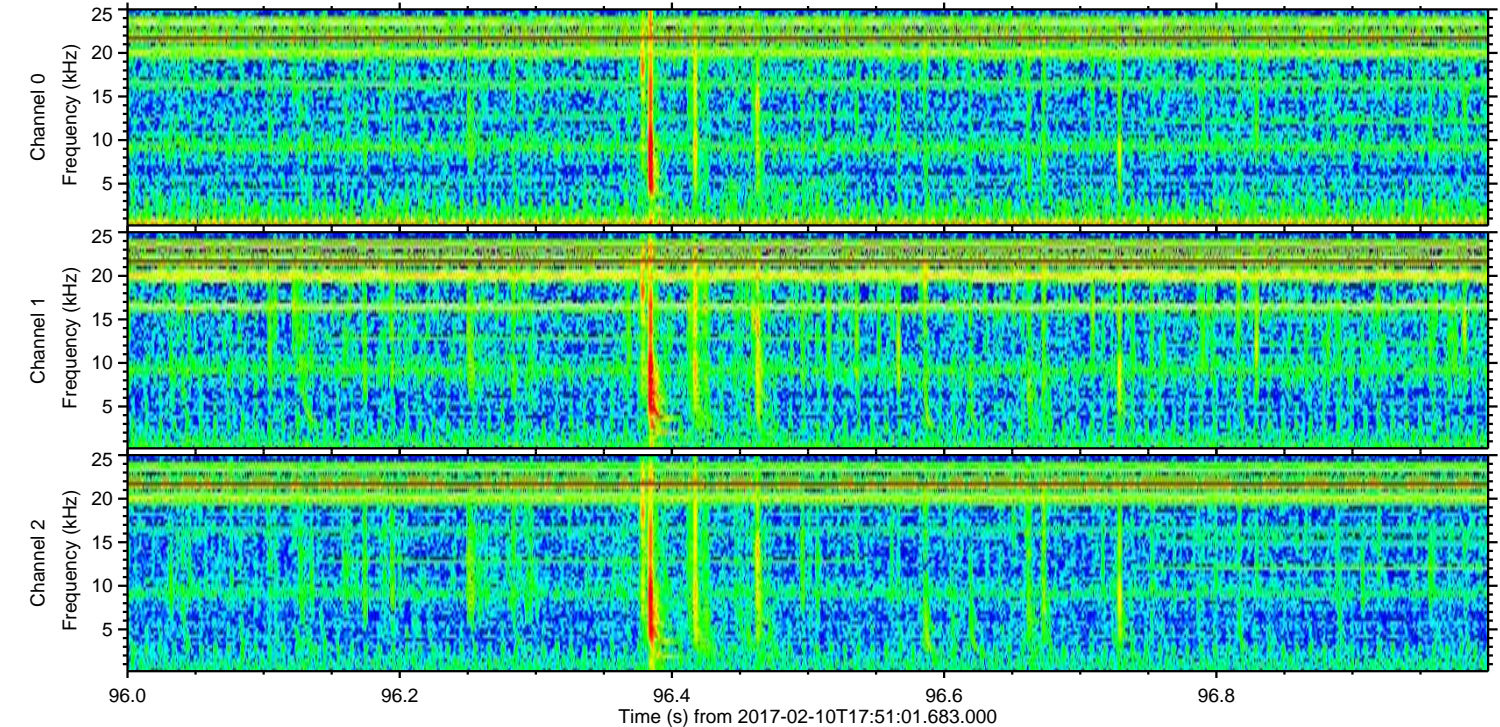
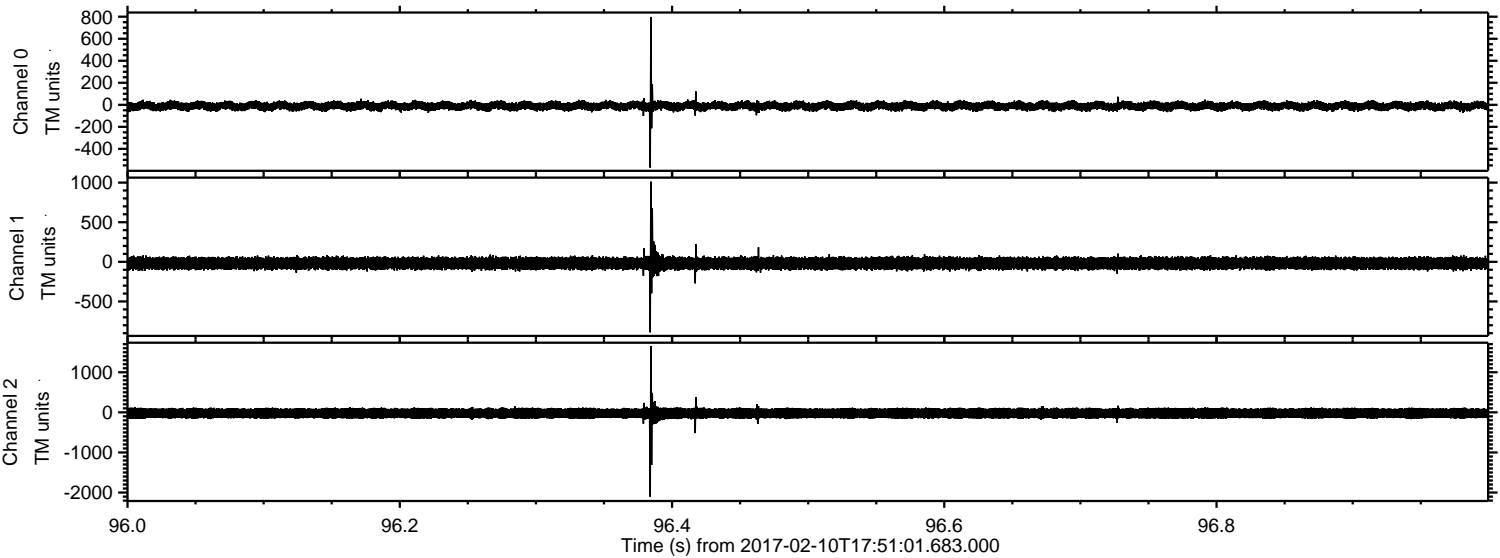


ELMAVAN 3D WAVEFORMS (Measured data sampled at 50 kHz) 51000 packets of 144 samples from 2017-02-10T17:51:01.683.000. Part 124/147

Processed Fri Feb 10 18:58:56 2017 by ELM ver.2012-10-06 from 001__elm20170210_175100__dat00.bin

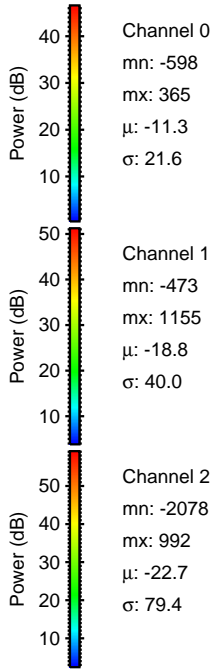
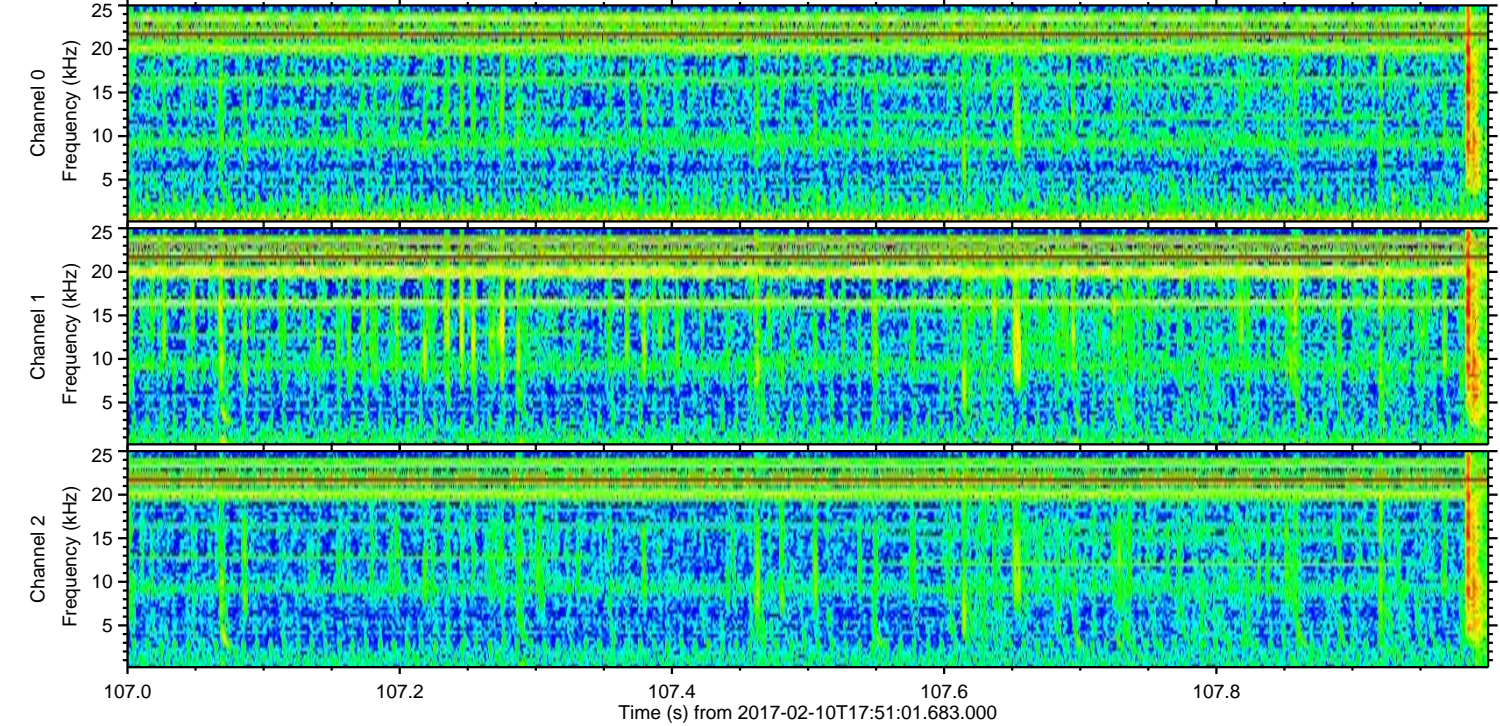
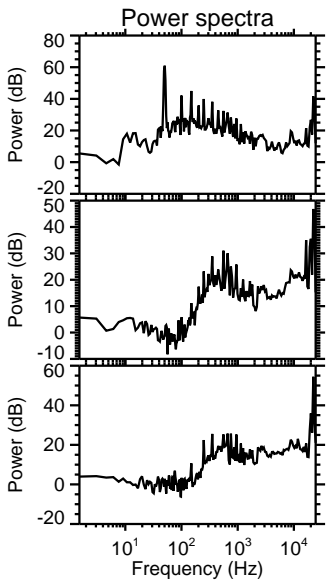
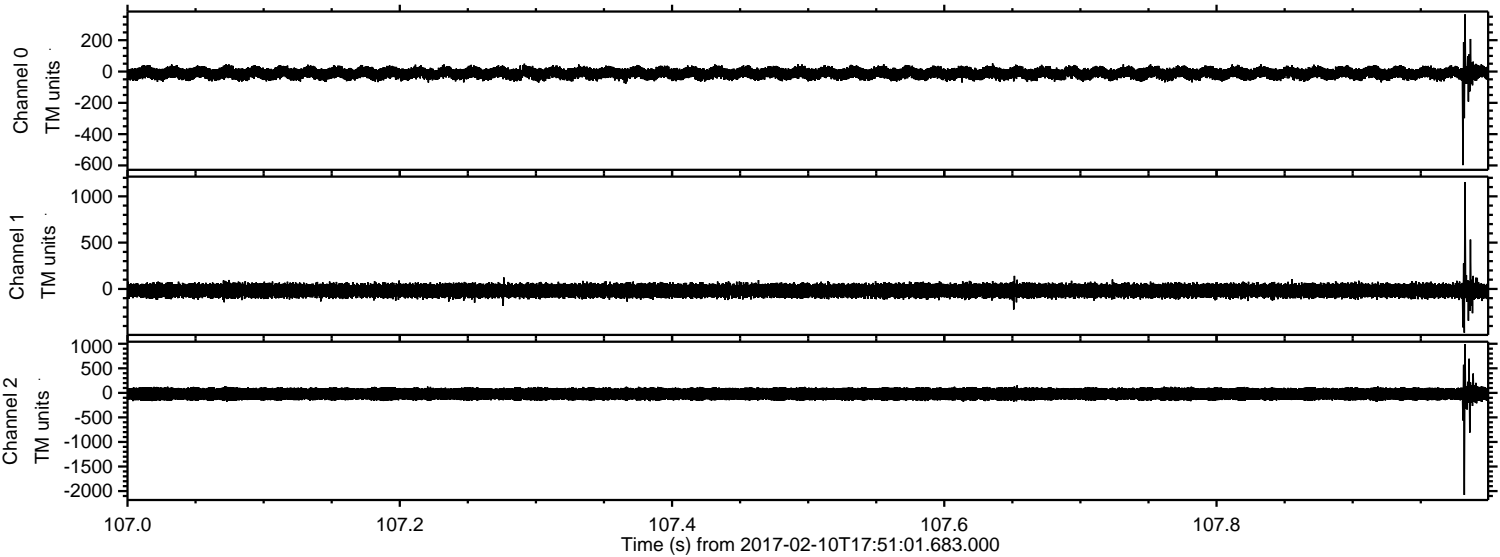


Processed Fri Feb 10 18:58:57 2017 by ELM ver.2012-10-06 from 001__elm20170210_175100__dat00.bin



ELMAVAN 3D WAVEFORMS (Measured data sampled at 50 kHz) 51000 packets of 144 samples from 2017-02-10T17:51:01.683.000. Part 108/147

Processed Fri Feb 10 18:58:58 2017 by ELM ver.2012-10-06 from 001__elm20170210_175100__dat00.bin



Channel 0
mn: -598
mx: 365
 μ : -11.3
 σ : 21.6

Channel 1
mn: -473
mx: 1155
 μ : -18.8
 σ : 40.0

Channel 2
mn: -2078
mx: 992
 μ : -22.7
 σ : 79.4

Processed Fri Feb 10 18:58:59 2017 by ELM ver.2012-10-06 from 001__elm20170210_175100__dat00.bin

