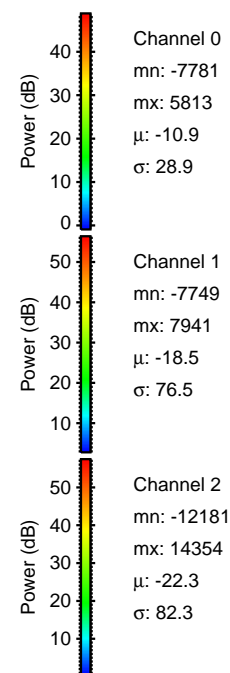
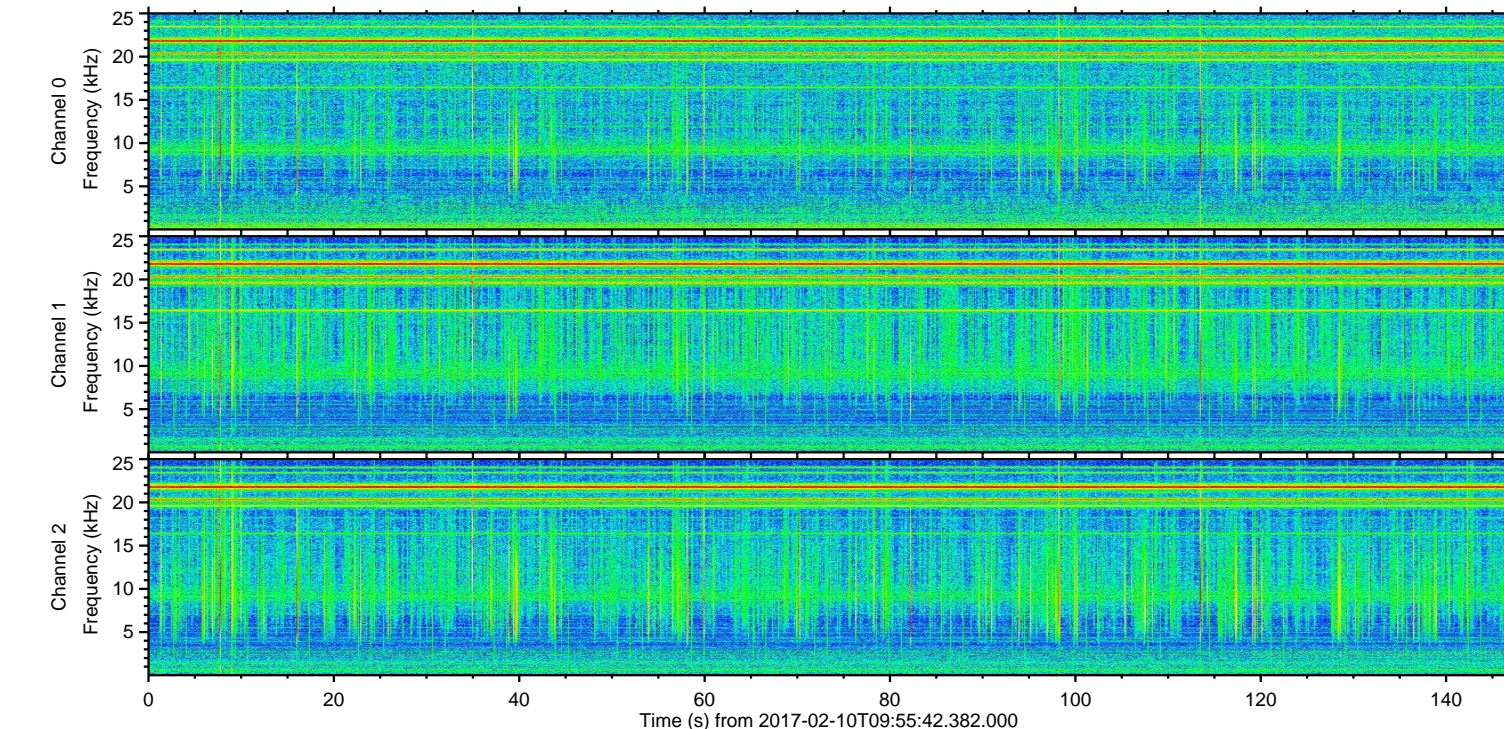
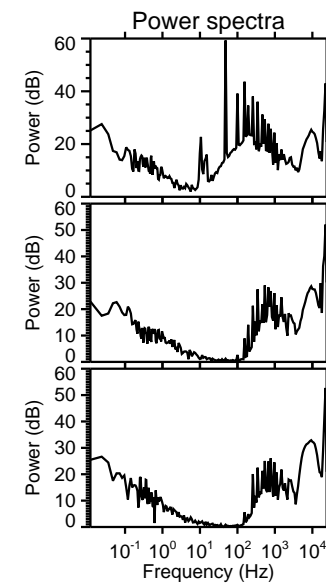
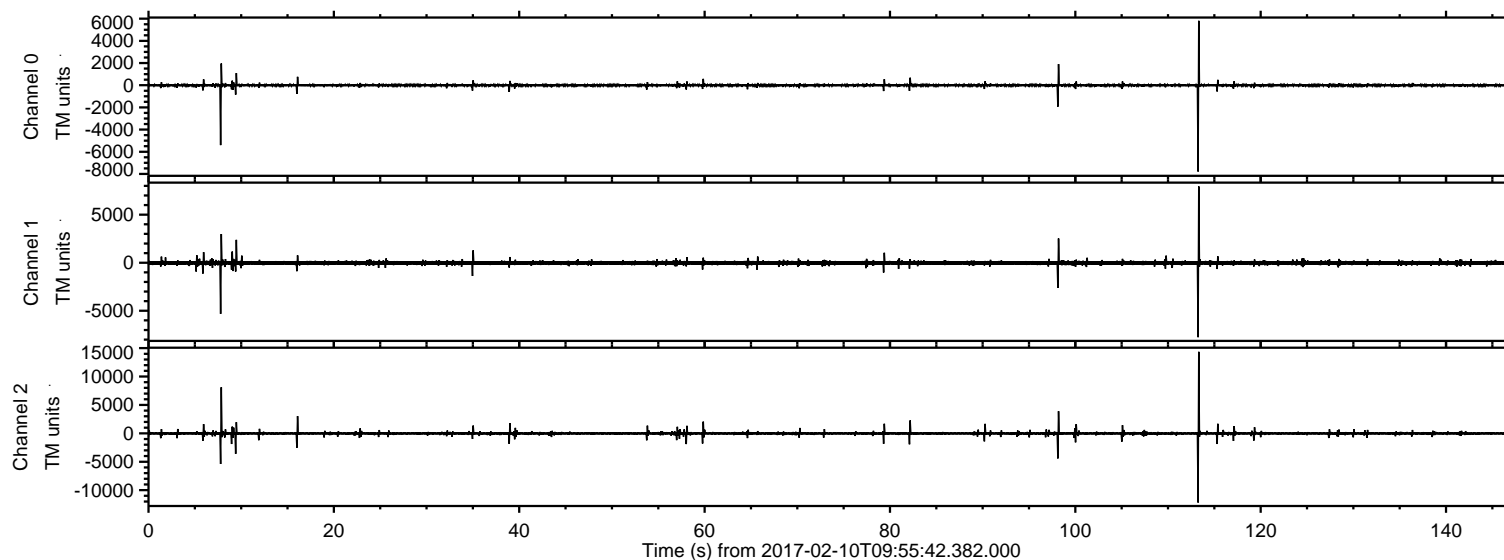


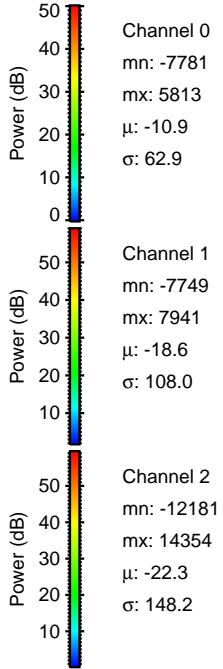
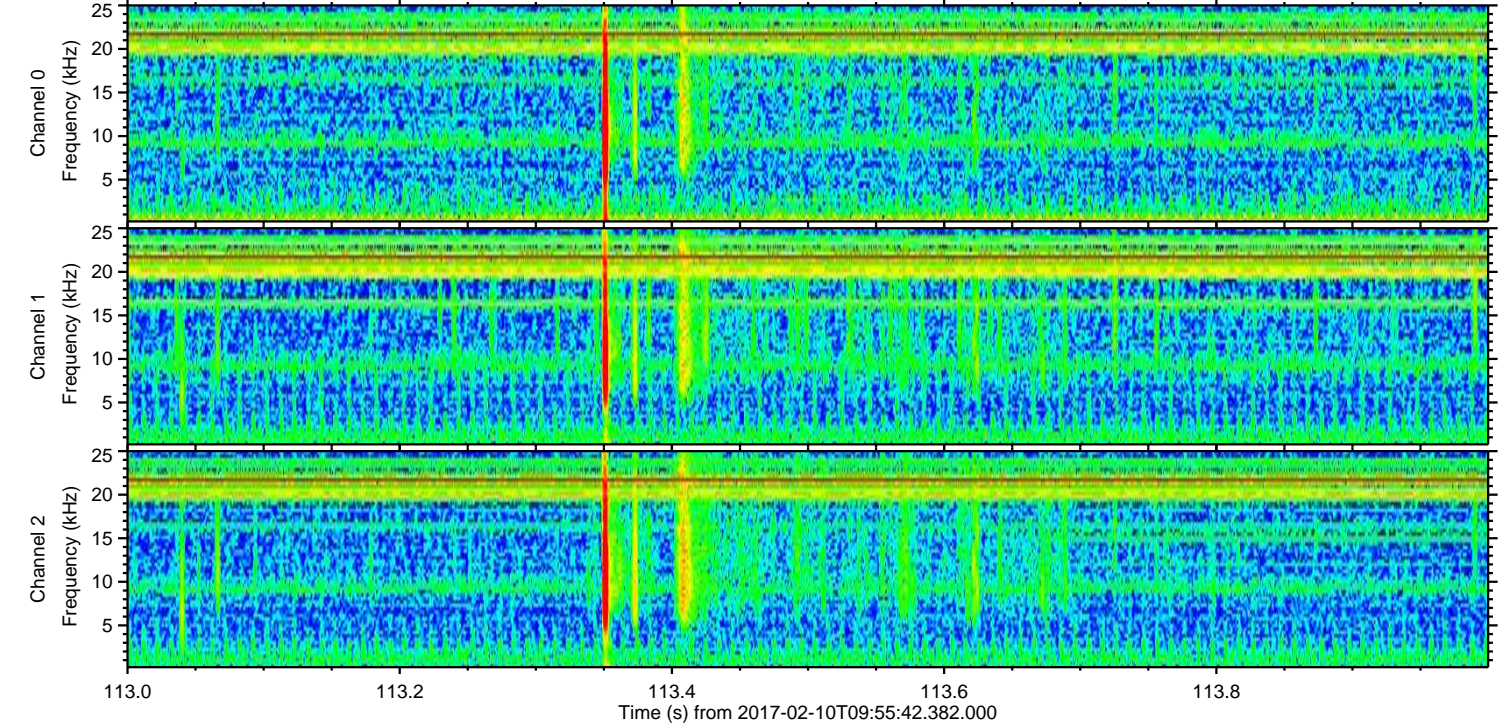
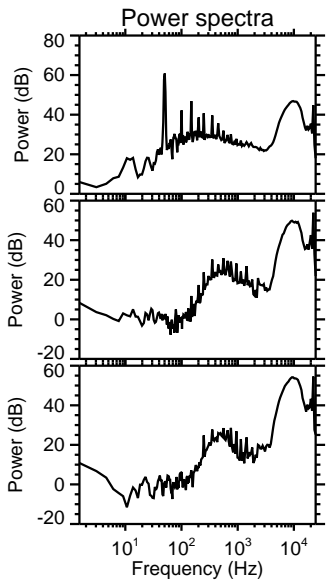
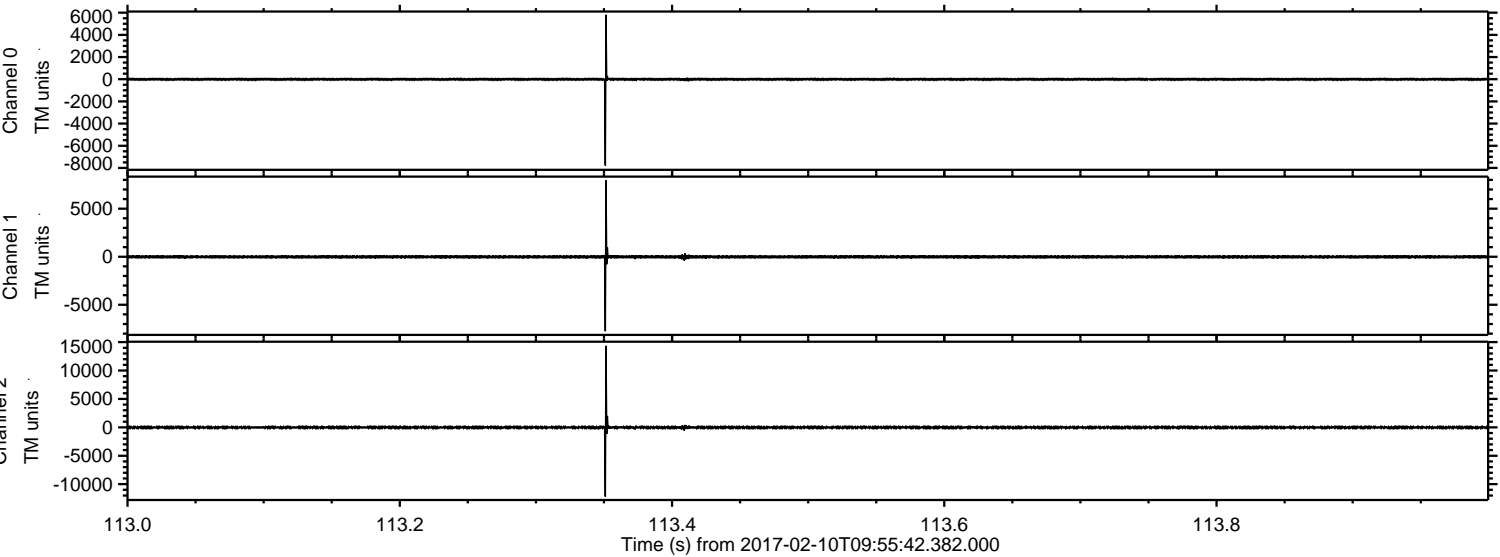
ELMAVAN 3D WAVEFORMS (Measured data sampled at 50 kHz) 51000 packets of 144 samples from 2017-02-10T09:55:42.382.000.

Processed Fri Feb 10 11:03:13 2017 by ELM ver.2012-10-06 from 001__elm20170210_095541__dat00.bin

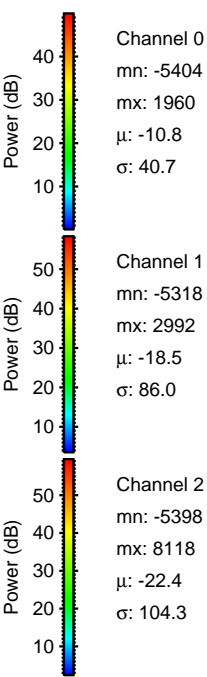
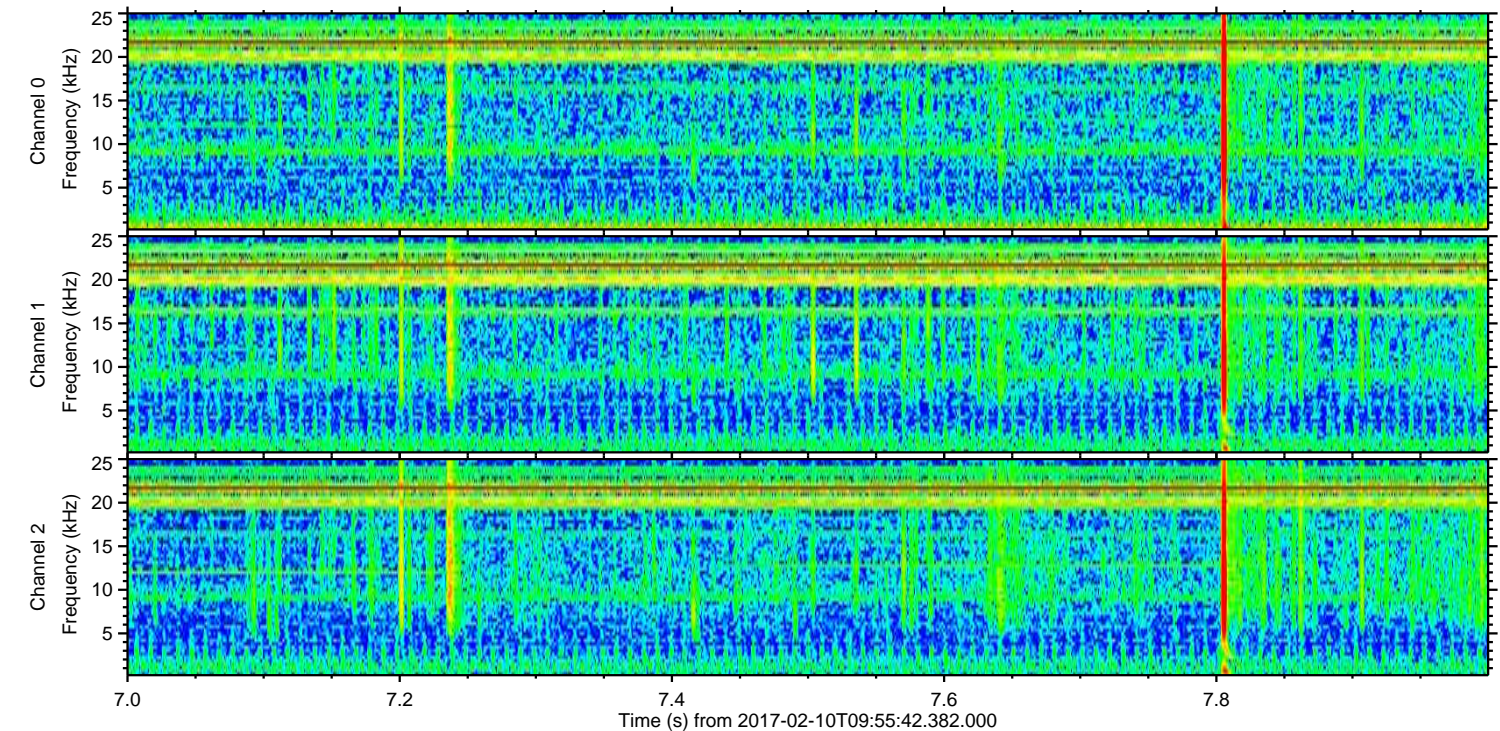
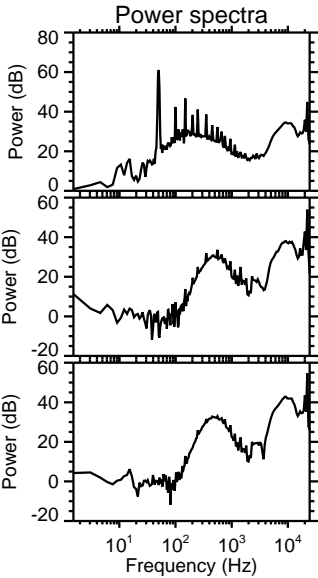
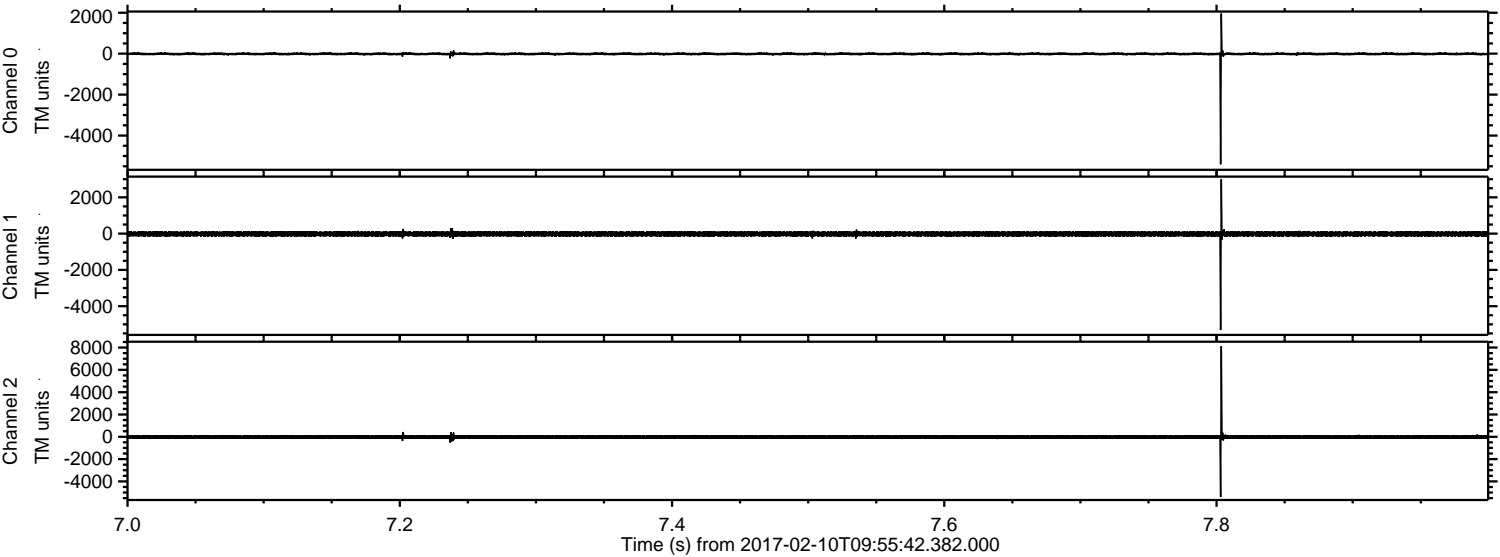


ELMAVAN 3D WAVEFORMS (Measured data sampled at 50 kHz) 51000 packets of 144 samples from 2017-02-10T09:55:42.382.000. Part 114/147

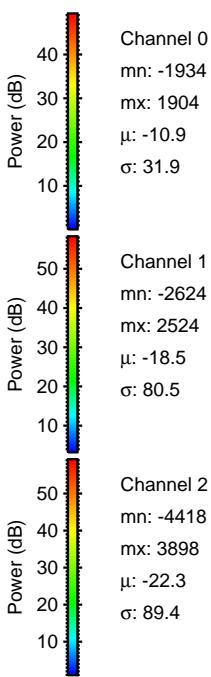
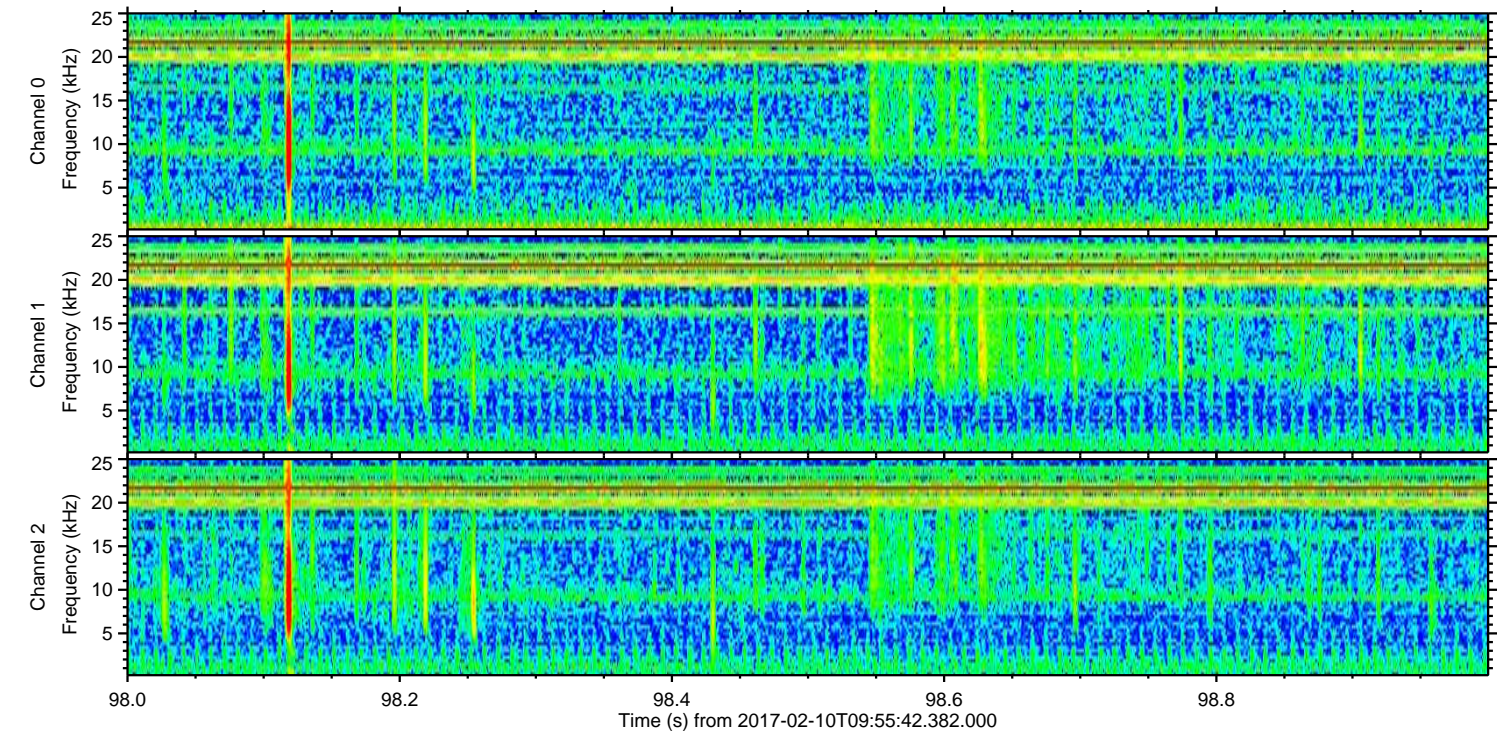
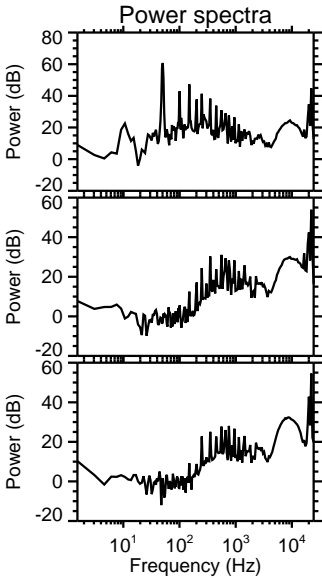
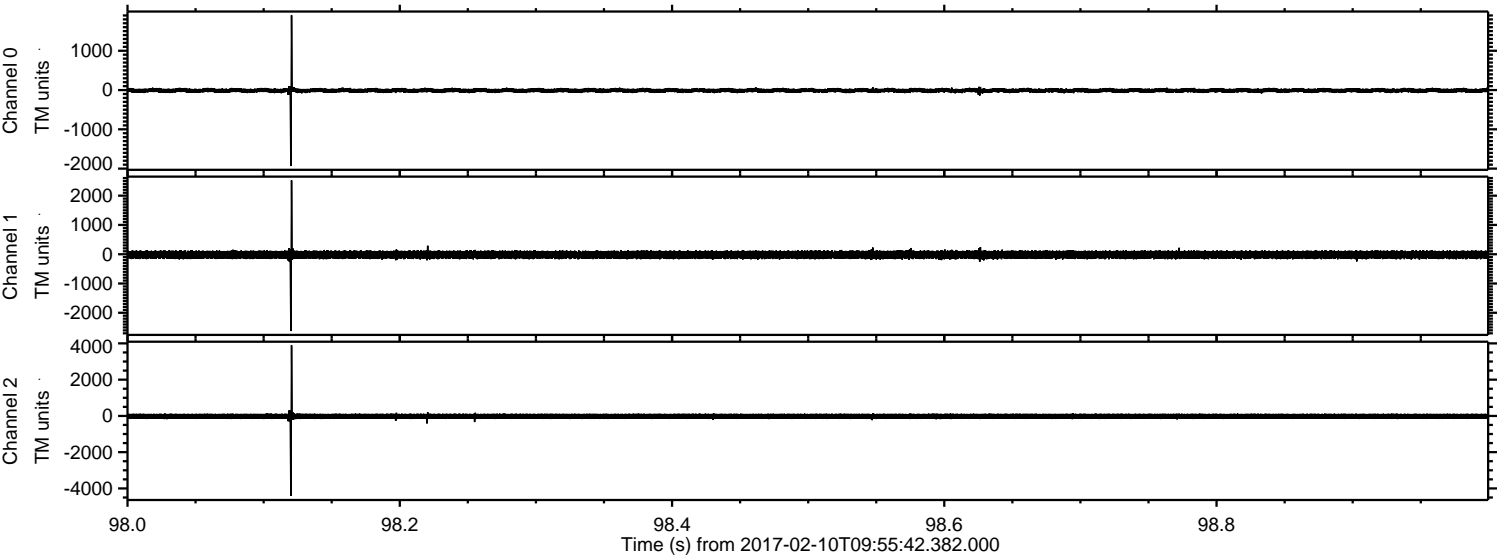
Processed Fri Feb 10 11:03:24 2017 by ELM ver.2012-10-06 from 001__elm20170210_095541__dat00.bin



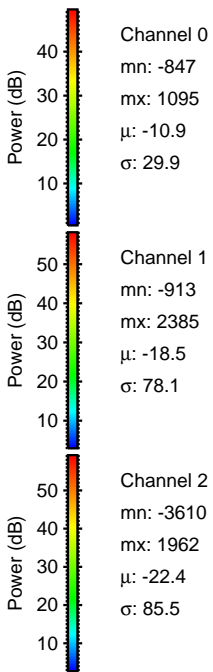
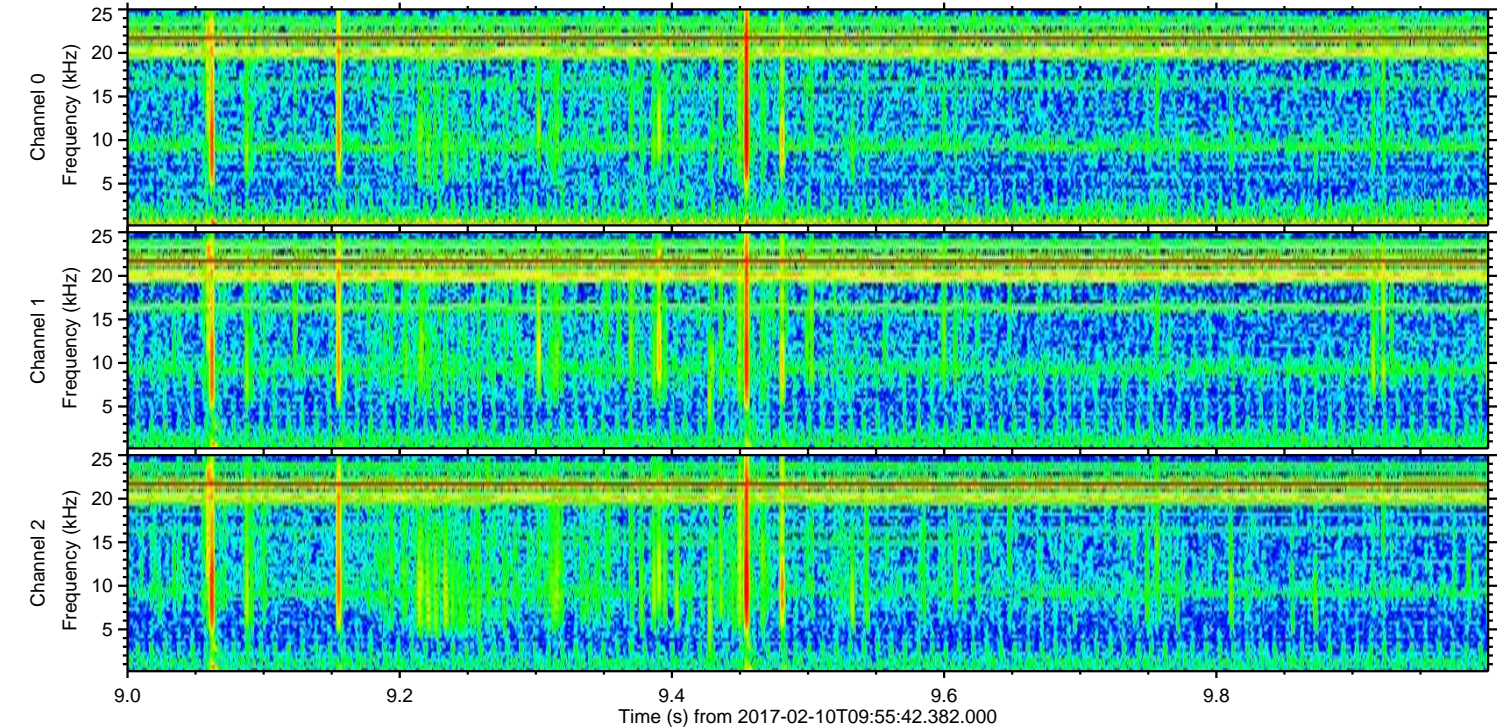
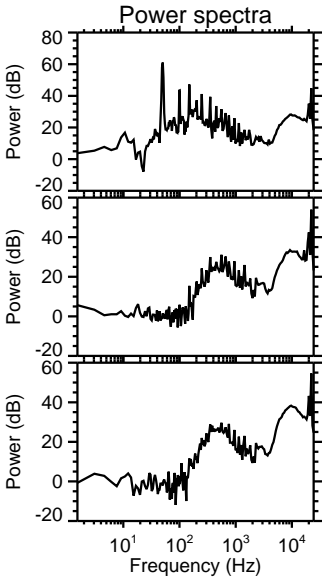
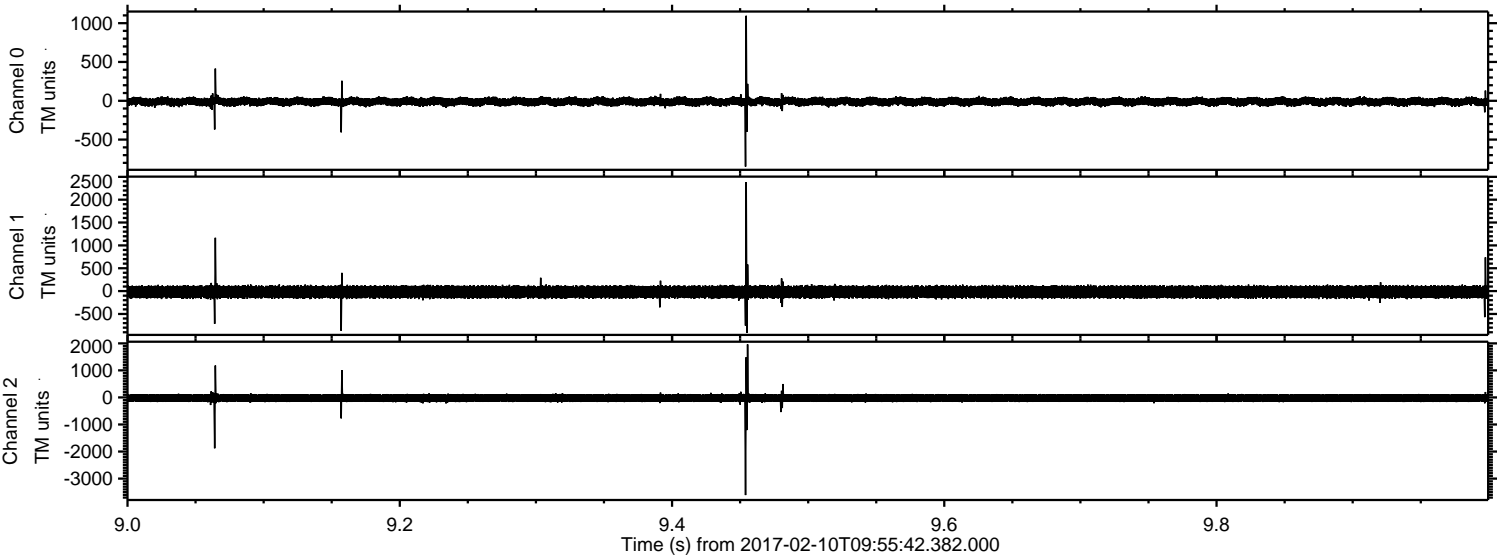
Processed Fri Feb 10 11:03:25 2017 by ELM ver.2012-10-06 from 001__elm20170210_095541__dat00.bin



Processed Fri Feb 10 11:03:26 2017 by ELM ver.2012-10-06 from 001__elm20170210_095541__dat00.bin

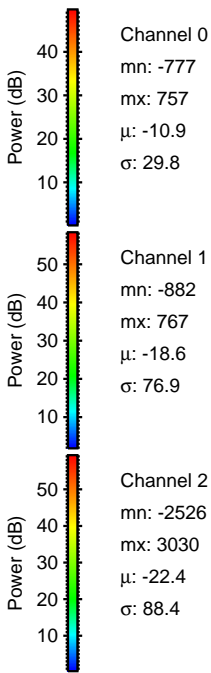
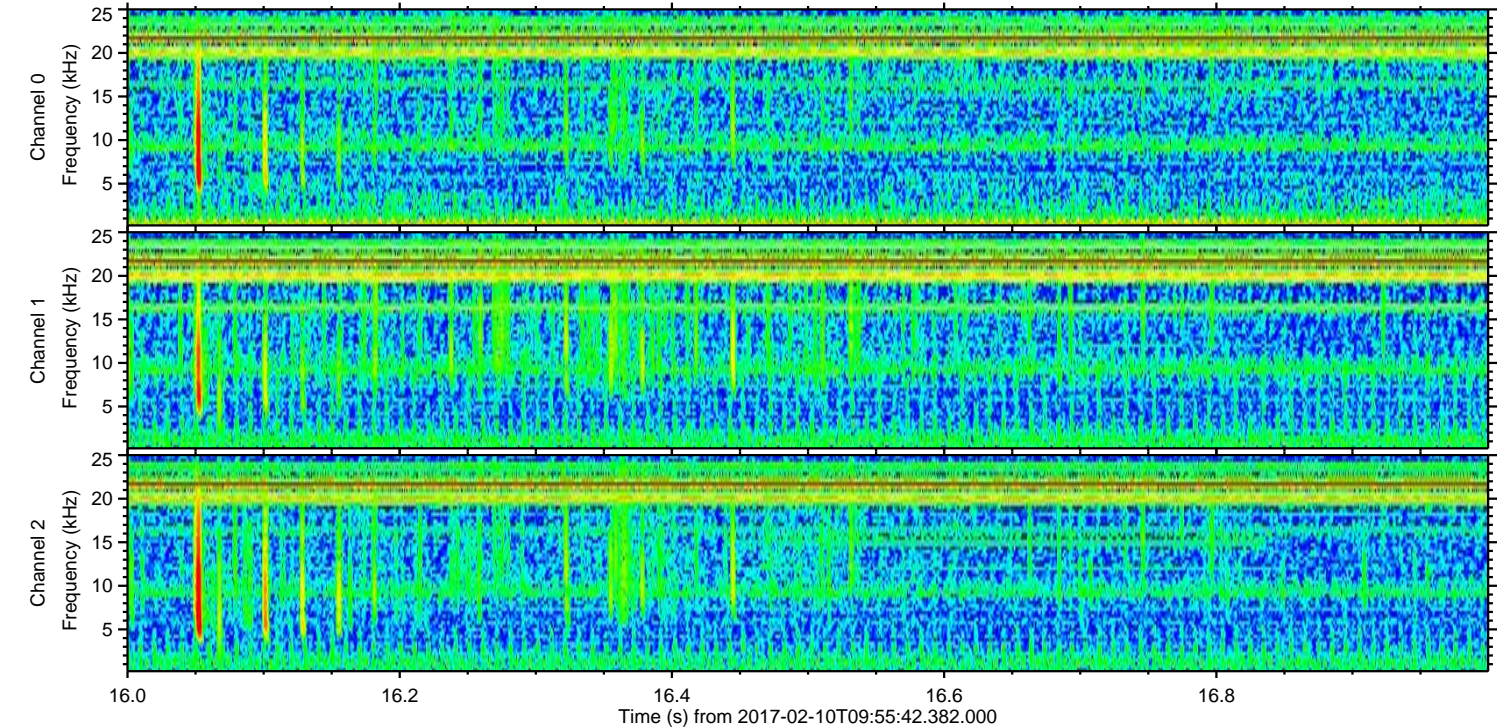
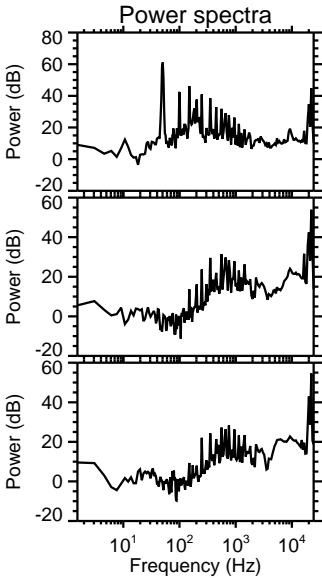
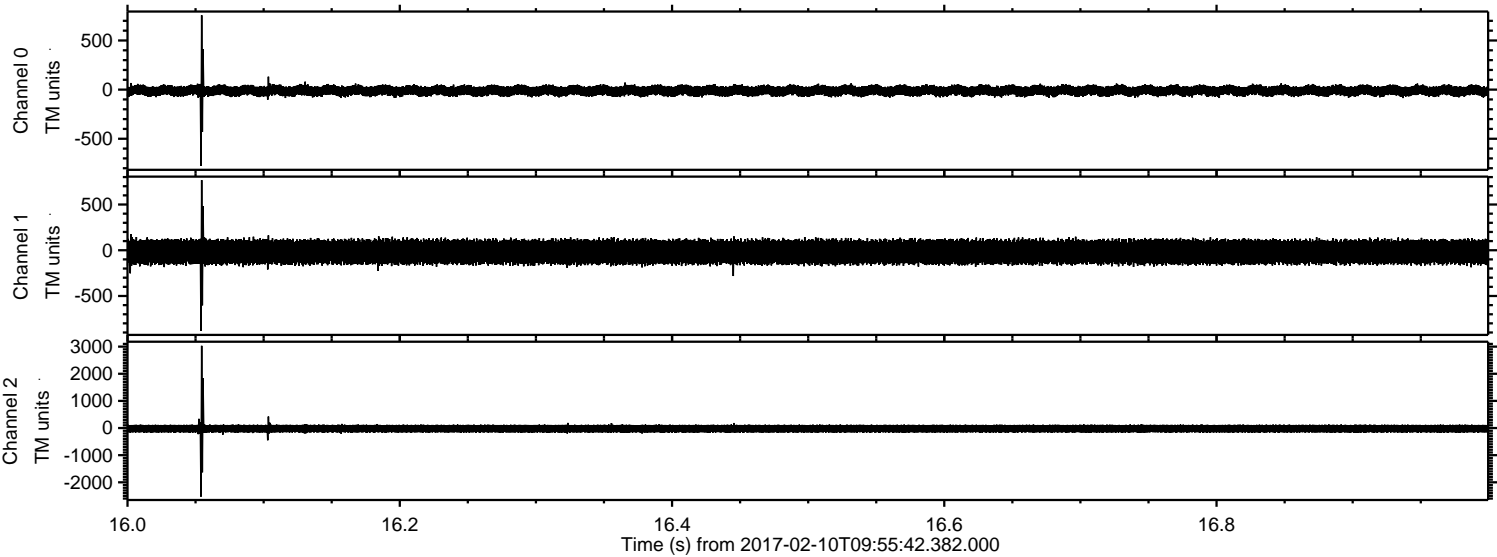


Processed Fri Feb 10 11:03:27 2017 by ELM ver.2012-10-06 from 001__elm20170210_095541__dat00.bin

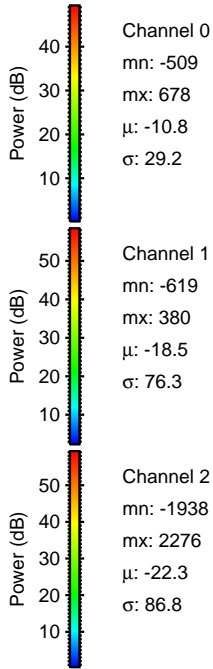
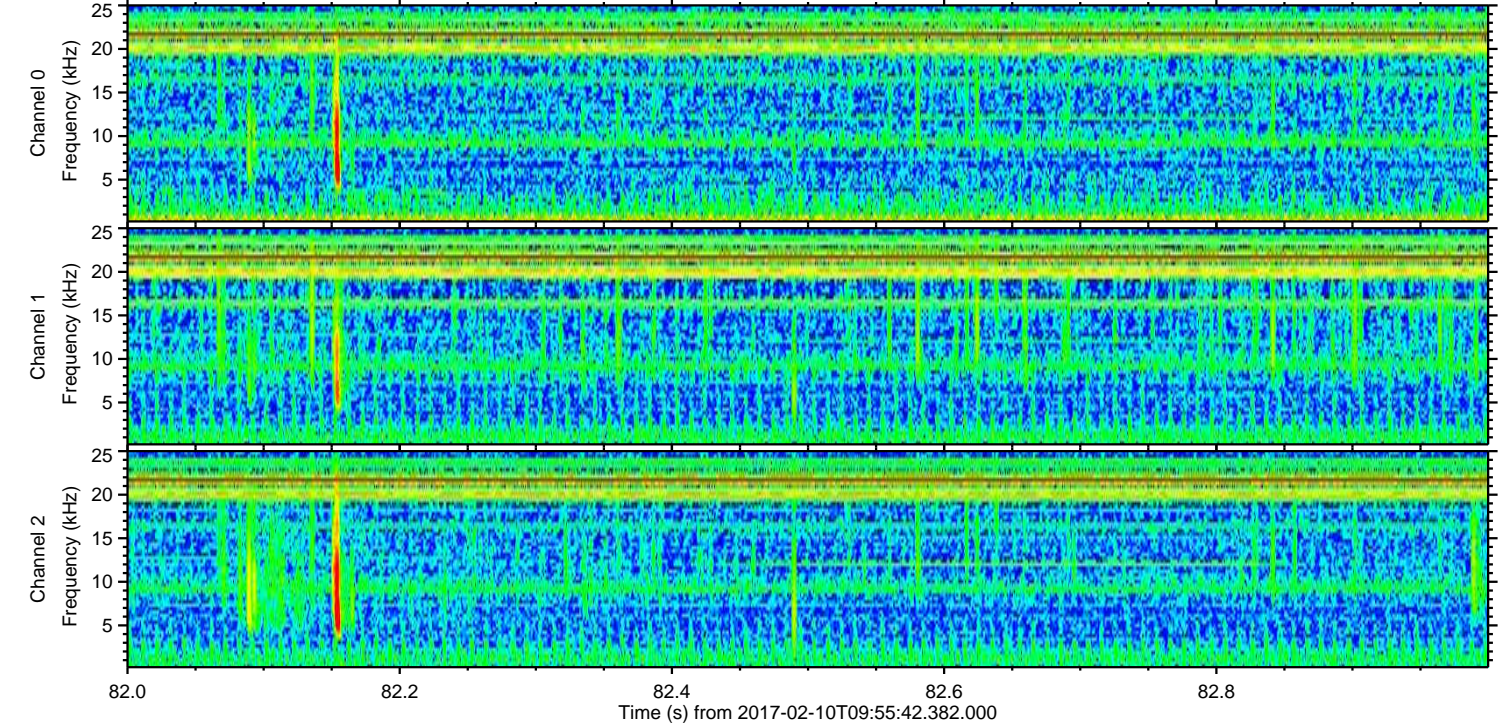
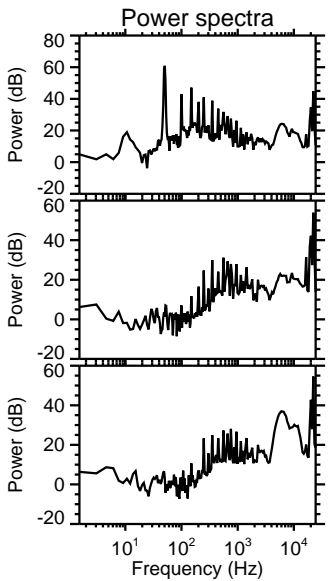
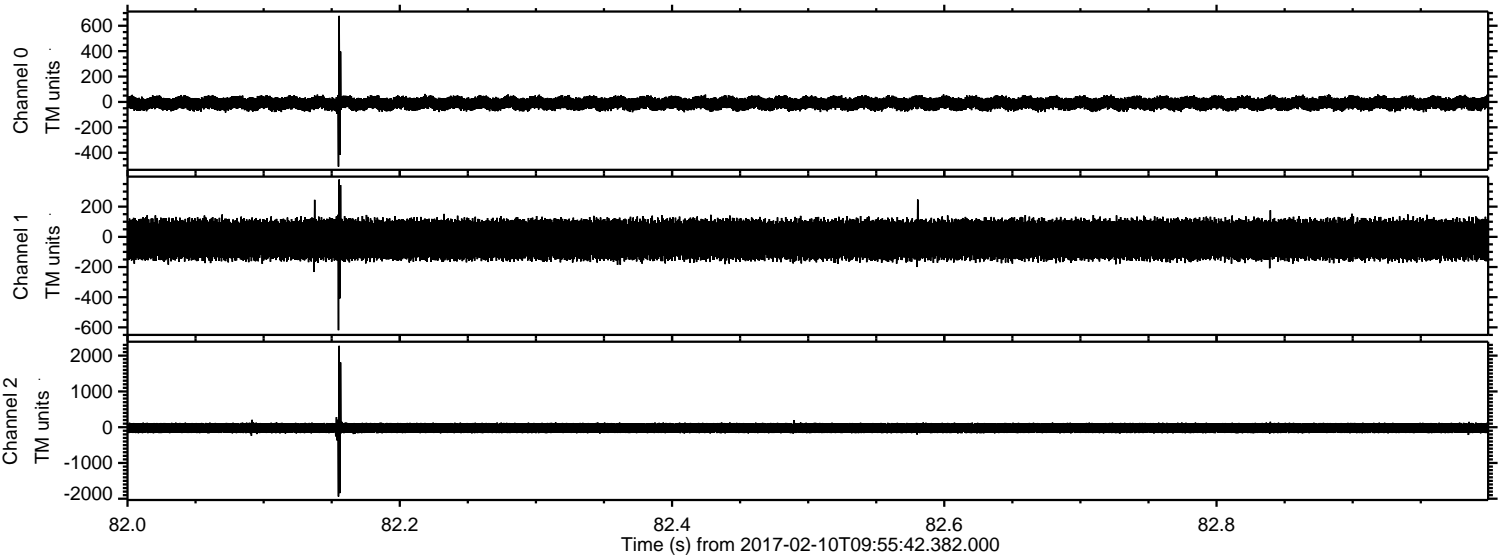


ELMAVAN 3D WAVEFORMS (Measured data sampled at 50 kHz) 51000 packets of 144 samples from 2017-02-10T09:55:42.382.000. Part 17/147

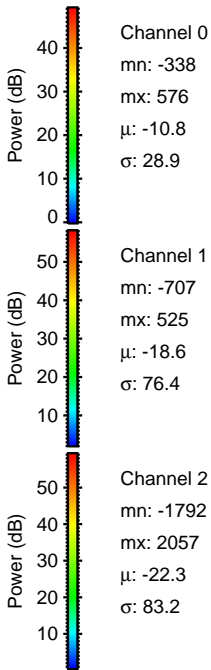
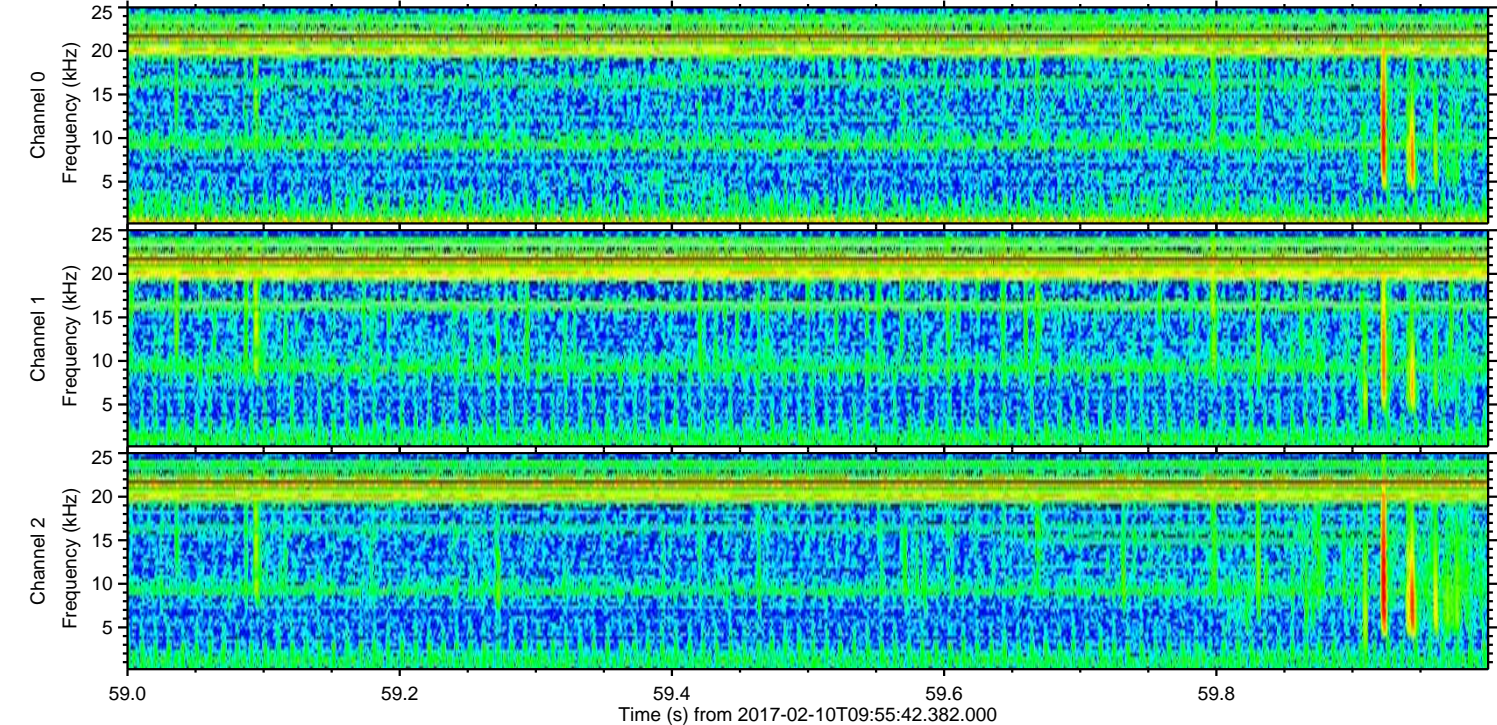
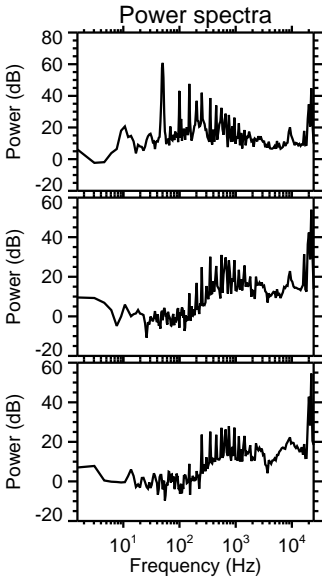
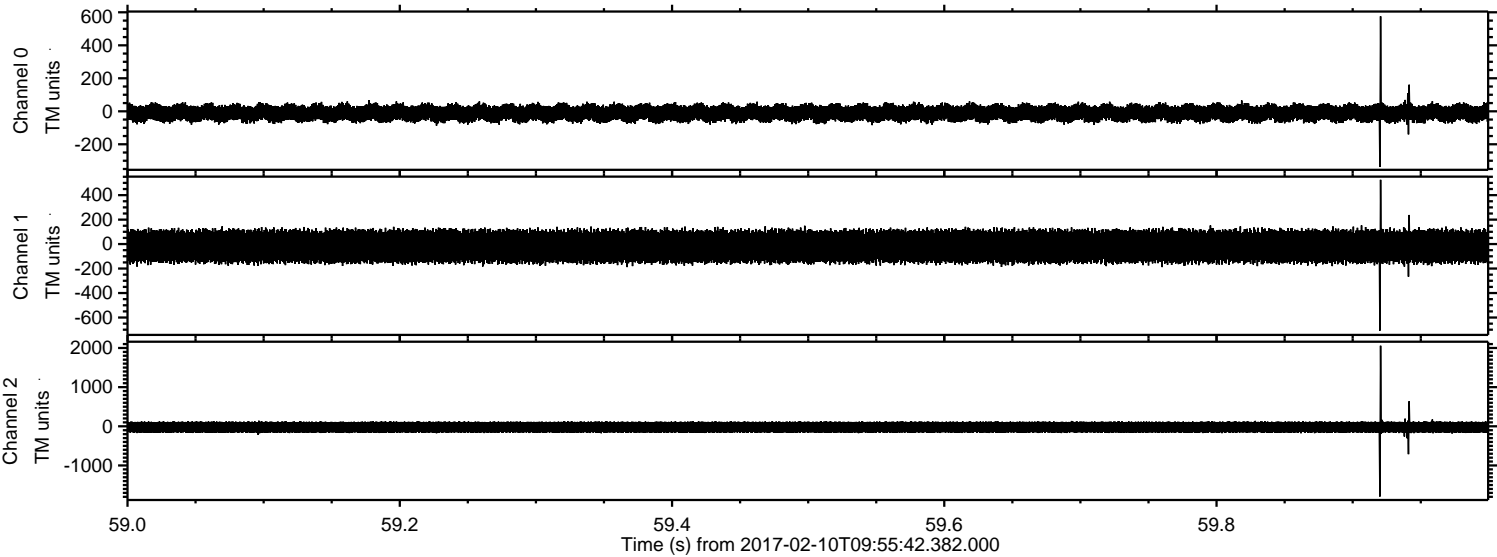
Processed Fri Feb 10 11:03:28 2017 by ELM ver.2012-10-06 from 001__elm20170210_095541__dat00.bin



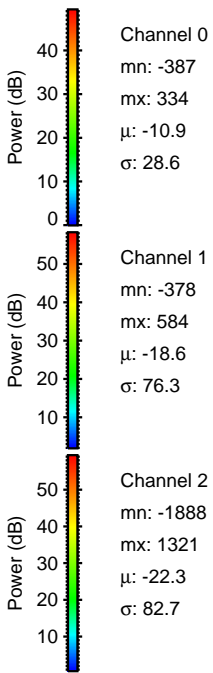
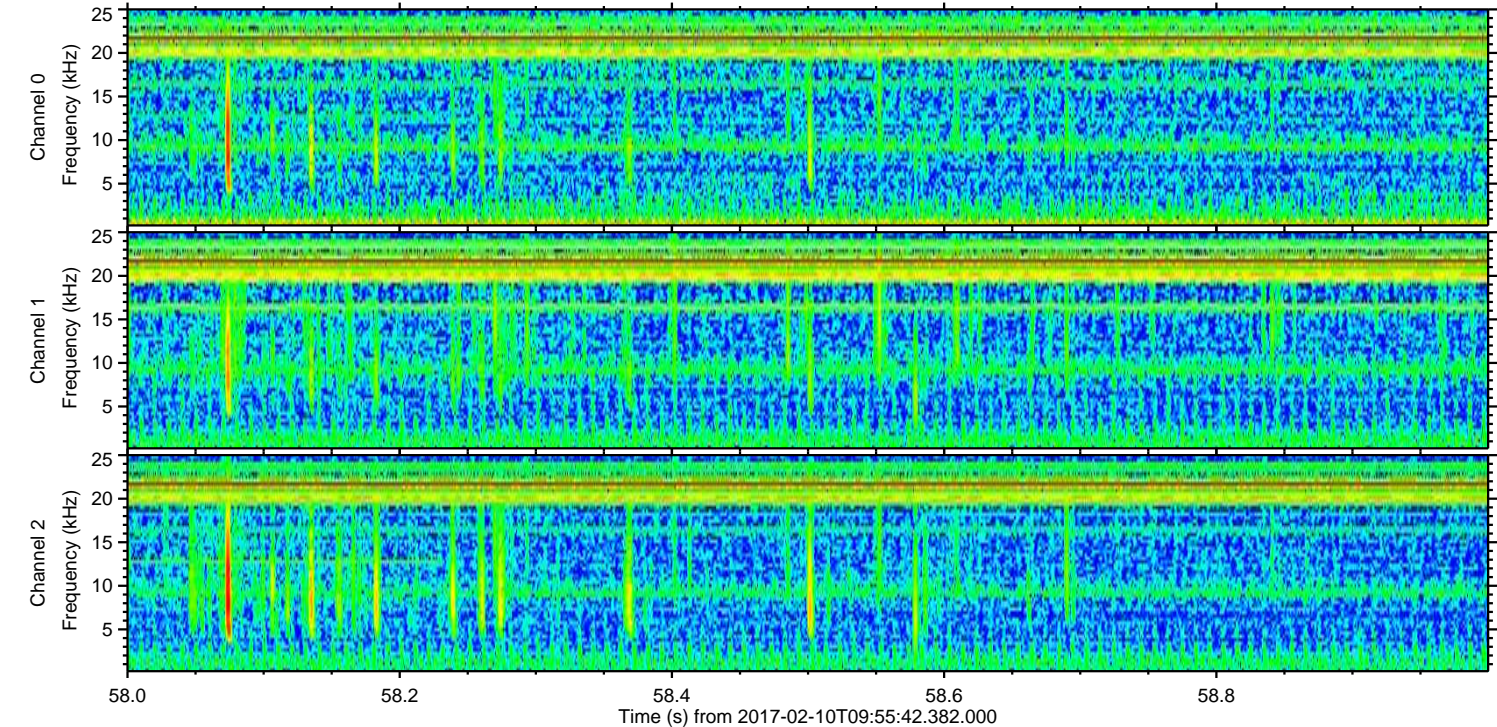
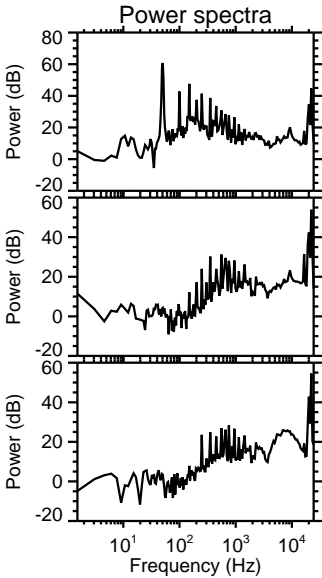
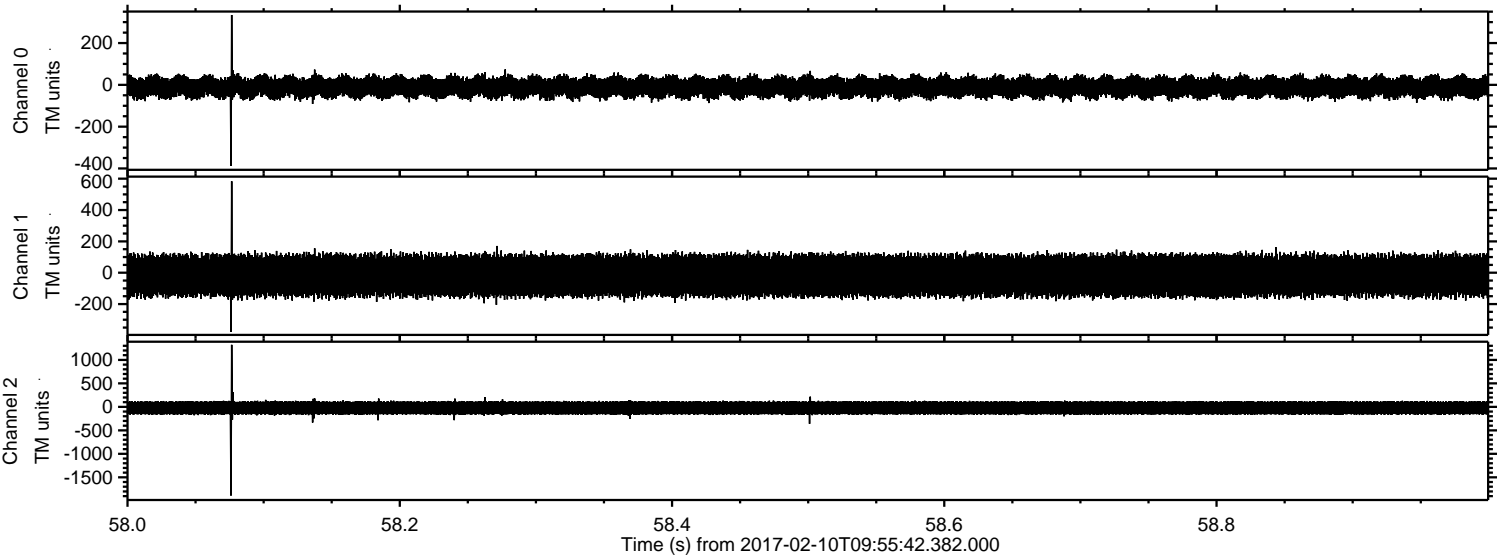
Processed Fri Feb 10 11:03:29 2017 by ELM ver.2012-10-06 from 001__elm20170210_095541__dat00.bin



Processed Fri Feb 10 11:03:30 2017 by ELM ver.2012-10-06 from 001__elm20170210_095541__dat00.bin

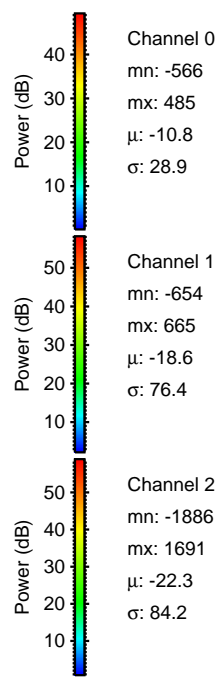
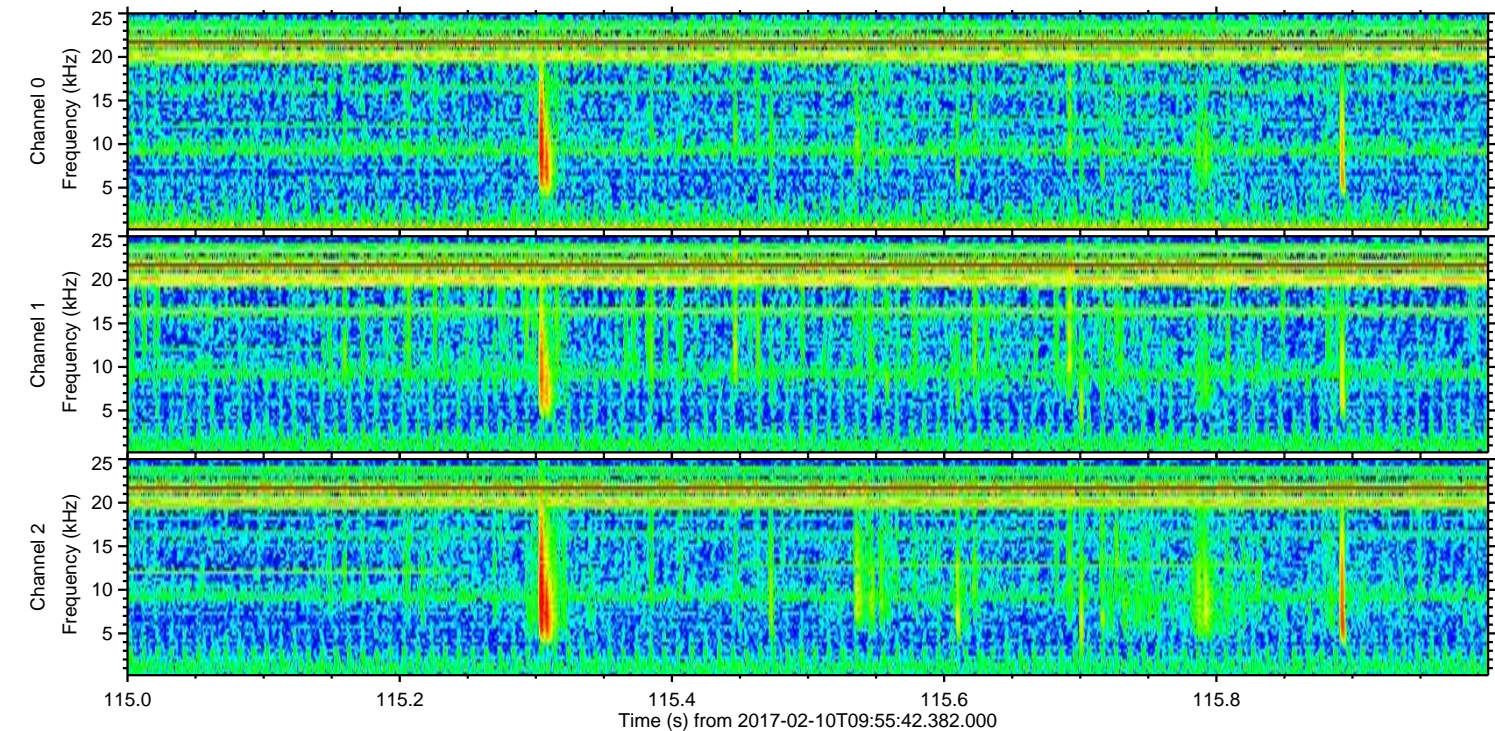
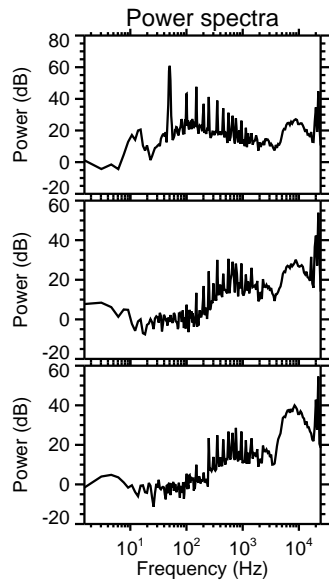
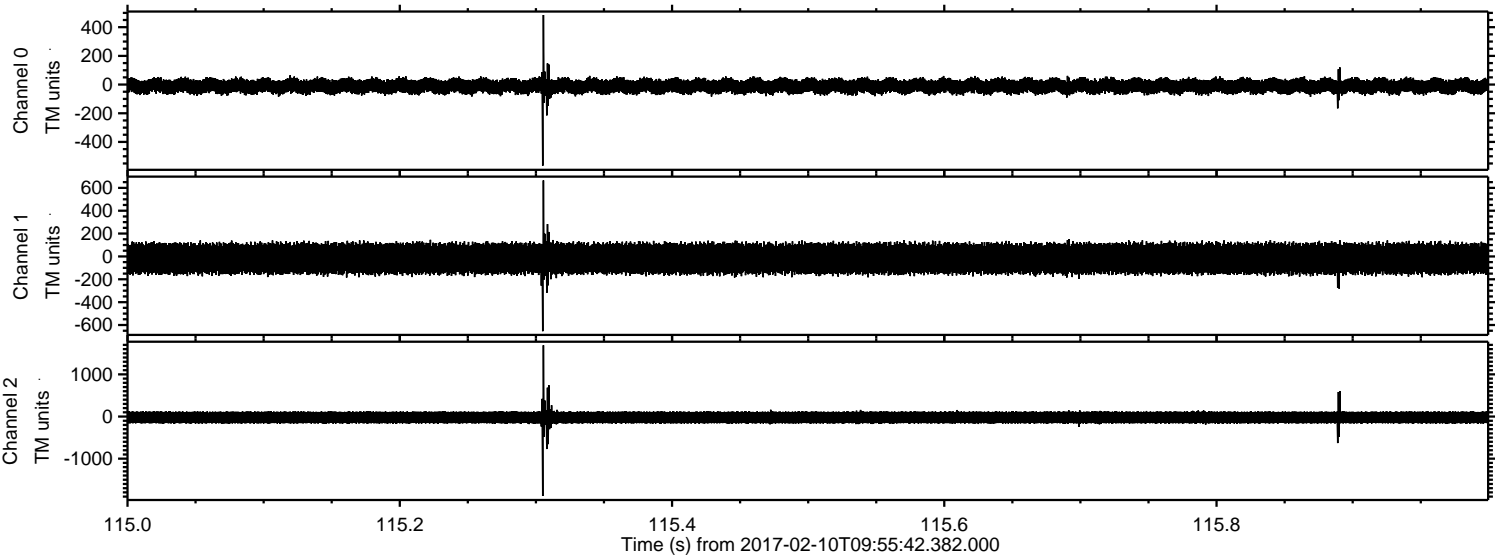


Processed Fri Feb 10 11:03:31 2017 by ELM ver.2012-10-06 from 001__elm20170210_095541__dat00.bin



ELMAVAN 3D WAVEFORMS (Measured data sampled at 50 kHz) 51000 packets of 144 samples from 2017-02-10T09:55:42.382.000. Part 116/147

Processed Fri Feb 10 11:03:32 2017 by ELM ver.2012-10-06 from 001__elm20170210_095541__dat00.bin



Channel 0
mn: -566
mx: 485
 μ : -10.8
 σ : 28.9

Channel 1
mn: -654
mx: 665
 μ : -18.6
 σ : 76.4

Channel 2
mn: -1886
mx: 1691
 μ : -22.3
 σ : 84.2

Processed Fri Feb 10 11:03:33 2017 by ELM ver.2012-10-06 from 001__elm20170210_095541__dat00.bin

