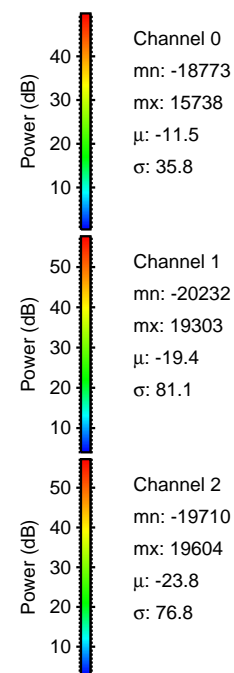
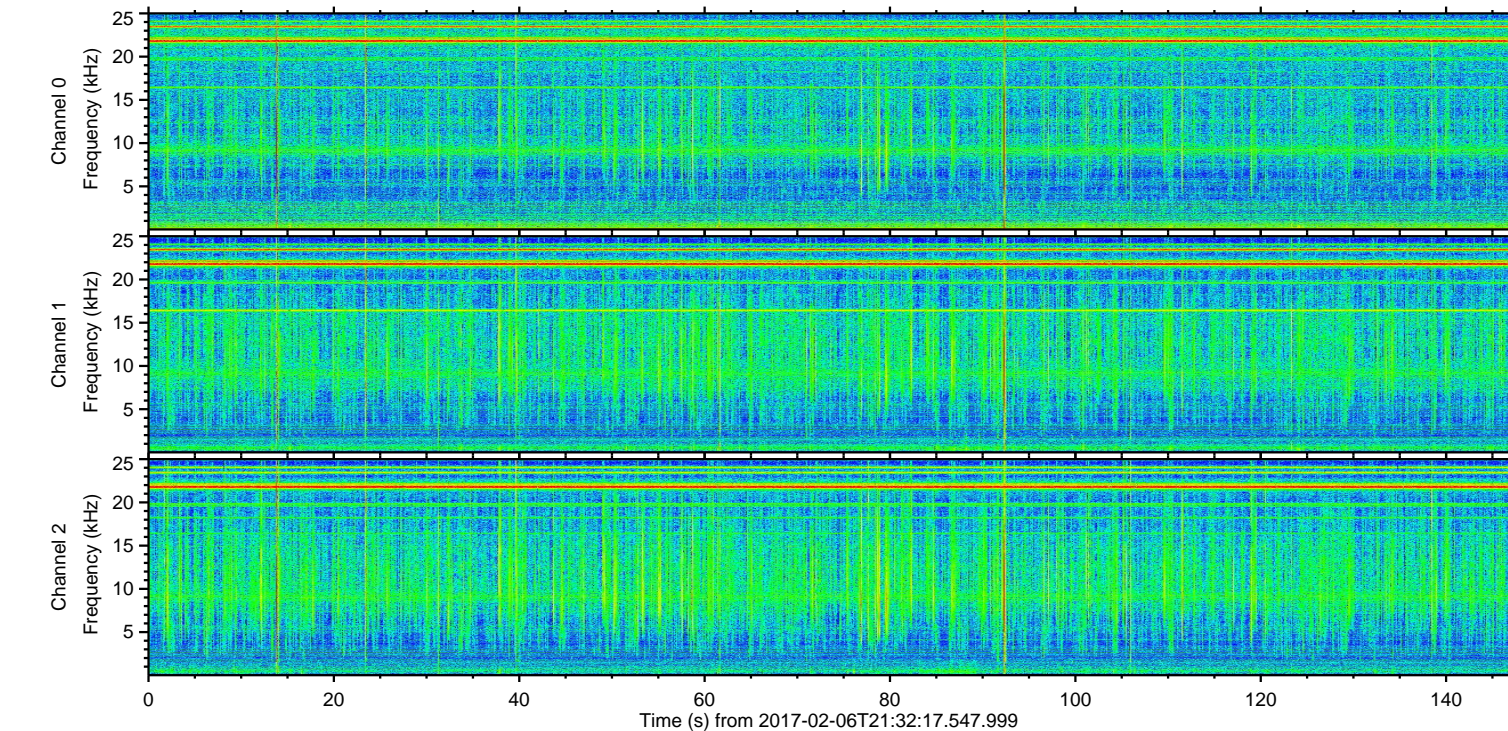
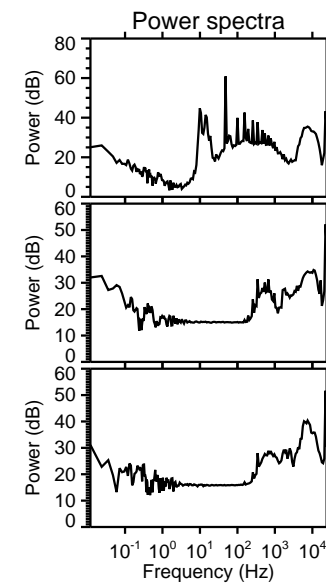
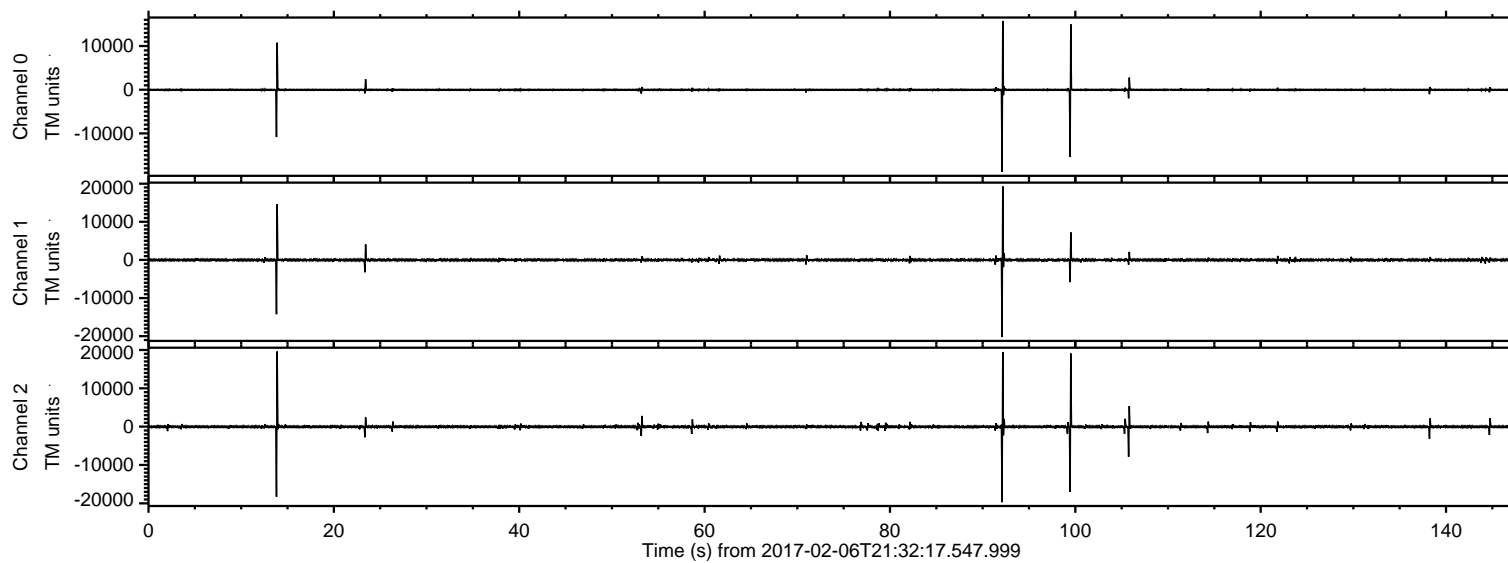


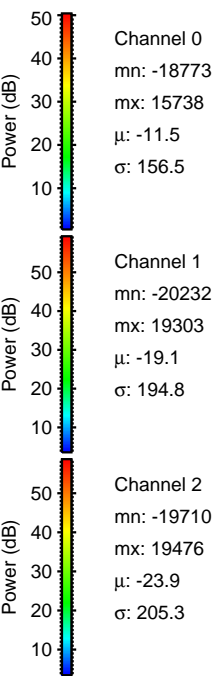
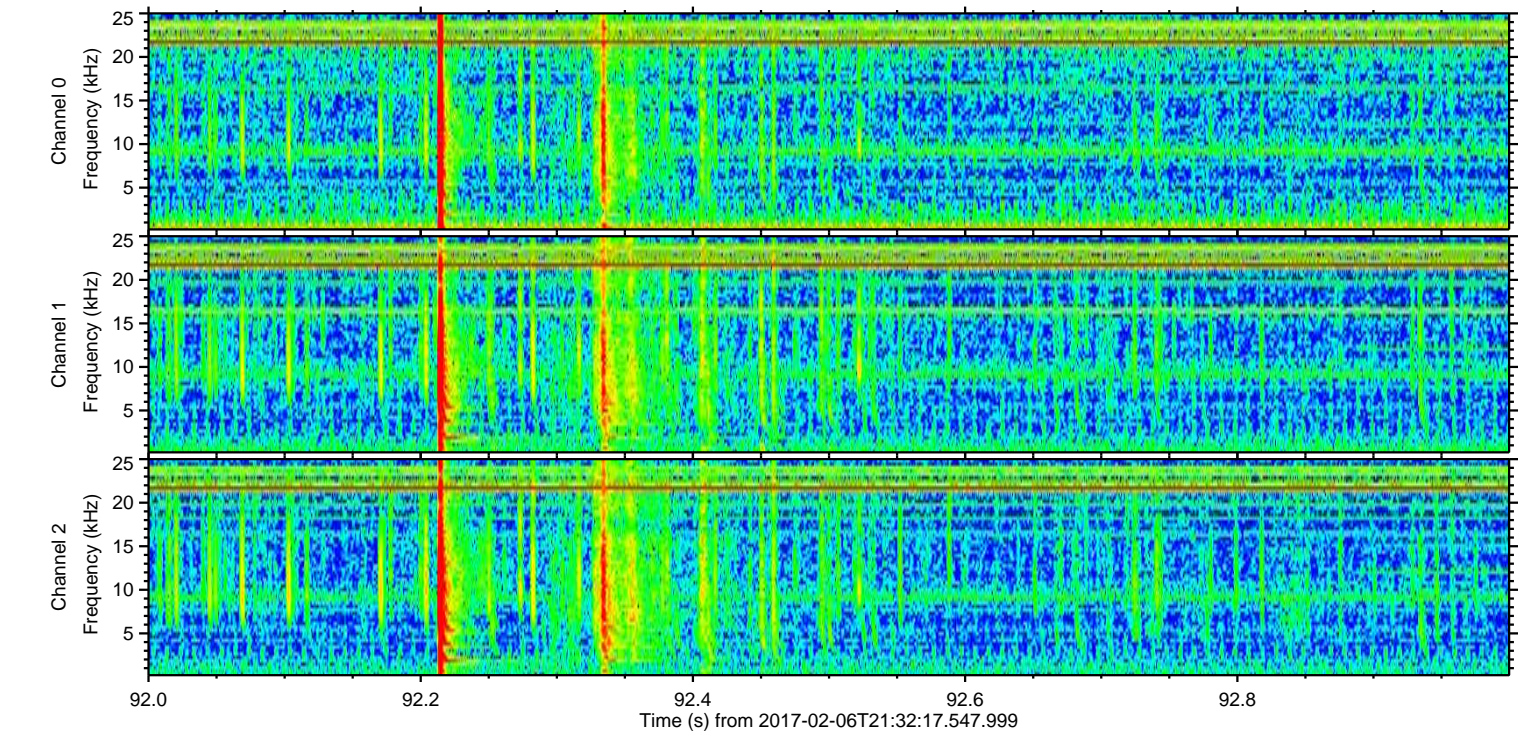
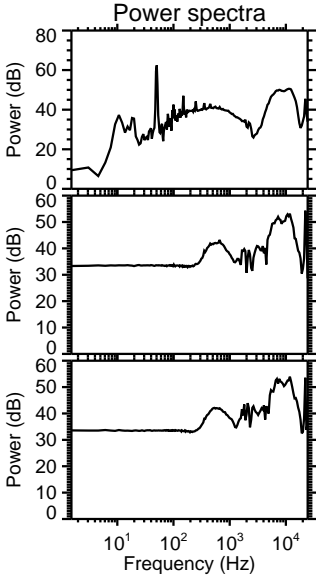
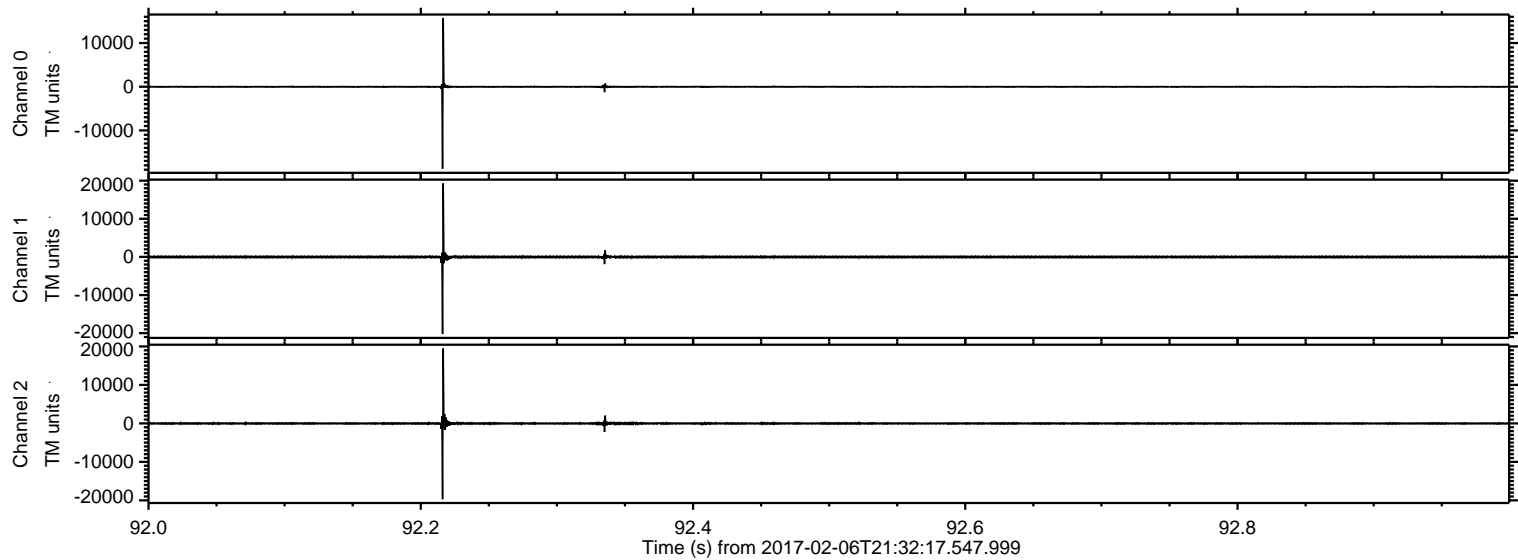
# ELMAVAN 3D WAVEFORMS (Measured data sampled at 50 kHz) 51000 packets of 144 samples from 2017-02-06T21:32:17.547.999.

Processed Mon Feb 6 22:40:20 2017 by ELM ver.2012-10-06 from 001\_\_elm20170206\_213216\_\_dat00.bin





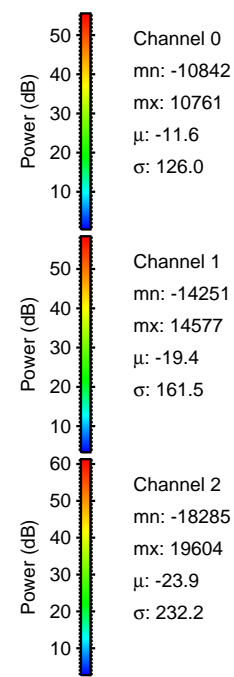
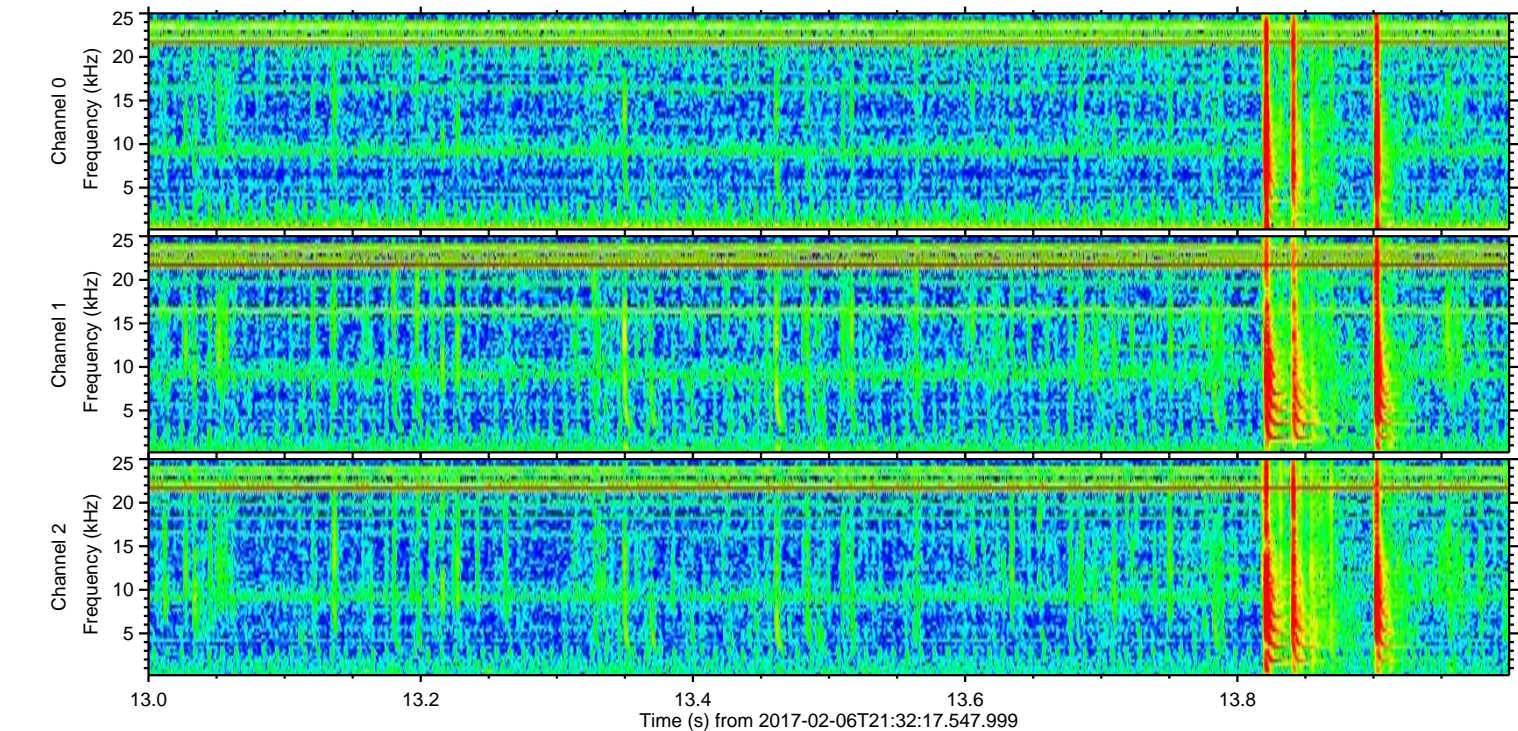
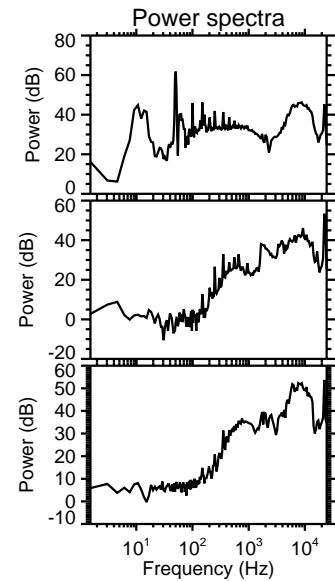
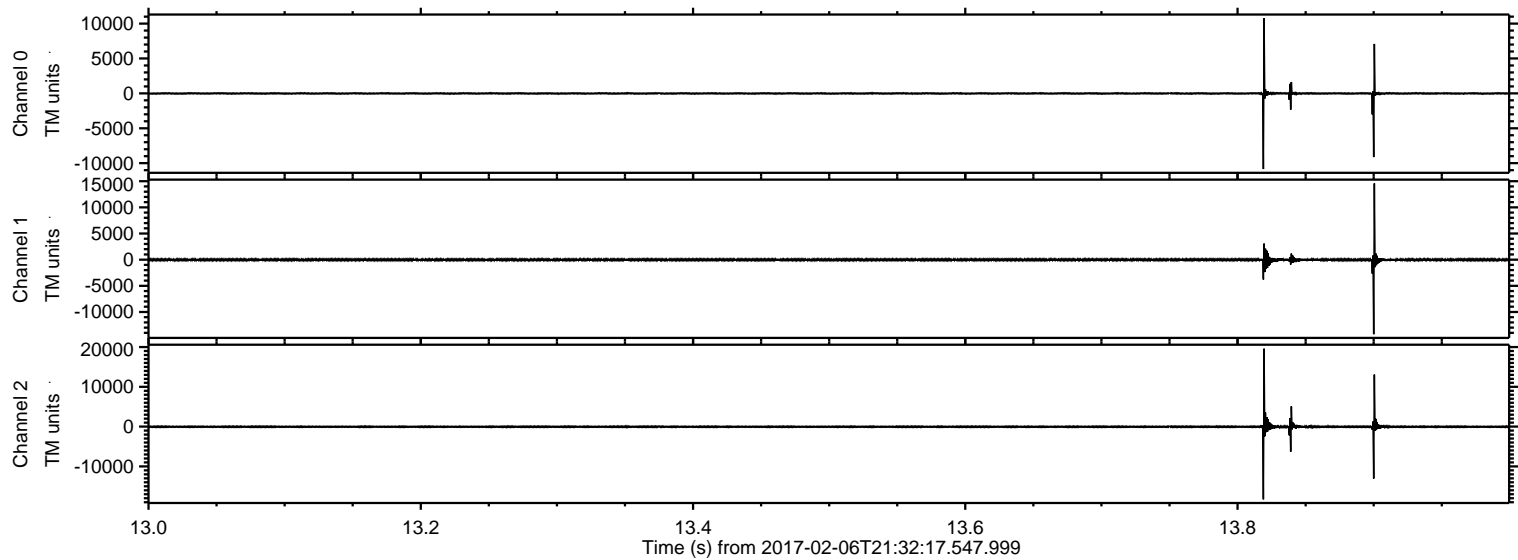
Processed Mon Feb 6 22:40:32 2017 by ELM ver.2012-10-06 from 001\_\_elm20170206\_213216\_\_dat00.bin





ELMAVAN 3D WAVEFORMS (Measured data sampled at 50 kHz) 51000 packets of 144 samples from 2017-02-06T21:32:17.547.999. Part 14/147

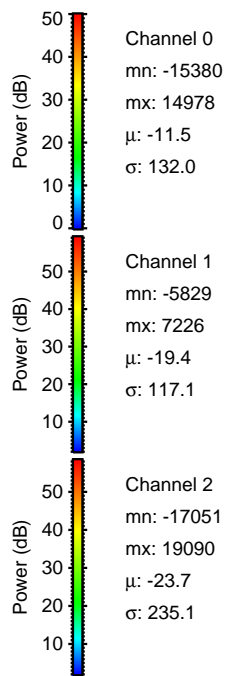
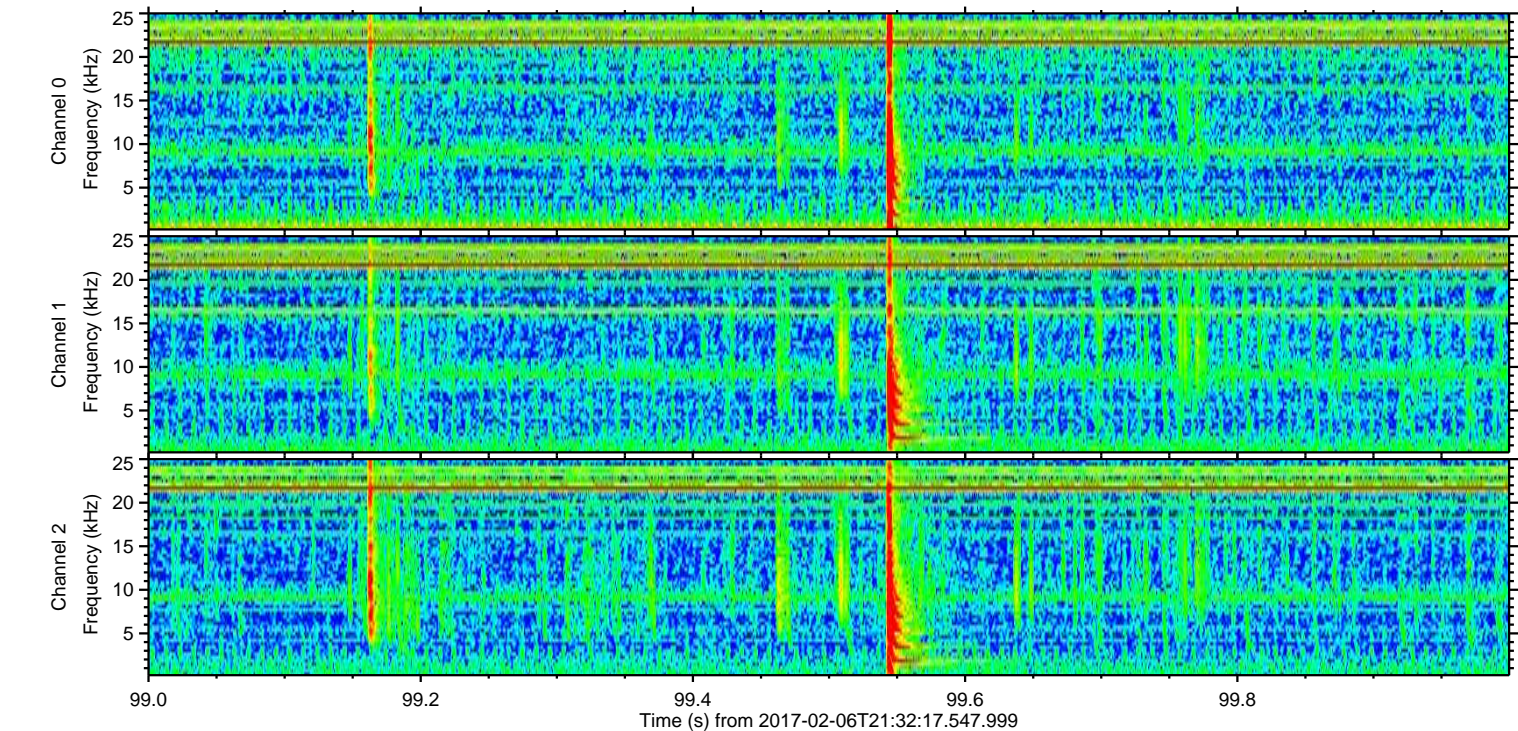
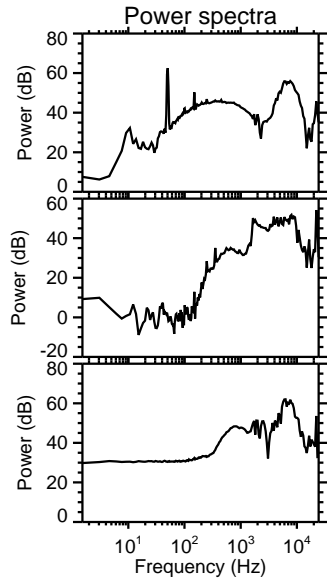
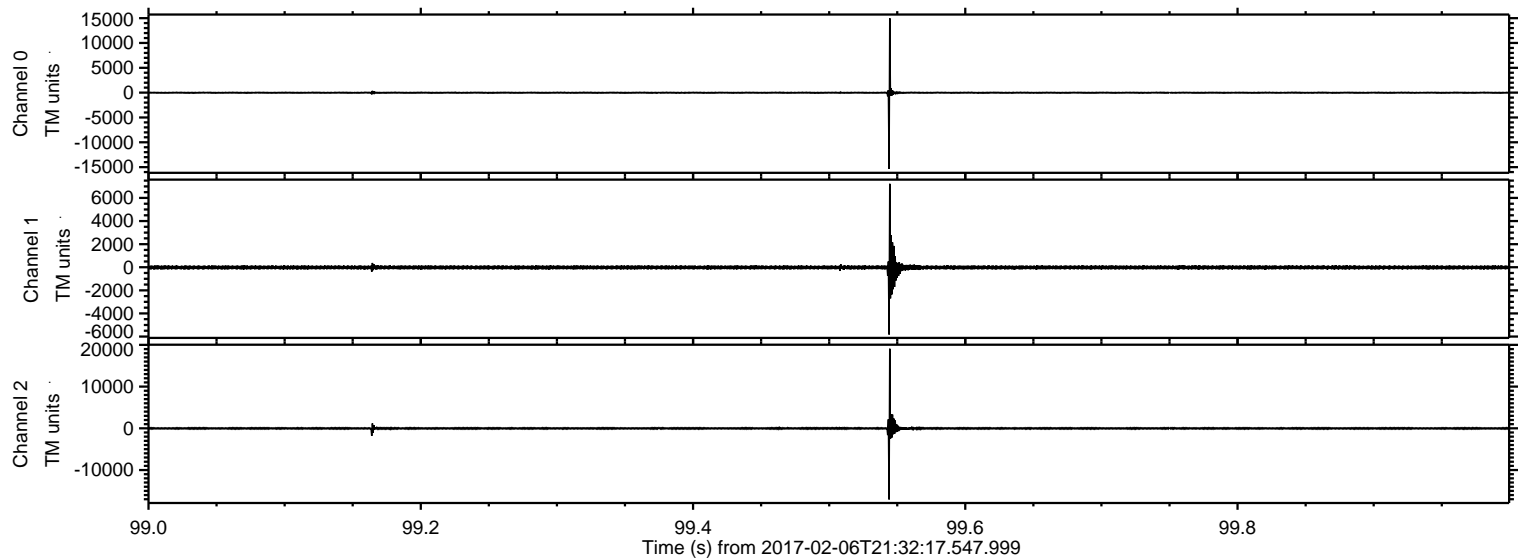
Processed Mon Feb 6 22:40:33 2017 by ELM ver.2012-10-06 from 001\_\_elm20170206\_213216\_\_dat00.bin





ELMAVAN 3D WAVEFORMS (Measured data sampled at 50 kHz) 51000 packets of 144 samples from 2017-02-06T21:32:17.547.999. Part 100/147

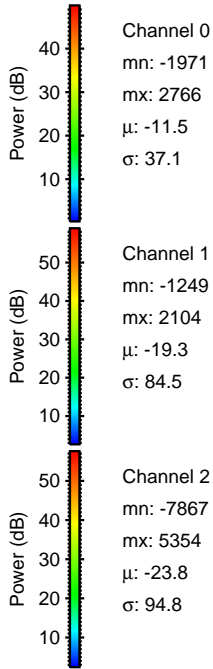
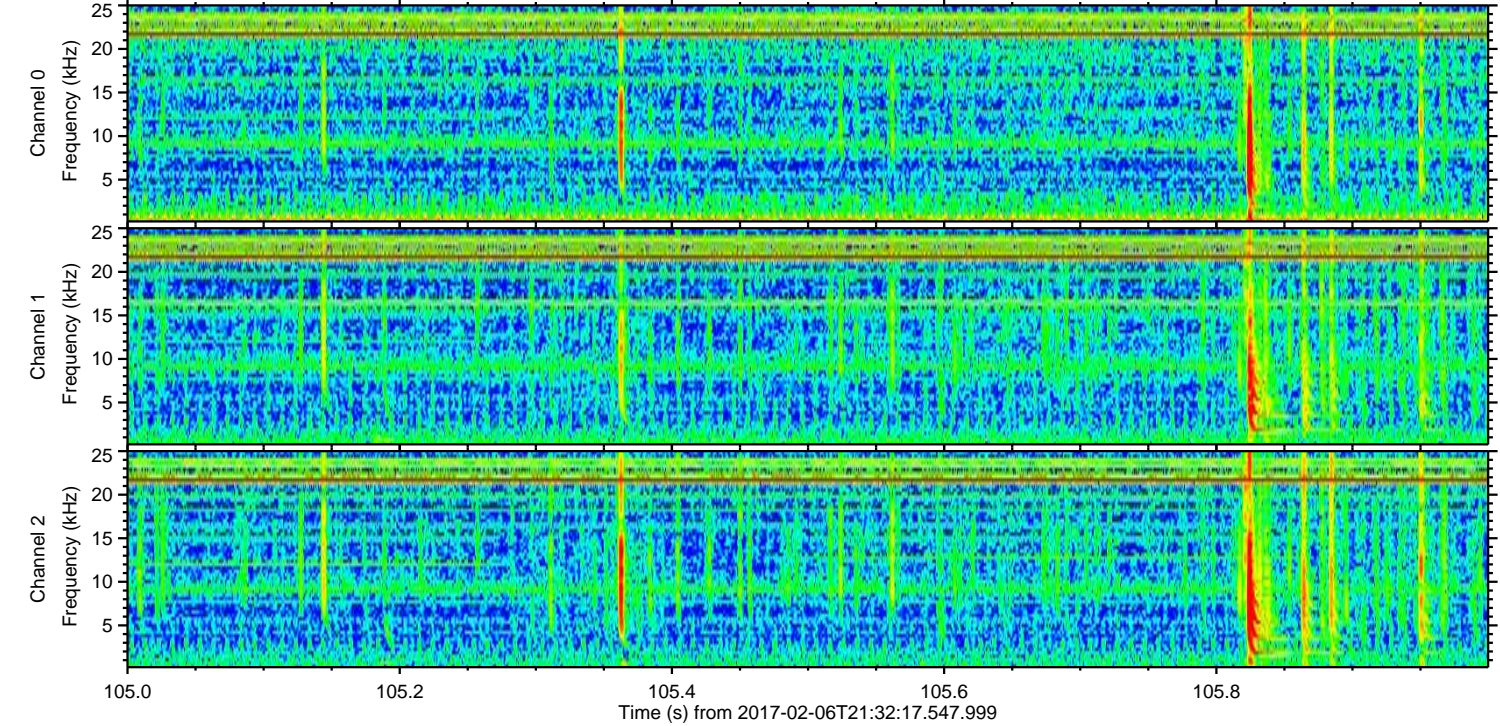
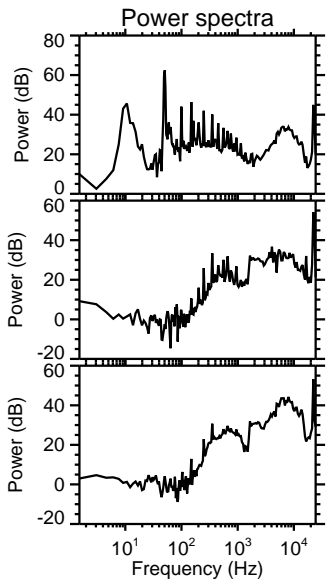
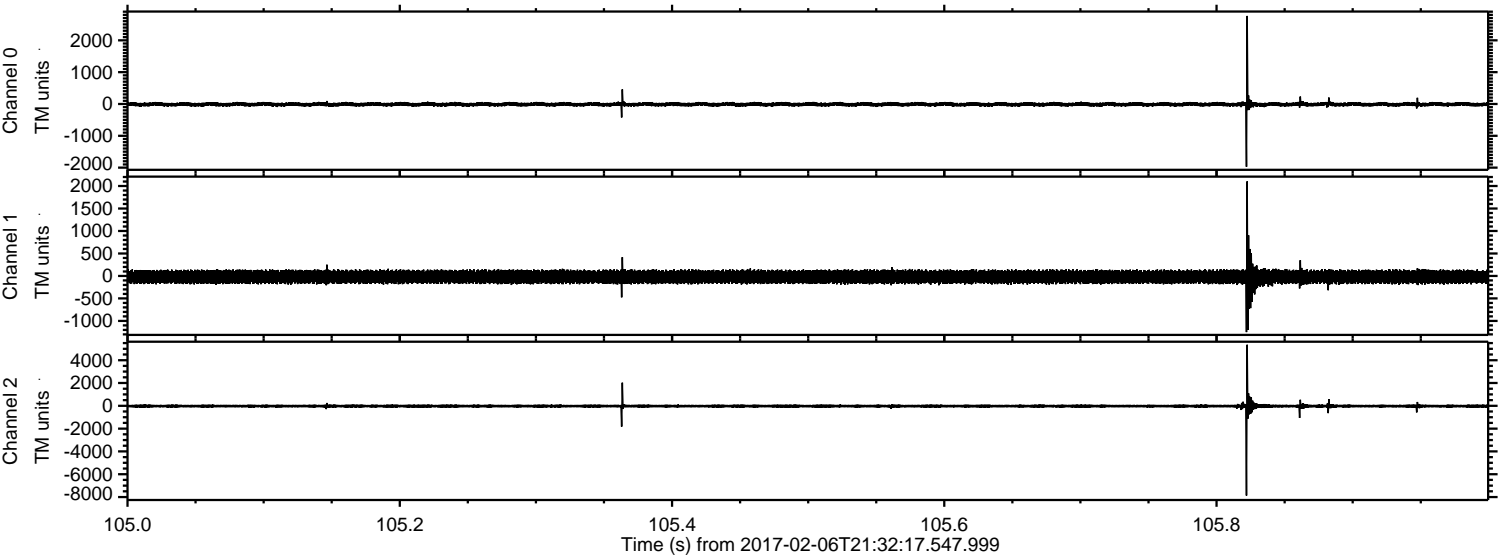
Processed Mon Feb 6 22:40:34 2017 by ELM ver.2012-10-06 from 001\_\_elm20170206\_213216\_\_dat00.bin





ELMAVAN 3D WAVEFORMS (Measured data sampled at 50 kHz) 51000 packets of 144 samples from 2017-02-06T21:32:17.547.999. Part 106/147

Processed Mon Feb 6 22:40:35 2017 by ELM ver.2012-10-06 from 001\_\_elm20170206\_213216\_\_dat00.bin



Channel 0  
mn: -1971  
mx: 2766  
 $\mu$ : -11.5  
 $\sigma$ : 37.1

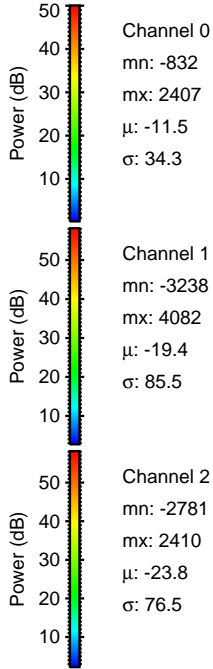
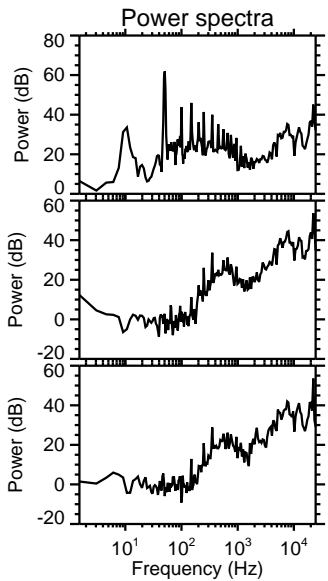
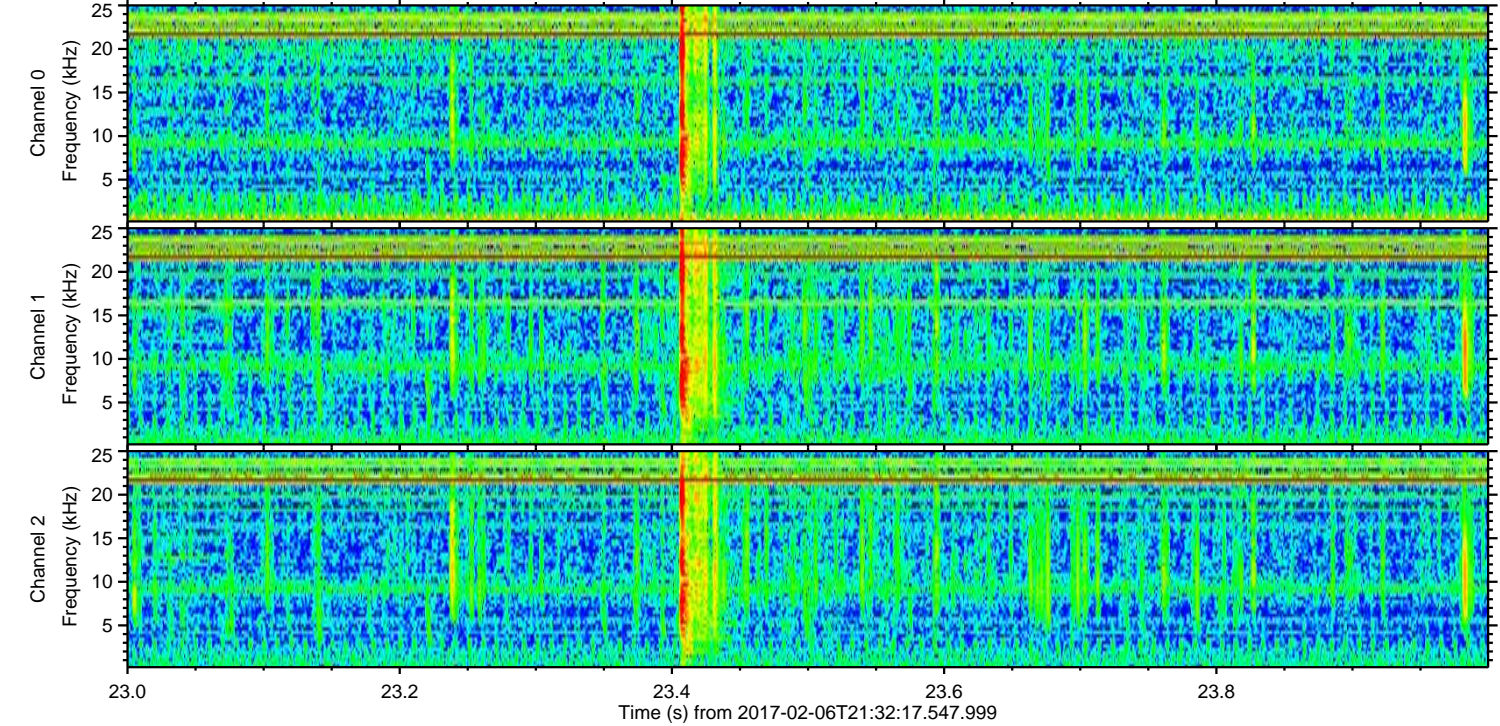
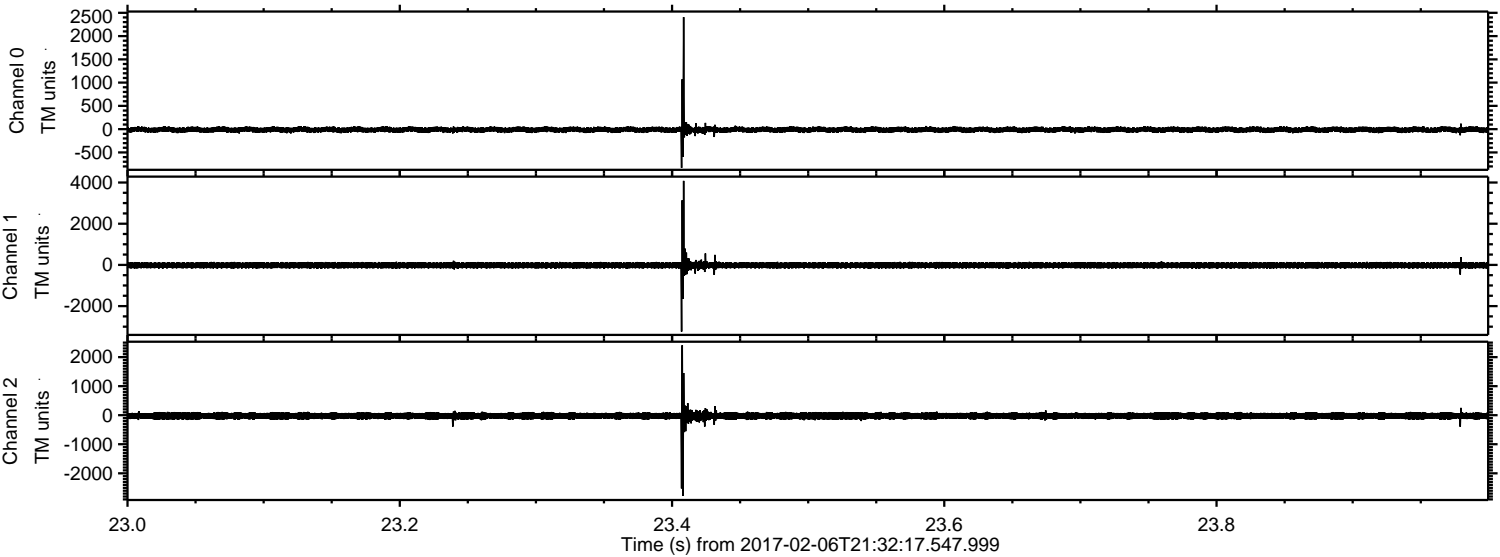
Channel 1  
mn: -1249  
mx: 2104  
 $\mu$ : -19.3  
 $\sigma$ : 84.5

Channel 2  
mn: -7867  
mx: 5354  
 $\mu$ : -23.8  
 $\sigma$ : 94.8



ELMAVAN 3D WAVEFORMS (Measured data sampled at 50 kHz) 51000 packets of 144 samples from 2017-02-06T21:32:17.547.999. Part 24/147

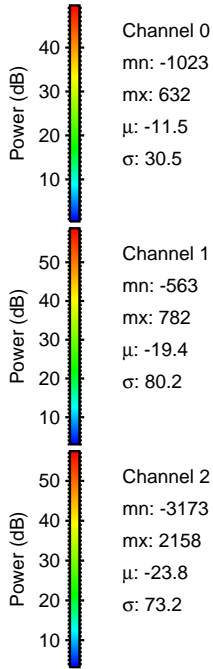
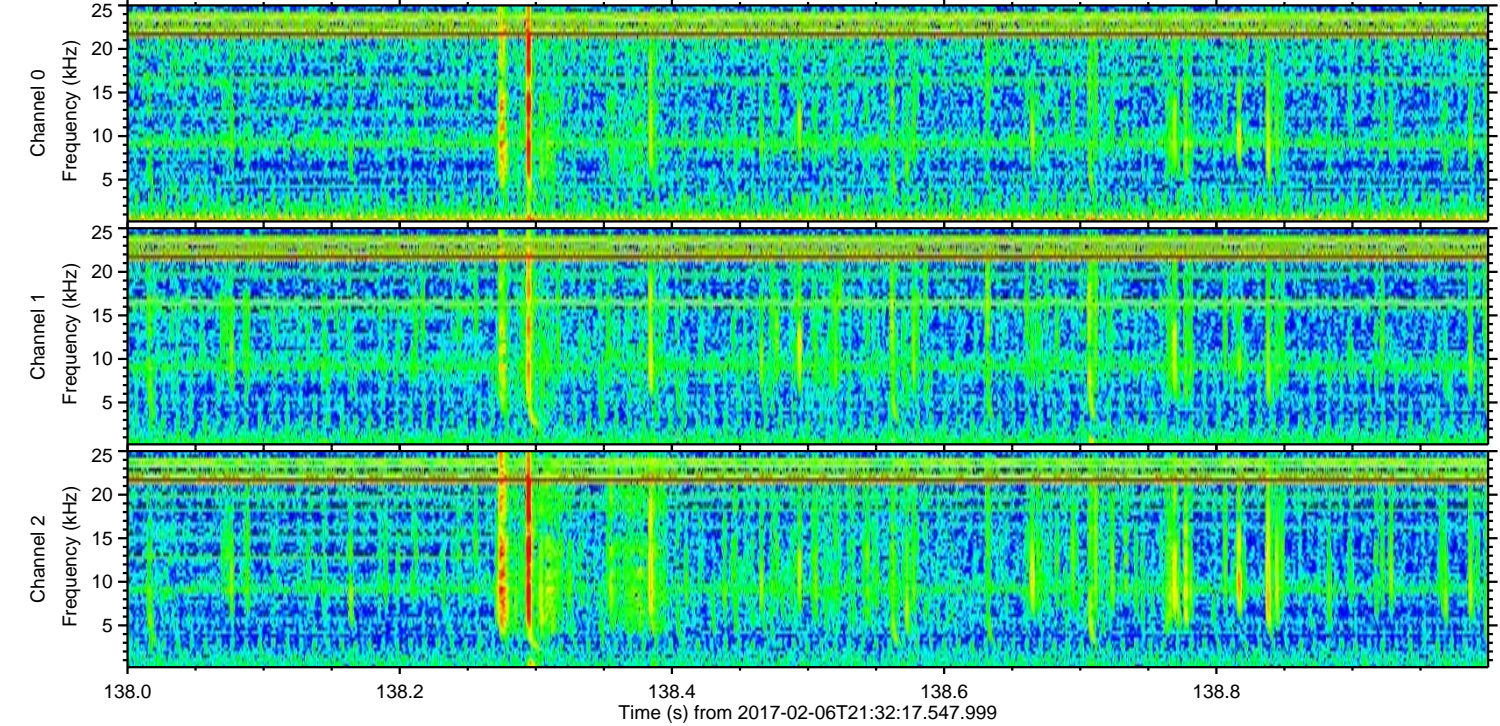
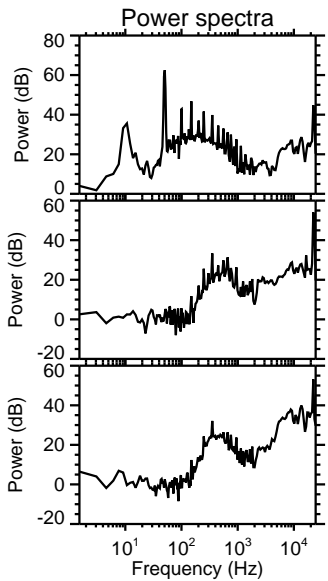
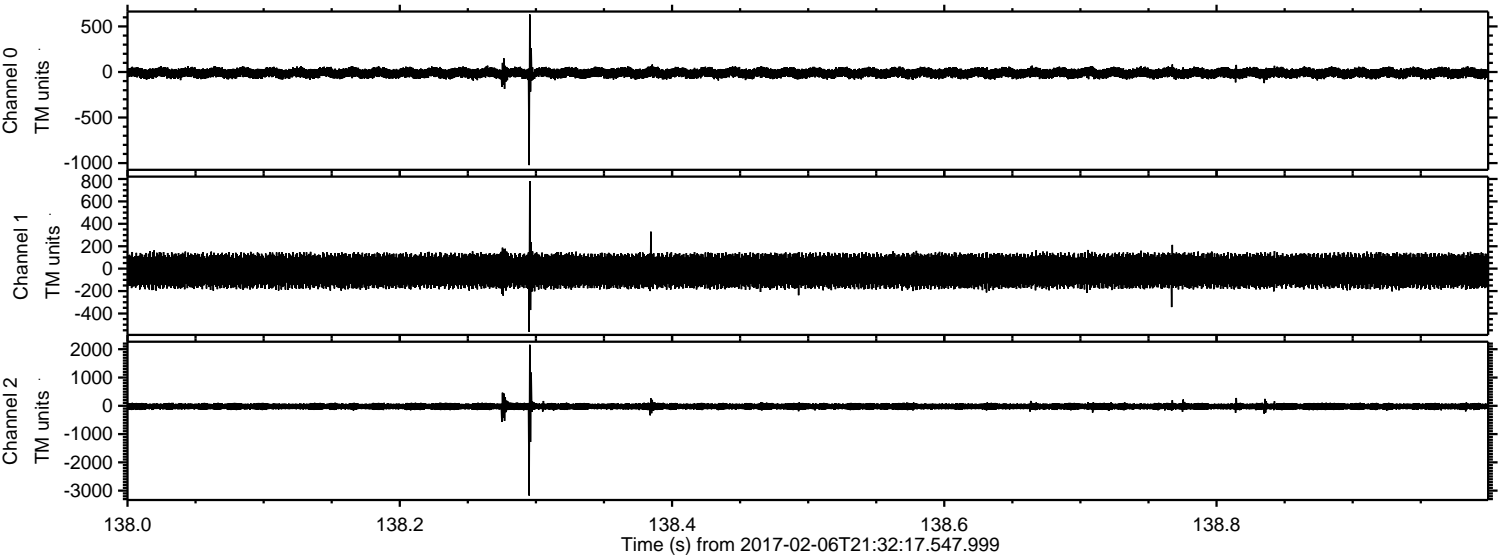
Processed Mon Feb 6 22:40:36 2017 by ELM ver.2012-10-06 from 001\_\_elm20170206\_213216\_\_dat00.bin





ELMAVAN 3D WAVEFORMS (Measured data sampled at 50 kHz) 51000 packets of 144 samples from 2017-02-06T21:32:17.547.999. Part 139/147

Processed Mon Feb 6 22:40:36 2017 by ELM ver.2012-10-06 from 001\_\_elm20170206\_213216\_\_dat00.bin



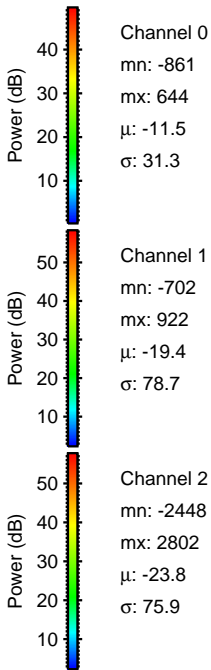
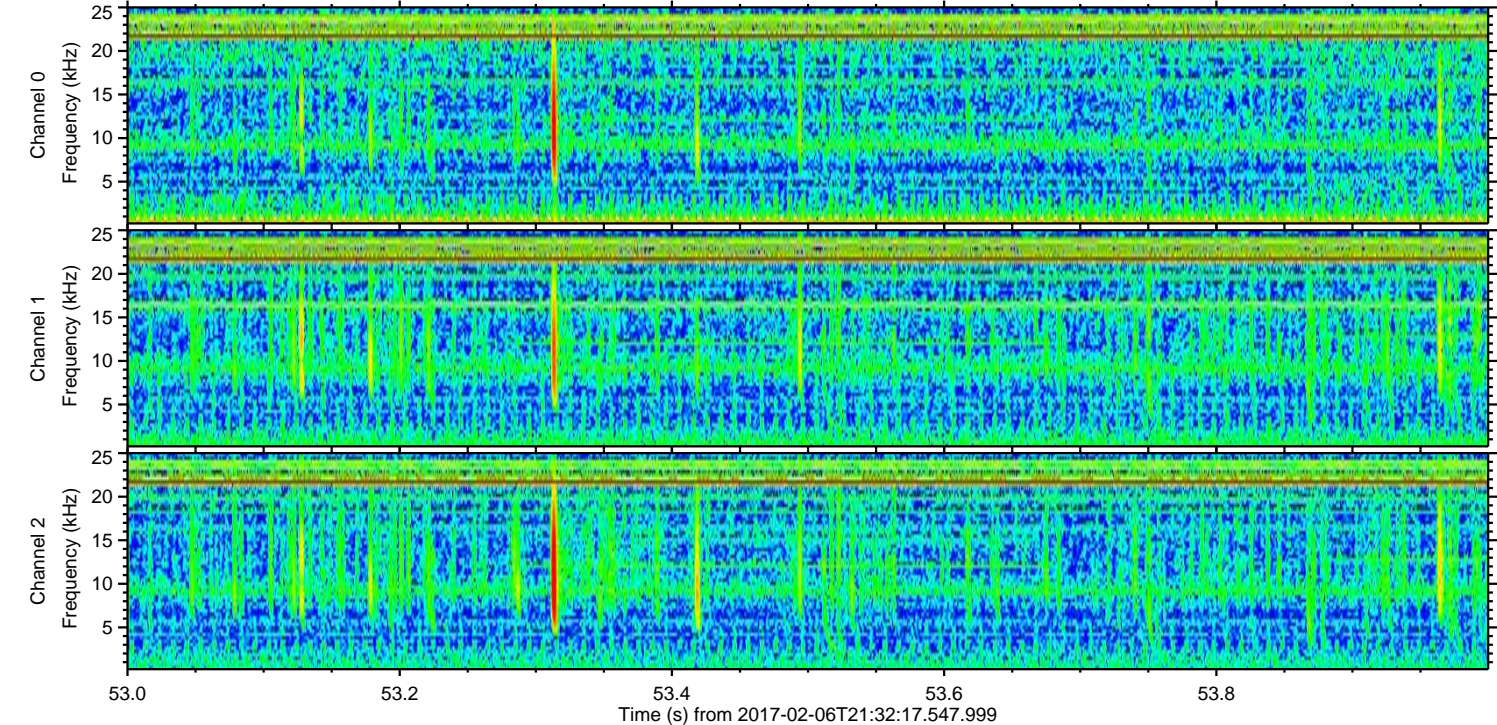
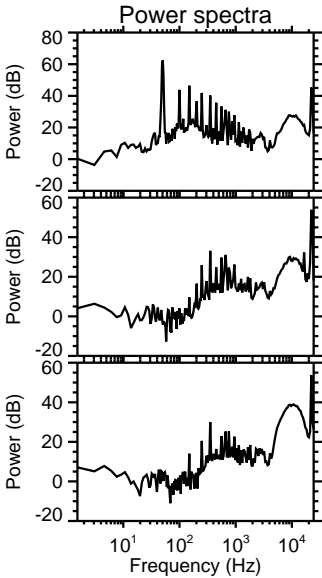
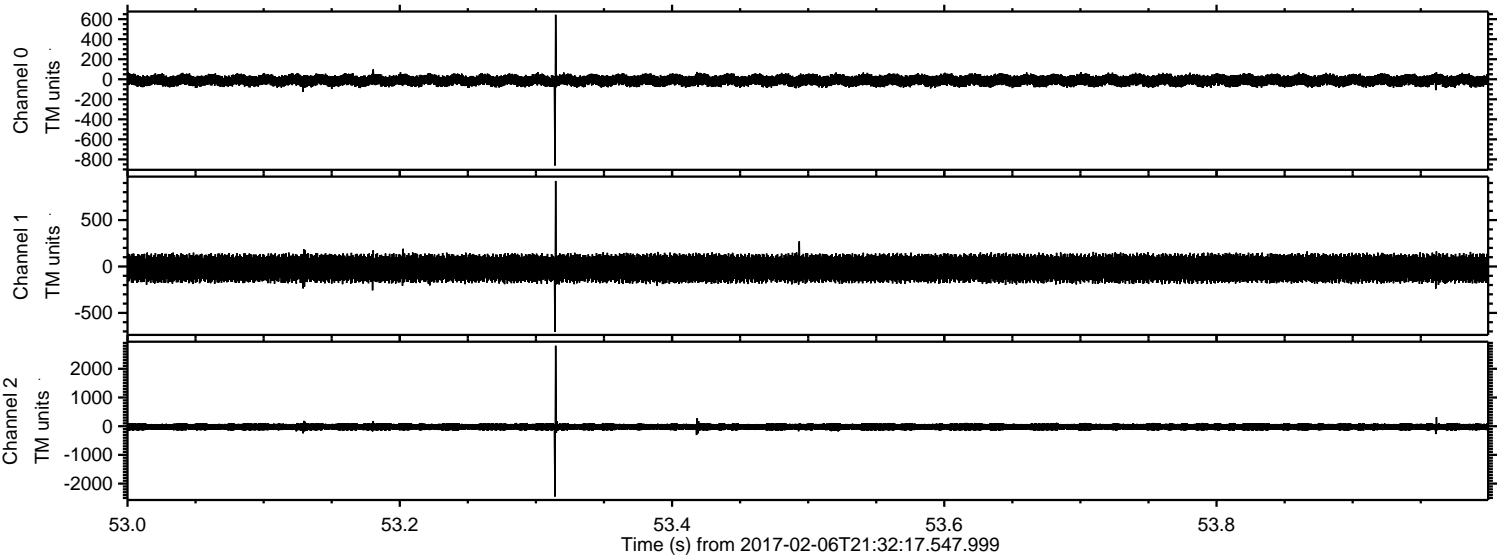
Channel 0  
mn: -1023  
mx: 632  
 $\mu$ : -11.5  
 $\sigma$ : 30.5

Channel 1  
mn: -563  
mx: 782  
 $\mu$ : -19.4  
 $\sigma$ : 80.2

Channel 2  
mn: -3173  
mx: 2158  
 $\mu$ : -23.8  
 $\sigma$ : 73.2



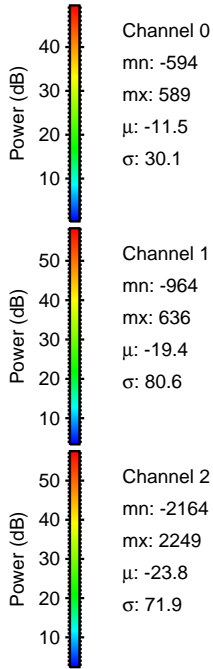
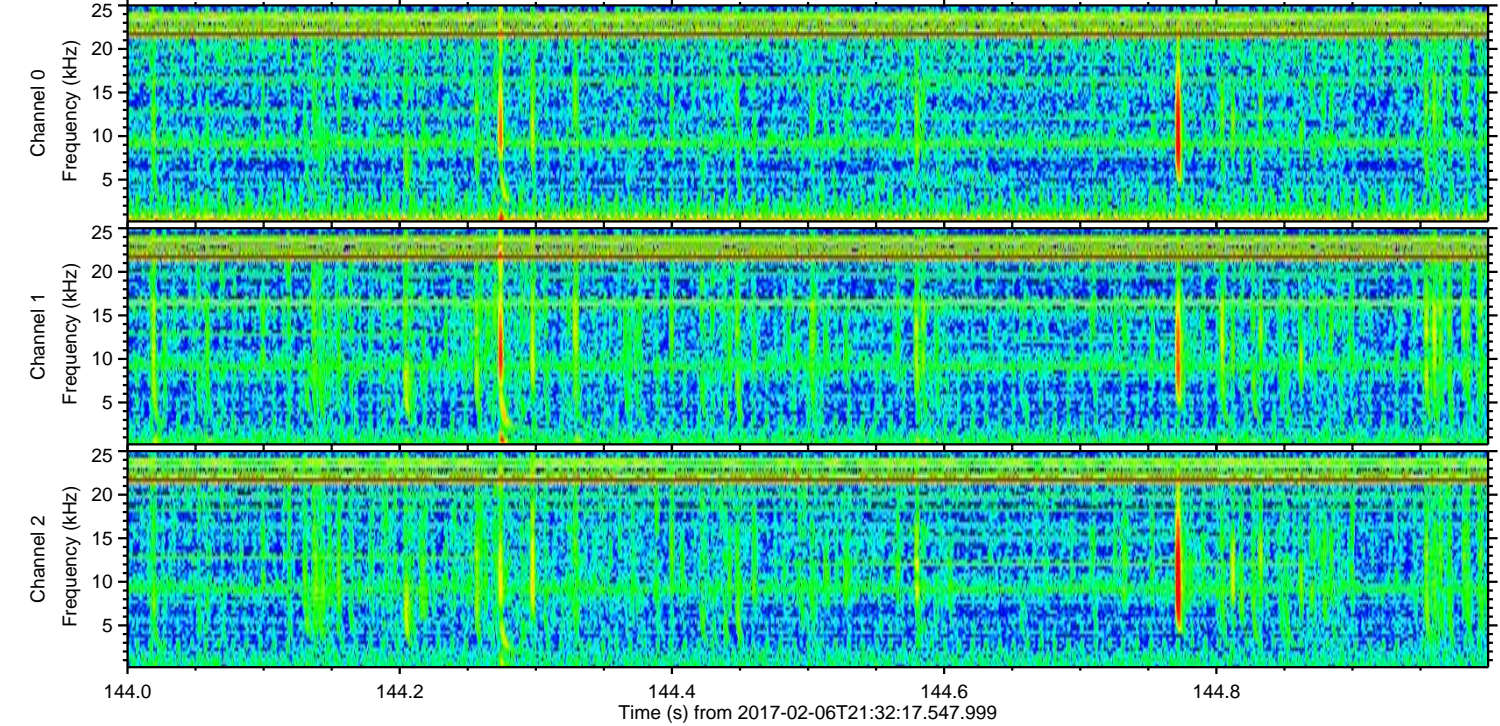
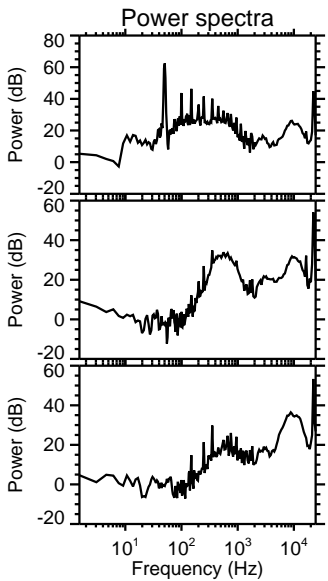
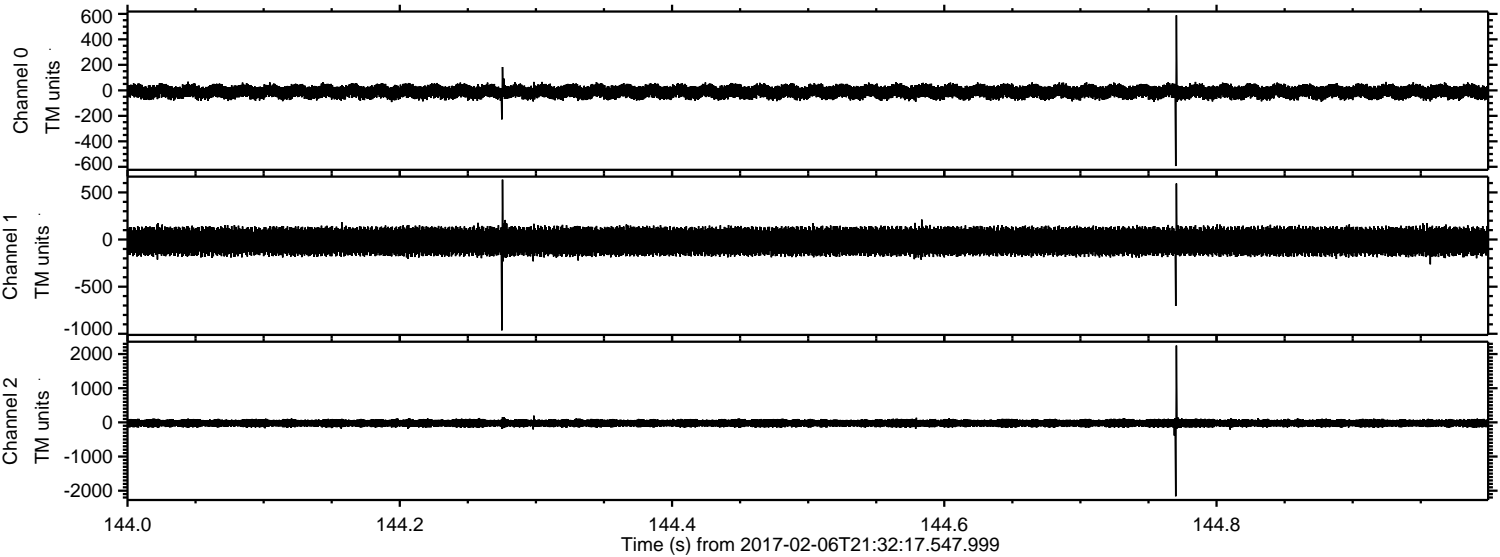
Processed Mon Feb 6 22:40:37 2017 by ELM ver.2012-10-06 from 001\_\_elm20170206\_213216\_\_dat00.bin





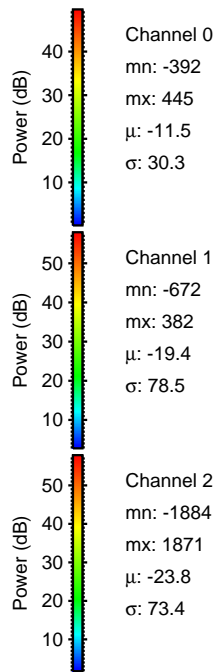
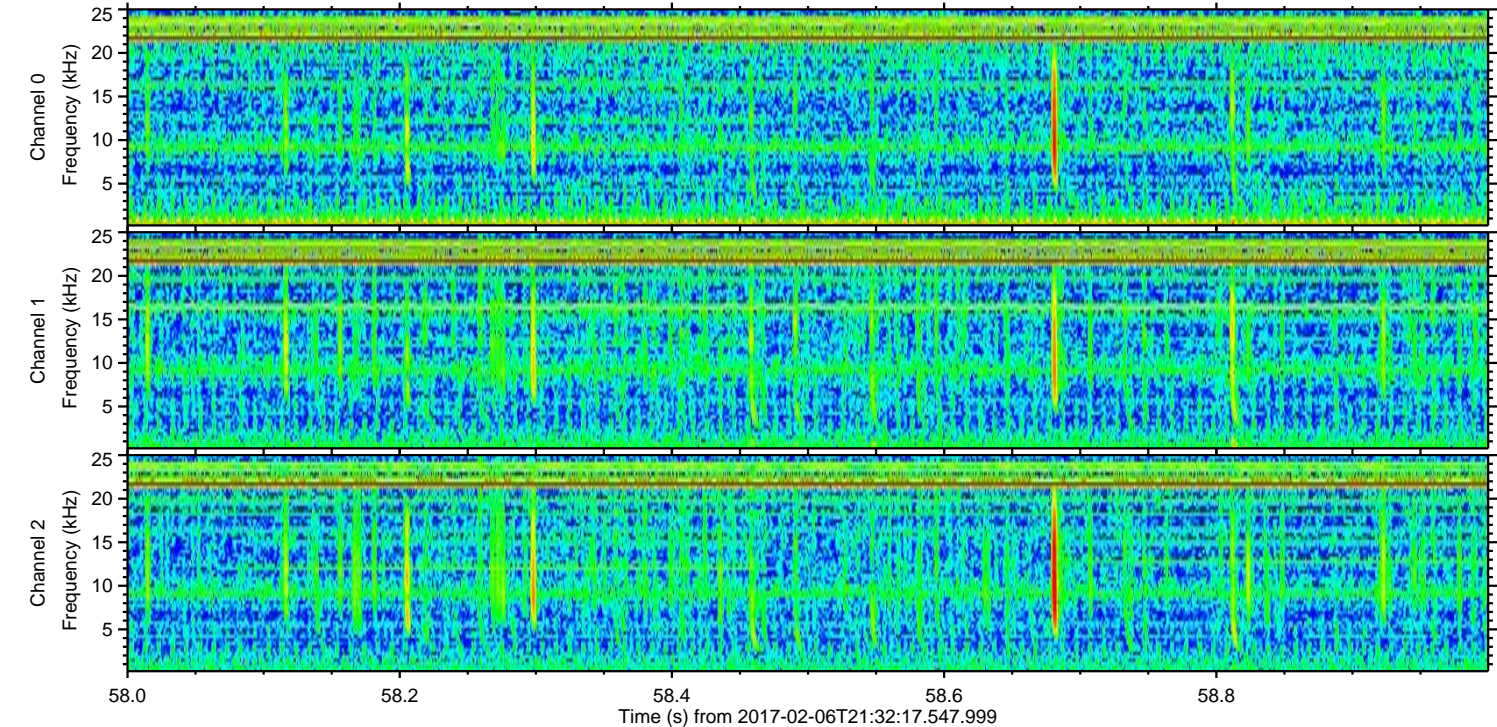
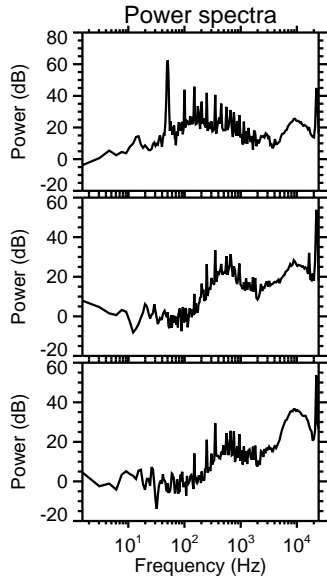
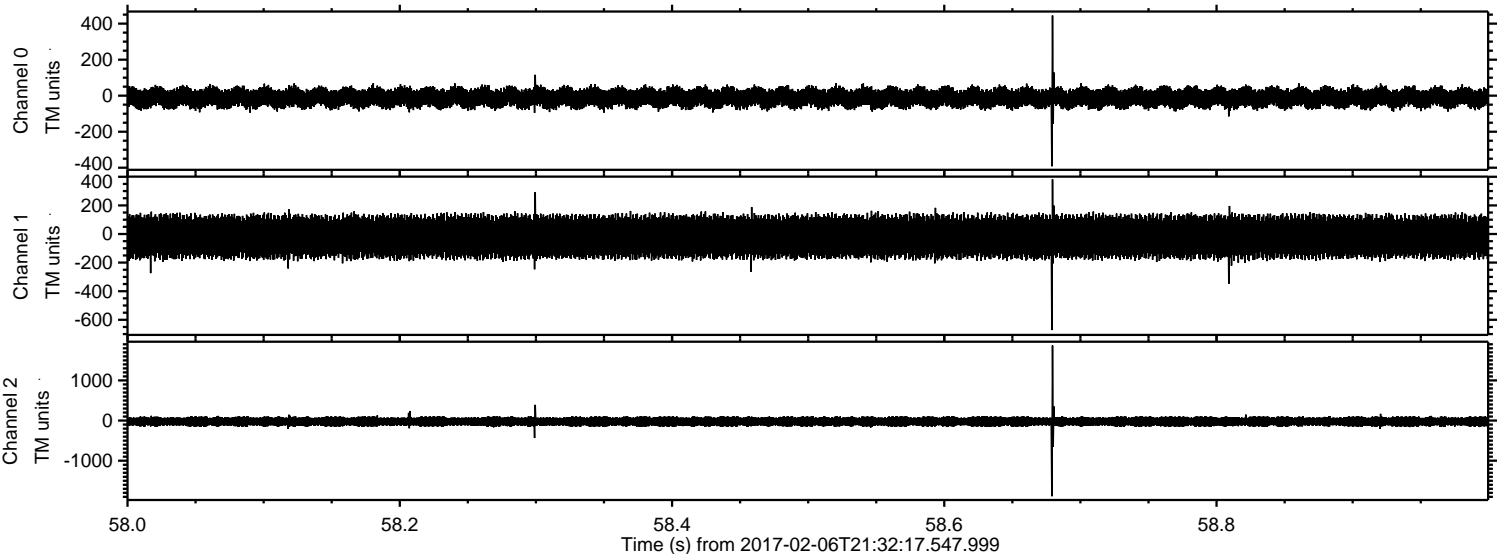
ELMAVAN 3D WAVEFORMS (Measured data sampled at 50 kHz) 51000 packets of 144 samples from 2017-02-06T21:32:17.547.999. Part 145/147

Processed Mon Feb 6 22:40:38 2017 by ELM ver.2012-10-06 from 001\_\_elm20170206\_213216\_\_dat00.bin





Processed Mon Feb 6 22:40:39 2017 by ELM ver.2012-10-06 from 001\_\_elm20170206\_213216\_\_dat00.bin





ELMAVAN 3D WAVEFORMS (Measured data sampled at 50 kHz) 51000 packets of 144 samples from 2017-02-06T21:32:17.547.999. Part 16/147

Processed Mon Feb 6 22:40:40 2017 by ELM ver.2012-10-06 from 001\_\_elm20170206\_213216\_\_dat00.bin

