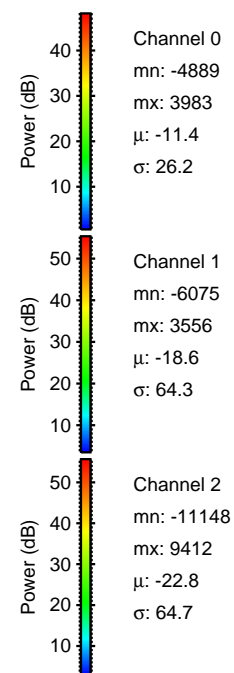
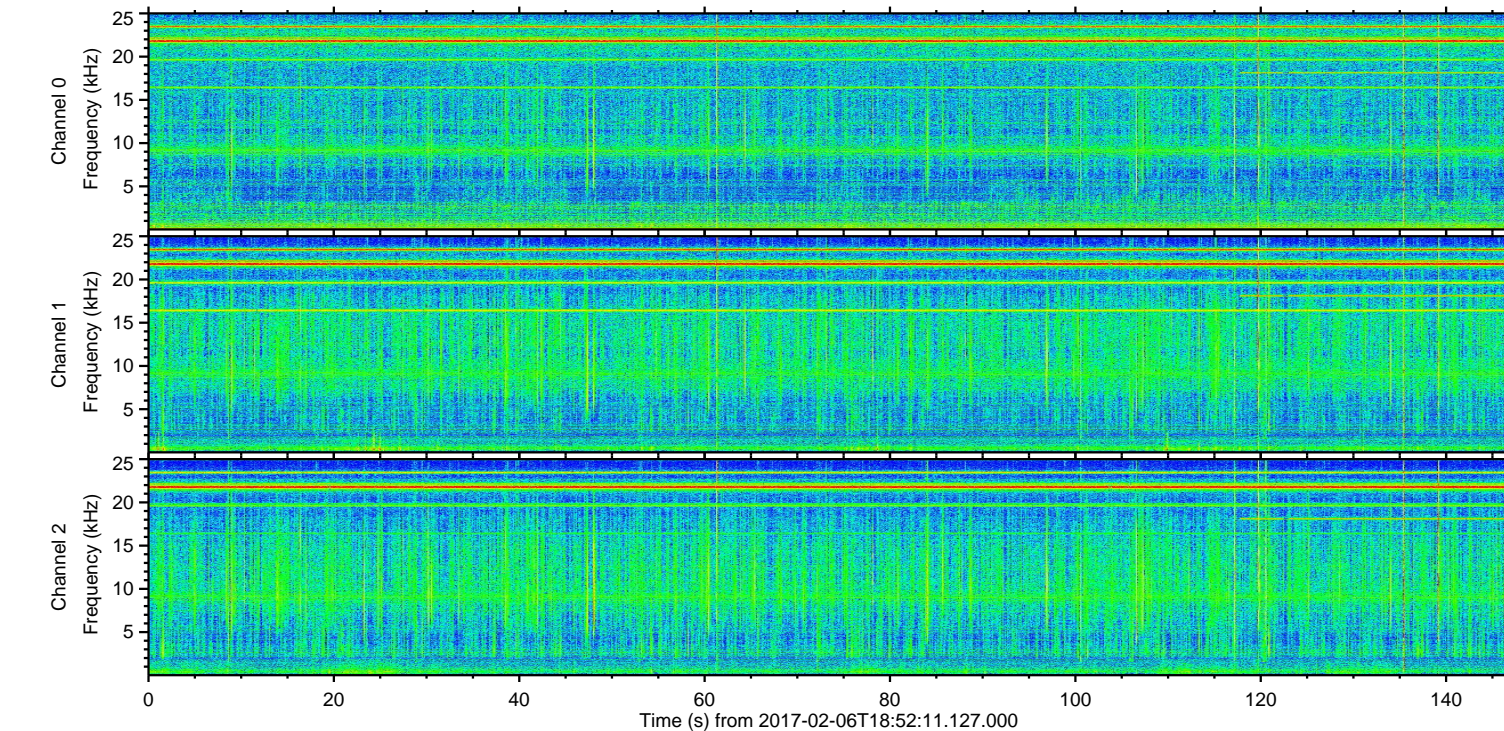
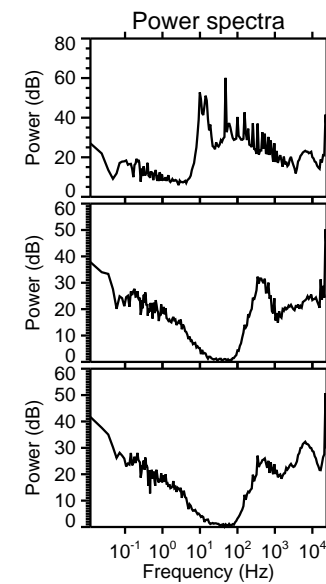
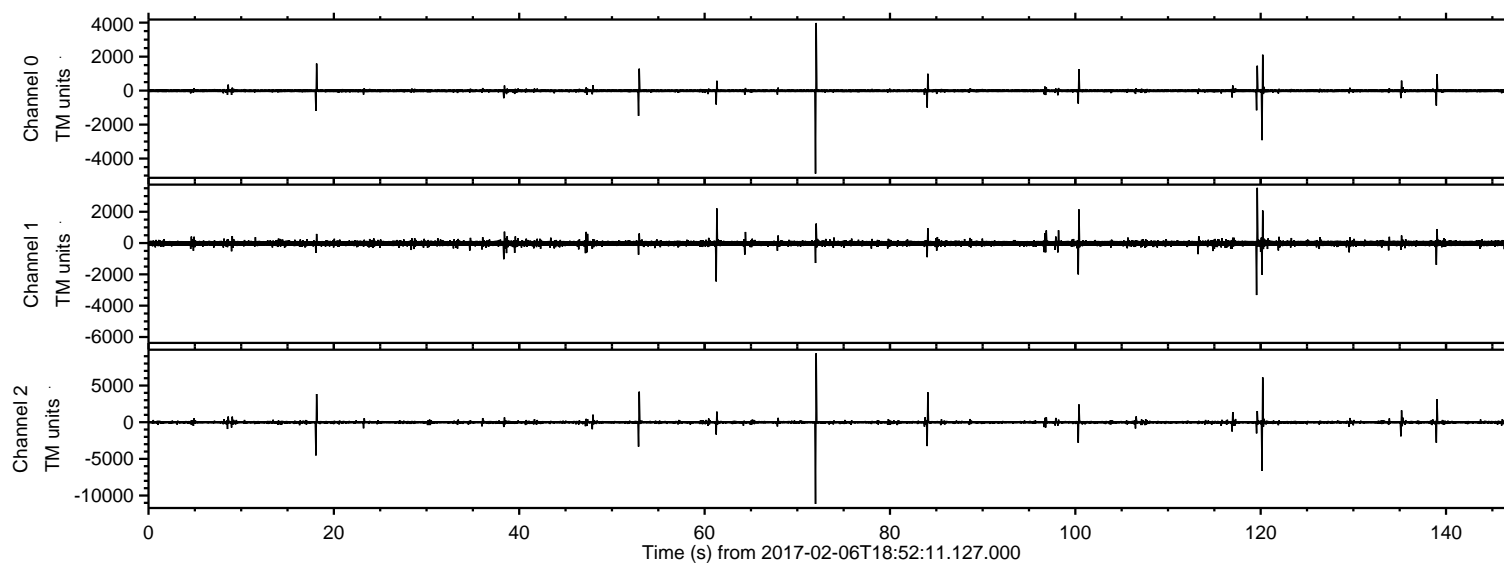


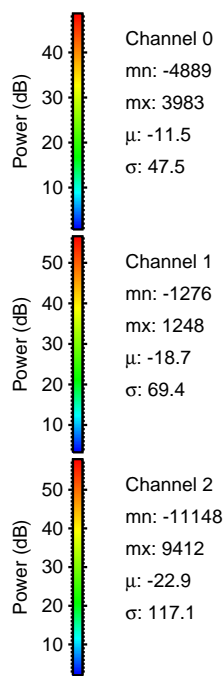
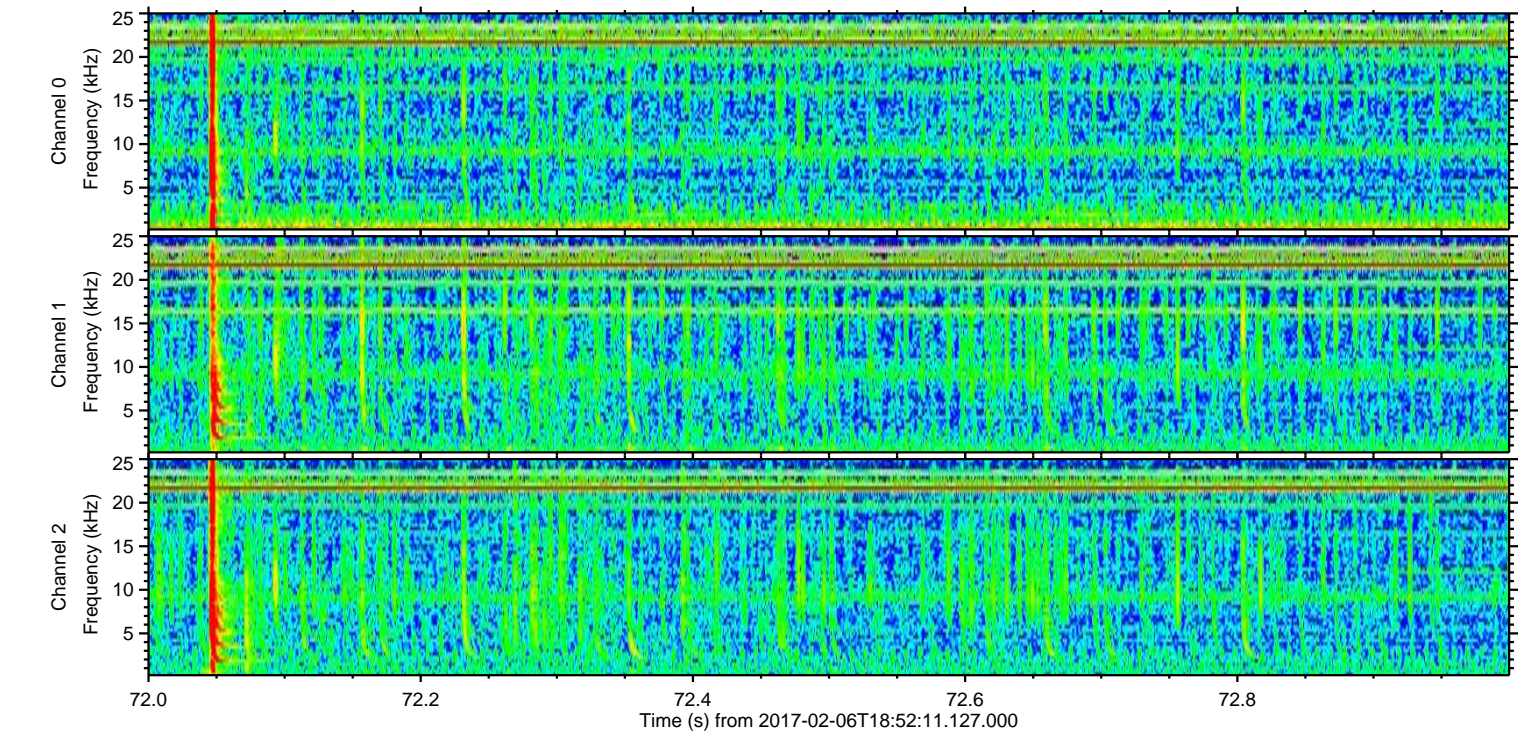
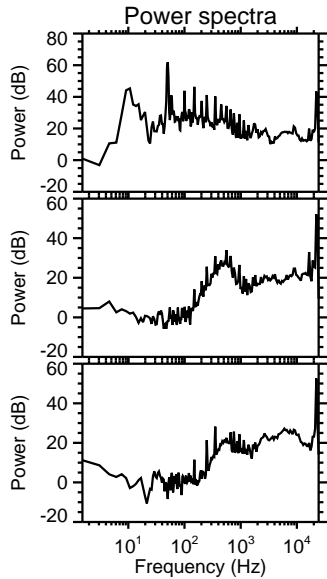
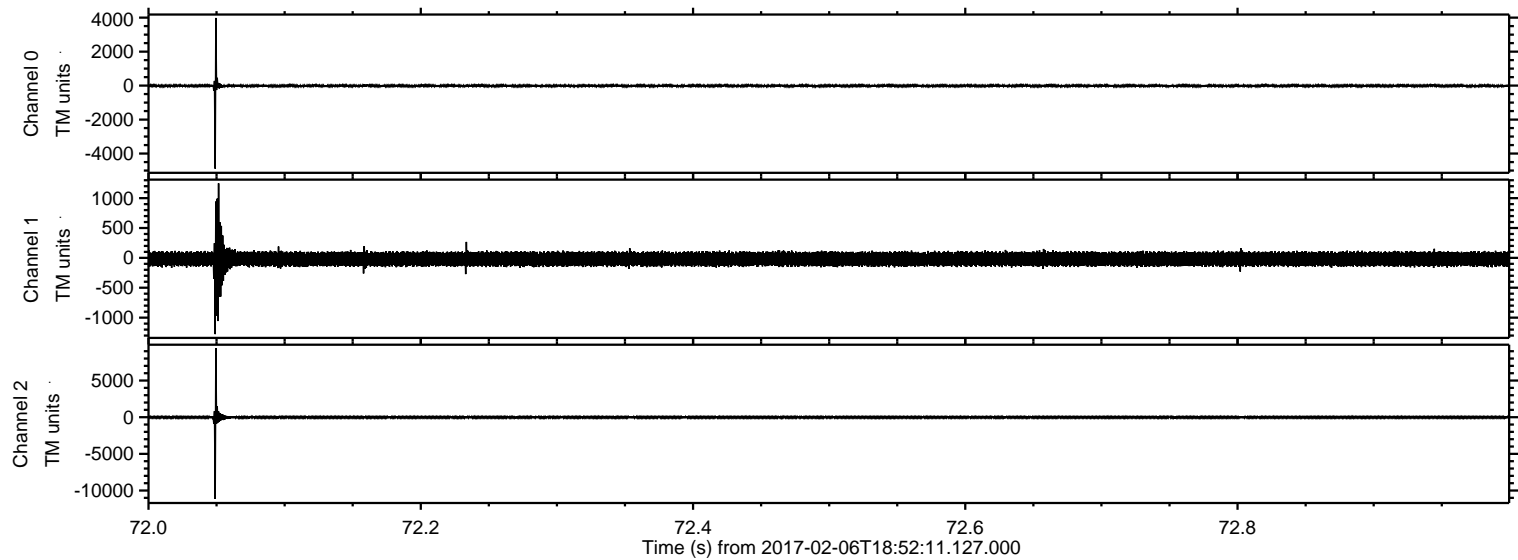
ELMAVAN 3D WAVEFORMS (Measured data sampled at 50 kHz) 51000 packets of 144 samples from 2017-02-06T18:52:11.127.000.

Processed Mon Feb 6 19:59:46 2017 by ELM ver.2012-10-06 from 001__elm20170206_185210__dat00.bin



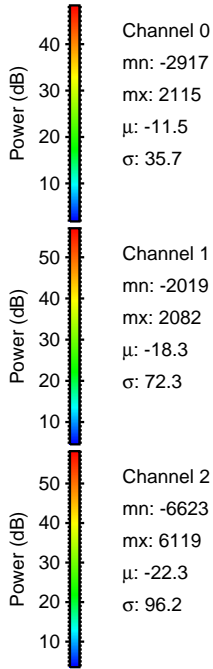
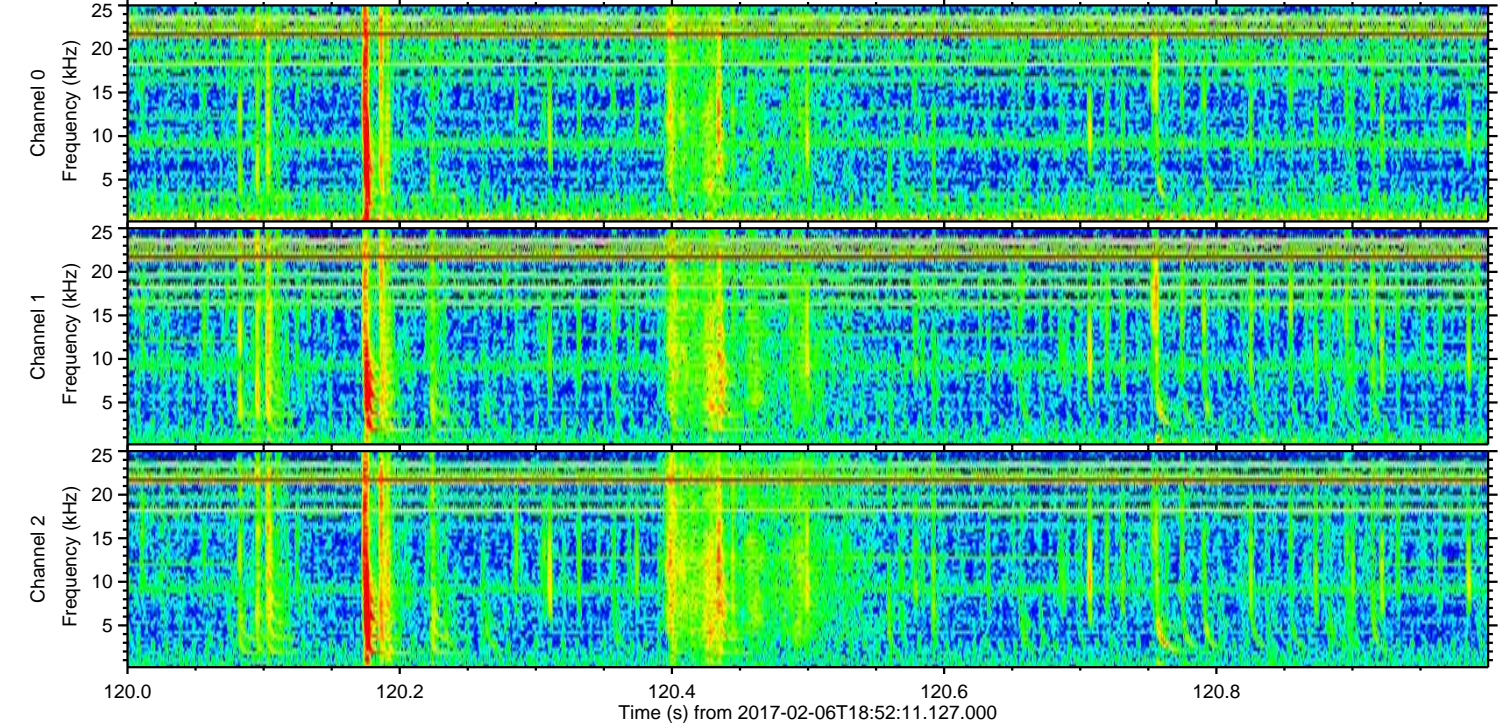
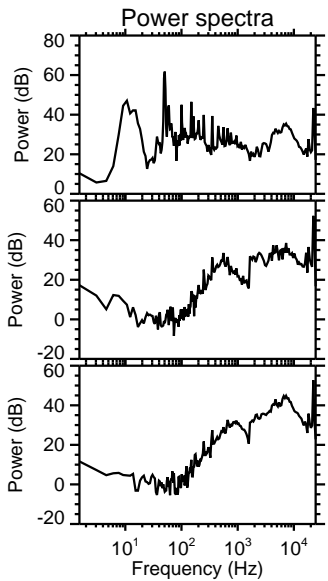
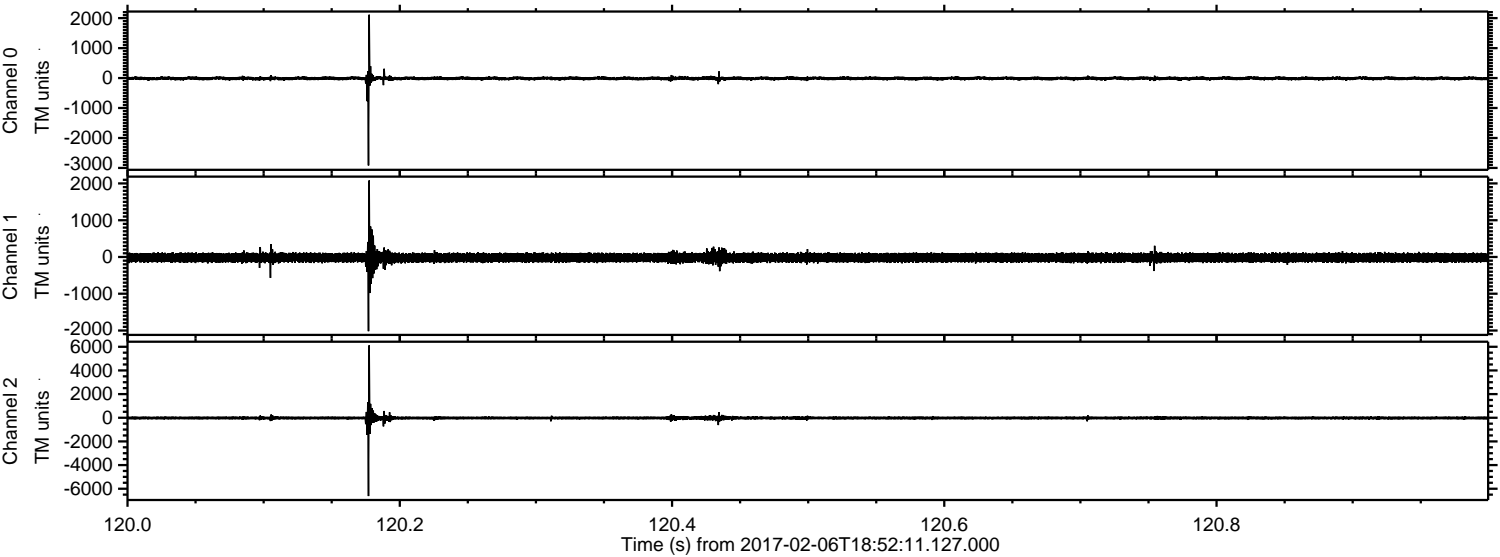
ELMAVAN 3D WAVEFORMS (Measured data sampled at 50 kHz) 51000 packets of 144 samples from 2017-02-06T18:52:11.127.000. Part 73/147

Processed Mon Feb 6 19:59:57 2017 by ELM ver.2012-10-06 from 001__elm20170206_185210__dat00.bin



ELMAVAN 3D WAVEFORMS (Measured data sampled at 50 kHz) 51000 packets of 144 samples from 2017-02-06T18:52:11.127.000. Part 121/147

Processed Mon Feb 6 19:59:58 2017 by ELM ver.2012-10-06 from 001__elm20170206_185210__dat00.bin



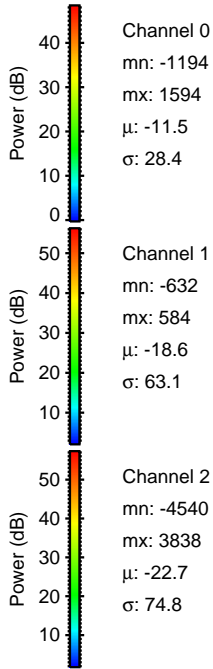
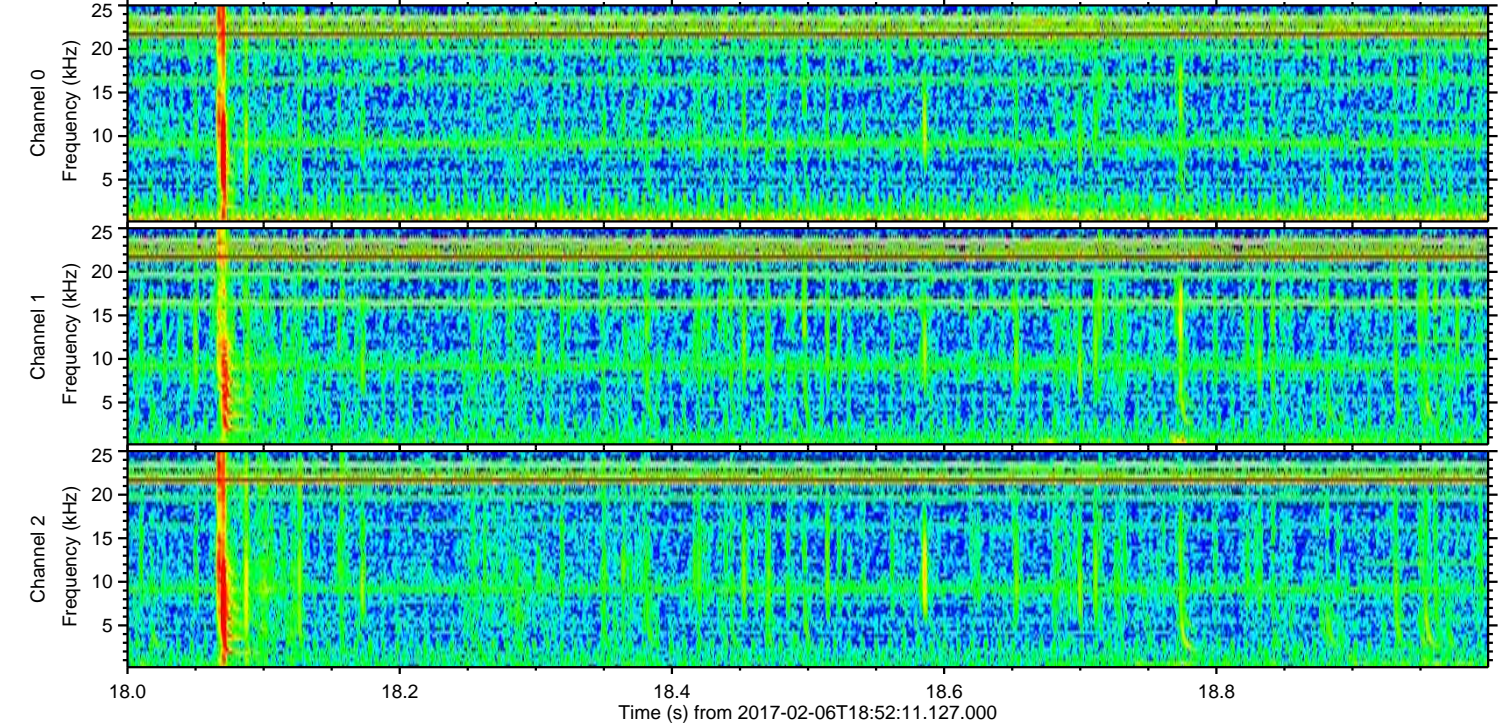
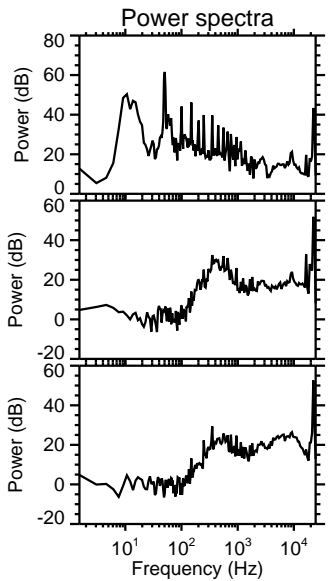
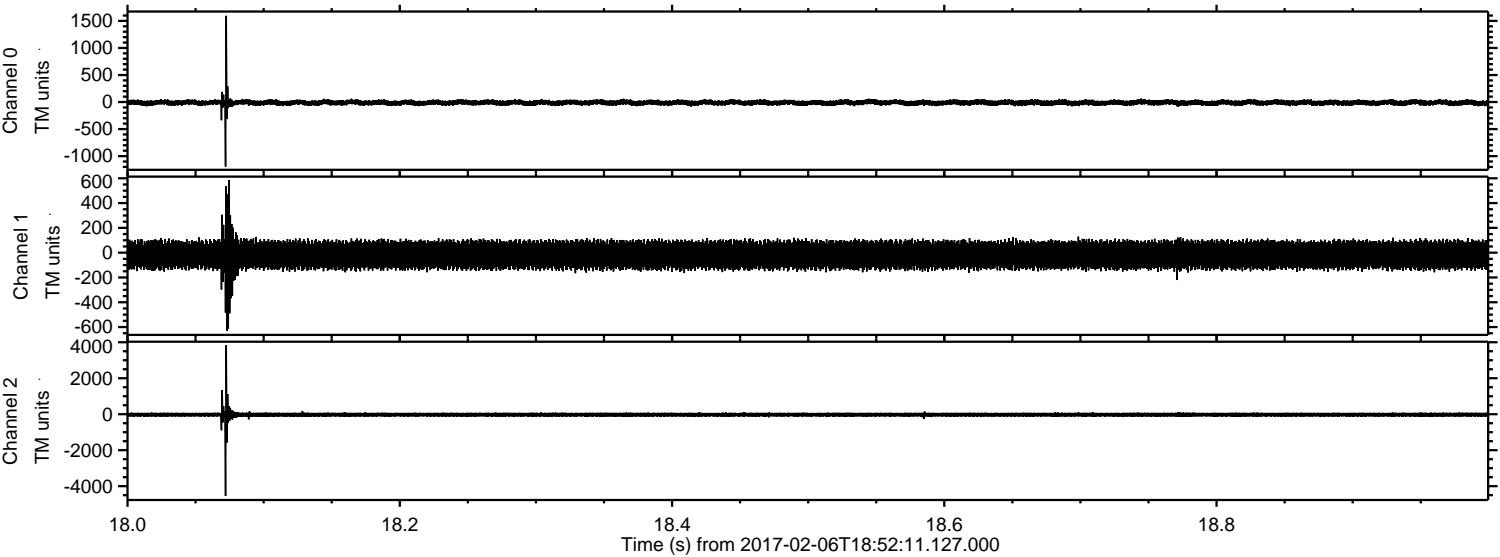
Channel 0
mn: -2917
mx: 2115
 μ : -11.5
 σ : 35.7

Channel 1
mn: -2019
mx: 2082
 μ : -18.3
 σ : 72.3

Channel 2
mn: -6623
mx: 6119
 μ : -22.3
 σ : 96.2

ELMAVAN 3D WAVEFORMS (Measured data sampled at 50 kHz) 51000 packets of 144 samples from 2017-02-06T18:52:11.127.000. Part 19/147

Processed Mon Feb 6 19:59:59 2017 by ELM ver.2012-10-06 from 001__elm20170206_185210__dat00.bin

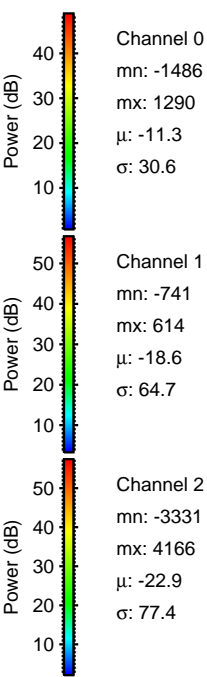
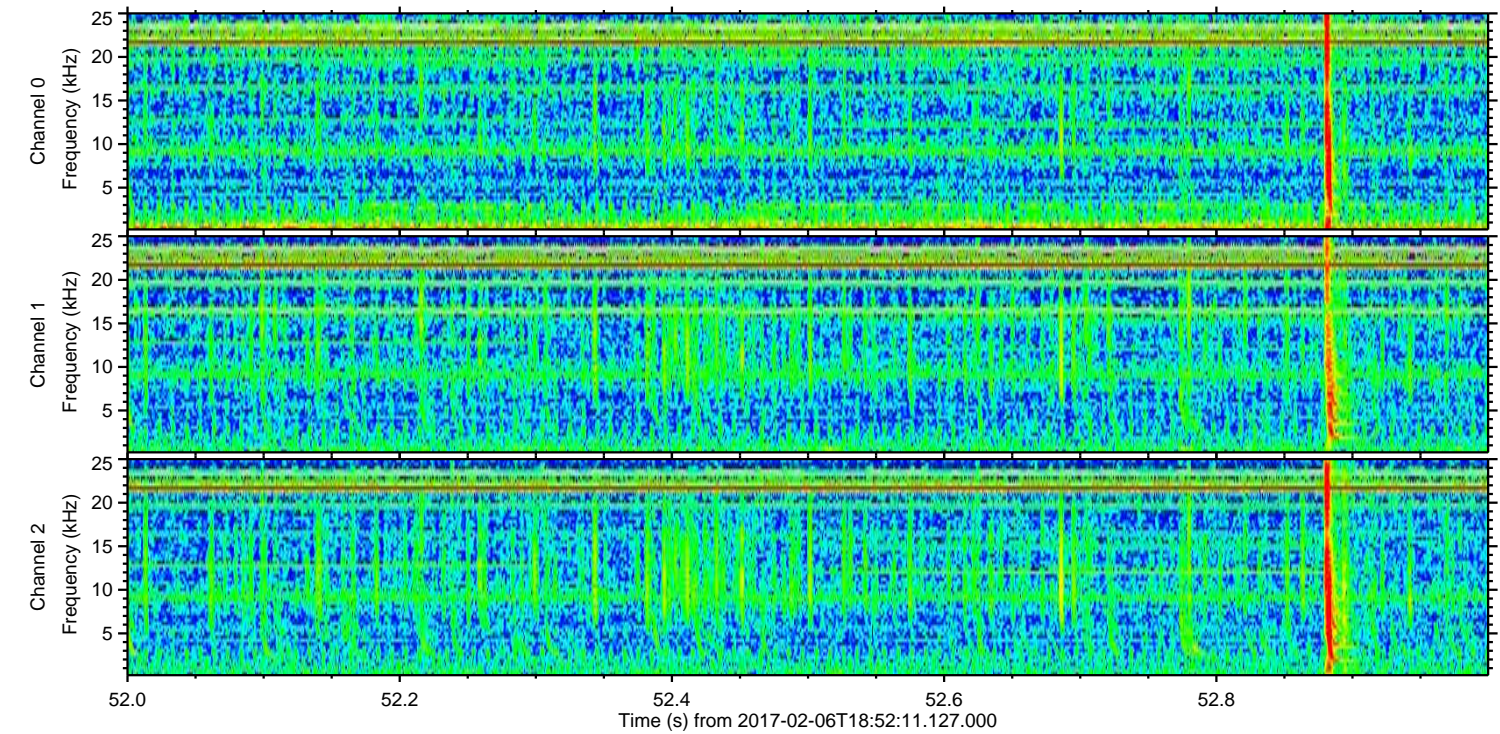
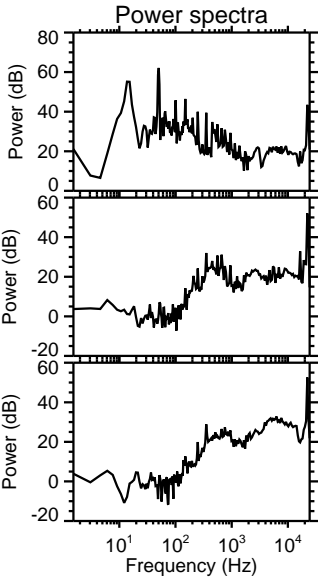
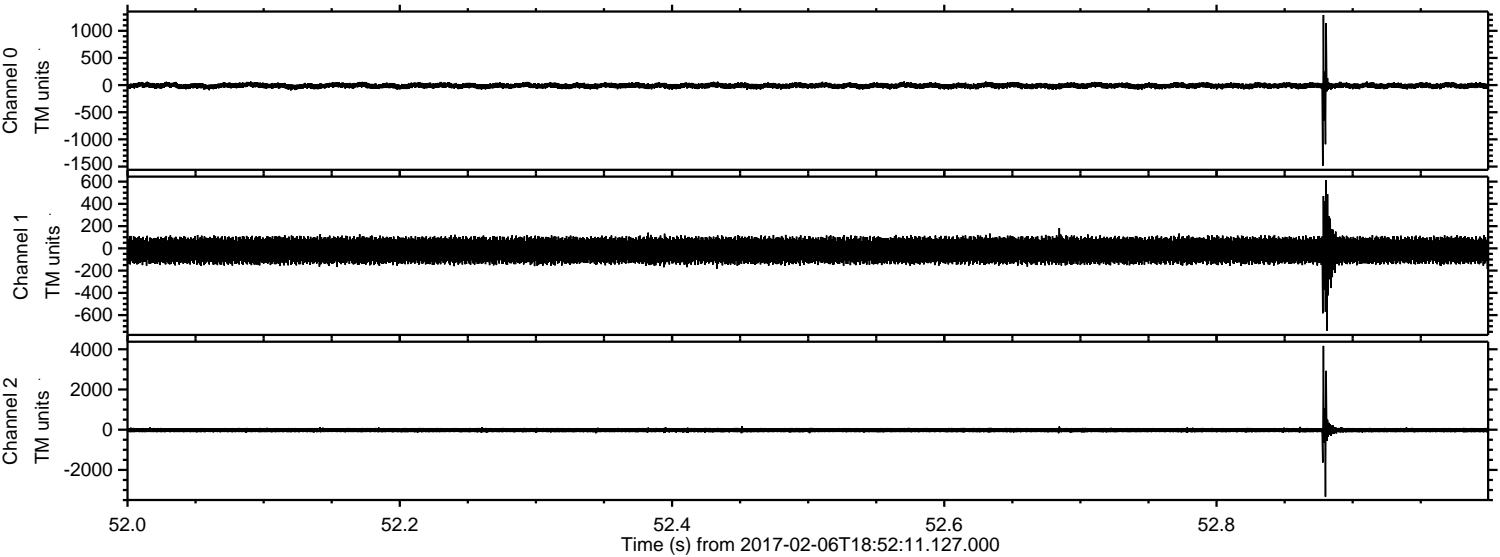


Channel 0
mn: -1194
mx: 1594
 μ : -11.5
 σ : 28.4

Channel 1
mn: -632
mx: 584
 μ : -18.6
 σ : 63.1

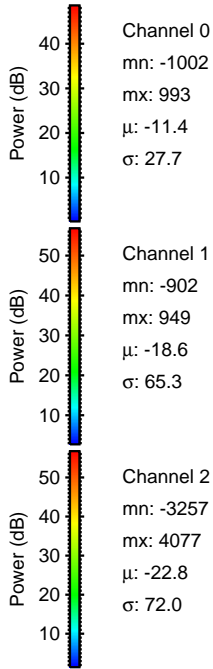
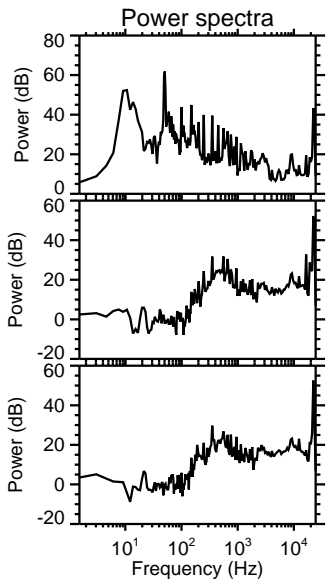
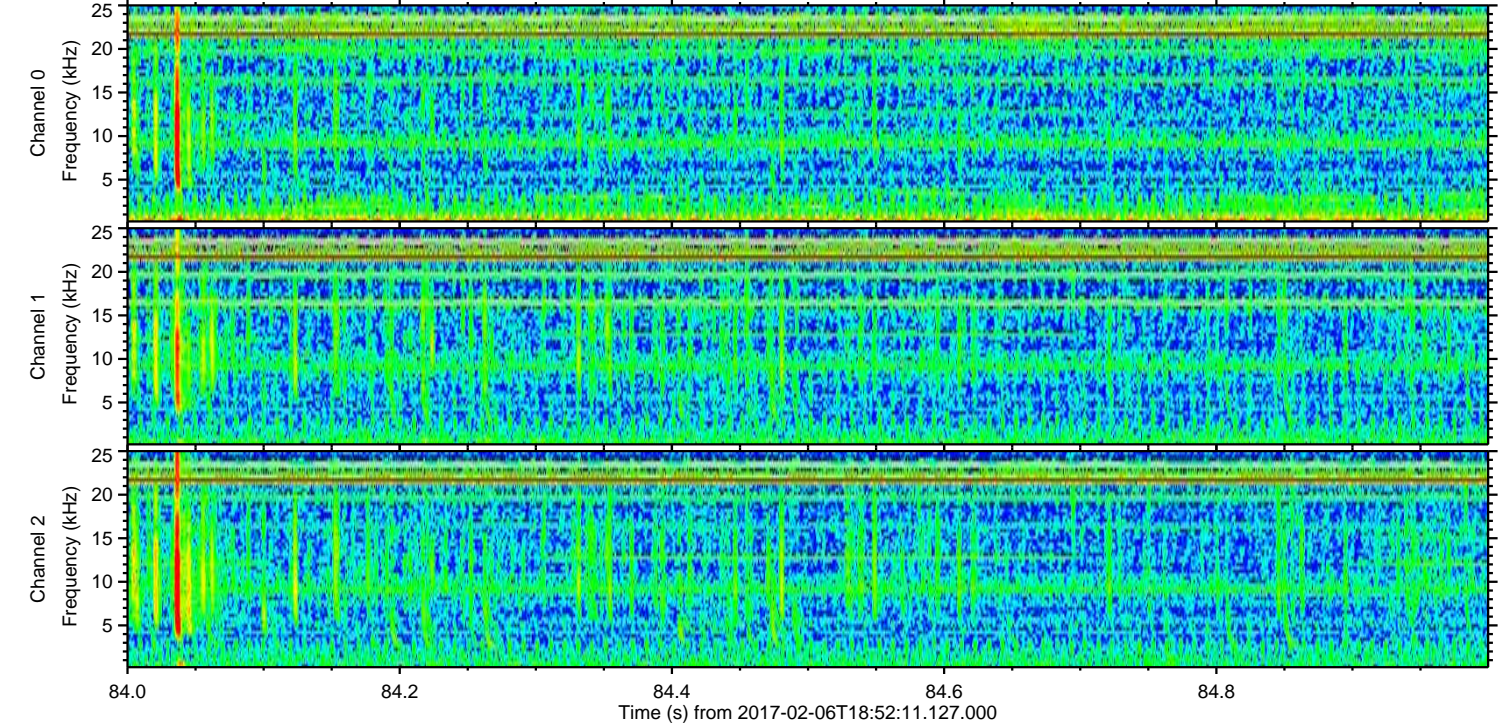
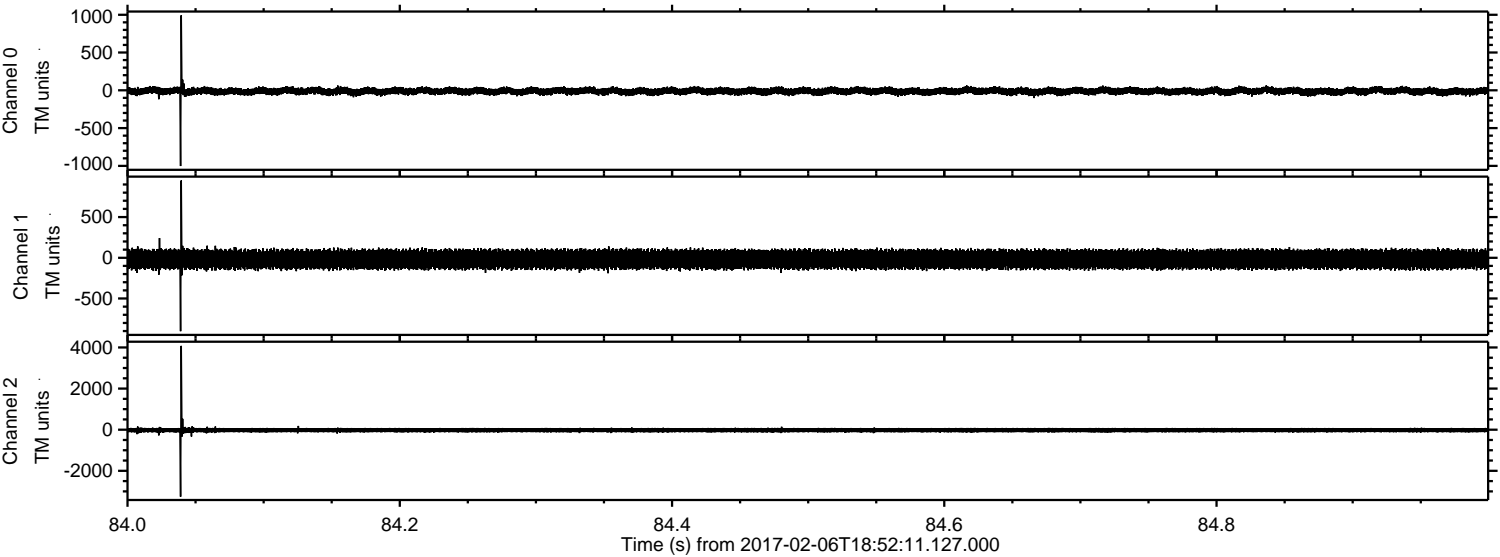
Channel 2
mn: -4540
mx: 3838
 μ : -22.7
 σ : 74.8

Processed Mon Feb 6 20:00:00 2017 by ELM ver.2012-10-06 from 001__elm20170206_185210__dat00.bin



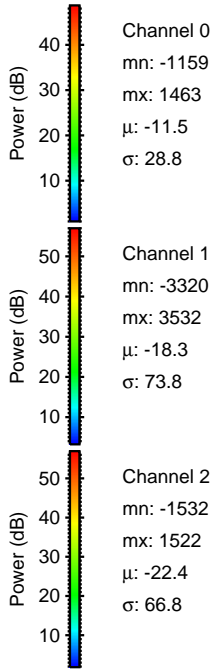
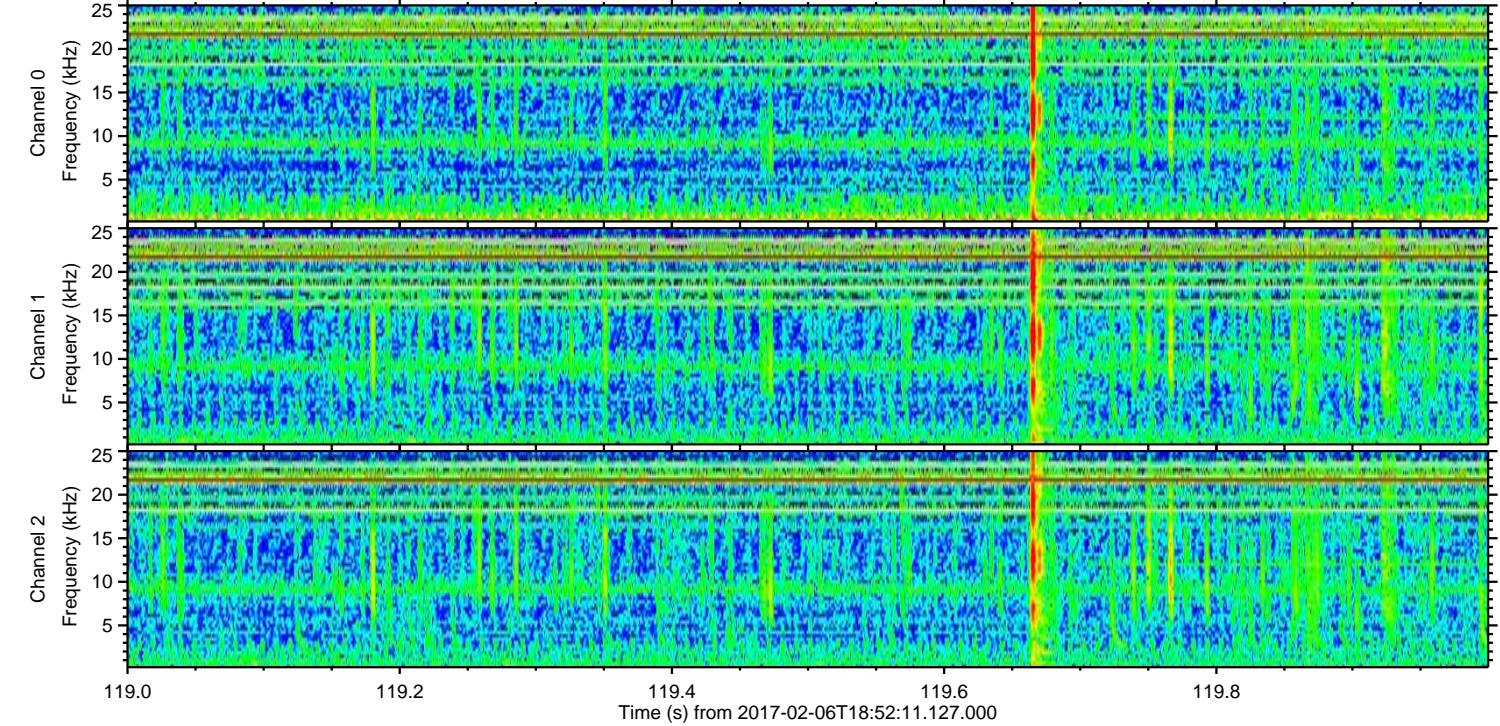
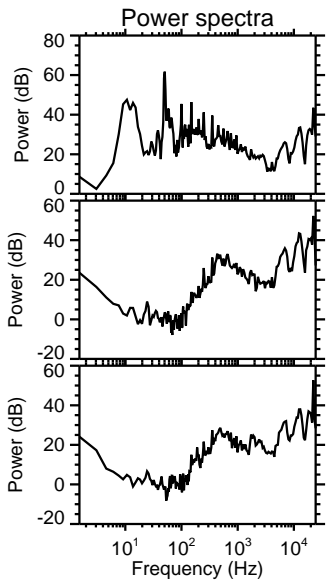
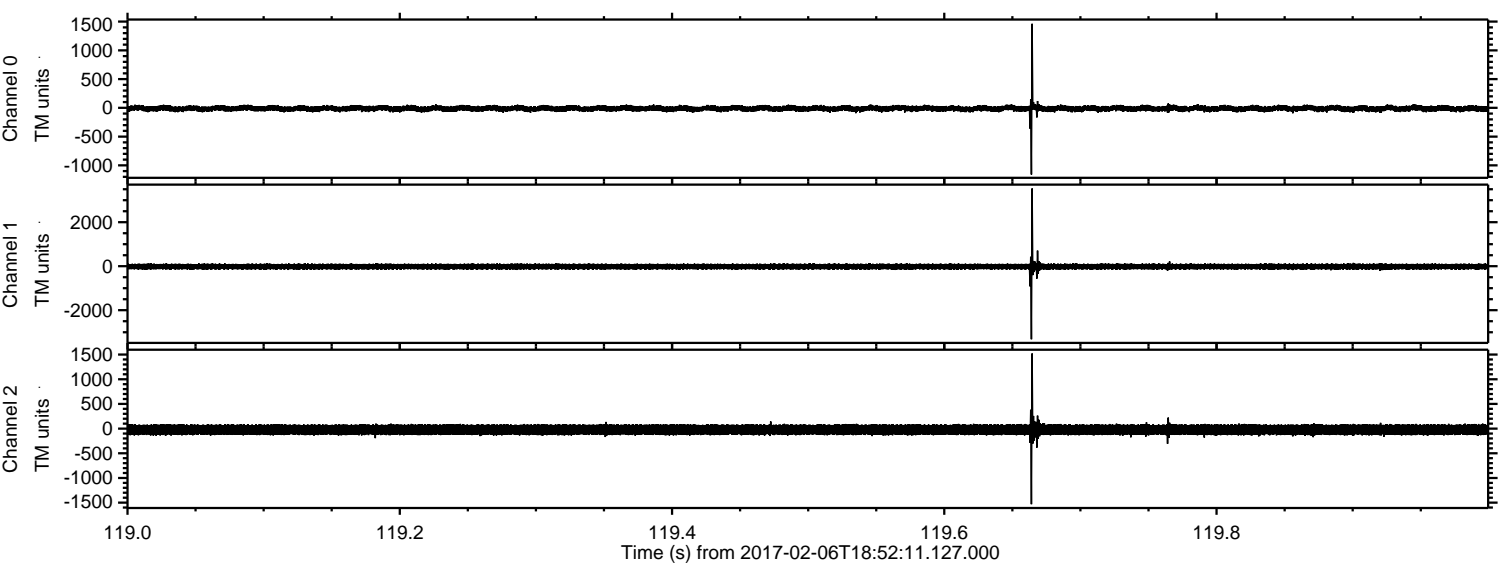
ELMAVAN 3D WAVEFORMS (Measured data sampled at 50 kHz) 51000 packets of 144 samples from 2017-02-06T18:52:11.127.000. Part 85/147

Processed Mon Feb 6 20:00:01 2017 by ELM ver.2012-10-06 from 001__elm20170206_185210__dat00.bin



ELMAVAN 3D WAVEFORMS (Measured data sampled at 50 kHz) 51000 packets of 144 samples from 2017-02-06T18:52:11.127.000. Part 120/147

Processed Mon Feb 6 20:00:02 2017 by ELM ver.2012-10-06 from 001__elm20170206_185210__dat00.bin



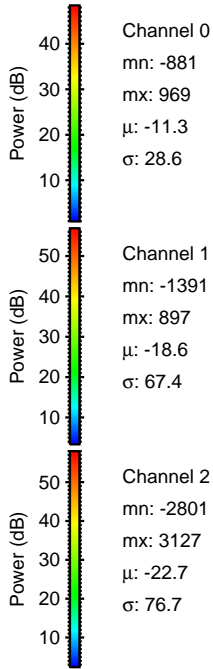
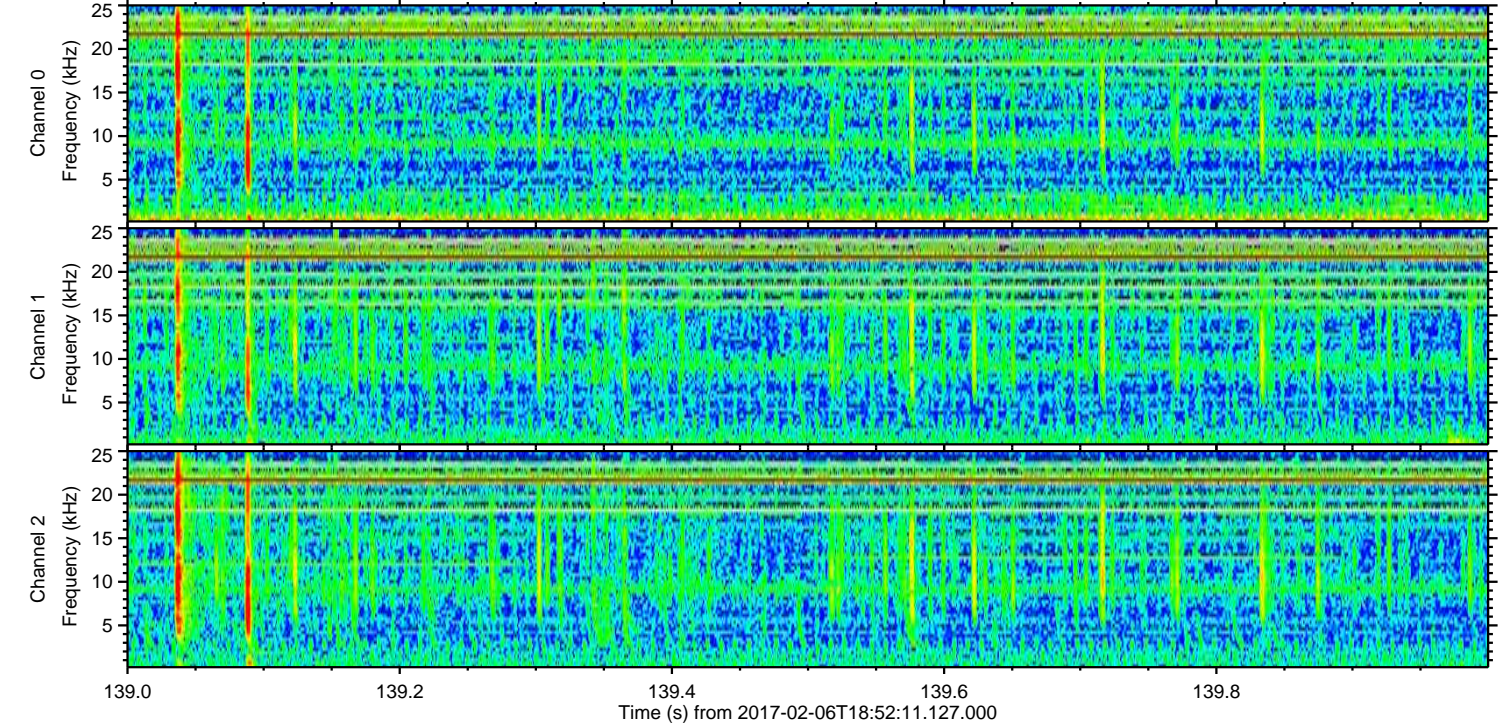
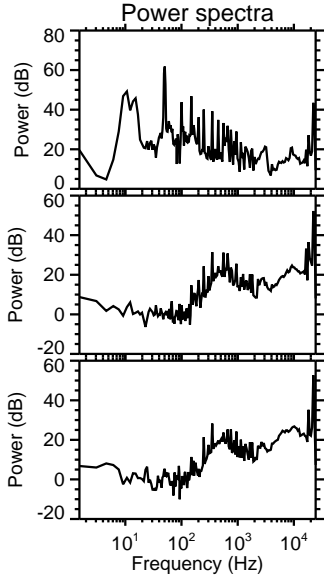
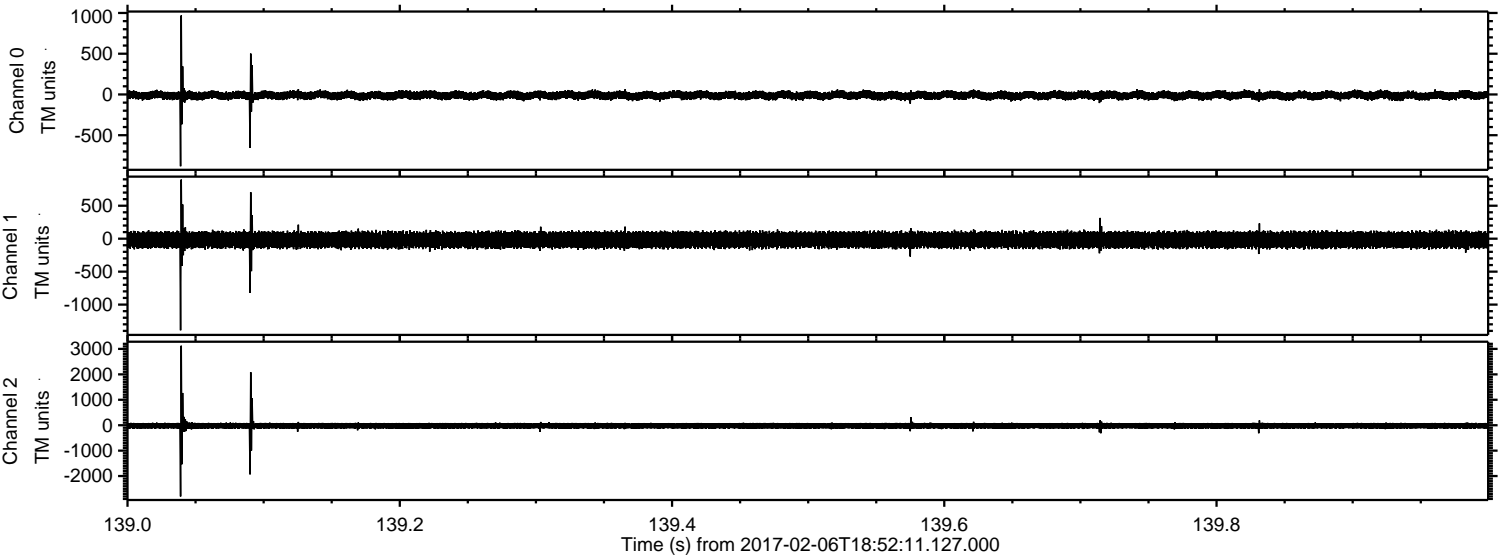
Channel 0
mn: -1159
mx: 1463
 μ : -11.5
 σ : 28.8

Channel 1
mn: -3320
mx: 3532
 μ : -18.3
 σ : 73.8

Channel 2
mn: -1532
mx: 1522
 μ : -22.4
 σ : 66.8

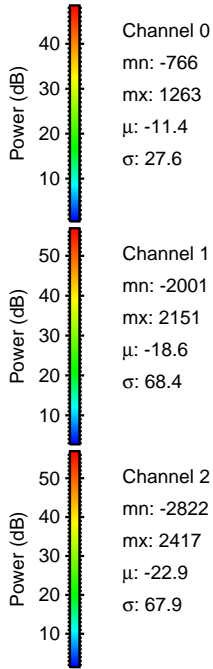
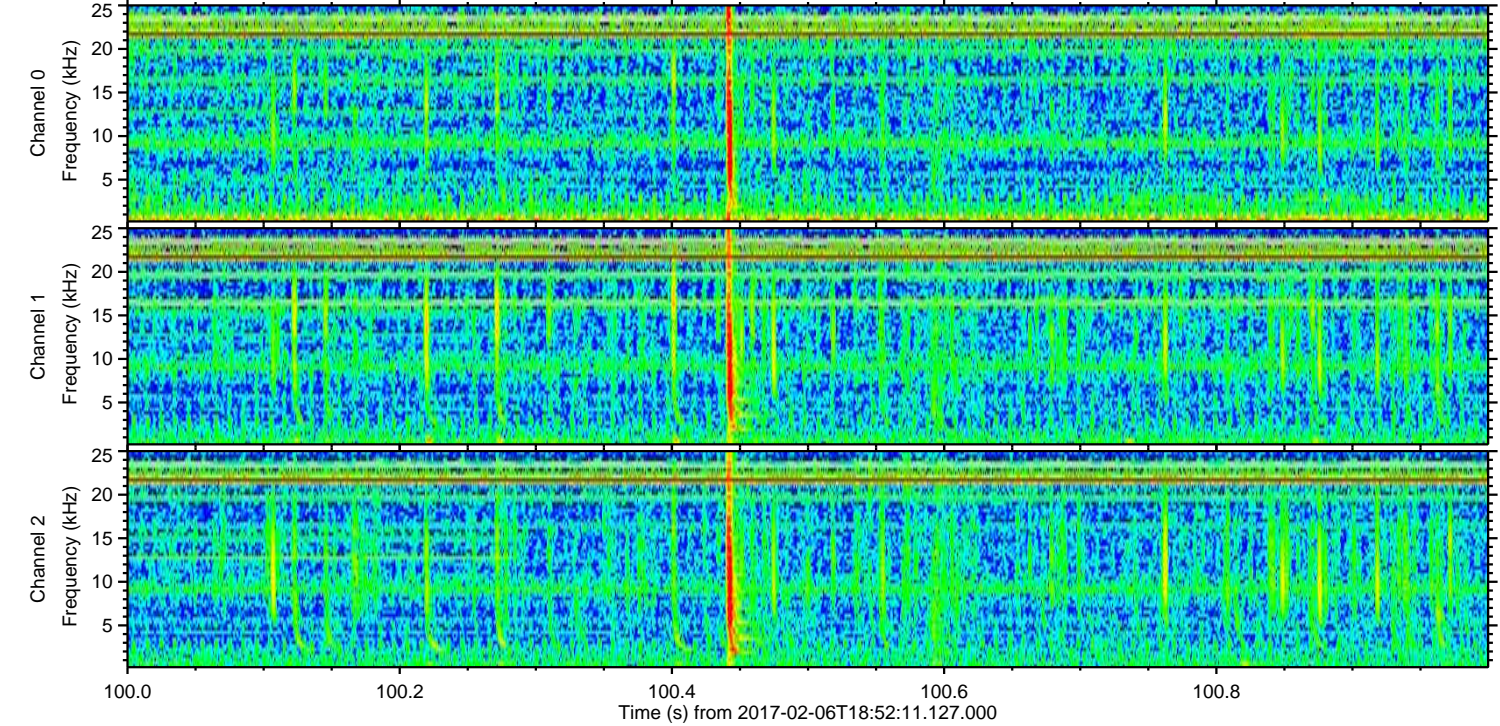
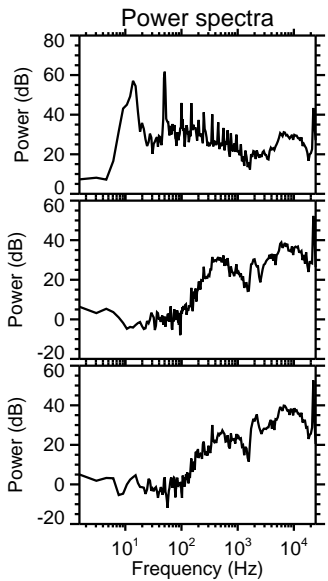
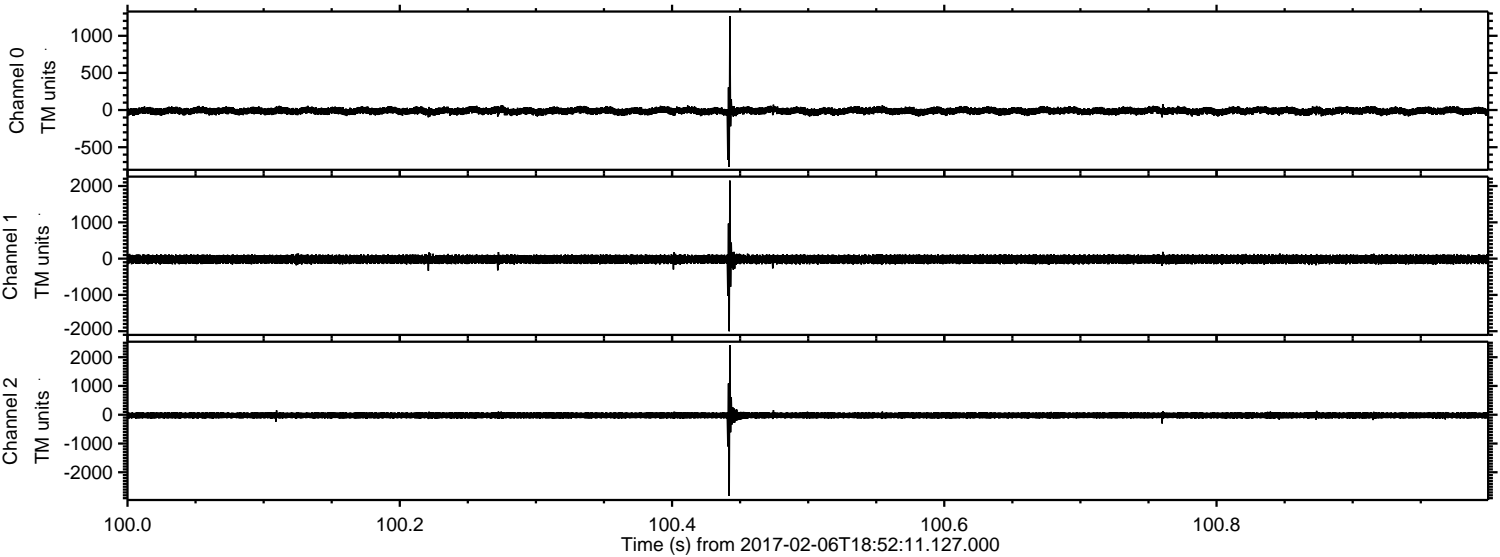
ELMAVAN 3D WAVEFORMS (Measured data sampled at 50 kHz) 51000 packets of 144 samples from 2017-02-06T18:52:11.127.000. Part 140/147

Processed Mon Feb 6 20:00:03 2017 by ELM ver.2012-10-06 from 001__elm20170206_185210__dat00.bin

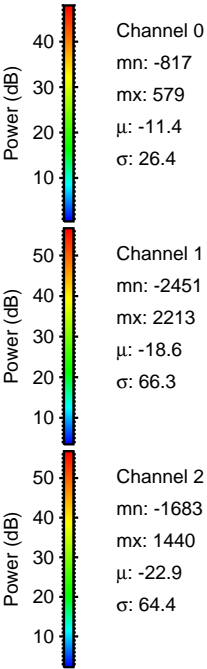
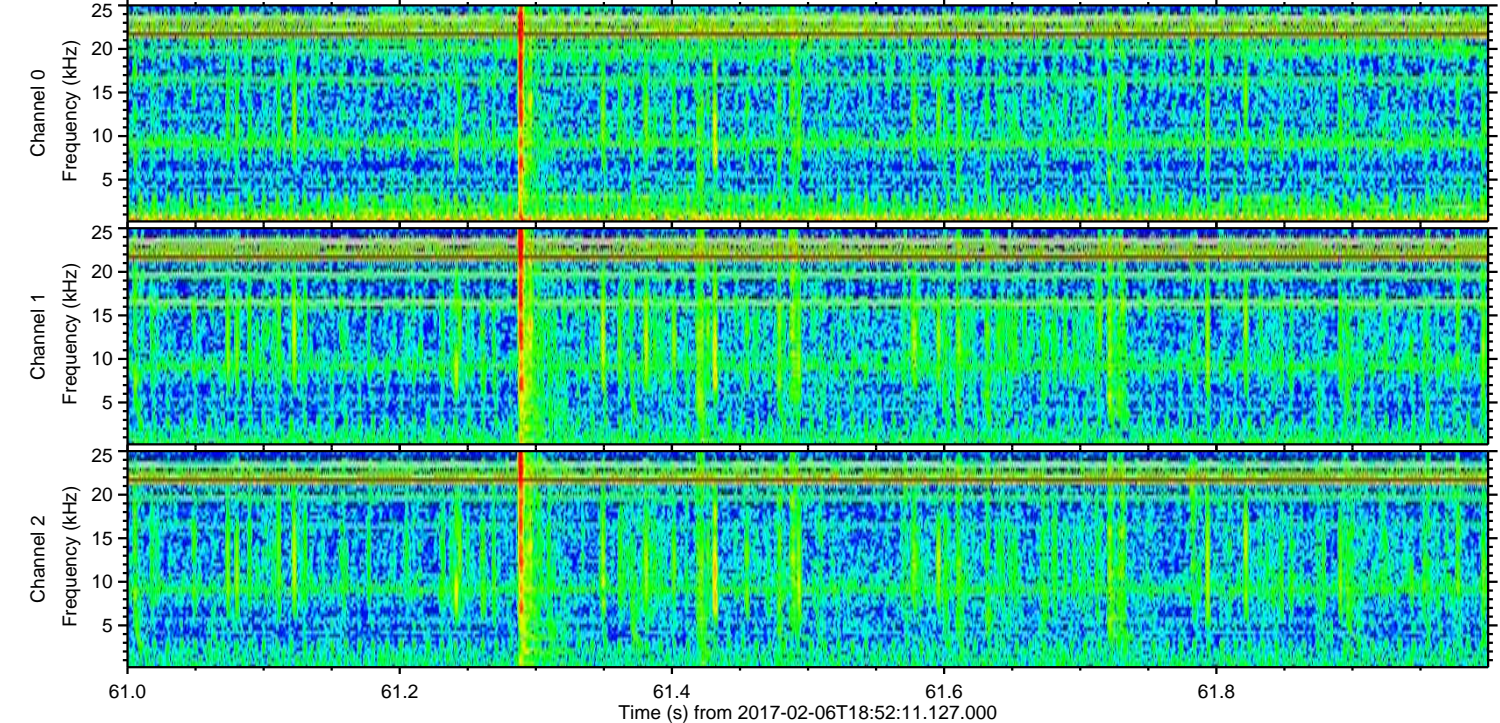
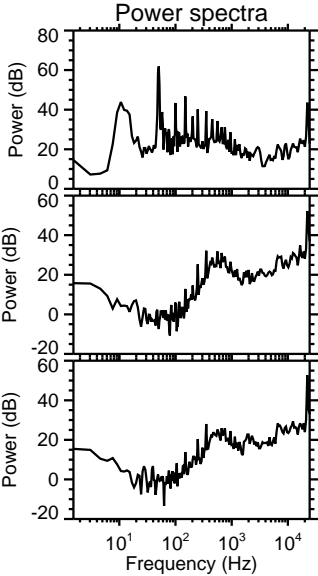
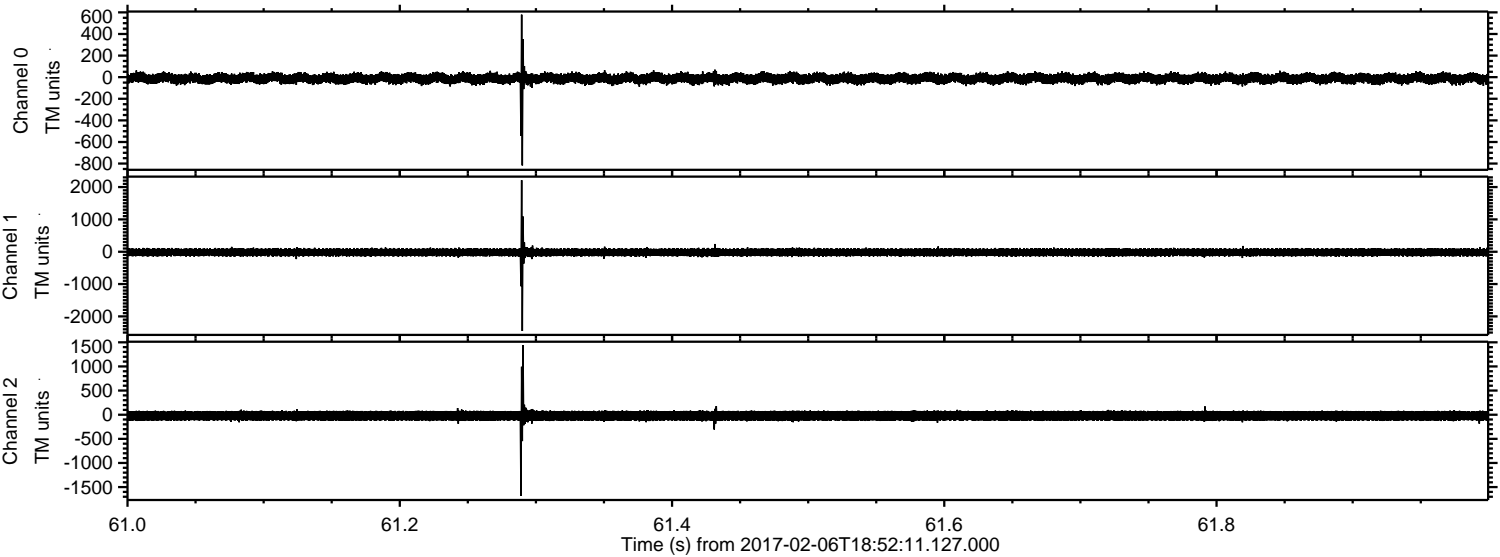


ELMAVAN 3D WAVEFORMS (Measured data sampled at 50 kHz) 51000 packets of 144 samples from 2017-02-06T18:52:11.127.000. Part 101/147

Processed Mon Feb 6 20:00:04 2017 by ELM ver.2012-10-06 from 001__elm20170206_185210__dat00.bin



Processed Mon Feb 6 20:00:05 2017 by ELM ver.2012-10-06 from 001__elm20170206_185210__dat00.bin



ELMAVAN 3D WAVEFORMS (Measured data sampled at 50 kHz) 51000 packets of 144 samples from 2017-02-06T18:52:11.127.000. Part 7/147

Processed Mon Feb 6 20:00:06 2017 by ELM ver.2012-10-06 from 001__elm20170206_185210__dat00.bin

