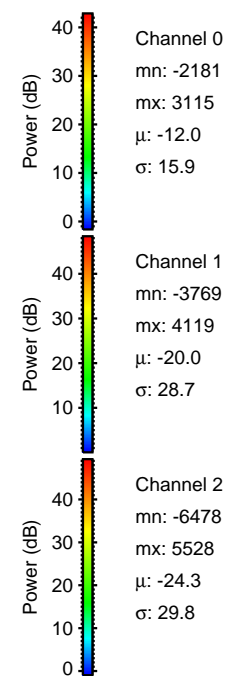
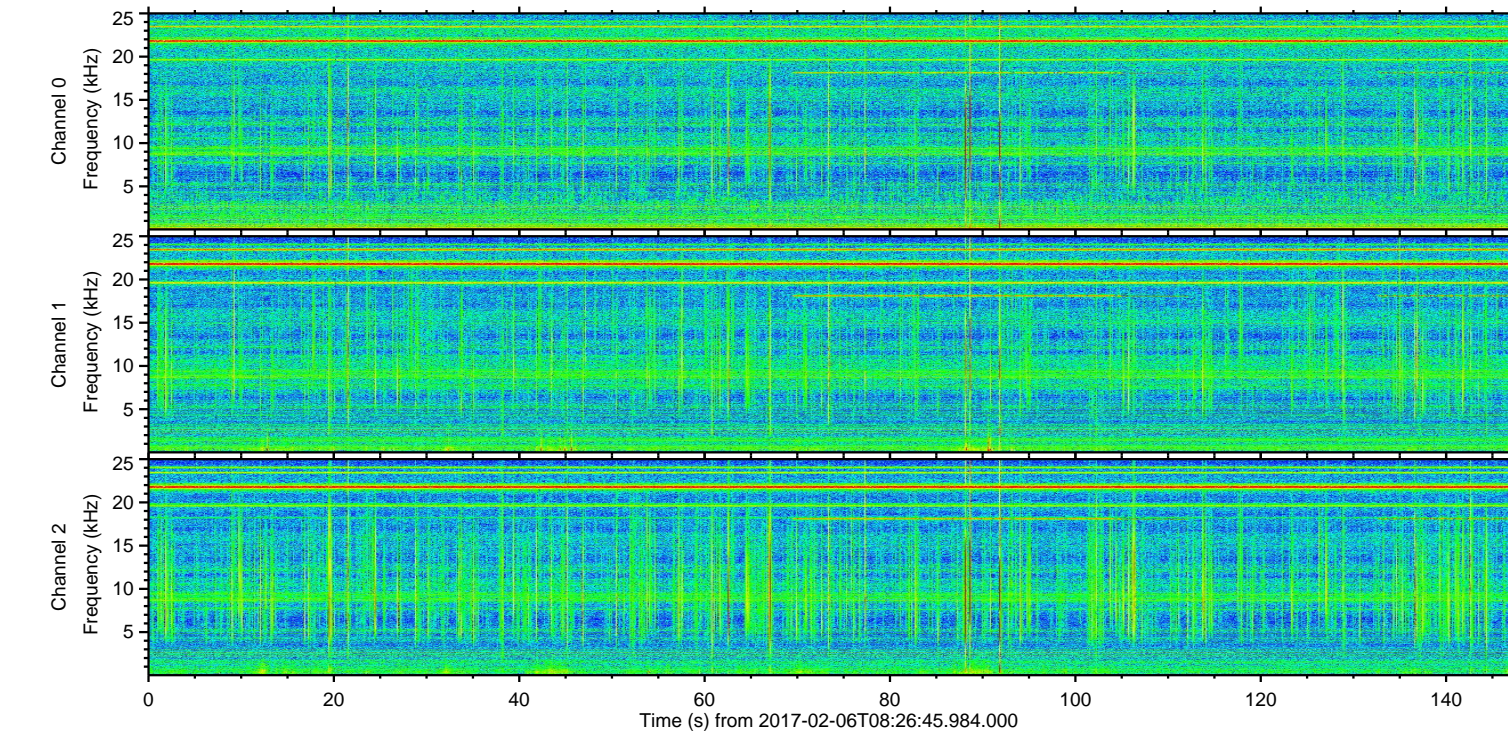
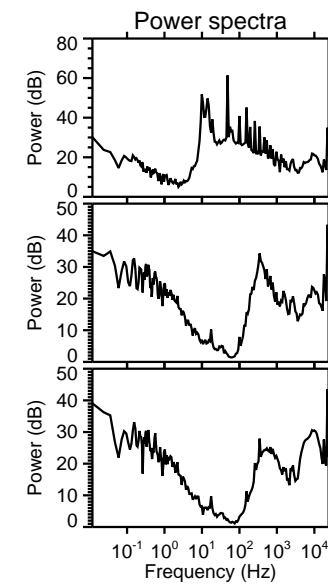
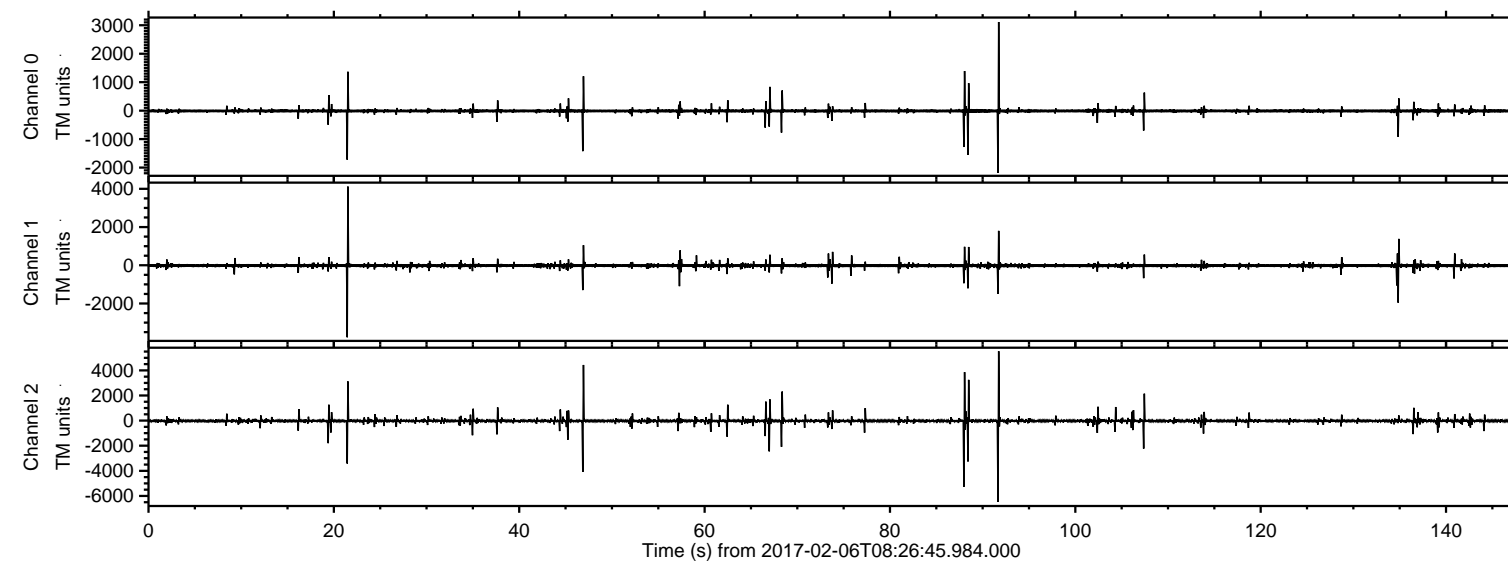


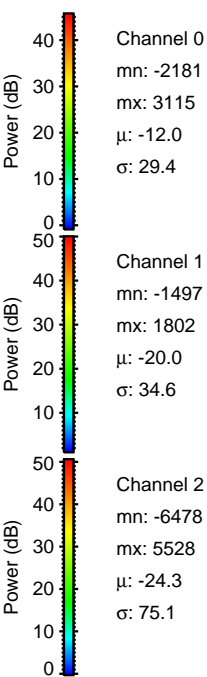
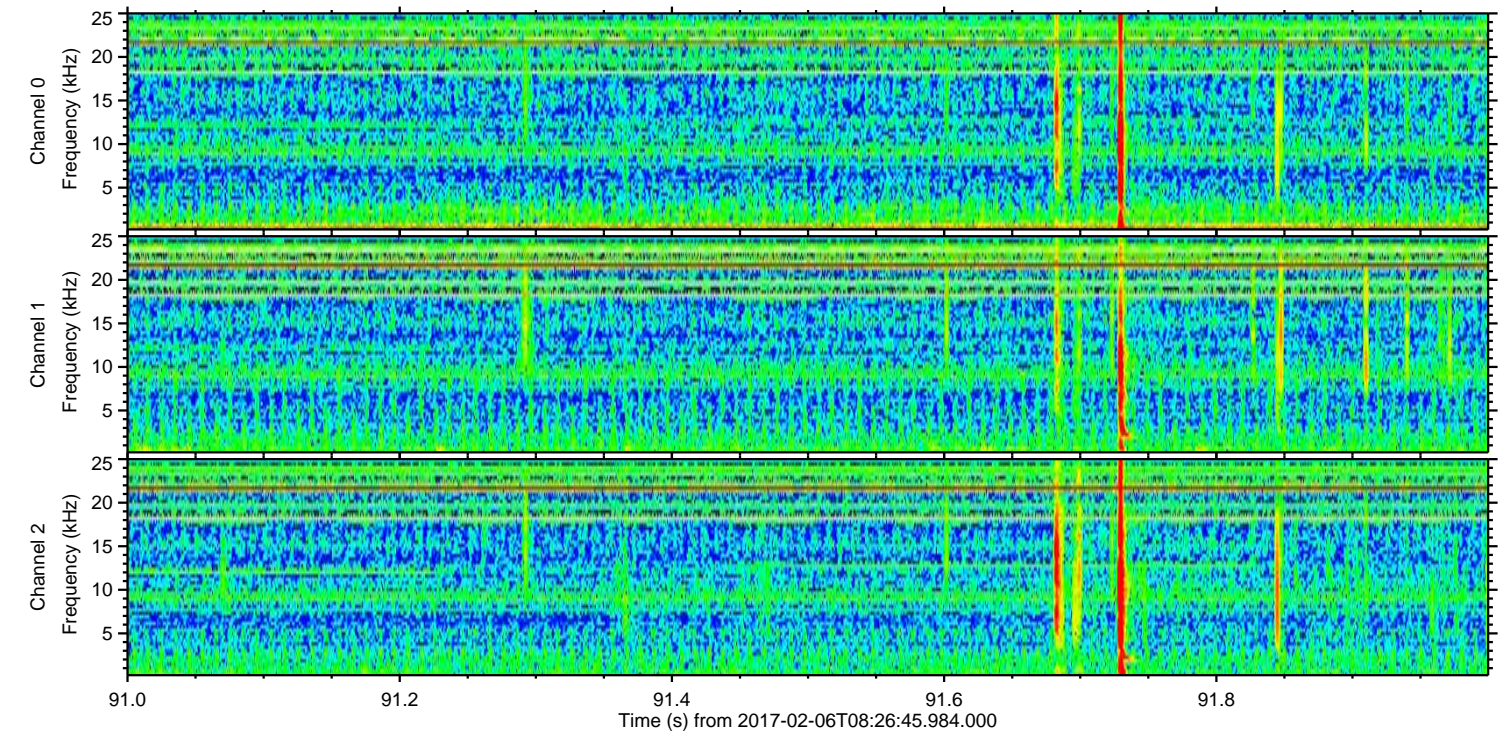
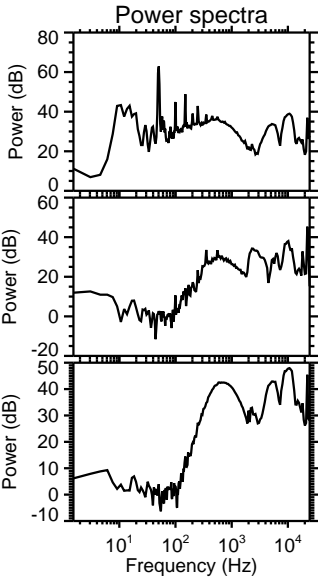
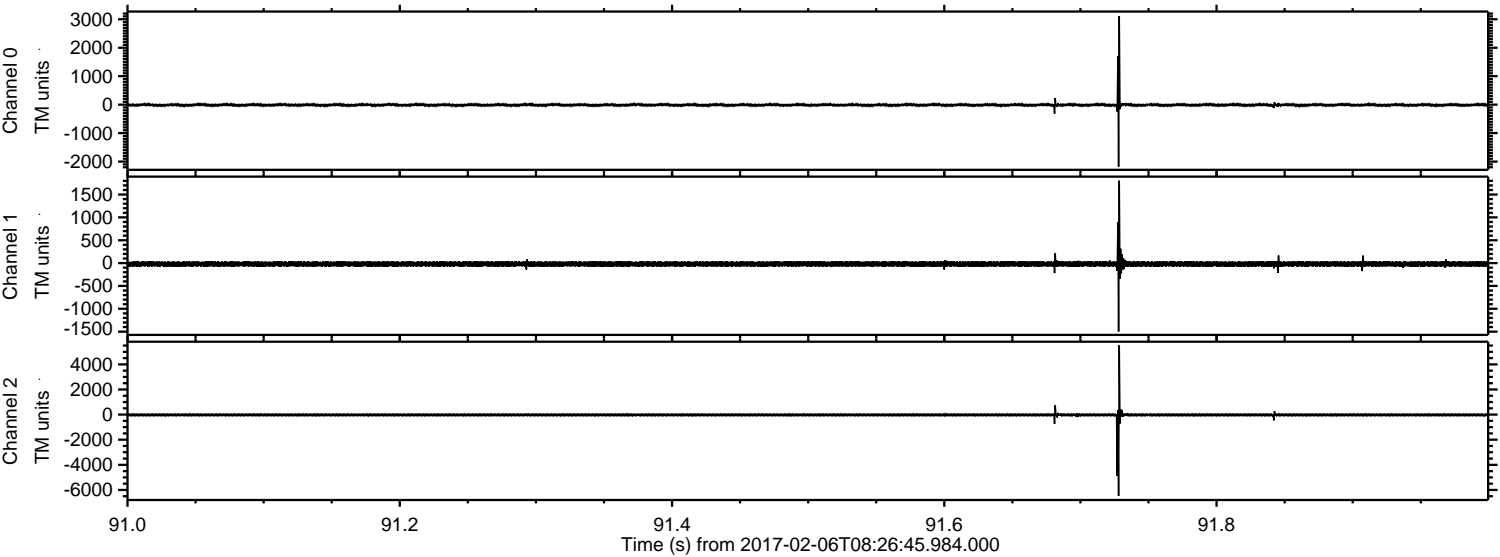
ELMAVAN 3D WAVEFORMS (Measured data sampled at 50 kHz) 51000 packets of 144 samples from 2017-02-06T08:26:45.984.000.

Processed Mon Feb 6 09:35:20 2017 by ELM ver.2012-10-06 from 001__elm20170206_082644__dat00.bin



ELMAVAN 3D WAVEFORMS (Measured data sampled at 50 kHz) 51000 packets of 144 samples from 2017-02-06T08:26:45.984.000. Part 92/147

Processed Mon Feb 6 09:35:32 2017 by ELM ver.2012-10-06 from 001__elm20170206_082644__dat00.bin



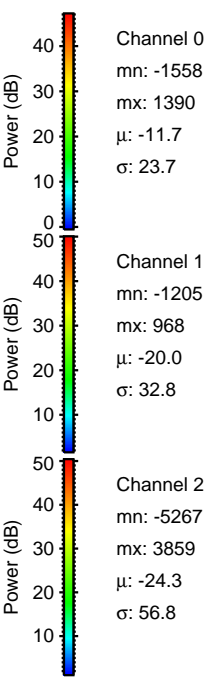
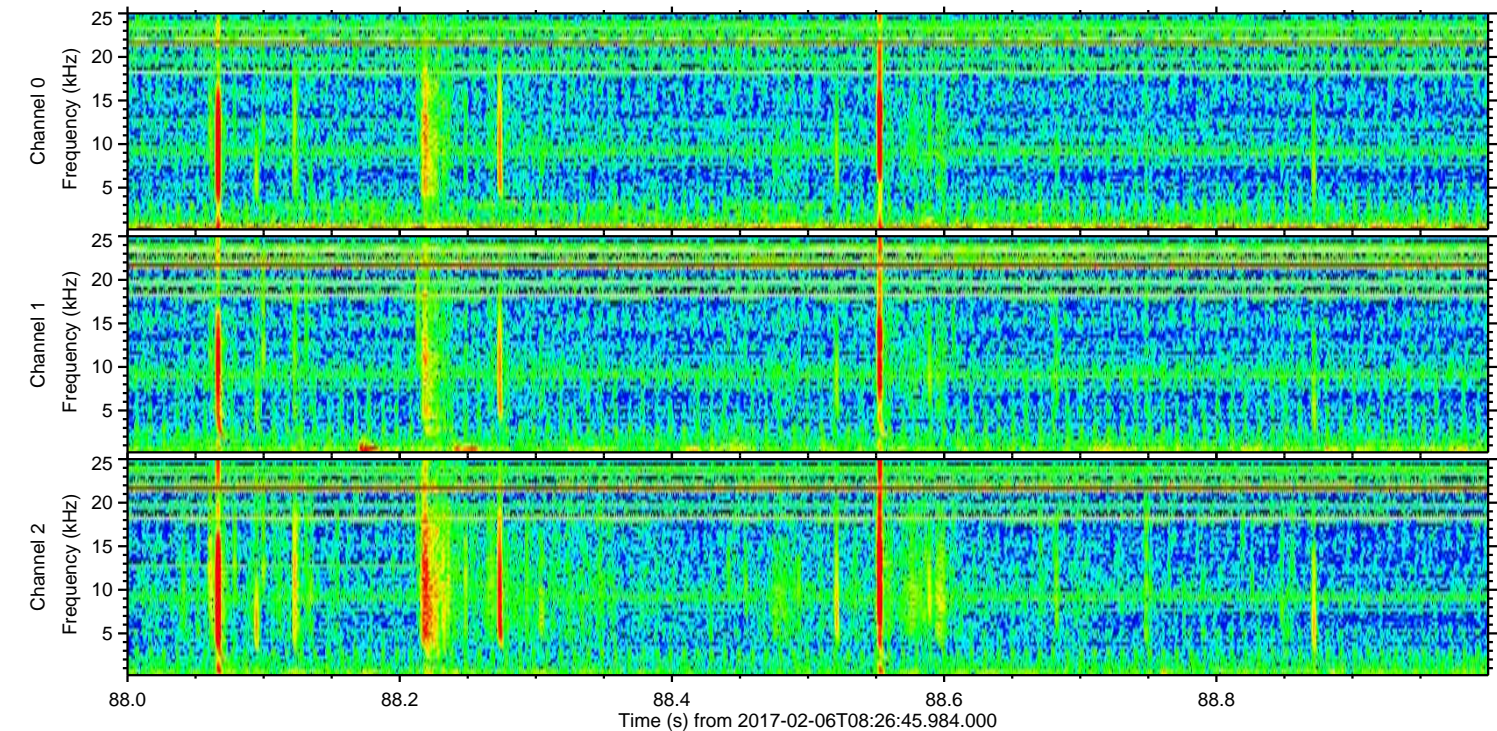
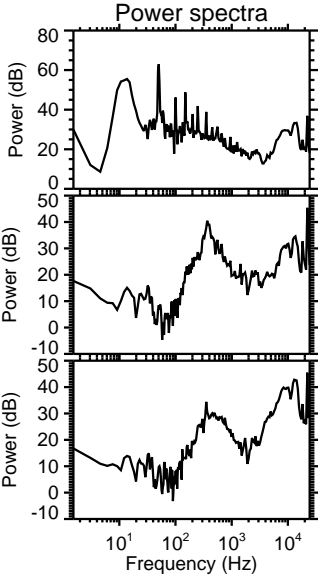
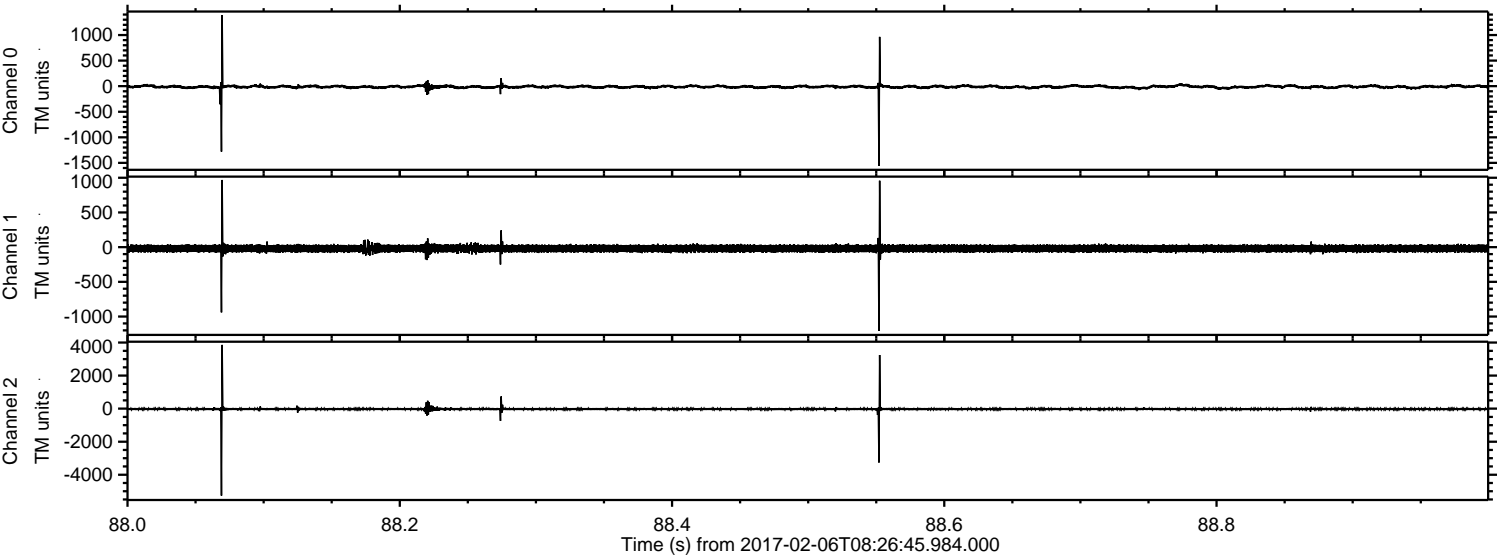
Channel 0
mn: -2181
mx: 3115
 μ : -12.0
 σ : 29.4

Channel 1
mn: -1497
mx: 1802
 μ : -20.0
 σ : 34.6

Channel 2
mn: -6478
mx: 5528
 μ : -24.3
 σ : 75.1

ELMAVAN 3D WAVEFORMS (Measured data sampled at 50 kHz) 51000 packets of 144 samples from 2017-02-06T08:26:45.984.000. Part 89/147

Processed Mon Feb 6 09:35:33 2017 by ELM ver.2012-10-06 from 001__elm20170206_082644__dat00.bin



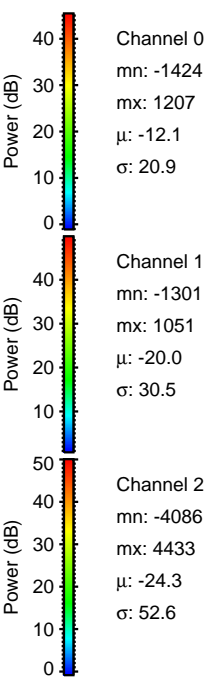
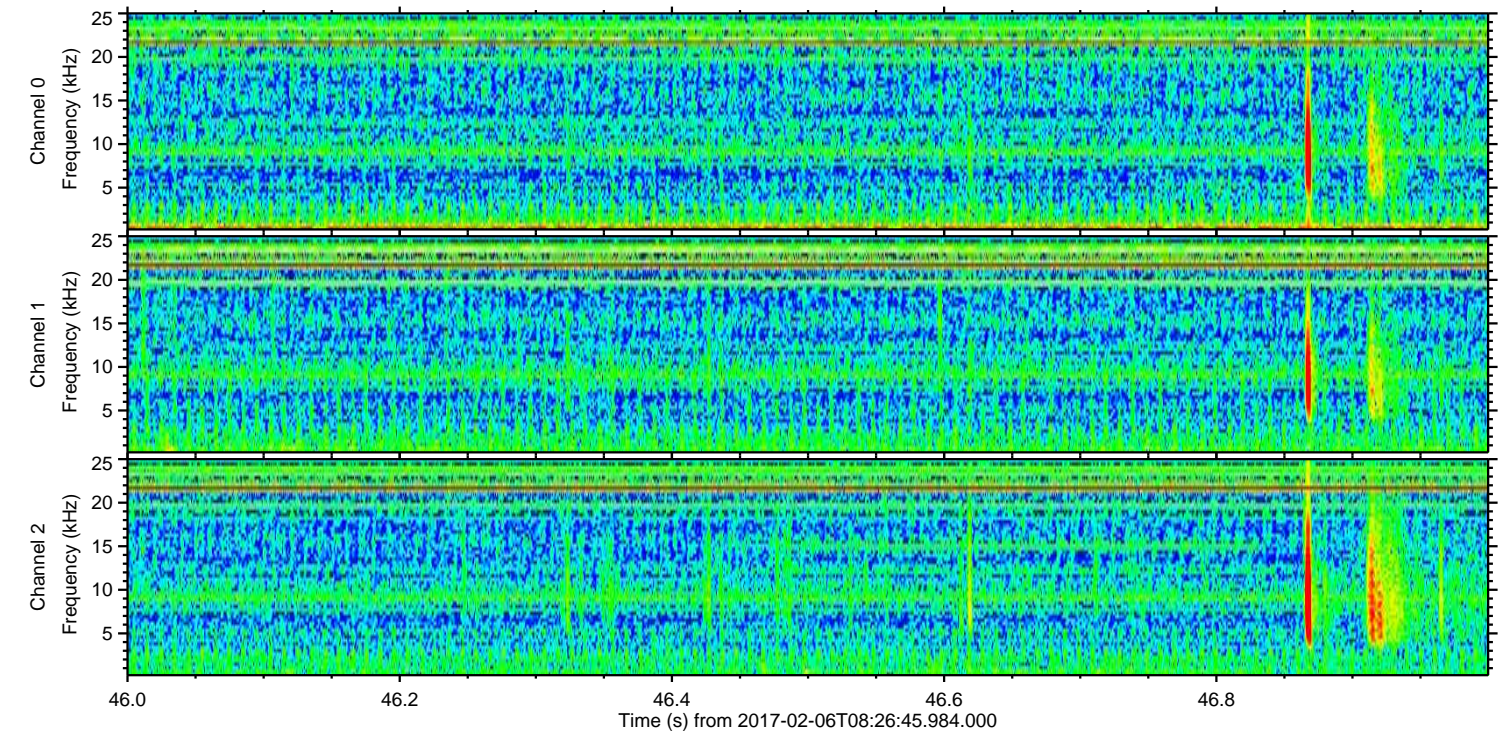
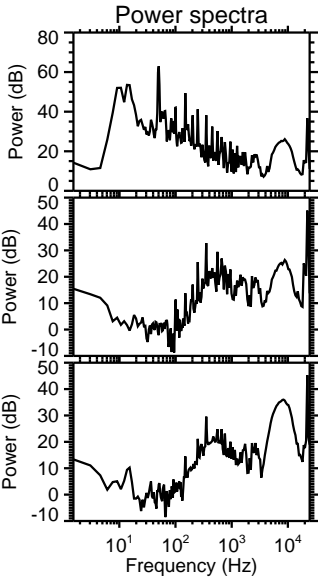
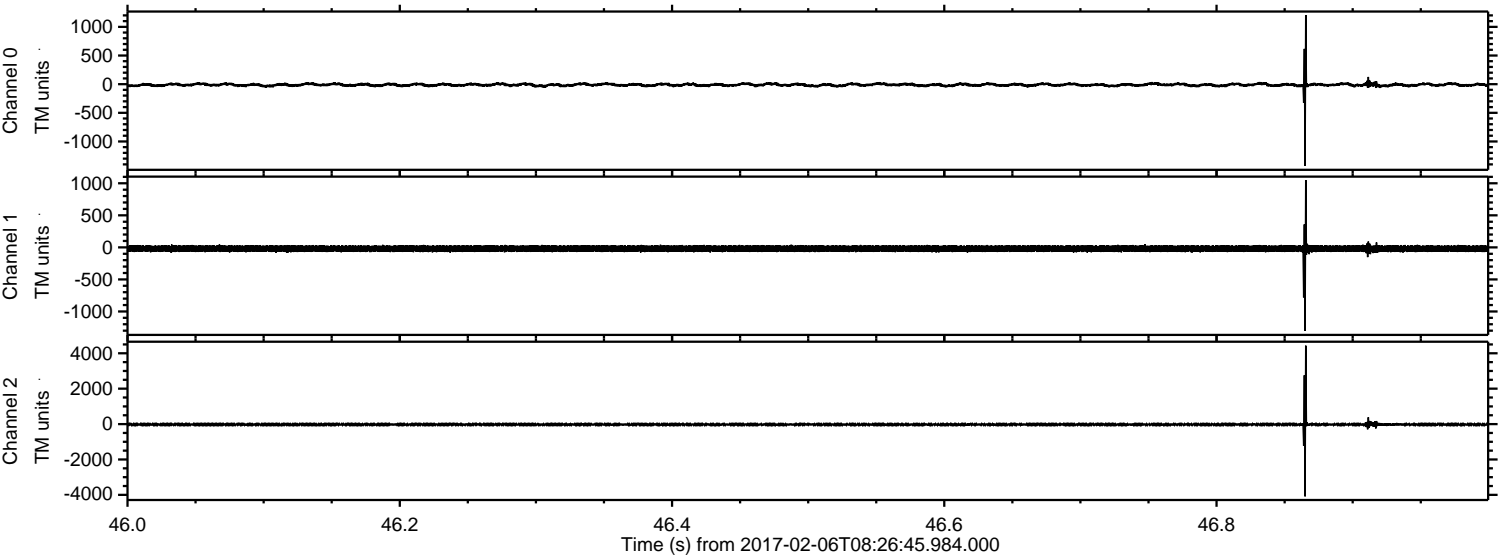
Channel 0
mn: -1558
mx: 1390
 μ : -11.7
 σ : 23.7

Channel 1
mn: -1205
mx: 968
 μ : -20.0
 σ : 32.8

Channel 2
mn: -5267
mx: 3859
 μ : -24.3
 σ : 56.8

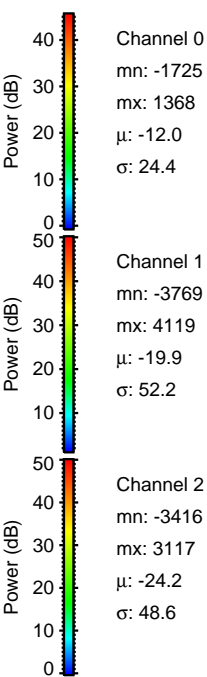
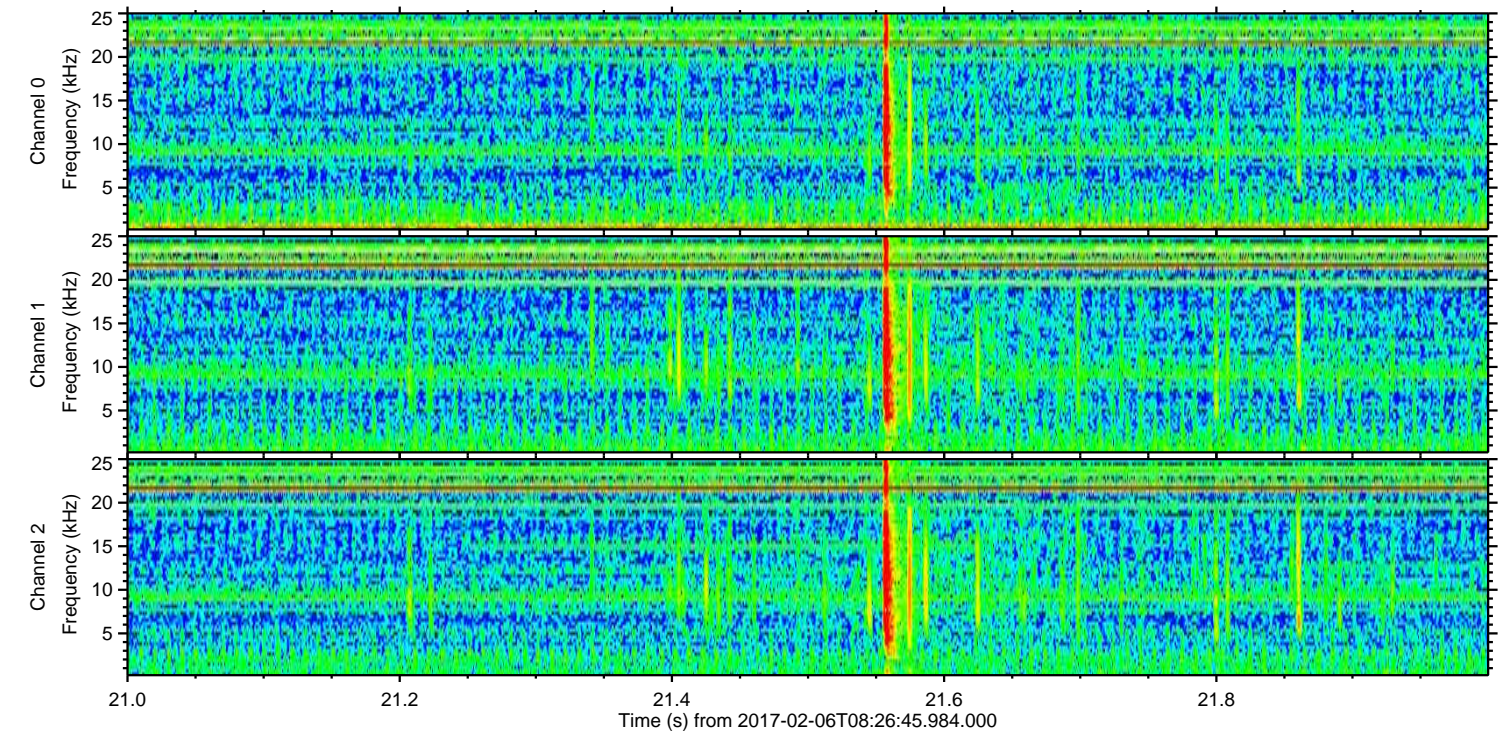
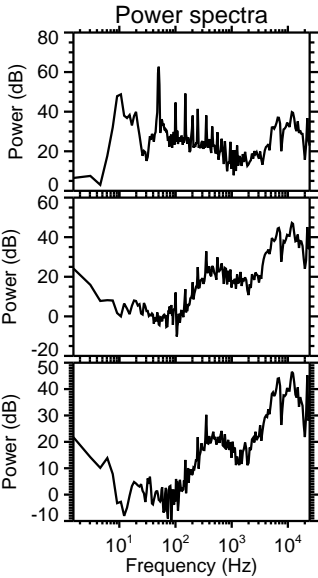
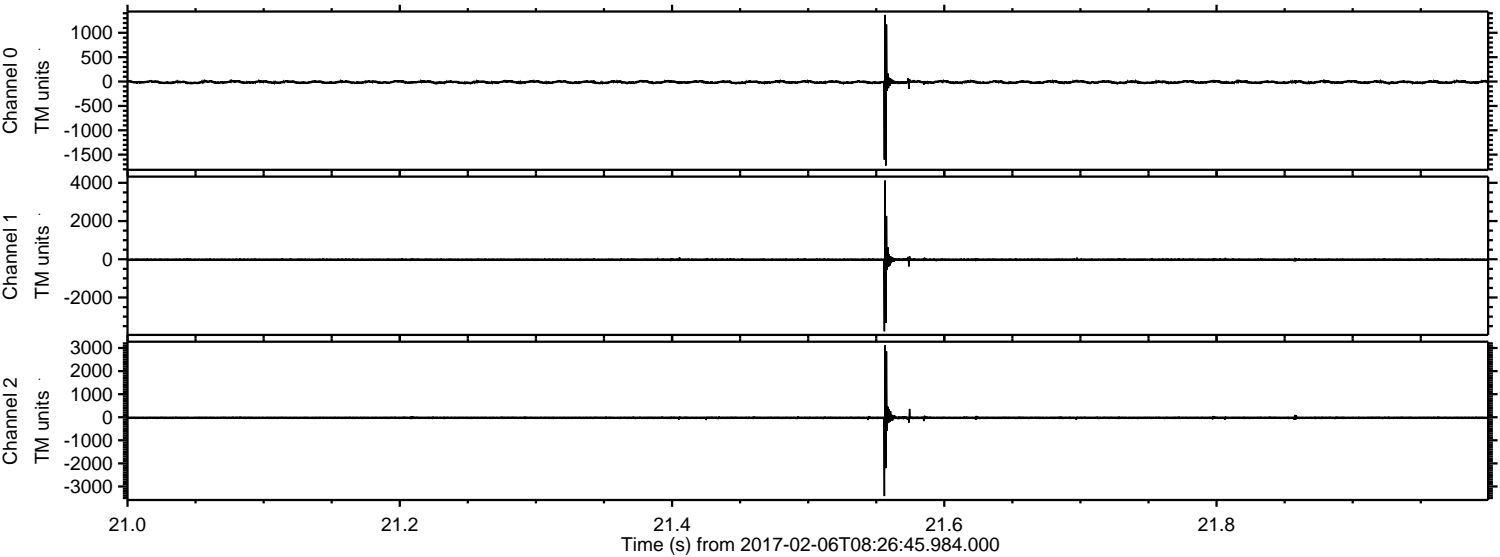
ELMAVAN 3D WAVEFORMS (Measured data sampled at 50 kHz) 51000 packets of 144 samples from 2017-02-06T08:26:45.984.000. Part 47/147

Processed Mon Feb 6 09:35:34 2017 by ELM ver.2012-10-06 from 001__elm20170206_082644__dat00.bin



ELMAVAN 3D WAVEFORMS (Measured data sampled at 50 kHz) 51000 packets of 144 samples from 2017-02-06T08:26:45.984.000. Part 22/147

Processed Mon Feb 6 09:35:35 2017 by ELM ver.2012-10-06 from 001__elm20170206_082644__dat00.bin

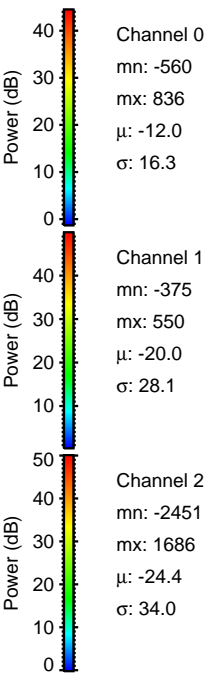
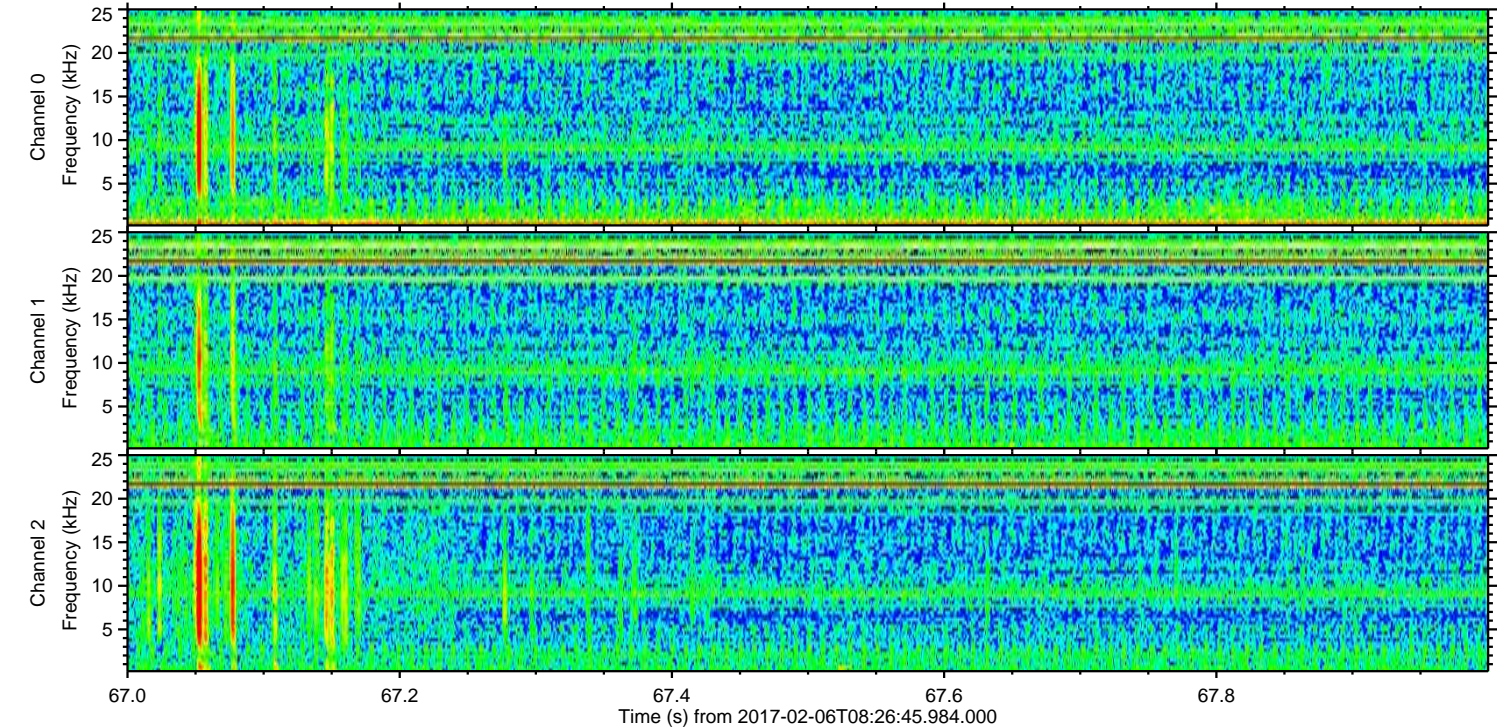
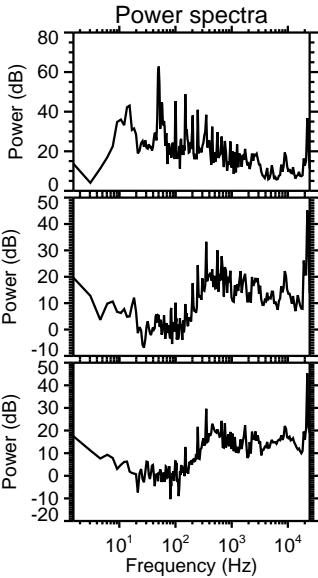
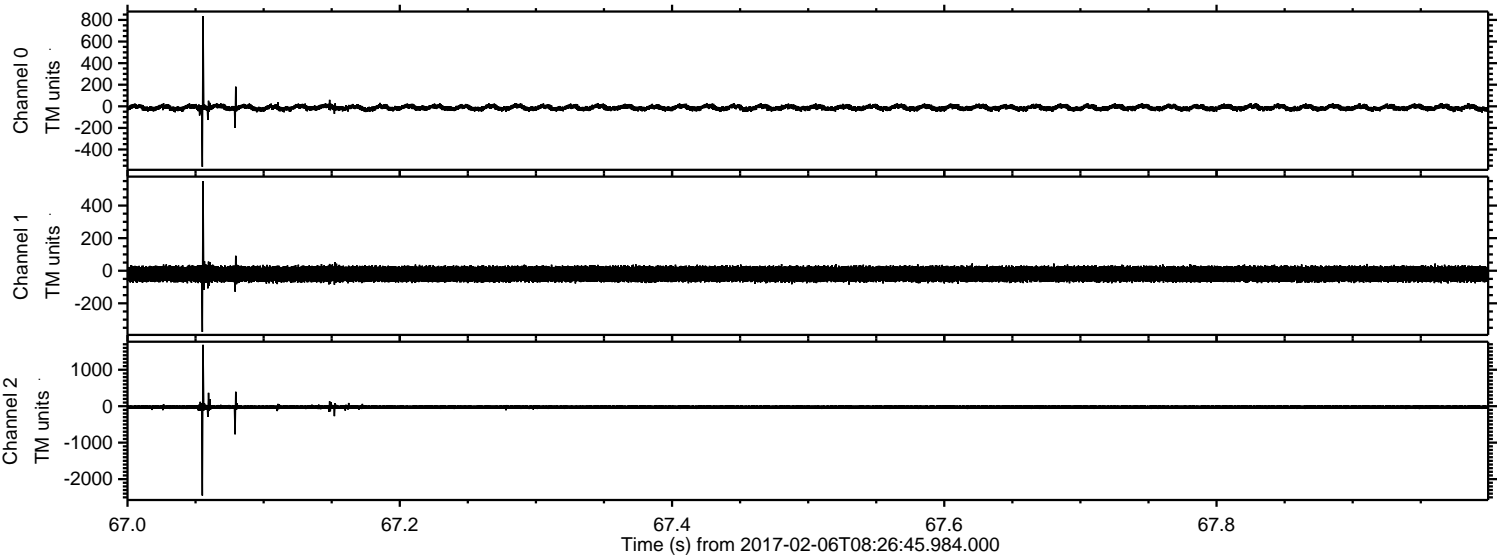


Channel 0
mn: -1725
mx: 1368
 μ : -12.0
 σ : 24.4

Channel 1
mn: -3769
mx: 4119
 μ : -19.9
 σ : 52.2

Channel 2
mn: -3416
mx: 3117
 μ : -24.2
 σ : 48.6

Processed Mon Feb 6 09:35:36 2017 by ELM ver.2012-10-06 from 001__elm20170206_082644__dat00.bin

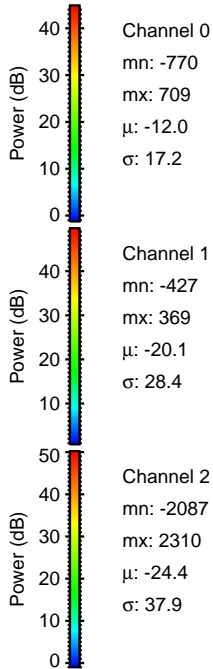
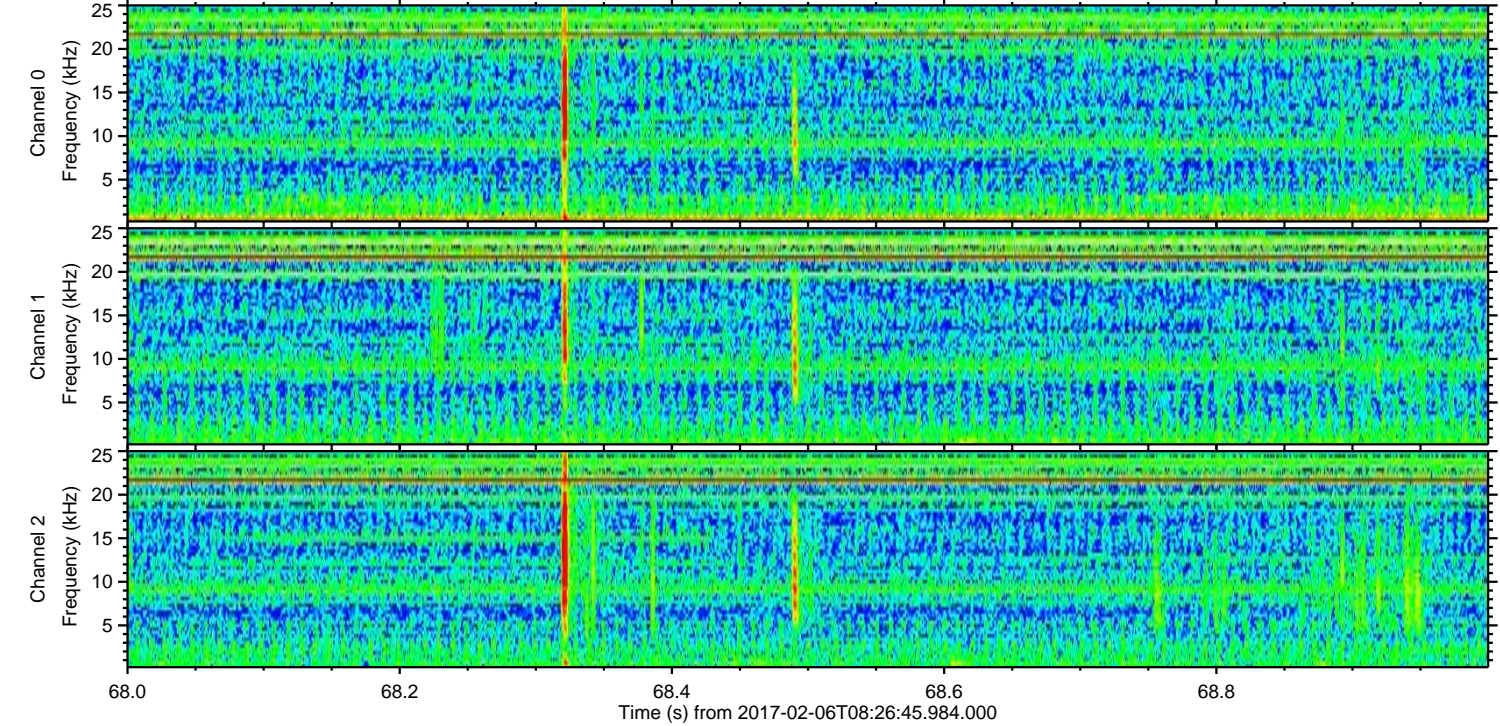
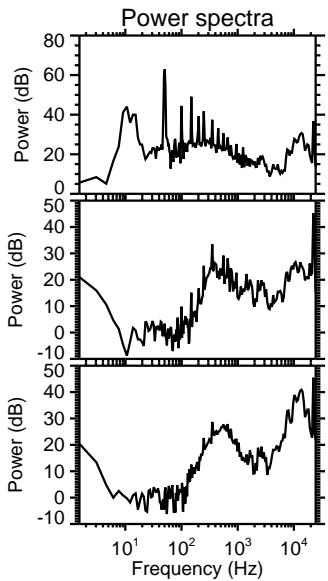
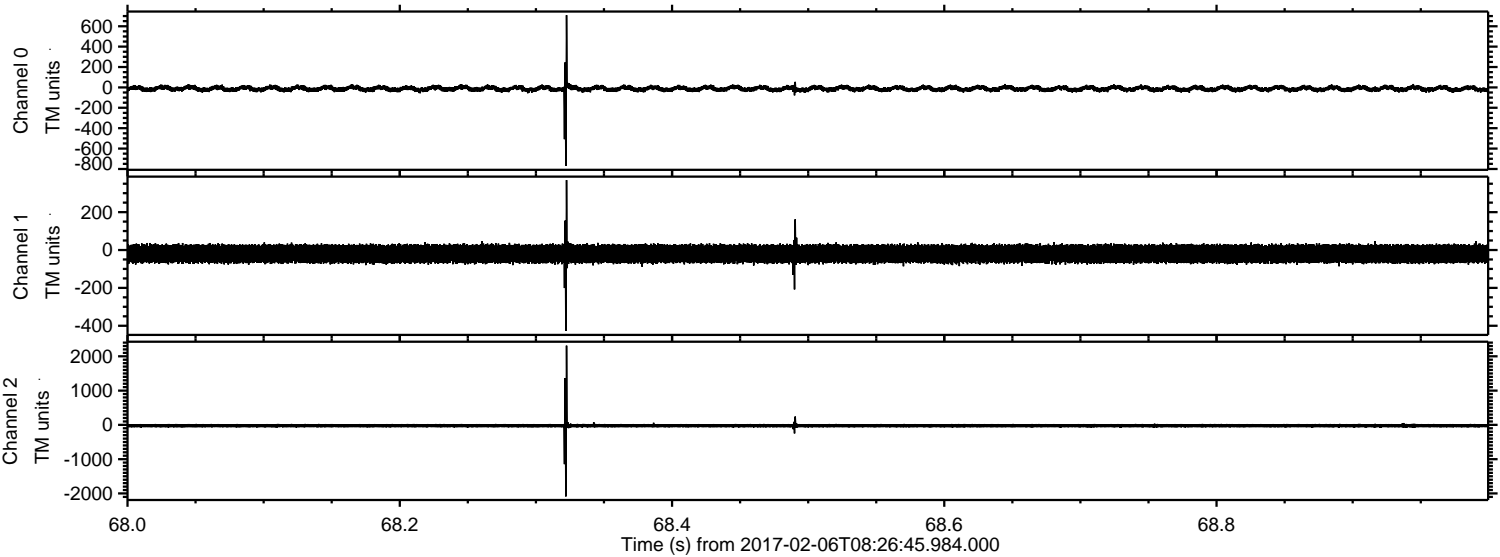


Channel 0
mn: -560
mx: 836
 μ : -12.0
 σ : 16.3

Channel 1
mn: -375
mx: 550
 μ : -20.0
 σ : 28.1

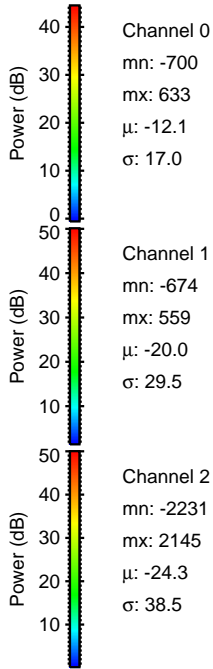
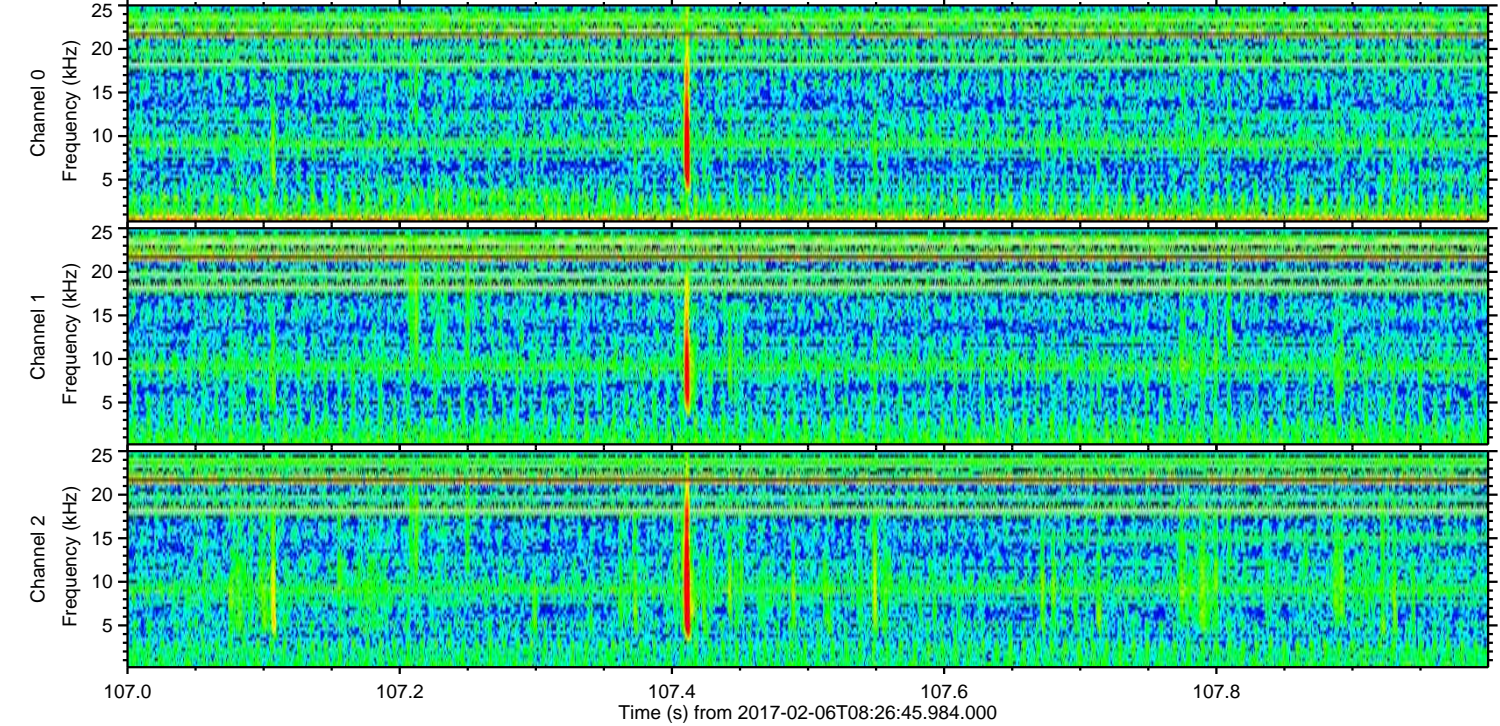
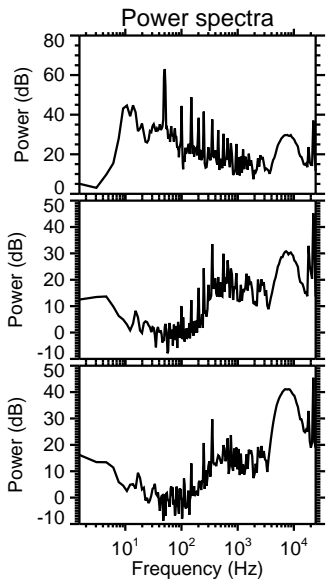
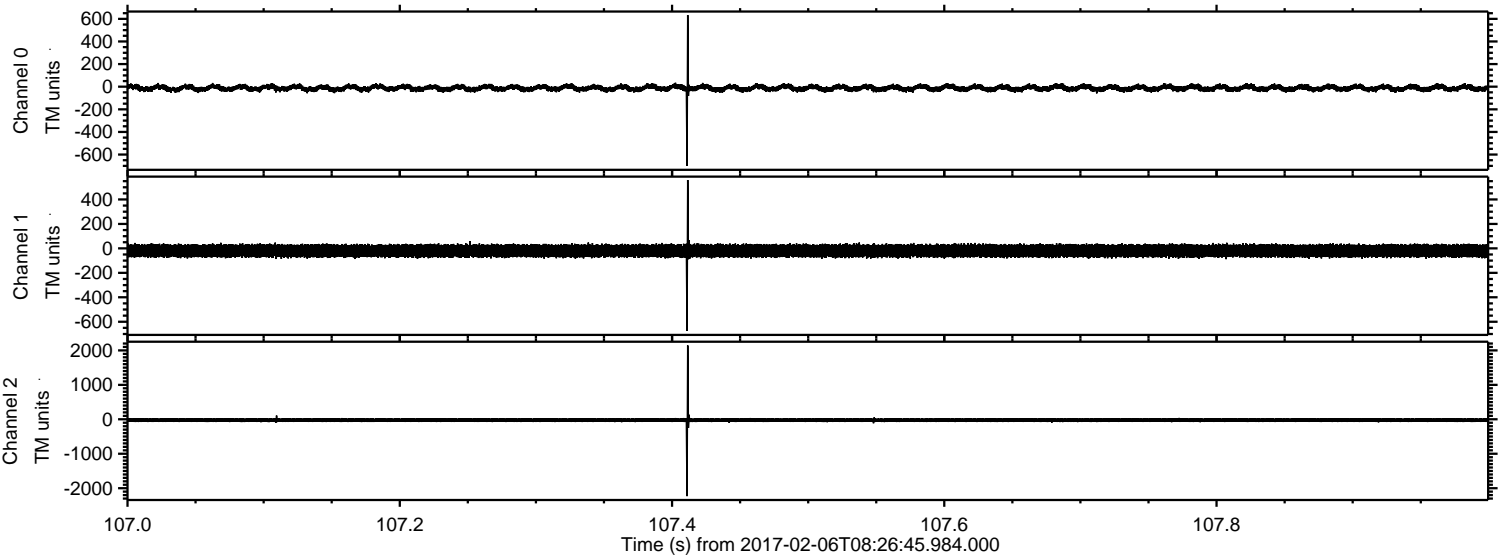
Channel 2
mn: -2451
mx: 1686
 μ : -24.4
 σ : 34.0

Processed Mon Feb 6 09:35:37 2017 by ELM ver.2012-10-06 from 001__elm20170206_082644__dat00.bin



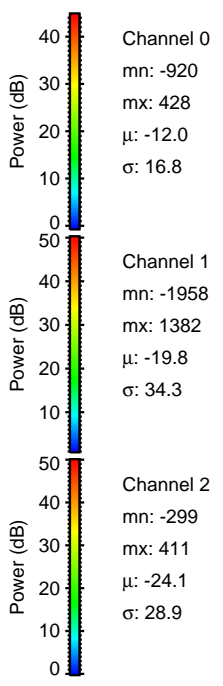
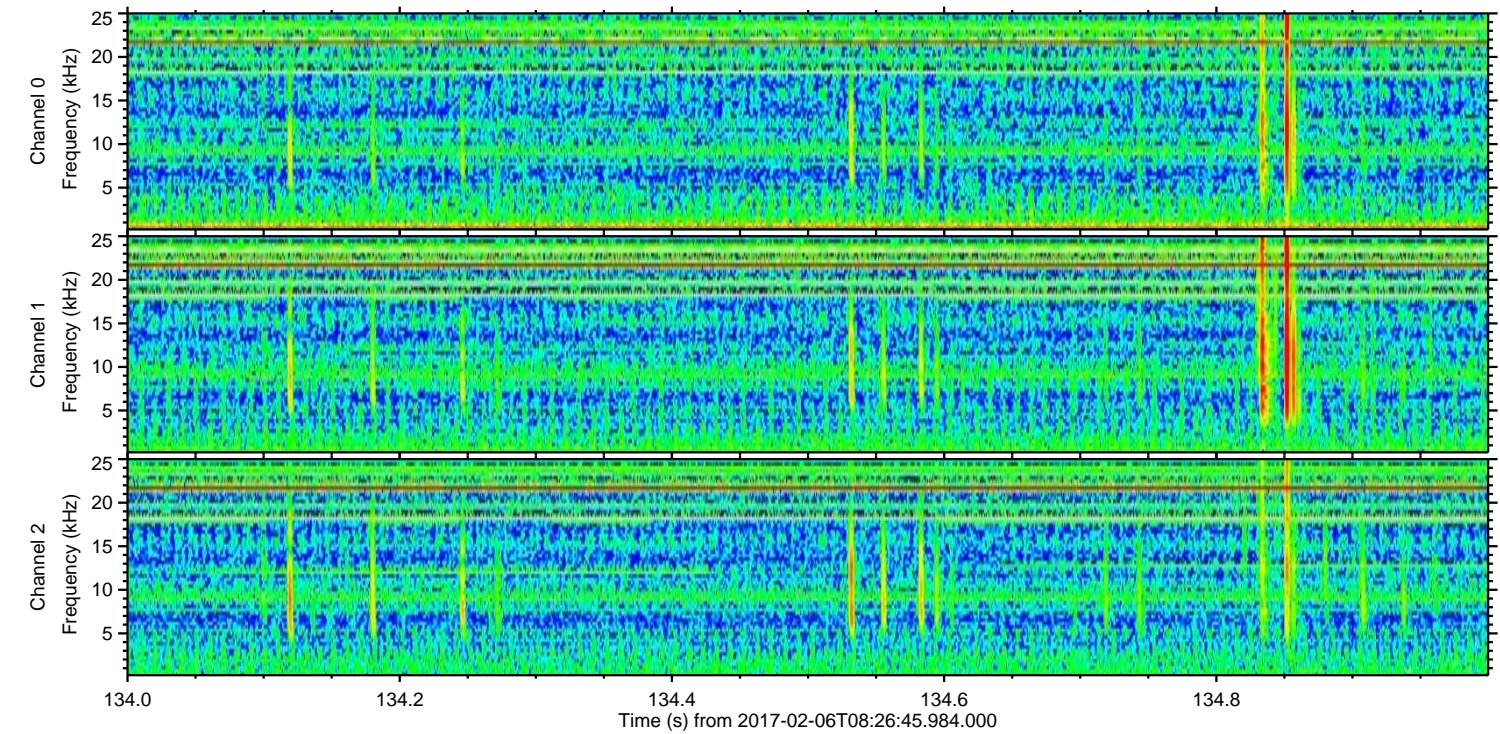
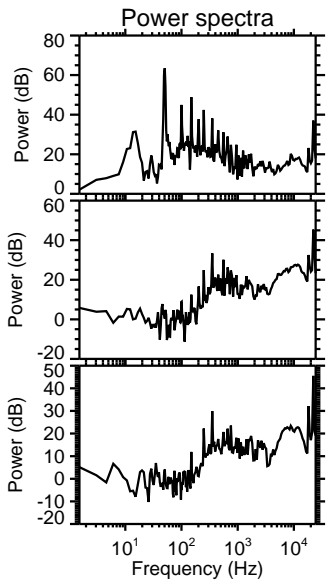
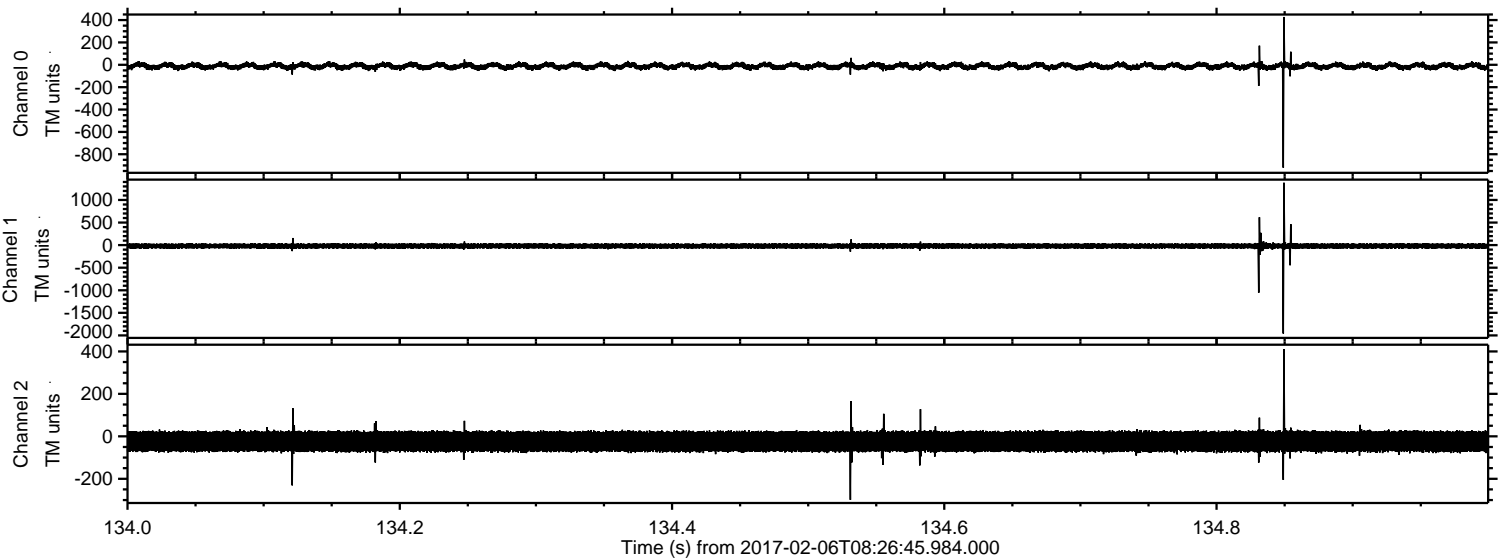
ELMAVAN 3D WAVEFORMS (Measured data sampled at 50 kHz) 51000 packets of 144 samples from 2017-02-06T08:26:45.984.000. Part 108/147

Processed Mon Feb 6 09:35:37 2017 by ELM ver.2012-10-06 from 001__elm20170206_082644__dat00.bin

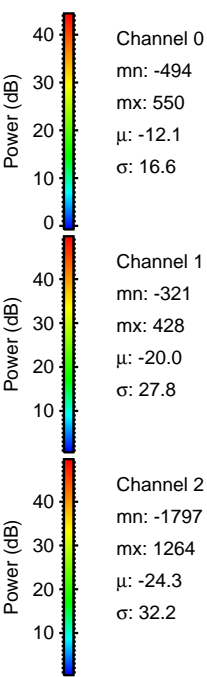
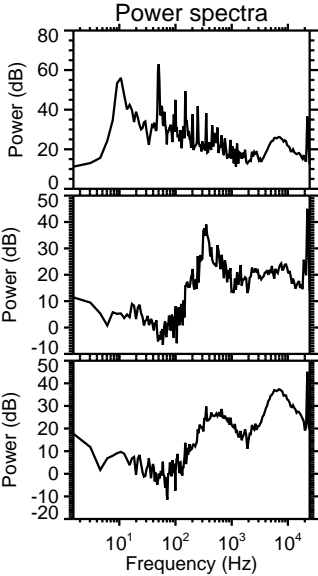
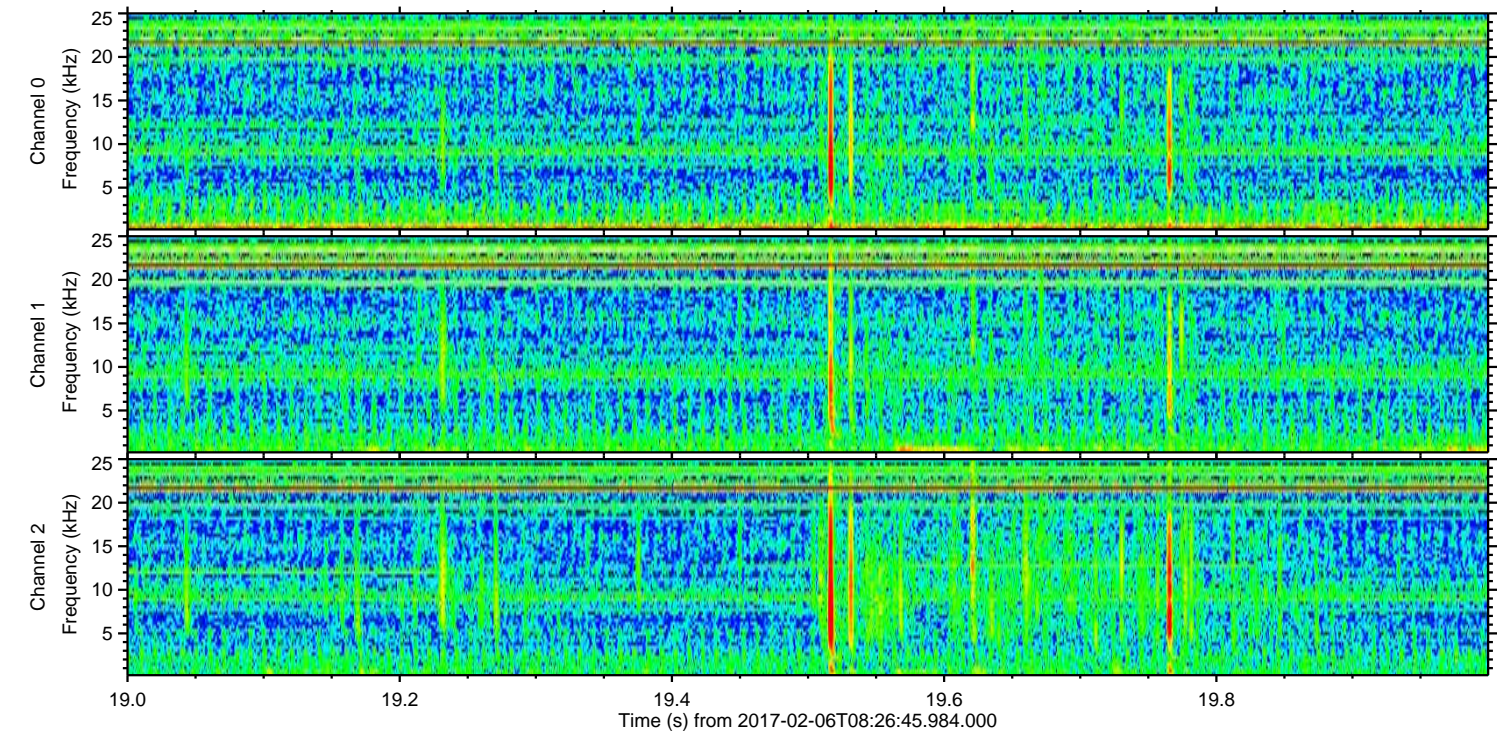
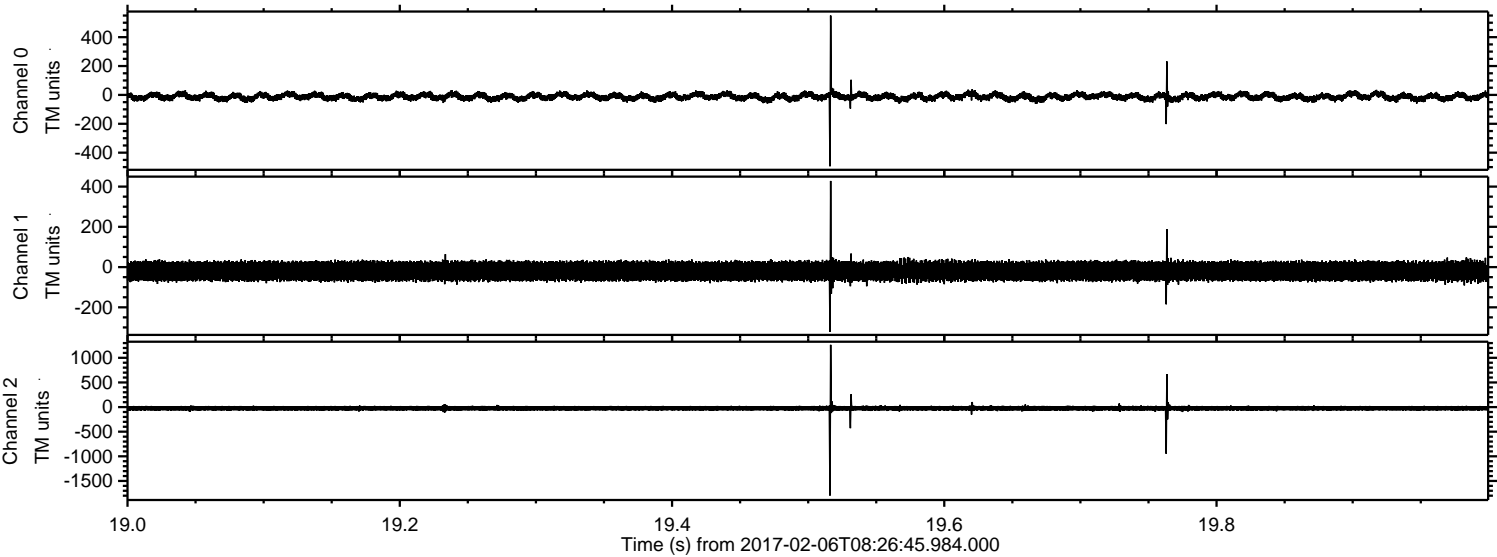


ELMAVAN 3D WAVEFORMS (Measured data sampled at 50 kHz) 51000 packets of 144 samples from 2017-02-06T08:26:45.984.000. Part 135/147

Processed Mon Feb 6 09:35:38 2017 by ELM ver.2012-10-06 from 001__elm20170206_082644__dat00.bin



Processed Mon Feb 6 09:35:39 2017 by ELM ver.2012-10-06 from 001__elm20170206_082644__dat00.bin



Processed Mon Feb 6 09:35:40 2017 by ELM ver.2012-10-06 from 001__elm20170206_082644__dat00.bin

