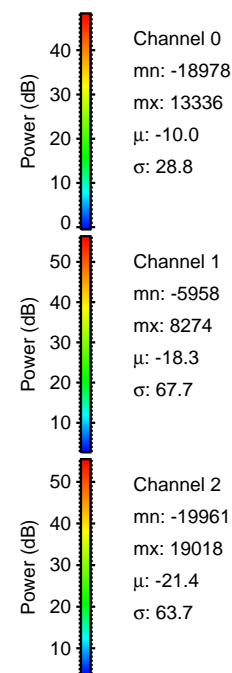
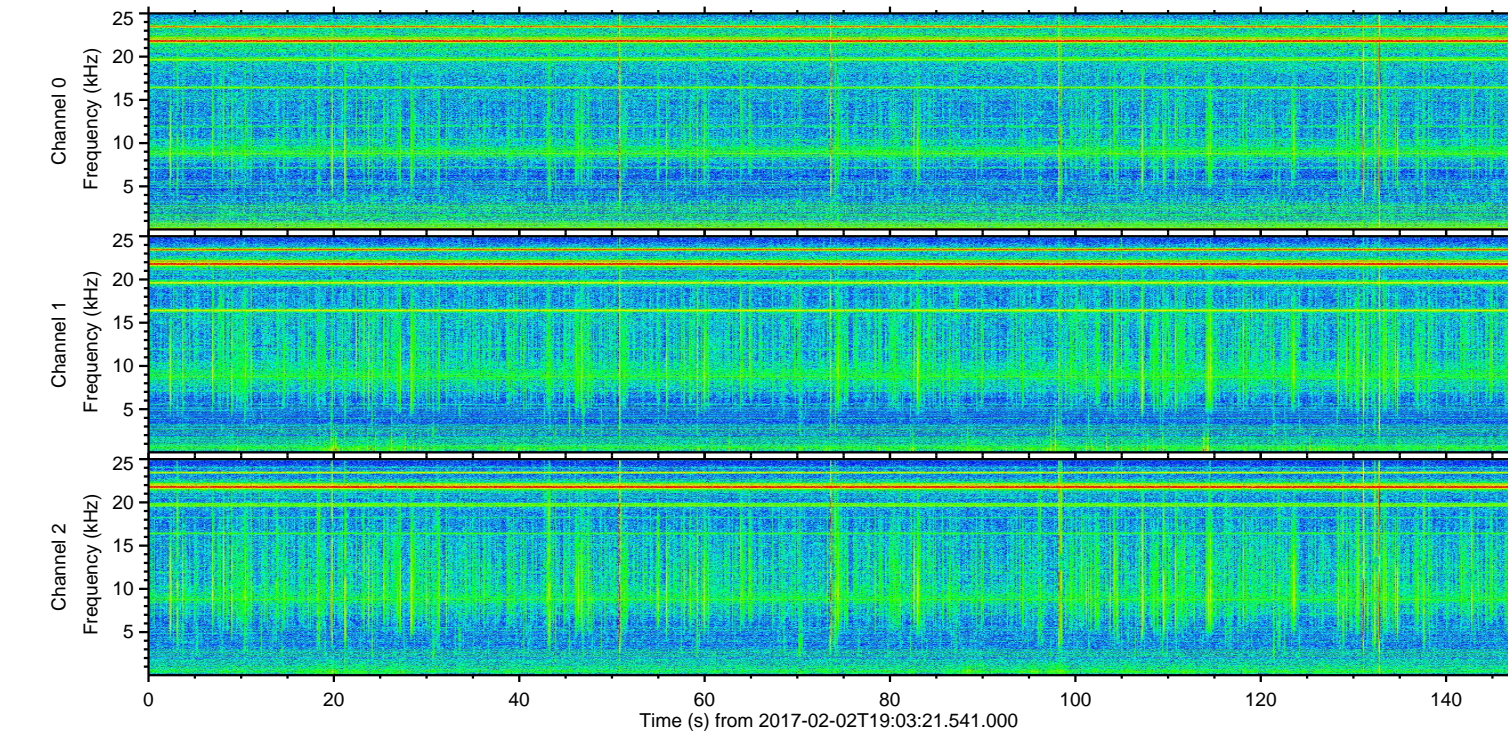
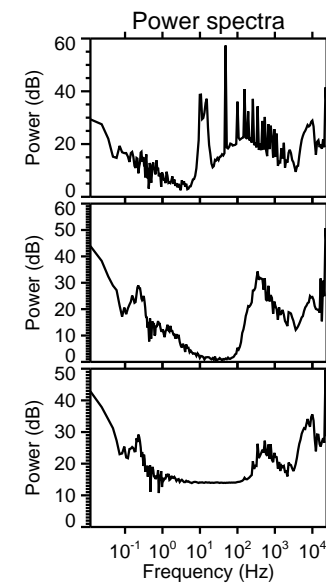
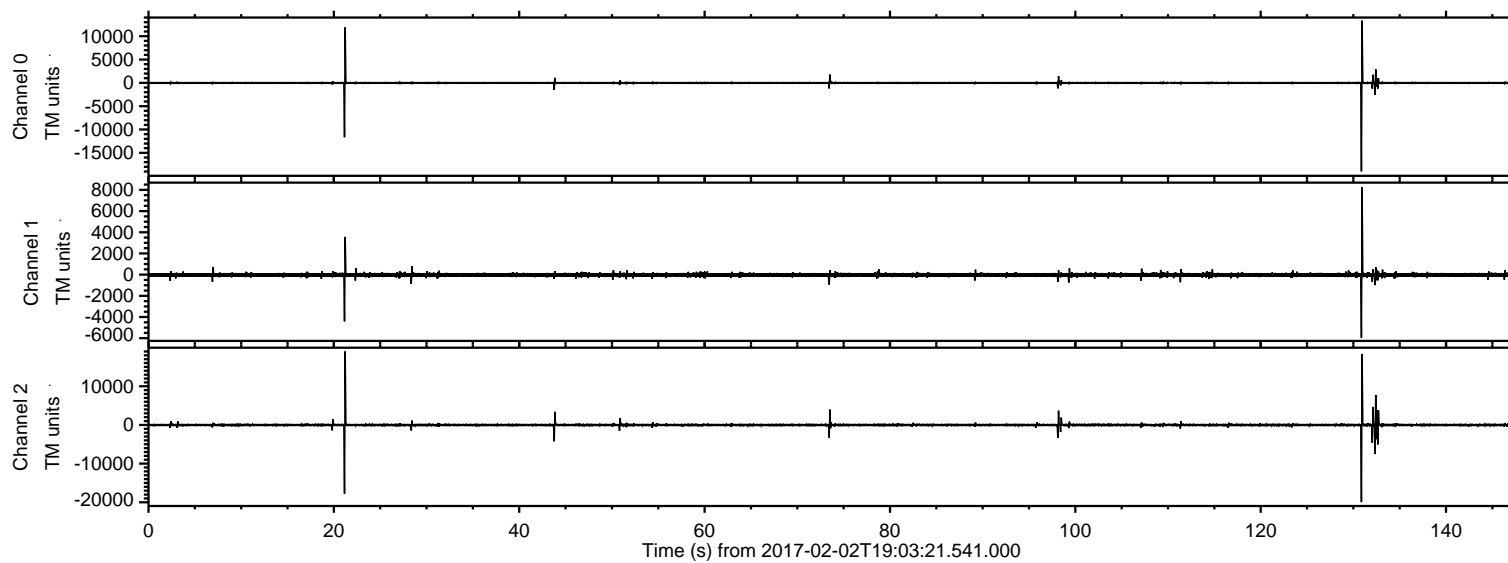


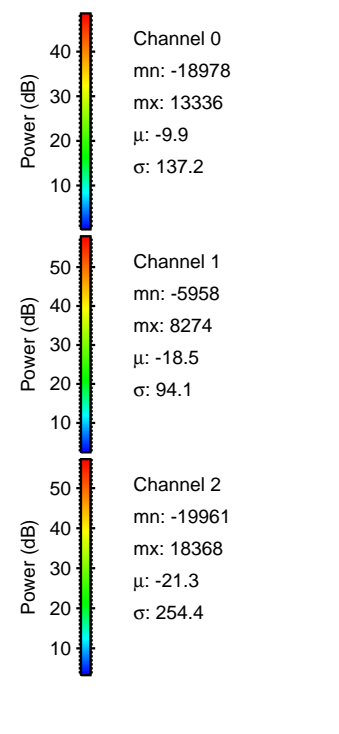
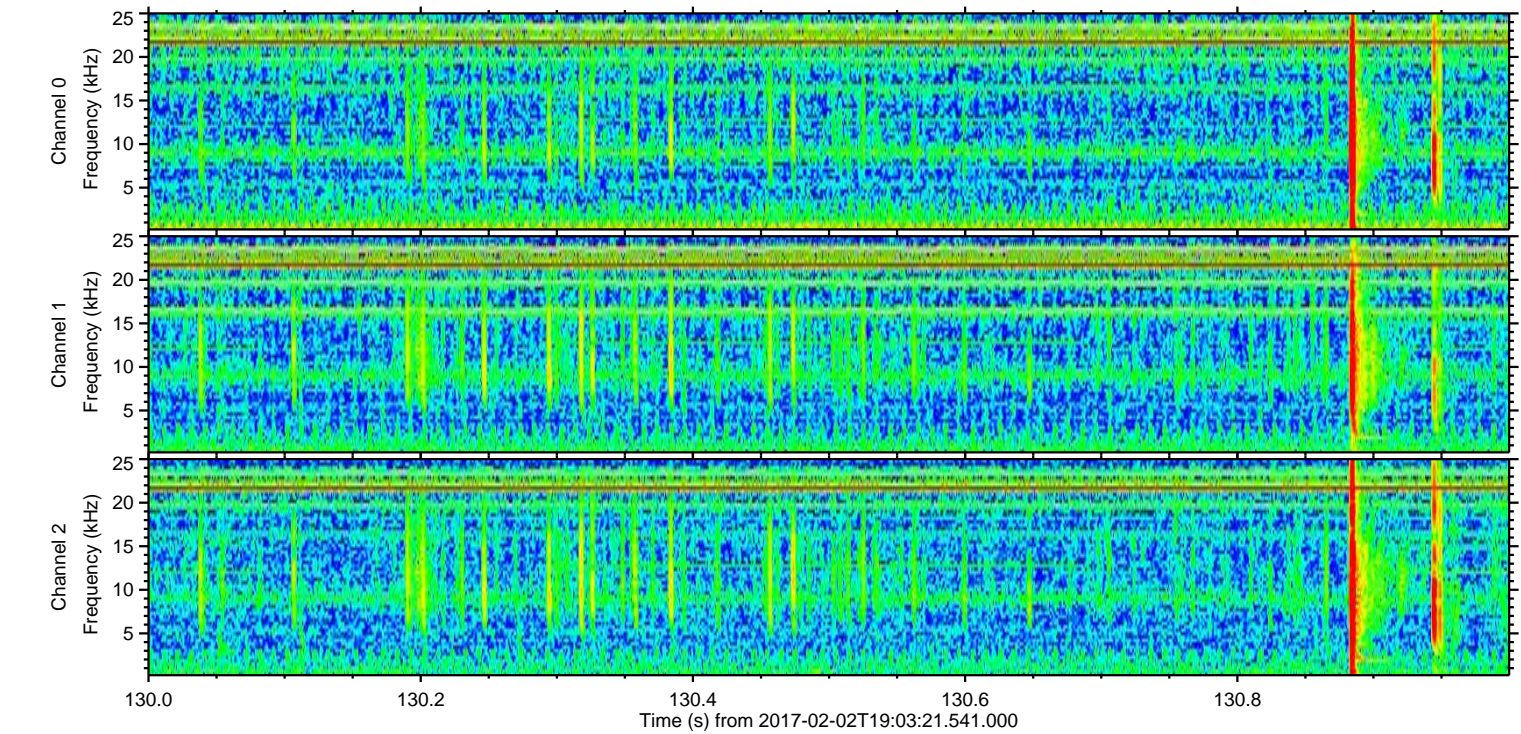
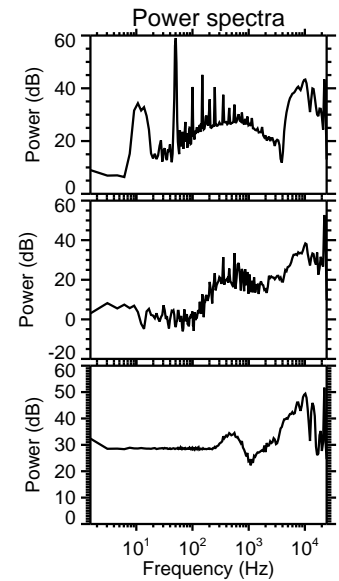
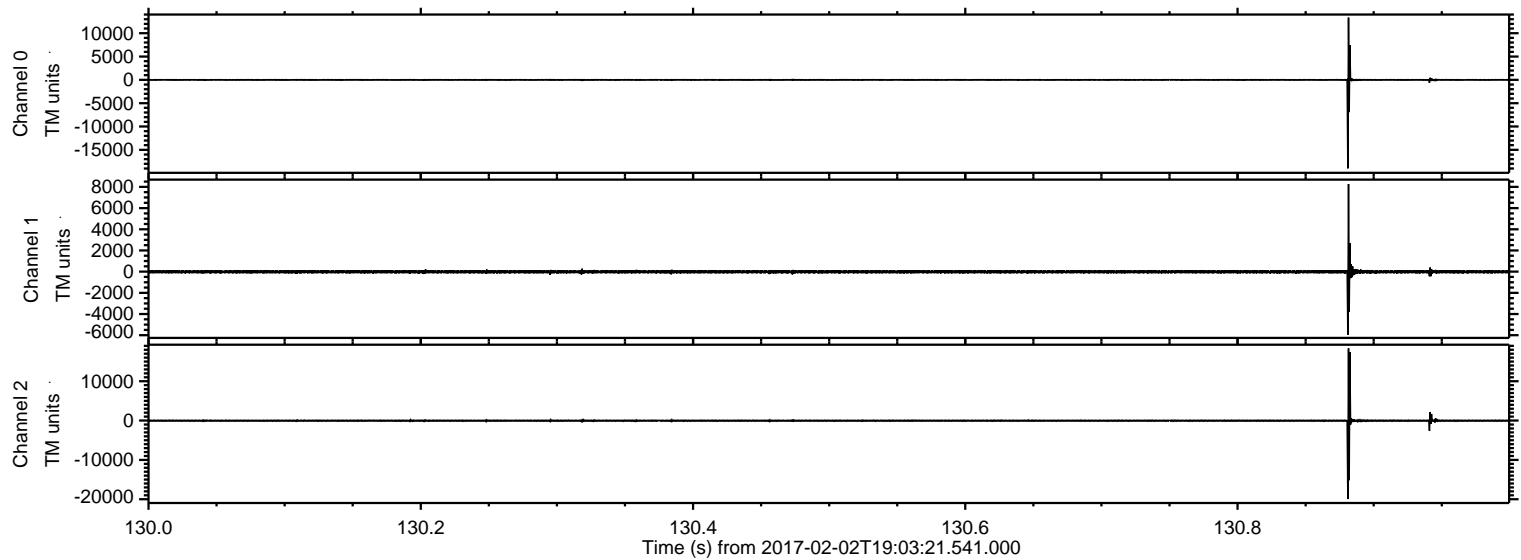
ELMAVAN 3D WAVEFORMS (Measured data sampled at 50 kHz) 51000 packets of 144 samples from 2017-02-02T19:03:21.541.000.

Processed Thu Feb 2 20:10:54 2017 by ELM ver.2012-10-06 from 001__elm20170202_190320__dat00.bin



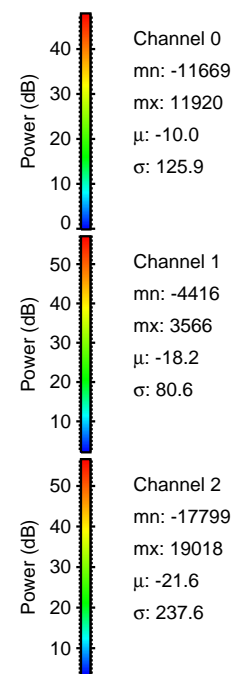
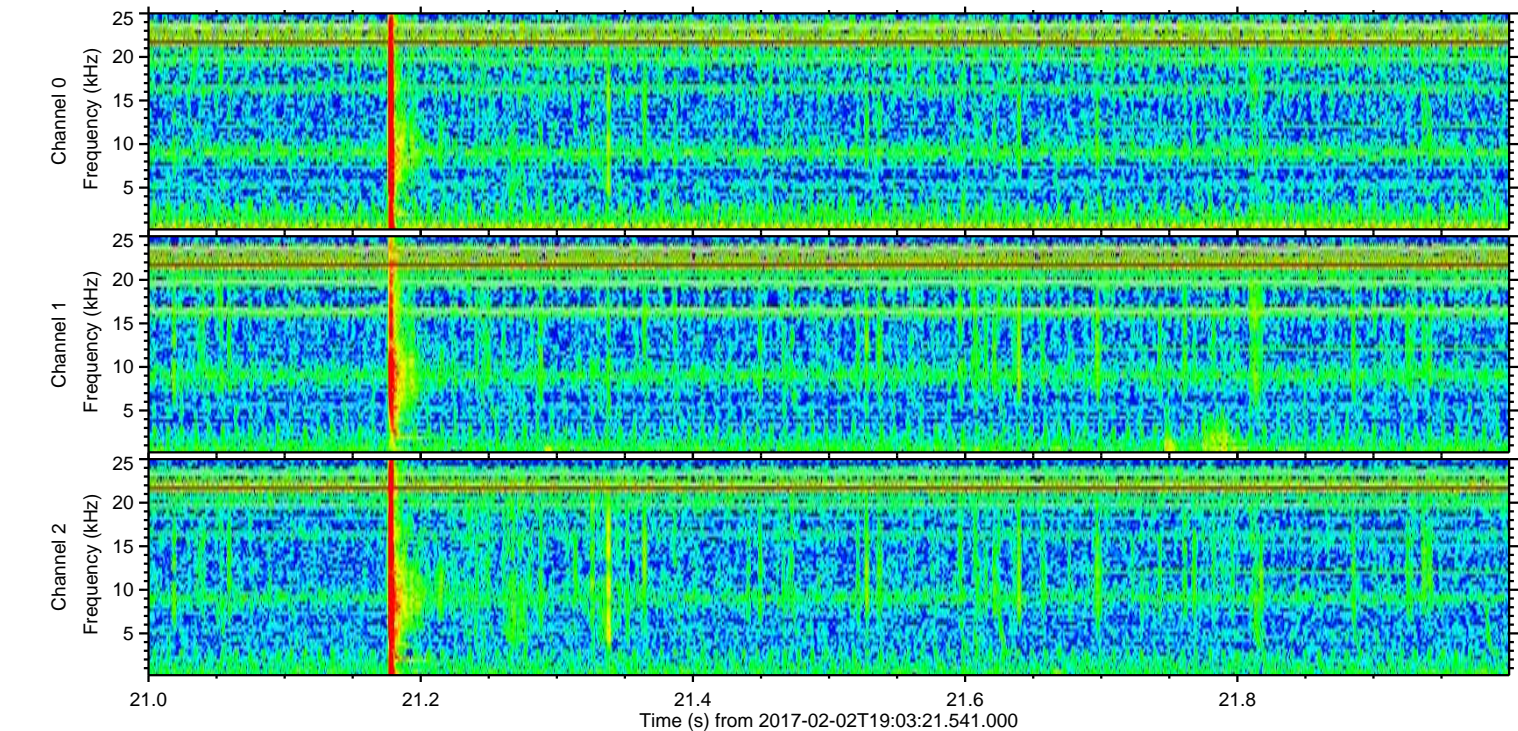
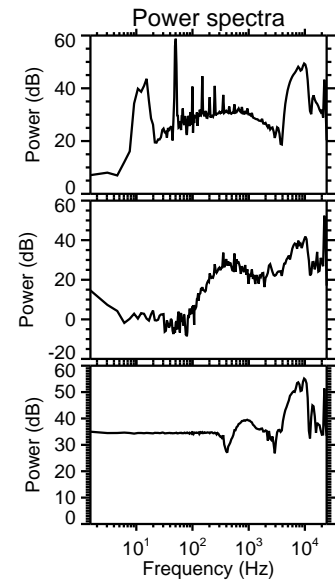
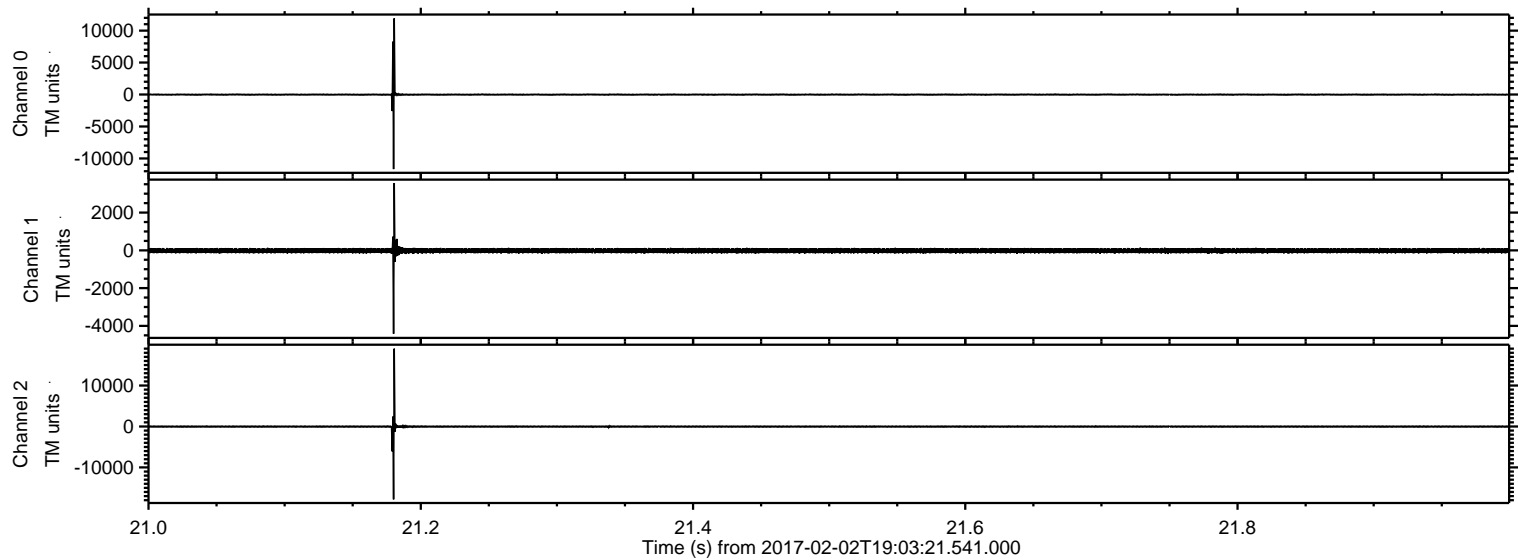
ELMAVAN 3D WAVEFORMS (Measured data sampled at 50 kHz) 51000 packets of 144 samples from 2017-02-02T19:03:21.541.000. Part 131/147

Processed Thu Feb 2 20:11:05 2017 by ELM ver.2012-10-06 from 001__elm20170202_190320__dat00.bin



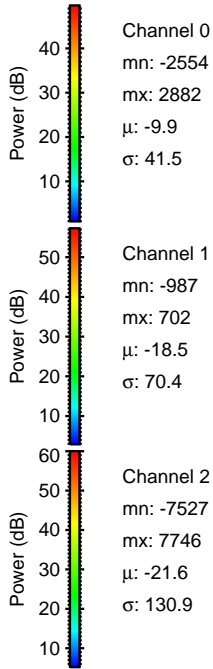
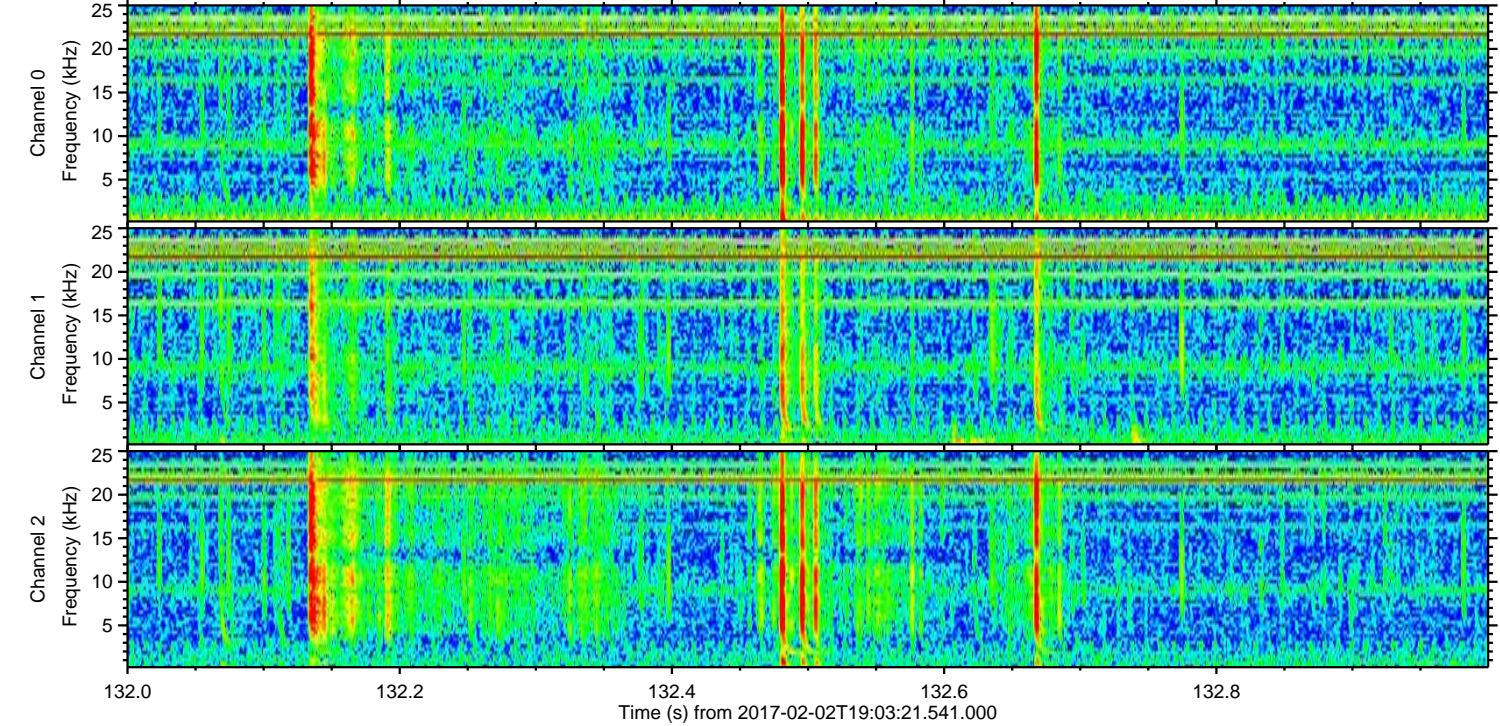
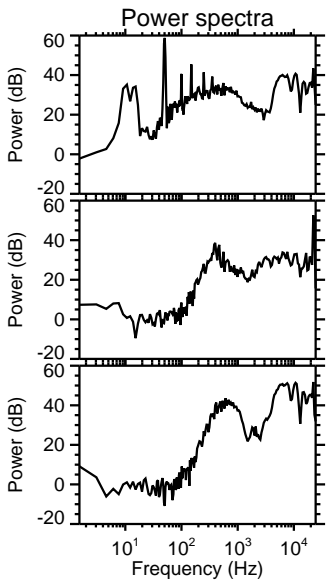
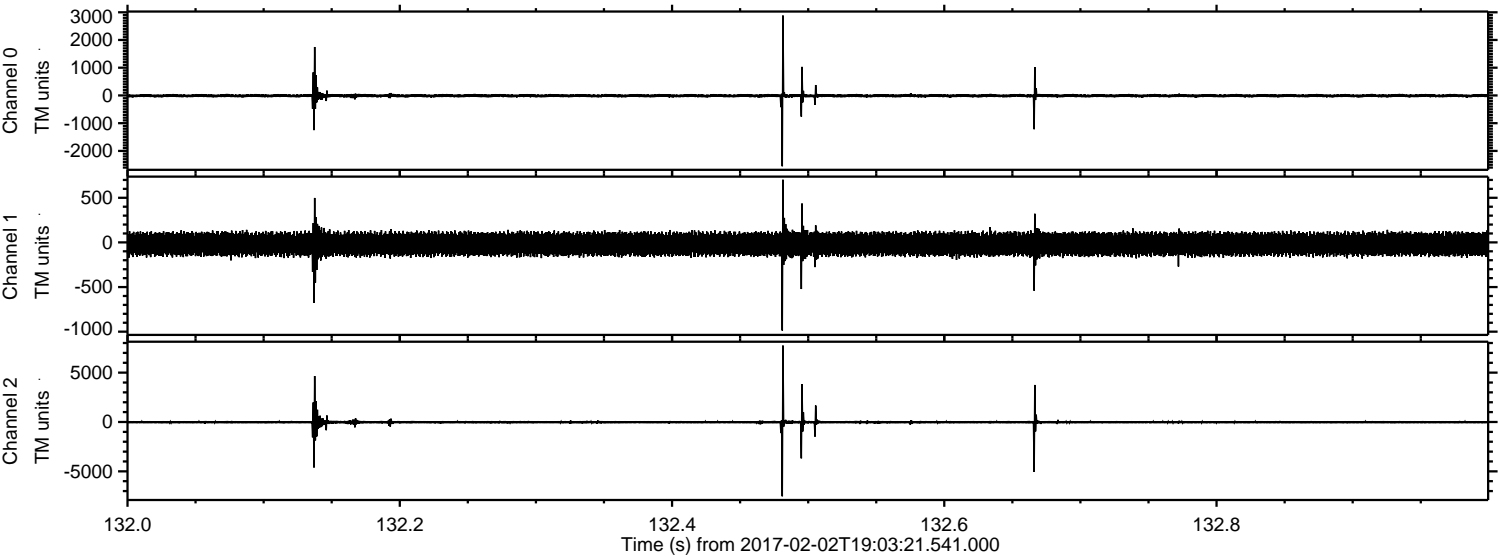
ELMAVAN 3D WAVEFORMS (Measured data sampled at 50 kHz) 51000 packets of 144 samples from 2017-02-02T19:03:21.541.000. Part 22/147

Processed Thu Feb 2 20:11:06 2017 by ELM ver.2012-10-06 from 001__elm20170202_190320__dat00.bin



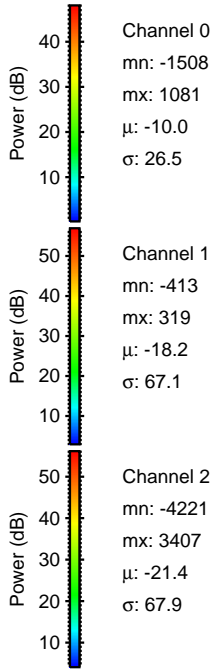
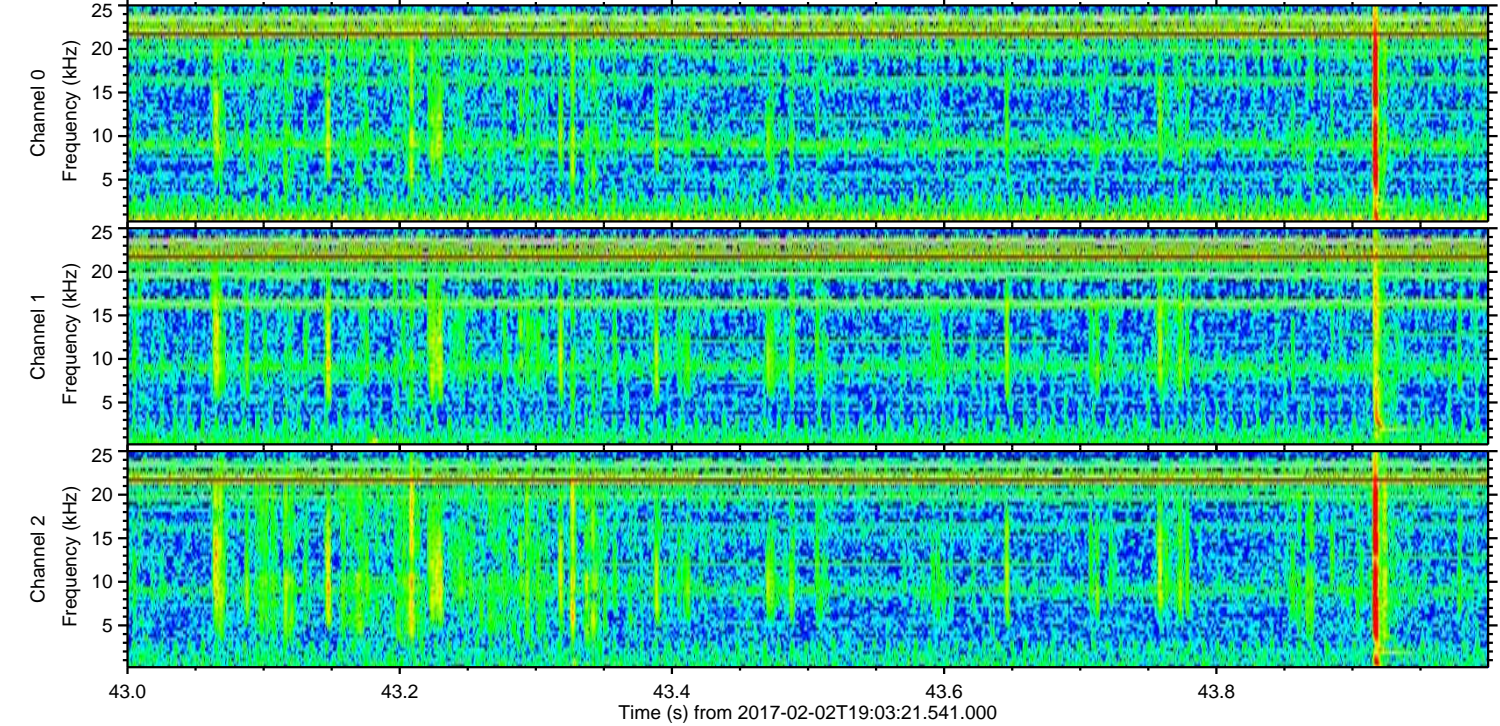
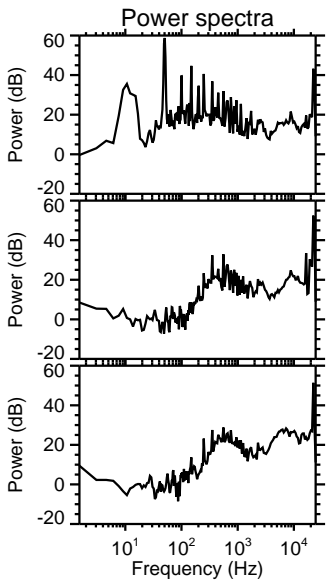
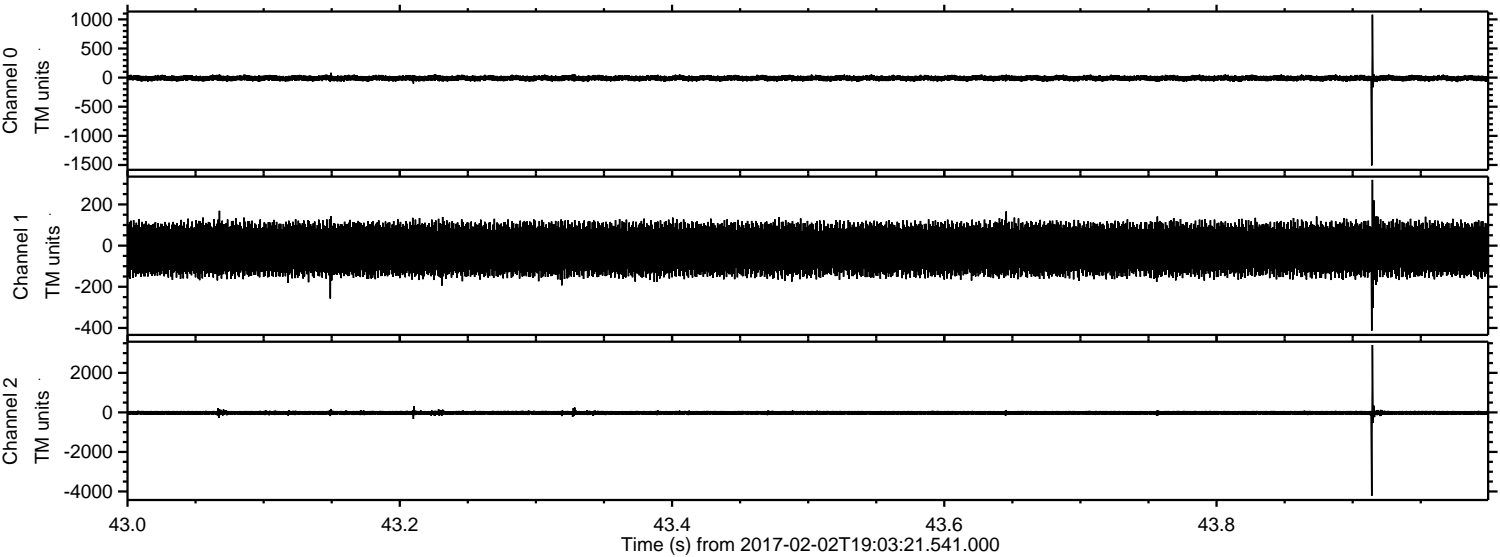
ELMAVAN 3D WAVEFORMS (Measured data sampled at 50 kHz) 51000 packets of 144 samples from 2017-02-02T19:03:21.541.000. Part 133/147

Processed Thu Feb 2 20:11:07 2017 by ELM ver.2012-10-06 from 001__elm20170202_190320__dat00.bin



ELMAVAN 3D WAVEFORMS (Measured data sampled at 50 kHz) 51000 packets of 144 samples from 2017-02-02T19:03:21.541.000. Part 44/147

Processed Thu Feb 2 20:11:08 2017 by ELM ver.2012-10-06 from 001__elm20170202_190320__dat00.bin



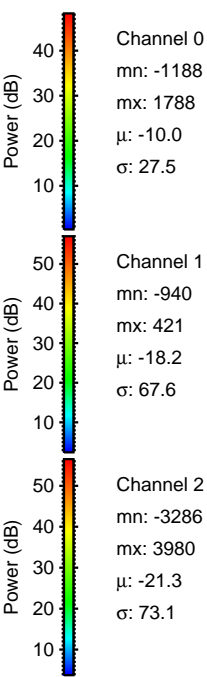
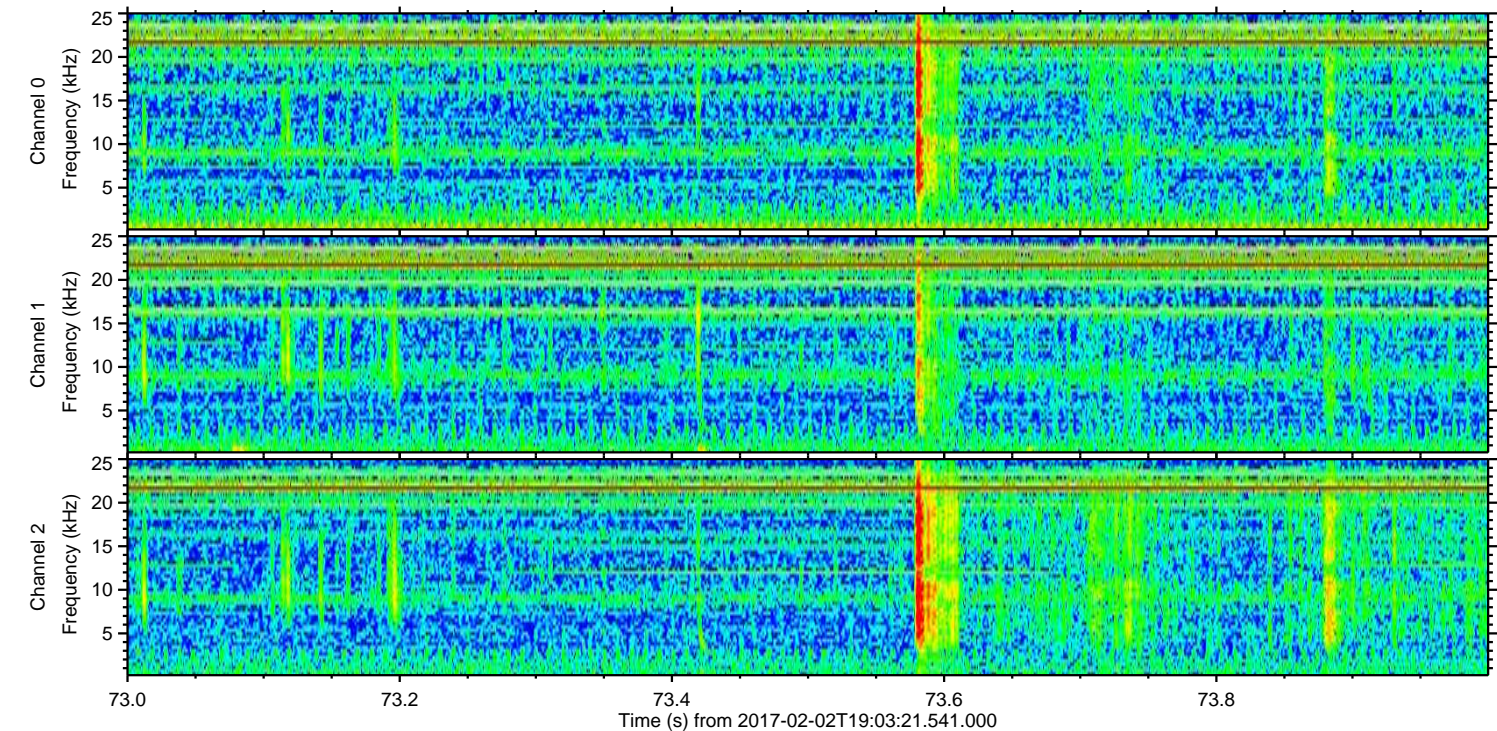
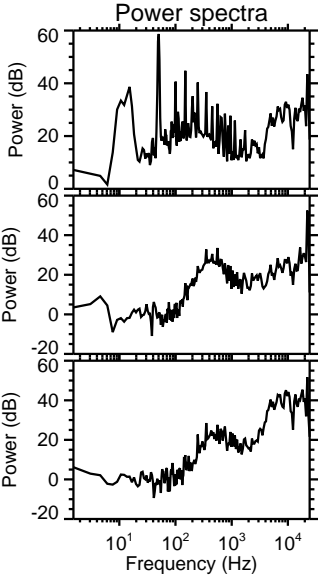
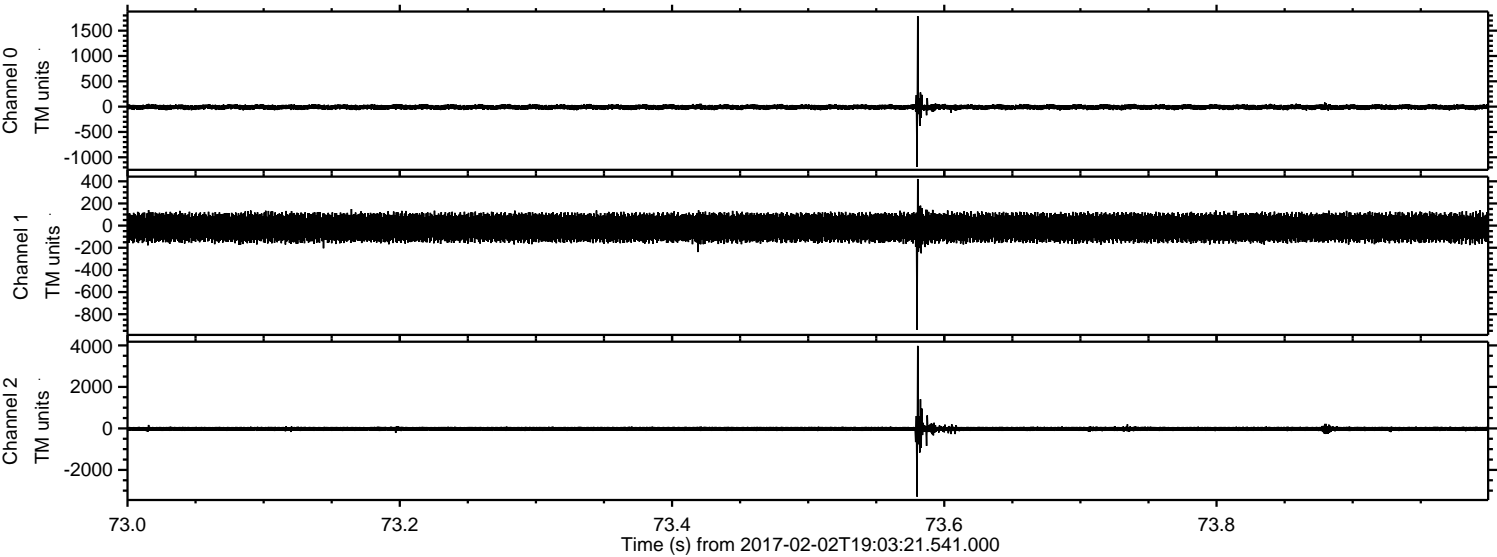
Channel 0
mn: -1508
mx: 1081
 μ : -10.0
 σ : 26.5

Channel 1
mn: -413
mx: 319
 μ : -18.2
 σ : 67.1

Channel 2
mn: -4221
mx: 3407
 μ : -21.4
 σ : 67.9

ELMAVAN 3D WAVEFORMS (Measured data sampled at 50 kHz) 51000 packets of 144 samples from 2017-02-02T19:03:21.541.000. Part 74/147

Processed Thu Feb 2 20:11:09 2017 by ELM ver.2012-10-06 from 001__elm20170202_190320__dat00.bin

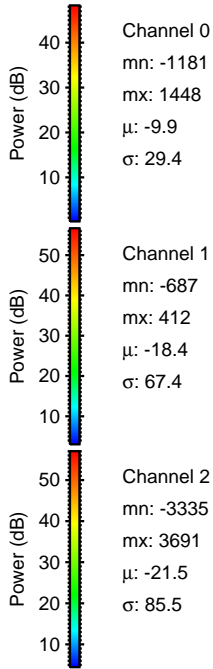
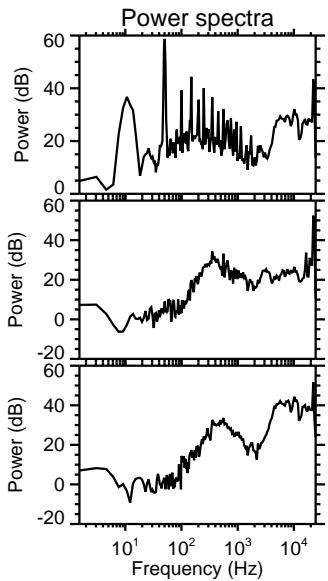
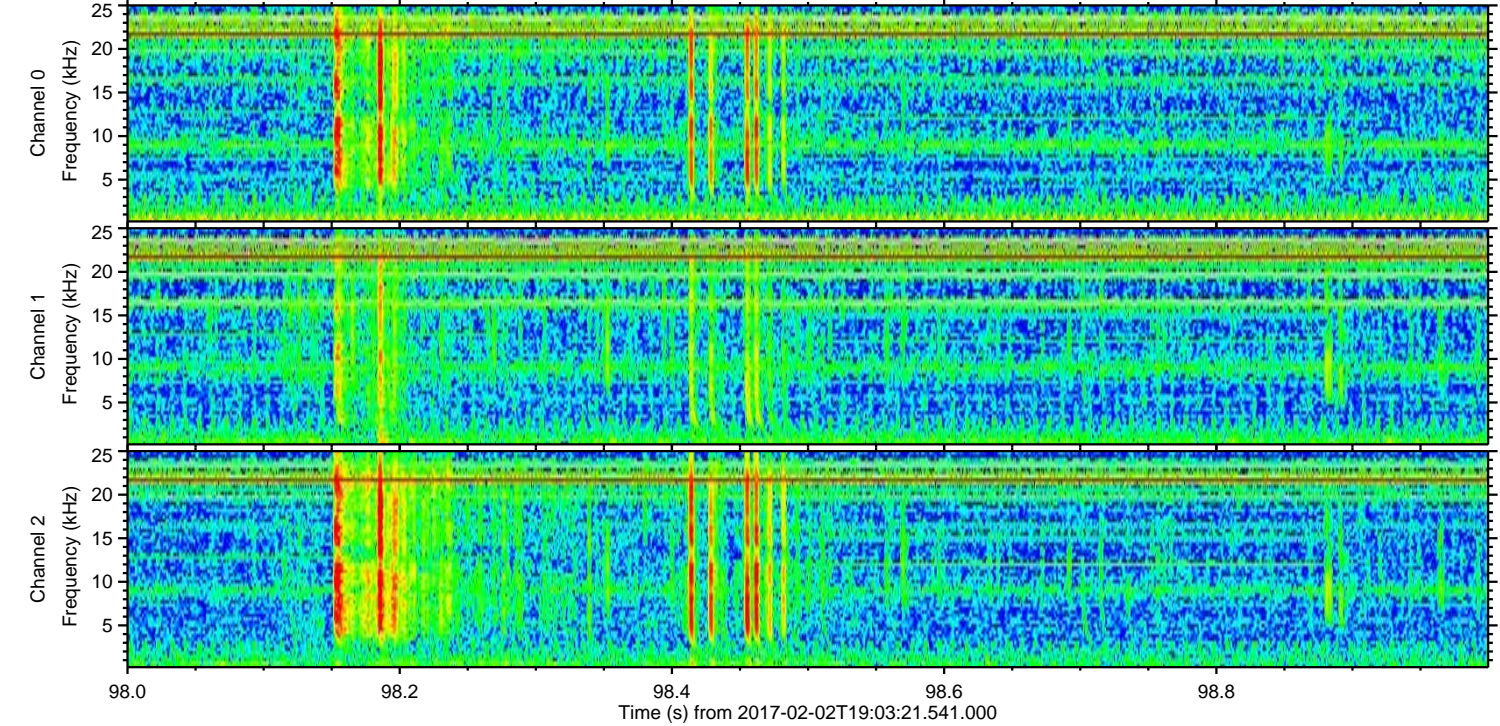
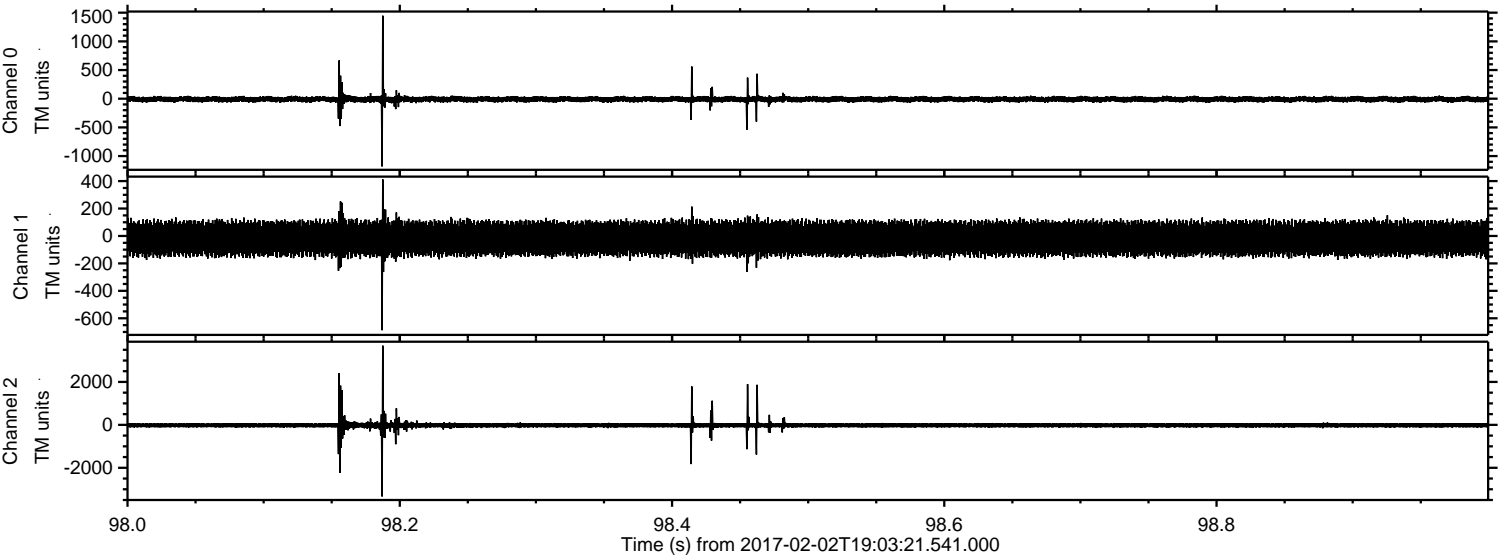


Channel 0
mn: -1188
mx: 1788
 μ : -10.0
 σ : 27.5

Channel 1
mn: -940
mx: 421
 μ : -18.2
 σ : 67.6

Channel 2
mn: -3286
mx: 3980
 μ : -21.3
 σ : 73.1

Processed Thu Feb 2 20:11:10 2017 by ELM ver.2012-10-06 from 001__elm20170202_190320__dat00.bin



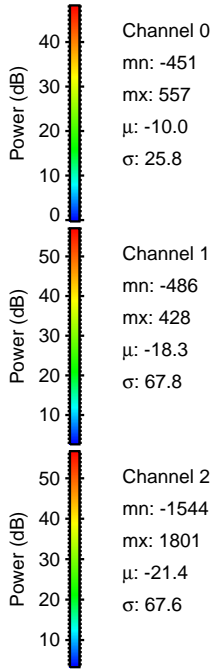
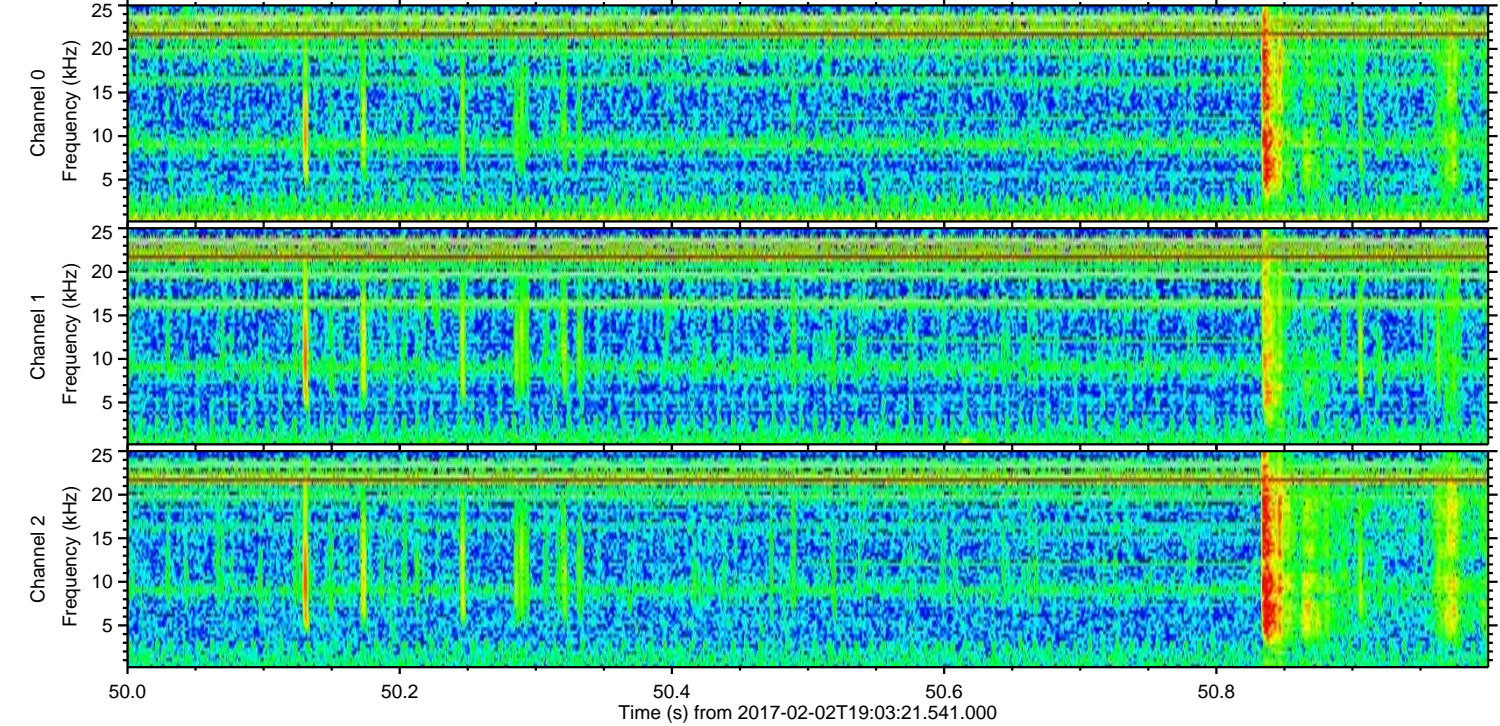
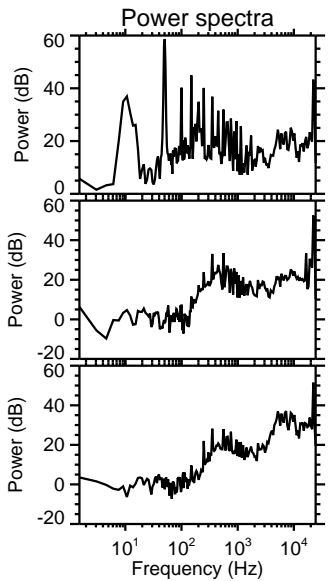
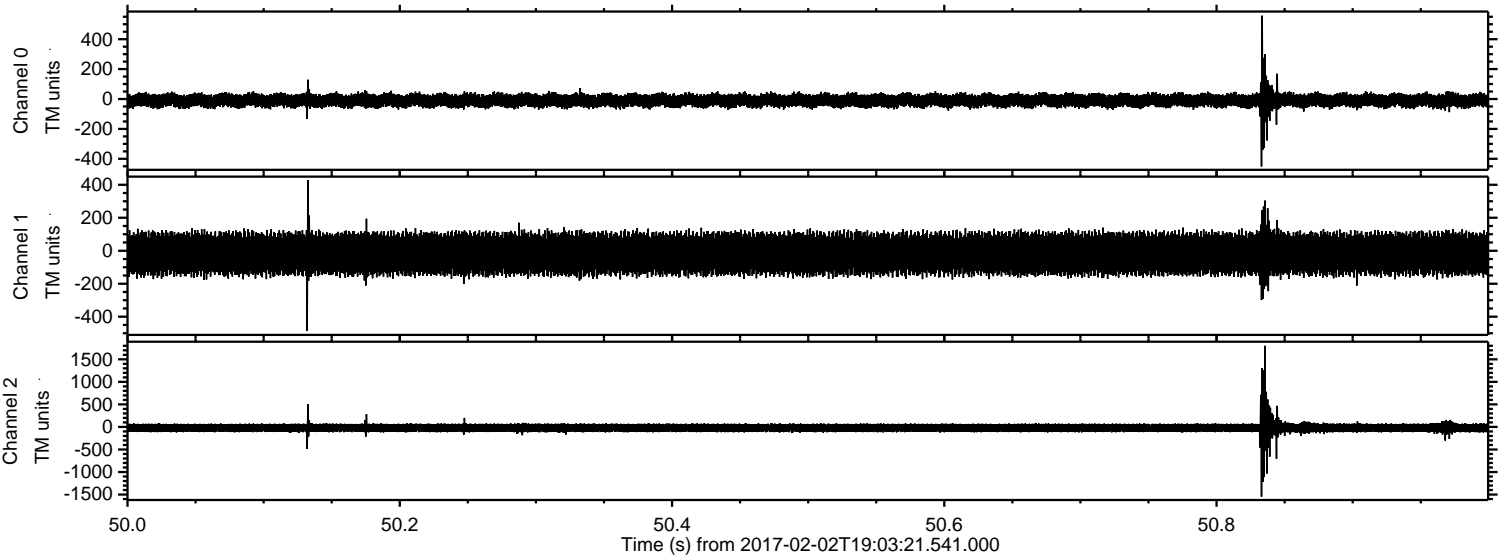
Channel 0
mn: -1181
mx: 1448
 μ : -9.9
 σ : 29.4

Channel 1
mn: -687
mx: 412
 μ : -18.4
 σ : 67.4

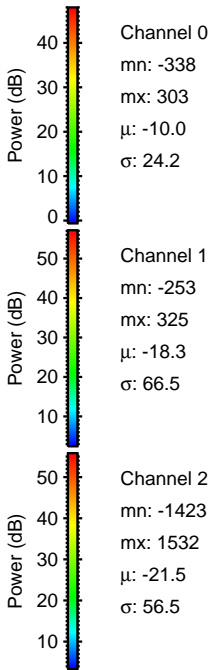
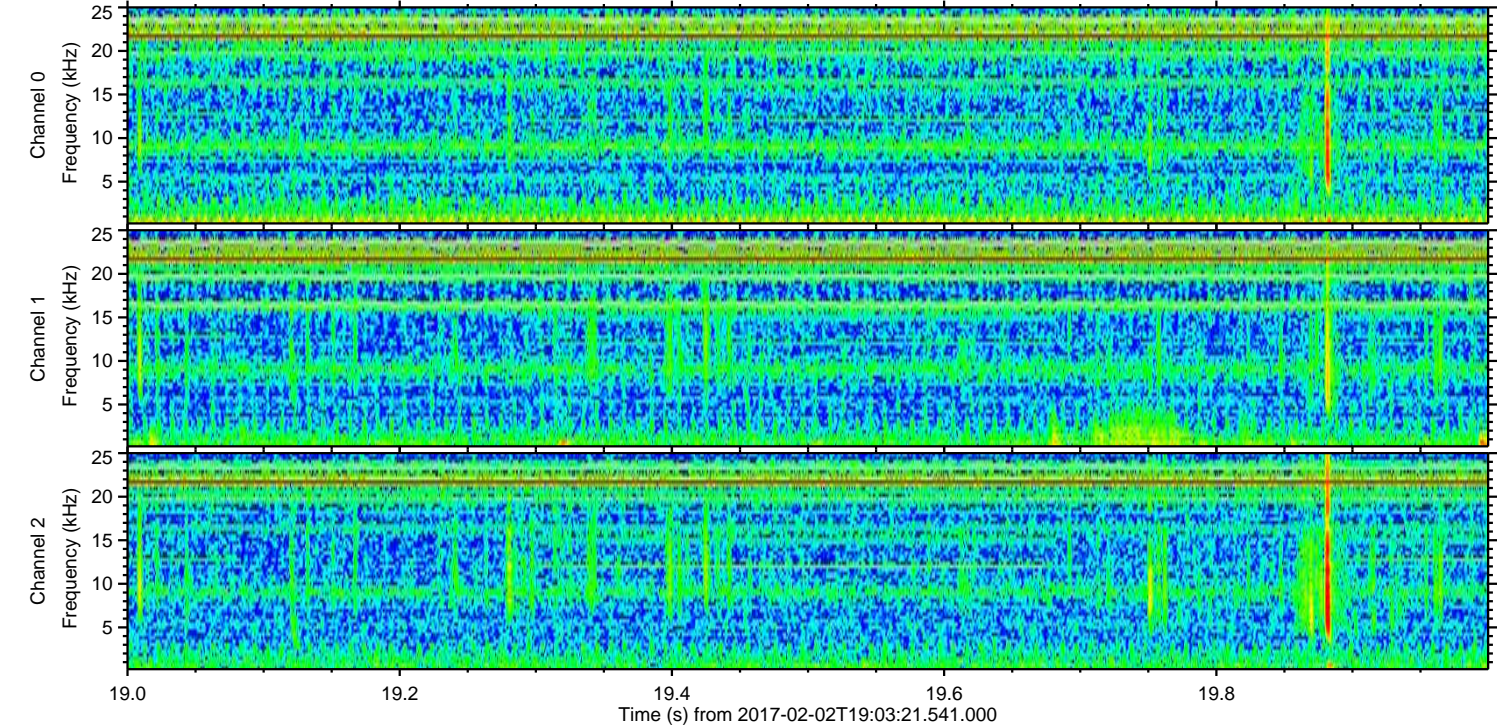
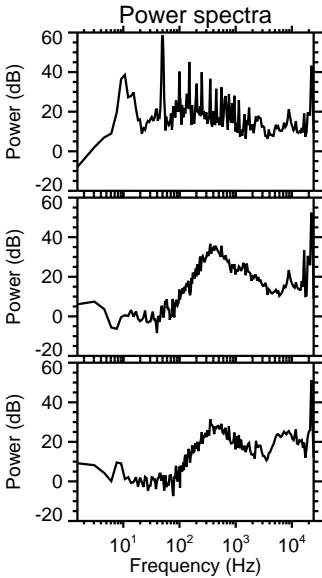
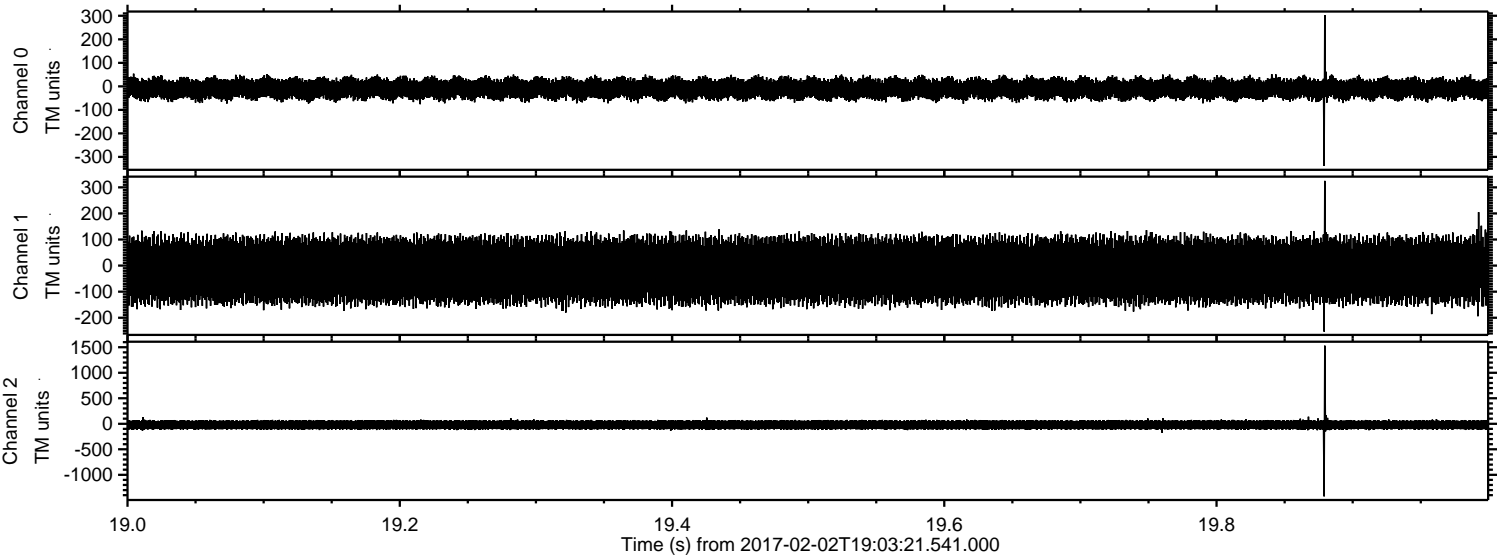
Channel 2
mn: -3335
mx: 3691
 μ : -21.5
 σ : 85.5

ELMAVAN 3D WAVEFORMS (Measured data sampled at 50 kHz) 51000 packets of 144 samples from 2017-02-02T19:03:21.541.000. Part 51/147

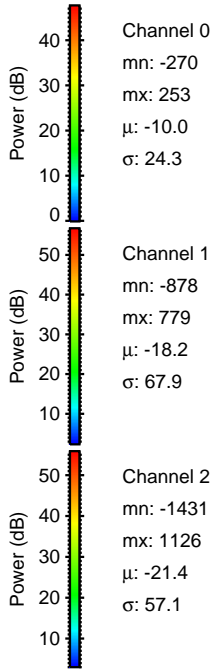
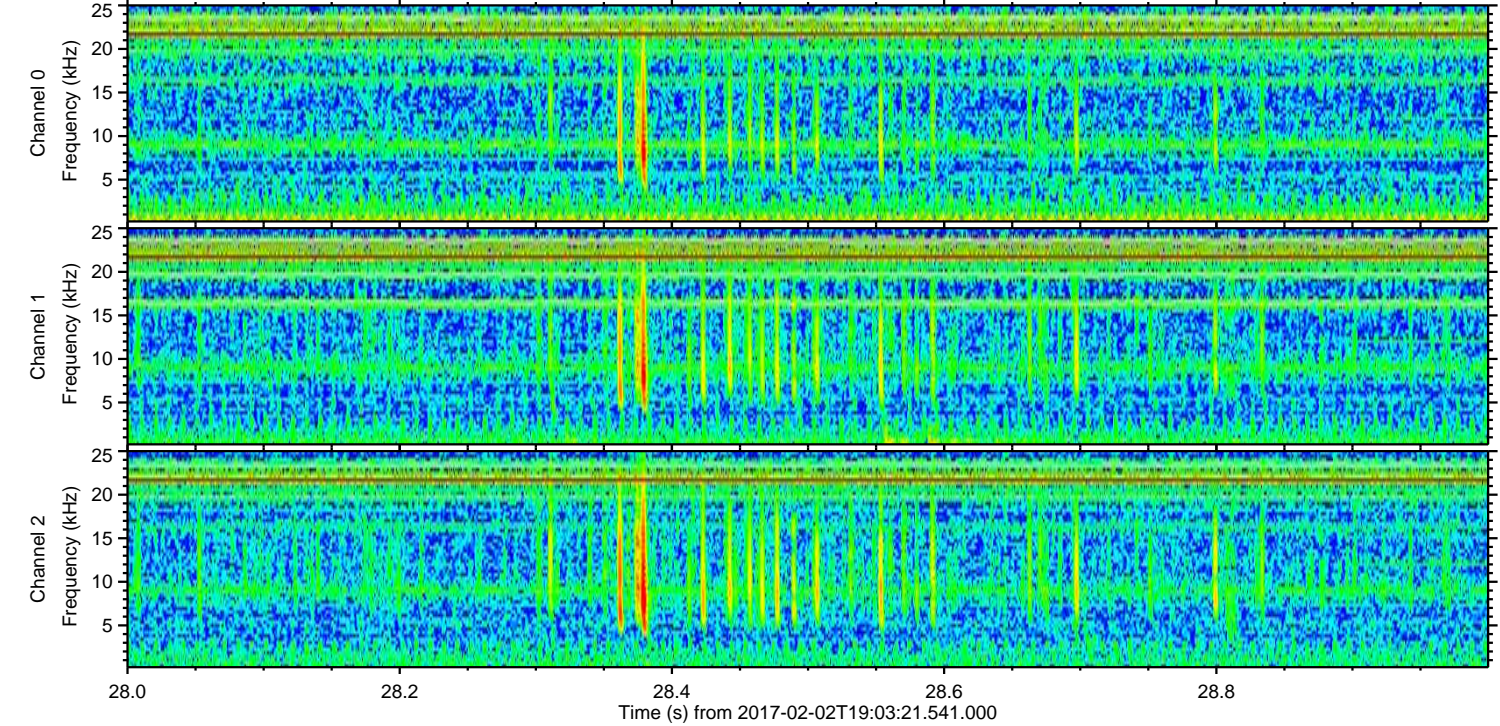
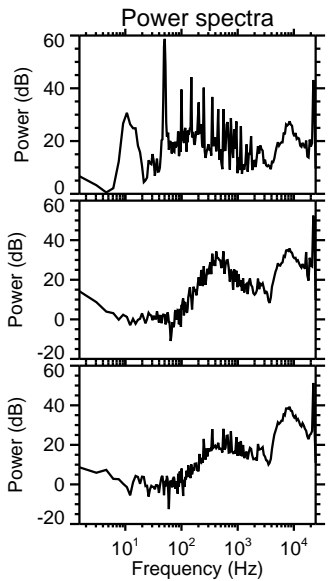
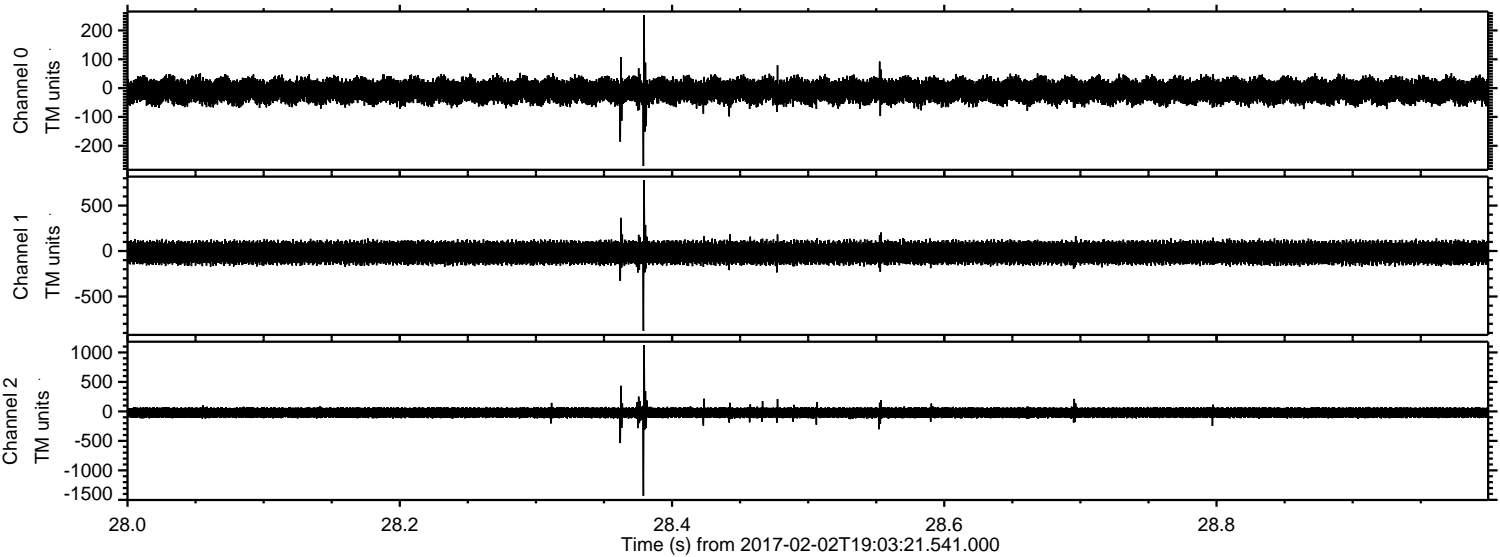
Processed Thu Feb 2 20:11:10 2017 by ELM ver.2012-10-06 from 001__elm20170202_190320__dat00.bin



Processed Thu Feb 2 20:11:11 2017 by ELM ver.2012-10-06 from 001__elm20170202_190320__dat00.bin



Processed Thu Feb 2 20:11:12 2017 by ELM ver.2012-10-06 from 001__elm20170202_190320__dat00.bin



Processed Thu Feb 2 20:11:13 2017 by ELM ver.2012-10-06 from 001__elm20170202_190320__dat00.bin

