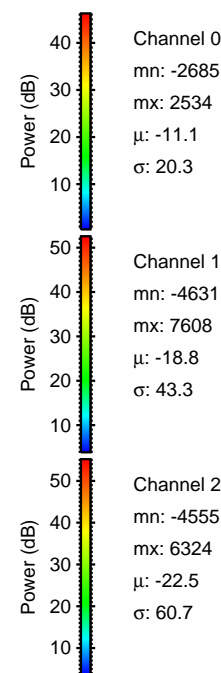
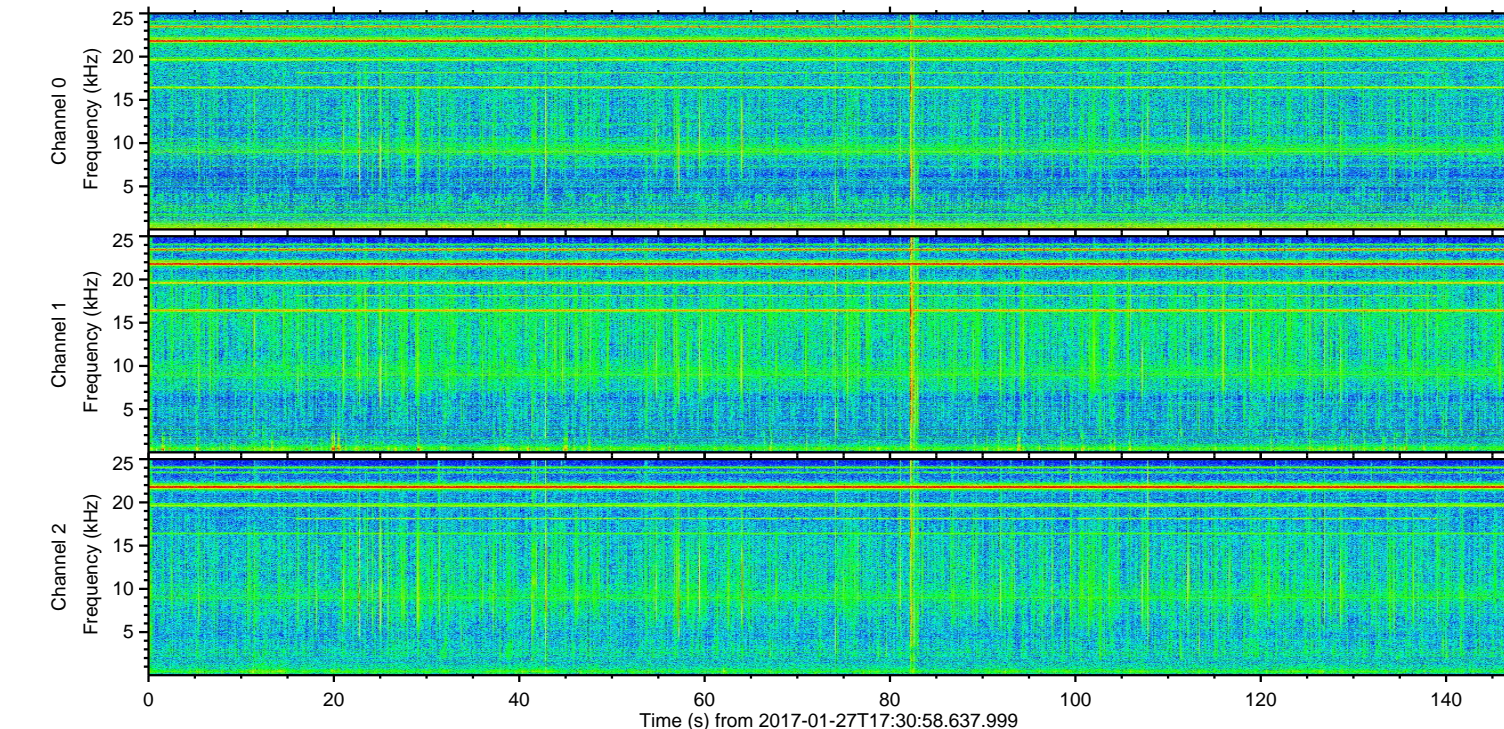
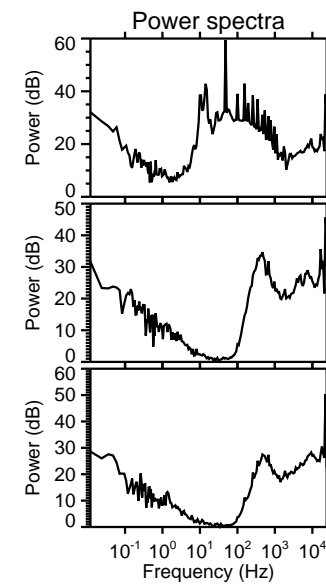
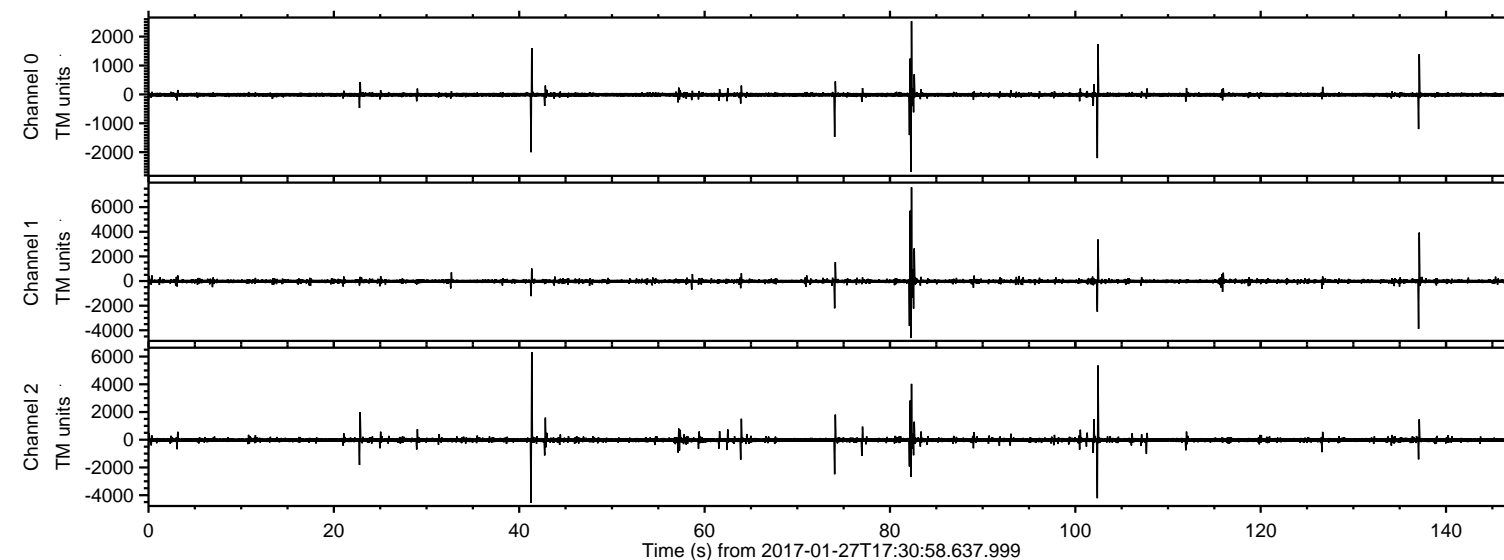


ELMAVAN 3D WAVEFORMS (Measured data sampled at 50 kHz) 51000 packets of 144 samples from 2017-01-27T17:30:58.637.999.

Processed Fri Jan 27 18:39:20 2017 by ELM ver.2012-10-06 from 001__elm20170127_173057__dat00.bin



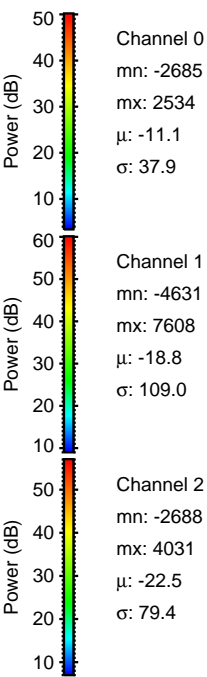
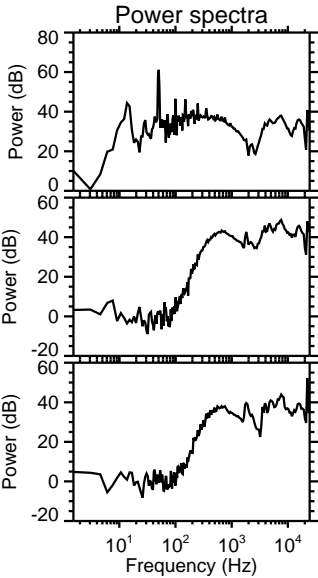
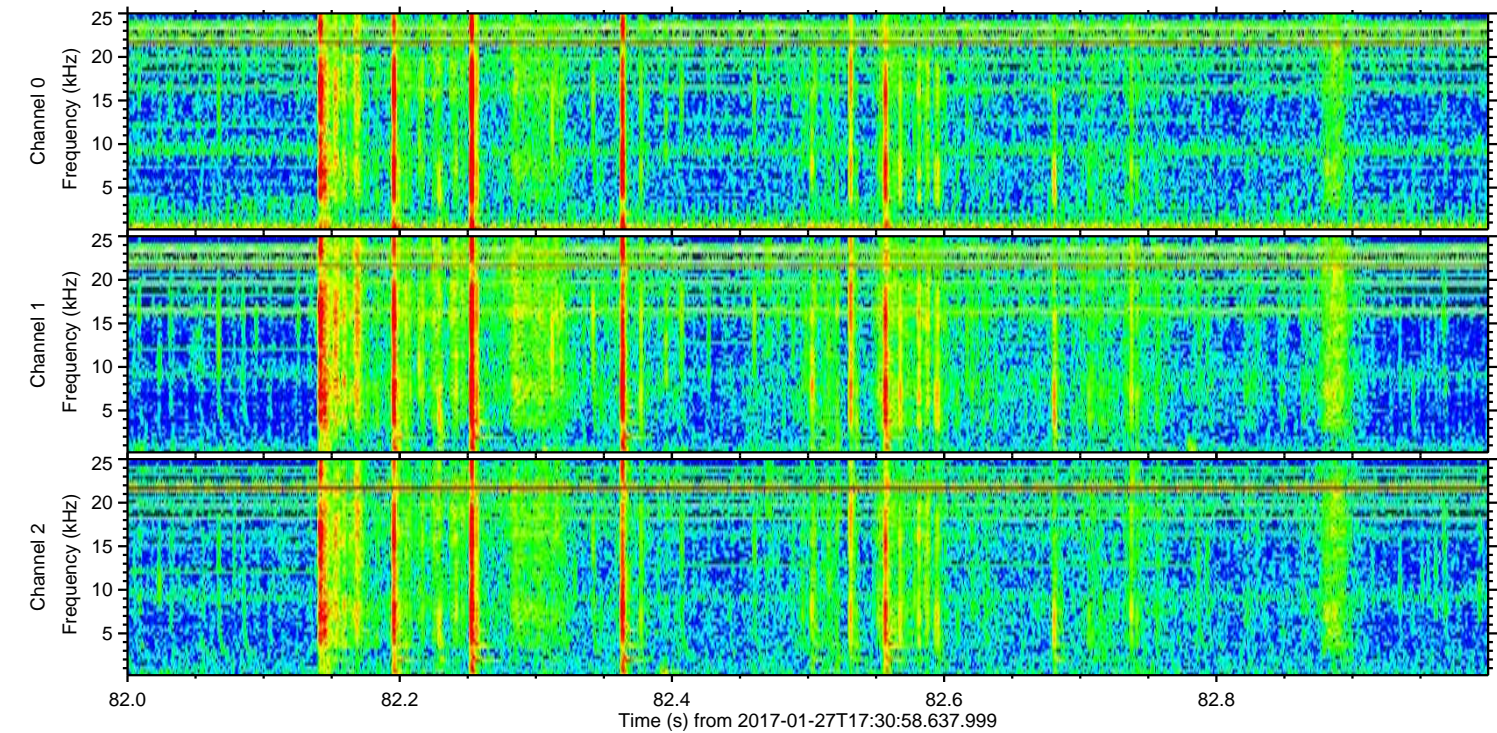
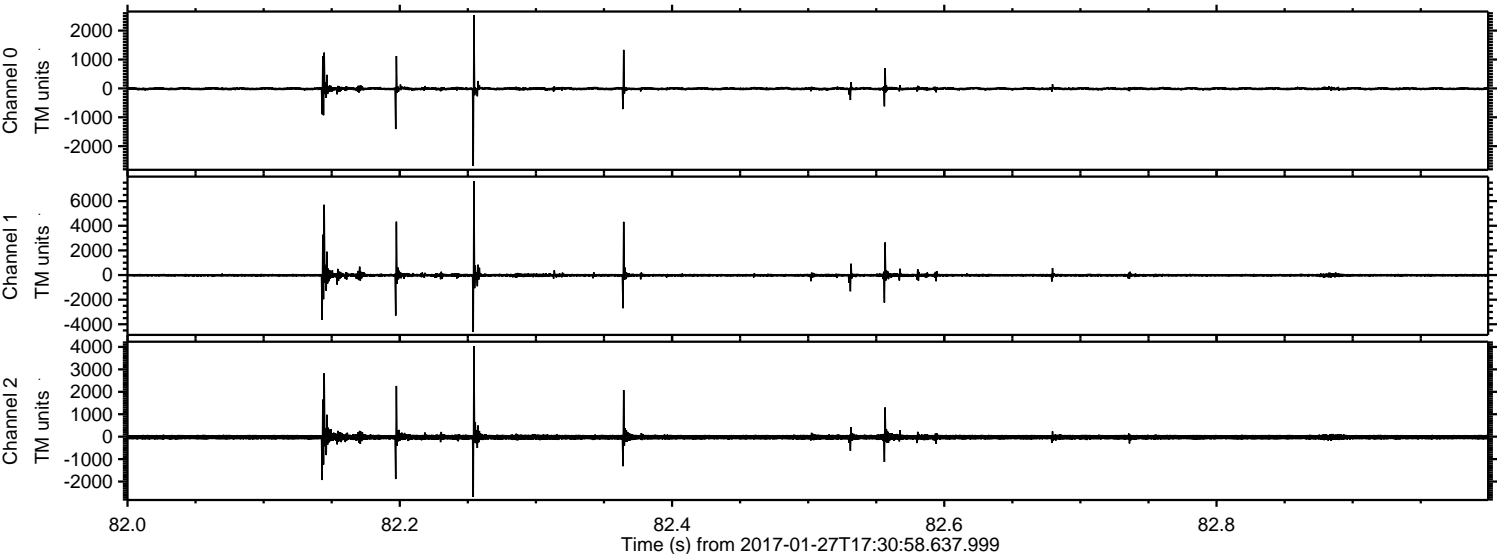
Channel 0
mn: -2685
mx: 2534
 μ : -11.1
 σ : 20.3

Channel 1
mn: -4631
mx: 7608
 μ : -18.8
 σ : 43.3

Channel 2
mn: -4555
mx: 6324
 μ : -22.5
 σ : 60.7

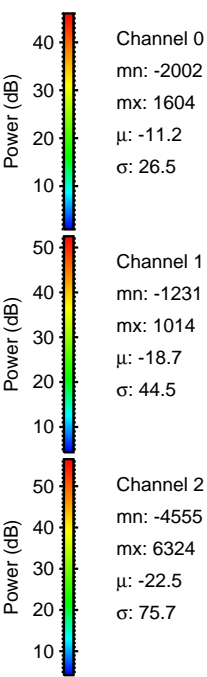
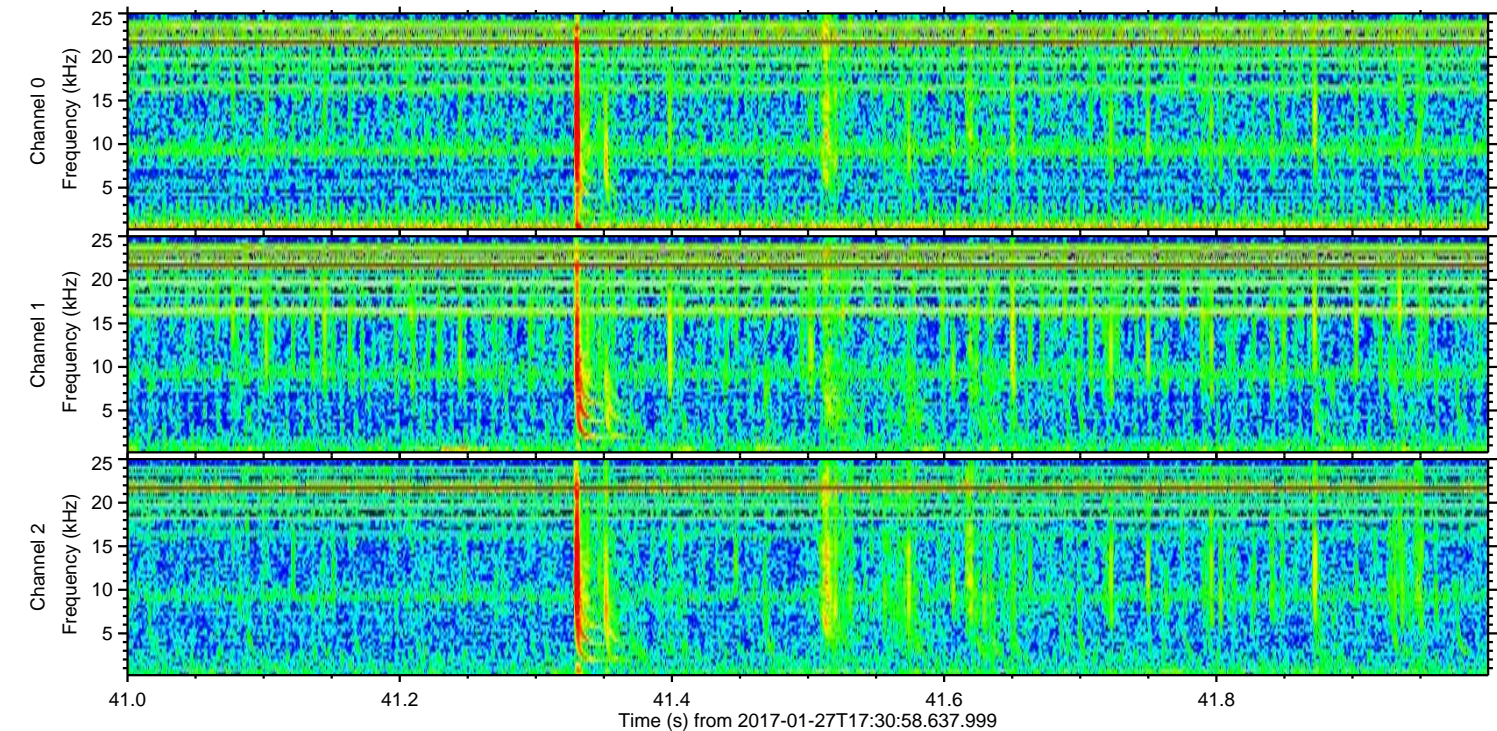
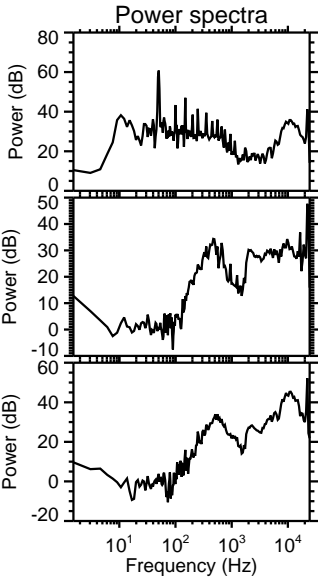
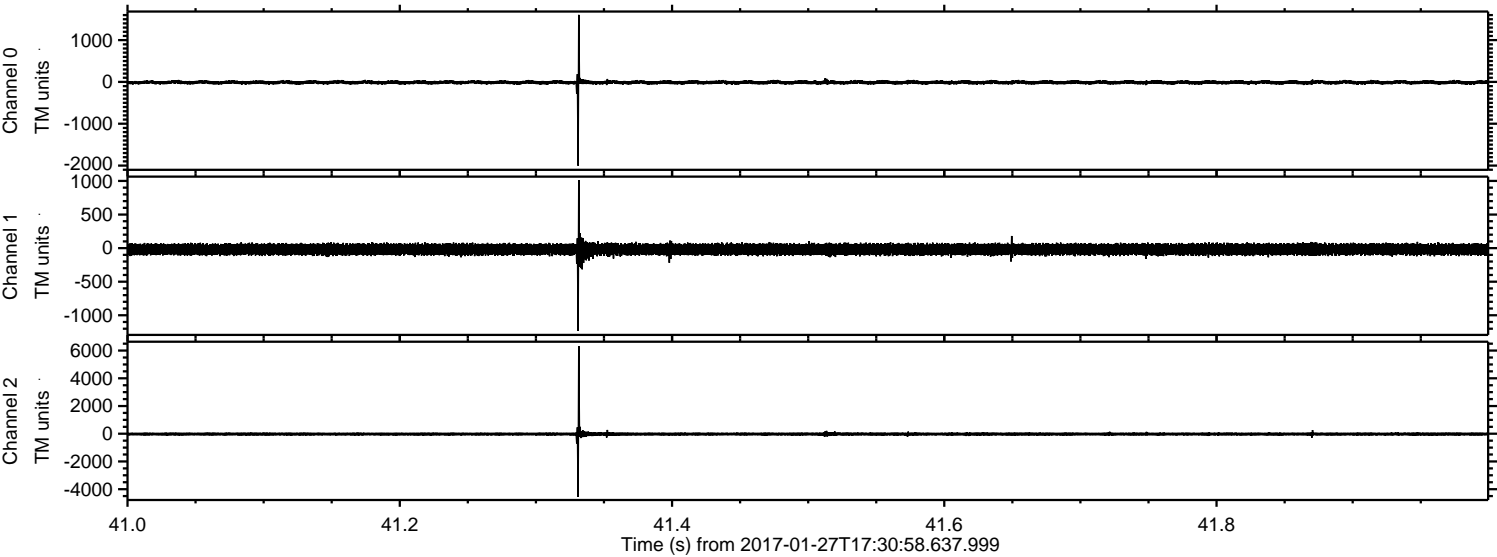
ELMAVAN 3D WAVEFORMS (Measured data sampled at 50 kHz) 51000 packets of 144 samples from 2017-01-27T17:30:58.637.999. Part 83/147

Processed Fri Jan 27 18:39:31 2017 by ELM ver.2012-10-06 from 001__elm20170127_173057__dat00.bin



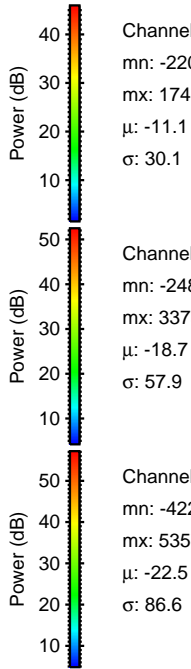
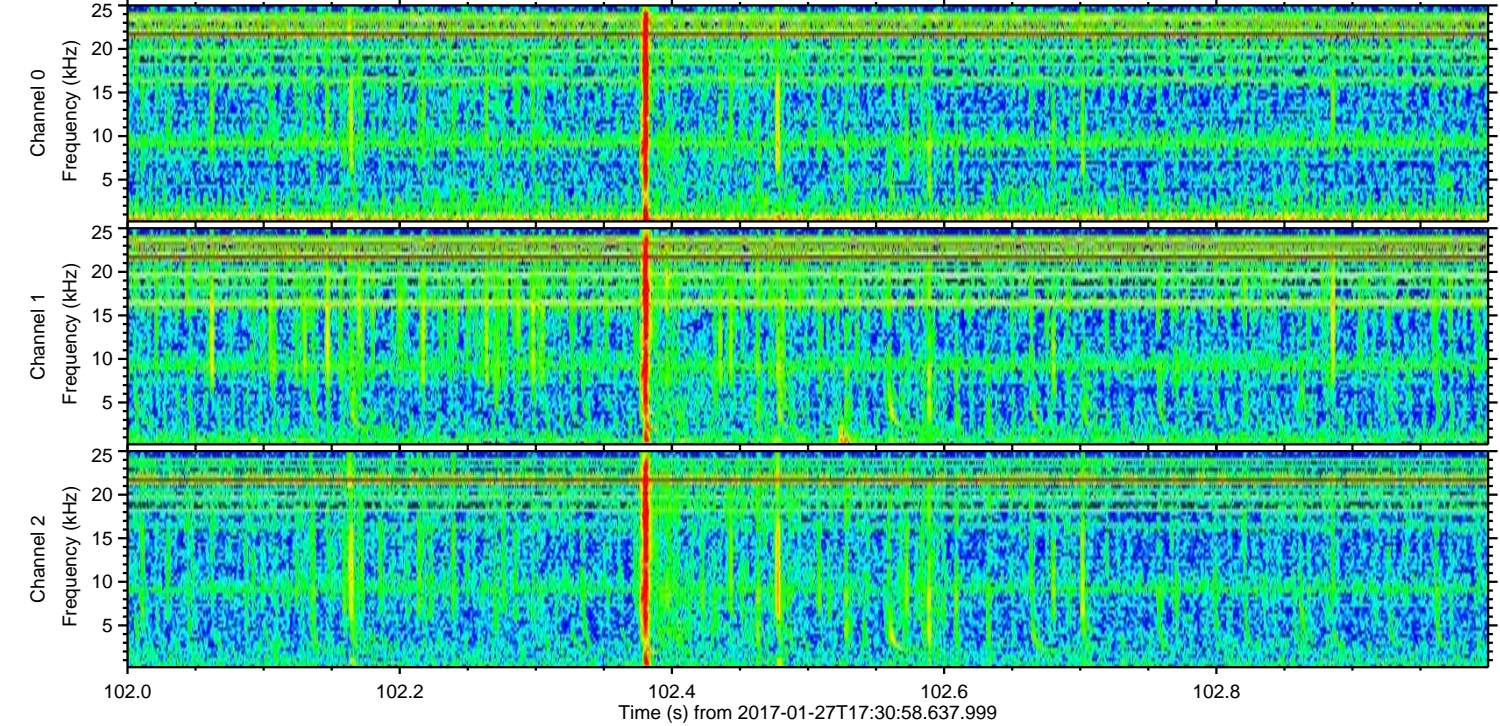
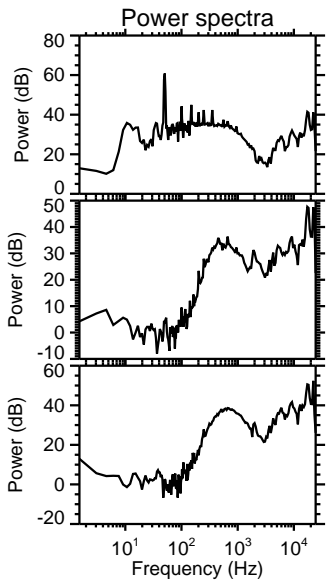
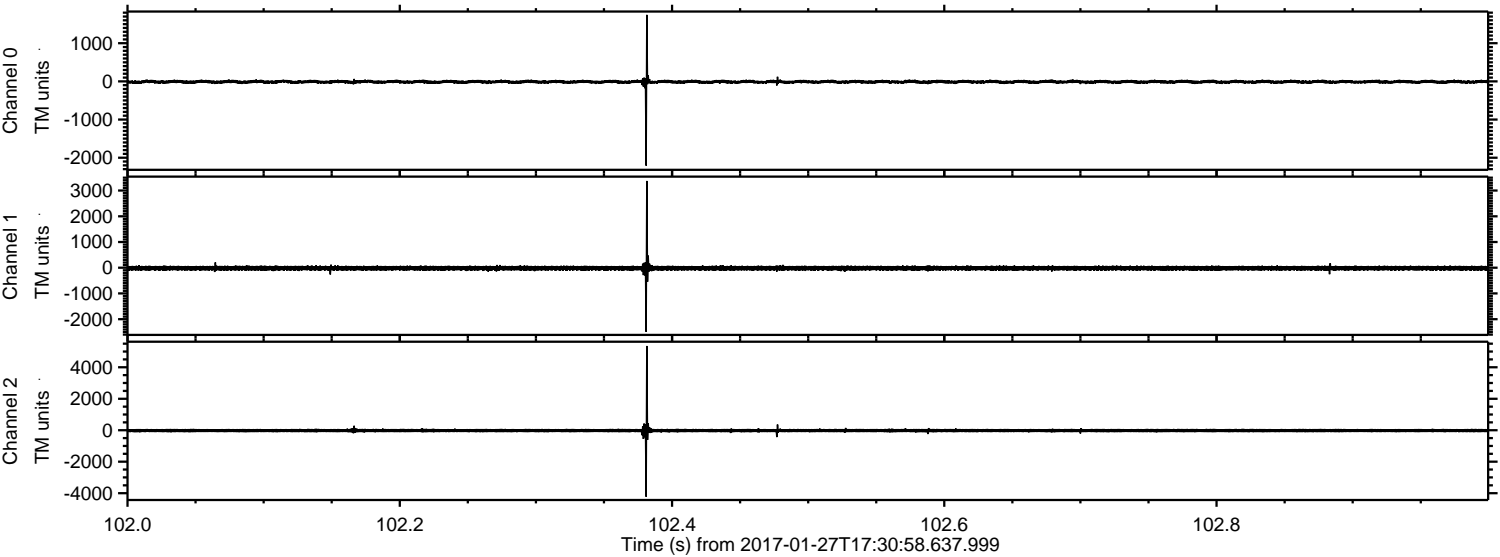
ELMAVAN 3D WAVEFORMS (Measured data sampled at 50 kHz) 51000 packets of 144 samples from 2017-01-27T17:30:58.637.999. Part 42/147

Processed Fri Jan 27 18:39:32 2017 by ELM ver.2012-10-06 from 001__elm20170127_173057__dat00.bin



ELMAVAN 3D WAVEFORMS (Measured data sampled at 50 kHz) 51000 packets of 144 samples from 2017-01-27T17:30:58.637.999. Part 103/147

Processed Fri Jan 27 18:39:33 2017 by ELM ver.2012-10-06 from 001__elm20170127_173057__dat00.bin



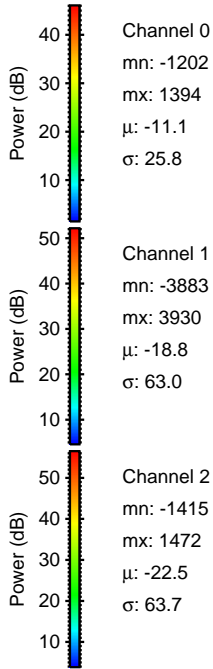
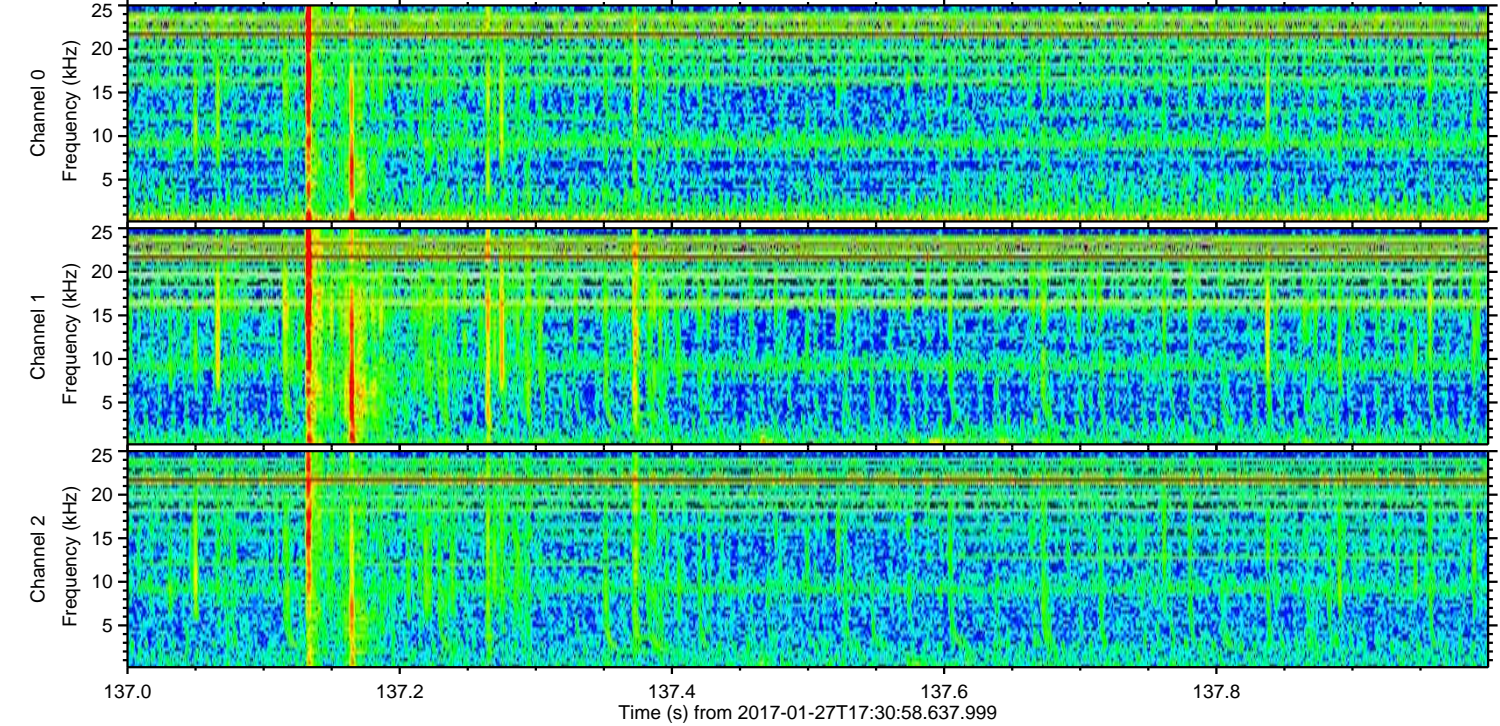
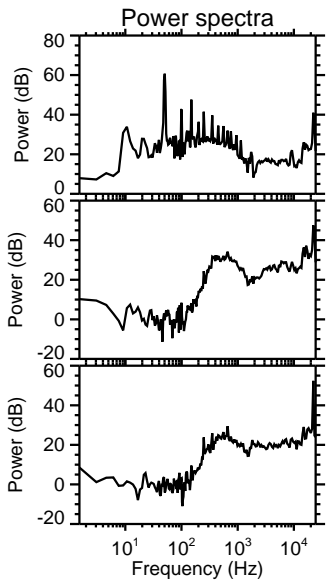
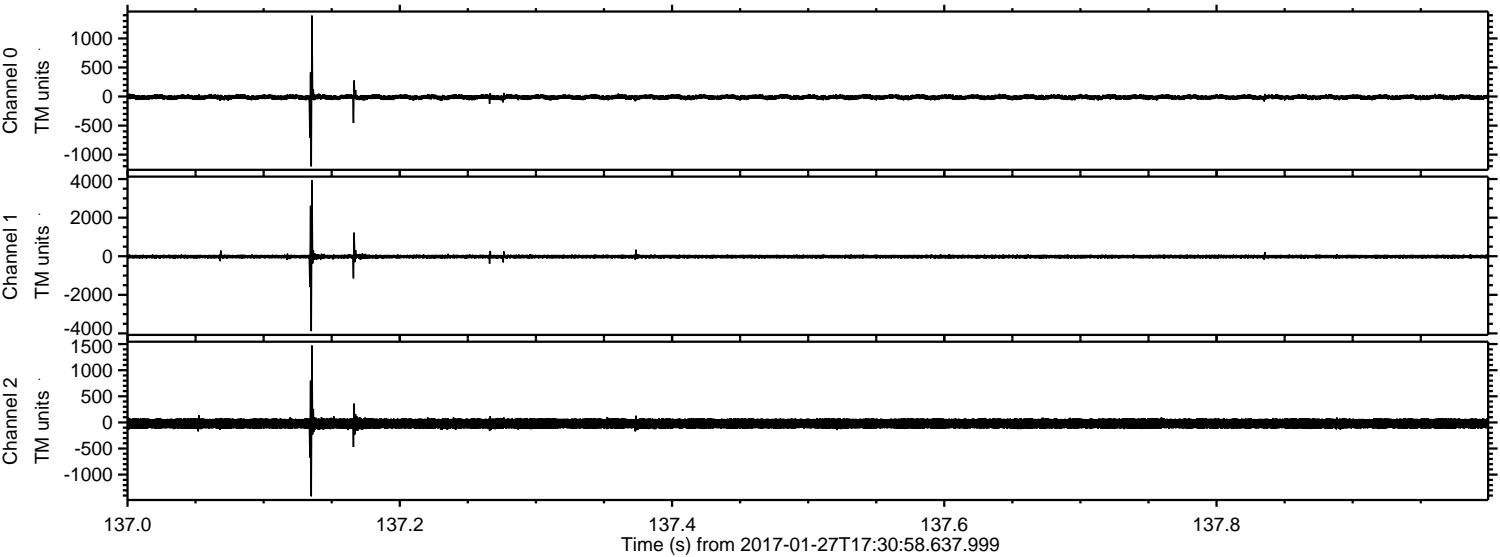
Channel 0
mn: -2207
mx: 1743
 μ : -11.1
 σ : 30.1

Channel 1
mn: -2488
mx: 3373
 μ : -18.7
 σ : 57.9

Channel 2
mn: -4223
mx: 5357
 μ : -22.5
 σ : 86.6

ELMAVAN 3D WAVEFORMS (Measured data sampled at 50 kHz) 51000 packets of 144 samples from 2017-01-27T17:30:58.637.999. Part 138/147

Processed Fri Jan 27 18:39:34 2017 by ELM ver.2012-10-06 from 001__elm20170127_173057__dat00.bin

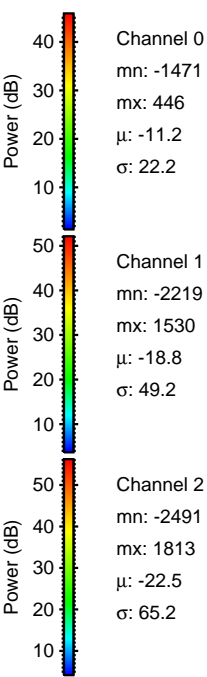
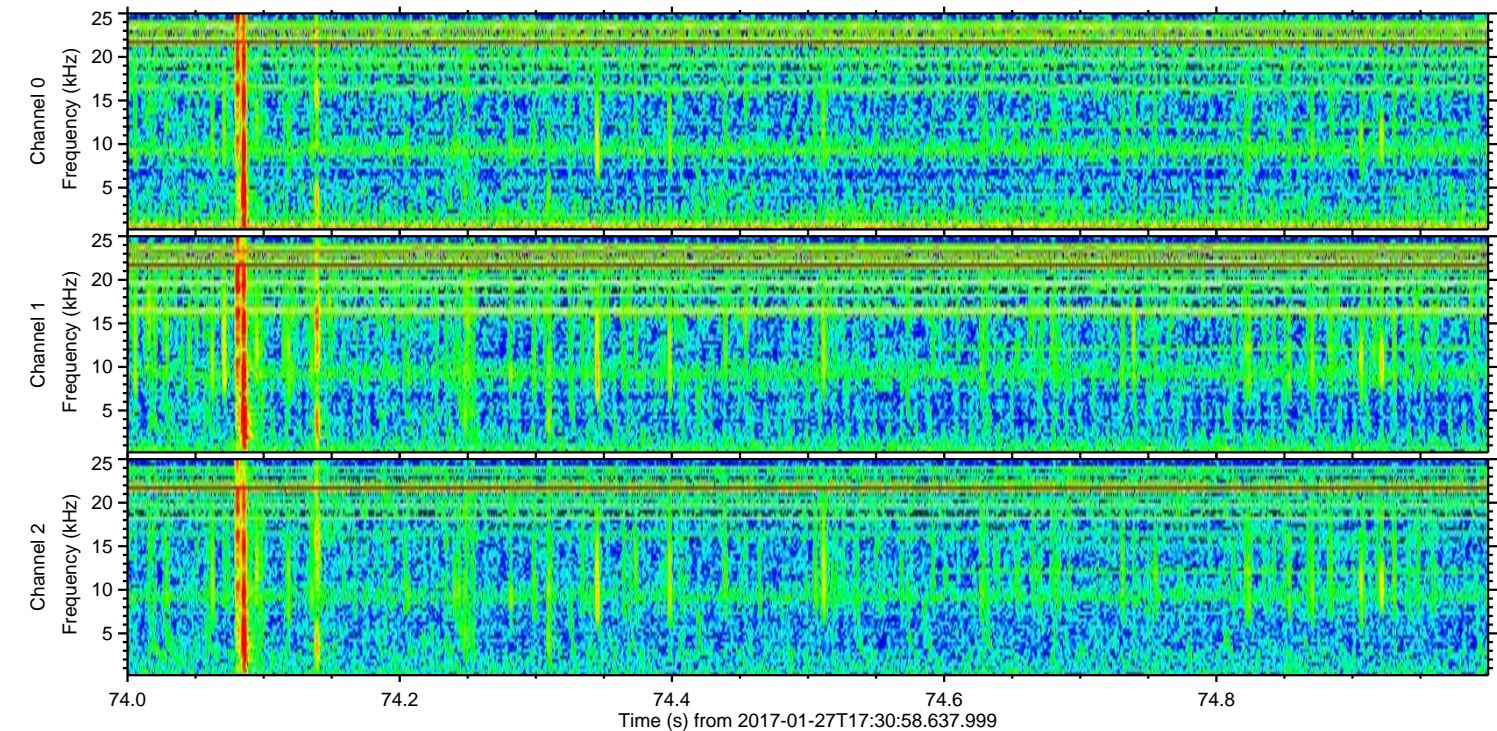
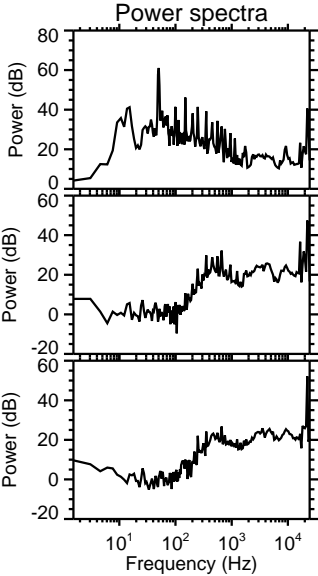
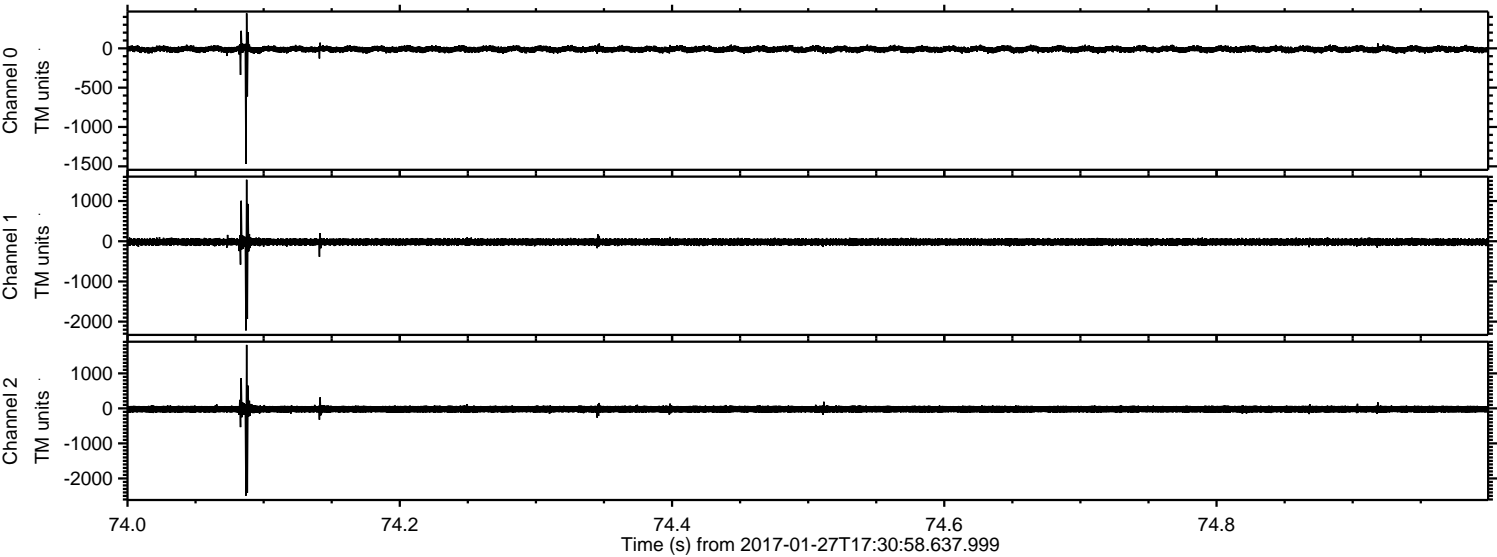


Channel 0
mn: -1202
mx: 1394
 μ : -11.1
 σ : 25.8

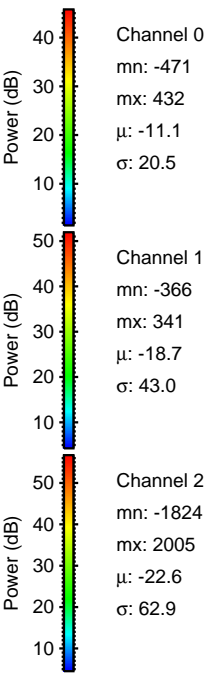
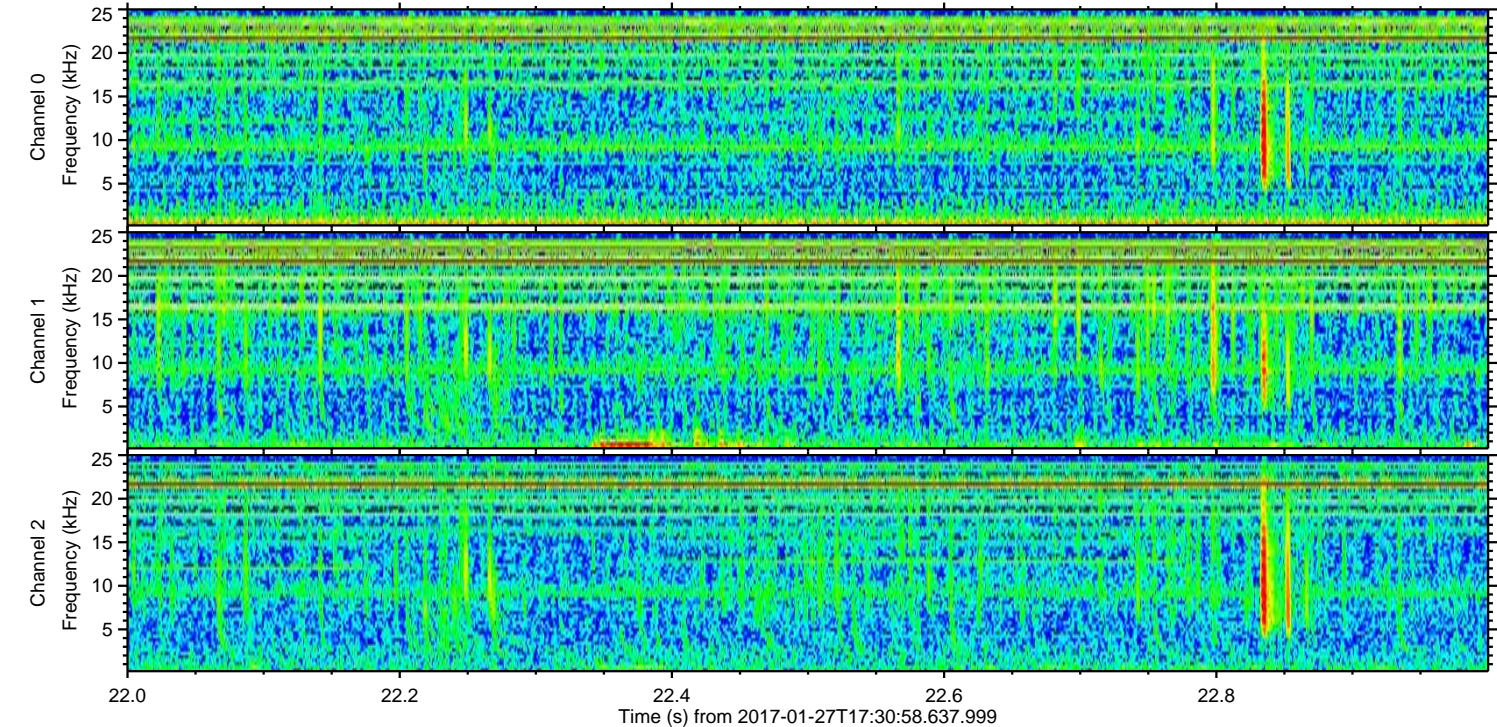
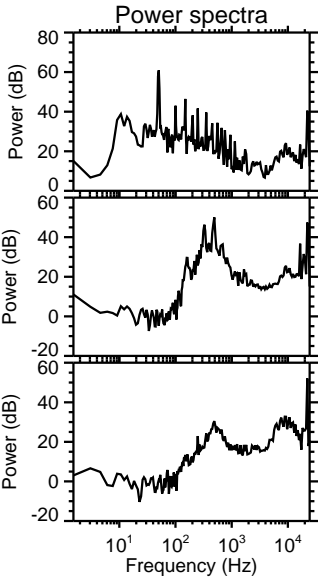
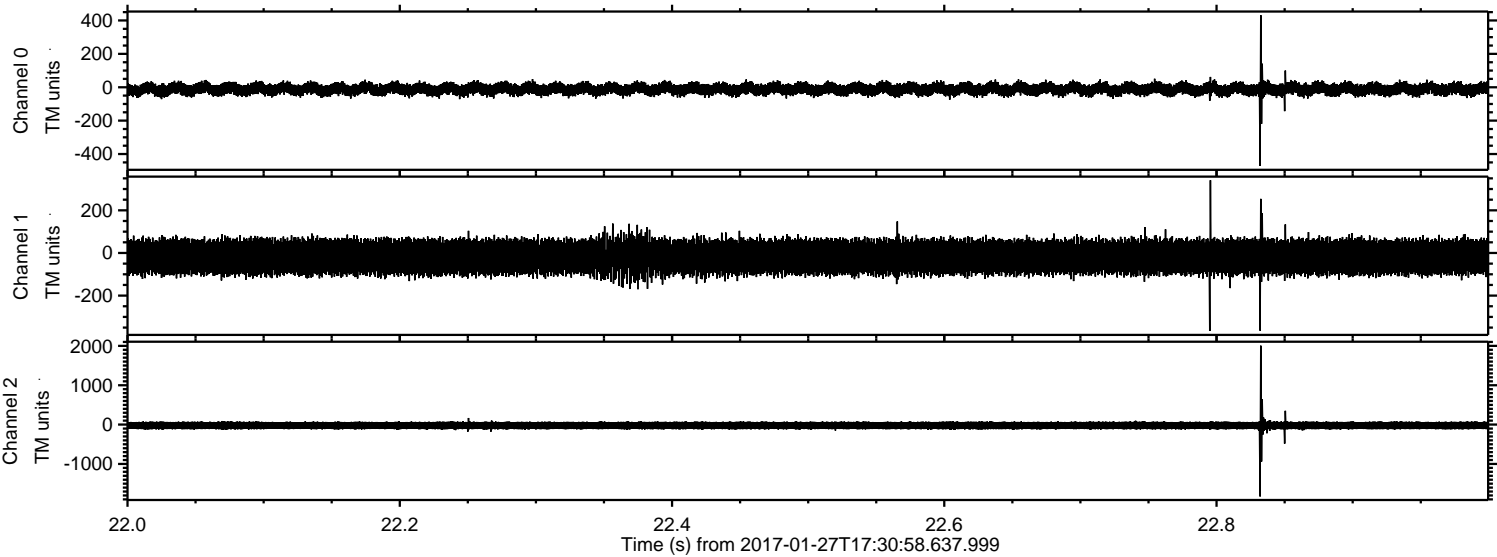
Channel 1
mn: -3883
mx: 3930
 μ : -18.8
 σ : 63.0

Channel 2
mn: -1415
mx: 1472
 μ : -22.5
 σ : 63.7

Processed Fri Jan 27 18:39:35 2017 by ELM ver.2012-10-06 from 001__elm20170127_173057__dat00.bin

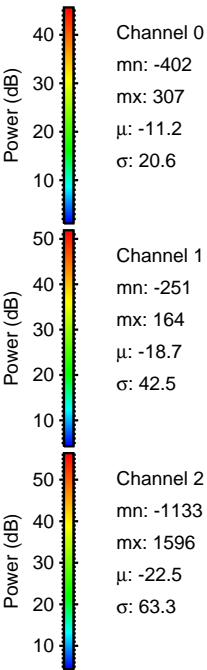
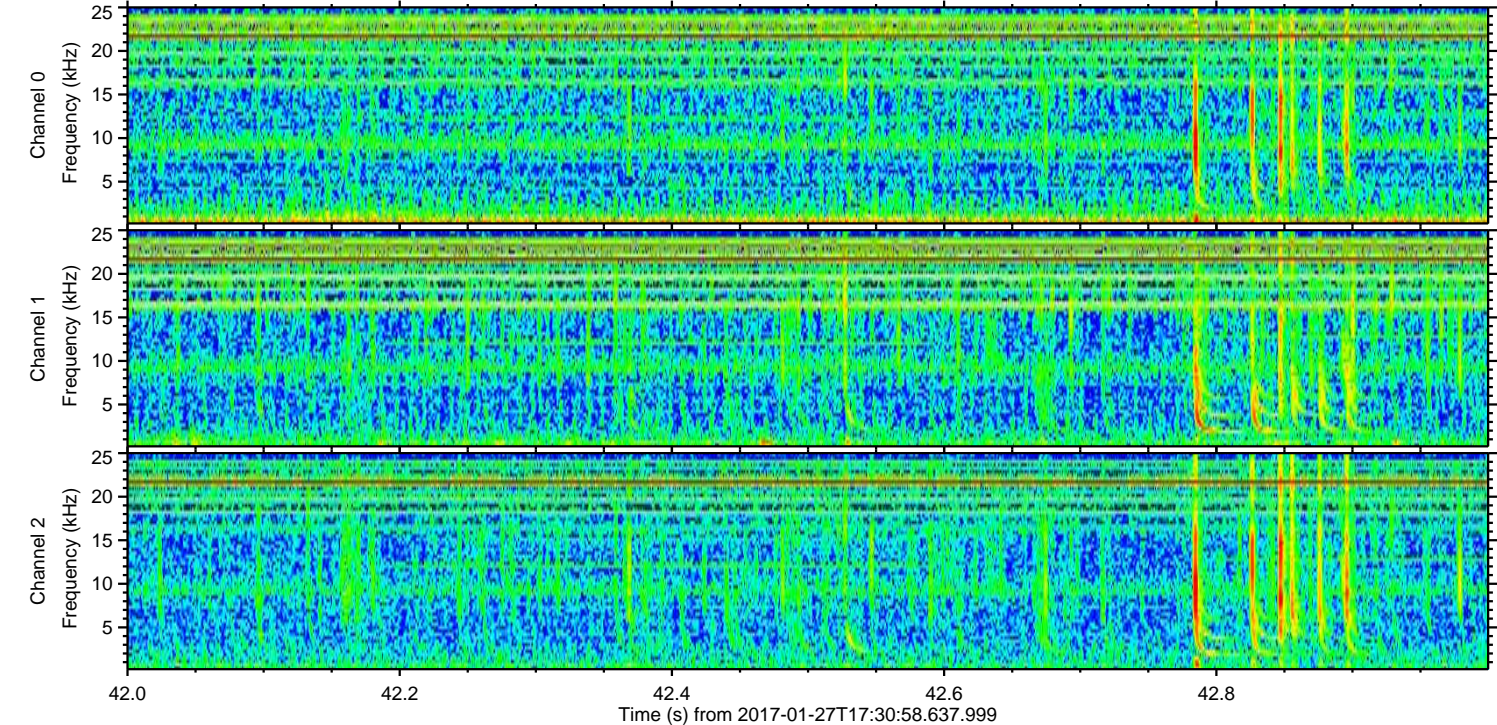
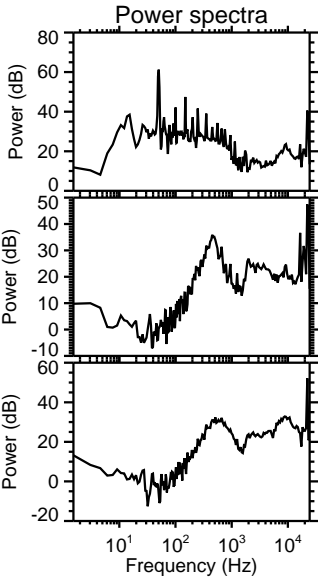
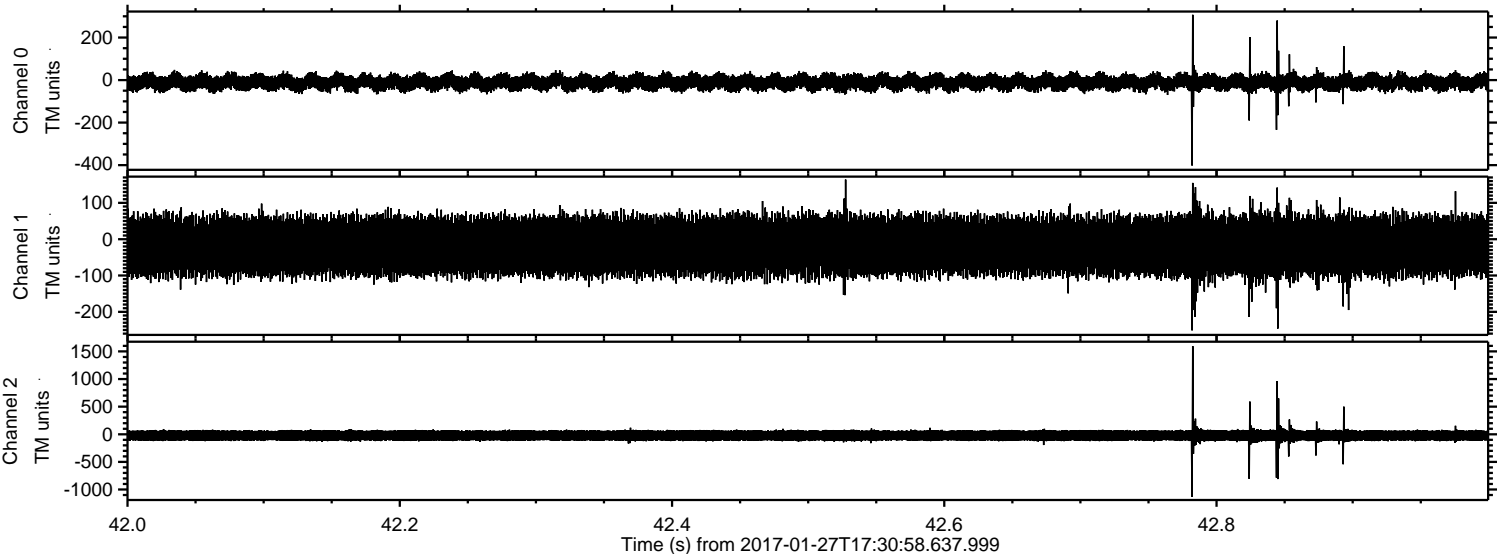


Processed Fri Jan 27 18:39:36 2017 by ELM ver.2012-10-06 from 001__elm20170127_173057__dat00.bin



ELMAVAN 3D WAVEFORMS (Measured data sampled at 50 kHz) 51000 packets of 144 samples from 2017-01-27T17:30:58.637.999. Part 43/147

Processed Fri Jan 27 18:39:37 2017 by ELM ver.2012-10-06 from 001__elm20170127_173057__dat00.bin

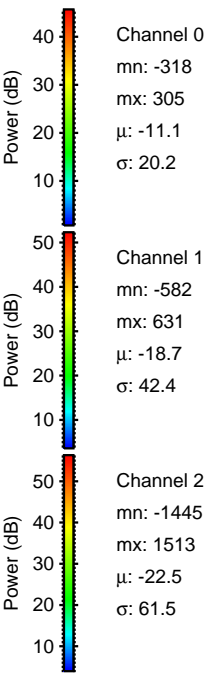
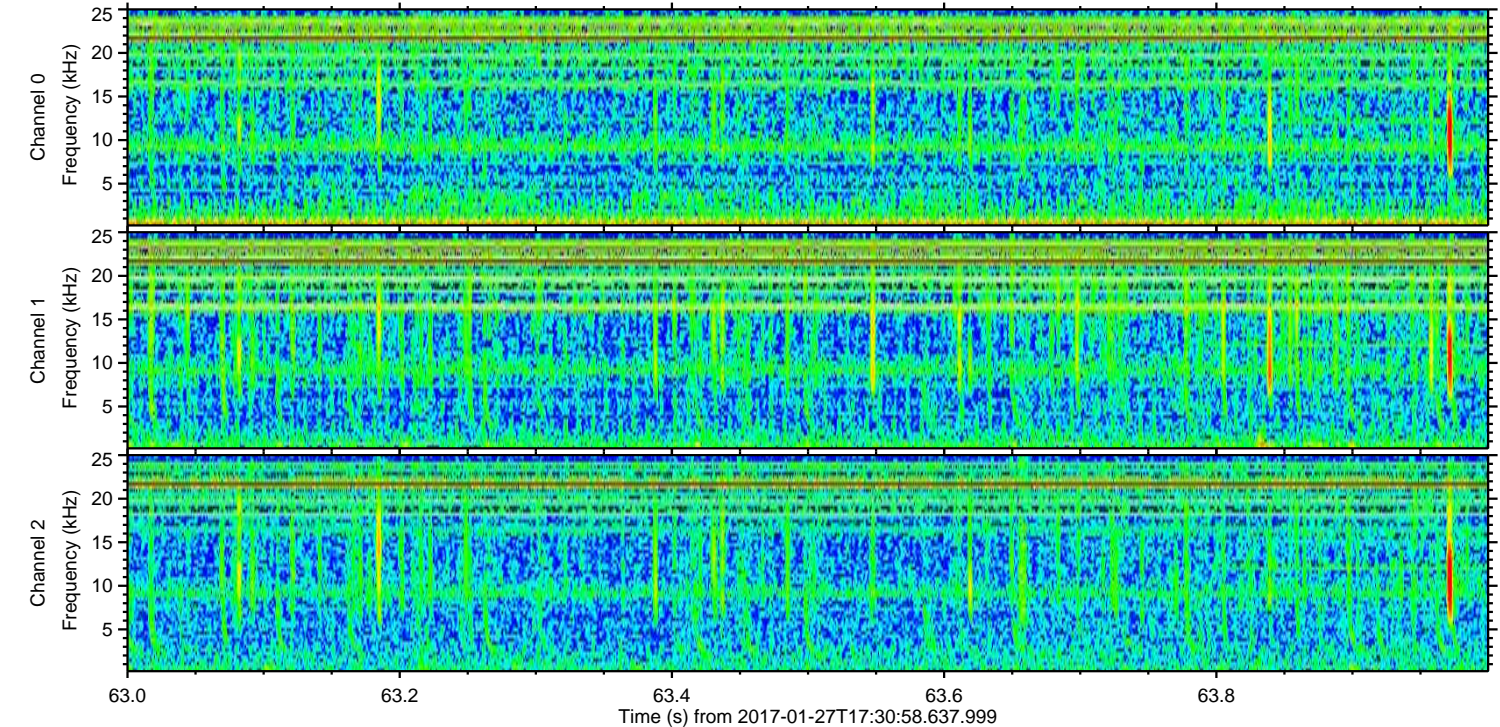
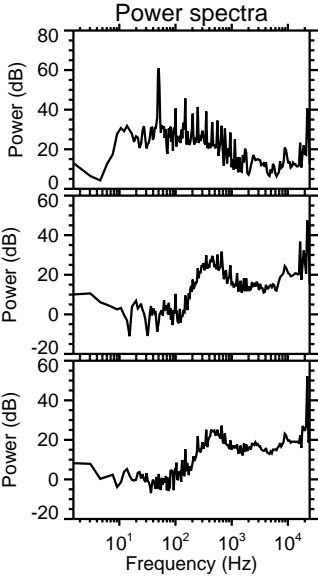
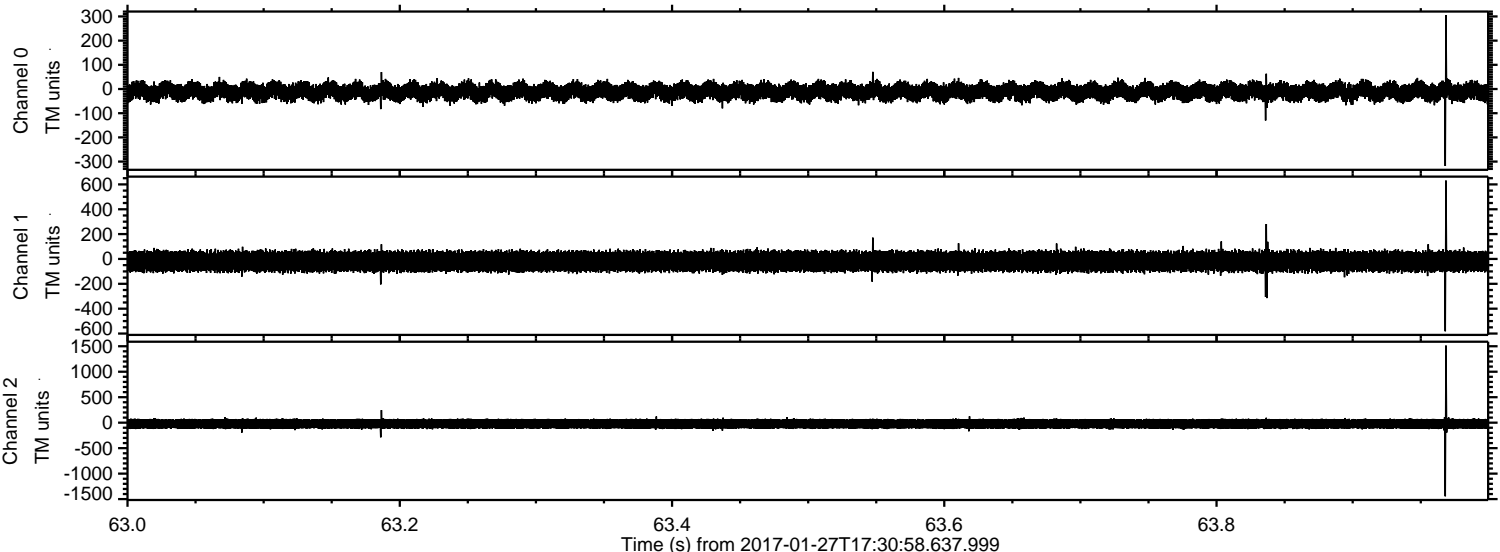


Channel 0
mn: -402
mx: 307
 μ : -11.2
 σ : 20.6

Channel 1
mn: -251
mx: 164
 μ : -18.7
 σ : 42.5

Channel 2
mn: -1133
mx: 1596
 μ : -22.5
 σ : 63.3

Processed Fri Jan 27 18:39:38 2017 by ELM ver.2012-10-06 from 001__elm20170127_173057__dat00.bin



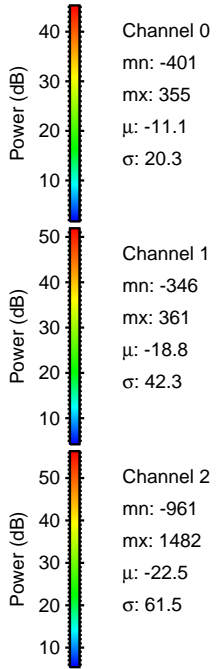
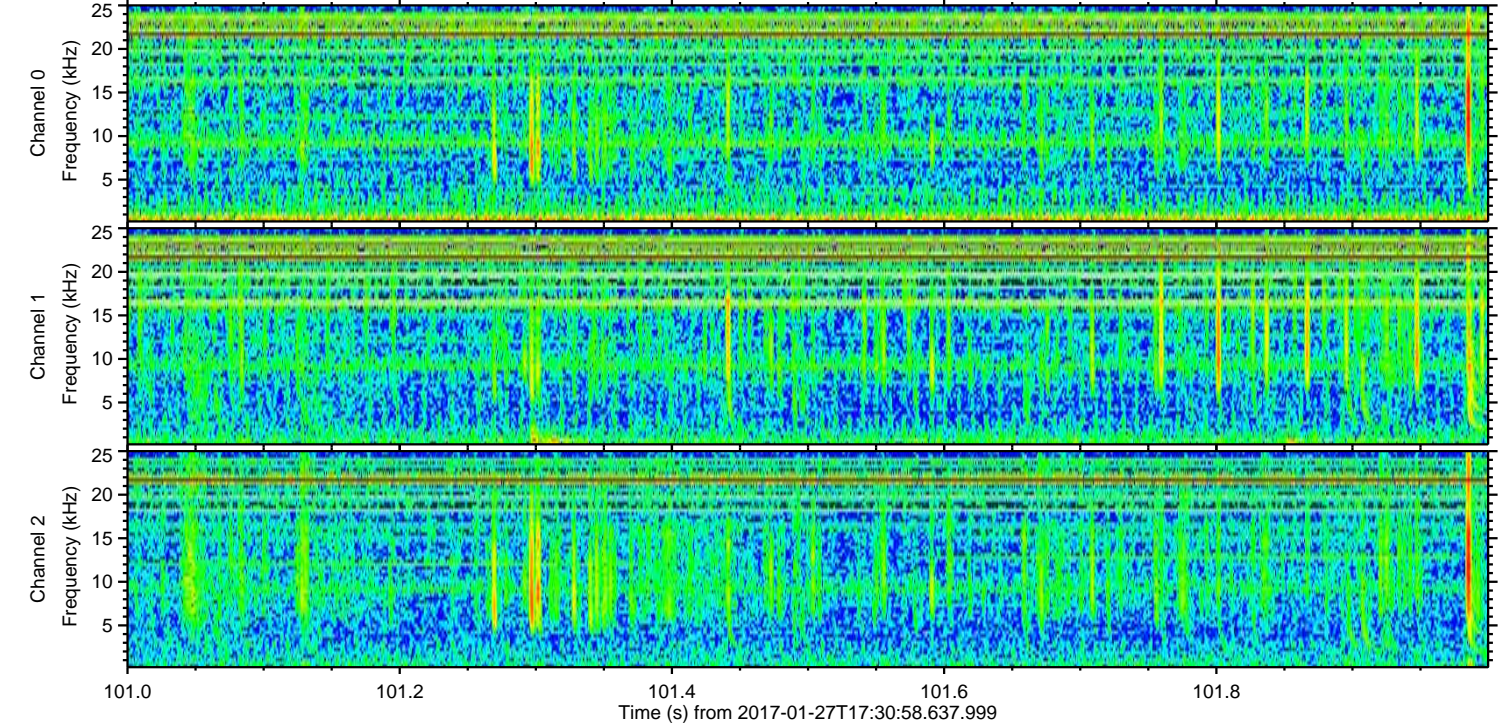
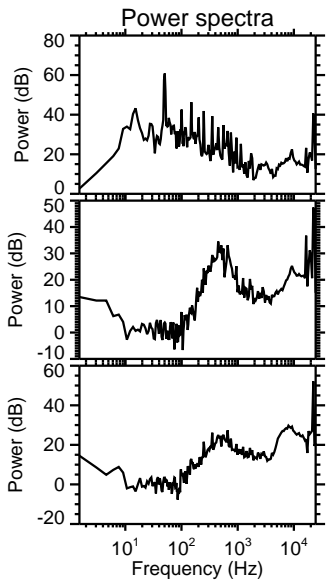
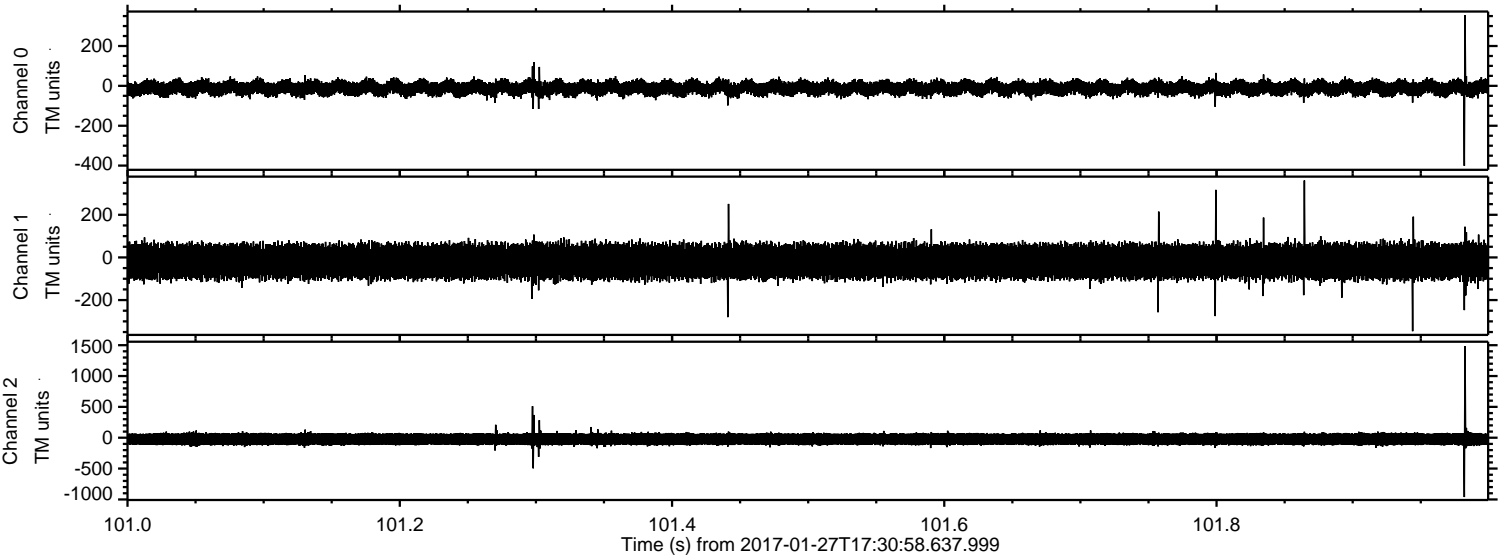
Channel 0
mn: -318
mx: 305
 μ : -11.1
 σ : 20.2

Channel 1
mn: -582
mx: 631
 μ : -18.7
 σ : 42.4

Channel 2
mn: -1445
mx: 1513
 μ : -22.5
 σ : 61.5

ELMAVAN 3D WAVEFORMS (Measured data sampled at 50 kHz) 51000 packets of 144 samples from 2017-01-27T17:30:58.637.999. Part 102/147

Processed Fri Jan 27 18:39:39 2017 by ELM ver.2012-10-06 from 001__elm20170127_173057__dat00.bin



Processed Fri Jan 27 18:39:40 2017 by ELM ver.2012-10-06 from 001__elm20170127_173057__dat00.bin

