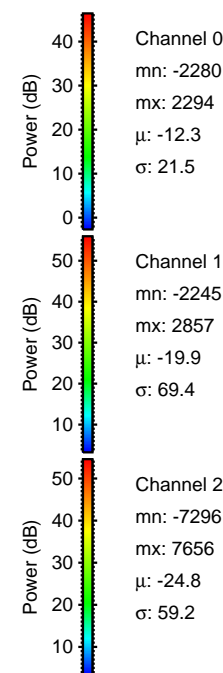
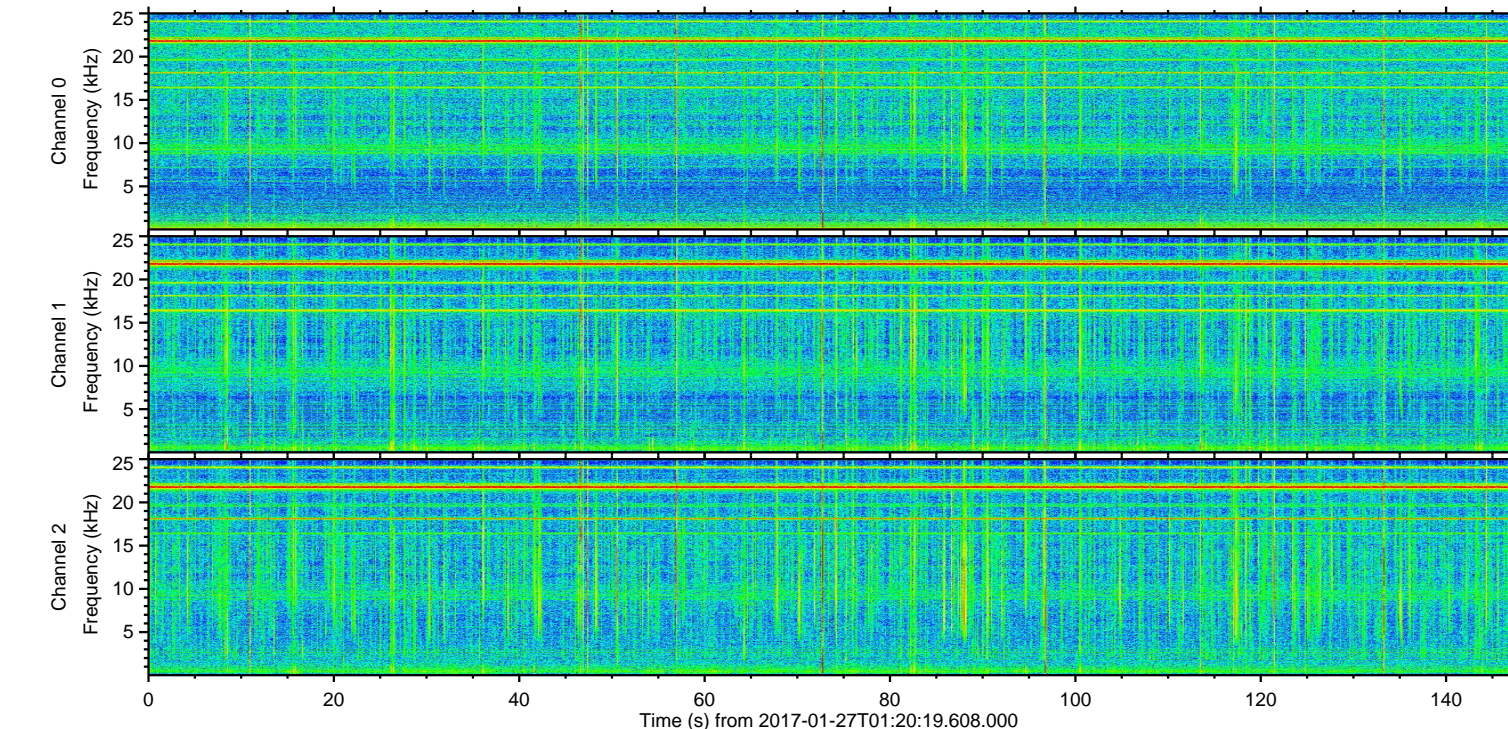
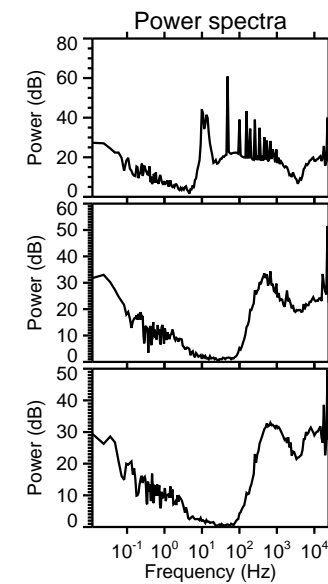
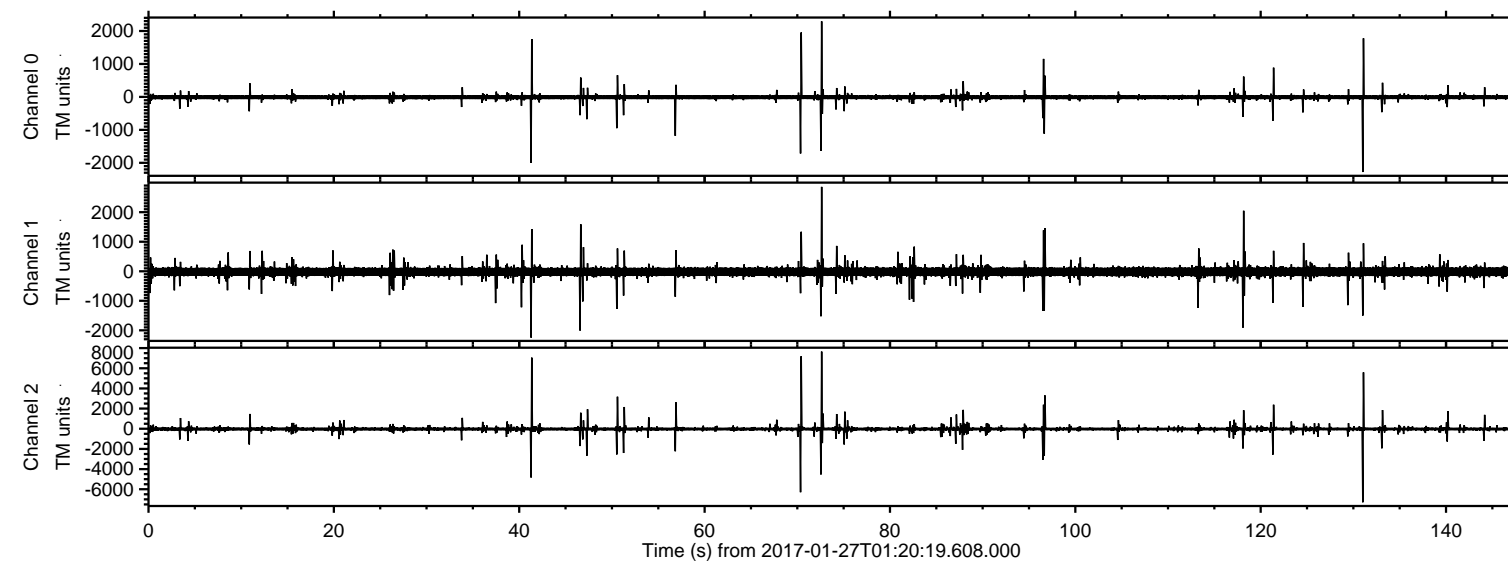


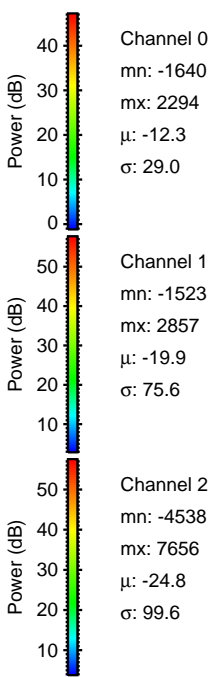
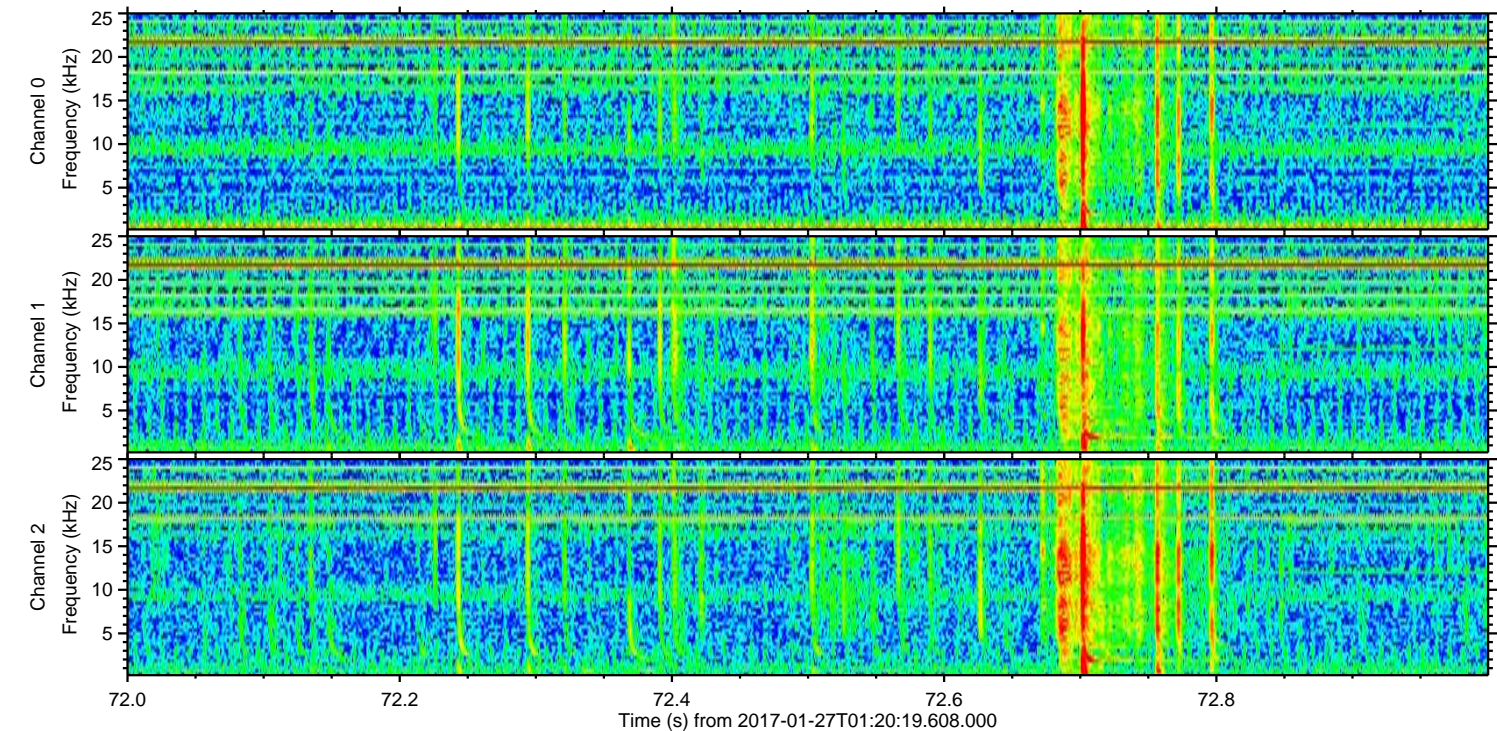
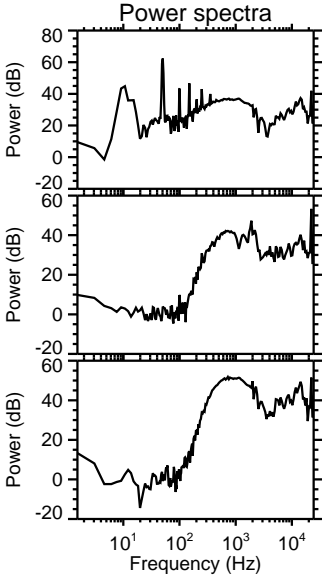
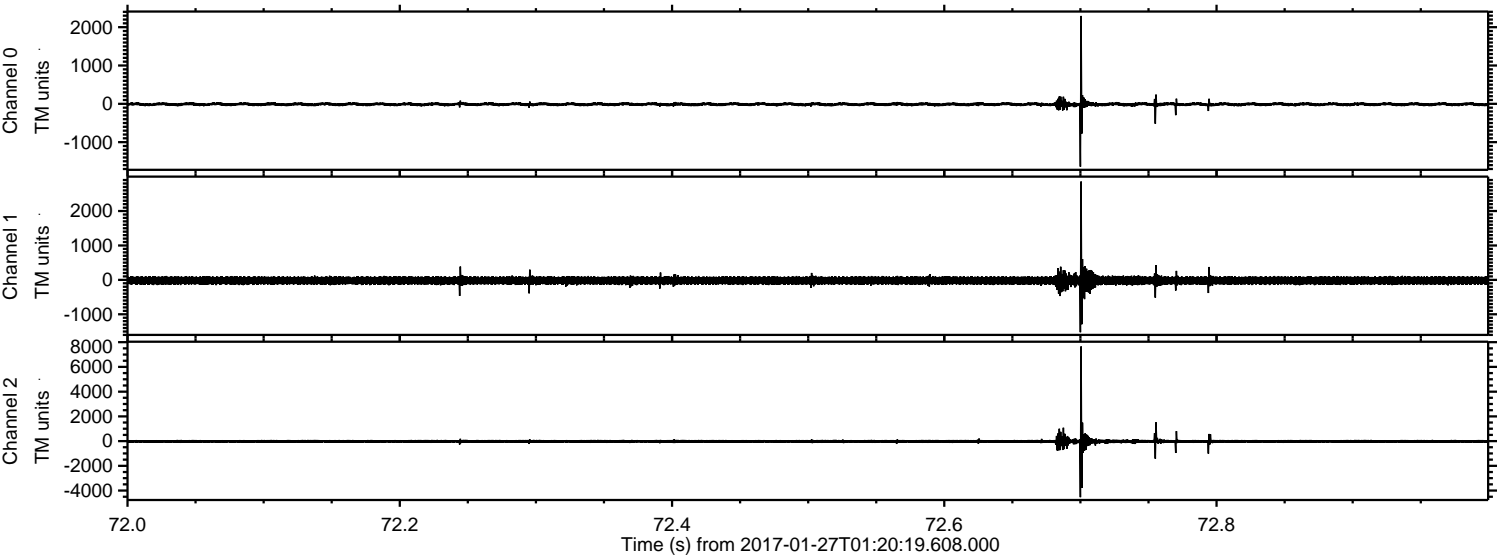
# ELMAVAN 3D WAVEFORMS (Measured data sampled at 50 kHz) 51000 packets of 144 samples from 2017-01-27T01:20:19.608.000.

Processed Fri Jan 27 02:27:44 2017 by ELM ver.2012-10-06 from 001\_\_elm20170127\_012018\_\_dat00.bin





Processed Fri Jan 27 02:27:56 2017 by ELM ver.2012-10-06 from 001\_\_elm20170127\_012018\_\_dat00.bin



Channel 0  
mn: -1640  
mx: 2294  
 $\mu$ : -12.3  
 $\sigma$ : 29.0

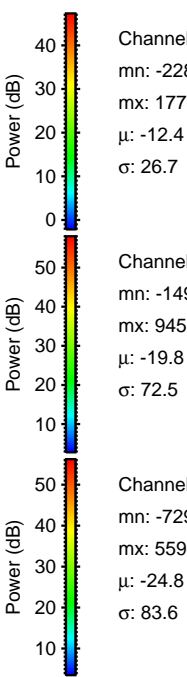
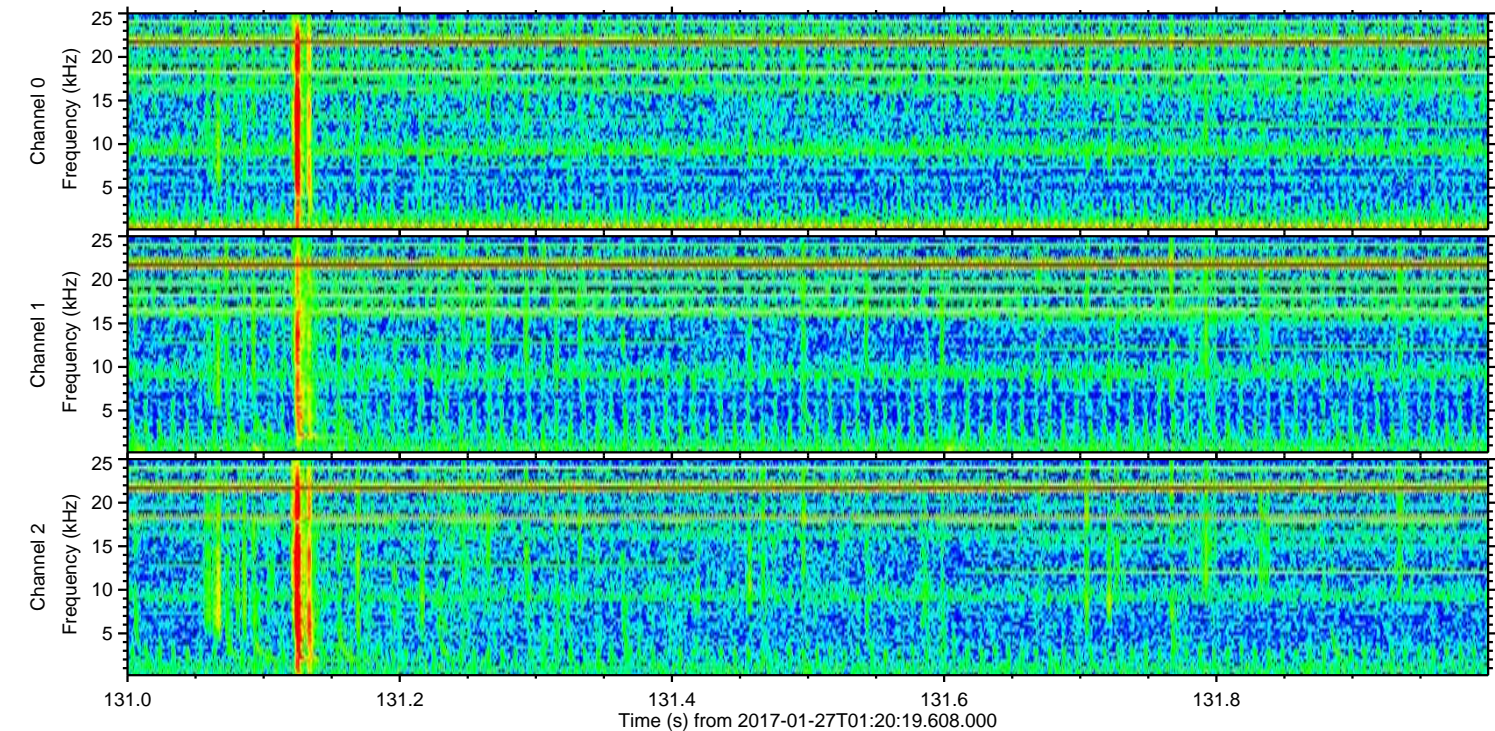
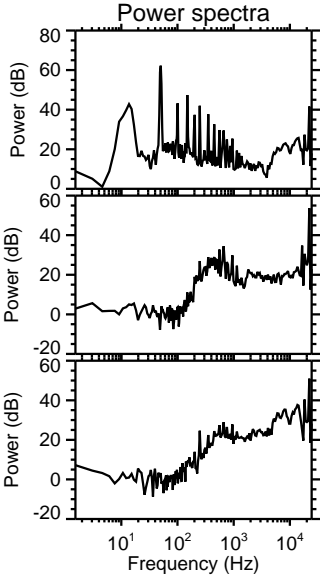
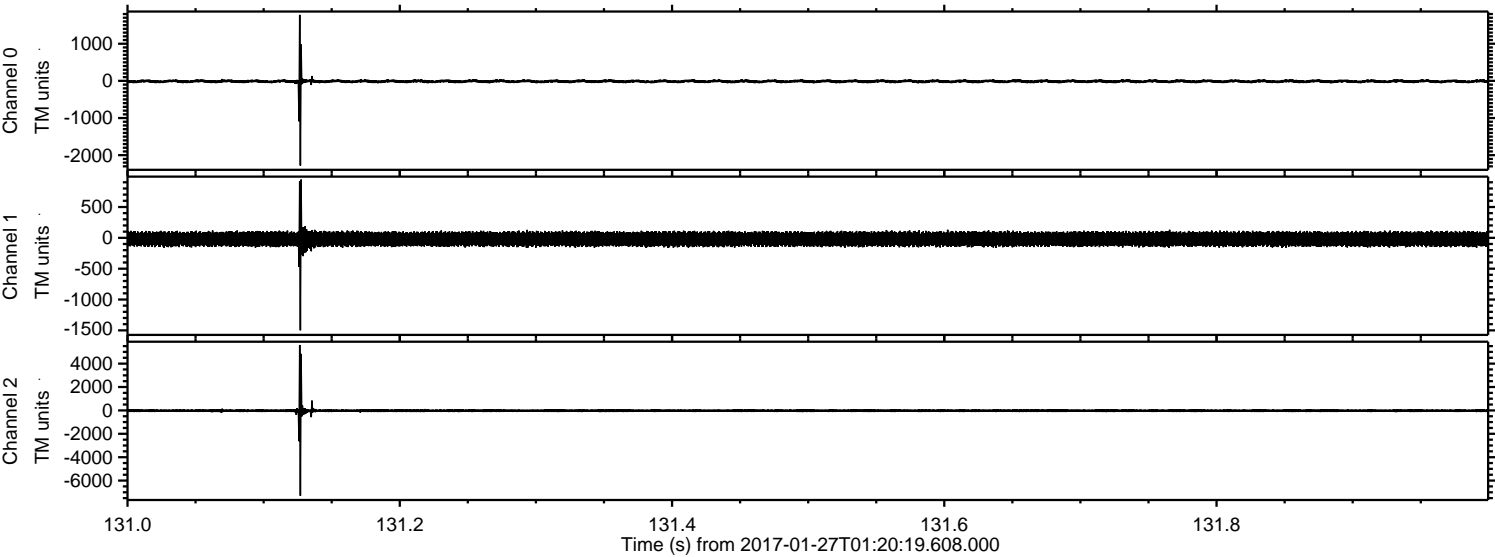
Channel 1  
mn: -1523  
mx: 2857  
 $\mu$ : -19.9  
 $\sigma$ : 75.6

Channel 2  
mn: -4538  
mx: 7656  
 $\mu$ : -24.8  
 $\sigma$ : 99.6



ELMAVAN 3D WAVEFORMS (Measured data sampled at 50 kHz) 51000 packets of 144 samples from 2017-01-27T01:20:19.608.000. Part 132/147

Processed Fri Jan 27 02:27:57 2017 by ELM ver.2012-10-06 from 001\_\_elm20170127\_012018\_\_dat00.bin



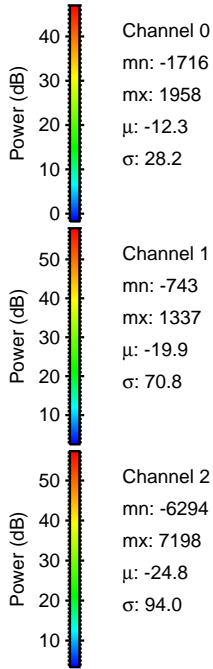
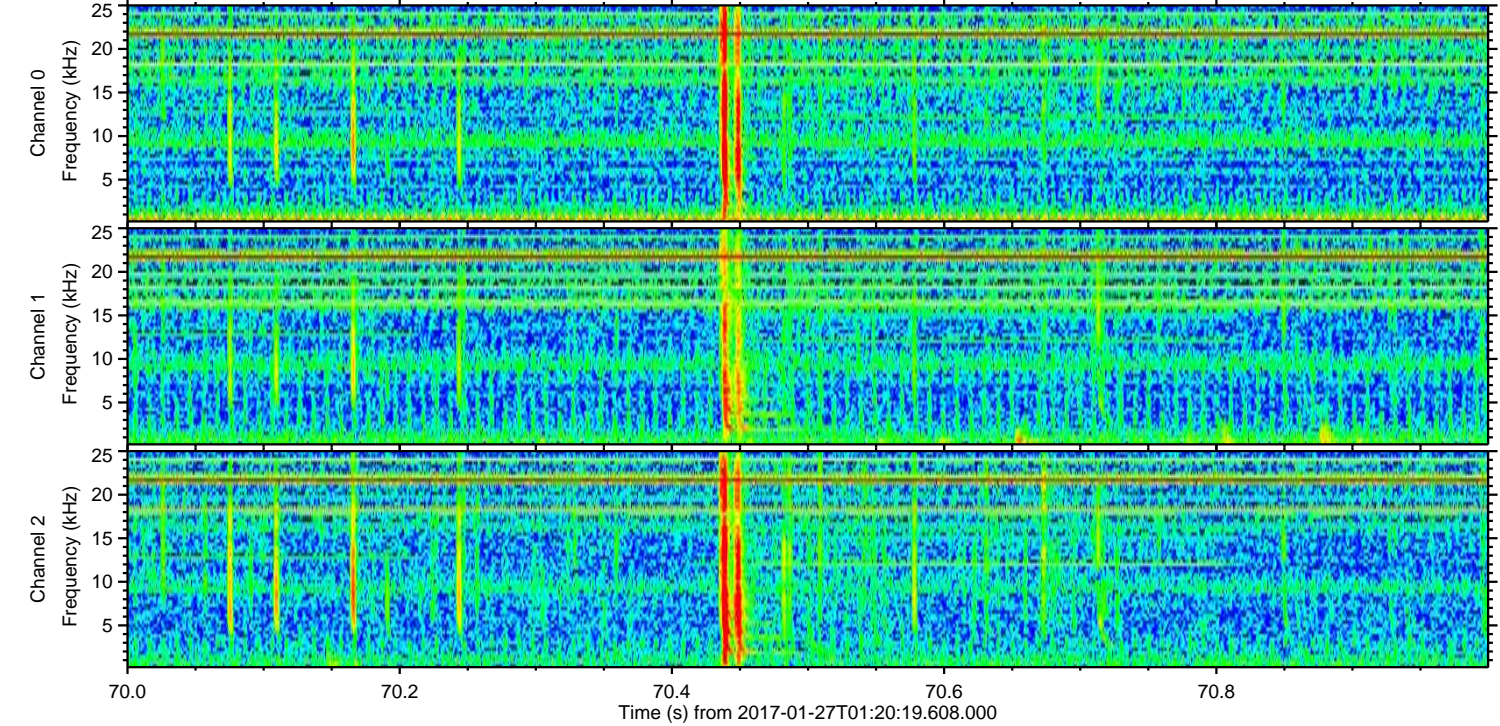
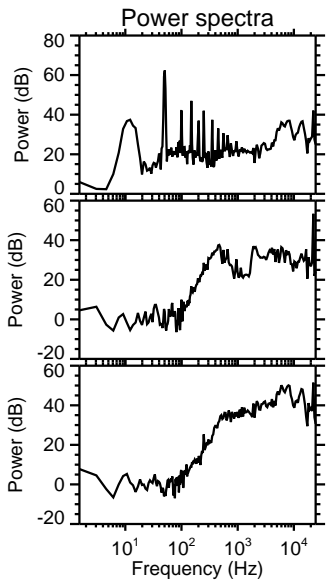
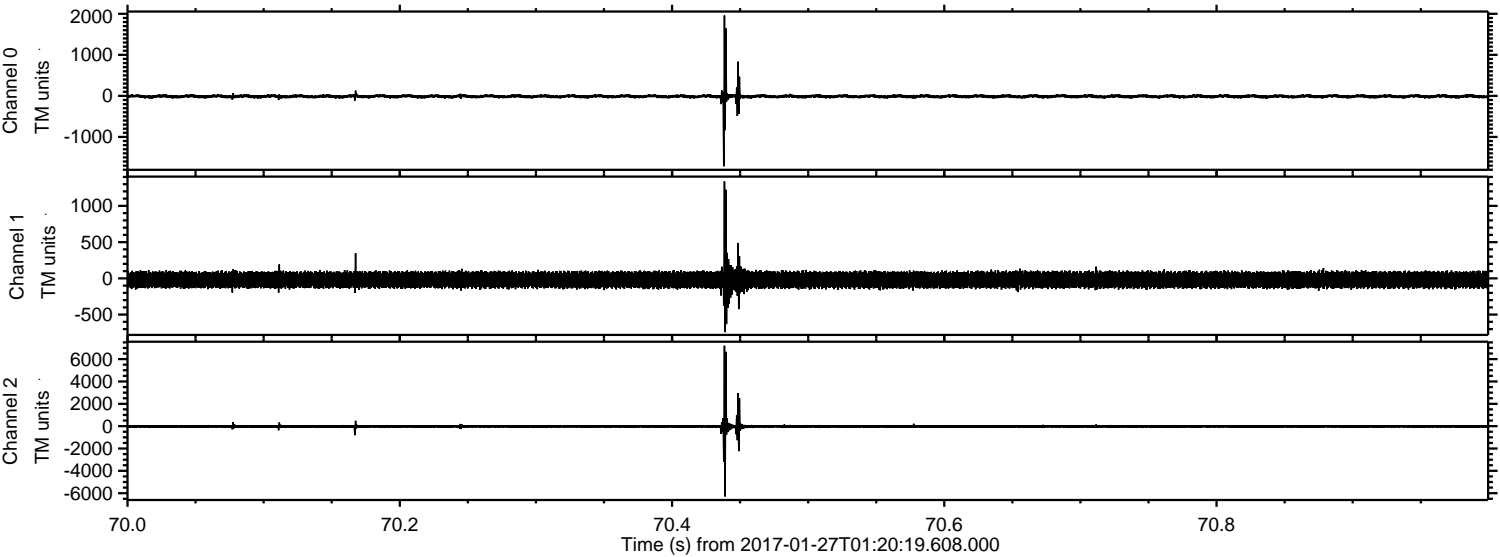
Channel 0  
mn: -2280  
mx: 1778  
 $\mu$ : -12.4  
 $\sigma$ : 26.7

Channel 1  
mn: -1499  
mx: 945  
 $\mu$ : -19.8  
 $\sigma$ : 72.5

Channel 2  
mn: -7296  
mx: 5594  
 $\mu$ : -24.8  
 $\sigma$ : 83.6

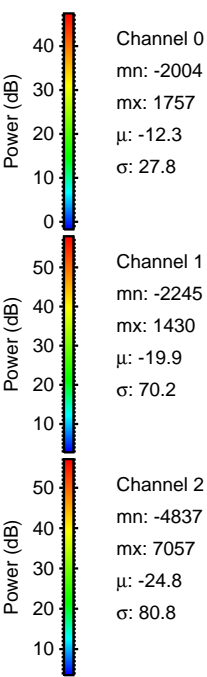
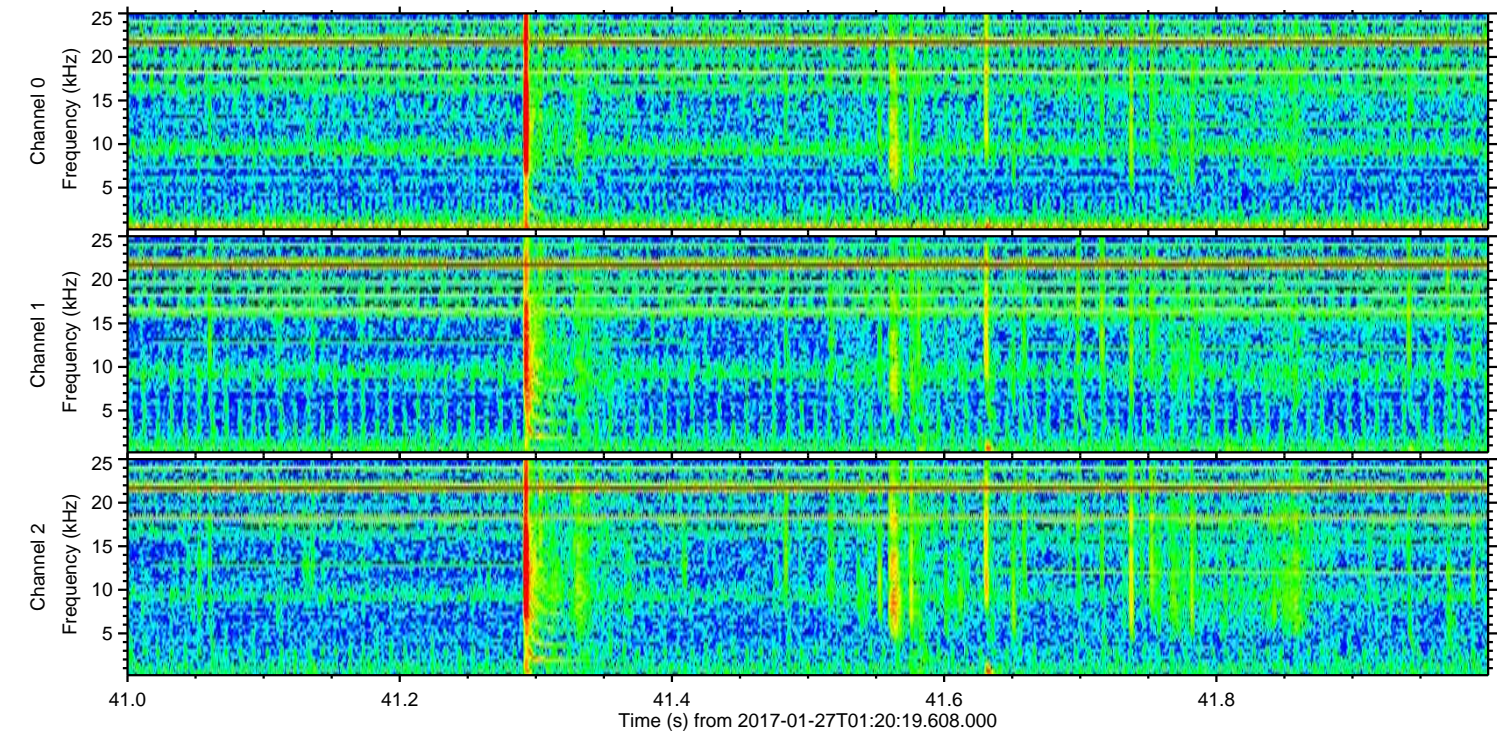
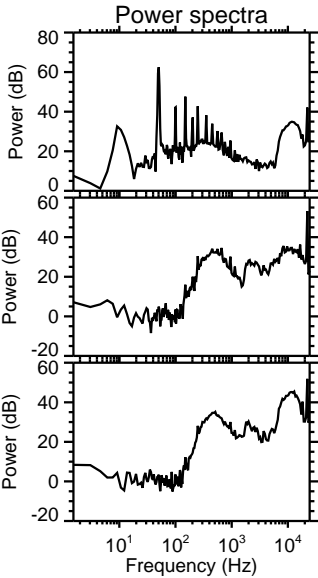
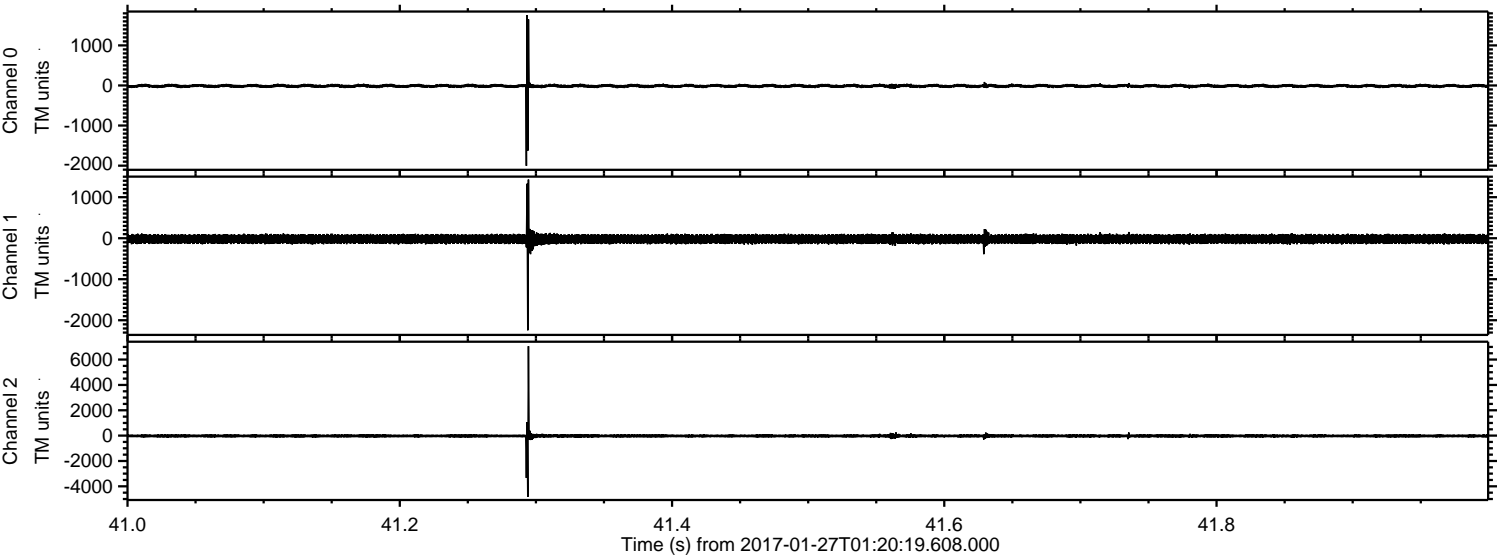


Processed Fri Jan 27 02:27:58 2017 by ELM ver.2012-10-06 from 001\_\_elm20170127\_012018\_\_dat00.bin





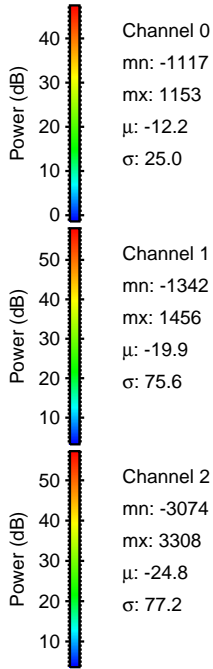
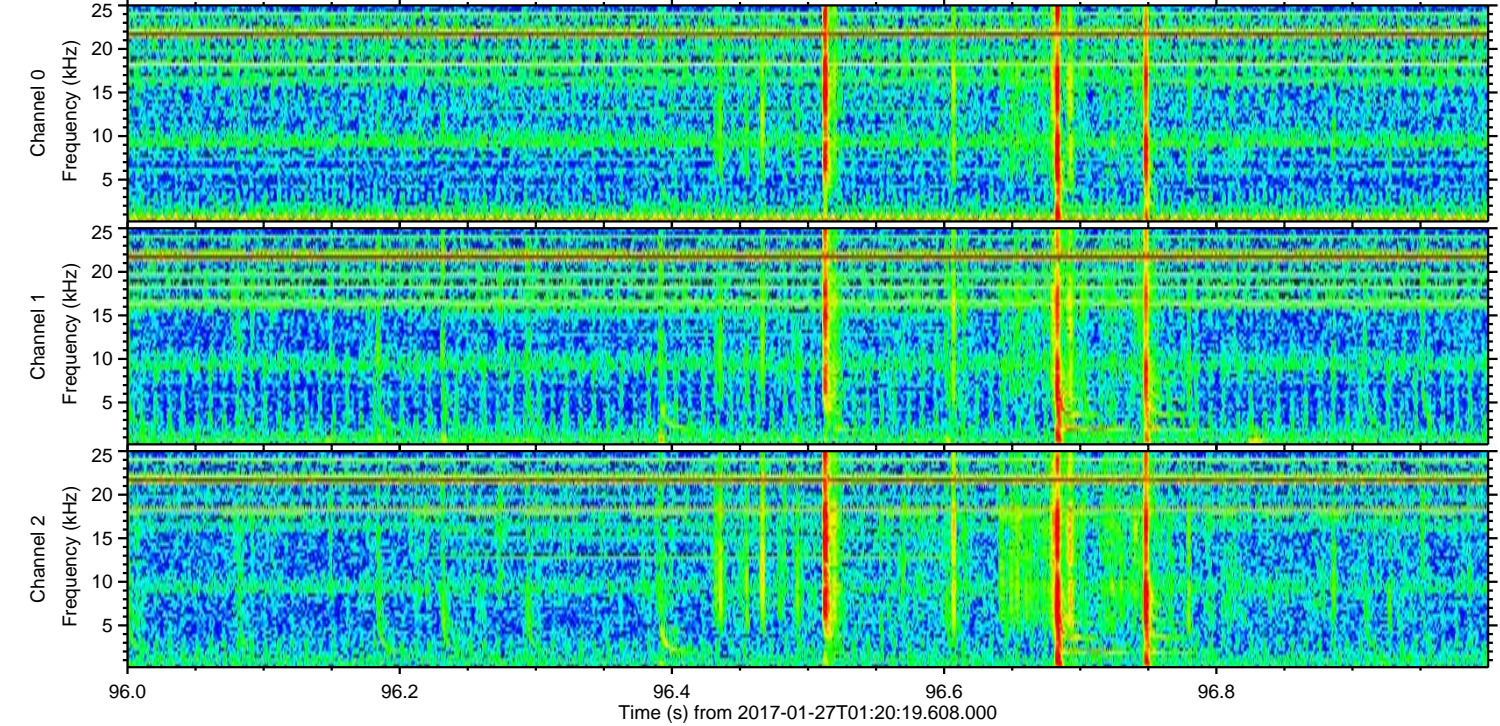
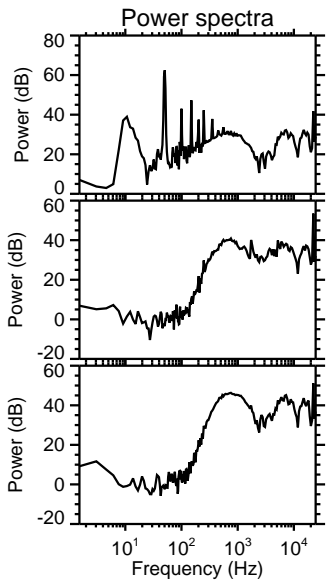
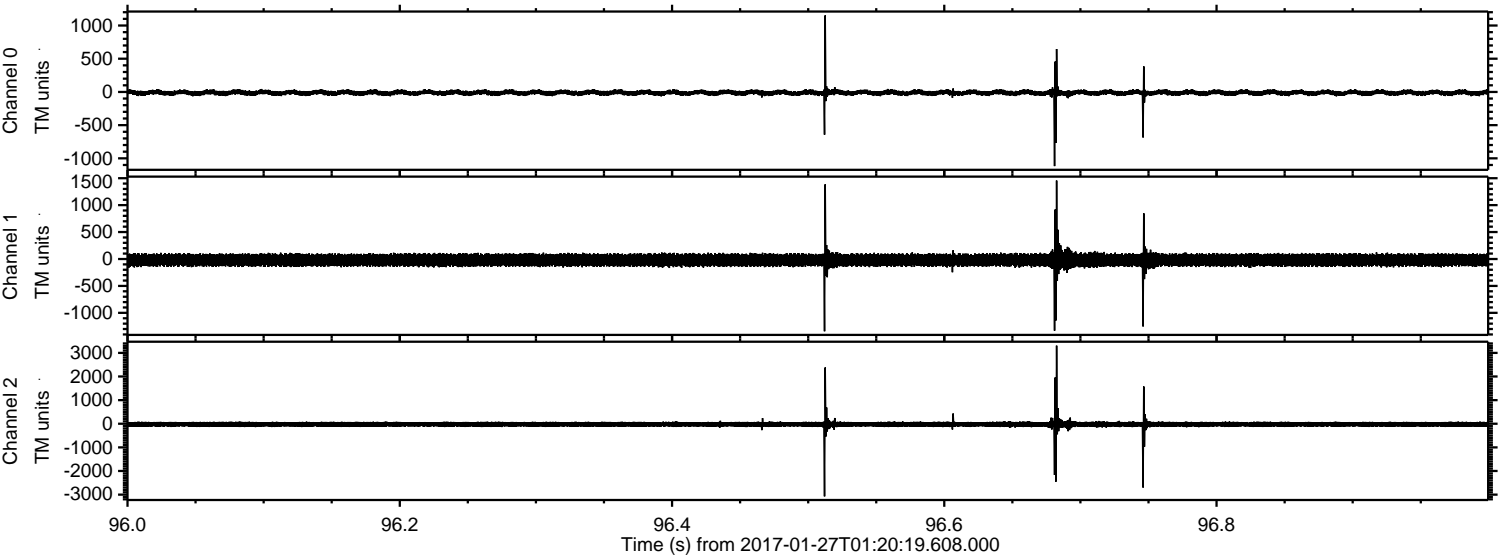
Processed Fri Jan 27 02:27:59 2017 by ELM ver.2012-10-06 from 001\_\_elm20170127\_012018\_\_dat00.bin





ELMAVAN 3D WAVEFORMS (Measured data sampled at 50 kHz) 51000 packets of 144 samples from 2017-01-27T01:20:19.608.000. Part 97/147

Processed Fri Jan 27 02:28:00 2017 by ELM ver.2012-10-06 from 001\_\_elm20170127\_012018\_\_dat00.bin



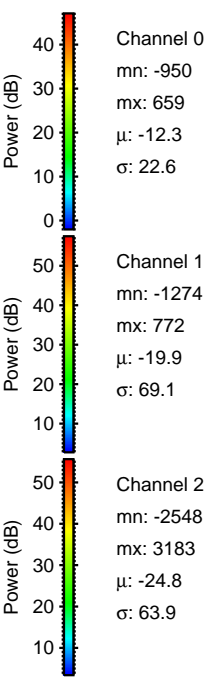
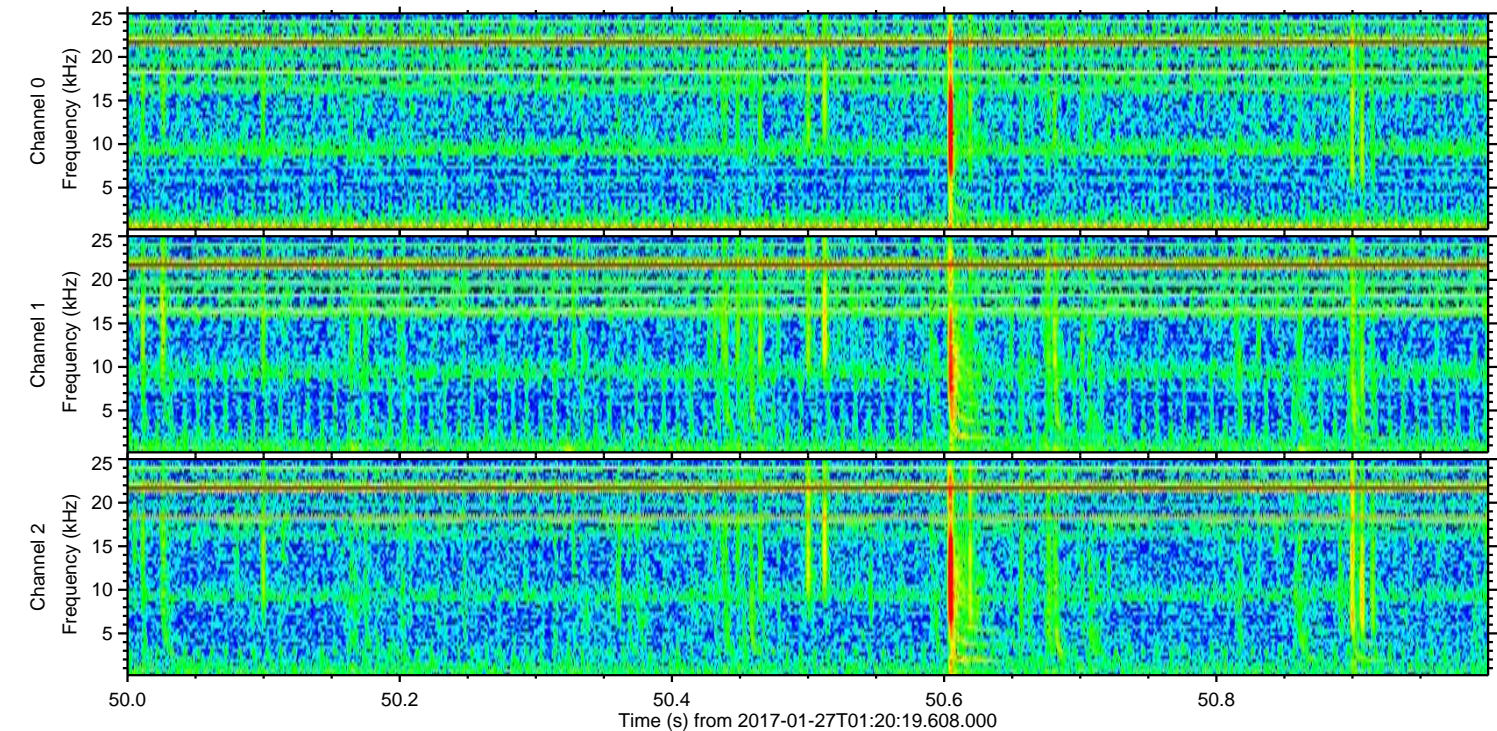
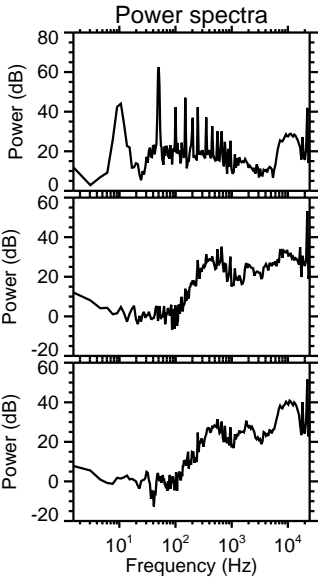
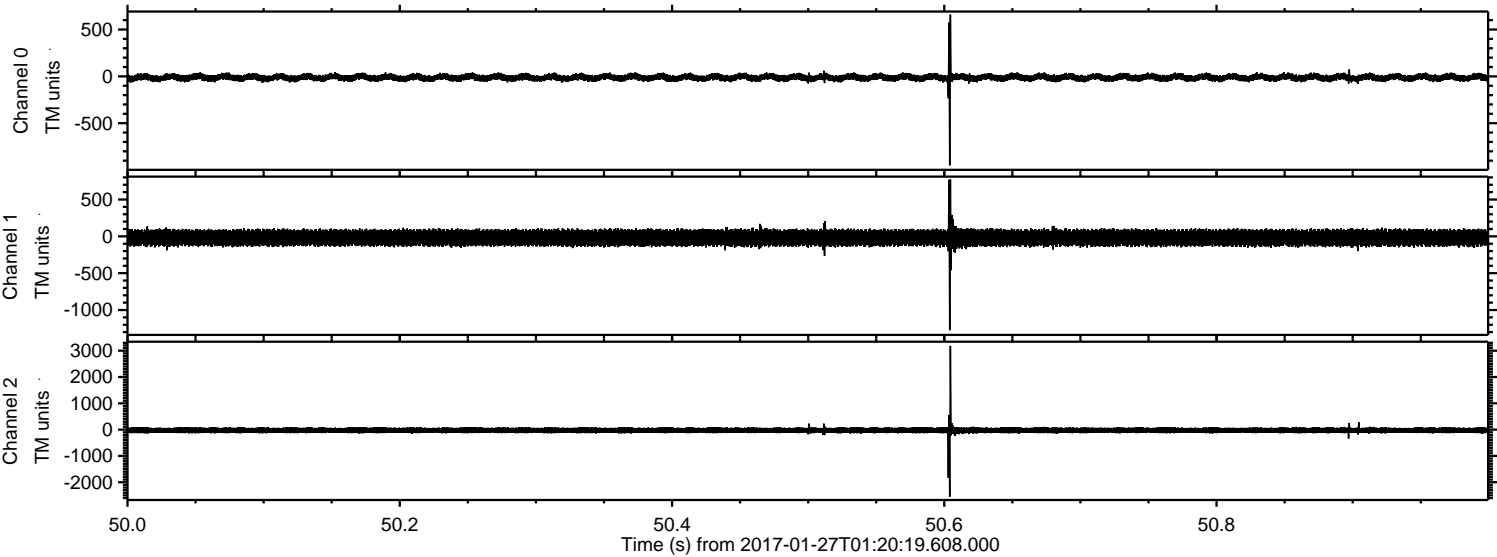
Channel 0  
mn: -1117  
mx: 1153  
 $\mu$ : -12.2  
 $\sigma$ : 25.0

Channel 1  
mn: -1342  
mx: 1456  
 $\mu$ : -19.9  
 $\sigma$ : 75.6

Channel 2  
mn: -3074  
mx: 3308  
 $\mu$ : -24.8  
 $\sigma$ : 77.2

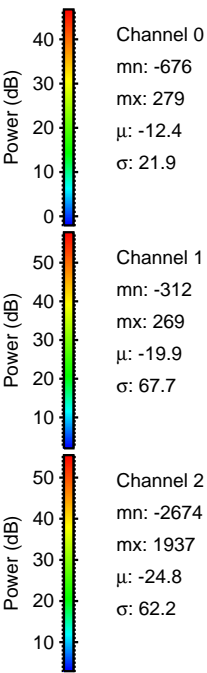
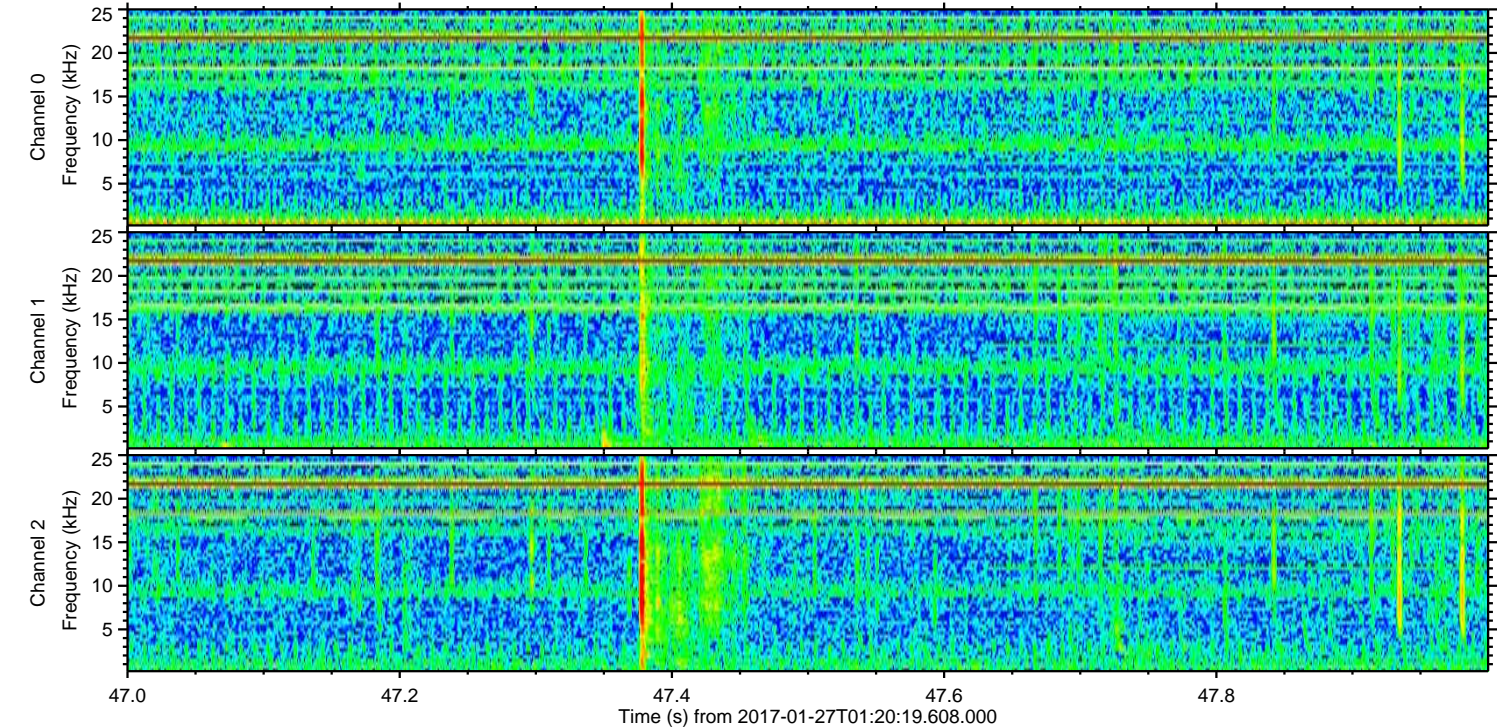
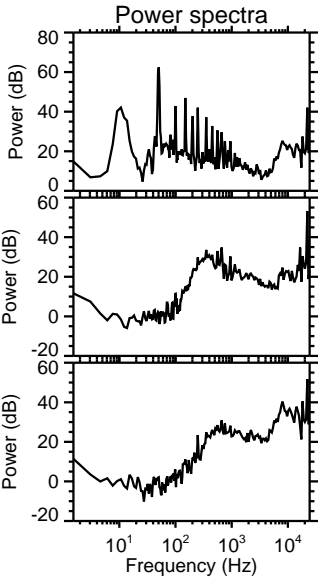
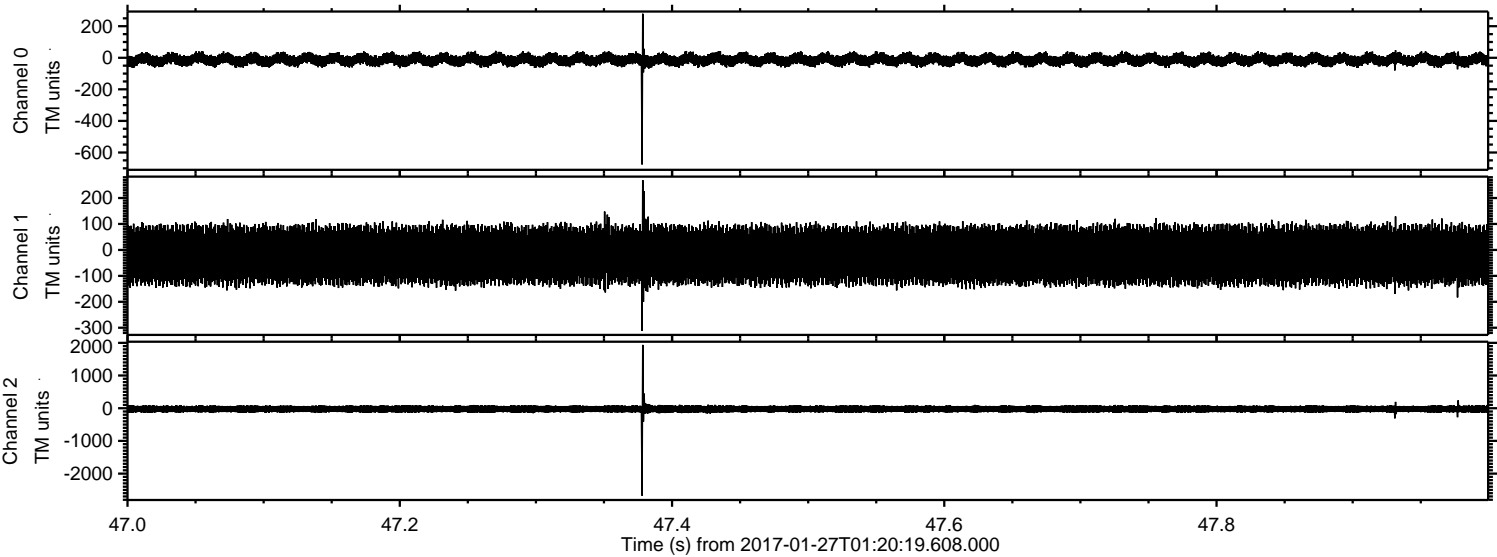


Processed Fri Jan 27 02:28:01 2017 by ELM ver.2012-10-06 from 001\_\_elm20170127\_012018\_\_dat00.bin





Processed Fri Jan 27 02:28:01 2017 by ELM ver.2012-10-06 from 001\_\_elm20170127\_012018\_\_dat00.bin



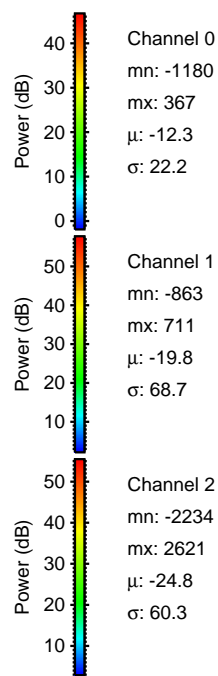
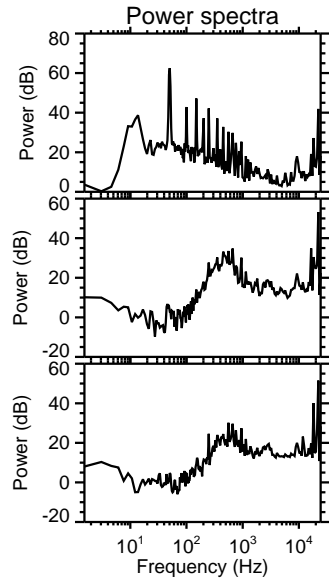
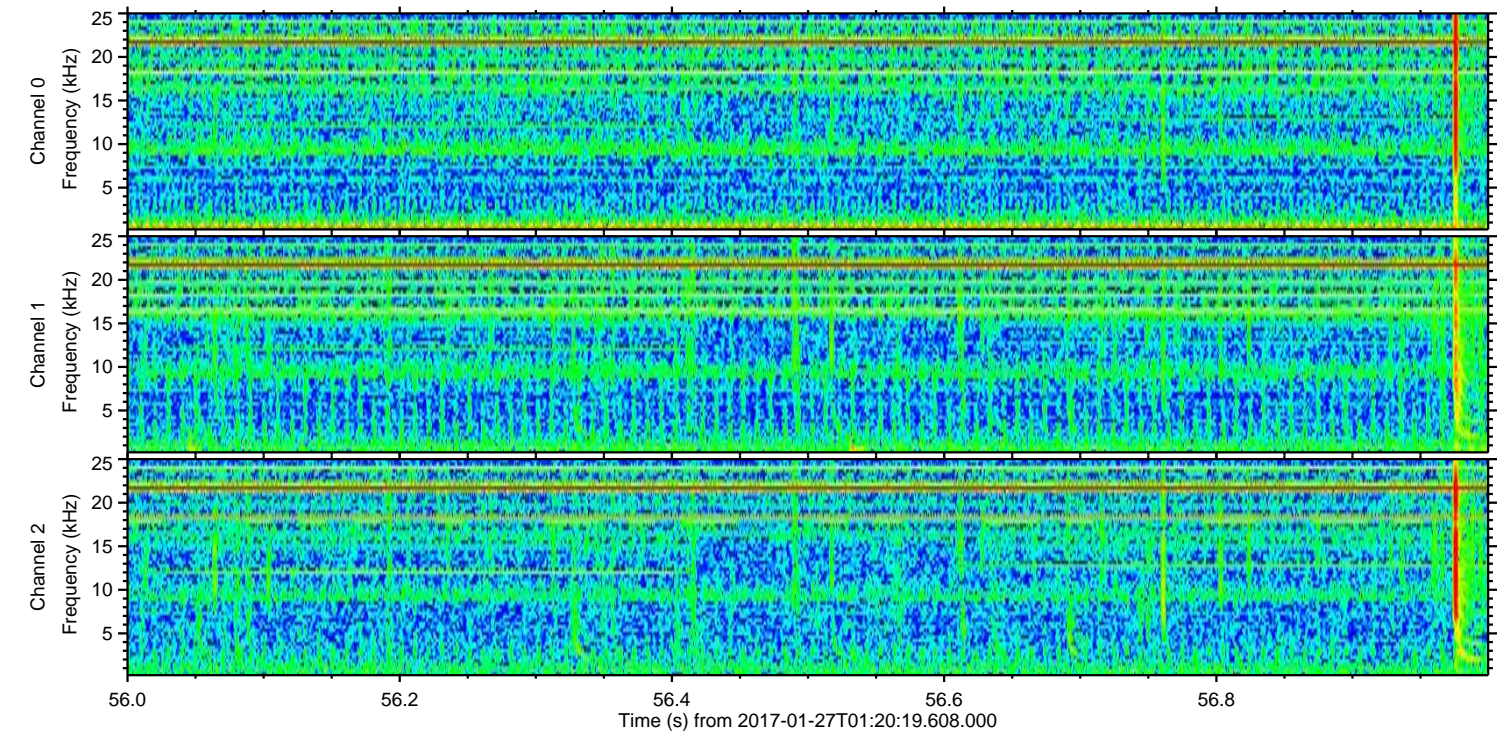
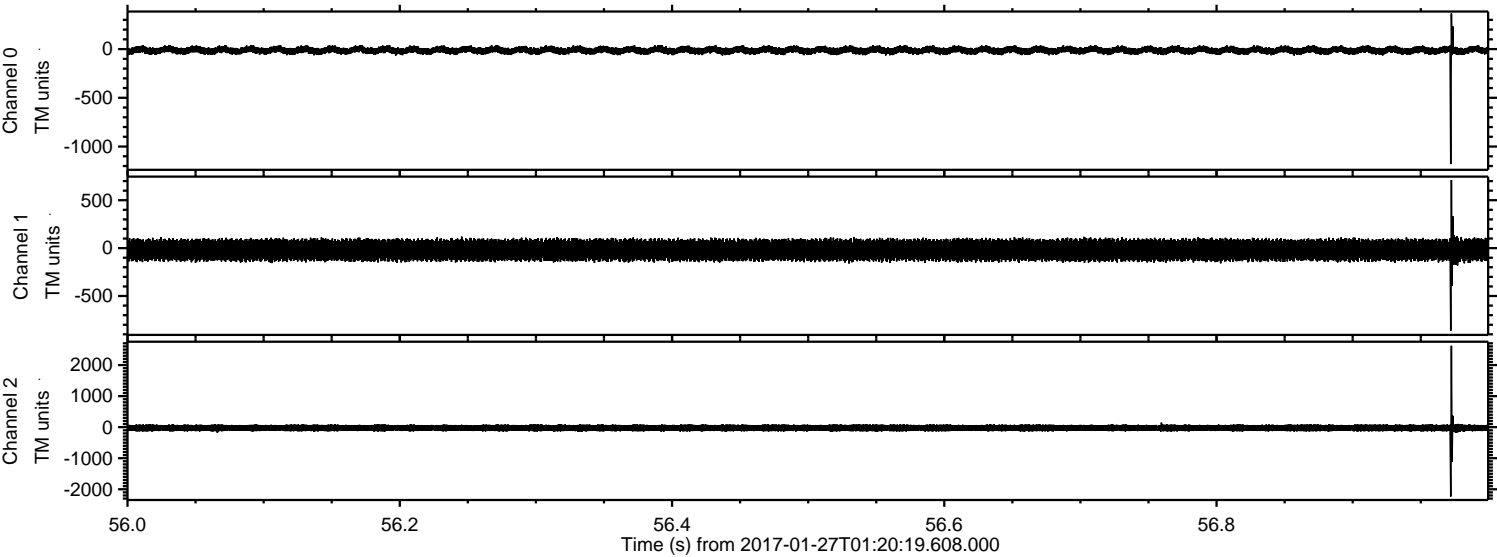
Channel 0  
mn: -676  
mx: 279  
 $\mu$ : -12.4  
 $\sigma$ : 21.9

Channel 1  
mn: -312  
mx: 269  
 $\mu$ : -19.9  
 $\sigma$ : 67.7

Channel 2  
mn: -2674  
mx: 1937  
 $\mu$ : -24.8  
 $\sigma$ : 62.2



Processed Fri Jan 27 02:28:02 2017 by ELM ver.2012-10-06 from 001\_\_elm20170127\_012018\_\_dat00.bin



Channel 0  
mn: -1180  
mx: 367  
 $\mu$ : -12.3  
 $\sigma$ : 22.2

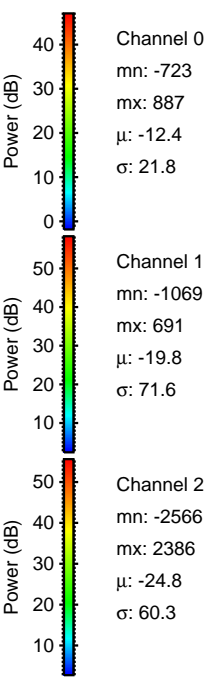
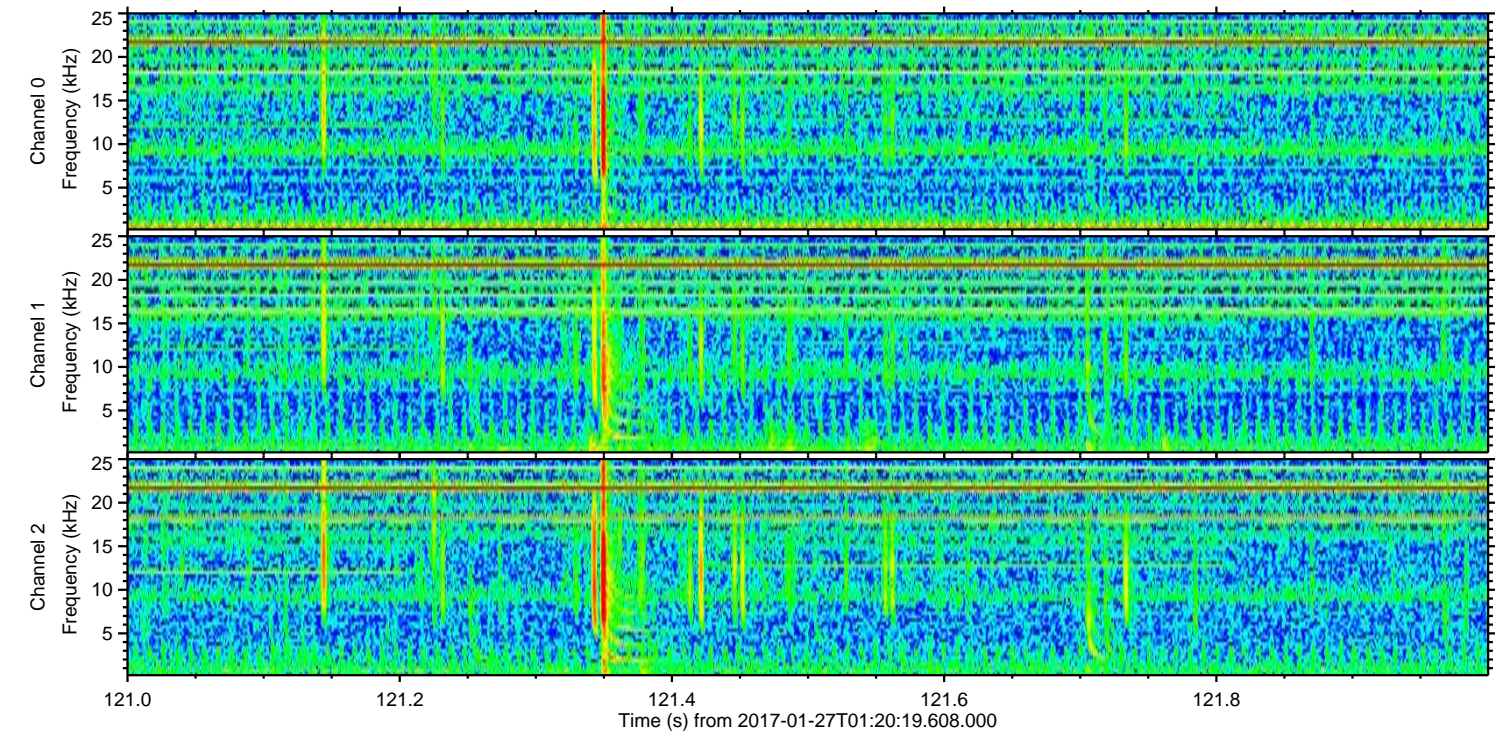
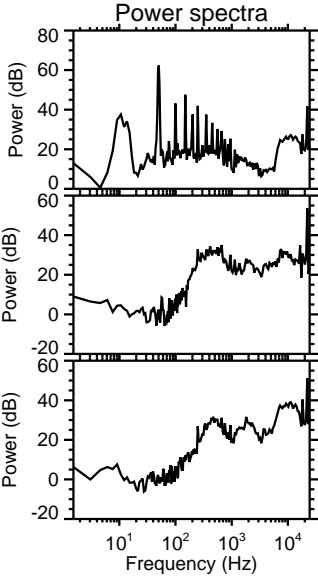
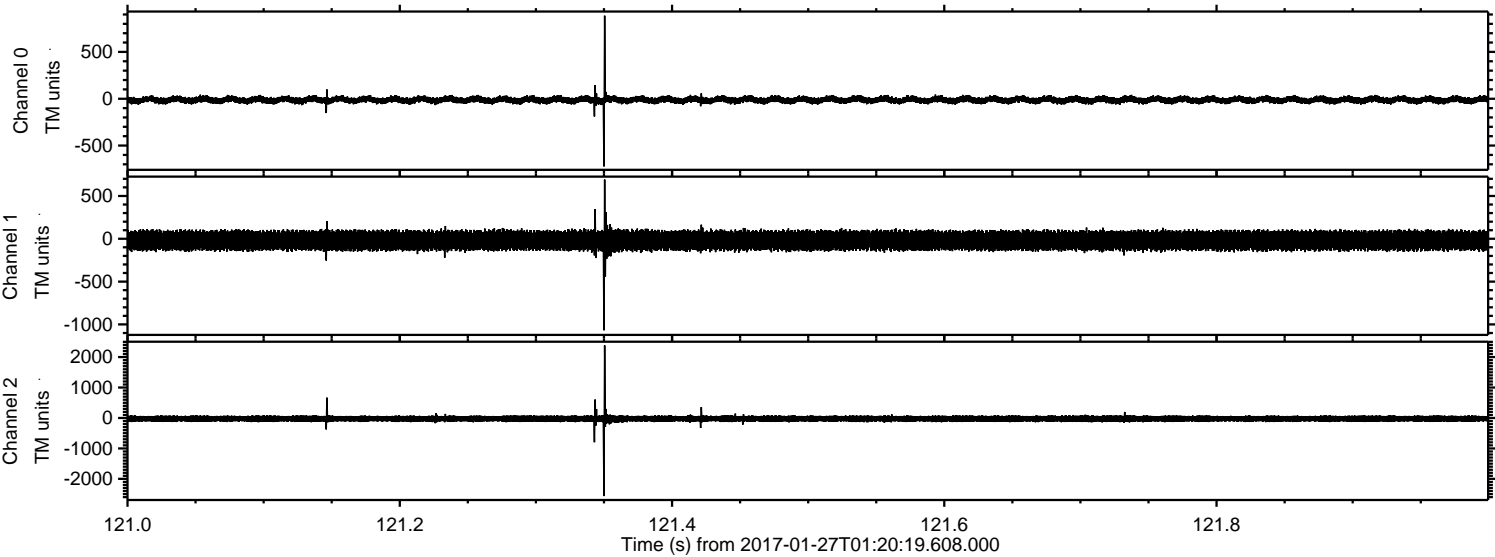
Channel 1  
mn: -863  
mx: 711  
 $\mu$ : -19.8  
 $\sigma$ : 68.7

Channel 2  
mn: -2234  
mx: 2621  
 $\mu$ : -24.8  
 $\sigma$ : 60.3



ELMAVAN 3D WAVEFORMS (Measured data sampled at 50 kHz) 51000 packets of 144 samples from 2017-01-27T01:20:19.608.000. Part 122/147

Processed Fri Jan 27 02:28:03 2017 by ELM ver.2012-10-06 from 001\_\_elm20170127\_012018\_\_dat00.bin



Channel 0  
mn: -723  
mx: 887  
 $\mu$ : -12.4  
 $\sigma$ : 21.8

Channel 1  
mn: -1069  
mx: 691  
 $\mu$ : -19.8  
 $\sigma$ : 71.6

Channel 2  
mn: -2566  
mx: 2386  
 $\mu$ : -24.8  
 $\sigma$ : 60.3



