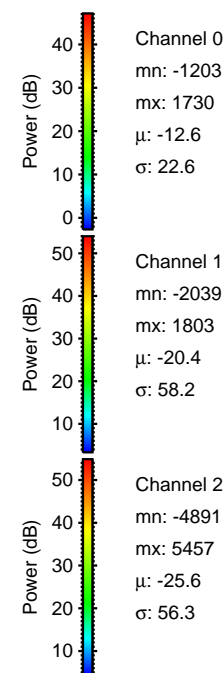
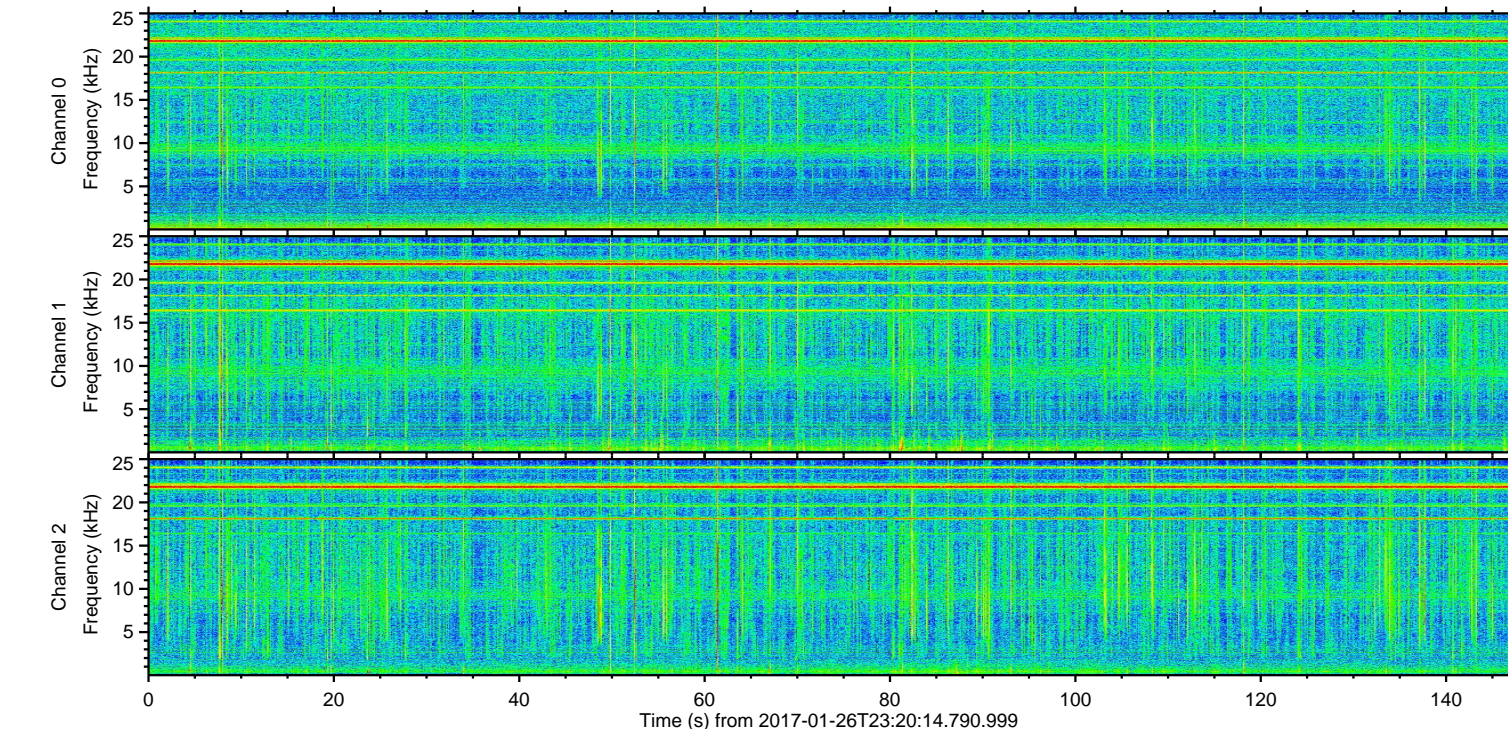
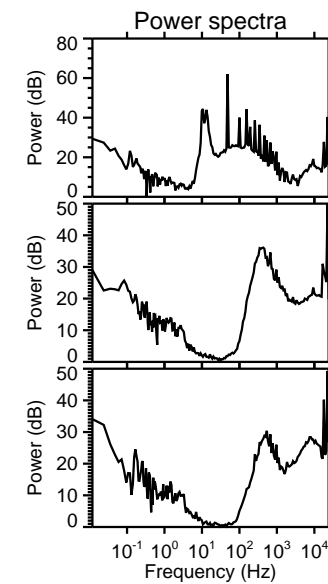
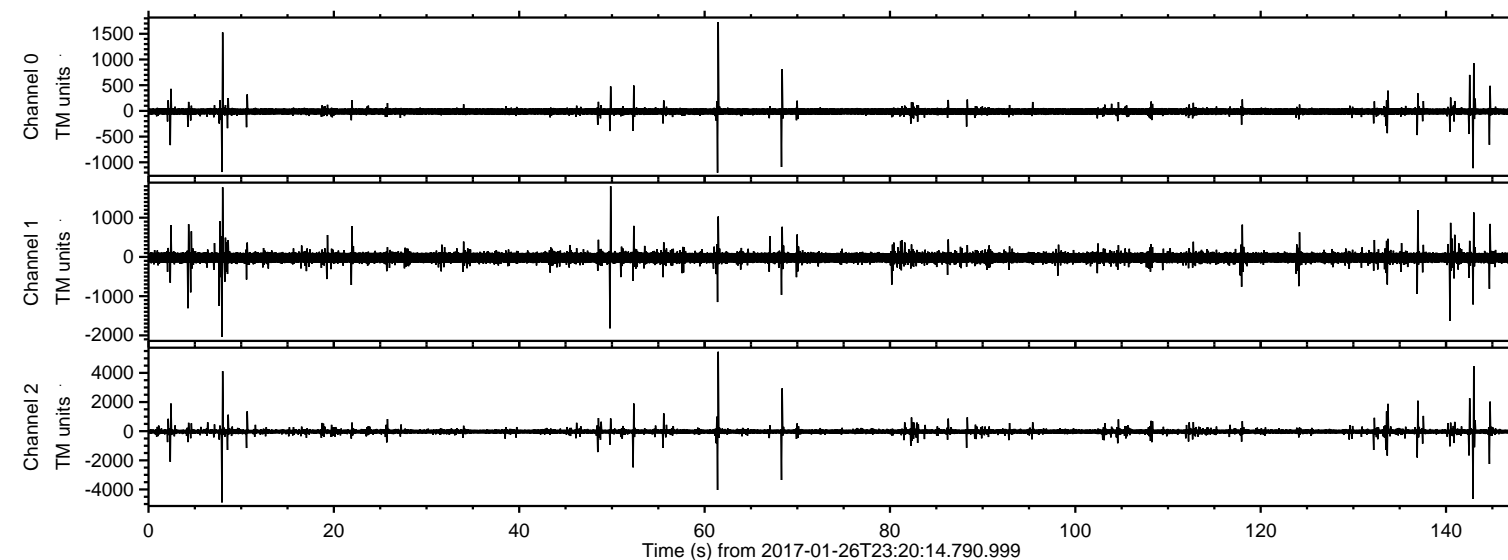
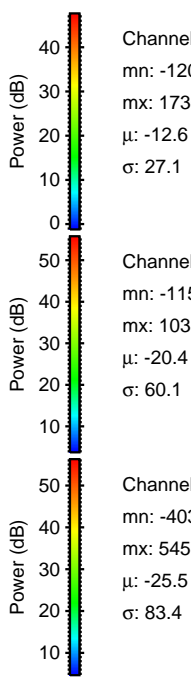
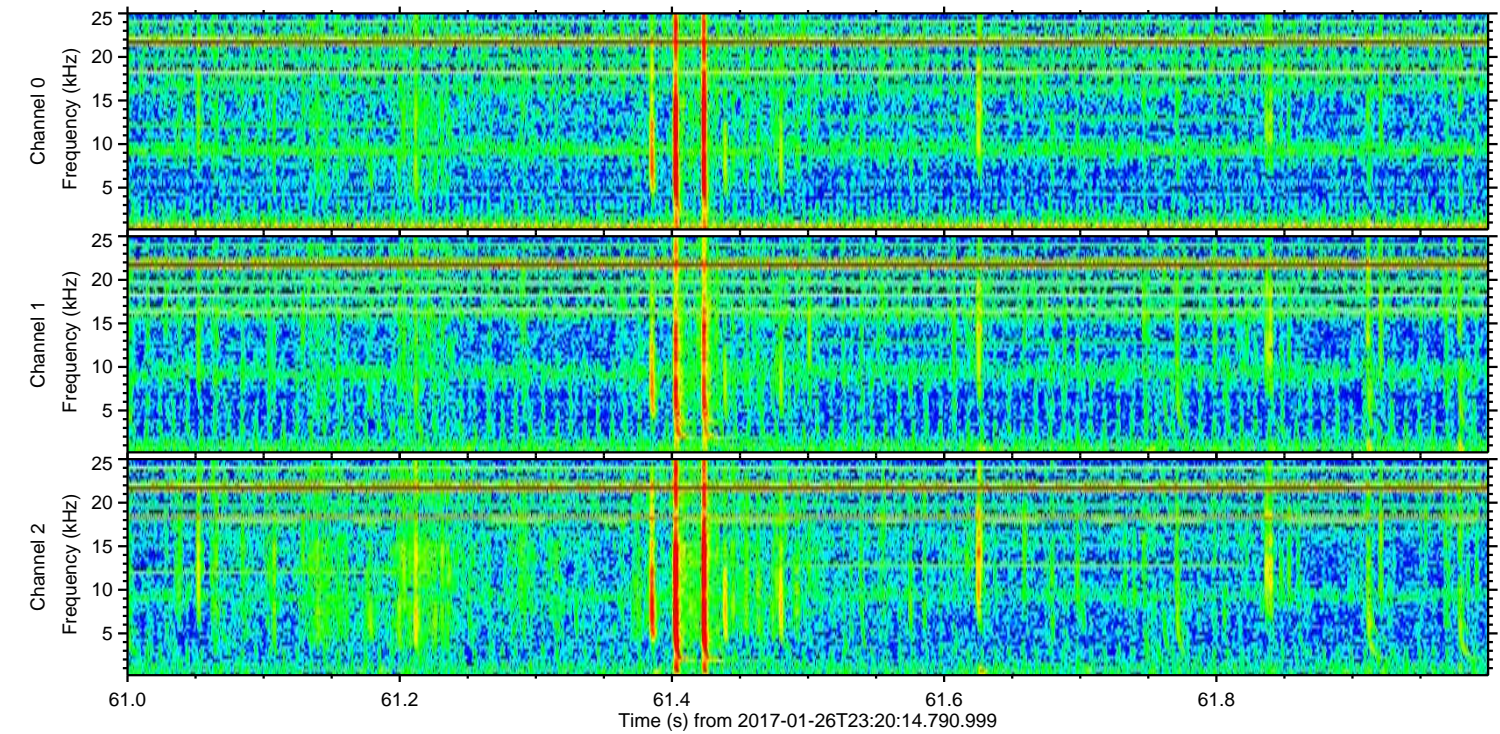
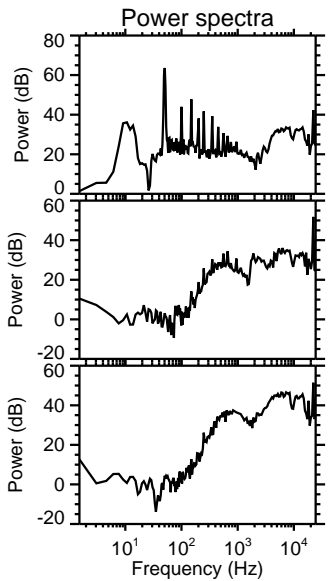
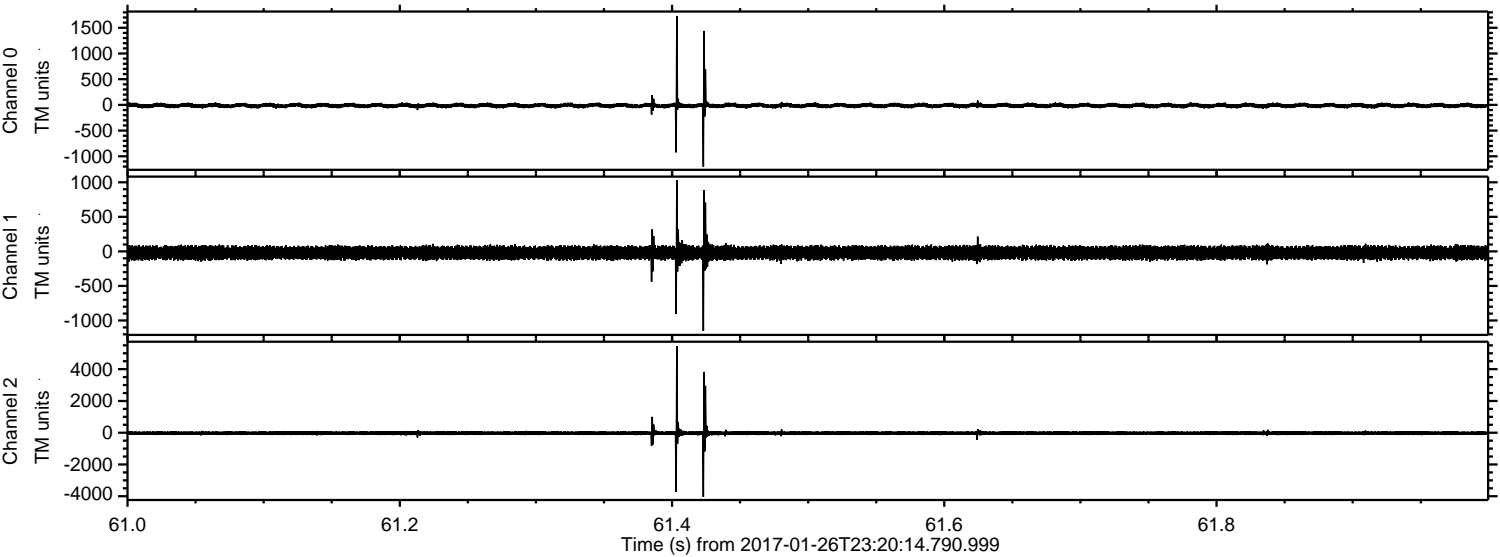


ELMAVAN 3D WAVEFORMS (Measured data sampled at 50 kHz) 51000 packets of 144 samples from 2017-01-26T23:20:14.790.999.

Processed Fri Jan 27 00:28:07 2017 by ELM ver.2012-10-06 from 001__elm20170126_232013__dat00.bin



Processed Fri Jan 27 00:28:19 2017 by ELM ver.2012-10-06 from 001__elm20170126_232013__dat00.bin



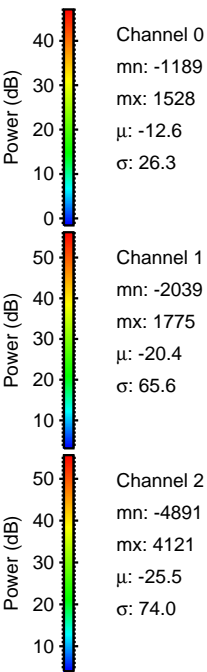
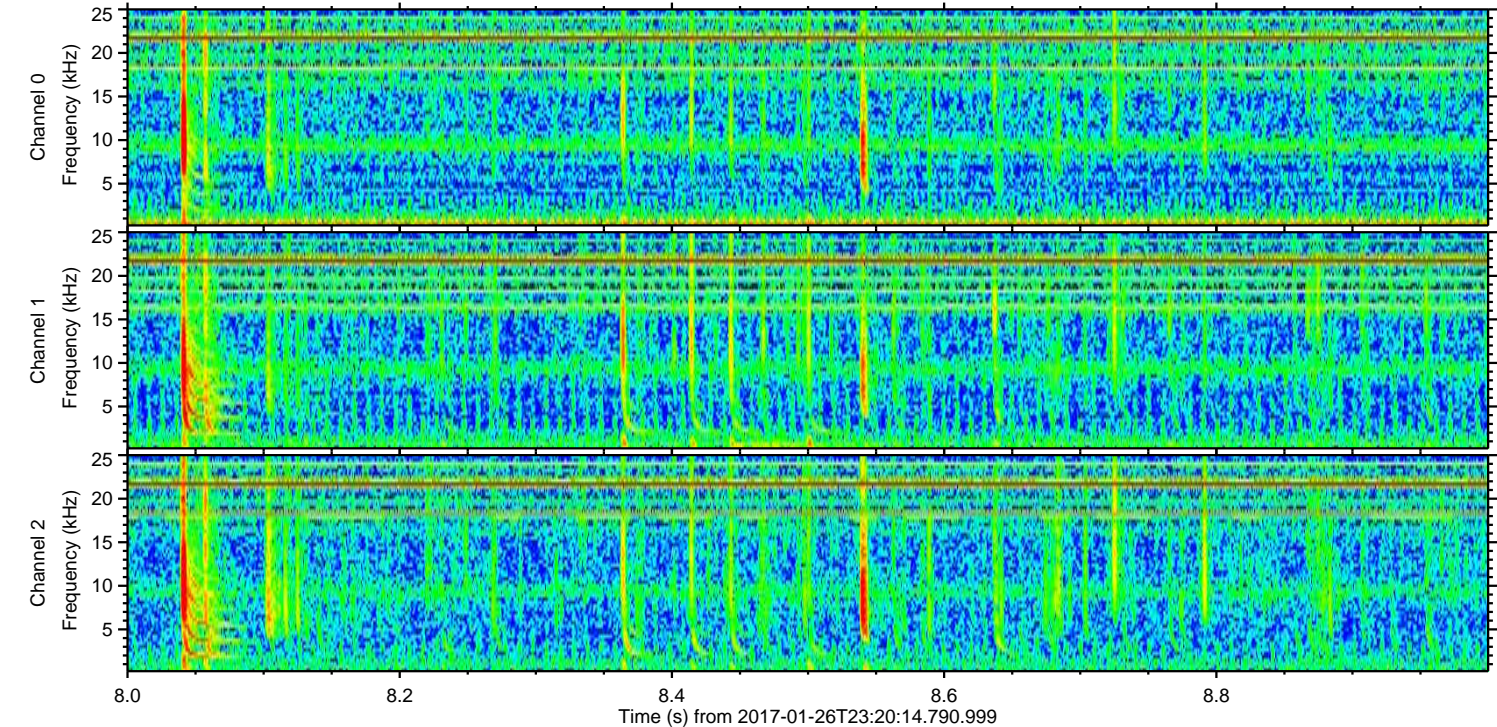
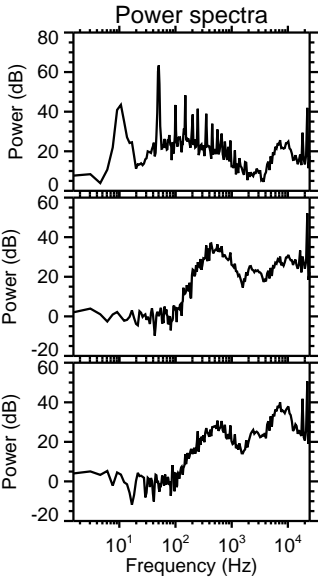
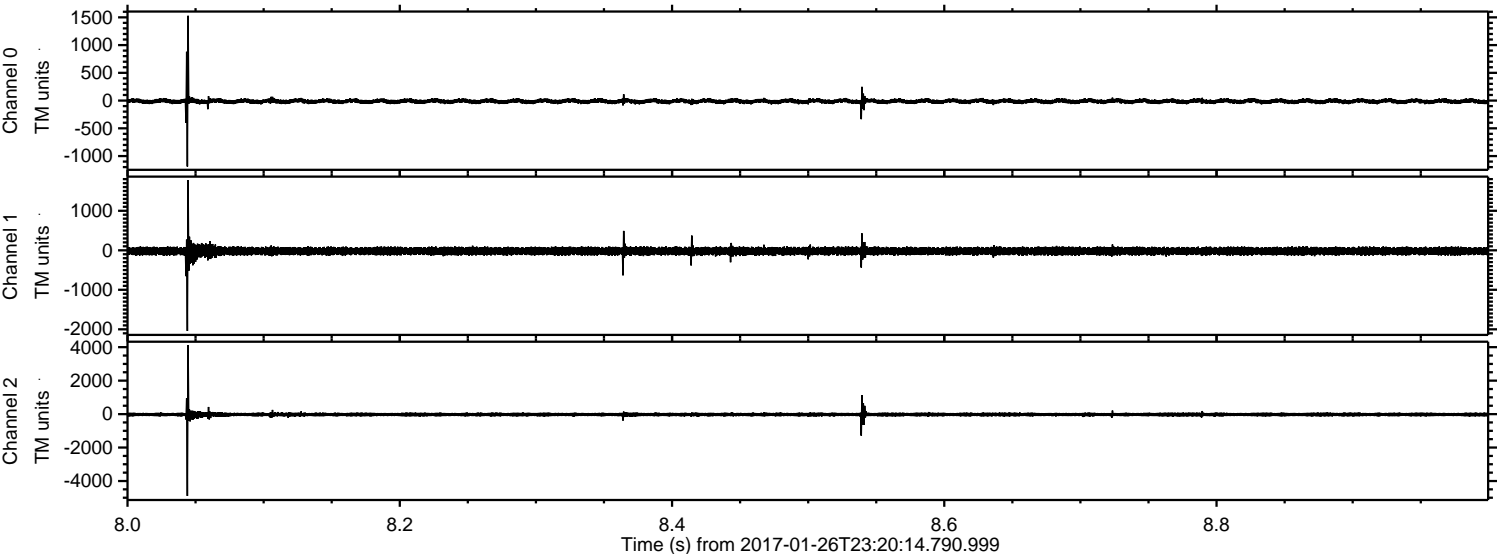
Channel 0
mn: -1203
mx: 1730
 μ : -12.6
 σ : 27.1

Channel 1
mn: -1151
mx: 1031
 μ : -20.4
 σ : 60.1

Channel 2
mn: -4036
mx: 5457
 μ : -25.5
 σ : 83.4

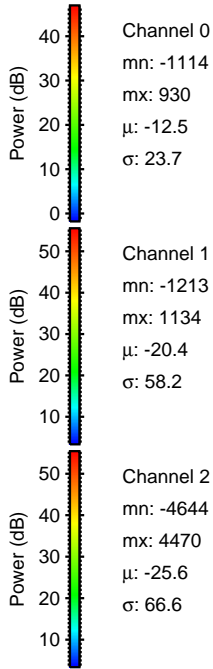
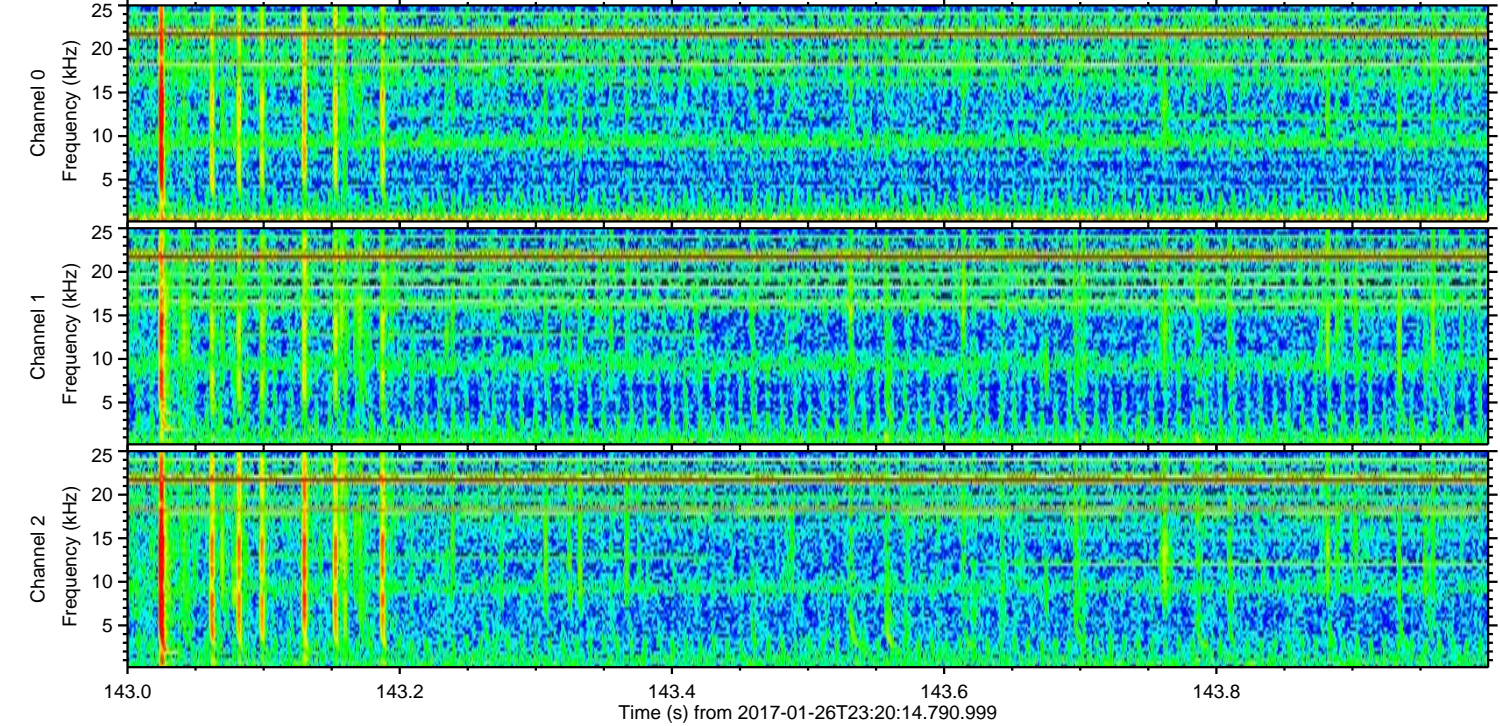
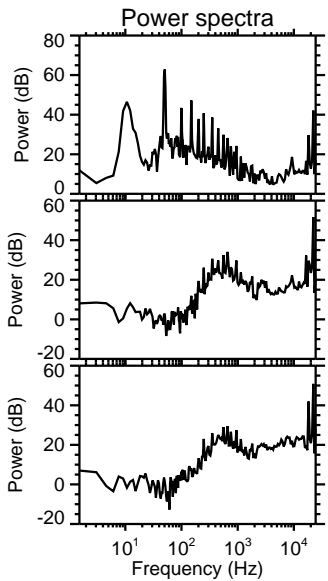
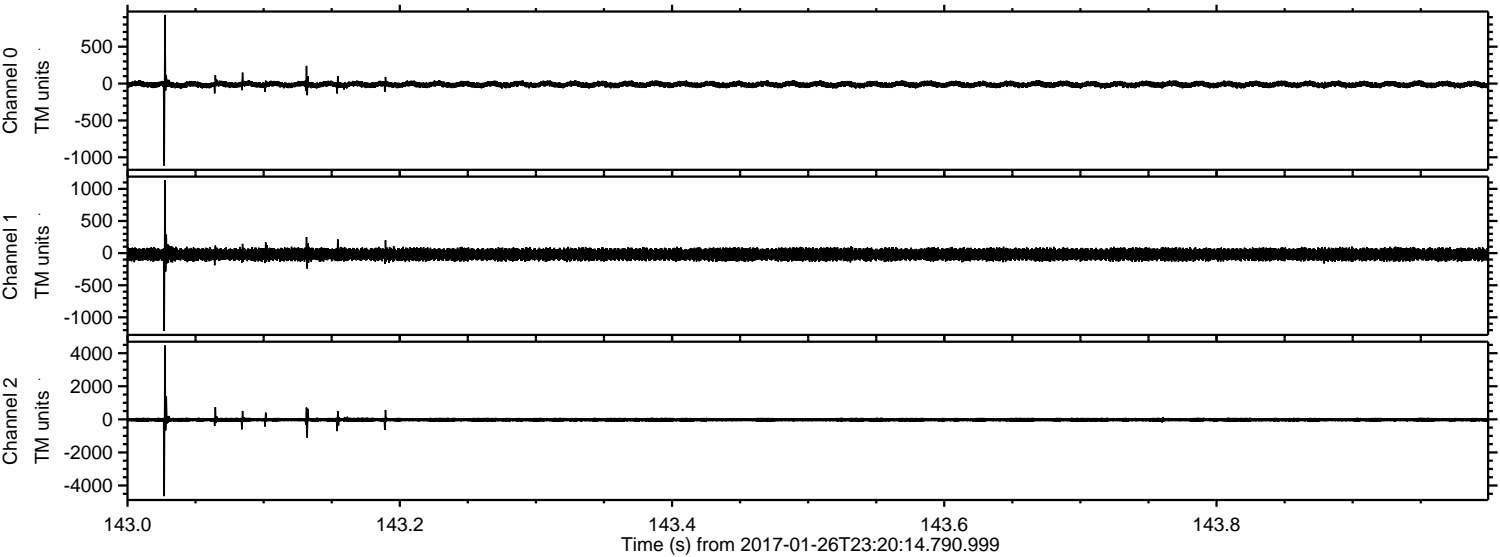
ELMAVAN 3D WAVEFORMS (Measured data sampled at 50 kHz) 51000 packets of 144 samples from 2017-01-26T23:20:14.790.999. Part 9/147

Processed Fri Jan 27 00:28:20 2017 by ELM ver.2012-10-06 from 001__elm20170126_232013__dat00.bin

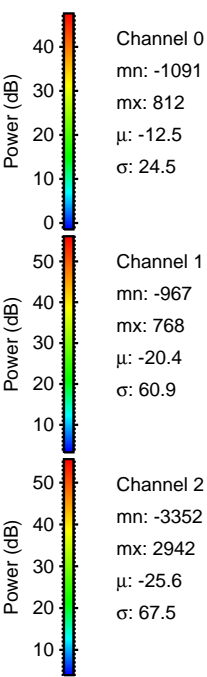
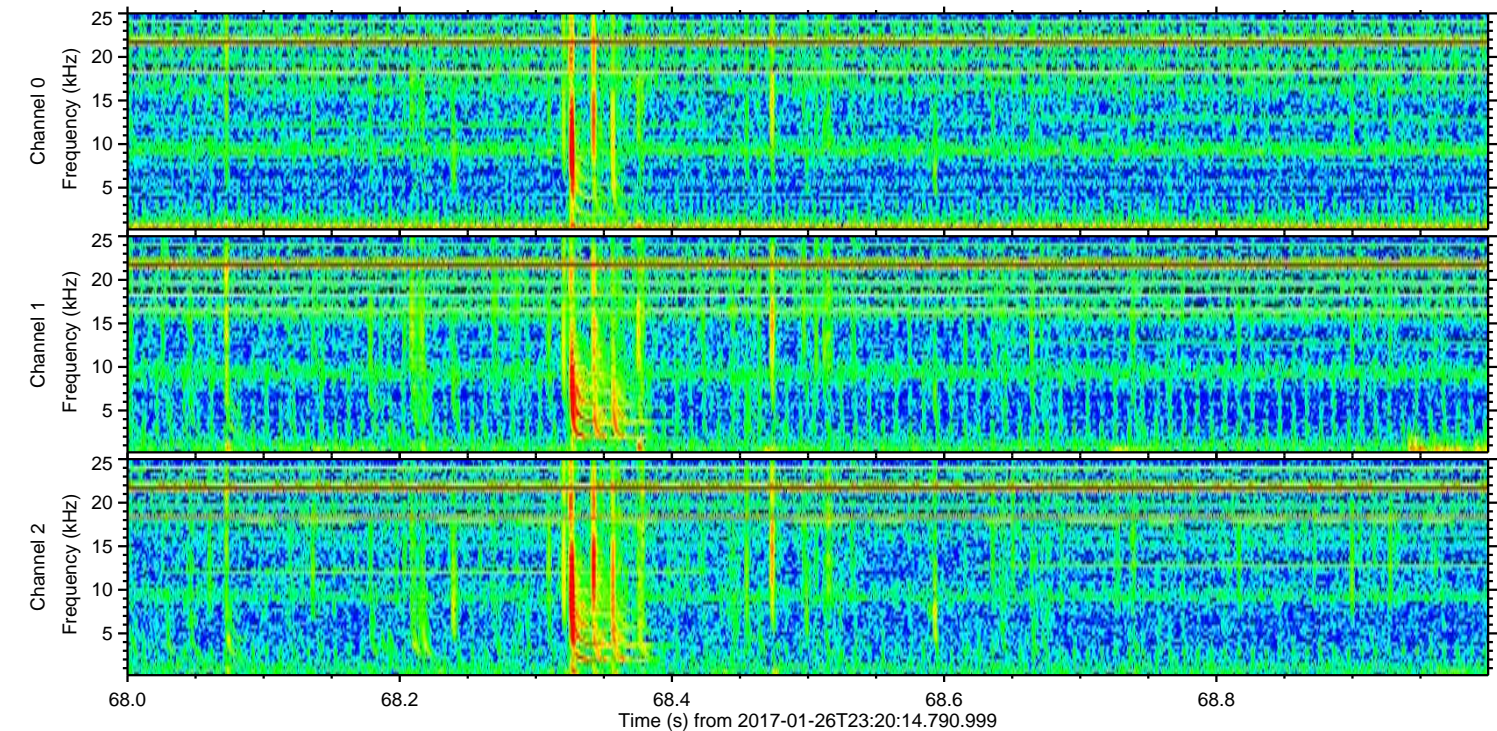
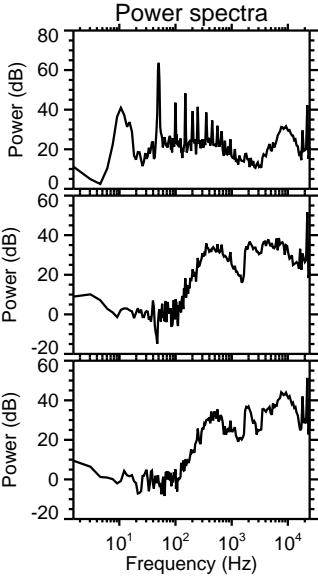
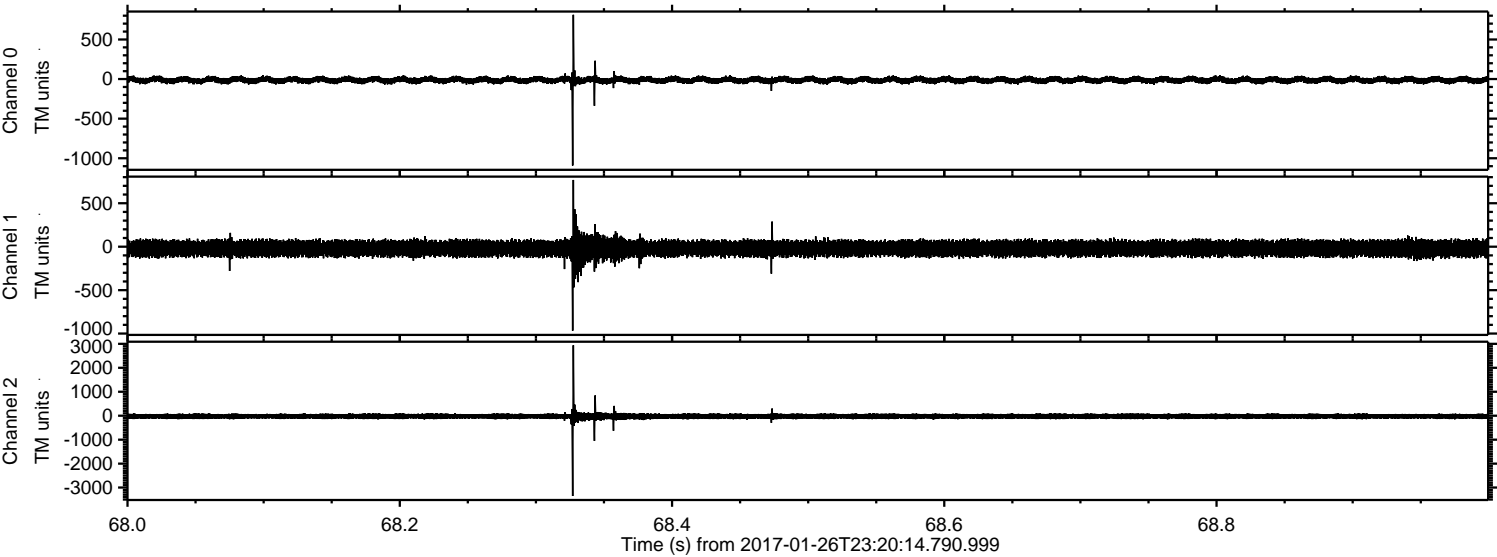


ELMAVAN 3D WAVEFORMS (Measured data sampled at 50 kHz) 51000 packets of 144 samples from 2017-01-26T23:20:14.790.999. Part 144/147

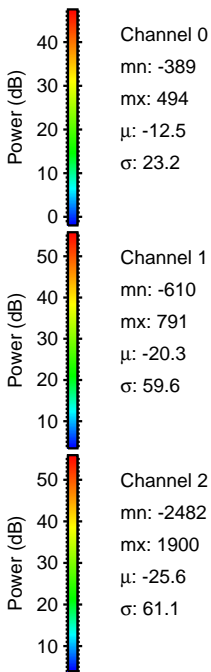
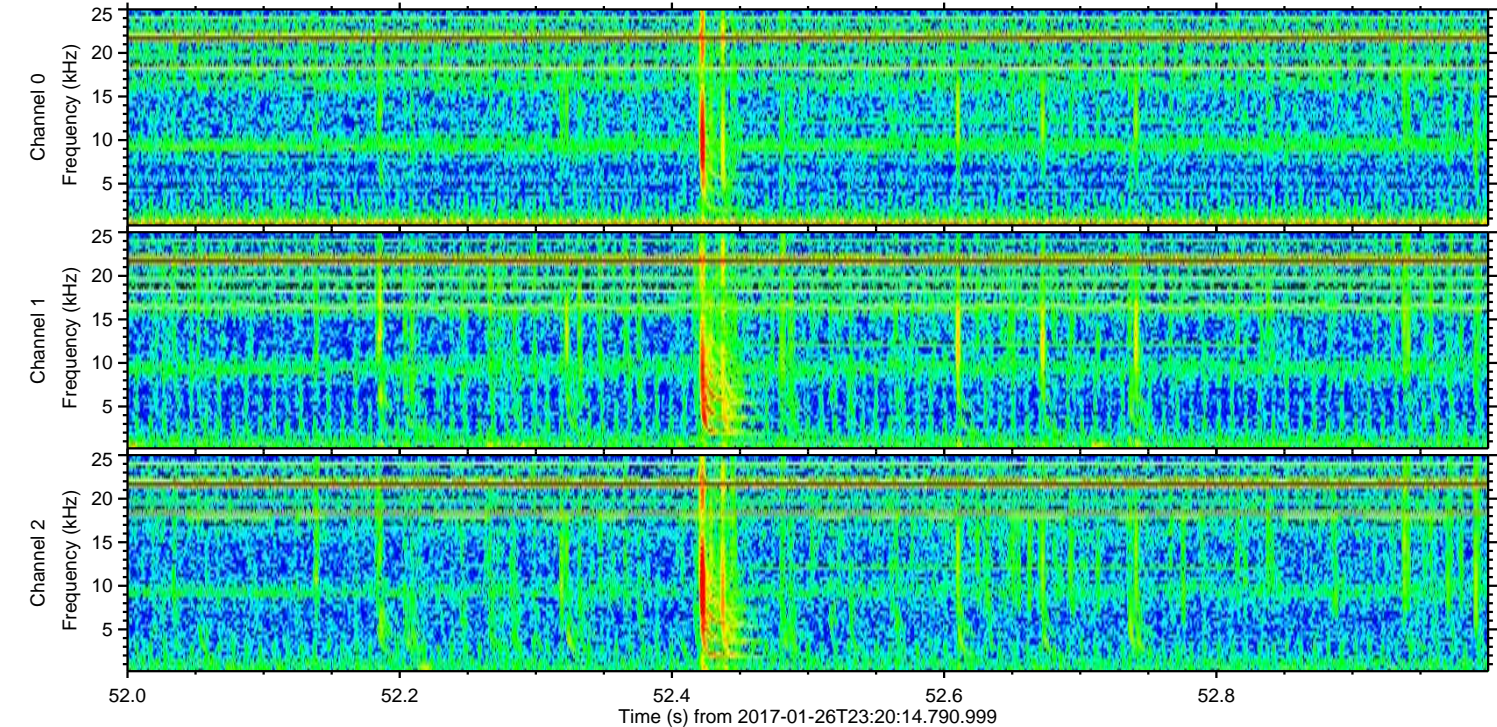
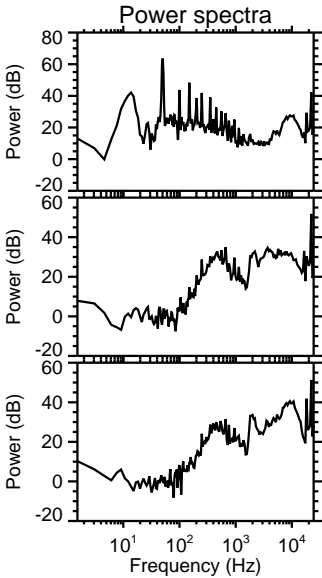
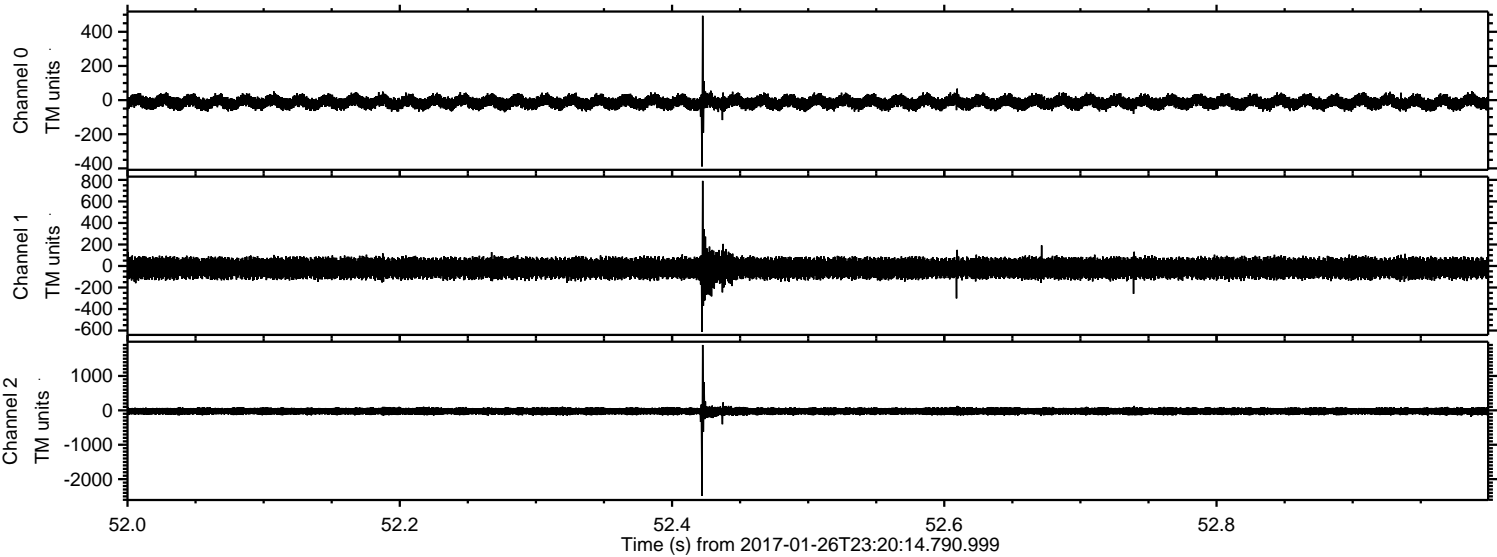
Processed Fri Jan 27 00:28:21 2017 by ELM ver.2012-10-06 from 001__elm20170126_232013__dat00.bin



Processed Fri Jan 27 00:28:22 2017 by ELM ver.2012-10-06 from 001__elm20170126_232013__dat00.bin

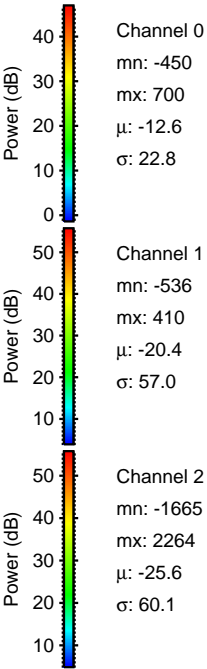
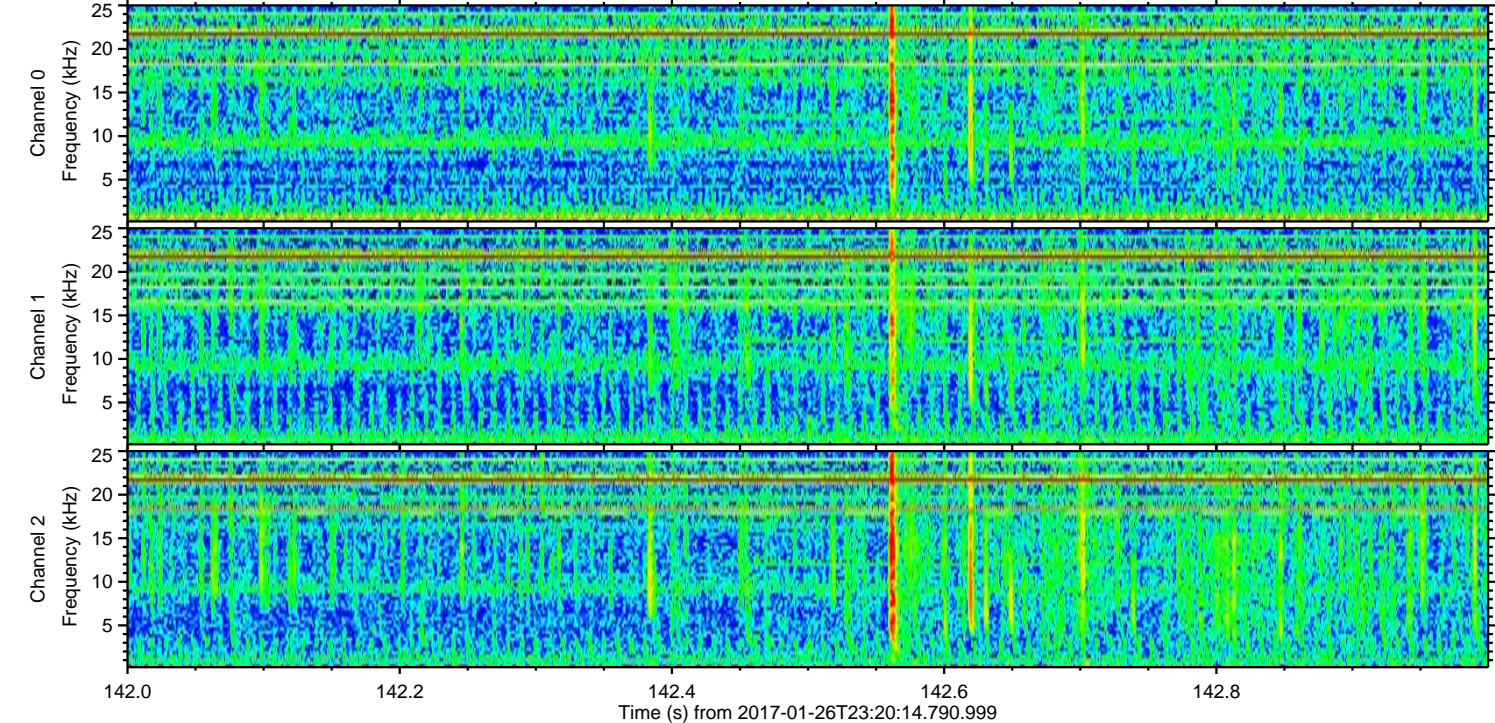
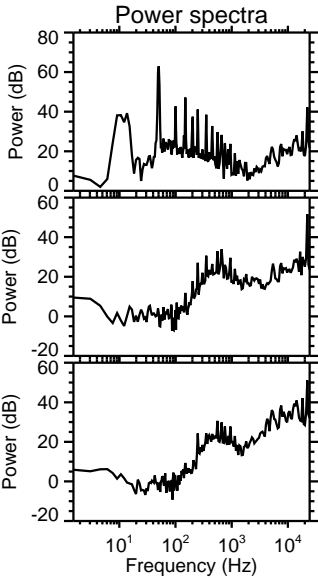
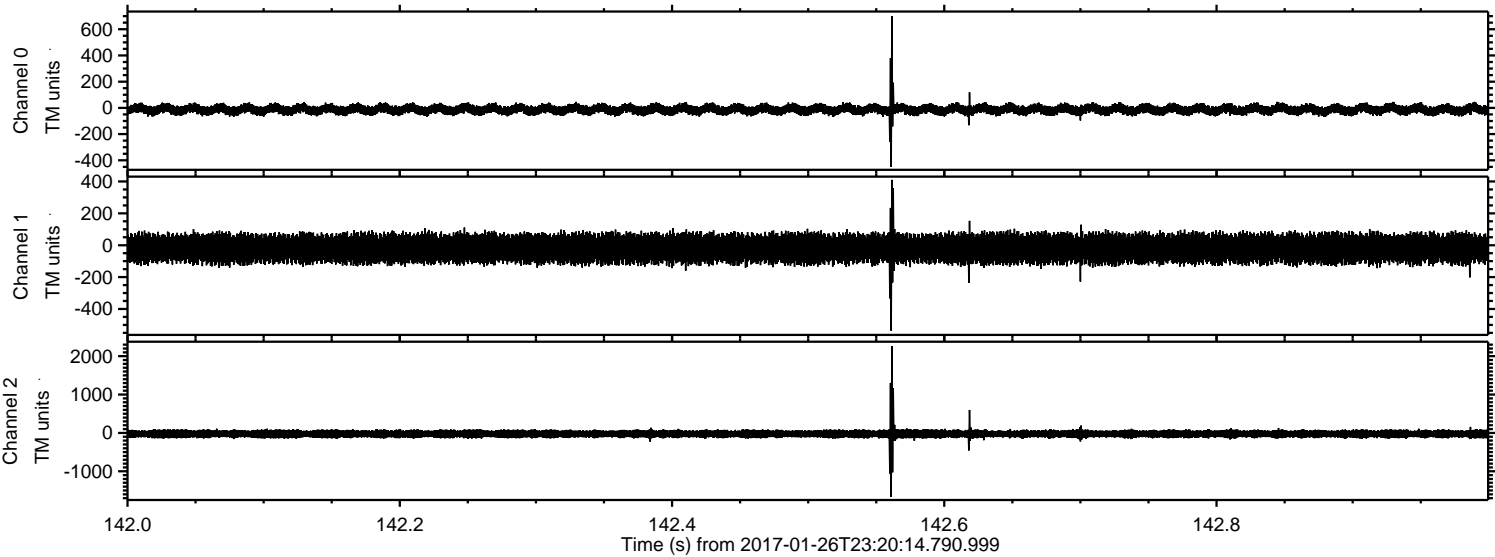


Processed Fri Jan 27 00:28:22 2017 by ELM ver.2012-10-06 from 001__elm20170126_232013__dat00.bin



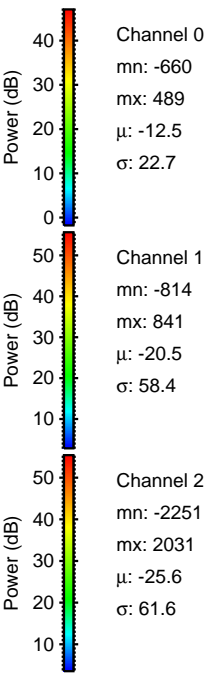
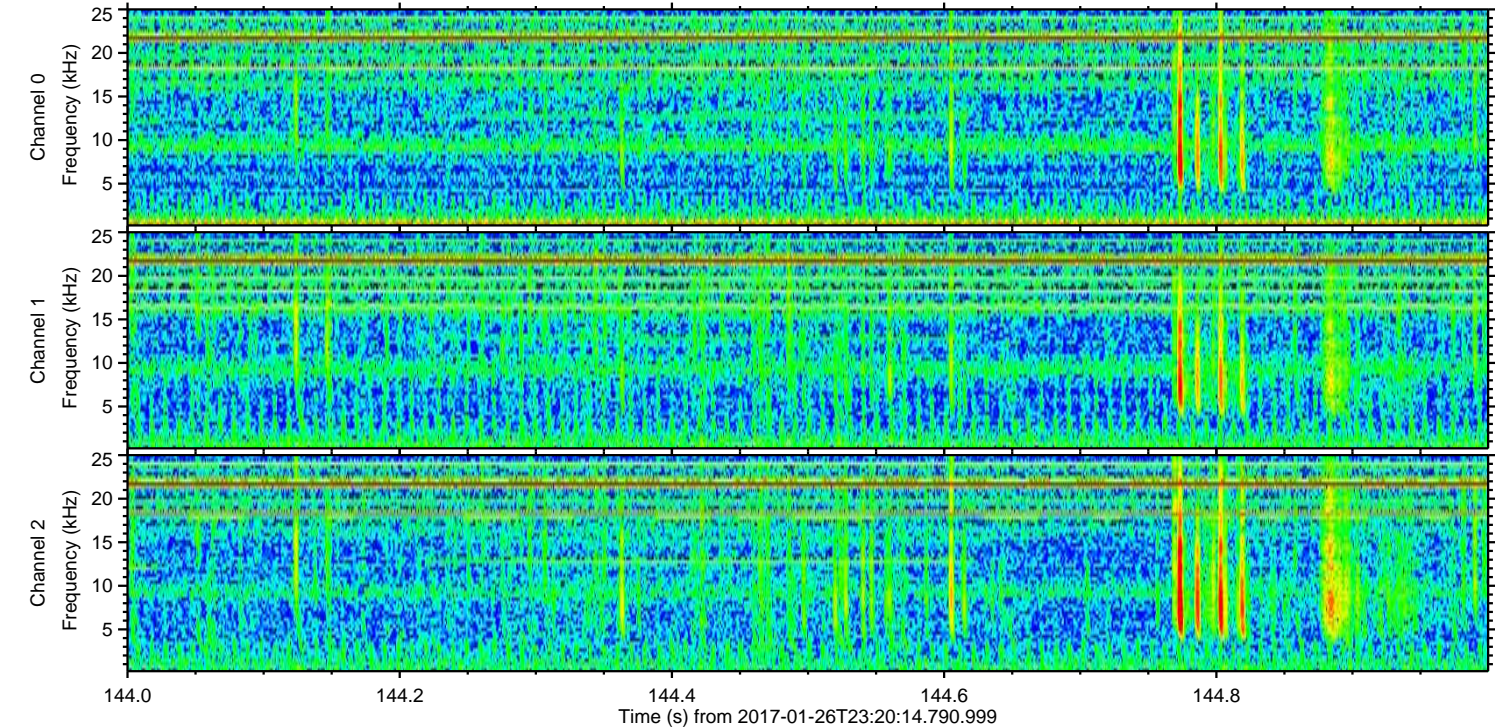
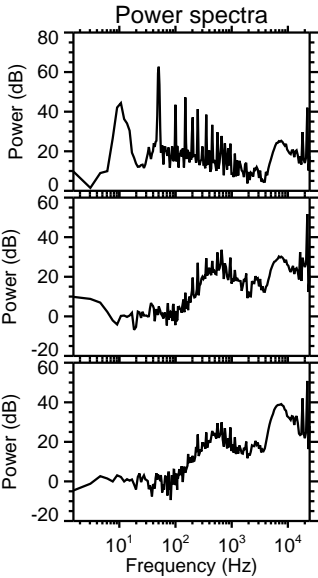
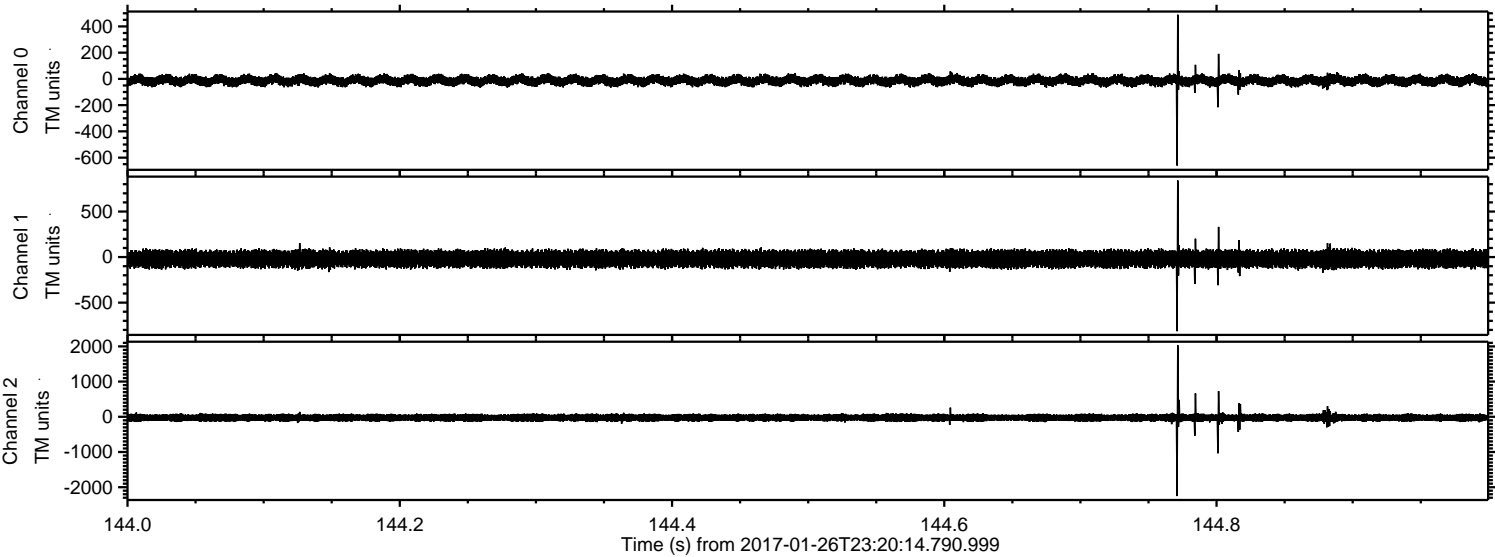
ELMAVAN 3D WAVEFORMS (Measured data sampled at 50 kHz) 51000 packets of 144 samples from 2017-01-26T23:20:14.790.999. Part 143/147

Processed Fri Jan 27 00:28:23 2017 by ELM ver.2012-10-06 from 001__elm20170126_232013__dat00.bin



ELMAVAN 3D WAVEFORMS (Measured data sampled at 50 kHz) 51000 packets of 144 samples from 2017-01-26T23:20:14.790.999. Part 145/147

Processed Fri Jan 27 00:28:24 2017 by ELM ver.2012-10-06 from 001__elm20170126_232013__dat00.bin

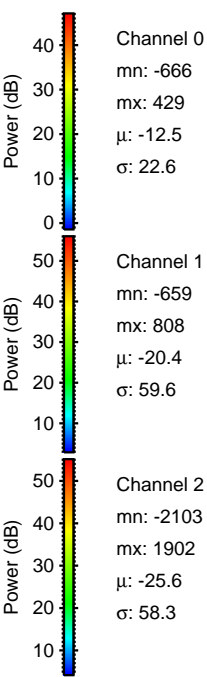
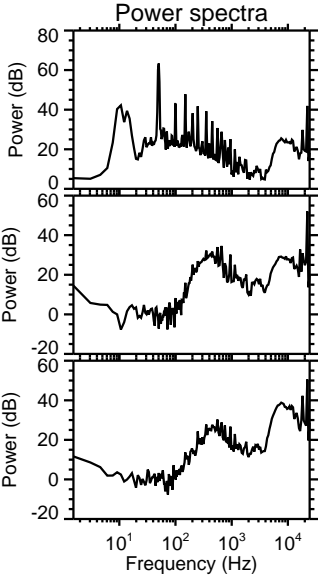
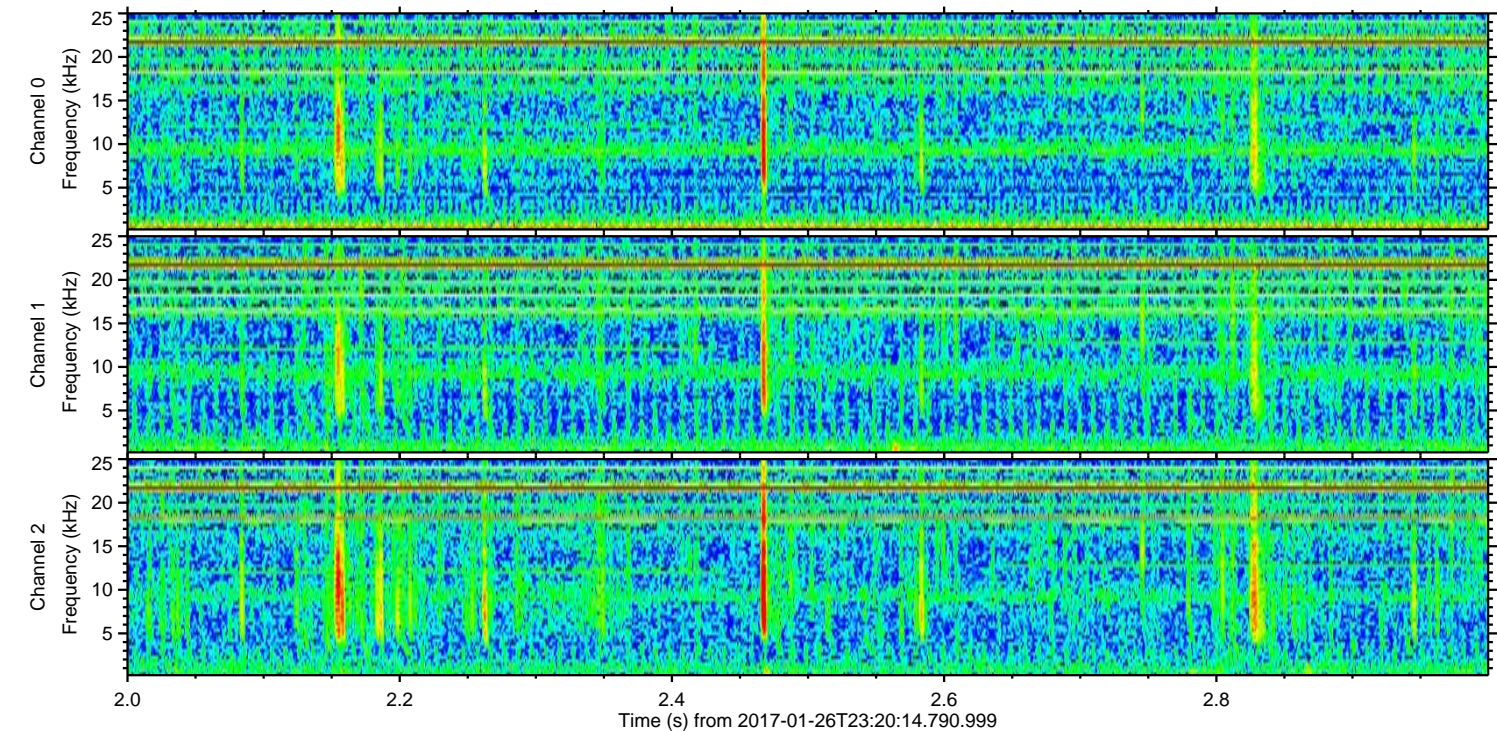
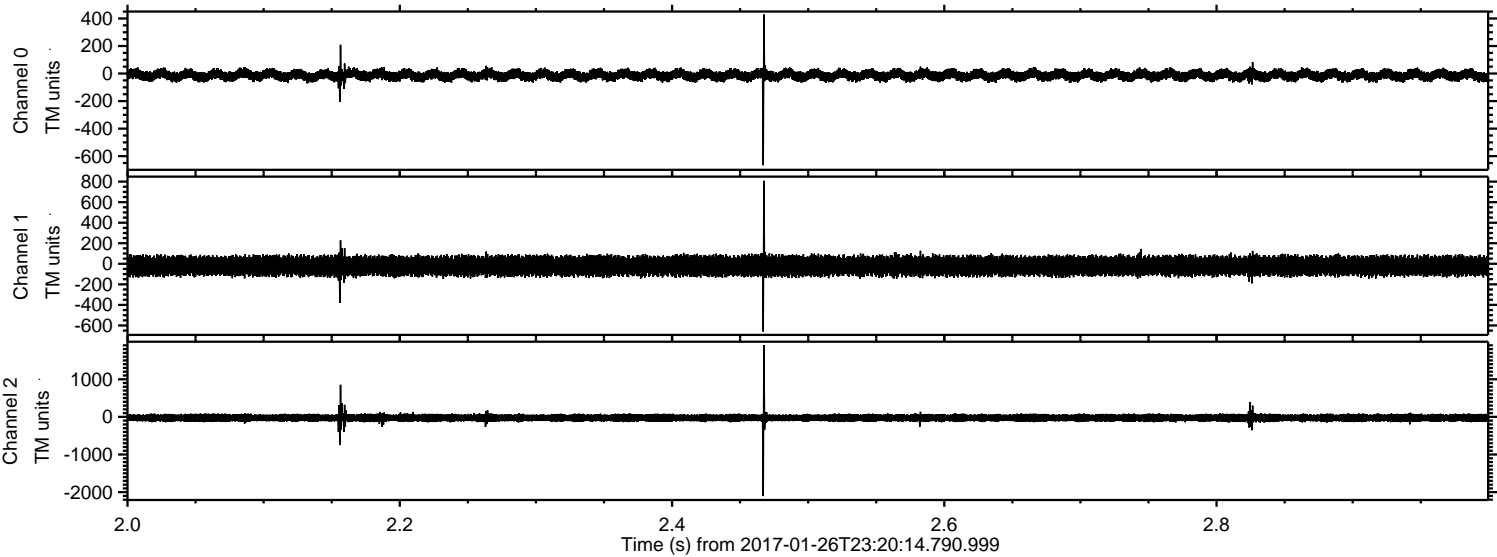


Channel 0
mn: -660
mx: 489
 μ : -12.5
 σ : 22.7

Channel 1
mn: -814
mx: 841
 μ : -20.5
 σ : 58.4

Channel 2
mn: -2251
mx: 2031
 μ : -25.6
 σ : 61.6

Processed Fri Jan 27 00:28:25 2017 by ELM ver.2012-10-06 from 001__elm20170126_232013__dat00.bin



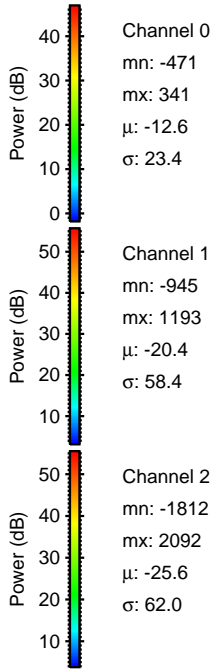
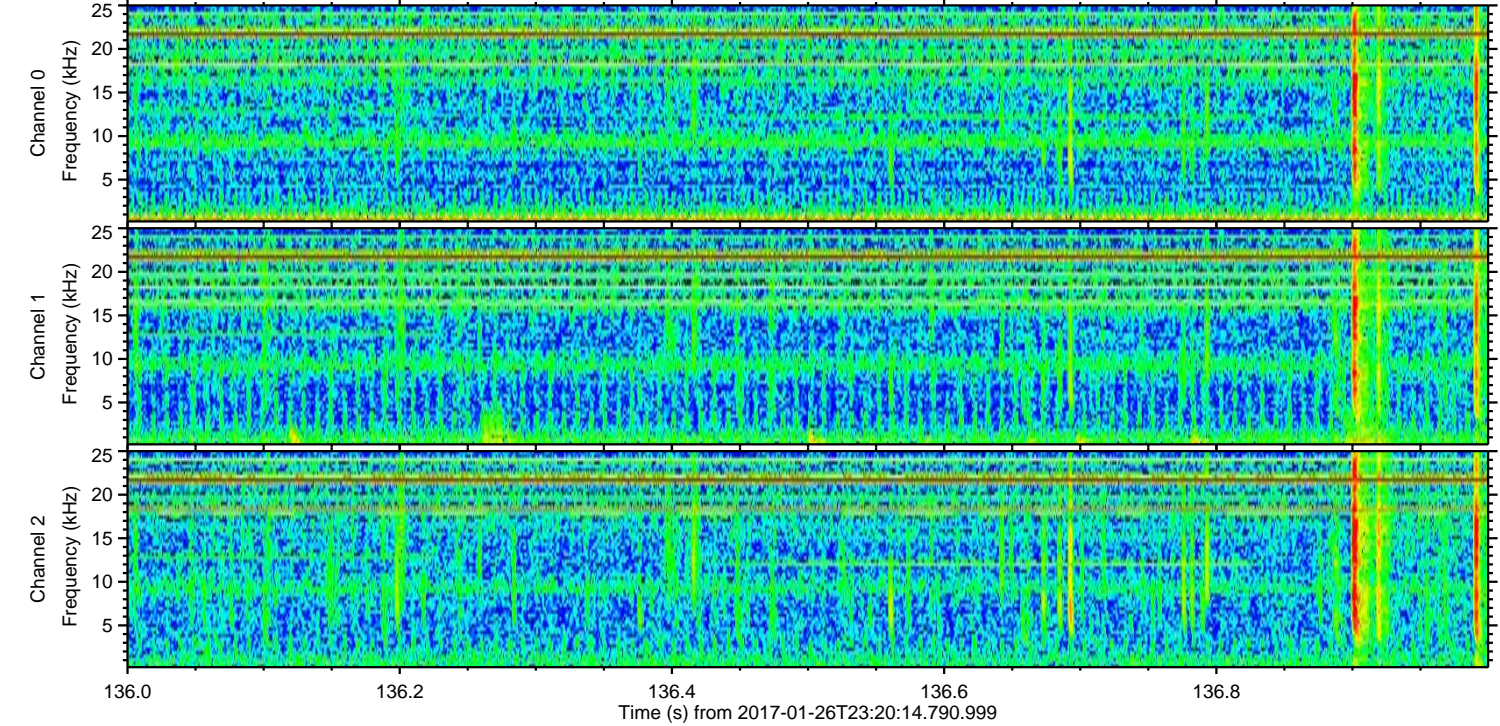
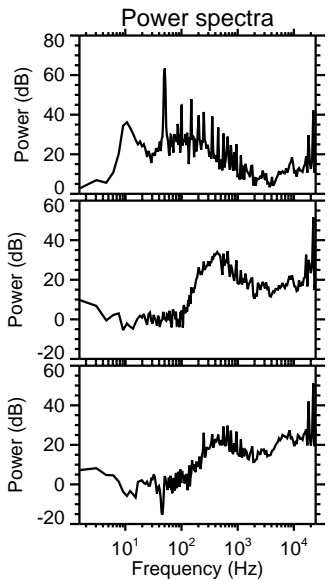
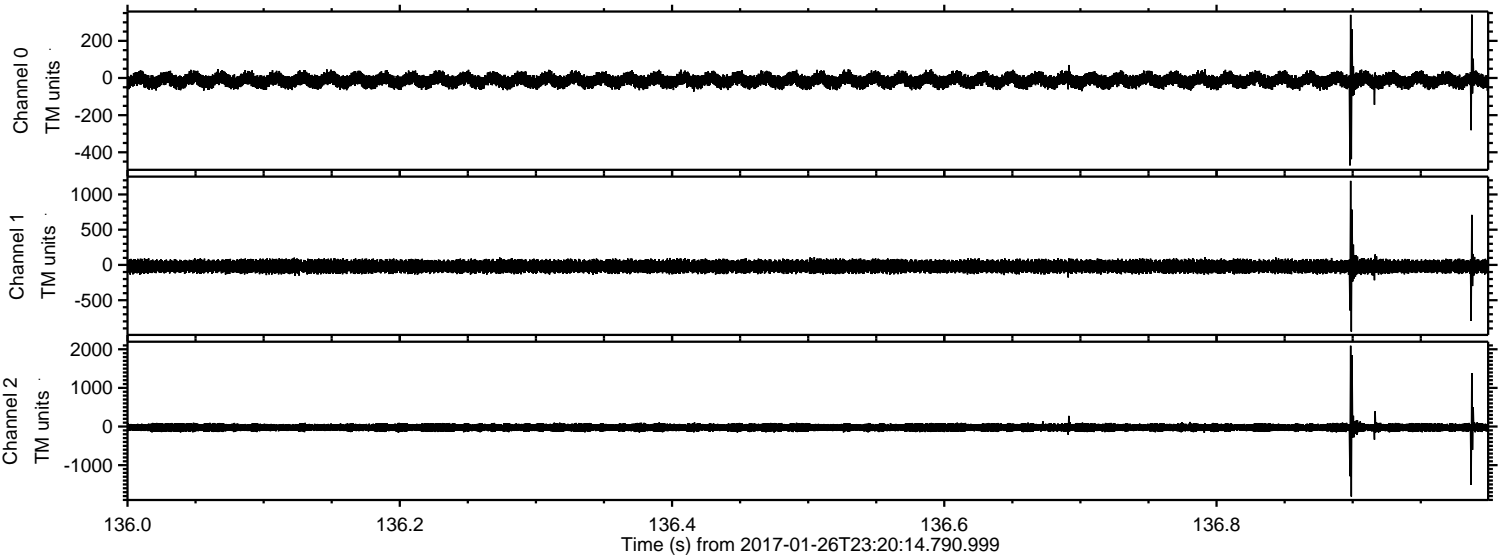
Channel 0
mn: -666
mx: 429
 μ : -12.5
 σ : 22.6

Channel 1
mn: -659
mx: 808
 μ : -20.4
 σ : 59.6

Channel 2
mn: -2103
mx: 1902
 μ : -25.6
 σ : 58.3

ELMAVAN 3D WAVEFORMS (Measured data sampled at 50 kHz) 51000 packets of 144 samples from 2017-01-26T23:20:14.790.999. Part 137/147

Processed Fri Jan 27 00:28:26 2017 by ELM ver.2012-10-06 from 001__elm20170126_232013__dat00.bin



ELMAVAN 3D WAVEFORMS (Measured data sampled at 50 kHz) 51000 packets of 144 samples from 2017-01-26T23:20:14.790.999. Part 107/147

