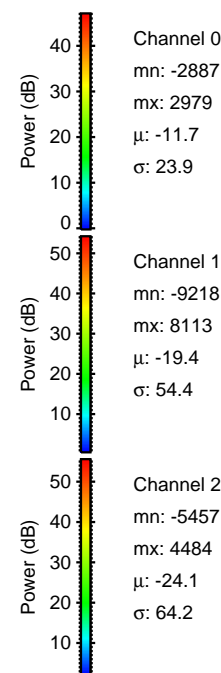
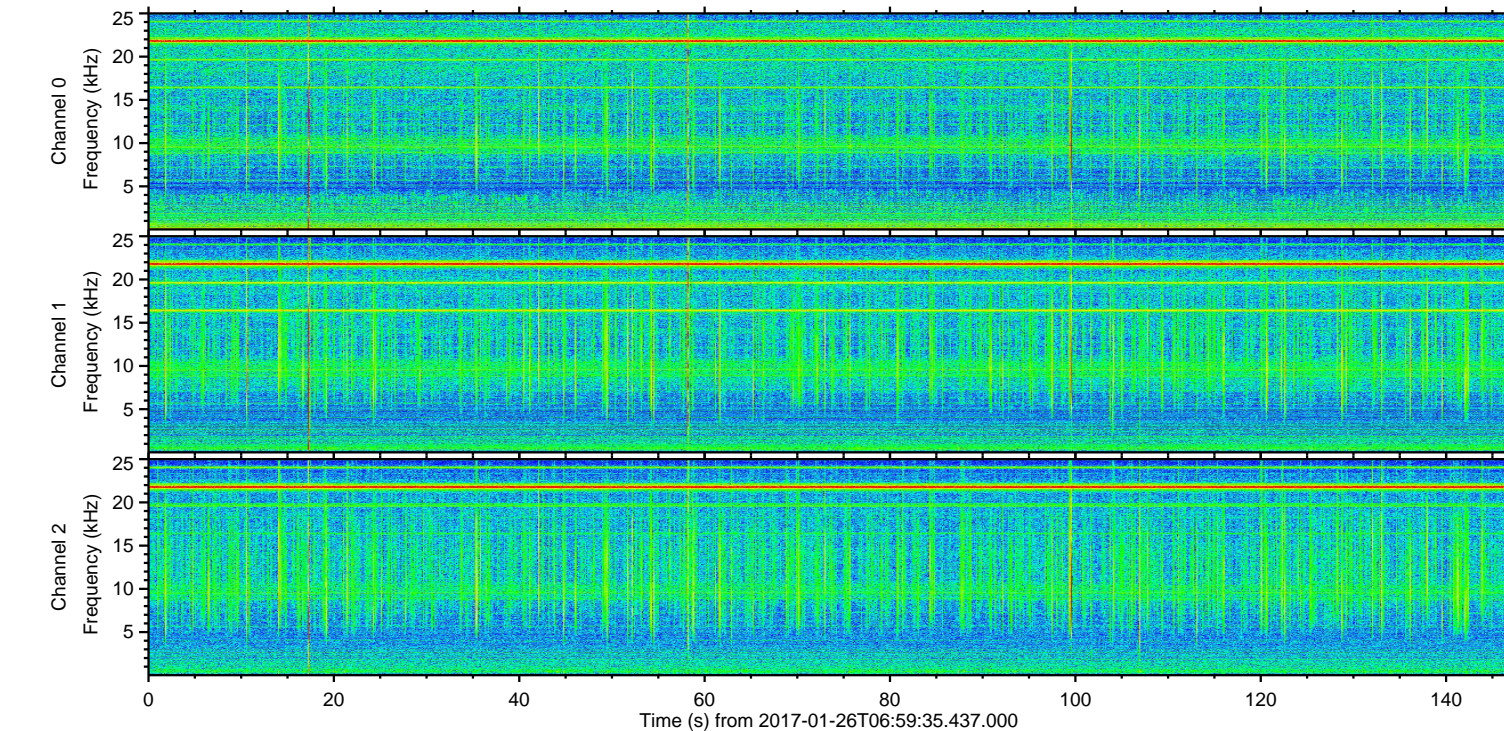
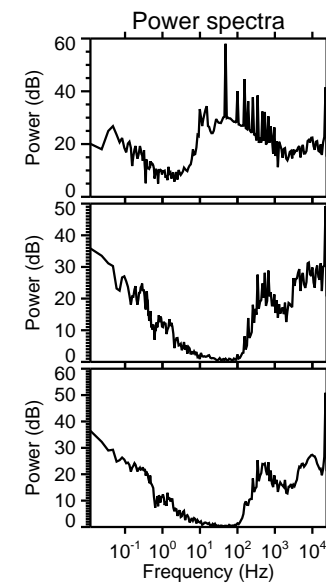
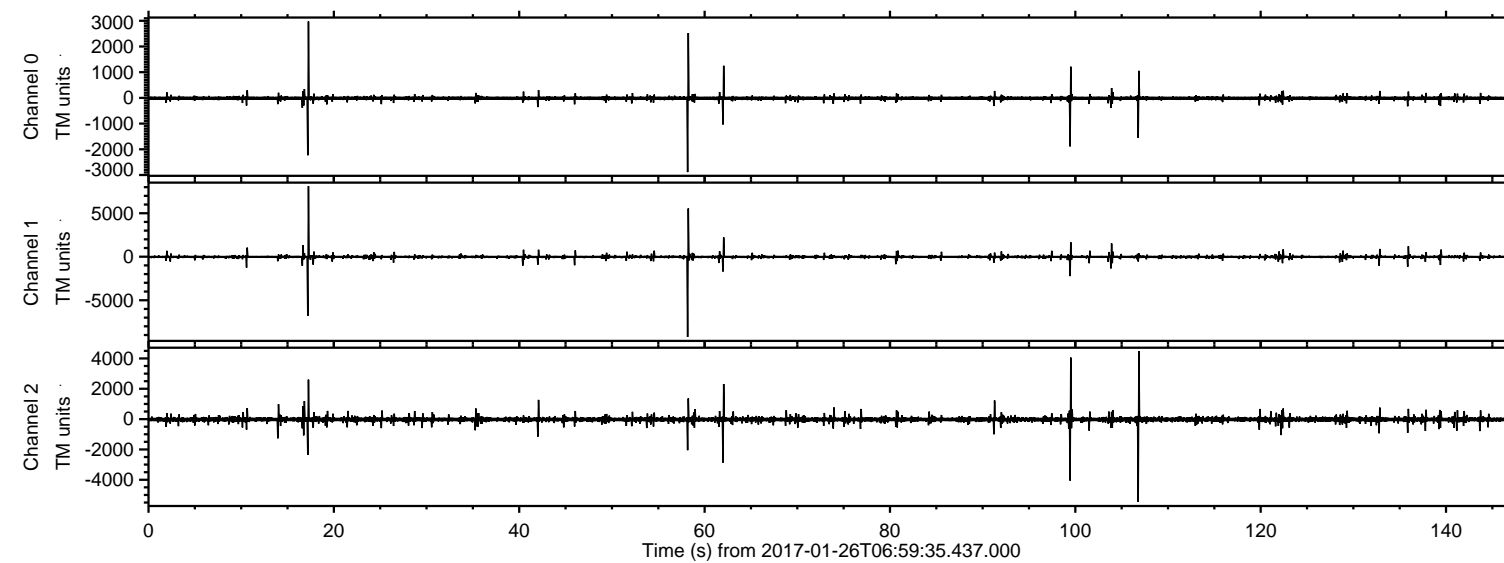
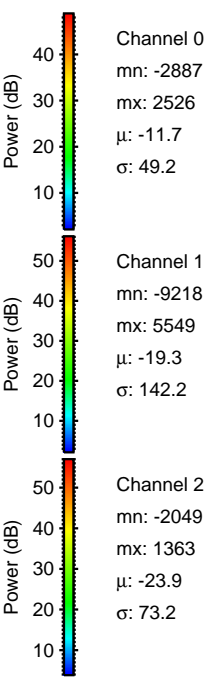
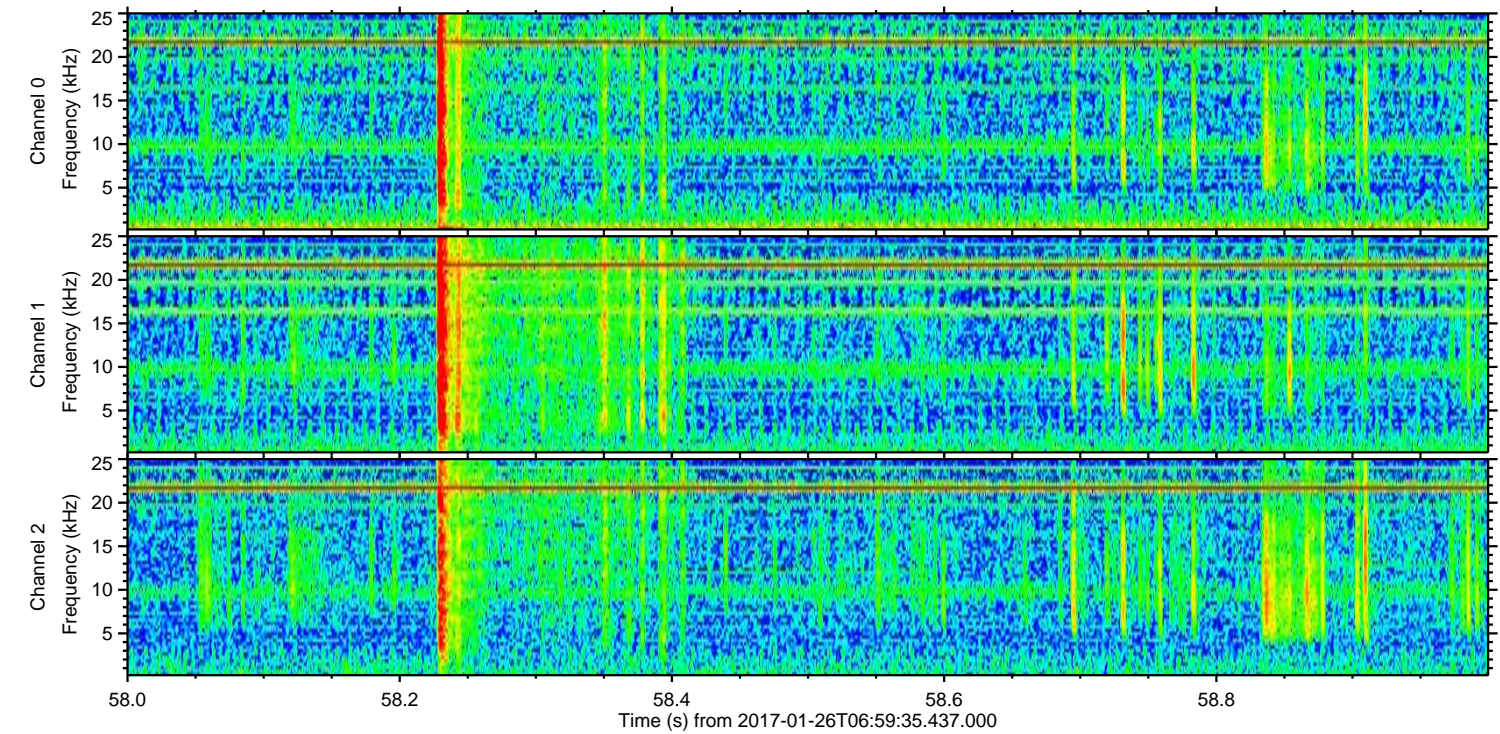
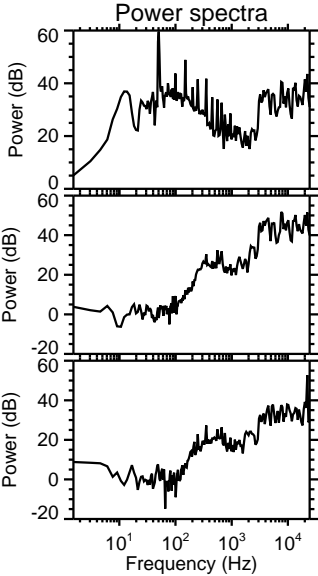
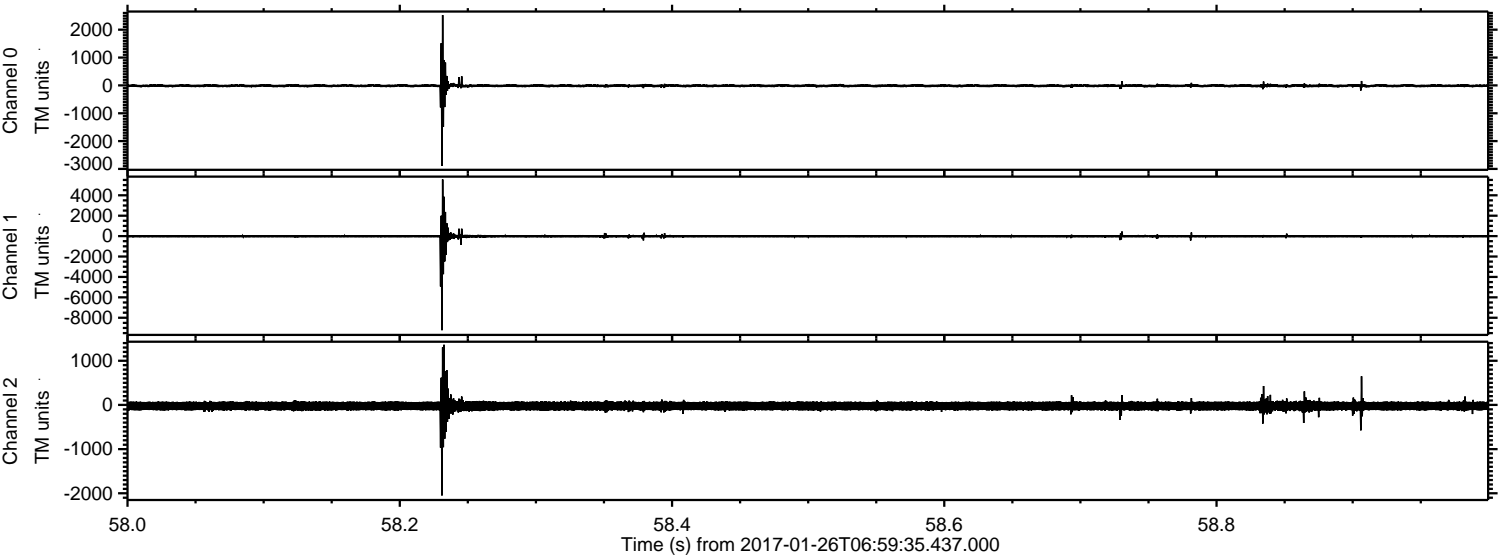


ELMAVAN 3D WAVEFORMS (Measured data sampled at 50 kHz) 51000 packets of 144 samples from 2017-01-26T06:59:35.437.000.

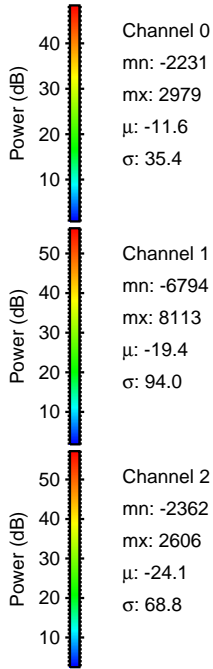
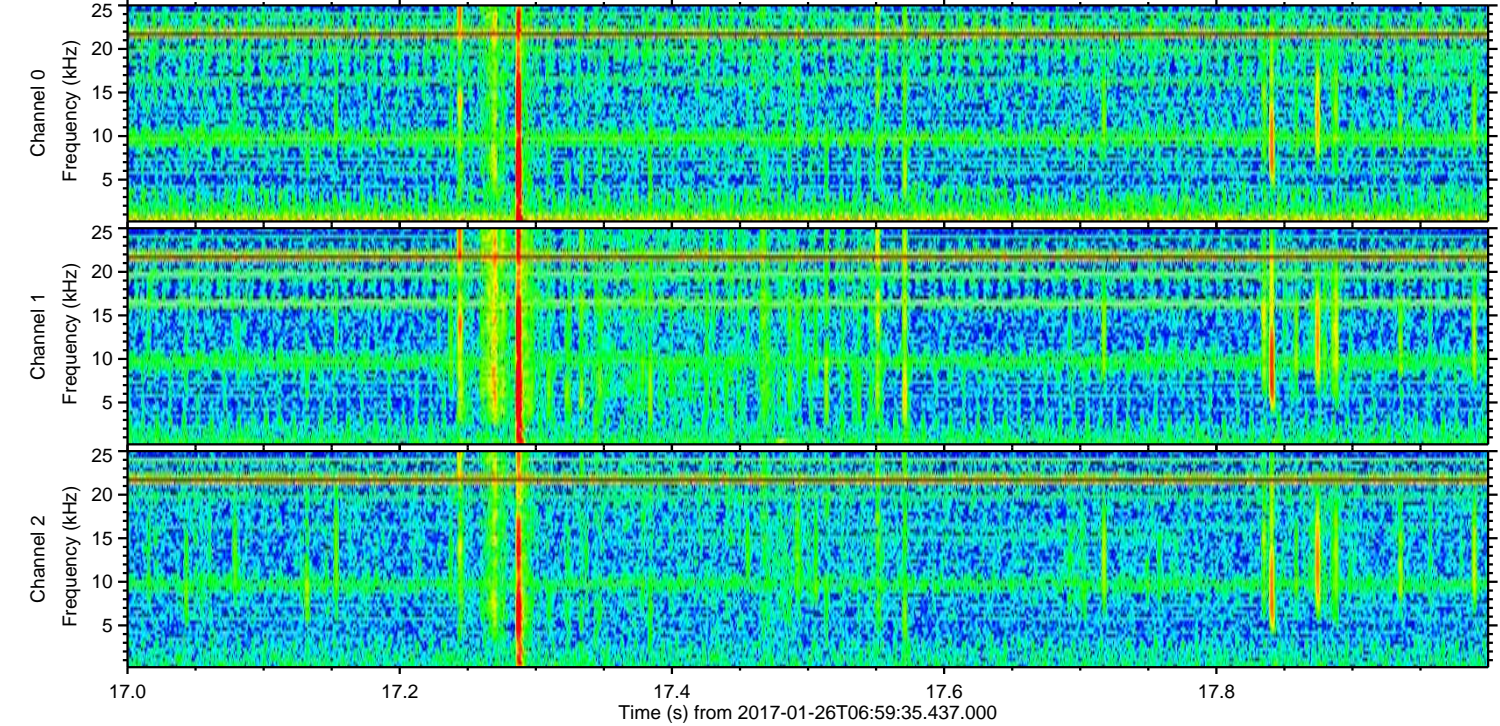
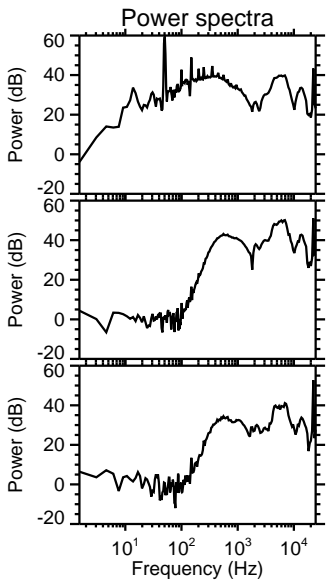
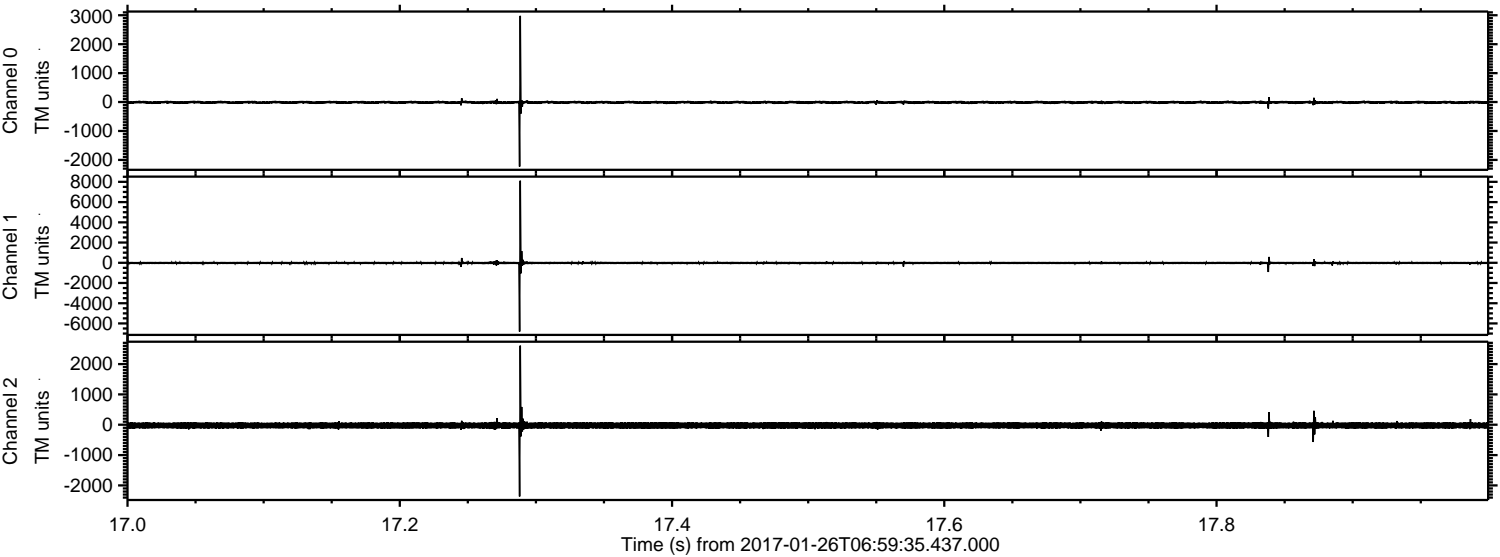
Processed Thu Jan 26 08:06:58 2017 by ELM ver.2012-10-06 from 001__elm20170126_065934__dat00.bin



Processed Thu Jan 26 08:07:10 2017 by ELM ver.2012-10-06 from 001__elm20170126_065934__dat00.bin

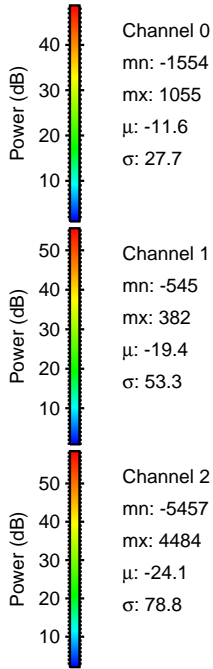
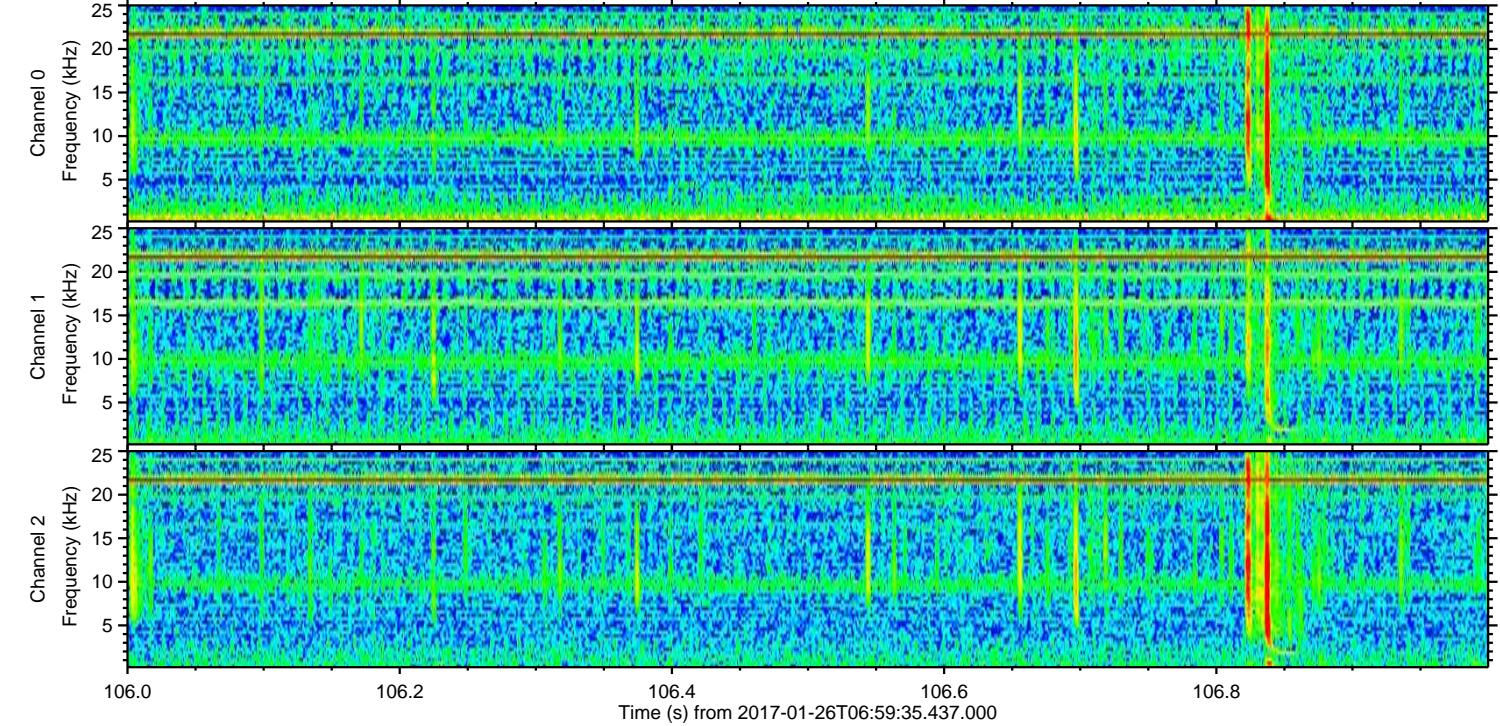
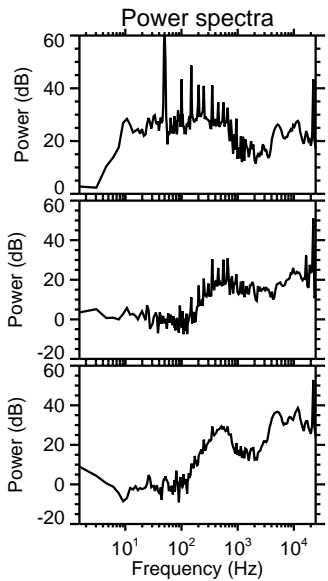
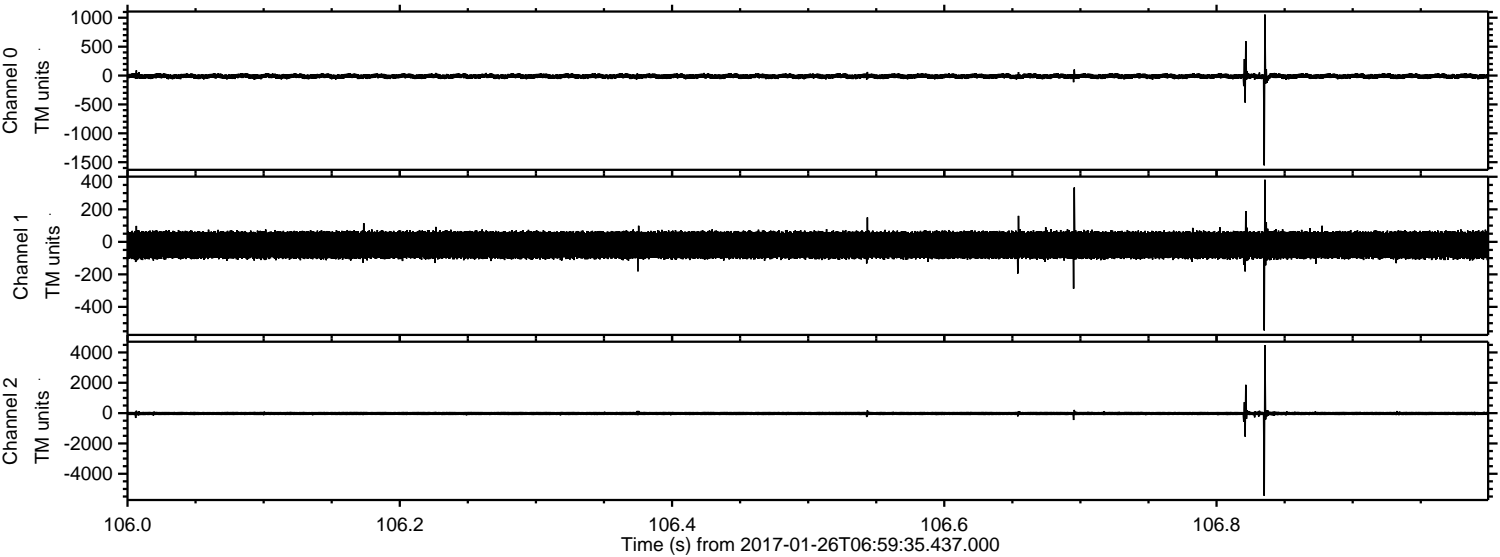


Processed Thu Jan 26 08:07:11 2017 by ELM ver.2012-10-06 from 001__elm20170126_065934__dat00.bin



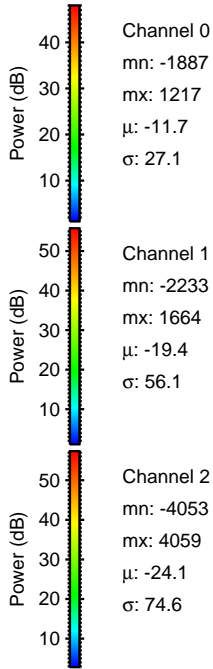
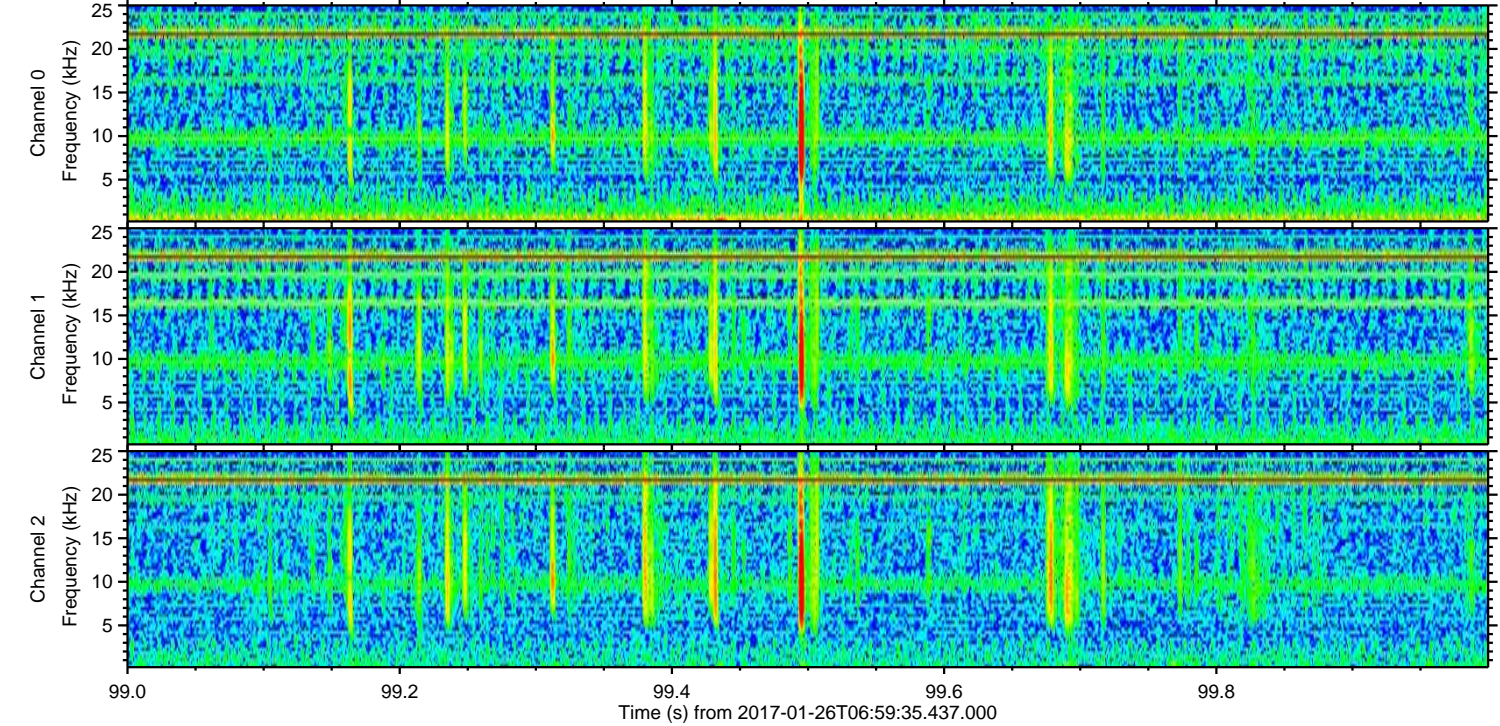
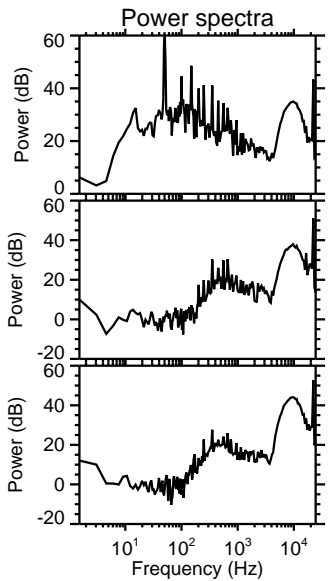
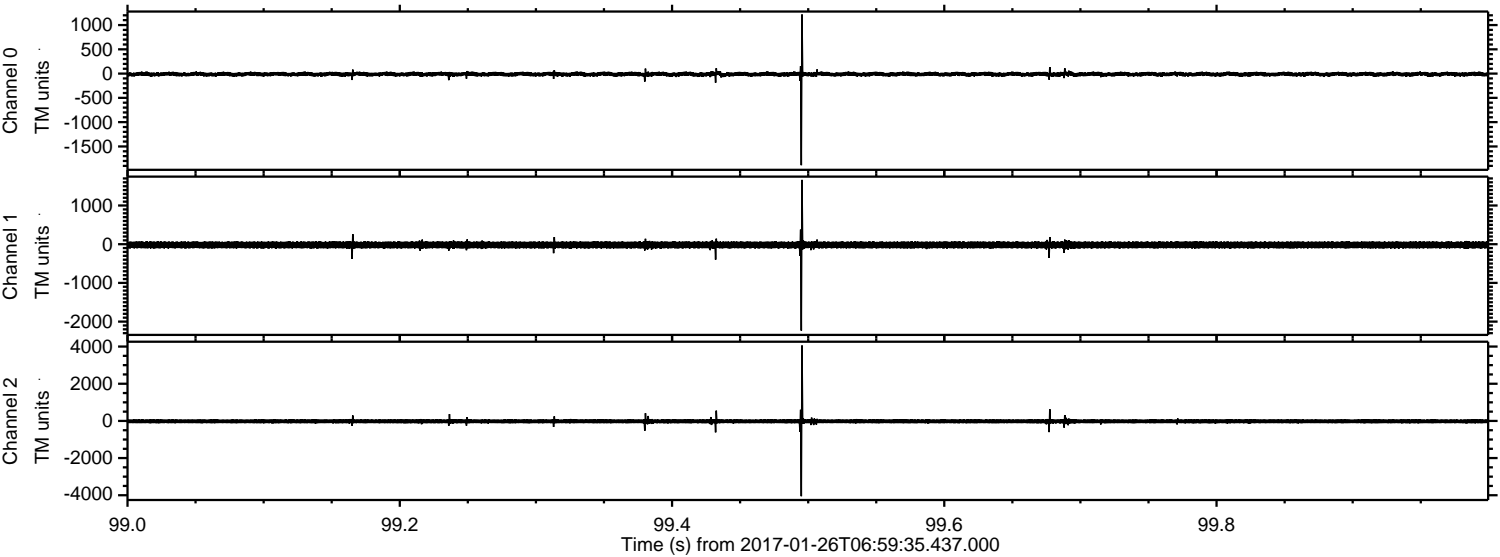
ELMAVAN 3D WAVEFORMS (Measured data sampled at 50 kHz) 51000 packets of 144 samples from 2017-01-26T06:59:35.437.000. Part 107/147

Processed Thu Jan 26 08:07:12 2017 by ELM ver.2012-10-06 from 001__elm20170126_065934__dat00.bin



ELMAVAN 3D WAVEFORMS (Measured data sampled at 50 kHz) 51000 packets of 144 samples from 2017-01-26T06:59:35.437.000. Part 100/147

Processed Thu Jan 26 08:07:13 2017 by ELM ver.2012-10-06 from 001__elm20170126_065934__dat00.bin

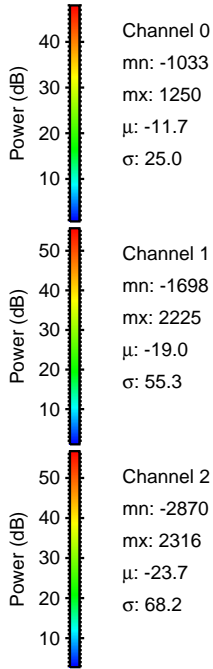
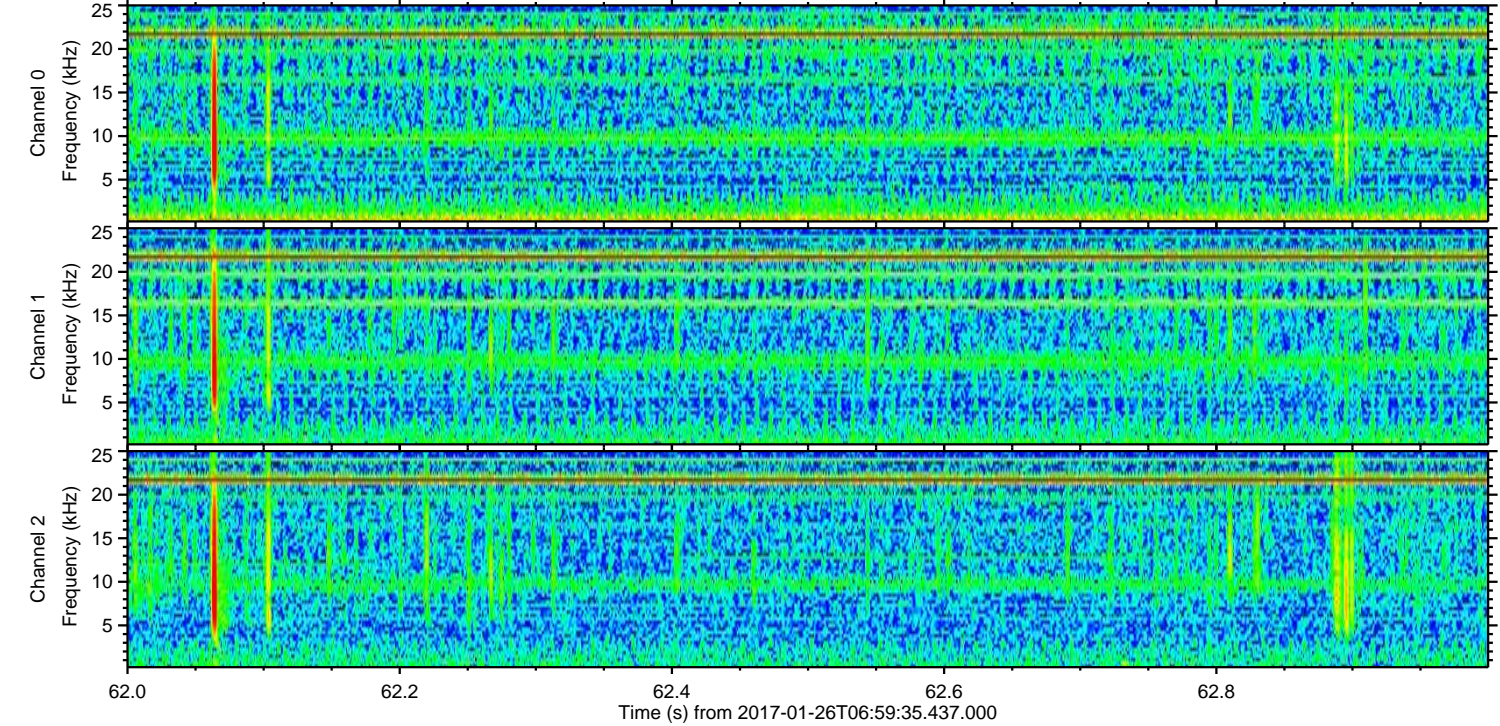
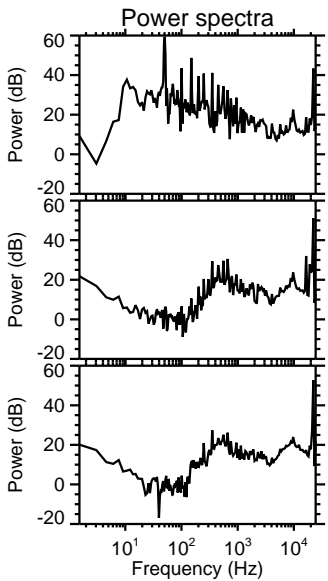
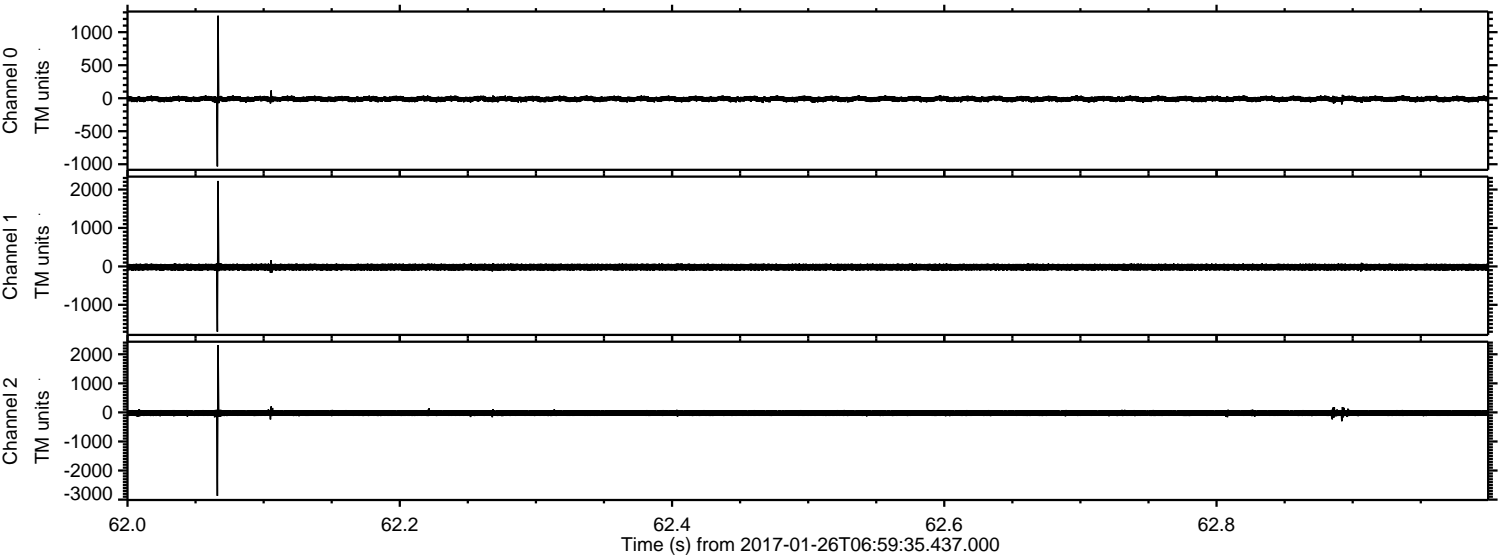


Channel 0
mn: -1887
mx: 1217
 μ : -11.7
 σ : 27.1

Channel 1
mn: -2233
mx: 1664
 μ : -19.4
 σ : 56.1

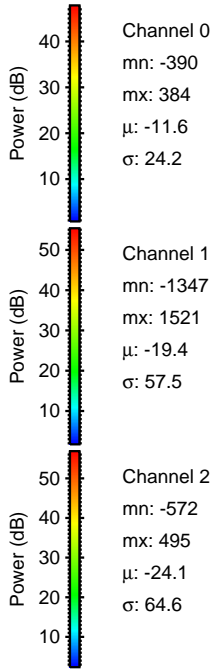
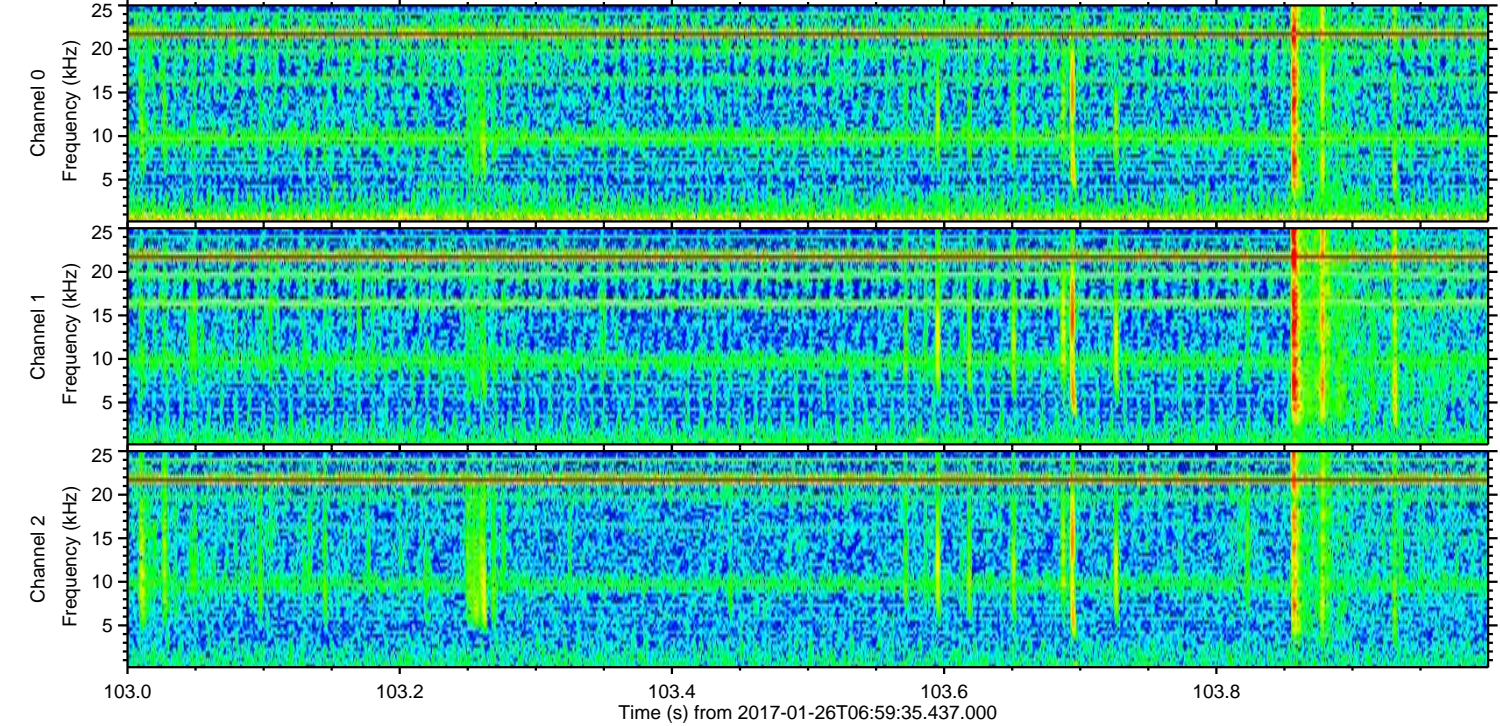
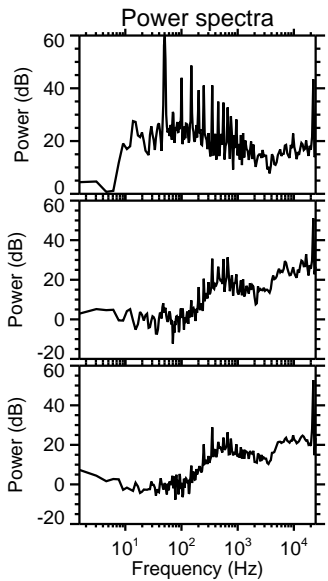
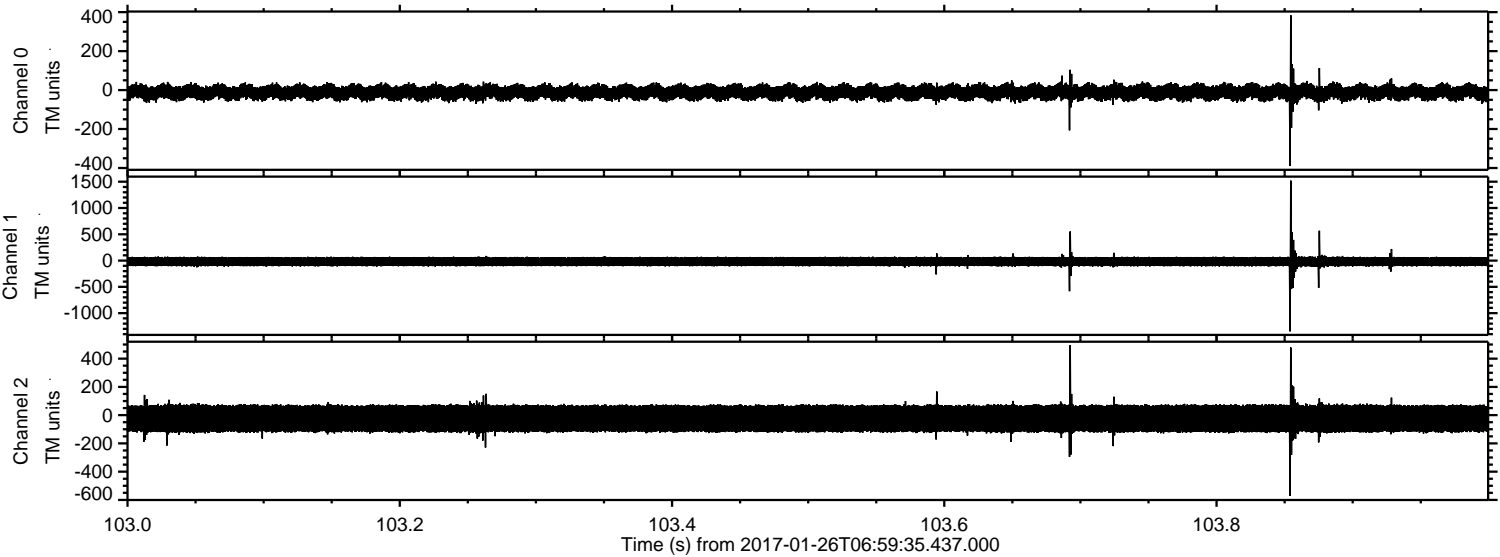
Channel 2
mn: -4053
mx: 4059
 μ : -24.1
 σ : 74.6

Processed Thu Jan 26 08:07:13 2017 by ELM ver.2012-10-06 from 001__elm20170126_065934__dat00.bin



ELMAVAN 3D WAVEFORMS (Measured data sampled at 50 kHz) 51000 packets of 144 samples from 2017-01-26T06:59:35.437.000. Part 104/147

Processed Thu Jan 26 08:07:14 2017 by ELM ver.2012-10-06 from 001__elm20170126_065934__dat00.bin

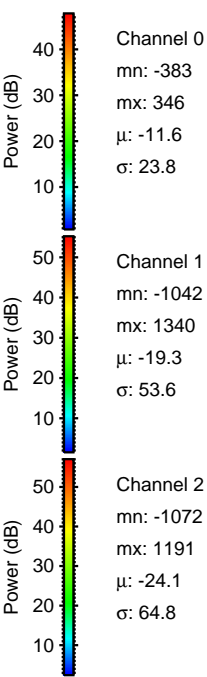
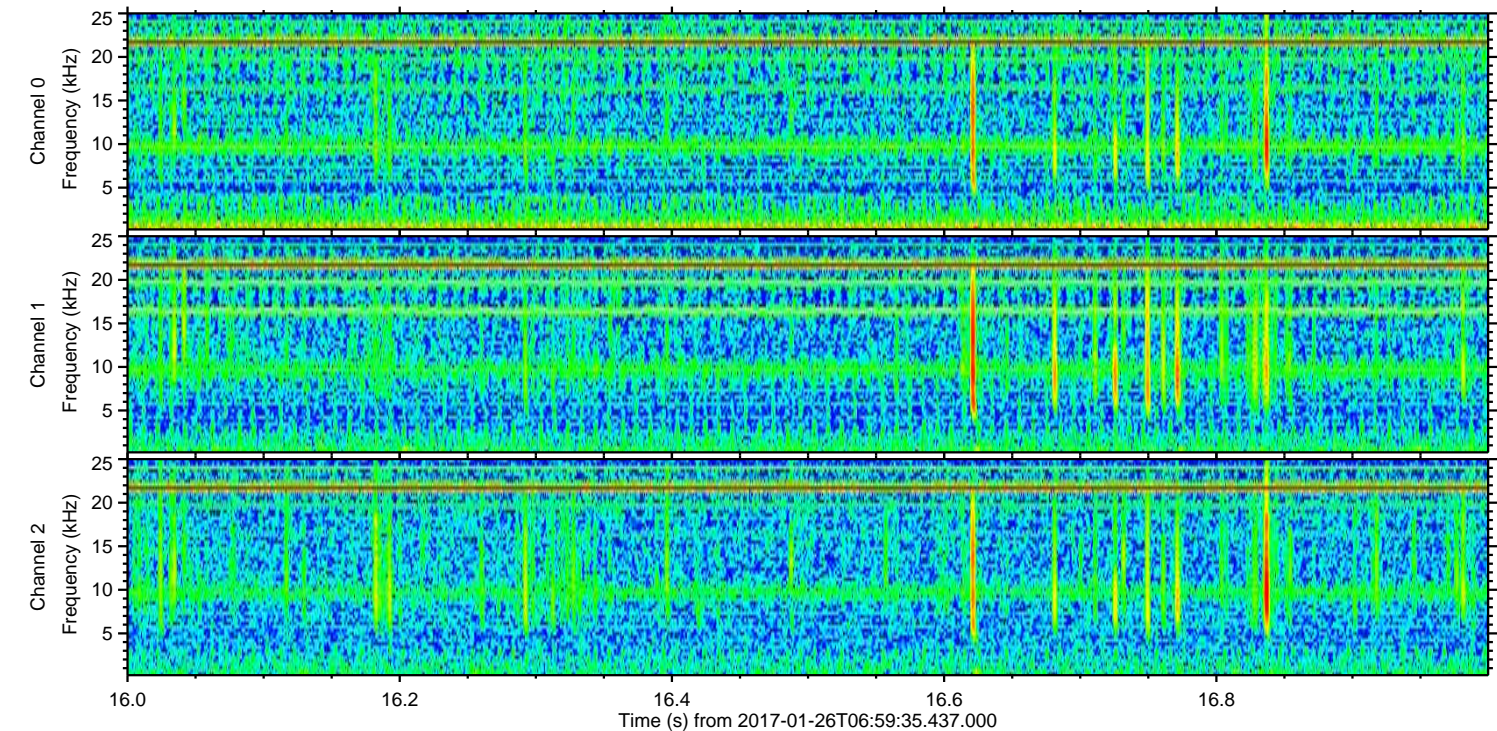
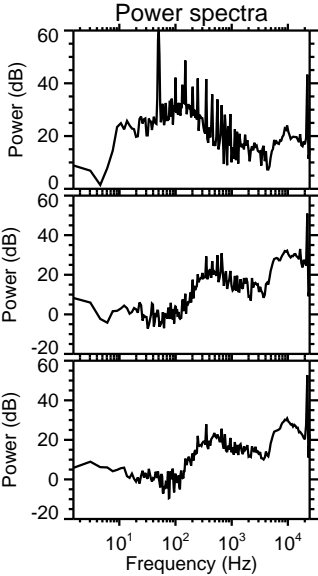
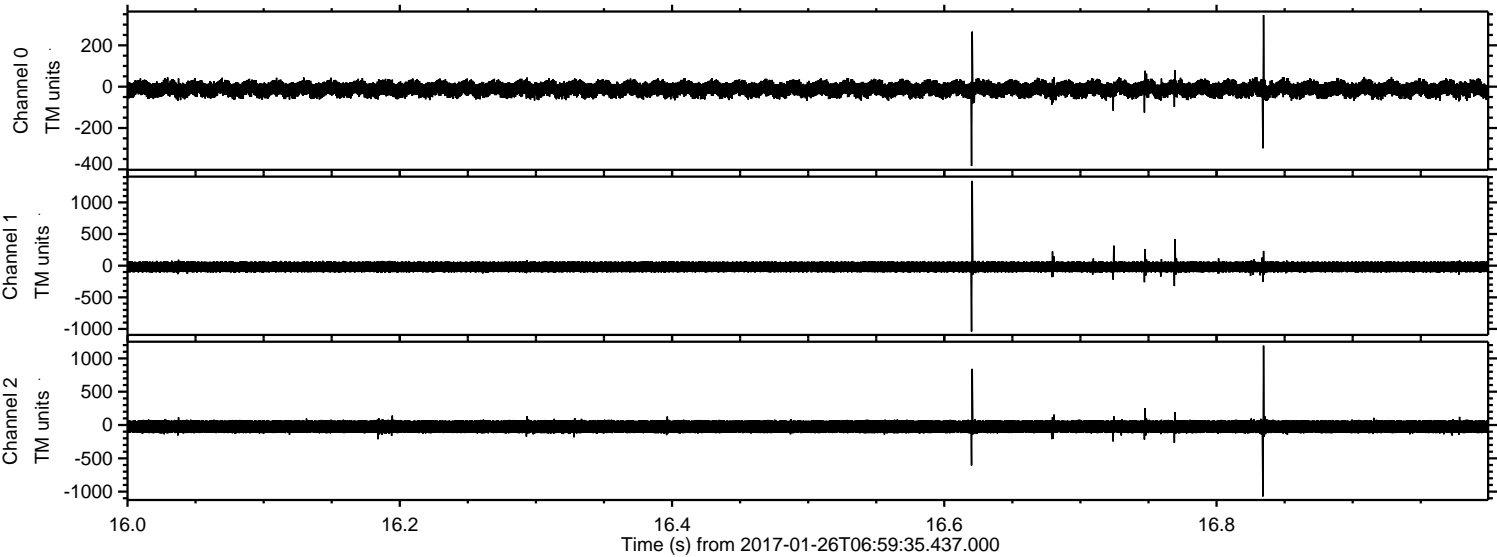


Channel 0
mn: -390
mx: 384
 μ : -11.6
 σ : 24.2

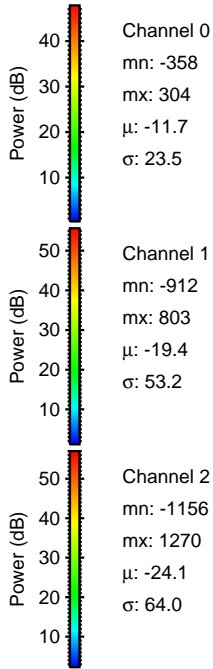
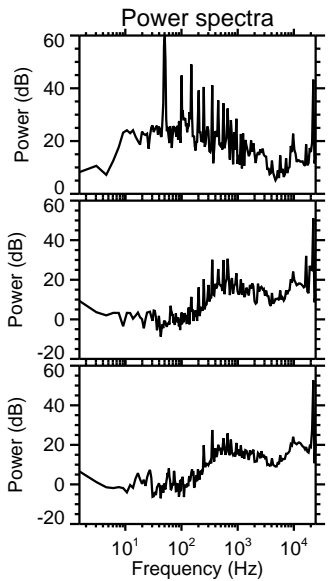
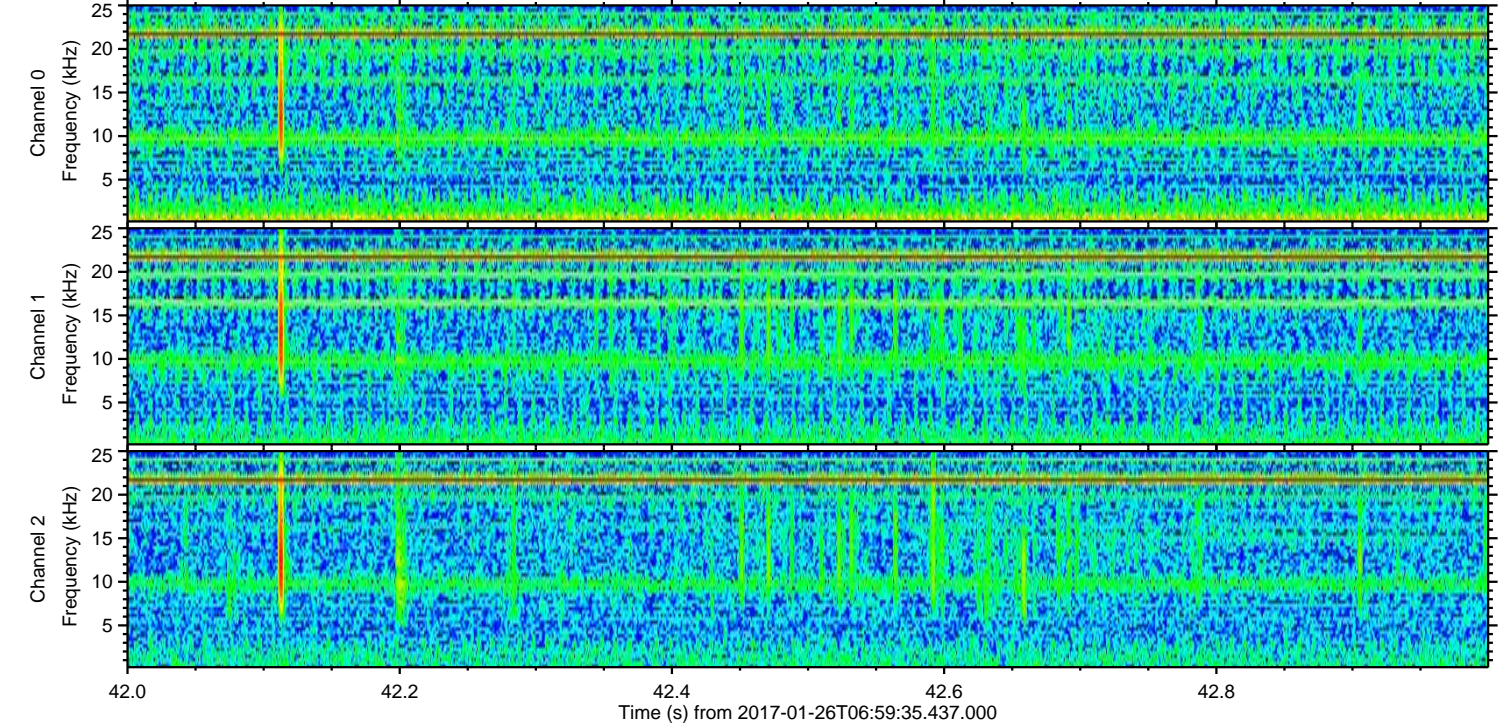
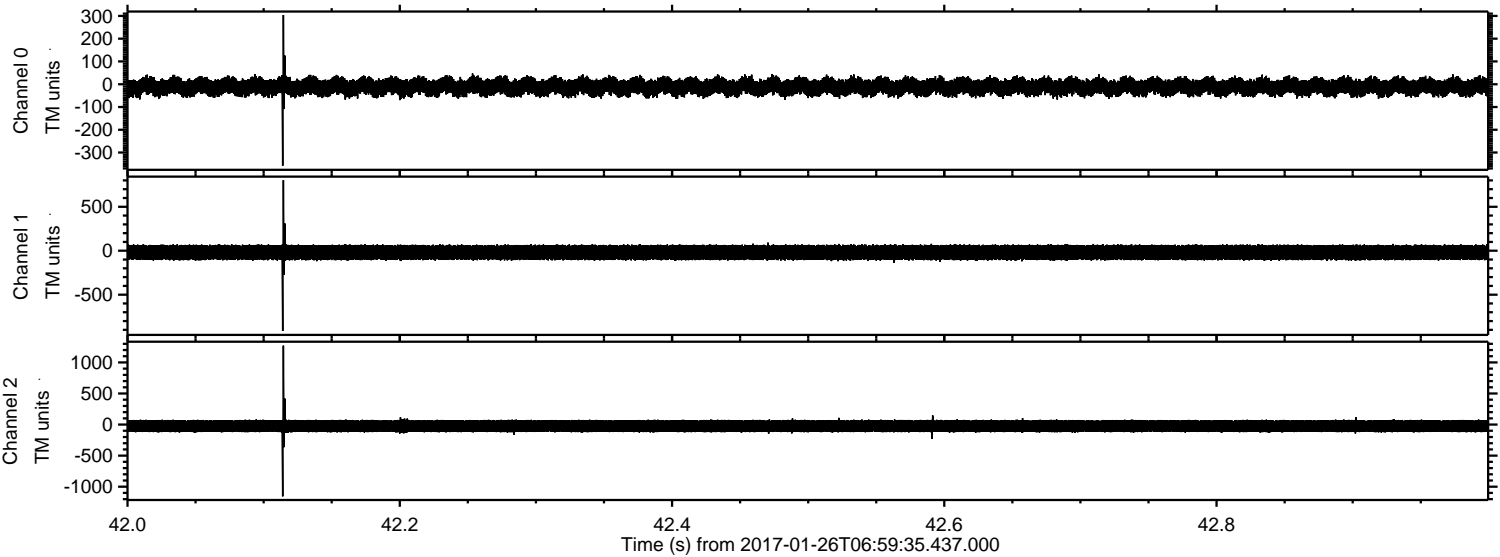
Channel 1
mn: -1347
mx: 1521
 μ : -19.4
 σ : 57.5

Channel 2
mn: -572
mx: 495
 μ : -24.1
 σ : 64.6

Processed Thu Jan 26 08:07:15 2017 by ELM ver.2012-10-06 from 001__elm20170126_065934__dat00.bin

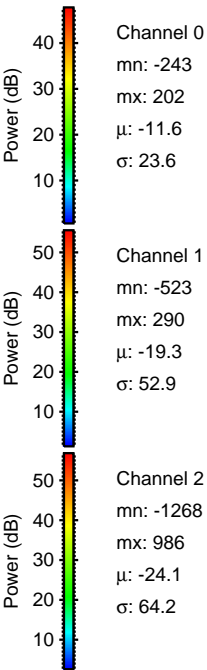
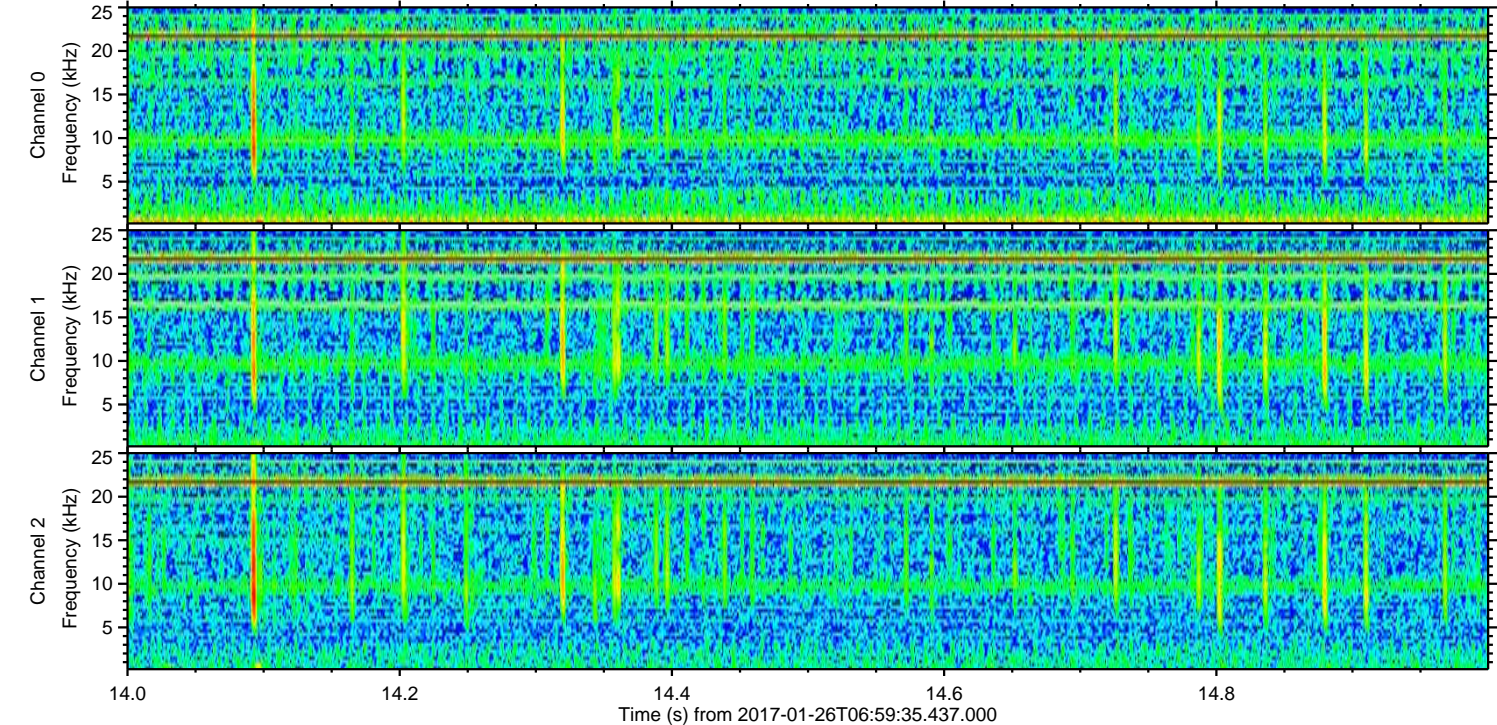
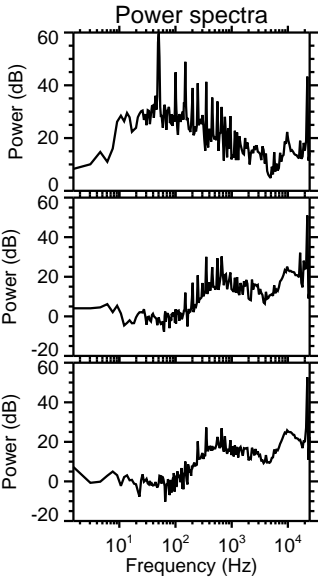
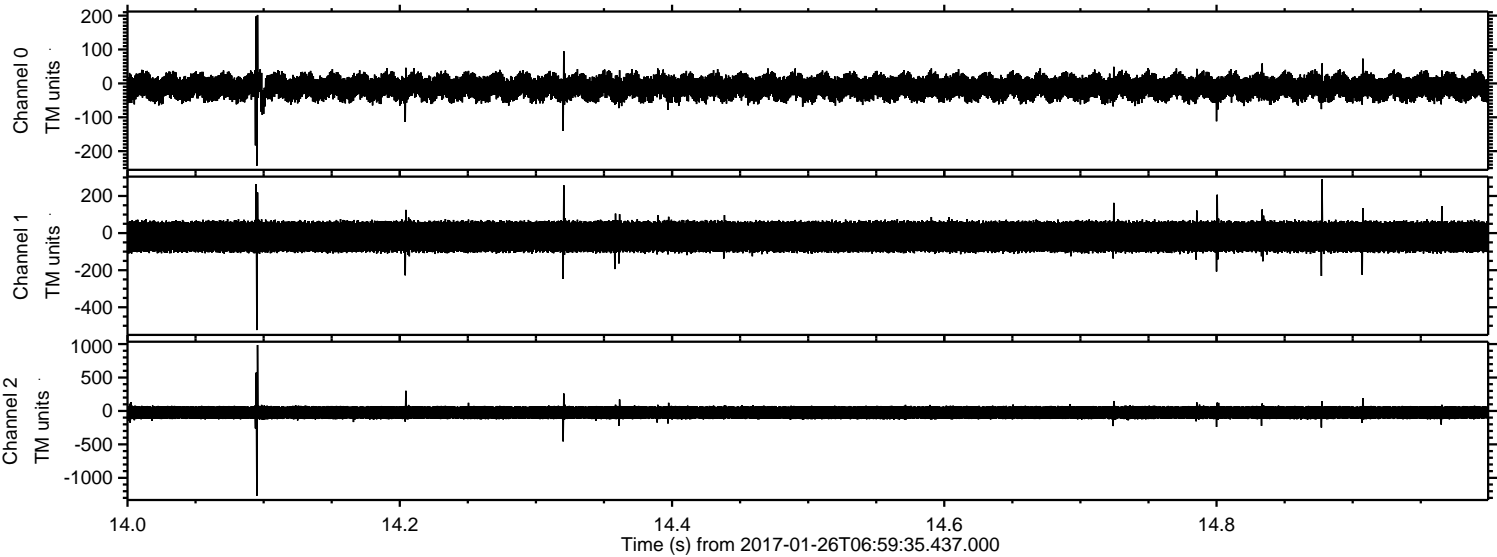


Processed Thu Jan 26 08:07:16 2017 by ELM ver.2012-10-06 from 001__elm20170126_065934__dat00.bin



ELMAVAN 3D WAVEFORMS (Measured data sampled at 50 kHz) 51000 packets of 144 samples from 2017-01-26T06:59:35.437.000. Part 15/147

Processed Thu Jan 26 08:07:17 2017 by ELM ver.2012-10-06 from 001__elm20170126_065934__dat00.bin



Channel 0
mn: -243
mx: 202
 μ : -11.6
 σ : 23.6

Channel 1
mn: -523
mx: 290
 μ : -19.3
 σ : 52.9

Channel 2
mn: -1268
mx: 986
 μ : -24.1
 σ : 64.2

ELMAVAN 3D WAVEFORMS (Measured data sampled at 50 kHz) 51000 packets of 144 samples from 2017-01-26T06:59:35.437.000. Part 87/147

