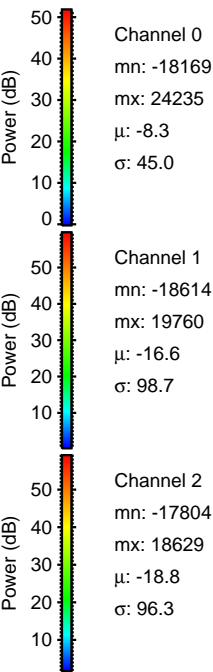
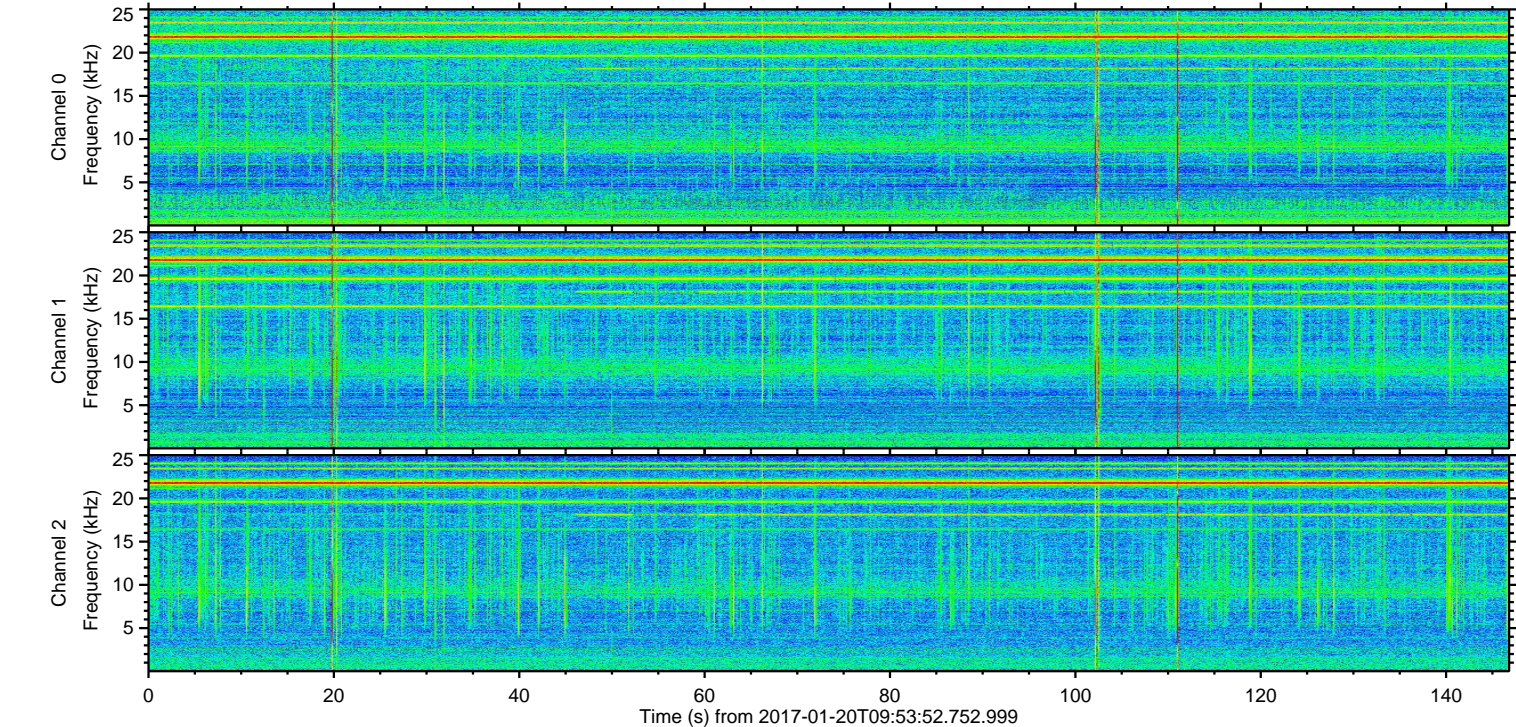
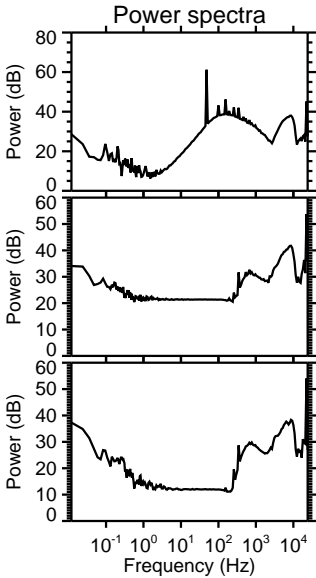
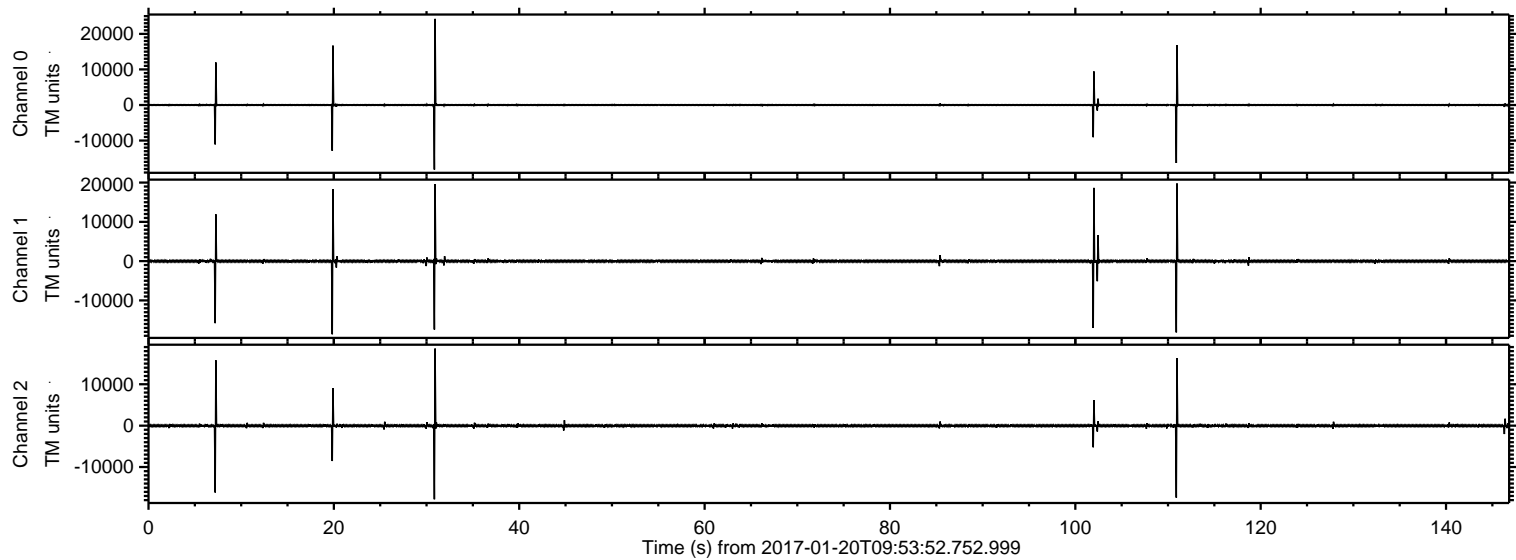


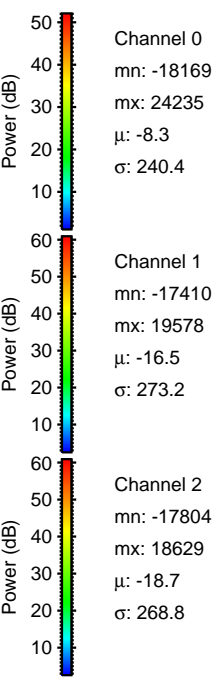
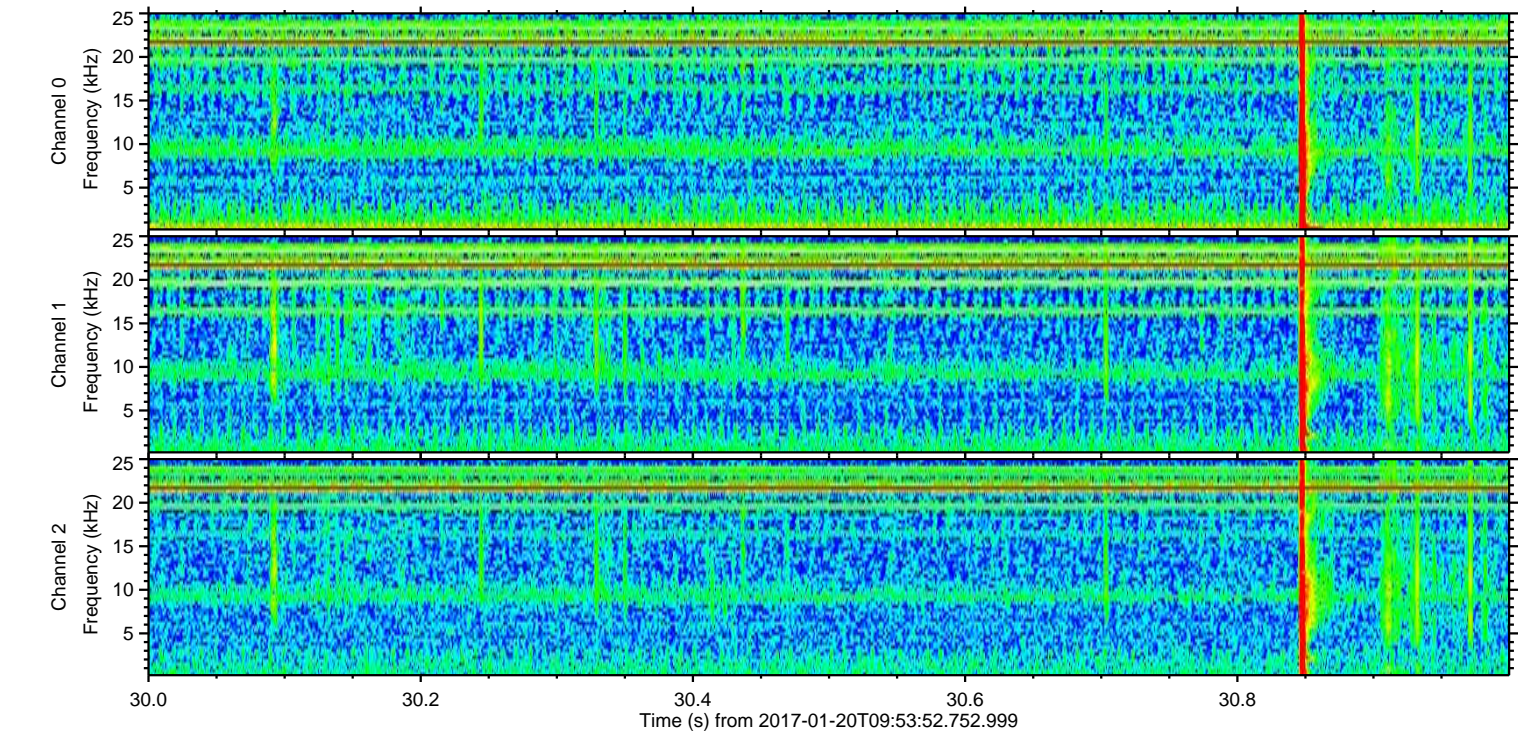
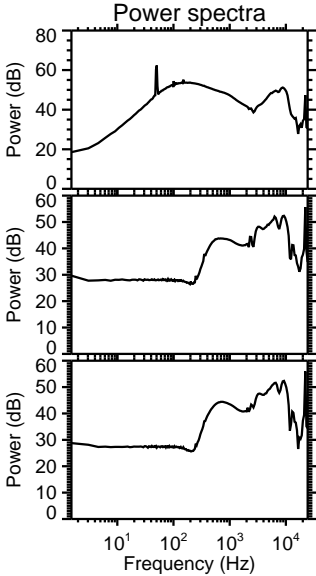
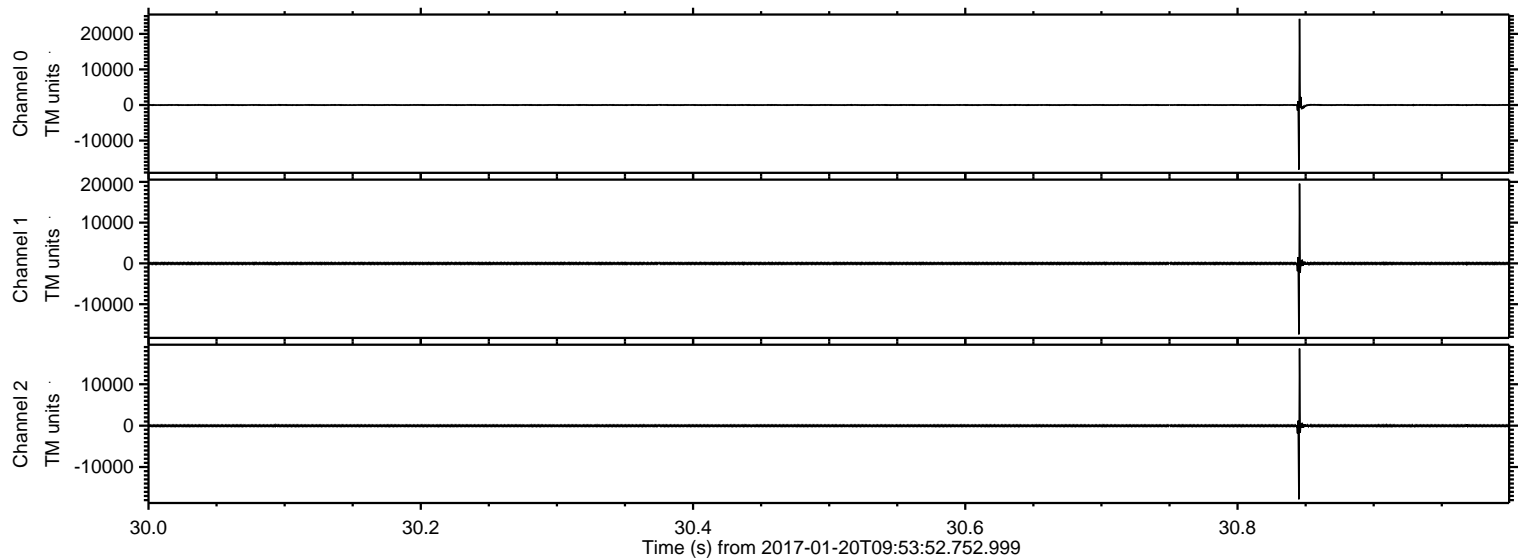
ELMAVAN 3D WAVEFORMS (Measured data sampled at 50 kHz) 51000 packets of 144 samples from 2017-01-20T09:53:52.752.999.

Processed Fri Jan 20 11:02:11 2017 by ELM ver.2012-10-06 from 001__elm20170120_095351__dat00.bin



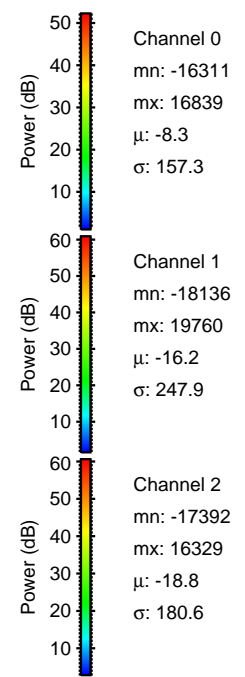
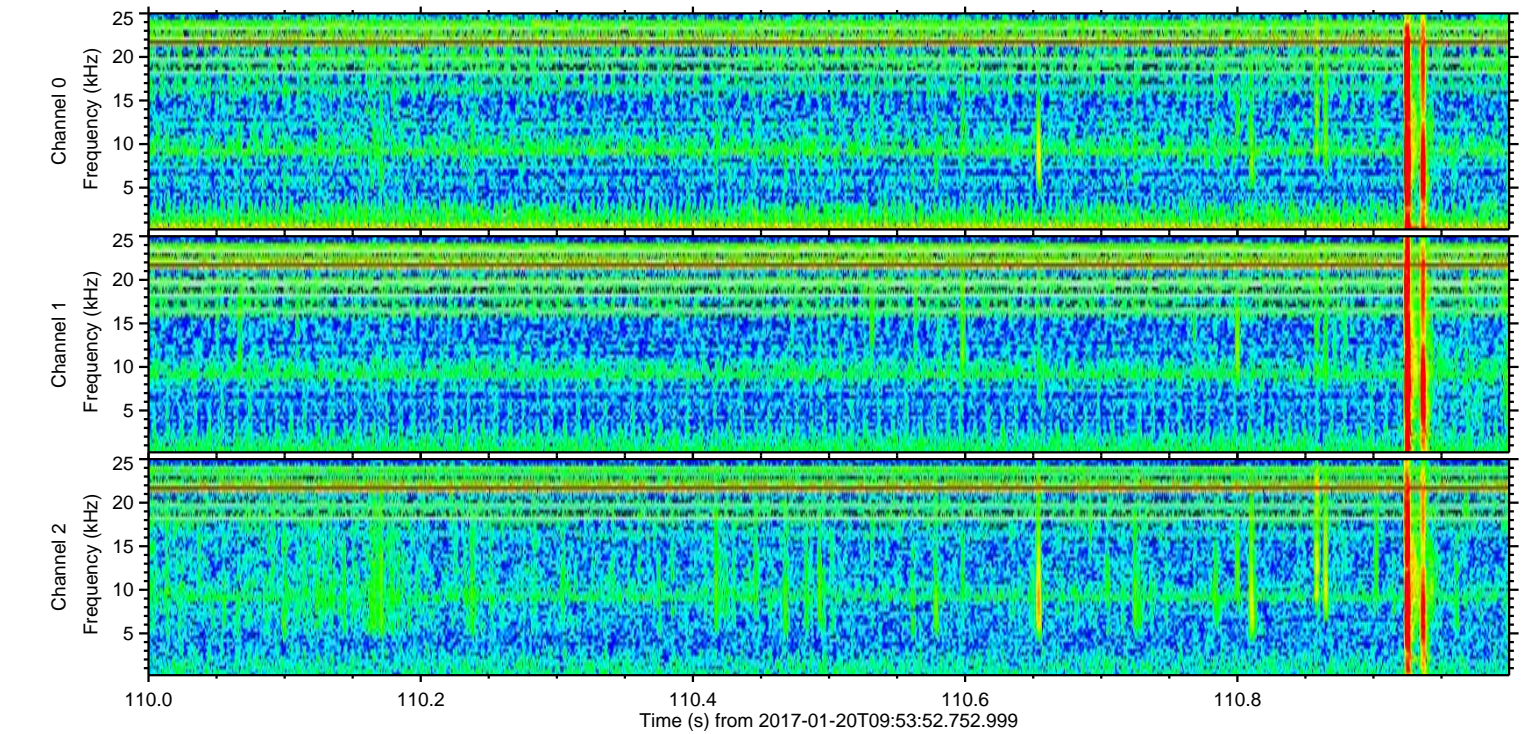
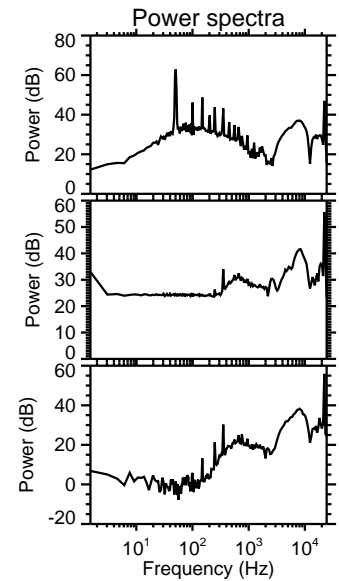
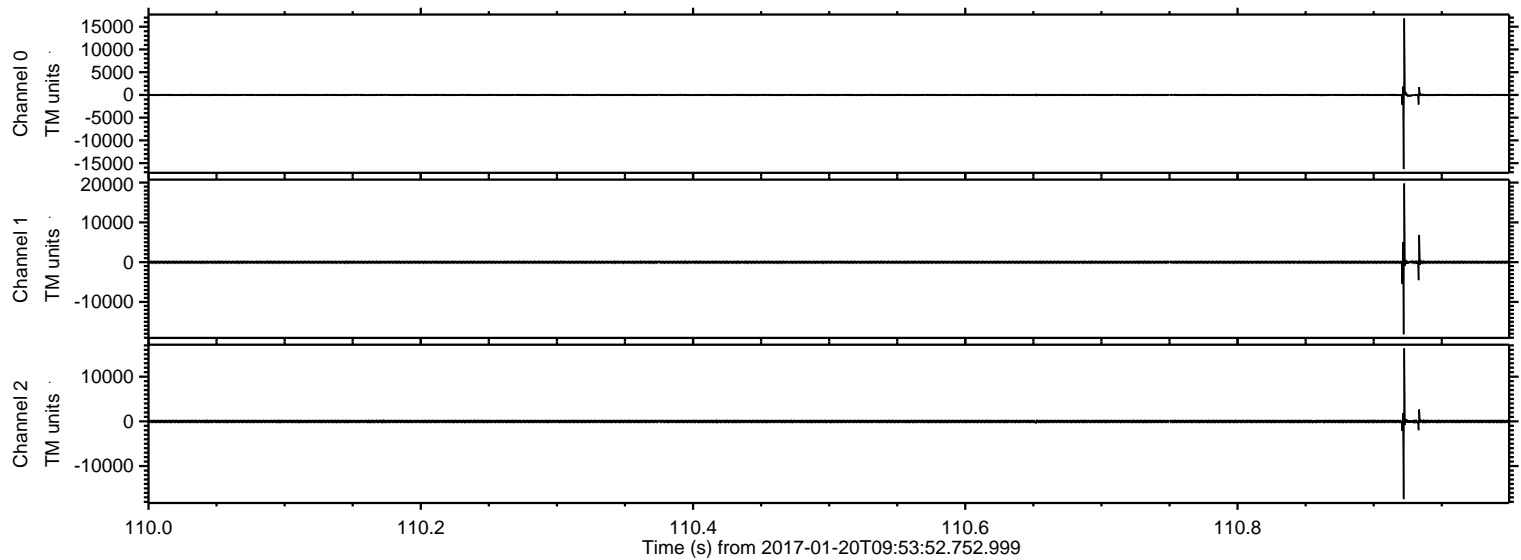
ELMAVAN 3D WAVEFORMS (Measured data sampled at 50 kHz) 51000 packets of 144 samples from 2017-01-20T09:53:52.752.999. Part 31/147

Processed Fri Jan 20 11:02:23 2017 by ELM ver.2012-10-06 from 001__elm20170120_095351__dat00.bin



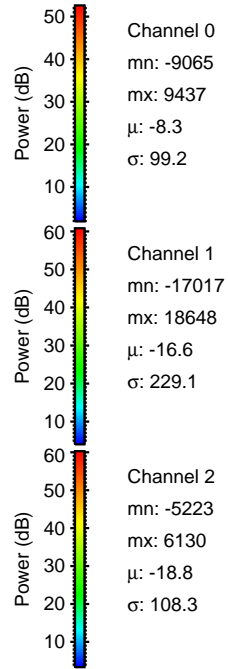
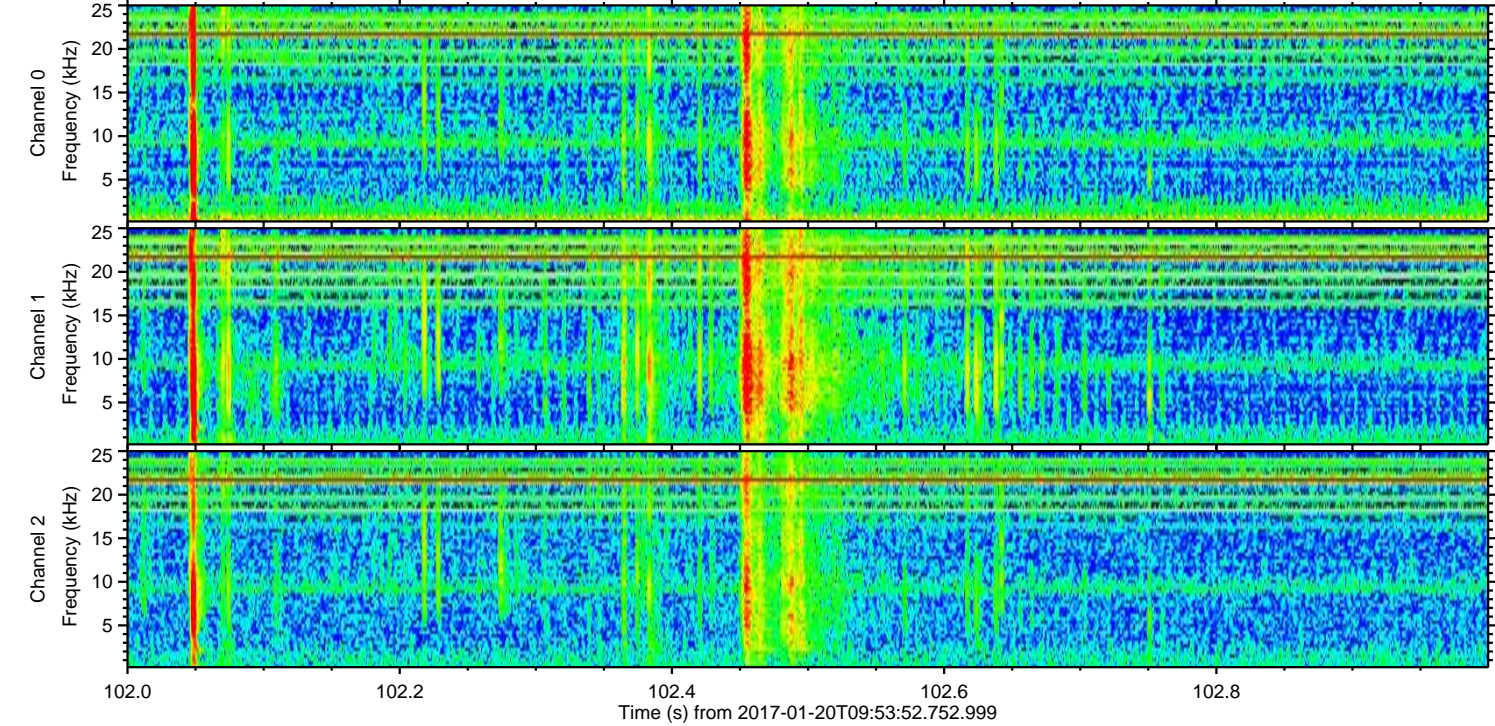
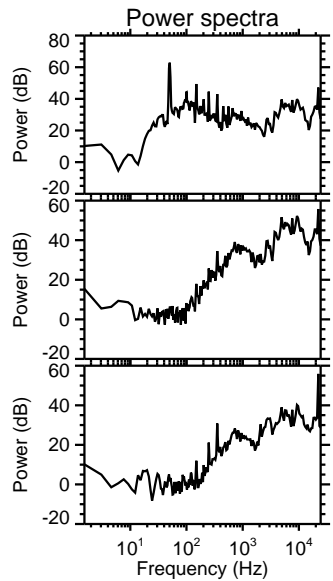
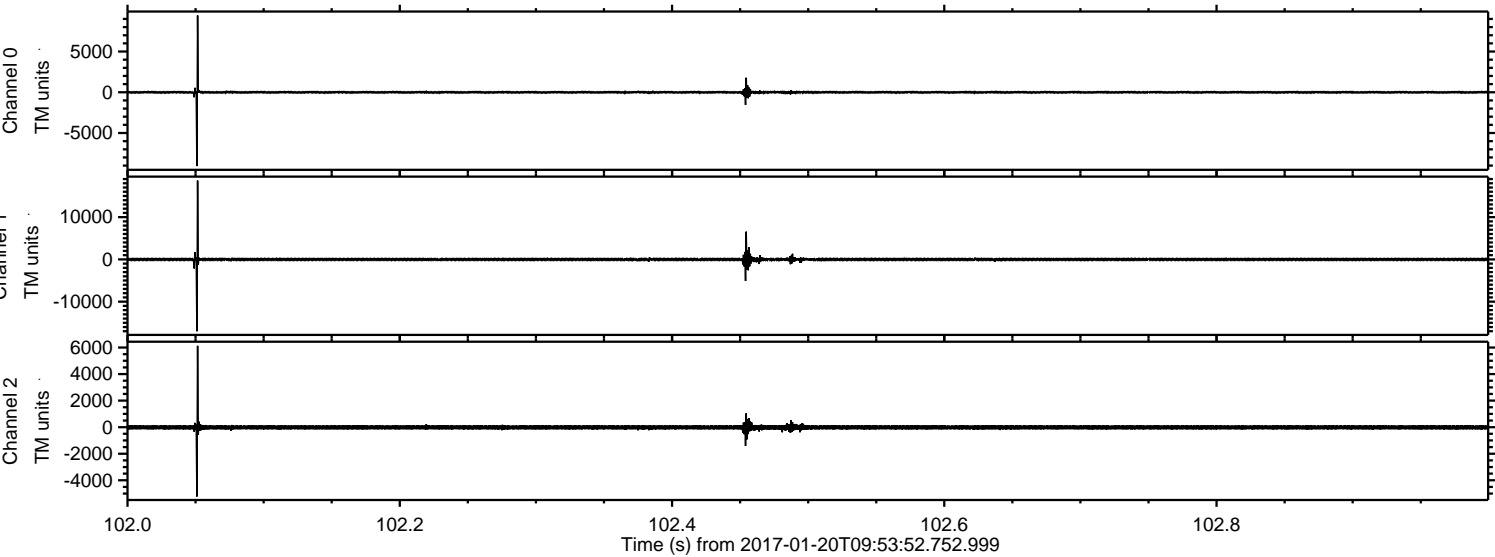
ELMAVAN 3D WAVEFORMS (Measured data sampled at 50 kHz) 51000 packets of 144 samples from 2017-01-20T09:53:52.752.999. Part 111/147

Processed Fri Jan 20 11:02:24 2017 by ELM ver.2012-10-06 from 001__elm20170120_095351__dat00.bin



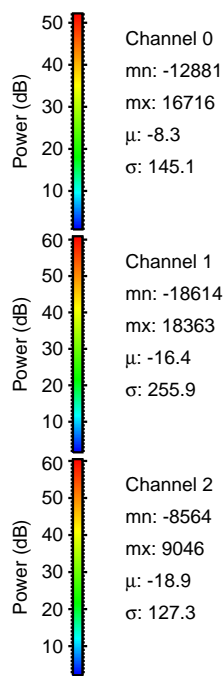
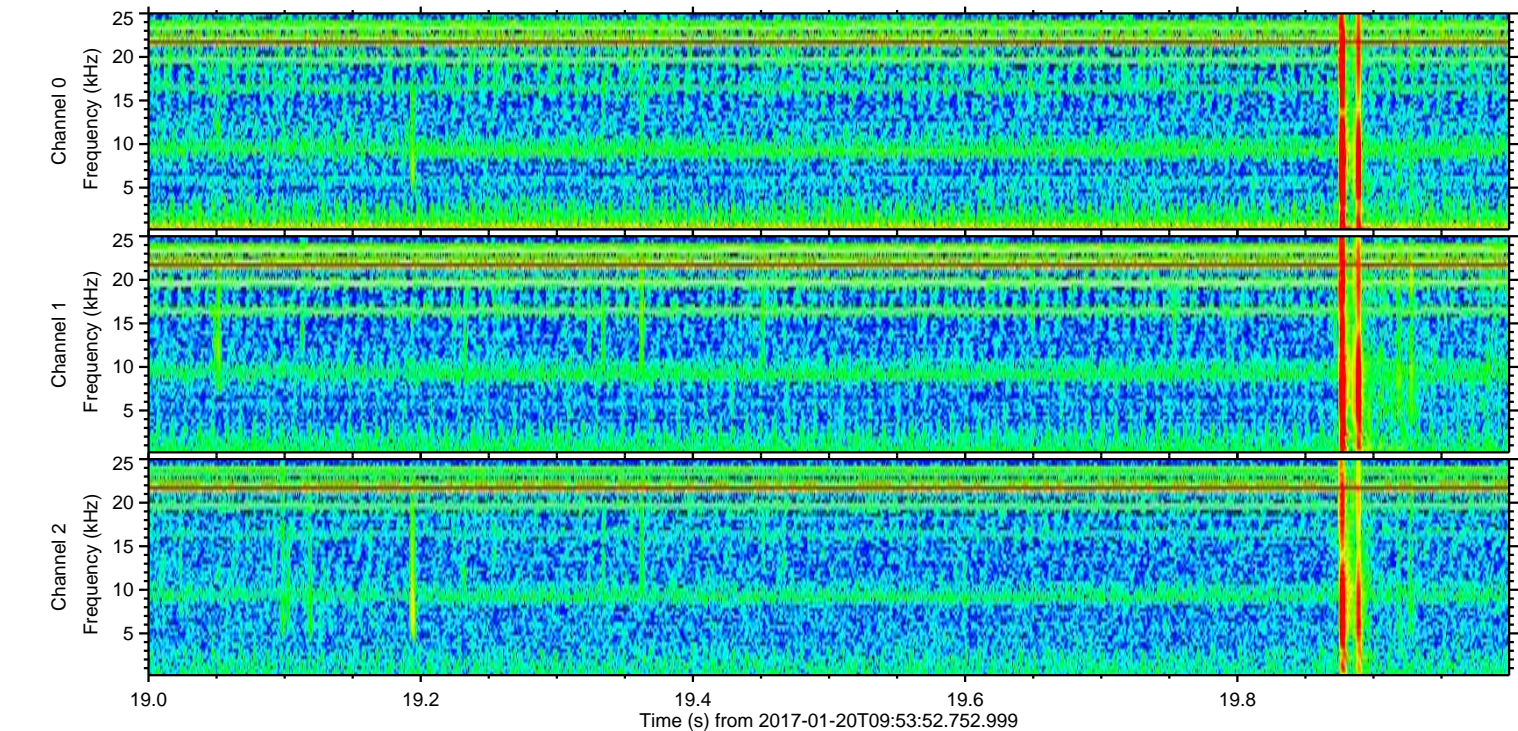
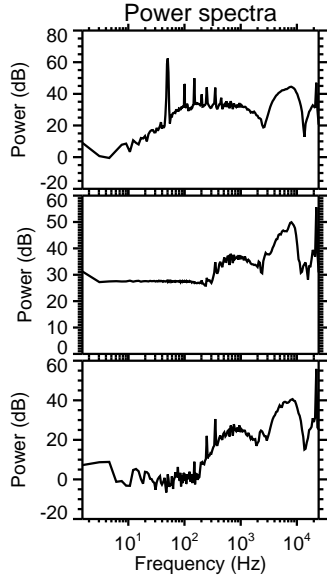
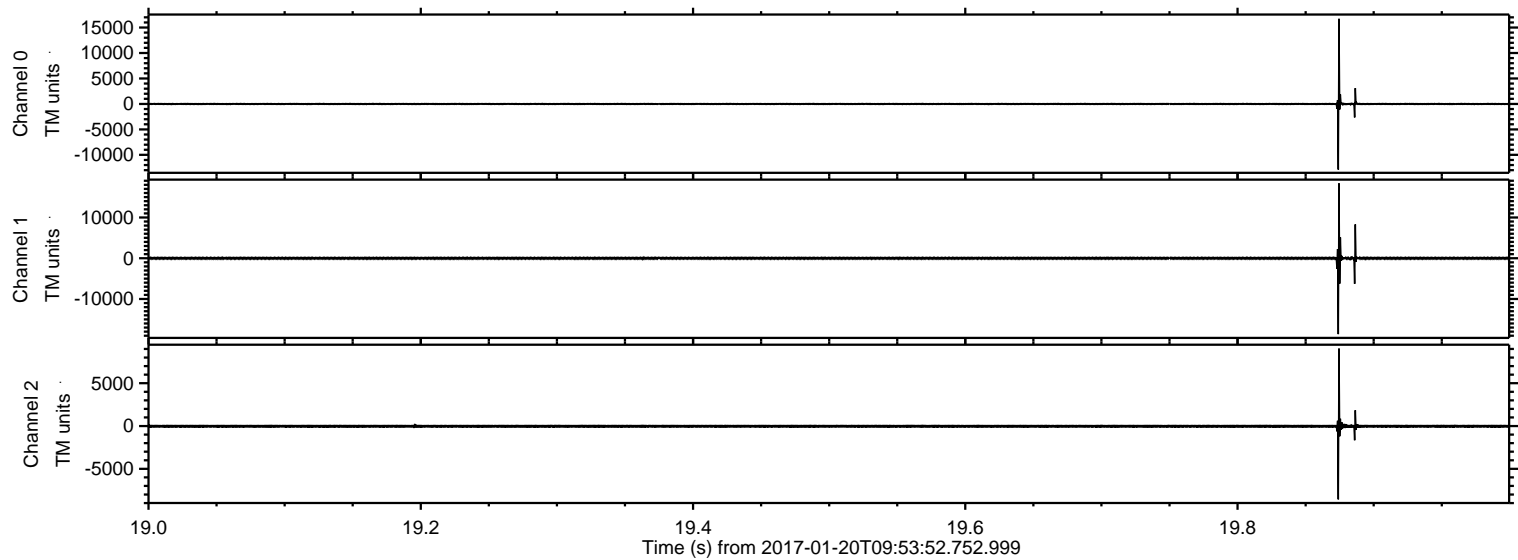
ELMAVAN 3D WAVEFORMS (Measured data sampled at 50 kHz) 51000 packets of 144 samples from 2017-01-20T09:53:52.752.999. Part 103/147

Processed Fri Jan 20 11:02:25 2017 by ELM ver.2012-10-06 from 001__elm20170120_095351__dat00.bin

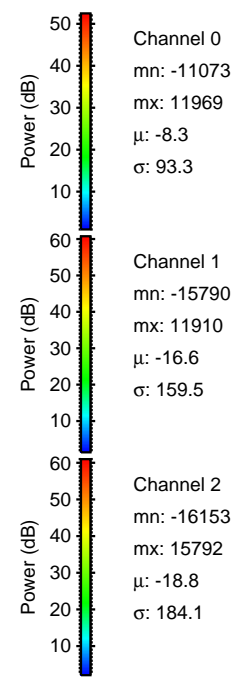
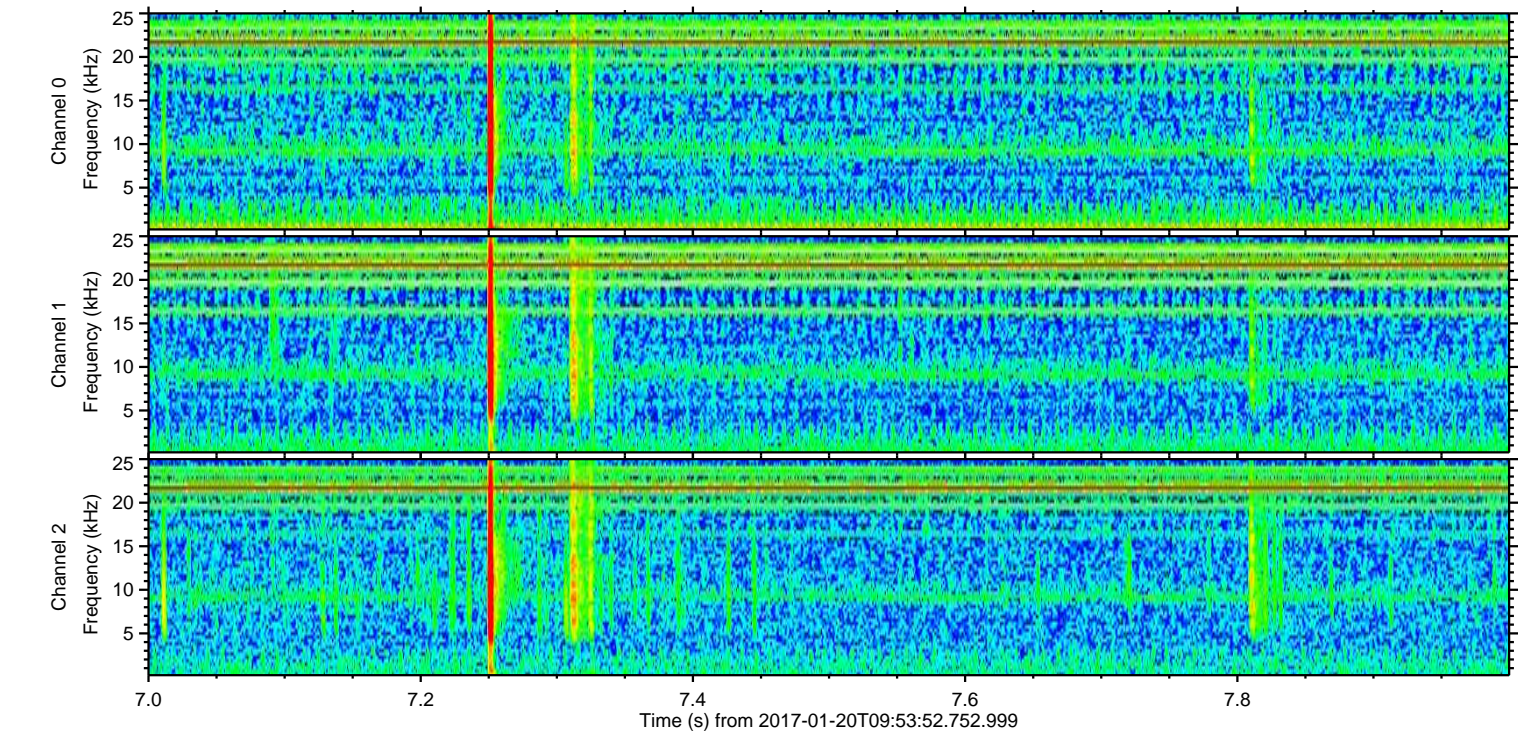
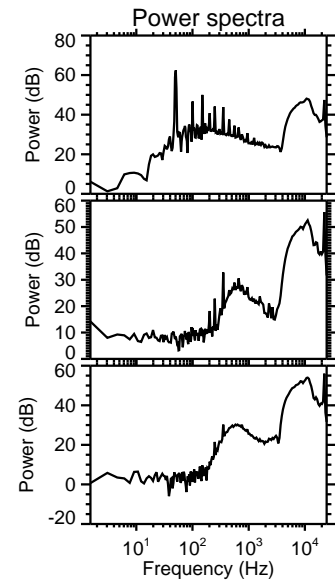
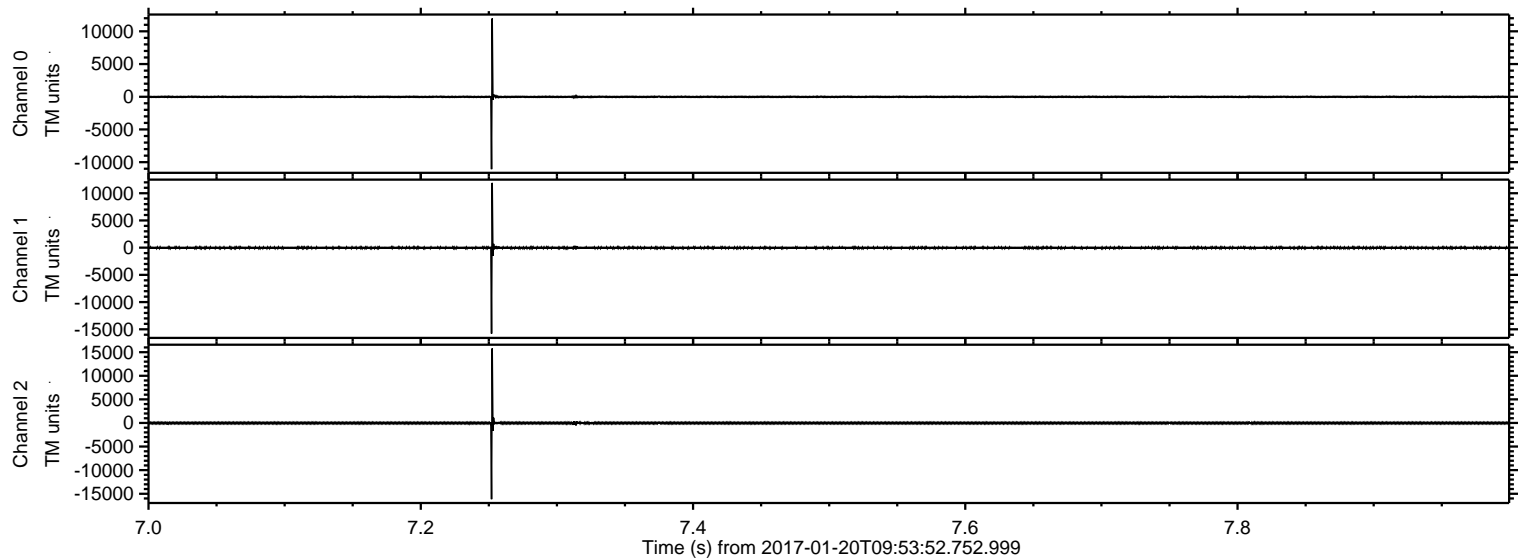


ELMAVAN 3D WAVEFORMS (Measured data sampled at 50 kHz) 51000 packets of 144 samples from 2017-01-20T09:53:52.752.999. Part 20/147

Processed Fri Jan 20 11:02:25 2017 by ELM ver.2012-10-06 from 001__elm20170120_095351__dat00.bin



Processed Fri Jan 20 11:02:26 2017 by ELM ver.2012-10-06 from 001__elm20170120_095351__dat00.bin



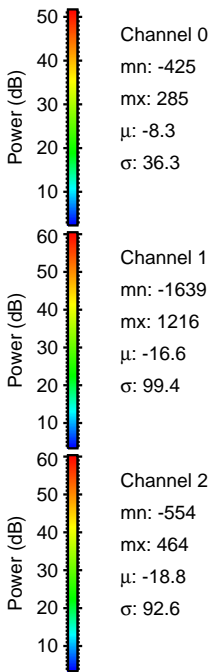
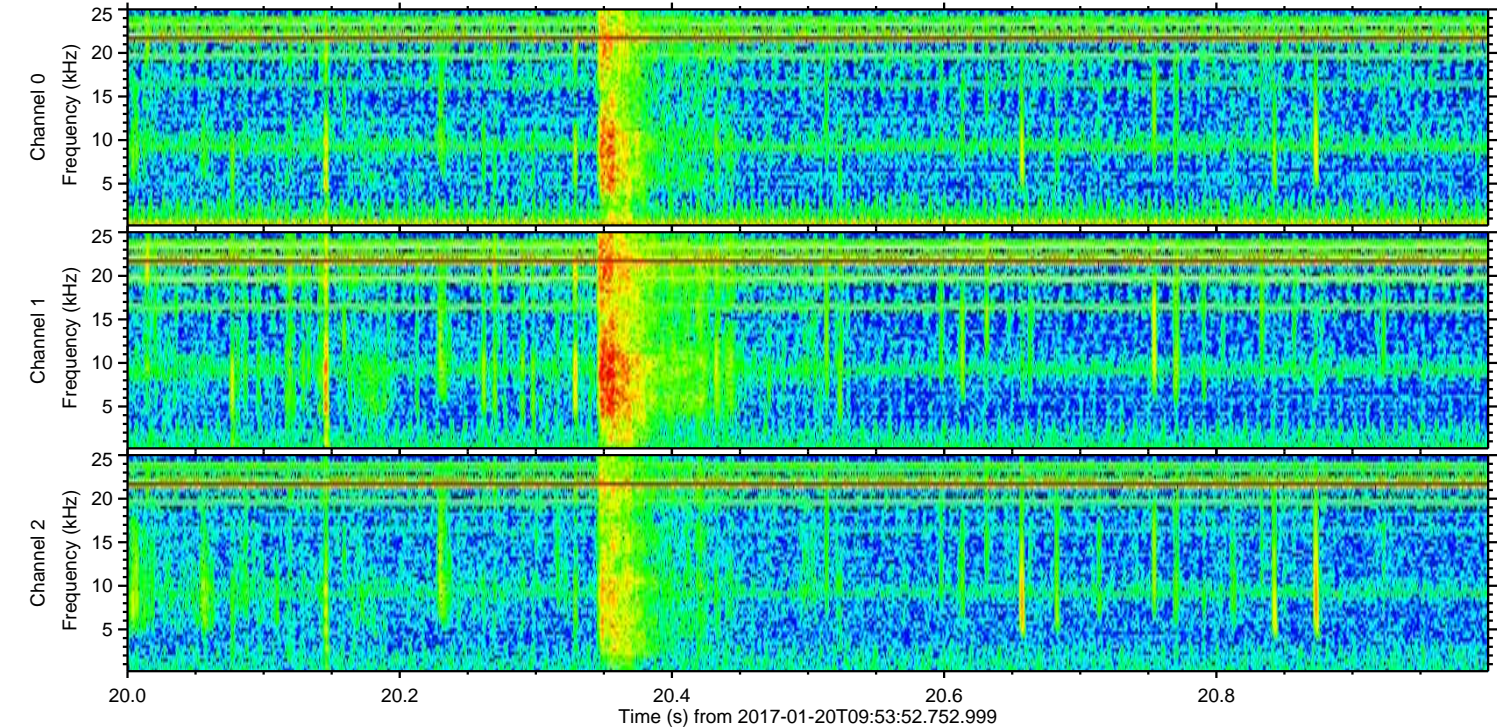
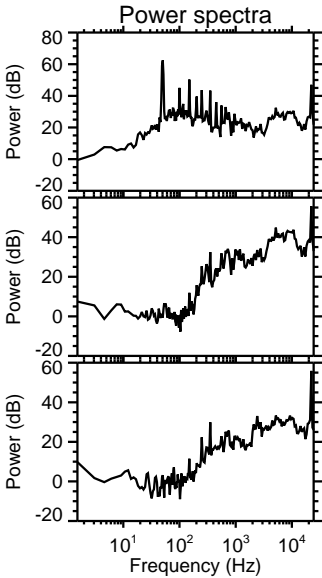
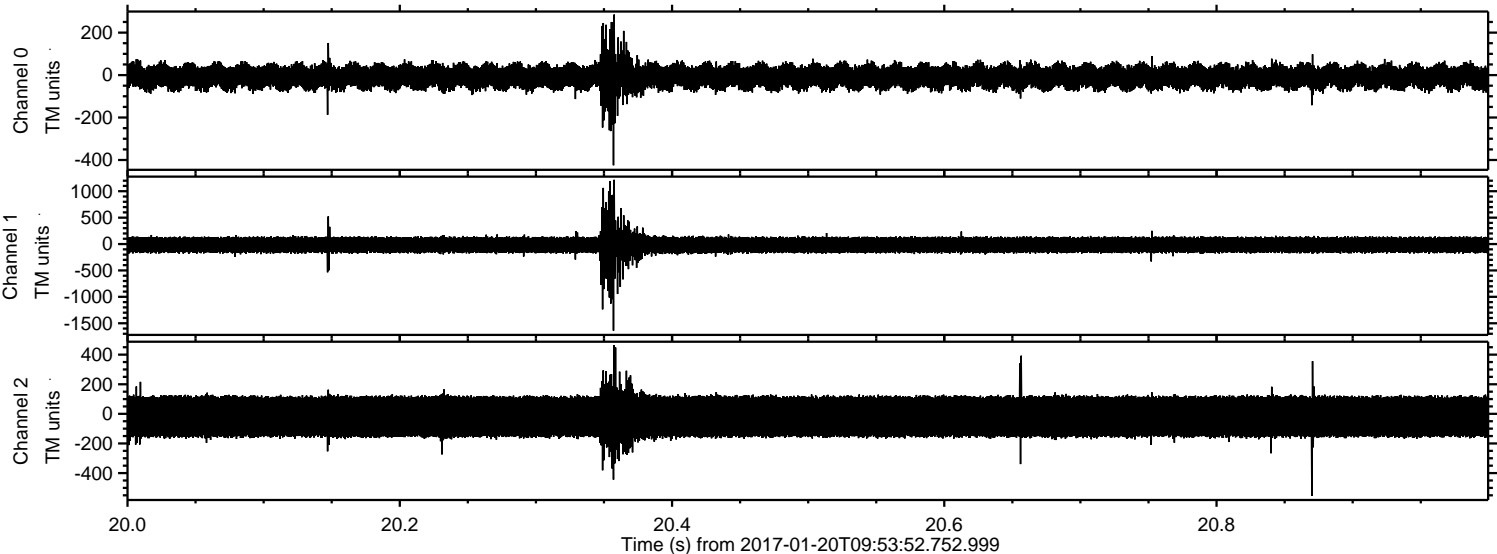
Channel 0
mn: -11073
mx: 11969
 μ : -8.3
 σ : 93.3

Channel 1
mn: -15790
mx: 11910
 μ : -16.6
 σ : 159.5

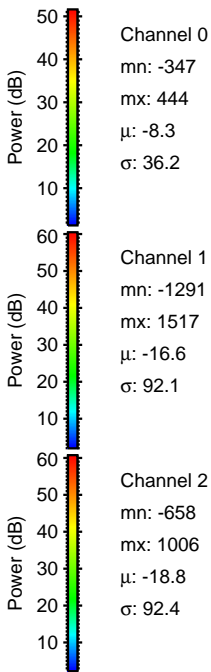
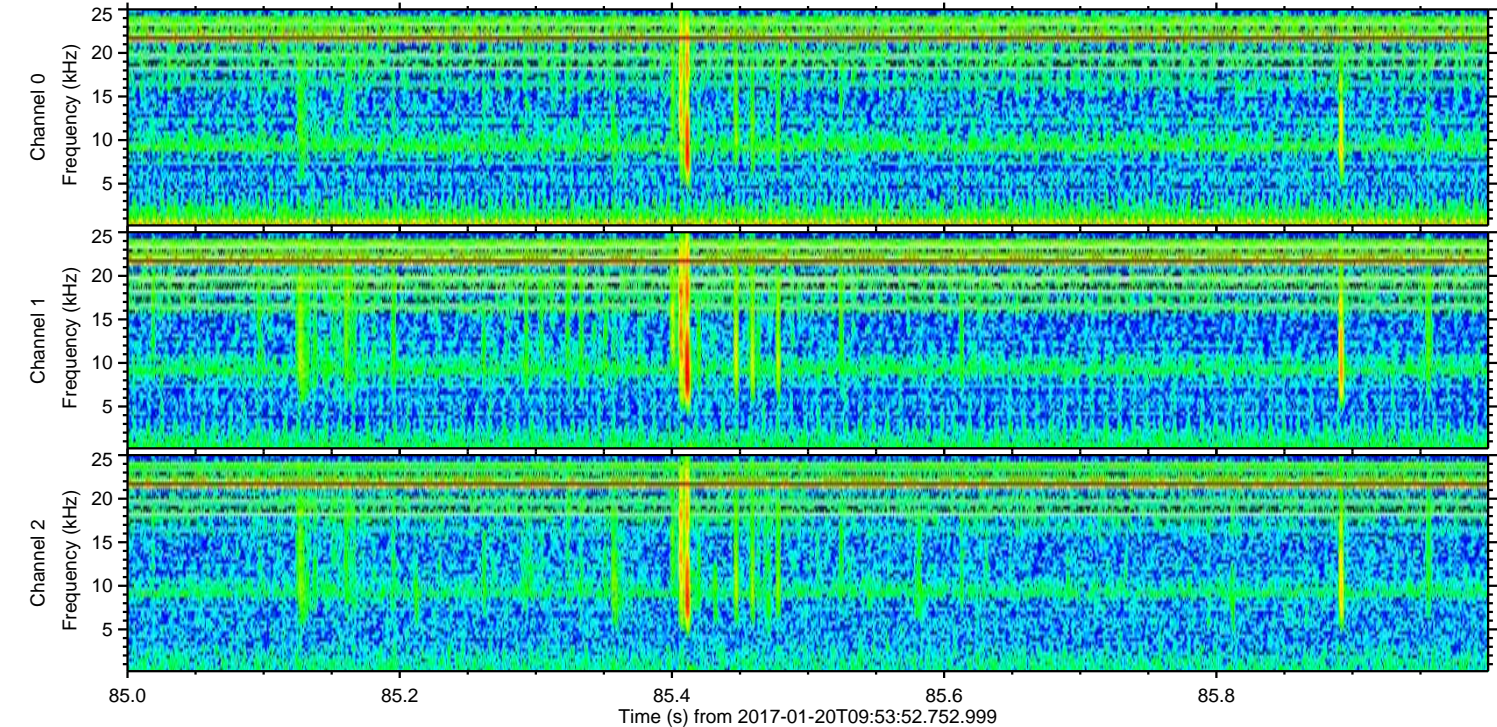
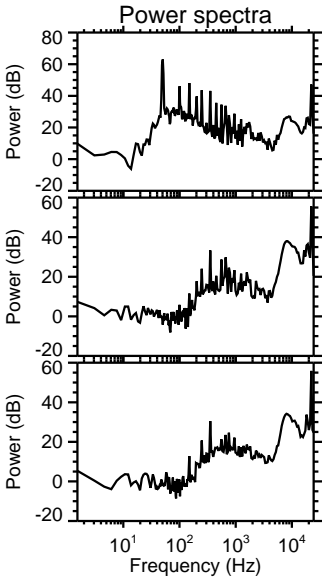
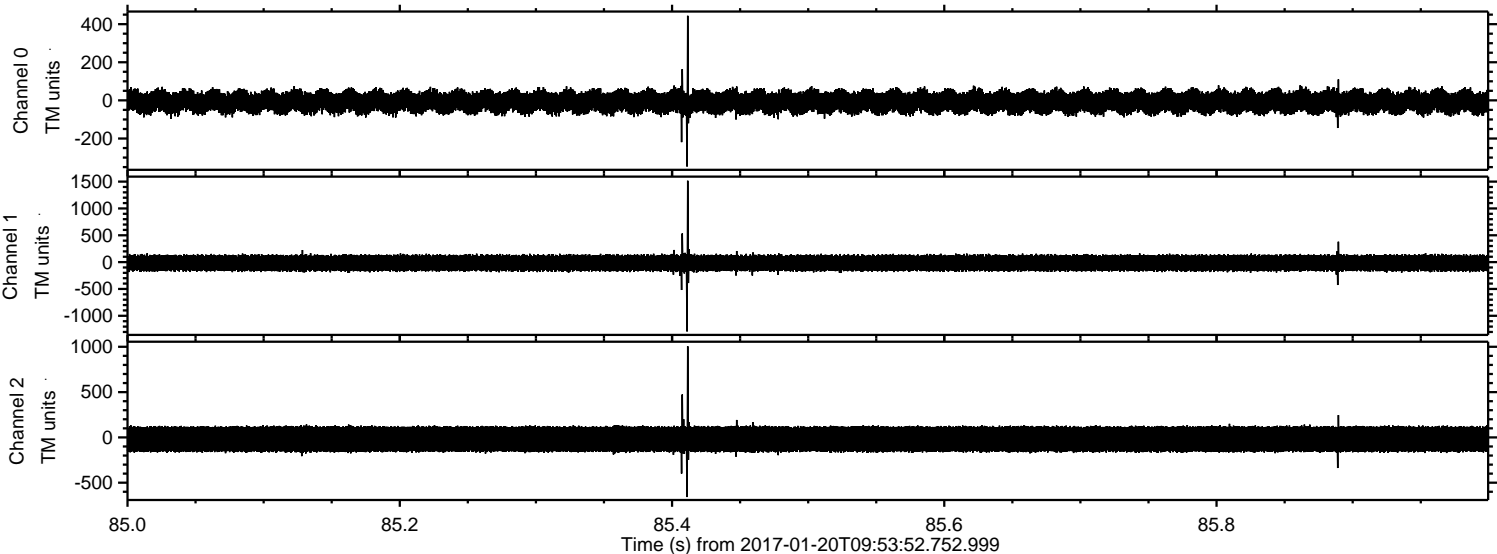
Channel 2
mn: -16153
mx: 15792
 μ : -18.8
 σ : 184.1

ELMAVAN 3D WAVEFORMS (Measured data sampled at 50 kHz) 51000 packets of 144 samples from 2017-01-20T09:53:52.752.999. Part 21/147

Processed Fri Jan 20 11:02:27 2017 by ELM ver.2012-10-06 from 001__elm20170120_095351__dat00.bin

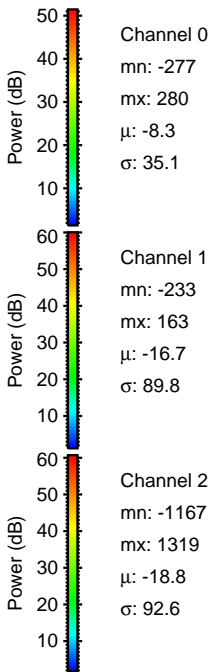
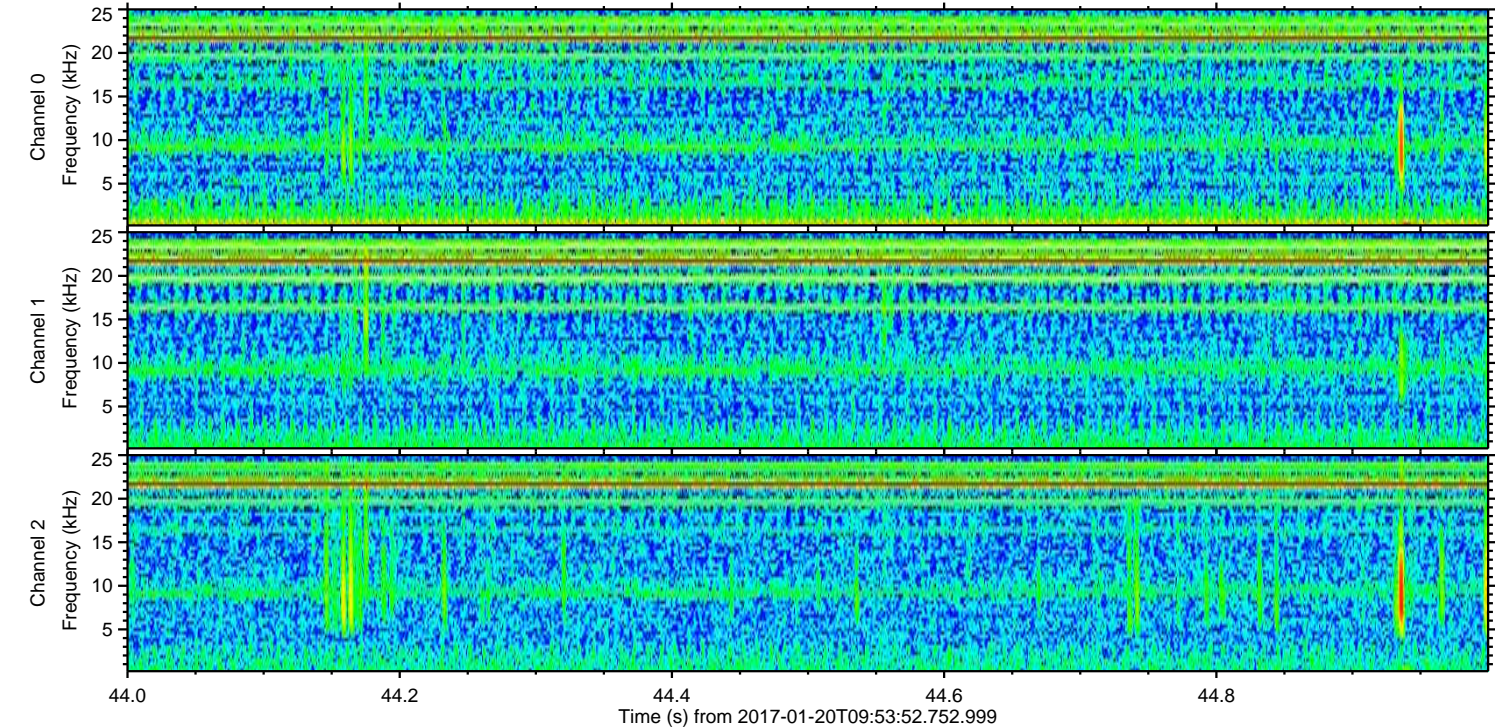
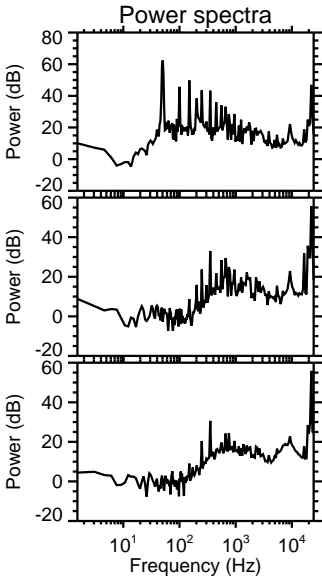
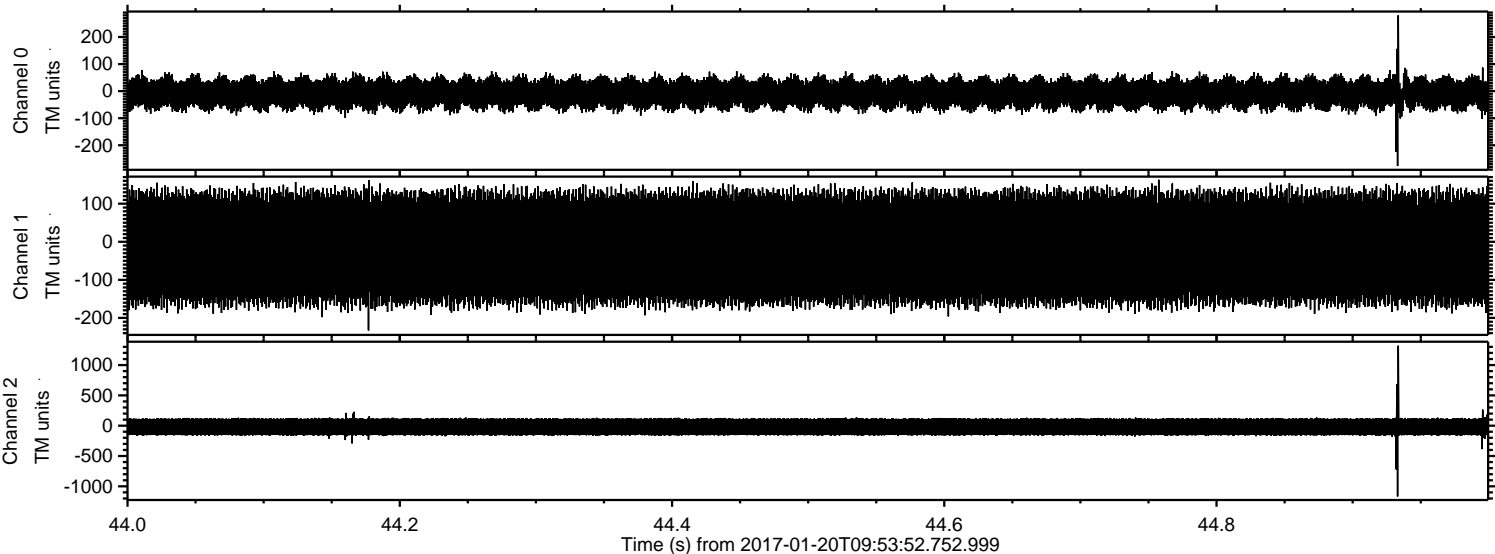


Processed Fri Jan 20 11:02:28 2017 by ELM ver.2012-10-06 from 001__elm20170120_095351__dat00.bin



ELMAVAN 3D WAVEFORMS (Measured data sampled at 50 kHz) 51000 packets of 144 samples from 2017-01-20T09:53:52.752.999. Part 45/147

Processed Fri Jan 20 11:02:29 2017 by ELM ver.2012-10-06 from 001__elm20170120_095351__dat00.bin

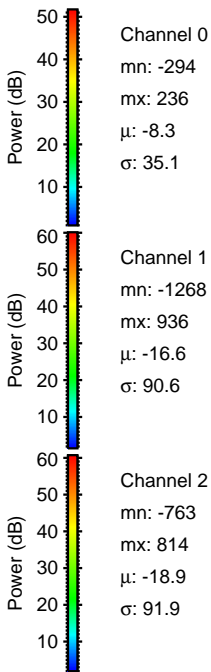
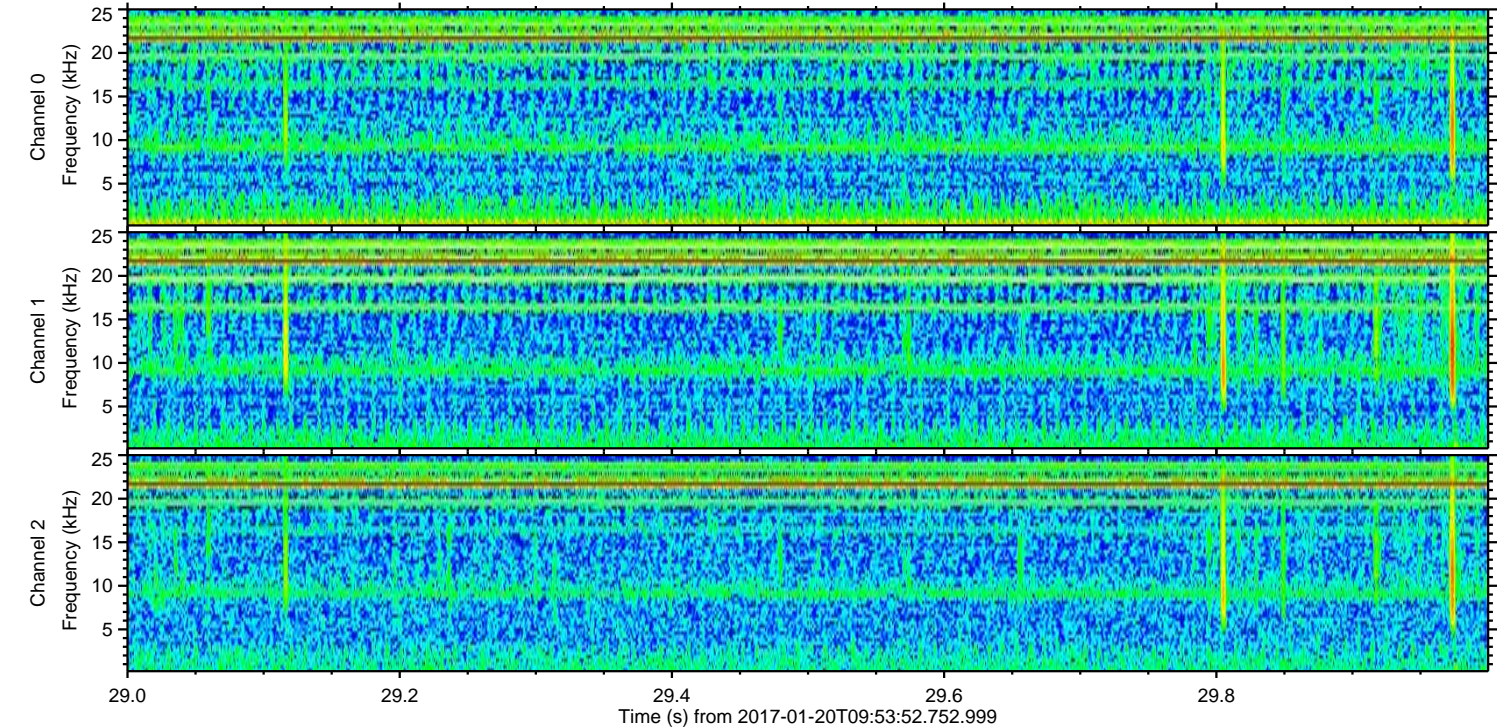
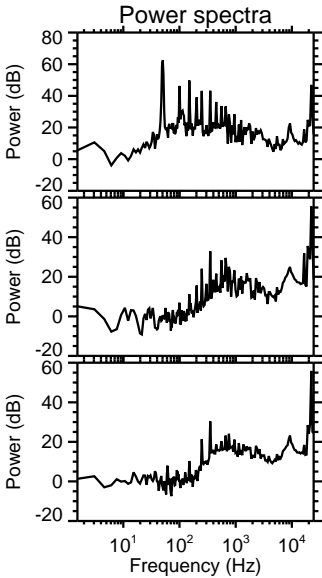
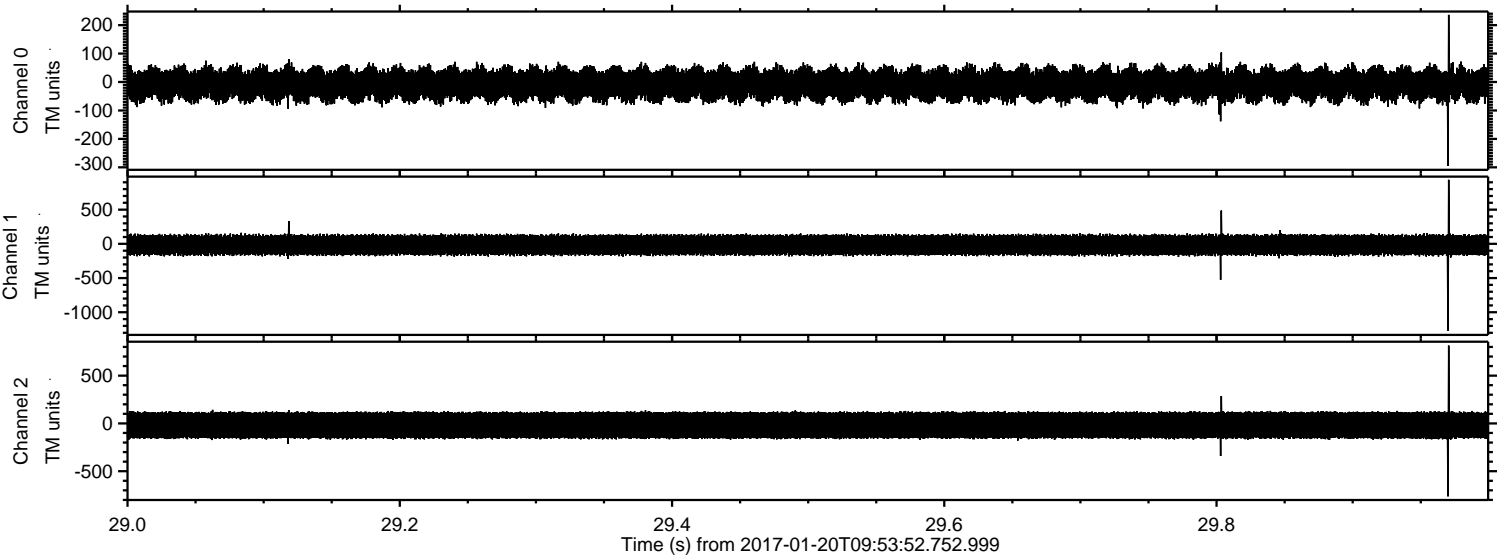


Channel 0
mn: -277
mx: 280
 μ : -8.3
 σ : 35.1

Channel 1
mn: -233
mx: 163
 μ : -16.7
 σ : 89.8

Channel 2
mn: -1167
mx: 1319
 μ : -18.8
 σ : 92.6

Processed Fri Jan 20 11:02:30 2017 by ELM ver.2012-10-06 from 001__elm20170120_095351__dat00.bin



Processed Fri Jan 20 11:02:31 2017 by ELM ver.2012-10-06 from 001__elm20170120_095351__dat00.bin

