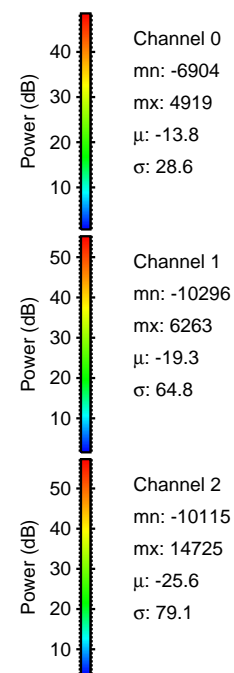
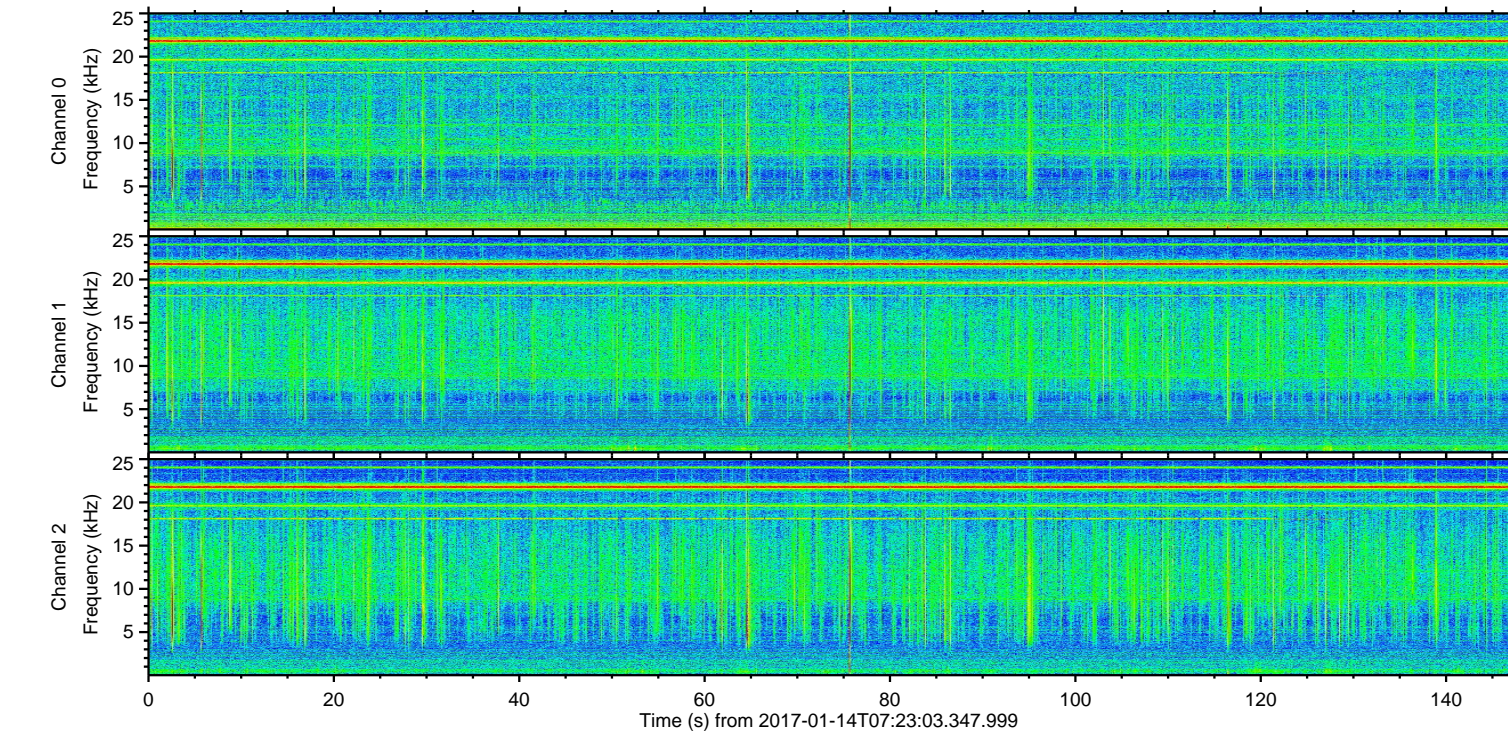
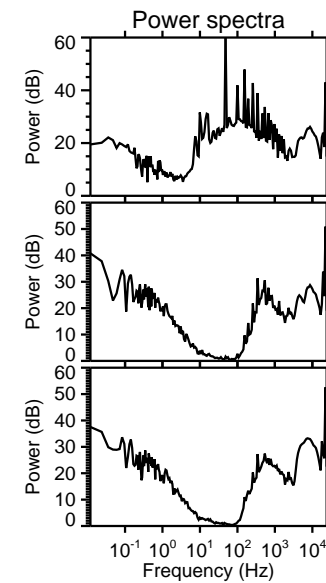
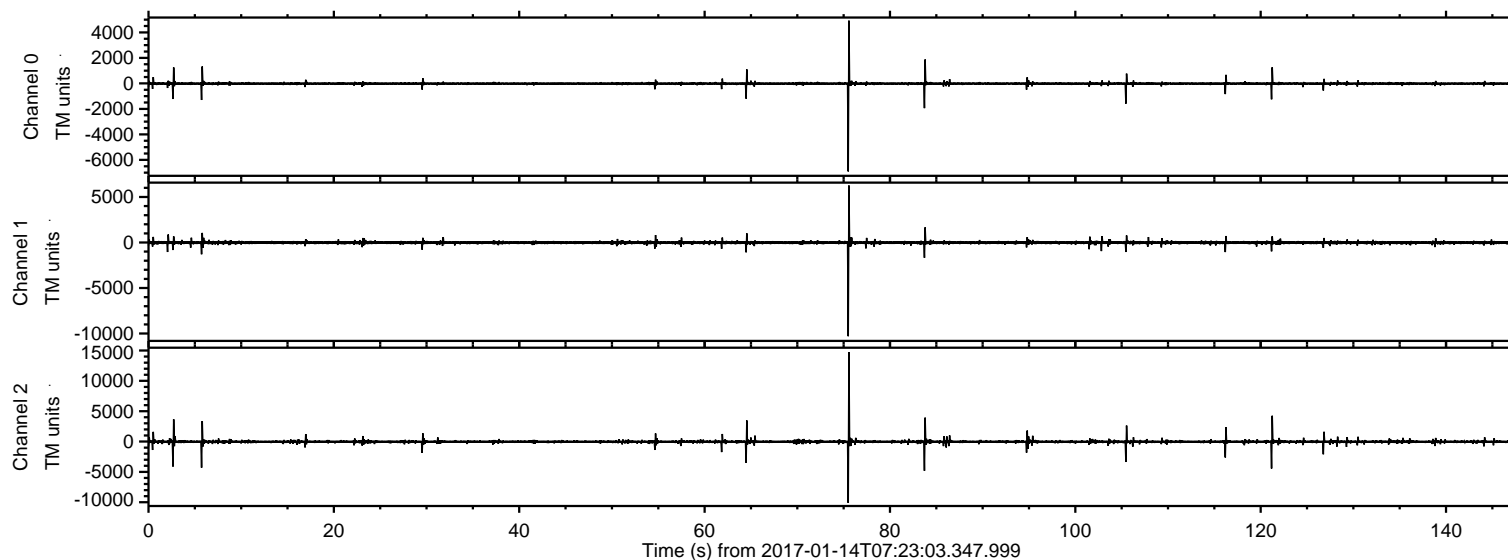


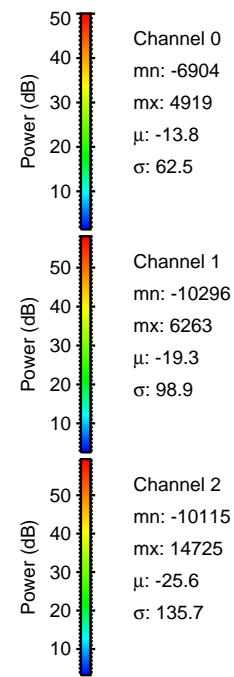
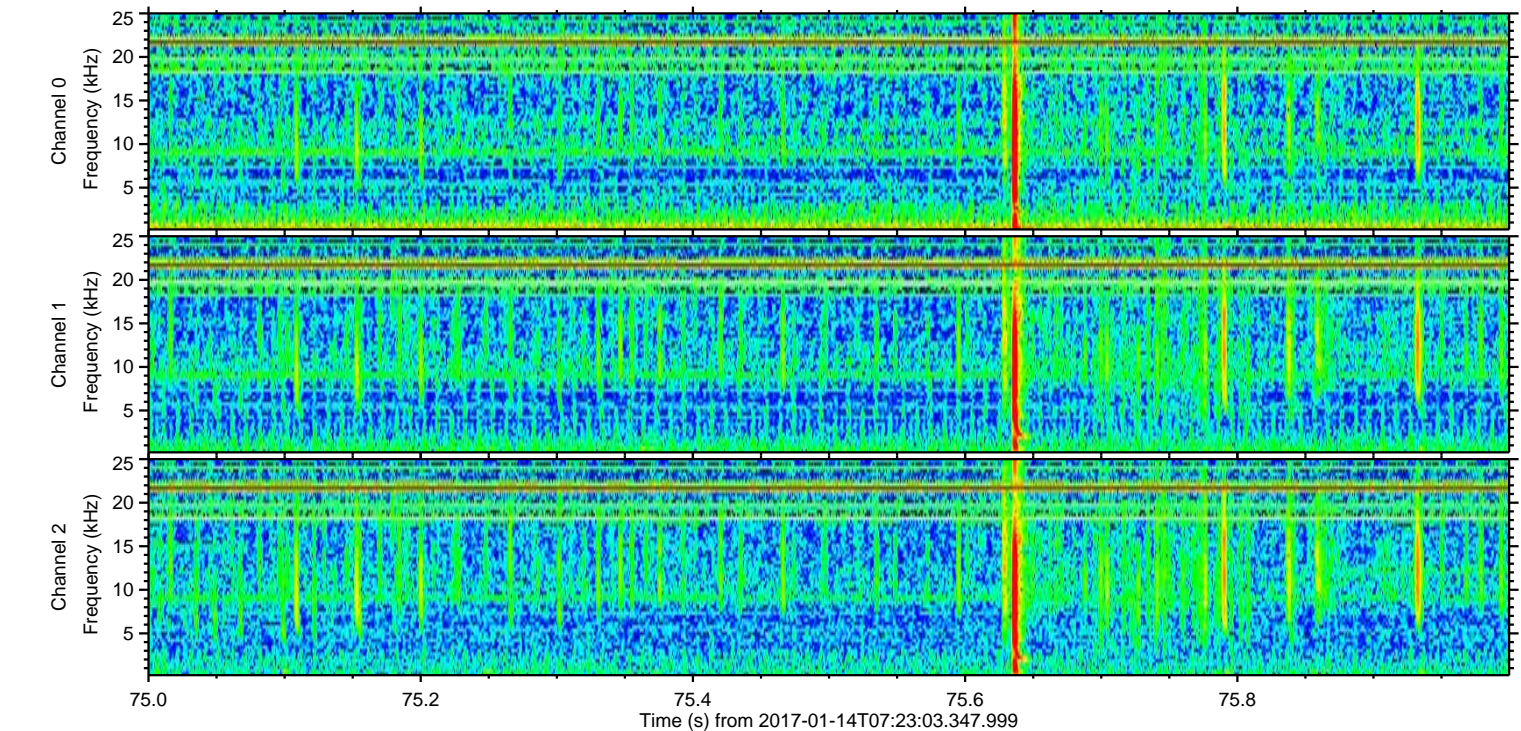
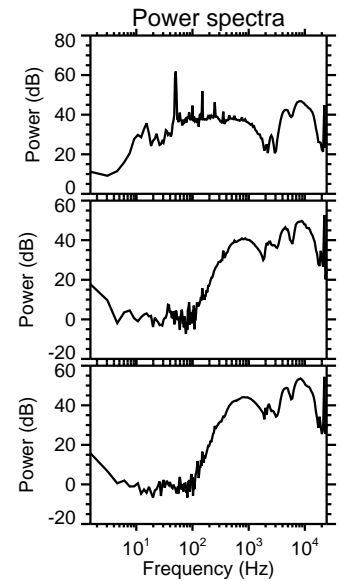
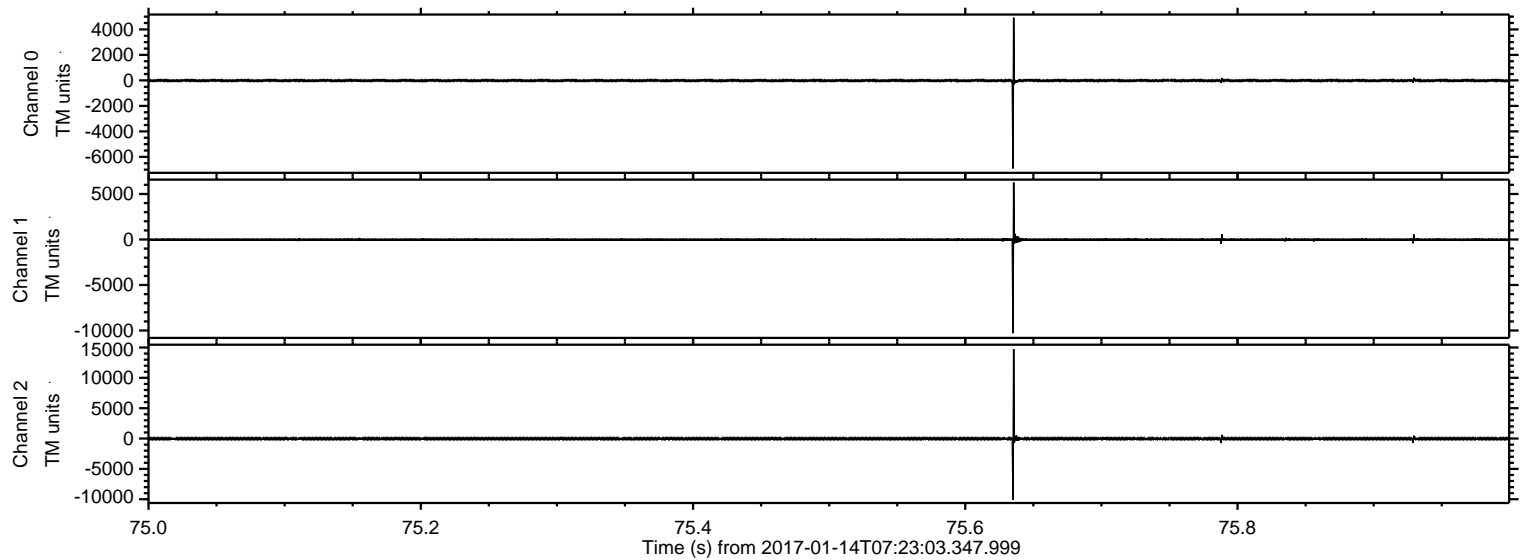
ELMAVAN 3D WAVEFORMS (Measured data sampled at 50 kHz) 51000 packets of 144 samples from 2017-01-14T07:23:03.347.999.

Processed Sat Jan 14 08:30:36 2017 by ELM ver.2012-10-06 from 001__elm20170114_072302__dat00.bin



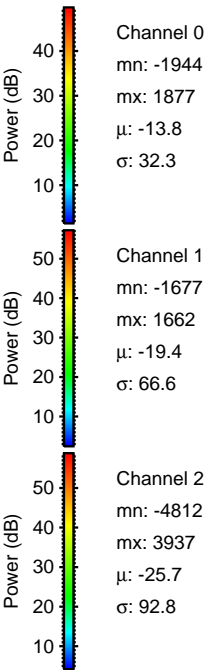
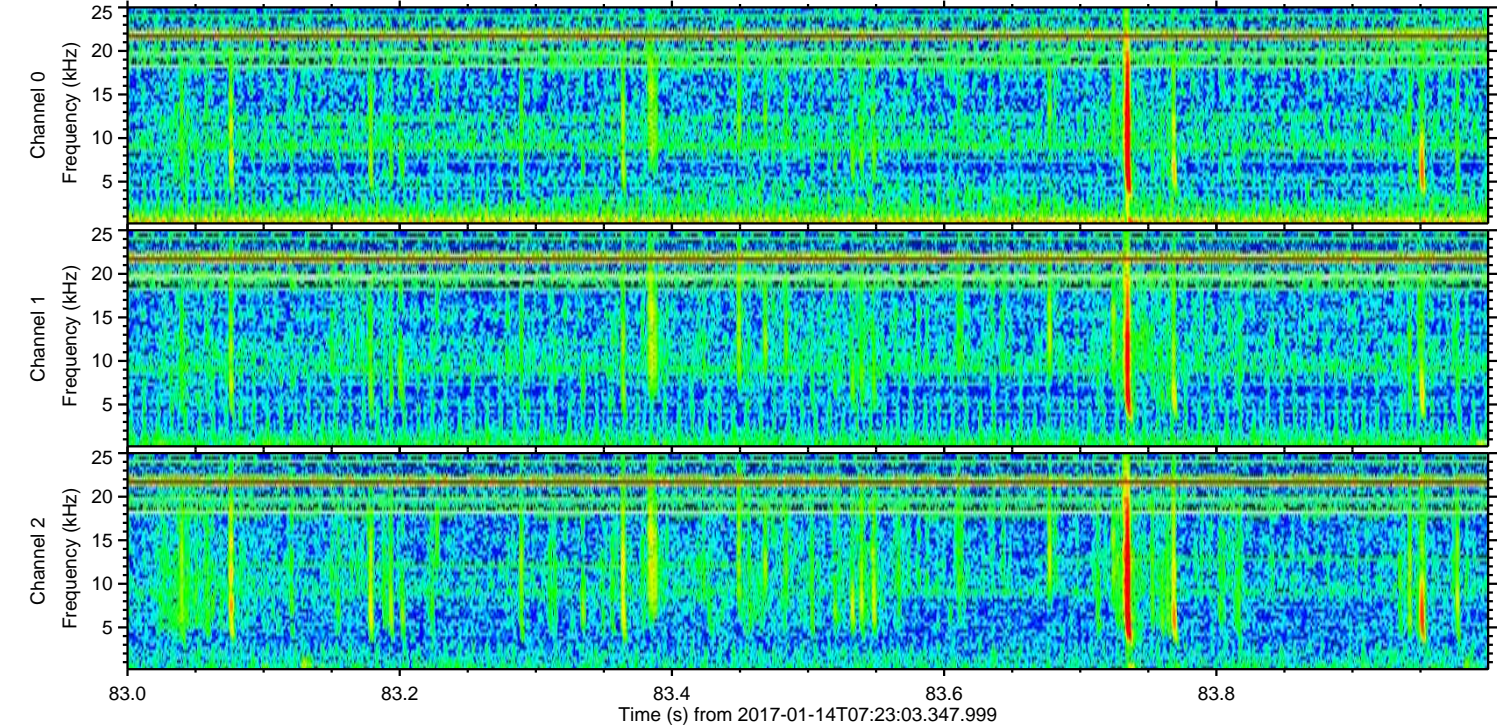
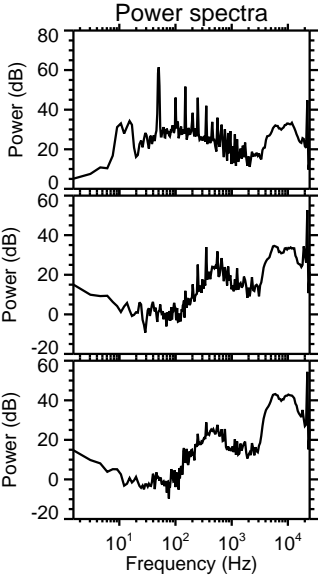
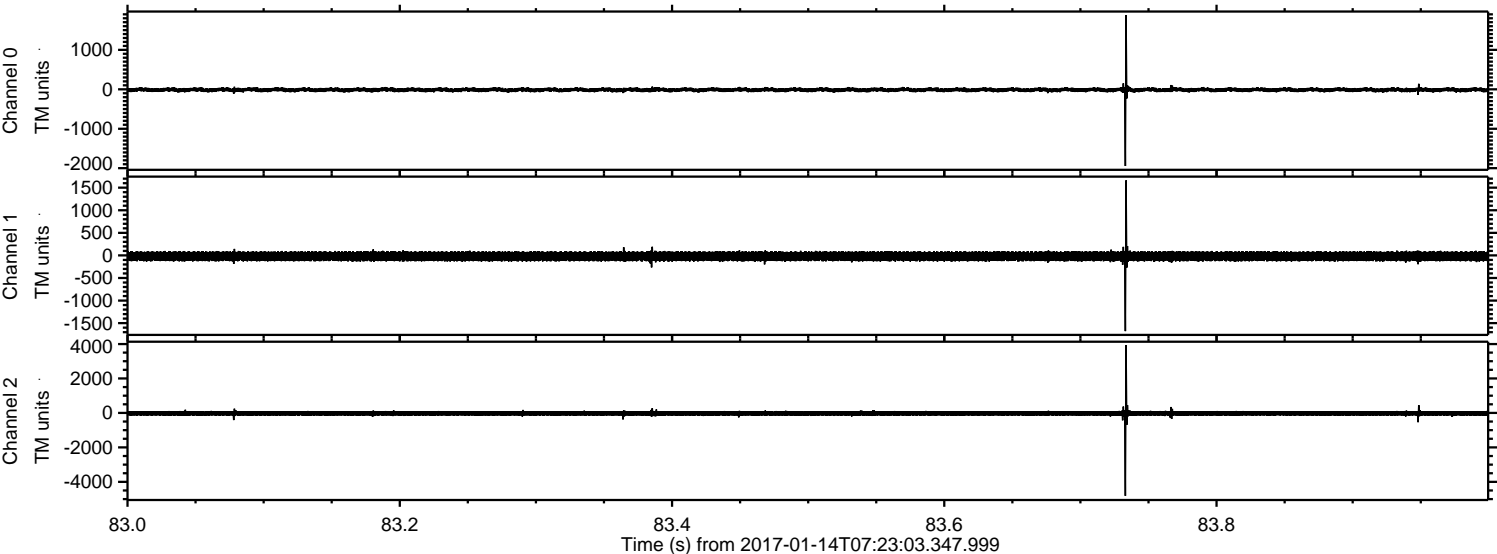
ELMAVAN 3D WAVEFORMS (Measured data sampled at 50 kHz) 51000 packets of 144 samples from 2017-01-14T07:23:03.347.999. Part 76/147

Processed Sat Jan 14 08:30:48 2017 by ELM ver.2012-10-06 from 001__elm20170114_072302__dat00.bin



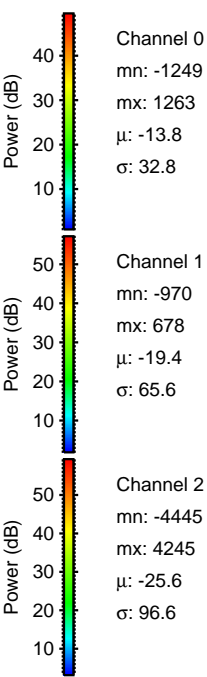
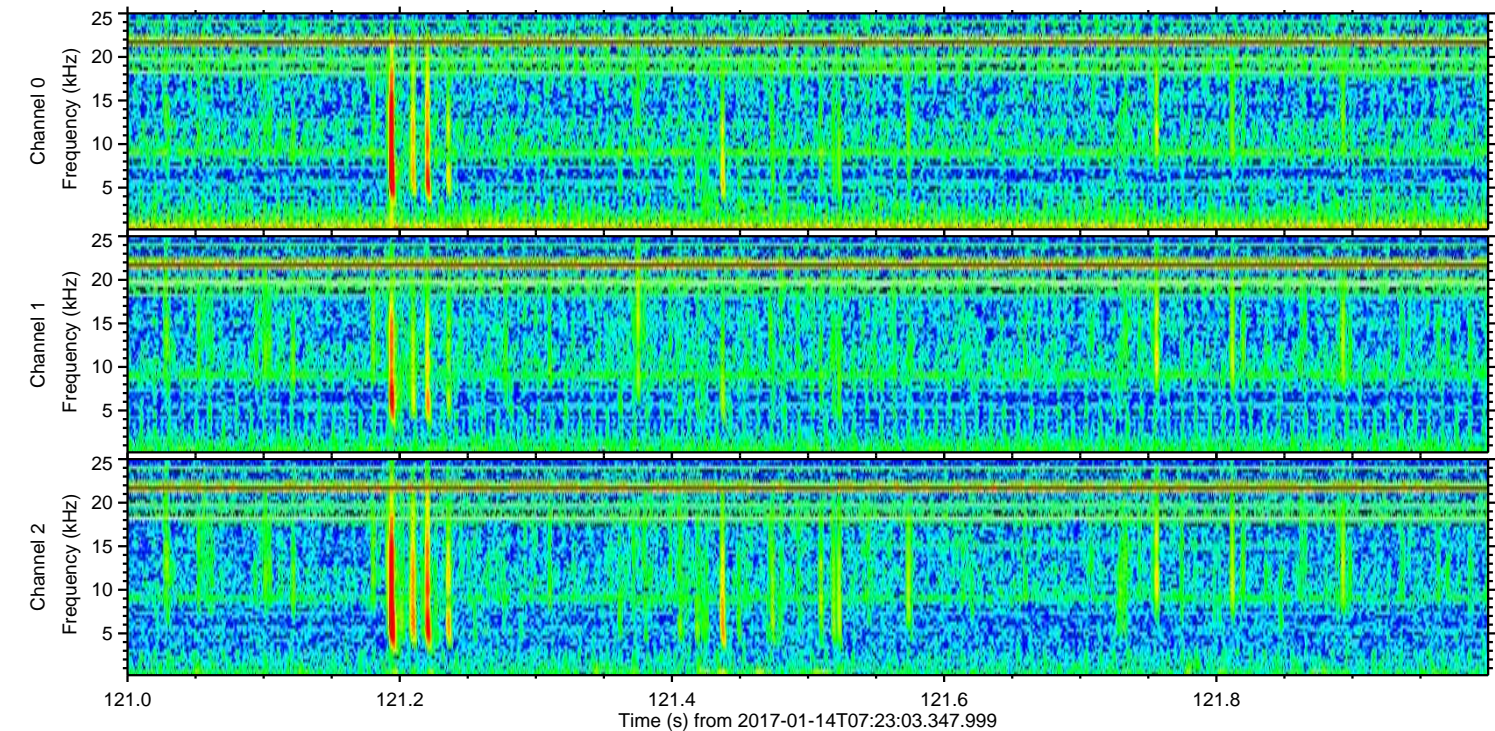
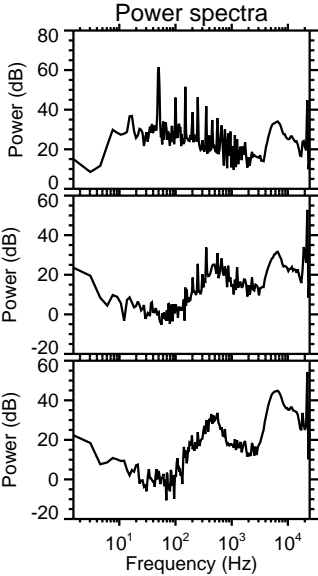
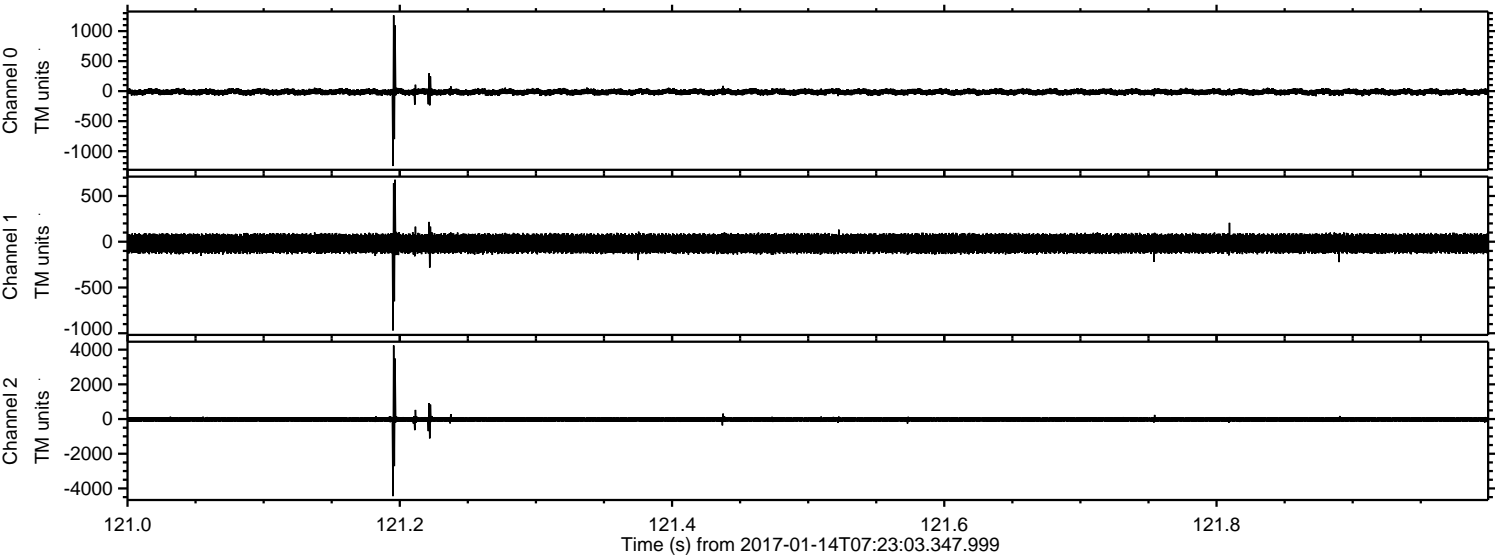
ELMAVAN 3D WAVEFORMS (Measured data sampled at 50 kHz) 51000 packets of 144 samples from 2017-01-14T07:23:03.347.999. Part 84/147

Processed Sat Jan 14 08:30:48 2017 by ELM ver.2012-10-06 from 001__elm20170114_072302__dat00.bin



ELMAVAN 3D WAVEFORMS (Measured data sampled at 50 kHz) 51000 packets of 144 samples from 2017-01-14T07:23:03.347.999. Part 122/147

Processed Sat Jan 14 08:30:49 2017 by ELM ver.2012-10-06 from 001__elm20170114_072302__dat00.bin



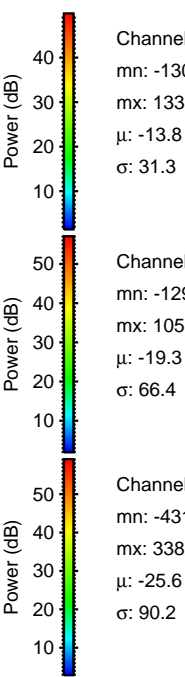
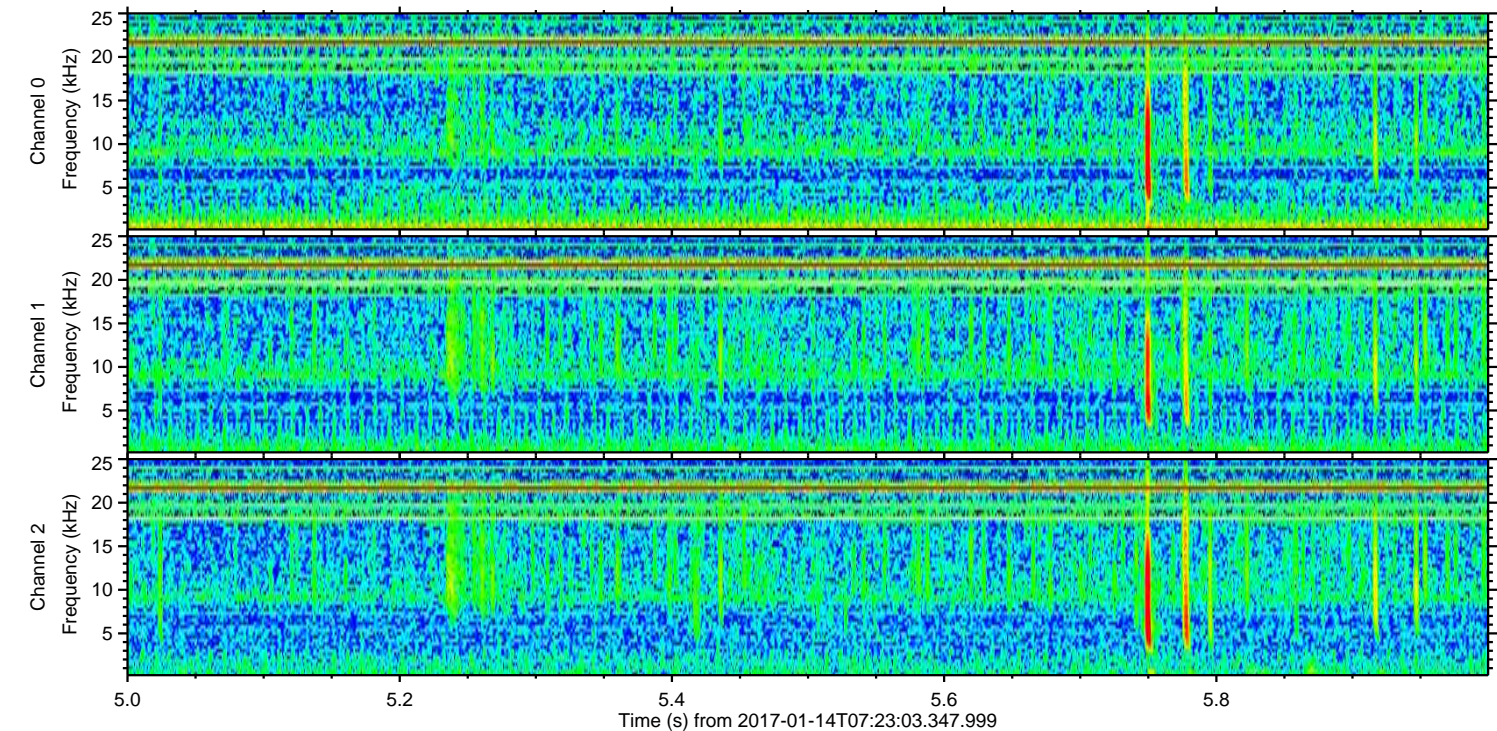
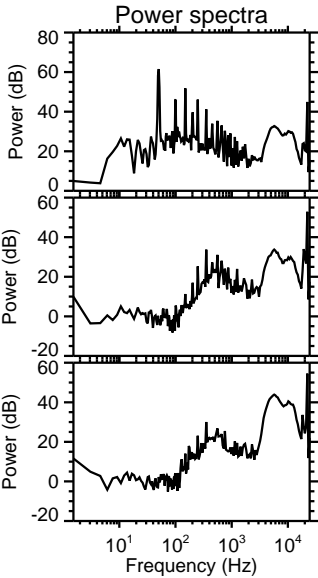
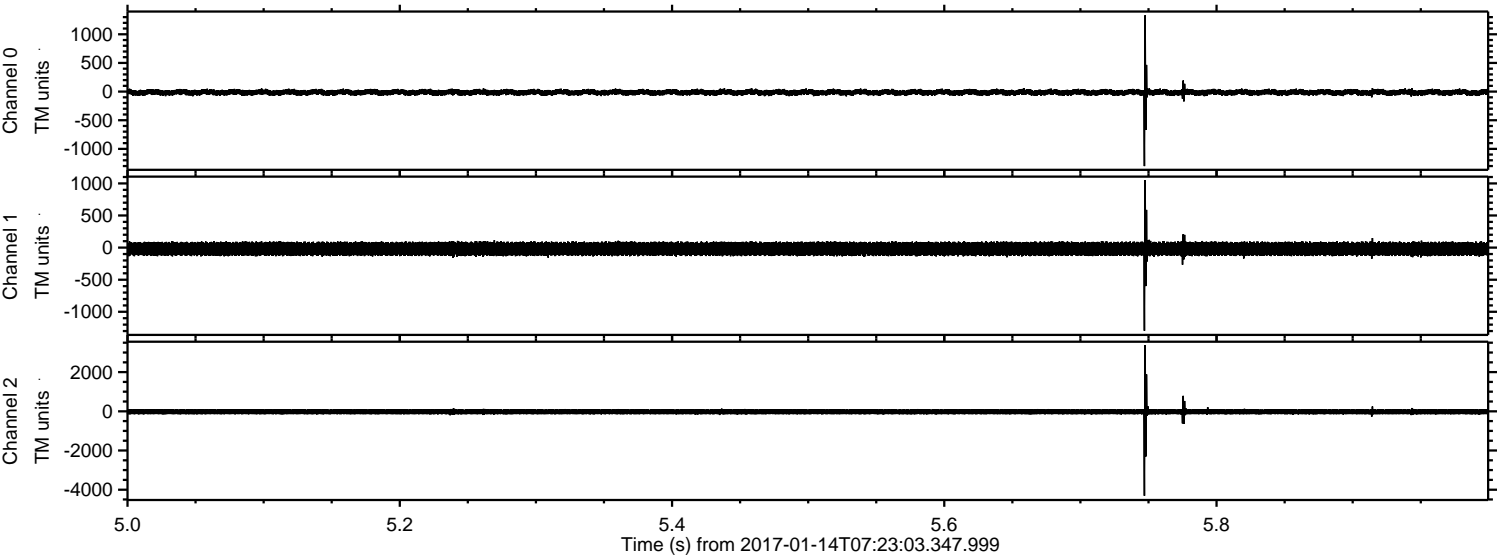
Channel 0
mn: -1249
mx: 1263
 μ : -13.8
 σ : 32.8

Channel 1
mn: -970
mx: 678
 μ : -19.4
 σ : 65.6

Channel 2
mn: -4445
mx: 4245
 μ : -25.6
 σ : 96.6

ELMAVAN 3D WAVEFORMS (Measured data sampled at 50 kHz) 51000 packets of 144 samples from 2017-01-14T07:23:03.347.999. Part 6/147

Processed Sat Jan 14 08:30:50 2017 by ELM ver.2012-10-06 from 001__elm20170114_072302__dat00.bin



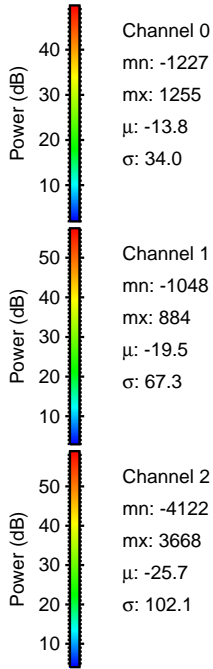
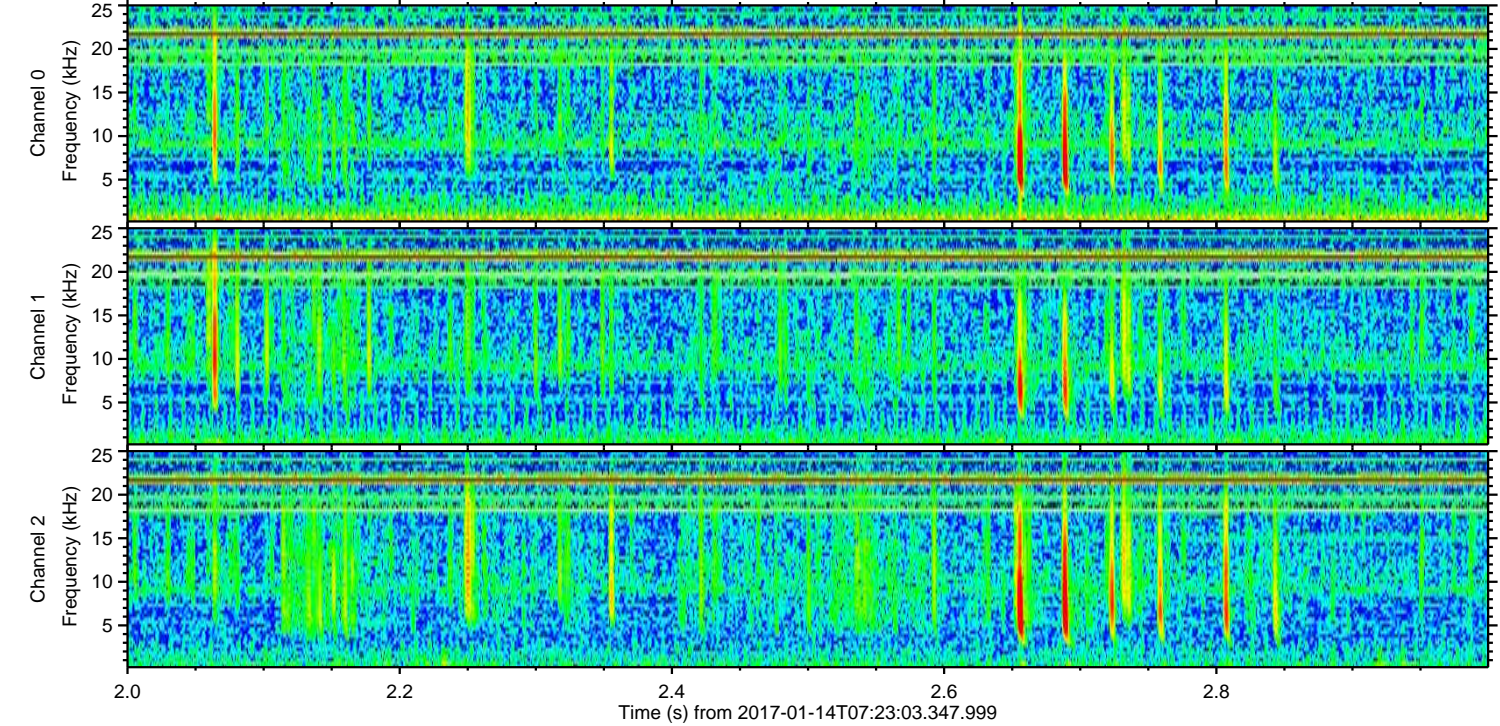
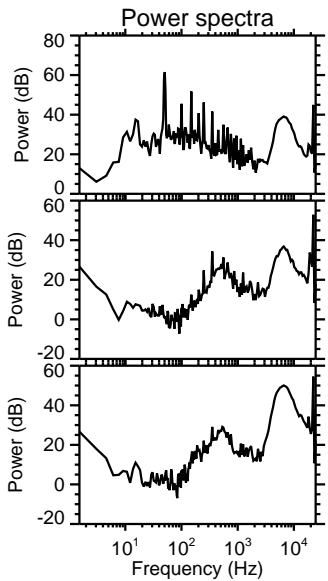
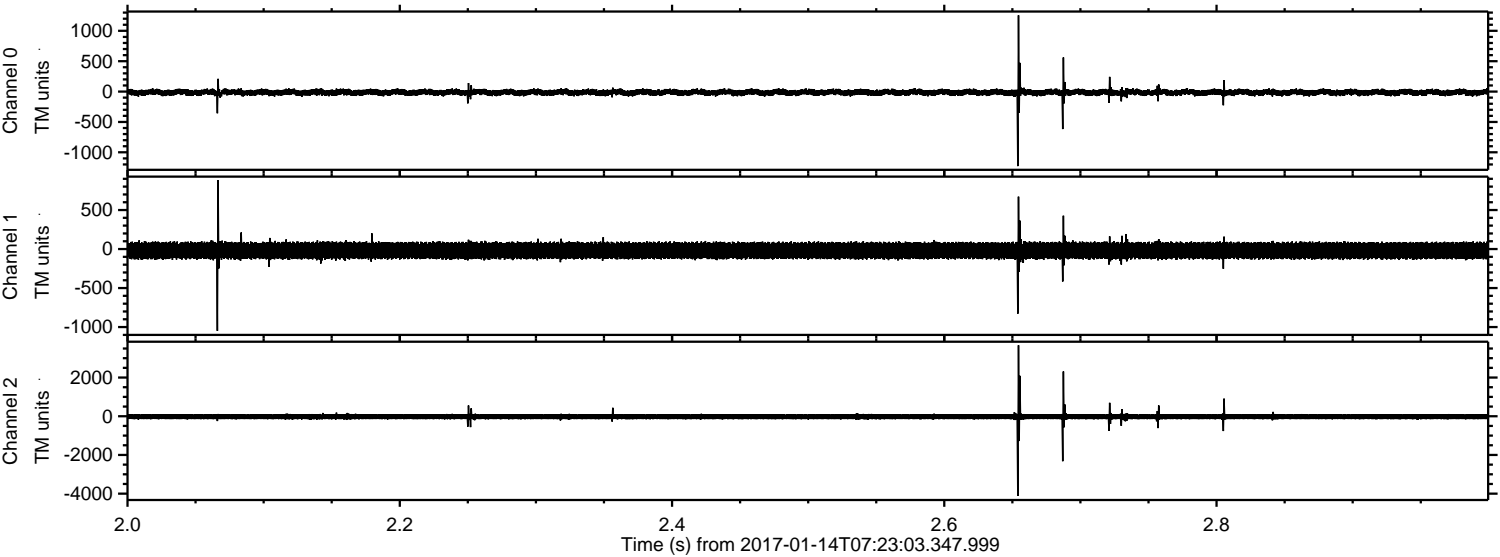
Channel 0
mn: -1301
mx: 1331
 μ : -13.8
 σ : 31.3

Channel 1
mn: -1295
mx: 1053
 μ : -19.3
 σ : 66.4

Channel 2
mn: -4310
mx: 3382
 μ : -25.6
 σ : 90.2

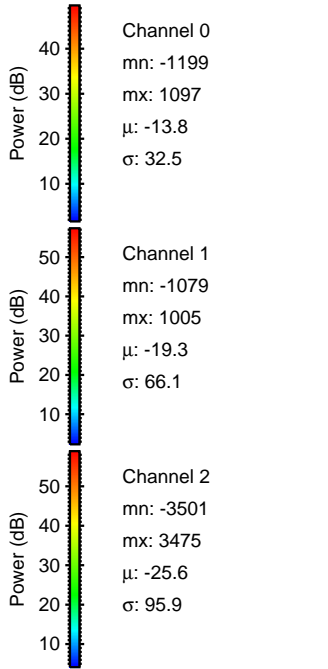
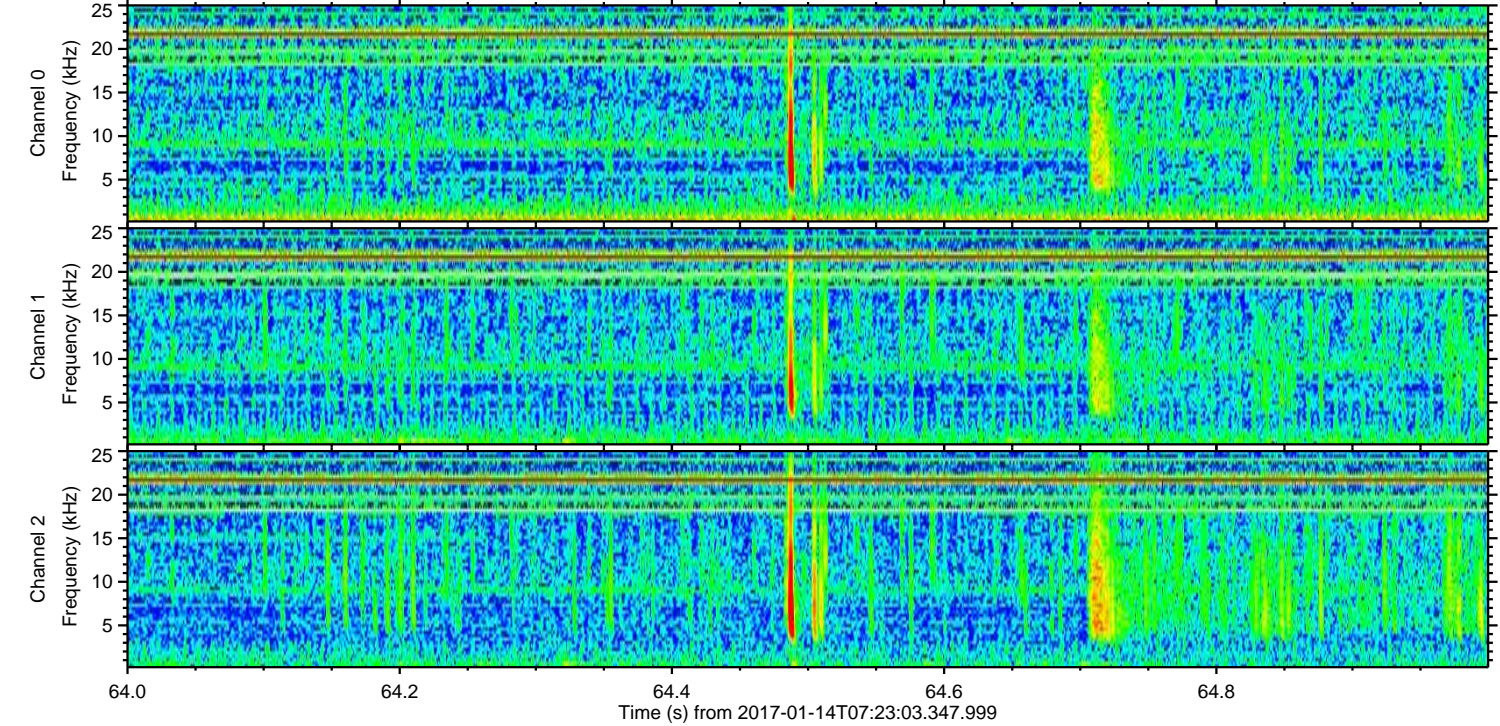
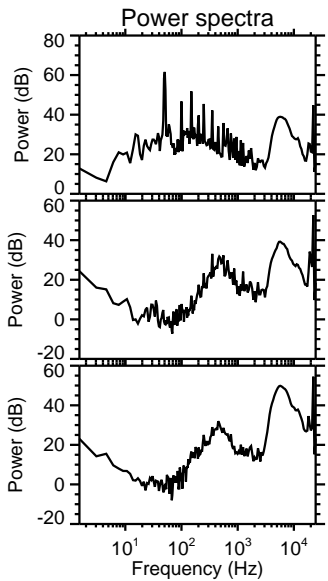
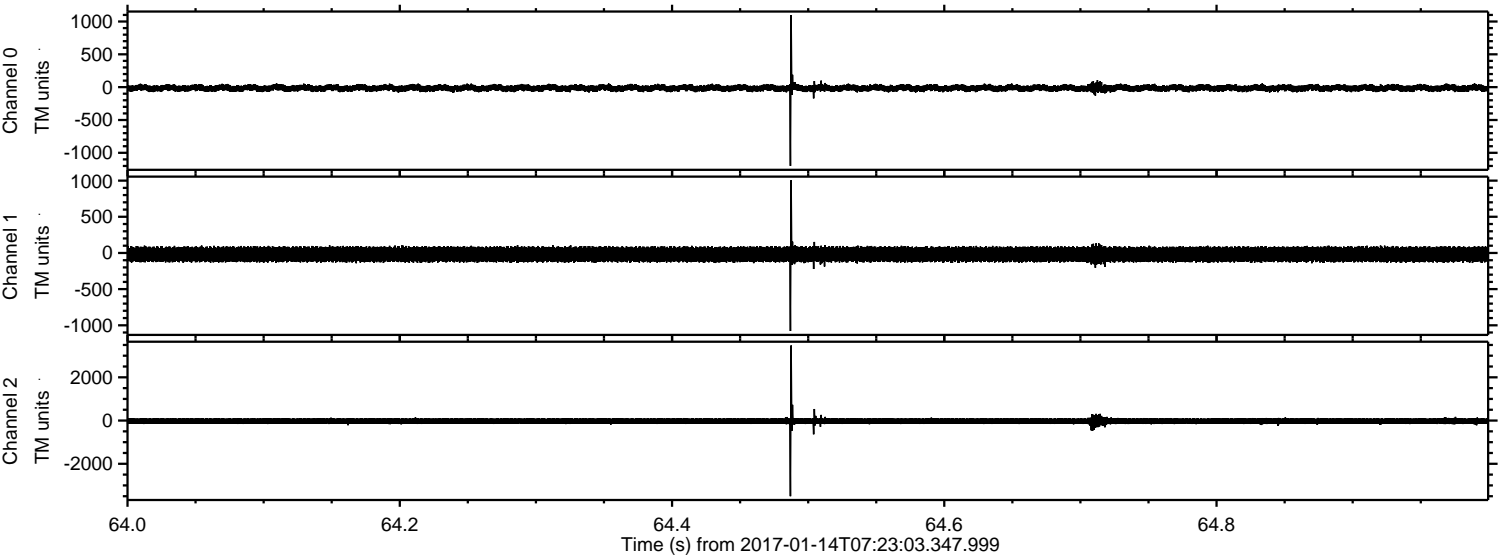
ELMAVAN 3D WAVEFORMS (Measured data sampled at 50 kHz) 51000 packets of 144 samples from 2017-01-14T07:23:03.347.999. Part 3/147

Processed Sat Jan 14 08:30:51 2017 by ELM ver.2012-10-06 from 001__elm20170114_072302__dat00.bin



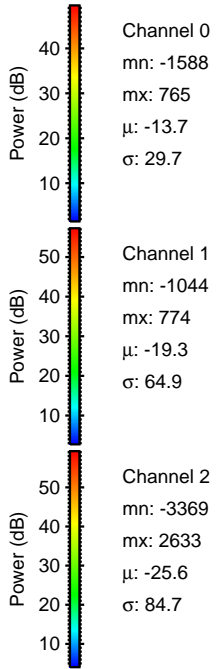
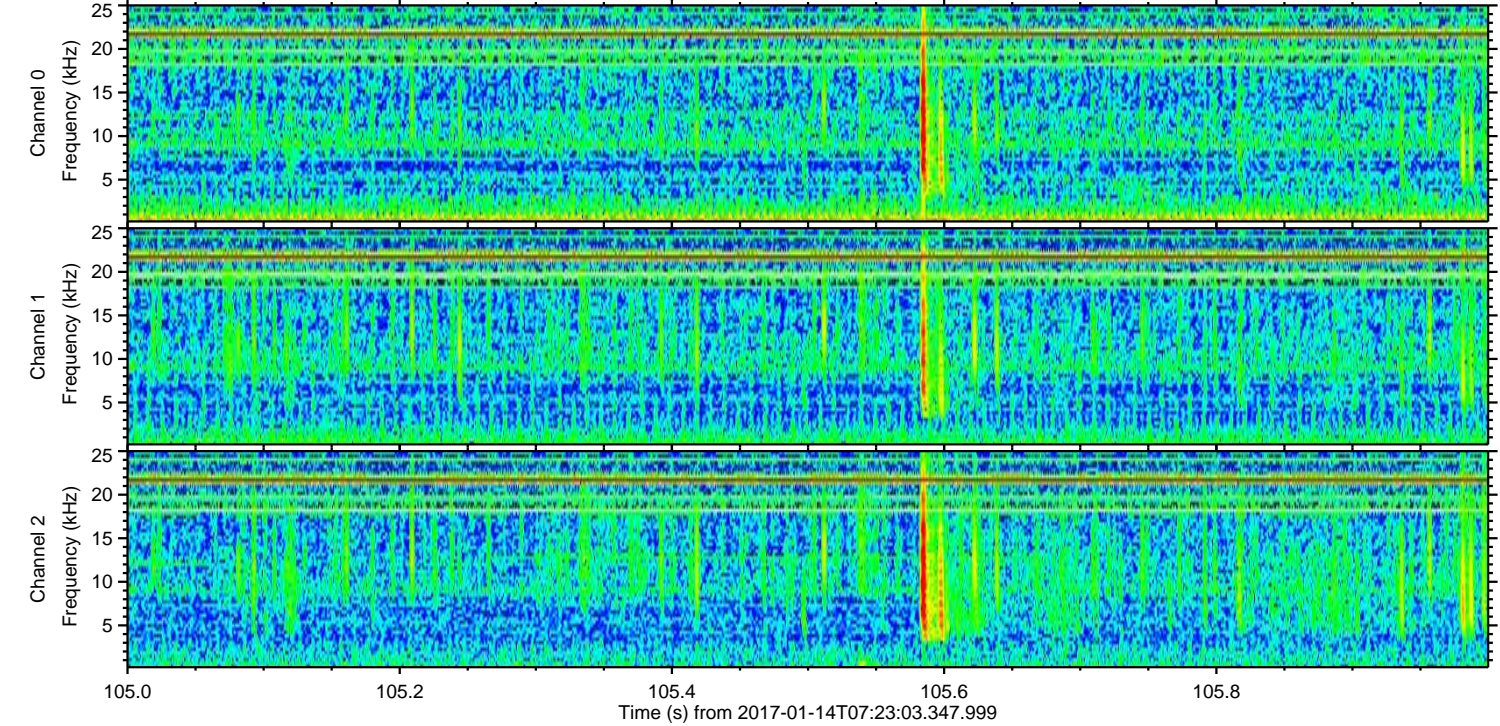
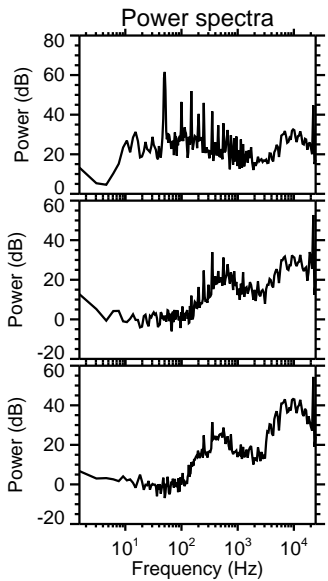
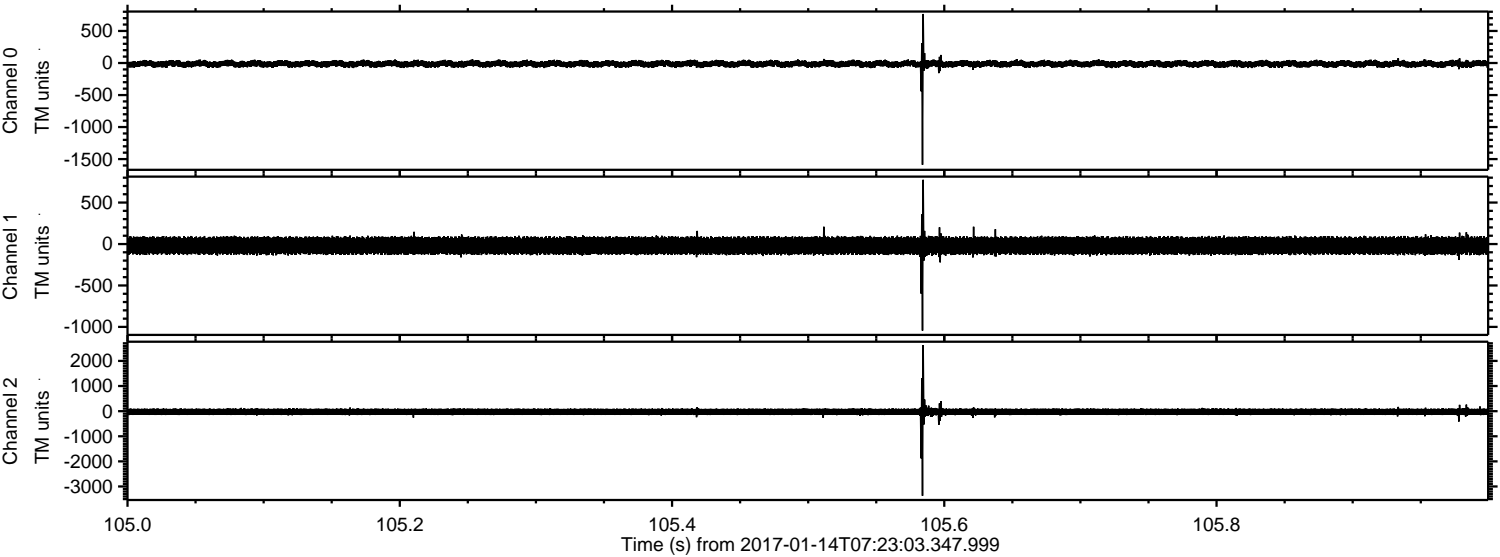
ELMAVAN 3D WAVEFORMS (Measured data sampled at 50 kHz) 51000 packets of 144 samples from 2017-01-14T07:23:03.347.999. Part 65/147

Processed Sat Jan 14 08:30:52 2017 by ELM ver.2012-10-06 from 001__elm20170114_072302__dat00.bin



ELMAVAN 3D WAVEFORMS (Measured data sampled at 50 kHz) 51000 packets of 144 samples from 2017-01-14T07:23:03.347.999. Part 106/147

Processed Sat Jan 14 08:30:53 2017 by ELM ver.2012-10-06 from 001__elm20170114_072302__dat00.bin



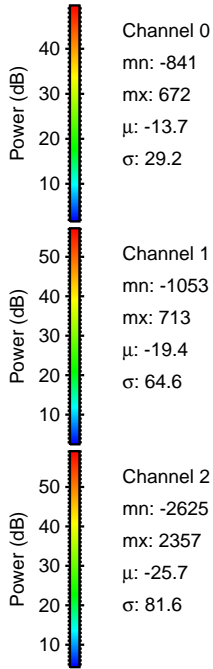
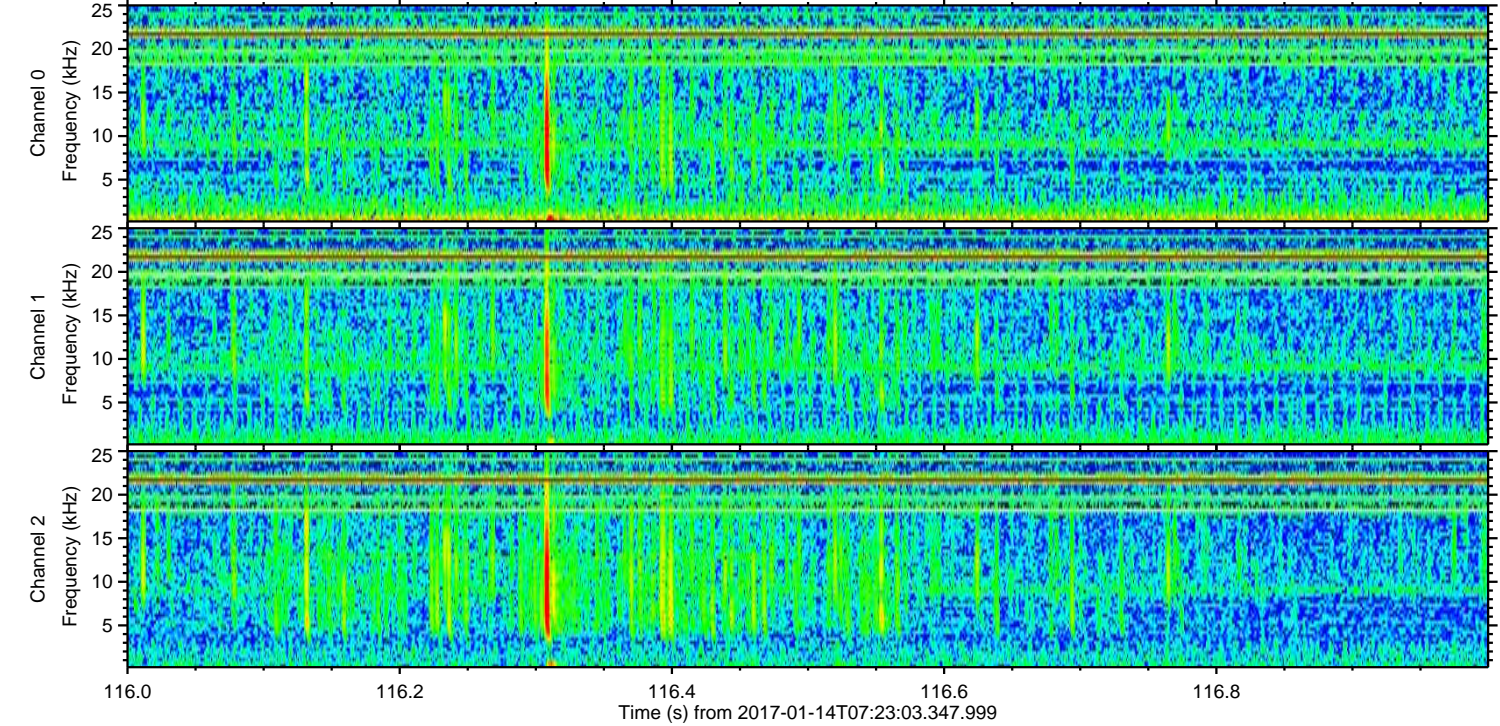
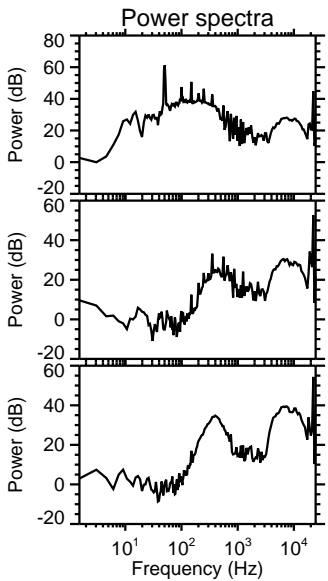
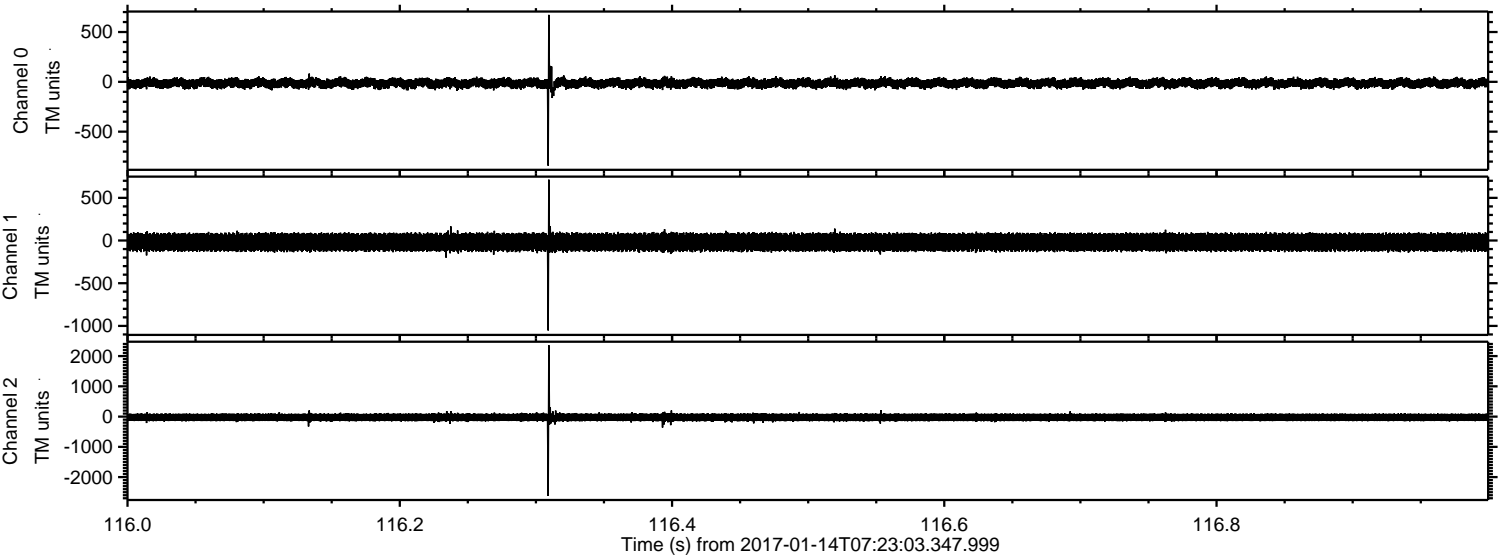
Channel 0
mn: -1588
mx: 765
 μ : -13.7
 σ : 29.7

Channel 1
mn: -1044
mx: 774
 μ : -19.3
 σ : 64.9

Channel 2
mn: -3369
mx: 2633
 μ : -25.6
 σ : 84.7

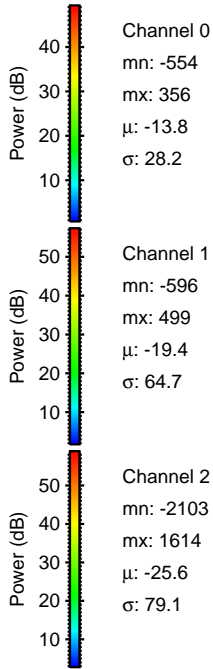
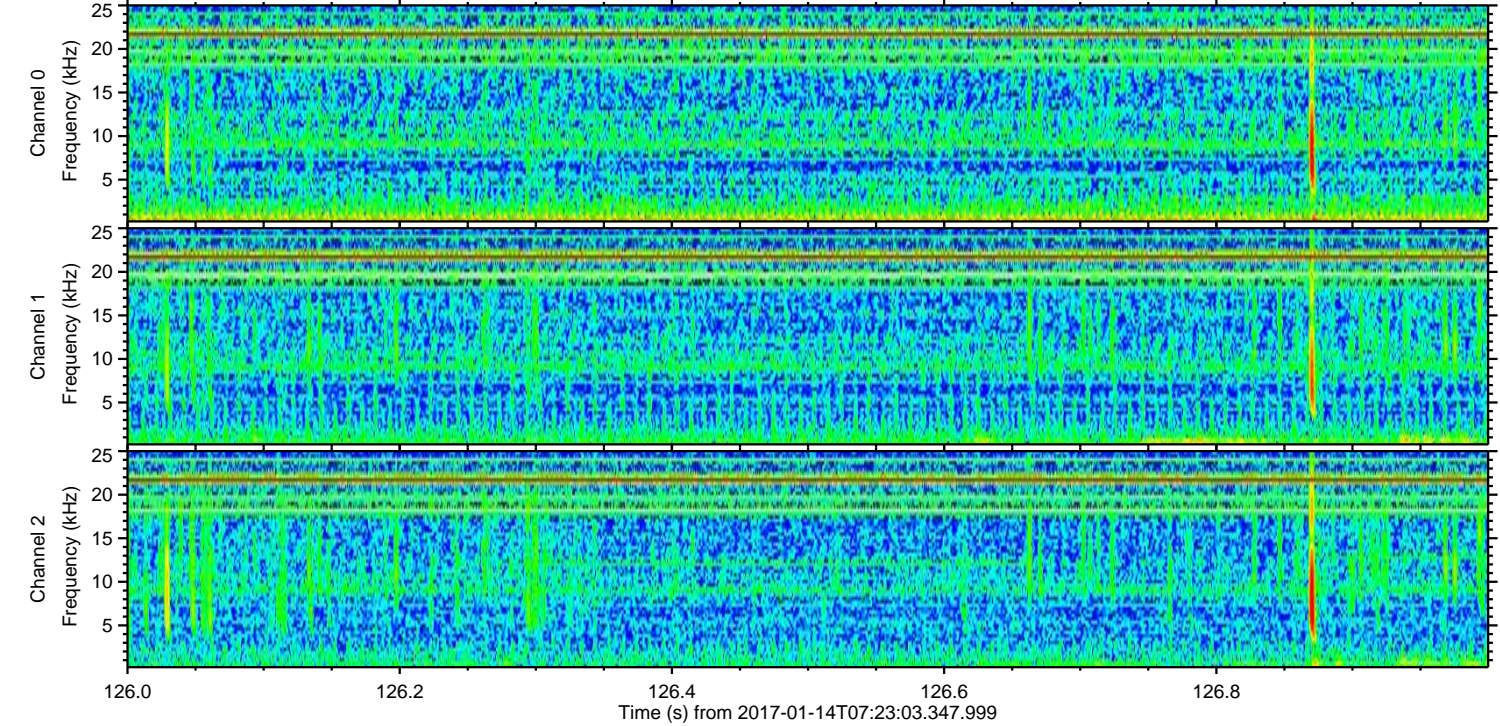
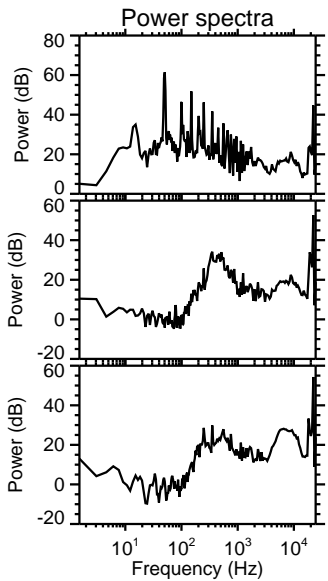
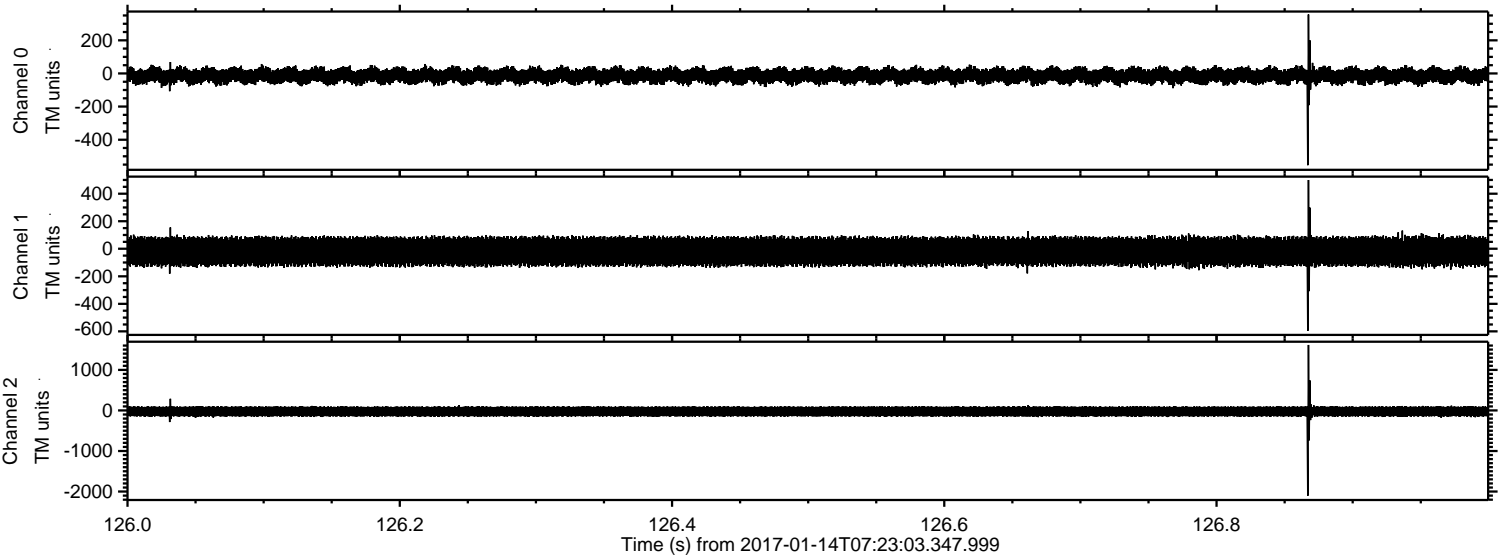
ELMAVAN 3D WAVEFORMS (Measured data sampled at 50 kHz) 51000 packets of 144 samples from 2017-01-14T07:23:03.347.999. Part 117/147

Processed Sat Jan 14 08:30:54 2017 by ELM ver.2012-10-06 from 001__elm20170114_072302__dat00.bin



ELMAVAN 3D WAVEFORMS (Measured data sampled at 50 kHz) 51000 packets of 144 samples from 2017-01-14T07:23:03.347.999. Part 127/147

Processed Sat Jan 14 08:30:55 2017 by ELM ver.2012-10-06 from 001__elm20170114_072302__dat00.bin



ELMAVAN 3D WAVEFORMS (Measured data sampled at 50 kHz) 51000 packets of 144 samples from 2017-01-14T07:23:03.347.999. Part 13/147

Processed Sat Jan 14 08:30:56 2017 by ELM ver.2012-10-06 from 001__elm20170114_072302__dat00.bin

