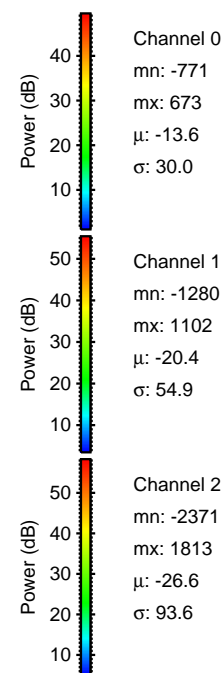
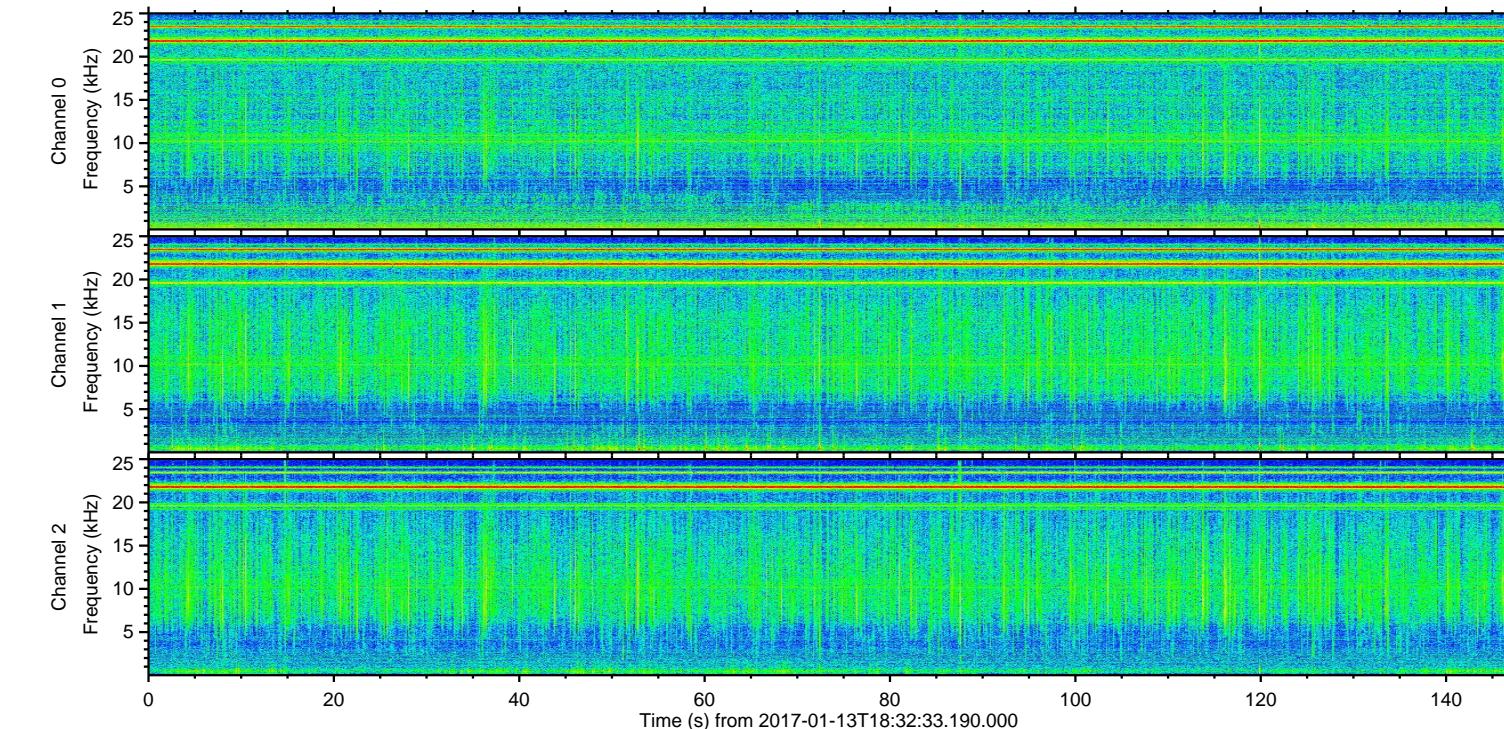
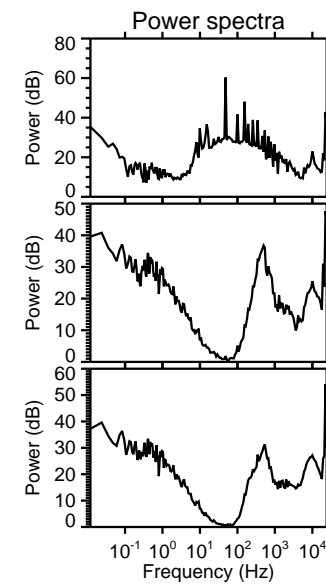
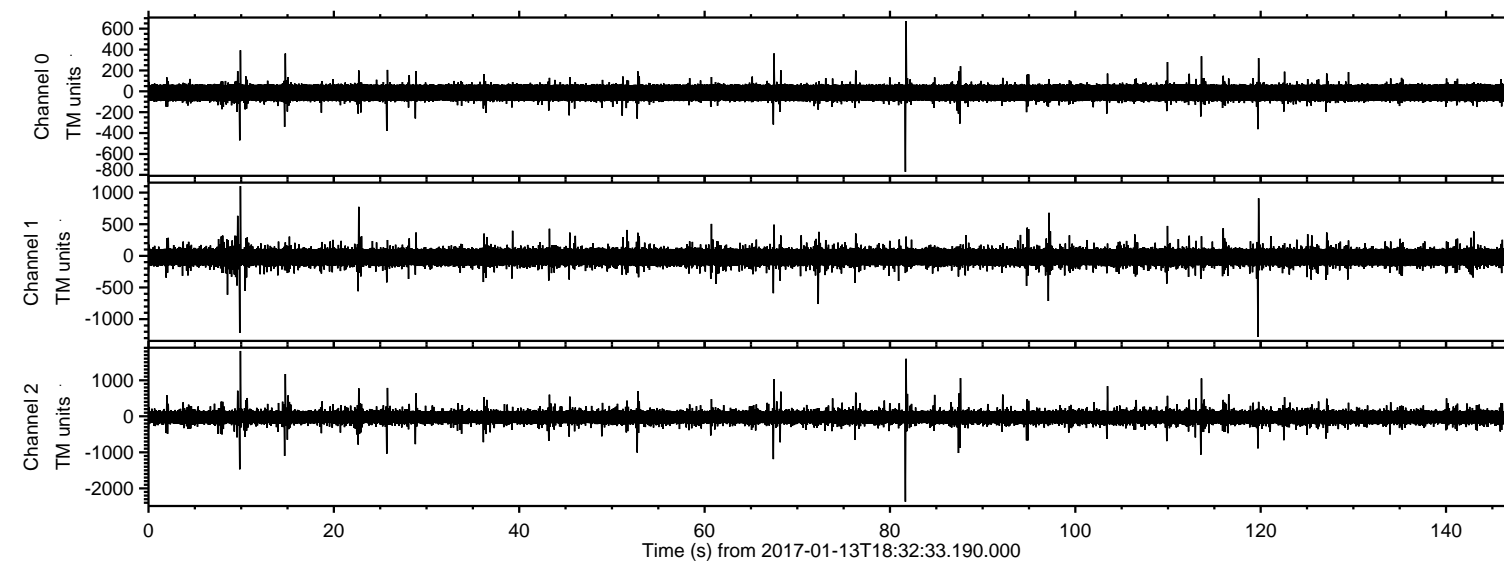
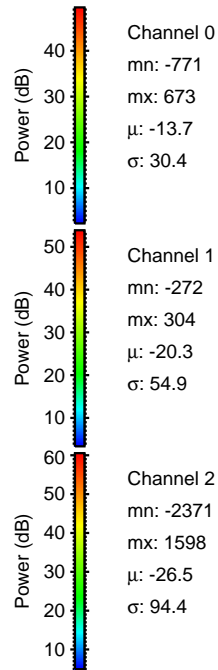
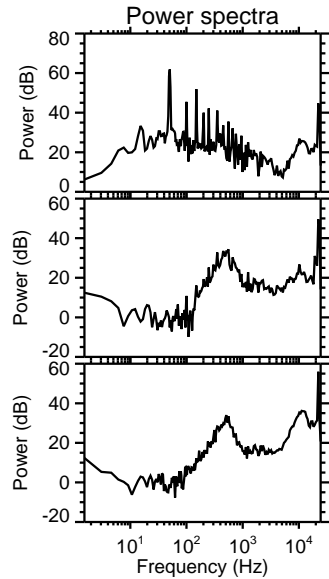
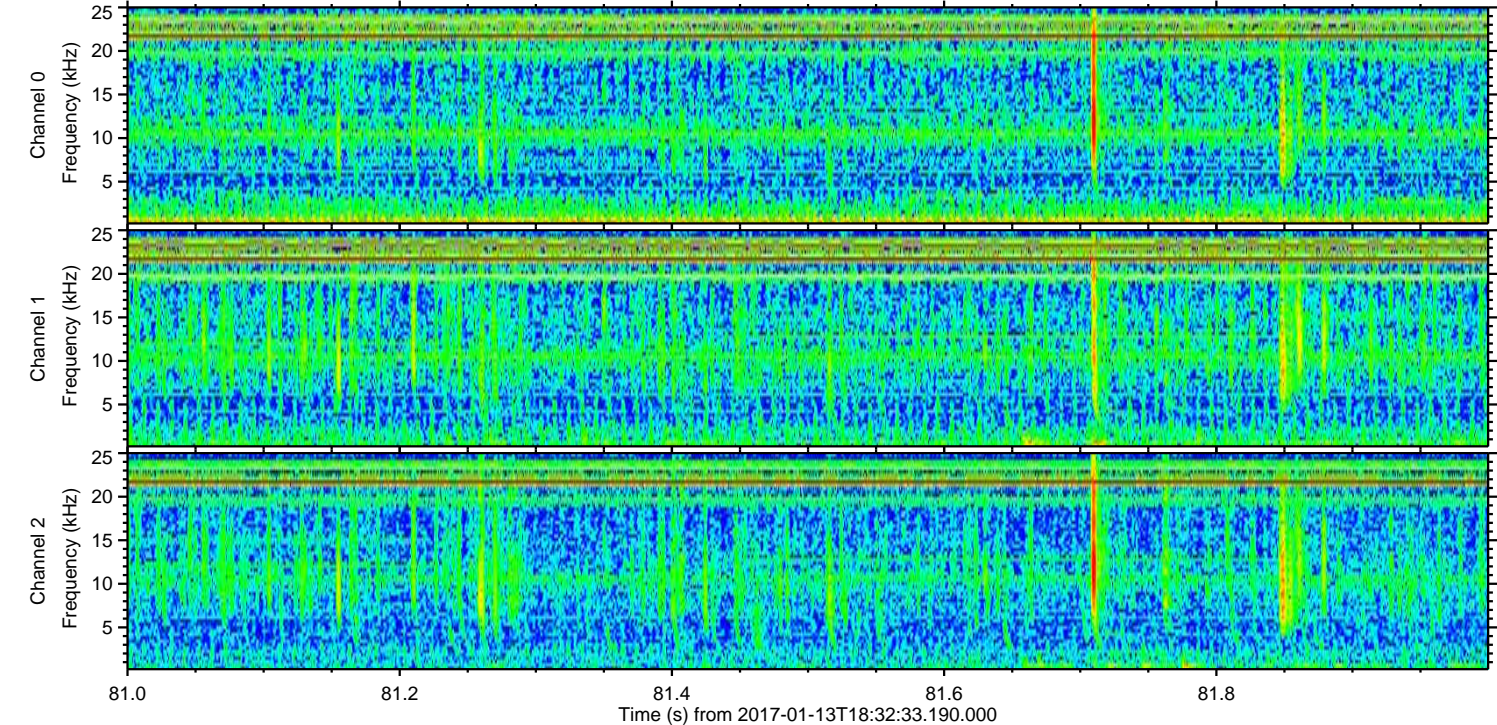
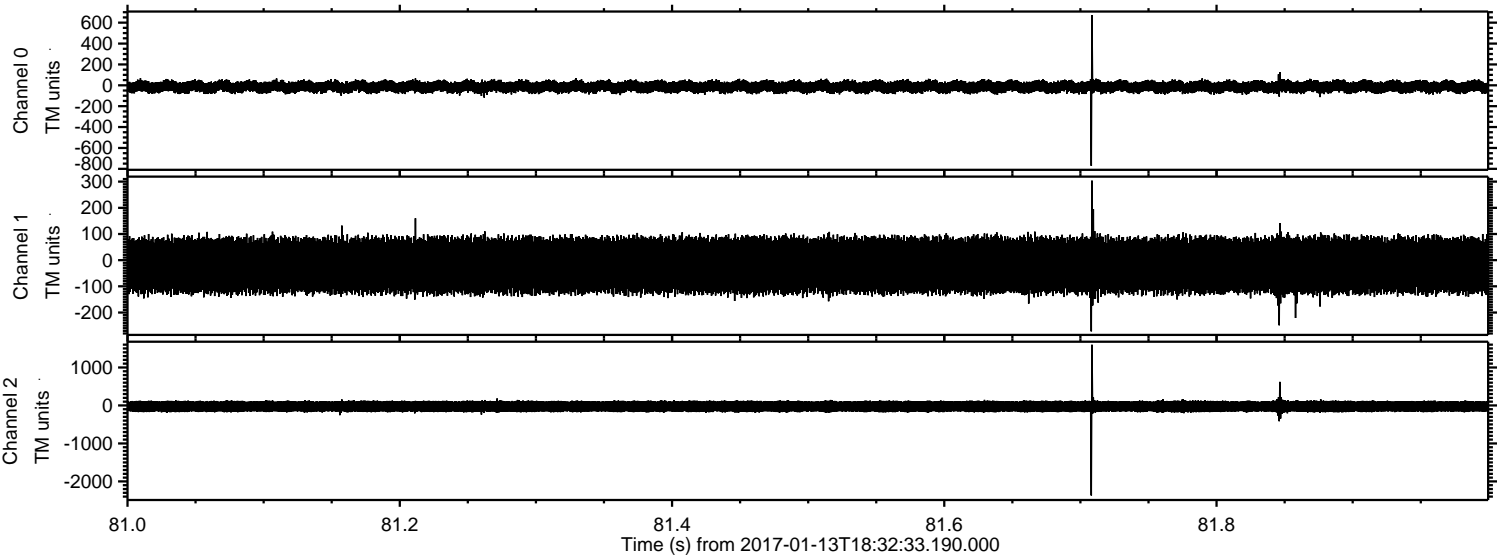


ELMAVAN 3D WAVEFORMS (Measured data sampled at 50 kHz) 51000 packets of 144 samples from 2017-01-13T18:32:33.190.000.

Processed Fri Jan 13 19:40:29 2017 by ELM ver.2012-10-06 from 001__elm20170113_183232__dat00.bin

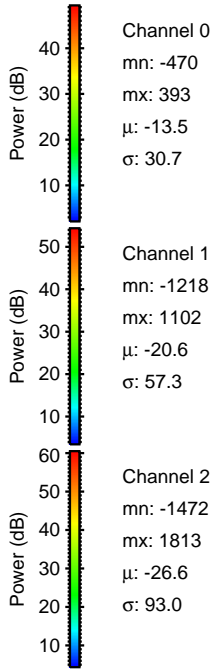
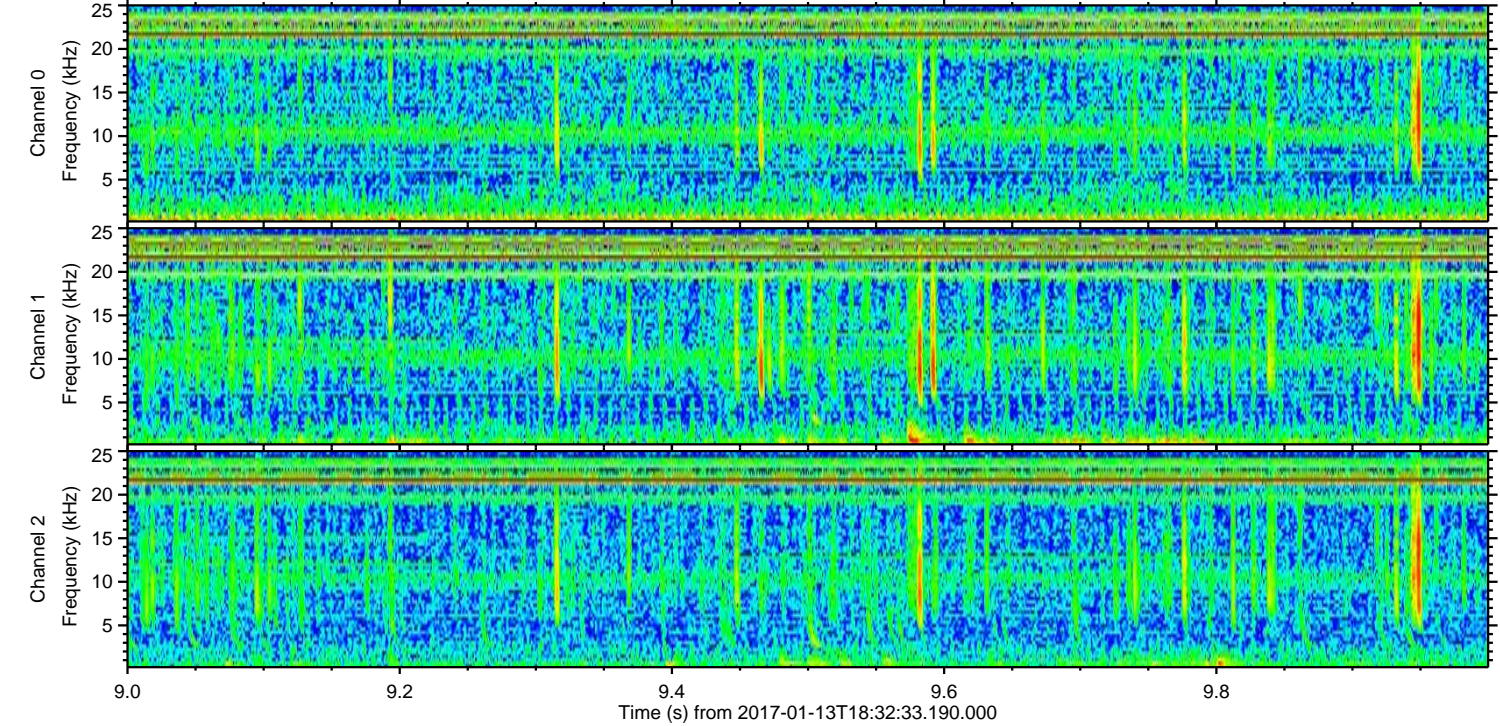
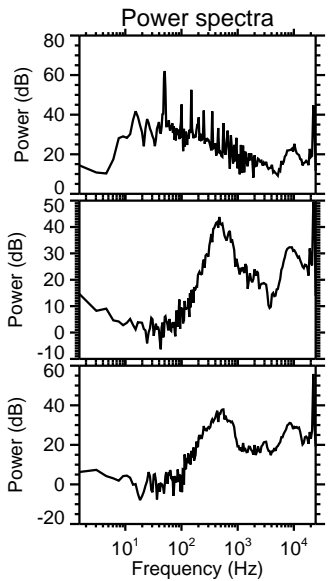
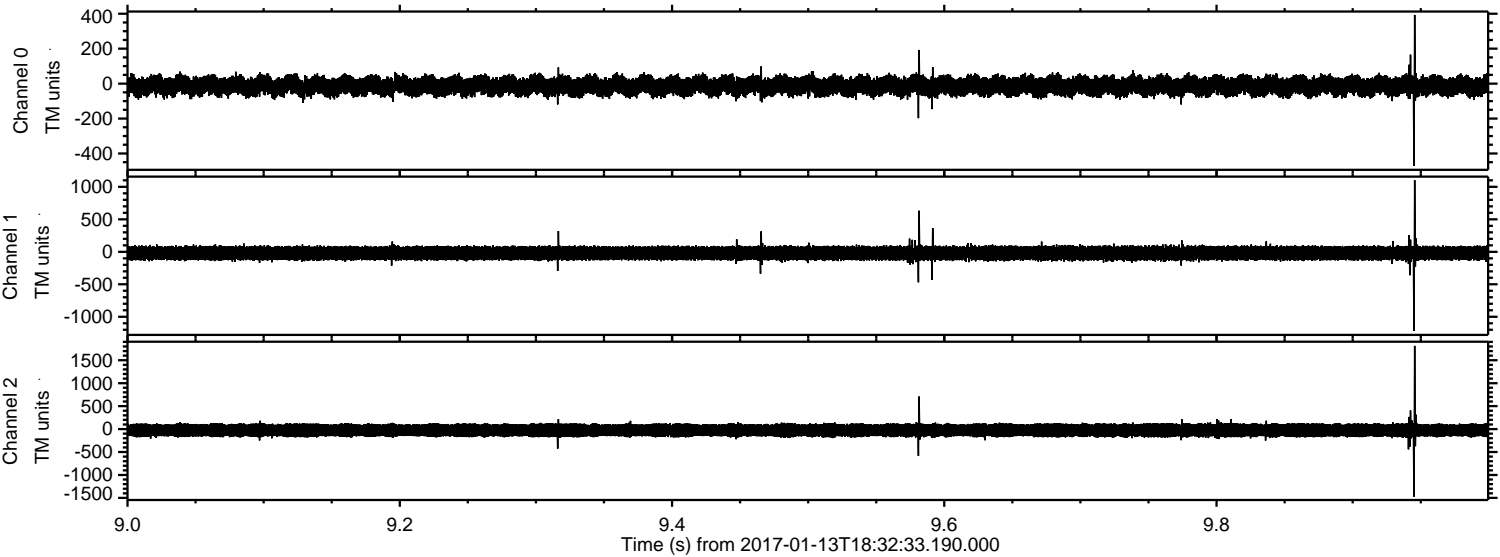


Processed Fri Jan 13 19:40:40 2017 by ELM ver.2012-10-06 from 001__elm20170113_183232__dat00.bin



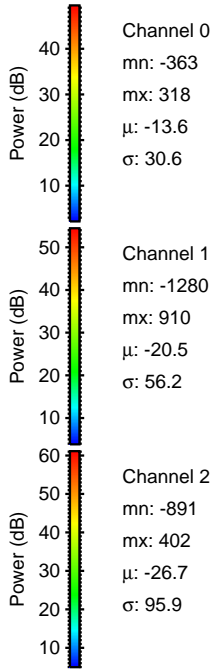
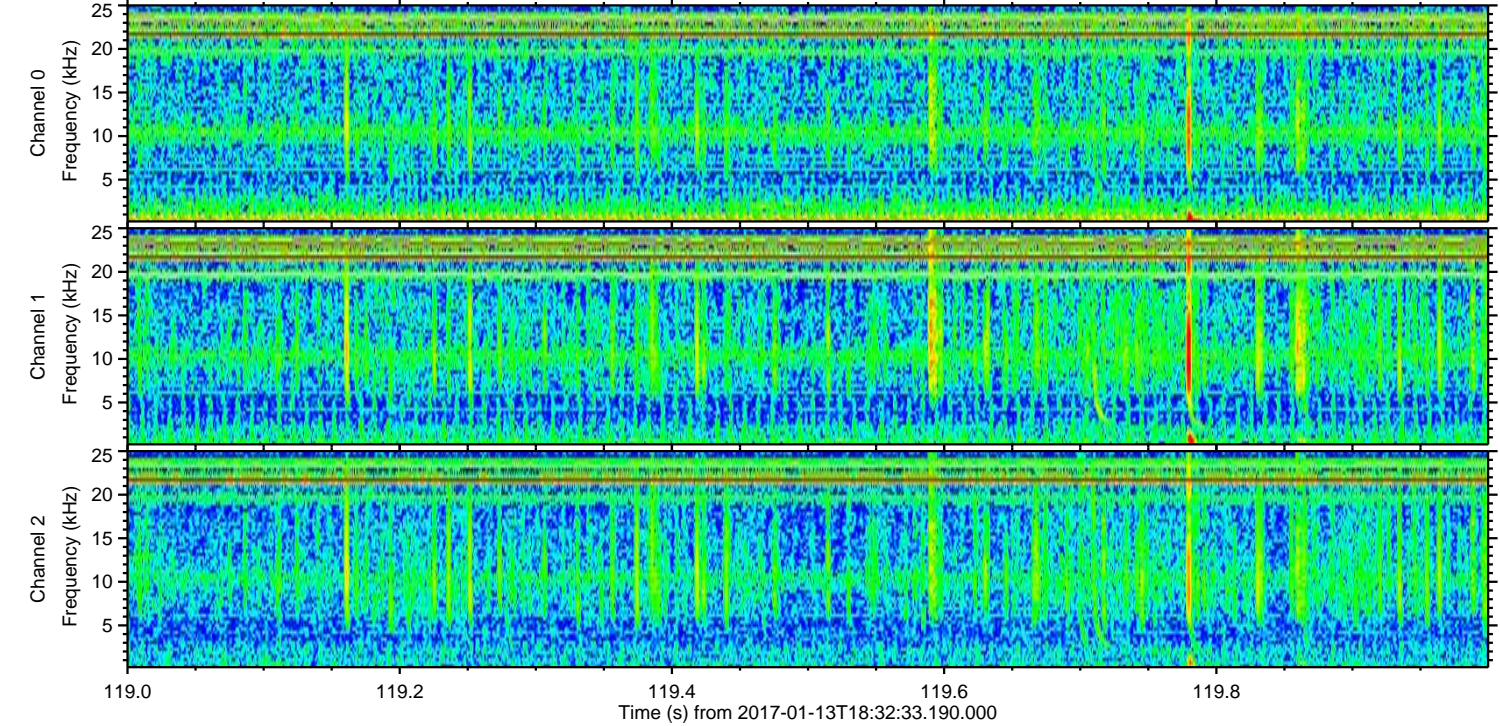
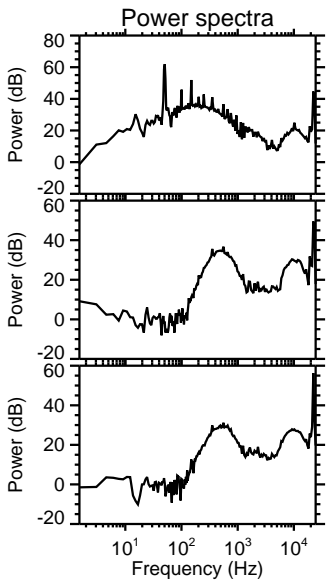
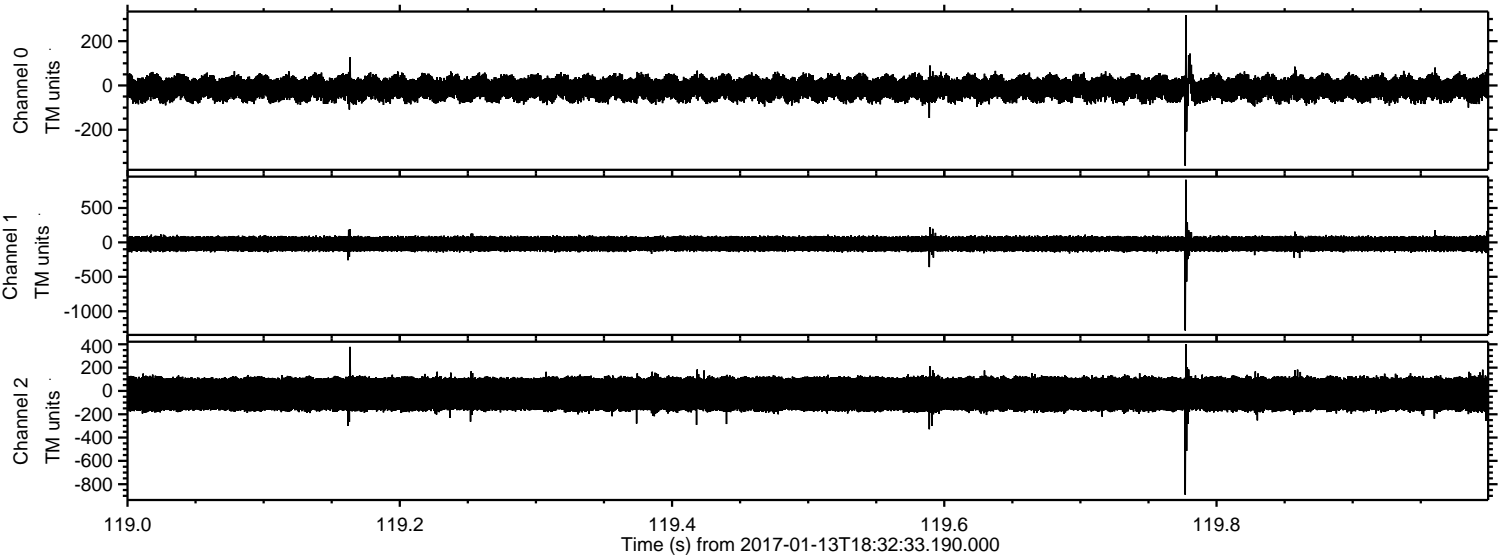
ELMAVAN 3D WAVEFORMS (Measured data sampled at 50 kHz) 51000 packets of 144 samples from 2017-01-13T18:32:33.190.000. Part 10/147

Processed Fri Jan 13 19:40:41 2017 by ELM ver.2012-10-06 from 001__elm20170113_183232__dat00.bin

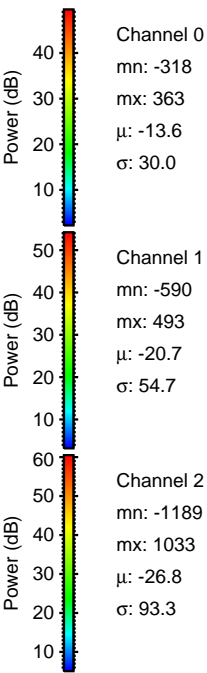
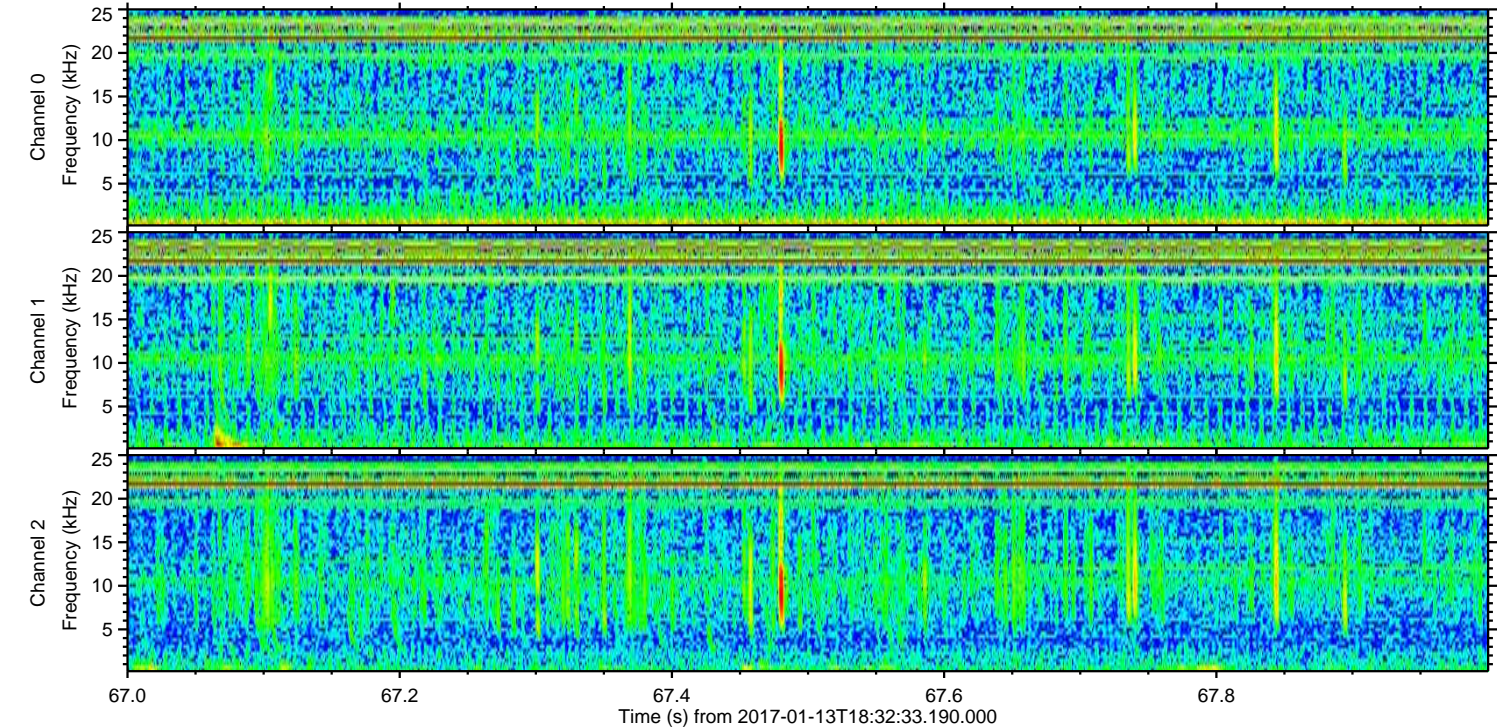
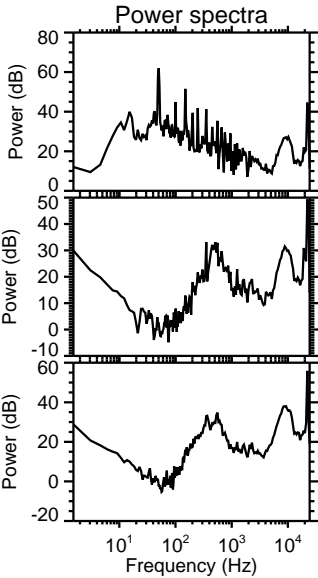
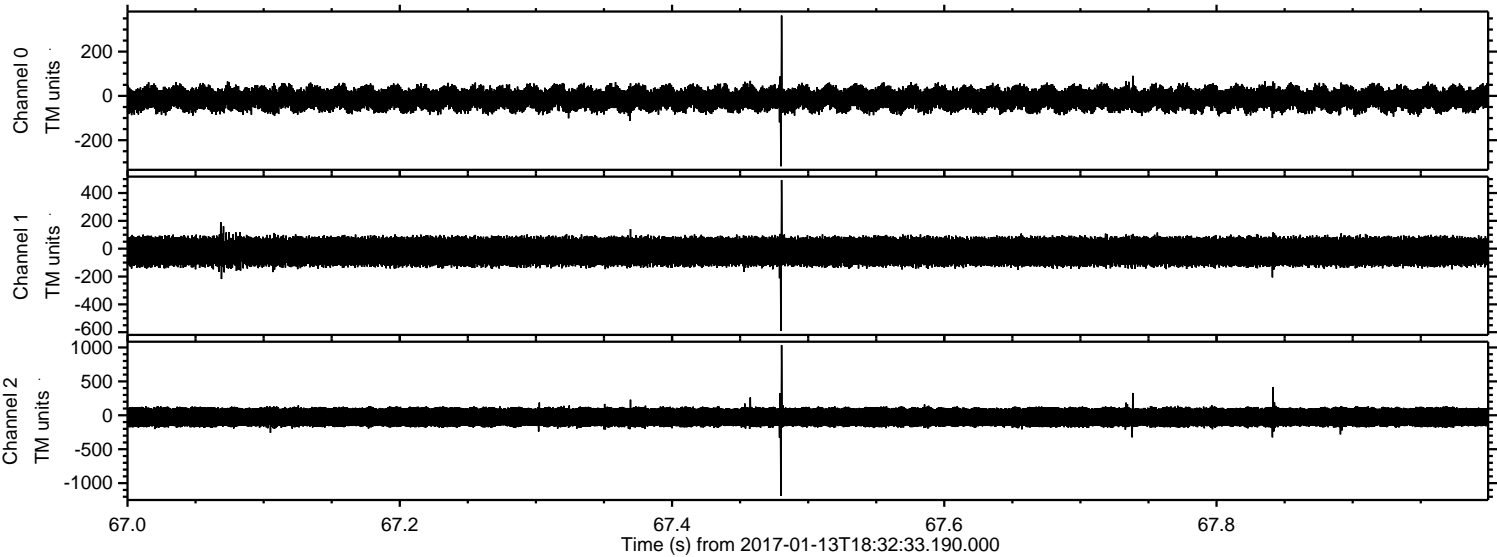


ELMAVAN 3D WAVEFORMS (Measured data sampled at 50 kHz) 51000 packets of 144 samples from 2017-01-13T18:32:33.190.000. Part 120/147

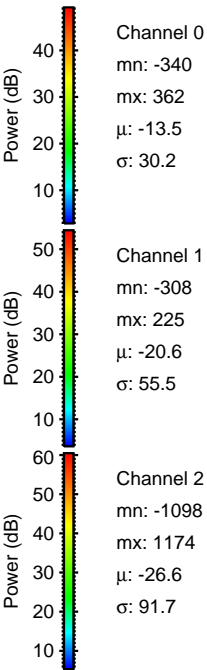
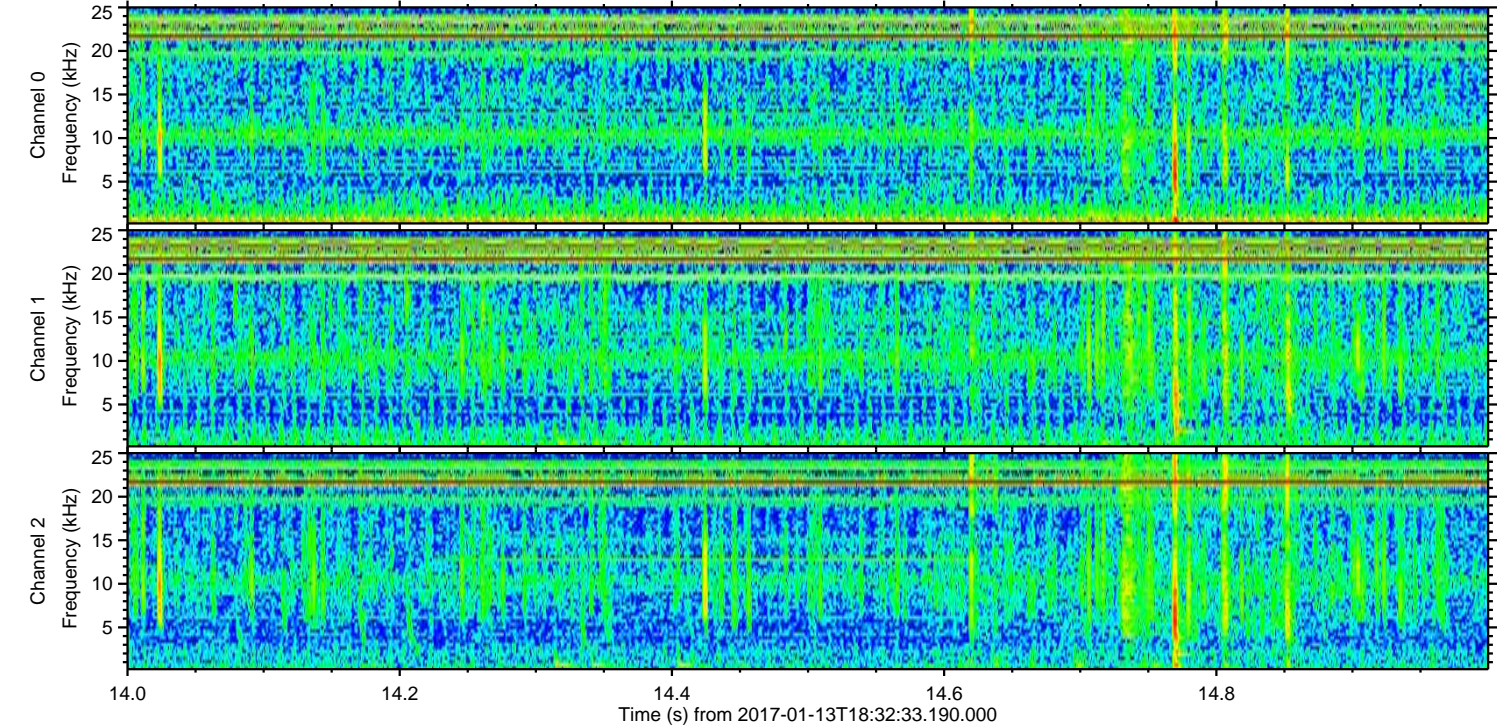
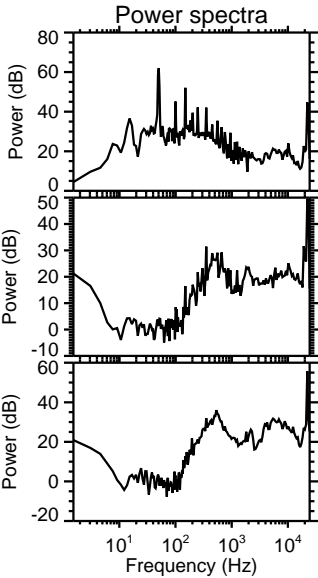
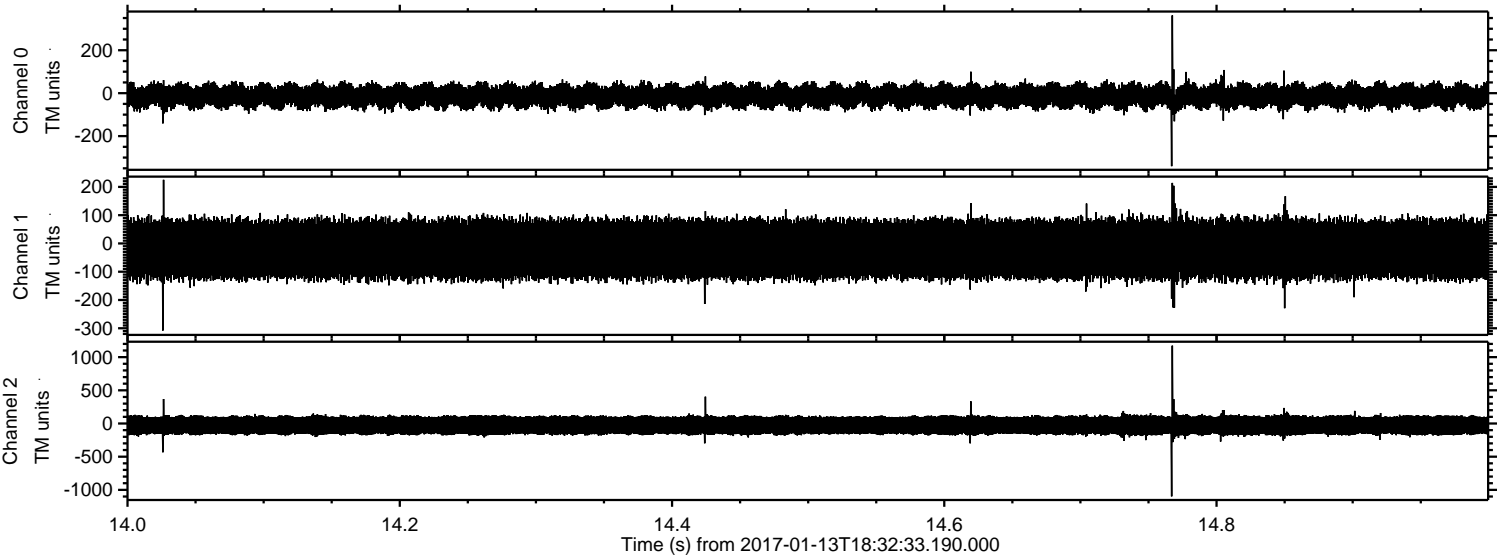
Processed Fri Jan 13 19:40:42 2017 by ELM ver.2012-10-06 from 001__elm20170113_183232__dat00.bin



Processed Fri Jan 13 19:40:43 2017 by ELM ver.2012-10-06 from 001__elm20170113_183232__dat00.bin

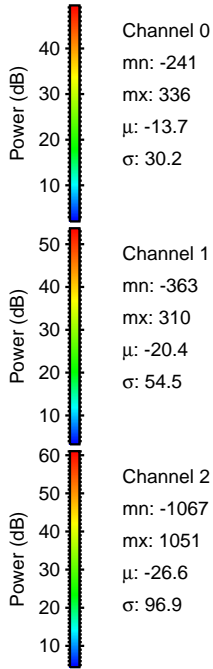
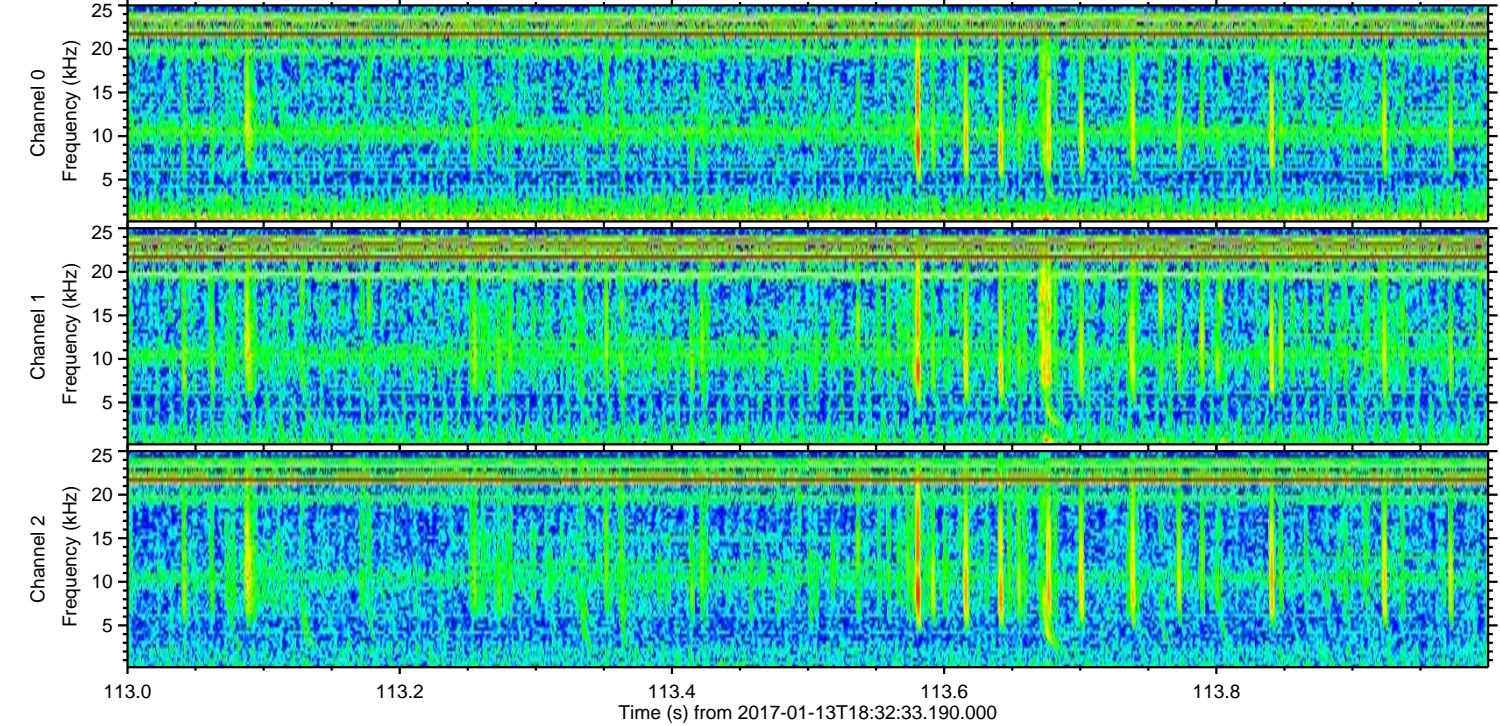
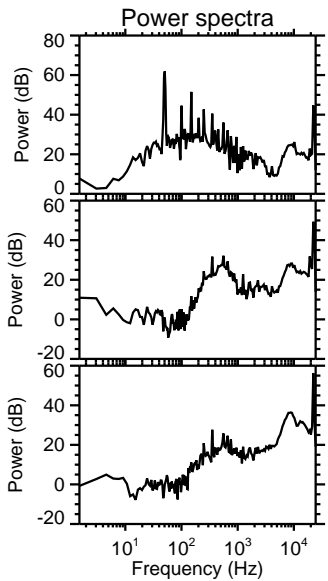
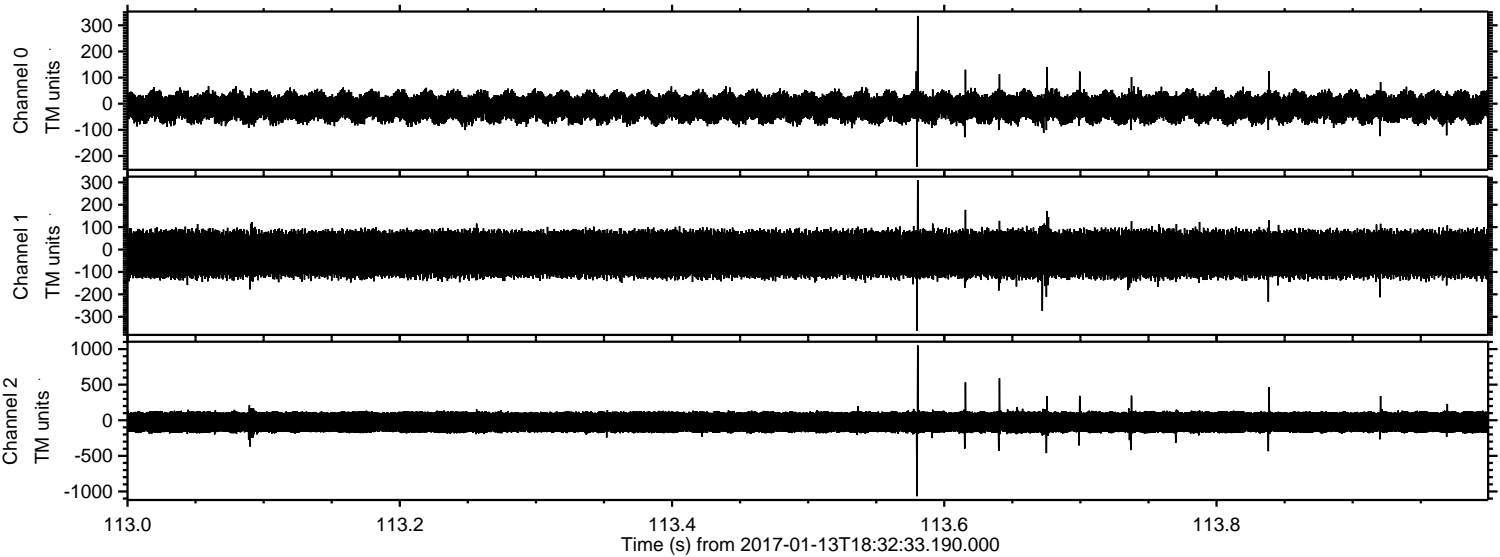


Processed Fri Jan 13 19:40:44 2017 by ELM ver.2012-10-06 from 001__elm20170113_183232__dat00.bin

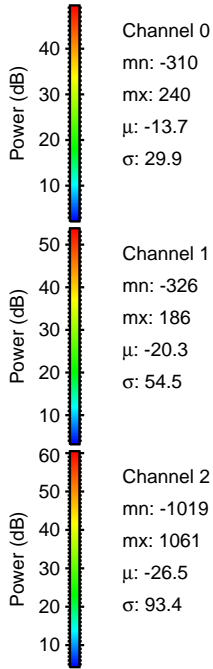
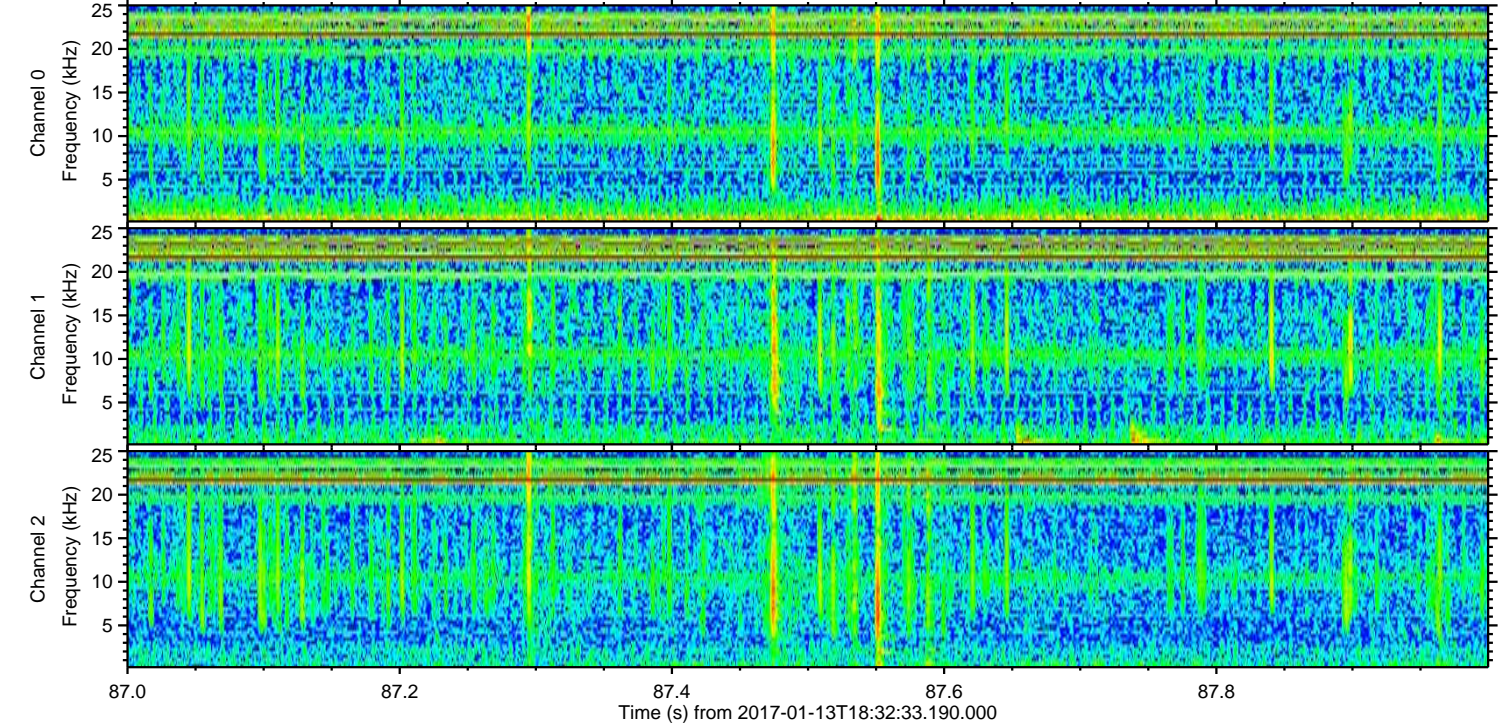
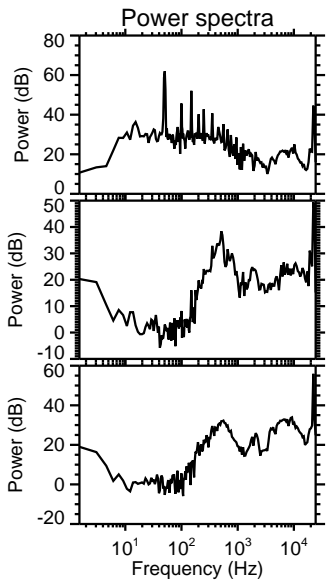
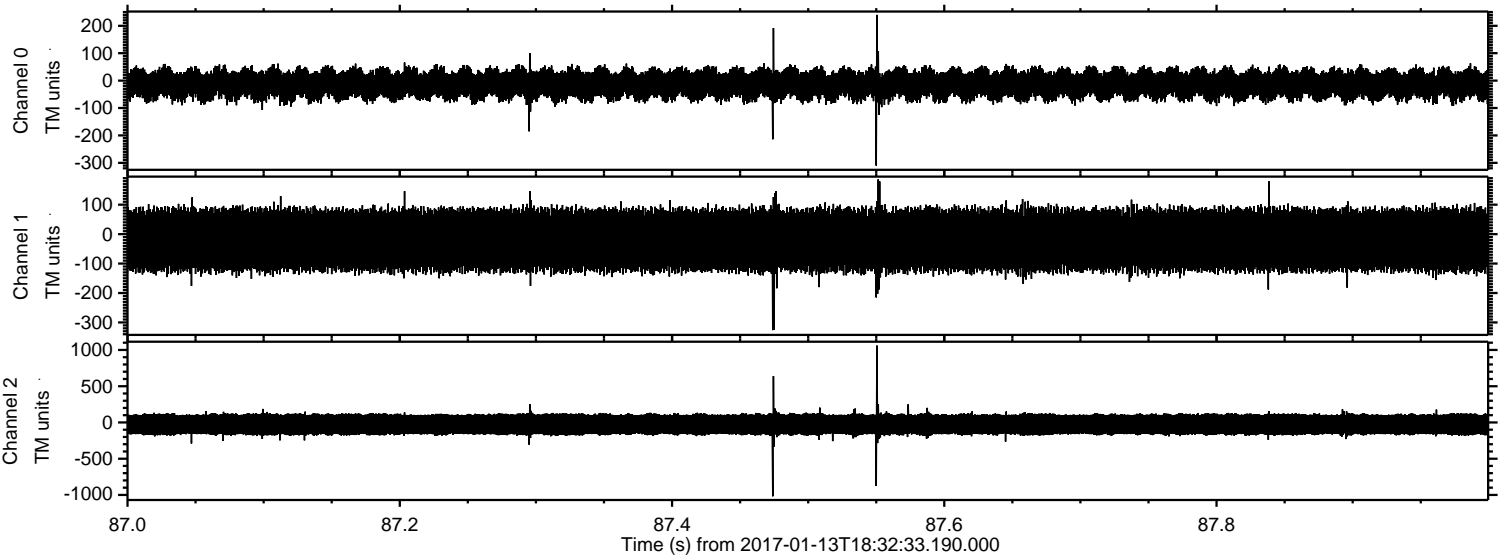


ELMAVAN 3D WAVEFORMS (Measured data sampled at 50 kHz) 51000 packets of 144 samples from 2017-01-13T18:32:33.190.000. Part 114/147

Processed Fri Jan 13 19:40:45 2017 by ELM ver.2012-10-06 from 001__elm20170113_183232__dat00.bin



Processed Fri Jan 13 19:40:46 2017 by ELM ver.2012-10-06 from 001__elm20170113_183232__dat00.bin

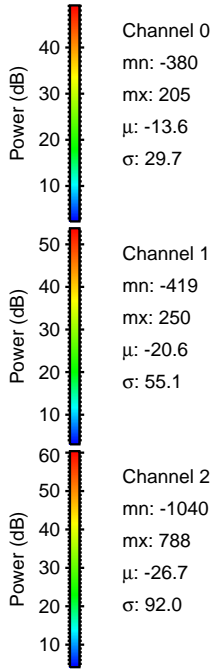
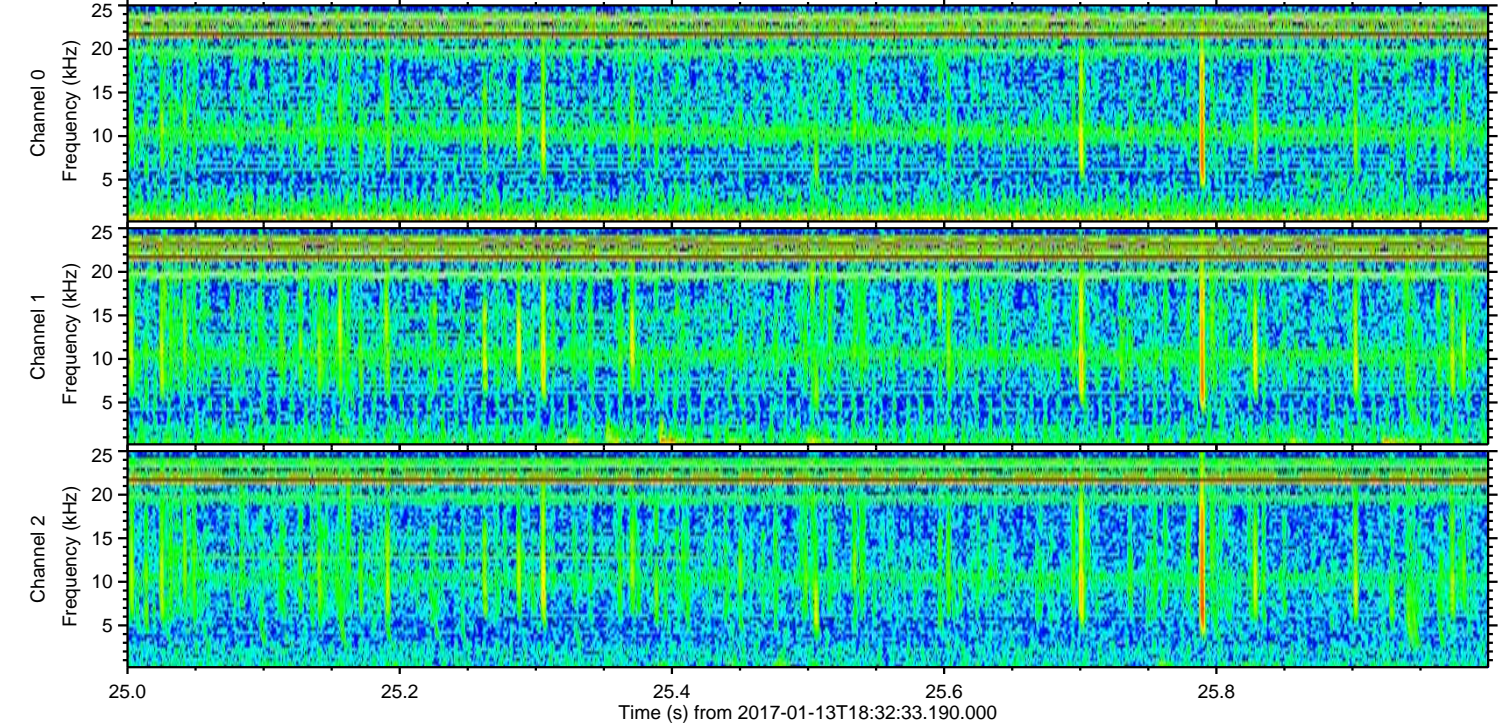
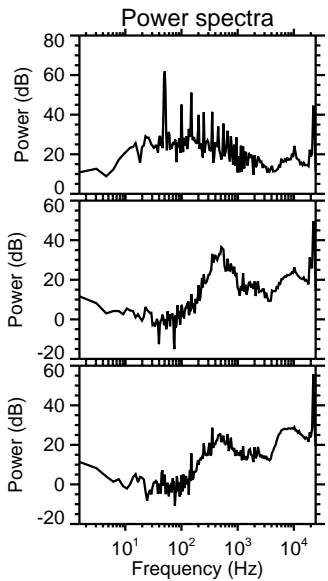
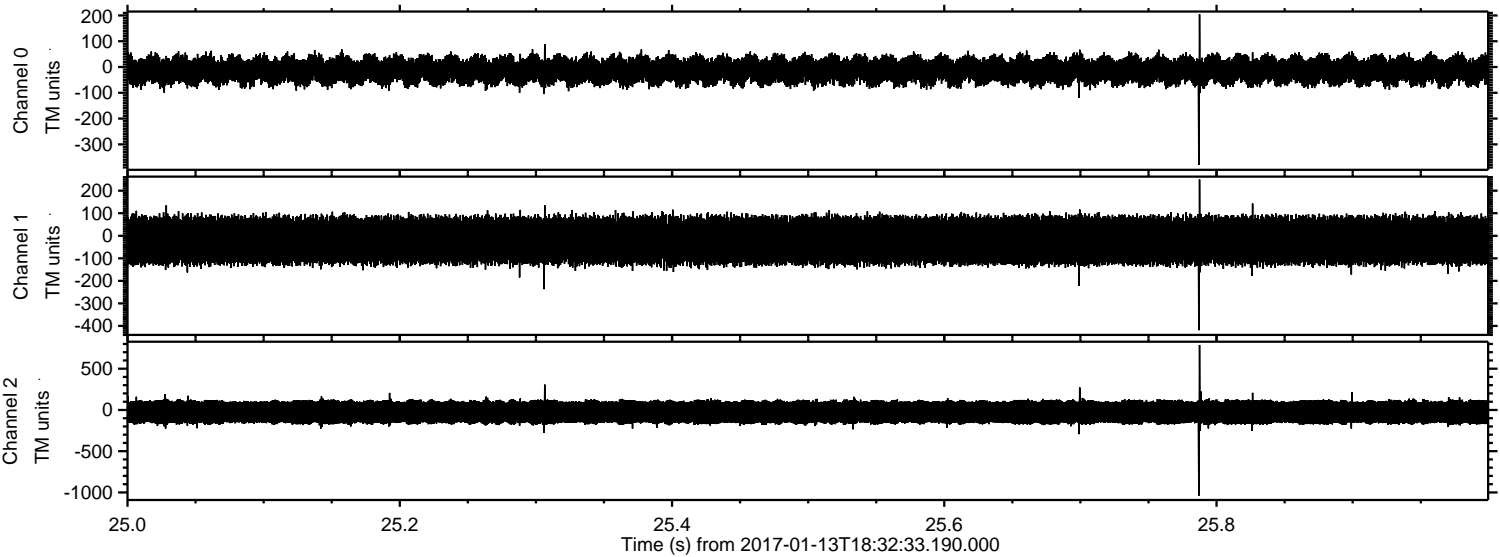


Channel 0
mn: -310
mx: 240
 μ : -13.7
 σ : 29.9

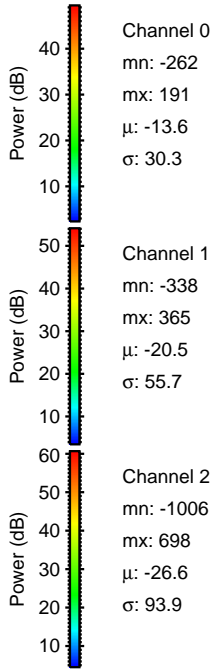
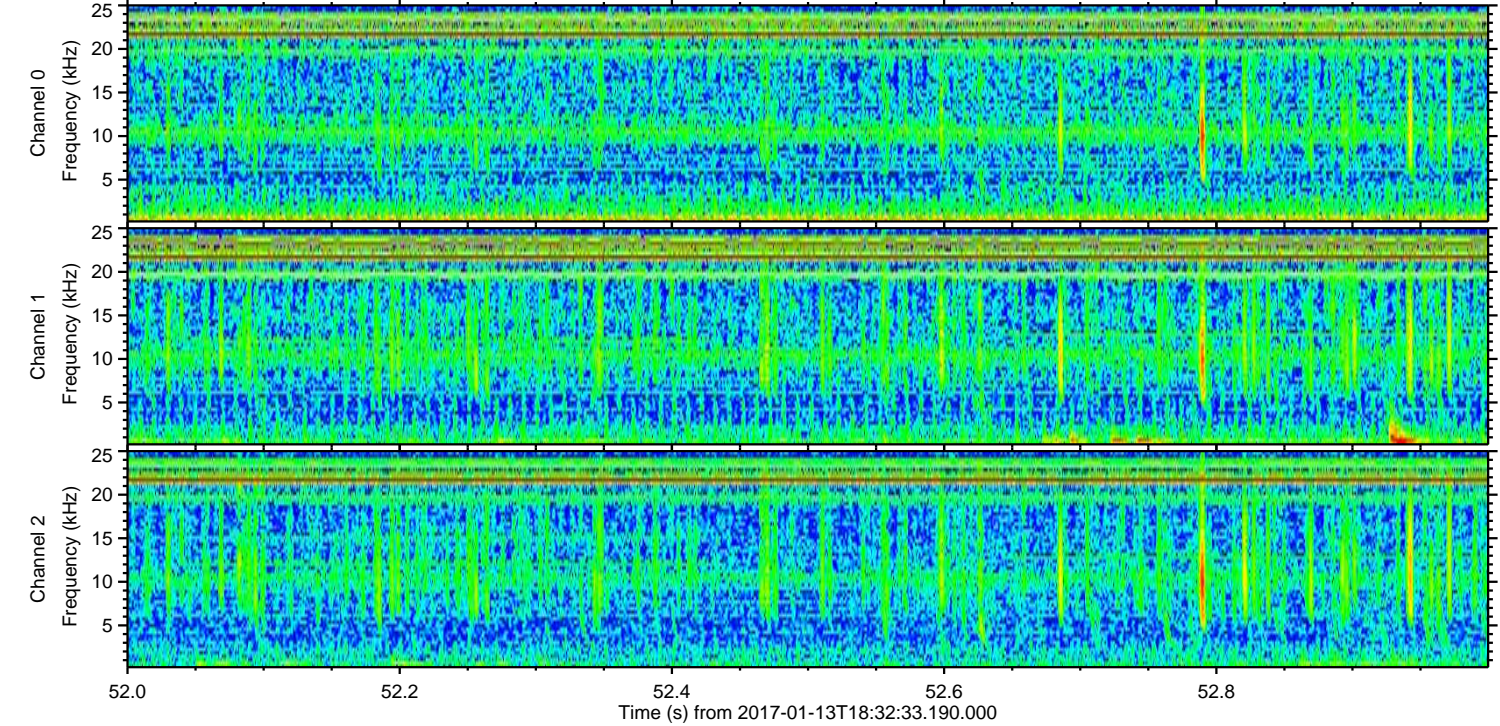
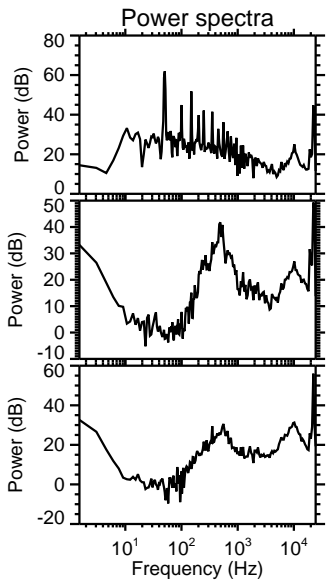
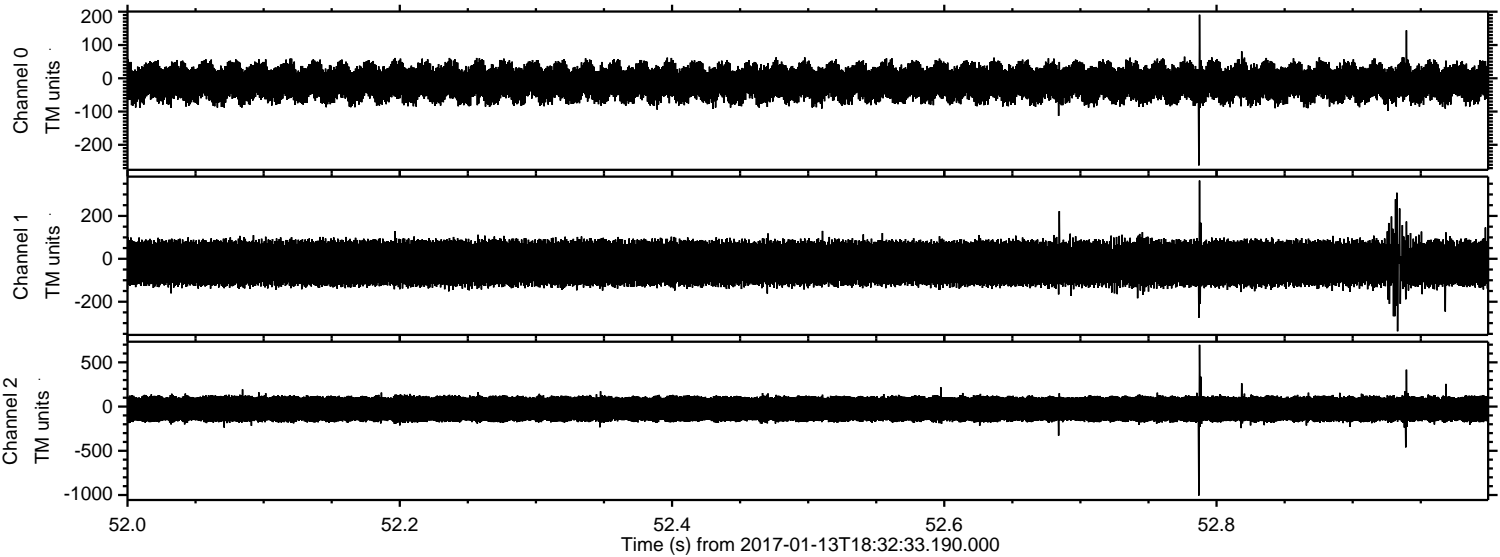
Channel 1
mn: -326
mx: 186
 μ : -20.3
 σ : 54.5

Channel 2
mn: -1019
mx: 1061
 μ : -26.5
 σ : 93.4

Processed Fri Jan 13 19:40:47 2017 by ELM ver.2012-10-06 from 001__elm20170113_183232__dat00.bin



Processed Fri Jan 13 19:40:48 2017 by ELM ver.2012-10-06 from 001__elm20170113_183232__dat00.bin



Channel 0
mn: -262
mx: 191
 μ : -13.6
 σ : 30.3

Channel 1
mn: -338
mx: 365
 μ : -20.5
 σ : 55.7

Channel 2
mn: -1006
mx: 698
 μ : -26.6
 σ : 93.9

Processed Fri Jan 13 19:40:49 2017 by ELM ver.2012-10-06 from 001__elm20170113_183232__dat00.bin

