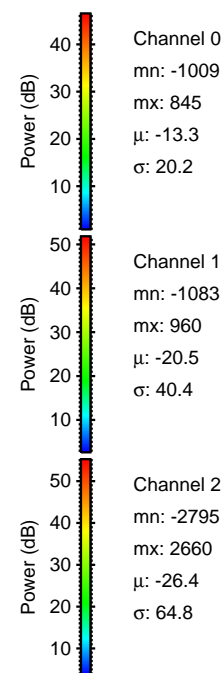
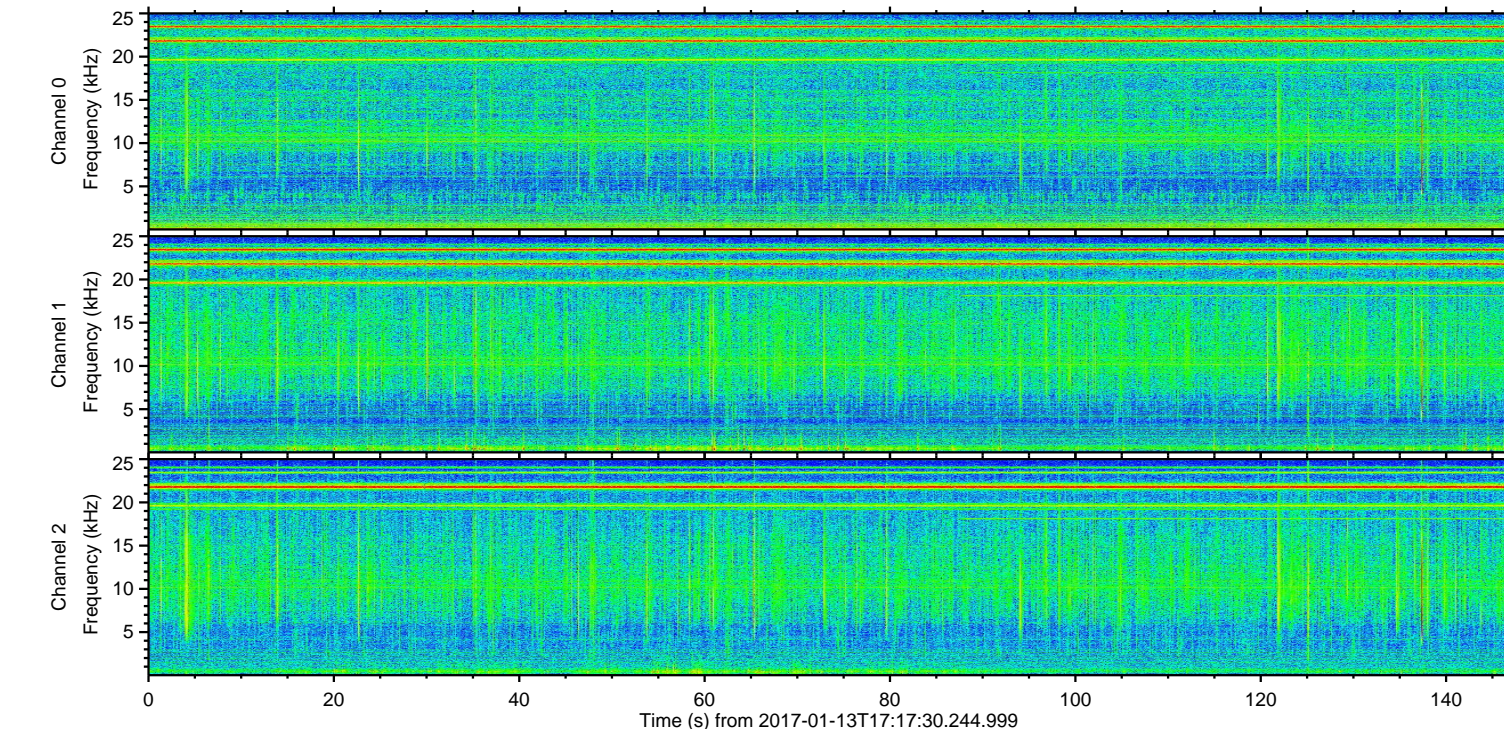
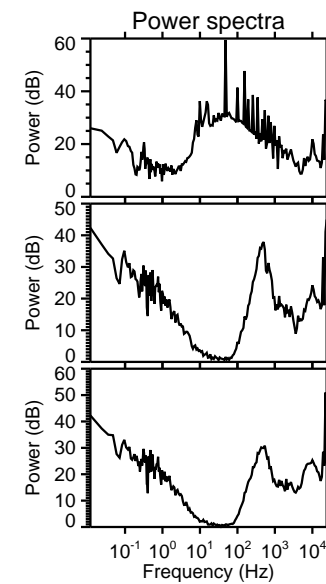
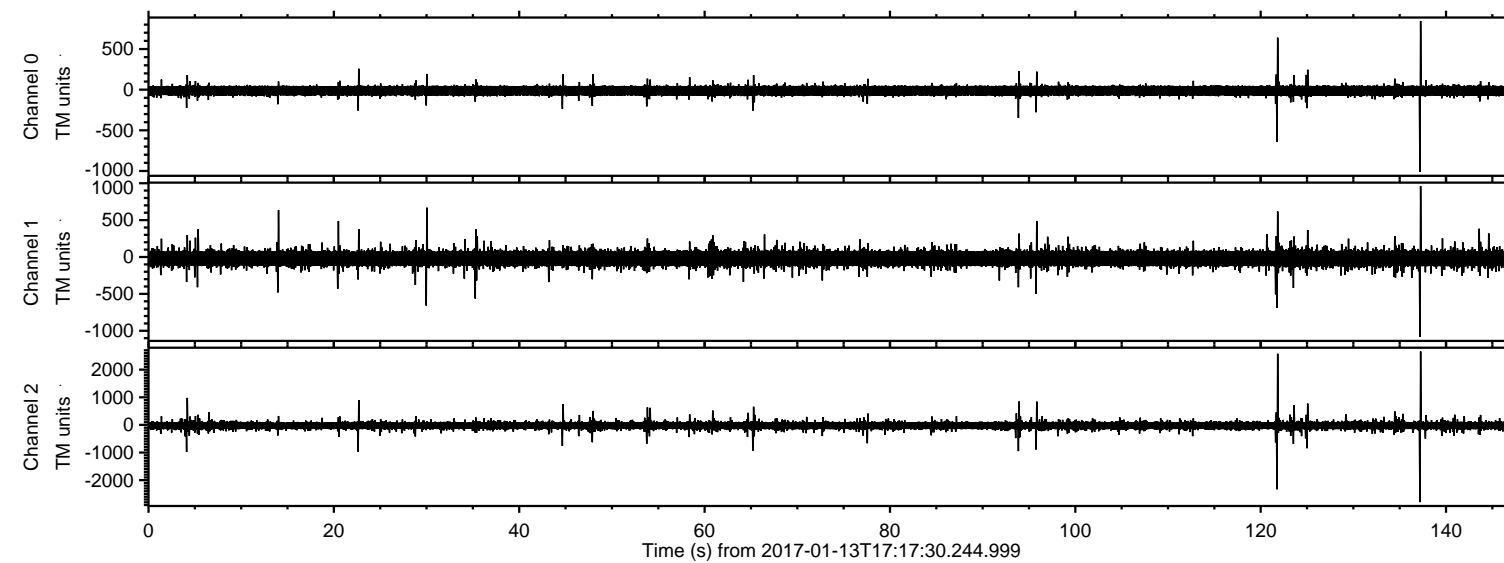


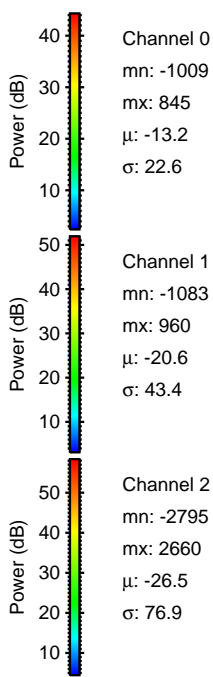
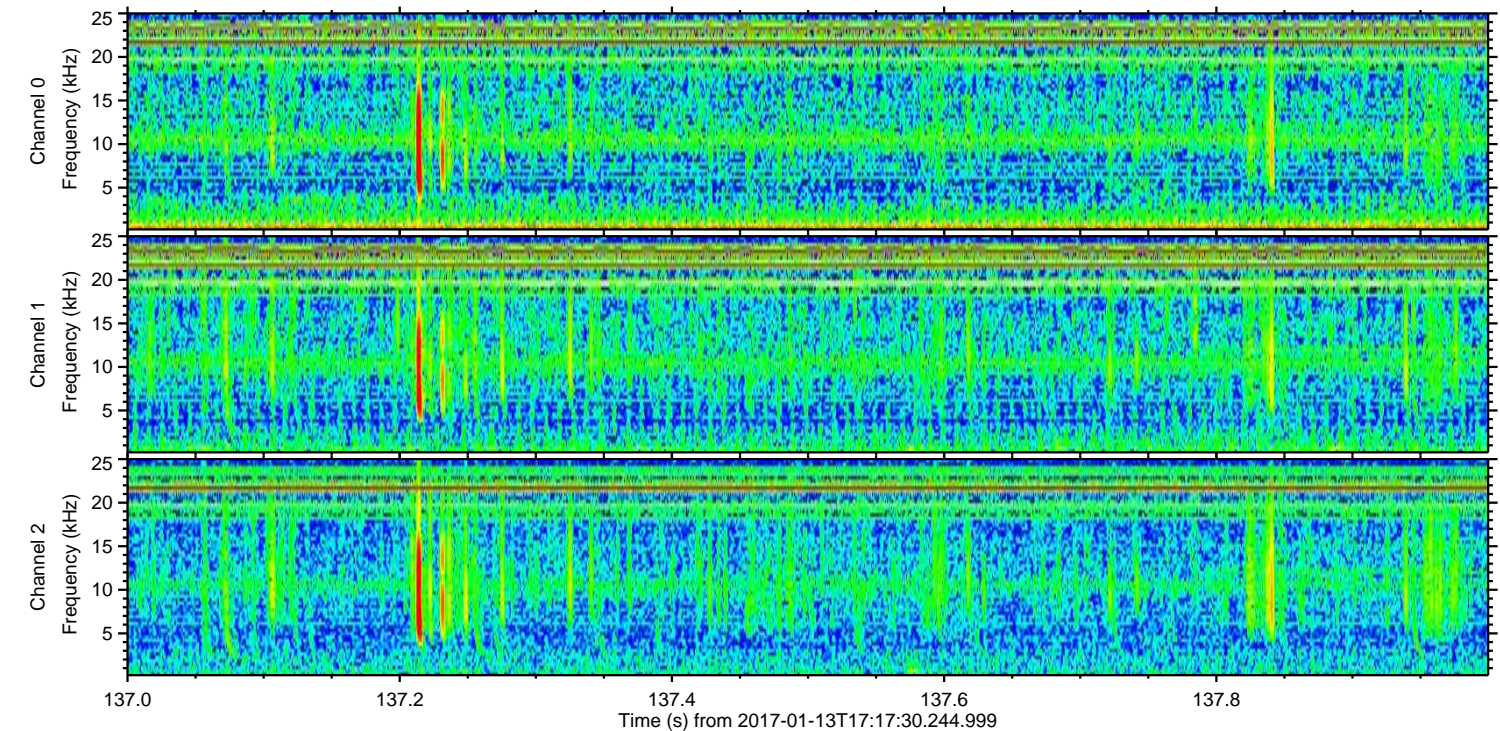
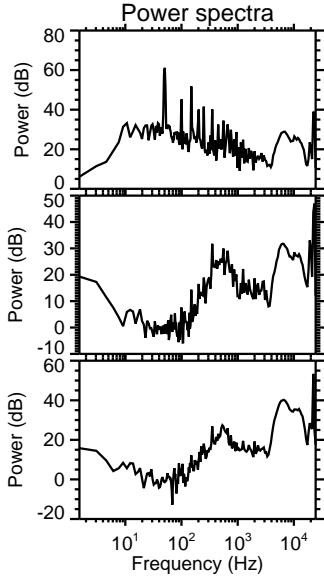
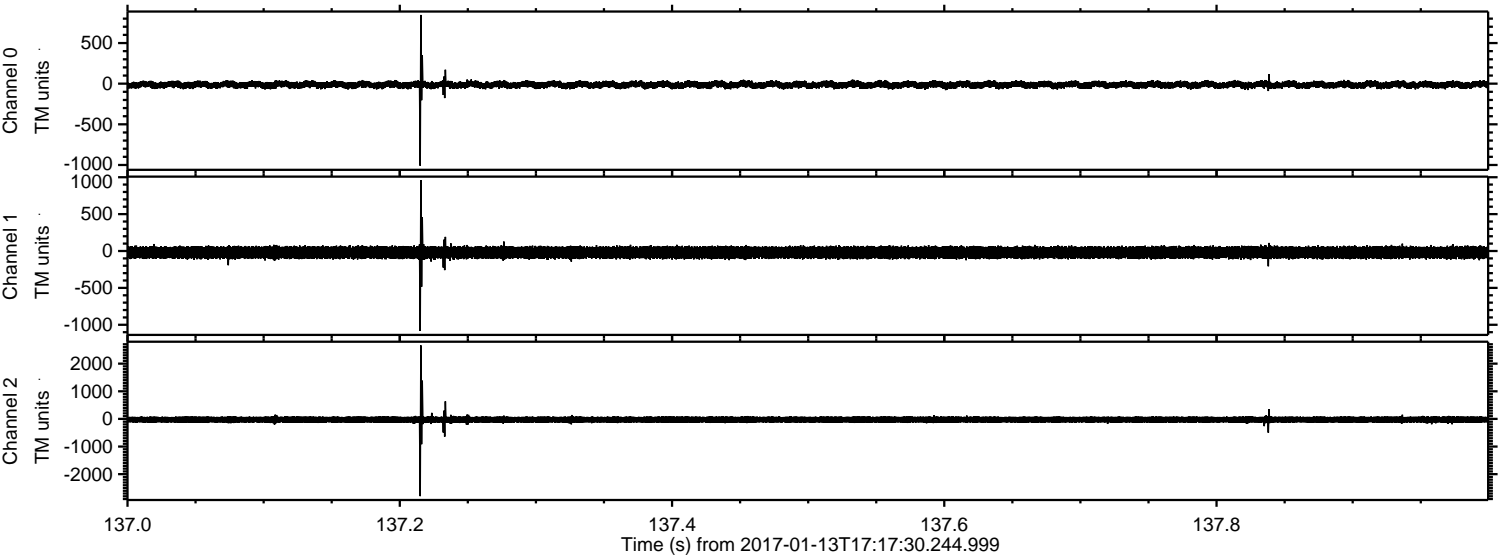
ELMAVAN 3D WAVEFORMS (Measured data sampled at 50 kHz) 51000 packets of 144 samples from 2017-01-13T17:17:30.244.999.

Processed Fri Jan 13 18:25:21 2017 by ELM ver.2012-10-06 from 001__elm20170113_171729__dat00.bin



ELMAVAN 3D WAVEFORMS (Measured data sampled at 50 kHz) 51000 packets of 144 samples from 2017-01-13T17:17:30.244.999. Part 138/147

Processed Fri Jan 13 18:25:32 2017 by ELM ver.2012-10-06 from 001__elm20170113_171729__dat00.bin



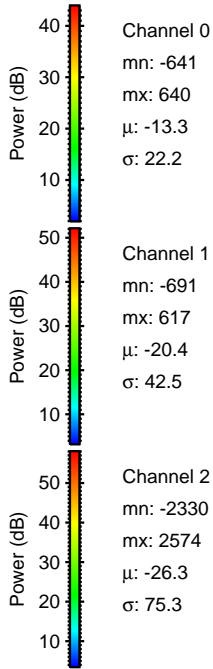
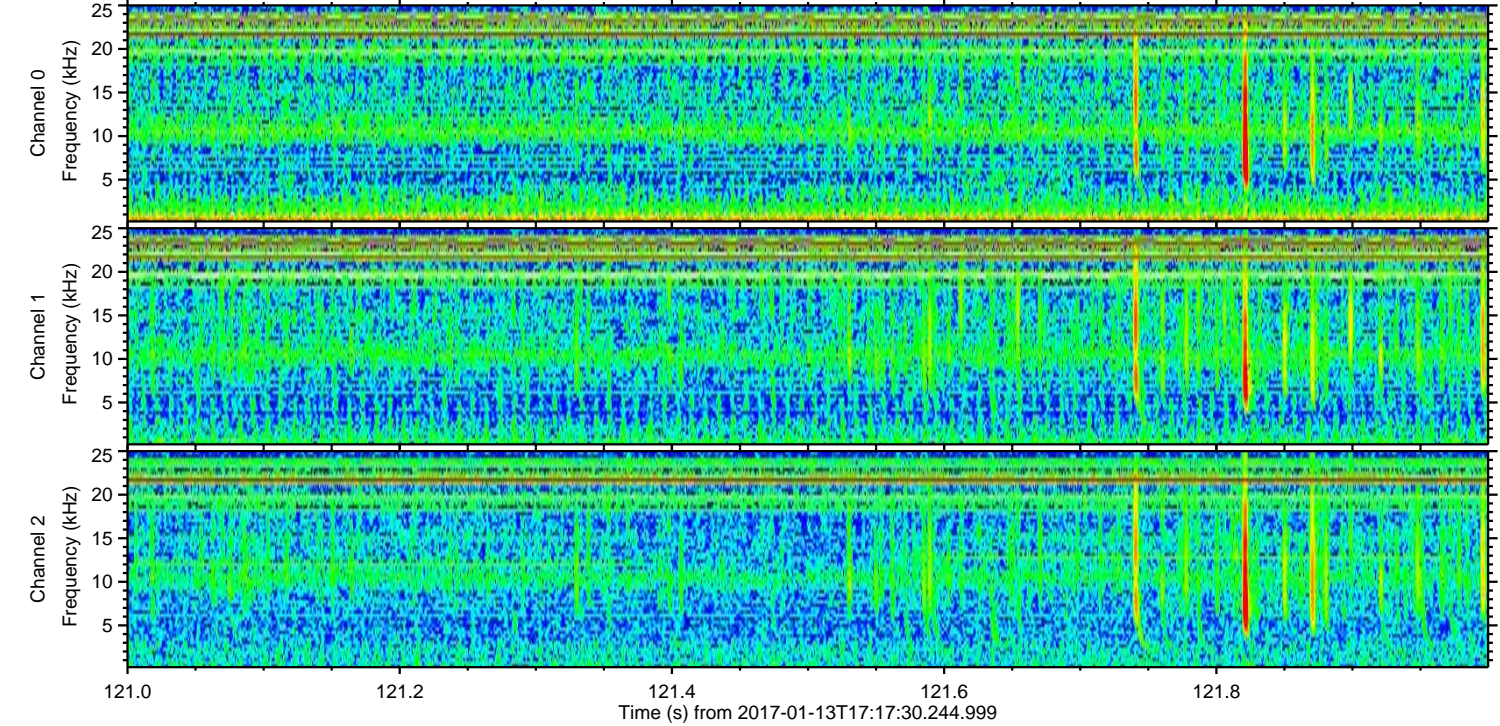
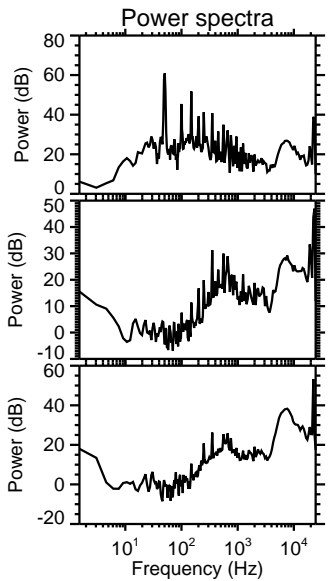
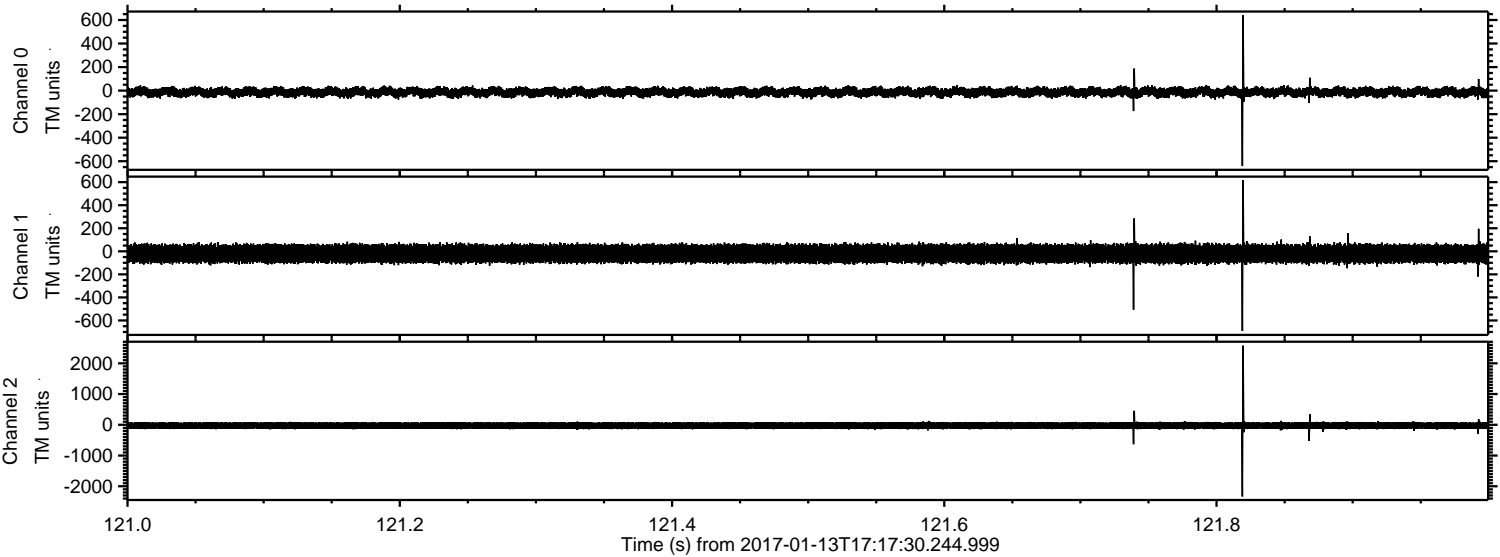
Channel 0
mn: -1009
mx: 845
 μ : -13.2
 σ : 22.6

Channel 1
mn: -1083
mx: 960
 μ : -20.6
 σ : 43.4

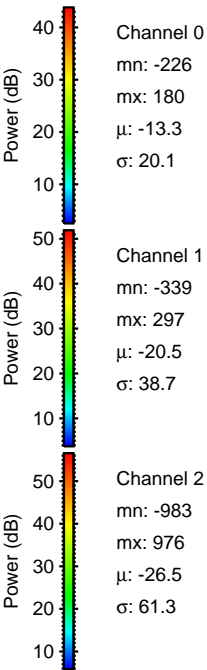
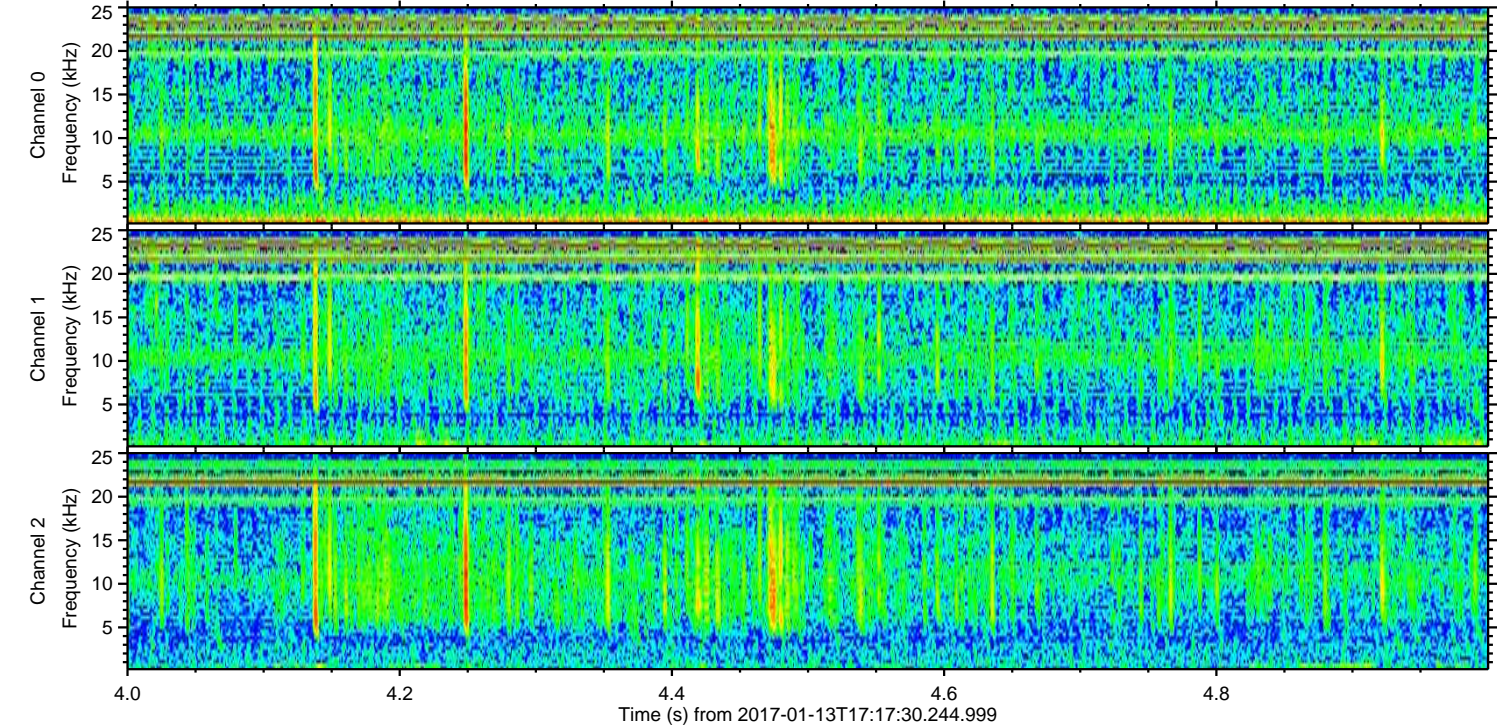
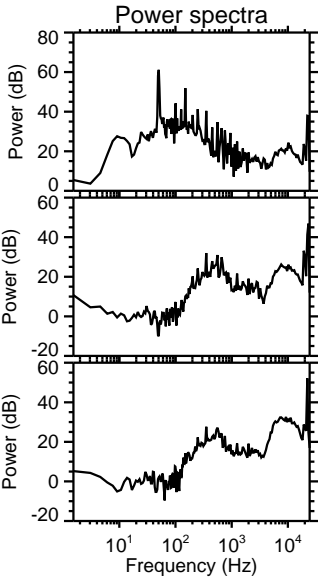
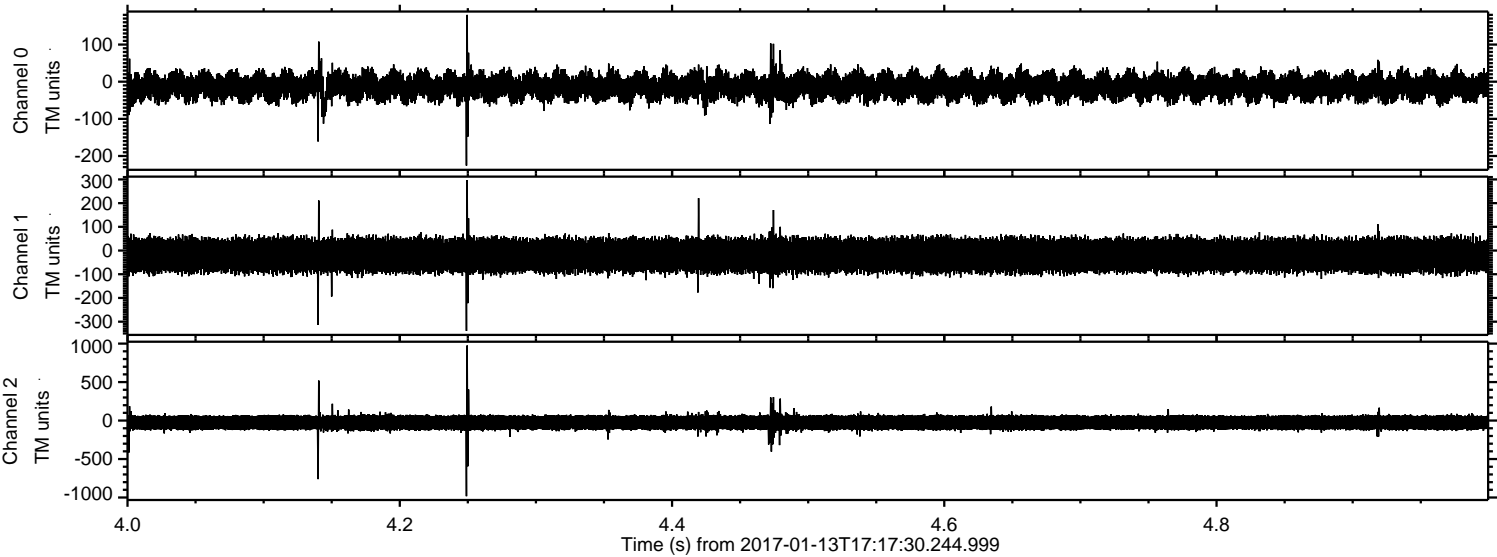
Channel 2
mn: -2795
mx: 2660
 μ : -26.5
 σ : 76.9

ELMAVAN 3D WAVEFORMS (Measured data sampled at 50 kHz) 51000 packets of 144 samples from 2017-01-13T17:17:30.244.999. Part 122/147

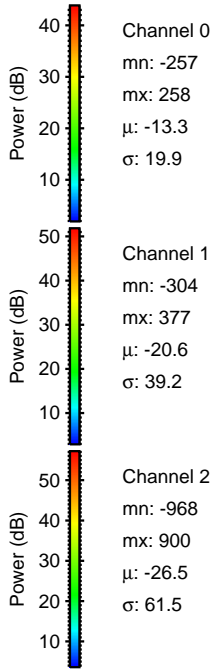
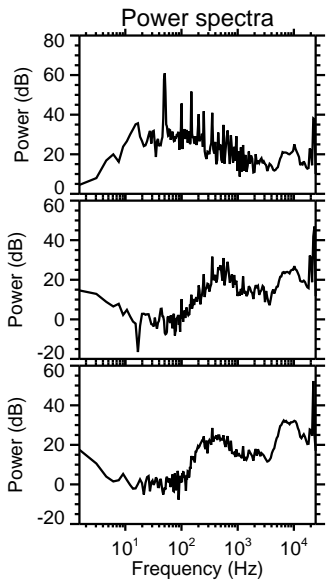
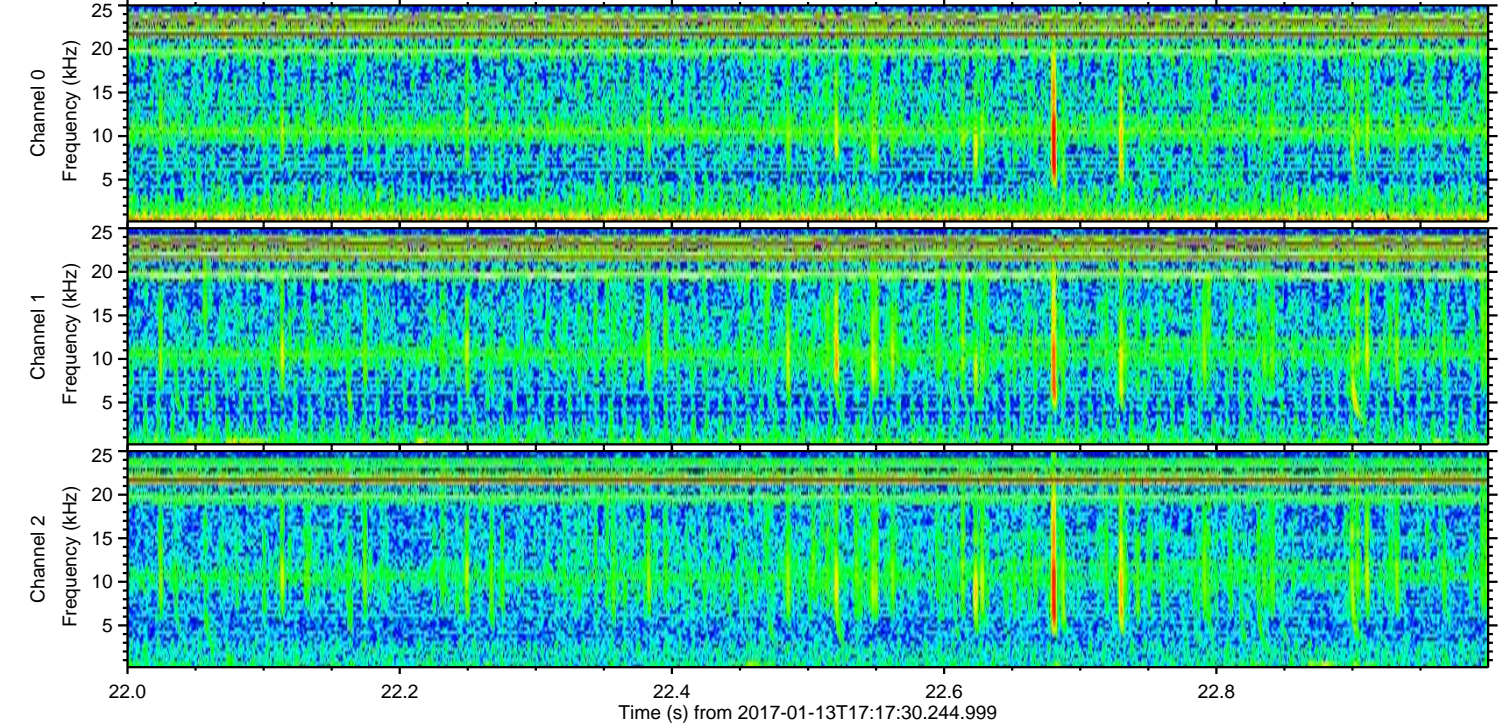
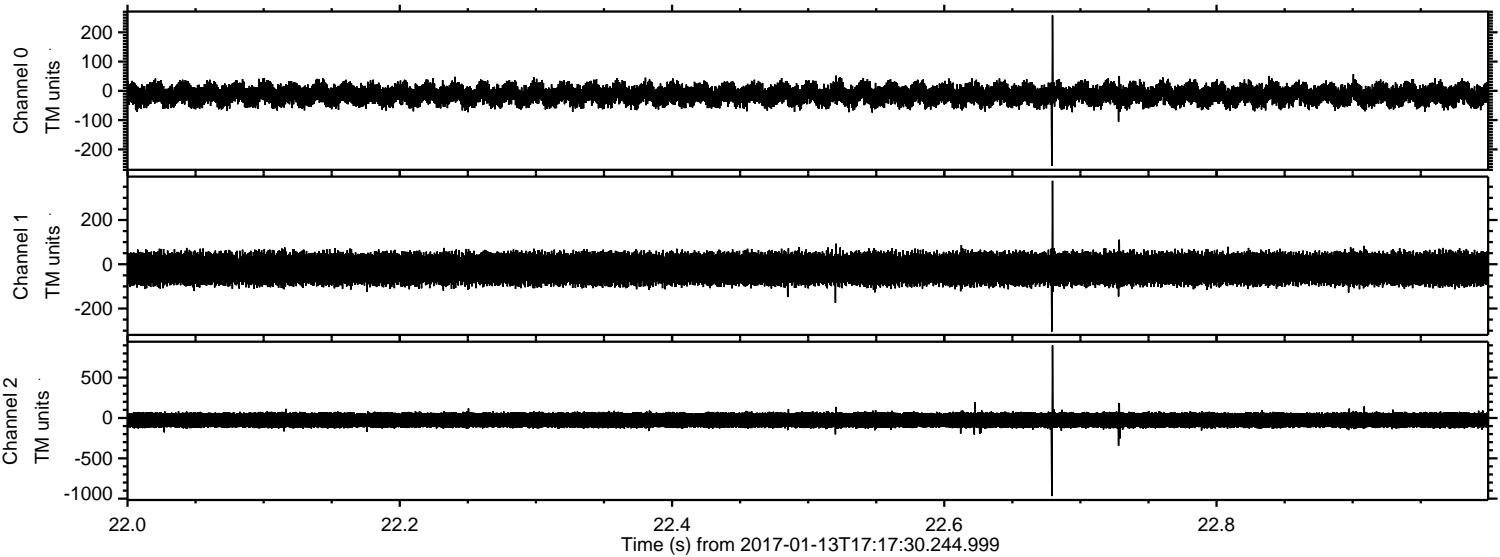
Processed Fri Jan 13 18:25:33 2017 by ELM ver.2012-10-06 from 001__elm20170113_171729__dat00.bin



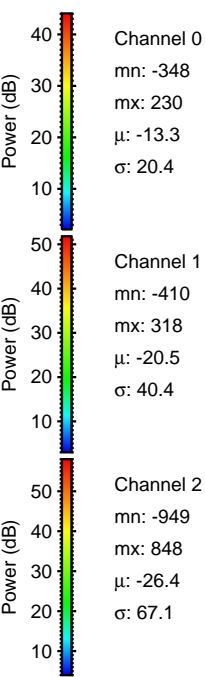
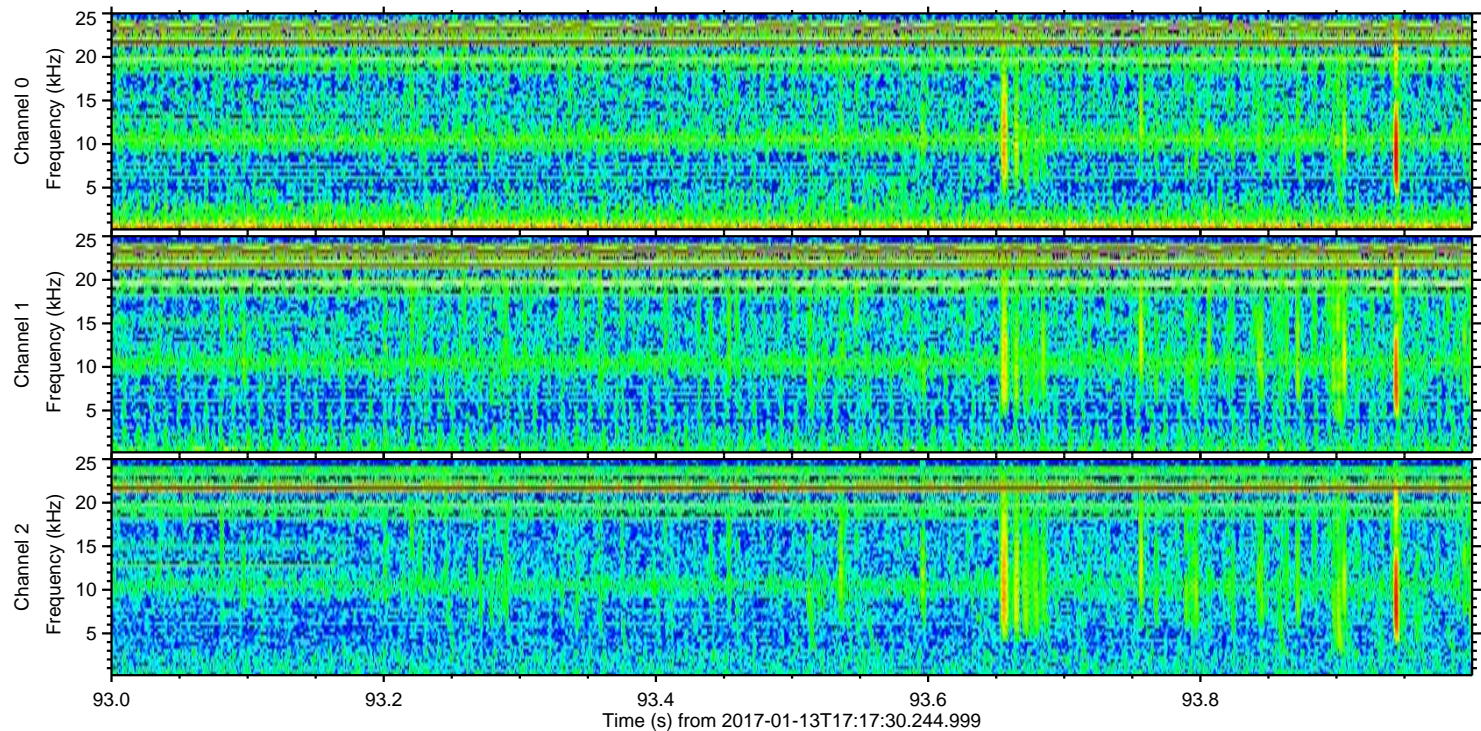
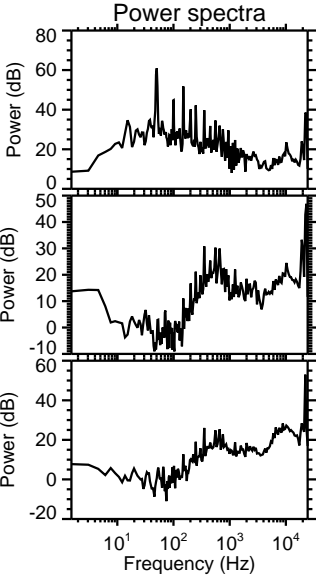
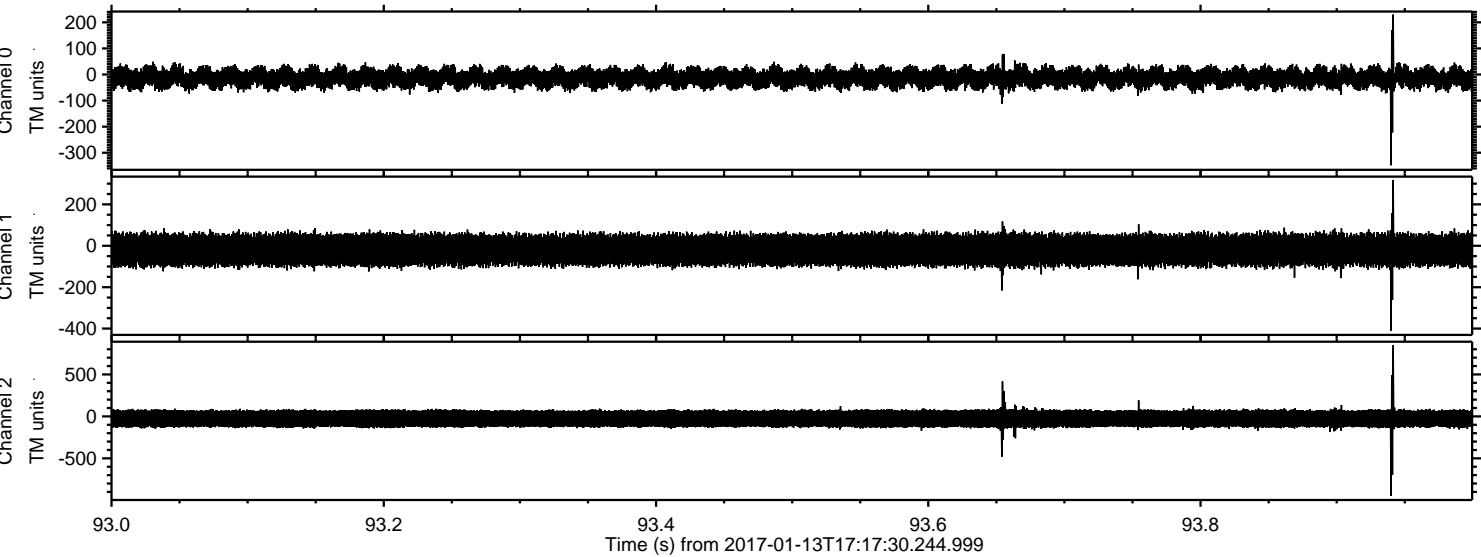
Processed Fri Jan 13 18:25:34 2017 by ELM ver.2012-10-06 from 001__elm20170113_171729__dat00.bin



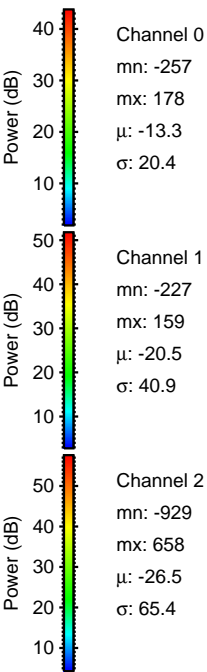
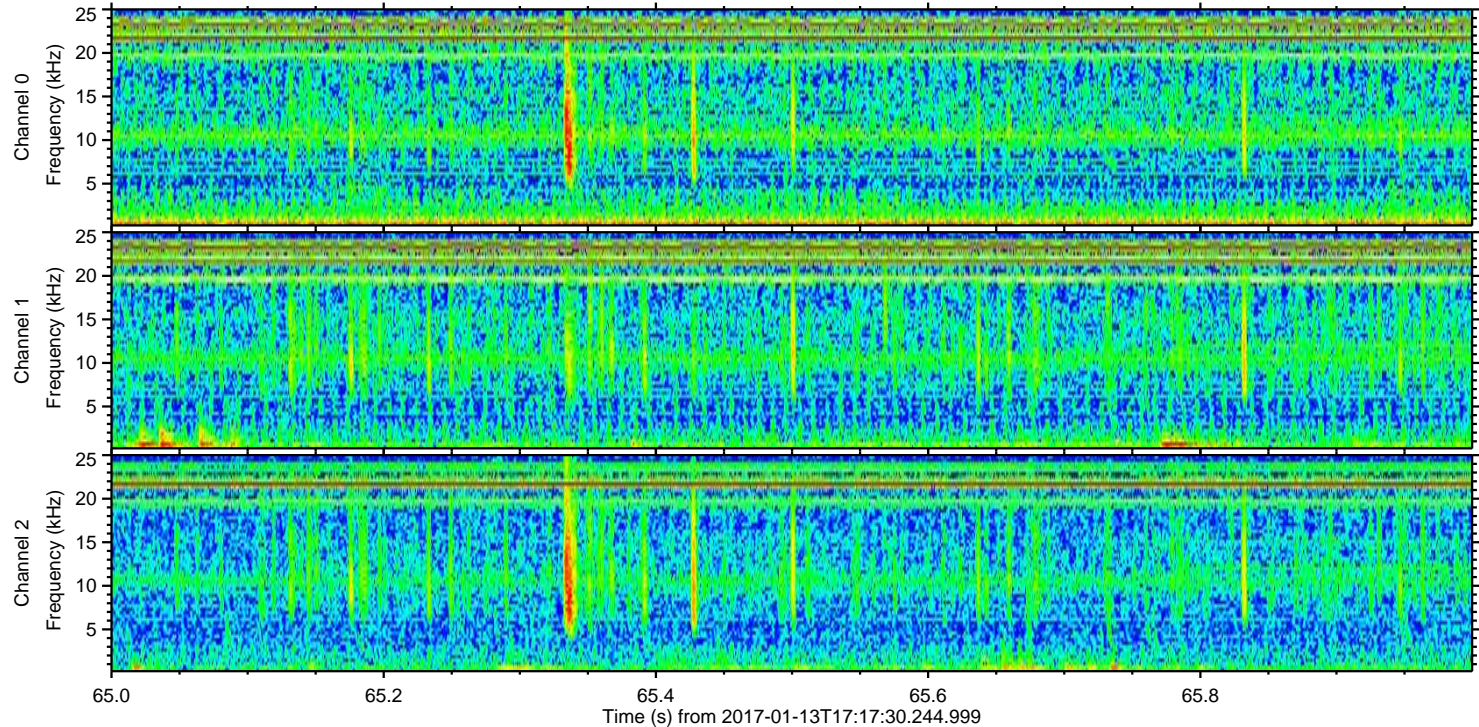
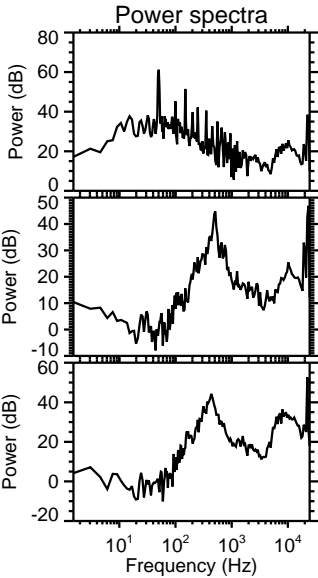
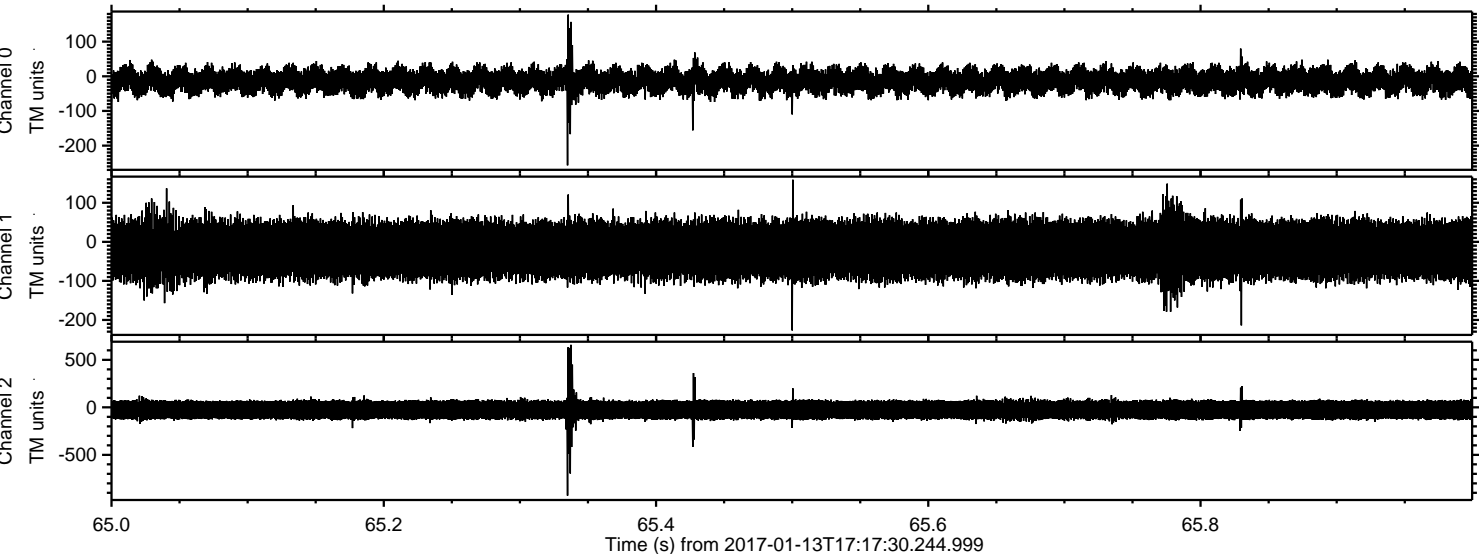
Processed Fri Jan 13 18:25:35 2017 by ELM ver.2012-10-06 from 001__elm20170113_171729__dat00.bin



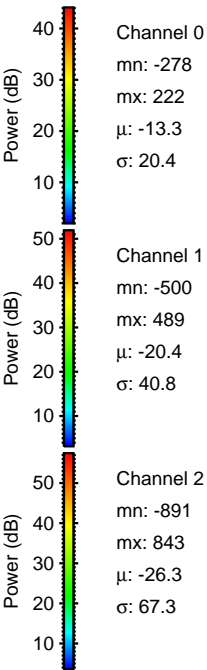
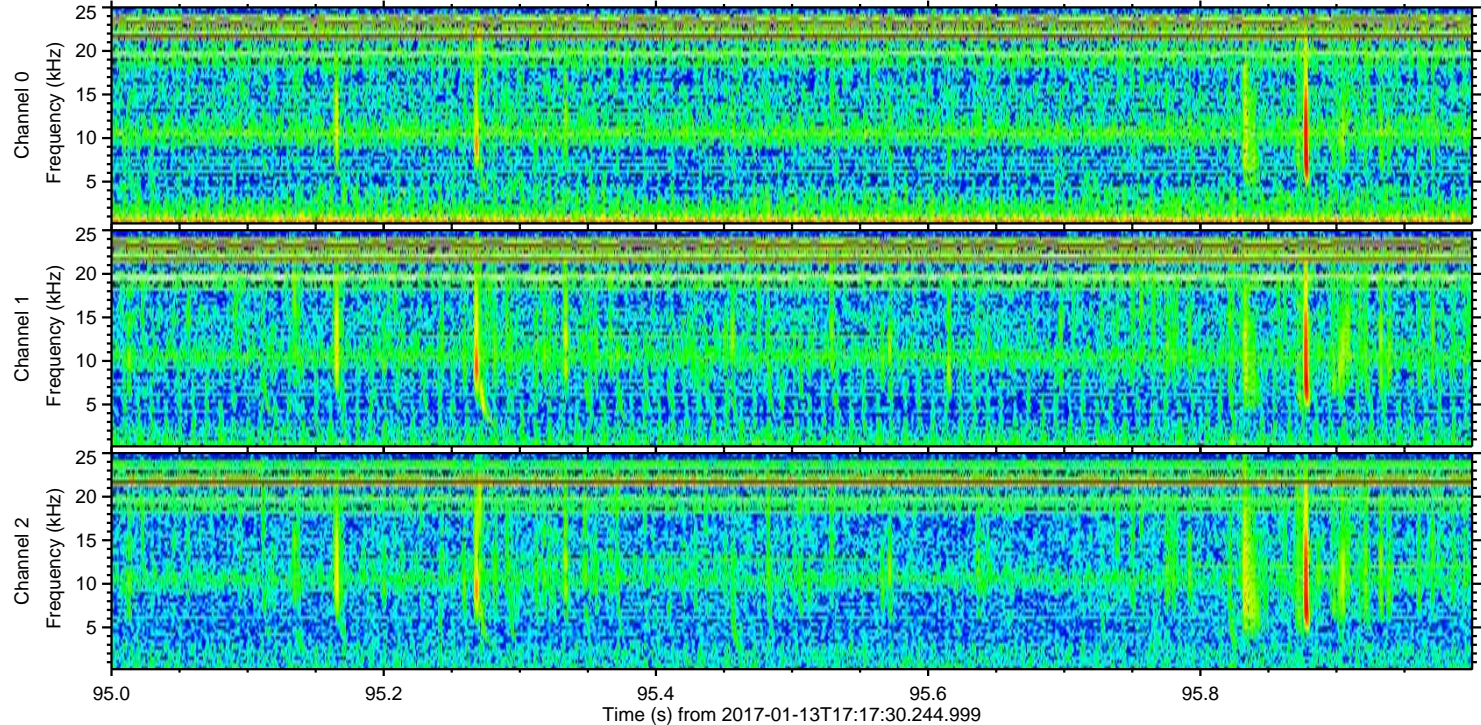
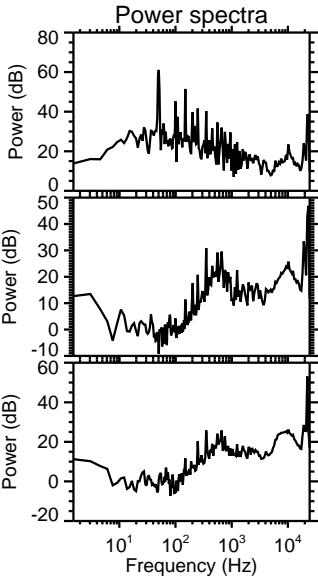
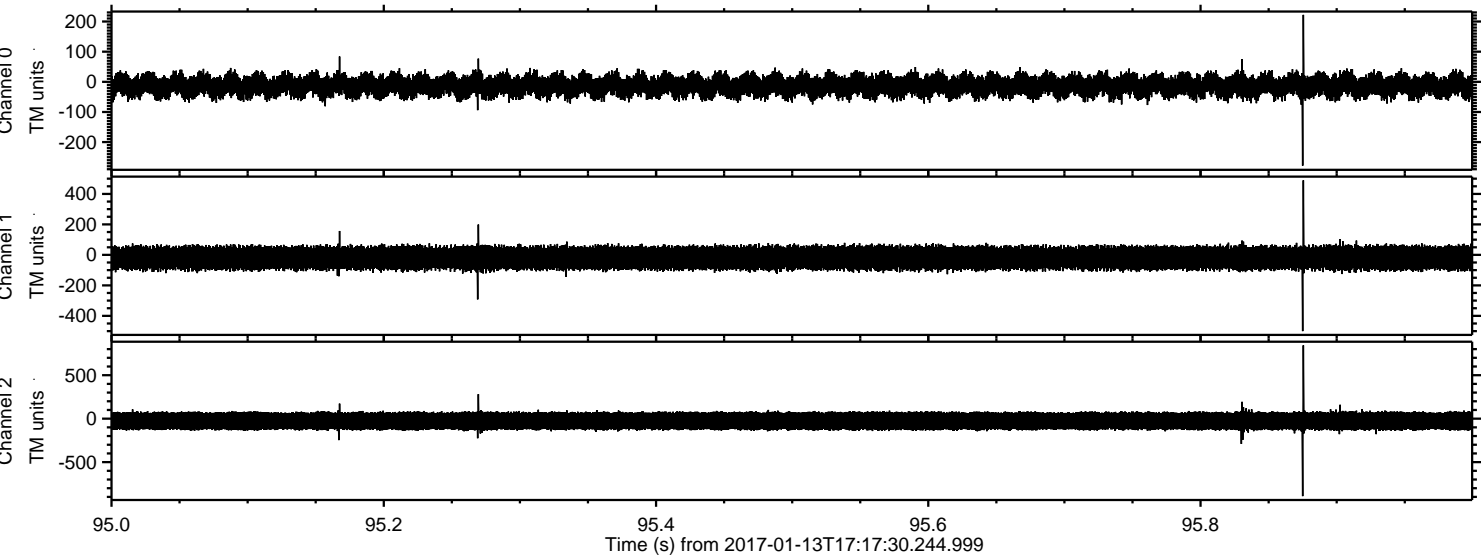
Processed Fri Jan 13 18:25:36 2017 by ELM ver.2012-10-06 from 001__elm20170113_171729__dat00.bin



Processed Fri Jan 13 18:25:37 2017 by ELM ver.2012-10-06 from 001__elm20170113_171729__dat00.bin

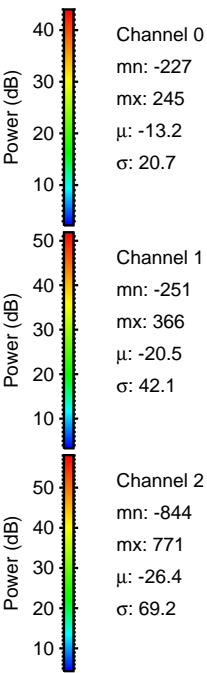
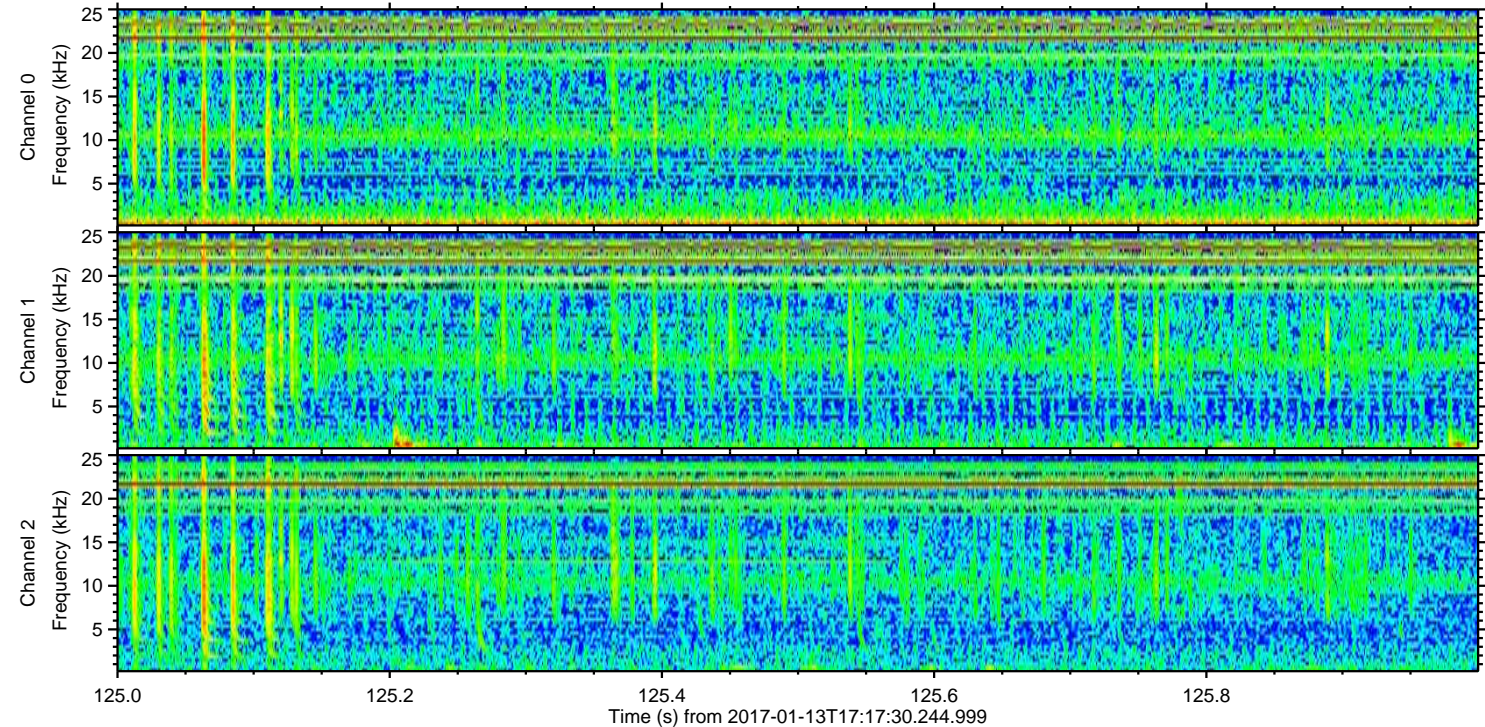
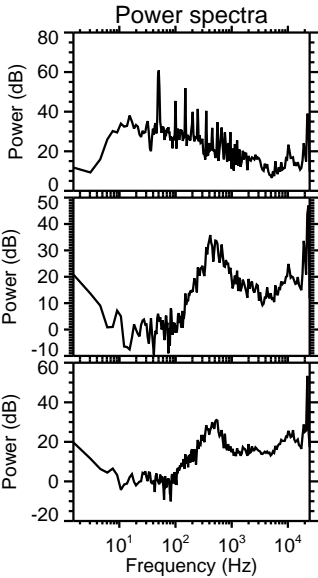
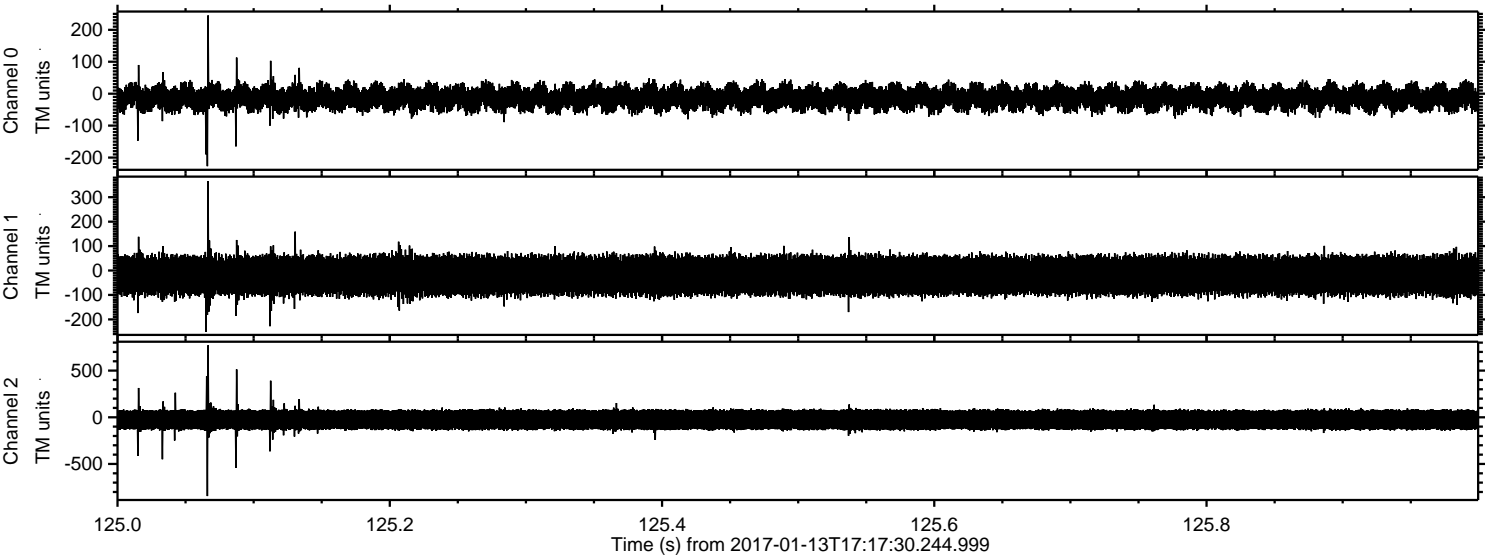


Processed Fri Jan 13 18:25:38 2017 by ELM ver.2012-10-06 from 001__elm20170113_171729__dat00.bin

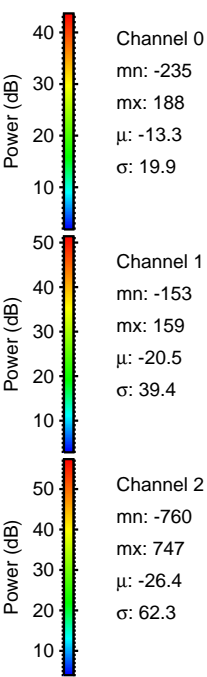
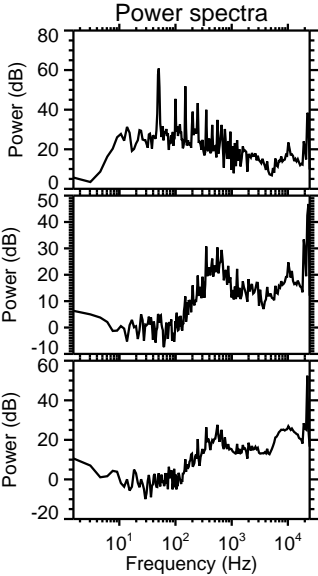
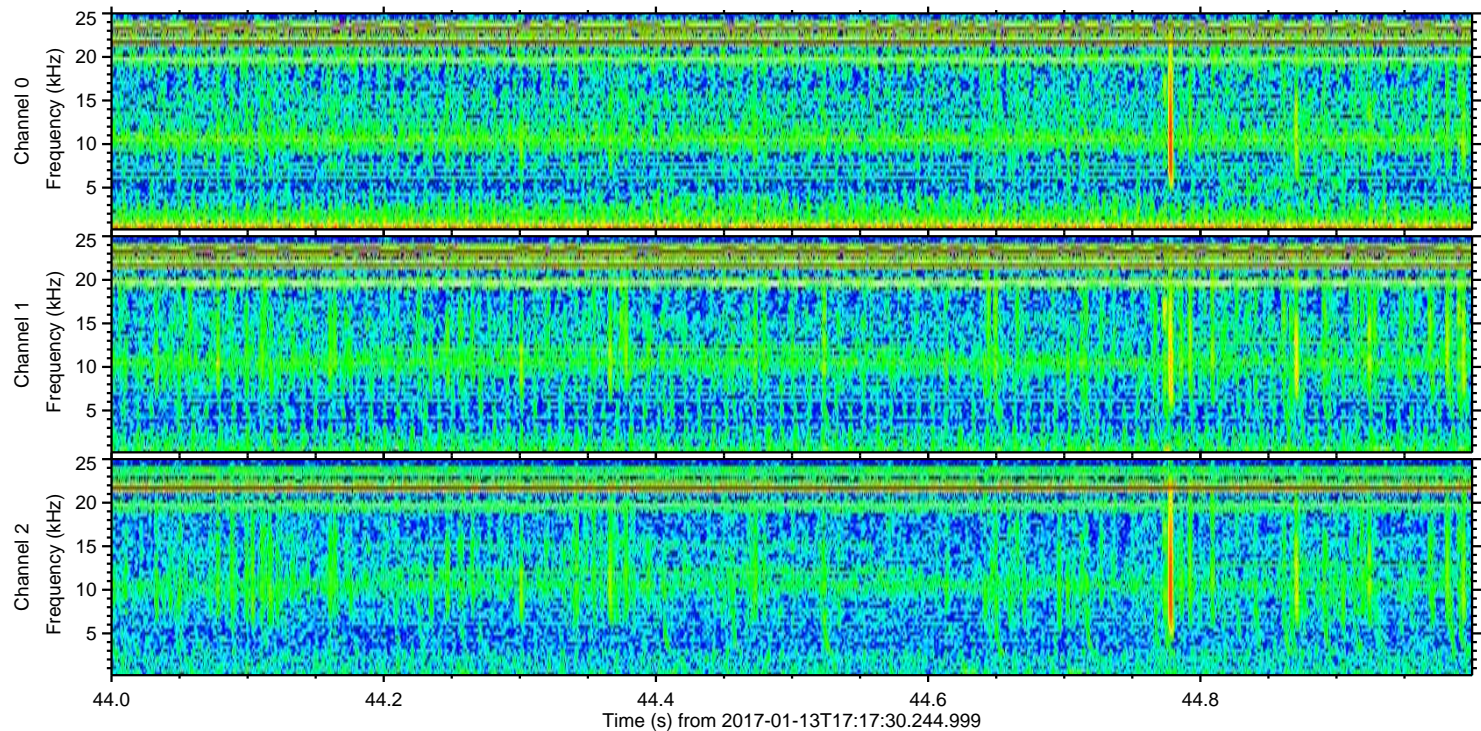
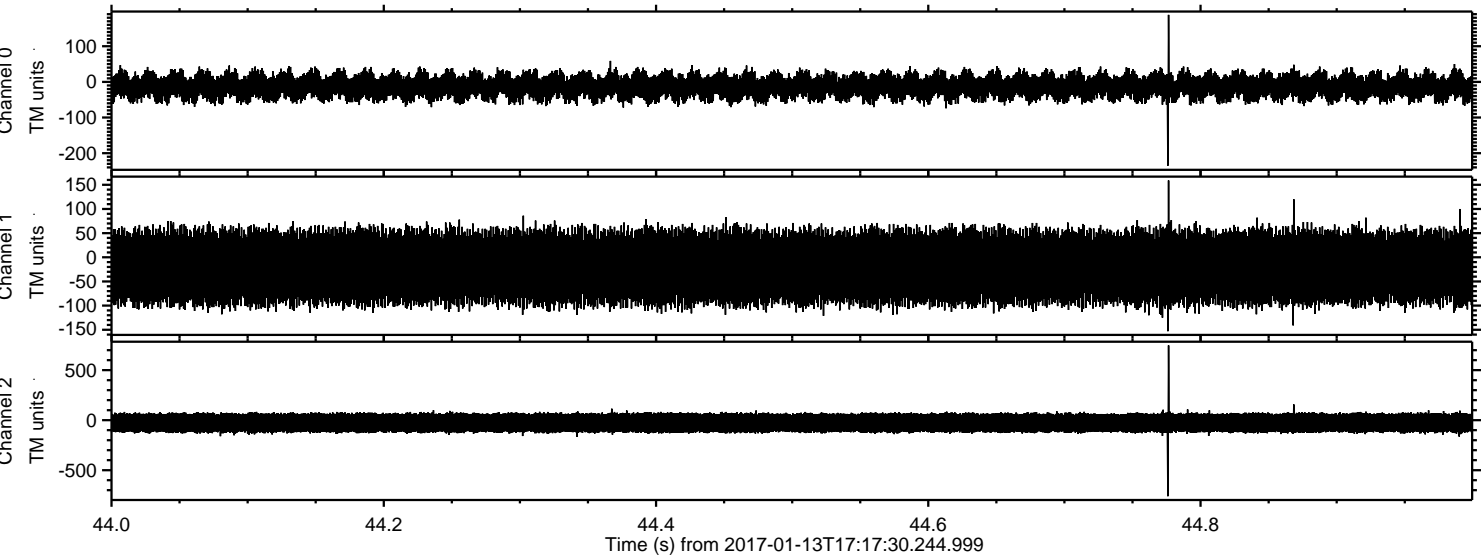


ELMAVAN 3D WAVEFORMS (Measured data sampled at 50 kHz) 51000 packets of 144 samples from 2017-01-13T17:17:30.244.999. Part 126/147

Processed Fri Jan 13 18:25:39 2017 by ELM ver.2012-10-06 from 001__elm20170113_171729__dat00.bin



Processed Fri Jan 13 18:25:40 2017 by ELM ver.2012-10-06 from 001__elm20170113_171729__dat00.bin



Channel 0
mn: -235
mx: 188
 μ : -13.3
 σ : 19.9

Channel 1
mn: -153
mx: 159
 μ : -20.5
 σ : 39.4

Channel 2
mn: -760
mx: 747
 μ : -26.4
 σ : 62.3

Processed Fri Jan 13 18:25:41 2017 by ELM ver.2012-10-06 from 001__elm20170113_171729__dat00.bin

