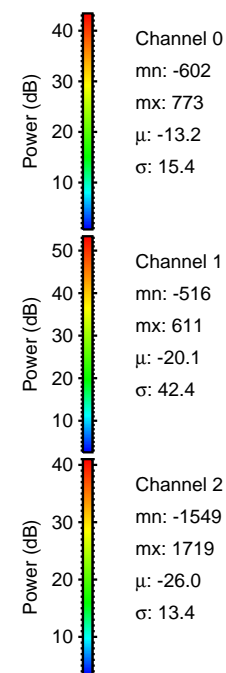
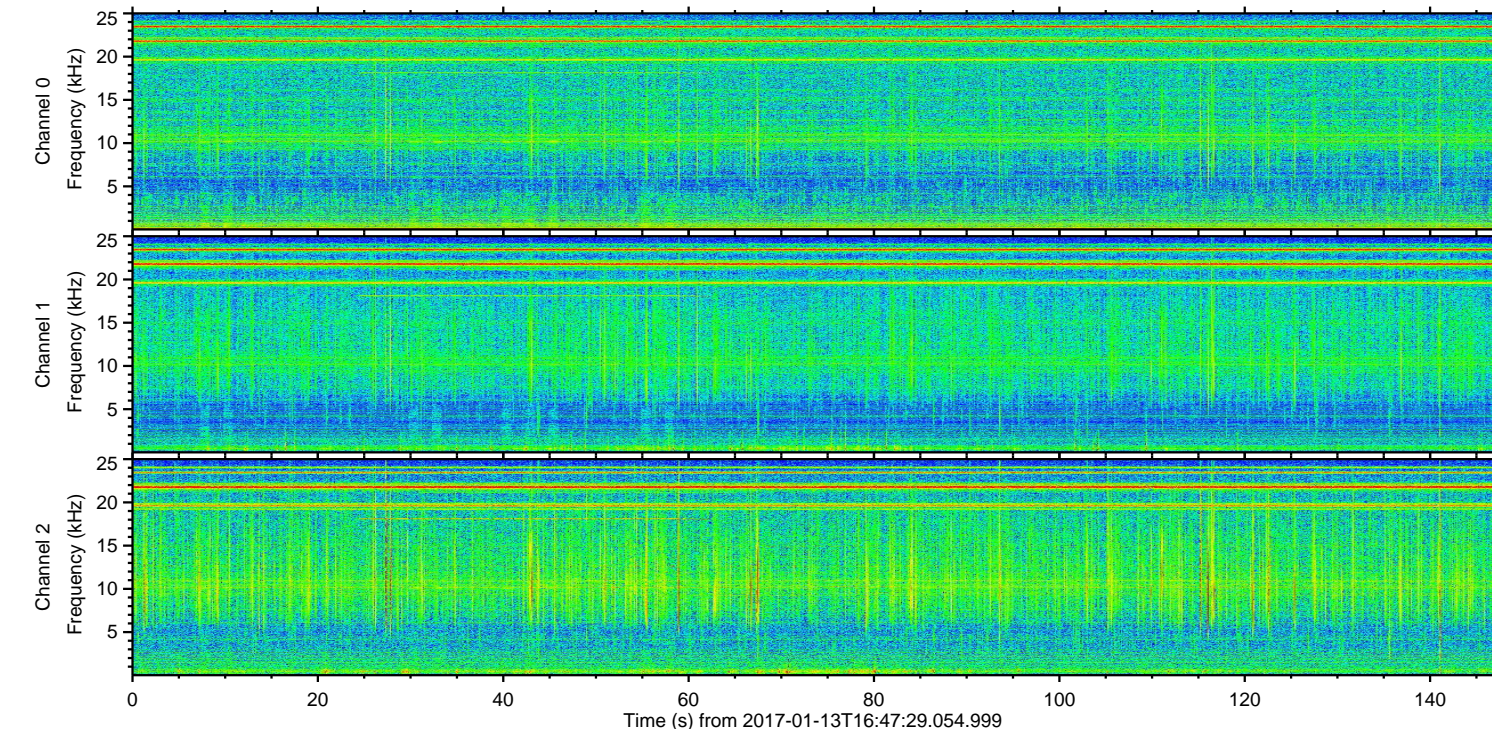
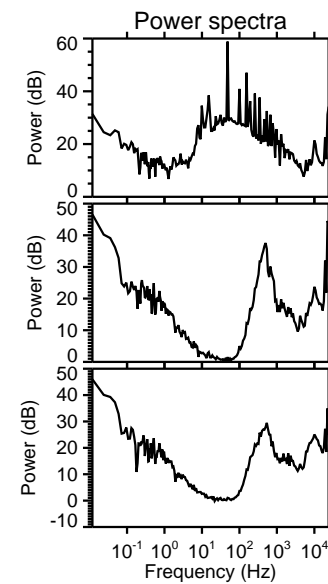
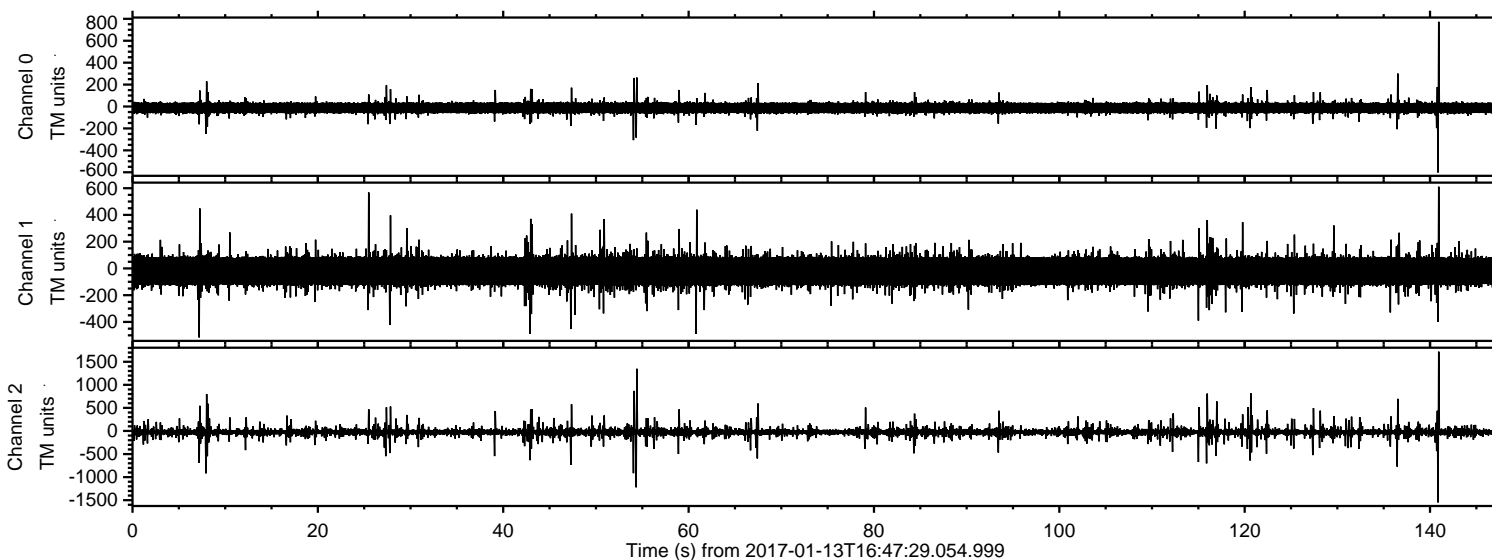


ELMAVAN 3D WAVEFORMS (Measured data sampled at 50 kHz) 51000 packets of 144 samples from 2017-01-13T16:47:29.054.999.

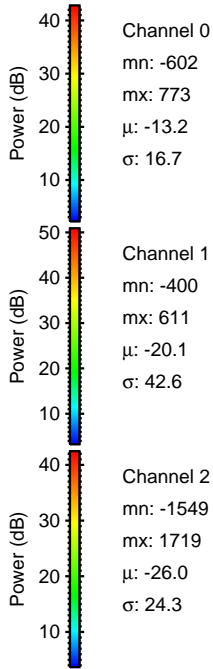
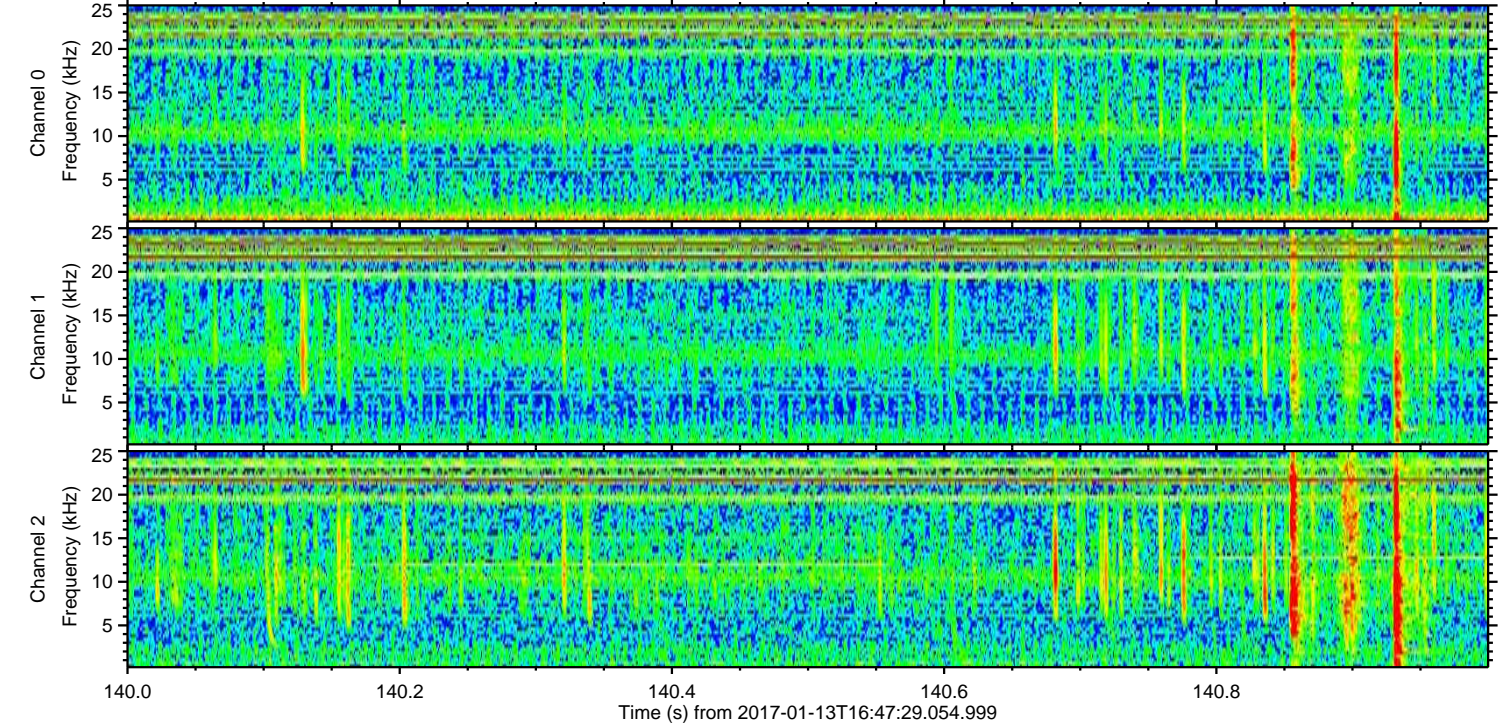
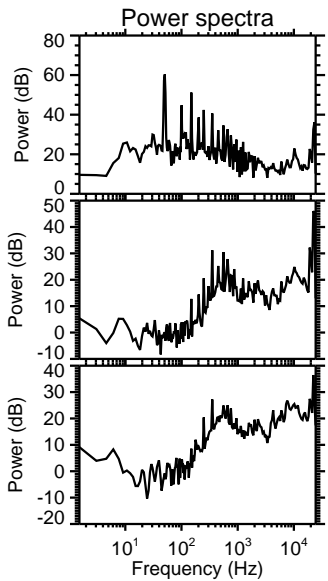
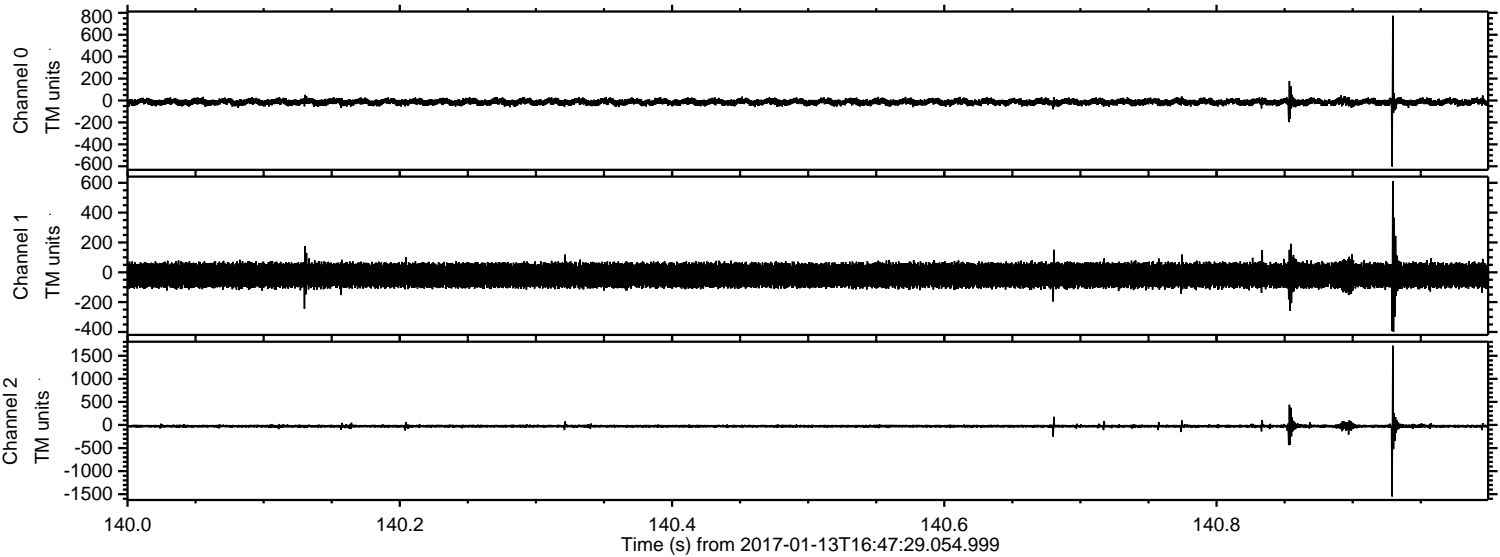
Processed Fri Jan 13 17:55:10 2017 by ELM ver.2012-10-06 from 001\_\_elm20170113\_164728\_\_dat00.bin





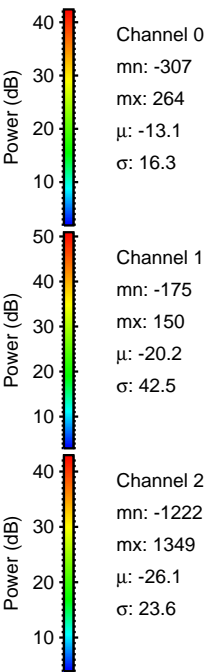
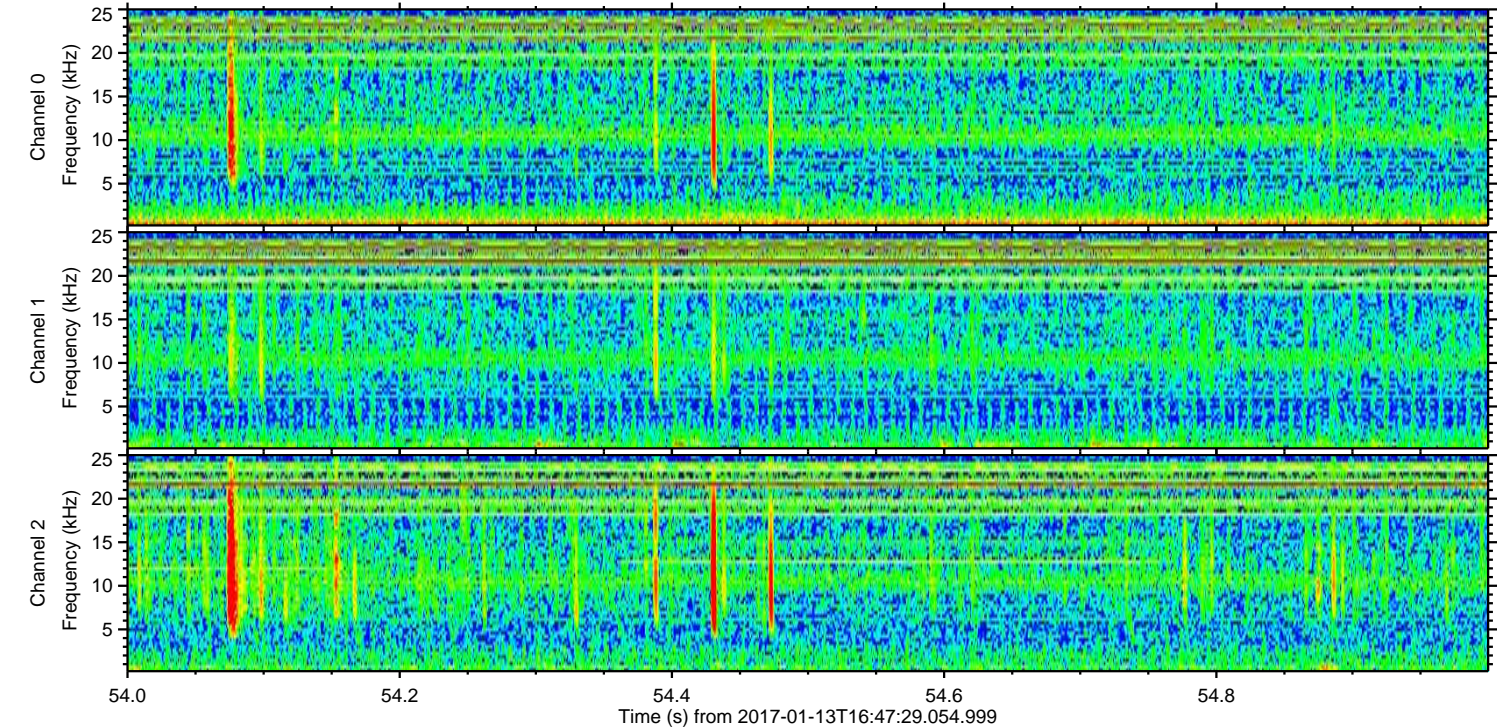
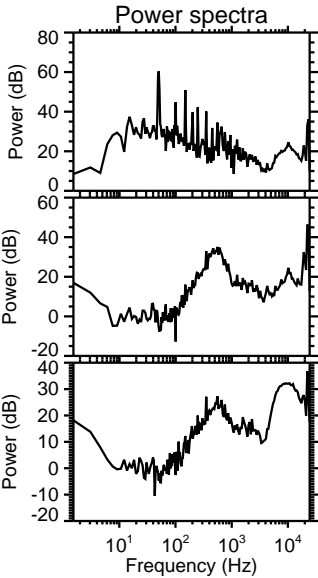
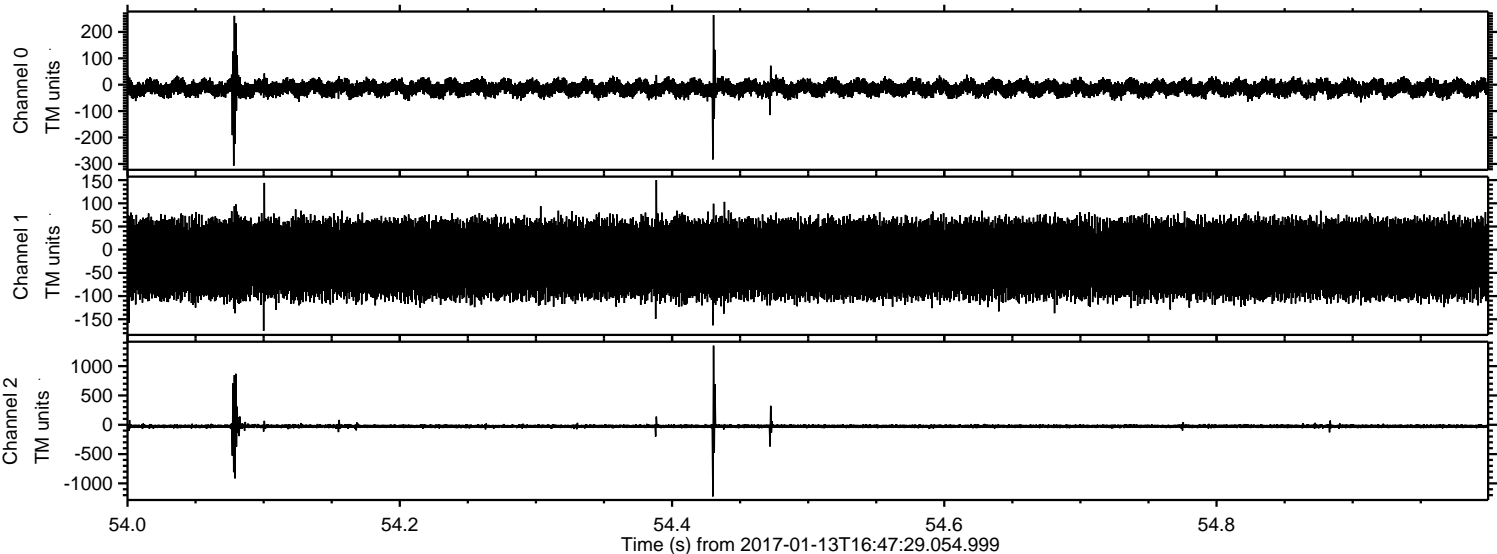
ELMAVAN 3D WAVEFORMS (Measured data sampled at 50 kHz) 51000 packets of 144 samples from 2017-01-13T16:47:29.054.999. Part 141/147

Processed Fri Jan 13 17:55:22 2017 by ELM ver.2012-10-06 from 001\_\_elm20170113\_164728\_\_dat00.bin



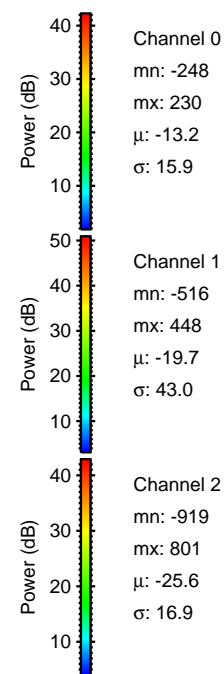
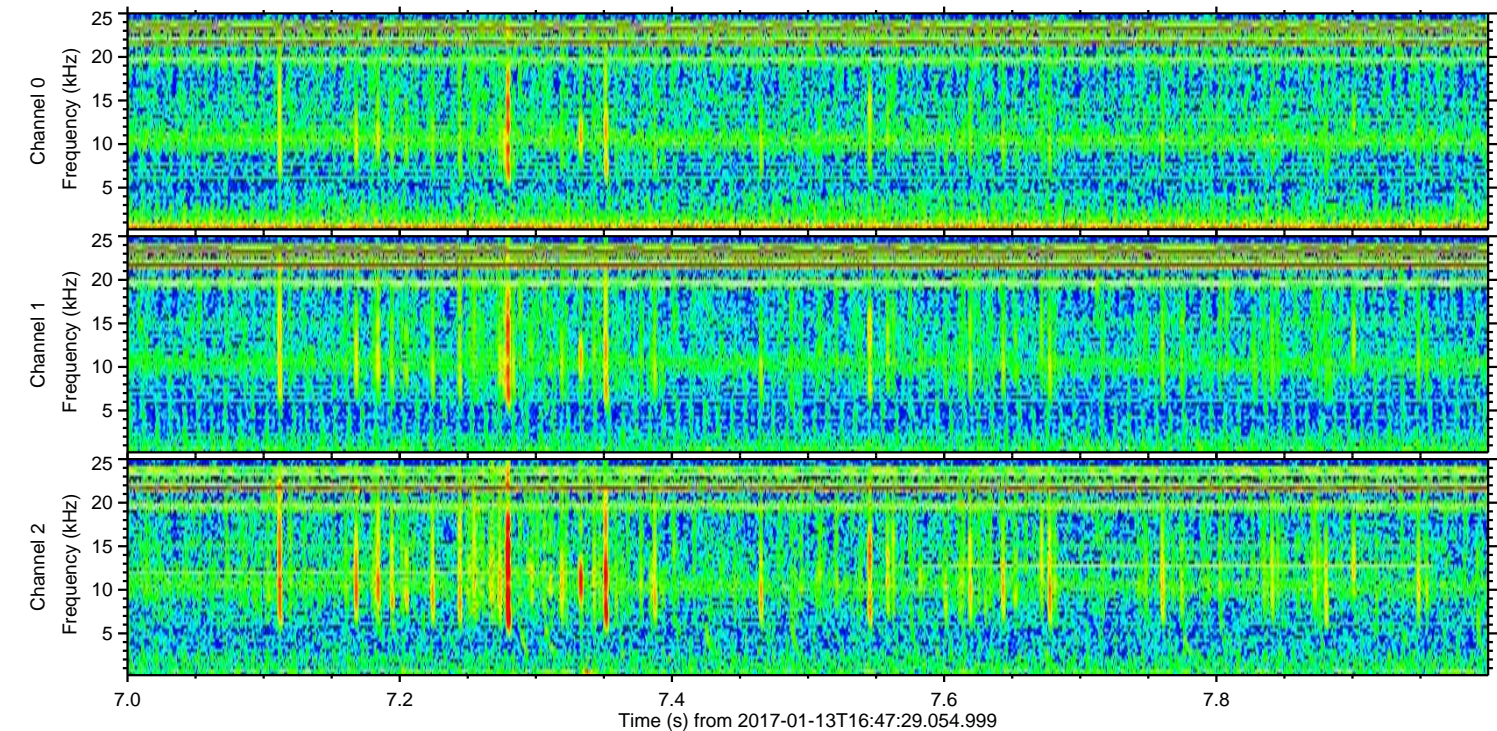
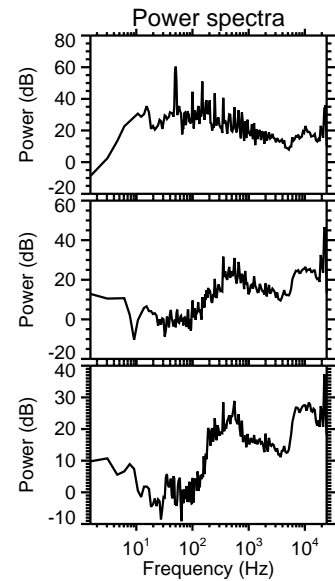
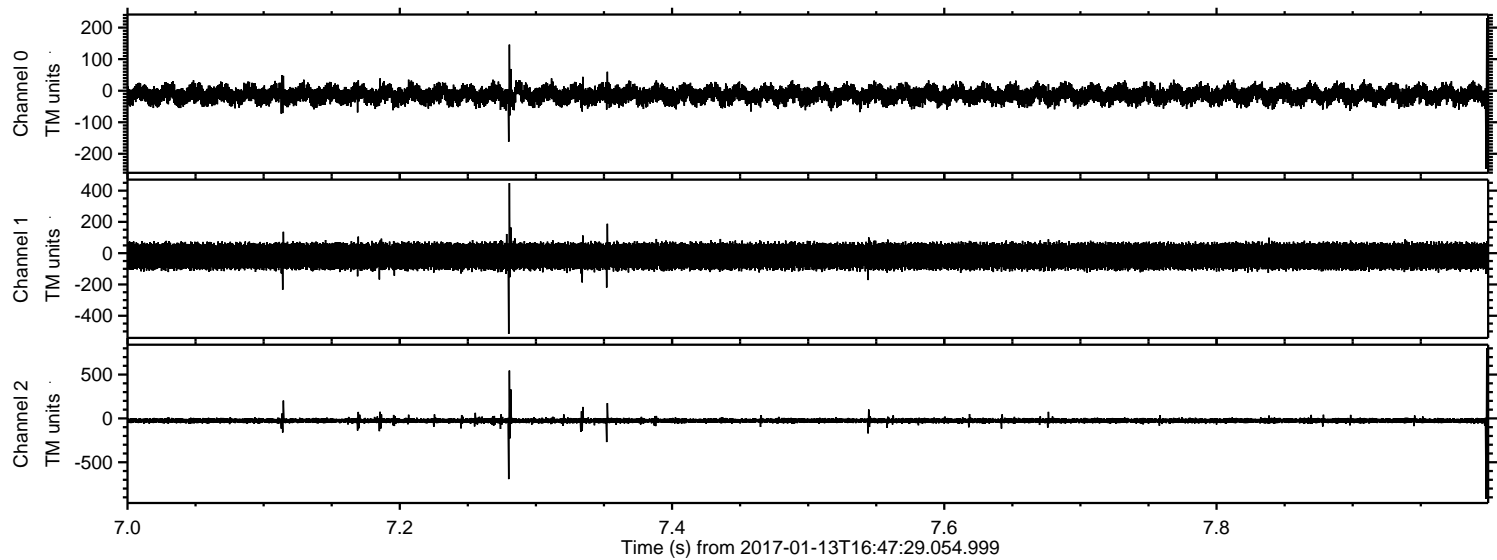


Processed Fri Jan 13 17:55:23 2017 by ELM ver.2012-10-06 from 001\_\_elm20170113\_164728\_\_dat00.bin



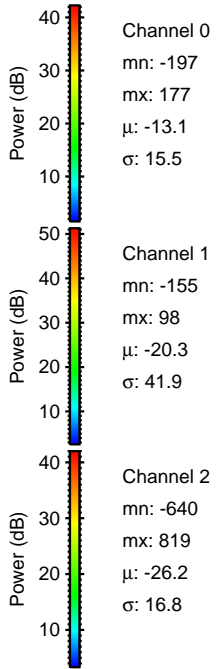
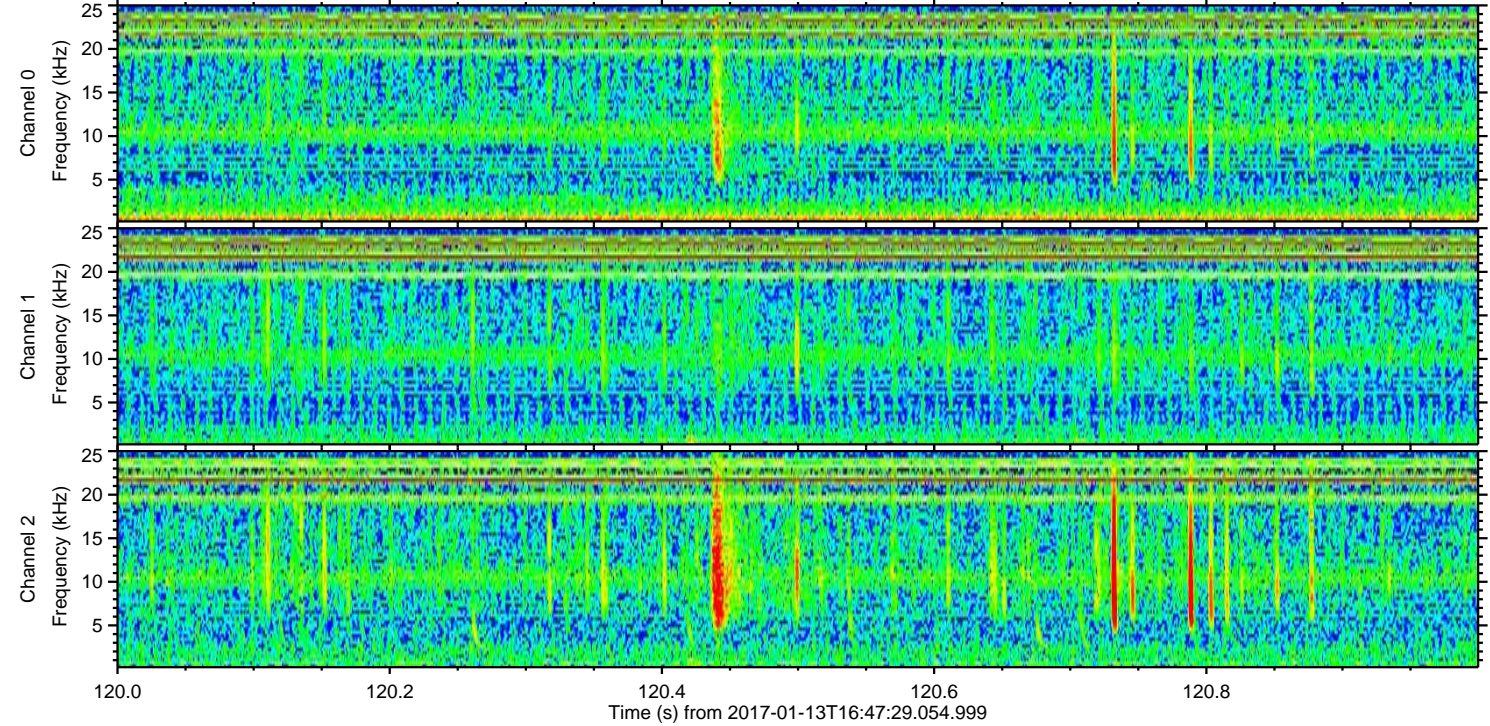
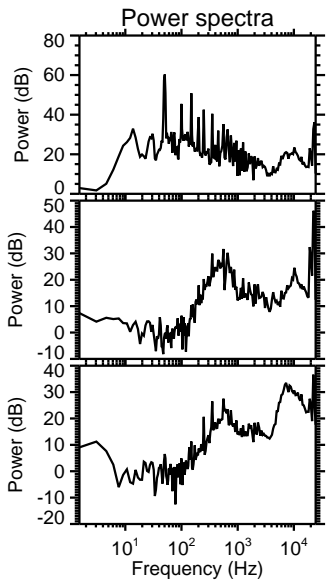
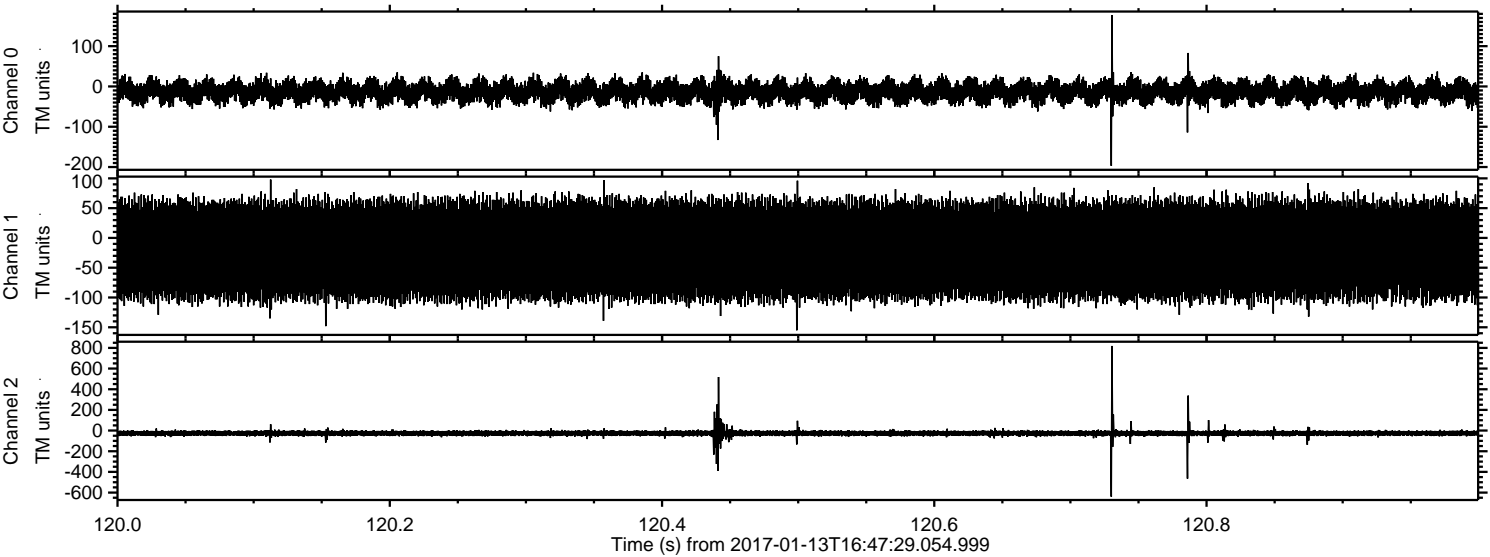


Processed Fri Jan 13 17:55:24 2017 by ELM ver.2012-10-06 from 001\_\_elm20170113\_164728\_\_dat00.bin



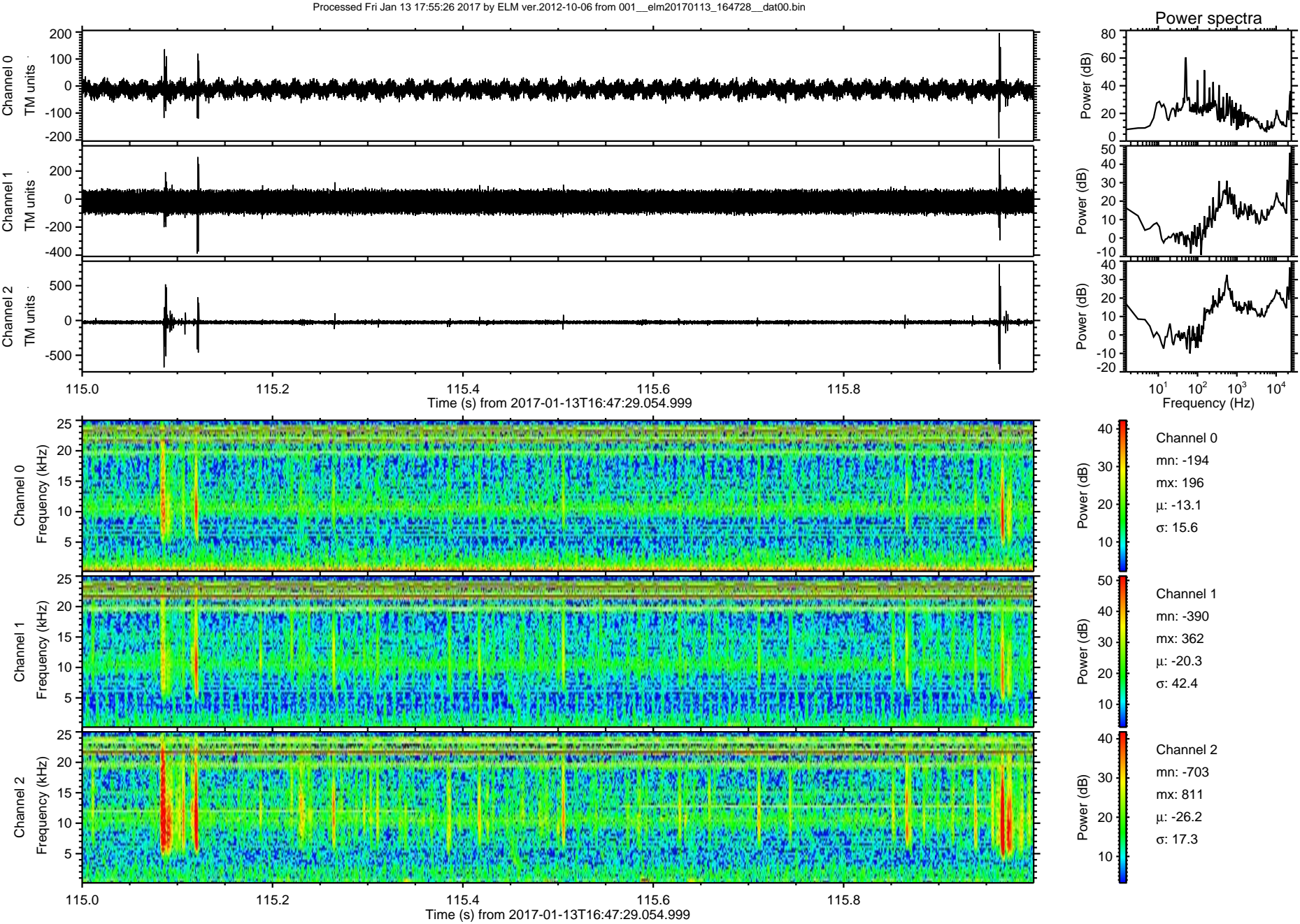


Processed Fri Jan 13 17:55:25 2017 by ELM ver.2012-10-06 from 001\_\_elm20170113\_164728\_\_dat00.bin



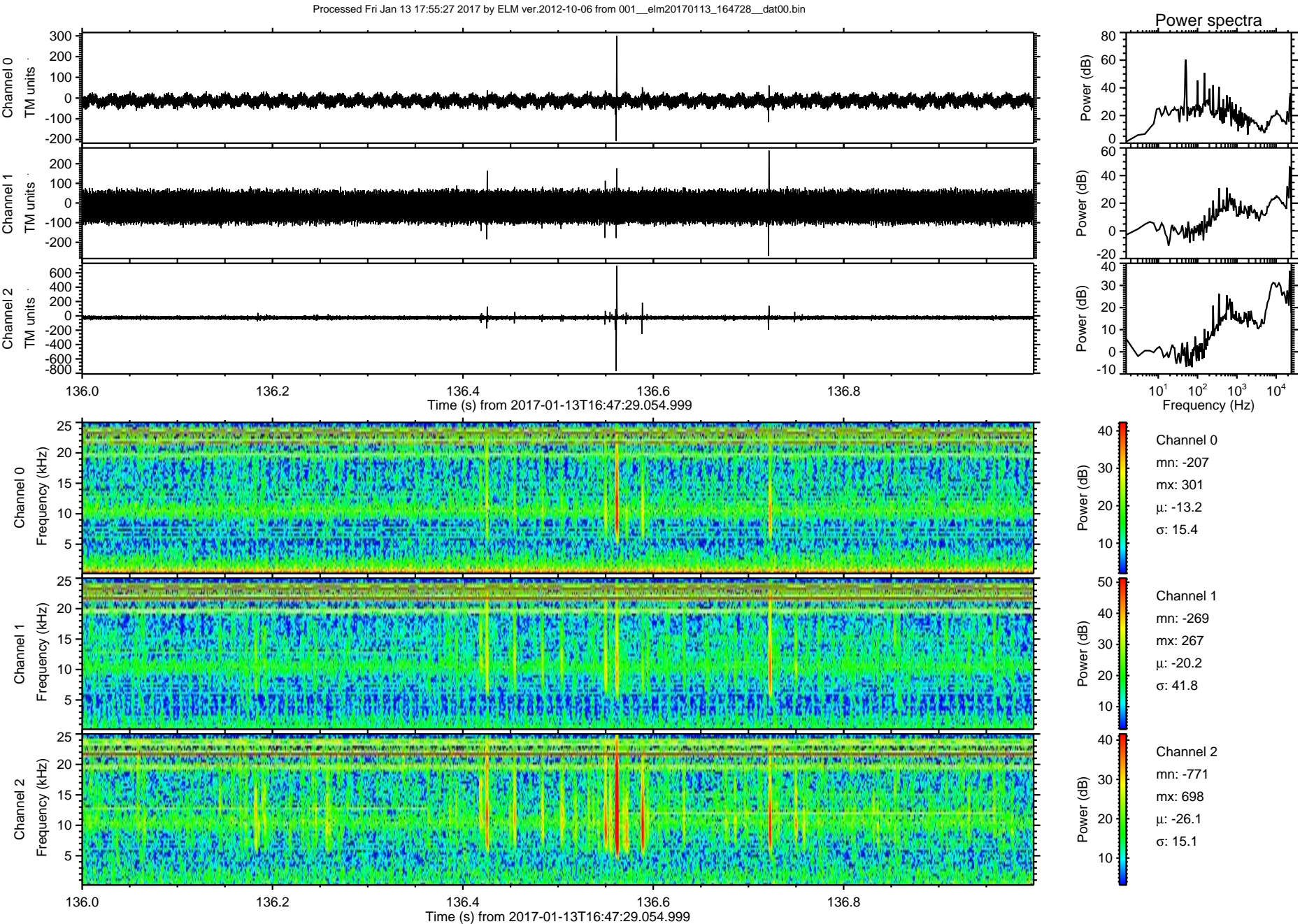


ELMAVAN 3D WAVEFORMS (Measured data sampled at 50 kHz) 51000 packets of 144 samples from 2017-01-13T16:47:29.054.999. Part 116/147



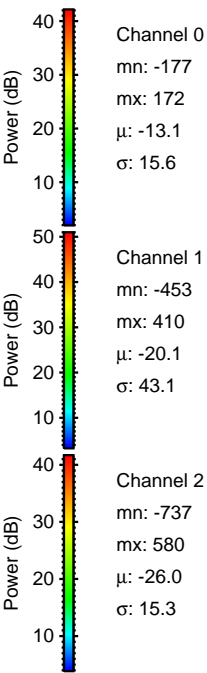
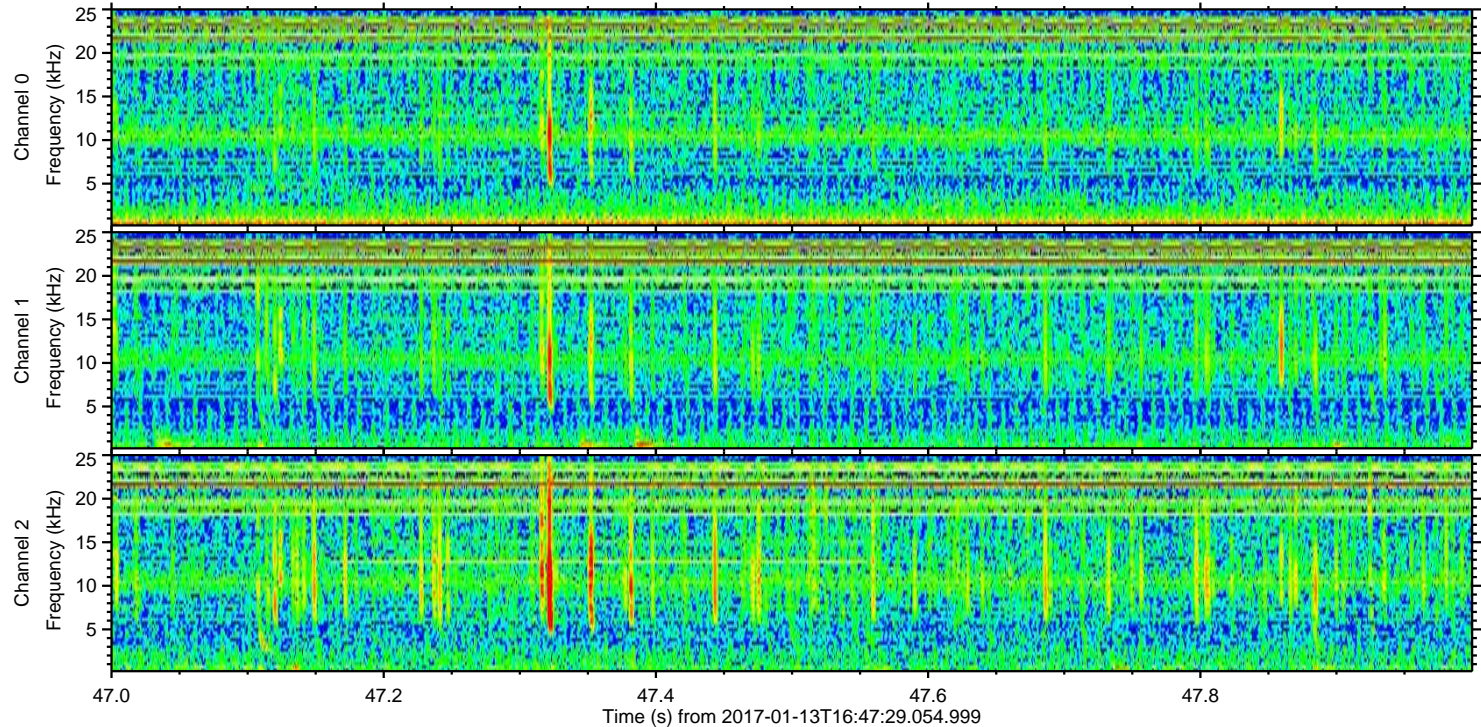
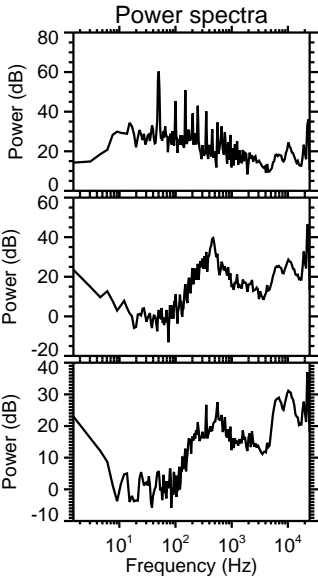
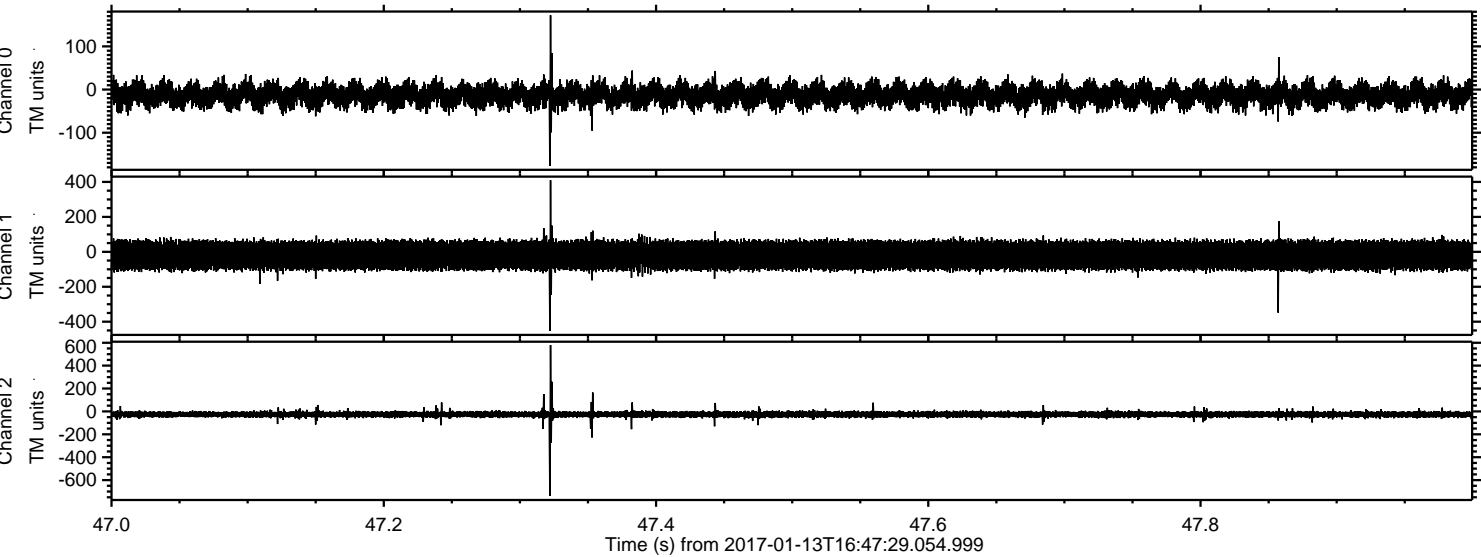


ELMAVAN 3D WAVEFORMS (Measured data sampled at 50 kHz) 51000 packets of 144 samples from 2017-01-13T16:47:29.054.999. Part 137/147



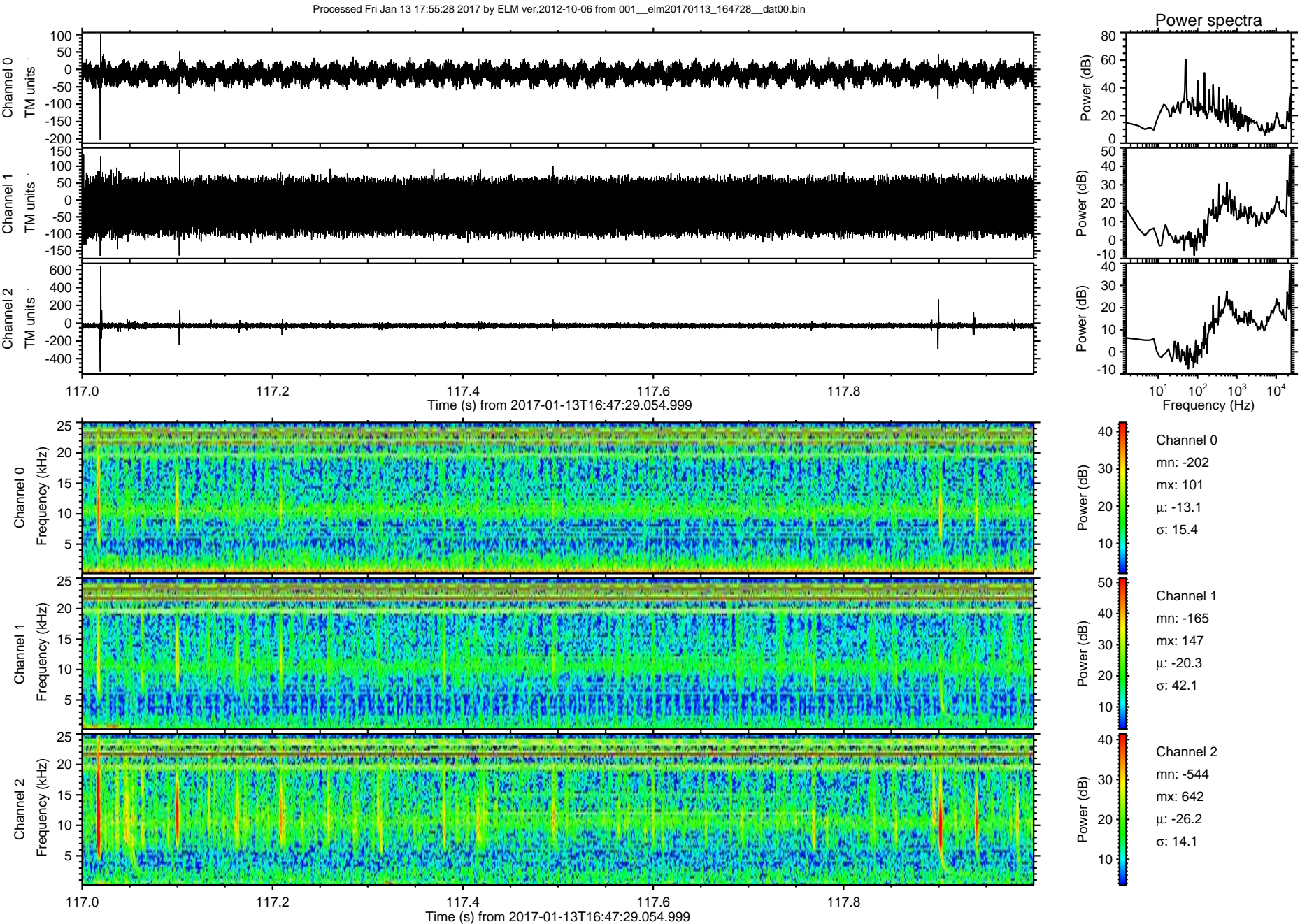


Processed Fri Jan 13 17:55:28 2017 by ELM ver.2012-10-06 from 001\_\_elm20170113\_164728\_\_dat00.bin



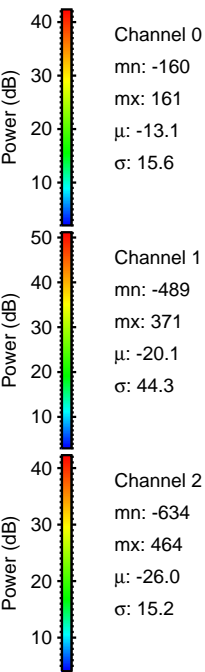
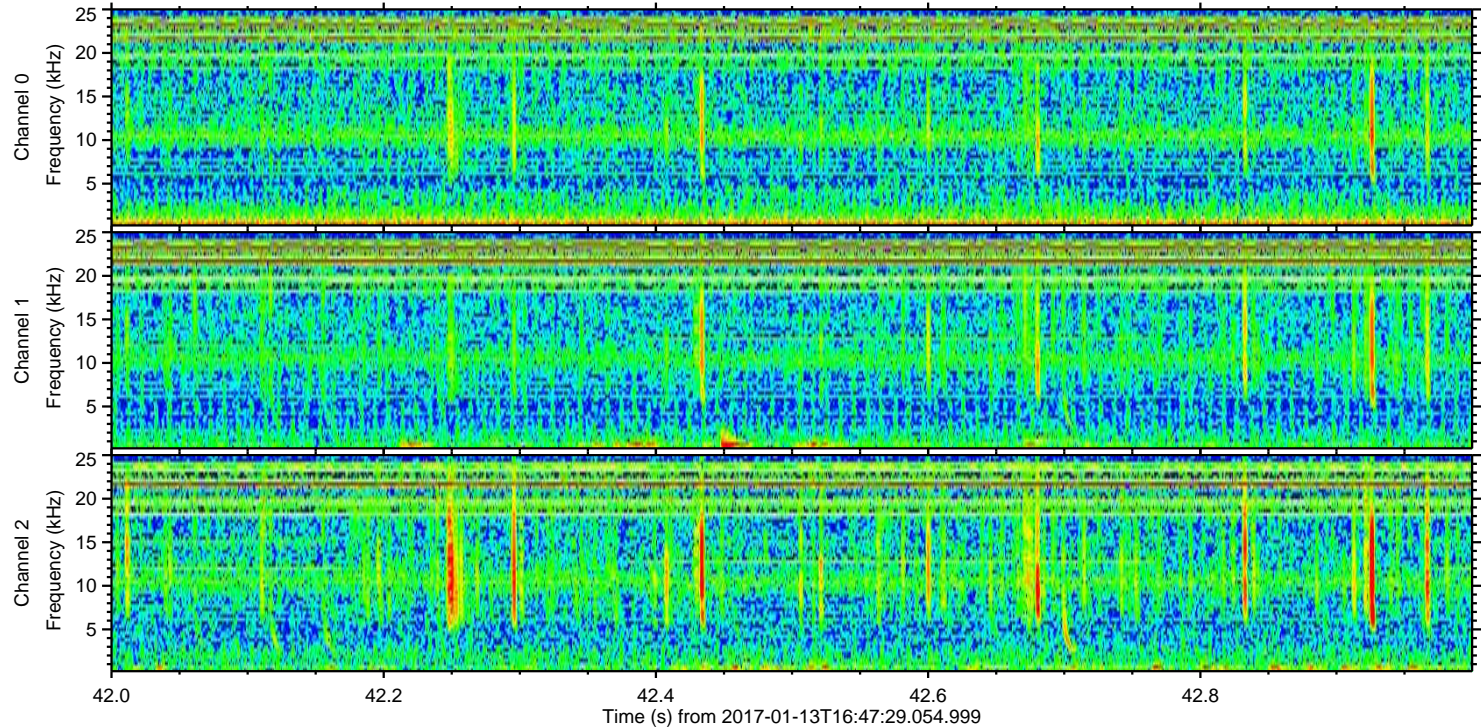
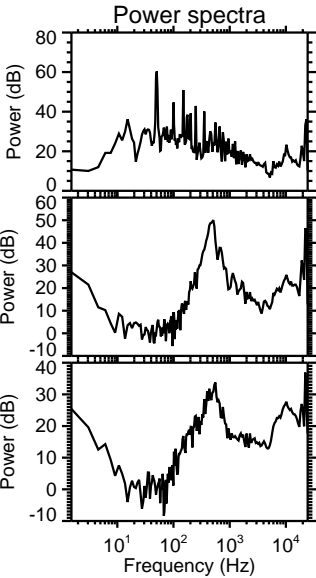
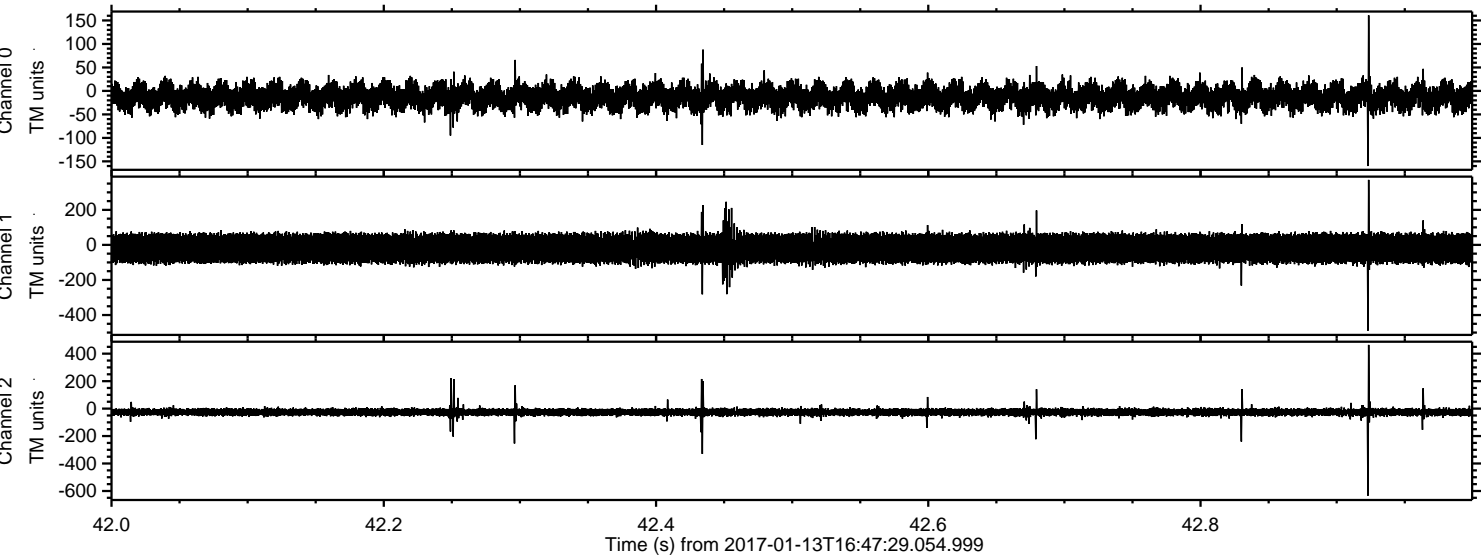


ELMAVAN 3D WAVEFORMS (Measured data sampled at 50 kHz) 51000 packets of 144 samples from 2017-01-13T16:47:29.054.999. Part 118/147





Processed Fri Jan 13 17:55:29 2017 by ELM ver.2012-10-06 from 001\_\_elm20170113\_164728\_\_dat00.bin





Processed Fri Jan 13 17:55:30 2017 by ELM ver.2012-10-06 from 001\_\_elm20170113\_164728\_\_dat00.bin

