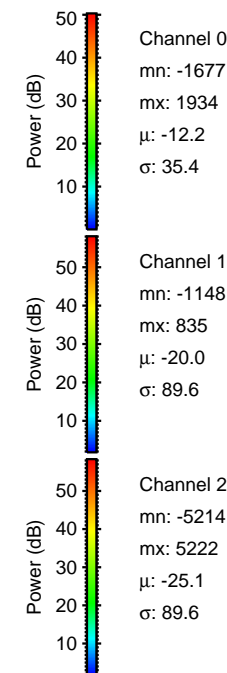
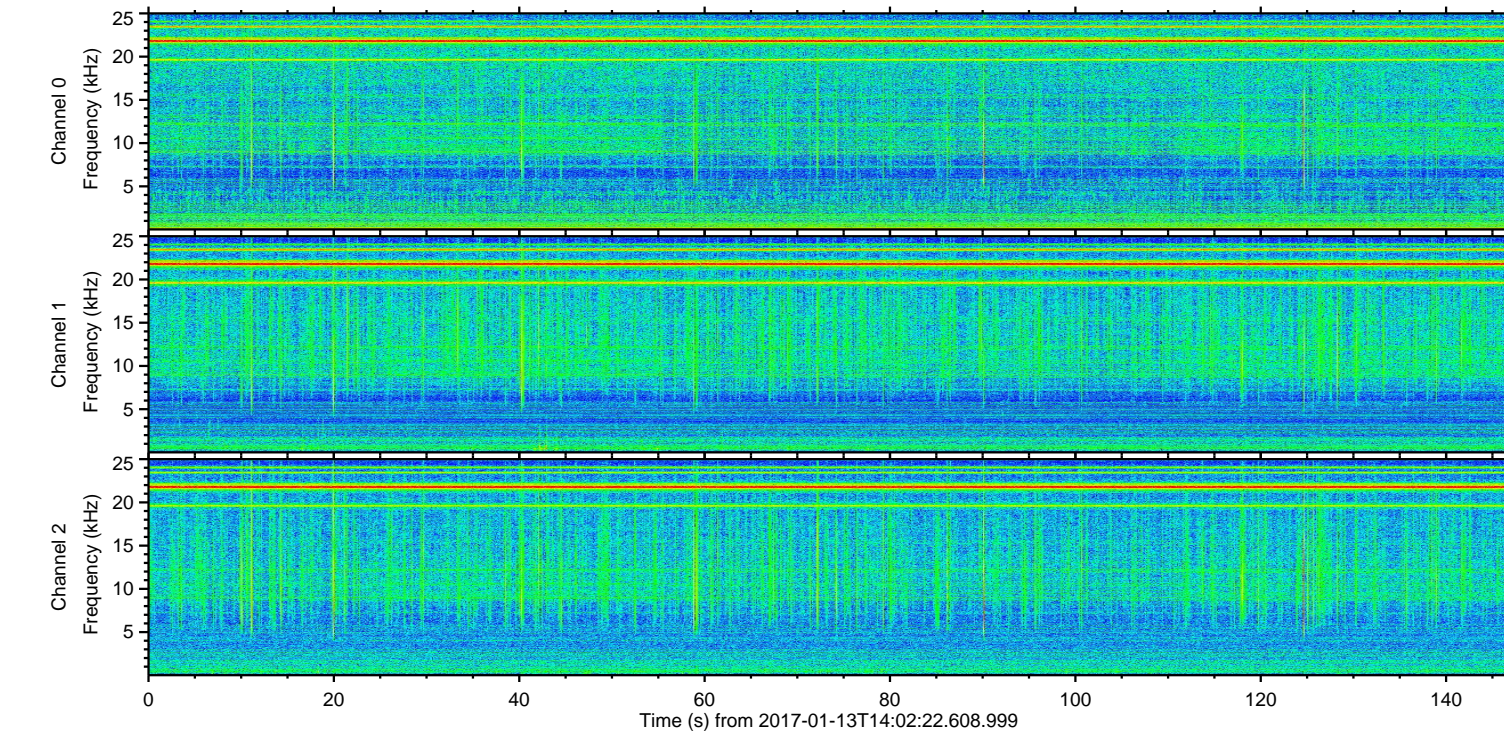
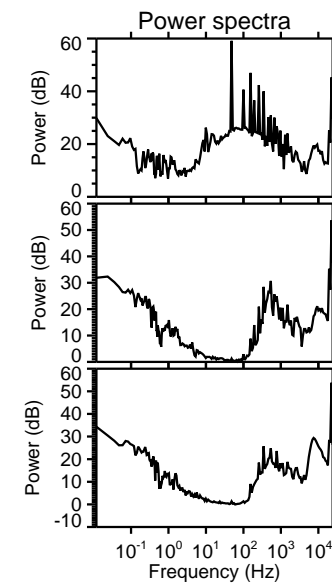
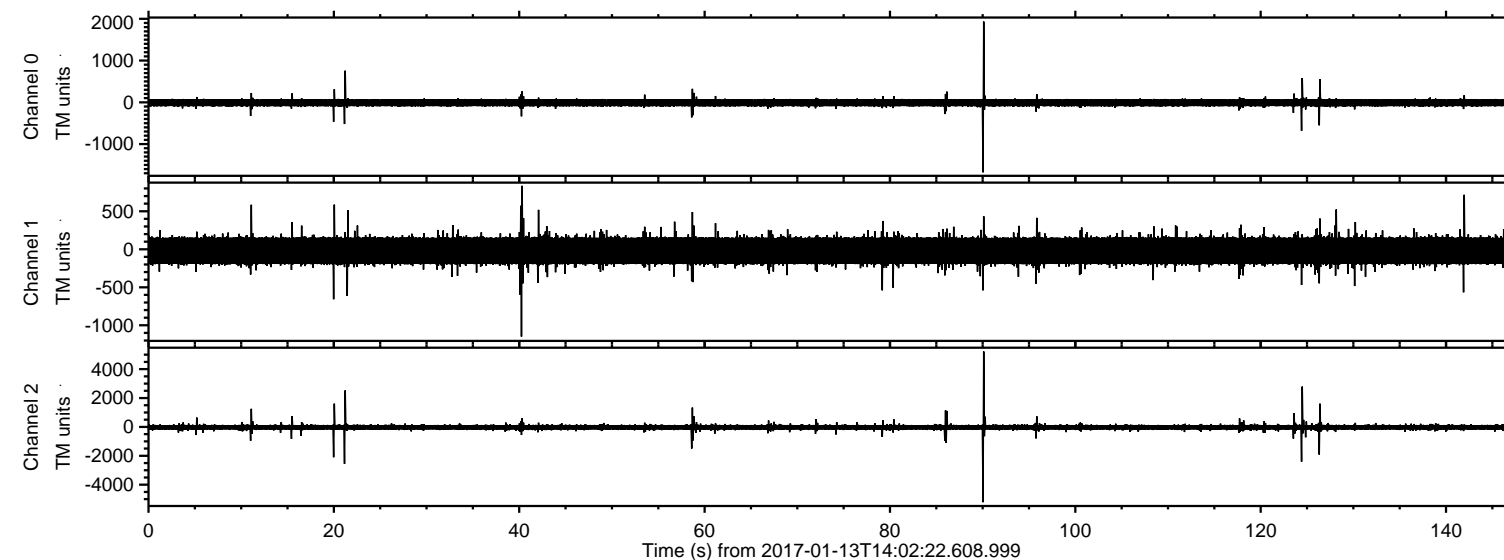


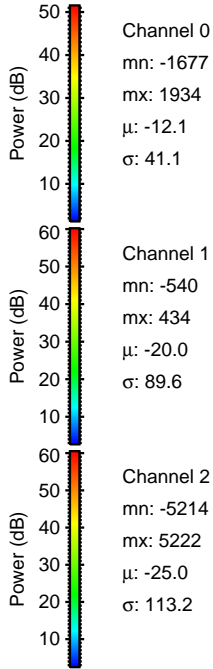
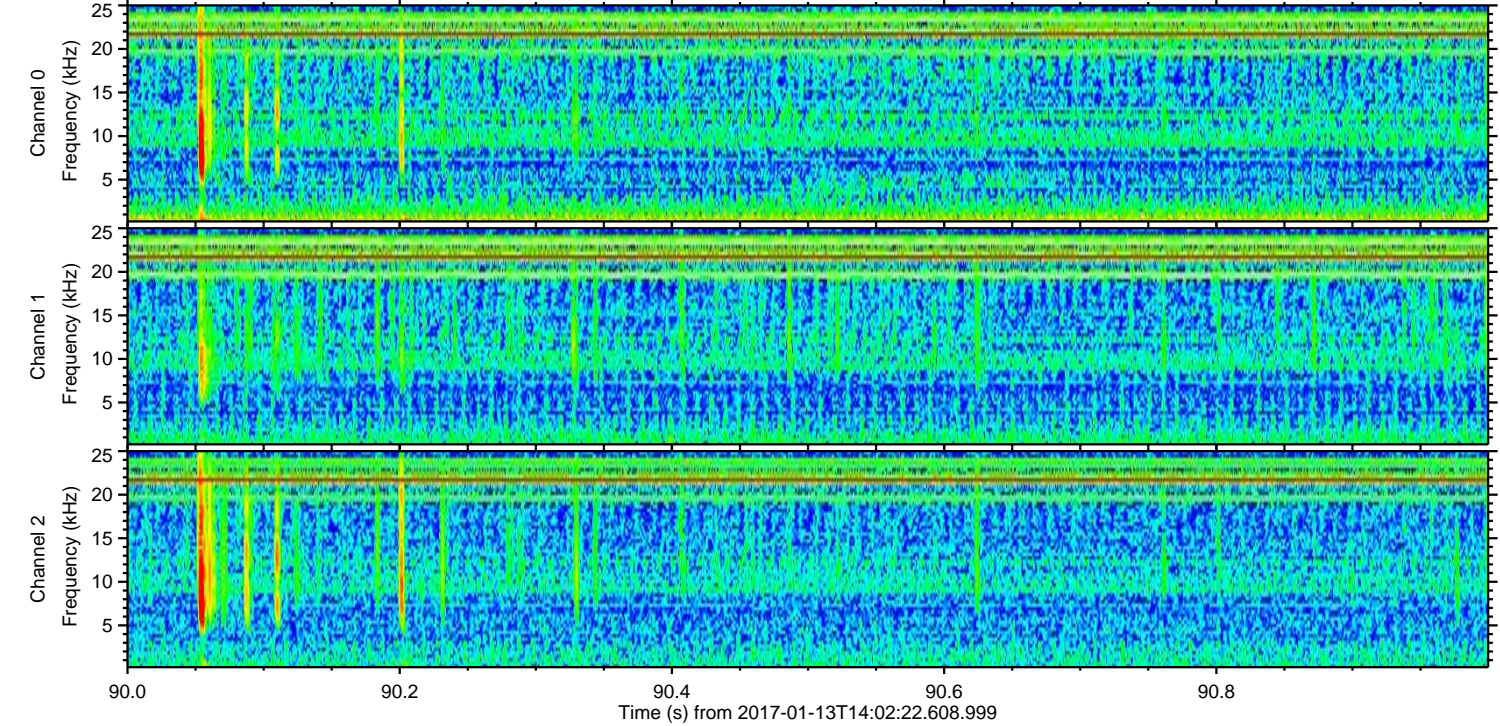
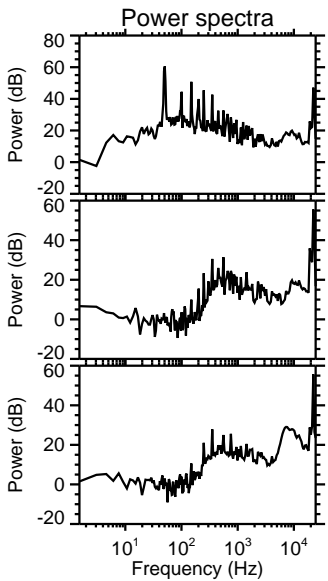
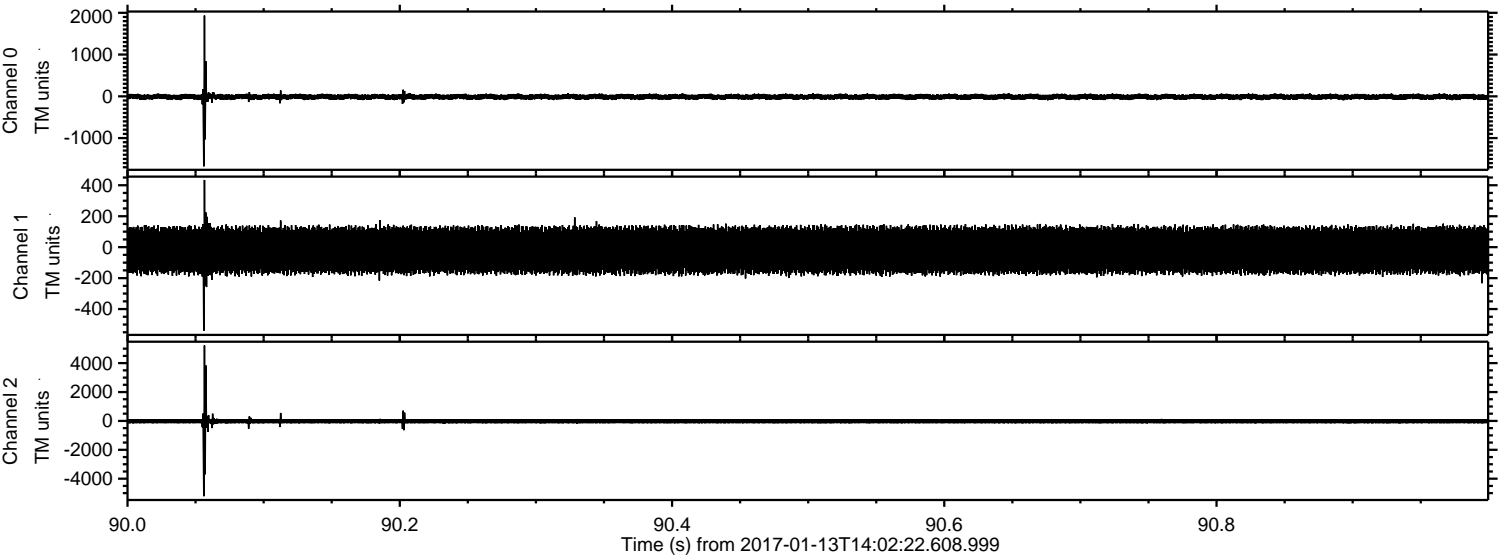
ELMAVAN 3D WAVEFORMS (Measured data sampled at 50 kHz) 51000 packets of 144 samples from 2017-01-13T14:02:22.608.999.

Processed Fri Jan 13 15:55:22 2017 by ELM ver.2012-10-06 from 001__elm20170113_140221__dat00.bin



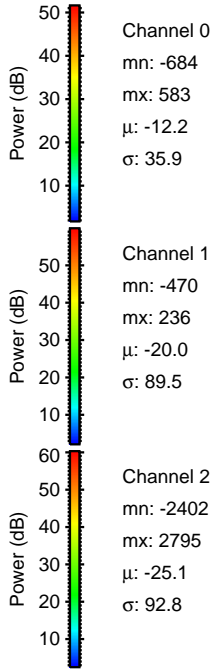
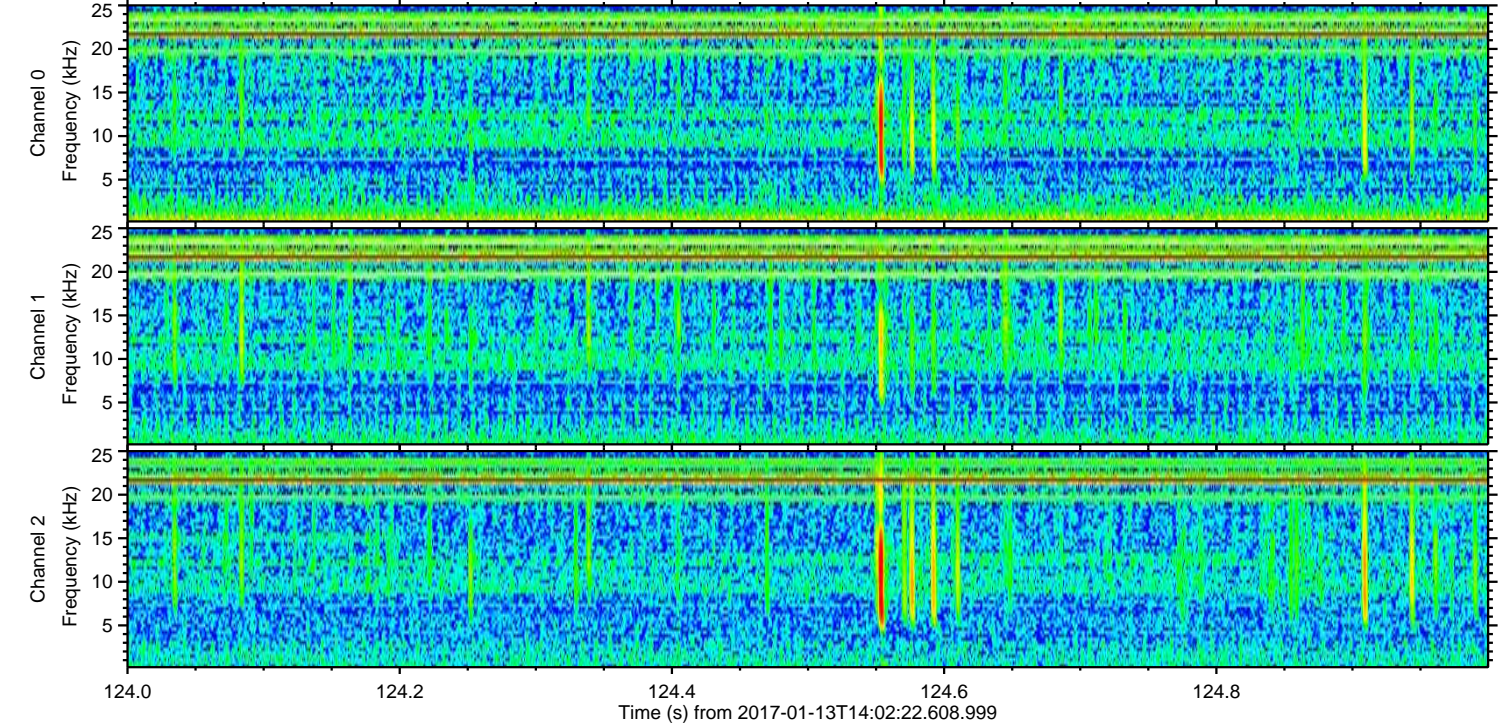
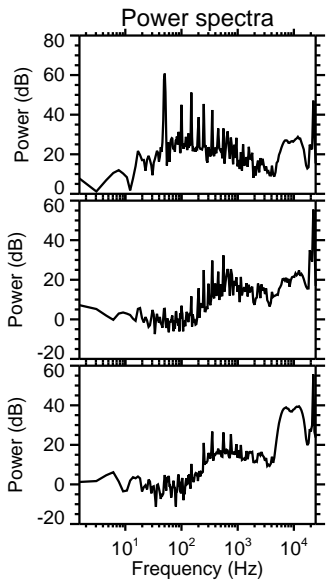
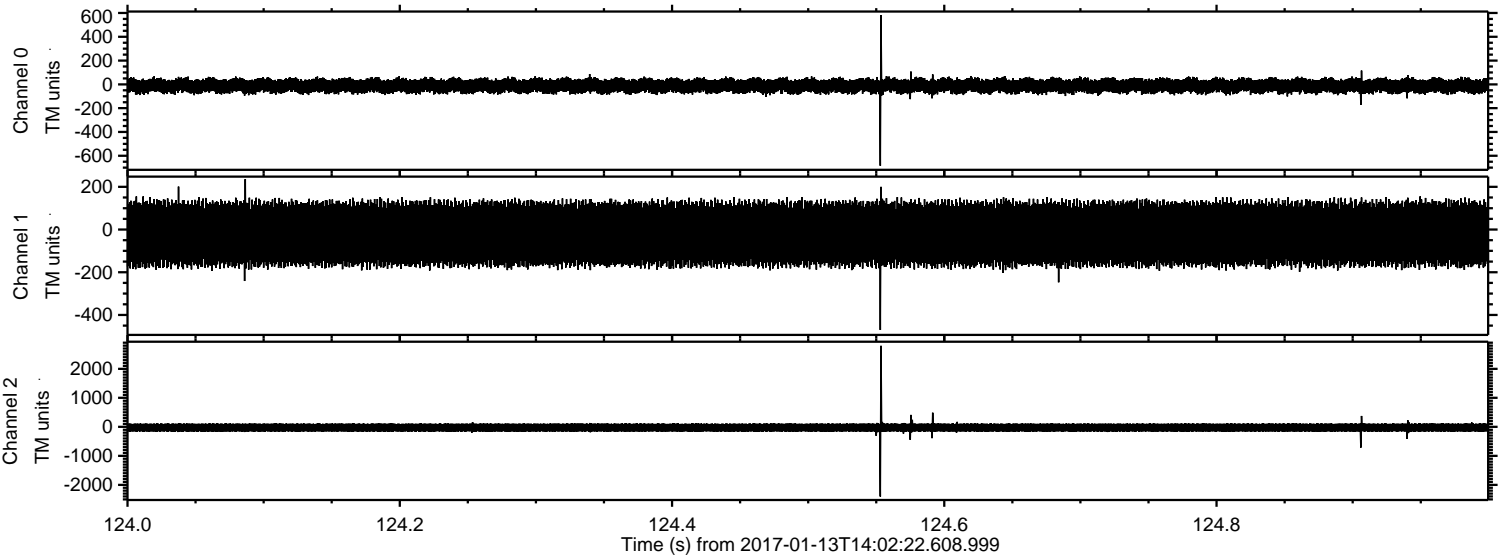
ELMAVAN 3D WAVEFORMS (Measured data sampled at 50 kHz) 51000 packets of 144 samples from 2017-01-13T14:02:22.608.999. Part 91/147

Processed Fri Jan 13 15:55:37 2017 by ELM ver.2012-10-06 from 001__elm20170113_140221__dat00.bin



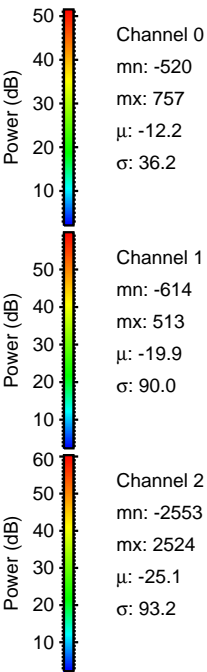
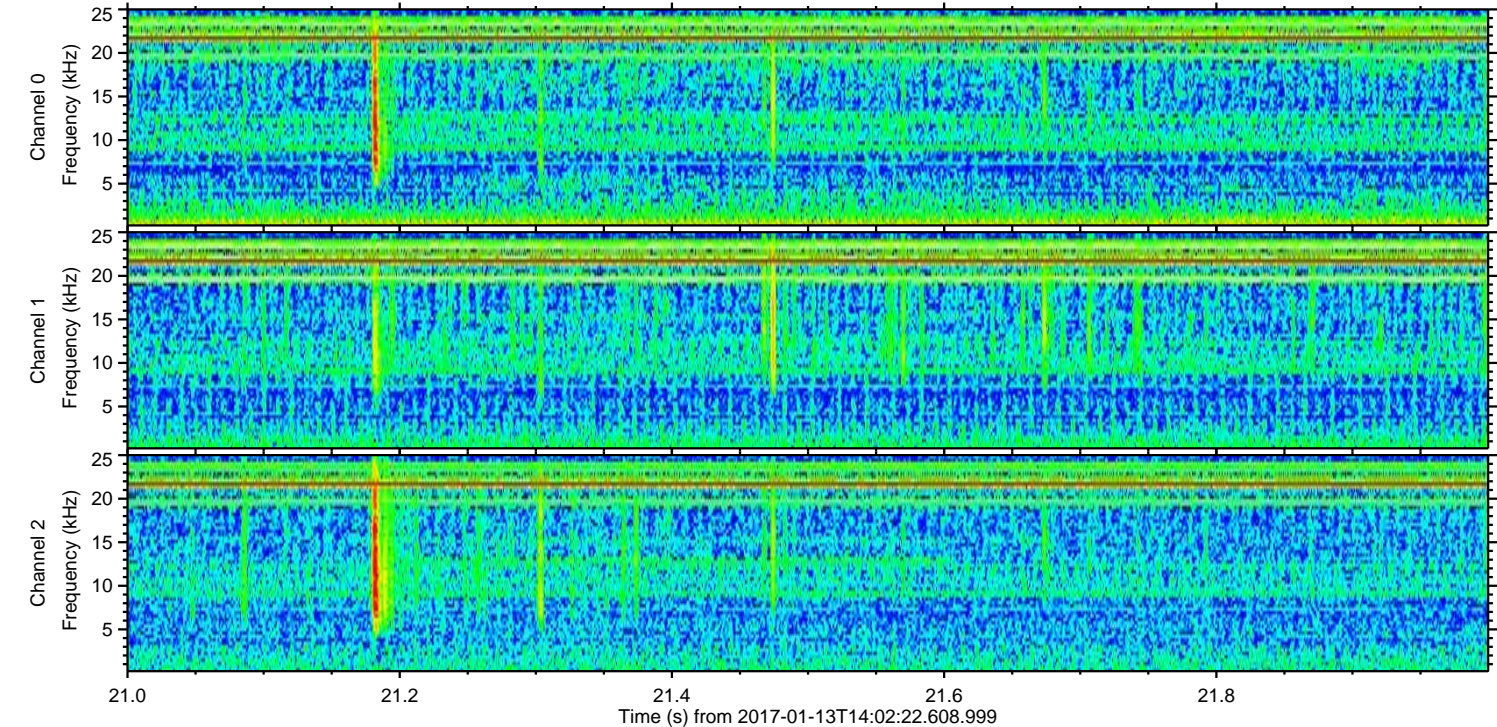
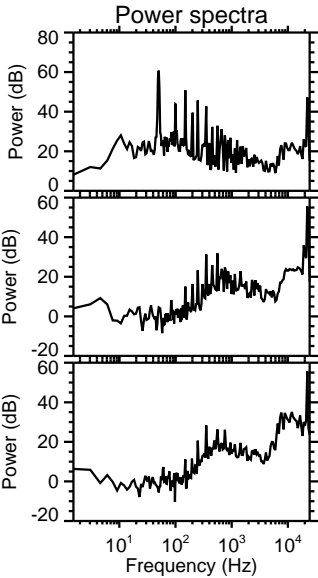
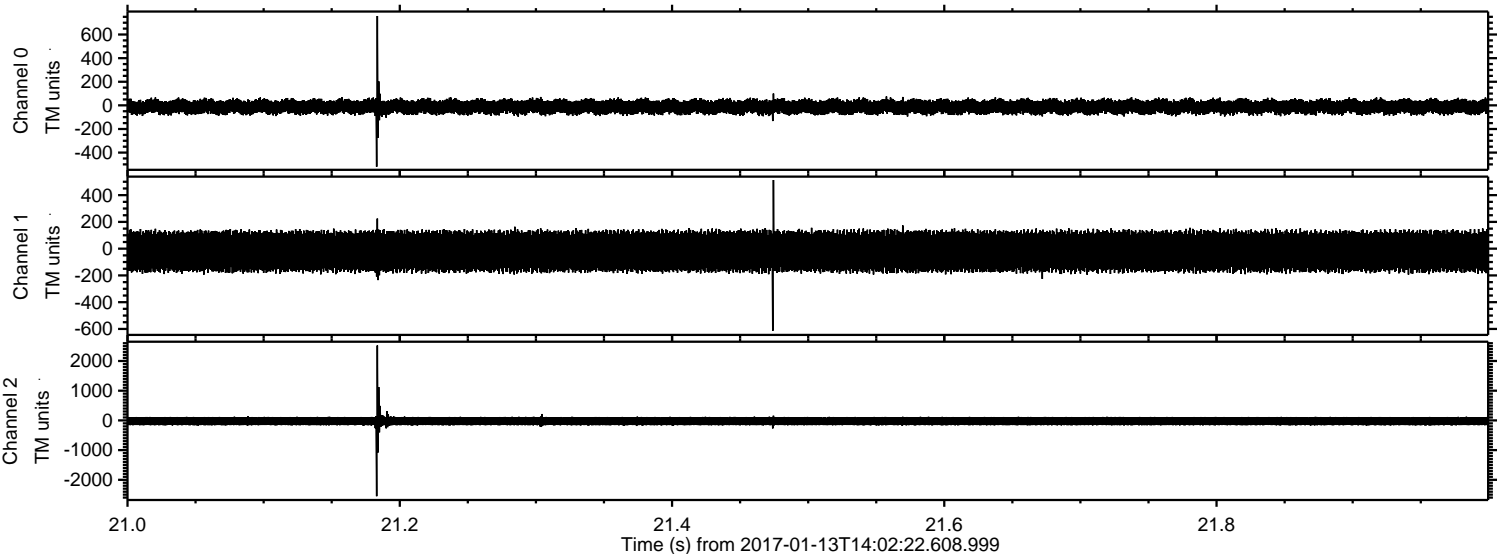
ELMAVAN 3D WAVEFORMS (Measured data sampled at 50 kHz) 51000 packets of 144 samples from 2017-01-13T14:02:22.608.999. Part 125/147

Processed Fri Jan 13 15:55:38 2017 by ELM ver.2012-10-06 from 001__elm20170113_140221__dat00.bin

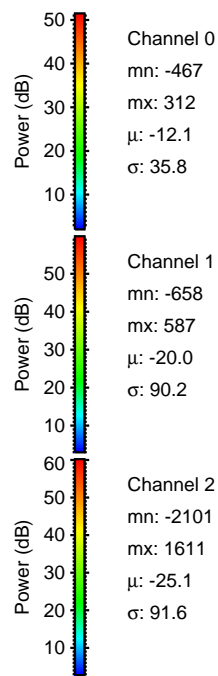
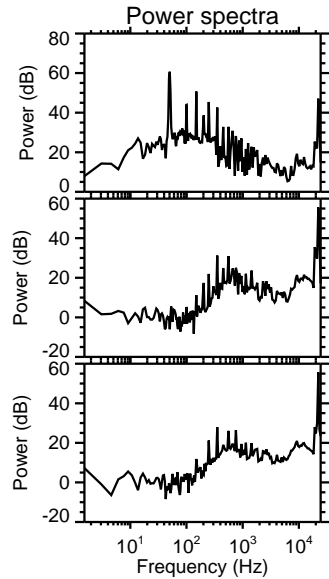
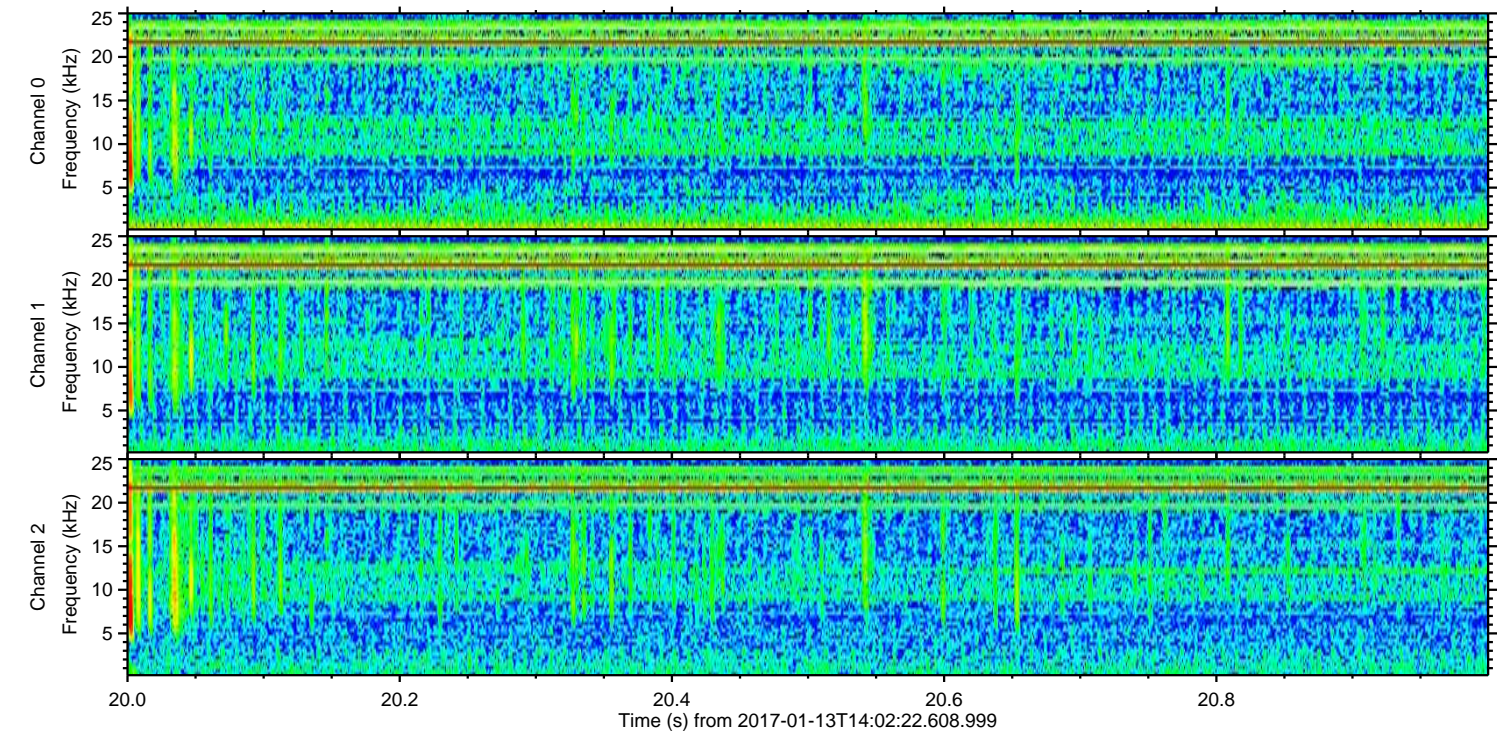
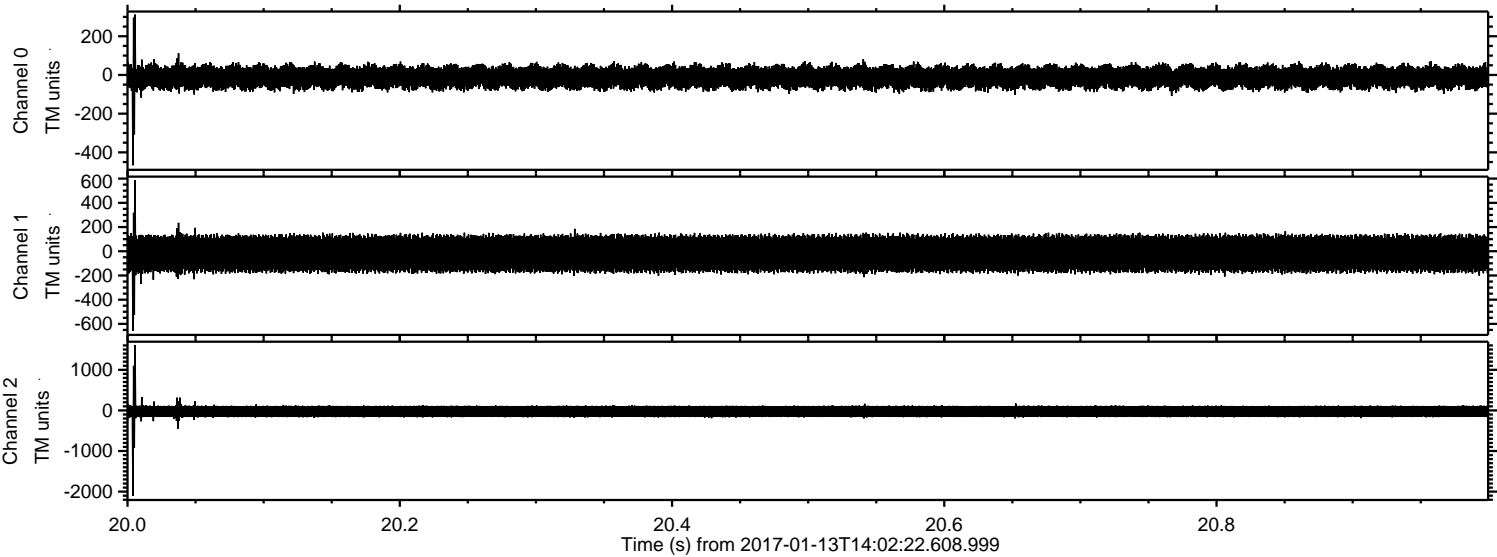


ELMAVAN 3D WAVEFORMS (Measured data sampled at 50 kHz) 51000 packets of 144 samples from 2017-01-13T14:02:22.608.999. Part 22/147

Processed Fri Jan 13 15:55:39 2017 by ELM ver.2012-10-06 from 001__elm20170113_140221__dat00.bin

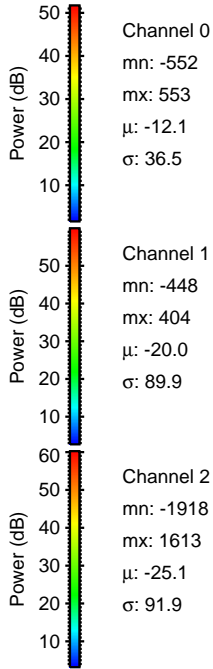
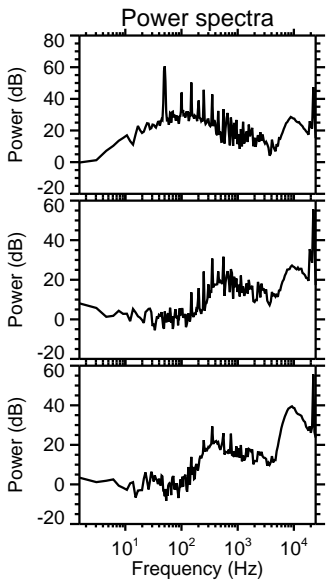
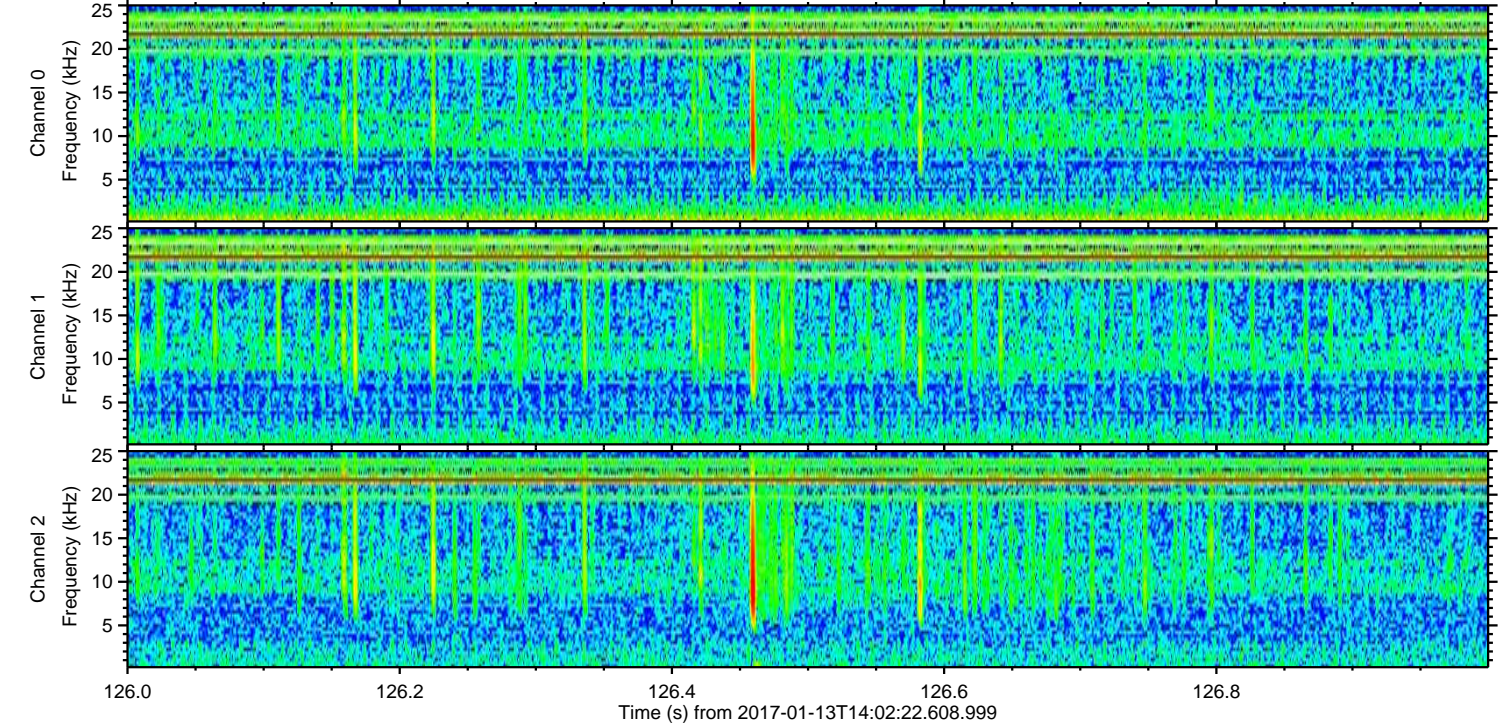
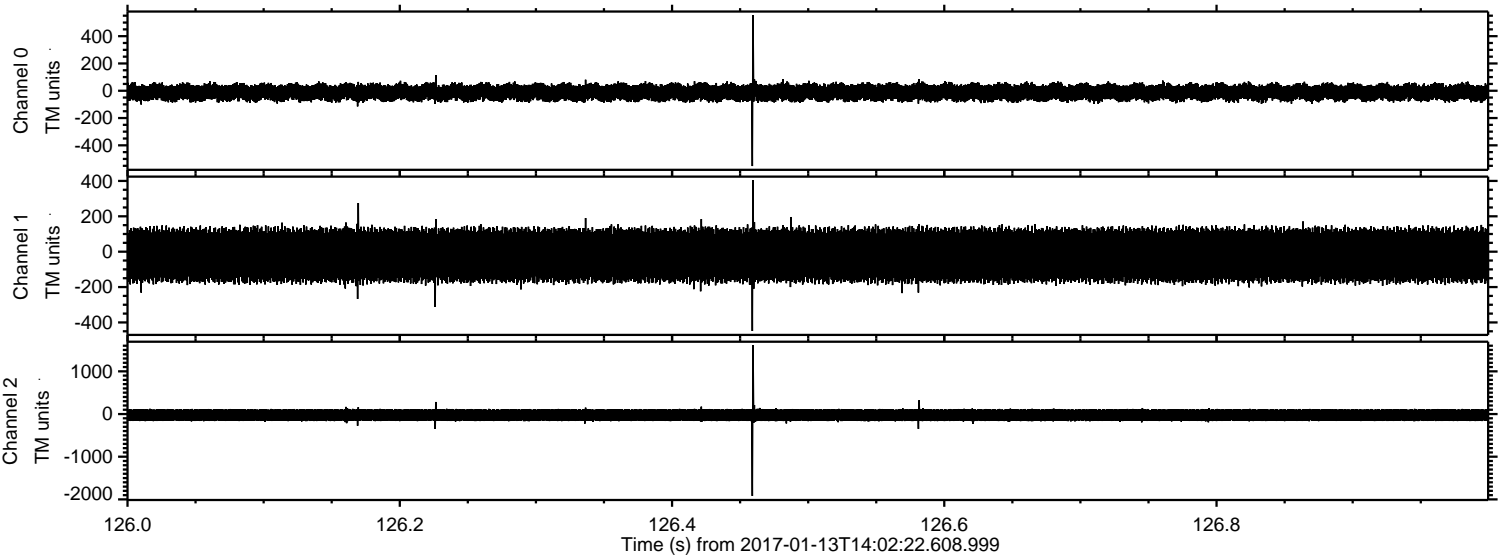


Processed Fri Jan 13 15:55:40 2017 by ELM ver.2012-10-06 from 001__elm20170113_140221__dat00.bin

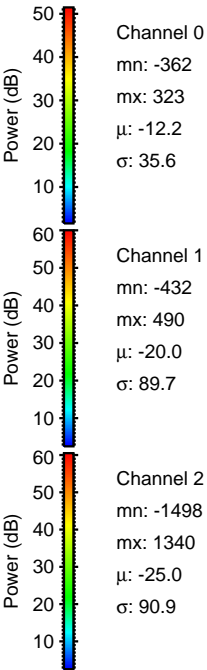
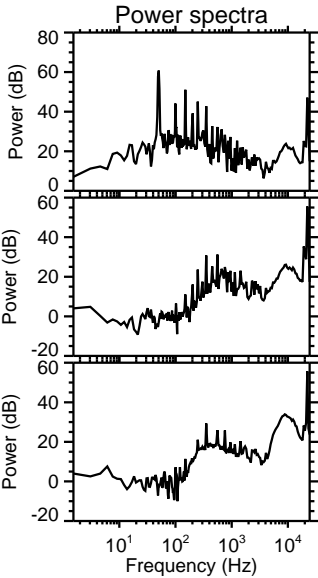
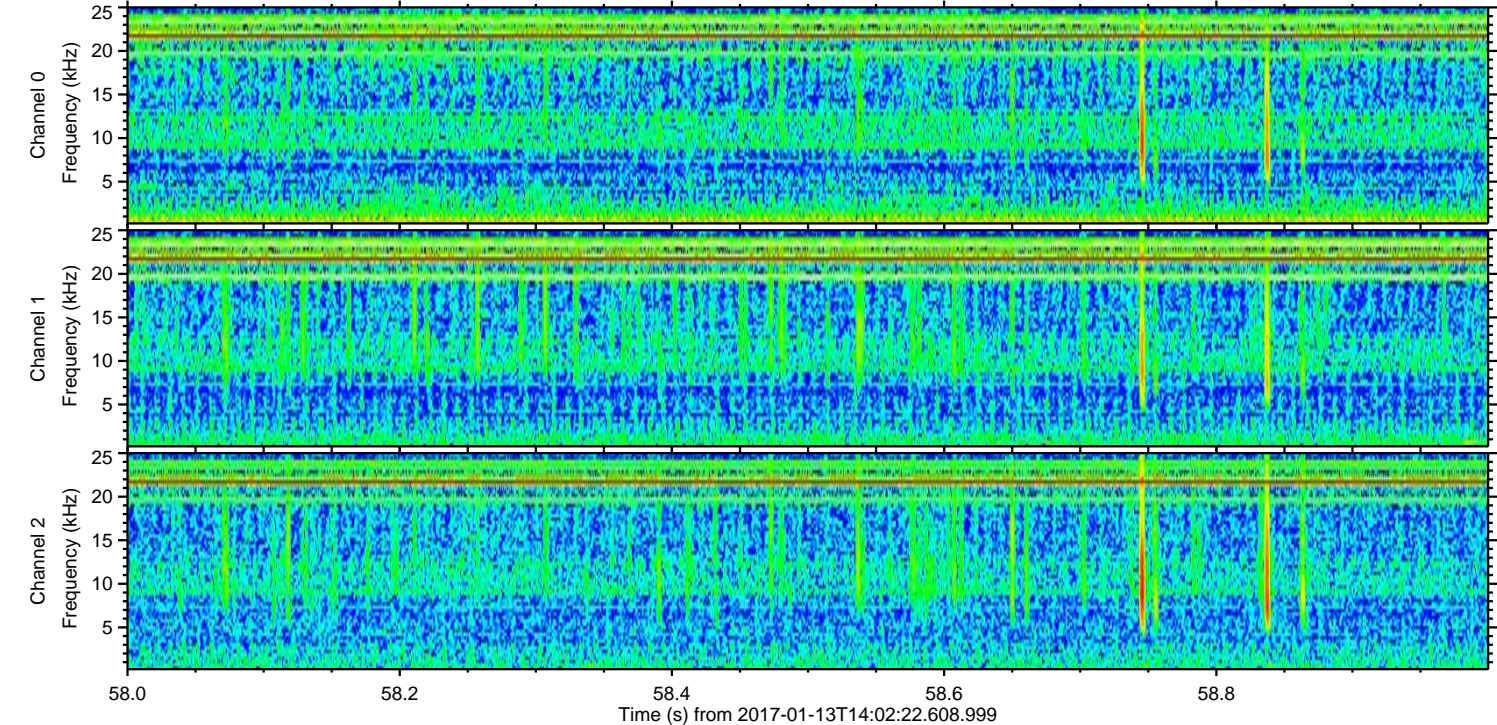
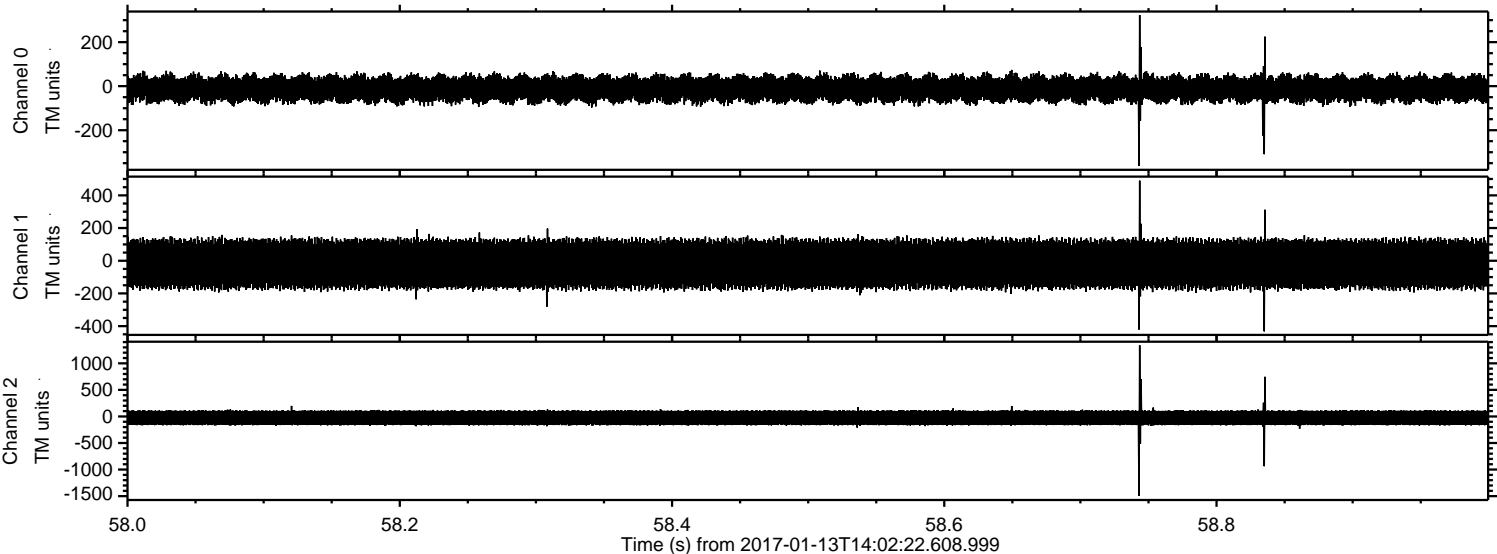


ELMAVAN 3D WAVEFORMS (Measured data sampled at 50 kHz) 51000 packets of 144 samples from 2017-01-13T14:02:22.608.999. Part 127/147

Processed Fri Jan 13 15:55:41 2017 by ELM ver.2012-10-06 from 001__elm20170113_140221__dat00.bin



Processed Fri Jan 13 15:55:42 2017 by ELM ver.2012-10-06 from 001__elm20170113_140221__dat00.bin

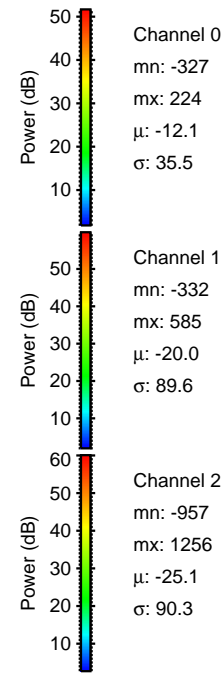
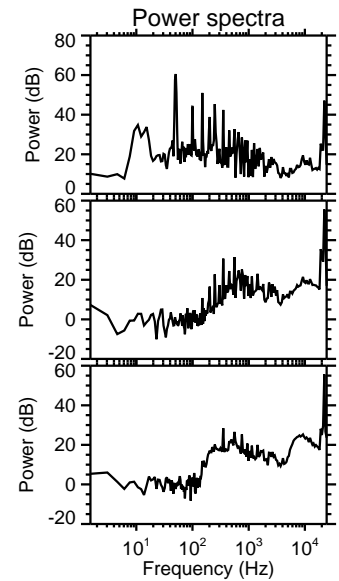
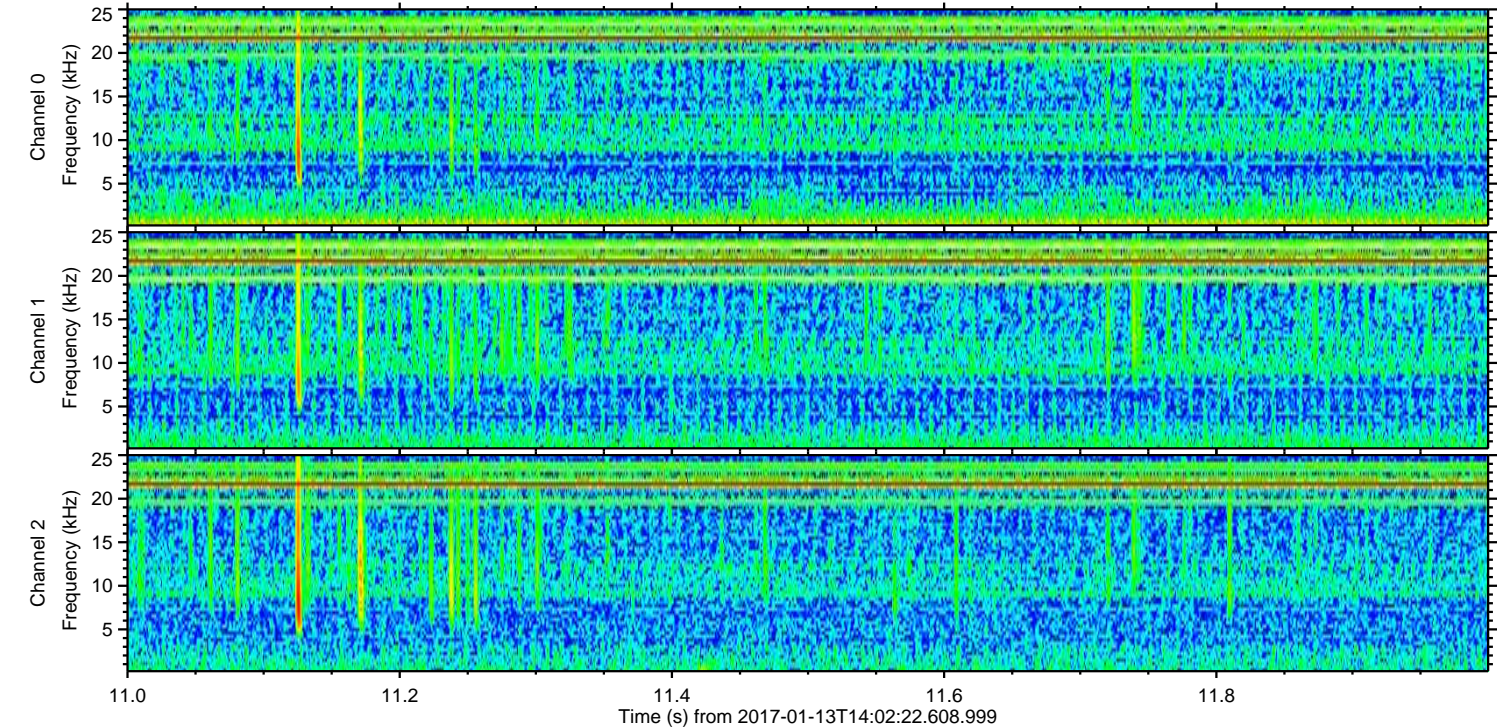
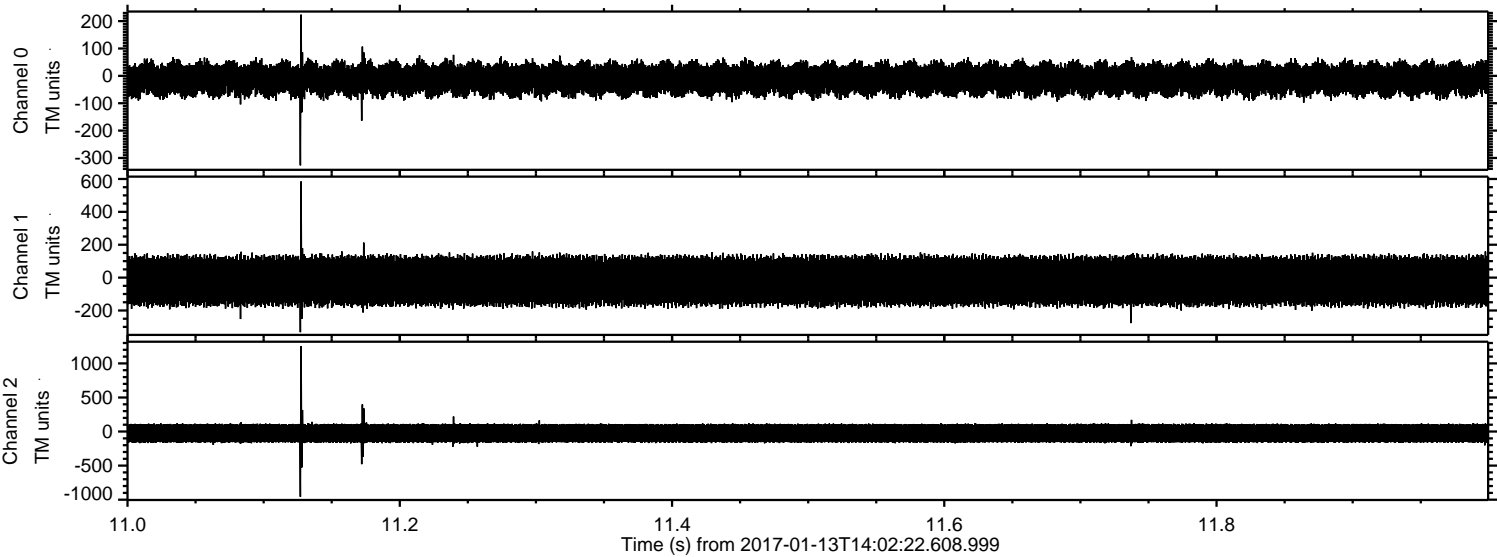


Channel 0
mn: -362
mx: 323
 μ : -12.2
 σ : 35.6

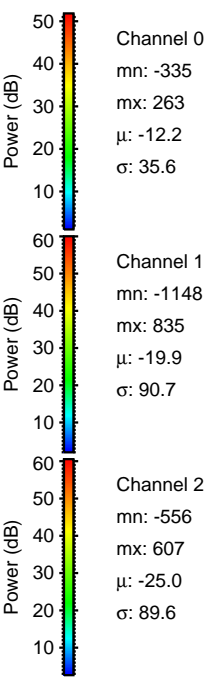
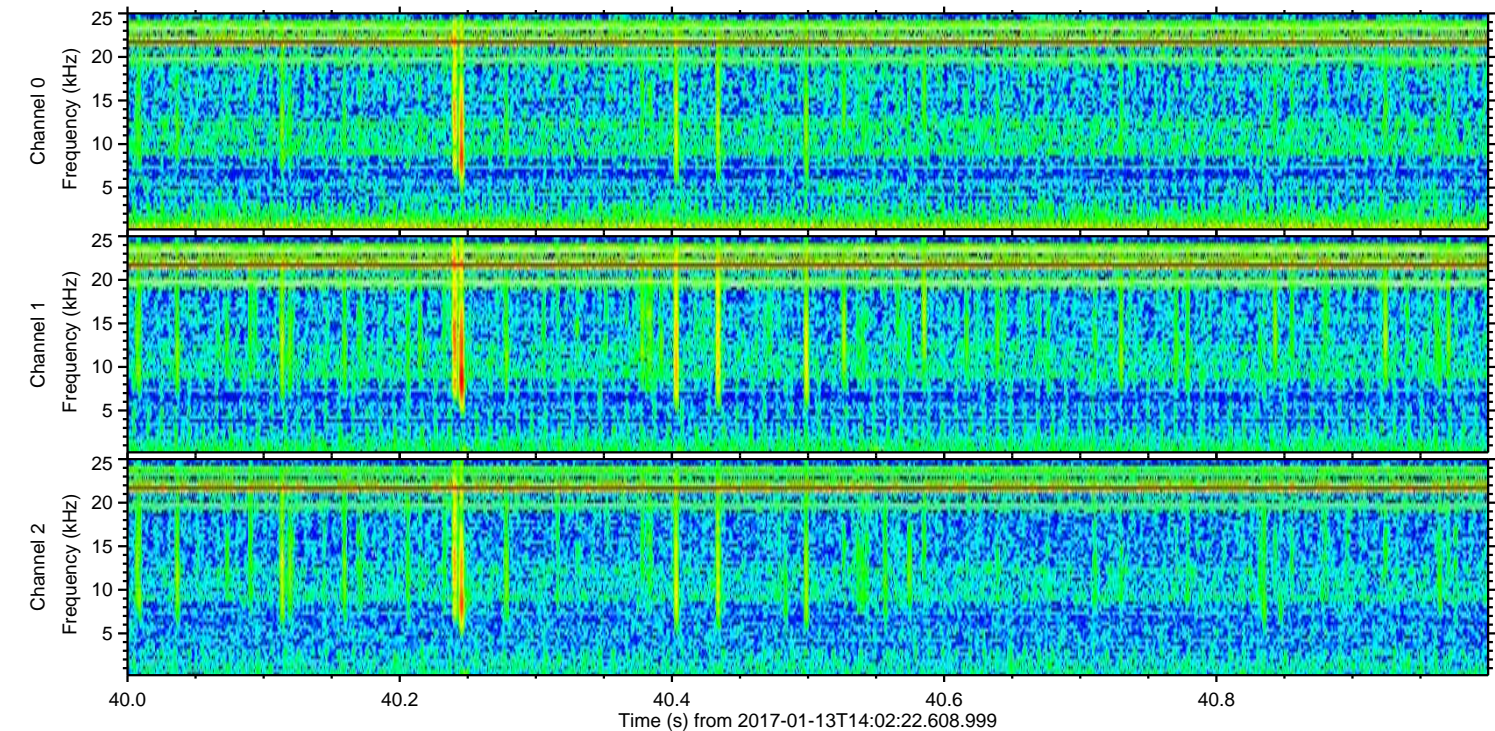
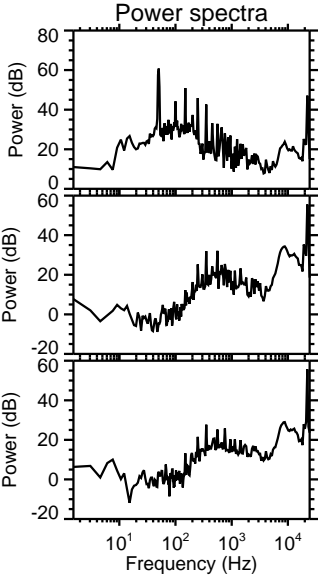
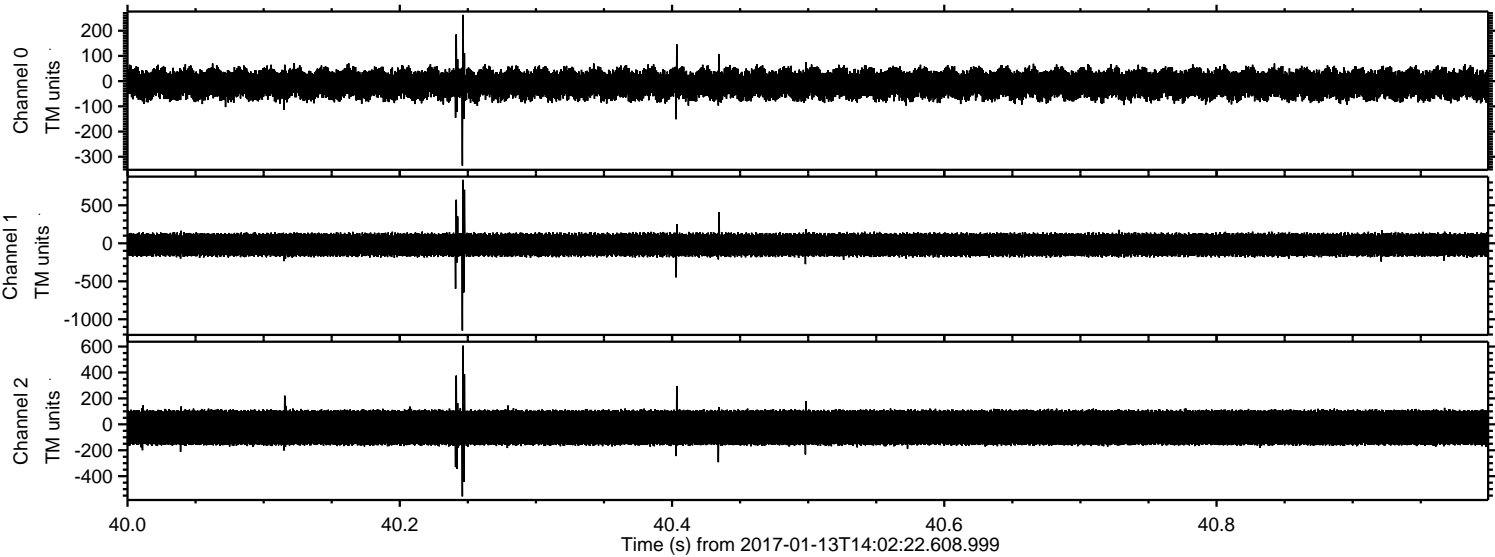
Channel 1
mn: -432
mx: 490
 μ : -20.0
 σ : 89.7

Channel 2
mn: -1498
mx: 1340
 μ : -25.0
 σ : 90.9

Processed Fri Jan 13 15:55:43 2017 by ELM ver.2012-10-06 from 001__elm20170113_140221__dat00.bin



Processed Fri Jan 13 15:55:44 2017 by ELM ver.2012-10-06 from 001__elm20170113_140221__dat00.bin

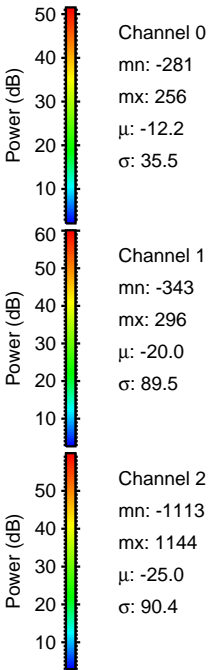
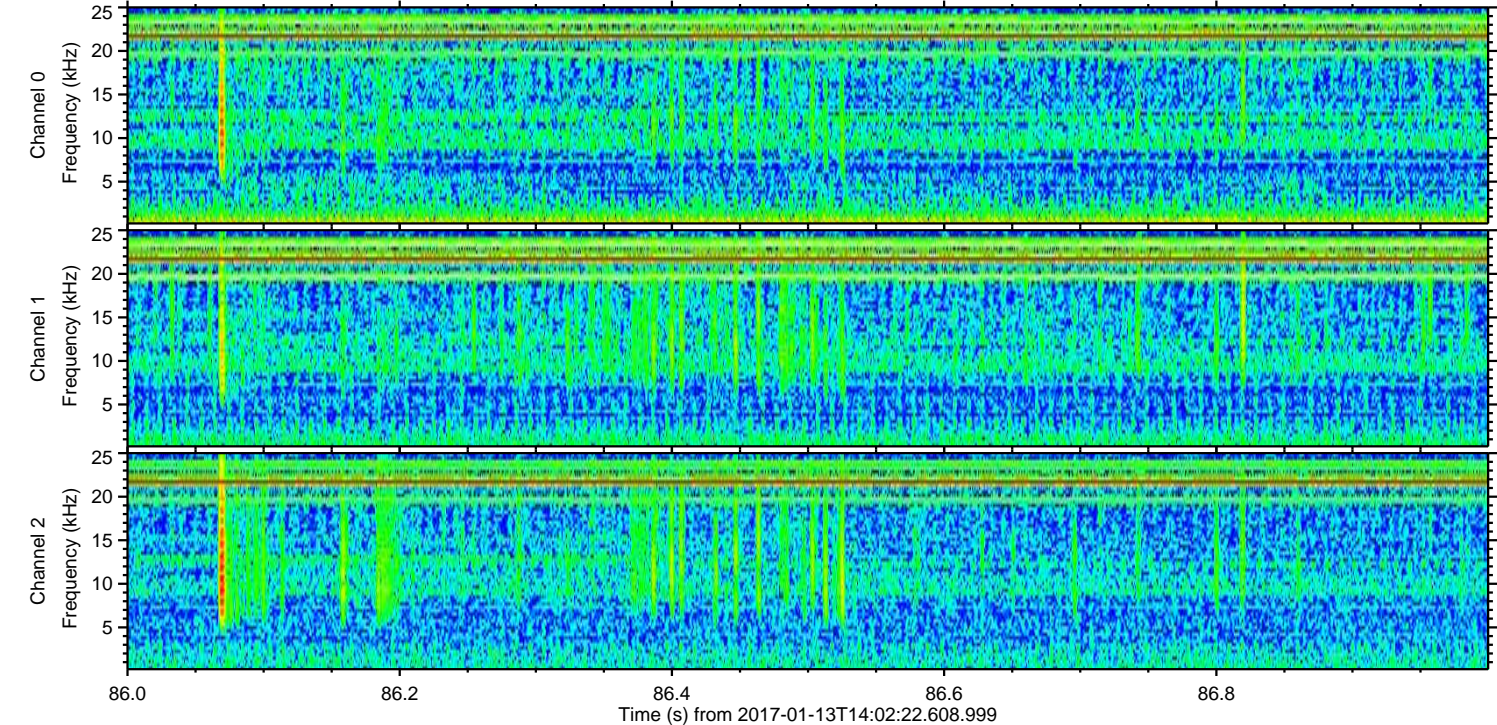
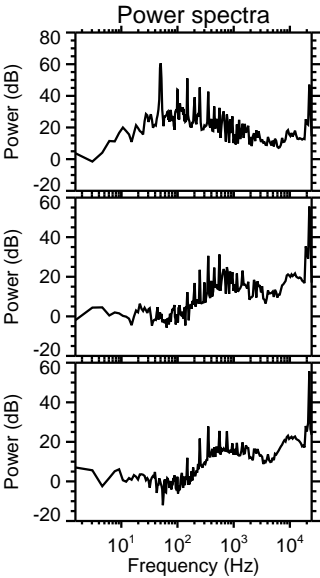
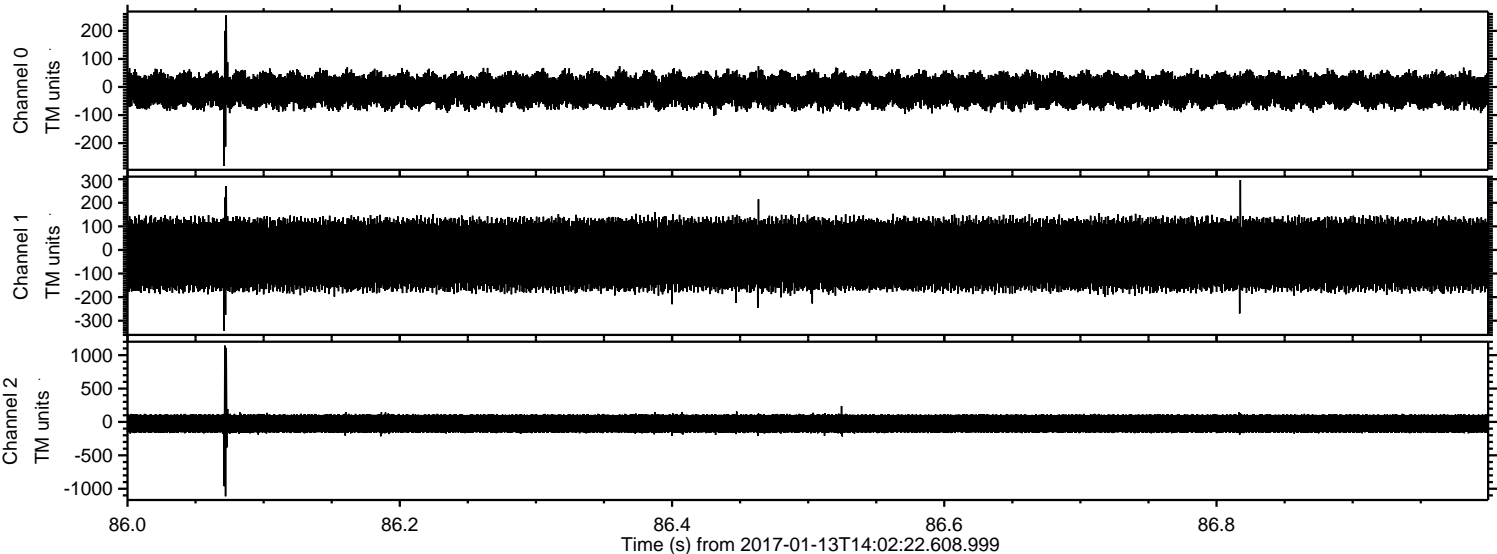


Channel 0
mn: -335
mx: 263
 μ : -12.2
 σ : 35.6

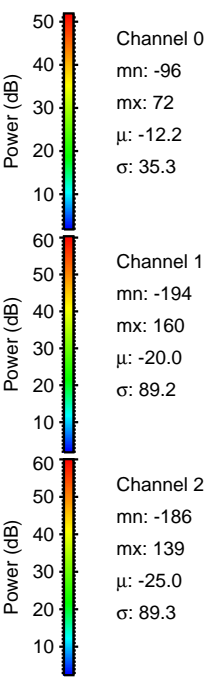
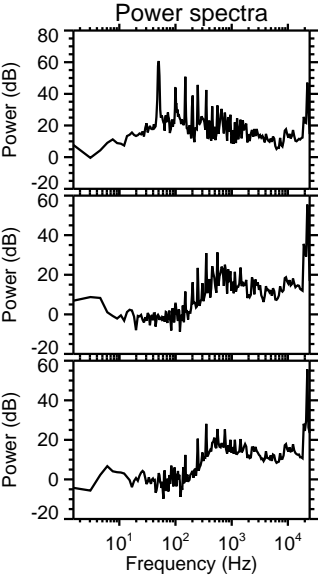
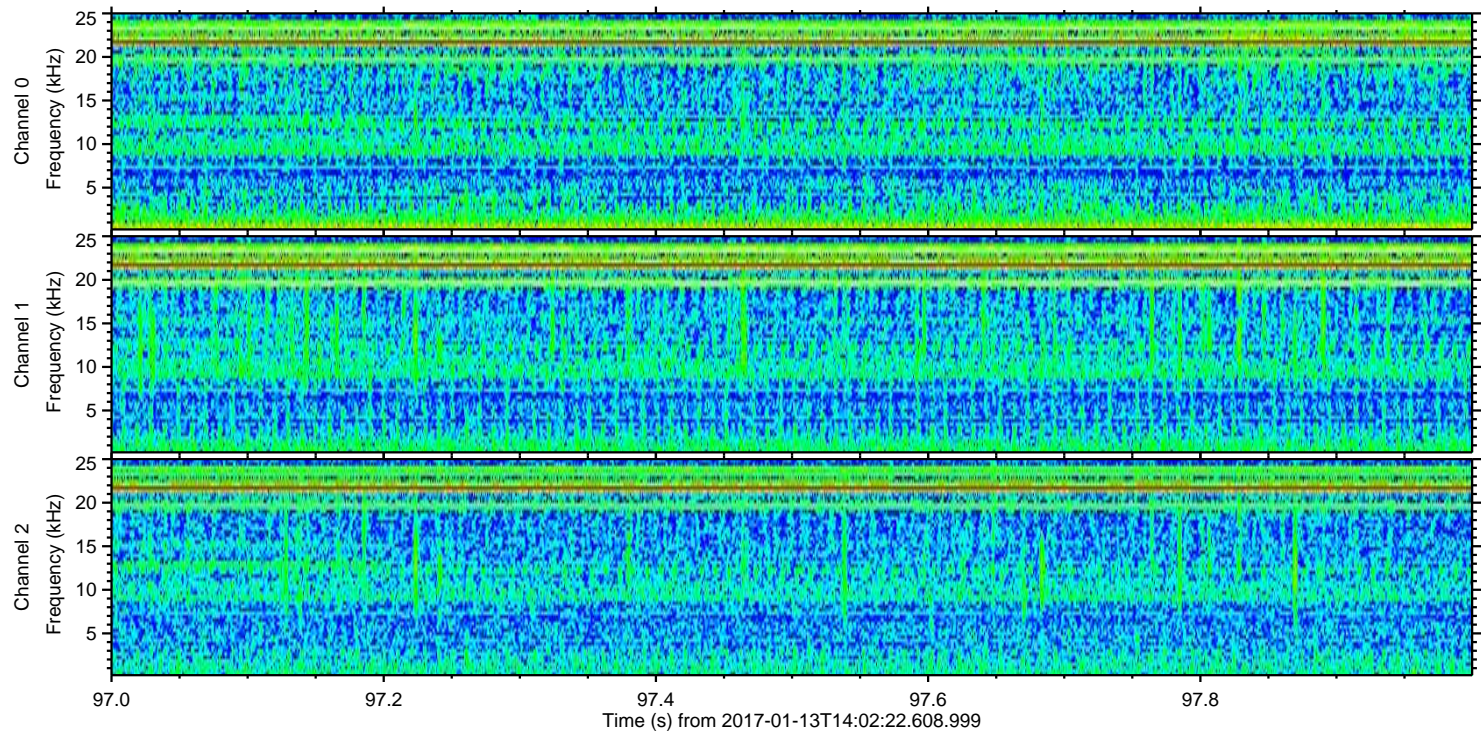
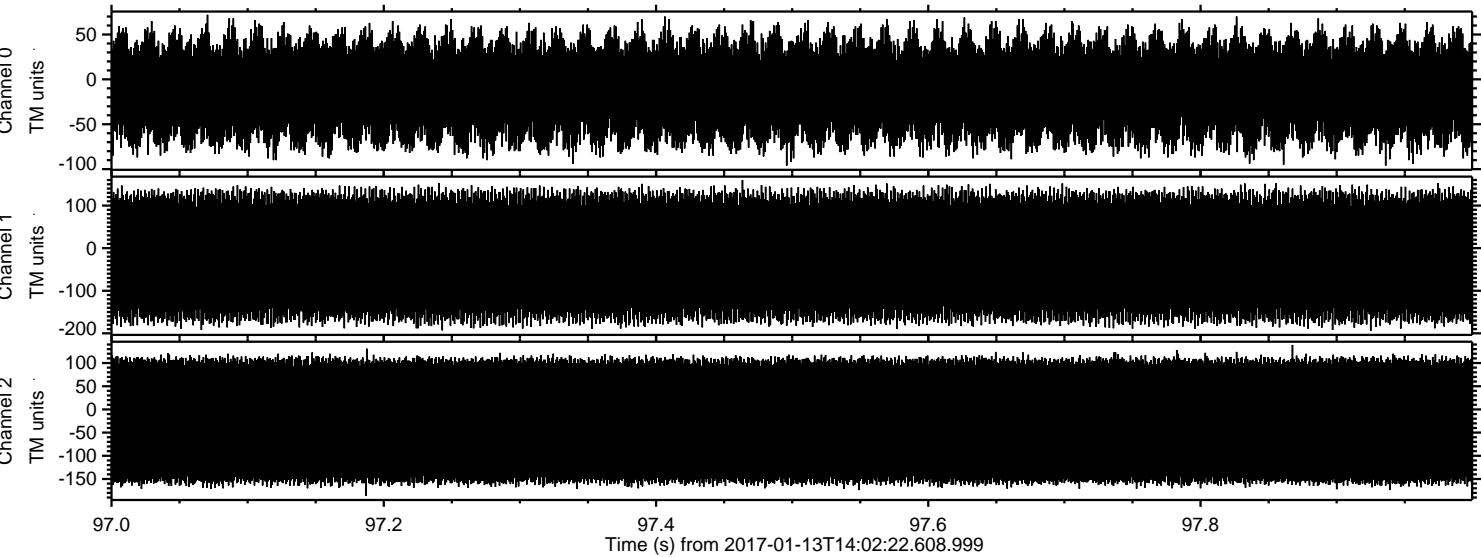
Channel 1
mn: -1148
mx: 835
 μ : -19.9
 σ : 90.7

Channel 2
mn: -556
mx: 607
 μ : -25.0
 σ : 89.6

Processed Fri Jan 13 15:55:45 2017 by ELM ver.2012-10-06 from 001__elm20170113_140221__dat00.bin



Processed Fri Jan 13 15:55:46 2017 by ELM ver.2012-10-06 from 001__elm20170113_140221__dat00.bin



Channel 0
mn: -96
mx: 72
 μ : -12.2
 σ : 35.3

Channel 1
mn: -194
mx: 160
 μ : -20.0
 σ : 89.2

Channel 2
mn: -186
mx: 139
 μ : -25.0
 σ : 89.3