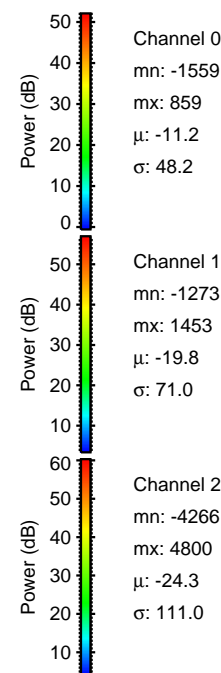
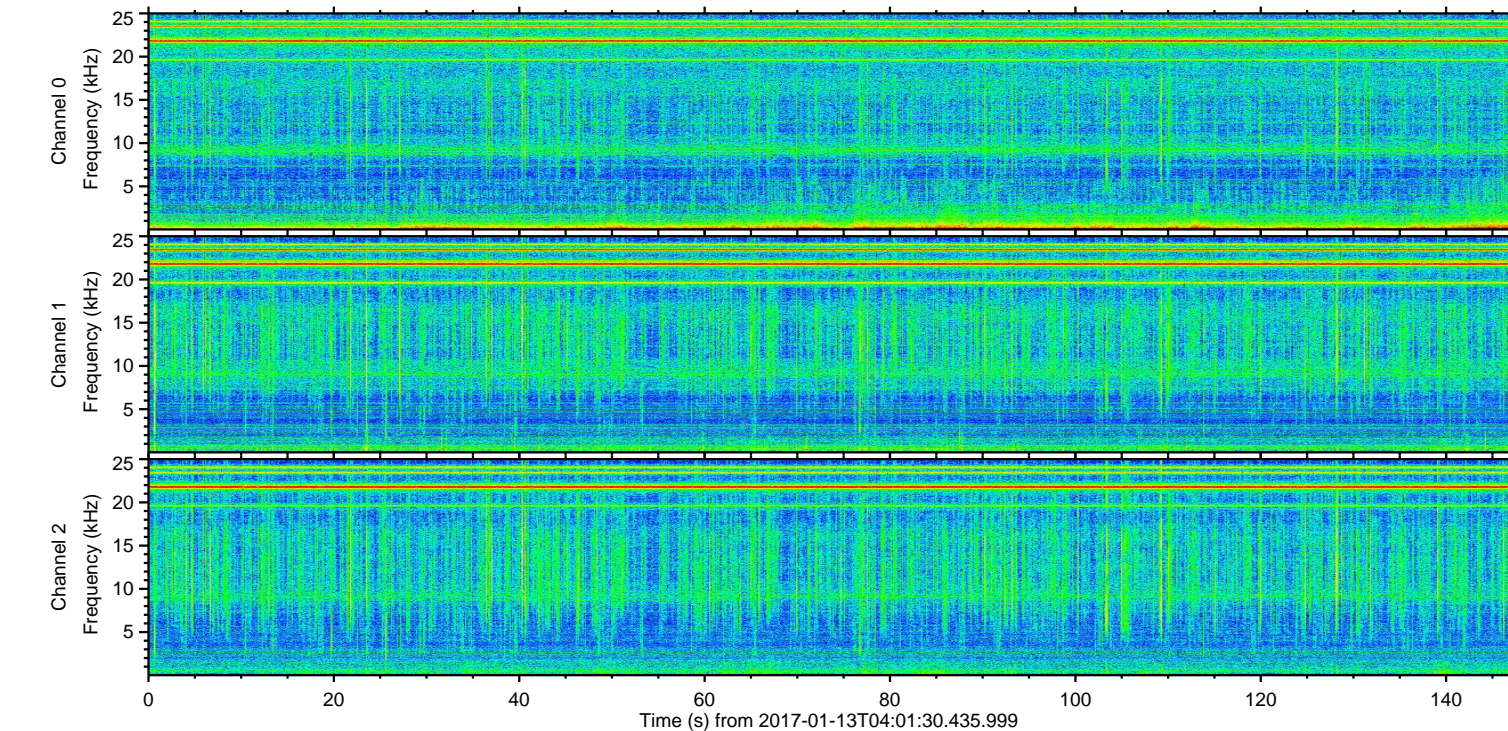
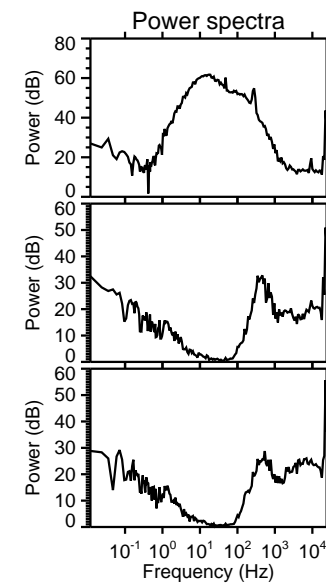
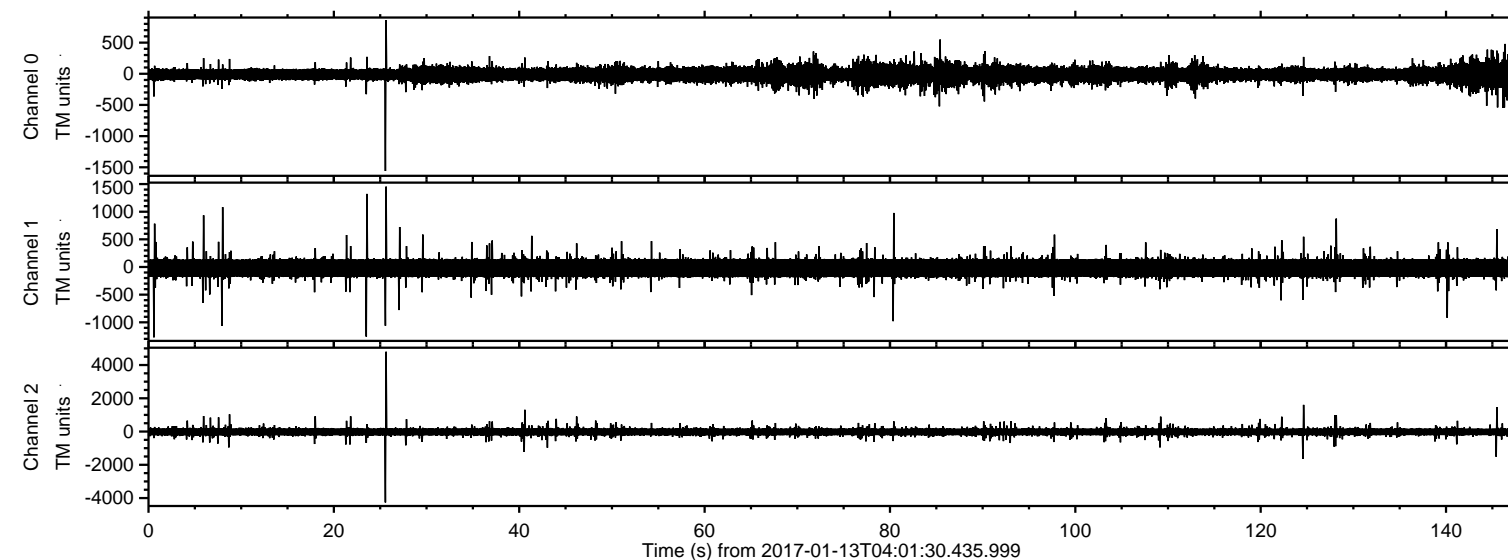


# ELMAVAN 3D WAVEFORMS (Measured data sampled at 50 kHz) 51000 packets of 144 samples from 2017-01-13T04:01:30.435.999.

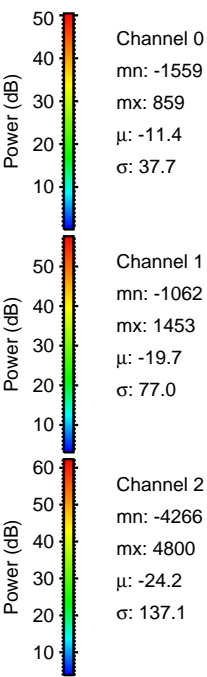
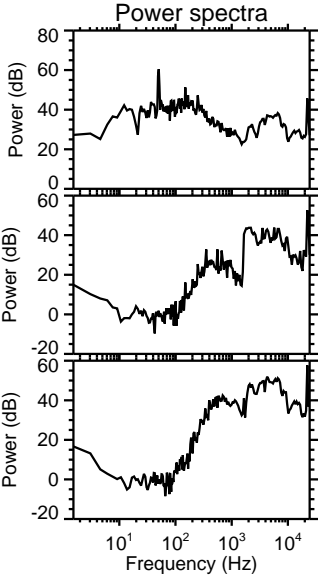
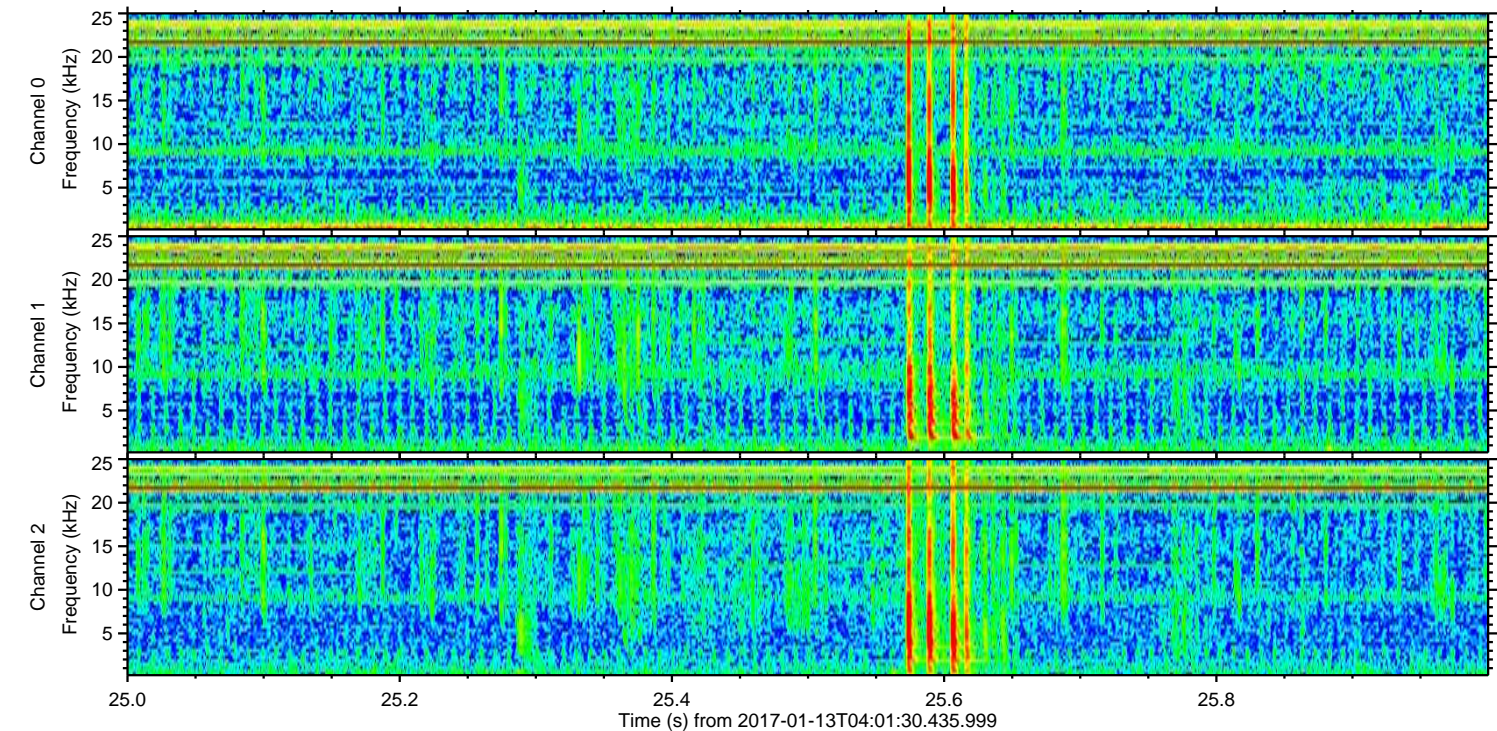
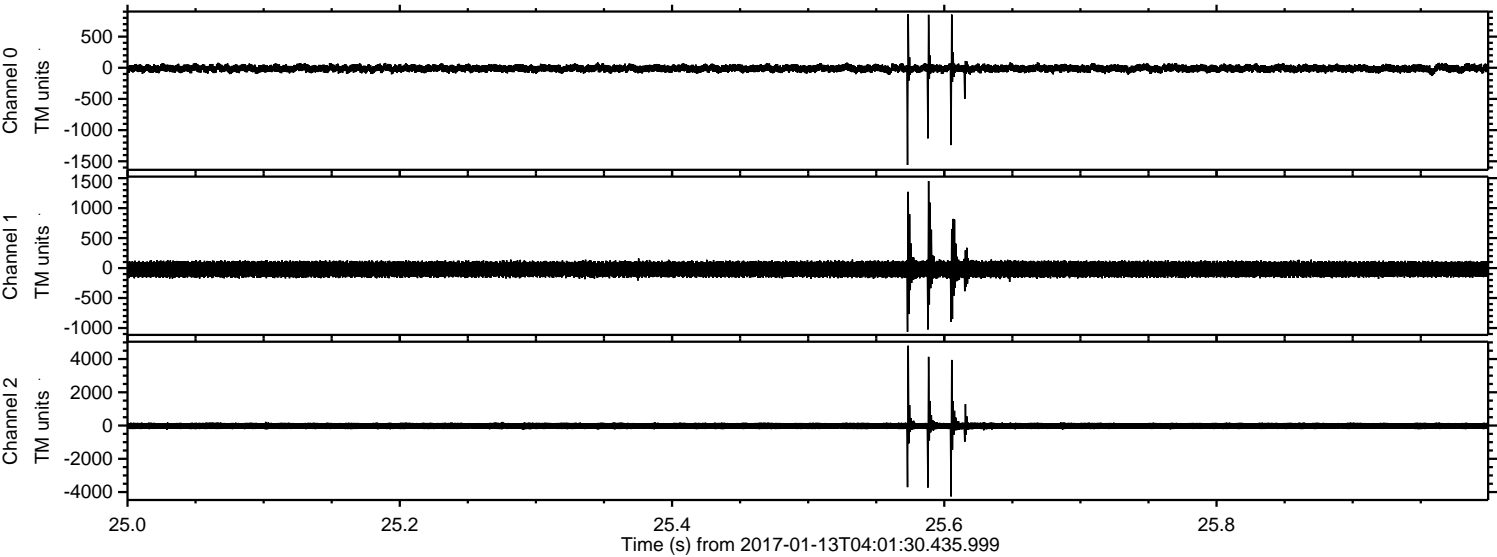
Processed Fri Jan 13 05:09:35 2017 by ELM ver.2012-10-06 from 001\_\_elm20170113\_040129\_\_dat00.bin





ELMAVAN 3D WAVEFORMS (Measured data sampled at 50 kHz) 51000 packets of 144 samples from 2017-01-13T04:01:30.435.999. Part 26/147

Processed Fri Jan 13 05:09:46 2017 by ELM ver.2012-10-06 from 001\_\_elm20170113\_040129\_\_dat00.bin



Channel 0  
mn: -1559  
mx: 859  
μ: -11.4  
σ: 37.7

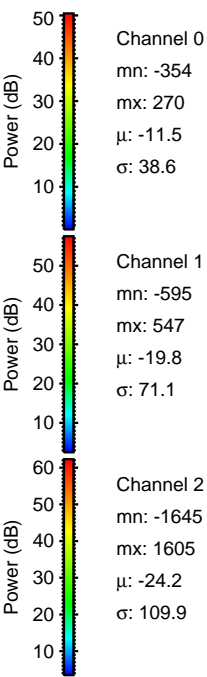
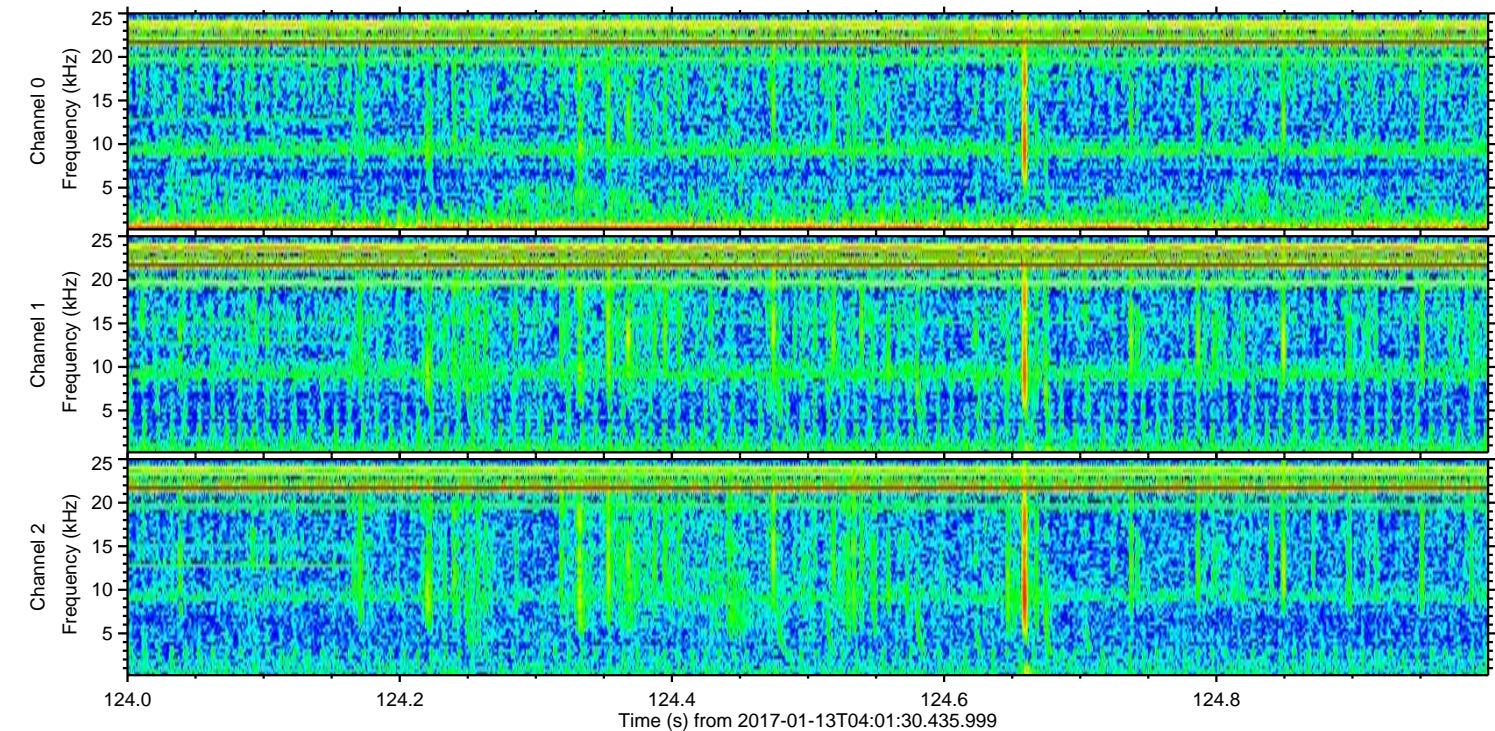
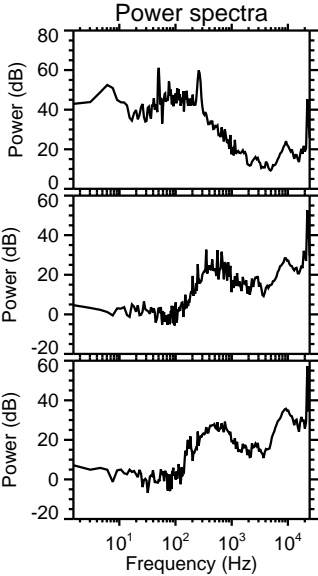
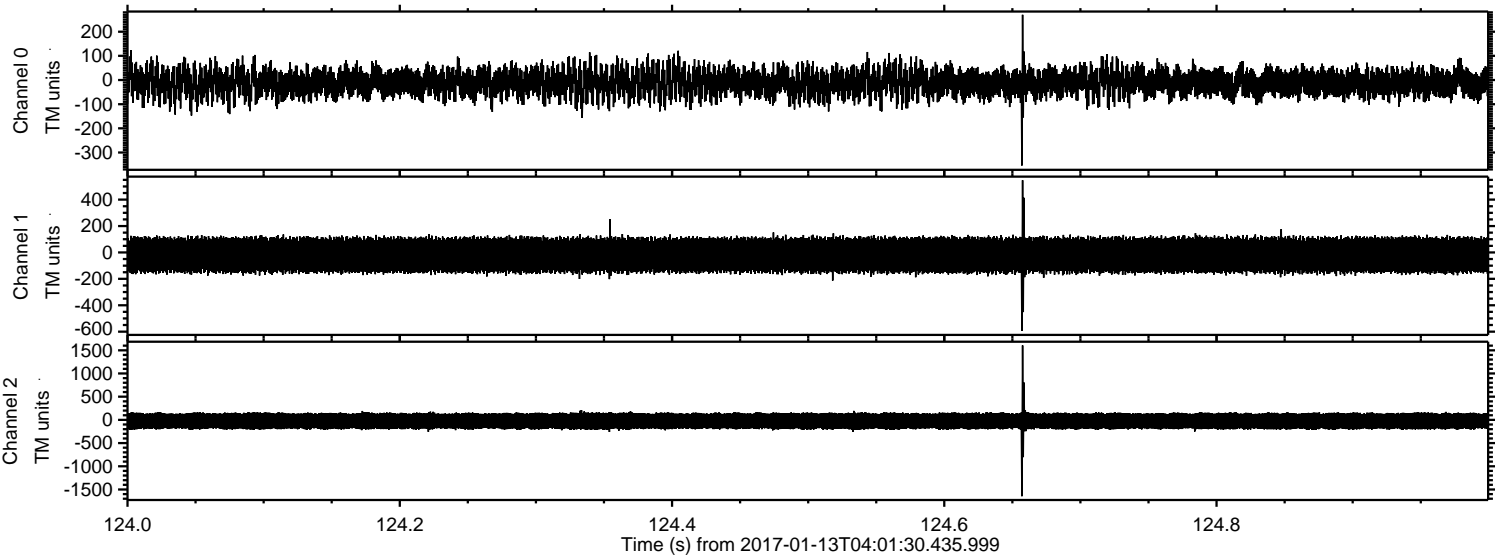
Channel 1  
mn: -1062  
mx: 1453  
μ: -19.7  
σ: 77.0

Channel 2  
mn: -4266  
mx: 4800  
μ: -24.2  
σ: 137.1



ELMAVAN 3D WAVEFORMS (Measured data sampled at 50 kHz) 51000 packets of 144 samples from 2017-01-13T04:01:30.435.999. Part 125/147

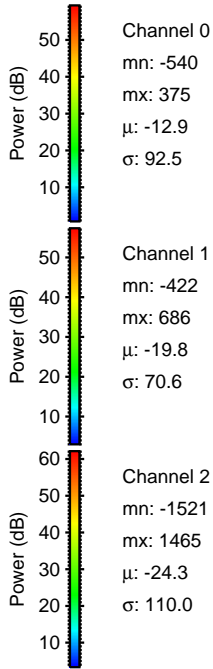
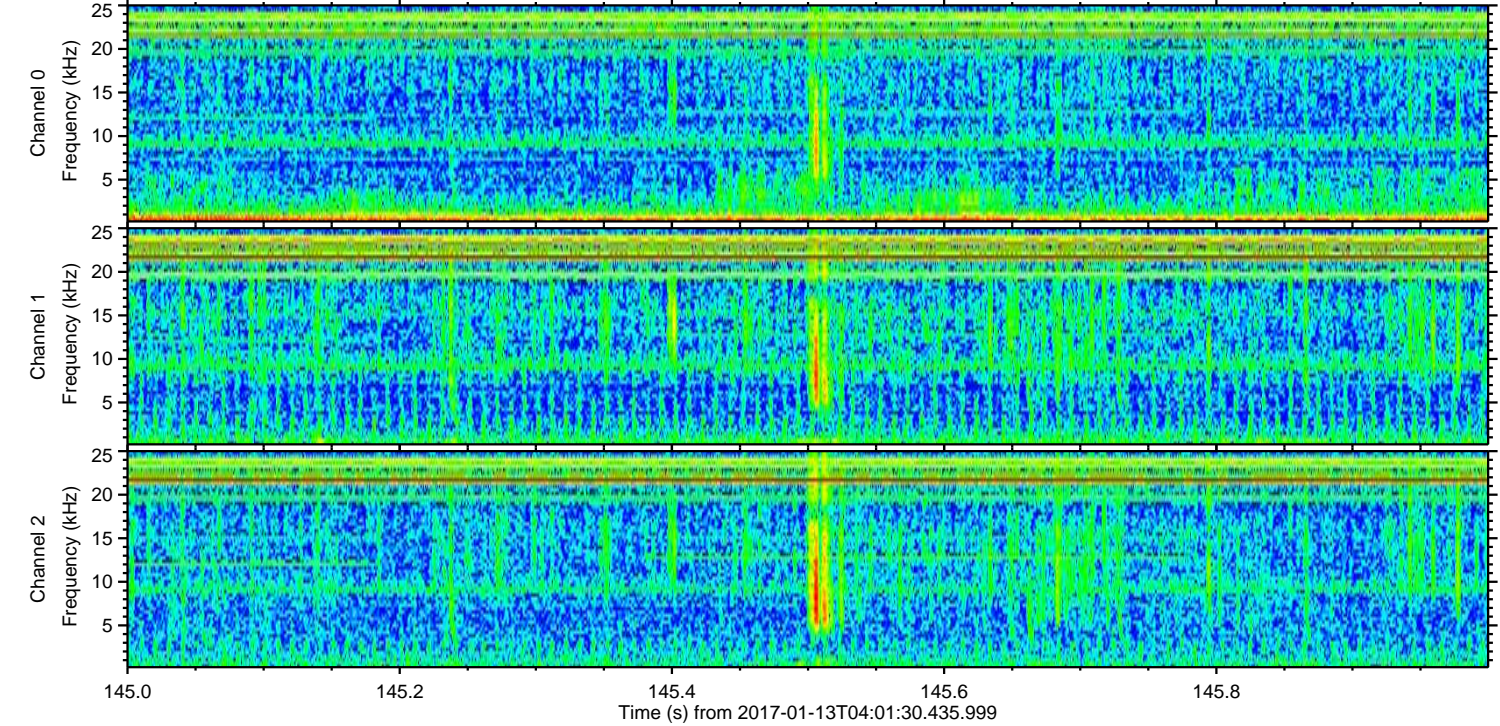
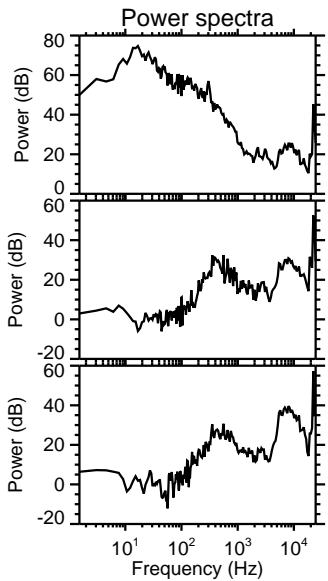
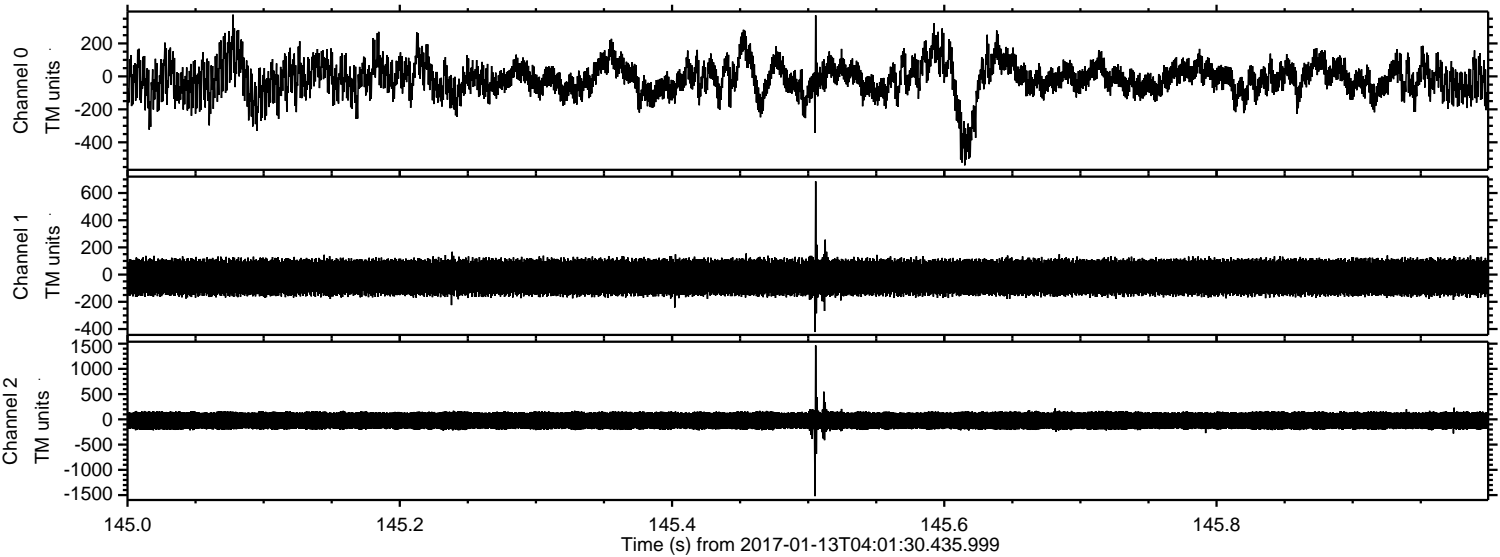
Processed Fri Jan 13 05:09:47 2017 by ELM ver.2012-10-06 from 001\_\_elm20170113\_040129\_\_dat00.bin





ELMAVAN 3D WAVEFORMS (Measured data sampled at 50 kHz) 51000 packets of 144 samples from 2017-01-13T04:01:30.435.999. Part 146/147

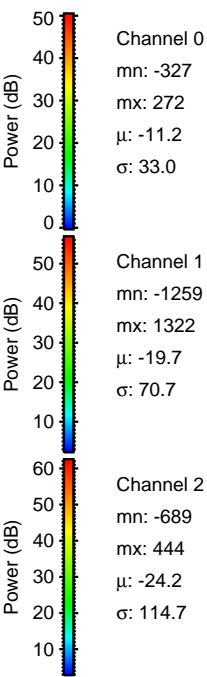
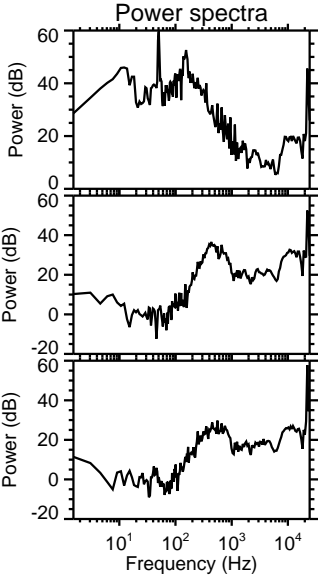
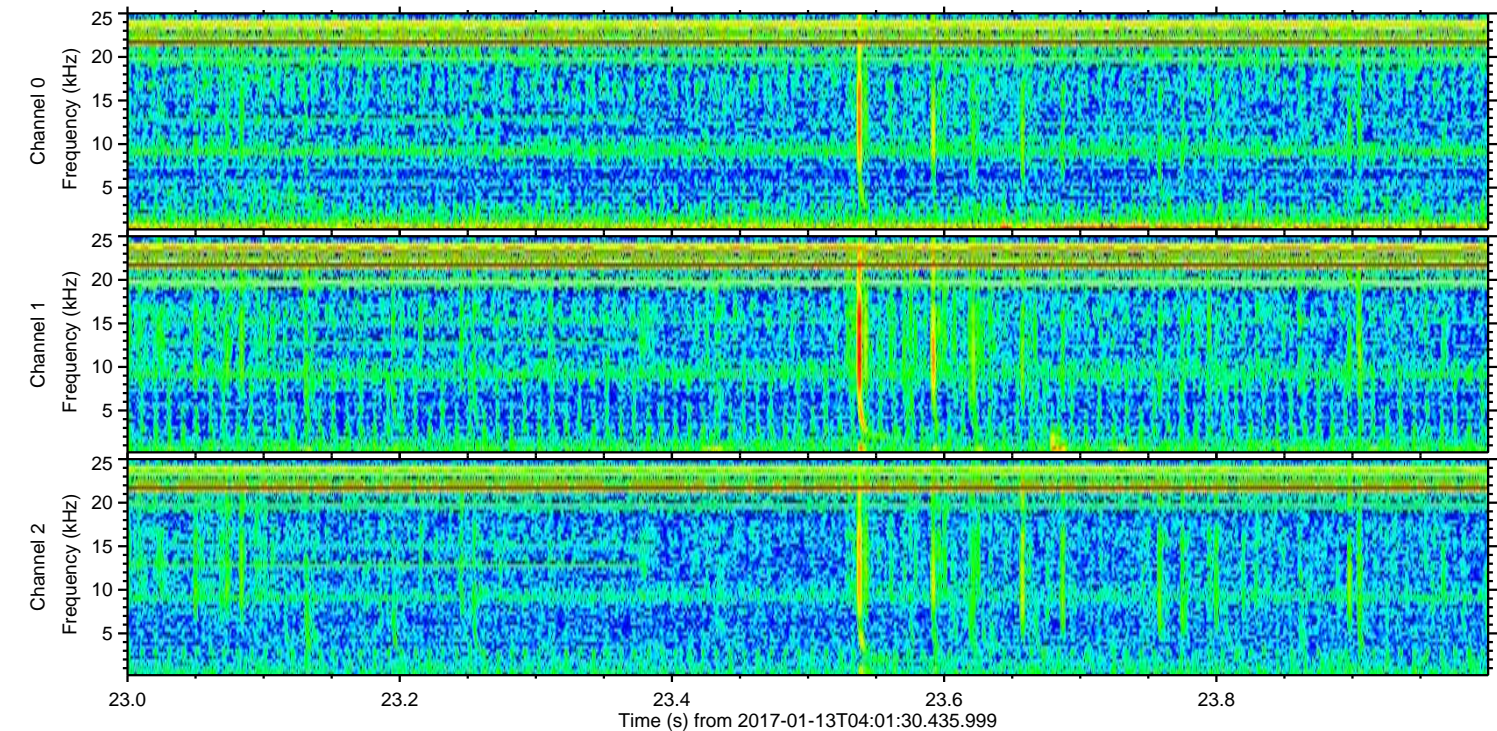
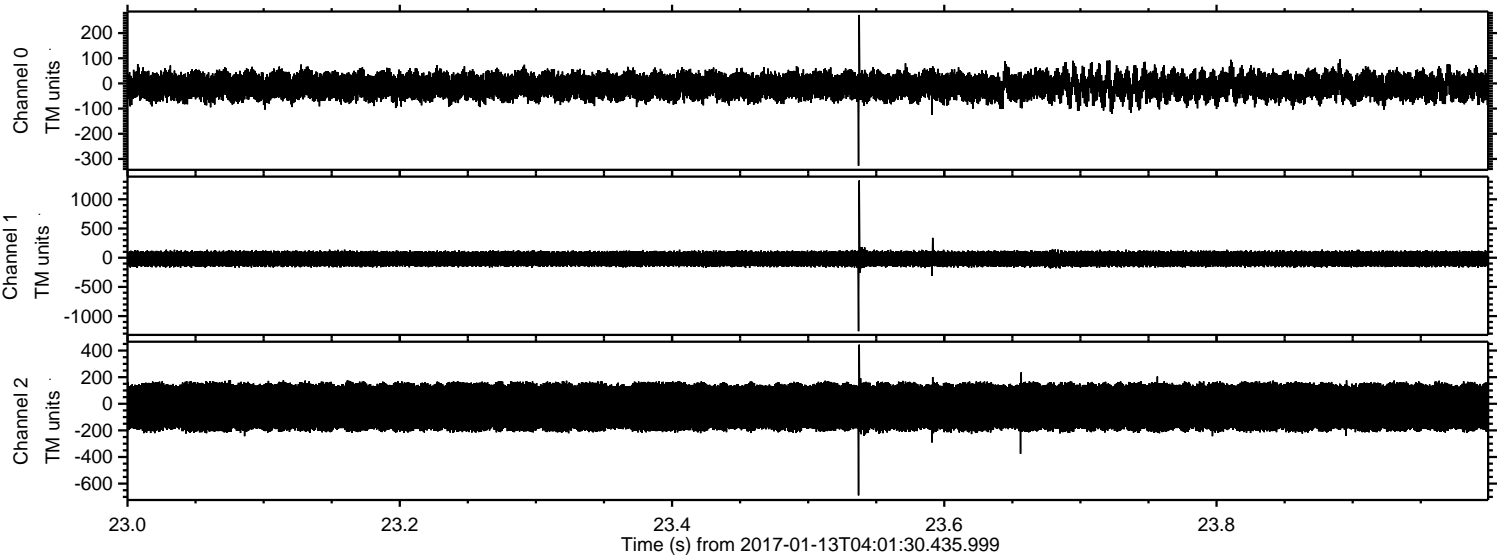
Processed Fri Jan 13 05:09:48 2017 by ELM ver.2012-10-06 from 001\_\_elm20170113\_040129\_\_dat00.bin





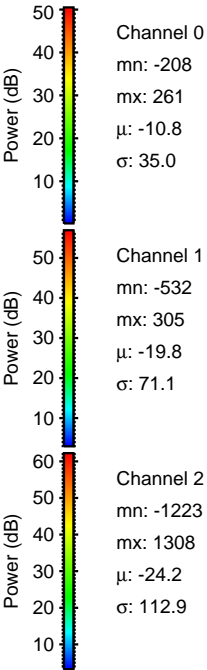
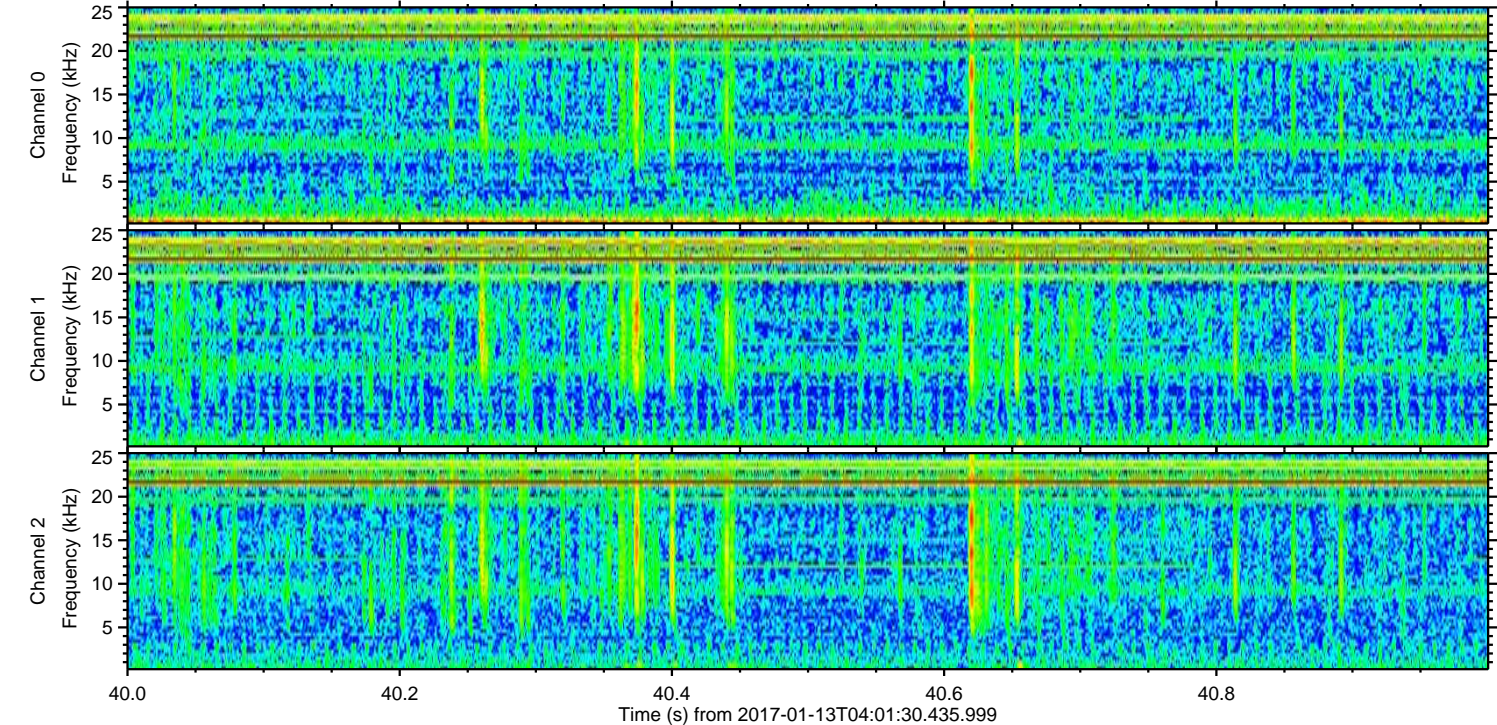
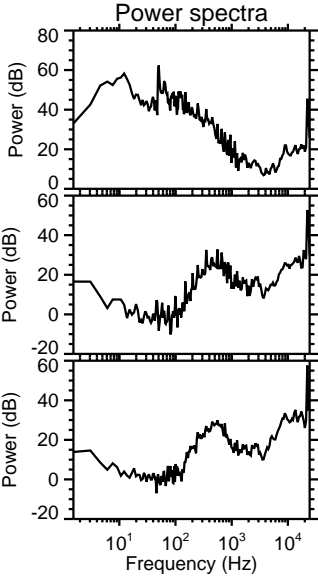
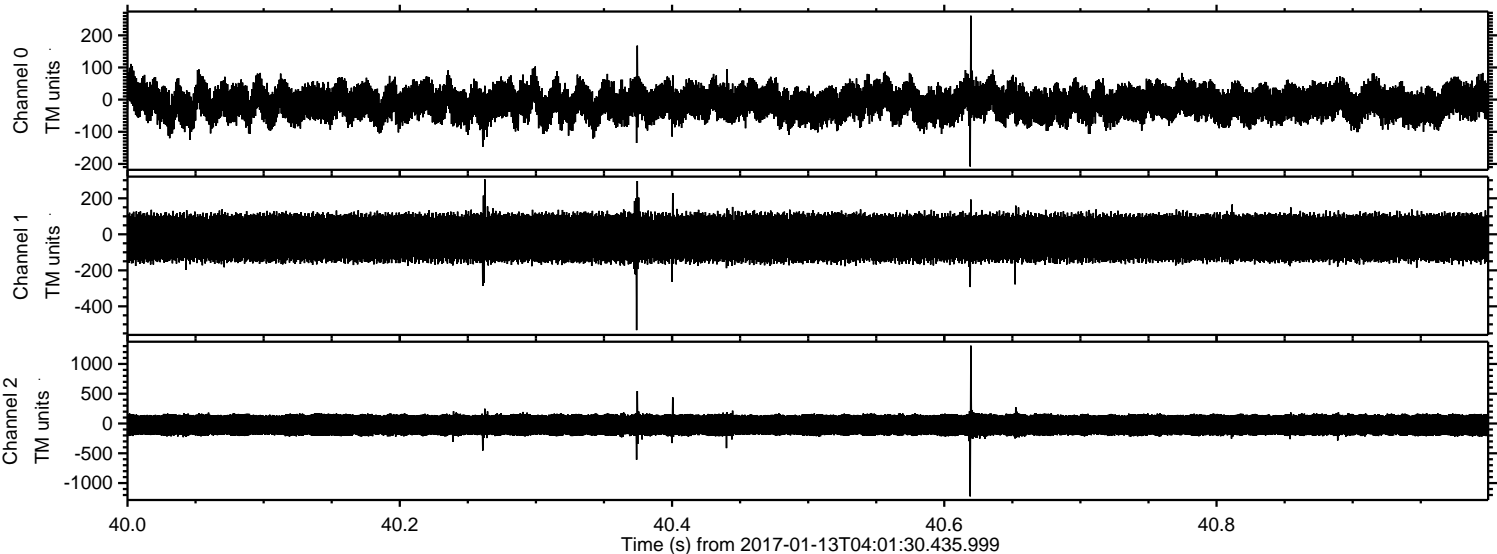
ELMAVAN 3D WAVEFORMS (Measured data sampled at 50 kHz) 51000 packets of 144 samples from 2017-01-13T04:01:30.435.999. Part 24/147

Processed Fri Jan 13 05:09:49 2017 by ELM ver.2012-10-06 from 001\_\_elm20170113\_040129\_\_dat00.bin





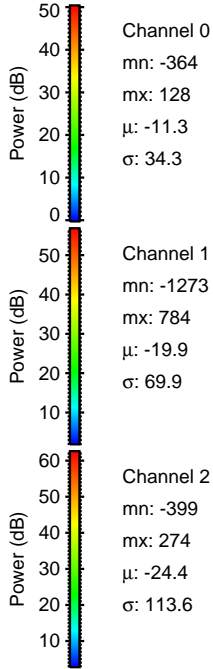
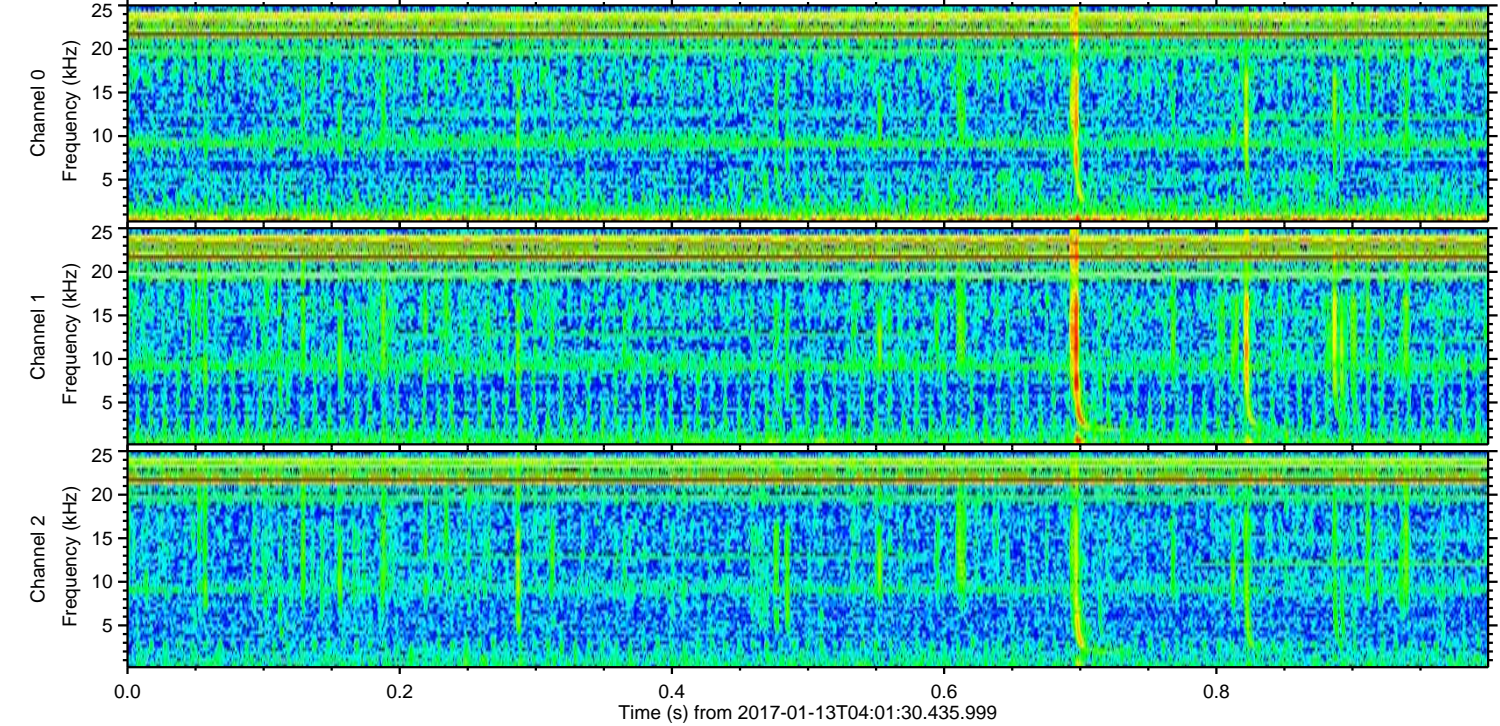
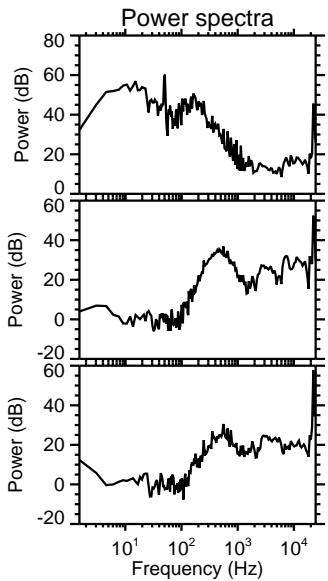
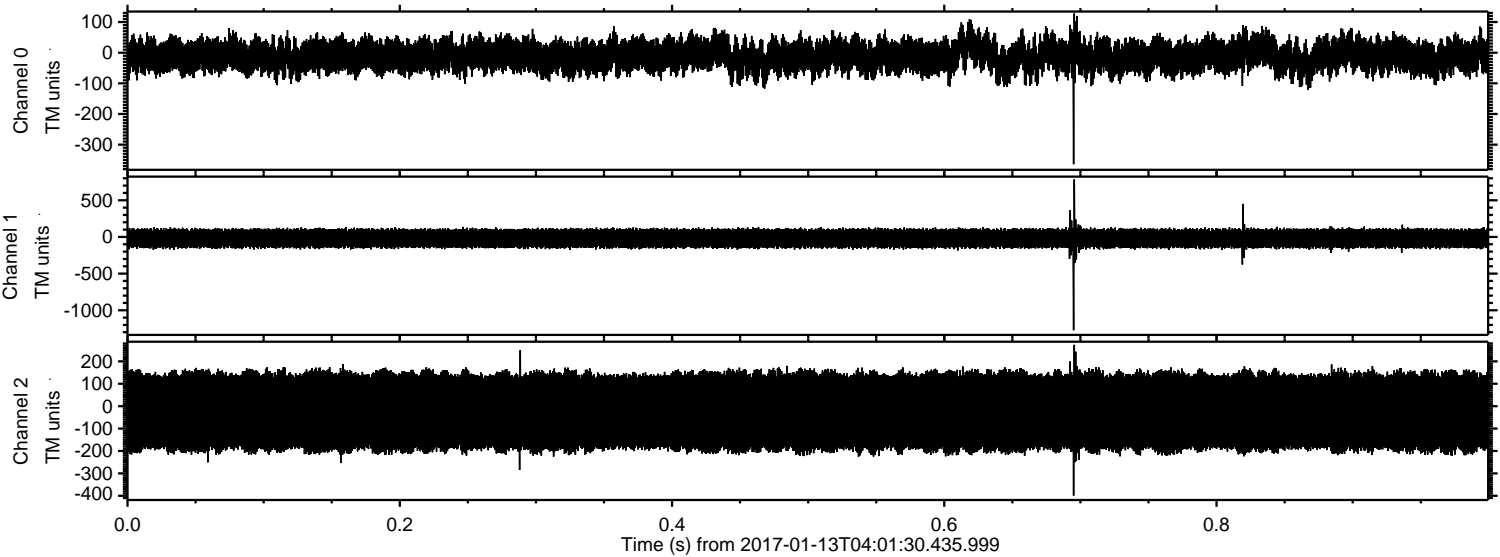
Processed Fri Jan 13 05:09:50 2017 by ELM ver.2012-10-06 from 001\_\_elm20170113\_040129\_\_dat00.bin





ELMAVAN 3D WAVEFORMS (Measured data sampled at 50 kHz) 51000 packets of 144 samples from 2017-01-13T04:01:30.435.999. Part 1/147

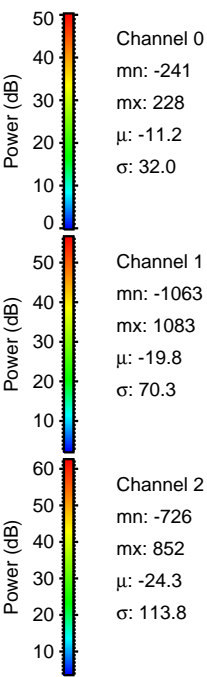
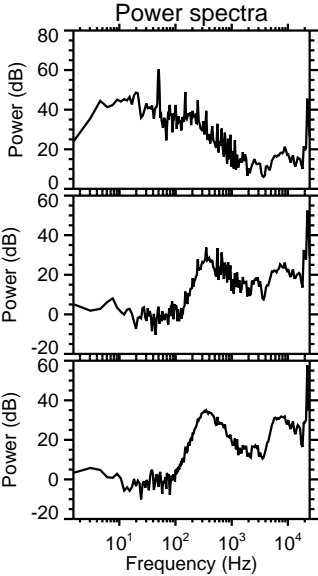
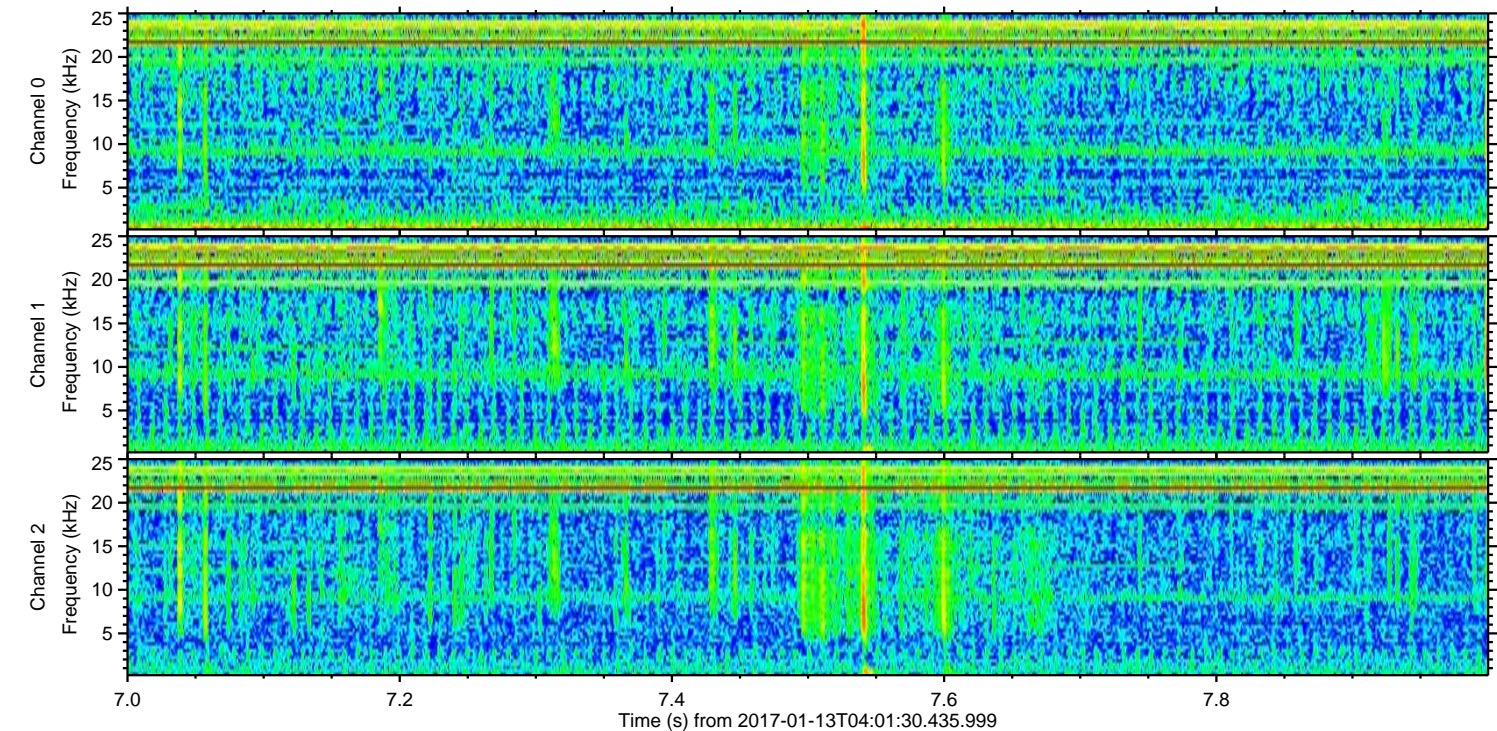
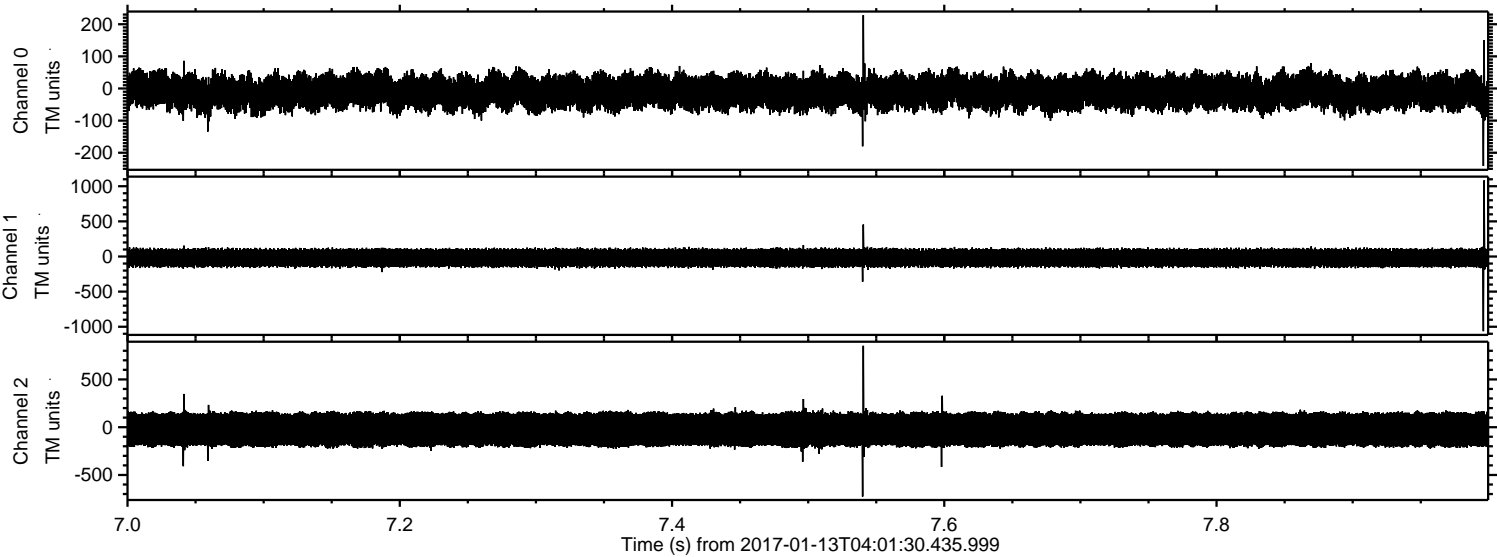
Processed Fri Jan 13 05:09:51 2017 by ELM ver.2012-10-06 from 001\_\_elm20170113\_040129\_\_dat00.bin





ELMAVAN 3D WAVEFORMS (Measured data sampled at 50 kHz) 51000 packets of 144 samples from 2017-01-13T04:01:30.435.999. Part 8/147

Processed Fri Jan 13 05:09:52 2017 by ELM ver.2012-10-06 from 001\_\_elm20170113\_040129\_\_dat00.bin



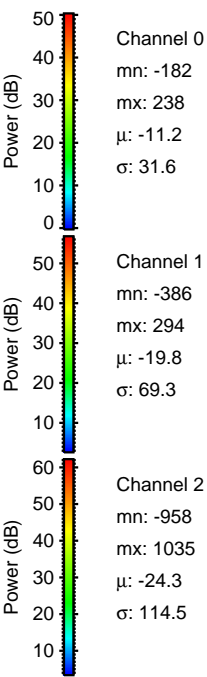
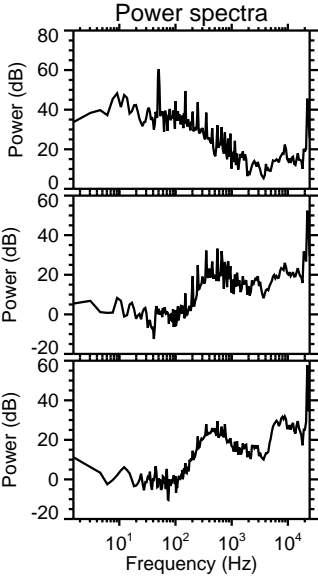
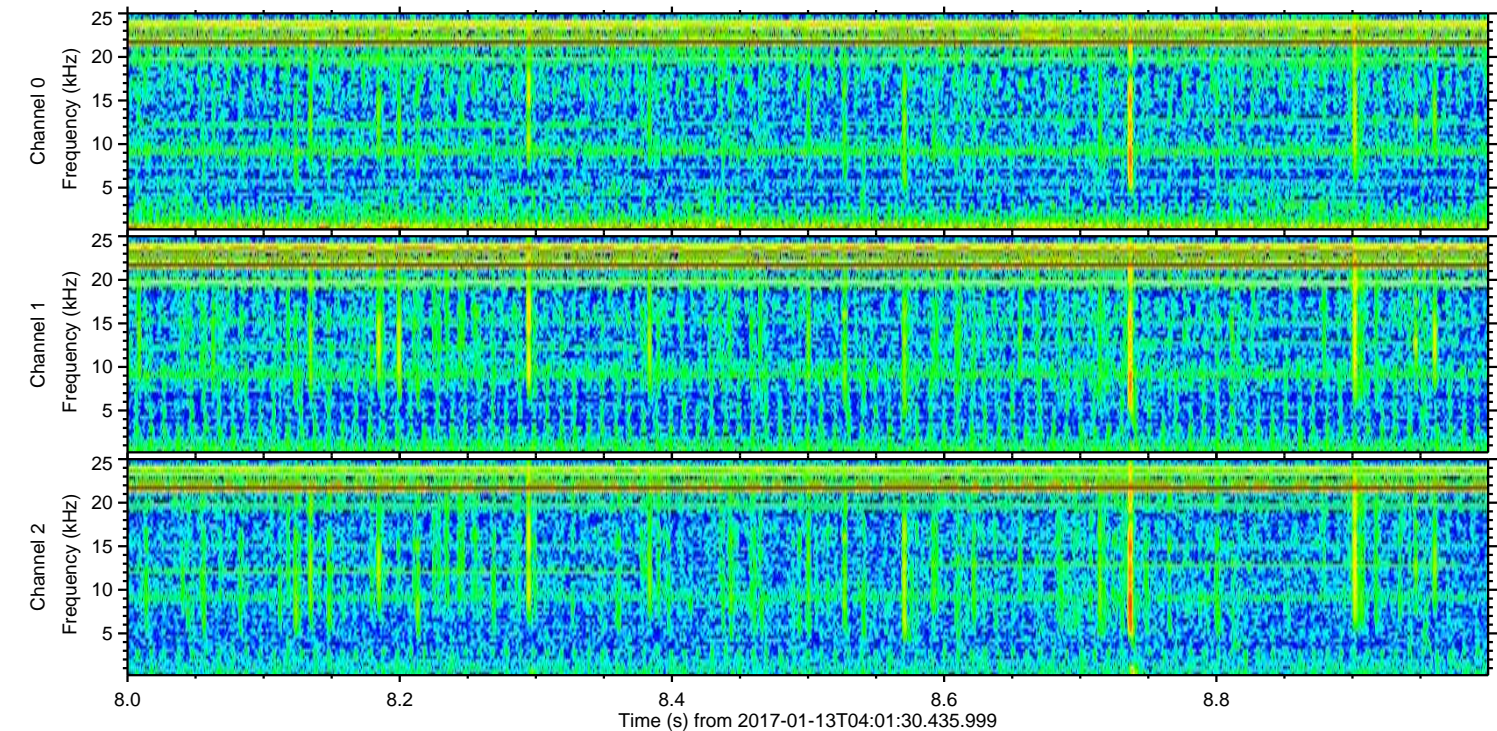
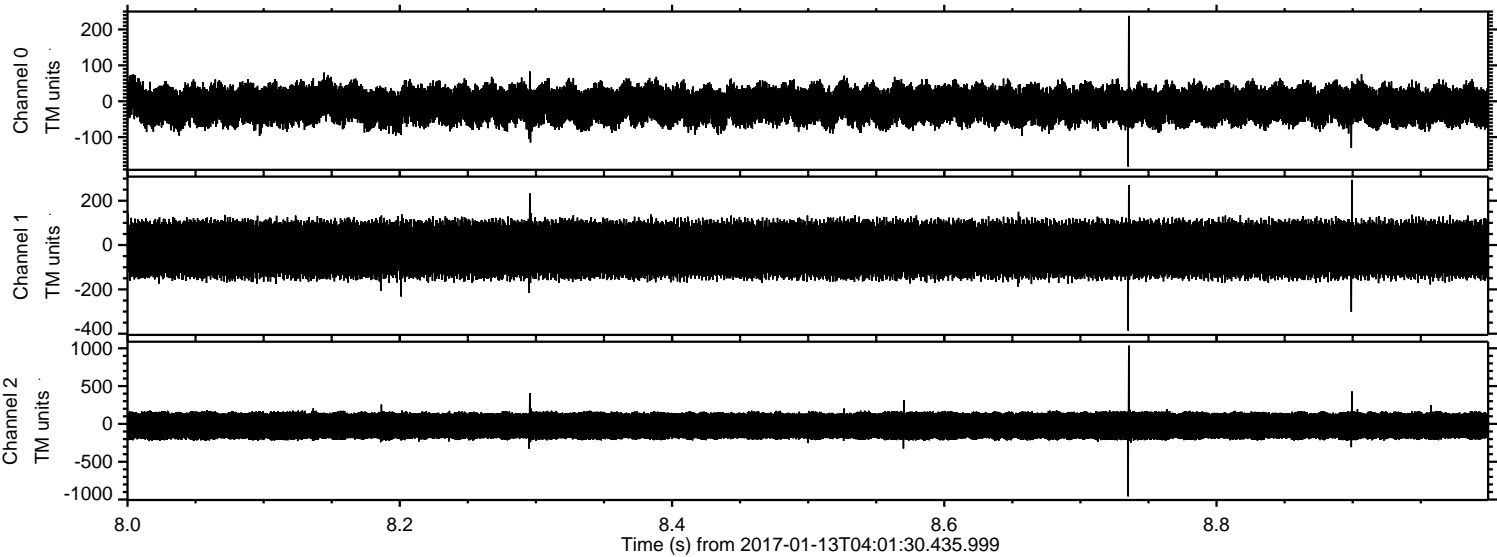
Channel 0  
mn: -241  
mx: 228  
 $\mu$ : -11.2  
 $\sigma$ : 32.0

Channel 1  
mn: -1063  
mx: 1083  
 $\mu$ : -19.8  
 $\sigma$ : 70.3

Channel 2  
mn: -726  
mx: 852  
 $\mu$ : -24.3  
 $\sigma$ : 113.8

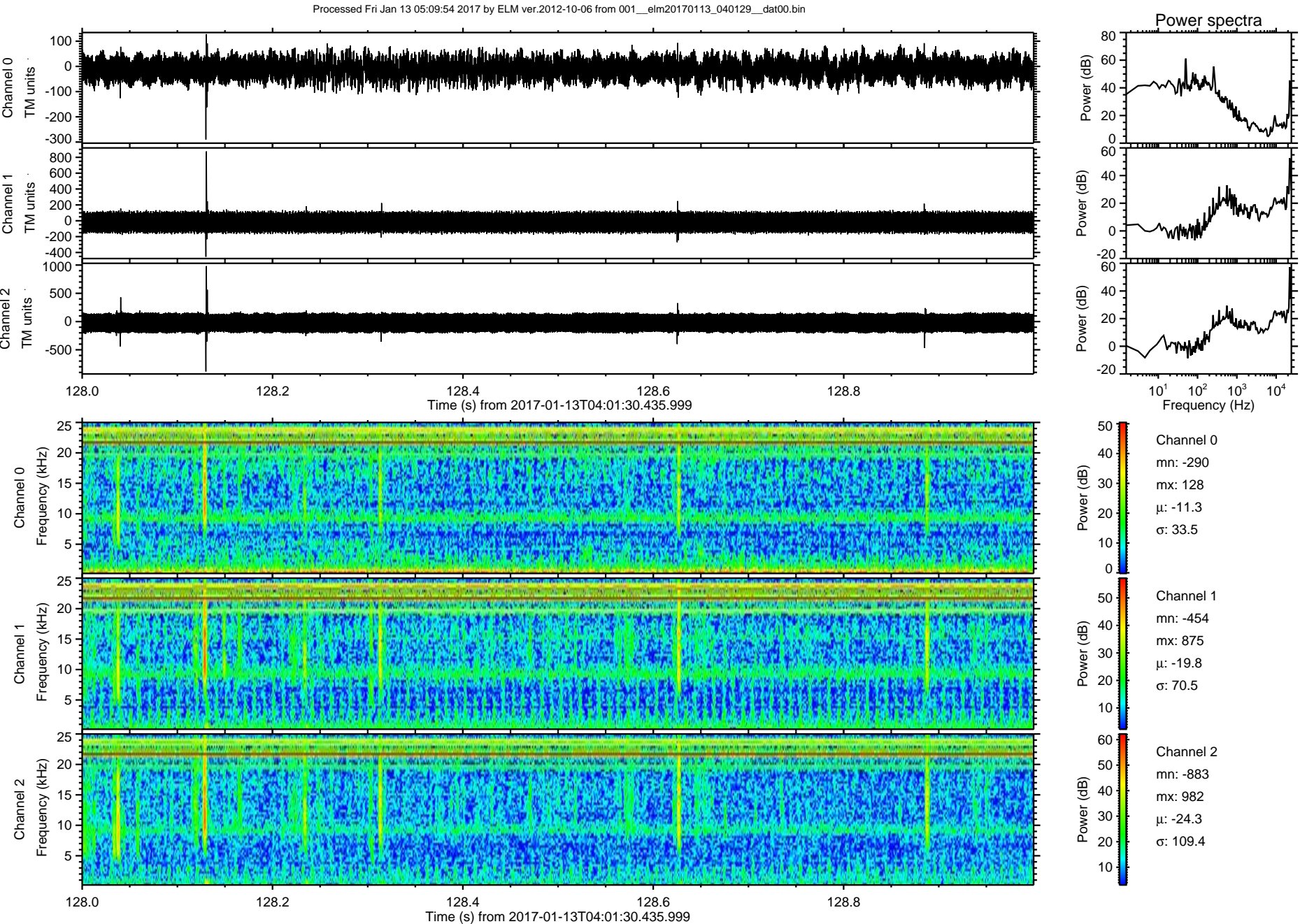


Processed Fri Jan 13 05:09:53 2017 by ELM ver.2012-10-06 from 001\_\_elm20170113\_040129\_\_dat00.bin





ELMAVAN 3D WAVEFORMS (Measured data sampled at 50 kHz) 51000 packets of 144 samples from 2017-01-13T04:01:30.435.999. Part 129/147





Processed Fri Jan 13 05:09:55 2017 by ELM ver.2012-10-06 from 001\_\_elm20170113\_040129\_\_dat00.bin

